

1/1/04
Baze Book Binding
514 W 7th St
Amarillo TX 79101-2212

3

Amarillo--33333 ZZXXXXXXXXXXXX
AMARILLO TX 791

Happy Labor Day ~ We salute the workers of our area

The Haskell Free Press

VOL. 117-NO. 35, ©AUGUST 28, 2003

"The People's Choice"

8 PAGES-ONE SECTION-50 CENTS

Football games

HASKELL
Indians OPEN
Fri., Aug. 29

PAINT CREEK
Pirates vs Loraine
Fri., Aug. 29, 6 p.m.
at Paint Creek (scrimmage)

Calendar

Early deadline

Deadline for news and advertising for the Thurs., Sept. 4 edition will be Thurs., Aug. 28 at 5 p.m. The Free Press office will be closed Mon., Sept. 1 for the Labor Day holiday.

AgScience to meet

A meeting of parents of Haskell High School AgScience students will be held Tues., Sept. 9 at 7 p.m. in the high school auditorium. Plans for the school year will be discussed. For more information call Justin Cox or Kenny Cockerell at 864-3310.

FSA elections

The nomination deadline for Farm Service Agency County Committee elections is Sept. 5. Contact your local FSA or USDA service center for nomination forms and information.

Office to be closed

The office of the Haskell Free Press will be closed Wed. afternoon, Sept. 10.

Fajita supper

The Haskell Indian Band Boosters will host a fajita supper Fri., Sept. 5 from 5 to 7 p.m. at the Haskell High School cafeteria. Tickets are \$4 for children, \$5 for adults and \$5.50 for takeouts. Tickets may be purchased from high school band members or at the administration building or band hall.

Softball meeting

The Haskell Girls Softball Association will hold a parents' meeting Thurs., Aug. 28 at 7 p.m. at Haskell City Hall. During this business meeting, a board of directors will be elected.

Society to meet

The Haskell County Historical & Genealogical Society will meet Mon., Sept. 8 in Haskell City Hall at 7 p.m. Bill Baker of the Knox County Historical Commission will present a program.

PIPS sign-up

PIPS will hold a sign-up Sept. 3 from 5:30 to 6:30 p.m. at Haskell City Hall. Cost for the program is \$60 per child. The program is for children in Kindergarten through sixth grades. For more information, call Terri Klose at 864-3801 after 5 p.m.

Breakfast for hunters

A free breakfast for hunters will be held Mon., Sept. 1 from 4:30 to 6 a.m. at the gazebo. The annual event is sponsored by the Haskell Chamber of Commerce.

Homecoming

The Haskell-Mattson-Weinert Homecoming will be held Oct. 10-11. Address changes, including new 911 addresses, may be mailed to Dorothy Hartsfield, 415 S. 1st or 405 N. Ave. H, Haskell, Texas 79521 or by email to hhessharts@cs.com. Changes may also be given by phone at 864-2069 or 864-2004.

Index

MenusPage 3
Out of the PastPage 4
ClassifiedsPages 6-7



PREPPING FOR THE SEASON—The Haskell Indians and coaches participated in a light workout and play review last Thursday in

preparation for their Aug. 22 scrimmage with the Rotan Yellowhammers. Their first game will be with Munday, Sept. 5.

Sales tax receipts remain steady

Texas Comptroller Carole Keeton Strayhorn has sent \$385.6 million in sales tax payments to Texas cities, counties, transit departments and special purpose taxing districts. Since January, local sales tax allocations are down 0.6 percent compared to the same period last year.

August sales tax rebates include local sales taxes collected in June by

businesses that report sales taxes monthly, and in April, May and June by quarterly filers, and reported to the Comptroller in July. The state's share of sales tax collected during this period was \$1.16 billion, down 4.6 percent compared to a year ago. Fiscal-year-to-date, the state has collected \$12.92 billion in sales tax, down 1.8 percent compared to the

same period in FY02.

Strayhorn sent sales tax rebates of \$263.5 million to 1,118 Texas cities. Sales tax rebates of \$21.4 million went to 121 Texas counties.

Haskell County had a 3.88 percent increase for August, 2003 of \$33,068.22 in comparison to \$31,831.88 for August 2002. 2003 payments to date of \$203,058.30 reflect a 8.70 percent decrease over 2002 payments to date of \$222,413.39.

The City of Haskell had a 3.60 percent increase for August, 2003 of \$29,920.88 in comparison to \$28,880.78 for August, 2002. 2003 payments to date of \$186,296.90 reflect a 9.66 percent decrease over 2002 payments to date of \$206,235.59.

The City of O'Brien had a 12.02 percent decrease for August, 2003 of \$95.99 in comparison to \$109.11 for

August, 2002. 2003 payments to date of \$1,031.35 reflect a 66.24 percent increase over 2002 payments to date of \$620.38.

The City of Rochester had a 0.33 percent decrease for August, 2003 of \$777.67 in comparison to \$780.32 for August, 2002. 2003 payments to date of \$4,545.51 reflect a 0.96 percent increase over 2002 payments to date of \$4,502.04.

The City of Rule had a 10.40 percent increase for August, 2003 of \$2,056.80 in comparison to \$1,862.93 for August, 2002. 2003 payments to date of \$10,103.26 reflect a 3.25 percent increase over 2002 payments to date of \$9,784.31.

The City of Weinert had a 9.12 percent increase for August, 2003 of \$1,081.28 reflect a 14.93 percent decrease over 2002 payments to date of \$1,271.07.

Fall Fest set Sept. 20

A Fall Fest on the Square in Haskell, is being planned for Sat., Sept. 20, from 6:00 to 10 p.m., by several churches in Haskell County that are joining together to bring an evening of live gospel music and family activities.

Singing groups coming for the event include Desert Reign of Seymour, The Batey's of Cedar Hill and The Uprising of North Richland Hills.

In addition to the live gospel music playing throughout the entire evening, booths of all types and varieties will be set up around the square, such as foods, crafts and game booths. Also, a cake walk is planned, and anyone wishing to bake and donate a cake will be appreciated.

Organizers would like for anyone or group interested in being a part of the event to set up a booth or table during the Fall Fest. The fee for renting a booth or table space is \$10.00. The proceeds from the booth space fees will be used to help fund the event. All earnings made from the booth or table will go to the individual booth owner.

Anyone having questions or interested in reserving a booth or table space should contact the Fall Fest Coordinator, Pastor James Rincker at 940-864-5438 or 864-3763, no later than Sunday, Sept. 7. Anyone calling after that date cannot be assured of a reserved space.

Also, donations will be appreciated and accepted from anyone just wishing to help fund this community event.

DPS troopers to be out

The Texas Department of Public Safety will have all available troopers on the roadways during the upcoming Labor Day weekend targeting speeders, seat belt violators and drunk drivers.

DPS, along with law enforcement agencies throughout the state, will increase patrols from Fri., Aug. 29 through Mon., Sept. 1 in an effort to cut down on highway deaths and injuries.

Last year, DPS issued 26,577 citations during the Labor Day holiday, which is more than three and a half times the number of a non-holiday weekend. This includes 1,297 alcohol-related citations or arrests.

"Labor Day tends to be a holiday with a large number of DWI fatalities," said DPS Director Col. Thomas A. Davis Jr. "Because Labor Day is traditionally the last weekend of the summer, more people are out celebrating, creating potentially dangerous situations on our roadways."

A new state law, effective Sept. 1, makes driving while intoxicated with a passenger younger than 15 a state jail felony, punishable by a maximum of two years in jail and a \$10,000 fine. Another new law will result in a \$3,000 surcharge (paid over three years) if an offender is convicted of driving while intoxicated.

continued on page 8

Early voting starts today

The special election to adopt or reject the proposed Constitutional Amendments as submitted by the 78th Legislature, Regular Session, State of Texas, will be held Sat., Sept. 13.

Beginning Thurs., Aug. 28, early voting ballots may be cast by registered voters at the Haskell County Clerk's Office in the Courthouse from 8:00 a.m. to 12:00 p.m., and 1:00 p.m. to 5:00 p.m., Monday through Thursday. On Friday, the office closes at 4:30 p.m. Early voting will end Sept. 9.

County polling places for the Sept. 13 election will be as follows:

- Box 1, Catholic Church, N. 16th St., Haskell
- Box 2, Assembly of God Church, N. Ave. E, Haskell
- Box 3, Extension Building, S. Ave. D., Haskell
- Box 4, Experienced Citizens Center, S. 1st St., Haskell
- Box 5, High School Gym, Rule
- Box 6, Fire Department, Rochester
- Box 7, City Hall, O'Brien
- Box 8, Weinert School Building
- Box 9, School Library, Paint Creek
- Box 10, Community Room, Sagerton

Early childhood to register

Early Childhood screening and registration for the 2003-2004 school year will be held Tues., Sept. 2 and Fri., Sept. 5 at Haskell Elementary School.

The screening identifies children ages 3-5 that may be developmentally delayed in any way. If you feel your child may be delayed in learning, speech and/or emotional skills, please call the elementary office at 864-2654 to set up a time for your child to be screened.

Bring your child's birth certificate, social security card and immunization record with you to the screening and registration.

If your child turns 3 years old during the 2003-2004 school year, please call the elementary office for more information about Early Childhood.



SPECIAL CARD HOLDER—Haskell County Librarian, Joan Strickland, right, hands library patron, Dayna Winterstein of Haskell, the 1000th card issued by the library since receiving a Tocker Foundation grant in Oct. 1999, for funding of the efficient plastic cards which make tracking of books easier, and speeds up the cataloging program. The milestone card was issued on Wed., Aug. 20.

FOR NEWS ITEMS OR TO SUBSCRIBE, CALL 864-2686

The Lumberyard

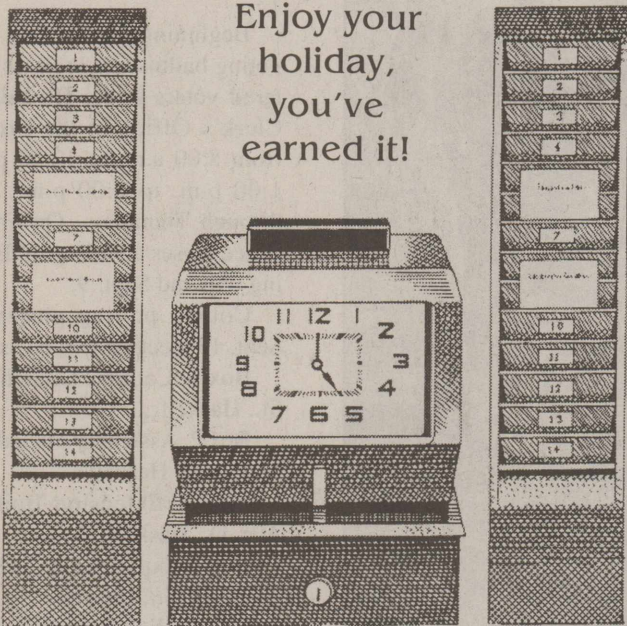
Been putting off replacing your roof until the end of summer? It's here! Come see us or send your roofing contractor to "The Lumberyard." We have the best prices in the area on shingles. Many different types, colors and brands available. We proudly serve professional contractors and do-it-yourselfers!

Hours: M-F 7:30 a.m. to 5 p.m.
Sat. 8 a.m. til noon

105 N. 1st Haskell 864-3552

IT'S TIME TO SALUTE ALL WORKING MEN AND WOMEN

America's success depends on your dedication and ingenuity. On Labor Day we take pause to thank you, though every day gives us reason to be grateful.



Enjoy your holiday, you've earned it!

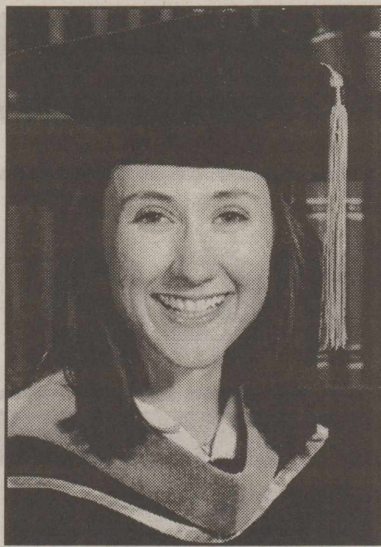
First National Bank Haskell

200 South Avenue E Haskell, Texas 79521

FDIC 940-864-8555

Other Convenient Locations to Serve You:
First National Bank Munday - Stamford - Rochester

Students in the News



AMANDA HOUGH

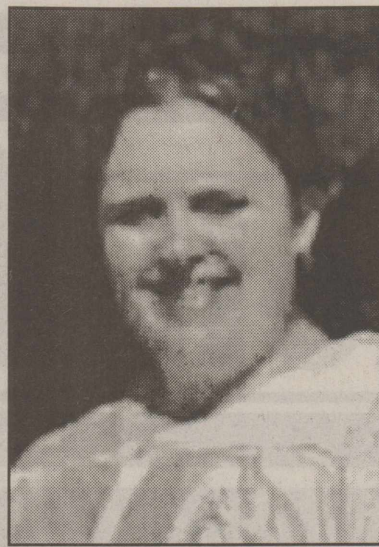
Amanda Kay Hough, daughter of former Haskell resident, Margaret Ann Walls and granddaughter of the late Virgil and Margaret Walls of Haskell, recently graduated from Texas Tech University with a B. A. degree in Visual Studies with an all-level (K-12) teacher certification in art.

Hough's parents are Margaret and Larry Jordan of Ransom Canyon and Clay and Char Hough of Denver City.

A graduate of Roosevelt High School, Lubbock, she attended South Plains College two years, where she was on the Texan Cheerleading Squad, received the Clifford Jones Academic Scholar Award, was a member of Phi Theta Kappa Honor Society and received an Associate of Arts degree.

At Texas Tech University she was a Texas Tech Spirit Squad Cheerleader and member of Phi Theta Kappa.

She will teach high school art in Ralls ISD.



MANDI HUNT

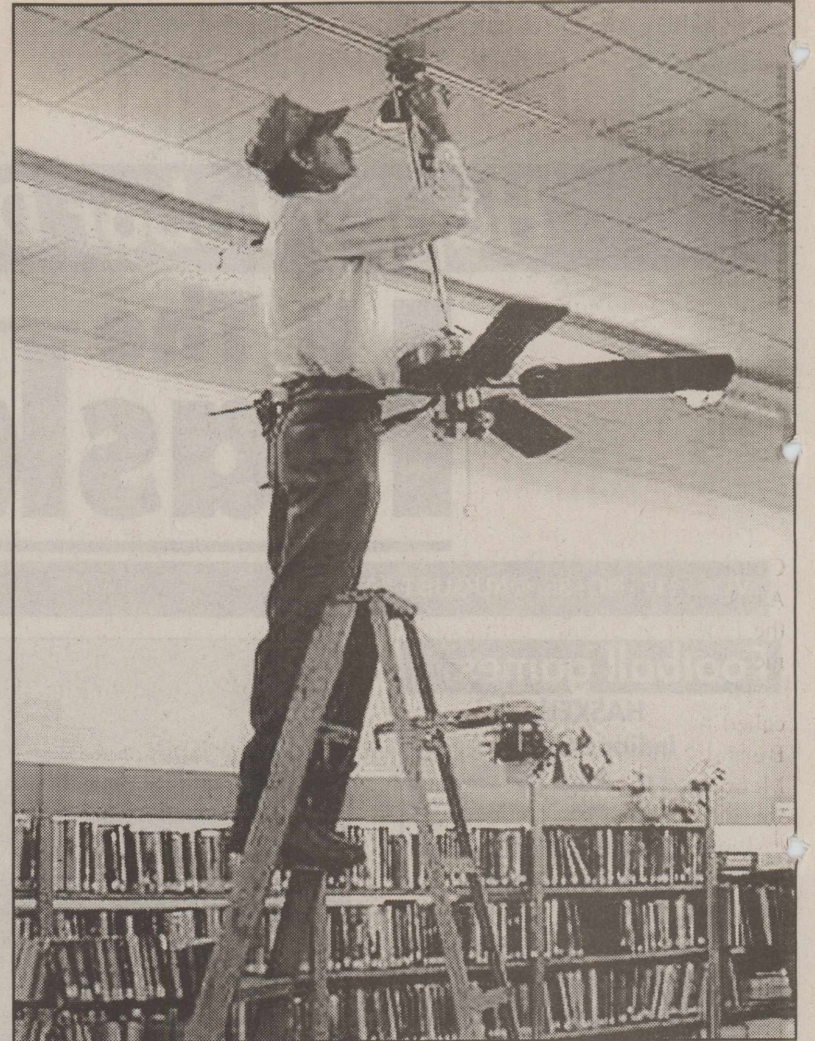
Mandi Hunt of Sagerton was among nine nursing students graduating from Western Texas College in ceremonies Aug. 21, at the First United Methodist Church in Snyder. Following the completion of the 12-month cycle of instruction, she is now eligible to take her state board examination to become a licensed vocational nurse.

Food choices important

Maintaining good blood glucose levels should not be the only concern for people with diabetes, says Dr. Larissa Aviles-Santa, assistant professor of internal medicine at UT Southwestern Medical Center at Dallas.

"While individuals with diabetes may control blood glucose levels with medication, if they are overweight they will still have chronic health problems that will affect the cardiovascular system," Dr. Aviles-Santa says. "Obesity is a major health concern and contributes to other debilitating illnesses including high blood pressure and heart disease."

She suggests diabetes patients be more conscious of food choices and exercise regularly. "Reading labels, selecting healthier foods and walking are a few steps that you can take to maintain a healthy weight."



LIBRARY 'LOOKING COOL'—The Haskell County Library recently took on a whole new 'air' with the addition of ten ceiling fans installed by Ricky Tidrow, working for County Commissioner Tiffen Mayfield. The fans were donated by the Square Dance Club.

Cattle Market Report

The market at the Haskell Livestock Auction was on a run of 541 head of cattle at its sale on Mon., Aug. 25, according to Gary Tate, reporter. 62 sellers and 35 buyers were present.

Packers \$1 to \$2 higher, feeders steady to \$2 higher, stockers steady. No sale Sept. 1 due to Labor Day holiday.

Jackpot results

The Stamford Jr. Sheriff's Posse met Aug. 23. The jackpot results are as follows:

5 and under: Jay Jenson of Avoca, 1st place ribbon; 6 to 8 years old: Tom Spikes of Aspermont, 1st place ribbon; 13 to 15 years old: Harvey Terrell of Stamford, 1st place ribbon. The next playday is Sat., Sept. 13.

Cows: fat, .40-.47; cutters, .36-.48; canners, .28-.38.

Bulls: bologna, .52-.59; feeders, .68-.86; utility, .48-.55.

Steers: medium and large frame No. 1 200-300 lbs., 1.15-1.60; 300-400 lbs., 1.00-1.20; 400-500 lbs., .95-1.12; 500-600 lbs., .87-1.04; 600-700 lbs., .84-.94; 700-800 lbs., .80-.90; 800-up lbs., .75-.85.

Heifers: medium and large frame No. 1 200-300 lbs., 1.05-1.40; 300-400 lbs., .95-1.10; 400-500 lbs., .88-1.00; 500-600 lbs., .82-.95; 600-up lbs., .64-.90.

Bred heifers medium frame, 550-675.

Bred Cows: young to middle aged, 650-725; aged or small, 450-600.

Cows with calves: medium frame No. 1 young and middle aged, 775-1010; aged or small, 625-800.

NOTICE OF PUBLIC MEETING TO DISCUSS BUDGET AND PROPOSED TAX RATE

The Paint Creek ISD will hold a public meeting at 7:00 p.m. September 8, 2003 in the Paint Creek ISD Lounge.

The purpose of this meeting is to discuss the school district's budget that will determine the tax rate that will be adopted. Public participation in the discussion is invited.

The tax rate that is ultimately adopted at this meeting or at a separate meeting at a later date may not exceed the proposed rate shown below unless the district publishes a revised notice containing the same information and comparisons set out below and holds another public meeting to discuss the revised notice.

Comparison of Proposed Rates with Last Year's Rates

	Maintenance & Operations	Interest & Sinking Fund *	Total	Local Revenue Per Student	State Revenue Per Student
Last Year's Rate	\$1.45	\$0.00 *	\$1.45	\$4,706	\$5,141
Rate to Maintain Same Level of Maintenance & Operations Revenue & Pay Debt Service	\$1.51	\$0.00 *	\$1.51	\$4,677	\$5,170
Proposed Rate	\$1.50	\$0.00 *	\$1.50	\$4,560	\$5,061

*The Interest & Sinking Fund tax revenue is used to pay for bonded indebtedness on construction, equipment, or both. The bonds, and the tax rate necessary to pay those bonds, were approved by the voters of this district.

Comparison of Proposed Levy with Last Year's Levy on Average Residence

	Last Year	This Year
Average Market Value of Residences	\$20,614	\$21,452
Average Taxable Value of Residences	\$5,614	\$6,452
Last Year's Rate Versus Proposed Rate per \$100 Value	\$1.45	\$1.50
Taxes Due on Average Residence	\$81.40	\$96.78
Increase (Decrease) in Taxes		\$15.38

Under state law, the dollar amount of school taxes imposed on the residence homestead of a person 65 years of age or older or of the surviving spouse of such a person, if the surviving spouse was 55 years of age or older when the person died, may not be increased above the amount paid in the first year after the person turned 65, regardless of changes in tax rate or property value.

Notice of Rollback Rate: The highest tax rate the district can adopt before requiring voter approval at an election is \$1.6467. This election will be automatically held if the district adopts a rate in excess of the rollback rate of \$1.6467.

Fund Balances

The following estimated balances will remain at the end of the current fiscal year and are not encumbered with or by a corresponding debt obligation, less estimated funds necessary for operating the district before receipt of the first state aid payment.

Maintenance and Operations Fund Balance(s)	\$280,860
Interest & Sinking Fund Balance(s)	\$0.00

Didn't Get What You Paid For?

You will... at Texas Cellular.

This remind you of you? Thought you got a "great deal" on cellular service? Too good to be true? Well at Texas Cellular, we just had a great sale, just like our competitors. We aren't always the cheapest. We didn't give away the most free stuff, either. So, what was so great about our sale? Service After the Sale...that's what! At Texas Cellular, you'll always get the best value at the right price!

We Take Care Of Our Neighbors.

TEXAS CELLULAR
A service of Taylor Telecommunications, Inc.
9796 N. I-20 • Merkel, TX • 79536
325-928-3200 • 800-424-7182

Safety—Your most important call
The Wireless Industry Reminds You To Use Your Phone Safely When Driving

See your friendly Texas Cellular agent today.

- IN HASKELL:** Haskell Tire & Appliance
206 S. Main Street
940-864-3269
 - IN ALBANY:** Albany Communications
500 S. Main Street
325-762-2333
 - IN SWEETWATER:** 1113 Lamar
325-235-2853
Sierra Communications
1901 Bristol
325-235-4377
- Some restrictions apply. See agent for details.

EEA Club holds last meeting of the club year

Fifteen members of the Haskell County Extension Education Association (EEA), met Aug. 14 in the Extension Kitchen for the last meeting of their club year.

Flossie Medford, chairman-elect, called the meeting to order. Joetta Burnett gave the recreation. Members answered roll call with "What's for Dinner?"

Papers on Three Common Concerns of Aging Skin were distributed to the members.

As members said "Good-bye" to Extension Agent Lou Gilly, who is retiring Aug. 31, she read the following poem:

"When I retire, I shall wear a red hat with a purple boa that doesn't go with anything and doesn't suit me.

"And I shall not wear panty hose unless absolutely necessary; this way I can save my pension for important

things like manicures, pedicures, and long lunches with my friends.

"I shall not get up in the mornings until I wake up; this means no alarm clocks ringing at 5 a.m. and no friends and family calling before 7:00 a.m.

"I shall not hurry to get dressed in the morning, and I look forward to enjoying a relaxing cup of coffee with my sweet husband.

"I shall be foot-loose and fancy free, and begin enjoying all those things I have thought I never had the time to do.

"So, maybe I ought to practice a little now, so that people who know me are not too shocked and surprised when I am officially retired and start to wear my red hat and purple boa."

The EEA will start a new club year in September.



MR. AND MRS. TRAVIS SANDERS

Sanders celebrate 55th anniversary

Mr. and Mrs. Travis Sanders of Coleman, who were married in Weinert in 1948, celebrated their 55th wedding anniversary, Sat., Aug. 23.

Helping them to celebrate on Saturday and attending church with them at the Concho Baptist Church on Sunday, were two of their children, Travis and Pam Sanders of Coleman and Brent and Yvonne Key of Cross Plains; grandchildren and great grandchildren, Leigh Sanders and daughter Alexis of Coleman; Shawn and Karmen Ellis, their daughter Lancy; and Jeff and Wendy Key and daughter Makayla, all of

Cross Plains. Also, attending were Travis' brothers and sisters, Andy and Marlene Sanders of Cross Plains, Jacky, Sandra and Jaclyn Sanders of Aleda; Rocky and Marsha Sanders of Abilene; B. D. and Marie Kirkland of Fort Worth; Walter and Sue Cox of Naples, and Lona Mae Phelps of Haskell.

The Sander's other son, Darrell, and his wife, Sunday Sanders and their children, Texas Marie and Phoenix Quinn, who live in Tampa, Florida, were not able to attend, but the children sent stories and pictures of themselves.

Haskell School Menu

Sept. 1-5 Breakfast

Juice and milk are served daily on the breakfast menu.

Monday: Holiday

Tuesday: Breakfast pizza

Wednesday: Cereal, graham crackers

Thursday: Apple muffins

Friday: Pigs in a blanket

Lunch

Milk and iced tea are served daily at the Secondary campus. Milk is served daily at the Elementary School. Secondary, campus: Choice

of entree or baked potato with cheese and ham.

Monday: Holiday

Tuesday: Bean and beef burrito, chips/salsa/cheese, Spanish rice, applesauce

Wednesday: Chicken fried steak/gravy, mashed potatoes, broccoli and cheese, hot roll, sliced peaches

Thursday: Enchiladas, pinto beans, garden salad, chips/salsa, cantaloupe

Friday: Cheeseburger, lettuce/tomato slices, French fries, chocolate chip bar

Paint Creek School Menu

September 1-5 Breakfast

Juice and milk are served daily.

Monday: Holiday

Tuesday: Toast or cereal

Wednesday: Pancakes

Thursday: Biscuits, sausage

Friday: Pigs in a blanket

Lunch

Milk is served daily.

Monday: Holiday

Tuesday: Sliced turkey, broccoli with cheese, cream potatoes, bread sticks, peach cobbler

Wednesday: Pepperoni or ham hot pockets, corn on the cob, green beans, mixed fruit

Thursday: BBQ on a bun, beans, pickle spears, tator tots, cake

Friday: Spaghetti with meat sauce, salad, green beans, garlic bread, applesauce

Sugar & Spice

Hair Removal

- 100% pure and natural
- Removes hair anywhere on the body
- Removes dead skin cells • Exfoliates the skin

Call for an appointment
864-5943 Amy Smith
(inside Good Times)

ECC Calendar and Menu

Mon., Sept. 1
Closed

Wed., Sept. 3
11:00 a.m. Outreach Health Services blood pressure check
Lunch—Mexican beef a roni, parslid potatoes, fresh garden salad, pinto beans, Mexican cornbread, Mexican bread pudding with lemon

sauce, milk, tea, or coffee

Fri., Sept. 5
Lunch—Meat loaf, creamy mashed potatoes, club spinach, buttered corn, green beans, garlic bread, banana pudding, milk, tea, or coffee
Announcements begin at 11:45 a.m. followed by lunch.

BUSY HANDS & FEET

Melba Lowrance, Licensed Nail Technician
701 N. Ave. E, Haskell
940-864-3536
Artificial Nails Reflexology Manicures Pedicures

Take some home tonight!

JUMBO POPCORN CHICKEN COMBO

SNACK COMBO
\$3.59
PLUS TAX

LARGE COMBO
\$4.79
PLUS TAX

NEW!
Chipotle Dipping Sauce powered by TABASCO

SONIC
America's Drive-In.

No Waiting
Call In Orders
864-8533

*Includes Large Fries or Tots and Medium Soft Drink
*Limited Time Only!

©2003 America's Drive-In Trust. ©2003 The TABASCO® marks, bottle and label designs are registered trademarks and servicemarks exclusively of McIlhenny Company, Avery Island, LA 70513. www.TABASCO.com

New!

Collegiate Items!

Texas Tech and Texas A&M

*Quilts

*Wood Boxes

*Christmas Ornaments

*Frames

*Totes and Bags

*Photo Albums

Texas Flag Items!

*Rodeo Wallets

*Drinking Glasses

*Magnetic Memo Pad

*Leather Purses

Bridal Registry

Now on Display for
Donna and Tim Weise

THE DRUG STORE

Haskell 864-2673

Sweet Expressions

Fashion Jewelry
and
Inspirational Crosses

Inside Henderson Book Store
3 Ave. E • Haskell • Open Sat. 12-5
or Call 864-5888 anytime

ATTENTION HUNTERS!

The Loft

BED & BREAKFAST

Day & Weekend Rates
Extended Stay Available

Private Apartment with Bath & Kitchen
1 Block from Sonic
1307 N. Ave. F, Haskell, TX 79521

Phone: 940-864-8161 or cell 940-256-2509
E-mail: jmburson@westex.net
Jimmy and Melissa Burson

SIDEWALK SALE

SATURDAY ONLY

\$10⁰⁰ \$20⁰⁰ \$40⁰⁰

Racks of Clothes
\$10⁰⁰ \$20⁰⁰

Rack of Shoes

SHOP INSIDE FOR
•1/2 price Shoes

•Buy 1 pair and Get 2nd pair 1/2 off

•New Fall Sportswear

by Koret, Graff, Sharon Young, DaRue and More

Personality-Slipper Shoppe

940/864-2501 • 864-3051
South Side of Square Haskell, Texas

Misty McMeans
RN, BSN

HERE'S TO YOUR HEALTH... AT HOME!

Brought to You By:

Haskell Home Health Agency

Caring at a Time of Need:
Top 10 Reasons for Choosing Home Care

What is home care?

Home care encompasses a broad spectrum of health and social services that can be delivered to recovering, disabled, or chronically ill persons in the home environment. These services include the traditional core of professional nursing and home care aide services, as well as physical therapy, occupational therapy, speech therapy and nutritional services.

Why choose home care?

1. It is delivered at home. When we are not feeling well, most of us ask to go home. When we are feeling well, we enjoy the sanctity of our residences and the joy of being with our loved ones.
2. Home care keeps families together. There is no more important social value. It is particularly important in times of illness.
3. Home care prevents or postpones institutionalization. None of us wants to be in a hospital or nursing home unless this is the only place we can obtain the care we need.
4. Home care promotes healing. There is scientific evidence that many patients heal faster at home.
5. Home care is safe.
6. Home care allows a minimum amount of freedom for the individual. A hospital, of necessity, is a regimented, regulated environment. The same is true of a nursing home. Upon admission to either, an individual surrenders a significant portion of his or her rights in the name of the common good. Such sacrifices are not required at home.
7. Home care is the most efficient form of health care. By bringing health services home, the patient does not generate board and room expenses. The patient and/or his or her family supply the food and tend to the individual's other needs. Technology has now developed to the point where almost any service that is available in a hospital can be offered at home.
8. Home care is personalized care. Home care is tailored to the needs of each individual. It is delivered on a one-to-one basis.
9. Home care is less expensive than other forms of care.
10. Home care is the preferred form of care. According to a recent study conducted by Louis Harris and Associates, Inc., the American public preferred long-term care based on home care over nursing home care by an overwhelming 79% to 14% margin.

What questions regarding home care do you have for the nurse? Send your questions to Haskell Home Health Agency, 417 S. First, Haskell, TX 79521 or call 940-864-5074 or 1-877-864-5074.

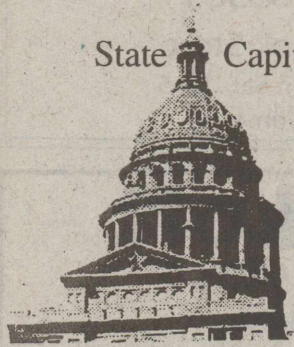
HERE'S TO YOUR HEALTH-AT HOME is brought to you by Haskell Home Health Agency providing home care services in Haskell, Knox, Stonewall, Throckmorton and Jones Counties

Home Care: Keeping Texans Proud & Independent

OPINION

TEXAS PRESS ASSOCIATION

State Capital



HIGHLIGHTS

By Mike Cox

AUSTIN—The democratic process in Texas continues to be delayed by the Albuquerque, N.M. faction of the state Democratic Party, but another aspect of democracy is on track for Sept. 13—a constitutional amendment election.

Many Texans may be wondering, "What constitutional amendment election?"

With the divided Senate and hundreds of state employee layoffs, the coming election has not received much attention, but the ballot will contain 22 proposed additions to our state charter. As provided for in that very document, the Legislature can offer constitutional amendments by passage of a joint resolution. All it takes, which is sometimes a lot, is a two-thirds vote of each chamber.

The importance of a particular amendment, incidentally, is not reflected by the number assigned to it. Propositions get their numerical handles through a random drawing conducted by the Secretary of State's office, which oversees elections in Texas.

No matter their number, some amendments are bigger deals than others. The propositions that naturally tend to get most of the attention involve money.

Prop. 12 would cap non-economic damages (pain, suffering, disfigurement and loss of a loved one) stemming from lawsuits against doctors and health care providers at \$250,000.

Any judgments against health care institutions also would have a \$250,000 cap for non-economic damages.

The proposition also would give the Legislature authority to set a liability limit for non-economic damages in all civil actions.

Two slots farther down the ballot is Prop. 14, which would allow

the Texas Department of Transportation to issue bonds or other securities to pay for transportation projects. The bonds would be repaid through state highway revenue funds. The bonding limit would be set at \$10 billion.

Some of the other propositions are relatively esoteric, unless it has to do with an issue directly affecting you. Example would be Prop. 21, which allows college professors to be paid if they serve on a water district board; Prop. 10, which would allow cities to donate used equipment to a rural volunteer fire department; or Prop. 19, which would abolish existing constitutional authority to create rural fire prevention districts.

For an overview of all the propositions and the arguments for and against their passage, check the League of Women Voters Voters Guide at www.lwvtexas.org or pick up a paper copy of the study. For more detailed analysis of the amendments, the House Research Organization has prepared a focus report available at www.capitol.state.tx.us/hrofr/focus/amend78.pdf.

Early voting starts Aug. 27 and continues through Sept. 9. Voting hours on election day are 7 a.m. to 7 p.m.

Remembering the Alamo...

As the Texas Film Commission quietly works to bring other movie projects to Texas, trailers for the recently wrapped Disney Alamo movie have hit theater screens. The latest motion picture on the timeless Alamo story was shot in Central Texas, with one scene done inside the venerable Paramount Theater in downtown Austin. The movie will be released in December.

The film commission currently is scouting locations in Austin for a movie in which Texan Tommy Lee Jones plays a Texas Ranger.

Brady
©/03



From the AG

By Greg Abbott

The Internet has given child predators the anonymity to act on their perversions. That is why it is imperative for us to be vigilant in tracking down and locking up these predators. Today, law enforcement agencies across Texas and the nation are working together to bring justice to those who prey on our children.

The Texas Attorney General's Office formed the Internet Bureau to track online predators and train law enforcement officers. Our investigators are online every day looking for evidence of cybercrimes against children.

In the last three months, the Internet Bureau has intensified its efforts, arresting nearly a dozen suspected child predators. In a four-day period alone, investigators arrested four men. Three of the men traveled to Hays County expecting to meet 13-year-old girls. Another traveled to Kendall County to meet what he thought would be a 13-year-old boy.

Three men have been charged with attempted aggravated sexual assault of a child. Another has been charged with criminal solicitation of a minor. Both charges are felonies. The "children" the men stalked turned out to be Internet Bureau undercover investigators. The men allegedly initiated sex talk with the children in Internet chat rooms and allegedly planned to meet them to engage in sexual activity.

The true intentions of child predators are clear, and our Internet Bureau officers have no qualms whatsoever about taking these people off the street and putting them behind bars when they cross the line. I will not tolerate the victimization of children. While we are pleased that our efforts have been successful at taking predators out of chat rooms and putting them into jail cells, it is important to remember that you as parents are still the most effective tool at protecting your children.

The fact is, when you strike up a conversation by e-mail, you have no idea who you are dealing with. Predators use this fact to take advantage of trusting, curious young people. We turn the tables and use it against the predators. But too often the predator's target really is a child. You can protect your child by taking some simple precautions. You should be aware that in chat rooms, someone may very well pick up on your child's youth, gender, and vulnerability. You might be shocked to find out how quickly a dangerous contact can occur.

Our investigators posing as children have no problem attracting predators. Surf the Internet with your children. This will allow you to assess the types of Web sites and chat rooms your children visit. You may wish to place your computer in a family room or the kitchen, which will make it easier for you to monitor your children's Internet activity.

Establish ground rules for Internet surfing. Set the hours when your children can access the Internet, for how long, and what Web sites they can visit. Most Internet service providers (ISP) provide technical safeguards that allow parents to restrict certain Web sites. Contact your ISP for more information.

The Internet is a wonderful way for children to learn and grow. As long as you provide a little guidance, they can safely enjoy the World Wide Web.

From Out of the Past

From the files of The Haskell Free Press

10 Years Ago August 26, 1993

Dee Sprayberry harvested from her backyard garden two huge sunflowers, one 4.5 pounds and the other 3.5 pounds. She planted the sunflowers to feed the birds in her yard.

The American Cancer Society netted more than \$2,000 at the fourth annual Texas Hawaiian Luau at the home of Abe and Ruby Turner.

Sherry Burson Upshaw received her masters of education in Guidance and Counseling at Angelo State University.

Kemberly Kemp Brossman of Haskell received the Gold Key award from the Columbia Scholastic Press Association.

Steven Lin Guess of Haskell was selected to receive honorary award recognition by having his biography published in the 16th annual edition of "The National Dean's List."

20 Years Ago August 25, 1983

East Side Baptist Church celebrated its 60th anniversary. They started in 1923 as the Weaver Baptist Church, meeting in the Weaver School building. In 1938 they moved to Haskell and met in the East Ward School building.

Tammy Roberts of Haskell was among the graduates of Angelo State University, receiving a Bachelor of Business Administration degree.

Maj. William R. Moore of Munday arrived for duty at Osan Air Base, South Korea. Moore, a fighter pilot with the 36th Tactical Fighter Squadron, was previously assigned at Clark Air Base, Philippines.

30 Years Ago August 23, 1973

Fair President J. R. Perry presented Dr. Gaines Post with a ribbon he was supposed to have received 64 years ago when he won a map drawing contest at the Fair.

Winners in the Senior Division at the Haskell County 4-H Dress Revue were: 1st place, Melissa Roberson of Haskell County; 2nd place, Linda

Yates of Weinert; 3rd place, Bennita Jackson of Haskell.

Over 260 people came to the reception honoring retiring Judge Ben Charles Chapman.

The Haskell Chapter of Young Homemakers honored Mary E. McCollum, retired Homemaking teacher for Haskell High School, with a surprise program tiling her as "The Girl In Our Life."

Robin Gates Colbert was featured in the Seventh Annual Edition of Who's Who Among American High School Students.

40 Years Ago August 22, 1963

H. Cleve Walkup, teacher of vocational agriculture at Rule High School from 1955 to 1957, was recognized for outstanding work in teaching vocational agriculture by the Texas Vocational Agriculture Teacher Association receiving the third place award in the state of Texas.

A total in excess of 800 cattle, 700 of them straight off the farm, and 48 hogs moved through the ring at the Haskell Livestock Auction Company's first sale at its sparkling new plant here.

Response to a community-wide appeal for help in completing a half-finished "den" building for Haskell Cub Scouts was so hearteningly spontaneous the goal of finishing the

scouting structure by school opening time was in sight.

Wanda Dulaney of Haskell attended the World Red Cross Centenary Convention in Geneva, Switzerland.

50 Years Ago August 27, 1953

Roy Clay Brock, student in Baylor University School of Law, received his L. B. Degree from the University.

Commissioners Court of Haskell County approved an order calling for the erection of a modern new county jail building and employed a Fort Worth firm of architect for the proposed new building.

West Texas Utilities Company's Paint Creek generating station southeast of Haskell is now a "working unit" of the company's generating system.

Nebeela Hassen of Haskell, a graduate of the University of Texas, accepted a position on the faculty of Corpus Christi high school.

100 Years Ago August 29, 1903

John Bell, Haskell's saddle and harness man, returned from a visit with relatives at Rusk and Nacogdoches.

P. G. Yoe has taken a position in the livery stable with A. D. English, the popular livery man.

Letters to the Editor

Dear editor,

I would like to express my personal gratitude for the very impressive article in your July 31 issue regarding the new changes here at Rice Springs Care Home. Over the last week, I have received literally hundreds of comments, questions, and phone calls regarding the article, and it has truly helped me to become even more welcome in the community.

Unfortunately, in today's society, many negative connotations are often attached to Nursing Facilities, and as an administrator, I do not often hear positive comments or optimistic views about my home or my industry. Since your article was published, however, I have been inundated with

hopeful attitudes from people not only in Haskell County, but also Baylor County, Stonewall County, and even the Abilene and Wichita Falls areas.

In short, your article reached so many people in a positive way that I am getting responses and opinions from people that didn't even read the article first-hand. That alone speaks volumes for the professionalism that your newspaper exudes with every issue.

I have purchased a subscription, and look forward to enjoying your paper for years to come, so keep up the excellent work and please feel free to contact me if I can ever be of service to you.

With highest regards,
Stephen D. King, Sr.
Administrator,
Rice Springs Care Home

Establish ground rules for Internet surfing. Set the hours when your children can access the Internet, for how long, and what Web sites they can visit. Most Internet service providers (ISP) provide technical safeguards that allow parents to restrict certain Web sites. Contact your ISP for more information.

The Internet is a wonderful way for children to learn and grow. As long as you provide a little guidance, they can safely enjoy the World Wide Web.

Continue to protect yourself against WNV

by Brandon Anderson
Haskell Co. Extension Agent

We are now entering the peak season of human infection for West Nile virus and other mosquito-borne diseases. These diseases begin to spill over into human populations in late-summer and usually calm down by Oct. 15.

The Texas Department of Health reported 13 human cases of West Nile virus this year. Three people have died—one in Ellis County, one in Lubbock County, and the other in Montgomery County. People who have contracted the virus will likely suffer from flu-like symptoms.

To avoid mosquitoes and the possibility of disease, wear clothes that are loose fitting. Clothing should also be light-colored because mosquitoes are attracted to darker hues.

Classifieds Sell
Call 864-2686

Ergonomics studies help protect workers

Ergonomics is the study of work to prevent and control injury and illness while improving productivity, quality, delivery, marketing and customer service at a reduced cost. Ergonomics involves gathering information on capacities and capabilities of human beings for use in designing jobs, products, workplaces and equipment. Well-designed jobs, equipment and workplaces lead to improved safety, health, productivity and increased job satisfaction for employees.

According to the U. S. Bureau of Labor Statistics, disorders associated with ergonomic hazards (reported as "repeated trauma disorders") accounted for 66 percent of all

nonfatal occupational illnesses in 1999. That number has decreased slightly in recent years, due to the efforts of ergonomists to reduce ergonomic risks, but the percentage remains high.

Employees can take an active part in their workplace safety programs, becoming familiar with their job requirements and their own limitations and promptly report any discomfort or pain at its onset. In addition, employers can help by providing training to employees on ergonomic issues and taking a proactive approach to implementing ergonomic controls to reduce injuries and illnesses.

The Haskell Free Press

Established January 1, 1886
PUBLISHED EVERY THURSDAY
420 North First Street
P. O. BOX 555 HASKELL, TEXAS 79521

John McDougal Publisher
Lisa Shaw Business Manager
Mary Kaigler Editor
Doris McDougal Production
Bill Blankenship Staff Photographer

Periodical Paid Haskell, Texas 79521
(USPS 237-040)

SUBSCRIPTION RATES:
Haskell County, one year, \$20.00.
Outside of Haskell County, one year, \$28.00.

NOTICE TO PUBLIC—Any erroneous reflection upon the character, reputation or standing of any firm, individual or corporation will be gladly corrected upon being called to the attention of the publisher.
POSTMASTER: Send address changes to: The Haskell Free Press, P.O. Box 555, Haskell, TX, 79521-0555.



This issue mailed Wed., Aug. 27, 2003

To Subscribe,
Call 940-864-2686



Keeping an Eye on Texas

Honor the flags

Starting this school year, students at Texas public schools will recite the Pledge of Allegiance to both the United States and the state of Texas.

Senate Bill 83, requires both pledges to be recited, but does allow parents to have their children excused from the practice.

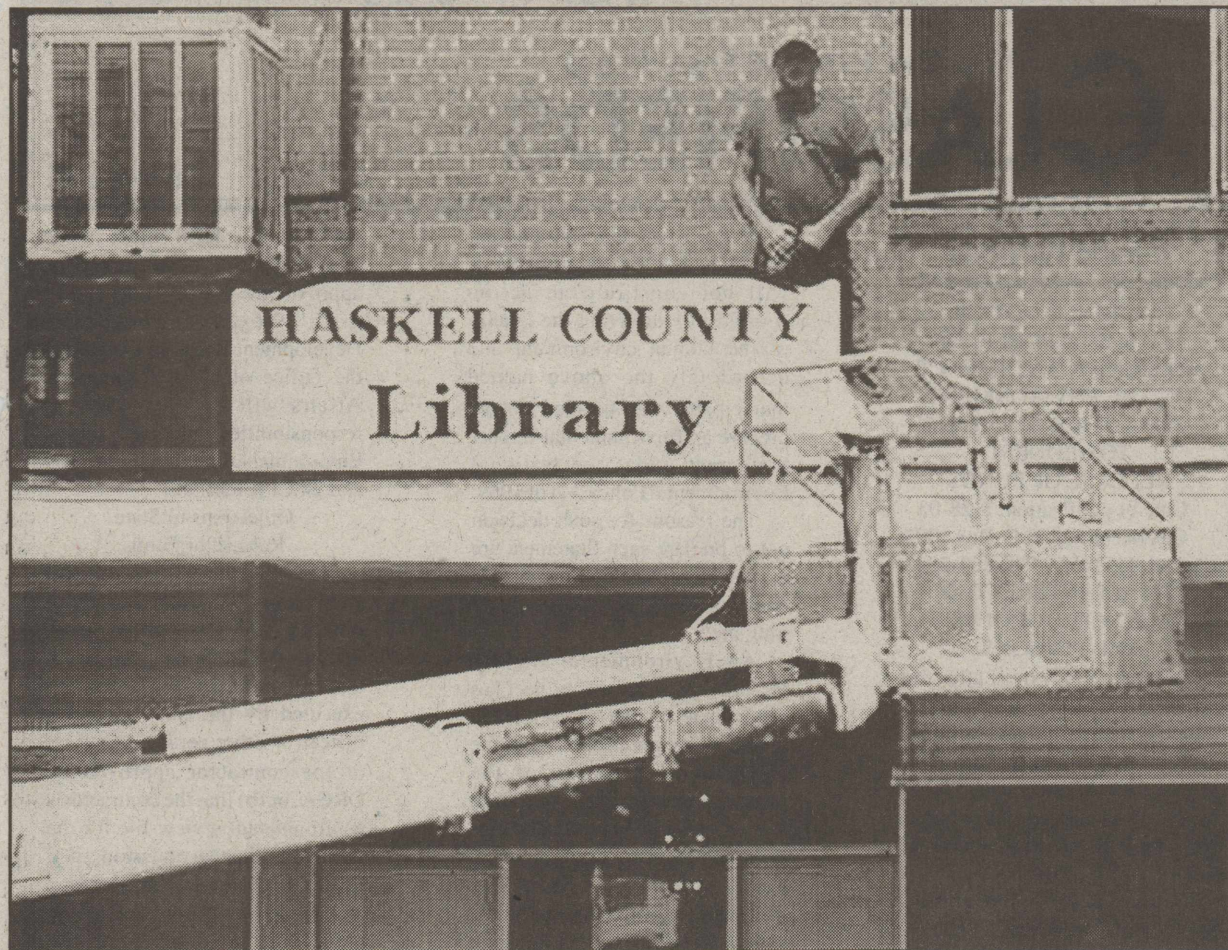
The Texas Pledge of Allegiance reads as follows: "Honor the Texas flag. I pledge allegiance to thee, Texas, one and indivisible."

SB83 also provides a minute of silence following the pledges for students to reflect, pray, meditate, or engage in another silent activity that is not distracting to other students.



SOURCES: Carole Keeton Strayhorn, Texas Comptroller (www.window.state.tx.us) and Texas Education Agency.

To Subscribe, Call 940-864-2686



NEW SIGN OF PROGRESS—Haskell County Commissioner, Bobby Smith, installed a fresh new sign in front of the County Library Wed., Aug. 20, to replace the temporary sign put up when the library moved to its present location on the square in downtown Haskell. Artist Larry LeFevre of Rule donated his talent and time to creating the new sign, giving a needed face lift to the library.

Hot weather can be deadly for man's best friend

Hot weather can be deadly for dogs, who cannot perspire the way humans do and can only pant to cool themselves. It is especially dangerous for those left in parked cars—even with the windows partially rolled down—where temperatures can climb well above 100° F in a matter of minutes.

In May, a dog died after being locked in a parked car on a sunny, 67° F day in Albany, N.Y., even though the car windows had allegedly been left open a crack.

Heatstroke can come on quickly in dogs, resulting in brain damage or death. Symptoms include restlessness, excessive thirst, heavy panting, lethargy, lack of appetite, dark tongue, rapid heartbeat, fever, vomiting, or lack of coordination. Some suggestions for keeping canine companions safe include:

- Never leave a dog in a parked car. On a 78° F day, the temperature inside a shaded car is 90°, while the inside of a car parked in the sun can reach 160° F in minutes. Animals can succumb to heatstroke in just 15

minutes.

- If you see a dog in a car and in distress, take down the car's color, model, make, and license-plate number, have the owner paged inside nearby stores, and call local humane authorities or police. If the dog's life appears to be in imminent danger, find a witness (or several) who will back your assessment, take steps to remove the animal, and then wait for authorities to arrive.

- If you see a dog showing symptoms of heatstroke, get him or her to shade immediately and call a veterinarian. Lower body temperature gradually by providing water to drink, applying a cold towel or an ice pack to the head, neck, and chest, or immersing the dog in lukewarm (not cold) water.

- Keep your dog indoors. If he or she must stay outside, avoid the hottest part of the day. Provide shade, water, and a "kiddie" pool. Keep drinking water in an anchored bucket or a heavy nontip bowl.

- Don't carry your dog in the bed

of a pickup truck. This is always dangerous, but the heat carries with it the added danger of burning dogs' feet on the hot metal.

- Don't take your dog jogging—except on cool mornings or evenings—and don't force exercise. On long walks, rest often and bring plenty of water. Hot pavement can burn dogs' pads; choose shady, grassy routes. A dog will try to keep up, so watch for signs of exhaustion.

- Clip heavy-coated dogs' fur, but leave an inch for protection against insects and sunburn. Keep an eye on areas where hair is thin, like eyelids, ears, and noses, as animals can get sunburn and even skin cancer.

Weathers Whys: Doppler radar

Q: What exactly is "Doppler radar" that the weather folks refer to?

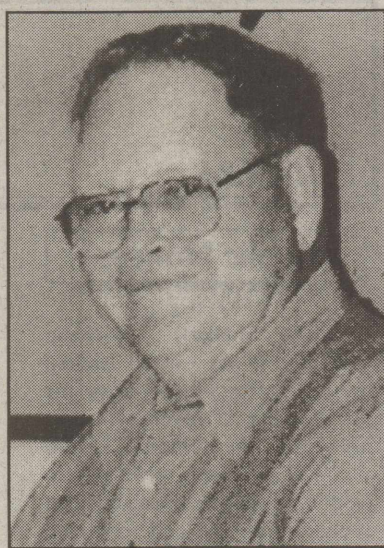
A: It's the type of radar that uses sound waves to detect strength and movement of severe storms, says Andrew Odins of Texas A&M University.

It's named after the Austrian scientist Christian Doppler, who in 1842 discovered many of the principles of sound waves that we know today. "Doppler radar allows us to observe the movement of precipitation, such as rainfall or even snowfall and ice crystals, by using sound waves that bounce off these substances," says Odins.

"Waterdrops and snow and ice will reflect a sound wave and send it back to a transmitter or receiver and because it's so precise, Doppler can tell us the movement of storms and how intense they are. It usually does this with the use of a colored monitor or screen showing severe storms as dark green, blue or red."

Q: Is Doppler radar effective?

A: Very much so, says Odins. "It's the most advanced weather radar system there is," he explains. "The unique aspect of Doppler radar is that it allows us to look inside a storm.



JAMES BEVEL

Bevel, Gilly honored by Ag Assn.

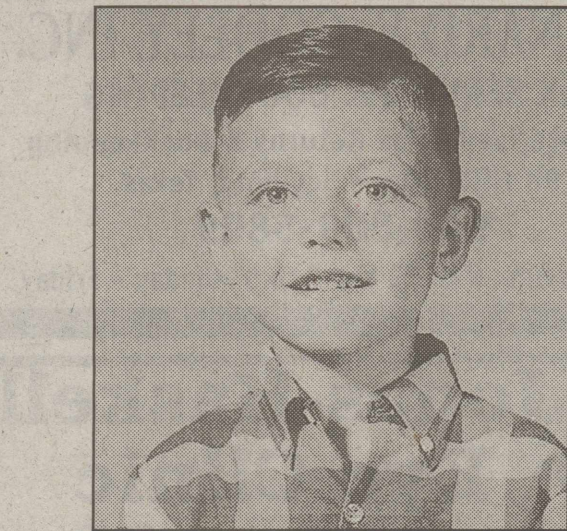
Two Haskell men were honored with awards from the Vocational Agriculture Teachers Association of Texas, at the annual Professional Development Conference for Agricultural Science and Technology Teachers of Texas, held in Wichita Falls, July 28-Aug. 1.

James Bevel, recently retired agriculture science teacher at Haskell, was awarded the Distinguished Service Award for Area Coordinators.

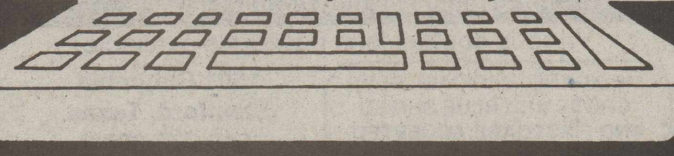
Bevel served as the Area II VATAT Coordinator this year. The award is given by the Association to area coordinators who make efforts in their local areas to coordinate VATAT events and activities.

Duane Gilly, of Haskell, received the Distinguished Service Award for Retired VATAT Board Members. It is given to honor individuals who have completed their three-year term as a member of the VATAT Board of Directors.

In Texas, there is an estimated 1,500 agricultural science and technology teachers impacting more than 90,000 students enrolled in agriculture classes at the secondary level.



Happy 40th Birthday
(August 27) to an excellent husband, father, son, brother, grandson and 'Computer Guy'!



George Tomek
Longtime Trusted News Anchor

One Day Only! Hearing Aid Event

Free Screenings!

Where:
Haskell Home Health
417 S. First, Haskell

When:
Tuesday,
September 2
Time:
9:30 a.m.
to 4 p.m.

Buy One, Get One
FREE
Or, Buy One 1/2 Price*

Now there's a hearing aid that's right for everyone!

Developed by Siemens, #1 manufacturer of hearing aids in the world

Provides all-day comfort with better speech understanding

Limited Time Offer!

For a limited time, you can buy ANY CUSTOM TRIANO FULLY DIGITAL HEARING AID at MSRP & GET ONE FREE.

That's 2 for the price of one!
*Save 50% off MSRP. See store for details.

UNBEATABLE LOW PRICE GUARANTEE
Economy Hearing Aid Center's low price guarantee: If you find a lower advertised price on an identical hearing aid at any local retail competitor, we will beat their price by 10% when you buy from us. Just bring us the competitor's current ad, or we'll call to verify the item's price that you have found. Competitor's remanufactured, discontinued, and used hearing aids are excluded from this offer.

ECONOMY HEARING AID CENTER, INC

3130 Lawrence Road • Wichita Falls, Texas
(inside Wal-Mart SuperCenter)
Toll Free 888-818-7774
www.economyhearing.com

In-the-Ear
Electone
Conventional
Suggested Retail \$650
OUR LOW PRICE \$495

Siemens Phoenix ITE
100% Digital
Suggested Retail \$650
OUR LOW PRICE \$895

Meeting to organize wildlife, nature group to be held tonight

Some citizens of Baylor County are organizing a Wildlife and Nature Enrichment Association. The association has three purposes:

1. To help landowners reap some of the dividends and improvements of their investments and habitats;
2. To educate landowners and users about land and habitat enhancement possibilities; and
3. To educate the public about the economic rewards.

Different levels of membership will be available, depending on land ownership, residency or business

affiliation.

Come and learn about working with your neighbor to help improve the bottom line and learn more about hunting and nature tourism Thurs., Aug. 28, beginning at 7:00 p.m. at the Cliff Styles Ag Pavilion. The Wildlife and Nature Enrichment Association is open to all landowners and residents of Baylor and surrounding counties.

For more information contact Mark Dorsey, CEA-AG, Baylor County Extension, at 940-889-5581.



4.25%

- 6 MONTH VARIABLE RATE
- LONG TERM FARM & RANCH LOANS
- IMPROVEMENT LOANS
- FIXED RATES AVAILABLE
- RATES PRICED WEEKLY
- NO PRE-PAYMENT PENALTY

Federal Land Bank Association of Texas, FLCA

550 S. 2nd • Haskell, Texas • (940) 864-8565

www.flbatexas.com



Annual percentage rates from 4.5260% APR to 4.3415% APR depending on length of contract. APR based on rates for specified 6 month variable rate during week of August 26, 2003 - September 2, 2003. Rates subject to change without notice.

Diabetes Demands A Lot Of Attention.

Are You Overwhelmed?

Let **MP TotalCare** help by being your partner for a better life.


- Home delivery of diabetes testing supplies & insulin pumps/supplies.

- Medicare and most insurance accepted - and we complete the forms!

866-447-2182

BURN BAN IN EFFECT

BERNARD E. GODLEY, INC.
TAX SERVICE & BOOKKEEPING
 Computerized • Tax Returns & Bookkeeping
 98 Hill Drive • Seymour, Texas
940-889-8809
 Office Hours: 9 to 12 and 2 to 5 Monday - Friday

Jones-Haskell

Eye Clinic
Dr. Trussell Thane, O.D.
 Therapeutic Optometrist

Appointments Available • Monday through Friday

Dr. Thane provides comprehensive eye care including the diagnosis and treatment of eye disease. Dr. Thane offers complete evaluation for eyeglasses and contact lenses.

Various contact lens packages available.

MEDICARE, MEDICAID, BLUE CROSS AND BLUE SHIELD AND FIRSTCARE ACCEPTED.

1501 Columbia
 Stamford, Texas
 915-773-2083

Public Notices

NOTICE:
 The Haskell Housing Authority of the City of Haskell will receive sealed bids for replacement of seven (7) roofs including the removal of old shingles: replacing old shingles with new shingles of same grade, weight and type and replacing existing decking with new decking on two buildings at the Southside Apartments.

Monday, September 08, 2003; 4:00 P.M. at the Haskell Housing Authority of the City of Haskell, 702 South Avenue H, Haskell, Texas 79521.
 Immediately thereafter all bids will be publicly opened and read aloud. The Haskell Housing Authority and Rural Rental Development Reserve the right to refuse any bids. Documents and plans are available for inspection at the Haskell Housing Authority office located at 702 South Avenue H in Haskell, Texas. 34-35c

Shop the Haskell Free Press CLASSIFIEDS

864-2686

864-2686

Public Notices

COMBINED NOTICE:
NOTICE TO PUBLIC OF NO SIGNIFICANT IMPACT ON THE ENVIRONMENT AND NOTICE OF INTENT TO REQUEST RELEASE OF FUNDS
 Date of publication: 8-28-03
 City of Haskell, P.O. Box 1003, Haskell, TX 79521. 940-864-2333.
TO ALL INTERESTED AGENCIES, GROUPS, AND PERSONS:
 Seventeen (17) days after this publication, the above named municipality will request the Office of Rural Community Affairs to release Federal funds under Title I of the Housing and Community Development Act, as amended, for the following project:
 Sewer System Improvements- SE Part of Community, Haskell, Haskell County, Texas, TCDP Contract No. 723361.
 Finding of No Significant Impact

It has been determined that such a request for release of funds will not constitute an action significantly affecting the quality of the human environment and accordingly the above named municipality has decided not to prepare an Environmental Impact Statement under the National Environmental Policy Act of 1969.

The reasons for such decision not to prepare such Statement are as follows: All environmental concerns could be minimized or mitigated.

An Environmental Review Record respecting this project has been made by the above named municipality which documents the environmental review of the project and more fully sets forth the reasons why such Statement is not required. This Environmental Review Record is on file at City Hall and is available for public examination and copying, upon request, between the hours of 8:30 A.M. and 5:00 P.M.

Public Comments on Finding:
 All interested agencies, groups, and persons disagreeing with this decision are invited to submit written comments for consideration by the municipality to the Office of the Mayor within sixteen (16) days after this publication. All such comments so received will be considered and the municipality will not request the release of Federal funds or take any administrative action on the within project prior to the date specified in the preceding sentence.

Release of Funds:
 The City of Haskell will undertake the project described above with Texas Community Development Program funds from the Office of Rural Community Affairs, under Title I of the Housing and Community Development Act of 1974, as amended.

The City of Haskell is certifying to the Office of Rural Community Affairs that the City of Haskell and Ken Lane, in his official capacity as Mayor, consent to accept the jurisdiction of the Federal courts if any action is brought to enforce responsibilities in relation to environmental assessments, decision making, and action; and that these responsibilities have been

satisfied. The legal effect of the certification is that, upon its approval, the City of Haskell may use Texas Community Development Program funds, and the Office of Rural Community Affairs will have satisfied its responsibilities under the National Environmental Policy Act of 1969 and 24 CFR Part 58.

Objections to State Release of Funds:
 The Office of Rural Community Affairs will accept an objection to its approval only if it is on one of the following bases: (a) that the certification was not in fact executed by the chief executive officer or other certifying officer of the contractor approved by ORCA, or (b) that the contractor's environmental review file for the project indicates omission of a required decision, finding, or step applicable to the project in the environmental review process. Objections must be prepared and submitted in accordance with the required procedure (24 CFR 58) and may be addressed to the Office of Rural Community Affairs, P.O. Box 12877, Capitol Station, Austin, Texas 78711. Objections to the release of funds on bases other than those stated above will not be considered by the Office of Rural Community Affairs. No objection received later than thirty-three (33) days after this publication will be considered by the Office of Rural Community Affairs.

Ken Lane, Mayor
 City of Haskell, P.O. Box 1003, Haskell, TX 79521 35c

Public Notices

FLOOD PLAIN NOTICE:

(Explanation)
 Date of Publication: August 28, 2003
 The City of Haskell, Texas intends to undertake improvements involving the following:
SEWER SYSTEM IMPROVEMENTS: Installation of a new 0.5 MGD clarifier, piping, valves, and disinfection improvements at the wastewater treatment plant.

A portion of the project is located in the 100 Year Flood Plain as identified by the Federal Emergency Management Agency (FEMA). Because the proposed improvements are needed in the area, there is no practical alternative to the proposed project. It is the City's judgement that the need for the proposed improvements within the area outweigh consideration of Executive Order 11988.

A more detailed description of the project and the FEMA Flood Map are available for citizen review at City Hall, Haskell, Texas. Comments will be received on or before September 12, 2003.
 Ken Lane, Mayor 35c

This Week's Devotional Message:



FAITH GIVES CREDIT TO WORK FOR OUR ENVIABLE LIFESTYLE

The work we've done has been the way
 We've earned the life we live today.
 The farmer with his fields of wheat
 Provides the food for us to eat.
 The worker in the factory
 Assembles with efficiency
 Each necessary home appliance
 That's conceived by modern science.

Bible passages we've read
 Declare that man must earn his bread;
 And we've become, by this decree,
 A model for the world to see.
 Thus, from the way that we've progressed,
 Our nation has indeed been blessed.
 So on the Sabbath, go and pray,
 Then celebrate on Labor Day.

ATTEND CHURCH THIS SUNDAY

HASKELL

East Side Baptist Church
 Dr. Jim Helfin, interim pastor
 Sun. 8:30 a.m., 9:45 a.m., 11 a.m., 6 p.; Wed. 7 p.m.
 600 N. 1st East, Haskell

Christian Church
 Dusty Garrison, minister
 Sun. Morn. 9:45 a., 10:45 a., 6 p.m.; Wed. 7 p.m.
 107 N. Ave. F, Haskell

New Vision Family Worship Center
 James Rincker, pastor • 864-5438
 Sun. 9:45 a.m., 11 a.m., 6 p.m., Wed. 7:00 p.m.
 East Hwy 380, Haskell

Trinity Lutheran Church
 Sunday School 9:30 a.m., Worship 10:30
 Hwy 380 East, Haskell

Iglesia Bautista El Calvario
 Art Flores, Interim pastor
 Sun. Morn. 9:45 a., 10:45 a.m., 5 p.m.; Wed. 7 p.m.
 607 S. 7th, Haskell

First United Methodist Church
 Allen Brooks, pastor
 Sun. Morn. 9:45 a.m., 10:50 a.m. 6 p.m.; Wed. 6 p.m.
 201 N. Ave. F, Haskell

First Assembly of God
 Rev. J.C. Amburn
 Sun. Morn. 9:45 a., 10:45 a.m., 6 p.m.; Wed. 7 p.m.
 1500 N. Ave. E, Haskell

St. George Catholic Church
 Father George Roney
 Sat. Mass 7 p.m.; Sun. Morn. 9:00 a.m.
 901 N. 16th, Haskell

Church of Christ
 Brett Anderson, minister
 Sun. Morn. 9:30 a., 10:30 a., 6 p.m.; Wed. 7:30 p.m.
 510 N. Ave. E, Haskell

First Presbyterian Church
 Steve Beatty, pastor
 Sun. Morn. 9:30 a.m., 11:00 a.m.; Wed. 7 p.m.
 401 S. Ave. D, Haskell

Hopewell Baptist Church
 Sun. Morn. 9:30 a.m., 11:00 a.m.; Wed. 7 p.m.
 908 N. Ave. A, Haskell

Greater Independent Baptist Church
 Sun. Morn. 9:30 a., 11:00 a., 6:30 p.; Wed. 7 p.
 301 N. 3rd St., Haskell

New Covenant Foursquare

Bill and Renee Glass, pastors
 Sun. Morn. 10 a.m., 11 a.m., 6:30 p.m.; Wed. 7 p.
 200 S. Ave. F, Haskell

Mission Revival Center

Rev. William Hodge
 Sun. Morn. 10 a.m., 11 a.m., 6 p.m.; Tues. 6 p.m.
 1600 N. Ave. B, Haskell

First Baptist Church

Kevin Hall, pastor
 Sun. Morn. 9:45 a., 10:55 a., 6 p.m.; Wed. 7 p.m.
 301 N. Ave. E, Haskell

Church in the Park

Rev. Tim and Suzann Townsend
 Sun. Morn. 10:30 a.m. Wed. 7 p.m.
 Gazebo or Pavilion

Cornerstone Baptist Fellowship

Dr. Gibbie McMillan, Interim pastor
 Sun. Morn. 9:30 a.m. 10:45 a.m. Wed. 7 p.m.
 1303 N. Ave. I, Haskell

WEINERT

First Baptist Church

Chris Powell, pastor
 Sun. Morn. 10 a.m., 11 a.m., Wed. 7 p.m.
 Weinert

Weinert Foursquare Church

Rev. Robert Harrison
 Sun. Morn. 10 a.m., 11 a.m. Wed. 7 p.m.
 Weinert

ROCHESTER

Church of Christ

Steve Willis, minister
 Sun. Morn. 9:45 a., 10:45 a., 6 p.m.; Wed. 6 p.m.
 West on Main Street, Rochester

First Baptist Church

Jackie Brem, pastor
 Sun. 11:00 a.m., 6 p.m.; Wed. 7:00 p.m.
 500 Main, Rochester

Union Chapel Baptist Church

Rev. Clarence Walker
 Sun. Morn. 9:45 a., 10:45 a., 6 p.m.; Wed. 7 p.m.
 Rochester

Faith Chapel of Rochester

Katherine Byrd, minister
 Sun. Morn. 10 a.m., 11 a.m., 7 p.m.
 Hwy 6, Rochester

First United Methodist Church

Dolan Brinson, pastor
 Sun. Morn. 10:00 a.m., 11:00 a.m.
 Rochester

SAGERTON

Sagerton Methodist Church

Melissa Bemis, pastor
 Sun. Morn. 9:30 a.m.
 Sagerton

Faith Lutheran Church

Deborah Nissen, pastor
 Sun. Morn. 9:15 a.m., 10:30 a.m.; Wed. 7 p.m.
 Sagerton

RULE

First Baptist Church

Josh Stowe, pastor
 Sun. Morn. 9:45 a., 11:00 a., 5 p.m.; Wed. 7 p.m.
 1001 Union Ave., Rule

Primitive Baptist Church

Dale Turner Jr., pastor
 First & Third Sundays 10 a.m.
 Corner of 8th & Robins, Rule

Church of Christ

John Greason, minister
 Sun. Morn. 9:45 a., 10:40 a., 6 p.m.; Wed. 7 p.m.
 811 Union, Rule

First United Methodist Church

Tommy Wilson, pastor
 Sun. Morn. Worship 10 a.m.
 1000 Union Ave., Rule

Primera Iglesia Bautista

Alfa y Omegas
 Manuel Marin, pastor
 Sun. Morn. 10 a., 11:00 a., 5 p.m.; Wed. 6 p.m.
 500 Elm Street, Rule

Sweet Home Baptist Church

Bill Trice, pastor
 Sun. Morn. 10:00 a., 11:00 a., 6 p.; Wed. 7 p.m.
 Gladstone Ave., Rule

West Bethal Baptist Church

Rev. Robert Sweet
 Sun. Morn. 10 a., 11 a., 8 p.m.; Wed. 7:30 p.m.
 300 Sunny Ave., Rule

PAINT CREEK

Paint Creek Baptist Church

Sun. Morn. 10:00 a.m., 11:00 a.m., 6 p.m.
 Paint Creek

O'BRIEN

O'Brien Baptist Church

Kyle Gullledge, pastor
 Sun. 9:45 a., 11 a., 5 p., 6 p. Wed. 6 p.m.
 O'Brien

The Haskell Free Press

read by more people
 in Haskell County
 than any other print
 media.



APPLE REMODELING & CONSTRUCTION

* Carpentry
 * Painting
 * Acoustic Ceiling
 * Metal Roofs
 * Tape & Bedding
 * Tree Trimming

Gary Apple
 325-773-5295

Get Connected . . .

Local Internet Access
 Local Tech Support
 Free Software
 Multiple Free E-mail Accounts
 Free Home page
 No set-up fee
 Unlimited Access

\$19.95 per month or \$16.95 per month
 if paid annually

West Texas Internet

Locally Owned and Operated
 864.8124 • www.westex.net • administrator@westex.net
 Haskell

Sonic Drive-In

1402 N. Ave. E
 864-8533
 Managers: Leon & Carolyn Herring

Steele Machine

Hwy. 280 • 864-2208

Modern Way Food Store

1202 N. Ave. E • 864-3763

Smitty's Auto Parts

107 N. 1st East • 864-2607

HANSON PAINT & BODY SHOP

207 S. 1st • 864-3631
 Professional Auto Body Repair
 Glass Installation • 24 Hour Wrecker Service

Rule Co-op Gin & Elevator

301 Adams • Rule • 997-2421

Rice Springs Care Home, Inc.

1302 N. 1st • 864-2652
 Medicare • Medicaid • Therapy

Committed To Excellence
 In Service

Personality Slipper Shoppe

413 S. 1st (South Side of Square)
 864-2501 and 864-3051
 "One Stop Shopping"

The Haskell Free Press

"The People's Choice"

420 N. First
 Haskell, Texas
 940-864-2686

Serving
 Haskell County Since
 1886



Shop The Haskell Free Press CLASSIFIEDS

864-2686

ALL DEADLINES MONDAY 5 P.M.

864-2686

Public Notices

NOTICE OF SPECIAL ELECTION (AVISO DE ELECCION ESPECIAL)

To the registered voters of the County Haskell, Texas:
(A los votantes registrados de Condado de Haskell, Texas.)
Notice is hereby given that the polling places listed below will be open from 7:00 a.m. to 7 p.m. on Saturday, September 13, 2003, for voting in a special election to "adopt or reject the proposed Constitutional Amendments as submitted by the 78th Legislature, Regular Session of the State of Texas. (para adoptar o rechazar la emiendas propuestas constitucionales asi como fueron sometidas por la 78a Legislatura Sesion Regular, de la Estado de Texas.)"

LOCATIONS OF POLLING PLACES:

- Box 1: Catholic Church, N. 16th, Haskell
 - Box 2: Assembly of God Church, N. Ave. E, Haskell
 - Box 3: Extension Building, S. Ave. D, Haskell
 - Box 4: Experienced Citizens Center, S. First St., Haskell
 - Box 5: High School Gym, Rule
 - Box 6: Fire Department, Rochester
 - Box 7: City Hall, O'Brien
 - Box 8: Weinert School Bldg., Weinert
 - Box 9: School Library, Paint Creek
 - Box 10: Community Room, Sagerton
 - Box 11: Early Voting, County Clerk, Courthouse
- David C. Davis
County Judge 35-36c

Lost & Found

LOST: 7 year-old, blonde, rat terrier mix. No collar. Answers to Phoebe. Call 864-2743. 35p

Miscellaneous

HOUSE LEVELLING and foundation repair. No payments until work is satisfactorily completed. David Lee & Co. 915-675-6369. 6tc

NEED CASH? Sell your owner financed home, real estate or business note for cash. All or part. Free quote. Free call. 1-866-295-3714. 35-38p

Housework may not kill you, but why take a chance. Kinney Furniture in Stamford has queen size Spring Air "Never Turn" mattress sets starting at \$299. 35c

AFFORDABLE QUALITY HOME REPAIR

Commercial & Residential Roofing
GAF TAMCO ELK
Commercial - 10 yr. warranty
Residential - 20 & 30 yr. warranties
composition, metal & wood
Plumbing & Electrical, Add-ons, Drywall
Paint, Kitchens and Bathrooms
Countertops, Ceramic Tile.
~ ALL WORK GUARANTEED ~
Michael Moore 940-422-4436
211 West Main • Munday, TX 76371

For Sale

FOR SALE: 188 round bales maize hay. \$35 per bale. Rule. R. A. Turner. 940-997-2221. 35-36c

FOR SALE: Queen wall bed in fruitwood. Lighted. 864-3619. Evenings. 864-8589. 35c

Garage Sales

3 FAMILY GARAGE SALE: Sat., Aug. 30. 8 til 2 925 N. 6th. Lots of good back to school clothes. We cleaned out. Boys' 10-12; jr. girls', size 3-5; ladies', small and size 12; mens' good shirts. XL. Jr. golf clubs, lawn chairs, knick-knacks and much, much more. 35c

Estate Sale

ESTATE SALE: 303 N. Ave. C, Haskell. Household items, bedroom suite, TV, refrigerator, misc. Priced to sell. 1964 Pontiac. Heavy-duty sewing machine. Sat., 30-Mon., 1. 7:30 a.m. 35p

Wanted

NEEDED: The Food Distribution Center in Haskell is in need of refrigerators in good condition. Call Roy Wright 864-5800 or Grace Thomas 864-3639. 35p

For Rent

FOR RENT: 604 N. 3rd. 1 and 2 bedroom apartments. 864-3762. 35c

Real Estate

FOR SALE: Brick home 3-2 1/2 bath-2. Approx. 2700 sq. ft. Sprinkler system, surround sound. Rear carport. 1207 Park Drive, Stamford. 325-773-2408 after 6 p.m. or leave message. 34-37c

FOR SALE OR RENT by owner: Country home on 15 acres. 2 bedroom, 2 bath, 2,000 sq. ft. plus. Fireplace, cathedral ceilings. Sunroom, \$60s. Paint Creek School District. 361-578-0358. 35p

ZERO DOWN

Land-Home with low interest rate.
NO CREDIT NECESSARY
325-673-8488

Friendship isn't a big thing, it's a lot of little things. Come in and see why we sell so many La-Z-Boy recliners. Open Labor Day 10-4. Kinney Furniture in Stamford. 35c

Help Wanted

NOW TAKING APPLICATIONS for all positions at Sonic Drive In, Haskell. Apply in person.

RICE SPRINGS Care Home is accepting applications for full time RNs and LVNs; and a relief RN. Call Karen at 864-2652 for information. 16tc

THE CITY OF GOREE will be taking applications for a full time maintenance man. Must have TX DL. Must obtain Class D Water/D Wastewater license within one year. You may pick up applications at Goree City Hall. Any questions call Shawnda Moore at 940-422-5306. Equal Opportunity Employer. 33-35c

THERE IS AN OPENING for a Treating Driver in the Knox City area. Candidate will operate a treater truck for downhole and pipeline treatments. Applicant must be physically capable as well as maintaining associated paperwork. Requirements: High school diploma or equivalent; good driving record; Class A CDL; HAZMAT and Tanker endorsements. Successful applicant will be subject to a probationary period (not to exceed 90 days) after which he/she will be eligible for full company benefits (vacation, holidays, 401K, etc.) Please call 940-658-3574 or 800-658-2769 for application. "An Equal Opportunity Employer." 34tc

FULL TIME POSITION open. Are you people oriented, outgoing, responsible, dependable? Come join our winning team at TNT Video, 9 Ave. E, Haskell. Manager position also available. 34tc

DQ of Munday now accepting applications for day and night help. Flexible full and part time help needed. Drug and smoke free work environment. Drug test required. Apply in person today with Manager, Theresa Aldridge.

NOTICE
The deadline for Classified Advertising is 5 p.m. on Mondays.
Haskell Free Press

Help Wanted

CERTIFIED NURSE AIDE position available for dependable person. Competitive pay scale with benefits. Please apply in person at Brazos Valley Care Home, 605 S. Ave. F, Knox City. 34tc

DAIRY QUEEN in Haskell is now taking applications. All shifts. Apply in person. 211 N. 1st, Haskell. 34-35c

GIBSON CARE CENTER in Aspermont is needing LVNs and CNAs. Sign on bonus for LVNs is \$400. \$200 after 30 days and \$200 after 60 days. Sign on bonus for CNAs is \$100. \$50 after 30 days and \$50 after 60 days. Apply in person or call 940-989-3526. 34tc

SECURITY FINANCE: Now looking for part time employee in the Stamford area. We offer competitive pay and opportunities for advancement. Looking for someone with experience in collections, cash handling and customer service. Apply at 112 N. Swenson, Stamford, Texas. 34-37c

EMERALD CORRECTIONAL Management at Rolling Plains Regional Jail & Detention Center in Haskell, Tx is currently accepting applications for "Correctional Officer." Please call Lorie Rodriguez at 940-864-5964 or come by front office to pick up an application. 35c

NURSES UNLIMITED, INC. needs attendants to assist with personal care, meal preparation and light housekeeping. Part time basis. Please call 1-888-859-0640. M-F, 8 a.m.-5 p.m. E.O.E. 35-36c

JOBS WANTED
Horseshoeing & Trimming
940-864-5547

CUTE LITTLE HOUSE
Very affordable. Call
325-673-7353

For Your Sheet Metal Work
Water Storage Tanks
All Kinds of Metal Duct Work
See or call:
Guinn Sheet Metal & Plumbing
940-658-3341 L.C. Guinn Knox City, TX

FIRST American BANK

First American Bank, SSB, one of the largest Texas owned and operated institutions, with assets in excess of \$3 Billion, is looking to add to their staff of progressive-thinking professionals in Haskell. Currently we are interviewing for a Full-Time Teller. Previous teller or cash handling and customer service experience preferred.
To apply for this job opportunity, please go to:
WWW.FABTEXAS.COM
or apply in person: 518 S. Second, Haskell, TX.
First American Bank, SSB offers competitive pay and excellent benefits.
EOE M/F/D/V 35-36c

\$500 MOVE IN

Owner finance.
Call Alex
325-725-1449
Se habla español. 35tc

Spalding Construction
Hamlin, Texas
Owner: James Spalding
Tired of replacing your Composition Roof?
Join many other wise homeowners and Update with an attractive Metal Roof in your choice of a variety of colors. Free estimates!
(Other general construction)
915-576-2109

EXPERT AUTO WORK

REASONABLE RATES
See us for all your auto mechanic needs. 20 years experience. We do it right the first time.
305 South Ave. E • Haskell

Dodson Concrete Construction
Commercial - Residential
David Dodson
704 N. Ave. F • Haskell
940-864-2038
Over 20 Years in the Business
FREE ESTIMATES 18tc

Guadalcazar Roofing

Daniel or Lupe
325-665-7060
940-864-5009
Free Estimates.
All Types including Metal roof installation.

RULE

OWNER FINANCE
Cozy 2 bedroom at 511 Central. Corner lot, carport, big trees. Low down, low monthly.
Call Jim at
325-518-8128
or Teri at
325-660-2122

WILD HORSE TRADING POST

Haskell's General Store and
RadioShack
Hunting Season is here!
See us for your hunting license, guns & ammo.
Don't forget - We also have gifts, musical instruments and ladies clothing!
419 S. 1st, Haskell • 864-2200
Hours: M-F 9-6; Sat. 9-3

The family of Juanita Garza Fernandez would like to extend our deepest gratitude to all who brought food, cards and flowers to us in our time of sorrow. A special thanks to Tiffany Weems for traveling with us to Rocksprings. Again, thank you all and may God bless you.
The Fernandez Family

Marry your policies. Honeymoon with the savings.

Haskell Co. Insurance Agency
103 N. Ave. E
Haskell, TX 79521
940-864-2665
Allstate
You're in good hands.
Allstate Insurance Company, Allstate Property and Casualty Insurance Company, Home Office: Northbrook, Illinois. Discounts offered only with select companies. Subject to qualifications. ©2002 Allstate Insurance Company.

ROUSTABOUTS
WINCH TRUCKS
WELDERS
BACKHOES
DUMPTRUCKS

LANGFORD ROUSTABOUT SERVICE
SCOTT LANGFORD
Mobile: (940) 256-0535 Home: (940) 864-2565
East 380 • Haskell, Texas

FOR SALE

241+ ACRES in Haskell County, TX. Adjoining Russell Lake. Hunters' dream! Good crop base. Priced right.
460+/- ACRES in Knox County. Good hunting.
3 BEDROOM, 2 BATH brick home on .818 acres. Nice kitchen with tile countertops. Covered patio, storage building, sprinkler system, fence, pecan trees, wonderful yard. Fine country living. North of Knox City.
2 BEDROOM, 1 BATH brick home in Knox City. Small yard, covered parking, good storage areas. Price reduced.

Counts Real Estate
David Counts
102 North Avenue A • Knox City, Texas
940-657-5012 or 658-3390

Dear editor:
The "Experienced Senior Citizen's Center." would like to thank the Stamford, "Wal-Mart" for supporting our cause. Jean Meier presented us with a check for \$600 as they have done now, for several years. "We salute you," and "we thank you." for your concern, and your support. "Wal-Mart" also donates \$25 per month to our center for bingo prizes and we are appreciative of this donation as well.
Sincerely, Jennabeth Kimbrough
Director, ECC

The "Experienced Senior Citizen's Center" would like to thank those who attended our variety show, and to those who performed, or helped.
Gene Leonard, "Master of Ceremonies" (from Mabank) and to: Mary Kammenga, The J. R. Merchants, Danny Langford, Bobby Jenkins, The Sonny Reynolds, Ruby Laroque, Doris Lehrmann, Dennis Rueffer, Dortha Monroe, Philip Martin, Tara and Haley Myers, Meagan Cheek, Taylor and Griffen Buchanan, Opal Dunnam, Thural Reid, Joan Dulaney and Janet Stephens.
Our special thanks to the following for expenses: Haskell National Bank, \$150 for lease of center; First National Bank, \$150 for food expenses; and Rule Banking Center, \$50 for expenses.
"Door Prizes:" Smitty's Auto, Bassings, Sport About, Haskell County Insurance, Sonic, Dairy Queen, Subway, Rodriguez, Star Stop, Medford Buick, Toliver Chevrolet, Haskell Tire & Appliance, Richardson's, Personality-Slipper Shoppe.
"It was a great success."
Sincerely, Jennabeth Kimbrough

FOR SALE

RIKE Real Estate
864-2411
864-2332
Mary Rike, Broker 411 1/2 South First St.

NEW LISTINGS
904 N. AVE. L. 3-2-carport, living, large kitchen, outside storage.
808 N. 16TH. Large 4-3, entry and living with hardwood floors, large master suite with private bath, fenced yard, well and covered slab and grill for cooking. Many amenities including faux finishes, textured walls and much more.
606 N. 17TH. 2-2-carport, brick, C/H.A. patio with hot tub, fenced, well, new appliances all in great condition.
1406 N. AVE. G. 3-2-carport, living, den, kitchen, C/H.A. well with sprinkler, shop, all in excellent condition.
900 N. 8TH. 3-1-2. Well kept older home, C/H.A. large lot, cellar and lots of storage.
700 N. AVE. K. 3-2-2, brick, C/H.A. living, dining, kitchen-den, well, nice corner lot.
TWO HOMES IN COUNTRY. One 3-1-carport on approximately one acre and one 3-2 rock home on 1 1/2 acre. Both homes are move-in ready.

411 1/2 South First Street
Box No. 853
Haskell, TX 79521
(940) 864-2411 (940) 864-2332
FAX (940) 864-3686
Mary Rike, Broker John Rike, Agent
mrike@metec.net

Haskell County REALTY

PRICED TO SELL: 2 bedroom, 1 bath. Close in. Excellent condition. 2 window units. Central Heat. Utility room. Neat kitchen with range. New pump on well. Fenced yard. 2 car carport.
OWNER FINANCE: 2 bedroom. New carpet, new bath fixtures. 2 new window units. Storm Cellar.
NEW LISTING: 1606 Robbyn Lane. 3 bedroom, 2 bath. 4 year old home.
NEW LISTING: 1206 N. Ave. J. 3 bedroom, 2 bath. 3 bedroom, 2 bath. Garage, door opener. Fenced yard. Very clean.
3 bedroom, 1 bath BV on large corner lot.
Large restaurant building with lots of fixtures.
Several choice building lots.
103 N. Ave. E
940-864-2665
1-800-658-6342
or call
Robert Tribbey 256-1400
Bridget or Chan Guess
864-6142
Hess Hartsfield, Broker 864-2004

Thanks To Our County Commissioners

Outstanding performance by elected officials is a rarity. It is for this reason the excellent quality of our Haskell County Commissioners and their employees should be called to the attention of Haskell and Knox County residents.
Recognizing the need for repairs to the O'Brien Cemetery grounds, Commissioner Johnny Scoggins volunteered the services of his department. His skillful equipment operators brought in loads of a dirt and gravel mixture, restoring our treasured old cemetery to its original beauty. The precision maneuvering of bulky equipment in narrow spaces is a testimony to the craftsmanship of Commissioner Scoggins and those who surround him.
The O'Brien Cemetery Committee takes this opportunity to express our sincere thanks.



KICKING OFF A NEW SEASON—The Paint Creek Pirates try out their defensive moves against the Benjamin Mustangs, at Pirate stadium, Fri., Aug. 22, during a scrimmage for the six-man team.

Commissioner's Court report

During the Haskell County Commissioners' Court regular session, Mon., Aug. 11, the Court voted to set the delinquent charges for overdue library books, video tapes, electronic accessories and other library equipment at \$1.00 per day for the first 30 days, \$10.00 per day after 30 days and then, after 60

days, it will be turned over to law enforcement for collection or prosecution.

Also approved was a motion to set a burn ban for Haskell County, effective Aug. 11, and to set a minimum fine of \$100.00, with the amount of the maximum fine to be left up to the discretion of the County

Sheriff or the Fire Chief for anyone violating this order.

Approval was given by the Court to transfer Precinct 4 time warrants on a John Deere Motor Grader from Haskell National Bank to Rule Banking Center.

After discussion of a request made by Coleman Wright, to open closed Whiteaker County Road in Pct. 1, no action was taken by the Court.

In a special called meeting on Aug. 11, the Court voted to accept the bid in the amount of \$32,750.00 from Buckner's for two belly dump trailers for Precinct 2. One other bid was received from Carpenter's Truck Center, Inc.

Reconvening at 3:10 p.m., the Court met with Mayor Ken Lane, Sam Watson, W. L. Wolf and Ruby Turner from the City of Haskell to discuss projects done between the City and County.

Cattle workshop set Sept. 11-12

by Brandon Anderson
Haskell Co. Extension Agent
A two-day workshop for cattle producers to focus on "Marketing Your Way to Profitability" will be held in Wichita Falls Sept. 11-12. The workshop is sponsored by Texas Cooperative Extension, Texas & Southwestern Cattle Raisers, National Cattlemen's Beef Association and the Chicago Mercantile.

The workshop will be taught by Chicago Mercantile Exchange and Cattle Fax Analysts. Topics will include marketing alternatives, hedging, forward pricing with options, developing a risk management plan driven by realistic profit objectives, cattle numbers and meat supply and other timely topics.

For more information and to obtain a registration form, contact the Haskell County Extension Office at (940) 864-2658 or Todd McCartney at (800) 242-7820 ext. 140.

Troopers

continued from page 1

"Our job is to make sure the highways are safe for everyone, so drivers who insist on endangering others run a much higher risk of getting a ticket or going to jail this holiday weekend," said Davis.

DPS is a participant in Operation CARE, Combined Accident Reduction Effort, a nationwide effort by police agencies to reduce fatalities during holidays.

CLASSIFIED ADVERTISING PAYS
940-864-2686

BURN BAN IN EFFECT

Hunting Season Opens **DOVE SEASON** Opens Mon., Sept. 1st
We will be Open Sunday at 2 p.m.
Open Monday, Labor Day at 7 a.m.

We have your hunting needs:

- ✓Guns
- ✓Shotguns Shells
- ✓Game Vest
- ✓Reloading Supplies

Special
12 Ga. Heavy Load
1 1/2 oz. Shot.
10 boxes **\$36.95** case

- ✓Gun Cases
- ✓Cleaning Kits, etc.
- ✓Camouflage Apparel
- ✓Hunting Stools

We Sell Hunting & Fishing Licenses
Where Winners Shop

Sport-About of Haskell



940-864-3891
402 N. 1st

We accept Discover, VISA, AMEX, MasterCard

STAR STOP
706 N. 1st • Haskell • 864-2062

Happy Labor Day!

New
Breakfast Meal **\$2.19**
2 Biscuits, Gravy,
Your Choice of Sausage or Bacon

All Flavors Coke and Sprite 20 oz. **89¢**

All Flavors Pepsi and Mountain Dew 20 oz. **79¢**

Centipedes moving indoors

by Lou Gilly

Haskell Co. Extension Agent

The summer heat is causing centipedes to move indoors. Centipedes are common in the Hill Country and West Texas.

Centipedes are worm-like nuisances with many fast moving legs. They can pinch people with their fangs causing irritation and discomfort. A six-inch centipede

called Scholopendra (Skole-oh-pendra), pinches and poisons victims with a cyanide-like chemical.

Applying weather-stripping and caulking to doors and windows can keep centipedes out. Spraying a building's perimeter with insecticide will also prevent centipedes from entering the home.

In addition, brush piles near the home should be removed.



August 24, 2003 thru September 6, 2003

HASKELL #153
1000 N. AVE. E
RULE #91
501 UNION AVE.

RED BULL
REGULAR OR SUGAR FREE ENERGY DRINK
3 FOR \$5

8.3 OZ. INDIVIDUAL CANS \$1.99 EACH OR

DIET COKE, SPRITE OR COCA-COLA
3 LITER BTL. **\$1.69**

6 PACK **\$1.59**

TOM'S CORN CHIPS
REG. 99¢ **79¢**

LANA'S PORK EGG ROLLS
REG. \$1.29 EACH OR **2 FOR \$1.59**

ALLSUP'S ICE CREAM
1/2 GALLON / REG. \$3.59 **\$2.79**

SANTA FE FLOUR TORTILLAS
12 CT. / REG. \$1.59 **99¢**

ALL FLAVORS POWERADE
REG. \$1.49 / 32 OZ. **99¢**

SO-DRI PAPER TOWELS
SINGLE ROLL 59¢ EACH OR **2 FOR \$1**

ALL MEAT BAR-S FRANKS
12 OZ. / REG. 99¢ **69¢**

ALLSUP'S BACK TO SCHOOL BONUS MINUTES
Up To **50%** Additional Minutes!

BREYER'S ICE CREAM REG. \$3.09 / 1 1/2 PINT **\$2.89**

SOFT & GENTLE BATHROOM TISSUE 4 ROLL PKG. **99¢**

ALL FLAVORS TOM'S CHIPS REG. \$1.89 **2 FOR \$3**

T.G.I. FRIDAY'S CHIPS 3 OZ. / REG. \$1.29 **\$1.19**

ALLSUP'S WHITE BREAD 24 OZ. / 59¢ EACH OR **2 FOR \$1.09**

ALLSUP'S WHEAT BREAD 24 OZ. / 69¢ EACH OR **2 FOR \$1.29**

ALLSUP'S COMBO MEALS

COMBO NO. 1 2 BURRITOS & 32 OZ. TALLSUP **\$1.99**

COMBO NO. 2 CHICKEN BITES & 32 OZ. TALLSUP **\$1.99**

COMBO NO. 3 BBQ SANDWICH, HOWLERS & 32 OZ. TALLSUP **\$1.99**

COMBO NO. 4 BREAKFAST BURRITO, HASHBROWN & 16 OZ. COFFEE **\$1.99**