

Softball games

Haskell JV-V vs Seymour
Fri., Feb. 20, 4 p.m.
at Seymour
Haskell V vs Clyde
Tues., Feb. 24, 4 p.m.
at Haskell

Baseball games

V Indians vs Merkel
Fri., Feb. 20, 4 p.m.
at Merkel (Scrimmage)
V Indians vs Olney
Tues., Feb. 24, 4 p.m.
at Haskell

Track

Indians and Maidens
Sat., Feb. 21
Tiger Relays, Anson,

Calendar

Classic car show

The 8th annual Haskell Fire Dept. Classic Car Show will be held Sat., March 20 around the courthouse in Haskell. Entries are \$20. Registration will be from 8 a.m. to 11 a.m. at the Fire Station. Judging will be at 12:30 p.m., followed by a trophy presentation at 3:30 p.m. Hot Wheel races will be held for the kids. Kids tractor pull will be held. For more information contact Randy Shaw at 864-2023 or Shane Buchanan at 864-3252.

Swedish smorgasbord

The bi-annual Swedish smorgasbord will be held Sat., Feb. 28 at Bethel Lutheran Church in Ericksdahl. Serving times are 5:00, 6:00 and 7:00 p.m. For ticket information call Connie Shurley 325-773-3757 or 773-5521 or Tena Tankersley 325-773-2721.

Rule Chamber banquet

The Rule Chamber of Commerce will hold their annual banquet March 9 at 7 p.m. at Rule ISD.

Storytime

Fun with Friends storytime will be held each Tuesday morning from 10 to 10:30 a.m. at the Haskell County Library beginning Feb. 3 and ending April 20. Children under 5 years old, accompanied by an adult, are encouraged to bring their favorite toy, blanket or pillow. Storytime is provided by friends of the Haskell County Library and the Lebri Foundation.

Food distribution

The Haskell County Ministerial Alliance Food Distribution Center will distribute food Sat., Feb. 21 from 10 a.m. til 11:30 a.m. at 206 S. 2nd (building east of Civic Center) in Haskell. Volunteers are needed.

Immunizations

The Texas Dept. of Health in Stamford will hold an immunization clinic Thurs., Feb. 26 at the Haskell National Bank Community Building in Haskell. Clinic times are from 2 to 4 p.m. For more information call 325-773-5681.

TAKS test

Students at Rule ISD along with all students in public schools in Texas will take the state-mandated Texas Assessment of Knowledge and Skills (TAKS) test Tues., Feb. 24. The testing schedule is 4th and 7th grades—writing; 9th grade—reading; 10th and 11th grades—English/Language Arts. Other subjects and grade levels will be tested later this spring.

Index

Obituaries.....Page 2
Out of the Past.....Page 4
Menus.....Page 4
Classifieds.....Pages 6-7

Support your hometown merchants

The Haskell Free Press

VOL. 118—NO. 8, ©FEBRUARY 19, 2004

"The People's Choice"

8 PAGES—ONE SECTION—50 CENTS



INDIAN'S SWEETHEART AND BEAU—Haskell students chosen recently as the 2003-04 Haskell Indians' Basketball Sweetheart

and Haskell Maidens' Basketball Beau were seniors Consuelo Gonzalez and Ross Hairgrove.

Photo by Kis

TxDOT TTC meeting to be held Feb. 23

The Texas Department of Transportation (TxDOT) will hold a series of public hearings throughout the state in February regarding the Trans-Texas Corridor (TTC). The purpose of these hearings is to gather public comments and opinion on possible routes for the corridor.

During February, TxDOT has elected to host a TTC hearing in each Texas County. In Haskell County, the Abilene District has set the public hearing for Mon., Feb. 23 in the Haskell High School auditorium, 600 N. Ave. D, Haskell. Registration begins at 5:30 p.m. with the hearing starting at 6 p.m.

The TTC is a network of roads, rail and dedicated utility zone. This corridor will be built to move people, goods, utilities—and even ideas—through the state safely and faster than ever before.

Construction will be funded over several decades through tolls, bonds and other innovative financing tools. Likely starting points for this corridor will be high-population areas of the state. Eventual features of the corridor could include separate lanes for cars and trucks, separate passenger, commuter and freight rail lines as well as a dedicated utility zone that includes water, electricity, natural gas, petroleum, fiber optics and telecommunications.

Everyone is invited to attend and participate in this public hearing. The facility is handicap accessible. For additional information on the meeting, contact Mary Beth Kilgore, Abilene district public information officer, at 325-676-6806.

Chamber names outstanding residents

Haskell CISD Assistant Superintendent, Billie McKeever, was named the 2003 Citizen of The Year at the Haskell Chamber of Commerce Banquet, Thurs., Feb. 5.

Receiving a Volunteer of the Year Award, which was given this year for the first time, were Frances and Jimmy Bowen, and Bob Smith.

In making the presentations, Ruby

Turner noted McKeever's work as an outstanding school administrator; securing college level classes for students at Haskell High School; guiding the school to Exemplary status; arranging for the training of correctional officers at Rolling Plains Jail and Detention Center; serving as secretary/treasurer of the

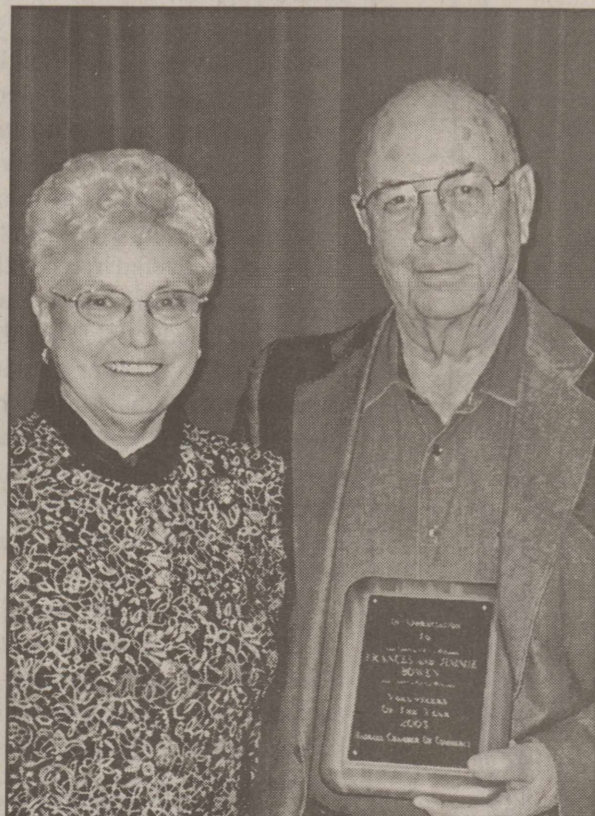
Development Corporation of Haskell; a founding member of the CISD Educational Foundation; instrumental in obtaining a Community TIF grant; a driving force in starting and maintaining the Soup Kitchen free meals program.

Frances and Jimmy Bowen were honored for their volunteer work last spring to beautify Haskell's Willow Cemetery.

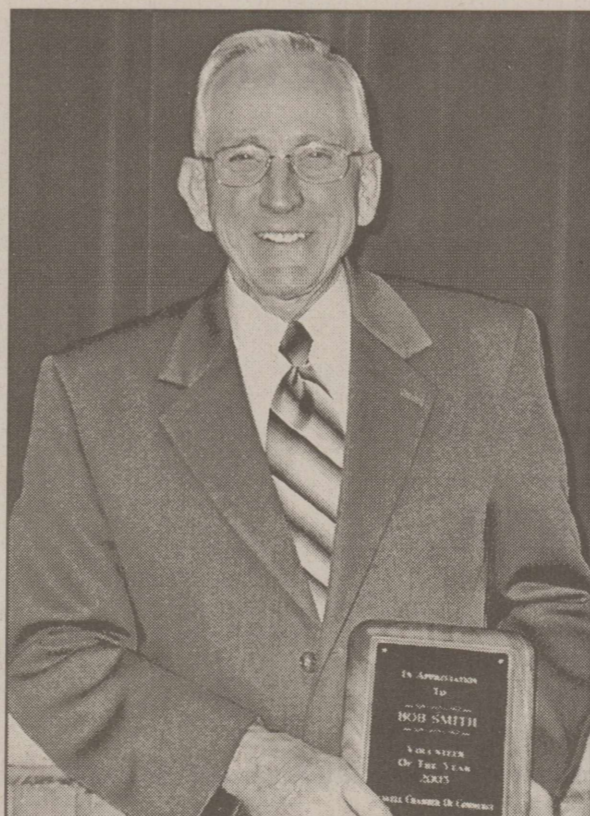
After finding a source for the purchase of Desert Willows, the couple drove over 200 miles to transport them to Haskell. With Jimmy Bowen hand digging the holes, they planted 54 trees, which they watered by hand each week during the summer. Their effort at the cemetery soon caught the attention of many other persons who

wanted to be a part of it by making memorial gifts to the project.

Bob Smith received the Volunteer of the Year Award for the job he did decorating the Courthouse square for Christmas, in not only giving the decorations in memory of his late mother, Allie Belle Smith, but also giving many hours of work to getting them set up, hooked up and working.



FRANCES AND JIMMY BOWEN
VOLUNTEERS OF THE YEAR



BOB SMITH
VOLUNTEER OF THE YEAR



RANDY HISE PRESENTS BILLIE McKEEVER
2003 CITIZEN OF THE YEAR AWARD

FOR NEWS ITEMS OR TO SUBSCRIBE, CALL 864-2686

Obituaries

Billy M. Comedy

Funeral services for Billy M. Comedy, 77, of Abilene and former Coleman resident were held Sat., Feb. 14 at Stevens Funeral Home in Coleman with Brother Mack Cason officiating, assisted by Rev. Edd Chappell. Burial with military honors followed in Coleman City Cemetery under the direction of Stevens Funeral Home.

Mr. Comedy died Wed., Feb. 11 at Hendrick Medical Center in Abilene.

Born Oct. 31, 1926 in Coleman, he was the son of James Milton Comedy and Willie Belle Smith Comedy. He grew up and attended school in Coleman. He served in the United States Army. He married Clydene Cason May 7, 1947 in Brownwood. At the age of 11, he went to work for Jetty Clare at the Democrat-Voice in Coleman. He published the Throckmorton Tribune for six years before moving to Haskell, where he published the Haskell Free Press for 21 years. He was involved with many community and civic organizations, including the Fire

Departments in Coleman, Throckmorton and Haskell; Chamber of Commerce in Haskell and Throckmorton where he was president from 1985 to 1987; Lions Club in Throckmorton and the Rotary Club in Haskell and the Haskell Industrial Foundation. He was a member of the Texas Press Association, West Texas Press Association and the First United Methodist Church in Haskell.

He was preceded in death by one brother, William Marvin Comedy.

Survivors include his wife, Clydene Comedy of Abilene; son and daughter-in-law, Billy Don and Jeannine Comedy of Wichita Falls; two granddaughters, Jessica New and husband, Josh of Minot, North Dakota and Jennifer Holmes and husband, Staten of San Antonio; an aunt Louise Smith of Los Angeles, California; niece, Brenda Keenam and husband, Jerry of Granbury; nephew, Gary Comedy of Coleman; and other nieces and nephews.

PD. NOTICE

Revival planned by local church

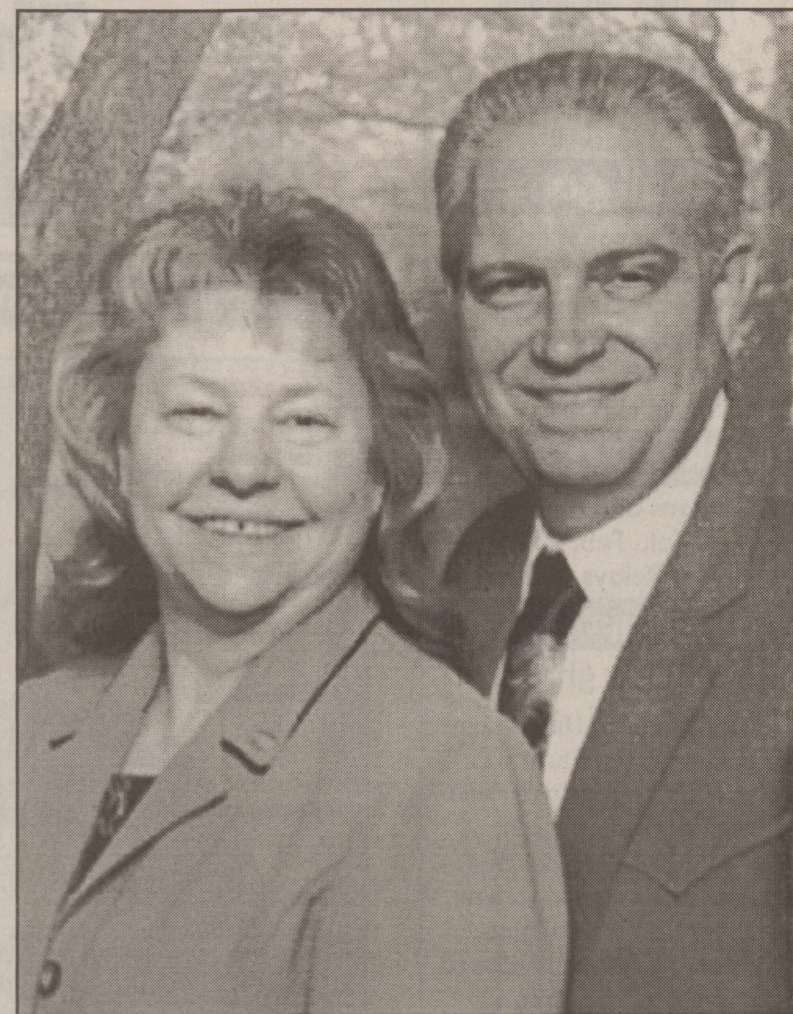
The First Assembly of God Church at 1500 North Ave. E in Haskell will conduct revival services each evening at 7:00, beginning Sun., Feb. 22, and extending at least through Feb. 27. The Sunday evening service will begin at 6:00. Friday evening will have a special youth emphasis.

Evangelist G. Wayne Kirk of Plano will preach the unchanging and uncompromising word of God in each service, said Rev. J. C. Amburn, church pastor. "Rev. Kirk preaches in a style known as old fashioned Holy Ghost anointed preaching; where God, by His power, moves and anoints people in each service. He gladly prays for the sick, believing that God is able to heal sick bodies as recorded in the Bible. His slogan is: preaching the end time message to this end-time generation."

Rev. Kirk's wife, Pat, will tell a Bible story for children prior to his preaching each evening.

A former businessman, Rev. Kirk pastored churches in North Texas for several years before launching a ministry of Evangelism and Kid's Crusades.

Pastor Amburn states that all are welcome to attend the services. For more information, contact him at 940-864-2189.



REV. AND MRS. WAYNE KIRK

The Haskell Free Press

READ BY MORE PEOPLE IN HASKELL COUNTY THAN ANY OTHER NEWSPAPER.



To the citizens of Haskell, the administration, faculty, staff, and students of Haskell CISD, especially Haskell CLISD school board:

In the effort to consolidate our school districts, we appreciate your time, caring attitudes, and sincerity toward our school in so many different ways. We admire how you always remembered that it's the students who come first in all this.

We regret that our best efforts failed to unite our two schools.

Signed,
Rochester Citizens
for Consolidation

Pd. Adv. Pd. for by Rochester Citizens for Consolidation, P.O. Box 231, Rochester, TX 79544

Ask for . . .

TOFF
SPRAYED-ON BEDLINERS[™] *artlux*

the BEST sprayed-on bedliner!

Let **TOFF** take the punishment from the cargo . . . while increasing the life of your truck and its resale value.

Available in a variety of colors!

See us today for details!

Steele Machine

940- 864-2208 or 800-687-7639

East Hwy. 380 - Haskell



TAX
PLANNING

Written By
Richard E. Rodgers, CPA



THERE'S NEW HELP TO COVER
HEALTH CARE COSTS

There's new help from Washington to cover the costs of health care: Health Savings Accounts (HSAs), which were included in the Medicare Act of 2003. HSAs are similar to IRAs, but they also have some unique features. You can make a tax-deductible contribution for 2004 of up to \$2,600 to an individual HSA or \$5,150 to a family HSA. If you're 55 or older, your annual contribution can be \$500 higher. If your employer makes the contribution as part of a cafeteria benefits plan, it isn't taxable to you. Earnings on investments made with your contributions won't be taxed currently, and withdrawals are also tax-free if they are used for a broad range of medical expenses.

Of course, there are restrictions. To be eligible for an HSA, you must be covered by a health plan with a deductible of at least \$1,000 annually for an individual or \$2,000 annually for a family. These "high deductible" health plans can save you money, since they should have lower premiums. You must be under 65, and therefore not eligible for Medicare, when opening an HSA. Your contribution can't be greater than the deductible on your insurance, nor can you be covered by another plan with a lower deductible for the same benefits. If you withdraw HSA funds for nonhealth expenses, you'll pay taxes, plus be subject to a penalty if you do it before age 65. Some other conditions also apply.

You should consider an HSA if you're interested in building a nest egg to cover future health care costs, as an alternative to a flexible health care spending account, or if you're willing to exchange lower premiums for higher deductibles. To discuss the potential benefits in more detail, give us a call.

RODGERS & COMPANY

Certified Public Accountant
20 Southwest Third Street
Hamlin, Texas • 325-576-2356

Mission to homeless is Study Club topic

The Haskell Progressive Study Club met at the Haskell National Bank Community Room, Thurs., Feb. 12, to hear a program presented by Mark Hewitt, founder and pastor of the Love and Care Ministries and The Mission, both of Abilene.

First hearing the call to minister to the homeless while on a lay-ministry trip to Russia, two years later he was led to the homeless and poor in Abilene. Nine years ago he began the Love and Care Ministries, going to the streets, under bridges in abandoned buildings in Abilene, finding hundreds of people in desperate need of unconditional love and care.

From its beginning of handing out cups of hot soup from the back of a pick-up truck, the 9-year ministry has expanded to a staff of volunteers who provide food, clothing, medical care and spiritual guidance for homeless men, women and children.

Club members brought litre bottles of water for distribution to the homeless by Love and Care

Ministries. To these were added 922 bottles of water collected by members of the Leadership Class at Haskell High School, who delivered them to the meeting and stayed for Hewitt's presentation.

A donation from the club was also presented to the speaker for the work of the Ministries.

During a business meeting, a slate of officers was presented and accepted for the next club year, beginning in September. They will be installed at the May 13 meeting.

Federation Counselor, Frances Lane, spoke about the Mesquite District Spring Convention to be held Mar. 27, in Stamford.

District Women's Homelife Department Financial Information chairperson, Thula Perry, gave a report on the 529 College Savings Plan for grandparents of students.

For the next meeting of the club, members will travel to Stamford Sat., Mar. 6, to attend the annual Texas Heritage Breakfast hosted by the Pierian Club of Stamford.

Double ring ceremony unites Ejem, Cunningham

Tammy Ejem and Mathew Cunningham were united in marriage, Sat., Dec. 27, in a double ring ceremony at the East Side Baptist Church in Haskell, with Rev. Tony Grand officiating.

The bride is the daughter of Joe and Diane Ejem of Roscoe. The groom is the son of Donald and Denia Cunningham of Haskell.

Maid of honor was Kelly Felderhoff of Muenster. Matron of honor was Amy Martin, sister of the bride. Bridesmaids were Mandi Haynes of Lubbock and Shannon Sanford of Dallas.

Best man was Alan Merchant of Abilene. Groomsmen were Jim Crawford of El Reno, Oklahoma, Cory Green of Haskell and Randall Martin of Haskell, brother-in-law of the groom.

The flower girl was Kelsey Tidrow of Knox City. Ushers were Kory Tidrow of Knox City and Casey Judd of Rule, cousin of the groom. Candlelighters were Chelsea and Ashley Bullard of Haskell, and Kristy Judd of Rule, all cousins of the groom, and Fallon Ejem, niece of the bride.

Annette McCloy of Jal, New Mexico, aunt of the bride, provided the traditional wedding music for the bridal party as they entered and exited.

The bride wore an A-line gown with a square neckline featuring Chantilly lace sparkling with pearls and sequins. Tiny spaghetti straps were delicately beaded. Embellished Chantilly lace appliques highlighted the fitted bodice. The floor-length hemline featured the same trim of pearls and sequins. The bride also wore a rhinestone and pearl headpiece and elbow length veil.

The bride's bouquet was seven red roses accented by pearled stephanotis and pine branches and hand-tied with silver ribbon. Flowers for the occasion, including the bride's and bridal party's, were designed by the groom's sister, Amy Martin.

For something old, the bride wore a diamond ring, belonging to the groom's aunt, Azile Larned, traditionally worn by her nieces or future nieces. Something new was the wedding gown and pearl necklace and bracelet, gifts of her parents.

Something borrowed were pearl earrings from her cousin, Holly McLain. Something blue was her garter. She also wore a six pence in her shoe.

The bride's attendants wore floor-length red dresses with embroidered empire waists and spaghetti straps. They carried hand-tied bouquets of white gardenias and red berries, accented with pine branches.

The candlelighters wore tea-length black velvet dresses and carried heart-shaped red rose pomanders on their wrists. The flower girl wore a white tea-length dress with a satin bodice and tulle skirt and carried a basket of red rose petals.

The groom and his attendants wore long-sleeved western cut white shirts and black cinch pants. The groom's boutonniere was a red rose with white pearled stephanotis and holly leaves. The groomsmen and ushers wore boutonnieres of white pearl-adorned stephanotis, red berries and holly leaves. The setting for the candlelight ceremony was decorated in a red, white and silver theme with pine garland, red poinsettias and white lights.

JoAnna Castillo of Little Elm attended the guest book. Justin Ejem, nephew of the groom, handed programs to the guests.

The bride's family served a fajita buffet at the reception, held in the fellowship hall of the church, which was decorated in a winter theme, including boughs of pine garland, red berries, poinsettias, silver snowflakes candles and silver and red Christmas balls.

The four-tiered wedding cake, topped with red roses and baby's breath, was made by the groom's mother. Serving the cake and punch were cousins of the bride, Jana McCloy, Holly McLain and Sahala Gaillard.

The groom's table featured a chocolate cake topped with chocolate dipped strawberries, and three cheese cakes on a tiered silver holder. Serving at the groom's table were Adele Stoots and Christina Tidrow.

A rehearsal dinner hosted by the groom's family, was held at the Haskell National Bank Community Room, decorated in a winter theme.

Helping to prepare and serve the meal were Bobby and Lena Tidwell, David Tidwell and Darla, Felix Rodriguez, Tim and Casey Judd and Gary Druessedow.

A bridal tea for the couple was hosted at the First Baptist Church in Roscoe. A bridal shower was held at the home of Cindy McCulloch in Haskell.

The bride is a 1999 graduate of Roscoe High School and a Dec. 2003 graduate of Texas Tech University,

with a Master of Science degree in Accounting. She is employed by Layton and Fowler CPA's in Abilene.

The groom is a 1998 graduate of Haskell High School and an Aug. 2003 graduate of the West Central Texas Law Enforcement Academy. He is a K-9 city police officer in Haskell.

Following their trip to Las Vegas, New Mexico, the couple resides in Haskell.



MRS. MATHEW CUNNINGHAM

Garden Club meets

Members of the Haskell Garden Club met Thurs., Feb. 12, at the Haskell National Bank Community Room to hear a program presented by Grace Hannsz on Lasting Impressions, using treasured invitations and announcements preserved in picture frames. Giving tips on how she tea-dyes the paper and dries flowers for her creations, she showed several finished frames.

Frances Bowen gave a report of the planting of the Desert Willows in the Willow Cemetery last summer. She and her husband, Jimmie, and their grandson, planted 54 of the trees, donated by people from several states in memory of their loved ones buried there.

Telling of her childhood memory of smelling the sweet fragrance of the trees when her grandfather died, Bowen spoke of how she dreamed of wanting to plant more of the willow

trees before all the old willow trees died, and of how, with the help of the donated money for new trees, her dream will now come true.

Valentine refreshments were served on tables with pink silk covers, antique silver coffee and tea services, and centered with pink and red rose buds. Hostesses were Connie Cothron, Laverne Kuenstler and Florence Alexander.

During a business meeting, with president Florence Alexander presiding, new officers were named for the year, and the Spring Convention in Big Lake was announced for Mar. 12-13.

Those attending were: Erna Piezer, Grace Hannsz, Melyn Wittenborn, Betty LeFevre, Bennie Shelton, Tinka Nelson, Frances Bowen, Jane Powers, Florence Alexander, Laverne Kuenstler, Ruby Middlebrook and Martha Spitzer.

Oil portrait technique shown

The Brazos West Art Association met Mon., Feb. 9 at the Haskell National Bank Community Room.

Guest artist, Patti Rae Welborn, of Abilene, demonstrated portrait painting using oils. With her granddaughter as her model, Welborn provided helpful hints for the club.

Attending the meeting were Doris Reeves, Adeline Laird, Betty Hook,

Marsha Whittemore, Denia Cunningham, Martha Spitzer, Florence Larned, Bobbie Harrison, Betty Berry, Peggy Middlebrook, Jennie Lyckman, Gary Conn, Dorothy Brown, and new club member, Judith Chapman.

Hostesses were Peggy Middlebrook and Betty Berry.

Double Mountain Coach
Let us do the driving for you!

Whether it's around town for bill paying, shopping, doctor appointments or just visiting a friend, give us a call and schedule your ride today!

Daily Trips to Abilene - Monday thru Friday

Call 940-989-2239 or 1-800-722-0137

Did You Know?
Rice Springs Care Home offers **Respite Care Services** to all ages. This service allows both people the opportunity to take time off from each other, while knowing that your loved-one is safe, comfortable, and being taken care of.

Rice Springs Care Home also offers **Skilled Health-Care for Children** that have high medical or nutritional needs.

Contact Stephen King, Administrator for more information!

RICE SPRINGS CARE HOME
Your locally owned Care Home, Rice Springs. "Caring for Those who Cared for Us."
1302 North First • Haskell • 940-864-2652

Invest in a

TEXAS HERMANN SONS
ANNUITY or IRA

4.5%

Jan. 1- March 31, 2004 - Guaranteed One Year

Call Today!

1-877-HERMANN • 1-800-234-4124

LOCAL AGENTS:
Haskell #241:
Eunice Koehler • 940-864-2134
Elna Weise • 940-864-3564
Old Glory #228:
Beunice Vahlenkamp • 940-989-3609

Serving Texas Families Since 1890
Order of the Sons of Hermann in Texas, San Antonio
www.texashermannsons.org

HERMANN SONS
HSFI
FRATERNAL INSURANCE

HEY!
Little Dribblers
Be A Winner -
Come To Sport-About
for all
Your Basketball Needs

FREE!
Little Dribbler
T-shirt with each pair of
basketball shoes purchased

Basketball Checklist

•Shorts	•Team Color Socks
•Sweats	•Sweat Bands
•Goals	•Knee Pads
•Shoes	•Balls -all sizes

Life Begins When
Little Dribblers Starts!

Where Winners Shop

Sport-About of Haskell 940-864-3891
402 N. 1st

STAR STOP
706 N. 1st • Haskell • 864-2062

Chicken Breast Reg. \$1.69 **\$1.19**

Chicken Thighs Reg. \$1.19 **99¢**

Chicken Legs Reg. 89¢ **2/\$1**

Chicken Wings Reg. 79¢ **3/\$1**

DRINK PRODUCTS OF AMERICA, LTD. Play The Game Of Texas

CHICKEN STRIP DINNER & DRINK

SONIC

It's Sonic Good.

\$4.49 plus tax

4 Chicken Strips, Regular Fries, Texas Toast, Gravy, an Onion Ring and a Medium Drink

No Waiting
Call In Orders
864-8533

Limited Time Only!
Offer good February 1-29, 2004. Not valid with any other offer. Only at participating SONIC Drive-ins. ©2004 America's Drive-In Corp.
DR PEPPER is a registered trademark of Dr Pepper/Seven-Up Corporation Dallas TX 2004

OPINION

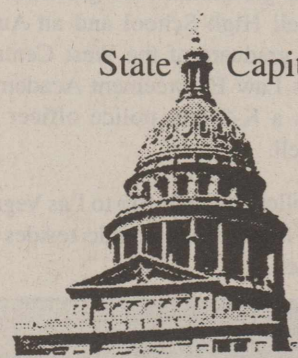
TEXAS PRESS ASSOCIATION

Bobby www.barrycartoons.com
©03

State Capital

HIGHLIGHTS

By Mike Cox



Sales tax revenues increase again
AUSTIN—The good economic news continues for Texas.

January sales tax receipts were up compared to a year before, the fifth straight increase in revenue to state coffers. Earlier this month, the Legislature Budget Board was briefed by economists who predicted this would be a much better year for the state's economy. Texas may gain as many as 150,000 jobs this year, University of North Texas economist Bernard Weinstein told the LBB. One problem: Jobs lost during the recent economic downturn tended to be of the higher paying variety. Many of the newly-created jobs, and anticipated positions, are in the service industry and government. Both categories are lower paying than many of the jobs lost, a factor that translates into lower consumer spending. That, of course, means less in sales tax revenue.

Special session in April?

The buzz around the Capitol is that early April, possibly April 10, is D-Day for the special session on school finance.

That would be a month after the primaries and six months before the November general elections. Believe this or not, but another component of the buzz is that one of the school funding considerations that ranks fairly high up the list is an increase in the sales tax.

New Main Street communities...

Since 1981, the Texas Historical Commission's Main Street program has helped 145 communities in the state revitalize their historic downtown areas.

The cities selected for Main Street funding this year are Grand Saline, Pecos, Pharr and McKinney.

Architectural renderings for downtown renovations in each of these cities will be unveiled by First Lady Anita Perry in ceremonies set for March 30 in Pharr and Pecos and the following day in McKinney and Grand Saline.

Beam up all the cell phones?

If you watched the original "Star Trek" on television back in the '60s, or caught the series on syndication, you know that Captain Kirk and the other members of the Enterprise crew had a communication device that looked remarkably like today's small cell phone.

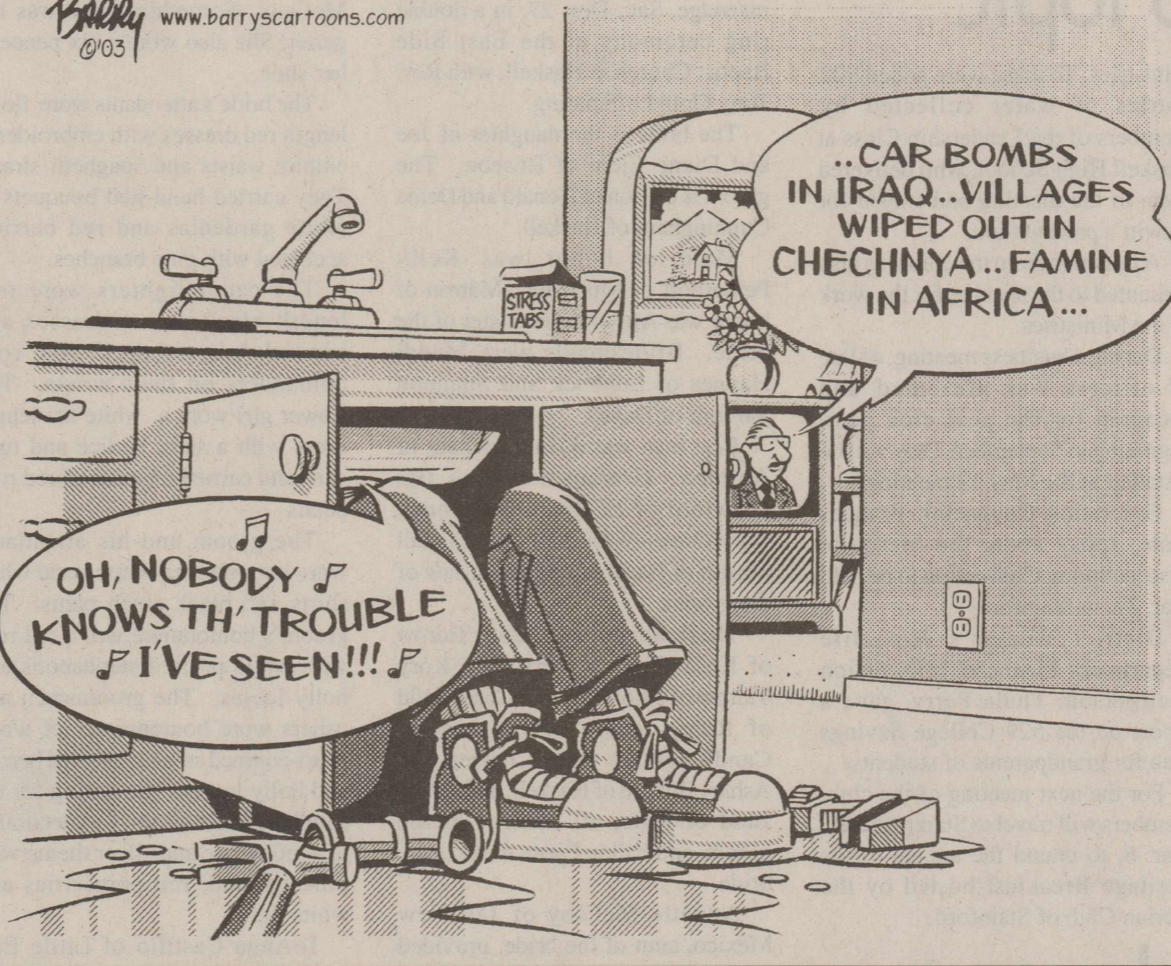
These days, according to the Department of Public Safety, cell phones are becoming almost as dangerous as entering Klingon territory. Traffic crashes related to cell phone use (because of the driver distraction they cause) jumped 44 percent from 2000 to 2001. And if data from 2002-03 were available, which it isn't, the percent of increase probably is even greater.

In real numbers, reported cell phone-related crashes jumped to 1,032 from 716. Seven people died in cell phone-related crashes in 2000 and eight deaths were reported the following year.

A more traditional problem, road rage, was blamed on 219 crashes in 2001. That represents an increase of 143 percent from the 90 crashes attributed to road rage the year before.

"It is difficult to draw conclusions at this point," said DPS Director Col. Thomas Davis Jr., "but the data probably understates the problem. There is no doubt that cell phone misuse and road rage create major problems on Texas roadways."

The solution: Don't use your cell phone when you're driving.



From Out of the Past

From the files of The Haskell Free Press

10 Years Ago
February 17, 1994

Jesse Medford of Haskell, an eight-year-old First Degree Red Belt brought home a second-place trophy from the eighth annual West Texas Invitational Taekwondo Championship.

Ember Miller of Haskell was named a Distinguished Student at Tarleton State University.

Five Haskell men went on a humanitarian mission to Richmond, Missouri. There, they helped repair the home of a family of five which was severely damaged in last year's devastating flood. In the group were Tom Hairgrove, Kenny Watson, Ken Lane, Bob Baker and David Davis.

Emily Cox, daughter of Wallace and Jo Cox of Haskell, went to Sidney, Australia where she attended the University of New South Wales for a year's study to work on her doctoral in pharmacy.

20 Years Ago
February 16, 1984

Ruben Castillo of Weinert won Reserve Champion Berkshire with his market hog at the Fort Worth Stock Show.

Haskell defeated the Paducah Dragons in Jayton to earn the district title. Paducah won the first half of District and Haskell won the second half to force the play-off. Ricky Rojas was the leading scorer for the Tribe with 16, Patrick McCoy had 13.

Law degrees were awarded to 26 students in the Texas Tech University School of Law. Graduates included Joseph Arthur Williams Jr. of Haskell.

Bonnie Woods of Rule was selected as an officer of the Southwestern State University Student Pharmaceutical Association.

30 Years Ago
February 21, 1974

Alexia Mayfield of Weinert played the lead role in the musical production of "Music Man" at Hardin-Simmons University Van Ellis Theatre.

Haskell firemen received service pins including were R. A. (Shady) Lane, 40-year service pin; Raymond Davis, Ray Lusk, Satch Lusk, Dugan Starr and Jack Speer, 30-year pins; Olen Bartley, Olen King and Chester Hodges, 20-year pins; Jack Medford and Jim Alvis, 15-year pins; Cleo Merchant, 5-year pin.

Grand Champion Heifer of the Wichita Falls Beef Show was shown by Kim Hager of Weinert.

Lee Ann Toliver was named Haskell High School's Betty Crocker Family Leader of Tomorrow.

40 Years Ago
February 20, 1964

Andy Gannaway of Haskell was one of the top ribbon recipients in the "heavy" steer class in the Wichita Falls Junior Chamber of Commerce 4-H and FFA Calf Show. Ricky Perry of Paint Creek, Sherry Newton and Brenda Boone of Weinert, all were winners in the "medium" steer weight class. Kay Newton of Weinert

showed a winner in the "light" steer weight class.

Louisa Herren and Rodney C. Brown of Haskell were among the 109 attaining the McMurry College Dean's List.

Kenneth Diggs McCollum of Haskell was accepted as a member of the Knights Social Club at Abilene Christian College.

50 Years Ago
February 18, 1954

"Teacher of the Week" in Haskell Schools was Mrs. A. T. Weaver, elementary teacher. Weaver taught in Tulia and in Snyder before moving to Texas.

Haskell was in the radio and TV spotlight in Abilene. Appearing in entertainment features were Sylvia Trimmier, A. M. Harris and daughters, Anita and Meda Rose; Jan Herren, Susanne Lane, Darlene Morgan, Sue Nichols, Kendall Henderson, Jean Lawson and George Turner and his children.

Ives June Casey of Rule was declared the over all winner in the County 4-H Club dairy food contest.

Billy Matthews, son of Mr. and Mrs. C. B. Matthews of Haskell, graduated from the U. S. Naval Pre-Flight School at Florida, preliminary to receiving a commission as a Naval Officer and pilot.

100 Years Ago
February 20, 1904

Mrs. Frank Vernon and children spent the week in the country, visiting with relatives, while Frank presided as chief cook and bottle washer at home.

J. S. Keister is having a neat four room residence built on a tract he owns on the east side of town. J. S. Fox has the contract.

Having secured leave of absence from the bank M. Pierson, assistant cashier, left for East Texas to be gone about a month.

Cattle Market Report

The market at the Haskell Livestock Auction was on a run of 241 head of cattle at its sale on Mon., Feb. 16, according to Gary Tate, reporter. 25 sellers and 29 buyers were present.

Packers \$2 to \$4 higher, stockers \$1 to \$4 higher, feeders steady.

Cows: fat, .45-.55; cutters, .47-.58; canners, .32-.43.

Bulls: bologna, .64-.71; feeders, .78-.88; utility, .55-.67.

Steers: medium and large frame No. 1 200-300 lbs., 1.20-1.60; 300-400 lbs., 1.12-1.25; 400-500 lbs., 1.00-1.18; 500-600 lbs., .90-1.10; 600-700 lbs., .87-1.00; 700-800 lbs., .80-.92; 800-up lbs., .73-.82.

Heifers: medium and large frame No. 1 200-300 lbs., .98-1.35; 300-400 lbs., .95-1.15; 400-500 lbs., .90-1.05; 500-600 lbs., .82-.95; 600-up lbs., .68-.85.

Bred heifers medium frame, 525-675.

Bred Cows: young to middle aged, 650-750; aged or small, 450-675.

Cows with calves: medium frame No. 1 young and middle aged, 825-975; aged or small, 675-750.

Haskell School Menu

Feb. 23-27
Breakfast

Juice and milk are served daily on the breakfast menu.

Monday: Breakfast pizza
Tuesday: Breakfast on a stick
Wednesday: Cinnamon Toast Crunch cereal, 1 pop tart
Thursday: Funnell cake
Friday: Pig in a blanket

Lunch

Milk and iced tea are served daily at the Secondary campus. Milk is served daily at the Elementary School. Secondary campus: Choice of entree or baked potato with ham and cheese.

Monday: Steak fingers/gravy, mashed potatoes, green beans, hot rolls, sliced peaches
Tuesday: Lasagna, fried squash, garden salad, bread stick, applesauce

Wednesday: Bean and beef burrito, corn, garden salad, Spanish rice, chocolate brownie

Thursday: Corn dog, ranch style beans, tater tots, baby carrots, pineapple chunks

Friday: Cheeseburger, lettuce/tomato/pickle, French fries, orange wedges

Paint Creek School Menu

February 23-27
Breakfast

Juice and milk are served daily.

Monday: Toast, cereal
Tuesday: Biscuits/gravy
Wednesday: French toast
Thursday: Breakfast casserole
Friday: Toast, cereal

Lunch

Milk is served daily.
Monday: Tacos, beans, Spanish rice, salad, jello

Tuesday: Chicken strips, mashed potatoes, green beans, rolls, cake
Wednesday: Turkey with dressing, peas, salad, rolls, fruit

Thursday: Steak fingers, mashed potatoes, gravy, green beans, bread, jello

Friday: Hot dogs, fries, corn, salad, cake

ECC Menu and Calendar

Mon., Feb. 23

11:00 a.m. Blood pressure check
Lunch—Ham slice, cheese/macaroni salad, sliced cranberries, green beans, sliced onions, yeast rolls, banana split cake, milk, tea, coffee

Wed., Feb. 25

Lunch—Beef and cheese enchiladas, tossed salad, Spanish rice, pickles, chips and hot sauce, jello and cookies, milk, tea, or coffee

Fri., Feb. 27

Lunch—Beef stew, carrot salad, sliced onions, sliced beets, cornbread, dessert, milk, tea, or coffee

Sheriff appeals to citizens to join in fight against crime

Responding to the increased number of citizens and businesses wanting to assist law enforcement officials and build a stronger partnership in the fight against crime, Sheriff David Halliburton has announced that Haskell County citizens and businesses are invited to become Associate Members of the Sheriff's Association of Texas.

Membership appeals will go out in the mail shortly. The funding from the memberships provides critically technical resources, training, and legislative support on key criminal justice issues.

In addition, the dues will be used to support crime prevention and

awareness programs, promote public safety, fight drug abuse, provide additional training for sheriffs and their deputies, and provide scholarships for children of law enforcement officers. Contributions are tax-deductible.

"The Associate Membership Drive helps provide the funding which is vital to helping us carry out our mission of making our communities safer places to live, work and play," said Sheriff Halliburton.

The Associate Membership Program was started to provide citizens and businesses with an opportunity to better help local

Sheriffs protect the lives and property of citizens.

"As the need for building stronger public-private law enforcement partnerships in this country continues to escalate, programs such as this continue to grow in importance," said Halliburton. "I encourage every citizen and business receiving a membership appeal to consider joining forces with us by becoming an Associate Member. It is a valuable investment in our future."

Founded in 1874, the Association is a non-profitable professional and educational organization dedicated to the preservation of peace and the protection of the lives and property of the citizens of Texas. Steve M. Westbrook serves as the Executive Director. Headquarters are located in Austin. The Sheriff's Association does not make solicitations by telephone. Anyone receiving a call using the name, should report it to the local County Sheriff or County District Attorney.

Students in the News

John Henry Lopez and Monica Lynn Shelton of Haskell were named to the Fall 2003 Deans's List at McMurry University. Both students are seniors, majoring in Multidisciplinary Studies.

To be eligible for the Dean's List, a student must have maintained at least a 3.5 grade point average while taking 12 or more credit hours.

All deadlines are 5 p.m. on Monday.

'Chester Drawers' performs for kids

Missouri author, Eddie Bowman, performed for students at the Haskell Elementary School cafeteria Wednesday morning, Feb. 11.

Students in pre-kindergarten through sixth grades listen in rapt attention as the hillbilly comic, author and song writer played his guitar, sang songs from his Silly Songs Series, and through his stories and jokes, encouraged children to believe in themselves and always do their best.

Bowman travels to schools dressed as the homespun character, "Chester Drawers," who wears overalls, an oversize necktie, and has many missing teeth and large spectacles. "Chester" entertains children while sending them messages about values, self-esteem and the importance of reading and

learning. Before he began visiting schools, Bowman played the part of "Chester Drawers" in Branson, Missouri for eight years. He now travels to schools around the country, speaking to students, teachers and parents. He visits about 330 schools a year in 15 states, spreading his message of encouragement and his belief that good values are essential for happiness and success.

Haskell students sang and clapped with Bowman as he presented his unique brand of hillbilly humor. Betsy McManamon, school librarian, said, "Everyone seemed to have a great time participating in the performance."

After the show, a number of students met with him in the library for book purchases and autographs.

The Haskell Free Press

Established January 1, 1886
PUBLISHED EVERY THURSDAY
420 North First Street

P. O. BOX 555 HASKELL, TEXAS 79521

John McDougall Publisher
Lisa Shaw Business Manager
Mary Kaigler Editor
Doris McDougall Production
Bill Blankenship Staff Photographer

Periodical Paid Haskell, Texas 79521
(USPS 237-040)

SUBSCRIPTION RATES:

Haskell County, one year, \$20.00.
Outside of Haskell County, one year, \$28.00.

NOTICE TO PUBLIC: Any erroneous reflection upon the character, reputation or standing of any firm, individual or corporation will be gladly corrected upon being called to the attention of the publisher.
POSTMASTER: Send address changes to The Haskell Free Press, P.O. Box 555, Haskell, TX, 79521-0555.



This issue mailed Wed., Feb. 18, 2004

Haskell INDIANS



Front, l-r: Nate Webb, Philip Collins, Kory Foster, Kendall Mitchell, Jared Webb. Middle: Miguel Chavez, Osiel Garcia, L. J. McCullouch. Back: Jakaan Hodge, Brandon McClatchey and Ross Hairgrove. Photo by KIS



Front, l-r: Callie Thomasson, Meagan Wallace, Kerri Newton, Consuelo Gonzalez, Mollie McKnight, Morgan Acosta. Back: Brittany Rutkowski, Lindsay Pannell, Brittany Bird, Melody Kennedy, Monica Buerger, Lynzie Harlan and Calina Kendall. Photo by KIS

Haskell MAIDENS

Congratulations
on a
great
season!

**District
Champs**
3rd place tie

Congratulations
on a great
season!

This Page Sponsored By The Following Indian and Maiden Boosters

Personality-Slipper Shoppe
Haskell Free Press
Brian Burgess State Farm Insurance
Haskell County Insurance Agency
Haskell National Bank
Double A Drive Inn
Hanson Paint and Body

The Lumberyard
Johnson KIS Photo
First National Bank
Rice Springs Care Home
Video Mania
Flatlands
Haskell County Gin

Haskell Save-A-\$
Medford Buick-Pontiac-GMC
Larned Sales Center
Matlock & Associates
Cecil's Country Meat Mkt. & Grocery
Richardson TrueValue & NAPA Auto Parts
Haskell Tire & Appliance

Bailey Toliver named to FNB board

Haskell First National Bank president, Wallace Emerson, has announced the election of Bailey L. Toliver of Haskell to the Board of Directors of the First National Bank, Munday, Haskell, Rochester and Stamford.

Toliver was born and grew up in the farm community north of Haskell called Josselet Switch, where his grandfather, V. J. Josselet, an immigrant of France, raised cattle and maintained a railroad switching station for cars to load cattle.

After graduation from Weinert High School, he was offered several football scholarships, but due to the strong possibility of army service in the near future, he went to work in the oil fields of the Texas Panhandle.

In 1950 he entered the armed

services and spent most of the next two years at Ft. Leonardwood, Missouri. During that time he trained troops in the Engineer Corp. Following his discharge from the army, he married Nancy Burton of Haskell, and they both entered Texas Tech University.

He attended college and worked part time for the next four years until graduation from Tech. Shortly after graduation, he and several other men formed a ball-bearing corporation in Lubbock, which is still in operation.

In 1957, he had the opportunity to buy into an automobile dealership in Haskell with W. O. Smith. A few years later, he became the sole owner of Bailey Toliver Chevrolet Co.

From that time until the present he has expanded the car business to include three additional dealerships. With his three sons helping him manage those dealerships, he is now actively involved in farming and ranching in Haskell County.

Throughout the years his family has grown to include his wife, four children and their families, and he has been actively involved in many civic and church activities.



NEW DIRECTOR—Wallace Emerson, left, president of First National Bank, Haskell, congratulates Bailey Toliver of Haskell on his recent election to the Board of Directors of First National Bank, Munday, Haskell, Rochester and Stamford.

CLASSIFIED ADVERTISING PAYS
940-864-2686

Shop the Haskell Free Press
CLASSIFIEDS
864-2686 864-2686

Public Notices

NOTICE OF SALE
THE STATE OF TEXAS
COUNTY OF HASKELL
BY VIRTUE OF
AN ORDER OF SALE
DATED: JANUARY 27, 2004
and issued pursuant to a judgment decree of the District Court, 39th Judicial District, of Haskell County, Texas, by the District Clerk on said date, and to me directed and delivered as Sheriff of said County, I have on the 27th day of January, 2004, seized, levied upon, and will on the first Tuesday in March, 2004, the same being the 2nd day of said month, at the Courthouse door, ground floor vestibule entrance, of said County in the City of Haskell, beginning at 10:00 o'clock a.m., on said day, proceed to sell for cash to the highest bidder all the right, title and interest of the defendants in such suit to the following described real estate levied upon as the property of said defendants, the same lying and being situated in the County of Haskell and the State of Texas, to-wit:

Tax Suit No. 11,022; City of Stamford vs. RST-PAL Pallets, LLC, et al.; Tract #1 & 2: 3.886 acres, more or less, AH 1066, 12 BBB & C, Tract 1066-28, being the same portion located in Haskell County of property more particularly described in Volume 492, Page 366, Deed Records of Haskell County, Texas, to which reference is made for a more complete description, I. D. #R13080; and Personal Property consisting of Furniture, Fixtures, Equipment and Supplies used in the operation of RST-PAL Pallets, City of Stamford, Haskell County, Texas, I. D. #N9204851;

Tax Suit No. 11,078; Stamford I.S.D. vs. Bernice Robbins, et al.; 15 acres, more or less, Abstract 568, Section No. 7 BBB & C RR Company Lands, being the same property more particularly described in Volume 355, Page 123, and Volume 355, Page 125, Deed Records of Haskell County, Texas, to which reference is made for a more complete description, I. D. #R23869;

or upon the written request of said defendants or their attorney, a sufficient portion thereof to satisfy said judgment, interest, penalties, and costs; subject, however to the right of redemption by the defendants or any per having an interest therein, to redeem said property, or their interest therein, in the manner provided by law, and subject to any other and further rights to which the defendants or anyone interested therein may be entitled, under the provisions of law. Said sale to be made by me to satisfy the judgment rendered in the above styled and numbered cause, together with interest, penalties and costs of suit, and the proceeds of said sale to be applied to the satisfaction thereof, and the remainder, if any, to be applied as the law directs.

I have appointed the following as agent to conduct the sale, to-wit: Jerry Shiever, Attorney at Law, 506 W. 12th St., Suite B, Austin, Texas 78701. (512) 477-3741

At the time the sale begins, all bidders at the sale must be registered with me, a deputy sheriff, or the above named agent conducting the sale.

Dated at Haskell, Texas, this 26th day of January, 2004.
David Halliburton, Sheriff
Haskell County, Texas 6-8p

NOTICE OF PUBLIC MEETING ON AGENCY PLANS
The Haskell Housing Authority will hold a Public Meeting on March 16th at 4:30 p.m. to receive comments on the Annual Plan for the Haskell Housing Authority. All documents are on display at the office of the Housing Authority, Monday through Friday, during the hours of 9:00 a.m. until 5:30 p.m.

This Week's Devotional Message:



THE FAMILY STRUCTURE REMAINS THE BEST HUMAN RELATIONSHIP

Many households are quite diversified these days in the lifestyles and interests of the members, as well as in the biological sense because of step-children and half-brothers and sisters living under one roof. Indeed, many families find it hard to remember the last time they all had dinner together. Some of this is unavoidable, as in the case of a father who must travel on business or a mother involved in committee

work for a worthy cause. However, the family members should make an effort to be together whenever possible, to discuss problems or just to have some kind of fun that spans the generation gap. Moreover, they should attend their house of worship regularly, for this will help to cement the bonds. The family circle should be an unbroken one; a center of love and a haven of refuge from the outside world.

ATTEND CHURCH THIS SUNDAY

- | | | |
|---|---|---|
| <p>HASKELL</p> <p>East Side Baptist Church
Dr. Jim Helfin, interim pastor
Sun. 8:30 a.m., 9:45 a.m., 11 a.m., 6 p.; Wed. 7 p.m.
600 N. 1st East, Haskell</p> <p>Christian Church
Dusty Garrison, minister
Sun. Morn. 9:45 a., 10:45 a., 6 p.m.; Wed. 7 p.m.
107 N. Ave. F, Haskell</p> <p>New Vision Family Worship Center
James Rincker, pastor • 864-5438
Sun. 9:45 a.m., 11 a.m., 6 p.m.; Wed. 7:00 p.m.
East Hwy 380, Haskell</p> <p>Trinity Lutheran Church
Sunday School 9:30 a.m., Worship 10:30
Hwy 380 East, Haskell</p> <p>Iglesia Bautista El Calvario
Art Flores, Interim pastor
Sun. Morn. 9:45 a., 10:45 a.m., 5 p.m.; Wed. 7 p.m.
607 S. 7th, Haskell</p> <p>First United Methodist Church
Allen Brooks, pastor
Sun. Morn. 9:45 a.m., 10:50 a.m. 6 p.m.; Wed. 6 p.m.
201 N. Ave. F, Haskell</p> <p>First Assembly of God
Rev. J.C. Amburn
Sun. Morn. 9:45 a., 10:45 a.m., 6 p.m.; Wed. 7 p.m.
1500 N. Ave. E, Haskell</p> <p>St. George Catholic Church
Father George Roney
Sat. Mass 7 p.m.; Sun. Morn. 9:00 a.m.
901 N. 16th, Haskell</p> <p>Church of Christ
Brett Anderson, minister
Sun. Morn. 9:30 a., 10:30 a., 6 p.m.; Wed. 7:30 p.m.
510 N. Ave. E, Haskell</p> <p>First Presbyterian Church
Steve Beatty, pastor
Sun. Morn. 9:30 a.m.
306 N. Ave. E, Haskell</p> <p>Trinity Baptist Church
Tony Grand, pastor
Sun. Morn. 10 a., 11 a., 6:30 p.m.; Wed. 6:30 p.
401 S. Ave. D, Haskell</p> <p>Hopewell Baptist Church
Sun. Morn. 9:30 a.m., 11:00 a.m.; Wed. 7 p.m.
908 N. Ave. A, Haskell</p> | <p>Greater Independent Baptist Church
Rev. Tom Collins, pastor
Sun. Morn. 9:30 a., 11:00 a., 6:30 p.; Wed. 7 p.
301 N. 3rd St., Haskell</p> <p>New Covenant Foursquare
Bill and Renee Glass, pastors
Sun. Morn. 10 a.m., 11 a.m., 6:30 p.m.; Wed. 7 p.
200 S. Ave. F, Haskell</p> <p>Mission Revival Center
Rev. William Hodge
Sun. Morn. 10 a.m., 11 a.m., 6 p.m.; Tues. 6 p.m.
1600 N. Ave. B, Haskell</p> <p>First Baptist Church
Kevin Hall, pastor
Sun. Morn. 9:45 a., 10:55 a., 6 p.m.; Wed. 7 p.m.
301 N. Ave. E, Haskell</p> <p>Church in the Park
Rev. Tim and Suzann Townsend
Sun. Morn. 10:30 a.m. Wed. 7 p.m.
Gazebo or Pavillion</p> <p>Cornerstone Baptist Fellowship
Dr. Gibbie McMillan, Interim pastor
Sun. Morn. 9:30 a.m. 10:45 a.m. Wed. 7 p.m.
1303 N. Ave. I, Haskell</p> | <p>First United Methodist Church
Dolan Brinson, pastor
Sun. Morn. 10:00 a.m., 11:00 a.m.
Rochester</p> <p>SAGERTON</p> <p>Sagerton Methodist Church
Melissa Bemis, pastor
Sun. Morn. 9:30 a.m.
Sagerton</p> <p>Faith Lutheran Church
Deborah Nissen, pastor
Sun. Morn. 9:15 a.m., 10:30 a.m.; Wed. 7 p.m.
Sagerton</p> <p>RULE</p> <p>First Baptist Church
Josh Stowe, pastor
Sun. Morn. 9:45 a., 11:00 a., 5 p.m.; Wed. 7 p.m.
1001 Union Ave., Rule</p> <p>Primitive Baptist Church
Dale Turner Jr., pastor
First & Third Sundays 10 a.m.
Corner of 8th & Robins, Rule</p> <p>Church of Christ
John Greeson, minister
Sun. Morn. 9:45 a., 10:40 a., 6 p.m.; Wed. 7 p.m.
811 Union, Rule</p> <p>First United Methodist Church
Wendall Ferguson, pastor
Sun. Morn. Worship 10 a.m.
1000 Union Ave., Rule</p> <p>Primera Iglesia Bautista
Alfa y Omegas
Manuel Marin, pastor
Sun. Morn. 10 a., 11:00 a., 5 p.m.; Wed. 6 p.m.
500 Elm Street, Rule</p> <p>Sweet Home Baptist Church
Bill Trice, pastor
Sun. Morn. 10:00 a., 11:00 a., 6 p.; Wed. 7 p.m.
Gladstone Ave., Rule</p> <p>West Bethal Baptist Church
Rev. Robert Sweet
Sun. Morn. 10 a., 11 a., 8 p.m.; Wed. 7:30 p.m.
300 Sunny Ave., Rule</p> |
|---|---|---|

The Haskell Free Press
IS READ BY MORE PEOPLE IN HASKELL COUNTY THAN ANY OTHER NEWSPAPER.

BERNARD E. GODLEY, INC.
TAX SERVICE & BOOKKEEPING
Computerized • Tax Returns & Bookkeeping
98 Hill Drive • Seymour, Texas
940-889-8809
Office Hours: 9 to 12 and 2 to 5 Monday - Friday

Jones-Haskell Eye Clinic
Dr. Trussell Thane, O.D.
Therapeutic Optometrist
Appointments Available • Monday through Friday

Dr. Thane provides comprehensive eye care including the diagnosis and treatment of eye disease. Dr. Thane offers complete evaluation for eyeglasses and contact lenses.

Various contact lens packages available.

MEDICARE, MEDICAID, BLUE CROSS AND BLUE SHIELD AND FIRSTCARE ACCEPTED.

1501 Columbia
Stamford, Texas
325-773-2083

Get Connected . . .

Local Internet Access
Local Tech Support
Free Software
Multiple Free E-mail Accounts
Free Home page
No set-up fee
Unlimited Access

\$19.95 per month or \$16.95 per month if paid annually

West Texas Internet
Locally Owned and Operated
864.8124 • www.westex.net • administrator@westex.net
Haskell

Sonic Drive-In
1402 N. Ave. E
864-8533
Managers: Leon & Carolyn Herring

Steele Machine
Hwy. 280 • 864-2208

Modern Way Food Store
1202 N. Ave. E • 864-3763

Smitty's Auto Parts
107 N. 1st East • 864-2607

HANSON PAINT & BODY SHOP
207 S. 1st • 864-3631
Professional Auto Body Repair
Glass Installation • 24 Hour Wrecker Service

Rule Co-op Gin & Elevator
301 Adams • Rule • 997-2421

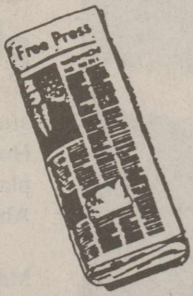
Rice Springs Care Home, Inc.
1302 N. 1st • 864-2652
Medicare • Medicaid • Therapy
Committed To Excellence In Service

Personality Slipper Shoppe
413 S. 1st (South Side of Square)
864-2501 and 864-3051
"One Stop Shopping"

The Haskell Free Press
"The People's Choice"

420 N. First
Haskell, Texas
940-864-2686

Serving Haskell County Since 1886



Shop The Haskell Free Press CLASSIFIEDS

ALL DEADLINES MONDAY 5 P.M.

864-2686

For Sale

FOR SALE: Coastal hay round bales, \$35 per roll. Delivery available. 254-893-4040. Cell 817-313-9077. 8-11c

FOR SALE: Bunk beds. In good condition. Call 940-864-2223, if not home leave message. 8p

Garage Sales

INSIDE GARAGE SALE: Sat. 8:30 to 2:30. 603 S. Ave. G, Haskell. Closing mother's house, so everything must go. Great prices. No checks. 8p

GARAGE SALE: Moving. Lots of good bargains. Furniture, appliances, kids' stuff. 402 N. Ave. D. Sat. 8:00 a.m. 8c

Miscellaneous

HOUSE LEVELLING and foundation repair. No payments until work is satisfactorily completed. David Lee & Co. 325-675-6369. 6tfc

COMPUTER REPAIR-HELP onsite. Hardware/software training. Steve Livingood 325-773-2616. If no answer, leave message. 6-11p

CUSTOM FRAMING. Country Friends and Frames, 101 N. Swenson, Stamford. 325-773-2661. Complete framing needs. Closed Mondays. 8c

Wanted

WANTED: Older model car in good condition. Call 864-6156-8p

WANTED: I would like to buy a 1995 Haskell Indian school yearbook. Call 940-864-3885. Mary Ann McFadden. 8p

Help Wanted

NOW TAKING APPLICATIONS for all positions at Sonic Drive In, Haskell. Apply in person. 25tfc

For Rent

FOR RENT: Furnished rooms for rent. Nightly, weekly, monthly. Call Lone Star Lodging 864-2238. 52tfc

FOR RENT: 604 N. 3rd. 1 bedroom apartment. CH/A. 864-3762. 8c

APARTMENT FOR RENT: 301 North 6th. Call Lonnie at The Drug Store. 864-2673. 8c

Real Estate

FOR SALE OR TRADE: Lake cabin at Veda's Camp. Financing available. 864-2238. 7tfc

FOR SALE: 503 N. Ave. F. Two bedroom, one bath vintage home with original wood work, wood floors, mantel with built-in gas stove, well and lots of pecan and fruit trees. Owner will consider owner finance. Call 940-864-2411 for an appointment. Rike Real Estate, Mary Rike, Broker. 5-8c

HOUSE FOR SALE: 2 bedroom, CH/A. 600 Elm, Rule. \$8,000. Contact R. Martinez. 972-723-2134. 8-10c

EXPERT AUTO WORK
REASONABLE RATES

See us for all your auto mechanic needs. 20 years experience. We do it right the first time. 305 South Ave. E. • Haskell

Dodson Concrete Construction
Commercial - Residential
David Dodson
704 N. Ave. F • Haskell
940-864-2038
Over 20 Years
in the Business
FREE ESTIMATES
18tfc

Public Notices

NOTICE BY PUBLICATION
PROJECT: 8008-1-41
PARCEL: 66
STATE OF TEXAS
COUNTY OF HASKELL

TO: Ed Richardson, whose residence is unknown, and if he be deceased, the unknown heirs of Ed Richardson, whose names and addresses are unknown.

Emma Richardson, whose residence is unknown, and if she be deceased, the unknown heirs of Emma Richardson, whose names and addresses are unknown.

You are each hereby notified that a hearing will be held at 10:00 o'clock a.m., on the first Monday after the expiration of forty-two (42) days from the date of issuance hereof, that is to say Monday, the 8th day of March, 2004, and at District Courtroom in the District Courthouse in Haskell, Texas, to assess the damages of the owner of the property being condemned.

The State of Texas filed a Petition for Condemnation with the Judge of the 50th Judicial Court of Haskell County, Texas, on the 18th day of December, 2003, in Cause No. 11,173 which is styled The State of Texas v. Ed Richardson, et al. The Plaintiff is the State of Texas. The Defendants are: Ed Richardson, whose residence is unknown, and if he be deceased, the unknown heirs of Ed Richardson, whose names and addresses are unknown; Emma Richardson, whose residence is unknown, and if she be deceased, the unknown heirs of Emma Richardson, whose names and addresses are unknown; City of Haskell; Haskell County, Texas; Haskell Consolidated Independent School District; North Central Texas Municipal Water Authority; Haskell County Memorial Hospital District; Rolling Plains Groundwater Conservation District; Farm-Market Lateral; and Precinct Road.

The name and address of the attorney for Plaintiff is Kelly Wintroath, Assistant Attorney General, P. O. Box 12548, Austin, Texas 78711-2548.

This suit is an eminent domain proceeding in which the State of Texas is condemning a tract of land located in Haskell County, Texas, being a 0.1446 acre tract or parcel of land, being out of and a part of that certain map or plat of the Subdivision of the Isidro Ramos No. 109, Patent No. 165, Volume 18, Abstract No. 351, Haskell County, Texas as recorded in Volume 20, Pages 22 through 23, Deed Records, Haskell County, Texas, said subdivision also being known as the Brown and Roberts Addition to the Town of Haskell, Haskell County, Texas, and being the remainder of Lots 7 and 8, Block 33, as described in Warranty Deed dated November 17, 1928, from C. M. Conner to Ed and Emma Richardson, as recorded in Volume 115, Page 10, Deed Records, Haskell County, Texas, such property being fully described in Exhibit "A" of Plaintiff's Petition for Condemnation filed under the above-referenced cause number.

Chartered Bus
Abilene to Thackerville, Okla.
2 Casinos & Bingo

OWNER FINANCE
STAMFORD
2 BDR.
Large older home near schools. Low down, low monthly payments
Call Jim at
325-518-8128
or Teri at
325-660-2122 49tfc

LANGFORD ROUSTABOUT SERVICE
SCOTT LANGFORD

Roustabouts
Backhoes
Winch Trucks
Dump Trucks
Welders

Specializing In:
Oilfield Repair,
Maintenance & Construction

Mobile: 940-256-0535
Office: 940-864-3490
Home: 940-864-2565

8348 N. Hwy. 277
Haskell, Texas 79521

The interests of these Defendants are that they either own or claim an interest in said property, subject to unpaid accrued taxes.

You are further notified that you may appear at the hearing before that Special Commissioners and present evidence you desire on the issue of damages to be assessed against the State. If you do not appear at the hearing, the Special Commissioners may proceed to assess the damages of the owner of the property being condemned.

If this Notice is not served within ninety (90) days after its issuance, it shall be returned forthwith.

Issued this 20th day of January, 2004.

Joe A. Cortez
Dolan Brinson
Lavon Beakley
Special Commissioners 7-10

NOTICE BY PUBLICATION
PROJECT: 8008-1-41
PARCEL: 72
STATE OF TEXAS
COUNTY OF HASKELL

TO: James Cox, whose residence is unknown, and if he be deceased, the unknown heirs of James Cox, whose names and addresses are unknown.

You are each hereby notified that a hearing will be held at 10:00 o'clock a.m., on the first Monday after the expiration of forty-two (42) days from the date of issuance hereof, that is to say Monday, the 8th day of March, 2004, and at District Courtroom in the District Courthouse in Haskell, Texas, to assess the damages of the owner of the property being condemned.

The State of Texas filed a Petition for Condemnation with the Judge of the 50th Judicial Court of Haskell County, Texas, on the 18th day of December, 2003, in Cause No. 11,174 which is styled The State of Texas v. James Cox, et al. The Plaintiff is the State of Texas. The Defendants are: James Cox, whose residence is unknown, and if he be deceased, the unknown heirs of James Cox, whose names and addresses are unknown; City of Haskell; Haskell County, Texas; Haskell Consolidated Independent School District; North Central Texas Municipal Water Authority; Haskell County Memorial Hospital District; Rolling Plains Groundwater Conservation District; Farm-Market Lateral; and Precinct Road.

The name and address of the attorney for Plaintiff is Kelly Wintroath, Assistant Attorney General, P. O. Box 12548, Austin, Texas 78711-2548.

This suit is an eminent domain proceeding in which the State of Texas is condemning a tract of land located in Haskell County, Texas, being a 0.2251 acre tract or parcel of land, being out of and a part of that certain map or plat of the Subdivision of the Isidro Ramos No. 109, Patent No. 165, Volume 18, Abstract No. 351, Haskell County, Texas as recorded in Volume 20, Pages 22 through 23, Deed Records, Haskell County, Texas, said subdivision also being known as the Brown and Roberts Addition to the Town of Haskell.

The only shame-is to have none. The best recliner you can buy is a La-Z-Boy and we have lots of them at the best prices in Big Country, starting at 2 for \$499. Kinney Furniture in Stamford. 8c

OWNER FINANCE
1403 N. Ave. K
Roomy older home with carports in front and back. Nice yard. Easy terms.
Call Jim at
325-518-8128
or Teri at
325-660-2122 51tfc

Haskell County, Texas, and being all of Lot 3, Block 33 as described in Warranty Deed dated March 8, 1937 from Matt Justice, Willie Justice and Fredia Sipro to James Cox recorded in Volume 132 Page 606 Deed Records, Haskell County, Texas, such property being fully described in Exhibit "A" of Plaintiff's Petition for Condemnation filed under the above-referenced cause number.

The interests of these Defendants are that they either own or claim an interest in said property, subject to unpaid accrued taxes.

You are further notified that you may appear at the hearing before that Special Commissioners and present evidence you desire on the issue of damages to be assessed against the State. If you do not appear at the hearing, the Special Commissioners may proceed to assess the damages of the owner of the property being condemned.

If this Notice is not served within ninety (90) days after its issuance, it shall be returned forthwith.

Issued this 20th day of January, 2004.

Joe A. Cortez
Dolan Brinson
Lavon Beakley
Special Commissioners 7-10

NOTICE BY PUBLICATION
PROJECT: 8008-1-41
PARCEL: 142
STATE OF TEXAS
COUNTY OF HASKELL

TO: Ben F. Thorpe, whose residence is unknown, and if he be deceased, the unknown heirs of Ben F. Thorpe, whose names and addresses are unknown.

Edgar Taylor, whose residence is unknown, and if he be deceased, the unknown heirs of Edgar Taylor, whose names and addresses are unknown.

You are each hereby notified that a hearing will be held at 10:00 o'clock a.m., on the first Monday after the expiration of forty-two (42) days from the date of issuance hereof, that is to say Monday, the 8th day of March, 2004, and at District Courtroom in the District Courthouse in Haskell, Texas, to assess the damages of the owner of the property being condemned.

The State of Texas filed a Petition for Condemnation with the Judge of the 50th Judicial Court of Haskell County, Texas, on the 18th day of December, 2003, in Cause No. 11,175 which is styled The State of Texas v. Ben F. Thorpe, et al. The Plaintiff is the State of Texas. The Defendants are: Ben F. Thorpe, whose residence is unknown, and if he be deceased, the unknown heirs of Ben F. Thorpe, whose names and addresses are unknown; and Edgar Taylor, whose residence is unknown, and if he be deceased, the unknown heirs of Edgar Taylor, whose names and addresses are unknown.

The name and address of the attorney for Plaintiff is Kelly Wintroath, Assistant Attorney

\$500 MOVE IN
Owner finance.
Call Alex
325-725-1449
Se habla español. 35tfc

R & L Home Improvement
Royce C. Meier
Complete Home
Remodeling and Repair
940-864-2982
940-864-4977

Haskell County REALTY

1301 N. AVE. L. 3 bedroom, 2 bath. Corner lot. Reduced. 907 N. AVE. L. 4 bedroom, 2 bath. Large backyard with nice RV and boat storage. 1307 N. AVE. L. 3 bedroom, 2 bath on corner lot. Storm cellar, water well, garden plot. 104 N. AVE. M. Nice 2 bedroom.

General, P. O. Box 12548, Austin, Texas 78711-2548.

This suit is an eminent domain proceeding in which the State of Texas is condemning a tract of land located in Haskell County, Texas, being a 0.0335 acre tract or parcel of land, being out of and a part of that certain map or plat of that certain Frisco Addition to the Town of Haskell, recorded in Volume 34 Page 219, Deed Records, Haskell County, Texas being also out of and a part of Outlot 100 of the Isidro Ramos League and Labor, Abstract No. 351, Haskell County, Texas as recorded in Volume 20 Page 23, Deed Records, Haskell County, Texas, and being part of Lot 10, Block 43 of said Frisco Subdivision as described in Sheriff's Deed dated December 8, 1962, from G. T. Garrett, Sheriff to Ben F. Thorpe and Edgar Taylor, recorded in Volume 299 Page 313, Deed Records, Haskell, County, Texas, such property being fully described in Exhibit "A" of Plaintiff's Petition for Condemnation filed under the above-referenced cause number.

The interests of these Defendants are that they either own or claim an interest in said property, subject to unpaid accrued taxes.

You are further notified that you may appear at the hearing before that Special Commissioners and present evidence you desire on the issue of damages to be assessed against the State. If you do not appear at the hearing, the Special Commissioners may proceed to assess the damages of the owner of the property being condemned.

If this Notice is not served within ninety (90) days after its issuance, it shall be returned forthwith.

Issued this 20th day of January, 2004.

Joe A. Cortez
Dolan Brinson
Lavon Beakley
Special Commissioners 7-10

BID NOTICE
ASPERMONT SMALL BUSINESS DEVELOPMENT CENTER, INC. is accepting invitations to bid for the 2004 Comprehensive Energy Assistance Program (CEAP) in the Heating and Cooling component. Bidders must be qualified to assess, as well as, repair, replace or retrofit central units, window units and all other major heating and/or cooling appliances for individuals who qualify. Counties to be served include: Haskell, Jones, Kent, Knox, StoneWall and Throckmorton. To request a bid package please contact Kim Lowack at 940-989-3538 or 800-722-0137 or reply to P.O. Box 188, Aspermont, TX 79502. 7-8c

PUBLIC NOTICE
The annual report of the J. U. Fields and Florence B. Fields Museum is available at the address noted below for inspection during regular business hours by any citizen who so requests within 180 days after this publication. Fields Museum, 412 N. 1st St., Haskell, Texas. Joan Frazier. 8c

New!
Memory Contour
Memory Foam
Bedding
with Visco-Elastic-Surface.
Come in and try it!
Different from any bed
you've ever been on!
BOGGS & JOHNSON FURNITURE
864-2346
East Side Square • Haskell

103 N. Ave. E
940-864-2665
1-800-658-6342
or call
Robert Tribbey 256-1400
Bridget or Chan Guess
864-6142
Hess Hartsfield, Broker 864-2004

POL CALENDAR
The Haskell Free Press is authorized to make the following announcement for the political office in Haskell County, subject to the action of the 2004 Primaries.

Unless otherwise specified the candidates listed paid for the announcement, and have designated themselves as campaign treasurer.

All political advertising, announcements, and printing is cash in advance.

Sheriff
Bill Glass
(Pd. by James Bevel, Campgn. Treas.)

David Halliburton
Jack Whorton
(Pd. by Ella Daye Whorton, Campgn. Treas.)

ZERO DOWN
Land-Home with low interest rate.
NO CREDIT NECESSARY
325-673-8488 35tfc

It is better to be looked over than overlooked. Close out prices on Spring Air "Never Turn" mattress sets during our Clean Sweep Sale. All sizes in stock ready for quick free delivery. Kinney Furniture in Stamford. 8c

A smile is an inexpensive way to improve your looks. Lots of specials on discontinued items and floor samples during our Clean Sweep Sale. You always get small town personal service and quick free delivery at Kinney Furniture in Stamford. 8c

Attention Homeowners
Hail season will be here soon. Get your metal roof on now!
Metal prices have gone up: **But we've got good news!**
If you let us put your roof on in February, we will give you the metal at last year's price.
Hurry, Hurry!!
Spalding Construction
Hamlin, Texas
James Spalding
325-576-2109

The family of Dorothy Halliburton would like to thank their wonderful friends for the many acts of kindness during their loss. Our many thanks to Holden-McCauley Funeral Home, Dr. McSmith, Joe Yates, and Haskell Senior Living for all the things they did for her. A special thanks to John Greeson and Brett Anderson for a lovely service and for comforting us at the hospital. A special thanks to Paul and Donna Clayton. We appreciate all of you for your thoughtfulness and love for our family. You will be remembered always.

The David Halliburton Family

Great drivers stop here.

Haskell County Insurance Agency
103 N. Ave. E
Haskell, TX 79521
940-864-2665

Allstate
You're in good hands.

Allstate Insurance Company and Allstate Property and Casualty Insurance Company, Northbrook, Illinois. ©2002 Allstate Insurance Company

FOR SALE RIKE
NEW LISTINGS

864-2411
864-2332

Mary Rike, Broker 411 1/2 South First St.

826 N. 17th. 2-2-carport, living, kitchen, dining, covered patio, sprinkler system and new appliances, C/H.A.
906 N. AVE. M. Extras galore. 3-2-2.brick, living, sun room, den, crown molding, ceramic tile, well, fenced yard, C/H.A.
1171 HWY 277 S. Large 1 1/2 story, 3-3-2, den with fireplace, large kitchen, dining, office and utility room, C/H.A.
700 N. AVE. K. 3-2-2, living, dining, den & kitchen combination, fenced yard, C/H.A.
509 N. AVE. E. Large 4-3-carport, den with fireplace, large utility, C/H.A., well, sprinkler system, storm cellar and storage.
423 S. 3rd EAST. Beautiful singlewide mobile home on three lots, one year old, C/H.A. three bedrooms, two baths.
HWY. 380 E. 2-2-carport, kitchen-den, living, large utility, storm cellar, C/H.A.

411 1/2 South First Street
Box No. 853
Haskell, TX 79521
(940) 864-2411 (940) 864-2332
FAX (940) 864-3686
Mary Rike, Broker John Rike, Agent
mrike@west.net



GAYLE MARTIN

Friends to meet in February

By Mary Kaigler

Centered on the theme of "Angels Among Us," celebrating the scriptural assurance of Heb. 1:14, "Are not all angels ministering spirits sent to serve...?", the Friends of Faith will meet from 9:30 to 12:30, Saturday morning, Feb. 28 at the Haskell National Bank Community Room.

Guest speaker will be Gayle Martin of Abilene, who has worked in Women's Ministry for about 15 years.

Recipient of the 2003 "Denman Award," the highest award given for evangelism in the United Methodist Church, Martin has spoken at functions for many different denominations in many states.

She has pastored for the last five years and has been on the staff of several churches in various capacities in New Mexico and Arizona. During the last fifteen years, she has also worked in Children's Ministry.

Presently an undergraduate taking 18 hours at McMurry University, Martin will graduate in May with a BA degree, and will graduate from Duke University in July, in preparation to being an ordained elder of the United Methodist Church within a few years.

The day after her graduation in July, Martin will marry Methodist minister, Wesley Thornberry, of Weyers Cave, Virginia, whom she says is the love of her life and the delight of her soul for whom she's prayed and "patiently awaited" for fifteen years.

After graduation she will take a church ministry position in the United Methodist Church Virginia Conference.

Martin has two children. Son Daniel and wife, Teri, and their three girls, who live in Colorado Springs, Colorado, and daughter, Kimberly, of Guthrie, Oklahoma.

Program activities for the day will also feature the Friends of Faith singers, and a covered-dish 'finger-food' brunch served during the morning. If they wish to do so, those attending may bring a covered-dish.

All women in the Big Country area are invited to attend the meeting and enjoy the warm and upbeat atmosphere of sharing faith and fellowship with the group which brings together women of all ages from every denomination and church in the area.

Students win at stock show

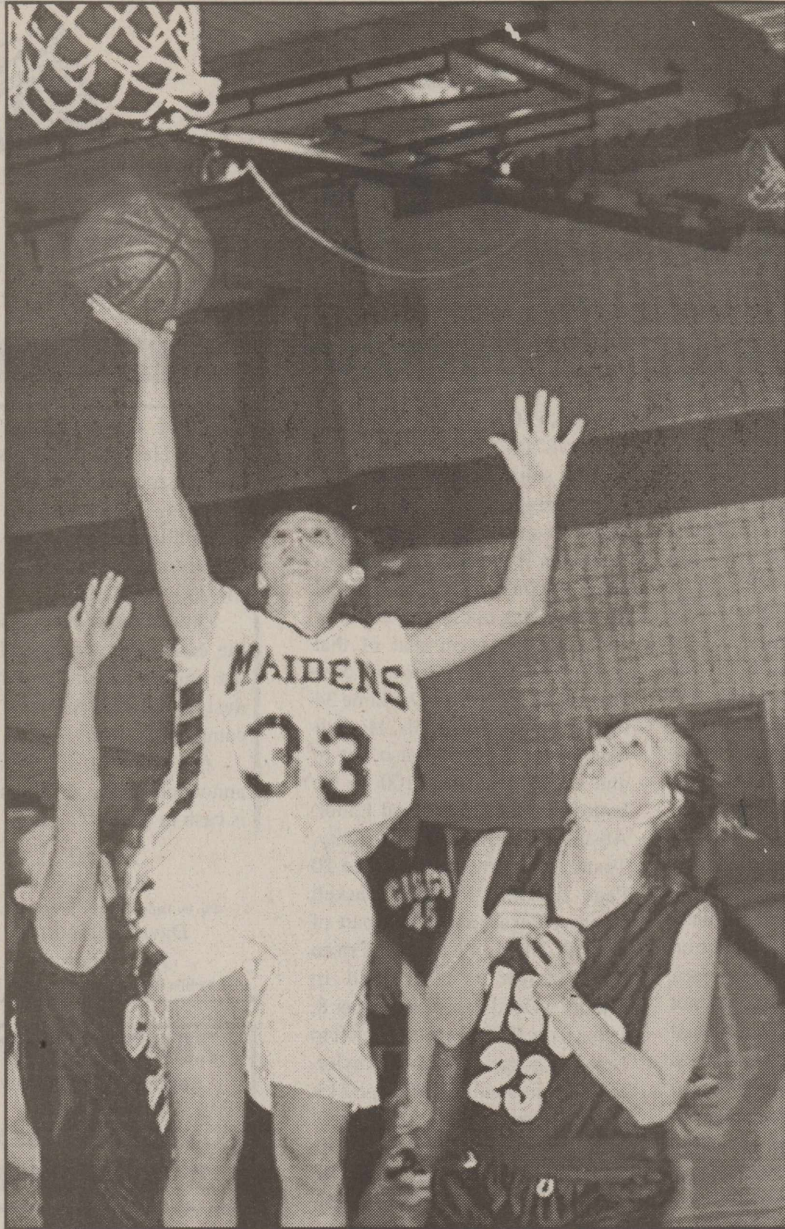
FFA members, Chase Cockerell of Haskell and Kate Rowan of O'Brien, showed winning entries in the Southwestern Exposition and Livestock Show in Fort Worth, Feb. 5-6.

Cockerell exhibited a First Place Crossbred in the Junior Barrow Show.

Rowan exhibited the Reserve Champion Black/Other Purebred in the Junior Barrow Show.

The Stock Show's Junior Division this year hosted 7,508 entries by youth of Texas as the culmination of yearlong agricultural educational projects in various areas of livestock production. Junior premiums exceeded \$89,356.

The junior entry list was part of the overall count this year of more than 24,000 head of cattle, sheep, swine, horses, mules, donkeys, llamas, goats, poultry, pigeons and rabbits.



MAIDEN UP TO SCORE—Haskell Maiden #33, Lynzie Harlan, adds to the team's 57 to 45 win over Cisco, which put the team into a District playoff game with Electra. Photo by Bill Blankenship

Area Basketball scores

Girls
Haskell 58, Eula 50
Scoring for Haskell: Kendall 16, Buerger 13, Bird 10, Rutkowski 6, McKnight 6, Harlan 4, Thomasson 3.
JV score: Haskell 35, Eula 20.

Rule 91, Paint Creek 24
Scoring for Paint Creek: A. Daniel 7, Hope 6, Duniven 5, Woodall 4, T. Daniel 2.
Scoring for Rule: M. Lehrmann 27, Hertel 16, Smith 14, Marquis 10, Brown 8, Lisle 6, Johnson 6, Dudensing 2, Kitley 2.

Aspermont 71, Rochester 21
Scoring for Rochester: Nicholson 9, Martin 8, Turner 4.

Boys
Haskell 43, Eula 38

Scoring for Haskell: Webb 15, Hodge 8, Garcia 6, Mitchell 4, Foster 4, Hairgrove 4, Chavez 2.
JV score: Eula def. Haskell.

Eastland 64, Haskell 56
Scoring for Haskell: Mitchell 17, Garcia 16, Webb 10, Hodge 9, Foster 2, Hairgrove 2.
JV score: Eastland def. Haskell.

Rule 65, Paint Creek 52
Scoring for Paint Creek: Medford 23, R. Cisneros 16, A. Cisneros 8, Loyd 3, Bryant 2.
Scoring for Rule: Turner 18, Ky. Kitley 15, Brown 13, Carrion 7, Ko. Kitley 7, Dudensing 5.

Aspermont 59, Rochester 28
Scoring for Rochester: McGhee 15, Self 7, Pittman 4, Saucedo 2.

GONZALES CARPET CLEANING

Carpet Cleaning • Upholstery Cleaning
Emergency Water Extraction • Expert Floor Care
Waxing Polishing & Cleaning

Residential & Commercial
(325) 773-2667 • (325) 773-2258

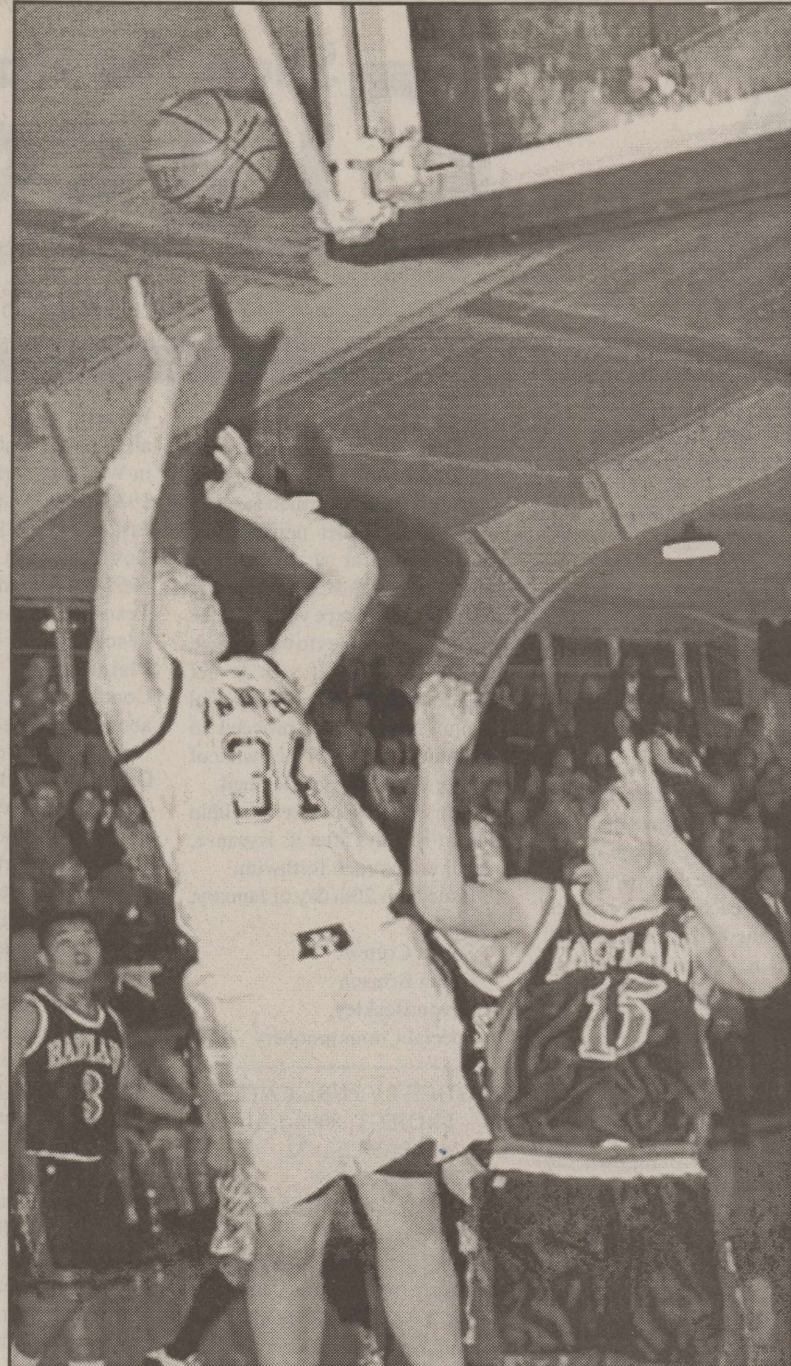
Robert Gonzales
P. O. Box 929
Stamford, Tx
79553

Our Auto Loans Leave Other Lenders in the Dust

Whether you're buying a new or used car, you won't find a lower rate or speedier approval anywhere else.
So don't waste your time and energy idling when you can be making tracks.
Call or stop in today for all the details.

First National Bank Haskell
200 South Avenue E Haskell, Texas 79521
FDIC 940-864-8555 LENDER

Other Convenient Locations to Serve You:
First National Bank Munday - Stamford - Rochester



INDIAN REACHING—Haskell's Nate Webb, #34, reaches up in the teams' game with Eastland, Fri., Feb. 13. Photo by Bill Blankenship

DAVID HALLIBURTON
INCUMBENT SHERIFF OF
HASKELL COUNTY, TEXAS

Sheriff Halliburton works full time at being the Sheriff of Haskell County, Texas
For 17 years he has faithfully enforced the law in this county.

Policy and procedure to continue

- ☛ Quick response time to calls involving welfare of senior citizens.
- ☛ Quick response time to calls involving crime.
- ☛ Quick response time to calls involving welfare of domestic violence
- ☛ Quick response time to calls involving assistance to other local law enforcement agencies.

Working on Keeping Drugs Out of Haskell County.

Pd. for by David Halliburton, 1206 Taylor St., Rule, Texas 79547

Cliff McGuire to play in Abilene

Cliff McGuire, sophomore student and basketball player at Howard Payne University, will be playing in two conference games in Abilene this week.

Thurs., Feb. 19, he will play at McMurry University, at 7:30 p.m.

Sat., Feb. 21, at 3:00 p.m., he will play in a game at Hardin-Simmons University.

The Haskell High School graduate is the son of Steve and Phoi McGuire of Haskell.

Basic Treatments Help Harvest Clean Grain

Watching combines gobble acre after acre of a flawless wheat crop brings a smile to any producer. But the odds of cutting a perfect field can be as tough as winning a purple ribbon at the state fair.

In most seasons, weather plays a key role in any production equation. However, if diseases and bugs infest kernels, there's likely to be a major reduction in test weight and quality.

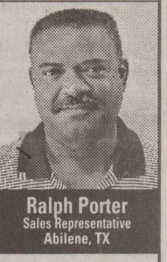
To help combat major foliar diseases, keep your fields clean with PropiMax® EC fungicide. Its label covers such problems as rust and tan spot.

The key strengths of this broad-spectrum systemic fungicide include protectant and post-infestation activity, plus excellent rainfastness with up to 14 days of residual. Once applied, it's rapidly absorbed by leaves and stems and transported to new plant growth.

To achieve optimum results, treat fields early in the disease cycle at a rate of 4 ounces per acre. Apply to wheat until flag leaf ligule emergence (Feekes growth stage 8)¹. PropiMax contains the same active ingredient as Tilt fungicide and is applied at the same rates. But, it comes at a more economical price and with the backing of Dow AgroSciences service and support.

The addition of Lorsban®-4E insecticide to a fungicide program provides protection from sucking insects such as Russian wheat aphid, and chewing insects like armyworms, cutworms and grasshoppers.

For more information about using PropiMax EC and Lorsban-4E to prevent foliar diseases and insect infestations, contact your local ag retailer.



Ralph Porter
Sales Representative
Abilene, TX

Dow AgroSciences

¹Trademark of Dow AgroSciences LLC. Lorsban-4E is a federally Restricted Use Pesticide. Section 24c label in states such as Alabama, Arkansas, Delaware, Georgia, Indiana, Kansas, Maryland, Michigan, Minnesota, Mississippi, Missouri, North Dakota, Ohio, Oklahoma, Tennessee, Texas, Virginia. Washington allows application through Feekes growth stage 10.5. Always read and follow label directions.

www.dowagro.com/usag

HEALTH SCREENINGS

THE DRUG STORE

100 S. Ave. E • Haskell, Texas

February 24, 2004

8:00 a.m. to 3:00 p.m.

We will be offering Health Screenings for:

- Cholesterol Levels
- Arterial Elasticity (Heart) Screening
- Body Fat Composition
- PSA for Men's Prostate Health
- Liver Function Test
- Bone Density Screening

Prices will be discounted during this health fair.
Prices will vary from
\$10.00 to \$35.00 with the discount.

Call 940-864-2673 for appointment and further details.

Testing to be performed by Calvert Home Health Care, Inc.