

1/1/05  
Base Book Binding  
514 W 7th St  
Amarillo TX 79101-2212

Amarillo--33333 zzzz  
AMARILLO TX 791

3

### Softball games

V Maidens vs Cisco  
Fri., March 12, 4 p.m.  
at Haskell  
V Maidens vs Albany  
Tues., March 16, 5 p.m.  
at Albany

### Baseball games

V Indians vs Cisco  
Fri., March 12, 4 p.m.  
at Haskell  
JV Indians vs Hamlin  
Mon., March 15, 4 p.m.  
at Haskell

### Track

Indians and Maidens  
Thurs., March 11  
Panther Relays, Seymour

### Calendar

#### Fun Run and Walk

A 5K Fun Run and Walk will be held Sat., March 13 at 10 a.m. at the Haskell City Park. Registration will be held at 9 a.m. at the Gazebo in the park. Contact Leiza Morales at 256-0769 or Bill Markunas at 864-8903 for more information. Entry fee is \$5.

#### Sagerton Hee Haw

The Sagerton Hee Haw will be presented March 25-27 at the Sagerton Community Center. Tickets are \$4. Doors will open at 5:30 for the meal. Auditorium doors will open at 7 p.m. with music provided until the show starts at 8 p.m. Tickets may be ordered from J. B. or Dorothy Toney, 1825 FM 1661, Sagerton, Texas 79548 or by 940-997-2688.

#### One-Act Plays

One-Act Plays from Rochester, Paint Creek, Haskell and Rule will be presented at the Haskell Civic Center Mon., March 22 beginning at 5:30 p.m. Admission is \$3. A concession stand will be available.

#### Food distribution

The Haskell County Ministerial Alliance Food Distribution Center will distribute food Sat., March 20 from 10 a.m. til 11:30 a.m. at 206 S. 2nd (building east of Civic Center) in Haskell. Volunteers are needed.

#### Jr. 4-H to meet

The Jr. 4-H Club will meet Mon., March 15 at 5:30 p.m. at the Haskell National Bank Community Room. The 4-H photography awards program and 4-H fashion show along with other events will be discussed. A program on fire ants will be presented.

#### Retired teachers

The Haskell Co. Retired Teachers will meet at KP's Mesquite Grill, 900 S. Ave. E, Wed., March 17 at 11:45 a.m.

#### Benefit lunch

A covered dish lunch will be held Sun., March 21 from 11 a.m. to 1 p.m. at the Haskell Elementary cafeteria to assist Haskell residents Janie and Joe Rodriguez with medical expenses. Tickets are \$5 per plate and available from Friends of Faith members, at the Haskell School Administration office during the week of March 15-19 or at the door. Call Lisa Teague at 864-2606 for more information.

#### Noah Project

The Noah Project-North Advisory Committee will meet at KP's restaurant in Haskell Fri., March 12 at noon.

#### Blood drive

The Meek Blood Center Bloodmobile will be in Haskell Tues., March 16 from 1 to 6 p.m. at Haskell National Bank. Donors must be at least 17 years of age, weigh at least 110 pounds, be in good health and free of infection. For more information call 325-670-2805.

#### Index

Obituaries.....Page 2  
Out of the Past.....Page 4  
Menus.....Page 6  
Classifieds.....Page 7

## Storm coverage inside

# The Haskell Free Press

VOL. 118--NO. 11, ©MARCH 11, 2004

"The People's Choice"

8 PAGES--ONE SECTION--50 CENTS

## Thursday storm leaves damage behind



**AFTER THE STORM**—County crews work under dark clouds Fri., Mar. 5, aiding residents of The Anchor with debris left from the

By late mid-morning, Thurs., Mar. 4, it was apparent that the local area was in the line of a strong, upper-level weather system that was likely to bring damaging high winds and possibly some rain.

Predictions proved correct when about 12:00 noon, along with heavy, dark rain clouds, winds exceeding 80 mph whipped through Haskell, producing varying degrees of damage throughout the city, and causing some electrical and phone service outages.

The severe storm quickly moved to the southeastern part of the county,

where at 12:05, tornadic winds ripped through The Anchor on Lake Stamford.

According to Terry Huber, Senior Forecaster for the National Weather Service in San Angelo, a weather service survey team, which drove to the area, rated the winds at The Anchor lake camp, based on the level of destruction involved, as an F2 'significant' tornado, with wind speeds of 113 to 157 mph. Weather Service data states that based on the Fujita Scale of intensity, an F2 tornado usually does considerable

**tornado that swept through the area around noon on Thursday. The trailer turned on its side belongs to Elmer McReynolds.**

damage, such as roofs torn off frame houses, mobile homes demolished, boxcars pushed over, large trees snapped or uprooted and light object missiles generated.

The actual damage sustained to homes and trailers around The Anchor area on the northeast side of Lake Stamford, fits all of the above criteria and more. Benny Gibbs, The Anchor manager, said Friday, that approximately 22 residences were at The Anchor, all receiving severe structural damage. No bodily injuries were sustained and no lives were lost.

By nightfall, many persons were having to find alternate places to stay.

Quickly responding to the scene, helping to search for residents, and working throughout many hours following the storm were Haskell and Knox County E.M.S. teams, Haskell County Sheriff, David Halliburton, Haskell County workers and equipment, Judge David Davis, Haskell City Police, Haskell Volunteer Fire Department, Steve Barbour of the Parks and Wildlife Dept., the Knox County Police Chief, Knox County Sheriff's Department,

## Classic cars drive to Haskell March 20

The 8th Annual Haskell Volunteer Fire Department Car Show will be held around the Courthouse Square Sat., Mar. 20, again offering a full day of varied activities, with something for fun and entertainment of all age groups.

The ten classes of vehicles included for judging are: Cars Pre-'64; Cars '65 and up; Antique Cars, Trucks through '50; Street Rods Pre-'49; Race Cars; Older Pickups Pre-'84; Pickups '85 and up; Motorcycles; Restoration in Progress; Cushman Scooters.

First and second place will be

awarded cash prizes in each class. Third place in each class will receive a trophy. Awards and cash will be awarded for Best of Show, People's Choice (selected by the public) and Furthest Distance Traveled.

Entry time will be from 8:00 to 11:00 a.m. at the Fire Station. Entry fee is \$20.00. Judging will be at 12:30, with trophy presentation at 3:30. For information call Randy Shaw at 940-864-2023.

Entry fee for the Hot Wheels for Kids is \$1.00. Trophies will be given for 1st and 2nd places.

The Kids Tractor Pull, with kid-

sized tractors, will again be featured.

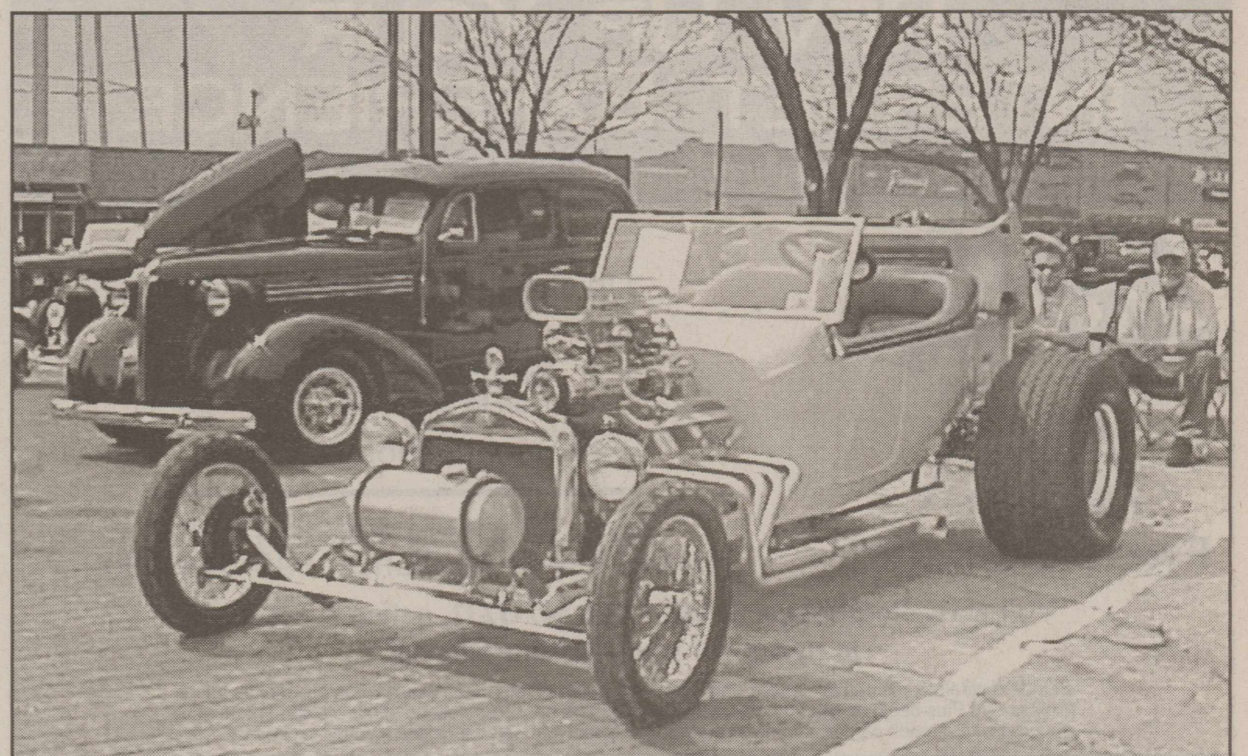
Hamburgers and fries will be served on the square by the Fire Department.

The annual Flea Market, sponsored by the Chamber of Commerce, will be held on the sidewalks in front some of the vacant buildings around the square.

Vendor spaces will be

approximately 6 feet deep by 20 feet long and are \$20.00 each. Food vendor spaces are \$15.00 each. Previous vendors may reserve the same space they had last year by indicating their choice on the entry form.

For more information on the Flea Market, call the Chamber of Commerce office at 940-864-2477.

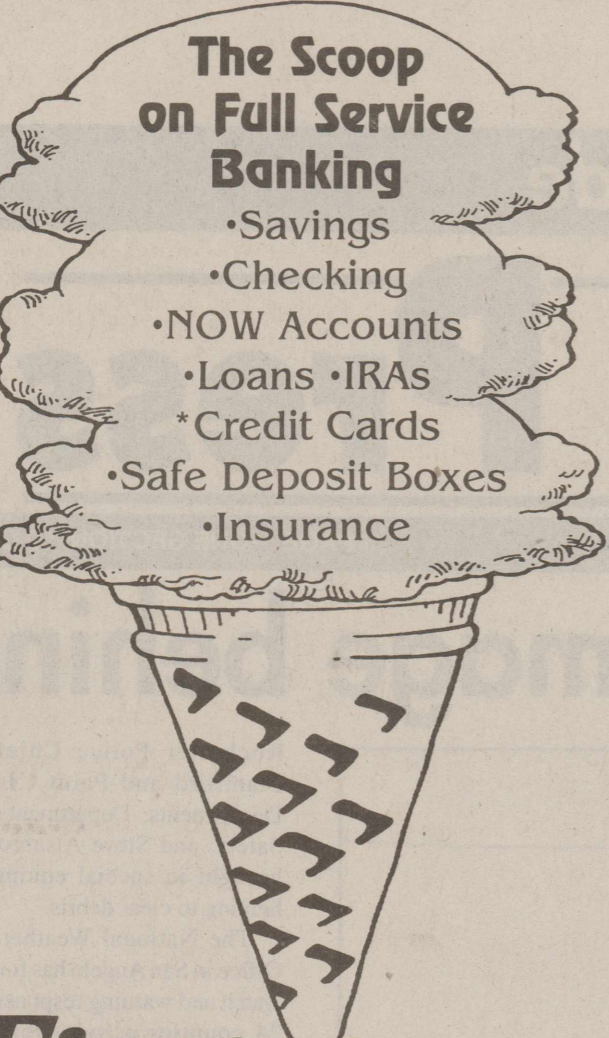


**CLASSIC CARS RETURNING**—In what will be a showing of vehicles rarely seen parked around the Haskell County Courthouse Square, the Haskell Volunteer Fire Department's 8th Annual Car Show on Sat., Mar. 20, will be an occasion of fun for everyone. Featuring ten categories of motor vehicles, such as the one pictured above from last year's show, the events planned will again bring to town many interesting, valuable vintage vehicles and vehicle owners from across a wide area.

**FOR NEWS ITEMS OR TO SUBSCRIBE, CALL 864-2686**

**The Scoop on Full Service Banking**

- Savings
- Checking
- NOW Accounts
- Loans •IRAs
- \*Credit Cards
- Safe Deposit Boxes
- Insurance



**First National Bank Haskell**

200 South Avenue E Haskell, Texas 79521

FDIC 940-864-8555

Other Convenient Locations to Serve You:  
**First National Bank Munday - Stamford - Rochester**

## Indians to begin district play with game at Cisco

The Haskell Varsity Baseball team played in the Sweetwater Tourney last weekend. Due to the weather, the tourney was shortened to a two-day affair.

In a game with Sweetwater on Friday night, Haskell lost 7-0, with Brad Blanks doing a great job pitching against a very good 3-A team. The game was called after four innings due to a time limit.

Saturday, the Indians faced the Eagles of Lubbock Roosevelt. The Indians were slow starting out, but got rolling, and defeated the Eagles, 6-1. Ronald Chapman and Jon Dulaney combined for a well-pitched game. Chapman was the top offensive player for Haskell, going 3 for 5 at the plate.

Haskell traveled to Rotan on Monday for a game against the Yellowhammers, improving the Indians record to 3 and 3 with a 13-3 win. The game was called in the 5th inning. Kendall Mitchell pitched the entire game and did a great job. The bats for Haskell came alive in the 3rd inning, with the Indians scoring 6 in the top of the inning. Nate Webb was 2 for 4 for the day, with Brad Blanks and Austin Coker 3 for 4 at the plate. Kendall Mitchell was 3 for 4 with a double, and Brandon McClatchey was 3 for 3 with a double.

"The kids did a great job of getting the bats going after a slow start," said Coach Kent Colley. "This was a good way to end the non-district season and head into District. Our next game will be our district opener at home against the Lobos of Cisco; game time is Friday at 4:00 p.m."

## Cattle Market Report

The market at the Haskell Livestock Auction was on a run of 169 head of cattle at its sale on Mon., Mar. 8, according to Gary Tate, reporter. 36 sellers and 24 buyers were present.

Packers \$1 to \$4 higher, stockers \$2 to \$4 higher.

Cows: fat, .43-.48; cutters, .45-.53; canners, .35-.45.

Bulls: bologna, .63-.69; feeders, .78-.88; utility, .58-.65.

Steers: medium and large frame No. 1 200-300 lbs., 1.25-1.70; 300-400 lbs., 1.17-1.38; 400-500 lbs., 1.00-1.20; 500-600 lbs., .90-1.12; 600-700 lbs., .88-1.05; 700-800 lbs., .82-.93; 800-up lbs., .75-.84.

Heifers: medium and large frame No. 1 200-300 lbs., 1.10-1.50; 300-400 lbs., 1.00-1.16; 400-500 lbs., .89-1.12; 500-600 lbs., .83-.97; 600-up lbs., .74-.87.

Bred heifers medium frame, 675-775.

Bred Cows: young to middle aged, 700-825; aged or small, 525-650.

Cows with calves: medium frame No. 1 young and middle aged, 775-1025; aged or small, 650-800.

To Subscribe,  
Call 940-864-2686



**CLEANING UP THE AFTERMATH**—Under a black cloud shedding big drops of rain Fri., Mar. 5, Haskell County crews and equipment, and volunteers with donated equipment, team up to help remove debris at The Anchor after the tornado on Thurs., Mar. 4. This Bobcat loader from James Isbell was used by Steve and Wes Alsbrook.

## Obituaries

### Travis Weldon Boyd

Funeral services for Travis Weldon Boyd, 85, of Rule were held Thurs., March 4 at the Church of Christ in Rule with John Greeson officiating. Burial was in Rule Cemetery under the direction of McCauley-Robison Funeral Home.

Mrs. Boyd died Tues., March 2 at his residence. Born Oct. 18, 1918 in Hill County, he was the son of Robert and Edna Cook Boyd. He married Ida Lorene Goodman on July 4, 1940 in Hillsboro. He had lived in the community since 1989. He was a Church of Christ minister for 56 years and served various churches in Rule and Lorenzo.

He was preceded in death by his parents; son, Allen

### Billie Joe Woodward Mathis

Funeral services for Billie Joe Woodward Mathis, 78, of Rule were held Tues., March 9 at First Baptist Church in Rule with Josh Stowe and Scott Hensley officiating. Burial was in Rule Cemetery under the direction of McCauley Robison Funeral Home.

Mrs. Mathis died Sun., March 7 at Hendrick Healthcare System in Abilene.

Born Nov. 23, 1925 in Knox City, she was the daughter of Samuel Park and Effie Vannoy Woodward. She was a beauty operator who owned her own shop for over 44 years. She married Richard E. Mathis at the First Baptist Church in Munday. They lived in the community for 60

Boyd; three brothers, Odell Boyd, Tracy Boyd and Charles Boyd; and sister, Lilly Stovall.

Survivors include his wife, Ida Lorene Boyd of Rule; two sons, Glen Boyd and Don Boyd, both of North Carolina; daughter and son-in-law, Linda Joy and Stanley Trammell of Aspermont; four sisters, Ruth Goodman of Blum, Nevada Wall and Jewel Connolly, both of Fort Worth, and Blanche Arnold of Whitney; sister-in-law, Lucille Goodman of Kennesaw, Georgia; five grandchildren; and five great grandchildren.

Memorials may be made to Medina Children's Home, 21300 State Highway 16, Medina, Texas 78055.

PD. NOTICE

years. She was a member of First Baptist Church, Eastern Star in Rule and was president of the Rule Cemetery Association.

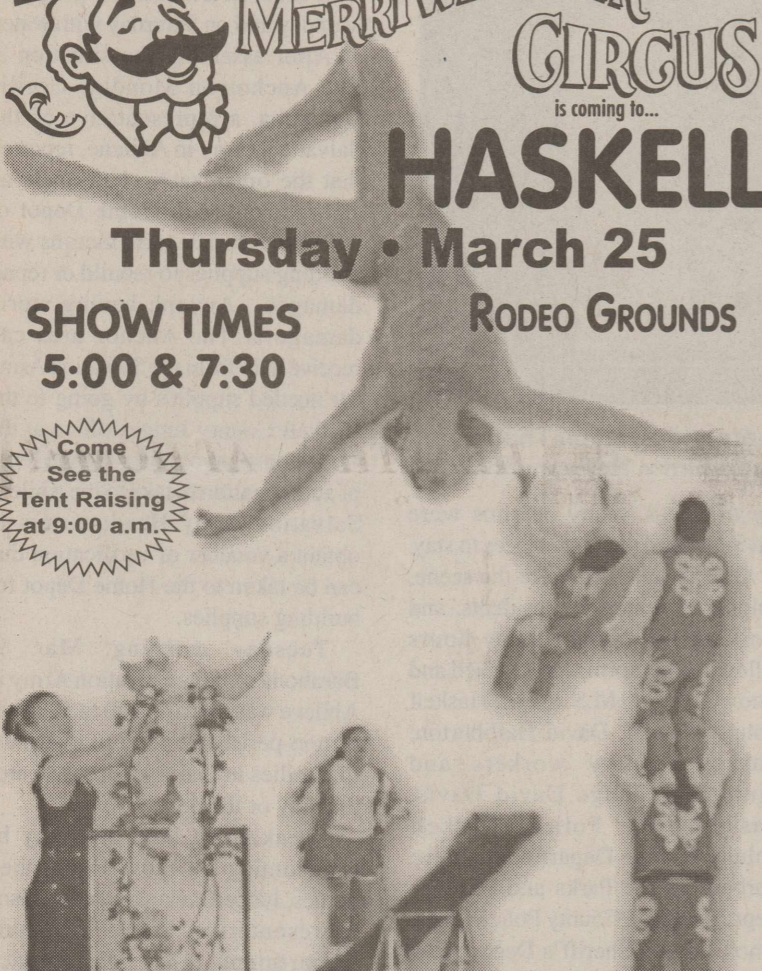
Survivors include her husband, Richard E. Mathis of Rule; children, Richard Van Mathis of Haskell and Jo Carroll Jent of Buckingham, Virginia; grandchildren, Kevin Lane Mathis, Amanda Michelle Porter, Michael Duane Mathis, John Cavaness and Sharie Cavaness Dunnam; six grandchildren; brothers, S. P. Woodward of Scott City, Kansas and Tommy Joe Cox of Fort Worth.

PD. NOTICE

**CULPEPPER & MERRIWEATHER CIRCUS**  
 is coming to...  
**HASKELL**  
 Thursday • March 25

**SHOW TIMES 5:00 & 7:30** **RODEO GROUNDS**

Come See the Tent Raising at 9:00 a.m.



Sponsored by The Haskell Rotary Club  
 BUY ADVANCE TICKETS AND SAVE \$\$\$

Haskell Chamber Office, KVRP Radio, First National Bank, City Market-Rochester

**TICKET INFORMATION**

IN ADVANCE		CIRCUS DAY	
Adult .....	\$7.00	Adult .....	\$9.00
Child .....	\$5.00	Child .....	\$7.00

VISIT US ON LINE AT WWW.CMCCIRCUS.COM

## Garden checklist for March

by Brandon Anderson  
 Haskell Co. Extension Agent

•Prepare beds for planting flowers and vegetables. You may want to consider renting or buying a garden tiller to speed up the process; however, a strong back and a garden fork will still do an excellent job.

•For every 100 square feet of bed area, work in a several-inch layer of either compost, pine bark or

sphagnum peat moss, plus 5 pounds of balanced fertilizer.

•Check with your local county agent for the average last killing freeze date for your area. Remember that killing freezes can occur after this date.

•Pruning of evergreens and summer flowering trees and shrubs should be completed in early March.

Prune spring flowering trees and shrubs as soon as they finish blooming.

•Select and order caladium tubers as well as geranium and coleus plants for late April and early May planting. Do not plant caladiums until soil temperature reaches 70° F.

•As camellia and azalea plants finish blooming, fertilize them with three pounds of azalea-camellia fertilizer. Check mulch on azalea and camellia beds and add where needed.

•In North Texas there is still time to plant seeds of your favorite annuals in flats to be transplanted out-of-doors when danger of frost is past.

•Beware of close-out sales on bare-root trees and shrubs. The chance of survival is rather low on bare-root plants this late in the season. Your best bet at this time of year is to depend on container-grown or balled-and-burlapped plants for landscape use.

•Start hanging baskets of petunias and other annuals for another dimension in landscape color.

•Plant dahlia tubers in fertile, well-drained soil.

•Dig and divide summer and fall flowering perennials just before they initiate their spring growth.

## Calendar

### Storytime

Fun with Friends storytime will be held each Tuesday morning from 10 to 10:30 a.m. at the Haskell County Library until April 20. Children under 5 years old, accompanied by an adult, are encouraged to bring their favorite toy, blanket or pillow. Storytime is provided by friends of the Haskell County Library and the Lebrri Foundation.

### Classic car show

The 8th annual Haskell Fire Dept. Classic Car Show will be held Sat., March 20 around the courthouse in Haskell. Entries are

\$20. Registration will be from 8 a.m. to 11 a.m. at the Fire Station. Judging will be at 12:30 p.m., followed by a trophy presentation at 3:30 p.m. Hot Wheel races will be held for the kids. Kids tractor pull will be held. For more information contact Randy Shaw at 864-2023.

### Flea market

A flea market will be held Sat., March 20 in conjunction with the Haskell Fire Department's Classic Car Show. To reserve a space for the flea market, call the Haskell Chamber of Commerce at 864-2477.

**REV UP YOUR INTERNET EXPERIENCE**

With SpeedNet's High-Speed Wireless Internet



**ONE MONTH FREE SERVICE!**

**SPEEDNET MAX**  
 Up to 20x faster than dial-up  
 \$49.95/month

**SPEEDNET PLUS**  
 Speeds up to 256K, \$39.95/month  
 Service Initiation Fee \$199

Texas Tabs, Inc. 940-864-3983  
 Haskell Tire & Appliance 940-864-2900

Visit [www.dtnspeed.net](http://www.dtnspeed.net) or call 1-800-847-5231, option 8, ext. 8428 to sign up for your FREE Site Survey!!

Standard wireless residential service only. One year contract required. Regular monthly service prices for Max and Plus begin on the 2nd month. New customers only. Restrictions apply. Equipment must be secured with a credit card. Equipment returned to SpeedNet upon cancellation. Offer expires 3-31-04.

**1.800.847.5231**  
[www.dtnspeed.net](http://www.dtnspeed.net)

**SPEEDNET SERVICES**  
 HIGH-SPEED WIRELESS INTERNET

**Federal LAND BANK Association**

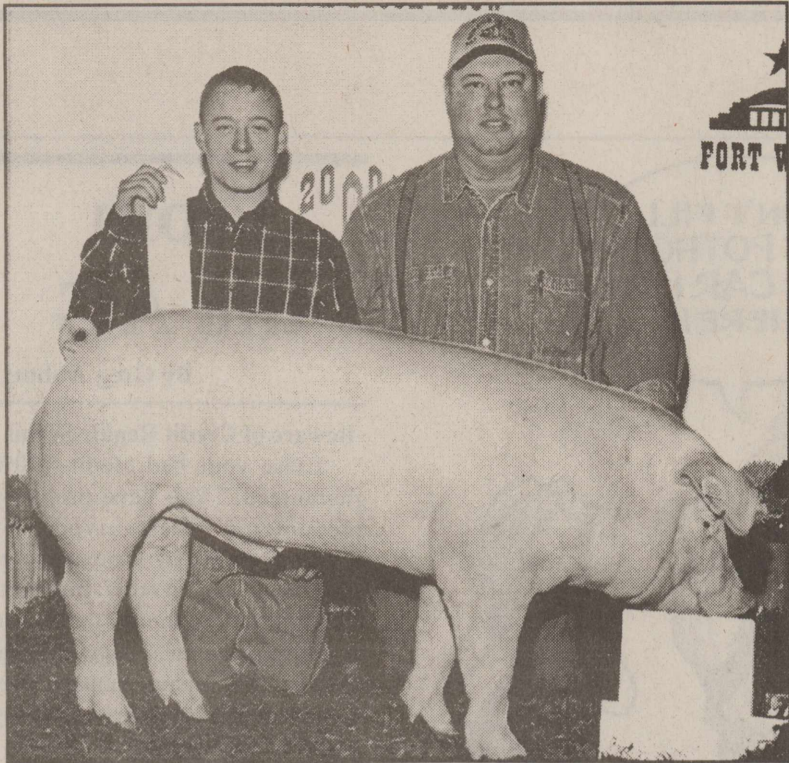
**4.25%**

- VARIABLE RATE
- LONG TERM FARM & RANCH LOANS
- IMPROVEMENT LOANS
- FIXED RATES AVAILABLE
- RATES PRICED WEEKLY
- NO PRE-PAYMENT PENALTY

**Federal Land Bank Association of Texas, FLCA**  
 550 S. 2nd • Haskell, Texas • (940) 864-8565  
[www.flbatexas.com](http://www.flbatexas.com)

Annual percentage rates from 4.5260% APR to 4.3415% APR depending on length of contract. APR based on rates for specified 6 month variable rate during week of March 9, 2004 - March 15, 2004. Rates subject to change without notice.

**EQUAL HOUSING LENDER**



**SHOW WINNERS**—Keith Wilcox, member of Haskell FFA, holds the ribbon he won at the Fort Worth Livestock Show and Exposition for placing fourth in his class with a middle weight Chester. With him is his father, Jackie Wilcox of Haskell.



**SHOW WINNERS**—Chase Cockerell, member of Haskell FFA, showed the winning swine in the light weight Cross class at the Fort Worth Livestock Show and Exposition. With him is his father, Haskell agri-science teacher, Kenny Cockerell.

## Area high school students named to Who's Who list

Students from this area included in the 2002-03 annual edition of Who's Who Among American High School Students include:

From Haskell High School: Morgan Acosta, Laura Baxter, William Baxter, Sydney Brueggeman, Ryan Burgess, Nick Crosson, Jacklyn Escobedo, Leon Goudeau, Scott Kennedy, Melody Kennedy, Jacqueline Kilgore, Brandon McClatchey, Dax Pueschel, Alexis Reed, Brittany Rutkowski, Chase Seelke, Taylor Seelke, Julio Solano, Christi Sorrells, Samantha Steele, Eden Thomas, Jillian Thomas and Chris Washburn.

From Paint Creek High School: Cyle Brown, Kasey Duniven, Bonnie Emert, Todd Emert, Jessica

Messenger, A. J. Shaw, Hattie Walton and Misty Woodall.

From Rochester High School: Rosalba Cruz, Roxann Ramos, Gilbert Saucedo and Ross Short.

From Rule High School: Carlos Aguinaga, Haley Brown, Cassidy Cooper, Misty Davis, Jonathan Hisey and Samuel Turner.

The annual edition features over 700,000 students or just five percent of the nation's 15,000,000 high school students representing approximately 20,000 or the 24,000 public, private and parochial high school in the country.

The book is distributed to up to 15,000 high schools, colleges, universities and public libraries throughout the country.



**STOCK SHOW WINNER**—Haskell FFA member, Matthew Brown, center, won second place with his light medium Cross at the Fort Worth Stock Show and Exposition. With him are his parents, George Brown and Rosemary Brown.

**CLASSIFIED SELLS**  
CALL 864-2686

**Jones-Haskell Eye Clinic**  
Dr. Trussell Thane, O.D.  
Therapeutic Optometrist  
Appointments Available • Monday through Friday

Dr. Thane provides comprehensive eye care including the diagnosis and treatment of eye disease. Dr. Thane offers complete evaluation for eyeglasses and contact lenses.

Various contact lens packages available.

MEDICARE, MEDICAID, BLUE CROSS AND BLUE SHIELD AND FIRSTCARE ACCEPTED.

1501 Columbia Stamford, Texas 325-773-2083

**PIT AND GRILL**  
1308 N. Ave. E, Haskell • 864-5348  
Hours: Sunday 11 a.m. to 2 p.m.; Closed Mon. & Tues.; Wed. & Thurs 11 a.m. to 8 p.m.; Fri. & Sat. 11 a.m. to 9 p.m.

6 A.M. TO 10 A.M.  
**Breakfast Buffet**  
Beginning Fri., March 12 \$7.00 per plate

Catfish Served All Day on Friday

SAT. NIGHTS 5 TO 9 P.M.  
**Peel and Eat or Fried Shrimp**  
includes beans and choice of one vegetable \$12.95 per plate

Come join us for lunch!  
D. L. & Shelly Cooper ~ Owners ~

**NEW! THE SMOKY SUPER SONIC**

Smoky Texas Sauce  
Pepper Jack Cheese  
Smoky Cheddar Cheese  
Crispy Bacon

**SONIC**  
It's Sonic Good.

**\$3.79**

No Waiting  
Call In Orders  
**864-8533**

Limited Time Only!  
Offer good March 1-31, 2004. Only at participating SONIC Drive-Ins. ©2004 America's Drive-In Corp.

**Under New Ownership!**  
Smith Drug and Grace Gift Center of Munday are now under NEW OWNERSHIP.

The Drug Store in Haskell has purchased Smith Drug and Grace Gift Center of Munday.

Smith Drug and Grace Gift Center remain open with the same friendly service from the same trusted staff. Raquel Decker is the Pharmacist at Smith Drug.

**CLEARANCE SALE**  
at Grace Gift Center in Munday!

Selected Jewelry  
Selected Oneida Silverware  
Selected Precious Moments Figurines  
Colonial Candles  
Maybelline Makeup

**1/2 regular price**

ALL SALES CASH & FINAL  
No refunds or exchanges.  
No credit card charges or in store charges.  
Sale prices good at Munday store only.

**SMITH DRUG** 422-4552  
**GRACE GIFT CENTER** 422-4632

Don't Miss Out  
Subscribe Today!  
**864-2686**  
**The Haskell Free Press**

**Double Mountain Coach**  
Let us do the driving for you!

Whether it's around town for bill paying, shopping, doctor appointments or just visiting a friend, give us a call and schedule your ride today!

We're giving you a "Spring Break" for the Month of March - Children under the age of 12 ride FREE

Transportation to Dialysis available Monday thru Saturday

**Call 940-989-2239 or 1-800-722-0137**

**Happy 30<sup>th</sup> Anniversary**  
Mom and Dad  
March 10  
Love, Hans and Marcus

**HERE'S TO YOUR HEALTH... AT HOME!**  
Brought to You By:  
**Haskell Home Health Agency**  
Caring at a Time of Need:  
**Top 10 Reasons for Choosing Home Care**

**What is home care?**  
Home care encompasses a broad spectrum of health and social services that can be delivered to recovering, disabled, or chronically ill persons in the home environment. These services include the traditional core of professional nursing and home care aide services, as well as physical therapy, occupational therapy, speech therapy and nutritional services.

**Why choose home care?**

1. It is delivered at home. When we are not feeling well, most of us ask to go home. When we are feeling well, we enjoy the sanctity of our residences and the joy of being with our loved ones.
2. Home care keeps families together. There is no more important social value. It is particularly important in times of illness.
3. Home care prevents or postpones institutionalization. None of us wants to be in a hospital or nursing home unless this is the only place we can obtain the care we need.
4. Home care promotes healing. There is scientific evidence that many patients heal faster at home.
5. Home care is safe.
6. Home care allows a minimum amount of freedom for the individual. A hospital, of necessity, is a regimented, regulated environment. The same is true of a nursing home. Upon admission to either, an individual surrenders a significant portion of his or her rights in the name of the common good. Such sacrifices are not required at home.
7. Home care is the most efficient form of health care. By bringing health services home, the patient does not generate board and room expenses. The patient and/or his or her family supply the food and tend to the individual's other needs. Technology has now developed to the point where almost any service that is available in a hospital can be offered at home.
8. Home care is personalized care. Home care is tailored to the needs of each individual. It is delivered on a one-to-one basis.
9. Home care is less expensive than other forms of care.
10. Home care is the preferred form of care. According to a recent study conducted by Louis Harris and Associates, Inc., the American public preferred long-term care based on home care over nursing home care by an overwhelming 79% to 14% margin.

What questions regarding home care do you have for the nurse? Send your questions to Haskell Home Health Agency, 417 S. First, Haskell, TX 79521 or call 940-864-5074 or 1-877-864-5074.

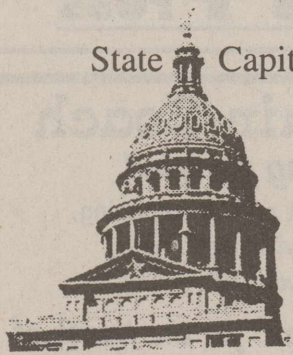
HERE'S TO YOUR HEALTH-AT HOME is brought to you by Haskell Home Health Agency providing home care services in Haskell, Knox, Stonewall, Throckmorton and Jones Counties

**Home Care: Keeping Texans Proud & Independent**

# OPINION

TEXAS PRESS ASSOCIATION

State Capital



## HIGHLIGHTS

By Mike Cox

### Governor's new management council meets in secrecy

AUSTIN—Some states have a cabinet similar to the federal government's, but not Texas. Of course, you can have a cabinet and call it a pantry. Or, in the case of Texas, it could be called the Governor's Management Council.

Last week Gov. Rick Perry presided over the first meeting of a newly-created group by that name. It's made up of the directors of 11 major state agencies (excluding the constitutional offices such as the General Land Office and comptroller) who will meet with Perry to discuss various issues and ideas.

The state's constitution does not give the governor much direct authority over state agencies, but he or she gets to appoint the policy-making commissions that oversee the agencies. And there's always the so-called "bully pulpit" of public office.

Open government advocates were not happy about the fact that the new council met behind closed doors. "For true free flow of information," Perry said before shutting the door, "I think to close the doors to talk to those agency heads about what's going on over there (is) quite appropriate."

### Public schools start 2004-05 leaner

All Texas public schools participating in the federal child nutrition programs must comply with new guidelines for the 2004-05 school year designed to fight child obesity.

The new policy limits the number of grams of fat and sugar Texas schoolchildren may have each week, and allows a phase-in period to eliminate deep-fat frying in food preparation for meals, a la carte and snack items, Agriculture Commissioner Susan Combs said.

French fries are one of the foods on the hit list. In elementary schools fries may not exceed 3 ounces per serving, may only be served once a

week and students may only purchase one serving at a time.

In junior high and middle school french fries may not exceed 3 ounces per serving, may only be served three times a week and students may only purchase one serving at a time.

In high school french fries may not exceed 3 ounces per serving and students may only purchase one serving at a time.

The new policy becomes effective Aug. 1, 2004.

### New Public Safety commissioner...

Brownsville accountant Carlos H. Cascos has been appointed by Gov. Perry to the Public Safety Commission, the three-member panel that sets policy for the Department of Public Safety.

Cascos, a former Cameron County commissioner, replaces former Commissioner James B. Francis Jr., who resigned last December after eight years' service. The new commissioner will serve a six-year term that expires Dec. 31, 2009.

Reappointed as chair of the commission was Colleen McHugh, a Corpus Christi attorney who has served on the commission since 1998.

### Death and taxes in Texas...

The old saw that the only two inevitabilities in life are death and taxes may not hold true in the Lone Star state.

Anyone familiar with Texas' colorful political history knows that during the reign of George Parr—the Duke of Duval—the dearly-departed still exercised their right to vote.

The marking of ballots by dead people happened decades ago in Duval County, but recently anonymous letters have been in the mail concerning the ongoing issue of the use of corporate campaign contributions in Texas. Some of the letters bore a return address of 900 Navasota St. in Austin. That is the location of the State Cemetery.

Meanwhile, the Travis County grand jury investigation into whether corporate money illegally-funded the Republican cause in Texas continues.



www.barrycartoons.com

## From the AG

By Greg Abbott

### Beware of Credit Repair Scams

"Erase your bad credit—100% guaranteed!" You have probably encountered these types of advertisements in a newspaper, magazine or on the Internet. Unfortunately, their claims are generally false or misleading. Despite what a credit repair company may lead you to believe, there is no easy way to fix bad credit.

Your credit history is maintained by credit bureaus, private companies that collect your payment history from creditors such as banks, department stores and mortgage companies. The only items that can be changed in your credit file are those that are erroneous or more than seven years old. Bankruptcy declarations can be reported for ten years.

Accurate items that are reported within the seven- or ten-year period cannot be erased from your credit record by companies advertising credit repair services. Credit repair companies charge anywhere from \$50 to more than \$1000 dollars for their services. In fact, you can do anything to your credit file that a credit repair company can. If you find an inaccurate item in a your credit file, you can fix it yourself at little or no cost.

Creditors seek information on your payment history from one of three major credit bureaus. It is a good idea to check the accuracy your credit report annually. You can do this by requesting a credit report from all three credit bureaus. Credit bureaus are required by law to share any information they have on file about you. In addition, you are entitled to a free copy if you have been denied credit, insurance or employment. You must request the report within 60 days from the credit bureau that provided the report to the business.

If you do find inaccuracies in your credit file, notify the credit bureau of the problem. Request a dispute form and submit it with supporting documents. By law, the credit bureau must investigate and correct any erroneous or outdated information. There is no charge to dispute mistakes in your credit file. The credit bureau must also send corrected copy of your report to anyone who received the incorrect version within the past six months.

Even so, it may also be a good idea to contact the creditor directly to ensure that its records are correct. If these steps do not completely resolve your dispute, you can have a written protest added to your credit file.

Consumers should be careful when considering loan consolidation as a way to pay off creditors. Some companies claim they can guarantee a loan for a fee paid in advance. The fee may be as much as several hundred dollars. If someone guarantees or strongly suggests that they can get a loan or credit for you, it's against the law for them to request or accept payment until you actually get the loan or credit. And be aware that there are entirely bogus credit companies that will collect a fee up front and then simply abscond with your money. Legitimate lenders never guarantee or say that you are likely to get a loan or credit card before you apply, especially if you have bad credit, no credit or a bankruptcy.

We have also heard about companies that claim to be able to get your mortgage "released" by the holder for a fee of \$2000. Needless to say, your mortgage cannot be dismissed for a fee. If you have credit problems, consider a consultation with a credit counseling service. There are no easy answers. Rebuilding your credit will take time and good management. Don't allow yourself to be further victimized by credit repair scams.

### Sr. Citizen Dance

The Old Glory Senior Citizen's dance will be held Thurs., March 11 from 7 to 10 p.m. at the Old Glory Community Center in Old Glory. Call 940-989-2925 or 866-997-9505 for information.

## From Out of the Past

From the files of The Haskell Free Press

### 10 Years Ago March 10, 1994

Matt Pace of the Haskell County 4-H showed a medium weight steer which took reserve champion honors at the San Antonio Stock Show.

Orions Dream, a lovely filly, raised by G. V. and Anne Woffard of Haskell won first place in a Class A show in Fort Worth, the Pro Am.

Missy Davis of Haskell was included on the Dean's List at Sul Ross State University.

City employee Dan Hoover planted a tree at the city park, the first of 500 trees the city will plant. The trees were given to the city by Modern Way and IGA as part of the IGA Hometown Proud Tree Program.

Hal Spain, Kim Burrow and Gerry Spain went to Southwest Texas State University in San Marcos to see Hal's daughter, Christi, a drama major, in "Come Back to the Five and Dime, Jimmy Dean, Jimmy Dean."

### 20 Years Ago March 8, 1984

Haskell Indian Shane Hadaway received an All Tournament Trophy during the Class AA Regional Tournament in Lubbock.

Two students earning "Distinguished Student" status at Texas A&M University were Dennis W. Cloud and James E. Cloud, both of Rule.

Kip Nemir of Haskell was one of five Mr. Trailhand nominees introduced at the half of the Western Texas College Westerner basketball game in the Scurry County Coliseum.

Corsie Johnston Field of Haskell celebrated her 80th birthday with a surprise party at her home.

The Rev. Jimmy Hooper assumed duties as pastor of the Haskell First Presbyterian Church.

### 30 Years Ago

Haskell Indian Shane Hadaway received an All Tournament Trophy during the Class AA Regional Tournament in Lubbock.

### March 14, 1974

Haskell County 4-H Food Show junior divisions winners were Gena Fischer, Kerry Kemp, Lynn Weatherly, and Kim Campbell. Winners in the senior divisions were Joan Cloud, Jill Lefevre, Lynn Fouts, Benita Jackson, and Susan Lewis.

Reserve grand champion of the San Angelo Stock Show was shown by Kyle Wilfong of Haskell.

Houston calf scramble winners were Calvin Wilfong and Les Lane, Haskell High School FFA students.

Jim Pace of Haskell set a new world's record in rattlesnake eating at the 14th annual Rattlesnake Eating Contest at the Sweetwater rattlesnake hunt.

District winners in the poster contest sponsored by the Board of Supervisors of the California Creek Soil Conservation District were Donna Adams and Julie John Wallace of Haskell, Linda Coker of Rule, and Linda Wells of Paint Creek.

### 40 Years Ago March 12, 1964

Six Haskell High School students receiving Quill and Scroll scholastic awards were Hollis Callaway, Judy Sego, Charles Chapman, Diane Summers, Beth Vaughter and David Follstaedt.

J. M. (Mac) Williams, retiring longtime Haskell rural mail carrier, was honored with presentation of a gift from the Brazos Valley group for his faithful service.

Coronation ceremonies honoring four queens of the Intermediate Girls' Auxiliary of Haskell were held. Theresa Abbott, Sara Yeary, Deana Roberson and Beverly Owens were reigning queens at the event.

James Davis was named to the Class AA All-Area second basketball team.

### E. J. Stewart and Porter Oaks were

named by President Ira Hester to head an "On-to-Fort Worth" committee of the Rotary Club of Haskell to secure representation at the annual conference of District 579 in Northwest and North Central Texas.

### 50 Years Ago March 11, 1954

All-district basketball teams for District 13-B were first team girls: Barbara Myers of Rochester, Estalyn Edwards and Couilla Mayfield both of Weinert, Peggy Edge of O'Brien, Margie Martin of Rule and Helen Grand of Paint Creek.

Vivian Roberson, a teacher in the fifth grade of Haskell Elementary School, was teacher of the week.

An overnight camp at Lueders Park on the Clear Fork of the Brazos River culminated Scout training for Cecil Corley, Culver Carney and Dr. E. O. McClellan.

Six girls from the Weinert Chapter of FHA attending the area meeting at Stephenville were Nelda Jetton, Peggy Shelley, Couilla Mayfield, Earlene Edwards, Carmela Silva and Joann Winchester.

### 100 Years Ago March 12, 1904

All Cousins of the northwest part of the county visited Haskell friends.

Rev. O. G. Jones, pastor of the Presbyterian Church at Big Spring, was here a day or two.

M. S. Shook, S. S. Cummings, W. T. Hudson, J. S. Boone, John E. Robertson, L. Lumsden and Roy Shook attended the cattlemen's convention in Fort Worth.

Presiding Elder Smith conducted a quarterly Conference at the Methodist Church.

S. E. Carothers remarked to us that we might say that his announcement for Tax Assessor would appear in The Free Press next week.

## Weathers Whys

### Names of Winds

Q: I've heard the weatherman refer to "chinook winds." What are they?

A: Chinook winds are very warm air currents that blow down the Rockies, and the term comes from an Indian word meaning "snow eater," says Andrew Odins of Texas A&M University. "When certain conditions are right, a Chinook wind can be remarkably warm and it's not uncommon for temperatures to rise 40 degrees or more," says Odins. "A case in point occurred on Jan. 22, 1943, in Spearfish, S.D., when a Chinook wind raised temperatures 49 degrees in less than three minutes. Winds such as the Chinook have different names all over the world depending where you live."

Q: What are some other names of winds?

A: In the European Alps, a Chinook is called a foehn, and the same wind in Argentina is called a zonda, Odins explains. "In Southern California, hot winds are called the Santa Ana winds, named after the Santa Ana Canyon area where they frequently occur," Odins adds. "In North Africa, warm winds are often called a simoon, and in parts of the Middle East winds are called a haboob, and these can produce dust storms. Over the Mediterranean area, warm winds are called a sirocco, and in parts of Egypt they are called a khamsin. Monsoon winds in Asia blow from the southeast in summer and bring heavy rains. A katabatic wind is one that blows cold air, and in Italy, a tramonta wind is a northerly wind that blows off the coast. Again, depending where you live, winds have different names—some are warm winds, some are cold and some are pleasant."

### Winds at night

Q: Why does the wind seem to die down at night?

A: The simple and quick answer is that there's no sun, says Kelsey

Curtiss of Texas A&M University. "Wind is a form of energy and it gets much of its strength from the sun," Curtiss explains. "You can think of wind as a huge river of air over land, and it does this day or night. But as the sun rises and starts heating up the ground, rising warm air mixes with slower air near the ground and with air moving faster that is above ground. This faster-moving air is pushing downward, and it creates windy and breezy conditions as the day progresses."

Q: So what happens at night?

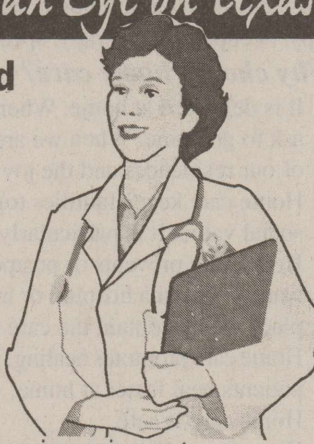
A: When the sun starts to set, this mixing of conditions doesn't happen as much, so the winds start to slow and eventually die down. "Remember that hot or warmer air expands and rises," Curtiss adds. "At night, the ground begins to cool. Air closer to the ground cools by radiation, so there is a lack of heat and energy and these directly affect air currents. So the winds at night and in the early morning hours are usually the weakest. But remember that cold fronts and storms can occur and these directly affect wind speed, too."

## Keeping an Eye on Texas

### Nurses In Demand

Texas will need up to 138,000 licensed practical nurses, registered nurses and nursing aides within the next seven to ten years.

The U.S. Bureau of Labor Statistics projects nursing as the fastest growing occupation over the next five years.



For more information about careers in nursing, go to:

<http://www.twc.state.tx.us/careers/nursing.html>

## The Haskell Free Press

Established January 1, 1886  
PUBLISHED EVERY THURSDAY  
420 North First Street  
P. O. BOX 555 HASKELL, TEXAS 79521

John McDougal ..... Publisher  
Lisa Shaw ..... Business Manager  
Mary Kaigler ..... Editor  
Doris McDougal ..... Production  
Bill Blankenship ..... Staff Photographer

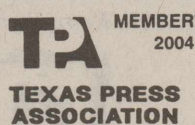
Periodical Paid Haskell, Texas 79521  
(USPS 237-040)

### SUBSCRIPTION RATES:

Haskell County, one year, \$20.00.  
Outside of Haskell County, one year, \$28.00.

NOTICE TO PUBLIC—Any erroneous reflection upon the character, reputation or standing of any firm, individual or corporation will be gladly corrected upon being called to the attention of the publisher.  
POSTMASTER: Send address changes to The Haskell Free Press, P.O. Box 555, Haskell, TX, 79521-0555.

This issue mailed Wed., March 10, 2004



CLASSIFIED  
ADVERTISING  
PAYS  
864-2686

# Storm damage from March 4, 2004

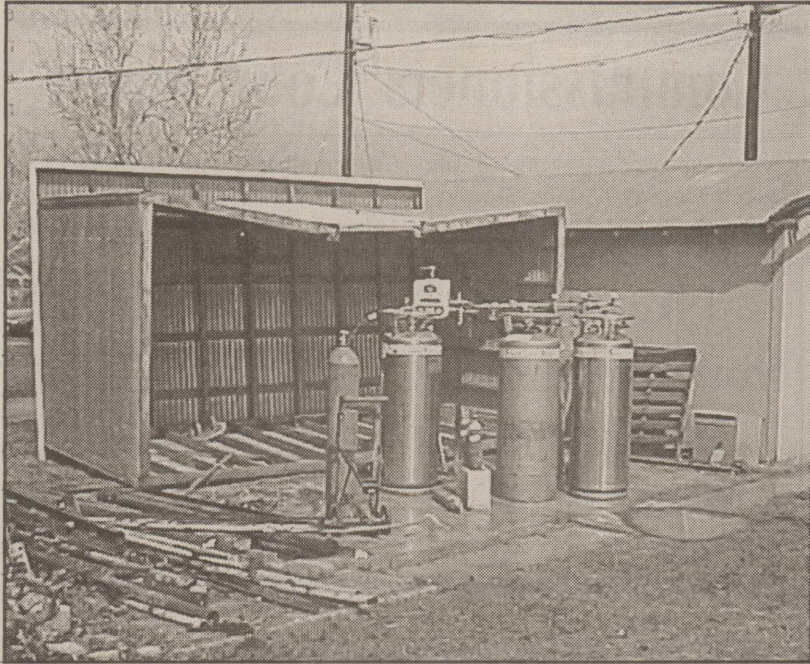
## Inside Haskell City Limits



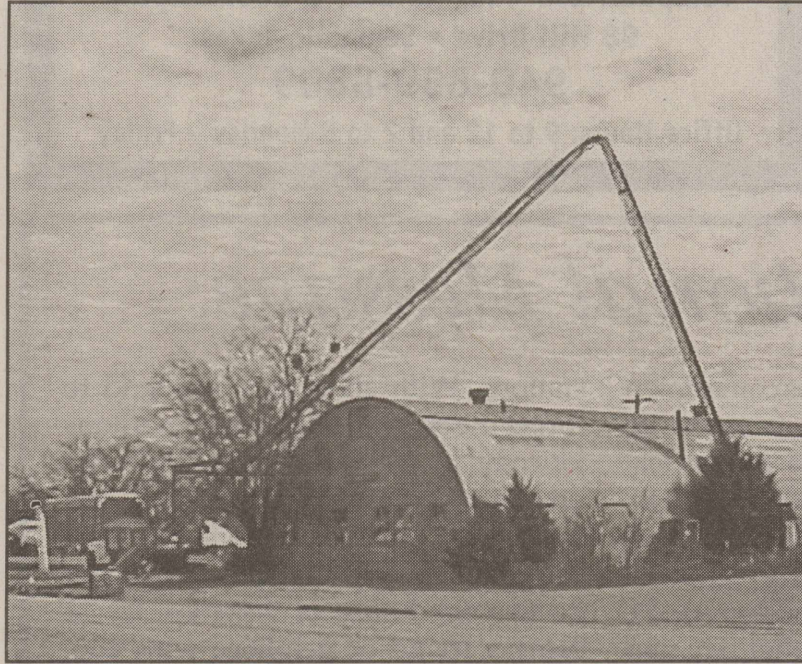
Uprooted tree at Larned home, 907 N. Ave. G



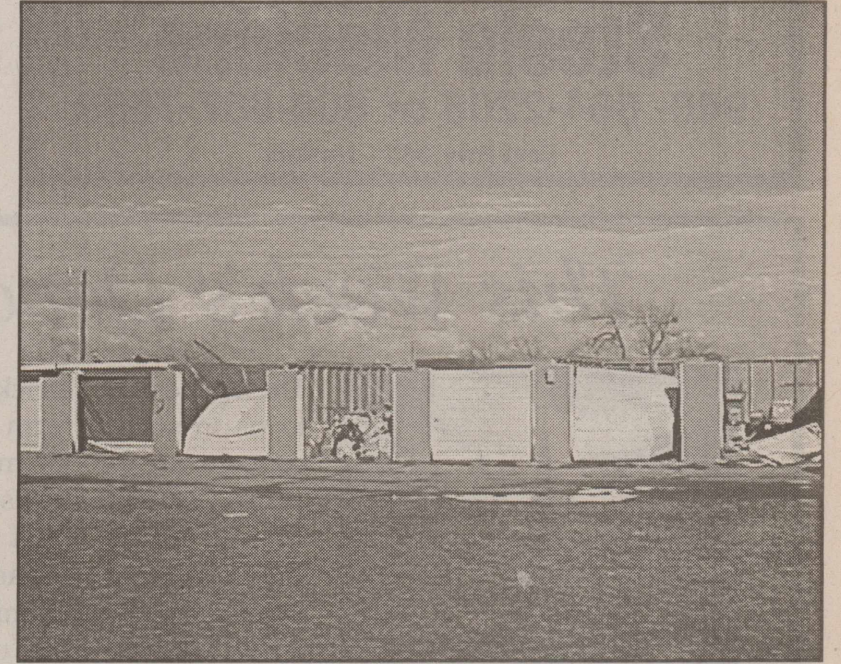
Grain bin at former Haskell Grain location, S. First and Ave. A



Shelter for oxygen system overturned at Haskell Hospital



Antenna near Eddie's Welding on North East First



Storage units at Jim Strain Road and North East 6th Street

## Storm damage at The Anchor, Lake Stamford



Debris field at The Anchor



Overturned home of Tommy Williams



Home of Steve and Tommy Watson



Scene from RV Row



Woody Morris site, home completely gone



Sheet metal wrapped around Donnie Griffin home



Fifth wheel belonging to Tri-County Sprayers stacked on top of trailer belonging to R. C. Brumley



Marvin Baros home



Tangled sheet metal at adjoining sites of Billy Griffin and Joe Aleman

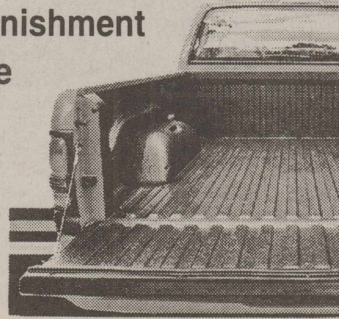
**CLASSIFIED SELLS  
CALL 864-2686**

Ask for . . .



**the BEST sprayed-on bedliner!**

Let **TOFF** take the punishment from the cargo . . . while increasing the life of your truck and its resale value.



Available in a variety of colors!  
See us today for details!

**Steele Machine**  
940- 864-2208 or 800-687-7639  
East Hwy. 380 - Haskell

**Haskell School Menu**

**March 15-19  
Breakfast**

Juice and milk are served daily on the breakfast menu.  
**Monday:** Breakfast pizza  
**Tuesday:** French toast sticks  
**Wednesday:** Froot Loops cereal, Graham crackers  
**Thursday:** Pig in a blanket  
**Friday:** Honey Nut Cheerios, toast  
**Lunch**  
Milk and iced tea are served daily at the Secondary campus. Milk is served daily at the Elementary

To Subscribe,  
Call 940-864-2686

**BERNARD E. GODLEY, INC.**  
**TAX SERVICE & BOOKKEEPING**  
Computerized • Tax Returns & Bookkeeping  
98 Hill Drive • Seymour, Texas  
940-889-8809  
Office Hours: 9 to 12 and 2 to 5 Monday - Friday

School. Secondary campus: Choice of entree or baked potato with ham and cheese.  
**Monday:** Chicken fried steak/gravy, mashed potatoes, green beans, hot roll, sliced peaches  
**Tuesday:** Chili cheese dog, tater tots, pickle spears, pineapple tidbits  
**Wednesday:** Chalupas/cheese/salsa, corn, garden salad, Spanish rice, Saint Patrick's Day cake  
**Thursday:** Hamburger, lettuce/tomato/pickle, Cool Ranch or Nacho Cheese chips, applesauce  
**Friday:** Scroodles fish portions, coleslaw, hush puppies, French fries, orange wedges

**Paint Creek School Menu**

**March 15-19  
Breakfast**

Juice and milk are served daily.  
**Monday:** Biscuits, gravy  
**Tuesday:** Cereal, toast  
**Wednesday:** Breakfast burritos  
**Thursday:** Muffins  
**Friday:** Cereal, toast  
**Lunch**  
Milk is served daily.

**Monday:** Steakfingers, mashed potatoes, green beans, salad, bread, jello  
**Tuesday:** Frito pie, corn, salad, cake  
**Wednesday:** Chicken spaghetti, peas, salad, cookies, garlic bread  
**Thursday:** Barbeque on a bun, tots, corn, coleslaw, fruit cups  
**Friday:** Ham and cheese pockets, fries, baked beans, salad, jello

**ECC Calendar and Menu**

**Mon., Mar. 15**

11:00 a.m. Blood pressure check  
Lunch—Chicken and dressing, gravy, green beans, sliced cranberries, yeast rolls, milk, tea, or coffee

**Wed., Mar. 17**

10:30 a.m. Bingo  
Lunch—Hamburger steak with onions, gravy, Texas potatoes, pinto

beans, club spinach, cornbread, deep gooey pineapple dessert, milk, tea, or coffee

**Fri., Mar. 19**

Lunch—Beefaroni, carrot salad, cheese potatoes, sliced onions, Mexican cornbread, peaches and cookies, milk, tea, or coffee  
Announcements begin at 11:45 a.m. followed by lunch.

**Commissioners' Court report**

At a special meeting of the Haskell County Commissioners' Court, Feb. 24, members voted to lift

the burn ban in Haskell County. After discussion, the vote on choosing outside auditors for 2004-2005 was tabled.

Interlocal agreements with other counties to use the same brand of voting machines was discussed.

A motion was passed to accept the County Sheriff's Racial Profiling Report for 2003. A copy of the report is on file.

No public comment was received at the meeting.

Like what you're reading?  
Call 864-2686 to Subscribe.

*This Week's Devotional Message:*



The legend of St. Patrick has come down to us in such a form as to make us concentrate on its more whimsical aspects rather than its serious message. The greeting card racks sprout shamrocks and little men in green suits. Regardless of our ethnic backgrounds, we all become 'Irish' on that day and don green garments. Hibernian melodies emanate from the radio

stations. With all of that, we tend to forget the story of St. Patrick's perilous journey to Ireland to persuade the people to go and worship God, and that under much safer conditions we could do the same thing. So, when you go to your house of worship, try to bring a friend or neighbor with you, and you'll both receive the blessings that St. Patrick spoke of so long ago.

**ATTEND CHURCH THIS SUNDAY**

**HASKELL**

- East Side Baptist Church**  
Dr. Jim Helfin, interim pastor  
Sun. 8:30 a.m., 9:45 a.m., 11 a.m., 6 p.; Wed. 7 p.m.  
600 N. 1st East, Haskell
- Christian Church**  
Dusty Garison, minister  
Sun. Morn. 9:45 a., 10:45 a., 6 p.m.; Wed. 7 p.m.  
107 N. Ave. F, Haskell
- New Vision Family Worship Center**  
James Rincker, pastor • 864-5438  
Sun. 9:45 a.m., 11 a.m., 6 p.m., Wed. 7:00 p.m.  
East Hwy 380, Haskell
- Trinity Lutheran Church**  
Sunday School 9:30 a.m., Worship 10:30  
Hwy 380 East, Haskell
- Iglesia Bautista El Calvario**  
Art Flores, Interim pastor  
Sun. Morn. 9:45 a., 10:45 a.m., 5 p.m.; Wed. 7 p.m.  
607 S. 7th, Haskell
- First United Methodist Church**  
Allen Brooks, pastor  
Sun. Morn. 9:45 a.m., 10:50 a.m. 6 p.m.; Wed. 6 p.m.  
201 N. Ave. F, Haskell
- First Assembly of God**  
Rev. J.C. Amburn  
Sun. Morn. 9:45 a., 10:45 a.m., 6 p.m.; Wed. 7 p.m.  
1500 N. Ave. E, Haskell
- St. George Catholic Church**  
Father George Roney  
Sat. Mass 7 p.m.; Sun. Morn. 9:00 a.m.  
901 N. 16th, Haskell
- Church of Christ**  
Brett Anderson, minister  
Sun. Morn. 9:30 a., 10:30 a., 6 p.m.; Wed. 7:30 p.m.  
510 N. Ave. E, Haskell
- First Presbyterian Church**  
Steve Beatty, pastor  
Sun. Morn. 9:30 a.m., 10:30 a.m.  
306 N. Ave. E, Haskell
- Trinity Baptist Church**  
Tony Grand, pastor  
Sun. Morn. 10 a., 11 a., 6:30 p.m.; Wed. 6:30 p.  
401 S. Ave. D, Haskell
- Hopewell Baptist Church**  
Sun. Morn. 9:30 a.m., 11:00 a.m.; Wed. 7 p.m.  
908 N. Ave. A, Haskell

**Greater Independent Baptist Church**

Rev. Tom Collins, pastor  
Sun. Morn. 9:30 a., 11:00 a., 6:30 p.; Wed. 7 p.  
301 N. 3rd St., Haskell

**New Covenant Foursquare**

Bill and Renee Glass, pastors  
Sun. Morn. 10 a.m., 11 a.m., 6:30 p.m.; Wed. 7 p.

**Mission Revival Center**

Rev. William Hodge  
Sun. Morn. 10 a.m., 11 a.m., 6 p.m.; Tues. 6 p.m.  
1600 N. Ave. B, Haskell

**First Baptist Church**

Kevin Hall, pastor  
Sun. Morn. 9:45 a., 10:55 a., 6 p.m.; Wed. 7 p.m.  
301 N. Ave. E, Haskell

**Church in the Park**

Rev. Tim and Suzann Townsend  
Sun. Morn. 10:30 a.m. Wed. 7 p.m.  
Gazebo or Pavilion

**Cornerstone Baptist Fellowship**

Dr. Gibbie McMillan, Interim pastor  
Sun. Morn. 9:30 a.m., 10:45 a.m. Wed. 7 p.m.  
1303 N. Ave. I, Haskell

**WEINERT**

**First Baptist Church**

J. C. Baker, pastor  
Sun. Morn. 10 a.m., 11 a.m., Wed. 7 p.m.  
Weinert

**Weinert Foursquare Church**

Rev. Robert Harrison  
Sun. Morn. 10 a.m., 11 a.m. Wed. 7 p.m.  
Weinert

**ROCHESTER**

**Church of Christ**

Steve Willis, minister  
Sun. Morn. 9:45 a., 10:45 a., 6 p.m.; Wed. 6 p.m.  
West on Main Street, Rochester

**First Baptist Church**

Jackie Brem, pastor  
Sun. 11:00 a.m., 6 p.m.; Wed. 7:00 p.m.  
500 Main, Rochester

**Union Chapel Baptist Church**

Rev. Clarence Walker  
Sun. Morn. 9:45 a., 10:45 a., 6 p.m.; Wed. 7 p.m.  
Rochester

**Faith Chapel of Rochester**

Katherine Byrd, minister  
Sun. Morn. 10 a.m., 11 a.m., 7 p.m.  
Hwy 6, Rochester

**First United Methodist Church**

Dolan Brinson, pastor  
Sun. Morn. 10:00 a.m., 11:00 a.m.  
Rochester

**SAGERTON**

**Sagerton Methodist Church**

Melissa Bemis, pastor  
Sun. Morn. 9:30 a.m.  
Sagerton

**Faith Lutheran Church**

Deborah Nissen, pastor  
Sun. Morn. 9:15 a.m., 10:30 a.m.; Wed. 7 p.m.  
Sagerton

**RULE**

**First Baptist Church**

Josh Stowe, pastor  
Sun. Morn. 9:45 a., 11:00 a., 5 p.m.; Wed. 7 p.m.  
1001 Union Ave., Rule

**Primitive Baptist Church**

Dale Turner Jr., pastor  
First & Third Sundays 10 a.m.  
Corner of 8th & Robins, Rule

**Church of Christ**

John Greeson, minister  
Sun. Morn. 9:45 a., 10:40 a., 6 p.m.; Wed. 7 p.m.  
811 Union, Rule

**First United Methodist Church**

Wendall Ferguson, pastor  
Sun. Morn. Worship 10 a.m.  
1000 Union Ave., Rule

**Primera Iglesia Bautista**

Alfa y Omegas  
Manuel Marin, pastor  
Sun. Morn. 10 a., 11:00 a., 5 p.m.; Wed. 6 p.m.  
500 Elm Street, Rule

**Sweet Home Baptist Church**

Bill Trice, pastor  
Sun. Morn. 10:00 a., 11:00 a., 6 p.; Wed. 7 p.m.  
Gladstone Ave., Rule

**West Bethal Baptist Church**

Rev. Robert Sweet  
Sun. Morn. 10 a., 11 a., 8 p.m.; Wed. 7:30 p.m.  
300 Sunny Ave., Rule

**PAINT CREEK**

**Paint Creek Baptist Church**

Sun. Morn. 10:00 a.m., 11:00 a.m., 6 p.m.  
Paint Creek

**O'BRIEN**

**O'Brien Baptist Church**

Milton McManus, pastor  
Sun. 9:45 a., 11 a., 5 p., 6 p, Wed. 6 p.m.  
O'Brien

**Sonic Drive-In**

1402 N. Ave. E  
864-8533  
Managers: Leon & Carolyn Herring

**Steele Machine**

Hwy. 280 • 864-2208

**Modern Way Food Store**

1202 N. Ave. E • 864-3763

**Smitty's Auto Parts**

107 N. 1st East • 864-2607

**HANSON PAINT & BODY SHOP**

207 S. 1st • 864-3631  
Professional Auto Body Repair  
Glass Installation • 24 Hour Wrecker Service

**Rule Co-op Gin & Elevator**

301 Adams • Rule • 997-2421

**Rice Springs Care Home, Inc.**

1302 N. 1st • 864-2652  
Medicare • Medicaid • Therapy

Committed To Excellence  
In Service

**Personality Slipper Shoppe**

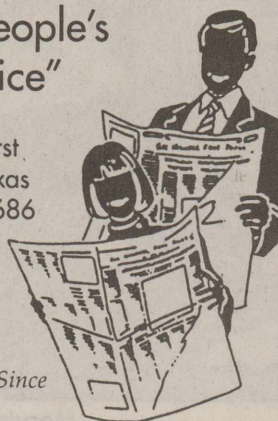
413 S. 1st (South Side of Square)  
864-2501 and 864-3051  
"One Stop Shopping"

**The Haskell Free Press**

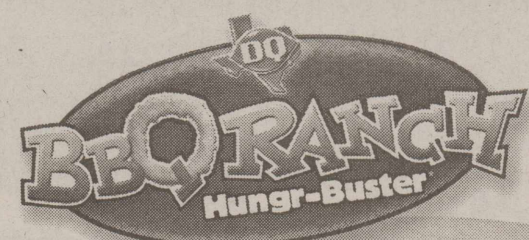
"The People's Choice"

420 N. First  
Haskell, Texas  
940-864-2686

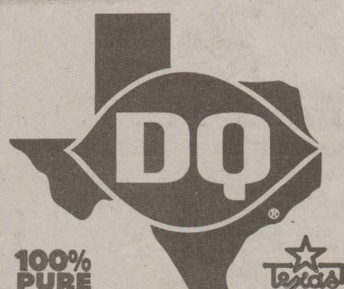
Serving Haskell County Since 1886



**There's a NEW Burger in Town!**

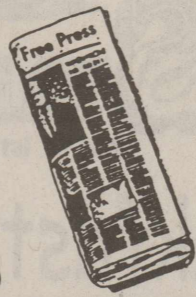


- BBQ sauce
- Ranch dressing
- Cheddar cheese
- Lettuce
- Pickles
- CRUNCHY ONION RINGS

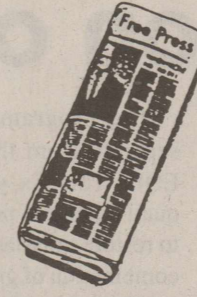


**100% PURE AMERICAN BEEF**  
**That's What I Like About Texas!**

On sale February 29-March 20.  
Offer good at participating DQ® restaurants.  
© Reg. U.S. Pat. & TM Off. Am. D.Q. Corp.  
© Reg. U.S. Pat. & TM Off. Tr. D.Q. Op. Com.



# Shop The Haskell Free Press CLASSIFIEDS



864-2686

ALL DEADLINES MONDAY 5 P.M.

864-2686

### For Sale

FOR SALE: Coastal hay round bales, \$35 per roll. Delivery available. 254-893-4040. Cell 817-313-9077. 8-11c

FOR SALE: Coastal hay. Square bales. \$4 per bale. 864-3384. 9-12c

FOR SALE: Hogfeeder. Call 864-2223, leave message. 11p

### Garage Sales

GARAGE SALE: Sat. Mower, guns, air compressor, welder, encyclopedia. Lane-Felker van; 46,000 actual miles, 60 gallon gas tank. 801 N. Ave F. 11p

GARAGE SALE: 807 N. 14th St., Haskell. Sat., March 13, 8 a.m. 11c

3-FAMILY GARAGE SALE: Sat., March 13. 8 a.m. til 7:30 N. Ave. K East, behind Trinity Lutheran Church. 11p

GARAGE SALE: Thurs.-Fri. 8 to 5. 715 S. 9th. Men's, ladies, and junior size clothing. Little girl's size 7/8 clothes; bedspreads, sheets, baby items, misc. 11c

### Miscellaneous

HOUSE LEVELLING and foundation repair. No payments until work is satisfactorily completed. David Lee & Co. 325-675-6369. 6tfc

COMPUTER REPAIR-HELP onsite. Hardware/software/training. Steve Livingood 325-773-2616. If no answer, leave message. 6-11p

BALLONS & MORE, 502 S. 1st. Now open. Balloons for all occasions. Also, burritos and sandwiches. Tamales on Sat. Tues.-Fri. 8 a.m.-6 p.m.; Sat. and Sun. 9 a.m.-3 p.m. 11p

### Wanted

WANTED: Newer, small farm tractor in good condition. With equipment. Call Bruton at 214-803-8500. 10-11c

You know you're in a small town-if people wear tank tops to church. Special purchase of Spring Air "Never Turn" mattress sets. Pillow top sets start at \$299 for a queen and \$399 for a king. Kinney Furniture in Stamford. 11c

### Spalding Construction

Hamlin, Texas  
Owner: James Spalding  
Tired of replacing your Composition Roof?  
Join many wise homeowners and Update with an attractive Metal Roof in your choice of a variety of colors.  
Free estimates!  
(All other general construction)  
325-576-2109

### OWNER FINANCE STAMFORD

2 BDR.  
Large older home near schools. Low down, low monthly payments  
Call Jim at  
325-518-8128  
or Teri at  
325-660-2122 39tfc

### WILD HORSE TRADING POST

Haskell's General Store and  
RadioShack.  
All Music CD's \$8.95 each  
All Ladies Clothing 30% off our already low price  
Don't forget-We also have guns and ammo, gifts, musical instruments and ladies clothing!  
419 S. 1st, Haskell • 864-2200  
Hours: M-F 9-6; Sat. 9-3

### Help Wanted

NOW TAKING APPLICATIONS for all positions at Sonic Drive In, Haskell. Apply in person. 25tfc

S.L.P. HASKELL Healthcare Center is an equal employment opportunity employer. We are located at 1504 N. First Street, Haskell, Texas 79521. We are looking for dependable, honest, hard working and caring individuals for the following positions: Cook/Dietary Aides, Long-term care experience preferred; Certified Nurse Aide, PRN; Housekeeping, PRN. Qualified individuals may apply in person. 940-864-8537. Contact Stella Woodard, Dietary Supervisor or Cindy Guess, Director of Nursing. Stanley I. Song, Administrator. 9-12p

RICE SPRINGS Care Home is making a difference. We are looking for 1 CNA 6-2; 1 CNA 2-10; part-time dietary; records clerk. Call Shandra at 864-2652 for information. 11c

GREAT PAY AND MILEAGE for flexible part-time hours. Case manage small caseload in your area. If you have 2 years college, 2 years supervisor experience, licensed nurse or 2 years in healthcare facility, agency or CBA experience fax resume to Community Care 940-322-1754. 10-11c

APPLICATIONS ARE NOW being taken for activity director. Must be cheerful, enthusiastic, dependable and enjoy working with the elderly. For more information, apply in person at Brazos Valley Care Home, 605 S. Ave. F, Knox City. 11tfc

You may be getting old-if you can remember the only way to get mail was to walk to the mail box. You might not feel so old if you had a La-Z-Boy to relax in. Get a pair starting at 2 for \$499. Kinney Furniture in Stamford. 11c

### For Rent

FOR RENT: Furnished rooms for rent. Nightly, weekly, monthly. Call Lone Star Lodging 864-2238. 25tfc

HOUSE FOR RENT: Large 3 bedroom, 2 bath. \$300 month. Call Rosie 940-325-3687 after 3:30 p.m. 10-13p

### Public Notices

NOTICE  
Tiffen Mayfield, Commissioner Precinct 2, Haskell County is taking bids until March 15, 2004 for a used 90-100 hp farm tractor. Must have cab and air, 540-1,000 rpm PTO, 2 hydraulic, plug-ins, decent tires, motor and transmission. Tractor must be in good shape. Maximum bid \$17,500. Mail bids to Haskell County Courthouse, 1 Ave. D, Haskell, Texas 79521. 9-11c

### ZERO DOWN

Land-Home with low interest rate.  
NO CREDIT NECESSARY  
325-673-8488 35tfc

### CUTE LITTLE HOUSE

Very affordable. Call  
325-673-7353 35tfc

### \$500 MOVE IN

Owner finance.  
Call Alex  
325-725-1449  
Se habla español. 35tfc

### HASKELL 3 BR.

OWNER FINANCE  
Central A/C & Htg., Storage shed. Very nice neighborhood. Easy terms.  
Call Jim at  
325-518-8128  
or Teri at  
325-660-2122 51tfc

### Real Estate

FOR SALE OR TRADE: Lake cabin at Veda's Camp. Financing available. 864-2238. 7tfc

HOUSE FOR SALE: 500 N. Ave. D. 2,000 sq. ft. Living room, dining room, den, 3 bedrooms, 2 full baths, double garage. \$20,000 cash only. Call 864-2502. 9-11p

NOTICE  
The deadline for Classified Advertising is 5 p.m. on Mondays.  
Haskell Free Press

**Dodson Concrete Construction**  
Commercial - Residential  
David Dodson  
704 N. Ave. F • Haskell  
940-864-2038  
Over 20 Years in the Business  
FREE ESTIMATES 18tfc

**Guadalcazar Roofing**  
Daniel or Lupe  
325-665-7060  
940-864-5009  
Free Estimates.  
All Types including Metal roof installation.

**For Your Sheet Metal Work**  
Water Storage Tanks  
All Kinds of Metal Duct Work  
See or call:  
**Guinn Sheet Metal & Plumbing**  
940-658-3341 L.C. Guinn Knox City, TX

**R & L Home Improvement**  
Royce C. Meier  
Complete Home  
Remodeling and Repair  
940-864-2982  
940-864-4977

**OWNER FINANCE**  
1403 N. Ave. K  
Roomy older home with carports in front and back. Nice yard. Easy terms.  
Call Jim at  
325-518-8128  
or Teri at  
325-660-2122 51tfc

**The Haskell Free Press**  
read by more people in Haskell County than any other print media.

**Part-time Personal Care Attendant** needed for Lake Stamford area. Clean criminal history check.  
Call 325-823-4378  
Anson General Hospital Home Health P.A.S. Dept.  
Ask for Billie or Sharon

**EXPERT AUTO WORK**  
REASONABLE RATES  
  
See us for all your auto mechanic needs. 20 years experience. We do it right the first time.  
305 South Ave. E • Haskell

**Annuities, Mutual Funds, Life Insurance and a Plan for your Financial Future.**  
CHAN GUESS  
940-864-2665  
  
Allstate  
You're in good hands.  
Allstate Life Insurance Company, Home Office, Northbrook, IL. Securities offered through Allstate Financial Services, LLC (USA Securities in LA and PA). Registered Broker-Dealer, Member NASD, SIPC. Office of Supervisory Jurisdiction: 2020 South 94th Street, Lincoln, NE 68506. (877)525-5722 Allstate Insurance Company allstate.com

**DANCE**  
at Rhineland  
**K-MAC**  
Special-Mechanical Bull  
9 to 1 Sat., March 13 \$5.00

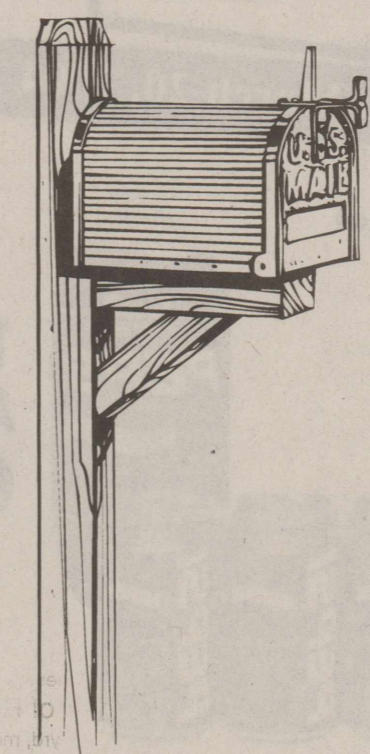
**LANGFORD ROUSTABOUT SERVICE**  
SCOTT LANGFORD  
Roustabouts  
Backhoes  
Winch Trucks  
Dump Trucks  
Welders  
Mobile: 940-256-0535  
Office: 940-864-3490  
Home: 940-864-2565  
8348 N. Hwy. 277  
Haskell, Texas 79521  
Specializing In:  
Oilfield Repair,  
Maintenance & Construction

**EKDAHL REAL ESTATE**  
118 S. Swenson • Stamford  
325-773-3676  
ed@ekdahlrealestate.net  
FARM AND RANCH LISTINGS  
261 ACRES Mattson Community. 43 acres native pasture on Miller Creek. Pasture on 200 acres cotton and wheat base. \$365 per acre.  
247 ACRES irrigated with center pivot. Northwest of Rochester. \$900 per acre.  
51 ACRES irrigated coastal. Northwest of Rochester. Fenced, has center pivot. \$800 per acre.  
164 ACRES hunting and CRP. Northern Stonewall County.

**Haskell County REALTY**  
1301 N. AVE. L. 3 bedroom, 2 bath. Corner lot. Reduced.  
907 N. AVE. L. 4 bedroom, 2 bath. Large backyard with nice RV and boat storage.  
1307 N. AVE. L. 3 bedroom, 2 bath on corner lot. Storm cellar, water well, garden plot.  
104 N. AVE. M. Nice 2 bedroom.  
103 N. Ave. E  
940-864-2665  
1-800-658-6342  
or call  
Robert Tribbey 256-1400  
Bridget or Chan Guess  
864-6142  
Hess Hartsfield, Broker 864-2004

**FOR SALE RIKE Real Estate**  
864-2411  
864-2332  
Mary Rike, Broker 411 1/2 South First St.  
**RIKE**  
NEW LISTINGS  
606 N. 17th. 2-2-carport, living, kitchen, dining, covered patio, sprinkler system and new appliances, C/H.A.  
906 N. AVE. M. Extras galore. 3-2-2-brick, living, sun room, den, crown molding, ceramic tile, well, fenced yard, C/H.A.  
1500 N. AVE. H. Large 3 or 4 bedroom, 2 baths, living, dining, kitchen-den, C/H.A., brick, carport and fenced yard.  
1171 HWY 277 S. Large 1 1/2 story, 3-3-2, den, fireplace, large kitchen, dining, C/H.A., office, all on one acre.  
599 N. AVE. E. Large 4-3-carport, den with fireplace, large utility, C/H.A., well, sprinkler system, storm cellar and storage.  
403 S. 3rd EAST. Beautiful singlewide mobile home on three lots, one year old, C/H.A., three bedrooms, two baths.  
HWY. 280 E. 2-2-carport, kitchen-den, living, large utility, storm cellar, C/H.A.  
411 1/2 South First Street  
Box No. 853  
Haskell, TX 79521  
(940) 864-2411 (940) 864-2332  
FAX (940) 864-3686  
Mary Rike, Broker John Rike, Agent  
mrk@rks.net

Like what you're reading?



We'll send it to you each week for just \$20 a year. (in Haskell County)

Name \_\_\_\_\_  
Address \_\_\_\_\_  
City \_\_\_\_\_ State \_\_\_\_\_ Zip \_\_\_\_\_

Yearly Subscription Rates  
\$20 a year in county  
\$28 out-of-county

Clip and Mail Coupon, Along with Check or Money Order to:  
**The Haskell Free Press**  
P. O. Box 555, 420 N. First, Haskell, TX 79521

# Restoration of grassland sought

A special grassland restoration program is available this year to landowners in Haskell County through the Environmental Quality Incentives Program or EQIP. According to Ricky Linex, Wildlife Biologist with NRCS, grassland habitat in the area has been damaged by years of heavy grazing, drought and brush encroachment. Linex says that when grasslands are restored, habitat for bobwhite quail and other birds is greatly improved.

The program is different and separate from the regular County EQIP. This six year grassland and quail emphasis program is designed to restore grassland health through a combination of grazing management incentive payments and cost share for needed practices. Up to two years of complete rest from grazing is often needed to start the recovery process and landowners will be paid \$5 per acre cash incentives for the first and second year of rest. After that time,

grazing may be resumed, but at about half of the normally recommended stocking rate. In addition to a reduced stocking rate, ranchers will need to rotate livestock from pasture to pasture in a grazing system. This will help insure the continued development and improvement in grassland condition and quail nest cover.

Quail specialists such as Dr. Dale Rollins point out that adequate nesting cover is often the weakest link in providing good quail habitat. About 500 potential nest sites per acre are needed for optimum nesting success. Bobwhites prefer to make their nests in large clumps of old grass left from the previous year. These clumps are often about the size of a basketball. Rest from grazing followed by light rotational grazing is often the best way to restore good nest cover.

In addition to cash incentive payments, landowners may also receive cost sharing to conduct selective brush management, re-seeding, or prescribed burning as needed to accelerate the restoration of grasslands. These practices will be planned in a specific manner to

benefit quail and other grassland birds.

In the fifth year of the program, landowners will receive an additional \$5 per acre incentive if they have successfully carried out all of the grazing management provisions. The three incentive payments are limited to 2500 acres.

Participants in the program will also need to work with their local TPWD Biologist to develop a wildlife management plan for their property. These plans will help insure that good wildlife benefits are achieved according to the goals of the landowner.

For more information or to sign up for this program, contact the NRCS office in Haskell at 864-8516.

# Sunday brunch to benefit couple

A community-wide covered-dish lunch will be held from 11:00 a.m. to 1:00 p.m., Sun., Mar. 21, at the Haskell Elementary cafeteria, to assist Haskell residents, Janie and Joe Rodriguez, with the extensive expense incurred by weekly cancer treatments Joe is undergoing at M. D. Anderson Hospital in Houston.

local women's group as a time and opportunity for the community to come together in the fellowship of sharing a meal and reaching out in care to the Rodriguez' in a time of trial in their lives.

Any and all help by members of the community through donations of prepared food dishes or cash will be accepted and appreciated. The door of the Elementary School cafeteria will be opened at 9:00 a.m. for those wanting to bring their dishes of food before church time.

Information about the event may be obtained by calling Lisa Teague, Haskell School Administration office, at 940-864-2606.

Sponsored by the Friends of Faith, tickets for the meal are set at \$5 per plate. They may be purchased at the door, from Friends of Faith members, or at the Haskell School Administration office during the week of Mar. 15-19. Take out plates will be available.

The event is being planned by the

**NOW OPEN!**

**Western Winds Motel & Eatery**

~ Eatery Hours ~  
Monday thru Saturday  
10 a.m. to 3 p.m. and 5 to 8 p.m.  
Sunday 11 a.m. to 6 p.m.

**COME BY OR CALL IN YOUR ORDER!**

Located 1/2 mile West of Stop Light in Rule  
200 5th Street ♦ 996-0205

**ferti-lome**

**"An Ounce of Prevention Is Worth a Pound of Cure"**  
**Weed & Feed Special**

Now is the time to apply ferti-lome Weed & Feed Special on well-established Bermuda and St. Augustine lawns.

Controls weeds before they germinate, including:

- Dandelions • Crabgrass
- Henbit • Foxtail
- Bur Clover

**Nootens**  
940-864-3696  
307 S. Ave E • Haskell

**STAR STOP**  
706 N. 1st • Haskell • 864-2062

**Breakfast Taco**  
**New! 89¢**

---

Chicken Breasts **\$1.19**

---

Chicken Thighs **99¢**

---

Chicken Legs **2/\$1**

---

Chicken Wings **2/\$1**

**Did You Know?**

Rice Springs Care Home offers  
**Respite Care Services**

to all ages. This service allows both people the opportunity to take time off from each other, while knowing that your loved-one is safe, comfortable, and being taken care of.

Rice Springs Care Home also offers  
**Skilled Health-Care for Children**  
that have high medical or nutritional needs.

Contact Stephen King, Administrator  
for more information!

**RICE SPRINGS CARE HOME**

Your locally owned Care Home, Rice Springs.  
"Caring for Those who Cared for Us."  
1302 North First • Haskell • 940-864-2652

**ALLSUP'S**

March 7, 2004 thru March 20, 2004

**DIET PEPSI, MOUNTAIN DEW OR PEPSI**  
3 LITER BTL.  
**\$1.49**

**6 PACKS**  
**3 FOR \$5**

**ASSORTED T.G.I FRIDAY'S CHIPS**  
2.25-3 OZ.  
**\$1.29**

**HASKELL #153**  
1000 N. AVE. E  
**RULE #91**  
501 UNION AVE.

**ASSORTED FLAVORS GATORADE**  
32 OZ. BTL.  
REGULAR \$1.95  
**\$1.49**

**16 OZ. COFFEE OR CAPPUCINO AND A KELLOGG'S POPTART**  
**99¢**

**REGULAR OR CAJUN CATFISH**  
3 STRIPS  
**\$1.49**

**CORN OR TORTILLA TOM'S CHIPS**  
REG. \$1.89  
**2 FOR \$3**

**HOMOGENIZED, 1% OR 2% ALLSUP'S MILK**  
GALLON  
**\$1.99**

**APPLE ZINGS, GOLDEN PUFFS OR CORN BURSTS MALT-O-MEAL CEREAL**  
22.5-27 OZ.  
**\$2.99**

**ALLSUP'S ICE CREAM** 1/2 GALLON / REGULAR \$3.79 **2 FOR \$5**

**SHURFINE FASTLIGHT CHARCOAL** 2 LB. BAG **99¢**

**ALLSUP'S SANDWICH BREAD** 24 OZ. / 59¢ EACH OR **2 FOR \$1.09**

**ALLSUP'S WHEAT BREAD** 24 OZ. / 69¢ EACH OR **2 FOR \$1.29**

**BAR-S CHOPPED HAM** 12 OZ. PKG. **\$1.59**

**SO-DRI PAPER TOWELS** ROLL **59¢**

**SOFT'N GENTLE BATHROOM TISSUE** 4 ROLL PKG. **99¢**

**BLUE BUNNY TURTLE SUNDAE BAR** 4.5 OZ. / \$1.89 EACH OR **FREE**

**ALLSUP'S COMBO MEALS**

<b>COMBO NO. 1</b>	2 BURRITOS & 32 OZ. TALLSUP	<b>\$1.99</b>
<b>COMBO NO. 2</b>	CHICKEN BITES & 32 OZ. TALLSUP	<b>\$1.99</b>
<b>COMBO NO. 3</b>	BBQ SANDWICH, HOWLERS & 32 OZ. TALLSUP	<b>\$1.99</b>
<b>COMBO NO. 4</b>	BREAKFAST BURRITO, HASHBROWN & 16 OZ. COFFEE	<b>\$1.99</b>

**ALLSUP'S "MOO" GET ONE FREE!**

**BUY 12 GALLONS OF FRESH ALLSUP'S MILK...**

Collect Bull Stick "Moo" Stamp Today & You Could Win FREE Milk For A Year!