

Christmas Parade of Lights Sat., Dec. 9, 6 p.m.

The Haskell Free Press

VOL. 120—NO. 49, ©DECEMBER 7, 2006

"The People's Choice"

12 PAGES—ONE SECTION—75 CENTS

Football games

RULE

Bobcats vs Meadow
Sat., Dec. 9, 6 p.m.
at Lowrey Field, Lubbock

Basketball games

HASKELL

JV-V G in Albany Tourney
Dec. 7-9

7th-8th G vs Merkel
Mon., Dec. 11, 4 p.m.
at Merkel

7th-8th B vs Merkel
Mon., Dec. 11, 5 p.m.
at Rochester

JV-V B vs Munday
Tues., Dec. 12, 6 p.m.
in Munday

JV-V G vs Hawley
Tues., Dec. 12, 6 p.m.
in Haskell

PAINT CREEK

VG-VB vs Benjamin
Fri., Dec. 8, 6:30
at Paint Creek

JH vs Trent
Mon., Dec. 11, 5:30 p.m.
at Paint Creek

VG-VB vs Jayton
Tues., Dec. 12, 6:30
at Jayton

RULE

VG-B in Spur Tourney
Dec. 7-9

JH G-B vs Aspermont
Mon., Dec. 11, 6 p.m.
at Rule

JV-V G-B vs Eula
Tues., Dec. 12, 4 p.m.
at Eula

Calendar

Rule vs. Meadow

The Rule Bobcats will meet #2 ranked Meadow Sat., Dec. 9 at 6 p.m. at Lowrey Field in Lubbock. Rule will be the visiting team. Rule's record is 11-0, after the defeat of Throckmorton last week, and the Bobcats are ranked #1. Admission is \$6 for adults and \$3 for students. A pep rally will be held Fri., Dec. 8 at 3:15 p.m. at the Rule School gym. Bobcat football players and cheerleaders will leave Rule for Lubbock at 1:30 p.m. Saturday. Reservation for fans to ride on a chartered bus are being accepted at the Rule Superintendent's Office. The bus will leave Rule Sat. at 3:30 p.m. Call 997-2521 to make a reservation or for more information.

Memory tree

A memory tree is located in the foyer of Stamford Memorial Hospital for those wishing to memorialize a friend or loved one with a gift of \$5 or more. A dove will be placed on the tree for each gift. The tree is sponsored by Stamford Memorial Hospital Home Health Hospice. Call 325-773-2725 for details.

Poinsettias

The Noah Project-North has a few Christmas poinsettias for sale. Cost is \$12 each. Call 940-864-2551 for information. Proceeds will be used to help victims of family violence in Haskell and area counties.

Letters to Santa due December 7

Hey kids! Santa is getting ready to make his trip to Haskell on Christmas Eve. It's time to get your Christmas letters written and sent to him.

Letters to Santa may be dropped off at the Free Press office at 420 N. First St. or mailed to Santa Claus at P.O. Box 555, Haskell, Texas 79521.

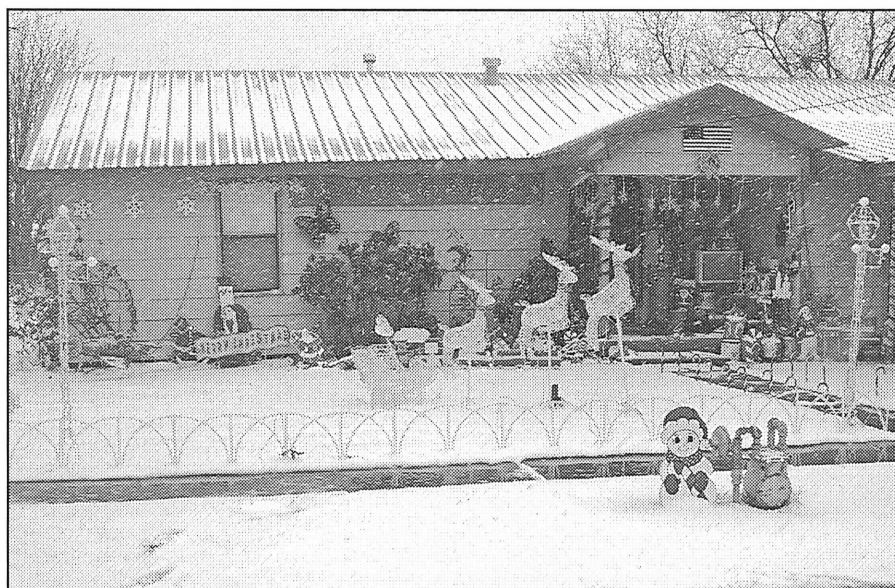
Deadline for having your letter printed in the newspaper is 5 p.m. Thurs., Dec. 7. All letters received by that time will be printed in the Dec. 21 issue.

Index

Obituaries Page 2
Around Town Page 3
Out of the Past Page 4
Menus Page 8
Classifieds Page 9



LEARNING ABOUT COMMUNICATIONS—Tiger Cubs from Haskell's Cub Scout Pack 136 visited the Haskell Free Press last Thursday to learn about communications, one of their requirements. They learned how information is received at the newspaper and how articles and their placement helps a reader interpret information. They also visited the newspaper's morgue. Scouts making the visit were, l-r, Christopher Hall, Dalton Meinzer and Devery Reed. Their leader is Tyke Meinzer.



HOLIDAY SCENE—Last week's blast of cold helped local Christmas decorations glisten with ice and snow, making it seem more like wintertime. These fun-loving arctic decorations are at the home of Tony and Linda Haynes on North Fifth Street.

Parade of Lights set Saturday

The Haskell Chamber of Commerce Christmas parade, "Old Time Christmas Parade of Lights," is set for Dec. 9 at 6 p.m. in historical downtown Haskell.

Lighted floats and displays will adorn the square and courthouse lawn. Those attending are invited to take a stroll through historical downtown Haskell while sipping hot chocolate served to help keep the cold away.

Santa will be making his appearance at the gazebo on the courthouse lawn. The Haskell Lions Club will take pictures with Santa, for a small donation, at the gazebo.

Free drawings will go on during the evening, so go by the gazebo to sign up.

Call Lorie Rodriguez at 940-864-5694 for more information.

Last sign-up for Goodfellows set Saturday

The Haskell Goodfellows will distribute Christmas packages to needy families again this year. The project will be conducted as it has in previous years and a sincere effort will be made to provide a Christmas package of useful items to those who might not otherwise have provisions for Christmas.

On Sat., Dec. 9, the names of those who qualify for the Goodfellows project may be placed by application at the Haskell City Hall between 1 and 3 p.m.

This year's Goodfellows project will be a joint effort between the Haskell Lions Club, the Haskell County Child Welfare Board and the Haskell Volunteer Fire Department. The Lions Club will take care of the food portion of the project; the Child Welfare Board will handle the toys and clothes and the Fire Department will handle delivery.

If you would like to help with this project by donating food, toys, money or clothes, contact any member of the Lions Club for more information. All cash donations may be made at the Haskell Free Press office at 420 N. First, or mailed to the Free Press at P.O. Box 555, Haskell, Texas 79521.

Rule to play Meadow Sat.

The Rule Bobcats will meet Meadow Sat., Dec. 9 at 6 p.m. at Lowrey Field in Lubbock. Admission is \$6 for adults and \$3 for students.

A pep rally will be held Fri., Dec.

8 at 3:15 p.m. at the Rule School gym.

Reservation for fans to ride on a chartered bus are being accepted at the Rule Superintendent's Office. Call 997-2521 to make a reservation.

Goodfellows Donations

The Haskell Goodfellows, sponsored by the Haskell Lions Club, are accepting donations for Christmas boxes to be distributed to needy families this holiday season. Donations of food, toys and clothing are being accepted. Cash donations may be sent to The Haskell Free Press, P.O. Box 555, Haskell, Texas 79521.

Friendly Folks Sunday School Class,	
First United Methodist Church	\$50
Anonymous	\$50
In memory of Carl Wheatley, Allene Wheatley, Adell Thomas and Ann Thomas Wilson by Mary Ann and Jerry Wheatley	\$400
Jim Williams	\$200
In memory of Bobby Roberts and Don Whitfield by Ronnie Bailey	\$50
Total this week	\$750
Previous total	\$225
Total to date	\$975

FOR NEWS ITEMS OR TO SUBSCRIBE, CALL 864-2686



CHRISTMAS SPIRIT DISPLAY—Students of Karen Smart at Rochester Junior High are in the Christmas spirit. Irma DeLeon, left, who created this Christmas display shows off her holiday work to Beth Foley and Karen Smart, far right.

Be mindful of allergies while decorating for the holidays

As you begin pulling down the holiday decorations from the attic this season, doctors at UT Southwestern Medical Center have some tips for cutting down allergy risks.

"Carrying items down from dusty attics or pulling them from garages and other storage areas can stir up dust and molds," says Dr. Rebecca Gruchalla, chief of allergy

and immunology at UT Southwestern.

If you have fabric decorations, try washing them before putting them up. When selecting decorations, try avoiding fabric, which trap more dust than plastic, metal and glass items.

If the decorations appear dusty, take them outside and wipe them down before putting them up in your

home. That can be particularly helpful with artificial trees, which can accumulate dust and mold in the branches.

People suffering from mountain cedar allergy should not use freshly cut juniper trees for the holidays since these trees pollinate during the winter season. If you are selecting a freshly cut or live tree, look for Scotch pines and Douglas fir—the mainstays of most Christmas tree lots.

Other things that may exacerbate symptoms in persons with asthma and allergies during the holiday season include: scented candles, wood stored for fireplaces, even the smoke from fires can be a trigger of asthma attacks. If traveling during the holidays, consider taking your own pillow containing a dust mite-proof encasement.

BERNARD E. GODLEY, INC.
TAX SERVICE AND BOOKKEEPING
 Specializing in Farm, Ranch & Agri-business
 Over 35 Years Experience
940-889-8809
 98 Hill Drive • Seymour, Texas
 Fax 940-889-4908

Obituaries

Laura Ethel Howard Alvis Tidwell



ETHEL TIDWELL

Funeral services for Laura Ethel Howard Alvis Tidwell, 96, of Haskell were held Fri., Dec. 1 at East Side Baptist Church in Haskell with Rev. Danny Manross and grandson,

Pastor Berry Alvis officiating. Burial was in Willow Cemetery under the direction of Holden-McCauley Funeral Home of Haskell.

Mrs. Tidwell died Mon., Nov. 27 at Haskell Memorial Hospital.

Born March 24, 1910 in the Paint Creek community, she was the daughter of the late Marion Bunyan Howard and Janie Bray Howard. She married Rice G. Alvis Dec. 24, 1925. He preceded her in death and she later married Robert E. Tidwell Jan. 3, 1973. She was a devout Christian, a Southern Baptist, and a member of East Side Baptist Church. She was a member of the Eastern Star for 50 years.

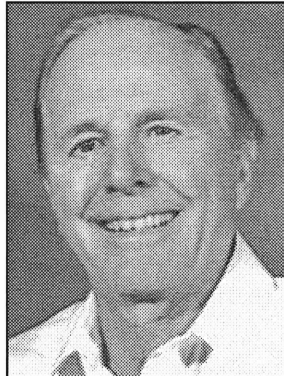
She was preceded in death by her parents; husbands, Rice G. Alvis on Dec. 24, 1925 and Robert E. Tidwell on Jan. 3, 1973; brothers; one son,

Howard Taylor Alvis; and one granddaughter, Mary Caroline Strahan.

Survivors include son, Rice Gambrell Alvis Jr. and wife, Lena of Haltom city; daughter, Ruth Mock and Coolie Reynolds of Cocoa, Florida; daughter, Cecilia Ann Patton and husband, Phil of Montgomery; son, Dr. Thomas Alvis and wife, Geneva of Lubbock; stepson, Bobby Tidwell and wife, Lena of Haskell; stepdaughters, GERAL DARDEN and husband, Glenn of Haskell and Shirl Burchard and husband, Jerry of Childress. She had numerous grandchildren, great grandchildren and great great grandchildren, whom she loved dearly and prayed for all her life.

Pallbearers were grandsons and great grandsons. PD. NOTICE

Lee Weldon Norman



LEE WELDON NORMAN

Funeral services for Lee Weldon Norman, 91, long time farmer, rancher, educator and life long resident of Rule were held Sun., Dec. 3 at Rule Baptist Church with John

Greeson officiating. Burial was in Rule Cemetery under the direction of Holden-McCauley Funeral Home.

Mr. Norman went to be with his maker Nov. 30 in Fort Worth.

Born Oct. 31, 1915 in Rule, he received his Master's degree in economics from North Texas University in 1939 and served in the U.S. Army Air Corp in World War II. He taught school in Haskell and Stonewall counties where he served as teacher, coach and principal for twenty-five years in Rule, Old Glory and Mattson schools. A farming and ranching career followed, which he did full time for the last forty years. He was a deacon in the First Baptist Church of Rule, a member of the Maskat Shrine Temple, served on the Haskell Memorial Hospital

board and as major of Rule during the 1970's.

He was preceded in death by his wife of 65 years, Rubye Faye Doyle Norman; son, Craig Norman; brother, J.B. Norman; and two sisters, Hazel Norman Eastland and Lois Norman Leggett.

Survivors include son, James Lee Norman and wife, Marty; two grandsons, James Lee Norman Jr. and wife, Holly and Darin McReynolds and wife, Blythe; and four great grandchildren.

Memorials may be made to the Craig Norman Scholarship Fund at Rule Banking Center, Box 10, Rule, Texas 79547; or the James L. West Presbyterian Care Center, 1100 Summit Avenue, Fort Worth, Texas 76104. PD. NOTICE

Law enforcement report

Haskell County Sheriff, David Haliburton, released the following list of arrests and offenses in Haskell County for the month of November.

Possession of controlled substance, less than one gram: 1 case.

Driving while license invalid: 2 cases.

Possession of marijuana, less than two ounces: 5 cases,

Driving while intoxicated: 3 cases.

Larceny theft, less than \$50.00: 1 case.

Possession of drug paraphernalia: 2 cases.

Driving with no drivers license: 1 case.

Surety withdrawal: 1 case.

Public intoxication—3 cases.

Manufacture/deliver of controlled substance in drug free zone: 2 cases.

Traffic: 2 cases.

Assault: 2 cases.

Theft by check: 4 cases.

Criminal mischief: 1 case.

During the month, 302 calls were made to 911.

Go Indians! Go Maidens!

TAX PLANNING

Written By
James E. Rodgers, CPA



900-PAGE PENSION LAW INCLUDES TAX CHANGES

The Pension Protection Act of 2006, signed by President Bush on August 17, revised the funding rules for pension plans. It is hoped that requiring most company pension plans to be fully funded within a seven-year period will lessen the need for taxpayer-funded bailouts of failed plans. Tucked away in the 900-plus page law are a number of tax law changes. Here's a quick summary highlighting the changes.

•The higher contribution limits for IRAs, SEPs, SIMPLEs, 401(k)s, and 457 plans, set by the 2001 Tax Act, were scheduled to expire after 2010. The pension law makes the higher limits permanent, including the additional contributions permitted for those aged 50 and older. Roth 401(k)s, also previously scheduled to expire, are made permanent.

•The "saver's credit" of up to \$1,000 available to lower-income taxpayers who contribute to a retirement account is made permanent, and the income thresholds for eligibility will be adjusted for inflation after 2006.

•The \$500 retirement plan start-up credit for small businesses is made permanent. The credit is for plan expenses in the first three years.

•Nonspouse beneficiaries (e.g., children, siblings, significant others) of a decedent's retirement account will be able to roll over the account into an IRA, an option formerly permitted only for spouses of a decedent.

•The favorable tax treatment allowed for Section 529 plans (college accounts) is made permanent; withdrawals used for qualifying higher education expenses will continue to be tax-free.

•Military reservists called to active duty and public safety employees (such as policemen and firemen) will be able to take penalty-free early withdrawals from retirement plans if certain requirements are met.

•Rules for deducting charitable donations are tightened. Cash donations, even those under the previous \$250 threshold, will have to be substantiated by a bank record or written documentation from the charity. Donations of used clothing or household goods will be tax deductible only if they are in "good" condition.

If you need details on this new law, give our office a call.

RODGERS & COMPANY

Certified Public Accountant
 20 Southwest Third Street
 Hamlin, Texas • 325-576-2356

FREE RAZR

buy one,
 get one free

Starting at
\$79.99

with 2-yr. service agreement on both lines after \$50 mail-in rebates. See below for details.



Most advanced **MOTORAZR™**

- Bluetooth® wireless technology
- 1.3 megapixel camera

Silver or Fire Red
MOTORAZR V3m

come and get your love™



Gift Cards — always the perfect gift

shopalltel.com

Alltel Retail Stores

Abilene
 4149 Southwest Dr.
 (325) 437-0800

Graham
 1221 Hwy. 16 S.
 (940) 549-1885

Snyder
 4109 College Ave.
 (325) 573-7907

Vernon
 807 Hillcrest Dr.
 (940) 553-1885

Breckenridge
 3732 W. Walker St.
 (254) 559-3684

Haskell
 10 Ave. D.N.
 (940) 864-8585

Sweetwater
 1418 Halley St., Ste. C
 (325) 235-0300

Abilene
 Cellular Connection
 1150 S. Treadway Blvd.
 (325) 672-3841

Trio Wireless
 4310 Buffalo Gap, #K1110
 (325) 692-5195

Colorado City
 Lone Wolf Cellular
 1040 Hickory
 (325) 728-8000

Aspermont
 Trinity Cellular
 612 E. Broadway
 (940) 989-2543

Sweetwater
 Sierra
 1209 Lamar St.
 (325) 235-3157

Vernon
 Island Phones
 3800 Hwy. 287 W.
 (940) 553-3860

Proud Sponsor of:

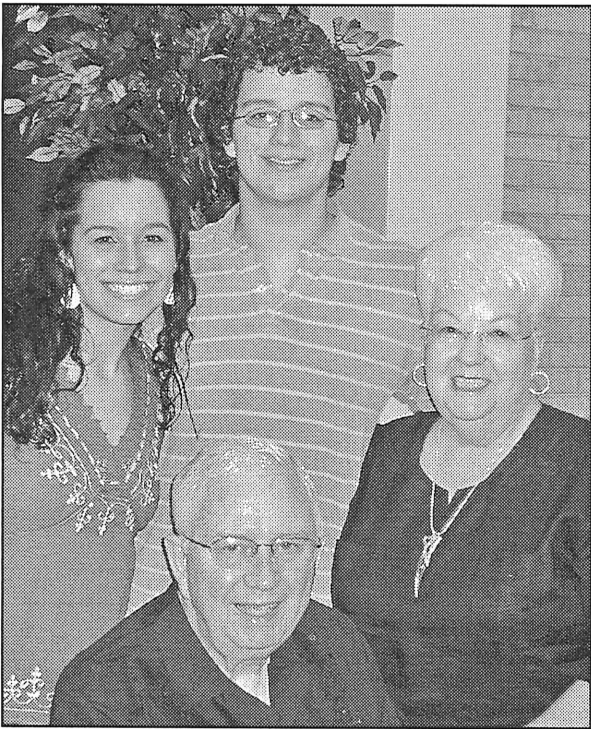


And now we're ranked "Highest Call Quality Performance Among Wireless Cell Phone Users in the Southwest Region"

J.D. Power and Associates 2006 Wireless Customer Satisfaction Study™

Federal, state & local taxes apply. In addition, Alltel charges a monthly connectivity, regulatory & administrative surcharge up to \$1.70; federal & state Universal Service Fund fees (both vary by customer usage); & a 911 fee of up to \$1.94 (where 911 service is available). These additional fees may not be taxes or government-required charges & are subject to change. Phone Promotions: Phones available at sale prices to new customers & eligible existing customers. Qualifying Alltel rate plan required. Contact Alltel to determine if you are eligible. Phone Details: Phones & applicable rebates available for a limited time, while supplies last, with activation of a qualifying rate plan. Limit 1 rebate per qualifying purchase. Phone cannot be returned once mail-in rebate certificate has been submitted. Customer pays applicable taxes. See rebate certificate for details. Bluetooth Wireless Technology: The Bluetooth features of this handset may not be compatible with all devices that are Bluetooth enabled; Alltel cannot be responsible for compatibility with devices not sold by Alltel. Gift Cards: While supplies last. Additional Information: Limited-time offer at participating locations. While supplies last. Credit approval & approved handset required. \$25 non-refundable activation fee applies per line. \$200 early termination fee may apply per line. Offers are subject to the Alltel Terms & Conditions for Communications Services available at any Alltel store or alltel.com. All product & service marks referenced are the names, trade names, trademarks & logos of their respective owners. Screen images are simulated. ©2006 Alltel Communications, Inc. All rights reserved. J.D. Power and Associates Award: Alltel Wireless received the highest numerical score among wireless cell phone providers in the Southwest region of the proprietary J.D. Power and Associates 2006 Wireless Call Quality Performance Study™ - Vol. 2. Study based on 23,828 wireless users measuring 5 providers in the Southwest region (AR, KS, MO, OK, TX) and measures opinions of consumers with the call quality of their wireless service. Proprietary study results are based on experiences and perceptions of consumers surveyed in March and June 2006. Your experiences may vary. Visit jdpower.com.





BIRTHDAY FIESTA—Sue Mahood, on the right, enjoys her special 75th birthday celebration Oct. 21 at the First Baptist Church of Odessa, along with her husband, Bob Mahood, and grandchildren Whitney and Nicholas Fogle.

Fiesta honors Mahood birthday

A fiesta was given in honor of Sue Busby Mahood's 75th birthday at First Baptist Church in Odessa Oct. 21. Mahood was born and raised in Haskell, and now resides in Odessa. The fiesta was hosted by her three daughters, Pam Mahood Austin of Abilene, Patricia Mahood Fogle of Bedford and Kathy Mahood McPherson of Odessa.

Brightly colored table covers and center pieces of terracotta pots with hand made paper flowers adorned the tables. Guests were asked to autograph the center piece pots as a gift for Mahood. Giant piñatas also decorated the fellowship hall, and everyone was treated to the revelry of Mariachi Imperial XXVI, who played as they strolled throughout the party area.

The festivities included cuisine from the talented students of the Career Center High School Culinary Arts Department.

Three birthday cakes were served, including a fresh pumpkin, a pineapple banana and a Black Forest chocolate cake smothered in a rich cherry sauce.

A memory table was on display with pictures and memorabilia provided by the guests and family from her love-filled life. Pat Sammons made a wonderful book filled with newspaper articles telling of Mahood's activities from days gone by.

More than 200 guests honored her with their attendance, cards and personal phone calls, many of whom were friends from Haskell.

Sue and Bob Mahood were married in the First Baptist Church of Haskell 55 years ago, and resided early on in Haskell and Stamford. They enjoy visiting the farms they own in east and north Haskell County as often as possible.

4-H Club delivers food baskets

The Haskell Sr. 4-H Club met Sun., Dec. 3 at the Haskell County Extension Office with six members and three leaders present.

The meeting started with a hay ride to several homes in town, where the 4-H members donated a box of canned foods that had been donated in October. The 4-H'ers gave boxes to the families and also sang Christmas carols at each house.

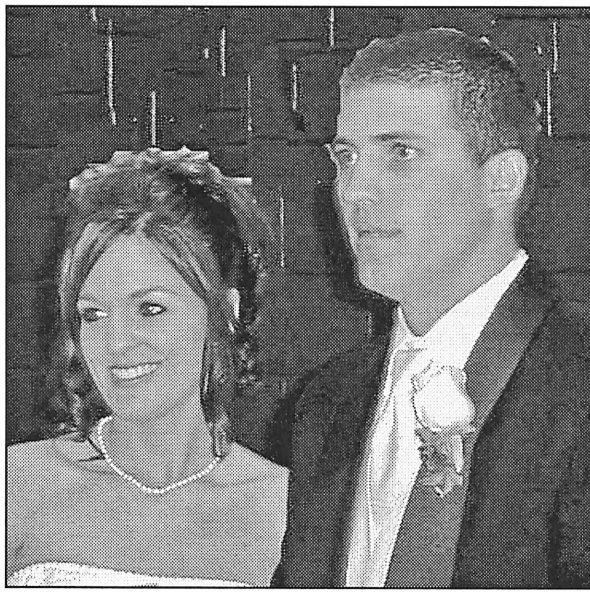
The meeting was taken back to the Extension Office for homemade

cookies and drinks. A continuance of the Character Counts lesson in "Sharing" was given.

Upcoming contests, such as livestock shows, photography and clothing, were discussed.

Meeting plans were made for Sun., Jan. 7, which will include a Mexican Pile-Up supper and games.

For more information, call the County Extension Office at 940-864-2658.



MR. AND MRS. HEGAN LAMB

Mitchell, Lamb wed at Crutch Ranch

Hegan Lamb and Shawna Mitchell were married Sept. 9 in a ceremony held at the Crutch Ranch in Borger.

Their parents are Billy and Tina Lamb, Craig and Kara Grant, and

Mark and LeAnn Mitchell.

They are residing in Haskell where the bridegroom is self-employed and the bride is employed by Haskell ISD.

Prevent holiday burglaries

This time of year many people take advantage of school breaks and the holidays to go on vacation, visit friends, or just get out of the house for holiday shopping. Unfortunately, empty homes also mean burglars will have countless good prospects. "It's a very vulnerable time for homeowners," said Ray Palermo, director of public information for Teachers' Insurance Plan™. "People are busy, distracted, and not always focusing on the more mundane things of life, like making sure your home is secure." He offered a few precautions to help prevent homeowners from falling victim to thieves this holiday season.

•Start by making a full exterior examination of your house. Make sure all locked doors and window have a tight fit when closed. Check to see if there's any "wiggle room" that could give a thief enough space to jimmy it open. Walk around the entire property to ensure there is nothing that can be used to climb to upper floors. Look in your windows to make sure blinds are positioned to screen the interior view, but not closed completely. You may want to move any computers and TVs away from prying eyes. Never leave an "emergency key" hidden outside your house.

•Always leave your home in a secure state, regardless of the time you expect to be away. A burglar watching your house is capable of

taking what he wants in a few carefully planned moments.

•When you are away from the house, particularly for an extended period, be sure to make it look lived-in. Put timers on a few lights at varied times; put a timer on a radio set to a talk-radio station; install a dusk/dawn outside light or motion detector; ask a neighbor to pick up any circulars that might pile up on your doorstep; and stop delivery of newspapers and mail.

•In many instances installing a home alarm system will give you protection, a sense of calm and even a discount on your homeowner's insurance.

•Walk around the interior of your home and inventory your major possessions. An easy way is to place valuables out on tables and videotape your house, room-to-room of all furniture, paintings and other possessions. Make a list and place it, any photos/video you took, and perhaps the valuables themselves, in a safe deposit box.

•Tell a trusted neighbor on your block that you will be away. Activity or noise that might otherwise seem normal to them could be alarming if they know you are away from home.

•The only thing worse than losing your possessions is not being sufficiently covered to recoup your losses, so check to see if your homeowner's insurance coverage is up to date.

Sanders family joins for Christmas gathering

The children, grandchildren, great grandchildren and great, great grandchildren of the late Jack and Sallie Sanders family, longtime residents of Weinert, met at their brother Jacky Sanders Circle S ranch in southeast Haskell County for their Christmas get together. They have continued the practice since 1988.

The earliest ones to arrive were Travis and Wilma Sanders of Coleman, and Rocky Sanders of Abilene. When Lona Mae Phelps arrived, they were riding over the ranch looking for deer and other wild animals.

Others arriving later were Andy and Marlene Sanders, Ricky Sanders, Jacky, Sandra and Jaclyn Sanders, Kenneth Campbell, Walter and Sue Cox, Brenda Austin and Sallie Sartain, B.D. and Marie Kirkland, Kenneth and Elaine Campbell, Karen, Kendall, Allison Mitchell and baby Keegan, Bill and Martha Maupin, Johnny Hardman,

Marsha Sanders, Denise and William Mark, Ethel Slade and Scarlett Cole and their families were not able to come.

The family reunion will be held on the second weekend in June at the ranch.

Births

Deon and Kim Gilly Miles of Hewitt announce the birth of their daughter, Addison LuRay Miles, born Nov. 15 at 3:45 p.m. at Hillcrest Baptist Medical Center in Waco. She weighed 6 lbs. 9 oz. and was 19 1/2 inches long.

Grandparents are Duane and Lou Gilly of Haskell; Travis Miles of Hobbs, New Mexico; and Jack and Sheila Reagan of Stephenville.

Around Town

By Joyce Hawkins

Mr. and Mrs. Lee Magby of Muleshoe visited with Joyce Hawkins, Gary and Vickie Hawkins Wednesday evening.

Fannie Mae Barton was in Fort Worth with her daughter, Mr. and Mrs. Kip Derrick for Thanksgiving. Her granddaughter, Kim and family of San Antonio, was also there. Kay and Kim brought Barton back to Haskell. They visited with Erma Liles and helped her decorate for Christmas.

Open daily
Mon. thru Fri.

Christmas Countdown

40% OFF ALL MERCHANDISE

Including
HOLIDAY GOODIES

Good Times UNLIMITED

512 N. 1st
940-864-6133

Join us this Wed., Thurs. and Fri. nights, Dec. 6-7-8 at 7 p.m. at Faith Chapel in Rochester for REVIVAL SERVICES

with Prophetess Tricia Butcher of Gospel Tabernacle in Dallas.

Prophetess Butcher brings the anointed word of God, and if you are seeking a word from the Lord, don't miss these services. God is looking for people that will not compromise in this last day and time and Prophetess Butcher brings the Word of the Lord without apology. God has used her mightily in the past to restore and refresh.

We invite you to join us all three nights at 7 p.m. and we guarantee you will be blessed.



Misty Gibson
RN, BSN

HERE'S TO YOUR HEALTH... AT HOME!

Brought to You By:

Haskell Home Health Agency

Dear Misty,

What are the symptoms of a respiratory infection?

Symptoms of the respiratory infections can appear suddenly and worsen quickly. When an infection develops, it's important to start treatment right away. Your doctor may decide to prescribe antibiotics or other drugs to get the infection under control before it becomes serious. (Don't try to treat yourself. Over-the-counter cold remedies may worsen the problem, so don't use them unless your doctor tells you it's okay.) Call your doctor immediately if any of these signs occur:

- Fever
- Increased coughing, wheezing, or trouble breathing
- Mucus changes in any of these ways: the mucus is thicker; the amount is either more or less than usual; it has a foul odor; or the color is green, yellow, brown, pink or red
- Stuffy nose, sneezing, or sore throat
- Increased fatigue or weakness
- Weight gain or loss or more than 5 pounds within a week
- Swollen ankles or feet
- Confusion, memory loss, or persistent drowsiness

What questions regarding home care do you have for the nurse? Send your questions to Haskell Home Health Agency, 417 S. First, Haskell, TX 79521 or call 940-864-5074 or 1-877-864-5074.

HERE'S TO YOUR HEALTH—AT HOME is brought to you by Haskell Home Health Agency providing home care services in Haskell, Knox, Stonewall, Throckmorton and Jones Counties



Home Care: Keeping Texans Proud & Independent

Come Eat with us at

Bud's Cafe

709 E. Main Street
Knox City

Serving 7 days a week

6 a.m. to 9 p.m.

Full menu offered!

Featuring:

Grilled Steaks Thurs., Fri. & Sat.

24 oz. Sirloin for 2: \$15.95

10 oz. Ribeye: \$13.95

10 oz. New York Strip: \$11.95

12 oz. Sirloin: \$11.50

Catfish Friday night

All you can eat! \$7.95

Call in orders welcome!

Bud Conner welcomes you!

658-5100

Denver Omelet Burrito

Eggs, ham, green peppers and shredded cheese.

\$2.19 plus tax

Try it with Minute Maid CRANBERRY JUICE

No Waiting Call In Orders 864-8533

Limited Time Only!

Only at participating SONIC Drive-Ins. ©2006 American's Drive-In Corp.

OPINION

TEXAS PRESS ASSOCIATION



State Capital

HIGHLIGHTS

By Ed Sterling

Effect of tax cut complicates budgeting process

AUSTIN—Passing a 2008-2009 budget will be an overarching priority for lawmakers when the 80th regular session of the Texas Legislature convenes Jan. 9.

But the amount the Legislature will be able to spend is in question.

Last spring, the Texas Legislature passed House Bill 1, a tax-spreading measure meant to bring school district property tax relief, and the commitment to reduce school property taxes by one-third will have powerful consequences.

According to a late-November report by the Center for Public Policy Priorities, an Austin think-tank, lower revenue because of the tax cut will trigger a constitutional spending cap. That means less money will be in play.

Lawmakers and the executive branch already are looking at formulas to minimize the pain.

Bill would prevent use of images

Legislation filed by State Rep. Linda Harper-Brown, R-Irving, would make it a crime to use the image or name of a U.S. serviceman or servicewoman in an advertisement.

Harper-Brown's staff said one of the lawmaker's constituents asked for the legislation to prevent businesses from printing the names or images of service members, especially of the fallen ones, on merchandise such as T-shirts without their permission or the permission of their surviving spouse or legal representative.

Senator's bill would kill TAKS

Sen. Florence Shapiro, R-Plano, said she plans to file legislation that would do away with the high-stakes Texas Assessment of Knowledge and Skills exams that schoolchildren must pass to advance in grade and graduate.

Her legislation would replace the controversial TAKS with end-of-semester testing that is tied to the normal curriculum.

Judge says give up the tape

The Texas Department of Public Safety must release a May 2005 Capitol security videotape, a state district judge and the attorney general agree.

A two-hour portion of the tape was sought by the Austin biweekly Texas Observer to see if Republican campaign donor James Leininger of San Antonio took part in a hallway

debate with lawmakers over his proposal to spend state money on private school vouchers.

The DPS maintains that it would constitute a security breach if the tape were made public.

In late November, Austin state District Judge Stephen Yelenosky ruled the tape must be made public, but the DPS had not released it to the Texas Observer, as of press time.

Yelenosky's ruling is in line with an earlier opinion by Attorney General Greg Abbott.

Former lawmakers laid to rest

Former state Sen. Frank Madla, D-San Antonio, was laid to rest in the Texas State Cemetery on Dec. 1.

Madla, 69, and two close family members died in a house fire a week earlier.

Madla served in the Texas Legislature from 1972 to 2006.

Former State Sen. Temple Dickson, D-Sweetwater, died Nov. 29. He was 72.

Dickson served in the Senate from 1989 to 1993. His funeral was at the family ranch in Nolan County on Dec. 2.

Gift disclosure stance stays same

The Texas Ethics Commission voted 5-3 to stick with its earlier position that state officials do not have to disclose the amount of cash gifts they receive.

A cash gift simply may be reported as "currency," "check" or "money order" under the Nov. 26 ruling.

The agency earlier ruled that State Employee Retirement System board member Bill Cerverha of Dallas did not have to report a \$50,000 check he received from Houston homebuilder Bob Perry as anything other than a "check."

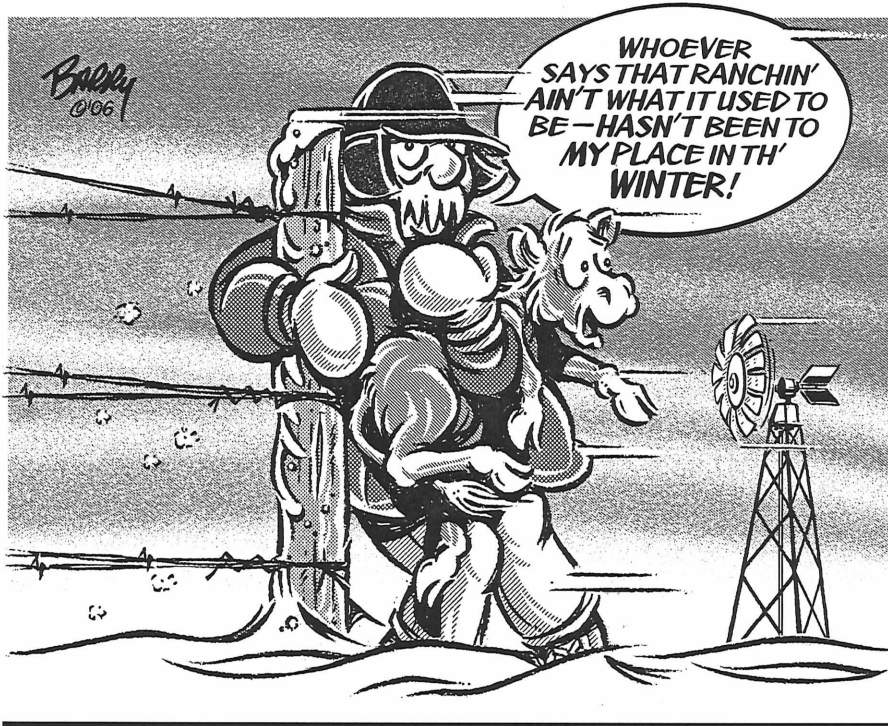
Government watchdog organizations and several of the state's larger newspapers criticized the ruling.

State railroad to keep running

There will be enough money in the Texas Parks & Wildlife Department budget to keep the Texas State Railroad operating through the end of the fiscal year, Aug. 31.

Lt. Gov. David Dewhurst and House Speaker Tom Craddick, informed the agency the money would be available to allay concerns by citizens that the railroad would shut down at the end of the current calendar year.

The railroad, built in 1880, runs between Palestine and Rusk.



From Out of the Past

From the files of The Haskell Free Press

10 Years Ago December 5, 1996

Mr. and Mrs. George Mayen and Kimberly of Bryan spent the Thanksgiving holidays with parents Mr. and Mrs. Joe Ruiz and Mr. and Mrs. Hernandez and their relatives.

Floradean Cockerell of Early visited with her mother, Joyce Hawkins.

Mr. and Mrs. Pat Henry had their children home for the holidays. Mr. and Mrs. Grant Kirby of Houston, Harry Henry of Arlington and Cindy Henry of Lubbock.

Dan Burson spent Thanksgiving in Lubbock with son, Travis and Peggy Burson and their son and wife, Bruce and Shelly Burson.

20 Years Ago December 4, 1986

Jerry Davis, Leiza Morales and Jason Whitehead are members of the Haskell FFA Farm Radio team which placed fourth; and Stoney Trussell, Patrick Burson and Shane Osborne are members of the FFA Junior Farm Skill team which placed third in the area leadership contest in Big Spring.

Dan Griffith, Mark Young and Joel Torres were chosen by district 7-AA coaches to the All District football team.

Floyd Chenaunt, Larry McMillin and Will Parker were appointed to the Housing Authority Board.

30 Years Ago December 2, 1976

The Haskell CowBelles donated \$300 for a "Resusi-Baby" to the Haskell Memorial Hospital. The "baby" will be used in the hospital and for cardio pulmonary

resuscitation courses and training.

Haskell Elementary School reenacted the original Thanksgiving. The pilgrims were first graders from the classes of Mrs. Thomas, Mrs. Cunningham and Mrs. Everett. The Indians were Kindergarteners from the classes of Mrs. Sloan and Mrs. Jarred.

40 Years Ago December 1, 1966

C.B. Shelton announced that he had purchased the Phelps Ice and Locker Plant and will operate the business under the name of Haskell Ice and Locker Plant.

Thornton Gilmore, Kenneth Felker and Keith Chapman were elected as tri-captains of the 1966 Indian football team.

Virgil C. Cobb of Haskell, WTU shift engineer at the company's Paint Creek Generation Station, has been named assistant plant superintendent of West Texas Utilities Company's plant located on Lake Stamford.

Carolyn Rhoads, Haskell High School junior, daughter of Mr. and Mrs. Thurman Rhoads, was selected football sweetheart at the banquet honoring the Haskell Indians and "B" team.

50 Years Ago December 6, 1956

A large five room house on the Fred Gilliam farm about seven miles east of town burned from a fire of undetermined origin. The house, unoccupied for about two months, was a total loss, along with quite a bit of furniture and household articles stored there. Albert Peiser,

who lived several miles away, telephoned the fire department and reported the blaze.

Three members of the Haskell High School band were named to the regional band including Nancy Fancher, clarinet; Bobby Sego, drums and Carrol Thompson, cornet. Fancher also was named to the All State Band.

Students in the seventh grade of Weinert Junior High elected officers including president, Lonnie Sturdy; vice president, Patsy Raynes; secretary, Annette Swamer; treasurer, Wayne Offut; reporter, Mary Alice Davis; class artists, Jerry Hamilton and Gayle Davis and class host and hostess, Joe Williams and Julia Drinnon. Class sponsor and home room teacher is Mrs. W.E. Partridge. Board keeper for the class is Dennis Johnson.

100 Years Ago December 1, 1906

W. J. Evers has moved his saddle and harness shop to the Alexander building on the south side of the square.

Jones Bros., W. T. Hudson, J.A. Bailey and S.S. Cummings shipped 11 cars of cattle to Fort Worth. They were loaded at the Haskell stock pens.

County Commissioners have granted permission to the Brazos River Bridge Co. of Rule to put a toll bridge on the Brazos River west of Rule. The County Judge was also authorized to rent the courthouse for entertainment programs with the county to receive 20 percent of the proceeds from such programs.

Shallowater company turns pesky mesquite into useful products

by Wes Utley

CEA-Ag/NR, Haskell Co.

The Aspermont Economic Development Corporation (AEDC) has been working closely with Randy Plank of National Windmill and Timber Company in Shallowater for the past two years trying to turn the vast resource of mesquite wood into industry for West Texas.

Plank has made it his passion for the last six years to utilize this wood in a fashion that will bring industry to West Texas and put dollars back into the landowners pockets. His passion is fueled by a desire to help landowners and create a new industry and jobs in rural West Texas.

Mesquite is a beautiful and durable wood that is used by crafters around the state of Texas. Plank wants to bring West Texas mesquite into a national marketplace where the mesquite timber can be used to produce mesquite flooring and other products for the commercial and residential hardwood consumers on a consistent supply basis, as well as a reasonably priced product.

Plank has researched the various

areas of mesquite throughout West Texas. He has formed relationships with ranchers throughout our area by virtue of his current sawmill operations for the last few years. Some ranchers have already verbally committed their mesquite to this endeavor. He has also developed relationships with hardwood lumber brokers who have made commitments to the final product.

Although Plank and his current operation are located in Shallowater, the AEDC has been working closely with him because they see the value of having satellite primary mills in the rural West Texas communities closer to the harvest. Each local satellite mill will create five or more jobs but will have benefits that reach far beyond the mill. It will also produce jobs for those harvesting mesquite, jobs for truck drivers to haul the cut product, and it will pay landowners for a product that has been a nuisance in the past. This is a win-win situation for everyone involved.

The time-line for this project is approximately 12 to 18 months. Plank foresees the Shallowater mill

being up and running within the next year. The first satellite mill is to be located in Aspermont and is projected to be in place within two years. The mesquite in Stonewall County will allow producer's with ample quantities and sizes to have a harvestable commodity.

The AEDC would like to make all landowners aware of this project, and the extended efforts of the AEDC and Plank to convert the producer's mesquite into a marketable cash crop as well as providing economic development for local rural West Texas communities.

The AEDC is working hard to better Stonewall County, but we need your help. In the past, mesquite trees have always been considered a nuisance; however, technology is changing that. Many different projects are in the works to utilize mesquite wood.

Consider all your options for your mesquite before you make any decisions. Call the AEDC office 940-989-3197, or contact your local County Extension Agent—Wes Utley at 940-864-2658, for more information.

From the AG

By Greg Abbott

Safe Buying: Medical Products and Treatments

Over the past several weeks, my Consumer Protection Division has halted three separate outfits that put consumers at risk for serious eye injury by selling contact lenses without physician approval. Dispensing any contact lenses, even noncorrective lenses or lenses which are intended solely to change the appearance of the eye, still requires a permit and a prescription from a physician or optometrist.

Two of the businesses were operating from local flea markets, where dispensing contact lenses is never permitted. The businesses rarely obtained a prescription from the consumers, but sold them the contact lenses anyway.

Selling and dispensing contact lenses violate key protective elements of the Contact Lens Prescription Act as well as the Texas Deceptive Trade Practices Act.

Before you buy contact lenses from someone other than your eye care professional, take simple precautions to ensure your purchase is safe and effective.

Have a current, valid prescription when you order contact lenses. To keep your eyesight healthy, you should not order lenses with a prescription that has expired or stock up on lenses right before the prescription is about to expire. Have your eyes re-checked by a licensed eye care professional.

Order contact lenses from a trusted supplier. Request the manufacturer's written instructions for use of your new lenses as well as other risk and benefit information.

Check back with your eye care professional after receiving the lenses to be sure they are the correct prescription. Do not accept substitutions unless approved by your eye care professional. Slight changes in weight, diameter and other measurements can affect your eyesight.

The health and safety of Texas consumers is a high priority for my administration. Three years ago, we effectively halted the unlawful selling and clinical use of prescription "colonic hydrotherapy" devices in several Texas cities. The treatments consisted of using prescription nozzles and systems to thoroughly cleanse the colon, which requires physician oversight under federal and state law. In addition, the purchase, possession and use of the devices must be done with the approval of a physician. Colonic irrigation without physician oversight poses potential dangers to patients.

Our office was also successful in shutting down four ultrasound imaging companies that were operating ultrasound equipment without physician oversight. The companies offered fetal sonograms to pregnant women as "keepsake" photos and videos. The operators did not inform the women that prescriptions are required before such devices may be used. A physician often approves sonograms only for medical and diagnostic purposes, not for memento purposes.

My office takes action against such unlawful practices upon referral of the cases from the Texas Department of State Health Services (DSHS). Consumers may file complaints about unlawful medical practices.

Haskell Co. Gin Report

Dec. 4, 2006

Haskell

Haskell County Gin 370

Haskell Co-op Gin 30

O'Brien

O'Brien Co-op Gin 9,200

Rule

Rule Co-op Gin 1,272

Weinert

Griff's Gin 632

Weinert Gin 662

Total bales 12,166

Parade of Lights Sat., 6 p.m.

The Haskell Free Press

Established January 1, 1886
PUBLISHED EVERY THURSDAY
420 North First Street • P. O. Box 555
HASKELL, TEXAS 79521
Phone 940-864-2686 • Fax 940-864-2687
hfp@valernet.com

John McDougal Publisher
Lisa Shaw Business Manager
Mary Kaigler Editor
Doris McDougal Production
Bill Blankenship Staff Photographer

Periodical Paid Haskell, Texas 79521
(USPS 237-040)

SUBSCRIPTION RATES:

Haskell County, one year, \$25.00.
Outside of Haskell County, one year, \$34.00.

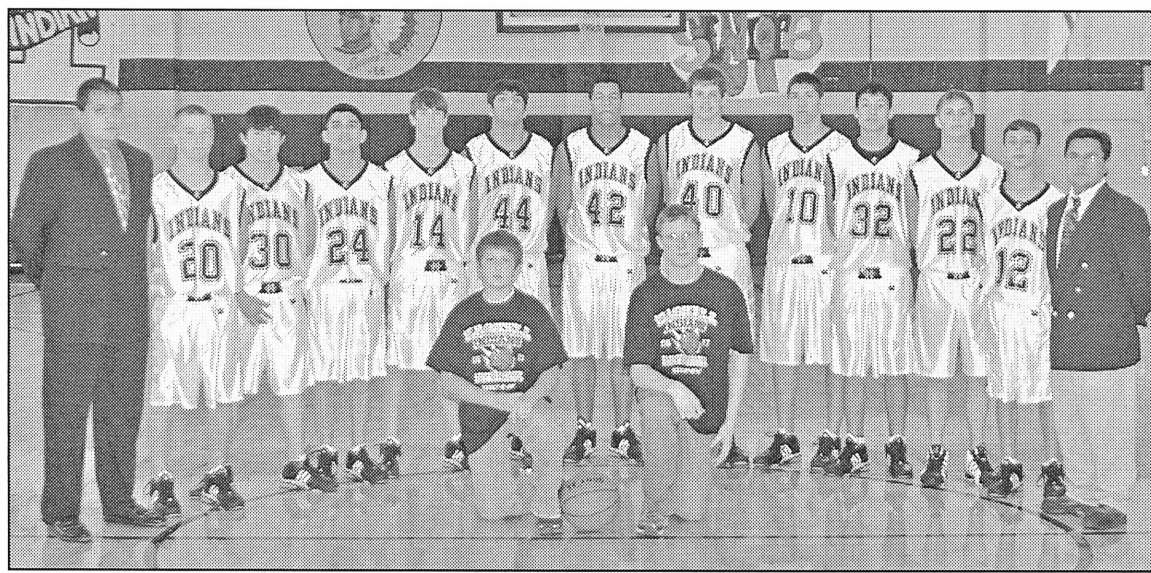
NOTICE TO PUBLIC—Any erroneous reflection upon the character, reputation or standing of any firm, individual or corporation will be gladly corrected upon being called to the attention of the publisher.

POSTMASTER: Send address changes to The Haskell Free Press, P.O. Box 555, Haskell, TX, 79521-0555.



This issue mailed Wed., Dec. 6, 2006

Haskell Indians



HASKELL INDIANS: L-r: Coach Lolo Martinez, Travis Adams, Gregg Guzman, Raul Villarreal, Weston Rutkowski, Vicente Castillo, D.J. McCulloch, Samuel Bitner, Derek Agraz, A.J. Alvarez, James Haggard, John English and Coach Toby Villa. Front, Luke Terry, Jared Webb. Photo by Bill Blankenship

December 7-9
Varsity Boys – Albany Tournament

Tues., Dec. 12 • 6 p.m.

JV & Varsity Boys vs Munday at Munday



Haskell Maidens



HASKELL MAIDENS: Front, l-r, Lauren Newton, Ashton Rutkowski, Haley Chavez, Hope Reid, Jasmine Thomas; back, Lacey Peiser, Chambray Bartley, Kimberly Medford, Sarah Garcia, Samantha Rodriguez, Molly Agraz, Hanna Wallace. Photo by Bill Blankenship

December 7-9

Varsity Girls – Albany Tournament

Tues., Dec. 12 • 5 p.m.

JV & Varsity Girls vs Hawley at Haskell

H
H
S

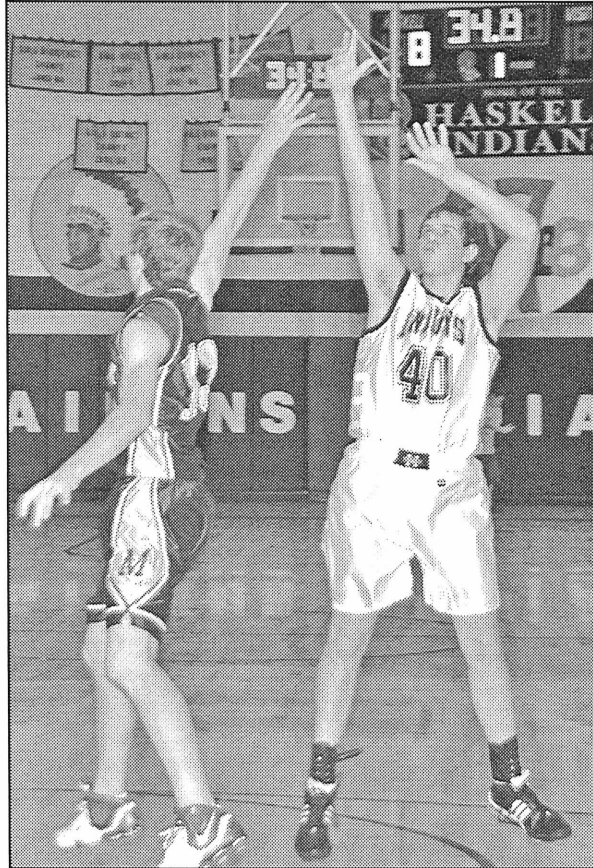
This Page Sponsored By The Following Indian and Maiden Boosters

- Santa Rosa Telephone Cooperative**
- Big Country Electric Cooperative**
- Cecil's Country Meat Mkt. & Grocery**
- Richardson TrueValue & NAPA Auto Parts**
- Brian Burgess State Farm Insurance**
- Personality-Slipper Shoppe**
- Haskell Tire & Appliance**
- Haskell County Insurance Agency**

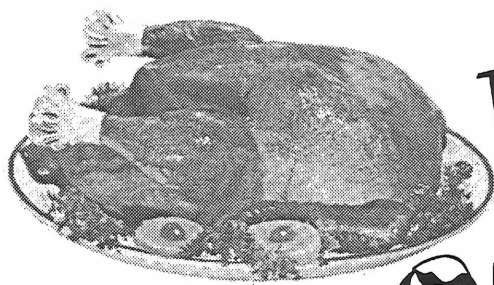
- Haskell Free Press**
- Haskell National Bank**
- Double A Drive Inn**
- Hanson Paint and Body**
- Haskell Save-A-\$**
- Larned Sales Center**
- Matlock & Associates**



INDIAN MOGUL MIXER—Haskell Indian, D.J. McCulloch, #42, goes up against a Mogul to protect the basket in the game with Munday, which ended for Haskell, 47 to 45. Photo by Bill Blankenship



RISING TO SCORE—Haskell Indian, Samuel Bitner, #40, leaps under the basket to add score to the Indians' 47 to 45 winning game with the Munday Moguls. Photo by Bill Blankenship



WIN YOUR CHRISTMAS TURKEY

Christmas Parade

Sat., Dec. 9, 6 p.m.

Call Lorie Rodriguez, Monday through Friday
at 864-5694 for entry information.

\$10 off
After a Purchase Receive
a \$10 Gift Certificate
towards your Next Purchase
of \$25 or more on
regularly priced merchandise.
(Excluding Brighton)
*Gift certificates available
and FREE gift wrapping*

**Personality-Slipper
Shoppe**

940/864-2501 • 864-3051
South Side of Square • Haskell, Texas

Name _____
Address _____
Phone _____

Counter Art
including Christmas Designs

20% off

Floor Puzzles

15% off

Must see!
Santa Claus
Purses
by Timmy Woods

*Bridal Selections for
Coy and Crystal Hise*

Name _____
Address _____
Phone No. _____

The Carousel Gift Shop

Erlinda Mayfield
Open M-F 10 to 5:30. Sat. 10 to 4
Southside of the square
in Haskell
864-2069

**Need an Experienced
Ag Lender?**

When it's time to finance your farm and ranch real estate, look no further than Central Texas Farm Credit. We provide great rates and a variety of flexible loan programs.

**Central Texas
Farm Credit, ACA**
www.centraltexasaca.com

**550 South 2nd
Haskell, Texas 79521
940-864-8565**

Part of the Farm Credit System

*Christmas Selections
for Everyone
on your Shopping List!*

**PERFECT FOR LANDING
ON ROOFS AND
CLIMBING
DOWN
CHIMNEYS.**

Lay Away Now!

Where Winners Shop

Sport-About
of Haskell 940-864-3891
402 N. 1st

We accept Discover, VISA, AMEX, MasterCard

Name _____
Address _____
Phone No. _____

Bailey Toliver

Ford

LOW
Interest Rates
Still Available!

940-864-2611
800-749-5576
209 S. Ave. E
P.O. Box 1057
Haskell,
Texas

*It's a great time
to select a new vehicle!
Let us help you today!*

Name _____
Address _____
Phone No. _____

1. Cli
tel
2. De
bu
in
3. Ea
no
Dr
at
4. An
(e)
thi



1. Clip out the ads, fill in your name, address and telephone number.
2. Deposit each ad in the box *each week* at the business listed on the ad. (All entries deposited in the wrong box will be disqualified.)
3. Each store will award one FREE TURKEY – you need not be present to win, no purchase is necessary.
4. Drawing will be held Friday, December 22, 2006, at noon.
5. Anyone over 16 years of age is eligible to enter (except employees at participating stores and this newspaper.)

STAR STOP

706 N. 1st • Haskell • 864-2062

Bean & Chili
Burritos
Beef-n-Bean
Burritos
Pigs-in-a-Blanket
Deli Fried Pies

2 for \$1

Name _____
Address _____
Phone No. _____

Check out our selection of *Appliances!*

Shop early for best selection!

Haskell Tire & Appliance

206 S. Ave. E • 864-2900

Name _____
Address _____
Phone No. _____

Come in to receive your **FREE 2007 Cardui Calendar and Ladies' Birthday Almanac**

Gift a Gift of Fragrance
Choose from our Large Selection of Men's and Ladies' **Fragrances**
including Gift Sets

Christmas Ornaments
Buy one Ornament at regular price, buy a second, of equal or lesser value, for **1/2 price**

3 piece **Luggage Sets**
Black & White Polka Dot Camouflage
Red & White Polka Dot Route 66
Pink & Green Polka Dot Pink Flip Flops
Cherry
Reg. \$99.99 **Now \$75**

Homedics Neck & Shoulder **Massager**
Or
Hydragel Rechargeable **Massager**
Your Choice **\$19⁹⁹**

Radio Flyer Mini Classic Wagon
\$3⁹⁹

5 inch Steel Truck with Trailer
Assorted Styles **\$5⁹⁹**

Aspen Mulling Spice **\$2⁷⁹**

Chocolate Covered Cherries 8 oz **\$1²⁹**

Chocolate Covered Thin Mints 5 oz. **99¢**

Hershey's Kisses Original or with Caramel **\$2⁴⁹**

Candy Canes 12 Reg. Canes or 40 Mini Canes **99¢**

Copenhagen Butter Cookies 16 oz. **\$2⁹⁹**

Selected Christmas

*Bows 25 ct. *Light Sets *Ornaments
*Paper Plates, Cups & Napkins

25% off reg. price

Christmas

*Gift Bags *Wrapping Paper
*Gift Boxes

25% off reg. price

Give a delicious gift:
Russell Stover Candy

We have a large selection including Millionaires and Sugar-free Millionaires.

When in Doubt, Give a Gift Certificate!

Prices good December 7, 8 & 9. Discounts taken off regular price. All Sales Cash and Final. Limited to stock on hand. Some restrictions apply.

Don't make SANTA do all the work!!

Bring your Christmas packages to Pack & Mail inside The Drug Store.

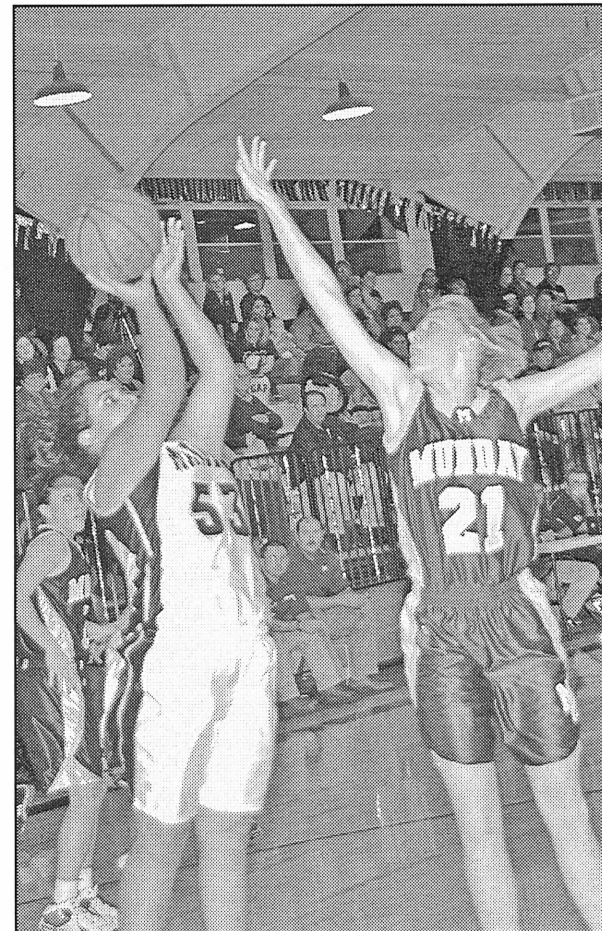
*Let our packing pros pack and ship your packages by UPS. Pack & Mail also has postage stamps for your Christmas cards.

Name _____
Address _____
Phone No. _____

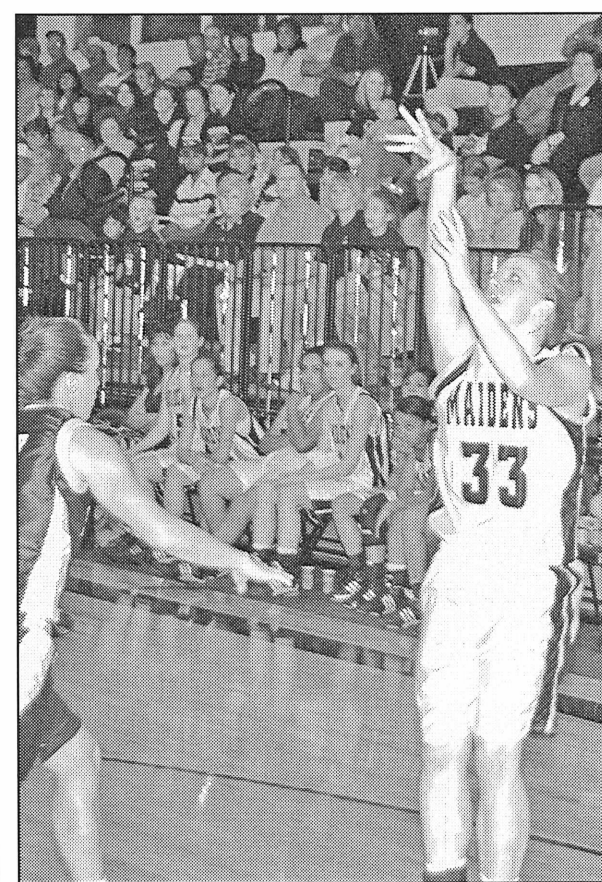
www.haskelldrugstore.com

THE DRUG STORE

100 S. Ave. E • Haskell • 864-2673



BLOCKING A SCORE—Haskell Maiden, #21, Sarah Garcia, works to make a score in the Nov. 28 game with Munday, which ended 51 to 42 for Haskell. Photo by Bill Blankenship



BASKET BALLET—Haskell Maiden, Hope Reid, #33, lets fly a scoring attempt under the basket in the Maidens' 51 to 42 win against Munday team Tues., Nov. 28. Photo by Bill Blankenship

EVERYONE COULD USE A LITTLE HELP NOW AND THEN!

If you've found something out of the ordinary this year that's a little beyond Santa's Christmas gift budget, let us help with a personal loan. We want you to be able to buy those Christmas gifts that catch your eye. Qualification is easy. Keep us in mind. We can help you make that purchase a reality.

First National Bank Haskell

200 South Avenue E Haskell, Texas 79521

940-864-8555

FDIC

Other Convenient Locations to Serve You:
First National Bank Munday - Stamford - Rochester

Daily Specials
Served 11 a.m. to 2 p.m.
Monday - Friday
Full Service
Soup, Salad and
Baked Potato Bar Daily
Hot Food for Cold Weather!
Daily Specials Dec. 4-8
New Daily Specials!
MONDAY
Frito Pie
TUESDAY
Soft Tacos and fixings
WEDNESDAY
King Ranch Chicken Casserole
THURSDAY
German Sausage, Beans & Cornbread
FRIDAY
Chicken & Dumplings
Call-in orders welcome!
Good Times
CAFE
512 N. 1st
940-864-6133

Texas Forts Trail responds to state's funding decision

At its regular meeting Fri., Dec. 1, the Texas Forts Trail board of directors adopted a six-point action plan and agreed to move forward with continued implementation of its Trooper Partner Program. These actions were taken in response to the recent decision by the Texas Department of Transportation (TxDOT) to cease the state-wide enhancement program.

In recent days, TxDOT announced its decision to abruptly cease funding the Transportation Enhancement Program which has long benefited Texas communities and heritage tourism programs aimed at rural Texas. With this decision, the agency has denied funding to hundreds of projects and programs, including the Texas Forts Trail Region which is a part of the Heritage Trails Program of the Texas Historical Commission. TxDOT claims that its decision is based on several nationwide

rescissions of unobligated highways funds to the states by the Federal Highway Administration (FHWA). In a letter to transportation enhancement applicants, TxDOT stated that because of the rescissions, it was forced to choose between the enhancement program and programs that advance safety, mobility and congestion relief. It decided that transportation enhancements had a weaker relation to their "core functions." However, the federal government does not require them to eliminate the program. In fact, federal law requires a 10% set-aside of state apportioned funding to go to the transportation enhancements program.

The state began soliciting nominations for federal enhancement funds in November 2005. Eligible projects included provisions for bicycles and pedestrians; preservation of transportation facilities such as railways; control or removal of billboards; and acquisition of scenic easements. Collectively, Texas communities spent thousands of dollars and hours preparing

applications for this round of enhancement funding. Additionally, for 15 years, hundreds of communities have utilized the enhancement program for downtown streetscape projects, visitor centers, historic preservation projects and hike and bike trails. More than \$466 million has been distributed to 505 different enhancement projects since 1991.

Nearly all of the funding for the nationally-recognized and award-winning Texas Heritage Trails Program came from the Transportation Enhancement Program. The Texas Heritage Trails Program provides technical, financial and marketing assistance to heritage regions across Texas. The Texas Forts Trail Region served as the pilot project for the program in the late 1990s proving the worth of a regional heritage tourism program and leading to the implementation of the other nine heritage trail regions. Since 1997, the program has revitalized local economies, increased visitation to cultural and historic sites and raised the awareness of the importance of historic preservation to the tourism

industry. Funding remains in place for the Texas Heritage Trails Program and the Texas Forts Trail Region through August 2007.

In response to this announcement, the Texas Forts Trail has announced it has developed an action plan seeking to reverse TxDOT's decision and will be enhancing internal funding sources within its 29-county region. The Texas Forts Trail, chartered as a non-profit organization in 1999, is part of a grassroots heritage tourism initiative that works with central west Texas communities to focus on the promotion of historic sites, rural tourism, education and preservation. The Texas Forts Trail Region is one of ten regions within the Texas Historical Commission's Heritage Trails Program. The program has received funding through TxDOT Enhancement funds, however, the Heritage Trails Program was recently informed that funding from this program would no longer be available.

"Since the late 1990s, TxDOT Enhancement funding has assisted us in developing our region into a major travel destination for heritage tourists. Initially, funds allowed us to conduct historical site assessments, site development consultations and education workshops as well as the design, print and distribution of a regional travel guide and map. In recent years, enhancement funding has allowed us to continue hosting educational workshops, update our beautiful full-color, 24-page brochure and develop a website which highlights the region's historical and cultural attractions," says Margaret Hoogstra, Regional Coordinator. In May, 2005 the Heritage Trails Program was awarded the prestigious Preserve America Award from President Bush and First Lady Laura Bush.

While TxDOT Enhancement funds have helped the region develop successful marketing, educational and advocacy programs, the Regional Board of Directors have been building internal funding to complement and enhance their efforts. Referred to as the "Trooper Partner Participation" the voluntary program encourages cities, counties, chambers of commerce and attractions within the region to make monetary contributions to the organization. Funds received from partners have made numerous special projects possible. Some of these projects have included educational and safety workshops for the living historians who present life in the 1800s and fire cannons at the living history events held annually at the various frontier forts, assisting communities with developing promotional materials, travel show participation, and assisting communities and attractions with hosting state-wide meetings.

"We are at a crucial turning point for our region. We are seeking support from the region and from across the state to reverse TxDOT's decision. Additionally, we must rely on the internal funding sources that we've been building. We are confident that our successes can and will continue," said Hoogstra.

The Texas Forts Trail Region encompasses 29 counties in West Central Texas including: Brown, Callahan, Coke, Coleman, Comanche, Concho, Eastland, Erath, Fisher, Haskell, Irion, Jack, Jones, McCulloch, Mason, Menard, Mills, Nolan, Palo Pinto, Runnels, San Saba, Schleicher, Shackelford, Stephens, Stonewall, Taylor, Tom Green, Throckmorton and Young.

For more information contact regional coordinator Margaret Hoogstra at 325-676-1762 or by email at: tft@texasfortstrail.com.

GONZALES CARPET CLEANING
Carpet Cleaning • Upholstery Cleaning
Emergency Water Extraction • Expert Floor Care
Waxing Polishing & Cleaning
Residential & Commercial
(325) 773-2667 • (325) 773-2258
Robert Gonzales
P. O. Box 929
Stamford, Tx
79553

SANTA ROSA Telephone Cooperative
INC.
SANTA ROSA COMMUNICATIONS HAS
DSL
CALL OUR OFFICE 863-1125 FOR MORE DETAILS!
Broadband, High Speed Internet. Always On - Won't tie up your phone line. Surf with amazing speed. Download with "super speed."
A must for distance learning.
Haskell office 863-1125, or come by 113 N. Ave. D.

Weather Whys

Sleet and freezing rain
Q: What's the difference between sleet and freezing rain?

A: They are formed a bit differently, says Brent McRoberts of Texas A&M University. Freezing rain is rain that is supercooled and will usually freeze when it comes into contact with other surfaces, such as cars.

"Freezing rain can form when warm, moist air moves over cold air near the surface," McRoberts explains. "Sleet is often confused with freezing rain. Sleet is made of frozen rain and forms in advance of a warm front and is often sandwiched between an area of snow and freezing rain. When rain is being produced in warm air and then falls into a layer of colder air below, the raindrops can freeze. Sleet forms ice pellets that

make the familiar crackle sound as they hit the ground, trees or cars."

Q: So can you have snow, freezing rain and sleet at the same time?

A: You can, McRoberts adds. "Winter storm systems frequently contain all three," he adds.

"Sometimes, you can have two of them at the same time. Freezing rain is difficult to forecast because just one or two degrees in temperature difference can mean either rain or snow or freezing rain. Freezing rain is extremely dangerous because it tends to coat roads with ice. If the surface it hits is 32 degrees or lower, it will freeze on contact, and the resulting ice storm can shut down an entire city quickly."

Tips to prevent the spread of oak wilt

Texas Forest Service is encouraging Texans to be careful when collecting and purchasing firewood at this time of year. Transporting and storing diseased wood is a known means of spreading the devastating oak wilt fungus to previously uninfected neighborhoods. Utilizing these prevention steps is the key to safeguarding against spreading the disease through the selection and use of firewood:

- Select well-seasoned firewood. Well-seasoned wood is cut before the summer and is typically dry with loose bark and cracked ends. Avoid oak wood that appears unseasoned, that may have tight bark and cut ends which show no cracks or signs of aging. The extreme heat and drying of a full Texas summer effectively destroys the fungus in cut firewood.

- Safely store unknown sources of firewood. If the oak wood comes from an unknown source and it is not well seasoned, cover the woodpile with a clear piece of plastic. Burying the edges of the plastic will prevent the entry or exit of insects that might have been attracted to diseased wood and fungal mats.

- Destroy diseased red oaks. A knowledgeable arborist or forester should diagnose red oaks (i.e., Spanish, Texas red, blackjack or shumard oak) that die rapidly (2-3 weeks) or in groups (2 or more trees over several years) for oak wilt. Trees suspected to have died recently from oak wilt should be destroyed by burning, burying or chipping. The heat of a fire destroys the fungus and the smoke emitted poses no threat to healthy trees. Red oaks that have died from oak wilt should not be stored or used for firewood. When planning to do any outdoor burning, be sure you check with local officials to see if an

outdoor burning ban is in place for your county and take care not to burn on windy days with low humidity.

- Avoid wounding oaks during vulnerable seasons. The general recommendation is to avoid injuries to oaks from February through June. The best times for pruning of oaks are during the heat of summer (minimal spore production) or the cold of winter (minimal insect activity).

- Paint all oak wounds including pruning cuts. Throughout the year, immediately apply a thin coat of latex or pruning paint to all fresh wounds and other injuries that expose the inner bark or sapwood of oaks. This prevents contaminated sap beetles from infecting the wound with oak wilt spores.

Oak firewood is an important commodity to Texans, whether it's used for firing up the barbecue pit or for warming up the home on a cold winter's day. By selecting well-seasoned, disease-free firewood and by following other disease prevention guidelines, homeowners are taking the correct steps to prevent a new oak wilt disease outbreak in their neighborhood. Visit www.texasoakwilt.org or call Jim Houser, TFS Coordinator for Oak Wilt at 512-339-4589 for more information.

Caulking info

A tube of caulk is a pretty handy item to have around the house. It's used in the joints between window frames, exterior door frames, exterior trim, and siding to help prevent moisture from getting into your home. It can also save on the energy needed to heat and cool your home.

Time and weather may shrink and dry caulking. Old caulking and sealant can be easily pulled up or scraped away and should be replaced.

Periodically check caulking for deterioration and fix any damaged caulking with an appropriate product from a home center.

It is important to thoroughly clean the area before reapplying the sealant.

5:35 p.m. Thursday



Lighting up the holidays.

As you begin using decorative lighting in and around your home this holiday season, AEP Texas reminds you to keep safety in mind. Check light strings for frayed cords, and use only UL-approved lights and extension cords. Remember not to overload circuits, and remind children not to touch lights or outlets. And on behalf of all of us here at AEP Texas, please enjoy a safe, bright holiday season with your family and friends. **AEP Texas is there, always working for you.**

AEP TEXAS
A unit of American Electric Power

For more information about electrical safety, visit AEPTexas.com

Shop Haskell First

Home heating remains second highest cause of home fires

As temperatures drop outdoors and people take steps to warm their homes, the National Fire Protection Association (NFPA) urges the public to be mindful of the risks associated with home heating which is second only to cooking when it comes to causes of home fires. Along with the colder temperatures that accompany winter, there is an elevated risk of dying from fire during this season with December, January and February generally being the deadliest months for fires.

According to a newly released NFPA study, heating equipment was involved in an estimated 53,000 reported home structure fires in the United States in 2003. The study includes fires associated with chimneys and chimney connectors, space heaters, central heating, fireplaces, water heaters and heat tape. These fires accounted for 14% of all home fires and were responsible for an estimated 260 deaths, roughly 1,300 injuries and \$500 million in direct property damage.

Although space heaters, excluding fireplaces and chimneys, were responsible for one-fourth (26%) of home heating fires in 2003, they were the most deadly, accounting for three-fourths (73%) of the fire deaths related to home heating. Space heaters also were responsible for three out of every five injuries (58%) in home heating fires in 2003 and half (51%) of the associated property damage.

According to the report, space heaters present a greater fire risk than central heating systems. Space heaters tend to be closer to household combustibles and the people occupying the home, and they tend to require a more direct role by occupants in fueling, maintenance, and operation.

Even so, any widely used heating device can be used safely, if the rules of safety are followed.

NFPA suggests the following for safe heating:

- Maintain a 3 feet (or 1 meter) separation between things that can burn and heating equipment.
- When buying a new space heater, make sure it carries the mark of an independent testing laboratory and is legal for use in your community. (Some communities do not permit portable kerosene heaters, for example.)
- Install your stationary (fixed) space heater according to manufacturer's instructions or applicable codes or better yet, have it installed by a professional.
- Plug your electric-powered space heater into an outlet with sufficient capacity and never into an extension cord.
- Use the proper grade of the

proper fuel for your liquid-fueled space heater, and never use gasoline in any heater not approved for gasoline use. Refuel only in a well-ventilated area and when the equipment is cool.

•In your fireplace or wood stove, use only dry, seasoned wood to avoid the build-up of creosote, an oily deposit that easily catches fire and accounts for most chimney fires and the largest share of home heating fires generally. Use only paper or kindling wood, not a flammable liquid, to start the fire. Do not use artificial logs in wood stoves.

•Make sure your fireplace has a sturdy screen to prevent sparks from flying into the room. Allow fireplace and woodstove ashes to cool before disposing in a metal container, which is kept a safe distance from your home.

•Turn off space heaters whenever the room they are in is unoccupied

or under circumstances when manufacturer's instructions say they should be turned off. Portable space heaters are so easy to knock over in the dark that they should be turned off when you go to bed, but make sure your primary heating equipment for bedrooms is sufficient to avoid risks to residents from severe cold.

•Do not use your oven to heat your home.

•Make sure fuel-burning equipment is vented to the outside, that the venting is kept clear and unobstructed, and that the exit point is properly sealed around the vent, all of which is to make sure deadly carbon monoxide does not build up in the home.

•Inspect all heating equipment annually, and clean as necessary.

•Test smoke alarms monthly; install a carbon monoxide alarm in a central location outside each sleeping area.

Cattle Market Report

The market at the Haskell Livestock Auction was on a run of 847 head of cattle at its sale on Sat., Dec. 02, according to B.D. Rainey, reporter.

Packers \$2 higher. Feeders, steady. Stockers, steady.

Cows: fat, .44-.47; cutters, .42-.47; canners, .35-.41.

Bulls: bologna, .56-.62, feeders, .55-.65, utility, .48-.53.

Steers: medium and large frame No. 1 200-300 lbs., 1.35-1.45; 300-400 lbs., 1.20-1.42; 400-500 lbs., 1.15-1.26; 500-600 lbs., 1.00-1.12;

600-700 lbs., .85-.95; 700-800 lbs., .82-.92; 800-up lbs., .78-.85.

Heifers: medium and large frame No. 1 200-300 lbs., 1.15-1.28; 300-400 lbs., 1.10-1.25; 400-500 lbs., 1.00-1.07; 500-600 lbs., .88-.95; 600-up lbs., .83-.98; 700-up lbs., .80-.85.

Bred Heifers medium frame 675-750.

Bred cows young to middle aged 650-900; aged or small, 400-575.

Cows with calves: medium frame No. 1 young and middle aged, 900-1165; older, 650-835.

Area Basketball scores

Girls
 Haskell 51, Munday 42
 Scoring for Haskell: Kim Medford 12, Lacey Peiser 11, Chavez 3, Jasmine Thomas 3, Hanna Wallace 3.
 Rodriguez 7, Hope Reid 4, Haley JV score: Haskell 32, Munday 30.

a thrill of

HOPE

A CHRISTMAS MUSICAL

This year's Countywide Christmas Cantata 'A Thrill of Hope' will be presented December 17 at 7 p.m. at First Baptist Church 301 North Avenue E in Haskell. A nursery will be provided. For more information, call First Baptist Church at 864-2581

Smoke and carbon monoxide detectors

Like a piercing squawk to wake you in the middle of the night? I bet you wouldn't mind if your smoke detector or carbon monoxide detector is making the racket.

Smoke detectors and carbon monoxide detectors are powerful and effective fire safety tools. They provide an early warning alerting individuals of a fire, allowing them precious time to escape. Smoke and carbon monoxide detectors must operate according to the local fire code and the manufacturer's recommendations.

You should check your detectors once a month and replace the batteries every six months (like when the time changes) to ensure they are in proper working order.

Shop Haskell First

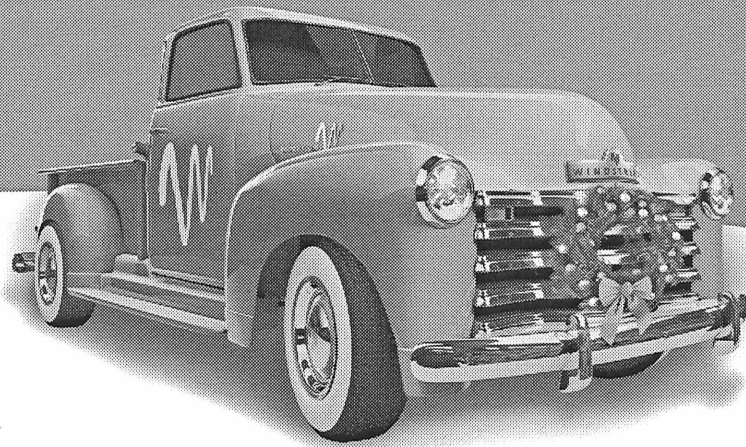
SANTA-LIKE SPEED AT A JOLLY GOOD PRICE.

FREE MODEM* (AFTER REBATE / WITH AGREEMENT)
 FREE ACTIVATION
 FREE SELF-INSTALL KIT
 FREE PARENTAL CONTROL SOFTWARE

BROADBAND
\$24.95 per month WITH BUNDLE

RELIABLE CONNECTIONS
 DOWNLOAD MOVIES AND MUSIC
 SHARE PHOTOS AND MORE

\$39.95 WITH BUNDLE
 UNLIMITED LOCAL AND UNLIMITED LONG DISTANCE



PHONE
 BROADBAND
 DIGITAL TV

windstream
 1.877.312.WIND | windstream.com

VISIT THESE WINDSTREAM LOCATIONS:

MISSOURI
BOLIVAR
 1705 S. Lillian
 417.326.1013

NEW MEXICO
CARLSBAD
 906 W. Pierce Street
 505.887.8100

ESPANOLA
 2000 Hwy. 68 N. Riverside Drive
 505.747.6200
HOBBS
 320 N. Shipp Street
 505.397.0912
RUIDOSO
 721 Mechem Drive (Sierra Mall)
 505.257.9000

OKLAHOMA
BROKEN ARROW
 929 N. Elm Place
 918.259.8255
BROKEN ARROW
 Coming Soon: 2449 W. Kenosha
 918.259.8255

TEXAS
ANDREWS
 112 S.W. 1st Street
 432.523.3323
BOERNE
 215 W. Bandera Road, Suite 104
 830.248.1111
DALHART
 310 Rock Island Avenue
 806.249.1100

DUMAS
 401 W. 1st Street
 806.935.1681
FREDERICKSBURG
 1425 E. Main, Suite 100A
 830.990.9299
KERRVILLE
 955 Water Street
 830.257.9100
PERRYTON
 301 S. Amherst Street
 806.435.2050

POST
 Coming Soon: 410 N. Broadway
 806.495.3864
SEYMOUR
 400 N. Main Street
 940.888.1220
SUGAR LAND
 8306 Highway 90A
 281.490.9412
TEXARKANA
 2315 Richmond Road,
 Suite 101
 903.223.4688

Limited-time offer. Subject to availability in certain locations. Must be a Windstream wireline customer. Broadband 1.5: Price is good for first 12 months when bundled with Connect Package or DISH Network & includes Broadband transport & Internet access. Broadband Speeds: Windstream cannot guarantee Broadband speeds or that Broadband service will be uninterrupted or error-free. *Free Modem: Free Modem available with 1-year Broadband agreement and after instant credit of \$49.95 and \$50.00 mail-in rebate. A \$9.95 shipping and handling fee applies. Connect Unlimited: \$39.95, when bundled with Broadband and DISH Network, includes residential access line, unlimited hours of long distance & certain calling features. Unlimited Long Distance is for residential 1-plus direct-dialed calls for voice use only. Unlimited Long Distance may not be used for Internet services, fax machines, softphones or data devices, transcription services, business (whether for-profit or not-for-profit), telemarketing, auto-dialing, multi-party conference calls (including 3-way calls), party lines, chat lines, adult entertainment lines, calls to 900 and 976 numbers and calls to access voice mail or information services. Additional charges may apply for directory assistance, calling cards, collect calls, operator services, international calling or toll-free calling services. If Windstream determines that usage is not consistent with residential voice service, includes excessive usage or usage predominantly during business hours, Windstream may immediately restrict use or change your long distance plan to the Windstream 10 plan. If any required component of the service bundle is discontinued, the account will convert to the Windstream 10 plan. Additional Information: Credit approval required & pre-payment may be required. Taxes, fees & other charges, including Universal Service Fund, apply. Windstream reserves the right to cancel or discontinue this plan at any time. If any required bundle component is disconnected, all remaining components convert to the regular tariffed monthly rate. Other restrictions may apply. Offers are subject to the Windstream Terms & Conditions for Communications Services available at any Windstream store or at windstream.com. Contact a Windstream representative for details.



ATTENDS MEETING—The Haskell EEA club attended the District 3 Fall Training Meeting in Vernon Nov. 28. Theme of the meeting was "Music of the Season." Seventy club members and nineteen agents attended the meeting to revise and update the TEEA Procedures Manual. Entertainment of Christmas music was provided by Stephen Ramsey and Virginia Kieschnick. Attending from Haskell were, l-r, County Agent Jane Rowan, Lena Tidwell, Alice Ballard, Geraldine Baker and Sue McGee.

Haskell School Menu

Dec. 11-15 Breakfast

Juice and milk are served daily on the breakfast menu.

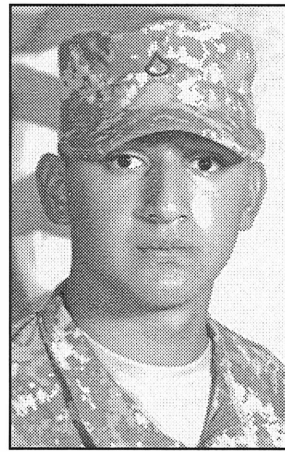
- Monday:** Blueberry muffin
Tuesday: Pig in a blanket
Wednesday: Cereal, animal crackers
Thursday: Breakfast on a stick
Friday: Cinnamon glazed French toast

Lunch

Milk and iced tea are served daily at the Secondary campus. Milk is served daily at the Elementary School. Secondary campus: choice of entree or baked potato with cheese and ham.

- Monday:** Pepperoni pizza, Oriental coleslaw, corn, baby carrots with ranch dressing, orange slices
Tuesday: Beef and vegetable stew, grilled cheese sandwich, pineapple tidbits
Wednesday: Chicken fajitas, cheese, onions, bell peppers, pinto beans, garden salad, apple crisp
Thursday: Chicken strips, gravy, mashed potatoes, green beans, hot roll, sliced peaches
Friday: Chicken on a bun, lettuce, tomato, pickle, french fries, strawberry or raspberry Gogurt.

In the Service



PFC JEFFRY SILBA

PFC Jeffrey Allen Silba, son of Jessie and Frances Silba of Haskell, has completed 16 weeks of Army Basic Training at Fort Knox, Kentucky.

The 2006 graduate of Haskell High School was chosen Platoon Leader of the 4th Platoon, C-Troop,

5-15 Cavalry. During the basic, he received his Rifle Pin for high marks, getting 36 out of 40 targets. He is now stationed at Fort Hood in Killeen as a Cavalry Scout.

Army Pvt. Victoria L. Armenta has graduated from basic combat training at Fort Jackson, Columbia, S.C.

During the nine weeks of training, the soldier studied the Army mission, history, tradition and core values, physical fitness, and received instruction and practice in basic combat skills, military weapons, chemical warfare and bayonet training, drill and ceremony, marching, rifle marksmanship, armed and unarmed combat, map reading, field tactics, military courtesy, military justice system, basic first aid, foot marches, and field training exercises.

A 2006 graduate of Haskell High School, she is the daughter of Maria Martinez of Haskell and niece of Mary Seanz of Roscoe.

Paint Creek School Menu

Dec. 11-15 Breakfast

Juice and milk are served daily.

- Monday:** Toast or cereal
Tuesday: Biscuits, gravy
Wednesday: Pancakes
Thursday: Toast or cereal
Friday: Biscuits, gravy

Lunch

- Milk is served daily.
Monday: Chicken fajitas, pinto

beans, corn, salad, applesauce cake
Tuesday: Spaghetti, green beans, salad, garlic bread, lemon cake
Wednesday: Pork roast, rice, gravy, corn, salad, jello with fruit

Thursday: Ham, mac and cheese, fried okra, salad, rolls, apple crisp
Friday: Hamburgers, cheese, lettuce, tomatoes, onions, pickles, chips, fruit

ECC Calendar and Menu

Mon., Dec. 11

Lunch—Ham and beans, carrots, buttered corn, onion slice, cornbread, Devil's food cake, milk, tea, or coffee

Wed., Dec. 13

Lunch—Beef and mac, English peas, club spinach, garlic toast, apricot

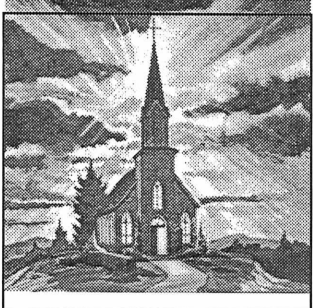
cobbler, milk, tea, or coffee

Fri., Dec. 15

Lunch—Meatballs, gravy, mashed potatoes, blackeyed peas, green salad, gooey cake, milk, tea, or coffee

Announcements begin at 11:45 a.m. followed by lunch.

This Week's Devotional Message:



LET LOVE ADORN YOUR HOME WITH HOLIDAY HAPPINESS

Your favorite stores are all a-glitter with lights, ornaments, tinsel, candles, wreaths and gift wrappings. However, these seasonal adornments may not put you in a gala holiday mood, and if so, assuming that you have no major problems or sorrows, something must be wrong. Have you quarreled recently with a relative or friend? Are you normally impatient with

people? Then it's time to get rid of these negative tendencies. Mend that quarrel, not matter whose fault it was. Let your house of worship put some love and kindness in your heart before you plug in the Christmas lights. Then your home and your life will be much brighter during the upcoming holidays, as well as at all other times of the year.

ATTEND CHURCH THIS SUNDAY

—HASKELL—

- East Side Baptist Church**
 Danny Manross, pastor
 Sun. 9:45 a.m., 11 a.m., 6 p.; Wed. 7 p.m.
 600 N. 1st East, Haskell
- Christian Church**
 Richard Barr, minister
 Sun. Morn. 9:45 a.m., 10:45 a.m.; Thurs. 7 p.m.
 107 N. Ave. F, Haskell
- Church of God**
 Bruce Ray, pastor
 Sun. 10 a.m., 11 a.m., 6 p.m.; Wed. 7:00 p.m.
 714 North First East, Haskell
- Trinity Lutheran Church**
 Ron Fennegarbe, pastor
 Sunday School 9:30 a.m., Worship 10:30
 Hwy 380 East, Haskell
- Iglesia Bautista El Calvario**
 Art Flores, Interim pastor
 Sun. Morn. 9:45 a.m., 10:45 a.m., 5 p.m.; Wed. 7 p.m.
 607 S. 7th, Haskell
- First United Methodist Church**
 Rev. Daniel Echols, pastor
 Sun. Morn. 9:45 a.m., 10:50 a.m. 6 p.m.; Wed. 6 p.m.
 201 N. Ave. F, Haskell
- First Assembly of God**
 Rev. J.C. Amburn
 Sun. Morn. 9:45 a.m., 10:45 a.m., 6 p.m.; Wed. 7 p.m.
 1500 N. Ave. E, Haskell
- St. George Catholic Church**
 Father George Roney
 Sat. Mass 7 p.m.; Sun. Morn. 9:00 a.m.
 901 N. 16th, Haskell
- Church of Christ**
 Jim Yates, minister
 Sun. Morn. 9:30 a.m., 10:30 a.m., 6 p.m.; Wed. 7 p.m.
 510 N. Ave. E, Haskell
- First Presbyterian Church**
 Kelly Pigott, interim pastor
 Sun. Morn. 9:30 a.m.
 306 N. Ave. E, Haskell
- Trinity Baptist Church**
 Tony Grand, pastor
 Sun. Morn. 10 a., 11 a., 6:30 p.m.; Wed. 6:30 p.
 114 S. Ave. D, Haskell
- Hopewell Baptist Church**
 Rev. Tom Collins, pastor
 Sun. Morn. 9:30 a.m., 11:00 a.m.; Wed. 7 p.m.
 908 N. Ave. A, Haskell

Greater Independent Baptist Church

Sun. Morn. 9:30 a., 11:00 a., 6:30 p.; Wed. 7 p.
 301 N. 3rd St., Haskell

New Covenant Foursquare

Bill and Renee Glass, pastors
 Sun. Morn. 10 a.m., 11 a.m., 6:30 p.m.; Wed. 7 p.
 200 S. Ave. F, Haskell

Mission Revival Center

Rev. William Hodge
 Sun. Morn. 10 a.m., 11 a.m., 6 p.m.; Tues. 6 p.m.
 1600 N. Ave. B, Haskell

First Baptist Church

Greg Gasaway, pastor
 Sun. Morn. 9:45 a., 10:55 a., 6 p.m.; Wed. 6:30 p.m.
 301 N. Ave. E, Haskell

Church in the Wind

C.C. Curran, pastor
 Sun. fellowship 5 p.m. Church 5:30 p.m.
 Tues. Bible Class 7:30 p.m.
 203 S. 1st East, Haskell

Cornerstone Fellowship Baptist Church

Dr. Larry Nail, pastor
 Sun. 9:30 a.m. 10:45 a.m., 6 p.m.; Wed. 7 p.m.
 1600 N. First St., Haskell

—WEINERT—

First Baptist Church

Dan Bullock, pastor
 Sun. Morn. 10 a.m., 11 a.m., Wed. 7 p.m.
 Weinert

Weinert Foursquare Church

Rev. Robert Harrison
 Sun. Morn. 10 a.m., 11 a.m. Wed. 7 p.m.
 Weinert

—ROCHESTER—

Church of Christ

Steve Willis, minister
 Sun. Morn. 9:45 a., 10:45 a., 6 p.m.; Wed. 6 p.m.
 West on Main Street, Rochester

First Baptist Church

Fred Garvin, pastor
 Sun. 11:00 a.m., 6 p.m.; Wed. 6:00 p.m.
 500 Main, Rochester

Union Chapel Baptist Church

Clovis Dever
 Sun. Morn. 9:45 a., 10:45 a., 6 p.m.; Wed. 7 p.m.
 Rochester

Faith Chapel of Rochester

Katherine Byrd, minister
 Sun. Morn. 10 a.m., 11 a.m., 7 p.m.
 Hwy 6, Rochester

First United Methodist Church

Rev. Daniel Echols, pastor
 Sun. Morn. 9:00 a.m., 11:00 a.m.
 Rochester

—SAGERTON—

Sagerton Methodist Church

Terry O'Rear, pastor
 Sun. Morn. 9:45 a.m.
 Sagerton

Faith Lutheran Church

Deborah Nissen, pastor
 Sun. Morn. 9:15 a.m., 10:30 a.m.; Wed. 7 p.m.
 Sagerton

—RULE—

First Baptist Church

Josh Stowe, pastor
 Sun. Morn. 9:45 a., 11:00 a., 5 p.m.; Wed. 7 p.m.
 1001 Union Ave., Rule

Primitive Baptist Church

Dale Turner Jr., pastor
 First & Third Sundays 10 a.m.
 Corner of 8th & Robins, Rule

Church of Christ

John Greeson, minister
 Sun. Morn. 9:45 a., 10:40 a., 6 p.m.; Wed. 7 p.m.
 811 Union, Rule

First United Methodist Church

Terry O'Rear, pastor
 Sun. Morn. Worship 8:30 a.m.
 1000 Union Ave., Rule

Primeria Iglesia Bautista

Alfa y Omegas
 Manuel Marin, pastor
 Sun. Morn. 10 a., 11:00 a., 5 p.m.; Wed. 6 p.m.
 500 Elm Street, Rule

Sweet Home Baptist Church

Larry Neal, pastor
 Sun. Morn. 11 a.m., 5 p.m.; Wed. 5 p.m.
 Gladstone Ave., Rule

West Bethal Baptist Church

Rev. Clovis Dever
 Sun. Morn. 10 a., 11 a., 8 p.m.; Wed. 7:30 p.m.
 300 Sunny Ave., Rule

—PAINT CREEK—

Paint Creek Baptist Church

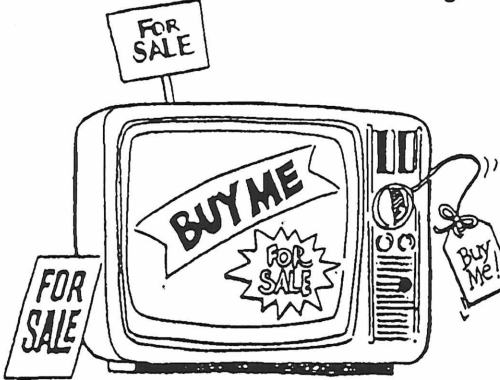
Sun. Morn. 10:00 a.m., 11:00 a.m., 6 p.m.
 Paint Creek

—O'BRIEN—

O'Brien Baptist Church

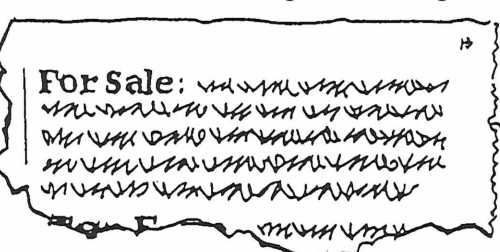
Jim Reid, pastor
 Sun. 9:45 a., 11 a., 5 p., 6 p., Wed. 6 p.m.
 O'Brien

The Hard Way.



Sure, you can stand in the street in the middle of a major intersection every day for a week with an item you want to sell, put a couple of huge signs on it, and hope someone takes you up on the offer. It might just get the job done. Or you might just end up looking foolish.

The Easy Way.



Or, you can place a Classified Ad with us and have people from all over the area clamoring to take your unwanted items off your hands for a handsome profit. Quickly and easily. And for a very small investment. So what are you waiting for? Call now!

The Haskell Free Press

P. O. Box 555
 420 N. First Street
 Haskell, Texas 79521

Serving Haskell County for over 100 years

Sonic Drive-In

1402 N. Ave. E
 864-8533
 Managers: Leon & Carolyn Herring

Steele Machine

Hwy. 280 • 864-2208

Modern Way Food Store

1202 N. Ave. E • 864-3763

HANSON PAINT & BODY SHOP

207 S. 1st • 864-3631
 Professional Auto Body Repair
 Glass Installation • 24 Hour Wrecker Service

Rule Co-op Gin & Elevator

301 Adams • Rule • 996-2421

Smitty's Auto Parts

107 N. 1st East • 864-2607

The Haskell Free Press

"The People's Choice"

420 N. First Haskell, Texas 940-864-2686

Serving Haskell County Since 1886





Shop The Haskell Free Press CLASSIFIEDS

864-2686

ALL DEADLINES MONDAY 5 P.M.



864-2686

For Sale

FOR SALE: Large round milo bales \$60. Jayton, 214-533-2333. Delivery by arrangement. 48-49c

FOR SALE: Pool table, with all accessories. Call days 864-8555, ask for Bob. 49-50c

FOR SALE: Parcel of 8 lots in Willow Cemetery \$2800/obo. Call 972-897-6525. 49c

FREE to good home: Young female lab. Call 864-3735. 49p

FOR SALE: Medical lift chair (less than 1 year old). Original cost \$699. Will take \$250. Call 806-781-8912. 49-50p

Garage Sale

YARD SALE: Sat. 8 to ? New handmade crocheted doilies, Christmas items and misc. 207 S. 2nd. 49p

YARD SALE: Sat., 8 til noon. Toys, TV/VCR combo, clothes. 401 N. Ave F. 49p

MOVING SALE: Fri. and Sat., 7 a.m. til ? 1000 S. Ave. G. Tons of baby items, clothes, furniture and lots more. 49p

ESTATE SALE: Ethel Alvis Tidwell Estate Sale, Dec., 14, 15, 16, Thurs., Fri., Sat. Until all sold. Furniture, appliances, clothes, kitchen items, misc., Ford Cultivator parts, equipment tires jacks, etc., storage building 10x12 you move. 1201 N. Ave. F. 49-50p

Real Estate

FOR SALE: Large brick, 4 bedroom, 2 bath home. Spacious living, fireplace, workshop and in great condition. New CH/A, roof, water well pump, water heater and much more. Offered at only \$65,000. Call Sally Barnes for more information. 325-338-9157 or 325-691-1300. Dalzell Realtors. 42-49c

FOR SALE: Recently remodeled. 904 N. 3rd E. 4 bedroom, 2 1/4 bath, 2 car garage, central AC/heat, fireplace, storage building, custom shutters. 325-370-3946. 46fc

Miscellaneous

HOUSE LEVELLING and foundation repair. No payments until work is satisfactorily completed. David Lee & Co. 325-675-6369. 1-888-486-8588. 6fc

Dodson Concrete Construction

Commercial - Residential
David Dodson
704 N. Ave. F • Haskell
940-864-2038
Over 20 Years
in the Business
FREE ESTIMATES

Help Wanted

NOW TAKING applications for all positions at Sonic Drive In, Haskell. Apply in person. 25fc

GIBSON CARE Center, Aspermont needs CNAs for all shifts. Call Melissa Prew, ADON at 940-989-3526. E.O.E. 9fc

WEST-T-GO now accepting applications for cashier. Apply in person at store. 400 N. Ave. E. 48-3c

MUNDAY NURSING Center is now taking applications for CNAs, LVNs, and dietary help. Apply in person. 421 W. F St. 48fc

GIBSON CARE CENTER needs a full time housekeeper. Great place to work and good benefits. Please contact Melva or Glen at 940-989-3526 E.O.E. 49c

GIBSON CARE CENTER, Aspermont, Texas needs Certified Nurse's Aids as well as Non-Certified Nurse's Aids. Great place to work with competitive salary. Contact Darla Trammel or Melissa Smart at 940-989-3526 E.O.E. 49-50c

APPLICATIONS ARE now being taken for Activity Director. Must be cheerful, enthusiastic, dependable and enjoy working with the elderly. For more information, apply in person at Brazos Valley Care Home, 605 S. Ave. F, Knox City. 49-50c

GIBSON CARE CENTER, Aspermont, Texas needs full time and/or weekend R.N. Please call Darla Trammel or Melissa Prew 90-989-3526 E.O.E. 49-50c

For Rent

FOR RENT: Furnished rooms for rent. Nightly, weekly. Call Lone Star Lodging 864-2238. 21fc

I BUY HOUSES

Quick cash and closing on homes \$25,000 or less.
Call Jim at 325-518-8128



Photos and Photo Pin Buttons
Available upon request.
Sports Athletes
Other Activities also.
Contact
Bill Blankenship 940-864-3535

Public Notices

PUBLIC NOTICE
Haskell Consolidated Independent School District is seeking bid proposals for a video surveillance system for the high school and field house. Bid proposal specifications may be obtained from the Haskell Consolidated Independent School District Technology Office at 600 North Avenue E, Haskell, Texas. Haskell C.I.S.D., P.O. Box 937, Haskell, Texas 79521. 940-864-2602 #215.

All bid proposals must be received on or before 1:00 p.m. December 6, 2006. Haskell CISD reserves the right to accept or reject any or all bids. 47-49c

Application has been made for a Private Club Registration Permit For:
Cluck's Sport Club, Inc., DBA-Red Rooster Restaurant, 1006 S. Avenue E, Haskell, TX, Haskell County.

Michael Shane Whitt-President, Treasurer, Director; Rosylin Doris Whitt-Vice President, Director, Mena Rosell Gilbreath-Secretary, Director.

Said application has been made to the Texas Alcoholic Beverage Commission in accordance with the provisions of the Texas Alcoholic Beverage Code. 48-49c

A bank is a place that will lend you money if you can prove you don't need any. One group of Christmas items on sale at half price or less. Kinney Furniture in Stamford. 325-773-2232. 49c

EXPERT AUTO WORK
REASONABLE RATES

See us for all your auto mechanic needs. 20 years experience. We do it right the first time.
117 North Ave. E • Haskell

WILD HORSE TRADING POST
Haskell's General Store and **RadioShack**
See us for your Christmas Shopping needs!
Don't forget-We also have guns and ammo, gifts, musical instruments and ladies clothing!
419 S. 1st, Haskell • 864-2200
Hours: M-F 9-6; Sat. 9-3

NOTICE
Haskell County Commissioner, Precinct 2 will accept bids for one 2000 model D5MXL, 2300 hours, rear rippers, grubber and rake, excellent machine; and for two 1000 gallon fuel tanks with pump, hoses and nozzles included. Bids will be opened Jan. 3, 2007. 49-50c

Haskell County reserves the right to accept or reject any or all bids. For bidding and other information, call 940-864-8602 days or 940-673-8364 nights. 49-51c

NOTICE
The City of Haskell will be clearing the 2 blocks around the lumberyard and the city warehouse over the next couple of weeks. If anyone is interested in

the fencing or building materials on the area to be torn down, we will be letting anyone who is interested come in and get what they would like on a first come, first served basis. To get more information on materials available, you can contact Brandon Anderson at 940-864-2333. 49-50c

NOTICE
The deadline for Classified Advertising is 5 p.m. on Mondays.
Haskell Free Press

Nancy Trussell
Tupperware Consultant
Independent AVON Rep.
Cell: 325-518-5280

Nanny Plumbing, Inc.
301 S. Ave. E • Haskell
940-864-3043
Sales and Service for Residential Plumbing and Heating/Cooling, Pump Installer and Sprinkler Systems.
License numbers available upon request.

Cabinets
Custom Made by Bud Adkins
In time for SANTA Custom Woodwork of all kinds-Furniture, Kitchen, Bathroom, Work areas, Plastic Laminate, Toys, Rocking Horse
940-864-3318
(if no answer, leave message)

LANGFORD ROUSTABOUT SERVICE
SCOTT LANGFORD
Roustabouts Backhoes Winch Trucks Dump Trucks Welders

Mobile: 940-256-0535
Office: 940-864-3490
Home: 940-864-2565
8348 N. Hwy. 277 Haskell, Texas 79521
Specializing In: Oilfield Repair, Maintenance & Construction

A.C.I. Professional Services
Carpet Steam Cleaning

Cory Ivy
P.O. Box 41
Haskell, Texas 79521
940-256-0223

Haskell County REALTY
1010 N. 6TH ST. 3 bedroom, 1 bath. Cottage like home. Great interior. Ceramic tile. Hardwood flooring. Rock patio. Fenced yard.
200 N. 2ND. 2 bedroom, 1 bath. Immaculate condition. Completely new flooring, cabinets, fixtures. CH/A, plumbing and wiring. Much more.
401 BEVERS IN WEINERT. Great deal. 2 bedroom, 2 bath, living room and large den. 2 car garage. Nice storage. More amenities. UNDER CONTRACT.
1409 N. AVE. J. 2 bedroom, 1 bath. Water well. 1 car garage. Fenced backyard. Cute home. Possible owner finance.
3 BEDROOM, 2 bath. One acre. CH/A. Water well. Price reduced.
PROPERTY at 203 N. Ave. G. 3 bedroom, 2 bath. Large living room. 3 car garage. 2 apartments. More amenities.
507 N. 5TH. 3 bedroom, 2 bath. Hardwood floors. CH/A. Large corner lot with storage building. Water well. Priced to sell.
103 N. Ave. E
940-864-2665
1-800-658-6342
or call
Bridget or Chan Guess 864-6142
Hess Hartsfield, Broker 864-2004

"I HAVE A HOUSE AND TWO CARS. IS THERE SUCH A THING AS ONE-STOP INSURANCE SHOPPING?"
YES. CALL ME ABOUT OUR HOME AND AUTO DISCOUNTS.
CHAN GUESS
P O BOX 617
HASKELL
(940) 864 2665
P.S. Call or stop by for a free quote

Allstate
You're in good hands.
Discount and insurance offered only with select companies and subject to availability and qualifications. Discount amount may be lower. Allstate Texas Lloyd's Irving, TX. © 2003 Allstate Insurance Company and Allstate Texas Lloyd's Irving, TX. © 2003 Allstate Insurance Company.

Kountry Kids Preschool and Daycare employees collected donations at the red light in Haskell Sat., Dec. 2 for the Haskell County Child Welfare Board's Christmas for Kids. We thank you all for your generosity for the Christmas for Kids of Haskell County.

The Alvis and Tidwell families deeply appreciate the care that Dr. Wayne Cadenhead and the Haskell Memorial Hospital gave to our Mother and Stepmother, Ethel Alvis Tidwell, during her recent illness. We would like to express our appreciation to the friends and families who donated food, flowers and memorials to celebrate our mother's life here in Haskell County.

We would especially like to express our appreciation to all those who cared for our Mother in Haskell Healthcare Center and to those who visited her there and shared their lives and love with her.

A special thanks to East Side Baptist Church for the special meal they provided our families and the special ceremony for our Mother. She was a member there for many years.

We thank each of you who expressed your sympathy in person, by telephone and in writing. A special thanks to Frankie and James Alvis who so graciously provided meals for our family and the Rueffer family who provided meals for us.

We want to thank Holden-McCauley Funeral Home for making this time easier for our families.

NOTICE TO CONTRACTORS OF PROPOSED TEXAS DEPARTMENT OF TRANSPORTATION (TxDOT) CONTRACTS
Sealed proposals for contracts listed below will be received by TxDOT until the date(s) shown below, and then publicly read.
CONSTRUCTION/MAINTENANCE/BUILDING FACILITIES CONTRACT(S)
Dist/Div: Abilene
Contract 6156-34-001 for LANDSCAPE MAINTENANCE in HASKELL County, etc. will be opened on January 4, 2007 at 1:30 p.m. at the District Office for an estimate of \$4,860,000.
Plans and specifications are available for inspection, along with bidding proposals, and applications for the TxDOT Prequalified Contractor's list, at the applicable State and/or Dist/Div Offices listed below. If applicable, bidders must submit prequalification information to TxDOT at least 10 days prior to the bid date to be eligible to bid on a project. Prequalification materials may be requested from the State Office listed below. Plans for the above contract(s) are available from TxDOT's website at www.dot.state.tx.us and from reproduction companies at the expense of the contractor.
NPO: 22003
State Office: Constr./Maint. Division, 200 E. Riverside Dr., Austin, Texas 78704. Phone 512-416-2540.
Dist/Div Office(s): Abilene District, District Engineer, 4250 N. Clack, Abilene, Texas 79604-0150. Phone 325-676-6800.
Minimum wage rates are set out in bidding documents and the rates will be part of the contract. TxDOT ensures that bidders will not be discriminated against on the grounds of race, color, sex, or national origin.

RIKE REAL ESTATE
Mary Rike, Broker John Rike, Agent
411 1/2 S. First Street
Haskell, Texas 79521
940 864 2411 940 864 2332
mrike@dtmspeed.net
www.rikerealestate.com

1600 N. AVE. F. Two living areas with three large bedrooms, three baths (one with utility room), kitchen has lots of cabinets with built-in appliances and large window overlooking backyard, fireplace with gas logs, large yard with well and sprinkler, outside storage, C/HA and one-car garage.
101 N. AVE. M. Immaculate home with four to five bedrooms, den with fireplace, large kitchen with lots of cabinet space, two baths and C/HA. Property has large utility room, two-car garage and there is an office or craft room. There is good storage and large closets. Property is on a fenced corner lot with large trees and water well.
1206 N. 12TH. 3-2-2, immaculate brick home on large corner lot with great manicured lawn. Amenities include living, kitchen-dining, good closets, utility, C/HA, fenced yard with water well and much more. Located in northwest Haskell with open view.
Come by Rike Real Estate for a complete list.

OWNER FINANCE IN HASKELL
1305 N. Ave. F:
2 bedroom.
605 N. 5th:
1 bedroom.
1007 N. Ave. D:
2 bedroom.
LOW DOWN LOW MONTHLY Call Tyler at 325-829-3276 or Jim at 325-518-8128

Haskell Volunteer Fire Dept.

is accepting donations to build Fire Station #2 at 300 S. 1st
to house donated Texas Forest Service firefighting equipment and provide a larger training facility. If you would like information on making a donation or how you can help contact Fire Chief Bill Steele 940-864-2208; Randy Shaw 940-864-2023; or ask any Haskell fireman for details.
Donations may be mailed to:
Haskell Volunteer Fire Dept.
301 N. First St., Haskell, TX 79521

Calendar

Toy run

The 'Big Empty Riders' of the West Texas H.O.G. Chapter will sponsor a toy run Sat., Dec. 16 to benefit the children of this area. All riders and all types of motorcycles are welcome to take part in this ride to help make a child's Christmas just a little brighter. Registration will be held at Kathy's Barber Shop in Rule at 11:30 a.m. and parade to Haskell to drop off toys to the Child Welfare Board. For more information, call Lonnie Rolls at 864-8910.

Christmas parade

All businesses, organizations or groups are encouraged to participate in the Haskell Chamber of Commerce Christmas parade set for Dec. 9 at 6 p.m. The Haskell Lions Club will do pictures with Santa, for a small donation, at the gazebo. Local groups or individuals are being sought to sing during the festivities. Call Lorie Rodriguez at 940-864-5694 for information.

Christmas Cantata

'A Thrill of Hope,' this year's countywide Christmas Cantata, will be presented Dec. 17 at 7 p.m. at First Baptist Church, 301 N. Ave. E in Haskell. A nursery will be provided. For information, call First Baptist Church at 864-2581.

Storm sirens

The City of Haskell will test the storm sirens at noon on Fridays.

Candlelight service

A candlelight Christmas Eve service will be held Sun., Dec. 24 at 5:30 p.m. at First Baptist Church in Haskell.

Lighting contest

The Rule Chamber of Commerce is sponsoring a Home and Yard Lighting Contest. Prizes are \$50 for first place, \$35 for second place and \$25 for third place. Call Rule City Hall at 996-2214 to enter. Entry deadline is Fri., Dec. 8. No entry fee will be charged. Judging will be held Sun., Dec. 10.

Christmas dinner

The Rule Chamber of Commerce and the churches of Rule will host a community-wide Christmas dinner and program on Sun., Dec. 10 at 6 p.m. in the school cafeteria. The program will begin at 7 p.m. in the auditorium. Reservations are required and must be made in person by Tues., Dec. 5 by calling John Greeson at 997-2141 or Larry LeFevre at 996-2540. No reservations may be made by leaving messages on the answering machine, please call until someone answers to confirm your reservation.

Food distribution

The Haskell County Ministerial Alliance Food Distribution Center will distribute food Sat., Dec. 16 from 10 a.m. til 11:30 a.m. at 206 S. 2nd (building east of Civic Center) in Haskell. Volunteers and boxes are needed.

Scout registration

Registration for those wishing to join Cub Scouts or Boy Scouts may be done at any time by calling Kay Smith at 864-3344 or Patrick Pace at 997-2216.



SPECIAL TREE FOR JUNIOR HIGH—Edie Strickland of Rochester, spent lots of time collecting items and decorating the tree for Rochester Junior High, and then constructing the mannequin Indian maiden for the top. Authentic right down to the feather ornaments, it is special to all, and her hard work is appreciated by both students and teachers.

Fire safety holiday gift ideas

Show the people you care about that you are mindful of their personal safety by giving creative, practical presents that will protect them from fire this holiday season and throughout the year.

Here are some suggestions from the National Fire Protection Association (NFPA):

- Smoke alarms. If a fire occurs, having a smoke alarm cuts the chance of dying nearly in half. Consider smoke alarms for everyone on your list. Smoke alarms for people who are deaf or hard of hearing include strobe lights, high decibels and/or vibration. All smoke alarms should be replaced after 10 years.
- Flashlights for emergency lighting instead of candles, to avoid the risk of fire from an open flame.
- Sturdy candleholders to prevent tip-over when candles are lit.
- A sturdy fireplace screen, to keep embers out of the room.
- Gift certificates for clean-up services to remove clutter that could give fires a place to start or trip you up if you need to escape quickly if fire occurs. Chimney sweeps can reduce oily creosote build-up in chimneys that can be easily ignited, and many chimney sweeps provide more comprehensive fire inspection,

maintenance, and clean-up services.

- Warm nightwear or bedding to reduce the need for space heaters, particularly at night. Space heaters (fixed and portable) are the equipment involved in three-fourths of home heating fire deaths, and NFPA recommends they be turned off at night when people go to sleep.
- Nightwear or bathrobes with tight-fitting sleeves that will stay well away from cooking flames and hot surfaces like stove burners.
- Large, deep, sturdy ashtrays. If family members or friends smoke, using appropriate ashtrays can prevent smoking materials from igniting upholstered furniture, bedding or other nearby combustibles.
- Portable fire extinguishers, with clear instructions on how to use them, as well as strong encouragement to the gift recipient to learn the rules of safe extinguisher usage so they will be ready if fire occurs.
- Oven mitts for handling cooking equipment, tableware or cookware and especially to permit safe placement of a lid on a stove pan to smother a small fire.
- Large house numbers so firefighters can locate a home at night quickly during an emergency.

- Carbon monoxide alarms. While this item won't help keep your loved ones safe from fire, it's something you should consider for home safety. Often called the silent killer, carbon monoxide is a colorless, odorless gas formed when fuels—such as natural gas, oil and wood—burn incompletely.
- Stocking stuffers. Download loads of fire safety information—including home escape grids—from NFPA's Web site, at <http://www.nfpa.org>, or for children, try NFPA's <http://www.sparky.org>. And don't forget batteries for smoke alarms and flashlights!

Facts and figures to consider for seasonal safety:

- Generally, December, January and February are the deadliest months for fires.
- In recent years, the top three days for home fires were Christmas Day, New Year's Day and Christmas Eve.
- Cooking and heating are the leading causes of home fires in the months of December through February.
- Home candle fires occur at nearly twice the rate in December as throughout the rest of the year, at least in part because of holiday decorations and rituals.



TEXAS COWBOY CHRISTMAS ON THE SQUARE
SAT., DEC. 9 - 3-9 P.M.

Sponsored By: Stamford Main Street and Stamford Chamber of Commerce

Activities on the square will include, hay rides to tour decorated homes in the area, live music, cow potty bingo, and activities for the kids.

Santa and Mrs. Claus will be in Stamford from 6:00-7:00. Bring the kids and have their picture taken with Santa!

Stores will be open late for all of your Christmas shopping needs.

The Lighted Christmas Parade will start at 8:00 p.m. followed by the lighting of the trees on the square.

Area schools, church groups, clubs and organizations are encouraged to participate in this event.

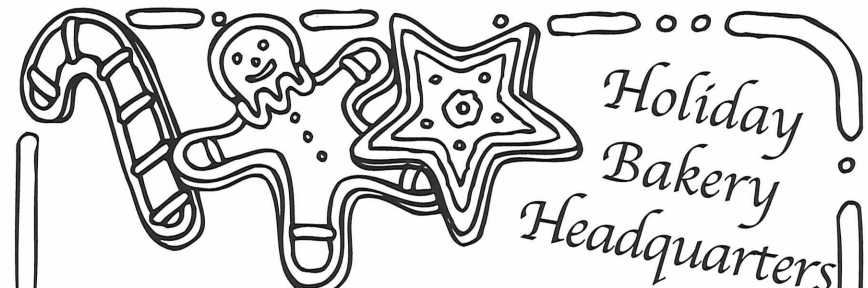
If you would like to sponsor a booth or activity, or would like to enter in the parade, please call Stamford Main Street at 325-773-3301.

Why drive

to Abilene when you can get quality care right here at home? Let physical therapist **Dr. Rene Flores** and his trained staff help you. Do you have neck pain? Low back pain? Or how about low back pain with leg pain? Do either of your arms or legs ever tingle or feel weak? Do you need rehabilitation for a joint replacement? The list goes on and on!

Physical Therapy
at
Haskell Memorial Hospital

Give us a call 940-864-8511



Holiday Bakery Headquarters

Modern Way Bakery

- Meringue Pies **\$5.99**
- Pecan Pies **\$6.99**
- Christmas Cookies, Pinks, Chocolate and Fruit Filled Doz. **\$2.99**
- Gingerbread Men **6 for \$2.99**

Picture Perfect Party Cake®
Birthday and Wedding Cakes

Homemade Sweets
by Martha and Tammy
(formerly of The Sweet Shop)

Please Call 864-3976

Modern Way
1202 N. AVE. E • Haskell

WE WILL BE CLOSED CHRISTMAS DAY, MON., DEC. 25.



Haskell's "Old Time Christmas Parade of Lights"

Haskell Chamber of Commerce proudly presents 'Haskell's Old Time Lighted Christmas Parade.'

The parade will kick off at 6 p.m. Sat., Dec. 9, right in historical downtown Haskell. Come see all the various lighted floats and other attractions. And, let's not forget that all important visit from the 'Big' guy in RED. Santa will be making his appearance at the gazebo on the courthouse lawn. Come have your picture taken with Santa. Hot chocolate will be served to help keep the cold away. Come see the lighted displays on the courthouse lawn and take a stroll through historical downtown Haskell. Free drawings will be handed out during the parade, go by the gazebo to sign up. The first 10 people to present this ad at the gazebo will be registered to receive a special drawing. You do not have to be present to win. We hope to see you there.

Merry Christmas
from the Haskell Chamber of Commerce and all of our community.