

Brannan Congratulates 4-H Clubbers

TO THE MORE THAN TWO MILLION 4-H CLUB MEMBERS:

Congratulations as you observe National 4-H Achievement Day, November 8. You, your parents, your local leaders and your communities can take pride in your 1952 accomplishments which are to be recognized on that day.

We in the Department of Agriculture know that you have invested hard work, continued effort, and much study in your 4-H projects and other 4-H activities. We are very proud of you who could and did complete your projects. We recognize that disappointments and disasters beyond your control, such as drought and flood have hindered some of you this year. We are equally proud of you who tried so hard and gallantly in the face of these disappointments. In trying, you have used and improved your

Head, Heart, Hands, and Health in the best 4-H tradition.

Your theme for the year, "Serving as loyal citizens through 4-H", is a new reminder of the fine training for citizenship which your program provides and the contribution it makes to well-informed, willing, and capable leadership for our country's future.

May the observance of National 4-H Achievement Day this year bring you new inspiration for the important work before you.

Charles F. Brannan
Secretary.

DARBYS HAVE GUESTS

Harold Darby and two friends from Houck, Ariz., visited last Tuesday and Wednesday in the home of his parents, Mr. and Mrs. C. J. Darby of the Progress community.

APPLE FOR THE PROF



The spirit of femininity is portrayed in this versatile cavalier jacket and skirt ensemble of butter-soft cotton corduroy by Stephanie Koret. Style highlights point to the narrow skirt, the rounded hips and push-up sleeves on the jacket.

Hospital News

Rebecca Wilson, small daughter of Mr. and Mrs. Harold Wilson, underwent a tonsillectomy. She has gone home.

Mr. L. Z. Anglin of Earth was admitted due to an accident. He has been released to his home.

Peliano Gomez, a Mexican National, was in for medical care. He has been discharged.

Antonio Sandoval, a Mexican National, was in for medical care. He is doing better.

Marvin Mitchell was in for medical care. He has gone home.

Otis Kinchloe was in due to an accident. He has gone home.

Mrs. Fred Beene is in for medical care, she is doing fair.

Jerry Shanks, an accident patient, has gone home.

W. T. Hendrix is in due to an accident. He is resting well.

Joe Mack Waggon has been readmitted due to an accident several days ago. He is doing fine.

Minnie Ola Cox is in for medical care.

Mr. Alvis Burge is in for medical care. He is resting fair.

Congratulations To:

Mr. and Mrs. L. N. Edwards on the birth of a son, Robert Luther, born October 24, 1952.

Mr. and Mrs. Freeman Hyatt on the birth of a son, Bobby Ray, born October 19, 1952.

Mr. and Mrs. J. C. Johnson on the birth of a son, Larry Wayne, born October 16, 1952.

Mr. and Mrs. B. R. Gullety on the birth of a daughter, Sandra Yvonne, born October 18, 1952.

Mr. and Mrs. Glenn Truelock on the birth of a son, Kenneth Wayne, born October 14, 1952.

Mr. and Mrs. Henry Krieger on

Petitions Ask More Consistent Cotton Classing

(Lamb Co. Leader)

Petitions are reported in circulation among farmers over the South Plains, which when completed are to be presented PMA officials, the Secretary of Agriculture, and other government agencies.

The petitions allege inefficient, inconsistent classing of cotton at the Lubbock office, allege a slow or bottleneck according to E. C. Hatton of Lubbock, who is chairman of an eight-man committee, representing approximately 50 farmers. The petitions were drawn after a four-hour meeting of farmers at the office of Lubbock Farm Bureau.

L. O. Buchanan heads the Lubbock office of PMA, and had made no comment as of Friday morning.

The petition is addressed to Production Marketing Administration "in the interests of all farmers on the South Plains, sponsored by the Lubbock County Farm Bureau." Signed copies, Hatton stated, will be sent to Secretary of Agriculture Charles Brannan, Congressman Lyndon Johnson, Congressman George Mahon, and J. Walter Hammond, president of the Texas Farm Bureau.

Classing Appeal Privilege Asked

It asked "for the privilege of classing appeal, without re-pecussion from the Lubbock Classing Office." It further asked for an increase in personnel at the office to alleviate what Hatton termed a "bottleneck."

OFFICIAL ANSWERS LUBBOCK COMPLAINTS

"We class cotton on official government standards. Our men have all passed rigid government examinations so as to grade and staple all qualities of American Upland cotton, regardless of origin," J. B. Russ, chief of the Lubbock Board of Cotton Examiners in the absence of L. O. Buchanan, who was injured in an Army helicopter crash last summer, said Saturday.

Russ poked in answer to charges made last week by a committee from the Lubbock County Farm Bureau, headed by E. C. Hatton, charging he Lubbock Classing Office with "inefficient, inconsistent classing."

"It is definitely known by all concerned that drouth conditions, even with irrigation, have caused most of the staple grown on the South Plains this year to be

the birth of a daughter, Phyllis Marie, born October 16, 1952.

Mr. and Mrs. W. C. Newbrough on the birth of a daughter, Brenda Kay, born October 14, 1952.

Mr. and Mrs. Bobby Burris on the birth of a son, Earnest Veardean, born October 21, 1952.

Mr. and Mrs. Oran Dorsey on the birth of a son, Oran Jay, Jr., born October 15, 1952.

Mr. and Mrs. Gene Harvey on the birth of a daughter, Rhonda Jeanette, born October 14, 1952.

Mr. and Mrs. John Schoolcraft on the birth of a son, Jerry Lewis, born October 18, 1952.

Mr. and Mrs. V. H. Oldham on the birth of a son, Vernon H., October 3, 1952.

Mr. and Mrs. Sisneros on the birth of a daughter, Rita, born October 27, 1952.

What Your Chamber Of Commerce Means To You

By RAY FRANZ

It's A Bargain For You!!
Have you ever given real thought as to the value of a local Chamber of Commerce to you? Are you really aware of its real function, its real purpose? Do you realize that the institu-

much shorter in 1952 than on last year's crop.

Selected At Random
"Samples are selected at random by recorders with classers having no knowledge of which sample will be taken, and these are re-classed by the supervisors. These are re-submitted to the board of cotton examiners in Memphis, who further class the cotton, putting down their opinion as to grade and staple. To date, our Board of Cotton Supervisors has lowered on staple length, 197 bales, and raised as too short, 101 bales.

"On grade, the Lubbock office was too high on 128 bales, and too low on 105."

tion of your Farm-Labor office (Grace Benton) was originally a Chamber project? Your Will Rogers Memorial Roundup, now considered the finest spectacle of its kind in this area, was also an original project of your chamber. Both of these programs are now self-sustaining, living examples of a chamber service to its community.

Wide and varied are the functions of a Chamber of Commerce, but always pointed to the constant improvement of health, wealth, population and standard of living of its community.

Your Chamber of Commerce is still comparatively young, but as it matures and its program of work develops and envelops its full field of endeavor its effect upon you will not be denied. After all, what is your Chamber of Commerce? It is an organization through which you, along with others in this community, can pool your energies and tal-

ents to do those things that are right and good for our community.

The effectiveness and influence of any chamber on the home front as well as in higher levels is determined in a large measure by the support it receives from all elements in its community, including, of course, active membership participation in the formulation of its policies.

VISITORS FROM OKLAHOMA

Mr. and Mrs. Jack Slaton of Gould, Okla., were last week visitors in the C. J. Darby home.

MINK COATS GIVEN AWAY

- at your expense to grafting politicians. Aren't you tired of paying for things like these?

VOTE FOR EISENHOWER AND NIXON

Pol Adv Paid for Charles Long

INSURANCE PROTECTION POLICY FOR EVERY NEED

Lane Insurance & Real Estate
EDDIE LANE, OWNER

PHONE 3630

MULESHOE, TEXAS

COX

DRIVE-IN THEATRE
OF FINE ENTERTAINMENT

Thurs. & Fri., Oct. 30 & 31

BEND OF THE RIVER

James Stewart & Arthur Kennedy

Saturday Only, Nov. 1

THE DENVER-RIO GRANDE

Edmond O'Brien & Sterling Hayden

Sun. & Mon., Nov. 2 & 3

MY FAVORITE SPY

Bob Hope & Hedy Lamarr

Tues. & Wed., Nov. 3 & 4

SUMMER STORM

George Sanders & Linda Darnell

MULESHOE

TEXAS

Now In Stock

2-NEW IHC COTTON STRIPPERS

1-NEW OLDS SUPER "88"

1-NEW OLDS "98"

JOHNSON & NIX

YOUR INTERNATIONAL HARVESTER OLDSMOBILE DEALER IN MULESHOE

PHONE 2940

From GREEN ROUGHAGE to small grain

Your Wetmore Mill is quickly and simply adjusted to perform any feed chopping and grinding job. It fairly "eats up" either threshed grain or ear corn... wet, green or dry hay and roughage... loose or bunched. Chops coarse or grinds to any fineness desired. Fills silos, too!



It's all the same to WETMORE KNIFE-TYPE Hammer Mills

BUY MORE in a WETMORE

the all-purpose mill with 19-year reputation for superior performance. Costs less to own... Costs less to operate

Before you buy any feed grinder see what the Wetmore Mill will do for you. We'll gladly demonstrate it... on your own farm if you wish... without obligation.

FRY AND COX BROS. MULESHOE, TEX.

PRODUCT OF FRY AND COX BROS. MACHINERY CO. TONKAWA, OKLA.

Vote Nov. 4th

VOTING- IS YOUR BUSINESS YOUR-

Security and Prosperity Are Tied To Congressional Action. Talk To Your Legislators With Your Pen And Your Ballot!

Your One Vote Counts!

MULESHOE CHAMBER of COMMERCE





ORANGEADE H. I. C. 24c 46 Oz. Can

- HUNTS NO. 300 CAN **Tomato Juice** 11c
- HEINZ 7 1/2 OZ. MIX **PICKLES** 32c
- LIBBY THROWN NO. 12 **OLIVES** 53c
- KETCHMERS 12 OZ. **Wheat Germ** 33c
- MARYLAND CLUB, 1 LB. CAN, ANY GRIND

- HUNTS NO. 300 CAN **POTATOES** 13c
- HEINZ ASSORTED **Baby Food, 3 for** ... 27c
- GERBER'S STRAINED **Meats for Babies** ... 21c
- GREEN GIANT NO. 303 CAN **PEAS** 19c

- HORMEL PLAIN 16 OZ. CAN **CHILI** 47c
- PATIO CHICKEN NO. 300 CAN **TAMALES** 30c
- SWIFT'S **PREM** 49c
- Oscar Mayer Bar-B-Q 12 oz. Can **PORK** 50c
- LIBBY'S NO. 1/2 CAN **POTTED MEAT** ... 15c

COFFEE 84c



GET YOUR DEL MONTE BITTLES AT OUR CHUCK WAGON SALE!

DEL MONTE **PEAS** No. 303 Can 20c

DEL MONTE NO. 303 CAN **FRUIT COCKTAIL** 25c
 DEL MONTE NO. 2 CAN **SPINACH** 15c
 DEL MONTE NO. 303 CAN **WHOLE BEANS** 27c
 DEL MONTE 8 OZ. CAN **Tomato Sauce** 9c

DEL MONTE 14 OZ. BOTTLE **CATSUP** 20c
 DEL MONTE NO. 303 CAN **PEACHES** 23c

Peaches Del Monte No. 2 1/2 Can 25c

TRICK OR TREAT, HERSHEY **Candy Bars, 6 for** 25c
 TRICK OR TREAT WRIGLEY'S **GUM, ctn.** 85c
 Trick or Treat With Mask, Pk. **Candy Kisses** 29c

Tooth Paste Ipana 50c Size 34c

- COLGATES **LATHER SHAVE** 69c
- CHAMBERLAIN'S \$1.00 SIZE **HAND LOTION** 79c
- LARGE BOX **SNOWY BLEACH** 47c
- QUART BOTTLE **PUREX** 17c
- LARGE BOX **TREND** 22c
- REGULAR BOX **TIDE** 31c
- FROZEN MAID 10 1/2 OZ. **JOY** 31c
- MENNEN **BABY OIL** 43c
- MENNEN'S 49c SIZE **SKIN BRACER** 39c
- YES 300 COUNT **TISSUES** 19c
- O'CEDAR LARGE BOTTLE **POLISH** 45c
- JOHNSONS QUART CAN **HARD GLOSS** \$1.19
- BOTTLE LIQUID, REG. BOTTLE

STRAWBERRIES 25c

U. S. GRADED QUALITY MEATS

WILSON CERTIFIED **PICNIC HAMS** Half Or Whole, lb. 43c

- ASSORTED KIND **LUNCH MEAT, lb.** 55c
- SHOULDER CUTS **PORK STEAK, lb.** 59c
- FRESH SLICED **BEEF LIVER, lb.** 59c
- MORRIS SUPREME EXTRA LEAN AND THIN **BACON** Lb. 69c
- WHITE TROUT **FISH, lb.** 19c
- LEAN AND MEATY **SPARE RIBS, lb.** 49c
- BORDEN 12 OZ. BOX **Cottage Cheese** 28c

FRESH FRUITS & VEGETABLES

GOLDEN RIPE **BANANAS** Lb. 10c

- LARGE FIRM HEADS **LETTUCE, lb.** 12 1/2c
- DELICIOUS **APPLES, lb.** 23c
- BUNCH **CARROTS** 12 1/2c
- FIRESIDE 1 LB. PACKAGE **MARSHMALLOWS** 23c
- YELLOW **SQUASH, lb.** 12 1/2c
- TOKAY **GRAPES, lb.** 19c
- SHUNKIST **LEMONS, lb.** 19c



GIANT, REG. 57c SIZE **RINSO** 39c

MIRACLE WHIP Kraft Pint Jar 30c

- SNOW CROP 10 OZ. **BROCCOLI** 29c
- SNOW CROP 4 OZ. CAN **ORANGE JUICE** 12 1/2c
- SNOW CROP, CUT 10 OZ. PKG. **GREEN BEANS** 24c

PIGGLY WIGGLY  **MARKETS** **DAVIS & PUMPHRIES** OWNERS & OPERATORS

- IDEAL TALL CAN **DOG FOOD** 16c
- 3 MINUTE CAN **POP CORN** 20c
- LARGE BOX **MORTON SALT** 17c

1953 CHRYSLER NEW YORKER CLUB COUPE



Smart new lines mark the 1953 Chrysler New Yorker club coupe. New Yorker models are offered in a choice of 6-passenger sedan, club coupe, special Newport club coupe, Town and Country wagon and 8-passenger sedan on a wheelbase of 125 1/2 inches. Powered by the Chrysler 180-horsepower FirePower V-8 engine, they feature power brakes and Oriflow shock absorbers as standard equipment. They are available with full-time power steering as optional equipment.

ation. The grilles have been re-designed and refined; the new front end treatment includes new hood ornaments and new parking light styling. On the sides of the cars long, low lines are achieved by carrying the front fender top line back through the doors and blending it with the rear fender top lines.

Driver and passenger visibility has been considerably improved and a feeling of lightness in the top design in the new Chrysler is achieved by the more extensive use of glass. The total glass area has been increased from 23.3 to 25.0 square feet, and includes a new one-piece wrap around curved windshield.

FIREPOWER ENGINE

All 1953 Chrysler models, except the Windsor and Windsor DeLuxe, are powered by the 180-horsepower V-8 high compression FirePower engine, a lighter, more compact, more economical and more efficient unit than any previous engine of comparable piston displacement. It is exceptionally smooth and quiet and develops its full, rated H. P. on ordinary grades of gasoline due to its hemispherical combustion chamber. It has a bore of 3 13-16 inches, stroke of 3 5-8 inches and a piston displacement of 331.1 cubic inches with a compression ratio of 7.5 to 1.

The Windsor and Windsor De-

Luxe models are powered by an improved version of the Chrysler six-cylinder "Spitfire" engine, higher powered and designed for improved performance and longer life. It has a bore of 3 7-16 inches with a stroke of 4 3/4 inches and a displacement of 264.5 cubic inches and produces 119 horsepower at 3600 r. p. m. with a compression ratio of 7 to 1.

RIDING COMFORT INCREASED

Contributing to a more comfortable ride are the softer, 2 1/2 inch wide rear springs which are new to all but the Crown Imperial models. Because a smaller number of leaves is used, the new springs absorb a larger portion of the small road shocks within the spring. The wider leaves, with corresponding longer spring pivots, offer greater resistance to twist, thus increasing car stability on turns.

The new pivot mounting at the forward end also permits the lowering of the frame at this point, providing increased space for the rear seat cushion construction. These changes in conjunction with Oriflow shock absorbers, contribute materially to improved riding qualities in the new cars.

MORE PEOPLE read the want ads every week. They cost little, get the job done. Try one.

LOCAL PEOPLE AT MRS. ANDERSON FUNERAL

Death came for Mrs. Olan Anderson, Godley, Texas, last Thursday night. Funeral services were held from the First Baptist Church there Friday afternoon at 3 o'clock and interment was in Godley cemetery.

Mrs. Anderson, who was 68, was a sister-in-law of Mrs. W. M. Pool, Jr., of Muleshoe, Mrs. Sally Cook, of Spur, all sisters of Mr. Anderson, and Mrs. O. I. Anderson, of Earth, a sister-in-law attended funeral services.

VISITORS IN BRUNS HOME

Visiting the past week in the Fred Bruns home was Mrs. Amelia Jennings of Kansas City, Mo. She and Mrs. Bruns are sisters.

PAPER and Office Supplies at The Journal. Pho.7220.

IN EL PASO
Lt. and Mrs. Garvin Pruitt of Clovis, former residents of Muleshoe, are in El Paso where he is attending military school at Ft. Bliss.

BAKE SALE NOV. 4
Muleshoe Rebekah Lodge will hold a bake sale Tuesday, November 4 at the Piggly Wiggly store. Each member is asked to bring a cake or two pies.

FOR THE BEST OF

Service

—Stop At—

Kelton Barber

Shop

2nd door west of Post Office

Dr. C. H. McIlroy
Naturopathic Physician

Phone 5350 Muleshoe, Texas 906 MAIN STREET

DO YOU LIKE HIGH TAXES?

Then remember what Party gave them to you!

VOTE FOR **EISENHOWER** AND **NIXON**

Pol Adv Paid for Martin Oliver)

Morrison Motor Company, D. L. Morrison and Carol Goss, are holding open house today, Friday and Saturday to show the "Most Beautiful Chryslers Ever Designed." They are dealers for Chrysler and Plymouth in Muleshoe territory. The new Chryslers are being unveiled this week throughout the U. S.

Chryslers for 1953 feature entirely new and beautiful body styling with long, low lines which emphasize the length and width of the cars.

"These cars, we know, will set the new highway fashion for 1953", reports J. A. O'Malley, vice president and general sales manager, Chrysler Division, Chrysler Corporation.

"The new, sleek bodies in combination with proven engineering advances such as the revolutionary 180-horsepower V-8 Chrysler FirePower engine, full-time power steering, Fluid Torque Drive, power brakes and Oriflow shock absorbers make these the finest, most luxurious cars Chrysler has ever produced."

"In addition, this year's Chrysler introduces a 12-volt electrical system designed to meet the higher electrical loads imposed by the increasing use of new electrically operated equipment."

WIDE CHOICE OF BODY STYLES AND MODELS OFFERED

twenty body styles. The lines this year are the Windsor, Windsor DeLuxe, New Yorker, New Yorker DeLuxe, all on an 125 1/2

inch wheelbase; Custom Imperial with a wheelbase of 133 1/2 inches and the Crown Imperial line with a wheelbase of 145 1/2 inches.

The Windsor is available in six passenger sedan, club coupe, Town and Country wagon and 8-passenger sedan models; the Windsor DeLuxe in a choice of six-passenger sedan, special Newport club coupe and convertible coupe models. New Yorker models are available in six-passenger sedan, club coupe, special Newport club coupe, Town and Country wagon and 8-passenger sedan; and New Yorker DeLuxe models are available in six-passenger sedan, special Newport club coupe and convertible coupes.

The Custom Imperial is available in six-passenger sedan and 4-door Town limousine models. The Crown Imperial is available in either the 8-passenger sedan or the limousine model.

New for 1953 are 60 spoke, chrome plated wire wheels which will be available as optional equipment throughout the line at extra cost.

ONE-PIECE WINDSHIELDS
The front styling for the 1953 Chrysler models is designed to retain the established indentifi-

PAT R. BOBO
ATTORNEY-AT-LAW
Office in Bank Building
Muleshoe, Texas

NOW On HAND

A GOOD SELECTION OF
NEW CHEVROLETS

TRADE YOUR OLD CAR
IN NOW WHILE WE
CAN GIVE YOU THE BEST
PRICE!

CONVENIENT TERMS

C. & H. CHEVROLET CO.

CHEVROLET CARS AND TRUCKS

PHONE 2720

MULESHOE

"You Never Had It So Good"

This expression has been made so often that some people believe it. Franklin D. Roosevelt was elected in 1932 and became president in March, 1933. In the landslide he also had both houses of congress, enabling him to enact any legislation he desired.

From the files of the Frederick, Okla., Press, Friday, Oct. 20, 1939, almost seven years later, the local markets showed the following:

Cotton, mid., 7-8th in., lb.	7.75c	Turkeys, No. 1, lb.	6c to 8c
Cotton, mid., 13-16th in., lb.	7 1/2c	Hens, over 4 1/4 lbs., lb.	8c
Cotton, mid., 15-16th in., lb.	8c	Hens, under 4 1/4 lbs., lb.	6c
Cotton Seed, ton	\$24.00	Fryers, lb.	8c to 11c
Wheat, bushel	72c	Roosters, lb.	4c
Barley, bushel	45c	Geese, lb.	8c
Oats, bushel	35c	Duck, lb.	6c
Alfalfa hay, new, ton	\$8 to \$12	Guineas, each	15c
Alfalfa seed, best grade, lb.	13c	Hogs, lb.	7c to 8c
Butter, lb.	20c and up	Steers, lb.	5c to 7c
Cream, No. 1, lb.	24c	Cows, lb.	4c to 5c
Cream, No. 2, lb.	21c	Cattle, stocker, lb.	4c to 5c
Eggs, No. 1, dozen	18c	Hides, lb.	7c

There were several million people unemployed in 1939. The only thing that changed this picture was Pear I Harbor and World War II.

After World War II there were again signs of a recession, shown by a drop in the stock market and in the price of wheat. Most low income families had cashed their war bonds.

In 1948 more than eight million individuals and families received less than \$1,000 cash income. Unemployment and poor business continued until the Korean war.

VOTE TEXAN VOTE IKE
(Political Advertisement Paid for by Al Cassidy)

for the love of **IKE**



STOP WASTE

Vote for **EISENHOWER and NIXON**
(Pol. Adv. Paid for by Al Cassidy)

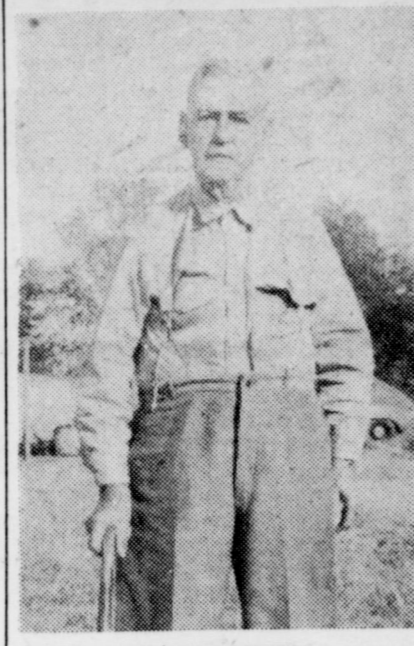
Shower Honors Mrs. Lewis Morris

Mrs. J. Lewis Morris, of Lubbock, formerly of Muleshoe, was honored Tuesday, Oct. 28, with a pink and blue shower given in the home of Mrs. R. A. Bradley. Mrs. Bob Harvey and Mrs. Clyde Brown served as co-hostesses.

The table arrangement consisted of a miniature stork standing watch over a cradle holding tiny dolls. The colors of pink and pale green were dominant in the design.

Individual green frosted cakes topped with pink booties and lime punch were served by Mrs. Brown and Mrs. Harvey to guests, Mesdames W. Q. Casey, Elsie Patterson, R. L. Dillard, Glenna Lane of Lubbock, Lamond Lane and the hostesses.

Garth Celebrates 93rd Birthday



A. P. GARTH
A. P. Garth celebrated his 93rd birthday Sunday, Oct. 19 in the home of his son, G. J. Garth where he now resides.

He is the father of 10 living children, and grandfather of 34 grandchildren, numerous great grandchildren, and 3 great great grandchildren. A nephew, Tom Denton of Barstow, Calif., was present Sunday and the two met for the first time in 31 years.

Mr. Garth has been a resident of Muleshoe for about 12 years. Before that time he was a resident here in 1928 and 1929.

Mrs. Johnson Is Shower Honoree

The H. B. Flanagan home was the scene of a pink and blue shower Tuesday, Oct. 14, honoring Mrs. Milburn Johnson, with Mesdames George Chambliss, C. H. Odom, and Edd Harp as co-hostesses.

CHILDREN ENJOY BIRTHDAY PARTY

A lively party was enjoyed by a younger set of girls recently when Mrs. David Anderson honored her daughter, Davy Jean, on her eighth birthday.

The group attended a Saturday movie then went to the Anderson home at 1204 West 11th for refreshments and play.

Those attending were the honoree, her brother, Hal Stephen, her cousin, Gary Edwards, and Patty White, Jane Bryant, Gayle Kitchens, Marilyn Green, Roxanna Hart, Virginia Bayless, Eugenia Ruth English, Donna Moore, Pam Lenau, Dnna Guinn, Kay Landers, Pat Butts, Carol Ann Bryan, Billie Jean Dorsey, Maria Reed, the hostess, and Mrs. Horace Edwards.

Ike Led Final Plains Tally

In the final tally of the Plains poll, conducted by The Amarillo News in conjunction with county papers, Gen. Dwight D. Eisenhower led by three to one, according to a telegram today to The Journal from David Raso, of The News.

He said Eisenhower Republican nominee, had 1895 to 551 for Governor Stevenson, the Democratic candidate for President.

The Stevenson strength, the last two weeks, gaining from 4 to 1 to 3 to 1.

Refreshments of cocoa, cake, and assorted candies were served to the guests by the hostesses.

Present were Mesdames J. W. Williams, Alfred Williams, J. R. King, S. E. Odom, Henry Harvey, Lismon Harvey, Terry Lee Harvey, Jr., Clyde Holt, Marvin Burkhardt, Winston Burkhardt, Johnnie Williams, J. W. Johnson, M. M. Scott, Viola Blanscet, Marvin Waggoner, and the hostesses.

PAPER PUNCHES in stock at The Journal.

FARLEY INSURANCE AGENCY
REAL ESTATE & INSURANCE
AUTO FINANCING — FARM LOANS
Over Bank, Muleshoe, Texas
Office Phone 7279 Res- 5103

TERRACING
WITH A HANCOCK ELEVATOR
CECIL BLANSCET
501 S. Main Phone 4363

NOTICE

WE HAVE BEEN IN LUBBOCK THIS WEEK ATTENDING A POST GRADUATE COURSE IN HAIR STYLING.

We Invite All Of You To Visit Us Soon For The Latest In Hair Fashions.

FOR APPOINTMENT CALL 6130

WELLBORN BEAUTY SHOP

ANNUAL OPEN HOUSE
Nov. 8th — 10th — 11th
—AT—
SHRUBS

KERSHNER'S NEW MEXICO NURSERIES
LOCATED ON CLOVIS-PORTALES HIWAY 70

FREE — Coffee and Donuts All 3 Days
PLUS A FREE SHRUB TO EACH ADULT WHO REGISTERS.

When you register, pick-up coupon good or \$2.00 on \$10.00 purchase ... \$5.00 on \$25.00 purchase.

NEWLY REMODELED SALES YARD TO BETTER SERVE YOU

Most of our stock is grown here and are already acclimated to the high plains. Our stock is now more complete than at any time in the past!

KERSHNER'S NEW MEXICO NURSERIES
ON CLOVIS-PORTALES HIWAY 70

TREES **LAWNS**

CASHWAY GROCERY & MARKET

"Where Friends Meet And Prices Talk"
FREE DELIVERY Phone 2440 or 2450
THESE PRICES IN EFFECT THROUGH NOVEMBER 6, 1952

COFFEE Maryland Club Drip or Reg., Lb. **79**

NO. 1 TALL SNO-TIP SALMON 39c 32 OZ. LAKEWOOD PURE STRAWBERRY PRESERVES 59c

ORANGE ADE HI-C 46 Oz. Can **19c**

NO. 2 1/2 CAN GARDEN SPOT PURPLE PRUNE PLUMS 25c 6 OZ. PKG. HERSHEY BITTER-SWEET DAINITIES 19c

Cherries R. S. P. Sun Spun No. 303 Can **17c**

25c PKG. PIONEER VANILLA WAFERS 19c NO. 2 1/2 CAN ROSE DALE PEARS 29c

Biscuits Ballard Oven Ready, Per Can **7 1/2c**

LARGE BOX BETTY CROCKER SOFTASILK CAKE FLOUR 39c 9 OZ. JAR FRENCH'S PURE MUSTARD 13c

U. S. Good Baby Beef STEAKS

ROUND STEAK	SIRLOIN OR T-BONE
LB. 85c	LB. 69c
SIRLOIN TIPS	PRIME RIB
LB. 85c	LB. 69c

ROAST

RUMP OR PIKES PEAK	ARMROAST	CHUCK ROAST
LB. 69c	LB. 59c	LB. 55c
SHORT RIBS, lb. 39c	FRESH GROUND BEEF, lb. 59c	

FROZEN FOODS

6 OZ. SNOW CROP FROZEN GRAPE JUICE 19c

14 OZ. SNOW CROP FROZEN LEAF SPINACH 25c

10 OZ. SNOW CROP FROZEN FRESH BLACK EYE PEAS 25c

PRODUCE

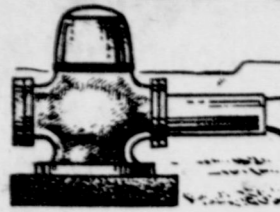
FLORIDA MARSH — SEEDLESS GRAPEFRUIT lb. 9c

CALIFORNIA FRESH RADISHES 2 for 9c

CALIFORNIA FRESH GREEN ONIONS 2 for 9c

FANCY WASHINGTON DELICIOUS APPLES lb. 19c

The Muleshoe Journal



DEDICATED TO THE PROGRESS AND DEVELOPMENT OF BAILEY COUNTY AND THE GREAT MULESHOE COUNTRY

VOLUME 30, NUMBER 45

MULESHOE — County Seat of Bailey County — TEXAS

THURSDAY, OCTOBER 30, 1952

SECTION TWO

C. of C. Names Two Committees

Two committees to study and carry on various phases of the Chamber of Commerce work here were named when the board of directors of the body met Monday night.

On the agriculture committee are Morris Childers, chairman; Onard Upton, Joe Sooter, and Horace Edwards.

Bob Harvey will head the better business committee and other members are Cecil Tate, Arnold Morris, L. S. Barron, and Harvey Bass.

Ray Franz, manager, said the newly formed committees are to meet soon and begin to plan their program of work.

members and their ladies to attend the Morton JayCee banquet and dance, to be held Monday evening, Nov. 3.

Tickets may be purchased at the door or from Dr. B. R. Putman. The price per person will be \$2.00. Principal speaker will be Raymond Roberts, state JayCee president. Music will be furnished by the ENMU band. The banquet will be in the school cafeteria and the dance in the Veterans Hall.

MORE PEOPLE read the want ads every week. They cost little, get the job done. Try one.

DR. Woods & Armistead

OPTOMETRISTS

IRA E. WOODS, O.D.
B. W. ARMISTEAD, O.D.
GLENN S. BURK, O.D.

Phone 328 Littlefield

VOTE FOR EISENHOWER AND NIXON

(Pol. Adv. Paid for by John Gammons)

Bailey County Abstract Co.

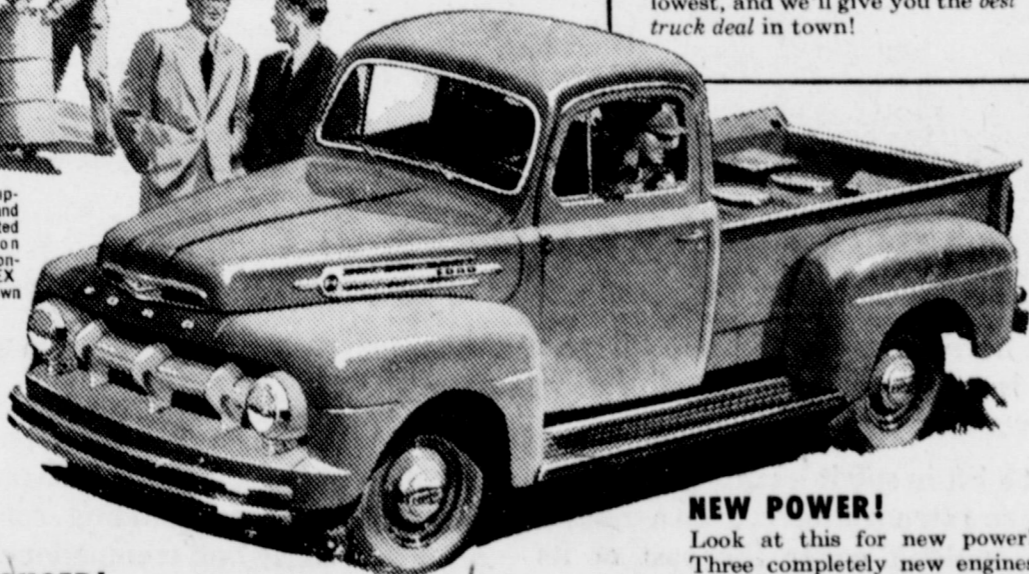
ABSTRACT SERVICE — LOANS
Mrs. Lela Barron — Mgrs. — L. S. Barron
Established in 1906

Why accept less when we offer you more in a **FORD TRUCK** at no increase in price!

The only Pickup with a new Low-Friction engine! New Ford F-1 offers choice of new 101-h.p. COST CLIPPER SIX, or famous V-8, now 106 h.p.



Availability of equipment, accessories and trim as illustrated is dependent on material supply conditions. 5-STAR EX TRA Cab shown (added cost).



GAS SAVINGS UP TO 14%

Now three new high-compression, Low-Friction, overhead-valve Ford Truck engines cut friction power-waste — you save as much as one gallon of gas in seven! Ford Trucks are priced with the lowest, and we'll give you the best truck deal in town!

NEW POWER!

Look at this for new power! Three completely new engines — PLUS famous V-8 (now 106 h.p.) PLUS Ford's Big Six (now 112 h.p.)! Five great engines in all... a Ford Truck that's just right for your kind of job!

NOW FIVE GREAT ENGINES!

- 101-h.p. COST CLIPPER SIX. New!
- 106-h.p. TRUCK V-8. New power!
- 112-h.p. BIG SIX. New power!
- 145-h.p. CARGO KING V-8. New!
- 155-h.p. CARGO KING V-8. New!

LAST LONGER!

Using registration data on 8,069,000 trucks, life insurance experts—for the sixth straight year—prove Ford Trucks last longer!

RUN FOR PENNIES!

Before you buy, let us show you the new Ford Economy Run Book. See running costs of 5,500 Ford Truck owners! See how little it can cost to run a Ford Truck in your kind of work!



F.D.A.F.

FORD TRUCKING COSTS LESS... FORD TRUCKS LAST LONGER!
Using latest registration data on 8,069,000 trucks, life insurance experts prove Ford Trucks last longer!



MOTOR CO.

PHONE 4930

FORD AUTOMOBILES AND TRUCKS

MULESHOE

Lightning Is Explained By Rotary Speaker

A liberal education on how lightning comes about, how it operates, and what it does was gained by members of the Rotary Club and their guests at their meeting Tuesday noon, when they were addressed by H. W. Worthington, of Plainview, superintendent of the Plains division, Southwestern Public Service Co.

In brief, lightning occurs when there is an unbalance of positive and negative charges as from the ground to a cloud. It is often said that lightning never strikes twice in the same place. Actually, said Mr. Worthington, there are two strokes, one to prepare the air, as in a descending bolt which strikes the ground or a tree, and the instantaneously following bolt which ascends back to the cloud.

Mr. Worthington said that the old time lightning rods were not fraudulent or nonsensical. In fact he is putting them on his new home. But there were faulty installations, which allowed the lightning to go into the building that the rods were to protect; or the rods became rusty and corroded and blocked the passage of the lightning into the ground.

He urged that everyone, if they have TV aerials erected, should go into the question of lightning arrestors, else a danger of fire or human injury may be set up.

He dwelt somewhat on static electricity, lightning's "baby brother."

Mr. Worthington was introduced by Herb Potter, program chairman. Jeff Peeler, local manager of the Service Company was a guest. Other guests included Bill Willis, high school footballer

School Carnival Nets \$1,281.00

Muleshoe school carnival took in \$1,281.00 according to figures released this week by George Glover, high school principal, who was finance chairman.

At the same time, Jerry R. Kirk, superintendent of schools issued a statement in which he thanked all who helped in any way to make this the greatest school carnival ever held in Muleshoe school district. His statement follows:

I wish to take this opportunity to express my appreciation to everyone who had part in making our fall carnival a success.

I certainly want to thank the entire faculty for their splendid co-operation and support which

PUBLIC LIBRARY RECEIVES NEW BOOKS

The Muleshoe Public Library has received several more books for your winter reading pleasure. On the new book list are: "Confessors of the Name" by Gladys Schmitt, "Call of the Owlhoot" by Floyd Day, "Murder of a Redhaired Man" by Mary Plum, "Broken Creek" by Lee Thomas, "The Tiger in the Smoke" by Margery Allingham, "The Long Garden" by Emily Noble, and "The Golden Horse" by Gay Rutherford.

and Rotary's outstanding student of the month.

helped make this a good carnival. We are very happy to have had the support and backing community. I know that the faculty, students, and the entire community will be proud to see our stage scenery completed.

We are certainly fortunate to have had Mrs. Noel Woodley as the General Chairman and Mr. Franz as the Co-ordinator. We appreciate their hard work in planning and carrying out the details of the carnival.

Again, I wish to thank everyone who had a part in planning this carnival and thanks to the patrons for attending the carnival.

Jerry R. Kirk

Mr. Glover released the following information showing what each class or organization made in the carnival:

QUEENS RACE	
Fifth Grade	\$133.15
Second Grade	\$25.27
Third Grade	\$71.50
Fourth Grade	\$10.26
Fifth Grade	\$60.23
Sixth Grade	\$98.61
Seventh Grade	\$31.08
Eighth Grade	\$135.09
Freshmen	\$8.05
Sophomores	\$7.45
Seniors	\$50.00
BOOTHS	
First Grade	\$35.00
Second Grade	\$49.14
Third Grade	\$10.00
Fourth Grade	\$12.60

Fifth Grade	\$13.32	P. T. A.	\$60.62
Sixth Grade	\$18.54	E. S. A.	\$37.25
Seventh Grade	\$97.00	Scouts	\$17.75
Eighth Grade	\$17.37	Garden Club	\$55.90
Freshmen	\$13.26	Rotary Club	\$41.00
Sophomores	\$12.00	Grand Total of Carnival	\$1,281.00
Juniors	\$27.34	Quineil Elliott, eighth grader,	
Seniors	\$17.46	was crowned queen of the Fall	
Jr. Study Club	\$38.75	Festival in appropriate ceremonies.	
JayCees	\$46.00		



BUTANE — PROPANE CARBURETORS — STOVES — APPLIANCES
Phone 2810 For Prompt Service

Bring food costs down and eat better with a Genuine Deepfreeze Home Freezer



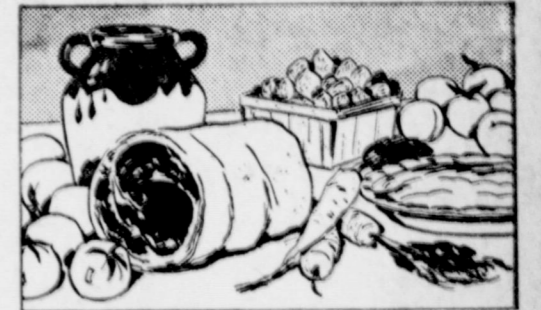
LOWER COST OF FOOD

With a Deepfreeze Home Freezer you can cut your food bills up to 25% by volume purchases and "shopping day specials".



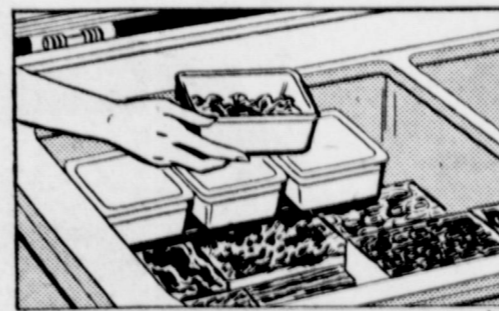
SAVINGS OF TIME AND WORK

You shop less often with a Deepfreeze Home Freezer. You can cook several meals at one time, freeze them, serve them weeks later.



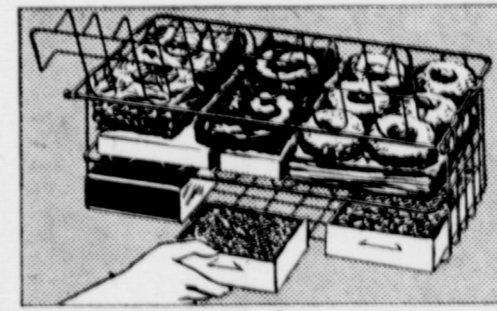
MORE AND BETTER FOODS

You can store all kinds of foods in your Deepfreeze Home Freezer. Freezing preserves their natural flavor and goodness.



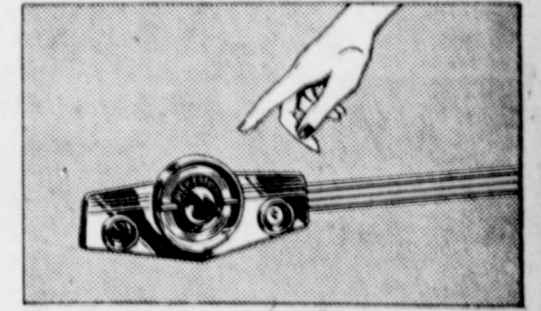
NEW DEEPFREEZE "MENU-MAKER"

Four re-usable one-pint aluminum containers make it easy to store pre-cooked meals or left-overs. Exclusive with Deepfreeze!



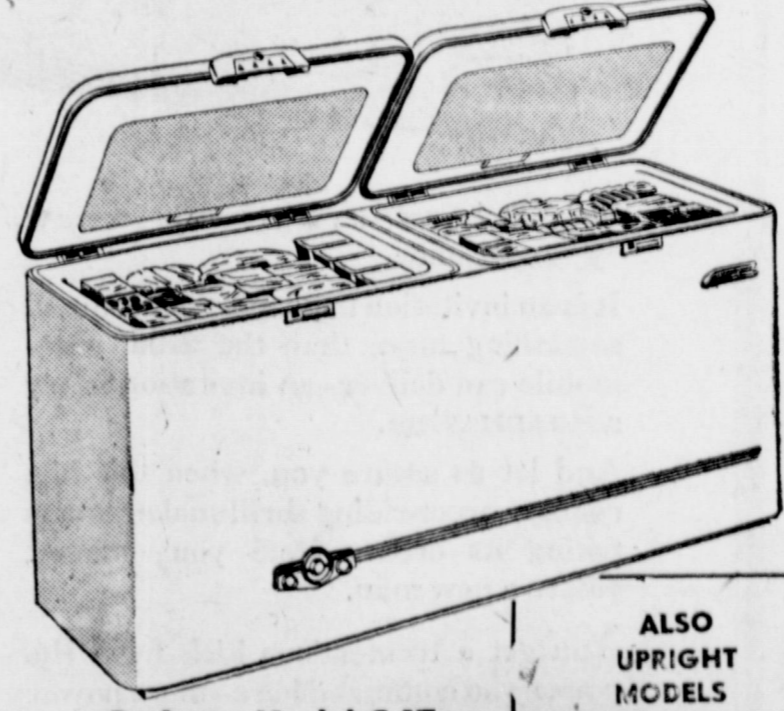
NEW DEEPFREEZE "HANDY BASKET"

Double-deck basket has a hinged side for removing bottom packages of foods easily. Only Deepfreeze Home Freezers have it!



NEW DEEPFREEZE "SILENT SIGNAL"

Gives assurance that desired temperature is being maintained for proper food preservation. Separate temperature control.



De Luxe Model C-17

ALSO UPRIGHT MODELS

PRICES BEGIN AT \$279.95

Let us show you how the Deepfreeze Home Freezer you want can pay for itself in savings! Drop in today and get the whole story!

Deepfreeze Home Freezer Model C17 holds over 590 lbs. of assorted frozen foods. There are 6 models and 4 sizes in the complete line, with capacities ranging from 7 to 23 cu. ft.

THERE'S ONLY ONE GENUINE Deepfreeze Home Freezer

Made by Deepfreeze, North Chicago, Illinois. Prices and specifications subject to change without notice.

LOW DOWN PAYMENT! E-Z TERMS! COME IN TODAY!

MULESHOE LIQUEFIED GAS CO.

WEST ON CLOVIS HIGHWAY

PHONE 3130

M—B—C—E—D

MOST

BEAUTIFUL

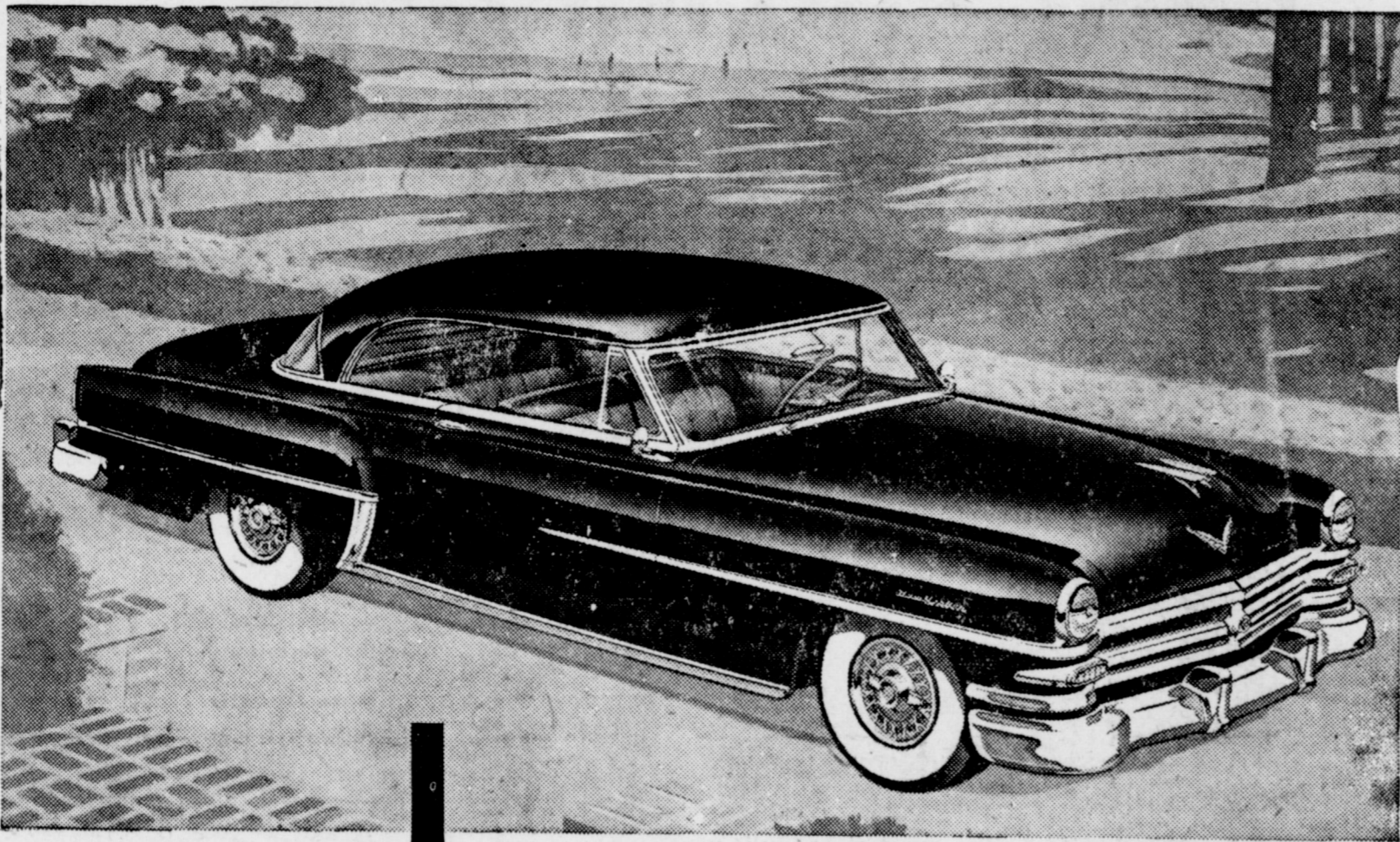
CHRYSLER

EVER

DESIGNED

ANNOUNCING for 1953

THE MOST **BEAUTIFUL** **CHRYSLERS** EVER DESIGNED



WIRE WHEELS OPTIONAL AT EXTRA COST

America's
First Family
of
fine cars!

They're just out and they're just wonderful! . . . strikingly new in beauty and performance . . . the safest, most comfortable cars you ever rode in. From new, one-piece windshield to majestic rear deck you'll see leadership in every Chrysler detail. You'll see the *Highway Fashion of 1953!*

And here are cars that not only look like leaders, but *act it!* Here is Chrysler engineering, bringing

you the 180-H.P. FirePower engine that outperforms all others . . . the ease and safety of Power Steering . . . Power Brakes for faster, smoother, safer stops . . . and famous Oriflow Shock Absorbers for the smoothest ride of all!

We're displaying these superb new cars *now*. Stop in and look them over. Never has Chrysler superiority been so great . . . or so obvious!

CHRYSLER — creates a stunning new mood in Highway Fashion!

ON DISPLAY THURSDAY, FRIDAY AND SATURDAY

Although We Have Been In The Automobile Business Only A Short Time, We Are Fortunate In Being Able To Present This New And Distinctive Line Of 1953 Chryslers To You. It Is Truly The Finest Car We've Ever Seen!

We Have A Supply Of Chrysler Industrial Engines In Stock — Investigate These Fine Motors While Looking Over The New 1953 Chrysler!

"Your Chrysler Plymouth Dealers In Muleshoe"

MORRISON MOTOR Co.

This Is Our Invitation To You To Visit Our Showrooms Thurs. - Fri. - Sat. Oct. 30 - 31 and Nov. 1 To See This Beautiful New CHRYSLER

Why thousands of life-long Democrats

have become

DEMOCRATS FOR EISENHOWER

BECAUSE It's time for a change—not for the sake of change but for the sake of our country!

BECAUSE The shameful era of Pendergast political corruption in Washington has been responsible for:

- The leakage of our atomic and other secrets to Russia.
- Internal Revenue scandals.
- R. F. C. scandals.
- Grain storage thefts.
- Selling of political influence and jobs.
- Political mink coats and deep freezers.

... And hundreds of other examples of gross abuse and selfish misuse of public office.

BECAUSE The shocking mess of political scandal, graft, waste, immorality and fraud has sunk the national political moral standards to the lowest depth in American history.

BECAUSE To restore simple honesty and integrity to national government at once is the urgent duty of every citizen, and should come ahead of self, party, politics, personalities and every other issue of any kind.

BECAUSE The bungling of foreign affairs and the shortsighted policy of "softness" towards Russia have resulted in:

"Losing the peace", which was won so dearly in World War II.

The "give-away" programs of Yalta and Potsdam, where we surrendered eastern Europe and most of Asia to Red Russia.

The "write off" of our historic ally, China.

The catastrophic Korean war for which we were totally unprepared and which was INVITED by our vacillating "diplomats" who had abandoned China and withdrawn Allied troops from Korea.

The seemingly endless Korean "peace talks", which have dragged on for a year, while American casualties grow higher and American prestige grows lower, while Communistic China has had the chance to build up its forces and equipment.

The staggering load of debt, taxes and inflation which are fruits of the Truman foreign policy.

BECAUSE We believe that Communist infiltration of government and certain other organizations is a clear and present danger . . . and not a "red herring", as Mr. Truman has stubbornly insisted.

We believe Republican efforts to smoke out these Communists is NOT a "pursuit of phantoms", as Stevenson has called it.

We believe that Alger Hiss might still be an influential "Fair Deal" advisor, but for the courageous work of Senator Nixon.

The national administration not only has FAILED TO LEAD the fight against Communist infiltration in government—but has actually OBSTRUCTED those who have tried to oust the Communists.

BECAUSE The reckless and spendthrift policies of the present administration has resulted in:

The largest Federal bureaucracy and the largest Federal payroll in history.

Taxes reaching an all-time high.
A staggering Federal debt of 260 BILLION DOLLARS.
An increase in the national debt from \$156 to \$1,730 for every woman, man and child in the United States.

In the words of the "New Dealers," "Fair Dealers" and Mr. Truman: "They have never had it so good." Is the per capita national debt increases from \$156 to \$1,730 REALLY GOOD?

A shrinkage in the value of the dollar to 52 cents.

The depreciation, by fifty per cent, of the value of savings, life insurance, pensions and the like.

The worst inflation and the highest cost of living in our history.

BECAUSE A married couple with two children whose earnings in 1939 were \$333.00 a month must now earn \$750.00 a month just to stay even!

BECAUSE In 18 of the past 20 years the Federal administration has lived beyond its income and gone each year deeper into debt. Even during the most productive years in the history of our country this government did not put aside or save anything for leaner years, or to reduce its colossal debt.

And this year, even while taking from the American people the greatest taxes ever collected by any government on the face of the earth, this Federal government will spend TEN BILLION DOLLARS MORE THAN IT TAKES IN!

BECAUSE Governor Stevenson has accepted the leadership of the left-wing politicians and the big city "bosses" who have spawned and bred and nourished the corruption, the extravagances, the abuses and the misguided socialism against which we are in rebellion.

If elected, he COULD not repudiate the people who picked and elected him. That he WOULD not is clear from his own words when after nomination he addressed the National Democratic Convention in Chicago, saying: "I accept YOUR program!"

BECAUSE Stevenson, in his campaign to date, has repeatedly approved the Democratic platform in toto. He has likewise endorsed the major policies of "Trumanism" as follows:

Stevenson favors further increase in "Big Government" at the expense of the States (e. g., his desire to seize the off-shore oil lands). Stevenson, as his Baltimore speech indicates, apparently approves the Truman fiscal policies which have produced our shocking inflation, ruinous debt and the highest taxes in history.

Stevenson likewise approves the entire Truman foreign policy—a policy which has led America into the Korean war.

Stevenson has not repudiated the alien Truman philosophy of "unlimited inherent powers" in the Executive Branch of the Government.

Stevenson's record in Illinois, where (according to a survey of Illinois newspaper editors conducted by U. S. News and World Report) he converted a substantial surplus into a deficit, indicates that he would continue the reckless extravagance and waste of the Truman regime.

Stevenson makes ONLY ONE CRITICISM of the Truman administration. He admits the "mess in Washington", but thinks he should be given a chance to clean it up!

BECAUSE Dwight D. Eisenhower, respected and beloved the world over, is best qualified.

To reverse the irresponsible and disastrous fiscal policies of the Truman administration, which have prompted the greatest inflation and the highest debt and taxes in our history.

To prevent World War III, and the utter chaos which would result from such a war.

To deal with Communists and their fellow-travelers, at home and abroad, in the manner they deserve! To enable the South to work out its special problems in a manner that would avoid doing immense harm, and setting back race relations for fifty years.

To restore honesty and decency in high places of government.

To protect and preserve Constitutional Government and the free enterprise system.

General Eisenhower is one of the truly great men of American history. We NEED him—NOW!

BECAUSE We agree with Texas Governor Allan Shivers when he told a statewide radio audience that he dreaded another Democratic administration "whose policies would still be decided by men like Harry Truman with Dean Acheson bungling the foreign policy, Gen. Harry Vaughn handing out favors, Oscar Ewing promoting socialized medicine, Oscar Chapman trying to steal the tidelands and Charlie Brannan still promoting the so-called Brannan plan."

BECAUSE We agree with Gov. James F. Byrnes of South Carolina, life-long Democrat, former U. S. Senator, Supreme Court Justice and Secretary of State, who recently announced for Eisenhower, as follows:

"I shall place loyalty to my country above loyalty to a political party. If you want more of the Truman administration, you should vote for Governor Stevenson. If you have had enough, you should vote for General Eisenhower."

"Eisenhower could do more than any living American to bring about an end to war in Korea and prevent our stumbling into another World War."

"When Governor Stevenson was nominated . . . it was my hope he would disassociate himself from the policies of the present administration. He has NOT done so."

"Should Governor Stevenson be elected, he would be under great obligation to President Truman, to the big city political bosses, the Americans for Democratic Action and other pressure groups. Mr. Truman and the leaders of these groups will call upon Mr. Stevenson to retain in office the bureaucrats who have been running the government for the last eight years."

Put Patriotism above Party! Principles above politics!

This Political Advertisement Paid for by Sike Watkins, H. L. Griffiths, F. L. Oliver, John Gammons, Martin Oliver, Charles Long, Shelton Sanders, Lloyd Alsop, Kenneth Precure, R. D. Precure, Walter Ramm, Al Cassidy, D. H. Sneed, Dewitt Precure, and Dr. L. T. Green, Jr.

WTCC Urges Defeat Of Proposed Amendments To Constitution Nov. 4

Defeat of two proposed amendments to the Constitution of Texas to be voted upon November 4 was urged by the taxation and legislation committee of the West Texas Chamber of Commerce at its convention in Wichita Falls last week.

Basic provisions of the two proposals are:

1. To empower the Legislature to enact laws to enable cities to provide Workman's Compensation Insurance, including the right to provide their own insurance risk for all employees, and provide suitable laws for administration of such insurance, and for payment of costs, charges premiums on insurance policies

and the benefits to be paid under them. (House Joint Resolution No. 20).

2. To require that the Legislature create a State Medical Education Board, establish a Medical Foundation Fund and make adequate appropriations for that fund to grants, loans or scholarships to persons desiring to study medicine and to practice in rural areas in Texas, upon such terms and conditions as shall be prescribed by law. The term "rural areas" would be defined by law. (House Joint Resolution No. 38).

The WTCC committee is composed of men of many businesses and professions living in all parts of the 132 counties served by the organization.

Among reasons for opposing approval of the measure relating to Workman's Compensation for city, town and village employees were the following:

1. The Constitution already provides for passage of laws to provide Workman's Compensation Insurance for such employees. Such insurance is available from private insurance companies.

2. Language of the proposed amendment may be interpreted to make it mandatory upon cities to set up a Workman's Compensation system, unlike a present law that makes such policy voluntary for counties and their employees.

3. It would further encroach upon the legal power and authority of cities, and is a step toward centralizing of government.

4. It could bring about creation of an additional State Board that would be supported by further taxation.

Among reasons for opposing the proposal to create grants, loans or scholarships to students who would agree to practice medicine in rural areas, were the following:

1. It would add another to the numerous boards and commissions of the state.

2. The Constitution now prohibits the State from appropriation of public funds for "private or individual purposes" or "giving or lending of the credit of the State in aid of, or to any person, or for pledging the credit of the State for payment of liabilities, present or prospective, of any individual."

3. It is discriminating in that its benefits would be limited to a single class or group.

4. Nothing is binding beyond the moral obligation of a person receiving its benefits to practice in a designated area, which would have to be defined by law.

5. All Medical schools of the

Piglift Is Set November 6 To 8

Texas is doing it again. The Christian Rural Overseas Program, popularly known as CROP, is working with Church, farm and civic leaders of the Lubbock area on an unusual operation, a "PIGLIFT".

The "Good Neighbor Policy" is getting a practical workout. Christian workers in San Salvador and Costa Rica, Central America, have made an appeal for 200 hi-grade breeding stock pigs. These are to be put into the hands of the 4-S boys of those countries. Under the direction of Missionaries and agricultural experts which have been loaned for the purpose, a long range agricultural improvement program is underway there. We are seeking to help them lift their general economic level thru improved farm methods. Seed stock help is being given. In the operation of "Piglift", these little

state are overcrowded and have long waiting lists, and additional facilities for teaching medicine would have to be provided.

6. The term "medical" is not defined. It is left to the Legislature to determine whether the term would include dentists, veterinarians, nurses, technicians, chiropractors, and doctors of osteopathy as well as doctors of medicine.

7. There is no limit upon the amount of money the legislature may appropriate to operate the proposed Board and create the proposed Fund.

8. This is a step in the direction of socialized medicine.

undeveloped Central American countries will furnish the boys if we furnish the pigs. Texas leaders have promised to set the plan in motion here. Donors are responding daily, among them many farm boys.

November 6, 7, and 8, have been set as the dates when the pigs will be received at the Tech farm near Lubbock. Any individual or group wishing to participate may do so.

Walter Wells, Stanley Anderson, G. T. Hackney, L. M. Hargrove and John H. Key of Lubbock are some of the outstanding local men who are helping bring the "Piglift" to a successful conclusion. On November 17, the pigs will be loaded at the Tech farm for immediate delivery to the boys who will receive them in Central America. There will be no costs to the recipients.

LEDGER SHEETS in stock at The Journal. Ph. 7220.

ATTEND FUNERAL IN PADUCAH

Mr. and Mrs. W. F. Creamer attended the funeral Thursday Oct. 23, of B. H. Creamer of Paducah who passed away at the home of his daughter, Mrs. Alton Ryan in Childress.

Funeral services were held from the Church of Christ of Paducah at 3 p. m.

Mr. and Mrs. Creamer were one time residents of the Goodland and Bailey County area for approximately eight years. They were very active in the work of the Church of Christ and she was

LUZIER'S
Fine Cosmetic & Perfumery
MRS. E. E. HOLLAND
1101 East 2nd St.
Phone 5449

CALIFORNIA WESTERN PUMPS UNIVERSAL JET PUMPS

WHY NOT get the best when you drill your Fall wells?

Our prices are right. Complete, Fast service at all times. Turnkey estimates made.

We have a wider variety of bowls to suit your water conditions. Service and pumps fully guaranteed.

E. H. KENNEDY
1200 W. 5th. St.
Phone 5480

RAY CARTER
Farm Bureau
Phone 6480

A sound economy is a sound understanding brought into action.—Hannah Moore.

Governments have no right to engraft into civilization the burlesque of uncivil economies.—Mary Baker Eddy.

supervisor of the lunch room of Three Way.

Stop Taking Harsh Drugs for Constipation

End Chronic Dosing! Regain Normal Regularity This All-Vegetable Way!

Taking harsh drugs for constipation can punish you brutally! Their cramps and griping disrupt normal bowel action, make you feel in need of repeated dosing. When you occasionally feel constipated, get gentle but sure relief. Take Dr. Caldwell's Senna Laxative contained in Syrup Pepsin. It's all-vegetable. No salts, no harsh drugs. Dr. Caldwell's contains an extract of Senna, oldest and one of the finest natural laxatives known to medicine.

Dr. Caldwell's Senna Laxative tastes good, acts mildly, brings thorough relief comfortably. Helps you get regular, ends chronic dosing. Even relieves stomach sourness that constipation often brings.

Try the new 25¢ size Money back if not satisfied. Mail bottle to Box 280, N. Y. 18, N. Y.

DR. CALDWELL'S
SENNA LAXATIVE
Contained in pleasant-tasting Syrup Pepsin

IN DALLAS
Mrs. Charlie Barnett, Mrs. Roland Matthiesen, Mrs. Clyde Bray and Hoyt Morgan left Sunday for Dallas where they will attend clothing markets.

IT'S ONLY YOUR MONEY!

That's what Administration officials seem to be saying about the taxpayer's hard-earned bucks, judging by the waste in Government spending. But if you value your money,

VOTE FOR **EISENHOWER AND NIXON**

(Pol. Adv. Paid for by H. L. Griffiths)

USE OUR **Lay-A-Way Plan** For CHRISTMAS PORTRAITS **Cline's Studio** 1324 Main — Muleshoe

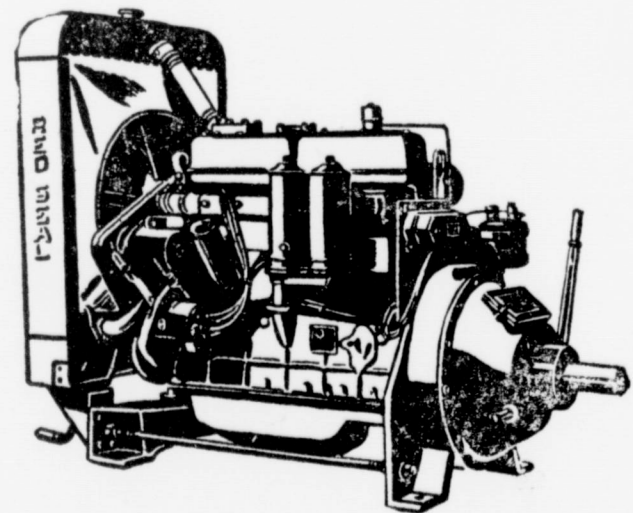
for the love of **IKE**



Vote for **EISENHOWER and NIXON**

(Pol. Adv. Paid for by R. D. Precure)

RED SEAL CONTINENTAL ENGINES



DESIGNED AND EQUIPPED FOR BUTANE, NATURAL GAS OR GASOLINE.

A complete line of engines from 1 1/2 HP to 280 HP.

WE NOW HAVE IN STOCK 4 sizes, special built Irrigation Engines, with 8.6 compression for Butane Gas. Equipped with heavy duty clutch, roto type valves, overhead oilers, Penn safety switches, and cooling system.

PRICES are very competitive for the amount of horsepower produced.

COME IN AND LET US SHOW YOU THE LATEST THING IN IRRIGATION ENGINES

D. H. SNEED SUPPLY CO.

Phone 4170

Muleshoe



"They never had it so good!"

THE order is, "Forward march"—and oft they go, feet sucking against the Korean mud, every bone crying, "I'm tired!"

The order is flop and eat—and they flop and try to eat, no matter how little they like the food.

The order is, "Take hill number 63!"—and they fight forward, not ready for death, but expecting it with every splatter of bullets.

Then, in the quiet moments, one soldier will turn to another and half grin and say, "You never had it so good."

A joke—a classic Army joke—but these days it has a real bitter note to it. Because at the same time everyone is wondering and saying:

"Did it have to come to this?"

"Couldn't the shooting have been stopped before it began?"

"What's the matter with our foreign policy?"

"Why didn't the Administration see this coming?"

"Must we keep paying for their mistakes?"

"WHAT? We've never had it so good? COME INTO MY FOXHOLE AND SAY THAT!"

All right—the damage is done—and we all know what has been badly begun must be well ended.

BUT—shall we forget or forgive those who blundered? Will YOU? Do YOU DARE? Will you trust America's future foreign policy to those responsible for Korea? Is this official fumbling what you want for America? You know it isn't!

Not if you value the lives of your sons. Not if you value your own life and welfare and that of your family. Not if you value the peace and prosperity of America.

No—you will want to clean house. You will want to sweep out of power and into the ash can the Administration that brought your country to this. You will run, not walk, to the polls. You will vote eagerly, glad that you can make a change. You will

Vote for EISENHOWER and NIXON

and a Republican Congress

(Political Adv. Paid for by Bailey County Republican Party, Earl Ladd, County Chairman, Sike Watkins, Prec. Chairman)

The Muleshoe Journal

PUBLISHED EVERY THURSDAY AT MULESHOE, TEXAS
Entered as second class matter at the Muleshoe Post Office under the Act of Congress, March 3, 1897



SUBSCRIPTION RATES

In Immediate Territory, 1 Year \$2.00
Out of Immediate Territory, 1 Year \$2.50

J. M. FORBES Editor and Publisher

BABSON DISCUSSES

New Inventions

New York City, Oct. 24 — Electronic developments may largely counteract the evils of inflation. In fact, they may cause the value of the dollar to increase for awhile. I feel so strongly about the importance of new inventions that I keep, at my own expense, two fulltime experts at the Patent Office in Washington to watch for revolutionary discoveries.

WHAT ELECTRONICS ARE DOING

Newer forms of electronic equipment are helping business and industry to operate faster, more accurately, and at lower cost. Electrical computers, recording oscillographs, mass spectrometers, electron diffraction cameras, electron microscopes, strain measuring equipment, and the complex analytical instruments used in the oil and chemical industries are accomplished feats. Electronic perceiving, memorizing, calculating, and concluding mechanisms will be widely used to see and act far beyond man's physical powers.

Engineers have developed automatic electronic equipment which reduces by at least 50% the time required to make color plates for printing. This reduces costs, saves time, and assures high-quality color reproduction. The telephone and telegraph companies and the railroads have already made very important savings in time, labor, and equipment through the use of electronic mechanisms and devices. The air lines and the military forces have found them invaluable. Only the bus companies lag in the procession of progress.

NOW SAVING TIME AND LABOR

An electronic inventory control system will accomplish, in a matter of days, what ordinarily takes scores of people a period of several weeks. In the field of medicine the electron microscope, which magnifies more than 350,000 diameters, is bringing to light much new information regarding viruses, bacteria, cells and tissues. There is also electronic equipment for the inspection of medicines, as well as of food and beverages, which will prove big labor and time savers.

I am told a large insurance company will displace 1,000 women with new electronic equipment. All the above will be greatly hastened by the new "transistor", a tiny device using a

germanium crystal which will replace present tubes. This should greatly reduce the cost and size of electronic machines.

GREAT CHANGES POSSIBLE

Biologists believe that a primary purpose of food is to develop electronic waves in the body which directly stimulates our nerves, brains, and blood; while indirectly stimulating our hearts, stomachs, and other organs. Hence, these questions arise: (1) Instead of heating the air in our homes and offices in winter, why not, electronically, merely heat our bodies? This might eliminate present heating systems and the use of fuel. (2) Could not the necessary food consumption be radically cut by treating, electronically, the food we eat either before or while eating?

Homes may have something about the size of a small radio with push buttons. Push No. 1, and all those in the room will laugh; push No. 2, and they will all cry; push No. 3, and they will all enjoy beautiful music, but without a sound in the room, push No. 4, and their thinking powers and memories will quickly be stimulated so that they can answer questions like the "Quiz Kids".

PHYSICAL CHECK UPS

Having watched the progress of the Electronic Medical Foundation, located at 2452 Van Ness Avenue, San Francisco, California, I recently sent them a small sample of my blood to be electronically studied. It seems fantastic, but their diagnosis corresponds very closely with the "check up" which my physician gave me after the use of various machines and the consuming of considerable time. I surely would not recommend such electronic tests as a substitute for present medical diagnosis; but they may become of valuable assistance, and have definite curative powers.

Surely tremendous material advances are ahead. It is most important that our grandchildren develop spiritually at the same rate.

Our Honor Roll

New subscribers to The Journal this week are:
John Killion, Portales, N. M.
Arthur L. Cooper, Route 2.
Old subscribers who have renewed their subscriptions to The Journal this week are:
R. L. Roubinek, Star Route 1.
H. M. Gable, Route 1.
H. M. Shofner, Route 2.
E. W. Gray, Route 2.
Ed Hulse, Baileyboro.
Durwood S. Green, Sherman, Texas.
Vance Wagnon, City.
I. H. Robertson, City.
L. S. Barron, City.
Mrs. Leota Wilterding, City.
R. L. Lewis, City.

SAND HILLS PHILOSOPHER — Says Some People Are Tired Of Race But Not Him, Says Let It Rip

Editor's note: The Sand Hills Philosopher on his Johnson grass farm is talking about the election his letter this week reveals.

Dear editor: I've heard a lot of people say they're tired of the Presidential race and they'll be glad when it's over, it's been too bitter, too much wrangling, too many lies being told, maybe too much truth, too much dissension among friends, too much time wasted, too many radio programs interfered with, too many good murders crowded off the front page, but I do not look at it that way.

I'll admit the campaign started a little early and the candidates got to the name calling stage too soon and it's gettin a little dull, after all, after you reach the climax and call your opponent a liar, there's nothing left to say, and if you

call him one too early in the campaign you have to spend the last three weeks just repeating yourself. All the shock value is gone out of your charges and a man is almost reduced in the home stretch to runnin on his

own merits and in lots of cases there ain't nothin more borin than that, regardless of how much merit you got.

But on the whole the campaign has been pretty good. Believe there have been more new ways invented for callin the other fellow a liar than I've ever remembered, more real ingenuity and evidence of some real thinkin in that field, there've been more predictions of disaster than I can remember, more promises of plenty, more concern for the future of the country and more assurance of how to protect it than I've ever encountered. There are people who say democracy is worn out, but when democracy can stand a dog fight like the one we're about to emerge from and keep right on goin, there ain't nothin seriously wrong with it.

And three or four days after the election, after the enthusiasm of one side and the disappointment of the other has worn off and the bets have been collected, things will settle back down and the campaign will be about as interestin as a last year's football game.

I ain't predictin how it will come out, but it might not be a bad idea for both candidates to be given some thought not only to a victory statement but to a telegram of congratulations to



"T. A."

Local Grocery Display Price Posters Nov. 3

DALLAS, Oct. 27 — Retail grocery in Bailey County will begin displaying official OPS ceiling price posters on November 3 in an extension of the Office of Price Stabilization's nationwide "community food pricing" program.

The announcement was made in Dallas by Frank C. Tomlinson, OPS regional food and restaurant branch chief, who added that the posters are now being printed and will be mailed in sufficient time to be posted by grocery before the deadline date.

On the same date, the OPS grocery price posting program will be extended to 179 counties in Texas, covering the entire state. Since September 29, "community pricing" has been in effect in a 72 county area in the northern half of Texas, and in the three south Texas counties of Bexar, Harris and Galveston.

According to Tomlinson, the official charts which will be posted in this county and in most of West Texas, list uniform ceiling prices for some 450 food items. The posters basically are the same posters which have been in use in northern Texas,

the other one. Yours faithfully, J. A.

but with some minor price changes and a few additions and deletions reflecting local food item and brand preferences.

"Community pricing" gets its name, the food chief explained, because all stores of the same class have the same retail ceilings in an area or "community" where wholesalers are able to deliver to retailers without adding freight costs.

Tomlinson pointed out that posted prices give grocery customers an opportunity to see at a glance the ceiling prices on many of the important foods they buy. Also, the grocer is relieved of the task of figuring his own price ceilings, since this is done for him on a periodical basis by OPS.

Myron Bayless Wins \$570 For Factory Idea

A total of \$1320 in awards was shared this week by four General Electric employees for ideas they submitted to the Company's Suggestion System at Hanford Works.

Topping the list with \$570 is Myron K. Bayless, Separation Section, with an idea for greatly improved jet assembly system at the storage area in which he works. Bayless lives at 802 Chesnut in Richland. He is a former resident of Muleshoe.

A check for \$350 went to John V. Theis, Metal Preparations Section, for an idea to eliminate a

problem and improve a work method in his unit. He lives at 1503 Lee Boulevard.

D. J. Fellman and E. E. Beebe, both of Reactor Section, joined forces in redesigning a part which simplified their work operation, and earned awards of \$200 each. Fellman lives at 804 Chesnut, and Beebe lives at 510 Cottonwood in Richland.

The suggestions system is one way in which the General Electric Company gives employees recognition for their ideas which improve efficiency of operation, increase production, or reduce hazards.

Mr. Bayless was raised in Muleshoe, attended school here and went to the Armed Forces in the last War. He has been with General Electric for several years. Bayless is a son of Mr. and Mrs. Roy Bayless.

VISITED IN TULIA

Mrs. C. D. Julian visited last week in Tulia with her son-in-law, R. M. Willis, who is very ill. He underwent an operation in Amarillo last Thursday.

VISITED GARDNERS

Mr. and Mrs. Oscar Abernathy, of Oklahoma City, visited over the week end here with Mr. and Mrs. A. J. Gardner. Mrs. Abernathy and Mrs. Gardner are cousins.

CECIL H. TATE
ATTORNEY-AT-LAW
Office in Courthouse
Muleshoe, Texas

Your VOTE is your voice in your government

It speaks for you, for your family, for your job... and for your country's future.

It can advance equal opportunity to all men... and it can wipe out prejudice.

It can make tyrants tremble...and it can give a troubled world new hope.

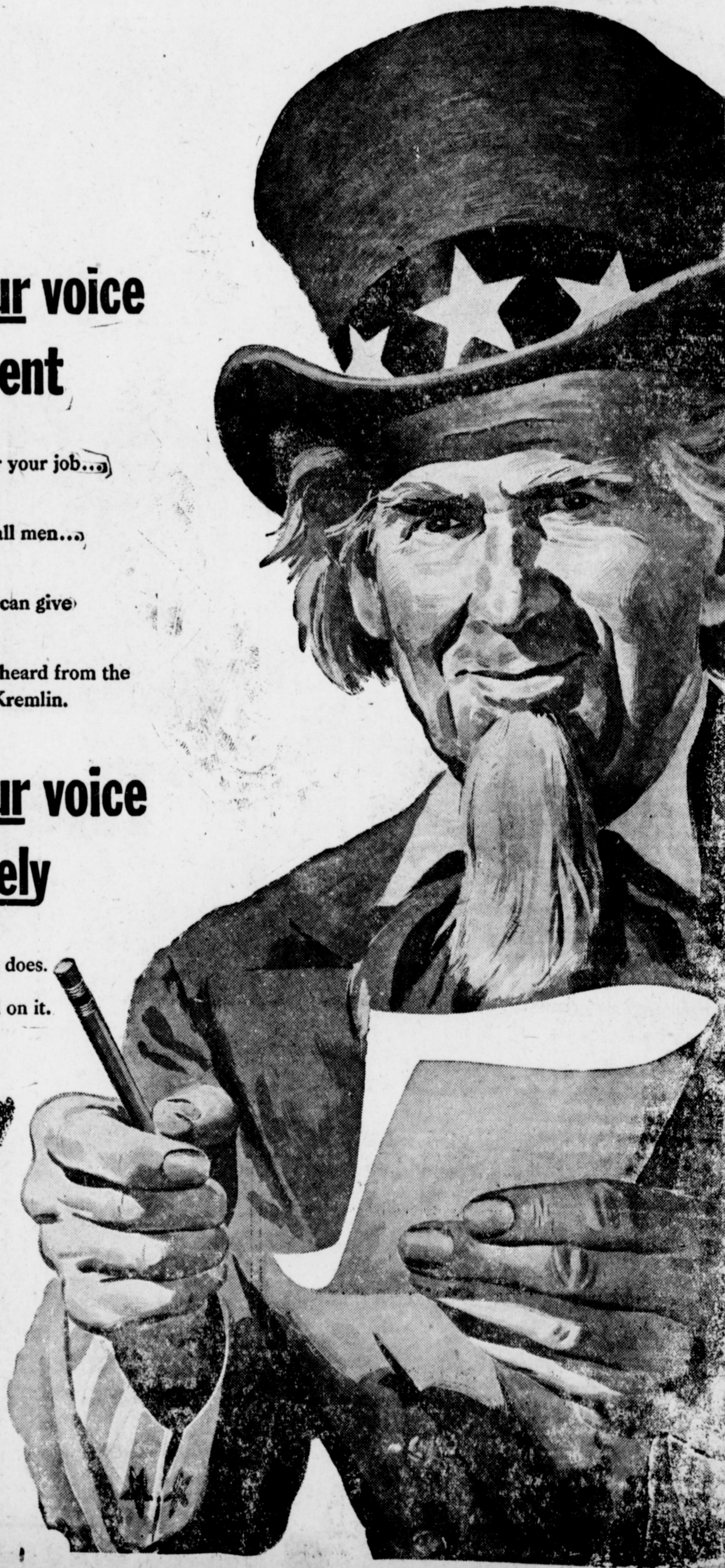
It is a powerful voice. Its echo can be heard from the halls of Congress to the walls of the Kremlin.

Your VOTE is your voice Let it speak wisely

Vote as if your life depended on it. It does.

Vote as if America's future depended on it. It does.

VOTE!



CUSHMAN SCOOTERS ACCESSORIES — REPAIR WORK

Cushman Scooter Sales & Service
510 Prince St. Clovis, N. M. 39-121c.

Fiber of Defense



WAREHOUSE YOUR COTTON FOR GOVERNMENT LOANS

The first step in obtaining government loan is to place your cotton in an approved warehouse. You will receive a negotiable warehouse receipt for each bale. Your warehouse will furnish correct weights, pull samples for classing, and certify loan papers requested by the government for completing your loan.

Cotton farmers, who placed 3,800,000 bales in the 1948 loan, realized an extra profit of \$17.50 per bale. Only through a time tested and proved efficient system of warehousing and marketing could these millions of bales have been stored, protected and preserved to bring cotton growers this \$67,000,000 profit.

Take care of your crop from boll to bale, and you can depend on your warehouse to take care of your cotton from bale to spindle and to the most profitable market for you.



UNION COMPRESS & WAREHOUSE CO.
Muleshoe, Texas.

No Quotas On Cotton For '53

No marketing quotas or acreage allotments for the 1953 cotton crop. That's the word going out to farmers, according to B. F. Vance, Chairman of the State Production and Marketing Ad-

ministration Committee. Under provisions of law, the Secretary of Agriculture is required to proclaim a national marketing quota by October 15 whenever he determines that the total supply of cotton for the marketing year will exceed the "normal" supply, that is, domestic consumption and exports plus a 30 per cent carry-over. For extra long staple cotton, a proclamation is required whenever the total supply exceeds the normal supply by more than 8 per cent.

NORMAN W. BAYS
Attorney-At-Law
Office In Courthouse
Phone 2670 Muleshoe, Texas

GUARANTY ABSTRACT CO.

BONDED FOR YOUR PROTECTION

Office In Bank Building
Phone 2640 Muleshoe

Complete Abstracts of Title to All Lands and Towns in Bailey County, Texas

PAT R. BOBO, Owner BETTE COWAN, Manager

THE MAYTAG AUTOMATIC GETS CLOTHES CLEANEST!

- Famous Gyrateam washing action
- Fully automatic
- No hotting down
- See it today at...



JOHNSON-POOL

Tire & Appliance
Dial 7370 Muleshoe, Texas



TIRE HEADQUARTERS



By John C. White, Commissioner

ORDERLY COTTON MARKETING

A marketing problem may develop in Texas this fall which should attract the attention of every crop producer. The commodity to watch, primarily, is cotton but all crops can be similarly affected when unexpected surpluses develop. At present, there is no big surplus in cotton, but here is the situation:

Cotton prices declined slightly following the United States Department of Agriculture's production report in early October. The report showed an increase of 524,000 bales above the previously expected total.

Growers of cotton immediately expressed the fear that this decline would continue if the true facts of the cotton situation were not clearly understood.

There should be no alarm at all about this modest increase in 1952 prospects. This added production will be needed. The higher figure is still well below the 1952 production goal and is just about the same as the expected domestic and export demand for cotton during the marketing year.

Since this is the case, the farmer would do well to hold a part of his cotton for this year in anticipation of a good market a few months from now. Every grower knows prices drop when the market is flooded to quickly.

If the present indications for production and disappearance are borne out, we will hold our

eting quotas or acreage allotments".

While supplies of extra long staple cotton exceed the level at which a quota proclamation is required, such cotton is a strategic raw material for national defense, and quotas are therefore not being proclaimed this year.

Acreage planted to cotton in 1953 will be considered as a part of the base average in establishing future cotton acreage allotments, Mr. Vance said.

own in the cotton situation and possibly add a few hundred thousand bales to the comparatively low carryover reserves of the last two years.

Cotton producers themselves can do a great deal to avoid the danger of temporary declines in prices by spreading out their marketing in an orderly way. Gathering has been proceeding rapidly. If the crop is dumped immediately after the harvest, prices might dip temporarily below levels justified by the overall situation.

Farmers are urged to market in an orderly manner, taking advantage of the price-support loan program to make this possible. By following this course, they can protect the values of the 1952 crop as they have done in previous years.

If the crop is marketed properly, there will be no apparent reason for any material drop in prices, even for the period right after harvest.

More Hogs Are Needed In Texas

COLLEGE STATION, Oct. 28 — An economic appraisal of hog production and pork consumption in Texas has just been published by the Texas Agricultural Experiment Station.

Authors are John A. Kincannon and John G. McNeely, and the study was published at Bulletin 749.

While Texas does not produce enough animals to fill our need for pork products, yet the state ranks ninth nationally in hog production. Cash income to Texas farmers from sales of hogs amounted to more than 63 million dollars in 1950, the study reports.

Hogs are produced over all of Texas but the greatest concentration was found in the principal grain-producing areas. Farm and commercial slaughter of Texas hogs fall short of supplying the needs of the State's growing population. Annually thousands of live hogs and millions of pounds of pork products are shipped into Texas from other states to meet this demand.

Bulletin 749 shows the amounts of imports and the comparative prices paid for hogs in Texas and out-of-state markets. A summary is given on the present situation and possible adjustments in the future are indicated.

A copy of Bulletin 749 may be obtained from the Texas Agricultural Experiment Station, College Station, Texas.

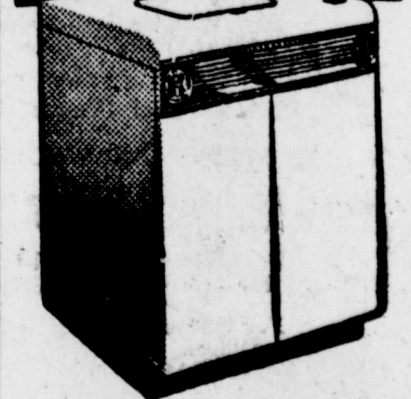
Cpl. Bass Is Back From Army

Cpl. Edgar A. Bass, Jr., is back at home after a tour of duty of three years and 4 months with the Army. Cpl. Bass served in Korea with the 2nd Engineer Construction Group, a part of the Eighth Army.

He is the son of Mr. and Mrs. Edgar A. Bass of Enochs. He received his honorable discharge from the Army a few days ago, and says he may engage in farming. A brother farms in the West Camp community.

MORE PEOPLE read the want ads every week. They cost little, get the job done. Try one.

WORLD'S FINEST AUTOMATIC WASHER



BLACKSTONE

• We'll demonstrate its superiority right before your eyes. Weekly payments as low as \$2.50

Johnson-Pool
TIRE & APPLIANCE

Dial 7370 Muleshoe

Bulb Planting Time In Texas

COLLEGE STATION, Oct. 28 — October 15 through December 15 is bulb planting time in Texas. Sadie Hatfield, homestead improvement specialist for the Texas Agricultural Extension Service says October is considered the best month for planting most bulbs which can exist in cold weather.

The hardiest bulbs are the narcissi or daffodils, jonquils, grapehyacinth, snowflakes, snowdrops and most of the early blooming bulbs. The specialist recommends waiting until later to plant those with roots or bulbs that frozen soil would destroy. Gladiolus grow from tender corms and dahlia from tender tubers, so these bulb-like plants are not planted until hard freezing weather is past. In much of Texas they can be planted in January and February.

Most bulbs grow best in fertile soil which is moist but well drained. The specialist says most bulbs will grow better in full sun, however many of them grow in the shade.

Prepare the soil by fertilizing with 5-10-5 for the sandy and light soil, and 16-20-0 for black and potash-rich soils in West Texas. The specialist recommends one-half cup to each 25 square feet of soil. Add a tablespoon of bone meal and a cup of sand or two inches beneath each bulb when placed in the soil.

The depth of planting depends on the size of the bulb. A large narcissus bulb may be planted seven to nine inches deep. Tulips are usually planted about seven inches, and bulbs of Dutch iris are smaller and planted four or five inches deep. Grape-hyacinth is still smaller and planted two to four inches deep. Iris which grow from rhizomes, are planted almost on top of the ground barely covered with soil. The crocus is planted only three inches deep. Place lilies which root at the base of the bulb five inches deep in the soil.

CREAMERS HAVE VISITORS

Mr. and Mrs. S. S. Kos of Portales visited in the W. F. Creamer home over the week end. She is Mr. Creamer's sister.

John Williams Aboard Essex

Serving aboard the aircraft carrier USS Essex in the Far East, is John W. Williams, airman, USN, son of Mr. and Mrs. Walter S. Williams of Earth.

The Essex, famous since World War II as the "Fightin'est Ship in the Fleet", has been in almost continual combat operation since her recommissioning on Jan. 15, 1951.

PAPER and Office Supplies at The Journal. Pho.7220.

LEDGER SHEETS in stock at The Journal. Pho.7220.

Clovis Veterinary Hospital

AT THE STOCKYARDS CROSSING

Facilities for Large and Small Animals

E. E. KRAUS, D. V. M. CHAS. WEBSTER, D. V. M.
104 Hull Phone 5442 Clovis, N. M.

BACTEX

THE ORGANIC and MINERAL FERTILIZER

Recommended Now

—FOR—

Fall feeding of Lawns, Flowers, Shrubs, Trees and Permanent Pasture.

HICKS TRACTOR CO.

Phone 6020

Muleshoe



TAX PROBLEMS?

You can meet the tax problem of tomorrow with a sound program of business life insurance.

Marion F. Harris

REPRESENTING

Southwestern Life

Insurance Company
JAMES RALPH WOOD, PRESIDENT HOME OFFICE • DALLAS

OUR COTTON CROP IS VERY LIGHT

Therefore

WE WILL HAVE PLENTY OF ROOM FOR SOME OF YOUR COTTON AROUND MULESHOE

WE HAVE 2 FINE GINS —

Beck Gin, No. 1

8 Miles Due South of Sudan

Beck Gin, No. 2

6 Miles South, 3 West of Sudan — Or 4 Miles East And 3 South of Circleback

Both Have Been Repaired And Are Ready To Give You A Good Turnout

So-

IF YOUR GINS HERE GET SWAMPED THIS SEASON WE INVITE YOU TO BRING SOME OF YOUR COTTON TO ONE OF OUR PLANTS NEAREST TO YOU.

Our country has grown strong and great under a two party system. When one party stays in power too long it tends to get more negligent and corrupt. Fortunately, the people have changed them in the past just in time. No one party has done all the good or all the bad. Yet one party is claiming all the credit for the good times.

In 1930 when we had the last Republican president, house and senate, cotton sold for nineteen cents per pound. In 1931 the Democrats took over control of Congress and six months later cotton was selling for six cents per pound.

Six years later with a Democratic president and congress, The New Deal in full swing, cotton was still bringing less than 10c.

It took World War II to bring up prices and when they began to sag, Korea and the threat of World War III kept them up.

Yet there are those who claim the Democratic Party was solely responsible for the good times, and if you want to exercise your privilege of voting for the opposition you are accused of being captured by big business or old line politicians. Do they want to turn our nation into a one party system. God forbid!

Ike was good enough to lead us in time of war and we believe he is good enough to lead us now.

The Democrats do not know what to do with the Korean situation. They draft our boys when there are thousands of Asiatics wanting to fight the Com-mies.

Let's let them fight !!

Let's Vote Ike

(Pol. Adv. Paid for by W. W. Dranscum)

Attend Society Meet In Plainview

Several from Muleshoe last week attended the regional Meeting of the Delta Kappa Gamma Society, held in Plainview. Four

chapters were represented at the meeting which had for its theme "Forward Together with Understanding and Vision". A coffee and luncheon was served. Local members at the meeting were Mrs. Ed Johnson, Mrs. Jerry R. Kirk, Mrs. Mabel Dowell, and Mrs. John Watson.

Study Club Meets In Home Of Mrs. Irvin St. Clair

The Muleshoe Study Club met Thursday evening, Oct. 23, in the home of Mrs. Irvin St. Clair. Mrs. Mary Hart introduced the speaker, Mrs. L. S. Barron, who presented the story of "Mary, Mother of Jesus, and Mary Magdalene". Mrs. Lee Pool then spoke on "Mary of Bethany and Mary, Sister of the Virgin".

The club received an invitation to hear Mrs. J. W. Walker speak in Sudan on October 27 on "Government and Club Women". Refreshments were served by the hostess to visitors, Mesdames Lela Barron, Bill Jim St. Clair, Pat Bulloch, and members, Mesdames A. J. Gardner, Mary Hart, Glenn Dunn, Horace Blackburn, Lee Pool, H. S. Sanders, Sr., Pat Bobo, Vance Wagnon, Clifton Griffiths, John Watson, M. F. Green, and Naomi St. Clair.

The club was 100 per cent in donating for the fall festival. The total club donation was \$20.

VISITORS FROM LUBBOCK

Mr. and Mrs. Bruce Horsley and sons of Lubbock visited in the home of Mr. and Mrs. C. A. Horsley Sunday.

Office Supplies at The Journal

Society News

By Mrs. Joyce Shafer

THE MULESHOE JOURNAL, Thursday, October 30, 1952

Bishops Celebrate Golden Wedding Anniversary Sunday At Progress

Mr. and Mrs. C. A. Bishop celebrated their Golden Wedding Anniversary Sunday, Oct. 19, in their home at Progress.

Mr. and Mrs. Bishop were married at Boxelder, Texas, in 1902 and moved to the Panhandle in 1919.

Estelle Dawson Is Hall President At Wayland College

Plainview, Oct. 30 — Estelle Dawson, senior from Muleshoe, has been elected president of Willis Hall at Wayland College.

Besides serving as president of her dormitory, Estelle is president of the Young Woman's Auxiliary, a Baptist mission centered organization. One of the most important functions of YWA is their community missions, which include sending boxes of food to Korean soldiers, preparing Thanksgiving baskets for needy and giving parties for Mexican and Negro children. The Wayland YWA's are sponsored by the Business Womens Circle of College Heights Baptist Church.

Estelle is secretary of her Sunday School class and worked in the Former Students Association Office. She is majoring in business and minoring in English. She is the daughter of Mr. and Mrs. J. U. Dawson, Muleshoe.

Old friends calling during the afternoon were Mr. and Mrs. H. G. Eastwood of Taiban, N. M., Mr. and Mrs. H. C. Potter of Clovis, N. M., and Mrs. L. H. Shockey of Hagerman, N. M. Forty-six guests called throughout the afternoon and the honorees received many nice gifts and anniversary cards.

Cake, punch and coffee were served by Mrs. C. C. Morgan and guests were registered by Mrs. M. O. Nigh.

Allisons Host Philathea Circle

The Philathea Circle of the First Methodist Church met in the home of Mrs. Harold Allison Thursday, Oct. 23, with Mrs. Oscar Allison as co-hostess.

In the absence of the president, Mrs. Theresa Edwards conducted the business meeting.

Mrs. Deon Awtrey brought the program on "Housecleaning of Our Homes and Our Souls." Mrs. Oscar Allison then gave a very interesting report on the National Sunday School workers Conference which was held in Lubbock Thursday, with Dr. Mary Alice Jones presiding.

Refreshments were served to Mesdames N. D. MacAllister, J. K. Adams, Jigs Johnson, Deon Awtrey, Horace Edwards, George Elders, Edsel Bynum, David Weyer, H. W. Hanks, Willis Farrell, and one visitor, Mrs. Sam McKinstry, mother of the hostess and co-hostess.

The meeting of November 6 will be held in the home of Mrs. Deon Awtrey.

It is heaven upon earth to have a man's mind move in charity, rest in providence, and turn upon the poles of truth.—Bacon.

VISITED IN SNYDER
Mrs. Charlie Prather and children visited in Snyder Sunday

with her mother, Mrs. H. S. Hart and family and other relatives.

The world abhors closeness, and all but admires extravagance; yet a slack hand shows weakness, and a tight hand strength.—Buxton.

PAYMASTER ELEVATOR

In The Market For Your

SORGHUM GRAINS

Highest Market Prices At All

Times

PAUL SCOTT, Mgr.

Muleshoe, Texas

See Us Or Call 4820

WHO HAS RED BED-FELLOWS?

You remember how the Administration kept saying there was no one under the covers with them, except other Democrats—and then some Red would show through! Be sure of your Government officials.

VOTE FOR EISENHOWER AND NIXON

Pol Adv Paid for by Kenneth Precure).

BIG SAVINGS ON

COTTON SACKS — WORK SHOES — KHAKI CLOTHES

IRRIGATION SUPPLIES — TENTS and TARPAULINS

GUNS And AMMUNITION

BLANKETS — QUILTS

PRESTONE ANTI-FREEZE

RUSSELL SUPPLY CO.

PHONE BILL RUSSELL — 3400

Muleshoe

Texas

4,000 Attended Grand Chapter Meet This Week

About 4,000 persons attended the annual OES Grand Chapter meeting, held in Amarillo this week.

Members of the Muleshoe chapter attending included Mrs. Chet Layne, Mrs. Jim Cox, Mrs. Winnie Dunn, Mr. and Mrs. J. E. Mills, Mrs. John Farley, Mrs. J. W. Thomson, Mrs. Willie Strong, Miss Elizabeth Harden, R. J. Klump, Mrs. A. J. Gardner, Mrs. Dorothy Barron, Mrs. Edward White, Mrs. Loyd Roberts, now of Clovis, and Mrs. Lucy McAdams, now of Amarillo.

PRATHERS HAVE GUESTS

Wilbur Floyd and Glen Robinson of Snyder, visited in the J. F. Prather home Sunday.



Vote for EISENHOWER and NIXON

(Pol Adv. Paid for by F. L. Oliver Jr.)

ACCEPT A COUNTERFEIT? OF COURSE NOT!



A forged coin may get by for a while, but sooner or later it's found out and someone's left holding the "phony."

When it comes to buying parts for your John Deere Equipment, buy parts that you can trust... genuine John Deere Parts. They're dependable parts made right... to fit right... to perform properly and last longer.

John Deere Parts are made from the same top-grade materials... by the same precision methods... to the same exacting standards as were the original parts they replace. We carry the genuine; see us for your John Deere Part needs. Come in soon.

DAVIS - LENDERSON

YOUR JOHN DEERE DEALER

PHONE 2970

MULESHOE

BUY ONLY GENUINE JOHN DEERE PARTS - THEY FIT AND WEAR LIKE THE ORIGINALS!

ONE UNDER A COVER MAN

All winter long, you can sleep under one cover — if that cover is an electric blanket. Just set the automatic control at your personal comfort setting, and you'll rest without fear of any outside temperature changes.

Now is the time to get set for an "under one cover" winter. Buy electric blankets for your beds before the cold weather sets in.

SEE YOUR **MODERN ELECTRIC** APPLIANCE DEALER

SOUTHWESTERN PUBLIC SERVICE COMPANY

28 YEARS OF GOOD CITIZENSHIP AND PUBLIC SERVICE

No. 0000 (Specimen) OFFICIAL BALLOT

You may vote for the candidates of your choice by placing an X in the square beside the name or you may vote for the candidate of your choice in each race by scratching or marking out all other names in that race.

DEMOCRATIC PARTY	REPUBLICAN PARTY	PROHIBITION PARTY	PROG
For President and Vice-President: <input type="checkbox"/> ADLAI E. STEVENSON and JOHN J. SPARKMAN	For President and Vice-President: <input type="checkbox"/> DWIGHT D. EISENHOWER and RICHARD M. NIXON	For President and Vice-President: <input type="checkbox"/> STUART HAMBLEN and A. HOLTWICK	For P.
For United States Senator: <input type="checkbox"/> PRICE DANIEL	For United States Senator: <input type="checkbox"/> PRICE DANIEL	For United States Senator:	
For Congressman-At-Large: <input type="checkbox"/> MARTIN DIES	For Congressman-At-Large: <input type="checkbox"/> MARTIN DIES	For Congressman-At-Large:	
For Governor: <input type="checkbox"/> ALLAN SHIVERS	For Governor: <input type="checkbox"/> ALLAN SHIVERS	For Governor:	
For Lieutenant Governors: <input type="checkbox"/> BEN RAMSEY	For Lieutenant Governors: <input type="checkbox"/> BEN RAMSEY	For Lieutenant Governor:	
For Attorney General: <input type="checkbox"/> JOHN BEN SHEPPERD	For Attorney General: <input type="checkbox"/> JOHN BEN SHEPPERD	For Attorney General:	
For Associate Justice, Supreme Court, Place 1: <input type="checkbox"/> FRANK P. CULVER	For Associate Justice, Supreme Court, Place 1: <input type="checkbox"/> FRANK P. CULVER	For Associate Justice, Supreme Court, Place 1:	
For Associate Justice, Supreme Court, Place 2: <input type="checkbox"/> GRAHAM B. SMEDLEY	For Associate Justice, Supreme Court, Place 2: <input type="checkbox"/> GRAHAM B. SMEDLEY	For Associate Justice, Supreme Court, Place 2:	
For Associate Justice, Supreme Court, Place 3: <input type="checkbox"/> W. ST. JOHN GARWOOD	For Associate Justice, Supreme Court, Place 3: <input type="checkbox"/> W. ST. JOHN GARWOOD	For Associate Justice, Supreme Court, Place 3:	
For Associate Justice, Supreme Court, Place 4: (unexpired term) <input type="checkbox"/> CLYDE E. SMITH	For Associate Justice, Supreme Court, Place 4: (unexpired term) <input type="checkbox"/> CLYDE E. SMITH	For Associate Justice, Supreme Court, Place 4:	
For Judge of Court of Criminal Appeals: <input type="checkbox"/> KENNETH K. WOODLEY	For Judge of Court of Criminal Appeals: <input type="checkbox"/> KENNETH K. WOODLEY	For Judge of Court of Criminal Appeals:	
For Railroad Commissioner: <input type="checkbox"/> OLIN CULBERSON	For Railroad Commissioner: <input type="checkbox"/> OLIN CULBERSON	For Railroad Commissioner:	
For Comptroller of Public Accounts: <input type="checkbox"/> ROBERT S. CALVERT	For Comptroller of Public Accounts: <input type="checkbox"/> ROBERT S. CALVERT	For Comptroller of Public Accounts:	
For Commissioner of General Land Office: <input type="checkbox"/> BASCOM GILES	For Commissioner of General Land Office: <input type="checkbox"/> BASCOM GILES	For Commissioner of General Land Office:	
For State Treasurer: <input type="checkbox"/> JESSE JAMES	For State Treasurer: <input type="checkbox"/> JESSE JAMES	For State Treasurer:	
For State Commissioner of Agriculture: <input type="checkbox"/> JOHN C. WHITE	For State Commissioner of Agriculture: <input type="checkbox"/> JOHN C. WHITE	For State Commissioner of Agriculture:	

WHAT TO DO:

1. At the top of the Democratic Party column, strike out the names of Adlai E. Stevenson and John J. Sparkman.
2. Leave the rest of the Democratic Party column as it is.
3. At the top of the Republican Party column, leave the names of Dwight D. Eisenhower and Richard M. Nixon.
4. Strike out the rest of the Republican Party column.
5. Strike out all other columns on the ballot.

DEMOS FOR IKE BALLOT — A resolution of the State Democratic Convention recommended that "every Democrat in Texas vote and work for" the election of Eisenhower and Nixon. The sample ballot reproduced above shows the easiest way a Texas Democrat can vote for Eisenhower. Another method is the write-in plan recently approved by Attorney General Price Daniel. Voters may scratch Stevenson and Sparkman and write in Eisenhower and Nixon under the Democratic column, crossing out the Republican and other slates.

(Political Adv. Paid for by Pat R. Bobo)