

# Muleshoe Journal

Volume 87, No. 3

www.muleshoejournal.com

Muleshoe, Texas

50¢

January 19, 2006

## School board talks about money, building needs

By Larry Thornton  
Managing Editor

The Muleshoe Independent School District's Board of Education met with administrators, architects and financial advisors Thursday, Jan. 12, for an opportunity to "think outside the box," discussing preliminary drawing and getting an idea about possible construction costs.

"Right now, we're trying to decide on a square footage to determine construction costs," Stephan Faulk of MWM Architects explained to the school board and administrators prior to speaking about the preliminary drawings that had been prepared for the meeting.

Faulk said there was a possibility that



Architect Stephan Faulk talks about the preliminary drawings with the MISD school board.

construction materials would be in short supply for a couple of years, and even rationed, because of the reconstruction effort following Hurricane Katrina on Gulf Coast.

And while the projected costs may seem high, Faulk also noted that the removal of hazardous materials from the school district's aging

buildings.

Still, financial advisor Doug Whitt of Southwest Securities had a little positive news to add, noting that while construction costs are high, the cost of money — i.e. the cost of borrowing funds for such a construction project, is still relatively low.

Whitt discussed a variety

of options available to the school district to fund either the construction of new buildings or the rehabilitation of existing structures.

However, while Whitt believes the school district could fund a construction project totaling \$20 million, utilizing available state funding programs and passage of a local bond issue, the projected costs of building four new buildings at each of the district's campuses would cost a projected \$59,366,593.

Whitt also pointed out that the school district could approve a bond issue, and then sell the bonds in a multiple-phase construction project.

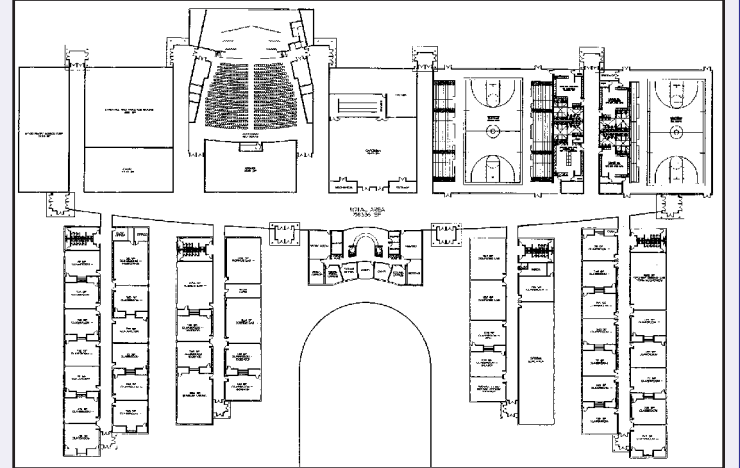
With such information at hand, Superintendent Gene Sheets asked Faulks what type of building and

rehabilitation projects would best for the district if there were only \$20 million available.

In his reply, Faulk said the school board would have to decide if the proposed projects could be "tightened

up." Whitt said there were several different time lines available to the school district, depending upon the availability of state

*Continued on page 11.*



### A time to dream!

Pictured above is a preliminary drawing of a new high school building presented to the MISD school board Thursday. Unfortunately, with a projected construction cost of \$20,583,680, the likelihood of it housing Muleshoe's secondary education needs are extremely small, but it doesn't cost anything to dream...

## Commissioners' court amends Bailey County's burn ban

By Larry Thornton  
Managing Editor

Bailey County's Commissioners' Court modified its burn ban during

a brief special meeting Monday, with the intent of allowing certain types of work — such as welding — under very strict

supervision.

As he did at last week's regular meeting, Commissioner Juan Chavez voted against the burn ban, restating his belief that a burn ban wasn't necessary because the wildfires that have struck other areas of Texas weren't intentionally set.

However, Chavez' vote was in the minority with the remaining commissioners in attendance and County Judge Sherri Harrison

discussed whether the county should place signs along Hwy. 84 reminding drivers and passengers not to throw out lit cigarettes.

At the Jan. 6 meeting, Commissioner C.E. Grant indicated the county needed such a burn ban in place for county residents to be eligible for FEMA funds.

Turn to page 2 for the text of the county's amended burn ban.

In other business, the court set an hourly wage for

the new maintenance and community service coordinator position at \$10 per hour.

According to Judge Harrison, Guy Wiley has accepted the position and would be working 20-25 hours per week. "He's way overqualified and we're lucky to have him," she said.

**A burn ban is in effect in Bailey County**

## Candidates file for March primary county elections

A total of nine candidates have filed for elected positions in Bailey County, according to County Judge

Sherri Harrison.

Of those positions, only two are being contested at this point — that of Precinct 2 County Commissioner, and Bailey County Judge.

Filing as Republicans are:

- Incumbent County Clerk Paula Benton — who has filed for the position to which she was appointed in February 2005;
- County Treasurer Shonda Black;
- Incumbent Justice of the Peace Deb Stone;
- Incumbent County Judge — who has filed for the position to which she was appointed in February 2005;
- Incumbent Precinct 2 Commissioner C.E. Grant; and
- Precinct 2 Commissioner candidate Rex Harris.

Filing as Democrats are:

- Incumbent Precinct 4 Commissioner Juan Chavez, and
- Incumbent District Clerk Elaine Parker.

Filing as an Independent is:

- County Judge candidate Wells Hall.

This year's primary election will be held on Tuesday, March 6.

The general election will be held on Tuesday, Nov. 7, at which time the candidates currently facing opposition may also face opposition from the county's write-in vote.



### Just visiting...

Muleshoe Chamber of Commerce & Agriculture members gathered for Business After Hours Thursday, at the warehouse of Five Area Telephone Cooperative, Inc., which hosted this month's event. Among the guests were Cong. Randy Neugebauer, who stopped by for a hamburger and gave a brief analysis of events occurring back in Washington, D.C. His message — things are looking up.

### Changes announced at Muleshoe Motor

Effective as of January 2006, Dan Brannon has purchased 100 percent ownership of Muleshoe Motor Co., Inc. from former owners Lary and Wanda Hooten.

Muleshoe Motor has a long history in Bailey County and has been in existence since the 1920s and a Ford Dealer since 1962. Brannon looks forward to many more years of service to the

residents of Muleshoe, Bailey County and the surrounding area.

Brannon has brought in general manager and partner Jim Hall to oversee the day-to-day operation of the dealership.

Hall has extensive experience in the automotive industry, most recently in Columbus, Texas.

His wife Jaelynn will

assume the duties of office manager. She too has an automotive industry background.

The Halls have five children: Tanner, 10; Audrey, 9; Colton 8; Joci 6; and Meagan 5.

Joci and Meagan are currently enrolled in first grade and kindergarten respectfully at Muleshoe

*Continued on page 3.*

### Junior Livestock Show opens this week

FFA and 4-H students from across the county will be gathering at the Bailey County Coliseum this week as the 2006 Junior Livestock Show kicks off.

The show, which is scheduled for Thursday, Jan. 19, to Saturday, Jan. 21, will include the Premium Sale on Jan. 21, beginning at 1 p.m.

Animals entered into this year's show are scheduled to arrive between 10 a.m. and 6 p.m. on Jan. 19, and begin showing on Jan. 20.

According to show officials, the this year's show schedule is as follows:

- Swine — Jan. 20, beginning at 8:30 a.m.
- Meat goats — Jan. 20, beginning at 2 p.m.
- Sheep — Jan. 20, following the goat show.
- Cattle — Jan. 21, beginning at 8:30 a.m.

The event is open to Bailey County students with projects supervised by the county extension agent or county vo-ag teachers.

**Local Weather**

**Thurs.**  
Pt. Cloudy.... 67/27

**Fri.**  
Pt. Cloudy.... 52/18

**Sat.**  
Mt. Sunny.... 55/22

**Sun.**  
Sunny..... 56/22

**Mon.**  
Pt. Cloudy.... 59/26

**Tue.**  
Pt. Cloudy.... 53/26

**Wed.**  
Pt. Cloudy.... 61/26

---

*Give It  
A Thought*

It is rewarding to know that we can and will make a difference in this world. We can be more: caring, positive, understanding, patient, and more willing to give of ourselves to help others. What an opportunity we have!

Words to ponder from Beverly

---

**Missed your paper?**  
Call the Journal at 272-4536, between 8:30 a.m. and 5 p.m.

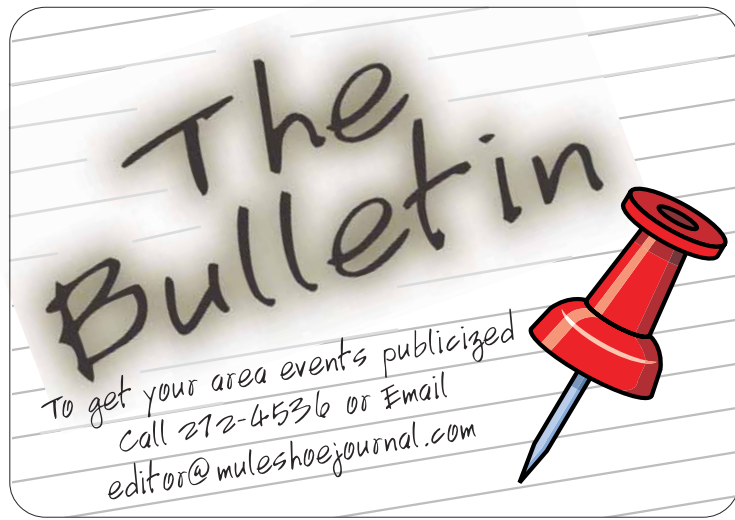
**HOME OWNED AND HOME OPERATED**

**MULESHOE STATE BANK**

Each deposit insured to \$100,000

**FDIC**

Muleshoe Branch: 272-4561  
101 W. American Blvd.  
Farwell Branch: 481-9580  
801 Ave. A



### County burn ban amended

During a Regular Meeting of the Commissioners' Court of Bailey County, Texas, on Jan. 9, 2006, an Order Prohibiting Outdoor Burning was adopted.

Further, the court hereby amends the prohibitions and restrictions imposed under the Jan. 9, 2006, Order to provide as follows:

1. The use of combustible materials in an outdoor environment by any person is prohibited. Combustible materials include, but are not limited to the use of all fireworks, discarded cigarettes and materials used outdoors in activities such as welding and any other activity that could result in a fire.



2. Notwithstanding No. 1 above, outdoor welding shall be allowed under the following circumstances:

A. The welder must notify the BAILEY County Sheriff's Department before any welding, cutting or grinding begins;

B. A perimeter around the welding area shall be a minimum of 25 feet and clear of vegetation, if possible, and kept wet. The welding perimeter must be three times the height of the actual welding. Example: if the welding is occurring ten feet off the ground, a perimeter of thirty (30) feet must be protected.

C. If the perimeter cannot be cleared of vegetation, proper precautionary measures must be taken (Example: Protecting brush, etc. by utilizing fire resistant tarps.)

D. A spotter with water and a ready pressurized delivery system must be on hand before any welding, cutting or grinding begins and remain on hand until the activity is completed.

In accordance with the Local Government Code, a person who knowingly or intentionally violates this order commits a Class C Misdemeanor, punishable by a fine of up to \$500.

The purpose of this order is the mitigation of the public safety hazard posed by wildfires during the current drought and severe weather conditions by restricting use of combustible materials.

Approved and so ordered this the 16th day of January 2006.

### Diabetes support group

The Bailey County Diabetes Support Group will meet on Tuesday, Jan. 17, at 7 p.m. in the meeting room of the Bailey County Coliseum. The program will be "How to have an Effective Doctor's Office Visit." This program is free of charge to everyone interested. The Diabetes Support Group meets the third Tuesday of each month. For more information contact Mandi Seaton, Bailey County extension agent — Family and Consumer Sciences, 306 West Second, Muleshoe, TX 79347, 806-272-4583.

### AA meeting

Those looking for help with problem drinking can do so at open AA meetings being held at 7 p.m. each Friday at the First United Methodist Church, at 507 W. 2nd, Muleshoe. Please use the west side entrance. For information about these meetings or AA in general call 806-965-2870

### Financial seminar

First Baptist Church will be hosting Financial Peace University, a Dave Ramsey Financial Seminar, beginning Jan. 29. Orientation dates are Jan. 15 and 17 at 6 p.m., and classes start on Jan. 29 at 5 p.m. This is a 13-week study. Child care will be provided.

For more information or to reserve your seats call Tadd and Annie Young at 272-5883 or the First Baptist Church of Muleshoe's office at 272-4224, or contact Dave Ramsey at www.daveramsey.com

### Cotton conference to be held

The Llano Estacado Cotton Conference will be held Jan. 25 at the Bailey County Coliseum in Muleshoe. Registration begins at 8 a.m. There is a \$15 fee, which includes lunch at the seminar. Five continuing education units are available. For more information, call Curtis Preston at the Bailey County Extension Office, (806) 272-4584.

### Girl Scout cookies going on sale

Muleshoe's Girl Scouts, part of the Caprock Council, have started their annual cookie sales, and will be joining more than 4,000 other Caprock Girl Scouts in the annual marketing venture that will run from Jan. 10 to March 15.

### Olton Junior Livestock Show

The 61st annual Olton FFA and 4-H Junior Livestock Show is set for Jan. 19 -21 at the Olton Ag Pavilion.

Judging is set to begin Friday, Jan. 20, at 8:30 a.m., and the premium sale on Saturday at 1:30 p.m.

### Trinity Baptist to celebrate 50th

Trinity Baptist Church in Muleshoe will be celebrating their 50th Anniversary on Jan. 29. Past and present members as well as any and all who would come and celebrate a love for the Lord are invited to attend. Services will begin at 10 a.m. Lunch will be provided. If you plan to attend and have lunch, call the Rev. Bennie Wright at 272-3301 or Johnnie Parker at 272-4788.

### Kevin Spencer & Friends performing

The southern gospel singing group Kevin Spencer & Friends are scheduled to perform at the First Assembly of God in Muleshoe on Jan. 22 during the 11 a.m. worship service. The public is invited to attend.

### Melba Bratcher retirement party

After serving more than 20 years with the Bailey County Farm Service Agency office, Melba Bratcher is retiring. With that in mind, a farwell party has been scheduled in her honor on Tuesday, Jan. 31, from 1:30 p.m. to 3:30 p.m.

### Youth program meeting set

The Muleshoe Heritage Foundation has been awarded a \$7,500 grant by Xcel to fund programs and activities for local students, eighth grade and younger, during the interim periods — Spring Break, Summer Break and Fall Break.

These programs are required to be "learning programs to enhance the participants understanding and appreciation of the area's history, heritage and various art forms."

A meeting has been set for Thursday, Jan. 19, at 5:30 p.m. to form a committee for this program at the Heritage Depot. The meeting is open to individuals, including parents and grandparents of the target-age children, who are interested participating in such a youth program or just wish to attend.

### High Plains production conferences offer CEU opportunities for producers

Helping farmers stay up on the latest trends in crop production, marketing, and management ideas is the number one goal of High Plains crop production conferences.

Sponsored by Texas Cooperative Extension, the Conferences offer valuable production information for producers entering the 2006 growing season.

Conferences are scheduled at multiple locations throughout the area to provide growers an opportunity to receive this information without having to travel too far from home.

By attending the conferences producers can also earn continuing education units (CEUs) necessary to maintain private and commercial applicator licenses.

This year's conference dates and locations are:  
**Jan. 12 West Plains Cotton Conference**, 8 a.m. South Plains College, 1401 S. College Ave., Levelland.

For more information contact Kerry Siders, Hockley County EA-IPM at 806-894-2406.

**Jan. 17 Caprock Cotton Conference**, 8 a.m.

Plains Baptist Assembly, nine miles south of Floydada on Hwy. 62. There is a \$25 registration fee.

For more information contact Steve Davis, Crosby County EA-IPM, at 806-675-2426 or J.D. Ragland, Floyd CEA-AG, at 806-983-4912.

**Jan. 25 Muleshoe Crop Conference**.

For more information contact Curtis Preston, Bailey CEA-AG, at 806-272-4584.

**Jan. 26 Southern Mesa Ag Conference**, 8 a.m.

Dawson County Annex Bldg., 609 N. First Street, Lamesa. Early \$20 registration can be mailed to Texas Cooperative Extension, P.O. Box 1268, Lamesa, TX 79331. Registration at the door is \$25

For more information contact Jeff Wyatt, Dawson CEA-AG, at 806-872-7539.

**Feb. 7 South Plains Ag Conference**, 8 a.m.,

Nikki Vinson Youth Center, 110 W. Hill, Brownfield.

For more information contact Chris Bishop, Terry CEA-AG, at 806-637-4060.

### St. Ann's dinner

St. Ann's Catholic Church of Bovina is sponsoring its annual German Sausage Dinner on Sunday, Jan. 29, from 11:30 a.m. til 2 p.m. at St. Ann's Parish Hall, on Third Street in Bovina.

Donations are \$7 for adults and \$3 for children under six.

**Muleshoe Journal** USPS 367820  
Established February 23, 1924. Published by Bradford Newspaper Group. Every Thursday at 201 W. Ave. C, P.O. Box 449, Muleshoe, TX 79347.  
Periodicals Postage paid at Muleshoe, TX.  
POSTMASTER: Send address changes to the Muleshoe Journal, P.O. Box 449, Muleshoe, TX 79347.  
We are qualified members of:  
Panhandle Press Association, West Texas Press Association and Texas Press Association © 2006

**Chris Bradford, Publisher**  
cbradford@castrocountynews.com  
**Leah Bell, General Manager/Ads**  
ctyankee@fivearea.com  
**Larry Thornton, Managing Editor**  
editor@fivearea.com  
**Bookkeeping/Classified Advertising**  
journal@fivearea.com

**Member TPA 2006 TEXAS PRESS ASSOCIATION**  
**PPA Panhandle Press Association**  
**WEST TEXAS PRESS ASSOCIATION**

SUBSCRIPTIONS:  
By Carrier Yearly - \$22.00  
Bailey County — By Mail - \$24.00  
Elsewhere - \$26.00  
Advertising Rate Cards On Application

"Advertisers should check their ad the first day of insertion. The Journal will not be liable for failure to publish an ad or for a typographical error or errors in publications except to the extent of the cost of the ad for the first day of insertion. Adjustment for errors will be limited to the cost of that portion of the ad where the error occurred."

**ONLY PLATEAU DELIVERS CARRYOVER MINUTES!**

Does Your Plan Let You Keep Your Unused Minutes Every Month?

**\$39.95** For Our **BEST** Plan

- > **1000** Anytime Minutes with **FREE** Nationwide Long Distance
- > **FREE** Unlimited Night and Weekend Minutes with **FREE** Nationwide Long Distance
- > **FREE** Unlimited Mobile-to-Mobile
- > **FREE** Carryover Minutes
- > **FREE** Loyalty Minutes

**You Oughta Be in Pictures!**  
Extra Minutes Mean Extra Memories with Carryover Minutes.

**The Motorola RAZOR is Here!**

**NETWORK EXPANSION**

**OUR NEW TOWERS ARE LOCATED AT:**

- Boaz — 21 miles SW of Kenna, NM on Hwy. 70. Provides coverage between our existing cell sites at Kenna and High Lonesome.
- Brooks — In Clovis near Llano Estacado Blvd. & Sugar Beet Rd. serving the Eastern Clovis area.
- Muleshoe — 1/2 mile south on Hwy 214. Will improve cell phone usage on the south side of Muleshoe.

EXT MESSAGING ■■■ WEB BROWSING ■■■ PICTURE MESSAGING ■■■ WIRELESS INTERNET ■■■

"A CLOSER CONNECTION"  
www.plateauwireless.com  
877-PLATEAU (752-8328)

**PLATEAU Wireless**

**Race to any Plateau Wireless store to sign up!**  
Way To Go, Plateau!

<b>Muleshoe</b> Five Area Telephone Coop. 302 Uvalde (806) 272-7700	<b>Muleshoe</b> Connection Warehouse 117 Main St. (806) 272-5532	<b>Frona</b> WT Services 1010 Columbia (806) 250-5555	<b>Frona</b> Pancho's 611 W. 11th (806) 250-2299
--	---	--	---

Contract Term: 2 years. Early termination fees: \$200 per year, maximum of \$400. Night and Weekend hours are Monday through Thursday 7:00 PM through 6:59 AM and Friday 7:00 PM through Monday 6:59 AM. When outside the designated home area, Roaming: \$.50 per minute with Free Long Distance. Additional taxes, fees, and surcharges may apply. Unused plan minutes carried over month to month. 30 minutes after one year of service, 60 minutes after three years of service and 100 minutes after five years of service. Carryover Minutes will be removed on the date of disconnect or suspension. Certain restrictions apply. Plan only available on GSM phones. Offer not available in all markets. Offer valid through 1/31/06.

# Editorial

## Tough decisions ahead

It's a classic car, a 1965 Ford Mustang, "cherished out" with a spotless interior. Sure, it doesn't have an automatic transmission, or air conditioning, but it has class and a lot of memories tied to it... and it's paid off.

Unfortunately, the years have gone by, and while the paint is still bright with a new coat of paint, you know that over the years there have been a few mechanical repairs that are still needed. And there's also that space problem. Your family began growing a few years ago, and now trips with the entire family are limited to your second vehicle. This also means part of the family has to stay at home when the second car is in the shop.

It's a hard pill to swallow, but the time has come for your Mustang to head down the road with someone else behind the wheel. The problem is there is no way to replace the Mustang without considerable, long-term expense.

A similar feeling must have gripped the stomachs of many at Thursday's school board meeting with its architects and financial advisor. To say the meeting was disappointing is a vast understatement.

Looking at the school district's \$59 million dollar need, and trying to figure out how the district's bonding capacity of \$20 million — including available state funding — can meet that need was no doubt an enormous pill for the school board, the administration and community members in attendance to swallow.

According to school district records, the last construct bond approved by the residents of the district was in 1965 for DeShazo Elementary. The last bond issue presented to the public was a \$1 million bond for renovations to the high school. It failed.

Since that time, the MISD school board has accomplished a lot... paying for small projects out of its building fund rather than presenting the districts' needs to the people and allowing the voters to help decide this important portion of their children's education.

But the problem is that over the years the school district's buildings have started falling behind, losing ground in their ability to meet the educational needs of the district's children.

At this time, we don't know what route the school district should take, but we do know that a comprehensive plan providing for the replacement of all the district's buildings over a period of time should have been in place a couple of decades ago.

When you consider that the \$20 million bond issue previously referred to would cost the owner of a \$50,000 home about \$100 more per year, it's hard to understand how it could be opposed... but no doubt many will oppose it.

Still, when you consider that for a family of four, you're talking about the equivalent of eating at home rather than eating out twice during the year and not taking the family to a movie twice, it becomes a matter of priorities. Which is more important... four evenings' entertainment, or the education of your children and grandchildren?

Your at an intersection, and the engine in your Mustang has just thrown a rod. Should you call a garage, or a car dealer?

## Springlake-Earth High School honor rolls released

The third six-week period honor roll for Springlake-Earth High School has been released. Among the students honored were:

**"A-B" Honor Roll**  
**Ninth grade** — Quay Collom, Austin Conner, Blake Fennell, Matthew Fuentes, Claudia Longoria,

Taylor Moore, Sheryl Proctor and Jennifer Silva.  
**Tenth grade** — Victoria Conner, Amanda Furr, Margaret Garcia, Laura Geissler, Mary Gonzalez, Daniella Martinez, MiReyna Reyes and Kate Sides.  
**Eleventh grade** — Jayme Howard, Andrew

Lancaster, Meagan Lowe, Haley Lunsford, Roxanne Martinez, Logan McCurry, Erica Proctor and Judith Reyes  
**Twelfth grade** — Melinda Garcia, Hilary Garza, Joseph Gonzalez, Landon Miller and Monica Nieto.

**"A" Honor Roll**  
**Ninth grade** — Amy Fennell, Heath Fennell and Hunter Jones.  
**Eleventh grade** — Laurie Davis and Kristi Miller.  
**Twelfth grade** — Zeth Collom and Shelley York.

## Muleshoe Motor changes hands



Jaelynn and Jim Hall with owner Dan Brannon

Continued from page 1  
 Independent School District.

The new owners and managers to Muleshoe Motor encourage everyone to come by and see all the new and exciting things happening at the dealership.

"Our inventory will grow substantially both on the new and used lines," said Jim Hall. "And our hours of operation are being extended — Monday through Friday, 8 a.m.-6 p.m., and Saturdays, 9 a.m.-5 p.m."

Muleshoe Motor will continue to maintain its Blue Oval dealership status, including the certified sales staff and technicians, Brannon said.

"We'd like to take this opportunity to thank Lary and Wanda Hooten for their many years of service and ownership Muleshoe Motor," said Brannon. "Their shoes will be hard to fill."

## BUTTONS

Does your business have a web site? Do you want more exposure for that web site?

Invest in a button on the Muleshoe Journal's new web site [www.muleshoejournal.com](http://www.muleshoejournal.com).

For only \$25 a month, you'll get a button ad that links your web site to ours from any section of our site - news, obituaries, lifestyle, classifieds or forum! Information indicates our web site is a high traffic site - don't miss out! Call the office at 272-4536 for more info.

**WE ARE YOUR HOMETOWN WHIRLPOOL DEALER.**  
*"Let Us Give You A Quote On Your Next Appliance!"*  
**McDaniel's APPLIANCES**  
 1020 Main Street, Clovis, NM • 505-762-4481 or 800-682-7891

**We're In The Field With You.**  
 So when you need us, we'll be there.

**Farm & Ranch Loans at Competitive Rates**  
 Land Loans • Production Loans • Equipment Loans  
 Cattle Loans • Rural Housing Loans

**Also, Ask About Our**  
 Cash Management Program • Equipment Leasing Program  
 Credit Life Insurance • Crop Insurance • Recreation Loans  
 Young and Beginning Farmer Program

**We Proudly Support Agriculture!** [www.agmoney.com](http://www.agmoney.com)

**FIRST AG CREDIT**  
 FARM CREDIT SERVICES

1601 West American Blvd. Muleshoe 272-3010

## Letter to the Editor

To the Editor:

With many health problems and when times are tough, sometimes we wanted to give up, but we put our faith in the Lord, and he showed us that there are good people among us.

One of those persons is Gene Sheets, superintendent of Muleshoe Schools. He came to our house and shared with us the spirit of Christmas and on Thanksgiving he brought a full meal — already cooked — to our house. He also took us Christmas shopping.

In our time of trials, and our needs, he came through. We just wanted express our gratitude, and tell him "you are greatly appreciated. We love you, and you and your family will always be in our prayers."

Just wanted the City of Muleshoe to know what a wonderful man you are.

The Hernandez Family, Muleshoe

## MAHD meeting set for Thursday

The Muleshoe Area Hospital District's regular meeting is tonight, Thursday, Jan. 19, at 7 p.m., in the dining room of the Muleshoe Area Medical Center.

Trust Your Friends At  
**DR. J.W. HALTOM**  
*Family Dentistry*  
 To Give You A Gorgeous Smile!

Dr. J.W. Haltom, Jessica Haltom, Amber Garcia & Rhonda Griffin

**TEETH WHITENING \$150<sup>00</sup>**

**\$25 OFF COMPLETE EXAM**

**RECEIVE \$50 OFF ANY CROWN, BRIDGE, PARTIAL OR COMPLETE DENTURE**

- Nitrous Oxide available
- Emergencies seen promptly
- Insurance and credit cards accepted

OFFICE HOURS: Mon.-Thurs.: 8 am-5 pm; Friday: 8 am-noon  
 320 E. 8th St. • Littlefield • 385-6935

## Nobody Gets You Money Faster.

**Instant Money Refund Anticipation Loan.**  
**Nobody gets you more money on the spot.**

With an Instant Money Refund Anticipation Loan, you can walk into H&R Block with your taxes and walk out with a loan check.\* Now that's fast money.

Call 1-800-HRBLOCK or visit [hrblock.com](http://hrblock.com) for an office near you.

**H&R BLOCK®**

**H&R Block**

104 E. Ave. C

Muleshoe, TX 79347  
 806-272-3332

Mon.-Fri. 9:00-6:00

Sat. 9:00-5:00  
 Late Appointments Available

\*Credit provided by HSBC Banks USA, N.A., member FDIC. An account fee and a finance charge are charged by HSBC. You may not qualify for an Instant Money refund anticipation loan (RAL) but may qualify for a classic RAL as soon as one day later. Amount received may be reduced by debt owed for a prior RAL and fees owed to H&R Block. At participating offices. Those who e-file with direct deposit typically receive refunds in 8-15 days.  
 ©2005 H&R Block Services, Inc.

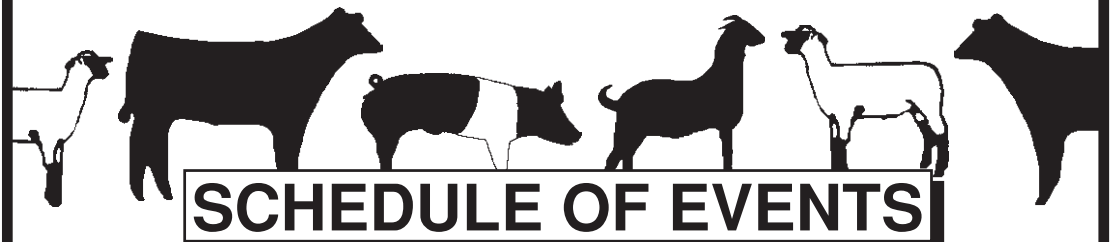
Five Area Telephone Cooperative encourages you to show your support for the youth of Bailey County by attending the

# 2006 BAILEY COUNTY JR. LIVESTOCK SHOW

## FRIDAY, JAN. 20

## SATURDAY, JAN. 21

Bailey County Coliseum • Muleshoe, Texas



## SCHEDULE OF EVENTS

### FRIDAY, JANUARY 20

Gilt & Barrow Show ..... 8:30 am  
 Goat & Sheep Show ..... 2:00 pm

### SATURDAY, JANUARY 21

Steer & Heifer Show ..... 8:30 am  
 "Jimmy Dale Black Award" Immediately following Steer/Heifer Show

PREMIUM SALE ..... 1:00 pm  
 Product Auction Sale ..... 1:00 pm

Prospective buyers are welcome to attend a luncheon beginning around noon on Saturday, January 21, prior to the premium sale.

Brought to you by:

## Five Area Telephone Organization

Five Area Telephone Cooperative, Inc. • West Plains Telecommunications, Inc.  
 Plateau Wireless Network • Five Area Systems, Inc.  
 Five Area Long Distance, Inc. • [fivearea.com](http://fivearea.com) • Five Area Paging



302 Uvalde, Muleshoe • 272-5533 or 800-741-6925

# BAILEY COUNTY DEVOTIONAL PAGE

**AG AVIATION**  
2 1/2 miles North on HWY 214  
272-3066 FAX 272-8981  
P.O. Box 68 • Muleshoe, TX

**H & W HAY COMPANY**  
**Alan & Ted Harrison**  
Rt. 1 Box 5 272-3825 Muleshoe

**Henry Insurance Agency**  
"Serving You Since 1964"  
111 West Avenue B 272-4581  
Muleshoe, TX

**BAILEY COUNTY ELECTRIC COOPERATIVE ASSN.**  
Muleshoe — 272-4504 Morton — 266-8600

**PRAIRIE VIEW DAIRY**  
Just southwest of Muleshoe

**Lazbuddie Feeders, Ltd.**  
"We make your dairy bull calves worth more!"  
Lazbuddie, Texas  
**965-2435**

**Burris Collision Center**  
Jackey W. Burris  
1300 W. American Blvd., 272-3031

**TEXAS FARM BUREAU INSURANCE CO.**  
1612 W. American Blvd. • 272-4567 • Muleshoe

**MV ALLEY INC.**  
2601 W. American Blvd. P.O. Box 631  
Muleshoe, Texas  
(806) 272-4266  
Mobile (806) 946-8763  
mvinc@fivearea.com

**MCDONALD'S OF MULESHOE**  
1315 W. American Blvd. • 272-3333  
Open at 5:30 a.m. every day! i'm lovin' it

**ST BANK** MEMBER FDIC  
202 South First 272-4515

Hwy. 84 Muleshoe, TX 272-4203  
Manager Bruce Bruns **AGRILIANCE**

**Farmers Coop Ass'n of Sudan**  
P.O. Box 120 • Sudan, Texas 272-2461  
Mobile: (806) 638-7692 FAX (806) 227-2102  
Dennis Flowers, Gen. Manager Email: dflowers@fivearea.com

**Lazbuddie Garage & Supply**  
Glenn, Adora, Terry and Lee Scott  
Specializing in irrigation motor parts and service since 1957  
AUTO PARTS P.O. Box 100 • Lazbuddie • 965-2188

**MAPLE COOP GIN**  
927-5501  
Maple, Texas

**CENTRAL COMPRESS & WAREHOUSE**  
SUDAN, TEXAS

**Taqueria Guadalajara**  
Specializing in Jalisco Style Mexican Food  
DIFFERENT SPECIALS EVERY DAY!  
Open 7 days a week — 7 AM to 10 PM  
Orders to go: 272-4333 or 272-3328 — Drive-Thru Service  
1201 W. AMERICAN BLVD., MULESHOE

**Park View NURSING CARE CENTER**  
1100 W. Ave. J - Muleshoe, Texas 79347  
Phone (806) 272-7578 Fax: (806) 272-3514

**WEST CAMP GIN, INC.**  
Better Ginning & Courteous Service  
James & Phyllis Shepard Rt. 2 Box 1000 • 925-6681  
Muleshoe, TX

**MULESHOE LIVESTOCK AUCTION**  
Muleshoe, TX • Sale Every Saturday  
Clayton, C.L. & Thurman Myers • 272-4201

492 *Facts About The BIBLE* BY JOHN LEHTI  
Copyright © John A. Lehti, National Representative, Dai Advertising Service, P.O. Box 10278, Goldsboro, NC 27532

This is a dramatized version of facts taken from the Book of Exodus intending to show some of the customs of these ancient and traditional times.

**MOSES AND PLAGUES OF EGYPT**  
IN ORDER TO REMOVE THE PLAGUES FROM EGYPT, PHARAOH HAS AGREED TO LET THE ISRAELITES GO INTO THE WILDERNESS TO WORSHIP GOD - BUT NO SOONER THAN THE PLAGUES END, PHARAOH, REFUSES TO LET THE PEOPLE GO.

PHARAOH SAYS THE PEOPLE SHALL NOT GO!

AND MOSES STANDS BEFORE PHARAOH, ONCE AGAIN...

BEHOLD THE LORD HATH SAID: ALL THE CATTLE OF EGYPT SHALL BE DESTROYED!

BUT OF THE CATTLE OF THE ISRAELITES, NONE SHALL DIE!

BEHOLD! IT IS THE WORK OF THE ISRAELITES' GOD! OUR CATTLE ARE DEAD AND THEIRS LIVE!

AND ON THE MORROW ALL OF THE EGYPTIAN CATTLE DIE - BUT THE ISRAELITES' CATTLE ARE UNHARMED!

Next Week SUFFERING EGYPT!

SAVE THIS FOR YOUR SUNDAY SCHOOL SCRAPBOOK

This devotional & directory is made possible by these businesses who encourage all of us to attend worship services.

**ASSEMBLY OF GOD**  
FIRST ASSEMBLY OF GOD  
521 South First Street • 272-3017  
Jack Stone, Pastor • 272-3984  
S.S. 9:45 am, W.S. 11 am & 6:30 pm,  
Wed. 7:00 pm  
**EL BUEN PASTOR**  
415 E. Ave. F - 272-5455  
Pastor Domingo Luna - 272-4542  
S.S. 9:45 am, W.S. 11 am & 6 pm; Wed. 7 pm

**BAPTIST**  
**CALVARY BAPTIST**  
1733 W. Ave. C. • Rev. Jeff Coffman  
**CIRCLE BACK BAPTIST**  
Intersection FM 3397 & FM 298 • 946-3676  
**FIRST BAPTIST**  
220 West Ave. E. • Dr. Stacy Conner  
**FIRST BAPTIST**  
Lazbuddie • 965-2126  
**PRIMERA IGLESIA BAUTISTA**  
223 E. Ave. E • Rev. Greg Guzman  
**PRIMITIVE BAPTIST**  
621 South First  
Elder Bernard Gowens, Min.  
**PROGRESS BAPTIST**  
Progress, TX  
**PROGRESS SECOND BAPTIST**  
Arthur Hays, Min. • 1st & 3rd Sundays  
**RICHLAND HILLS BAPTIST**  
17th & West Ave. D  
S.S. 10 am; W.S. 11 am & 6 pm;  
Wed. 7 pm  
**TRINITY BAPTIST**  
314 E. Ave. B, Bennie Wright, Min.

**CATHOLIC**  
**IMMACULATE CONCEPTION CATHOLIC CHURCH**  
805 E. Hickory • Leonardo Pahamtang, Min.

**CHARISMATIC EPISCOPAL**  
**ST. CLEMENTS**  
1536 W. American Blvd. • 272-5954  
Father Sergio Leal • Sun. W.S. 10:30 am

**CHRISTIAN**  
**TRINITY CHRISTIAN CENTER**  
1723 W. American Blvd. • 272-3877  
Reydon Stanford, Pastor

**CHURCH OF CHRIST**  
**LARIAT CHURCH OF CHRIST**  
Sam Billingsley, Min.  
S.S. 10 a.m.; W.S. 11 a.m. & 6 p.m.,  
Wed. 7 p.m.

**LAZBUDDIE CHURCH OF CHRIST**  
Nathan Crawford, Min.  
S.S. 9:30 am; W.S. 10:20 am & 5 pm;  
Wed. 7 pm

**MULESHOE CHURCH OF CHRIST**  
22nd & W. American Blvd.  
Minister Barry Wiseman  
S.S. 9:30 am; W.S. 10:20 am  
& 6 pm; Wed. 7:30 pm

**16th & AVE. D CHURCH OF CHRIST**  
Curtis Shelburne, Min. • 272-4619  
S.S. 9:30 am; W.S. 10:30 am;  
Growth Gr. 1:30 pm; Wed. 7:00 pm

**LUTHERAN**  
**ST. JOHN LUTHERAN**  
Lariat, TX • David Symm, Min.  
S.S. 10:30 am; W.S. 9:30 am

**METHODIST**  
**FIRST UNITED METHODIST HISPANIC MINISTRIES**  
E. 5th and E. Ave. D  
Pastor Javier Careaga  
**FIRST UNITED METHODIST**  
507 W. 2nd St.  
S.S. 9:45; W.S. 11:00  
Pastor Monty Leavell, 272-5517  
**LAZBUDDIE METHODIST**  
S.S. 9:30 am; W.S. 10:30 am  
Rev. Randy Thomas • 965-2121  
**EL DIVINO SALVADOR U.M.C.**  
619 E. 5th Street & Ave. G, Muleshoe  
Javier Careaga, Pastor • 272-6888

**NAZARENE**  
**ROCA DE SALVACION**  
814 W. Ave. C • Pastor Rafael Quezada  
Sunday, S.S./W.S. 10:00 a.m.,  
Evening 6 p.m.; Wednesday, W.S. 7 p.m.

**PENTECOSTAL**  
**UNITED PENTECOSTAL LIGHTHOUSE**  
207 East Ave. G • 1-800-454-6051  
S.S. 10 am; Thursday, Bible Study 7 pm

**INTER DENOMINATIONAL**  
**NEW COVENANT**  
Plainview Hwy.  
Steve Claybrook, Pastor  
W.S. 10 am; Wed. 7 pm  
**MULESHOE COWBOY FELLOWSHIP**  
117 E. Birch Street, Muleshoe  
Steve Friskup, Minister • 272-5199  
Service: 7:30 p.m. Thursday

Ford • Chrysler Dodge • Jeep Tommy Brown Used Car Mgr.  
**BIG VALLEY**  
1112 West American Blvd. Muleshoe 272-7777  
& M-Pyre Auto Sales TF 877-873-2325 FAX 272-7758  
tbrown@bigvalleyautos.com

**DONUT HOLE**  
1106 W. American Blvd., Muleshoe 272-3668 • Lavon Hunt, owner

**MULESHOE AREA HOSPITAL DISTRICT**  
708 South First, Muleshoe 272-4524  
Ray Mason CEO/Hospital Administrator 1-800-770-6262 FAX 806-272-4938

**minsa corporation**  
P.O. Box 484 272-5545 Muleshoe, TX  
FAX (806) 272-5135 (800) 852-8291

**Little Real Estate & Appraisal Services**  
Residential • Commercial • Farm & Ranch  
Walter B. "Jack" Little  
**272-4805**  
MOBILE: 946-7965 FAX: 272-3729 1913 US 70-MULESHOE

**COUNTRY DAISY DESIGNS**  
**MONOGRAMMING**  
Kelly Heinrich **272-4430**

**Ellis Funeral Homes**  
Muleshoe - Morton - Earth - Sudan  
272-4574 Todd Ellis

**Lowe's MARKETPLACE**  
401 W. American Blvd. • Muleshoe • 272-4585

PASSENGER • TRUCK • TRACTOR  
**Alex's Tire Service**  
For Service 24 Hrs. A Day  
**272-5012**  
302 E. American Blvd. Alex Aguirre Muleshoe, Texas

**MULESHOE FEED BARN**  
311 W. American Blvd. Muleshoe, TX 272-5626

**AGP Grain Marketing**  
Bovina • Lariat • Farwell • Lazbuddie  
Toll Free: 866-583-7362

**"THE FIVE AREA TELEPHONE COOPERATIVE, INC."**  
West Plains Telecommunications, Inc.  
Five Area Systems, Inc., Plateau Wireless  
Five Area Long Distance - Five Area Internet  
302 Uvalde Muleshoe, USA (806) 272-5533

**WESTERN DRUG**  
& Something Special Gifts  
1411 W. American Blvd. 272-3106 Muleshoe

**Jarman Seed PIONEER**  
801 W. American Blvd. Muleshoe, TX • 272-5985

**TRIPLE SSS Auto Glass**  
Windshield Replacement & Repair  
Insurance Approved & Claims Welcome  
FREE MOBILE SERVICE  
Terry Steinbock Lazbuddie, Texas **806-946-9964**

**MCCORMICK SEEDS, INC.**  
400 East Ash • 272-3156  
Muleshoe, Texas  
A COMPLETE LINE OF FIELD SEEDS  
Tim McCormick

**United Supermarkets**

**FIRST UNITED BANK**  
200 Main St. Sudan, Texas 227-2411

**IRRIGATION PUMPS & POWER**  
**Zimmatic** W. Hwy. 84  
CENTER-PIVOTS 272-5597

**PACO FEED YARD, LTD.**  
Commercial Cattle Feeders  
P.O. Box 956 265-3281  
Friona, TX  
Feller Hughes-Mgr.

**MULESHOE PEA & BEAN, INC.**  
1680 CR 1044 272-5589  
Muleshoe, TX

**BLACKWATER AGRI ASSN. INC.**  
**272-4962**  
Cell: 946-8943 — Muleshoe, TX

**Stoney Point Muleshoe**  
"Custom Growing Dairy Heifers"  
**965-2856**

**Pizza Hut**  
1412 W. American Blvd. Muleshoe • 272-4213  
Open: Sun.-Mon. 11 AM to 11 PM  
Lunch Buffet: Sun.-Fri. 11:30 AM to 1:30 PM  
"Gather round the Good Stuff"

**SAIN IRRIGATION & MACHINES**  
Complete Pump Service  
W. American Blvd. 272-4397  
Walt Sain Muleshoe, TX 272-4148

**MULESHOE ANIMAL CLINIC**  
GENERAL PRACTICE  
MULESHOE VET SUPPLY  
1430 US Hwy. 84 • Muleshoe Office: 272-3061

**PRAIRIE ACRES**  
Skilled Nursing Facility  
Dedicated To The Service Of Our People  
201 E. 15th, Friona • 250-3922  
Mrs. Jo Blackwell, Administrator

**DODD COTTON GIN**  
2912 CR 504, Muleshoe • 965-2311 or cell 674-1457  
ROBERT BOOZER, MGR. BEVERLY TURNEY, OFFICE MGR.  
Email: robertb@amaonline.com

**Deaf Smith County Grain, Inc.**  
Cliff A. Skiles

**FRIONA HERITAGE ESTATES**  
Assisted Living Apartments  
"Making Life Easier"  
ESTATES 201 East 15th, Friona • 250-5599  
License #100379 Jo Blackwell, C.E.O. - Rhonda Bentley, A.L. Mgr.

# Obituaries

## Kenneth Burke

A chapel service for Kenneth Burke, 75, of Clifton, formerly of Morton, was held Jan. 13 at Ellis Funeral Chapel in Morton with the Rev. Paul Lively officiating. Burial followed in Morton Memorial Cemetery. Burke died at his home on Tuesday, Jan. 10, 2006. He was born on Dec. 8, 1930, in Morton, and married Shirley York on July 21, 1951, in Portales, N.M. She preceded him in death on March 21, 2004.

Burke attended school Morton. He served as a Cochran County deputy,

and later Cochran County Sheriff. He also served as the Morton Police Chief and the Cochran County Commissioner.

Survivors include his daughters and their husbands — Patricia Anne and Ronald Bell of Ft. Worth and Angelia and Sam Johnson of Austin; his daughter — Donna Kay Burke of Muleshoe; three brothers — Buster Stevens of Clifton, DeWayne Burke of Sapulpa, Okla., and Penn Tom Burke of Gainsville; seven grandchildren and 17 great-grandchildren.

## Marie Edmiston

A graveside service for Marie Edmiston, 81, of Muleshoe, was held Friday, Jan. 13, at Littlefield Memorial Park Cemetery, Littlefield, with the Rev. Tim Harper of Plainview officiating.

Edmiston died on Jan. 10, 2006, in the Park View Nursing Home, Muleshoe. She was born on March 4, 1924, in Colorado City, and was preceded in death by a sister — Eilene Foley, a grandson, and a son-in-law.

Edmiston was a member

of the Park View Baptist Church in Littlefield, where she had lived from 1956 to 2005. In January 2005 she moved to Muleshoe. She was a member of the VFW Auxiliary in Littlefield, and worked for the Littlefield Police Department as a dispatcher and for the Lamb County Sheriffs Department as a dispatcher and jailer.

Survivors include a daughter — Doris Palmer of Muleshoe; a brother — Bill Anderson of Ft. Dodge, Iowa; a grandson and two great-grandchildren.

## Dot Parker

Services for Dot Marie Parker, 91, of Muleshoe were held Monday, Jan. 16, at the Trinity Baptist Church of Muleshoe with the Rev. Bennie Wright officiating.

A graveside service was held on the afternoon of Jan. 16, in the Anton Cememtery, Anton.

Parker was born to Charles and Senith, Peppers on Feb. 19, 1912, in Whitman, Neb., and married Arthur Parker on Dec. 24, 1928, in Vinita, Okla. She moved to Muleshoe from Anton in 1960.

Parker was preceded in death by her husband — Arthur Parker, on Feb. 28, 1977, her parents, three brothers and four sisters.

Survivores include four sons and daughters-in law — Jimmy and Dorothy Parker of Des Moines, Iowa, Frank and Johnnie Parker of



**DOT MARIE PARKER**

Muleshoe, Carlos and Velma Parker of Fritch, and Thomas and Kathy Parker, of Hawkins; a sister — Mae Stewart of Sierra Vista, Ariz.; 12 grandchildren, 23 great-grandchildren, and four great-great-grandchildren.

Memorials may be sent to the Parkview Nursingcare Center, 1100 W. Ave. J, Muleshoe, TX 79347, or Samaritan Hospice, P.O. Box 1999, Hererford, TX 79405-1999.

## Katy Collins

A church service for Katy Collins, 97, of Muleshoe was held Tuesday, Jan. 17, 2006, at the Primitive Baptist Church in Muleshoe with Elder Bernard Gowens, assisted by Elder David Montgomery, officiating. Burial followed in Earth Cemetery.

Collins died on Jan. 15, 2006, in Lubbock. She was born on Oct. 27, 1908, om Mt. Pleasant Tenn, and married Joe Collins in Olton on Oct. 8, 1836.

Collins was a life-long resident of the Muleshoe area. She was a member of the Primitive Baptist

Church in Muleshoe.

She was preceded in death by her husband — Joe Collins, in 1977. She was also preceded in death by a grandson, four sisters and two brothers.

Survivors include three sons and daughters-in-law — Wayne and Darlene Collins, James and Darlene Collins, and Ted and Zeta Collins, all of Dimmitt, nine grandchildren and 28 great-grandchildren.

Memorials may be sent to Primitive Baptist Church Memorial Fund — c/o James Collins, 2244 FM 1524, Dimmitt, TX 79027.

## Danny Blaylock

A funeral service for Danny Lynn Blaylock, 51, of Garland was held Monday, Dec. 12, in Williams Memorial Chapel, Garland.

Blaylock died on Dec. 9, 2005. He was born on Sept. 11, 1954, in Muleshoe.

Blaylock worked for GTE-Verizon for 25 years and was an Eagle Scout.

Survivors include his wife — Barbara Blaylock; a step-son — Charles Womack; a step-daughter — Jessica Womack; his mother — Jackie Blaylock; a brother



**DANNY BLAYLOCK**

— Ronnie Larson; a sister — Elaine Hart; and several grandchildren.

## Bill Key

A chapel service for Bill Key, 88, of Levelland, was held on Friday, Jan. 13, at the Ellis Funeral Home chapel in Morton with the Rev. Roger Foote of Plainview officiating. Burial followed in Enochs Cemetery

Key died on Monday, Jan. 9, 2006, in Levelland. He was born on Jan. 16, 1917, in Jean, and married Ruth Fort in Clovis, N.M. on Oct. 23, 1937.

Key was preceded in death by a son — Sydney Wayne Key in 1992; his wife — Elnita in 2004; four sisters and one brother.

He was a longtime resident of Bailey County, where he farmed and lived near Three Way.

Key worked for Boeing Corporation for many years. He was a member of the First Baptist Church in Levelland.

Survivors include two sisters — Juanita Howard of Littlefield and Janelle Estep of Los Lunas, N.M.; two grandsons and four great-grandchildren.

Memorials may be sent to the Enochs Cemetery Association — c/o Wanda Layton, 3140 CR 184, Morton, TX 79346.

## Jane Snelgrove

A graveside service for Jane Snelgrove, 89, of Lubbock and formerly of Muleshoe, was held Thursday, Jan. 12, at Muleshoe Memorial Park Cemetary with Mike Troxell of Lubbock officiating.

Snelgrove died on Monday, Jan. 9, 2006, in Whisperwood Nursing and Rehab Center. She was born on Aug. 30, 1916, in Marietta, and married Virgil Snelgrove in Texarkana on June 10, 1933. He preceded her in death Jan. 1, 1984. She was also preceded in death by one daughter, two sisters and four brothers.

Snelgrove was a homemaker and a life-time member of the First Seventh Day Adventist Church. She lived in Muleshoe from 1947 to 1957, and since 1959 she had lived in Lubbock.

Survivors include a son and daughter-in-law Ñ E.R. and Dorothy Snelgrove of Plain Dealing, La.; two daughters and sons-in-law Ñ Bema Dean and Neal Radford of Apache, Okla., and Merlene and Jack Wilson of Lubbock; six grandchildren, 12 great grandchildren and five great-great-grandchildren.

Memorials may be sent to a chairty of ones own choosing.

**Lance Insurance**  
Competitive Rates, Variety of Leading Companies  
For Home, Auto, Commercial and Crop  
**806-227-2466**

## These Truths Have Saved Many Lives

You would have to work hard to find anyplace that more seriously tests faith and theology than a hospital waiting room. An honored clergy colleague, Dr. Bill Love, himself now with the Lord, once wrote about just such a place and his experience there.

The lady lying in Intensive Care had cancer. Dr. Love writes that she also had children in high school, a loving husband, a good job, and everything, it seemed, to live for. But she and her doctors were now out of all but the

“salvation”? He didn’t know. But a few weeks later the young woman succumbed to the ravages of cancer, and her husband, her children, and all of her family, including her church family, mourned their grievous loss.

If the little brass-covered New Testament had been intended to be a talisman, a good luck charm, it had failed. And yet, as Bill writes, that little book did indeed contain words of life pointing to a truth that for God’s people never fails:

“If we live, we live to the Lord, and if we die, we die to the Lord; so then, whether we live or whether we die, we are the Lord’s. For to this end Christ died and lived again, so that he might be the Lord of both the dead and the living” (Romans 14:8-9).

Dr. Love is right: “What God did in Christ to underwrite that promise *does* save our lives. Whether we live or die.”

In life. In death. If we place our trust in God, we will find that all of our lives and the whole direction of our lives will be vindicated. We will be saved, redeemed, enfolded, accepted, and eternally secure in God’s love.

Like you, I have many questions. But, in the end, two things are bedrock for me. When we’re awash in pain and all we seem to have in abundance are hurt and anger and questions, two things stand: God is loving, and God is good.

In life. In death. Those two truths are the ultimate realities upon which we can stand.

**Focus On Faith**  
Curtis Shelburne

most radical options.

Bill remembers that as her family, including her mother and aunt, gathered around her, her aunt suddenly reached into her purse and pulled out an old and well-worn Army-issue, 1943, New Testament, with a brass cover on the front.

“Hold on to this,” she said to her sister, “this kind of Bible has saved many lives.”

Bill said that he wondered later what she meant. Was she thinking about the stories of soldiers who took a bullet in the chest but were saved because it was deflected by the brass-covered New Testament? Or was she thinking of a completely different kind of

Curtis Shelburne is minister of the 16th & D Church of Christ in Muleshoe.

Check out the Journal’s new website!  
[www.muleshojournal.com](http://www.muleshojournal.com)

Additional obituaries on page 10

**Piano Lessons For All Ages!**  
Call Fran Hamilton @ 272-4759

## New Management Deals

On New & Used Models

<p><b>2006 F150 RANGER XL 4x2</b></p> <p>Stk#6T24 White/Dark Flint Interior, A/C, AM/FM, Great Work Truck!</p> <p><b>MSRP \$17,315</b></p> <p><b>\$13,595</b></p>	<p><b>2006 Ford Taurus</b></p> <p>Stk#P002 Gold Ash/Tan Interior, Power Windows/Locks, AM/FM/CD, Cruise, GREAT MPG!!</p> <p><b>\$14,995</b></p>
<p><b>2006 FORD EXPLORER XLT 4x4</b></p> <p>Stk#6T28 White/Light Stone Interior, 6 Speed Auto. Transmission, Moonroof, AM/FM/6CD, Aluminum Wheels.</p> <p><b>MSRP \$36,625</b></p> <p><b>\$31,195</b></p>	<p><b>2003 FORD F150 SUPER CAB</b></p> <p>Stk#5T40A XLT, V6, Pwr. Windows/Locks, AM/FM/CD, GREAT MPG!!</p> <p><b>\$12,995</b></p>
<p><b>2006 FORD FOCUS ZX3</b></p> <p>Stk#604 Black/Charcoal Interior, Power Windows/Locks, GREAT MPG!!</p> <p><b>MSRP \$16,020</b></p> <p><b>\$13,595</b></p>	<p><b>2000 MERCURY GRAND MARQUIS</b></p> <p>Stk#B105 White/Grey, Loaded, One Owner, Great Family Car!!!</p> <p><b>\$9,495</b></p>

[www.muleshoemotor.com](http://www.muleshoemotor.com)

**NEW EXTENDED HOURS**  
Monday-Friday 8-6 and Saturday 9-5  
Service & Parts Dept. Hours: 8:30 am-6 pm M-F; 9-1 Sat.

Dan Brannon Dealer, Jim Hall General Manager, David Hill Sales, Marisol Robles Sales

**MULESHOE MOTOR CO.**

1125 W. American Blvd. Muleshoe, Texas 272-4251 TF 800-432-7617

# Sports

## Mules defeat Tulia Cubs in final non-district victory

**By Delton Wilhite**  
Sportswriter

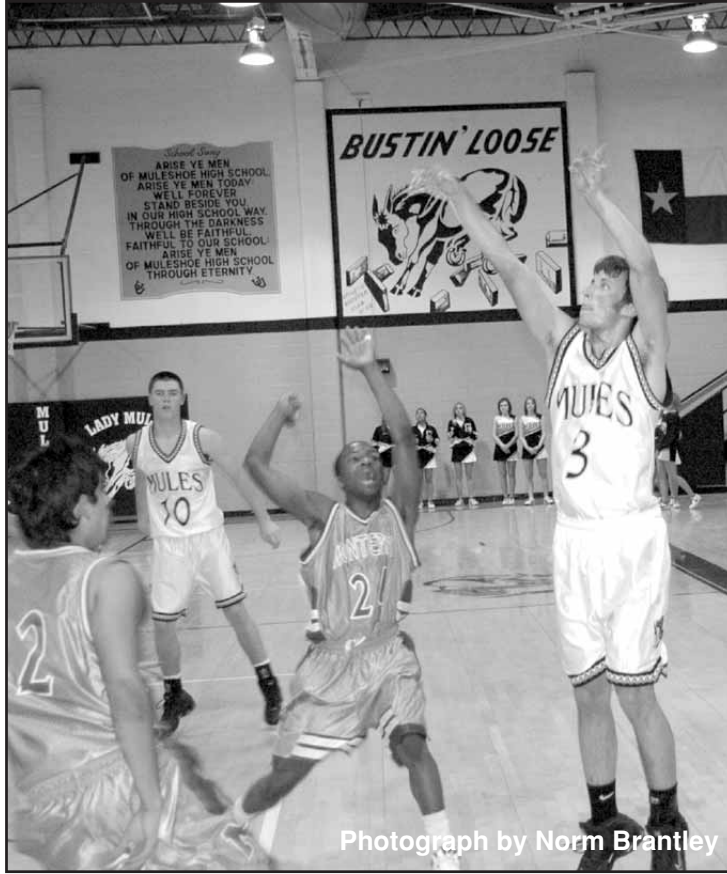
The Mules wrapped up their non-district schedule in Tulia with a 68-55 win. The Mules had to withstand a 22-point run by the Hornets in the final period to hang on. The Mules opened their district run in Brownfield against the Cubs.

The Mules fell behind in the first half as the Cubs shot lights out from behind the arc. The Mules were stubborn and hung in and began to over take the Cubs in the second half. Two minutes into the final period the Mules finally took the lead.

The 10-minute scoring run to catch up took a lot out of the Mules and they could not hang on in the final six minutes. The Cubs pulled out a 73-61 win over the Mules.

Arsenio Geter made a cross-lane pass to Tyler Sheets to complete a fast break to open the game in Tulia. Tulia answered with a two of their own before Myles James made a perfect lob over the defense to Geter posting up in the lane.

Sheets cut to the bucket without the ball and Geter fired a bullet pass down the lane for an easy shot inside. Trevor Turnbow stuck back a rebound and then answered a Tulia trey with a 3-pointer from the corner to give the



Photograph by Norm Brantley

Myles James shoots in a game against Monterey. Mules a 15-7 lead with three minutes left in the opening period.

Garrett Riley picked off a Hornet pass and found Geter streaking down the floor. Geter soared to the basket for the one-hand dunk. Tulia made five unanswered points in the final minute and half to cut the Mule lead to 17-12 at the quarter break.

Turnbow made his second trey of the game in the second period as the Mules out scored the Hornets 16-

13. Turnbow added a deuce to go with his trey and Brady Black and Brant Hamilton each made a bucket. Geter made one from the line and added a bucket.

Sheets knocked down a pair of short jumpers to end the half with the Mules in front 33-25.

The Mules turned up the defensive pressure in the third frame to hold the Hornets to eight points. Seven Mules scored two each as the Mules pushed

their lead to 47-33. Turnbow, Black, Geter, Sheets, Cory Wallace and Riley each had a basket in the period.

There was almost no defense in the final frame as the Hornets posted 22 in the period. The Mules responded with 21 of their own to hold off the Hornets.

Turnbow knocked down two of his four treys in the game and added a short jumper. Black added a pair of buckets inside and made one from the line. Sheets dropped in a bucket and Hamilton chipped in a charity toss.

Turnbow led the Mules with 20 points, Geter added 16 and Sheets dropped in 14. Black made nine points, Hamilton five and Wallace and Riley chipped in two each.

Brownfield hit five treys in the opening frame to jump in front of the Mules 21-14. Sheets drained a trey from the corner early in period. Sheets answered the Cubs first trey with a 3-pointer after Black ran into a road block inside and kicked the ball back out.

Black scored twice inside and finished the a break for six in the opening frame.

The Cubs made three from behind the arc to finish the first half with eight threes and a 38-24 advantage over the Mules.

Turnbow had a 3-pointer early in the second period and knocked down his second at he two minute mark. Wallace and Geter made two each as the Mules fell farther behind.

The Mules trailed by 14 when the second half began and cut that margin to six by the time the final eight minutes started. Turnbow heated up the Mules scoring with 12 in the third quarter that included two treys.

Geter made hay in the lane as he posted up and the Mules got him the ball. He made six points while Sheets nailed a trey and added a bucket. The Mules out scored the Cubs 23-15.

The first two minutes of the final frame was all Mules with Black completing an old fashion three-point play and a free throw. Turnbow nailed

his fifth 3-pointer of the night to give the Mules their first lead since the opening frame.

Geter added a pair of buckets, Hamilton had two from the line and Riley added a charity toss. The final six minutes of the game was all Cubs as they out ran the Mules 20-4. The Cubs finished the night with 14 treys.

Turnbow led the Mules with 23 points, Geter had 12, Sheets 11 and Black made 10. Hamilton and Wallace each made two points and Riley chipped in one.

The Mules hosted Levelland Tuesday night in their second district match and then travel to Lubbock Cooper to meet the Pirates Friday.

The Mules wrap up their first lap of district in Littlefield on Jan. 24.

## JV Mules conquer the Tulia Hornets in non-district play

**By Delton Wilhite**  
Sportswriter

The JV Mules conquered the Tulia Hornets for the second time this season in their return match in Tulia last Tuesday night. The Mules overcame a five-point first period deficit to defeat the Hornets 46-40 in their final non-district tilt.

The Brownfield Cubs appeared to be subdued going into the final period Friday night in the Mules opening district match. The Cubs trailed 38-25 when the period began but made a strong run at the Mules. The Cubs out scored the Mules 24-10 in the final eight minutes but the Mules hung on for a 49-48 road win.

Tulia jumped in front of the Mules 10-5 in the opening frame. T. J. Brantley had two

buckets and a charity toss for the Mules five. Patrick Precure nailed a 3-pointer and added a bucket as the Mules began to fight back in the second period.

Cade Smith, Colby Carpenter and Doc Fulmer each added a bucket in the second frame while Brantley continued to prowl the lane. Brantley added a pair of baskets and was three of six from the line. The Mules trailed 23-25 at the intermission.

Precure, Brantley and Smith each scored in the opening three minutes of the second half as the Mules over took the Hornets 29-28. Brantley soared over the defense on a turn around jumper in the lane as the Mules began to run away from the Hornets.

Carpenter made a skip pass to Dusty Clayton in the corner. Clayton nailed the 3-ball to push the Mule lead to 34-28. Brantley answered a Tulia charity toss with a pair from the line. The Hornets scored again before Adam Zamora scored on a break away to end the period with the Mules leading 38-31.

Tulia cut one from the Mule lead in the final period with Smith making a pair of buckets inside and added two from the line for six in the period. Carpenter drove the lane for a bucket as the Mules hung on.

Brantley led the Mules with 18 points and Smith added 10. Precure dropped in seven, Carpenter four, Clayton three and Zamora and Fulmer each chipped in two.

The Mules had an easy first period in Brownfield as they jumped out to a 10-1 lead. Carpenter and Smith had four points each in the opening frame and Brantley added a bucket. The Cubs out scored the Mules 12-11 in the second quarter to trail 21-13 at the intermission.

Smith had a pair of buckets, Brantley added a bucket and a charity toss and Clayton and Precure each added two points each.

The Cubs cut the Mule lead to 21-17 with a pair of buckets before the Mules offense got fired up in the third quarter. Smith followed his own shot and was fouled on the put back. He converted one from the line.

Elias Alvarado worked for position and cleaned up the

Continued on page 14

### GET TOP QUALITY SERVICE FROM A TOP QUALITY TEAM.


**Ford Factory Trained & Certified**

Service Dept. Hours  
8:30 am-6 pm M-F; 9-T Sat.  
Parts Dept. Hours  
8:30 am-6 pm M-F; 9-T Sat.

1125 W. American Blvd.  
Muleshoe, Texas  
272-4251 or 800-432-7617

**Motor Co.**

[www.muleshoemotor.com](http://www.muleshoemotor.com)

## Support the Boosters Who Support Our Teams, Schools and Community!

East of Muleshoe on Hwy. 84  
**272-6701**

1010 W. American Blvd.  
Muleshoe, Texas  
272-3294  
"The Original - Since 1957"

Western Drug & Something Special Gifts  
"Home Owned & Committed to Service"  
1411 West American Blvd.  
Muleshoe • 272-3106

413 W. American Blvd.  
Muleshoe • 272-5576

Western "66"  
607 N. 1st St.  
Muleshoe • 272-4556

1315 W. AMERICAN BLVD.  
MULESHOE • 272-3333

202 S. 1st, Muleshoe  
272-4515  
Member FDIC

Clovis Hwy. West  
Muleshoe • 272-4203  
Bruce Bruns, Location Mgr.

MULESHOE ANIMAL CLINIC & MULESHOE VET SUPPLY  
1430 US Hwy. 84  
MULESHOE • 272-3061

708 S. 1st St.  
Muleshoe • 272-4524

FIVE AREA TELEPHONE COOPERATIVE  
302 Uvalde  
Muleshoe, TX  
272-5533

104 W. 9th St.  
Muleshoe, Texas  
272-3120

East Hwy. 84, Muleshoe  
272-5545

Muleshoe Journal  
201 W. Ave. C.  
272-4536  
[www.muleshoejournal.com](http://www.muleshoejournal.com)

LEAL'S TORTILLA FACTORY  
107 Ash St. - 272-5772  
Muleshoe, Texas

WE SUPPORT ALL AREA SPORTS TEAMS & COACHES!

got milk? BOEHNING DAIRY FARMS  
690 CR 45, Earth  
965-2997

401 W. American Blvd., Muleshoe

Muleshoe Tire  
107 Main Street  
Muleshoe • 272-4594

PO Box 754, Muleshoe  
272-4201

Irrigation Pumps & Power  
West Hwy. 84  
Muleshoe • 272-5597  
**ZIMMATIC**

305 E. Ave. B, Muleshoe  
272-4504

BOB STOVALL PRINTING  
Graphic Arts & Design Specialists  
221 East Avenue B  
Muleshoe, Texas 79347  
806-272-3373

2601 West American Blvd.  
Muleshoe • 272-4266

# Sports

## Lady Mules 'hammer' the Lady Cubs, 55-29

By Delton Wilhite  
Sportswriter

The Lady Mules took Tuesday night off because of the five team district schedule. However, the time off did not seem to bother them as the Lady Mules hammered their second district opponent Brownfield.

The Brownfield Lady Cubs were no match for the Lady Mules as they jumped out to a 19-11 half-time lead. The Lady Mules poured in 36 in the second half to down the Lady Cubs 55-29.

"It was a win," said Lady Mule coach Shanna Simms. "It is hard to develop good chemistry without all the ingredients. Brandi Wood was very ill tonight and that caused the team to struggle as they all tried to do a little extra."

"Brownfield is hard to play as you never know what to expect. They do not do what they are suppose to do and we were guilty of looking ahead to Tuesday night when Levelland comes to town."

Kate Lepard finally broke the scoring ice in the first period near the six minute mark with a three ball from the corner. Ashley Dickson cut to the bucket on an in bound play for a short jumper.

Kyra Kimbrough beat her defender off the dribble and drove the baseline. Dickson's defender stepped out to stop Kimbrough and she made a perfect dish to Dickson for her second bucket of the period.

The Lady Cubs scored back to back buckets near the mid point of the period to make the score 7-4. Lepard fought her way through a foul for a shot from the elbow. She completed the old fashion three-point play by sinking the free throw.

Lepard added her seventh



Photograph by Norm Brantley

An embattled Lady Mule takes a shot.

and eighth points of the period on the Lady Mules next trip down the floor by getting backside position and sticking back the rebound. The Lady Cubs finished the period with back to back buckets to trail the Lady Mules 12-8 at the quarter break.

Amberlee Steinbock set up outside the arc at the top of the key as the second frame got under way. The Lady Cubs chased the ball inside for the double team on Cholov Hernandez.

Hernandez kicked the ball out front to Steinbock. Steinbock did not hesitate in dialing up the long distance trey. Dickson shoveled the ball across the lane on a fast break to Hernandez to push the Lady Mule lead to 17-11.

Lepard capped off the half with a drive from the left wing through a seam in the Lady Cub defense. The half ended with the Lady Mules in front 19-11.

The Lady Mule made adjustments at the half and

exploded for 19 in the third to take a 38-19 margin into the final period. Kasey Wood knocked down a trey and added a bucket in the third frame.

B. Wood added a pair of buckets and Kimbrough drove the baseline for a bucket. Dickson dropped in a charity toss and Lepard added a deuce. Chelsi Hawkins dropped in a short jumper and Irma Torres went three for four from the line.

To prove double digit scoring was no fluke the Lady Mules dropped in 17 in the final eight minutes. B. Wood drained a trey, K. Wood hit from behind the arc and Lepard made three of four from the line and dropped in her second trey of the game.

Kimbrough made one from the line and added a short jumper. Hawkins capped off the scoring with a pair from the line.

All nine Lady Mules scored in the contest. Lepard's eight point first period set the stage

for an 18-point game high performance. K. Wood dropped in eight, B. Wood seven and Kimbrough and Dickson each added five.

Hawkins made four, Torres and Steinbock made three each and Hernandez chipped in two.

The Lady Mules and Levelland Loboettes settled leadership of the district Tuesday night. The Lady Mules travel to Lubbock Cooper Friday night to try and keep their domination of the Lady Pirates in tact and end

the first round of district.

The Lady Mules travel to Littlefield Jan. 24 to open their second loop of district.

"Our Family Serving Your Family"

**Colonial Funeral Home**

The Area's **NEWEST** and **ONLY** Home Owned and Operated Funeral Home

We honor all pre-need funeral plans from other funeral homes.

Mike and Eva Mullins  
Owners/Funeral Directors  
809 Butler Blvd.  
Dimmitt, Texas (806) 647-4444  
Se Habla Español

**www.drippi.com**



### Muleshoe Cattle Market

The Muleshoe Cattle Market is brought to you each week by Muleshoe Livestock Auction, located east of Muleshoe on U.S. 84. Muleshoe Livestock conducts sales every Saturday, beginning with hogs, sheep and goats at 10 a.m. and cattle following at approximately noon.

### REPRESENTATIVE SALES SAT., JAN. 14, 2006

734 head of cattle, 145 hogs and 252 sheep and goats for a total of 1,131 livestock sold at the Jan. 14 sale. Market steady on most classes of cattle with good demand.

### FOR INFORMATION ON SALES OR TO CONSIGN CATTLE-272-4201

Seller, City	#	Type	Wt.	CWT or PH
C&D Land & Cattle, Friona	3	Hol. str	183 lbs.	at \$121.00
Brant Lookingbill, Friona	8	Hol. str	361 lbs.	at \$113.00
Eddie Moudy, Earth	1	Blk. str	315 lbs.	at \$143.00
Frog Scott, Vega	1	BWF bull	375 lbs.	at \$143.00
Rick Wells, Lamesa	5	Blk. bulls	373 lbs.	at \$152.00
L.G. Layman, Muleshoe	1	Red bull	410 lbs.	at \$133.00
Hall Bros., Sudan	4	Red bulls	500 lbs.	at \$113.00
NM Ranch, NM	13	Blk. str	493 lbs.	at \$123.50
NM Ranch, NM	15	Mxd. str	636 lbs.	at \$109.50
L.W. Shafer, Muleshoe	4	Yell. bulls	589 lbs.	at \$107.00
NM Ranch, NM	22	Blk. str	597 lbs.	at \$120.25
NM Ranch, NM	53	Mxd. str	749 lbs.	at \$113.25
C.E. Moore, Muleshoe	3	Blk. bulls	670 lbs.	at \$97.50
Dale Demel, Sudan	1	Blk. str	690 lbs.	at \$110.00
R&J Cattle, Levelland	4	Red str	691 lbs.	at \$110.00
Stan Adcock, Lubbock	5	Mxd. str	797 lbs.	at \$109.00
Rick Hill, Lamesa	3	Blk. hfrs	385 lbs.	at \$137.00
L.G. Layman, Muleshoe	3	Red hfrs	433 lbs.	at \$114.00
NM Ranch, NM	13	Mxd. hfrs	434 lbs.	at \$120.00
NM Ranch, NM	14	Mxd. hfrs	507 lbs.	at \$116.00
B&D Dairy, Plains	5	Blk. hfrs	483 lbs.	at \$119.00
Hall Bros., Muleshoe	2	Red hfrs	473 lbs.	at \$114.00
Cristobol Valadez, Lubbock	4	Blk. hfrs	499 lbs.	at \$114.00
John Hill, Abernathy	5	Blk. hfrs	503 lbs.	at \$114.00
John Hill, Abernathy	7	Blk. hfrs	687 lbs.	at \$106.00
L.W. Shafer, Muleshoe	4	Char. hfrs	559 lbs.	at \$110.50
R&J Cattle, Levelland	6	Mxd. hfrs	604 lbs.	at \$108.00
Chico Cattle, Abernathy	4	Blk. hfrs	628 lbs.	at \$108.50
Steve Adcock, Lubbock	2	Char. hfrs	790 lbs.	at \$97.00
JCL, Inc., Muleshoe	3	Blk. hfrs	832 lbs.	at \$96.00
John Robison, Eunice, NM	1	Char. cow P7		\$750.00
L.H. Larson, Olton	1	Red cow P8		\$720.00
Randy Johnson, Muleshoe	1	Blk. cow	1130 lbs.	at \$47.75
W.B. Ethridge, Morton	1	RWF bull	1930 lbs.	at \$62.50

## JV Lady Mules skin the Lady Cubs

By Delton Wilhite  
Sportswriter

Ashley Grumbles got the Lady Mules off to a fast start in Brownfield with two quick buckets against the Lady Cubs. Cecelia Reyna added a basket and Kelsey Tipps converted a charity toss as the Lady Mules jumped out to a 7-3 lead.

Tipps converted a second charity toss before Gabby Agundis jumped in a passing lane to grab the ball. Agundis drove the floor and laid the ball up. Grumbles posted up in the lane to cap the scoring with the Lady Mules leading 12-5 after one period in Brownfield.

The Lady Mules continued to post double digit production to skin the Lady Cubs 63-31.

Agundis found a seam in the Lady Cub defense and drove from the right wing to open the second frame. Agundis pushed the ball ahead to Reyna running on the break after a Lady Cub bucket.

Agundis and Reyna sandwiched a Grumbles' steal and driving lay-up between their three-pointers. Tipps scored inside on a feed from Janae Pyle to close out a 10 point Lady Mule run to open a 26-8 lead.

Jacy Lawrence blocked out and had the defender try to go over her back for the rebound. Lawrence converted a charity toss before sinking a long two from the wing. Agundis hit a 12-foot jumper before Caitlyn Wills grabbed an offensive rebound and was fouled. She made the front end of the one and one to close out the first half with the Lady Mules in front 32-16.

The Lady Mules repeated the 20 points made in the second period in the third. Reyna dropped in a trey and Grumbles, Madison Smith and Pyle each added a bucket. Tipps hit a pair of baskets and added two for line.

Wills made a charity toss and Agundis made a pair from the line and added a bucket to give the Lady Mules a 52-19 advantage going into the final eight minutes.

Tipps made a pair of buckets from short range in the final period and Reyna dropped in a short jumper and a charity toss. Smith and Grumbles capped the Lady Mule scoring with a bucket apiece.

Four Lady Mules reached double figures. Tipps led the way with 14 points, Agundis and Reyna each made 13 and Grumbles added 12. Smith made four points, Lawrence three and Wills and Pyle chipped in two each.

The Lady Mules hosted the Levelland Loboettes Tuesday night and travel to Lubbock Cooper to wrap up the first round of district. They travel to Littlefield Jan. 24 to open the second lap of district.

### New Year's Resolutions

1. Lose weight.
2. Eat right.
3. Get fit.
4. Reduce stress.
5. Call Dr. Hannagan to assist with above.

As an experienced family practitioner, Michele Hannagan, D.O., can help guide you and your family on the path to a healthy lifestyle. Dr. Hannagan offers expertise in a full range of family health care, including: immunizations and well-child checks; preventive health care; and managing chronic illnesses, such as diabetes, asthma and high blood pressure. Dr. Hannagan received her Doctor of Osteopathic Medicine degree from the School of Osteopathic Medicine at the University of Medicine and Dentistry of New Jersey and is board-certified in family medicine.

Getting help with your resolutions couldn't be easier. Schedule an appointment with Dr. Hannagan by calling 769-7577 or stop by 2200 West 21st Street in Clovis between the hours of 8 a. and 5 pm, Monday through Friday. Same-day appointments and in-house lab and X-ray services are available.

**PRESBYTERIAN**

Plains Regional Medical Center

[www.phs.org](http://www.phs.org)

"YEAH, IT'S THAT BIG!"

#65109

**2006 DODGE RAM 1500 MEGA CAB SLT**

**\$29,995**

- 13.5" Longer Cab Than Ford Crew Cab!
- Reclining Rear Seat • Sirius Satellite Radio
- Available Rear Seat DVD Entertainment System

Limited Edition!

#65091

**2006 CHRYSLER 300 SIGNATURE EDITION**

**\$28,995**

- SpecialT wo- ToneL eather
- P owerS unroof
- U nbelievableL owP rice!
- 3 .5LH /OV 6 • B ostonAc ousticsS ounds ystem
- w ithF ulf unctionN avigation!

7 PASSENGER & 25 MPG!

#65057

**2006 DODGE CARAVAN SXT**

**\$19,995**

- Quad Seating • 3.3L V6 Automatic
- AM/FM/CD/Cass
- Rear Entertainment DVD System

**Bender** "Where the Dealin's Easy" Se Habla Español

CHRYSLER DODGE

**762-4511**

3400 Mabry Drive, Clovis, NM

[www.benderchryslerdodge.com](http://www.benderchryslerdodge.com)

**HOME OF THE**  
**20/35**  
**GUARANTEE**

• We'll have your order ready in 20 minutes or you'll get \$3 off your order.  
 • We'll deliver in 35 minutes or you'll get \$3 off your order.

**Pizza Hut**  
 1412 W. American Blvd.  
 Muleshoe, Texas  
**272-4213**

Cell: **946-8908**      506 W. American Blvd.  
**ROOFING**  
**HUGO VASQUEZ CONSTRUCTION**  
 REMODELING | CONCRETE  
 METAL BUILDINGS | GENERAL CARPENTRY  
**806/272-5405**

**T.L. Irrigation Systems**  
 Dealer  
**PRECURE ELECTRIC**  
 Carroll Precure - Owner  
**424 N. 1st, Muleshoe 272-4844**  
 GENERAL ELECTRICAL CONTRACTING  
 • Residential • Commercial • Irrigation

**Decorators Floral & Gifts**  
 616 South First Street  
 Muleshoe, Texas  
 806/272-4340  
 www.decoratorsfloral.com

**Valentine's Day is just around the corner!**  
**FEB. 14<sup>TH</sup>**

**KINDER KORNER PRESCHOOL**  
 605 W. 8th Street  
 Muleshoe, TX  
 Director: Joyce Scott  
 Co-Owner: Mandy Garner  
**272-5215**

**ALVARADO PARTY RENTALS**  
**INFLATABLE BOUNCER**  
 Safe - Affordable Fun For Kids!  
 BEST PRICES AROUND  
**272-5588**  
 2 Hrs. \$50 - 4 Hrs. \$75 - 8 Hrs. \$100  
 Birthday Parties • School Functions • Special Events  
**DELIVERY, SETUP & PICKUP**  
 Se Habla Español  
 EDDIE & RACHEL ALVARADO

**Anzaldua Income Tax Service**  
 804-A W. American Blvd., Muleshoe  
**272-3001**  
**800-507-3001**  
**FAX: 272-3002**  
 Appointments Available. Walk-ins Welcome.

**RAPID REFUND**  
**MSB file**

**6 months \$11.25 week**  
**12 months \$9.00 week**

**Haircutting, Color Perms, Braids, Updos Highlights**  
 Men • Women • Children  
**Family Hair Salon**  
**115 S. Main • 272-5987**  
 Mon.-Fri. 9ish to 5ish  
 Pat Young, Jennifer Taylor, Jannie Snyder & Sherry Curtis

**Carolyn's Christmas Creations**  
 106 E. American Blvd.  
 Muleshoe, Texas  
 272-5911  
 www.visitcarolyns.com  
 Open Daily  
*'Tis Always Christmas at Carolyn's!*

**LOWE'S MARKETPLACE**  
 401 W. American Blvd.  
 Muleshoe, Texas  
 272-4585

**BAILEY COUNTY ELECTRIC COOPERATIVE ASSOCIATION**  
 305 E. Ave. B  
 Muleshoe, Texas  
 272-4504

**6 months \$11.25 week**  
**12 months \$9.00 week**

Where's Arid?      Can you find her?  
**Newspaper Fun!**  
 Created by Annimills © 2006 V3-N3

**Snow! Snow! Snow!**

Do you know that bears sleep during the winter? We hide away in a safe spot and go to sleep during the coldest time of the year when food is hard to find. In the fall, we eat extra food and store up fat which we live off of while sleeping. We find a cave or hollow tree or we dig out a burrow under the ground. Then we make a nest of leaves, branches and grass. Our fur keeps us warm. Although we usually sleep from October until April, we sometimes wake up. I know I should be sleeping, but I love playing in the snow too much to sleep!

Draw a snowflake here:

- In Winter...**
- snowflakes formed in colder, drier air are usually \_\_\_\_\_ and leave a fluffy snowfall
  - snow is a cold \_\_\_\_\_ on the ground
  - water in the air condenses around a bit of dust to form this
  - liquid turns to solid due to cold temperatures
  - when crystals falling through the air group together
  - cluster of crystals
  - a large, dangerous mass of snow tumbling down a mountainside
  - wind-blown pile of snow
  - snowflakes have more of these than we can count
  - this may melt quickly or stay on earth permanently in glacier form

Can you help me fall gently to the ground?

crystal cluster snowflake patterns blanket snowfall freezes avalanche snowdrift smaller

Hey! Who is throwing that snowball? To see who it is, visit our website: [www.newspaperfun.com](http://www.newspaperfun.com). You will find answers to the puzzles too.

Can you find and circle words on this page that start with these consonant blends: bl, cl, fl, gl, pl, and sl?

**Snow Math!**

There's no math like snow math! Add the words in the snowman to the word 'snow' to make new words: (The shapes of the spaces will give you clues.)

- snow + \_\_\_\_\_ = \_\_\_\_\_
- snow + \_\_\_\_\_ = \_\_\_\_\_
- snow + \_\_\_\_\_ = \_\_\_\_\_
- snow + \_\_\_\_\_ = \_\_\_\_\_
- snow + \_\_\_\_\_ = \_\_\_\_\_

mobile plow bank suit plow ball

Whoooooaa!!!  
 I know I wanted to see snow up close, but this is ridiculous!

**FARMERS INSURANCE GROUP**  
**FARMERS LAURIE WINCHELL**  
 Insurance Agent  
 Call for a free quote:  
**HEALTH • AUTO LIFE • HOME BUSINESS**  
 1602 W. American, Muleshoe  
 272-7548 • FAX 272-4756

Study the playing penguins. Can you find 6 differences between them?

**DoubleTake DoubleTake**

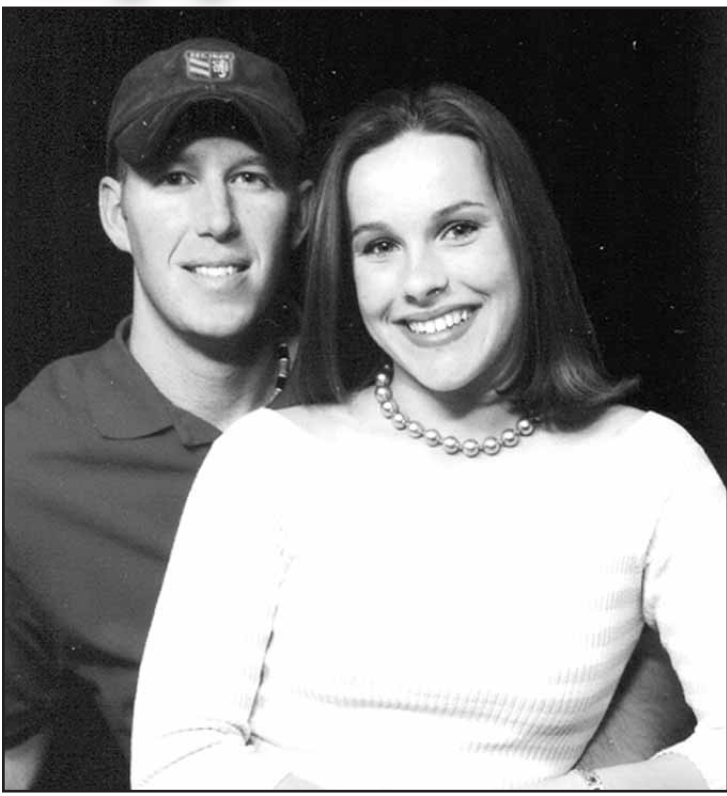
Next, find and circle these 12 winter weather words:

snowflake drifts icicle hail water frozen cloudy glaze ice sleet cold frost

**Newspaper Fun!**  
 Created by Annimills © 2006



## Engagement



GENTRY CREECH AND JOSH SLAYDEN

### Creech, Slayden engaged

Gentry Creech of Post and Josh Slayden of Muleshoe proudly announce their engagement.

The prospective bride is the daughter of Scott and Joy Creech of Post. The prospective groom is the son of Mike and Teresa Slayden of Muleshoe. He is an instrument-rated pilot looking for a career in commercial aviation, and is currently working with his father.

The wedding has been set for March 25, 2006, at 6 p.m., at the First Baptist Church of Muleshoe.

## Baby Showers



### Lovelady honored with shower

A baby shower honoring Tisha Lovelady, pictured above, was held at Trinity Christian Center Church of Muleshoe on Sunday, Jan. 8.

Hostesses for the event included Ronnie Bennett, Vandl Combs, Pamela Counterman, Louvenia Garlington, Kay Gray, Sharla Stanford and Pat Watson.

Among the guests attending were Debbie Lovelady, Cathy Williams and Stevie Jo Williams.

## We're Looking for Someone Special...

Every night in Muleshoe, there are children and teens who will go to sleep alone and afraid, with no place to call home.

If you believe that God has blessed you so that you might be a blessing in the life of another...

### We're Looking for YOU!

Orientation starts January 26th at 12 noon for full and part time (respite) foster parenting. Call for details...

**The Bair Foundation**  
Christian Foster Care

for a free info. Packet call:  
**(806) 797-2247**  
**1-800-571-2651**



## Wildlife Refuge News

Crane counts conducted Wednesday, Jan. 11, on the Muleshoe National Refuge, were an estimated 80,000 sandhill cranes on Goose Lake and nearly 500 ducks, mainly pintails and teal. One golden eagle was spotted on White Lake. There is an estimated 1,000 sandhill cranes roosting on neighboring Baileyboro Lake.

## College News

### Hahn graduates

William Kyle Hahn graduated from Baylor University, Waco, with a bachelor of arts degree on Dec. 17.

### Madrid makes dean's list

Timothy W. Madrid of Muleshoe has been named to the Fall 2005 Dean's List at Sam Houston State University.

Hahn is the grandson of Mary Crane of Muleshoe, and Sal and Margaret Hahn of Ingleside.

Hahn is a member of the Phi Delta Theta Fraternity.

The Dean's list at Sam Houston consists of all full-time students with grade point averages of 3.5 and above.

## Do you have story or photo ideas? Let us know!

Contact  
**General Manager**

**Leah Bell**  
ctyankee@fivearea.com

or  
**Managing Editor**

**Larry Thornton**  
editor@fivearea.com

Call 272-4536.

## PUBLIC NOTICE First Day of Instruction Waiver

The Muleshoe Independent School District will hold a Public Hearing regarding a request for a waiver to begin school on August 15, 2006. The earliest starting date for instruction by state mandate is August 21, 2006. The August 15 starting date will allow the first semester to end prior to the winter break.

On Monday, January 23, 2006, at 7:00 p.m., a Public Hearing will be conducted to discuss the waiver request. The hearing will be in the Muleshoe I.S.D. Administration Board Room at 514 W. Ave. G, Muleshoe, Texas.

Muleshoe Independent School District would appreciate your concerns and suggestions regarding the August 15 starting date for the 2006-07 school year. If you cannot attend the hearing, you may contact the superintendent at 806-272-7404 to express your concerns.



January 15, 2006 thru January 28, 2006

FRENCH ONION OR GREEN CHILI  
**PLAINS DIPS**  
REGULAR \$1.99 EACH OR

**2 \$3**  
FOR  
12 OZ. TUB



**POTATO WEDGES**  
REGULAR 99¢

**MUNCHERS**  
REGULAR \$1.29



**ALLSUP'S "MOO" GET ONE FREE!**  
BUY 12 GALLONS OF FRESH ALLSUP'S MILK...  
Collect Self Stick "Moo" Stamps Today & You Could Win FREE Milk For A Year!

**Allsup's #34**  
318 W. American Blvd.  
Muleshoe, Texas  
(806) 272-4862

ASSORTED FLAVORS  
**ALLSUP'S ICE CREAM**

**2 \$6**  
FOR

1/2 GALLON



ASSORTED FLAVORS  
**DORITOS**

**89¢**

REG. 99¢

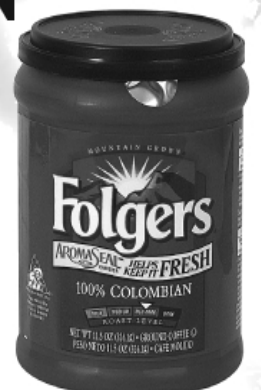
DIET COKE, SPRITE OR  
**COKE**  
3 LITER BTL. OR 6 PACKS

**\$1.99**



FOLGERS  
**COLOMBIAN COFFEE**  
11.5 OZ.

**\$3.99**



## ALLSUP'S COMBO MEALS

COMBO NO. 1	BACON/EGG BISCUIT & 16 OZ. COFFEE	\$1.99
COMBO NO. 2	SAUSAGE/EGG BISCUIT & 16 OZ. COFFEE	\$1.99
COMBO NO. 3	BBQ SANDWICH & 32 OZ. TALLSUP	\$1.99
COMBO NO. 4	HOMESTYLE POPCORN CHICKEN & 32 OZ. TALLSUP	\$2.69
COMBO NO. 5	SPICY POPCORN CHICKEN & 32 OZ. TALLSUP	\$2.69
COMBO NO. 6	3 TAMALES, HOWLERS & 32 OZ. TALLSUP	\$2.59
COMBO NO. 7	2 HOT LINKS WITH BREAD & 32 OZ. TALLSUP	\$2.49
COMBO NO. 8	2 CORN DOGS & 32 OZ. TALLSUP	\$2.59
COMBO NO. 9	CHIMICHANGA & 32 OZ. TALLSUP	\$2.39
COMBO NO. 10	2 BEEF & BEAN BURRITOS & 32 OZ. TALLSUP	\$2.59

BLUE BUNNY CHAMP CONES CARAMEL OR VANILLA \$1.09 BUY ONE GET ONE FREE

ALLSUP'S COFFEE OR CAPPUCCINO 16 OZ. OR 20 OZ. 79¢

ALLSUP'S SANDWICH BREAD 24 OZ. / 79¢ EACH OR 2FOR \$1.09

ALLSUP'S WHEAT BREAD 24 OZ. / 89¢ EACH OR 2FOR \$1.29

MALT-O-MEAL ASSORTED CEREALS 12.8-17.5 OZ. / REG. \$2.79 BUY ONE GET ONE FREE

SNACK STOP CANDIES ASST. FLAVORS 59¢ EACH OR 2FOR \$1.00

ALLSUP'S WATER .5 LITER BTL. / CASE \$3.99

KLEENEX 200 CT. / REG. \$2.59 \$1.99

SO-DRI PAPER TOWEL SINGLE ROLL REG. 75¢ / 59¢ EACH OR 2FOR \$1.00

# Obituaries

## Mary Obenhaus

A funeral service for Mary B. Obenhaus, 86, of Abilene, formerly of Muleshoe, was held Wednesday, Jan. 18, at Ellis Funeral Home with the Rev. Dr. Stacy Conner officiating.

Obenhaus died on Jan. 15, 2005. She was born on Dec. 28, 1919, in Abilene to John E. Moore and Caroline Ellis Moore. She graduated from Sudan High School and received a teaching degree and later a masters of education degree from West Texas State University.

On May 24, 1942, she married Jack Obenhaus in Circle Back. They later moved to Muleshoe, where she taught elementary school for 39 years, and was a member of the First Baptist Church.

In 1996, Obenhaus moved to Abilene, where she became a member of Wylie Baptist Church. Since 2003, she had been a



**MARY B. OBEHAUS** resident of the Mesa Springs Health Care Center. Obenhaus was preceded in death by her parents and step-mother — Minnie Moore, her husband, and a sister — Wanda Faye Moore.

Survivors include two brothers and sisters-in-law — John E. and Imogene Moore of Abilene and Jackson and JoAnn Moore of Alvarado; and a sister and brother-in law — Christine and Bill Bradshaw of Abilene; and a sister — Virginia Anderson, also of Abilene.

# Nursing Home News

Happy January birthday to Floy Hanson, Howard Awbrey and Hubert Elliott.

The January birthday party is scheduled for Thursday, Jan. 26, at 3 p.m. If your family member is having a birthday and you would like to host the birthday party, please call 272-7578 and talk to Joy or Janis.

Marie Salinas was visited recently by Martha K. Acevedo and Estheer Perez of Littlefield.

After coffee time, Wednesday morning, Buster Kittrell, Loyce Killingsworth, Jo Ellen Cowart, James and Ann Sinclair, Anna B. Lane, and Wanda Kittrell directed our singspiration time. The Rev. Bennie Wright brought the devotional.

Howard Awbrey was visited by his sister and brother-in-law Tuesday, and Wayne Barnett on Wednesday afternoon.

Glenda Jennings and Jackie Scoggins directed the Wednesday afternoon sing-a-long. Zona Gatewood gave a music and song program in the day room as well as the Special Care unit Thursday morning.

Marlin and Loma Mosley, Gladys and Cathy Wilson, Cynthia Crawford Hattie Heathington, Lela Crawford, Alliene Lasiter and guest Zona Gatewood played table games on Thursday afternoon.

Harold and Avis Carpenter entertained the residents with music and songs from yesteryear on Friday afternoon.

Butch Vandiver directed the Bingo Bash on Saturday afternoon.

The Trinity Baptist Church came Sunday afternoon for church services and fellowship.

Park View celebrated Elvis and the 50<sup>th</sup> Monday. The day room and dining room were decorated with Elvis memorabilia and 50s decor. Sandwiches of peanut butter and bananas — Elvis' favorite, and pizza and cake were served to all attending. Alliene Lasiter and Cynthia Crawford helped prepare the sandwiches.

Gary and Judy Hubbard directed the music, praise and devotional time Tuesday morning. The Hubbards also visited with residents in their rooms following the program.

An "Army of Volunteers" gathered in Park View early morning Tuesday to undecorate Christmas. Chairpersons Lynn and Buck Campbell, Charles and Jerrie Flowers, the Stevens family, Ed Nickels, Danny Maye, Marilyn Wilson, Dianne Brown, Jan Crawford, Peggy Dent worked together to haul boxes, take down decorations, box up and haul to the storage a great amount of Christmas Decor. Park View residents, staff and employees are very grateful for the wonderful help.

Tuesday afternoon Jan Crawford, Pat Clark, Pat Watson, Beckye Conklin, and Dianne Brown, Eva Nell Dale shampooed and styled the ladies hair. Pat Clark gave several hair cuts.

Our sincere sympathy goes to Doris Palmer and family, the family of Lillie Edmiston.

Melvin and Mike Griffin, Gary Skaggs, Terome Clemmons cooked breakfast afor the men Wednesday morning.

The breakfast included eggs, bacon, sausage, biscuits, gravy, pancakes, and hash browns all that "all you can eat."

Paul Chaisson also attended the breakfast.

Our thanks to Ruth Kitchens and Pattie Puckett for the Elvis memorabilia.

Jo Ellen Cowart and Anna B. Lane directed a sing-a-long in the special care Wednesday morning.

Carol Ring visited Mary Johnson recently.

Rusty and Cristie Wititt visit our residents almost every weekend.

The family of  
**Danny Blaylock**  
would like to thank everyone for their prayers, memorials, flowers, food, cards and loving kindness shown during our time of sorrow. A special thanks to Dr. Stacy Conner for his prayers and visits, also to the Trinity Baptist Church for their letters and the prayer services held while Danny was so ill in the hospital. Thank you and God Bless.  
**Jackie Blaylock, Elaine Hart, Ronnie Larson and Aunt Sissy**

# Hospital Report

The Muleshoe Area Medical Center has released the following list of admissions.

Jan. 7 — Juanita Buhrman, Josue Garcia, Oswaldo Mendez and Jack Lane.

Jan. 8 — Sherlon Orcutt, David Brock and Ronald Daratt.

Jan. 9 — Mary Bleeker, Matt Moselet, Truman Nix, Josie Toscano, Amy Howard, Aliza Ridriquez, Leavell Parker, William

Johnson and David Stovall. Jan. 10 — Jose Villarreal, Manuela Villarreal, J.L. Bass, Joseph Carrion, James Elder and Phyllis Steelman.

Jan. 11 — Juanita Buhrman and Anastacia Soto.

Jan. 12 — Elzie Darland and Maria Ruvalcaba.

Jan. 13 — Rosemary Lopez and Murpha Street.

Jan. 14 — Mary Bryant.

Jan. 15 — Harry Sheets.

Jan. 16 — Gwendol Lasiter and Leslie Marquez.

## Texas wheat acreage is up

Texas wheat producers have seeded 5.8 million acres for the 2006 winter wheat crop, up five percent from last year, but eight percent lower than 2004.

"Total acreage increased due to planting activity returning to normal levels on the Blacklands (Dist. 4). However, many fields failed to emerge and wheat stands are in very poor condition throughout the state due to extreme drought," State Director Robin Roark reported.

Nationally, U.S. seedings of winter wheat for 2006 totaled 41.4 million acres, up two percent from 2005.

**A Special Thank You**  
The family of Lillie Marie Edmiston would like to extend our sincere thanks and appreciation to all the Vista Care Hospice personnel. A special thanks to some wonderfully caring nurses named Donna, Amber and Connie. A special thanks to Kathy Melton and to Tim Harper for his spiritual care. Special thanks to Dr. Kelly Klein and Dr. Sheets for the loving way you cared for our loved one and to personnel at Park View for all you did for her each day. Thanks to the community for your cards, flowers and food. We are especially grateful to Todd Ellis and Rob Tapley and their staff for the wonderful and caring way they conducted the funeral service.  
Doris Palmer, William & Kathy Anderson, Sharon & Charles Kramer, Kathy & Tommy Moore and Pat & Jerry Zenor

**A Special Thank You**  
The family of Bobby "Bob" Ray Palmer would like to extend our sincere thanks and appreciation to all the doctors and staff of the Amarillo V.A. Hospital for the care they gave Bob. Thanks to all our friends for your prayers and to everyone at Park View and throughout the community for all the food, flowers and prayers. A every special thank you to Tim Harper for a wonderful service. We are especially grateful for Frank and Todd Ellis and Rob Tapley and their staff for the wonderful and caring way they conducted the funeral service.  
Doris Palmer, Jane Tanner and all our families

**AT RICHARD BARTON WE WERE BORN TO DISCOUNT**

Get Your Motor Running... Head Out On The Highway!  
We've Discounted Every Vehicle In Stock!

**WE'VE DISCOUNTED CARS!**

#P0607 2006P ontiac Grand Prix V6,A utomatic,C D,P wrW indows & Locks Old List \$24,677 New MSRP \$23,582 RB's PRICE <b>\$22,770</b> SAVE \$1,907	#P0610 2006 Pontiac G6 Sedan GT V6,P anoramicS unroof, XM,6 D isc Old List\$ 26,272 NewM SRP \$25,010 RB's PRICE <b>\$23,468</b> SAVE \$2,804	#B0105 2006 Buick LaCrosse CX V6,A utomatic,C D, PwrW indows & Locks Old List\$ 25,867N ewM SRP \$24,919 RB's PRICE <b>\$23,544</b> SAVE \$2,323	#B0110 2006 Buick Lucerne CXS V8,L eather, XM,L oaded Old List\$ 39,377 NewM SRP \$38,540 RB's PRICE <b>\$37,950</b> SAVE \$1,427
--	---	--	---

**WE'VE DISCOUNTED TRUCKS & SUVs!**

#G9146 2005G MC YukonS LE V8,B uckets,P wrW indows & Locks,C D Old List \$39,292 New MSRP \$38,650 RB's PRICE <b>\$27,137</b> SAVE \$12,155	#G11045 2006 GMC Reg Cab SL 1 PwrW indows & Locks CruiseC ontrol Old List\$ 24,059 NewM SRP \$21,894 RB's PRICE <b>\$18,611</b> SAVE \$5,448	#P0623 2006 Pontiac Torrent V6,P wrW indows & Locks, A utomatic Old List\$ 24,389 NewM SRP \$22,855 RB's PRICE <b>\$21,309</b> SAVE \$3,080	#B0104 2006 Buick Rendezvous V6,A lloys,C D,P wrS eat, Keyless Entry OldLI st \$29,542 New MSRP\$ 27,372 RB's PRICE <b>\$25,972</b> SAVE \$3,570
--	--	---	--

**WE'VE DISCOUNTED USED!**

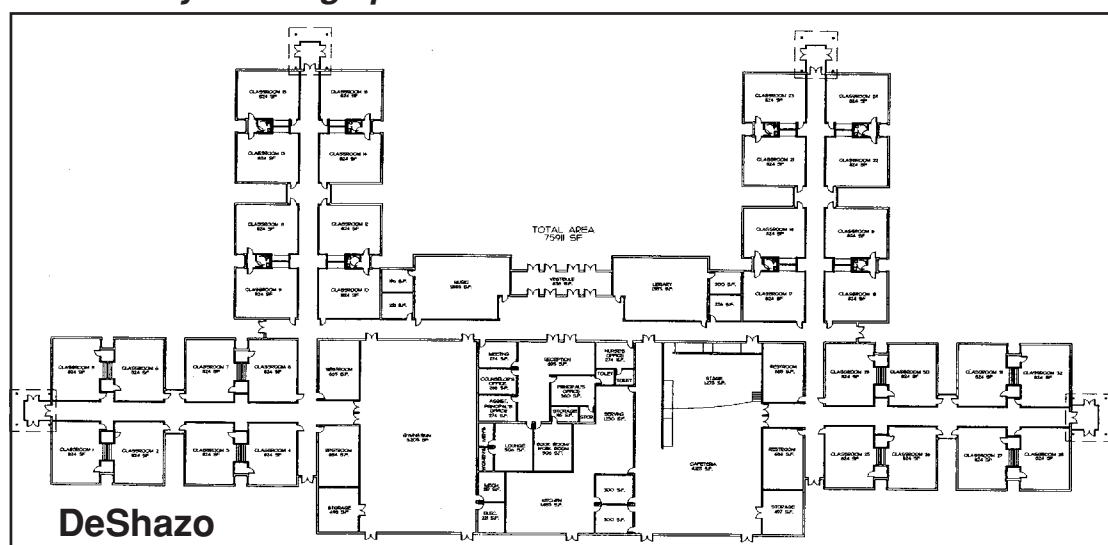
KELLEY BLUEBOOK 1996BuickLeSabre S#H81547A \$4,260 RICHARD BARTON DISCOUNTED PRICE <b>\$3,995</b>	KELLEY BLUEBOOK 2002FordFocusSE S#H81535 \$9,635 RICHARD BARTON DISCOUNTED PRICE <b>\$8,250</b>	KELLEY BLUEBOOK 2003BuickCentury S#H3021A \$11,550 RICHARD BARTON DISCOUNTED PRICE <b>\$8,955</b>	KELLEY BLUEBOOK 2005ChevyCavalier GM CertifiedS#H81531 \$11,725 RICHARD BARTON DISCOUNTED PRICE <b>\$9,995</b>	KELLEY BLUEBOOK 2005PontGrand AmSE GM CertifiedS#H1521 \$14,215 RICHARD BARTON DISCOUNTED PRICE <b>\$12,250</b>	RICHARD BARTON DISCOUNTED PRICE 2005ChevyImpala GM CertifiedS#H1540 \$16,480 <b>\$13,250</b>	RICHARD BARTON DISCOUNTED PRICE 2005ChevyMalibuLS GM CertifiedS#H1543 \$17,340 <b>\$14,995</b>	RICHARD BARTON DISCOUNTED PRICE 2005BuickLaCrosseCX \$18,830 GM CertifiedS#H1553 <b>\$17,750</b>	RICHARD BARTON DISCOUNTED PRICE 2004Che AvalanceZ66 GM CertifiedS#H91202 \$26,950 <b>\$22,995</b>
---	---	---	--	---	--	--	--	---

There's never been a better time to buy! ¡Se Habla Español!

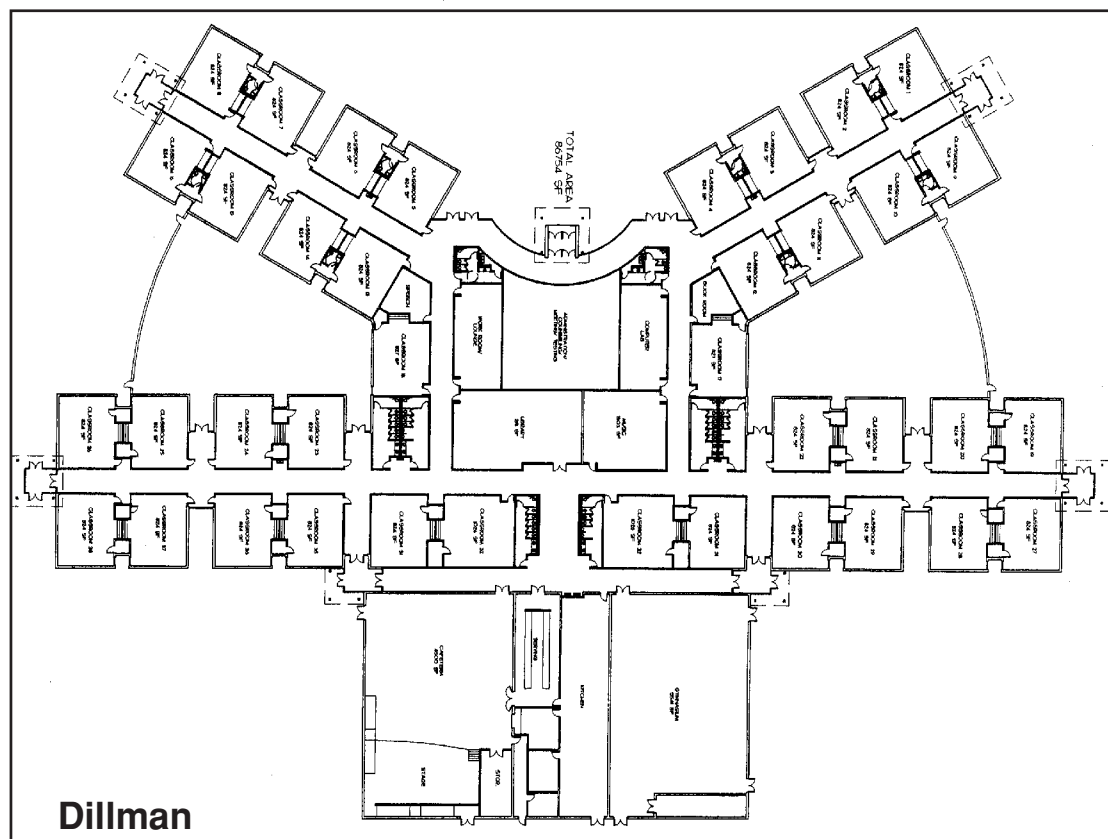
**Richard Barton**  
"The Country Store Where Deal' in Is Easy! Guaranteed!"  
PONTIAC FUEL FOR THE SOUL  
BUICK Its All Good!  
GMC We are professional grade.  
3300 Mabry Drive Clovis, NM 88101 505-762-2986 / 1-888-569-1900  
\*All vehicles subject o priors ale,p,lus TR&L and DTF,e oleer etainsa llr ebates.  
www.richardbarton.com

## Dream time continued...

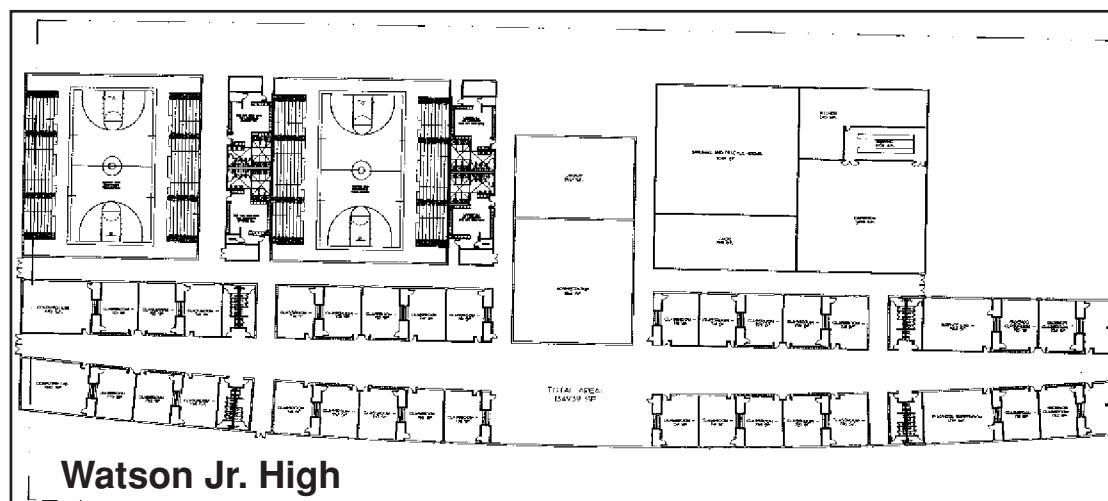
Preliminary drawings presented to MISD school board



DeShazo



Dillman



Watson Jr. High

## School board looks at building expenses

Continued from page 1  
funding, with the earliest deadline requiring a May 6, 2006, bond election. With that in mind, a special board meeting was called for additional discussion on Wednesday, Jan. 18., at 4 p.m.

"It's not going to get any cheaper to build," school board president David Tipps said, indicating that the school district wouldn't save any money by putting off a decision.

According to the prices didn't include such

information provided with the preliminary drawings from the MWM Architects, a partial renovation project at the school district, with additions at all of the schools would cost roughly \$36,841,101.

A full renovation with additions to all four schools would cost roughly \$42,889,693, and construction of four new buildings would run just short of \$59,400,000.

He also noted that these

things as furniture, fixtures, equipment costs, or the costs associated with a new athletic playing fields.

Whitt projected that the bonds needed for a \$20 million construction and renovation project would raise property taxes about 30 cents per \$100, and would raise the taxes on a house valued at \$50,000 about \$100.

## Youth program meeting set

The Muleshoe Heritage Foundation has been awarded a \$7,500 grant by Xcel to fund programs and activities for local students, eighth grade and younger.

A meeting has been set for Thursday, Jan. 19, at 5:30 p.m. to form a committee for this program at the Heritage Depot, and is open to individuals, including parents and grandparents of the target-age children, who are interested participating in such a youth program or just wish to attend.

## Senior Citizen News

By Laverne Winn

Our thanks go to all you senior citizens for the annual donations you have given to the center. The donations are greatly appreciated and needed.

For you who may have missed the Rightway Medical Shoes last Thursday, Mr. Milner will return on Thursday, Feb. 9. Any senior citizen needing help with diabetic shoes should remember this date.

A general meeting for all senior participants of the center will be held on Tuesday, Jan. 31, shortly after the noon meal.

The by-laws for the center will be discussed and acted upon. All participants with an interest for the center should try to be present.

The Senior Tuesday night dances are being enjoyed by everyone who attends. We invite any of you seniors that would like a night out to come and enjoy the good music and fellowship.

Sandy, our good disc

### Bratcher party set for Jan. 31

After serving more than 20 years with the Bailey County Farm Service Agency office, Melba Bratcher is retiring. With that in mind, a farewell party has been scheduled in her honor on Tuesday, Jan. 31, from 1:30 p.m. to 3:30 p.m.

jockey, will be here on Jan. 24 and Jan. 31, from 7-10 p.m.

On Tuesday, Feb. 7, the Bootscooters Band will be furnishing the music. On Tuesday, Feb. 14, Valentines Day, we invite all you senior men to bring your sweethearts for a good time at the Senior Dance.

All senior citizens that enjoy Bingo, plan to be with us on Thursday, Jan. 26, beginning shortly after lunch, from 1-3 p.m.

The fee for playing will be a can of food for the food bank. Prizes will be awarded to the winners.

Menu for Jan. 23 - 27.

Monday, Jan. 23 — Baked ham, green beans, mashed potatoes, tossed salad, wheat roll and apple cake.

Tuesdays Jan. 24 — Taco salad, beans, rice, tossed salad, chips, salsa, pound cake and strawberries.

Wednesday, Jan. 25 — Hamburger steak, mashed potatoes, green beans, pears and cottage cheese salad, roll and peanut butter cookies.

Thursday, Jan. 26 — Lasagna, corn, salad, wheat roll and apple cobbler.

Friday, Jan. 27 — Fish or chicken strips, tator tots, coleslaw, hush puppies and oatmeal cookies.

Resolving to slim down this year? We can help!

**Casseroles To Go!**

2512 W. 5th, Fairview  
Open Mon. - Fri. 9-6  
Sat. 9-2

806-293-5538  
Toll Free  
877-293-5538

Choose from one of our Weight Watchers Casseroles  
All major credit cards accepted  
www.casserolestogo.com

The Lazbuddie Robotics Team would like to thank the following businesses and people for their financial support and help. The team greatly appreciates the donations to help with expenses for the trip to the state and national robotics competition at Dallas. The community support has been wonderful!

**North Lazbuddie Gin**  
**Clay's Corner Gin**  
**Russell Spraying, Inc.**  
**Lazbuddie Garage and Supply**  
**Dale Gallman Equipment, Inc.**  
**Eagle, Inc. - Texas Best Bean and Seed**  
**Gordon H. Green**  
**Foster Fertilizer**  
**Farwell Abstract Company, Inc.**  
**Ronnie Holt Insurance**  
**Smokey Gast**  
**Gary's Engine and Machine**  
**Central Compress**  
**First United Bank**  
**Dave Engelking Farms**  
**Kelly Green Seeds, Inc.**  
**Dodd Cotton Gin**  
**Richard and Marilyn Engelking**

The Lazbuddie Robotics Team 2005  
Debbie Weir, Sponsor

**Parmer County Pump**  
**Stateline Tribune**  
**Sanitary Barber Shop**  
**Muleshoe Pea and Bean**

A special thank you to the following for giving their time and support to the project:  
**Junior and Chandra Sanchez**  
**Rosa Davis**  
**Randy and Terrie Smith**  
**John Jones**  
**Lazbuddie Elementary Teachers**  
**Brad and Debbie Treider**  
**Chris and Jill Timms**  
**Shana Fleming**  
**Buster Ingram**

Friends & family invite you to a  
**Going Away Reception**  
honoring  
**Vivian White**  
Friday, Jan. 20  
5:00-6:30 PM  
Heritage Center Depot

In lieu of gifts, an honorarium is being set up at the Heritage Center toward the purchase of a red caboose to be displayed on the railroad tracks at the Heritage Center, a longtime dream of Vivian's.

Vivian is moving to the Craig Methodist Retirement Community in Amarillo. She has mostly lived in and around Muleshoe since 1928 and has three children: Joe Bob, Annette and Rhonda Gail.

**Bender CHEVROLET Lightning Fast**

**START 2006**

<p><b>2006Chev yImpalaL S</b> #66141MSRP \$22,020</p> <p><b>\$19,600 SALE PRICE**</b></p> <p>or</p> <p><b>\$297 Mo* Smart Buy</b></p> <p>*35MonthSmar tBuy.1Final payment\$12,111WAG.**AfterRebate. Plus.TT&amp;IWith10%Down</p>	<p><b>2006Chev yMalibuL S</b> #66167MSRP \$22,050</p> <p><b>\$18,595 SALE PRICE**</b></p> <p>or</p> <p><b>\$265 Mo* Smart Buy</b></p> <p>*35MonthSmar tBuy.1Final payment\$9,117WAG.**AfterRebate. Plus.TT&amp;IWith10%Down</p>	
<p><b>2006Chev yCobalt</b> #6615MSRP \$16,480</p> <p><b>\$14,480 SALE PRICE**</b></p> <p>or</p> <p><b>\$253 Mo* Smart Buy</b></p> <p>*35MonthSmar tBuy.1Final payment\$7,416WAG.**AfterRebat e. Plus.TT&amp;IWith10%Down</p>	<p><b>2006Chev yCobaltSS</b> #66170MSRP \$20,260</p> <p><b>\$18,260 SALE PRICE**</b></p> <p>or</p> <p><b>\$326 Mo* Smart Buy</b></p> <p>*35MonthSmar tBuy.1Final payment\$9,117WAG.**AfterReba te. Plus.TT&amp;IWith10%Down</p>	
<p><b>05Tahoe,Suburban, Escalade, ESV&amp;EXT</b></p> <p><b>0% for 72 mos</b></p>	<p><b>06Escalade, ESV, EXT</b></p> <p><b>1.9% for 72 mos</b></p>	<p><b>06Tahoe, 06Suburban</b></p> <p><b>0% for 72 mos</b></p>

**Bender CHEVROLET**  
Se Habla Español  
2500 Mabry Drive, Clovis, NM • 763-4465  
www.benderchevycad.com  
AN AMERICAN REVOLUTION  
BREAK THRU







### Students of the Week

Watson Junior High Students of the Week for the week of Jan. 16 are, from left to right: Front row — Amy Regalado, Veronica Soliz and Audrie Hellar; back row — Angel Salcido, Joshua Stanford and Pilar Campos.

### Heritage Foundation News

By Jean Allison

A going away reception is being held Friday, Jan 20., from 5 - 6:30 p.m., at the Heritage Center Depot dedicated community worker Vivian White, who is moving this weekend to the Craig Methodist Retirement Community in Amarillo.

Vivian moved to Muleshoe with her family in 1928 and has lived most of her life in this area. She married Elton Stevenson on May 22, 1943.

Vivian and Elton had three children, Joe Bob, Annette and Rhonda Gail. Jo Bob and wife Sheila Stevenson live in Muleshoe. Both Annette Stevenson Gaillard and Rhonda Gail Stevenson Walls now live in Texhoma, Okla., with their families.

Vivian and Elton lived two years in Baghdad, Iraq, where he worked for an American Oil Company. These were exciting years,

and they learned much about another part of the world. Vivian has shared many of their experiences during Esther-Dorcas Circle meetings.

They were in Iraq for two years before moving to Borger, where they lived until 1957. They then returned to the Muleshoe area, and shortly after their return Elton died suddenly of a heart attack.

Vivian went to work as a cashier at First Bank where she worked for 26 years.

In January 1971, Vivian married Thurman White, the owner of White's Cashway Grocery. Thurman died in 1997 after 26 years of marriage to Vivian.

Many years ago Vivian became interested in the Muleshoe Heritage Center realizing what an asset the center could be to this area. She has served as president and treasurer of the Heritage

Foundation Board and was a valuable member and worker for many years. She served as manager of the Heritage Thrift Shop until she retired from this position two years ago.

The White family donated the building where the Thrift Shop is located to the Heritage Foundation several years ago.

Vivian is a faithful member of the First United Methodist Church where she is a member of the Fidelity Sunday School Class and the Esther-Dorcas Circle.

You are invited to stop by the Heritage Center Depot Friday, and help give Vivian a happy send-off.

In lieu of gifts, an honorarium is being set up at the Heritage Center toward the purchase of a caboose to be displayed on the railroad tracks at the center, a long-time dream of Vivian's.

### 'Road to Recovery' to help drive out cancer

An estimated 81,561 Texans will learn that they have cancer this year. Because of advances in medical research, there will be cures for many. Getting to the treatment, however, may be a problem.

"A cancer patient requiring radiation therapy could need anywhere from 20 to 30 treatments in six weeks," said Alana Carr, Dist. 3 executive director for the American Cancer Society. "A

patient receiving chemotherapy might report for treatment weekly for up to a year. In many cases, a patient is driven to hospitals or clinics by relatives or friends, but even these patients may occasionally seek alternative transportation."

"That's where Road to Recovery comes in, responding to a very real need in this community," she said.

Road to Recovery is a volunteer driving program that provides rides for cancer patients to the treatment center and home again.

"If you have a car and some spare time, you can help someone keep a very important appointment," Carr said.

For more information, call Alana Carr at (806) 792-7128 or Kim Cook, Bailey County Relay for Life chairperson, at 272-4093.

### JV Mules... Continued from page 6

backside with a put back. Precure picked a Cub's pocket and dished to Zamora to finish the break. Alvarado got the ball back on a give and go from Smith. He raked off his defender on Smith's screen and laid the ball up and in to give the Mules a 28-19 advantage.

Smith hit from just inside the free throw line to put the Mules at 30 and took a pass from Brantley after Smith's defender left him to double Brantley. Smith made the easy shot before being fouled after a Mule take away.

Smith made both charity tosses and then dropped in

the two shots for the technical foul called on the Cubs. Brantley scored on an in bound play to push the Mule lead to 38-25 to end the third quarter.

The Cubs would not go away and opened the final period with an 8-2 run that cut the Mule lead to 40-33. The Cubs continued to chip away at the Mule's lead and got it down to one before Carpenter made a five of seven from the line as the Cubs were forced to foul in the final minutes.

Carpenter made his final charity toss with 4.6 seconds left to give the Mules a four point lead. The Mules backed off to avoid a foul as the clock ticked down and the Cubs made the open trey to leave the Mules with a one-point win.

Smith paced the Mules with 17 points and Carpenter added 13. Brantley dropped in seven and Clayton and Alvarado each made four. Precure and Zamora each chipped in two points.

### Cotton conference to be held Jan. 25

The Llano Estacado Cotton Conference will be held Jan. 25 at the Bailey County Coliseum in Muleshoe.

Registration begins at 8 a.m.

There is a \$15 fee, which includes lunch at the seminar.

Five continuing education units are available. For more information, call Curtis Preston at the Bailey County Extension Office, (806) 272-4584.

**TONG SING CHINESE BUFFET**  
272-8999  
1820 W. American Blvd., Muleshoe  
Monday-Thursday 11-9:30; Friday & Saturday 11-10; Sunday 11-9:30

**Senior Citizen's Special .... \$1 Off**  
Age 60 and over — Any meal, any day — Offer expires April 30, 2006

**TAKE OUT BUFFET**  
**LUNCH \$3 DINNER \$3.50**  
(1 lb. container)


**DINE IN BUFFET**  
**LUNCH \$5.45 DINNER \$6.45**  
We add NO MSG to our food!

# M-PYRE

## AUTO SALES INC.

### 806-272-7777

Cars · Trucks · Vans & Auto Accessories



**1112 W. American Blvd. Muleshoe**

Sales Manager Tommy Brown would like to thank everyone for a warm welcome to Muleshoe. "I appreciate your business and support!"



### Some words of wisdom... To all participants in area livestock shows

"The reason most people never reach their goals is that they don't define them, or ever seriously consider them as believable or achievable. Winners can tell you where they are going, what they plan to do along the way, and who will be sharing the adventure with them."

— Denis Watley

"People rarely succeed unless they have fun in what they are doing."

— Dale Carnegie

### The Muleshoe Economic Development Corporation encourages the citizens of Bailey County to come out and support their youth at the Bailey County Junior Livestock Show this Friday and Saturday, Jan. 20-21.

About MEDC...The Muleshoe Economic Development Corporation (MEDC) is committed to the promotion of high quality development in the Muleshoe Area and to improvement in the quality of life for its citizens. Formed in 1993, the MEDC has assisted several businesses in creations and expansions. The Muleshoe Economic Development Corporation offers incentives to businesses based upon job creation and retention and increase in tax base. Coupled with the local government's pro-business attitude, Muleshoe is an attractive location for new and expanding businesses. MEDC is funded from a one-half cent local sales tax (4A) dedicated to economic development.

What are you Waiting For?

# START YOUR FUTURE TODAY!

On Campus Registration Begins

MONDAY JANUARY 9  
8:00 AM


TUESDAY JANUARY 17

Classes begin

for more info please call 769-4747 to schedule an appointment

www.clovis.edu

DO IT TODAY!



**Clovis Community College**