



### Cagers Win Consolation At Farwell Tourney

The Muleshoe Mules walked away from the Farwell tourney last Saturday not empty handed, but with a consolation trophy from the boys' tourney. After losing their first game to Farwell, who won first place, the Mules won two in a row to take the consolation trophy.

In Thursday's game, Farwell was leading 18 to 4 at the end of the first quarter and halftime score was Farwell 26, Muleshoe 11. Third quarter score was Farwell 50, Mules 17 and in the final quarter the Mules made 23 points for a final score of Farwell 59, Muleshoe 46. Eddie Wilt was the Mules' high scorer with 11 points and Bert Williams was high scorer for Farwell with 20 points.

The Mules led Vega 24 to 9 at the end of the first quarter in Friday's game, and half time score was Mules 36, Vega 16. Third quarter score was 44 to 24, and final score was Mules 51, Vega 39. Eddie Wilt was again high point man with 21 points, and Ferguson was Vega's high scorer with 18 points.

The Mules led Adrian 14 to 10 at the end of the first quarter Saturday in the game for consolation, and second quarter score was Mules 26, Adrian 21. At the end of the third quarter the score was 33-26 in the Mules' favor, and the final score was Mules 46, Adrian 31. Bo Bryant was the Mules' high scorer with 13 points, and Hamfeld was Adrian's high scorer with 10 points.

Winners of trophies in Saturday's games were: First place winner, Farwell, beating Bovina 83 to 70 for first place. Second place, Bovina. Third place, to 31 in the game for third place and consolation, Muleshoe, winner of Adrian.

### Springlake Beats Mules, Mulettes

The Muleshoe Mules and Mulettes lost both games to Springlake Tuesday night, the Mulettes losing by a score of 47 to 35, and the Mules losing by three points, 36 to 43. The Mulettes led Springlake

14 to 7 at the end of the first quarter and were leading 24 to 21 at the half. Third quarter score was Springlake 47, Mulettes 35.

Mary Jo Holt was the Mulettes' high scorer with 14 points and Hamilton was Springlake's high scorer with 18 points.

At the end of the first quarter in the Mules-Wolverines game, the score was tied up at 14-14. The Mules were leading 24 to 23 at the half, and at the end of the third quarter, the Wolverines were leading 36 to 34. In the final quarter the Mules made ten



points to the Wolverines nine, but lost out by a very close margin, Springlake 46, Mules 43. Eddie Wilt was high scorer for Muleshoe, scoring 14 points, and Rex Loftis was the high scorer for Springlake with 19 points.

### Jackie Tidwell Named To 2-AA All District Team

One Muleshoe football player, end Jackie Tidwell, was named to the defensive first team of the all-district squad of district 2-AA at a meeting of coaches held in Olton Monday night.

Also being placed for honor-



Cotton khaki today is part of the fashion world, as well as an essential fabric for the military. Seventeen magazine reports that cotton khaki is popular in young fashions this winter. This eye-catching outfit pairs a khaki and white blazer of cotton twill with cotton khaki shorts. The hood is an important fashion trend, the National Cotton Council notes.



This little clown is ready for the sandman in a warm, soft cotton knit pajama outfit by Carter. The harlequin print cotton knit top is combined with solid halbriggan pants of the same material. This fabric requires no ironing, the National Cotton Council says.

### Twirp Week At MHS Is Next Week

Stanley Fox Student Council president at MHS has announced that the annual twirp week activities will begin Monday, January 16, and end Friday night, January 20. Twirp week is when the girls have to take the boys out instead of the boys taking the girls.

A committee from the Student Council was appointed by Fox to adopt the rules for twirp week. Those on the committee are Thurston Garrison, chairman and Joe Roark, Brenda Sinnacher, and Marcia Redwine.

A list of the rules follows: All girls must have a license, which can be bought at the office for twenty-five cents, and must show the license to any member of the student council when asked.

Girls must have the boy's name that they have a date with on the back of their licenses. All licenses will be checked for features.

Girls must furnish cars and pay all expenses. Girls must have at least one date during twirp week.

Girls must use etiquette. Dates must be limited to high school students. No one is permitted to stand up near dates.

Girls who do not have dates or who break rules are subject to

able mention were Doyle Henry, guard, and John Young, and G. R. Howell, backs.

Coaches from Muleshoe, Lockney, Tulla, Dimmitt, Littlefield, and Olton met with Superintendent Jerry Kirk, district chairman to make their choices.

Olton, Dimmitt and Littlefield dominated the first string all-district team.

### SCD Supervisors To Attend Conference On January 18-20

Conservation strategy for 1956, speedup of upstream flood prevention work, and water legislation for Texas will be the big topics of discussion when farmers and ranchers from all over the state meet in Lubbock January 18, 19 and 20 for the 15th annual convention of the Association of Texas Soil Conservation District Supervisors.

Billed as a "working convention", there will be plenty of time for committee work and floor discussion of the many soil and water problems facing Texans.

This year's Soil and Water show, a feature of the convention will present one of the largest displays of irrigation, land-leveling, earth-moving, brush control, and other conservation equipment for farms and ranchers ever assembled in Texas.

Both the show and convention will be held in Lubbock's Fair Park Coliseum. Admission is free, and supervisors are extending a hearty invitation for all interested folks to attend, visit the exhibits, and participate in the convention. Farmers and ranchers of the Plains area will be especially interested in the exhibits of equipment.

Supervisors of the Blackwater Valley Soil Conservation District planning to attend the Lubbock Convention are: Virgie Nowell, Sherman Inman, Ray Carter, of

Kangaroo Court. All profit from sales of licenses will go into the Student Council treasury.

### VERSATILE TERRY



Terry cloth today is used to make a lot of things besides towels, the National Cotton Council reports. It is found in military and industrial uses, apparel, and a variety of household products. Because it's comfortable, washable, and absorbent, cotton terry cloth has become a favorite sportswear fabric. Cotton terry is used for this pair of coveralls made for swimmers to don after a dip.

Muleshoe; Shorty McCall of Enochs; and Bill Eubanks of Maple. Also Senn Stemmmons, J. K. Adams, Arch Fowler, and Duane Barbee.

Read The Journal Want-Ads

### Scout Hut Scene Of Troop 5 Meet

Girl Scouts of Troop Number 5 met in the Scout Hut, Monday, January 9, and a court of awards was held.

These receiving badges were: Magann Lamb, group musician and radio and TV; Doris Ann Gilbreath, My Troop, storyteller; speaker; my government and games; Donna Fowler, my community; Carolyn Burge, cook; an dhonemaker; Alana Evans, traveler; and Sandra Howard, my community, homemaker, athlete, and housekeeper.

Mrs. Elmo Evans read to the girls what Juliet Law read to the Girl Scouts under her direc-

tion many years ago. Alana Evans was elected by the girls as treasurer and welcomed her as a new officer. Mrs. Elmo Evans and Mrs. Rufus Gilbreath granted the Troop 5 girls permission to hold their own scout meeting next Monday. They held a special meeting to make plans.

Donuts were enjoyed by the group following the meeting. The girls wish to thank Mrs. Evans for bringing them.

Attending were: Carolyn Burge, Sandra Howard, Annamary Elrod, Jay Autry, Alana Evans, Donna Fowler, Donna Gwyn, Jane Sanders, Pat Thompson Beth Young, Doris Ann Gilbreath and Magann Lamb. Joyce Sedgwick was a visitor.

## WANTED

1,000 NEW SUBSCRIBERS

— OLD RATES STILL PREVAIL —

In Bailey County and Muleshoe Territory

If you don't take the paper now, we invite you to become a subscriber at once. Our improved facilities will permit the addition of many new names on the subscription list.

THE MULESHOE JOURNAL

PHONES 7220 — 5400

## SALE! SALE! SALE!

- 1 LOT Men's, Ladies' and Children's WOOL & SUEDE JACKETS 1/2 Price 1-4 to 1/2 Off
- 1 Lot Men's and Children's BOOTS 1-4 to 1/2 Off
- LADIES' SQUAW DRESSES 1/4 TO 1/2 OFF

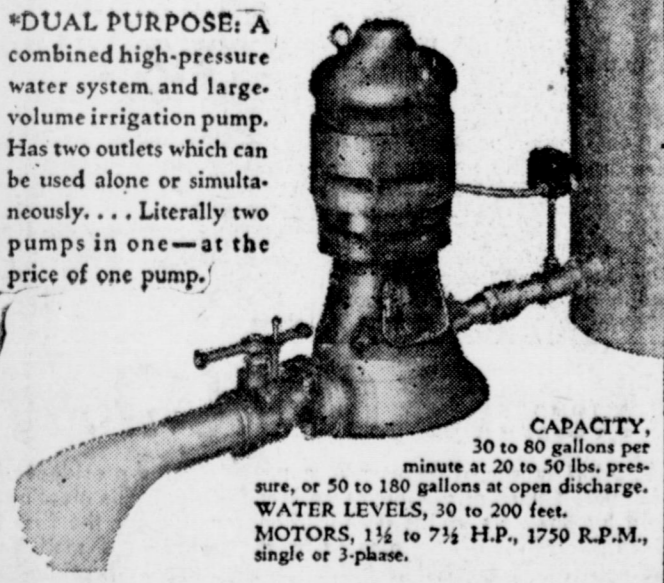
ROBINSON BOOT SHOP & WESTERN STORE

Muleshoe Texas

### IRRIGATE ALL DAY WITHOUT INTERRUPTING YOUR HOME WATER SUPPLY—FROM ONE PUMP!

#### BERKELEY DUAL-PURPOSE DEEP WELL TURBINE PUMPS

\*DUAL PURPOSE: A combined high-pressure water system and large-volume irrigation pump. Has two outlets which can be used alone or simultaneously. . . . Literally two pumps in one—at the price of one pump.



CAPACITY, 30 to 80 gallons per minute at 20 to 50 lbs. pressure, or 50 to 180 gallons at open discharge. WATER LEVELS, 30 to 200 feet. MOTORS, 1 1/2 to 7 1/2 H.P., 1750 R.P.M., single or 3-phase.

- DELIVERS 50% TO 75% MORE WATER FOR IRRIGATION THAN CONVENTIONAL TURBINE WATER SYSTEMS OF EQUAL POWER.
- LONG-LIVED, WEAR-RESISTANT RUBBER BEARINGS.
- WATER LUBRICATED—NO OILY-TASTING WATER.
- DURABLE CONSTRUCTION, ATTRACTIVELY PRICED.

Many small farms can use only one deep well pump for both irrigation and domestic pressure water. The ordinary deep well turbine has not enough pressure, and a jet pump will not deliver sufficient volume. The Berkeley Dual-Purpose Pump solves this problem perfectly—high capacity for flood irrigation, high pressure for sprinklers and hose—with both services at top efficiency. LET US SHOW YOU!

E. R. HART COMPANY

Phone 3300

Muleshoe

# Clearance

## SALE CONTINUES

UNTIL SATURDAY NIGHT, JAN. 14

AT PRESENT LOCATION

# OPEN FOR BUSINESS

AT NEW LOCATION 1014 CLOVIS ROAD

TUESDAY, JANUARY 17

IT WILL PAY YOU TO

## STOCK UP NOW

AT THESE

## SALE PRICES

ON MANY ITEMS TOO NUMEROUS TO MENTION

# WAGNON GRO. & MKT.

PHONE 4060 DELIVERY SERVICE

# everybody SHOPS everybody SAVES

AT CASHWAY — WHERE YOU GET THE ADDED VALUE OF  
Gunn Bros. Stamps Double On Tues.

CHILI ARMOUR'S STAR No. 2, Hot or Mild 2 for 69c    ARMOUR'S TREET 12 Oz. 35c    Cherry Preserves Zestee, Pure, 20 Oz. Glass Tumbler 39c    COFFEE Bright & Early 1 Lb. Tin 79c

20 OZ. GLASS TUMBLER ZESTEE PURE PLUM

PUFFIN — READY-TO-EAT

## Preserves 29c | Biscuits ... 9c

WASTE BASKETS Large Size \$1.98 Value \$1.29    SALTED PEANUTS Big Top 8 Oz. Tin 3 for \$1    SWEET PEAS Mission No. 303 15c    LOTION Woodbury's Lanolin Rich \$1.00 Size 49c

**NEW IDEA! try... CHOCOLATE PANCAKES EASY TO FIX WITH...**

**AUNT JEMIMA Pancake Mix** LG. BOX **35c**

PET MILK Tall Cans 2 for 25c    ALKA-SELTZER 59c Size 39c

PITTED DATES Dromedary 6 1/2 Oz. Pkg. 19c    LIBBY'S 46 OZ. Vegetable Juice Cocktail 39c

**HOMINY** No. 2 Can 9c    Diamond, White ...

INSTANT LUSTRWAX Quart Size 59c    BLACK PEPPER Schilling 4 Oz. Tin 29c

**ASPIRIN** 15c Size 9c    Bayer's ...

HERSHEY-ETS 25c Box 19c    SORGHUM SYRUP Turner's Goldenrod Quart Jar 39c

3 LB. CARTON DELITE **Pure LARD ... 39c**

**GARDEN-FRESH fruits-vegetables**

Turnip & Tops Garden Fresh bu. 9c    CABBAGE Fresh Crisp Green lb. 5c

GRAPEFRUIT Marsh Seedless White lb. 7c    CAULIFLOWER California Snow White lb. 9c

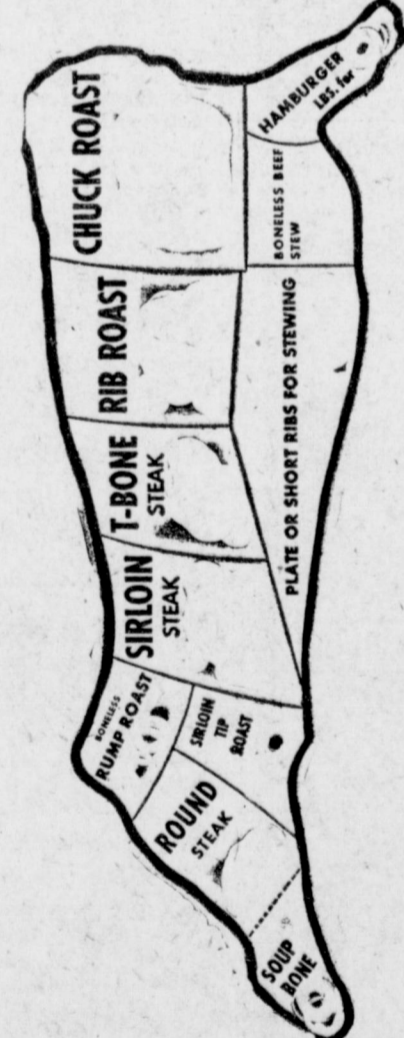
**FROZEN FOODS**

FROZEN CATFISH Frionor 1 Lb. Pkg. 49c    BREADED SHRIMP Gulf Stream 10 Oz. Pkg. 49c    LIMA BEANS Snow Crop or Fordbrook 10 Oz. Pkg. 25c    DRUMSTICKS Youngblood's 1 Lb. Pkg. 89c

**FEATURING SPECIALS**

**ARMOUR'S STAR CHOICE Beef**

**...THE BEST IN TOWN!**



BONELESS ROAST Armour's Star Choice Beef Rump or Pikes Peak lb. 49c

ARMOUR'S STAR CHOICE BEEF ROUND **STEAK LB. 69c**  
 Armour's Star, Choice Beef Loin Steak lb. 69c    Armour's Star, Choice Beef T-Bone Steak lb. 69c

ARMOUR'S STAR CHOICE BEEF CHUCK **ROAST 37c**  
 Armour's Star, Choice Beef Club Rib Steak lb. 49c    Armour's Star, Choice Beef Arm Roast lb. 39c

ARMOUR'S STAR SUGAR CURED **PICNICS 29c**  
 Armour's Star Pure Pork Sausage 1 lb. roll 33c    Armour's Star All Meat Franks 1 lb. pkg. 39c

ARMOUR'S STAR THICK SLICED **BACON** 2 LB. PKG. ... **79c**

**CASHWAY**

HIGHWAY 70 & N. AVE. B FREE DELIVERY    MULESHOE, TEXAS Phone 2440 or 2450

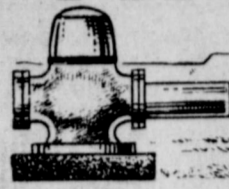
FILLETS MIGNON Armour's Star lb. 98c    BEEF Armour's Star Choice, 1/2 or Whole lb. 36c    MINUTE STEAKS (Made From Choice Beef) lb. 69c    GROUND BEEF Armour's Star Choice, Lean lb. 43c







# The Muleshoe Journal



DEDICATED TO THE PROGRESS AND DEVELOPMENT OF BAILEY COUNTY AND THE GREAT MULESHOE COUNTRY

VOLUME 35, NUMBER 2

SECTION II — 8 PAGES

THURSDAY, JANUARY 12, 1956

## April 15 Deadline For Farmers To Pay Social Security Tax

Self-employed farmers and ranchers can become eligible for insurance benefits under the social security law by mid 1956 if they have earned as much as \$400 from farming in both calendar years 1955 and 1956. A. B. Wooten, extension economist, reminds Texas farm operators.

Along with this goes the responsibility to report earnings from farming and pay the 3 percent social security tax not later than April 15, 1956. The Social Security Administration has suggested that payments be made as early as possible after January 1.

The form for making a report and remitting the required tax for social security insurance (Schedule SE) comes with the Federal Income Tax Return, Form 1040. If your net earnings from farming were as much as \$400 in 1955, you are obliged to fill out and file this return and pay the social security tax, according to Wooten, even if you do not owe any Federal income tax for 1955.

Older farmers — those 65 or over — can retire after mid 1956 and start getting monthly old-age insurance payments if they have met the earnings requirements and paid their tax. Other farmers, regardless of age, will acquire family protection, in the form of monthly payments to

## July-November Farm Exports Up

Exports of agricultural commodities from the United States during the July-November, 1955 period are estimated at \$1,300,000,000, a gain of 4 percent over the same period for 1954.

According to the U S Department of Agriculture, farm exports in November are estimated at about \$275,000,000, or 11 percent greater than the monthly average in the first quarter of the current fiscal year but 18 percent less than for November of 1954. The chief differences between November, 1955 and the corresponding month a year earlier were the declines in exports of cotton and vegetable oils and oilseed while increases were made by grains and feeds. Exports of livestock products, tobacco and fruits and vegetables

surviving dependents in the event of their death, provided they meet the same requirements.

In either case, the payment of the social security tax must accompany your income tax declaration or return. This responsibility is required by law.

Further information on social security taxes may be obtained at your nearest Internal Revenue Service office or from the local county agent. Information about benefits can be obtained from your social security district office if you do not know where these offices are, your postmaster can tell you, says Wooten.

## Ground Water Inventory - Bailey County

The portion of Bailey County within the boundary of the High Plains Underground Water Conservation District covers about 362,000 acres of land. (The total area of the county is about 532,000 acres.) The underground reservoir in the Ogallala formation beneath the area within the district contained approximately 5,770,000 acre-feet of ground water in storage available for pumping in January, 1955. The above maps were prepared from data compiled from a study of about 500 logs of water wells and about 250 measurements of water levels in wells.

The map in plate 1 shows the thickness of the water-bearing strata between the water table and the red-beds in 1938 before an appreciable amount of water had been pumped from the reservoir. The map in plate 2 shows the decline of the water table from the spring of 1938 to January, 1955.

The volume of water remaining in the underground reservoir did not change significantly.

Cotton exports, although aided by sales for foreign currencies, still were less than half as great in the 1955 July-November period as in the corresponding months of 1954. There was a slight increase in wheat and flour exports, and feed grain shipments abroad continued to advance.

Read The Journal Want-Ads

voir was determined by subtracting the volume of material unwatered since 1938 from the total volume of saturated material in 1938 and multiplying the remainder by the coefficient of storage of 15 percent.

These data show that 6,100,000 acre-feet of water was in storage available for pumping in 1938, and that the net decrease in storage from 1938 to 1955 was 330,000 acre-feet. In other words, the net decrease in storage is 5 percent of the quantity available in 1938. The total pumpage, however, from 1938 to 1955 was considerably more than 330,000 acre-feet. The recharge which took place after the exceptionally heavy precipitation in 1941 added a large quantity of water to the underground reservoir. The 330,000 acre-feet plus the quantity added by recharge has been withdrawn by pumping.

The approximate quantity of underground water in storage, available for pumping, beneath an individual farm may be determined by multiplying the number of acres in the farm by the thickness of the water-bearing strata underlying the farm and then multiplying by the storage coefficient of 15 percent. Suppose the farm consists of 320 acres and has 200 feet of water-bearing strata underlying it, then 320 acres x 200 feet x 0.15 equals 9,600 acre-feet of water available for pumping. An acre-foot of water is the quantity re-

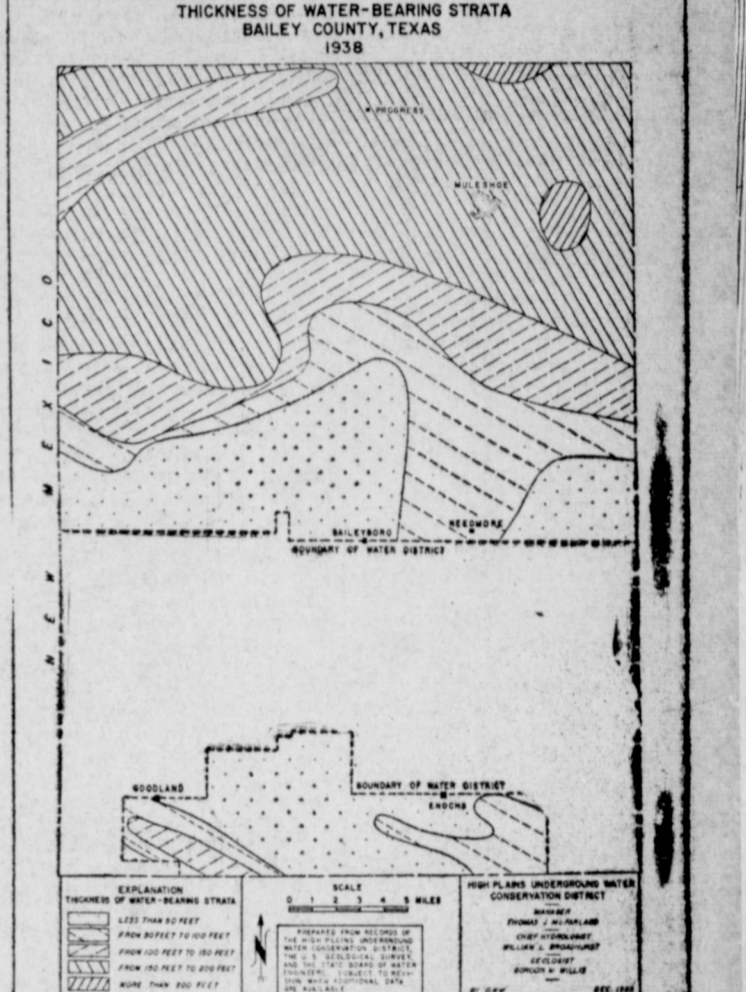
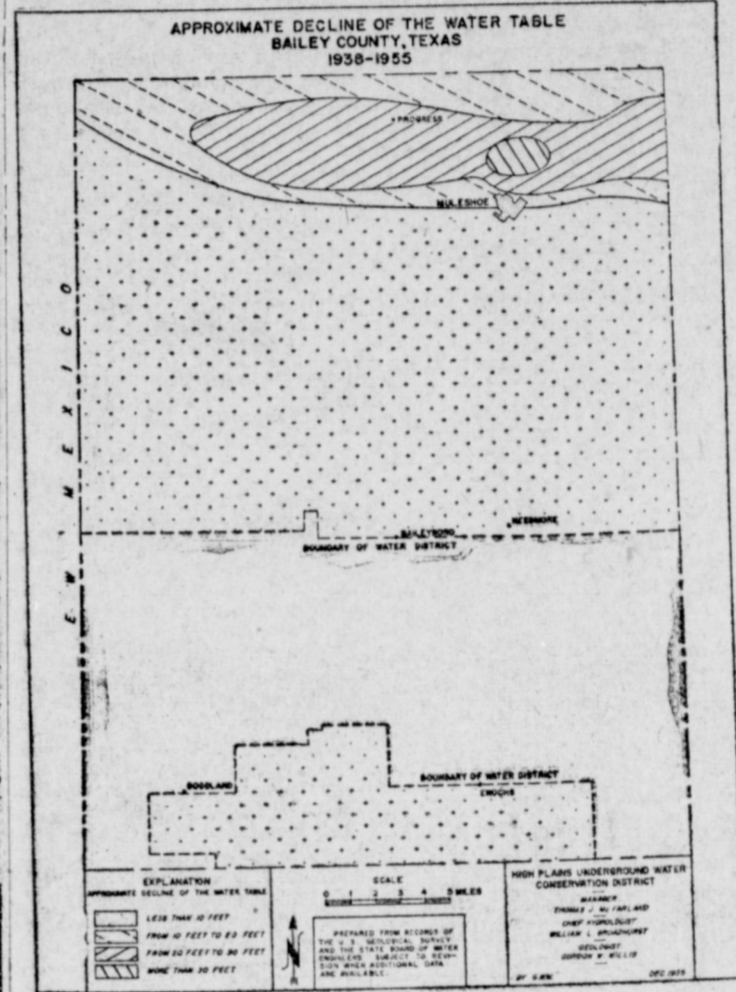
quired to cover one acre to a depth of one foot, and it is also equal to 43,560 cubic feet or 325,829 gallons.

An individual may use this information to determine, within reasonable limits, how long the quantity of underground water

in storage beneath his farm will last at any annual rate of withdrawal. This assures of course, that his neighbors pump a comparable amount of water per acre on their farms.

These maps and studies of this type are parts of the regular hydrological work in progress by

the staff of the Water District. Similar maps and information will be prepared as rapidly as practicable for all the counties within the Water District. Maps of Deaf Smith, Farmer, Castro, Potter, Randall, Armstrong, Floyd and Bailey Counties are now available.



## Notice of Annual Meeting of Members

The Annual Meeting of The Members of Bailey County Electric Cooperative Association Will Be Held In The HIGH SCHOOL AUDITORIUM

Wednesday, January 11, 1956 - 2:00 P. M.  
TO TAKE ACTION UPON THE FOLLOWING

1. Give members a financial report, Progress Report and General Condition of the Cooperative.
2. Elect three directors for a term of three years.
3. Appoint a Nominating Committee for Annual Meeting to be held in 1957 for Districts 3 and 6.
4. Consider and take action upon any other matters that might be presented or come before the meeting.

In connection with the election of three directors, the following members have been nominated:

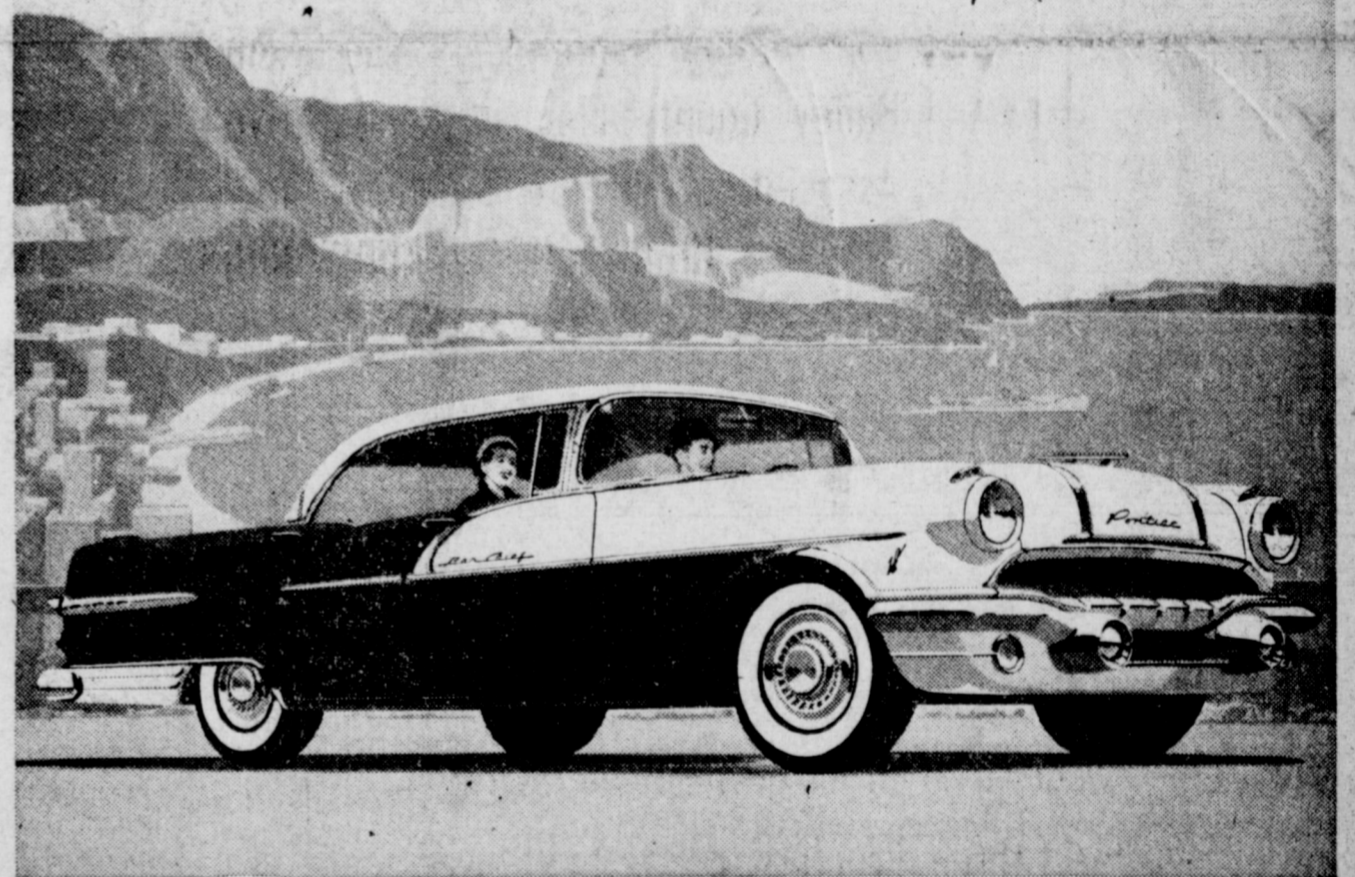
- |                                 |                                |                                     |
|---------------------------------|--------------------------------|-------------------------------------|
| — DISTRICT 4 —                  | — DISTRICT 5 —                 | — DISTRICT 7 —                      |
| C. G. DAMRON<br>Star Rt., Sudan | R. L. DAVIS<br>Maple, Texas    | GLENN THOMPSON<br>Morton, Texas     |
| JAMES WARREN<br>Rt. 5, Muleshoe | L. E. WARREN<br>Box 554, Maple | LEROY JOHNSON<br>Star Rt. 7, Morton |

**OFFICERS**  
Joe Sooter, President  
Tommy Galt, Vice-Pres.  
H. E. Schuster, Sec.-Treas.

**DIRECTORS**  
R. L. Kimbrough  
R. A. Axtell  
Roy Young  
G. W. Thompson

**BAILEY COUNTY ELECTRIC COOP. ASS'N.**  
MULESHOE, TEXAS

"A LOCALLY OWNED, MANAGED AND TAX PAYING FARM ORGANIZATION"



The car says GO and the price won't stop you!

## Invest in Dependability... get a Bonus in Go!

You can buy it on its name alone—this big, high-powered '56 Pontiac—and be safe in the knowledge that you couldn't have made a better investment in years of dependable, carefree motoring.

The good things you've been hearing about Pontiac for years assure you that.

But "go" is the word for '56! Performance so new and dramatic it must be experienced to be believed!

A short spell behind the wheel will nail that statement down as a fact. Come along for a drive and see.

Waiting for the light to change, you can't hear the engine. But touch your toe to the accelerator and in a split second there's a torrent of power, sparked by the most advanced engine of them all—the blazing 227-h.p. Strato-Streak V-8.

Team this terrific power plant with Pontiac's all-new Strato-Flight Hydra-Matic\* and you've got the smoothest take-off that ever brightened a highway.

And remember—this easy handling dream is actually among the biggest, huskiest cars built!

Now for the final test—head for the open road and some landmarks you can challenge. Wipe out a hill. Straighten a curve. Smooth out a stretch of rough road that's bothered you for years.

Now see why they're calling this the greatest "go" on wheels?

More than that—it's the greatest buy on wheels! And that too, is easy to prove.

Then take a look at the price tag—a check on our deal.

Nothing will stop this powerful beauty from being yours!

You can actually have a big, glamorous Pontiac 860 for less than you would pay for 44 models of the low-priced three!

**PONTIAC**

**LADD PONTIAC**

MULESHOE HIGHWAY 70 AND 84

Friday 12:00 p.m. to 7 p.m.  
Saturday





**NOTICE OF ROAD BOND ELECTION**  
**THE STATE OF TEXAS,**  
**COUNTY OF BAILEY:**

TO THE RESIDENT QUALIFIED ELECTORS OF BAILEY COUNTY, TEXAS, WHO OWN TAXABLE PROPERTY IN SAID COUNTY, AND WHO HAVE DULY RENDERED THE SAME FOR TAXATION:

TAKE NOTICE that an election will be held on the 4th day of February, 1956, in Bailey County, Texas, to determine whether or not bonds shall be issued by said County to the amount of \$50,000, for the purpose of the construction, maintenance and operation of macadamized, graveled or paved roads and turnpikes, or in aid thereof, in Bailey County, Texas, and whether or not ad

valorem taxes shall be levied on all taxable property in said county, subject to taxation, for the purpose of paying the interest on said bonds and to provide a sinking fund for the redemption thereof at maturity, in obedience to an ELECTION ORDER passed by the Commissioners' Court of Bailey County, Texas, on the 4th day of January, 1956, and which order is in words and figures as follows, to-wit:

**ORDER FOR ROAD BOND ELECTION**  
**THE STATE OF TEXAS,**  
**COUNTY OF BAILEY:**

ON THIS, the 4th day of January, 1956, the Commissioners' Court of Bailey County, Texas, convened in special session, at the regular meeting place thereof in the courthouse at Mule-

shoe, Texas, the following members of said Court, to-wit: Glen Williams, County Judge, Presiding; and Tom Morgan, Commissioner, Precinct No. 1; W. W. Couch, Commissioner, Precinct No. 2; R. R. Kindle, Commissioner, Precinct No. 3; R. P. McCall, Commissioner, Precinct No. 4; being present and participating; there came on to be considered the petition of Willie George Wilson and 83 others for an election to be held in said Bailey County, Texas, to determine whether or not bonds be issued by said Bailey County, Texas, to the amount of \$50,000, for the purpose of the construction, maintenance and operation of macadamized graveled or paved roads and turnpikes, or in aid thereof, in Bailey County, Texas,

and whether or not ad valorem taxes shall be levied on all taxable property in said County, subject to taxation, for the purpose of paying the interest on said bonds and to provide a sinking fund for the redemption thereof at maturity; and

IT APPEARING to the said Court that said petition is signed by more than Fifty (50) qualified property tax paying voters of said Bailey County, Texas, and

IT FURTHER APPEARING that the amount of bonds to be issued will not exceed one-fourth of the assessed valuation of the real property of said Bailey County, Texas;

IT IS, THEREFORE, CONSIDERED AND ORDERED by the said Court that an election be held in said County on the 4th day of February, 1956, which is not less than thirty (30) days from the date of this order, to determine whether or not the bonds of said Bailey County, Texas, shall be issued in the amount of FIFTY THOUSAND DOLLARS (\$50,000), in conformity with the Constitution and laws of the State of Texas, for the purpose of the construction, maintenance and operation of macadamized, graveled or paved roads and turnpikes, or in aid thereof, in Bailey County, Texas; said bonds to bear interest at a rate not to exceed THREE AND ONE HALF PER CENTUM (3½%) per annum, and to mature serially over a period of years not to exceed ten (10) years from the date thereof; and whether or not ad valorem taxes shall be levied upon the property in said Bailey County, Texas, subject to taxation, for the purpose of paying the annual interest on said bonds and to provide a sinking fund for the redemption of said bonds at maturity.

SUBJECT to the authorization of said bonds by the qualified property tax-paying voters, \$25,000 of the proceeds of said bonds will be used to acquire and purchase lands for rights-of-way in respect of Texas State Highway No. 84 and farm-to-market roads in said County; and \$25,000 of the proceeds of said bonds will be used to acquire and purchase lands necessary for rights-of-way in respect of farm-to-market roads in said County.

THE SAID ELECTION shall be held under the provisions of the Acts of the Thirty-ninth Legislature, First Called Session, Chapter 16, as amended.

ALL PERSONS who are legally qualified voters of said Bailey County, Texas, who are resident property taxpayers of said County and who have duly rendered their property for taxation, shall be entitled to vote at said election.

THAT THE BALLOTS for said election shall be prepared in sufficient number and in conformity with V. A. T. S. Election Code, adopted by the Fifty-second Legislature in 1951, and that printed on such ballots shall ap-

pear the following:

"For The Issuance of Bonds and The Levy of Ad Valorem Taxes in Payment Thereof"

"Against The Issuance of Bonds and The Levy of Ad Valorem Taxes in Payment Thereof"

"AS TO THE foregoing proposition, each voter may mark out with black ink or pencil one of such expressions, thus leaving the other as indicating his vote on the proposition; or in the alternative, each voter may vote on the proposition by placing an "X" in the square appearing on the ballot beside the expression of his choice.

THE POLLING PLACES and presiding Judges of said election shall be, respectively, as follows: Precinct No. 1 Polling Place, The Election House, Presiding Judge, Ernest Kerr.

Precinct No. 2, Polling Place, Baptist Church, West Camp, Presiding Judge, Partin Austin.

Precinct No. 3, Polling Place, Longview Church, Mays, Presiding Judge, Bert Seales.

Precinct No. 4, Polling Place, Schoolhouse Threeway, Presiding Judge, J. G. Arnn.

Precinct No. 5, Baileyboro Gin, Baileyboro, Presiding Judge, Howard Ashler.

Precinct No. 6, Schoolhouse, Bula, Presiding Judge Roy, Young.

Precinct No. 7, Schoolhouse, Circleback, Presiding Judge, C. G. Damron.

**SPECIAL CANVASSING BOARD:**

Barry T. Lewis, Johnnie Johnson, Mrs. Elizabeth Woodley.

THE COUNTY CLERK of Bailey County, Texas, is hereby authorized and directed to cause said notice of election to be published once each week for three consecutive weeks prior to said election in a newspaper of general circulation published in Bailey County, Texas, and, in addition thereto, by posting notice of such election at four public places in Bailey County, Texas, one of which shall be at the Courthouse door of said County, for three consecutive weeks prior to said election.

A COPY of this order, signed by the County Judge of Bailey County, Texas, shall serve as proper notice of said election. THE ABOVE ORDER having been read in full, it was moved by Commissioner Morgan and seconded by Commissioner McCall that the same be passed and adopted. Thereupon, the question being called for, the following members of said Court voted "AYE": Commissioners Morgan, Couch, Kindle and McCall; and none voted "NO".

PASSED AND APPROVED, this 4th day of January, 1956. Glen Williams, County Judge, Bailey County, Texas.

Tom Morgan, Commissioner, Precinct No. 1.

W. W. Couch, Commissioner, Precinct No. 2.

R. R. Kindle, Commissioner, Precinct No. 3.

R. P. McCall, Commissioner, Precinct No. 4.

IN WITNESS WHEREOF, I have hereunto signed my name officially and affixed the seal of the Commissioners' Court of Bailey County, Texas, this 4th day of January, 1956, pursuant to authority given by law and the above order of the Commissioners' Court of said County, TEXAS.

GLEN WILLIAMS, County Judge, Bailey County, Texas.

AL GRIFFIN, County Clerk and Ex-officio Clerk of the Commissioners' Court of Bailey County, Texas (COM. CRT. SEAL)

**MHS Cagers Start Conference Race With Friday Game**

The Muleshoe Mules and Mulettes will start their conference games in basketball for this season as they meet the Lockney Longhorns at Lockney Friday night, January 13. They have had a little bad luck so far in the season, but hope to get off to a winning start in conference play Friday night.

The Mules have won one trophy this year, which was a consolation trophy from the Farwell tournament held last week. The Mulettes also won a consolation trophy this season, it being from the Friona tourney, held earlier in the season.

The Mules and Mulettes will have ten conference games, playing each team twice. The teams in Muleshoe's conference are Olton, Lockney, Tullia, Littlefield, and Dimmitt.

Dates of the games to be played are:

January 13, Lockney, there; January 17, Tullia, here; January 20, Dimmitt, here; January 24, Littlefield, here; January 27, Olton, there; January 31, Lockney, here; February 3, Tullia, there; February 7, Dimmitt, there; February 10, Littlefield, here; and February 14, Olton, here.

**Mulettes Lose To Friona. Sudan At Farwell Tourney**

The Muleshoe Mulettes were stunned short at the Farwell basketball tourney Thursday and Friday as they lost their first two games in the tournament to lose out completely.

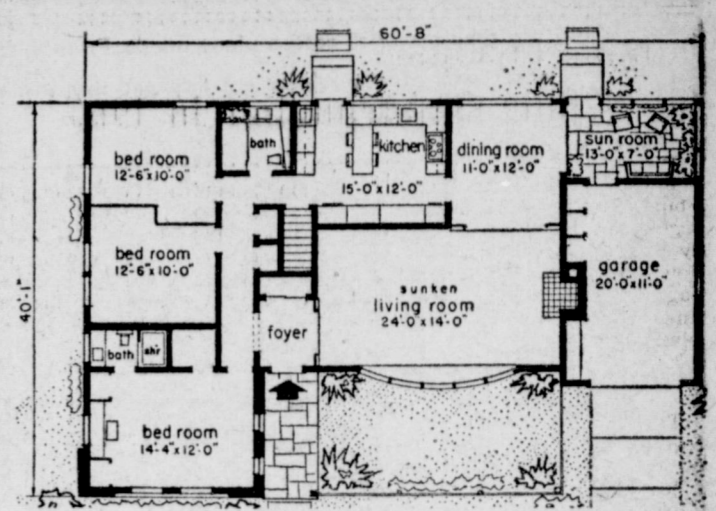
In Thursday's game the Mulettes played Friona, who won third place honors there. The Mulettes were leading 7 to 4 at the end of the first quarter, and they were leading by six points at the half. 19-13. Muleshoe led by a single point at the end of the third quarter, 25-24, and Friona went ahead in the last quarter, 31 to 29, by a two-point margin. Win by Mary Jo Holt was

the Mulettes high scorer with 14 points and Fairchild was Friona's high scorer with 13 points. Muleshoe lost to Sudan Friday by 14 points, 37 to 23. Sudan led by seven at the end of the first quarter, 12 to 5. Halftime score was Sudan 26, Muleshoe 15. Sudan was leading 32 to 19 at the end of the third quarter, and scored five points in the fourth quarter to make the final score Sudan 37, Mulettes 23.

Mary Jo Holt was again the Mulettes' high scorer, making 10 points for the evening, and Lynch was Sudan's high scorer with 23 points.

In the finals Saturday, the Bovina girls took top honors, beating Farwell 43-32 with Farwell winning second place trophy. Friona beat Vega in a close one, 45 to 44 to win third place trophy, and Lazbuddie won the girls' consolation trophy by beating Sudan 51 to 41.

**Last Word in Comfort**



Elegance, privacy, and up-to-the-minute convenience are the keynotes of this attractive ranch-style house.

Architect Rudolph A. Matern of Jamaica, L.I., N.Y., has separated the sleeping, working, and living areas for efficient household activity and gracious entertaining. Completely equipped, the kitchen is a housewife's dream. Dryer and washer are located at one end of the room, separated from the work area by a snack bar. Refrigerator, freezer and oven are set in.

The sunken living room has a ponderosa pine bow window that frames a planted area. A large wood-burning fireplace adds to the friendly atmosphere.

The master bedroom suite has a complete bath, a walk-in closet, and a built-in vanity. A Hollywood-style bathroom serves both the bedrooms and the kitchen.

There is a sun room, an attached garage with storage closets and a work bench, abundant closet space throughout, and a full basement. The exterior of the house is warm and impressive. Vertical boards on the gable ends add height. Pastel asphalt shingles emphasize the feeling of brightness and unify the exterior decoration.

The architect suggests that a full 4 inches of mineral wool insulation be installed in the attic and 3 inches in the walls for economy and comfort in winter and summer.

The house has 1,597 square feet of floor space and should be placed on a lot at least 100 feet square.

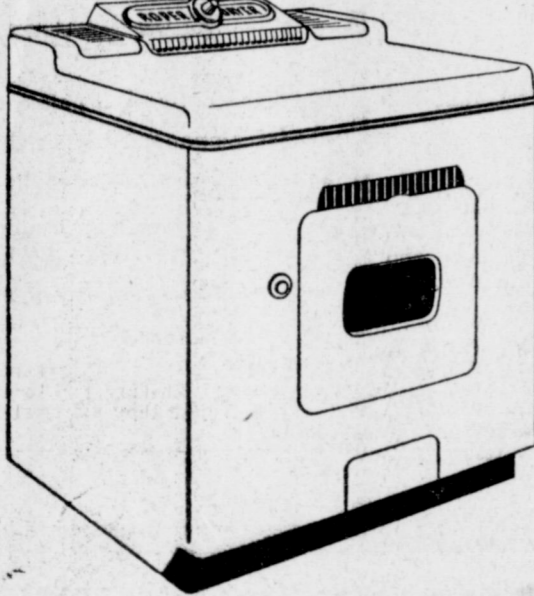
This plan is from the Home-Master Plan Book. Blueprints and specifications are available from Rudolph A. Matern, 90-04 161st St., Jamaica 32, L.I., N.Y. Refer to plan No. 4442.

**LEFT FOR DALLAS**  
Mr. and Mrs. Raymond Gaede left Tuesday for Dallas, where they were to pick up their daughter Ginger, who will return home with them to spend a week.

**EXPECTED GUESTS**  
Expected guests this weekend in the home of Mr. and Mrs. Raymond Gaede are their sons Jim, of Texas Tech and Keith of Canyon, and Miss Iva Crowley, of Salton.

**CANTON AUXILIARY TO MEET FRIDAY**  
Muleshoe Canton and Auxiliary will meet Friday evening, January 13, at 8:00 o'clock. Officers will be installed and all members are asked to attend.

Read The Journal Want-Ads



**A Gas Clothes Dryer Is:**  
✓ Dependable  
✓ Fast  
✓ Economical

\*Just as natural gas supplies you with plenty of really hot water for washing clothes... so... will dependable natural gas dry your clothes. Gas for drying clothes costs only approximately \$2.60 a year for the average family. See your gas appliance dealer. Buy an automatic gas clothes dryer... a dryer you know you can afford to use every day of the year.

**Pioneer Natural Gas Company**  
FUEL FOR A GROWING EMPIRE

Illustrated above is a Roper automatic Gas clothes dryer. This dryer is approved by the American Gas Association testing laboratories.



THESE ARE  
IMPORTANT PEOPLE  
IN YOUR LIFE

*Dear Friends*

The people in the picture in this advertisement are Humble researchers on their way to work in Humble's Houston Research Center.

They are important people in your life, because their studies and their constant experimentation have only one purpose: to supply your increasing needs for oil and natural gas.

At the Houston Research Center, they pool their efforts to make the finding and production of oil and natural gas more efficient. And since they are top people in their different fields, their work has met with notable success.

It has helped to make the Humble Company not only the largest but also one of the most efficient producing companies in the country.

The new ideas, new methods and new practices developed by Humble researchers have resulted in the discovery of new reservoirs of a valuable natural resource; in making these reservoirs more productive; and in prolonging their life for your future benefit.

Sincerely  
**HUMBLE OIL & REFINING CO.**  
**HUMBLE**

Announcing . . .  
**FORMAL OPENING**  
THURS., FRI., SAT., JAN. 12, 13, 14

**FREE** GIFTS FOR WOMEN AND CHILDREN  
Nothing to Buy . . . Just Register

**SHOE CLEARANCE** Which includes Over 75% of Our Entire Original Stock. Savings Up to 50% On Many Numbers

**NEW SPRING STYLES**  
The Famous Brands  
Mademoiselle  
Trim-Tred  
and  
Golo

**SPECIAL — MADMOISELLE**  
The Fashion Shoe For Women  
VALUES TO \$17.95, ONLY **\$11.99**

**HEELS, FLATS LOAFERS**  
Suedes and Smooth Leathers  
VALUES UP TO \$5.95, Only **\$3.99**

**HOUSE SLIPPERS**  
Women's and Children's  
VALUES UP TO \$4.95, Only **\$1.98**

**Children's Shoes**  
Famous Poll Parrot  
Tweens By Golo  
**ALL REDUCED FOR THIS EVENT**

**All Sales Final**  
**JOHNSON'S SHOES**  
Next Door To Muleshoe Jewelry — Phone 8460 — Muleshoe

# PRINTED COTTON PIECE GOODS

VALUES TO \$1.29

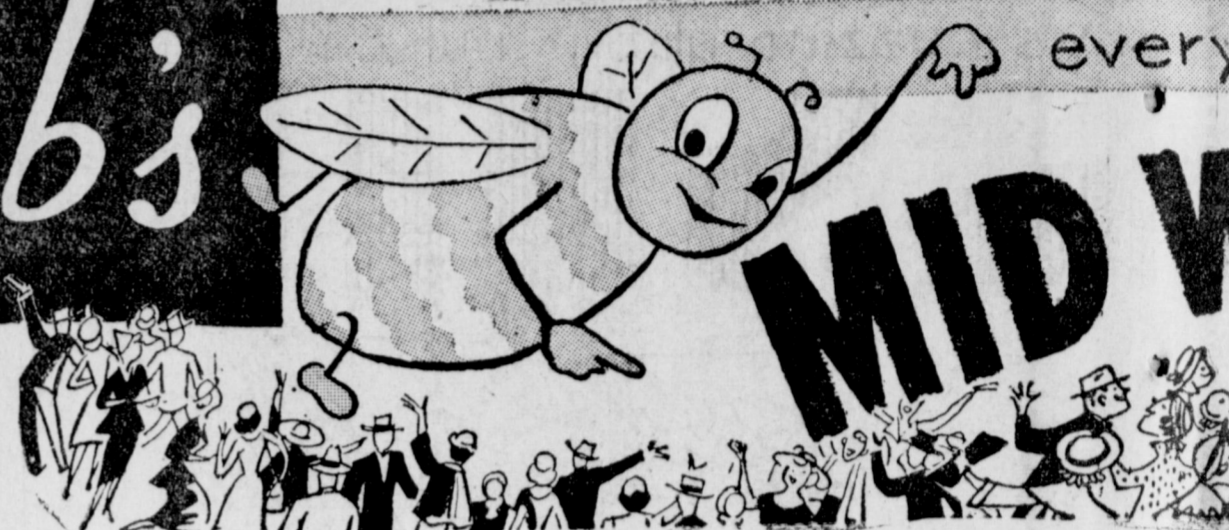
One group of cotton piece goods. Printed, solids and stripes. These fabrics are drip and dry, disciplined and fertilized processed.

**67¢**

- NO REFUNDS
- NO APPROVALS
- NO LAY-A-WAYS
- NO EXCHANGES
- MINIMUM CHARGE FOR ALTERATIONS

Sale Opens 9 a.m.

# Cobb's



**CANNON BATH TOWEL**  
SIZE 22x44  
New Spring Shades With Reinforced Double Selvage Edges of Dacron and Nylon.  
For Added Strength Maximum Wear Rugged Service  
**59¢**

---

**One Group Fabric Gloves**  
VALUES TO \$3.98  
This is our entire stock of fall gloves. Consisting of nylon suede and wood knit.  
Assorted colors and sizes.  
**1/2 Price**

---

**COTTON BRASSIERES**  
Ladies' Cotton, Nylon and Dacron Brassieres. This Includes Straps, Padded, and Several Styles.  
SIZES 32A TO 36B  
**\$1.00**

---

**Cotton Loop RUGS**  
27x50 SIZE  
Low loop cotton rugs with non-skid back adds beauty to every room.  
**\$1.69**  
3x5 FOOT SIZE, now \$3.18  
4x6 FOOT SIZE, now \$4.90

---

**Tufted With Dust Ruffle Bed Spread**  
\$8.98 Value  
Bates Tufted Spread with dust ruffle for all at once handling and washability.  
**\$4.90**

## LADIES' SKIRTS

Three groups of ladies' skirts of rayon gabardine, wool gabardine, rayon and all wool flannel.

Val. to \$5.98	NOW	\$3.90
Val. to \$7.98	NOW	\$4.90
Val. to \$9.98	NOW	\$5.90
Val. to \$10.98	NOW	\$6.90

## LADIES' Sweaters

\$6.98 VALUES

Full fashioned sweaters in assorted colors and styles, in all wool, orlon and Cashmere blends.

Sizes 32 to 40

**\$3.90**

Val. to \$10.98	NOW	\$5.90
-----------------	-----	--------

## LADIES' DRESSES

Our complete stock of ladies' fall and winter dresses at real savings. All popular brand dresses in princess, long torso, flared, sheath, and two-piece styles. Taffetas, cottons, tweed, faille, crepes and rayons.

Sizes Junior, Regular and Half Sizes

Val. to \$12.98	NOW	\$ 7.90
Val. to \$17.98	NOW	\$ 9.90
Val. to \$24.98	NOW	\$12.90
Val. to \$39.95	NOW	\$19.90

## LADIES' LONG COATS

VALUES TO \$49.95

This represents our very finest coats from Fashion Built and Dumas of California. This is an excellent buy. These are all wool coats. In solid, tweed, and Cashmere blends, Milium lined.

Size 6 to 16

**\$29.90**

Other Val. to \$79.95 NOW \$34.90



## ONE GROUP Children's Wear

OVERALLS - COVERALLS JACKETS

One group of coveralls, flight suits, creepers, biballs, bobby suits and western suits. In sizes small, medium and large and 1, 2, 3, and 4. These are all nationally advertised brands.

These Are Real Values At—

**1/2 Price**

Children's Nitey Nite

## PAJAMAS

\$2.98 VALUES

Children's cotton knit pajamas in pastel shades. Zipper and gripper styles. Solids and prints. Also knit sleeping bags.

Size O to 3, S, M, L

Also Boy's Knit Pajamas

Size 2 to 16

**\$1.90**

## LADIES' DRESS SHOES

VALUES TO \$9.98

One group of ladies' dress shoes. In pumps, wedges, sling pumps. Assorted colors in calf and suedes. Broken sizes. Come early for your correct sizes.

**\$4.90**



## FLAT HEEL SHOES

VALUES TO \$7.98

One group ladies' flats in suedes and calf skins. Ideal for the working and school girls. Assorted colors and styles. Broken sizes. Shop early for correct sizes!

**\$3.90**

## LADIES' FELT House Shoes

\$3.49 VALUES

One group of ladies' felt house shoes. In colors of Royal Blue and Red. These shoes have leather soles. Broken sizes, A Real Bargain!

**\$1.99**

Closed All Day We  
**COBB'S** **MULES**

Thursday, Jan. 12

SHOP THESE SPECIALS  
AND SAVE!!

# WINTER SALE

Everybody's buzzing about our bargains



## ALL LEATHER HANDBAGS

To add the polishing touch to your ensembles. Our entire stock of Plastic, Suede, Velvet, and Leather Purses.

- VALUES TO \$2.98 ..... now \$1.90
- VALUES TO \$4.98 ..... now \$2.90
- VALUES TO \$7.98 ..... now \$4.90
- VALUES TO \$12.98 ..... now \$6.90

## REINFORCED SEAT BATISTE PANTIE

EYELET EMBROIDERY TRIM

Here is a real value in little girl's batiste pants. All white, double seat, eyelet ruffle trim, bias cut.

Size 5 to 14

**3 for \$1.00**

## GIRL'S COTTON SKIRTS

SIZES 7 TO 14

Styles of circular tiered and gathered skirts, in printed and solid colors. Also one group of Orlon and Rayon skirts.

Size 6 to 14

VALUES TO \$4.98

**\$2.90**

Other Values To ..... \$6.98

This Group of Skirts Includes Cottons, Rayons, Tweeds, Corduroy and Wool Mixture.

**\$3.90**



## LADIES' WOOL SUITS

VALUES TO \$49.95

Save Now! All our fall and winter suits at prices that spell real savings. Hurry, for these won't last long. All wool tweed, 100% wool worsted and wool flannel.

**\$29.90**

Other Val. to \$69.95 now \$34.90

## SIZES 8 1/2 TO 3 SUEDES AND LEATHERS Children's Shoes

One group of boy's and girl's shoes in two straps, oxfords, loafers, and few high tops. Medium and narrow widths. Assorted colors and sizes. Shop Early!

VALUES TO \$3.98

**\$1.99**

Other Val to \$5.98, now \$2.99

## LADIES' MILLINERY

VALUES TO \$12.98

Our entire stock of fall and winter hats. Velvets, Felts, Metallics, Velour, Brushed Wool. A large assortment in many styles. This includes our finest hats, at such a low price. Hurry in for first choice!

FIRST DAY ..... \$3.00

2nd DAY ..... \$2.00

3rd DAY ..... \$1.00

## CHILDREN'S COATS

Don't Miss These Values On Girl's All Wool Coats. Flannel, Worsted, Tweeds, Wools and Cashmere Blend.

Size 6 to 14



Val. to \$17.98 NOW \$9.90

Val. to \$24.95 NOW \$12.90

Val. to \$35.00 NOW \$19.90

## BOY'S SIZES 6 TO 14 JACKETS

VALUES TO \$5.98

Two groups of boy's jackets. In the very popular basket weave and reversible rayon gabardine. Assorted colors.

Sizes 6 to 14

**\$3.90**

Other Val. to \$10.98 NOW \$5.90

## MEN'S DRESS SHOES

VALUES TO \$12.98

Two groups men's dress shoes. Wingtip, French Toe, Moc Toe, Cap Toe. In assorted styles, in brown and black. Suedes and leather combinations.

**\$6.90**

Other Val. to \$9.98 NOW \$4.90

## MEN'S CURLEE SUITS

VALUES TO \$55.00

Your choice of two groups of fine all wool suits by CURLEE. In the popular colors of Charcoal Tones of Black, Brown, and Grey.

Sizes 36 to 46 In Regulars and Longs

**\$34.90**

Other Val. to \$60.00 NOW \$39.90



### LADIES' BELTS

Leather, Velvet, Metallic, Plastic, and Stretch. Assorted colors and styles.

Values to \$3.98

**1/3 OFF**

---

### Men's Sport SHIRTS

Values to \$5.00

One group of fine long sleeve sport shirts in the very popular patterns of checks, stripes, plaids, and solid colors in cottons, rayon and silk mixtures. Fast colors.

Sizes, S, M, L, XL

**\$2.90**

Val. to \$7.98, now \$3.90

---

### BOY'S SPORT SHIRTS

Group of boy's long sleeve sport shirts in Italian collars, custom and pullover styles. Assorted patterns in cotton and rayon fabrics in solid colors, plaids, gingham, and splash weave.

**\$2.98, now \$1.90**

VALUES TO \$3.98 now \$2.90

---

### MEN'S DRESS SHIRTS

VALUES TO \$4.50

Two groups men's Arrow dress shirts. In solids, stripes and bankers checks in top quality broadcloth and oxford cloth.

Size 14 to 17, Assorted Colors

**\$2.38**

Val. to \$5.00, now \$3.88

---

### 9 Pair Only NOCONA BOOTS

We are closing out our stock of Nocona Cowboy Boots. These are real values. Kangaroo, Kid and Calf Skin.

**\$10.00**

SMALL SIZES

Wednesday, Jan. 11  
MOE TEXAS

### M. & J. Feed In Vigorous Paper Ad Campaign

M. & J. Feed & Seed Company is beginning a vigorous newspaper advertising campaign this week to acquaint the public with their many forms of service.

First of all they want everyone to know it's Baby Chick time and they handle the well known DeKalb chicks. Broiler raisers are furnished chicks and feed until ready for market by the company.

The firm which operates in the building next to Muleshoe Locker, also stocks all kinds of garden seeds, garden supplies like fertilizers, liquid fertilizers

and field seeds.

This year they have free bags of hybrid grain sorghums to be given with purchase of 25 lb. bags of any seed. They stock several brands of hybrid seed corn, also. The firm also buys produce.

**CIVIL SERVICE EXAMS**

The U. S. Civil Service Commission announces examination for Truck Driver (Light Trucks), \$1.33 per hour, for employment in the Lubbock, Texas area.

Full information and applications may be obtained from the Post Office, or from the Executive Secretary, Base Air Force Base, Lubbock, Texas.

Read The Journal Want-Ads

### GUESTS IN WILHITE HOME OVER SUNDAY

Sunday visitors in the home of Mrs. Carrie Wilhite included her five sons and their families; Mr. and Mrs. C. W. Wilhite and Mona Ellen, Mr. and Mrs. Doc Wilhite and children, Mr. and Mrs. J. E. Wilhite and children, Mr. and Mrs. Lonnie Wilhite and children, all of Muleshoe; Mr. and Mrs. Jess Wilhite, of Reed Okla.

Other guests included Mrs. Troy Atkinson of Muleshoe, Mr. and Mrs. Roscoe Ivy, of Priona, and Mrs. Rosie Ivy, of Amarillo.

### WEEKEND AT HOME

Dorothy Giles spent the past weekend in Knox City and Benjamin visiting her parents, Mr. and Mrs. R. C. Giles and other relatives and friends. Her father returned home with her and visited friends here Monday.

# NOTICE Taxpayers

Your 1955 Property Taxes Are Now Due And MUST Be Paid Before The FIRST DAY OF FEBRUARY, 1956 to AVOID PENALTY.

## WARNING!!

Midnight, January 31st is DEADLINE FOR ISSUING POLL TAX RECEIPTS

### 1956 AUTOMOBILE LICENSE FEES

Cannot Be Paid Before February 1, 1956, But MUST BE PAID Between February 1st and April 1st, 1956. All Residents of Texas Are Required By Law To Buy Licenses For Motor Vehicles In The Counties In Which They Reside. Bailey County Will Retain All License Fees — They Will Go To Help Build County Roads.

**Poll Taxes Must Be Paid On Or Before January 31, 1956**

## HUGH FREEMAN

SHERIFF, TAX ASSESSOR-COLLECTOR  
BAILEY COUNTY, TEXAS

### YOU CAN DO IT TOO!

Sharpen 12-14" Lister Shares .....	\$9.00
Sharpen & Set 19 Knives .....	19.00
Sharpen 4 Lister Points .....	3.00
Sharpen & Set 21 Knives .....	21.00
TOTAL .....	\$52.00
LESS 20% .....	\$10.40
	\$41.60

SAVE 20% On Your Machine Work, Welding or Blacksmithing NOW . Let Jim

Bell Schedule Your Shop Work Today. YOU CAN SAVE TOO!

This Offer Remains In Effect Until February 28th At—

## Fry & Cox Bros.

Phone 3660

MULESHOE

YOUR FRIENDLY ONE-STOP FARM SERVICE



MULESHOE MULES IN KOREA

are seen in this photo made by Charles Anderson, Korean 4-H club's advisor. Anderson writes that the mules and wagon have attracted a great deal of attention in that war-torn country, and have been faithful ambassadors of good will for Muleshoe, as well as for Texas and the entire U. S. The mules and the wagon shown here, were sent to Korea by area residents to aid residents of that country in rehabilitating themselves. The photo was sent recently to Ralph Mardis, Chamber of Commerce president.

### Korean Foundation Thanks Local Folks For Contributions

(Editor's Note: The following letter was received recently by Ralph Mardis, president of the Muleshoe Chamber of

#### IT'S A DAUGHTER!

Mr. and Mrs. Troy Daniel, of 2318 5th St., Lubbock, are the proud parents of a daughter, Genevieve Louise. The young lady weighed 6 lbs. 4 oz. She is the granddaughter of Mr. and Mrs. I. M. Stinson, of Muleshoe.

#### DR. B. Z. BEATY

Dentist  
Office Hours: 9-12, 1-5  
1314 West 1st.  
Closed Saturday P. M.  
Off. Pho. 2040 Res. 8511

Commerce. It is self explanatory.)

#### THE AMERICAN-KOREAN FOUNDATION

Chung-Dong I. Suhddalmun-ku

Dear Sir:

I want to take this opportunity to thank the good people of your community and especially the Muleshoe Chamber of Commerce for their generous contribution to the "Texas Friendship" for the rehabilitation of Korea. Through your kind generosity you are making it possible for these unfortunate people to become self supporting and our country to gain a stronger ally against the common enemy of civilized man, Communism.

This gift from Texas not only was timely and a Godsend to these people, but it also was an historical event which very probably will not be repeated again for many years to come. This shipment of livestock was the largest and most varied ever brought to the Orient.

I am enclosing some photographs of the Mules and other equipment contributed by your

Chamber of Commerce. These Mules have attracted a great deal of attention and have been faithful ambassadors of good will for Muleshoe but for the State of Texas and our United States as well.

This outfit is being kept at the Seventh Day Adventists school and farm. They are used in demonstrations and for power on the farm. Every one is very pleased with them. They have more than earned their keep since arriving in Korea.

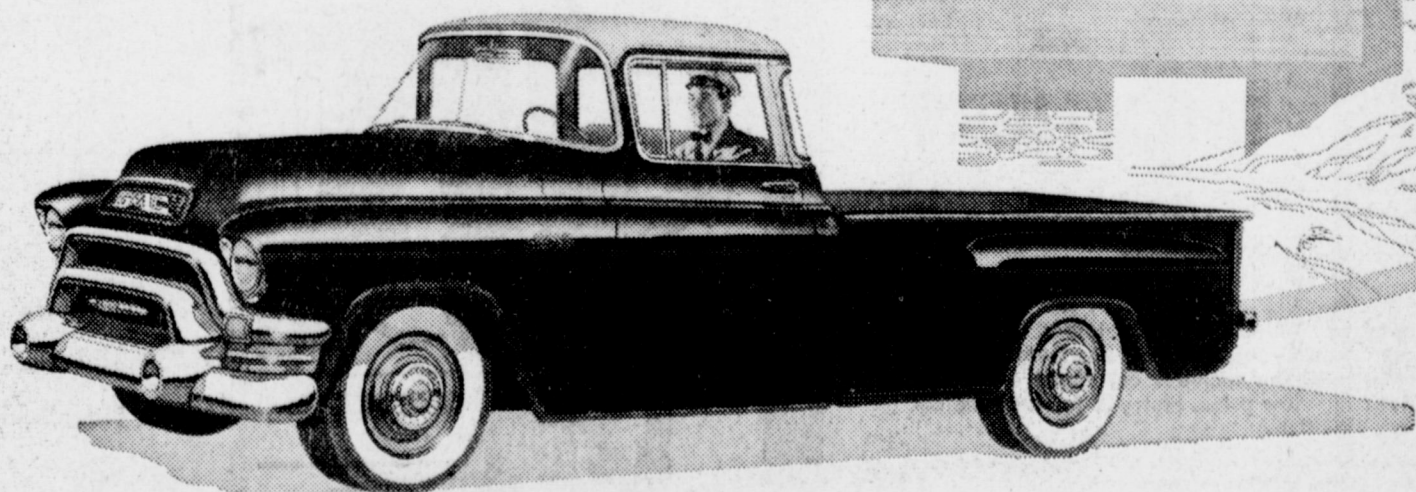
As you know the good people of your community contributed a very large part of the other materials and livestock. Please convey our thanks to the other donors who so generously contributed to this shipment. We will write and send pictures to them as soon as time permits.

Many thanks again and may God bless the good people of your community.

Sincerely,  
CHARLES A. ANDERSON  
Col. USA (Ret.)  
4-H Club Consultant AKF



KOREAN 4-H GIRLS are seen here with a sewing machine which was donated to Korea 4-H clubs by a Muleshoe citizen. This photo was made recently by Charles Anderson, director of 4-H in Korea. The sewing machine was among a number of other gifts sent to Korea from the Muleshoe area.



It tells the world you've arrived

A BLUE CHIP GMC helps its owner achieve the prosperity it advertises. Its operating costs are low because the 155-h.p. V8 engine's a fuel miser—its Hydra-Matic Drive's\* a maintenance shrinker—its rugged construction's a life stretcher. Come in and see one!

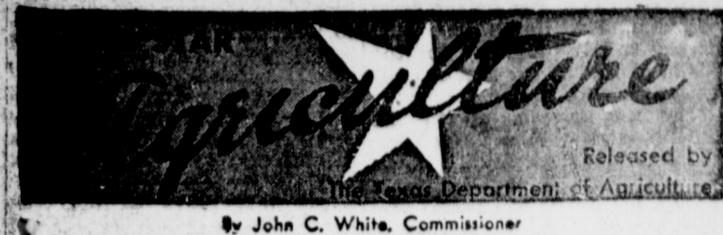
\*Hydra-Matic standard on many models; optional at extra cost on some others

See us, too, for Triple-Checked used trucks

## LADD PONTIAC

MULESHOE

PHONE 3080



Released by the Texas Department of Agriculture  
By John C. White, Commissioner

### TEXAS FIGHTS THE KHAPRA BEETLE

The Texas-New Mexico border marks the line of defense in the battle against a new and dangerous threat to state grain crops. The enemy is the Khapra Beetle, a native of Asia which invaded this country via California about three years ago.

As far as Texas Department of Agriculture inspectors can determine the pest has not yet reached here, but in California, Arizona and New Mexico, it takes its toll in thousands of tons of stored grains. Quarantine barriers are aimed at keeping it out of Texas while the neighboring states completely eradicate the insect.

The Khapra Beetle is primarily a stored grain pest and is not found in open grain fields. It can also live on animal products when necessary or can survive for as long as three years without any food at all!

In the larva stage — its most active period — the pest has an enormous appetite. Grain damage, depending on weather and temperature, varies from 5 to 30 percent although up to 75 percent damage has been reported. The beetle is a "dirty feeder", breaking or powdering more kernels than it consumes. What it doesn't eat, it lowers in grade, causing heavy losses to farmers and grain men.

The adult Khapra Beetle is small—about 1/16 inch in length. It is pale red-brown to dark brown or black in color with wing covers that usually have indistinct red-brown markings. Generally, it is hairy on top but often the hairs are rubbed off so that it has a sleek appearance.

The larvae, 1/8 inch long, are yellowish brown and clothed with long brown hairs. The area between the segments and the underside of the body is pale yellow in color, giving the worm a ringed appearance when viewed from above.

The insect is difficult to control and is so feared by grainmen that its presence in a state is enough to lower the market demand. If it spreads into Texas, grain values can drop or, in some cases, be prohibited from shipment into U. S. markets without strict and costly inspections.

Detailed information on the Khapra Beetle may be obtained without charge by writing John White, Commissioner of Agriculture, Austin, Texas.

### CONTINENTAL



A continental design destined to win the favor of American women is this double-breasted, cotton poplin coat. The coat and matching hat are Zelan treated to shed showers and to resist non-oily spots and stains.

### Social Security Representative Here January 18

A Social Security representative will be in Muleshoe at the Post Office at 9:30 a. m. on January 18 and will be glad to assist in all matters pertaining to social security.

Now that the crops are laid by, many farmers are turning their attention to the Federal tax filing time in January, according to John G. Hutton, manager of the Social Security office.

Hutton explained that many farmers will be requested to file two types of returns in January, 1956, for the 1955 calendar year: (1) the farmer who is self-employed will be required to file an income tax report and pay his social security tax if net earnings for 1955 are at least \$400 and the gross income is at least \$800; and (2) the farmer who has paid cash wages of \$100 or more to any employee in agricultural labor in 1955 will be required to file on Form 943, listing the name and social security account number of each such employee.

Hutton pointed out that employees of the Social Security Administration are not authorized to advise or aid any taxpayer in the preparation of a tax return. He emphasized that such assistance as needed should be secured from the District Director of Internal Revenue, or someone who specializes in filing tax returns. However, any question as to benefits payable under the Social Security law will be gladly answered by his office, Hutton concluded.

### SEWING QUEEN ON BREAKFAST CLUB



One of the highlights of a week in Chicago for Mrs. Norman F. MacNeil (right), of Midvale, Utah, the Cotton Bag Sewing Queen for 1955, was an appearance on Don McNeil's Breakfast Club. Other ladies: Mrs. Julius Jones (left) of Alva, Okla., the runnerup, and Betty Johnson, singer on the McNeil show. Back row: Dick Noel, singer, Don McNeil, Sam (Fiction and Fact) Cowling, Mrs. MacNeil's exhibit of household and apparel items sewn from cotton bags was judged best of 62 entries from 37 states in the finals in Chicago. Third place winner was Mrs. Charles A. Carlson of Vicksburg, Miss., who was unable to be in Chicago. Her award came one day after her fifth child, a girl, was born in Vicksburg.

### COURTHOUSE News

- H. B. Abbe, et ux, to A. E. Robinson; All of Labor No. 9, in League No. 123, of the Childress County School Lands.
- Henry Druess, Jr., to Jack Adair; All of Lot No. 5, Block No. 8, Warren Addition.
- G. C. Toerman to L. E. Testerman; All of Lots 6 and 7, Blk. 34.
- George G. Johnson, et ux to John L. Murrell; All of Lot 5, Block 6, Highland Addition.
- M. M. Nowlin, et ux, to R. J. Mitchell; All of the Southeastern one-half of Lots One and Two, Block 18, and all of the Southwesterly 10 feet of the Northwest one-half of said Lots One and Two, Block 18.
- V. L. Bradley, Jr., et ux, to Elroy County Electric Cooperative Assn.; All of Lots 22, 23, and 24, Block 14.
- J. D. Leitch and W. S. Moss to F. O. Bennett, the Northeast

### Prices Down For REA Subscribers

For the first time in the history of the 20-year-old REA program, the average cost of power to residential consumers, including farm and non-farm, dropped under three cents per kilowatt-hour. In a year end summary of Agriculture reports shows that the sale of electric energy went up 16 percent and the cost to consumers dropped 5 percent during 1955.

The REA-financed systems sold an estimated 19 billion kilowatt-hours of electricity. Their generation of power was up 21 percent and purchases of wholesale power were up 13 percent.

At the year end there were 1,026 borrowers with systems in operation. They were serving 4,244,000 rural consumers.

trator, said the borrower's, largely farmer-owned electric cooperatives, were never in better financial condition. In 1955 revenues from operations amounted to \$453 million, an 11 percent increase over 1954. Net margins from operations amounted to \$61.8 million, a 41 percent increase. Too, Nelson reported a drop of 25 percent in the number of borrowers whose current operations might be considered financially unsatisfactory, from 194 in June, 1954 to 143 in June, 1955.

In 1955 the systems paid \$111.2 million in principal and interest on their 2 percent loans and continued their excellent repayment record. In 1955 the borrowers also increased their advance repayment of borrowed money by \$13.2 million. Payments on principal ahead of schedule now amount to \$91.8 million. Loans over the life of the program now total \$3.1 billion. Of this amount

### Honor Roll

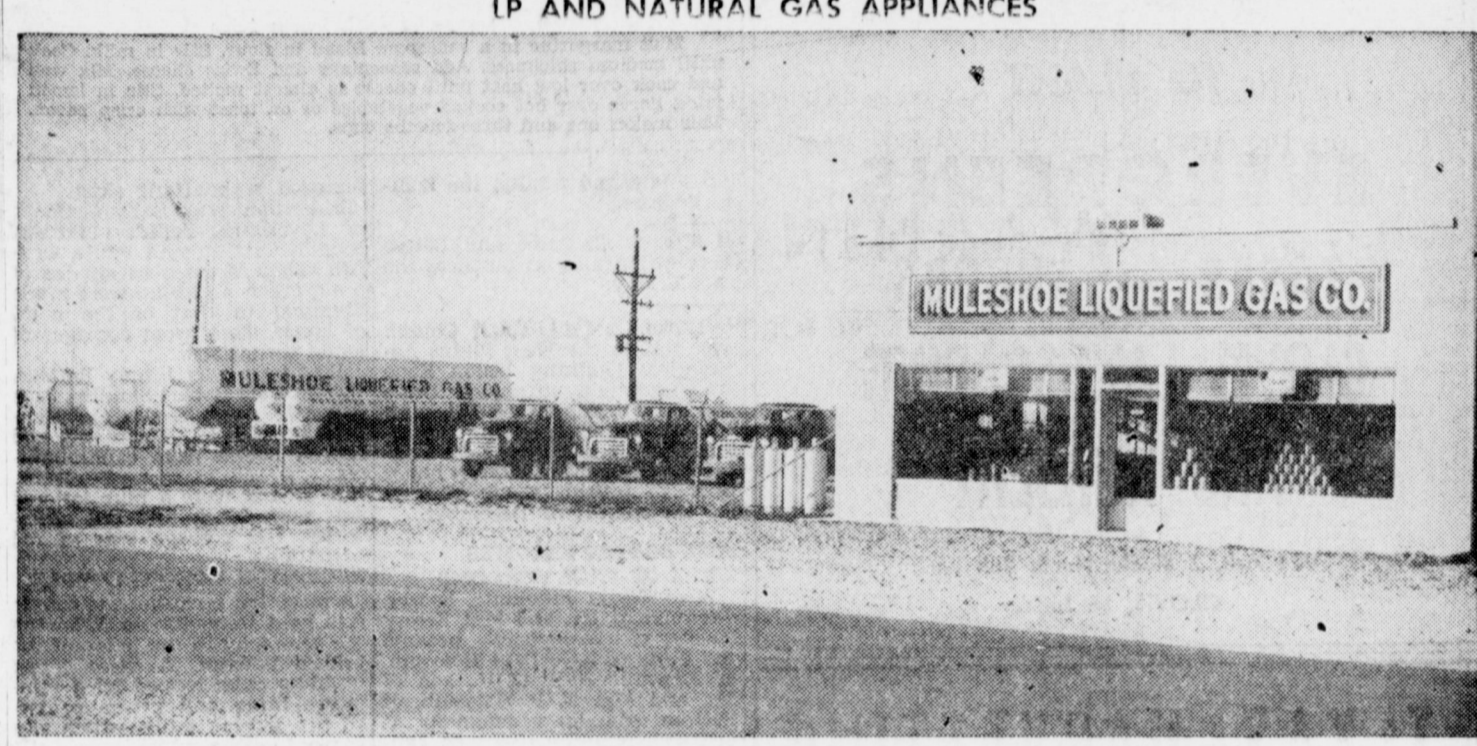
- NEW SUBSCRIBERS:**  
Bruce Horsley, Calif.  
Mrs. Bobby Goodwin, Rt. 2.  
M. G. Killough, Rt. 5.  
Max Self, City.
- RENEWALS:**  
Reece Wiltfording, Tulla.  
Noel Woodley, City.  
R. J. Tucker, Calif.  
Arley Stone, City.  
C. S. Sullivan, City.  
Mary F. Pool, City.  
Mrs. Abbie Patterson, Ill.  
A. H. Owen, City.  
H. N. Nivens, City.  
E. L. Merriott, Rt. 3.  
E. R. Lawhon, Rt. 1.  
George King, Kans.  
I. W. Haney, City.

- Raymond Houston, Friona.  
Luther Ham, Rt. 3.  
R. N. Edwards, City.  
J. U. Dawson, Rt. 5.  
J. B. Dawson, Hampshire.  
Bill Collins, City.  
S. D. Boller, Calif.  
Dick Bell, Sudan.  
A. W. Black, Rt. 1.  
E. U. Billingsley, Rt. 1.  
W. H. Autrey, Sr., Hereford.  
Jesse Arnold, Rt. 1.  
J. V. Adcox, City.

**VISITED PARENTS**  
Dorothy Lowery spent the past weekend visiting her parents Mr. and Mrs. R. E. Lowery and other relatives and friends at Sudan.

**FROM PLAINVIEW**  
Mr. and Mrs. Bill Boling, former Muleshoe residents, now of Plainview, visited here Friday night with Mr. and Mrs. Cleon Davis and other friends.

## BUTANE - PROPANE SALES AND SERVICE



IP AND NATURAL GAS APPLIANCES

**TWO-WAY RADIO FOR BETTER AND FASTER SERVICE**

- Gasoline — Oil — Tires — Batteries
- Plant At Needmore For South Bailey County
- Let Us Convert Your Tractor and Motors to Butane

**Muleshoe Liquefied Gas Co.**  
MULESHOE TEXAS  
CLOVIS HIGHWAY  
PHONE 3130

## NOTICE! TO PARENTS of School Age Children

The school census is being taken during the month of January this year. All children who are six years old on or before Sept. 1, 1956, but will not be 18 or older on or before that same date should be counted in this census. It is very important that all children six to 18 years be counted in the census. The child should be counted even though he may not be in school and even though he or she may be married.

If you, as a parent, have not received and filled out a school census blank on or before January 21 you are being overlooked and should do one of the following:

1. Phone Supt. Jerry Kirk at No. 7300 or the School Tax Office No. 6720 and ask for a census blank.
2. Call in person at the School Tax office and get a census blank and fill it out.

Remember, if your child will be six years old next Sept. 1st he should be counted in the census now, even though he is not in school now. If he is six but not 18 or older on next Sept. 1st he should be counted now. All children from six to 18 should be counted. The six years old who start next September to school are the ones most often overlooked in the census. Failure to count them costs the school and the taxpayers extra money. Please help us not to overlook anyone.

Please read the census blank carefully, fill it out completely, and return it by your child next day to the teacher. Thank you.

**DON'T WAIT TILL FEB. 1st To Turn YOUR BLANKS IN — AS THAT WILL BE TOO LATE!!**

**MULESHOE PUBLIC SCHOOLS**  
CONNIE GUPTON, Census Officer

Dodge presents... *"The TEXAN"*

Choice of this dashing Lancer Hardtop or the big, rangy 4-Door Sedan

**The Texan by Dodge!**

A handsome, rugged car big as all outdoors, with the surging power of a quarter horse, sweeping lines of a gull in flight, the relaxed touch of push-button driving!

The Texan is built for Texas driving. It skims swiftly along the big broad highways, it rips over hills like a hungry cougar, it takes the bumpiest, roughest, sandiest road and comes back for more. Powered by the mighty engine that busted the AAA record book wide open at Bonneville Salt Flats, it gives you the same superior engineering and design that made Dodge the greatest sales-gainer in the industry in 1955

Plenty of special features, too... specially designed interior trim, special paint combinations, jaunty twin exhaust pipes, and other smart touches. The Texan's name is proudly blazoned on both rear fenders. And the brave crossed flags of the Lone Star State are right up front where your fellow-Texans can admire them!

Best of all, the Texan is priced right down with the so-called "low-priced three." Yet it's big and powerful and luxurious... rivaling cars costing as much as a thousand dollars more! Visit your nearest Dodge Dealer now and drive the Texan!

*The Texan*

BY

**DODGE**

SOLD BY YOUR FELLOW-TEXAN—YOUR DODGE DEALER

**ARNOLD MORRIS AUTO CO. 1012 Main Street**

## Three-Way News

Mr. and Mrs. Charlie Shipley and children, of Sundown, visited in the Elmer Batteas home the past Saturday.

Mr. and Mrs. Paul Powell flew to New York last week to visit with their son and family.

Three Way School has another water well on the grounds. The new well pumps eight gallons per minute.

Donald Knox is in critical condition in the Morion Hospital, under the care of doctors.

Lindon Lowe is reported improving rapidly.

**BASKETBALL TEAMS PLAYED ROGERS**

The grade school basketball teams, both boys and girls, and the high school girls team played at Rogers, N. M. last Thursday evening, with the high school team winning their game. Four both grade school teams losing.

The grade school teams will be in a tournament at Pen this week. The high school teams

will play in a tournament at Amherst this week beginning January 12.

Rev. and Mrs. Bobby Rowe and daughter went to Ft. Worth the first of last week to attend the Texas Evangelistic Conference.

Mr. and Mrs. Micky Sowder and Mr. and Mrs. Clifford Dupler have moved from Three Way to Lubbock.

The Ted Thetfords visited her family in El Paso during the holidays. They were given an oil painting of their farm painted by her sister's husband, A. B. Shields. Mr. Shields painted the picture during a recent visit to the farm.

The picture placed first in a show at El Paso, sponsored by the United Artists Association.

While in El Paso, Mr. Thetford and sons were shown through "Bronc Park" by Col. Lyle Benson, a B-36 pilot.

Mr. Bill Welborn and son, of Worth are visiting for sis-

### SWISS CHEESE SAUCE



Cheese adds to the flavor and texture of many tempting sauces. Although most homemakers are more familiar with white sauces for distinctive sauces which make use of the wide variety of cheeses available. This delicious sauce made with Swiss cheese is excellent for hot cooked vegetables or served on toast with crisp bacon.

- 3 tablespoons margarine
- 2 tablespoons flour
- 1/4 cup milk
- 1/4 teaspoon salt
- 1/8 teaspoon ground black pepper
- 1/16 teaspoon ground cayenne pepper
- 3/4 cup finely chopped Swiss cheese
- 2 teaspoons fresh lemon juice

Melt margarine in a saucepan. Blend in flour. Stir in milk. Cook until medium thickness. Add seasonings and Swiss cheese. Mix well and cook over low heat until cheese is almost melted. Stir in lemon juice. Serve over hot cooked vegetables or on toast with crisp bacon. This makes one and three-fourths cups.

## Mahon Warns of Danger In Senate Plan To Lower Price Support On 7-8 In. Cotton

### FARMER COUNTY Farm Bureau News

By RAYMOND EULEA

Gilbert Kalwasser attended the unity presidents meeting in the Farm Bureau town of Waco, Tex. three days of this week.

Harry Engleking, president of "Individuals for Freedom" out in the Pleasant Valley community, is doing a lot toward keeping his neighbors and friends up to date on national legislation. They discuss various phases of such matters. Their particular project now is that of accumulating as much evidence as they can gather, showing conclusively that farmers are not interested in paying into or receiving money from social security sources. They are presenting this evidence to their legislators. Joe West and Kenneth Precure are two other farmers taking a leading interest in this worthy community venture.

Attending their last meeting as guests last Thursday night were: Gilbert Kalwasser, Jack Patterson, Harry Hamilton, J. T. Jones, B. H. Kube, L. F. Brunts, A. J. Ellison and Raymond Eulea, all associated with the Parmer County Farm Bureau.

We would like to commend Mrs. Roy V. Miller, chairman of the March of Dimes talent contest, who has been taking care of promotional activities from her home, where she has been confined because of illness. We are sure the show will be a success, too. We are also sure you will cooperate with the chairman in your community in whatever activities he or she may try to promote for this worthy cause.

Congress is in session, and everyone is interested in the action that will be taken there in the next few weeks. We notice several resolutions being presented that lead further down the Socialist line. Among them is one "to provide a direct Fed-

WASHINGTON, Jan. 12 — Rep. George Mahon (D-Tex.) warned today on the eve of scheduled Senate hearings on a new farm law that steps should be taken to prevent the adoption of a plan for lower supports on cotton of less than one inch staple.

"The present law requires that cotton loans be based on 7/8 inch staple. There is considerable sentiment in the U. S. Senate to drop the 7/8 inch high to one inch. This would tend to reduce the support on all cotton on an average of about 2 1/2 cents per pound," Mahon declared.

He said Senator Ellender, chairman of the Senate Committee on Agriculture, has indicated his committee might favor raising the basis from 7-8 inch to one inch.

"One proposal would require 90 per cent of parity support of one inch staple, but a support level of less than 90 per cent for cotton having less than one inch staple," Mahon said.

"For example, the support level on one inch cotton might be 90 per cent of parity and the support for 7/8 inch staple might be 75 per cent of parity."

This would not only be discriminatory, according to Mahon but would deal a disastrous blow to West Texas cotton producers.

Since his return to Washington, Mahon has discussed the problem with officials of the Department of Agriculture and members of the Senate and House agriculture committees.

The Senate Committee is expected to open brief hearings on the new farm bill today (Jan. 12). Mahon has asked to be allowed to testify before the committee before final action is taken.

Briefly, here is the legislative program Mahon has proposed:

GENERAL PENSION TO ALL AMERICAN CITIZENS who have been citizens 10 years or longer. "We haven't read the full context, but are inclined to say 'What next?' There are several better sounding ones, too. One is H. R. Res. 438, designed to deprive foreign countries of criminal jurisdiction over American Armed Forces Personnel stationed within their boundaries. This situation is another provision born of the United Nations. As a matter of fact, we like the thought provoking lines seen in parts of the country that ask simply, 'IN or US?'"

**CONSIDER THIS:** That which is crooked cannot be made straight; and that which is wanting cannot be numbered. Ecclesiastes 1:15.

Read The Journal Want-Ads

outlook in Congress on the farm program. The House last year passed a bill providing for the restoration of 90 per cent of parity supports for the basic crops.

The next move is up to the Senate, and it is expected that the Senate will modify the House bill to include many additional provisions before the House will again have a chance to vote on the new farm legislation.

Senator Ellender expects to have a bill on the President's desk by Feb. 15.

"We are interested in getting something done reasonably soon, but we are more interested in getting the right kind of legislation and most anxious to safeguard ourselves against discrimination in the new law as applied to West Texas," Mahon concluded.

**HERE ON LEAVE**

SP2 Lyle Evans and his friend Sgt. Bill Jenkins, of Clinton, Iowa, are here from Ft. Bragg, visiting Doyle's parents and friends. Doyle will leave in the near future for a tour of overseas duty.

**VISITED HERE**

Mr. and Mrs. M. C. Faubus and children of McAadoo, visited at Muleshoe Sunday afternoon in the home of his parents, Mr. and Mrs. Claude Faubus and his sister Mrs. Howard Taylor and family.

Read The Journal Want-Ads

### REPORT OF CONDITION OF THE FIRST NATIONAL BANK

Of Muleshoe in the State of Texas, at the close of business on December 31, 1954 published in response to call made by Comptroller of the Currency, under Section 5211, U. S. Revised Statutes.

ASSETS	
Cash, balance with other banks, including reserve balance, and cash items in process of collection	\$711,694.10
Corporate stocks (including \$7,500.00 stock of Federal Reserve Bank)	\$7,500.00
Loans and discounts (including \$1,500.28 overdrafts)	\$775,627.07
Bank premises owned \$14,949.33, furniture and fixtures \$7,734.44	\$52,683.77
Other assets	\$1,235.42
<b>TOTAL ASSETS</b>	<b>\$1,348,740.36</b>

LIABILITIES	
Demand deposits of individuals, partnerships and corporations	\$1,053,900.45
Deposits of United States Government (including postal savings)	\$2,037.88
Other deposits (certified and cashier's checks, etc.)	\$2,755.53
<b>TOTAL DEPOSITS</b>	<b>\$1,058,693.86</b>
<b>TOTAL LIABILITIES</b>	<b>\$1,058,693.86</b>

CAPITAL ACCOUNTS	
CAPITAL STOCK:	
Common stock, total par	\$200,000.00
Surplus	\$50,000.00
Undivided profits	\$40,046.50
<b>TOTAL CAPITAL ACCOUNTS</b>	<b>\$290,046.50</b>
<b>TOTAL LIABILITIES AND CAPITAL ACCOUNTS</b>	<b>\$1,348,740.36</b>

**MEMORANDA**

Loans to farmers directly guaranteed and redeemable on demand by the Commodity Credit Corporation, and certificates of interest representing ownership thereof \$280,499.50

**TOTAL AMOUNT OF LOANS, CERTIFICATES OF INTEREST AND OBLIGATIONS, or PORTIONS THEREOF (listed above), which are fully backed or insured by agencies of the United States Government (other than "United States Government obligations, direct and guaranteed"** \$280,499.50

I, M. D. Gunstream, cashier of the above named bank, do solemnly swear that the above statement is true to the best of my knowledge and belief.

M. D. Gunstream, cashier

CORRECT—ATTEST:

Verney Towns, Director  
L. L. St. Clair, Director  
E. O. Baker, Director

State of Texas, County of Bailey, ss:

Sworn to and subscribed before me this 5th day of January, 1955, and I hereby certify that I am not an officer or director of this bank.

Jerie Nell Toten, Notary Public  
My commission expires June 1, 1957.

## NOW IS THE TIME TO PLANT EVERGREENS TREES — SHRUBS CLOVIS LANDSCAPING AND NURSERY

904 Ash, 2 Blocks North Ball Park CLOVIS, N. MEX.

## TEXAS HARVESTING ASSOCIATION

Central Offices Will Be Located in Muleshoe

Serving — LAMB, FARMER, BAILEY AND CASTRO COUNTIES

## JAMES JONES

Manager

FERTILIZERS — INSECTICIDES

Phone 3970 — Muleshoe — Littlefield Highway

ter-in-law and family, the Zephyr Boozers.

Mrs. J. G. Arm and Betty were in Portales on business the past Friday.

Hicks Chapel Baptist Church was host to the West Plains Association Training Union Zone meeting Sunday afternoon. There was an attendance of 113, with Watson Church receiving the attendance banner and Hicks Chapel receiving the efficiency honor with an overall grade of 70% for the month of December.

**MISS BOOZER BECOMES BRIDE OF PAUL HOLCOMB**

Miss Farris Jauquetta Boozier, daughter of Mr. and Mrs. Zemy Boozier, of Baileyboro, became the bride of A-1c Paul Holcomb, of Edwards AFB, Calif., son of Mr. and Mrs. T. P. Holcomb, of Section, Ala., in a ceremony at 1:00 o'clock in the afternoon, January 6, at the Three Way Baptist Church.

The double ring rites were read before an archway of greenery and wedding bells flanked by candelabra bearing white tapers. Rev. Bobby Rowe officiated.

Misses Peggy Fowler and Jo Ann Hodge sang "I Love You Truly" and "O Promise Me." Miss Kay Cole accompanied them at the piano, and presented the traditional wedding marches.

Given in marriage by her father, the bride wore a waltz length gown of Chantilly lace over slipper satin with a bouffant skirt. The bodice was designed with a scalloped neckline. Long tapering sleeves extended to points over the hands.

Her fingertip length veil of illusion was of nylon tulle gathered to a satin headpiece and held with seed pearls. She carried a bouquet of pink rose buds.

Carrying out the tradition, she carried a handkerchief belonging to her grandmother, for something old and borrowed. Something blue was a garter.

Drilma Boozier, sister of the bride, was maid of honor. She wore an orchid faille street-length dress fashioned with a V neckline. The long torso creation came to a point in the center front and center back, and

featured a bouffant skirt. Bridesmaid were Sally McShaw, of Levelland, Bonnie Batteas, Brenda Griffith and Paula Griffith. Their dresses in shades of pink, green and blue were made identical to that of the maid of honor. They wore corsages of white carnations.

Best man was Jimmy Batteas. Ushers were Robert Sandlin, Jack Reeves, George Taylor and Kenneth Donald. Jeff Townsend and Lowell Boozier were candlelighters.

**RECEPTION HONORS COUPLE**

A reception honoring the couple was held immediately following the ceremony in the home of the bride's parents. A three tiered wedding cake topped by a miniature bride and groom centered the serving table, which was covered with a white linen cloth.

Cake was served by Miss Janice Latimer, and Misses Jo Ann Hodge and Drilma Boozier poured coffee and tea.

Following the bride wore a lilac fitted suit with gray pearl luster accessories. The couple honeymooned in New Mexico.

Mrs. Holcomb attended school at Three Way. The couple will make their home at Edwards Air Force, California.

**VISITED RECENTLY**

Mr. and Mrs. Carl Ellington went to Ft. Hood recently and visited his parents, Mr. and Mrs. J. E. Ellington at Killeen. On the return trip they visited by parents, Mr. and Mrs. G. W. Alexander in Lubbock.

**ON STAGE IN PERSON**

The FAMOUS **Tom CROTZER SHOW**

With his ENTIRE COMPANY Starring **LADY MARIE**

THE BROADWAY MYSTERY EXTRAVAGANZA THAT IS THRILLING MILLIONS FROM COAST TO COAST

A \$25,000 PRODUCTION THE GENTLEMEN OF THE PRESS AGREE THE SHOW OF THE CENTURY

FABULOUS STAGE REVIEW Includes the SENSATIONAL "HOLIDAY" WATER-FILLED MILK CAN ESCAPE

THE COMEDY CLASSIC "THE RIGHT COUNT"

THE GREATEST MIRACLE IN THE THEATRE TODAY EGYPTIAN MUMMY APPEARS FROM NOWHERE

Plus MANY OTHERS

DON'T MISS THE Tom CROTZER SHOW

MR. CROTZER WILL APPEAR IN PERSON AT ALL PERFORMANCES

UNCLE LUKE'S LAS WISH IS TO BE INSURED WITH

**POOL INSURANCE AGENCY**

W. M. Pool, Jr. Lee Pool Phone 7010 — Muleshoe

**NECCHI**

**THE WORLD'S FINEST SEWING MACHINE**

HARVEY BASS APPLIANCE Phone 4690 Muleshoe

**MORRISON MOTOR CO.**

Muleshoe High Auditorium JANUARY 18 — 6-8 p.m.

Sponsored By Lions Club

**WHAT IS THE MH-50 EVERYONE IS TALKING ABOUT**

**THE MIRACLE OF '56 THE TRACTOR TRIUMPH OF OUR TIME**

— SEE IT SOON AT —

**Texas Machinery Co.**

Muleshoe — Texas

**SPEND 15 MINUTES IN A "PowerStyle" CHRYSLER**

**learn why it's today's biggest buy of all fine cars!**

It doesn't take long to find out why Chrysler is winning the reputation as the performance leader of 1956. Just a few minutes behind the wheel of a big Chrysler Windsor V-8 like this one will show you why.

Suppose you are in the right-hand lane on an expressway . . . four lengths behind a big truck rolling along between 35 and 40 miles per hour. You want to pass. You toe the throttle and in eight seconds flat you're four lengths ahead of that moving truck and back in your own lane!

That's 1956 Chrysler performance. That's the kind of power only the "PowerStyle"

Chrysler can deliver . . . with its great airplane type V-8 engine. And that's not all. There's full-time PowerPilot Steering . . . Pushbutton PowerFlite, the ultimate in automatic transmissions . . . and the big PowerSmooth Brakes that outlast others 2 to 1.

These are just some of the exciting new things that await you the first time you pilot a "PowerStyle" Chrysler. If you're driving one of the other cars in Chrysler's price class, by all means make a direct comparison now. Just 15 minutes behind the wheel will show you why it's the biggest buy you can drive today!

**"PowerStyle" CHRYSLER**

**MORRISON MOTOR CO. 1612 W. First Phone 4130**

**FOR SHOP**

**Good merchandise Good prices Good service**

**Your home town first. It pays!**

We Will Be Closed Monday, January 2nd.

**MULESHOE STATE BANK**

# The Muleshoe Journal

DEDICATED TO THE PROGRESS AND DEVELOPMENT OF BAILEY COUNTY AND THE GREAT MULESHOE COUNTRY

VOLUME 35, NUMBER 2

SECTION III — 6 PAGES

THURSDAY, JANUARY 12, 1956

## Lazbuddie News

Rev. and Mrs. C. K. Roberts are attending the Evangelistic Conference in Ft. Worth this week.

Mrs. W. S. Menefee is visiting her sister in Abilene for a few days.

Mrs. Charlie Myers of Dimmitt visited with Mrs. Claud Heath Monday.

Mr. J. T. Bostwick of New Deal has been visiting his daughter, Mrs. Raymond Houston of this community and Mrs. Clyde Henry of Progress.

Mr. and Mrs. A. T. Peterson visited in the J. A. Young home Sunday.

The W. B. Petersons were guests in the A. J. Peterson home Saturday.

Mr. and Mrs. M. L. Edwards and Bill Hargrove visited with the R. C. Albright of Lubbock over the weekend.

Mr. and Mrs. A. J. Peterson were in Lubbock Tuesday.

## Farm Employers Tax Deadline Set For January 31

Farm operators who have paid as much as \$100 in cash wages to any farm employee during the year 1955 should file an employer's tax and information return for agricultural employees, John R. Robinson, Administrative Officer, Lubbock, announced today. This tax return should be filed with the District Director of Internal Revenue, Dallas, Texas, together with the social security taxes on the wages shown on the form.

Mr. Robinson emphasized that this annual report of wages paid for agricultural labor must be filed with the Internal Revenue Service before January 31, 1956. The return must show the name, social security number, and wages paid every employee whose cash wages from the same farmer amounted to \$100 or more.

Farmers, who must make these returns and have not yet received or written for the proper forms, should write the District Director of Internal Revenue, Dallas, Texas, immediately in order to be sure of getting the report filed before the January 31 deadline, Robinson urged.

Construction on the new school building is progressing rapidly. The agriculture boys have spent several days painting the walls in the new agriculture building.

Richard Chitwood, son of Mr. and Mrs. Dee Chitwood was honored with a birthday party at his home on Friday, Jan. 6. After several games were played, refreshments of hot dogs, cakes and cake were served to 18 school friends.

Mr. James G. Ward attended a meeting for school officials in Austin last week.

Mr. and Mrs. Jack Rials and children visited with Mr. and Mrs. Bob Freeman Sunday.

The P. T. A. met Monday night Jan. 9 for their regular session with Mrs. Mary Shuman in charge. After a short business meeting, the program was presented by the second and fourth grades.

**VISITED IN LITTLEFIELD**  
Mr. and Mrs. M. D. Gunstream visited Saturday evening in Littlefield with Mr. and Mrs. Harmon Elliott.

**WERE IN LUBBOCK**  
Mrs. W. T. Andrews, Mrs. Winnie Dunn and Mrs. M. D. Gunstream were in Lubbock Monday.

REAL BEAUTY Begins with a becoming Hair do. Let us style your hair to suit your face and personality.

Start the New Year with—

A NEW HAIR STYLE

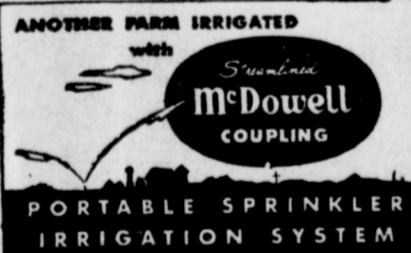
We Specialize IN—

Bleaching and Tinting

All Operators Licensed to Give 4-Way Hair Cuts  
**MULESHOE BEAUTY SALON**

PHONE 4570 For Appointments  
BONNIE, BETTY, LUCILLE, Operators

Sure Sign of Better Crops...



It's this patented GASKET-COIL PRESSURE LOCK that makes McDowell Couplings work better, easier and faster.

In all sections of the country, McDowell Coupling portable sprinkler irrigation systems are proving their superiority. That's because the McDowell Coupling is the simplest, fastest, most efficient method of assembling or disassembling irrigation pipe.

In this design, water pressure provides a watertight seal and positive lock automatically—at both high and low pressures. No tools are required. And there are no yokes, latches or gadgets to break or wear out.

Free Planning Service! Free Literature!

Call

Form for requesting literature or service.

**Johnson.Pool**

PHONE 7370 TIRE AND APPLIANCE MULESHOE

## SOIL CONSERVATION DISTRICT NEWS



### OUR SOIL ★ OUR STRENGTH

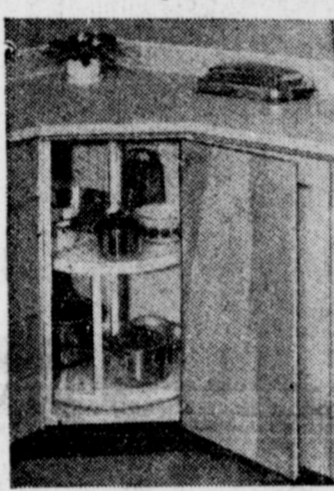
Arizona Cypress are being made available to cooperators of this district through a joint agreement between the Local District Supervisors, the Lubbock S. C. D. Board, and the Nursery Association of Lubbock.

These trees are small Evergreen seedlings, which are well adapted in this area. The seedlings will be very small, but will be potted. With good management, a person should expect a high liveability.

Buddy Meyers and Joe Simmacher have requested the maximum number of trees allowed, four hundred.

Buddy plays a farmstead windbreak and field windbreak, while

### Corner Cabinet Boasts Spin Shelf



This corner kitchen cabinet with a spin shelf combines easy accessibility with generous storage space. By rotating the spin shelf, objects in the rear of the cabinet are moved to the front, easy to get at. There is plenty of room for unwieldy pans and other kitchen utensils. The corner cabinet is one of many versatile ponderosa pine stock kitchen units available through lumber dealers. There are styles to solve any kitchen storage problem. They come completely assembled or knocked-down. The knocked-down version comes unpainted. Only a hammer and a screwdriver are needed for assembling. The assembled version can be had three ways—unfinished, with a natural finish, or with a prime coat of paint.

Modern kitchens are colorful. Ponderosa pine cabinets are easy to paint to suit any existing color scheme. They can be repainted to meet future color needs.

### WEEKEND GUESTS

Mr. and Mrs. H. H. Carlyle had as their guests over the weekend, Lt. and Mrs. Milton R. Gillock and children, Sandra, Bonnie, Finessa and Tony.

The family has just returned from Guam, where Lt. Gillock has completed a two year tour of duty in the Air Force. They were on their way to Elizabethtown, Ky., where they will visit their families before going to Waco, where he will be stationed.

### C. L. COVINGTON, 52c VISITED PARENTS HERE

C. L. Covington, 52c, who is with the U. S. Navy has been spending Christmas holidays with his parents, Mr. and Mrs. C. E. Covington, of Muleshoe.

He has returned to San Diego, Calif., where he will sail for Pearl Harbor on the Aircraft Carrier Wasp. While on leave he spent a few days with his sister and brother-in-law, Tech. Sgt. and Mrs. James Maroney.

### Missionary Will Speak Here Jan. 17



MISS RUTH DECH

Miss Ruth Dech, above missionary for the Church of the Nazarene in British Honduras, has recently arrived in the United States for her second furlough. She will speak at the Nazarene Church at 7:30 p. m. January 17.

A graduate of Pasadena College, Pasadena, California, Miss Dech took additional studies in the Spanish language at the University of Southern California before beginning missionary work among the Mexican people in Albuquerque, New Mexico.

In 1946 Miss Dech was sent to British Honduras to become director of Nazarene Day Schools in that country. She has remained in the capacity of both director and teacher since that time.

While in the States, Miss Dech will be actively engaged in deputational work under the supervision of the Department of Foreign Missions of the Church of the Nazarene. Her home for this furlough year will be in Pasadena, California.

### Amarillo Man Has Leased Garage Here

R. E. Singletary has leased the service shop of Brook Motor Co., located on Plainview highway here in Muleshoe. Mr. Singletary comes here from Amarillo.

However, he comes not as a stranger. Mr. Singletary's father homesteaded near Clovis in the early days and he was raised there and knows lots of people around Texico, Clovis, and Farwell.

He was accompanied here by his son, Dewayne and the latter's wife, Mr. Singletary's wife had another child will join them here when housing is available. The firm will bear the name of Singletary Motor Co.

Ernest J. Jec, who has been operating the Brook Motor Co., will remain at the same old stand at least for a while; he has some used cars that are for sale and will be seeing after that business for a time.

## WE HAVE SOLD THE PHILLIPS '66' SERVICE STATION NO. 2

To Mr. Carl Goettsch, of Dawn, Texas

We want to Thank our patrons and invite you to visit us at our regular location at the

Crossroads of Highway 70 and 84

## Goss Bros. '66' Service Station

## WE HAVE MOVED TO OUR NEW LOCATION

— AND —

INVITE YOU TO COME IN AND SEE OUR NEW STORE

## JOHNSON FURNITURE

Located Across Street From Johnson-Pool

Phone 5150

Muleshoe

## Views From Pleasant Valley

Sunday evening supper guests in the home of Mr. and Mrs. Leroy Hicks, were Mr. and Mrs. Markam Chadwick and three children, Bobby, James and Leandra of Farwell.

The community welcomes Mr. and Mrs. Roy Shoemaker and daughters who have recently moved in the Pleasant Valley area.

A farewell party was given for Mr. and Mrs. Floyd Andreas and family recently at the P. V. Community building games and visiting provided the entertainment and refreshments were served to the George Wuertlein's, Harold Allison's, E. K. Angeley's, Forrest Greens, Oscar Allison's, Paul Hammetts, Gerald Allison's, Doyle Turners, Billy Frees, Prof. and Mrs. Shelby, Mrs. Bonnie Haberer and the honorees.

The Andreas have moved to Ft. Sumner, N. M. They have lived in the P. V. Community for several years and will be greatly missed by all.

The Pleasant Valley Social Club met at the P. V. Community building, Wednesday, Jan. 4 with Mrs. E. K. Angeley hostess and Mrs. D. W. Lucky co-hostess.

The meeting was called to order by the president Mrs. Angeley and roll call was answered.

The minutes were read by the secretary Lillie Wuertlein. Several committees reported.

Katie Roubinek was appointed by the president to be responsible to send cards and flowers to members of the club or other people in the community in case of illness.

Those on the committee to compose the club's year book are Leona Hicks, Sammy and Jean Allison and Hazel West.

The meeting was adjourned. Delicious refreshments were served to the following members present: Mmes; O. E. Green, Gerald Allison, Paul Hammett, Roubinek, Oscar Allison, Harold Allison, Winifred Riddle, C. E. Landers, Lucky, Doyle Turner, John West, Leroy Hicks, George Wuertlein and E. K. Angeley.

Mr. and Mrs. Ralph Broyles and family are moving from this community to Amarillo, Texas.

Mr. and Mrs. Rochelle Christian of Farwell were visiting in the home of Mr. and Mrs. Leroy Hicks Thursday.

Mrs. E. K. Angeley was shopping in Lubbock Friday.

Mr. and Mrs. John West and FROM LEVELLAND

Verbie Griffith, of Levelland visited relatives here over the weekend.

FARRS HAD GUESTS

Mr. and Mrs. H. E. Farr had as guests in their home last week her sister and brother-in-law, Mr. and Mrs. Jack Dantsott, of Oakland, Calif.

Read The Journal Want-Ads

family returned recently from San Diego, California where they visited Mrs. West's aunt and uncle and other relatives during the holidays.

The P. V. Skeet Club met Sunday January 1, at the community center for skeet shooting. The members present were: Leroy Hicks, Edward and Frank Wuertlein, E. K. Angeley, Harry Engelsing, Bobby Broyles, Ken and Bonnie Angeley, Winston Allison, and Doyle Turner.

Mrs. Bonnie Haberer had as her dinner guests on Jan. 2, Mr. and Mrs. Gerald Allison, Mr. and Mrs. R. L. Roubinek, Mr. and Mrs. Oscar Allison, Mr. and Mrs.

E. K. Angeley, and Mr. and Mrs. Harold Allison.

Visitors in the O. E. Green home recently were Mr. and Mrs. Carl Day and sons from Roswell.

Allan Turner returned Sunday to Baylor University after spending the holidays in the home of his parents Mr. and Mrs. Doyle Turner and family.

Jimmy Dale Landers who is attending Texas University and Mrs. Fern Cone and children all of Austin, spent the holidays in the home of their parents Mr. and Mrs. C. B. Landers.

Read The Journal Want-Ads

## COSTUME JEWELRY FROM 1-3 TO 1/2 OFF

Make Nice Lay-Aways For Graduation and Other Gifts

## MERLE NORMAN COSMETIC STUDIO

Lauranette Mason — Phone 4719

## The Best in Pictures Showing Valley Theatre

IN MULESHOE

Box Office Opens 7:00 P. M.; Show Starts 7:15 P. M.

— Saturday & Sunday 1:45 P. M., Continuous Showing —

Thurs., Fri., Jan. 12 & 13

## THE DEEP BLUE SEA

—Starring—

Vivien Leigh

Kenneth Moore

Sun., Mon., Jan. 15 & 16

## THE MCCONNELL STORY

—starring—

Alan Ladd

June Allyson

Saturday, Jan. 14

## FORT DEFIANCE

—Starring—

Dane Clark

Tracey Roberts

Tues. & Wed., Jan. 17 & 18

## MOONFLEET

—starring—

Stewart Granger

Joan Greenwood

MOTION PICTURES ARE YOUR BEST AND CHEAPEST ENTERTAINMENT

## Irrigation Time TURNKEY JOBS

- On Pumps
- Chrysler Motors
- Sprinkler Systems
- Motor Overhauls

Check with us for—

BEST SERVICES REASONABLE PRICES  
TRAINED MECHANICS WASH & GREASE  
FIELD SERVICE MAN

NEW AND USED CARS AT

WHOLESALE PRICES

## MORRISON MOTOR CO.

D. L. MORRISON, Owner

Phone 4130

Muleshoe

### Gwenelle Workman and Donald Moore Were Married Here December 22



MR. AND MRS. DONALD GLEN MOORE

Mr. and Mrs. Donald Glen Moore are making their home at 2409 13th St. Lubbock, following their marriage December 22, at the First Methodist Church here.

The bride was Miss Eva Gwenelle Workman. She is the daughter of Mr. and Mrs. S. O. Workman. Parents of the bridegroom are Mr. and Mrs. Seshorn Moore. Both families are of Muleshoe.

The Rev. Clarence Stephens, pastor of the church, officiated at the impressive double ring ceremony which was held by candlelight. The communion table was centered with a golden cross and flanked by two golden candelabras bearing ivory tapers. In the foreground were three rustic arbors of candlelight bearing ivory tapers, and entwined with showers of golden eucalyptus foliage. Two triangular arrangements of white gladiolus and gold foliage were used on white marble like columns with garlands of eucalyptus foliage around the columns. Fern trees of gold emerald foliage decorated the communion table and behind the kneeling bench. Church pews were marked with ivory candles on gold leather-leaf foliage.

Roth Gaede, soloist, was accompanied at the organ by Miss LaVon Copley, as he sang "Be a Shepherd" and "Whither Thou Goest." Miss Copley also presented the traditional wedding marches and other wedding selections.

Given in marriage by her father, the bride wore belle creation of neau de sole, designed with a boat neckline and full circular skirt. The sash and matching gloves were trimmed with tiny pearls as was her hat. She carried a triangular bouquet of eight gardenias with gold foliage and miniature white roses.

Bridal attendants Gloria Stinson and Nelda Eshour wore length dresses of brown pearly de sole and bronze satin respectively. Both carried bouquets of bronze mums and gold glittered grapes.

#### BANK'S OFFICIAL Statement of Financial Condition OF THE **MULESHOE STATE BANK**

at Muleshoe, Texas at the close of business on the 31st day of December, 1955, pursuant to call made by the Banking Commissioner of Texas in accordance with the Banking Laws of this State.

RESOURCES	
Loans and discounts, including overdrafts	\$3,801,561.48
-A. (After deduction of \$15,643.30 valuation allowance or had debt reserve)	
United States Government Obligations, direct and guaranteed	\$1,468,605.50
Obligations of states and political subdivisions	\$306,491.20
Cash, balance due from other banks, including reserve balances, and cash items in process of collection (including exchanges for clearing house)	\$1,524,452.57
Banking house, or leasehold improvements	\$39,963.98
Furniture, fixtures, and equipment	\$17,556.24
Other assets	\$1.00
<b>TOTAL RESOURCES</b>	<b>\$7,178,631.98</b>
LIABILITIES AND CAPITAL ACCOUNTS	
Common Capital Stock	\$200,000.00
Surplus: Certified	\$200,000.00
Undivided Profits	\$24,700.80
Demand deposits of individuals, partnerships, and corporations	\$5,788,179.70
Time deposits of individuals, partnerships, and corporations	\$470,098.78
Public funds (Incl. U. S. Govt., states and political subdivisions)	\$495,446.50
Other deposits (certified & cashier's checks, etc.)	\$206.20
Total all deposits	\$6,733,931.18
<b>TOTAL LIABILITIES AND CAPITAL ACCOUNTS</b>	<b>\$7,178,631.98</b>

STATE OF TEXAS  
COUNTY OF BAILEY

I, Inez F. Bobo, being Vice-president and Cashier of the above named bank, do solemnly swear that the foregoing statement of condition is true to the best of my knowledge and belief.

INEZ F. BOBO  
Subscribed and sworn to before me this 10th day of January, 1956.

Katie Lena Winter  
Notary Public, Bailey County, Texas

D. M. Wiggins  
W. Q. Casey  
John A. Hughes

DIRECTORS

SEAL

### Three Way H. D. Met January 5

Mrs. George Fine was hostess in her home to members of the Three Way Home Demonstration Club in a regular meeting, Thursday, January 5.

Mrs. Carrie Huff served as president and vice-president.

Following a short business hour, the year books were distributed and plans for the coming year discussed.

Since so few ladies attended the meeting it was decided to meet with Mrs. Fine again on January 19, for an all day meeting. The program will be on "hat making." All ladies who plan to attend and make a hat are asked to bring material.

Those present were Mmes. Carrie Huff, Loy Krebs, Lynsky and Fine.

After refreshments of fruit cake and coffee served, the meeting was adjourned.

### Sunshine Club Met January 5

Sunshine Club members met with Mrs. E. W. Adkins on the fifth of January. The seven members present were Mmes. D. L. Npton, J. W. Williams, C. W. Patterson, George Chambliss, Hazel Odon, Janit Burden, and the hostess.

Mrs. Simmons, former member of the club, now of Muskogee, Okla., visited.

Hostess gift was won by Mrs. C. W. Patterson.

Next meeting will be at the home of Mrs. Merle Earhous, January 19, and will be an all day affair. The ladies will quilt.

### Miss Peterson, John E. Vaughan To Be Married

Mr. and Mrs. Earl B. Peterson, of Muleshoe, are announcing the engagement and approaching marriage of their daughter, Earlene, to John E. Vaughan, son of Mr. and Mrs. J. D. Vaughan, of Reed, Okla.

Rev. Hightower, of Mangum, Okla., will read the ceremony in the home of the bride's parents, at 4:00 o'clock in the afternoon, February 12.

Miss Peterson will graduate at mid term from Muleshoe High School. The prospective bridegroom is a graduate of the high school at Reed, Okla.

Read The Journal Want-Ads

### Mrs. Clay Beavers Directs W. S. C. S. Program Monday

Members of the Muleshoe First Methodist Women's Society of Christian Service met Monday, January 9, at 2:00 p. m. for a regular meeting.

Mrs. Clay Beavers directed the program, "The Changeless Gospel In A Revolutionary Age." Those assisting her were Mrs. L. F. Williams, and Mrs. Marvin Wilder. Mrs. W. D. Moore conducted the devotion.

A vocal trio composed of Mmes. L. F. Williams, Cecil Davis and R. O. Richards, presented a selection.

At the First Methodist Church in Plainview, Tuesday, January 17, from 10:00 a. m. until 3:00 p. m. there will be a meeting held on "World Understanding." All Methodists in this district are invited to attend.

The Sub-District meeting for second quarter, Plainview District will be held in the Progress Methodist Church on Wednesday, January 18, beginning at 9:45. All W. S. C. S. members are urged to attend this important meeting.

W. S. C. S. will meet in home of Mrs. H. Jay Weyer, Monday, January 16, at 2:00 o'clock p. m. to begin the current study, "To Combine Our Efforts For Lasting Peace." Mrs. F. E. Pierson will be study director.

### Luncheon Enjoyed By Half Century

Anna Moeller was hostess in her home to members of the Half Century Club last Thursday.

Attending were Daisy Engram, Lula Kistler, Snow Davis, Jennie Pantier, Sallie Harden, Sarah Parrel, Mrs. Rockey, Mattie Duke, Lois Schoenberger, Pearl Moore, Beulah Carles, Mary Young, Laura Gibbasath, Alice Mitchell, and Heitha Wilker.

Mrs. J. W. Waits and son were visitors. Mrs. Waits served the delicious luncheon to the group. Canasta was enjoyed during the afternoon.

Next meeting will be January 19, in the home of Laura Gilbreath.

### 42 Party Held In Black Home

Mr. and Mrs. Ralph Block of the Longview Community held a "42" party in their home the past Saturday evening. Cake, punch, and coffee was served.

Those attending and enjoying the evening were: Mr. A. H. Owen, Mrs. Gross, Marion Waggoner, Fred's Owen, Mr. and Mrs. John Carter, of Plainview, Mr. and Mrs. Dick Owen and children, of Texas;

Mr. and Mrs. James McCain and sons, of Odessa, Mr. and Mrs. Chitrod Rogers and daughter.

Read The Journal Want-Ads

### Rebekahs To Hold Installation Services Tuesday

Muleshoe and Earth Rebekah Lodges will have a joint meeting and installation of officers the coming Tuesday evening, January 17, at the Lodge Hall here.

Time for the installation to begin has been set at 7:30. Each lady attending is asked to bring a salad for the salad supper which is to take place following the installation services.

Tuesday evening of this week the Rebekahs gathered at lodge hall here and attended to business, after which twelve of the ladies went in a group to meet the new officers they attended the joint installation of the Rebekahs at Needmore and Odd Fellows Lodges.

#### TO LUBBOCK

Mrs. E. D. Ivy accompanied her daughter and son-in-law, Mr. and Mrs. Bill Garrett, of Farwell, to Lubbock Tuesday, on a business and shopping trip.

Mr. and Mrs. Charles Wagoner and son, Mr. and Mrs. Elmo Owen and children, Mr. and Mrs. Clyde Bland, Mr. and Mrs. Harvey Tolson and daughters, Mr. and Mrs. Ben Higginbotham and children, Mr. and Mrs. Arvie Owen and sons and the children of the host and hostess.

Read The Journal Want-Ads

## Treasurer's Report

REPORT of Edith Wilt, County Treasurer of Bailey County, Texas, of Receipts and Expenditures from October 1, 1955 to December 31, 1955, inclusive:

JURY FUND FIRST CLASS	
Balance last Report	1,766.83
To Amount received since last Report	1,874.51
By Amount paid out since last Report	285.67
Amount to Balance	3,355.67
Balance	3,641.34
Balance	3,641.34
Balance	3,355.67
ROAD & BRIDGE FUND, SECOND CLASS	
Balance last Report	8,815.23
To Amount received since last Report	26,356.40
By Amount paid out since last Report	33,191.89
Amount to Balance	1,979.74
Balance	35,717.63
Balance	35,171.63
Balance	1,979.74
GENERAL COUNTY FUND THIRD CLASS	
Balance last Report	11,621.45
To Amount received since last Report	25,069.25
By Amount paid out since last Report	8,705.73
Amount to Balance	27,984.97
Balance	36,693.70
Balance	36,693.70
Balance	27,984.97
OFFICER'S SALARY FUND	
Balance last Report	4,734.53
To Amount received since last Report	16,210.55
By Amount paid out since last Report	13,210.62
Amount to Balance	7,734.46
Balance	20,945.08
Balance	20,945.08
Balance	7,734.46
ROAD & BRIDGE NO. 1 FUND	
Balance last Report	3,301.41
To Amount received since last Report	2,620.50
By Amount paid out since last Report	2,322.40
Amount to Balance	3,599.51
Balance	5,921.91
Balance	5,921.91
Balance	3,599.51
ROAD & BRIDGE NO. 2 FUND	
Balance last Report	263.32
To Amount received since last Report	4,060.30
By Amount paid out since last Report	2,988.80
Amount to Balance	1,324.82
Balance	4,313.62
Balance	4,313.62
Balance	1,324.82
ROAD & BRIDGE NO. 3 FUND	
Balance last Report	1,308.71
To Amount received since last Report	3,170.00
By Amount paid out since last Report	2,662.72
Amount to Balance	1,815.99
Balance	4,478.71
Balance	4,478.71
Balance	1,815.99
ROAD & BRIDGE NO. 4 FUND	
Balance last Report	142.64
To Amount received since last Report	3,309.59
By Amount paid out since last Report	2,515.86
Amount to Balance	936.37
Balance	3,452.23
Balance	3,452.23
Balance	936.37
COURTHOUSE AND JAIL FUND	
Balance last Report	2,799.00
To Amount received since last Report	7,498.45
By Amount paid out since last Report	2,276.16
Amount to Balance	8,021.32
Balance	10,297.48
Balance	10,297.48
Balance	8,021.32
COURTHOUSE AND JAIL SINKING FUND	
Balance last Report	5,473.53
To Amount received since last Report	1,245.70
Amount to Balance	6,724.23
Balance	6,724.23
Balance	6,724.23
LATERAL ROAD FUND	
Balance last Report	21,510.15
To Amount received since last Report	21,271.29
Amount to Balance	238.86
Balance	21,510.15
Balance	21,510.15
Balance	238.86
GENERAL SINKING FUND	
Balance last Report	2,050.80
Balance	2,050.80
IMPROVEMENT SINKING FUND	
Balance last Report	1,223.79
Amount to Balance	1,223.79
Balance	1,223.79
ROAD DISTRICT 1-A FUND	
Balance last Report	51,917.42
To Amount received since last Report	26,583.93
Amount to Balance	78,901.51
Balance	78,901.51
Balance	78,901.51
SOCIAL SECURITY FUND	
Balance last Report,	1,994.33
By Amount paid out since last Report	1,008.02
Amount to Balance	986.31
Balance	1,994.33
Balance	1,994.33
Balance	986.31
JURY FUND BALANCE	3,355.67
ROAD AND BRIDGE FUND BALANCE	1,979.74
GENERAL COUNTY FUND BALANCE	27,984.97
OFFICER'S SALARY FUND BALANCE	7,734.46
ROAD & BRIDGE NO. 1 FUND BALANCE	3,599.51
ROAD & BRIDGE NO. 2 FUND BALANCE	1,324.82
ROAD & BRIDGE NO. 3 FUND BALANCE	1,815.99
ROAD & BRIDGE NO. 4 FUND BALANCE	936.37
COURTHOUSE & JAIL FUND BALANCE	8,021.32
COURTHOUSE & JAIL SINKING FUND BALANCE	2,050.80
GENERAL SINKING FUND BALANCE	1,223.79
IMPROVEMENT SINKING FUND BALANCE	1,223.79
COURTHOUSE & JAIL SINKING FUND BAL.	6,724.23
ROAD DIST. 1-A FUND BALANCE	78,901.51
SOCIAL SECURITY FUND BALANCE	986.31

The State of Texas  
County of Bailey

I, Edith Wilt, County Treasurer of Bailey County, who being by me duly sworn, upon oath, says that the within and foregoing report is true and correct.

EDITH WILT, County Treasurer

Sworn to and subscribed before me, this 9th day of January, 1956.

Al Griffin, Clerk  
County Court Bailey County, Texas

By Helen Ingie, Deputy  
(Seal)

## YOUR CENTER FOR ALL BUILDING

Whether you are building, remodeling, fixing-up or adding to — you'll find all your needed lumber and building supplies here! Top quality materials! Stop in. Let us give you free estimates.

### WILLSON - SANDERS LUMBER

## PASTURES NEED WATER

In The Right Place  
At The Right Time



We Now Carry In Stock One Of The Largest And Most Complete Assortments Of Aluminum Surface and Irrigation Pipe On The South Plains.

- TERMS •
- 25% DOWN 2 YEARS TO PAY BALANCE
- Each System Engineered To Your Individual Requirements
- Lowers Unit Cost of Production
- Produces Maximum Yields Per Acre.

EASY AS 1-2-3

1. PUSH IN 2. TURN 3. LOCKED

# D. H. SNEED SUPPLY CO.

PHONE 4170 MULESHOE, TEXAS

PLAINVIEW HIGHWAY



# SAVE **Cash** ON THESE... **Frozen Foods**

Every home-maker appreciates the convenience and economy of delicious, nutritive frozen foods. Now is the time to really stock your home freezer with all the family's favorites. You'll enjoy substantial savings on top quality items throughout our entire selection of famous brand frozen foods. Shop today—for better values in finest frozen foods. Receive S & H Green Stamps with every purchase!

- APRICOTS Cal Top No. 2 1/2 Can 25c
- PEACHES Val Vita No. 2 1/2 Can 29c
- Pork & Beans Campfire No. 300 10c
- CORN Mayflower No. 300 12 1/2c
- HOMINY Van Camp No. 2 12 1/2c
- YEAS Rose Dale No. 303 17c
- PUMPKIN Libby's No. 303 14c
- Tomato Sauce Hunt's 9 Oz. Can 9c
- CHILI Wolf No. 2 Can 49c
- PICKLES Libby's 22 Oz. Sour 33c
- Salad Dressing Salad Bowl Pint 29c
- MILK Dari Craft No. 1 Tall 12 1/2c
- Tomato Juice Hunt's 46 Oz. Can 29c
- Grape Juice Betsy Ross 24 Oz. Bottle 33c
- COFFEE Hixson's 1 Lb. Can 79c
- PRUNE JUICE Real Prune 24 Oz. Bottle 29c

## POT PIES

WHOLE SUN 6 oz. CAN

LIBBY'S 8 Oz. FROZEN 19¢

## ORANGE JUICE 12 1/2¢

- CANDIED YAMS Hills 'O Home 14 Oz. Pkg. 31c
- CUT OKRA Hills 'O Home 10 Oz. Pkg. 17c
- BARBECUE Underwoods' 16 Oz. Pkg. 79c
- BRUSSEL SPROUTS Libby's 6 Oz. Pkg. 27c

- CUT CORN Libby's 10 Oz. Pkg. 20c
- GREEN PEAS Libby's 10 Oz. Pkg. 21c
- LEAF SPINACH Libby's 10 Oz. Pkg. 18c
- PEACHES Libby's 10 Oz. Pkg. 23c

FRESH PACK 10 OZ. PKG.

## STRAWBERRIES 21¢

FOLGER'S, 1 LB. CAN

COFFEE . . . . . 89c

LARGE BOX

TIDE . . . . . 25c

GOLDEN WEST, 10 LB. BAG

FLOUR . . . . . 69c

CAKE MIX Dromedary Angel Food 39c

SYRUP Karo 1 1/2 Lb. Bottle 25c

Orange Drink Realemon 46 Oz. Can 25c

OLEO Golden Mist 1 lb. pkg. 20c

TOMATO SOUP Campbell's No. 1 Tall 12c

## BANANAS

GOLDEN FRUIT LB.

12 1/2¢

- BELL PEPPER Calif. Green lb. 21c
- CELERY Large Stralk 15c
- ORANGES Texas Juicy lb. 12 1/2c
- CABBAGE Firm Heads lb. 7 1/2c
- CARROTS 1 Lb. Cello 15c
- CALAVOS Large Calif. 17c
- RADISHES Fresh bunch 5c
- ONIONS Fresh bunch 5c
- CORN Fresh On The Cob 5c

## APPLES

IDAHO DEL LB.

12 1/2¢

## PICNIC HAMS

WILSONS CERTIFIED LB.

27¢

- T-BONE STEAK U. S. Choice lb. 69c
- FRANKS E & R 3 lb. 99c
- WILSON'S PLAIN Sliced Bacon 4 lb. \$1
- CLUB STEAK U. S. Choice lb. 59c
- PERCH 4 Fisherman lb. 39c
- COD FISH 4 Fisherman lb. 39c
- BEEF RIBS U. S. Choice lb. 29c
- BACK BONE Fresh Pork lb. 39c
- SPARE RIBS Fresh Pork lb. 39c
- CHUCK ROAST U. S. Choice lb. 39c
- PORK LIVER Fresh Sliced lb. 29c
- SAUSAGE Vance's Pure Pork lb. 49c
- HAMBURGER Fresh Ground lb. 29c
- PORK STEAK Fresh Shoulder lb. 39c
- SAUSAGE Pinkney's Bulk 4 lb. \$1

## PORK ROAST

FRESH SHOULDER LB.

29¢

## COCA COLA 12 BOTTLE CARTON 39¢

- CLOROX Quart Bottle 17c
- CLEANSER Babo Reg. Can 12 1/2c
- CHEER Large Box 31c
- CHEER Giant Box 75c

## SHAMPOO MODART 75c SIZE 39¢

- TISSUE Northern 3 for 25c
- ASPIRIN Bayer's 15c Size 10c
- Dental Cream Colgate 50c Size 33c
- ALCOHOL Pint Bottle 15c

**DOUBLE YOUR GREEN STAMPS EVERY TUESDAY!**

WITH \$2.50 PURCHASE OR MORE S+H GREEN STAMPS ARE GIVEN AND REDEEMED NATIONWIDE



### Claude W. Pattersons Observed 50th Wedding Anniversary With Open House



MR. AND MRS. CLAUDE W. PATTERSON

Mr. and Mrs. Claude W. Patterson were honored with open house, December 28, from 2:00 until 6:00 o'clock, on their Golden Wedding Anniversary.

Mrs. Gordon Patterson and Mrs. Jewel Robinson were hostesses for the open-house, which was held at the farm home of the honorees.

Mrs. Gordon Patterson and Mrs. Earl Patterson, daughters-in-law of the couple, served the coffee and wedding cake. Mrs. W. E. Dang, granddaughter, presided at the guest register, while two other granddaughters, Linda Patterson and Jean Robinson, assisted in serving.

Fifty-four guests called during the afternoon. Among the out-of-town guests calling were Mrs. T. M. Broughton, of Eddy, and Mrs. Hugh E. Bone, of Waco, both sisters of Mrs. Patterson; Mrs. A. W. Smith, of Bryan, and Mrs. Frank Arp, of Belton, both sisters of Mr. Patterson, and Mrs. Arp's daughter, Mrs. O. B. White, also of Belton.

#### CALIFORNIANS VISIT

Mr. and Mrs. Hughie Albright and John Friesen, of Palo Alto, Calif., are visiting here in the J. H. Sain home.

### Officers Elected At Meeting Of Rainbow Assembly

Order of Rainbow for Girls met in regular session January 5, at 7:30 in the evening, with officers being elected as follows: Mary Janice Puckett, Worthy Advisor; Quinell Elliott, Worthy Associate Advisor; Mary Jo Holt, Charley Sandra Briscoe, Hope; Doris Childers, Faith; Doris Ann Gilbreath, reporter; Jeanette Cunningham, secretary.

The other officers will be appointed by the Worthy Advisor at a later date.

A card from Mrs. Wimple Dyson, Grand Visitor, Order of Rainbow for Girls, Grand Assembly of Texas, was read. Three petitions for initiation were also read.

Installation of officers was set for January 30, at 7:30 in the evening. The public is invited to attend.

### PVS Club Met At Community Center

Pleasant Valley Social Club met Wednesday afternoon, January 4, at the Community Center. Hostesses were Meses, Alice Angeley and Ruth Lockey.

The meeting was called to order by the new president, Mrs. Angeley. Names were drawn for new pleasant pals, and it was decided to have a local talent show to raise money for the Red Cross Drive.

Refreshments were served to Meses, Ethel Allison, Jean Allison, Sammy Allison, Alice Angeley, Doris Mammitt, Leona Hicks, Katie Roubinek, Alma Turner, Hazel West, Lilly Wuerflein, Verne Landers, Ruth Lockey, Mary Margaret Riddle, and Judy Green.

### Gil Lamb Speaks To Los Planos

Los Planos Study Club met this week with Betty Murrah, Jane White serving as co-hostesses. Barbara Mae Blackman, president, was in charge of the meeting.

Roll was called by Frances Griffin. Cletis Moore will be the new representative.

A contribution of \$25, was donated to the March of Dimes. Evelyn Riley, program chairman, introduced the evening's guest speaker, Gil Lamb. Mr. Lamb spoke on "Alcoholism." Cake and punch were served

### Organ Concert At Lubbock Features The Copley Twins

Don and LaVon Copley, twins of Mr. and Mrs. A. W. Copley, were dual features on an organ concert sponsored by the Lubbock Chapter of the American Guild of Organists, Monday evening at the First Heights Methodist Church in Lubbock.

Other organists who performed were: Mrs. H. W. Wylie, Lubbock; Mrs. Pollyanna Cavitt, Plainview; Miss Janelle Ohlenbusch, Lubbock; and Mr. Dallas Haslam, of the Texas Tech College Music Department.

Mr. Carl Bolton, dean of the Lubbock Chapter of Organists, lectured and demonstrated hymn playing for church services.

The Copley twins are organ and piano students of Mr. Bolton, whose studio is located at the Jenkins Music Company, in Lubbock. Miss Copley and her father Don, are organists and assistant organists of the First Methodist Church, of Muleshoe.

#### LAZBUDDIE HD MEETS TUESDAY

Lazbuddie Home Demonstration Club will hold their regular meeting Tuesday, January 17, at 2:00 p.m. at the home of Barbara Blackman.

### Progress Methodist WSCS Presented An Epiphany Program

Progress Methodist Church was the scene of an Epiphany service the past Friday evening, January 6.

Epiphany is the traditional anniversary of the Wise Men's visit to the Christ Child, on the twelfth night after Christmas.

Call to worship was given by Jean Henry, after which John Westbrock sang "From The Eastern Mountains."

First, second and third readers were Jean Cooper, Doris Welch, and Ruth Cooper, respectively.

Scholar Joyce Walker presented "Brightest and Best." She was accompanied at the piano by Jean Garrett.

John Westbrock offered a prayer, and response was received from the group in unison. Jean Carter gave a poem, "To The Star Appareth."

The program was closed with benediction.

#### Read The Journal Want-Abs

Next Wednesday, January 18, the Women's Societies of seven churches in the Sub-district will convene at the Progress Methodist Church. The meeting is scheduled to begin at 9:45 a. m., and continue until 3:00 o'clock in the afternoon.

Plans for the sub-district meeting were made at the regular session of the W. S. C. S., Thursday, January 5, in the church sanctuary. Other business included a vote to send ten dollars to a Korean Church, and a vote to send a letter to the Texas Legislature concerning narcotics.

After a hymn "Awake, Awake To Love and Work", by the group, the devotional, on Labor Unions, was given by Elmita Gray.

Sadie Bass, teacher of the study course, presented the first two chapters and led the discussion on "Efforts For A Lasting Peace". Velma Gwyn asked the benediction.

Those present were Mrs. Elmita Gray, Joyce Walker, Fern Davis, Johnnie Westbrock, Doris Wedel, Ruth Cooper, Sadie Bass, Velma Gwyn, Juanita Urteaga, and Mattie Griffin.

Mr. and Mrs. M. T. Hukill returned last week from a three weeks visit with their two daughters and families at Ft. Smith, Ark.



DREAM CAR BECOMES A REALITY—The Eldorado Brougham, first shown as an experimental dream car last year, is scheduled for limited production by the Cadillac Motor Car Division later this year. According to Cadillac, the car, which will sell for about \$8,500, will feature the greatest number of technological advances ever included on a custom built automobile in the history of the automotive industry.

### Seven Societies To Convene At Progress Methodist

Next Wednesday, January 18, the Women's Societies of seven churches in the Sub-district will convene at the Progress Methodist Church. The meeting is scheduled to begin at 9:45 a. m., and continue until 3:00 o'clock

# Super Savings Special

FROM THURSDAY, JANUARY 12 THRU TUESDAY, JANUARY 17

— FOR DELIVERY SERVICE CALL 6469 —

<b>SUGAR</b>		Pure Cane	<b>89c</b>
		10 LB. BAG . . . . .	
<b>PURE PORK COUNTRY STYLE</b>		<b>FROZEN</b>	
<b>Sausage . . . . . 4 lbs.</b>	<b>\$1.00</b>	<b>CATFISH . . . . .</b>	<b>49c lb.</b>
<b>JELLO</b>		<b>ASSORTED</b>	<b>5c</b>
		<b>FLAVORS . . . . .</b>	<b>BOX</b>
<b>FAMILY STYLE</b>		<b>ELLIS BRAND</b>	
<b>STEAK . . . . . 49c lb.</b>		<b>BEEF STEW . . . . .</b>	<b>35c can</b>
<b>SUGAR CURED PICNIC</b>			
<b>Ham</b>		<b>HALF OR</b>	<b>27c</b>
		<b>WHOLE . . . . .</b>	<b>LB.</b>
<b>FRESH</b>		<b>12 BOTTLE CARTON</b>	<b>PLUS BOTTLE DEPOSIT</b>
<b>GROUND BEEF . . . 3 lb.</b>	<b>\$1</b>	<b>COCA COLA . . . . .</b>	<b>39c</b>
<b>PINKNEY'S SNOW WHITE</b>			
<b>Lard</b>		<b>3 LB.</b>	<b>49c</b>
		<b>CARTON . . . . .</b>	
<b>WAPCO</b>		<b>REGULAR OR DRIP, WHITE SWAN</b>	
<b>CATSUP . . . . . 19c ea.</b>		<b>COFFEE . . . . . 89c lb.</b>	
<b>Pork Chops</b>		<b>FRESH</b>	<b>39c</b>
		<b>LEAN, LB. . . . .</b>	

**Your "Natural" Money Maker - SHUR-RANE PORTABLE IRRIGATION SYSTEM**

Reduces costs of manhours, power, water. Increases quality and yields. Eliminates land preparation, furrows or ditching expense. Prevents soil erosion.

Life-giving "rain" when you need it! For 20 years, from coast to coast, SHUR-RANE has obtained results that are absolutely amazing!

We want to submit an engineering plan to give you the marvelous benefits of this pioneer lightweight sprinkler irrigation. Every factor of your problem will be considered by experts and the system will be designed to suit your individual requirements.

Drop in today for free, illustrated literature. Give us a chance to show you how we can reduce your costs.

Ask Us About Our SHUR-ROLL — The Labor Saving Sprinkler System On Wheels

**30% Down . 3 Years To Pay**

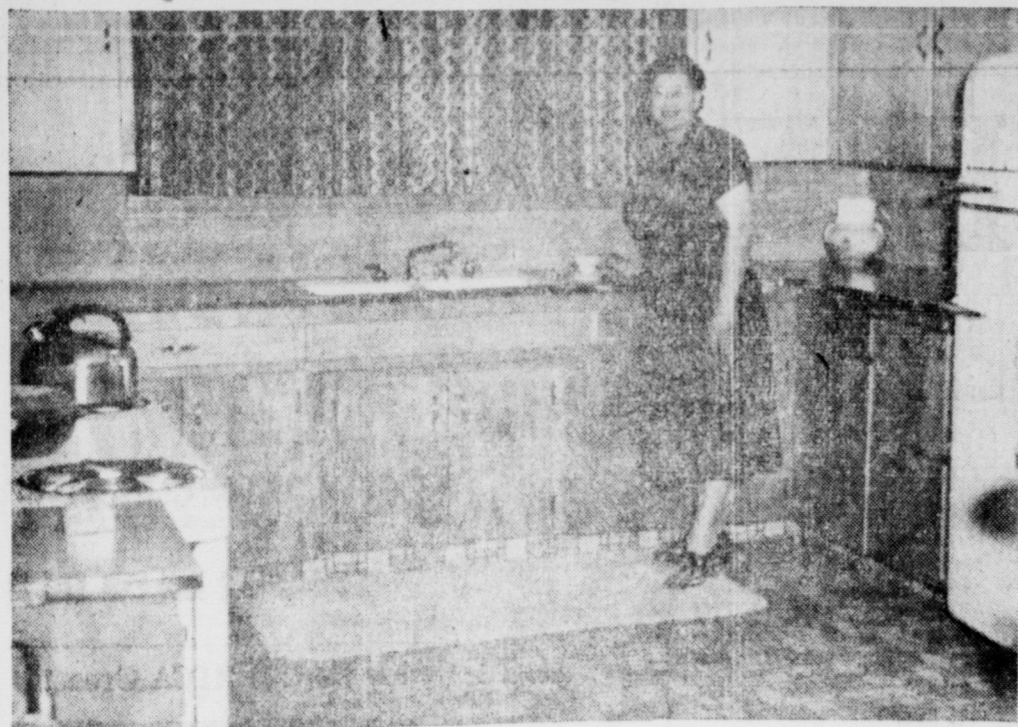
**PEERLESS PUMPS**

PLAINVIEW HIGHWAY  
PHONE 3600  
MULESHOE

**D. & G. Food** 7 a. m. till 11 p. m.

OPEN 7 DAYS A WEEK EARLY TILL LATE FOR YOUR SHOPPING CONVENIENCE

MARVIN DOSS  
GERALD GREEN



THE KITCHEN in the Pierson home is lovely with birch cabinets in natural finish, inlaid flooring and clever curtains in shades of brown. (Staff Photo)



ENJOYING A CUP OF COFFEE, Mr. and Mrs. Pierson are seen in the dining end of their kitchen-dining nook room. Note the birch cabinet and built-in serving bar. (Staff Photo).

## Finley Piersons Move Into New Home at Seventh and Avenue D

Pink holiday stone exterior, painted in gleaming white, and tasteful early American interior furnishings, all add up to one of the more charming of the new homes recently completed in Muleshoe.

Mr. and Mrs. Finley Pierson moved into their new home on the corner of West Seventh and Avenue D on October 6, and this was the very day they sold their three bedroom home to another family.

The large living room faces west, and big picture windows offer a sweeping view of the ranch to the west in a panorama to please any viewer.

Linden green walls, with fiber-glass curtains to match, and a wall to wall carpet in a neutral shade make this a pleasant room to enter. Contemporary furniture is used here in pleasing shades and a built-in wall furnace heats this room.

Woodwork throughout the house, including the doors is in natural finish birch. Knotty pine wainscoting is used in the den and kitchen-dining area.

A cozy fireplace is the focal point of the den, which is furnished in early American style. Provincial print curtains are hung here in gray and green with a touch of brown. Here the Piersons find a pleasant spot to relax, read, watch TV, or just enjoy the fireplace.

Dutch doors open off the den onto a paved patio.

The kitchen and dining area carries out the linden green wall color, with pine wainscoting. Curtains in a draw curtain style are used in this room. The floor is an inlaid tile hibernian pattern. The cabinets are in natural finish birch also, and the curtain cornice is birch to match. Early American maple furniture is found here. A small but convenient serving bar serves as a divider between the kitchen and dining area.

The hall is also linden green, and there is a utility room plumbed for washer and dryer, and a half bath tiled in yellow and green.

Closet and storage space abound in this home, with double closets in the bedrooms, an out of season closet in the hall, and other storage space to be used.

One of the bedrooms in this two bedroom home is in yellow and green, with walnut furniture, and drapes of green faille. The spread is a matching hunter's green, trimmed with chartreuse. Carpeting here is the same as in the other bedroom, and den and the living room.

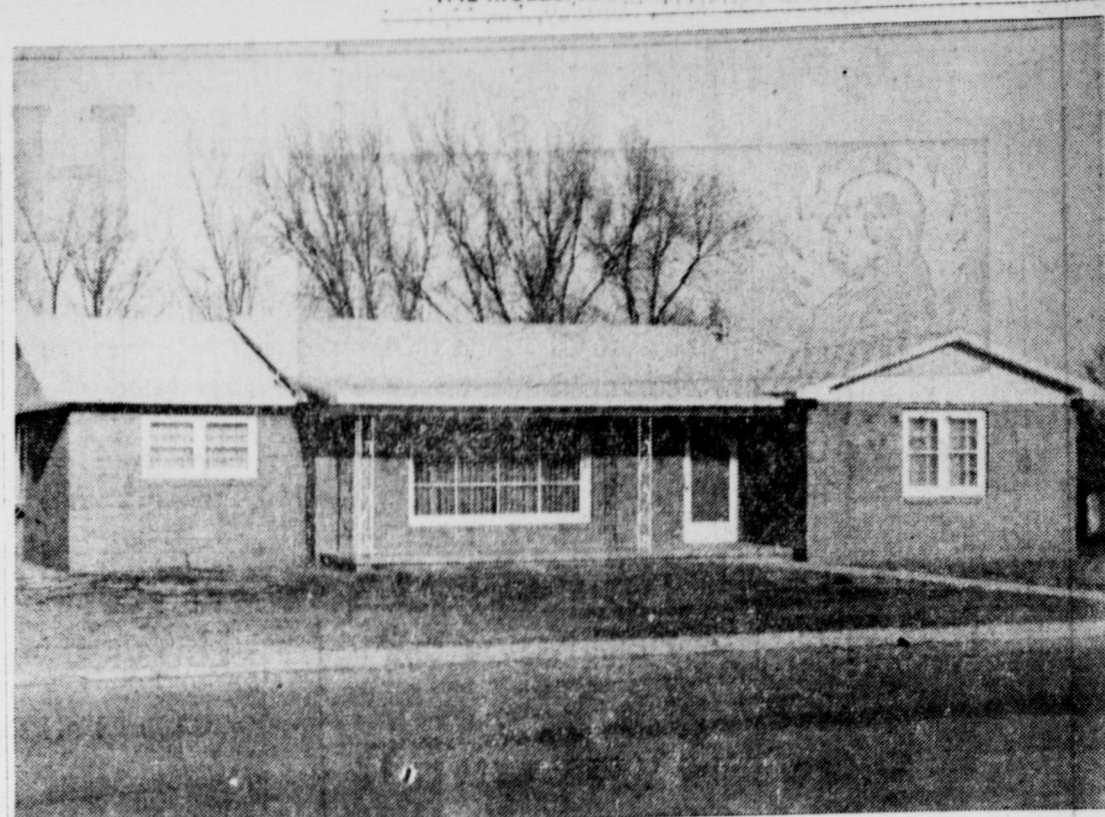
The other bedroom is tastefully decorated with wood rose walls, with white nylon cross-cross curtains. The spread is a hobnail design in white, with green trim. Fruitwood furniture adds to the charm of this bedroom.

The bath, located between the bedrooms, is tiled in pink, with a dressing table built in. The floor and counter top are tiled in brown and pink.

The house contains 1590 square feet of livable floor space. There is a double garage, and landscaping of the grounds began this week.

White panelling is applied to the exterior of the house along the den-patio wall.

Mr. and Mrs. Pierson are proud of their new home, as anyone would be if they lived at the corner of Avenue D and West Seventh street in Muleshoe.



THE FINLEY PIERSON HOME, just recently completed. The home is of pink brick with white trim and features a floor plan designed to please. Two bedrooms, a den, living room, and large kitchen-dining area are features of the house. (Staff Photo.)



THE DEN is the favorite spot for Mr. and Mrs. Pierson. Here they find comfort at the fireplace, and the paneled wainscoting adds charm to the room. A patio opens through a dutch door off this room. (Staff Photo)

## Local Youths Attended Tulia MYF Meeting

The Plainview District Methodist Youths held a mass meeting at the First Methodist Church in Tulia Sunday afternoon.

The program was presented by the Tulia Methodist Youth Fellowship, who featured skits on an unprepared and a prepared MYF program.

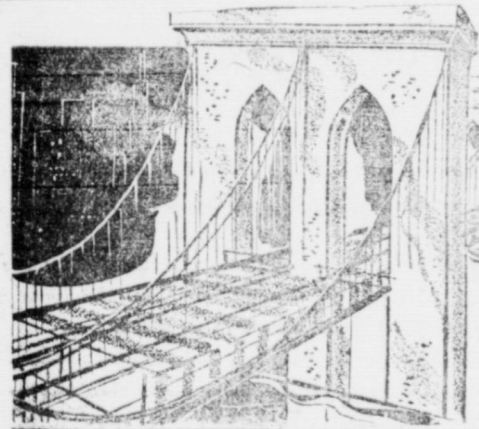
Those from Muleshoe attending were: Linda Lou Lancaster, Velva Gillis, Margaret Lamb, LeVon Copley, Charles Lenau, Don Merchant, Louis Wimberley, Don Copley, Carl Adair and Mrs. A. W. Copley.

Don and LeVon Copley are publicity chairman of the Plainview District Methodist Youth Fellowship. Linda Lou Lancaster is the president of the Sub-District MYF and is also president of the local MYF Chapter.

### SPENT LAST WEEK HERE

Mrs. E. J. Calloway, Jr., and daughter Janice, of Spearman spent last week in Muleshoe with her parents Mr. and Mrs. Roy Hogan and other relatives.

Read The Journal Want-Ads



### In case you buy the Brooklyn Bridge

When we say we handle all forms of insurance we mean that if you own a bridge, we can insure it against practically any peril you name even theft.

Our business is to provide you with the most complete and up-to-date insurance services possible—giving you the benefit of new, broader types of insurance protection and helping you to greater value received for your insurance dollar.

### BOBO INSURANCE AGENCY

PHONE 2650

MULESHOE

Speaks softly and packs a powerful wallop!



THE BEL AIR SPORT COUPE—one of 19 high-priced-looking Chevrolets, all with Body by Fisher.

Soft-spoken, yes. (One reason is the hydraulic-hushed valve lifters now in all Chevrolet engines—V8 or 6.) And this handsome traveler packs a horsepower wallop that ranges up to 205! It's charged with sheer, concentrated action.

Action that can save you precious seconds for safer passing! Action that lets you take steep hills in ef-

fortless stride! Action that helps you zoom out of trouble spots!

And action isn't all. Chevy holds the road like part of the pavement!

Of course, Chevrolet brings you the security of safety door latches, instrument panel padding and seat belts, with or without shoulder harness, are offered at extra cost. Come in and highway-test it.



## C. & H. CHEVROLET CO.

MULESHOE, TEXAS

## ENJOY THE HAPPINESS OF OWNING YOUR OWN HOME



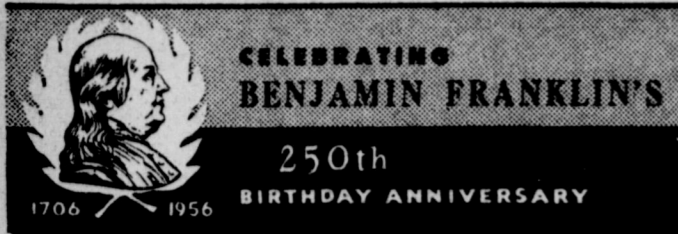
Why wait longer to have that home...you have always wanted and dreamed about? Let us help you with your plans. Maybe you want a larger home, or a medium size, or just a small one there is no feeling compared to the pride of saying this is MY HOME.

Here you will find Top Quality Materials - - Fair Prices and Courteous Treatment  
Let us give you Free Estimates

## CHAS. LENAU LUMBER CO.

PHONE 2220

MULESHOE



... WITH GIGANTIC SAVINGS AT YOUR BEN FRANKLIN STORE

# HELP US CELEBRATE

## BENJAMIN'S IDEA OF THRIFT

SALE STARTS FRIDAY - CONTINUES THROUGH TUESDAY

### Men's Department

- Men's Corduroy Caps, \$1.00 val. .... **.77**
- Men's Imitation Leather Caps  
\$1.00 Val. .... **.67**
- Men's Corduroy Trousers, \$3.98 val. .... **\$2.27**
- Men's Combed Yarn, Taped Seam's  
KNIT BRIEFS, 79c val. .... **.47**
- Men's Athletic Shirts, 39c val. .... **.27**
- Men's Fruit of Loom Broadcloth  
SHORTS, 69c val. .... **.57**
- Men's Fruit of Loom Athletic  
SHIRT, 49c val. .... **.37**
- Men's Blue Chambray Work Shirts  
Regular \$1.29 ..... **.99**



Men's 11 Oz.  
**WORK JEANS**  
\$2.79 val. .... **\$2.27**

Men's 13 3/4 Oz.  
**WESTERN JEAN**  
\$2.79 val. .... **\$2.67**  
**2 FOR \$5.00**

- Men's Long Sleeve Sport Shirt, \$2.98. .... **\$1.97**
- Men's Long Sleeve Sport Shirt  
2 Pocket, Cotton ..... **\$1.88**

### Boy's Department

- Boy's Cotton Shirts, \$1.79 val. .... **\$1.17**
- Boy's Gabardine Shirts, \$1.98 val. .... **\$1.37**
- Boy's Rayon & Acetate Trousers  
Regular \$1.98 ..... **\$1.37**  
Sizes 4, 6, 8, 10, Elastic Back
- Boy's Fruit of Loom Knit Briefs  
49c Value ..... **.37**
- Boy's Fruit of Loom Athletic Shirt  
39c Value ..... **.27**
- Boy's Fruit of Loom Tee Shirts  
59c Value ..... **.42**

#### Boy's Jeans — Super Special

- Boy's 8-Oz. Western Jeans, \$1.49 val. .... **.99**  
Broken Sizes 4, 8, 12
- 11 1/4 Oz. Coarse Weave Jeans  
\$1.69 Value ..... **\$1.23**  
Sizes 6, 8, 10
- 13 3/4 Oz. Heavy Denim Jeans  
\$2.29 Value ..... **\$1.67**  
Sizes 6, 8, 10
- FARAH JEANS, \$1.98 Val. .... **\$1.47**  
Double Knee — Sizes 8, 10, 12
- Tex-Ranch Zipper Pocket Jeans ..... **\$1.88**

### LUGGAGE — 25% DISCOUNT

26" CASE TRAIN CASE AND 21" CASE	SALE PRICE
\$11.95 Value .....	<b>\$8.95</b>
\$19.95 Value .....	<b>\$14.95</b>
\$29.85 Value .....	<b>\$22.35</b>

**All Merchandise Not Sale  
Priced — 10% Discount**

- 32"x35" Rayon Headscarf, 69c val. .... **.47**
- .31"x33"-6 1/4 Monogramed Silk Scarf.  
98c Value ..... **.67**
- L. L. Filler, 50c Val. .... **.37**
- L. L. Zipper Binder, \$1.89 Val ..... **\$1.17**

**FREE! FREE!**  
**3 Merchandise Certificates**  
**\$10.00 \$5.00 \$2.50**  
BRING THIS COUPON TO BE  
ELIGIBLE TO PARTICIPATE  
NOTHING TO BUY

### BOY'S JACKETS — Sizes to 14

- Clearance ..... **1/2 PRICE**
- Child's Tennis Oxfords, \$1.79 Val. .... **\$1.47**
- Toddler Dresses, 1-3, \$1.98 val. .... **\$1.27**
- Toddler Dresses, \$2.98 val. .... **\$1.97**
- Toddler Dresses, \$ .98 Val. .... **.67**
- 1-4 Corduroy Slack Suits, \$3.95 val. .... **\$2.67**
- Wilson Knit Infant Gown, \$1.19 val. .... **.77**
- 2-Piece Corduroy Diaper Set, \$1.69. .... **.97**
- Infant's Batiste Dress, 69c Val. .... **.37**



26"x34" Flannel	Combed Cotton T-SHIRTS
RECEIVING BLANKETS	Sizes 4, 6, 8
Assorted, Pastels	Stripes Boys and Girls
Reg. 49c	Reg. 69c
Anniversary Special 35c	Anniversary Special 44c

### Ladies' Ready-To-Wear

- Orlon Cardigans, \$3.95 Val. .... **\$2.88**
- Cotton Cardigan, \$2.98 Val. .... **\$1.99**
- Wool Crested Sweater, \$5.95 Val. .... **\$3.88**  
Red, Green, Tan Colors
- Misses and Ladies' "FARAH" JEANS  
and Frontier Blues, \$2.98 val. .... **\$1.99**
- Ladies' Dresses, \$7.95 val. .... **\$4.27**
- Ladies' Dresses, \$6.95 val. .... **\$3.97**
- Ladies' Dresses, \$4.95 val. .... **\$2.99**
- Ladies' Dresses, \$3.95 val. .... **\$2.66**
- Ladies Cotton Dresses, \$2.49 val. .... **\$1.49**
- Ladies' Skirts, \$3.95 Val. .... **\$2.88**
- Ladies' Skirts, \$2.98 Val. .... **\$1.97**
- Ladies' Blouses, \$2.98 Val. .... **\$1.97**
- Ladies' Blouses, \$1.98 Val. .... **\$1.47**

### Ladies' And Child's Lingerie

- Ladies Rayon Panties, 39c val. .... **.25**  
Sizes 5, 6, 7
- Ladies' Rayon Panties, 29c val. .... **.23**
- Ladies' Rayon Panties, 25c val. .... **.17**
- Ladies' Extra Size Briefs, 49c val. .... **.33**
- Ladies' Fruit of Loom  
PANTIES, 59c val. .... **2 FOR \$1.00**
- 40 Denier Nylon Briefs, 49c val. .... **.33**  
Sizes 5, 6, 7
- Cotton Challis Nite Gown, \$1.98 val. .... **\$1.33**
- Child's Jersey Panties, 25c val. .... **ea. .17**
- Polly Pig Tail Cotton Slip, \$1.98 val. .... **\$1.27**  
Sizes 8, 10, 12

### ALL FRAMED PICTURES

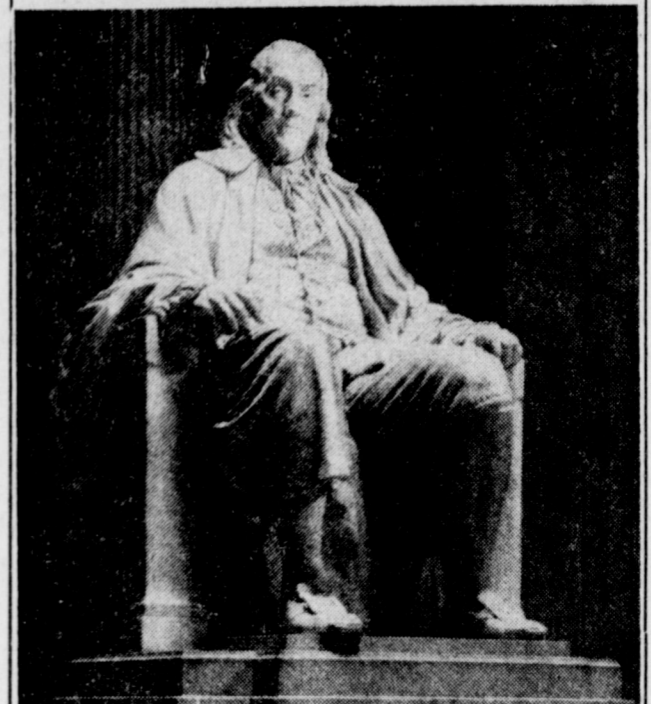
**1/2 PRICE**



### HOME FURNISHINGS

- Boxed Fancy Pillow Cases, Assorted  
\$2.98 Value ..... **\$1.99**
- Boxed Fancy Pillow Cases, Assorted ..... **\$1.37**
- Boxed Fancy Towels Set,, \$2.98 val. .... **\$1.99**
- Spongy Bath Mat, 98c val. .... **.67**
- 10"x10" Turkish Wash Cloth, 10c val. .... **ea. 6c**

His Ideals Made AMERICA Great!



A TRIBUTE TO  
**BENJAMIN FRANKLIN**  
In Commemoration Of His  
250th Birthday Anniversary

BORN JANUARY 17, 1706

Benjamin Franklin had a wide range of ideals and sympathies, truly majestic in scope, and gave the world a wealth of practical ideas in education, medicine, science and civic improvement. His advice was constantly sought by leaders of his time. In 1754, twenty-two years before he became a signer of the Declaration of Independence, Mr. Franklin wrote a treatise urging the Colonies to unite. He knew what united action could achieve, and his is believed to be the first public word to take root, grow and become the United States of America. . . .



3-Piece Set Sauce Pans Granite Ware Reg. \$1.19 Anniversary Special <b>63c</b>	46" OILCLOTH Columbus Blenback Reg. 69c Anniversary Special <b>41c</b>	Modern LAMPS With Shades Maroon, Black Green Ceramic Reg. \$4.95 Anniversary Special <b>\$2.63</b>
--	--	--



Fruit of Loom  
**Ironing Board  
PAD  
AND COVER SET**  
Regular \$1.69  
Anniversary Special  
Save \$1.03  
**66c**

- Plastic Drapes, \$1.98 val. .... **\$1.47**
- Plastic Drapes, \$1.00 val. .... **.77**
- Plastic Cottage Curtains, \$1.19 val. .... **.77**
- 12 Pocket Shoe, Plastic, \$1.00 val. .... **.67**
- Plastic Jumbo Garment Bags  
\$1.98 value ..... **\$1.57**
- 18"x36' Cotton Braided Rug, 35c val. .... **.23**

# BEN FRANKLIN STORE

PHONE 7329

MULESHOE

1101 MAIN STREET