

## Hospital district signs contract with new doctor

By Larry Thornton  
Managing Editor

Changes are in the air at the Muleshoe Area Medical Center, and Administrator Ray Mason is excited about they mean for the hospital and the entire hospital district.

After a long search, a new physician will be joining the staff in the near future increasing the available service to area residents as well as increasing the hospital district's bottom line.

Dr. Francis Lansang, a family practitioner from Colorado and graduate of the medical school at Colorado University in Denver, has signed a contract with the hospital district, Mason said, and is awaiting approval of his credentials by the State of Texas.

Unfortunately, according to Mason, delays in the certification process will probably prevent Lansang from opening his office at Muleshoe, in the former

Smith Clinic at Ave. H and Second Street, until September.

Still, Mason feels the hospital district is moving in the right direction in its physician recruitment, noting that another physician who has spent some time in Muleshoe, and worked briefly in the MAMC emergency room, has expressed a strong interest in opening a practice here.

"West Texas is a hard area to recruit to," Mason said. He attributed a good portion of the recent success to the hospital district board's decision to contract with Merritt Hawkins, a physician recruitment company.

Mason said four full-time physicians were needed to properly serve the area. "Then we can look at the possibility of a surgeon or a part-time surgeon," he said.

Other success at the hospital district include the nursing school, which is nearing completion and which is expected to start registering students for the fall semester in the near future.

At the next regular meeting of the Muleshoe Area Hospital District, the board members will probably be touring the school building, located on the west side of the hospital grounds at Ave. G and Second Street.

Mason also talked about the hospital's nutrition program, and all of the work that has been put into renovating the hospital's kitchen by the maintenance staff.

Plans are for the first hospital patients' meals to be served on Aug. 14, followed in a couple of weeks by meals for hospital personnel and eventually the public.

'West Texas is a hard area to recruit to...'



## Whoppers on a hot day

"Let me tell you about the time I had to handle four popcicles on a hot afternoon," the youngster pictured above seems to be saying to his friends as they enjoy a cool refreshment during a break Monday afternoon at the recent Christian roping camp held at Muleshoe.

Photograph by Larry Thornton

## New police chief is on the job

Muleshoe Chief of Police Brian Frieda is on the job as of Aug. 1.

The appointment of the new chief was approved by the Muleshoe City Council on June 23.

Frieda has been the police chief at Idalou for the past 3-1/2 years. Prior to that, he was assistant police chief at Friona for 18 months, and has about 20 years experience in law enforcement.

"I think he has a demeanor and attitude that will be real compatible with Muleshoe, City Manager David Brunson said previously.



CHIEF BRIAN FRIEDA

## TEA TAKS letter raises local concerns

By Larry Thornton  
Managing Editor

Are Muleshoe Independent School District's students, administrators and faculty TAKS cheats?

If you listen to reports from one of the large daily newspapers from central Texas, it wouldn't be hard to reach the conclusion they are... or at least to come to the conclusion that problems exist that need to be resolved, especially after word of a letter generated by the office of Education Commissioner Dr. Shirley J. Neeley on May 31 came to light.

However, Muleshoe ISD Superintendent Gene Sheets fell just short of issuing a broad denial of the allegations in an interview Monday, expressing his support for all involved in the local TAKS testing, while still saying that the issue was being taken seriously.

"We think we've done a good job, and then we hear this," Sheets said.

At issue is the evaluation of the state-mandated TAKS tests from the 2004-2005

Although the letter from Neeley's office doesn't specifically accuse MISD of cheating it does list some of the reasons certain school district's, such as

Muleshoe's high test scores, as suggested by the letter will require additional investigation, the superintendent feels a significant answer lays in the work and preparation the faculty, students and administration put in prior to taking the tests.

Sheets explained that MISD set up TAKS remedial classes to help prepare the students, and even taught students how to take tests.

Sheets further pointed out that according to the Texas Education Agency the indicators that showed up in the analysis could also be the result of good teaching.

"Clearly, several of these reasons are consistent with appropriate teaching and learning," the letter states.

Still, Sheets said precautions are already

'If we determine something inappropriate has occurred, we will address it'

— Superintendent Sheets

school year, which according to a state-wide audit reportedly placed tests from Muleshoe ISD in a "questionable" bracket along with more than 100 other school districts.

On top of everything else, the superintendent said the requested investigation into the matter is made more difficult by the fact that the tests under scrutiny are more than a year old.

Muleshoe's, were targeted to receive the letter.

"Very similar test responses;" multiple marks possibly due to changed answers; a significant increase in test scores; and unusual response patterns were among the criteria used by the company hired by the state in its analysis of the test data.

While some of the possible explanations for

Continued on page 3

### Local Weather

**Thurs.**  
Sc. T-Strms..... 83/62

**Fri.**  
Mt. Cloudy..... 85/62

**Sat.**  
I. T-Strms..... 85/62

**Sun.**  
I. T-Strms..... 90/62

**Mon.**  
Pt. Cloudy..... 90/62

**Tue.**  
Mt. Sunny..... 92/62

**Wed.**  
Pt. Cloudy..... 93/63

### Give It A Thought

My favorite time and place is in the stillness of the night, in my yard, under the starry sky and gently swaying willow tree, giving a quiet prayer of thankfulness and feeling the closeness and watchfulness of God.

Words to ponder from Beverly

**Missed your paper?**  
Call the carrier Bobby Flores at 806-891-8993 (leave a message) or call the Journal at 272-4536, between 8:00 a.m. and 5 p.m.

In this week's issue:

## RELISH

A monthly magazine featuring ideas on how to make old recipes look and taste new as well as offering up new recipes to expand your cooking prowess!

Sponsored by:  
**LOWE'S MARKETPLACE**  
401 W. American Blvd., Muleshoe  
"Get your recipe ingredients at Lowe's!"



## Mighty 'M' Band camp begins

The Muleshoe High School Mighty "M" Band camp began this week. Pictured above and to the left, band members go over the basics of marching with this year's drum majors.



**Bible study series offered**

The public is invited to participate in a Bible study at Richland Hills Baptist Church featuring Chip Ingram's series: "God As He Longs For You To See Him." The 10-week Bible study will begin on Sunday, Sept. 10, at 6 p.m., and is free of charge. Richland Hills Baptist Church is located at 17th and W. Ave. D in Muleshoe. For additional information, contact Bro. Larry Thornton at 272-5852.

**AA meeting**

Those looking for help with problem drinking can do so at open AA and Al-Anon meetings being held at 7 p.m. each Friday at the First United Methodist Church, at 507 W. 2nd. Please use the west side entrance. For information about these meetings call 806-965-2870.

**Alzheimers Support Group**

Alzheimers disease is the fourth leading cause of death in adults after heart disease, cancer, and stroke. Alzheimers disease is the most common form of dementia — a brain disorder that seriously affects a person's ability to carry out daily activities. Scientists think that as many as 4.5 million Americans suffer from AD.

Most primary caregivers for the Alzheimers disease patient are family members. Many other people also participate in the care of those with AD. Friends, neighbors, work colleagues, and faith community members often help to care for the person with Alzheimers disease. Research has shown that caregivers are often at an increased risk for depression and illness, especially if they do not receive adequate support.

Bailey County Aging Services and Texas Cooperative Extension, Bailey County, are in the planning stages of forming a support group for those affected by this devastating disease.

The first meeting will be Aug. 8, at 6:30 p.m. in the meeting room of the Bailey Co. Coliseum. For more information contact Debbie Crabtree, Bailey County Aging Services, 272-3647, or Mandi Seaton, Bailey County extension agent • Family and Consumer Sciences agent, 272-4583.

**'Fun Day' cancelled**

The plans of Compassionate Care of Muleshoe, a non-profit organization formed to assist pregnant women faced with tough decisions, to hold a "Fun Day in the Sun" fund raising event in the Muleshoe City Park on Saturday, Aug. 12, have been cancelled.

**Reserved stadium seats**

Reserved seat tickets for the 2006 Muleshoe Mules football season will go on sale Aug. 7. The tickets are \$25 for five home games.

Persons who held reserved seat tickets for the 2005 football season may purchase their seating options at the School Administration office, located at 514 W. Ave. G, Monday through Thursday, during regular business hours.

Those persons whose names appear on the chart may pick up their tickets:

Either in person; by mail with ticket holder's personal check; or by third party, if tickets are purchased with ticket holder's personal check.

Beginning Monday, Aug. 28, all remaining tickets will go on sale on a first come, first serve basis.

Any reserved seats remaining after the season starts will be available at a cost of \$6 per game and may be purchased at the administration office on game day.

If you have questions concerning the ticket sales, contact Dana Rasco at 272-7400.

**MISD registration**

The Muleshoe Independent School District has released the following registration information for the upcoming school year:

Dillman Elementary will be registering new students in the school district who plan to attend Dillman on Aug. 7-8, from 8:30 a.m. until noon, and from 1 p.m. until 3:30 p.m.

DeShazo Elementary will be registering students Aug. 7-8, from 9 a.m. until 6 p.m.

Watson Junior High's registration will be held on Aug. 7, from 9-11 a.m. and 1-3 p.m.; and on Aug. 8, from 9-11 a.m., 1-3 p.m., and 5-7 p.m.

Muleshoe High School will be registering students on Aug. 10. Seniors at 11 a.m., juniors at 1 p.m., sophomores at 2 p.m. and freshmen at 3 p.m.

**Girl Scout sign up**

A Girl Scout sign up will be held on Aug. 7 at the Muleshoe City Pool from 4 - 6 p.m. The sign up fee is \$10 per girl, and the registrants may swim for free. Bring a friend, and get the first patch free (a bring a friend patch). By signing up before Aug. 31, scouts can also receive an Early Bird patch.

**Meet the Mules on Aug. 22**

The Muleshoe Independent School District's annual "Meet the Mules" gathering is set for Aug. 22, at 7 p.m., at the football stadium.

**Boy, Cub Scout sign up**

Cub Scout Pack and Troop 620 invite you and your family to the Mule Putt Golf Course on Sunday, July 30, from 7- 9 p.m. to sign your son up as a prospective scout. An adult must accompany all prospective scouts.

Hamburgers and hotdogs will be served. Try your skill at a game of Mule Putt. All current members of the Pack and Troop are also invited to attend.

If your boy is about to enter first through fifth grade, Cub Scouting may be exactly what you are looking for. Cub Scouting involves a variety of family activities and teaches lifelong values such as character development; good citizenship; personal achievement; friendly service; fun and adventure and preparation for Boy Scouts.

Boy Scouts is available to boys who are least 11 years old and are not yet 18 years old. This program achieves the Boy Scouts of America objectives of developing character, citizenship and personal fitness.

For additional information, contact Cubmaster Noemi Sanchez-Mora at 272-3866 or Scoutmaster Mike Richards at 272-3536.

**Diabetes support group**

The Bailey County Diabetes Support Group will meet this month on Tuesday, Aug. 15, at 7 p.m. in the meeting room of the Bailey County Coliseum. The program will be "Diabetes and Heart Disease." People with diabetes are two to four times more likely to get heart disease.

This program is free of charge to everyone interested. For more information contact Mandi Seaton, Bailey County extension agent • Family and Consumer Sciences, 306 West Second, Muleshoe, TX 79347, or call 806-272-4583.

**Drivers license office**

The Texas Department of Public Safety's drivers license office in Muleshoe will only be open Tuesday and Wednesday, from 8:30 a.m. until noon, and 1-5 p.m., until further notice.

**MISD bus routes released**

Muleshoe Independent School District has released the following bus route information:

If you are new to the area or have questions about specific stops, call Richard Hawkins, transportation director, at 272-7329.

For questions concerning regulations and policy contact Don Wood, asst. superintendent, at 272-7400.

**Bus Stops**  
 Bus #1 — 301 East Sixth; Housing Authority Apartments; East sixth and Ave. F; DeShazo Elementary; Dillman Elementary; and High School and Junior High.

Bus #2 — East Sixth and Ave. F; East Sixth, Housing Authority Apartments; East Fifth and Ave. D; DeShazo Elementary; Dillman Elementary; and High School and Junior High.

Bus #5 — Main and Ave. G; East Fourth and Ave. F; Dillman Elementary and High School and Junior High. (All Dillman students who get on at DeShazo, ride Bus #5).

Bus #6 — West Birch and Chicago; Muleshoe Cotton Compress; West Date and Boston; and West Cedar and Dallas.

Bus #7 — West Ave. I and South First; West Ave. J and Eighth; West Third and Ave. J; West Third and Ave. H; Second and Ave. H; 15th and Ave. J; East Fourth and Ave. D; East Fourth and Ave. B; Deshazo Elementary; Dillman Elementary; and High School and Junior High.

Bus #9 — East Austin and East Cedar; East Austin and East Elm.

Bus #10 — Behind Ranch House

Bus #12 — Eighth and Ave. B; East Hickory (across from Roger Miller Park); East Birch and East Fir (next to church); East Gum (between Ithaca and Joliet); 10th and Ave. C; 14th and Ave. C; Dillman Elementary; 14th and Ave. C; Eastbound 10th and Ave. C; Eastbound DeShazo Elementary; and High School and Junior High. (All DeShazo students going to Dillman or West Ave. C and ride Bus #12).

Bus #13 — Behind carousel Reno and Ash; Quincy and Railroad Ave.; Pasadena (middle of the street).

Bus #14 — (P.M. buses

Time for new appliances? WE ARE YOUR HOMETOWN WHIRLPOOL DEALER. *We now carry Speed Queen!*

**AFFORDABLE MEDICAL BENEFITS** with • Dental • Prescription • Vision • Chiropractic **\$11<sup>95</sup> - \$59<sup>95</sup> /Mo.** All On-Going/Pre-Existing Conditions Accepted! **(806) 729-8757** www.SuperHealthBenefits.com

**Muleshoe Journal** USPS 367820 *Established February 23, 1924. Published by Bradford Newspaper Group. Every Thursday at 201 W. Ave. C, P.O. Box 449, Muleshoe, TX 79347.* Periodicals Postage paid at Muleshoe, TX. POSTMASTER: Send address changes to the Muleshoe Journal, P.O. Box 449, Muleshoe, TX 79347. We are qualified members of: Panhandle Press Association, West Texas Press Association and Texas Press Association © 2006

**Chris Bradford, Publisher** cbradford@castrocountynews.com  
**Leah Bell, General Manager/Ads** ctyankee@fivearea.com  
**Larry Thornton, Managing Editor** editor@fivearea.com  
**Bookkeeping/Classified Advertising** journal@fivearea.com

SUBSCRIPTIONS:  
 By Carrier Yearly - \$22.00  
 Bailey County — By Mail - \$24.00  
 Elsewhere - \$35.00  
 By E-mail - \$24.00  
 Advertising Rate Cards On Application

**Member TPA 2006 TEXAS PRESS ASSOCIATION**  
**PPA Panhandle Press Association**  
**WEST TEXAS PRESS ASSOCIATION**

\*Advertisers should check their ad the first day of insertion. The Journal will not be liable for failure to publish an ad or for a typographical error or errors in publications except to the extent of the cost of the ad for the first day of insertion. Adjustment for errors will be limited to the cost of that portion of the ad where the error occurred.\*

*It's Happening at Carolyn's....*

*Muleshoe's Own Mini Antique Roadshow* Sponsored by Carolyn's Christmas Creations **Saturday, August 5, 2006**

**Chuck Braden** Certified Appraiser Chuck Braden from Carlsbad, NM will be at Carolyn's from 9 AM-4 PM appraising antiques and providing educational and entertaining information about a variety of YOUR treasures.

At 2 PM, Chuck will do a 15-minute seminar on Antique Collecting. Come take advantage of his hints and suggestions on authenticity and buying, displaying and protecting your treasures and investments.

At 4 PM, 10 individuals will be selected by Chuck to appear in a TV taping to air on the local TV station Channel 6. This taping will showcase the antiques brought in by these 10 lucky participants.

If you would like to have an item appraised, call Carolyn's today - (806) 272-5911. You must have an appointment to get an item appraised. Even if you don't have an item to appraise, come anyway. Chuck is so interesting!

This whole day is provided at no charge to our customers. Just another way we have of saying thanks for shopping at Carolyn's.

Don't miss the fun. We hope to see you there!

**So, your antique doesn't want to come? Leave him home!** *(But do bring a friend!)*

*Gigantic Garage Sale* **Friday, August 4, 2006**  
**Saturday, August 5, 2006**

Come and experience America's favorite sport — garage sale shopping — on Carolyn's parking lot these 2 days. For a year, Carolyn has been boxing up items that were overstocked or slightly damaged to save for her annual sale. Come take advantage of quality, retail merchandise at slashed down/unheard of prices! It will be garage sale madness at its finest at Carolyn's Christmas Creations August 4-5, 2006!

*Carolyn's Christmas Creations*  
**106 E. American Blvd., Muleshoe • 272-5911 • www.visitcarolyns.com**

# MISD TAKS tests...

Continued from page 1  
being set in place for the district's next round of TAKS testing, including increased security measures and monitoring in the testing rooms, and additional training for testing personnel.

"If we determine something inappropriate has occurred, we will address it," Sheets said.

## Donations sought for local youth

Accounts have been set up at Muleshoe State Bank and the First Bank of Muleshoe donations for Chuy Valdez, a Muleshoe student who is scheduled for additional surgeries at a hospital in Salt Lake City later this month.

## Local van fund benefit scheduled

The public is invited to attend a fund raiser on the evening of Friday, Aug. 18, to benefit the Muleshoe Area Hospital District's Park View Van Fund.

The event, which will be held at the Bailey County Coliseum, will feature live music and local talent.

## Cancer screening clinic set

The Don and Sybil Harrington Cancer Center Comprehensive Breast Center will conduct a breast cancer screening clinic at Muleshoe Area Medical Center on Aug. 7 and Aug. 17.

Funding is available through the Texas Department of Health for Texas residents who qualify for assistance.

Call 806-356-1905 or 1-800-377-4673 for more information or to schedule an appointment.



The Muleshoe Masonic Lodge #1237 AF&AM holds stated meetings the second Tuesday of each month at 7:30 p.m. All masons are encouraged to attend.  
**2B1ask1.**

# Lamplight

By Larry Thornton

## What God expects of his church

Several years ago, a school board in Oklahoma hired an architect to build a new school building. A contractor was subsequently hired, and there were a number of subcontractors involved as well. After the building was constructed, the school board and the architect were doing the final punch list, when they came to one of the rooms.

They went inside and looked around. Everything appeared to be okay, but when they turned to leave, someone tried to turn off the light, and couldn't. The contractor hadn't included one in the circuit. The only way to turn off the light was to take out the light bulbs.

Needless to say, the school board was more than a little upset. The school board turned to the superintendent and asked, "Why isn't there a light switch?"

The superintendent turned to the architect and asked, "Why isn't there a light switch?"

The architect went to the contractor, who in turn went to the subcontractor, each asking why there wasn't a light switch. And the subcontractor said, "It wasn't included in the building plans."

From that day on, every time the school board talked to an architect about a new building, someone would ask if the plans would include a light switch in

every room.

Light switches are something you expect in a room, especially a new building. Sure, things can happen... the switch could be broken, or the bulb burned out, but if the light bulb is on, you expect a way to turn it off.

If you read the apostle Paul's letter to the Philippians, you'll see a list of things God expects from his church.

And, unlike the light switch in the classroom, these things that God expects of us are intended to brighten our lives in him rather than to dim or extinguish the light.

Philippians 2:12-16, NIV, says, "Therefore, my dear friends, as you have always obeyed — not only in my presence, but now much more in my absence — continue to work out your salvation with fear and trembling, for it is God who works in you to will and to act according to his good purpose. Do everything without complaining or arguing, so that you may become blameless and pure, children of God without fault in a crooked and depraved generation, in which you shine like stars in the universe as you hold out the word of life — in order that I may boast on the day of Christ that I did not run or labor for nothing."

In these scriptures, God tells us that he expects obedience from his

followers and that he expects his followers to acknowledge him.

He tells us that he expects us to grow in our sanctification, our "Christ-likeness;" and reminds us that we represent him before the world.

And finally, the scriptures tell us that God expects his followers to "hold out the word of life..." that we should help others to find the path to salvation.

When you consider all the blessings God showers his church with, his list of expectations are really rather small. Amen.

"And the Word was made flesh, and dwelt among us, and we beheld his glory, the glory as of the only begotten of the Father, full of grace and truth."  
— John 1:14

**EXPERT JEWELRY AND WATCH REPAIRING**

- Ring sizing - 2-3 days
- Ring re-mounting • Jewelry appraising
- All makes watch batteries • Faster service

*Celebrating 63 years*  
**HOLMBERG JEWELRY**  
Jewelry Accents • Credit Program; Always 90 Days Same As Cash  
1908 N. Prince • Clovis, NM • 762-9376  
New Saturday Hours: 9:30 - 12:30

**We're In The Field With You.**

So when you need us, we'll be there.

**Farm & Ranch Loans at Competitive Rates**  
Land Loans • Production Loans • Equipment Loans  
Cattle Loans • Rural Housing Loans

**Also, Ask About Our**  
Cash Management Program • Equipment Leasing Program  
Credit Life Insurance • Crop Insurance • Recreation Loans  
Young and Beginning Farmer Program

**We Proudly Support Agriculture!**

1601 West American Blvd. Muleshoe 272-3010

**FIRST AG CREDIT**  
FARM CREDIT SERVICES

www.agmoney.com

**DAIRIES & FEEDYARDS!**

**Forage Harvesting & Packing**  
Call 806-683-0986  
or 806-683-1923

SM Ag, Inc.  
Steve Meiwes  
2912 CR 504  
Muleshoe, TX  
79347

## Tired of paying taxes on your cars? Tired of paying City Taxes? Tired of paying high school taxes?

Build a new home in the Deer Lake Estates community of Sudan, Texas. No automobile property taxes, no city taxes, lowest school taxes in Lamb, County. Quality homes, schools, living, & value... Deer Lake Estates!

**Deer Lake Estates**  
Sudan TX  
SUDANPRIDE.SCORENET.NET

**HOMESITES NOW AVAILABLE!**

- 22 Two-acre Estates
- 1/2 Mile South on HWY 303
- Brand New 3 & 4 Bedroom Homes
- Floor Plans from 1600 to over 3000 sq. ft.

More Home. Less Money.

8207 Quincy  
Lubbock, TX 79424  
806-797-9494  
www.betenbough.com

Model Homes Open ■ Monday - Saturday 10 a.m. - 6 p.m. ■ Closed On Sunday

**HELPING YOU LIVE SAFER**

FRANKLIN ELECTRIC MOTORS USED FOR DRINKING WATER ARE CERTIFIED TO NSF/ANSI STANDARD 61

**Franklin Electric**  
WATER FOR LIFE

**CLASSIFIED UL WATER QUALITY ANS/NSF 61**

**NSF**

# BAILEY COUNTY DEVOTIONAL PAGE

**MULESHOE MOTOR CO.**  
 1125 W. American Blvd., Muleshoe, Texas 79347  
 806.272.4251 or TF 800.432.7617 FAX 806.272.5266  
 www.muleshoemotor.com

**Stoney Point Muleshoe**  
 "Custom Growing Dairy Heifers"  
**965-2856**

**Deaf Smith County Grain, Inc.**  
 Cliff A. Skiles

**Lowe's MARKETPLACE**  
 401 W. American Blvd. • Muleshoe • 272-4585

**FRIONA HERITAGE ESTATES**  
**Assisted Living Apartments**  
 "Making Life Easier"  
 201 East 15th, Friona • 250-5599  
 License #100379 Jo Blackwell, C.E.O. - Rhonda Bentley, A.L. Mgr.

**MULESHOE ANIMAL CLINIC**  
 GENERAL PRACTICE  
**M V S**  
 1430 US Hwy. 84 • Muleshoe Office: 272-3061

**WESTERN DRUG**  
 & Something Special Gifts  
 1411 W. American Blvd. 272-3106 Muleshoe

**PRAIRIE ACRES**  
 Skilled Nursing Facility  
 Dedicated To The Service Of Our People  
 201 E. 15th, Friona • 250-3922  
 Mrs. Jo Blackwell, Administrator

**United Supermarkets**

**DODD COTTON GIN**  
 2912 CR 504, Muleshoe • 965-2311 or cell 674-1457  
 ROBERT BOOZER, MGR. BEVERLY TURNEY, OFFICE MGR.  
 Email: robertb@amaonline.com

**Henry Insurance Agency**  
 "Serving You Since 1964"  
 111 West Avenue B 272-4581  
 Muleshoe, TX

**CENTRAL COMPRESS & WAREHOUSE**  
 SUDAN, TEXAS

**BAILEY COUNTY ELECTRIC COOPERATIVE ASSN.**  
 Muleshoe — 272-4504 Morton — 266-8600

**1ST BANK** MEMBER FDIC  
 202 South First 272-4515

**Lazbuddie Feeders, Ltd.**  
 "We make your dairy bull calves worth more!"  
 Lazbuddie, Texas  
**965-2435**

**AG AVIATION**  
 2 1/2 miles North on HWY 214  
 272-3066 FAX 272-8981  
 P.O. Box 68 • Muleshoe, TX

**MULESHOE VALLEY INC.**  
 (806) 272-4266 Mobile (806) 946-8763 mviinc@fivearea.com  
 2601 W. American Blvd. P.O. Box 631 Muleshoe, Texas

**FIRST UNITED**  
 LITTLEFIELD BANKING CENTER 2003 Hall Avenue • 806-385-7181  
 EARTH BANKING CENTER Main & Cedar • 806-257-3451  
 SUDAN BANKING CENTER 200 Main • 806-227-2411

**MULESHOE CHAMBER OF COMMERCE & AGRICULTURE**  
 115 E. American Blvd., Muleshoe • 272-4248  
**www.muleshoe.org**

**Facts About The BIBLE** BY JOHN LEHTI  
 Copyright © John A. Lehti, National Representative: Dall Advertising Service, P.O. Box 10278, Goldsboro, NC 27532

518

This is a dramatized version of facts taken from the Book of Genesis intending to show some of the customs of these ancient and traditional times.

**The Blind Prophet**  
 IN THE LATTER DAYS OF KING SOLOMON, WHEN THE KING WAS REBUILDING HIS KINGDOM, A YOUNG PRINCE, JEROBOAM, FOUND GREAT FAVOR IN SOLOMON'S EYES...

...AND JEROBOAM SETS OUT FOR MILLO, HAPPY IN HIS IMPORTANT MISSION!

YEA! THE KING HATH GIVEN UNTO ME WORK OF GREAT IMPORTANCE IN HIS NAME!

WHERE, NOW, WILT THOU GO, JEROBOAM?

TO MILLO - TO REPAIR THE WALLS OF THE CITY IN THE NAME OF KING SOLOMON!

AH, JEROBOAM! BLESSED ART THOU IN SOLOMON'S HOUSE!

JERUSALEM LIES BEHIND HIM, AND MILLO IS STILL FAR AHEAD AND IN THE WILD LANDS BETWEEN. A GAUNT AND LONELY FIGURE WATCHES JEROBOAM'S APPROACH...

Next Week  
 A torn cloak

SAVE THIS FOR YOUR SUNDAY SCHOOL SCRAPBOOK

This devotional & directory is made possible by these businesses who encourage all of us to attend worship services.

- ASSEMBLY OF GOD**  
**FIRST ASSEMBLY OF GOD**  
 521 South First Street • 272-3017  
 Jack Stone, Pastor • 272-3984  
 S.S. 9:45 am, W.S. 11 am & 6:30 pm,  
 Wed. 7:00 pm  
**EL BUEN PASTOR**  
 415 E. Ave. F - 272-5455  
 Pastor Domingo Luna - 272-4542  
 S.S. 9:45 am, W.S. 11 am & 6 pm;  
 Wed. 7 pm
- BAPTIST**  
**CALVARY BAPTIST**  
 1733 W. Ave. C.  
 Rev. Jeff Coffman  
**CIRCLE BACK BAPTIST**  
 Intersection FM 3397 & FM 298  
 946-3676
- FIRST BAPTIST**  
 220 West Ave. E  
 Dr. Stacy Conner  
**FIRST BAPTIST**  
 Lazbuddie • 965-2126
- PRIMERA IGLESIA BAUTISTA**  
 223 E. Ave. E  
 Rev. Greg Guzman  
**PRIMITIVE BAPTIST**  
 621 South First  
 Elder Bernard Gowens, Min.  
**PROGRESS BAPTIST**  
 Progress, TX  
**PROGRESS SECOND BAPTIST**  
 Arthur Hays, Min.  
 1st & 3rd Sundays  
**RICHLAND HILLS BAPTIST**  
 Bro. Larry Thornton  
 17th & West Ave. D  
 S.S. 10 am; W.S. 11 am & 6 pm;  
 Weds. 7 pm  
**TRINITY BAPTIST**  
 314 E. Ave. B  
 Bennie Wright, Min.
- CATHOLIC**  
**IMMACULATE CONCEPTION CATHOLIC CHURCH**  
 805 E. Hickory  
 Leonardo Pahamtang, Min.
- CHARISMATIC EPISCOPAL**  
**ST. CLEMENTS**  
 1536 W. American Blvd. • 272-5954  
 Father Sergio Leal  
 Sun. W.S. 10:30 am
- CHRISTIAN**  
**TRINITY CHRISTIAN CENTER**  
 1723 W. American Blvd. • 272-3877  
 Reydon Stanford, Pastor
- CHURCH OF CHRIST**  
**LARIAT CHURCH OF CHRIST**  
 Sam Billingsley, Min.  
 S.S. 10 a.m.; W.S. 11 a.m. & 6 p.m.,  
 Wed. 7 p.m.  
**LAZBUDDIE CHURCH OF CHRIST**  
 Nathan Crawford, Min.  
 S.S. 9:30 am; W.S. 10:20 am & 5 pm;  
 Wed. 7 pm  
**MULESHOE CHURCH OF CHRIST**  
 22nd & W. American Blvd.  
 Minister Barry Wiseman  
 S.S. 9:30 am; W.S. 10:20 am  
 & 6 pm; Wed. 7:30 pm
- 16th & AVE. D CHURCH OF CHRIST**  
 Curtis Shelburne, Min. • 272-4619  
 S.S. 9:30 am; W.S. 10:30 am;  
 Growth Gr. 1:30 pm; Wed. 7:00 pm
- LUTHERAN**  
**ST. JOHN LUTHERAN**  
 Lariat, TX • David Symm, Min.  
 S.S. 10:30 am; W.S. 9:30 am
- METHODIST**  
**FIRST UNITED METHODIST**  
 507 W. 2nd St.  
 Spanish Service 8:30;  
 S.S. 9:45; W.S. 11:00  
 Praise & Prayer 6 PM  
 Pastor Monty Leavell, 272-5517  
**LAZBUDDIE METHODIST**  
 S.S. 9:30 am; W.S. 10:30 am  
 Pastor Ken Peterson • 965-2121  
**EL DIVINO SALVADOR U.M.C.**  
 619 E. 5th Street & Ave. G, Muleshoe  
 Javier Careaga, Pastor • 272-6888
- NAZARENE**  
**ROCA DE SALVACION**  
 814 W. Ave. C  
 Pastor Rafael Quezada  
 Sunday, S.S./W.S. 10:00 a.m.,  
 Evening 6 p.m.; Wednesday, W.S. 7 p.m.
- PENTECOSTAL**  
**UNITED PENTECOSTAL LIGHTHOUSE**  
 207 East Ave. G  
 1-800-454-6051  
 S.S. 10 am; Thursday, Bible Study 7 pm
- INTER DENOMINATIONAL**  
**NEW COVENANT**  
 Plainview Hwy.  
 Steve Claybrook, Pastor  
 W.S. 10 am; Wed. 7 pm  
**MULESHOE COWBOY FELLOWSHIP**  
 117 E. Birch Street, Muleshoe  
 Steve Friskup, Minister • 272-5199  
 Service: 7:30 p.m. Thursday

If your church has a change of information, please call 272-4536!

**minsa CORPORATION**  
 US Hwy. 84 East  
 Muleshoe • 272-5545

**MULESHOE PEA & BEAN, INC.**  
 1680 CR 1044 272-5589  
 Muleshoe, TX

**MCCORMICK SEEDS, INC.**  
 400 East Ash • 272-3156  
 Muleshoe, Texas  
 A COMPLETE LINE OF FIELD SEEDS

**PACO FEED YARD, LTD.**  
 Commercial Cattle Feeders  
 P.O. Box 956 265-3281  
 Friona, TX  
 Feller Hughs-Mgr.

**PRAIRIE VIEW DAIRY**  
 Just southwest of Muleshoe

**Park View NURSING CARE CENTER**  
 1100 W. Ave. J - Muleshoe, Texas 79347  
 Phone (806) 272-7578 Fax: (806) 272-3514

**Little Real Estate & Appraisal Services**  
 Residential • Commercial • Farm & Ranch  
 272-4805  
 MOBILE: 946-7965 FAX: 272-3729 1913 US 70-MULESHOE

**MULESHOE LIVESTOCK AUCTION**  
 Muleshoe, TX • Sale Every Saturday  
 Clayton, C.L. & Thurman Myers • 272-4201

**SAIN IRRIGATION & MACHINES**  
 Complete Pump Service  
 W. American Blvd. 272-4397  
 Walt Sain Muleshoe, TX 272-4148

**Farmers Coop Ass'n of Sudan**  
 P.O. Box 120 • Sudan, Texas  
 227-2461  
 Mobile: (806) 638-7692 FAX (806) 227-2102  
 Dennis Flowers, Gen. Manager Email: dflowers@fivearea.com

**MCDONALD'S OF MULESHOE**  
 1315 W. American Blvd. • 272-3333  
 Open at 5:00 a.m. every day! i'm lovin' it

**Lazbuddie Garage & Supply**  
 Glenn, Adora, Terry and Lee Scott  
 Specializing in irrigation motor parts  
 and service since 1957  
**AUTO PARTS P.O. Box 100 • Lazbuddie • 965-2188**

**AGP Grain Marketing**  
 Bovina • Lariat • Farwell • Lazbuddie  
**Toll Free: 866-583-7362**

**TEXAS FARM BUREAU INSURANCE CO.**  
 1612 W. American Blvd. • 272-4567 • Muleshoe

**"THE FIVE AREA TELEPHONE COOPERATIVE, INC."**  
 West Plains Telecommunications, Inc.  
 Five Area Systems, Inc., Plateau Wireless  
 Five Area Long Distance - Five Area Internet  
 302 Uvalde Muleshoe, USA (806) 272-5533

**Pizza Hut**  
 1412 W. American Blvd.  
 Muleshoe • 272-4213  
 Open: Sun.-Mon. 11 AM to 11 PM  
 Lunch Buffet: Sun.-Fri. 11:30 AM to 1:30 PM  
 "Gather round the Good Stuff"

**MAPLE COOP GIN**  
 927-5501  
 Maple, Texas

**Carniceria Jalisco**  
 Fruteria, Panaderia Y Tienda Mexicana  
 Open: 7 Days a Week - 9 AM to 9 PM  
 2006 W. American Blvd., Muleshoe • 272-7664  
 Pifatas • Pan Mexicano • Mini Tacos • Aguas Frescas • Copas de Frutas • Mas!

**IRRIGATION PUMPS & POWER**  
**Zimatic** W. Hwy. 84  
 CENTER-PIVOTS 272-5597

# BAILEY COUNTY DEVOTIONAL PAGE

## Obituaries

### Chris Harris

A graveside service for Chris Harris, 39, of Houston and formerly of Muleshoe, was held on Wednesday, Aug. 2, at Muleshoe Memorial Park Cemetery with the Rev. Monty Leavell, pastor of First United Methodist Church, officiating.

Harris died on Wednesday, July 24, 2006, in St. Joseph's Hospital in

Houston after suffering from Lou Gehrig disease. He was born on Jan. 24, 1967, in Deming, N.M.

Harris was a 1987 graduate of Muleshoe High School and he was employed as a security guard.

Survivors include his stepsister — Bessie Green of Clovis, N. M., and a brother — Ronald Harris.

### Muleshoe City Council to meet Aug. 3

The Muleshoe City Council will be holding a public hearing on Thursday, Aug. 3, at 5:30 p.m., to discuss the city's proposal to increase its total tax revenue.

A special meeting will follow the public hearing. Among the items listed on the agenda is a special election in Nov. 4 to fill the Dist. 4 vacancy.


## BVD-PI TESTING

The first step in eliminating BVD from your cattle.

- Identifying PI animals is vital to health management & the bottom line - in both beef & dairy operations.
- We provide accurate results, timely reporting & excellent service.


**Call us today to get started!**

Chris McClure, Manager  
205 W. 4th Street, Suite 103 • Hereford, TX 79045  
(806) 363-1700



**Gold Standard Labs**

*Setting the Standard in Animal Diagnostics*



## Ladies Golf Assn. News

The Muleshoe Ladies Golf Association met on Wednesday, July 19, for a business meeting, lunch, golf and cards. The meeting was called to order by president Judy Wilbanks and a prayer was said by Pat Kirk.

Secretary Shelia Stevenson called the roll with 15 members present and read the minutes from the last meeting. Treasurer Pat Kirk gave a treasury report. A thank you was given to Tina for great meal. Birthdays for July are Marlene Martin and Pat Kirk.

A welcome back from surgery to Melody Hettinga, and reports of illness was given on Judy Wilbanks and Anita Blacks' father and Helen Templeton's husband.

Deborah Noble won the door prize. Jerri Flowers gave out golf balls for play day winners. Janetta Precure gave jobs to every one to help with the Men's golf tournament and for the Jennyslipper's women's tournament. Meeting was adjourned.

Members present included Shelia Stevenson, Marlene Martin, Judy



**JULY 19 CRAMBLE WINNERS — JAN FONTILLA, JANETTA PRECURE, JUDY WILBANKS, TREENA MATTHEWS, PAT KIRK, DEBORAH NOBLE AND SHERYL ENGELKING**

Wilbanks, Pat Kirk, Anita Black, Jerri Flowers, Janetta Precure, Sheryl Engelking, Kay Field, Claudine Elliott, Tammy Black, Treena Matthews, Elinor Yerby, Deborah Noble and Melody

Hettinga. A scramble of three teams was played with 10 members playing, the winners was a tie between two teams with a score of 71 each.

Four ladies played cards.

### Muleshoe Chamber of Commerce Business & Employee of the Month

If you've had great service from an individual or business in our community, get them recognized for their excellent customer service by nominating them for the Muleshoe Chamber of Commerce's Business or Employee of the Month award! Write down their name and a brief description of why they deserve the award (use extra paper if you need to), clip this form and mail it to the Chamber office, P.O. Box 356, or drop it off at the Chamber office, 115 E. American Blvd., Mon.-Fri., 9 am to 3 pm. The "employee" selection can be different than the "business" selection.

#### Employee of the Month

Reason: \_\_\_\_\_


#### Business of the Month

Reason: \_\_\_\_\_

### Sports boosters to meet Aug. 10

The Muleshoe Athletic Boosters will be meeting Aug. 10, at 8 p.m., in the science room of Muleshoe High School.

All parents of athletes are invited to attend and support the kids.



## Muleshoe Cattle Market

The Muleshoe Cattle Market is brought to you each week by Muleshoe Livestock Auction, located east of Muleshoe on U.S. 84. Muleshoe Livestock conducts sales every Saturday, beginning with hogs, sheep and goats at 10 a.m. and cattle following at approximately noon.

### REPRESENTATIVE SALES

**SAT., JULY 29, 2006**

590 head of cattle, 79 hogs and 782 sheep and goats for a total of 1,451 livestock sold at the July 29 sale.

**FOR INFORMATION ON SALES OR TO CONSIGN CATTLE-272-4201**

Seller, City	# Type	Wt.	CWT or PH
Gerald Boehning, Earth	2 Hol. bulls	358 lbs.	at \$124.00
Gerald Boehning, Earth	6 Blk. bulls	238 lbs.	at \$172.00
Santiago Leal, Friona	Hol. str	355 lbs.	at \$113.00
A&B Cattle, Muleshoe	3 Blk. hfrs	580 lbs.	at \$108.00
A&B Cattle, Muleshoe	B hfr	460 lbs.	at \$118.00
Jewel Toon, Lovington	3 Red hfrs	463 lbs.	at \$116.00
Jewel Toon, Lovington	2 Red str	603 lbs.	at \$106.00
Leon Dupler, Morton	Blk. bull	340 lbs.	at \$147.00
Leon Dupler, Morton	2 Char. hfrs	333 lbs.	at \$127.00
Robert Jarnigan, Lubbock	2 Char. bulls	300 lbs.	at \$155.00
David Gonzales, Friona	Blk. str	425 lbs.	at \$132.00
Carl Greenwood, Hobbs	2 Red str	488 lbs.	at \$125.00
Kenray Inc., Springlake	9 Blk. str	337 lbs.	at \$155.00
Kenray Inc., Springlake	6 Blk. str	389 lbs.	at \$144.00
Kenray Inc., Springlake	5 Blk. hfrs	363 lbs.	at \$128.00
Doug Walden, Littlefield	2 Brown bulls	510 lbs.	at \$117.00
Randy Smith, Ropesville	5 Blk. bulls	586 lbs.	at \$104.00
Kenneth Ray, Littlefield	2 Blk. str	393 lbs.	at \$146.00
Martin Cattle Co., Farwell	BMF hfr	850 lbs.	at \$86.00
Charles Flowers, Muleshoe	45 Blk. str	678 lbs.	at \$116.25
Charles Flowers, Muleshoe	7 Blk. str	586 lbs.	at \$119.00
Ramon Salas, Littlefield	WF pair		\$810.00
George Frosse, Seminole	Blk. cow P6		\$810.00
George Frosse, Seminole	Blk. cow P8		\$1000.00
George Frosse, Seminole	Blk. cow	965 lbs.	at \$62.50
Don Gates, Whiteface	Yell. cow	1140 lbs.	at \$45.50
Wendell Jones, Morton	Red cow	1150 lbs.	at \$46.50
Osterkamp Dairy, Muleshoe	Hol. cow	1010 lbs.	at \$45.25
Debra or Mike Beauchamp, Bovina	Blk. cow	1370 lbs.	at \$45.00
Kent Gable, Sudan	2 Blk. cows	1048 lbs.	at \$47.00
Kent Gable, Sudan	4 Red cows	1115 lbs.	at \$46.75
Kent Gable, Sudan	2 Char. P cows		\$690.00
Tony Barrier, Muleshoe	Blk. bull	1730 lbs.	at \$60.00

Love those Mules, Hornets, Longhorns and Wolverines!

"Your Exhaust Specialist Since 1979"

## KC Muffler & Mfg., Inc.

425 N. 1st • Muleshoe • 272-5333

More Than Just Muffler Service...

Indoor Storage for Boats & RVs

Pickup & Car Accessories

Brake Drums & Rotors Turned

Chrome Tips

Muffler Work on Grain Trucks, Tractors & Irrigation Engines

Trust Your Friends At

## DR. J.W. HALTOM

*Family Dentistry*

To Give You A Gorgeous Smile!



Dr. J.W. Haltom, Jessica Haltom, Amber Garcia & Rhonda Griffin

**TEETH WHITENING**  
\$150<sup>00</sup>

RECEIVE \$50 OFF ANY CROWN, BRIDGE, PARTIAL OR COMPLETE DENTURE

**\$25 OFF COMPLETE EXAM**

- Nitrous Oxide available
- Emergencies seen promptly
- Insurance and credit cards accepted

OFFICE HOURS: Mon.-Thurs.: 8 am-5 pm; Friday: 8 am-noon  
320 E. 8th St. • Littlefield • 385-6935

www.muleshoemotor.com

# Ford's

## Celebration Clearance Sale!!

Huge Discounts & Rebates On All '06 New Vehicles

0% Up To 60 Mos. Available On Select Units

### USED CAR BLOWOUT!!

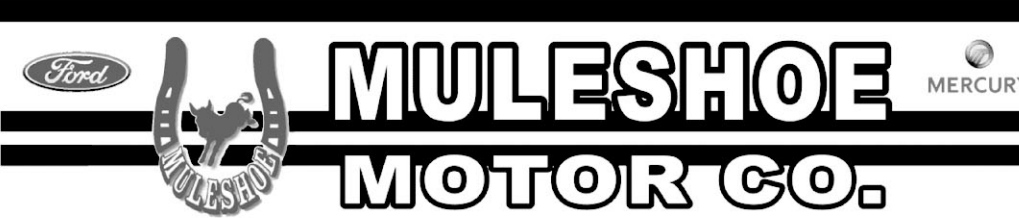
<p>2002 Pontiac Sunfire ..... <b>\$5,995</b> + tt&amp;l Stk# P129A</p> <p>2004 Dodge Neon ..... <b>\$7,495</b> + tt&amp;l Stk# P131</p> <p>2005 Chrysler Town &amp; Country .. <b>\$11,877</b> + tt&amp;l Stk# P139</p> <p>2004 Chevy Trailblazer ..... <b>\$14,995</b> + tt&amp;l Stk#PF077A</p> <p>2006 Chevy Uplander ..... <b>\$16,995</b> + tt&amp;l Stk#P100</p>	<p>2006 Chevy Impala ..... <b>\$15,495</b> + tt&amp;l Stk# P116</p> <p>2006 Ford 500 ..... <b>\$15,995</b> + tt&amp;l Stk# P028</p> <p>2006 Saturn Ion ..... <b>\$11,995</b> + tt&amp;l Stk# P127</p> <p>2005 Ford Ranger ..... <b>\$12,995</b> + tt&amp;l Stk#PF090</p>
--	--

ALL UNITS PRICED TO SELL!

### CASH CARS - NO FINANCING!!

<p>1998 Mitsubishi 3000GT ..... <b>\$4,500</b> + tt&amp;l</p> <p>1999 Jeep Cherokee ..... <b>\$4,000</b> + tt&amp;l</p>	<p>1996 Ford F-250 ..... <b>\$6,500</b> + tt&amp;l</p> <p>1999 Ford Taurus ..... <b>\$3,950</b> + tt&amp;l</p>
---	--

1125 West American Blvd.  
Muleshoe, TX 79347



## MULESHOE MOTOR CO.

272-4251 or Toll Free 800-432-7617



### July Business of the Month

The City of Muleshoe was selected as the Muleshoe Chamber of Commerce & Agriculture's July Business of the Month. Pictured above are city workers, the Public Works supervisor, and chamber representatives Danny Rainey, Martha Hunicutt and Shorty Flores.



### July Employee of the Month

Julio Elizade of United Supermarkets of Muleshoe was selected as the July Employee of the Month by the Muleshoe Chamber of Commerce & Agriculture. Pictured above, from left to right are 'Shorty' Flores, Martha Hunicutt, Julio Elizade, Ray Ibarra and Heather Foley.

## Health

### Juice: Too much of a good thing

Submitted by Mandi Seaton, Bailey CEA-FCS

Preschoolers who drink too much juice are more likely to be too short, and to heavy, for their age according to research.

As a result, nutrition experts are advising parents and child care givers to limit juice to 3/4 cup per day. "Unfortunately, when it comes to juice \* there's such a thing as too much" says Dr. Sharon Robinson, nutrition specialist with Texas Cooperative Extension.

While fruit and juice are part of a healthful eating plan, they should not be substituted for milk and other healthful foods. As always, a healthy eating plan is based on variety, balance, and moderation.

When shopping for fruit juice, look for "100% juice" on the packaging. Powdered fruit-ades and fruit-flavored sodas are no substitute for the nutrition that is in 100 percent fruit juice.

"In fact," says Dr. Robinson, "sweet drinks not only add calories to the diet but they can spoil children's

appetite for the foods they need to grow, develop, and stay healthy."

Children who consume more calories than needed are more apt to be heavy for their age.

How much fruit and juice should you offer your preschooler? Most young children need about one to two cups from the MyPyramid Fruit Group each day. To determine how much food you should serve your child based on your child's age, gender, and physical activity level, visit <http://www.mypyramid.gov>.

The next time you take your child to the doctor, ask if your child's height and weight is right for his or her age. Remember, never place a child on a weight loss diet unless instructed by a doctor. Instead, serve foods based on MyPyramid during family mealtimes and enjoy regular family activity.

For more information on healthful eating, contact Mandi Seaton, Bailey County extension agent • Family and Consumer Sciences, 306 West Second, Muleshoe, TX 79347, or call 806-272-4583.

**Baby Shower Selections**  
Eric & Ashley McElroy  
Baby Shower Date: Sunday, August 6th  
**Carolyn's**  
106 E. American Blvd.  
Muleshoe 272-5911

402

**RED WING SHOES**

**The Fair Store**  
120 Main 272-3500

**Don't miss out on local news!**  
**Get the Journal! 272-4536**

**Lance Insurance**  
Competitive Rates, Variety of Leading Companies  
For Home, Auto, Commercial and Crop  
**806-227-2466**

**Prices Good : 7/30/06-8/12/06**

NACHO TORTILLA, NACHO RINGS, HOT FRIES, BACON CHEDDAR FRIES, CORN CHIPS OR PUFFED CHEEZERS

**TOM'S CHIPS**  
**2 FOR \$3**  
REG. \$1.99

Store #34  
312 W. American Blvd.  
Muleshoe, Texas  
272-4862

DIET PEPSI, SIERRA MIST, MT DEW OR  
**PEPSI COLA**  
**\$1.19**  
**2 LITER BTL.**

**MORE SPECIALS**

MARS ASSORTED KING SIZE CANDY BARS REG. \$1.29 ..... **99¢**

ALLSUP'S SANDWICH BREAD 24 OZ. / 79¢ EACH OR ..... **2 FOR \$1.29**

ALLSUP'S WHEAT BREAD 24 OZ. / 89¢ EACH OR ..... **2 FOR \$1.39**

SOBE ASSORTED FLAVORS 20 OZ. BTL. .... **2 FOR \$2.22**

BLUE BUNNY COOL TUBES 4.25 OZ. / REG. 99¢ ..... **3 FOR 99¢**

BLUE BUNNY ICE CREAM 64 OZ. SQUARES / REG. \$4.19 ..... **\$2.99**

BAR-S COOKED HAM 12 OZ. PKG. / REG. \$2.85 ..... **\$2.29**

DOLE ICEBERG SALAD MIX 1 LB. PKG. .... **\$1.29**

RED RIPE TOMATOES EACH ..... **2 FOR \$1**

YELLOW ONIONS EACH ..... **25¢**

SOFT N' GENTLE BATH TISSUE 4 ROLL PKG. / REG. \$1.19 ..... **99¢**

SO DRI PAPER TOWELS 1 ROLL PKG. / REG. 75¢ ..... **59¢**

---

**LANA'S EGG ROLLS 2 FOR \$1.29**

ASSORTED REG. SIZE  
**HERSHEY'S CANDY BARS**  
**2 FOR 99¢**  
KISSABLES, PLAIN, ALMOND, TAKE 5 OR KIT KAT

ASSORTED VARIETIES  
**BROWNIE BAKER COOKIE**  
**99¢**  
REG. \$1.79

PEYTON'S SMOKED  
**SAUSAGE**  
14 OZ. PKG.  
**\$1.99**

**COMBO MEALS**

COMBO NO. 1 BACON/EGG BISCUIT & 16 OZ. COFFEE	\$1.99	COMBO NO. 6 3 TAMALES, HOWLERS & 32 OZ. TALLSUP	\$2.59
COMBO NO. 2 SAUSAGE/EGG BISCUIT & 16 OZ. COFFEE	\$1.99	COMBO NO. 7 2 HOT LINKS WITH BREAD & 32 OZ. TALLSUP	\$2.49
COMBO NO. 3 BBQ SANDWICH & 32 OZ. TALLSUP	\$1.99	COMBO NO. 8 2 CORN DOGS & 32 OZ. TALLSUP	\$2.59
COMBO NO. 4 HOMESTYLE POPCORN CHICKEN & 32 OZ. TALLSUP	\$2.69	COMBO NO. 9 CHIMICHANGA & 32 OZ. TALLSUP	\$2.39
COMBO NO. 5 SPICY POPCORN CHICKEN & 32 OZ. TALLSUP	\$2.69	COMBO NO. 10 2 BEEF & BEAN BURRITOS & 32 OZ. TALLSUP	\$2.59

**ALLSUP'S "MOO" GET ONE FREE!**

BUY 12 GALLONS OF FRESH ALLSUP'S MILK...  
Collect Bull Stick "Moo" Stamps Today & You Could Win FREE Milk For A Year!

# Sports

## Sports Academy sends three to Las Vegas competition

The Muleshoe Sports Academy recently sent three of its athletes to the USA Gymnastics Elite Challenge in Las Vegas, Nev.

The two-day trampoline and tumbling event featured the top athletes in the nation from levels 10, Jr. Elite, and Sr. Elite.

The level 10 athletes would compete in an all age category for the first time in US history. A format that is often used in international competitions.

The junior competition is a 17 and under category while the senior competition is a 17 and over competition.

Each category goes up in the level of it's requirements.

Baylee Bessire and AnnMarie McClelland would compete in the level 10 category.

This is the first year that these two former level 9 and level 6 champions respectively have competed in the level 10 category.

"Both girls have had tremendous success their first year of level 10. It is



BAYLEE BESSIRE, AMANDA BAYLEE AND ANNMARIE MCCLELLAND

always a big jump no matter how well you are prepared. Vegas was one more step towards building their confidence for the National Championships later this year," said Will Green, MSA director.

Both would compete well in the field of 45 athletes. McClelland finished in

eight place, only two spots out of the final group of six athletes.

Bessire went into the finals round in third place. She cemented her bronze medal status with a solid finals routine that included three double flips.

Amanda Baylee, coach and athlete at the academy, competed in the Sr. Elite Women's trampoline event.

This was only Bailey's second major event of the year, coming off an ankle injury that had sidelined her most of the year.

She competed in a new routine with 10 double flips to earn the silver medal, and also won the Women's synchronized trampoline event with partner Erin Blanchard of Lafayette, La.

"This was a great event and one that will build all of our confidence for the National Championships in Chicago," Green said.

## TDA announces third annual kids recipe contest

Hey kids, think you've got the tastiest recipe in Texas? Put on your chefs hat, get your ingredients together and head to the kitchen!

The Texas Department of Agriculture has announced its third annual "Kids Kitchen Corral Contest," calling on kids from across Texas to submit their own unique healthy recipes for judging.

"Kids love to get creative in the kitchen and add their own touch when it comes to exploring healthier ways to eat," said Agriculture Commissioner Susan Combs. "This contest inspires them to create their own healthy dishes to suit their tastes. It's a fun way to promote good nutrition."

The contest categories include breakfast, lunch, dinner and snack. Recipes must be original, nutritious, easy to prepare and contain no more than 10 ingredients.

Nearly 200 recipes — everything from granola mixes to wacky wraps to veggie pasta, were submitted to TDA last fall for the second annual contest.

TDA judges narrowed the recipe submissions to 12 finalists, and students from the Travis High School Culinary Arts Program in Austin put the finalists to the test by preparing and tasting each recipe.

Winners will be officially announced during formal presentations in August.

The contest is open to Texans, aged 6 to 18, and entry packets include goodies, flyers, information that promotes good nutrition and contest details.

The deadline for recipes will be in late 2006. Entry packets will be accepted throughout the fall.

All contest participants will

receive a certificate of completion and various other items emphasizing healthy eating and exercise.

Entry cards for the contest can be requested by sending an e-mail to kidskitchen@agr.state.tx.us.

To view winning and finalists' recipes from the previous contest and to learn more information, visit TDA's Square Meals web site at www.squaremeals.org and click on the link "For Kids."

## The Apostle Paul's Critics Are Still Alive and Well

Some things never change. When in his *Letter to the Romans*, St. Paul is relentlessly pounding home to his readers the point of the gospel that salvation comes only "by grace through faith"—indeed, that it cannot come "by law through works," he faces these two thousand years later the very same criticisms he did then.

Take a look, for example, at Romans 6. Paul knows exactly what his critics will throw at him: "So, Paul, if God's grace

of grace; on the contrary, his mistake is understanding and valuing it far too little.

Will grace forgive any sin, except the ultimate sin of turning our backs so completely on God that we don't even desire forgiveness? Yes!

Is grace absolutely the free gift of God based not at all on law or merit? Yes!

But grace has a cost, the highest cost ever paid, and God paid it: the blood of his only perfect Son.

The Apostle John writes that the blood of Christ continually cleanses God's children of all sin. And, in Romans 4, St. Paul quotes David, "Blessed is the man whose sin the Lord will never count against him."

Blessed indeed!

Those who know how much God paid will never take his gift lightly. One way to spit in the gift-Giver's face is to live a shabby life. Another way is to live in fear as if the price had not been once and for all time and all sin truly paid.

Life is not a line with law at one end and grace at the other, law-people who lead really careful lives at one end and grace-people who wildly strain the bounds of grace at the other.

Real grace encompasses all of life and is a beautiful way—the only genuine way—of relating to the God who graciously gives us power to live beautiful lives and dance before him with joy and spontaneity that legalism can't even begin to understand. Real grace produces a kind of loving and fearless obedience that religious rule-keeping is absolutely powerless to produce.

Real grace. Thank God we'll have all eternity to thank God for it!

Curtis Shelburne is minister of the 16th & D Church of Christ in Muleshoe.



**Focus On Faith**  
Curtis Shelburne

is shown clearly by the amazing way it forgives my sin, I'll just sin more and more and let God's grace really shine!"

Paul's answer is, "God forbid! May that never be!" And he reminds us of the beautiful picture our baptism—our "death" with Christ and our "resurrection" to new life.

"Don't you know that you're new people now?" Paul is asking. "Don't you know that you're to count yourselves dead to your old way of life? Don't you know that sin no longer has any more claim over you than the IRS has over a dead man?"

"Count yourselves dead to sin but alive to God in Christ Jesus. . . . For sin shall not be your master, because you are not under law, but under grace" (6:11, 14).

You see, the mistake of the person who sees God's grace as an excuse to live a shabby life is not that he makes too much

## Muleshoe Head Start program is open for student enrollment

Parents worry about their children.

Parents encourage their children to "be all that they can be, aim for the stars," be as successful, healthy and happy as possible.

Success begins with a good education. To help children be successful in school, healthy and enjoy life are long standing goals of the Head Start program.

Head Start children benefit from a variety of educational activities that help them grow mentally, socially, emotionally and physically.

Teachers offer children love, acceptance, understanding and the opportunity to learn and to experience success.

Head Start is operated by

public schools and at child

care centers. In some communities Head Start is offered in schools and at child care centers so parents can choose the setting they prefer or need.


Head Start program services are available at Muleshoe ISD. Head Start is a federal program for preschool children, ages 3 and 4, from low income

families.

Early Head Start accepts pregnant women and children birth to three year olds.

The Head Start program is currently taking applications for classes starting in August.

Call 1-866-894-2207 to schedule an appointment to complete the application or to get additional information.



**PANDORA**  
*Jewelry*

One for every charmed moment

*As seen in Glamour, Oprah and Lucky magazines*

*Antiques & Fine Things*

2104 W. American Blvd., Muleshoe • 272-4217  
*Bridal Shower Selections*

### 2006 Property Tax Rates in the City of Muleshoe, Muleshoe Area Hospital District, Bailey Co. General Fund and Bailey Co. Farm Market Road

This notice concerns 2006 property tax rates for the City of Muleshoe, Muleshoe Area Hospital District, Bailey County General Fund and Bailey County Farm Market Road. It presents information about three tax rates. Last year's tax rate is the actual rate the taxing unit used to determine property taxes last year. This year's effective tax rate would impose the same total taxes as last year if you compare properties taxed in both years. This year's rollback tax rate is the highest tax rate the taxing unit can set before taxpayers can start tax rollback procedures. In each case these rates are found by dividing the total amount of taxes by the tax base (the total value of taxable property) with adjustments as required by state law. The rates are given per \$100 of property value. This notice contains a summary of actual effective and rollback tax rates' calculations. You can inspect a copy of the full calculations at 302 Main St., Muleshoe, Texas. This notice was prepared by Kaye Elliott, Chief Appraiser, on August 1, 2006.

	CITY OF MULESHOE	MULESHOE AREA HOSPITAL DIST.	BAILEY CO. GEN. FUN	BAILEY CO. FARM MKT. ROAD
<b>LAST YEAR'S TAX RATE</b>				
Last Year's Operating Taxes	655,107	1,028,126	1,175,195	242,679
+Last Year's Debt Taxes	-0-	-0-	343,764	-0-
=Last Year's Total Taxes	655,107	1,028,126	1,518,959	242,679
/Last Year's Tax Base	95,385,353	257,031,646	235,133,010	230,902,711
=Last Year's Total Tax Rate	.6868	.40	.6460	.1051
<b>THIS YEAR'S EFFECTIVE TAX RATE</b>				
Last Year's Adjusted Taxes	654,888	1,026,710	1,518,664	242,361
/This Year's Adjusted Tax Base	106,030,482	268,404,006	253,981,760	249,843,310
=This Year's Effective Tax Rate	.6176	.3825	.5979	.0970
<b>THIS YEAR'S ROLLBACK TAX RATE</b>				
Last Year's Adjusted Operating Taxes	654,888	1,026,710	1,322,094	242,361
/This Year's Adjusted Tax Base	106,030,482	268,404,006	253,981,760	249,843,310
=This Year's Effective Operating Rate	.6176	.3825	.5205	.0970
x1.08=Maximum Operating Rate	.6670	.4131	.5621	.1047
+This Year's Debt Rate	-0-	-0-	.1404	-0-
=This Year's Rollback Rate Before Adjustment	.6670	.4131	.7025	.1047
-Sales Tax Adjustment Rate	N/A	N/A	.0608	N/A
=Rollback Tax Rate	.6670	.4131	.6417	.1047

#### SCHEDULE A: UNENCUMBERED FUND BALANCES

The following estimated balances will be left in the taxing unit's property tax accounts at the end of the fiscal year. These balances are not encumbered by a corresponding debt obligation.

	CITY OF MULESHOE	MULESHOE AREA HOSPITAL DIST.	BAILEY CO. GEN. FUN	BAILEY CO. FARM MKT. ROAD
Bailey County:				
General Fund Maintenance & Operation and Farm to Market Maintenance & Operation	-0-	-0-	123,516	70,408
*General Fund Debt Service (I&S)			316,942	
*\$312,461 of this amount is the market value (as of June 30th) of a U.S. Treasury & Agency Obligation that will not mature until 6/14/2013.				

#### SCHEDULE B: 2006 DEBT SERVICE

Bailey County General Fund plans to pay the following amounts for long-term debts that are secured by property taxes. These amounts will be paid from property tax revenues (or additional sales tax revenues, if applicable)

Description of Debt	Principal or Contract Payment to be Paid from Property Taxes	Interest to be Paid from Property Taxes	Other Amounts to be Paid	Total Payment
Certificates of Obligation for Jail Construction	\$160,000	\$200,992	-0-	\$360,992
Total required for 2006 debt service		\$360,992		
-Amount (if any) paid from funds listed in Schedule A		4,179		
-Amount (if any) paid from other resources		13,000		
-Excess collections last year		-0-		
=Total to be paid from taxes in 2006		343,813		
+Amount added in anticipation that the unit will collect only 95% of its taxes in 2006		18,095		
=Total Debt Levy		361,908		

#### SCHEDULE C: EXPECTED REVENUE FROM ADDITIONAL SALES TAX (see below)

In calculating its effective and rollback tax rates, the unit estimated that it will receive \$\_\_\_ in additional sales and use tax revenues. For County: The county has excluded any amount that is or will be distributed for economic development grants from this amount of expected sales tax revenue.

	CITY OF MULESHOE	MULESHOE AREA HOSPITAL DIST.	BAILEY CO. GEN. FUN	BAILEY CO. FARM MKT. ROAD
	N/A	N/A	156,672	N/A

#### SCHEDULE F: ENHANCED INDIGENT HEALTH CARE EXPENDITURES

The County of Bailey spent \$0.00 from July 1, 2004 to June 30, 2005 on enhanced indigent health care at the increased minimum eligibility standards, less the amount of state assistance. For the current tax year, the amount of increase above last year's enhanced indigent health care expenditures is \$134.37.

#### STATEMENT OF INCREASE/DECREASE

If the City of Muleshoe adopts a 2006 tax rate equal to the effective tax rate of \$.6176 per \$100 of value, taxes would increase compared to 2005 taxes by \$13,830.

If the Muleshoe Area Hospital Dist. adopts a 2006 tax rate equal to the effective tax rate of \$.3825 per \$100 of value, taxes would increase compared to 2005 taxes by \$14,452

If Bailey Co. General Fund adopts a 2006 tax rate equal to the effective tax rate of \$.5979 per \$100 of value, taxes would increase compared to 2005 taxes by \$21,157.

If Bailey Co. Farm Market Road adopts a 2006 tax rate equal to the effective rate of \$.0970 per \$100 of value, taxes would increase compared to 2005 taxes by \$3,105.

BOOTS SHOES CLOTHING  
Work & Dress Casual & Athletic Western & Athletic

**GENERAL WILLIAMS STORE**  
SINCE 1963

**1405 West American Blvd.**  
Muleshoe, Texas  
806-272-MULE (6853)

**ALVARADO PARTY RENTALS**  
**INFLATABLE BOUNCER**  
 Safe - Affordable Fun For Kids!  
 BEST PRICES AROUND  
**272-5588**  
 2 Hrs. \$50 - 4 Hrs. \$75 - 6 Hrs. \$100  
 8 Hrs. \$125  
 Birthday Parties • School Functions • Special Events  
**DELIVERY, SETUP & PICKUP**  
 SE HABLA ESPAÑOL EDDIE & RACHEL ALVARADO  
 DJ SERVICES ALSO AVAILABLE

Rent this space for only \$9-\$11.25 per week!  
 Call 272-4536 and ask how!

**ace**  
 SATELLITE &  
 HOME ENTERTAINMENT  
 local sales, service & installation  
**GABRIEL ACEVEDO**  
**806.272.3215**  
 m-f 8 am to 6 pm acesatellite.com

**T-L Irrigation Systems**  
 Dealer  
**PRECURE ELECTRIC**  
 Carroll Precure - Owner  
**424 N. 1st, Muleshoe 272-4844**  
 GENERAL ELECTRICAL CONTRACTING  
 • Residential • Commercial • Irrigation

**Decorators Floral & Gifts**  
 616 South First Street  
 Muleshoe, Texas  
 806/272-4340  
 www.decoratorsfloral.com  
 Forget the dog days of summer with a fresh arrangement!!  
 We'll deliver to your home or office!

Rent this space for only \$9-\$11.25 per week!  
 Call 272-4536 and ask how!

Rent this space for only \$9-\$11.25 per week!  
 Call 272-4536 and ask how!

ALFREDO "NOE" ANZALDUA  
**ADVANCE TOWING**  
 24 HR/7 DAY SERVICE AVAILABLE **272-4007** DAMAGE FREE WHEEL LIFT  
 804-A W. American Blvd., Muleshoe  
 We serve a 60 mile radius - Affordable rates  
 Prompt, professional service - Quick response - All major credit cards accepted  
**Insured for your protection - Se habla Español**  
**MULESHOE BAIL BONDS**  
 TF 1-800-507-3001 Cell 1-806-946-7216  
 Littlefield Muleshoe Farwell  
 385-8011 272-3001 481-2245

6 months \$11.25 week  
 12 months \$9.00 week

**Family Hair Salon**  
 Men • Women • Children  
 115 S. Main • 272-5987  
 Mon.-Fri. 9ish to 5ish  
 Pat Young, Jamie Snyder, Sherry Curtis, Kayla Claybrook & Dondee Brown

**Carolyn's Christmas Creations**  
 106 E. American Blvd.  
 Muleshoe, Texas  
 272-5911  
 www.visitcarolyns.com  
 Open Daily  
*'Tis Always Christmas at Carolyn's!*

**LOWE'S MARKETPLACE**  
 401 W. American Blvd.  
 Muleshoe, Texas  
 272-4585

**BAILEY COUNTY ELECTRIC COOPERATIVE ASSOCIATION**  
 305 E. Ave. B  
 Muleshoe, Texas  
 272-4504

**SHIPMAN'S BODY SHOP, INC.**  
 410 N. 1st Street  
 Muleshoe  
**272-4408**  
 • 24 hr. Wrecker Service  
 • Complete Collision Repair  
 • Glass Work  
 Family owned for over 35 years  
 Garry Shipman

**FARMERS INSURANCE GROUP**  
**FARMERS LAURIE WINCHELL**  
 Insurance Agent  
 Call for a free quote:  
**HEALTH • AUTO LIFE • HOME BUSINESS**  
 1602 W. American, Muleshoe  
 272-7548 • FAX 272-4756

Where's Chatter? **Newspaper Fun!** Can you find her?  
 www.newspaperfun.com Animills LLC © 2006 V3-N31

Is summer vacation starting to feel too loooong? Are you having **summer blues** because swimming lessons and camp are finished? Are all of your friends away on vacation? Then this page is for you! It is full of tips and ideas to keep busy and have fun during the last long days of summer!



Is it going to rain again? Set up a rainy day **Game Party.** Invite a small group of friends to bring video or computer games to share. Hand-held electronic games and small pinball or other mechanical games are fun too! Ask friends to bring board games or any games that can be played in less than one hour. Take turns playing one or two games.

**Rainy Day-Game Party!**  
 You might provide drinks and ask each friend to bring a snack to share with others.

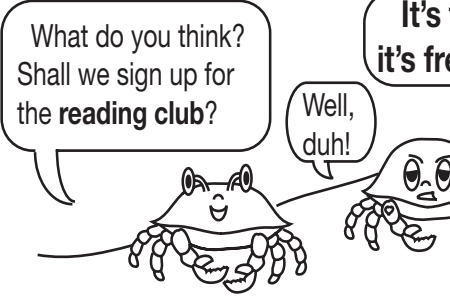
**Picnic in the Park**  
 Picnic in the park, at the lake or in the yard!  
 - Set a place, date and time; call your friends

**Hike, Bike or Walk!**  
 - Ask everyone to bring his own lunch  
 - Ask everyone to bring equipment for one activity or sport such as:

- 1. giant bubble wands, soap
- 2. soccer balls
- 3. wiffle ball and plastic bat
- 4. Be a good host, speak with all guests
- 5. Include everyone in all activities

**Places to Go!**  
 When you feel the need to get out of the house or to see something new, here are lots of places to go with lots of things to do! Can you fit the underlined words into the puzzle?

- 1. museum
- 2. theater
- 3. library
- 4. ferry
- 5. airport
- 6. aquarium
- 7. nature walks
- 8. recreation center
- 9. friend's house
- 10. petting zoo
- 11. amusement park
- 12. farmers' market
- 13. train station
- 14. playground



It's fun and it's free!  
 You can use any of your favorite berries!

Don't be crabby! Visit our website today at [www.readingclubfun.com](http://www.readingclubfun.com) for more cartoon fun and to see the answers to the puzzles. While you are there, join our new national reading club. Check out Yoshi's Scrapbook! Then peek into Forest's Diary.

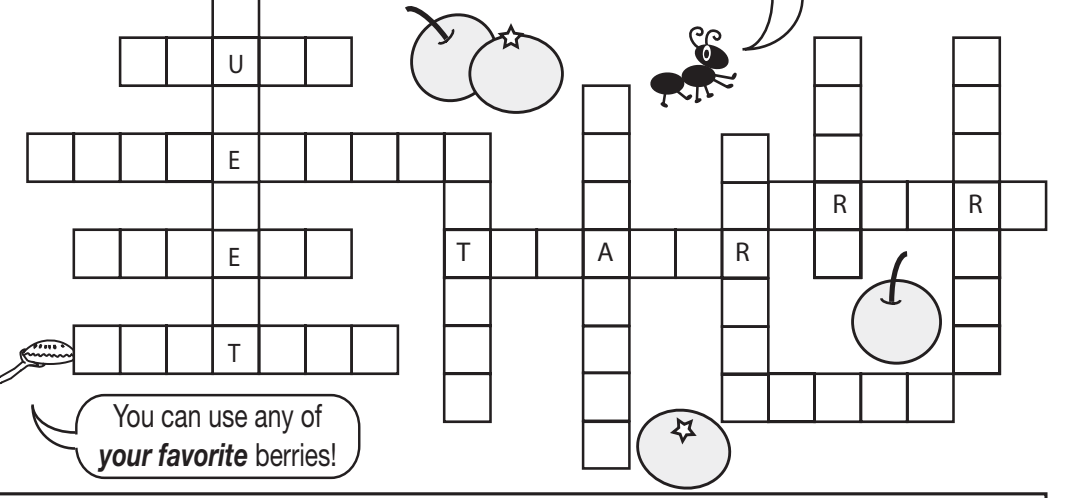
**Summer Blues?**

**Camp-out!**  
 Have a tent? **Camp out!** Invite friends for a sleepover. Have hotdogs and beans for supper. Does a parent play a guitar? You will need sleeping bags, flashlights and comic books! Don't forget to plan a breakfast.

**"Berried" Treasure**  
 You can **cook** up a "berried" treasure with sweet, juicy blueberries. Farm-grown or wild, sun-ripened blueberries in the summer are delicious! **Match the "Berry" treasures you can bake to their descriptions.**

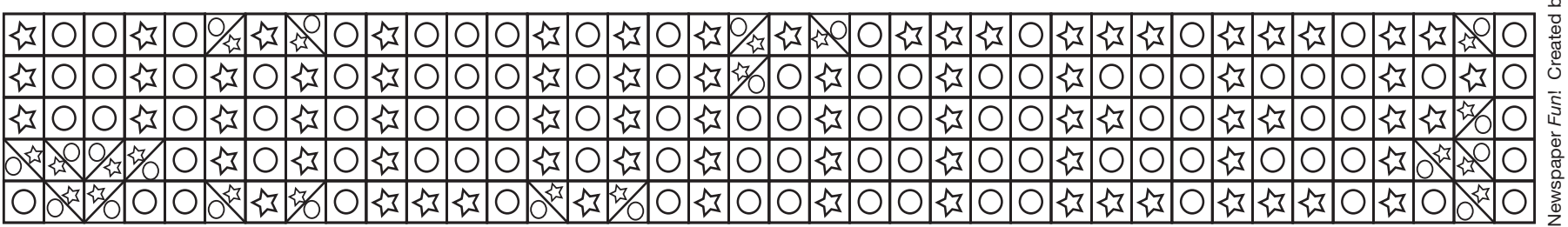
- 1. small, round breads, usually cooked a dozen at a time
  - 2. flat cake made of batter cooked in a pan or on a grill
  - 3. deep dish fruit pie that has a biscuit covering only on the top
  - 4. usually has pastry lining the dish and pastry on top; many kinds of fillings: fruit, pudding, meat
  - 5. crunchy, hard, but easily breakable topping, fruit on bottom
- A. pancakes
  - B. pie
  - C. cobbler
  - D. crisp
  - E. muffins

When 2 consonants are blended, but you can still hear the sound of each letter, this is called a consonant blend. Can you find 12 words on this page that begin with these consonant blends: br, cr, dr, fr, gr, pr and tr?



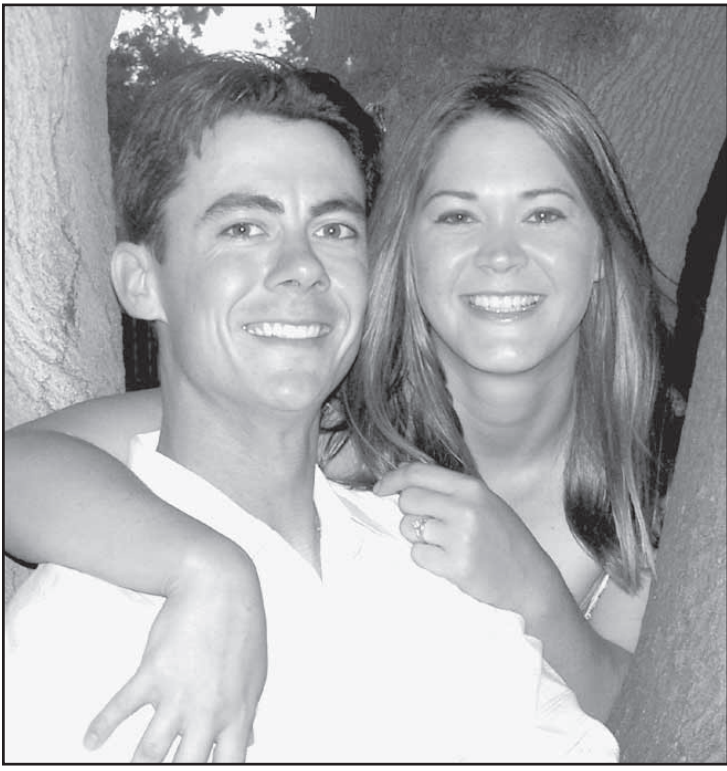
**Your Time and Help are Needed!**

The staffs at hospitals, camps, parks, libraries and many other places welcome help all year long, but may need more when some of their workers go on their summer vacations. Think about what kinds of activities or sports you like to do. Is there a place where you can lend a hand? Maybe you would like to help in an area where you will learn something new. Follow the color key to fill in the puzzle and find out what **you** can do: ☆ = yellow ○ = green





## Engagements



CHRIS JOLLY AND TARRAH BELL

## Bell, Jolly to wed

Steve Bell and Yolanda the son of John and Sara Guelker announce the engagement of their daughter, Tarrah Leigh Bell of Lubbock, to Christopher Michael Jolly, also of Lubbock.

The prospective bride is a graduate of Muleshoe High School and Miswestern State University with a bachelors of arts and science in biology.

The prospective groom is

the son of John and Sara Rosser. He is a graduate of Richland High School, the Dallas Arts Institute and Texas Tech University.

The prospective bride and groom are co-owners of Nature Works Landscaping. The wedding has been set for Oct. 14, 2006, at 2 p.m., in Puerta Vallarta, Mexico.

A reception will be held at Koko Palace, in Lubbock, on Nov. 4., at 7:30 p.m.

## Baby Showers



MACY RHEA MORRIS

## Morris honored at shower

Macy Rhea Morris, the daughter of Cade and Emily Morris was recently honored with a baby shower held in the home of Sheryl Engelking on Saturday, July 22.

Hostesses for the event

included Sarah Black, Vickie Burch, Sheryl Engelking, Paulette Foster, Vickie Morris, Jana St. Clair, Mandi Seaton, Holly Rasco, Gwen Warren, Stephanie Foster, Debbie Gallman, Ellen Gallman, Debbie Weir, Becky Jones, Claire Brown, Joann McDonald and Linda Martin.

Guests attending included Karen Ensor, Kaley Barrett, Geraldine More and Marca Morris.

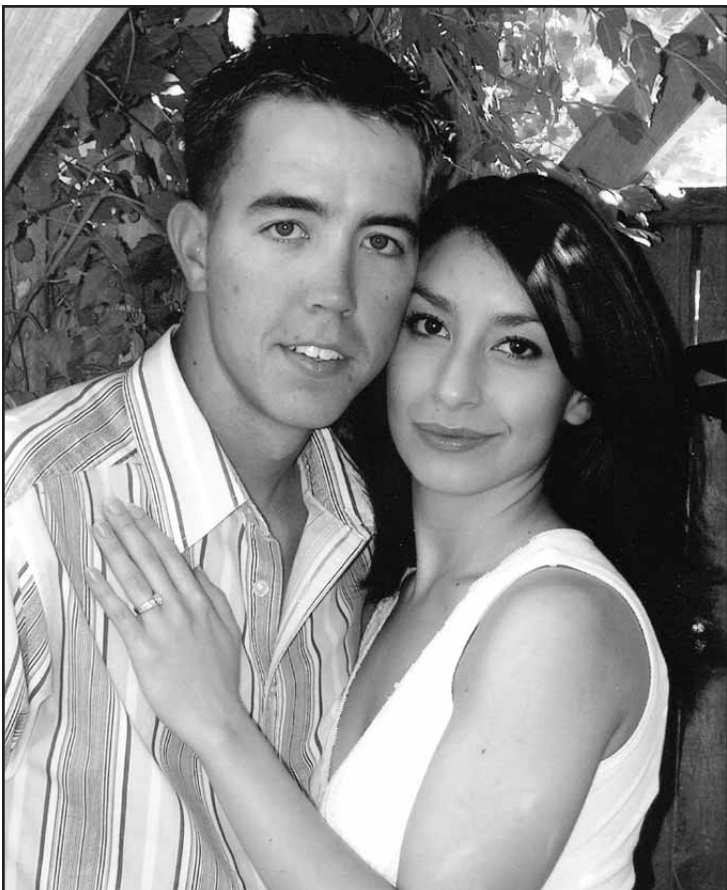
Among the gifts received was a hostess gift of a Chico infant travel system.

## Toscano honored

Angelica Toscano of Leal's Mexican Restaurant, in Muleshoe, was honored recently as one of the Texas Restaurant Association Education Foundation's 2006-2007 Restaurant Managers of the Year.

More than 50 nominations were received from across the state and 18 local winners were chosen.

"Managers are the heart and soul of any restaurant," said Lisa Perini, Perini Ranch Steakhouse and chair of the TRA Education Foundation. "Restaurant owners know that without outstanding managers, their business will not be successful. The Restaurant Manager of the Year awards are an opportunity for us to show our appreciation."



BRANDON ZAHN AND SILVIA GARCIA

## Garcia, Zahn to wed

Edward and Teresa attend Western Texas Orozco are pleased to announce the engagement of their daughter, Silvia Garcia of Snyder, to Brandon Sahn, also of Snyder.

The prospective bride is a 2003 graduate of Littlefield High School, and is currently employed as a lineman for Big Country Coop.

The wedding date has been set for Sept. 2, 2006, at the Snyder Country Club.

## Meet the Mules on Aug. 22

The Muleshoe Independent School District's annual "Meet the Mules" gathering is set for Aug. 22, at 7 p.m., at the football stadium.



Happy Birthday Princess!

*Aaliyah Rey*

is turning 2 years old August 1, 2006!

We Love You!

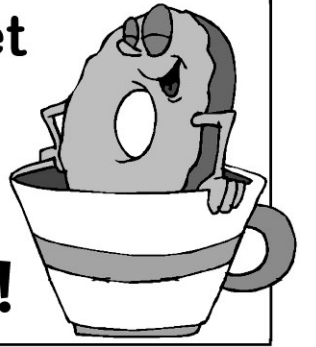
Grandpa Tomas, Grandma Rosa, Sarah, Tina, Tommie, John & Fabie

## DONUT DEPOT IS NOW OPEN!

111 First Street  
Muleshoe

Open: Mon.-Sat. 6-11 AM  
Parking behind building or on La-Tea-Da parking lot

**SPUDNUT RECIPE!**



www.CovenantHeartInstitute.org

Heart disease is the leading cause of death for both men and women. Early diagnosis is the key to living a longer, healthier life. Thanks to a strong partnership between physicians, Muleshoe Area Medical Center and the Covenant Heart Institute in Lubbock, you now have the opportunity to see a leading heart specialist right here in Muleshoe.

We're committed to  
**the heart**  
of Muleshoe.

Call today to schedule an appointment at the  
**Cardiology Clinic**  
1.877.60HEART (1.877.604.3278)



Juan Kurdi, M.D.

When: Thursday, August 10  
Beginning at 11 a.m.

Where: Muleshoe Area Medical  
Center Specialty Clinic  
708 S. 1st Street



Call 1.877.60HEART today.

©CHS 2006

# USED CAR

## ADOPT-A-THON!

### THIS WEEKEND ONLY AT RICHARD BARTON!

**\$49** ADOPTION FEE TAKES ONE HOME!

**05 Buick LeSabre**  
Choose From 5 All Fully Equipped & GM Certified!  
**\$14,850**

**03 Pontiac Aztec AWD** \$12,450  
*GM Certified. Lots of Room & Easy to Drive, Lots of Versatility!* SL#91225

**02 Chevy TrailBlazer LS** \$13,850  
*One of a Kind, Has It All! Don't Miss This One!* SL#G15032A

**05 Hyundai GLS AWD** \$17,550  
*Carries Balance of 10 Yr./100k Mile PowerTrain Warranty, Super Buy, Super SUV!* SL#91282

**04 Nissan Xterra SE** \$17,850  
*It's Got It All. From Grill Guard to 6-Disc CD Changer!* SL#B0128A

**03 Dodge SLT Quad Cab** \$17,850  
*Nice Truck & It's Ready To Go! Only 22,000 Miles!* SL#G11131A

**06 Pontiac SV6 Van** \$19,850  
*GM Certified. Has It All, From DVD Player to Double Power Sliding Doors. Super Buy!* SL#91224

**03 Chevy Tahoe LS 4x4** \$20,750  
*GM Certified. Previous One Owner, Like New, Only 28,800 Miles. Don't Miss This One!* SL#G15012A

**04 Ford F150 XLT Super Crew** \$21,850  
*Has All The Extras, Including Power Sunroof - Save Thousands of \$\$\$ Over New!* SL#G15055A

**04 Ford F150 Super Crew FX-4** \$25,850  
*One of a Kind. Has All The Extras, Including Leather!* SL#G15053A

**"THESE VEHICLES HAVE BEEN WELL CARED FOR!"**

**03 Chevy Cavalier LS** \$8,850  
*GM Certified. Great Gas Mileage!* SL#81576

**04 Ford Taurus LX** \$9,650  
*Great Car For The Young Family!* SL#81575

**05 Pontiac Grand Am SE** \$12,250  
*GM Certified. V6, Auto, A/C, & More! Ready For College!* SL#91213A

**06 Chevy Cobalt LS** \$12,850  
*GM Certified. Lots of Room!* Great For Mom to Run Around Town! SL#81587

**06 Dodge Stratus SXT** \$14,550  
*Has Only 13,300 Miles. Great Fuel Mileage Like New Inside & Out!* SL#81579

**05 Buick LaCrosse CX** \$14,850  
*GM Certified. All New Quality Ride & Comfort!* SL#81553

**06 Pontiac G6** \$16,950  
*GM Certified. All New Style, Comfort & Room, Plus 30 MPG Hwy.* SL#81577

**04 Ford Mustang Mach I** \$21,850  
*One of a Kind, Only 15,200 Miles! Has It All!* SL#G15053B

**04 Chevy Silverado LS Ext. Cab 4x4** \$18,850  
*5.3 V8, Auto, A/C, Power, Tilt, Cruise, & More! GM Certified!* SL#91209

## THIS WEEKEND ONLY!

### THURSDAY • FRIDAY • SATURDAY

**\$50** FROM EACH SALE DONATED TO THE CITY OF CLOVIS ANIMAL SHELTER!

**There's never been a better time to buy!**

**Richard Barton**  
*Nobody Beats a Richard Barton Deal - Nobody! Guaranteed!*

3300 Mabry Drive Clovis, NM 88101 505-762-2986 / 1-888-569-1900

**ALL '03 AND NEWER GM PREOWNED GM CERTIFIED WITH 4.5% APR FINANCING THRU GMAC W.A.C.**

**[¡So Habla Español!]**

www.richardbarton.com



## Who Says Faster Internet Is Only For Big Cities?

Get High Speed Internet via Satellite

WildBlue® offers high-speed Internet service to almost every corner of the U.S. Imagine "always on", lightning fast connections to the Internet. No more dialing in. No more delays. No more wondering if high-speed Internet will arrive in your town. Get connected the way you've always wanted to: fast.

WildBlue gives you:

- Speeds up to 30 times faster than dial up
- Packages as low as \$49.95 per month
- An "always-on" connection (no dialing in, no phone line needed)
- One year free AntiVirus/AntiSpyware software (a \$30 value)
- Access to new and interesting web content only accessible with high-speed
- All this comes with a 30 Day Satisfaction Guarantee!

FREE Installation & \$100 Off Equipment!

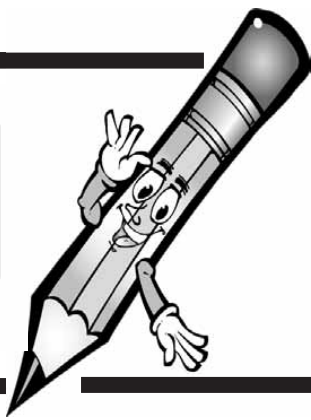


**WILDBLUE**  
Satellite Speed Internet™

**Gabriel Acevedo, Muleshoe - 272-3215**  
**Lupe Acevedo, Littlefield - 385-1180**  
**Joel Acevedo, Littlefield - 385-3474**  
**TOLL FREE - 800-786-1050**

WildBlue.com and enter your ZIP code on the home page to check for service availability and promotional offers in your area. Requires a clear view of the southern sky. Download speed comparison between the Fio and 4Mbps DSL up. Speed may vary; many factors affect speed. Usage subject to WildBlue's Fair Access Policy. Monthly fees apply to WildBlue. No equipment and installation charges. Taxes and activation fees apply. Service subject to change. All trademarks are the property of their respective owners. All other trademarks are the property of their respective owners. © 2006 WildBlue.com

# Back to school



## Muleshoe ISD supply lists released

Muleshoe Independent School District's has released the following list of supplies that will be needed for the upcoming school year.:

### PPCD Supply list

1 - complete change of clothes (pants, shirt, socks and underwear)

If your child uses diapers or pull-ups you will need to bring some to school.

1 - box of zip-lock gallon baggies

2 - large boxes of baby wipes

2 - large boxes of Kleenex

### Pre-Kindergarten

1 - (4 oz) bottle Elmer's school glue

2 - Regular size No.2 pencils

2 - Beginner size (Oversized-Husky) pencils

1 - Package water based markers-Classic size (primary colors - no neon or flourescent)

1 - Package construction paper 9x12 assorted colors

1 - Package manila paper

1 - Box water colors

1 - Box crayons (large-beginner size) 8 colors only (Crayola Brand)

1 - Pair student scissors (Fiskar brand) rounded ends

2 - Boxes tissues

1 - Box baby wipes

2 - Folders (2 pocket-no brads)

1 - Clear water bottle with pop up lid (16 ounce capacity) no sipper cups, please!

1 - (70 page) spiral notebook

1 - Rest mat (folding type)

1 - Complete change of clothes in gallon ziploc bag labeled with your child's name:

Boys: shirt, pants, underwear and socks

Girls: dress or pants and blouse, panties and socks

### First grade

1 - Package yellow wooden pencils - no mechanical pencils

1 - Package pencil top erasers

6 - Boxes of 8 crayons (1 for each 6 weeks, 8 count only)

1 - Box of Crayola washable markers

1 - Large zippered pouch or supply box

1 - Large bottle of Elmer's school glue

2 - Large glue sticks

4 - Pocket folders

1 - Wide rule, 100 page, spiral notebook

1 - Pair of Fiskar scissors

1 - Package of wet wipes

3 - Boxes of Kleenex

2 - Packages assorted construction paper

1 - Water color set

\*Optional items — Stickers, snack-size zip-locl bags, snack items (animal crackers, vanilla wafers, etc. No peanut products.)

\*Due to the lack of

space, please use child-sized backpacks that are no larger than 10X13 inches.

\*Please label all supplies with a permanent marker.



scissors

4 - Small glue sticks

1 - Package boys bring plates and girls bring small cups

2 - Boxes of Kleenex

\* No notebooks or Trapper Keepers; no rolling backpacks.

**Third grade**

Standard List

2 - Packages of pencils, plain wooden #2 (8-12 count)

1 - (4 ounce) bottle of Elmer's glue (not Ross)

2 - Packages notebook paper (wide

ruled)

1 - Box Crayola Brand Crayons (24 count)

1 - Fiskars Brand pointed scissors

1 - 12 inch ruler (Metric/English), not flimsy, easy to read

4 - Flat plastic pocket folders: 1 - zipper pouch (sturdy)

4 - Boxes of Kleenex (we give some to outside teachers)

1 - Spiral notebook (wide ruled, about 70 pages)

1 - Box quart-size zip-lock bags

\*\*Extra supplies at teacher discretion.

\*\* Exceptions to this would be Special Education needs.

\*\* Absolutely no backpacks with wheels, 3-ring binders, flip-top clipboards or carrying cases. These items do not fit in the desks or lockers.

2 - Highlighters

2 - Packages notebook paper (wide rule)

4 - Fabric book covers

1 - Package of eraser tops

1 - Pair of scissors

1 - Spiral notebook (120 pages)

1 - Bottle of glue or glue stick

1 - Pencil bag (sturdy)

3 - Boxes of Kleenex

6 - Folders (with brads and pockets)

2 - 1 inch, 3 hole binder (one for math and one for other classes)

\*\* Extra supplies at teacher discretion.

Exceptions to this would be Special Education needs.

\*\*Absolutely no backpacks with wheels. These items do not fit in the desks or lockers.

**Fifth grade**

Standard List

1 - Large Set of Crayola brand map pencils

12 - Pencils, plain wooden #2

2 - Red pens

2 - Highlighters

2 - Packages notebook paper (wide rule)

1 - Package of eraser tops

1 - Pair of scissors

2 - Spiral notebooks (120 pages)

1 - (4 ounce) bottle of Elmer's Glue or 1 glue stick

1 - Pencil bag (sturdy)

3 - Boxes of Kleenex

5 - Pocket folders with brads (All different colors if possible)

**Continued on page 12**

**Fourth grade**

Standard List

1 - Set of Crayola brand map pencils

12 - Pencils, plain wooden #2

2 - Red pens

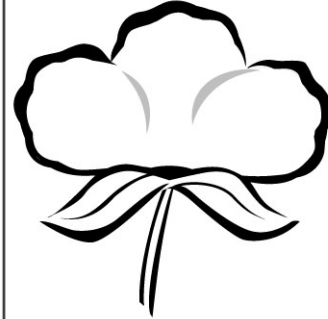
1 - Box of Crayons

## Bruce Inc.

Rt. 3 Box 485 - 272-5114  
Muleshoe, Texas

Make This Your Best School Year Ever!  
**GO, FIGHT, WIN MULES!**

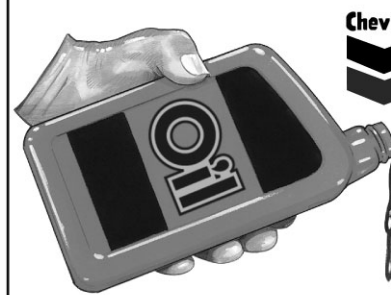
We're Proud of All Area Students & Teachers!



### DODD COTTON GIN

2912 CR 504 • 965-2311

Good Luck & Work Hard To Succeed!



### DALE OIL CO.

413 W. American Blvd.  
Muleshoe, Texas  
272-5576

**Good Luck & God Bless Students! Have An Awesome Year!**

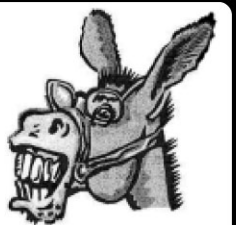
## Leal's

Muleshoe  
The Original  
Since 1957

Get Hungry For An Education!

1010 W. American Blvd. • 272-3294

We Support Muleshoe Schools, Students & Staff Members!



Juniors & Seniors interested in starting a Jr. Chamber of Commerce should call our office weekdays from 9 AM to 3 PM at 272-4248!

The chamber is a community oriented organization whose goal is to promote Muleshoe in a positive manner through sponsorship of events designed to share our town with the citizens of Bailey County and surrounding communities! Help us shape the direction in which Muleshoe advances! Let's make some noise!

**MULESHOE CHAMBER OF COMMERCE & AGRICULTURE**

115 E. American Blvd., Muleshoe • 272-4248

## MULESHOE SPORTS ACADEMY

FEATURING THE FINEST IN GYMNSATICS, TUMBLING, TRAMPOLINE AND CHEERLEADING

**ALL AGES BOYS AND GIRLS**

### FALL REGISTRATION:

WHEN: AUGUST 11, 1 PM-6 PM  
AUGUST 12, 10 AM-6 PM

### CLASSES:

MON., TUES., WEDS., THURS., and SAT.-MORNINGS & EVENINGS

If you are unable to make registration, please call and set up a time to register.

**FALL CLASSES START WEEK OF AUGUST 21<sup>ST</sup>!**

USA GYMNASTICS  
SAFETY CERTIFIED  
STAFF

**MULESHOE SPORTS ACADEMY**

2309 West American Blvd.  
Muleshoe, Texas  
(806) 272-6817

**CATCH DELTON WILHITE'S COVERAGE OF THE MULESHOE MULES RIGHT HERE!**

# BAGS TO SCHOOL 2006



## SCHOOL BUS SAFETY

### Safety Advice for Students

- School bus safety tips for students:**
- Be on time - better yet be 5 minutes early!
  - Never run to or from the bus.
  - Stay away from the bus until it comes to a complete stop.
  - Stay in a group while waiting for the bus. If anyone bothers you, tell a trusted adult such as your parents or teacher.
  - Stand back from the curb. Have a safe place to wait for the bus, away from traffic and the street - use the 10 foot rule!
  - Don't push or shove.
  - Stay in your seat.
  - Don't yell or shout.
  - Always obey the driver and follow his or her instructions closely.
  - Wait for the driver's signal before crossing.
  - Pay attention to your surroundings. Although motorists are supposed to stop for school buses loading and unloading, not all of them do.
  - Always cross at least 10 feet in front of the bus.
  - Never crawl under a school bus.

- The numbers:**
- Number of public school buses: 450,000.
  - Number of miles traveled by school buses annually: 4.3 billion.
  - Number of children who ride school buses annually: 25 million.
  - Number of school-age children killed annually in motor vehicle crashes during school travel hours: 800.
  - Percentage of those school-age deaths involving school buses: 2 percent.
  - Number of children killed annually in crashes involving school buses: 20.
  - Number of children injured annually during school travel hours: 152,000.
  - Percentage of those injuries that involve school bus accidents: 4 percent.
  - Percentage of the nation's 40,000 annual motor vehicle deaths that are school-age children during school travel hours: 2 percent.

SOURCES: Transportation Research Board; National Highway Traffic Safety Administration

"Flashing Red Means Stop Ahead"  
**National School Bus Safety Week**  
 October 15-21, 2006



### Illegal Passing: The Problem

The big yellow school bus approaches the intersection of First and Main. Seven or eight elementary school students are waiting near the curb. First the yellow lights come on. Then the school bus comes to a halt. The red lights start to flash. The stop-arm goes out. The school bus driver looks at the traffic behind her and in front of her and thinks, "Will anyone try to pass?"

School buses and motorists. Both have been part of the morning and afternoon landscape for five generations of school children. Although yellow wasn't adopted as the school bus color until 1939, school buses have been around since 1915, about as long as the automobile.

In all that time there has been an uneasy co-existence between school buses and motorists. School buses make frequent stops to load and unload students. It is the nature of their business. By law, when a school bus stops to drop off or pick up students, motorists must stop too. But motorists often don't want to stop. Motorists want to get where they are going, with little interruption and as quickly as they can.

In a recent survey on speeding and other unsafe driving behaviors, 99 percent of the drivers interviewed felt that the most dangerous unsafe driving behavior was passing a school bus with its lights flashing and stop arm extended. Passing a stopped school bus was considered to be more dangerous than any other unsafe driving behavior, more dangerous even than racing another driver, driving through a stop sign or red light, crossing railroad tracks with red lights blinking, passing in a no-passing zone, and speeding.

**Don't put a child's life and future on the line just to get where you're going a few SECONDS ahead of time! Stop.**

### The Number of Persons That Can Safely Sit on a School Bus Seat

Federal regulation does not specify the number of persons that can sit on a school bus seat. The school bus manufacturers determine the maximum seating capacity of a school bus. The manufacturers use this number, which is based on sitting three small elementary school age persons per typical 39 inch school bus seat, in the calculations for determining the gross vehicle weight rating and the number of emergency exits. School transportation providers generally determine the number of persons that they can safely fit into a school bus seat. Generally they fit three smaller elementary school age persons or two adult high school age persons into a typical 39 inch school bus seat.

National Highway Traffic Safety Administration (NHTSA) recommends that all passengers be seated entirely within the confines of the school bus seats while the bus is in motion. Federal motor vehicle safety standard No. 222, "School Bus Passenger Seating and Crash Protection" requires that the interior of large buses provide occupant protection so that children are protected without the need to buckle-up. Occupant crash protection is provided by a protective envelope consisting of strong, closely-spaced seats that have energy-absorbing seat backs. Persons not sitting or sitting partially outside of the school bus seats will not be afforded the occupant protection provided by the school bus seats.

### The BUS stops here!



**ALWAYS STOP FOR A BUS LOADING OR UNLOADING CHILDREN**

### Avoiding the danger of handrail snagging

**The bus driver's responsibility:**  
 The school bus driver is a trained professional concerned with getting children to school and returning them home safely. Driving a school bus is a demanding task. There is a lot of activity in and around the bus. The bus driver must be aware of ever-changing traffic conditions, the children on the bus, and the children who enter and exit at each school bus stop. Compounding this already complex situation is the need for the driver to maintain the school bus schedule.

The major reason for injury and death due to handrail snagging incidents is the driver's failure to notice that the child's drawstring has become snagged. The driver should observe all children, especially those with long drawstrings, oversized or baggy clothing, or other items that may become snagged in handrails, as they exit. Additionally, to ensure safety at each stop, the driver should cleared the danger should see is a question of whether a child has moved safely away from the bus. Finally, the driver must be alert for warnings as the bus pulls away. In many of the snagging incidents that have occurred to date, someone inside or outside the bus attempted to warn the driver that a child was being dragged by the bus.

**Children's and parents' responsibilities**  
 Children and parents must also accept some responsibility for ensuring that a snagging incident does not occur. While oversized and baggy clothing may represent the latest fashion trend, try to avoid choosing any article that may become caught in a school bus handrail or door. The Consumer Product Safety Commission recommends that drawstrings be no more than three inches in length at the waist. Parents should caution children about attaching key rings and other items to their backpacks as these too may become caught on the handrail or door.



*This Ad and Information Proudly Sponsored By:*



**Bailey County Electric Cooperative Association**

305 E. Ave. B, Muleshoe • 272-4504  
 In Morton 266-8600



**Five Area Telephone Cooperative, Inc.**

**West Plains Telecommunications, Inc.**

302 Uvalde, Muleshoe • 272-5533

# Back to school



## Muleshoe ISD supply lists... Continued from page 10

1 - 12 inch ruler (Metric/English) not flimsy, easy to read  
 2 - 1 1/2 inch, 3 hole binder, not flimsy, easy to read, inches on one side, centimeters on opposite side  
 \*\*Extra supplies at teacher discretion.

Exceptions to this would be Special Education needs.

\*\* Absolutely no backpacks with wheels. These items do not fit in the desks or lockers.

### Sixth grade

3 - Boxes of colored pencils  
 1 - Highlighter  
 Notebook paper, wide ruled  
 #2 pencils  
 2 - Red pencils  
 Erasers  
 1 - Pack red pens  
 1 - Pack blue or black pens  
 2 - Boxes of Kleenex  
 1 - Zipped pencil pouch  
 1 - Binder

1 - Transparent ruler  
 5 - 100 page spirals  
 10 - Pocket folders with brads  
 1 - Package of 100 3x5 index cards  
 Art students — 8x11 drawing pad, 1 box of pencils, 1 box of colored pencils, 1 box of



tissue, 1 pair of pointed scissors, 1 12-inch ruler.

### Seventh grade

5 - Packs of blue or black pens  
 5 - Packs of red grading pens  
 5 - Packs of #2 pencils

4 - Highlighters  
 Large package of notebook paper  
 Binder  
 5 - Pocket folders with brads  
 2 - Spirals  
 1 - Pkg. (5 sheets) of 11 x 14 inch poster

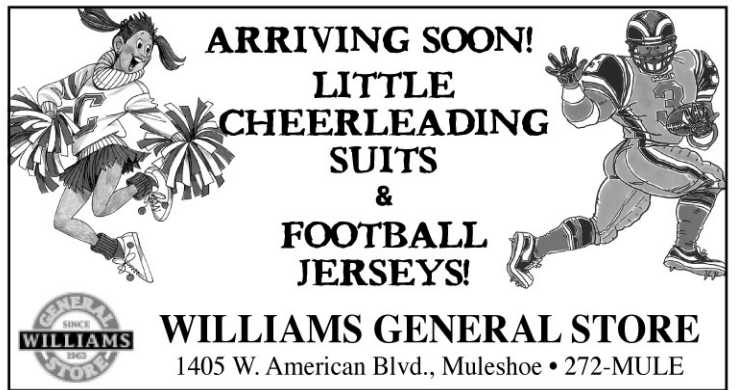
board  
 2 - Boxes of Kleenex  
 3 - Boxes of colored map pencils  
 Art Students — 8x11 drawing pad, 1 box of pencils, 1 box of colored pencils, 1 box of tissue, 1 pair of pointed scissors, 1 12-inch ruler.

Spanish class — 2 pocket folders


### Eighth grade

#2 Pencils  
 8 - Pens (blue or black)  
 8 - Folders with brads and pockets  
 Colored pencils for social studies and science  
 Graph paper (algebra I only)  
 Regular lined notebook paper  
 2 - Spirals (150 pages)  
 1 - Spiral (2 subject)  
 1 - Spiral (dividers with pockets)  
 2 - Boxes of tissue  
 1 - Ruler  
 2 - Red pens  
 1 - Pencil bag  
 (1) stick glue  
 (1) package of 3x5 note cards  
 Art students — 1 drawing pad, 8x10; 1 box of pencils; 1 box of colored pencils; 1 box of tissue; 1 12-inch ruler; 1 pair of pointed scissors.  
 Spanish class — 2 pocket folders

**ARRIVING SOON!**  
**LITTLE CHEERLEADING SUITS & FOOTBALL JERSEYS!**  
**WILLIAMS GENERAL STORE**  
 1405 W. American Blvd., Muleshoe • 272-MULE



**We Proudly Support Lazbuddie, Muleshoe & All Area Schools!**  
**Clay's Corner Gin**  
 RR 3 Box 1005, Muleshoe  
 965-2176



**Always press forward kids!**  
**BOB STOVALL PRINTING**  
 GRAPHIC ARTS & DESIGN SPECIALISTS  
 221 E. Ave. B, Muleshoe  
 272-3373



**We Back Muleshoe 100% LOWE'S MARKETPLACE**  
 401 W. American Blvd., Muleshoe • 272-4585



**Lasting Impressions**  
 Wishes all students, teachers and staff a wonderful year!  
 516 S. First Street, Muleshoe • 272-4287



## Muleshoe bus route information released

The Muleshoe Independent School District has released the following bus route information:

If you are new to the area or have questions about specific stops, call Richard Hawkins, transportation director, at 272-7329.

For questions concerning regulations and policy contact Don Wood, asst. superintendent, at 272-7400.

### Muleshoe ISD Bus Stops

Bus #1 — 301 East Sixth; Housing Authority Apartments; East sixth and Ave. F; DeShazo Elementary; Dillman Elementary; and High School and Junior High.

Bus #2 — East Sixth and Ave. F; East Sixth, Housing Authority Apartments; East Fifth and Ave. D; DeShazo Elementary; Dillman Elementary; and High School and Junior High.

Bus #5 — Main and Ave. G; East Fourth and

Ave. F; Dillman Elementary and High School and Junior High. (All Dillman students who get on at DeShazo, ride Bus #5).

Bus #6 — West Birch and Chicago; Muleshoe

Cotton Compress; West Date and Boston; and West Cedar and Dallas.

Bus #7 — West Ave. I and South First; West Ave. J and Eighth; West Third and Ave. J; West Third and Ave. H; Second and Ave. H; 15th and Ave. J; East Fourth and Ave. D; East Fourth and Ave. B; Deshazo Elementary; Dillman Elementary; and High School and Junior High.

Bus #9 — East Austin

and East Cedar; East Austin and East Elm.

Bus #10 — Behind Ranch House

Bus #12 — Eighth and Ave. B; East Hickory (across from Roger Miller Park); East

Ave. C; Eastbound DeShazo Elementary; and High School and Junior High. (All DeShazo students going to Dillman or West Ave. C and ride Bus #12).


Bus #13 — Behind carousel Reno and Ash; Quincy and Railroad Ave.; Pasadena (middle of the street).

Bus #14 — (P.M. buses only) West 10th and Ave. D; West 14th and Ave. D; West 18th and Ave. D; Dillman Elementary; West 18th and Ave. B; West 14th and Ave. B; West 10th and Ave. B.

Bus #27 — Behind the Dinner Bell; Kinder Corner at West Eighth and Ave. G.

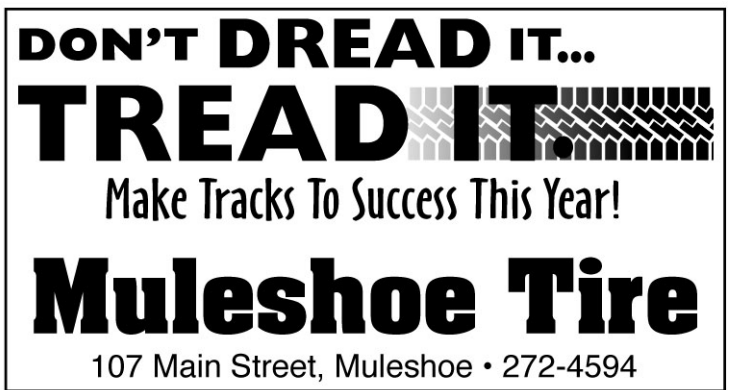


**AGRILIANCE**  
**AGRILIANCE**  
 WE GIVE OUR STUDENTS, FACULTY AND ADMINISTRATION AN "A" FOR EFFORT! BEST WISHES FOR ANOTHER SUCCESSFUL SCHOOL YEAR!

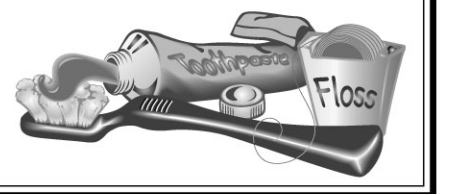


**Agriliance LLC**  
 Clovis Highway  
 West of Muleshoe  
 272-4203

**DON'T DREAD IT... TREAD IT!**  
 Make Tracks To Success This Year!  
**Muleshoe Tire**  
 107 Main Street, Muleshoe • 272-4594



**STUDY HARD STUDENTS!**  
**Dr. Robert Leppard, DDS**  
 121 W. Ave. B  
 Muleshoe  
 272-3446

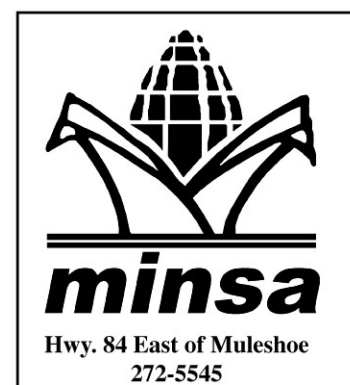


**Art Loft Galleries & Très Chic Interiors**  
 Wish all students, teachers, staff and administrators a successful year!  
 1529 W. American Blvd. - 272-3485  
 Muleshoe, Texas

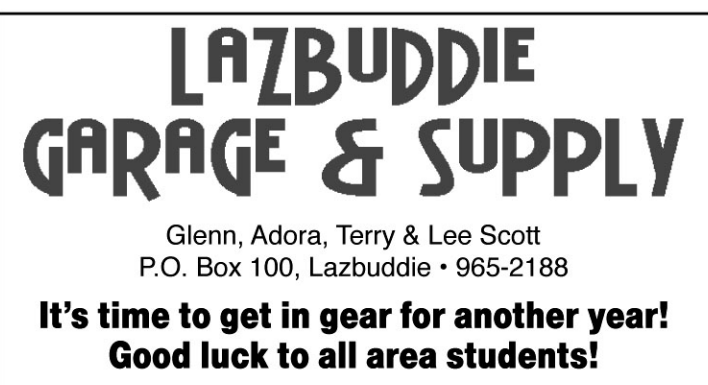


**minsa**  
 Hwy. 84 East of Muleshoe  
 272-5545

**IT MIGHT SOUND CORNY, BUT WE THINK MULESHOE GROWS THE BEST STUDENTS IN TEXAS! STUDY HARD AND YOU CAN BECOME ANYTHING YOU SET YOUR MIND TO!**



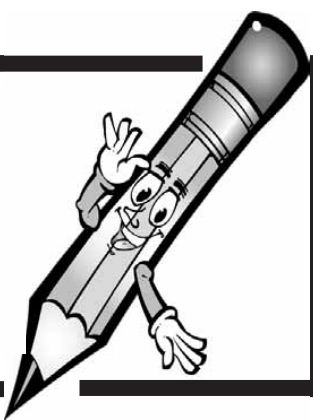
**Lazbuddie GARAGE & SUPPLY**  
 Glenn, Adora, Terry & Lee Scott  
 P.O. Box 100, Lazbuddie • 965-2188  
**It's time to get in gear for another year! Good luck to all area students!**



**SAIN**  
**Irrigation & Machine**  
 Complete Pump Service  
 W. American Blvd., Muleshoe • 272-4397 or 272-4148  
 Walt Sain, Owner  
*Good Luck to All Area Students!*



# Back to school



## Muleshoe ISD registration dates set

The Muleshoe Independent School District has released the following registration information for the upcoming school year:

Dillman Elementary will be registering new students in the school district who plan to attend Dillman on Aug. 7-8, from 8:30 a.m. until noon, and from 1 p.m. until 3:30 p.m.

DeShazo Elementary will be registering students Aug. 7-8, from 9 a.m. until 6 p.m.

Watson Junior High's registration will be held on Aug. 7, from 9-11 a.m. and 1-3 p.m.; and on Aug. 8, from 9-11 a.m., 1-3 p.m., and 5-7 p.m.

Muleshoe High School will be registering students on Aug. 10. Seniors at 11 a.m., juniors at 1 p.m., sophomores at 2 p.m. and freshmen at 3 p.m.

## Reserved stadium seats are offered

Reserved seat tickets for the 2006 Muleshoe Mules football season will go on sale Aug. 7. The tickets are \$25 for five home games.

Persons who held reserved seat tickets for the 2005 football season may purchase their seating options at the School Administration office, located at 514 W. Ave. G, Monday through Thursday, during regular business hours.

Those persons whose names appear on the chart may pick up their tickets:

Either in person; by mail with ticket holder's personal check; or by third party, if tickets are purchased with ticket holder's personal check.

Beginning Monday, Aug. 28, all remaining tickets will go on sale on a first come, first serve basis.

Any reserved seats remaining after the season starts will be available at a cost of \$6 per game and may be purchased at the administration office on game day.

If you have questions concerning the ticket sales, contact Dana Rasco at 272-7400.

## Immunization clinic set

An immunization clinic is being held at Muleshoe High School on Thursday, Aug. 10, from 1:30-4 p.m.

There is a \$10 fee for each shot.

High school students must have up-to-date shot records before they can receive a class schedule.

Contact Michele Barton, RN, for additional information at 272-7309 or 272-7303.

## Task force to meet

The Muleshoe ISD Facilities Task Force is scheduled to meet on Aug. 8, at 6 p.m., in the MISD board room, to evaluate the recently prepared long range facility plan.



**ALVARADO PARTY RENTALS** *HAVE A GOOD SCHOOL YEAR!*  
**INFLATABLE BOUNCER**  
 BEST PRICES AROUND! Safe - Affordable Fun For Kids!  
 Birthday Parties • School Functions • Special Events  
 2 Hrs. \$50 - 4 Hrs. \$75 - 6 Hrs. \$100 - 8 Hrs. \$125  
**DELIVERY, SETUP & PICKUP**  
 SE HABLA ESPAÑOL EDDIE & RACHEL ALVARADO  
 DJ SERVICES ALSO AVAILABLE **272-5588**

**FIRST UNITED**  
 LITTLEFIELD BANKING CENTER 2003 Hall Avenue • 806-385-7181  
 EARTH BANKING CENTER Main & Cedar • 806-257-3451  
 SUDAN BANKING CENTER 200 Main • 806-227-2411  
 The New Star Of West Texas  
 - To All Area Students -  
 Good Luck & Have A Great Year! Study Hard!

**Doggonit, Have A Good Year!**  
**MULESHOE ANIMAL CLINIC & MULESHOE VET SUPPLY**  
 1430 US Hwy. 84, Muleshoe • 272-3061

**Muleshoe Economic Development Corporation**  
 Committed to Improving the Quality of Life of Bailey County Citizens  
 Wishes All Bailey County & Area Students A Successful, Fruitful & Fun School Year!  
 Janet Claborn, MEDC Director  
 Board Members:  
 Wanda Hooten, Max King, Pat Angeley, Mark Morton & Jose Sanchez

**R.A.S.S. SECURITY & PRIVATE INVESTIGATIONS**  
 109 W. Ave. D - Muleshoe, Texas 79347 • (806) 946-6888  
 Chief Investigator Julian Dominguez (806) 946-6799  
 Investigator Ralph Sanchez (806) 946-7189 Lieutenant David Dominguez (806) 946-6115  
 Email: rasspi@fivearea.com  
 Office: (806) 946-6888  
 Security Guards for: Weddings, Quinceñeras, Birthday Parties, Dances and any of your other security needs  
 Investigations for: Civil & Criminal Investigations, Private & Public Investigations, Bounty Hunting, Repossessions and General Assistance  
 "Licensed by the Texas Commission on Private Security" - License #C12091

**FYI**  
 If your college student is graduating or has made the Dean's or President's List, in order for that information to appear in the Muleshoe Journal, we must receive notice from the respective educational institution. Your son or daughter must sign a release so the information can be sent to us. Have them visit their bursar's office to sign a form indicating they wish to share their good news! Once permission to share information has been granted, the college or university should send the info via email to: editor@fivearea.com.

**Fall Piano Lessons For All Ages!**  
 Call Fran Hamilton @ 272-4759

**COYOTE LAKE FEEDYARD**  
 1287 FM 1731 Muleshoe, Texas 946-3321  
 HAVE A GREAT SCHOOL YEAR!  
 BEST OF LUCK IN '06-'07!

**Nieman Realty**  
 116 E. Ave. C • George Nieman, Broker  
 272-5285 or 272-5286  
 CHECK OUR LISTING INFO., PHOTOS, ETC. ON-LINE AT WWW.NIEMANREALTY.COM  
 HAVE BUYERS! NEED HOME AND LAND LISTINGS!  
 Best of luck to all students and school faculty!

**TAX FREE WEEKEND SALE**  
 FRI., AUG. 3, 9 AM-6 PM & SAT., AUG. 4, 9 AM-5 PM

**SHOES** Inside Store Specials!  
 Adult's & Kid's Styles \$5<sup>00</sup> Off AND TAX FREE!

**CINCH**  
 Shirts & Jeans \$10<sup>00</sup> Off AND TAX FREE!

**MEN'S DRESS BOOTS**  
 Anderson Bean, Twisted X & Justin Styles \$10<sup>00</sup> Off AND TAX FREE!

**CINCH**  
 Kid's Shirts & Jeans \$5<sup>00</sup> Off AND TAX FREE!

**NIKE PINK & LIME GREEN BACKPACKS HAVE ARRIVED!**

**Urgent Gear Shirts ..... \$20**  
**Silver Tee & Reef ..... \$5 Off**  
**Silver Jeans ..... \$10 Off**  
 THESE ITEMS ALSO TAX FREE!

**WILLIAMS GENERAL STORE**  
 1405 W. American Blvd. Muleshoe • 272-6853

**Catch a firefly™ for only \$19<sup>95</sup>** Reg. Price \$95  
 The Mobile Phone for Mobile Kids.™ While Supplies Last.

**Our BEST Plan is only \$39<sup>95</sup>**

- > 1000 Anytime Minutes with FREE Nationwide Long Distance
- > FREE Unlimited Night and Weekend Minutes with FREE Nationwide Long Distance
- > FREE Unlimited Mobile-to-Mobile
- > FREE Carryover Minutes
- > FREE Loyalty Minutes

**firefly™ Calling Plan only \$10 mo.**  
 100 Anytime Minutes

**BACK TO SCHOOL SPECIAL!**  
 Donate 3 School Supplies and Get FREE Activation on a New Plan!  
 Help the kids in your community. Bring in three school supplies - valued at \$10 or more - and receive FREE activation on a new wireless plan.  
**A \$25 VALUE!**

**PLATEAU Wireless**  
 www.plateauwireless.com 877-PLATEAU (752-8328)

**Don't Miss Out on Limited Quantities. Hurry to a Plateau Wireless Store Today!**

<b>Muleshoe</b> Five Area Telephone Coop. 302 Uvalde (806) 272-7700	<b>Muleshoe</b> Connection Warehouse 117 Main St. (806) 272-5532	<b>Frona</b> WT Services 1010 Columbia (806) 250-5555
--	---	--

**NETWORK EXPANSION LOCATED AT:**

- Clayton West - Located 2 miles West of Clayton, NM. Provides a second angle of service to the Clayton area and stronger coverage on the West side of Clayton
- Maljamar - Located 1/2 mile North of Maljamar, NM. Provides coverage to Maljamar and Hwy 82 between Artesia and Lovington.
- Glencoe - Located 1/2 mile East of Glencoe, NM. This site will provide coverage to Glencoe and Hwy 70 through the Hondo Valley.

**Carryover & Loyalty Minutes**

Contract Term: 2 years. Early termination fees: \$200 per year, maximum of \$400. Night and Weekend hours are Monday through Thursday 7:00 PM through 6:59 AM and Friday 7:00 PM through Monday 6:59 AM. When outside the designated home area, Roaming: \$50 per minute with Free Long Distance. Additional taxes, fees, and surcharges may apply. Unused plan minutes carried over month to month. 30 minutes after one year of service, 60 minutes after three years of service and 100 minutes after five years of service. Certain restrictions apply. Plan only available on GSM phones. Offer not available in all markets. \*\$19.95. Offer requires one-year commitment and available while supplies last. Offer valid through 8/31/06.

# Jennyslipper News

The Jennyslippers met for their regular meeting at noon on July 25 at the Girl Scout Hut.

Those attending were Anna Bales, Brenda Tapley, Donna Kirk, Alene Bryant, Joy Williams, Nelda Merriott, Dianne Thornton, Peggy Bruton, Bobbie Harrison and Elaine Parker.

The group voted to purchase four new benches, a lighthouse and a fountain for Mule-Putt.

Our black sheet-metal mules have been repainted and added to the decor — as well as a black wagon hitched to a span of mules. The wagon may become a covered wagon.

A note of thanks was read from the PUSH group, bicyclists, on the Journey of Hope, expressing their gratitude to the Jennyslippers and sponsors, for the wonderful food, steaks and hospitality. They said, "If all of Texas is as great as Muleshoe, we'll have a wonderful trip."

It was reported that the U-Group from United Supermarket will help paint the concrete walkways at the 18 hole Mule-Putt golf course for which the ladies were grateful.

Varied bright colors were chosen and a work day of Aug. 8 was set.

Appreciation was expressed to all who helped prepare the Jennyslipper Mule-Putt Golf Course for the visit of NewsChannel 11 of Lubbock. Many improvements were made.

Golf was free to all on July 24 and the course remained open until after 10 p.m. The NewsChannel 11 dignitaries, especially, enjoyed the evening along with the huge crowd.

Muleshoe pitching is a new addition to the course and it continues to be free.

The Jennyslippers challenged Channel 11's Pete Christy to a game of muleshoe pitching with Doug Bales, who is 81 years of age. Pete was up to the challenge and took an early

lead of 4-0. Doug settled in and continued to close the gap and pull ahead with a final score of 21-16. It will be on the Channel 11 Sports News soon.

Doug was seen wearing a big smile and his "I beat Pete" T-shirt. The cameraman, Colin McElroy, then challenged Doug to a game and the crowd watched the close game. Doug was able to keep his title with a score of 21 to 19. A muleshoe pitching tournament and a golf tournament are being discussed.

The Jennyslippers chose Monday evening, Aug. 7 at 6:30 p.m. for their family cook-out at the Mule-Putt Golf Course. This is well-attended and lots of fun for all.

A planning session will be held at the Girl Scout Hut on Thursday evening Aug. 3, at 7 p.m. to plan the 25th anniversary of the Jennyslippers. It will be in late August or early September at the Jennyslipper Mule-Putt Golf Course and the public, all friends, former presidents, officers and members, etc. are invited.

Louise Agee's lovely flower garden pots at Parkview was chosen as the "Jennyslipper Garden Spot of the Week."

In recent news, the cub scouts and families, numbering about 60, enjoyed a cookout and an

evening of Mule-putt Golf and muleshoe pitching in the nice golf course. Many commented that they did not know it was so enjoyable and they would be back and also have some birthday parties there.

## Burch to graduate from ENMU

Vickie S. Burch from the Muleshoe area is among the 103 graduation candidates at Eastern New Mexico University this summer.

Burch is a candidate for a master of education in education.



# August 14-19 Clovis, NM

## MAKE YOUR WORLD GO-ROUND CURRY COUNTY FAIR

### MUSIC

**GRUPO VIDA with Grupo Eclipse**

Thursday, Aug. 17 - 8 pm

**JACK INGRAM with Charla Corn**

Saturday, Aug. 19 - 8 pm

### MOTOR SPORTS

**Saturday, Aug. 19 - 7:30 pm**

Tickets: Advance \$13 adults, \$6 child 3-12  
At Gate: \$15 adult, \$8 child 3-12

Locations: High Desert Honda, Cycle City, Fair Office & Extension Office

### DAILY ENTERTAINMENT

**AMAZING ARTHUR**

**AUSTIN P. ROADMAN**

**AMAZING RAINFOREST EXPERIENCE**

**WRIGHT'S AMUSEMENTS**

**AUG. 15-19**

**THRILLS & CHILLS!**

Info: (505) 762-8827

**FAIR ENTRY DEADLINES**  
Home Arts, Flower Show, Agricultural Exhibits accepted on Aug. 14, 8 am to 6 pm

**AG NEW MEXICO**  
FARM CREDIT SERVICES ACA  
Serving Agriculture in the Land of Enchantment

**YOUTH DAY - AUG. 19**  
Plateau Wireless - (505)-769-1823

**ccfair@plateautel.net**  
**CurryCountyFair.com**

Bridal Selections for  
**Jenna Rasco**  
bride elect of  
**Coli Hunt**  
Shower-Saturday, Aug. 12

**Carolyn's Christmas Creations**  
106 E. American Blvd.  
Muleshoe  
272-5911

# More Classifieds

## Stop and Shop

Deadline 5 p.m. Friday

### WANT TO BUY FURNITURE

We buy used furniture, appliances and more. We'll take it off your hands and out of your way! Call 806-685-1154 or 505-762-7838.

### CLEANING

**HATE TO WASH WINDOWS?**  
Have sparkling windows all the time!  
We will wash the windows on your home inside or out or both!  
Call 806-543-3324 for a free estimate and have "Sparkling Windows" in no time!

### MOVING SALE

MOVING SALE - Furniture, baby things, clothes, odds and ends. 902 W. 8th Street. Friday, August 4, 9 AM to ???

### GARAGE SALES

Sat., Aug. 5 at Jarman Seed in Muleshoe. 9 AM till 2 PM. Many household items, some furniture, brand name women's & kid's clothing.

**Garage Sale**  
**1532 W. Ave. C**  
**Saturday**  
**August 5, 2006**  
**8 AM - 12 PM**

### CLEARANCE SALE

**CLEARANCE SALE!!!**  
**FRI. & SAT. AUGUST 4 & 5**  
**Heritage Thrift Shop**  
\$5/bag - all you can put in a brown bag for only \$5! 401 S. Main.

**FIRST ASSEMBLY OF GOD CHURCH GARAGE SALE**  
**SAT., AUG. 5**  
**8 AM - 2 PM**  
**Family Life Building**  
Big sale with lots of great bargains!

**SHOULDN'T YOU BE ADVERTISING?**

**2 FAMILY GARAGE SALE**  
**Saturday, August 5**  
**8 AM to 12 PM**  
**4 mi. east of Clay's Corner on FM 145**

Riding lawnmower, entertainment center, computer, pressure washers, housewares, even some FREE STUFF!

**HUGE GARAGE SALE**  
**Carolyn's Christmas Creations**  
**PARKING LOT**  
**106 E. American Blvd. • 272-5911**  
**Friday & Saturday**  
**August 4 & 5**  
**9 AM to 7 PM**  
Many New Items!  
**DRASTICALLY REDUCED PRICES!**

### AUCTION

## AUCTION

**Tuesday, August 8, 2006 — Sale Time 9:30 a.m.**  
Located: Tannahill Sale Site, Friona, Parmer County, Texas.  
Friona, Texas from Intersection of US Hwy 60 & Texas 214, 1 mile North on Texas 214, then 3/4 mile East on CR G to Sale Site. (Watch for Signs.)

**Parmer County Farmers - Owner**

- The following will be sold at Public Auction. Call Fletcher Auctioneers (806) 866-4201.
- |   |  |   |  |
|---|--|---|--|
| <p><b>TRACTORS</b></p> <ul style="list-style-type: none"> <li>1-1993 John Deere 4960 Diesel Tractor, 2 WD</li> <li>1-1992 Case IH 7150 Diesel Tractor, MFWD</li> <li>1-1984 John Deere 4020 LP Tractor</li> </ul> <p><b>TRUCKS</b></p> <ul style="list-style-type: none"> <li>1-1988 White Truck Tractor, 350 Cummins Engine, 9 spd Fuller Trans, Sleeper</li> <li>1-1982 IH Truck, 6 cyl Diesel, Auto Trans, Unused 7020 Leader Fertilizer Spreader (No Title)</li> <li>1-1979 GMC 7000 Truck, 366 V8, 5 sp Trans, Kraus Mfg Fertilizer, Spreader, (No Title)</li> <li>1-1963 Chev 60 Series Truck, TA, V8, Hobbs 20 ft Grain Bed (No Title)</li> <li>1-1960 Chev Viking 60 Truck, TA, V8, Hobbs 18 ft Bed, Cattle Boards, (No Title)</li> </ul> | <ul style="list-style-type: none"> <li>1-1954 Chev 6100 Truck, 6 cyl, 4 sp, SA, Hobbs 13.6 Grain Bed (No Title)</li> <li>1-1993 Ford F150 XLT Pickup, 4x4, (No Title)</li> <li>1-1984 Ford F150 XL Pickup, LWB, 4x4, (No Title)</li> <li>1-1970 Chev 3/4 Ton Pickup, 4x4, (No Title)</li> </ul> <p><b>EQUIPMENT</b></p> <ul style="list-style-type: none"> <li>1-KMC 8 row Bed Planter</li> <li>1-8 row Hyd Rod Weeder</li> <li>1-Milton 8 row Planter</li> <li>1-Lilliston 8 row Rolling Cultivator</li> <li>1-IH 8 row Rolling Cultivator</li> <li>1-IH 6 row Flex Cultivator</li> <li>1-IH 6 row Flex Cultivator</li> <li>1-Hamby 28 ft Double 4" x 4" Bar, LTM, GW, 7-1" x 3" shanks</li> <li>1-Hamby 8 row Rotary Hoe</li> <li>1-6 row Lister</li> <li>1-Graham 40 ft Field Cultivator</li> </ul> | <ul style="list-style-type: none"> <li>1-JD 3 section 24 ft Grain Drill, Pull Hitch</li> <li>1-IH 480 Folding 21 ft Tandem Disc</li> <li>1-Schafer 14 ft Tandem Disc</li> <li>1-Schafer 14 ft Tandem Treeder</li> <li>1-Pengo Farm Services 6 row 7 shank Plow, GW, 285 HP Cummins Diesel Engine</li> <li>1-Pengo Farm Services 4 row 5 shank Plow, GW, 285 HP Cummins Diesel Engine</li> <li>1-28 ft Triple 4" x 4" Bar, LTM, Hitch</li> <li>1-Servis 6 ft Blade, 3 pt</li> <li>1-Servis 2 row Shredder, 3 pt</li> <li>1-Meyers V Ditcher</li> <li>1-Towner 3 Bottom Breaking Plow, 3 pt</li> <li>1-300 gal Plastic Tank on 2 wheel Trailer</li> <li>1-AA 400 gal Fertilizer Rig, 4 row</li> <li>1-Hay Fork, 3 pt</li> <li>1-Eversman Camelback Float</li> </ul> | <ul style="list-style-type: none"> <li>1-JD 30 ft Equipment Trailer</li> </ul> <p><b>HARVEST EQUIPMENT</b></p> <ul style="list-style-type: none"> <li>1-Oliver 2 row Pull Type Cotton Stripper, SN 20-333</li> <li>1-New Holland 890 Ensilage Cutter, 2 row 3-4 Ratio</li> </ul> <p><b>IRRIGATION</b></p> <ul style="list-style-type: none"> <li>6-MM Irrigation Motors</li> <li>2-Randolph Gearheads, 3-4 Ratio</li> <li>18-Jts 7 in x 20 ft Gated Pipe, 40 in rows</li> <li>5-Jts 6 in x 20 ft Gated Pipe, 38 in rows</li> <li>6-Jts 8 in x 30 ft Gated Pipe, 38 in rows</li> <li>1-Lot Salvage Pipe</li> <li>1-Lot Casts, Elbows, Reducers, VS, VL, Hydrants</li> </ul> |
|---|--|---|--|

**Terms: Cash All Equipment Must Be Removed In 10 Days.**

**Fletcher Auctioneers**  
Auctioneers and Real Estate Brokers  
PO BOX 609 - WOLFFORTH, TX 79382

**(806) 866-4201**  
Lic #7131

# Classifieds

Call 272-4536 to advertise!

Stop and Shop

Deadline 5 p.m. Friday

**PUBLIC NOTICE**

**PUBLISHER'S NOTICE**

All real estate advertising in this newspaper is subject to the Fair Housing Act which makes it illegal to advertise "any preference, limitation or discrimination based on race, color, religion, sex, handicap, familial status or national origin, or an intention, to make any such preference, limitation or discrimination." Familial status includes children under the age of 18 living with parents or legal custodians, pregnant women and people securing custody of children under 18."

This newspaper will not knowingly accept any advertising for real estate which is in violation of the law. Our readers are hereby informed that all dwellings advertised in this newspaper are available on an equal opportunity basis. To complain of discrimination, call HUD toll-free at 1-800-669-9777. The toll-free telephone number for the hearing impaired is 1-800-927-9275.



**FOR RENT**

3 bedroom, 1 bath, single car garage, central heat & air, 319 W. Ave. K. Rent is \$575, deposit is \$350. Call 806-272-4546 or 806-346-3695 or 806-346-4113.<sup>2ch7-27</sup>

**HANDYMAN**

**WEST TEXAS HANDY-MAN**  
Leaks, Fixtures & Cosmetics  
**806-946-9050**  
TFN10/6

**NEED TO MAKE QUICK MONEY? Place a classified ad in the Journal!**

**FOR SALE**

**KING PILLOWTOP** mattress set, \$239. Full orthopedic mattress set, \$135. Brand new, warranty. 806-549-3110.<sup>5pd8-3</sup>

1998 3-seater Yamaha jet ski, 1100cc w/very few hours. Single trailer included. \$3,000. Please call 272-7518 for more details. Also, 1985 Suzuki 550 motorcycle, \$500.<sup>2pd7-27</sup>

**BEDROOM SET, 5** pieces, new in box, **MUST sell, \$399.** 806-549-3110.<sup>1pd8-3</sup>

**FOR SALE**

**3 DOOR LARGE CAPACITY COMMERCIAL REFRIGERATOR.** CONTACT RAY MASON AT MULESHOE AREA MEDICAL CENTER 806.272.4524, EXT. 104.<sup>1ch8-3</sup>

**MATCHING SOFA** and loveseat, new in crate, lifetime warranty, stain resistant, \$475. 806-549-3110.<sup>1pd8-3</sup>

**QUEEN PILLOWTOP** mattress set, \$145. **TWIN MATTRESS** set, \$99. New, in plastic, warranty. 806-549-3110.<sup>5pd8-3</sup>

**NEED TO MAKE QUICK MONEY? Place a classified ad in the Journal!**

**LAWN SERVICES**

**FRIESEN LAWN SERVICE**  
925-6789  
Cell: 806-470-0406  
JAY FRIESEN TFNch

Lawn mowing and yard work. Mowing, edging, weed eating, etc. Contact Michael Dean at 806-946-9692.<sup>2pd7-27</sup>

**HOUSE FOR SALE BY OWNER**

**READY TO MOVE INTO CONDITION -** 3 BDRM, living room and den, 1 lg. bath w/ 2 sinks, separate tub and walk-in shower, large linen storage. Covered patio, carport, covered RV parking, 2 metal storage buildings. Large corner lot. \$52,500. 272-3905.<sup>TFN8-3</sup>

3 BDRM, 2 BA, 1 office, sprinkler system, skylights, all electric. Guest house/workshop. Call 210-659-3294 or 210-410-5185.<sup>4ch7-13</sup>

**FARMS FOR LEASE**

**Farms For Lease**  
**Bailey County**  
**John**  
**(806) 853-9476**  
4pd7-13

**PAINTING**

**Rex Lowery Painting**  
Painting in the Muleshoe Area over 40 years!  
FREE ESTIMATES.  
Cell: **789-9142**  
Evening- 385-5927  
8/25chTFN

**REAL ESTATE**

**Cleavinger & Associates**  
Real Estate Just Became A Breeze™

**House and 8 acres of land-** 2451 CR X One mile N of Lazbuddie. This is a very well maintained country home with many updates and additions. One completely remodeled bathroom, master bath, three hot water heaters, a beautiful redwood deck with hot tub and an above ground swimming pool. \$155,000. **Richland Hills, 1713 W. Ave. J** — Beautiful 2-story home with unique open concept, large rooms, storage, covered patio, hot tub/spa and circular drive. Great for entertaining. REDUCED \$220,000.

**Muleshoe area farm in prime dairy location!! Dairy permit in process! 1310 acres** located about 6 miles NE of Muleshoe in the heart of an area found to be excellent for dairies. This farm is eight quarter sections that have been very well maintained and cared for. This farm lays well and is set up for peak production with center pivot sprinklers, 7 packaged for 700 gal/min and 1 packaged for 550 gal/min. There are three houses as well as two barns, a shop building, and a storage building. One house has been completely updated with granite countertops in kitchen, new flooring, and a beautiful sunroom addition.

**Commercial** — 1202 W. American Blvd. - Prime location in Muleshoe, off Main thru way. \$90,000.  
**Commercial** — 623 W. American Blvd. Muleshoe, TX 79347 - A thriving business in a progressive rural city. The business currently includes tree and plant sales, landscaping projects of all sizes, yard sprinkler planning and installation, and yard and tree spraying. Also included are approximately 700 growing trees on five acres south of Muleshoe that will be maintained by the current owners for five years. The land does not convey. Great opportunity!

**Commercial** — 311 W. American Blvd. Muleshoe, TX 79347 - An established business that carries everything for your farm. **IN CONTRACT**; this business carries hay, Hi-Pro feed for large and small animals and a wide variety of animal care essentials. It is located in an area surrounded by feed yards, dairies and farmsteads.

**Hart** — CR 522 & CR 619 — 661 acres Northwest of Hart, TX in a very good water area. 4 wells. Great Farm! \*see other listings in Farms & Land

**MIKE CLEAVINGER, ABR**  
**KELLER WILLIAMS REALTY**  
4747 S. Loop 289, Suite 110  
Lubbock, TX 79424  
Cell: (806) 239-5139  
Office: (806) 771-7710  
Fax: (806) 771-7700  
REALTOR

**CRP BUYERS: COCHRAN CO.** - 2 sections. **DEAF SMITH.** - 3 sections. **CASTRO CO.** - 1/2 section. **MULESHOE NEEDS A STATE-OF-THE-ART VEG-ETABLE SHED,** let's syndicate this one farmers, businessmen, etc. - 21.39 acres +/-, over 29,000 sq. ft. Warehouse/Packing Facility with Corp. Offices, approx. 7,200 sq. ft. cold storage, 12 loading docks, truck wash, wells, migrant housing. Prime location on Hwy. 84.

**PARMER CO.** - Hwy. 145, 480 acres on pvmt. with three circles. **CHECK OUR WEBSITE** for data and pictures of many farms, ranches, feedyards, dairies and choice dairy locations with permits and acreages with homes.<sup>TFN12/29</sup>  
**www.scotlandcompany.com**  
**Ben G. Scott — Broker 800/933-9698 day/eve**

**3 BR/2 BA/ 2 CAR GA** — 1033 NE 1st, Earth, TX. Spacious brick home, 160 sq. ft. finished basement, large kitchen and living area, isolated master w/private bath. Great floor plan.

**3 BR/2-1/2 BA/2 CAR GA** — Brick home approx. 1920' sq. ft. living area, located in a nice neighborhood in Sudan on Hwy. 303. Well maintained, awesome kitchen and nice neighborhood. **PRICE REDUCED!!!! \$75,000.**

**3 BR/2 BA/1 CAR GA/1 CARPORT** — 206 Austin, Sudan. 1941' sq. ft. home with formal living room and dining room, den, central air, large kitchen, auto. sprkler. system and large sheds in back yard. Priced to sell quick at \$44,900.

**3 BR/2 BA/2 CAR GA** — 301 Minyard, Sudan. 1700' sq. ft. beautiful brick home with great floor plan. Corner lot with large utility w/ private isolated bathroom. Neat house with a unique look. \$59,900.

**Lutrick REAL ESTATE**  
Monty Edwards, Realtor Associate  
806-786-5426 or 806-687-7355

**REAL ESTATE**

**Byrd Realty**  
Ronald Byrd  
Licensed Broker  
Crista Bass  
228 Main Street, Muleshoe, Texas  
www.byrdrealestate.net

**Price Reduced!!!** - Spacious 3 bedroom, 2 bath brick home, updated kitchen, fireplace, office, ref. air, central heat, fenced back yard, shop + more.

**Price Reduced!!!** - Take a look at this house first. For half the cost of new construction, you can own this beautiful, spacious 4BR, 3-1/2 bath, brick home, approx. 5,000 sq. ft., built-ins, ref. air, central heat, 2 living areas, dining room, lg. utility, 2 fireplaces, office, lg. closets, lots of storage, sprinkler system, 2 car garage, nice fenced back yard, plus a lot more, all on a corner lot.

**Price Reduced!!!** - Spacious 4 bedroom, 3 bath brick home, built-ins, refrig. air/central heat, 2 living areas, utility room, sunroom, built-in grill, fireplace, dining room, sprinkler system, fenced back yard, 2 car garage, domestic well. Outside city limits on highway.

**Price Reduced!!!** - Lazbuddie area, 2 bedroom, 1 bath brick home, built-ins, ref. air/central heat, 2- car garage, all on approximately 3 acres.

**New Listing** - 2003 Solitaire home to be moved, 3 bedroom, 2 bath, ref. air/central heat, utility. This would make a great starter home.

**New Listing** - Nice 3 bedroom, 1 1/2 bath brick home, central heat, refrig. air, built-ins, fenced back yard & single car garage.

**Need House Listings! Have Buyers! Give us a call!!!**

**New Listing** - Country Home on Hwy. Nice 3 bedroom, 2 bath brick home on approx. 3 acres, ref. air, central heat, lg. utility, fireplace, built-ins, spacious living area, finished basement, 2 car garage, 30 x 30 barn + more.

**Great 3 bedroom, 1 3/4 bath brick home, built-ins, fireplace, ref. air, central heat, utility, dining room, 2 car garage.** Call for more details.

**480 acres NE of Bovina, 2 circular sprinklers, 3 wells, 1 submersible well. Includes 141.5 acres of CRP. Excellent cattle operation. Call for details.**

**New Listing** - 4 bedroom, 1 3/4 bath home, central heat, refrig. air, built-ins, fenced back yard & single car garage.

**New Listing** - Nice country 2 bedroom, 1 3/4 bath brick home, built-ins, ref. air, central heat, sunroom, lg. utility room, 2 car garage, sprinkler system, fenced back yard, 2 metal barns, all on approx. 3 to 4 acres.

2 bedroom, 1 1/2 bath home. This home would make great rental property.

**Office: (806) 272-5380** **Toll Free: 1-888-999-3846**

**Vic Coker Land Co.**  
Agricultural Real Estate

**•1288 Acres in Southwestern Bailey County**-932 Acres in C.R.P. through 2017. Balance is Native grass. New Mexico state line is West boundary. 6 miles of fence. Good domestic well. Quail, antelope, and other hunting. Excellent cash flow for a hunting retreat.

**•Bailey County**-Stegall area. 3000 square foot home. Austin Stone. Metal roof. 3 bedroom, 2 bath, 2 park garage. Outside in good condition, inside needs update. A large house for a bargain price. \$50,000.

**•309 acres**- Near Progress. Hwy. 84 frontage. 1/2 mile of pavement. Good soil, lays good, depreciable assets.

**•Bailey County**—14.7 acres Northwest of Muleshoe on U.S. Highway 84. 76' x 36' doublewide home. 40' x 80' x 16' shop barn.

**• Bailey County** — West of Muleshoe on 1760. 315 acres, 3 wells, 1 towable sprinkler. Fenced. Large Quonset barn.

**• Bailey County** — 354 acres in Baileyboro area; 250 acres of non-irrigated farmland; 100 acres of native grass.

**•Lamb County**— Southeast of Amherst 922 acres, 310 acres of alfalfa. 5 center pivots, 42 acres of drip irrigation.

**NEW LISTINGS**

**• Northwestern Lamb County** — 160 acres, 2 wells, Center pivot, perimeter fence, 1/2 circle of improved grasses, good allotments.

**• Lazbuddie Area** — Brick home, 3 BR/2 BA, 2 park garage, on 1.3 acres, 2,200 sq. ft. plus large enclosed patio, large fenced back yard. **ON PAVEMENT.**

**• West of Muleshoe** — 80 acres, irrigated with 2 wells. Lays good. Good direct payment.

**316 Main Street • Muleshoe, Texas**  
**Office: 806-272-3100 Home: 806-965-2468**  
**Website: www.vicoland.com**

**• Irrigated farms** — Plains, Earth, Levelland, Plainview and Littlefield.

**• Amherst** — 5/2/2 on 2 acres, \$48,000.

**FARRAR & ASSOCIATES**  
**806-894-7099**

**ANTIQUES AUCTION**

**Large Antique Multi-Estates Auction**

**Saturday, August 5th - 10 A.M.**  
**LUBBOCK, TX ... SOUTH PLAINS FAIRGROUNDS**  
**Merchant's Building - 105 E. Broadway**  
**Viewing 1 Hour Before Sale**

Due to owners moving to the area from large home to much smaller home, they have decided to sell their collection at auction, plus other consignments. **Plan Now To Attend!** This is one of the finest collections that truly must be seen to be appreciated! There will be plenty of seating and parking. Building is Air Conditioned! Everything must be moved day of sale.

**A Partial List:** A Very Rare Antique "Victor" Table Model Phonograph In Beautiful Oak Case. A Beautiful Antique Heavy Carved American Double Secretary with Bookcase on Each Side and Beautiful Bevel Mirror - Must See! An Antique Heavy Carved Oak "Morris Chair" with Lion Heads and Paw Feet - Never Seen One Before! A Rare Antique Victorian *Roller Organ* - Plays Great! An Antique Child-Size Actual Working Grandfather Clock. A Beautiful Antique American Complete Heavy Carved Oak Dining Room Suite with Unusual China Cabinet. An Antique American Oak Curved Glass China Cabinet with Beautiful Bonnet Top and Bevel Mirror! A Fantastic Antique German Weight Driven Grandfather Clock with Beautiful Chimes. A Beautiful Ladies Etage're with Bevel Mirror. A Beautiful Antique Heavy Carved all matching Bedroom Suite. A Very Rare Antique American Oak China Buffet, One side Curved Class China - One side Buffet - Very Rare! A Rare Antique "Edison" Standing Phonograph In Beautiful Oak Case. An Antique Oak Child's Roll Top Desk. An American Antique "Martha Washington" Sewing Cabinet. A Rare Antique "Ansonia" Parlor Clock. An American Antique Smoker's Stand. A Fantastic Antique Cedar Chest. A Western Bronze Statue "Rattlesnake" by Fredric Remington on Marble Base. A Beautiful Grape & Cable "Carnival" Multi-Colored Covered Sweetmeat Dish. A Large 1890's Square "Wave Crest" Embossed Dresser Box - Red Banner Mark! A Rare Antique 1920's Hercules Steelcraft Dump Truck.

**GUN COLLECTION:** A Rare Authentic Antique "Colt Lightning" Early Model Slide Action Oct. Barrel Rifle 38 Caliber in Great Original Working Condition - Never Seen One! A Rare Authentic Antique Single Action "Colt" Early Model Pistol Also in 38 Caliber in Great Original Working Condition. A Rare Authentic Antique Single Action "Colt" Blesley Model Pistol in Great Original Working Condition. A Rare Authentic Antique Model 1887 "Winchester" Lever Action Shotgun in Great Original Working Condition. Antique Gold and Silver Coins - 1899 \$10 Gold Coin, 1879 \$5 Gold Coin, 1913 \$5 Indian Gold Coin, 1862 \$1 Gold Coin Ring, 20 Antique Silver Dollars, 1858 Flying Eagle Cent, 1853 Silver Three Cent, 1854 Large Cent and Much More! Beautiful Gold and Diamond Jewelry, Beautiful and Unique Leaded Glass Lamps - Dresden - RS Prussia - Fabulous Large Green Etched Vase - Leaded Glass Windows - Beautiful Cut Crystal and Many More Must See Items! Bring Cash or check with Proper I.D. Dealer's Must have copy of Sales Tax Permit or Sales Tax will be added, No Exceptions.

Announcements Made Day of Sale Supersede all Other Advertisement. Don't Miss This Sale! Auctioneer - Michael Mears Tx. Lic. # 12703 - A Completely Licensed and Bonded Auctioneer No Buyer's Premium! - 405-381-3402 - Proud member of the Texas Auctioneers Association

**HELP WANTED**

RN's needed. Now hiring full-time & part-time. Excellent benefits with competitive wages. Apply by appointment with administrator: Jo Blackwell, Prairie Acres, 201 E. 15th, Friona, TX 79035. 806-250-3922.<sup>2ch7-27</sup>

Looking for part-time nursery worker for Sunday mornings, Wed. evening and special events. Flexible schedule working with other workers. Excellent position for high-school aged female, young mom or older grandmother. Call 965-2787 to leave message.<sup>4ch7-13</sup>

Muleshoe Motor Co., a Ford Mercury Dealership, has an opening for an experienced Sales Consultant. We are under new management and building a new sales team. Come grow with us. Apply in person at 1125 W. American Blvd., Muleshoe, or call Jim Hall 806-272-4251.<sup>TFNch2/9</sup>

Looking for reliable, adult help with pruning, hoeing and weeding flowerbeds-2 hrs./week. Contact Leah at 272-4536. Must be able to recognize weeds! Good pay/flexible schedule.<sup>Nch7-27</sup>

Farmers Coop Assn. of Sudan is accepting applications for a mechanic to work in our automotive service center. Great benefits, health plan, paid vacations, sick leave, 401K. Salary based on experience. Apply in person at 222 N. Main, Sudan.<sup>2ch7-27</sup>

**Now hiring a part-time secretarial/office assistant position.** Computer, basic bookkeeping, language and telephone skills all a must. Bilingual a plus. Some ad design and commissioned work involved. **Apply in person at the Muleshoe Journal, 201 W. Ave. C, Muleshoe.**<sup>TFNch</sup>

**Rawls Equipment, Littlefield, TX** — Now accepting applications for a full time **diesel technician.** Apply in person or mail resumes to: P.O. Box 629, Littlefield, TX, 79339. NO PHONE CALLS. Contact: Brian, service manager.<sup>2ch8-3</sup>

**Azteca Milling** Temporary harvest help wanted. Apply in person 1-1/4 mile E. of Muleshoe on Hwy 84. **Positions needed:** Corn testers Ticket writers Truck probers  
TFNch8-3

**TFNch2/23**  
**NOW HIRING**  
**minsa**  
MINSA HAS SEVERAL POSITIONS AVAILABLE IN OUR PRODUCTION FACILITY.  
We are looking for hardworking individuals to fill several positions. Apply in person at Minsa or at WorkSource, 201 S. Main, Muleshoe. EOE.

**TFNch2/23**  
**NOW HIRING**  
**minsa**  
MINSA IS ACCEPTING APPLICATIONS FOR 2 POSITIONS IN THE MAINTENANCE DEPT.  
Some previous maintenance or welding experience preferred. **Apply in person at Minsa or at WorkSource, 201 S. Main, Muleshoe. EOE.**

**LUBBOCK AVA-LANCHE JOURNAL NEWS PAPER CARRIER** needed in Muleshoe. Supplement your income. We have over 200 carriers, and most have full-time jobs, and use the newspaper routes to add extra money to their income. Must have dependable transportation. Call Henry at 1-800-692-4021, ext. 8767.<sup>2ch8-3</sup>

The City of Muleshoe is taking applications for a worker in the Refuse Department. High school graduate/GED required. Upon employment, subject may be required to pass a drug test. Applications can be picked up at City Hall, 215 South First, Muleshoe, TX. Position open until filled. EOE, ADA.<sup>1ch8-3CALL</sup>

**Nieman Realty**

**116 E. Ave. C • George Nieman, Broker • 272-5285 or 272-5286**  
**CHECK OUR LISTING INFO., PHOTOS, ETC. ON-LINE AT WWW.NIEMANREALTY.COM**  
**HAVE BUYERS! NEED HOME AND LAND LISTINGS!!**

**RICHLAND HILLS**  
• Very Nice 3-2 Home with detached 3 car garage, Cent. A&H, built-ins, FP, lv. area, den, large gameroom w/built-in gun cabinets & storage, cov. patio, fenced yd., auto spkrl., RV hookups, nice landscaped back yard. MORE!! \$149,900!!  
• NICE 4-2-2 Brick Home, corner lot, Cent. A&H, built-ins, office, 5 fans, fenced yd., storage/workshop w/elec., fountain!! MORE!! \$87K!!

**HIGHLAND AREA**  
• NICE 3-1-1 carport Home, Cent. A&H, fenced yd., storage area, MORE!! \$40K!!  
**LENAU - COUNTRY CLUB AREA**  
• 3-1 Home, corner lot, built-ins, Cent. A&H, fenced yd., workshop/storage!! \$44.5K!!  
• VERY NICE 4-2 Mobile Home, Cent. A&H, built-in, 28' x 56', Mstr. bath has garden tub & separate shower, vaulted ceiling, storm windows & doors, large lot!! \$63K!!

**HIGH SCHOOL AREA**  
• NICE 3-1.5-1 Carport Home, 1380' lv. area, Cent. A&H, remodeled, new paint, carpet, stove, W&D, Thermal windows, metal trim, corner lot!! \$65K!!  
• 2-2 Bdrm., 1 bath units & 1-1 Bdrm., 1 bath unit, Cent. Elec. Heat Pumps, appliances, furniture, fenced!! GOOD RENTAL PROPERTY!! \$85K!!  
• VERY NICE 3-2-2 Brick Home +2 carport, Cent. A&H, built-ins, FP, 2157' main lv. area, plus nice office, hot tub, covered patio, fenced yd., workshop/storage bldg. w/air compressor!! REMODELED!! \$150K!!

**COMMERCIAL**  
• 40' x 75' METAL BLDG w/office & restroom on 2.91 acre tract at edge of town (Hwy. 84 & 70), domestic well & MORE!! \$85K!!  
• 150' x 100' tract with an approx. 1600 building + approx. 1440' storage on corner of Hwy. 70, 84, & 214!! PRIME LOCATION!! \$45,000!!  
• 100' x 140' tract, corner lot on Hwy. 84, 1760' Bldg., 1076' Bldg., 308' storage, & 2-56' x 22' metal canopies w/paved area!! \$49,5K!!  
• 413' Frontage on S. Hwy. 214, 24' x 50' shop, 24' x 30' office, chainlink fence!! \$21K!!  
• 4.2 acre tract at edge of town, 40' x 60' metal insulated bldg., 2 other sheetiron bldgs., chainlink fenced area, numerous uses!! \$59K!!  
• Approx. 1274' Building, 75' x 140' lot, U.S. Hwy. 84!! \$35K!!  
• FORMER RICHLAND HILLS TEXACO - 1414' Bldg. + 1080' canopy + 16,530' asphalt paving!!  
**RURAL**  
• 310 acres with 265 in CRP and 65 native pasture!! \$295 per acre!!  
• 105 ACRE TRACT - 2-20HP wells, 50 acres under circle sprinkler, stock shed & corrals, good allotments and yields, highway frontage. \$850/acre.  
• SUDAN-NICE 4-2 Mobile Home on 94' x 140' lot, 1848' lv. area, Cent. A&H, built-ins, Mstr. bath has garden tub & separate shower, 1 car detached garage, deck w/hot tub!! \$49,9K!!  
• CLAY'S CORNER - 320 acres, 2 wells, 2 circle sprinklers, 2 bedroom 2 bath, 2 carport home!!  
• NICE 3-2-2 Home on 60 acre tract!! Central A&H, built-ins approx. 2575' lv. area, 10 hp, well, workshop, barns, corrals, fenced!! MORE!! \$130,000!!  
• NEEDMORE-3-1.5 Home on 2.5 acres, Cent. heat, win. evap. air, metal roof, 1504' lv. area, 1920' barn, 320' x 304' stor. bldgs.!! \$32,5!!  
• NEEDMORE - Gin Building, office, well on 3.6 acres (Hwy. 214 & FM 298) !! \$13,500!!  
• NEEDMORE - NICE 3-2-2 Brick home on Hwy. 214, 1.14 acres, Cent. A&H, built-ins, 10 hp well, horse pen. MORE!! PRICE REDUCED \$74,9K!!  
• LAZBUDDIE AREA — 3-2-2 Home, Cent. A&H, built-ins, FP, deck, hot tub, cellar, stor. bldgs., on 2 acre tract!! \$95K!!  
Additional 156 acre farm w/circle sprinkler, 3-20 hp. sub. wells!! \$495 per acre!!

