

Boxes Being Relocated

If you have trouble locating your postoffice box in the Tahoka Postoffice, just look in a new location at the same height and you should find it, Postmaster Leonard Dunn said this week.

Dunn explained that more boxes are being added in the postoffice here, and to make room for them, all boxes with numbers above 481 are being shifted around. They keys will still fit, and the boxes will remain at the same height from the floor as before, but they may be on a different wall. An area at the west end of the present box selection is scheduled to be moved back as work progresses this week.

The front counter in the postoffice will be moved around facing the east as part of the project, Dunn said. After the job is completed there will be more than 1,500 boxes in the postoffice. Presently there are 1180, he said, so more than 300 will be added.



WHAT'S THAT THING? Tavia Lawson gives the basketball a close look during this action in youth basketball last week. At left is Terri Solomon. Both girls are members of the Taylor Tractor team. (LYNN COUNTY NEWS PHOTO by Charlie Mac)

School Leaders To Get More Pay, More Work

BY DALTON WOOD
Tahoka School Board Monday night formally voted salary increases for four administrators and the band director, implementing a plan members had put forth at the regular meeting April 8, when it was decided that most administrators would be paid extra for taking over additional duties next semester.

Supt. Jim Coulston summed up the salary situation for the board prior to the vote, explaining that a total of \$83,000 in salaries being paid this current year would be saved by cutting teachers and by resignations of high school Principal Jim Marcus, business manager David Roberson and others. With next year's budget tentatively set at about the same amount as this year, \$47,000 of that amount will be lost because of declining enrollment (used by the state as basis of determining how much money is sent to the school).

Approximately \$30,000 more will be lost because of

farm machinery tax exemption, it has been estimated.

With the school board voting increases for five persons totaling \$22,000 Monday night, and with delinquent taxes still totaling more than \$100,000 a tax increase to pay for next year's operations appears likely.

Monday night the board voted additional pay increases of \$6,000 a year for Coulston, \$4,000 each for A.D. Shaver and Clifton Gardner, \$5,000 for Tom Cooper and \$3,000 for band director Milton Fox.

Cooper was assigned to handle the high school and junior high principal's jobs with Shaver to be assistant principal; Gardner will take over both elementary schools.

The board vote on the reassignments and pay increases was very close 4-3, with some members obviously reluctant to vote for the administrators' salary increases without tacking on an across-the-board pay boost for classroom teachers. Such

an across-the-board increase is anticipated, but some members of the board said they prefer to wait to see if a large portion of delinquent taxes will come in before committing the board to an exact figure.

Voting for the five pay increases were Bob Haney, Joe Brooks, Robert Smith and J.E. Nance Jr. Voting against the motion were Joe Hays, Jim Wells and Bettye Green.

The vote was taken after a lengthy closed meeting excluding visitors and the press.

The board also took a specific action designed to encourage delinquent taxpayers to make their payments. Delinquent taxes carry a penalty which will reach 18 per cent by July 1, and the board Monday night voted unanimously to tack on another 15 per cent penalty starting July 1, because attorneys will get 15 per cent of any taxes collected after that date.

This means that delinquent taxes paid after June 30 will have a 33 per cent penalty added on.

A hearing was conducted

regarding a seventh grade student who reportedly has been in fights, pulled a knife on another student, threatened teachers and other pupils and refused to do his

E.L. Follis In J.P. Race

E.L. Follis Jr. this week made formal announcement for the office of Justice of the Peace Precinct 4, Lynn County. His statement:

"I have been a lifetime resident of Lynn County having resided the last 14 years in O'Donnell.

"I am a graduate of New Home High School and Texas Tech University. I have worked with the public in my profession for the past 23 years, and through the O'Donnell Vol. Fire Dept. serving as secretary treasurer the past 9 years.

"If elected I will serve the community to the best of my ability in accordance with the laws of the state of Texas.

"Your vote on May 1 will be greatly appreciated."

Primary Vote Set For Saturday

Lynn County voters are expected to turn out in good numbers for the Democratic Primary election Saturday as contested races on the county level should draw the most attention.

Interest also is high in the contest for the nomination for the Dist. 28 State Senate race between incumbent E.L. Short of Tahoka and John Montford of Lubbock.

There are many other contests on the state level, including a race between Walter Grubbs of Merkel and Steve Carrier of Roby for the right to be the Democratic nominee for state representative from this 78th district. The district presently is represented by Jim Rudd of Brownfield, but Terry County no longer is in

the same district as Lynn. All county Democratic voters will choose between County Judge Melvin Burks and challenger J.F. Brandon. Both are Tahoka residents.

Longtime County Clerk C.W. Roberts is opposed by Mrs. Bill (Catherine) Barham for that job. And five persons are running for the position of county treasurer, as incumbent Mrs. Jessie Jewel Stephens is not seeking re-election.

Seeking the county treasurer's job in a race that is expected to wind up in a runoff are Blanche Franklin, Glenda Williams, Margie Jester, Radene Turner and Cynthia (Cindy) Bryan.

In county precinct four, incumbent commissioner E.R. Blakney is opposed by Robert Edwards and Charles A. Smith, and in precinct two, incumbent J.C. Gandy faces the challenge of Boyd Barnes for the commissioner post.

three candidates are seeking the justice of the peace position. They are Ben Morrison, E.L. Follis Jr. and David M. Smith.

In each of the 13 Democratic voting precincts in the county, there will be a precinct convention at 2 p.m. Saturday, said Tommy J. Lawson, county chairman. The precincts elect delegates to the county convention, which will be at the district courtroom in Tahoka on Saturday, May 15, at 10 a.m. At that time the county delegates to the state convention will be elected.

Tahoka Volunteer Fire Dept. members will post election results on a blackboard on the south side of Whitaker Hardware building Saturday night after the polls close and as the votes are counted.

A sample ballot is printed in this issue of the Lynn County News; the sample happens to be for voting box 1. All ballots are the same down through the county treasurer list.

Voters with questions about where they vote also may check voting precinct maps inside this issue of the News. One map shows the entire county, and the other shows the dividing lines in the city of Tahoka. The place to vote is marked on the Tahoka map; those in voting box 1 will go to the community center, voting box 6 will be at the Production Credit Assn. office on Lockwood, those in box 9 will go to the high school, and box 12 will ballot at the county show barn.

Polling places for the other boxes in the county:

- Pct. 2-Wilson High School.
- Pct. 3-O'Donnell High School.
- Pct. 4 - New Home High School.
- Pct. 5- Draw Gin Office.
- Pct. 7- Grassland community center.
- Pct. 8-Gordon Gin Office.
- Pct. 10-New Moore community building.
- Pct. 11-Lakeview Gin office.
- Pct. 13- Poka-Lambro building.

assigned work. The board decided to remove the student from the classrooms and provide some hours of home instruction by school personnel for the last few weeks of school.

DEMOCRATIC PARTY PRIMARY ELECTION (ELECCION PRIMARIA DEL PARTIDO DEMOCRATICO)

(CONDADO DE) LYNN COUNTY, TEXAS

MAY 1, 1982
(1 DE MAYO DE 1982)

SAMPLE OFFICIAL BALLOT BOLETA DE OFICIAL

INSTRUCTION NOTE:
(NOTA DE INSTRUCCION)

Vote for the candidate of your choice in each race by placing an "X" in the square beside the candidate's name. (Vote por el candidato de su preferencia en cada candidatura marcando con una "X" el cuadro al lado del nombre del candidato.)

I am a Democrat and pledge myself to support the nominees of this primary. (Yo soy Demócrata y comprometo mi apoyo a los candidatos nombrados de esta primaria.)

United States Senator
(Senador de los Estados Unidos)

Joe Sullivan
 Lloyd Bentsen

United States Representative, 17 District
(Representante de los Estados Unidos, Num. de Distrito 17)

Charles W. Stenholm

Governor
(Gobernador)

Don Beagle
 Ray Allen Mayo
 Mark White
 Bob Armstrong
 David L. Young
 Buddy Temple

Lieutenant Governor
(Gobernador Teniente)

Troy Skates
 Bill Hobby

Attorney General
(Procurador General)

Jack Ogg
 Jim Mattox
 John Hannah
 Max Sherman

Comptroller of Public Accounts
(Controlador de Cuentas Publicas)

Bob Bullock
 Robert Calvert

State Treasurer
(Tesorero Estatal)

Lane Denton
 Warren G. Harding
 John R. Cutright
 Ann Richards

Commissioner of General Land Office
(Comisionado de la Oficina General de Terrenos)

George Fore
 Pete Snelson
 Garry Mauro
 Dan Kublak

Commissioner of Agriculture
(Comisionado de Agricultura)

Reagan V. Brown
 Jim Hightower

Railroad Commissioner
(Comisionado de Ferrocarriles)

James E. (Jim) Nugent
 Ralph Pacheco

Justice, Supreme Court, Place 1
(Juez, Corte Suprema, Lugar Num. 1)

Ted Robertson
 John M. Barron

Justice, Supreme Court, Place 2
(Juez, Corte Suprema, Lugar Num. 2)

James G. Denton
 Bill Kilgartin

Justice, Supreme Court, Place 3
(Juez, Corte Suprema, Lugar Num. 3)

Woodrow Wilson Bean
 Charles W. Barrow

Presiding Judge, Court of Criminal Appeals
(Jefe Presidente, Corte de Apelaciones Criminales)

John F. (Jack) Onion

Judge, Court of Criminal Appeals, Place 1
(Juez, Corte de Apelaciones Criminales, Lugar Num. 1)

Carl Dally
 William B. Phillips
 Charles F. 'Chuck' Campbell, Jr.
 John E. Humphreys

Judge, Court of Criminal Appeals, Place 2
(Juez, Corte de Apelaciones Criminales, Lugar Num. 2)

Chuck Miller
 Bill Black
 Andrew Jackson Shuval
 Mel Bruder
 Roy Rawls

State Senator, 28 District
(Senador Estatal, Num. de Distrito 28)

E.L. Short
 John T. Montford

State Representative, 78 District
(Representante Estatal, Num. de Distrito 78)

Walter B. Grubbs
 Steven A. Carriker

Member, State Board of Education, 17 District
(Membro de la Junta Estatal de Instruccion Publica, Num. de Distrito 17)

Curly Hays
 Jewell Harris

Associate Justice, Court of Appeals, 7 District, Place 1
(Juez Asociado, Corte de Apelaciones, Num. de Distrito 7, Lugar Num. 1) (Termino no completado)

Richard N. (Dick) Countiss

Associate Justice, Court of Appeals, 7 District, Place 2
(Juez Asociado, Corte de Apelaciones, Num. de Distrito 7, Lugar Num. 2)

John T. Boyd

District Judge, 104 District
(Juez del Distrito, Num. de Distrito 104)

George H. Hansard

County Judge
(Juez del Condado)

J.F. Brandon
 Melvin Burks

District Clerk
(Secretario del Distrito)

Joy Laws

County Clerk
(Secretario del Condado)

C.W. Roberts
 Catherine Barham

County Treasurer
(Tesorero del Condado)

Cynthia (Cindy) Bryan
 Radene Turner
 Margie Jester
 Glenda Williams
 Blanche Franklin

County Commissioners, Precinct 1
(Comisionado del Condado, Precincto Num. 1)

Boyd Barnes
 J.C. Gandy

Justice of the Peace, Precinct 1
(Jefe de Paz, Precincto Num. 1)

Ed Hamilton

County Chairman
(Presidente del Condado)

Tommy J. Lawson

Precinct Chairman, Precinct 1
(Presidente del Precincto, Precincto Num. 1)

This portion of the ballot will vary by precinct



DID YOU EVER notice how hard it is to keep from yawning when someone else yawns, or how difficult it is to keep a straight face when everyone else is laughing? The power of suggestion is very strong for all of us. If you don't believe it, try this: think about your nose itching. Concentrate, but don't scratch it. Sit very still and consider that it really would be nice to be able to scratch your nose. If this doesn't work, just think about itching anyplace and the first thing you know, you'll be scratching yourself.

This works better if you haven't bathed in four days. But even if that doesn't work, the power of suggestion is strong for most of us.

Last Sunday, for example, the minister in a church we attended had a pitcher of water and some cups as props for his children's sermon. He gave each of the youngsters a drink and then talked to them about giving some thirsty person a fresh, cool drink would be the same as giving a drink to Jesus.

The guy seated next to me whispered that he sure was thirsty after that sermon, and I agreed that I was, too. In fact, if the preacher had asked at that time how many people in the congregation would like a drink of water, I'll bet more than half of them would have said yes.

And just writing about it makes me thirsty all over again.



GINME THAT BALL--Stacie Milton of Cook Pump basketball team tries to get the basketball away from Johnny Phillips of Parker Pharmacy in this action last week. Behind Stacie is Stacie Chapa. (LYNN COUNTY NEWS PHOTO)

Arrests Follow Driving In Fields, Yards Here

Six young men accused of driving a pickup into a field north of town and damaging some 3-inch irrigation pipe were charged with felony criminal mischief following their arrest Sunday night by sheriff's officers.

Officers said they first arrested the six in a 1982 Chevrolet pickup here after receiving complaints from two residents on N. 8th St. in Tahoka that the pickup had been driven through their yards. Also, a deputy had stopped the group and warn-

ed them earlier Sunday evening after having observed them driving into a field on the west side of town.

They were picked up on a disorderly conduct charge, for which they posted \$400 bond each, but the charge was upgraded to criminal mischief after it was learned that pipe owned by J.T. Miller of Tahoka had been run over in the field north of N. 8th St., with damage estimated at \$225.

The group is scheduled to be arraigned in justice of the peace court Friday. Five of them are Tahoka residents; one is from O'Donnell. Another gin office burglary

was reported during the week, this time at New Lynn Gin. Owner Roy Lynn Kahlich said the burglary occurred during the lunch hour last Thursday. The burglars got about \$45 cash, mostly from a soft drink machine.

Buster Phipps of Tahoka reported a Doberman valued at \$300 stolen from a horse farm southwest of Tahoka. Nothing was determined missing in a weekend burglary of Bartley-Weaver Fertilizer Co. in Tahoka. A door was damaged.

Wayne Crowell reported a barn 12.5 miles west of Tahoka burglarized, with welding equipment stolen.

In jail during the week were two for public intoxication, one for driving while intoxicated and the six for disorderly conduct.

Two offense reports were filed by Tahoka Police over the past week along with a couple of thefts that were reported.

On Friday, Tahoka police received a call at 4:30 p.m. to go to the Softball Park on S. 8th. A three-year-old girl was caught in barbed wire on top of a 10 foot fence on the SE side of the softball park, and had apparently been tangled in the wire for over an hour. The child's mother advised police that she was doing housework and had not realized her child was gone.

A criminal mischief report has been filed after an incident on Sunday night at N. 4th and Main. A Tahoka woman reported to police that a drunk driver had driven through her front yard and the vehicle had broken her faucet. Police identified a suspect and found that the paint from the faucet did correspond to the paint of the metal of his vehicle.

Police investigated a theft from Louder Gin. Items reported missing included two 8-foot chokes, one 10 foot sheet belt, a 12-volt battery, 30 gallons of gas, a grease gun with a case of grease, and two 15-foot chains with hooks. Value of the items were not given.

Odell Hogan of Tahoka reported to police that someone had stolen a 9 MM pistol valued at \$250. Time of the

offense was not known. A Tahoka man was filed under city ordinance Sec. 5.22F for letting loose his dog, which had bitten a child. The penalty for failure to appear in court ranges from \$25-\$200, according to Chief Jack Miller. No tickets were issued over the past week.

Tahoka C-C Now In New Location

The Tahoka Chamber of Commerce has moved its office to the Wharton Building, office 3, at 1730 Main Street. President Melvin Burks and Manager Winston Wharton announced this week.

Mrs. Louise Fisher has been employed as chamber secretary, and the office will be open from 9 a.m. to noon Monday through Friday. The phone number is still 998-4761.



The expression "piping hot" alludes, experts say, to the hissing sounds very hot food makes as it boils.



Baby spiders are known as spiderlings.



DEMONSTRATION — Donna Roberson of Tahoka demonstrates her china painting technique at the cotton art show in the Lubbock Civic Center earlier this month.

Painting Process Is Shown

Donna Roberson of Tahoka was demonstrating her china painting at the Lubbock Civic Center during the cotton art show, a feature of the 1982 Cotton Ginners Convention April 8-9.

In addition to demonstrations by Donna, the Jr. Jolly Quilting Club of Slaton were working on a quilt and had some 15 original quilts on display. Diane Pool of Lubbock was doing stained glass and glass etching. Nancy Harleson of Seminole, was working in pastels. Don Hensley of Brownfield was sculpting in metal. Tom and Nancy Beck of Lubbock were weaving on a loom and doing fancy stitchery and artistic embroidery.

About 7500 persons attended the convention.

THURSDAY BRIDGE

Winners at Thursday Duplicate Bridge were: First, Christine Askew and Dory Ashcraft; Second, Mildred LeMond and Gerry Renfro; Third, Arlys Askew and Fern Leslie.

Next play will be Thursday, April 29 at 1:00 p.m.

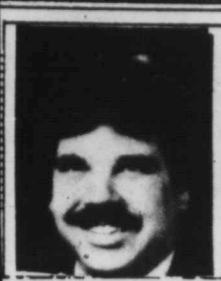
The cotton art show and demonstrations, co-ordinated by Jo Ann Mock was judged by Paul Wylie of Lubbock. Money and ribbons winners also included Glenda Morrow of Post, third in watercolor and pastels; Jo Ann Mock of Post, third in oils; and Bill Craig of Tahoka, first in sculpture.

Auxiliary Cites Member

Lynn County Hospital Auxiliary met Monday morning at the home of Grace Huffaker for a brief business session and special presentation to Juanita Warren, a member "who, although ill herself, has given above and beyond the call of duty to serve others." A plaque lettered by Retha Pittman and decoupage by Alta Thomas was presented to Juanita.

Final reports on the annual Fun and Food Festival were given with Betty Owens reporting \$6,850.00 from this project.

Nine of our states got their names from the rivers that flow through them — Minnesota, Colorado, Connecticut, Illinois, Mississippi, Nebraska, Ohio, Oregon and Wisconsin.



INSIGHT INTO EYESIGHT

David Gibson, O.D.

OPTOMETRIST

Snellen chart.

However, parents should not be lulled into the impression that their child has perfect vision because he scores a 20/20 on this vision test. All it means is how well or poorly the child sees at that distance. And that's all. Problems with near vision, eye coordination and focusing ability are among the many problems NOT discovered in this test. Only a professional eye examination will protect the priceless miracle of sight.

In the interest of better vision from the office of:

Drs. Armistead, Moore and Gibson
Optometrists
2132 - 50th St. 747-1635
Lubbock, Tx. 79412

THE 20/20 NUMBERS GAME

The term 20/20 refers to the size letters which the average eye can read twenty feet away. In most standard vision testing, you read the familiar Snellen eye chart at a distance of 20 feet. The upper number of the fraction expresses this distance. The lower number identifies the size letters you were able to read at this distance. Thus 20/20 vision means that you are able to read at 20 feet the line which a normal eye can read at 70 feet.

Often, this test is given by having you look into a machine which creates the same conditions optically. The results are roughly similar to those of the

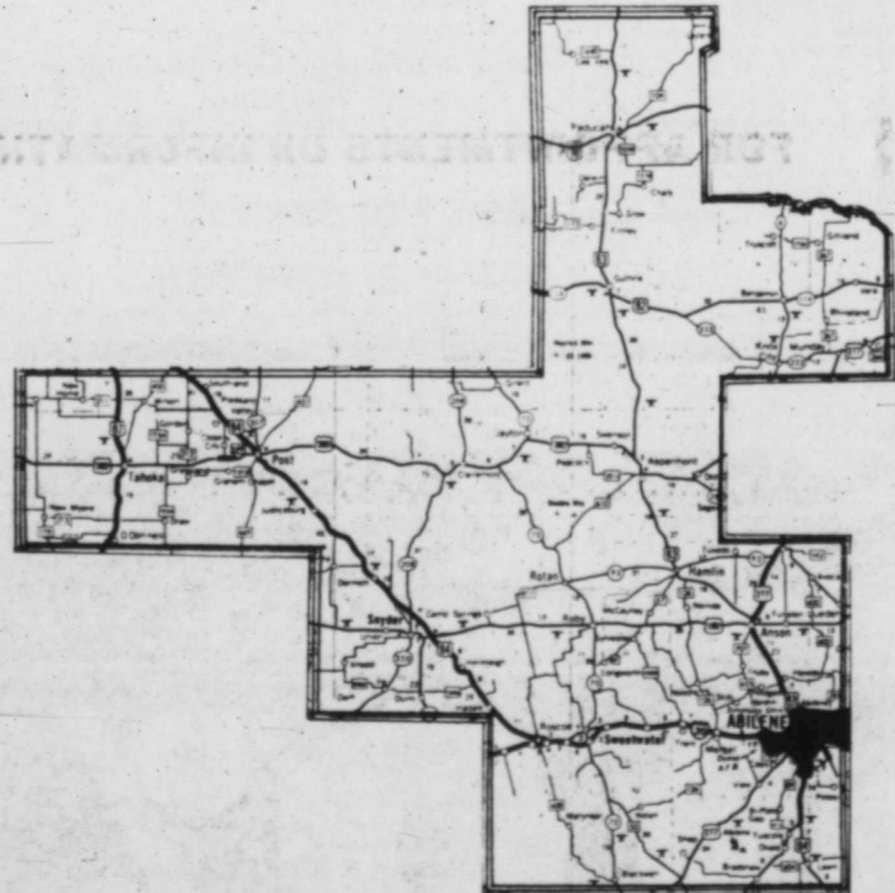
Tahoka, Texas 79373
"Oldest Business Institution in Lynn County"
THE LYNN COUNTY NEWS (USPS 323200) is published weekly by Woodwork, Inc., on Thursday, except the last Thursday of each year, at Tahoka, Lynn County Texas. Office location is 1617 Main, Tahoka. Phone (806) 998-4888. Entered as second-class matter at the post office at Tahoka, Texas 79373 under Act of March 3, 1879. Postmaster: send address change to The News, P.O. Box 1170, Tahoka, Tx. 79373.

SUBSCRIPTION RATES

Lynn and Adjoining Counties	\$8.50
Elsewhere in Texas	\$9.50
Out of Texas	\$10.50

Dalton Wood	Editor and Publisher
Betty Jolly	Adv. and Bookkeeping
Velma Phillips	Compugraphic Operator
Terry Wood	Advertising
Danette Phillips	Photography

Vote for a record, not a promise.



Walter Grubbs is a conservative, progressive Democrat . . .

- who has 26 years of experience with legislative bodies
- who is a 'working' member of the Texas House
- who understands and works for the best interests of this farming and ranching area
- who is a former mayor and 6-year councilman from Colorado City, Texas
- who served as a Major in the U.S. Air Force and spent 4 years on active duty, serving in the South Pacific during World War II
- who is a family man. His wife Viola is now serving as President of the Legislative Wives. They have one son, Gary of Lubbock, and three grandchildren.

The following local friends urge you to support the re-election of Walter Grubbs:

DISTRICT CAMPAIGN CHAIRMAN: Congressman Omar Burlison [Ret.]

DISTRICT CAMPAIGN COMMITTEE: TAHOKA: Clint Walker, Nicky Summitt, John Brooks Grace Huffaker and Roy Lynn Kahlich

SWEETWATER: Jay Waddell, Jimmy Waddell, Ed Aiken, Jr., Mr. and Mrs. Rigdon Edwards, Pat Gerald, Lavelle Layfield, Johnny Moore, Ronnie Cox, Jere Lawrence, Watson Moore, Dr. James Pace, and Dr. Preston Nash; SNYDER: Truett Bryan, Mel Gilbert, Joe Sentell, Renal B. Rosson, Bob Watlington, Mrs. Julia Fox, Milton Ham, Bobby McCormick, Roger Mize and Mayor Rod Waller; STAMFORD: Harell Petty, A.C. Humphrey, Dr. Ike Hudson, Don Welch, James Elam and Roy Arledge; ANSON: Steve Teichelman, Herman Reeves, Mrs. Mozelle Pittard and John Deatherage; KNOX CITY: Greg Clonts, Mr. and Mrs. Carl Shelton, Dick Ewalt, Barney Arnold and David Counts; MUNDAY: Charles Baker, Frank Jackson, Kenneth Baker and M.L. Wiggins; MERKEL: Don Hart, Glen Teaff; ROTAN: Joe D. Burk, Wayne Harris and James Springer; ROBY: Cecil King; ASPERMONT: Mike Martindale; HAMLIN: Mrs. LaVerne Hunter, Ronald Combs and Robert Fowler; PADUCAH: W.Q. Richards, Mr. and Mrs. T.G. Richards; JAYTON: James Hall; TRENT: Bruce McGlothlin; AVOCA: Mr. and Mrs. Darrell Richards; LUEDERS: Mrs. Floyd Jones; TUSCOLA: Bobby Sayles and Bill Thornton; BUFFALO GAP: Walter Shaller; HAWLEY: Joe T. Smith; ROSCOE: Lance and Walter Deal; NEW HOME: Lt Moore and Joe D. Unfred; POST: Billy Greene, Mrs. R.H. Sappington and Larry Johnson; O'DONNELL: Jim Chambers and J.T. Forbes.

Vote To Keep An Experienced, CONSERVATIVE Democrat In The Texas House



Re-elect
Walter Grubbs
78th District Representative

Political advertisement paid for by Friends to Re-elect Walter Grubbs committee
Walter Grubbs, 1702 South Clark, Abilene, TX 79605

GLENDA WILLIAMS For County Treasurer

Your Vote Is Appreciated May 1st



Paid For By Richard Williams Campaign Mgr

after you see your doctor, bring your prescription to

Dayton Parker Pharmacy
TAHOKA, PH. 998-4300

Bedding Plants

20¢

Strawberries

40¢

10 - 1 inch Geranium

\$1.25

14 inch Geranium

\$2.75

Bartley-Weaver Fertilizer Co.

1029 LOCKWOOD

TAHOKA

998-4717

Mrs. H Seeks Board



JEWEL H. Lene has filed Democratic office of State Education Director. Mrs. Harri teacher, has ground in cation. For taught English Holiday Hig day, Texas, S er of English Jefferson Jr Abilene, for Director of ices for the for three ye until she reti 1981 she wa rector for t Teachers A region of a counties. Jewell Har tive in prof



E

Are

Mrs. Harris Seeks State Board Post



JEWEL HARRIS

Mrs. Jewell Harris of Abilene has filed with the State Democratic Party for the office of State Board of Education, District 17.

Mrs. Harris, a retired teacher, has a broad background in the field of education. For six years she taught English and Speech in Holliday High School, Holliday, Texas. She was a teacher of English and Speech in Jefferson Jr. High School, Abilene, for 22 years and was Director of Information Services for the Abilene schools for three years. From 1974 until she retired in August of 1981 she was Regional Director for the Texas State Teachers Assn. covering a region of approximately 46 counties.

Jewell Harris has been active in professional organi-

zations. She is a past president of the Texas Classroom Teachers Association, 1965-66, and a past president of the Texas State Teachers Association, 1970-71. In 1969 she was appointed by the governor to serve on the first Professional Practices Commission. This group wrote the Code of Ethics for the teaching profession that was adopted by teachers in 1971.

A native of Abilene she has received a BA Degree from Abilene Christian University, a Master of Education Degree from McMurry College, and has done graduate work at Hardin-Simmons University, and the University of Texas.

In March 1981 the State Human Relations award was presented to Mrs. Harris by the Texas State Teachers Assn. in recognition of her leadership and promotion of human relations.

Pol. Adv. Paid By Leta Pierce, Rt. 5, Tahoka, Texas



TEXANNS--From left, Coach Linda Spruelli, Lori Tipton, Rosemary Gutierrez, Marie Garcia, Elisa Tijerino. Front row, Lisa Chandler, Autumn Martin, Rachelle Smith and Becky Mendoza. (LYNN COUNTY NEWS PHOTO)

County 4-H Members Get Good Premiums

Lynn County 4-H members received over \$45,800 for premium sale animals during the spring of '82 show season.

Outstanding achievements were accomplished by the club members. Grand Champion Barrows were exhibited

at two major shows by two sisters. Kathy Davis exhibited the Grand Champion at the Southwestern International Livestock Show at El Paso and the following week sister Patricia Davis exhibited the Grand Champion at the San Antonio Livestock

Show. Kathy and Patricia are the daughters of Billy and Ann Davis of Tahoka. The girls received \$3735 and \$11,000 respectively for the animals.

Other champions exhibited included Champion Duroc at San Angelo by Curt Terry, Reserve Champion Duroc, El Paso by Jason Spence and Reserve Champion Cross barrow at Houston by Bryan Wood, shown by Marci Miller.

Monies received in the premium sales approximately are Houston \$21,600, San Antonio \$18,500, El Paso \$4,500 and San Angelo \$1,200. These monies will funnel into the economy of Lynn County, and also be used for future projects, education and other items.

List of placings for the club members at these shows are as follows:

EL PASO

Kathy Davis, Grand Champion-Barrow; Jason Spence, Res. Champion Duroc; Cody Smith, 11th Place Duroc.

SAN ANTONIO

Todd Ballard, Champion Southdown, Carcass Lamb on Hoof; Patricia Davis, Grand Champion Barrow, 5th Place Yorkshire; Daron Norwood, 2nd Place Duroc, 7th Place Cross; Byron Norwood, 4th Place Cross; Tabatha Miller, 3rd Place Hampshire; Bridgett Miller, 10th Place Duroc; Andra Draper,

3rd Place Cross, 4th Place Cross; Mike Rivas, 20th Place Hampshire; Greg Curry, 13th Place Hampshire, 13th Place Cross; Curt Terry, 2nd Place Chester, 10th Place Hampshire; Melanie Terry, 5th Place Berkshire; Marci Miller, 15th Place Berkshire; Tammy Wood, 12th Place Chester.

HOUSTON

Shawn Ballard, 2nd Place Hereford, 3rd Place Southdown; Cory Ballard, 3rd Place Southdown; Curt Terry, 6th Place Finewool, 2nd Place Yorkshire; Melanie Terry, 32nd Place Suffolk; Wayne Barton, 35th Place Suffolk.

Bryan Wood, Res. Champion Cross; Mike Rivas, 6th Place Berkshire; Cody Smith, 4th Place Hampshire; Patricia Davis, 5th Place Hampshire; Daron Norwood, 20th Place Cross; Tabatha Miller, 20th Place Cross; Rochelle Reid, 25th Place Spotted Poland China; Marci Miller, 25th Place Hampshire; Tadd Knight, 5th Place Cross; Stephanie Womack, 13th Place Hampshire.

SAN ANGELO

Curt Terry, Champion Duroc; Tadd Knight, 3rd Place Hampshire, 4th Place Cross; Patricia Davis, 4th Place Hampshire.

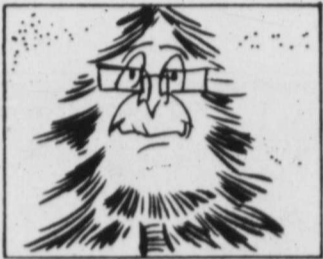
Beauty expert Helena Rubenstein wrote a book of memoirs in her nineties.



WINNERS in the Special Olympics held in Lubbock were Pablo Basquez, 2nd place, and Dennis Williams, 3rd place. Both received gold medals in the baseball throw.

Saturday, May 1
WATCH
Computerized Election Returns from Lynn County
KLEK 13
LUBBOCK, TEXAS

Dr. David Geeslin, Veterinarian Announces
TAHOKA VETERINARY CLINIC
will be open every
Thursday Afternoon from 1:30 p.m. until 5:30 p.m. Beginning May 6.
Clinic location is west entrance of old hospital (behind Health Office)
FOR APPOINTMENTS OR INFORMATION CALL LAMESA 872-3183 DAYS OR 872-3160 NIGHTS.



Some bristlecone pines in central Arizona are known to be more than 4,000 years old and called "the oldest living things."

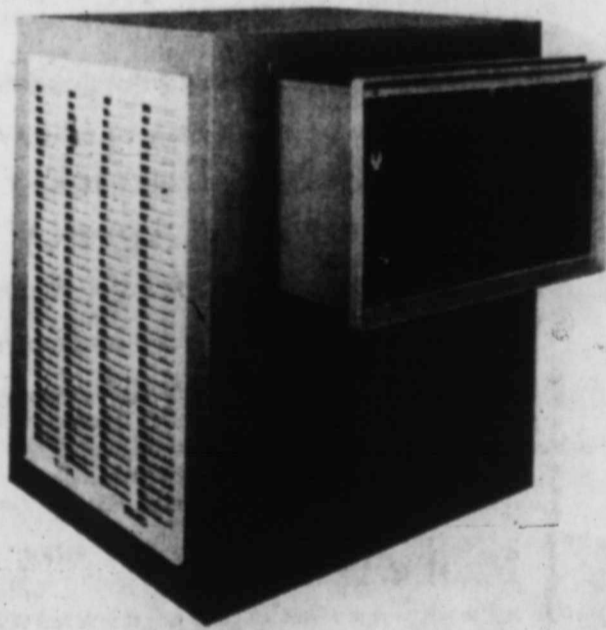
"The absent have a ringing in the ears when they are talked about."
Pliny the Elder



ELECT Robert Edwards For Commissioner, Pct. 4
Democratic Primary May 1, 1982
Your Vote & Support Will Be Appreciated!

Pol. Adv. Paid by Robert Edwards, Rt. 1, Wilson, Tx. 79381

Evaporative Air Conditioning



By PHOENIX

- *More than 30 units in stock.
- *Window units, downdraft, etc.
- *Variety of sizes.
- *Installation available.

from \$359⁸⁸ Up

- 3300 CFM 1/3 HP \$359.88
- 4400 CFM 1/3 HP \$399.88
- 4800 CFM 1/2 Hp 2 speed \$438.88
- 5800 CFM 1/2 HP 2 speed \$529.88
- 6800 CFM 3/4 HP 2 speed \$559.99

Lower prices than these on side discharge and downdraft models.

Marrier's Furniture

VISA - MC or Credit Terms

Ave J. and S. 1st St. On The Square In Tahoka 998-4170

NOW!

FINANCE RATE ROLLBACK!

12.8%
ANNUAL PERCENTAGE RATE

SAVE HUNDREDS OF DOLLARS IN FINANCING COSTS.

EVERY NEW CHEVY CAR, LIGHT-DUTY TRUCK, AND VAN DELIVERED BY MAY 31 QUALIFIES!

Here's the financing deal you've been waiting for. We are now offering financing at only 12.8% to qualified buyers. You can save hundreds of dollars in financing costs. All you have to do is take delivery by May 31, 1982. Hurry in and see us now for the Chevy of your choice.

All 1981 new cars and executive car quality for this savings! All 1982 new cars and pickups! See our stock for your selection today.

Participating Dealers Contribute to the Financing Rate and the Dealer's Cost. This May Affect the Final Repayment Price of the Vehicle. 12.8% APR on all new cars and light duty trucks.

Limited time offer! Hurry in for best selection at Bray Chevrolet Company

1615 Lockwood Tahoka, Texas 998-4544

**PUBLIC NOTICE
INVITATION FOR BIDS**

The City of Tahoka, Texas in behalf of applicants under the city's Community Development block grant program is seeking bids for home improvement work.

Sealed bids for case numbers 81-11-08, 81-12-012, 81-12-013, 82-1-015, and 82-1-018 will be received until 11:00 a.m. May 13, 1982, at the Wharton Building, 1730 Main Street, Tahoka, Texas, and at that time publicly opened.

The right is reserved by the owner or the City of Tahoka to reject any and all bids. All qualified bidders will receive consideration for award without regard to race, color, religion, sex or national origin.

Bidding information for the above cases may be obtained at the Wharton Building, 1730 Main Street, between the hours of 8:00 a.m. to 5:00 p.m. Monday through Friday, starting April 30, 1982 through 11:00 a.m. May 13, 1982.

/s/ John H. Fisher
Rehabilitation Coordinator
17-1c

**WOMENS SOFTBALL
SIGNUP EXTENDED**

The Womens Softball League has extended the deadline for signup to May 3. You may call Donna Whitley at 998-4844 or Pat Williams, 998-5073 after 5 p.m.

There will be a meeting at the softball field on May 3 at 7:30 p.m.

TUESDAY NIGHT BRIDGE

Last week's Tuesday night bridge winners were — First, Mrs. C.R. Burleson and James McAllister; Second, Mrs. Margie Maddox and Auda Norman; Third, Mrs. Arylis Askew and Mrs. Sam Edwards; and Fourth, Mrs. Mabel Gurley and Frank Hill.



SENIOR CITIZENS FAIR--The Senior Citizens Fair at Lynn County Pioneer Club last week was a big success, with judging of the entries done by Extension Agent Harriett Pierce, left. In the picture at right are some of the first place winners, from left: Altah Thomas, Cordie Swann,

Herbert Watson, Dr. K.R. Durham and Geneva Carter. Not shown are first place winners Ruth Martin, Lula Gryder, Lucille Stewart and Effie Evans.

(LYNN COUNTY NEWS PHOTO)

Re-Elect

E. R. Blakney

Commissioner, Pct. 4

Democratic Primary May 1

**I Will Be Grateful For
Your Vote and Support**

Pol. Adv. Paid By E.R. Blakney, Box 205, New Home, Tx. 79383

Pioneer Club

We would like to thank each participant and also those who came to look, for making our senior citizens mini-fair such a huge success. We'd especially like to thank Harriett Pierce for judging the show for us. Winners in each category are:

Painting: first, Altah Thomas; second, Mrs. M.O. Montgomery; third, fourth and sixth, Altah Thomas; fifth, Teddie Kelley.
Arrangements: first, Mrs. R.M. Stewart; second, Clifford Tankersley; third, Clifford Tankersley.
Plants: first, Cordie Swann.
Canned Goods: first, Lula

Gryder, second, third and fourth, Anna Pennington; fifth and sixth, Audrey Akin.
Baked Goods: first, Ruth Martin; second, Altah Thomas; third, Audrey Akin; fourth, Geneva Carter.
Pillows: first through fifth, Vesta Appling; sixth, Audrey Akin.
Handcrafts: first, Herbert Watson; second, Aline Eakin; third, Teddie Kelley; fourth, Herbert Watson; fifth, Elaine McMillan; sixth, Lennie Cox.
Quilts: first, Geneva Carter; second, Audrey Akin; third, Eula Lee Stokes; fourth, Stella Rains; fifth, Stella Rains; sixth, Audrey Akin.
Afghans: first, Effie Evans; second, Anna Pennington; third, Verna Lee Brown; fourth, Verna Lee Brown; fifth, Stella Raines; sixth, Teddie B. Kelley.
Needlework: first, Altah Thomas; second, Vesta Appling; third, Vesta Appling; fourth and fifth, Eula Lee Stokes; sixth, Ina Slover.
A special award went to Dr. Durham for his display of hand made miniatures.
May 12, 13 and 14 are the dates set for the games tournaments. Winners of these tournaments will be eligible for these games at the Senior Olympics May 27. We will hold tournaments for "42", checkers, washer toss, horse-shoe toss, and dominoes.
Our monthly singing will be May 3 at 7 p.m. We are expecting a good crowd to hear our special singers and join in our group singing. We will have singers from Pleasant Grove Baptist Church and Wesley Chapel Methodist. Make plans to join us. Call 998-5264 if you need to be picked up.
Social Security Day- May 12.
Hearing Aid representative - May 12.
Blood Pressure Check- May 4.
Exercise every day at 10:30 to 11 a.m.



DAN'S AUTO TEAM-- This team includes, from left, back row, Doc Hopson, assistant coach, Bruce Lehman, Danny Alvarado, John Aldous, James Antu and Coach Jimmy Hopson. Front row, John Tijerino, Boone Barrow, Gerald Antu and Bobby Joe Patterson.

(LYNN COUNTY NEWS PHOTO)

Victory

in a vote for

John T. Montford

one who

Values

People's **Voices**

Pd. Pol. Adv. Ed add Betty Moseley 840 S. 23rd Slaton, Tx. & Harley and Theresa Martin, Route 1, Slaton, Tx.



CYCLING SENSE
Safety Ideas

Emergency Reactions
How much time do you have to react when you're faced with an emergency traffic situation? Researchers at the University of Southern California studied more than 900 motorcycle accidents to learn that riders, on the average, had less than 1.9 seconds to respond. And, during that 1.9 seconds they had to see the threat, decide how to handle it and carry out their decision properly.



What can you do to be better prepared? The Motorcycle Safety Foundation offers these tips:

- Constantly scan the road up ahead for possible problems. Never let your eyes rest for more than a few seconds on any one spot.
- Maintain a two-second following distance to allow yourself a better view, more maneuvering room and a chance to be seen by others in traffic around you.
- Play a mental game with yourself. Map out, in your head, how you would handle emergency situations that might crop up as you ride.

The world's greatest migrators are birds called the Arctic terns. They travel each year to the Antarctic. The round trip totals about 25,000 miles.

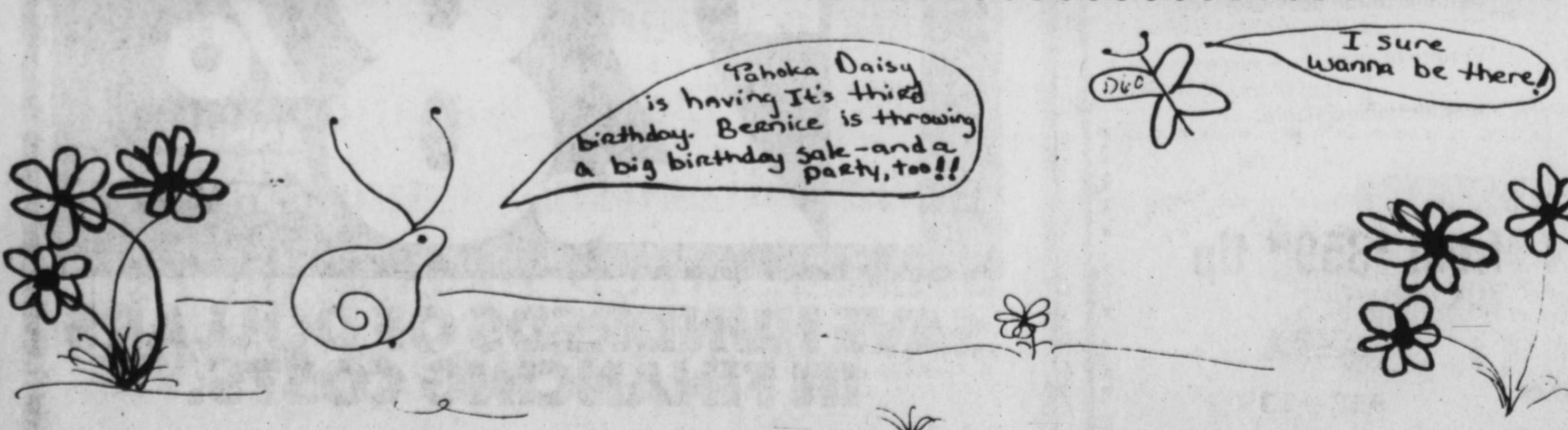
**Get Your Office Supplies
At The
Lynn County News**

**Robert Harvick
Insurance Agency**

★ Fire ★ Farm ★ Life ★ Auto
★ Crop Hail ★ Hospitalization

Located in the former Poka-Lambro Building
Ralph Allaire, O'Donnell, Agent
Billy Davis, Tahoka, Agent
2129 Main St. In Tahoka
NO MEMBERSHIP DUES

Phone 998-4536 HOME PHONE 628-2841



On Saturday, May 1, 1982, The Tahoka Daisy will "Sale-A-Brate" three years of business. In honor of this occasion, we are having a store-wide sale. See You Saturday!

The Tahoka Daisy

**ALLISON COLLECTIBLE PANTS '33''
STORE-WIDE SALE**

**OPEN 9:00 - 6:00
MONDAY-SATURDAY**

**CHIC JEANS 20% OFF
ALL DRESSES 20% OFF**

Pete Snelson

Democrat
Texas Land Commissioner

- Dean of Texas Senate
- Chairman of Education Committee
- Named one of Ten Best Legislators, 1982 Session
- Combat veteran, World War II
- Married, four children

It's a matter of trust.

Pol. adv. pd. for by Snelson for Land Commissioner, Gary R. Rodgers, Treasurer, P.O. Box 13252, Austin, TX 78711.

Melba

Services for Prather, 71, were held at O'Don Christ with officiating. Burial was at White Funer hoka.

Mrs. Prath p.m. Sunday Care Center illness.

She was bor in Hugo, Ok ated from N School and at ry College in.

She married Prather and Lynn County Hamlin.

Mrs. Prathe of the O'Don Christ.

Survivors i daughters, S O'Donnell an egge of Gra mother, Ber Hamlin; four Pallbearers: Freddy Jame Ender, Nc Allan Eaker Forbes.

I feel I a Administ worked a company

I contin Church.

AIR RESIDENT

A

Native P Reaso

Area's f coupled microna

SEED PROCT

Obituaries

Melba Prather

Services for Melba Marie Prather, 71, of O'Donnell were held at 3 p.m. Tuesday at O'Donnell Church of Christ with Leslie Mickey officiating.

Burial was in O'Donnell Cemetery under direction of White Funeral Home of Tahoka.

Mrs. Prather died at 11 p.m. Sunday at the Tahoka Care Center after a lengthy illness.

She was born Sept. 11, 1910 in Hugo, Okla. She graduated from McCaulley High School and attended McMurry College in Abilene.

She married the late Hiram Prather and they moved to Lynn County in 1949 from Hamlin.

Mrs. Prather was a member of the O'Donnell Church of Christ.

Survivors include two daughters, Sarah Edwards of O'Donnell and Mary Vierge of Grand Prairie; her mother, Bertha Gregg of Hamlin; four grandchildren.

Pallbearers were Rob Land, Freddy James, Wendell McClendon, Norman Wilson, Allan Eaker and Stanley Forbes.

Ricardo G. Garza

Rosary for Ricardo Garcia Garza, 25, of Las Cruces, N.M. was recited at 7:30 p.m. Sunday at White Funeral Chapel.

Mass for Garza was celebrated at 10 a.m. Monday at St. Pius X Catholic Church of O'Donnell with the Rev. Patrick Hoffman of Lamesa officiating.

Burial was in Peaceful Gardens Cemetery in Woodrow under direction of White Funeral Home of Tahoka.

Garza died Wednesday near Truth or Consequences, N.M. from injuries received in a traffic accident that day.

He was born in Lamesa July 15, 1956, and attended school at O'Donnell. He married Nadine Gallegos June 29, 1974 in O'Donnell.

Garza had served in the U.S. Army and was scheduled to graduate next month from New Mexico State University in Las Cruces.

Survivors include his wife; his parents, Mr. and Mrs. Catarino Garza of Lubbock; his grandparents, Mr. and Mrs. Delfino Garcia of O'Donnell; and three brothers.

ers. Joe and Delfino, both of Lamesa, and Alfredo of Lubbock.

Erineo Acuna

Mass for Erineo Acuna, 71, of Wilson was celebrated at 2 p.m. Monday at Blessed Sacrament Catholic Church of Wilson with the Rev. George Roney of Post officiating.

Burial was in Peaceful Gardens at Woodrow. Acuna died Thursday night in Methodist Hospital after a lengthy illness.

He was born in Nordine and moved to Wilson in 1936. He married Maria Cruz Feb. 17, 1930, in Texas.

Survivors include his wife; six daughters, Mary Lamb, Dale Garza, Anne Morales, Peggy Sandoval and Amelia Riojas, all of Wilson; three sons, Wallie of Houston, Elivero of Lubbock and Alejandro of Wilson; three brothers, Abel and Celedino, both of Edenburg, and Ralph of Lubbock; five sisters, Criselda Zapata, Adelita Reyna and Adelaida Vasquez, all of Lubbock, Elena Ramirez of Brownfield and Elicia Garcia of Modesto, Calif.; 50 grandchildren; and 20 great-grandchildren.

Clarence Crouch

Services for Clarence D. Crouch, 80, of Alamogordo,

N.M. were held on April 15 in the Alamogordo Funeral Home.

Crouch died April 13 after an illness.

Burial was in the Alamogordo Cemetery.

He was born in Richland Springs on Oct. 4, 1901. He moved to Lynn County with his parents in 1913 from Richland Springs and moved to Alamogordo, N.M. several years ago. He was a carpenter and architect until his retirement. He married Ila Collum who preceded him in death in Aug. 1981.

He is survived by two sons, Clarence D. Crouch Jr. of Ruidoso and James K. Crouch of Candler, Okla.; two sisters, Mrs. Nora Lullain of Ruidoso and Mrs. Velma (Babe) Self of Tahoka; and 7 grandchildren.

Esther Wheeler

Services for Esther Rebecca Wheeler, 99, a South Plains pioneer, were held at 4 p.m. Friday, April 23, at First United Methodist Church of Lorenzo with the Rev. Jerry Klaverweiden, pastor, and Dr. William R. Fleming, Lubbock district superintendent of the United Methodist Church, officiating.

Burial was in Ralls Cemetery.

Mrs. Wheeler, a native of Buffalo Gap, died at 5:30 a.m. Thursday in Methodist Hospital in Lubbock. She had lived in Lubbock since 1950.

She came to Crosby County in 1886 at age 4, moving to Estacado where her father, John W. Murray, published the first newspaper on the South Plains.

She married R.M. "Marsh" Wheeler Dec. 20, 1901 in Emma and they dug their half-dugout first home in the canyon wall south of Robertson. She was a Methodist.

Survivors include four sons, Rex of Crosbyton, Horace of Slaton, Ralph of Edmonson and Curtis of Lorenzo; four daughters, Mrs. Wilmer (Lola) Smith of New Home, Mrs. J.W. (Ruth) Adams of Ralls and Mrs. Marvin (Jessie) Aycock and Mrs. W.O. (Marcia) Lockwood, both of Lorenzo; 18 grandchildren 40 great-grandchildren; and 13 great-great-grandchildren.

Pallbearers were David and Robert Lockwood, Donald Aycock and Valton, Ferrel, Stanley, Edwin and Charlie Wheeler, grandsons.

Mary Vaughn

Services for Mary Ola Vaughn, 90, of O'Donnell will be at 2 p.m. Thursday (today) at First Baptist Church in O'Donnell with the Rev. Don Blackman, pastor, and the Rev. John Johns of Lubbock officiating.

Burial will be in O'Donnell Cemetery.

Mrs. Vaughn died at 11:15 a.m. Tuesday in Medical Arts Hospital in Lamesa after a lengthy illness.

She moved to O'Donnell in 1906 from Leon County. She married James Monroe Vaughn Sept. 7, 1910, in Lynn County. He died in 1961. She was a Baptist.

Survivors include a daughter, Faye Parker Fanning of Crane; a son, Willis Monroe of Clovis, N.M.; a step-

daughter, Pearl Lewis of Boise, Idaho; a brother, Dallas of Lamesa; 11 grandchildren; and nine great-grandchildren.

Pre-School Day at Wilson

Wilson Elementary School in Wilson, Texas, will hold a pre-school day for all children who will be entering kindergarten this fall. Pre-school day will be held Wednesday, May 5, 1982, from 2:15-3:00 p.m. in the elementary kindergarten classroom.

The children who are eligible are all five year old children who will be five years old by September 1, 1982. The Wilson I.S.D. Board of Education will determine policy procedures that will be followed for the 1982-83 kindergarten program after pre-registration and enumeration of these students are determined. Birth certificates and immunization records are required when you come for pre-school day.

Parents, please bring your child, and find out what he will be doing in kindergarten this fall.

Rodeo Queen's Contest

The Tahoka Rodeo Association wishes to announce there will be a Rodeo Queen's Contest held in connection with the annual Lynn County Rodeo to be held June 24, 25, and 26.

The Queen will be determined by the girl selling the most tickets. The Queen will receive a belt buckle.

Each contestant must ride a horse in the queen's presentation at the rodeo; if necessary, a horse will be provided. Contestants must be between the ages of 14 and 25 with parental consent forms required from contestants under 16 years of age.

Anyone interested in entering the contest should contact Louise (Mrs. John) Fisher, Sherry Tilley or Tom Marrier.



FIRST NATIONAL BANK BUNCH--These 5th and 6th grade girls play for the First National Bank team. Back row, from left, are Dee Hopson, coach; Regina Ingle, Michelle Graves, Shannon Roberts and Tamara Knight. In front are Lisa Carter, Angela Draper and Robin Parker. Not shown are Monica Taylor and assistant coach Pat Knight.

(LYNN COUNTY NEWS PHOTO)

Rabies Clinic Planned Here

A rabies clinic is planned here Saturday from 1 to 4 p.m. at the west entrance of the Tahoka Dental Office building, S. 1st and Ave. L.

Immunizations against rabies, distemper and parvovirus will be available for dogs and cats, said Dr. David Geelsin of Lamesa, veterinarian who will be here for the clinic.

Extra Outlets Light Fixtures Ceiling Fan Maintenance Trouble Shooting Irrigation

NOTICE
Phone Number Changed
924-7783
Melvin Lehman Electrical

Residential Wiring Commercial Repairing Farm Installation

Res. 924-7783 Mobile 924-7629
Route 4, Tahoka, Texas 79373

Elect Blanche Franklin

Lynn County Treasurer

Democratic Primary May 1, 1982



I feel I am qualified to fulfill the duties of this office as I have a Bachelor of Business Administration degree from West Texas State University. I taught school in Lamesa, worked as secretary for the Lamesa National Bank and kept books for an implement company.

I continued to use this experience while we were members of the Wells Baptist Church.

Your vote in this election will be appreciated.

Pol. Adv. paid by Blanche Franklin, Tahoka, TX 79373



It's time to get your air conditioner serviced and ready for summer

Complete Installation & Service

Arthur Whitley Electric Co.

998-5373 or 998-4844 (nights)

Native Born Research



Tahoka, Texas

998-4935

★ BLUE RIBBON COTTON VARIETIES ★



Area's finest disease ratings coupled with rare premium microaire consistency

The original Ranger variety still in demand for its native Texas performance

Wide area of adaptability with excellent disease tolerance and high turnout

SEED PROCESSING

Bryant Seed And Delinting, Inc.

806/998-4497

SALES DISTRIBUTION

vote for somebody saturday

Using your voting privilege is being a good citizen. At First National Bank, we encourage good citizenship - and sound banking practices built on 75 years of experience in serving this community.



THE FIRST NATIONAL BANK OF TAHOKA

"Helping You Change Things For The Better"



Thank You!

1907-1982

Wilson Menu

May 3-7, 1982
BREAKFAST
 MONDAY- Cinnamon Roll, Applesauce, Milk
 TUESDAY- Pancake, Butter, Syrup, Orange Juice, Milk
LUNCH
 MONDAY- Hamburger, Lettuce, Tomato, Pickles, On-

ions, French Fries, Brownies, Milk
 TUESDAY- Fish w Tartar Sauce, Green Beans, Cream Potatoes, Hot Rolls, Peach Half, Milk
 WEDNESDAY- Meat Balls & Spaghetti, Blackeyed Peas, Slaw, Cornbread, Chocolate Chip Cookies, Milk
 THURSDAY- German Sausage, Red Beans, Spinach, Cornbread, Apple Cobbler, Milk
 FRIDAY- Meat & Cheese Sandwich, Pork & Beans, Carrot Sticks, Pickles, Banana Pudding, Milk

Wilson News

A bridal shower honoring Stephanie Cook, bride-elect of Randy Moczygmba, will be held in the home of Mrs. Roy Lynn Kahlich Saturday May 1 from 10 to 11 a.m. Selections are at Whitakers Hardware, Tahoka and Anthony's and Pauline's Flowers in Slaton.

 Congratulations to Mrs. Lula Gryder, Mrs. Aline Eakin and Mrs. E.O. Montgomery who were named as winners in the Lynn County Senior Citizens Fair. Thanks to everyone for entering.

 The following students won places in Regional UIL Contest:



America's favorite appetizer is shrimp cocktail.



A diesel powered vehicle has been devised that is said to be capable of achieving 1,585 miles per gallon at 25 miles per hour.

Borden's Real Ice Cream
 "Old Fashioned Goodness"
 HAND DIPPED ASSORTED FLAVORS
Star-Lite Drive In
 998-4465
 Monday through Saturday 9:30-9 Sunday 9:30-10

What store has practically every kind of item for sale anybody can think of?
The General Store
 Ave. J, one block south of square, in old lumber yard building.
 We sell on consignment only; at this time we have over 95 consignees. More merchandise arrives every day at this flea market-type store that has everything, new and used.
 Let us handle your merchandise on commission.
Open 8 A.M. to 8 P.M.
7 Days A Week
 Rayford Smith, mgr.

VOTE
 FOR
JR. FOLLIS
 FOR J. P.
Precinct 4, Lynn County
 Pol. Adv. Paid by Jr. Follis, O'Donnell, Texas

Wilson Holds Town Meeting

Thirty-two residents of Wilson and eight non-residents (including school board members, county sheriff and county commissioner) were in attendance at the Town Meeting on Friday, April 23. The meeting was conducted by the Wilson Planning Committee which was appointed by the City Council last February to determine the needs of the community and then to arrive at methods of solving those needs. With the help of SPAG (South Plains Association of Governments) the committee conducted a survey of the city residents in March. This meeting presented the results of that survey and gave citizens further opportunity to discuss them and decide what actions to take.

Sylvester Cantu of SPAG presented a summary of the survey results. About 61% of the households participated in the survey.

The Committee next presented their eight areas of need as shown from the survey: streets, recreation, elderly services, community appearance, housing, economic development, trash collection and civil defense.

After discussion of each area's problems and possible solutions, those present agreed to form three action groups to work with 1. recreation, 2. housing and economic development and 3. community appearance. The others were felt best handled by the City Council since they were already working with them.

Another town meeting will probably be held to report on the work of these Action Groups. If you were unable to attend this meeting and wish to serve on any one of the three action groups, contact the City Secretary or Chairmen of the Planning Committee, Bob Zacharias at 628-3261.

Lynn County Merchants Appreciate Your Business

Don't Forget
 To Vote For
J. C. Gandy
 May 1 For Commissioner Precinct 2
 Pol. Adv. paid for by J.C. Gandy, Rt. 5, Tahoka, TX

See How GMAC's New
12.8%
 Financing Lowers Your Monthly Payments!
WE OFFER LOW GMAC FINANCING
12.8% ANNUAL PERCENTAGE RATE
 Participating dealers contribute to the reduction of the financing rate and dealer's contribution may affect the final negotiated price of the vehicle.
 GM QUALITY SERVICE PARTS
 GENERAL MOTORS PARTS DIVISION
 Keep That Great GM Feeling With Genuine GM Parts.
McCord Motor Co.
 TAHOKA, TEXAS
 SEE THE NEW GENERAL MOTORS LINE OF FINE CARS
 PONTIAC BUICK OLDSMOBILE GMC

CYNTHIA (Cindy) BRYAN HAS:
 *Proven experience and knowledge of county government accounting
 *Sincere dedication and interest in operating a professional and efficient Treasurer's Office to serve the citizens of Lynn County.

CYNTHIA (Cindy) BRYAN WOULD:
 *Appreciate your vote on May 1, 1982
 *If elected, do the job to the best of her ability

ELECT
CYNTHIA (Cindy) BRYAN
LYNN COUNTY TREASURER
 SUBJECT TO DEMOCRATIC PRIMARY, MAY 1, 1982
 (Pol. Adv. Paid for by Cynthia (Cindy) Bryan, Tahoka, Tx.)

FANCY THAT!

A podiatrist really put his foot in it recently—and with terrific results. He discovered that an office copier can be used to reproduce footprints to aid him in designing corrective footwear and treatments.



The experiment won for his nurse, Mary Jo Burke, who thought of the unique use of the copier, first prize in Minolta Corporation's "Wild and Crazy" copier contest for unusual uses of office photocopiers. Minolta Business Equipment dealers keep coming up with unusual copier uses.

They'll have to go some to top Mrs. Burke, or Dr. Orlando Garcia Piedra, another of last year's winners. He uses his copier to make transparencies of hands and various diagrams for his lectures at a Florida hospital.



A shower of needles was the result of a cyclone striking a factory that made knitting needles.



3 MONTH RUN—Hubert Morgan, a 60 year-old Seventh Day Adventist pastor from Sayre, Pa., is approximately at a half-way point as he jogged through Taboka last Sunday afternoon. Pastor Morgan averages 45 miles a day on this 3300 mile run from Los Angeles, California to Washington, D.C. He is running in order to raise money for his congregation to build a new church building. (LYNN COUNTY NEWS PHOTO)

The Veterans Administration has toll-free telephone service to VA regional offices as an outreach medium. Currently, 950 circuits make it possible for all of the nation's veterans to receive benefits information and assistance for the cost of a local call.

Salvation Army Fund Drive Going

The annual spring kick-off drive for the Salvation Army was held at the First National Bank Tuesday.

"Proverbs are forever at war with each other."
G.C. Lichtenberg

Assisting with the drive this year is Mrs. J.D. (Virginia) House, who has 23 workers to call on businesses and residential prospects. The goal this year is set for \$2000 according to Jon-Roy Ramsour, chairman of the North Lynn County Salvation Army service unit. Ramsour asked that people contribute generously as they have in past years so as to help the needy. Local funds are used to help stranded people in emergencies with food, clothing, lodging, transportation and other needs. Persons are also helped with medical and dental bills, rent, clothing, shoes, utilities, camp for boys and other necessities.

Funds also are used for natural disasters such as the devastating tornadoes that hit Paris and Wichita Falls. Prison paroles are assisted as well as homes for undwed mothers, elderly adult and youth rehabilitation. A missing persons bureau is also maintained in 150 countries throughout the world. The Salvation Army is a legal charity and gifts are tax deductible.

EVERY TUESDAY
HOME COOKED
Beans & Cornbread
95¢
With Chili \$1.35
Star-Lite
Drive In
998-4465
Monday through Saturday 9:30—9 Sunday 9:30—10

Let's Elect Buddy Temple Governor



The Temple Family
Susie, Hannah, John, Whitney, Ellen and Buddy

Democratic Primary
Saturday, May 1

Pol. Adv. paid for by
Temple for Governor Committee, P.O. Box 5838, Austin, TX 78764

One Good Reason To Vote May 1
ELECT
Radene Turner

★ Responsible ★ Dependable
★ Competent ★ Civic-Minded

To The People of Lynn County:
Duck and I want to thank you all for being so gracious and kind to me as I campaigned for the Office of County Treasurer. I wish I could have seen each of you personally, as it has been a rewarding experience - seeing old friends and making new ones. Remember to vote May 1 and I would sincerely appreciate your support.
Thank you
Radene & Duck

POL. ADV. PAID FOR BY RADENE TURNER, RT. 1, WALTON, TX 75081

Spring SHOWER BARGAINS

PEASANT BLOUSES \$3
A versatile peasant neckline with bow, fluted sleeves in assorted prints and solids. Machine washable 100% polyester or acetate/nylon. In sizes S, M, L.
Extra sizes... 3.50 ea.

CANDY JAR, VASES, TRAYS GLASS GIFT WARE ASSORTED \$3.99

PRETTY NYLON WALTZ GOWNS \$4.97

BAR-B-Q 18" GRILL PORTABLE \$6.98
NYLON SATIN TRICOT BRIEFS 87¢
American Enka Semi-Bright nylon tricot in white and colors. All with a cotton-lined crotch. Sizes 5-6-7.

BOX FAN 20" \$24.99
EXTRA WIDH PANTY HOSE \$1
Nylon, knitted with a special stretch fiber. Reinforced toe. Sun-tan, beige, coffee, off black. Sizes 2X, 3X, and 4X.

6 PC ALUMINUM COOKWARE SET GOLD OR BROWN \$14.97

FAMOUS BRAND BATH TOWELS 4.97
You'll recognize the fine quality of these big, solid color towels! Come see, come save on these slight irregulars.

FINGERTIP TOWEL BUYS \$1 ea.
Century classic style, 20x16" size. Save on these irregulars from a very famous maker, known for fine quality. Stock up now!

DISPOSABLE BIC SHAVERS \$1.29
10 PACK

BIC LIGHTER 2/97¢

WOMEN'S VINYL WEDGE 4.99 Pr.
Easy-fitting leather-look vinyl, with attractive vamps. Latest styles with EVA indoor/outdoor sole. Black, tan ombre or camel. Sizes 5-10. A really great buy.

NEW SHIPMENT SWEAT PANTS & TOPS ASST COLORS \$7.99
LOOK AT OUR NEW LACE TO TRIM THEM WITH

V-STRAP ZORIS FOR THE FAMILY 88¢ Pr.
So easy to slip into after the bath, lounging on the beach! Get them in men's, women's, and children's sizes.

ASSORTMENT OF RUBICUBE WHIPPET PYRAMID \$1.97

FAST WHEELS METAL CARS 88¢
Trucks, racing cars and more of strong die-cast metal. Kids love 'em. At this low price buy more than one.

CHILDREN "SMRUF" SAND BOX OR POOL \$6.99

STATIONERY ASSORTMENT \$1 box
18 assorted designs from which to choose. Box contains both decorated and plain sheets with envelopes.

RED WOOD BAR-B-Q TABLE & 2 BENCHES \$49.99

JERGENS 3 OZ SIZE HAND SOAP 5/\$1.00

NORTHERN 1200 WATT HAIR DRYER \$10.99

MEN'S STRETCH SPORT SOCKS \$1 pr.
Over-the-calf style, cushion foot. Orion nylon stretch in colors with striped top. Sizes 10 to 13.

BAT AND BALL SET \$1
Durable plastic bat and power hitter ball for the budding Little League stars. Great way to keep in practice. Buy a set now, for summertime fun.

LANKFORD'S

Garden Club

The Tahoka Garden Club met Tuesday, April 29, at 9:30 a.m. in the home of Mrs. Johnny Marett of Brownfield. Mrs. Janelle Crain served as co-hostess. Eleven members and one visitor attended the meeting. Mrs. Clifford Tankersley, club president, presided over

the business session. Mrs. R.M. Stewart gave the "The Gardener's Prayer." A new member, Mrs. Madeline Brown, was voted into the club. Certificates of recognition were presented to the following active club members having been in the club for 20 years or more: Eloise Durham, Altah Thomas, Opal Hines, Clifford Tankersley, Loucile Stewart, Zela Taylor, Esta Mae Kidwell and Frankie Fenton.

A report on the District Convention held in Odessa April 7-8, attended by Clifford Tankersley, Lena Short and Mildred Abbe, was given by Mildred Abbe. She reported that the club's 1981-82 yearbook received first place in the District—the president's report: third place.

The program, based on "How to Grow Annuals and Perennials", was brought by Bill Band of the Brownfield Band Nursery and Greenhouse. Following the meeting, club members met at the Senior Citizens Center of Brownfield for lunch. Afterwards, a tour of the Bond Nursery and Greenhouse was made.

VA-guaranteed Graduated Payment Mortgages are now available with lower downpayments for new home purchases. On new homes the downpayment with a VA Graduated Payment Mortgage may be as low as 2.5 percent of the sales price or reasonable value of the property, whichever is lower.

Pythian Sisters

Lynn Temple Pythian Sisters met April 20 in regular meeting.

The charter was draped for past Supreme Grand Chief Nellie B. Miller, who died recently.

Grand Chief Ruth McRae of Waco has asked to make her official visit to this Temple Aug. 3.

The local Sisters will host the District Convention Sept. 25. Helen Ellis was elected District Deputy and will make the plans for this meeting.

Grand Temple will be held in Abilene this year instead of Waco, which was previously stated.

Thirteen members were present with Dixie Payne and Bertha Williams as hostesses.

Vaccinating shrimp increases production

COLLEGE STATION — In the first field experiment of its kind, a Texas A&M University veterinary microbiologist has successfully immunized saltwater shrimp against harmful bacteria.

The immunity lasted through harvest, and production was greater in the ponds containing immunized Pacific white shrimp, said Dr. Donald Lewis.

The experiment was part of the continuing research program at Texas A&M's shrimp mariculture center near Corpus Christi. The studies are funded by the Texas A&M Sea Grant College Program along with the Texas Agricultural Experiment Station and Texas Agricultural Extension Service.



Keep frozen poultry hard-frozen until time to thaw, and cook promptly after thawing.

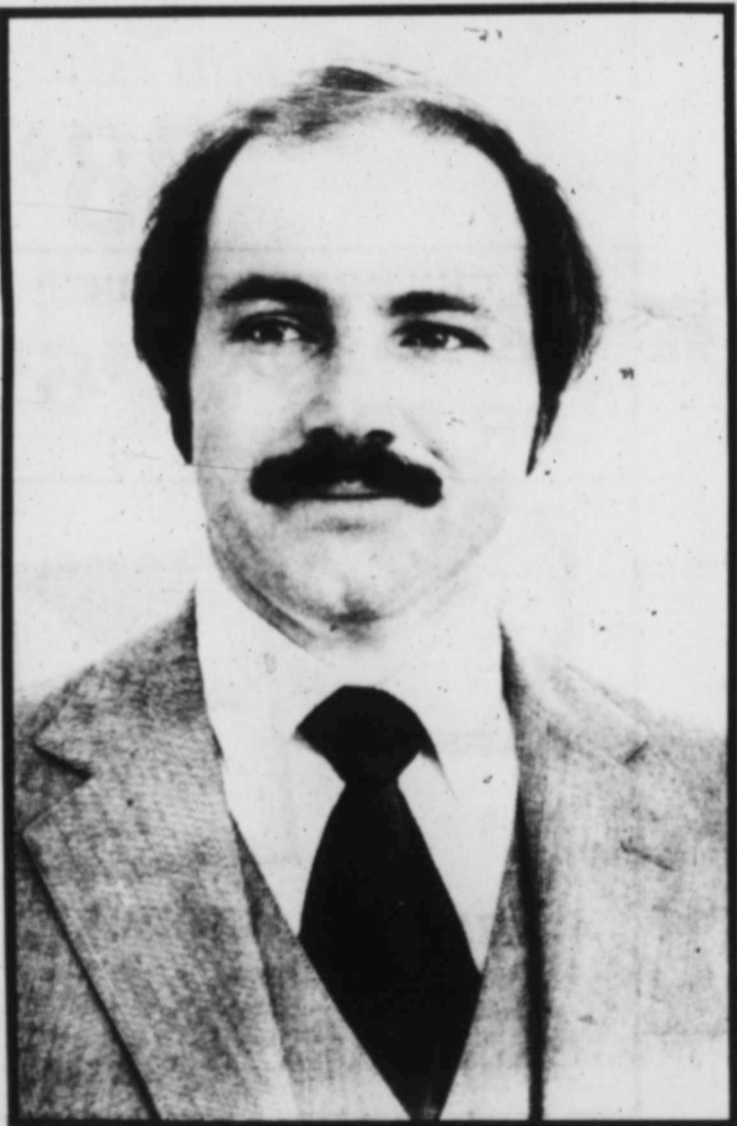


ALL-OUT EFFORT—Alvin Hatchett of Shorty's Body Shop makes a big effort at blocking this shot, but Valentin DeLeon of Louder Gin already has the ball on its way. (LYNN COUNTY NEWS PHOTO)

Every Day - Anytime
 Home Cooked MEALS
Mexican Food
Star-Lite Drive In
998-4465
 Monday through Saturday 9:30—9 Sunday 9:30—10

"For A People's Voice In State Government"

Steve Carriker



Believes in:

- ★ The Farmer
- ★ The Small Businessman
- ★ Teachers And Education
- ★ Senior Citizens

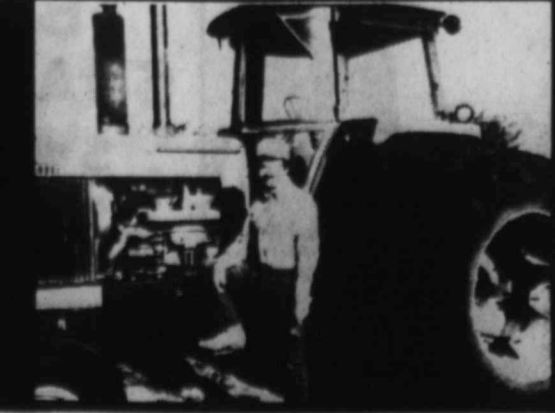
And Most Of All He Believes In

The Future Of Rural West Texas

Elect Democrat

Steve Carriker

Your 78th District State Representative



INSIDE-OUT CREAMY CUPCAKES
 1 package (14 oz.) gingerbread mix
 1/2 cup finely chopped walnuts
 1 container (8 oz.) Birds Eye Dover Farms whipped topping, thawed

Prepare gingerbread mix as directed on package, adding walnuts. Divide batter evenly into 12 paper baking cups set in muffin pans. Bake at 350° for 25 to 30 minutes, or until tops spring back when lightly touched. Remove from pan and cool on racks. Cut a 1-inch circle in center of each cupcake and remove. Gently scoop out center, reserving crumbs. Toast reserved crumbs at 350° for 10 minutes; cool. Fill each cupcake with about 1 tablespoon of the whipped topping. Replace tops. Frost tops of cupcakes with remaining whipped topping and sprinkle with toasted crumbs. Serve the day prepared or freeze 2 to 3 hours or overnight. Remove cupcakes from freezer 5 to 10 minutes before serving. Makes 12.

Tahoka Merchants Appreciate Your Business

Thank You Without You, Little League Would Not Have Been Possible
 Taylor Tractor Equip. Co., Inc.
 Louder Gin
 Dayton Parker Pharmacy
 First National Bank
 Robert Harvick Insurance
 Wade Farm Implement
 Marrier's Furniture
 Quality Cleaners
 NAPA Flanigan's Auto Parts

The boys & girls playing Little League say "Thanks" to these sponsors for making their summer fun!

Charlie Stenholm
 Charles W. Stenholm
 Congressman
 17th District of Texas

"Thanks for the opportunity to serve. Vote in the May primary. VOTE for America."

Charles STENHOLM
 Democrat - 17th District - U.S. Congress

Stenholm for Congress Committee
 P.O. Box 1032
 Stamford, Texas 79533

Paid for by the Stenholm for Congress Committee.



Visit Your Home Town COMPLETE GIFT CENTER



1614 MAIN
NEXT TO
TAHOKA
DRUG

BORDENS



Ice Cream
1/2 GAL ROUND

\$1.69



SHURFINE

Tomato Sauce
8 OZ. CANS

\$1.00



ALL PURPOSE

Gladiola Flour
5 LB. BAG

79¢



CALIFORNIA RED RIPE

Strawberries
BASKET

59¢

TEXAS RUBY RED
Grapefruit 5 LB. BAG **99¢**

CALIFORNIA CELLO PKG.
Carrots 3 1 LB. PKGS. **99¢**

VINE RIPENED
Tomatoes LB. **39¢**

RUSSET ALL PURPOSE
Potatoes 10 LB. BAG **\$1.39**

GLADIOLA MIXES
WHITE OR YELLOW
Cornbread 5 6 OZ. PKGS. **\$1.00**

SMUCKER'S JELLY OR
Grape Jam 32 OZ. JAR **\$1.19**

ALL GRINDS COFFEE
Folger's 1 LB. CAN **\$2.39**

PAPER TOWELS
Job Squad JUMBO ROLL **89¢**

SHELF SPECIALS
REGULAR/SCENTED
Lysol Spray 12 OZ. CAN **\$1.89**
LYSOL TOILET BOWL
Cleaner 24 OZ. CAN **99¢**
LYSOL DEODORANT
Cleaner 28 OZ. BTL **\$1.59**
LYSOL BATH/TUB/TILE
Cleaner 17 OZ. BTL **\$1.19**
REG./FLORAL
Love My Carpet 20 OZ. CTR. **\$1.89**
DETERGENT 20% OFF LABEL
Palmolive Liquid 32 OZ. BTL **\$1.49**

HEAVY GRAIN FED BEEF
BLADE CUT

Chuck Roast
LB. **\$1.29**



SOMEHOW, NOTHING
SATISFIES LIKE BEEF.

Ever wonder what Oscar Mayer has in store for you...

OSCAR MAYER MEAT/BEEF
Wieners JUMBO 1 LB. PKG. **\$1.89**
OSCAR MAYER SLI./MEAT/
Bologna BEEF/THICK/THIN 12 OZ. PKG. **\$1.49**
OSCAR MAYER MIX OR MATCH
Meats LIVER CHEESE/COTTO SALAMI/P & P LOAF 8 OZ. PKG. **\$1.19**
OSCAR MAYER
Loaf HAM & CHEESE NEW ENGLAND 8 OZ. PKG. **\$1.49**

LEAN FRESH
GUARANTEED 73% LEAN
Ground Beef LB. **\$1.19**
ARMOUR PURE HAMBURGER
Beef Patties 3 LB. BOX **\$4.89**
BONELESS HEAVY GRAIN FED
Roast CHUCK LB. **\$1.89**
BONELESS HEAVY GRAIN FED
Steak CHUCK LB. **\$1.99**

GROCERY SPECIALS

STOKELY LEMON LIME-ORANGE
Gatorade 32 OZ. BTL. **69¢**
DEL MONTE ENCHILADA
Sauce MILD/HOT 16 OZ. CAN **49¢**
DEL MONTE GREEN
Chilies WHOLE/DICED 4 OZ. CAN **49¢**
HEINZ WORCESTERSHIRE
Sauce 10 OZ. BTL. **89¢**
SCHILLING BLACK
Pepper 2 OZ. CAN **59¢**
KRAFT ASSD. FLAVORS
Sauce BARBECUE 18 OZ. JAR **69¢**

HEALTH & BEAUTY AIDS

TOOTHPASTE 10% OFF LABEL
Close-Up 27 OZ. TUBE **79¢**
MOUTHWASH 15% OFF LABEL
Signal 12 OZ. BTL. **\$1.39**
ANTACID
Maalox 12 OZ. BTL. **\$2.19**

DAIRY & FROZEN FOODS

MARGARINE SQUEEZE
Parkay 1 LB. BTL. **79¢**
KRAFT
Velveeta Slices 16 OZ. PKG. **\$1.89**
KRAFT CHILLED
Orange Juice QT. BTL. **89¢**

Introducing Trading Stamp Punch Card
GET YOUR CARD PUNCHED EVERY TIME YOU COME IN FOR GROCERIES
AFTER IT'S ALL PUNCHED, YOU GET \$60.00 WORTH OF TRADING STAMPS AND A NEW CARD.



Spring Warehouse Sale
3-PLY VERA FACIAL TISSUE
3 \$1
150 CT. BOXES

Spring Warehouse Sale
BATHROOM TISSUE
NICE 'n' SOFT
\$1.15
6 ROLL PKG.

SUMMITT'S
VENTURE FOODS

2001 Lockwood
TAHOKA, TEXAS
998-5128



MEMBER STORE **AT** AFFILIATED FOODS INC

PRICES EFFECTIVE APRIL 29-MAY 5 WE RESERVE THE RIGHT TO LIMIT QUANTITIES WE ACCEPT MANUFACTURER'S COUPONS

New Home News

By Florence Davies
Call 924-7479

The New Home senior class were honored with a banquet in the Baptist Church Fellowship Hall Thursday evening, April 22. "The Signs of the Times" was the theme. Rhonda Timmons and Julia Gill presented the program. Rhonda doing a chalk talk accompanied by Julia's message in song. The entire senior class and their sponsors were served chicken, potatoes, hot rolls, green beans, salad and dessert.

Doris Lamb of Seattle, Washington and Roy and Ernestine Webb of Wellington, Nev. are here visiting

their sister and brother-in-law, Lois and Donnie Morris. Gloria and Toy Dulin of Tulsa spent Sunday with them and Ronnie and his family from Plainview were with them Saturday.

Carlton Davies, of Amarillo and Jim Spikes of Lubbock visited with us Saturday.

Jerry Overman and his family of Boulder, Colo., Rodney and Leah Overman of El Paso, Mr. and Mrs. Billy Kennedy and children, Melissa Overman of Lubbock and Mike and Rebecca Ballou and Bambi of Wolforth

spent last weekend with Ruby and Randy Overman.

Mr. and Mrs. Paul Boyd of Lafayette, La. were here Friday until Sunday last week with Mr. and Mrs. Bob Parker.

John and Mary Bess Edwards went to the Bob Wills Day in Turkey Saturday.

Gene and Gail Grider, their daughter and granddaughter, Christi and Crystal Davis of Dennison, came Friday to visit Mr. and Mrs. C.G. Kieth and family and with Mr. and Mrs. Carl Grider and family in Wilson.

Britt McClung of Austin spent a week here with his grandparents, Mr. and Mrs. Leroy Nettles. Marjorie accompanied him home Sunday to stay a few days.



KARY DURHAM
4-Year-Old Violinist In Concert

Kary, daughter of Mr. and Mrs. Larry Durham, participated in the Suzuki Spring Concert on April 17th during the Lubbock Arts Festival at the Civic Center.

73 violin students performed during the concert and Kary was one of the five four-year-olds playing. She has been with the Texas Tech Suzuki program since September 1981 under the instruction of Patrice Barnett.

New Home School News

New Home High School boys and girls tracksters met with success in district competition to advance to regionals in Levelland. Representing New Home in girls' competition were Lana Kieth in the long jump; Linda Tillman in the 200 meter dash; and Elaine Griffin in the 100 meter dash. Griffin, Kieth, Tillman, and Nancy Hirscheta in the 400 and 800 meter relay. Alternate was Brenda Tillman. Both relays qualified at regional to advance to the state meet in Austin on May 6, 7 and 8.

In boys' regional competition are Robert Estrada in the shot; Robert Griffin in the 400 meter dash; Juan Solorzano, Johnny Vickers, Estrada and Griffin in the

James Ray is reported slightly improved in Methodist Hospital. Still no company allowed.

400 meter relay. Solorzano, James Tillman, Vickers, and Griffin will compete in the 1600 meter relay. Alternate is David Estrada.

The annual Junior-Senior Banquet was held at the Lubbock Holiday Inn Sierra Room on Friday evening, April 23. Guest speaker at the banquet was Herb Williams, New Home High School Counselor. The evening's entertainer, Richard Byers, New Home High's coach, was prevented from performing at the banquet when a traffic mishap delayed his arrival. Byers was not injured in the accident. The mishap occurred when Byers' car was hit by a car that was attempting to exit on an oncoming traffic ramp at University and Loop 289 in Lubbock.

New Home School Menu

May 3-7, 1982
BREAKFAST
MONDAY- Oatmeal, Toast, Juice, Milk
TUESDAY- Cereal, Pineapple Juice, 1/2 Slice Toast, Milk
WEDNESDAY- Pancakes, Juice, Milk
THURSDAY- Rice Krispy Bars, Fruit, Milk
FRIDAY- Toast, Jelly, Milk

LUNCH

MONDAY-Shepard's Pie, Corn, Tossed Salad, Rolls, Milk
TUESDAY- Super Dogs, Ranch Style Beans, Cheese Sticks, Fruit Cobbler, Milk
WEDNESDAY- Tacos, Salad, Fruit, Cheese, Crackers, Milk
THURSDAY- Steak Fingers, Gravy, Cream Potatoes, Green Beans, Rolls, Milk
FRIDAY- Hamburger or Cheeseburger, Lettuce, Pick-

H. S. students lack interest in consumer issues

COLLEGE STATION — A lack of interest in consumer issues by high school students is the biggest obstacle in establishing a consumer education program in Texas Schools, says a university marketing professor.

les, Tomatoes, French Fries, Cookie, Milk

In a study comparing 1970 and 1981 state high school consumer education programs, Dr. James McNeal of Texas A&M University said a lack of student interest and already-crowded curriculums keep them from doing well.

"Half of our high schools don't offer a separate course and more than 10 percent of the high schools offer no consumer education at all," said McNeal, a specialist in consumer research.

RABIES CLINIC

Saturday, May 1

1:00 - 5:00 PM

at West entrance of old hospital

(behind Health Office)

Immunizations against Rabies, Distemper and Parvovirus will be available for dogs and cats.

Vaccinations will be administered

by Dr. David Geeslin of Lamesa.

Qualified

Dependable

Re-Elect C. W. Roberts County Clerk, Lynn County

The following is something I wish to share with the voters: There are many instruments to be handled in the County Clerk's office. Among these I will name a few, although all are important. During the time of my responsibility of being County Clerk, we have filed along with numerous other items, 223 Civil Cases, 953 Probate, Wills, Guardianships, etc., 2380 Criminal Cases, County Court level. We have recorded 236 Volumes of Deed and Deed of Trust records, Oil & Gas leases and various other records. Indexing is a major key to well kept records. We are proud of our indexes and records. Remember they belong to you, the people of Lynn County.

OFFICE POLICY

Our policy is Service to the people. The staff includes the County Clerk and two deputies, with regular hours being 8:30 a.m. to 12:00 noon, and 1:00 p.m. to 5:00 p.m., five days a week and after hours calls and weekend overtime being handled in agreement with each other at no cost to the county.

We welcome you to come by and visit and see what we mean.

Your vote will be appreciated May 1, 1982

Thank you
C. W. ROBERTS

Pol. Adv. paid for by C. W. Roberts, P.O. Box 937, Tahoka, Texas 79373

Now there are four ways to solve your phone problems

At General Telephone, we're committed to improving service in your area. In the last couple of years, we've spent millions of dollars to modernize equipment. And we have more good people than ever to help you if you're having a problem with your phone.



*For repairs

Call your 24-hour local repair service number if something is wrong with your telephone. In almost every case, they can solve your problems.



*Billing problems

Residential customers can call your Billing Center from 8:30 a.m. to 5:00 p.m., Monday through Friday (except holidays). They have all the information necessary to straighten out your bill. Business customers need to call your business office representative. Phone numbers are in your directory and shown on your GTE telephone bill.



*Call the manager

If you don't think your problem is being handled properly through normal channels, go straight to your Division or District Manager's office, from 8:00 a.m. to 5:00 p.m., Monday through Friday (except holidays). Their phone number is in your directory.



If all else fails call our customer action line:

*505-397-6363

This number will put you in direct contact with a Customer Relations Supervisor. Our representative is ready to provide fast assistance when unresolved problems do occur.

No matter what kind of problem you are having, let us know about it right away. We will handle it right away.

*No charge if call placed from GTE exchange.

General Telephone



COW POKES

By Ace Reid



"I'm tryin' to quit cigarettes."

YOUR FULL SERVICE BANK

No problem! Come in and see how quickly and easily you can start a checking account with us! You'll always be glad you did!

Wilson State Bank

WILSON, TEXAS

Member Federal Deposit Insurance Corporation

MAY Savings

J. P. STEVENS & CANNON

TOWELS

ALL PATTERNS

20% OFF



PILLOWS

REG \$9⁹⁹

\$6⁹⁵

SAVE 20%

ON MEN'S SHORT SLEEVE

KNIT & SPORT

SHIRTS

3 DAYS

THURSDAY, FRIDAY,

SATURDAY



ONE GROUP JUNIOR

JEANS

REG \$24⁰⁰

\$18⁹⁵



LADIES & JUNIORS
**TOPS, PANTS,
SHORTS, ETC**

20% OFF

THURSDAY-FRIDAY-SATURDAY



COTTON TODAY

A NATIONAL COTTON COUNCIL SERVICE

Senators Battle Bug: All four Senators from the Carolinas have urged support for expanding the boll weevil eradication program beyond the trial area in North Carolina down through South Carolina.

In a letter to Thad Cochran (R-Miss.), chairman, Senate Agriculture subcommittee, the Senators stated that in order to move forward with the expansion "it is essential that minimal additional funding be provided in the U.S. Department of Agriculture's FY 1983 budget."

The Senators are Jesse Helms (R-N.C.), John East (R-N.C.), Ernest Hollings (D-S.C.), and Strom Thurmond (R-S.C.).

Their letter stated the expansion would involve a joint industry-government effort with cotton producers assuming the major share of the cost. If USDA's share is set at 30 percent, approxi-

mately \$2.5 million would be required.

The letter concluded: "No other program, in our view, has greater potential for reducing production costs, or improving productivity, than eradication of the boll weevil. Therefore, we strongly urge your support for this critically important program."

Expansion of FmHA Lending Authority Urged: A National Cotton Council representative has urged a Senate subcommittee on agricultural credit to continue, and if possible expand, the lending authority of the Farmers Home Administration.

In his testimony, William H. Houston, III, a Tunica, Miss., cotton farmer, said the agency's reauthorization is imperative because the farmer's financial condition is "strained almost to the breaking point." He said most cotton farmers are in extremely difficult financial



AWARD TO MAC DAVIS — Joe Montgomery of Abilene (left), president, Association of Texas Soil and Water Conservation Districts, presents entertainer Mac Davis an award for outstanding public service for his voluntary efforts to promote the conservation of Texas' soil, water and related renewable natural resources. Davis serves as a spokesman for Texas soil and water conservation districts by urging Texans to become aware of and active participants in the state's soil and water conservation efforts.

situations because of circumstances beyond their control, noting many have suffered two disastrous seasons in a row, and some three. Houston told the committee: (1) legislation is needed to correct the inequity that has resulted from the 1978 law that placed a \$100,000 ceiling on FmHA operating loans, and (2) more credit could be made available to farmers without additional government outlays by subordinat-

ing existing FmHA loans to new loans from the private sector.

Export Sales Climb: Net new sales for the 1981-82 marketing year surged to 115,900 running bales during the week ended April 15, bringing the year's total commitments to 6,505,600.

The major buyers were Japan, 55,900 bales; Bangladesh, 27,900; and China, 20,500. To date, China's commitment for U.S. cotton

totals 833,300 bales.

The week's export shipments totaled 190,800 bales. Sales for 1982-83 were 86,100 the largest weekly total for the new year, according to the National Cotton Council.

The VA operates 172 medical centers and 226 outpatient clinics. There is at least one medical center in each (except Hawaii and Alaska, where VA provides hospital beds on a contract basis), and one each in Washington, D.C., and Puerto Rico.

ASC News

May 17 — Very Important Date. If you have wheat or other small grain planted, you may want to take some action by May 17. This is the final date to certify or sign up for measurement service for wheat or other small grain. If you have wheat or a small grain planted and are not going to participate in the program, you may want to certify these acreages for history purposes. You will then have a record of those acres being planted if needed in future years.

Set aside acres with small

grain planted must be certified or signed up for measurement service by May 17. These acres must be baled, shredded or plowed up by May 17. You may continue to graze your set aside with small grain planted. No other harvesting of set aside is allowed.

Change for Set Aside. In the last newsletter I stated that home gardens are not eligible cover for set aside. I have received another notice that corrects this. You may use produce from set aside acreage for home consumption.

Change in Tolerances. I have been notified of a change in tolerances applied to certified acreages. The tolerance is the larger of 1 acre or 5% for crops and 1 acre or 10% for set aside.

Base Protection. If you underplant your permitted acreage and give the required set aside, your base will not be reduced for 1983. A crop base with no planted acres can be protected by certifying to zero for that crop.

Conservation Use Acreage (Set Aside). Land eligible to be used as set aside must have been planted in 1980 or 1981. When whole blocks are given, the minimum size is one acre and minimum width is one chain (66 feet). Skip-row patterns must contain a minimum of 4 normal width rows in a uniform pattern.

Set aside must be adequately protected from wind and water erosion and weeds. This may be done by planting a cover crop or by cultural practices normal for the area. Approved chemicals may be used for control of noxious weeds. Annual, biennial, perennial grasses, legumes (excluding soybeans), forage and sudan are approved covers. Cotton, grain sorghum, corn, soybeans, and sunflowers may be planted on set aside if plowed up prior to certifica-

tion. Set aside may be grazed beginning October 1 until March 31.

Measurement Service. Applications for this service are being taken for small grain and set aside with small grain cover now thru May 17. The cost is \$11 for the first slide and \$9 for each additional slide needed. One slide will cover a section of land. Applications for measurement of later planted crops will be taken later.

Jimmy Woodard
County Executive Director



HAIL SIZE ISN'T IMPORTANT—HAIL DAMAGE IS IMPORTANT.

Insure your growing crops against loss from Hail Damage.

It's so easy to obtain hail insurance for your growing crops at low net cost—a dividend has been paid to Crop Hail Policyholders eight of the past eleven years, and for 1982—20% DEVIATION OFF OF TEXAS CROP HAIL RATES.

Just call your Texas Farm Bureau Insurance Companies Agent.

PAT GREEN
Lynn-Garza County
Farm Bureau
Tahoka, Texas 79373



case case

"THE TRACTOR SPECIALIST"

Why not deal with the specialist...?

CALL GRADY JACKSON, HOME 744-0806
CALL JOE ANTHONY, HOME 762-5040

Case Power & Equipment

3302 Slaton Hwy. Lubbock 745-4451

Wildcat Mfg.

4 Miles S. on U.S. 87

Leighton Knox Jr.

★ Treflan Rigs Built

★ General Spray Equipment

★ Wildcat 3-Wheelers

Phone 327-5602

NAPA MACHINE SHOP

look for this sign of the experts—
For professional automotive machine shop work—

VALVE GRINDING
CYLINDER HEAD RECONDITIONING
BRAKE DRUM & ROTOR SERVICE
FOR QUALITY PARTS call

FLANIGAN'S AUTO PARTS
1313 Lockwood
Tahoka, TX. 79373

Commuter Spray Rigs
Snapper Ariens Dixon
Poulan Chain Saws

Repair all makes of lawnmowers and tillers and spray rigs.

Curry's Commuter & Lawnmower

727 Lockwood Tahoka
998-4779

THESE TAHOKA FIRMS ARE MAKING THIS FARM NEWS POSSIBLE

McCord Oil Co. H. B. McCord, Jr.	Lubbock-Tahoka Federal Land Bank Assn. Jay Dee House, Mgr.
Production Credit Association Don Boydston	Farmers Co-Op Assn. No. 1 Tommy Lawson, Mgr.
Tahoka Co-Op David Martin, Mgr.	Tahoka Auto Supply The Hollands
Lynn County News	Lynn County Farm Bureau Pat Green, Mgr.

ELECT

J. F. Brandon

Lynn County Judge

Subject to Democratic Primary, May 1, 1982

If elected I will strive to carry out the duties of this office on a conservative basis. I feel I am aware of the needs of the people and will respect the wishes of each individual. Your vote and support will be greatly appreciated.

Pol. Adv. Paid by J. F. Brandon, Tahoka, Texas

Rilcot Seed knows what a risky business cotton farming really is...

RILCOT SEED CO.

REPLANT PROTECTION

- RILCOT 90
- RILCOT 90A
- STRIPPER N
- BALEBUSTER 1
- DRYLANDER 289

We care about the problems farmers face. The 1982 Rilcot Replant Protection Program is designed to even up the odds in the battle against the weather. If you plant a Rilcot Certified Seed and the weather wins the first round, you can replant at a fraction of the original cost with RILCOT REPLANT PROTECTION.

Contact your Ginner or Rilcot Seed Dealer

Joe D. Unfred
New Home Farm Store

All Rilcot varieties meet high strength requirements

Clean Air Week Planned

Mayor Mel Leslie has proclaimed May 2-8 as Clean Air Week in Tahoka, in conjunction with the statewide observance stressing the importance of protecting and conserving Texas' air resources.

The Texas Air Control Board (TACB), the state agency with responsibility for reducing and controlling air pollution, and the American Lung Assn. of Texas (ALAT) are co-sponsoring Clean Air Week at the state level. "For the second consecutive year, energy conservation is Texas' theme for Clean Air Week because of the relationship between energy production and air pollution," said Lottie Joe Walker, member of the Lung Association's State Board of Directors and resident of Tahoka.

TACB Executive Director Bill Stewart said, "We hope that Texans will use Clean Air Week to focus their attention on how energy use relates to environmental pollution and to think of ways to conserve energy. Helping reduce air pollution can be as simple as using mass transportation or car pools, adjusting thermostats, using less hot water, and turning off lights when leaving a room," he said.

Mrs. Walker said, "The air we breathe affects our lives and our lungs. By joining together to conserve energy, this community can reduce air pollution."

She suggested several ways to do this:

- do not burn leaves and trash;
- keep automobiles properly tuned and keep pollution control devices maintained;
- use car pools and public transportation and walk rather than ride as much as possible. The more cars on the road, the more pollution.

The mayor's proclamation urged individuals, businesses, industrial leaders, organizations and government agencies "concerned with the health environment to pledge themselves to more effective action for clean air for ourselves, and future generations."

North Elementary News

Our sixth graders are excited about the new Dough Art projects they have begun this week. Mrs. Jewel Parker gave a presentation on the technique of dough art with step by step instruction and many helpful hints. We hope our mothers will be delighted with their gifts on Mother's Day!

newsworthy trends

There's been a growing trend in America toward a different kind of care for the terminally ill: hospice care. This comprehensive, inpatient home and bereavement care program has become an increasingly popular alternative to traditional forms of treatment for thousands of Americans suffering from terminal illnesses. Although fewer than eight years have passed since the opening of the first program of hospice care in the United States, today there are hospice programs in every state and the total number will soon surpass 400.



Hospice care—professional care for the very ill at home—is on the increase in America today.

However, the national health care reimbursement system does not recognize hospice as a unique alternative health care service.

Such concerned firms as Warner Lambert, a major health care company, have added hospice to their employee medical benefits package. The company also supports a movement in Congress to allow Medicare coverage to extend to hospice care. Studies show hospice care is about a quarter to a fifth the cost

per patient per day compared to hospital care. That saves taxes. Many people concerned about both the monetary and humanitarian aspects of this issue are asking their legislators to support the hospice bills: H.R. 5180 in the House and S. 1958 in the Senate. They are writing to the House of Representatives, Washington, D.C. 20515 and the Senate, Washington, D.C. 20510.

Para Bailes Bodes Quincianeras Etc.

CONJUNTO LOS PRISIONEROS De Tahoka, Texas

Mingo Riojas Jr. 998-5194

EVERY FRIDAY
Fish Platter
 FISH - TARTER SAUCE - COLE SLAW - FRENCH FRIES - HUSH PUPPIES
\$275

Seafood Platter
 FISH - SHRIMP - SCALLOPS - COLE SLAW - FRENCH FRIES - HUSH PUPPIES
\$395

Star-Lite Drive In
 Monday through Saturday 9:30-9 Sunday 9:30-10
998-4465

VOTE FOR BARNES

To the voters of Precinct Two: I've tried to see each one of you before election, but I know I've missed some of you. If I don't get to see you before May 1, I would still appreciate your vote and influence. I want you all to know I am still committed to holding the line on taxes, improving the roads, and equal representation in the office to all.

Thank you for your time and support.

Elect Boyd Barnes
 County Commissioner, Precinct 2
 Pol. Adv. Paid For By Boyd Barnes, Rt. 5 Tahoka, Tx. 79373

PERRYS		IF YOU WANT VARIETY WE HAVE IT	
FLOWER VASES 99^c	STANDING ASH TRAY \$15⁸⁸	16 PIECE MELMAC SET \$7⁸⁸	5 QT CROCK POT \$24⁸⁸
METAL BREAD BOX \$9⁹⁹	G.E. FOOD PROCESSOR \$60⁹⁵	STRAW BASKETS 49^c	20 PIECE CORELLE DISH SET \$34⁹⁵
22" HANGING CLAY POTS 99^c	LARGE TRASH CANS \$6⁹⁷	10 COUNT PLATES 99^c	BOXED FANS \$25⁸⁸
KORDITE FREEZER CONTAINERS \$1⁴⁹	SLEEPING BAGS \$15⁸⁸	LAWN CHAIRS \$8⁹⁹	1/2" - 50' GARDEN HOSE \$4⁴⁷
THONGS 99^c	BLOUSON HALTER \$4⁴⁹	2 PIECE BOYS SET \$4⁹⁹	SHORTS \$2⁶⁷
3-WAY LIGHT BULBS \$1²⁹	LADIE'S PURSES \$8⁹⁹	LANTERN WITH BATTERY \$3⁹⁹	IVORY DISH SOAP \$1²⁹
CASCADE DISH SOAP \$1⁹⁹	JERGENS HAND SOAP 20^c		

As citizens of the **Merkel Area** we know and support

Steven A. Carriker
 for State Representative, Dist. 78

Billy Bob Toombs
 D.L. Moore
 J.D. Sandusky
 Roy Buchanan
 J.L. Fisher
 Bill Tarpley
 Ford Smith Jr.
 Tom Hogan

Ricky Meeks
 Joe Higgins
 Lloyd Robertson
 Clyde Wurst
 A.L. Moore
 Ruby Faye Sipe
 Jimmy Jacobs
 Buster Tarpley

Political Advertising Paid For By Carriker Campaign Fund, F.A. Lollar, Treasurer, Anson, Texas

ELECT

Margie Jester

FOR

Lynn County Treasurer

Margie and her husband, A.J. Jester are both long-time Lynn County residents.

Margie has 30 years experience in all phases of bookkeeping and accounting.

She is qualified, experienced and dependable and would be dedicated in operating an efficient Treasurer's office for the residents of Lynn County.

She will devote full time to the duties of this office and work with and for the people of Lynn County.

Your Vote For

Margie Jester for Treasurer

would be appreciated

Pol. Adv. Paid For By Margie Jester, P.O. Box 646, Tahoka, TX. 79373



TAYLOR TRACTOR--Jim and Andra Solomon coach this girls team sponsored by Taylor Tractor & Equipment. From left standing are Melissa Ramirez, Jacki Stevens, Lori Taylor, Audrey Gutierrez, and kneeling are Tavia Lawson, Tracy Scott, Terri Solomon and Mary Roberts. Not shown is Jennifer Bingham. (LYNN COUNTY NEWS PHOTO)

Family Focus

From Harriett Pierce
County Extension Agent

Self, what are you worth? You are worth more than any single element in the society.

Without you, this entire society can neither function nor progress, much less fight the battle against inflation.

With the high level of interest in the economy today, value is placed on things-- but seldom on people.

Without self-worth, people do not have the initiative to meet and solve economical crises that affect the entire society's standard of living.

Attaining self-worth is indeed similar to business and/or financial success-- all are directly related to goal setting, decision-making and achievement of goals.

Some components of self-worth, like business, include:
*sense of identity
*sense of integrity
*sense of direction, and
*significant purpose.

As a bonus of continued successes in the process of building self-worth, these additional elements are created: adventure, stimulation, challenge, self-respect, concern for others, and feelings of personal security and free-

dom from the numerous fears many people suffer.

Self-Worth, Family Success

Self-worth of family members, especially the primary adults in the family, affects the success of the entire family--and that of its individual members.

How people look at family success, sometimes termed "an abundant life," is highly variable, of course, but self-worth feelings play the major role.

Obviously, self-worth plays a dominant role in a family's success regarding unity, enjoyment as a family group, and levels of self-satisfying lifestyles that each member eventually reaches, but self-

worth also plays a key role in the family's economic success.

In looking at family economics, it's interesting to observe the cycle of economic well-being for different stages of family life today.

The per-capita-income peak for most families occurs when the family head is age 55-65, a time when most children have left home.

Family budget is closely related to the philosophy of life and the values the family holds--most dear--material and non-material, utilitarian (purposeful), and symbolic or status-producing.

All of these values, in turn, are linked to the feelings of self-worth of the primary adults in the family--directly or indirectly.

Self-Worth, Work

Work, the source of most families' wealth, has some parts that are "dirty work" and may challenge the integrity--or self-worth-- of a

person. When the major part of an occupation is viewed by a person as having prestige and value, the more likely he will identify it as an activity of self and put more effort into the job.

Without self-confidence and feelings of worthiness, though, people cannot become a contributing element to a society that is trying to fight inflation and improve the quality of living for all individuals and families.

re elect ☆☆☆☆☆☆☆☆☆

REAGAN V. **BROWN**

Democrat for Texas
Agriculture Commissioner

Vote for experience and good government--vote for Reagan Brown.

For Adv. P.O. by Reagan V. Brown Election Campaign Committee, Reagan Brown, Treasurer, P.O. Box 28806, Austin, TX 78755

ONE NAME YOU CAN
VOTE FOR WITH CONFIDENCE:

DENTON

A proud record of public service... a record of independence, fairness and integrity!

DENTON

The overwhelming choice of informed attorneys throughout Texas!

DENTON

The choice of the Committee for a Qualified Judiciary!

Re-Elect **JUSTICE JAMES G.**

DENTON

SUPREME COURT OF TEXAS

Pol. adv. paid for by Denton for Supreme Court Committee, Larry E. Temple, Treasurer, P.O. Box 12924, Austin, Texas 78711

Secretaries Are Rotary Guests

The Rotary Club had a packed house last Thursday for their annual Secretary Week program with their lady employees as guests.

Frank Barrow was the principal speaker on the subject of physical fitness. A long-time jogger, Tahoka's bank president extolled the benefits from exercise in health.

He said exercise, diet, and attitude are the three important factors in a physical fitness program, not only for the elderly and the overweight, but for every adult.

He emphasized regular exercise for 15 or 20 minutes at least three times a week, and recommended walking, running, and aerobic exercises. But, he warned, anyone should start an exercise program on a physician's recommendation and begin

with mild exercise and to keep the program fun.

Winston Wharton was in charge of the program which was arranged by Mrs. Frances Chestnutt, who also decorated the meeting room tables at Tahoka Cafeteria.

Computer literacy necessity for today's educators

COLLEGE STATION — Computers have become a new factor to be considered in the age-old quotient of reading, writing, and arithmetic, says a national leader in teacher education.

That means teachers today must be able to show their students how to use computers in mastering those skills. And if teachers going into the school systems need to know computers, it follows that university faculty who teach those teachers must know computers as well, said Dr. Dean Corrigan, dean of Texas A&M University's College of Education. Corrigan also is president of the American Association of Colleges for Teachers Education.

"Computer literacy is almost a basic skill now," Corrigan said. "Students can use computers for sociology classes as well as mathematics. We want to make sure our prospective teachers are competent to teach their students in the schools in the use of computers."



ANNIVERSARY

With Great Bargains!

Genny Halford is offering Special Prices

to show Appreciation to her Customers.

Sportswear
Jeans and
Lingerie **1/3 Off**

Just In Time For Mother's Day!

genny's

1531 AVE J
PHONE 998-4001

WEST SIDE OF SQUARE
TAHOKA, TX

VISA / MASTERCARD

Cushion
Comfort.



Pecos time
is anytime!



Safety
boots



54⁹⁹ to 70⁹⁹

The pull-ons
that fit.

You've earned
your Wings!



Red Wings

Anthony's
Slaton

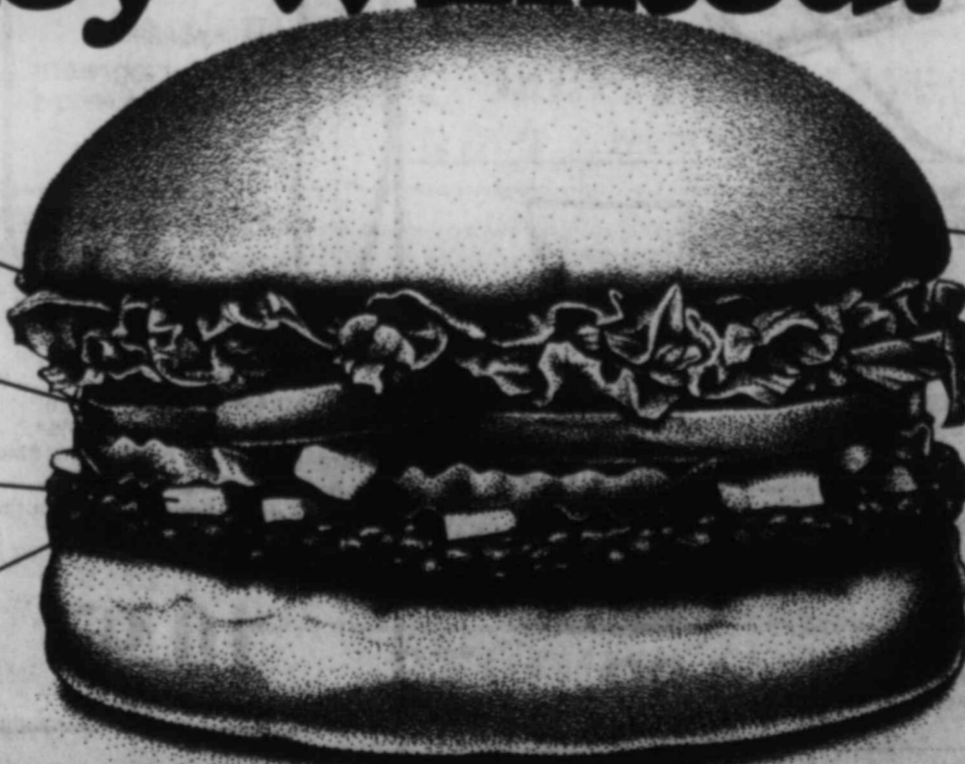
The Hamburgers Texans told us they wanted!

Mustard or
mayonnaise? The
choice is yours.

Red, ripe tomato
slices across
the board.

Plenty of
fresh onions.

We start with a
quarter-pound
of lean,
100% pure beef.
Want more?
Our half-pound
Beltbuster's for you.



A fresh, toasted
bun is the topper.

A big helping of
garden-fresh lettuce.

Lots of crisp
dill pickles.

Made to your order,
just the way you
like it.

Introducing Dairy Queen's all-new quarter-pound Hungr-buster® & half-pound Beltbuster®

At Dairy Queen we're out to treat you like a Texan. With the bigger, better hamburgers Texans told us they wanted.

Our all-new Hungr-buster and Beltbuster start with a full quarter-pound or half-pound of 100% pure, lean beef. Then we top them with plenty of your fresh favorites. Like crisp lettuce, red, ripe tomato, juicy pickles, onions, mustard or mayonnaise, all on a toasted bun. And, of course, your hamburger is made to your order -- hot, fresh and just the way you like it.

Come taste our all-new Hungr-buster and Beltbuster at any of more than 750 Dairy Queen locations all across Texas. They're the hamburgers Texans told us they wanted.

And that's why they're the best.



We treat you like a Texan.

AROUND TOWN

By Leona Waldrip

After spending a week with her sister, Gladys Holden in Big Spring, Mrs. Ava Lichey returned to her home here on Saturday.

On last Tuesday I attended the 60-Plus covered dish luncheon at noon, held in Lubbock Baptist Association Center at 26th and Salem.

Elmer East, attorney, himself a senior citizen, gave the program on "Wills and Estate Planning." Raymond Dunn is president of the organization and presided at the meeting.

Zenda Oliver Hodge and baby of Graham spent the weekend with her grand-

mother, Mrs. C.T. Oliver. She is a teacher in the Graham Public Schools.

L.C. McKee, owner of the "Twins" fruit stand in South Tahoka, entered Lynn Co. Hospital Monday for tests.

Grace Foster and Eva Williamson were hostesses when the Wilson Sewing Club met on Monday afternoon. There were seven members present. Mrs. Ava Lichey and Mrs. Elmer Rice attended from Tahoka.

The Lynn County Extension Homemakers Council met in

the SPS meeting room Tuesday at 10 a.m. Vicki Ashbrook, president, was absent and Leona Waldrip, vice president, presided. Inspiration was brought by West Point Club. Club reports were given by representatives of each of the four clubs in the county and Harriett Pierce. CEA gave a report on her activities since coming to Tahoka. The Harvest Festival was also discussed.

Most topaz is white or blue. The famed golden variety is actually very rare.

Senior Citizens Menu

May 3-7, 1982
MONDAY- Fried Chicken, Cream Gravy, Buttered Rice, Turnips and Greens, Cornbread, Butter, Apple Crisp, Milk
TUESDAY- Spaghetti w/ Meat Sauce, Buttered Green Beans, Tossed Salad w/ Dressing, Roll, Butter, Peanut Butter Cookie, Milk
WEDNESDAY- Smothered Pork Chop in Mushroom Sauce, Candied Yams, Buttered Spinach, Roll, Butter, Chocolate Pudding w/ Whipped Topping, Milk
THURSDAY- Ham, Diced Lima Beans, Buttered Carrots, Sliced Tomatoes, Onions, Cornbread, Butter, plum Cobbler, Milk
FRIDAY- Chicken Fried Steak w/ Cream Gravy, Mashed Potatoes, Buttered Broccoli, Roll, Butter, Cake, Milk



COOK PUMP TEAM-This team, sponsored by Cook Pump, includes, from left, back row, Amber McNeely, Stina Chapa, Michelle Barrientez, Stacie Milton and Michelle Wisdom. Kneeling are Wendi Jordan, Rochelle Reid and Stephanie Womack, flanked by coaches Kenny and Rebecca Scott.

YOU HAVE A FRIEND
 IN THE COUNTY CLERK'S OFFICE

C. W. Roberts

LET'S KEEP HIM THERE
 VOTE MAY 1

Paid for by Friends of C.W. Roberts, J.F. Moore, Rt. 3, Post, TX 79356



The standards and symbols we use today for graduation attire were set back in 1894 by the Intercollegiate Commission.

Lynn County Merchants
 Appreciate Your Business

The Veterans Administration has launched a \$4 million scholarship program in an effort to ensure sufficient nursing staff in its health care facilities. Scholarships will go to about 300 qualified nursing students. The scholarships will provide educational benefits on a pay-back-in-service basis.

Spring Art Show

at
Post Community Center
 Post, Texas

OPEN 9 A.M. - 5 P.M.
 FRIDAY & SATURDAY, APRIL 30-MAY 1

CHECK-IN DATE
 WEDNESDAY, ALL DAY

SPONSORED BY POST ART GUILD

Insurance

If you are trying to watch your dollar closer, why not start by checking our prices and protection.

Hochheim Prairie Farm Mutual

See us for low-cost coverage to fit your needs!

Fire & Extended Coverage
 Hospitalization

Medicare Supplements
 Life & Estate Planning

J. A. & Joyce Pebsworth

Jeanell Edwards

2208 Main St.
 998-4564

Tahoka
 998-5160

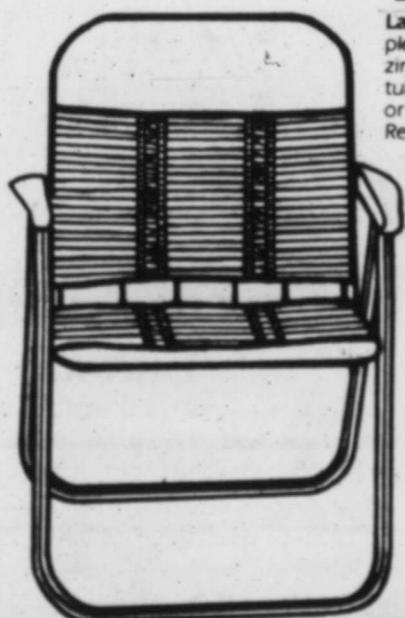
TG&Y

family centers

Patio To Picnic

With Even More Great Savings Storewide

7.97 **save 3.00**



Lawn Chair This portable patio/picnic pleaser is supportive and comfortable. Sturdy zinc-plated steel frame with pliable vinyl tubing. Select from solid lime, solid yellow or two-tone brown with almond. #LD114. Reg. 10.97

8.97 **save 4.00**

Chaise Lounge Lean back and watch the grass grow! Sturdy zinc-plated frame with pliable vinyl tubing. Solid lime, solid yellow or two-tone brown with almond. #LD111. Reg. 12.97



Excellent lawn food. Especially formulated for this area.

5.97

40 lb. bag



Keeps grass greener, longer. Contains sulfur-coated urea for controlled nitrogen release during growing season.

7.97

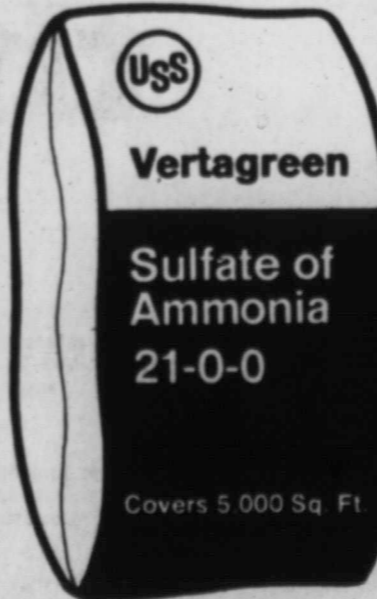
20 lb. bag



Gives both fast-acting and long-lasting feeding plus broad range weeding. Controls chickweed, black medic, ground ivy, knotweed, plantain, dandelions, henbit, spurge and most other common lawn weeds.

10.97

20 lb. bag



21% nitrogen with sulfur.

3.97

40 lb. bag



33 **save 42%**

Tucker Plastic Tumblers Jumbo size! Holds 30 oz. of liquid. Dishwasher safe.



2.47 **save**

Super Seal Containers Cold cut saver, 20 cup bowl, small bread saver, or fruit and vegetable saver. Seals in freshness.



1.99

Kingsford Charcoal Briquets Don't run out at your next picnic! 10 lb. bag. Reg. 2.47. Limit 2.



1.49

Aim Toothpaste Price reflects 30% off label. 8.2 oz. tube.



2.37

New Freedom Maxl Pads 30 ct. box. Limit 2.



1.23 **save 34%**

9" Foam Plates Divided to keep the potato salad out of the jello! 50 ct. Reg. 1.87 pkg.

Vita Hume®
 Peat Moss

Vita Hume®
 Sheep Manure

Vita Hume®
 Cow Manure

2.37

40 lb. bag

STORE HOURS
 9 AM-9 PM

PRICES GOOD IN TG&Y FAMILY CENTER
 SLATON ONLY
 April 29 and 30 and May 1

TG&Y's policy is to always have advertised merchandise in adequate supply in our stores. In the event the advertised merchandise is not available due to unforeseen reasons, TG&Y will provide a Rain Check, upon request, in order that the merchandise may be purchased at the sale price when it becomes available, or you may purchase similar quality merchandise at a similar price reduction. It is the policy of TG&Y to see that you are happy with your purchases. It is TG&Y's policy to be priced competitively in the market. Regular Sale Prices may vary market by market, but the sale price will always be as advertised. We will be happy to refund your money if you are not satisfied with your purchase. VISA® and MasterCard® accepted.



The record speaks for itself. Since he has served as our State Treasurer, that office has earned more income on public funds than the combined total of all previous earnings in the history of Texas!

Let's Re-elect

Warren G. Harding
 State Treasurer



Pub. ad., paid for by the Warren G. Harding Campaign, 120 Perry Brooks Building, 8th & Brazos, Austin, Texas 78701

Lynn Deputy Scores High in Course

Rex Childress, Lynn County sheriff's deputy, recently completed a 320-hour course in basic law enforcement taught by SPAG in Lubbock, with a very high grade average of 98.19, ranking

him eighth in a class of 29. Childress also was rated the best in class in firearms drill, including use of firearms and accuracy.

"We're very proud of Rex for his achievement in the course," said Sheriff Stanley Krause.

Early Americans used white shells called wampum for money.

Men's Softball League Here

The Tahoka Men's Softball League will have a work night and sign up Thursday, April 29 at 7:30 p.m. and teams will be chosen Sunday at 2:30 at the Softball Park! Those who haven't paid can pay or sign up at Chancy's Exxon or Flanagan's Auto. No one will be picked until they pay.

Lower County Tax Rate Is Given Okay

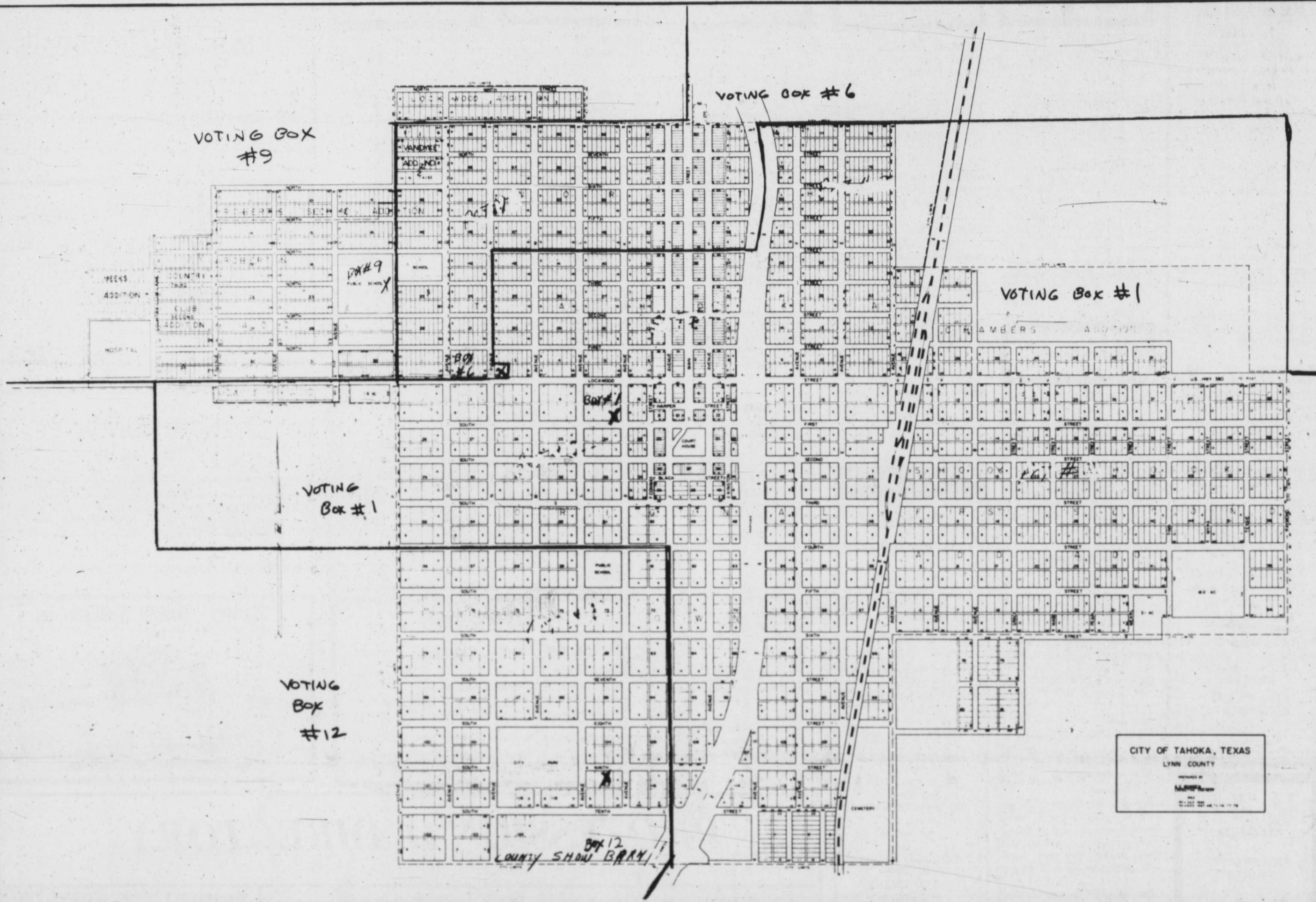
Lynn County commissioners formally adopted a 1983 budget calling for total expenditures of \$1,107,058, including contingency funds totaling \$147,000 as the court met Monday. Tax rate for next year was

set at 27 cents per \$100 valuation, three cents lower than the present rate. The budget is about \$4,000 higher than last year's, but a surplus in contingency funds this year will be cut back to take care of the difference. Two citizens appeared at the budget hearing, with one, Lanny Brewer of O'Donnell, asking some questions. Commissioners told Brewer they appreciated his

showing up and said they would like for more citizens to show interest in the county government operations by attending some of the commission meetings, particularly the public hearings. The group approved attendance at a training class in Austin by Sherry Pierce of the tax assessor's office. All commissioners and Judge Melvin Burks were present.

Some parts of the Sahara Desert hide underground streams. People digging to reach fresh water sometimes catch fish.

All orders of "home" water distillers that I receive from Lynn County will be shipped "direct" from our factory in Lincoln, Neb. to you. Allow 2 weeks for delivery.
Raymond Griffin
390 Flower Street, Turlock, Calif. 195380



TAHOKA COMMUNITY CALENDAR FOR MAY

SUNDAY	MONDAY	TUESDAY	WEDNESDAY	THURSDAY	FRIDAY	SATURDAY
<p>This Month's Community Calendar is Made Possible By the Following Sponsors:</p> <p>ROBERT HARVICK INSURANCE AGENCY 998-4536</p> <p>DAN'S AUTO & BODY REPAIR 998-5375</p>						1
2	3	4	5	6	7	8
9	10	11	12	13	14	15
16	17	18	19	20	21	22
23	24	25	26	27	28	29
30	31					

The community calendar listings are free, please contact the Tahoka Chamber or Nadine Dostap.

This map will tell you which voting box you are in. . . See Tahoka city map elsewhere in this issue for boundaries in city.

Tahoka School Menu

MAY 3-7, 1982
BREAKFAST

MONDAY: Hot Biscuits, Jelly-Butter, Orange Juice, Milk
TUESDAY: Cinnamon Toast, Sliced Peaches, Milk
WEDNESDAY: Scrambled Eggs, Biscuits, Butter, Grape Juice, Milk
THURSDAY: Cereal, 1/2 Slice Toast, Orange Halves, Milk
FRIDAY: Honey Buns, Diced Pineapple, Milk

LUNCH

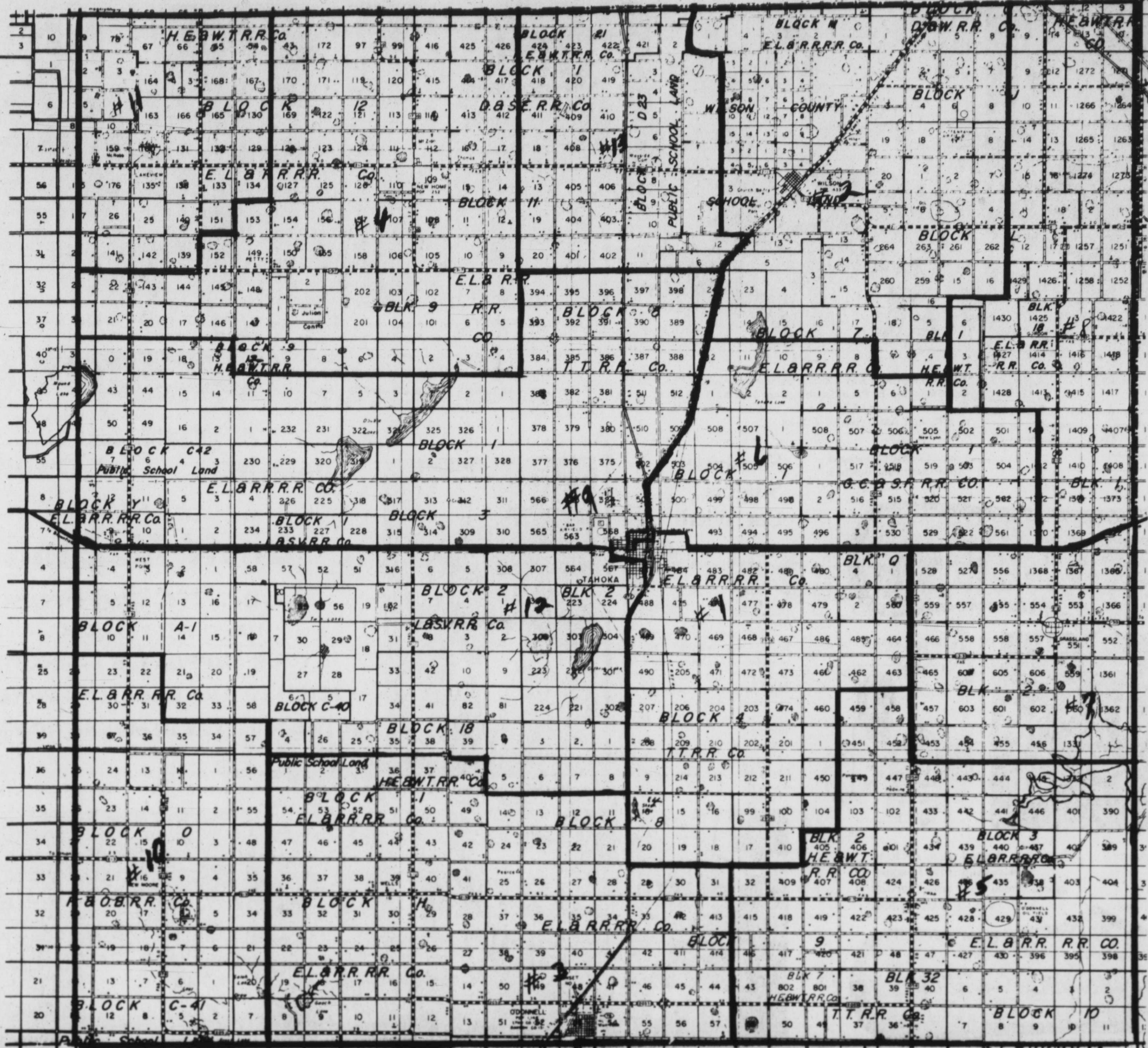
MONDAY: Meat Loaf, Creamed Potatoes, Tossed Salad, Hot Rolls, Sliced Peaches, Milk
TUESDAY: Hot Dogs & Chili, Seasoned Pinto Beans, Cole Slaw, Peanut Butter Cookies, Milk
WEDNESDAY: Tuna Fish Sand., Buttered Corn, Fossed Salad, White Cake & Choc. Icing, Milk
THURSDAY: Beef Patty & Brown Gravy, Creamed Potatoes, Seasoned Green Beans, Hot Rolls, Jello & Whip Topping, Milk
FRIDAY: Hamburgers, French Fries, Lettuce, Onions, Pickles, Prune Spice Cake, Milk

Comptroller Rep. to Assist Locals Here

State Comptroller Bob Bullock has announced that Virgil Rogers from his Lubbock field office will be at the Lynn County Courthouse in the Courtroom on Wednesday, May 5, 1982 from 10 a.m. to 12 p.m. A comptroller's representative is available to assist local residents at the courthouse the first Wednesday of each month.

Bullock urges anyone with problems or questions concerning state taxes to contact Mr. Rogers at the courthouse in person or call the Lubbock field office at (806) 795-0691. A toll free number (1-800-252-5555) is also available to Texas taxpayers.

Lynn County Merchants Appreciate Your Business



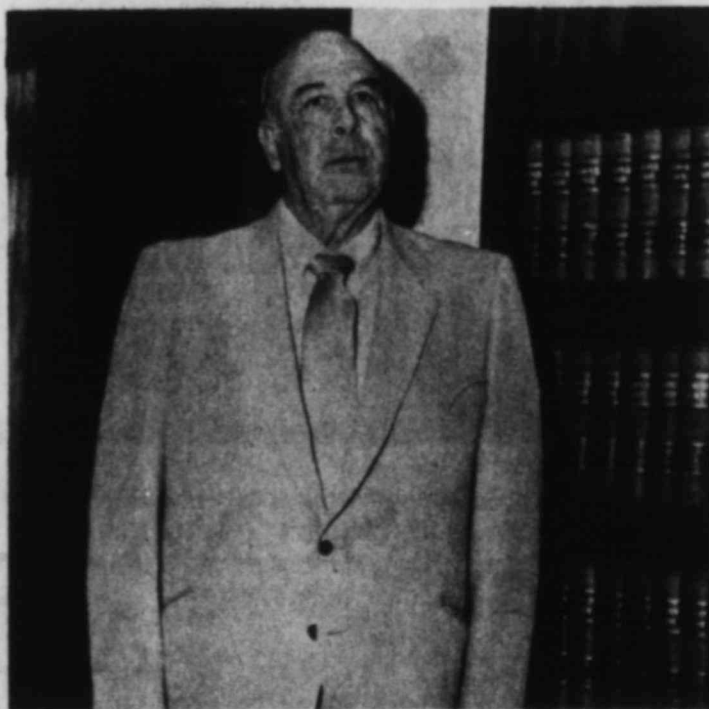
This map will tell you which voting box you are in... See Tahoka city map elsewhere in this issue for boundaries in city.

BE SURE TO EXERCISE YOUR RIGHT AS AN AMERICAN AND VOTE MAY 1ST

As County Judge Melvin Burks Offers Experience, Education, Training And Knowledge Plus Dedication

MELVIN BURKS

1. IS FULL TIME JUDGE with no other business interest.
2. Votes his convictions — IS NOT OBLIGATED TO ANY SPECIAL INTEREST GROUP.
3. Is active in civic organizations and works for community betterment on and off the job.
4. Is always objective — a fair minded judge who treats everyone the same.
5. Represents Lynn County on South Plains Association of Gov'ts and is chairman of Criminal Justice Advisory Committee at S.P.A.G.
6. Worked diligently as chairman of board of Lynn County Senior Citizens Center to secure grants that enlarged the building and FUNDED LUNCHEES FOR TAHOKA, WILSON and O'DONNELL SENIOR CITIZENS.



RE-ELECT JUDGE MELVIN BURKS

MELVIN BURKS

1. HAS LYNN COUNTY FINANCES IN EXCELLENT CONDITION.
 - a. Lynn County is debt free.
 - b. 1983 budget will provide each precinct \$20,000.00 more for road upkeep.
 - c. 1982 TAXES WILL BE REDUCED 3 cents per \$100.00 valuation and taxes will not have to be increased in 1983.
2. Is proud of the fact that three biggest problems facing Texas counties have been solved in Lynn County.
 - a. Our jail meets standards, precincts have been realigned and county wide appraisal system mandated by Texas voters is in operation. [Lynn County saved thousands of dollars by going into system at same time cities and school initiated system.]
3. Has upgraded courthouse at minimal cost using local labor.

MELVIN BURKS SAVES LYNN COUNTY THOUSANDS OF DOLLARS

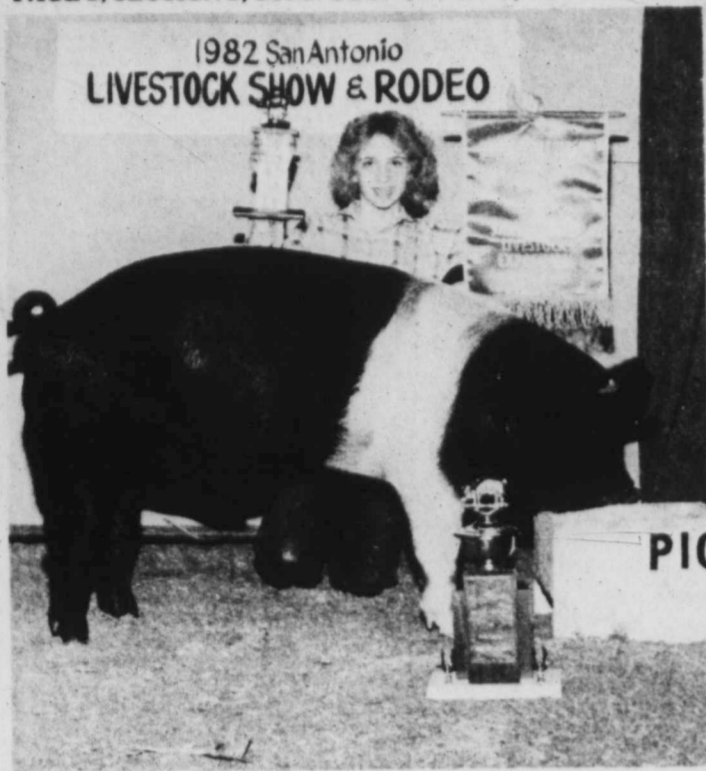
1. On behalf of Commissioners Court did surveys, compiled information and submitted alternate proposal on precinct realignment. This proposal was advantageous to Lynn County and was accepted by Federal Court.
2. Prepared maps and wrote metes and bounds legal descriptions of precincts and voting boxes after realignment.
3. Compiled information, formulated maps and charts answering technical questions from Justice Department in Washington. (Most counties our size had to hire consultant firms to perform these three tasks.)
4. Since school counselor background qualifies him, he serves as Juvenile Judge and Juvenile Probation Officer at no extra cost to Lynn County. All surrounding counties (Garza, Dawson, Terry and Lubbock) have some or all of these duties assigned to others. In Terry County alone over \$30,000.00 per year is spent for Juvenile professional services with \$3,600.00 per year of this for Juvenile Judge pay.
5. Prepares and administers county budget, saving the cost of an in-house county auditor and operates county as economically as possible, always trying to keep balance between the needs of all departments in Lynn County government and the burden on our taxpayers.

YOUR VOTE AND INFLUENCE IS APPRECIATED

My duties in the Courthouse have prevented me from making a house-to-house campaign. I would like to have seen each of you as I value your friendships and support.

THINK
IS THE OPPONENT QUALIFIED AND CAPABLE OF DOING THE JOB NOW BEING DONE BY
JUDGE MELVIN BURKS

Political advertisement paid for by Melvin Burks, Box 7, Tahoka, Texas 79373.



EXHIBITS WINNER — Patricia Davis, daughter of Billy and Ann Davis of Tahoka, exhibits her Grand Champion Barrow at the 1982 San Antonio Livestock Show. The Lynn County 4-H member received \$11,000 for the animal.



4-H MEMBER Kathy Davis exhibits her Grand Champion Barrow at the El Paso Southwestern International Livestock Show. She received \$3735 for the animal, and is the daughter of Billy and Ann Davis of Tahoka.



RESERVE CHAMPION Cross Barrow, shown here by Marcel Miller, was exhibited by Bryan Wood at the Houston 1982 Livestock Show.



LYNN COUNTY 4-H member Jason Spence exhibited the Reserve Champion Duroc in the El Paso Livestock Show.



The first photograph of a President in office was made of President James Polk in 1849.

Lynn County Merchants Appreciate Your Business

Sonshine Singers Car Wash

The Sonshine Singers will have a car wash Saturday, May 1, 1982 from 10:00 a.m. to 4:00 p.m. at the First Baptist Church west parking lot.

Prices are: Cars — \$5.00 inside and outside; \$3.00 outside only. Other vehicles — \$6.00 inside and outside; \$4.00 outside only. The money made will help cover expenses for a tour this summer.

Everyone is encouraged to go out and vote and then come and have your vehicle washed.

SUMMER AT VAIL... Spectacular Scenery & Outdoor Everything!



Enjoy unlimited activities during SummerVail at Village Inn! Located in the center of Vail's fantastic summer fun, Vail Village

Inn offers heated pool, cocktail 4 restaurants, 15 store arcade plus daily maid service and 24-hour switchboard.

Write or Call Today for Free Brochure & Guide to Summer Vail

Vail Village Inn

48 S. Frontage Rd. E. Vail, CO 81657

PHONE 980/476-6822

did you know?

The add-on heat pump can provide both central cooling and heating. The pump can be used with your existing heating system and can provide all your heating requirements on moderately cold days. The add-on heat pump also saves on your overall heating costs by providing up to two units of heating energy for each unit of electricity it uses. And the pump automatically switches over to your existing heating system whenever it cannot meet your home's complete heating needs.



John Kallas, Consumer Services Representative, Lubbock.

Of the known recoverable energy reserves in the United States, nearly 80% are in the form of coal deposits. This is one reason for Southwestern Public Service Company's decision to switch to coal-fired power plants. Today, more than 40% of the electricity produced by SPS is generated by coal-fueled boilers. At SPS, we expect to produce almost 60% of our customers' electricity with coal by 1985.

Earl Zwickey, Plant Engineer, Tolk Station, Muleshoe.



Microwave ovens use less electricity because they cook faster than conventional ovens. Microwaves cost less to operate than conventional electric ranges and can save on summer air conditioning costs as well, since they use a cool cooking method. Faster cooking helps foods retain their natural flavors, vitamins and minerals.

Connie Moyers, Home Service Advisor, Clovis.

Knowing what electricity is worth is worth knowing. For answers to your questions, call or write your SPS manager.



SOUTHWESTERN PUBLIC SERVICE COMPANY

980.1



SENATOR E. L. SHORT AND FAMILY

A good state senator must represent ALL the people... not just a few who contribute heavily to his political campaigns.

Senator E. L. Short is comfortable with all the people in his district... whether he's in the corporate board room, the churches or just visiting in a rural cafe near the gin. He likes people and he knows their problems.

His 8 years in the House of Representatives and his 4 years in the Senate have earned him a position as one of the most stable and experienced Legislators in the state.

He is the only farmer-rancher listed in the official Senate roster among 14 lawyers, 16 businessmen and one housewife. We need E. L. Short in the Senate.



RE-ELECT
VOTE SATURDAY SENATOR E. L. SHORT
HE'S GOT THE KIND OF EXPERIENCE THAT COUNTS!

(Paid political advertisement by the committee to re-elect Senator E. L. Short, Joe Durham, treas., 3314 59th St., Lubbock)

**VOTE SATURDAY
MAY 1
FOR**



CATHERINE BARHAM

LYNN COUNTY CLERK

Your Vote For Her Will Be

★ *For Competency*

★ *For Responsibility*

★ *For Qualification*

★ *For Dependability*

★ *For Efficiency, Not Complacency*

The present office holder has been a county employee for 28 years - that's long enough. For a fresh approach to the job of county clerk, vote for Catherine Barham Saturday. She is qualified and will serve all taxpayers.

Catherine has lived in Lynn County 22 years, and is the wife of Bill Barham, a lifetime resident of the county. She is ready and qualified to serve the citizens as county clerk. In her job as director of the senior citizens center, she has kept records for federal government programs which demand accuracy and extreme detail. She is qualified to keep the county's records so that all information will be readily accessible.

**VOTE FOR CATHERINE —
YOU'LL BE GLAD YOU DID!**

SUBJECT TO DEMOCRATIC PRIMARY

If I have missed seeing some people, please be assured that I value your support, too. I tried to see everyone.

POL. ADV. PAID BY FRIENDS OF CATHERINE BARHAM; Catherine Barham, Treas., Dist 1982, Tishka, TX.



DOUBLE S & W GREEN STAMPS EACH WEDNESDAY WITH 2nd PURCHASE OR MORE

SHOP COMPARE SAVE

ROGER STAUBACH



USDA GRADE A CERTIFIED FINEST QUALITY COUNTRY PRIDE

WHOLE FRYERS 49¢ LB.

USDA GRADE A FINEST QUALITY

COUNTRY PRIDE CUT UP WHOLE FRYERS	LB.	69¢
COUNTRY PRIDE SPLIT FRYER	LB.	\$1.19
COUNTRY PRIDE MEATY FRYER	LB.	99¢
COUNTRY PRIDE FRYER	LB.	99¢
GOOCH GERMAN STYLE SMOKED SAUSAGE	12 OZ. PKG.	\$1.59
GOOCH MEXICAN STYLE HOT LINKS	LB.	\$1.39
LOUIS RICH TURKEY FRANKS	12 OZ. PKG.	89¢
LOUIS RICH SLICED TURKEY BOLOGNA	1 LB. PKG.	\$1.29
DECKER'S QUALITY RANCH STYLE BONELESS FULLY COOKED 2-4 LBS. AVERAGE HALF HAMS	LB.	\$1.79

CALIFORNIA RED RIPE VINE RIPENED

STRAWBERRIES 49¢ BASKET

TOMATOES 39¢ LB.

WASHINGTON RED DELICIOUS APPLES	LB.	49¢
WASHINGTON D'ANJOU PEARS	LB.	49¢
WHITE NEW CROP ONIONS	LB.	29¢
US NO. 1 RUSSET POTATOES	10 LB. BAG	\$1.19

SWEETENED CONDENSED MILK

EAGLE BRAND \$1.09

14 OZ. CAN

ASST. BETTY CROCKER LAYER

CAKE MIXES 79¢

18 OZ. BOX

ALL PURPOSE

GLADIOLA FLOUR 79¢

5 LB. BAG

Spring Warehouse Sale

3-PLY VERA

FACIAL TISSUE 3 \$1

150 CT. BOXES

BUSH SHOWBOAT

PORK & BEANS \$1.00

3 14 1/2 OZ. CANS

DR PEPPER 7 UP 99¢

2 LITER DIET OR REG

SHOP OUR CONVENIENT DISPLAYS

PAPER TOWELS

SCOTT TOWELS 69¢

BIG ROLL

6" OFF LABEL

AJAX CLEANSER 59¢

21 OZ. CAN

LIPTON

INSTANT TEA \$1.99

3 OZ. JAR

BATHROOM TISSUE

NICE 'n' SOFT \$1.15

6 ROLL PKG.

FROZEN FOOD & DAIRY

ASSORTED MORTON (EXC. BEEF, FISH & HAM) FROZEN DINNERS	11 OZ. PKG.	79¢
HUNGRY JACK MICROWAVE POPCORN	10 1/2 OZ. PKG.	\$1.29
DOWNYFLAKE WAFFLES	10 CT. PKG.	89¢
SHURFRESH COTTAGE CHEESE	24 OZ. CTN.	\$1.29
ASST. FLAVORS SHURFRESH YOGURT	8 OZ. CTN.	39¢
KRAFT PLAIN VELVEETA	1 LB. BOX	\$1.59
KRAFT SQUEEZE PARKAY	1 LB. BTL.	79¢

50" OFF LABEL-LAUNDRY

AJAX DETERGENT \$2.79

KING SIZE

DEODORIZING

LYSOL CLEANER \$1.69

28 OZ. BTL.

REGULAR/CITRUS/FLORAL

LOVE-MY-CARPET \$2.09

20 OZ. CAN

REGULAR OR SCENT II

LYSOL SPRAY \$1.99

12 OZ. CAN

LYSOL TOILET

BOWL CLEANER \$1.09

24 OZ. BTL.

LYSOL BASIN-TUB & TILE CLEANER

\$1.29

17 OZ. CAN

HEALTH & BEAUTY AID SAVINGS

BRONZE DEODORANT	RIGHT GUARD	5 OZ. CAN	\$1.79
ANTI-PERSPIRANT SILVER	RIGHT GUARD	4 OZ. CAN	\$1.79
FOAMY 50" OFF LABEL-REG./MENTH/LEAM-LIME	SHAVE CREAM	11 OZ. CAN	\$1.39

TOTAL GROCERY SAVERS

LE SUEUR EARLY	JUNE PEAS	17 OZ. CAN	
RANCH STYLE	BLACKEYES	15 OZ. CAN	39¢
BAMA	GRAPE JELLY	3 LB. JAR	\$1.69
BAMA	RED PLUM JAM	3 LB. JAR	\$1.99
PACE	PICANTE SAUCE	16 OZ. JAR	\$1.19
MR. COFFEE	FILTERS	50 CT. PKG.	49¢

VIVA PAPER

NAPKINS \$1.39

260 CT. PKG.

KRAFT CREAMY CUC./ITAL./CATALINA/FR./1000 ISLAND

DRESSINGS \$1.29

16 OZ. BTL.

FOLGERS

ALL GRINDS FOLGER'S COFFEE \$2.39

1 LB. CAN

11 PIECE SET-WOOD HANDLE

SCREWDRIVERS \$4.99

WITH \$30.00 PURCHASE

Fresh Garden Plants

ONIONS SEED	PEPPER
POTATOES	TOMATO
GERANIUM	HONEYSUCKLE
CHRYSANTHEMUM	CALADIUM
BROCCOLI	PETUNIA

5 PIECE PLIER SET \$1.19

WITH \$30 PURCHASE

GOOD APRIL 28-31, 1982

AT AFFILIATED FOODS INC. MEMBER STORE

We're proud to give you more!

THRIFTWAY

PRICES EFFECTIVE APRIL 28-31, 1982
WE RESERVE THE RIGHT TO LIMIT QUANTITIES
WE ACCEPT FOOD STAMPS