



NEAL EVERETT left, and Harold Locke, pilots at the airport, are pictured here with a 126 Single Schweizer Sail Plane used for training at the Airport. The two men and Locke took training at Elmira, N. Y., and are qualified instructors.

UNDER MORGAN LOCKER'S LEADERSHIP

# Muleshoe Airport Growing In Prestige and Service To Area

Edward Warren Field, commonly called the Muleshoe Airport, has seen many changes in the past ten years. Located on the Plainview highway on the outskirts of town, the 360 acre tract was donated to the City of Muleshoe by E. K. Warren with the stipulation that it was to be used for airport purposes or revert back to the Warren Estate.

In the early 1940's Pat Bobo and Earl Ladd sponsored the first flying schools at the airport, erecting hangars, purchasing planes and hired Joe

Trujillo, former army pilot to begin student training. After several years, two pilots who now reside near Sudan took over the school for a short time, selling out to Elvie Jennings, Friona pilot, who for about two years, operated the airport, offering charter service, flight instruction and commercial spraying.

In 1950, Morgan Locker purchased the business after a tornado had destroyed planes belonging to Bobo and Ladd and all hangars, leaving only a slab of concrete where they once stood.

It was Locker's first intention to have the airport for a hobby, but within the year, noting the rapid advancement in aviation, he realized Muleshoe's need for adequate air facilities. This was the beginning of the present Muleshoe Flying Service.

With only a J-3 and no hangars, progress was slow at first. Max Hard joined Locker and was co-owner of the business until 1955 when he sold his interest back to Locker. He entered into a contract rent agreement with the City of Muleshoe, paying annually the

amount of rent specified by the city officials. The runways were moved to allow farming operations on the land, the proceeds of which will be used for paving the runways, piping of natural gas and other improvements to the airport proper.

House 14 Planes

Hangars have been built to accommodate 14 planes. Lighted runways makes night flying and training possible. The runway lighting system has been changed recently and is patterned after those used in Canada that attracted Locker's attention while flying over Canada last year. A Uni-com radio has recently been installed in the office, enabling contact with radio equipped planes. A fleet of twelve radio equipped planes are available for charter flights, training and commercial spraying. Over the ten year period, the Muleshoe Flying Service has



MORGAN LOCKER, manager of Muleshoe Airport, and Lyndol Kinsler, left, a student private pilot, soon to be licensed alongside a Super Cub PA 18. The Airport has trained many men of the area.

# The Muleshoe Journal

DEDICATED TO THE PROGRESS AND DEVELOPMENT OF BAILEY COUNTY AND THE GREAT MULESHOE COUNTRY

VOLUME 38, NUMBER 43 12 PAGES — SECTION I, 6 PAGES Published Every Thursday At Muleshoe, Bailey County, Texas 10c PER COPY THURSDAY, OCTOBER 27, 1960



BRUCE M. PEMBER  
**Rotary Governor Coming Tuesday**

The Rotary Club of Muleshoe will host to the Rotary District Governor, Bruce M. Pember, of Slaton, next Monday and Tuesday, Oct. 31 and Nov. 1.

The governor will attend a club assembly, consisting of officers, directors, and committee chairmen the evening of Monday, to go over reports and work plans.

At the club's regular meeting Tuesday he will be the guest of honor and will address the club. Monday afternoon he will have a conference with Alex Williams, president, and Robert Alford, secretary of the local club.

Mr. Pember is a member and past president of the Rotary Club of Slaton. He is one of 267 district governors supervising the activities of more than 10,600 Rotary Clubs which have a membership of nearly 500,000 business and professional executives in 116 counties throughout the world.

## Dads Day Is Friday

Friday, October 28, is Dads Day for the Muleshoe Mules. The dads are asked to attend the pep rally given for the boys at 3:15 p.m., and they will be recognized. Also, the dads are asked to be at the Benny Douglas Stadium at 7:30 p.m., and the ceremonies will begin at 7:45 p.m.

Each dad and his son will be introduced in impressive ceremonies. The dads will be extra special Friday night, they will have chairs beside the Mule bench for the entire game. The public also is requested to be at the stadium at 7:45.

Dads to be introduced are: Robert Blackwood, father of Rodney Blackwood; George Cabrera, Mike and Jimmy Cabrera; Blundy Ray, Linton Ray; Buddy Howard, Jerry Howard; Chief Jones, Frosty Jones; Jack Julian, Ronald Julian.

Consepcion Refino, Lups Refino; James Leigon, Steve Leigon; Dudley Malone, Wayne Malone; Joe Shipman, Nelson Shipman; Red Wright, Jerry Wright; James White, Bob White.

Howard Splawn, Kenny Splawn; John Miller, Rex Miller; Francis Gilbreath, Billy and Jerry Gilbreath; Buck Creamer, Travis Creamer; Dub Finn, Don Finn; Homer Lackey, Stacy Lackey.

Dub Stewart, Freddie Stewart; W. F. Harrison, Jerry Harrison; Winford Young, Jim Young; Haskell Pierce, Gary Pierce; Lester Walker, Curtis Walker.

Fathers of two players are deceased. They will be represented by H. W. Callan, Mike Barron; Claude Patton, Jimmy Patton.

## Mock Election Set November 3

The Future Teachers of America is sponsoring a mock election, so the Muleshoe high school student body will have a chance to elect the next president, vice-president, and senator of the United States. The election will be held on Thursday, November 3.

Campaign week will be Monday, October 31 to Thursday, November 3. The Republican and Democrats held their county conventions Wednesday to elect a county chairman and to select different committees to work during the election. Shirley Henry is the Republican Chairman and Jimmy Patton is the Democratic Chairman.

Poll taxes will be sold by FTA members on the Tuesday and Wednesday before the election. Poll taxes will cost 5c each and each voter must have one. Money will go to buy new dictionaries for the high school.

The election will be held as near like the real elections as possible, so the students will receive educational value from it. Both County Chairmen are to meet with Mr. Kerry Moore, FTA sponsor, today to decide in what order the parties will be listed on the ballots.

## Texas Press Boosts Bonds In Contest

U. S. Savings Bonds will receive a boost in November when the Texas Press Association conducts a campaign to inform the public about recent improvements made in series E and H bonds, L. B. Smith, Brady publisher and president of TPA, has announced that Forrest Weimhold, Levelland, will head up the campaign.

Weimhold, publisher of the Levelland Sun-News, contest committee chairman for the Texas Press Association, and his committee are working out details of the campaign to be conducted during November 1960. The committee is made up of publishers of four state newspapers.

Smith said that in 1959 Texas savings bonds advertisements and thousands of news stories, pictures, editorials and features telling the public about series E and H bonds.

"You can readily see," he added, "that promoting the sale of Savings Bonds is not new for Texas newspapers. However, for the one month period in November, we plan to do something additional to call attention to the many improvements made in bonds by recent legislation."

Both E and H bonds now earn 3 3/4%, based on being held to maturity. For the E bond, this is compounded semi-annually, accumulating to the value of the bond, and for the H it is paid by semi-annual Treasury check.

Members of the Texas Press Association Savings Bonds contest committee directing this special campaign are the following publishers: Weimhold; Watler Buckner, San Marcos Record; Ward Lowe, Lampassas Dispatch; and L. B. Smith, Brady Standard, Ex-Officio.



CHIEF JONES  
**T-T Leader**

Forrest (Chief) Jones of Muleshoe was elected president of the Ex-Double T Association, organization of former Texas Tech lettermen, at the group's annual breakfast meeting Saturday morning.

Jones, Tech griddler during the 1930's, succeeds D. M. (Deacon) McElroy.

Others elected were Dr. L. A. Storr, vice-president, and Gerald Myers, secretary-treasurer. Both are Lubbock residents.



## Halloween Carnival Set Monday Night; Queen To Be Crowned

Plans are underway for the Halloween Carnival, sponsored by the Band Boosters, to be held in the Bus Barn Monday, Oct. 31, starting at 6 p.m.

The finale will be the crowning of the Carnival Queen at 10 p.m. The school and their candidates are: Ann Brooks and Jan McVicker, high school; Donna Phipps, Junior High; Pamela S. Clair, Mary DeShazo and Jeanine Wagnon, Richland Hills.

All clubs and organizations are invited and urged to enter a booth in the carnival. Contact George Bragg or Buddy Blackman for information. All proceeds from the carnival will be used to buy uniforms for the band.

Organizations and their booths are listed as follows: Lions Club—Ducking Board (teachers are the victims). MYF (intermediates)—Bean Guessing Contest. MYF (senior)—Spook House. Cub Scouts—Cake Walk. DeShazo P-TA—Water Pistol and Candle Game. Richland Hills P-TA—Caramel Apples. Band Boosters—Movies, Bingo, Fishing Pond.

## Boys Ranch Talk Heard by Rotary

Speaker at the Rotary Club's noon meeting Tuesday was Ray Noblett, a volunteer worker for Boys Ranch at Tascosa. Mr. Noblett, after 35 years in the butane business, sold his holdings and since has spent his time traveling and telling the people about the Ranch.

He related that Cal Farley, who had left home at 15, became a professional wrestler and ball player, retired from business and had devoted practically all his time and energies to Boys Ranch, which he founded 21 years ago. There are now 261 boys at the Ranch, 1500 have passed through the home.

He said that as the sun comes up each morning someone is calling Cal Farley about some boy that needs help. Greatest need today is more housing.

He said 50 percent of the boys come from good homes, and only need help; 50 percent of the boys come from the "bottom of the barrel", but all are kept busy with a wholesome routine of work, sleep, study.

The school has 12 accredited grades and 14 vocational courses. Each boy must pass each grade. Teachers hold night classes to help those that are not passing. Either some business organization or Cal Farley sees that a boy goes to the college that he chooses.

## Search Is On—For South Plains Maid of Cotton

The South Plains Maid of Cotton Committee of the Lubbock Chamber of Commerce in cooperation with the National Cotton Council is searching for the 11th consecutive year for a young lady who will represent this area as an automatic entry in the National Contest in Memphis, Tenn. — and who we hope will be selected as the 1961 National Maid of Cotton.

This is an opportunity for some young lady between the ages of 19 and 25—at least five feet, five inches tall—who has never been married—and must have been born in a cotton producing state—does not wear glasses—and have her home residence in one of the following South Plains counties:

Bailey, Borden, Briscoe, Castro, Cochran, Crosby, Dawson, Deaf Smith, Dickens, Floyd, Gaines, Garza, Hale, Hockley, Howard, Lamb, Lubbock, Lynn, Motley, Parmer, Swisher, Terry, and Yoakum.

## LOCAL STUDENTS MAKE HONOR SOCIETY

CANYON—Two West Texas State College students from this area have been selected as members in Alpha Chi, national honor society.

They are: Mrs. Rose Lee Powell of Muleshoe, daughter of Mr. and Mrs. W. T. Miller of Muleshoe. Mrs. Powell was promoted to a senior member in Alpha Chi. Ralph Tunnell of Muleshoe, son of Mr. and Mrs. A. S. Tunnell of Muleshoe was also selected as a member. Tunnell is a junior member.

## Postoffice Bids Asked

Postmaster Senn D. Slemmons said today he has been advised by the Office of Postmaster General Arthur E. Summerfield that the Post Office Department is now asking for bids to build and lease to the Department a new building for the Post Office at Muleshoe, Texas. Advertising will be posted from November 5, 1960, to January 6, 1961.

Specifications call for a structure containing approximately 4,564 square feet with an outside loading platform and adequate space for parking and truck maneuvering.

The proposed building will be located at the northwest corner of the intersection of East Third Street and East Avenue "C".

Postmaster Slemmons said the Post Office Department will enter into a lease agreement with the successful bidder which will run for ten years, with four consecutive five-year renewal options.

Bids should be submitted to the Postmaster advised to Real Estate Officer V. E. Bell, Post Office Box 1386, Lubbock.

## 362 Bailey Countians In '59 Drew \$233,000 Social Security Benefits

New York—Money set aside for the benefit of Bailey County workers during the past 25 years, through Social Security that taxes that they and their employers paid, is now coming back to them like manna from heaven.

At the beginning of this year, some 362 local residents were receiving monthly pension checks.

These beneficiaries were retired workers, disabled workers, their wives, children and other dependents.

Their number is far greater than it was a few years back the result of liberalization of the Social Security program which has enabled many people to qualify for pensions.

In 1955, for example, there were only 124 residents of Bailey County receiving checks. The rise, since then, amounts to 192 per cent.

There has been an equally impressive increase in the volume of money received locally.

Texas. The Real Estate Officer will supply information with regard to bidding forms, building specifications, lease provisions, etc.

The Postmaster quoted Regional Operations Director George A. Gray for the Post Office Department's Dallas Region, as saying that "significant progress now is evident in the postal modernization program begun by Postmaster General Arthur E. Summerfield."

Under the Post Office Department's unique Commercial

Leasing Program, the resources and investment funds of private enterprise are utilized to obtain needed postal buildings. More than 4,500 new structures have been erected during the past five years.

Moreover, due to Congressional approval of the Postal Modernization Program, construction during 1960 will be greatly accelerated with 1602 new facilities scheduled for completion and several hundred obsolete post offices modernized and expanded.

## SUNSHINE HELPING CROPS MATURE

Climateer Foresees Rains This Weekend

Muleshoe basked in continued mild October temperatures for the past seven days and it looks like the month will end with mild temperatures and wet skies.

Only a trace of moisture was recorded in the 7-day period ending today. This came at the midnight hour Monday. Thus the city's rainfall for October holds at 4.90 and 23.88 for the year.

More rainfall is anticipated this Sunday and Monday as a squally frontal and low pressure system churns through West Texas and on to the east. Look for rains in the New Mexico mountains Sunday (with snow above 7,000 feet). These rains will move into West Texas late Sunday and Monday.

Clearing skies Tuesday will allow sufficient nighttime radiation for the area to cool to the low 30's by Wednesday morning. November 2 is the day we picked for the first freeze. It should get no lower than 32 that day.

There is a possibility for clouds to arrive again late Wednesday ahead of a fairly cool spell. A low of 29 or 30 degrees is anticipated November 4.

The long range outlook for November sees generally mild temperatures after the early cool spell. There will be a brief return to chilly readings at mid-month and some snappy readings immediately after Thanksgiving.

Rainfall for the month of November will be considerably less than October's 5-inch pour. We foresee about 1.50 inches of moisture. This will arrive principally between November 10 and Thanksgiving Day.

Here is the immediate 7-day outlook:

Date	Lo	Hi	Precip.
Fri., 28	41	74	T
Sat., 29	38	75	O
Sun., 30	40	72	Chance
Mon., 31	40	54	.48
Tues., 1	35	70	T
Wed., 2	32	76	O
Thurs., 3	39	64	Chance

Muleshoe's lowest temperature for this young fall season through Thursday is 38 degrees which occurred October 21. This week may bring in the winner to the first freeze contest, so be watching.

## GRAVESIDE SERVICES HELD FOR ROGERS INFANT

Graveside services were held Tuesday, Oct. 25, at 5:30 p.m. for Yolanda Rogers, 11 month old daughter of Mr. and Mrs. Wiley Rogers of Star Route, Sudan. The child was born here Nov. 9, 1959.

Father Corcoran of Immaculate Church conducted the services. Interment was in Muleshoe cemetery under direction of Singleton Funeral Home.

Palbearers were Walter Verner, Cecil Atchley, Jack Boone, Allison, Mervin Wilsterding, Euel Embry. Honorary palbearers were I. W. Haney, Tom Smith, Jess Pruitt, Ernest Lovelady, Byron Gwyn, and Robert Shanks.

## Jean LaRue and James Drake To Marry Nov. 4



JEAN LARUE

Mr. and Mrs. C. O. LaRue, Jr., of Muleshoe announce the engagement and approaching marriage of their daughter, Jean, to James Drake, son of Mr. and Mrs. C. B. Drake of Lubbock.

The double-ring ceremony will be read by the father of the groom in the Youth Chapel of the First Methodist church in Muleshoe Friday, Nov. 4, at 5 p.m. Only the members of the immediate family will be present.

Miss LaRue is a graduate of Muleshoe high school and attended Draughton's Business College in Lubbock. Her fiancé is a graduate of Crosbyton high school and is presently employed in Lubbock.

## Mrs. Daniel Presides At WMS Meeting

Mrs. B. O. McDaniel presided at the regular meeting of the WMS of the First Baptist church which met Monday morning, Oct. 17, in the dining room of the church.

Mrs. Eddie Lane taught the Bible study.

Those present were Meses. McDaniel, Lane, Howell, Callan, Grogan, King, Bratcher, McAdams, Coffman, Jamison, Morrison, Howard, Wilson, Stinson, Seymour, and Griffiths.

All women of the church are urged to come to WMS. You are needed.

## Sarah Earley

COSMETICS

—CALL—  
RUBY BRASHEAR  
For An Appointment

6650  
After 7:30 P. M.

## Johanna Wrinkle Presents Pledge Pins October 18

Johanna Wrinkle, president presented Pledge Pins to Vickie Young and Marlene Martin during the meeting of the Epsilon Chi chapter of ESA sorority which met in the home of Ann Alford Tuesday, Oct. 18.

Ten year pins were presented to Bill Ed Jones, Betty Glaze and Marjorie Precue. Refreshments of chocolate pie, nuts, coffee and Cokes were served from a table accented with an arrangement of yellow jonquills, the ESA flower.

The members present were Chubby Douglass, Johanna Wrinkle, Laura Bartlett, Anna Copeland, Jean Gillespie, Maurine Hooten, Helen Kriebbs, Loretta Small, and the hostess, Ann Alford.

## Garlington Heads MHS Student Council

Robert Garlington has been elected as the new Muleshoe High School Student Council President. Robert is president of his junior class and was elected Junior Rotarian for the month of September. He is the son of Mr. and Mrs. Clinton Garlington.

Rodney Blackwood was elected to fill Robert's office of vice-president. He is the son of Mr. and Mrs. Robert Blackwood and vice-president of the senior class. Julia Hollis is new secretary of the Student Council, Julia is the daughter of Mrs. W. L. Hollis and she is secretary of the junior class.

## C. A.'s Fellowship Party At Halloween

The C. A.'s of the Muleshoe Assembly of God Church are planning a Halloween Fellowship party, Monday, Oct. 31 at 8:00 p.m. in the American Legion Hall.

Everyone is invited for an hour of games, tricks, and wholesome Christian fellowship. Remember to wear your favorite Halloween costume and bring a friend.

## 11 Ladies Attend Quarterly Meeting

Eleven ladies from Muleshoe attended the Quarterly meeting of the Llano Altos Association held in the First Baptist Church in Bovina Tuesday night, Oct. 25.

Approximately 100 ladies attended the meeting and enjoyed the evening meal that was furnished by the host church.

The ladies that attended from Muleshoe were Meses. Bill McDaniel, R. E. Everett, H. W. Callan, J. Lewis Morris, I. M. Stinson, W. B. McAdams, Ed Little, Vernon Jamison, Fred White, Lois Shook, and Eddie Lane.



SHIRLEY HENRY

## Shirley Henry Is Installed As New YWA President

Ninety-seven young women, with their leaders, were present at a Mexican supper held at La Vista Dining Room in Clovis, N. M., Wednesday evening, at which time officers for the Young Women's Auxiliary Council of Llano Altos Association, auxiliary to the Baptist General Convention of Texas, were installed.

Officers installed were President, Miss Shirley Henry, 17-year-old daughter of Mr. and Mrs. Clyde Henry of Muleshoe. Vice - presidents were Meses Marilyn Turner of Bovina, Kaye Bradley of Amherst, and Judy Dale of Littlefield; secretary, Miss Evelyn Meadows of Earth; pianist, Miss Melva Lynn Ross of Littlefield; Miss Sarah Gentry, who will serve as choirster, was unable to attend the Installation Service due to an injury sustained in a fall last Sunday.

The entire affair was under the direction of Mrs. Ralph Nelson, YWA Director of Llano Altos Association. Carrying out the foreign mission theme for the evening was "Christ M'Alme" (Jesus Loves Me). The young women were beautifully dressed in colorful Fiesta dresses. Mrs. Nelson acted as toastmistress.

The invocation was led by Mr. Cecil Turner of Hale Center.

The YWA watchword for the year is "The Love of Christ constrained me", carrying out the Llano Altos YWA theme for the year, "By Love Impelled".

Mrs. Cecil Turner, YWA Director of District Nine, Baptist General Convention of Texas, served as installing officer. In a most impressive and inspiring ceremony, she charged those officers who will serve Llano Altos Council during the coming year with the need of discharging their duties "by love impelled". As the officers were presented, Mrs. Turner placed large black letters covered with gold glitter on the mirror spelling the word "LOVE". Each letter represented a necessary quality of an officer: Love, Obedience, Vigilance, and Enthusiasm. Climaxing the beautiful installation service, Miss Kaye Brantley of Amherst sang, "The Love of God", accompanied at the piano by Miss Nancy Embry, also of Amherst.

Mrs. Bill Curry, YWA Director of Lazbuddie Baptist Church, led the benediction, after which the lights were lowered for the closing meditation.

Those attending from this area were Mrs. Wilma Davis, Muleshoe YWA Director; also attending from Muleshoe were Meses Sylvia Pool, Karen Jones, Louise Stinson, Lynda Lee, Mary Sanders, Benni McDaniel, and Shirley Henry. Groups were also present from Progress, Lazbuddie, Bo-

## WSCS Circles of First Methodist Church Meet Tuesday, October 25

On the hour of 3:00 p.m., the Alpha Circle of the First Methodist Church met Tuesday, Douglas Jones. Twelve members were in attendance.

After a short business session to Mrs. Gedonne Williams who led the group in their study of "Into All The World Together". Mrs. Jones brought the devotional and closed with a prayer.

Refreshments were served and an hour of visitation was enjoyed.

### Esther Circle

Mrs. Ralph Douglas was hostess to the Esther Circle of the First Methodist Church when it met at 9:00 a.m., on Tuesday, Oct. 25.

## Mrs. Welch Is New President of Hi-Lo Piano Club

Mrs. L. J. Welch of Earth was elected president of the Hi-Lo Piano Club which met in Fellowship Hall Tuesday night, Oct. 25.

Other officers elected include Mrs. John Gammon of Lazbuddie, vice - president; Mrs. James Glaze, secretary and treasurer, and Mrs. Sam McKinstry, club counselor.

Mrs. Gammon gave report on the new year books which were presented to each family.

Mrs. Welch read an article entitled "Parental Confusion" which appeared in the first edition of the Texas Music Teachers Journal.

The following students of Mrs. McKinstry presented a program of music to a large crowd.

Susan Pendergrass, Doris King, Monica Griffiths, Joyce and Joe Adams, David Gupton, Ellen Lewis, Gary Edwards, Harriett Glaze, Linda Kerr, Donna and Kay Baker.

Kerna Nickels, Denise Doss, Rickey Welch, Kim Welch, Sandra Glaze, Butch Taber, Carolyn Amers, Melaine and Allison Ray Precure, Sheila Harvey.

Terri Sue Mabry, Marsha Parkinson, Laura Moore, Nel-da and Neil Finley, Pamela St. Clair, Tonnye Welch, Theresa and Charlotte Seaton, Cynthia Phillips, Kathy Williams, Linda Monk, Marianna Gammon, Veta and Sue Allison.

The hostesses were Meses. Harold Allison, James Freeman and Fred Welch.

vina, Oklahoma Lane, Littlefield, Amherst, Earth, and Langview. Special guests were Mr. and Mrs. Cecil Turner of Hale Center and Mr. Ralph Nelson and little Miss Cathy Nelson of Littlefield.

## Only factory-authorized SALES & SERVICE

**Electrolux**  
VACUUM CLEANERS

Prompt, friendly service. For parts, supplies or information, call or write:

Phone 5124  
Box 1057  
MULESHOE, TEXAS

Welcome your friendly Electrolux man

## NOW SHOWING - AT -

**MOELLER THEATRE**  
IN MULESHOE

FRIDAY & SATURDAY  
OCTOBER 28-29

13 FIGHTING MEN

Grant Williams  
Brad Dexter  
Carole Matthews

SUNDAY ONLY  
OCTOBER 30

HELL BENT FOR LEATHER

Audie Murphy  
Felicia Farr  
Stephen McNally

SATURDAY NIGHT - SUNDAY AFTERNOON  
PALACE THEATRE  
"MARIJA"

## Two From Area Are Wayland Club Leaders

Plainview—Two young women from the Muleshoe area, Bonnie Battaas of Goodland and Martha Wuerflein of Muleshoe, have been elected officers of clubs at Wayland Baptist College for 1960-1961.

Miss Battaas, daughter of Mr. and Mrs. E. T. Battaas, Goodland, has been elected stewardship chairman of the Young Women's Auxiliary. She was secretary of her sophomore class and at present is a member of the Baptist Student Union, the Volunteer Mission Band, and the council of Matador Hall, women's residence.

Miss Wuerflein, daughter of Mrs. Lillie Wuerflein, Muleshoe, was elected president of the Home Economics Club. She is a member of the speech club and is the senior class nominee for homecoming queen.

## Attention... Club Reporters

Publicity chairmen and reporters of women's organizations in the Muleshoe area are invited to attend a discussion on "Reporting Club Activities" to be held in the Production Credit Building Thurs., Nov. 3, at 7:30 p.m.

Cherry Hoybook and Polly Otwell, Journal staff, will try to convey some of the material discussed at the Publicity Clinic, which they attended in Lubbock October 8.

WANT BUILDING MATERIALS?  
See the YELLOW PAGES

## Wesleyan Service Guild

The Wesleyan Service Guild met in the Youth Chapel of the First Methodist Church on Monday, October 24 at 7:30 p.m., with 14 members present.

Mrs. Ray Edwards introduced the program. Mrs. Lois Schoenberger gave the devotional and Mrs. Horace Brooks gave the program from the study, "Basic Christian Beliefs".

## MR. AND MRS. HUMPHRY SPENDS 2-WEEKS HERE

Mr. and Mrs. Henry Humphrey of Iowa Falls, Iowa, recently spent two weeks visiting in the home of their daughter and family, Mr. and Mrs. Harold McClelland.

## Heads New Dimes Week Posters

MIDLAND—Edwin L. Gardner of Midland will lead Texas volunteers in the New March of Dimes next January.

The appointment to head the state's campaign against birth defects, arthritis, and polio, was announced in New York by Basil O'Connor, president of the National Foundation.

"The New March of Dimes has come to symbolize a compassionate way to give help and courage to the stricken and to make the nation a safe and healthy place for our children", O'Connor said.

Shop The Muleshoe Journal for all your School Supplies.

## Progress Methodist

As a part of the Stewardship Program engaged in by the Progress Methodist church, Rev. M. Horace Brooks of First Methodist Church, Muleshoe, will preach on Sunday, October 30 at the evening service.

The Progress Methodist Church has been engaged in this program which began on October 2, and will close on November 13.

Remember the change in the evening service hours. Fellowship hour is at 6:00 p.m. with worship at 7:00 p.m.

Shining Light Sub-district Methodist Youth Fellowship Council will meet this Sunday at Sudan in the Methodist Church. The meeting is scheduled for 2:30 p.m. All council members are urged to be present.

FRIDAY & SATURDAY  
October 28 and 29

SUN., MON., TUES.  
October 30, 31—Nov. 1

BOPHIA LOREN  
ANTHONY QUINN  
**HELLER IN PINK TIGHTS**  
TECHNICOLOR

ALAN LADD - DON MURRAY - DAN O'HEARLY  
**"ONE FOOT IN HELL"**

WATCH FOR A GREAT SCHEDULE OF  
FIRST RUN MOVIES IN NOVEMBER

# Welcome to the GRAND OPENING of Muleshoe's Newest Service Station

## YOUR STANDARD CHEVRON SATURDAY, OCT. 29 TO NOV. 5

We are proud to bring the first Standard service to the Muleshoe territory. You will like our friendly and prompt service. This new Standard station is built to facilitate the dispensing of proper service with ease and speed. No job is too small and any job will be handled promptly.

You are invited to come by Saturday and inspect our modern new plant. We welcome you to get acquainted with the many superior Atlas products we stock and use to service your automobiles.

While you are here Saturday make arrangements to have your car winterized. We'll lubricate, change oil, add antifreeze, check for cooling system leaks, and check for any mechanical defects. You'll be assured of carefree winter driving when you drive from the new Standard station.

### Sanderson's Chevron SERVICE STATION

Featuring Atlas Auto Supplies  
4th and American Blvd. - Muleshoe

Clip This Coupon and Take To Sanderson's Chevron!

**FREE! FREE!**

For Every 10 Gallons of Gasoline Purchased Saturday, October 29 to Saturday, November 5 Sanderson's Chevron Station Will Stamp Your Coupon Which Will Entitle You To A **FREE LUBRICATION JOB!**

WESLEY SANDERSON  
Manager

**Dr. A. J. Black**  
OPTOMETRIST  
113 West 1st St. Muleshoe, Texas  
Phone 8240

**Theron and Leatha West**

ANNOUNCE THE **OPENING**

— OF A —

**QUICK LUNCH CAFE**

On Clovis Road Across Highway  
From Piggly Wiggly Grocery

**THURSDAY, OCTOBER 27**

**OPEN AT 5 A. M.**

EVERY MORNING TO SERVE YOUR FAVORITE BREAKFAST INCLUDING WAFFLES

FRESH CHILI AND BEEF STEW EVERD DAY

ALSO MEXICAN FOOD DISHES STEAKS - SHORT ORDERS, ETC.

—Homemade Donuts and Pies—

Telephone 3-9650

**THE CHILI BOWL**

## PIGGLY WIGGLY LAYAWAY SALE

Eight short weeks until Christmas—buy now while the selection is complete and the prices are low. Just select your gifts now and Piggly Wiggly will hold your purchase until Christmas week.

### CERAMIC LAMPS:

Handsome domestic ceramic lamps with fiberglass shades at unbelievable prices! Five beautiful styles in a choice of thirteen colors. Brighten your home for Christmas.

\$3<sup>99</sup>

### 25" BRIDAL DOLL

A Darling Creation to warm the heart of any little girl at Christmas. This darling bride has moving eyes, head, legs and arms and is dressed in pink, blue, or white satin. A small deposit now will hold her until Christmas week. You get S&H Green Stamps, too!

\$5<sup>95</sup>

### 6' ALUMINUM CHRISTMAS TREE

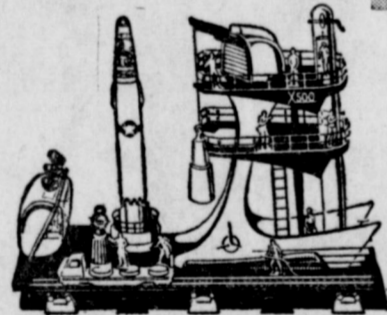
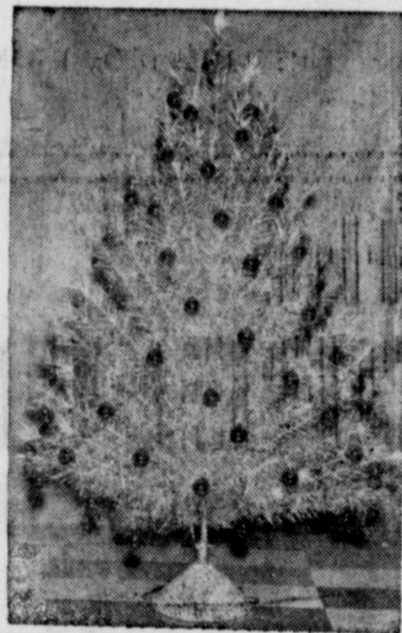
A thing of beauty and a joy forever! This ever bright beautiful tree is 6' tall with 74 — 24" shimmering branches. Stand is included. Storage carton protects between seasons. Expensive looking, yet economical to buy. Use our lay-a-way! \$20 value—

\$15<sup>95</sup>

### Missile Defense Base & Rocket Launcher

Rocket blast off! Dials light up! Missiles fire! Crane really works! Engineered for perfect safety! Just the thing for a science-minded boy at Christmas!

\$11<sup>88</sup>



### BABY CONTEST WINNER

RICHARD FUDGE  
Son of Mr. and Mrs.  
R. C. FUDGE  
Box 1112, Muleshoe



## FREE

TRICK OR TREAT BAGS  
AT PIGGLY WIGGLY

Judson's Candy	2 LB. ASSORTED INDIVIDUAL WRAPPED PIECES	69c
Tee Vee Candy Mix	2 LB. ASSORTED HARD & FILLED, INDIVIDUAL WRAPPED	79c
Bubble Gum	FLEER'S 80 COUNT BOX	49c
CARAMELS	Kraft's 14 oz. 3 For \$1	
HERSHEYETTES	24 — 5c Bags Box 89c	
HERSHEY KISSES	16 oz. Bag 69c	
Chocolate Chips	Baker's, 12 oz. Pkg. 49c	

MIRACLE WHIP	Salad Dressing Qt. Jar	49¢
SUGAR	Powdered or Brown 1 Lb. Pkg.	2 FOR 25¢
COFFEE	Maryland Club 1 Lb. Can	69¢
GIANT FAB	For An Easier Wash	73¢

CAKE MIX	Fillsbury White, Golden, Orange, Choc., Double Dutch, Spice, Caramel or Pineapple 2 FOR 69c	
NAPKINS	Zee, 80 Count Pkg.	10c
CLEANSER	Ajax, Giant Box	2 For 49c
BEAUTY BAR	Vel	2 For 39c
VEL	Large Box	35c
APPLE CIDER	Martinelli, 1/2 Gallon	79c
FRUIT MIX	Calrose, No. 2 1/2 Can	25c
ORANGE JUICE	Swan, 46 oz. Can	33c
POWDERED MILK	Pet, 8 Quart Size	75c
HAIR SPRAY	Lanolin Plus \$2.00 Value	69c
WASH 'N CURL	Lanolin Plus \$2.25 Size	\$1 <sup>19</sup>

BROCCOLI	Spears, Frozen Seabrook, 10 oz.	23c
TV DINNERS	Swanson EACH	59c

Values In This Ad Good In Muleshoe Friday, October 28 Through Thursday, Nov. 3

## PICNICS

Swift's Premium Cooked, Ready-To-Eat Whole, LB.

33¢

### CHICKEN PARTS:

CHICKEN BREAST	Mrs. Chesser's 2 Lb. Pkg.	89c
CHICKEN LEGS	Mrs. Chesser's 2 Lb. Pkg.	79c
Chicken Thighs	Mrs. Chesser's 2 Lb. Pkg.	79c



Breaded Shrimp	Booth's 1 Lb. Pkg.	79c
DRIED BEEF	Swift's Premium, Sliced, 4 oz. Pkg.	39c
SLICED BACON	Swift Premium	lb. 59c
Ground Beef	Piggly Wiggly's Lean High Quality	3 Lbs. \$1

DOUBLE EVERY WEDNESDAY

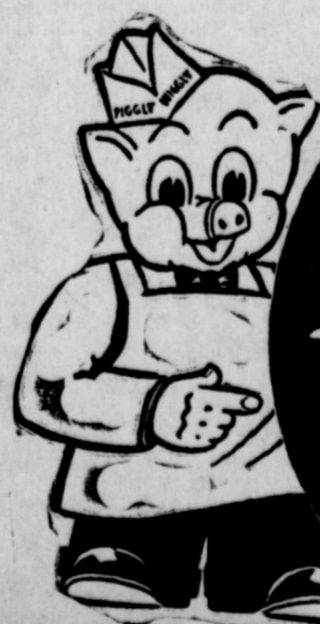
With \$2.50 Purchase or More

BANANAS	Golden Fruit LB.	10¢
---------	------------------	-----

CARROTS	1 Lb. Cello Bag	10¢
---------	-----------------	-----

RADISHES	Fresh Bunch	each 5c	FILM	Kodak, Black and White, 120, 620 and 127 — Roll	3 For \$1
----------	-------------	---------	------	---	-----------

ONIONS	Fresh Bunch	each 5c	COLOR FILM	Kodak, 120, 620 and 127	89c
--------	-------------	---------	------------	-------------------------	-----



Shop Rite always shop Piggly Wiggly

# BUY! SELL! SWAP!

READ and USE THE

# WANTED

## Want Ads

**RATES:** Minimum charge... 50c time.  
 1 time, per word... 4c  
 2 times, per word... 7c  
 3 times, per word... 10c  
 4 times, per word... 13c  
 3c per word each additional  
 All Card of Thanks \$1.00

### 1. Personals

**WANTED:** Ironing, baby sitting or house cleaning. Will stay with your child day or night. Phone 3-9260. 1-42-4tc.

**MATTRESS RENOVATING**—Mattress renovated, special built king size mattresses and box springs. All work guaranteed, fast service. Phone 3-9380, Mrs. Odom, Elite Hotel, Muleshoe, Direct Mattress Co., Lubbock, Texas. 1-40-1tc.

**PRIVATE ACCORDIAN** lessons. Instruments available. Call WA 5-3141 or write Route 2, Box 211, Muleshoe. 16-43-tfc.

**WANTED:** Sewing and alterations See Mrs. Carl Case. 319 W. Ave. E. Phone 7069. 1-7tc.

**WURLITZER,** Knabe Fischer and Lester Pianos, Hammond Organs, Phillips House of Music, 219 Main, Clovis, N. M. 1-41-tfc.

**IF YOU** want to drink, that's your business. If you want to stop, that's your business. For information, write Alcoholics Anonymous, Muleshoe, Texas. 1-32-tfc.

**WANTED:** 3 used pianos for Sunday School departments. Must be cheap. Call 3-3381 or YO 5-3560 or contact Rev. Hard at Progress Baptist Church. 1-41-tfc.

**FOR SALE:** Three registered Dashed puppies 6 weeks old. Ideal playmate for child. Call 3-3189 or 3-0966. 1-38-tfc.

**COCKER,** Masonry Contractors. All types masonry. Brick, block stone, block fences, barbecue pits to ten story buildings. All work of the best. Phone 3-9180, Muleshoe. 1-22-tfc.

**FOR SALE:** Three registered Dashed puppies 6 weeks old. Ideal playmate for child. Call 3-3189 or 3-0966. 1-38-tfc.

**COCKER,** Masonry Contractors. All types masonry. Brick, block stone, block fences, barbecue pits to ten story buildings. All work of the best. Phone 3-9180, Muleshoe. 1-22-tfc.

**FOR SALE:** Three registered Dashed puppies 6 weeks old. Ideal playmate for child. Call 3-3189 or 3-0966. 1-38-tfc.

**COCKER,** Masonry Contractors. All types masonry. Brick, block stone, block fences, barbecue pits to ten story buildings. All work of the best. Phone 3-9180, Muleshoe. 1-22-tfc.

**FOR SALE:** Three registered Dashed puppies 6 weeks old. Ideal playmate for child. Call 3-3189 or 3-0966. 1-38-tfc.

**COCKER,** Masonry Contractors. All types masonry. Brick, block stone, block fences, barbecue pits to ten story buildings. All work of the best. Phone 3-9180, Muleshoe. 1-22-tfc.

**FOR SALE:** Three registered Dashed puppies 6 weeks old. Ideal playmate for child. Call 3-3189 or 3-0966. 1-38-tfc.

**COCKER,** Masonry Contractors. All types masonry. Brick, block stone, block fences, barbecue pits to ten story buildings. All work of the best. Phone 3-9180, Muleshoe. 1-22-tfc.

**FOR SALE:** Three registered Dashed puppies 6 weeks old. Ideal playmate for child. Call 3-3189 or 3-0966. 1-38-tfc.

**COCKER,** Masonry Contractors. All types masonry. Brick, block stone, block fences, barbecue pits to ten story buildings. All work of the best. Phone 3-9180, Muleshoe. 1-22-tfc.

**FOR SALE:** Three registered Dashed puppies 6 weeks old. Ideal playmate for child. Call 3-3189 or 3-0966. 1-38-tfc.

**COCKER,** Masonry Contractors. All types masonry. Brick, block stone, block fences, barbecue pits to ten story buildings. All work of the best. Phone 3-9180, Muleshoe. 1-22-tfc.

**FOR SALE:** Three registered Dashed puppies 6 weeks old. Ideal playmate for child. Call 3-3189 or 3-0966. 1-38-tfc.

**COCKER,** Masonry Contractors. All types masonry. Brick, block stone, block fences, barbecue pits to ten story buildings. All work of the best. Phone 3-9180, Muleshoe. 1-22-tfc.

**FOR SALE:** Three registered Dashed puppies 6 weeks old. Ideal playmate for child. Call 3-3189 or 3-0966. 1-38-tfc.

**COCKER,** Masonry Contractors. All types masonry. Brick, block stone, block fences, barbecue pits to ten story buildings. All work of the best. Phone 3-9180, Muleshoe. 1-22-tfc.

**FOR SALE:** Three registered Dashed puppies 6 weeks old. Ideal playmate for child. Call 3-3189 or 3-0966. 1-38-tfc.

### 7. Wanted to Rent

**RENT A NEW Spinnet Piano:** Phillips House of Music, 219 Main, Clovis, N. M. Money paid will be applied on purchase. 7-41-4tc.

### 8. Real Estate for Sale

**FOR SALE:** Equipment and supplies in Dairy Mart Drive-In on Clovis highway. Would take part trade. 5 year lease. 3 years to go. 8-30-tfc.

### FOUR GOOD DEALS

- 240 A., 10' well on natural gas. Good red land, \$275 A.
- 240 A., 8' well, improved Good red land, \$265 A.
- 85 A., 10' well, \$34,000, \$16,000 down. Good terms on balance.
- 160 A., good well. About 35 A. cotton, \$160 A.
- 135 A., 10' well. Too cheap at \$325 A.

### BILL COLLINS Real Estate

**19th & Clovis Road**  
 Next To Bill's Drive-In  
 Beryl Wingo, Salesman  
 Phone 7250

**8 ACRES** N. of Clovis, 4 room modern house, natural gas, domestic well, lots of barns, outbuildings; suitable for horses, cattle or poultry. Sell or trade equity or rent.

**A VERY FINE HOME,** 3 bed room brick, den, basement, two full baths and shower, extra large cedar closets, lots of storage. Plumbed for washer and dryer, carpeted, drapes, sprinkler system from street to alley. Possession now. This home is conveniently located to all schools and churches. FHA commitment. Have client with plenty of money to loan on land.

**G. C. Kennedy Realtor**  
 1436 Axtell St.—Clovis, N.M.

**FOR SALE**  
 Used Spinnet Pianos  
 Good Condition  
 PHILLIPS HOUSE OF MUSIC  
 219 Main — Clovis, N. M.  
 Phone PO 3-5041

### Farms & Homes For Sale

- 136 A 3 room house, 1 large barn. \$17,100.00 loan, 28 A. cotton A plant 1/2 min. some J grass, \$310.00 per A. 10 in. well.
- 80 A. 3 bedroom house on paved road good well, clean land, \$205. A dry land to sell. See me before you buy.

On Lubbock Hwy  
 At East First Street  
**J. E. DAY**

**FOR SALE:** 2 bedroom house and 2 bedroom garage apartment, both new and modern, located on same lot. Can get good FIAA loan. Also have vacant lot, 62 ft. wide next door. Call 4111 or 1612 W. Ave. B. 8-32-tfc.

**REAL ESTATE VALUES**  
 ● Exclusive: 30 acres, 5 mi. Northeast of town; fair imp. 10 in. well, some underground pipe. A real buy. Other small tracts.  
 ● 80's, 160's and 320's.  
 ● 2 and 3 bedroom homes.

**ERNEST E. HOLLAND**  
 Real Estate  
 Just West of Cross Roads  
 121 American Blvd.  
 Ph. Off. 3-2749 Res. 3-0549  
 Muleshoe, Texas

**AM INTERESTED** in making loans on farms and ranches, also in buying first and second lien notes on land. J. J. Steele, Citizens Bank Building, Clovis, N. M. Dial PO 3-6453, or PO 3-3521. 8-41-4tc.

**LAND WANTED:** We have buyers for your farm land. Irrigated, dry or ranch land. Call write or see Turner Bros., Land Co., Hale Center, Phone 5221. 8-41-12tp.

**FOR RENT:** 2 room furnished apartment, suitable for couples or one. Mrs. Rosie McKillip, 410 West 2nd. Phone 3-9280. 5-41-tfc.

**FOR RENT:** Duplex apartment, 3 rooms and bath, just refinished. Extra nice. Suitable for couple or couple and one child. 1308 Ave. B. D. O. Smith, Dial WA 5-3327. 5-43-tfc.

**POST BINDERS,** ledger sheets, columnar sheets at The Journal.

### 8. Real Estate for Sale

**FOR SALE:** 12 A. 4 miles west of Mansfield, Texas. Ideal for working people of Ft Worth who desire a suburban home. Would take Muleshoe property in on trade. Write Mrs. G. C. Tapp, Box 763, Muleshoe. 8-36-tfc.

### LANE'S LISTINGS FARMS & RANCHES

- 160 A., good 8' well, 3 bed room home. Priced to sell at \$235 per A.
- 170 A., good 8' well on natural gas. Can be bought, \$275 A. Will work with the above 160 A.
- 160 A., good dry land. Priced at \$16,800, 45 A. cotton.
- 177 A., dry land, 49 A. cotton. Priced at \$100 per acre.
- 160 A., good 8' well, on paving. Priced to sell at \$300 per A.
- 2 bedroom home in the Lenau Addition. Payments \$55 per month.

### City Property

● 2 bedroom home, well located, good condition. Price, \$6,500. Will sell GI.

### EDDIE LANE REAL ESTATE

Phones 4390 or 5680  
 C. L. Campbell  
 Salesman

### TRADE FOR INCOME PROPERTY

● 640 A. near Bovina. 440 in cultivation, 110 A. wheat, 22 A. Cotton. One 8' and 1 6' pump. Best of land, 3 bedroom house, Quonset Barn, 40x100. Fine place. Trade for income property or land near Muleshoe. Has \$32,000 loan, 5%, 20 years. Priced at only \$250 A.

● 80 A. northeast of Muleshoe. Best level place. Electric pump, concrete pipe. Good improvements, \$40,000, or will trade for cheaper land, more acres.

● Nice 2 bedroom house, Lenau Addition, 4 1/2% loan, small payments. Equity about \$2,500.

● 3-bedroom, Lenau Addition, 4 1/2% GI loan, \$7,500. Trade equity for land or what have you.

● 2-bedroom house, 8 acres, level, 5' pump, \$12,500. Trade.

See  
**DAVE AYLESWORTH**  
 At 1919 Clovis Road  
 in Muleshoe — Phone 5290

### 10. Farm Equip. for Sale

**FRANCIS IMPLEMENT CO.**  
 2-56 FORDS — 640  
 1-55 FORD  
 1-53 FORD w/loader.  
 3-FORDS — 9N GOOD  
 1-43 CASE — 4 row equip  
 1-53 Massey Harris-4 row equip.  
 1 - IHC Sillage Cutter.  
 1-Moline 4 row equip. Good.  
 2-IHC (M) 4 row Equip.  
 Dri Eoy 230 Crop Drier in stock.  
 2 - 1-row Corn Picker, good.  
 1 - 2-row Corn Picker  
 1 - 1-row Corn Picker and Sheller.

**FRANCIS IMPLEMENT CO.**  
 Ph. 6020 — Muleshoe

**IRRIGATION PUMPS** on rental basis. We maintain—You pay only one yearly payment, which is fully deductible. Box 5305, Lubbock, Texas.

**USED IRRIGATION PUMPS** at Bargain prices. We have a selection large enough to fit your well exactly. Box 5305, Lubbock. 10-16-tfc.

**FOR SALE:** New Quonset barn, 20x48. Never been put up. Contact Gene Foerster, 1/2 mile west and 1/2 south of Lazbuddie. 10-41-tfc.

**CHRISTMAS CARDS,** order early, be sure of delivery. 8 books to select from at The Journal.

### LAND BUYERS

To The Clyde A. Bray Agency  
 Looking for Stock Ranches, and Land With Irrigation Water? List your property where the buyers go.

Licensed in Texas  
 P. O. Box 243  
 Muleshoe, Texas  
 Phone 3-1910

Licensed in New Mexico  
 Burns Agency Bldg.  
 Clovis, N. M.  
 Phone PO 3-5581

### 11. Swap

**FEEDERS GRAIN, INC.**  
 Daily buyers for Cattle Feeders Federal Storage License 3-4451 We can use Barley and Milo.  
 Have Semi Lift. Located at  
**SUDAN LIVESTOCK & FEEDING COMPANY**  
 Phone 5321 Sudar, Texas

**SALE OR TRADE** for house of anything of value 1956 35 ft. trailer house. See D. L. Morrison, Jr. Call 3-3325. 11-43-1tp.

### 12 Household Goods

**SELL US** your used furniture and Appliances, SWAP SHOP, Muleshoe, Texas. Ph. 3-0360. 12-29-tfc

**LUZIER'S COSMETICS**  
 Free Demonstration  
 Satisfaction Guaranteed  
**MRS. E. E. HOLLAND**  
 Ph. Office 3-2749—Res. 3-0549  
 121 American Blvd.

### 15. Farm Prop to Rent

**FOR RENT:** 160 acres, cash rent. See Farm Bureau, Muleshoe. 15-42-3tp.

### 16. Miscellaneous

**FOR SALE OR TRADE:** Trailer house, '58 model, 47x10. J. B. Timms, 5 mi. out on 1760 and 2 miles south. 16-41-tfc

**FOR SALE:** Colorado honey, \$2.50 per gallon. 712 West 2nd. 16-41-4tp.

**STRAYED:** Strayed to my place. One steer and one heifer. R. B. Seaton. Call YO 5-3245. 16-42-tfc.

**FOR SALE:** 10 gallon aquarium with all accessories, including pump. Phone 4520. 16-42-2tc.

**FOR SALE:** Store Fixtures. Very good condition. Many for sale. Maple Merchandise Store, Maple, Texas. 16-43-1tp.

**FOR SALE:** 1949 G John Deere tractor with lister planter, cultivator, good condition. Three mold-board breaking plows, practically new. One Myers ditcher. One blade ditcher. Two small cotton trailers. 1954 John Deere cotton stripper, fair condition. 1954 Ford pickup, 6 cylinder, good condition. Contact James W. Burleson, Oklahoma Lane, Phone 825-2147. 16-43-1tp.

**UNIVERSAL MEAT PROCESSORS** will pay 3c per pound over top market price on a contract basis to men raising meat hogs for them. For complete information write: UNIVERSAL MEAT PROCESSORS, 1502 Ave. X, Lubbock, Texas. 16-43-2tc.

### 17. Livestock

**FOR SALE:** Shetland horses, \$100 while they last. Appaloosa stud fee \$50. See Victor Cox, Muleshoe. 17-43-tfc.

## Dr. Birdsong Is New President of Cancer Society

Dr. W. F. Birdsong was elected president of the Bailey County unit of American Cancer Society Thursday night, Oct. 20. Dr. Ray Santos, who presided, was elected vice-president.

The action followed the resignation of former president, Judge Glen Williams, who was cited for the commendable work that he has done.

Dr. Santos is the Muleshoe delegate to attend the State Cancer Society meeting to be held in Dallas Dec. 8-9. Mrs. Dean Sprayberry was elected as alternate.

Dr. Charels Lewis was approved as a new member of the board of directors.

Dr. Birdsong will announce the committee chairman soon. Charles Preston, field representative of Lubbock, reported that individual meetings with committee chairmen will be arranged.

### 18. Seed

**BLACK EYE PEAS**  
 You pick 'em. \$1.00 Bushel. First road south, 1/2 mile west.  
**A. R. BOWNS**  
**DAVE AYLESWORTH**  
 16-40-tfc.

### WANTED

**Commercial Quantities of DRY BLACKEYES**  
**TOP MARKET PRICES**  
**DORMAN & COMPANY**  
 1920 Ave. E — PO 2-0896  
 Lubbock, Texas

### DEER HUNTING

Harry Waddle, James Leigon, Delmer McMillen and Don Taylor, all of Muleshoe, returned recently from a very successful deer hunt in Pagosa Springs, Colo.

For All Your Art Supplies Shop The Muleshoe Journal.

## Corn Yield 172 Bu. Per Acre

One hundred seventy-two bushels of corn per acre was the top yield in the 1960 Corn Variety Test at the High Plains Research Foundation. The low yield in the 16 variety test was 138 bushels per acre, Dr. Earl H. Collister, chief agronomist, announced.

These 16 varieties were planted April 21 and were sited dressed with 120 pounds of actual nitrogen (Uran) on May 23. They were harvested September 21. The corn was irrigated three times plus a pre-plant irrigation totaling 14 1/2 inches, with far above average rainfall during the growing season.

The percent of stalk breakage (lodging) ranged from 1.84 to 15.94 percent in the 16 varieties. Most varieties stood well until harvest with no root lodging. Early vigor ranged from good to poor. There was no significant difference between yields of the first seven varieties in the test.

All grain yields were calculated at a uniform moisture level of 14%. The yields in order were PAG 485, 172.01 bushels; Funks G711AA, 171.50; Texas 28, 167.32; Asgrow XP 2887, 166.20; Watson 124-A, 165.49; PAG 454, 161.47; Texas 30, 159.55; PAG 633W, 155.63; Texas 36, 155.28; Asgrow 105W, 155.21; Asgrow XP 2890, 146.54; Texas 17W, 145.31; Watson 111, 143.91; PAG 434, 140.31; Texas 26-138.62, and Texas 34, 138.09.

## Band Boosters Vote To Buy New Uniforms

The Muleshoe Band Boosters voted to set aside \$3,000 to purchase new uniforms this year for the high school band during the regular meeting Thursday evening, October 20, in the band hall.

The group also voted to have a float in the Christmas Parade sponsored by the Chamber of Commerce.

Reports were heard from committee chairmen Opal Boothe, J. E. McVicker, Mrs. Ralph Douglas, Owen Jones, and Buddy Blackman.

Miss Kathy Phillips, the band director, and her German Band entertained the 35 members in a surprise performance. Coffee was served to those attending.

### REBEKAHS SPONSOR RUMMAGE SALE OCT. 29

A rummage sale will be held Saturday, Oct. 29, in front of the former RBH supermarket was announced at the regular meeting of the Muleshoe Rebekahs which met at the Hall Tuesday night, Oct. 25. The rummage sale is sponsored by the Rebekahs.

The Degree Team will assist the Earth Lodge with initiation tonight, Oct. 27. Coffee and cookies were served to 13 members and three guests from Earth.

### BRATCHERS HAVE GUESTS

Guests in the home of the R. E. Bratcher family last weekend were Mr. and Mrs. H. M. Walker of Abilene.

### SPENDS WEEKEND IN MULESHOE

Peggy Brown of Albuquerque, N. M., spent the weekend in the home of Mr. and Mrs. Howard Brown.

## Courthouse Records

**Real Estate Transfers**  
 Willie Hagan to H. R. Nicols. A tract or parcel of land lying and being situated in the County of Bailey, State of Texas, being the N 25.3 acres Labor 17, League-212 of County School Lands.

Morrison Improvement & Development Co. to Fred Johnson. All of Lots 11, 12, 14, 15, 16, 17, 18, 19, and all in blk. 5, Country Club Addition.

L. L. Hamilton to Willie H. Hagan. All of lot 31, Richland Addition.

J. W. Helms to Douglas Weber. All of the N 1/2 of 1 NW 1/4 of Sec. 75, blk. Y. W. and F. W. Johnson Subdivision No. 2.

J. L. Thomas to Guadalupe Flores. All of lots 13, 14, 15 and 16, blk. 33, Original Town of Muleshoe.

Floyd Haynes to Inez Hagan. All of the E 110 yards of E 1/4 of the SW 1/4 of Sec. 42, blk. Y. W. D. and F. W. Johnson Subdivision No. 2.

Ineta Maud Hart to Jam Monte Long. All of lot 26, blk. 1, Robinsons Addition.

J. B. Williams to L. E. Evar. All of the lot 13, blk. 1, Legion Addition.

### Wests Opening New Cafe, "Chili Bowl"

Theron and Leatha West veteran cafe people here after a rest of several months are opening a new place, "The Chili Bowl", located on the Clovis Highway across from Pigg Wiggly.

They said they will serve new made chili and steaks every day and will cater on to short orders, sandwiches, etc.

# IN TEXAS YOU PAY 90¢ TAX ON TEN GALLONS OF GASOLINE!

## HOW DID YOU VOTE? No matter how you voted, these facts on gasoline taxes are important to you:

**National Increase 1950-1959** 5.5%  
**Gasoline Tax** 51%

**Living Costs** 21%  
**Gasoline Prices** 5.5%

**GASOLINE TAXES UP 51% IN TEN YEARS**

- Everywhere in Texas, car owners pay 90¢ tax on every 10 gallons of gasoline they buy!
- Gasoline taxes across the nation amount to a 50% sales tax—and that's five times as high as the tax rate on luxuries like diamonds and mink coats!
- Since World War II, there have been three increases in the Federal gasoline tax alone. This brought the Federal tax to 4 cents a gallon, in addition to the State tax of 5 cents a gallon!
- In the last ten years gasoline taxes have skyrocketed 51%—yet the price of gasoline itself has risen only 5.5% during the same period!
- Each year the average motor vehicle owner in this state pays \$78 for gasoline taxes alone. That's just a few dollars less than the average week's pay for most people!

## The Gasoline You Buy Is Taxed Too HIGH!

Presented in public interest by the Gasoline Tax Education Committee, 575 Lexington Avenue, New York 22, N. Y.

# We've Gone HAWG WILD ON PRICES!

Shop Where Friends Meet and Prices Talk . . . .

**NO TRICKS HERE!** **JUST LOW PRICED FOOD TREATS!**

Cashway is Trick-or-Treat Headquarters in Muleshoe. You'll Find All the Treats Kids Go For and At Low, Low Prices. You Can Treat All the Young Goblins in Your Neighborhood On Cashway's Friendly Pocketbook Prices. Large Assortment of Candy and Cookies.

**HALLOWEEN TRICKS OR TREATS**

**Candy - Gum - Fruits**

- Hershey Bars 5c BARS 10 FOR 10 for 39c
- Mars Bars 5c BAR DELICIOUS CANDY 6 for 25c
- Wrigley's Gum 5c PACK 3 for 10c
- Cracker Jacks 10c PKG 3 for 25c



## PORK CHOPS

Hormel's Extra Lean First Cuts **LB. 49<sup>c</sup>**

## BACK BONE

Country Style Hormel's Extra Lean **LB. 49<sup>c</sup>**

## BACON

Pinkney's Harvest Time Thick Sliced **2 LB. PKG. 89<sup>c</sup>**

PORK ROAST Pinkney's Extra Lean lb. 49c

PORK STEAKS Pinkney's Extra Lean lb 53c

## SAUSAGE

Pinkney's Pure Pork **2 LB. PKG. 59<sup>c</sup>**

# SHORTENING

Snow Drift 3 Lb. Tin **59<sup>c</sup>**



**OATS** Mother's Premium Large Box **49<sup>c</sup>**

**MILK** KIMBELL'S TALL CAN 2 for 29c



**OATS** Quaker Regular or Quick Small Box **19<sup>c</sup>**



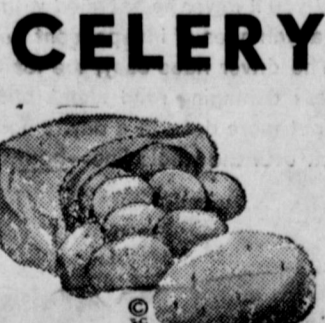
# COFFEE

Kimbell's Drip or Regular 1 Lb. Tin **65<sup>c</sup>**

- BISCUITS Kimbell's "Oven Ready" 3 For 27c
- CRACKERS Sunshine Krispy 1 Lb. Box 25c
- MILK Kimbell's Tall Cans 2 For 29c
- Brownie Mix Betty Crocker Fudge 2 For 69c
- POP CORN Kimbell's 2 Lb. Cello Pkg. 25c
- GREEN BEANS Del Monte, Cut No. 303 Can 23c
- PEANUT BUTTER Peter Pan 18 oz. Refrig. Jar 59c
- Preserves Strawberry, Mrs. Winston's 20 oz. Glass 49c



**CARROTS** Garden Fresh, Crisp 1 Lb. Pkg. **9<sup>c</sup>**



**CELERY** Calif. Crisp Green LARGE STALK **15c**



**POTATOES** Reds 25 Lb. Bag **89<sup>c</sup>**

- PARD DOG FOOD Tall Can 2 For 29c
- FLOUR Gold Medal, 25 Lb. Pillow Case Bag \$1.98
- Marshmallow Creme Hip-O-Lite Pr. Jar 23c
- DR PEPPER 12 Bottle Ctn. Plus Deposit 49c
- MINCE MEAT None Such 9 oz. Box Borden's 25c
- COCOANUT Angle Flake 4 oz. Can Bakers 19c
- POWDERED MILK Pet Instant, 8 Qt. Size 59c
- Chocolate Syrup Hershey 16 oz. Can 23c

## SALAD DRESSING

Miracle Whip Qt. Jar **49<sup>c</sup>**

## CHILI

IRELAND NO. 2 CAN

## 59<sup>c</sup> OXYDOL

GIANT SIZE **69<sup>c</sup>**

GUNN BROS. STAMPS  
DOUBLE ON WEDNESDAY

# White's CASHWAY

LISTEN TO THE MULE TRAIN OVER KMUL BROUGHT TO YOU BY CASHWAY

## FRUIT PIES

- BANQUET APPLE, CHERRY, OR PEACH 29c
- CATFISH Priener, Ocean 1 Lb. Bkg. 45c

continued from page (1)

## Airport -

gradually developed and today has an aviation program available that is rarely, if ever, found in a city the size of Muleshoe and seldom in much larger cities. Although there is a few Sallplane Clubs, other than here at Muleshoe, the nearest known place where Sallplane instructions and license can be obtained is Elmira, N. Y.

Early this year, three Flying Service pilots, Morgan Locker, Harold Locke, and Neal Everett attended Schweizer Soaring School at Elmira where Locker and Locke obtained their instructors ratings and Everett, his private license. While at Elmira, Locker acquired the Schweizer Sallplane dealership, purchased two Sallplanes and immediately began a Soaring School here, which has brought to Muleshoe glider enthusiasts from near and far.

Also at the Flying Service is another "first" at Muleshoe. The Amphibian Seaplane, a craft that is as much at home on land as in the water and is ideal for chartered fishing trips. Locker completed his Seaplane training under the supervision of test pilot Winn Young in Sanford, Maine.

In addition to these, a twin-engine Apache, seating the pilot and four passengers and a 4-place Comanche is used for most charter flights. The Tri-Pacer, a versatile 4-place craft is suited for charter as well as training and is used for instrument instruction.

A PA-18 and a J-3 is also used for student training. Four agricultural planes are available for commercial spraying. Locker has a plane rental service and is the dealer for Piper

## Boys Ranch Talk Heard By Rotary

Ten ladies met Wednesday for the Women Golf Club's weekly play day.

Ruth Malone won the low putting score and Janet Wagon and Marie White won the Blind Hole play.

The ladies decided to have a contest among the club members. It was decided that the lady that played the most days in the play day, would receive a trophy.

The officers for the club were also installed. They were: President, Eunice Evans; vice-president, Punk Bragg; secretary, Mary Ferguson; reporter, Jo Wood; historian, Winona Daniels; Hi-Plains Director, Lois Lenau, and Play Day Chairman, Mary Frances Holt.

Aircraft here.

**Chartered Vacations**  
The Muleshoe Flying Service features two special chartered vacations, both in locales with warm climates, perfect for vacations the year around. One to beautiful Torch Island, the Lockers' resort home, located on the Florida Keys with accommodations for 9 people and with attractions such as Skin-Diving at the reefs in the Atlantic Ocean where underwater visibility is approximately 200 ft., deep sea fishing in the Gulf Stream, and side trips by airboat into the Everglades for a close-up view of parts of the Big Cypress Swamps, Ten Thousand Islands.

Due to lack of space, this article, written so well by Mrs. Noah Kinsler, with help from the Airport staff, will be completed in our next week issue.

See the Journal for all your school supplies. Everything you need is in stock.

## "Stardust" Selected For Student Play

Muleshoe High School Student Council will present their annual play Thursday, Nov. 3, at 2:00 in the high school auditorium. The play "Stardust" is a humorous play about a nice hard-working girl whose efforts have made her a famous actress, and what happens when she visits a dramatic school full of students trying to live their parts.

Mr. Kerry Moore is director of the three-act comedy "Stardust" written by Walter Kerr. Cast members are Ronda Johnson as Janet Ross, Dick Allison as Phil Ford, Joy Autry as Marion Phipps, Don Gardner as John Redman, Linda Wingo as Cynthia Keene, Gary King as Raimund Brown, Davy Jean Anderson as Mavis Moriarity, Kay Landers as Miss Freeman, Goldialu Goucher as Miss Robinson, Sondra Broyles as Miss Jones, Billy Roring as Tad Voorhis, Julia Harris as Stella Brahm, Robert Garlington as Mr. Bach, Sandra Taylor as the Dean of Women, Nonnie Taylor as Prudence Mason, Magann Lamb as Clair Carter, Benny Joe Moore as Jerry Flanagan, and Darrell Lancaster as Arthur Scott, Jr. Student Council members who are not in the play will act as stage crew.

The public is invited to see this gay and thoroughly enjoyable play. Admission is 75c for adults and 50c for high school and junior high students.

Those attending were: Norman Brantley, Patsy Marrow, Coretta Watkins, R. L. Porter, Odie Bradshaw, Beverly Smith, Jerry Don Glover, Billy Harbage, Freddie Savage, Jerry Smith, Ronnie Gustin, Judy Brown,

Thomas Ketchum, Robert Pruitt, Wayne Peterson, Ronald Elliott, Eddy Morris, Marilyn and Kirby Carroll, Penny Grusendorf, and Mr. and Mrs. Marrow. Everyone thoroughly enjoyed themselves.

Larry Trieder and the Nomads play Saturday night at Lazbuddie auditorium. Also the Rockets of Bovina. There was also some local talent.

Those having birthdays this week were:  
Ara McGee, Oct. 25; Yolanda Salinas, Oct. 25; Don Smith, Oct. 26; Shorty Ivy, Oct. 28; R. G. Treider, Oct. 26; Wayland Bever, Oct. 27, and Shirley Putman, Oct. 31.  
We hope that all of these had a nice birthday and we wish them a Happy Birthday.

The Lazbuddie Longhorns played the Vega Longhorns Friday and won 46-0. This was the first conference game of the year. They will play the next game at Bovina Friday night, and we urge everyone to attend.

Mr. and Mrs. Dewain Menefee and Jody spent Sunday in the Dan Cargile home.

Mr. and Mrs. Dan Cargile went shopping in Clovis Monday.

Lazbuddie Baptist Church had a WMU program Monday. The program was on "Enlistment", and approximately 14 were present.

The Lazbuddie Junior High had their Football Banquet Saturday at Leigon's. Everyone really enjoyed themselves.

Billy Melton and Bob Robinson from San Diego, Calif., are visiting in the D. L. Schumann home.

Pat Peterson, Alice Curry, and Lillian Morris went to Clovis, N. M., Wednesday to attend YWA association. There was approximately 125 girls attending from areas around here. The atmosphere was

## Hospital News

**MULESHOE HOSPITAL AND CLINIC Admitted (Oct. 19-26)**

Mrs. Rose Luera, Mrs. Nell Thomas, Mrs. Lena Sharrock, Jeanette Campbell, Muniz Baca Leoniem, Hernandez Renira Epifiano, Enrique Sanchez, and Randy Lacky.

**Admitted and Dismissed (Oct. 19-26)**

J. J. Redwine, Menuseo Zamarron, Lozano Jimenez, Trudola Gonzales, Benny Pena, Grady Hall, Mrs. Callie Taylor, Mrs. Vaughn Killion, Karam Rhodes, Jesse Lacky, Gloria Duarte, Fannie Miller, Mildred Vaughn, Carl Vining, M. L. Shipp, and Mrs. Concepcion Taber.

**WEST PLAINS HOSPITAL AND CLINIC Admitted (Oct. 19-26)**

Mrs. Fern Breber, Mrs. B. A. Spanish, and they all ate Mexican food for supper.

The Lazbuddie Senior class had a party Monday night in the Kirby Carroll home. They ate Frito pie, garlic bread, punch, cake, brownies, and other things.

Those attending were: Norman Brantley, Patsy Marrow, Coretta Watkins, R. L. Porter, Odie Bradshaw, Beverly Smith, Jerry Don Glover, Billy Harbage, Freddie Savage, Jerry Smith, Ronnie Gustin, Judy Brown,

Thomas Ketchum, Robert Pruitt, Wayne Peterson, Ronald Elliott, Eddy Morris, Marilyn and Kirby Carroll, Penny Grusendorf, and Mr. and Mrs. Marrow. Everyone thoroughly enjoyed themselves.

Mitchell, Mrs. C. C. Young, Leon Seals, and Howard Cox. Admitted and Dismissed (Oct. 19-26)

Ina Lee Inman, A. C. Bell, Mrs. Gayle McCoy, Mrs. Gene Tunnell, Mrs. Rosel Reed, J. J. Lazzeri, Johnnie Hall, Ray Wampler, A. D. Linton, Rhonda Atwood, Mrs. Kelly Joe Barnett, Mrs. Myrtle Austin, Mrs. John Hodnett, Mrs. O. C. Markham, Lupe Gutierrez, Quintona Ruiz Garoto, Mrs. Kirk Holt, Mrs. H. E. Newsom, Mrs. Paul Chance, Mrs. George Gussman, and Noe Anzaldina.

**VISIT WALTON FAMILY**

Mrs. Buck Wood and Mrs. Julian Lenau visited over the weekend with Mrs. Jim Walton and son, Charles, in Albuquerque. Mrs. Walton's husband passed away in Albuquerque Oct. 13 and was buried at his old home, Anna, Mo. He established and became the first manager of Muleshoe Wildlife Refuge and the family lived here from 1937 to 1941. He had remained in the Wildlife Service until illness incapacitated him a year ago. The family had returned here for visits with old friends several times.

**MULESHOE HOSPITAL AND CLINIC**

Mr. and Mrs. Cruz Luera are the parents of a boy born Oct. 26 and weighing 6 lbs., 9 ozs.

Mr. and Mrs. Vaughn Killion are the parents of a girl, Cheryl Rhyll, born Oct. 20, and weighing 6 lbs., 6 ozs.

Mr. and Mrs. Mike Duarte are the parents of a girl, born Oct. 21 and weighing 6 lbs., 9 ozs.

Mr. and Mrs. Concepcion Taber are the parents of a boy, born Oct. 22, and weighing 7 lbs., 9 ozs.

**WEST PLAINS HOSPITAL**

Mr. and Mrs. Kirk Holt are



**MULESHOE HOSPITAL AND CLINIC**

Mr. and Mrs. Cruz Luera are the parents of a boy born Oct. 26 and weighing 6 lbs., 9 ozs.

Mr. and Mrs. Vaughn Killion are the parents of a girl, Cheryl Rhyll, born Oct. 20, and weighing 6 lbs., 6 ozs.

Mr. and Mrs. Mike Duarte are the parents of a girl, born Oct. 21 and weighing 6 lbs., 9 ozs.

Mr. and Mrs. Concepcion Taber are the parents of a boy, born Oct. 22, and weighing 7 lbs., 9 ozs.

**WEST PLAINS HOSPITAL**

Mr. and Mrs. Kirk Holt are

## New Telephone Directories Due Soon

New and bigger telephone directory for Muleshoe is going to press soon, Bob Sanders, General Telephone regional director, announced Tuesday.

Sanders said, "The fact that the book is growing indicates that the economy of Muleshoe is also growing."

If anyone has a change in the way his name or number is listed in the old directory, or if you are anticipating a change in the next month or so, it is important that you give notice to the telephone company before November 4. All information for the new directory is sent to the printers in Chicago after November 4. Any changes reaching the tel-

ephone company after November 4 cannot be included in the 1961 directory.

The new directories will arrive and be distributed in Muleshoe on December 26.

**ANNOUNCEMENT**  
The next meeting of the Muleshoe Study Club will be held in the home of Mrs. Gil Lamb Thursday, October 27.

**SPONSORS CARNIVAL**  
The 1950 Junior Study Club of Sudan is sponsoring a Halloween Carnival at 2:00 p.m., Saturday, Oct. 29 on the City Square.

A children's costume parade will begin at 2:00 p.m., and march to the City Square where the carnival will begin.

There will be fun booth for all and concessions.

**HARVEST TIME**  
A time to enjoy the rewards that come from a year's hard work and a time to guard your hard-earned cash by saving where safety is the first consideration.

There is No Safety Like **BANK SAFETY!**

**MULESHOE STATE BANK**

304 MAIN ST. PHONE 2540  
Member FDIC 3% On Savings, Paid Quarterly

## LAST CHANCE!

TO REGISTER  
At C. R. Anthony's  
Store For A 1961  
Olds Or A 53-Piece  
Set of China

REGISTRATION ENDS OCTOBER 31



- A NEW F-85 OLDSMOBILE
- A 53-PIECE SET OF IMPORTED CHINA



Register FREE

No obligation to make a purchase... you do not have to be present to win. Just stop in at Anthony's during our big Election Value sale and sign a registration slip for these two valuable prizes. You must be of legal voting age to register.



**Am I Right?**

BRIDGE PLAYERS ARE LIKE POLITICIANS -- THEY TELL YOU HOW BUT CAN'T DO IT

You tell us how you want it and we can do it!

**TAYLOR METAL PRODUCTS**

1228 West American Blvd. Phone 4210

NOW FOR '61...

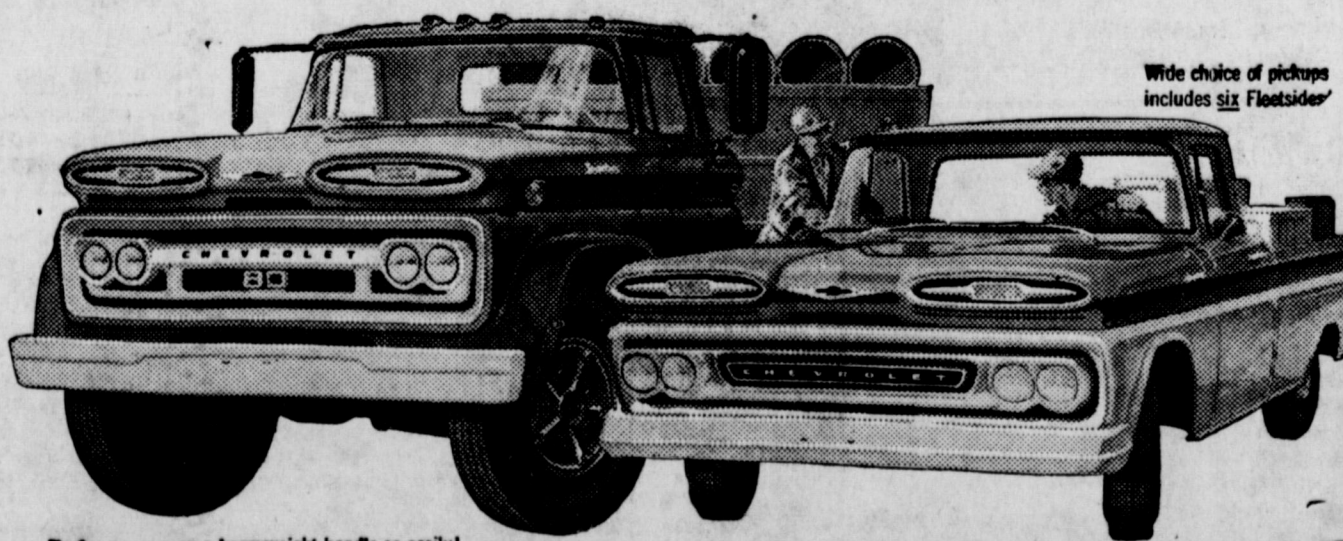
# 2 TOTALLY DIFFERENT TYPES OF CHEVY TRUCKS!



Rampside—roll your loads in and out. Nothing to it. Corvan—side loading height is only 14" from the ground!

**1. REAR-ENGINE CORVAN 95'S—THE TRUCKS THAT BEGAN WITH 4 WHEELS AND A FRESH IDEA!**  
That Rampside model you see is nearly two feet shorter than a conventional pickup. Yet it has over 20 cu. ft. more capacity. The Corvan 95 panel (Corvan) offers 191 cu. ft. of the most accessible load space you ever saw. Think of up to 1,500 pounds of whatever you haul riding on a highly maneuverable, light handling 95-inch wheelbase. That'll give you an idea of Corvan 95 efficiency. This is a beauty. Has 4-wheel independent suspension. An integral body-frame build. Exceptional comfort and visibility. And a thrifty air-cooled rear engine that needs water or antifreeze or radiator repairs. You've never seen trucks like these before!

**2. TORSION-SPRING CHEVROLETS—WORTH MORE BECAUSE THEY WORK MORE!**  
Once around the block in this '61 and you'll never be satisfied with a front-axle truck again. The difference is that noticeable. You actually feel the advantages of independent front suspension in the almost total absence of I-beam shimmy and wheel fight. The driver rides easy, the load's better protected, tires take less abuse, the whole truck is subjected to far less damaging road shock and vibration. You find you can move faster over rough trails and off the road to get more done in a day. Efficiency goes up. Profits follow. Stop by your dealer's and look over the whole line—both types of Chevy trucks.



Wide choice of pickups includes six Floatsiders!

They're easy on a heavyweight handle so easily!

SEE THE GREATEST SHOW ON WORTH NOW AT YOUR LOCAL AUTHORIZED CHEVROLET DEALER'S!

**C. & H. CHEVROLET CO.**

MULESHOE

PHONE 3-1000

# LONE STAR AGRICULTURE

## PROCESSING AND FOOD DOLLARS

Explanation of why the farmer's share of the American food dollar keeps going down generally come up against the established fact that as the amount of food processing increases the farmer's share of the food dollar declines.

The farmer's share of each dollar spent for food in 1959 was 38 cents. In 1940 it was 40 cents, and went up to 53 cents in the war years of 1945.

The wheat grower's share of each dollar spent for white flour is now 33 cents. When the flour is mixed with other ingredients and baked as white bread, the farmer's share for his wheat drops to 12 cents.

The corn grower receives 18 cents of each dollar spent for corn meal, but only nine cents of the dollar for cereals such as corn flakes.

On fresh green beans, the farmer receives 43 cents of each dollar. But if the green beans are processed and frozen, he gets only 19 cents of the dollar.

There are, of course, exceptions to the rule. Take citrus for instance. For fresh oranges, the grower receives 32 cents of each dollar spent. This goes up to 38 cents for canned orange juice, and 43

cents for frozen orange juice concentrate.

The wheat used in baking a 20-cent loaf of bread costs less than three cent. In 1949, when the retail price of a one-pound loaf of bread averaged 19.7 cents, the farmer received 2.8 cents, the miller got .6 of a cent, the baker-wholesaler 12 cents, and the retailer 2.9 cents. The other 1.4 cents went for transportation, storage, handling and other processing.

The fact, of course, is that today the American housewife is buying convenience—freedom from kitchen chores. They are also buying food with less waste, needing less trimming, sorting, or washing.

Three so-called ready-to-serve meals costing \$6.70 for a family of four could be prepared in the home kitchen for \$4.50, or \$2.20 less. The homemaker would use about 5 1/2 hours to prepare these three home-cooked meals from start to finish, but only about 1 1/2 hours to get the three ready-to-serve meals on the table.

The food cost saving of \$2.20 in the three home cooked meals would represent an hourly wage of 55c for the four extra hours of work in preparing them.

These examples are extreme. Most families actually use a combination of foods—unprepared, partially prepared, and ready to heat and serve.

# The Muleshoe Journal

VOLUME 38, NUMBER 43

THURSDAY, OCTOBER 27, 1960

## No. 11 — Manufacture of Weather

# CLIMATE

by Vern Foltz

All the elements and controls of weather acting upon an area go together to compose the climate of that area.

Here again, the most important controls of climate are temperature and humidity. The weather controls, developed by temperature and humidity, modify the degree and details of the climate.

In the division on ocean currents it was shown what a tremendous influence these currents have upon the climate of an area. This is because humidity is so important a climate control.

However, one must bear in mind all the factors determined by temperature, which not only puts heat into the climate of the area in question, but also has much to do with the character of the water circulating close to shore, the wind and pressure belts which keep the water circulating as it is, and the land masses which divide the water bodies and therefore affect their circulation.

There have been several attempts to classify the many climatic types into a few related categories. Perhaps the most successful of these to the present day is the Koeppen (pronounced Keppen) classification system.

Mr. Koeppen divided the climate into divisions of A, B, C, D, and E. Each of these have subdivisions of lower case letters which describe the conditions of temperature and humidity, etc.

**THE A TYPE CLIMATES:** The A climates are determined largely by temperature and consists only of tropical areas. Each month of the year must average greater than 64.4 degrees. This means that each day high temperature and low temperature is averaged and the month averages are computed to a single average figure.

Rainfall distribution accounts for further divisions of the tropical type A climates. An "Af" climate is termed "tropical rainforest". An area must receive an average of no less than 2.4 inches of precipitation in every month of the year to qualify as Af.

An "Am" climate has a distinct dry season and must average less than 2.4" of rainfall in at least one month of the year.

An "Aw" climate is termed "Savannah" on which tall grass grows. It has a distinct monsoonal season: The rains come as monsoon and are heavy and frequent. The remainder of the year receives little rain and perhaps nothing in some months.

**THE B TYPE CLIMATES:** The B climates are determined by rainfall, or the lack of it. Its subdivisions are deter-

mined by temperature to a large extent. "BS" and "BW" climates are arrived at by rather complicated means, so rather than to explain them in detail, just their definitions are given.

"BW" indicates the desert wastelands in which there are no long growing periods. "BS" is semi-arid steppe lands on which short grass grows and grazing can be practiced. "BSw" indicates a dry winter and BS indicates a dry summer. Therefore you can see that the small letters classify the dry season.

A further subdivision of the B climates takes into consideration the temperatures. A "Bh" climate indicates a hot desert with the annual mean above 64.4 degrees. The "Bk" climate indicates a cold desert with the mean annual temperature below 64.4 degrees, and a "Bk" indicates that the warmest month is below 64.4 degrees.

There are several areas which are denoted as "Bwn" where the "n" indicates frequent fog. You will recall this type of fog was described under ocean currents.

**THE C TYPE CLIMATES:** The C type climate classification is sometimes called the sub-tropical climates in that these areas have mild winters.

The coldest month for C climate must be below 64.4 degrees, but not below 26.6 degrees. Its warmest month must average above 50 degrees F.

A "Cf" climate denotes that there is no dry season (for C climates this means no month averages less than 1.2 inches of precipitation). Then there are the Cs and Cw climates, (remember what the s and w represent).

A climate with the classification of "Cfa" is known as "humid sub-tropical". The lower case "a" indicates the warmest month averages in excess of 71.6 degrees. A lower case "b" here would indicate the warmest month average below 71.6 degrees. A lower case "c" would indicate that less than four months average above 50 degrees.

**THE D TYPE CLIMATES:** The main difference between the C and D climates is that the D climates have severe winters. The coldest month averages less than 26.6 degrees and the warmest month averages above 50 degrees.

The small letters a, b, and c pertaining to temperature indicate the same as in the C climates; the small letters f, w, and s, pertaining to rainfall, also indicate the same as in the C climates. A climate of Ds is very rare. Can you figure why?

**THE E TYPE CLIMATES:** The E climates are the coldest classification. The E climate itself must average greater than 50 degrees for its warmest month. Its coldest months are somewhere below 26.6 degrees.

There is an "ET" climate referred to as the "tundra". Its warmest month must average above 32 degrees in order that it can support simple plant life, such as flowers, grasses, and mosses.

The "EF" classification for climates is the one which signifies continuously frozen conditions. These are the areas covered by ice. Their warmest month is everything below 32 degrees all months of the year. This covers all the classifications of the climate. However, on a map which depicts the

## Kay Rogers Is Honored On Her 5th Birthday

Laticia Kay Rogers was honored on her fifth birthday, Oct. 14, with a party in the home of her parents, Mr. and Mrs. Clinton Rogers.

Those attending were Kay and Mark Allen, Warren, Diane and Donetta Dale, Kem and Rex Black, Danny, Eddie, Cammie and Randy Waggoner, Randy Marlow, James Slaughter, and Gene and Cynthia Rogers.

Mrs. Leon Warren, Lewis Dale, Charles Waggoner, Ralph Black, and Betty Marlow assisted with hostess duties.

types of climates you will find the classification of H. It is used to show the areas of mountain highlands where it is too difficult to differentiate

## Civil Service Clerk Exams Announced

The U. S. Civil Service Commission is now accepting applications for an examination for clerical positions in the Federal Government.

The starting salary of these positions ranges from \$3,185 to \$4,830 per year. As this examination will be closed soon, persons interested in these positions should apply without delay.

The following counties: Bailey, Cochran, Cottle, Crosby, Dickens, Floyd, Garza, Hale, Hockley, Kent, King, Lamb, Lubbock, Lynn, Motley, Stone-wall, Terry, and Yoakum.

Federal employees receive numerous fringe benefits such as paid vacations, sick leave with pay, low cost group life insurance, and an excellent retirement plan.

Information on how to apply for the examinations may be obtained at the Post Office. Interested persons may also apply directly to the Eighth U. S. Civil Service Region, 1114 Commerce St., Dallas 2, Texas.

## Homecoming For Three Way Held October 22

Homecoming was held at Three Way Saturday, Oct. 22, with Open House at the school from 6:30 to 7:30 p.m. The football game between the Three Way Eagles-Bula Bulldogs began at 7:30 with the Eagles winning 45-12.

During the halftime ceremonies, Sandra Lemons and Larry Dupler were crowned "Sweetheart" and "Hero".

A business meeting of the ex-students was held after the game. Officers were elected for the coming year. They are Joe Wheeler of Muleshoe, president, and Homer Richardson of Maple, secretary.

The ex-students and teachers enjoyed refreshments after the business meeting. The refreshments were served by the mothers of the football squad and the pep squad. Approximately 100 people attended.

system. Clip it out and save it. BSK is the climate classification for the Muleshoe country. Can you determine what this reads.

TABLE I  
Koeppen's Classification of The Climates

CLIMATE	PRECIPITATION	TEMPERATURE
A, always hot	f, always humid m, seasonally humid w, seasonally dry	always hot always hot always hot
B, Dry	S, semi-arid	h, hot k, cool or cold
	W, arid	h, hot k, cold k, very cold
C, Mild Winters	f, always humid	a, long hot summers b, short warm summers c, short cool summers
	w, winter dry	a, long hot summers b, short warm summers
	s, summer dry	a, long hot summers b, short warm summers
D, Severe Winters	f, always humid	a, long hot summers b, short warm summers c, very short cool summers d, excessively cold winters
	w, summer rainy (summer dry)	a, long hot summers b, short warm summers c, very short cool summers d, excessively cold winters
E, Always Cold		T, short growing season F, plant growth impossible

## C of C Committee Chairmen Named

Committee chairmen for a number of committees of the Muleshoe Chamber of Commerce have been named to serve in 1961, by Chamber president-elect Robert Alford.

The newly elected president of the Muleshoe Chamber announced today that the following members have been named:

Agriculture, Harold Allison; Industrial, M. D. Gunstream; Education, Linda Murray; Retail Trade, Roger Albertson; Congressional Action, Gil Lamb; Building, Alex Williams; Solicitation, Cecil Tate and Arnold Morris; Civic Affairs, Dr. A. J. Black and Dr. Ray Santos; Roads and Highways, Jack Morris; Membership, James Jennings.

In addition, the president-elect has named the following committee members: Executive, Norman Thomas, Roy Whit, Wilbur LeVaque, Bill Wimberly, and Earl Harris; Program of Work, LeVaque, Lamb, Williams, Wimberly, Jennings, and Frank Ellis.

As soon as committee chairmen select members of their committees, indoctrination meetings will be held, and committee assignments given following a meeting of the program of work committee.

New officers and directors take office January 1, 1961.

## Missionary Speaker Here October 27

The Rev. Lennart G. Blomquist, a Swedish-born missionary of the Methodist Church (U. S. A.) serving in British controlled Southern Rhodesia, Africa, will be the guest speaker at the First Methodist Church, Muleshoe, on Thursday, Oct. 27, at 7:30 p.m.

Mr. Blomquist has supervision of the agricultural training of African youth at the "Woodlands Farms". The young people from the Teacher Training School, the Bible Institute, and the Methodist Secondary School, all at Old Umfali, enroll in agricultural classes under Mr. Blomquist. He is also an ordained minister, serving as pastor in Old Umfali, and supervising churches in the district.

See the Journal for all your school supplies. Everything you need is in stock.

This Name . . . . .

POSTAGE PAID

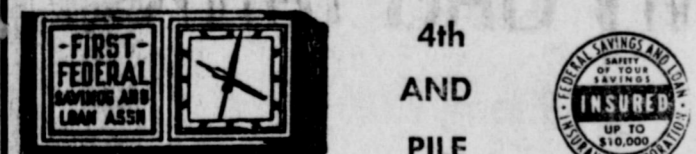
FIRST FEDERAL SAVINGS AND LOAN ASSOCIATION

P. O. BOX 470  
CLOVIS, NEW MEXICO

can SAVE thousands of dollars

No HUSTLE, NO BUSTLE—just three short minutes is all it takes to save-by-mail with us. Here's how — first, sign a check or money order — seal it in an envelope, along with your passbook — and send it off to us. Your savings will be promptly credited and your passbook returned through the mail. Easy isn't it?

CURRENT DIVIDEND ON INSURED SAVINGS 4%



CLOVIS, NEW MEXICO

## Vote as a Free American!

Vote the Ticket that is BEST FOR TEXAS  
HERE'S HOW TO DO IT

OFFICIAL BALLOT

Look for these names at the top of one of the columns:

For President and Vice President  
**RICHARD M. NIXON and HENRY CABOT LODGE**

1. Find the names of RICHARD M. NIXON and HENRY CABOT LODGE at the top of your ballot.
2. Leave the names NIXON and LODGE unmarked on the ballot; scratch all other names for President and Vice President.
3. To complete your ballot, leave the name of the candidate for whom you wish to vote for each office and scratch the rest.

### WARNING!

You may be told that you cannot vote for Nixon and Lodge if (1) you voted in the Democratic Primary or (2) your poll tax receipt or exemption certificate is stamped "Democrat." THIS IS NOT TRUE. You CAN vote for any candidate you wish, no matter how you have voted, or not voted, in any previous primary or election. THIS IS YOUR RIGHT AS A FREE AMERICAN.

Vote November 8 for NIXON and LODGE

Texas Democrats for NIXON & LODGE, Allan Shivers, Chairman (Pd. Pat. Adv.)

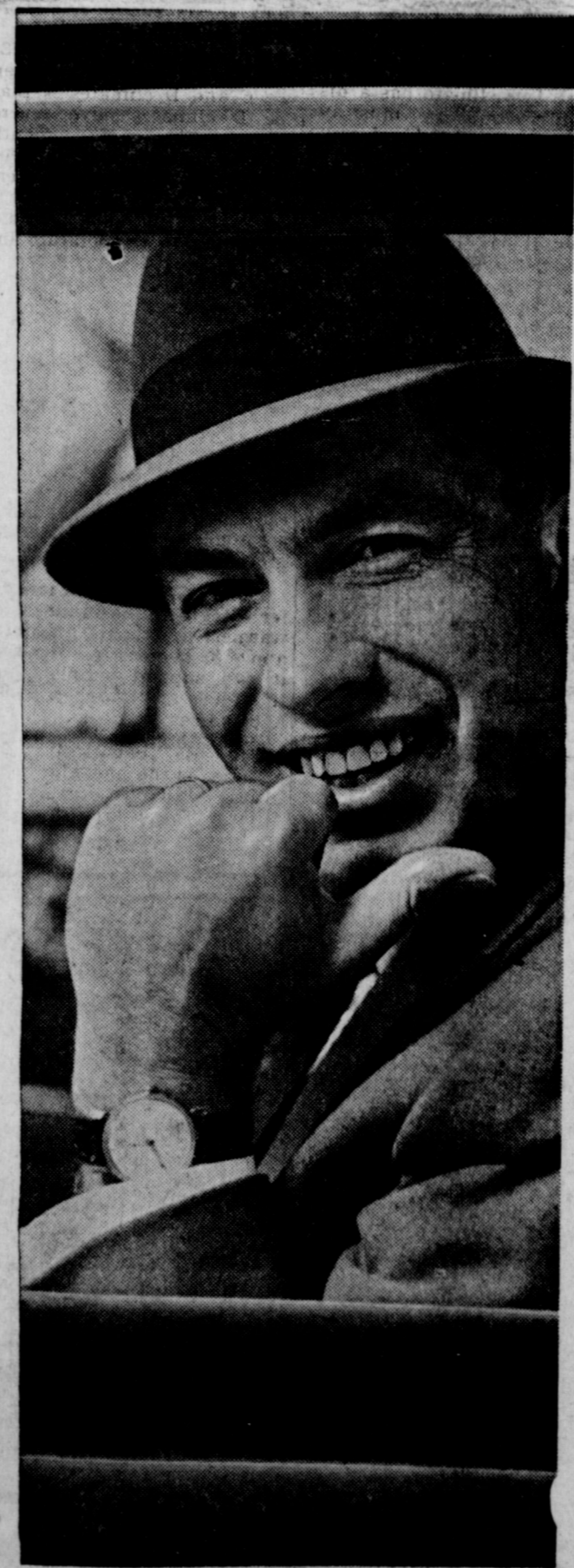
## PASTIMES IN SPORTS

By Lee R. and W. J. Pool Jr.



JIM FEGG WON THE CHAMPIONSHIP OF ENGLAND BY BEATING NED SUTTON WITH A CLUB IN THE EARLY DAYS OF BOXING.

Today for HOME - FARM - AUTO LOANS — SEE — POOL Insurance Agency 20 years of insurance know how! Phone 2950 - Muleshoe



# "JUST FILL MY GAS TANK THAT'S ALL"



## "My '61 Ford is beautifully built to take care of itself"

Imagine! You can skip much of the inconvenience and expense of stopping for a lube job . . . or an oil change . . . or a brake adjustment. Why? Because Ford engineers have created a completely new concept with the '61 Ford.

And what a car! The '61 Ford offers more built-for-people comfort than ever before. Beautifully proportioned to the Classic Ford Look, it's a beauty others try . . . but fail . . . to imitate. And you get your choice of three optional Thunderbird V-8's . . . or . . . the great Mileage Maker Six!

We Ford Dealers would like to show you in black and white just how much you can save in operating costs with this . . . the most beautiful of all Fords! Why not drop in soon!

HERE'S HOW THE '61 FORD TAKES CARE OF ITSELF . . . THE FIRST 1961 CAR THAT DEALERS HAVE WARRANTED FOR 12,000 MILES OR ONE FULL YEAR. Lubricates itself. You'll normally go 30,000 miles between chassis lubrications. Cleans its own oil. You'll go 4,000 miles between oil changes with Ford's Full-Flow oil filter. Adjusts its own brakes. New Truck Size brakes adjust themselves automatically for the life of the lining. Guards its own muffler. Ford mufflers are double-wrapped and silencer-enclosed — normally will last three times as long as ordinary mufflers. Protects its own body. All vital underbody parts are specially processed to resist rust and corrosion, even to galvanizing body panels beneath doors. Takes care of its own finish. New Diamond Lustre Finish never needs wax. Extended warranty. Ford Dealers were the first to extend their warranty on '61 cars to 12,000 miles or one full year, whichever comes first. Ask your Ford Dealer to show you a copy.

BEAUTIFULLY PROPORTIONED TO THE CLASSIC FORD LOOK

# '61 FORD

# MULESHOE MOTOR CO.

At the Crossroads

Phone 2510

# The Muleshoe Journal

Published Each Thursday At 304 - 306 West Second Street, Muleshoe, Texas

Entered as second class matter at the Muleshoe Post Office under the Act of Congress, March 3, 1879.



**J. M. Forbes** Publisher  
**Vern Foltz** Advertising  
**J. C. Gatewood** Advertising  
**Cherry Hoybook** Society Editor  
**Mrs. J. M. Forbes** Business Office  
**Mrs. Polly Ottwell** Bookkeeper  
**H. B. Flanagan** Mechanical Supt.  
**Freddie Owen** Production Dept.  
**Tony Puente** Production Dept.

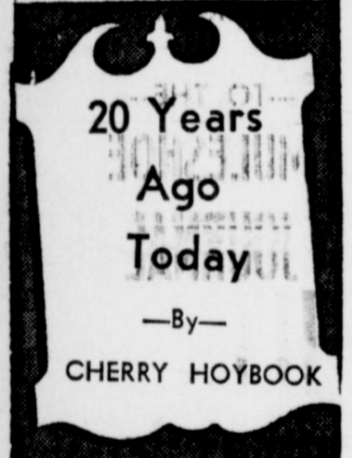
**SUBSCRIPTION RATES**  
 Immediate Territory \$3.00 per year  
 Out of Territory \$3.50 per year  
 Advertising Rate on Application

## BABSON DISCUSSES 1960 CENSUS

Babson Park, Mass., Oct. 27—The following rough analysis of the 1960 Census figures is intensely interesting to me. The figures show that the total population of the United States, including Hawaii and Alaska, is now about 180 million. This is 30 million over 1950.

**Large Cities Suffer**  
 For the first time since the original federal decennial census in 1790, all of our largest cities except one now show a decline. By "large cities", I mean those with 1,000,000 or more population forming the core of larger "metropolitan areas." Considering that the U. S. has been taking censuses for 170 years, this is an extraordinary event.

The above-mentioned, "one exception" is Los Angeles, which shows a gain of over 20%. This is due to several reasons. Los Angeles found oil within its borders. It is also a center of the fruit industry, or at least it was until the inhabitants began to uproot trees in order to build subdivisions. Until the smog developed, the



**Yellow Jackets Trample, Sting Morton Indians**  
 The Muleshoe Yellow Jackets downed Morton to the tune of 39 to 0 in a game played there Friday of last week. A large crowd of Muleshoe fans accompanied the team and cheered them on to victory. The Muleshoe band, in their bright new regalia, and the pep squad lent color to the occasion.

**Henry Wegman, A Farm Worker In Progress Community Gored To Death**  
 Henry Wegman, about 50 year of age, met a tragic death last Saturday afternoon on the W. G. Kennedy farm about 8 miles northwest of Muleshoe. The body was not found until the next day.

**Halsell Ships Cattle To Other Ranches**  
 Ewing Halsell shipped 21 car loads of cattle from Muleshoe Monday from his VVN ranch west of Muleshoe to his ranch near Owasso, Okla.

**The Valley Motor Co. report 1941 Chevrolet sales as follows: Deluxe Town Sedan to Dr. L. T. Green; Deluxe Coupe to Miss Helen Jones; Special Town Sedan to C. L. Roberts.**

**The Muleshoe Motor Co., report Ford V-8 sales as follows: 4-door Deluxe Sedan to Jess Oborn; 4-door Deluxe Sedan to Ray Griffiths; 2-door Deluxe Sedan to D. P. Ragsdale; 2-door Super Deluxe Sedan to Will Boothe.**

**Miss Marie Courtney, one of the local telephone operators, spent the weekend visiting her parents at Falls.**

**Mrs. Penon Winters of Littlefield, visited her daughter and family, Mr. and Mrs. J. B. Davis in Muleshoe Sunday. She was accompanied home by her granddaughter, Diana Davis.**

Los Angeles climate was also superb.

**Boston Among Worst Declines**  
 Of all large cities in the U. S., Boston has suffered one of the greatest losses. My first job after graduating from M. I. T. was in Boston, which then had a population of 500,000. This increased to 750,000 in 1940 when the Boston Chamber of Commerce was forecasting a population of 1,000,000 for the city. Boston proper did reach 800,000 in 1950; but the number has since dwindled to 677,000.

Boston has lacked natural resources, with the possible exception of the fishing industry. Educational institutions and small factories have been its chief assets. Boston may still claim to be a great educational center, but it is rapidly losing its factories and mills. The New England shoe industry has moved to the Central West where hides are plentiful; the textile mills are moving to the South where they are nearer the cotton and sheep. However, Southern California and Eastern Massachusetts ride at the head of the "electronics parade." Union wages and restrictions are a handicap but the quality of New England workmanship is very high.

**The Rise of Suburbia**  
 The most revealing statistics of the 1960 Census concern the mighty force and growth of suburbia. Most people who have left the large cities have not moved to other states. Rather, they have moved primarily to new suburbs some fifteen to twenty-five miles distant. This not gives them better living conditions, but provides an entirely new social life.

**Major factors causing this change are automobiles, telephones, and television. These factors, plus airplanes, have raised havoc with the railroads as well as the large cities. The railroads now employ only 800,000 workers compared with 1,200,000 in 1950. Trucks are carrying the less-than-carload freight, while supermarkets and shopping centers are distributing the merchandise. Use of natural gas has doubled, while coal has suffered tremendously. The number of miners working in some areas of West Virginia is now only half those in 1950.**

**The Boom in Housing**  
 Since the census of 1950 the U. S. population has increased by 20%; housing by 70%. And almost half the expenditure for total new construction is now going into housing—practically all in the suburbs, and built mostly on credit amounting to \$100 billion or more.

**The most unfortunate figure is this 1960 Census is the amount being spent on borrowed money. These great mushrooming suburbs are built on borrowed money—not only the new houses, but also their furnishings and the automobiles. I estimate that the suburbs have also borrowed, since the 1950 census, over \$100 billion for roads, sidewalks, water, gas, etc. One dollar out of every eight of fake-home pay is apparently obligated for appliances and other things useful but not necessary. What would happen to these suburbs in case of a severe depression makes me shudder.**

**LONGVIEW BAPTIST WMU**  
 The Longview Baptist WMU met Wednesday, Oct. 19, for their regular meeting. There were 10 members present for the Royal Service program. A cordial invitation is extended to the ladies to attend these meetings that are held every Wednesday evening at 7:30.

**CATHOLIC LADIES TO SPONSOR RUMMAGE SALE**  
 The ladies auxiliary of the Altar Society of the Catholic church are sponsoring a rummage sale to be held Saturday, Oct. 29, in the Palace Theatre. The sale will begin at 9 a.m. Anyone wishing to donate clothing for the sale are asked to bring it to the Palace Theatre before 9 a.m.

## Highlights and Sidelights

**AUSTIN, TEX.**—For years a high chain link fence marked the back boundary of the Austin State Hospital grounds. Sturdy and forbidding, with in-turned barbed wire at the top, it was a fence that suggested the plight of the people it confined. It was a depressing, prison-like, mile-long fence that paralleled Lamar, one of Austin's busiest boulevards.

Now, each spring, Austinites make a point of driving out Lamar to see the mass of climbing red roses covering the fence. Today this long stretch of roses is a symbol of the change that has come to state hospitals during the past 10 years as a result of volunteer services.

University engineering students donated and planted the rose bushes. Thousands of people over the state have landscaped the grounds, redecorated the dining halls and reception rooms, built swimming pools, given parties, conducted classes, wrapped gifts and in hundreds of other ways brought beauty and warmth to state hospitals and schools.

In its fall report, the State Hospital Volunteer Service Council shows that volunteers gave 163,904 hours of time to state institutions during the past year. Figured at only \$1 per hour and adding in contributions of food, clothing, prizes, furniture, etc., volunteers enriched life in state institutions by more than \$338,996 during the year. This does not count considerable sums collected for all-faith chapels at several schools and hospitals.

**Last year, 96,000 citizens went into 18 different state hospitals and schools to do volunteer work.** Impact of these volunteers is two-fold, says Miss Helen Colburn, coordinator of volunteer services for the State Hospital Board.

First, they help to create a pleasant environment which gives patients a better chance to respond to medical treatment. Second, the volunteers learn the problems of the hospitals and schools and are an effective force in educating the community as to needs and goals.

"State money can't be spent for pictures or parties or swimming pools", said Miss Colburn. "It has to go for beds and food. But these other things are important. Patients respond to environment and they respond to people. And they know the difference between people who are paid and people who come to help them out of sheer kindness."

Right now the volunteers are getting ready for their biggest undertaking of each year—Christmas. It means securing, wrapping and tagging about 26,000 gifts to keep up a three-year record of having a gift for each patient in the state system. It means decorations, trees, parties and caroling. In some cases it means setting up shops where patients can get gifts to send to their families—often more ardently desired by the patient than a gift for himself.

**RATE DECISION POSTPONED**—State Board of Insurance voted 2-to-1 not to adopt a recommended 13.3 per cent rate increase in certain types of auto insurance.

Board members R. W. Strain and Ned Price said they wanted to study the new safe driving plan more before approving any rate change. They have been at odds with Board Chairman Penn J. Jackson who has recently advocated abolition of mandatory merit rating. To scrap merit rating, said Dr. Strain, would penalize the 70 per cent of drivers who earn a discount for good driving records.

Board also refused by a 2-1 vote to allow insurance companies to disregard penalties against drivers involved in accidents. But many do resent the assessment of a penalty based on traffic tickets issued. Especially tickets they feel were not warranted.

traffic fines. Therefore if they are paying a premium for fines they should be reimbursed for those fines.

**AVERAGE SPEED LAWFUL**—Average speed of Texas passenger cars on rural roads is 55. miles per hour, reports the State Highway Department.

This is below the legal limit of 60 miles per hour. Trucks average 51.2 miles per hour. Legal limit for trucks and buses is 55.

Statewide speed survey is taken by the Department each year with concealed radar devices. Department found that 19.3 per cent of passenger cars were exceeding 60, a 2.6 per cent decrease from last year.

**STUDENTS GALORE**—Texas is getting set for a bumper crop of college graduates in the sixties.

Commission on Higher Education reports the highest ever enrollment—90,035 students in the 18 fully supported state colleges and universities.

This is up 5,391 from last fall and a 60 per cent increase over 10 years ago. Biggest enrollments (in state schools) are at the University of Texas, Texas Tech, North Texas State, Arlington State, and Texas A & M in that order.

**ROAD LAG AVERTED**—Release of additional federal funds will largely prevent an expected winter slowdown of highway work in Texas, State Highway Engineer D. C. Greer announced.

## SANDHILLS PHILOSOPHER WILL BE Glad When Election Is Over, But Not So He Can Go Back To Work

Editor's note: The Sandhills Philosopher on his Johnson grass farm has discovered the election is getting close at hand. His letter this week reveals. That must mean everybody knows it by now.

Dear editor:

It's getting closer all the time to the election on November 8 and I heard a man on television last night say he'd be glad when it's here and past so the country could get some work done.

I don't know what part of the country he's talking about, but it's not my Johnson grass farm out here. I fail to see any connection between electing a President and me going to work.

Only the November bid letting will be affected, said Greer.

This month the Highway Department tabulated low bids totaling \$19,030,137 for highway work. Next month the contracts are expected to total only about \$12,000,000, but by December the total should be increased again to about \$17,000,000 or \$18,000,000.

This will mean fewer workers laid off for the winter by contractors doing state highway work.

I thought it was the other way around. When we elect a President, he's the one that goes to work.

One of the troubles with this country is that we take time off to elect an office-holder, then go back to work and forget about him till next time. I don't follow that procedure. I like to keep my eye on him all the time, and any man who can't look over his grass and weed in his own crop to keep his eyes centered on Washington is taking the type of short-sighted view that results in farm surpluses.

I don't intend to work any more after the election than I did before, and I'll say this, if whichever candidate gets elected works as hard running the office as either of them did running for it, the fur ought to fly in Washington.

One reason I don't think we'll ever have one government for the entire world is that no candidate for World President could ever make all the whistle stops around the earth. As it is now, Presidential candidates have three months from the time they're nominated till election day to crowd in every section of the country they figure they ought to show up in, and they still

## Tax Man Sam Says:

When a young man or lady grows up nowadays he usually becomes of age not by becoming 21, but through becoming a taxpayer. Long before the young folks reach the 21 mark nowadays, they are usually (1) paying income taxes; (2) paying Social Security tax for their eventual retirement; and (3) if they go into business they are paying employers' taxes.

Before you go to work you must secure a Social Security number. You get a Form SS-4 from your Post Office to file for your Social Security number. If you are going into business and will become an employer you probably need to read Internal Revenue Service Publication No. 15, Circular E, The Employer's Tax Guide.

miss a good many; but if they had to cover the entire world, it'd take em five years to do it and by the time they'd gotten to the last country, the people in the first would have forgot ten what they said.

The problem is too big for me. I'll be glad when the election is over, but not because I'm going back to work.

Yours faithfully,  
 J. A.

This tax guide will tell you whether you need an employer's number or not. Young folks nowadays find that it's less taxing to be well informed on taxes.

## Ad Facts

According To Preliminary Estimates, More Than \$3,500,000,000 — Or 31.7% of All Advertising Dollars Invested In 1959, Went To Newspapers. This Made Newspapers Again The Number One Advertising Medium.

The Muleshoe JOURNAL  
 Phone 7220  
 Member Texas Press Assn.

# BUSINESS SERVICES DIRECTORY

**DR. B. R. PUTMAN**  
**OPTOMETRIST**  
 Office Hours: 9-5 Sat. 9-1 Phone 6560  
 111 East 3rd St. Muleshoe, Texas

**SEPTIC TANKS**  
**CESSE POOLS**  
**CLEANED**  
 Phone Parks at 3-2420 6643

FOR Complete Insurance Service SEE  
**Jennings Insurance Agency**  
 .05 E. Ave. B — Box 144 — Muleshoe  
 Phone 3-4970 — Res. Phone 7670

**BAILEY COUNTY ABSTRACT CO.**  
 Established In 1900  
**KANSAS CITY LIFE INS. CO. FARM LOANS**  
 Phone 3-4590 — South Side of Square

**SINGLETON FUNERAL HOME**  
 24 Hour Ambulance Service  
 Pho. 2860 — Muleshoe

For Economical Selling and Buying Read and Use  
**JOURNAL CLASSIFIEDS**  
 Phone 7220 or 5400

Get The Auto Part You Need At  
**WESTERN WRECKING**  
 1017 West American Blvd. (Clovis Rd.) PHONE 4869  
 We Pay The Highest Price for Scrap Iron.

**DR. A. E. LEWIS**  
**DENTIST**  
 315 S. 1st. — Muleshoe  
 Closed Wed. & Sat. P.M.  
 Off. Ph. 9-0110 — Res. 6570

**McADAMS**  
**INSURANCE AND REAL ESTATE**  
 AUTOMOBILE - FIRE - LIABILITY - BONDS  
**W. B. McADAMS, owner**  
 Phone 3-3849 — 409 N. First  
 Night 7740 Muleshoe

**COTTONSEED DELINTED**  
 Williams Seed Cleaning Co  
 Phone 6280 — Muleshoe

**LAND BUYERS**  
 Go To The Clyde A. Bray Agency  
 Looking for Stock Ranches, and Land With Irrigation Water? List your property where the buyers go.  
 Licensed In Texas P. O. Box 243 Muleshoe, Texas Phone 3-1910  
 Licensed In New Mexico Burns Agency Bldg. Clovis, N. M. Phone PO 3-5581

**GUARANTY ABSTRACT CO.**  
 Phone 2640 — Muleshoe  
 Complete Abstracts of Title to All Lands and Towns in Bailey County, Texas  
**BONDED FOR YOUR PROTECTION**  
 Office: 108 East Ave. C.  
**PAT R. BOBO, Owner**

**Kelton Barber**  
**Shop**  
 — BARBERS —  
 Omer Kelton  
 Jimmy Carpenter

**Farley Insurance Agency**  
 Real Estate and Insurance  
**AUTO FINANCING**  
**FARM & CITY LOANS**  
**SERVICE BEYOND THE CONTRACT**  
 Off. Ph. 7279 — Res. 9-0343  
 Over Bank, Muleshoe, Texas

**SPECIAL PRICES**  
**400 NEW RADIATORS**  
 But Old Models  
**50 to 75% Discount**  
**STOVALL-BOOHER**  
 Radiator Sales & Service  
 Phone CA 4-2865 Plainview

**ARNOLD MORRIS**  
**AUTO**  
 FOR  
 • Parts and  
 • Service  
 for Your  
 • Auto  
 • Tractor  
 • Truck  
 • Irrigation Engines

**It Pays To Borrow MONEY From Us!**  
 We can save you money when you buy a new or used car. We're here to help you... with low cost, easy-to-repay loans. We can help you in other ways too. It will pay you to talk to us, and no obligations.  
**Texas Investment Finance Co.**  
 Pool Ins. Office Ph. 2950 Muleshoe  
 W. M. Pool, Jr. Lee R. Pool

**DR. B. Z. BEATY**  
**dentist**  
 Office Hours 9-12, 1-5  
 115 South 1st.  
 Closed Saturday P. M.  
 Off. Ph. 2040 Res. 8511

**PLAY SAFE**  
**BUY AN Exide BATTERY**  
 An Exide in your car is the safest insurance against battery failure.  
**WHEN IT'S AN Exide YOU START!**  
**Arnold Morris Auto Parts**  
 Phone 7150 — Muleshoe

**COMPLETE**  
 Small Engine Service  
 Lawn Mower Engines, etc.  
 Clinton Power Products  
 Lawson, Briggs & Stratton  
**Muleshoe Auto Parts**  
 Plainview Highway  
 Phone 9-0940

**DANIEL PAINTING**  
 Redecorating A Specialty  
 ESTIMATES BY APPOINTMENT  
**PHONE 8120**



### Students Receive Certificates

Eleven Muleshoe High School students received certificates for outstanding academic accomplishments Friday morning, Oct. 21, presented by the Muleshoe Chamber of Commerce Education Committee.

Ray Daniel, co-chairman of the committee presented certificates to the following students who excelled in specific studies.

Brown, English; Shirley Henry, speech; Darrel Lancaster, social studies; Rhonda Wagnon, home making; Mary Ann Greene, math; Georgia Hall, foreign language; Jeanne Gray, chorus; and Norma Bruce, business.

The students were chosen by a faculty group, and the certificates awarded on the basis of outstanding academic work.

**FILING EQUIPMENT and steel desks for sale at The Journal.**

Barry Lewis, driver education; Sylvia Pool, science; Pat

### All Saints Day To Be Observed

Next Tuesday, Nov. 1, is All Saints Day, on the Catholic Calendars throughout the world. Muleshoe Catholics will observe All Saints Day with Holy Mass at 8:00 p.m.

All Saints Day, Nov. 1, is one of six days besides Sundays that Catholics worship at Holy Mass.

The State of Louisiana observes Nov. 1, All Saints Day, as a legal holiday.

### The Lions Club Presents Program To Students

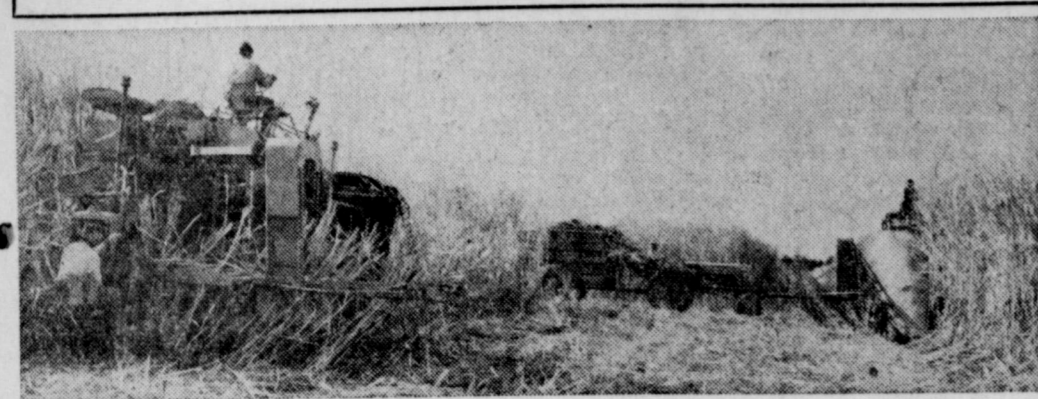
A framed "Morale Code For Youth", was presented to the students of Muleshoe High School Friday morning by the Muleshoe Lions Club, at a special assembly in the High School auditorium.

An identical Moral Code was presented at a Friday afternoon assembly in Mary DeShazo elementary school cafeteria.

Making the presentations on behalf of the Lions Club was Lion Boss J. E. McVicker. McVicker told the students that the Lions Club is vitally interested in the young people of the community, and presented the code as a guide for their actions toward becoming better citizens and better Americans.

Copies of the framed code will be presented to students at Richland Hills elementary school and Muleshoe Junior High at an early date.

### Modern Sugar Harvest Underway...



The days when hundreds of laborers used to cut the sugar cane by hand and mules slowly pulled the wagons to the sugar mill, are gone. Today Thomson "Hurricane" harvesters cut, top and stalk a hundred tons of cane a day and specially designed Allis-Chalmers cane tractors speed two or three heaped cane wagons at a time to the mill.

It's cane cuttin' time along the bayous of America's sugar bowl and once again Louisiana sugar cane growers are unfolding their story of world leadership in the mechanized harvesting of sugar cane.

The hum of huge harvesters can be heard through Evangeline land from October through December as they mow down row upon row of 14 to 18-foot cane and windrow it at the same time.



A big crane swings a quarter ton of freshly cut sugar cane from a cane truck to a sugar mill stockpile as today's modern mechanized harvest operates around the clock.

Tractor equipped cane burners follow the harvesters to burn the "trash" of the windrowed sugar-producing cane stalks. Then the huge claws of tractor-mounted cane loaders bunch, grasp and load the cane into waiting wagons. In moments two or three heaped cane wagons pulled by tractor are rolling along cane field roadways for the sugar mill.

While the Louisiana sugar cane harvest totals only about two per cent of the 240,000,000 tons of sugar cane harvested annually throughout the world, its growers can boast the smallest percentage of man-hours per ton of cane harvested than any other cane growing area in the world.

The almost complete mechanization of Louisiana's sugar



A Thomson "Hurricane" loader gathers, bunches and loads windrowed cane into waiting cane wagons in one unbroken movement. Then high clearance Allis-Chalmers cane tractors, which helped plant and cultivate the cane months earlier, speeds the cane wagons to the sugar mill.

### Social Security Man Here Nov. 3

What would you do if suddenly your income were cut off because you became totally and permanently disabled? One of the first things to do is to contact your social security office. Under amendments to the social security law enacted in 1954, 1956, 1958, and 1960, protection for severely disabled persons and their families has been liberalized.

If you are so severely disabled as to prevent your continued employment in any type of substantial gainful work and not yet 65, and if you meet all other requirements, you and your dependents may be eligible for monthly benefits. As a result of the 1960 amendments, severely disabled workers no longer need wait until age 50 to become entitled to disability insurance benefits.

The amount of these payments will be the same as you would receive if you were already 65 years old. The minimum payment to a worker is \$7.00 and the maximum to a family is \$254.00.

What is necessary to qualify for disability protection. Briefly, your disabling condition must have existed for at least six months (only severe and long-lasting disability counts); you need at least five years of work in the ten years immediately before your disability began. To illustrate, if your disability began January 1, 1960, the first month for which you could receive a check would be July 1, 1960.

In addition, you would need to have worked 5 years under social security in the ten-year period between January 1, 1950 and January 1, 1960, the beginning date of your disability.

If you are totally and permanently disabled, get in touch with your social security office. If you are unable to visit the office, you may telephone, write, or ask someone to come in on your behalf.

A representative of the Lubbock Social Security Office will be in Muleshoe on Thursday, Nov. 3, in the County Courthouse at 9:30 a.m., and will be glad to assist in all matters pertaining to social security.

### BERNIE FRALIN NEW HOSPITAL PHARMACIST

Bernie Fralin, who comes here from Lubbock, Tuesday took over his duties as pharmacist at the West Plains Hospital & Clinic. Mr. Fralin has been pharmacist at the Boaz Pharmacy in Lubbock.

Mr. and Mrs. Fralin have two married daughters and a son, who is a sophomore in Texas Tech.

The former pharmacist at the hospital, Turner Bledsoe, died of a heart attack at the hospital Sept. 13.

#### Cotton Quiz

HOW MANY FARMS IN THE UNITED STATES GROW COTTON?

MORE THAN 850,000 FARMS GROW COTTON IN THE 14 COTTON-PRODUCING STATES.

## Television Schedule For Muleshoe

SUNDAY	SUNDAY	SUNDAY	SUNDAY
<b>KGNC-TV (4)</b>	<b>KVII (7)</b>	<b>KPDA (10)</b>	<b>KCBD (11)</b>
11:00 - Church	8:00 - Church	8:30 - Church	12:00 - Football
12:00 - Football	8:30 - Church	9:30 - Movie	3:00 - Answer
3:00 - News/Wthr	9:00 - This Is The Life	11:15 - Wrestling	3:30 - African Pat.
3:15 - Pass. Parade	9:30 - Christophers	11:30 - Football	4:00 - Dee Weaver
3:30 - Poets are Peo.	10:00 - It Is Written	1:00 - Football	4:30 - Huntley
4:00 - Cotton John	10:30 - Movie	3:00 - Movie	5:00 - Press
4:30 - Bowling	12:00 - Funday	4:30 - Weather	5:30 - Peo. are Funny
5:00 - Meet the Press	12:30 - Dory Funk	5:00 - Auto Show	6:00 - Maverick
5:30 - Football	1:00 - Oral Roberts	5:30 - 20th Century	7:00 - Velvet
6:00 - News, Sports, Weather	1:30 - Church	6:00 - Lassie	8:00 - Chevy Mystery
6:30 - Westerner	2:00 - Bridge	6:30 - Dennis	9:00 - Loretta Young
7:00 - Velvet	2:30 - Football	7:00 - Ed Sullivan	9:30 - Not For Hire
7:30 - Hunter	3:00 - Weather, News	8:00 - GE Theatre	10:00 - News, Sports
8:00 - Chevy Show	3:30 - Lawman	8:30 - Jack Benny	Weather
9:00 - Loretta Young	4:00 - Shotgun Slade	9:00 - C. Camera	10:30 - Movie
9:30 - Not For Hire	4:30 - Islanders	9:30 - A. Southern	
10:00 - News, Sports, Weather	5:00 - Sea Hunt	10:00 - Wthr., News	
10:30 - Movie	5:30 - News, Wthr	10:25 - H'way Patrol	
	10:20 - Movie	10:55 - Movie	

### HUNKE'S

**ELECTRIC AND MUSIC**  
113 E. Ash Ph. 7070

Television Repairs  
Appliance Repairs  
Electrical Wiring

**ELECTRICAL CONTRACTORS**  
All Work Guaranteed

Television Sets  
Washers, Hi-Fi  
Sets, Records  
Guitars and Musical Instruments

#### MON-FRI. DAYS

6:00 - Classroom  
7:00 - Today  
9:00 - Dough-Re-Mi  
9:30 - Play Your H.  
10:00 - Price Is Right  
10:30 - Concentration  
11:00 - Truth or Con.  
11:30 - Could Be You  
12:00 - News, Wthr., Ideas

1:00 - Queen for Day  
1:30 - Loretta Young  
2:00 - Dr. Malone  
2:30 - These Roots  
3:00 - Train Man  
3:30 - Buckskin  
4:00 - Life of Riley  
4:30 - Movie  
5:30 - Passing Parade  
5:45 - Nus, Wea., Spts.

#### Shop Muleshoe First

**SHOP AT LANE'S**  
Furniture & Carpet  
111 Main St. and Save

**Lamps 1/2 Price**  
All Styles, Colors, and Sizes

Need 9 New Living Room Suite?  
**2-PC. SOFA BED AND CHAIR**  
REG. \$169.95  
**\$99.95**

**NOW GOING ON SINGER SALE**  
of Sewing Machines

**\$30 OFF REG. PRICE**  
of Automatic Come in or Call  
**Lane's Furniture and Carpet**  
Phone 6430  
For Free Demonstration In Your Home Day or Night

#### Monday Night

6:30 - Cheyenne, 7, 11  
6:30 - Tell The Truth, 10, 13  
6:30 - Riverboat, 4, 11  
7:00 - P & G, 10, 13  
7:30 - Surfside, 7  
7:30 - Buddy, 10, 13  
7:30 - Hope, Fargo, 4, 11  
8:00 - T. Scouts, 10, 13  
8:00 - Shangri-La, 4, 11  
8:30 - Paradise, 7  
8:30 - S. Jones, 10, 13  
9:30 - B. Patrol, 11  
9:30 - S'case, 10, 13  
9:30 - Peter Gunn, 7  
9:30 - Allyson, 10, 13  
10:00 - News, Wthr., 10, 13  
10:00 - News, Sports, Weather, 4, 11  
10:20 - Movie, 7  
10:30 - Rebel, 10, 13  
11:00 - Movie, 10, 13  
11:30 - Riley, 10, 13

#### Tuesday Night

6:30 - Bugs B., 7  
6:30 - Wil'ison, 10, 13  
6:30 - Laramie, 4, 11  
6:30 - Bilko, 13  
7:00 - Peck's Bad Girl, 10, 13  
7:30 - Rifleman, 7  
7:30 - Hitchcock, 4  
7:30 - Billis, 10, 13

#### MON-FRI. DAYS

8:00 - Robn Hood  
8:20 - Funz A Poppin'  
9:00 - Movie  
9:30 - Miss Brooks  
11:00 - Court  
11:30 - Love Bob  
2:00 - Texan  
2:30 - Queen For Day  
1:00 - About Faces  
1:30 - The P. M. Show  
2:00 - Day In Court  
2:30 - Reality  
3:00 - Beat the Clock  
3:30 - Trust  
4:00 - Bandstand  
5:00 - Ho Ho  
5:30 - Cap. Gallant  
6:00 - News, Wthr

#### MON-FRI. DAYS

7:00 - Last Night  
7:45 - Little Rascals  
8:15 - Kangaroo  
9:00 - LaLanne  
9:30 - Video Village  
10:00 - I Love Lucy  
10:30 - Horizons  
11:00 - Love of Life  
11:30 - Search  
11:45 - Church  
12:00 - Wthr, News  
12:30 - World Turns  
1:00 - Star Theatre  
1:30 - House Party  
2:00 - Div. Hearing  
2:30 - Verdict  
3:00 - Brighter Day  
3:15 - Secret Storm  
3:30 - Edge of Night  
4:00 - Kids Matinee  
5:00 - Huck Hound  
5:45 - News, Wthr.

#### MON-FRI. DAYS

6:30 - Class  
7:00 - Today  
9:00 - Dough-Re-Mi  
9:30 - Play Your H.  
10:00 - Price Is Right  
10:30 - Concentration  
11:00 - Truth or Con.  
11:30 - Could Be You  
1:30 - Burns & Allen  
1:00 - Queen for Day  
1:30 - Loretta Young  
2:00 - Dr. Malone  
2:30 - These Roots  
3:00 - Thin Man  
3:30 - Movie  
4:45 - Comedy  
5:30 - Passing Parade  
5:45 - News, Sports, Weather



### CLUB TREASURERS

## Muleshoe State Can Help YOU!

No Matter What The Size of Your Club... We Can Help You Manage Your Job More Efficiently & Dependably. Use Our Checking and Savings Account Services. Let Us Advise You On Investments and Tax Requirements. Come In and Get Acquainted! You'll Find Our Bank An Invaluable Aid In Managing Your Club's Finances!

## MULESHOE STATE BANK

3% Interest on Savings Comp. Quarterly



## WIEDEBUSH & CHILDERS

VEHICLES ARE 2-WAY RADIO EQUIPPED

To Assure You of Prompt Service In—

BUTANE  
PROPANE  
AMALIE MOTOR OIL  
FRAMS OIL FILTERS

### DIAL 2810

We Delivery Anywhere ANYTIME!  
Clovis Hiway  
Muleshoe

THE GIFT CHERISHED A FULL YEAR...!

Remember Your Friends and Loved Ones' Birthdays, Anniversaries, Etc. With A

## FULL YEAR SUBSCRIPTION —TO THE— MULESHOE JOURNAL

#### SUNDAY KDUB (13)

10:40 - Church  
12:00 - Baseball  
2:30 - Pied Piper  
3:00 - This is the Life  
3:30 - Talent Var.  
4:30 - Lawrence Welk  
5:00 - Doug Edwards  
5:30 - 20th Century  
6:00 - Lassie  
7:00 - Ed Sullivan  
8:00 - GE Theatre  
8:30 - Hitchcock  
9:00 - Luck  
9:30 - U. S. Marshal  
10:00 - What's my L'ne  
10:30 - News, Wthr.  
11:00 - Movie

#### MON-FRI. DAYS

7:45 - Farm Fair  
7:50 - News  
8:15 - Cap. Kangaroo  
9:00 - Dec. Bride  
9:30 - Video Village  
10:00 - I Love Lucy  
11:00 - Love of Life  
11:30 - Home Fair  
12:00 - News, Wthr.  
12:30 - World Turns  
1:00 - Full Circle  
1:30 - Houseparty  
2:00 - Millionaire  
2:30 - Verdict  
3:00 - Brighter Day  
3:15 - Secret Storm  
3:30 - Edge of Night  
4:00 - Announced  
5:00 - Comedy  
5:30 - McGraw  
6:00 - News

### 3-3100



This number is your passport to year round entertainment. Call 3-3100 for an Able Cable 5-channel television service hookup.

## MULESHOE ANTENNA CO.

107 EAST THIRD

## COBB'S DEPT. STORE

216 Main St. Phone 4090

## WESTERN DRUG CO.

110 Main St. Phone 3-1060

#### WEEK OF OCT. 29

#### Circle the Winners

California at Oregon State  
Kansas State at Minnesota  
Ohio State at Michigan State  
Northwestern at Indiana  
Kansas at Iowa  
Auburn at Florida  
Tulsa at Georgia  
Pennsylvania at Harvard  
Marquette at Holy Cross  
Oklahoma at Colorado  
Georgia Tech at Duke  
Illinois at Purdue  
Texas Tech at Rice  
Pittsburg at Syracuse  
West Texas State at Arizona  
New Mex. State at Arizona State  
Arkansas at Texas A & M  
Baylor at TCU  
Oregon at Washington  
Utah at Wyoming  
Michigan at Wisconsin  
SMU at Texas  
Hardin-Simmons at Texas Western  
Dayton at Wichita  
Dartmouth at Yale  
S. California at Stanford

The Breaker — Pick The Score

Colgate at Buffalo

Name.....

Address.....

## HARVEY BASS APPLIANCE

222 Main St. Phone 3-0300

## LINDSEY JEWELRY

214 Main St. Phone 3-3550



1 - OFFSIDE



2 - ILLEGAL POSITION OR PROCEDURE



3 - ILLEGAL MOTION OR SHIFT



4 - DELAY OF



5 - PERSONAL FOUL



6 - ROUGHNESS AND PILING ON

TAKE THIS PAGE WITH YOU TO THE GAME!

FRIDAY, OCT. 21, 1960

# MULESHOE MULES

## vs. MORTON INDIANS

AT BENNY DOUGLASS STADIUM

Mules

Chiefs

81 Jimmy Patton	LE 145
71 Ronald Julian	LT 190
64 Jerry Wright	LG 160
50 Bob White	C 180
61 Wayne Malone	RG 158
70 Jerry Howard	RT 180
80 Rodney Blackwood	RE 140
10 Billy Gilbreath	QB 148
25 Jim Young	HB 157
20 Curtis Walker	HB 140
43 Gary Pierce	FB 160



7 - CLIPPING



8 - ROUGHING THE KICKER



9 - UNSPORTSMANLIKE CONDUCT



10 - DEFENSIVE HOLDING



11 - ILLEGAL USE OF HANDS AND ARMS



12 - INTENTIONAL GROUNDING



13 - ILLEGALLY PASSING OR HANDING BALL FORWARD

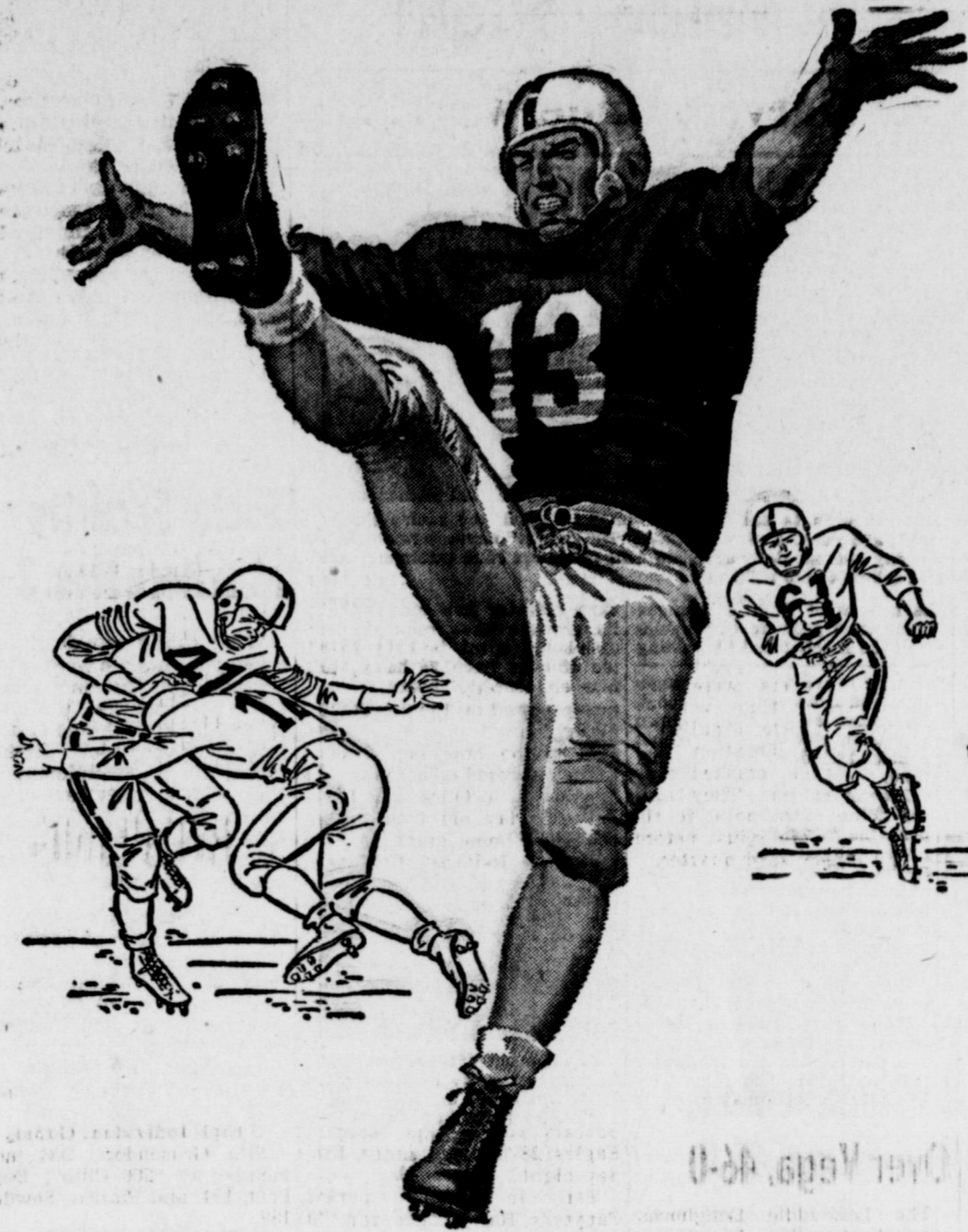


14 - FORWARD PASS OR KICK CATCHING INTERFERENCE

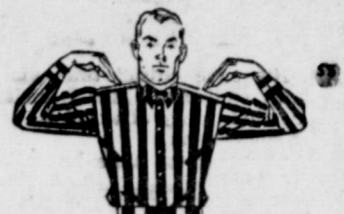
### MULESHOE MULES 1960 SCHEDULE AND SCORES

Date	Team	Place	Time	Score
SEPT. 2	CLOVIS			22-22
SEPT. 9	LITTLEFIELD			0-28
SEPT. 16	OPEN DATE			
SEPT. 13	HEREFORD			6-6
SEPT. 30	DIMMITT			0-44
OCT. 7	FRIONA			32-6
OCT. 14	OLTON	* HERE		22-35
OCT. 21	FLOYDADA	* THERE		7-14
OCT. 28	MORTON	* HERE	8 p.m.	
NOV. 4	LOCKNEY	* THERE		
NOV. 11	ABERNATHY	* THERE		

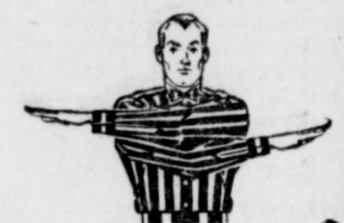
\* Denotes Conference Games



15 - INELIGIBLE RECEIVER DOWN FIELD ON PASS



16 - BALL ILLEGALLY TOUCHED, KICKED OR BATTED



17 - INCOMPLETE FORWARD PASS, PENALTY DECLINED NO PLAY OR NO SCORE



18 - CRAWLING, HELPING THE RUNNER OR INTERLOCKED INTERFERENCE



19 - BALL DEAD; IF HAND IS MOVED FROM SIDE TO SIDE TOUCHBACK



20 - TOUCHDOWN OR FIELD GOAL



25 - BALL READY-FOR-PLAY

### SCHOOL AND TEAM CHEERS

#### What's The Good Word?

What's The Good Word?  
(Crowd) Beat Morton!  
What?  
(Crowd) Beat Morton!  
Louder  
(Crowd) Beat Morton!

Go Big Team — Go!  
Beat the Indians!

#### Three Big Fights

Let's Give One Big Fight  
(Crowd) Fight!  
Let's Give Two Big Fights  
(Crowd) Fight! Fight!  
Let's Give Three Big Fights  
(Crowd) Fight! Fight! Fight!

#### Fight

F-I-G-H-T!  
Fight Mules (pause) Fight!

#### Yea Team Fight

Yea team Fight  
Yea team Fight  
Yea team, Yea team  
Fight, Fight, Fight!

#### Two Bits

Two-Bits, Four-Bits  
Six-Bits, A Dollar  
All For Muleshoe  
Stand Up and Holler!

### THESE MULESHOE MERCHANTS ARE SUPPORTING THE MULES 100%

- Edwards Gin Company
- Blackburn Food
- Alsop Insurance Agency
- Bovell Motor Supply
- Arnold Morris Auto Co.
- Lambert Cleaners
- Charles Lenau Lumber Co.
- Muleshoe State Bank
- First National Bank
- Muleshoe Journal
- Beavers Flowerland
- Black Optometric Clinic
- Brown Supply
- Chubby's Beauty Shop
- Carl's Fruit Market
- City Cleaners
- Goss Bros. "66" Service
- Western Auto Associate Store
- Main Street Beauty Shop
- Judge Glen Williams
- Cayle Reed Buick
- Muleshoe Floral
- Bill's Drive In
- Cross Roads Cafe
- E. R. Hart Company

#### 2AAA STANDINGS

TEAM	W	L
OLTON	2	0
ABERNATHY	2	0
FLOYDADA	2	0
LOCKNEY	1	1
MORTON	0	2
MULESHOE	0	2

- First Street Confectionery
- Morris Douglass Implement Co.
- Finn's Gulfstare
- Zela's Beauty Shop

- Western Drug Co.
- Dinner Bell Cafe
- Farmers Co-op Elevator
- Lenderson Implement
- McCormick's Upholstery & Drapery Shop
- Muleshoe Auto Parts
- Muleshoe Co-op Gins
- Heathington Lumber Co.
- Bailey County Electric Cooperative Ass'n.
- Cashway Grocery and Market
- Gilbreath Seed & Grain Co.

- Cobb's Department Store
- Sam Fox, Texaco Consignee
- McAdams Insurance Agency
- Muleshoe Motor Co.
- Murray's Jewelry
- Taylor Metal Products
- Lane Furniture Co.
- Spudnut Shop
- Union Compress and Warehouse
- Wagnon Grocery and Market
- Singleton Funeral Home



23 - HESITATION



24 - START THE CLOCK OR NO MORE TIME-OUTS ALLOWED



22 - TIME-OUT



21 - SAFETY

By you buying it's red

# Sports Parade

By Journal Senior Staff Member  
H. B. FLANAGAN

## MULES PLAY OUTSTANDING DEFENSE

### Mules Lose Hard Fought Game To Whirlwinds Friday Night

Playing one of their best defensive games of the year, the Muleshoe Mules outplayed the favored Floydada Whirlwinds on their own field last Friday night, but came out second best as they fumbled away their chances in District 2-AA with a 14-7 loss to the Abernathy eleven.

After an exchange of kicks, the Whirlwinds found themselves on the Muleshoe 9-yard line. With second down and 8, the Floydada quarterback, Lindsey attempted a screen pass, which Dixon Ray, a ball hawk all night for Muleshoe, grabbed in mid-air and set sail for the Floydada goal, 94 yards away. He outran the pursuers and raced across untouched. Bob White split the goal posts on the extra point try, and the Mules led 7-0, a score that looked bigger as the game rolled on.

The second quarter was a scoreless stand-off as both teams were forced to punt. The Muleshoe forward wall played fine defensive football as they time and again stopped the Whirlwind running attack with ferocious tackles, led by Donald Julian, Jerry Wright, Wayne Malone, Dixon Ray and others.

Just before the half ended, the Whirlwinds recovered one of many fumbles on the Muleshoe 36. Four plays later they were only on the Muleshoe 31, from where the Mules took over as the half ended.

#### Olton Rumps Over Morton Indians

The Olton Mustangs, District 2-AA favorites, lived up to role Friday night as they dropped the Morton Indians 38-22.

Olton's Quarterback Johnny Schenck ran to the Indian 7 and then pitched to Rande Buchenau who carried over the goal. Fullback Robert Priest kicked the point.

On the kickoff following the TD, Olton covered the ball on an on-side kick, drove to the Indian 1 and from there Gary Berry scored with James Lovelless running for the two extra points.

A 71-yard drive for the Indians ended in a keeper play by Lester Dupler going 7 yards for the first tally and Steve Middleton passed to Wilburn Ziser for the two point.

With six seconds left in the third period, Priest raced 8 yards for Olton and Schenck added the PAT. In a quick-kick exchange immediately prior to the score, the Indians kicked 56 yards and Olton kicked 66.

Morton's Johnny Vandevanter, a halfback, ran around end from the 1 and then passed to end Tommy Morrison for the points.

Morton later recovered a fumble on their own 9 and after the teams exchanged pass interceptions, put together a 48-yard pass-run play by Zuber for a touchdown.

Olton scored in four plays capped by a 23-yard run around end by Buchenau and extra points on a pass to Frankie Miller to end the scoring.

#### MISSIONARIES SPEAK AT BAPTIST CHURCH SUNDAY

Rev. J. A. Lunsford and Mrs. Lunsford, both missionaries to Brazil, will be guests of the First Baptist Church congregation the coming Sunday. Rev. Lunsford will preach at the morning worship hour, Mrs. Lunsford will speak in the evening service.

They are back in the States on furlough, and are visiting in Plainview.

#### Third Quarter

Floydada kicked to the Mules at the start of the second half. The Mules found themselves in a hole from the start, after being penalized back to their own 10-yard line following a clipping penalty on the kickoff. Unable to move farther than their own 14, the Mules punted out. Floydada took the punt on the Mule 36-yard line and ran it back for three yards. Driving down to the Muleshoe 24, the Whirlwinds again attempted a pass, which was picked off by Dixon Ray, who slipped immediately on the Muleshoe 1-yard line.

Muleshoe managed to drive out to their own 14, when disaster struck in the way of a fumble which Floydada recovered on the Muleshoe 10-yard stripe. From 10-yards out it took the Floydada eleven five plays to reach paydirt, as the ball carriers were met head-on each time with a thunderous tackle. Finally on a third down situation, Ted Allen, halfback, crashed over from 2-yards out. They also kicked the extra point to tie up the ball game just before the end of the third quarter.

#### Fourth Quarter

After an exchange of punts, the Mules drove from their own 29 to the 45 before they again fumbled. After recovering a Mule fumble of the Muleshoe 45, Lindsey, quarterback for Floydada hit on a 55

#### Lazbuddie Rolls Over Vega, 46-0

The Lazbuddie Longhorns swept by the Vega Longhorns Friday night by a lopsided victory of 46-0 in a District 2-B game.

Freddie Savage plunged 7 yards in the first period, but halfback Odie Bradshaw was not far behind with a 56-yard scamper and then quarterback Max Miller passed to end Norman Brantley on an 80-yard play for two more first period touchdowns.

Two points were added after the second score with a run. Miller ran four yards in the second period and Savage carried for the PAT's.

Bradshaw ran 10 yards for a score in the fourth. Savage rambled for 65 yards and Terry Darling caught a jump pass for 10 yards and the final Lazbuddie TD of the game.

#### Tulia Hornets Down Friona Chiefs 34-0

Tulia took their seventh win against only one loss for the season Friday night against the Friona Chiefs, 34-0. Friona, in losing the 1-AA conference game, stands with one win against seven losses.

The Hornets of Tulia enjoyed a comfortable lead of 28-0 at half time. Gary Don Haught was high scorer for the ball game with 18 points. His scoring came on an eight yard ball through center, a three yard sweep around end and the catching of a 15-yard pass from quarterback Russell Rucker.

Other scorers for the Hornets were Richard Bales on a 13-yard run through the middle, Bobby Howard on a 40-yard dash through center which was stopped two yards short of the goal and the successful culmination of the TD by him on the next play and two pass conversions from Paul Caraway to Charlie Mitchell.

#### Abernathy Downs Lockney Longhorns

The Abernathy Antelopes smashed the Lockney Longhorns 34 to 6 Friday night in a District 2-AA contest.

The win gave the Antelopes a perfect district record of 2-0. The Antelopes took the opening kickoff on the 15-yard line and in 12 plays John Brown had passed to end Jack Waters for the score. Mike Ritchey kicked the point.

In the second, Brown threw 43 yards to Neal Humphrey for Abernathy's second touch-down. Ritchey again kicked the point.

Abernathy scored again when Brown again threw a touchdown pass, this time to Waters for 8 yards. Ritchey again converted.

Lockney took the kickoff and marched back to score in 13 plays with Johnny Belt running 2 yards.

Early in the fourth quarter Ritchey intercepted a Lockney pass and returned it to the 27. Two plays later Keith Beard threw to Jerry Gist for the score. Ritchey's kick failed.

#### Last Week's Scores

**District AA**  
Muleshoe 7, Floydada 14.  
Abernathy 34, Lockney 6.  
Olton 38, Morton 22.  
**District 1-AAA**  
Lvelland 14, Hereford 6.  
Phillips 22, Littlefield 6.  
**District 1-AA**  
Tulia 34, Friona 0.  
Dimmitt 28, Canyon 12.  
**Other Scores**  
Kress 14, Springlake 2.  
Farwell 21, Hale Center 20.  
Lazbuddie 46, Vega 0.

### BOWLING NEWS

#### COMMUNITY LEAGUE

**3 High Team Games**  
Progress Gin, 788; KMUL, 775, and KMUL, 769.

**3 High Team Series**  
KMUL, 2287; Clay's Corner, 2236, and St. Clair's, 2212.

**3 High Individual Games**  
Nita Grusendorf, 208, new member of "200 Club"; Doris Peat, 194, and Frances Sowder, 188.

**3 High Individual Series**  
Frances Sowder, 513; Nita Grusendorf, 495, and Beverly Heathington, 482.

#### Standings

Team	W	L
St. Clair's	23	1
Clay's Corner	19	5
KMUL	18	6
Casey Ins.	14	10
First National Bank	12	12
Progress Gin	12	12
Muleshoe Co-op Gin	11	13
Shelby's Ins.	10	14
M'shoe Beauty Salon	7	17
Lane's Furniture	7	17
Nightingales	6	18
Carl's Meat Market	5	19

#### POWDER PUFF LEAGUE

**3 High Individual Games**  
Beverly Heathington, 214; Evelyn Sowder, 192; Chubby Douglass, 188, and Frances Glass, 188.

**3 High Individual Series**  
Elinor Yerby, 506; Evelyn Sowder, 504, and Beverly Heathington, 490.

**3 High Team Games**  
Farmer's Co-op, 798, 780, and 768.

**3 High Team Series**  
Farmer's Co-op, 2346; Fashion Shop, 2158, and Chubby's Beauty Shop, 2093.  
New member of "200 Club, Beverly Heathington, 214.

#### Standings

Team	W	L
Fashion Shop	18	2
Chubby's Beauty Shop	17	3
Farmer's Co-op	15	5
Falcons	11	9
Western Drug	10	10
West Plains Pharm.	8	12
Anthony's	14	14
D & G Food	6	14
Wiedebush & Childers	5	15
Ben Franklin	4	16

### Progress News

**Progress Baptist Church**  
The Sunday School attendance was back up to 96 this past Sunday. We hope to see an increase each Sunday. You are always welcome.

The Junior Department will have a Halloween Social Oct. 29 at the Fellowship Hall at the Baptist Church.

The Intermediates will enjoy a social and party Oct. 29 in the home of their department superintendent, M. D. Marrow.

**Attended Conference**  
Rev. and Mrs. Earl Hord and Mr. and Mrs. R. M. Gibson attended conference Friday of last week at Farwell.

**Ed Gulley Passed Away**  
The funeral was held Tuesday for Ed Gulley at Oklahoma Lane church. Mr. Gulley lived several years in this community and at Lariat.

Several of the Gulley children still live in this vicinity. And two of their grandchildren live in Muleshoe. Mr. and Mrs. Gulley moved to Arkansas several years ago for Mr. Gulley's health.

#### Progress Methodist News

Progress WSCS met Tues., Oct. 18 at the church for worship and study. Mrs. Elnita Gray brought a very interesting lesson in Stewardship. Mrs. Doris Wedel directed an interesting discussion on "Basic Christian Beliefs". There were seven members present.

There were three ladies attending District WSCS meeting at Petersburg Thursday, Oct. 20.

#### October 26

The Women's Society of Christian Service met at the church from 10 a.m. to 3:30 p.m. to observe their "Week of Prayer and Self Denial". A covered dish luncheon was served at the noon hour.

Mr. and Mrs. Leander Sims and Renee, Wayne Johnson and Mr. and Mrs. Dalton Davis, all of Lubbock were visitors in the O. S. Richards home over the weekend to celebrate Leander's and Wayne's mother's birthday.

#### RONALD STINSONS VISIT

Mr. and Mrs. Ronald Stinson and daughters, Donna and Terry, of Littlefield, visited in the home of Mr. and Mrs. I. M. Stinson this past weekend.

### Children Make Fire Posters

Richland Hills school fire posters were judged by Mr. Earl Ladd and Mr. Owen Jones last Monday, Oct. 17. Each room in the school participated in the poster making contest. Winners by rooms are listed below.

Miss Childress' first grade room: First, Bryan Stacy; second, Mark Long; third, Bruce Brunns. Mrs. Witherspoon's room: First, Becky Halter; second, Twani Pierce; third, Vicki Stallings. Mrs. Hale's room: First, Monica Griffith; second, Leroy Rogers; third, Nicky Kim Nickels. Mrs. Benefield's room: First, Karen Gillespie; second, Gerald Fendor; third, Larry Wayne Johnson.

In the second grade, the following winners were announced: Mrs. Fox's room: first, Debra Jean Williams; second, Mike Tibbets; third, Gordon Lindley. Mrs. Slemmons' room: first, Amanda Torres; second, Janice Head; third, David Hodges. Mrs. Kendall's room: first, Jill Wheeler; second, David Pedraza; third, Glenn Timmons. Mrs. Everett's room: First, Debbie Bruns and Jan Lemons; second, Suzanne Byrd and Cathy McCormick; third, Art Faulkner and Johnny DeLeon. A window display by second grade pupils was judged as follows: First, Joe Mata; second, Carla Hord;

third, Marilyn Allen. In the third grade the following winners were chosen: Mrs. Rutherford's room: first, Marlene Wallace; second, Sid Richards; third, David Hurd. Mrs. Peugh's room: first, Treena Bryant; second, Luisa Costilla; third, Richard Sellers. Mrs. Bryant's room: first, James Jasmin; second, Dorene Gates and Carolyn Wedel; third, Narssia Otwell. Mrs. Johnson's room: first, Kathryn Kemp; first, second Lawrence Halter; third, Gayetta Gable.

In the fourth grade, the following winners were chosen: Mrs. Shelby's room: first, Vina Bass; second, Brenda Brewer; third, Teedy Millen. Mrs. Coster's room: first, Charlotte Davis; second, Romelia Garcia; third, Kerma Nickels. Mrs. Middlebrooks' room: first, Joe Pat Riley; second, Daniel Caralez; third, Carl Gable.

In the fifth grade the following winners were chosen. Mrs. Eggers' room: first, Judy Jones, Darla Cogdill, and Kay Honeycutt; second, Gregory Dalton and Gus Taylor; third, Dana Moore and Cynthia Harris. Mrs. Gleaton's room: first, Donald Griswold; second, Susan Camp; third, Chery Trapp. Mrs. McCormick's room: first Stan Johnson; second, Paul Lenau and Ernest Garcia. Mrs. Hawkins' room: first, Jeanette Perry; second, Clifford Black and Steve Oliver; third, Wilford Gallegos.

In the sixth grade the following winners were chosen. Mrs. Gaines' room: first, Jeanine Waggon; second, Edward Dominquez; third, Ronnie Kemp. Miss Mosteller's room: first, Donna Heard and Diane Avery; second, Renee Howell and Gail Locker. Mrs. Benefield's room: first, Sherri Turner; second, Terry Lynn Bryant; third, Gloria Vela.

The making of the posters was an outgrowth of study of fire prevention study coming during American Fire Prevention Week.

### Remember... Chili and Bean Supper Oct. 28

For a good hot meal, come to the Homemade Chili and Bean Supper, sponsored by the Mary DeShazo P.T.A. to be held in the high school cafeteria Friday night, Oct. 28.

The supper, which precedes the Morton-Muleshoe football game, will be served between the hours of 6-8 p.m. The price will be \$1.00 per plate.

FILING EQUIPMENT and desk desks for sale at The Journal.

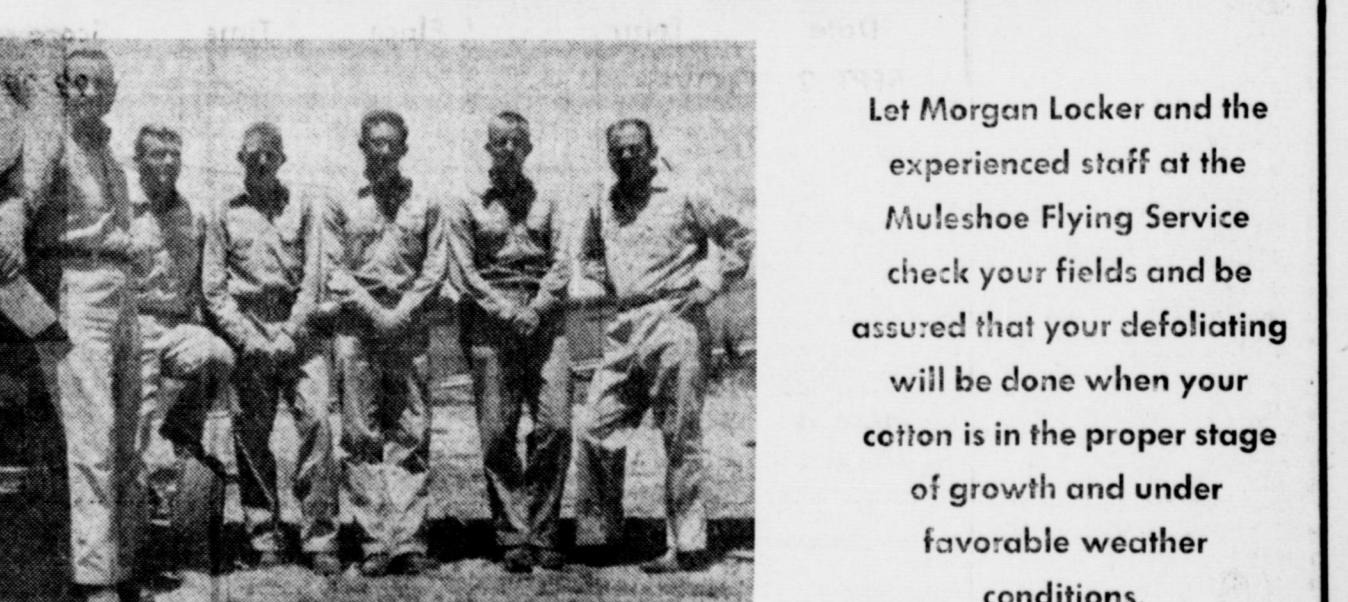
**EVERYBODY ought to have GAS LIGHTS!**

Distinctively and authentically styled, Gas Lights cast a soft glow that bids "welcome" to guests... serves as a silent deterrent to nighttime trespassers.

SEVEN MODELS - PRICED FROM **\$49.50** INSTALLED

To order, contact any employee of **PIONEER NATURAL GAS COMPANY**

## YOUR DEFOLIANT SPECIALISTS



Let Morgan Locker and the experienced staff at the Muleshoe Flying Service check your fields and be assured that your defoliating will be done when your cotton is in the proper stage of growth and under favorable weather conditions.

We safeguard your crops and our reputation by handling only tested chemicals of finest quality. With a skillful application or reputable name brand defoliants such as Magron, Shed-A-Leaf, Pena or De-Green, you can be confident of receiving full value for every dollar spent.

Experienced pilots, using the latest agricultural equipment are on hand to serve you. Come by or call the Muleshoe Flying Service for all your defoliant needs.

## Muleshoe Flying Service

SERVING THE MULESHOE AREA FOR OVER 10 YEARS

Phone \_\_\_\_\_ Located \_\_\_\_\_

Day 3-0660 - Night 3-3360 1 Mile East on Highway 70

### GOVERNMENT SURPLUS BUILDING SALE

Buy 20' by 100' Building. Move In, Fix It Yourself, and See How Cheap You Can Own 2,000 Square Feet of Floor Space. These Buildings Have Wood Floors, Good Roofs Over Wood Decks, Are Wired and Sealed Inside... Some With Plywood, Making Them Desirable For Farm Labor Housing, Storage, and Many Other Farm and Home Uses.

20' x 100' ..... \$700 to \$1100  
20' x 50' ..... \$425  
26' x 35' ..... \$375

10 ft. by 12 ft. Electric Overhead Doors - \$200 Each In Place

**HARVEY'S BUILDING SALES**  
Office 1/4 Mile East of Cannon AFB, on Hiway 60  
Night Phone PO 3-5742 - Clovis, N. M.

### FOR SALE ELECTRICAL OPERATED STORE FIXTURES

MANY TO CHOOSE FROM

Complete Butchers Equipment Included. 12 ft. Refrigerated Meat Counter, Band Saw, Sausage Grinder, Slicer, Scales, Walk-In Box.

**2 DEEP FREEZES**

Money Changer - Refrigerated Cake Box  
Checking Cash Register and Many Others

—SEE AT—

**MAPLE MERCHANTILE**  
General Store - Maple, Texas

### Three Way News

Mrs. Frank Griffiths

Three Way defeated Bula 45-12 in the football game Saturday evening to climax the Homecoming celebration.

Sandra Lemons and Larry Dupler were presented at the half time as "Football Sweet-heart and Hero".

Miss Lemons, a junior, is the daughter of Mr. and Mrs. Thurl Lemons. Larry is a sophomore and is the son of Mr. and Mrs. Leon Dupler of Maple.

Gate receipts at the ball game totaled \$331. Ex-students and teachers from points in Texas and New Mexico returned to Three Way for the celebration.

Following the game, a meeting was held in the gym to elect officers for the coming year. Joe Wheeler was elected president and Homer Richardson, recording secretary and treasurer. The group voted to have a supper next year before the game. A percent of the proceeds will go into the alumni treasury to help pay for cards and printing. Over 200 cards were mailed to ex-students and teachers this year.

Refreshments were served by mothers of the pep club and members of the football boys.

The Three Way Eagles play at Nazareth Saturday, Oct. 29.

Mr. and Mrs. George Reaves of Abilene visited last weekend with his parents, Mr. and Mrs. Oran Reaves, and attended the Three Way Homecoming celebration.

Guests in the Jack Furgeson home last week were Mr. and Mrs. Ray Furgeson of Becton, Jack and Ray are cousins.

Visiting in the Cass Stegall home the past weekend were Mr. and Mrs. Ira Merchant of Amarillo. Mrs. Merchant is a sister to Cass.

Mr. and Mrs. T. G. Gaddy of Portales, N. M., visited over the weekend in the home of Mr. and Mrs. Tommy Galt. Mrs. Galt is the daughter of the Gaddys.

Nan Johnson of Texas Tech was home for the weekend to attend the Homecoming celebration. She had as her houseguest, Miss Mary Jane Aldridge of Midland. Miss Aldridge is a student at Tech.

Grady Shuman of Lubbock and George Shuman of Needmore visited Sunday in the home of their sister and husband, Mr. and Mrs. L. W. Chapman of Goodland.

Mr. and Mrs. Gary (Tiny) Johnson of Vega, Texas, visited relatives and friends in the community over the weekend, and attended the Three Way Homecoming. Johnson is a nephew of Mrs. L. W. Chapman and a cousin to Mrs. Cass Stegall and Mrs. Tommy Galt.

The father of Mrs. Smelser was buried at Vernon. He had been ill several weeks and Mrs. Smelser had been at his bedside.

After helping her mother settle affairs at Vernon, Mrs. Smelser will return home the last of this week.

Mr. and Mrs. Kenneth Paul visited Saturday with Mr. and Mrs. Griffith and attended the Homecoming.

The Pauls and Griffiths and Mrs. Florence Bailey took Sunday dinner with Mr. and Mrs. Jimmie Batteas and Mrs. West Camp. Mrs. Batteas and Mrs. Paul are daughters of the Griffiths.

Mrs. Buck Ragsdale shopped in Littlefield Monday.

Pee Tarlton and Buck Ragsdale were at San Angelo several days last week on business.

A baby shower honoring Mrs. Jimmie Batteas was given Tuesday in the home of Mrs. Donnie Carenter. Appropriate games were played and refreshments of cake, punch and nuts were served. The cake was white, decorated with pink and blue.

Bonnie Batteas, a student at Wayland College, Plainview, was home for the weekend and attended the football game and homecoming events at Three Way.

The Three Way Methodist WSCSmet Monday with Mrs. Tommy Galt for the week of self denial and prayer program. Seven members were present for the program.

Mr. and Mrs. John Hodnett are the parent of a girl born Saturday, Oct. 22 at West Plains Hospital in Muleshoe. She is the first granddaughter of the Brock Hodnetts and the Bud Warrens.

The mother is the former Sue Warren, youngest daughter of Mr. and Mrs. Bud Warren.

Mr. and Mrs. Kirk Holt are the parents of a son born October 24 at West Plains Hospital in Muleshoe. The boy weighed 6 lbs., 12 oz., and was named Brian Stephen. This is the second son for the Kirk Holts. The grandparents are Mr. and Mrs. Marvin Holt of Goodland and Mr. and Mrs. Arthur Shafer of Needmore.

The school carnival will begin at 6:30 Friday evening and run until 9 p.m. The coronation of the school kings and queens will be at 9:30. James Long will announce the program. Jeff Lynskey and Stephen Huff are crown bearers and Creta Lee is the flower girl. Train bearers are Sandra Simpson, Sherry Mann, Sylvia Forseca and Linda Javila.

The admission is 25c and 50c to be paid at the door of the upch room. Booths will be set up in the lunch room. The cake walk and the dunking tank will be in the Ag building, the senior bingo games will be in the school library, food concession in the Home Ec room and the movie will be in one room of the main building.

Everyone is invited to attend and support the class and candidates of his or her choice.

#### CHRISTIAN SCIENCE SERVICE

Comforting assurance of the final destruction of all sin will be given in the Lesson-Sermon entitled "Everlasting Punishment" to be presented Sunday at Christian Science church services.

God's mercy will be emphasized in the scriptural selections from Psalms (130:7, 8): "Let Israel hope in the Lord; for with the Lord there is mercy, and with him is plenteous redemption. And he shall redeem Israel from all his iniquities."

The following is one of the passages to be read from "Science and Health with Key to the Scriptures" by Mary Baker Eddy (265:5): "Mortals must gravitate Godward, their affections and aims grow spiritual, — they must near the broader interpretations of being, and gain some proper sense of the infinite, — in order that sin and mortality may be put off."

CHRISTMAS CARDS, order early, be sure of delivery. 8 books to select from at The Journal.

### Cotton Bowl Tickets On Sale

Dallas—Ticket applications for the 1961 Cotton Bowl Football Classic on January 2 will be accepted by mail only during the period starting Friday, October 21, and lasting thru Wednesday, November 2.

The Cotton Bowl Classic is the official Southwest Conference post-season bowl game, and the conference champion automatically becomes the host team. This will be the 25th annual Cotton Bowl game, the Silver Anniversary of the famous gridiron classic.

There will be no limit on the number of tickets that can be ordered. As usual, after all applications have been received, a drawing will be conducted to determine the allocation of the 25,000 available tickets. Tickets will be mailed and unfiled applications and checks will be returned to the senders shortly after Dec. 1.

The price of tickets for the 1961 Cotton Bowl Classic is \$5.50 each, and a 25-cent mailing fee should be added to each ticket order. Checks or money orders must accompany all applications.

Applications should be mailed to arrive during the period specified, October 21—November 2, to Cotton Bowl Athletic Association, P. O. Box 7185, Inwood Station, Dallas 9. Envelopes must be postmarked not later than midnight, November 2.

Applications received for more than ten tickets from any one person will be placed in the draw in groups of ten or less. In other words, any number of tickets can be ordered, but they will be drawn so that they will be in blocks of ten.

The board of directors of the Cotton Bowl Athletic Association has announced that the 1961 Cotton Bowl Classic will be blacked out for television in Dallas and the area within 100 miles of the city if the stadium is not 90 per cent sold out for the January 2 game.

Syracuse's 1959 national champions defeated Texas 23-14 in the 1960 Cotton Bowl Classic played on last New Year's Day.

#### Enochs News Events

by Mrs. Jerome Cash

Miss Clacie Lou Aitman was honored with a wedding shower Oct. 18 at 2:30 p.m. in the home of Mrs. J. E. Autry.

The serving table was covered with orchid with a lace table cloth over it. An archway was made of orchid flower with a bride and groom standing in the archway.

There were 51 guests registered. Others set gifts that were unable to attend.

There were guests from Morton, Bledsoe, Bula, Littlefield, and Smyer.

Cake and punch were served. The hostesses were Mmes. Roy Seagler, Zed Robinson, J. E. Autry, Doyce Turney, Clyde Price, Billy West, J. D. Bayless, D. S. Newman, A. D. Hallford, Sue Hodge, Oscar Coats, Bob Newton, E. N. McCall, and George Autry.

Janell and Sandra Seagler and Doris McBeck were home over the weekend from ENMU. They attended the Bula Homecoming Saturday night.

Mrs. Grace Vanlandingham had her children home for the weekend. Mr. and Mrs. James Beck of Littlefield, and Mr. and Mrs. Becker of Levelland.

Elwood, George, and Edd Autry have gone deer hunting in Colorado. Word was received George had already killed two deer.

### Today's Meditation

Read II Corinthians 1:1-7. Grace be to you and peace from our Father, and from the Lord Jesus Christ. (I Corinthians 1:2.)

It was a stormy November day in a town in northern Norway. I made my way toward the hospital to make my regular calls upon the patients and to hold the preaching service there. In the hospitals I found the usual silence—and the usual hurry.

Before the service, an anxious mother asked me to see her son who was seriously ill. She told me he was eighteen and wanted to talk to a minister. As I went into his room, the boy's mother left, closing the door behind her. He and I were alone.

I did not know him, but was about to begin speaking when something unexpected happened. The boy turned his face toward me. He smiled and said, "Peace from the Lord." This dying boy, with faith in the Lord, wanted to share with a minister the peace that Jesus Christ had given him.

On a stormy day, in a house of pain and uneasiness, the boy knew the comfort and leavening power of Christ's peace. He passed on to me a feeling of peace, which I carried with me into many experiences.

**PRAYER**  
O God of Love, we thank Thee for Christ's peace. Help us to share Thy peace with those we meet, that it may be the heaven of life to them. In Christ's name. Amen.  
**THOUGHT FOR THE DAY**  
In all circumstances, Christ's peace leavens life.  
—Leif Sevre (Norway)

Read Revelation 15:1-5. Thou shalt worship the Lord thy God, and him only shalt thou serve. (Matthew 4:10.) Since boyhood, Harry Emerson Fosdick has remembered the morning his father waved good-by for the day and said to his mother, "Tell Harry he can cut the grass today, if he feels like it." Then after a few steps, he turned and added: "Tell Harry he had better feel like it!"

Sometimes we forget that the gentle hints of God about what we may do—even what we can be—are accompanied by a note of command. At our peril we ignore these notes of command.

Feelings play an important part in life. Wise is the person, however, who subjects his feelings to life's stern demands and does what must be done whether he feels like it or not.

On those occasions when we are inclined to let feelings have their way, we need to remember that Jesus put self-indulging tendencies aside and accepted the arduous task of doing the Father's will and serving Him only.

**PRAYER**  
Eternal God, our Father, help us this day to master our moods of self-indulgence and indifference. Gird us for the hard task and the difficult decision. By Thy grace enable us to do that which we know we ought to do. This we ask in Jesus' name. Amen.  
**THOUGHT FOR THE DAY**  
Blessed is the man who

knows what must be done; but twice blessed is he who, knowing, gets it done.  
—W. Ralph Ward, Jr. (N. Y.)

**SPEND WEEKEND IN LUBBOCK**

Sue and Louise Stinson visited in Lubbock this past weekend with their sister and family, Mr. and Mrs. Troy Daniel.

**VISITING DAUGHTER**  
Mr. and Mrs. Jackie Stancell visited in the home of her grandparents, Mr. and Mrs. J. E. Reddin of Lorain recently. Mrs. Reddin returned home with them to spend a few days in the home of her daughter and husband, Mr. and Mrs. J. E. Martin.

# MILO GROWERS

## TEXAS SESAME GROWERS GRAIN ELEVATOR

### Will Buy Your Milo Or Place It In The Government Program

AT TEXAS SESAME YOU GET SERVICE UNEXCELLED ANYWHERE

- Quick and Efficient Service
- Latest Market Prices
- Local Warehouse Receipts

## TEXAS SESAME GROWERS GRAIN ELEVATOR

NORTHWEST OF MULESHOE PHONE 2310 BILL WIMBERLY, Manager

## Muleshoe Cotton Co., Inc.

321 East American Boulevard  
Office Phone 3-3390 — Res. Phone 5729

### WALT COLBERT — Cotton Buyer

We Contract For "B" Loan Cotton

We prepare all types of Government Cotton papers and have equipment and help to give you prompt and efficient service.

In addition we have a modern lighted classing room with Fibronaire Machine for testing cotton.

YOUR SATISFACTION IS OUR SUCCESS

### NEW LOCATION

1 1/2 Blocks East of Muleshoe Main Street  
On The Sudan Highway  
MULESHOE, TEXAS