

The Muleshoe Journal

DEDICATED TO THE PROGRESS AND DEVELOPMENT OF BAILEY COUNTY AND THE GREAT MULESHOE COUNTRY

VOLUME 39, NUMBER 50

16 PAGES - SECTION 1, 6 PAGES

Published Every Thursday at Muleshoe, Bailey County, Texas

THURSDAY, DECEMBER 14, 1961



ALL-REGION HONOR BAND MEMBERS from Muleshoe are shown above. Selected last Saturday morning in Lubbock, the band contains 105 pieces selected from 33 competing schools. Members of the regional band will present a concert January 20 in Lubbock. Pictured above are Linda Scott, cornet; Kathy Gray, Kathy Moore and Susan Birdsong clairnets. (Journal Photo and Engraving)

School Board Ups Lunch Worker Pay

The school board of Muleshoe School District this week voted to raise the salaries of cafeteria personnel beginning January 1.

Raises, to be paid from the Luncheon Fund, brought the salaries of three managers from \$32.50 per week to \$35.

Twenty-four employees will receive a \$30 bonus in June if they complete the remainder of the work year.

Two part-time employees will

receive a \$20 bonus in June, subject to the same conditions as above.

The supervisor will be paid \$3,000 for ten months work instead of \$2,700 for nine months, necessitated by the time it takes to prepare for the school opening and inventory stock at the end of the year.

Members of the board also approved a state textbook committee of teachers and administrators who will choose new textbooks to

replace books that go out of adoption at the end of this school year. (See also separate story in this issue)

Approval was granted for the purchase of a new calculator for use in the Business Office. The old calculator will be moved to the High School Business Department.

A maintenance report informed board members of recent work done or planned for the school plants and grounds.

1962 Cotton To Have Price Props, Quotas

A referendum held December 12 to decide whether marketing quotas would apply to the 1962 crop of Upland Cotton carried nationally in Bailey County.

With 303 growers voting in Bailey County, the vote ran 247 for the motion and 56 against.

Marketing quotas and acreage allotments will be in effect for the 1962 crop of Upland Cotton. Farmers who exceed their farm allotments will be subject to a quota penalty on "excess" cotton.

Price supports will be available to growers who comply with their allotments at the full level of effective supports. Support will range from 65 to 90 per cent of parity.

Mrs. Alsup Attends ACS State Meet

Mrs. Charles Alsup of Muleshoe, vice-president of the Bailey County Unit of the American Cancer Society, has returned from the sixteenth annual meeting of the Texas Cancer Society meeting December 7 and 8 in Fort Worth.

The newly-elected national president of the society, Thomas Carlile, M. D. of Seattle, Wash., gave the feature address at the Thursday evening informal "Meet Your Directors" dinner-meeting.

The director of the American Medical Association, Oliver Field, gave a report on "Quackery."

Field's department of investigation collects and disseminates information on patent medicines, quacks, medical fads and various other phases of pseudo medicine.

Dr. John H. Childers, M.D., subjects on Thursday were progress in research, national organization problems and the recently-concluded Alliance with the Eleanor Roosevelt Foundation.

Curt Reimann brought the members up to date on the growth of programs of the Texas division and the present limitations of the future growth, in terms of the number of trained volunteers available for expanded programs.

At luncheon Thursday the delegates, guests and members participated in the discussion of their choice in the fields of education, service, publicity, campaign and board member direction.

On Thursday afternoon, by popular request, for the third consecutive year a tumor clinic case presentation was held.

The real advances in cancer treatment made possible by medical research was visibility demonstrated by representatives of the University of Texas Medical Center and the Veterans' Administration Hospital at Dallas.

A reception was held Thursday evening, sponsored and financed by the members of the Texas Division Executive committee.

Mrs. Charles Alsup reported that she feels her time was well spent in attending the meeting. "I appreciated the privilege of being a part of such an education as well as enjoyable convention," she said.



LUCKY WINNER of the Journal's football contest Howard Splawn, is shown above as he receives his two Cotton Bowl tickets and an expense check for \$50 from Polly Otwell, Journal bookkeeper. (Journal Photo and Engraving)

The home lighting contest this year will feature three separate contests in three areas of town, with prizes to be awarded winners in each district.

One district includes the area east of Main, the second takes in the part of town west of Main and the third will include all north of the Santa Fe railroad tracks.

Residents of each division will compete only within their own division, as separate judging will be done for each area.

First prize in each division is an electric post lantern courtesy of Southwestern Public Service Co. Valued in excess of \$50, these lanterns are exclusive of wiring and installation.

Second prize in each division is a string of 25 colored outdoor floodlights. Third prizes are outdoor floodlights.

Judging will be on originality, fighting effect and overall effect and will take place the evening of December 20.

Home Lighting Deadline Dec. 16

Entries for the approaching home lighting contest must be in no later than December 16, Chamber of Commerce Manager Carroll Pouncey warned this week.

Entries for the home lighting contest may be made at the Chamber of Commerce office or to John Smith at Corner Drug Store.

Jaycees Meet

Dale Fischgrabe, president of Muleshoe Junior Chamber of Commerce, this week announced that the Jaycees will meet Monday at 6 p.m. at Campbell's Cafe to discuss plans for the Christmas Dinner to be held December 23. All Jaycees are urged to attend. The group will not meet for lunch that day.

Traffic Deaths Up Over 1960 Texas Figure

The Highway Patrol investigated 10 accidents on rural highways in Bailey County during the month of November, according to Sergeant D. S. Lawson, Highway Patrol Supervisor for this area.

These wrecks accounted for two persons injured and an estimated property damage of \$4,410.

The rural traffic accident summary for Bailey County from January through November of 1961 shows a total of 59 crashes. As a (See Traffic, Page 6)

Ice, Snow, Severe Cold Dampen Spirits, Cause Untold Damage

A rundown of the weather damage in and around Bailey County looked bad for the area this week.

D. B. Lancaster, manager of the Bailey County Electrical Cooperative Association, said Wednesday that service to all electrical users would be restored Wednesday night after many users had been without power for several days.

Service to telephones out of order would not be completely restored for a week or ten days, however, he indicated.

Highways were reasonably safe for travel Wednesday after the sun melted ice and snow from many road surfaces that had

Schools Offer Operetta Here

"Merry Christmas, Mister Snowman," an operetta for children, will be presented at 7:30 p.m. December 18 and 19 in the High School Auditorium by the fourth-grade classes of the Muleshoe schools.

The operetta, which is a play set to music, will include a cast of about 100 fourth-grade students. The script was written by Nancy Hosking and the music by Ada Richter.

Two casts of lead characters have been prepared. One cast will feature students from Mary DeShazo School, while the other will include fourth graders from Richland Hills School. They will be assisted by 24 Snowflake Fairies, 24 children made up to appear as toys, 24 Brownies and 110 Carol Singers, coming from both schools.

Students from Mary DeShazo school will be featured Monday night. Leading the cast will be Elaine Phipps and Jean Lane, Delton Bass and Jerry Lane, Donna Locke - as Crystal (Snowflake Queen), Cathy Myer as Polly (Leader of Carol Singers), Leland Ferris and Snowman, and Catherine Bell as Santa Claus.

Tuesday night's cast, from Richland Hills, will feature Lana Moore, Bernice Ray, Niewarner, Lenita Splitter, Brent Tanner, Gary Pittman, Larry Ratliff, and Pam Avery.

Presented free of charge, the music play is directed by Frederic Byers, assisted by Mulla Hollis at the piano and the eight homeroom teachers of the two schools, including Mrs. Leota Hardgrove, Mrs. Letha Petterson, Mrs. Pauline Guinn and Mrs. Ruth Fowler, all of Mary DeShazo, and Mrs. Joyeline Costem, Mrs. Edity Shelby, Mrs. Ruby Lambert and Mrs. Maxine Harris, Richland Hills School.

Ice, Wrecks Keep Prisoners Waiting

Highway Patrolman James Freeman found it difficult Monday to get two prisoners delivered to the county jail in Muleshoe.

About 3:45 p.m. Monday, Jaime Espino Mendoza stopped in the middle of highway 214, south of Muleshoe, to clean his windshield of ice.

A car driven by Laura Seales, Rt. 2, Muleshoe, plowed into Mendoza's car, causing damage estimated at about \$125 to the car she was driving for Mrs. J.D. Dunlap and about \$75 to Mendoza car.

Mendoza looked at the damage and then got into his car and continued to his home in Baileyboro. Hampered by his lack of

Solve Parking Problem Here

Downtown Muleshoe store employees were asked this week to cooperate in solving a parking problem on Main Street and adjacent streets, Carroll Pouncey, manager of the Muleshoe Chamber of Commerce, said this week.

(See Parking, Page 6)

School Holidays

Muleshoe Superintendent of Schools Neal Dillman announced this week that Muleshoe schools will be dismissed at 2 p.m. December 21 for the Christmas Holidays. Classes will resume January 3, with buses running at the usual time.

Officials Warn Crimes Up Now

Bailey County Sheriff Dee Clements and District Attorney Jack Young this week issued a joint statement warning merchants and homeowners of the rise in crime at this time of year.

"With forgery cases higher now than they ever have been," Jack Young said, "merchants should be especially wary of cashing checks drawn by people unknown to them."

He went on to say that if a merchant does not know a customer, he should require identification before cashing a check. "Forgery cases are the hardest to solve," added Sheriff Clements.

There has been a large increase in burglaries in Bailey and surrounding counties lately. The sheriff suggested that homeowners and merchants be particularly careful about locking doors and leaving lights burning when homes and stores are left unattended.

"Local police will be especially watchful since the high rate of breaking and entering has been noted," the sheriff commented.

Another crime which has been known to increase during the holiday season is that of shoplifting. Merchants have been warned to watch for those who remove merchandise from stores without paying.

Stock Deadline Is Extended

County Agent J. K. Adams announced today that the deadline for getting animals on feed for the Junior Fat Stock Show to be held in March has been extended through December 15. The date originally announced for animals to be on feed was December 11, which was extended this week.

Helped Needy

"We only hope the person who got them needed them as much as much as the ones they were intended for," one Goodfellow said this week of the disappearance of toys from one of the collection points in downtown Muleshoe.

Numerous ash cans are placed on Main Street as receptacles for toys for needy children. One of these had been full of toys when someone checked it early December 2. Later that same day, the can was empty.

Goodfellows are anonymous workers who help the needy at Christmas in Muleshoe.

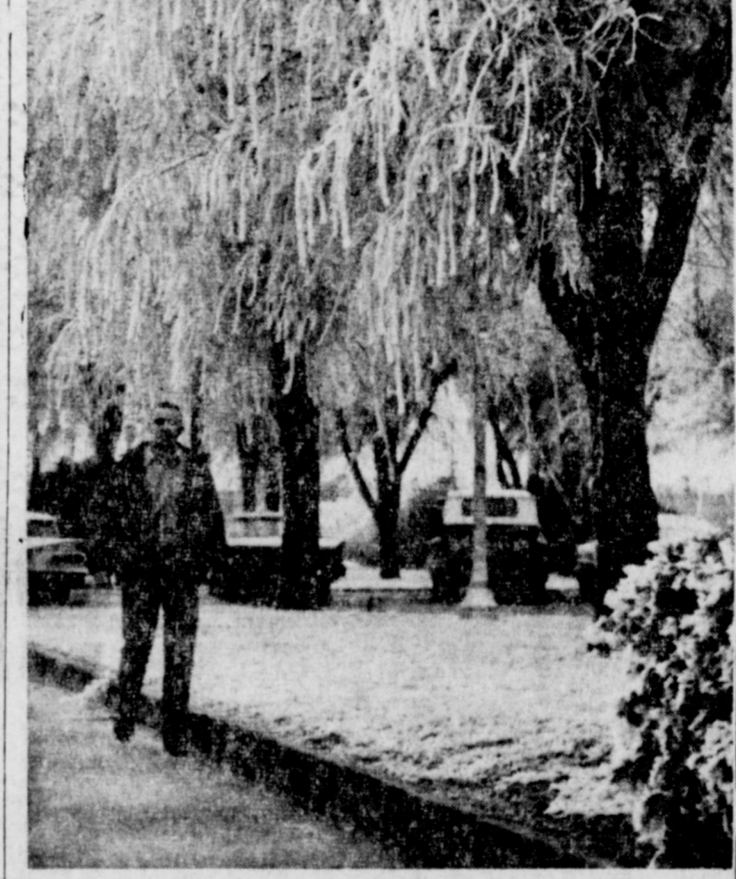
Guy Nickels Is Shown On Cover Of Cotton Digest

Guy Nickels, co-owner and superintendent of the Central Compress and Warehouse Company in Sudan, is pictured on the cover of the November 25 issue of The Cotton Digest, weekly magazine widely circulated in the cotton-producing states.

The story pertaining to Guy Nickels gives a short biography of Mr. Nickels, who began working with cotton at the age of 14.

In addition to his association with the Central Compress and Warehouse, Nickels owns several gins in the Rio Grande Valley and on the South Plains.

Nickels is also engaged in banking and insurance on the South Plains.



WALKING IN A WINTER WONDERLAND of ice and snow is Bo Bryant, who is employed by Pioneer Natural Gas Co. in Muleshoe. Bryant enjoyed walking past the courthouse Tuesday morning in the snow, with an ice-laden world of rears and wire around him. Cold though it was, the ice presented an enchanted-world look for those who saw it. Old-timers marvelled, saying this was the first such weather they had ever seen. (Journal Photo and Engraving)

Notice

Postmaster Senn Slemmons announced today that the Post Office will be open until 5 p.m. this Saturday, December 16, in order to accommodate Christmas mailing.

Local Market Prices

| Local Market Prices | |
|---------------------|-------------|
| Grain Sorghum | \$1.60 cwt. |
| Corn, Yellow | \$2.20 cwt. |
| Wheat | \$1.40 bu. |
| Soybeans | \$2.15 bu. |
| Cotton Seed | \$45.00 ton |

The Muleshoe Journal

Society

Mrs. Doris Kinser, Society Editor

Phone 5400



Mrs. Ronald Julian

Pat Akins And Ronald Julian Wed In Double Ring Service

Miss Pat Akins and Ronald Julian were married in a quite ceremony in the home of Rev. Don Murray, pastor of the First Baptist Church the evening of November 22.

The Rev. Murray read the double ring service.

Parents of the couple are Mr. and Mrs. Raymond Akins and Mr. and Mrs. Jack Julian.

Given in marriage by her father, the bride wore a sheath dress of white lace over satin. Traditionally, something old was a white silk handkerchief which belonged to Mrs. John Gummelt, the hand-

kerchief is 55 years old. Something borrowed was a white Bible belonging to Jeannie Bayless and something blue was a garter given her by Barbara Simmons. Something new was her wedding dress which she designed and made. She wore a lucky penny in her shoe, a gift from her brother, Steve.

Nancy Julian, sister of the groom was maid of honor and Todd Wilt, cousin of the groom served as best man.

The wedding was attended by the immediate families of both the bride and groom, two cousins, and close friends.



YOUNG BOY AND FRIENDS — Harry Wolfe, son of Mr. and Mrs. Elmer Wolfe, Rt. 2, Muleshoe, is shown above as he meets three carol singers in Muleshoe State Bank. The three singers didn't say much to young Harry, but he seemed to be enjoying his talk with them. Journal Photo and Engraving)

Evening Ceremony To Be Recited in Christian Church

Dr. and Mrs. S. E. Goucher announce the coming marriage of their daughter, Goldialu, to Gary Vance Stone, December 23 at 8 o'clock in the evening in the First Christian Church.

The reception will follow the ceremony in the home of Mr. and

WE LIKE TO LOOK

More than half the population ranks sight-seeing first as a vacation activity.

A survey conducted by the Executive Inn chain of motor hotels found that 54 per cent of vacationers prefer to sightsee. Swimming was the second preferred pastime and resting third.

Mrs. T. R. White, 707 W. Second Street.

All friends of the couple are invited to attend.



WELLBORN'S HAIR STYLE of the Month

Claudia Hartsell Will Be Bride of Darwin C. Bounds

Mr. and Mrs. C. L. Hartsell of Route 3, Muleshoe, announce the approaching marriage of their daughter, Claudia Janette, to Darwin Charles Bounds, son of Mr. and Mrs. Ray Bownds of Muleshoe.

The bride-elect is a junior at Muleshoe High School. Her fiancé is employed at Myers Meat Co.

Since last Sunday, additional responsibility has been thrown on the Red Cross. War, in grim reality, is here. To fill the service which is essential to the armed forces, fifty million dollars must be raised at once.

A telegram was received Tuesday by the Rev. R. N. Huckabee, chairman of the Bailey County chapter that our quota had been set at \$900. This is more than \$400 more than was thought necessary a few days ago.

-1941-

"Mitzi Mixes In," a three-act hilarious rip-roaring farce comedy is well along in the process of production and will be given at the high school auditorium on Thursday night, December 18, by the Senior Class.

The cast is composed of Dixon Wagon, James Bentley, Sam Damron, Spud Thomas, Wynelle Eskridge, Gloria Gowdy, Barbara Morris, Betty Jo Jordan and Theresa Pierson.

-1941-

Gene Howa, "Old Tack" of the Amarillo New-Globe was among the party of men who hunted near Muleshoe the first of the week.

20 Years Ago

(Items taken from the December 11, 1941, issue of the Muleshoe Journal)

-1941-

December 11, 1941, only 4 days after the bombing of Pearl Harbor, the Muleshoe Journal carried these stories.

"Now that the "Empire of the Rising Sun" has chosen to follow the dictate of Europe's Mad Dog and become the "Empire of the Setting Sun," let us all grid ourselves for an all-out effort to hasten the twilight, endure the night and enjoy the glorious dawn of a new day.

-1941-

FIVE MEN LEAVE

Calling up of new recruits began Wednesday in increasing number, when five men left Bailey County for Fort Bliss, El Paso. Many others will leave in a few days, but just how many is not yet known.

Those leaving are Virgil Obenhouse, Odus Wilkerson, Carl Hagart, John Bob Jones and Gilbert Churchman.

Christmas Trees of Glass!



Each year witnesses many new uses for glass, one of man's most versatile materials.

This year, an intriguing new use will add cheer to many a yuletide gathering.

It's a Fiberglass Christmas tree composed of thousands of glass rovings which comprise the "needles". Basic structure of the tree is wire.

The tree is absolutely fire-safe, an important feature particularly in a household of children. It may be used with any type of decoration, and can be safely lighted with electric bulbs since there is no danger of shock. Produced in a wide range of sizes up to 30 inches, it's adaptable either as the main attraction in the living room where all the presents are heaped, or as a table tree in the "family room" or child's bedroom. FNS

FLORAL CHRISTMAS DECORATIONS

and ALL Fall & Plastic ARRANGEMENTS

20% OFF

ALL COLORS — To Order

FLOCKED CHRISTMAS TREES

Beautiful, Blooming POINSETTIAS

Say "MERRY CHRISTMAS" with a gift of Flowers—POINSETTIAS DELIVERED ANYTIME DURING THE HOLIDAYS

BEAVER'S FLOWERLAND

520 S. First

Ph. 3-1160

YOU CAN ALWAYS PUT YOUR CONFIDENCE IN

Betty Rose

Betty Rose

The LADY-LIKE Look Personified

... poised and polished in a dress-maker suit of luxurious silkened worsted. Figure-skimming jacket detailed with emphatic welt seaming... chunky crocheted buttons dyed to match. Black, bone, green, white, navy, gray. Sizes 6 to 16.

Betty Rose does THE TWIST for Spring

Fashionable French Twist, whiff-weight woolen... in a body-conscious coat that follows the straight and narrow. Collarless neckline, crochet-button, lowered yoke and patch pockets... are so new, so very Spring '62! Gray, beige, gold, azalea, navy, black. Sizes 8 to 18.



SUPERB NEW SUITS

BOTANY 500 \$69.50-\$79.50

Highest quality and standards.

SEWELL all wool \$39.95-\$49.95



SPORT SHIRTS

A complete collection of styles and colors by such outstanding names as Jayson, Campus & Capri.



SPORT COATS

By Style Mart and Botney

A whole range of fabrics whose beauty is matched by their quality and long wear.



COMPLETE MEN'S FURNISHINGS

ST. CLAIR DEPARTMENT STORE

110 MAIN

Ph. 4530



FUTURE BUSINESS LEADERS OF AMERICA are shown above. These students at Muleshoe High School will work in downtown businesses December 20, without pay, as part of their training. Members of the FBLA Club, they are, front row, left to right, Donald Copley, Dwight Burkhead, Tommie Hall, Julia Holis, Jeannine Coffman, Judy Bell, Glen Stevens, Dorothy Pruitt and Barbara Jones. Back row, left to right, are George Nieman, Henry Reid, Gerald White, Sue Stinson and Jim Thomson. (Journal Photo and Engraving)

Holiday Dresse - Spring Ensembles
Original Howard Wolf Creations
Modled At Special Style Show

A special showing of the Howard Wolf Originals collection was shown December seventh at Gerald's Fashion Shop by Jack Kent, Wolf's representative from Dallas.

Miss La Nelle Boothe and Mrs. Wood, Earth, each won a Howard Wolf original dress presented as the door prizes.

Highlighted by the store's Christmas white and gold decorations, eight modeled lovely holiday dresses and a group of sur-



prise spring ensembles. The new spring showings told the story of fabulous fabrics and styles. Silks - with indian names and combination rayon and linens were special spring fabrics, while the blacks, beiges, whites with grey blues, green and pineapple yellows were the colors of pre-dominance for '62.

The patriotic combination dress, with the Americana look in red, white and blue; the straight-lined dress with matching coat, the black Tussah silk basic sheath with smooth lines, a Rajah tweed dress offset with a fringe scarf were day-time favorites with Gerald's audience Thursday evening.

For after-five the classic great silhouette with front apron-like necks on straight skirts and Wolf's new version of the shaped and controlled full-skirted, self-belted tangerine red "Gazelle" number were shown.

Modeling were Carolyn Hicks, Janice Oliver, Glenda Dearman, Sheila Cotton, Maria Reed, Shirley Henry, Rhonda Johnson, and La Nelle Boothe.

X-mas Schedule Told By Church

The Immaculate Conception Catholic Church here in Muleshoe has announced its 1961 Christmas schedule:

Sunday, December 24, Holy Masses 8:30 a.m. and 12:15 p.m. with 10:30 a.m. Holy Mass in the Earth Theatre, Earth, Texas.

11:45 p.m. Christmas Carols followed by Midnight High Mass.

Monday, December 25, Christmas Day-8:30 a.m. Dialogue Mass with a 10:30 a.m. Holy Mass in the Earth Theatre, Earth, Texas.

Monday, January 1, Octave of Christmas and a Holy Day, Holy Masses, 8:00 a.m. and 7 p.m. (High Mass) with a 6 p.m. Holy Mass in the Earth Theatre, Earth.

Ethridge-Whittle Wedding Told

Mr. and Mrs. L. V. Ethridge of Bronco, announce the engagement and forthcoming marriage of their daughter, Linda Jeannine, to Neil Curtis Whittle, son of Mr. and Mrs. W. C. Whittle.

The wedding is scheduled for January 28 at the home of the bride-elect.

MEN'S CURLEE SUITS
Priced from \$49.95 to \$69.95

LADIES' DRESSES
Lots of famous brands \$5.98 to \$49.95

Cobb's

Sue Willman Is F.F.A. Sweetheart

Muleshoe's own sweetheart, Sue Willman, placed first in this contest which will be held May 12.

Lynn Lenuu, Muleshoe F. F. A. Plow Girl, was a special guest. Mr. H. W. Callen, Muleshoe High School principal, and his wife also attended as special guests of Muleshoe F. F. A.

The Littlefield district of Future Farmers of America held its annual banquet at Olton Thursday night, November 30.

Fifteen people attended from Muleshoe, including Stacey Lackey, district vice-president, and Nison Shipman, district parliamentarian. These two boys helped carry on the meeting and took part in the ceremony which made Mr. Guy Nichols of Muleshoe an honorary farmer.

This high honor was given to Mr. Nichols because of his untiring and active support of all activities of the F. F. A. in the Littlefield district.

After the dinner was served, Mr. Bob Stevens gave the main address of the evening. Then everyone adjourned to the Olton High School auditorium to watch the judging of the District Sweetheart Contest.

Dinner Party For Friendship Class Given Thursday

A dinner party was held Thursday night in the home of Mrs. R. D. Precure for the members of the Friendship Sunday School Class of the First Baptist Church. Mrs. C. M. King was co-hostess.

Dinner was served in the den of the home where room and table decorations carried out the seasonal yuletide theme. The tables were covered with Christmas designed cloths and candle center pieces were placed on each table. A large candle arrangement atop the mantel was the focal point.

An after-dinner business meeting was conducted by Mrs. Tye Young and the devotional was given by Mrs. Cecil Tate.

The class planned its annual "Red Dress Christmas Party," which will be held the night of December 18 in the Legion Hall. This event has been one that the class has found to be their most enjoyable social. All ladies attending are attired in red dresses and their husbands as guests wear red ties.

The dinner party was attended by fifteen members.

Pre-Nuptial Courtsey Honors Bride-Elect Shirley Matthiesen

Shirley Matthiesen, bride elect of First Lt. Jerry Hicks was honored with a prenuptial shower Saturday morning in the home of Mrs. Houston Hart.

In the receiving line with Shirley was her mother, Mrs. Roland Matthiesen, and Mrs. T. B. Hicks, mother of the prospective bride groom.

The Hart home was decorated with Christmas arrangements for the occasion in the bride-elect's chosen colors of red and white.

The serving table was centered with a spiral arrangement of poinsettias, pine cones, and red grape clusters, around red candles. The candles arranged in circular fashion; each taller than the previous one, created the spiral effect.

The cloth was of white nylon net trimmed in white felt, over white.

The register table was centered with a rotation Christmas candle tree. Mrs. Hatti Jones, great aunt of the honoree, registered the guests.

Presiding at the silver service were Mrs. Woodie Lambert and Mrs. Dan Smith.

Gifts were displayed in the den of the home. The hostess gift to the honoree was a General Electric Mix Master.

Hostesses were Meses. Buck Wood, Raymond Gaede, Strot Walker, Woodie Lambert, Clyde Barnett, Clyde Holt, C.B. Howard, Jack Cox, Arch Fowler, W. G. Harlen, Sherman Inman, Melvin

Mrs. Ann Graham Is Special Guest of Home Demonstration Council

The Bailey County Home Demonstration Council were honored with the presence of the new Home Demonstration agent, Mrs. Ann Graham and her mother-in-law, Mrs. Graham, at their annual Christmas party.

The club room was beautifully decorated by the members of the Muleshoe club with Christmas motifs and a Christmas tree.

Games of skill and knowledge were led by the Progress club members.

Coffee, Christmas cake and candy was served by the Three Way Club to the 16 members, guests and visitors.

Gifts were exchanged and everyone enjoyed an afternoon of fun and fellowship.

The Bailey County Home Demonstration Council is composed of the clubs from Muleshoe, Progress, and Three Way.

Lee, Kenyon Dean, and Houston Hart.

The club room was beautifully decorated by the members of the Muleshoe club with Christmas motifs and a Christmas tree.

Games of skill and knowledge were led by the Progress club members.

Coffee, Christmas cake and candy was served by the Three Way Club to the 16 members, guests and visitors.

Gifts were exchanged and everyone enjoyed an afternoon of fun and fellowship.

The Bailey County Home Demonstration Council is composed of the clubs from Muleshoe, Progress, and Three Way.

TODAY'S MEDITATION



THE AWESOME GIFT
For unto us a child is born, unto us a son is given.

WHO HAS NOT THRILLED TO Handel's interpretation of this scripture reading in his magnificent Messiah? As the chorus swells with the wonder that "unto us a child is born, unto us a son is given," we bow to that awful privilege and responsibility. We reflect on this dual attitude of preparation. The names given to the coming Christ again emphasize it.

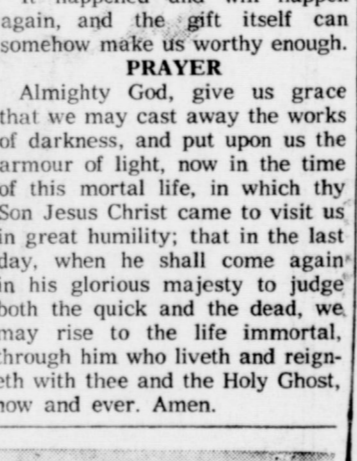
"Wonderful, Counsellor, 3/4 mighty God, The everlasting Father, The Prince of Peace."

And the bearer of these names is to be given to us, His extraordinary our to worship and imitate; His wisdom available to us as we wander bewildered; His power apparent, His kindness and guidance as father always directed in loving individuality toward each problem; and as son as well as father, prince as well as king, He represents us as He rules us.

What a limitless paradox. We cannot have earned such a wondrous gift. Can we become worthy to receive it?

It happened and will happen again, and the gift itself can somehow make us worthy enough.

PRAYER
Almighty God, give us grace that we may cast away the works of darkness, and put upon us the armour of light, now in the time of this mortal life, in which thy Son Jesus Christ came to visit us in great humility; that in the last day, when he shall come again in his glorious majesty to judge both the quick and the dead, we may rise to the life immortal, through him who liveth and reigneth with thee and the Holy Ghost, now and ever. Amen.



THE GOLDEN COOKIE CONE

Festive Foods On List of Plentifuls

Thirteen versatile foods suited to either big dinners or quick snacks are listed on the U. S. Department of Agriculture's December list of plentiful foods. By using them extensively, Texas homemakers can serve tasty, attractive meals that reflect joys of the season.

A perfect Yuletide trio—turkey, cranberries and broiler-fryers—share top billing on the December list. Also to be available all month in abundance are pork, apples, fresh grapefruit, pecans, almonds, honey, vegetable fats and oils, peanuts and peanut products, pinto beans and rice.

The supply of each exceeds normal table needs. Producers, processors and distributors will do everything they can to encourage full use of the abundance. Plentiful foods usually are more economical than items in tight supply.

Take turkeys and broiler-fryers for example. This year's turkey crop of 107 million birds is the largest on record—26 per cent more than a year ago. And prices on live turkeys have been at near-record lows. The same is true with

Annual Yule Festivities Slated By Local Eastern Star Members

Mrs. Mary Farley, Worthy Matron and Elbert Nowell, Worthy Patron, presided at the regular meeting of Muleshoe Chapter No. 792, Order of the Eastern Star, Tuesday evening, December 5th, in Masonic Hall.

Routine business was transacted and plans were made for the annual Christmas party for Eastern Star members and their families, Saturday evening, Dec. 16. A turkey dinner with all the trimmings will be served at 7:30, followed by an appropriate program and the arrival of Old Santa who will greet the children.

Mrs. Sidney Dell Bullock was appointed and installed to the Star Point of Esther, for the unexpired term of Mrs. Harriette Jackson, who has moved to the state of Washington.

Mrs. Viola Layne was appointed

to fill the vacancy on the Committee on Decorations.

Greetings were received from Mrs. Lois Smith of Olton, Deputy Grand Matron of District 2, Section 3, Grand Chapter of Texas, and she will make her official visit to Muleshoe Chapter on January 2, 1962. A salad supper will be served at 6 o'clock p.m. as a courtesy to her.

The Worthy Matron appointed Mesdames: Wynnie Dunn, Billie Mathis and Pet Wingo to select and mail a Christmas Gift to their adopted sister, Mrs. Catherine Law, a resident of the Eastern Star Home in Arlington.

A card was received from Grand Chapter, announcing the death of Mrs. Bessie Garth, a Past Grand Matron. The Altar was draped and a Memorial service held.

At the close of the meeting, delicious refreshments were served to 25 members, by Mesdames: Lou Davis, Hazel Nowell and Ruth Williams. The serving table was beautifully appointed in the Christmas motif. A social hour was enjoyed.

Busy Holiday Meais Can Be Easy



With crowded holiday schedules, meals that go together quickly and easily are the choice of all busy homemakers.

After a long day of Christmas shopping, you can please your family . . . and delight yourself . . . with a tasty supper if you let convenience foods and small electric appliances help you.

Bring out your electric saucepan and prepare a Holiday Soup of canned condensed chili beef soup and small whole white onions. A hearty satisfying combination that's served right from the saucepan. (Cuts down on dishwashing time, too.)

To go-along with the soup . . . sandwiches, of course. Make them attractive . . . it's no more work . . . and good. With a can of boned chicken and a package of small dinner rolls, you can whip up "party-type" sandwiches while the

soup is heating.

From the pantry shelf, too, comes dessert . . . canned whole apricots and packaged chocolate chip cookies.

Holiday Soup
1 can (11 ounces) condensed chili beef soup
1 soup can water
1/2 cup cooked small whole white onions
This strips of avocado
Combine soup, water, and onions. Heat, stirring now and then. Top each serving with avocado. Makes 2 to 3 servings.

Chicken Salad Sandwiches
Dice a 5-ounce can of boned chicken; mix with 1 teaspoon lemon juice. Lightly mix in 1/2 cup chopped celery, 1 tablespoon minced onion, 1 tablespoon mayonnaise, and a dash of pepper. Spread on split packaged dinner rolls. Tuck in bits of crisp salad greens.

Mrs. Benard Phelps Hostess For PTA State Convention Delegates

Mrs. Benard Phelps was hostess at a coffee Friday morning, December 7, honoring delegates to the State Convention held in were: Mrs. Myron Pool, II, Mrs. David Wyer and Mrs. Joe Ferris.

The Phelps home was beautifully decorated with Christmas arrangements enhanced by candlelight. Guest were served fruit cake, Christmas cookies and coffee from a table covered with a red linen cloth. A golden boot filled with spires of pines and cones adorned the table. The crystal and silver appointments completed the decor.

The honorees, Mesdames Ray Daniel, Irvin St. Clair and Mrs. Carl Bamert, arrived with enthusiasm from the convention and each gave highlights of the session they attended. Other guests participated in the question and answer period. Answers submitted by groups at the convention that were rated as the most effective for use in the discipline and training of children were then read. Those attending received some very worthwhile information usable in everyday living.

Among those attending were Superintendent of School Neal Dillman and Principal of Richland Hills, Milton Oyler.

Mrs. Santos Hostess For Epsilon Society

The E. S. A. Society met in the home of Jo Santos, Tuesday night, December 5, for a regular business meeting.

A very interesting program "My Best Me" was presented by Sammye Lewis.

Members present were: Kay McPherson, Lu Martin, Sammye Lewis, Lanetta Small, Evelyn Johnson, Carol Bryant, Jeri Nil Wagner, Vickie Young, Marlene Martin, Ann Alford, Laura Bartlett, Shorty White, Marjorie Precure, Chubby Douglass, and the hostess, Jo Santos.

Area Delta Kappa Gamma Society Has Initiation Dinner In Sudan

The Sudan members were the hostesses to the Epsilon Delta Chapter of Delta Kappa Gamma Society at the initiation ceremony of eight initiates to membership in the Delta Kappa Gamma Society, Saturday 9, 6:30 p.m. in the School Cafeterium.

The initiates were: Meses. Dorothy Beddingfield, Marqueta Collins, Joylene Costen, Oleta Hodges, and Bee Miller, Muleshoe, Florine Burke and Gladys Houk, Littlefield, and Helm Bonner, Olton.

Dinner was served to thirty members following the business session, presided over by Mrs. Addie Abernathy, Chapter president.

Roll call was answered by each member reporting on a book read recently.

The tables were tastefully decorated in a Christmas motif.

Mrs. Mary B. Obenhouse gave an interesting and informative account of Christmas in other lands.

Besides the Muleshoe initiates Meses. Beatrice Blackburn, Mary B. Obenhouse, Elizabeth Watson, Lois Witherspoon, Owetha Finley, and Blanche Johnson of Muleshoe, attended the meeting.

★ DEAR SANTA *Gerald's* FASHIONS

WHAT I REALLY NEED THIS DRESSES FOR THE COMING HOLIDAYS.

YEAR ARE SEVERAL MARVELOUS

What I want is the **PERFECT SILK**

as shown at Gerald's Howard Wolf Special Showing last Thursday by Glenna Dearman (left) in a muted diagonal stripe silk with a swishy open-pleat skirt . . .

And I'd love to have OTHERS from the NEW COLLECTION —

so fashionable for the Holiday Season and with the new look of Spring '62.

priced from **\$9.98 to \$55.00**

Now . . . **Don't forget my dresses Christmas Eve, Santa!**



FUTURE BUSINESS LEADERS OF AMERICA are shown above. These students at Mulleshoe High School will work in downtown businesses December 20, without pay, as part of their training. Members of the FBLA Club, they are, front row, left to right, Donald Copley, Dwight Burkhead, Tommie Hall, Julia Holis, Jeannine Coffman, Judy Bell, Glen Stevens, Dorothy Pruitt and Barbara Jones. Back row, left to right, are George Nieman, Henry Reid, Gerald White, Sue Stinson and Jim Thomson. (Journal Photo and Engraving)

Holiday Dresse - Spring Ensembles

Original Howard Wolf Creations

Modled At Special Style Show

A special showing of the Howard Wolf Originals collection was shown December seventh at Gerald's Fashion Shop by Jack Kent, Wolf's representative from Dallas.

Miss La Nelle Boethe and Mrs. Wood, Earh, each won a Howard Wolf original dress presented as the door prizes.

Highlighted by the store's Christmas white and gold decorations, eight modeled lovely holiday dresses and a group of surprise spring ensembles



The new spring showings told the story of fabulous fabrics and styles. Silks - with indian names and combination rayon and linens were special spring fabrics, while the blacks, beiges, whites with grey blues, green and pineapple yellows were the colors of predominance for '62.

The patriotic combination dress, with the Americana look in red, white and blue; the straight-lined dress with matching coat, the black Tusshak silk basic sheath with smooth lines, a Rajoh tweed dress off with a fringe scarf were day-time favorites with Gerald's audience Thursday evening.

For after-five the classic great silhouette with front apron-like necks on straight skirts and Wolf's new version of the shaped and controlled full-skirted, self-belted tangerine red "Gazelle" number were shown.

Modelling were Carolyn Hicks, Janice Oliver, Glenda Dearman, Sheila Cotton, Maria Reed, Shirley Henry, Rhonda Johnson, and La Nelle Boethe.

Ethridge-Whittle Wedding Told

Mr. and Mrs. L. V. Ethridge of Bronco, announce the engagement and forthcoming marriage of their daughter, Linda Jeannine, to Neil Curtis Whittle, son of Mr. and Mrs. W. C. Whittle.

The wedding is scheduled for January 28 at the home of the bride-elect.

Pre - Nuptial Courtsey Honors

Bride - Elect Shirley Matthiesen

Shirley Matthiesen, bride elect of First Lt. Jerry Hicks was honored with a prenuptial shower Saturday morning in the home of Mrs. Houston Hart.

In the receiving line with Shirley was her mother, Mrs. Roland Matthiesen, and Mrs. T. B. Hicks, mother of the prospective bride groom.

The Hart home was decorated with Christmas arrangements for the occasion in the bride-elect's chosen colors of red and white.

The serving table was centered with a spiral arrangement of poinsettias, pine cones, and red grape clusters, around red candles. The candles arranged in circular fashion, each taller than the previous one, created the spiral effect.

The cloth was of white nylon net trimmed in white felt, over white.

The register table was centered with a rotation Christmas candle tree. Mrs. Hatti Jones, great aunt of the honoree, registered the guests.

Presiding at the silver service were Mrs. Woodie Lambert and Mrs. Dan Smith.

Gifts were displayed in the den of the home. The hostess gift to the honoree was a General Electric Mix Master.

Hostesses were Mmes. Buck Wood, Raymond Gaede, Strot Walker, Woodie Lambert, Clyde Barnett, Clyde Holt, C.B. Howard, Jack Cox, Arch Fowler, W. G. Harlan, Sherman Inman, Melvin

TODAY'S MEDITATION



THE AWESOME GIFT
For unto us a child is born, unto us a son is given.

WHO HAS NOT THRILLED TO Handel's interpretation of this scripture reading in his magnificent Messiahs? As the chorus swells with the wonder that "unto us a child is born, unto us a son is given," we bow to that await privilege and responsibility. We reflect on this dual attitude of preparation. The names given to the coming Christ again emphasize it.

"Wonderful, Counsellor, $\frac{3}{4}$ 3 mighty God, The everlasting Father, The Prince of Peace."

And the bearer of these names is to be given to us. His extraordinary nature to worship and imitate; His wisdom available to us as we wander bewildered; His power apparent, His kindness and guidance as father always directed in loving individuality toward each problem; and as son as well as father, prince as well as king, He represents us as He rules us.

What a limitless paradox. We cannot have earned such a wondrous gift. Can we become worthy to receive it?

It happened and will happen again, and the gift itself can somehow make us worthy enough.

PRAYER

Almighty God, give us grace that we may cast away the works of darkness, and put upon us the armour of light, now in the time of this mortal life, in which thy Son Jesus Christ came to visit us in great humility; that in the last day, when he shall come again in his glorious majesty to judge both the quick and the dead, we may rise to the life immortal, through him who liveth and reigneth with thee and the Holy Ghost, now and ever. Amen.

Lee, Kenyon Dean, and Houston Hart.

Mrs. Ann Graham Is

Special Guest of Home Demonstration Council

The Bailey County Home Demonstration council were honored with the presence of the new Home Demonstration agent, Mrs. Ann Graham and her mother-in-law, Mrs. Graham, at their annual Christmas party.

The club room was beautifully decorated by the members of the Mulleshoe club with Christmas motifs and a Christmas tree.

Games of skill and knowledge were led by the Progress club members.

Coffee, Christmas cake and candy was served by the Three Way Club to the 16 members, guests and visitors.

Gifts were exchanged and everyone enjoyed an afternoon of fun and fellowship.

The Bailey County Home Demonstration Council is composed of the clubs from Mulleshoe, Progress, and Three Way.

Festive Foods On

List of Plentifuls

Thirteen versatile foods suited to either big dinners or quick snacks are listed on the U. S. Department of Agriculture's December list of plentiful foods. By using them extensively, Texas homemakers can serve tasty, attractive meals that reflect joys of the season.

A perfect Yuletide trio—turkey, cranberries and broiler-fryers—share top billing on the December list. Also to be available all month in abundance are pork, apples, fresh grapefruit, pecans, almonds, honey, vegetable fats and oils, peanuts and peanut products, pinto beans and rice.

The supply of each exceeds normal trade needs. Producers, processors and distributors will do everything they can to encourage full use of the abundance. Plentiful foods usually are more economical than items in tight supply.

Take turkeys and broiler-fryers for example. This year's turkey crop of 107 million birds is the largest on record—26 per cent more than a year ago. And prices on live turkeys have been at near-record lows. The same is true with

Annual Yule Festivities Slated

By Local Eastern Star Members

Mrs. Mary Farley, Worthy Matron and Elbert Nowell, Worthy Patron, presided at the regular meeting of Mulleshoe Chapter No. 792, Order of the Eastern Star, Tuesday evening, December 5th, in Masonic Hall.

Routine business was transacted and plans were made for the annual Christmas party for Eastern Star members and their families, Saturday evening, Dec. 16.

A turkey dinner with all the trimmings will be served at 7:30, followed by an appropriate program and the arrival of Old Santa who will greet the children.

Mrs. Sidney Dell Bullock was appointed and installed to the Star Point of Esther, for the unexpired term of Mrs. Harriette Jackson, who has moved to the state of Washington.

Mrs. Viola Layne was appointed

to fill the vacancy on the Committee on Decorations.

Greetings were received from Mrs. Lois Smith of Olton, Deputy Grand Matron of District 2, Section 3, Grand Chapter of Texas, and she will make her official visit to Mulleshoe Chapter on January 2, 1962. A salad supper will be served at 6 o'clock p.m. as a courtesy to her.

The Worthy Matron appointed Mesdames: Wynnie Dunn, Billie Mathis and Pet Wingo to select and mail a Christmas Gift to their adopted sister, Mrs. Catherine Law, a resident of the Eastern Star Home in Arlington.

A card was received from Grand Chapter, announcing the death of Mrs. Bessie Garth a Past Grand Matron. The Altar was draped and a Memorial service held.

At the close of the meeting, delicious refreshments were served to 25 members, by Mesdames: Lou Davis, Hazel Nowell and Ruth Williams. The serving table was beautifully appointed in the Christmas motif. A social hour was enjoyed.

Busy Holiday Meals Can Be Easy



With crowded holiday schedules, meals that go together quickly and easily are the choice of all busy homemakers.

After a long day of Christmas shopping, you can please your family . . . and delight yourself . . . with a tasty supper if you let convenience foods and small electric appliances help you.

Bring out your electric saucpan and prepare a Holiday Soup of canned condensed chili beef soup and small whole white onions. A hearty satisfying combination that's served right from the saucapan. (Cuts down on dishwashing time, too.)

To go along with the soup . . . sandwiches, of course. Make them attractive . . . it's no more work . . . and good. With a can of boned chicken and a package of small dinner rolls, you can whip up "party-type" sandwiches while the

soop is heating.

From the pantry shelf, too, comes dessert . . . canned whole apricots and packaged chocolate chip cookies.

Holiday Soup
1 can (11 ounces) condensed chili beef soup
1 soup can water
 $\frac{1}{2}$ cup cooked small whole white onions
Thin strips of avocado
Combine soup, water, and onions. Heat, stirring now and then. Top each serving with avocado. Makes 2 to 3 servings.

Chicken Salad Sandwiches
Dice a 5-ounce can of boned chicken; mix with 1 teaspoon lemon juice. Lightly mix in $\frac{1}{2}$ cup chopped celery, 1 tablespoon minced onion, 1 tablespoon mayonnaise, and a dash of pepper. Spread on split packaged dinner rolls. Tuck in bits of crisp salad greens.

Mrs. Benard Phelps Hostess For

PTA State Convention Delegates

Mrs. Bernard Phelps was hostess at a coffee Friday morning, December 7, honoring delegates to the State Convention held in Waco: Mrs. Myron Pool, II, Mrs. David Wyer and Mrs. Joe Ferris.

The Phelps home was beautifully decorated with Christmas arrangements enhanced by candlelight. Guest were served fruit cake, Christmas cookies and coffee from a table covered with a red linen cloth. A golden boot filled with spires of pines and cones adorned the table. The crystal and silver appointments completed the decor.

The honorees, Mesdames Ray Daniel, Irvin St. Clair and Mrs. Carl Bamert, arrived with enthusiasm from the convention and each gave highlights of the session they attended. Other guests participated in the question and answer period. Answers submitted by groups at the convention that were rated as the most effective for use in the discipline and training of children were then read.

Those attending received some very worthwhile information usable in everyday living.

Among those attending were Superintendent of School Neal Dillman and Principal of Richland Hills, Milton Oylar.

Mrs. Santos Hostess For

Epsilon Society

The E. S. A. Society met in the home of Jo Santos, Tuesday night, December 5, for a regular business meeting.

A very interesting program "My Best Me" was presented by Sammye Lewis.

Members present were: Kay McPherson, Lu Martin, Sammye Lewis, Lanetta Small, Evelyn Johnson, Carol Bryant, Jeri Nil Wagnon, Vickie Young, Marlene Martin, Ann Alford, Laura Bartlett, Shorty White, Marjorie Precure, Chubby Douglass, and the hostess, Jo Santos.

Area Delta Kappa Gamma Society

Has Initiation Dinner In Sudan

The Sudan members were the hostesses to the Epsilon Delta Chapter of Delta Kappa Gamma Society at the initiation ceremony of eight initiates to membership in the Delta Kappa Gamma Society, Saturday 9, 6:30 p.m. in the School Cafeterium.

Addie Abernathy, Chapter president.

Roll call was answered by each member reporting on a book read recently.

The tables were tastefully decorated in a Christmas motif.

Mrs. Mary B. Obenhou gave an interesting and informative account of Christmas in other lands.

Besides the Mulleshoe initiates Mmes. Beatrice Blackburn, Mary B. Obenhou, Elizabeth Watson, Lois Witherspoon, Owetha Finley, and Blanche Johnson of Mulleshoe, attended the meeting.

Dinner was served to thirty members following the business session, presided over by Mrs.

MEN'S CURLEE SUITS
Priced from \$49.95 to \$69.95

LADIES' DRESSES
Lots of famous brands
\$5.98 to \$49.95

Cobb's

THE GOLDEN COOKIE CONE

☆ **DEAR SANTA** *Gerald's* **FASHIONS**

WHAT I REALLY NEED THIS DRESSES FOR THE COMING HOLIDAYS. YEAR ARE SEVERAL MARVELOUS

What I want is the PERFECT SILK

as shown at Gerald's Howard Wolf Special Showing last Thursday by Glenna Dearman (left) — in a muted diagonal stripe silk with a swishy open-pleat skirt . . .

And I'd love to have OTHERS from the NEW COLLECTION — so fashionable for the Holiday Season and with the new look of Spring '62.

priced from \$9.98 to \$55.00

Now . . . Don't forget my dresses Christmas Eve, Santa!



FIRST SIX WEEKS HONORS went to these students this week at Muleshoe High School when the Muleshoe Chamber of Commerce presented them awards in a special assembly at the high school. Selected by a committee of teachers, the scholarship awards went to Juanita St. Clair, English; Jim Thomson, math; Jane Bruns, physical education; Jerry Coulter, physical education; Karen Jones, language; Myke Murrah, vocational ag.; Tommie Hall, business; Bill Harbin, driver education; Clinton Judd, science; Joyce Adams, home-making; Robert Garlington, speech and chorus; and Ronda Johnson, social studies. (Journal Photo and Engraving)

LETTERS TO SANTA

Dear Santa Claus,
I would like a big three year old doll. A big doll house and a sno-cone machine. I am 11 years old. Thank you and Merry Christmas.

With love
Melanie Pouncey
P. S. - Please bring close for the doll you bring me and a suitcase for the close to go in.

Dear Santa Claus, I would like Drithilla with close and a doll suitcase put together wooded v put aso dollhouse.

Merry Christmas.
With love
Carolyn Pouncey

Dear Santa,
I am a little girl three years old. I have been pretty good all year and I would like for you to bring me a doll, dollie high-chair, cleaning set, and a jack-in-the-box.

Don't forget my little brother and all other little kids.
Thank you
Jerri Gatewood
Abilene, Texas

Dear Santa,
I am four years old. I try to be a good girl and so does my six year-old brother Perry.
Please bring me a Chatty Cathy doll.

Perry would like an electric train. We like records too.
Don't forget we live in Muleshoe now, not Farmington, New Mexico.

XX's
Lawren Hall
MRS. PEUGHS CLASS

Dear Santa,
I want a monopoly game and some ice skates. I am eight years old. I am in the third. My teacher's name is Mrs. Peugh. I have one brother, his name is Bo. He wants a chemistry set. We live 9 and one-half miles out of Muleshoe, Texas. My mother wants a hifi.
Becky L. Saston

Dear Santa,
How are you? I am fine. I am in the third grade. I am nine years old. What do you want for Christmas? I want an electric train, an electric horse race game and a camera. I hope you like my Christmas tree. We flopped it this year. It has red lights on it.
Love,
Mark Dillman

Dear Santa,
I hope you are keeping warm. I am 9 years and in the third grade. I have a very nice teacher, and her name is Mrs. Peugh. I would like some nylon payamas and a matching robe. I would also like a dog pajama bag. I will save you a hot cup of coffee and a piece of cake. I would like a birthstone ring and a Baby Dear. My class and I got a Christmas tree today. I'm glad we have a Santa Claus. And one more thing I want is a Bible of the Old and New Testament at zips with a cross.
Well, Goodbye for now.
Love, Alice Coker

Dear Santa,
I want a Thumbelina doll for Christmas this year. I'm in the third grade this year. My teachers name is Mrs. Peugh. I'm 8 years old. My address is 1733 West Ave. B. MY phone number is 3-2652.
from
Ann Newsom

Dear Santa,
I am 8 years old. And I am in the third grade. Could you bring my brother a rocky horse and my

sister a three year old doll, too. I will tell my mother to put a cup of coffee and a piece of pie on the table.
Your friend,
Glenda James

Dear Santa,
I would like to have a football suit. I am eight years old. I am in the third grade. My teacher is Mrs. Peugh. She is a very nice teacher. I have three brothers.
Darwin Green

Dear Santa,
I hope you are fine and your sled. I am in third grade and I am nine years old. We have a good teacher her name is Mrs. Peugh. Will you bring me a bb gun and a Bible and a glove and tell my mother you want a cup of coffee. We will be happy to see you on Christmas.
From ruben Sanchez

Dear Santa,
I am nine years old and want a Mattel frontier set and I want a cement truck and a pickup with a house on it.
Your friend,
Verdean Barris

Dear Santa,
I am 8 years old. My teacher is Mrs. Peugh. I want a bb gun and a football.
Art Faulkner

Dear Santa,
I want a Baby Dear doll. I am nine years old. I am in the third grade. And I want a kangaroo shoes. My brother Derrel wants a kangaroo shoes, too. And I want a football set. I am in Mrs. Peugh's room. I want a Bible for Christmas.
from your friend,
Beverly Evins.

I want Polly the Lolly for Christmas. I will leave you a piece of pie. I am in the third grade. And I am in Mrs. Peugh's room. And I forgot to tell you that I want a Bible with big printing and horse stories, dog stories and nature stories.
Karen Mayhugh

Dear Santa,
How are you? I am fine. I am eight and in the third grade this year. I want a Baby Dear

Doll, and a Monopoly game. I want a Bible in picture, and also a stuffed animal.
Your friend,
Renée Hurd

Dear Santa,
I am nine years old. I'll leave you some cake and milk. I wood like a Thumbelina Doll. I have been bad. I am sorry. I wood like one more thing, a globe. I hope Miss Santa is feeling all right.
Your friend,
Linda Langer

Dear Santa,
I am in the third grade. And I am nine years old. My name is Brenda and I want an electric stove. And I want a Baby Dear Doll. Christmas is fun. I have a green Christmas tree for our room. I wanted a white Christmas tree.
Your friend,
Brenda

Dear Santa,
I am in the third grade and I am 8 years old and I want a nashen gun for Christmas and there will be a coke for you on a desk in the kitchen, and I do hope you bring me a "going to Jerusalem game."
Jack Allison

Dear Santa,
How are you? I am in the third grade. I am eight years old. My teacher is Mrs. Peugh. She is a nice teacher. I want a Barbie doll for Christmas with some clothes, and I want a new Bible. And some books. And furry house shoes. And a new house coat. I would like to find out where you live.
Your friend,
Ricki Richardson

Dear Santa,
I am 8 years old and I am in the third grade, and my teachers name is Mrs. Peugh. And my address is Rt 1 Box 173, Muleshoe, Texas. And I would like you to bring me a Baby Dear Doll, and bring my 4 brother some cars and my house color is on the top it has red and at the bottom it has orange.
Your friend,
Paula Rodriguez

Dear Santa,
I am in the third grade and I am 8 years old and I want a

Johnny Reb cannon, and a globe, and a bb gun for Christmas. And as you know, I am 8 years old and I am in the third grade. But I have a very nice teacher. Her name is Mrs. Peugh, and I like her very much. She is very nice to us.
Your friend,
Tommy Taylor

Dear Santa,
I want a map of the United States. And I want a Sorry game. My teacher's name is Mrs. Peugh I am in grade three. I am eight years old. I bet you are going to have a busy Christmas this year. My address is 1721 W. Ave. D.
Your Friend,
Gerald Gusendorf

Dear Santa Claus,
I am eight years old. And I am in the second grade I would like a remote control car for Christmas. And I would like a Jet Liner that does everything but fly. And I would like a big big farm set. And I would like a pogo stick. And please remember all of the other boys and girls.
Your friend,
Mike Duncen

FFA Chapter Sponsors Turkey Shoot Saturday

The Muleshoe FFA Chapter is sponsoring a Turkey Shoot which will be held Saturday, December 16, at the shooting range located on the Sudan highway south of the Muleshoe Livestock Auction Barn.
The Shoot will begin at 1 p.m. and there will be shells for sale and guns will be furnished to those who do not have their own guns.

Frank Silka of Detroit is captain of Michigan State's hockey team. He is a senior defenseman.



EASIEST oven to clean you've ever seen!

- Frigidaire Pull 'N Clean oven slides out for stand-up cleaning.
- Automatically, Cook-Master starts and stops oven!
- Meat Tender rests to exact doneness!
- Frigidaire Dependability, too!

24 MONTHS TO PAY
HARVEY BASS APPLIANCE
222 Main 3-0300
FRIGIDAIRE
PRODUCT OF GENERAL MOTORS

DO YOU POISON

LISTEN

to the voice of nature. If it were not for pain, our bodies could be destroyed without our knowledge. Pain is a friendly warning that something is wrong. If, in disease you silence this warning by deadening the pain, you have not corrected the cause, but you have taken away nature's danger signal.

a headache?

Patzer Clinic
Chiropractic

1538 American Blvd.
Muleshoe, Texas

Phone 3-9670

—Hours—
Tues. 2-6
Thurs. 9-1 2-6
Sat. 9-1

OTHERS GET WELL — SO CAN YOU.

KEEP SMILING

Now . . . at Piggly Wiggly . . .

ARMOUR STAR, GRAIN FED, HEAVY, AGED

BEEF

FOR YOUR FREEZER

NO MONEY DOWN

36 MONTHS TO PAY

Cut, Wrapped and Quick Frozen to your personal needs and specifications at no extra charge.

BUY FROZEN FOODS ON OUR BUDGET-PLAN TOO!

Buy Frozen Foods on our Budget Plan too . . . fine quality beef from grain fed steers at a big, big saving! Rigid quality standards govern Piggly Wiggly meat buying. You are guaranteed fresh beef and uniform quality. What a convenience for your family . . . and at such a saving too! 30 days before first payment! Ask your favorite Piggly Wiggly Market or Store Manager for complete information and assistance.



| | | |
|--------------------|--|-----------------------|
| BEEF SIDES | Armour Star Heavy Aged Beef, Consists of all the cuts in a carcass of beef, LB. | 49^c |
| BEEF HINDS | Armour Star Heavy Beef, Consists of Round, Sirloin, Porterhouse, T-Bone, Sirloin Tip Steaks, Rump and Pikes Peak Roast, LB. | 59^c |
| BEEF FORES | Armour Star Heavy Beef, Consists of Chuck Roast, Arm Swiss, Rib Roast, Rib Steaks, Lean Ground Beef and Short Ribs, LB. | 45^c |
| BEEF LOINS | Armour Star Trimmed Heavy Beef Loins, Consists of Sirloin, Porterhouse T-Bone, and New York Steaks, LB. | 79^c |
| BEEF ROUNDS | Armour Star Heavy Beef, Consists of Round and Sirloin Tip Steaks, Rump and Pikes Peak Roast, Ground Round and Boneless Stew, LB. | 63^c |
| BEEF RIBS | Armour Star Heavy Beef, Consists of Standing Rib Roast, Rib Steaks and Short Ribs, LB. | 59^c |

At Piggly Wiggly you receive FULL measure on each side of beef you purchase. From a 250 pound side of beef, you will receive approximately the number of pounds of each cut as listed below:

| CUT | APPROXIMATE WEIGHT | CUT | APPROXIMATE WEIGHT |
|------------------------|--------------------|-------------------------|--------------------|
| Rump Roast | 9 1/4 lbs. | T-Bone Steak | 9 lbs. |
| Heel of Round Roast | 5 1/4 lbs. | Boneless Eng. Cut Roast | 7 lbs. |
| Porterhouse Steak | 5 lbs. | Boneless Chuck Roast | 4 1/4 lbs. |
| Sirloin Tip Steak | 8 lbs. | Rib Steaks | 12 lbs. |
| Center Cut Chuck Roast | 14 lbs. | Flank Steak | 1 lbs. |
| Blade Cut Chuck Roast | 13 lbs. | Short Ribs | 11 1/2 lbs. |
| Arm Swiss Steak | 11 lbs. | Ground Chuck | 10 lbs. |
| Boneless Lean Brisket | 6 1/2 lbs. | Kidney | 1 lbs. |
| Boneless Beef Cubes | 17 lbs. | Suet | 23 1/2 lbs. |
| Round Steak | 23 lbs. | Bones | 26 1/4 lbs. |
| Sirloin Steak | 15 1/4 lbs. | Cutting Loss | 1 1/2 lbs. |
| Ground Beef | 15 1/2 lbs. | TOTAL | 250 lbs. |



NOTICE
DEC. 20 LAST
DAY TO ORDER
IN TIME FOR
CHRISTMAS!
WARDS

SOIL CONSERVATION NEWS



By Douglas R. Lowe, Soil Conservationist.

Do you plan to construct terraces on your cropland this fall or winter after all your crops are harvested? If so, now is the time to start planning and making arrangements to get the work done in this area under dryland farming conditions level closed-end terraces are very beneficial in catching and holding moisture on the land. By holding the water on the land erosion by run-off is held to a minimum and extra moisture is stored in the soil for use by future crops.

Cost-share assistance is available for constructing a complete terrace on a farm under the Great Plains Conservation Program. The cost-share paid for terracing amounts to 70 per cent of the total cost. Some producers who plan to install terraces this winter are L. T. Green, Jr., O. D. Campbell, Houston Hart, and J. A. Vincent.

If you have a farm on which you want to construct terraces come by the Soil Conservation Service office or contact one of the S.C.S. employees who assist the Blackwater Valley Soil Conservation District for further information.

able for constructing a complete terrace on a farm under the Great Plains Conservation Program. The cost-share paid for terracing amounts to 70 per cent of the total cost. Some producers who plan to install terraces this winter are L. T. Green, Jr., O. D. Campbell, Houston Hart, and J. A. Vincent.

If you have a farm on which you want to construct terraces come by the Soil Conservation Service office or contact one of the S.C.S. employees who assist the Blackwater Valley Soil Conservation District for further information.

Maple News Topics

by Mrs. Oran Reaves

Mr. and Mrs. Guy Smyer had as their guests over the weekend their granddaughter and family Mr. and Mrs. A. D. Massey and girls.

Mr. and Mrs. Jim Pyburn spent several days last week with her parents, Mr. and Mrs. Jimmy Daricks at Kingsland.

Mr. and Mrs. Adolph Wittner have as their guest his mother, Mrs. Wittner of Levelland.

Mr. and Mrs. Albert Smyer

were shopping in Lubbock Thursday and they also visited his sister and family, Mr. and Mrs. Wayne Cash.

Mr. and Mrs. Oran Reaves and Sheila spent the weekend in Denton with their son and wife, Mr. and Mrs. George Reaves. They came back by Bellevue and his mother, Mrs. Nellie Reaves, came home with them for a visit.

The ice on the highlines and telephone lines have broken the wires so we are out of light and telephone.

patient in the Friona Community Friday much improved.

Mrs. Lena Menefee visited her daughter and family, the Sam Longs, in Hereford from Tuesday until Thursday of last week.

PASTOR MOVES
Rev. and Mrs. Moles and Carrol are moving to Hart this week. Rev. Moles is the former pastor of the Lazbuddie Methodist Church.

Glendale King was in Lubbock during the weekend.

Mrs. Wesley Barnes was in Farwell on business Friday of last week.

CLUB MET IN FRIONA
Mrs. Dee Brown, chairman, Mrs. Louella White, Civil Defense, Health & Safety; and Mrs. Edmund Kitten, sec-treasurer; members of the Midway H. D. Club met with other committees in the Community Room of the Friona State Bank the afternoon of November 30 to make plans for their Committee Recommendations. Mrs. Joe Briggs and Shirley Smith chairman of the Lazbuddie Club also met with the group.

Congratulations on Birthdays this week go to: Davis Gulley, John Gulley, Dianna Stansberry, December 11; Lyndon Foster, Taft Vinch, Lupe Treveno, 12; Leroy Cox, 13; Theron Vaughn, 14; James Nolan and Mark Ram, age, 15; Lynn Cox 17.

Football players with better than average scholastic records are invited to contact the mentor at one of his stops.

Jewell Treider was a medical

Be A Goodfellow

If you know any family, regardless of race, color or creed living within the Muleshoe area, who might be forgotten on Christmas Day, fill out this coupon and bring or mail to: Goodfellows, City Hall, Muleshoe, Texas.

| | |
|----------------------|------------|
| NAME OF FAMILY _____ | |
| ADDRESS _____ | |
| No. of Boys _____ | Ages _____ |
| No. of Girls _____ | Ages _____ |

Hey Kids--

You Boys & Girls Who Need

Some School Supplies--

HERE'S AN EASY WAY TO MAKE MONEY

Just bring in one new subscriber to the Muleshoe Journal at \$4.08 (8c is the sales tax).

You can select \$1.50 worth of school supplies or any thing you need—Theme paper, construction paper, pencils, pens, erasers, folders, inks and Ball Point Pens—JUST ANY THING.

Be sure to have correct name and mailing address for your subscriber.

The Muleshoe Journal

Sudan Neighbors

by Mrs. R. E. Scott

Mrs. N. C. Chisholm, of Littlefield, mother of Paul Chisholm and Mrs. Coleman Terrell, has been ill and confined to the hospital in Amherst.

A number of members of the Future Teachers of America Club of Sudan High School were in Lubbock Saturday to attend a District meeting.

Those going from here were Mrs. Marvin Tollett, sponsor, Butch Dykes, Kathy Burnett, Pam Otten, Nancy Williams, Frances Wiseman, Carol Ann Watkins, Dyanne Curry, Candance Mudgett, Fredra Cox, Laurie Shaffer, Glenna Galswood, Carole Harper, Anita Kay Whitmire, Morsalene Pierce.

Following the meeting the group attended the West Texas—Teen football game.

Mrs. Doyle Terrell and Mrs. Bill Curry were in Littlefield Sunday afternoon to attend the Christmas Show at Chisholms Florist.

Mrs. Guy Walden was ill and confined last week to a hospital in Quannah.

Mrs. L. F. Meeks, Mission Study chairman, led the Foreign Mission Study at the meeting Monday afternoon of the WMU of the First Baptist church.

"Hands Across the Sea" was the book given by Mrs. Meeks. Following a refreshment time, Mrs. Hubert Austin, vice-president, presided at the business session.

Mrs. Dexter Baker. Those present included Mesdames Meeks, Jessie Jordan, J. W. Olds, Doyle Allen, Miss Ruby Mince.

"Quit Your Kidding," a three act comedy, will be presented Dec. 18 by members of the Junior class of Sudan High School.

Names to the cast have been Carol Ann Watkins, Frances Wiseman, Mike Mudgett, Judy Sterr, Laurie Shaffer, B. A. Narramore, Mike Masten, Durwood White, Linda Chapin, Morsalene Pierce. Directing the play are class sponsors Miss Robbie Petty and Don Ham. Student director is Eloise Ingram.

Jimmy Newman, member of the U. S. Navy, has arrived for fifteen days stay with his family, the Bruce Newmans. Following his visit here he will report to Treasure Island, Calif. where he will be then be sent to Japan.

Navy Representative Sets Interviews For Academy Applicants

Don Ross, assistant football coach at the U. S. Navy Academy will be in this area tomorrow and next week to interview prospective applicants for entrance to the Academy, according to the U. S. Navy Recruiting Office in Clovis. Scheduled to be in Hobbs, New Mexico, tomorrow until noon, the Academy representative will then go on to Roswell. Tuesday, December 19, he will be in Amarillo from 3-5 p.m.

Football players with better than average scholastic records are invited to contact the mentor at one of his stops.

AD GETS RESULTS

BILOXI, Miss. (AP)—The Biloxi-Gulfport, Miss., Daily Herald says that its advertising get results.

Auto dealer George Pattison described two automobiles as "a steal" in an advertisement. Both cars were later stolen, the dealer reported.



COMMUNITY LEAGUE

- | | | |
|------------------------|----|----|
| K M U L | 39 | 13 |
| Clay's Corner | 38 | 14 |
| Western Drug | 35 | 17 |
| Wellborn's Beauty Shop | 33 | 19 |
| North Lazbuddie Gin | 30 | 22 |
| Muleshoe Coop Gin | 30 | 22 |
| Progress Gin | 28 | 24 |
| Patzler Clinic | 28 | 24 |
| Paul's Super Market | 16 | 34 |
| Gateway Motor | 14 | 38 |
| Cashway | 13 | 39 |
| West Plains Pharmacy | 10 | 42 |

HI IND GAME

- | | |
|-----------------------|-----|
| 1. Ruth Bates | 206 |
| 2. Ada Murrah | 200 |
| 3. Glenna Heathington | 191 |

HI IND. 3 GAMES

- | | |
|---------------------|-----|
| 1. Ruth Bates | 515 |
| 2. Dorothy Mathiesm | 509 |
| 3. Ada Murrah | 507 |

HI TEAM GAME

- | | |
|-----------------|-----|
| 1. KMUL | 804 |
| 2. KMUL | 797 |
| 3. Progress Gin | 751 |

HI TEAM 3 GAMES

- | | |
|------------------|------|
| 1. KMUL | 2251 |
| 2. Patzer Clinic | 2114 |
| 3. Western Drug | 2071 |

JUNIOR LEAGUE

- | | | |
|-----------------|----|----|
| Rough Riders | 26 | 1 |
| Mustangs | 15 | 12 |
| Sharpshooters | 14 | 13 |
| Bollweevils | 13 | 14 |
| American Eagles | 9 | 21 |
| Team II | 5 | 22 |

HIGH INDIVIDUAL GAME

- | | |
|---------------|-----|
| Johnny Dalton | 221 |
| Louis Flores | 179 |
| Johnny Dalton | 172 |

TEAM HIGH GAME

- | | |
|---------------|------|
| Rough Riders | 1956 |
| Mustangs | 1904 |
| Sharpshooters | 1850 |

HIGH SERIES

- | | |
|---------------|-----|
| Johnny Dalton | 55 |
| Grady Casey | 486 |
| Louis Flores | 485 |

TEAM SCRATCH GAME

- | | | |
|--------------|-----|-----|
| Rough Riders | 629 | 688 |
| Mustangs | 594 | 695 |

CALENDAR OF EVENTS

THURSDAY, DECEMBER 14

Seventh and eighth Girls with Friona, there.
Seventh and Eighth and Nint! Grade Boys, with Friona, here 6 a.m. - Methodist Men's Breakfast, Fellowship Hall.
9 a.m. - W M U, Trinity Baptist Church, Sunbeams- Trinity Annex.
7:30 - Muleshoe Study Club Christmas Party, home of Mr. & Mrs. O. N. Jennings.

THURSDAY through SATURDAY, Tula Tournament of Mule shoe Varsity Boys and girls, there

FRIDAY, DECEMBER 15

1 p.m. - Turkey Shoot, Shooting range on Sudan Highway, FFA Sponsored.
7 p.m. - Christmas Pagen Babe Ruth Park, presented by Trinity Baptist Church.

SUNDAY, DECEMBER 17

Services AT THE CHURCH OF YOUR CHOICE.
7:30 - Chancel Choir will present "The Manger of Bethlehem" Sunday, at the First Methodist Church. Directed by Kathy Phillips.
8:30 - Caroling, Church of the Nazarene Member, at hospital's ect.

MONDAY, DECEMBER 18

4:15 p.m. - Cherub Choir, Methodist Church.
7:30 p.m. - "Merry Christmas, children, high school auditorium 8 p.m. - Brotherhood Meeting, First Baptist Church.

Seventh and Eighth Grade Boys Basketball game, with Morton, there.

TUESDAY, DECEMBER 19

12 noon - Rotary Club, American Legion Hall.
4:15 p.m. - Chancel Choir, First Methodist Church.

7 p.m. - Varsity Boys and Girls Basketball Game with Slaton, there.

8 p.m. - Rebekah's Lodge, 100F Hall, 308 West Second Street.

WEDNESDAY, DECEMBER 20

12 noon - Lions Club, American Legion Hall.
1:30 - Ladies Play Day, Muleshoe County Club.

7 p.m. - Church of the Nazarene presents their Christmas play, "Rose of Sharon," at the church located at West 9th and Ave. C.

THURSDAY, DECEMBER 21

SCHOOL'S Christmas Holidays

MULESHOE CHAPTER TO MEET HERE THURSDAY

The Muleshoe Chapter of Lubbock Christian College Associates will meet at 7:30 Thursday evening, December 14, in the home of Mrs. Robert Grigg at 304 West 9th for their Christmas party.

FUTURE TEACHERS-AMERICA

By Geraldine Cooper
The Blackburn Chapter would like to congratulate Karen Jones on being elected Vice President of the Future Teachers of America, District XII.

The Freshman class was awarded the "School Beautification" award in assembly, December 11 1961 by Karen Jones, President and Mr. Moore, sponsor.

A GREEK WRITER

COLUMBUS, Ohio, (AP)—The loot taken from Mary's Grill here recently was all Greek to the thief.

Grill owner James J. Chakeras told police that thief stole a Greek alphabet typewriter.

Hospital Notes



on birth of a daughter born December 10. She weighed 6 lbs. 11 ounces.

Mr. and Mrs. Juan Duran on birth of a son born December 12 He weighed 6 lbs. 12 ozs.

WEST PLAINS HOSPITAL

Congratulations to:
Mr. and Mrs. Johnnie E. Hays of Enoch on birth of a daughter SANDRA DARLENE, born December 4.

GREEN HOSPITAL & CLINIC

Mrs. Jan Fisher, medical, dismissed, Mrs. Jack Dunham, ob, dismissed; Miss Kerma Nickle, Miss Cammie Levett, medical, Jerry Levett, medical, dismissed; Mrs. Gladyd Myers, ob, dismiss; Mrs. Olga Echavorria, ob.; Miss Kathy Kelly, medical, dismissed; Mr. C. H. McAliter, medical; Mr. Jess Lackey, medical; Mrs. Juan Duran, ob, Mrs. Josephene Mendosa, medical, dismissed; Mrs. Mary Adkinson, medical, Mrs. I. W. Harden, medical; Mrs. Willie Jones, accident, dismissed; Mrs. Johnny Boyston, medical and Miss Linda Middlebrook, med

WEST PLAINS HOSPITAL & CL

Willie Jones, accident, dismissed; Lyle Agnew, surgery, dismissed; Mary Bryan, surgery, dismissed; Mr. Lindsey Bates, med . dismiss Mr. A. P. Smith, urgery, dis-Calvin Jones, medical, dismissed; Buck Williams, dismissed; Kathy Fisher, medical, dismissed; Regina Hawkins, medical, dismissed; Edgar Hartley, dismissed; R. E. Williams, Mrs. Duane Martin, ob, Jack Cunningham, accident; Tommy Edwards, medical; W. L. Hanon, medical; and Mrs. James Cole, ob.

Stork News

GREEN HOSPITAL & CLINIC

Congratulations to:
Mr. and Mrs. Clayton Myers on birth of a son, December 10. He weighed 6 pounds.

Mr. and Mrs. O. L. Echavorria

Sheriff's Report

Sheriff's officers arrested one for drunk and returned one from Morton last week for breaking and entering and car theft.
City police this week arrested four for drunk and disturbance and four for drunk.
Department of Public Safety officers this week arrested two for traffic violations.

VETERAN BIBLE READER

DRESDEN, Tenn. (AP)—O.B. Kindred figures he may hold the Bible reading championship.

Kindred, 87, says he had read the Bible—both the Old and the New Testament—67 times.
NO SINNERS HERE

MEMPHIS (AP)—Sign in a lovely flower garden at St. Peter's Roman Catholic Church:
Trespasgers
Will Be Forgiven.

JIMMIE COCHRAN Cotton Co.

COTTON BUYERS

AND

COTTON LOANS

AGENTS

A. W. COPLEY

W. R. CARTER

FARM BUREAU OFFICE

Muleshoe, Texas

Phone 6480

ATTENTION CARPET

TENDER-HEARTED JAMES

TENDER-HEARTED JIM

ALL INSTALLED ON COMMERCIAL RUBBER PAD

- Factory Trained Installation
 - 500 Mile Delivery
 - 300 Rolls to choose from
- CARPET IS OUR BUSINESS

100% COTTON TWIST

Decorative Colors
5 Yr. Guarantee

\$4⁹⁹
Sq. Yd.

INSTALLED ON FOAM RUBBER

100%

Nylon Tweed

INSTALLED ON FOAM RUBBER

\$3⁹⁹
Sq. Yd.

100% CAPERLON NYLON

- Certified for Performance
- 20 Decorative Colors
- 10 Yr. Guarantee

\$9⁸⁸
Sq. Yd.

INSTALLED ON FOAM RUBBER

100% DuPont Nylon

- 5 Yr. Guarantee
- Heat Set 15 Denier
- 20 Colors

\$8⁸⁸
Sq. Yd.

INSTALLED

100% NYLON

Commercial Grade
Tweed-DuPont
Decorative Colors

\$6⁸⁸
Sq. Yd.

INSTALLED

50% WOOL

50% NYLON

Textured Tweed

\$5⁹⁸
Sq. Yd.

INSTALLED

100% CAPERLON NYLON

"1,500,000 Couldn't Wear it out"
PERFORMANCE TESTED
43 Colors—15 Yr. Guarantee
Reg. \$18.95

\$12⁴⁸
Sq. Yd.

INSTALLED

100% WOOL AXMINSTER

50,350 Tufts per sq. yd.
Commercially Moth Proofed
Decorative Colors

\$10⁸⁸
Sq. Yd.

INSTALLED

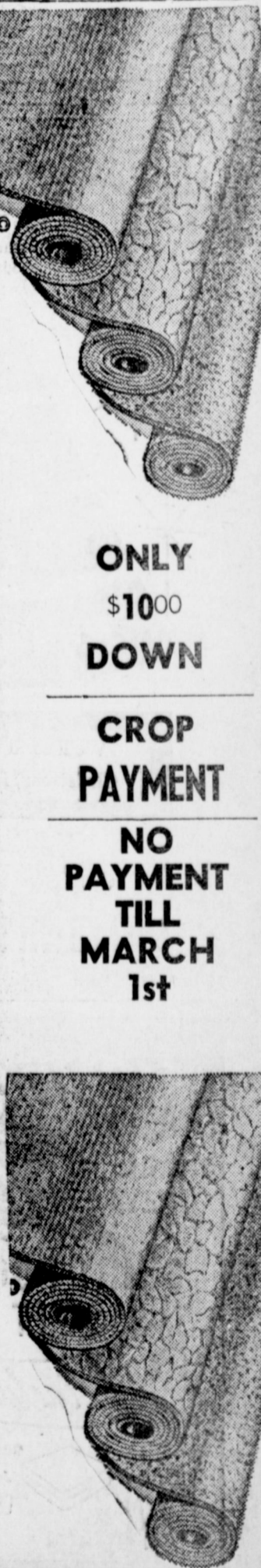
CARPET FURNITURE G.E. APPLIANCES

TRADER

109-111-111½ Main

CLOVIS, NEW MEXICO

Ph. PO 3-9511



Letters TO THE EDITOR

Dar Sir, I have been hearing and reading a lot about the fuss that's being raised by electric co-op managers around here...

That petition didn't read like a bunch of cut-throats and hate-mongers were out to take the very bread of life from the co-ops...

If 1500 people out of a potential 264,000, can cause that much consternation and alarm, maybe we better look a lot deeper...

(Editor's note: The following is in answer to a recent "Stone's Throw" in The Journal)

I do not intend to argue about Robert Welch-John Birch Society on the story you report...

This writer was also present at Amarillo to hear Mr. Welch...

It would be folly to pretend Robert Welch is without fault...

Probably Welch's meat eating statements of fact are too much for many on the milk die...

posed and consumed in larger doses, Khrushchev's small ones will soon be our end.

With Tito's 100 per cent communist record on all major key issues, if the pilot training planes to Yugoslavia and the case here does not prove that more than one segment of the government of the United States is supporting international communism...

If this puts butterflies in your stomach (the milk was binky) you are ready to start burning the midnight oil for there is all that you have the time and constitutional will to consume.

"Failure to know the enemy, failure to understand him in all his fronts, failure to prepare completely to battle him to the ultimate in the defense of the United States, only gives him aid and comfort described in our Constitution as treason."

"Study to shew thyself approved unto God, a workman that needeth not to be ashamed, rightly dividing the word of truth."

You are an American and it ends in "I-CAN". Lester Howard Rt. 5 Box 59 Muleshoe

Dear Mr. Hall, Last week's Journal carried Mr. D. B. Lancaster's opinion of the ignorant troublemakers who signed a petition opposing the plans to build a co-operative generating plant...

The people who wrote the petition, and those who signed it, did not do so because they "hate co-ops"...

The act never intended that the co-operators should go into competition with private enterprise...

Let's just sit on our little federal money-grabbing hands for a minute and look back to 1935, when the REA was passed...

being debated in congress—"We are not, in this bill, intending to go out and compete with anybody. By this bill, we hope to bring electricity to people who do not have it. This bill was not written on the theory that we are going to punish somebody, or parallel their lines or enter into competition with them."

More than 96 per cent of the nation's farms are now electrified, according to the Department of Agriculture. During 1959, 58.2 per cent was supplied by government owned or government financed projects...

The general public is unaware of a fight shaping up in Washington over proposals for a government financed and government controlled grid—or tie-in—of electric power lines throughout the West...

Now you may ask how that concerns this issue. It's simple; this is the more government financed facilities there are built, the more government control of all power, giving us a totally socialized industry!

This country attained it's greatness thru the free enterprise system. Lets Keep It That Way. Yours for a free America Ragan Little Sunnyside, Texas

Jimmie D. Kemp Takes Mountain Combat Training

Army Pvt. Jimmie D. Kemp, son of Mr. and Mrs. Frank Y. Kemp, 420 E. Fourth, Muleshoe, completed two weeks of combat training at Pike National Forest in Colorado with other personnel from the 1st Division's 5th Infantry, December 2.

Designed to improve individual and unit combat efficiency, the training included cold weather operations and mountain warfare tactics. The rugged terrain of Pike National Forest and the average November temperatures ranging in five below zero make this area especially suitable for such training.

Kemp, a rifleman in the infantry's Company D which is regularly located at Fort Riley, Kan., entered the Army last July.

The 21-year-old soldier attended Muleshoe High School and was employed by the Cashway Grocery, Muleshoe, before entering the Army.

Charles Jennings Now In Colorado

Army Pvt. Charles L. Jennings, son of Mrs. Pearl Jennings, 513 W. Avenue E, Muleshoe, recently was assigned as a recreation specialist at Fitzsimons General Hospital, Denver, Colo.

Fitzsimons, one of the largest military hospitals in the world, is the Army's tuberculosis treatment center and one of the primary hospitals in the Armed Forces specializing in open-heart techniques of cardiac surgery.

He entered the Army last September and completed basic training at Fort Carson, Colo.

The 23-year-old soldier is a 1957 graduate of Muleshoe High School and a 1961 graduate of the University of Texas in Austin.

His father, Elmer C. Jennings, lives at 905 Miliam, Amarillo.

Textbook Group To Begin Work Soon

Muleshoe's School Board this week approved the state textbook committee of teachers and administrators who will choose new textbooks to replace books going out of adoption at the end of the current school year.

Included on this committee are Mrs. Ruth Fowler and Mrs. Joyeline Costen, geography 4; Kelly Eubanks and Mrs. Gladys Eggers, geography 5; Clarence Hawkins and Miss Vera Mosteller, geography 6, Mrs. Betty Jennings, dictionaries, 4-7; Frederic Byers, vocal music, 7-8; Miss Barbara Dye, American History 8; Byron Hardgrove, world history; W. O. Coltrane, American History; Bryan Brady and Marion Harris, Science 9; textbook custodian, R. E. Everett; and chairman, Neal B. Dillman.

Selection of a new textbook is a lengthy process which began in May of last year. Members of local textbook committees are appointed each year prior to December 15.

Parking

(Continued From Page 1)

Voluntary action will be taken by clerks in participating stores in Muleshoe, it was announced. Participating clerks have signed off Main Street, side streets and other business streets in Muleshoe. These posters will be displayed on each registers in local stores.

Voluntary action was called for, according to Pouncey, when results of a recent consumer survey were checked. Many area residents complained on the survey that parking space was too hard to find in Muleshoe's downtown area.

"This parking problem is as important as any other consideration in encouraging shoppers to shop Muleshoe first," Pouncey noted.

Pouncey added, "We are proud of the people who have signed the pledges to park away from the business area so those parking spaces may be used by customers."

Traffic

(Continued From Page 1)

result of these crashes there were 6 persons killed and 28 persons injured and property damage amounted to \$34,015.

The veteran patrol supervisor announced that a stepped-up traffic law enforcement program is being launched in an all-out effort to stem the tide of traffic deaths during the remainder of the year. "We find ourselves confronted with the alarming fact that statistics indicate some 238 persons will be killed in traffic crashes in Texas this December," the Sergeant stated.

The patrol supervisor reported that as of Friday, December 1, a total of 2,014 traffic deaths had been reported to the department, as compared with 1,984 during the same period in 1966. "This represents an increase of 30 deaths or 2 per cent," he said, "and presents all of us with a stern challenge to hold the line during the month of December. This will not be an easy job, because the toll of 218 deaths during December, 1966, was low for that month of the year and we will have to beat that in order to halt the trend toward a higher death toll for 1967."

"But we feel confident that with an accelerated enforcement program and most important, the active support and cooperation of the driving public—the statistics can be made to lie. And that is exactly what we propose to do. "We feel that the traffic death tragedy cannot be over-emphasized. When it is considered that during last year alone, there were 2,254 violent deaths on the streets and highways of our state caused by colliding motor vehicles, it can readily be seen that concerted action on the part of everyone concerned is in order," the Sergeant added.

PP&K National Winners Named

Five grade school boys from Oklahoma, California, Michigan and Wisconsin were announced today as winners of national championships in the "Punt, Pass and Kick" contest that attracted 205,000 youngsters throughout the United States, according to Jack Morris, local Ford dealer.

The five youths emerged as champions by winning regional and then national competition in the PP&K contest launched this year by the Ford Division of Ford Motor Company and its dealers in cooperation with the National Football League.

The winners, their fathers and the Ford dealers who sponsored them will embark late this month on an expense-paid "tour of champions," including an official reception at the White House and a trip to the National Football League championship game in Green Bay, Wis., December 31.

The five champions also will receive trophies and autographed footballs and will be introduced to a nationwide television audience during half-time ceremonies at the NFL title game.

The 70 finalists were regional winners, outscoring thousands of boys in local contests for the right to vie for national honors in half-time competition at a selected November game of each of the 14 NFL teams.

Renowned Editor Amarillo Speaker

Tom Anderson, editor and publisher of the Farm and Ranch Magazine of Nashville, Tennessee, will be speaking at the Municipal Auditorium in Amarillo at 8 p.m. on Thursday, December 14.

Known across the country for his often-quoted and reprinted column of editorial comment, "Straight Talk," Mr. Anderson has in recent years become a nationally recognized patriotic speaker and is a recipient of the Freedom Foundation Award.

A past president of the American Agricultural Editors' Association, Mr. Anderson began his publishing career as editor of "The Arkansas Farmer" in 1947 and has, since 1953, edited the Farm and Ranch Magazine, a regular farm publication covering "The Sunbelt of Agriculture," 20 states from Maryland to California, with a circulation of nearly one and half million.

Doors of the Municipal Auditorium in Amarillo will open at 6:30 p.m., with Weldon Bright at the organ from 7:30 p.m. until the hour of Mr. Anderson's address. There will be no admission charge and the meeting is open to the public.

Mr. and Mrs. Hugh Preston were feted to a housewarming Friday evening when a number called at their new home.

A wall plaque and mirror were presented as the host gift. Serving as hosts were Messers and Mmes. Doyle Terrell, Bill Curry, Edgar Williams, R. E. Scott, Nolan Parrish, Radney Nichols, Wayne Brown, Waymon Gordon, Paul Chishom, M. C. Ingram, and Coleman Terrell.



SCHOLARSHIP CERTIFICATE winners for the second six yeeks of school at Muleshoe High School are shown above. The Scholarship awards, presented by the Chamber of Commerce, were given in a special assembly Monday at the school. Selected by a committee of teachers, the students are Joyce Adams, physical education and math; Robert Garlington, speech and choir; Bill Harbin, drivers education; Karen Jones, social studies; Linda Bartley, English; Georgia Hall, science; David Douglas, foreign language; Lanelle Spurgeon, homemaking; Julia Hollis, business; Myke Murrah, vocational ag.; and Coy Gabbert, physical education. (Journal Photo and Engraving)

FARWELL SAILOR ABOARD RADAR PICKET SHIP

Allen E. Hodges, electrician's mate second class, USN, son of Mr. and Mrs. Paul Hodges of Route 1, Farwell, is serving aboard the radar picket destroyer USS McKean, a unit of the first Fleet which took part in Exercise Black Bear from November 24 through December 1 off the coast of Southern California.

Involving some 10,000 men and 16 ships, the training operation striking force subjected to air and sub-surface attack.

Opposition was provided by jet and conventional aircraft and by submarines, simulating attacks with all types of weapons. During the exercise the striking force was replenished at sea by fleet oilers, stores ships and ammunition ships.

Otis Dunagin Announces Judge Candidacy

Otis T. Dunagan, the 53-year-old state district judge who put the NAACP under a permanent injunction in Texas, has announced in a candidate for judge of the Texas Court of Criminal Appeals in Austin.

He is seeking the position now held by W. A. Morrison. A district judge at Tyler for 20 years without opposition in election years, Judge Dunagan is also the jurist who ordered the disbarment of former Randall County Judge Roy Joe Stevens, central figure in a legislative investigation into alleged vice and corruption in and around the West Texas town of Canyon.

Judge Dunagan's announcement begins another era in his political and public life which began

at the age of 23 when he was elected to the Texas Legislature.

While a young legislator, he wrote the state's first driver's license law, the law granting absentee voting rights to persons physically unable to come to the polls and the depression-era law permitting payment of delinquent taxes without the required payment of the accumulated penalties and interest.

Badges Presented To Boy Scouts In Court

Boy Scout Troop 620 of Muleshoe had their Court of Honor at the Boy Scout Hut on Tuesday, December 5.

Badges were presented to the following boys by Gorge Haskins Jr. and Owen Jones; Tenderfoot badge, Billy Kelly; 2nd class, Jerry Haskins, Tommy Jones, Cary Purdy, and Billy Kelly; Star badge, Bruce Purdy.

The boys then presented their mothers with a miniature pin of their rank. The mothers receiving pins were: Mrs. Owen Jones, Mrs. Roy Kelly, Mrs. John Purdy and Mrs. George Haskins, Jr.

Merit Badges were then presented to Bruce Purdy for Painting, Firemanship, and Finger printing.

One year service pins went to Tommy Jones, Jerry Haskins, Billy Kelly and Cary Purdy. Three year pin to Bruce Flores. Herbert Blair received a gold palm on his eagle badge.

Parmer County Farm Bureau News

Because we believe the Preamble of the Texas Farm Bureau is an outstanding preamble, we are printing it for all to read.

"We give thanks to almighty God for the many blessings He has bestowed upon us as a nation and as individuals. We invoke his wisdom and direction upon our every decision in order that we may be worthy citizens of His Kingdom and our nation."

"We believe that the democratic principles of free enterprise and human freedom upon which our nation was founded are responsible for its greatness."

"We believe in the right of every man to choose his own occupation free from compulsory unionism; to be rewarded in accordance with his productive contribution to society; to save, invest and spend his earnings as he chooses; and to worship as his conscience dictates."

"We believe that further centralization of power and authority in the Federal Government and the apathy of American people to this trend are among the greatest dangers threatening our Republic and American way of life. "Planned economy concepts such as socialism and communism,

and communism, fac ism and other forms of totalitarianism must be opposed wherever and in whatever form they may be found.

"In order that we as individuals in our profession may make a greater contribution through group action we believe that Farm Bureau is a free, independent, non-governmental, voluntary organization of farm and ranch families united for the purpose of analyzing their problems and formulating action to achieve educational improvement, economic opportunity, and social advancement thereby promoting the national welfare. Farm Bureau is local, national and international in its scope and influence and is non-partisan and non-secret in character."

"It is wholly controlled by its members through majority decision and is financed by voluntary membership dues." (This preamble was approved by the delegates at the 1961 Texas Farm Bureau Convention in Galveston.)

President Harry Hamilton checked with State FB Director, Hub King, of Brownfield last week, to be sure work was being done to retain and improve the Bracero Program. King had been in Washington at the hearing.

Holiday cheer for your clothes

LAMBERT CLEANERS advertisement featuring a Christmas tree graphic with text: LET US PICK THEM UP FOR SANITONE DRY CLEANING. We'll send them back bright as Christmas, fresh as the new year!

LAMBERT CLEANERS 123 Main St. Phone 7260

JOHNSON & POOL HOLIDAY SPECIAL! ALL NEW ZENITH SHIRT POCKET RADIO in 4 pc. GIFT PACKAGE including Custom Carry Case, Jewel Box, Batteries, Royal 50H Radio. Price \$31.95. LIMITED TIME ONLY!

WESTERN WEAR AT HOME ON THE RANGE See Our Handsome Gift Wraps! FINE WESTERN WEAR for MEN, WOMEN and CHILDREN Select from our Christmas Selections of Western Shirts, Pants, Jackets, Belts, Billfolds, Hats, Ties & (of course) Boots! HURRY IN! WESTERN BOOTS for... Christmas Gifting. ROBINSON'S BOOT SHOP 127 MAIN Ph. 7219



GIVE A GAS LIGHT FOR CHRISTMAS Buy NOW and SAVE During Our Pre-Christmas Sale For a limited time, our entire stock of Gas Lights is being offered at substantially reduced prices. Order now on budget terms...no money down with two years to pay! PIONEER NATURAL GAS COMPANY

McCourt Construction Company Opens Muleshoe Office

McCourt Construction Company has opened offices in Muleshoe. John D. McCourt, local representative of the company announced this week.

The construction firm specializes in the Bab-U-Steel buildings and especially small steel buildings for farmer's use as individual service buildings are also built commercially.

Companies of McCourt Construction firms are additionally located in Brownfield and Plainview, as well as the new office here. W. J. McCourt of Plainview office and John McCourt of the Muleshoe office are brothers.

The firm recently completed a laundry mat building in Seagraves in which were installed mahogany wall panels. McCourt added that the steel may be colored or galvanized. The framework which is constructed in Plainview is erected on the job site with finishing touches such as windows, doors, and special wood panels added after the sheet iron framework is in place, he said.

"There is no upkeep expense and the insurance is less expensive for all types of steel commercial buildings such as we construct," McCourt said.

John McCourt is a native of Plainview and attended college while serving in the U. S. Army in the Research and Development while testing new army equipment during this time.

A member of the Church of Christ, McCourt's office is 323 Avenue B, Muleshoe.

WILL TRADE

1958 Ford Fairlane 500 for any good pickup. Preferred above 1956 model. See J. C. Gatewood at the Journal.

Driving Tips

By Linda Warren

MAN VERSUS CAR

In any collision of pedestrian and automobile, the pedestrian is obviously at a great disadvantage. The automobile has the better speed, impact and hardness of material. Flesh and bones are no match for steel, glass, and rubber tires under pressure. Accidents happen very fast. Whether on city streets or in rural areas, the traffic hazards of today's pedestrians are a very serious matter. You should know everything to know about preventing accidents to pedestrians.

Dozens of mental characteristics contribute to pedestrian accidents. Good drivers plan an extra margin of safety in stopping distance where there are pedestrians realizing that the man walking in the street may be afraid, confused

inattentive, or distracted. Remember, when driving a car, you are responsible for every other object on the road.



Off The Runways

GROUND SCHOOL

Aviation ground school classes which are being taught at the Muleshoe airport are almost complete, with the student who enrolled at the beginning of the school taking their tests and passing them.

Ground school instructor, Fred Boyd, said that a new series of classes will begin on January 8, and will be taught in the same manner, by visual aid film and instruction.

NEW STUDENT

Clayton Fox, Motorola radio engineer of Clovis, N. M. is beginning flight training here.

Fox will begin as a student pilot and complete his training at the Muleshoe Flying Service. AIRPORT FIRST STOP Pvt. Lyndol Kinser home on leave from Fort Carson, Colo. made his first stop at the airport to fly after arriving here Saturday night on a 14 day leave.

Kinser, who was employed at the airport for 2 years prior to enlisting in the Army in September, began training under Morgan Locker at the age of 15 years, and after 10 weeks in the service, was most anxious to fly again. After landing from his first flight since returning, Kinser stated that flying the Super Cub, was still wonderful. The cub was his first plane to fly and is still his favorite for local flying.

APPROVAL CERTIFICATE

Morgan Locker, owner of the Muleshoe Flying Service received a certificate of approval from the Aircraft Owners and Pilots Association. The certificate read as follows:

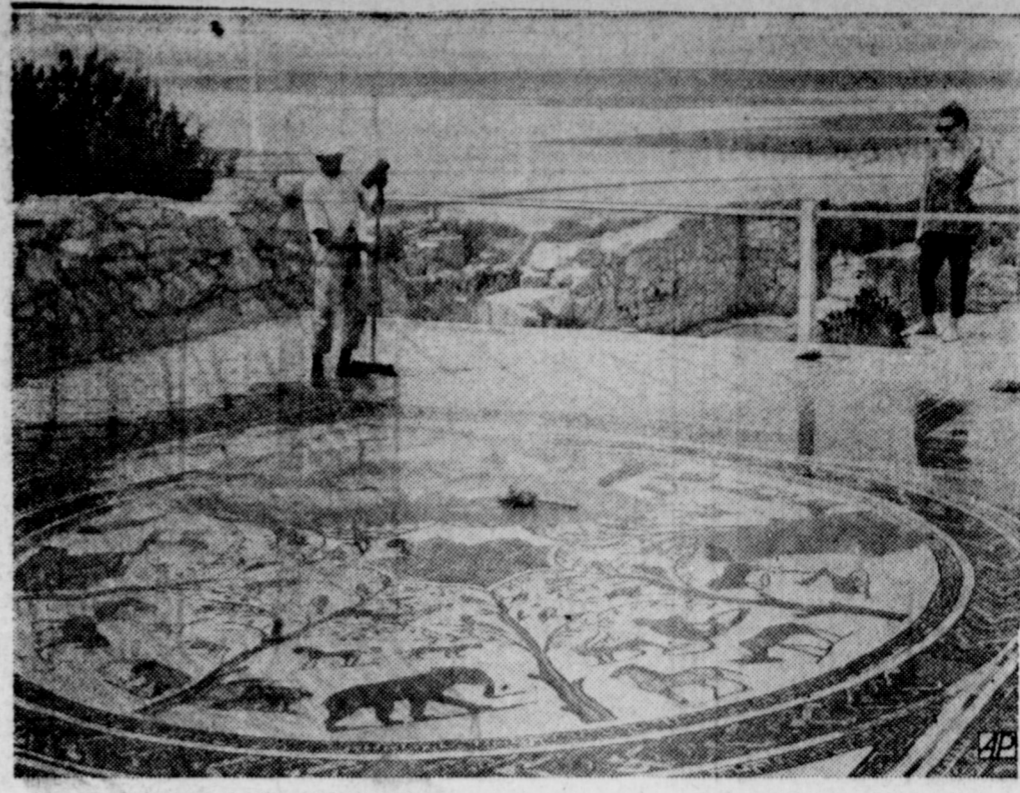
This is to certify that the service and facilities of the Muleshoe Flying Service at Edward Warren Field, Muleshoe, are recommended to aircraft owners and pilots.

NEED GROWS FOR SMALL AIRPORTS

The Federal Aviation Administrator, N. E. Halaby, told members of the Airline Pilots Association—"General aviation is the fastest growing segment in aviation and if these (private and business) airplanes can't land at other general aviation fields, they will have to land at the hubs with you."

This is the Administrator's way of reminding all groups that it is "our job to help men fly, safely and profitably."

The private and business airplane has become an important supplement to air carrier service. The airlines of the United States provide the world's finest and fastest scheduled air transportation, however, such service is only economically possible between a limited number of larger cities. Less than 600 of the nation's 18,000 incorporated places have airline service. Therefore, more than 17,000 medium and smaller towns which contribute manufact-



HISTORY UNCOVERED — Workman cleans one of mosaic floors unearthed amid the Roman ruins at Volubilis, Morocco. The floor depicts wild life which according to Pliny the Elder, the ancient Roman naturalist, was quite plentiful in the area.

urers products, education facilities, industrial raw materials and essential food, get for themselves air-age timing by providing landing facilities for the private and business airplane.

The dynamic growth of general aviation confirms the statement of the President's Civil Air Policy Report—"The American people have accepted the airplane as a primary means of travel." People now travel by air to locate or help produce the nation's basic materials, or add their labor in the production transportation and sales distribution activities that make possible taxable incomes.

Because of real estate economics, the small airports needed by the general aviation segment of Civil Aviation have been going out of business at strategic locations.

FFA Spokesmen have been reminding county and municipal officials to acquire and hold airport property. The restless real estate developers will not cease suburban expansion and their subdivisions will occupy new areas. Each year long established small airports are being replaced by shopping centers with extensive parking lots. The natural inclination of property owners to make steady of long-term, and sometimes controversial, airport investments for future returns, has been rapidly shrinking the nation's airport system.

For instance, in the fast developing State of California about 130 general aviation airports went out of business last year. A majority of California's airports are privately financed and they are in a three-way squeeze; high taxes, absence of zoning protection, and pressure from citizens groups interested in housing and shopping centers, yet unaware of the importance of an adequate airport system to public welfare and security.

California's State Aviation Director, Clyde P. Barnett, has stated that industry's growing dependence upon the light utility air plane for time-saving travel will eventually compel airport facilities to exist. Some enlightened to include airports in their plans to attract industry. The Chamber of Commerce of Los Angeles now has an active interest in a five county Southern California study of general aviation airport requirements. This study is revealing that airport property should be owned by a policy-setting city or county with service functions leased out to private enterprise.

An FFA booklet entitled "Small Airports" states that the best location for an airport is where it will be readily accessible to the users—not more than 15 minutes away from the center of population of the community to be served.

Administrator has said that a total of 465 new airports should be built and the existing airports should be improved if the nation's civil aviation needs are to be met, according to reports of the AOPA airport news letter.

Bula Happenings

by Mrs. John Blackman

The sophomore class, with their sponsor, Mrs. Guinn Casey, honored the football boys and pep squad with a banquet Saturday night December 9.

Entertainment was given in the banquet room of the Chat and Chew Cafe of Levelland. Members of the school faculty were also present.

Mr. William De Bose from Tom S. Lubbock High School, Lubbock was speaker for the evening. Dennis Medlin gave the welcome. Jerry Cox gave the response, Freshman girls, including Diana Cox, Beverly Clawson, Linda Gueseward and Sandra Strowd sang "Moments to Remember."

Donna Spence was crowned Sweetheart by the Co-Captains, Jerry Cox and Donnie McCall, during the carnation. "Let Me Call You Sweetheart" was sung by Wanda Hubbard and Georgia Bahlman.

Comments were given by the Coaches, followed by Superintendent Casey giving the benediction which closed the program.

Tables were laid in white, centered with arrangements of mums. Individual goal posts set in gum drops were at each place. All decorations were in the school colors of red and black.

The menu consisted of: Kick Off, grape juice; Scrimmage,

salad; Pig Skins, ham; Tackle, green Beans; Whip up, Creamed Potatoes; Extra points, Cherry Pie-a-la-mode; Tea, Coffee and Hot Rolls.

Mr. and Mrs. Tommie Kirk of Levelland visited Sunday afternoon with her parents, Mr. and Mrs. Paul Young.

Lunch guests Sunday in the T. L. Harper home were her parents of Levelland, Mrs. and Mrs. C. H. Middleton.

Mrs. George Bahlman has been confined in the Methodist Hospital, Lubbock for a week, she was admitted suffering from a stomach virus.

Visiting with Mr. and Mrs. John Richardson Tuesday were Mr. and Mrs. Jess Richardson of Floydada.

Mr. and Mrs. C. C. Taylor are visiting in the home of the Jim Claunch's. The ladies are sisters. Mr. Taylor has recently retired from the Air Force and was stationed at Coos Bay, Oregon, for several years.

Mrs. John Gunter will present her music pupils in a Christmas Recital at 8 p.m. Monday night. The public is invited to attend. Those appearing on the program will be both local students and other pupils taught by Mrs. Gunter.

Superintendent Casey announced the school Christmas Holidays will begin at 2 p.m. on Wednesday, December 20. School will resume on January 2, following New Year's Day.

High school students making the honor roll for the second six-weeks were: Seniors—Jacque Risinger and Wanda Hubbard; Juniors—Billy Wright and Donna Spence; sophomores, Donna Lands and Mike Risinger; Freshman, Pat Risinger, Linda Grusendorf, Diana Cox, Charles Pool and

Gerald Reid.

Students making the honor roll in grade school were: eighth grade, Brenda Clawson; seventh grade, Juana Young, Betty Salyer and Richard Wright; sixth grade, Mike Richardson; fifth grade, Patricia Grusendorf and Elaine Tiller; fourth grade, Donna Crune Margaret Richardson and Iva Clawson; third grade, Diana Crume, Pam Layton, Jolene Reid, Jolene Cox and Patricia Robertson.

Word was received recently by Mr. and Mrs. V. C. Weaver that their grand-son, Mark Weaver, son of Mr. and Mrs. Howard Weaver, had accidentally been shot in the leg by a bear rifle, which might necessitate the removal of the leg. Mr. and Mrs. Weaver and sons, Mark and Howard moved from the Bula community about two years ago to Anchorage, Alaska.

Coach Risinger and his basketball girls are looking forward to attending the girls SWAAU tournament held in Ducanville the last week in December. They plan to leave on Tuesday after Christmas and return on Sunday, December 31.

Other area schools making the trip to Ducanville are Muleshoe, Tulia, Friona and Dimmitt.

Thursday evening, December 7, a Christmas party was held for the teachers and their families in the school lunch room. Games of 42 were enjoyed following refreshments and exchanging of gifts.

Mr. and Mrs. Jonnie Flowers and children, David, Kenneth and Jannie Marie have recently moved to the Bula community from Littlefield. He is presently employed as minister for the Church of Christ.

Eleven members of the local PTA met in a called meeting Monday, November 27, to make up the regular November meeting that was called off because of the snow.

For the second time the sophomores received the \$2.50 prize for room count with largest number of parents present.

Effective learning in the home was the subject of the meeting. Mrs. Ruby Rid reviewed an article from the PTA magazine by Dr. M. C. Farland, sup. of Houston Public Schools.

Mrs. John Hubbard and Mrs. Robert Claunch served refreshments and visiting was enjoyed.

The Bula FFA will have its Christmas turkey shoot Friday and Saturday, December 15 and 16. Hams and Turkeys will be given. Everyone is welcome.

The Bula FFA met Wednesday morning at 10:30 in the home-making room, with their sponsor, Mrs. Elwanda Duke.

After the regular opening rituals, a business meeting was held. Plans were made for their Christmas party, to be held on December 19.

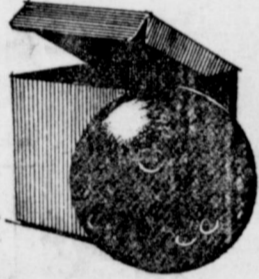
Christmas cards were brought by the girls and are to be sent to a mental hospital.

You'll Make A... STRIKE

By Giving

BOWLING EQUIPMENT

For Christmas



- BALLS by AMF, MANHATTAN, & BRUNSWICK
- BAGS by AMF, MANHATTAN, & BRUNSWICK
- SHOES by AMF, RIPLETTES, HYDE, BRUNSWICK
- Wearing Apparel by BOB-ETTE

GIVE A BOWLING GIFT CERTIFICATE

For Equipment or Lineage Tickets

from

Tri-Co Bowling Lanes

American Blvd.

Phone 4310



GIFT IDEAS:

Men's GIFT TOILETRIES

- SPORTSMAN, YORK TOWN, OLD SPICE, HIS, KINGS MEN, MENNEN'S for Shaving Needs.
- Toiletry Sets, Electric Razors, Billfolds, Clocks, Leather Goods.

G.E. RADIOS

All colors & Sizes



PANG BURN'S CHRISTMAS CANDY

SANTA SAYS: NEED A COFFEE BREAK? At Western Drug You Can Do ALL Your SHOPPING and RELAX too!

These are just a few of the many gifts we have of the nationally famous brands, carefully selected for value and quality.



LADIES LOVE

- Fragrances from DANA.
- Cosmetics, Sachets, Compacts, Bath Powder, Atomizers, Costume Jewelry, Manicure & Travel Sets.
- CHRISTMAS SPECIAL PACKAGES!

From the House of Coty, DuBarry, Max Factor, Circo & Others.

WESTERN DRUG

Your Walgreen Agent

Phone 3-1060

CHRISTMAS ANGEL COLORING

FOR BOYS AND GIRLS



Then I make a great big star to light your Christmas tree. Now you know why Christmas is so much fun for me!



Season's Greetings from the entire staff of the SANTA FE RAILWAY and your local Santa Fe Agent.



GOVERNOR PROCLAIMS CHRISTMAS SEAL DAYS—Governor Price Daniel proclaimed Christmas Seal Days in Texas from November 13 to December 25, and urged all Texans to use Christmas Seals and thus support the TB-control work of the Texas Tuberculosis Association, and county TB associations. Shown with Governor Daniel on the occasion of signing the Christmas Seal proclamation are two brothers who have a real interest in TB-control. They are Albert (right) and Alfred Flores Jr. whose grandmother, Mrs. Hilaria Flores, has been a TB patient hospitalized in Austin for more than a year. The boys took their grandmother's picture with them to show the governor. They have lived with their grandparents since their mother's death when Albert was born.

Three Way Briefs

By Mrs. Jack Lane

JEAN CALDWEL FETED WITH BRIDAL SHOWER
Miss LaJean Caldwell, bride-elect of Carter Williams, was honored with a bridal shower Sunday evening, from 2 until 5, December 10, by sixteen hostesses and 10 Jr. hostesses at the home of Mrs. Cass Stegall.

There were 41 guests registered by Madalyn Galt including the bride-elect's mother, Mrs. Caldwell of Pampa, the grandmother Mrs. Hudson, and aunt, Mrs. Moreman of Canyon.

Karen Eubanks, Kay Lemons, and Kathrine Niasten were at the gold tea and silver coffee service, elegantly topped with white nylon and draped at the sides and corners with red holly berries, centered by a white net tree.

The bride's chosen carriers of red and white were carried out in additional room decorations.

The hostesses were Mrs. Jack Lane, Mrs. Frank Griffith, Mrs. Buck Ragsdale, Mrs. Tommy Galt, Mrs. John Shepard, Mrs. Horace Hutton, Mrs. Dolly Ann, Mrs. Cecile Cole, Mrs. Jack Ferguson, Mrs. Clint Everett, Mrs. Cass Stegall, Mrs. Thurl Lemons and Mrs. Bill Eubanks.

PINK AND BLUE SHOWER
A pink and blue shower was given December 5 from 2:30 until 5:00, honoring Mrs. Doyle Day at the home of Mrs. Jack Ferguson.

There were approximately 35 guests registered. Gifts were on display in the adjoining room.

The table was centered with a white stock and babies in walnut shells.

Refreshments of miniature sandwiches, cookies, mixed nuts, min- and spiced tea were served.

The hostesses were Mrs. Ear Bowers, Mrs. Adolph Wittner, Mrs. Jack Hutcheson, Mrs. D. W. Chapman, Mrs. Ed Latimer, Mrs. Tommy Galt, Mrs. Cass Stegall and Mrs. Jack Ferguson.

GIRLS VISIT
Visiting Bonnie Bateas in the Elmer Bateas home over the weekend were Mary Nell Wiman, Gay Halford, Judy Sato, Rosella McDonald, Peggy Crowover, Sonja DeBord and Jeri Cross, all of Wayland College.

VISITS PARENTS
Carter Williams and LaJean Caldwell of West Texas State College in Canyon, Texas, visited in the home of Mr. and Mrs. Conrad Williams over the weekend.

Mr. and Mrs. Dyle Houlette and Chris of Levelland visited in the home of the Conrad Williams Sunday.

VISITS PARENTS
Shirley Reeves and Maudine Lubenski visited in the home of her parents, Mr. and Mrs. Leon Reeves and Mr. and Mrs. Bill Lubenski over the weekend.

VISITS DAUGHTER
Mr. and Mrs. Frank Griffith and Mrs. Florence Bailey were in Albuquerque, N. M. last weekend visiting in the home of Mr. and Mrs. Kenneth Paul. They had visited other points in New Mexico.

BASKETBALL
The Three Way Jr. girls took first place in the Pettit Basketball tournament Saturday night.

Progress News
By Mrs. M. O. Nigh

Rev. Earl Ford reported he was proud of the number of members that attended "M Night" in the field last week. There were 30 present from the Progress Baptist Church.

CHRISTMAS PROGRAM
A committee was appointed last Wednesday night conference to work on the Christmas program. Also a committee for the treats and a tree and other things.

Those appointed were: Mrs. Sam Beckwell, Mrs. Ruby Kindred, and Mrs. Gene Stegall for treats; Mrs. D. O. Smith; Mrs. Grace Morina and Mrs. Helen Redwing for decorations; Whit Barber for Nativity Scene; and Mr. R. M. Gibson will buy the tree.

Mr. and Mrs. Ray Ethridge and children visited friends at Tulsa Sunday.

Mr. and Mrs. A. L. Nigh of Lockney visited Mr. and Mrs. M. O. Nigh and Larry Sunday.

Mr. and Mrs. Jena Rogers were here this weekend visiting the John Rogers.

S. C. S. met last Thursday at the home of Mrs. James Wedel.

VISITING PARENTS
Staff Set and Mrs. Ronnie Gaby and children of Wichita Falls were here over the weekend visiting her parents, Mr. and Mrs. J. R. Walker, Sr.

RETURNS HOME
Mrs. Dorothy Walker and children came home this past week after spending about 10 days with her parents, Mr. and Mrs. J. C. Donaghey of Seagraves.

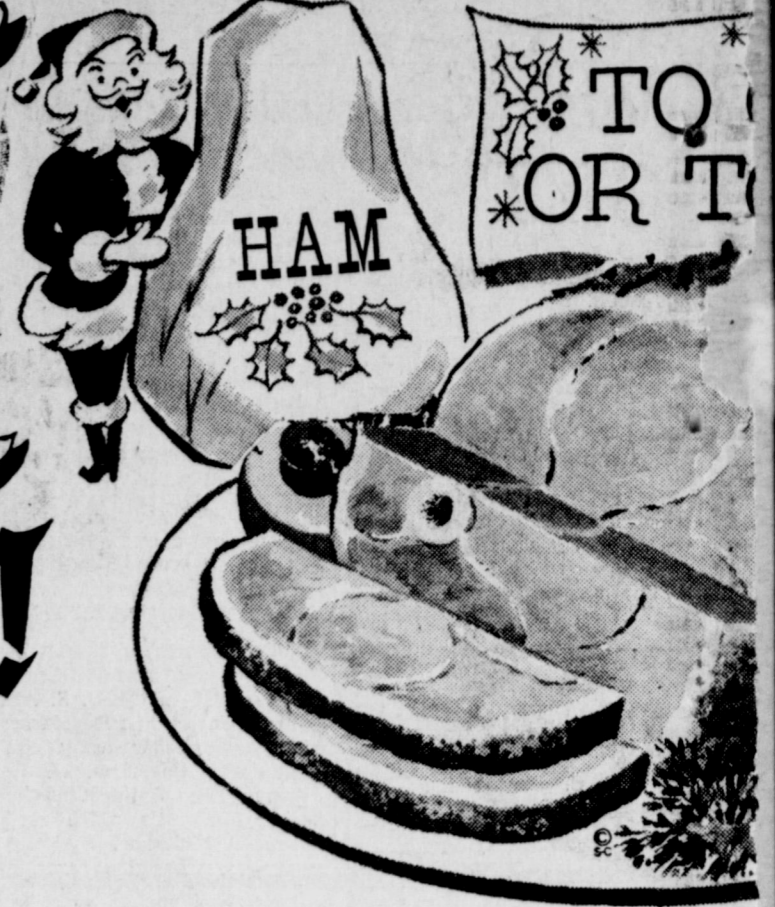
The Detroit Tigers have set Feb. 7 as the reporting date for rookies and minor league players. They train at Lakeland, Fla.

The fruit of the ginkgo tree encloses a kernel which is roasted and eaten as a delicacy in the Orient.

The Eastern Hotel in Boston was the United States' first steam-heated building in 1843.

HAM

for Christmas!



Cashway brings you these Christmas specials to help you save in a warm-hearted Christmas season.

Mr. and Mrs. T. R. White and the personnel of Cashway wish you a Merry Christmas and a Happy New Year.

HAMS **HORMEL'S Fully Cooked "READY TO EAT"** **59c**

HALF HAMS **HORMEL'S FULLY COOKED "READY TO EAT"** **LB. 59c**

Bacon **HORMEL'S RANGE BRAND THICK SLICED** **99c**

Turkey's **CLARY'S U.S.D.A. GRADE A TOMS** **35c**

TURKEYS **CLARY'S U.S.D.A. GRADE A HENS** **39c**

SIRLOIN STEAK **CHOICE HEAVY PEN FED BEEF** **LB. 89c**

Hens **XIT—Pride of the Plains Caged—3 TO 5 LB. AVERAGE** **29c**

SPINACH **LIBBY'S FANCY 303 CAN** **7 FOR 1\$**

DR. PEPPER **12 BOTTLE CARTON (Plus Deposit)** **49c**

SHORTENING **Swift Jewel** **3 LB. TIN**

SUGAR **Pure Cane** **IMPERIAL 10 LB. BAG**

FLOUR **Pur-A-Snow** **25 LB. PILLOW-CASE BAG**

Chocolate **OLD FASHIONED HAND SPUN 79c VALUE**

CARNATION INSTANT **JELLO ASSORTED FLAVORS** **3 FOR**

OLEO **1 LB. CTN. SEAL BLUE** **2 FOR 2**

Libby's SO PICKLE
Libby's Far OLIVES
Libby's Ala SALMG
Libby's No. APPLE
No. 1 Flat MILK
SUN
CRACK
CRACK



"One of those theatrical experiences that can come very seldom in a lifetime."
WASHINGTON POST

MIRACLES WORKER
SEE IT—LOVE IT—NEVER FORGET IT

COMING . . .
LUBBOCK AUDITORIUM
Monday, December 25, 8 p.m.
Tickets on Sale Auditorium Box Office, PO2-4416
A Civic Lubbock Presentation

Carnation
INSTANT
8 Qt. Size
73c
See box for New Diet Plan Idea

GIVE
TO GET



- Dr. Dills or Hamburger Slices
- 22 oz. jar 3 for \$1.00
- Family Size Ripe
- No. 1 Tall Can 3 for \$1.00
- Red Sockeye
- 1/2's Flat Can 59¢
- 303 Can
- SAUCE 5 for \$1.00
- Can Libby's Fancy Crushed
- Peas
- Brand 29¢
- Washing Detergent
- 16 oz. Box 49¢
- Sunshine Hi-Ho
- 1 lb. Box 33¢
- Supreme Saltine
- 2 lb. Box 53¢

FRUIT COCKTAIL LIBBY'S 303 CAN **4 FOR \$1**

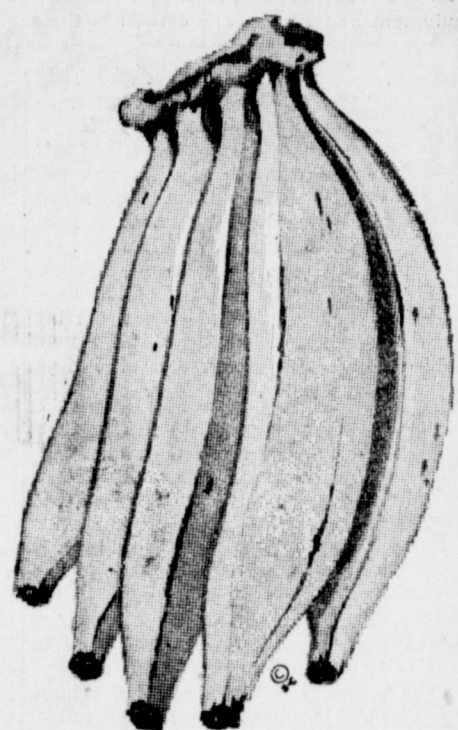


COFFEE KIMBELL'S (Drip or Regular) 1 LB. TIN **59¢**



PEAS EARLY GARDEN LIBBY'S 303 CAN **5 FOR \$1**

PRODUCE



BANANAS GOLDEN RIPE LB. **9¢**

APPLES COLORADO DOUBLE RED DELICIOUS LB. **15¢**

ORANGES TEXAS JUICY SWEET LB. **9¢**

GREEN ONIONS GARDEN FRESH BUNCH **2 FOR 15¢**

CELERY CALIFORNIA CRISP GREEN PASCEL STALK **9**

Green Beans LIBBY'S CUT 303 CAN **5 FOR \$1**

CRUSHED PINEAPPLE LIBBY'S FANCY NO. 1 FLAT CAN **6 FOR \$1**



PUMPKIN LIBBY'S 303 CAN **2 FOR 25¢**

PECANS ELLIS' SHELLED 10 Oz. CELLO PACKAGE **59¢**



PINEAPPLE JUICE LIBBY'S 46 OZ. CAN **3 FOR \$1**

FROZEN FOOD

- 59¢** BREADED SHRIMP Flying Jib 10 oz. Pkg. 49¢
- 89¢** MINCEMEAT PIES Banquet Family Size 39¢
- 89¢** GREEN PEAS Keith's 10 Oz. Pkg. 19¢
- 89¢** BRUSSELS SPROUTS Keith's 8 Oz. Pkg. 19¢



Peaches

LIBBY'S SLICED or HALVES 2 1/2 CAN **3 FOR 89¢**

BE SURE TO SHOP AT CASHWAY WE HAVE A COMPLETE ASSORTMENT OF CHRISTMAS CANDY—FRUITS—NUTS AND FRUIT CAKE MIXES.

These Prices Good at Cashway—Dec. 15th thru 23rd.

- GREEN BEANS** Libby's Cut No. 303 **5 for \$1.00**
- BLACK-EYE PEAS** with Snaps Libby's **7 for \$1.00**
- PEAS** Libby's Early Garden No. 303 **5 for \$1.00**
- SPINACH** Libby's Fancy No. 303 **7 for \$1.00**
- PUMPKIN** Libby's No. 303 Can **2 for 25¢**
- CATSUP** Libby's 14 oz. Bottle **5 for \$1.00**
- HONEY GRAHAMS** Nabisco Sugar 2 lb. Box **65¢**
- CAKE MIX** Betty Crocker Angel Food **49¢**
- DAINTIES** Hershey's Semi-Sweet 12 oz. Cello pkg. **39¢**
- INSTANT MILK** Carnation 8 qqt. Size **73¢**
- ALUMINUM FOIL** Reynolds Wrap 75 ft. roll **79¢**
- LUNCHEON NAPKINS** Northern 80 ct. box **25¢**
- COCONUT** Kimbell's Snow Flake 7 oz. Pkg. **29¢**

99¢ LISTEN TO THE MULE TRAIN OVER KMUL BROUGHT TO YOU BY CASHWAY

White's CASHWAY

Gunn Bros. STAMPS DOUBLE ON WED.

AMERICA'S ONLY 'FLYING VETERINARIAN'



Believed to be the only "Flying Veterinarian" in America is M. R. Osborn, DVM, of Fort Worth who each month pilots his plane 3500 miles throughout Texas and Oklahoma making calls on veterinarians in the two states for a leading West Coast packer of premium and clinical pet foods. The Texas A&M grad of '49 flies out of Meacham Field near Fort Worth, where he makes his home and maintains kennels for 160 dogs of various breeds.

Bailey County Ministerial Alliance

Written by Tommy Gleaton Phone 8591

The Bailey County Ministerial Alliance adopted the attached Constitution on November 14th.

The Alliance met in regular meeting on the 12th of December at the First Methodist Church at 9:30 a.m. All ministers were urged to attend. There was several items of business which need to be attended to.

CONSTITUTION

Bailey County Ministerial Alliance Adopted November 14 1961.

ARTICLE I. NAME

This organization shall be known as the Bailey County Ministerial Alliance.

ARTICLE II. PURPOSE

The purpose of this Alliance shall be to extend the Kingdom of God through organized Christianity, to foster Christian fellowship, to help to raise spiritual standards, to seek moral uplift, and to promote social and civic righteousness.

ARTICLE III. MEMBERSHIP

The membership of the alliance shall consist of all Ministers of the Gospel of Christ, associate and executive assistants, who live in Bailey County, and who meet the following conditions of membership:

1. Those who are willing to cooperate with other ministers and churches in attaining the above stated purpose of the Alliance.
2. Those who attend the meetings of the Alliance with reasonable regularity.
3. Resident ministers who are not pastors of churches and who meet the foregoing conditions of membership shall be eligible to membership in this Alliance by the vote of the Alliance.
4. Other ministers of Lamb and Palmer Counties who meet the foregoing conditions of membership shall be eligible for Associate membership, not entitled to hold office or to vote.
5. Active membership shall consist of those who pay annual dues into the Alliance on the basis of two dollars (\$2.00) annually. Retired ministers not pastors of churches in Bailey County and Associate members shall pay dues on the basis of one dollar (\$1.00) per year.

ARTICLE IV. OFFICERS

The officers of this Alliance shall consist of a President, a Vice-President, and a Secretary-Treasurer. The Officers shall be elected annually in the regular June meeting and shall assume the duties of their respective office on July 1 following. The officers of the Alliance shall constitute the Executive Committee of the Alliance.

ARTICLE V. MEETINGS

Regular meetings of the Alliance shall be held each month on the date and hour set by the Alliance. Called meetings may be ordered by the Alliance or by the Executive Committee.

At least one-fourth of the paid-up membership shall be necessary

to constitute a quorum at both regular and special (or called) meetings.

ARTICLE VI. AMENDMENTS

This Constitution may be amended or changed by a majority vote of the members present at any regular meeting, provided that said change or amendment is presented to the Alliance at a previous regular or special meeting.



Legal Notice

NOTICE TO DEBTORS AND CREDITORS

THE STATE OF TEXAS COUNTY OF BAILEY

TO THOSE INDEBTED TO, OR HOLDING CLAIMS AGAINST THE ESTATE OF J. A. WIMBERLEY, DECEASED, NO. 563, IN THE COUNTY COURT OF BAILEY COUNTY, TEXAS:

PROBATE MATTERS:

The undersigned, having been duly appointed Independent Executors, of the Estate of J. A. Wimberley, deceased, late of Bailey County, Texas, by the Judge of the County Court of said County on the 11th day of December A.D. 1961, hereby notify all persons indebted to the estate to come forward and make settlement, and those having claims against the estate to present them to the undersigned, within the time prescribed by law, to the undersigned, at the residence of H. E. Wimberley, Route 2, Muleshoe, Texas where the said H. E. Wimberley receives his mail.

Witness our hands this 11th day of December A.D. 1961.

H. E. Wimberley (Signed)

J. H. Wimberley (Signed)

Independent Executors, of the Estate of J. A. Wimberley, deceased. 50-2tp

FOUR GOOD FARMS

160 acres N. W. of Muleshoe, lays almost perfect, all in cultivation, improved, irrigated, good allotments. Only \$400 per acre. 160 acres north of Olton, all in cultivation, well improved, irrigated, 70 acre cotton allotment, 12 acres wheat. \$550 per acre.

320 acres north of Earth, well improved and good allotments, worth the money. \$300 per acre.

800 acres north of Springlake, 500 acres in cultivation, 300 acres in native grass. Improved, irrigated. A real bargain at \$200 per acre.

Many other good farms, ranches, and other properties.

BROWN REAL ESTATE

Springlake, Texas

Box 266 Tel. 986-2681 8-50-2tc

For HIGH YIELDS and GOOD STANDABILITY

PLANT KANSAS BRED **FRONTIER BRAND Sorghum**

No Johnson grass. Yields up to better than 9000 LBS. PER ACRE in Bailey County. We have two numbers bred especially for dry land on high lime soils. Early order discount \$2.00 per hundred. **REPLANT SEED FREE!**

See Boone Allison or Sherman Inman at **MULESHOE ELEVATOR** Phone 5850

The Muleshoe Journal

Published each Thursday by The Muleshoe Publishing Company
304 West Second Street, Muleshoe, Texas

Entered as second class matter at the Muleshoe Post Office
under act of Congress, March 3, 1897.
Member of The Associated Press

SUBSCRIPTION RATES

Immediate Territory \$4.00
Out of Territory \$4.50
Advertising Rate on Application.

L. B. Hall, President
Jessica P. Hall, Sec'y-Treas.
L. B. Hall, Publisher
Gary Stone, Editor
L. B. Hall, Adv. Manager
Mrs. Doris Kinser, Society Editor
Jessica P. Hall, Business Office
Mrs. Polly Otwell, Bookkeeper



Guest Editorial

Ad Artistry

If the advertising industry is upset over attacks that have been made on it by long-haired theorists in Washington, maybe it should be assailed further. The result of late seems to be a finer creativity, more artistry that is both enjoyable and efficient in fueling prosperity.

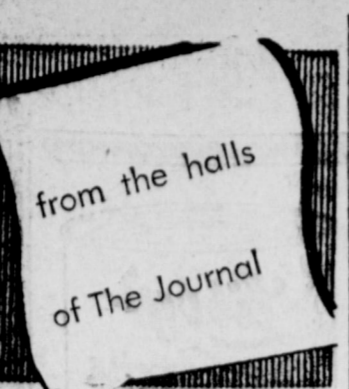
Advertising undoubtedly causes some to buy what they cannot afford at the moment. But advertising's overall merit is as a basic stimulator of economic activity. Ads kindle desire. Desire evokes ambition. Ambition fires work, and work built the greatest nation on earth.
—The Dallas Morning News

Sandhills..Philosopher..Doesn't

Need Help To Find A Spot To Loaf In

Editor's note: The sandhills Philosopher on his Johnson grass farm discusses loafing this week, a field he is very familiar with. Dear editor: I was in my house last night sitting in my rocking chair reading a newspaper, there's one thing you can say for my rocking chair, I can sit in it without a fraction of the responsibility Mr. Kennedy has when he sits in his, and over on an inside page I

found an article that almost floor'd me. According to it, a lot of people in big cities are complaining about their set-up, they think there are too many ugly places in cities, too much hurry, and not enough places to loaf. They want the Federal government to do something about it. It was that latter complaint that got me—wanting the government to furnish a place to loaf in.



NEWSPAPER READERS

The Bureau of Advertising released last week the results of the most important and extensive survey of newspaper readers ever conducted on a nation-wide basis. Part of the survey gives documentary proof to what newspapermen have been asserting for years: Newspapers are read in 86.4 per cent of U. S. homes each week day and 90 per cent of the time they are read at home. It was also found that two-thirds of the readers go through the paper methodically from the beginning, page by page. (This should answer the queries of those who fuss about the location of their ads, who always want to be "up front," and also those critics who say we are a nation of headline, front-page readers.) More importantly for advertisers, the survey discovered that 75 per cent of the men and 84 per cent of the women say they look at the ads even when they do not plan to buy anything. Other interesting statistics include that within the past three months, 23 per cent reported they have bought by mail or phone some specific item advertised in the newspaper; 28 per cent reported clipping an advertisement; over half of those (15 per cent of the total) recalled buying the product whose ad they had clipped. The survey also reveals that readers placed newspapers above other media in the impact of advertising messages (above television, radio and magazines) in rating these comments: "Sticks to the facts;" "Gives useful information;" "Is meant for people like me," etc. Most important of these was this: 82.8 per cent of those inter-

views said newspapers "tell me where I can buy things." (This was almost 30 percentage points above the rating given to radio on the same statement. Television came in third and magazines fourth.) A major portion of any advertising effort is lost, it seems to us, if when a customer is attracted interested, and motivated into buying he is not told where he can make the purchase. Newspapers, being local, can do that better than any other advertising medium and retail merchants know that better than any other advertisers. It all adds up—(Do you mind statistics?) We like to share these "printed thoughts" with our readers. **NOTES FROM OUR FILES FROM SUDAN** These notes from our scrapbook remind us of the Sudan Homecoming last month when Jack Lenderson of Muleshoe and Hoyt Tobertson, Sudan, were elected president and vice-president respectively, of the Sudan Ex-Student Association. Mr. and Mrs. Lenderson are both graduates of Sudan. Jack was master-of-ceremonies at the homecoming and Mrs. Lenderson was depicted, among other members of her class being honored, in a skit as the class prophecy decreed: "A dress designer." (She notes that she turned out in the artist-housewife field, but does saw "some".)

THREE WAY FOOTBALL

And did we all realize that Three Way community has a record of all wins during the 1961 football season? They deserve a belated Congratulations and Best Greetings of the Season from us all! "SADISTICALLY" "When the white man discovered this country, the Indians were running it. There were no taxes. There was no debt. The women did all the work. . . And the white man thought he could improve on a system like that!" (Quoted, naturally, by a man) That is all 'til our 'big Christmas issue next week. . .from the halls of The Journal.

Stone's Throw

Central Texas, like London, is noted for fog. San Francisco has fog, too. And now West Texas has fog. According to old-timers, fog is a rare thing in this neck of the woods. Rare or not, it created a beautiful sight this week in Muleshoe. When the moisture on the trees, fences, highlines, and everything else began to freeze it froze in thin layers on all the surfaces it could find, causing a world that looked artificial—almost like it was made of styrofoam. It was hard on drivers, hard on walkers, too, when the streets and walks froze. The thin covering of ice made all the streets in Muleshoe seem like someone had spilled oil on them. I have a BIG stone to throw this week. A couple of months ago, a dog belonging to M. E. Simmons—"Red" to most of us—was shot through the body with a small-calibre rifle. The dog recovered and is now as frisky as ever. Then, a couple of weeks ago, another of "Red's" dogs died, possibly of poison. If it was poisoned, which the vet seemed to think unlikely, it was a shame, Blackie to get the ball back then they would just playing ball. Tommy takes good care of Blackie. He feeds him every day

and brushes his coat every week, because the dog was just a pup. Somewhere in Muleshoe, there is a little boy. He has a dog that follows him everywhere he goes. Perhaps he waits for the boy at the school door each day. Let's say he does, just to make it more traditional.

"Blackie," as the boy may call the dog, can do all kinds of tricks. The boy, let's call him "Tommy," has had Blackie since both were just old enough to walk. Tommy taught Blackie to sit up and beg. He taught him to roll over and to "speak" for his dinner. He even taught Blackie to fetch a ball.

When Tommy plays ball with the other kids, he has a little trouble with Blackie, as Blackie thinks the ball is there for him to play with. But Tommy and his friends have more fun chasing Blackie sleeps at the foot of Tommy's bed and is there to greet Tommy when he awakens.

Somewhere else in Muleshoe, there is someone who doesn't care for dogs. Perhaps it is a grouchy old man. Perhaps it is a lady whose cats are bothered by a dog that chases them up a tree. Perhaps it is a neighbor of Tommy's who is irritated when Blackie gets in the flower bed.

Instead of issuing a warning that Blackie will be turned over to the police if he doesn't keep out of the flower beds, this person might throw out a poisoned scrap of meat.

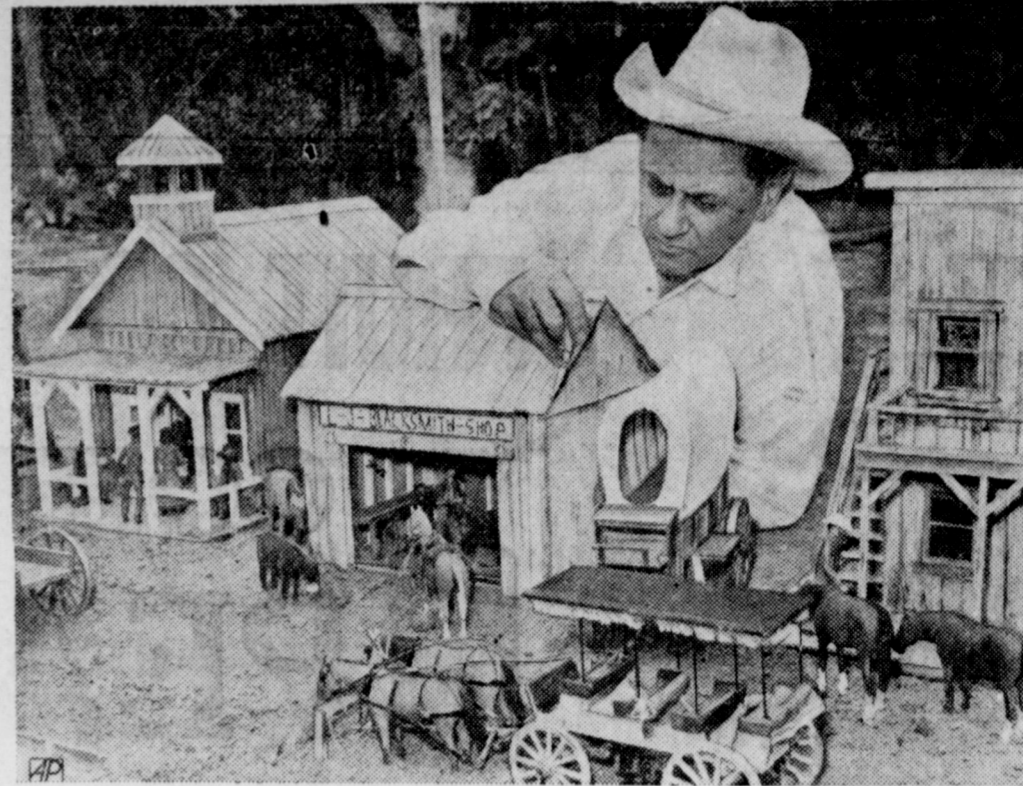
Blackie may come along and eat the meat. In a short while, he would go into horrible convulsions and writhe in pain and agony. Then Blackie would die. He might die at the steps of Tommy's home, where Tommy would find him later.

Can you imagine the pain and sorrow this would leave in a little boy's heart? Can you know the tears that he would shed over his lost friend? It would not be "just a dog" someone has killed. It would be premeditated murder of a lifelong friend.

Someone in Muleshoe has been in closing. I cite the Golden Rule—Do unto others as you would have them do unto you. . .guilty of murdering little boys' friends. Maybe it was accidental, which would make it manslaughter. But some dogs have been poisoned in their own fenced yards.

The smallest piece of territory under the U. S. flag is Kingman Reef, about 1,000 miles south of Hawaii. It is 150 feet long and 120 feet wide at high tide.

The peanut is a native of tropical America and was cultivated by pre-Columbian Indians. Incas ground the rich, oily seeds into a form of butter.



WESTERN WHITTLER — Former cowboy Gene Hobak works on a blacksmith's shop, part of an Old Western town he has fashioned from kiln-dried sugar pine at Hawthorne, Calif. Equipment and figures are carved to the scale of a half inch to one foot.

Texans Hunt, Fish More

The average Texan who hunted and fished in 1960 spent \$157.84 as compared to \$101.57 in 1955, according to a survey of hunting and fishing conducted by the Bureau of Census for the Texas Game and Fish Commission. This survey is in addition to the national survey of hunting and fishing which was conducted by the Bureau for the U. S. Fish and Wildlife Service and reported two months ago. Figures on the Texas survey have just been received by Howdy Dodgen, executive secretary of the Game and Fish Commission. The survey breaks down hunting and fishing practices of 2,425,000 Texans over 12 years of age, or 33.2 per cent of the state's 7 million population. Based on interviews throughout the state during most of this year, the survey covers all of 1960. In age groups, 36.3 per cent of Texans between 25 and 34 were hunters and fishermen last year. Among those in the 35-44 age bracket, the percentage was 35.3. In the age group of 12-17, 33.5 per cent hunted and fished. The bulk of the fishing was done in fresh water, with 1,915,000 Texans over 12 years of age fishing. This represented 26.2 per cent of the total population. The 7 million Texans put in 54,638,000 man days of fishing, or

an average of 22 1/2 days. They made 47,369,000 trips, or an average of 19.5 trips per person. These fishermen spent 33,924,000 days, or an average of 17.7 days per person fishing fresh water, and 6,236,000 man days, or 11.2 man days each, fishing salt water. On small game they hunted 11,117,000 days for an average of 13.9 days per person on 13.3 trips. On big game they hunted 2,282,000 man days for an average of 5 days per hunter.

There were 776,000 fishing trips that lasted more than one day, representing 10.6 per cent of the 7,369,000 hunters who averaged 3.9 days each. The average fisherman in Texas in 1960 spent 8.6 days on the water, and the hunter spent 6.8 days in the field. In traveling by automobile, they racked up a grand total of 1,168,706 miles. The average fisherman traveled 314.7 miles, and the average hunter 301 miles. There were 418,000 deer hunters last year, who killed 208,000 Texas deer representing one deer for every two persons. There were 9,665,000 quail, with an average of 30.1 quail per hunter. The 450,000 Texas dove hunters killed 14,081,000 doves, averaging 31.3 each. In expenditures, 96 per cent of those persons who hunted and fished spent \$382,769.00, for an average of \$157.84 per person. They spent a total of \$198,436,000 or an average of \$81.53, for fishing equipment; \$156,168,000 or an average of \$64.40 trip expense, and \$13,649,000, or \$5.63 each, for licenses

and lease fees. It was pointed out that the relatively high total cost of fishing equipment was bought about mainly by more expensive boats. In a comparison of these figures with a similar survey in 1955, it was shown that there was a 131.9 per cent increase in total expenditures of fishermen and hunters. The 1960 total of \$382,769,000 is compared with the 1955 total of \$165,054,000. The average hunter-fisherman expenses last year amounted to \$157.84 against \$101.57 in 1955. On equipment items, the average expenses last year amounted to \$81.53 against \$36.25 in 1955. The total trip expenditures last year amounted to \$64.40 against \$58.27 in 1955, whereas hunting licenses and lease fees were \$5.63 last year against \$2.12 in 1955. The report showed that slightly more than 50 per cent of all Texas Hunters and fishermen last year bought licenses.

The percentage of Texans who hunt and fish is much higher than the national figure. In the U.S. survey released in September, it was shown that 23 per cent of the population of 12 years old and over fished and hunted in 1960. This compares with 33.2 per cent of Texans.

It is interesting to note that both in Texas and nationally there is a definite increase in the number of hunters and fishermen, the number of hours they spend in hunting or sports fishing, and their expenditure on equipment.

WESTERN 66 CO. AND WESTERN FERTILIZER ANNOUNCE

They Are Now

DEALERS for DEKALB Products

HYBRID SORGHUM

HYBRID CORN

Earth Hwy.

Ph. 2560

I'll tell you, it's a sad day for American enterprise when people have to ask Washington to furnish them a place to loaf. A man who hasn't got enough get-up about him to figure out a place on his own to loaf in, is in pretty bad shape. I don't want to brag, but I've never seen a place yet I couldn't loaf in. Why, I wouldn't be surprised if these city people not only want the government to furnish a place for them to loaf in, but before long would be asking the government to provide supervised loafing. I am worried about this situation, and had no idea enterprise and self-reliance were disappearing so fast in this country. But I was just thinking. Now I'm an expert in finding a place to loaf, and if Washington can keep a straight face—which won't be hard, it's had a lot of practice and seriously goes about undertaking to teach city people how to find a place to loaf in, I will be glad to head up this department, at a reasonable salary. A specialist is entitled to adequate pay. It takes years of practice to learn how to loaf, all the parks in the world won't accomplish it if a man hasn't got the inner resources to swing it by himself. I never figured there'd be an opportunity to get paid for this accomplishment, but I'm willing to give it a try. A man should never get so busy at his job that he refuses to share his achievements with others. Yours Faithfully, J. A.

NO DEFROSTING EVER!



Model FPI-14T-62
13.93 cu. ft. net capacity
4 colors or White

- Frost never forms—with exclusive Frigidaire Frost-Proof system!
 - Freezer stores 100 pounds!
 - Instant ice service with Flip-Quick Ice Ejector.
 - Luxury features galore—Butter Conditioner, Roll-To-You shelves, Meat Tender and more!
- Famed Frigidaire Dependability!

24 MONTHS TO PAY

easy terms

FRIGIDAIRE
PRODUCT OF GENERAL MOTORS
HARVEY BASS
APPLIANCE
222 Main 3-0300

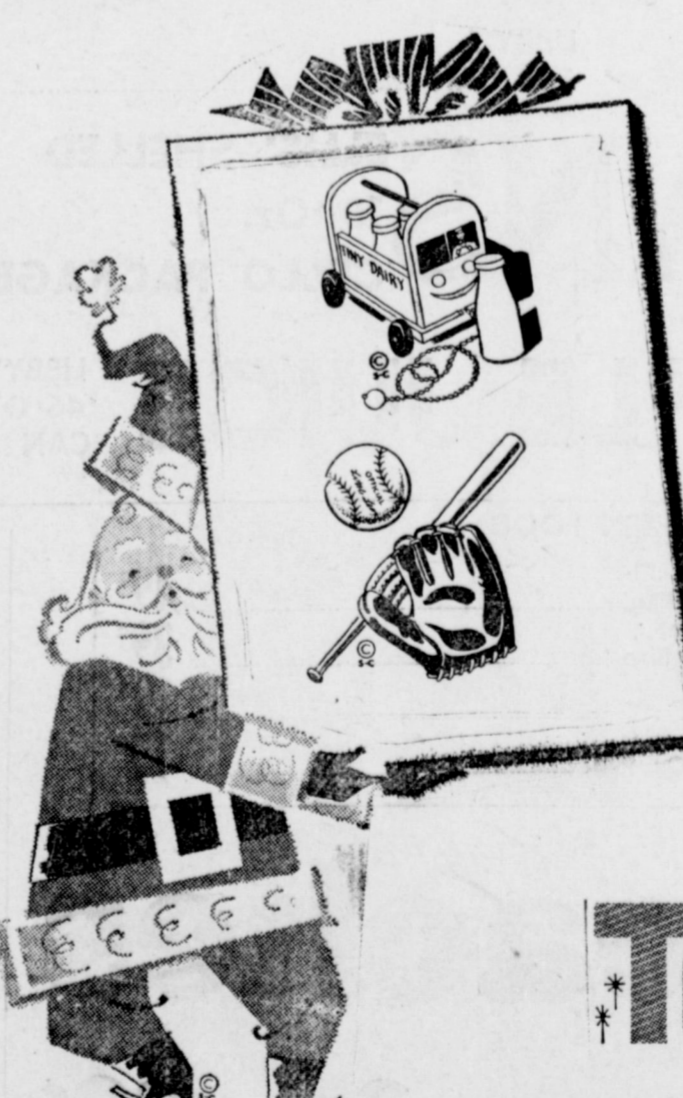


Light up her Christmas with a Starlite phone

What gift could be more thoughtful than a personal STARLITE® extension phone—it saves steps, serves as a night light (with its new PANESCENT® dial) and adds a modern touch to any room. What gift could be easier to give than a STARLITE—it comes in a new gift package, or as a gift certificate, and we'll put it on your monthly phone bill. Stop in today and pick up your gift-packaged phone (available in your choice of five decorator colors). We'll hook it up for you right after the holidays.

GENERAL TELEPHONE
America's Largest Independent Telephone System

TOYS FOR GIRLS



BICYCLES TRICYCLES WAGONS



TOYS FOR BOYS

Shop A Big New Selection

Games

JOHNSON & POOL

320 MAIN

Ph. 7370

Tax Rules Are Made More Clear

Ellis Campbell, Jr., District Director of Internal Revenue Service today outlined Federal income tax rules covering deduction of amounts paid for leasing of automobiles or trucks.

Mr. Campbell said the information is intended to answer continuing inquiries which apparently stem from advertisements implying that all auto leasing expenses are fully tax deductible.

Federal income tax rules on this point are quite clear, Director Campbell said. Auto or truck lease payments are deductible only if they represent ordinary and necessary expenses of and are directly attributable to the operation of a trade or business, the agency explained.

Under no circumstances are such lease payments deductible to the extent they represent personal use by a taxpayer, such as for vacation trips or driving to and from his place of business or employment.

No deduction will be allowed for so-called lease expenses which, in fact, constitute pay-

ments toward the purchase price of autos or trucks, Mr. Campbell said. The lease payments are so arranged as to constitute advance rental—such payments must be duly apportioned over the entire rental period.

Changes Seen In Crop-Hail 1962 Insurance

AUSTIN — There will be some changes made in crop-hail insurance for 1962, if the State Board of Insurance approves the rates and rules to be proposed at the annual hearing to be held here Dec. 13 at 9 a.m.

Three different filings have been made, proposing to offer between them a wide range of choices for farmers who protect themselves against hail losses.

The Crop-Hail Insurance Actuarial Assn., made up of most companies writing this type of insurance, has asked to be allowed to drop the 4 and 6 per cent optional escalators it offered last season. Instead, it wants an escalator, then when the crop loss



MAN OF THE YEAR

Frank Moore of Plainview has been named "Man of the Year in Texas Agriculture" by Progressive Farmer Magazine. Moore, who farms 1,600 acres of irrigated land in Hale County, is shown above examining a grain

sorghum crop. In addition to his farming interests, Moore is president of High Plains Research Foundation at Halfway and president of the Grain Sorghum Producers Association, Amarillo.

to offer a new 5 per cent escaper cent statewide average rate lator, and keep the 3 per cent increase. If a farmer there would be no increase at all, takes both the 3 and 5 per cent Ranger Insurance Co., which reaches 68 per cent of insurance was organized by Anderson-Clayton Co. last year to write crop-hail insurance at the 1960 rates day instead of 3 or 5 per cent. and plans, will keep the same The Association proposes a 4 policy provisions as last year.

and in addition, wants to adopt the Association plan. Ranger does not propose any increase in rates.

The Texas Farm Bureau Mutual Insurance Co. of Waco, which entered the crop-hail filing field last year when it began to look like there would be no such insurance offered, likewise wants to offer the same policy it offered last year, with a few minor changes. It has also asked permission to offer an optional policy which would graduate at 10 per cent a day instead of 5 per cent as at present. This policy would cost the farmer about 25 per cent more than the old Farm Bureau policy.

The Board of Insurance got the filing firms to submit their pro-

The Muleshoe Journal

DEDICATED TO THE PROGRESS AND DEVELOPMENT OF BAILEY COUNTY AND THE GREAT MULESHOE COUNTRY
VOLUME 39, NUMBER 50 THURSDAY, DECEMBER 14, 1961

BY FARM MAGAZINE

Frank Moore Named 'Man of the Year'

Frank Moore of Plainview has been named "Man of the Year in Texas Agriculture" by the Progressive Farmer magazine.

The award is given annually to a top Texas agriculturist.

Although living in one of the country's most productive agricultural areas, Moore says "We're at half throttle and haven't nearly reached our potential."

A member of the state ASC committee, Moore farms 1,600 acres of irrigated land in Hale County with rotation crops of cotton, grain sorghum, soybeans and wheat.

The Hale County farmer is president of the High Plains Re-

search Foundation at Halfway which was started in 1956 partly under his supervision.

Moore is also president of the Grain Sorghum Producers Association of Amarillo which serves as a sounding board—both nationally and internationally—for the U.S. grain sorghum industry. He was instrumental in its founding in 1955.

Dear Santa Claus,
I want a gun with a little gun on the holster and I want a watch to, and I want a winchester.

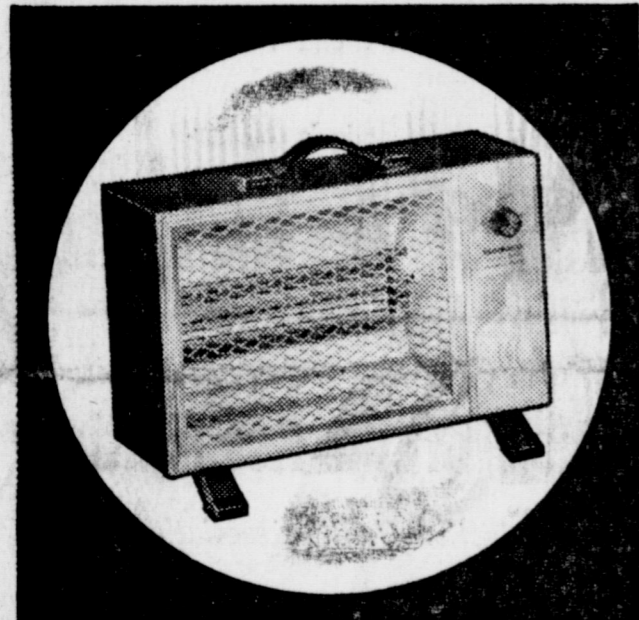
Love,
Johnny Ray Eagle



GLAMOUR—Wearing a beautiful cotton lace formal at a fashion show is Linda Lackey, 1961 Maid of Cotton. Similar thrills are in store for the 1962 goodwill ambassador of cotton, who will be chosen in De-

TRY

BEFORE YOU BUY!



TOASTMASTER PORTABLE

ELECTRIC HEATER

\$19.95*

Safe, instant heat with this beautiful new TOASTMASTER electric heater, thermostatically controlled to give you the heat you select. Closely-spaced safety grill keeps inquiring fingers away from elements. Cabinet and carrying handle stay cool to the touch. ■ HOW TO TRY — HOW TO BUY... Ask any Southwestern Public Service Company employee or call your nearest Southwestern Public Service Company office. ■ EASY PAYMENT PLAN (3 ways to pay) ■ You may pay cash, pay in 30 days, or take up to 12 months to pay, without interest or carrying charges.

H-4 * PLUS SALES TAX
SOUTHWESTERN PUBLIC SERVICE COMPANY



BIG ENOUGH TO ACCOMMODATE — SMALL ENOUGH TO APPRECIATE

COFFEE

MARYLAND CLUB 1 Lb. Can 59¢

LARGE 400 Ct. Box
KLEENEX

FACIAL TISSUE 4 Boxes for 89¢

PURE CANE
SUGAR
IMPERIAL 10 Lb. Bag 89¢

COUNTRY FRESH
EGGS

DOZEN 49¢

MANY OTHER SPECIALS

SPECIALS START FRIDAY, DEC. 15 thru DEC. 22

WAGNON GROCERY & MARKET
Quantity Is No Substitute For Quality
We Give Wagnon Stamps

515 AVE. A PHONE 4060

ALL NEW!
SENSATIONAL QUALITY VALUE
ZENITH
AUTOMATIC STEREO/Phono PORTABLE

Plays ALL your Stereo/Monaural Records



COMPLETE WITH REMOTE SPEAKER UNIT that has Exclusive provision for playing many transistor radios thru its giant 6" x 4" speaker!

THE CHEERLEADER, MODEL HPS45B
In smart two-tone color washable Duratron covering.

CARRIES AS SINGLE UNIT

\$89.95

COMPLETE

Includes:
• 6" x 4" Zenith Quality Speaker in each unit.
• Automatic Shutoff, Automatic Intermix.
• Dual Volume and tone controls.

ALBUM OF HI-FI RECORDS, \$14.98 VALUE.

FREE With Any Stereo Set Purchased

JOHNSON-POOL

320 Main Ph. 7370



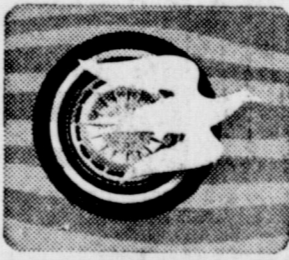
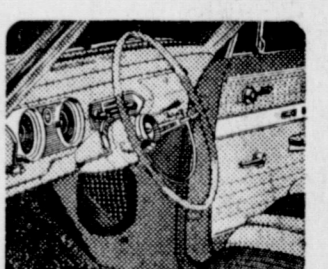
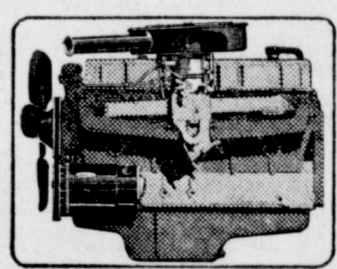
You've got nine Chevy II models to choose from. This is the Nova 400 Sport Coupe.

Luxury and low price were never blended so beautifully

Who but Chevrolet could've done it? Price, spice and everything nice! A car that's bustin' with room, zoom and richness. One that's deep in convenience and comfort. One that won't let you squander a thing but affection. Look over the beautiful new Chevy II Nova here, and light out in it at your dealer's.

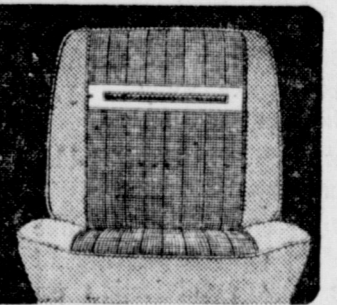
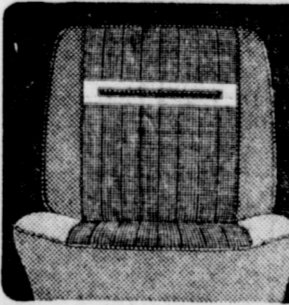
NEW CHEVY II NOVA

A SIX WITH V8 SCAT. You design a throaty Six (120 hp. strong) with special refinements like seven main bearings. You take your Six and team it with a car that is hundreds of pounds lighter than the big jobs—and, partner, you've got Go!



EASIER GOING RIDE. New Mono-Plate rear springs take the place of old-fashioned multi-leaf springs. Tough but ever so gentle, they help give you a ride that reminds you of the big Chevrolet—and you know how smooth that is.

RICH REFINED INTERIORS. Here's where you sit in the lap of luxury. Leatherlike vinyl upholstery. Carpeting and scuff mats. Vinyl overhead and chrome trim—the works!



EVEN BUCKET SEAT. IF YOU LIKE. Comfortable, contoured for full support, padded with thick deep-foam cushioning, covered in rich leather-grained vinyl. Yours at slight extra cost in the Nova Sport Coupe and Convertible.



Body by Fisher

STRIKING NEW STYLING. Any way you look at it, the Chevy II Nova is a neat, nifty fashion plate. The lines are so crisp and clean we're tempted to call them "elegant" (except that sounds downright expensive and, as your dealer will happily show you, Chevy II is anything but!).

See the new Chevy II, '62 Chevrolet and '62 Corvair at your local authorized Chevrolet dealer's

C & H CHEVROLET CO.

207 MAIN PHONE 3-0850 MULESHOE, TEXAS



FORTH SPAN—Cables are strung from the twin steel girder towers of new suspension bridge rising across the Firth of Forth at South Queensferry, Scotland.

GO — NO NO-GO

BLYTEVILLE, Ark. (AP)—A solid black billygoat named No-Go was a factor in boosting attendance at the Blytheville Jaycee meetings.

The unlucky member who missed a meeting received No-Go as a two-week guest. The reluctant host could get rid of him earlier by bringing in a new member.

Three Way Briefs

by Mrs. Jack Lane

ATTENDS FUNERAL

Mrs. Thurl Lemons and Mrs. Ed Irwin went to Weatherford, Texas Wednesday to attend the funeral of their father Mr. W. W. Lytle. Mrs. Lemons returned home Friday.

VISITS AUNT

Eddie Erwin Jr. of Morton came home with his aunt, Mrs. Thurl Lemons, Friday to spend a few days in her home.

VISITS PARENTS

Mr. and Mrs. Jack Lane and girls visited in the home of Mr. and Mrs. V. A. Lane at Muleshoe Sunday.

VISITS GRANDPARENTS

Scarlet Scoggins daughter of Mrs. Luella Scoggins of Ballinger, Texas is spending a few weeks with her grandparents Mr. and Mrs. Virgil Holley. Scarlet plans to stay until Christmas.

BIRTHDAY DINNER

Mr. Tommy Galt and James Courtney were honored with a birthday dinner Sunday in the home of the Tommy Galts. Those attending the dinner were, Mr. and Mrs. T. G. Gaddy of Portales, Mr. and Mrs. L. W. Chapman, Mr. and Mrs. Cass Stegall and children, Mr. and Mrs. James Courtney and children, Linda Jordan and Kathrine Masten.

PIANO STUDENTS

Wenonah Williams and Janna Sue Lane will be among the students playing special music at the Hi-Lo Piano Christmas Program Monday night December 4, in Muleshoe.

WCS

The WCS of the Three Way Methodist Church met Monday, November 27 in the home of Mrs. Cecil Cole. The theme for the program was, "This Is My Church." Members present were: Mmes. John Tyson, Lon Reeves, Tommy Galt, Cass Stegall, Rayford Masten and the hostess Mrs. Cecil Cole.

LUBBOCK SHOPPERS

Mr. and Mrs. L. W. Chapman and Mrs. Tommy Galt were in Lubbock Tuesday shopping.

Mrs. Conrad Williams was in Lubbock Thursday shopping with her mother and sister.

DINNER GUEST

Bro. Cleveland of the Enoch's home of Mr. and Mrs. Perry Fort Sunday.

WMU

The WMU of the Three Way Baptist Church presented part of the Foreign Mission Program to the church Wednesday night. The theme for the program "Good Tidings To All People" began the week of prayer for Foreign Missions.

The women plan to present the rest of the program Wednesday night, December 6 at 7:30.

"M" NIGHT

Lawayn Batteas and Patsy Fort will represent the Three Way Baptist Church as King and Queen in the "M" Night Services at the First Baptist Church in Littlefield, Monday night.

DINNER GUEST

Bro. Jerry Haley, Pastor of the Three Way Baptist Church was dinner guest in the home of Mr. and Mrs. Carroll Fort Sunday.

HDC

The Home Demonstration club met in the home of Mrs. Gene

57th Legislature in view of the fact that 90 percent of every state dollar expended is for highways, education, public health and welfare.

All but the health and welfare agencies are centrally coordinated.

TEXTBOOK STUDY—Five representatives have been appointed to an interim committee to study contents of textbooks used in public school. Particular attention will be paid to those relating to American heritage, traditions, philosophy and history.

Representatives W. T. Dungan of McKinney, Bob Bass of DeKalb, John C. Alaniz of San Antonio Nelson Cowles of Malheur and Ronald E. Roberts of Hillsboro are to report their findings to the 58th Legislature.

STATE CAPITAL Highlights AND Sidelights
by Vern Sanford
TEXAS PRESS ASSOCIATION

AUSTIN, Tex.—More than 600 "Texans for Tourists" attended Gov. Price Daniel's conference on Tourism.

They took a long look at sources and resources that can be used to promote nation advertising of the state's visitable virtues. While here, they decided to set up a non-profit organization called the Texas Tourist Council. Tentatively scheduled was an organizational meeting for January 10, "or during the next session of the Legislature."

Texas Tourist Council will seek the reverse effect of another group who tried to exploit the state—the carpet-baggers. It was the influence of the latter that caused the Legislature to prohibit the use of state funds for advertising Texas' attractions 86 years ago.

Governor Daniel said, "Now the march of time has come full circle... we find ourselves engaged in a vigorous economic competition which might be called, in a friendly way, another 'war between the states'."

He referred to the battle for tourists—third largest industry in the nation; the 13th in Texas. Texas Tourist Council will seek \$300,000 a year from the Legislature, for advertising tourist attraction. Texas law now requires that state funds be matched by business and industry. So some system of financial subscription will have to be devised.

BANKERS ASKED FOR IDEAS—Governor Daniel sent a letter to the Texas Bankers Association asking the bankers to present a proposal for protecting the rights of bank depositors. He recommended that newspaper ads be published by the banks to locate owners (or heirs) of accounts inactive for more than seven years.

Governor Daniel added that proper notice to the state, of an escheatable property would be "an incidental result of this production."

He said the subject will be

THE W. J. WOODARDS TO RESIDE IN ARLINGTON

Mr. and Mrs. W. J. Woodard moved to Arlington last week after having farmed in the Muleshoe area for the past 11 years.

The Woodards have recently purchased a brick home situated near Arlington lake where they will make their home.

Their three children who live at Arlington are: Mr. and Mrs. Don Dilks and children, Mr. and Mrs. Pat Williams and children, and Clyde Woodard.

Clyde Woodard has lived in Muleshoe and Friona for several years and was employed as a pilot at Bengier Field in Friona until moving to Arlington recently to accept a position with the A. L. Davis Stores there.

Mr. and Mrs. Woodard were active members of the Church of Christ.

submitted very soon to a special session of the Legislature and asked the TBA to present its own proposal before December 20.

"The reason for the urgency is the known fact that a sizeable number of national banks are transferring these dormant deposits to the profits of the banks without advertising for the lost owners," he wrote.

"I believe most Texas bankers will agree that this is a practice which should be stopped for the protection of the good name of the banking profession in Texas, as well as for the protection of the rights of missing owners and the rights of the State if no owners exist."

WILSON ANNOUNCES—Attorney General Will Wilson has announced as a candidate for governor.

The 49-year-old Dallas native said he has remained loyal to his party, but is "an independent Democrat who wears no man's collar and is not a captive candidate of any faction or interest group."

SHIVERS IN THE NEWS—There's considerable talk in Austin about the possibility of former Gov. Allan Shivers running again.

This surprised some since Shivers backed Jack Cox in 1960 and Cox is the Republican candidate.

Rumor started with Shivers' statement that: "If I get involved in politics at all next year it will be as a candidate."

HEALTH AND WELFARE COORDINATION—Speaker James A. Turman announced appointment of an advisory committee, composed of Representatives George Richardson of Fort Worth, Obie Jones of Austin and Jim Markgraf of Scurry, to help the Texas Legislative Council study coordination of state health and welfare agencies.

Study was requested by the

Brazil has been a republic only since 1889. Before that it was ruled for 67 years by its own emperor.

Rambler—An Obviously Better Value In Product and Price—in every model and size!



You'll find every 1962 Rambler priced lower than 1961, but with scores of improvements for new beauty, savings, safety, and trouble-free driving.

Lowest-priced convertible! The Rambler American "400". Power top is standard. Sedans, wagons, too.

Get the best of both! Big-car room and comfort, compact-car handling ease and economy... you get the best of both in the Rambler Classic 6.

Hot 'n' handsome! 250 or 270 H.P. V-8... Rambler Ambassador—'62's action-packed compact.

102 ways new and better! Double-Safety Brake System. Self-adjusting brakes. New Road Command Suspension, 33,000-mile chassis lubrication on Classic 6 and Ambassador V-8.

All models lower priced! Lower than '61. See your Rambler dealer, for today's obviously better value!

*Manufacturer's suggested factory-delivered prices. Optional equipment, transportation, state and local taxes, if any, extra. Prices may vary with dealer's individual pricing policy.

Rambler WORLD STANDARD OF COMPACT CAR EXCELLENCE

CAYLE REED Buick-Rambler
301 North First MULESHOE, TEXAS Ph. 4030

RAMBLER SALES HIT ALL-TIME HIGHS FOR OCTOBER AND NOVEMBER

TRAVEL
THE HOSPITALITY ROUTE
70 COAST P

Perfect Family Gift!

ALL NEW 1962
HIGH FIDELITY STEREO
By World Famous
ZENITH
with NEW STEREO FM RADIO

JOHNSON-POOL
320 Main Ph. 7370

The Churches of Muleshoe Welcome You

ASSEMBLY OF GOD
Muleshoe Assembly of God
219 E. Ave. E - Ph: 3-9840
J.W. Farmer, Evangelist
Sunday School - 9:45 a.m.
Morning Worship - 11:00 a.m.
Youth Meeting - 6 p.m.
Sunday Evan. Service - 7 p.m.
Midweek Ser., Wed. - 7:30 p.m.
W.M.C. - Thurs. - 2 p.m.

BAPTIST
Calvary Baptist Church
1733 W. Ave. C

First Baptist Church
220 W. Ave. E - Ph: 6900
Rev. Don Murray, Pastor

Main Street Baptist Church
424 Main St. - Ph: 8130
Rev. Lynn Stephens, Pastor

Primitive Baptist Church
W.R. Dale, Pastor
621 S. First

Trinity Baptist Church
— A Southern Baptist Church —
314 E. Ave. B. - Ph: 3-4794
Troy Walker, Pastor

Sunday School - 9:45 a.m.
Training Union - 6:30 p.m.
Wed. Prayer Meeting - 7:30 p.m.
W.M.S. Thurs. - 9:30 a.m.

St. Matthew Baptist Church
W. Third
L. B. Davis, Pastor

Spanish Baptist Mission
421 E. 4th St. - Ph: 3-3280
Roque Puente, Pastor

CATHOLIC
Immaculate Conception Catholic
Northeast of City
(Fr.) Clifton J. Corcoran

Sunday Masses:
8:30 a.m. - High Mass
12:15 p.m. - Dialogue Mass

Daily Masses:
Mon. 4 p.m.
Wed. - 7:30 a.m.
Other days - 8 a.m.

Christian Doctrine Classes
Sundays: After 8:30 a.m. Mass
Mondays: After 4 p.m. Mass
Wed. After 7:30 p.m. Holy Mass

CHRISTIAN
First Christian Church
120 W. Ave. G. - Ph: 3-5040
Ray Vinson Jr., Pastor

JEHOVAH'S WITNESS
Friona Highway
Boyd Lowery, Minister
Phone 965-3381

CHURCH OF CHRIST
Muleshoe Church of Christ
517 S. First - Ph: 3-0700
R.M. Grigg, Evangelist

Sunday:
Radio Program KMUL - 8 a.m.
Bible Classes for all - 10 a.m.
Morning Worship - 10:50 a.m.
Evening Worship - 6:30 p.m.

Wednesday:
Mid-Week Meeting - 7:30 p.m.

Northside Church of Christ
117 E. Birch St. - Ph: 3-4110
Frank Duckworth, Evangelist

Sunday: 10-30 a.m.
Night - 6:30 p.m.
Wednesday - 7:30 p.m.

EPISCOPALIAN
St. James' Episcopal Church
Clovis N.M. - Ph: PO 3-4638
Rev. Charles L. Henry, Rector

Monthly Communion:
Fourth Tuesdays at 8 p.m. in the Youth Chapel at the First Methodist Church.

METHODIST
First Methodist Church
507 W. Second - Phone 8470
J. Frank Peery, Pastor

Sunday:
9:45 a.m. - Sunday School
10:50 a.m. - Morning Worship
6 p.m. - Youth Fellowship
7 p.m. - Evening Worship
Wednesday:
8 p.m. - Midweek Service

Latin American Methodist
Ave. D & 5th St. - Ph: 3-0620
Rev. E.C. Pequeño, Pastor

NAZARENE
Church of the Nazarene
Ninth & Ave. C. - Ph: 5128
Ronald Crosley, Pastor

Sunday School - 10:00 a.m.
Morning Worship - 11:00 a.m.
N.Y.P.S. - 6:30 p.m.
Sun. Evening Worship - 7:30 p.m.
Mid-Week Ser. Wed. - 7:00 p.m.

PRESBYTERIAN
First Presbyterian Church
Morton Highway
Rev. Finis G. Hodges, Minister

Sunday School - 9:45 a.m.
Morning Worship - 12 a.m.
Youth Fellowship - 6:45 p.m.
Jr. Activities - 6:45 p.m.
Adult Study - 6:45 p.m.

LETTERS TO SANTA

My name is Torie Freeman and I have a little cousin named Brian Thomas. Brian's Daddy, Carl Thomas is in Mannheim Germany. We would like very much to have uncle Carl home with us on Christmas Day. But even you, with all your gifts and wonders can't bring him to us. But you can Dear Santa see that Uncle Carl and all of the lonely service boys have a nice Christmas. And please let them know that all of here in Muleshoe are thinking of them and ask all the people to remember the service boys when they say their Christmas prayers. Merry Christmas to all.

Tori Freeman

Dear Santa

Here is what I want for Christmas. A bike also a basketball, for myself and my little brother Johnny want a truck and a red wagon. I'm three year old and my brother is going to be 2 year on December 29, and Santa please don't forget my 4 cousins who live on North Main in Mrs. Oean's rent house right behind her house. I forgot what they want, but please don't forget them are Cruz, Jr. 4 year and his sister is Minnie 3 year and his brother, Nino 2 year and his little brother, David 1 year.

Thank you Santa,
Your little friends
Gregory & Johnny Hernandez.

Plainview Production Credit Association 1961

PAY TO THE ORDER OF Association Stockholder-Borrower \$ 37,000,000

Thirty-seven Million and no/100----- dollars

For financing farming and ranching operations

Plainview Production Credit Assn.

More than 1,300 farmers and ranchers received drafts totalling more than \$37,000,000 in 1961 to finance their farming and ranching operations. The Plainview Production Credit Association, through its experience and resources, provides complete credit services for any type or size of agricultural operation.

- Low interest rate (6%) charged only for the time money is actually borrowed
- Service by personnel experienced in all phases of agricultural credit
- Dealing only in agricultural credit
- Owned and operated by farmers and rancher stockholder-borrowers
- Loan funds available through the nation's commercial money market

Consult the Plainview Production Credit Association office nearest you in planning your 1962 financing program.

Plainview Production Credit Association
"The Nation's Largest Production Credit Association"

W. B. LeVeque, Manager
JoLen Ballew, Ass't. Manager

Muleshoe, Texas Phone 3-1620

AMUSEMENT GUIDE

TV Tips

The season premier of Leonard Bernstein and the New York Philharmonic and the Bluebonnet Bowl Game top the week's viewing on KDUB-TV, Channel 13.

THURSDAY

Leonard Bernstein and the New York Philharmonic present "A Joyful Noise, bringing viewers Christmas music by the classic masters and modern composers, at 6:30 p.m. Thursday on Channels 13 and 10, one hour special.

Mitch Miller recalls his early days in New York City when he haunted the employment offices for work—and does a bit of dreaming about jobs which are filled with music—on Sing Along With Mitch, in color, at 9 p.m. Thursday, Channel 11.

FRIDAY

A new series of acts will be presented by the "Circus Heros Toga" on INTERNATIONAL SHOWTIME at 6:30 p.m. Friday, Channel 11. This will be the second visit to the Italian circus.

A close look at a Peace Corps group in a challenging assignment in Tanganyika, British East Africa, will be presented as an NBC News Special in color at 8:30 p.m. Friday on channel 11 and 4.

"Clase Up" illustrates communist hold in Italy, spotlighting the most active opposition to the party, the Roman Catholic Church in an hour-long program, "The Remarkable Comrades at 10:30 p.m. Channel 13 Friday.

SATURDAY

Channels 13 and 10 bring grid-iron action from THE BLUEBONNET BOWL at 12:45 p.m. Saturday followed by the San Francisco 49ers and the Baltimore Colts FOOTBALL LEAGUE in San Francisco at 3:30 p.m. Saturday.

Post season grid games to be presented Saturday on Channel 11 are the Blue-Gray game, the East-West game, the NFL Pro Football Championship, the Sugar Bowl, the Rose Bowl, the Senior Bowl and the Pro Bowl.

At 11:45 a.m. this Saturday, on Channel 4 and 11, THE LIBERTY BOWL.

SUNDAY

PRO FOOTBALL is at 2:30, 2:30, channel 7; 1 p.m., channel 10, and 13 at 4 p.m., 13.

Channel 4 offers "COMMUNISM," part three of A Way of Thinking Dynamics at 4 p.m.

THE BOYS RANCH CHRISTMAS PARTY will be seen on Channel 10, 10:25 p.m.

At 9 p.m., the DU PONT SHOW will present a Christmas story on channel 11.

WEDNESDAY

ARMSTRONG CIRCLE THEATRE will present a special at 9 p.m. on channels 10 and 13.

TV Tips (cont.)

'Miracle Worker' Lubbock Yule Play Offering

"The Miracle Worker," the humorous, dramatic, award-winning Broadway success—called "the most exciting show in seasons"—is coming to the Lubbock Auditorium on Dec. 25, at 8:00 p.m.

Is the "Miracle Worker" a religious play? One could call it a religious play, for that matter, in that it deals with the salvation of a human soul from darkness, not of sin, but incomprehensibility. That soul is Helen Keller.

Though normal at birth, she suffered, while still an infant, a disease that robbed her of the senses of seeing and hearing. Thus deprived, Helen Keller grew

into a child who behaved like a wild animal.

When Helen was about 7, her parents hired a teacher, a girl of 20 named Anne Sullivan, portrayed by Eileen Brennan. Before regaining her sight through surgery, Anne Sullivan had been educated in a school for the blind. Driven by her own deep sympathy for the child's plight, the teacher was determined to establish communication with Helen, played by Donna Zimmerman.

Their dramatic struggle and the thrilling success of the teacher makes you proud of the human race. Helen Keller, who today reads braille, speaks and even lectures, is one of the outstanding personalities of our time.

Tickets may be purchased at the box office or by writing: Civic Lubbock, Inc., Box 5101 or calling PO2-4616.

AND IT'S INSURED LIKE ALL THE OTHER THINGS WE HAVE—IT'S INSURED BY

POOL INSURANCE AGENCY

114 E. Ave. C — Muleshoe Tex.
Dial — 2950

RUFFY TWINS

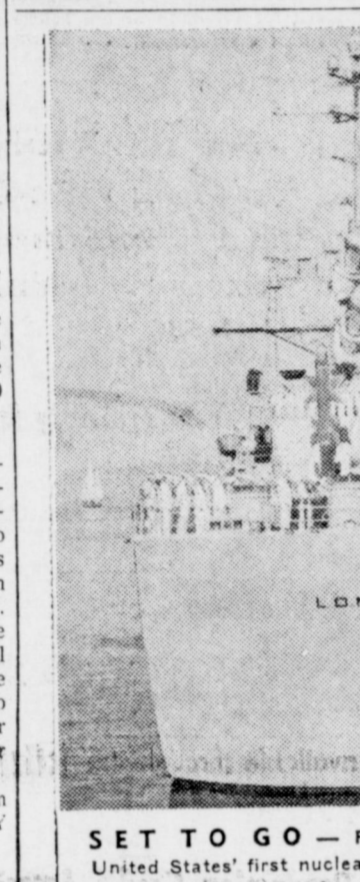
by LEE POOL



AND IT'S INSURED LIKE ALL THE OTHER THINGS WE HAVE—IT'S INSURED BY

POOL INSURANCE AGENCY

114 E. Ave. C — Muleshoe Tex.
Dial — 2950



SET TO GO — Flag is raised on stern of the United States' first nuclear powered surface warship—the guided missile cruiser Long Beach at Boston commissioning.

PRISCILLA'S POP BY AL VERMEER

DID YOU REMEMBER TO ADDRESS IT TO THE NORTH POLE??

YES, PRISCILLA! I REMEMBERED TO USE CHRISTMAS SEALS, TOO!

U.S. MAIL

© 1961 by NEA, Inc. T.M. Reg. U.S. Pat. Off.

Ways To Cut Electric Bills

(Some we recommend; others are for laughs)

These tips, reprinted from the

COMBINATION MOTOR CO.

NEW and USED PARTS

COMPLETE LINE OF GATES BELTS and HOSES

SHURHIT IGNITION

REBUILT GENERATORS and STARTERS

24 HOUR WRECKER SERVICE

Open Till 10:00 P. M. 7 Days A Week

1302 American Blvd. — Phone 4580

ALL SANTA'S DESIRES IN

Lumber

Paint

Wallpaper

Hardware

Houseware

Gifts

Higginbotham Bartlett MULESHOE

107 E. Ave. B
phone 2880

FOR ALL OF YOUR AUTO PARTS AND ACCESSORIES

BOVELL

Motor Supply

107 E. Ave. B
phone 2880

WIEDEBUSH & CHILDERS

VEHICLES ARE 2-WAY RADIO EQUIPPED

To Assure You of Prompt Service In

BUTANE PROPANE AMALIE MOTOR OIL FRAM OIL FILTERS DIAL 2810

We Deliver Anywhere ANYTIME!

Clovis Highway Muleshoe

Three Plans for Hook-Up with

Abel Cable

For Year-Long Enjoyment

INSTALL NOW

for Christmas Special Programs

Call

Muleshoe Antenna Co.

107 East Third
Phone 3-3100

Television Schedule For Muleshoe Area

* Indicates Color

| KGNC-TV (4) Amarillo | KVII-TV (7) Amarillo | KFDA-TV (10) Amarillo | KCDB-TV (11) Lubbock | KDUB-TV (13) Lubbock |
|---|---|---|---|---|
| Monday Thru Friday Daytime Viewing | Monday Thru Friday Daytime Viewing | Monday Thru Friday Daytime Viewing | Monday Thru Friday Daytime Viewing | Monday Thru Friday Daytime Viewing |
| 6:00 - Classroom* | 10:30 - Funz-A-Poppin | 6:20 - Min. Alliance | 6:30 - Classroom* | 6:15 - Farm Fare Rep. |
| 7:00 - Today Show | 11:00 - The Texan | 9:25 - Classroom | 7:00 - Today's News | 6:30 - College of Air |
| 8:00 - Capt. Kidd | 11:30 - Love Bob | 7:00 - Farm News | 7:05 - Farm Report | 7:00 - Cartoons |
| 9:00 - Say When | 12:00 - Make A Face | 7:20 - News, W/ther | 7:25 - W/ther w/Bernie | 8:00 - Capt. Kangaroo |
| 9:30 - Play Your Hunch | 12:30 - Day In Court | 8:00 - Capt. Kingaroo | 7:30 - Today | 8:45 - Exercise |
| 10:00 - Price Is Right | 1:25 - M'Day Rept. | 9:00 - Jack La Lanne | 8:25 - News, Weather | 9:00 - Calendar |
| 10:30 - Concentration | 1:30 - Betty Mac | 9:30 - I Love Lucy | 8:30 - Today | 9:30 - I Love Lucy |
| 11:00 - Truth or Conseq. | 2:00 - No, Please | 10:00 - Video Village | 9:00 - Say When | 10:00 - Video Village |
| 11:30 - Could Be You | 2:30 - Seven Keys | 10:30 - Surprise Pack. | 9:30 - Play Hunch* | 10:30 - Surprise Pack. |
| 11:55 - NBC News | 3:00 - Q. for Day | 10:55 - CBS News | 10:00 - Price Is Right* | 10:55 - CBS News |
| 12:00 - News | 3:30 - Do U Trust | 11:00 - Love of Life | 11:00 - Concentration | 11:00 - Love of Life |
| 12:15 - Weather | 4:00 - Standstill | 11:30 - Search for Tom. | 11:00 - Truth or Conseq. | 11:30 - Camouflage |
| 12:25 - Woman's World | | 11:45 - Guiding Light | 11:30 - It Could Be You* | 12:00 - W. Texas News |
| 1:00 - J. Murray Show* | | 12:00 - The World Turns | 12:00 - Local News | 12:20 - Names in News |
| 1:30 - Loretta Young | Thursday Evening | 1:00 - Amos 'N Andy | 12:05 - Mks., Weather | 1:00 - Password |
| 2:00 - Doctor Malone | 4:30 - Movie | 1:30 - Art Linkletter | 12:15 - Hosp. Time | 1:30 - Steve Wilson |
| 2:30 - These Roots | 6:00 - Shotgun Slade | 2:00 - The Millionaire | 2:00 - Dr. Malone | 2:00 - The Millionaire |
| 3:00 - Room For Daddy | 6:30 - Ozzie, Har. | 2:30 - Verdict Is Yours | 2:30 - These Roots | 2:30 - Verdict Is Yours |
| 3:30 - Here's Hollywood | 7:00 - Alton Reed | 2:55 - CBS News | 3:00 - Room for Daddy | 2:55 - CBS News |
| 3:55 - NBC News | 7:30 - Real McCoys | 3:00 - Brighter Day | 3:30 - Here's Holl'wd | 3:00 - Brighter Day |
| 4:00 - Capt. Kidd | 8:00 - My 3 Sons | 3:15 - Secret Storm | 3:55 - NBC Report | 3:15 - Secret Storm |
| 4:45 - Hunt-Brink. | 8:30 - Margie | 3:30 - Edge of Night | 4:00 - Childs World | 3:30 - Edge of Night |
| | 9:00 - Peter Gunn | 4:00 - Kids Matinee | 4:30 - Wild Bill Hickok | 4:00 - Yours For A Song |
| | 9:30 - Untouchables | 5:00 - Yogi Bear | 5:00 - Comedy Carousel | 5:00 - The Texas |
| | 10:30 - News, W/ther | 5:30 - Dick Tracy | 5:30 - Quick Draw | 5:00 - News, W/ther |
| | 10:40 - Newsreel | 5:45 - Doug Edwards | 6:15 - Hunt, Brinkley | 5:45 - Doug Edwards |
| | 10:45 - Movie | Thursday Evening | Thursday Evening | Thursday Evening |
| | | 6:00 - W/ther, News | 6:00 - Alvin & Chip | 6:00 - Alvin & Chip |
| | | 6:00 - Leonard Bernstein | 6:30 - Leonard Bernstein | 6:30 - Leonard Bernstein |
| | | 7:30 - Bob Cummings | 7:00 - Ripcord | 7:30 - Real McCoys |
| | | 8:00 - The Investigators | 7:30 - Dr. Kildare | 8:00 - My 3 Sons |
| | | 9:00 - CBS Reports | 8:30 - Hazel | 8:30 - Margie |
| | | 10:00 - W/ther, News | 9:00 - Mitch Miller | 9:00 - Untouchables |
| | | 10:25 - River Boat | 9:30 - Cains 100 | 10:00 - News, W/ther |
| | | 11:25 - Highway Patrol | 10:00 - Joey Bishop | 10:30 - Naked City |
| | | | 10:30 - News, W/ther, Sports | 11:00 - Jack Paar* |
| | | | Friday Evening | Friday Evening |
| | | | 6:30 - Int. Showcase | 6:30 - Rawhide |
| | | | 7:30 - Detectives | 7:30 - Int. Showcase |
| | | | 8:30 - Dinah Shore* | 8:30 - Miami U/cover |
| | | | 9:30 - Outlaws | 9:30 - Come Again |
| | | | 10:30 - News, W/ther, | 9:30 - Eyewitness |
| | | | 11:00 - Jack Paar | 10:00 - News, W/ther |
| | | | | 10:30 - B&H Close Up |
| | | | | 11:30 - M Squad |
| | | | SAT., KCBD | SAT., KDUB |
| | | | 7:30 - Roy Rogers | 7:45 - Farm Report |
| | | | 8:30 - Pip the Piper* | 7:50 - W. Texas News |
| | | | 9:30 - Shari Lewis* | 8:00 - Capt. Kangaroo |
| | | | 10:00 - King, Leonardo* | 9:00 - Video Village |
| | | | 10:00 - Fury | 9:30 - Mighty Mouse |
| | | | 10:30 - Room for Daddy | 10:00 - Allekzeam |
| | | | 11:00 - Update | 10:30 - Learn to Draw |
| | | | 12:00 - Tarzan | 10:45 - Popeye Theatre |
| | | | 11:30 - Pre-Game, Program | 11:00 - Sky King |
| | | | 11:45 - Liberty Bowl | 11:30 - Flicka |
| | | | 2:45 Tarzan | 12:00 - Trout's News |
| | | | 4:00 - All Star Golf* | 12:30 - Industry Parade |
| | | | 5:00 - Sat. Night Report | 12:45 - Blue Bonnet Bowl |
| | | | 5:45 - News, W/ther | 3:30 - Balt. vs Frisco |
| | | | 6:00 - Here and Now | 6:30 - Perry Mason |
| | | | 6:30 - Wells Fargo* | 7:30 - Corruptors |
| | | | 7:30 - Tall Man | 8:30 - Have Gun |
| | | | 8:00 - Lawrence Welk | 9:00 - Gunsmoke |
| | | | 9:00 - Fight of Week | 10:00 - Hennessey |
| | | | 9:45 - Make that Spare | 10:30 - Ben Casey |
| | | | 10:00 - Award Theater | 11:30 - Detectives |
| | | | 10:30 - News, W/ther, | |
| | | | Sports | SUNDAY |
| | | | 11:00 - Movie | 8:30 - Herald of Truth |
| | | | | 9:00 - Oral Roberts |
| | | | SUNDAY | 9:30 - Reval |
| | | | 12:30 - Catholic Hour | 10:00 - Talk Back |
| | | | 1:00 - Pro Football | 10:30 - Off to Adventure |
| | | | 3:30 - Pat. In Music* | 10:45 - Islam Mysteries |
| | | | 4:00 - Red Raider Show | 11:00 - Church |
| | | | 4:30 - Chet Huntley | 12:00 - This is the Life |
| | | | 5:00 - Meet the Press* | 12:30 - Off to Adventure |
| | | | 5:30 - Sports Club | 1:00 - Cowboys vs Wash. |
| | | | 5:45 - News | 4:00 - NY vs Dallas |
| | | | 5:55 - Weather | 4:30 - G.E. Bowl |
| | | | 6:00 - Bull Winkle* | 5:00 - Wizard of Oz |
| | | | 6:30 - W. Disney | 7:00 - Ed Sullivan |
| | | | 7:30 - Car 54 | 8:00 - GE Theatre |
| | | | 8:00 - Bonanza* | 8:30 - Jack Benny |
| | | | 9:00 - Dupont Show | 9:00 - Candid Camera |
| | | | 9:30 - Lawman | 9:30 - Lawman |
| | | | 10:00 - Tightrope | 10:00 - What's My Line |
| | | | 10:30 - News, W/ther, | 10:30 - The Defenders |
| | | | 11:00 - Movie | Monday Evening |
| | | | | 6:00 - Tell the Truth |
| | | | | 6:30 - Chettyne |
| | | | | 7:30 - Window on Main |
| | | | | 8:00 - Danny Thomas |
| | | | | 8:30 - Andy Griffith |
| | | | | 9:00 - 77 Sunset Strip |
| | | | | 9:30 - Thriller |
| | | | | 10:00 - News, W/ther |
| | | | | 10:30 - Investigators |
| | | | | 11:30 - M Squad |
| | | | | Tuesday Evening |
| | | | | 6:00 - Pete & Gladys |
| | | | | 6:30 - Bugs Bunny |
| | | | | 7:00 - The Flintstones |
| | | | | 7:30 - Bobbie Gillis |
| | | | | 8:00 - Dick Skelton |
| | | | | 8:30 - Donna Reed |
| | | | | 9:00 - Garry Moore |
| | | | | 9:30 - News, W/ther |
| | | | | 10:00 - News, W/ther |
| | | | | 10:30 - Roaring 20's |
| | | | | 11:30 - Int. Detectives |
| | | | | Wednesday Evening |
| | | | | 6:00 - Father Knows |
| | | | | 6:30 - Steve Allen |
| | | | | 7:30 - Top Cat |
| | | | | 8:00 - Hawaiian Eye |
| | | | | 9:00 - Naked City |
| | | | | 10:00 - Tightrope |
| | | | | 10:30 - News, W/ther |
| | | | | 10:40 - Newsreel |
| | | | | 10:45 - Rough Riders |
| | | | | 11:25 - West Tex. Talks |

"TRUTONE" TELEVISION SETS

Exclusive Muleshoe Dealer

USED TELEVISION SETS ALSO AVAILABLE

Jack Riels, our service man, services all makes of Radio and Television sets

WESTERN AUTO ASSOCIATE STORES

228 Main Muleshoe Ph. 3-1120

For All Your Needs

PRESCRIPTIONS COSMETICS VETERINARY

CALL ON YOUR

WALGREEN AGENCY WESTERN DRUG

FARM AND RANCH LOANS — top appraisals

REAL ESTATE in town and farm

INSURANCE of all types... See "Sugar" Glaze

109 S. First

ALSUP INSURANCE AGENCY

Phone 3-2200

Time To Look Your Holiday Loveliest Phone Today

Bernice Holdeman

Reba Hall

Flossie Dutton

Jonnie Parker

Betty Perry

Main Street Beauty Shop

115 Main 3-4480

Shop Muleshoe First for the Lane's Furniture CHRISTMAS SPECIALS

POLE LAMPS \$9.95 to \$114.95

Hanging Chain LAMPS \$39.95 to \$59.95

RENT OUR SHAMPOO MACHINE by the hour or day

Lane's Furniture 111 Main St., and Save Phone 6430

LUMBER

PAINT

and Hardware

Chas. L. Leneau

LUMBER COMPANY

202 E. Ash Phone 2220

SANTA SAYS Come in See our TOY SELECTION — at — Johnson & Pool

Tire & Appliance 320 Main Phone 7370

Santa Often Needs Spare Cash—Get It In The Want Ads

Page 4A, Muleshoe (Tex.) Journal, Thursday, Dec. 14, 1961

READ AND USE CLASSIFIED ADS FOR FAST RESULTS

WANT ADS—PHONE 7220

1 time per word 4c 3 times per word 10c
2 times per word 7c 4 times per word 13c
After 4th issue, 3c per word each additional time.

Minimum charge 50c
Card of Thanks \$1.00

DEADLINE FOR CLASSIFIED ADVERTISING PAGE:
TUESDAY, 12 NOON
Late advertising will run under Too Late To Classify.

1. Personals

Will keep children in my home day or night. 524 W. 2nd. Phone 3-4310. 4-31c

WANTED: Sewing and alterations. See Mrs. Carl Case. 319 W. Ave. E. Phone 7069. 1-71c

WANTED ALTERATIONS: See Ola Seales, 234 East 5 St. Phone 3-0661 1-48-3tp

FOR WATKINS PRODUCTS call W. O. Burford, 965-3770. 1-46-1c

IF YOU want to drink, that's your business. If you want to stop, that's our business. For information write Alcoholics Anonymous, Box 396, Muleshoe, Texas. Phone 3-2220. 1-32-1c

3. Help Wanted

RAWLIGH DEALER WANTED at once. Good opportunity in Bailey County. Write at once. Rawligh Dept. TXL-270-105, Memphis, Tenn. 3-50-1c

WANTED: Reliable woman to keep children and do house work 5 days a week. Call 3-1070. References required. 3-50-1c

WANTED: Experienced mechanic. Good pay. Excellent working conditions. Apply at C. & H. Chevrolet, Phone 3-1009. 3-42-1c

4. Houses for Rent

FOR RENT 2 bedroom house on Clovis Highway, in good condition. Living kitchen and bath new rugs. Phone 7832. 4-46-2c

FOR RENT 2 bedroom house. Phone 3-9163. 4-49-1c

FOR RENT: 3 room house see Spencer Beavers at Bovell Motor Supply. 4-43-1c

FOR RENT: 2 bedroom house, panel ray heated, cyclone fence. Call 6929 after 5:00 p.m. or City Hall in daytime, Royce Garth. 4-48-1c

FOR RENT: 2 bedroom house on West 11th. Phone Pool Ins., 2950. 4-45-1c

HOUSES FOR RENT: Three bedroom house at 315 West 10th, and three room furnished house at 811 South First. Call Bernice Holdeman at 3-4480, after 6 p.m., 3-9910. 4-46-1c

5. Apts. for Rent

FOR RENT: Furnished apartment 419 West Second. Phone 3-3280. 5-49-1c

FOR RENT: 3 room furnished apartment. See Mrs. Jack Lenderson or call 3-0389. 5-42-1c

FOR RENT: Furnished apartment. Front and back entrance. Also furnished bachelor apartment. See Mrs. Melendy, 323 West Ave. E., Phone 8120. 5-42-1c

For Rent Bedroom in my home 410 West 2nd. Call 3-9280. 6-48-1c

Private bedroom and bath, outside interence. 808 West First. 6-48-1c

8. Real Estate For Sale

FOR SALE: 12 A. 4 miles west of Mansfield, Texas. Ideal for working people of Ft Worth who desire a suburban home. Would take Muleshoe property in on trade. Write Mrs. G. C. Tapp, Box 763, Muleshoe. 8-46-1c

FOR SALE: Three lots downtown Lubbock with old folks home and apts. Will trade for property in Muleshoe, Friona, or Bovina. Write or call Mrs. E. E. Smith, 1520 Ave. K, Lubbock, PO 2-3065. 8-46-1c

FOR CASH LEASE: Approximately 50 acres cotton land, 1 mile west and 1 mile south of West Camp Store. Call Leonard Strickland, OL 4-2246 at Lockney after 7:00 p.m. 8-49-3tp

The 1962 baseball season in New York will open with the Pittsburgh Pirates playing the New York Mets in the Polo Grounds on Friday, April 13. The Mets and Houston's Colts are new National League teams in 1962.

10. Farm Equip for sale

IRRIGATION PUMPS on rental basis. We maintain — You pay only one yearly payment, which is fully deductible. Box 5305, Lubbock, Texas. 10-15-1c

USED IRRIGATION PUMPS at Bargain prices. We have a selection large enough to fit your well exactly. Box 5305, Lubbock, Texas. 10-16-1c

FOR SALE: 1 F162 Continental Motor, Completely reconditioned and guaranteed. Harold Sneed Repair Shop. 10-25-1c

11. Swap

TRADE \$7,000 equity, 3 bedroom home in Mesa, Arizona on farm or acreage. Write Box 626A, Enoch, Texas. 11-47-4tp

FOR TRADE: 141 International Combine for 2 bedroom 35 foot longer trailer house. Brown and White Equipment, Earth. 11-46-1c

16. Miscellaneous

BLUE LUSTRE not only rids carpets of soil but leaves pile soft and lofty. Rent our Blue Lustre electric shampoo machine. LANES FURNITURE 16-50-1c

FOR SALE: 11,000 bales alfalfa hay stored inside barn. 8 1/2 miles west of Muleshoe on Farm to Market road 1760. Phone 925-3145 Lariat. 16-50-4tp

SEWING MACHINE TO PARTY with good credit. Resume payments on late model Singer Zig Zag equipment, makes buttonholes and fancy stitches. 6 payments, \$7.59. 3 Swing Needle. Dial-a-stitch. Completely automatic, 1961 models, 20 years guarantee. For balance due. Payments as desired or will discount for cash. Will trade. For information, write Credit Manager, Box 3541 Amarillo. 16-49-3tc

TRAILER HOUSE FOR SALE: See Jimmy Lane at LANE'S FURNITURE. Call 6430. 16-49-1c

WANTED TO BUY: Good 2 room house with bath fixtures, John Littlefield, Phone 965-3413, Rt 1 Friona. 16-47-4tp

WANTED TO BUY: Good used piano. See J. C. Gatewood at The Muleshoe Journal. 16-47-4tp

17. Livesock

FOR SALE: Registered Angus Bulls 16 miles north and 1 west of Muleshoe, John Littlefield and Son, Phone 965-3413 Route 1, Friona. 17-47-8tp

KIRBY VACUUM CLEANERS Sales and Service 909 West Plains or Box 612 — Clovis, N. M. Phone PO 2-2121

Alsop Insurance Agency

Muehoe's Olds Agency —LISTINGS—

● 160 acres west of Muleshoe. \$325 per acre. Good improvements.

● 160 acres west of Muleshoe. \$367.50.

● 180 acres on highway. \$425.

● We have several houses and lots for sale.

We have people that will buy equipment to lease land and to cash lease land.

We have highest appraisals for farm loans.

George Hicks, Salesman
Alsop Insurance Agency,
108 S. First — Phone 3-2200

LUZIER'S COSMETICS Free Demonstration Satisfaction Guaranteed MRS. E. E. HOLLAND Ph. Off. 3-2930 — Res. 3-2530 121 American Blvd.

18. Seed

FEEDERS GRAIN, INC. Daily buyers for Cattle Feeders. Federal Storage License 3-4451. We can use Barley and Milo.

Have Semi-Lift. Located at—
SUDAN LIVESTOCK & FEEDING COMPANY Phone 237-3321 — Sudan, Texas

We Repair Any Make Sewing Machine—Authorized Necchi—Elna-Dealer Ph. 3-9000 For Quick Service Harvey Bass Appliance

280 Acres, South of Lariat, \$175 A. Two 8-in. wells, 18 A. cotton, good maize allotment.

171 A., near Muleshoe, 20 A. spriged to Bermuda grass. Strong 8" well and double sprinkler line. Goes at \$200 A., 29% down.

JNO. A. ROBERTS c/o Homer Hall Realtors, 3833-34th Street Lubbock, Texas



"Haven't seen a dog like that in years."

He doesn't need much service, but if you do, you'll find it with us. We're experts at lubrication and ear washing. Try us out the very next time and be convinced.

BOBS "66" SERVICE

Jennings Insurance Agency
FOR COMPLETE INSURANCE SERVICE
Corner of Avenue B and South 1st
Phone 3-4970 P. O. Box 144
MULESHOE

Newcomers Welcome

Report of Mrs. D. O. Smith, city hostess for the merchants service guide show that four families have moved to Muleshoe during the past month.

They are as follows: Mr. and Mrs. Howard Young and 2 children from Liberal, Kansas.

They reside at 1411 W. Avenue C and are members of the Baptist Church.

Mr. Young is employed by Jake Diehl Construction Company.

Mr. and Mrs. Robert E. Dunn moved here from Madlien, California and are making their home at 1317 W. Ave. B.

Mr. and Mrs. Bobby Timmons are making their home at 301 W. Ave. E after moving here a few weeks ago from Central City, Kentucky.

Mr. and Mrs. Preston Favor and their three children of Houston moved to 426 E. Dallas Street. They are members of the Baptist Church and Mr. Favor is employed by Merriman Insurance Company.

The first American patent for the manufacture of false teeth was awarded to C. M. Graham in 1822.

NIGHTOWLS

GET YOUR PARTS AT COMBINATION MOTOR CO.

Open Until 10:00 P. M.
1302 West American Blvd.
Phone 4580

FORD ENGINES WITH A WARRANTY YOU CAN DEPEND ON AT A NEW LOW COMPETITIVE PRICE

See Our **430** Cubic Inch New Ford Displacement

'BABY GIANT'

Ford has made available Automotive Engines for irrigation in the following cubic-inch displacements —

| | | |
|--------------------------------|--------------------------------|--------------------------------|
| 223 Commercial 6-cylinder | 292 H.D. Industrial 8-cylinder | 332 H.D. Industrial 8-cylinder |
| 223 H.D. Industrial 6-cylinder | 352 Automotive 8-cylinder | 390 Automotive 8-cylinder |

430 HEAVY DUTY INDUSTRIAL 8-CYLINDER 534 HEAVY DUTY INDUSTRIAL 8-CYLINDER
Visit your nearest Ford Power Dealer for details on NEW LOW PRICES and advantages of buying during this crop year. The right power at the lowest cost.

MULESHOE MOTOR CO.

Your Friendly Ford Dealer
at the Cross Roads Ph. 2510

BUSINESS SERVICES DIRECTORY

AROUND THE CLOCK
SIGNS OF ALL TYPES
Muleshoe Sign Service
808 Ave. D Phone 3-0029

GUARANTY ABSTRACT CO.
Phone 2640
Complete Abstracts of Title to All Lands and Towns in Bailey County, Texas
BONDED FOR YOUR PROTECTION
Office: 108 East Ave. C.
PAT R. BOBO, Owner

Farley Insurance Agency
Real Estate and Insurance
AUTO FINANCING FARM & CITY LOANS SERVICE BEYOND THE CONTRACT
Off. Ph. 7279 — Res. 9-0343 Over Bank, Muleshoe, Texas

Robinson's Boot Shop
127 Main—Ph. 7219
FINE WESTERN WEAR Men, Women & Children
SHOE REPAIR SHOP
Ike Robinson & John Howard

ANY WAY YOU FIGURE IT
IT PAYS TO BORROW MONEY FROM US.
We can save you money when you buy a new or used car. We're here to help you... with low cost, easy-to-repay loans. We can help you in other ways too. It will pay you to talk to us, and no obligations.
POOL INSURANCE COMPANY
Phone 2950 W. M. POOL, JR. Muleshoe — LEE R. POOL

Christmas SHOP EARLY

W-J AUCTION
Auction Every Tues. Nite
— We Buy —
Furniture & Appliances
PO 3-7311 — 108 PILE Clovis, New Mexico
OLD MASTERS WOOD STAIN Refinish Your Woodwork and Furniture Without Removing Old Finish
LONE STAR Gift Shop PHONE 3-0600
SELL US YOUR USED FURNITURE AND APPLIANCES
SWAP SHOP PHONE 3-0360

HEATHINGTON LUMBER COMPANY
Lumber, Paint, Builder's Hardware
Clovis Rd. - Ph. 7970

COTTONSEED DELINTED
Phone 3-2519 — Muleshoe
WILLIAMS SEED CLEANING CO.

DR. A. E. LEWIS
DENTIST
Closed Wednesday Afternoon and Saturday
Off. Ph. 3-0110—Res. 6570

Kelton Barber Shop
— BARBERS —
Omer Kelton R. C. Dearman

DR. B. Z. BEATY
dentist
115 South First Street
Office Hours 9-12 — 1:30-5
Closed Saturday Afternoon
Off. Ph. 2040 — Res. 8511

COMPLETE
Small Engine Service
Lawn Mower Engines, etc.
Clinton Power Products
Lawson, Briggs & Stratton
Muleshoe Auto Parts
Plainview Highway
Phone 9-0940

WANT TO BUY - SELL OR TRADE
See The Classifieds
The Muleshoe Journal

PATZER CHIROPRACTIC CLINIC
Phone 3-9670
American Blvd.
next to Triple Inn Cafe
HOURS
Tuesday 2 - 6
Thursday 9 - 1 2 - 6
Saturday 9 - 1

DR. B. R. PUTMAN
OPTOMETRIST
Office hours: 9-12 — 1-5
Sat., 9-12 Phone 7050
111 East 3rd St.
Muleshoe, Texas

SINGLETON FUNERAL HOME
24 HOUR AMBULANCE SERVICE
Phone 2860 Muleshoe

ARNOLD MORRIS
AUTO FOR
• Parts and
• Service
BUY AN
Exide
BATTERY
for Your
• Auto
• Tractor
• Truck
• Irrigation
Engines
An Exide in your car is the safest insurance against battery failure.
WHEN IT'S AN
Exide
YOU START!
Arnold Morris Auto Parts
Phone 7150 Muleshoe

New Low Prices On Plastic Molds
As Much as 40% Off Our Previous Prices
Come In Now!
The LONE STAR Gift Shop

FREE VACATION IN TEXAS

Texas is praised throughout the nation as one of the most ideal vacationlands.

Most vacationers, in praising Texas, have in mind the good highways, healthy climate, modern accommodations, friendly people, and inexpensive cost of living — rather, cost of playing.

Many of the vacationing tourists also praise Texas laws that allow them to fish for just \$2.15 per year, at the same rate as native Texans. Texas is unique in this respect as most states penalize tourists with excessive fishing license charges.

Some ingenious tourists have learned how to make Texas' "ideal vacationland" into a "free vacationland." They simply pay an extra 85 cents for a commercial fishing license and then sell their catches to pay for their stay in Texas.

All this time they get to do exactly what they want—fish in some of the most productive fishing waters in the nation.

Driving Tips

BAD RISKS AS DIVERS
By BECKY CAMP

As drivers we take many bad risks. In driving we run into "accident-prone" drivers. These are drivers who have had several accidents and will probably have more. They usually prove responsible for most accidents.

Some persons are unfit to drive because they develop bad habits while they are young. Some have emotional weaknesses.

A baby would make the worst possible driver. He would consider nothing but his own interests and desires. The babish adult makes a miserable driver for the same reason. He has never outgrown his babish egotism. We also have to watch for people like this and stay out of their way.

The smart-aleck probably thinks he is admired by everyone but most likely by none.

The over-emotional usually loses their temper and judgment easily.

The Rationalizer never learns to face facts squarely. He fails conspicuously in sportsmanlike driving.

The thwarted person is usually an unimportant fellow who is always looking for a chance to become powerful. He usually wants to become powerful when he steps into a car.

We should try to be the top notch driver. The topnotch driver has not only motor skill, but balance and self control. He has good social attitudes. He has good social judgment and maturity. These characteristics show up in evidences of his: acceptance of responsibility, self control, good sportsmanship, forethought, controlled attention, good judgment, and a good sense of humor.

(Note: Driving tips are contributed by students of the Driver's Education class of Muleshoe High School)

IT'S IN THE BOOK
COLUMBUS, Ohio (AP) — Ohio State University is giving cupid a little assistance.

The new university directory now included a person's marital status. Numbers listed after each name indicate whether a man or woman is single, married, separated, divorced or widowed.

A quick check is all that's needed to find out who's fair game.

LETTERS TO SANTA

Dear Santa Claus,
I want a bike for Christmas. I am glad we have a \$58 Claus. And I want a football, too. And a model airplane and a baseball, too.

Love
Jim Carralez

Dear Santa Claus,
I would like a b.b. gun, and 22 gun and a knife, and chemistry set.

Love,
Kelly Miller

Dear Santa,
I would like to have a doll bed and Babette doll and some clothes for her also, some play nigh heels.

Love,
Peggy Jane Carter

Dear Santa Claus,
Please bring me a china doll and a doll buggy.

Love,
Suzanne Byrd

Dear Santa Claus,
I want a bride doll for Christmas and a play nurse kit. I did not get to talk to you at the Christmas parade, but I saw you on the wagon. I want some play high heels and play dress, too.

Love,
Debra

Dear Santa Claus,
I want a doll.
I want a ball.
I want a watch.

Love,
Linda

Dear Santa Claus,
I want a 24 inch baton and a Barbie doll and a new purple purse.

Love
Carla Rene Hord

Dear Santa Claus,
I want a b.b. gun for Christmas and a football for Christmas. Are you going to have a Christmas tree? I saw you in town Saturday. I will see you on Christmas.

Love,

Dear Santa Claus,
I wish I did have a bike and a car for Christmas.
And if you can please get my bike I can thank you.

Dear Santa,
I am writing for my sisters, little cousin and myself. We have all been good this past year, we have helped our Mother all we could.

My littiest sister Delores (4) wants a cry-doll and dishes. Linda (7) my middle sister wants a Bobby Doll, nurse kit and a pair of skate. My cousin Billy Don (1) wants a trike, wagon, and a baby doll.

I'm Lettie (9) I would like a Bobby Doll, nurse kit and a baton. Please remember all the other you. There will be cake and milk waiting for you.

See you soon,
Lettie Vinson

Questions concerning the application of the State Sales Tax to agricultural production goods are still numerous, reports C. H. Bates, extension farm management specialist. He says some time will be required for the State Comptroller to issue rulings covering the multitude of individual items where "gray" areas exist in the statute's meaning.

LEGAL NOTICE

THE STATE OF TEXAS
To any Sheriff or any Constable within the State of Texas—
GREETING:

You are hereby commanded to cause to be published once each week for four consecutive weeks, the first publication to be at least twenty-eight days before the return day thereof, in a newspaper printed in Bailey County, Texas, the accompanying citation, of

which the herein below following is a true copy.

CITATION BY PUBLICATION THE STATE OF TEXAS
TO: LOLA EARLY, Defendant,
Greeting:

YOU ARE HEREBY COMMANDED to appear before the Honorable District Court of Bailey County at the Courthouse thereof, in Muleshoe, Texas, by filing a written answer at or before 10 o'clock a.m., of the first Monday next after the expiration of forty-two days from the date of the issuance of this citation, same being the 8th day of January A.D. 1961, to Plaintiff's Petition filed in said court, on the 16 day of November A.D. 1961, in this cause, numbered 2487 on the docket of said court and styled N. J. Early, Plaintiff, vs. Lela Early, Defendant.

A brief statement of the nature of this suit is as follows, to-wit: Suit for Divorce as is more fully shown by Plaintiff's Petition on file in this suit.

If this citation is not served within ninety days after the date of its issuance, it shall be returned unserved.

The officer executing this writ shall promptly serve the same according to requirements of law, and the mandates hereof, and make due return as the law directs.

Issued and given under my hand and the seal of said court at Muleshoe, Texas, this 16 day of November A.D. 1961.

Attest: Hazel Glibreath, Clerk, District Court Bailey County, Texas (Seal)

BIG REDUCTION SALE

Open for Inspection 8:00 A.M. December 19, 1961

SALE STARTS DECEMBER 19, 1961 at 1 P.M.

ROCKEY SUPPLY

109 MAIN

Phone 3-3450

- | | | |
|-----------------------------|--------------------|-----------------|
| Gun Cabinets | 8'x10' Rugs | Brushes |
| Filing Cabinets | Roller Skates | Gas Mask Bags |
| Desks | Tarps New & Used | Caps |
| Refrigerators | Gun Belts | ANTIQUES |
| Wringer Washers | Back Packs | Clocks |
| Gas Ranges | Canteens | Bowl & Pitcher |
| Bed Springs | Canteen Cups | Lamps |
| Bunk Beds | Mess Kits | Dishes |
| Insulated Socks | Canteen Covers | Pictures |
| New G.I. Undershirts | Baseball Equip. | Sideboard |
| Toilet Seats | Shoe Dubbing | Rocking Chairs |
| 50' & 100' Heavy Drop Cords | Luggage | Guns |
| Office Chairs | Gloves | Teapots |
| Suit Cases | T.V. Cushions | Cruet Set |
| Round Tables | Clothes New & Used | Jugs |
| All Wool G.I. Blankets | Paint | Telephone |
| Air Mattress Boxes | Hooks & Eyes | Book Case |
| Portable Filing Boxes | Rope | Pipe |
| Electric Drills | Overshoes | Jewelry Boxes |
| New 7" Power Saws | Padding | Sugar & Creamer |
| | Nails | Butler Dish |
| | Bolts & Nuts | |
| | & Many Other Items | |

Auctioneer **COL. CLAYTON MYERS**

BUILDINGS FOR SALE

GOOD CONDITION
Priced For Quick Sale

Located at Cannon A.F.B., Clovis, N.M.

Can be used for homes, farm bldgs., storage, warehouses, business, etc. 20' x 100' covered with 2 layers of sheetrock, outside finished with 4" x 8" asbestos panels. Wood floors covered with heavy linoleum. Solid sheeted wood roof, recently covered with 90 lbs. rolled roofing. In good condition, completely wired.

PLUMBING FIXTURES WHILE THEY LAST
MOVING COST—ADDITIONAL

| | | |
|------------------|------------|-------|
| Cost of Building | 20' x 100' | \$785 |
| Open End Section | 20' x 60' | \$558 |
| Open End Section | 20' x 50' | \$465 |
| Open End Section | 20' x 40' | \$372 |

Cost of Building:

HOWARD L. HARVEY

Office Bldg. T464 Ph. PO 2-4445 Clovis, NM.

WANT A CLEANER?

See the **YELLOW PAGES**

MEET THE MULESHOE STATE BANK EMPLOYEE OF THE WEEK



MR. W. Q. CASEY, president of Muleshoe State Bank. Mr. Casey has been in the banking business since May 1, 1924, and with Muleshoe State Bank since April, 1949. His competent leadership insures you of the finest and most accurate service when you let Muleshoe State Bank take care of all your banking needs.



THE MULESHOE STATE BANK

Member FDIC

For
Lovely Gifts
O.
Welcome Centerpieces
Everyone is glad to
Receive beautiful Christmas Flowers & Gifts
So, come in to see our gift selections

THE MULESHOE FLORAL COMPANY
611 South First
Phone 2870

GIFT HINTS for Your "PRESENT" PROBLEM . . .

The styling you love...
the comfort you want

Daniel Green
COMFY SLIPPERS

Warm the hearts of your Whole Family with House Shoes for ALL



FREE GIFT WRAPPING SERVICE

Little Fall House Shoes and Daniel Green are Favorites

MULESHOE'S ONLY HAYDON'S EXCLUSIVE SHOE STORE

All Colors and Sizes in Stock!

IT'S THE LAW
in Texas
★ ★
Public Service Bureau
of the State Bar of Texas

At the time of their engagement, John gave Judy an expensive diamond ring. He also gave her a wrist watch for her birthday the following summer.

One evening, to John's surprise, Judy told him that she was breaking their engagement. Later John asked Judy to return his engagement ring and the wrist watch. She refused, claiming that they were given with no string attached. John maintained that the ring and wrist watch were given to Judy after their engagement, and that he would not have given them to her if they had not been engaged.

Is John correct? Does he have a legal right to have the engagement ring and the wrist watch returned?

Yes, John is right, at least as far as the engagement ring is concerned. In similar cases the courts have said that an engagement ring is a symbol or pledge of the coming marriage, and signifies that the one who wears it is engaged to marry the man who gave it to her. If the engagement is broken off, the ring should be returned since it is a conditional gift.

It would be unusual for a man, in giving a woman an engagement ring, to tell her that she must give it back if they do not get married. However, even though no such express condition is imposed, the law will imply one because of the symbolic significance of the ring.

The giving of the wrist watch is an entirely different proposition. True, it was given after the parties became engaged. The watch, though, has no symbolic meaning and is only a token of the love and affection which John bore for Judy. Under the law there is no consideration required for a gift. It is, absolute once made, unless a condition is imposed. There was no condition here, and the law will not imply one as in the case of the engagement ring since the wrist attached to it.

(This news feature, prepared by the State Bar of Texas, is written to inform—not to advise. No person should ever apply or interpret any law without the aid of an attorney who is fully advised concerning the facts involved, because a slight variance in facts may change the application of the law.)

ENDORSE THIS CHECK, PLEASE

Most people today have checking accounts. As negotiable instruments, checks allow you to transfer money easily.

Two main ways to negotiate checks: by delivery or by endorsement and, now and then, by assigning them.

For checks made out to "cash" or "bearer," delivery alone negotiates them. It's not a good idea to make out checks this way. Any holder can cash the check with endorsement—a thief, a finder or some other unauthorized person. A merchant cashing it may still have you sign the check for identification.

You negotiate checks made out to named payees by endorsement. There are several kinds:

- 1. A BLANK ENDORSEMENT:** The endorser just signs his name, usually a poor idea. Anyone getting hold of it can negotiate it by delivery. As the endorser, you may have to pay if it bounces.
- 2. SPECIAL ENDORSEMENTS** say who gets the money. On the check's back, you may write "pay to the order of John Jones," followed by your name. If Jones cashes it, he must sign it, a way to show that he got the check.
- 3. Some endorsements cut off further negotiations:** You sign a check, "for deposit only," "for collection only," "Pay to Joe White only." This means no further negotiation.
- 4. QUALIFIED endorsements** remove endorser's liability if the check bounces. Here you write "without recourse" on the check's back and sign your name.

When would you use such a check? Suppose you are collecting funds for your club, a debt for a friend, or a business associate. The debtor makes out the check to you. You have no stake in the check; you just want to pass it on to its rightful owner. But you may have to endorse it, though you don't want to guarantee it. Should the check bounce after negotiation to other people you don't want to hold the bag as an endorser. The qualified endorsement solves this problem.

5. A CONDITIONAL endorsement limits the rights of the person getting the check. "Pay to the order of John Jones, upon completion of my home." It calls upon John Jones to honor this condition. But such an endorsement does not always work. Jones can still negotiate it or cash it at a store or bank. Only he is subject to the condition, not the store or bank. Such an endorsement may at least fix your rights between you and Jones.

When you endorse a check (except "without recourse"), you guarantee that it is good, even though the first maker may make a stop payment or deny that the reasons for making the check

Piggly Wiggly SERVES YOU ...BY SERVING YOU

Self service meat departments are real time-savers to homemakers in a hurry. But there are times when you want some special attention—times when you want a special cut of meat—or want to talk to someone about special ways of preparation. That's when you'll really appreciate the folks in the market at Piggly Wiggly. Just ask for any special help or services you want — and someone is



PECANS 10 OZ. PKG. **59¢**
CORN KOUNTY WHOLE KERNEL GOLDEN 8 12 OZ. CANS **\$1**

- Imperial Pure Cane 10 lb. **89c**
- SUGAR** 12 oz. Bottle **39c**
- JOY LIQUID** Zest, 2 Regular Bars **31c**
- TOILET SOAP** Zest, 2 Bath Bars **43c**
- TOILET SOAP** Ivory, 4 Personal Size Bars **27c**
- TOILET SOAP** Camay, 2 Bath Bars **31c**
- TOILET SOAP** Camay, 3 Regular Bars **33c**
- TOILET SOAP** Regular Size **45c**
- DOWNY** Giant Size **69c**
- MR. CLEAN**

CRISCO
3 LB. CAN **79¢**

TOILET TISSUE
ZEE 3c OFF 4 FOR **27¢**

MELLORINE All Brands Assorted Flavors 1/2 Gal. **29c**
PUNCH BOWLS 55 Servings, Regular \$1.98 Value Matching Cups Regular 19c Each **14c**
SHAMPOO Prell, Liquid, 60c Size **33c**
TOOTHPASTE Gleem, Economy 69c Size **44c**

- CANNED MILK** Pet or Carnation 15 Oz. Can 2 for **29¢**
- MARSHMALLOWS** Kraft Miniatures 10 1/2 Oz. Pkg. **23¢**
- GRAPE DRINK** Monarch Quart Can 4 for **\$1**
- COFFEE** Folger's 1 Lb. Can **67¢**
- COCONUT** Baker's Angel Flake 3 1/2 Oz. Box **19¢**
- COOKIES** 12 Bottle Ctn. **49¢**



DOUBLE EVERY WED.
WITH \$2.50 PURCHASE OR MORE

These values good in Muleshoe December 14-20, 1961.

- TUNA** Breast O' Chicken Chunk Light No. 1/2 Can **29¢**
- PECANS** Azar 14 Oz. Pkg. **79¢**
- YAMS** Trappy Whole Fancy No. 3 Squat Can **29¢**
- PEACHES** Hunt's No. 2 1/2 Can 4 for **\$1**

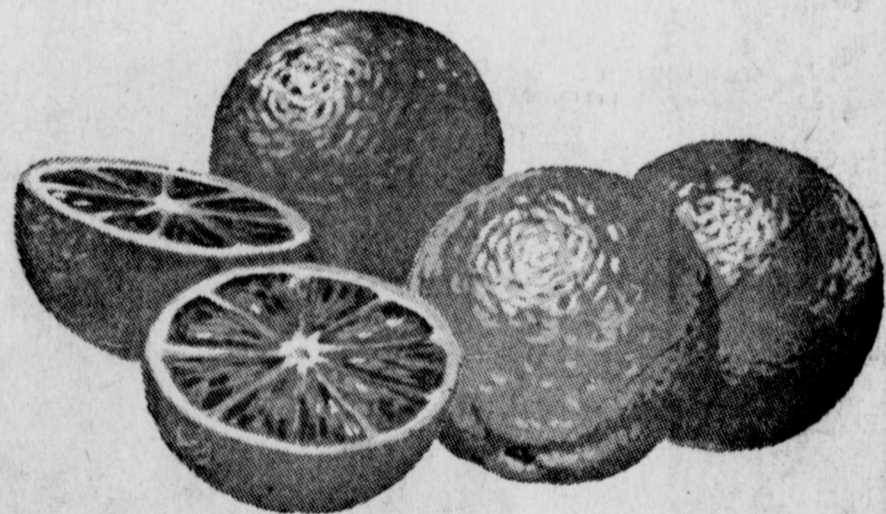
- Borden's, American or Pimento, 8 Slices 4 6 Oz. Pkg. **\$1.00**
- Buckboard, Thick 2 Lb. Pkg. **89¢**
- Armour's Star Heavy Beef 1 Lb. **89¢**
- Sunco or Swift's Butterball U.S.D.A. Grade A 16-24 Lb Avg. Pound **33¢**

Last Chance To Complete Your Set of **VOGUE COOKWARE**
GOES OFF SALE DEC. 16

- 1 Quart Covered Sauce Pan **\$1.99**
- 2 Quart Covered Sauce Pan **2.69**
- 3 Quart Covered Sauce Pan **2.99**
- 4 Quart Covered Sauce Pan **3.69**
- 2 Quart Double Boiler **4.79**
- 10 1/2 Inch Chicken Fryer **4.99**
- 6 Quart Dutch Oven **4.49**
- 1-2-3 Quart Mixing Bowl Set **3.49**

OCEAN SPRAY **CRANBERRY SAUCE**
16 OZ. CAN **19¢**

- ORANGES** EXTRA FANCY, CALIFORNIA NAVEL, LB. **19¢**
BANANAS GOLDEN FRUIT, LB. **10¢**
- Pecans, Filberts, In Shell Nuts, Almonds, Mixed Nuts, Brazil, "mix-um" 3 Lbs. for **\$1.00**
NUTS
YAMS Yellow, No. 1 Quality Lb. **10¢**



- GREEN PEAS** SOMERDALE 10 OZ. PKG. 8 FOR **\$1**
CUT CORN SOMERDALE 10 OZ. PKG. 8 FOR **\$1**
ORANGE JUICE Treesweet 5 6 Oz. Cans **\$1.00**
CHOPPED BROCCOLI Somerdale 8 10 Oz. Pkgs. **\$1.00**

- PECAN SANDIES** Supreme 16 Oz. Bag **49¢**
- MARGARINE** Meadolake 5c Off, Lb. **25¢**

Lowest Prices ... Greatest Variety ... always at ...
Piggly Wiggly