

around  muleshoe with the journal staff

Harden Douglass, son of Mr. and Mrs. H. A. Douglass, 1808 W. Avenue D, has enrolled for the fall semester at Lubbock Christian College.

A 1966 graduate of Muleshoe High School, Harden is a business administration major.

LCC is a private liberal arts junior college founded in 1957. It offers associate degrees in 12 different fields and also offers technical vocational training in welding, machine shop and electricity.

Mrs. W. H. (Lula) Kistler returned Monday from a week's visit with her daughter and son-in-law, Mr. and Mrs. J. A. Arwine, Floydada.

Rev. Don Davidson will be at Methodist Fellowship Hall at 10 a.m. Monday. Rev. Davidson, executive director of King's Manor, Hereford, will explain King's Manor and discuss the subject with those who might be interested in going there.

Two were arrested for drunk and disturbance by city police and another for malicious mischief. One was placed in Bailey County jail by the Sheriff's department for drunk and disturbance.

Joe D. Vaughn, Veterans County Service Officer for Bailey County, attended the 20th Annual Statewide Rehabilitation Conference for Veterans Service Officers, which was held at the Austin Hotel in Austin, Texas, September 11-14.

Rites Held For Former Sheriff

Funeral services were held Wednesday, September 20, at 2:30 p.m. in the Morton First Baptist Church for James Clay Buchanan, 63, who died there at his home Monday following a brief illness.

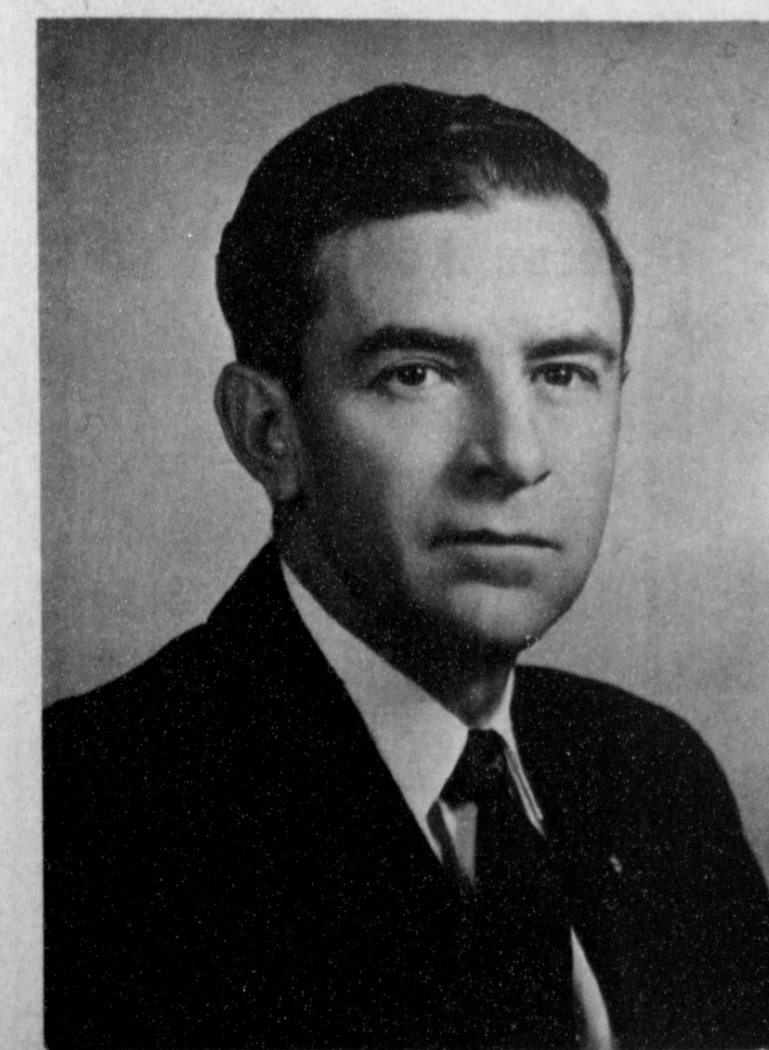
Officiating was Rev. Fred Thomas, pastor, with interment in Bailey County Memorial Park under direction of Singleton Funeral Home, Morton.

Buchanan, a former long-time Muleshoe resident was Bailey County Sheriff from November 1, 1944 until December 31, 1948. He had served as Sheriff's deputy prior to that time.

The Buchanan family moved to Cochran County 17 years ago where they made their home in Morton. He was a retired book-keeper.

Survivors include his wife, three daughters, Mrs. Francis Cont. on Page 16, Col 1

John J. Kendrick Reveals Representative Candidacy



John J. Kendrick

Gas Rate Increase Approved: Williams Takes Council Post

City Councilmen took action Tuesday afternoon in a special called session on two matters of importance.

The proposed hike in the rates of domestic gas users by Pioneer Natural Gas was approved by unanimous vote of the councilmen and Alex Williams was appointed and sworn in to fill the unexpired term of Rudolph Wiedebush, Place I, Muleshoe City Council.

C. L. 'Stoney' Wall, President of Pioneer, Amarillo, explained in detail the nature of the rate raise request and answered councilmen's questions concerning all issues.

Along with the explanation of the maintenance operation of the company, Wall provided maps

for the council, showing the location of underground gas deposits, where it came to Muleshoe from, the supply now and that of the future.

Only three of the 55 cities affected by the hike had not accepted the increase when Wall met with the Council. They were Friona, Muleshoe and Tulla. Before the close of the meeting, a Friona representative called to say the council there had approved the hike. Wall was to meet with the Tulla Council Friday night.

The increase in the General Service Rate is applicable to the West Texas Distribution system and results in an increase of 11.5 percent to those customers served under this

rate, which figures an average increase annually to be about \$8.61 or a monthly increase of 72 cents for domestic users.

Alex Williams, Certified Public Accountant, Williams and Merriman, was sworn in by Mayor Wilbur LeVeque to fill Place One, following the resignation of Wiedebush.

During Tuesday's session, names of considered persons to fill the vacancy created by the resignation and Williams received the nomination by unanimous vote, City Manager Albert Field called Williams in for his consideration to fill the post, which he subsequently accepted.

Williams has been active in civic work and contributed much

time to the reorganization of the Chamber of Commerce now underway.

Wiedebush said "It is with regret that I leave the Council. However, I do not feel that I can continue to do justice to the job entrusted to me by the people during the last election, due to the increased demand of my attention to business."

Wiedebush filled the unexpired term of T. L. Timmons, then was elected to the post in the May, 1965 election. His term was to have expired in May, 1968.

A special meeting of the City Council was set for Thursday, September 28 at 2 p.m. to review the airport contract with

M. D. Locker, manager of the field.

Councilmen discussed the request of the building of two tennis courts. Possible sites were discussed with the school premises being favored as the request came from the school for the courts. City Councilmen felt the aid of Bailey County should be enlisted on the project as well as Muleshoe Independent School District. The school is to put up nets and provide maintenance should they be put there. Estimated cost of the courts, 50 by 200 feet was set at \$4,500. Further consideration is being given the matter.

The courts would be used by the school during Physical Edu-

cation classes and open to the public after those hours.

Dearly Beloved

"Dearly Beloved, we have gathered together this afternoon in the sight of each other and the presence of these numerous witnesses to join together this man and this woman which is an onery mistake!"

The foregoing quote is an excerpt from one of the most fantastic presentations to go on stage here in Muleshoe. It will be "The Womanless Wedding." The bride is to be a large man and the bridegroom one of Muleshoe's smallest men. The contrast in size will bring the house down with laughter, not to mention the script which continues throughout the wedding filled with the height of comedy.

Men will fill all the spots in "The Womanless Wedding," large, small and medium build. Their attire will be worth the price of the show.

The wedding (according to the script) did not stem from 'love Cont. on Page 16, Col. 3

C of C, MAIF Review Given for Rotarians

Vic Benedict, president of the Chamber of Commerce and Harmon Elliott, Muleshoe Area Industrial Foundation chairman presented an informative program for Rotary Club members at noon Tuesday.

Benedict stressed that everyone should become involved in the Chamber of Commerce because the participation of the people is necessary to have a successful and active Chamber.

He pointed out that the Muleshoe Area Industrial Foundation was part of the Muleshoe Chamber of Commerce and gave a brief history of its organization and as Chamber president, expressed his personal pride in MAIF's accomplishments.

In addressing the group, Elliott spoke on up-grading the Chamber of Commerce and stressed the importance of having a strong Chamber in order to attract new payrolls. Also, it was noted that the absence of a Chamber cannot be hidden from industrial prospects. The recently compiled Industrial Facts Book has been placed with MAIF industrial allies and is now in use, he said.

Elliott said he had received a letter from the head of the Industrial Development Department of the AT & SF Railway, a person who had assisted Wilson Packing Plant to locate in Friona, complimenting MAIF on the Industrial Facts



Alex Williams

Purple Heart Awarded to Pvt. Address Perez

FT. HOOD--Army Private First Class Address G. Perez, Jr., 19, son of Address N. Perez, Sudan, received the Purple Heart Medal September 1 during ceremonies at Ft. Hood.

Pvt. Perez received the award for wounds received in action while serving in Vietnam, May 29.

Perez, a patient in Medical Holding Company, Darnall Army Hospital, entered the Army in July 1966. He holds the Combat Infantryman Badge. Before entering the Army he was employed by Texboro Cabinet Corp., in Mineral Wells.

Health Officer Warns Of City-Wide Hazards City Clean-Up Holds Business Limelight

The problem of cleaning up the city held the limelight at the meeting of the Business Activities Committee Tuesday morning held at 10 a.m. in the Muleshoe State Bank Community Room.

A statement concerning the city health hazard (see related story) made by Dr. W. F. Birdsong, city health officer, was read by Harvey Bass.

Many ideas concerning the effective way to accomplish this clean-up week were discussed by the members attending the meeting.

City Councilman Irvin St. Clair was in attendance and explained the city's position concerning clean vacant lot and to outline the problems encountered during previous attempts in doing this and billing the property owner. An ordinance is in the making and expected to be completed by the time actual clean-up week is launched.

Some of the problems encountered by the city in assuming this responsibility for the property owner was mowers striking broken bottles, part of implements and boards hidden in the weeds, and the city personnel and equipment for the operation.

"The another problem, some property owners paid the bill while others did not," St. Clair said.

"The Council is willing to cooperate with the citizens of the city in this all-out clean-up week," St. Clair said. "However, it does not seem Cont. on Page 7, Col 4



CLEAN UP TIME — Since weeds and garbage throughout the city is creating a health hazard, September 25 is the starting date set for a city-wide clean-up week. Chamber of Commerce president Vic Benedict, left, and Bailey County Health Officer Dr. W. F. Birdsong are shown with Mayor Wilbur LeVeque as he signs the proclamation designating clean-up week.

School Board Adopts Three New Policies

Studying and approving three policies highlighted the Monday night school board meeting. They were the school's policy of use of school buses for Extra Curricular Activities which is based on the recent State Legis-

lative Action. The policy becomes effective if and when there is a surplus in transportation fund.

The second policy approved was "the use of Protective Eye Devices" in the schools. This is in accord with State Law, Article 2919i. These protective devices must be worn in vocational or industrial arts shops or science laboratories when materials or equipment are being used that could cause serious eye injury to the student or teacher.

The third policy was the adoption of the board policy on reporting certain eye injuries to the State Department of Education.

This is an amendment to State Law, Article 2919i passed the last legislature.

Pre-Game Football Tickets Now On Sale

Tickets for the Muleshoe vs. Olton Game are on sale at the three drug stores downtown and at the principals' offices in the high school building and the junior high school building. They can also be obtained at the school administrative building.

Prices for the pre-game sale are \$1.50 for adults and 50 cents for students. At the gate, student tickets will cost 75 cents. Ticket sales will close at 4 p.m. Friday.

This policy sets up the reporting procedure and prescribes a form to be used for reporting this type of injury.

Details of the three policies are as follows:

SCHOOL BUSES

The payment of the cost of extra curricular activity and field trips may be paid from the Muleshoe I.S.D. transportation Fund, provided that there is an unencumbered balance in the transportation fund as of August 31st of any school year after all operational costs and school bus purchase payments due for the year have been paid.

The following regulations must be strictly adhered to:

1. The reimbursement rate will be 40 cents per mile which includes driver fees, fuel, depreciation and purchase payments.
2. A trip ticket shall be used for each activity trip that indicates date, mileage, and fee paid to the driver.
3. A reserve fund, if available, will be set up for the replacement of equipment based on current replacement costs

Cont. on Page 7, Col. 1

Muleshoe Livestock Auction Report

SOLD	
Cattle	334
Hogs	181
Sheep & Goats	193
Horses	3

Clayton Myers, owner, reports that the market was fully steady to strong in all classes.

MYF 'New Look' Starts Sunday

The "New Look" Methodist Youth Fellowship (MYF) will begin Sunday at 5:45 at the First Methodist Church.

A program has been prepared for the youths of the church with all youths of the senior high age group welcome to attend any or all of these Sunday afternoon programs.

"Foolish But Fun" will start the program at 5:45 and will be followed by a "Track Meet" at 6:10 p.m.

"Hanging Tree Time" will be held at 6:20 followed by study and inspirational program at 6:35.

Clifford Black is president of the MYF with Mr. and Mrs. Bob Breckenridge and Mr. and Mrs. Roger Albertson as adult sponsors.

Mules to Meet Mustangs

The Muleshoe Mules tangle with the Olton Mustangs here at 8 p.m. Friday night.

In last week's play, Olton defeated the Hereford Whitefaces in a close one, 21-20.

Olton's Kenneth Johnson proved to be a 'thorn in the Whiteface's flesh' during the game all the way. He raced from his own 16 to the Hereford 36. The Mustang quarterback lost two yards and then Johnson gathered steam and whizzed 30 more yards to the Hereford 8 yard line.

Beginning the second half behind, Olton quickly showed that they were still in the game when Akin ran the opening kickoff 38 yards out to the Mustang 48. From there, the Mustangs worked the ball to the Hereford 31 before a penalty set them back to the 40 yard line.

In three plays, Akin and Johnson had moved the ball to the Hereford 10, where Johnson scored with 1:18 left in the third period. Spain kicked the point for the Mustangs and Hereford's winning streak was narrowed 20-14.

After fumbles on both sides, Spain gathered the ball on his own 22 yard line and surrounded by Whitefaces, wormed his way into the clear and dashed the distance for the touchdown with only 1:25 minutes left in the game.

The Mustangs gained the all-important lead on the kick for the extra point which put them in the winning slot of 21-20 and they ran out the clock. Olton is credited with 93 yards rushing, holding Hereford to 51 yards.

Contest Winners

Hazel Gilbreath won first place in last week's "back the Mules" football contest, missing only the Midland-Lubbock tie.

Joe B. Stevenson of Muleshoe won second place, missing two games with a 10 point spread on the Muleshoe-Littlefield score.

Others missing two games were Jarrell Pruitt, L. C. Roddam, Jerry Gilbreath, James Roy Jones, Herb Whalin, Billie Whalin and Irene Splawn.

Win a ^{Maryland Club} Cup of Coffee at Piggly Wiggly!



SERVED ON THE SUGAR LOAF IN RIO DE JANEIRO, BRAZIL!



BRANIFF INTERNATIONAL . . .
flies to Brazil in jets of nine different colors and seven interiors. Their menus are prepared by the famous BRANIFF Board of International Chefs. Hostesses are in Emilio Pucci high-fashion wardrobes. If the flight seems all too short . . . that's the whole idea!

Rio De Janeiro

. . . A city sparkling with life. Enjoy the sun and surf at Rio's many beaches. Dance until dawn. Ride cable cars to Sugar Loaf's 1,230 foot summit. Take the cog rail to Corcovado, where the 11 story statue of Christ overlooks the city and bay.

WINNERS WILL STAY AT THE FABULOUS . . .

HOTEL GLORIA

Breathtaking views from the open-air balconies . . . gourmet meals amid the splendor of a palm-studded poolside restaurant . . . the Hotel Gloria offers the ultimate in comfort, relaxation and convenience (only 5 minutes from downtown Rio). 500 air conditioned rooms, 4 bars, several restaurants, all night coffee shop, drug store, beauty shop and spacious convention facilities are some of the features of this world-famous hotel!

OVERLOOKING SCENIC GUANABARA BAY AND SUGAR LOAF!

- ★ All Expenses Paid For Two For A Week!
- ★ Trips can be taken thru Sept. 30, 1968 with the exception of Feb. 19 thru Feb. 28, 1968.
- ★ Registrations end September 27, 1967. No purchase necessary. You need not be present to win.
- ★ You must be 18 years of age or older to enter.

Simply Register at Piggly Wiggly!



QUALITY, VARIETY and SAVINGS!

CHRISTMAS HELPS 1967 FROM FAMILY CIRCLE ALL NEW GUIDE TO FOOD, DECORATIONS, GIFTS

<p>SIRLOIN STEAK U.S.D.A. Choice, Aged Heavy Beef, Valu-Trimmed 98¢ Pound</p> <p>Blue Morrow's, Pure Pork, Fresh Link Sausage 12-Ounce Package 55¢</p> <p>U.S.D.A. Grade A, Fresh Fryers Legs AND THIGHS 49¢ Pound</p> <p>U.S.D.A. Grade A, Fresh Fryer Backs AND NECKS 10¢ Pound</p>	<p>COOKED HAM Glover's, Fully Cooked, or Pinkney's, Sunray, Full Shank Half 49¢ Pound</p>	<p>SWISS STEAK U.S.D.A. Choice Arm Cuts of Choice Beef, Cook with Carrots and New Potatoes 69¢ Pound</p>	<p>PORK CHOPS Lean, Northern Pork, Full 1/4 Pork Loin, Family Pack 79¢ Pound</p> <p>Extra Lean, Dated to Assure Freshness Ground Chuck 59¢ Pound</p> <p>Farmer Jones, Fancy, First Grade Sliced Bacon 79¢ 1-Lb. Pkg.</p> <p>2-Pound Package \$1.37</p> <p>Farmer Jones, All Meat, Juicy, Fine Flavor Franks 1-Pound Package 59¢ 12-Ounce Package 49¢</p>
---	---	--	--

<p>Suzan Best Quality Salad, DRESSING ITS FLAVOR TELLS THE STORY Quart Jar 27¢</p>	<p>Fresh, Grade "A" Medium EGGS VERY TASTY AND NUTRITIOUS. YOU'LL LIKE THEM Dozen 34¢</p>			
<p>Bakerite or Vegetole SHORTENING 347¢ Pound Can</p>	<p>Chef's Delight 2-Pound Loaf CHEESE FOOD 57¢</p>			
<p>C and H, SUGAR 5-Lb. Bag 48¢</p>	<p>Maryland Club, Coffee All Grinds 68¢ Pound Can 2-Pound Can \$1.35</p>	<p>Starkist, Chunk Style Tuna Fish No. 1/2 Cans 28¢</p>	<p>1/2 Lb Wax Loaf Bread 4 for 76¢</p>	<p>Wolf, with Chili Gravy Tamales No. 300 Can 35¢</p>

Win!
\$100.00 CASH!
PLUS HUNDREDS OF OTHER PRIZES!

Play PRO-SCORES!
TO WIN, SIMPLY MATCH THE SCORE OF THE . . .
Dallas Cowboys vs. New York

To Be Played September 24
GET YOUR FREE PRO-SCORES TICKET FOR NEXT SUNDAYS GAME AT PIGGLY WIGGLY TODAY!

Garden-Fresh Fruits and Vegetables!

BANANAS Cream and Cereals **9¢**

Stuffed with Ground Beef
Bell Pepper Pound **10¢**

Ripe, Ready to Serve
Pears Bartlett Pound **29¢**

POTATOES Russet, Baking Size, Sour Cream Pound **8¢**

CELERY Stuffed with Cheese Spread Pound **15¢**

More food for LESS... always at...
PIGGLY WIGGLY

Crackers Pride Saltine 1-Pound Box **19¢**

Sunlight Flour 10-Pound Bag **79¢**

PINTO BEANS 4 lbs. **48¢**

Detergent Giant Box Cheer **58¢**

Frozen Selections for Your Freezer!
DINNERS **39¢**
Banquet, All Varieties Plate

GREEN PEAS Libby 5 10-Oz. Pkgs. **\$1.00**

POTATOES Golden Glow French Fries 4 2-Lb. Bags **\$1.00**

POUND CAKE Sara Lee 12-Oz. Pkg. **79¢**

Houseware Buy
SHELVING UNIT Quaker, Walnut Finish, Extra Strong Construction, Ideal for Book Shelf or Small Room Divider, Regular \$6.99
4 Shelves **\$5.49**

Health and Beauty Buy
TOOTHPASTE Crest, Family Size Tube, 6 1/2 Off Label, Regular 95¢
69¢

Oldsmobile, The Power Train Concept

BLOOMFIELD HILLS, Mich. --A new power train concept for all 1968 model Oldsmobiles will give the owner additional benefits in mid-range performance, fuel economy, quietness of operation and durability, it was announced here today by Oldsmobile General Manager Harold N. Metzel, at his division's National Press Preview.

In addition, he revealed a performance option and substantial styling improvements in the front-wheel drive Toronado, the development of a brilliant new front-end look for the 88's and 98's, and a completely changed appearance for the F-85, Cutlass, Cutlass Supreme, 4-4-2 and Vista Cruiser.

"Of particular interest," Metzel said, "are the two-door models in the Cutlass Series identified as 'S' Coupes. We expect this line of coupes, pillar, hardtop and convertible, to augment Oldsmobile's recent gains in the youth market."

"The Cutlass 'S' Coupe," he continued, "is youthfully styled, agile in performance and may be customized with the use of any one of 12 engine-transmission combinations. Deluxe interior trim and special exterior ornamentation are standard, while dual exhausts, a wood grained steering wheel and rally type handling components are among the new car's options. Bucket seats, standard on the convertible, are optional on the closed coupes."

becomes the top of the F-85 line in 1968, with an extension of identity features, dual exhaust outlets discharging through rear bumper cutouts, and 9 engine-transmission combinations.

Included is the availability of a ram-air performance option with a special high output camshaft, heat treated valve springs, and a special axle ratio. Boldly designed carburetor air intake scoops for this option are located below the front bumper.

In addition to the coupes, all other Cutlass Supremes, Cutlass, and F-85 models are com-

pletely restyled for 1968. Wheelbases for 4-door sedans and station wagons have been increased to 116 inches. The vent windows are now crank-operated, replacing the friction type windows on former F-85 and Cutlass models.

"Important changes have also been designed into the 1968 Vista Cruiser," Metzel continued, "resulting in its becoming one of the most spacious station wagons in the industry. Built on a wheelbase of 121 inches, the Vista Cruiser features 1.3" more leg room for second seat passengers, 1.3" more head room for third seat passengers. With the larger luggage locker under the floor, 2 more cubic feet of storage area is available. Optional for the first time on the Vista Cruiser is Oldsmobile's 400 cubic inch engine.

"Oldsmobile's Delmont and Delta 88's, the Delta Custom, the 98's and the Toronado," he said, "have undergone substantial restyling, front and rear, including new grilles, new side moldings, and revised rear end treatment."

"The Toronado, in particular," Metzel said, "has taken on a more sophisticated personalized car look, with more graceful lines. Front and rear bumpers and lamps are new. Headlamps are concealed behind twin grilles which retract upward with lights on."

"A softer ride with smoother movement over bumps has been achieved in the 1968 Toronado," he said, "while retaining the unexcelled handling characteristics for which this car is noted."

The Toronado's engine option includes a cold-air induction system with a high-speed camshaft. In addition, a new simplified ring and pinion drive axle with higher torque capacity replaces the more complex 1967 planetary unit.

"An extremely important part of our 1968 product story," Metzel said, "is the engineering concept adopted for all Oldsmobile power trains, which provides better fuel economy, improvement in mid-range per-

formance and quietness of engine operation."

He explained that displacement for engines powering the F-85, Cutlass and Delmont 88 models has been increased from last year's 330 cubic inches to 350. The bigger engines, used in Oldsmobile's other 88's, as well as 98's and the Toronado, are up from 425 to 455 cubic inches. The maximum torque of these engines is increased 30 ft. lbs. and 40 ft. lbs. respectively.

"In addition to the higher driving torque of the new engines," he continued, "transmissions have been re-calibrated for additional torque multiplication and drive axle ratios have been lowered. These changes result in better efficiency and lower engine operating speeds."

"As an example, the 98 develops the same drive-wheel turning effort at 1600 rpm's as the comparable 1967 model at 3200 rpm's," Metzel said.

"All new Oldsmobile engines meet the requirements of the 1968 federal emission law through use of the Oldsmobile-pioneered combustion control system. This system, modified for 1968, was first offered by Oldsmobile as an option called Climatic Combustion Control in 1967 models. In addition to reducing air pollution, it provides faster warmup and eliminates carburetor icing," he stated.

Also eliminated is the extra belt drive, air pump and the complexity of pipes and valves which were present in the former Air Injector Reactor system.

Oldsmobile's tilt and telescope steering wheel is equipped exclusively with a new type horn ring as an added convenience. To sound the horns, the driver may squeeze any part of a continuous contact strip circling the wheel's inner diameter. This is the first continuous horn ring to be offered in the industry which in no way interferes with driver vision.

Metzel said a long list of mechanical improvements includes larger diameter wheel cylinders for better overall

brake effectiveness and balance in F-85, 88 and 98 models. On the Toronado, a tandem power booster increases the effectiveness of the power braking system.

Other improvements in all 1968 Oldsmobiles include big increases in windshield wiper coverage area and more fluid released per pulse by the windshield washer system. In addition, for the reduction of glare, the wipers on most Oldsmobile models are depressed below the driver's line of vision. A new convoluted fuel tank filler neck will bend and collapse, thus preventing fuel leaks due to rupture of the neck of the tank in case of a rear end collision.

Other safety-related improvements include redesigned armrests, lower profile control knobs and door handles, wider vision outside rear view mirrors, shift levers built to bend upon impact, and the elimination of metal in the backs of seats.

Luggage capacity in 88 sedans has been increased from 17.1 to 19 cubic feet. A new, smaller stereo tape player is mounted under the instrument panel. In the Toronado, it is designed into the center of the instrument panel itself. For the first time the stereo tape player is offered in F-85 models.

Gerald Chisman Is Navy Grad

SAN DIEGO (FHTNC)---- Sept. 11 -- Seaman Recruit Gerald K. Chisman, USN, son of Mr. and Mrs. Chase Chisman of Route 1, Farwell, has been graduated from nine weeks of Navy basic training at the Naval Training Center here. In the first weeks of his naval service he studied military subjects and lived and worked under conditions similar to those he will encounter on his first ship or at his first shore station.

In making the transition from civilian life to Naval service, he received instruction under veteran Navy petty officers. He studied seamanship, as well as survival techniques, military drill and other subjects.

Sinatra heads American-Italian League.

Chevrolet Features New Systems

DETROIT--Light monitoring power door lock systems plus added availability of popular stereo tape players highlight a list of more than 400 options and accessories offered on 1968 Chevrolet cars.

The light monitoring system tells the driver at a glance if important front and rear lights and signals are working. The fiber optic principle is used to "pipe" the actual lamp light to jeweled indicators mounted on front fenders and just below the rear window. The system is offered on Chevrolets, Chevilles and Camaros and one with indicators mounted on a console is standard on Corvettes.

The power door lock system, for all regular Chevrolets, allows the driver or front seat passenger to lock all doors simultaneously by a master control lever. Vacuum power is furnished from the manifold.

Stereo tape players, rapidly growing in popularity since introduction by Chevrolet a year ago, are offered in 1968 on all lines except Corvettes. The

lineup includes a new "mini-stereo" to complement the redesigned interior styling of the Chevelle and the Chevy II. Chevrolet has also extended the availability of the Cruise-master, a push-button highway speed control device -- to some light-duty pickup trucks.

The option and accessory list also features a wide variety of air conditioning units; numerous exterior and interior trim and convenience items; specially packaged accessory groups for operating convenience, appearance and auxiliary lighting; special equipment for traveling and trailering; and a number of high-way safety aids.

Exhaust Emission Control on All Models -- Exhaust emission control equipment, added for all engines on 1968 Chevrolets, consists of two different designs.

In general, for models equipped with automatic transmissions, emission control is achieved by a new Controlled Combustion System (CCS). It includes temperature control-

led carburetor air, special calibration and ignition timing changes. Models with manual transmissions use an improved version of the Air Injection Reactor (A.I.R.) previously produced for California models. In A.I.R., air is pumped into the exhaust manifold and reacts with unburned gases to produce low emission levels.

Anti-Theft Protection for All Models -- New anti-theft provisions are included in a theft protection package for all Chevrolet models.

Included is a warning buzzer which sounds whenever the driver opens the car door and the key is left in the ignition in the "off" or "accessory" position.

A vehicle identification number on the instrument panel is clearly visible through the windshield. There is vehicle identification on every engine and transmission and new ignition key and lock combinations.

Bucket Seats Available on all 6 Chevrolet Lines -- Bucket seats are optional on

the Caprice Coupe and a "Super Sport" option on the Impala coupes and convertible in the regular Chevrolet line.

In Chevelle, they are optional on SS 3/16 and Malibu sport coupes and convertibles. On Chevy II bucket seats are optional for the Nova coupe. Bucket seats are standard on Corvette and Camaro models and on Monza models of Corvair.

Glass Rear Window on Chevelle Convertibles -- A glass rear window is introduced for 1968 on Chevelle convertibles. It previously has been available only on regular Chevrolet convertibles.

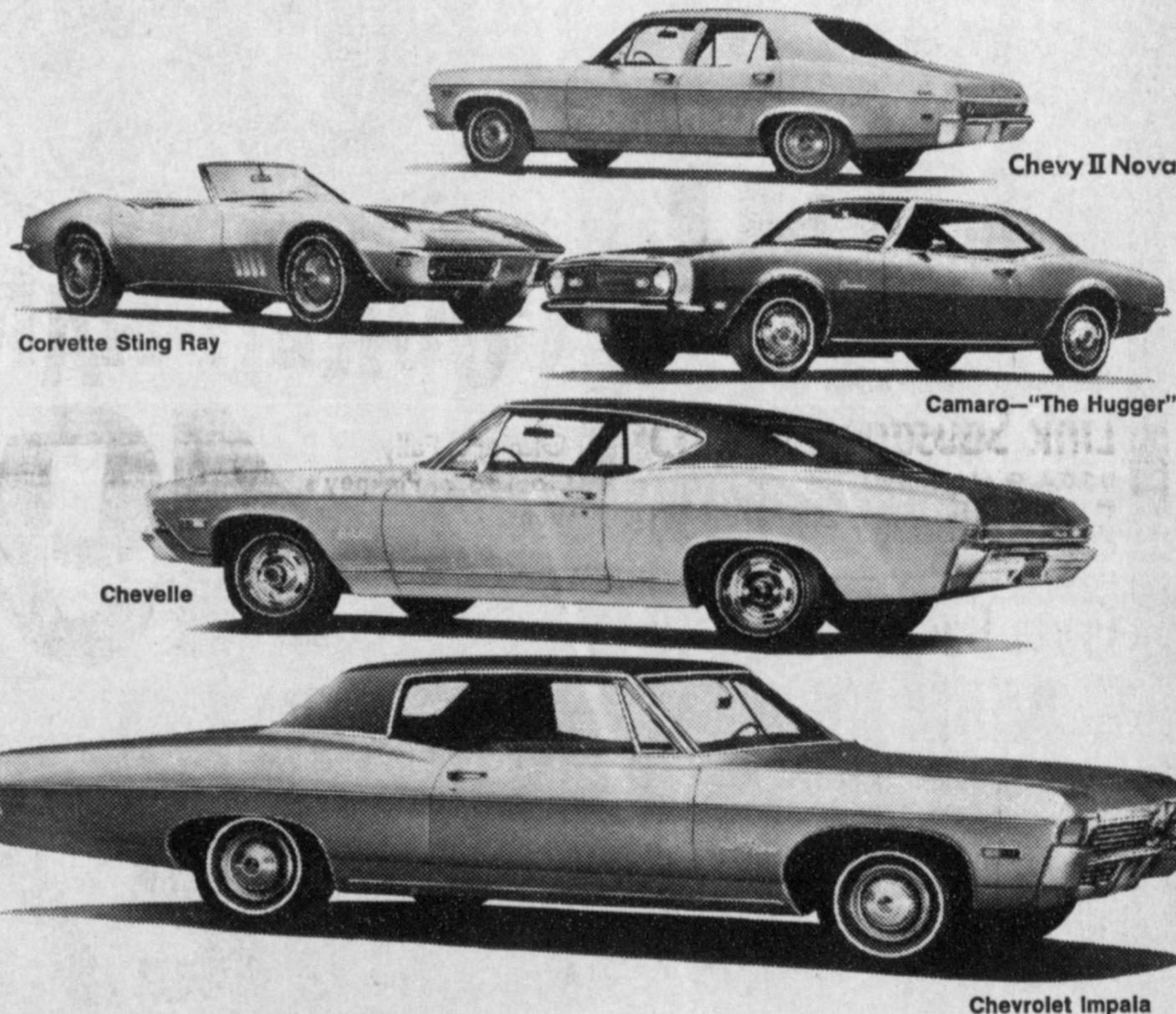
Sports Models Nearly Half of Total -- Nineteen of Chevrolet's 41 models for 1968 are "sport models" -- two- and four-door hardtops and convertibles. This high percentage of sport

Concealed rear storage compartments -- popular on regular Chevrolet two-seat station wagons, are added in 1968 to all wagons in the Chevelle line except the base Nomad.

Chevrolet offers a total of 11 station wagons for 1968 -- seven in the regular Chevrolet line and four Chevelle wagons.

A stereo tape sound system and Four-Season air conditioning are available for the first time on 1968 Chevy II models.

Dramatic! Distinctive! Daringly new!



'68s Top Secrets are here 1968 Chevrolets

The 1968 Chevrolets are the very essence of modern design. Every line, every curve is in close harmony. It's a smooth, uncluttered look with roof lines compatible with body lines, grilles and bumpers that blend gracefully into long, rounded fenders. Clean, flowing, beautiful in their simplicity, these '68 Chevrolets are rich and advanced in styling beyond any you've ever seen.

A MORE SILENT RIDE

And for 1968, we've gone to every length to give you more peace and quiet inside. The most sophisticated computers have been used to strategically place body mounts and successfully isolate noise and vibration. Shock absorbers have been improved. The wheel stance on many models is wider for greater smoothness. Exhaust systems have been redesigned to make them whisper-quiet. Even the clocks tick more softly. A sound car is a silent car. The '68 Chevrolets are the most silent, highest quality cars we've ever built.

BETTER PERFORMANCE

There are new engines, a bigger standard Six and V8. There's a new

250-hp V8 you can order that runs on regular fuel. Many new engine components increase dependability and keep your new Chevrolet running stronger. There's a new rear axle ratio you can add for greater economy. On most engines equipped with automatic transmissions, there's a special heater for the carburetor which gives you more efficient performance in cold weather. And with every engine, you get the new GM exhaust emission control.

UNIQUE ASTRO VENTILATION

There's a whole new idea in ventilation, called Astro Ventilation, for Camaro, Corvette and the elegant Caprice Coupe. It's also available on many other models. By opening two new vent-ports on the instrument panel, you bring in outside air that can be directed where you want it. This way, you can leave your windows rolled up and add still more to your peace and quiet.

PROVED SAFETY FEATURES

You get the proved GM-developed energy absorbing steering column, folding front seat back latches, dual

master cylinder brake system with warning light, plus many more new features. Among them: energy absorbing front seat backs, and safety armrests that shield the door handles.

MUCH MORE THAT'S NEW

There are new roof lines, some formal and graceful, others sporty and quick. There are new instrument panels, richly designed and all controls within easy reach. There are new interiors, new vinyls, new fabrics, new colors. There are models with Hide-A-Way windshield wipers and headlights that disappear behind grilles. There are new side marker lamps, new recessed taillights. There's even a new ignition alarm buzzer that reminds you not to walk away and leave your keys in the car.

These are the newest, the most different, the most dramatically changed Chevrolets ever. And they're at your Chevrolet dealer's now. You'll thoroughly enjoy slipping behind the wheel, experiencing the smooth new handling and library-quiet ride and, more than anything, seeing and feeling the even greater quality built into every new Chevrolet for 1968.

Be smart! Be sure! Buy now at your Chevrolet dealer's.



There's more quality and value built into Chevrolets than ever before, making every new 1968 model an even better buy!

CROW CHEVROLET COMPANY

201 Main

Mulshoe

Ph. 272-3100

Today, millions of people are getting young ideas. The '68 "youngmobiles" from Oldsmobile are here.

Get young ideas in this new Cutlass S! It's young in the way it looks, young in the way it acts. And you'll find the same young ideas in all 31 "youngmobiles" from Oldsmobile.

New Performance: Here's an Oldsmobile that performs young, rides young, feels young. There's greater economy from a brand-new generation of Rockets. Choice of a 350-cu-in. Rocket V-8 or 250-CID Six.

Exciting Style: Here's an Oldsmobile with contemporary style and smart new interiors. Two coupes, plus a bucket-seat convertible. All with louvered hood, hideaway wipers.

Spartan Features: Here's an Olds you can practically design yourself. Young it up with a stick-shift, center console, dual exhausts, Rally Sport Suspension. Plus all the new GM safety features.



See them. Drive them. At your Oldsmobile Dealer's.

BROCK MOTOR CO., INC.

422 North First St. Mulshoe, Texas



42 5827



Mr. and Mrs. James Wedel

Tea Honors Wedels On 25 Anniversary

Mr. and Mrs. James Wedel were honored with a tea given by their children, in their home September 17 at 2 p.m. The Wedels have six children, Mrs. Charles Lence, Phoenix, Ariz., Mrs. Paul Stanton, Irving, Wanda, Carolyn, Charolett, and Jimmie all of the home.

The table was laid with a lace cloth over red and the names Doris and James, 1942-1967 in silver lettering. The Wedels were married in 1942 in Muskogee, Oklahoma.

The decorations were white mums and red roses. The numeral 25 in silver lettering was implanted in the bouquet. A two tiered cake, decorated in red and white and atop the cake was the numeral 25 in silver. There were 35 guests, who called during the afternoon.

Vocational League of Nurses Meet

The Bailey County League of Vocational Nurses met Tuesday night September 12 in the Muleshoe State Bank Community Room at 7:30 p.m. with the President Mary Woodall presiding.

Secretary - Treasurer Sue Nesbitt read the minutes and gave the treasurer's report. A report was given on the Special Duty receipt books and the cost of having these printed. These books are now on sale to all qualified people doing private duty nursing by any member of the Nurses League.

Marshall Cook administrator of Green Memorial Hospital, gave a very interesting and informative program on "Anesthetics." A question - answer session followed.

Refreshments of sweet rolls, spudnuts and coffee were served by Sue Nesbitt to those present.

Pleasant Valley Club Meets

The Pleasant Valley Social Club met in the community building September 15 at 8:00 p.m. Hostess for the meeting were Mae Parker and Juanita Galyon. A short business session was held and Juanita Galyon, the President presided at the meeting.

Refreshments of coffee, cold drinks and cookies were served to Lenore Wells, Mae and Mary Parker, Eula Colhoun, Ida Collins, Sena Stevens, and Juanita Galyon.

The time of the next meeting will be Thursday, September 28.

Society News

EARLENE RAGLAND Society Reporter
Phone-272-4536

DeShazo P.T.A. Had Regular Meeting

The Mary DeShazo P-TA met in regular session Monday on September 19, at the cafeteria at 3:45. The president Mrs. Don Harmon called the meeting to order, Mrs. Mary Obenhaus gave the benediction, Mrs. Pat Gunter introduced Mrs. Mila Beth Gibson who introduced her Junior High choir. They sang the songs "The Lone Prairie" and the theme song from "Texas" the stage production put on each summer in the Pioneer Amphitheater in Palo Duro State Park out of Canyon, Texas. They were accompanied on the piano by Miss Jan Jinks and Miss Delura Williams.

Mrs. Mitchell then led the group in singing the state song, "Texas, Our Texas." Mrs. Gibson accompanied on the piano. Mrs. Pat Johnson read the minutes of the last meeting. Mrs. Mary Janice Brantley reported the treasurer had a balance on hand of \$181.20.

It was decided to have a hamburger fry in place of the usual chili-supper as the money making project of the year. The date will be October 6. Mrs. Leola Patterson's fourth grade room won room count with eight parents present.

Mr. Bill Taylor introduced all the teachers and other personnel to the parents present. Mrs. Elizabeth Watson gave a few interesting facts concerning Texas. She reminded the audience that Texas had been under the rule of Spain, France, Mexico, Texas as an Independence Nation the Confederacy and the USA. She also reminded us that the bluebonnet was our flower, pecan, our state tree, mockingbird, our state bird and "Friendship", our motto. She then showed a color film entitled "Six Flags Over Texas" which was made on the site between Dallas and Fort Worth. Over 100 people attended the program. The meeting was then adjourned.

Attend Area T.C.T.A. Conference

Mrs. Katherine Sanders and Mrs. Dorothy Beddingfield attended the Texas Classroom Teachers Association area conference at Holiday Inn West in Amarillo Saturday September 16. Members from Districts 7, 9 and 13 were in attendance.

Presiding at the opening session was Miss LaVerne Wong, Vice President of T.C.T.A. Section meetings were held on Legislation, Program, Welfare, Professional Rights and Responsibilities, Professional Consultation, Curriculum and Program Development, Teacher Education and Professional Standards. These section meetings were presided over by T.C.T.A. State Chairmen and State Board members.

At noon the members were guests of the T.C.T.A. for a delicious buffet held in the Continental Club dining room.

Some one hundred members from Districts 7, 9 and 13 attended this worthwhile conference.

Ann Phelps Pledged In Sorority

Miss Ann Phelps, daughter of Mr. and Mrs. Bernard Phelps, 310 East Fir, a freshman student at Texas Christian University, Fort Worth, has pledged membership in Kappa Kappa Gamma, national college social sorority.

Ann, a 1967 graduate of Muleshoe High School, accepted her invitation at the conclusion of rush week Saturday afternoon.

Muleshoe Study Club Has Work Shop

The Muleshoe Study Club met Thursday morning at 10 in the recreation room of the Methodist Church for a Work Shop and salad luncheon with Mrs. J. Frank Peery as hostess. Mrs. Cecil Cole, President called the meeting to order, leading the Club Collect, after which she introduced the visiting speakers, Mrs. Louis Cummings President of the Caprock District Federation of Womens Clubs of Plainview and Mrs. Lane Decker First Vice President of District of Floydada.

Mrs. Cummings spoke on Parliamentary Procedure and Mrs. Decker spoke on reporting. Both ladies really gave good educational talks and were so helpful in answering questions to make the Muleshoe Study Club more alert with these two as our leaders.

Mrs. Cummings also gave some facts about the Training Center in Plainview. The center now has 27 students. This Training Center is a project of the Caprock District Federation of Womens Clubs.

The State Board of Federated Clubs will be in Austin, October 3-4 and the Caprock District Board meeting will be in Littlefield October 14th.

The next meeting will be in the home of Mrs. W. H. Carpenter 1914 Avenue F., Thursday September 28th at 4 p.m.

Those present were: Mrs. Horace Blackburn, Mrs. R. F. Wright, Mrs. J. G. Arm, Mrs. S. L. Benefield, Mrs. H. W. Carpenter, Mrs. Cecil Cole, Mrs. R. O. Gregory, Mrs. G. L. Splawn, hostess, Mrs. J. Frank Peery, and visitors Mrs. Louis Cummings of Plainview and Mrs. Lane Decker of Floydada, Mrs. Magann Rennels of KMJL and Mrs. W. T. Andrews.



Mrs. Joe Mack Wagon

Busy Day Casserole Is Favorite of Mrs. Wagon

Mrs. Joe Mack Wagon, a busy housewife, shares her favorite recipe with the women of the Muleshoe area.

Mrs. Wagon is the mother of three children: Charlotte, who is a sophomore in high school. Kerry is in the seventh grade in Junior High School and Leslie is four years old. Her husband is co-owner of Wagon grocery store. Mrs. Wagon and her family attend the church of Christ.

For the busy housewife, Mrs. Joe Mack Wagon gives this delicious recipe for a busy day, Potato - Ground Beef Casserole.

Potato-Ground Beef Casserole
1 lb. Ground Beef
1 med. onion, diced
1/2 bell pepper, diced
2 T. flour
1 beef bouillon cube, dissolved in 1 cup hot water
salt and pepper to taste
2 or 3 med. potatoes
1/2 cup grated cheese

Brown meat, add onion and bell pepper, simmer. Add flour, then stir in water mixture. Continue to simmer until thick. Cook potatoes separately, cream with mixer, add salt, pepper, butter and small amount of milk. Place potatoes in casserole, cover with meat mixture and sprinkle cheese on top. Place in 375 degree oven for 15 to 20 minutes. If preferred, cheese may be mixed in with potatoes.



PROCLAMATION--Mayor Wilbur LeVeque is shown signing a proclamation designating Young Homemakers Week. Looking on are Darla Ivy and Billie Mason.

Young Homemakers

Cited by Proclamation

Mayor W. B. LeVeque has signed a proclamation designating September 17-23 Young Homemakers Week.

"The Young Homemakers of Texas is a State organization of Young Women under 36 years of age, not enrolled in school and interested in homemaking. As an integral part of the Home Economics education program, the organization contributes to the development of those qualities necessary in becoming worthy homemakers and citizens.

"It is appropriate that a time be set aside for recognizing contributions the Young Homemakers of Texas are making to the homes of our state and nation, and to encourage these young women to continue their work," the proclamation read.

In Fashion

Formal evening clothes come in a variety of styles this season. The most beautiful ones are long skirted but the skirts may be very full with the waistline high or they may gradually widen from under the bustline to the hem. And then there is the straight skirt with perhaps a panel of some kind to break the simple line.

Home Demonstration Club Meets

The Muleshoe Home Demonstration Club met in the home of Mrs. Haney Poyner, September 12, at 2 p.m. Their regular meeting date is the second Friday of each month.

The meeting was called to order by the President, Mrs. Derrell Kenemer and Mrs. Herb Ramage was asked to take minutes in the absence of the secretary, Mrs. Wayne Gilliland.

They are to have exhibits at the 4-H Fair to be held on Saturday, September 16, and will send another Viet Nam package on September 29.

A committee of Jaquita White, chairman, Donna Shaw, Faye Poyner, and Carol Henemer are to meet and write by-laws to be presented at the next meeting.

They had a "thank you" note from Brenda Griffiths, the girl they sponsor at Girlstown and one from Bob Ames, who they sent their last Viet Nam package to.

A financial report was given and the meeting adjourned.

Nine members were present and refreshments of cake and cokes were served by the hostess, Mrs. Haney Poyner.

The time and place of next meeting will be October 13, in the home of Mrs. Gordon Wilson.

Knows Everything
Groom: "Now perhaps I'll be permitted to point out a few of your defects."
Bride: "It won't be necessary, darling, I know them. They kept me from getting a better man than you."

MULESHOE MOTOR CO.

Invites You
To Attend
Their
Formal 1968 Automobile
Showing

THURSDAY, SEPTEMBER 21st.

IN THE HEART OF FORD COUNTRY

"At the Crossroads"

JUST SIGN UP AT YOUR FORD DEALER'S! LIMITED TIME ONLY!

All you have to do is visit your Ford Dealer between September 22 and October 14 and fill out the official registration form. That's all there is to it!

5 GRAND PRIZES

- | | |
|---------------------|--|
| 1st '68 Thunderbird | } Plus a vacation trip for two to any U. S. resort, use of a Ford car at the resort . . . and \$500 cash to spend! |
| 2nd '68 Ford | |
| 3rd '68 Torino | |
| 4th '68 Mustang | |
| 5th '68 Falcon | |

31,070 other prizes of vacations, Philco Portable TV's, radios and travel atlases!



Electricity has shortened our life expectancy. Power from the BAILEY COUNTY ELECTRIC COOPERATIVE automatically awakens us with light early in the morning and doesn't let us go back to sleep until far into the night. As a result we are up longer, eat more and get fatter faster. We know cooperative service is something to crow about but do they have to do it day and night? The BAILEY COUNTY ELECTRIC COOPERATIVE is fine for people but if it were left up to us, there wouldn't be a kilowatt to cook with. So we are bringing our case to you. We get no sympathy from our mother, the brooder. She's electric also.

Bailey County Electric Cooperative Association

Mrs. Gordon Murrah Attends THDA Convention

Representatives from Bailey County join 1,000 other Texas homemakers September 19-20 for the 41st annual convention of the Texas Home Demonstration Association in Fort Worth.

Attending the state meeting was Mrs. Gordon Murrah - Co-Chairman.

Walter Richter, director, Southwest Region Office of Economic Opportunity, keynoted the conference on Tuesday, telling of "The Significance of the Other War," Mrs. Florence W. Low, assistant director for home economics, Texas A&M University, introduced the executive officer.

Welcome notes came from L. F. Peterson of Fort Worth, member of the Texas A&M

University board of directors, and Mrs. J. E. Waggoner, THDA chairman, Tarrant County.

Other talks and topics included Mrs. Wilmer Smith of Wilson, president of the National Extension Homemakers Council, speaking on "The Home a World of Concern," and Dr. Alice Wonders, chairman, Division of Philosophy and Religion, Texas Wesleyan College, telling of "Family Portraits from the Middle East."

Dr. Carl S. Winters, guest lecturer for General Motors, closed the conference, speaking on "Today's Youth and Tomorrow's World" at a Wednesday evening banquet.

The two-day session featured training workshops on 4-H, family life, safety, citizenship, health and recreation. Recommendations from these meetings were taken back to the counties by those attending the state convention and carried out by the approximately 36,000 THDA members throughout the state.

Examples of proposed recommendations include home demonstration club members assuming citizenship responsibilities through study of new state legislation, clubs' studying the services for the mentally retarded, clubs' encouraging and supporting community and state agencies whose programs assist families, and

clubs' emphasizing driver education for youth and improved traffic safety legislation to legislators.

In citing the accomplishments of the THDA, Mrs. Low pointed out that "during 1966, the 36,000 club members in 1709 different clubs provided help in the development of home-making skills to 265,395 homemakers not enrolled in clubs--an average of about eight assistances per club member."

Mrs. Low also emphasized that 74 outstanding 4-H Club girls have received THDA scholarships in the past 41 years.

"These recipients now serve in leadership capacities throughout the state," Mrs. Low states, a tribute to the leadership of this organization."

BIBLE VERSE

"Bear ye one another's burdens, and so fulfil the law of Christ."

1. Who was the author of this advice?
2. To whom was he writing at the time?
3. How can one obey the command?
4. Where may these words be found?

Answers To Bible Verse

1. Paul, the Apostle.
2. The Christians living in Galatia.
3. By being forgiving and helpful to one's fellowmen.
4. Galatians 6:2.



SHELLING PEAS--A group of ladies from the First Baptist Church met Monday September 18 in the kitchen of the church to can peas for a missionary project. Those present to help pick, shell and can were: Mrs. Ethel Miller and her daughter, Mrs. Clarence Wilhite, Mrs. Ed Little, Mrs. John Crow, Mrs. Sherman Inman and Mrs. Earnest McNatt. The peas were gathered from the Bobby Free's place on the Lubbock Highway. They also plan to gather beans from the Walter Harrison place.

ON SPACE TREATY

Hopes are brighter for the passage of the second step in President Johnson's East-

West outer space peace treaty. The outer space treaty prohibits establishing military bases on celestial bodies and provides for on-site inspection.

Order of Eastern Star Has Ice Cream Supper

Fifty guests attended the ice cream supper Saturday night September 16 in the Masonic Hall. The ice cream supper was hosted by Worthy Matron and Worthy Patron, Pat and Bill Johnson.

Nine members will leave Sunday September 24, for Dallas to attend the Grand Chapter. Those who will be going are: Pat Johnson, Worthy Matron, Lois Norwood, Hazel Nowell, Laverne Hinkson, Barbra Lust,

Mary Farley, Syd Bullock and Mr. and Mrs. Spencer Beavers. The group will leave Lubbock Sunday at 5 a.m.

That Held Him

The rather overweight middle-aged lady, who, while proclaiming to be on a diet, was packing away a meal fit for a longshoreman, reproved her mild-mannered spouse with this cutting remark: "And you haven't even the will power to prevent me from going off my diet."



FIVE AT NURSING HOME CELEBRATE BIRTHDAYS--Mrs. Ed Blair, Mrs. Kattie Newton, Mr. Henry Nieman, Mrs. Claudia Lite and Mrs. Flora Hardin were honorees at a birthday celebration hosted by the Esther Circle of the First Methodist Church of Muleshoe.

Birthdays Celebrated In Muleshoe Nursing Home

The Esther Circle of the First Methodist Church was host to those celebrating birthdays in the Nursing Home September 19. Those celebrating birthdays are: Mrs. Ed Blair, 71, Mrs. Katie Newton, 87, Mr. Henry Nieman, 77, Mrs. Clau-

die Lite, 78, and Mrs. Flora Hardin, 86. Mrs. Blair's husband resides at Earth, where he owns and operates a grocery store. Mrs. Hatie Newton has a daughter, Mrs. Fred Lasster, Whiteface. Mr. Nieman has a daughter who lives here in Muleshoe, Mrs. Dorothy

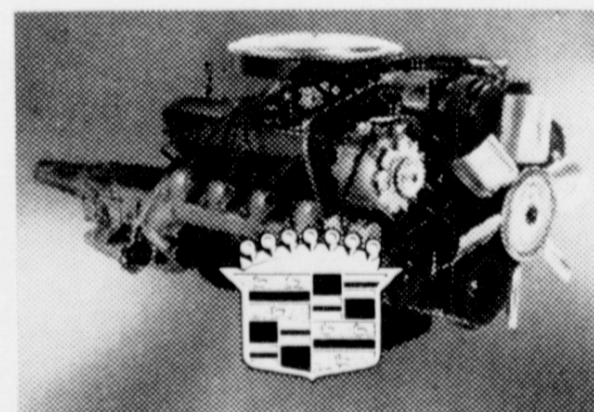
Green, and Mrs. Hardin has a daughter, Mrs. Eula Calhoun. Refreshments of cake and punch were served from a decorated table layed with a white linen cloth. A bouquet of verbenias in a beautiful white vase. A host of friends came by to wish them a happy birthday.



4-H CLUB FAIR--Left to right, Lavira Carpenter, Sandra Haley, Ruth Romm, Connie Floyd, Alta Ramm, Jolie Carpenter and Benny Floyd. Back row, Danita Throckmorton and Vowery Throckmorton. These are a few of the participants in the 4-H fair and a display of their goodies. More details of the story about the high point boy and girl will be in the next edition of the Journal.

Cadillac presents elegance in action!

And the "inside story" for 1968 starts with the biggest, smoothest V-8 engine ever put into a production motor car.



Brilliant new styling • Dramatic new interiors • Totally new instrument panel • Concealed windshield wipers • Improved variable ratio power steering • New disc brakes available • Wide choice of eleven exciting new body styles.

Now, enter a new era of luxury car performance. Cadillac's new 472 V-8 has the greatest torque, or usable power, of any passenger car engine and the newest combination of engine components since Cadillac pioneered the V-8 fifty-three years

ago. You will notice a brilliant improvement in passing performance that in no way compromises the reserve of strength for Cadillac's usual power conveniences.

You will also be impressed with its amazing quiet--so remarkable that only its responsiveness reminds you that a great new engine lies under the hood.

Cadillac for 1968 provides, in addition, its well-proved triple braking system with finned drums to deliver smooth, straight stopping power. Front disc brakes are

available for those who prefer the further refinement of an advanced disc and drum combination, and this year they're standard on Eldorado. You may also choose a greatly improved air conditioning system that moves more air more quietly.

Whether your preference is for one of the more traditional models--or the classic beauty of the Eldorado--come in soon and discover new elegance and excitement in luxury motoring!



THE NEW 1968 CADILLACS ARE NOW ON DISPLAY AT YOUR AUTHORIZED CADILLAC DEALERS.

801 Hall Avenue **JONES MOTOR CO.** Littlefield, Texas

Why get Scalped on Prescriptions?

Shop and Save at

GIBSON'S DISCOUNT PHARMACY

Phone 762-4579
108 Sycamore Street
Clovis, New Mexico

SHOP GIBSON'S TODAY & SAVE!

Harvest of Best Brands

...MULESHOE ON THE MOVE!

PACK YOUR PANTRY WITH SAVINGS

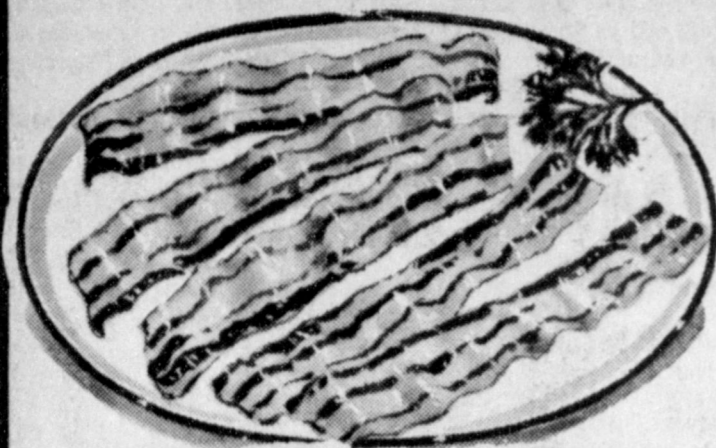
Rodeo Thick or Thin Sliced

BACON

Vacuum Packed

\$1.49

2 Lb. Pkg.



PORK ROAST

Pinkney's Lean

Picnic Cut

Lb.

29¢

SPARERIBS

Pinkney's Lean & Meaty Fresh Pork

Lb. 59¢



All Grinds

COFFEE

1 Lb. Tin

46¢

BACKBONE

Pinkney's Lean Country Style Pork

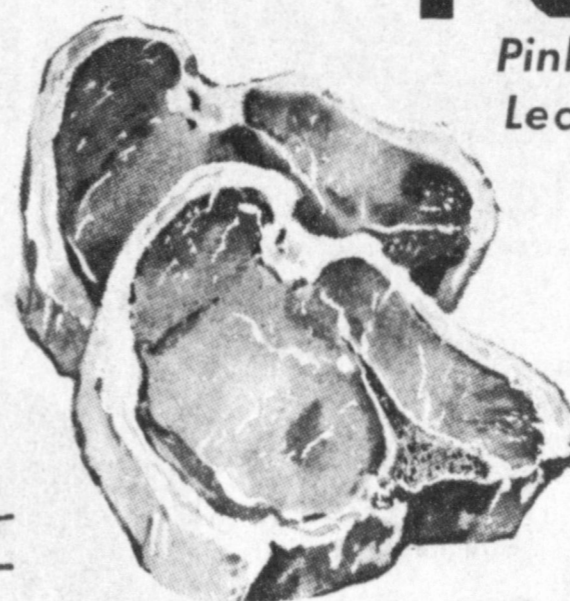
Lb. 59¢



PORK CHOPS

Pinkney's Sun Ray Lean First Cuts

Lb. 59¢



Pinkney's Sun Ray Extra Lean Center Cut

PORK CHOPS Lb. 79¢

Pinkney's Lean Fresh

PORK STEAK Lb. 39¢

Swift's Premium Proten Beef

T-BONE STEAK Lb. \$1.09

Rodeo's All Meat Thick or Thin Sliced

BOLOGNA 1 Lb. Pkg. 59¢

COCA COLA

6 Bottle Ctn.

Plus Deposit

26¢



BATHROOM TISSUE

4 Roll Pkg. 49¢



Cracker Barrel CRACKERS

1 Lb. Box

17¢

FROZEN FOODS

- 6 oz. Can Libby's PINK LEMONADE 3 for 39¢
- Banquet Family Size, Apple, Peach & Blackberry FRUIT PIES 3 for \$1
- 10 oz. Pkg. Keith Sno-White CAULIFLOWER 2 for 45¢
- 10 oz. Pkg. Keith's Fantail BREADED SHRIMP 69¢

POTATOES

Reds

20 Lb. Bag 49¢



California Tokay Red

GRAPES

Lb. 25¢

Portales Golden

SWEET POTATOES

Lb. 9¢

TOMATOES

Muleshoe Home Grown

Lb. 5¢



SHORTENING

3 Lb. Tin

49¢



CABBAGE

Firm Green Heads

Lb. 3¢



- Schilling Pure 4 oz. Can BLACK PEPPER 39¢
- Nabisco Oreo 1 lb. Pkg. COOKIES 49¢
- Del Monte #303 Can SPINACH 15¢
- Ranch Style 24 oz. Can BEANS 2 for 49¢
- Southwestern Pure Country 4 lb. 4 oz. Can HONEY 99¢
- Hunt's Tomato 20 oz. Family Size Bottle CATSUP 3 for \$1
- Del Monte Pink Pineapple-Grapfruit 46 oz. Can DRINK 3 for \$1
- First Prize 1 lb. Ctn. OLEO 5 for \$1
- Libby's #300 Can Beans & Vienna Sausage 3 for \$1
- Nestle Pkg. ICE TEA MIX 3 for 29¢
- Dove Giant Size LIQUID DETERGENT 49¢
- Bold Giant Size Box DETERGENT 69¢
- Bath Size Bar JERGENS DEODORANT 2 for 25¢
- Fantastic 22 oz. Size SPRAY CLEANER 79¢
- Nestles Chocolate 2 lb. Box QUIK 79¢
- 6 1/2 Pkg. White, Yellow & Devil Food GLADIOLA CAKE MIXES 2 for 19¢
- Kim #1 Tall Can DOG FOOD 6 for 49¢

GUNN BROS. STAMPS DOUBLE EVERY WEDNESDAY.

Whites' CASHWAY

We Reserve The Right To Limit Quantities

Listen to MULETRAIN over KMII 10:15a.m. sponsored by WHITE'S CASHWAY

Board...

Continued from Page 1

and the life expectancy of presently owned school buses. The amount set aside for said school bus purchase reserve fund shall be considered encumbered and not a part of the free balance available as of August 31st.

4. The unencumbered balance available in the transportation fund as of August 31st, may be used to defray the cost of all or part of extracurricular or field trip bus travel for the following school year.

State Transportation Funds received during a school year may not be used for such extracurricular or field trips travel during that year.

5. The use of transportation fund balances, as heretofore described, for the payment of extracurricular or field trip school bus travel must be approved by the Board of Trustees, Muleshoe I.S.D.

6. Buses used for extracurricular or field trips must be operated by drivers who are bonded and possess valid chauffers licenses.

PROTECTIVE EYE DEVICES

Industrial quality eye protective devices shall be worn by every teacher and pupil in the Muleshoe Schools participating in any of the following courses:

(1) vocational or industrial arts shops or laboratories involving experience with -

(A) hot molten metals

(B) milling, sawing, turning, shaping, cutting or stamping of any solid materials;

(C) heat treatment, tempering, or kiln firing of any metal or other materials;

(D) gas or electric arc welding;

(E) caustic or explosive materials;

(2) chemical or combined chemical-physical laboratories involving caustic or explosive chemicals or hot liquids or solids.

(3) "industrial quality eye protective devices" means devices meeting the standards set by the State Department of Health.

(4) The Muleshoe I.S.D. is responsible for providing at cost to teachers and pupils participating in the courses the required eye protective devices.

(5) Whenever an accident occurs during the conduct of any of the courses described above, and an injury to the eye of a teacher or pupil results, the principal shall make a full written report of the accident and injury to the State Department of Education.

EYE INJURIES

Reporting Certain Eye Injuries to the State Department of Education:

REPORTING FORM

The eye injury report form developed jointly by the Division of Administrative Service, Office of School Administration and the Division of Program Development Texas Education Agency, will be used by the Muleshoe I.S.D. This report form is in sufficient detail to guarantee that the intent of the Act will be complied with in full.

REPORTING PROCEDURE:

Each principal of a school in which an eye injury, as stipulated in the Act, does occur shall prepare within five (5) days after the date of the injury, a report in triplicate using the prescribed for ms. One

copy of the report shall be retained by the principal. Original and second copy are to be sent immediately to the office of the Superintendent, who will forward the original to the State Department of Education, Division of Administrative Service, and retain the second copy for his records.

FOLLOW UP PROCEDURE:

Where the original report indicates that permanent damage may result from the eye injury, a second report will be secured from the school district after the extent of such permanent damage, if any, has been determined.

As of September 15, total enrollment was 1,967 compared to 2,106 the same date last year. The tax roll for 1967-68 was approved at the figure of \$27,467,450.00 total valuation. Maintenance rate is \$1.40 and debt rate service is .55. Total tax rate is \$1.95.

Hazard...

Continued from Page 1

All plan were held later at the Business Activities Committee, the Rotary Club and during a special session of the City Council. (See related stories on this page)

Mayor Wilbur LeVeque signed a proclamation declaring Clean-Up Week September 25-30.

Review...

Continued from Page 1

the prospect's main office, Miller then informed MAIF to meet the prospect, a garment manufacturer, in Hereford Monday. This factory would employ approximately 200 persons with an annual payroll of \$1,250,000. Members of the Industrial team met with the prospect and personally escorted him to look over available industrial sites here and answered pertinent questions about the area as well as agreeing to supply additional industrial plants not immediately available. The prospect said Littlefield and Andrews were other prospective sites for the factory.

Elliott said that an industrial prospect could not help but notice and also take into consideration any weed and trash accumulation in and around industrial sites and within the town in general. Also noted by the prospect was the lack of the existence of community parks and service.

He said that an industry that employed 100 workers put 296 more people in 112 additional households, 51 more children in school and \$580,000 more dollars from personal incomes and created \$260,000 in additional bank deposits; caused 104 more new or used passenger cars to be purchased, required

164 additional workers in other businesses and services and required four additional retail establishments and generated \$350,000 in annual sales.

Elliott stated that everyone could help with the industrial prospects and MAIF welcomed all ideas on the subject.

Clean-Up...

Continued from Page 1

wise to us to spend the tax dollar for this when what is really needed is personal pride on the part of the property owner," he continued.

"Another truck, other equipment would need to be secured as well as additional personnel hired to do the work, and there is not enough of either to take care of all the weeds and debris in Muleshoe," he concluded.

The consensus of opinion ran among the businessmen that, to coin a title "To Each His Own" . . . each property owner should clean their lots, Albert Field said a flat bed truck would be used to haul the weeds to the dump ground during clean-up week and the idea was submitted that persons who had means of hauling their own weeds and debris away would not be charged a dumping fee of 50 cents during this specific week providing they are taxpayers within the city. This will be confirmed prior to the

Sunday issue of the Journal. Another suggestion was made to the effect that where vacant lots were on a city block, neighbors plan a late afternoon clean-up day to clear the vacant lot. This policy for keeping Muleshoe clean worked several years ago and stands to reason it would be effective in this effort today.

Since the weeds will soon be dead and dry, if they are not cut and hauled away, within a few weeks they will create a fire hazard. Therefore the Bailey County Fire Department could be interested in assisting with the campaign, although they had not been contacted at that time. Their cooperation has always been very dependable for the town welfare, it was pointed out.

The second annual "Moonlight Madness" sale is scheduled for October 19 from 7 to 9 p.m. Employers and employees will be dressed in costumes and prizes will be given in different categories. More details are being formulated and will be announced by Earl Harris, chairman.

Kendrick...

Continued from Page 1
tie S. Kendrick. He graduated from Lubbock High School and attended Texas Technological College. He is a graduate of various American Banking Institute and U. S. Air Force Institute courses. He enlisted

in the U. S. Air Force in February, 1942, and served in the China, Burma and India actions as a fighter pilot. Separated from the Air Force in 1946 as a Captain, he now holds a rating of Major in the USAF Reserve.

Kendrick, long active in civic affairs, currently is President of Water, Inc., a recently organized non-profit corporation that is working to bring additional water supplies to West Texas, Eastern New Mexico and Western Oklahoma. He is also President of the South Plains Underground Water Conservation District No. 4, a political subdivision in the Terry, Yoakum and Gaines County

areas. In making the decision to enter the race for State Representative, Kendrick stated that he would resign from this job if elected. "I will resign this latter office," Kendrick said, "Prior to qualifying for the new office to avoid conflict of interest but will continue to work for conservation of water resources."

Kendrick is also President of the Terry County United Fund, a Director of the Plains State Bank of Plains, Texas, a National Council Member of the Boy Scouts of America. He has served as President of the South Plains Bankers Association, President of the Brown-

field Rotary Club, President of the Brownfield Junior Chamber of Commerce, Commander of Howard-Hanson Post #269 of the American Legion, and as a Director of the Brownfield Chamber of Commerce.

He and his wife, Irma, make their home at 1609 East Buckley Street in Brownfield. They have three children: John J. Jr., a senior law student at SMU in Dallas; Jean, now Mrs. Jerry K. Phillips of Dallas; and Jimmy, a freshman in Brownfield High School. The Kendricks have two grandchildren. He and his wife are members of the First Methodist Church of Brownfield.

The MULESHOE JOURNAL
Established February 23, 1924
Published by Muleshoe Publishing Co., Inc.
Every Thursday at 304 W. Second
L. B. Hall, President
Jessica Perry Hall, Secretary-Treas.
TEXAS PRESS ASSOCIATION
Member 1967
L. B. Hall, Publisher & Managing Editor
Doris Knauer, News Reporter
Earlene Haglund, Society Editor
SUBSCRIPTIONS:
Zone I - (Muleshoe - Parkersburg - Coahoma - Lamb counties), \$4.00 per year, \$4.50 per year by carrier, with Thursday Muleshoe Journal, both papers, \$5.00 per year; \$6.00 per year by mail.
Zone II - (rest of Territory), \$5.00 per year, with Thursday Muleshoe Journal, both papers, \$6.25 per year.
Mail to: Zone I - 304 W. Second, Muleshoe, Texas 79051; Zone II - 1011 N. 10th St., Amarillo, Texas 79101.
Advertising rate card on application.

MRS BAIRD'S

Stays Fresh Longer

Anthony's
C. R. ANTHONY CO.
Muleshoe, Texas

Special Purchase

Cannon Frosty Tone TOWELS
Reg. \$1.00 Value **57¢**
24 x 40 Matching **27¢**
BATH CLOTH

BUDGET BITER
Specials
We Will Close At 5:45 p.m. Thursday & Reopen At 7 p.m. For Your Shopping Convenience

SPECIAL PURCHASE
World's Most Famous Makers #1 Selection Of Irregular and Factory Over Cuts

Wide Wale Corduroy Reg. \$8.50 & \$9.00
And Wide Wale Cotton Cord Slim Fit

PANTS **STOCK UP NOW** White, Blue, Green

SPECIAL PURCHASE
Men's Irregular SQUIRE SOCKS **3 FOR \$1**
Crew Top Elastic Top Rib Top Irregulars of Regulars 75, 100 & 150 Cotton, Blends, Wools **3 DAY SALE**

100% Cotton Shirt BLOUSES
Reg. \$3.98 **\$2.77**
Sizes 32 to 38
Long or Short Sleeve

SPECIAL PURCHASE Boy's Permanent Press SPORT SHIRTS
Dacron & Cotton Never Iron **2 For \$3**
Regular \$2.98 Long Sleeve Plaids or Solid Hot Fashion Shades Sizes 6 to 18 Yrs

Open 7 to 9 p.m. Thursday, Sept. 21st.

Sheer First Quality SEAMLESS NYLONS **3 PRS. 88¢**
New fall shades. Reinforced toe and heel construction. Sizes 8 1/2 to 11.

Shirt Style Blouse

LADIE'S 100% NYLON STRETCH PANT
Reg. \$8.99 **\$7.77** PR.
By Stockton of Dallas
The new look, the new look, in expertly tailored nylon capri pants. Compare quality you save at Anthony's.

SPECIAL PURCHASE SALE
New Fall COTTONS 44¢
Checks, Plaids, Stripes, Prints 36 & 45 Inch Values to 98¢ Famous Name Brands

HUGE SHIPMENT
New Fall PRINTS 2 \$1
39 & 45 Inch Values to \$1.19 3 DAY SALE

100% DACRON Knit Fabrics

100% Dacron Double Knit in fashion colors and textures **\$3.99** Yd.

Come FLY With Us FREE

To See **ROYAL OAKS ESTATES**
Fun-Center Of The Highland Lakes Area
Located on a beautiful Granite Shoals (L.B.J.) Lake near Kingsland, Texas. Royal Oaks Estates lies in the middle of what U.S. NEWS & WORLD REPORT calls "a Texas land boom." \$1 million already invested in 250-acre recreation center with 18-hole golf course, Country Club, olympic-size swimming pool, marina, and many other recreational facilities. 2300 acres of natural wonderland in tracts ranging from individual home sites to ranchettes of 3 acres or more. Unusual investment opportunity. Pre-development prices \$500 to \$5,000. 10% down, years to pay. P. n for your FREE flight today. Write for free 8-page color brochure.
Dan Burkett
P.O. Box 10145
Amarillo, Texas 79106
Phone: FL5-9351

Reg. \$2.99 Val. **2 FOR \$5**
Men's White or Stripe Permanent Press **DRESS SHIRTS**
Dacron & Cotton That Never Needs Ironing
Sizes 14 1/2 to 16 1/2

Men's Cut and Sewn or **COTTON KNIT SPORT SHIRTS**
Values to \$5.00 **\$1.22** EACH
Long or Short Sleeve

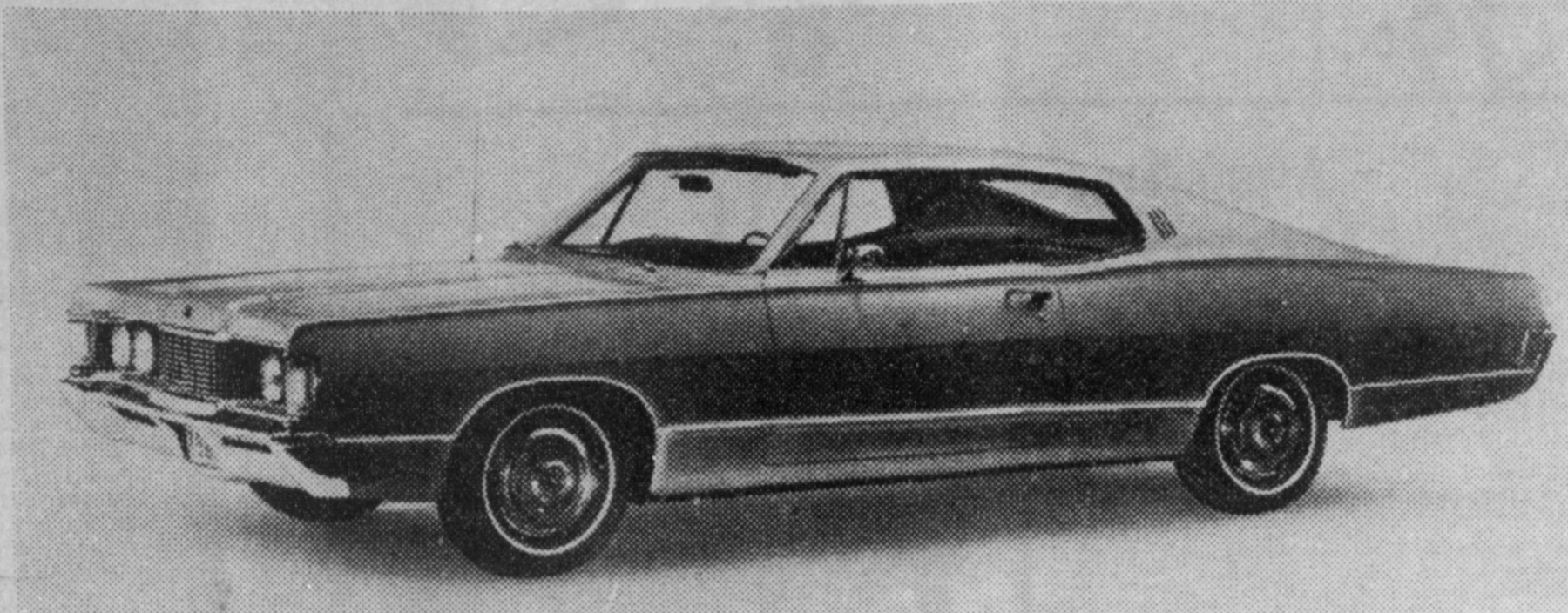
Men's Fine Wellington BOOTS \$11.99 Value SAVE! **\$10**
Rough Cut or
Fine finish smooth leather uppers, leather lined, leather sole, rubber heel. A good looking boot that will give excellent service and comfort wear. Sizes 6 1/2 to 12, B or D widths.

Ladies Nylon Tricot BRIEFS
Regular 98¢ value **2 PRS. 88¢**
Expertly tailored briefs, run resistant tricot knit. Sizes 5 - 6 - 7.

SWITCHING

New Car Styles!

Show



New two-door hardtops with sporty, sweeping roof lines highlight the Mercury for 1968. The design theme underscores Mercury's relationship to the Lincoln Continental. The fine-car family resemblance starts with a crisp new forward-thrusting die-cast grille, wrap-around bumper with functional air slots and power dome hood. The classic appearance is emphasized further by distinctive new vertical parking lamps that also serve as side marker lights at night and as turn signals designed as wrap-around elements in the front fenders. In addition to the new low crown roof in the Montclair, pictured above, and in the Monterey and Park Lane two-door hardtops, Mercury offers a more formal roof in the top-of-the-line Marquis two-door hardtop.

MULESHOE MOTOR CO.

with all
larger
350-cu.-
and



LUXURICUS LTD. Ford's luxurious LTD series - which offers a four-door sedan and two- and four-door hardtops with formal roofs - has a generous share of Ford's better ideas. Its standard power is a new regular gas 302 hp teamed with a three-speed manual all-sync box.

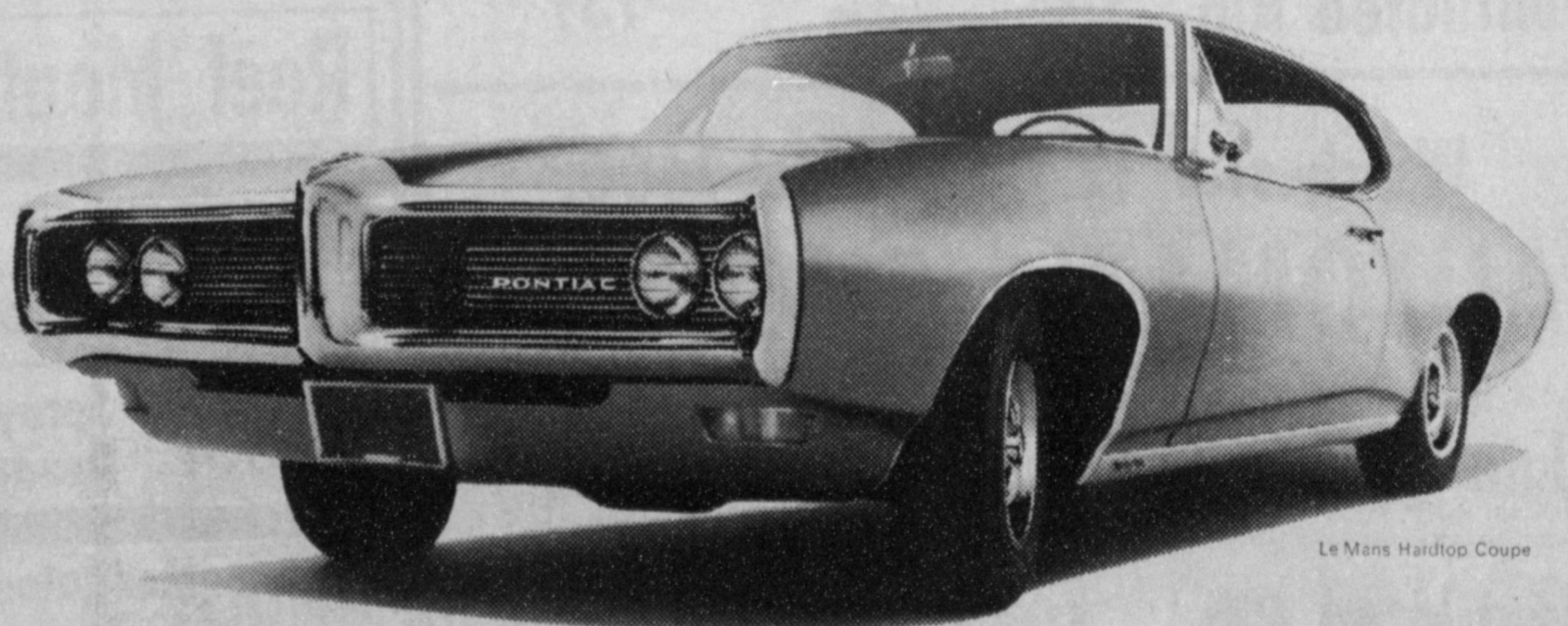
MULESHOE MOTOR CO.



CHRYSLER
MOTORS CORPORATION

all new, 5 series wide, 15 models deep. With no small versions. New Yorker - Newport Custom. - This year, make your move. And make it big. Make it Chrysler.

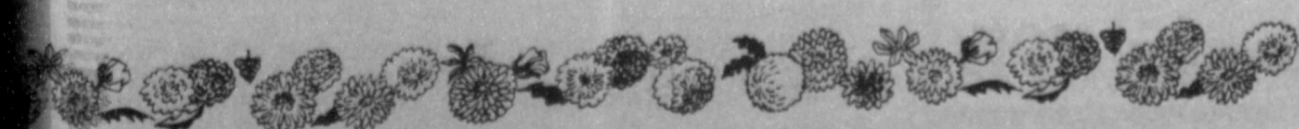
B.M.G. MOTORS, INC.



Le Mans Hardtop Coupe

Wide - Tracking has never been farther removed from just plain ordinary driving. One look at our stylish '68 Pontiacs should tell you that. One ride will convince you! Isn't it about time you decided to give up plain ordinary driving? Don't fritter away another hour. See your Pontiac dealer today and start Wide - Tracking!

LADD PONTIAC



GIBSON'S DISCOUNT CENTER
"WHERE YOU ALWAYS BUY THE BEST FOR LESS"

NO LIMIT ON QUANTITIES ON THESE SALE ITEMS TO OUR CUSTOMERS. SORRY... DEALERS, TO INSURE ENOUGH STOCK FOR OUR CUSTOMERS, WE RESERVE THE RIGHT TO LIMIT DEALERS.

DAYLIGHT SAVING HOURS
9a.m.-9p.m.

MONDAY thru SATURDAY

These Specials Good Through SATURDAY



FEDERAL® FIELD LOAD SHOT SHELLS

Low base plastic shells

- F123 12 Ga. \$1.97 Box
- M161 16 Ga. \$1.73 Box
- F202 20 Ga. \$1.73 Box

GUN CASE Vinyl \$2.27
#75 \$3.98 Val.

Jumbo GUN CASE \$3.77
#36 \$5.98 Val.

Hoppe's 12 Ga. Shotgun CLEANING KIT \$1.83

TOP PERFORMANCE



Coleman FUEL
For Coleman Lanterns, Camp Stoves, Catalytic Heaters. Blended to give trouble-free operation.

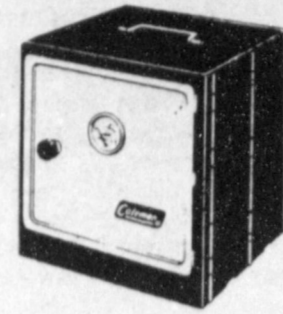
Gallon Size **79¢**

Coleman CAMP OVEN

BAKES ANYTHING
PIES, CAKES, BISCUITS, FROZEN FOODS

Bakes evenly, just like at home. Comes complete with thermometer. Folds flat—flips open at the touch of a finger. Large convenient side-hinged door.

\$6.13



Alcan Smokeless SHOTGUN POWDER

ALCAN AL-5 SMOKELESS POWDER
A progressive burning smokeless powder that will produce maximum velocity in heavy loads.

AL-5, AL-7, AL-8

3 Lb. Can **\$9.97**



100-FT. CIRCLE OF LIGHT
all night for just pennies
Coleman LANTERNS \$9.27
Light easily. Rust-Resistant. Wind-rain-bug-proof. #200A One Mantle

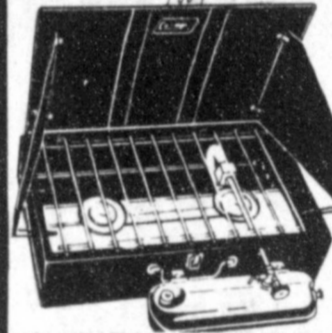


Alcan Shotgun RELOADING WADS

Box of 250 Wads-Flite-Max Single Unit **\$1.77**

- Air Wedge 12 Ga. Plastic Over Powder Wad Box of 500 **\$1.53**
- Nitro Card Box of 1,000 .070, .135, .200 - 12 Ga., 16 Ga., 20 Ga. **\$1.38**
- Feltan Wads Box of 500 5/16", 1/4", 3/8", - 12 Ga., 16 Ga., 20 Ga. **73¢**

Coleman
Hot meals in minutes!



2 Burner Camp STOVE #4136499 \$13.97

Remington 20 Ga. Model 1100

SHOTGUN

- Plain Barrel \$159.95 Value **\$121.97**
- Ventilated Rib \$184.95 Value **\$139.97**

Winchester 12 Ga. Model 1400

AUTOMATIC SHOTGUN

- Plain Barrel \$144.95 Value **\$108.97**
- Ventilated Rib \$169.95 Value **\$127.47**

CHILLED LEAD SHOT

\$4.77
25 Lb. Bag Bag

GIBSON'S DISCOUNT CENTER
"WHERE YOU ALWAYS BUY THE BEST FOR LESS"

Health And Beauty Aids

- GLEEM TOOTHPASTE** 95¢ Family Size **59¢**
- Johnson's Dental Floss** 100 Ft. 69¢ value **39¢**
- Reef Mouthwash** 22 oz. size **67¢**
- EXCEDRIN** 165's 2.19 value **\$1.36**
- Aqua Net Hair Spray** 16 oz. size **59¢**
- MUM Spray Deodorant** 7.5 oz. 1.53 value **91¢**
- Bactine Medicated First Aid Spray** 1.49 value **87¢**
- JOHNSON'S GLO-COAT** 27 oz. size. 98¢ value **73¢**
- DRANO** 26 oz. size **62¢**
- PLEDGE** Plain or with Lemon 1.39 value 14 oz. size **99¢**

Start Your Christmas Lay-a-way NOW



LAST DRAGS--The National NHRA Championship completed the racing at Amarillo Speedway Sunday. Among the 400 entries were Jerry Spies driving this 1957 Ford station wagon "Wanda's Wagon" entered in the 'E Stock Automatic Class. Other Muleshoe entries were Teddy Millen in H Stock racing and Bud Gilliland driving a 1963 Pontiac in the Super Stock Division.

Enoch News

by Mrs. J.D. Bayless

Mr. and Mrs. Eriton Wall have just returned from a vacation and sight-seeing trip to Colorado, Utah, Silver Falls, Arizona, and New Mexico, Grand Canyon, Pikes Peak and Grand Canyon.

Mrs. C. R. Smelser underwent major surgery Thursday in the Methodist hospital at Lubbock. She is very ill.

Mr. and Mrs. Edd Autry are at Taft visiting their daughter and family, Mr. and Mrs. Billy West.

Ricky Nichols fell at school last week and broke his arm.

Mrs. Quinton Nichols took Mr. and Mrs. J. B. Vanlandingham to Lubbock Friday for his checkup. He was able to attend church Sunday morning at the Enochs Baptist Church.

Mr. and Mrs. Bennie Gale Hall and family moved to the Enochs community recently. He will operate what is known as the old Enochs gin.

Mr. and Mrs. Bruce Angel and daughter of Lubbock spent the weekend in the home of his parents Mr. and Mrs. Johnnie Angel, to be with his father, who is seriously ill.

Mr. and Mrs. G. G. Snitker attended the funeral of their uncle, Alford Snitker, of Anton, who died Sunday morning in the Medical Arts Hospital in Littlefield. Funeral services were 3 p.m. Monday in the First Baptist Church at Anton. Burial was in Anton cemetery.

Mrs. Betty Long and son, Litt Newman from Possum Kingdom were guests in the home of her brother and wife, Mr. and Mrs. J. W. Layton, and they left Saturday for a trip to Idaho to visit Mrs. Long's son, Bert Newman.

Mr. and Mrs. H. B. King were hosts for the Baptist adult training union social Thursday night at their home. Those attending were Mr. and Mrs. E. F. Campbell, Mr. and Mrs. Carl Hall, Mr. and Mrs. Clyde Price, Mr. and Mrs. J. D. Bayless, Mr. and Mrs. E. N. McCall, Mr. and Mrs. Vergil Wood, Mr. and Mrs. Guy Sanders, Mr. and Mrs. J. W. Layton, Mr. and Mrs. Clifford Snitker, Mrs. Alma Altman, Mrs. C. R. Seagler, and James Gilbert. Mrs. Seagler brought the devotional, "Staying Young," and there were games of "42" and Pass-word. Refreshments were homemade ice cream, cake, tea and coffee.

Mr. and Mrs. Tommie Bryant from Hereford spent last weekend in the home of Mr. and Mrs. Elwood Autry and attended the wedding of Barbara Autry and Gordon McDaniel.

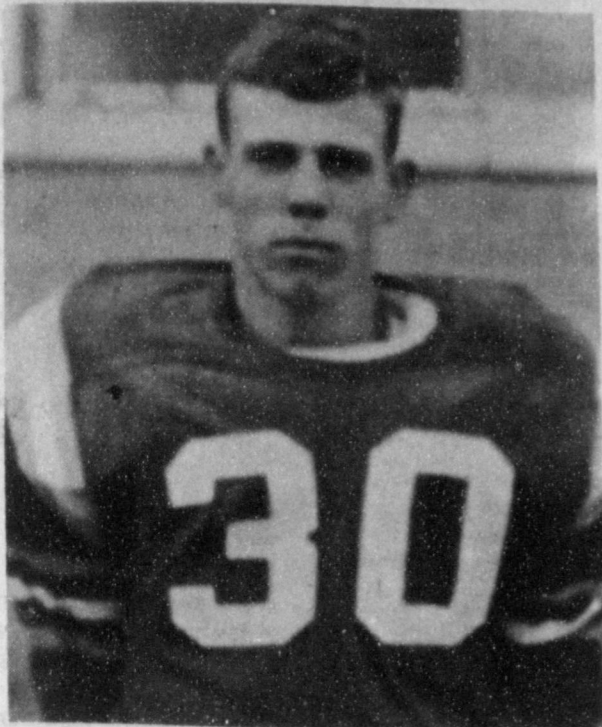
Dick Bryant underwent surgery on his elbow Thursday at the Medical Arts Hospital at Littlefield.

Those attending the State Mission Prayer Retreat program at the First Baptist Church in Littlefield Tuesday were Mrs. Dale Nichols, Mrs. J. W. Layton, Mrs. L. E. Nichols, Mrs. Chester Petree, Mrs. W. M. Bryant, and Mrs. C. C. Snitker. Also, Mrs. L. E. Busher, Mrs. C. A. Williams, Mrs. E. O. Battles, Mrs. Fred Locker, Mrs. Philip Pierce, Mrs. Clyde Hogue and Mrs. Earl Black of Bula.

Company in the home of Mr. and Mrs. H. B. King Wednesday and Thursday were her brothers, Jethro Gilbert from Broken Arrow, Okla., and James Gilbert. They also visited in the home of Mr. and Mrs. E. O. Battles at Bula.

POOR HELP POOR
NEW YORK (AP)—Who are the best friends of the poor? "Other poor people," says the Rt. Rev. Msgr. John G. Nolan, president of the Pontifical Mission for Palestine. He said low-income Americans are "most consistently responsive to the needs of the poor elsewhere," as indicated by contributions resulting from Pope Paul VI's appeal for aid to 1.3 million Arab refugees.

**The THREE WAY
EAGLES
PLAYER
OF THE WEEK**



Bruce Pruitt

Quarterback, Bruce Pruitt, Three Way head hunter, cited as outstanding player of the week. He crossed the goal line, running 2 extra points. He also plays defensive tackle.

This Recognition Courtesy Of:

**Maple Supply
Maple Grocery
Maple Dry Goods**

Maple Fertilizer & Seed

This Week's Game Sept. 22,

Loop...At Three Way, 8 p.m.

**Coronet, Something
For Everyone**

Coronet, Dodge's bread and butter car, has an all-new look for 1968 and a "something-for-everybody" theme.

There is a new two-door coupe with a hardtop roof styling to replace the two-door sedan. Station wagons have wood-grained side panels, double-hinged tailgate and a rear window washer-wiper.

There are racing stripes, high performance V-8's and hood scoops for the sporty car enthusiast. For the economy minded there are six-cylinder engines and low axle ratios.

"Coronet, which totaled 36 percent of all Dodge sales when it was introduced in 1965, accounted for 38 percent in 1967. We expect this stylish, 117-inch wheelbase, family-size car will account for even more sales in 1968," said J. T. Swim, of BMG Motors.

The 14 new models went on display in dealer showrooms September 14," Swim said.

The styling theme for 1968 incorporates soft flowing surfaces, with attention focused on the quarter panel to achieve an aerodynamic, forward motion look. Top curvature and tapering of body metal in the quarter area bears a family resemblance to the semi-fast-back 1968 Charger.

Adding to the design are the gull-wing shaped backlight, lower windshield and fast-angles roof line, which contribute to a lower silhouette. The grille is deeply recessed in keeping with the aerodynamic theme.

Larger bumpers are used with the front featuring narrow cooling slots. Round, rallye type park and turn lights are located at either end of the slots. Individual turn signals, parking and backup lights are Delta shaped to identify the car as a member of the Dodge family.

A two-door coupe with hard-top roof line and frameless

glass replaces the two-door sedan as a styling plus for the sedan buyer. Another styling touch is contained in the optional vinyl roof for the coupe.

Station wagons feature a new type tailgate that opens as a door or in the conventional tailgate manner.

The rich-looking wood grain side paneling, previously available in only the high-line Monaco station wagon, is now standard as a styling plus in the new Coronet 500 station wagons.

A simulated high riser hood scoop or "power bulge" readily identifies the R/T -- the sporty member of the Coronet family.

Other exterior items besides the distinctive grille, rear end, and hood include bumble bee racing stripes across the deck and down the quarter panels, and standard F-70 wide tread tires with either red or white side walls.

An added touch is the availability as an option of the Charger instrument panel with tach and gauges canted to the driver.

A choice of the standard Dodge 440-cubic-inch Magnum or optional 426-cubic-inch Hemi is available. Heavy-duty brakes, and heavy-duty suspension with sway bar are standard.

Bucket seats are standard. Offered as an option is the fixed center cushion with fold-down arm-rest. A console is also optional.

Other highlights for the 1968 Coronet include:

Green, black, or white vinyl roofs as an option for Coronet Deluxe Coupe, two-door hard-tops, and four-door sedans. Convertible tops are also available in green, black or white.

Optional speed control device located on end of turn signal lever, optional time delay ignition switch light, and bucket seats on 500 wagons.

Standard cleaner air system on all models, optional fender-mounted turn signal indicators, head restraints on all type seats, new combination AM radio and stereo tape player, and rear window defogger.

New safety features for 1968 include:

Side marker lights at the front and rear side extremi-

ties of the car to make the vehicle more easily seen from the side at night.

Instrument panels on all 1968 Coronets have increased padding.

The inside door locking button now must be pulled up before the inside door lever will operate the latch.

Folding front seat backs in all two-door models have a special manually-operated seat back latch for the safety of front and rear seat passengers.

All window crank knobs are made of soft plastic, formed into a tulip shape, that will yield upon impact.

Engines for Coronet, other than the previously mentioned 440 and 426 for the R/T, include the 225-cubic-inch Slant Six, 273-cubic-inch V-8, the 318-cubic-inch V-8 and 383-cubic-inch V-8 with two or four barrel carburetion.

The 1968 Coronet is available in a variety of six interior and 17 exterior colors.

**Move Up
To Chrysler '68**

The 1968 Chryslers are all new. 5 series wide, 15 models deep. With no small versions.

New Yorker - our most luxurious Chrysler. With new options like an 8-track stereo tape system and automatic air conditioning.

Town & Country - the most sophisticated wagon series around. With new optional rear window wiper/washer concealed in the tail gate. And optional all-vinyl 3-in-1 divided front seat with passenger recliner.

300 - the latest version of the sports-bred Chrysler. Concealed headlights and a big 440 cubic inch V-8 are standard.

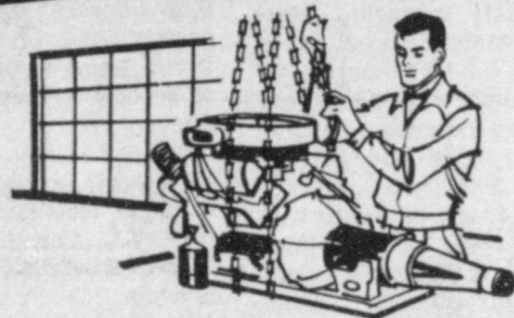
Newport Custom - with all the basic Chrysler luxuries. And a list of over 50 tailored-to-you options.

Newport - our easiest-to-own Chrysler. With more luxurious interiors. And a higher output 383 cubic inch V-8.

New Yorker to Newport - we've got you covered 15 ways. With the kind of luxury that could only come from Chrysler. And does.

This year, make your move. And make it big. Make it Chrysler.

**MOTOR
OVERHAULING**



EXPERT ENGINE REPAIRS

Guaranteed service, new parts will insure better driving mileage. Budget plans arranged.

PLAINS AUTO SERVICE

(ACROSS FROM CASHWAY)

South Main MULESHOE Phone 272-4576

GUARANTEED AUTO REPAIRS

Back The BULA BULLDOGS

B
E
A
T



Coach Flaniken, L.D. Holt, Mike Richardson, Dennis Newton, Rodney Claunch and Front Row - Gary Kessler, Tom Newton, Mitchell Autry and Terry Sowder.

This Week's Game...Friday, Sept. 22nd 8:30, THERE

- NORGAS** (Bula and Morton)
- SANITARY BARBER SHOP** (Muleshoe)
- COBB'S DEPARTMENT STORE** (Muleshoe)
- HENRY INSURANCE AGENCY** (Muleshoe)
- Anderson's Montgomery Ward Agency** (Muleshoe)

- COX Spraying Service** (Enochs and Bula)
- JOHNNIE'S BEAUTY SHOP** (Mrs. C.A. Petree)
- Corral Drive-In and Restaurant** (Muleshoe)
- POYNOR'S WHITE STORES, INC.** (Muleshoe)
- State Line Butane Co-op Ass'n.** (Maple and Needmore)

P
A
T
T
O
N
S
P
R
I
N
G
S

EDDIE'S FOOD MARKET
Low Prices Everyday
BUCCANEER STAMPS
Open 7a.m. 'till 11p.m. in Muleshoe
Muleshoe & Needmore

MULESHOE STATE BANK
OLDEST, STRONGEST and FRIENDLIEST
Let Us Help You Make
That Goal!
Muleshoe, Texas Member FDIC

Tri-County
SAVINGS AND LOAN ASSOCIATION
MULESHOE, TEXAS

WESTERN DRUG
Phone 272-3106
Muleshoe, Texas

MULESHOE MOTOR CO.
Ford - Mercury
"At the Crossroads"
MULESHOE, TEXAS

**Bailey County Electric
Cooperative Association**
Muleshoe Phone 272-4504
Morton Phone 266-3841

BULA CONOCO
Dale Middlebrooks
Phone 933-2312
BULA, TEXAS

**FARMER'S CO-OP GIN
ASSOCIATION**
Phone 927-3444
ENOCHS, TEXAS

YOUNG BROTHERS GIN
Phone 933-2352
BULA, TEXAS

SIMMONS' GROCERY
F.L. Simmons
ENOCHS, TEXAS

CLAUNCH GIN
"The Gin for the Farmer"
Phone 933-2372
Bula, Texas

**Robert's Retail & Wholesale
Mobil Products**
Burley Roberts
ENOCHS, TEXAS

TEXACO
SAME. FOX
DISTRIBUTOR OF TEXACO PRODUCTS
MULESHOE, EARTH, & ENOCHS TEXAS
GARY NICHOLS ENOCHS MGR. PHONE 927-3330 ENOCHS TEXAS

WESTERN 66 CO.
Muleshoe Phone 272-4556
Needmore Phone 946-2271

RICHARDSON'S GENERAL STORE
GUNN BROS. STAMPS
DOUBLE ON WEDNESDAY
Bula, Texas Phone 933-2386

FIRST NATIONAL BANK
"Home Owned"
MULESHOE, TEXAS
Member FDIC

The Ford..Quiet, Beautiful, Strong

The Ford, a conventional sized car which offers practically every feature obtainable in the industry, is presented in 21 models for 1968, the greatest choice in its 64-year history.

This car has earned such a reputation that it has attracted many owners who have previously purchased much higher priced competitive makes. Its popularity is due to its quiet, smooth ride, its superb handling and performance, its comfort and roominess, and many other attributes resulting from

Ford Motor Company's continuing quality campaign.

For 1968 the lineup includes three new models: a Galaxie 500 two-door hardtop with formal roof, and two Custom 500 Ranch Wagons. These wagons, along with the other five wagons in the Ford line, are expected to be favored among many Ford buyers.

Ford's traditional crisp styling is carried on with all new sheet metal below the window sill line, and new roof lines that merge gracefully with the lower body. The Galaxie

500 and XL series have new fastbacks with increased sweep in the back window and a shorter deck lid, emphasizing the classic long-hood look.

The least expensive models in the line are the Custom and Custom 500, available in two-door and four-door sedans with a 150-hp regular fuel six-cylinder engine standard. Standard transmission is a three-speed manual, all-synchronized. These models have a stylish appearance that belies their low price tag, and they share many features found in the higher priced series.

The five models of the Galaxie 500 line also have the six-cylinder engine and three-speed manual transmission as standard equipment and include a four-door sedan, two-door hardtop and fastback, a four-door hardtop and a convertible.

The Ford XL series includes the two-door fastback hardtop, seating six with an optional bench front seat, and a convertible. The XL series has bucket seats and console, retractable headlights, and deluxe wheel covers among many items of standard equipment. The Six and manual box are standard on the XLs, but they are eligible for the sporty GT equipment group option.

For this option, a 390, 428, or 427 engine is required at

extra cost, and the package also includes power front disc brakes, high-speed handling suspension, 3.25 rear axle ratio, low restriction exhaust system, C70-15 white sidewall oval tires, a tapered GT stripe, and simulated "mag wheel" wheel covers.

Ford's luxurious LTD series - which offers a four-door sedan and two- and four-door hardtops with formal roofs - has a generous share of Ford's better ideas. Its standard power is a new regular gas 302-cubic-inch V-8 of 210 hp teamed with a three-speed manual all-sync box. Among many other standard items are:

Retractable headlights, unique wheel covers, pleated cloth and vinyl upholstery, loop-pile nylon or nylon/rayon carpeting, simulated wood grain paneling on both the instrument panel and doors, and a full-width bench-type front seat.

A Brougham Trim option, exclusive with LTD in the Ford line, consists of a luxurious cloth trim with pleated cushion, tufted seat back with embroidered center panel, and seat sides framed in contoured bright metal, among many other features.

Another LTD comfort option is a front Twin-Comfort seat that is divided for individual adjustment of its halves.

Other optional power plants in Ford's six-engine lineup are:

The 390-cubic-inch V-8 at 265 hp in two-barrel version, and 315 hp in four-barrel; and the 428-cubic-inch V-8 delivering 340 hp. All but the two-barrel 390 operate on premium, and can be matched with a generous choice of automatic or manual transmissions.

The Cobra 427-cubic-inch V-8 rated at 390 hp is offered for '68 teamed with the Select-Shift Cruise-O-Matic (that can be shifted manually or automatically) as its only transmission choice. This engine runs on super-premium fuel.

New options offered with the Ford in 1968, in addition to those mentioned above, include: Floating caliper front disc brakes, for better cooling.

Vacuum-operated power door locks controlled by steering column toggle switch.

AM/FM Stereo radio, allowing a choice of AM, FM or FM

stereo reception at the touch of a switch.

Reflective stripes over rocker panel on Ford XL models.

Rear window defogger that clears frost or dew with a stream of air.

Tilt steering wheel for ease of entry and exit.

Automatic load leveling system which keeps your car level even with heavy inside or towed loads.

These are in addition to many carry-over options such as Select-Aire air conditioning; power steering, power brakes, and power seats; power ventilation; and the popular Stereonic tape system.

1968 Ford Lifeguard Design Safety Features include:

Dual hydraulic brake system with warning light; Glare reduced instrument panel padding, windshield wiper arms, steering wheel hub, horn ring, rearview mirror and windshield pillars; energy-absorbing steering column and steering wheel; energy-absorbing armrests and safety designed door handles; front and rear seat belts with front outboard retractors; turn indicators with lane-changing signal feature; inside day/night yield-away, windshield-mounted rearview mirror;

Energy absorbing instrument panel with padding; padded safety sun visors; padded windshield pillars; two speed or variable speed windshield wipers; windshield washers; double-thick laminate safety glass windshield; double-yoke safety door latches and safety hinges; positive door lock buttons; 4-way emergency flasher;

Back-up lights; side marker lights or reflectors; energy-absorbing front seat backs with padding; self-locking folding seats; vehicle structure designed to limit steering column displacement; safety designed coat hooks; safety designed window regulator knobs; safety designed radio control push buttons; padding on back of second seat in station wagons; outside rearview mirror, driver's side; safety rim wheels and load-rated tires; corrosion-resistant brake lines and uniform transmission shift quadrant.

Road beauty bill faces a shake-up.

New Mercury Montego

ST. LOUIS -- The Mercury Montego - a new name for a new car - highlighted Lincoln-Mercury Division's national press preview of its 1968 car lines here.

The new Montego, described as the lowest priced luxury car in the entire Mercury family, has a full line of 13 models. The Montego and all other Lincoln-Mercury cars will be introduced to the public in dealerships on September 22.

"Lincoln-Mercury Division enters the 1968 model year with new products designed to accelerate the surge which is carrying us to an all-time model year sales record," said E. F. (Gar) Laux, Ford Motor Company vice president and Lincoln-Mercury Division general manager.

"We look to even greater acceptance of our new cars in 1968, with the new Montego line supplying a great deal of impetus," Mr. Laux said. "New and sporty Mercury sweptback hardtops, new excitement from the Cougar with four models, and fresh appeal in the Lincoln Continental should propel us to even greater sales success in the year ahead," he said.

Led by the distinctive Lincoln Continental, Lincoln-Mercury Division's cars are designed and equipped specifically for today's luxury-oriented market. With 16 models in the standard Mercury, 13 in the Montego class, four Cougars and two Continentals, the Lincoln-Mercury Division line-up presents a total of 35 new models, all with the fine car touch.

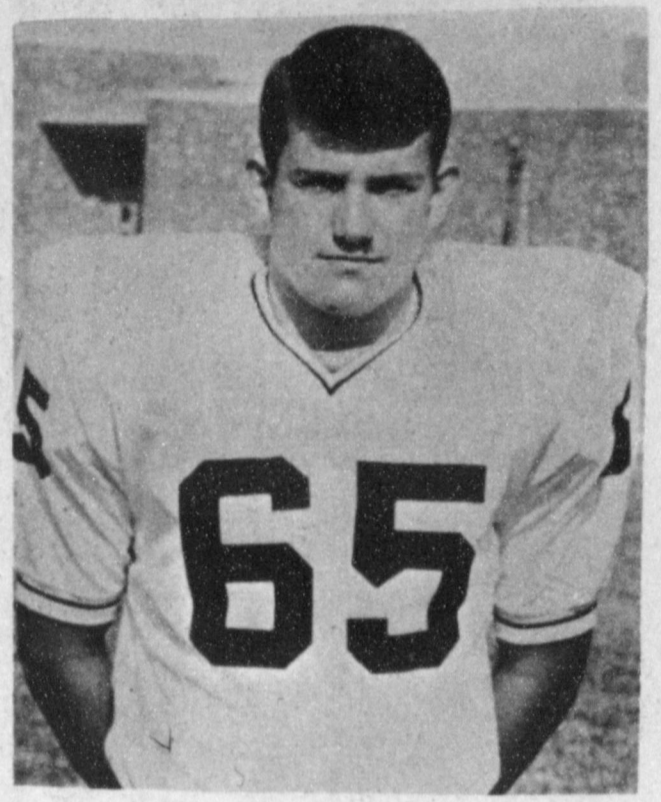
Three new two-door hardtops with sporty, sweeping roof lines highlight the standard Mercury for 1968. Mercury's relationship to the Lincoln Continental is dramatized by the similarity of its crisp, die-cast grille and power thrust hood to that of the Continental.

The success car of the year - Mercury Cougar - stalks an even larger share of the specialty car market with four models and a subtle but effective upgrading for 1968. Newest Cougar on the prowl is the 7.0 Litre GT-E, designed with the luxury appointments of a grand touring car and the muscular appeal of a competition car.

A distinctive, more formal

roof on the Lincoln Continental Coupe, new front end, exciting instrumentation and luxurious interiors give a fresh appeal to the Lincoln Continental without violating the car's traditional continuity of design. Acknowledged to be America's most distinguished motor car.

THE MULESHOE MULES' PLAYER OF THE WEEK



Steve Oliver

Steve Oliver rated an outstanding 90% grade on defensive blocking and overall defensive play.

This Recognition Courtesy of:

FIRST NATIONAL BANK

"YOUR HOME OWNED BANK"

Farm Bureau News...



REMINDER TO RETURN QUESTIONNAIRE...

Shown above working as members of the 1967 Policy Development Committee are: Jack Schuster, Chairman, James Warren, Leldon Phillips, Don Lowe, Leon Lewis, and Ed Little.

This committee met recently to consider resolutions to be adopted at the Annual Meeting being held September 30.

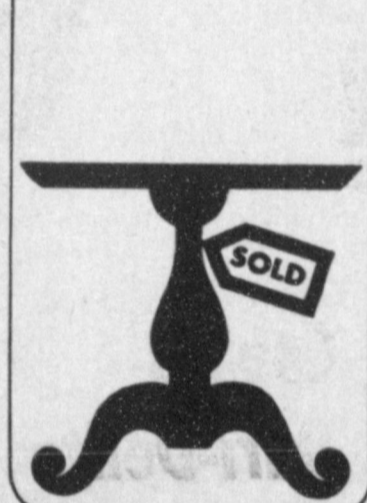
At a recent meeting it was decided to mail a questionnaire to each Bailey County Farm Bureau member. As you have now received your questionnaire, please complete the questions asked and return it to the Farm Bureau office this week.

Chairman Jack Schuster, stated that "By this method each Farm Bureau member has the opportunity to express their own opinion regarding current issues at county, state and national levels, and thus develop policies the "Farm Bureau Way."

James Warren, President and the entire Board of Directors urge all Farm Bureau members to attend the Annual County Meeting to be held Saturday, September 30, at the Muleshoe High School Cafeteria. A free meal will be served beginning at 6:30 p.m.

Ratzafrazt!

Missed out? There's plenty more. Look under FURNITURE DEALERS in the YELLOW PAGES. Where your fingers do the walking.



"Your Home Owned Discount Store" POYNOR'S WHITE STORE'S, INC. 303 Main Muleshoe Phone 272-3511

CATALINA CLOCK RADIO

- Solid State Chassis!
- Wakes you to Music!

\$16

Reg. \$19.95 **SAVE 20%**

BIG SAVER

9-VOLT BATTERY!

- Fits Most Transistor Radios! 42-155

REG. 45c

22c

SAVE 51%

BIG SAVER

COMPACT 12-TRANS. RADIO!

- Built-In Antenna!
- 9-Volt Battery, Earphone, Conv. Carrying Case!

5.99

Reg. \$9.95 **SAVE \$3.96**

BIG SAVER

SAVE \$1.05

Deluxe Stadium Seat

Lightweight Steel Frame

Regular \$4.49

3.44

- Padded Seat and Back
- Baked Enamel Finish!
- Carrying Handle!

DeSoto Quality Values!

DeSoto DeSotone Interior Latex

WALL FINISH

575 WHITE

SAVE 20%

Regular \$4.98 per gallon

3.99

- Covers all Interior Surfaces Beautifully!
- Quickly Dries in 30 Minutes! Highly Washable!
- No Painty Odor! No Lap or Brush Marks!

OUR BEST DeSOTO INTERIOR LATEX PAINT!

DESOTO Exterior Latex House Paint

140 acrylic LATEX HOUSE PAINT

SAVE \$1.10 ON ACRYLIC LATEX

4.88

Reg. \$5.98

- For Use on All Exterior Surfaces, Wood, Masonry, Composition!
- Long Lasting, Excellent Durability!
- Fast, Quick Drying in 30 Minutes!
- No Painty Odor! Mildew Resistant!
- There's No Easier Way to Paint!

DESOTO EXTERIOR HOUSE PAINT!

99 high quality HOUSE PAINT

SAVE 20% ON THIS PAINT VALUE

3.99

Reg. \$4.98

- Designed to stay Bright, Clean!
- Effective Fade-Resistant Beauty and Long-Lasting Protection!
- Provides Exceptional Hiding Power to Cover Old Colors!
- High Quality Paint, Budget Priced!

Steam or Dry Catalina Iron

Temperature Settings for All Fabrics. 69-306

7.99

Reg. \$9.95 **SAVE \$1.96**

Adjustable IRONING TABLE

Folded Edges! Folds Compactly!

2.99

- Sit or Stand to Iron - 36" Height!
- Ventilated Top Speeds Ironing! 75-173

SAVE \$1.99

Electric Slicing Knife

Serrated Stainless Steel Blades

Reg. \$9.95

7.99

SAVE \$1.96

- Slice Enough For Any Size Banquet!
- Control Switch on Handle!
- Cord Detaches Easily - Convenient! 68-453

All You Lift Is A Finger! Electric Can Opener

5.99

Regular \$8.95 **SAVE \$2.96**

Muleshoe's Annual "BACK THE MULES" Football CONTEST



ENTER TODAY!

and WIN CASH PRIZES!

WIN WEEKLY PRIZES!

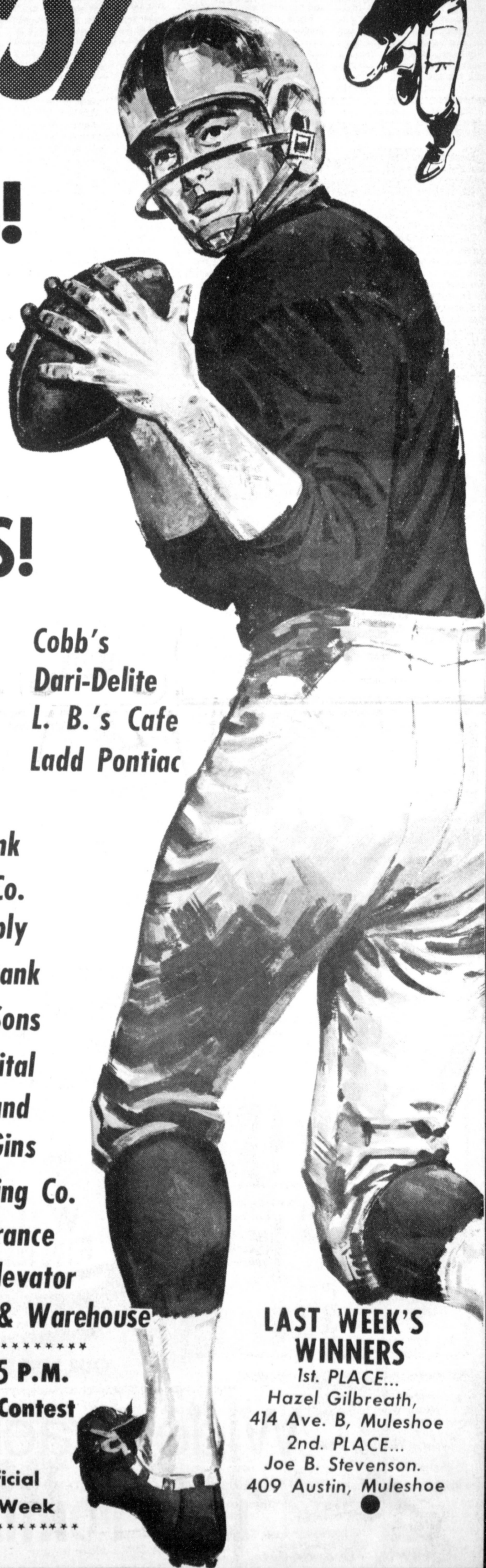
FIRST PRIZE SECOND PRIZE

\$ 5 \$ 3

GRAND PRIZE \$50

For Expenses and Two Tickets to the Cotton Bowl at Dallas, Texas. There Will Also Be a Contest & Prizes For The Bowl Games!

**LET'S
BACK
THE
MULES!**



THIS CONTEST MADE POSSIBLE BY THE FOLLOWING FIRMS:

- Richland Hills Texaco**
- King Bros. Grain & Seed**
- Muleshoe Garden Center**
- Union Compress & Warehouse**
- Johnson-Pool Furniture & Appliance**

- Texas Sesame**
- Pool Insurance**
- Western Drug**
- James Glaze Co.**
- White's Cashway**
- First National Bank**
- Muleshoe Motor Co.**
- Bovell Motor Supply**
- Muleshoe State Bank**
- Ray Griffiths & Sons**
- West Plains Hospital**
- Beaver's Flowerland**
- Muleshoe Co-op Gins**
- Muleshoe Publishing Co.**
- W.Q. Casey Insurance**
- Farmer's Co-op Elevator**
- Central Compress & Warehouse**

- Cobb's**
- Dari-Delite**
- L. B.'s Cafe**
- Ladd Pontiac**

RULES OF THE CONTEST:

- Muleshoe Publishing Co. Box 449 - Muleshoe, Texas
- .Contestant must be 12 years of age or older.
- .Only one entry per person may be made for any one contest.
- .Weekly contests are open to everyone except employees and families of this newspaper.
- .Entries are to be judged by the Sports Editor and staff of this newspaper.
- .Bring or mail your entries to the Journal office. Mailed entries must be postmarked not later than 5 p.m. Friday.
- .Winners names will be published in this newspaper each Thursday following the close of the weekly contest.
- .Choose the team you think will win.
- .10 points for 1st. place, 5 points for 2nd place determines the Grand Prize Winner.

**OFFICIAL ENTRY FORM
ONLY ONE ENTRY PER PERSON**

NAME _____ ADDRESS _____
CITY _____ STATE _____

- | | | | |
|-------------------------|--------------------------|---------------------|--------------------------|
| 1. MISSOURI | <input type="checkbox"/> | SMU | <input type="checkbox"/> |
| 2. SOUTHERN CALIF. | <input type="checkbox"/> | TEXAS | <input type="checkbox"/> |
| 3. NAVY | <input type="checkbox"/> | PENN STATE | <input type="checkbox"/> |
| 4. TEXAS A & M | <input type="checkbox"/> | PURDUE | <input type="checkbox"/> |
| 5. MICHIGAN STATE | <input type="checkbox"/> | HOUSTON | <input type="checkbox"/> |
| 6. FLORIDA STATE | <input type="checkbox"/> | ALABAMA | <input type="checkbox"/> |
| 7. OKLAHOMA STATE | <input type="checkbox"/> | ARKANSAS | <input type="checkbox"/> |
| 8. OREGON STATE | <input type="checkbox"/> | ARIZONA STATE | <input type="checkbox"/> |
| 9. MICHIGAN | <input type="checkbox"/> | DUKE | <input type="checkbox"/> |

TIE BREAKER
Olton --- SCORE At Muleshoe --- SCORE

**You Have Until 5 P.M.
Friday to Enter Contest**

**Watch for the Official
Entry Blank Each Week**

**LAST WEEK'S
WINNERS**
1st. PLACE...
Hazel Gilbreath,
414 Ave. B, Muleshoe
2nd. PLACE...
Joe B. Stevenson.
409 Austin, Muleshoe

**DON'T MISS ANY OF THE FUN & PRIZES
SUBSCRIBE TO OUR PAPER: CALL 272-4536**

The Story of Pontiac's 1968 Line

A new styling theme dominated by a bold front end design, engineering advancements which include another first in the industry and unexcelled safety are the characteristics of Pontiac Motor Division's 1968 models.

All Catalina, Executive, Bonneville and Grand Prix models carry a distinctive Pontiac oriented styling theme highlighted by a new wide peripheral front bumper with a strong and handsome center section.

Built-in safety features of every 1968 Pontiac include new side marker lamps, additional interior padding and crushable armrests.

"The safety, comfort and convenience of driving a new Pontiac are at their highest level," John Z. DeLorean, a General Motors vice president and Pontiac's general manager said.

The 1968 Pontiacs go on sale September 21.

A total of 17 models in four series is available in 1968. The volume selling Catalina series offers a two-door sedan, four-door sedan, hardtop coupe, four-door hardtop, convertible, two-seat station wagon and three-seat station wagon.

Executive models include a four-door sedan, four-door hardtop, hardtop coupe, two-seat station wagon and three-seat station wagon.

Bonneville luxury is avail-

able in a hardtop coupe, four-door hardtop, convertible and three-seat station wagon.

A new hardtop coupe represents the Grand Prix series. The popular Ventura custom trim option is offered on most Catalina models and the luxurious Brougham option is now available on Bonneville four-door hardtops, hardtop coupes and convertibles.

From every angle the 1968 Pontiacs reveal the look which has established Pontiac's styling trends as the ones to follow.

The new peripheral bumper integrates all front end components into one uncluttered design unit. Dual headlamps are placed horizontally within the bumper and appear wider apart with the new recessed horizontal ribbed design of the grille.

A familiar vertical Pontiac vee crest mounts on the bold center section of the bumper.

The Grand Prix front end features twin horizontally mounted headlamps that become visible when the lights are turned on.

All parking lamps are below the bumper and are teamed with side marker lamps in one housing to share a common lens that wraps around for side visibility. The parking lamps will be on when the headlamps are on.

Body sides emphasize the full

length side peak line and are accented with an exclusive narrow molding which has a vinyl plastic insert on all models except the Grand Prix and Executive station wagon.

The vinyl molding insert guards against parking lot scratches and dents. It is offered in five different body colors to serve as a distinctive trim feature.

Rocker panel moldings enhance the side appearance of all Executive, Bonneville and Grand Prix models and they are offered with the decor option on all Catalinas.

The new look from the rear includes wide tail lamps which turn downward at the outboard ends to integrate body and bumpers on all models except the Grand Prix and station wagons. On the Grand Prix the lamps are in the rear bumper and they turn down at the inboard ends and extend outward with the bumper to provide wrap-around lighting to the sides. Station wagon lights are mounted in the rear quarter.

All 1968 interiors are fully color-keyed to eliminate bright metal moldings and to minimize glare and annoyance.

The choice of colors for the Cordova or convertible tops have been increased to four and 13 of the 15 exterior colors are new for 1968.

Bi-level, tri-comfort air conditioning, AM-FM radio,

stereo tape player and Pontiac's cruise control system are just a few in the long list of accessories and options which assure the maximum in driving pleasure.

The instrument panel has additional thick foam padding that blends into the windshield pillars. This padding forms a large area of protection for front seat occupants. Full width padding has also been added to the center of the panel.

Other important standard interior safety features include a recessed ignition key and a newly designed cigarette lighter which will break away at a 90 pound load. Also standard are crushable arm rests, additional padding on the front back seats, an energy-absorbing steering column and dual master cylinder brake system.



Longhorn Stampede

Lazbuddie High School has elected class representatives for the Student Council. Those are: Seventh grade, Debbie Engleking and Mark Beach; Eighth grade, Letha Elliott and Jimmy Nolan; Freshmen, John-ee Seaton and Scott Brown; Sophomores, Leatrice Gallman and Gail Morris; Juniors, Vicki Broyles and Tommy Allen; Seniors, Jill Mimmis and Bobby Gleason. The Council voted on several ideas which will be presented to our principal, Mr. Gene Riddle. Some of these were: To have two special assemblies each six weeks, to have pep rallies each evening before every weekend. The date for Homecoming was also set, it will be October 27 when Lazbuddie battles Vega.

The Lazbuddie FHA is still on the go this week. FHA members, accompanied by their moms and advisor Miss Eva Dean Ivy, had their progressive meal Tuesday September 12. The girls were driven by Charleta Freider to the home of Mrs. Lee Mason for appetizers, Mrs. Bill Jennings for salads, Mrs. Jimmy Seaton for the main course, and Mrs. J. L. Ivy for dessert. Other mothers helped at each house. The girls reported a very enjoyable afternoon and good food. The Lazbuddie Senior Class

is now selling and renewing magazine subscriptions. If you are not contacted by a senior and you wish to purchase a subscription please contact any senior member.

Lazbuddie Junior High football team played Farwell Junior High Thursday September 14. The score was in favor of Farwell, 20 to 0. The Lazbuddie Junior High was very inexperienced having only four days of practice. The boys are looking forward to winning some games later this year.

The Lazbuddie High School football squad turned in a good report Friday night capturing the victory of the first game. They defeated Whiteface 21 to 12. Quarterback Troy Steinbock paced the Longhorns to victory scoring twice himself. Lazbuddie took a first quarter lead by a touchdown by Frank Hinkson. Troy Steinbock went in for a touchdown in the second period with Darrel Matthews adding two extras. Whiteface fought back with a 34 yard pass. Steinbock then scored again, making the halftime score 21 to 6. Whiteface scored the last time with 2 minutes 51 seconds left in the game. Monte Barnes had a good night, punting an average of 50 yards per punt. Troy Steinbock completed two passes to Steve Foster. Whiteface completed only one pass. Lazbuddie had a total of 380 yards gained to Whiteface's 101 yards total gain. Lazbuddie had 70 yards in penalties while Whiteface had only 25. Lazbuddie had 16 first downs while Whiteface had only 8. Lazbuddie will be playing Melrose, N. M. there this Friday. The Longhorn supporters are urged to attend. The game will be at 8:30 p.m. Tamra Jemmings has been in the hospital this week. Lazbuddie High is looking for her to be back soon.

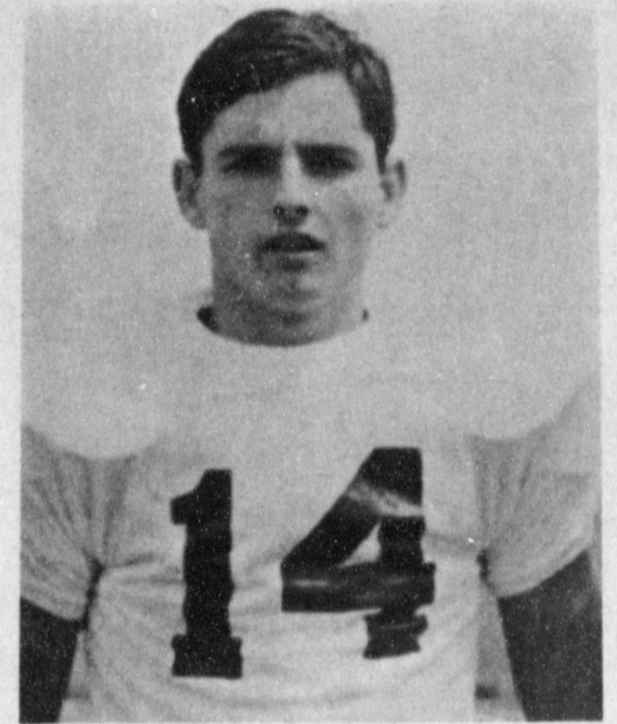
Thursday:
Sandwiches, meat and cheese
French fries
Lettuce, pickles, relishes
Sliced peaches
Milk, orange juice

Friday:
Skillet beef noodle dinner
Blackeyed peas
Buttered cabbage
Mixed green salad
Rolls, butter, honey
Ice cream sandwiches
Milk, orange juice

FORGETS LOOT
Hayward, Calif.--Two gunmen wearing stocking masks walked into the El Portal Motel and held up the operator. They put the \$60 tied up the couch while they tied up the motel operator then dashed out and sped away leaving the money on the couch.

LBJ URGES FARM AID
President Johnson has revealed a new farm policy. He said he thinks "the farmers are on the short end of the stick" and should have the right to bargain collectively for better prices for their products.

The LAZBUDDIE LONGHORNS PLAYER OF THE WEEK



Troy Steinbock

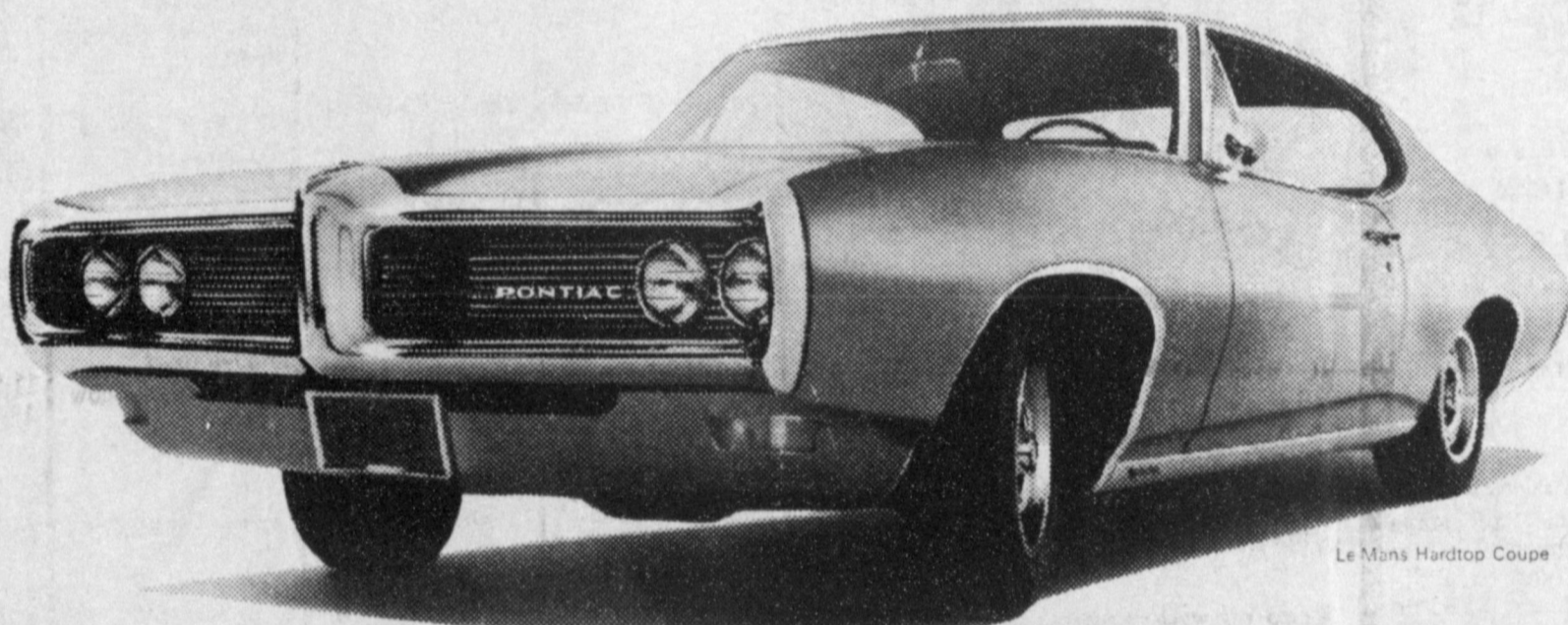
Quarterback, Troy Steinbock, carried the ball 15 times and totaled 150 yards. He scored 2 touchdowns and kicked an extra point.

This Recognition Courtesy Of:
Lazbuddie

Farmer's Union Co-op
Foster Fertilizer Co.
Western '66' Company
Sherley-Anderson Grain

This Week's Game, Sept. 22,
Melrose...There 8:30 CST

Pontiac announces the great American sport for '68



Le Mans Hardtop Coupe

Wide-Tracking has never been farther removed from just plain ordinary driving. One look at our stylish '68 Pontiacs should tell you that. One ride will convince you!

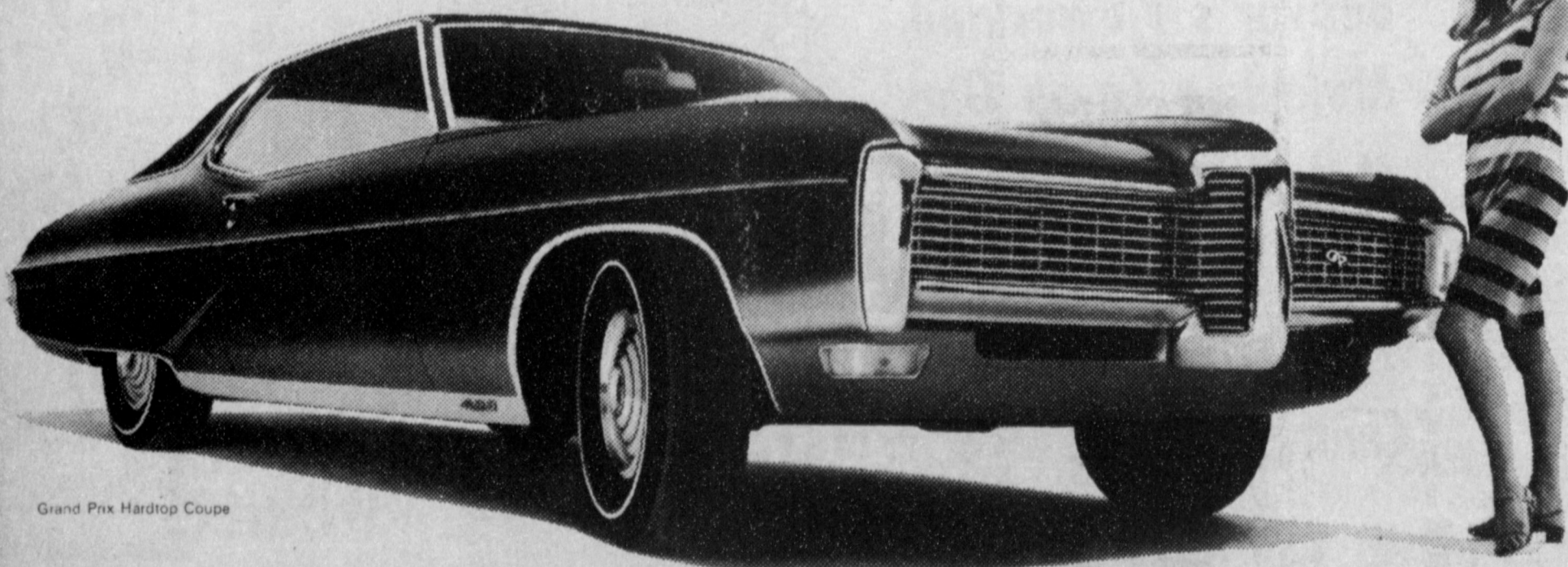
Our sporty new Tempests and Le Mans are new from the wheels up. There's a new 175-hp Overhead Cam Six. New sports car feel. Smoother ride. Superior stability and response. Disappearing windshield wipers on all GTOs and Le Mans. Even wider Wide-Track. And you can choose from two new regular- or premium-gas 350 cu. in. V-8s!

Our fabulous GTO boasts the neatest engineering innovation of the year—an exclusive revolutionary new bumper. It's the same lustrous color as the car. But it won't chip, fade

or corrode. And you won't believe what this bumper does until you see it with your own eyes!

Naturally, our new Bonneville, Grand Prix, Catalinas, Executives and Venturas won't take a back seat to anyone! Especially with their bold new integral bumper-grilles that are nearly twice as strong as before. There's also new Wide-Track ride. Improved handling. Smoother engines. And more new features for your protection, like a buzzer that warns you when you forget your ignition key.

Isn't it about time you decided to give up plain ordinary driving? Don't fritter away another hour. See your Pontiac dealer today and start Wide-Tracking!



Grand Prix Hardtop Coupe

Wide-Tracking!

See the Bonneville, Brougham, Grand Prix, Executive, Ventura, Catalina, GTO, Le Mans, Tempest and Five Firebirds at your Pontiac dealer's.

LADD PONTIAC

Hiway 70 & 84

Muleshoe, Texas



HERE'S WHERE TO DINE and DANCE

Enjoy the Finest Food in Eastern New Mexico
STEAK, SHRIMP, LOBSTERS & OYSTERS ON THE HALF SHELL
And other Taste Tempting Delights Served From 11 a.m.

Entertainment Nightly
For Your Listening And Dancing Pleasure
Now Featuring **Roger Soloman,**
By Popular Demand

FOR RESERVATIONS CALL
AREA CODE 505, 763-4433

AT SECOND and MAIN
Clovis, N.M.

OFF THE LOBBY OF THE HOTEL CLOVIS

Wondering What To Do Tonight?
ENJOY EXCELLENT ENTERTAINMENT
In The Red Carpet Lounge
at the **HOLIDAY INN**
Now Featuring
THE Ann Haggin Duo
8:30 Nightly
Spend This Week End In Your Home
Away From Home
Enjoy the Finest Food In Town!
For Your Reservations Call 762 4491

Have You Visited Our New Package Liquor Store?
Credit Cards Honored On All Package Store Purchases.

TRADE CLASSIFIED SELL BUY ADS LEASE

WANT ADS PH. 272-4536
CLASSIFIED RATES
 OPEN RATES
 First insertion, per word-6¢
 Second and additional insertions - 4¢
NATIONAL RATES
 First insertion per word-8¢
 Second and additional insertion-5¢
 Minimum charge-65¢
 Card of Thanks - \$1.00 Double rate for blind ads
 Classified Display - 85¢ per col inch
 95¢ col. inch for reverses
DEADLINE FOR INSERTION
 Thursday's Muleshoe Journal - Noon Tuesday
 Sunday's Bailey County Journal - Noon Friday
 The Journals reserve the right to classify, revise or reject any classified ad.
 Check advertisement and report any error immediately. Journals are not responsible for error after ad has already run once.

PERSONALS
 Want to Do Your Painting. By Contract or by Hour-Reasonable rates. E. L. Gootman 824 South First, Phone 272-4626.
 1-5s-tfc

LUZIER your experienced consultant 18 years serving Muleshoe. Free demonstration. Phone for appointment. FRESH complete stock on hand.
 MRS. E.E. HOLLAND
 121 Am. Blvd. Phone 272-3293
 1-2tc.

ALL kinds of roofing done the best yet. For free estimates see Ray Auld in trailer house behind Forbes Real Estate.
 1-32t-tfc.

FRESH milk. Friday-Whole Fresh Milk 85¢ a gal. Skim Milk 90¢ a gal. Cream 1/2 gal. \$1.00. All milk guaranteed to please. WHITE'S DAIRY, Star Route, Sudan, Texas.
 1-38s-4tp

JOB WANTED part time work. Experience in book-keeping, typing, secretary and receptionist. Phone 272-4915.
 1-37s-tfc.

for rent, 15 ft. camper. By week. Call 272-3163.
 1-35s-tfc

HELP WANTED
 WANTED waitress and car hop. Steady employment. Apply in person-Corral Drive In.
 3-35t-8tc

WANTED Day car hop, also night car hop when school starts, apply in person. See Bill or Margaret at Bill's Drive Inn.
 3-32s-tfc

Wanted Beautician, Main Street Beauty Salon, phone, 272-3448.
 3-25s-tfc

HOUSES FOR RENT

9 AUTOMOBILES FOR SALE
 FOR Sale or Trade, 1966 Ford, phone 272-3280.
 9-3ls-tfc.

NEW 1967 GMC 1/2-TON PICKUPS \$1950
 Heater & Hitch
LADD PONTIAC
 9-13s-tfc

10. FARM EQUIPMENT
 FOR SALE: John Deere #825 - 3 bottom, 3 point hoop up 16 inch Spinner plow. 2 row Caldwell stalk shredder, 2 cotton trailers. Phone 946-2392.
 10-38t-4tp

FOR SALE 1 Hesston cotton stripper, pulled 150 bales in good condition. See at Brock Motor Co.
 10-37t-tfc.

FOR SALE: Hunters Jeep, 21 IH Stripper. Ph. 4073. Norwood Imp., 1026 S. Main.
 10-35s-tfc

FOR SALE: 1967 Corn Head for C-2 Gleaner Baldwin Combine, for 40 inch Rows. Save \$1,000. Call Edgar Eaker, 915-428-3855, O'Donnell, Tex.
 10-38s-9tp

11. FOR SALE OR TRADE
 FOR TRADE: 160 acres, 2 wells, nice home on pavement to trade for nice 3 bedroom home in town.
 FOR RENT: Nice 3 bedroom home and 2 acres of land close in to town. Emmette Cross Real Estate, 511 South 1st, Muleshoe, Texas.
 11-38t-2tc

12. HOUSEHOLD GOODS
 TV REPAIR Call 272-3138 between 8 a.m. and 12 noon, 6 days a week. Poyner's White Store.
 12-29t-tfc

REPOSSESSED 1966 model Singer Sewing machine in Walnut console. Will zig-zag, blind hem, fancy patterns. Assume 4 payments at \$7.46. Must have good credit. Write Credit manager, 114, 19th St., Lubbock, Texas.
 12-34s-tfc

FOR LEASE: office building Refrigerated air, central heat. Utilities furnished, janitor service. 115 E. Ave. D. Phone 272-4630.
 13-37t-tfc.

Krebs Real Estate
 Good Terms
 ● 35 A., close in, pavement 1 to 5 A.
 ● Lamp Manufacturing Co. Muleshoe
 ● 3 Br. Brick, finest, Richland Hills.
 ● Choice Highway and Railway property.
 Phone 272-3191.
 8-35t-tfc

FOR better cleaning, to keep colors gleaming, use Blue Lustre carpet cleaner. Rent electric shampooer \$1. Sam's TV Auto Store, 222 Main Street, Muleshoe, Texas.
 12-38s-ttc


16. LIVESTOCK

FOR Sale, Registered Hampshire, 25 open gilts, 10 boars, Harris and Winters Breeding, 7 1/2 months old, Montex Farms, 1/2 mile E., Larlet, Tex. Phone 272-3168 Muleshoe, Night and Sunday.
 15-32s-tfc

Highway Patrol Investigates 12 Accidents
 The Texas Highway Patrol investigated 12 accidents on rural highways in Bailey County during the month of August, according to Sergeant Thurman Keffer, Highway Patrol Supervisor of this area. These crashes resulted in one person killed, five persons injured, and an estimated property damage of \$7,925. The rural accident summary for this county during the first eight months of 1967 shows a total of 33 accidents resulting in two persons killed, 13 persons injured, and an estimated property damage of \$28,464. "School days" are here again. The familiar yellow school buses are back on the highways. The Sergeant reminds all motorists of the State Law regulating traffic in regard to school buses. "The driver of a vehicle upon a highway outside of the limits of any incorporated city or town upon meeting or overtaking from either direction any school bus which has stopped on the highway for the purpose of receiving or discharging any school children shall stop the vehicle immediately before passing the school bus, but may then proceed past such school bus at a speed which is prudent, not exceeding ten (10) miles per hour, and with due caution for the safety of such children."

Political Announcements
 The following candidates have authorized the Journals to announce their candidacies for State Representative District 75
JOHN KENDRICK

TELEVISION SCHEDULE FOR THE MULESHOE AREA

KING BROS. GRAIN & SEED CO. Complete ELEVATOR SERVICE AND SEED PROCESSING FOR THE Muleshoe AREA	KGNC-TV Amarillo Muleshoe Cable 4 DAYTIME	KVII-TV Amarillo Muleshoe Cable 5 DAYTIME	KFDA-TV (10) Amarillo Muleshoe Cable 6 DAYTIME	KCBD-TV (11) Lubbock Muleshoe Cable 2 DAYTIME	KLBK-TV (13) Lubbock Muleshoe Cable 3 DAYTIME
<p>NEWSPAPERS MAKE A BIG DIFFERENCE IN PEOPLE'S LIVES</p> <p>Keep up with your HOMETOWN NEWS</p>  <p>SUBSCRIBE NOW!!!!</p> <p>WESTERN DRUG Your Walgreen Agency</p> <p>COSMETICS</p> <p>Prescriptions Drugs & Supplies for all your Veterinarian needs</p> <p>Fountain Service</p>	<p>7:00-Today 7:25-News 7:30-Today 9:00-Snap Judge. 9:25-NBC News 9:30-Concentra. 10:00-Personality 10:30-Holly Star 11:00-Jeopardy 11:30-Eye Guess 11:55-NBC News 12:00-News 12:10-Irrig. Rep. 12:15-Weather 12:20-Ruth Brent 12:30-Make Deal 12:55-NBC News 1:00-Days of Live 1:30-Doctors 2:00-Another W. 2:30-Don't Say 3:00-Match Game 3:25-NBC News 3:30-Mike Douglas 5:00-News 5:30-H-B Report</p>	<p>8:00 - Fugitive 9:00-Ed Allen 9:55-Child, Dr. 10:00 - Super Sw. 10:30-Fam. Game 11:00 - Donna R. 12:00 - News 12:15 - Com. Cl-- 12:30-Amarillo toda 1:00 - Newly Wed 1:30 - Dream Girl 1:55-News-Woman 2:00 - Gen. Hos 2:30-Dark Shadows 3:00-Dating Game 3:34 - Movie 5:00-Peter Jennin. 5:30-Have Gun 6:00 - News</p>	<p>6:30 - Film Fea. 7:00 - Farm News 7:30 - Tri Report 8:00 - Capt. Kang. 9:00 - Romer R 9:30 - Beverly H. 10:00 - Andy 10:30 - Dick Van 11:00 - Love of L 11:25 - News 11:30 - Search T 11:45 - Guiding L 12:00 - News 12:10 - Weather 12:30 -The World 1:00-Love Is 1:30 - Art Link 2:00 - To Tell T 2:25 - CBS News 2:30 - Edge of Ni 3:00 - Secret Sto 3:30 - Can. Cam. 4:00 - Mr. Mim. 5:00-Mr. Ed 5:30 - News 5:30 - CBS News 6:00 - News</p>	<p>7:00-Headline 7:05-Farm Report 7:25-Weather 7:30-Today 8:30 - Today 9:00 - Snap Judge. 9:25-News 9:30-Concentration 10:00-Personality 10:30-Hollywd. Sq. 11:00-Jeopardy 11:30-Eye Guess 11:55-News 12:00-Report 12:15-Com Closeup 1:00-Love Is 1:25-News 1:30-The Doctors 2:00-Another W 2:30-You Don't Say 3:00-Match Game 3:25-News 3:30-Dating Game 4:00-Donna Reed 4:30-Lassie 5:00-Wells Fargo 5:30-News</p>	<p>5:55-Sign On 6:00-Sun. Sem. 6:30-Farm/Ranch 7:05-News 7:30-Morn Show 8:00-C. Kang. 9:00-Can. Cam. 9:30-Hillbillies 10:00-Andy 10:30-D.Dyke 11:00-Love of Life 11:30-Search 11:45-Guiding 12:00-News 12:12-Farm Ran. 12:25-Weather 12:30-Weather Turns 1:00-World Is 1:30-Houseparty 2:00-Gen.Hosp. 2:30-Edge Night 3:00-Sec. Storm 3:30-Dateline 4:00-Fugitive 5:00-That Girl 5:30-CBS News</p>
	<p>THURS. EVENING 6:00-N/W/S. 6:30 D. Boone 7:30 Ironside 8:30-Dragnet 9:00-Dean Martin 10:00-News 10:30-Tonight 12:00-Sign Off</p>	<p>THURS. EVENING 6:30 - Batman 7:00-Flying Nun 7:30 - Switched 8:00-That Girl 8:30-Peyton Place 9:00-Good Comp. 9:30-The Profess. 10:00-N/W/S 10:30-Chuck Fairba 11:00-Joey Bishop</p>	<p>THURS. EVENING 6:30-Cim. Strip 8:00-Movie 10:00-N/W/S 10:30-Seven Seas 11:00-News 11:05-Movie</p>	<p>THURS. EVENING 6:00-Report 6:15-Weather 6:25-Sports 6:30-Daniel Boone 7:30-Ironside 8:30-Dragnet 9:00-Dean Martin 10:00-Report 10:30-Tonight Show 12:00-Sign Off</p>	<p>THURS. EVENING 6:00-News 6:15-Weather 6:20-Sports 6:30-Cim. Strip. 8:00-Movie 10:00-News 10:30-FBI 11:30-Riverboat 12:30-SIGN OFF</p>
<p>FRIDAY EVENING 6:30 Movie 8:30 Ac. Fam. 9:00-Bell Tel. 10:00-N/W/S 10:30-Tonight Sho 12:00-SIGN OFF</p>	<p>FRIDAY EVENING 6:30 - Movie 8:30-Guns of Will 9:00-Judd 10:00-N/W/S 10:30-Toey Bishop</p>	<p>FRIDAY EVENING 6:30 - Wild West 7:30-Gomer Pyle 8:00 - Movie 10:00 - News 10:30-Burk's Law 10:55 - News 11:00 - Movie</p>	<p>FRIDAY EVENING 6:00-News 6:15-Weather 6:25-Sports 6:30-Tarzan 7:30-Movie 9:30 - Acc. Family 10:00-Report 10:30-Tonight Show 12:00-Sign Off</p>	<p>FRIDAY EVENING 6:00-News 6:10-Weather 6:20-Sports 6:30-Gar. Gorillas 7:30-Gomer Pyle 8:00-Hondo 9:00-Judd 10:00-News 10:30-Movie 12:30-Late Show 2:30-Sign Off</p>	
<p>SATURDAY 7:00-Roy Rogers 8:00-Super 6 8:30-Super Pres. 9:00-Flintstones 9:30-Sam.&Gol. 10:00-Birdman 10:30-Atom Ant 11:00-Top Cat 11:30-Cool McCool 12:00- Cotton John 1:00 - Major. Base 4:30-G.E. College 5:00 - Branded 5:30 - F. McGee 6:30-Maya 7:30-Get Smart 8:00-Movie 10:15 - News 10:30-Weather 10:40 Spot 10:40 Sports 10:45-Theat. 4 12:15-Sign Off</p>	<p>SATURDAY 7:30 - Mod. Ed. 8:00-Casper 8:30-Faith 9:00-Spider Man 9:30-Journey 10:00-King Kong 10:30-Jungle 11:00-Beatles 11:30-Bandstand 12:30-Movie 4:00 - Wide W.S. 5:30 - Wrestling 6:30 - Dating G. 7:00 - Newly Wed. 7:30 - Law, Weik 8:30-Iron Horse 9:30-Mar. Dillon 10:00 - N.W.& S 10:25 - Wrestling 11:25 - Cinema 7</p>	<p>SATURDAY 6:45 - Cartoon 7:00-Capt. Kang. 8:00-Frankenstein 8:30-Herculeids 9:00-Shazzan in 9:30-Space Ghost t 10:00-Moby Dick 10:30-Atom Ant 11:00-Top Cat 11:30-Cool McCool 12:00-King Kong 12:30-Journey 1:00-Sandy Koufax 1:15-Baseball 4:00-Learn & L. 4:30-Wilborn Bro. 5:00-Earnest Tubs 5:30-Porter Wagner 6:00-News 6:30-Weather 6:30-Jackie Gleason 7:30-My Three Sons 8:00-Hogans Heroes 8:30-Petticoat 9:00-Mannix 10:00-News 10:15-Weather 10:25-Sports 10:30-Rawhide 11:30-News 11:35-Movie</p>	<p>SATURDAY 7:00-Roy Rogers 8:00-Super 6 8:30-Super Pres. 9:00-Flintstones 9:30-Sam.&Gol. 10:00-Birdman 10:30-Atom Ant 11:00-Top Cat 11:30-Cool McCool 12:00-King Kong 12:30-Journey 1:00-Sandy Koufax 1:15-Baseball 4:30-College Bowl 5:00-STrek 6:30-Maya 7:30-Get Smark 8:00-movie 10:00-Report 10:30- Movie</p>	<p>SATURDAY 5:55-Sign On 6:00-Sun. Sum. 6:30-Carnival 7:00-Cap. Kang. 8:00-Frankenstein Impossible 8:30-Herculeids 9:00-Shazzan 9:30-Space G. 10:00-Moby Dick 10:30-Superman 11:30-Bandstand 12:30-Swingin Set 1:00-Wrestling 2:00-P. Wagg 3:15- Football 2:30-Pickin Time</p>	
<p>SUNDAY 7:30-Herald Truth 8:00-Cotton John 8:30-Sheriff Bill 9:30-Movie 11:00-Church 12:00-Meet Press 12:30-Weekend Rep 1:00-Football 6:30-Walt Disney 7:30-Mothers-in- 8:00-Bonanza 9:00-High Chap. 10:00 - News 10:15 - Weather 10:25 - Sports 10:30 - Tonight 12:00 - Sign Off</p>	<p>SUNDAY 7:30 - Mod. Educa 8:00-Big Pict. 8:30 - Christ Wor 9:00 - Lins 9:30-Peter Pot 10:00 - Bullwinkle 10:30 - Discovery 11:00 - Baptist 12:00-Insight 12:30-Dory Funk 1:00-Honest Jess 1:30-Issues 2:00-ABC Scope 2:30-Mil. Monster 3:00-Beagles 3:30-Mag. Gorilla 4:00-Fantastic 4 4:30-Cisco Kid 5:00-See the Wizard 6:00 - Bot of Sea 7:00 - FBI 8:00 O Movie 10:00 - News 10:00-Hondo 11:30-Cinema 7</p>	<p>SUNDAY 7:30-Gospel Hr. 8:00-Wills Fam. 9:30 - Church 9:30 - LaFavers 10:00-Reg. Quest. 10:30-Face Nation 11:00 - Showcase 11:45-Football 4:00 - Lucy 4:30 - Amateur 5:00 - 21st. Cen. 5:30 - News 5:50 - Weather 6:00 - Lassie 6:30-Gentle Ben 7:00-Ed Sullivan 7:00-Ed Sullivan 8:00-Bonanza 9:00-High Chap 10:00-N/W/S 10:30-Red Raider 11:00-Movie</p>	<p>SUNDAY 8:00 - Faith for T. 8:30-Glory Rd 9:00-H.off Ruth 9:30-Answer 10:00-Discovery 10:30-Cutting Edge 10:45-Bapt. Church 2:00-Meet Press 1:00-Football 3:30-AFL Football</p>	<p>SUNDAY 6:55-Sign On 7:00-Looney T 7:30-Bullwinkle 8:00-Tom&Jerry 8:30-Mil. Monster 9:00-Linus 9:30-Porter Potam 10:00-Pepe Show 10:45-Church remot 11:45-"Horizons" 12:00-Inquiry 12:30-Face Nation 1:00-Football 4:30-Amateur Hr. 5:00-Wizard 6:00-Lassie 6:30-Gentle Ben 7:00-Ed Sullivan 8:00-Smothers Bro. 9:00-Mission Imp 10:00-News 10:30-Movie 12:45 - Sign Off</p>	

BUSINESS DIRECTORY

Robinson's Boot Shop
 127 Main - Phone 272-4721
FINE WESTERN WEAR
 Men, Women & Children
SHOE REPAIR SHOP
 The Robinson
 Serving Muleshoe since 1925.

Farley Insurance Agency
 Real Estate and Insurance
FARM & CITY LOANS
SERVICE BEYOND THE CONTRACT
 209 West Avenue B
 Off. Ph. 272-4727 Res. 272-3776

SINGLETON FUNERAL HOME
 24 HOUR AMBULANCE SERVICE
 PHONE 272-4574

Earth News

by Buleah Newton

The Town and Country Study Club began their year with a breakfast Thursday at 8 a.m. in the home of Mr. and Mrs. M. E. Kelley. Hostesses were Mrs. Kelley and Mrs. Dora Terry. The Club theme for the year will be "Educated Youth-Adult Wisdom, Opens the Door of Opportunity."

Year books were distributed. The president, Mrs. M. E. Kelley, recognized visitors, Mrs. Beard, of West Virginia, Mrs. Ola Fanning and the Club's student, Richard Rubv. One new

Muleshoe...

Continued from Page 1

Mrs. Don Harmon, local president of Mary DeShazo P-TA, attended the District Board of Manager's meeting in Lubbock Monday, September 19. Mrs. Harmon is vice president of the Lamb-Bailey P-TA Bi-County Council.

After game activities will be held in Methodist Fellowship Hall of the First Methodist Church Friday following the Olton-Muleshoe football game. The fellowship hall will be filled with entertainment for all high school youths with refreshments being served.

A pep rally will be held at the school at 3:10 p.m. Friday prior to the football game. All businessmen who can be asked to attend these rallies and 'get in the spirit' with the youths to back the Miles.

Approximately 50 persons attended the Athletic Booster's meeting held Monday evening in DeShazo cafeteria. Films were shown on the Littlefield-Muleshoe game and a scouting report given on the Olton team.

Last week's law enforcement activities included the arrest of one for theft by the Police Department and one for child desertion and another on a traffic warrant for Lubbock by the Sheriff's department. One was taken to Wichita Falls State Hospital for treatment.

Prof Shelby is in Muleshoe visiting friends. He was a former resident of many years prior to moving to Havana, Ark.

member was taken in, Mrs. Adria Welch.

Approximately 24 members and visitors enjoyed the breakfast of ham, bacon, sausage and eggs with all the trimmings. Mr. and Mrs. Earl Moore moved to their farm home in the Y. L. community last week.

George and Elizabeth Laing have moved to Portales. The Laings will both teach in the University and will also be students.

Combining in the grain is getting started. The storm damaged grain ripened faster than was expected.

Mayor E. C. Kelley proclaimed the week of September 17 through September 23 Young Homemakers Week in Earth. The Young Homemakers are the energetic groups working for better homes, family and community life and faith in God.

The Earth-Springlake Businessmen's Association met last Thursday morning with a breakfast at the Wolverine Drive Inn.

Guest speaker was Mr. Witherspoon of Hereford. Topic for discussion was growing sugar beets in our area. Approximately 15 men were present.

Mr. and Mrs. C. O. Taylor have won the high point contest in the 1967 General Electric Sales Safari Dealer's Trip. The trip this year is in the states and will be to Las Vegas, Nevada and other western points of interest.

There will be dealers from Oklahoma, Dallas and Lubbock areas. They will leave by plane October 8 and return October 13.

Headquarters will be the Dunes Hotel. All expenses including travel, accommodations, meals and entertainment are the courtesy of General Electric Company.

During the last three years the Taylors have won trips for outstanding sales to Europe, Mexico City, Hawaii and Louisville, Kentucky.

Mr. and Mrs. Darrell Sawyer and son Carry of Bracketville, Texas, spent last week with his parents, Mr. and Mrs. Kenneth Sawyer. The Darrell Sawyers formerly lived here.

It is nice to have the L. Z. Anglins in our midst again. Welcome home.

Mrs. W. H. Braden is con-

tinued to her home. She had a stroke recently. Mrs. Braden is able to be up and around but is not able to drive her car.

The Springlake-Earth Home Demonstration Club met last Thursday afternoon in the home of Mrs. Ona Higgins. An afternoon of planning and visiting was enjoyed by Ona Higgins, Pearl Murrell, Leona Blalock, Odeal Bills, Ola Fanning, Marie Bibby, Olilla Wisian, Essie Hollingsworth and the hostess, Refreshments of pumpkin pie and coffee were served.

The meeting time was changed to 1:30 p.m. due to mothers with school children. Stadium cushions are being sold by Beta Sigma Phi. They are 50 cents each. Any one who wishes one of these may contact any of the girls or Rick Taylor at Earth Beauty Salon.

Mrs. Mike Simmons underwent major surgery at Plainview Hospital Thursday. It has been reported that she is doing fine.

Mrs. Baldwin has been dismissed from Methodist Hospital in Lubbock and is recuperating at home.

Mrs. J. D. Phipps has been dismissed from the Littlefield Hospital. She is resting at home.

Mrs. Lena Hite is a patient in the West Plains Hospital in Muleshoe. She is suffering from the flu.

Mrs. Agnes Williams had back surgery in Galveston last week. Mrs. Williams had a ruptured disc in her back and has been suffering with it for several months. She is doing fine.

Mr. and Mrs. Floyd Bills had supper with his daughter and family, Mr. and Mrs. Dake Powell of Hereford Tuesday evening and helped their grandson Aaron celebrate his birthday. They had ice cream and cake.

The L.C.C. Associates met in the home of Mrs. Vera Martin Tuesday evening for a salad supper.

Mrs. Tanner of Lubbock showed the floor plan for the Homemaking Department at L.C.C. which is being built by the Associates over the South Plains. Approximately 20 ladies attended.

Mr. and Mrs. Floyd Bills were in Lubbock Sunday. They went to church with Mr. and Mrs. Carlis Bills. They also helped their grand daughter, Shellie, celebrate her birthday.

Mr. and Mrs. Terry Parish and son Jeff have recently moved to Lubbock where Terry is employed in the drafting de-

partment of the Mosher Steel Company of Lubbock.

Ruby Jordan was in Muleshoe on business Wednesday afternoon.

Mr. and Mrs. Dennis Simmons returned from Magnolia, Ark. where they attended funeral services for Simmons' Mother Mrs. Corrie Simmons of Littlefield. The services were held Tuesday morning. Mrs. Simmons passed away in a Lubbock Clinic after being transferred from a Littlefield Clinic. Also attending the services was a grandson Mike Simmons and Mrs. Simmons, Jack and Saneta of Earth. Mrs. Dennis Simmons has been at the bedside of her Mother Mrs. Dub Cockran of Magnolia for three weeks. Mrs. Cockran underwent major surgery in an Eldorado, Ark. hospital a week ago.

Mr. and Mrs. R. V. Bills and Mr. and Mrs. Floyd Bills attended Funeral Services for Elma Bell at Dimmitt Thursday afternoon.

H.S. Hickman, Jr., of Lolita, Tex. spent two weeks with his parents, Mr. and Mrs. H. S. Hickman, Sr. He also visited other relatives.

Mrs. J. D. Phipps underwent major surgery in the Littlefield hospital Friday. It was reported she is doing fine.

Mr. and Mrs. Norris Endley of Himore, S. D. visited last week with the A. C. Bartons and the H. S. Hickmans. Mrs. Endley is a cousin of Mrs. Barton and Mrs. Hickman.

Mr. Doss of Dimmitt is the

new owner of White Auto Stores. Mr. Doss will move his family to Earth after mid-term. We welcome the Doss' to our community.

Mr. and Mrs. Owen Goodsons, of Lamesa were in Earth last week visiting friends. They visited the A. C. Bartons and the Jack Hinsons. The Goodsons lived in this community and moved away in 1929.

Mrs. Edna Barlow of Long Beach, Calif. passed away last week. She was the wife of

Clifford Barlow who is the grandson of Mrs. Pearl Barlow.

Mrs. Garner Ball, of Olton, spent the day Monday with her Mother, Mrs. Beulah Newton.

Mrs. Dean Wendburne and Mrs. Alene Griffin spent Sunday in Lubbock. They attended the Spring Market showing.

Weekend guests in the home of Mr. and Mrs. L. T. Smith were Mrs. Smith's brother and wife, Mr. and Mrs. Elvis Sumner of Carlsbad and a sister-in-law, Mrs. Ruby Sumner of Amarillo. Also for Sunday dinner were Mrs. Billie Gwen Davis and children, Andria and Lance of Dimmitt and Mr. and Mrs. Ronnie Smith and Terri.

Sunday afternoon guests of Mr. and Mrs. Ronnie Smith and Terri were Mrs. Smith's parents, Mr. and Mrs. Jimmy Ivy of Lazbuddie.

Mr. and Mrs. John Laing, Jr. are the proud parents of a baby girl, born Sunday, Sept. 10 in the Plainview hospital. The little miss tipped the scales

at 7 lb. 9 1/2 oz. and has been named Jeanene Michelle, she has two sisters ages three years and 15 months. Mr. Laing farms in the Earth area.

Mr. and Mrs. Clarence Gillis and Mrs. Claudie Money of Stinette, spent Sunday and Monday with Mrs. Minnie Pate and Mr. and Mrs. A. C. Barton. Mrs. Money is a sister of Mrs. Pate and Barton.

A Spanish girl was struck down by a car driven by J. E. Livingston, Saturday afternoon. The girl, 14, granddaughter of Mr. and Mrs. Isabel Guana, was rushed by ambulance to the Community hospital in Olton. She was treated and released. She had no broken bones, just bruises and returned to school Monday.

Vernon Newton of Lubbock visited his Mother Mrs. Adline Newton, one day last week. Mr. and Mrs. C. E. Ginn of Dimmitt visited Sunday afternoon with Mr. Ginn's Mother Mrs. Nannie Ginn.

The Esther Class of the First Baptist Church had the regular monthly meeting Tuesday evening, in the home of Mrs. Nina Adarian.

Cokes, sandwiches, crackers and cake were served to, Kathleen Cole, Cora Bell Angeley, Juanita Blackburne, Lillian Hamilton and the hostess Nina Adarian.

Kathlene Cole gave a devotional on, "Willing to be a Gleaner." Scripture was taken from Proverbs 11th chapter, 23-30 verses. Ways to improve

attendance and visitation was discussed.

Mr. and Mrs. Bill Morris are now moving into their new home, the former Dr. Bausman home.

Mr. and Mrs. Bob Landis and children of Amarillo are visiting her parents, Mr. and Mrs. Chester Kelley.

Rites...

Continued from Page 1

Gable, Friona; Mrs. Peggy Newman, Morton and Mrs. Pat Kirby of Cilas, Colo.; two sons, J. C. of Richardson and Luther of Morton; his mother, Mrs. J. C. Buchanan of Lubbock; two sisters, Mrs. Burdard Lyles of Turkey and Mrs. G. W. Chavis of Ocean Springs, Miss.; three brothers, Marion of Lubbock, Henry of Deer Park and Harvey of Morton and 15 grandchildren.

Buchanan was the son-in-law of Mr. and Mrs. C. R. Farrell and brother-in-law of Mrs. Pat Bobo, Muleshoe.

Beloved...

Continued from Page 1

at first sight' but from a little germ called 'love.' This has all followed a lengthy courtship over a long joyful peiod of six whole months.

The men for the cast of this play, their assistants and backers promise each who attend this November 2 performance one of the most hilarious evenings of entertainment, just as surely as those united in this ceremony has two hearts beating as a single beat, and that a sugar beet; two heads with but a single neck, and that a rubberneck and two fools who wish to act as one.

Proceeds of the event will go into the Chamber of Commerce Christmas fund.

Borden's
GOLDEN
VANILLA
FLAVORED
ICE CREAM

MADE WITH REAL EGGS

'68 Buick. Now we're talking your language.

The new 230-hp., V-8 engine runs on regular gas. It's standard on all Skylark Custom models.

We also refused to limit your choices. Skylark Custom comes in four models, 15 colors and 32 trim combinations. So talk to the man who talks your language, your Buick dealer.

All Buicks have a full line of General Motors safety features as standard equipment. For example, side marker lights and energy-absorbing steering column.

Wouldn't you really rather have a Buick?

We changed the Skylark from front to rear, we gave it a whole new look, simply because we believe you want a car like this. In other words, we're talking your language.

We thought you'd like to have a little easier time parking. So we shortened the wheelbase of the two-door Skylark down to 112 inches.



The '68 Buicks are at your Buick dealer's now. He's ready to talk your language.

Meet the

Muleshoe State Bank Customer of the Week



Walter Bartholf Sr.

Walter Bartholf Sr., Minister of the First Christian Church, is Muleshoe State Bank's customer of the week. He recently moved from Bald Knob, Arkansas. Mr. & Mrs. Bartholf live at 215 W Ave. 1. They have four children - Doris Ann, 9, Walter Jr., 6, Robert, 5 and Chuck, 10 months. Muleshoe State Bank is proud to welcome this newcomer - and customer of the week.

MULESHOE STATE BANK

Member FDIC

