

# THE MULESHOE JOURNAL

Dedicated to the progress and development of the great Muleshoe country

VOL. 46 NO. 22

8 PAGES

Published every Thursday at Muleshoe, Bailey County, Texas — 79347

Newsstand price 10¢

THURSDAY, JUNE 6, 1968

## Continued Sunshine Needed

\*\*\*\*\*

# Bailey Crop Outlook Bright



**AUTHORITY APPOINTEES**—Bailey County Hospital Authority members were appointed by the Commissioners Court here recently. They are, front row, D. O. Burelsmith, Sam Damron, Mrs. J. G. Arna, Don Harmon, Dr. Charles Lewis. Back row, Eddie Beene, Freddie Parkman and Neal Dillman. Mrs. Bernard Phelps, not pictured, is also a member of the authority board. Officers named at the organizational meeting held Tuesday evening were Dr. Lewis, president; Don Harmon, vice president and Mrs. Arna, secretary-treasurer. Dr. Lewis set three meetings, June 11, June 18 and June 25 at 8:30 p.m. to begin work on obtaining a new hospital for the county. Advisors are supplying information concerning the procedures to take and the requirements to be met to achieve this goal for the betterment of the county and area.

## Underground Moisture Adequate on Dryland

Bailey County wheat is ripening rapidly and showing the near harvest time golden color, according to County Agent J. K. Adams and area farmers. Irrigated wheat, generally speaking, appears to be maturing to the above average stage, however, much of the dryland wheat crop has been abandoned due to hail and heavy rains in some sectors. However, a mediocre crop is expected to be harvested on the

remaining stand of dryland wheat. Adams said the Bailey County wheat was maturing on schedule for the time of year with little to no complications of insect infestations and disease damage. On a wide range scope, winter wheat in the states on the Southern Great Plains presents a wide variation in conditions, ranging from excellent through much of Kansas, Oklahoma and

Texas, to poor in the area in western Kansas and eastern Colorado, the Oklahoma Panhandle, portions of the northern counties on the Texas High Plains where continuing drought conditions prevailed from September of 1967 until early May of 1968.

From Amarillo comes the report of infestations of greenbugs and pale western cutworms together with the weather conditions have taken their toll. In a northern area comprising four states, located in the northern sections bordering the Texas Panhandle, it is doubtful if total wheat production this year in some counties will be sufficient for seed to plant the 1969 crop.

In much of the Low Rolling Plains of Texas and in much of the wheat producing areas to the north and east, the problem has been too much water rather than too little. Some outbreaks of red or leaf rust, also streak mosaic have been observed, but just how much this will reduce production cannot be determined at this time. This is not the condition of Bailey County wheat, Adams said. Generally, the progress of development of the 1968 winter wheat crop in early pro-

ducing areas on the Southern Great Plains is running several days behind the normal date due to cooler than usual weather, however, in spite of the generally slow developing crop, the first load of 1968 wheat was harvested in South Texas on May 6.

Combine crews from this area who make the harvest runs annually left several weeks ago to go into the southern and eastern parts of the state and will follow the wheat belts area as the crops reach the maturity stage.

Assuming there is not too much loss of yield in areas of rust infestation and that conditions remain favorable for the remaining acreage, there is the possibility of the five states of Kansas, Oklahoma, Texas, Colorado and New Mexico producing as much as 480 million bushels of winter wheat this year. The 1967 crop from these states produced 405,323,000 bushels.

**COTTON**

Adams reports that on the local level of the cotton situation, insects are a contributing factor of seedling diseases combined with the cold nature

Cont'd. on Page 3, Col. 3

## Vegetable Crops Good: Most Acreage Planted

Local vegetable growing is in a variety of states, depending on the vegetable.

The some 700 acres of tomatoes which have been planted are up and reported to be real well with a good stand.

The Texas Employment Commission's resume shows that 600 acres of cucumbers have been planted. Some of them are up and some are still not up. However, they have just been planted and some are in the planting process.

Test plot of 10 acres of Bell Peppers are up to the two-leaf stage and are growing, unhampered by wind or weather, thus far.

Test plots of beans are expected to be producing within 30 days.

A look at the general Texas vegetable scene shows that the 1968 onion crop on various Texas high plains areas is expected to total about 6,100 acres.

Of this, about 4,400 acres are transplants while about 1,700 acres are seeded. The 1967 crop totaled about 5,450 for the state.

Texas watermelons acreage for this growing season is approximately 74,000 acres, six percent more than the 70,000 acres harvested last year.

Again, with vegetables as with other crops, cool temperatures and wet soil have delayed land

preparation and planting and below normal temperatures have restricted growth of the vines.

The Texas High Plains potato crop for 1968 is expected

to total about 19,000 acres, a slight decrease from the 19,400 acres planted last year.

Approximately 13,000 acres of this season's crop is expected to be harvested in July and August with the remainder to be ready to harvest by September 1 or shortly afterward.

Red varieties have been planted on about 5,800 acres, white varieties cover about 8,400 acres and varieties for making potato chips are estimated at 4,800 acres.

Test plot of 10 acres of Bell Peppers are up to the two-leaf stage and are growing, unhampered by wind or weather, thus far.

Test plots of beans are expected to be producing within 30 days.

A look at the general Texas vegetable scene shows that the 1968 onion crop on various Texas high plains areas is expected to total about 6,100 acres.

Of this, about 4,400 acres are transplants while about 1,700 acres are seeded. The 1967 crop totaled about 5,450 for the state.

Texas watermelons acreage for this growing season is approximately 74,000 acres, six percent more than the 70,000 acres harvested last year.

Again, with vegetables as with other crops, cool temperatures and wet soil have delayed land

preparation and planting and below normal temperatures have restricted growth of the vines.

The Texas High Plains potato crop for 1968 is expected

to total about 19,000 acres, a slight decrease from the 19,400 acres planted last year.

Approximately 13,000 acres of this season's crop is expected to be harvested in July and August with the remainder to be ready to harvest by September 1 or shortly afterward.

Red varieties have been planted on about 5,800 acres, white varieties cover about 8,400 acres and varieties for making potato chips are estimated at 4,800 acres.

Test plot of 10 acres of Bell Peppers are up to the two-leaf stage and are growing, unhampered by wind or weather, thus far.

Test plots of beans are expected to be producing within 30 days.

A look at the general Texas vegetable scene shows that the 1968 onion crop on various Texas high plains areas is expected to total about 6,100 acres.

Of this, about 4,400 acres are transplants while about 1,700 acres are seeded. The 1967 crop totaled about 5,450 for the state.

Texas watermelons acreage for this growing season is approximately 74,000 acres, six percent more than the 70,000 acres harvested last year.

Again, with vegetables as with other crops, cool temperatures and wet soil have delayed land

preparation and planting and below normal temperatures have restricted growth of the vines.

The Texas High Plains potato crop for 1968 is expected

to total about 19,000 acres, a slight decrease from the 19,400 acres planted last year.

Approximately 13,000 acres of this season's crop is expected to be harvested in July and August with the remainder to be ready to harvest by September 1 or shortly afterward.

Red varieties have been planted on about 5,800 acres, white varieties cover about 8,400 acres and varieties for making potato chips are estimated at 4,800 acres.

Test plot of 10 acres of Bell Peppers are up to the two-leaf stage and are growing, unhampered by wind or weather, thus far.

Test plots of beans are expected to be producing within 30 days.

## Commissioners Name County Hospital Authority

An organizational meeting of the newly created Bailey County Hospital Authority board was

held Tuesday evening at City Hall.

From the members of the authority board appointed recently by the Bailey County Commissioners Court, Dr. Charles Lewis was named president; Don Harmon, vice president; and Mrs. J. A. Arna, secretary-treasurer. Other members of the Authority board are Mrs. Bernard Phelps, Neal Dillman, Sam Damron, Freddie Parkman, D. O. Burelsmith and Eddie Beene.

After extensive study of the growing need for an arrangement whereby area citizens would be assured of having continued and adequate hospital facilities and doctors, the members of the City Council met with the County Commissioners, May 24 in an attempt to formulate plans toward this goal.

Arriving at the conclusion

that the best, more effective course to pursue, both economically and expansively, was for the authority to be created by the county commissioners, to include all Bailey County, instead of being a city appointed authority with the major responsibility for working out of details and progress methods falling on city appointees.

Basis for the recognition of the need and action taken to date is the fact that it is becoming increasingly harder and in some cases, impossible, for private owned hospitals to keep their doors open and keep good doctors in communities of our population.

It was pointed out that a few years ago, eight doctors were practicing here. At present time there are four, one of which is past retirement age and the second is leaving around September 1.

Meeting with the board Tuesday evening were Joe Smith, an associate of First Southwest Company and Howard Kenyon, Texas Municipal Bond Company executive, Dallas.

Both companies were approved by the authority board as financial consultants for the Bailey County Hospital Authority until such a time as negotiation can be met and the county is ready to issue revenue bonds, then there are to act as the Bonding Companies.

Some of the initial duties of the Bailey County Hospital Authority were outlined by Smith and Kenyon.

It was explained that "Negotiations to purchase both West Plains Hospital and Green Hospital was one of the first duties which must be done and Federal grants will not be made to build a county hospital which is to compete with a private owned hospital."

For the purpose of the two operations, Revenue Bonds, preferably locally sold.

The authority is to employ and administer and secure the staff for the hospital.


It was also pointed out that the Bailey County Hospital Authority would not have taxing power.

A Federal grant will be available for one-half of the cost of the new hospital.

Once the authority has completed the groundwork, through legislation, a hospital district which can include areas other than Bailey County can be created. This can be done by the metes and bound rule to include areas which would benefit from the advantage of having such a Medical Center such as is in the making here.

As the present plans become a working plan, details will be

Cont'd. on Page 3, Col. 8

around  muleshoe with the journal staff

Mr. and Mrs. E. C. Smith and grandson, Ronnie, of Loreto, Tenn., have been guests for the past week in her sister's home, the Julian Lenauus. They left Tuesday to return home.

Also last Tuesday, overnight guests in the Julian Lenauus home were friends, Mr. and Mrs. Arthur Welch.

Two Muleshoe youths, John Gunter III and Perry Hall, Sunday began a month, first term, at Camp Rio Vista at Ingram, Tex.

John, accompanied by his parents, Mr. and Mrs. John Gunter Jr., and brothers, left Thursday by automobile. They were to visit in San Antonio and the HemisFair before John entered camp for his first year.

Perry, son of Mr. and Mrs. Larry Hall, and Mitch Voelker of Plainview, were accompanied to Lubbock by their families, where they flew into San Antonio and on to camp Sunday. Perry is in his second year at the boys camp.

The Murray Lemons family enjoyed the long Memorial Day weekend at Red River, N.M. They were accompanied by Tommy Lemons and daughter, Joan Stovall and Jay.

Lt. Rodney Blackwood and his wife, Sandra, are in Muleshoe visiting their parents, Mr. and Mrs. Robert Blackwood and Mr. and Mrs. Paul Scott.

They have just returned from

Cont'd. on Page 6, Col. 6

## Oliver Attends Chamber Meet

Derrell Oliver, manager of the Muleshoe Chamber of Commerce will attend the 62nd Annual Conference of the Texas Chamber of Commerce managers in Longview, Saturday through Wednesday, June 8-11.

Headquarters for the state TCCM conference will be the Contessa Inn where registration begins Saturday afternoon.

The Conference theme will be "Motivation - Methods - Mechanics" and the program has been designed to equip TCCM members with the latest techniques in handling Chamber programs.

TCCM President L. E. Gilliland, Manager of the Texarkana Chamber of Commerce described the conference program as being designed to "re-equip our Chamber managers

Cont'd. on Page 3, Col. 1

## Oratorical Contest Winners On 12 Day Washington Tour

Washington, D. C. was the destination of Patricia Grusendorf of Bula and Dick Black of Sudan, who left June 6, on a 12 day tour sponsored by Bailey County Electric Cooperative, Muleshoe.

Winners of an oratorical contest on the subject of their choice of suggested topics, Miss Grusendorf and Black will meet in Waxahachie with winners of similar contests conducted by other rural electric systems throughout Texas.

The youth tour began officially with a get acquainted dinner in Waxahachie on June 6 and includes overnight stops in Little Rock, Ark., Nashville, Tenn. and Roanoke, Va.

The return trip will bring the group through Knoxville, Tenn., Memphis, Tenn. and Texarkana back to Wax-

shines and memorials dedicated to the everlasting memory of great American leaders. They will enjoy the company of the Texas Delegation at the Congressional Breakfast, participate in Rural Youth Day, cruise the Potomac River and possibly visit with President Johnson.

Participants in the "Government in Action Youth Tour" will be furnished a set of colored slides for sharing with their communities upon their return.

The youth tour began officially with a get acquainted dinner in Waxahachie on June 6 and includes overnight stops in Little Rock, Ark., Nashville, Tenn. and Roanoke, Va.

The return trip will bring the group through Knoxville, Tenn., Memphis, Tenn. and Texarkana back to Wax-

hachie on June 18 at 11 a.m.

Also traveling with the Youth

Cont'd. on Page 3, Col. 2

## Junior Tennis Tourney Set

The Muleshoe Jaycees Junior Tennis Tournament will be held June 15 and 16 at the Muleshoe Tennis Courts. Pete White, tournament director, says a full slate of entrants will compete for special awards. The tournament, the first for many of the players, is sanctioned by the United States Lawn Tennis Association.

Admission is free and the public is encouraged by the sponsors to attend.

First round play begins at 8 a.m. Saturday, June 15. The tournament's final Championship play will begin at 2 p.m.

Cont'd. on Page 6, Col. 5

## Dudley, Eubanks Elected

Only two county races figured in the Saturday, June 1, Democratic primary runoff.

They were for the posts of Precinct 1-1A and Precinct 3. Matt Dudley polled a total of 662 votes to defeat his opponent, Sherman Inman, who received 327 votes.

## Cattlemen's Golf Tourney Set Thursday

Some 80 cattlemen and wives are expected at Muleshoe Country Club where men will begin a golf tournament at 10 a.m. and table games will be entertainment for the women during the day.

Steak dinner will be served around 8 p.m. followed by a dance.

Cattlemen who will be attending are members of the Texas Cattle Feeders Association.

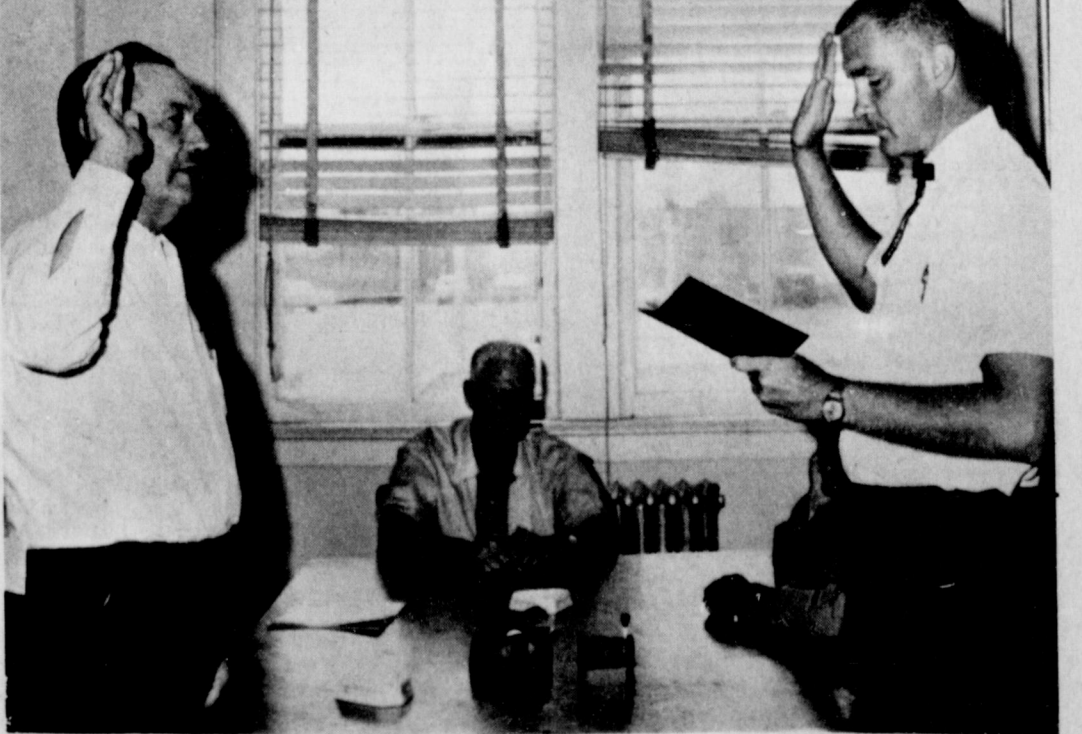
W. H. (Bill) Eubanks, incumbent, continues as County Commissioner of Precinct 3 after defeating Wayland Altman by only 23 votes.

Eubanks received 123 of the votes cast while Altman received 100 of the 223 votes cast in that Precinct.

Lt. Gov. Preston Smith carried Bailey County with a total of 1,048 votes compared to Don Yarborough's 327 votes.

Judge James A. Joy, Plainview, carried the district, however lost within Bailey County to Amarilloan Jack Hazelwood. The tally in Bailey County was 705 votes cast for Hazelwood and 577 for the winner of the judgeship for District Court of Civil Appeals.

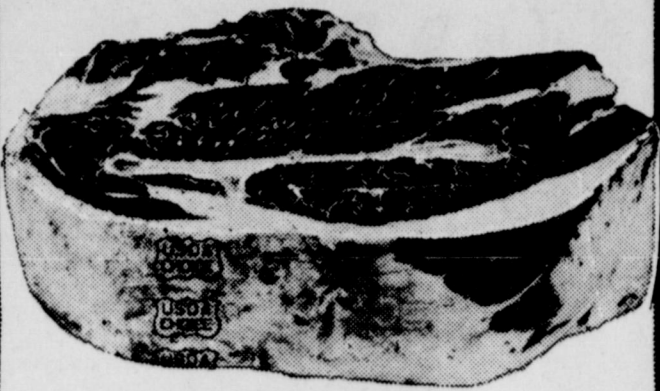
The conclusion of the ballot counting of the June 1 second Democratic primary leaves Democrat Lt. Gov. Preston Smith facing Republican Paul Eggers for the governorship of Texas in the November general election, November 5.



**TAKES OATH**—Matt Dudley (left) takes the oath of office as Bailey County Commissioner Precinct 1-1A administered by Judge Don Chah. Dudley defeated his opponent, Sherman Inman in the June 1 runoff. Dudley took office immediately, filling the unexpired term of I. M. (Ike) Stinson who resigned. Seated at the end of the table is W. H. (Bill) Eubanks, Precinct 3 incumbent who won the runoff over his opponent by 23 votes.



Piggly Wiggly Quality Meats!



**CHUCK ROAST**  
U.S.D.A. Good, Baby Beef  
Pound **53¢**  
U.S.D.A. Choice Beef, Pound **59¢**

Farmer Jones, Sweet Smoked  
**Sliced Bacon** Pound **69¢**  
Extra Lean and Tender  
**Cube Steaks** Pound **98¢**



**SHORT RIBS** Extra Lean for Barbecue  
Pound **29¢**

**RIB STEAKS**  
U.S.D.A. Good, Baby Beef  
Pound **85¢**  
U.S.D.A. Choice, Pound **89¢**

Family Package, Fully Pork Loin  
**Pork Chops** Pound **69¢**  
Skinned, Deined, Uniform Slices  
**Beef Liver** Pound **59¢**

**SIRLOIN STEAK**  
U.S.D.A. Good, Baby Beef  
Pound **89¢**  
U.S.D.A. Choice, Pound **98¢**

Decker's  
**Hot links** Pound **59¢**  
Extra Lean  
**Ground Chuck** Pound **59¢**

**29¢**

Win a Potful of Cash! Play...

# ALL STAR BINGO

This Friday at 7:30 P.M. on Channel 11  
Pick up your FREE All Star Bingo Card today!



## Ultra Fresh PRODUCE SALE

Piggly Wiggly Ultra Fresh Produce



### WATERMELON

Red, Ripe  
Pound **7¢**

- CANTALOUPE Ripe, Ready to Serve Pound **15¢**
- PEACHES California, Full of Flavor Pound **39¢**
- GREEN ONIONS Large, Crisp Bunches Each **10¢**
- BROCCOLI Fresh, Green Pound **39¢**
- CORN-ON-THE-COB Large, Well Filled Ears 3 For **29¢**
- ORANGES Arizona, Valencias Pound **25¢**

**CHERRIES**  
Bing, California  
Pound **69¢**

IDEAL Nest Fresh, Grade A Medium

**EGGS**  
Dozen **33¢**

Shortening

**BAKERITE**  
3 Pound Can **48¢**



Elgin Solids

**OLEO**  
Limit 3  
Thereafter 12 1/2c pkg.  
Pound Package **8¢**

- Gisha Sliced No. 2 Cans  
**Pineapple** 3 for \$1
- Tropicana  
**Fruit Drinks** 4 Qt. Btls. \$1
- Special Display  
**Cake Mixes** 3 for \$1
- 2 Pack Coronet  
**Bathroom Tissue** 4 for \$1
- Del Monte 46 oz.  
**Pineapple Juice** 3 for \$1

- Kraft with free Pepsi-Cola  
**Pizza** 2 for \$1
- Red Heart 15 oz. Cans  
**Dog Food** 6 for \$1
- Zestee Strawberry  
**Preserves** 2 #2 Jars \$1
- Kounty Kist 12 oz.  
**Corn** 5 for \$1
- 46 oz. Hi-C  
**Fruit Drinks** 3 for \$1

Health and Beauty Buy  
**DEODORANT**  
Hour After Hour, Regular \$1.00 Retail  
4-Ounce Spray Can **69¢**  
**TOOTH PASTE**  
Vote, 8¢ Off Regular 77¢ Retail  
New King Size Tube **69¢**

- S & W Sliced  
**Pineapple** 1/4 Can **29¢**
- Grand Ma  
**Cookies** 3 Packages **\$1.00**
- Saran Wrap** 50-Foot **35¢**

- Van Camp, Chunk, Light  
**Tuna** 3 No. 1/2 Cans **\$1.00**
- Hunt's  
**Tomato Catsup** 20-Oz. Bottle **37¢**
- Rite Good  
**Drinks** 2 28-Ounce Cans **37¢**

Frozen Foods for Your Freezer!

**STRAWBERRIES**  
Libby 3 10-Ounce Packages **\$1**

- Patio, Beef  
**Enchilada** Dinner 12-Oz. Pkg. **49¢**
- Sara Lee  
**Pound Cake** 12-Oz. Pkg. **79¢**

**CUT CORN**  
Libby 24-Ounce Poly Bag **49¢**



These Values Good June 6-7-8 in MULESHOE. We Reserve Right to Limit Quantities Purchased.



**MELLORINE** Borden's 1/2-Gallon **39¢**

**SUGAR** C & H, Pure Cane 5-Pound **58¢**

**BEANS** #303 Can Libby **17¢**

### Week End Specials

- Maxwell House  
**Coffee** 1-Pound Can **68¢**  
2-Pound Can \$1.35 3-Pound Can \$1.99
- Folger's  
**Instant Coffee** 10-Ounce Jar **\$1.39**
- Pride  
**Crackers** 1-Pound Box **18¢**



**Oliver...**

Cont'd, from Page 1

to meet the challenges of change." "The program will have practical application and is designed to give our member managers some fresh new ideas to meet the new challenges facing Texas Chambers," Gilliland stated. Over 200 Chamber of Commerce Managers and their wives from all parts of the state are expected to attend the conference. TCCM is the oldest state association of Chamber of Commerce executives in the

United States and is also the largest such association in the nation.

**Tour...**

Cont'd, from Page 1

Tour group are Darla Kendall and Diane Crawford of Muleshoe. Their parents are paying their way. They are getting to go as there were two extra spaces available on one of the tour buses. J. Wayne McDermott of Morton was to have gone on the Youth Tour, but he is ill and cannot go. Thus the alternate, Dick Black, will go instead.



**CLOSE OF ERA**—An era of life closed last May 30 for an area pioneer settler, J. W. Crim. One of the early settlers of this area, Crim is shown astride his horse, Tony, as he gathered 40 head of cattle for the last roundup and branding on his ranch north of Muleshoe. This closed out 45 years of such a life and proves that the olden days are going fast now, giving way to the modernized world. The Muleshoe Publishing Company requests that each pioneer contribute their stories, pictures and experiences to a book of the History of Bailey County to be published this year, the Golden Anniversary of the county. The pictures submitted for publication will be returned to the owner in their original state. Pioneers or their descendants may call the Journal or visit the office at 304 West Second Street to submit their history to assist with making the book complete. Many such experiences will make up the pages of the book, which would otherwise be lost and forgotten . . . a mystery to the upcoming generations.

**Rotary Speaker Authority...**

Cont'd, from Page 1

Jim Berry was guest speaker at the Rotary meeting Tuesday. Berry gave a history of the Jaycee organization, their achievements and progress in membership and community participation. Harmon Elliott arranged for the program and complimented the Jaycees for their work as an asset to the community. Other Jaycees who were guests were Clarence Christian, Bob Stovall and John Blackwell. Other guests were H. E. Roark with FHA and J. V. Turner. released for the information of the public. President Dr. Charles Lewis, in addressing the board members, said, "What the mind can conceive and believe, can be achieved." Lewis set three consecutive meetings on Tuesdays, June 11, June 18 and June 25 to begin work toward this goal. Scientist says life could exist on Venus.

**I WANT TO TAKE THIS MEANS OF SAYING THANK YOU**

**To My Friends Who Supported Me In My Race for Commissioner. I wish only the best for Bailey County. Again I Thank You.**

**Sherman Inman**

**Bright...**

Cont'd, from Page 1

of the soil and an unfavorable cool spring.

The Lubbock testing station reported a record low for the date, June 4, with soil temperatures recorded at only 60 degrees. Such conditions contribute to these seed disease troubles the informant told Adams.

Adams reports that Bailey County has been fortunate in the low percentage of cotton

ruined by hard rain at the time the tiny cotton plants emerged from the ground.

As compared with other counties, both Bailey and Parmer Counties are above average for holding the first planting of cotton.

He reports that the Beet Army Worm is causing a varying amount of damage within the county.

Lyndon Almand, extension entomologist for this area spent Wednesday in Bailey County observing insect damage.

He found thrip quite numerous along with some Beet Army Worm, however, they are being controlled with insecticide application. Some insects found in the cotton have been found to have overwintered along turnrow and roadway plants such as weed roots and Johnson grass.

Except where replanting was necessary due to loss of stands from heavy rain and hail, most of the intended cotton acreage has been planted in the Texas area and adjacent New Mexico and Oklahoma. In the general resume of the cotton crops, early planted areas of Texas, except where slowed by damp cool weather, cotton is making satisfactory growth with insect infestation generally light. In non-irrigated areas of the Texas High Plains and in adjacent states, additional moisture will be needed to keep cotton acre-

**KILL ATHLETE'S FOOT GERM** One application of T-4-L stops itch and burning in MINUTES or your 48¢ back. In 3 to 5 days, infected skin sloughs off to expose more germs for the kill. Then watch HEALTHY skin appear! TODAY at **DAMRON DRUG**

age looking good. Some of the estimated four to five acres of Castor beans planted in the county have some infestation of the Beet Army Worm. One farmer reports serious damage in Castor beans planted this year where corn was grown last year and no insect infestation in Castors planted where Castors were raised last year. This is attributed to the overwintering of insects under the ground in the corn residue.

Another crop, grain sorghum has also been somewhat hampered by cold ground and the unseasonal cool spring weather.

Adams said the small plants are staying yellow longer than would under normal growing conditions and warmer days are hoped for which will rapidly correct the situation, he continued.

On a 70 mile tour of the southern portion of the county, Adams noted that some of the dryland sorghum had to be replanted due to washouts. However, most of the land held their original crops of both sorghum and cotton.

Crops which were not washed out are off to a good start with the proper amount of moisture.

A southern Bailey farmer said that the moisture and crops in that area were the best in several years. There is enough moisture now to carry the crops a long way and even with less than average rainfall for a while, both cotton and grain sorghums should thrive.

An August rain will be needed, and possibly some July rains would increase the yield of both crops.

Over the general area, the 1968 grain sorghum crop is running about normal with ap-

proximately 60 percent of the intended Texas acreage planted by the middle of May. Moisture conditions are generally favorable for getting the early acreage off to a good start. Although cool, wet weather is much of the early Texas Sorghum producing areas have delayed development of plants.

In some areas of Texas, additional moisture is needed to get much of the non-irrigated sorghum off to a good start. This situation exists in parts of the Texas High Plains, eastern Colorado, Western Kansas and the Oklahoma Panhandle.

County Agent Adams said that corn has less problems than any of the other crops this year, however again the cold spring weather has eliminated its beautiful green color.

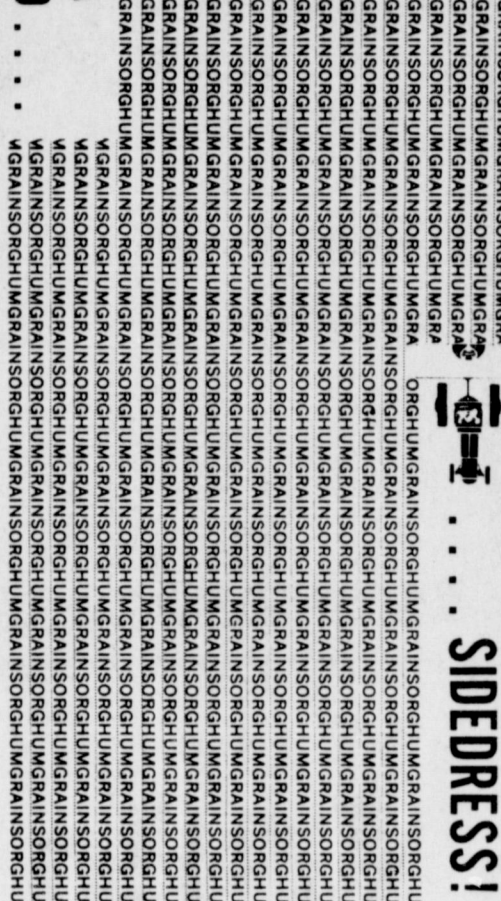
Adams said "The corn is now coming out of the starting shoot and with the low price of the nutrient, Nitrogen fertilizer, it should be adequately used and an excellent crop is foreseen."

Corn growers will also be concerned with the Beet Army Worm as well as other corn insects, however with the usual close observation on the part of the farmer, little to no problems are anticipated.

Planting of sugar beets in Texas, New Mexico, Colorado and Kansas has been completed and the thinning and hoeing operations are now underway on the early seeded fields.

Considerable acreage of Sugar Beet in Kansas and Colorado had to be replanted due to loss of stands on early seeded fields by freezing weather. The Bailey, Parmer and New Mexico fields as well as those in counties to the north did not experience this type of damage.

**GIVE YOUR CROP A SHOT IN THE YIELD**



**SIDEADDRESS!**



**YL Chemical Company**

Muleshoe, Texas

DISTRIBUTED BY:

Taylor-Evans, Inc.

Nitromite—Shamrock's fine brand of anhydrous ammonia—is 82% nitrogen for growing bigger, better yields.

**WESTERN DANCE**  
at **HOTEL CLOVIS**  
In the Ballroom.....2nd. Floor  
Music by:  
**D. F. Waldon and the WESTERN PLAYBOYS**  
**NEW TIME!**  
Dancing from 8 'till 12 P.M.  
Mark your calendar!  
Beverages of your choice will be served  
Western Music at it's Best!  
DANCES WILL BE HELD  
JUNE 7, 14, 15, 21, 22, 29.  
Dancing starts 8:00 P.M.  
Clovis, N. M.

**Sears SUPERTRED** One of our strongest, longest-wearing nylon cord tires

**Save 25%**  
**GET 4 TIRES FOR THE PRICES OF 3**  
All You Pay For The 4th Tire is Shipping!

6.50-13 Tubeless Blackwall  
EACH \$19.98 plus \$1.01 Federal Excise Tax  
4 for \$58.12 plus \$7.24 Federal Excise Tax

Here's a tire that's 23% stronger than the tires that come on most new cars. That's strength for extra resistance to road hazards, better high speed performance, and long, long wear economy. New low-profile design with a contoured, wrap-around shoulder and traction slots in every rib.

You get 4 of these great tires for only \$7 to \$10.50 monthly

**Sears**

129 Main Ph. 272-4216  
Muleshoe, Texas

**Guaranteed to wear for 36 months**  
**PASSENGER TIRE GUARANTEE**  
TREAD LIFETIME. Guaranteed Against: All failures of the tire resulting from normal road hazard or defects in material or workmanship. For How Long: For the life of the original tread. What Sears Will Do: Repair nail punctures at no charge. In the case of failure, in exchange for tire. Sears will replace it, charging only the proportion of current price that represents tread used.  
TREAD WEAR-OUT. Guaranteed Against: Tread wear-out. For How Long: The number of months specified on a particular tire. What Sears Will Do: In exchange for tire, replace it, charging the current price, less a 20% allowance for Guardsman and Supertred tires.  
ADJUSTING. This Guarantee will be honored at any Sears retail or catalog store in the U.S.A. The current price used as the basis of adjustment under this guarantee is: the regular retail or current catalog price, including applicable Federal Excise Tax then in effect at store where adjustment is made. You must present your guarantee card at time of adjustment.  
COMMERCIAL USE. Sears tires used in commercial service are covered only under the road hazard and defect failure portion of this guarantee. Commercial service is defined as other than normal private passenger or passenger station wagon service. Passenger tires used on trucks voids guarantee.  
NOTE—ONLY THE TREAD LIFE GUARANTEE APPLIES TO THE CRUSADER TIRE ON PAGE 71

So you're in range of your next new car. Fine. You're in range of an Olds.

A lot of people end up driving so-called low-priced cars that cost as much—or more—than this full-size Olds 88. Don't let it happen to you. Don't miss out on Olds luxury, Olds comfort, Olds Rocket V-8 performance. Before you make a final decision, price check an Olds 88.

**GM** See your nearest Olds dealer during "youngmobile savin' season"



# Jenda Nickels, Jerry Bruns Exchange Wedding Vows



Mrs. Jerry Bruns

## Lindy Kerr to Be Installed as Worthy Advisor

Lindy Kerr will be installed as Worthy Advisor of Rainbow Friday, June 7, 8 p.m. in the Masonic Hall.

Others to be installed are Kathy Williams, worthy associate advisor; Rena Lackey, charity; Charlotte Davis, hope; Annette Williams, faith; Debbie Burrows, chaplain; Sue Plant,

drill leader and Debbie Kerr, treasurer.

Also Martha Jane Chapman, recorder; Darla Kendall, love; Treena Bryant, religion; Mary Ruth Riddle, nature; Delinda Henry, immortality; Cathy McCormick, fidelity; Kathy Seymour, patriotism; Debra Rudd, service; Tracy Cowan, confi-

dential observer; Cathy Mardis, outer observer; Linda Lambert, musician and Ann Newsom, choir director.

The public is invited to attend.

## Marriage Announced

Mr. and Mrs. George W. Davis of Shamrock announce the marriage of their daughter, Pat, to Ronald D. (Tub) Angeley, son of Mr. and Mrs. E. K. Angeley of Muleshoe.

The couple will exchange wedding vows June 8, 7 p.m. in the home of Dr. Willa Vaughn Tinsley of Lubbock.

Pat is a senior Home Economics student of Texas Tech and Tub is engaged in farming and has recently been re-called to active duty.

Miss Jenda Nickels became the bride of Jerry Bruns in an impressive double ring ceremony read at First Methodist Church, at 8 p.m., May 31. Rev. E. M. Jennings, uncle of the bride and minister of the Presbyterian Church of Lubbock, read the service.

Escorted and presented in marriage by her father, the bride entered the church amid candleabras and palms with bouquets of pink gladioli and "Better Times" roses. The pew bows were light pink.

The bride is the daughter of Mr. and Mrs. J. A. Nickels. Parents of the bridegroom are Mr. and Mrs. Les Bruns.

For the wedding, the bride was attired in a formal length white crepe gown, controlled sheath, edged in Venice lace which swept back with fullness into a chapel train. The dress had a modified empire waistline banded in imported Venice lace, decorated with a single rose and two leaves of crepe in back. Her tier veil of bridal illusion was attached to a forehead rose accented with pearls. Her bouquet was a cascade of white roses and English Ivy with two pink cymbidium orchids in the center. This was attached to a white Bible which had been given to the bride's mother by her maternal grandmother, the late Mrs. T. J. Davis.

Miss Kerma Nickels, sister of the bride was maid of honor and bridesmaids were Miss Tamra Jennings, cousin of the bride; Donna Gaston, cousin of the bride; Sudan; and Miss Sharon Hutton, friend of the bride.

They wore dresses of light pink chiffon and carried a single long-stemmed dark pink rose. Their dresses had empire draped bodies with floor length trains of chiffon. The headpieces were pink feathered petals and tiny pearls tipped flowers attached to nylon tulle.

Candlelighters were Belinda Nickels, sister of the bride and Bruce Bruns, brother of the bridegroom.

Morris Bruns served his brother as best man. Groomsmen were Derrell Nowell, Ronnie Hannaberry and Charles Jones. Ushers were Gene McGuire, Howard Watson, brother-in-law of the bridegroom; Keith Stephens, Lubbock, brother-in-law of the bridegroom and Joe Pattie of Amarillo, brother-in-law of the bridegroom.

Traditional wedding selections were rendered by Sonja Bass and soloist was Wayland Ethridge. Selections were "True Love," "Twelfth of Never" and "The Lord's Prayer."

Following the wedding, the reception was held in Fellowship Hall of First Methodist Church.

Serving at the bride's table were Miss Cindy Davis and Miss Charlotte Davis and Miss Jan Mason, all of Muleshoe. The table was laid with crystal and silver appointments from which was served a decorated wedding cake, strawberry ring punch and mints. The centerpiece was silver candleabra containing pale pink tapers. At the groom's table were his sisters, Judy Watson and Toni Pattie. Coffee and cake were served from a table laid with a green tablecloth and the centerpiece were Brass candlesticks with green tapers and a Brass compote. Also presiding at the register table for the wedding and the reception was Mrs. Keith Stephens, twin sister of the bridegroom, assisted by Mark Bruns, brother of the groom.

Others in the house party were Mrs. Vernon Bleeker, Mrs. J. B. Jennings, Mrs. Edward Gaston, Mrs. Claude Riley, Mrs. Ed Nickels, Mrs. Neal Dillman, Mrs. Robert Hooten, Mrs. E. T. Ford, Mrs. Harold Allison, Mrs. Lee Mason, Mrs. Sam Damron, Miss Susan Gaston, Renee Nickels, Christi Ford and Gayla Hooten.

For traveling, the bride chose a suit dress with white accessories and an orchid corsage taken from her bridal bouquet.

The couple are both graduates of Muleshoe High School and the bridegroom has attended Texas Tech.

After a wedding trip to Ruidoso, the couple will be visiting in Amarillo for a few days.

A rehearsal party was given in the recreation room of the First Methodist Church on Thursday night, May 30. This was given by Mr. and Mrs. Les Bruns and daughters, Mrs. Howard Watson, Mrs. Keith Stephens and Mrs. Joe Pattie.

The tables were decorated with dark fuschia roses and refreshments of ice cream and cookies were served.

## Muleshoe Art Assoc. News

The next regular meeting of the Art Association will be Wednesday, June 12, 9:30 a.m. in the Muleshoe State Bank community room. The program will be a demonstration on water color by Rollie McNutt, art teacher in the Junior High School.

Plans have been completed for the Muleshoe Art Association's Show to be held in the Johnson - Pool building, 320 Main.

They will be open for public viewing June 28, 29 and 30. There will be thirteen cash awards and several citations. This should be well attended by all Muleshoe artists and artists in this trade area to which it is open. Anyone wishing a brochure, should contact Jeanne Garth, Velma Davis or Barbara Puckett, exhibit committee.

Two of the art association members have received honors with their art work. Frances Stegall of Goodland will have a hanging of her pictures at Chaparral Motor Hotel, Ruidoso, N.M., for the month of June. Mrs. Stegall, who has been painting for ten years, has studied under Dr. Emilio Caballero, Mrs. Katherine Hall Travis, Dick Cheatham and several local teachers. She has had a one-man show at High Country Lodge, Ruidoso, N.M., receiving repeat invitations to show July 4 through 6 this year.

Blanche Lenderson is one of the 26 area artists whose paintings are exhibited now at the Municipal Garden and Art Center, Lubbock. This exhibition sponsored by the Lubbock Art Association, is being shown in order to acquaint summer visitors with the colorful development of the South Plains region and is titled "Paintings of Plains History."

Each work is accompanied by a descriptive commentary. Mrs. Lenderson's painting is titled "Sand Hills, Bailey County." Another painting by Mary June Holton, Lubbock artist, titled "On James Ranch Near Muleshoe," is part of the exhibit.

# Society News

EARLENE RAGLAND Society Reporter Phone-272-4536



Patricia Peterson (bride elect of Virgil Maxwell)

## Bridal Shower Honors Patricia Peterson

## 30 Years Ago

30 YEARS AGO

### BAILEY COUNTY HOME DEMONSTRATION NEWS

(Why not put water in and out of your house)

A pre-nuptial shower honoring Miss Patricia Peterson (bride-elect of Virgil Maxwell) was given in the home of Mrs. Ance Ashford Friday night, May 31, 8 p.m.

The table was laid with a white lace cloth over blue with a lacy miniature replica of a bride standing atop an arrangement of bells of Ireland and blue poms. Lime green punch, a white cake with blue wedding bells was served, carrying out the chosen colors of the honoree. Appointments of crystal and silver were used.

Presiding at the serving table was Mrs. Roy Baker. The hostess gift was a Teflon electric skillet.

Those serving as hostesses were: Mrs. Bud Barber, Mrs. J. Lewis Morris, Mrs. Bert Garden, Mrs. Frank McCamish, Mrs. Lester Baker, Mrs. Wendell Speck, Mrs. Claud Coffman, Mrs. Roy Baker, Mrs. Ed Harp, Mrs. J. W. Barber, Mrs. R. G. Bennett Jr., Mrs. Troy Walker and Mrs. Ance Ashford.

Come on, join the parade! Bailey County women hope to put water in and out of 100 kitchens during 1938. Wouldn't you like to be one of the 100? Did you know that the average woman spends 30 days each year carrying water? Why not put water in and use that 30 days some better way? The average family carries 203 pounds of water in and out of the house each day. That makes 37 tons of water carried in and out of the house every year. In many cases, a few dollars will get the job done for you. Why not come to one of the home demonstration club meetings in June and find out how these women are getting the job done?

Knitted cotton or nylon as well as seersucker and other fabrics are used to fashion the new colorful play suits. Some skirts have solid color collars to match the skirts.



Mrs. Don McCall

## Mrs. Don McCall, Young Homemaker Shares Favorite Recipe of Goulash

Mrs. Don McCall, a young homemaker, is the mother of two children, Kelly Don, age five years and LaTanya, who is two years old. Her husband Don, farms in the West Camp community and they lived there for three years before moving to Muleshoe. She and her family live at 903 Fig Ave., and have been residents of Muleshoe two and one-half years.

Betty and Don are graduates of Bula High School and attend First Methodist Church of Muleshoe.

For a complete meal in one dish, Betty shares her favorite recipe of ground beef goulash.

**GROUND BEEF GOULASH**  
1 pound ground beef  
1/2 cup chopped onion  
1/2 cup shell-roni (cooked)  
salt and pepper to taste  
Cheese (Velveeta) according to taste  
2 tablespoons cooking oil

**METHOD**  
Brown onion in skillet with two tablespoons cooking oil. Add ground meat and brown. Add cooked shell-roni, salt and pepper to taste and enough water to keep from being dry. Simmer about 15 minutes. Top with cheese slices and melt.

Between us Hamburgers are great!

## MRS BAIRD'S BUNS



**Fine Entertainment**

**ENJOY Dancing**  
At The **COPPER PENNY**  
Featuring:  
**The Second Story Men**  
Thursday, Friday, & Saturday.

ALSO:  
**The Boxx**  
Monday, Tuesday, & Wednesday.  
**'HOTTEST' BANDS IN TOWN!**

**DINE HERE**  
The Best **STEAKS**  
in West Texas & New Mexico

DINING ROOM OPEN FROM 5 P.M. to 1 A.M.

**Copper Penny**  
1305 Mabry Drive Clovis, New Mexico

**YOU'LL COME!**  
\*\*\*

**DANCING From 9 'till 1:30 6 Nights a Week.**

**COUNTRY & WESTERN DANCE**

Featuring:  
**Tommy Haney and the RAINBOW RAMBLERS**  
3 Nights a Week  
**ALSO**  
**Tiny Lynn**  
3 Nights a Week

**LARGEST DANCE FLOOR IN CLOVIS AND WEST TEXAS**

**La Vista Lounge & Ballroom, CLOVIS, N. M.**

'Under New Management' Mabry Drive



# OES Presents Installation Service



**EIGHTEEN OFFICERS INSTALLED IN OES CEREMONY**--Eighteen officers for 1968-69 were installed in ceremonies Saturday, June 1 at 7:30 p.m. in the Masonic Lodge Hall. The officers will assume duties for the coming year in Order of the Eastern Star. Shown are back row, left to right, Cecil Davis, Buck Creamer, Alton Epting and Glenn Lust; second row, Mrs. Cecil Davis, Sid Bullock, Mary Farley, Charleta Treider, Wilma Polson, Barbara Lust, Betty Jo Davis. In the front row are Elizabeth Boren, Ruth Williams, Clara Lou Jones, Phyllis Beavers, Spencer Beavers, Inez Kennedy and Vera Clay.

Muleshoe Chapter No. 792, Order of the Eastern Star, installed new officers Saturday, June 1, at 7:30 p.m. in the Masonic Lodge Hall.

The program opened with the pledge to the flag by all officers, joined by the audience, and the National Anthem was sung by all.

An address was given by outgoing Worthy Matron, Pat Johnson. Presentations of gifts to the retiring Worthy Matron, Mrs. Johnson, from her three children, her mother, Mrs. Louis Norwood; her husband, Bill Johnson and by Ruby Green, on behalf of Past Matrons and Past Patrons.

Tom Smith presented a gift to the retiring Worthy Patron, Bill Johnson on behalf of the Past Patrons and Past Matrons.

Past Matron and Past Patron certificates and pins were presented by the incoming Worthy Matron, Phyllis Beavers, to Mr. and Mrs. Johnson and they were presented pins by Mrs. Norwood.

Eighteen new officers were installed by the following:

Installing Officer, Hazel Nowell; Lavonne Hinkson, Installing Marshal; Billie Mathis, Installing Chaplain; Viola Layne, Installing Secretary; Callie Smith, Presentation of the Bible; Wylie Bullock, Presentation of the Flag and two members of the Earth Chapter of the Order of the Eastern Star, Mrs. Jane Beavers, Registration and Lucille Campbell, Installing Organist.

Officers for 1968-69 include Worthy Matron, Phyllis Beavers; Worthy Patron, Spencer Beavers; Associate Matron, Barbara Lust; Associate Pat-



**NEW OES OFFICERS**--Officers for 1968-69 were installed Saturday, June 1, at 7:30 p.m. in Masonic Lodge for the Muleshoe Chapter of Order of Eastern Star, No. 792. Shown above are (left to right) Glenn Lust, Associate Patron; Barbara Lust, Associate Matron; Phyllis Beavers, Worthy Matron and Spencer Beavers, Worthy Patron.

ron, Glenn Lust; Conductress, Sid Bullock; Associate Conductress, Elizabeth Boren; Secretary, Mary Farley; Treasurer, Ruth Williams; Chaplain, Buck Creamer; Marshal, Alton Epting; Organist, Inez Kennedy; Ada, Clara Lou Jones; Ruth, Betty Jo Davis; Esther, Vera Clay; Martha, Charleta Treider; Electa, Wilma Polson; Warder, Melba Davis and Sentinel, Cecil Davis.

The program following the installation of officers consisted of some musical selections-

a quartet, Elbert Nowell, Buck Creamer, Lois Norwood and Beth Boren presented "In The Garden," which was followed by Charleta Treider with a rendition of "The Third Man."

Three selections, "He Bore It All," "Come Unto Me" and "He Keeps a Record" were presented by a group called "Our Gang" to wind up the program. Our Gang includes the Spencer Beavers, Mr. and Mrs. Buck Creamer, Mr. and Mrs. Zed Robinson and the Wilford Boren family.

Chester Clay Beavers was accompanist for the program. Mrs. Beavers introduced all their relatives who had joined the group at the Lodge Hall for the ceremonies. Friends and relatives from several points in Texas and New Mexico were in the audience.

Refreshments of cake, punch and coffee were served in the banquet hall of the Lodge to conclude the evening.

Plastic surgery aiding prisoner rehabilitation.

## Enochs News

Mrs. Irene Brackman of Muleshoe, was a guest in the home of Mr. and Mrs. Jerome Cash Thursday.

Miss Dolores McCall visited the first of last week with her sister, Mr. and Mrs. Robert George and family.

There were 34 registered at the Enoch's Vacation Bible School preparation day. The workers are Mrs. Dale Nichols, principal, Nursery I; Nursery II, superintendent is Mrs. ois, principal Nursery I and Mrs. C. C. Snitker; Nursery II, superintendent is Mrs. Loretta Layton and her worker is Mrs. Burley Roberts; Superintendent of beginners is Mrs. Quinton Nichols and her helpers are Mrs. Donald Grusendorf and Mrs. Keith Price, Primary Superintendent, Mrs. Preston Harrison, her helpers are Mrs. Bennie Hall and Mrs. J. E. Layton; Junior Superintendent, Mrs. Junior Austin and her workers are Mrs. J. O. Dane and Mrs. Bud Pierce. Dolores McCall is the song leader and Freda Layton is pianist.

Mr. and Mrs. Leland Finley and children, Donna Sue, Larry and Linda of Odessa, spent Saturday night and Sunday in the home of her parents, Mr. and Mrs. J. D. Bayless.

Donna Sue, Larry and Linda stayed to spend the week with their grandparents.

Mr. and Mrs. J. M. Knight of Fort Sumner, N.M. spent ten or twelve days visiting their nieces, Mr. and Mrs. E. N. McCall and Mr. and Mrs. Fred Locker, at Bula. Mrs. Knight has also been going to Lubbock and taking treatments.

Mrs. J. D. Bayless and her sister, Mrs. Gracy Swanner and son, Jimmie, of Levelland, were dinner guests in the home of their brother and wife, Mr. and Mrs. Claud Coffman, Memorial Day in Muleshoe and they all fished at a lake near Hub. Sammie Nichols and Kay Peterson graduated from South Plains College at Levelland Friday night.

The Enoch's WMU met Tuesday at 9:30 a.m. at the church for the Royal Service program. The meeting opened with a song "Make Me a Channel of Blessing," and Mrs. J. O. Dane offered the prayer. Mrs. L. E. Nichols gave the call to prayer and Mrs. Donald Grusendorf led in prayer.

Mrs. Junior Austin was in charge of the program "Plus- es for New Missionaries."

Others taking parts on the program were Mrs. Preston Harrison, Mrs. J. O. Dane, Mrs. W. B. Peterson and Mrs. Donald Grusendorf. Mrs. W. B. Peterson closed the meeting with prayer.

There were 15 women present, Mrs. W. M. Bryant, Mrs. C. C. Snitker, Mrs. Quinton Nichols, Mrs. Donald Grusendorf, Mrs. L. E. Nichols, Mrs. J. D. Bayless, Mrs. Preston Harrison, Mrs. J. B. Vanlandingham, Mrs. J. E. Layton, Mrs. Carl Hall, Mrs. Junior Austin, Mrs. Chester Petree, Mrs. Dale

Nichols, Mrs. H. B. King and Mrs. W. B. Peterson.

Mrs. C. H. Byars cared for the children, Mike Rickey Nichols, Chad Harrison, Kay and Charles Holloway, Larie Kessler, Paula Nichols, Greg Austin and Keith Layton.

Mrs. J. D. Bayless received word Saturday that a friend, Mrs. F. L. Adair of Lubbock, had major surgery Monday in the University Hospital in Lubbock. She was a former resident of Enoch's.

Mr. and Mrs. L. E. Pollard celebrated their 50th wedding anniversary May 26 in the home of their son and wife, Mr. and Mrs. Loyd Pollard. Mr. and Mrs. Pollard moved to the Plains from Mena, Ark., and they lived in Olton, Smyer and Littlefield communities before moving to Enoch's. They have lived in Enoch's since 1940.

The couple had two sons, Loyd and Harrie Pollard. The serving table was covered with a white lace cloth decorated with a flower arrangement of red roses and a three tiered anniversary cake topped with wedding bells. They were presented many useful gifts.

Those present for the occasion were relatives of the couple. Their sons, Mr. and Mrs. Loyd Pollard and Mr. and Mrs. Harrie Pollard; his brothers, Mr. and Mrs. Grady Pollard of Morton; Mr. and Mrs.

Carl Pollard and son, Terry, of Stegall; Charlie Pollard of Melrose, N.M.; his sister, Mr. and Mrs. Marvin Holt of Portales, N.M.; a niece, Mrs. Joe Warren and children, Rhonda and Donna of Fort Worth; her

sisters-in-law, Mrs. Lacy Terrel and Mrs. Sue Terrel, both of County Line and a grandson, Mr. and Mrs. Lamar Pollard of Lubbock.

Tea and cake were served to the group.

## 20 Years Ago

Muleshoe Masonic Lodge, one of the most active in these parts, now is making plans for a building on their lots on the north side of the courthouse square.

During recent weeks, members have been contributing liberally to a building fund, started some time ago. The lodge also bought the former Longview school building, moving the materials here to be used in their new building.

Present plans call for a lodge assembly place on the second floor, a meeting place for social gatherings of lodge groups on the ground floor.

## J. H. WIMBERLEY REOPENS PROGRESS GROCERY STORE

J. H. Wimberley of Progress is now back in the grocery and market business in Progress. Hershel has built a completely new building and has added all the equipment that it takes to make a modern self-service market.

Hershel says, "It's a grand feeling to know that I'll be able to meet all my old friends and customers and make new ones after having been out of the business for the past year." The new building is located on the highway just as you enter Progress coming from Muleshoe.

Ruth Wimberley, wife of the congenial proprietor will be on hand to assist him.

Turtle neck sweaters with sport coats for men are very popular.

Thurs. Thru Sat. "WHERE YOU ALWAYS BUY THE BEST FOR LESS"

# GIBSON'S DISCOUNT CENTER

Muleshoe, Texas— Open 9A.M. to 8P.M. Weekdays

Crestline PORTABLE AIR COOLER #305 \$18.97

100% VINYL SOLID BRASS COUPLINGS GIBSON 50 FEET \$1.83

10 Year Guarantee #8565

Lawn Crest Traveling Sprinkler Covers Entire Yard \$9.97

- Sprinkles Strip 200 Ft. Long
- Follows Any Desired Hose Pattern
- Sprinkles Path From 5 to 70 Ft. Wide
- Enclosed Gear Box
- Adjustable 3-Speed 30-45-60 Feet Per Hour

Deluxe Aluminum CHAISE LOUNGE 8 Web GIBSON'S PRICE \$6.97

Deluxe Aluminum LAWN CHAIR 7 Web \$3.97

BURGESS TRANSISTOR BATTERY 9 VOLT-2U6 9¢ ea.

Model 5050 24" Hooded Grill (Chinese Red) Swing Out Motor with 6 cord Rust resistant steel drip on hood with painted steel top. Socket type legs 5 black plastic wheels Crank type grid adjuster Plated strap handle. Wt. 13 lbs. Gibson's Low Price \$8.97

DRAGSTER BICYCLE by Huffly \* Boys or Girls \* American Made #2034 or #2035 \$27.88 Boxed Price

FAN-TYPE BROOM RAKE QUICK and EASY 93¢

- Cleans up leaves.
- Collects grass clippings.
- Does better job with less effort!

3 TUBE 50 Foot SPRINKLER HOSE \$1.57

CHAR-BASE Stops Charcoal Grill Burn-out 2 lb. Bag 43¢

GALAXIE 20 INCH FAN \$10.88 Ea.

- ★ 5 Year Guarantee
- ★ Sealed Bearings That Never Need Oiling
- ★ Two-Speed Rotary Switch
- ★ Reverses Manually

#3704



## Lazbuddie News

By Mrs. C. A. Watson

For the end of the school year outing, the seventh graders went to the sand hills near Muleshoe on a hay ride. They enjoyed a cookout. Going with the class were Mrs. Wayne Hardage, Mrs. Junior Treider, Mrs. Richard Engelking, Mrs. Roy Miller, Mrs. Tommie McGehee, Mrs. Dud Winders, Mrs. Jimmie Seaton and Mrs. Wayne Gilliland.

Alfred Scott and his twin

sister, Mrs. Alice Moothart, were feted with a birthday celebration on their 78th birthdays on Mother's Day, May 12. The celebration was held in the home of Mr. and Mrs. Leonard Elliott, Gary, Letha, Gina and Gay. Attending were Mr. and Mrs. Glen Scott, Terry, Karan and Lee; Mr. and Mrs. Hubert Elliott, Darrel, Connie and Scotty; Mr. and Mrs. Ronald Elliott; Bart and Carolyn Mc-

Guire, Mike and Kim and Mrs. Alfred Scott. Late in the afternoon the group enjoyed birthday cake and homemade ice cream. Mrs. Alice Moothart is from Webster, Iowa.

The Olen Ivy home was the scene of a recent get-together honoring Mr. and Mrs. Ivy and Mrs. T. D. Reed on Mother's Day. Mr. and Mrs. Chunky Ivy and children from Roswell, Gail Ivy from Lubbock and the Junior Matthews family of Lazbuddie and Mrs. Ivy's mother, Mrs. T. D. Reed, Lazbuddie, were present for the occasion.

Mr. and Mrs. Darrell Jennings and son from DeKalb

visited the past weekend with her parents, Mr. and Mrs. James Robinson and his parents, Mr. and Mrs. Joe Bates Jennings, all of Lazbuddie, Mr. and Mrs. Joe B. (Hoppy) Jennings from Lubbock were here also visiting her parents, Mr. and Mrs. J. T. Mayfield and his parents, Mr. and Mrs. Joe Bates Jennings.

Lazbuddie Home Ec. Department will have summer projects during June in food and clothing divisions.

They will represent in district according to the advisor, Eva Dean Stevens.

Mr. and Mrs. Charlie Neeley from Oklahoma returned to their home Tuesday after visiting their daughter and family, the Junior Treiders, Mr. and Mrs. Everett Maxwell and her husband, Mr. and Mrs. Johnson in Roswell since school has closed at Lazbuddie. Maxwell is English and Typing teacher in the Lazbuddie high school system. The Johnsons are moving to Santa Fe in the near future.

Mrs. Johnson is a former fifth grade Lazbuddie school teacher.

Congratulations to Cheryl Ramage, daughter of Mr. and Mrs. Gerald Ramage on being named most courteous. Miss Ramage received the unique award of \$100, selected on the basis of her attitude and outstanding citizenship throughout her school life. The recipient of this award was selected by a group of teachers looking back over reports as to her cooperation, courtesy, discipline record and all-over associates with her peers and elders.

Jill Mimms is to be congratulated on receiving the scholarship award from the Muleshoe State Bank. Ronald Mayfield won the annual outstanding award given by churches. Congratulations - Ronald.

Sammie Barnes, son of Superintendent and Mrs. Sam Barnes, Lazbuddie, received his B.S. degree at WTSU, Canyon, commencement exercises Sunday. Harold Redwine, son of Mr. and Mrs. J. C. Redwine was also a candidate receiving the degree of B. S. at the WT exercises. Gerald Foster, son of Mr. and Mrs. Ned Foster, also received his B. S. degree Sunday at the commencement exercises. Both Gerald and Harold are high school graduates of Lazbuddie High School.

Leon Watson, son of Mr. and Mrs. C. A. Watson, was among the ROTC students at WTSU receiving the efficiency award at the ROTC banquet held in Canyon, Friday night, May 17.

Birthday greetings go to: Mrs. Fred Wilbanks, Paul Wilbanks, Richard Gorden, Harold and Carrol Redwine, Terry Templeton, Lu Lu Linkhart, Terry Parham, Vickie Reese and Sheryl Ramage and Susan McBroom.

The first grade students of Lazbuddie and several mothers met the train at Muleshoe and rode to Clovis for a day at the park. The class carried sack

lunches. The mothers furnished soft drinks and cookies. Mothers accompanying the children were Mrs. Max Steinbock, Mrs. Alfred Hicks, Mrs. J. McDonald, Clara Bell Crain, Mrs. Weldon Crim and Mrs. Hobbs. Teachers of the first grade classes are Mrs. Less Bruns and Mrs. Williams. Mrs. Murfey's second grade class went to Farwell for their end of the school year picnic. They carried refreshments and did some skating. Mothers going were Mrs. Gene Smith, Mrs. Preston Cargile, Mrs. Cloyce Stanberry, Mrs. Andy Fuquay, Mrs. Macey Fuquay, Mrs. Wayne Moore, Mrs. Max Crim, Mrs. Reaford Wenner and Mrs. Ray Precure.

The third grade students met at the City Park, Muleshoe, for a party Monday night, May 20. They and a cloud gathered about the same time - quick refreshments were had and the group left for their homes just before the rain began to fall.

Mothers going were Mrs. Gene Riddle, Mrs. Dud Winders, Mrs. Billy Reese and Mrs. Dan Smith.

The class of the fourth grade went skating at Clovis. For their picnic lunch they went to the Clovis park and enjoyed eating sack lunches and drinking soft drinks. Mothers present for the occasion were: Mrs. Kenneth Hall, Mrs. Don McGuire, Mrs. Don Littlefield, Mrs. Richard Engelking, Mrs. Roy Miller and Mrs. Max Crim.

To bowl was the choice of the fifth grade, so the group went to Farwell Bowling Alley. Mothers going were Mrs. J. McDonald, Mrs. Kenneth Hall, Mrs. Orville Burnette, Mrs. Bill Jennings, Mrs. J. W. Gammon and Mrs. Gene Smith.

They were refreshed with hamburgers and cokes, served at the alley, before they returned home.

Mrs. Ruth Carter's sixth grade class went to Farwell for a skating party. The group made hot dogs with all the trimmings. The mothers served doughnuts, cookies and pops.

They had their picnic at the city park at Farwell. Accompanying the students were Mrs. Gene Smith, Mrs. James Harvey, Mrs. Max Bush, Mrs. Jack Smith, Mrs. Alton Morris, Mrs. Reaford Wenner, Mrs. Max Crim, Mrs. Hubert Elliott and Mrs. Don McDonald.

Birthday greetings this week go to: Billie Harvey, Emma Wallace, David Gallman, Letha Gail Elliott, Cheryl Ramage, John Mabry, Elaine Embry, Mike Templeton, Robert Gilbreath, Danial Domenguez, Jeff Isham, Gary Mack Brown, Tresa Henry, Joe Tarter and Pam McDonald.

Muleshoe... Cont. from Page 1

Panama City, Fla. where Blackwood had special training before being sent to Miyako, an island in the Ryukyu chain in the South Pacific, for a tour of duty.

He will leave from San Francisco July 9, and Sandra will continue her education at Texas Tech.

Mr. and Mrs. Byron Hardgrove will attend West Texas State University, Canyon, this summer, where Mrs. Hardgrove will receive her M. Ed. degree.

Bruce Slayden will attend ENMU in Portales during the summer.

Mr. and Mrs. Udell Ross and family of Las Vegas, N.M., children of the late Dorman Totten, visited in the home of Mr. and Mrs. Harvey Totten Sunday.

Mr. and Mrs. Vernon Bleeker attended the graduation of their daughter, Mrs. Max Horn (the former Wanda Bleeker) in Brownfield High School Monday night, May 27.

DAK TO, VIETNAM---Army Sergeant Robert P. Guana, 24, son of Mr. and Mrs. Ysabel Guana, Ceder St., Earth, was assigned to the 4th Infantry Division near Dak To, Vietnam, May 21.

LEGAL NOTICE

NOTICE TO ALL PERSONS HAVING CLAIMS AGAINST ESTATE OF GERALD BYRD

Notice is hereby given that original letters testamentary upon the Estate of Gerald Byrd, were issued to me, the undersigned, on the 3rd day of JUNE, A. D. 1968, in the proceeding indicated below my signature hereto which is still pending, and that I now hold such letters. All persons having claims against said estate which is being administered, in the County below named, are hereby required to present the same to me respectively at the address below given, before suit upon same are barred by the general statutes of limitations, before such estate is closed, and within the time prescribed by law. My residence and post office address is Route 2, Muleshoe, County of Bailey, State of Texas.

Dated the 3rd day of June, A. D. 1968.

/s/ Janell Byrd

JANELL BYRD, executrix of the Estate of Gerald Byrd, deceased No. 849, in the county court of Bailey county, Texas, 23t-1tc

ON CAMPAIGN FUNDS

Speculation is that the Senate proposal to revive a plan for federal financing of presidential campaigns will have little chance of passage in an election year.

JAYCEE JUNIOR TENNIS REGISTRATION FORM

Sponsored by the Muleshoe Jaycees

Name \_\_\_\_\_ Address \_\_\_\_\_  
Phone \_\_\_\_\_ Age \_\_\_\_\_ Date of Birth \_\_\_\_\_

Girl's Competition  Age 12 and under  
 Boy's Competition  Age 14 and under  
 Novice Division  Age 16 and under  
 Open Division  Age 18 and under

ATTESTED: \_\_\_\_\_  
(Parent or Guardian) (Junior Tennis Chairman)

I understand and agree that this form is subject to approval or rejection at any time by the Muleshoe Jaycees.

Registrant's Signature \_\_\_\_\_

## Social Studies Teacher To Attend Special Session

Mrs. Jack Beddingfield, Muleshoe Junior High School social studies teacher, along with more than 200 public school teachers and administrators, are registered for the three-day seminar which is held for the purpose of demonstrating the value of the daily newspaper as a classroom teaching aide.

This is the fourth annual Living Textbook Conference sponsored by the Fort Worth Star Telegram and the Amon G. Carter Foundation. The conference will open at the University of Texas, Arlington, on June 9 and close June 12.

Top national speakers will address the conferees. Among them will be John Kauffman, president of the Bureau of Advertising of the American Newspaper Publishers Association, New York, and Dr. Lowell Rose of Indiana University, former superintendent of schools at Kokomo, Ind., who will speak at the opening session Sunday evening.

Other out-of-state experts who will speak include Dr. Idella Lohmann, Oklahoma State

University and Mrs. Hope Shakkelford, teacher at Mead Junior High School, Wichita, Kan.

Editors, columnists, writers and several department heads from the Fort Worth Star Telegram also will speak and participate in panel discussions.

Mrs. Beddingfield will accompany her cousin, Mrs. H. T. Wilkerson, a teacher in Haskell. Mr. Wilkerson is superintendent of Haskell schools.

CARD OF THANKS

We wish to express our deep appreciation to our many friends who have remembered us with visits, food, flowers, prayers and other expressions of concern in the loss of our husband and father.

Mrs. L. F. Meeks  
Mr. and Mrs. Warren Meeks  
Mr. and Mrs. James Arnold Jr.  
Mr. and Mrs. Charles Perry  
Mr. and Mrs. Mack Campbell  
23t-1tp

Syrian Chief Staff replaced in army shift.

## ALTERNATOR REPAIR??

YOU BET WE CAN...

Generators- Starters and Distributors, Too...

Our electrical department has the 'KNOW HOW' and 'THE EQUIPMENT'

to handle your problem with a minimum of time and cost.

TRY US. YOU'LL SEE!

PLAINS AUTO SERVICE

(ACROSS FROM CASHWAY)

South Main MULESHOE Phone 272-4576

## Controls Broadleaf Weeds in GRAIN SORGHUM



## the safer, better way with CHIPMAN MCPA SODIUM SALT

Post Emergence Weed Killer

Very selective and safe to use in sorghums, corn, small grains, and pastures. Eliminates broadleaf weed competition for increased yields and easier harvesting. Much safer to spray near cotton than 2,4-D. The better way is CHIPMAN MCPA!

Ask your Dealer or

chipman  
WEED CONTROL

RHODIA INC.  
CHIPMAN DIVISION  
Box 6272  
Bob Harris Sta.  
Pasadena, Texas 77502

## Meet the Muleshoe State Bank Customer of the Week



Dub Nicewarner

Dub Nicewarner, manager of Bud's Pay "N Save Grocery, is Muleshoe State Bank's customer of the week. He and his wife, Lois Inez, live at 414 E Dallas Street and attend the Baptist Church. They have two children: Mrs. Darrell Burch, Pampa and Don, Plainview. Nicewarner said he had banked at the Muleshoe State Bank since 1946 and "I think this bank is one of the best on the Plains. The personnel are really nice people."

Muleshoe State Bank is proud to recognize this customer of the week.

## MULESHOE STATE BANK

Member FDIC



Impala Convertible

## Chevrolet gives you big savings on the big ticket items...

V8 engines, automatic transmissions, power steering, power disc brakes and more.

You can go to most any automobile dealer these days and get savings on the little things. You know, extra trim, mirrors, and such. But your Chevrolet dealer is giving you savings on the big items—things you really want. And it's an explosion of savings! Right now during '68 Savings Explo time.

### Bonus Savings Plans

1. Any Chevrolet or Chevelle with 200-hp Turbo-Fire V8, Powerglide and whitewalls.
2. Any Chevrolet or Chevelle with 250-hp Turbo-Fire V8, Powerglide and whitewalls.
3. Any big Chevrolet with 250-hp Turbo-Fire V8, Turbo Hydra-Matic and whitewalls.
4. Now, and for the first time, big savings on power disc brakes and power steering when you buy any Chevrolet or Chevelle with V8 engine.
5. Buy any Chevrolet or Chevelle V8 two-door or four-door hardtop model—save on vinyl top, electric clock, wheel covers and appearance guard items.

To help you pick and choose before you buy, we've listed the Bonus Savings Plans below. (Consider, for example, the 2-4 combination.) Simply make your choice, couple it with the Chevrolet or Chevelle you like, and hurry on down to your Chevrolet dealer's for big Explo savings. Yes, do hurry. Nothing so good lasts forever.

'68 savings explo





# TRADE CLASSIFIED SELL BUY ADS LEASE

## WANT ADS PH. 272-4536

**CLASSIFIED RATES**  
**OPEN RATES**  
 First insertion, per word-6¢  
 Second and additional insertions - 4¢  
**NATIONAL RATES**  
 First insertion per word-8¢  
 Second and additional insertion-5¢  
 Minimum charge- 65¢  
 Card of Thanks - \$1.00 Double rate for blind ads  
 Classified Display- 85¢ per col inch  
 95¢ col. inch for reverses

**DEADLINE FOR INSERTION**  
 Thursday's Muleshoe Journal - Noon Tuesday  
 Sunday's Bailey County Journal - Noon Friday

The Journals reserve the right to classify, revise or reject any classified ad.

Check advertisement and report any error immediately. Journals are not responsible for error after ad has already run once.

### PERSONALS

**BRAS & GIRDLES**  
 BY PENNYRICH  
 AT MAIN STREET  
 BEAUTY SALON  
 1-19s-tfc

**WANTED, Bookkeeping.** Pat Wylie, Mgr. H & R Block Inc. Tax Office, 115 E. Ave. D, Phone 272-4644. 1-11s-tfc

**FOR RENT:** 15 and 16 foot campers. By week, Call 272-3163. 1-35s-tfc

**WANTED:** Piano students on 309 Ave. J. Private lessons \$12.00 per month or special rates by group instruction. Teacher of experience, degree from N. Texas University, Denton. Life certificate in music. Classes begin June 4. Phone 3493 or 3650. 1-22s-2tc

I want to do babysitting and ironing. Call 272-3012 1-23t-tfc

### HELP WANTED

**WANTED:** Beautician, Guaranteed salary. Contact Lucille Cherry, 272-3258 or 272-3632. 3-22t-tfc

**WANTED:** Beautician, Main Street Beauty Salon, Phone 272-3448. 3-25s-tfc

**WOMEN SEWERS WANTED:** Work at home doing simple sewing. We supply materials and pay shipping both ways. Good rate of pay. Piece work. Write Dept. 2W3, Jamster Industries Inc., 100 Ashmun, Sault Ste. Marie, Mich., Zip 49783. 3-21t-3tc

**DOMESTIC HELP WANTED:** Reliable, household help, with references. Phone 272-4749. 3-23t-4t

meets every Tuesday at 12:00  
**FELLOWSHIP HALL**  
 Methodist Church  
**Muleshoe Rotary Club**  
 Earl Harris, Pres.

meets every Monday, 12 Noon  
**L. B.'s CAFE**  
 Clarence Christian, Pres.

meets each Wednesday, 12 Noon  
**FELLOWSHIP HALL**  
 Methodist Church  
 Guy Kendall, Pres.

### 6. BEDROOM FOR RENT

**FOR RENT:** One nice bedroom, 410 2nd St. 6-2t-tfc

**FOR RENT:** Bedroom, 272-4166 or 4903, 807 W. 7th. 6-22t-tfc

### 8. REAL ESTATE FOR SALE

**FOR SALE:** Well established John Deere Dealership for sale in Clayton, New Mexico.

We have operated this business for the past 25 years and with the rush of irrigation coming in all around Clayton, you will find business much better than ever in its history. More than 200 wells have been put into operation the past 3 years. The volume of business will more than double this year. Immediate possession with inventory and sale of buildings. Day phone - Area Code 505-374-2712 ---Night Phone - Area code 505-374-9404. BECKNER MOTOR & IMPL. CO. 22s-2tp

**FOR SALE:** 3 bedroom house, carpeted, fenced in back yard, car port. Low equity. 204 E. Birch Ave., Call 272-4476 after 6. 8-22t-tfc

**SMALLWOOD REAL ESTATE**  
 See us when you want to buy or sell farms or homes.

**SPECIAL**  
 3 bedroom brick, 2 bath, den and living room, 2 car garage. This appraised by FHA at \$130 a month. Bob Blackwood, Salesman Ph. 272-4838 8-20s-tfc

**FOR SALE:** 2 bedroom house, wall to wall carpet, central heat with 18x20 storage house. Low equity. Donald Prather, 218 E. Cedar. Ph. 272-4151 after 5. 8-18t-tfc

**FOR SALE:** 2 bedroom house to be moved. Real nice, \$1250. See Ted Treider, 3/4 mile East of Clay's Corner. 8-19t-tfc

**FOR SALE BY OWNER**  
 120 acres, improved, irrigated. John Thomson Ph. Day 272-4588 Night 925-3248 8-15t-tfc

**FOR RENT:** 2 bedroom house. East 4th. Call 946-2410. 4-13t-tfc

**FOR RENT:** 2 bedroom house. Ph. 4080. 4-15s-tfc

**FOR RENT:** Nice 2 bedroom house, large utility room, fenced yard, wall to wall carpeting, carport. Call Lewis Stewart, 272-4052. 4-22s-tfc

**FOR RENT:** 5 room house. \$45 a month, 8 years old. 946-2688. 4-22t-tfc

### 3. APTS. FOR RENT

**FOR RENT:** Nice, clean furnished apartment. Adults preferred. Bills paid. Layne Apartments. 5-5t-tfc

**FOR RENT:** furnished apt., 719 Ave. G. Call 763-5701, Clovis, N.M. 5-14s-tfc

**FOR RENT:** 1 bedroom apartment, tiled bath, carpeted, paneled and central cooling. Furnished, \$80 month. Bills not paid. 405 W. Ave E or phone 272-3102 5-21t-tfc

Furnished apts. large or small. Briscoe Apts. Ph. 272-3465. 5-5s-tfc

**FOR SALE:** Three room house, 324 W. 11th, Call 4304. 8-7t-tfc

692 acres for sale or trade. Dryland. Contact Ted Ratcliffe, 806-SW5-2821 or PO5-9557. Good government program. Small down payment. 14-19s-tfc

### 9 AUTOMOBILES FOR SALE

**FOR SALE:** 1956 Mercury. 272-4191 after 5 p.m. 9-22s-tfc

**NEW 1968 PICKUP LADD PONTIAC**  
 ID. FARM EQUIPMENT

**FOR SALE:** New TRI-MATIC sprinkler systems, used flow line, gated, and hand m o v e sprinkler pipe. Chapman Supply Co. Muleshoe Phone 272-3473 10-7s-tfc

### 11. FOR SALE ON TRACT

**FOR SALE:** Steel building, 30' x 40', one acre land. Contact Bobby Burris, 272-3043, 320 East American Blvd. 11-21s-8tp

**FOR SALE:** 1963 10 x 50 Detroiter Mobil Home. 272-4340, 524 S. Main. 11-23t-2tp

**FOR SALE:** Lincoln welder on wheels and a hydraulic lift for a pickup. 505 Austin, Call 272-4784. 11-23t-8tc

### 12. HOUSEHOLD GOODS

Used 3 months 1968 Singer sewing machine in walnut console. Equipped with automatic zig - zagger, fancy patterns, blind hems, etc. \$24.50 cash or good credit 4 payments at \$6.56. Write Credit Department, 1114 19th St., Lubbock, Tex. 15-16s-tfc

**TAKE** soil away the Blue Lustre way from carpets and upholstery. Rent electric shampooer \$1. Higginbotham-Bartlett, 215 Main. 12-23t-tfc

### 15 MISCELLANEOUS

For Sale, New and Used Tires, almost all sizes, Finns L.P. Gas, phone 272-4678. 15-29t-tfc

Pep up with Zippies "Pep Pills" non-habit-forming. Only \$1.98. Damron Drug. 15-13t-20tfc

### 17. SEED AND FEED

**FOR SALE:** Bundle type Hegari seed. C. W. Calhoun, Ph. 965-2677. 17-22t-tfc

**FOR SALE:** Midland Bermuda grass sprigs. Contract planting. A. D. Moses, Ph. 285-2215, Oilton. 17-13s-tfc

### LEGAL NOTICE

The Tax Equalization Board for the Lubbock Public Schools will meet at 9 a.m. on June 15, 1968 in the Board Room at Lazbuddie, Texas. Anyone wishing to appear before this board may do so at this time. 23t-1tc

A.B.C. to replace eight shows in the fall.

**Every Night at 8 P.M. AUCTION SALE**  
 CONSIGNMENTS WELCOME  
 Merchandise To Be Sold By Two Auctioneers Working At The Same Time. Featuring Antiques & General Merchandise One bedroom suit over 85 years old.  
**Buyers are welcome.**  
 DRAWING WILL BE \$15 THIS WEEK!  
**KNOWLES' AUCTION**  
 103 Main Muleshoe Ph. 272-4311

### LEGAL NOTICE

**NOTICE TO BE FILED IN NEWSPAPER**  
 To the public and all people doing business with MOHAWK AUTO PARTS and MOHAWK AUTO PARTS CO., a partnership, is now dissolved, and that the business of such partnership will in the future be carried on by Mo-

hawk Auto Parts Co., a corporation organized under the laws of the State of Texas, and that the partners of Mohawk Auto Parts and/or Mohawk Auto Parts Co. will not be personally liable for the debts of Mohawk Auto Parts Co., a corporation. 21t-4tc

**AUTO INSURANCE STUDY**  
 In his State of the Union address, President Johnson proposed a major study of automobile insurance.

## TELEVISION SCHEDULE FOR THE MULESHOE AREA

KING BROS. GRAIN & SEED CO. Complete ELEVATOR SERVICE AND SEED PROCESSING FOR THE Muleshoe AREA	KGNC-TV Amarillo Muleshoe Cable 4	KVII-TV Amarillo Muleshoe Cable 5	KFDA-TV Amarillo Muleshoe Cable 6	KCBD-TV Lubbock Muleshoe Cable 2	KLBK-TV Lubbock Muleshoe Cable 3
<b>DAYTIME</b>	<b>DAYTIME</b>	<b>DAYTIME</b>	<b>DAYTIME</b>	<b>DAYTIME</b>	<b>DAYTIME</b>
6:30-Amar, Col. 7:00-Today 7:25-News 7:30-Today 9:00-Snap Judge, 9:25-NBC News 9:30-Concentra, 10:00-Personality 10:30-Holly, Sq. 11:00-Jeopardy 11:30-Eye Guess 11:55-NBC News 12:00-News 12:10-Irri, Re. 12:15-Weather 12:20-Ruth Brent 12:30-Make Deal 1:00-Days of Lives 1:30-Doctors 2:00-Another W. 2:30-Don't Say 3:00-Match Game 3:25-NBC News 3:30-Mike Douglas 5:00-News 5:30-H-B Report	6:30-Cartoons 9:00-Dennis M. 9:30-Donna Reed 10:25-News 10:30-Temptation 10:35-News 11:00-Mother-In 11:00-Bewitched 11:30-Treasure Is 12:00-News 12:15-Com, Close 12:30-Amarillo 1:00-Newlyweds 1:30-Baby Game 1:55-Child Dr. 2:00-Gen. Hos. 2:30-D. Shadows 3:00-Dating Game 3:30-Movie 5:00-Bob Young 5:30-Have Gun 6:00-News	6:30-Amar, Coll 7:00-Farm News 7:20-N/W 7:35-CBS News 8:00-Capt. Kang. 9:00-Romper R 9:30-Hillbillies 10:00-Andy G. 10:30-Coffee Tim 11:00-Love Life 11:25-News 11:30-Sear 11:30-Search For 11:45-Guiding L. 12:00-News 12:10-Weather 12:15-Farm 12:30-As World 1:00-Live Is A 1:30-Art Link. 2:00-Tell Truth 2:25-CBS News 2:30-Edge of N. 3:00-Secret Stor 3:30-D. VanDyke 4:00-Mr. Mimmi 5:00-Mr. Ed 5:30-CBS News 6:00-News	7:00-Headlines 7:05-Farm Report 7:25-Weather 7:30-Today 8:25-Report 8:30-Today 9:00-Snap Judge, 9:30-Concentra, 10:00-Personality 10:30-Holly Sq. 11:00-Jeopardy 11:30-Eye Guess 11:55-News 12:00-Report 12:15-Com, Close 12:30-Make Deal 1:00-Days of 1:30-Doctors 2:00-Another W. 2:30-Don't Say 3:00-Match Game 3:25-News 3:30-Dating G. 4:00-Lassie 4:30-Bewitched 5:00-Wells Fargo 5:30-H-B News	5:55-Sign On 6:00-Sem, 6:30-Farm/Ranch 7:00-Ag. Weather 7:05-News 7:30-Morn. Show 8:00-Capt. Kang. 9:00-Can, Cam. 9:30-Hillbillies 10:00-Andy G. 10:30-D. VanDyke 11:00-Love of Life 11:30-Search for 11:45-Guiding L. 12:00-News 12:10-Farm News 12:20-Weather 12:30-As World 1:00-Love Is A 1:30-Art Link. 2:00-Gen. Hos. 2:30-Edge of N. 3:00-Secret Storm 3:30-D. Shadows 4:00-Newlyweds	4:30-Spiderman 5:00-Center Earth 5:30-News 6:00-News 6:15-Weather 6:20-Sports 6:30-Man, Beast 7:30-Ironside 8:30-Dragnet 9:00-Dean Martin 10:00-News 10:30-Tonight 12:00-Sign Off
<b>THURS. EVENING</b>	<b>THURS. EVENING</b>	<b>THURS. EVENING</b>	<b>THURS. EVENING</b>	<b>THURS. EVENING</b>	<b>THURS. EVENING</b>
6:00-N/W/S 6:30-Man,Beast 7:30-Ironside 8:30-Dragnet 9:00-Dean Martin 10:00-News 10:30-Tonight 12:00-Sign Off	6:30-Hun, Years 7:00-Flying Nun 7:30-Bewitched 8:00-That Girl 8:30-Peyton 9:00-Stonemans 9:30-Bobby Lord 10:00-N/W/S 10:30-Joey Bishop	6:30-Cimarron 8:00-Movie 10:00-News 10:15-Weather 10:25-Sports 10:30-Detectives 11:00-News 11:05-Movie	6:00-Report 6:15-Weather 6:25-Sports 6:30-Man,Beast 7:30-Ironside 8:30-Dragnet 9:00-Dean Martin 10:00-Report 10:30-Tonight 12:00-Sign Off	4:30-Casper 5:00-J. Quest 5:30-News 6:00-N/W/S 6:30-Voyage 7:30-Gomer 8:00-To be ann. 8:30-John Hill 9:00-To be ann. 9:30-Eugene Locke 10:00-News 10:30-Invaders 11:30-Pete Gunn	4:30-Casper 5:00-J. Quest 5:30-News 6:00-N/W/S 6:30-Voyage 7:30-Gomer 8:00-To be ann. 8:30-John Hill 9:00-To be ann. 9:30-Eugene Locke 10:00-News 10:30-Movie
<b>FRIDAY EVENING</b>	<b>FRIDAY EVENING</b>	<b>FRIDAY EVENING</b>	<b>FRIDAY EVENING</b>	<b>FRIDAY EVENING</b>	<b>FRIDAY EVENING</b>
6:00-News 6:30-Tarzan 7:30-Star Trek 8:30-Bingo 9:00-Joe Pyne 9:30-Eugene Locke 10:00-N/W/S 10:30-Tonight 12:00-Sign Off	6:30-Movie 7:30-Entertainm. 8:30-Guns of Wil 9:00-Judd 10:00-News 10:15-Weather 10:25-Sports 10:30-Joey Bishop	6:30-Wild West 7:30-Gomar Pyle 8:00-Movie 10:00-N/W/S 10:30-Burk's Law 11:30-News 11:35-Movie	6:00-Report 6:15-Weather 6:25-Sports 6:30-Man,Beast 7:30-Ironside 8:30-Dragnet 9:00-Dean Martin 10:00-Report 10:30-Tonight 12:00-Sign Off	4:30-Casper 5:00-J. Quest 5:30-News 6:00-N/W/S 6:30-Voyage 7:30-Gomer 8:00-To be ann. 8:30-John Hill 9:00-To be ann. 9:30-Eugene Locke 10:00-News 10:30-Movie	4:30-Casper 5:00-J. Quest 5:30-News 6:00-N/W/S 6:30-Voyage 7:30-Gomer 8:00-To be ann. 8:30-John Hill 9:00-To be ann. 9:30-Eugene Locke 10:00-News 10:30-Movie
<b>SATURDAY</b>	<b>SATURDAY</b>	<b>SATURDAY</b>	<b>SATURDAY</b>	<b>SATURDAY</b>	<b>SATURDAY</b>
7:00-Roy Rogers 8:00-Super 6 8:30-Super Pres. 9:00-Flintstones 9:30-Sam, & Gol. 10:00-Birdman 10:30-Atom Ant 11:00-Top Cat 11:30-Cool 12:00-Sheriff Bill 12:30-F & M Show 1:00-Baseball 1:00-Movie 2:30-Bugles 4:00-Wide World 5:00-Branded 5:30-McGee Rep.	7:00-Mod, Ed. 7:30-Cisco Kid. 8:00-Super Pres. 8:30-Fantastic 4 9:00-Spider Man 9:30-Journey 10:00-King Kong 10:30-Jungle 11:00-Beates 11:30-Bandstand 12:30-Happening 1:00-Movie 2:30-Bugles 4:00-Wide World 5:30-Sportsman 6:00-News 6:30-Dating G. 7:00-Newlyweds 7:30-Law, Welk 8:30-Holly Pal. 9:00-Hazel 10:00-News 10:15-Weather 10:25-Sports 10:40-Late Show 12:15-Late, Late	6:45-Cartoons 7:00-Capt. Kang. 8:30-Frankenstei 8:30-Herculoids 9:30-Shazzam 9:30-Space Ghost 10:00-Moby Dick 10:30-Superman 11:30-Johnny Que 12:00-Lone Range 12:30-Road Runne 1:00-News 1:30-Movie 3:00-Golf 4:00-Lone Range 4:30-Wilburn B. 5:00-Ernest Tubb 5:30-Porter W. 6:00-News 6:20-Weather 6:30-Gleason 7:30-My 3 Sons 8:00-Hogan's 8:30-Petticoat J. 9:00-Mannix 10:00-News 10:30-Rawhide 11:30-News 11:35-Movie	7:00-Roy Rogers 8:00-Super 6 8:30-Super Pres. 9:00-Flintstones 9:30-Sam, & Gol. 10:00-Birdman 10:30-Atom Ant 11:00-Top Cat 11:30-Cool McCoo 12:00-Roy Rogers 1:00-Movie 3:00-Baseball 4:00-Dick Powell 5:00-Star Trek 6:00-Report 6:30-Saint 7:30-Get Smart 8:00-Movie 10:00-N/W/S 10:30-Movie	5:55-Sign On 6:00-Sem. 6:30-Cartoons 7:00-Capt. Kang. 8:00-Frankenstei 8:30-Herculoids 9:30-Shazzam 10:00-Space Ghost 10:30-Moby Dick 10:30-Superman 11:30-Bandstand 12:30-Happening 1:00-Bowling 2:00-Wrestling 3:00-K. Derby 4:00-Sports 5:30-Death Valley 6:00-P. Wagoner 6:30-Gleason 7:30-Law, Welk 8:30-H. Palace 9:30-Guns of Will 10:00-N/W/S 10:30-Movie	5:55-Sign On 6:00-Sem. 6:30-Cartoons 7:30-B. Bunny 8:00-Tom & Jer. 8:30-M. Monster 9:00-Linus 9:30-Pepe Busfos 11:00-Pepe 11:45-Holiday 12:00-Inquiry 1:00-To be ann. 2:00-Mark Twain 3:00-Golf 5:00-Wizard 6:00-Lassie 6:30-Ed Sullivan 8:00-Smothers 9:00-Mission Im. 10:00-News 10:30-Movie 12:45-Sign Off
<b>SUNDAY</b>	<b>SUNDAY</b>	<b>SUNDAY</b>	<b>SUNDAY</b>	<b>SUNDAY</b>	<b>SUNDAY</b>
7:00-Herald 7:30-F & H Show 8:00-Tom & Jer. 8:30-Underdog 9:00-Mattinee 10:30-Glory Road 11:00-Church 12:00-Meet Press 12:30-Report 1:00-Movie 2:30-Movie 4:00-W. Kingdom 4:30-McGee Rep. 5:00-G. E. College 5:30-Flipper 6:00-N/W/S 6:30-Walt Disney 7:30-Mothers- 8:00-Bonanza 9:00-Ermy 10:00-News 10:15-Weather 10:25-Sports 10:30-Tonight	7:00-Mod, Ed. 7:30-Cisco Kid 8:00-Big Picture 8:30-M. Monster 9:00-Linus 9:30-Bugs Bunny 10:00-Bullwinkle 10:30-Discovery 11:00-Baptist 12:00-Direction 12:30-Issues 1:00-Movie 3:00-Amer. Sport 5:00-Outer Limits 6:00-Bottom of Se 7:00-FBI 8:00-Movie 10:30-N/W/S 11:00-Entertain 12:00-Movie	7:30-Gospel Hr. 8:00-Wills Fam. 8:30-Church 9:30-LaFavers 10:00-Rel. Ques. 10:30-Face Natio 11:00-Showcase 1:00-Hockey 3:00-Festival 4:30-Sportsman 5:00-21st Cen. 5:30-News 5:50-Weather 6:00-Lassie 6:30-Gentle Ben 7:00-Ed Sullivan 8:00-Smothers 9:00-Mission Im. 10:00-N/W/S 10:30-Theatre On 11:30-News 11:35-Movie	8:00-Faith for T 8:30-Glory Road 9:00-Insight 9:30-The Answer 10:00-Ask Minist 10:45-Church 12:00-Meet Press 12:30-Faith 1:00-Char. Pan. 2:15-D. Powell 3:00-Cooking 4:00-Award T. 4:30-Smokey-Bea 5:30-Sportsman 6:00-Report 6:30-Walt Disney 7:30-Mothers in 8:00-Bonanza 9:00-High Chap. 10:00-News 10:15-Weather 10:25-Sports 10:30-Red Raider	6:55-Sign On 7:00-Cartoons 7:30-B. Bunny 8:00-Tom & Jer. 8:30-M. Monster 9:00-Linus 9:30-Pepe Busfos 11:00-Pepe 11:45-Holiday 12:00-Inquiry 1:00-To be ann. 2:00-Mark Twain 3:00-Golf 5:00-Wizard 6:00-Lassie 6:30-Ed Sullivan 8:00-Smothers 9:00-Mission Im. 10:00-News 10:30-Movie 12:45-Sign Off	

## BUSINESS DIRECTORY

**Robinson's Boot Shop**  
 127 Main - Phone 272-4721  
**FINE WESTERN WEAR**  
 Men, Women & Children  
**SHOE REPAIR SHOP**  
 The Robinson  
 Serving Muleshoe since 1925.

**Farley Insurance Agency**  
 Real Estate and Insurance  
 FARM & CITY LOANS  
 SERVICE BEYOND THE CONTRACT  
 200 West Avenue B  
 Off. Ph. 272-4727 Res. 272-3770

**WESTERN DRUG**  
 Your Walgreen Agency

**COSMETICS**

Prescriptions  
 Drugs & Supplies  
 for all your Veterinarian needs  
 Fountain Service



# Bula News

by Mrs. John Blackman

Leaving Friday morning for a project known as "River Ministry" were Rev. and Mrs. Leo Buschur, Margaret Richardson, Donna and Diane Crume, Elaine Tiller, E. O. Battles, also Pamela Layton of Enochs and Kathy Hicks of Three Way.

They have called several times, state so far the weather has been very pleasant. Sunday was a rather full day for them, attending morning services and in the afternoon, walking about four miles handing out pamphlets and advertising the Bible school that was scheduled to start Monday morning.

They are living in a motel at Donna and will be engaged in Bible teaching at several churches around close. The group plans to return home Monday, June 10.

Paul Gordon, student at Wayland College, spoke Sunday morning and evening at the local Baptist church in the absence of Rev. Leo Buschur.

Mr. and Mrs. C. C. Testerman attended services Sunday morning at the Clovis Church of Christ and visited with friends, the A. W. Bryants.

Vickie Griffin of Muleshoe spent from Wednesday until Saturday with her cousin, Janice Tiller.

Mrs. Tommie Carter of Lovington visited Saturday night and Sunday with her mother, Mrs. Nettie Blackman at the Nursing Home in Muleshoe. Sunday, she went to the home and brought her mother out to spend the day with the John Blackmans. Mrs. Blackman thoroughly enjoyed seeing so many of her friends during the day, the pretty flowers, green trees and young crops that are beginning to make a cover for our fields. First time for her to be out of the hospital and home since February 12.

Mrs. B. S. Setliff came home Monday after spending several days with her daughter, Gladys, at Hereford. Gladys will spend the summer with her mother. Mrs. Setliff is doing real good and can get around on her walker. She fell Easter Sunday, fracturing her knee.

The newly organized Cubs and Dodgers ball club of the small boys of the Bula and surrounding communities, met Thursday for practice on their field at the Young Brothers' Gin.

Following the practice games parents and brothers and sisters of the boys enjoyed a picnic of hot dogs and home made ice cream.

Attending were Mr. and Mrs. Marvin Bowling and son, Tracy; Mr. and Mrs. Wayne Swart and Roger, Terry and Kathy; Mr. and Mrs. Leonard Pierce, Randy, Bruce, Brad and Celia; Mr. and Mrs. Larry McCain, Dennis and Bobby; Mr. and Mrs. James Boleyn, Jim and Tom; Mr. and Mrs. Joe Clark, Nita and Donnie; and Mr. and Mrs. Jimmy Drake, Karen, Cindy, Kerry Jim and Marty.

Also Mr. and Mrs. Olin Powell; Mrs. Charles Powell, Carolyn Ann and Bart; Mr. and Mrs. Jim Holt, Jimmy, Glenn, Lynn and Tommy, Mr. and Mrs. Dale Middlebrooks, Dana and Britt, Charla Grant; Mrs. Bolton and Keith and Sherry Claunch.

Sunday company in the Darnell Williams home was Mr. and Mrs. Tommie Durham and children, Bobby Gail and Tommie of Lubbock and Mr. and Mrs. George Tyson of Maple, Kim, Kevin and Rober Wal

lace, children of Mr. and Mrs. Eddie Wallace, are spending a week with their grandparents, Mr. and Mrs. A. J. Wallace at their cabin home at Colorado City Lake.

Mr. and Mrs. Buck Medlin and Mr. and Mrs. Dennis Medlin and son, Dewayne of Lubbock, spent the Memorial Day weekend at Brownwood Lake fishing and skiing.

Head Start Summer Project for Bula will start classes Friday, June 7. Buses will run for the children, lunch will be served and classes held.

Monday, Tuesday and Wednesday was workshop day at Hale Center and Thursday was workshop day at Bula.

Superintendent Marion J. McDaniel is supervisor for the school; Mrs. George Ann Bahlman, teacher; Mrs. Ben Davila, teacher's aide; Mrs. Olive Angel and Mrs. Sandra Boleyn, cooks; Mrs. Zoy Risinger and Mrs. Alta Salyer, bus drivers and Mrs. John Blackman, clerk.

Cecil Jones spent Saturday and Sunday at Quail, Tex. with his mother, Mrs. R. D. Jones.

Mr. and Mrs. Marion J. McDaniel and sons, Dwight and Craig, spent the Memorial Day weekend with relatives near Sidney; his father, A. L. McDaniel, her parents, Mr. and Mrs. Leslie Franklin and also with her brother and family, Mr. and Mrs. Thomas Franklin of Fort Worth and sister, Mrs. Joyce Lewis of Fort Worth who was a patient in a Fort Worth hospital.

Mr. and Mrs. John Blackman and Mr. and Mrs. Dutch Cash attended the commencement exercises for Eastern New Mexico University, Thursday evening at 8 p.m. Patsy Blackman Cash was among the 450 candidates for degrees. Mrs. Cash received her degree in Bachelor of Science in Education, Others from the community also receiving degree was Mrs. Sarah Ann Jones, degree in Bachelor of Science. She is the daughter of Mr. and Mrs. R. E. Jones.

Mrs. John Hubbard is with her daughter and family, Mr. and Mrs. Barney Oldfield of Grants, N.M. Mrs. Oldfield is recuperating from a short stay in the hospital.

Mrs. Leon Kessler is doing fine following surgery Tuesday at the University Hospital, Lubbock. She is scheduled to be able to return home first of this week.

Mr. and Mrs. C. A. Williams and daughter, Barbara, returned Miss Linda Wright of Las Cruces, N.M. back to her school work at Hardin-Simmons University, Abilene, after she had spent a week with Barbara. They drove down Saturday and returned Sunday. The girls were roommates the past semester at school.

Any upholsterer who knows his stuff is in the Yellow Pages

John Hubbard, Bula, Texas

# ONE STOP Savings BEEF Sale!

**KRAFT**

**MACARONI AND CHEESE DINNER**

7 OZ. BOX **19¢**

**Swift's Premium Proten Beef**

**1/2 or WHOLE**

**CUT AND WRAPPED QUICK FROZEN**

**Guaranteed**

**LB. 55¢**

**ROUND STEAK** Swift's Premium Proten Beef Lb. 98¢

**T-BONE STEAKS** Swift's Premium Proten Beef Lb. \$1.09

**SIRLOIN STEAKS** Swift's Premium Proten Beef Lb. 89¢

**ARM ROAST** Swift's Premium Proten Beef Lb. 59¢

**RANCH STEAK** Swift's Premium Proten Beef Lb. 59¢

**FROZEN FOOD FAVORITES**

Snow Bird 1 LB. PKG.

**Perch Fillets**.....39¢

**Morton's Honey Buns 3 for** 79¢

**Keith's 8 oz. Pkg. Brussels Sprouts**.....29¢

**BREEZE**

Giant Size

Free Dishtowel

**59¢**

**Swift's Premium Proten Beef**

**CLUB STEAK** Lb. 79¢

**SHORT RIBS 3 Lb. For \$1**

**HAMBURGER MEAT**

3 Lb. for \$1

**BACON**

Cudahy's Bar-S Brand THIN SLICED

1 Lb. PKG. **69¢**

**PRODUCE SPECIALS**

**TOMATOES**

California Small Vine Ripe Lb. **15¢**

**CAULIFLOWER** California Sno-White Lb. 15¢

**GREEN BEANS** California K. Y.'s Lb. 29¢

**CELERY** California Crisp Green Lb. 15¢

**CANTALOUPE** California Vine Ripe **4 for \$1**

**SALAD DRESSING**

Morton's

QT. JAR **39¢**

**USDA CHOICE**

**1/2 or WHOLE**

Lb. **53¢**

**John Hubbard**

Offering Complete Multiple-Line Insurance Service

**INSURANCES**

Announce the Appointment of...

**JOHN HUBBARD**

Offering Complete Multiple-Line Insurance Service

**AUTO** **FARM AND PERSONAL LIABILITY** **HOMEOWNERS** **FARMOWNERS**

**CROP HAIL** **FIRE** **HOSPITAL** **LIFE**

One-Stop Insurance Service for Home, Family and Farm

**JOHN HUBBARD, BULA, TEXAS**

Office...Phone 933-2392

Residence...Phone 933-2321

Fay Jones, Sec. Ph. 933-2330

Serving Bailey & Cochran Counties.

Pinkney's 25 Lb. Can	<b>PURE LARD</b>	\$2.99	Zestee Pure Apricot 18 oz. Glass Tumbler	<b>PRESERVES</b>	39¢
Bell Asst. Flavors 1/2 Gal. Ctn.	<b>ICE CREAM</b>	67¢	Libby's Beef or Pork #300 Can	<b>'SLOPPY JOES</b>	59¢
Bell 1/2 Gal. Ctn.	<b>BUTTERMILK</b>	39¢	Kimbell's #300 Can	<b>PORK &amp; BEANS</b>	2 for 19¢
Bell 2 Lb. Ctn.	<b>COTTAGE CHEESE</b>	49¢	Rio Grande Salad Pt. Jar	<b>OLIVES</b>	39¢
Folger's All Grinds	<b>COFFEE</b>	1 Lb. Tin 75¢ 2 Lb. Tin \$1.49	Old Spice Spray \$1.00 Size	<b>DEODORANT</b>	79¢
Johnson's Asst. 39¢ Cello Pkg.	<b>MARSHMALLOW COOKIES</b>	4 for \$1	Sta-Flo 20 oz. Can	<b>FABRIC FINISH</b>	49¢
6 Bottle Ctn. Plus Deposit	<b>TAB</b>	39¢	1 Gal. Can	<b>CRISCO OIL</b>	\$1.99
Bunte 29¢ Pkg.	<b>MARSHMALLOW PEANUTS</b>	19¢	Scottie's 400 Count Box	<b>FACIAL TISSUE</b>	29¢
Swift's Whole 3 Lb. Can	<b>CHICKEN</b>	89¢	Kim #1 Tall Can	<b>DOG FOOD</b>	6 for 49¢

**TOOTH PASTE**

Crest

59¢ Size

**39¢**

**White's CASHWAY**

We Reserve The Right To Limit Quantities

Listen to MULETRAIN over KMUL 10:15 a.m. Sponsored by WHITE'S CASHWAY

**GUNN BROS. STAMPS DOUBLE EVERY WEDNESDAY.**

**...MULESHOE ON THE MOVE**

FOR HOME DELIVERY. PHONE 272-4244

**NEW STORE HOURS (Daylight Savings Time)**

7:30 A.M. 'Till 9:00 P.M.

Monday Through Saturday

To better serve our customers!