

THE MULESHOE JOURNAL

Dedicated to the progress and development of the great Muleshoe country

VOL. 46 NO. 38

14 PAGES

Published every Thursday at Muleshoe, Bailey County, Texas - 79347

NEWSSTAND PRICE 10¢

THURSDAY, SEPTEMBER 19, 1968

Current Sorghum Prices Low: Yield Estimate High

Grain Producers Work To Better Situation

"It is no secret that current grain sorghum prices are low," Grain Sorghum Producers Association states. "They have been low since last April when prospects for another big crop of corn and sorghum, even on reduced acres was imminent and when it was obvious that USDA was changing its policy on sorghum export concessional sale, and that such demand would be down," the statement continues. "It is little encouragement to the grain sorghum producer to remind him, as some correctly do, that compared to wheat, or corn or almost any other crop, that sorghum prices are in better shape, markets stronger, and stocks more in line than any of them. None of these offer increased prices now," producers say.

Richland P-TA Serves Barbeque

Richland Hills Parent-Teachers Association will sponsor a Barbeque supper prior to game time Friday, September 20. Serving will start at 5:30 p.m. in the Muleshoe high school cafeteria and conclude at 7:30 p.m. Mule-Abernathy game time is 8 p.m. Tickets are being sold by the fourth and fifth grade students of Richland Hills. The room which sells the most tickets will be honored with a party and a prize will be given to the individual who makes the most sales. Tickets are \$1.25 for adults and .75 cents for children. The menu consists of barbeque ham, potato salad, baked beans, cherry cobbler, hot rolls, coffee and tea.

Estimated Population Near 10,000

Various officials have made an educated research survey of Bailey County and produced figures released to the Journal as the estimated population of Bailey County and Muleshoe. In addition to the county seat town, estimates of rural communities have also been given. A summary of the totals taken in August and concluding September 15 show the entire county of Bailey to have an estimated population of 9,984 while the city of Muleshoe's estimated population stands at 5,225.

Bailey Marker Dedication Set

Dedication of the Coyote Lake Historical Marker, placed some weeks ago by Bailey County Historical Survey Committee will be held at 10:45 a.m. Monday, September 23.

The marker is located at the west side of Coyote Lake in Southern Bailey County.

Members of the Muleshoe Study Club are being joined by the Historical group and any other interested citizen for a tour of points of interest in the county. All members of the Study Club are to meet at the home of Mrs. Horace Blackburn at 10 a.m. and go to the Mule Memorial Site where they are to join members of the Historical Society for the tour.

The dedication ceremony will be held about mid-way of the planned tour, comprising most of the historical places of interest within the county.

Each person who plans to make the trip is to take a sack lunch and the meal will be

Count. on Page 2, Col. 5

Count. on Page 2, Col. 5

Count. on Page 2, Col. 5

Saddle Tramps Sponsor Y-L 4-H Play Day

The YL Saddle Tramps are sponsoring 4-H Play Day, open competition for riders up to 19 years of age, to be held Saturday, September 21 at the Muleshoe Roping Arena.

Starting time is 10 a.m. and those wishing to participate may register up until starting time. Price is 50 cents for each event. Events on the performance agenda are Key Hole Race, Potato Race, Flag Race, Barrel Race, Ribbon Race and Pole Bending.

The concession stand will be open and serving sandwiches, coffee and soft drinks. Trophies and ribbons will be awarded to the winning contestants of each event.

Business firms making the prizes possible through their contributions are Don Strahan Garage, Red Barn Chemical, Paymaster Gin, Co-op Ele-



TO BE AWARDED--These are the trophies to be awarded Saturday to the event winners of the YL Saddle Tramp sponsored 4-H Club Play Day. Contestants do not have to be 4-H members to enter this competition. Ribbons will be given to those who place in the events. Those who wish to participate may enter until starting time.

Women to Head Project, Parade

around muleshoe with the journal staff

Muleshoe Junior High School cheerleaders were presented at the Muleshoe A and B game at Littlefield Tuesday night. The girls, who have practiced diligently, preformed well for their teams.

Mr. and Mrs. Lewis Blaylock and sons David and Bill returned Sunday from a weeks vacation trip over Texas. Highlights of the trip were stops at HemisFair, Possum Kingdom and Six Flags over Texas. The Blaylock family were accompanied on the trip by her sister, Mrs. Carolyn Coulter, wife of SP/4 Jerry Don Coulter who is serving with the Armed Forces in Korea at this time.

The Muleshoe FFA members elected Miss Patti Camp as their FFA Sweetheart and Miss Vicki Hennexson as FFA Flawgirl. The Chapter announces that citrus fruit will be sold by members as a money making project.

Mr. and Mrs. Walter Weems of Oklahoma City have been visiting in the home of Mrs. George Neely. Mrs. Neely and Mrs. Weems are sisters.

Miss Jona Goucher has enrolled in New Mexico State University and began studies there Monday. Miss Goucher is the daughter of Dr. and Mrs. S.E. Goucher, Muleshoe. She is a 1968 graduate of Muleshoe high school and worked at White Sands Missile Range, New Mexico from June until September. For her work there, she received letters of appreciation from the Department of the Army, Atmospheric Sciences Offices for her excellent performance of duty during her working months on the Range. She visited with her parents

Tax Discount Approved: New Teachers Hired

Taxes and the hiring of two teachers highlighted the agenda reviewed by the Muleshoe Independent school board at a meeting held Monday.

Tax discounts were approved. There are three months in which taxpayers will receive discounts on school taxes. In October, those paying taxes will receive a three percent discount; in November the discount drops to two percent and in December, only a one percent discount is given. After that time, an increase is added to the tax amount.

The board also approved the official tax roll for 1968 in the amount of \$27,860, assessed valuation.

Mrs. Balton (Beulah) Mimms was approved as a teacher of the third grade at Richland Hills. She holds a BA degree from Abilene Christian College and has four years teaching experience.

Gano Wilson, a graduate of West Texas State University, has been employed as teacher of Industrial Arts in Muleshoe high school. He holds a BA degree and has three years teaching experience.

The board accepted the resignation of Don Bozarth, Industrial Arts teacher at high school. Bozarth was drafted into the U.S. Army.

School will be dismissed at 2:15 p.m. Friday, October 4. Two reasons have been given: (1) Lubbock Area Reading Conference will be held at Coro-

Count. on Page 2, Col. 4

Need Clean Townsite: Yule Plans Mapped

Members of the Muleshoe Area Service Women's organization accepted the responsibility for promoting and assisting with two major projects of benefit to both county and city at a noon luncheon held in the home of Mrs. J. Pat Waggon Tuesday.

Guest speaker was Derrell Oliver, manager of the Chamber of Commerce, who presented the qualification of Muleshoe as a West Texas Chamber of Commerce Blue Ribbon City, to the group.

Oliver pointed out that "Although Muleshoe has some of the many qualifications for the Blue Ribbon City Award, there is one field in which it lacks meeting the specification. This is in the field of beautification.

More Workers Needed to Pick Tomato Crop

Bueford Scarborough, manager of the Texas Employment Commission, Muleshoe office said that some 200 more workers were needed to pick tomatoes.

Scarborough said, "The tomato crop is reaching 'Peak' stages now and if housing to fit the needs of workers was available, the labor could be obtained from Lubbock and other places."

He said "There is plenty of empty houses in town, however, they are too expensive for stoop laborers which will only be here a short time. Crews are working here out of Bovina."

A total of 1,302 workers have been placed through the local office during last month and to date a total of 481 placements have been made this month. This is an all-time record for the local office, Scarborough noted.

Sixty of the figure for the

Junior High B Team Winner

Muleshoe Junior High School's A and B teams journeyed to Littlefield for their first games with the Littlefield A and B teams Tuesday night. Muleshoe's B team came home victorious with a 20-0 win over the Littlefield B team.

In the first quarter, Roger Williams passed to Terry Wheeler for the first TD of the game. Try for extra points failed.

Williams again passed to Jackie Anderson in the second quarter and Anderson scored on an end sweep. Conversion attempt was successful and the score stood at 14-0.

In the third quarter, a pass

Football Forecaster Uses Crystal Ball



L.C. Roddam

Oliver explained that alleys and vacant lots are weedy, for the most part. Many lawns and yards are unkempt. However, the main approach routes to the city are the major draw backs on qualifying.

Believing that any property holder, especially along tourist approaches routes to the city of Muleshoe, had rather have attention attracted to their business or property through its beauty and neatness rather than through its shabby, junky appearance, took the chairmanship of a Clean-Up, Paint-Up, Fix-Up campaign for the city.

This campaign will be launched almost immediately and will include the housing areas adjoining the city limits, such as the Country Club addition and the housing area along Plainview highway.

A new system to recognize

Group Views FHA Locations

A group of local business men and farmers saw the results of some of the loans made by the Farmers Home Administration in Bailey County on a farm tour Monday afternoon.

The group's first stop was a housing loan in Muleshoe. This loan was for the purchase of a two bedroom home for a couple who had been living in a two room house previously. This particular loan was representative of about 30 housing loans made by the Federal agency in Muleshoe during the past two years.

County Supervisor John C. Kennedy stated that loans of this type had run from a low of \$2,250 to a high of \$13,000 in Bailey County.

The next stop was the farm of Mr. and Mrs. James Wilmoth near Needmore. The group learned how this young family had borrowed enough money to become established in farming by buying their equipment on a five year repayment plan. Wilmoth stated that he

Count. on Page 2, Col. 7



QUEEN AND COURT--Patsy Lucero was crowned queen of Diez y Seis celebration held here Saturday night. She was escorted by Juan Alfaro. The couple are pictured (center). To their left is Mary Orosco and her escort Juan Eduardo Orosco and at right is Noelia Orosco and Ramon Lucero who were first and second runnersup in the queen contest. Flower girl Estela Lopez is pictured center front.

Mules to Have Chance

The Muleshoe Mules will have their second chance for a victory when they meet Abernathy in Benny Douglass Stadium Friday night.

Last Friday night, the Mules went down before the sweep of the Dimmitt Bobcats for a 12-0 loss.

Abernathy's galloping quarterback Jerry Fuller, will be the one for the Mules to stop in order to win. Abernathy roamed over Petersburgh 28-8 in their first tilt for 1968 and the quarterback led all the way for the Abernathy team.

All of Abernathy's scoring was in the first half of the game. Fuller was the "big bad man" when it came to scoring, whether it was his first 70-yard gallop for a touchdown, then pitching out to Billy Elkins for the extra points, or whether it was his pass plays that scored. Clark Riley scored on a 10-yard pass from the QB and Elkins did his part for the third TD when he made a 50-yard dash. Fuller again put the icing on the cake in the second quarter when a 30-yard touchdown pass to Larry Vannoy ended the Antelope's scoring parade.

Taking to the air for touchdowns, seems to dominate the Antelope's game. However, their ground plays musn't be taken short, as is shown by the 70-yard and the 50-yard run.

Muleshoe's Mules, who showed strong on defense, left some wide-open holes offensively, and were prevented from scoring in their first game. The team, who didn't fumble all during scrimmage games prior to the season, had their "old bugaboo," fumbles,

Sales Tax Check Over Estimates

City Manager Albert Field announces that the City of Muleshoe received the first check from the State Comptroller in the amount of \$15,267.39.

This check was for the first quarter return on the City Sales and Use Tax which began April 1.

Field said "This money goes into the General Fund to be appropriated in accordance with the budget and be used to replace tax money used to retire bonds."

Field points out that this amount received is somewhat more than was expected for the

Count. on Page 2, Col. 4

Muleshoe...

Con't. from Page 1
here and Dr. and Mrs. Goucher took her back to the University Friday.
Mr. and Mrs. Windom Robertson from Rio de Janeiro have been visiting in the home of Mrs. Joe Simmacher. They are touring the U.S. by bus.
Other guests were Mrs. Ethyl Montgomery, California; and Mr. and Mrs. Ramby Phiffer and son, David, Morton.

Rotary guests at the noon meeting Tuesday were Marjorie Faust, daughter of Eddie Faust, Jack Little and Paul McClung. Student guest was Trevor Ford. Pete Cash had charge of the program and presented Bob Wear, Littlefield Rotarian, who gave an interesting and stirring talk on "Americanism."

Mr. and Mrs. George W. Tompkins have just returned from New York where they visited in the home of Mr. and Mrs. Loyd Tompkins. They left September 5 and attended their niece's wedding on September 14 before returning home Monday.

Mr. and Mrs. A.J. Webb attended the 60th anniversary of their parents, Mr. and Mrs. T.L. Webb, Littlefield Hospitality Home, Sunday.

Mr. and Mrs. Frank Swint, Sr., New York, N.Y., are vi-

siting in the home of their son and family, Mr. and Mrs. Frank Swint, Jr., Roger and Pam.

Football...

Con't. from Page 1
However, Wisian won second, missing the tie-breaker least of all, by eight points.

Jim Small, last year's grand champion, two tickets to the Cotton Bowl plus \$50 expense money winner, missed four games. But he and Bob Kimbrough were closest to the tie breaker score, picking Dimmitt 13 and Muleshoe 0.

It was interesting to note that a member of Dimmitt's football forecasting intelligencia, namely Bo Bryant, also missed four games.

Workers...

Con't. from Page 1
month of August were selected by individual farmers as year around farm hands and the remainder were migrant crew workers.

The other vegetables in Bailey County are also doing good, he reports.

"If the weather stays pretty, all looks well on the crop scene for this area," Scarborough concluded.

Play Day...

Con't. from Page 1
vator, Southwest Irrigation, Joe Smallwood Real Estate, Muleshoe Elevator, Farm Bureau, Muleshoe State Bank, Pioneer Natural Gas, Red Harris, White's Auto Store, Wilson Appliance, Gulf Farm Center, Texas Sesame and Westen 66.

Register...

Con't. from Page 1
residence to verify whether he would have been eligible to vote in that state if he had not changed his residence.

New residents whose applications are accepted will be notified of that fact and will return to the clerk's office between October 21 and November 1 to cast their ballots. They will not be permitted to vote on anything except President and Vice President. Persons voting under this law are not required to register with the county tax assessor-collector.

Voters who will have lived in Texas more than a year on election day must be registered with the tax assessor-collector in order to vote, Mrs. Gilbreath said. Persons who became residents of Texas on or before October 1, 1967, had to register by last January 31, the regular registration deadline, but those who became residents after October 1, 1967, may register at any time up to 31 days before the election. The deadline to register for the general election will be next October 5.

If a registered voter will have lived in the state more than a year and in the county more than six months on election day, he will vote a full ballot in the ordinary manner on election day at the polling place for the voting precinct in which he lives. If he will have lived in the county less than six months, he will be able to vote on statewide office and issues,

including President and Vice President, but not on local offices and issues, by applying to the county clerk for a ballot during the period from October 16 through November 1.

Tax...

Con't. from Page 1
first quarter return, and as outlined in the plans for the bond elections held and passed in voting September 10. This money will be of help to retire bonds.

Discount...

Con't. from Page 1
nado high school Friday afternoon and Saturday, October 4 and 5, and (2.) To allow bus drivers on regular routes to return and drive band buses to the Denver City game.

The Board heard the enrollment report which appeared in last Sunday's Bailey County Journal.

Team...

Con't. from Page 1
to Anderson made the third and final touchdown for the Muleshoe team. The conversion attempt failed and the game ended with the score of 20-0. Muleshoe Junior High School A team lost their game which followed in the final 13 seconds, with a final score of 14-8 for the Littlefield A team.

Littlefield scored at the end of the first half and at half-time, Littlefield led scoring, 6-0.

Going into the fourth quarter Raymond Davenport scored on a quarterback sneak and Charles Ray Young converted to bring the A team out into the lead with a score of 8-6.

Littlefield bounced back in the final 13 seconds of the game with a second TD and ran their extra points to leave the scoreboard lighted with 14-8.

A 60 yard runback by Billy Wimberley on the kickoff which followed was not enough to bring the A team out ahead again and the game ended on Littlefield's final 14-8 score.

Population...

Con't. from Page 1
added to that of Muleshoe brings the total to 6,115. Populations of rural areas, not including that of the communities, has been estimated at 3,890.

Sorghum...

Con't. from Page 1
have worked with others for increased cattle feeding in the sorghum area and have sought and gotten new export markets. . . some even this year with sorghum higher than corn. All these things have helped to keep sorghum strong, but they are not strong enough. There is nothing else these approaches can do now for higher prices.

The producer himself now is the only one that can strengthen prices this fall. Whether he sells dirt cheap or at some more reasonable price will depend on how he himself used these now markets at home and abroad he has developed.

ACERAGE
The 18.0 million acres of grain sorghum planted in the United States for the 1968 harvest is 1.2 million acres smaller than last year and 1.5 smaller than the 19.5 million acres planted during the 1960 base year period. Heavy participation in the Voluntary Feed Grain Program has held acreage in Texas, Oklahoma and Kansas below the base period. Shifts to some new production areas within these states along with expansion in other states is keeping the sorghum acreage high.

PRODUCTION
The production of grain sorghum for sale is increasing even though acreage is down. The yield is per acre of grain sorghum, like other feed grains, this year is expected to be about 20 percent higher than the last six years average.

The carryover of grain sorghum (that left from previous crops before this year's harvest) is expected to be 280 million bushels on October 1. This is 36 million bushels more than this time last year, but

markedly below the 639 million bushels carryover in 1964.

The supply of grain sorghum (the carryover plus the new crop) for use during the new marketing year, October 1, 1968-September 30, 1969, is expected to be 1,052,000 bushels, up 42 million over last year.

On the national scale, grain sorghum prices to producers this past year have averaged two percent below that of a year ago but 18 cents per hundred higher than the loan rate.

Dedication...

Con't. from Page 1
spread at the newly constructed Roadside Park just north of the Muleshoe National Wildlife Game Refuge.

It was pointed out at the meeting that eight historical markers had been placed in the county or were designated to be placed. A marker for old Virginia City has been applied for, however has not yet been received.

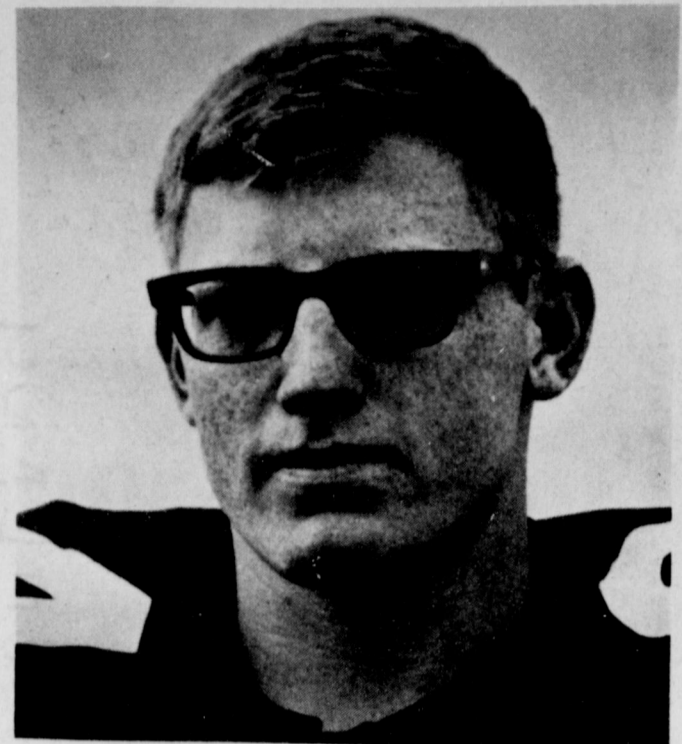
Those erected are at the Mule Memorial site, county line, west, Coyote Lake, Muleshoe National Wildlife Refuge, H.A. Douglass grave site, Courthouse, Muleshoe Ranch Cookhouse and the one yet to come for Virginia City.

It was pointed out again at the meeting of the Historical Society that the old city, Virginia City was named for Virginia Hurt, a native of the state of Virginia.

Davis is arranging for a speaker for the ceremony in which the marker is to be dedicated. The Douglass marker, citing the late H.A. Douglass as the first Sheriff of Bailey County, was dedicated in private ceremonies with the family attending on July 4.

Announcement was made that the annual Historical Convention is to be held November 1 and 2 in San Antonio at the Gunter Hotel in San Antonio.

ON OBSCENE CALLS
President Johnson has signed a bill to provide Federal criminal penalties for making obscene or abusive telephone calls across state lines or within the District of Columbia. Violators could get six months in prison and a fine of \$500.



MULESHOE YOUTH--Junior defensive back Joe Adams of Muleshoe has won promotion to the first team as Coach Bob Blackman sent the Dartmouth College football squad into its second week of double-sessions practice.

Former Resident Wed

"Miss Fern Haywood and David Paul Wollaeger were married at 5 p.m. by Dr. H.E. Spence. The ceremony was held at the home of the bride's parents, Mr. and Mrs. Ernest L. Haywood of 3512 Chapel Hill Road.

"The bridegroom, son of Mr. and Mrs. Louis A. Wollaeger of Southern Pines (N.C.) is a graduate of Duke University. He is a newly commissioned ensign in the U.S. Navy.

"The bride, a 1965 Durham debutante, is a senior at Duke

University where she is an honor student. She is a summer employee of First Securities Corporation where she will work part time in the fall. "A reception was held at the bride's home."

David visited his aunt, Mrs. Cole and Mr. Cole many times when they resided in the Stegall area.

He is now serving aboard the USS Stribling based at Mayport, Fla. and will be assigned as Chief Engineer officer after ten weeks of training.

Location...

Con't. from Page 1
much preferred to farm than stay on the salaried job he had before he started farming for himself.

A paralled terrace system was also observed by the group. The system was a part of a Great Plains Conservation contract, and the plan was explained by Henry Stoneham, local representative of Soil Conservation Service.

The last stop was the small business site of John Graves at Needmore. This blacksmith and welding shop was shown as an example of the small business type loan that is made by Farmers Home Administration.

This loan is available to try to strengthen small rural communities and help families provide the resources they need to make a satisfactory living and still remain in the rural area.

Women...

Con't. from Page 1
one person each summer month is being owner of "Yard of the Month" award. This home will have a sign in their yard for one month denoting this award.

The MAWS will name the chairman of this committee in order that a yard may be picked for the month of September and another for October.

It is the desire of the Chamber of Commerce and the Muleshoe Area Women's Service organization to get this campaign moving and completed for this year in order that the City of Muleshoe will meet qualifications as a Blue Ribbon City before the Chamber of Commerce banquet which will be held in early February.

The second major step made at the meeting was acceptance of the chairmanship of the annual Christmas Parade and festivities.

Mrs. T.R. White was appointed chairman of the Christmas parade and some plans made and some basic plans formalized. The committee head plans for the parade this year include all area towns.

New Christmas lighting purchased by the City of Muleshoe have arrived and will be installed in November along city streets. Again this year a Christmas tree will be erected at the Mule Memorial Site. Plans are being made for the dedication of the lighting of the tree.

SEE... All The New Models Of 1969 Car & Truck Lines
THURSDAY, SEPTEMBER 26th.
(REFRESHMENTS WILL BE SERVED)
CROW CHEVROLET CO.

Thurs. Thru Sat.
"WHERE YOU ALWAYS BUY THE BEST FOR LESS"
GIBSON'S DISCOUNT CENTER
Muleshoe, Texas—Open 9 A.M. to 8 P.M. Weekdays.

TOP PERFORMANCE
Coleman FUEL
For Coleman Lanterns, Camp Stoves, Camp Heaters. Blended to give trouble-free operation.
Gibson's Low Price **80¢**

Coleman LP GAS FUEL
6 1/4 oz. Can **53¢**

SEE THE NEW REMINGTON Wingmaster PUMP ACTION SHOTGUN

- Beautiful checkering
- Easy take down
- Quick-change barrels
- 5 shot capacity
- Rugged, dependable, lightweight
- Du Pont RK-W protective wood finish

12 or 20 Gauge
Remington
MODEL 570
"Wingmaster" is a trademark of Remington Arms Company, Inc.
Plain Barrel 104.95 Value
Gibson's **\$77.00** Special EA.

All Ben Pearson BOWS
1/3 OFF OUR REG. DISCOUNT PRICE.

CHILLED LEAD SHOT
6-8-9 Shot **25 Lb. Bag \$4.77**

Federal FIELD LOAD Shotgun SHELLS
#F202 20 Gauge **\$1.87** Box

HEAT
Safe Coleman Catalytic Heaters—Put out capacity BTU's no matter how cold the weather. Fumeless.
#513-700
Coleman
3000-5000 ATU
Special Low Price **\$19.97**

LP-GAS PICNIC STOVE
NEAT! A 2-burner gas stove for patio parties, boat or car trips. Uses LP-Gas in throw-away cans. Aluminum with chrome-plated snap-off grills.
No. 5409 **\$13.97**

ALCAN SMOKELESS Shotgun Powder
1/2 Lb. Can AL-120 **99¢**
AL-5, AL-7, AL-8

3 Lb. Keg-AL-5 **\$7.97**
AL-7, AL-8

4 1/2 Lb. Keg AL-120 **\$9.97**

ALCAN SHOTGUN Reloading Wads
Wads-Flite-Max-Sinale Unit **99¢**
Box of 250

Nitro Cards **77¢**
Box of 1,000

Air Wedge 12 Gauge Plastic over **99¢**
Powerwad Box of 500

Felton Wads **47¢**
Box of 500

825x14 IMPERIAL WHITEWALL TIRES
4 Ply Gibson's Special Low Price **\$15.97** Plus 2.35 FET

Telar
ANTI-FREEZE AND SUMMER COOLANT

560x15 Sports Master WHITEWALL TIRES
4 Ply Gibson's Special Low Price **\$11.97** Plus 1.74 FET

\$1.29 GAL.

REMEMBER AT GIBSON'S you never need coupons and no limit on quantity
BUY ALL YOU NEED WHILE QUANTITY LASTS

TAPPAN CLEARANCE ON '68 MODELS

FIRST CHOICE FOR VALUE
Vote for this value! 30-inches of cooking perfection. Lift-up top, lift-off door, huge 25-inch wide all-porcelain oven, matchless lighting...
\$149.95

'68 CLEARANCE Special
BRING YOUR KITCHEN UP-TO-DATE NOW—This sparkling 35-inch Tappan includes vitamin-saver top burners, lift-off door, char-krome broiler... sale priced now at just...
\$159.95 W/T

SIMILAR MARK-DOWN ON OTHER MODELS
GORDON WILSON APPLIANCE
202 MAIN Muleshoe PHONE 272-3138



PETE MORALES AND HIS BAND---The Pete Moralez band from O'Donnell provided music for the dance conjunction with Diez y Seis days which were celebrated in Muleshoe as elsewhere last weekend. The festival concludes on the Sixteenth of September which is Mexican Independence Day.

HARMON HIGHLIGHTS--NEW YORK

Notre Dame Selected to Beat Sooners

How about these so-called early season "Breathers"? Notre Dame - Oklahoma or Southern Cal - Minnesota. . . or such patsy games as Texas A&M - L.S.U. or Michigan State - Syracuse. Just who breathes on who . . . or whom?!!

The biggest of all big "Breathers," one of the toughest to pick, is the meeting between last year's 5th-ranked Oklahoma Sooners and Notre Dame, #3. Being real scientific, we'll first check tea leaves - then flip a coin - and finally read horoscopes. The winner: The Irish by ten points.

Since Minnesota hasn't found an O.J. Simpson, we'll go with Southern Cal to clip the Gophers by 12 points. Southern Cal was everybody's national champion last season. Minnesota ranked 21st in the final Harmon ratings.

Although Michigan State was unranked last year, finishing with a 3-7 record, and Syracuse ranked 28th in the nation, we're going to go with Spartan ball club that just might be on the way back: Michigan State over Syracuse by two points.

A few more of last year's powerhouses that are ready to explode the '68 season wide open include 6th-ranked Purdue, a big 24-point favorite over

Farmers Union Name Officers

Farmers Union held a meeting at the Bula School at 8 p.m. Tuesday.

New officers were elected for the coming year for Bailey County Farmer's Union.

Nolan Harlan was elected president; Delbert Watson, vice-president; Joe Costen, second vice president; Fay Jones, secretary; Betty Harlan, assistant secretary; Chester Settling, program director and Beth Watson, reporter.

Resolutions were made and approved to send to the coming convention to be held in Austin this December.

L.V. Clawson is Resolutions Committee Chairman. Clawson presided this portion of the meeting for the discussion on the problems facing farmers and what Farmer's Union can do to help solve these problems.

Ford Stresses Strength Need for Economy

Campaigning for State Representative through the 72nd District this week, Frank Ford stressed "The immediate need for strengthening our rural economy". "All over this district", stated Ford, "There are fine young farmers being forced out of farming by high costs and low income, new school facilities in the rural areas faced with dropping enrollment, and towns and businesses faced with the greatest challenges we have known in this generation".

"It is going to take a lot of hard work on the part of a lot of people, but I am convinced we have the desire and the ability to reverse this trend", Ford said. There was enough grain sorghum raised in this six-county district last year to feed out over one million additional cattle. This alone could mean over six hundred new jobs, plus the jobs which would be created in servicing industries. It would create a better market for our grain, and provide enough feed cattle for two of the largest and most modern packing facilities in the world which will be operating in this district.

"With proper water conservation, we have much potential in vegetable processing in ad-

BIBLE VERSE

"I am he that liveth, and was dead; behold, I am alive for evermore . . . and have the keys of hell and death."

1. Who made the above statement?
2. To whom was he speaking?
3. Where was the author at the time?

Answers To Bible Verse

1. Jesus Christ.
2. To John the Apostle in a vision.
3. John was a prisoner on the Isle of Patmos.

Three Way

MRS. H. W. GARVIN

Mr. and Mrs. Bill Roberts from Lubbock were in the community Thursday in the community. Larry Wheeler from Lovington, N.M. is spending the week with his grandparents, the Johnnie Wheelers.

The Three Way High School football team played Patton Springs on the home field Friday night winning by a score

of 40-6.

Mr. and Mrs. Jack Hodnett were in Lubbock on Thursday on business.

Mr. and Mrs. Carrol Fleming and son from Post visited his uncle and aunt Saturday evening, the H.W. Garvins.

The farmers have started the grain harvest at this time. Scott Shepard from Lubbock spent a few days with his grandparents, the John Shepards, this past week.

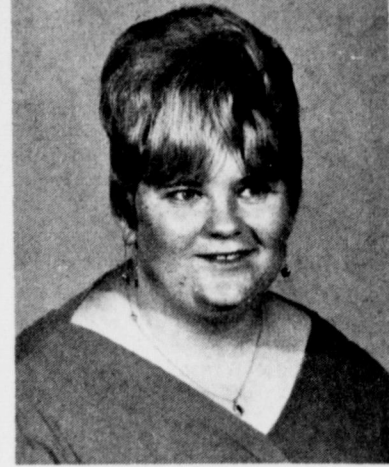
Three Way Junior High football team played Smver on their home field Thursday evening,

winning the game.

Mr. and Mrs. Billy Stafford from Lubbock visited the Dutch Powells Sunday.

The Natural Gas Co. of America's new pump station being built northwest of Goodland is coming on well at this time and looks like a small city now.

Mr. and Mrs. H.W. Garvin visited their cousin, Mr. and Mrs. L.T. Smith, in Earth Sunday evening. Mrs. Smith has been in ill health the last few months.



Introducing Glenna Raney

★ ★ ★

EARTH BEAUTY SALON IS HAPPY TO HAVE GLENNA RANEY, BEAUTICIAN, JOIN THEIR FINE STAFF OF HAIRDRESSERS.

Glenna is a recent Graduate of Curry County Beauty College, Clovis, N.M.

She invites her Many Friends to Call for an Appointment. After hours Call 965-2386.

Earth Beauty Salon

Jeannie Short Roxy Armstrong Glenna Raney

West Hwy. 70 OUR SPECIALTY "PLEASING OUR CUSTOMERS" Ph. 257-5251

gies finished the '67 season as the #22 team in the country. . . L.S.U. was rated 13th. Crystal ball says: L.S.U. by one.

Another one-point "Breather!" Rice over Washington in a real cliff-hanger. Indiana, 11th last fall, is favored over Baylor by eleven, and Florida State, the 8th-ranked team in the nation, should take Maryland by a big 32 points.

Ranked 4th in the final ratings last year, the Miami Hurricanes should muss up the 'Cats of Northwestern by 22 points. Texas was rated 26th. Houston, 19th. The favorite here is Houston by a rather surprising 14 points.

U.C.L.A., #9, will whip Pitt by 31. 17th-rated North Carolina State will top North Carolina by 19. Mississippi was 15th last fall. Auburn, 16th. The Rebels will beat Memphis by five, and the Tigers will bump S.M.U. by fifteen.

UNIVERSAL is in the process of producing a movie series for television which will star Richard Stack, Gene Barry and Tony Franciosa in about eight films, each. These films will be shown on Friday nights and will be made by different producers. David Victor, who produced "Man from U.N.-C.L.E.", will be one of the producers.

ED McMAHON is a busy man. He has been the announcer and co-worker with Johnny Carson for the past thirteen years and he also has his own show "Snap

The Harmon Football Forecast

Saturday, Sept. 21—MAJOR COLLEGES			Other Colleges—MIDWEST				
Alabama	23	V.P.I.	6	Ashland	20	Wooster	10
Arizona State	23	Wisconsin	7	Augustana, Ill.	26	Elmhurst	13
Arkansas	22	Oklahoma State	15	Baker	20	Bethel, Kansas	0
Army	25	The Citadel	0	Central Michigan	21	Youngstown	19
Auburn	28	S.M.U.	13	Central Oklahoma	28	SE Missouri	12
Boston U.	19	Colgate	14	Cornell, Iowa	19	Knox	19
Bowling Green	20	Baylor State	8	Defiance	21	ADrian	6
Brigham Young	17	Western Michigan	6	DePauw	21	Wheaton	19
California	20	Michigan	16	Doane	27	Concordia, Neb.	6
Clemson	14	Wake Forest	8	E. Cent. Oklahoma	31	Emporia State	0
Colorado	26	Oregon	8	Eastern Michigan	20	South'n Conn.	13
Colorado State U.	20	Kansas State	12	Evansville	21	Bradley	6
Davidson	20	Bucknell	14	Hamline	33	Augustburg	7
Dayton	12	St. Joseph's	0	Heidelberg	19	Bluffton	14
East Carolina	14	William & Mary	13	Lawrence	32	Coe	7
El Paso	40	New Mexico	7	Milwaukee	12	Eastern Illinois	8
Florida	28	Air Force	7	Mt. Union	21	Franklin	13
Florida State	39	Maryland	7	Nebraska Wesleyan	19	Midland	7
Georgia Tech	21	T.C.U.	20	North Park	14	Concordia, Ill.	12
Houston	21	Texas	17	Northern State	27	Eastern Montana	14
Indiana	21	Baylor	10	Parsons	27	NE Missouri	7
Iowa State	20	Arizona	18	Principia	18	Central Methodist	14
Kansas	20	Illinois	15	Sioux Falls	20	SW Minnesota	7
Kent State	14	Buffalo	8	SE Oklahoma	20	Ouachita	19
L.S.U.	22	Texas A & M	21	Sterling	18	Bethany	15
Louisville	27	Southern Illinois	6	Washington, Mo.	12	Rolla (U. of Mo.)	7
"Miami, Fla.	31	Northwestern	10	Wayne, Mich.	20	Michigan Tech	10
Miami, Ohio	24	Pacific	14	Other Colleges—SOUTH AND S'WEST			
Michigan State	17	Syracuse	15	Angelo	20	Sul Ross	19
Mississippi	14	Memphis State	9	Appalachian	28	Newberry	0
Miss. State	25	Louisiana Tech	0	Arkansas Tech	28	NE Oklahoma	7
Missouri	21	Kentucky	13	Arlington	25	NE Louisiana	20
Nebraska	24	Utah	7	Austin	15	Southwestern, Tenn.	7
No. Carolina St.	26	North Carolina	10	North-Texas	27	Western Carolina	13
North Texas	21	New Mexico State	10	Chattanooga	35	Austin-Peay	13
Notre Dame	24	Oklahoma	14	East Texas	28	Abilene Christian	5
Ohio U.	23	Marshall	0	Eastern Kentucky	34	Hillsdale	0
Oregon State	27	Iowa	7	Elon	15	Concord	12
Penn State	31	Navy	13	Fairmont	45	West Va. Wesleyan	0
Purdue	30	Virginia	6	Florence	19	Ark. State College	13
Rice	20	Washington	19	Furman	7	Presbyterian	13
Rutgers	20	Lafayette	7	Hampden-Sydney	24	Shepherd	7
South Carolina	15	Duke	14	Lenoir-Rhyne	27	Wofford	6
Southern Cal	22	Minnesota	10	Martin (U. of Tenn)	27	Murray	20
Southern Miss.	28	SE Louisiana	0	McNeese	24	Lamar Tech	7
Stanford	30	San Jose	7	Mississippi Coll.	19	Henderson	0
Texas Tech	24	Cincinnati	7	Muskingum	23	West Liberty	7
Toledo	28	Villanova	10	NW Louisiana	20	Tennessee Tech	10
U.C.L.A.	31	Pittsburgh	0	Samford	22	Jacksonville	7
Vanderbilt	18	V.M.I.	14	SE Missouri	20	Delta	15
Washington State	32	Idaho	7	SW Louisiana	34	Louisiana College	0
West Texas	27	Wichita	12	Southwest Texas	40	Texas Lutheran	0
West Virginia	20	Richmond	7	Texas A & I	34	Trinity, Texas	0
Wyoming	21	Ithaca State	17	Troy	27	Gordon	8
Xavier	26	Quantico	13	Other Colleges—EAST			
Other Colleges—EAST			Other Colleges—FAR WEST				
Bates	20	Middlebury	7	Cal Lutheran	14	Pacific Lutheran	6
Bridgeport	14	Trenton	0	Cal Poly (S.L.O.)	20	Sacramento	15
Clarion	27	Delaware State	6	Central Washington	18	Western Wash'ton	14
Connecticut	21	Vermont	6	Colorado College	19	Colorado Mines	7
Cortland	16	Montclair	13	**Davis	20	Occidental	16
Denison	19	California State	13	Fresno	25	Idaho State	6
Gettysburg	18	King's Point	14	Hawaii	30	Humboldt	7
Hofstra	21	Delaware	13	Hayward	27	Cal Poly (Pomona)	12
Indiana State	16	Northwood	0	Lewis & Clark	37	Eastern Oregon	0
Lehigh	19	Drexel Tech	14	Long Beach	21	Northern Arizona	13
Massachusetts	31	Maine	0	Montana State	33	Portland	0
Northeastern	28	C. W. Post	12	Puget Sound	26	Pomona	0
Norwich	13	Colby	7	**San Diego State	28	Northern Illinois	15
Rhode Island	21	Temple	20	San Francisco St.	17	Santa Clara	14
Springfield	27	Coast Guard	0	San Francisco U.	30	Oregon Tech	0
Waynesburg	33	Slippery Rock	7	Santa Barbara	22	Tampa	21
West Chester	32	Ithaca	7	(**FRIDAY GAMES)			

1969 DODGE POLARA
Big, luxurious and totally new. With such standard items as foam-padded seats, carpeting, concealed windshield wipers and a 230-hp V8. All this at a surprisingly low price.

1969 DODGE CHARGER
Dodge Charger's the car with a 343% increase in sales. And you can't do much to improve on success. But look what we've done. Made Charger still sharper-looking, front and rear. With a new grille and new taillights. We also added a new model. A Charger Special Edition with splashes of genuine leather.

1969 DODGE CORONET
Some people buy Coronet because it's a good-looking car. Others buy it because it's a nimble, easy-handling car. But Coronet appeals to more people because it's the car that's very big for its price. One look proves it. At the Dodge Boys'.

1969 DODGE DART
A brand-new edition of America's favorite compact. Dodge Dart for 1969. Built for the young and the young at heart. It doesn't look, ride, perform or squeeze you like a compact. Then why do we call it a compact? The price. Compact all the way.

NO WONDER DODGE BOYS' SALES ARE AT A FEVER PITCH.

THE DODGE BOYS

AUTHORIZED DODGE DEALERS CHRYSLER MOTORS CORPORATION

B M G MOTORS, INC.

1701 W. American Blvd. Muleshoe, Texas

FIRST NATIONAL BANK
"The bank with a million dollar bank structure" Muleshoe, Texas Member FDIC

Earth News

By Beulah Newton

Mr. and Mrs. Jerry Davenport and girls of San Angelo, were weekend guests of Mrs. Mrs. O.B. Whitford and Lonnie. Mrs. Davenport is the former Delora Whitford. Delora is a teachers aid at San Angelo and Jerry is still in school. Lonnie Whitford has returned to Austin where he will attend Texas U. again this year.

Others going to T.U. from Earth are Gill McCord and Lynn Hamilton.

Doug Messer and Billie Kay Kelley are attending school at South Plains of Levelland. They will commute. Jimmy Stockstill is also attending South Plains.

Mr. and Mrs. David Johnson have sold their home in the Hite Park addition and have purchased a trailer house. The trailer is located on a lot just north of B. & W. Gro.

Mr. and Mrs. Butter, parents of Mrs. Jarvis Angeley, have

bought the home formerly owned by the David Johnsons, in the Hite Park addition and have moved in. Mr. and Mrs. Butter have been living with the Angeleys for a year, they came from California here.

Guests of Mrs. L.B. Ginn Sunday afternoon were Mr. and Mrs. Cecil Ginn and Mrs. J.D. Newton.

New employees at the Earth Drive-in Theatre, snack bar are Mrs. Clarence Wages and Carolyn Kelley. The theatre is open on Friday and Saturday nights.

Mr. and Mrs. L.S. Griffin were guests of their son and family, Mr. and Mrs. Larry Griffin, Scharla and Micheal of Abernathy, Sunday.

J.B. Thomas was rushed to a Littlefield hospital last Friday morning. It was believed he suffered a heart attack. The Dr. reported there was no heart damage and he has made more tests and x-rays. Thomas is doing fine.

James Wages is a patient in the Medical Arts hospital in Littlefield. He is suffering with a back ailment that has been chronic for several years and is in traction.

Mrs. Edd Blair underwent hip surgery in the Methodist Hospital Lubbock, last Friday. It has been reported she is doing fair.

Mrs. Willace White remains in serious condition in the Methodist hospital in Lubbock.

Mrs. Wayne Rutherford and Mrs. Lyn Glasscock attended the funeral services for Bobby Temple in Lubbock Thursday afternoon, also attending from Earth was Bob Harber.

After church fellowship was held at the United Methodist

Church Sunday evening. Program was given by the three groups of M.Y.F. All Sunday School teachers and workers were honored. Sandwiches, cookies, homemade ice cream, coffee and tea was served and visiting followed the program.

Mr. and Mrs. Eldon Parish spent several days last week vacationing in Ruidoso.

Recent guests in the home of Mr. and Mrs. H.C. Martin were their son and family, Mr. and Mrs. Neal Martin and Lesa of Dallas.

L.S. Griffin attended church services at the Primitive Baptist Church in Muleshoe, Saturday.

Lesla Martin spent a week recently with her grandparents, Mr. and Mrs. H.C. Martin. Mrs. Martin returned her to her home and attended a family reunion in Cleburne, Tex.

Col. Robert L. Hite has had major surgery in Gaston Hospital in Dallas, Tex. His address is Gaston Hospital, room 247, Dallas, Texas. Lowell (as we know him) is doing real well but, will be hospitalized for several days yet.

Tommy Wheatlev underwent

surgery in Littlefield Hospital Monday and is doing fine.

Sunday guests of Mrs. Lena Hite were Mr. and Mrs. Leonard Griswold of Littlefield. They had lunch in the Holiday Inn, Clovis, New Mexico.

"TOWN AND COUNTRY STUDY CLUB HAS BREAKFAST"

Earth Town and Country study club had a breakfast Thursday morning 7:30 at the Wolverine Drive in. This was the beginning of the years work.

President Mrs. Cara Morgan presided, Invocation was given by Mrs. Sam Cearley. Mrs. Morgan presented the year books to all members present. The lovely red books are dedicated to the memory of Mrs. C.W. (Dora) Terry. Door prize was drawn by Mrs. L.K. Anderson, it was two hot pan holders and a cook apron with Campbell Gin Co. advertising on them.

The tables were arranged in a "T" with a fall arrangement of orange and bronze on the head table. A lovely breakfast of cantelop, ham, bacon, scrambled eggs, jelly, toast and coffee was served to the following members, Mrs. L.K. Anderson, Mrs. W.D. Martens, Mrs. L.Z. Anglin, Mrs. John Welch, Mrs. B. Campbell, Mrs. Sam Clearley, Mrs. Cara Morgan, Mrs. Marie Ross, Mrs. R.W. Fanning, Mrs. Wayne Rutherford, Mrs. John Laing, Mrs. Ray Kelley, Mrs. Lena D. Hite and a guest Mrs. J.D. Newton. Mrs. Lena D. Hite acted as Hostess.

The next meeting will be September 26. Topic for study will be "Texas Day." Hostess will be Mrs. Roy Neal.

Mrs. Nellie Barton was a guest of her children, Mr. and Mrs. Curtis Sterling in Lubbock from Sunday through Tuesday. Mrs. Barton also shopped in Lubbock.

Billie Kay Kelley spent the night in Amarillo Monday night with Scharlot Sawyer who is a student of Draughons Business school there.

New employee at the Earth Sun-News is Mrs. Beverly Stark. Mrs. Stark is the wife of one of the new coaches at Springlake-Earth school.

Wesleyan Service Guild met Monday night in Fellowship hall of the United Methodist church. Mrs. Wanda Martens presided over the meeting. Mrs. Roy Neal gave the program on, "Africans Seek A New Identity." Mrs. Martens served homemade fresh peach ice cream to the following members, Miss Ruby Jones, Mrs. Roy Neal, Mrs. John Welch, Mrs. Oliver Tunnell, Mrs. Euelah Newton, Mrs. B.T. Hamiltend the hostess Mrs. Wanda Martens.

Mrs. Leon Foster shopped in Lubbock Tuesday and visited her daughter, Mrs. Walter Elam and Cherril.

Mrs. L.S. Griffin is a patient in the Littlefield Hospital. Mrs. Griffin is undergoing tests and x-rays.



FIRST DOWN--Charles Beamon, No. 40, picked up yardage to make a first down in a determined march down the playing field. Although the running back picked up several yards, the ball was lost to the Bobcats in a costly fumble.

Football season starts this week in all rural and area schools. We hope no one boy receives injuries and there will be no car or bus wrecks. Please everyone be careful.

Next Tuesday night is the annual teachers reception for the Springlake-Earth school teachers. This is sponsored by the Earth and Springlake Lions Clubs. There will be a supper and guest speaker for the evening.

David Templeton, who sustained a broken leg in July has his cast off and is wearing a brace. David still has to use a cane to walk.

Mrs. Gladys Goodwin spent some time in Brownfield recently visiting with her sister.

Mr. and Mrs. V.T. Gooch believe in the song, "Bright In The Corner Where You Are", so they are making the corner where they live bright by painting their house the whitest white you have ever seen.

Dr. and Mrs. C.T. Richardson are vacationing this week in Kilgore, Tex. and other points of interest. White in Kilgore they visited his nephew who has had a heart attack recently.

Mrs. Oliver Tunnell is in Littlefield this week keeping her grandchildren while their parents, Mr. and Mrs. Jerry Tunnell vacation in Las Vegas, Nev.

This is the slow time of the year. The crops are just maturing and the farmers are waiting, and hoping no hail will come, to begin the fall harvest. The grain and cotton is the prettiest we have had in several years.

Mrs. J.M. Truelock is a patient in the Amherst hospital.

"Slightly" Over 21
"What is your age?" asked the magistrate. "Remember," he cautioned. "You're under oath."
"Twenty-one years and some months," the lady answered.
"How many months?"
"One hundred and eight."

Young Farmers Attended Area Banquet

Members of the Muleshoe Young Farmers for Area 1 attended the area convention and awards banquet at Plainview, Saturday, September 14.

Those attending from Muleshoe included Mr. and Mrs. Jimmy Dale Black, Mr. and Mrs. Bill Harmon, Mr. and Mrs. Pat Vinson, Mr. and Mrs. Lloyd Throckmorton, Mr. and Mrs. Robert Hunt, Mr. and Mrs. Aubrey Heathington, Mr. and Mrs. Jimmy White, Mr. and Mrs. Clarence Christian, Joe Harvin and Bill Bickel.

In the election of officers for the coming year, Aubrey Heathington, outgoing vice president was succeeded by Jimmy White, Muleshoe. Other officers included Glenn Odom, president, Dimmitt; Joe Keddington, secretary, Groom; Larry Dobbs, treasurer, Hereford; Jimmy Myers, reporter, Silverton; Ben Holcomb, state vice president, Dimmitt and Walter Labay, area advisor, Plainview.

Luncheon speaker was Clark Elvey, professor, Department of Home and Family Life, Texas Technological College, Lubbock. He spoke on "Husband and Wife Compatibility-Via the Image of Husband and Wife in Each Other's Mind."

Bob Lane of Lockney will represent Area 1 as its top Star Young Farmer of 1968 at the annual Texas Young Farmers convention, January 3-4 in Dallas.

David Cole of Dimmitt was named runner-up at the annual Area convention. Other applicants were Jimmy White, Muleshoe; Donald Hays, Cooper; Tom Garrison, Tullia; Robert Hill, Silverton and Bobby Neal, Whiteface.

SEE... All The New Models Of 1969 Car & Truck Lines
THURSDAY, SEPTEMBER 26th.
(REFRESHMENTS WILL BE SERVED)
CROW CHEVROLET CO.

MANAGER'S SALE!

AQUA NET HAIR SPRAY
37¢

PREL CONCENTRATE SHAMPOO
HANDY UNBREAKABLE TUBE FAMILY SIZE 99¢

Family Size CREST TOOTH PASTE
56¢

BAYER ASPIRIN
100 Ct. to Btl.
46¢

FAMOUS MILLS FABRIC GROUP
45" Wide 2-15 Yard Short Lengths
37¢ YD.
VALUES to \$1.98 yd.

LISTERINE Large Family Size
57¢

RIGHT GUARD SPRAY DEODORANT
56¢

BONDED KNIT \$1.77 Yd.
Reg. 1.99

SCOPE MOUTHWASH 12 oz. Size
57¢

BUY NOW CHRISTMAS CARDS
50 to Box **57¢** Reg. \$1.00

LARGE CANNON BATH TOWELS Size 24x48
2 FOR \$1.00

3 PIECE LUGGAGE SETS Red, Blue, Green
\$10.88

KODAK BROWNIE MOVIE CAMERAS
\$8.88

Do your Christmas shopping now. \$1 Down Holds Any Amount on Layaway

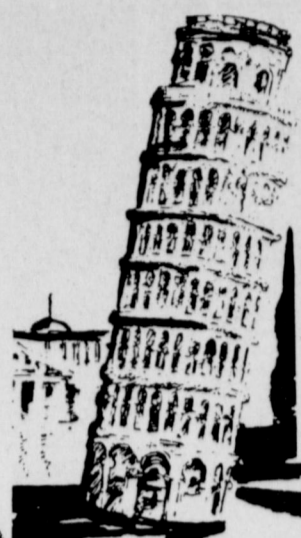
PERRY'S
KNOWN FOR BETTER VALUES
5 - 10 25 - \$1 Muleshoe

NOTICE!
If you are hauling grain be sure to check your carrying capacity on all vehicles of one ton or more.

ALSO... CHECK DRIVER'S LICENSE. VEHICLE RATED 2000 POUNDS OR MORE, EVEN WITH FARM TAGS, YOU MUST HAVE A COMMERCIAL DRIVER'S LICENSE.
Jean Lovelady
Assessor-Collector
Muleshoe, Texas

PIGGLY WIGGLY

1st in Savings!

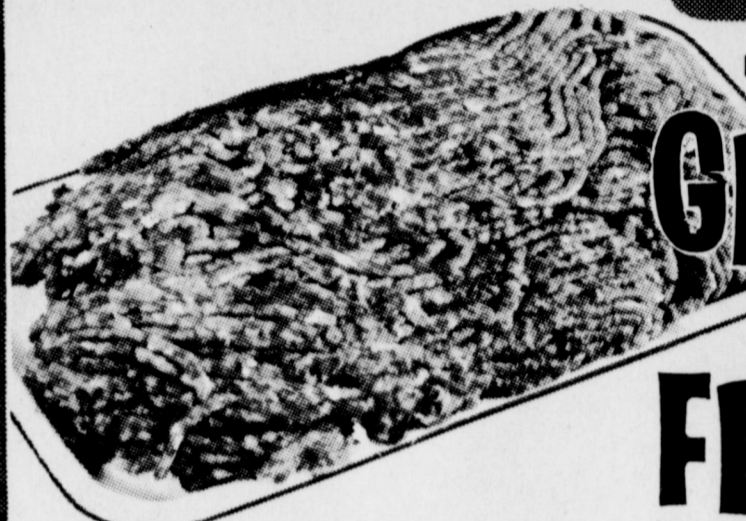


ITALIAN FEAST - IVAL

AT PIGGLY WIGGLY!



MORE FOR YOUR MONEY at Piggly Wiggly



For Italian Meat Balls, Italian Meat Sauce, Lasagne, Ravioli or Cannelloni

GROUND BEEF Pound **49¢**

For Chicken Cacciatore, Chicken Tetrizzini, Chicken Marengo, Chicken Con Pepperoni, Chicken Al Diavolo

FRYER BREAST Pound Pkg. **298¢**

Singleton's Individual Size, 4-Oz. Glass
Shrimp Cocktail 3 For **\$1.00**

Boneless, U.S.D.A. Choice, Valu-Trimmed Beef
K. C. Steaks Pound **\$1.39**

For Steak Florentine, U.S.D.A. Choice Beef
Sirloin Steak Pound **97¢**

For Pork Chops Florentine, Family Pak, 1/4 Pork Loin
Pork Chops Pound **79¢**

Lean, U.S.D.A. Choice, Valu-Trimmed Beef
Cube Steaks Pound **\$1.19**

U.S.D.A. Choice, Valu-Trimmed Beef
Short Ribs OF BEEF Pound **39¢**

For Pizzas, Blue Morrow
PORK SAUSAGE 2 -Pound Pkg. **98¢**

For Manzo Alla Lombarda, U.S.D.A. Choice, Aged Beef
POT ROAST Pound **59¢**

- 3¢ Off Label, Bonne' Liquid Bleach 1/2-Gallon **25¢**
- Florida Club Grapefruit Juice 46-Oz. Can **29¢**
- Sunlight, Fully Guaranteed Flour 5-Pound Bag **39¢**
- Goodhope, Sliced Pineapple No. 300 Can **19¢**
- 10¢ Off Label, Belle, Non-Fat Instant Milk 14-Quart Size **\$1.25**
- Kraft, Miniature Marshmallows 10 1/2-Oz. Pkg. **23¢**
- Maxwell House Coffee 1-Pound Can **65¢**
- Chef Boyardee, Cheese Pizza Mix 15-Oz. Package **63¢**



Robnett Grade AA Small

EGGS

Dozen **34¢**

Pure Shortening

BAKERITE

3 Pound Can **39¢**

CRISCO, Pure Shortening 3-Pound Can **69¢**

Holsum, Buttermilk or Sweetmilk

BISCUITS

10-Ct. Cans **5¢**

Biscuits, Pillsbury 10-Count Can **9¢**

Betty Crocker Layer Cakes

CAKE MIXES

20-Oz. Package **29¢**

Cake Mix, Good 'N Rich 18-Oz. Box **25¢**

American Beauty Long or Elbo Roni

SPAGHETTI

10-Oz. Package **15¢**

- Macaroni Dinner** Kraft 2 7/4-Oz. Pkgs. **43¢**
- Spaghetti** Austex With Meatballs 24-Oz. Can **53¢**
- Spaghetti Sauce** Schillings Mix 1 1/2-Oz. Pkg. **25¢**
- Pizza Dinner** Kraft, Cheese 15 3/4-Oz. Pkgs. **57¢**
- Spaghetti Sauce** Chef Boyardee With Meat 15-Oz. Can **37¢**

- Aluminum Foil** Reynolds Economy 75-Ft. Roll **87¢**
- Peas & Onions** Green Giant No. 303 Can **33¢**
- Sweet Peas** Green Giant No. 303 Can **25¢**
- Aluminum Foil** Alcoa Economy 75-Ft. Roll **87¢**
- Flour** Indian Girl Kitchen Tested 25-Pound Bag **\$1.69**

- Health and Beauty Buy of the Week!
- TOOTH PASTE**
Crest, Regular or Mint, Regular **79¢ Retail**
Extra Large Size **57¢**
 - DEODORANT**
Arrid, Extra Dry, Regular **\$1.29 Retail**
5.8-Oz. Size **79¢**

TOMATO SAUCE

Mountain Pass 8-Oz. Can **8¢**

Fresh Frozen Foods for Your Freezer!

PIZZA

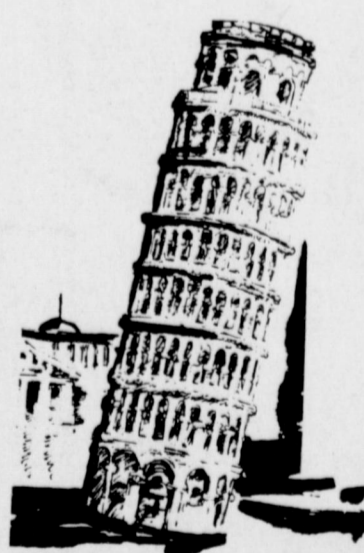
Chef Boy-Ar-Dee, Cheese 12 1/2-Oz. Package **49¢**

Jeno's Pizza Rolls 6-Oz. Pkg. **59¢**

Libby's Cut Corn 10-Oz. Pkg. **25¢**

CUSTARD PIES

Morton's, Coconut 20-Oz. Pkg. **29¢**



Russet, All Purpose **POTATOES** 10 -Pound Bag **49¢**

Bright Red Tokay Grapes Pound **29¢**

Large, Crisp Heads, Romaine Lettuce Pound **29¢**

Try Stuffing Italian Squash Pound **29¢**

Mild, Yellow Onions Pound **12 1/2¢**

APPLES Red Delicious, New Crop Pound **19¢**

YOUR 1ST SECTION **FREE** SECTION-2 NOW ON SALE... **99¢**



THIS COUPON GOOD FOR **FREE** SECTION #1
Random House American Dictionary and Family Reference Library **99¢ Value**

OPEN
8:00 to 7:00 Mon. - Fri.
8:00 to 9:00 Saturday
Closed Sunday

These Values Good Sept. 19-20-21 in Muleshoe We Reserve the Right to Limit Quantities.



QUEEN PATSY LUCERO---Patsy Lucero, center, was crowned queen of Diez Y Seis (Mexican Independence Day) at the Catholic Youth Center, Saturday, September 14. The crowning of the queen ended the celebration. Her attendants pictured with her are second runner-up left, Mary Orosco and first runner-up, right, Nolia Orosco. Proceeds from the one-cent vote campaign, will help build additional classrooms for the Catholic Church.

Diez Y Seis Celebration Nets \$3100

An observation of Mexico's Independence Day (Diez Y Seis de Septiembre) netted more than \$1700 for the Catholic Youth Organization and was culminated with the crowning of the Diez Y Seis queen on Saturday night at the Catholic Center. Crowned queen was Patsy Lucero, daughter of Mr. and Mrs. Petro Lucero. First runner-up was Nolia Orosco, daughter of Mr. and Mrs. Dolores Orosco and second runner-up was Mary Orosco, daughter of Mr. and Mrs. Jose Severo Orosco.

Music for the dance in conjunction with the celebration was provided by the Pete Morales band from O'Donnell. At one cent a vote, more than \$1790 was collected on votes in the queen contest. The CYO now has approximately \$3100 which will be used to build additional Sunday School classrooms at the Catholic Church. The celebration honors Father Miguel Hidalgo y Costilla at the town of Dolores in Mexico when he began the independence fight with a shout of "El Grito." The shout began the revolution which finally brought Mexico independence from Spain.

Humor depends largely upon whether you are the maker or the receiver of the joke.

One trouble with the world is the great number of people who seek to live without working.

Humor depends largely upon whether you are the maker or the receiver of the joke.

Society News

Cleta Creamer Williams Society Reporter Phone-272-4534

Muleshoe Study Club Plans Active Year

Under the leadership of Mrs. Horace Blackburn, president, the Muleshoe Study Club is planning an active year. Her theme is "A Life Filled With Enthusiasm and Love for Others." The course of study will be "Living With Othes."

First meeting of the year was in the home of Mrs. S.L. Benefield. It was a breakfast meeting. Mrs. G.L. Splawn and Mrs. Cecil Cole co-hosted the event with seventeen members attending.

Mrs. E.M. Pruitt, program director, led the salute to the flag and presented the program. Mrs. Mervin Wilterding led in prayer. Roll call was answered with "My Favorite Scripture."

Mrs. S.L. Benefield presented the yearbooks and Mrs. Horace Blackburn gave the presidents message.

Mrs. O.N. Jennings, federation counselor, gave a report. Departmental chairmen selected by Mrs. Blackburn are: Mrs. Cecil Cole, Texas Heritage; Mrs. John Agee, Conservation; Mrs. W.T. Andrews, Fine Arts; Mrs. Joe Costen, Education; Mrs. Ed Johnson, In-

ternational Affairs; Mrs. T.R. White, Council of International Clubs; Mrs. J.G. Armn, Public Affairs and Mrs. G.L. Splawn, Legislation.

Muleshoe Study Club members appointed by Caprock District President, Mrs. Lane Decker, Floydada, to serve on the District Board are: Poet Laureate, Mrs. Horace Blackburn; Public Affairs Department; Defense and Savings Bonds Chairman, Mrs. J.G. Armn; Conservation Department: Mrs. Cecil Cole, Beautification Chairman.

Club members recently sold advertising for the Texas Clubwoman. Members expressed appreciation to the businessmen who responded to the drive.

Next club meeting will be Monday, September 23. A tour of the Texas Plains Trail that crosses Bailey County is planned. Members are to meet at the home of Mrs. Horace Blackburn and bring a sack lunch.

First stop on the tour will be at Coyote Lake for the 10:45 a.m. dedication of the historical marker.

Auxiliary Installs 1969 Officers

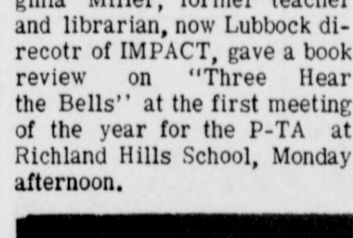
Members of the Muleshoe Hospital Auxiliary met in regular quarterly session Tuesday afternoon at 2 p.m. at the hospital.

President Sammy Lewis led the opening prayer. New officers for 1969 were installed. They were Mrs. Lewis, president; Wilma Embry, first vice-president; Marilyn Engleking, second vice-president; Ada Murrach, third vice-president; Ann Alford, treasurer; Betty Cihak, secretary and Mable Coldwell, corresponding secretary.

The president then appointed committees for the coming year: Membership - Sadie Bass, Jauree Smallwood and Lillian Morris; Program - Joy Tibbets and Lela Mardis; Fi-

nance - Ann Alford and Betty Cihak; Publicity and Telephone-Ada Murrach, Wilma Embry and Geneva Freeman and Schedules - Marilyn Engleking and Mable Coldwell.

It was voted by the members for the auxiliary to work one day a week for three hours. Members are asked to contact the president, secretary or one of the schedule committee to set their day to work.



GUEST SPEAKER--Miss Virginia Miller, former teacher and librarian, now Lubbock director of IMPACT, gave a book review on "Three Hear the Bells" at the first meeting of the year for the P-TA at Richland Hills School, Monday afternoon.



DESHAZO SPEAKER -- Rev. Douglas DuBose, pastor of the Muleshoe First Baptist Church, was guest speaker at the first meeting for 1968 of the Mary DeShazo Elementary School P-TA. Rev. DuBose spoke on "Where Does a Parent Go For Help?"



BIRTHDAY HONOREES---Four members of the Muleshoe Nursing Home were honored Tuesday afternoon in their birthday month. The Circles of the First Methodist Church presented a program and refreshments for the honorees and their guests, other members of the Nursing Home, their relatives and friends. Those honored were, L. to R., Mrs. Claudie Lite, 78; Henry Nieman, 78; Mrs. Lydia Fulcher, 95 and Mrs. Kadie Newton, 76.

CLUB NEWS

4-H Members in Bailey County are busy people these days getting ready for the Project Fair which will be held in Muleshoe on Saturday September 28th at the building located at 221 E. Ave B. The Annual Project Fair marks the end of a 4-H club year and the beginning of another.

Girls and boys will exhibit garden and field crops, flowers, canned foods, baked goods, clothing, household textiles and hand crafts. Immediately following the awarding of prizes cakes and pies will be auctioned off. The proceeds are used for financing county wide activities of the 4-H Clubs.

Everyone is invited to come by and see the exhibits and attend the auction.

The Progress 4-H Club will hold its regular monthly

meeting on Thursday night, September 19th in the Lariat Lutheran Church at 8:00 p.m. Mr. Adams, County Agricultural Agent and Mrs. Taylor, Home Demonstration Agent will discuss the preparation of exhibits for the fair.

Janice Head was elected president of the Y.L. 4-H Club for 1969 at the meeting held on Monday night at the Y.L. Methodist Church. Other officers elected were Timmy Black, vice-president; Glenda Calhoun, secretary; Larry Vinson, historian and Danita Throckmorton, reporter. Mr. and Mrs. Dan Throckmorton were re-elected Organization Leaders with Mr. and Mrs. Leon Lewis Assistant Organization Leaders.

One Reason
First Doc--Why did you choose to be a specialist?
Second Doc--Because my patients never get me out of bed at night, they never die, and they never get well.



NEW PRESIDENT -- Janice Head, daughter of Mr. and Mrs. Marshall Head, is the newly elected president of the Y.L. 4-H Club.

She Did
"Hey," cried Satan to a new arrival, "you act as if you owned this place!"
"I do," came the reply. "My wife gave it to me before I came."

SEE... All The New Models Of 1969 Car & Truck Lines
THURSDAY, SEPTEMBER 26th.
(REFRESHMENTS WILL BE SERVED)
CROW CHEVROLET CO.

WE Can't Be Beat!
GO-GO-GO...

Support our team, in

Donovan-Galvani

BAN-LON® Separates are prized by women who love tops and pants because they are different, dramatic, and beautiful! The top is double knit in Monsanto Nylon, hand screened in an abstract large flower pattern in brown/beige/white, or black/grey/white. 34 to 40. \$16.00. The slim skirt is Ban-Lon knit nylon stretch in Mayan Spice, Flamenco Red, Spanish Brass, Cantina Blue, Festive Green, Aztec Purple, Black and Brown. 7 to 17, 8 to 18. \$16.00.

GET SET FOR THE KICK-OFF AT

Cobb's

Snnaaarri! Unruly hair? Tame it. Look under **BEAUTY SALONS** in the **YELLOW PAGES**. Where your fingers do the walking.



Just in ZENITH

GOLDEN Anniversary Football Time

Color TV Specials

THE EMPEROR SERIES
GIANT-SCREEN 23"
29 1/2" in. rectangular picture DIAG.
HANDCRAFTED COLOR TV

The DAIVISSON • Z4535M
Charming Early American styled console with Early American styled gallery, spooled vertical columns in the grille area, four simulated drawers, and bracket feet with concealed casters. Genuine Maple veneers and select hardwood solids and selective decorative overlay. Cabinet features two simulated drawers and full base with concealed casters. Super Gold Video Guard Tuning System. Zenith AFC—Automatic Fine-tuning Control. 9" Oval and 5" x 3" Twin-Cone Speakers. Zenith VHF and UHF Concentric Tuning Controls with illuminated channel numbers. Cabinet size: 32 1/2" H, 41 1/4" W, 20" D.
*Add 3 1/2" to depth for tube cap.

The BALBOA • Z4538
Classic Mediterranean styled console in genuine Dark Oak veneers and select hardwood solids (Z4538D), or in genuine Pecan veneers and select hardwood solids (Z4538P), both exclusive of decorative overlay. Cabinet features two simulated drawers and full base with concealed casters. Super Gold Video Guard Tuning System. Zenith AFC—Automatic Fine-tuning Control. 9" Oval and 5" x 3" Twin-Cone Speakers. Zenith VHF and UHF Concentric Tuning Controls with illuminated channel numbers. Cabinet size: 31 1/2" H, 41 1/4" W, 19 1/2" D.
*Add 3 1/2" to depth for tube cap.

GORDON WILSON APPLIANCE
202 Main Phone 272-3138



NEW OFFICERS INSTALLED IN RAINBOW GIRLS---Mulshoe Assembly No. 161 Order of the Rainbow for Girls held installation ceremonies Saturday night, September 14 in the Mulshoe Masonic Hall. Officers installed included front row: 1. to r. Worthy Advisor, Kathy Williams; Worthy Associate Advisor, Rena Lackey; Hope, Annette Williams; Faith, Debbie Burrows; Chaplain, Sue Pylant; Drill Leader, Darla Kendall; Secretary, Martha Jane Chapman; Treasurer, Debbie Kerr and Gayla Hooten. Back row, 1. to r., Love, Tracey Cowan; Nature, Lee Ann Yerby; Immortality, Kathy Seymore; Fidelity, Debra Rudd; Patriotism, Cynthia Puckett; Choir Director, Kathleen Jennings and Debbie McDaniel.

Rainbow Girls Hold Installation Service

Mulshoe Assembly No. 161, Order of the Rainbow for Girls, held installation Saturday, September 14, in the Mulshoe Masonic Hall. Yellow and white, chosen colors of the new Worthy Advisor, Kathy Williams, were displayed throughout the hall, as was the daisy, flower chosen by the Advisor. The installation was dedicated to Debbie Burrows, Sue Pylant and Annette Williams "for their faithful service to Rainbow." Faith, Hope and Charity is the theme of the Rainbow Girls and their symbol is the mustard seed. Their scripture is from 1 Corinthians 13:13 "And now

abideth faith, hope, charity, these three." Special guests, Annita, Donita and Connie Kelley presented musical selections, "I'll Walk With God" and "I Shall Not Pass Again This Way." Lindy Kerr, retiring Worthy Advisor, was presented a pin for her service. George Washington pronounced the benediction. Vicky Henexson registered guests as they arrived and assisted Vicki Kelley in serving refreshments following the installation. Installing officer was Lindy Kerr; installing marshal, Marcella Williams; installing chaplain, Alicia Airhart; installing

recorder, Rhonda Wagnon and installing musician, Sonja Bass. DeMolays escorted the new officers as they were installed. They included Kathy Williams, Worthy Advisor; Rena Lackey, Worthy Associate Advisor; Charlotte Davis, charity; Annette Williams, hope; Debbie Burrows, faith; Sue Pylant, chaplain; Darla Kendall, drill leader; Debbie Kerr, treasurer; Tracy Cowan, love; Kathy McCormick, religion; Lee Ann Yerby, nature; Kathy Seymore, immortality; Debra Rudd, fidelity; Cynthia Puckett, patriotism; Linda Lambert, service; Cristy Ford, confidential observer; Melita King, outer observer;

Treena Bryant, musician and Kathleen Jennings, choir director. Teachers To Hold Dinner Mrs. Kathryn Townsend, Victoria, president of the Texas Classroom Teachers Association will be guest speaker at the annual Mulshoe Classroom Teachers Association Public Relations Dinner, Tuesday, September 24, at 7:30 p.m. in the Fellowship Hall of the First Methodist Church. The banquet is held annually for faculty members and special guests.

Area 1 Young Homemakers Attend Banquet

Several area couples attended the Area 1 Young Homemaker's banquet at Harrall Memorial Auditorium on the campus of Wayland College at Plainview on Saturday night, September 14. They included Mr. and Mrs. Jimmy White, Mr. and Mrs. Jimmy Black, Mr. and Mrs. Robert Hunt, Mr. and Mrs. Bill Harmon, Mr. and Mrs. Dan Throckmorton, Mr. and Mrs. Pat Vinson, Mr. and Mrs. Aubrey Heathington, Mr. and Mrs. Pat Christian, Bill Bickel and Joe Harbin.

Area 1 Young Homemakers has 34 chapters in the 38 chapter area. Childress was awarded the title as the Outstanding New Chapter. Other new chapters represented were Mulshoe, Dumas, Lakeview and Memphis. Area 1 Young Homemaker officers for 1968-69 include:

AREA ARTIST PRESENTS WORKS

Peggy Pendergrass, a well-known area artist, is presenting many of her art works at the Dimmitt Art Center through September 23. Mrs. Pendergrass, who started painting at the age of 12, has studied with Dr. Emilio Caballero, Mrs. Ruth Tears, Dallas; Conney Martin of Lubbock and Hillburn of Amarillo. The show will consist of water miked media, varathane glazes and collage. The show is open to the public.

ESA Tea Honored Ex-Members

E.S.A. Sorority honored all ex-members and inactive members with a tea Sunday afternoon, September 15, in the First National Bank Community room. Ruby Gregory, Ece Benedict, Marjorie Precure, Sammie Lewis and Sue DeVaney, Dimmitt, were welcomed by officers of the Epsilon Chi Chapter who formed a receiving line to welcome the guests.

Ruby Gregory was the first president when the Sorority was formed in 1949. Marjorie Precure served as president in 1962-63 and Sue DeVaney was president in 1965-66. Red, white and blue appropriately decorated the serving table in keeping with Chapter theme for the year, "Our America." Twelve active members attended the tea. They included JoAddine Mayhugh, Laura Sealse, Pat King, Nonnie Howard, Marlene Martin, Mila Beth Gibson, Joy Tibbets, Carol Johnson, Melba King, Jeri Wagnon, Magann Rennels and Vicki Young.

President, Mrs. Ferman McBeth, Kress; First Vice President, Mrs. David Prewitt, Ralls; Second Vice President, Mrs. Dick Shaver, Hale Center; Third Vice President, Mrs. Wayne Stephens, Silvertown; Fourth Vice President, Mrs. Don Foreman, Idalou; Fifth Vice President, Mrs. Glenn Odum, Dimmitt; Secretary, Mrs. John Thomas, Quail; Treasurer, Mrs. Jearl James, Springlake-Earth; Parliamentarian, Mrs. Lewis Cannon; Area Advisor, Mrs. Ima Dora Haile, Plainview and State Advisor, Mrs. Nell Smith, Austin. Mrs. Ben Holcomb, Dimmitt, is State officer for 1968-70. Honorary membership was awarded to two retiring Young Homemaker Advisors, Mrs. Estelle Caffey, Friona and Mrs. Paralee Coleman at Wellington. Special recognition for outstanding service to the organization went to former advisors: Mrs. Rowena Fucker, Pampa; Mrs. Fannie Pittman,

Kress; Mrs. Glenda Harris, Roosevelt; Mrs. Jeanette Wilson, Ralls; Mrs. Beryl Burel-Smith, Hereford; Mrs. Dean Bradley, Hereford and Mrs. Sue Burgess, Sudan. Judges were Mrs. Mary Phillips, Floydada; Mrs. Jo Anne Bray, Mulshoe; Mrs. Nancy Morckel, Floydada; Mrs. Ollie Linder, Plainview; Mrs. Wanda Marble, Lockney; Miss Lynn Bourland, Clarendon and Mrs. Doris Weil, Hale Center. Mrs. Freda Province, Area Vocational Secretary and Mrs. Ima Dora Haile, Area Advisor, both of Plainview, also received special recognition. Outgoing Area officers were presented citations for outstanding leadership. They were: Mrs. R.B. Stanton, Idalou; Mrs. Ferman McBeth, Kress; Mrs. Benny Sides, Roosevelt; Mrs. Fudd Wiseman, Sudan; Mrs. Bill Brandt, Friona; Mrs. David Prewitt, Ralls; Mrs. Larry Dobbs, Hereford and Mrs. Don Fisher, Hale Center.



Announcing...

MULSHOE BEAUTY SALON

IS PROUD TO ANNOUNCE

THE ADDITION OF

PEGGY TRENT AND CHERRY PIERCE TO THEIR STAFF OF HAIRDRESSERS.

BOTH ARE GRADUATES OF JESSIE LEE'S, LUBBOCK.



"Call For An Appointment Today"

Mulshoe Beauty Salon

111 S. First Ph. 272-3258



Use Anthony's Convenient Lay-Away Plan

3 DAYS ONLY
Thurs., Sept. 19
Friday, 20
Saturday, 21

SUPER SAVINGS SPECIALS

Recent Market Trip Savings

SPECIAL SEPT. SALE OF OUTERWEAR

September Super Savings Month

38" - 45" Wide

New Fall Dress & Sport Fabrics

JUST ARRIVED

2 Yds. FOR **\$1**

Values to 1.19 Yd.

Easy to care for fine combed cottons, polyester and cotton blends, Avril® rayon and cottons. A colorful selection of solids, prints and novelties in many weaves and textures.

Special Factory Closeout Famous Name Brands

GIRDLES

Values up to \$10

Some First Quality Discontinued Styles Some Irregulars

Save up to 7.50

2 FOR \$5

\$2.99 Ea.

Special 3 Days Only

NYLON HOSE

1st Quality Seamless

6 Pr. **\$2**

Tots 100% Nylon WIND STOPPER JACKETS

Zipper Front Hooded

Reg. 1.99 1.67 Ea.

2 for \$3

BOYS' 9.98 Value

Sizes 8 to 18 ON SALE

7.88

COLORS: BRONZE, OLIVE

Fine quality corduroy CAR COATS

Rich warm acrylic pile lined body and quilted lined sleeves

MEN'S 12.98 VALUE ON SALE

9.98

SIZES 36 TO 46

Ladies' New Fall Floral Prints

OVER BLOUSES

Reg. 3.98 **2 FOR \$5**

ALSO SHOP THE FINAL 3 DAYS ANTHONY'S HOME FURNISHINGS SALE

Cannon Bath Towels

Solid colors, stripes, jacquards and prints. Absorbent cotton turkish towels in most every color, towels you would expect to pay much more for. Slight imperfections. Complete satisfaction guaranteed.

77c ea.

Ladies' Sleepwear

Soft warm acetate and nylon brushed herringbone waist length or long gowns. Pink, blue, maize. Sizes S, M, L, XL.

2 FOR \$3.

Ladies' Nylon or Dacron

Values to \$10.99

STRETCH PANTS

2 FOR \$13

\$7.00 Ea.

LADIES' & MISSES'

VINYL PIXIS

Just Arrived New Shipment

\$1 Pr.

Ladies 40-Den. Nylon

HALF SLIPS

White, Pink, Blue

Sizes S - M - L - XL

88c

Tailored style petticoats. Nylon elastic waistband. Excellent values.

Men's Crew Socks

Men's 75% Orlon® acrylic, 25% stretch nylon socks. Basics or fashion colors. One size fits 10 to 13.

2 PR. \$1.

Mens' Nylon & Wool Blend

SHIRTS

Reg. 6.95 Value 4.88 Ea.

2 for \$9

Girls' Panties

Sizes 4 to 14 tailored nylon briefs. All elastic waist. White, pink, blue, maize.

3 PR. \$1.

Boys' Permanent Press or Wash & Wear

JEANS

Blue Denim or Colors

Some 1st quality Some #1 Irregulars

2 FOR \$3

1.67 ea.

Special Group Mens' & Boys' SWEAT SHIRTS

Reg. 1.98 Value

\$1 Ea.

Lazbuddie News

By Mrs. C. A. Watson

Bobby Redwine, son of Mr. and Mrs. A.E. Redwine is a pre-med student at A.M. Debbie Bullock, daughter of Mr. and Mrs. Wyle Bullock is at University of Texas, Austin. Lazbuddie school students names and the colleges they are attending will be printed as they call in this news for this column. It is better that they call individually or have a parent call to get full details making it more newsworthy. Jan Mason, daughter of Mr. and Mrs. Lee Mason will attend Eastern New Mexico University this new fall term. Her major is business. Congratulations to Mr. and Mrs. Clyde Redwine on the birth of a son, born September 10, in Hereford hospital. The baby weighed 8 lbs. 3 oz. He has been named Randol Scott Red-

at Levelland Junior college to continue training in electronics. Coach Mike Flaniken and Coach Pat Casey and the Longhorn Players have entered their football season with a bang, winning 38-0, their first game at New Home there, Friday 13. Players are Roy Flores, George Wilson, Loy Dale Clark, Steve Foster, Troy Steinbock, Terry Scott, Jimmy Holand, Derrell Matthews, Jimmy Noland, Pablo Mendoza and Mark Ramage. The shorthorns, Jr. Hi, players won over Farwell Saturday a.m. 16-6. The players names will be given at a later date.

Congratulations to Dale Blackstone on his receiving the fine scholarship of \$650 on Education opportunity grant from Tech, Lubbock. Dale, a Lazbuddie student most of his school life is a major at the Tech in horticulture. He is the son of Mr. and Mrs. Harvey Blackstone, Muleshoe. Little Mitzie Edwards from Pampa was a recent visitor in the home of her grandmother, Lorane Gallman, Lazbuddie, Gary and Twila Albertson from

Kirksville, Mo. also visited her mother, Mrs. Gallman and his relatives in the area on their recent vacation here.

The Longhorn Cheerleaders to cheer the horns on this season are Raygena Treider, Lee Ann Harlin, Leatrice Gallman and Kathy Coker.

Mr. and Mrs. Dwain McCarty from Midland and Ricahrd Martin from Odessa were here during the weekend visiting friends and relatives in the area.

At the school board meeting last week the board members appointed Redford Wenner on the board to fill out the place of Alton Morris since his resignation. Morris resigned due to the fact that his wife Lillian had been hired as one of the faculty members. Mrs. Morris teaches the fifth grade.

Birthdays go to: Lee Mason, Dorthy Mason, Charlie Garza, Mike Hinkson, Danny Miller, Randall Barrett, Brenda Hall, Larry Wilkins, Hubert Harden, Nickie Noland and Betty Templer.

Connie Harlin and Kirby Burch are students at South Plains, Levelland, Sammie Harlin is at Texas Tech. Fred Bruch visited his mother in Oklahoma the past weekend.

Mr. and Mrs. Vick Hunt from Denver, Colo. visited Mrs. Lorane Gallman Sunday. They also visited Mrs. Gallman's mother, Mrs. Noble in the Muleshoe Nursing home. She is Mrs. Noble's sister.

The Methodist Church had their conference meeting with district superintendent, Rev. Apling in the Church Sunday with basket lunch in fellowship hall during the noon hour.

Texas Land War Raging

By -- Vern Sanford
Texas Press Association

A new Texas land war is raging.

Land developers and Texas Land Commissioner Jerry Sadler are in disagreement over the recently-revived \$400 million state Veterans Land Program.

Mindful of the VLP scandals of the mid '50's, Sadler is adopting cautious, conservative policies to guide future state policies. Program permits qualified veterans to buy land on the low interest, long-term pay plan.

Developers claim Sadler is tight-fisted and is jeopardizing the program by low-ceilinging land value appraisals and limiting sales to 10 per cent of large sub-divisions.

Under Sadler's limits, developers with tracts of 1,000 acres can sell only 100 acres through the state bond-financed program. The Commissioner argues that the state should not spend all its constitutionally-authorized bond funds in a few areas.

Central Texas developers counter that land values already are soaring and that veterans held out of the market now eventually will pay higher rates. Sadler says land already is selling at prices beyond reason in Travis, Kerr, Bastrop and Hidalgo Counties. Realtors say Sadler's 25 appraisers are putting price tags on property \$40 to \$100 an acre too low right now. They claim qualified veterans are lining up to buy land at prevailing prices and the program is a "flop."

"Trying to make a fast buck at state expense," reprimands Sadler, who staunchly maintains he is having none of that kind of business.

One realtor is seeking a legislative investigation. WATER PLAN Texas' monumental water program -- to move surplus water from the Mississippi River and Northeast Texas to

the drier areas of South and West Texas -- is not to be released until late October or early November.

But the Texas Water Development Board, which is working up the plan, let some details slip out when it approved its budget request to be submitted to the Legislature for the two-year period beginning September 1, 1969.

Board's budget requests a more than 50 per cent increase in appropriations for the agency so it can get the plan into operation before Texas faces economic disaster from a lack of water.

A time schedule for the project -- estimated to cost around \$10 billion -- will be presented to the Legislature, outlining what needs to be done in the next six years.

First step is gathering the surplus Northeast Texas water for the Trans-Texas Canal, which will move water west to supply Dallas-Fort Worth, then on through the concrete-lined canal to the South Plains and areas of West Texas and the El Paso.

Then by the end of 1971, negotiations must be completed to bring surplus water from the lower Mississippi, below New Orleans, across Southern Louisiana, then into either the Sabine River or up the Red River to the Sulphur and Cypress Rivers.

By the middle of 1974, federal, state and private sources need to agree on the construction of nuclear -- energy power-generating plants to produce the electricity necessary to run the hundreds of pumps which will actually move the water.

South Texas will be served by a South Texas Canal, which will run from the lower Sabine River near Orange down the coast of the Lower Rio Grande Valley. This project will need to be approved by Congress by mid-1972.

State will probably have to pay 25-30 per cent of the cost of the project. This means that the \$400 million borrowing power the board now has will have to be expanded to at least \$2.5 billion. Legislature would have to approve this in January, with the people voting on it in 1970.

NEW LIQUOR PROBE

A House committee probing influence of vending machine operators on tavern keepers will hold hearings in Austin, Fort Worth, Houston and probably two smaller cities.

Dallas Attorney David Witts was named chief counsel and investigator of the committee headed by Rep. R.H. Cory of Victoria, in conference with Texas Liquor Control Board Acting Administrator O.N. Humphreys Jr.

Panel, armed with sworn statements from tavern operators, will look into rumors of Mafia and crime syndicate activity. Only witness heard to date said he knew of no such outside influences in his area.

LISTEN

to
PAUL HARVEY
NEWS

on
K R A N

Radio Station
1280 on your dial
MORTON, TEXAS

But he testified vending machine operators should be prohibited from lending money to taverns and drinking clubs.

APPOINTMENTS ANNOUNCED

Donald R. Fishel is new chief of Texas Liquor Control Board enforcement division, Sherman McBeath of Wichita Falls will replace Fishel as assistant enforcement chief, and Leonard J. Lozano of Poteet will be LCB supervisor of investigations.

Gov. John Connally named Bryan Beck Jr. of Beaumont and H.J. (Bubba) Shands Jr. of Lufkin to Lamar State College of Technology board of regents. He re-appointed Pat Peyton Jr. and Otho Plummer of Beaumont to new terms on same board.

William A. Wroe, Austin banker, has been appointed treasurer of the Republican Party of Texas.

Dr. Richard Tozer of Dallas is executive director of the Texas Nixon for President finance committee.

LOUDER SENATE

Newsmen and spectators in the Texas Senate have been complaining for years that they can't hear what the Senators are saying to each other on the floor, making it rather difficult to follow debate.

A San Antonio firm is solving that problem, at the request of a special Senate committee created by the June special session.

Company plans to install a powerful amplifier and 55 speakers around the chamber-- specially attuned so that deep-throated Senators and high-pitched ones, too, will be heard by all in the chamber.

Each senator will have an individual desk microphone, and a central panel at the president's desk will allow the Senators to be turned off and on by the Senate secretary. Cost of the system will be from \$20,000 to \$25,000.

ATTORNEY GENERAL SPEAKS

A write-in vote for President and Vice President is valid and must be counted, regardless of whether the political party of the candidates "written in" has qualified to have names printed on the ballot, Atty. Gen. Crawford Martin held. Martin said if the Secretary of State has not been notified as to identity of the slate of presidential electors for write-in candidates, inquiry may be made by him as to the elector's names.

In other recent opinions, Martin concluded that:

*A county judge performing duties of county school superintendent (where office of superintendent is abolished) is not entitled to office and travel pay or salary of an assistant in addition to his \$2,650 annual compensation for extra duty.

*Palo Duro Canyon State Park revenues collected since last November 28 must be deposited in state park fund with state treasurer.

*Texas State Board of Registration for Professional Engineers can pay temporary employee to help handle its examination papers.

JUVENILE DELINQUENCY Rep. Vernon Stewart of Wichita Falls, chairman of the House Committee on Juvenile Crime, offers a new approach to juvenile-crime problems.

Stewart wants to pay Texas' 254 counties to "keep their

young people out of trouble." This would involve a state program of paying the counties \$2,000 a year for each juvenile they keep out of the state reformatories.

Proposal is based on the fact that not only is the state planning to spend \$10 million in the next three or four years on building new Texas Youth Council facilities, but will also spend \$2,000 per year per "student" to keep them in the "schools."

Stewart said his plan "would save the state taxpayers the cost of the buildings to house them and the county taxpayers the cost of the losses they create by delinquency."

MILK FREIGHT RATES

For the first time, Texas Railroad Commission has established rates, rules and regulations on the shipping of milk in relatively small quantities from dairy farms to milk processors.

Previously, rates were simply agreed on by the dairyman and the transporter.

New rates will be based on a mileage scale from 10 to 200 miles and are different for Grade A and ungraded milk and according to the size of the shipments, in four brackets from fewer than 5,000 pounds up to 10,000 pounds and more.

Rate charts--Motor Freight Commodity Tariff No. 30-- are available free from the Railroad Commission, Transportation Rate Section, Austin.

SHORT SHORTS

Dove hunters bagged 20 per cent fewer whitewing doves-- 220,692 -- in the lower Rio Grande Valley this year according to the Parks and Wildlife Commission.

Attorney general said his office has obtained an injunction against Chapman Oil Company of Fort Worth for distributing barrels of fake Chevron oil.

Water Development Board will lend \$2 million maximum to the San Jacinto River Authority for Conroe Dam and Reservoir.

State general fund surplus at state of new fiscal year was \$32.9 million says State Comptroller Robert S. Calvert.

A \$100,500 federal grant has been approved for Marina Bay Park recreation facilities at Wichita Falls.

Of the 60 Texas school districts that the U.S. Department of Health, Education and Welfare said last March were not meeting federal desegregation standards, 47 are now clear, 10 are still up for HEW hearing, two are awaiting federal rulings and one (Carthage) has had its federal funds cut off.

★ ★ ★ ★ ★ ★ ★ ★ ★ ★
★ VETERANS ★
★ Q's and A's ★
★ ★ ★ ★ ★ ★ ★ ★ ★ ★
Q -- I was recently discharged from military service and want to enter the state university this fall. Should I inform the Veterans Administration now or merely tell the university registrar of my veteran status when I enroll?
A -- Inform the VA regional office where your records are on file as soon as possible of your intention to enroll in school this fall. By applying early for the VA Certificate of Eligibility which you must have you will be assured of no delay in receiving your monthly educational assistance allowance check from the VA once school starts.

FOR A MORE LOVELY FIGURE

That Is All You NO PADDING BONEING OR STAVES.

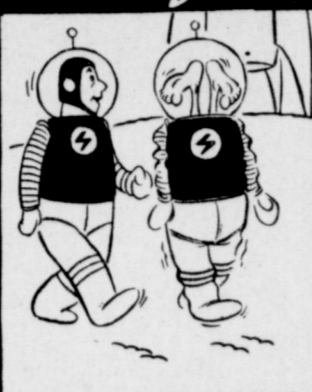
- ★ Bras.
- ★ Girdles.
- ★ Sleepwear.
- ★ Ergee Hose

FOR A PERSONAL FITTING CALL 965-2288

WADDELL FIGURETTES

Rt. 1 Box 67 Muleshoe, Texas

Out of Orbit



ROUGHEST LANDING EVER MADE!

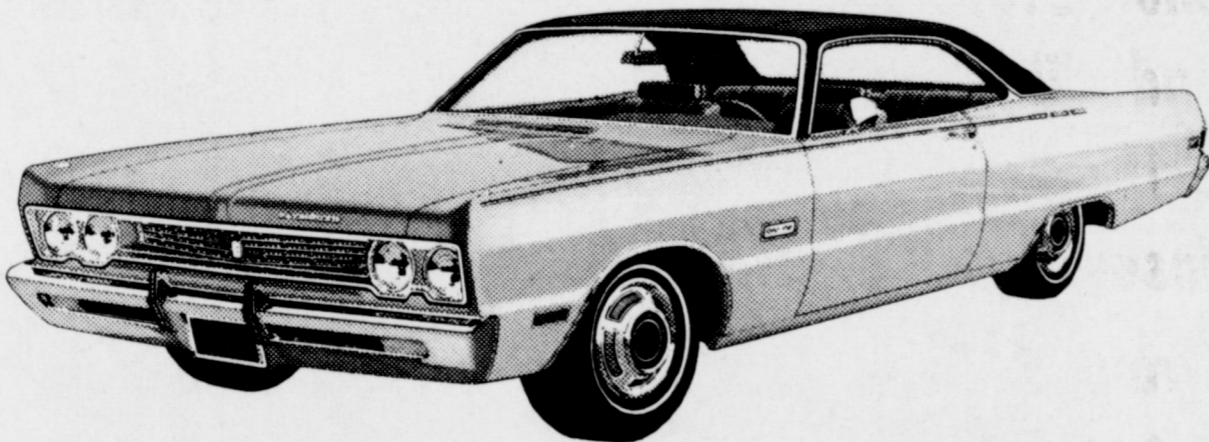
Commercial PRINTING for every business need

FOR FAST EFFICIENT SERVICE

CALL Art-Craft PRINTING CO. Phone 272-4681 105 E. Ave. D Muleshoe



Announcing the 1969 Plymouths.



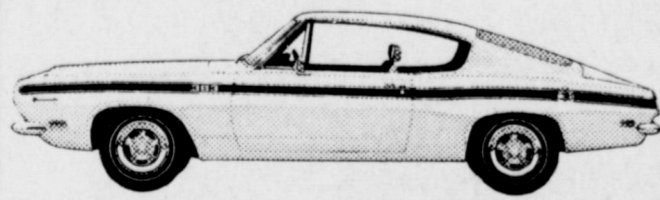
Sport Fury 2-Door Hardtop



Road Runner 2-Door Hardtop



Sport Suburban Wagon



Barracuda Sports Fastback

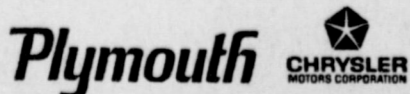


Valiant Signet 4-Door Sedan

FURYS · BELVEDERES · BARRACUDAS · VALIANTS

Now there are 64 great new Plymouths to win you over. Completely restyled Furys. Newest edition of the success car of the sixties. Longer, wider, roomier than ever. 6 new wagons, too. The beat goes on with Belvedere. Fastest-growing line in the mid-size market.

Cut loose with Barracuda--pure sport from bumper to bumper. Eight new Valiants because an honest compact makes a lot of sense to a lot of people. In the past two years, three-quarters of a million owners of competitive cars have been won over to Plymouth. See for yourself why.



Look what Plymouth's up to now. At your Plymouth Dealer's, September 19.

B M G MOTORS, INC.

1701 W. American Blvd.

Muleshoe, Texas

AUCTION SALE

Saturday, Sept. 21, 1968, 7:30 P.M.

COMPLETE LIQUIDATION OF JOHNSON-POOL FURNITURE STORE 320 Main Street, Muleshoe, Texas Randy Johnson, owner.

Building Will Be Open Friday and Saturday For Inspection.

ALL NEW FURNITURE & TOOLS Terms Cash. All Accounts Settled Day of Sale.

Knowles Auction Service

Jack Knowles - Jimmy Knowles, Nelvis Knowles, Tom Flowers Regular Sale at Knowles Auction Sat. Night, 7:30 P.M.

Muleshoe's Annual "BACK THE MULES"

CONTEST

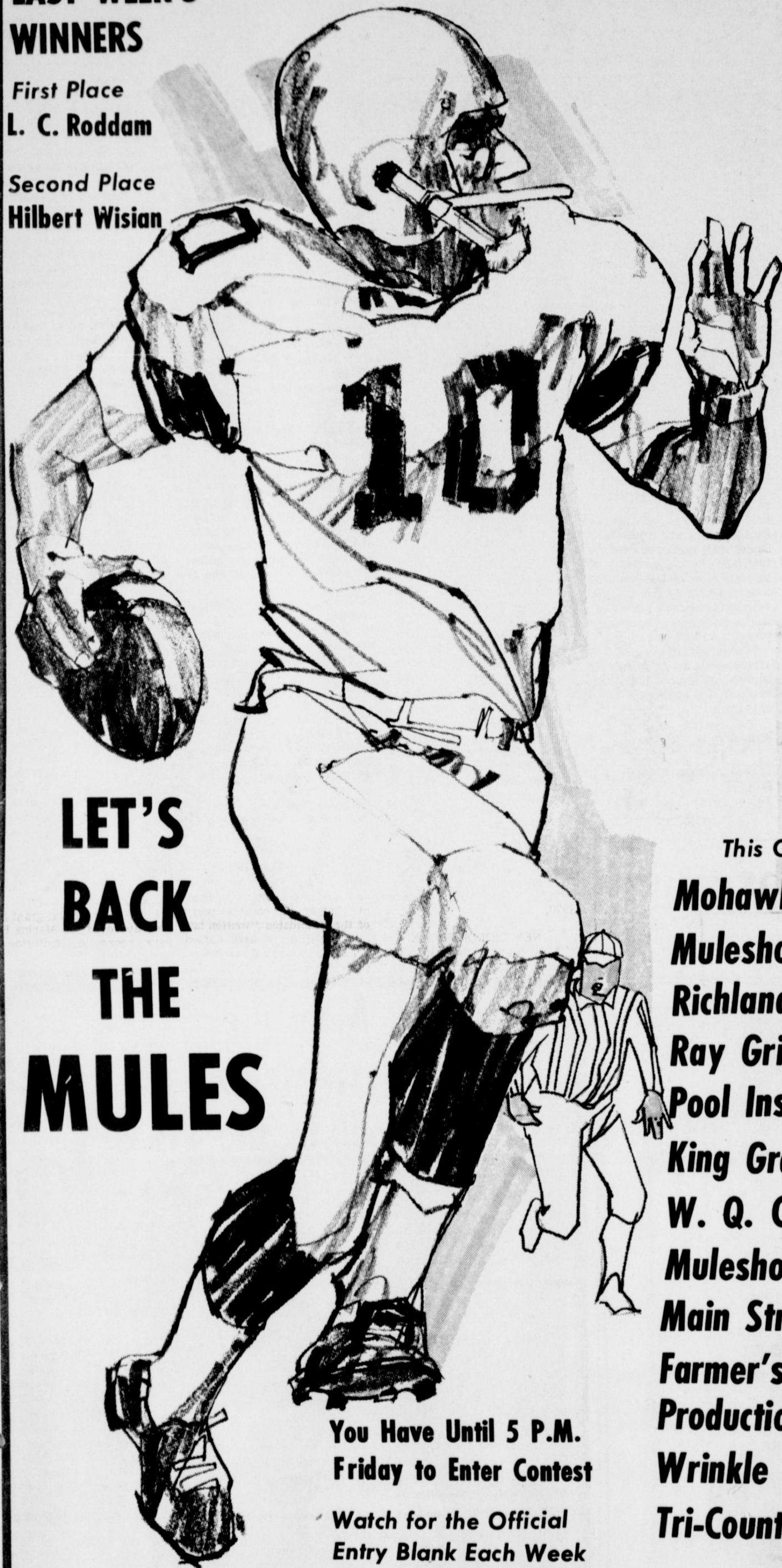
FOOTBALL

ENTER TODAY! and WIN CASH PRIZES!

LAST WEEK'S WINNERS

First Place
L. C. Roddam

Second Place
Hilbert Wisian



LET'S BACK THE MULES

You Have Until 5 P.M.
Friday to Enter Contest

Watch for the Official
Entry Blank Each Week

WIN WEEKLY PRIZES!
FIRST PRIZE \$5 **SECOND PRIZE \$3**
GRAND PRIZE \$50 For expenses and two tickets to the Cotton Bowl at Dallas, Texas. There will also be a contest and prizes for the Bowl Games!

This Contest Made Possible by the Following Mule Booster Firms:

- | | |
|--|----------------------------|
| Mohawk Auto Parts | Muleshoe Locker |
| Muleshoe State Bank | Muleshoe Electric |
| Richland Hills Texaco | James Glaze Co. |
| Ray Griffiths & Sons | Art Craft Printing |
| Pool Insurance Agency | White's Cashway |
| King Grain & Seed Co. | Plains Auto Parts |
| W. Q. Casey Insurance | First Street Conoco |
| Muleshoe Publishing Co. | Mills Machine Shop |
| Main Street Beauty Salon | First National Bank |
| Farmer's Co-op Elevator | Muleshoe Co-op Gins |
| Production Credit Association | Muleshoe Motor Co. |
| Wrinkle Welding & Machine Shop | Ready Mix Concrete |
| Tri-County Savings & Loan Association | Beavers' Flowerland |

OFFICIAL ENTRY FORM
ONLY ONE ENTRY PER PERSON

NAME _____ ADDRESS _____
 CITY _____ STATE _____

TEXAS..... <input type="checkbox"/>	HOUSTON..... <input type="checkbox"/>
MICHIGAN STATE..... <input type="checkbox"/>	SYRACUSE..... <input type="checkbox"/>
A & M..... <input type="checkbox"/>	L.S.U..... <input type="checkbox"/>
S. CAROLINA..... <input type="checkbox"/>	DUKE..... <input type="checkbox"/>
GEORGIA TECH..... <input type="checkbox"/>	T.C.U..... <input type="checkbox"/>
IOWA STATE..... <input type="checkbox"/>	ARIZONA..... <input type="checkbox"/>
WASHINGTON..... <input type="checkbox"/>	RICE..... <input type="checkbox"/>
OKLAHOMA..... <input type="checkbox"/>	NOTRE DAME..... <input type="checkbox"/>
AUBURN..... <input type="checkbox"/>	S.M.U..... <input type="checkbox"/>

TIE BREAKER

Abernathy _____ SCORE At Muleshoe _____ SCORE

RULES OF THE CONTEST:

- . Muleshoe Publishing Co. Box 449 - Muleshoe, Texas
- . Contestant must be 12 years of age or older.
- . Only one entry per person may be made for any one contest.
- . Weekly contests are open to everyone except employees and families of this newspaper.
- . Entries are to be judged by the Sports Editor and staff of this newspaper.
- . Bring or mail your entries to the Journal office. Mailed entries must be postmarked not later than 5 p.m. Friday.
- . Winners names will be published in this newspaper each Thursday following the close of the weekly contest.
- . Choose the team you think will win.
- . 10 points for 1st. place, 5 points for 2nd place determines the Grand Prize Winner.

DON'T MISS ANY OF THE FUN & PRIZES
SUBSCRIBE TO OUR PAPER: CALL 272-4536

- Cobb's**
- Dari Delite**
- Ladd Pontiac**
- BMG Motors**
- Dinner Bell Cafe**
- Texas Sesame**
- Western Drug**
- Jerry's Tire Co.**
- Decorator's 216**

Editorial

Dubcek Handcuffed

An interesting revelation concerning the brutal Soviet invasion of Czechoslovakia has come to light and that is how the Russian army treated Czech Communist Party leader Alexander Dubcek when it occupied Prague. As reliably reported, Dubcek was speaking on the telephone in a private office in the Central Committee building when Soviet troopers with machine guns burst in. They jerked the telephone from his hands, ripped the line from the wall and handcuffed him. He was then flown to a camp in Slovakia as a prisoner.

Only when Czechoslovakian President Ludvik Svoboda, with an iron nerve, flew to Moscow and held out for Dubcek's release did Dubcek's fate take a better turn. Svoboda was given an ultimatum: Czechoslovakia would be split into two Soviet protectorates (much as Hitler had done) if he did not agree to back a new Soviet-approved government.

Svoboda refused to discuss the question until Dubcek and others were freed. This, and Moscow's gradual realization that Czech citizens were solidly behind the Dubcek-Svoboda regime, that it would be next to impossible to form a stooge government that could achieve any following, led to Dubcek's release.

This story, from a Czech official who was there, clearly puts the lie to Russian claims that Moscow was asked to intervene. It is a fine description of Communist-style "democracy."



SEE ANYTHING ?

All letters to the Editor of reasonable length are welcome and will be published. Letters to the Editor must be signed, however, names will be withheld upon request.



Dear Turnrow Tunkel . . .

O. C. McBride

sthd inside turnrow tunkel

DEAR TURNROW TUNKEL:

Did you read where a sociologist blames advertising for much of the unrest in America, by causing some people to be discontented with their lot?

He may be right. I know of one television commercial that is causing a lot of trouble--the one put out by an airline encouraging wives to go along with their husbands on business trips.

I understand that an electric saxophone is now on the market. It weighs 68 pounds.

I'll bet that thing makes a lot of racket, but anyone big enough to play it probably won't get many complaints.

Some political experts are saying that the Democratic party can no longer count on the solid support of organized labor as in the past. How did they reach this conclusion?

They probably figure that after some of the recent wage settlements, many union members are going to be in such a high bracket they will start thinking like Republicans--worrying about taxes and Government spending.

I read that a marriage counselor says many marriages suffer because of a lack of communication between the partners.

Maybe so. It might help if wives didn't always want to do their communicating while their husbands were trying to read the morning paper, or watch a favorite television show in the evening.

I understand that Larry O'Brien, Vice President Humphrey's campaign manager, has accepted a job with the Howard Hughes organization after the campaign, although he would be in line for a high government position if Mr. Humphrey won.

That's good thinking on Larry's part. There's a lot more future in working for an outfit that is solvent.

Did you know that a British scientist has invented an anti-snoring device? When a person begins snoring, it delivers an electric shock.

That's not much improvement over my wife's system--an elbow to my ribs.

Letters From Readers

Dear Editor;

Thank you for the cooperation you have given to make "Tourist of the Week" a success. Your efforts to promote the City of Muleshoe are to be commended.

Through your participation, you have helped to fulfill the Tourist Development category essential to Muleshoe's attaining the Blue Ribbon City Award.

Again, thank you for your outstanding display of citizenship

for Muleshoe, and the promotion of "Tourist of the Week."

Sincerely,
Bob Stovall
Chairman
Tourism Committee
Muleshoe Chamber of commerce



"Could've used that guy at Normandy. An automobile, properly cared for, is a pleasure to drive. Regular visits to our station for FREE service will pay off for you. It is our pleasure to serve you.

CENTRAL SERVICE

Big Enough to Accommodate
Small Enough to Appreciate
221 A m. Blvd. Ph. 272-8944

IRRIGATION MOTOR REPAIR??

YES SIR...

Anything from a minor tune up to a complete overhaul -

Your 'SATISFACTION' is our only GUARANTEE

TRY US FIRST!

PLAINS AUTO SERVICE

(ACROSS FROM CASHWAY)

SOUTH MAIN MULESHOE Phone 272-4576



John Tower
United States Senate
COMMITTEE ON ARMED SERVICES

THE AUTUMN OF A CONGRESS

It always is difficult for Congress to do its work in the midst of an election campaign. Too often legislation becomes wrapped in emotion. Too seldom does good law result. Nevertheless, the seriousness and complexity of our national problems made it impossible for Congress to finish its work before the national nominating conventions. So, here we are in September and October. I frankly hope we can finish up on a few "must" measures and adjourn soon until January. It is clear that before January the people of the United States will have rendered some ballot box judgments on just what direction they want our nation to go. Only laws passed after January can reflect that new direction, and I think the people are entitled to have any major decisions postponed until their judgment has been rendered.

We will have to finish up on a few items left over from the spring. Work must be concluded on a Higher Education bill and on the drastically curtailed Foreign Aid bill. And, there still have to be funds appropriated to run the Defense Department, the Labor Department and the Department of Health, Education and Welfare. A law to help control misuse of drugs needs to be perfected, as does a compromise gun-control bill. And, of course, there is to be extended debate on the suggestion that Abe Fortas be approved as Chief Justice of the Supreme Court.

A NEW SUPREME COURT CHIEF JUSTICE

It is inconceivable to me that the honest, law-abiding majority of citizens in this country should be forced to live in perpetual fear of chaos, anarchy, riots, physical assault on their persons and property, and the assassin's bullet. Law and order must be returned to this country; there is no reason why law and order cannot be returned to this country.

The Supreme Court as the third branch of our government bears part of that responsibility.

It is time for the Supreme Court to expend a little more effort to protect society from the criminal. It is time for the appointment of a Chief Justice who will recognize the absolute necessity of drawing a proper balance between the protection of individual rights and the protection of our society from those who wish to destroy it.

The Chief Justice, in his role of leadership and authority, cannot afford to be above the really basic problems of America, the threat of disintegration and decay within, the violence and destruction which are spreading the plague of fear. No society--least of all a free society--can subsist if the challenge of illegal violence is not met with all the force of legal authority necessary to subdue it. Hence, the Chief Justice of the United States must be a man who will exercise his leadership to put the legal and moral force of the Court behind the massive effort which must be made against lawlessness.

The Supreme Court has in recent years failed in its responsibility to take proper cognizance of the urgent problems which face the country today--the most important of which is the dire need to protect society from criminals.

I feel it is essential, therefore, that we have as Chief Justice in these trying times a man of more moderate philosophical persuasion than Mr. Fortas so that our Supreme Court can regain the respect and confidence of the American people.

And, I feel that the new President elected by the American people in November should have the responsibility of appointing that new Chief Justice.

COMMUNISM VERSUS LIBERTY

The Soviet Communists gave us a pretty good lesson last month in the trustworthiness of tyranny. The cruel oppression of the Czechoslovak people by the armed forces of Russia's Warsaw Pact jangled a complacent world like a burglar alarm in the night. We were reminded again that the Iron Curtain re-

mains iron and that the Soviets--who are about to achieve strategic military equality with the U.S.--act only in their own self-interest and despite world opinion.

It was at very least a sobering reminder to some in Washington who have professed to see a "detente" of good will and restraint between the West and Russia. Our hearts go out to the people of Czechoslovakia. We understand their aspirations. We admire their courage. And, although American military intervention is neither wise nor feasible, I for one hope that the very great moral and economic power of the United States can be utilized in such a way that someday the freedom-loving Czechs and Slovaks and other captives of communism may regain their liberty.

Vietnam remains, of course, the most tragic example of Communist violence. I'm pleased that General Westmoreland has returned to Washington to become Army Chief of Staff, and I have talked with him a number of times about what needs to be done to bring peace in Vietnam. It is clear that we must end the war honorably and consistent with both our limited immediate

aims and our long-term goals for a peaceful Pacific. I think we can arrive at a negotiated settlement, but to hasten that end our Vietnam effort must be made more effective. We need a new strategy that does not waste our military superiority, that allows the South Vietnamese to do more for themselves, that begins to "de-Americanize" the conflict, and that is not hostage to the mistakes of the past and not built on past errors. We have not been out-fought, but out-thought in Vietnam.

KEEPING GUNS FROM CRIMINALS

Texas has been sending me a record volume of mail in recent weeks sharing with me their views on guns and gun control. If you have written me and have not yet received reply, I hope you will be patient. The volume of mail has overwhelmed my office's capacity to reply promptly.

In any event, I have already told you in many speeches around the state that while I am in agreement with the need for mailing restrictions on all sorts of firearms, I am not in favor of federal licensing or registration of guns.

There is, however, another very important area of federal concern. And, that is the need for prompt action to disarm non-law-abiding citizens but criminals. I have, therefore, joined in sponsoring a bill which directly attacks the gun all of us are most worried about--the gun in the hands of the criminal.

My bill would make it an additional, punishable crime to use any firearm in the commission of any felony that breaks federal law.

Mandatory jail sentences for armed crime would be a direct, frontal, inextinguishable attack on the professional criminals in our society, particularly those who repeat armed crimes over and over. It is these guns an orderly society must control.

The FBI has told us that the national crime rate shot up 16 percent last year; that each American stands a 71 percent better chance of being a crime victim than he did eight years ago. We have a violent crime every minute; a murder every 43 minutes; an assault every 20 minutes; a burglary every 20 seconds.

It is time to let the punishment fit the crime. And jail is the proper punishment for armed crime.

VIEWS REVIEWS

RAMSEY CLARK, Attorney General:

"This year was the most effective year in the history of federal law enforcement's effort to eliminate organized crime."

BILLY GRAHAM, Evangelist:

"The only hope for the United States is for a sweeping spiritual commitment by the country's citizens."

EDMUND S. MUSKIE, Democratic nominee for Vice-President:

"I've always found the role of underdog to be a very comfortable and routine one."

RONALD REGAN, Governor of California, on Chicago riots:

"We might as well wake up to the fact that there is a plan to all of this."

'NOSE AROUND'

... BUT

Be sure to see the new

1969

Chevrolts

Thursday, September 26th.

at

CROW CHEVROLET CO.

"You'll go no farther"

Meet the

Muleshoe State Bank

Customer of the Week

Roy Foster

Roy Foster, salesman for Muleshoe Ford Tractor Inc., is Muleshoe State Bank's customer of the week. He and his wife, Evadna, live at 314 W 9th. street and have four children: Mike, a student at Texas Tech, Katie Jean, a student at Texas Woman's University, Denton and Susan, 13 and Roy Don, 9 of the home. They attend the Church of Christ. Foster said he had banked at the Muleshoe State Bank 20 years and "I think this bank is alright. They have been OK with me.

Muleshoe State Bank is proud to recognize this customer of the week.

MULESHOE STATE BANK

Member FDIC

Entomologists at A&M Study Sunflower Moths

Results of a two-year study conducted at Texas A&M University on chemical control of the sunflower moth may help push sunflower production to the forefront of Texas agriculture. Researchers in the Entomology Department, working under a grant from the Entomology Research Division of the U. S. Department of Agriculture, found that certain insecticides not yet cleared for use on sunflowers may be the answer to economical production of the oil-bearing crop.

The sunflower moth has been a major limiting factor in production. Larvae or "worms" burrow into the head of the flower and eat seeds, tunnel into stems and may cause heads to fall. Untreated blooms examined on some of the check plots in experiments here have harbored an average of 118 larvae per head, George L. Teetes, research associate with the Entomology Department, said recently.

Teetes and Neal M. Randolph, A&M associate professor of entomology, tested numerous insecticides in two fields here and at the A&M Research Center at McGregor during 1967 and 1968.

Last year check plots here produced an average of 585 pounds of seed per acre, while chemically treated plots yielded

At present, three applications of the only insecticide cleared for use on sunflowers (endosulfan) runs much higher—about \$15 per acre each year for the three required applications.

Spraying of sunflowers should begin when about 25 percent of the plants are in bloom, Randolph said.

"Some success in controlling the moth larvae has also been noticed by later planting in the year. We should stress that this comes from only one year's work and only here at College Station, but we found that there were fewer larvae in sunflowers planted in mid-April than those planted in early March," Teetes added.

A major problem in controlling the pest is the availability of numerous wild host plants for the four to five generations

each growing season. Several species of wild sunflowers, gaillardia and golden crown-beard are excellent hosts for the moth larvae. However, there are also about seven types of wasps and flies which are parasitic on the larvae and can sometimes keep the sunflower moth population in check, say the entomologists.

Vietnam News

as reported by Marine Corps Combat Correspondents and edited by Gysgt. Bob Montgomery

Five times last month a young Marine from "K" Co., 3rd Bn., Twenty-seventh Marine Regiment has had bouts with enemy booby-traps.

Five times, he walked away from them.

Cpl. David E. Hill, 19, Scenery Hill, Pa., during a platoon size

mine sweep was going up a trail to blow a dud 105mm artillery round when he stepped in a foot trap and ignited a Chinese communist grenade.

"When the grenade exploded it blew off my left boot and peppered my trousers' legs, but I just received a few scratches," Hill said.

Two weeks later the Leather-necks were checking out a village when Hill stepped in the same kind of trap while entering a vacant house. This time the concussion from the grenade blew him backwards. . . he walked away without a scratch.

A few days later during a squad-size patrol, Hill was walking point when he spotted a booby-trap about three feet from him.

"Luckily for me I stopped because after I stood there for a few seconds I felt something under my right foot. I didn't move my feet as I leaned over and ran my finger under my boot.

"The hard object turned out to be an M-26 hand grenade without a pin, and I was standing on the spoon.

"The twine that some Viet Cong had placed over the spoon was broken, so I carefully edged a rock over the spoon and got out of there.

"Later we blew both of the booby-traps in place," Hill commented.



SPIRIT 'ROUSER—The students of Muleshoe high school, parents and boosters gathered on a downtown street last Thursday for the first parade and bonfire of the 1968-69 football season. The gala event was staged prior to Friday night's tangle with the Dimmitt Bobcats. Top picture shows the Mighty 'M' Band in the parade. The group is also shown as they swing into action with cheerleaders and twirlers at the bonfire sight, in bottom picture.

RACHEL, RACHEL

"Rachel, Rachel!" is based on the novel, "A Jest of God," by Margaret Laurence. Joanne Woodward plays Rachel, a spinster schoolteacher. Being a 35-year-old unmarried schoolteacher is not the end of the world, but caring for an ailing mother who is constantly nagging and prying into every corner of Rachel's life is enough to make a nervous wreck of anyone.

When Donald Moffat, played by James Olson, asks Rachel for a date she is so grateful that she thanks him. Up to now Rachel has seemed near hysteria and after her date with Moffat (which leads to an affair) she is even more upset in her dual role.

The film is directed by Miss Woodward's husband, Paul Newman, and although it is his first try at directing he does an excellent job with "Rachel, Rachel!"

NYLON WIND-BREAKERS \$3.49
Blue-Brown-Navy or Green
At Corner Drug & Variety

The average yield at McGregor this year was 192 pounds per acre on check plots while treated acreage zoomed to an average of 984 pounds.

Several of the effective insecticides tested cost only about \$2 per acre for each application, and two to three treatments were usually needed during the growing season.

Gross income from one acre yielding 2,000 pounds would be from \$80 to \$100, at only about \$6 per acre insecticide cost, while untreated sunflowers yielding approximately 600 pounds would gross only \$30 per acre, the researchers reported.

IRS Approves Industrial Bond

Internal Revenue Service has approved issuance of \$5 million in industrial bonds by the Plainview Industrial Foundation, moving a step closer the construction of a beef packing plant near the city, according to the Sunday edition of the Plainview Daily Herald.

According to estimates, the plant at full capacity would handle 1,500 head of cattle a day and employ 250 persons.

In the industrial resume of Plainview in the Herald story, it shows that several companies with building projects are located just outside the city limits and are not included in the year-long total of building permits issued by planning director Harold Gladman for \$7,474,050.

Jimmy Dean Pork Packing Plant is located northwest of Plainview. Groundbreaking ceremonies for the plant were held Friday afternoon following final approval of loan assistance to build the facility.

Construction cost of the plant earlier had been set at \$500,000

for a 16,000 square foot building, but size of the structure has been increased to cover 25,000 square feet, Don Dean, a member of the JDT Corporation which is building the facility said the plant will have a capacity of processing 600 head of hogs per day.

It is expected to employ 100 to 120 persons within a year after production begins, with an annual payroll of approximately \$750,000.

MULESHOE JOURNAL
Established February 23, 1924
Published by Muleshoe Publishing Co., Inc.
Every Thursday
L.B. Hall, President
Jessica Perry Hall, Secretary-Treas.
TEXAS PRESS ASSOCIATION
Member since 1968
L.B. Hall, Publisher & Managing Editor
Doris Kaiser, News Reporter
Clida Creamer Williams, Society Reporter
SUBSCRIPTIONS:
Zone I—Baylor-Parker-Cochran-Lamb counties, \$4.00 per year, \$4.50 per year by carrier. With Thursday Muleshoe Journal, both papers, \$5.00 per year, \$6.00 per year by carrier.
Zone II—Out-of-Territory, \$5.00 per year. With Thursday Muleshoe Journal, both papers, \$6.25 per year.
Monthly, by carrier - 55¢; single copies-10¢
Advertising rate card on application.

MRS BAIRD'S

Stays Fresh Longer

Announcing your next car:
It can surround you with a fuselage.
A sweeping new design where body and frame are one.

1969 Three Hundred 2-Door Hardtop

The great new Chrysler.

Your next car can be a gently curving line of tempered glass and steel that sweeps quietly around you. A molded shell of stressed skin and thousands of miniature welds.

Your next car can have a cockpit. Instead of just a seat and a dashboard.

Your next car can provide a controlled environment where man creates his own climate and the perimeter of the cockpit blots away the murmur of road and wind.

Your next car can cater with soft seats fitted to the contours of your body, and memory systems that complement your driving habits.

Your next car is 15 choices, but only one shape.

Your next car is one you can still move up to. Easily.

Your next car is here. The great new Chrysler for 1969.

CHRYSLER
CHRYSLER
MOTOR CREDIT CORP.

See it at your Chrysler Dealer's Sept. 19th.

B M G MOTORS, INC.
1701 W. American Blvd. Muleshoe, Texas

GREATER BLOWOUT PROTECTION . SMOOTHER RIDE!

Buy Your Dual Customs Now!

- Dual Customs' 4-FULL-PLIES NYLON Body gives greater protection against bruise blowouts and blistering hot pavement.
- Do you drive fast? Dual Customs' LOW PROFILE DESIGN gives speed endurance. NEW JET-FLO TREAD for smoother riding.

GUARANTEED FOR 25,000 MILES
600-13 TUBELESS BLACKWALL

944*

NO MONEY DOWN

TIRE SIZE	EXC. TAX	BLACKWALL	WHITEWALL
600-13	1.58	\$9.44*	\$11.88*
650-13	1.81	12.44*	14.88*
700-13	1.92	13.44*	15.88*
695-14	1.95	13.44*	15.88*
735-14	2.06	14.44*	16.88*
775-14	2.19	15.44*	17.88*
825-14	2.35	17.44*	19.88*
855-14	2.56		21.88*
885-14	2.85		23.88*
775-15	2.21	15.44*	17.88*
815-15	2.35	17.44*	19.88*
845-15	2.54		21.88*
885-15	2.76		23.88*

*plus tax and your old tire

Remington MODEL 1100 automatic shotguns

(Shown with Ventilated Rib Barrel)

Scientifically designed to make every shooter a better shot... perfect balance, fast pointing, a joy to use — to own — to show.

PLAIN BARREL Price \$119⁹⁵

WINTERIZE YOUR CAR NOW!
Buy Anti-Freeze Now! Save!

per gallon

119

• ETHYLENE GLYCOL BASE, specially developed to PREVENT RUST, CLOGGING & CORROSION! Protect your car now from harmful freezing! 80-100

\$7¹⁴

CASE

25 NIMROD SHOTGUN SHELLS FIELD LOAD

.12 GAUGE SHOTGUN SHELLS
3 and 1
• Carefully Blended Powders!
• 6 or 8 Shot. Length 2 3/4".
REG. \$2.69 SAVE 30% 68-114-115

188

BOX

POYNOR'S
WHITE STORE'S, INC.

303 Main Muleshoe Phone 272-3511

Bula News

by Mrs. John Blackman.

Bula FFA Chapter met Tuesday morning and elected officers for this year. Officers elected were: Tom Newton, president; Gene Stroud, Vice-president; Mitch Autry, reporter; Terry Souder, secretary; David Wood, sentinal; Rodney Claunch, treasurer; and Dwight McDaniel, parliamentarian. Director Jack Tharp met with the boys.

Mr. and Mrs. J.O. Dave returned home Tuesday from a months visit in California and Arizona with their children and other relatives. They spent some time with a daughter and family, Mr. and Mrs. Jackie Shan of Santa Clara, California also another daughter, Mr. and Mrs. Lindsey Bates and boys of Phoenix, Ariz.

Several young people from the local Baptist Church attended the Lanos Altos Youth rally at Friona Monday evening. The group from Bula brought the special music for the evenings program. Making the trip was Allan Black, Donna and Diane Crume, Margaret Richardson, Elaine and Beverley Tiller and Rev. Eddie Howard.

Mrs. J.L. Latham, accompanied by her mother Mrs. A.T. Flowers and grandson Terry Flowers of Tahoka, drove to Wichita Falls Saturday to help Mrs. Flowers mother, and grandmother of Mrs. Latham celebrate her 101 birthday, at the home of a son Edd Holder in Wichita Falls. A birthday dinner was enjoyed at the noon hour by relatives and in the

afternoon a reception was held for relatives and friends.

Mrs. Holder lives in a rest home at Wichita Falls, she enjoys good health for her age.

Mr. and Mrs. W.L. Clawson were in Hobbs over the weekend to visit with her daughter and family, the Travis Webb's. A grandson Douglas Webb, who has just returned from a seven months stay in Brazil was home and also a daughter and family, Mr. and Mrs. Don Shelutt from Carlsbad. Douglas will be entering New Mexico University in Las Cruces as a sophomore, studying electric engineering and will return to Brazil next spring for further study.

Mrs. E.W. Black is spending a few days with her daughters and families, Mr. and Mrs. W.T. Zedlitz and Mr. and Mrs. William T. Sullivan of Dallas.

Mr. and Mrs. J.C. Withrow and children drove to Abilene Saturday where Cynthia and Cherry unloaded their things at the dorm at ACC Abilene, then the family drove to Oak Creek Lake, southwest of Sweetwater and spent the night. Sunday they attended the church services at the Church of Christ at Blackwell, where Mrs. Withrow had lived when a child. They returned back by ACC to leave the girls for college and drove home late Sunday.

Mr. and Mrs. H.M. Black and children spent the weekend in Albuquerque, N.M. with her brother and family, Mr. and Mrs. Fred Wells.

Mrs. J.D. Rowland had charge of the lesson Tuesday afternoon when the Ladies Bible Class met for the Church of Christ. The study was a continuation of the study of "Abraham," taken from the current study book on "Bible History." Four were present, Mrs. John Hubbard, Mrs. Mary Ann Soria,

Mrs. Nolan Harlan and Mrs. Rowland.

Mrs. John Latham has been visiting with her mother at Highland Hospital, Lubbock. She was admitted Monday for tests and observation.

Rev. and Mrs. Whittenburg visited Sunday afternoon at the University Hospital with Mr. and Mrs. V.C. Weaver, who are both patients. Mr. Weaver still continues to show improvement.

They also visited with Mrs. P.M. Lancaster who has been making her home at the Hospitality House but was admitted to the Amherst Hospital several days ago. She was feeling much better than when she was admitted.

Mr. and Mrs. P.R. Pierce attended the Kerby reunion, Sunday at the home of Mr. and Mrs. Earnest Wallace at Coahoma, near Big Springs. 70 were present for this get together. The only living relative of the immediate family is an uncle of Mrs. Pierce, Hugh Kerby of Coahoma. They were accompanied by a daughter and family, Mr. and Mrs. Jim Carpenter of Hicks Chapel.

WMU was held Tuesday afternoon at 2:30 at the church with Mrs. Williams having charge of the program. The study for the meeting was on "The River Ministry", studying the work that was done this past summer and what that needs to be done.

Several are meeting at 2:30 each afternoon this week in observance of week of prayer. Attending were Mrs. Fred Locker, Mrs. C.A. Williams and Mrs. P.R. Pierce.

Women's Society of Christian Service met Wednesday afternoon at 3 p.m. at the church. Mrs. Tommie Kirk, the new president was in charge. A short business

session preceded the lesson study.

Program opened with group singing "Praise Him, Praise Him". The lesson study was entitled "Service of Celebration." This deals with the uniting of the Evangelical Brethren Church and the Methodist Church a few months ago.

The program opened with the group singing "Praise Him, Praise Him." The lesson study was entitled "Service of Celebration." This deals with the uniting of the Evangelical Brethren Church and the Methodist Church a few months ago.

Mrs. Charlie Landers, formerly being a member of the Evangelical Brethren Church gave the first part on "Heritage of the former Women of the Evangelical Brethren Church" and Mrs. Simmons gave the second part on "Women of the Former Methodist Church." The closing prayer was given in unison.

Agafa was served which was refreshments of danisic rolls and spice tea and each woman signed the charter certificate of the unity of the two churches.

Attending were Mrs. Paul Young, Mrs. F.L. Simmons, Mrs. Harvey Whittenburg, Mrs. Charlie Landers and Mrs. Tommie Kirk.

Melton McDaniel In Vietnam

VIETNAM--Army Specialist Four Melton D. McDaniel, 22, son of Mr. and Mrs. Marion J. McDaniel, Star Route, Enochs, was assigned August 19 to the 87th Engineer Battalion near Cam Ranh Bay, Vietnam, as a drafting specialist.

CARD OF THANKS

We take this means to express our most sincere appreciation to those who were so considerate during our recent bereavement. We appreciate your sincere prayers for our comfort, the food, flowers and cards sent to us and the expression of sympathy extended to members of the family. "May God richly bless each of you" is our prayer.

The A.F. Hutchinson family
38t-1tc

Ten causes traced in span collapse.

LEGAL NOTICE

STATEMENT OF OWNERSHIP, MANAGEMENT AND CIRCULATION (Act of October 23, 1962; Section 4360, Title 39, United States Code).

1. Date of filing-9-18-68
2. Title of Publication - Muleshoe Journal
3. Frequency of issue, weekly
4. Location of known office of publication (street, city, county, state, zip code, 304 West 2nd Muleshoe, Texas 79347.)
5. Location of the headquarters or general business offices of the publishers (not printers) 304 West Second, Muleshoe, Texas 79347
6. Names and addresses of publisher, editor, and news reporter, Publisher (Name and address) L.B. Hall, Box 449, Muleshoe, Texas 79347. Editor, (name and address) L.B. Hall, Muleshoe, Texas 79347. News Reporter, Doris Kinser, Muleshoe, Texas, 79347.
7. Owner (If owned by a corporation its name and address may be stated and also immediately thereunder the names and addresses of stockholders owning or holding 1 percent or more of total amount of stock. If not owned by a corporation, the names and addresses of the individual owners must be given. If owned by a partnership or other unincorporated firm, its name and address, as well as that of each individual must be given.) L.B. Hall, Box 449, Muleshoe, Texas (Mrs. Jessica P. Hall, Box 449, Muleshoe, Texas.) E.C. Perry, 608 West 9, Plainview, Texas.
8. Known bondholders, mortgagees, and other security holders owning or holding 1 percent or more of total bonds, mortgages or other securities are: (If there are none, so state) none.
9. Extent and nature of circulation.

A. Total no. copies printed (Net press run). Average no. copies each issue during preceding 12 months, 2400. Single issue nearest filing date 2458.

B. Paid circulation.

1. Sales through dealers and carriers, street vendors and counter sales. Average no. copies each issue during preceding 12 months, 858. Single issue nearest to filing date, 875.

2. Mail subscriptions: Average no. copies each issue during preceding 12 months, 1432. Single issue nearest to filing date, 1453.

C. Total paid circulation. Average no. copies each issue during preceding 12 months, 2290. Single issue nearest to filing date, 2328.

D. Free distribution (including samples by mail, carrier delivery, or other means). Average no. copies each issue during preceding 12 months, 80. Single issue nearest filing date, 95.

E. Total distribution. Sum of C and D. Average no. copies each issue during preceding 12 months, 2370. Single issue nearest to filing date, 2423.

F. Office use, left-over, unaccounted, spoiled after printing. Average no. copies each issue during preceding 12 months, 80. Single issue nearest to filing date, 95.

G. Total (Sum of E & F should equal net press run shown in A). Average no. copies each issue during preceding 12 months, 2400. Single issue nearest to filing date, 2458.

I certify that the statements



UNLOADING--Boys who make their home on Cal Farley's Boys Ranch are pictured unloading a truck load of vegetables taken there Thursday. These are the first vegetables to be donated to the Ranch. The donation was prompted by the desire of the members of the Chamber of Commerce and Muleshoe Area Industrial Foundation to share homegrown vegetables with these young boys. It was made possible by area farmers. The truck was provided by Donald Harrison.

2. Mail subscriptions: Average no. copies each issue during preceding 12 months, 1432. Single issue nearest to filing date, 1453.

C. Total paid circulation. Average no. copies each issue during preceding 12 months, 2290. Single issue nearest to filing date, 2328.

D. Free distribution (including samples by mail, carrier delivery, or other means). Average no. copies each issue during preceding 12 months, 80. Single issue nearest filing date, 95.

E. Total distribution. Sum of C and D. Average no. copies each issue during preceding 12 months, 2370. Single issue nearest to filing date, 2423.

F. Office use, left-over, unaccounted, spoiled after printing. Average no. copies each issue during preceding 12 months, 80. Single issue nearest to filing date, 95.

G. Total (Sum of E & F should equal net press run shown in A). Average no. copies each issue during preceding 12 months, 2400. Single issue nearest to filing date, 2458.

I certify that the statements

made by me above are correct and complete.
Signed: L.B. Hall
38t-1tp

Bill Slayton In Thailand

Thailand -- Airman First Class Bill A. Slayton, son of Mr. and Mrs. Bill Shackelford of Rt. 1, Dimmitt, is on duty at Ubon Royal Thai AFB, Thailand.

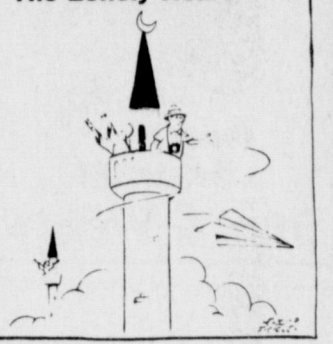
Airman Slayton, an aeromedical specialist, is assigned to a unit of the Pacific Air Forces. Before his arrival in Thailand, he served at Reese AFB.

A 1965 graduate of Hale Center High School, the airman attended Western Republic College in Amarillo.

His wife, Vicki, is the daughter of James Cannon of 9809 241st Pl., SW, Edmonds, Wash.

Mother is the name for God in the lips and hearts of little children.
-W.M. Thackeray.

The Lonely Heart



NYLON WIND-BREAKERS \$3.49

Blue-Brown-Navy or Green

At Corner Drug & Variety

SEE... All The New Models Of 1969 Car & Truck Lines

THURSDAY, SEPTEMBER 26th.

(REFRESHMENTS WILL BE SERVED)

CROW CHEVROLET CO.

GO LAZBUDDIE LONGHORNS

SHERLEY-ANDERSON LAZBUDDIE ELEVATOR

Federally Licensed & Bonded

Ph. 965-2922 Lazbuddie

LAZBUDDIE GARAGE

P.O. Box H Ph. 965-2188

Lazbuddie

TIDE TIDE PRODUCTS, INC.

Fertilizers-Farm Chemicals Friendly People-Fast Service
Symbol of Quality

Clay's Corner Ph. 965-2330

FARMER'S UNION CO-OP

Farm Supplies, Fertilizers, Gas

Lazbuddie, Texas

MULESHOE STATE BANK

Oldest, Strongest, and Friendliest

Let us help you make that goal!

Member FDIC Muleshoe

FIRST NATIONAL BANK

Muleshoe, Texas

\$1,000,000.00 Capital Structure



Back Row: Coach Pat Casey, Gary Elliott, Mike Casey, Larry Hodges, Monte Barnes, Frank Hinkson and George Wilson. Middle Row: Bobby Ealeras, Rene Flores, Roque Flores, Loy Dale Clark, Roy Flores, Steve Foster and Coach Mike Flaniken. Front Row: Terry Scott, Pablo Mendoza, Jimmy Noland, Mark Ramage, Troy Steinbock and Derrell Matthews.

This week's game-Friday, Sept. 20, 8:00 P.M.- Tatum -Here.

LAZBUDDIE CAFE
PAT'S BEAUTY SHOP
MOORE'S WELDING SHOP
BRATCHER MOTOR SUPPLY
CLAY'S CORNER GROCERY & STA

MOHAWK AUTO PARTS
SANITARY BARBER SHOP
POYNOR'S WHITE STORES, INC.
MULESHOE MOTOR COMPANY
Anderson's Montgomery Ward Agcy.

FRY & COX, INC.
PHONE 272-4511
Muleshoe

HARVEY BASS
APPLIANCE
Muleshoe

WESTERN '66'
Lazbuddie Phone 965-2191
Muleshoe Phone 272-4556
Needmore Phone 946-2271

St. Clair's
MULESHOE
Phone 272-4453

FOSTER FERTILIZER COMPANY

Phone 965-2921

Lazbuddie

LAZBUDDIE GROCERY

Shurfine Foods Buccaneer Stamps

Mr. and Mrs. John Aduddell

Let's go all the way, Longhorns!

O. C. Mc Bride & Sons Gin

Win District, Longhorns!

Lazbuddie

S I B GIN

We're with you all the way!

Rt. 3, Muleshoe

RUDY'S Free Pickup & Delivery

Dry Cleaning & Laundry

Wed. and Sat. Phone 385-3233

Littlefield

El Nuevo LEAL'S Restaurant

The Best Mexican Food on the Plains (Hamburgers for the Children)
Open 11a.m. - 10p.m. except Tuesday

1600 W. Am. Blvd. Muleshoe

TRADE CLASSIFIED SELL BUY ADS LEASE

WANT ADS PH. 272-4536

CLASSIFIED RATES

OPEN RATES

First insertion, per word - 6¢
Second and additional insertions - 4¢

NATIONAL RATES

First insertion per word-8¢
Second and additional insertion-5¢

Minimum charge - 65¢

Card of Thanks - \$1.00 Double rate for blind ads
Classified Display - 85¢ per col inch
95¢ col. inch for reverses

DEADLINE FOR INSERTION

Thursday's Muleshoe Journal - Noon Tuesday
Sunday's Bailey County Journal - Noon Friday

The Journals reserve the right to classify, revise or reject any classified ad.

Check advertisement and report any error immediately. Journals are not responsible for error after ad has already run once.

*FHA and VA repossessed houses
*35 acres grass-terms
*80 acres irrig. on pavement allot.
*330 acres cheap
KREBB'S REAL ESTATE
Phone 3191
8-32S-tfc

FOR SALE: 3 bedroom house, carpeted, 2 baths, paneled den and kitchen, double garage. Call D.L. Morrison Jr., 272-3421 or 272-3697
8-21t-tfc.

FOR SALE OR LEASE: business building, 30' x 100' Good location. Call Brock Motor Co. Phone 272-4588.
8-37t-tfc

For a good buy on all types of real estate, 2 and 3 bedroom homes, some V. A. repossessions, see Pool Insurance, 8-22s-tfc

9. AUTOMOBILES FOR SALE

NEW 1968 PICKUP LADD PONTIAC

1966 Super Sport, 396 engine, three speed, automatic transmission. \$1695. Gene Bates, Phone 946-2416
9-37s-6tc

Sharp 1967 Chevy. See at 921 Hickory after 5 p.m. \$1450.
9-37s-4tp

10. FARM EQUIPMENT

FOR SALE: 1 Hesston cotton stripper. Has pulled about 150 bales. Make offer. See at Brock Motor Co. Phone 272-4588.
10-37t-tfc

FOR SALE: Early Harvest Cotton Separator and basket combination. See or call Leldon Phillips, 925-3510.
10-37t-tfc

FOR SALE: 2 single axle trailers in good condition. See T.L. Timmons, State Line Irrigation in Littlefield.
10-37t-tfc

HI - TRACT tractor for lease or sale. Has front mounted cycle to top weeds and grain field. Also one 18-thousand grain kart. Inquire at Mills Machine Shop Inc.
10-37s-2tc

12. HOUSEHOLD GOODS

FROM wall to wall, no soil at all, on carpets cleaned with Blue Lustre. Rent electric shampooer \$1. Higginbotham Bartlett.
12 38t-tfc

15. MISCELLANEOUS

FOR SALE: New and used tires, almost all sizes, Finn's L.P. Gas, phone 272-4678.
15-35t-tfc.

FOR RENT: Small office space or place suitable for storage. See C.E. Layne at Layne apts. or call 4496.
-31S-tfc.

WANTED person with good credit to assume balance on late model Dial-and-Sew sewing machine. Full automatic bobbin winder, buttonhold, fancy pattern selector. No attachments, 20 year guarantee. One-half paid out, free home demonstration. Write Lubbock Sewing Center, 1114 19th Street, Lubbock, Texas.
15-36t-tfc

McCarthy calls for Federal housing program.

WANTED person with good credit to take over payments on 1968 model Singer sewing machine. Equity buy-balance \$23.75 or 5 payments at \$5.00. Write Lubbock Sewing Center, 1114 19th Street, Lubbock, Texas.
15-36t-tfc

FOR SALE: Rat Terrier puppies eight miles east and 1/2 mile south on the Plainview highway. \$10 each. Jesse Fox, 15-37s-3tp

LEGAL NOTICE

NOTICE TO ALL PERSONS HAVING CLAIMS AGAINST ESTATE OF RUTHIE E. WRIGHT. Notice is hereby given that original letters testamentary upon the Estate of Ruthie E. Wright, were issued to us, the undersigned on the 29th day of July, A.D. 1968, in the proceeding indicated below our signatures hereto, which is still pending, and that we now hold such letters. All persons having claims against said estate, which is being administered, in the County below named, are hereby required to present the same to us respectively, at the address below given, before suit upon same are barred by the general statutes of limitation, before such estate is closed, and within the time prescribed by law. Our residence and post office addresses are, Howard R. Wright, Box 293, Captain, New Mexico, and Eileen Wright Burkett, Box 75, Maple, Bailey County, Texas. Dated this 29th day of July, A.D. 1968.

Howard R. Wright and Eileen Wright Burkett
Executors of the Estate of Ruthie E. Wright deceased, No. 855, in the County Court of Bailey County, Texas.
1tc-38t

LEGAL NOTICE

NOTICE TO ALL PERSONS HAVING CLAIMS AGAINST ESTATE OF DAISY L. ENGRAM. Notice is hereby given that original letters testamentary upon the Estate of Daisy L. Engram, were issued to me, the undersigned, on the 16th day of September, A.D. 1968, in the proceeding indicated below my signature hereto, which is still pending, and that I now hold such letters. All persons having claims against said Estate which is being administered, in the County below named are hereby required to present the same to me respectively, at the address below given, before suit upon same are barred by the general statutes of limitation, before such estate is closed, and within the time prescribed by law. My residence and post office address is, 711 Hillcrest, Butler, Missouri, County of Bates. Dated this 16th day of September, A.D. 1968.

(s) Velma E. Warner
VELMA E. WARNER, executrix of the Estate of Daisy L. Engram, Deceased No. 861, in the County Court of Bailey County, Texas.
1tc-38t

CARD OF THANKS

There are no words to express our heartfelt appreciation to the Doctors, nurses and friends who assisted us during the illness and death of our loved one. We cherish the prayers, flowers, cards, food, and thoughtful deeds by our many friends. God bless you all.

Mrs. Major Wood
Mr. and Mrs. Joe Don Jackson and family
Mr. and Mrs. Howard Anderson and family
Mr. Stanley Wood
ltp

17. SEED AND FEED

SEED WANTED: Bulk seed, combine run or cleaned for Red Top Cane, African Millet, Hegari, Weeping Lovegrass, Ermelo Lovegrass, El Reno Sideots Gramma, Chinese Red Peas, Brabham Peas, New Era Peas. CONLEE SEED CO., INC., Box 7247, Waco, Tex. 76710, or call AC 817/772-5680.
17-38t-3tc

HYBRID SORGHUM-SUDAN-GRASS SEED wanted in quantity, combine run. State cross and quantities available. Box 449 Journal.
17-38t-3tc

FOR SALE: Rye seed, Tetra Petrus. Clean and sacked, \$4.50 a hundred per hundred. Pick up at Farmers Co-op in Muleshoe, or call 965-2353.
17-36s-4tc

CARD OF THANKS

We would like to take this opportunity to express our most sincere gratitude to our many friends, to the staff of the Muleshoe Nursing Home, Dr. and Mrs. B.O. McDaniel and all the nurses for their help and service. We are especially appreciative of your thoughtfulness and concern in the recent illness and death of our loved one. We will always

treasure your every expression of sympathy, your prayers, the food and flowers and words of comfort.

The Family of Hattie Bell Jackson
ltp

Going to church is like saving food for a famine; when you need the reserve of faith you can call on it to see you through trying times.
* * * *

1. PERSONALS

meets every Tuesday at 12:00
FELLOWSHIP HALL
Methodist Church
Muleshoe Rotary Club
John Shelton, Pres.

meets every Monday, 12 Noon
L. B.'S CAFE
Clarence Christian, Pres.

meets each Wednesday, 12 Noon
FELLOWSHIP HALL
Methodist Church
W. E. Young, Pres.

BRAS & GIRDLES BY PENNYRICH AT MAIN STREET BEAUTY SALON 1-19s-tfc

FOR SALE: Full blood collie puppies. Female. 501 Ave B. 1-37s-5tp

FOR RENT: 15 and 16 foot campers. By week. Call 272-3163.
1-35s-tfc

Sonja Bass will teach piano and organ. She is a Music Major at Eastern New Mexico University. For appointment call 272-4139.
1-38t-tfc

SPINET PIANO: (new) located in your vicinity. Will sacrifice to party able to assume \$27.50 monthly. Write Channer Music Co., Sterling, Colo.
1-38t-ltp

3. HELP WANTED
Experienced welders and layout men needed for tank and structure steel fabrication. Apply in person at Fab-Steel Corporation, Clovis, N.M.
3-38t-2tc

MALE HELP WANTED: ages from 18 to 25, and a high school graduate. Inquire at Gibson's Discount Center.
3-38t-2tc

Will do ironing in my home, \$1.50 a dozen. Phone 272-3413.
3-37t-3tp

FOR RENT: Unfurnished 2 bedroom apartment. Carpeted and draped with built-in range. Ph. 4209.
5-36s-tfc

Ladies: Would you like to earn extra money in your spare time selling Luzier Cosmetics? Write Francis Moore, 1105 Thunderbird, Plainview, Texas.
3-37t-4tc

WANTED: Beautician, Ma. Street Beauty Salon, Phone 272-3448.
3-25s-tfc

WANTED: Dishwasher. Apply in person. Corral Drive-In Restaurant.
3-36t-tfc

HELP WANTED: Experienced mechanic Crow Chevy, Muleshoe, Texas.
3-35t-tfc

Refilling and collecting money from dispensers in area. No Selling. To qualify must have car, references, \$600 to \$2,900. For personal interview write PENTEX DISTRIBUTING COMPANY, 3131 (A) STEMMONS FREEWAY, DALLAS, TEXAS 75247. Include phone number.
ltp

4. HOUSES FOR RENT
HOUSE FOR RENT: Call 946-2688.
4-27t-tfc

FOR SALE OR RENT: 3 bedroom house, central heating, plumbed for washer and dryer, near elementary school. See house at 1620 Ave C. Ph. 3914.
4-35s-tfc

FOR RENT: two bedroom unfurnished house for \$45. Good trailer space. Ph. 272-3183.
4-38t-tfc

FOR RENT: 2 and 3 bedroom brick houses. Furnished 1 bedroom apartment. Call D. L. Morrison Jr., 272-3421 or 272-3697.
4-21t-tfc.

FOR RENT: 3 bedroom house. 715 Ave. G. Clovis 763-5701.
4-36s-tfc

5. APTS. FOR RENT
Furnished apts., large or small. Nice trailer space. Ph. 272-3465.
5-24t-tfc

FOR RENT: furnished apartment, 719 W. Ave. G. ph. clovis 763-5701
5-38t-tfc

6. BEDROOMS FOR RENT
BEDROOM FOR RENT: 807 W. 7th, Phone 4166 or 4903.
6-27s-tfc

8. RE. L ESTATE FOR SALE
FOR SALE: Two, three bedroom homes. See Ester Magby, 1801 W. Ave D. Ph. 272-3124.
8-38t-3tc

TELEVISION SCHEDULE FOR THE MULESHOE AREA

KING BROS. GRAIN & SEED CO. Complete ELEVATOR SERVICE AND SEED PROCESSING FOR THE Muleshoe AREA	KGNC-TV Amarillo Muleshoe Cable 4	KVII-TV Amarillo Muleshoe Cable 5	KFDA-TV Amarillo Muleshoe Cable 6	KCBD-TV Lubbock Muleshoe Cable 2	KLBK-TV Lubbock Muleshoe Cable 3
DAYTIME	DAYTIME	DAYTIME	DAYTIME	DAYTIME	DAYTIME
6:30-Amar. Col. 7:00-Today 7:25-News 7:30-Today 9:00-Snap Judge 9:25-NBC News 9:30-Concentra. 10:00-Personality 10:30-Holly. Sq. 11:00-Jeopardy 11:00-Eye Guess 11:55-NBC News 12:00-News 12:10-Irri, Re. 12:15-Weather 12:20-Ruth Brent 12:30-Make Deal 1:00-Days of Lives 1:30-Doctors 2:00-Another W. 2:30-Don't Say 3:00-Match Game 3:25-NBC News 3:30-Mike Douglas 5:00-News 5:30-H B Report	6:30-Cartoons 9:00-Dennis M. 9:30-Dick Cavett 10:00-Temptation 10:25-News 10:30-Mother-In 11:00-Bewitched 11:30-Treasure Is 12:00-News 12:15-Com. Close 12:30-Hazel 1:00-Newlyweds 1:30-Dating Game 1:55-Child Dr. 2:00-Gen. Hos. 2:30-D. Shadows 3:00-Dating Game 3:30-Movie 5:00-Bob Young 5:30-Have Gun 6:00-News	6:30-Amar. Coll 7:00-Farm News 7:20-N/W 7:35-CBS News 8:00-Capt. Kang. 9:00-Romper R 9:30-Hillbillies 10:00-Andy G. 10:30-Coffee Tim 11:00-Love Life 11:25-News 11:30-Search For 11:45-Guiding L. 11:55-News 12:00-News 12:10-Weather 12:15-Farm 12:30-As World 1:00-Love Splen 1:30-Art Link. 2:00-Tell Truth 2:25-CBS News 2:30-Edge of N. 3:00-Secret Stor 3:30-D. VanDyke 4:00-Mr. Mimm 5:00-Mr. Ed 5:30-CBS News 6:00-News	7:00-Headlines 7:05-Farm Report 7:25-Weather 7:30-Today 8:25-Report 8:30-Today 9:00-Snap Judge. 9:25-News 9:30-Concentra. 10:00-Personality 10:30-Holly Sq. 11:00-Jeopardy 11:30-Eye Guess 11:45-Guiding L. 11:55-News 12:00-Report 12:15-Com. Close 12:30-Make Deal 1:00-Days of 1:30-Doctors 2:00-Another W. 2:30-Don't Say 3:00-Match Game 3:25-News 3:30-Dating G. 4:00-Beaver 4:30-Bewitched 5:00-Wells Farg 5:30-H-B News	5:55-Sign On 6:00-S em. 6:30-Farm/Ranch 7:00-Ag. Weather 7:05-News 7:30-Morn. Show 8:00-Capt. Kang. 9:00-Cam. Can. 9:30-Hillbillies 10:00-Andy G. 10:30-D. VanDyke 11:00-Love of Life 11:30-Search for 11:45-Guiding L. 12:00-News 12:10-Farm News 12:20-Weather 1:30-As World 1:00-Love Is A 1:30-Art Link. 2:00-Gen. Hos. 3:30-Edge of N. 3:30-Secret Storm 3:30-D. Shadows 4:00-Newlyweds	
THURS. EVENING	THURS. EVENING	THURS. EVENING	THURS. EVENING	THURS. EVENING	THURS. EVENING
6:00-N/W/S 6:30-Demo, Con. 7:30-Ironside 8:00-Dragnet 9:00-Dean Martin 10:00-News 10:30-Tonight 12:00-Sign Off	6:30-Hun, Years 7:00-Flying Nun 7:30-Bewitched 8:00-That Girl 8:30-Demo, Con. 9:00-Stonemans 9:30-Bobby Lord 10:00-N/W/S 10:30-Joey Bishop	6:30-Cimmaron 8:00-Movie 10:00-News 10:15-Weather 10:25-Background 10:25-News 10:45-Movie 11:15-News 11:20-Movie	6:00-Report 6:15-Weather 6:25-Sports 6:30-Demo, Con. 7:30-Ironside 8:30-Dragnet 9:00-Dean Martin 10:00-Report 10:30-Tonight 12:00-Sign Off	4:30-Spiderman 5:00-Center Earth 5:30-News 6:00-News 6:15-Weather 6:20-Sports 6:30-Dragnet 6:30-Movie con. 6:30-Demo, Con. 10:00-News 11:30-Invadrs? 11:30-Peter Gunn FRIDAY EVENING	
FRIDAY EVENING	FRIDAY EVENING	FRIDAY EVENING	FRIDAY EVENING	FRIDAY EVENING	FRIDAY EVENING
6:00-News 6:30-Tarzan 7:30-Star Trek 8:30-H. Squares 9:00-Joe Pyne 10:00-N/W/S 10:30-Tonight 12:00-Sign Off	6:30-Wizard 7:30-Man 8:30-Guns of Wil 9:00-Judd 10:00-News 10:15-Weather 10:25-Sports 10:30-Joey Bishop 12:00-Sign Off	6:30-Wild West 7:30-Gomr Pyle 8:00-Movie 10:00-N/W/S 10:45-B. Law 11:45-News 11:50-Movie	6:00-Report 6:15-Weather 6:25-Sports 6:30-Tarzan 7:30-Movie 10:00-Report 10:30-Tonight 12:00-Sign Off	4:30-Casper 5:00-J. Quest 5:30-News 6:00-N/W/S 6:30-Voyage 7:30-Gomer 7:30-F.B.I. 9:00-Judd 10:00-News 10:45-Movie	
SATURDAY	SATURDAY	SATURDAY	SATURDAY	SATURDAY	SATURDAY
7:00-Roy Rogers 8:00-Super 6 8:30-Super Pres. 9:00-Flintstones 9:30-Sam, & Gol. 10:00-Birdman 10:30-Atom Ant 11:00-McCool 11:30-Sheriff B. 12:00-Kids, Inc. 12:30-F & M Show 1:00-Baseball 4:00-Wrestling 5:00-Branded 5:30-McGee Rep.	7:00-Mod. Ed. 7:30-Cisco Kid. 8:00-Casper 8:30-Fantastic 4 9:00-Spider Man 9:30-Journey 10:00-King Kong 10:30-Jungle 11:00-Beetles 11:30-Bandstand 12:30-Happening 1:00-Movie 4:00-Sportsman 6:00-News 6:30-Dating G. 7:00-Newlyweds 7:30-Law, Welk 8:30-Holly Pal. 9:30-Hazel 10:00-News 10:15-Weather 10:25-Sports 10:40-Late Show 12:15-Late, Late	6:45-Cartoons 7:00-Capt. Kang. 8:00-Frankenstei 8:30-Herculoids 9:00-Shazzam 9:30-Space Ghost 10:00-Moby Dick 10:30-Superman 11:30-Johnny Que 12:00-Lone Range 12:30-Road Runne 1:00-News 1:30-Movie 4:00-Car & Truck 4:30-Wilburn B. 5:00-Ernest Tubb 5:30-Porter W. 6:00-News 6:20-Weather 6:30-Prisoner 7:30-My 3 Sons 8:00-Hogan's 8:30-Petticoat J. 9:00-Mannix 10:00-News 10:45-Rawhide 11:45-News 11:50-Movie	7:00-Roy Rogers 8:00-Super 6 8:30-Super Pres. 9:00-Flintstones 9:30-Sam, & Gol. 10:00-Birdman 10:30-Atom Ant 11:00-McCool 11:30-Johnny Que 12:00-New Mexico 12:00-Roy Rogers 1:00-Baseball 4:00-Dick Powell 5:00-Star Trek 6:00-Report 6:30-Virginian 7:30-Get Smart 8:00-Movie 10:00-N/W/S 10:30-Movie 12:00-New Mex.	5:55-Sign On 6:00-Sem. 6:30-Cartoons 7:00-Capt. Kang. 8:00-Frankenstei 8:30-Herculoids 9:00-Shazzam 9:30-Space Ghost 10:00-Moby Dick 10:30-Superman 11:30-Bandstand 12:30-Happening 1:00-68 Sebring 2:00-Wrestling 3:00-K. Derby 4:00-Sports 5:30-Death Valley 6:00-P. Wagoner 6:30-Prisoner 7:30-Law, Welk 8:30-H. Palace 9:30-Guns of Will 10:00-N/W/S 10:30-Movie	
SUNDAY	SUNDAY	SUNDAY	SUNDAY	SUNDAY	SUNDAY
7:00-Herald 7:30-F & H Show 8:00-Tom & Jer. 8:30-Underdog 9:00-Matinee 10:30-Glory Road 11:00-Church 12:00-Meet Press 12:30-Report 1:00-Movie 2:30-Movie 4:00-Campaign 4:30-Flipper 5:00-Frank McGee 5:30-Convention 6:00-N/W/S 6:30-Walt Disney 7:30-Mothers- 8:00-Bonanza 9:00-High Chap. 10:00-News 10:15-Weather 10:25-Sports 10:30-Tonight	7:00-Mod. Ed. 7:30-Mod Ag. 8:00-Cisco 8:30-M. Monster 9:00-Linus 9:30-Bugs Bunny 10:00-Bullwinkle 10:30-Discovery 11:00-Baptist 12:00-Direction 12:30-Issues 1:00-Insight 1:30-Sun. ow 4:00-Out West 6:00-Bottom of Se 7:00-FBI 8:00-Movie 10:30-N/W/S 11:00-Entertain 11:15-F. Line 12:15-Outer Limit	7:30-Gospel Hr. 8:00-Wills Fam. 8:30-Church 9:30-LaFavers 10:00-Rel, Ques. 10:30-Face Natio 11:00-Showcase 1:00-Hockey 4:30-Sportsman 5:00-21st Cen. 5:30-News 5:50-Weather 6:00-Lassie 6:30-Gentle Ben 7:00-Ed Sullivan 8:00-Snothers 9:00-Mission Im. 10:00-N/W/S 10:30-Theatre On 11:30-News 11:35-Movie	8:00-Faith for T 8:30-Glory Road 9:00-Insight 9:30-The Answer 10:00-Ask Minist 9:00-Linus 10:45-Church 12:00-Meet Press 12:30-Faith 1:00-Ma & Pas. 2:15-Kingdom 4:00-Campaign 4:30-Travelouge 5:00-McGee 5:30-Animal 6:00-Report 6:30-Walt Disney 7:30-Mothers in 8:00-Bonanza 9:00-High Chap. 10:00-News 10:15-Weather 10:25-Sports 10:30-Tonight er	6:55-Sign On 7:00-Cartoons 7:30-B. Bunny 8:00-Tom & Jer. 8:30-M. Monster 9:00-Linus 9:30-Pepe Bustos 11:00-Meet Press 12:30-Faith 1:00-Ma & Pas. 2:15-Kingdom 4:00-Campaign 4:30-Travelouge 5:00-McGee 5:30-Animal 6:00-Report 6:30-Walt Disney 7:30-Mothers in 8:00-Bonanza 9:00-High Chap. 10:00-News 10:15-Weather 10:25-Sports 10:30-Tonight er 6:00-Lassie 6:30-Gentle Ben 7:00-Ed Sullivan 8:00-N.F.L.S 11:00-News 11:30-Movie 12:45-Sign Off	

BUSINESS DIRECTORY

ROBINSON'S BOOT SHOP
127 Main - Phone 272-4721
Fine Western Wear
MEN, WOMEN & CHILDREN
Shoe Repair Shop
Ike Robinson
SERVING MULESHOE SINCE 1925.

Farley Insurance Agency
Real Estate and Insurance
FARM & CITY LOANS
SERVICE BEYOND THE CONTRACT
209 West Avenue B
Off. Ph. 272-4727 Res. 272-3776

WESTERN DRUG Your Walgreen Agency
Prescriptions
Drugs & Supplies
for all your Veterinarian needs
Fountain Service

SAVE ON THESE FOOD BUYS

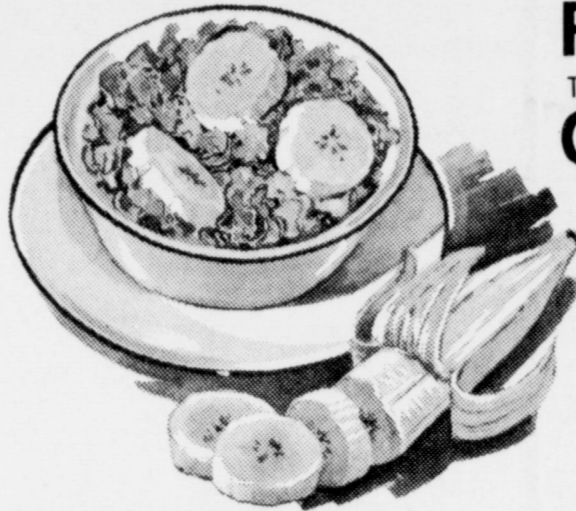


COFFEE
KIMBELL'S
Regular or Drip
1 lb. **59¢**
Tin

PEARS LB. 10

California Tokay
Grapes.....Lb. **15¢**

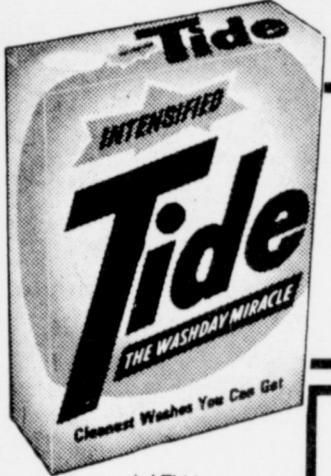
California Crisp YELLOW
CARROTS 1 lb. Cello Pkg. **10¢**



ALL PURPOSE WHITE POTATOES 20 lb. Bag.... **69¢**

Texas Long Green Slicers
Cucumbers.....Lb. **10¢**

BANANAS
Golden Ripe Lb. **7¢**



TIDE DETERGENT
GIANT SIZE **65¢**

SHORTENING
MRS. TUCKERS
3 lb. Tin **37¢**

NEW STORE HOURS
7:30 a.m. 'till
9:00 p.m.



PEACHES
OAK HILL FRESTONE
#2 1/2 CAN **27¢**

PORK ROAST

Pinkney's Fresh Lean Lb. **29¢**



Pinkney's Extra Lean
PORK STEAK.....Lb. **39¢**

Swift's Premium Proten Beef
SHORT RIBS 3 LB. FOR **\$1** Swift's Premium Proten Beef
T-BONE STEAK Lb. **\$1.09**

Swift's Premium USDA Grade A
HENS 5-7 lb. Avg. Lb. **39¢** Swift's Premium Proten Beef
HAMBURGER MEAT 3 Lbs. For **\$1**

Pinkney's Economy Pak
FRANKS 2 lb. Pkg. **79¢**

BACON

Decker's Premium Quality Ends & Pieces
4 LB. BOX 59¢



OLEO
Swift's All Sweet
1 lb. Ctn. **\$1**
4 for **1**

FROZEN FOOD

16 oz. Cello Pkg. Gold King
Hush Puppies..... **35¢**
8 oz. Box Banquet-Chicken, Turkey & Beef
Pot Pies..... **5 for \$1**
10 oz. Pkg. Keith's
Speckled Butter Beans **19¢**
3 lb. Cello Bag Gulf Princess
Shrimp Peeled & De-veined..... **\$6.39**

All Purpose 5 lb. Bag
Gladiola FLOUR..... **45¢**
Aunt Jemima 2 lb. Box
PANCAKE MIX..... **35¢**
White 5 lb. Bag
Gladiola CORN MEAL..... **45¢**
Chocolate Flavor 1 lb. Box
NESTLE'S QUICK..... **45¢**
Hershey's Chocolate 16 oz. Can
SYRUP..... **19¢**
Schilling Pure 4 oz. Can
BLACK PEPPER..... **39¢**
Nabisco Honey Maid 1 lb. Box
GRAHAM CRACKERS..... **35¢**
Note Book 300 Count Pkg.
FILLER PAPER..... **49¢**
Hunt's Tomato 20 oz. Bottle
CATSUP..... **3 for \$1**
Sunshine Oatmeal 14 oz. Pkg.
COOKIES..... **35¢**
Swift's 12 oz. Can
PREM..... **49¢**
Del Monte Pink 46 oz. Can
Pineapple-Grapefruit DRINK..... **25¢**
Our Darling Whole Kernel Golden #303 Can
CORN..... **25¢**
6 Bottle Ctn. Plus Deposit
DR. PEPPER..... **39¢**
Diamond #303 Can
TOMATOES..... **19¢**
Kounty Kist Cut #303 Can
GREEN BEANS..... **13¢**
Hunt's #300 Can
PORK & BEANS..... **2 for 29¢**
Burleson's Pure Strained 2 lb. Jar
HONEY..... **79¢**
Aunt Jemima 24 oz. Bottle
SYRUP..... **63¢**



PILE-UP--Roger Swint, 31, and Jesse Clemmons, 89, race in to bring down Lee Buchanan, 76, and another player in the Friday night football game with Dimmitt. Bill Sander, 11, quarterback for Dimmitt, comes in to try to help his teammates. Muleshoe lost the game to Dimmitt, 12-0.

Enochs News

By Mrs. J. D. Bayless,
and daughter of Lubbock visited their parents Mr. and Mrs. T.A. Thomas, Friday and Saturday. Vergil will be attending College at Tech the first semester.
Mr. and Mrs. Edd Autry left Tuesday for a 10 day or two week visit with Mr. and Mrs. Marvin Short and Mr. and Mrs. L.A. Short at Phoenix, Ariz.
Mrs. Brenda Kay Pyburn of Clovis, N.M. is the mother of twin daughters. They arrived Tuesday, September 10, at 10 a.m. The grandparents are, Mr. and Mrs. Jack Jackson of Clovis, and the first great-grandchildren for Mr. and Mrs. Edd Autry of Enochs.
Mrs. J.D. Bayless left by bus at 5:15 a.m. Saturday for Dallas to spend the week with her daughter, Mr. and Mrs. Joe Dale Doak and to see her new granddaughter, Stefanie Doak.
Mr. and Mrs. Jim Byars of Odessa, spent Wednesday night with his brother, Mr. and Mrs. Charlie Byars. Mr. and Mrs. Byars were on their way to Albuquerque, N.M., where Jim underwent surgery on his arm at the Presbyterian Hospital Friday.
The grain harvest will soon be in full swing in the community. Several farmers are through cutting their grain.
Mrs. J.D. Bayless was in Muleshoe, Thursday afternoon. She also visited Mrs. Nettie Blackman and Mrs. Jessie Lewis in the West Plains Rest Home.
Mrs. Joe Milsap drove to Muleshoe Friday afternoon to get her grand-children, Loveta Joe and Carol Sue so they could spend the weekend with them.
Mr. and Mrs. J.W. Layton were in Crosbyton Thursday to visit their daughter, Mr. and Mrs. Eldred Mize and son, Sterling.

Water Meeting Set In Hereford..Study Set

Representative Bill Clayton announces that he will attend a meeting of the House Interim Water Study Committee to be held in Hereford at the County Bull Barn on October 5. Lunch will be served during the noon hour at a nominal cost.
The agenda of topics to be discussed include eight issues. They include:
1. In view of the development of the total water resources in Texas, is there a need for change in the present ground water law pertaining to private ownership or should there be State-wide control of ground water resources?
2. Will the economic benefits of imported water justify the cost to the West Texas area?
3. If water could be delivered to West Texas at approximately \$20 per acre foot plus a 10 percent increase in all property taxes, would you be willing to contract for water at the price and pay the additional tax?
4. Assuming the cost figures mentioned in item "three" are correct, would non-irrigation water users be willing to pay the 10 percent increase in property taxes?
5. Would you favor a Master District, Agency or Authority to contract for imported water provided the District, Agency, or Authority was given powers essential to its operation if those powers included the following:
A. Power to contract with United States, State of Texas and their respective agencies.
B. Power to tax property for operational cost and to secure bonds.
C. Power to sell these bonds.
6. If you favor such a Master District, Agency or Authority, what territory should be included, and particularly, should your county be included?
7. Does the Water Quality Act sufficiently cover pollution problems created from feedlots and other agri-business industries?
8. As was suggested by an Association of Water District Managers from the Lower Rio Grande Valley, a question was posed as to whether there should be two distinct sets of statutes in Water Control and Improvement Districts Law; one set for Districts that provide domestic water services, and one set for Districts that provide water for irrigation purposes.
The House Interim water Study Committee is composed of Chairman Bill Clayton, Springlake; and members Menton Murray, Harlingen; Neal Solomon, Mt. Vernon; Bill Finck, San Antonio and Bill Swanson, Houston.
The public is urged to study these topics which will be discussed at this meeting and those attending are invited to participate in the meeting and the Study Committee expresses their desires to have the views of those who are interested.

Out of Orbit



GUNN BROS. STAMPS DOUBLE EVERY WEDNESDAY.

White's CASHWAY

We Reserve The Right To Limit Quantities

Listen to MULETRAIN over KMUL 10:15 a.m. Sponsored by WHITE'S CASHWAY