

# THE MULESHOE JOURNAL

Dedicated to the progress and development of the great Muleshoe country

VOL. NO. 42/

16 PAGES

Published every Thursday at Muleshoe, Bailey County, Texas — 79347

NEWS STAND PRICE 10¢

THURSDAY, OCTOBER 17, 1963

## Absentee Ballot Requests From Servicemen Arrive

## Car Stolen Saturday Found Wrecked Monday

### Several New Regulations Are Noted

### Bevy of Beauties to Vie for Title

Guess what's cooking for fall, . . . it's another hilarious show featuring an all-male cast of business and professional men of the Muleshoe area.

Remember the "Womanless Wedding" last year? Well, even if you do and did see it, you still haven't seen anything yet till you see "The Muleshoe Miss America Comedy Hour."

There will be an 'Ugh' beauty representing each state of the union when it's set for two nights this time, November 4 and 5 at the Muleshoe High School auditorium.

The show will be co-sponsored by the graduating seniors of Muleshoe High School and the Business Activities Committee of Muleshoe Chamber of Commerce. A portion of the proceeds will go in the senior's special fund and the rest will be used by the BAC to finance various projects for the betterment of the Muleshoe trade area.

Most all participants in last year's "Womanless Wedding" are taking part again, plus dozens of others who missed performing at that event. Plans are to have a local (Bert Parks) in the show as MC and a celebrity of this area taking Bess Myerson's place in this production. . . event. . . monologue. . . or happening.

Close your eyes and try to visualize a man (between 30-60 years) doing the hula in an authentic grass skirt or a natural tenor singing 'This Ole House' in a deep basso voice, still another doing the 'Big Apple Dance.'

Oh yes, there will be an ambulance sitting at the side door to carry away any who gets carried away with their energy-consuming performance and overdoes it.

Kerry Moore of the drama department in high school will be in charge of putting the show together, and also the production of it. All tranquilizers used by Moore while arranging this event will be paid for out of proceeds, say show officials. This will be his crowning achievement since coming to this fair city.

That's his organizing. . . the most dis-organized group of participants in any organization.

If you have a tendency to get the hic-ups when you laugh, please plan something else for these two nights. We'll guarantee that you will laugh until you hurt.

More information will be coming forth as time goes by, but right now mark your calendar for November 4-5.

By the way, election returns will be given intermittently throughout the show on Tuesday night, November 19, with the count.

around  **muleshoe**  
with the journal staff

### Band to Sell Magazines For Project

Women's Country Club Golf Tournament began October 16, Wednesday, and will continue through October 30.

Registrants in the Full Handicap tournament may start on or after the 16th and play three rounds on or before October 30.

Three classes are open; 18-hole flights; beginner flight and a 9-hole flight.

Registration fee for the tournament is \$3.50.

\*\*\*\*

A Den Mother's Training Session is being held at the First Christian Church today, Thursday, beginning at 9:30 a.m.

Warren Green South Plains Council officer is the executive in charge of the program.

Den mothers from both Pack 620 and Pack 622 are attending the training session.

Owen Jones, booth chairman of the upcoming Halloween Carnival to be held at the Muleshoe High School bus barn, is presently accepting applications for booth space at the carnival.

If you would like to have a booth, contact Jones at Bailey County Electric Cooperative and make your reservations.

\*\*\*\*

County Judge Don Cihak has announced that on October 15, the Bailey County Bar Association adopted the minimum fee schedule as recommended by the State Bar of Texas to become effective for legal services performed in this county on November 1.

Regular meeting of the Muleshoe Music Teachers Association will be held Monday, October 21, at 8 p.m. in the home of Mrs. Gil Lamb, 1815 W. Ave. H.

Mrs. Inez Kennedy said all

Con't. on Page 3, Col. 1

Among the several items under discussion at a meeting of the Band Boosters and Fine Arts Boosters Monday night was the upcoming sale of magazine subscriptions.

Band Director Jim Harvey said the band started selling magazines on Wednesday, October 16. Joe Harbin, president of the organization who presided over the meeting said, "The Band Boosters urge people to buy magazines from these students."

Con't. on Page 3, Col. 1

### Over 1200 Attend Clayton Dinner

"I never knew a time when words were hard to come by for a politician, but they are for me tonight."

"I feel humble and grateful for this honor. If nothing else, it has given me a reason to work harder for the people I serve, for there are no greater people in the state of Texas than those I serve."

With those words, Representative Bill Clayton concluded an appreciation dinner at the Littlefield Junior High School gymnasium Monday night.

Expecting a group of some 750 persons, seating had been arranged in the gymnasium for that amount. The overflow crowd filled the tables, the bleachers and people lined the walls to pay homage to their representative.

An estimated crowd of more than 1200 people heard Sen. Jack Hightower of Vernon and Rep. Gus Mutscher of Brenham speak of Clayton's achievements during his six-year tenure as a representative for the counties of Lamb, Bailey,

### Junior High Math Teacher Disappears

Activities for local law enforcement agencies picked up sharply over the past weekend after a car belonging to a nurse at West Plains Memorial Hospital was stolen late Saturday night, then on Monday afternoon, a 23-year old math teacher from Muleshoe Junior High School disappeared from the school.

Sunday morning at 2:45 a.m., Mrs. Kenneth Northcutt reported to City Police officers that her 1963 Oldsmobile had disappeared from a parking lot at West Plains Memorial Hospital.

Mrs. Northcutt told officers she had parked the car at the hospital at 2 a.m. and had removed the key from the ignition. Some 45 minutes later, another nurse who works with her at the hospital noticed that the vehicle was missing.

Monday afternoon at 4:05 Deputy Sheriff Homer McLauri of Sudan, who was assisting Bailey County officers in searching for the missing car, found it wrecked two miles north and dead-end road.

At presstime, Bailey and Lamb County officers continue investigation of the stolen car.

Monday afternoon, school officials reported to the Bailey County Sheriff's office that a junior high school teacher, John Stangle, had disappeared.

Last seen at lunchtime, Stangle reportedly told acquaintances that he would be back to the school in a little while, as

Con't. on Page 3, Col. 7



John Stangle



MULESHOE AREA'S LOVELIEST LADIES--This group of Muleshoe area 'beauties' provided a sneak preview Saturday night of the upcoming "Miss America Comedy Hour" which will be staged in Muleshoe on November 4-5. This bevy of beauties, representing Miss Arkansas, Miss Texas, Miss Alaska and Miss Rhode Island, will be among the 76 all-male cast in the show. Of course, Miss Texas, second from left, promises to win the beauty contest.

### Republican Wives Visit in Muleshoe

Mrs. Paul Eggers, wife of the Republican gubernatorial candidate, and Mrs. Bob Price, wife of the 18th District U.S. Congressman, were honored here Monday at a public reception attended by some thirty persons.

The women, campaigning in behalf of their husbands, made the Muleshoe visit as a part of a campaign tour of the High Plains area. They were accompanied here by Mrs. Frank Ford, Hereford, whose husband

is seeking the state representative position for this district, and Mrs. Warren Falteree, Pampa, 31th District GOP Committeewoman.

Commenting on the warm receptions accorded her husband and his candidacy, Frances Eggers said "People are coming in to us in small towns from even smaller towns, as well as cities, because they want a change and Paul Eggers. They say they want and like the issues stated plainly. That's why they are for him."

"He's taken his call for new Texas leadership directly to the people and wants to put new vitality into the statehouse, because he has also witnessed first-hand the lethargy built up through years of one-party domination."

A 12-year-old boy in Fort Worth designed and then presented Eggers with "my very own design" for auto bumper stickers as a suggestion and recommendation to others of Eggers' qualifications. The young man displayed with pride his new design, adding that it told WHY he wanted Eggers to be governor of Texas; because, as the sticker said, "He Cares". This story, Mrs. Eggers said, had been picked up by the Fort Worth Star Telegram and others. She expressed pleasure and confidence in other expressions of the people's interest in Eggers.

As indicated by Rep. Price's contacts, visiting personally and correspondence with people in his district, not just with special interest groups, Marty Price reported enthusiastically on the warm, "even anxious", and encouraging area receptions of this election year. She spoke of the larger crowds, such as in Dimmitt earlier in the day where she opened Castro County GOP headquarters in ribbon-cutting ceremony.

Con't. on Page 3, Col. 7

United Fund Kickoff Dinner Thursday Night

Con't. on Page 3, Col. 2

### Adult Classes To Begin At High School

Several persons interested in participating in an adult basic education class met in the high school building Monday, October 14, with Mrs. Horace Blackburn, who will teach the class, and Ralph Stevenson, director of special programs for the Muleshoe Schools. Sufficient interest was indicated to justify the organization of a class for those persons wishing to pursue work on the junior high school and the high school levels with special emphasis to be placed on the preparation for the General Education Development Examinations.

All persons interested in joining this class are asked to meet with the class when instruction begins at 7:30 p.m., Thursday, October 17, at the high school building. There remains room in the class for eight or ten additional people.

The class will meet from 7:30 p.m. to 9:30 p.m. on Monday and Thursday nights of each week.

Eighth Grade Flips Morton By 8-0 Score

By Chuck Smith

Muleshoe eighth graders met the Morton eighth graders Tuesday afternoon in Benny Douglass stadium in a clash that saw the Muleshoe team down the Morton team, 8-0. Muleshoe recovered a Morton fumble on the initial kickoff of the game, but was unable to score and the first half was scoreless.

Early in the third, Geard Bara made the lone TD of the game and also ran the extra point.

Con't. on Page 3, Col. 7

### Robert Alford Moving, Will Accept New Post

Robert Alford, a Muleshoe resident since 1957, is moving to Breckenridge on November 1, where he will be first vice president of the First National Bank of Breckenridge.

Alford, who worked at the First National Bank in Littlefield prior to moving to Muleshoe, is vice president and cashier of the First National Bank here.

Since living in Muleshoe, he has been quite active in many church and civic organizations. As a member of the Chamber of Commerce, he is secretary-treasurer of the Mule

Memorial Association; past treasurer, vice president and president of the Chamber of Commerce; chairman of the Blue Ribbon City Award committee; Chairman of the Christmas Decoration committee and is presently serving his second term as director.

In Rotary, which he joined in 1957, he is past president, past president; past secretary; spent several years as a director and has served as chairman of nearly all Rotary committees.

Alford is presently on his

Con't. on Page 3, Col. 3



Robert Alford

# STATE CAPITAL Highlights AND Sidelights

by *Wern Sanford*

**AUSTIN**, -- Presidential Campaign 1968 is starting to roll full speed in Texas. Democrat Hubert Humphrey's official state organization -- a political patchwork of two committees representing varying factions -- was formed just six weeks before the November 5 election. Former State Democratic Chairman Will Davis of Austin and Congressman Jim Wright of Fort Worth head Texas Democrats for Humphrey-Muskie. Cecil Burney of Corpus Christi is executive director and National Democratic Committeeman Robert Strauss of Dallas is finance chairman. At its initial meeting in Fort Worth, the group -- made up predominantly of Gov. John Connally's and President Johnson's friends -- declared the election is yet to be won, and Humphrey has a chance of carrying the state. U.S. Sen. Ralph Yarborough, leader of Texas liberals, heads a separate Texas Citizens for Humphrey-Muskie, and has formed a 137-member executive committee which met here Monday. Yarborough will work with

traditional Democrats, ethnic minorities, independents, Republicans and "former supporters of Sen Eugene McCarthy, Sen. George McGovern, Gov. Nelson Rockefeller and of the late Sen. Robert F. Kennedy." Republican candidate Richard Nixon and American Party candidate George Wallace have had the benefit of months of spadework on behalf of their election efforts. A recent Texas poll calculated Nixon and Humphrey are running close together (with about a third of the state's votes each) and Wallace is third with a fourth of the votes. Nixon was seen as having "the best potential for carrying the state." Most observers regarded that as an understatement as of now, although Humphrey's campaign could change the picture dramatically during the next five weeks. Opinions vary widely as to Wallace's effect on the outcome of the hard-fought state contest. Democrats claim presence of the former Alabama governor on the ballot is hurting Nixon most. Wallace campaign

leaders say they are cutting more deeply into traditional Democratic votes than normally would go to Humphrey. Nixon's Texas campaign director, John Hurd of Laredo, sizes up the Wallace candidacy as having "equal impact" on Nixon and Humphrey. Both the GOP and organized labor (backing Humphrey) are mounting special campaigns aimed at winning back from Wallace votes for Nixon and Humphrey. Success of these efforts might spell the difference on November 5.

**UNIVERSITY OF THE NORTH**  
Staff of the higher-education Coordinating Board has recommended "a multi-campus urban university" for the Dallas-Fort Worth-Denton area to include -- at first -- North Texas State University, Texas Woman's University and the University of Texas at Arlington. These schools would be put under a new board of regents for the area and would be joined in a system later by other state-supported colleges and schools to form a university system designed specifically for the area. Board itself will hold a hearing on the proposal October 11, along with UT's own plan for uniting some of its institutions in the area. **HOMESTEAD CHANGE URGED**  
Constitutional Revision Commission has suggested tightening the homestead debt exemptions following a member's charge that the present basis state law provides a "haven for swindlers." In its semi-final meeting, the

panel agreed to a ceiling on a homestead exemption from foreclosure for debt should be limited to \$25,000. Present constitution provides exemption for rural homesteads of up to 200 acres and urban homesteads (of any value) on lots of up to \$5,000 maximum valuation.

**PARK BONDS SOLD**  
First \$5.75 million of a \$75 million parks improvement bond issue has been sold at favorable interest rate. Lehman Brothers and Associates of New York headed an investment syndicate which submitted 3,5846 per cent interest rate bid, lowest of 16. American National Bank of Austin was selected paying agent for the bonds. Initial developments are expected to be a 120-mile range of the state's 10 largest population centers. A \$1 per car entrance fee at 30 existing parks and 50 cent per car charge at six others will payoff the bonds.

**JUNIOR COLLEGE PLANS**  
Texas' 40 public junior colleges have been given a new and expanded role in the state's educational processes, and now they're going back to the state for help in paying for it. Long-range master plan of the Coordinating Board, Texas College and University System, says junior colleges should concentrate on (1) preparing some students for transfer to senior colleges and universities for their last two years, (2) setting up badly needed technical and vocational programs and (3) continuing education and cul-



GHOSTS, GOBLINS AND WITCHES--All are featured in the Halloween decorations in the fifth grade classroom of W.B. Slayden at Mary DeShazo Elementary School. Pictured are left, David Smith and Hector Posados, who decorated a corner of the room.

district court in San Antonio to take over Casseb's extra duties as judge of the fourth administrative district. On October 1, Harley Pershing, Fort Worth Star-Telegram reporter, took over new duties as research-information specialist at Texas Liquor Control Board. Dallas Police Capt. Jack Revill was picked as chief of criminal law enforcement division at Department of Public Safety. Harris County District Attorney Carol Vance is the new executive director of the Texas Law Enforcement Legislative Council, succeeding Lewis Berry of Austin.

**SHORT SNORTS**  
Now available is a revised Spanish-language edition of the Texas Drivers Handbook -- including a glossary for quick translation. Water Quality Board has entered an agreement with the Trinity River Authority to help control pollution in the new Livingston reservoir. A State Board of Insurance study shows that cars in Texas carrying the legal minimum limits of liability insurance has constantly increased, from 18.2 per cent in 1945 to 74.5 per cent in 1967.

**A LUCKY RIDE**  
Fort Worth, Tex. -- An automobile stopped for a light and the driver offered a ride to a hitchhiker. The 19-year-old was grateful for a ride after a 54-hour bus trip and asked the driver if he could direct him to Parish Motors. When the driver said that he was Parish, the youth said, "I am your son Jimmy." Jimmy had been living with his mother in Oregon for the past 12 years.

## ZENITH CHOOSE from the SIGHTS and SOUNDS of '69



THE SCHELLING • Z3504-1  
\$339.95

THE 14" PORTABLE COLOR TV WITH BIG-SET FEATURES  
102 sq. in. rectangular picture  
Custom Compact Personal Portable Color TV featuring 102 sq. in. rectangular picture. New handsomely designed vinyl clad metal cabinet in Charcoal Metallic color (Z3504C-1), or in Silver-Brown color (Z3504-1). Exclusive Modular Solid-State 3-Stage Video IF Amplifier. Full Rate Power Transformer. Telescoping Dipole Antenna for VHF Reception.



THE MODERNE • 565  
1999.5

ZENITH CIRCLE OF SOUND MODULAR STEREO  
Handsome three-piece modular Circle of Sound unit with matching cylindrical-shaped speaker units that can be placed up to 20 feet away from main cabinet. Stereo Precision record changer, 100 Watts Peak Music Power, Micro-Touch 2G Tone Arm, Exclusive New Bass Control.

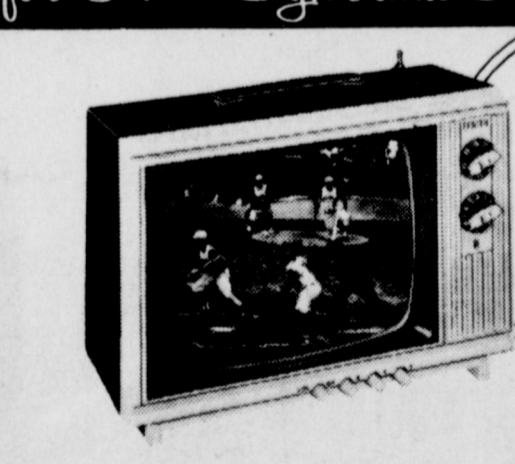


THE MURILLO • 24532  
\$675.00

Classic Mediterranean styled full base compact console with casters in genuine Dark Oak veneers and select hardwood solids with the look of fine distressing. 5" x 3" Twin-cone speaker. New Zenith VHF and UHF Concentric Tuning Controls.



COMPACT CONSOLE STEREO  
Fits in where others can't...yet it features rich, full console stereo sound!



THE BERKELEY • Z1305  
\$999.5

ONLY A FOOT HIGH... FITS IN ANYWHERE!  
ZENITH COMPACT 12" PORTABLE TV  
Compact molded multi-color cabinet sculptured in crisp, clean rectangular lines. Deluxe Video Range Tuning System. Monopole Antenna. Choice of exciting colors. And, it's handcrafted.

THE DE KOVEN Z922M  
Charming Early American styled cabinet in genuine Maple veneers. Lift lid and record storage space.

### Sights and Sounds for '69

tural and public-service programs. Now, junior colleges get state aid in two forms -- a line-item appropriation for each school for direct academic instructional costs (\$26,530,325 this year) plus another \$6,476,000 distributed by the Texas Education Agency for technical-vocational programs. For the two-year period beginning September 1, 1969, the junior colleges are asking a strong increase in the first figure -- \$35,490,803 in 1970 and \$37,577,190 for 1971 -- and a change, along with an increase, in the second. They want their vocational-technical money allocated via a line item -- the same as the academic figure is computed -- and increased to \$15,025,375 for fiscal 1970 and \$18,292,142 for 1971.

**ANTI-POLLUTION EXEMPTION CAMPAIGN**  
Houston Rep. Rex Braun plans a one-man campaign against proposed Constitutional Amendment No. 6 to be voted on November 5, to exempt from all property taxes pollution

control equipment installed by industry. Braun says the state shouldn't subsidize the pollution-law breakers and, besides, other states have found that the exemption only costs money and does not encourage the installation of anti-pollution equipment. He estimates the amendment would cost Texas \$500 million over a five-year period. **ATTORNEY GENERAL SPEAKS**  
Legislature has no authority to restrict purchase of Department of Public Safety aircraft to rescue work only (and rule out their use for traffic law enforcement), Atty. Gen. Crawford C. Martin has held. At the same time, Martin indicated that Governor Connally has no power to veto the restriction (as he did July 20). In other recent opinions, Martin concluded that: \*Commissioners Court of Dallas County can repair, maintain and operate the courthouse either with its own employees or by contracting with an independent contractor. \*State Board of Dental Examiners employees may re-

ceive merit salary increases during the current fiscal year. **APPOINTMENTS ANNOUNCED**  
Former State Sen. Franklin S. Spears of San Antonio has been named judge of the 57th District Court of Bexar County to fill the vacancy created by resignation of Judge Solomon Casseb Jr. Spears is the unopposed Democratic nominee for the post. Connally selected Judge Peter M. Curry of the 166th

RE-ELECT FOR A SECOND TERM  
**CRAWFORD MARTIN**  
ATTORNEY GENERAL  
Pd. Pol. Ad. Crawford Martin for Attorney General, Searcy Bracawell, State Chrm.

# \$25.00 get acquainted offer!

This is our way of introducing KitchenAid food waste disposers to this area. We believe you'll like your KitchenAid disposer so well that you'll tell your friends about it. It's built with the same kind of old-fashioned quality that has earned KitchenAid dishwashers their reputation for dependability. That's why we'll deduct \$25.00 from any KitchenAid disposer price when you buy it with any front-loading KitchenAid dishwasher. This offer is good from now until December 25, 1968. And by installing both at the same time you'll save on installation cost, too.

**KitchenAid disposers can handle the toughest food waste, from bones to stringy vegetables.** There are four models to choose from, batch feed or continuous feed. You'll get such features as automatic reversing action, heat-fused epoxy coating in the grind chamber, Teflon-S\* coated drain chamber, capacitor start motors. Come in and let us show you what real time-savers these products can be.

**See the world of difference in KitchenAid dishwashers**... built-ins, portables, convertibles and dishwasher-sink combinations. Get acquainted with the solid construction... the wonderful new loading convenience... the marvelous washing and drying systems... the exclusive TriDura\* porcelain enamel finish. Just some of the reasons why 6 out of 10 KitchenAid dishwashers are purchased on the recommendation of satisfied users. \*DuPont's registered trademark.

## KitchenAid. DISHWASHERS & DISPOSERS

Get them both and SAVE \$25... at

# GORDON WILSON APPLIANCE

202 MAIN MULESHOE PHONE 272-3138



### From The Chief's Desk

**UNLICENSED DRIVERS**  
It has been called to the attention of this office concerning underage drivers of vehicles. In the future, these drivers will receive one warning ONLY! Thereafter, officers will file complaints upon parents of these persons who continue to drive.

**DOGS, DOGS, DOGS**  
The city has long in the past issued ordinances declaring it illegal for dogs or any animal to run loose inside the city limits, even though they may be licensed.

Violators of this ordinance can be fined on and could be fined.

It is the duty of officers to pick up these animals and impound them OR, IN CASE THEY SHOOTS THEM!

### Band...

Carl Bamert, Halloween Carnival chairman announced that the carnival will be held October 31 at 6 p.m. in the bus barn. The queen contest is scheduled to be held at 10 p.m. in the auditorium.

During the meeting, the Band Boosters and Fine Arts Boosters voted to sell fruit cakes again this year.

**Bridge of Sighs**  
"Think of the golden moments you have wasted playing friend."  
"Yes," replied Miss Cavenne, regretfully, "besides a lot of silver coin and paper currency."

### Absentee...

Con't. from Page 1

had not listed his vice presidential candidate by the deadline in Texas in order to have ballots printed, a 'ghost' or 'proxy' had to be named. S. Marvin Griffin agreed to have his name placed on the ballot in Texas.

On October 1, soon after Wallace announced that his running mate would be Gen. Curtis LeMay, Mrs. Gilbreath received a letter from the Secretary of State's office which said:

"Recent newspaper stories concerning the selection of a vice presidential candidate for the American Party have prompted many county clerks to inquire whether they should delay the printing of their ballots for the general election until a further announcement was made."

"Yesterday the State Chairman of the American Party of Texas reconfirmed that S. Marvin Griffin is the vice presidential candidate whose name will appear on the ballot for the American Party of Texas. In response to our question, we were informed that the county clerks should be advised not to delay the printing of the ballots on account of a possible change in the nominee, as no change is anticipated."

County Clerk Hazel Gilbreath said she called the Secretary's office and reconfirmed that the ballots were to be printed with the name of S. Marvin Griffin.

### Clayton...

Con't. from Page 1

when he says something must be done in this country to develop our water resources."

Barnes said he was glad that so many people had given so much time to show Clayton how much the people of the 72nd district appreciated him.

He continued, "Bill is guilty of only one thing -- working too hard. And I, as much as anyone, am guilty of making him do this."

Nearly 50 state dignitaries, including state representatives, state senators, judges, mayors and others attended the packed dinner.

The votes cast for the American Party, however, still go to Wallace and LeMay, officials said.

Mrs. Gilbreath said other changes are in store for Texas voters. Instead of crossing out all the candidates except the voter's choice, this year's ballots instruct the voter to place an 'X' in front of his preference.

You can also vote a split ticket if you prefer. "If you want a Republican Governor and a Democratic Representative, all you do is mark your choice with an 'X,'" Mrs. Gilbreath said.

This year, Democrats will be listed first on the ballot, followed by Republicans and American Party candidates.

In order to vote, residents must have lived in the county six months and in the state one year. "However," said Mrs. Gilbreath, "if you have lived within the state and moved and have lived within Bailey County less than six months, you may vote on a limited ballot."

A limited ballot allows the voter to cast his preference for all national and statewide candidates, but prohibits him from voting in local elections, she concluded.

### Alford...

Con't. from Page 1

second three-year term as director of the United Fund; has served as president and is presently campaign chairman.

He has held offices in both the Boy Scout and Girl Scout organizations; is a trustee of the Senior Citizen's organization; a trustee of Roger Miller Little League Baseball Park and is chairman of Bailey County Savings Bonds.

Active in Muleshoe First Methodist Church, he is past official board chairman; past secretary-treasurer and president of the Methodist Men; past chairman of Membership and Evangelism Commission and is currently serving as chairman of the finance committee. He is married and has three children.

M.D. Gunstream, president of the First National Bank, said "Robert Alford grew up with the First National Bank and I wish him all the success in the world."



**WELCOME TO MULESHOE**--Mrs. Frank Ford, left, Mrs. Bob Price and Mrs. Paul Eggers are welcomed to Muleshoe by Mrs. Harold Allison and Mrs. Ernest Ramm who were co-hostesses for a reception honoring the three Monday afternoon at the Muleshoe State Bank community room. Mrs. Ford's husband is a Republican Candidate for State Representative, District 72; Mrs. Price's husband is a candidate for re-election to Congress and Mrs. Eggers' husband is Republican candidate for the Governor of Texas.

### From Congressman BOB PRICE

Congressman Bob Price of Pampa will arrive at Amarillo Air Terminal at noon today after posting one of the highest individual attendance and voting records during the 90th session.

Price, who left a newly opened campaign for reelection Sunday afternoon and returned to Washington, was on hand for the final gavel of the extended session Monday.

The Congressman will speak at 7 p.m. today at a Republican dinner at the Carson County Agriculture Building.

Last week the 18th District Representative was cited by

House Minority Leader Gerald R. Ford for his outstanding voting and attendance records. The achievement, said Ford, marks Price as an outstanding member of the 90th session since his record is one of the highest of any member.

Price scored 96 per cent on roll call votes in the first session and topped this with a 97 per cent during the second session which ended Monday.

Price missed only 10 of a total of 245 votes in the first session and six out of 229 in the second.

The record wasn't established by chance. When Price left Sunday afternoon he pledged to make up cancelled campaign dates which went by the board because the session

had not closed on schedule and said he felt his place was on the House floor "where the people of the district can best be served."

He made it there, but not without a few trials along the way.

Price boarded a commercial airliner in Amarillo just before 10 p.m. Upon arrival at Washington, the plane was diverted to New Jersey because of fog. When it finally touched down, the Congressman had a one hour wait for a bus which took four hours to reach Washington and at 10 a.m. the 18th District Representative was on the floor, in spite of the fact that he had not slept since early Sunday morning.

### Wives...

Con't. from Page 1

monies, where crowd seemed "not urged but happy to come."

"Women play an important part today in, and are more aware of, events outside the home. They are "ready for a change, to save our country for our children. We women feel that we must do our share in keeping this country as great as it is, and make it an even better country for our children," Mrs. Price feels and stated.

GOP committeewoman Frances Falteree added that the majority of or most Texans agree that Republican Senator John Tower and Congressman Bob Price, George Bush and Jim Collins are Republican "Texas kind of men." She said it was important to study all Republican candidates who compete to represent each area of Texas on the state and national scenes.

"We know that there are some politicians who insist the Democratic Party of Texas - with its "two wings" - has been just as effective as twoparties. But the record, speaking for itself, tells another story. Texans can make a bold move

toward developing the state's rich potential this November if voters accept the responsible, responsive alternatives offered by candidates of the Republican Party of Texas."

"The unrest, which must be alleviated - both in Texas and the nation explains the phenomenal strength by Wallace's "Telling it like it is" as well as Republicans more earnest pleas for strength, stability and authority.

Another spokesman said "This is the compelling need of our great Republic at a critical point in its history. Nixon is the best chance for a change in top leadership, with Eggers, Price, and others, who believe also in states' rights, law and order first. . ."

The informal coffee, held from 3 until 5 p.m. at Muleshoe State Bank's community room, was co-hosted by Mrs. Harold Allison, Mrs. Ernest Ramm, Mrs. Clarence E. Mason and Mrs. Vic Benedict.

Following the Muleshoe visit, the GOP women were honored at a 6 p.m. reception at Friona, a Monday evening dinner and Tuesday morning coffee in Hereford, and continued to Canyon Tuesday for a luncheon. The entourage coffee-ed in Tulia and was feted with a luncheon at Dimmitt prior to the public reception here.

### Car...

Con't. from Page 1

the first period after lunch was an 'off' period for him.

Superintendent of Schools Neal Dillman said they know nothing about the disappearance of 23-year old Stangle. "He is a real fine boy," said Dillman, "and we just don't know anything at this time."

A graduate of ENUM, where his parents are teachers, he attended Notre Dame last year and was in his first year as an eighth grade math teacher at Muleshoe Junior High School. Unmarried, he roomed with another teacher at the school.

At presstime, police investigation into the disappearance of John Stangle continues.

Other police activities in the past few days include one arrested by the City Police Department for rape; 2 arrests for drunk and one for abusive language by the Bailey County Sheriff's office and one DWI arrest by Texas Highway Patrolmen.

### THE GARBAGE PROBLEM

New York--Study is underway at the University of Rhode Island to determine the feasibility of burning garbage in incinerator ships and dumping the ashes in the ocean. They wish to find out what effect incinerated residue would have on marine life and if it could pollute the ocean.

**MULESHOE JOURNAL**  
Established February 23, 1924  
Published by Muleshoe Publishing Co., Inc.  
Every Thursday at 304 W. Second  
L. B. Hall, President  
J. B. Perry, Secretary-Treasurer

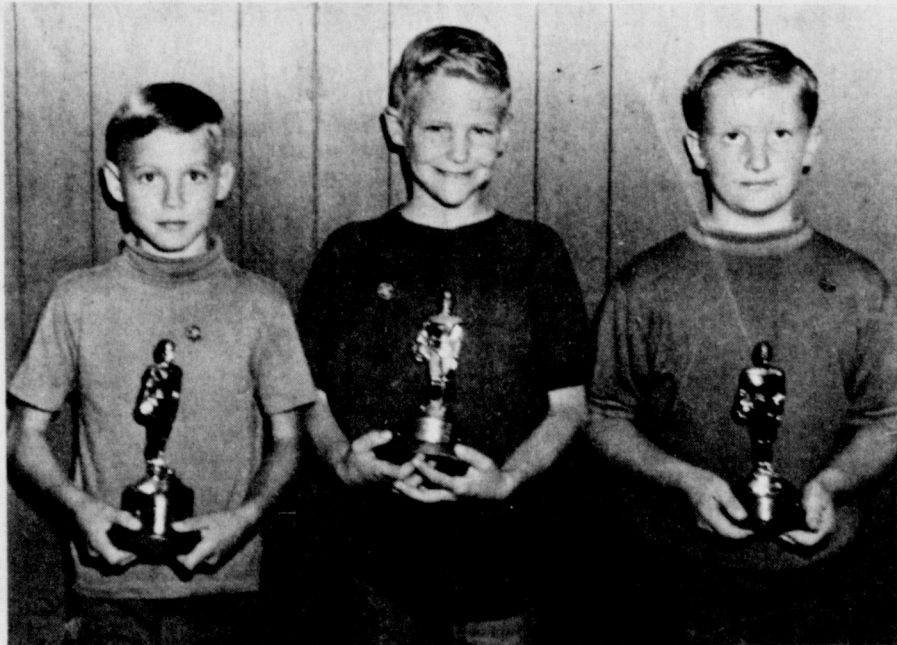
**TEXAS PRESS ASSOCIATION**  
Member Since 1961

L. B. Hall, Publisher & Managing Editor  
Chela Williams  
News Reporter

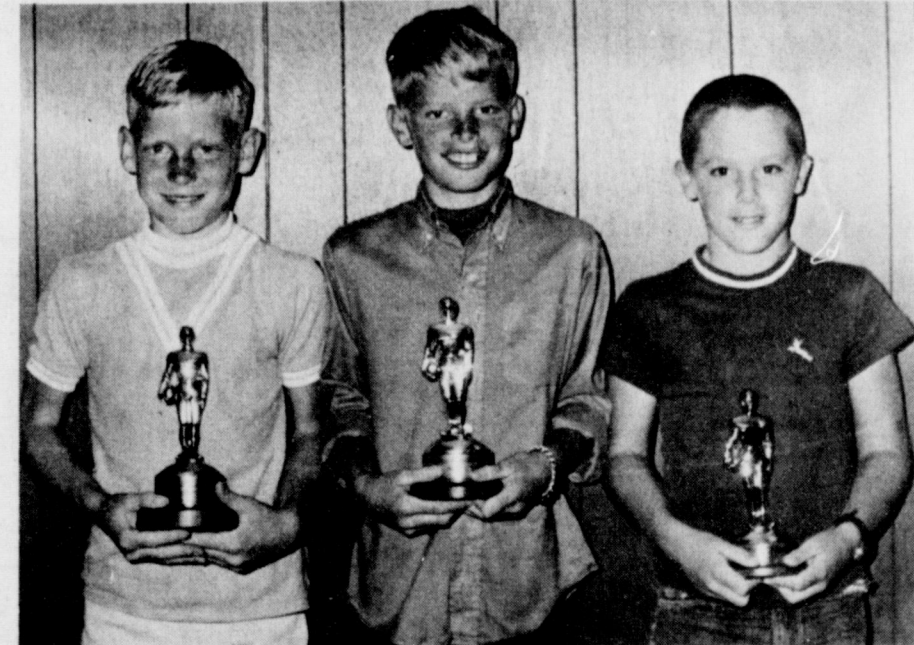
**SUBSCRIPTIONS:**  
Zone I-Bailey-Farmer-Cochran-Lamb counties: \$4.00 per year; \$4.50 per year by carrier. With Thursday Muleshoe Journal, both papers: \$5.50 per year; \$6.00 per year by carrier.  
Zone II-Out-of-Territory: \$5.00 per year; With Thursday Muleshoe Journal, both papers: \$6.25 per year.  
Monthly, by carrier-\$55; single copies-10¢  
Advertising rate card on application.



Age Eight Winners: First Place, Billy Vinson, Second Place, Tommy Clodfelter, Third Place, Mark Washington.



Age Nine Winners: First Place, Ronnie Powell, Second Place, Mike Wisian, Third Place, Mickey Merriott.



Age Ten Winners: First Place: Tommy St. Clair, Second Place, Gary Wrinkle, Third Place, Carey Sudduth.

## WE'RE PROUD OF THE WINNERS IN THE PUNT-PASS-KICK CONTEST

# Congratulations!

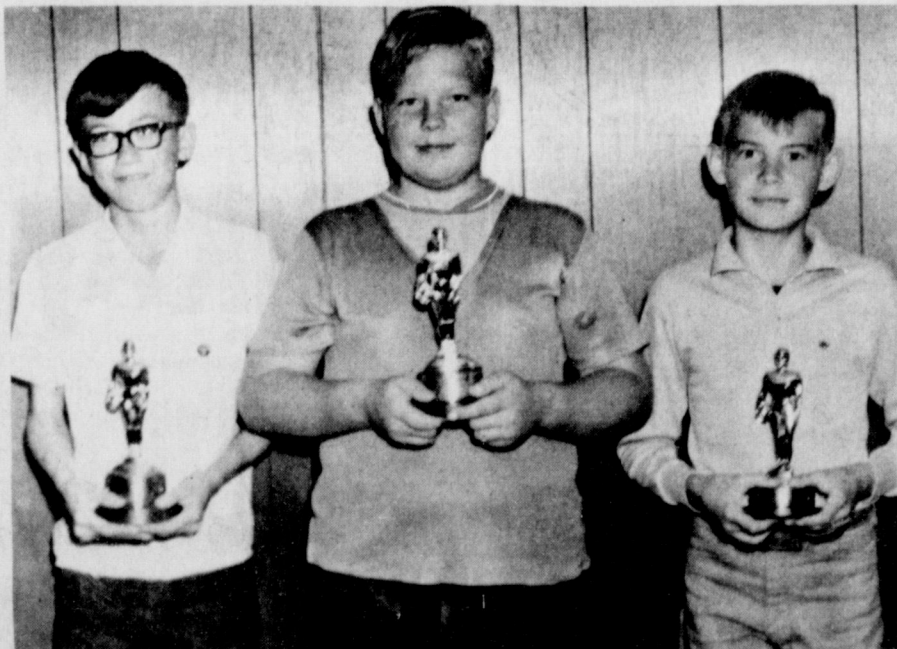
## MULESHOE MOTOR CO.

"AT THE CROSSROADS"

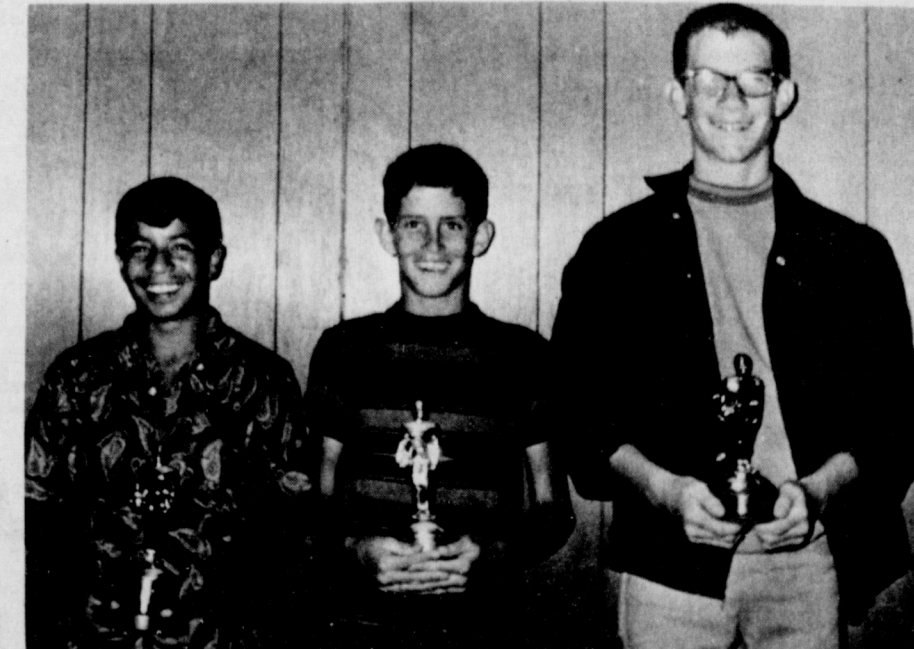
"CAR CAPITAL OF THE WEST PLAINS"



Age Eleven Winners: First Place, Dusty Davis, Second Place, Kim Smith, Third Place, Gary Parker.



Age Twelve Winners: First Place, Joe Flores, Second Place, Ricky Smallwood, Third Place, Douglas Crawford.



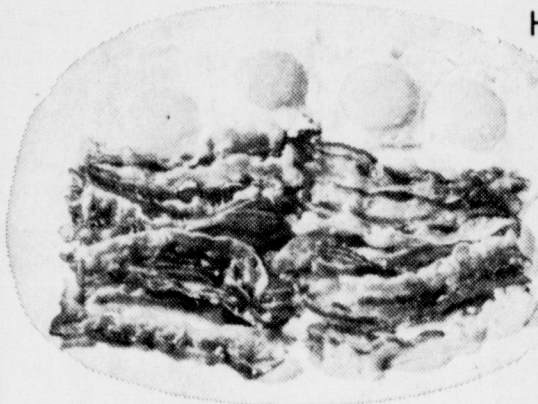
Age Thirteen Winners: First Place, Danny Rodriguez, Second Place, Roger Williams, Third Place, Perry Stockard.

**PIGGLY WIGGLY**

1st in Savings!

Piggly Wiggly Quality Meats!

Hormel's Black Label,  
Hickory Smoked Flavor



**SLICED BACON** Pound **69¢**  
**FRANKS** Hormel's All Meat 12-Oz. Package **49¢**

Lean, Boneless, For Braising and Stewing

**Beef Cubes** Pound **79¢**

Semi-Boneless, Oven Ready, Standing  
**Rib Roast** Pound **98¢**

Decker's Hickory Smoked, Whole

**PICNICS** Pound **33¢**

U.S.D.A. Choice, Valu-Trimmed Beef

**Family Steak** Pound **68¢**

U.S.D.A. Choice, Valu-Trimmed Beef  
**Sirloin Steak** Pound **97¢**

U.S.D.A. Choice

**STEAK** Pound **98¢**

U.S.D.A. Choice, Valu-Trimmed Beef, Boneless

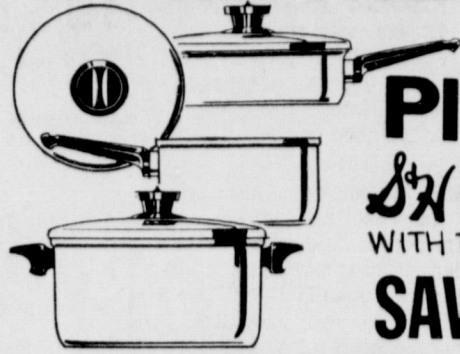
**Top Round** Pound **\$1.19**

U.S.D.A. Choice, Valu-Trimmed Beef  
**Cube Steaks** Pound **\$1.19**

T-BONE

**T-BONE** Pound **98¢**

Revere *Town 'n Country* Cookware  
with Perma-Loc, the "locked-on" teflon  
at amazing savings!



Plus: 100 FREE  
**GREEN STAMPS**  
WITH THE PURCHASE OF EACH PIECE

SAVE OVER \$12.00 ON A COMPLETE SET!

A NEW  
PIECE  
EACH  
WEEK

this week  
2 Qt. COVERED  
**SAUCEPAN**

**\$4.49**  
only  
Regular \$6.05 Value

Town 'n Country  
designer inspired  
in popular  
avocado green

**GIANT NEW-PAK NATIONAL Brands Sale!**



**SEC 7**  
NOW ON  
SALE  
**99¢**

Sections 2 through 12—only 99¢ each  
One piece Cloth Binder—only \$1.99

WE GIVE WE GIVE WE GIVE WE GIVE

**SUGAR**

C & H, Holly or Imperial

5 Pound Bag **48¢**

**MIRACLE WHIP** Qt. Jar **48¢**

Shortening  
**JEWEL**

3 Pound Can **28¢**  
Limit One - Thereafter 48¢

**FLOUR** 25-Pound Indian Girl **\$1.58**

**BEANS**

Green, Stokely's, Cut

**18¢** Can

**BREAD** Farmer Jones 1 1/2 Lb. Loaf **25¢**

**PEAS**

Sweet, Stokely's Honey Pod

**18¢** No. 303 Can

Health and Beauty Buy of the Week!  
Arrid Extra Dry 18¢ Off Label, Regular \$1.79 Retail  
**DEODORANT** 8.8-Oz. Can **99¢**

**OLEO**

Elgin, Blended Solids

1-Pound Package **5¢** Ea.  
Limit Two - Thereafter 12 1/2¢ ea.

Stokely's Cream Style or Whole Kernel  
**GOLDEN CORN**

**18¢** No. 303 Can

Golden West, All Grinds

**COFFEE** 2-Pound Can \$1.13 **57¢**  
1-Pound Can

Hunt's, Solid Pack

**TOMATOES** No. 300 Can **23¢**

Del Monte

**TOMATO JUICE** 46-Oz. Can **36¢**

Trappey's, Whole

**YAMS** No. 303 Can **30¢**

Stokely's Finest

**FRUIT COCKTAIL** No. 303 Can **18¢**

Without Newspaper Coupon 20¢

Stokely's

**TOMATO SAUCE** 8-Ounce Can **8¢**

Without Newspaper Coupon 9¢

Bonne', Liquid

**BLEACH** 3¢ Off Label 1/2-Gallon **27¢**

Bonnebelle

**PEANUT BUTTER** 2 1/2-Pound Jar **89¢**

Fresh Frozen Foods

**MEAT PIES**

Morton's, Chicken,  
Beef, Turkey and Tuna

8-Oz. Package **17¢**

**Grape Juice** Welch's 6-Oz. Can **22¢**

**Potatoes** Simplot, Hash Brown 16-Oz. Package **33¢**

**CUT CORN** Libby's 10-Oz. Package **19¢**



These Values Good  
Oct. 17-18-19, 1968  
in Muleshoe.

We Reserve the  
Right to Limit  
Quantities.

Tokay, Large Clusters

**TOKAY GRAPES** Pound **15¢**

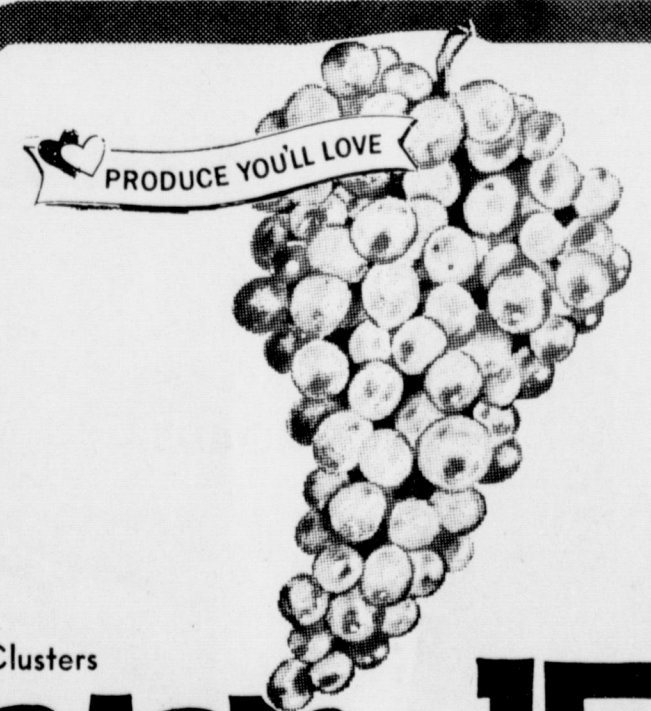
Firm, Green Heads  
**Cabbage** Pound **15¢**

New Crop, Medium Size  
**Sweet Potatoes** Pound **19¢**

**APPLES** New Crop, 4 Pound Bag **39¢**

Large, Crisp, Green  
**Celery** Pound **19¢**

California, Large Green Heads  
**Leaf Lettuce** Each **19¢**



## Legend of Sandhills

History . . . described by Webster as a branch of knowledge that records and explains past events.

Nothing sparks the memory, nor lingers as long as the discussion or reading about things, persons and places who have been, seen or known.

This along with the necessity of preserving the founding of Bailey County and the people who pioneered this once wild virgin land, is the purpose of writing history books of counties.

A history book is being written and additional material being gathered for a Bailey County history by Muleshoe Publishing Company. Each pioneer resident is a branch of knowledge that can contribute to the history of this county.

A phone survey of all county residents is being completed by the Journals' staff, in order that all possible pioneer residents or their descendants may be contacted. Every number has been called, but many numbers did not answer.

The publishers request that any pioneer or descendant who has not received a questionnaire or who wishes to be contacted, please telephone the L. B. Hall residence, 272-4749 or the Journals' office at 272-4536, so that their families will be included in the hard-cover volume being compiled by the company.

One story that should capture the interest of the younger generation concerns the sandhills which Indian Legend says "Spirit" made.

The story goes: An unusual topographic feature in Bailey County is the range of sand hills about a mile south of Muleshoe, entering the county from the northeast and lying across the county in a general southwesterly direction.

The hills are not high and offer no difficulty to transportation, but are low and rolling and are used as part of the grassland for present ranching operations.

Their width in most places will not average more than a mile or two though at some points the sand gradually slopes off to impregnate the surrounding soil with its particular characteristics.

Very old maps which were made by the early Spaniards

and are now on file in the Capitol building at Austin indicate that a river once ran where these sand hills are now, according to Jess Mitchell's "Legend of the Sandhills."

There are many legends which seek to explain how the sand came to take the place of the once beautiful flowing river. According to the most popular of these legends, the Indians displeased the Great Spirit and he in his anger caused a great typhoon of sand to sweep the area, completely covering the ancient river and wiping out the Indian village.

Only a few of the hardest braves escaped in some miraculous manner, according to the legend, and were fortunate in finding a sheltered area in the midst of a dense growth of low trees. Covering their heads with their blankets they shook off the sand as it enveloped them, keeping themselves above the growing mound, until at last when the storm ceased they were sitting in the top-most branches of the trees which had protected them.

Scarcely anything in their former land was recognizable

as they looked about them. Their homes were entirely wiped out. Not a person, pony, nor animal of any kind was to be seen. The river was now only a ridge of sand. They turned away sadly to find a new home.

Many, many years passed and the Great Spirit relented and changed the land back to what it once was, so the legend goes. A new race of people began drifting across the area but there was not enough water and the Great Spirit whispered to the people to dig in the shallow places where water had been standing. As they need more water the shallow places were dug deeper. The river still flows beneath the sand hills, but here and there great wells are giving up a supply of pure water, according to the legend.

Geologists and archeologists think that the sand dunes found in Bailey County are the result of the drying up on old drainage channels and that the "blowouts" are the remnants of old stream beds. They indicate a time of great precipitation, then a gradual drying up, later on a chain of lakes, and finally, wind erosion piling stream sediment into dunes, according to Charles Renfroe in his "Archeological History of the Panhandle-Plains."

## FHA Expands Services

L.J. Cappelman, Texas State Director of the Farmers Home Administration, said he had been notified by Secretary of Agriculture Orville L. Freeman of the rural housing and rural community planning features of the newly enacted 1968 Housing Act.

The Act was signed into law on August 1 by President Johnson.

Secretary Freeman's statement pointed out the new housing program is part of the President's drive to remove all substandard housing in the nation within a decade, including the 3 million substandard houses that exist today in rural America.

Mr. Freeman announced that benefits of the new Housing and Urban Development Act. will be channeled into Texas rural areas through the 138 local county offices of the Farmers Home Administration, and through the rural system of Technical Action Panels.

The Farmers Home Administration, a Department of Agriculture supervised credit agency for housing, farming, and community facilities, carries on rural housing programs, established by the new act and previous legislation, for farmers and for other people in the countryside and in rural towns of up to 5,500 population.

New housing services under the act will include--

- \* Housing loan interest supplement payments for families with incomes too low to meet in full the amortized loan payments on individual rural housing loans.

- \* Interest supplements on loans to develop nonprofit rental and cooperative housing for low income people.

- \* Financial support for "self-help" housing projects for low-income families including grants to nonprofit organizations for the development and supervision of "self-help" housing projects and loans to nonprofit organizations to buy and develop land to be used as building sites.

- \* Housing and training facilities for rural job trainees and their families.

- \* Expanded housing credit for city people who work in rural areas.

- \* Loans for the purchase of building sites for farm-labor housing.

Mr. Freeman announced that the interest-supplement program for individual borrowers under the Farmers Home Administration authority (Title X of the Act) will be placed in effect immediately. Individual loans may be made for up to 33 years, loans for rental and cooperative housing may be made payable over periods up to 50 years.

The interest-supplement program for rural nonprofit rental housing organizations and cooperatives of low-income families will take effect when administrative arrangements are completed. The new provisions for job-trainee and self-help housing assistance will not take effect until funds are appropriated.

The interest-supplement plan seeks to put adequate housing within reach of lower-income families by reducing their loan or rent payments. The supplement payments will be made by the Federal Government.

A minimum requirement is that a home-ownership borrower who does not have enough income to pay his loan installments in full will pay at least the amount that would be due if the interest rate were one per cent.

The actual amount that a low-income family will need to pay will depend on its income and the size of the family.

Freeman said the new Act will facilitate a back-to-the-country movement by city dwellers who work in rural areas. They no longer will be required to own rural homesites in order to be eligible for Farmers Home Administration rural housing loans to build homes where they work. They also will now be able to buy an existing home in a rural area.

The Act also eliminates an old provision that any tenant admitted to a Farmers Home Administration-financed rental unit, or any new member of a rural housing co-op, must already be a rural resident. In the future, low-income city dwellers who work in rural lo-

calities may move directly from the city into Farmers Home Administration-financed rental or co-op units.

Technical Action Panels, which include top local representatives of USDA agencies that have local offices in rural areas, will help rural communities gain access to all

provisions of the new housing legislation that can be adapted for use in small towns.

For further information regarding the new housing authorizations of the Farmers Home Administration, please contact John C. Kennedy, Bailey County Supervisor at 115 E. Avenue D., Muleshoe.

## 105 hp new Blue-Key Ford 8000 comes on strong with traditional Ford comfort and convenience.

**TRADE 'N SAVE NOW**  
NO INTEREST  
NO PAYMENTS TILL SPRING 1969

**Pull a 7-bottom plow.** Handle a 21-ft disc harrow. Cultivate up to 130 acres a day. Ford 8000 handles big-acreage jobs with authority. Makes your time more profitable.

**Feel fresher at the day's end.** Ride on a cushioned, adjustable seat. The steering wheel adjusts to eight positions to match your height and reach, sitting or standing. Hydrostatic power does the work in steering. No fighting the wheel at turns. You see fore and aft, either side, with ease.

**Step up your labor efficiency with acre-**



Nine sq ft of uncluttered space gives you plenty of leg room on the operator's deck of the Ford 8000. Convenient hand grips and step plates give you easy on and off, from either side.



With the Ford 8000 you can have your choice of row-crop models with either tricycle or wide adjustable front axle, or an all-purpose model, as shown here.

eating power. The 401-cu. in diesel engine features a massive crankshaft driven by six husky 4.4-in. pistons. 8-speed transmission gives you speeds from 1.9 to 17.5 mph. Outstanding lugging power. Get quicker response to changing loads.

**Get a big deal now on a Ford 8000** with the Ford "Trade 'n Save" Program. High trade-ins. No interest due till Spring. Then arrange payments by crop, semi-annually or monthly.

Work the Ford 8000 in your fields. You'll know why Ford blue is the key to greater quality.



**ASK FOR  
FREE  
DEMONSTRATION  
AT  
MULESHOE  
FORD  
TRACTOR, INC.**

West Clovis Hwy.

MULESHOE

Phone 272-4592

# BILL CLAYTON

Representing the 72nd Legislative District



Your Effective Voice in State Government



## THE 72nd DISTRICT NEEDS BILL CLAYTON

Bill Clayton's record reflects strong leadership in the following areas which directly affect all residents of the 72nd District.

- \* Water Development
- \* Law Enforcement
- \* Industrial Development
- \* County, City & Local Government
- \* Agriculture
- \* Education
- \* Economy
- \* Tourism

Bill Clayton's record stands for itself. It reflects the work of a conscientious young man.

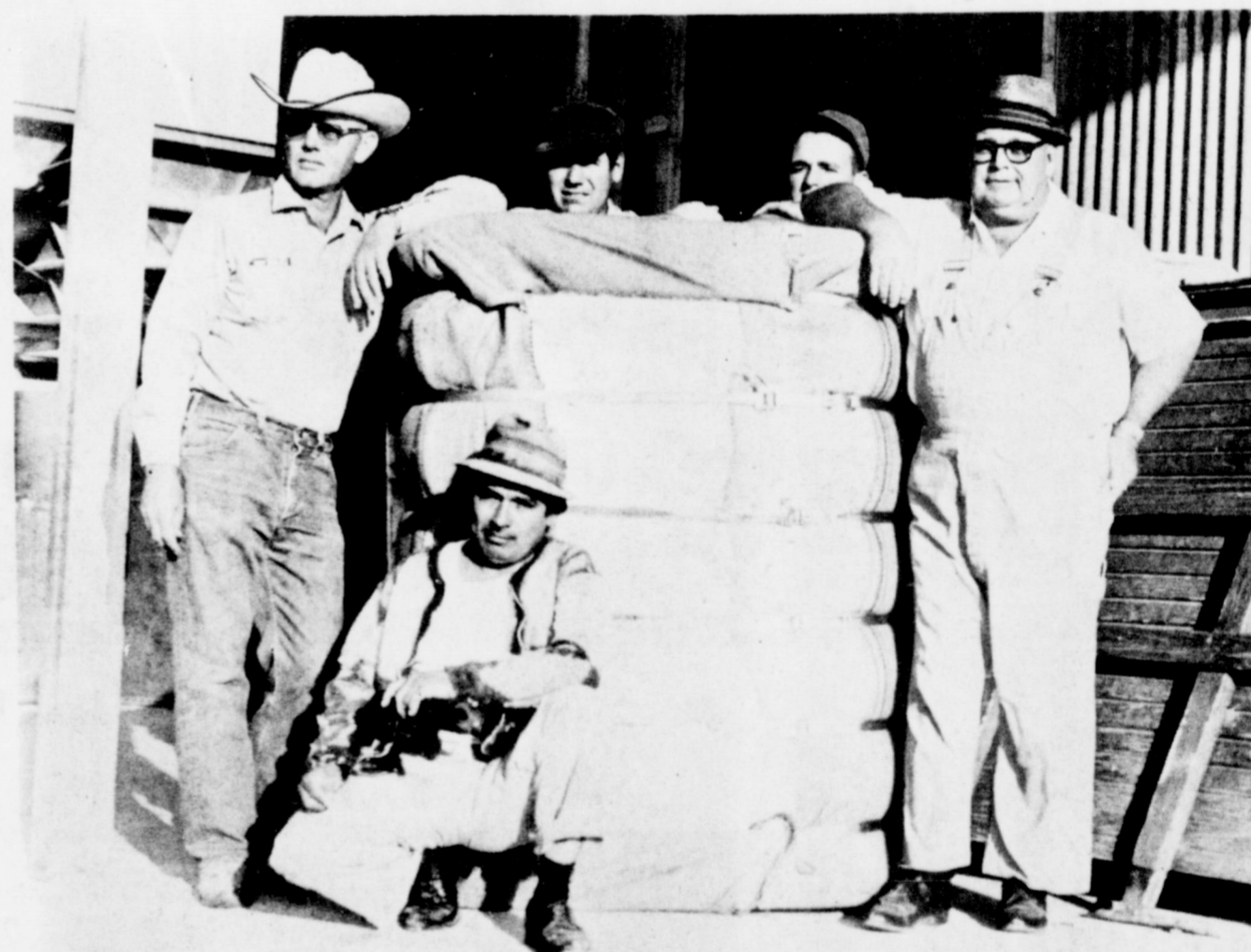
Bill Clayton's record shows him a tireless worker who is sincerely interested in helping the people he represents. The 72nd district is in good hands.

Pd. for by: Bill Clayton for Better Government Fund

Virgie Haile, Chairman, Littlefield, Texas

## OUR CONGRATULATIONS

To R. L. SCOTT



L.R. - R.L. Scott, farmer who produced the First Bale, John Hayes, ginner, Dick Pierce, ginner, Earl Richards, manager and Front, Felix Ybarra, press hand.

....PRODUCING MULESHOE CO-OP GIN'S  
FIRST 1968 BALE OF COTTON

"We're Proud To Have Ginned It."

The first bale weighed 485 pounds and was ginned from 1960 pounds seed cotton, producing 800 pounds seed. R.L. Scott planted Rilocot 90 seed May 10, 1968 and irrigated his crop one time. He farms 2 1/2 miles N.W. of Muleshoe.

# MULESHOE CO-OP GINS



Mrs. Neal Knight

Mrs. Neal Knight Honored at Shower

Mrs. Neal Knight, the former Pam Seymore, was honored with a miscellaneous wedding shower Saturday morning in the Muleshoe State Bank community room.

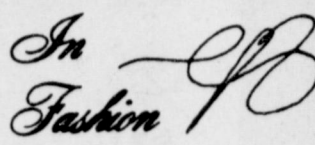
The honoree and her mother, Mrs. Melvin Seymore, greeted the guests as they arrived. They wore blue and gold corsages. Stephanie Brantley registered guests at a table covered with white and centered with an arrangement of gold mums.

Lace over gold offset the bride's chosen colors of blue and gold on the serving table. The table held a tall arrangement of blue and white flowers entwined with greenery.

Kathy Seymore and Darla Kendall served from a silver and crystal service.

Hostesses for the occasion were Mrs. Sam Hopper, Mrs. E.T. Ford, Mrs. George Washington, Mrs. J.B. Young, Jr., Mrs. Harland Davis, Mrs. Owen Jones, Mrs. J.T. Shofner, Mrs. Guy Kendall, Mrs. Curby Brantley, Mrs. Raymond Scott, Mrs.

Roger Albertson, Mrs. Roy Dyer, Mrs. Cleon Davis and Mrs. Spencer Beavers.



Separates are favorites of the college girl. With her plaid coat she can pick up the colors in skirts, blouses, and extra frocks. Add a jacket and a sweater or two and she has a big part of her fall wardrobe.

Pleated skirts are certainly in this season. They may be pleated all around or with a double or single pleat in front. One unusually smart skirt is lined with a different color which shows if the wearer swings around.

Belts are low or very high. Big buckles are used on some of these belts.

What human beings are unable to understand, they attribute to the Almighty, either as a blessing or a punishment.

Society News

Cleta Creamer Williams Society Reporter Phone-272-4536

Mrs. Gordon Murrah Receives THDA Pin

Mrs. Gordon (Ada) Murrah, who is completing her third term as chairman of the Texas Home Demonstration Association, was presented a pin last Friday afternoon commemorating her work with the association.

Only members are allowed to wear the state emblem pin and since 1948, Mrs. Murrah has now served in the capacity of chairman for the third time. Her first two-year term was 1948-49; again in 1960-61 and this year 1967-68.

She explained that each county has a chairman who represents

all clubs in the county. They also represent the clubs at district and state meetings, and are allowed to serve only two years at a time.

Mrs. Murrah has represented the clubs at the national meeting in Hawaii.

Mrs. Joe (Jauree) Smallwood will represent Bailey County Clubs in THDA as chairman in 1969-70.

THDA council chairman Mrs. Dean Roming, who is a daughter of Mrs. Murrah, presented the pin on behalf of THDA.

Muleshoe Study Club Hears Terry Wallace

"Do you take pride in the heritage of our nation? We, today, reflect our nation and what it has been for almost 200 years. We portray the men who made our country and the goals they died for. But do we portray them truthfully and fairly. . .?" quoted Terry Wallace from her thought-provoking speech entitled, "The Nation: Ours to Defend."

Terry Wallace is the daughter of Mrs. Charlene Wallace and a senior at Clovis High School. She was selected by the National Association of Student Councils to participate in the 1968 NASC European Tour for International Understanding. She is President of the Clovis High School Student Council. She is outstanding in many scholastic and civic activities in Clovis.

Miss Wallace presented this speech for the Muleshoe Study Club meeting of October 10, in the home of Mrs. W.T. Andrews, in observance of Americanism Day.

Her sister, Julie, accompanied her at the piano after Mrs. G.L. Splawn, program director, introduced the special guests.

In observance of National Poetry Month, Mrs. Elmo Stevens read her poem, entitled, "Footsteps," and Mrs. O.N. Jennings read an original poem, "Words."

The business meeting was presided over by Mrs. Horace Blackburn, president.

The club will have a booth at the school carnival and also have an entry in the Christmas parade. Mrs. S.L. Benefield is chairman for the carnival booth and Mrs. G.L. Splawn for the parade entry.

Guests at the meeting included Mrs. Charlene Wallace and daughters, Terry and Julie, of Clovis, N.M. and Mrs. G.A. Beddingfield, Muleshoe. Sixteen members at the meeting were Mrs. Pauline Benefield, Mrs. Horace Blackburn, Mrs. Les Bruns, Mrs. Cecil Cole, Mrs. Joe Costen, Mrs. Rufus Gilbreath, Mrs. Waid Griffin, Mrs. R.O. Gregory, Mrs. O.N. Jennings, Mrs. Ed Johnson, Mrs. E.M. Pruitt, Mrs. LeVina Pitts, Mrs. Elmo Stevens, Mrs. G.L. Splawn, Mrs. Mervin Wilterding and the hostess, Mrs. W.T. Andrews.

Members will attend a District board meeting in Bovina, Saturday, October 19, in the High School auditorium.

Never get so steamed up over politics that you lose your judgment and forget that there are other things in life besides an election.

Pleasant Valley Social Club Elects Officers

Pleasant Valley Social Club met in the community center, Thursday, October 3, with Mrs. Eula Calhoun as hostess.

Following the salad supper, the business meeting was presided over by Mrs. Sena Stevens.

Officers for 1969 were elected. They included Mrs. Tracy Angeley, president; Mrs. Royce Turner, vice president; Mrs. Enos Galyon, secretary; Mrs. Bonnie Haberer, reporter; Mrs. Sena Stevens, treasurer and Mrs. Kirk Pitts, historian. Other members present were Mrs. Harold Allison, Mrs. Doris Commons, Mrs. Lillie Wuerflein and Mrs. Ida Collins.

You can usually measure one's brain by the mouth, inversely.



THDA PIN PRESENTED--Mrs. Gordon Murrah, right, was presented the state THDA pin for serving as chairman of that organization for the past two years. This is the third time Mrs. Murrah has served in that capacity. Presenting the pin in her daughter, Mrs. Dean Roming.



Mrs. Robert Gallegos

Mrs. Gallegos Feted at Shower

Mrs. Robert Gallegos was honored Sunday afternoon in the home of Mrs. Martin Gallegos with a lullaby shower.

Pink, blue and white were carried out in the decorations in the home.

A blue and pink trimmed white sheet cake was the focus of attention on the serving table, which was laid with white over blue. Party favors of tiny doll bottles tied with blue and pink net were collected in a basket.

A stork holding a baby in a bundle was centerpiece of the serving table.

Cake, pink punch, nuts and mints were served guests. Hostesses presented the honoree with a high chair.

Assisting with hospitalities in the Gallegos home were Aurora Mata, Juanita Balderas, Lucy Lucero, Ester Ybarra, Amelia Madrid, Alicia Farías, Tanis Orozco, Augustina Leyba and Ina Flores.

Eastern Star Grand Chapter Holds Eighty-Sixth Session

The Eighty-sixth session of the Grand Chapter of Texas, Order of the Eastern Star, was held in San Antonio, October 7-10, with 4132 voting delegates attending.

Grand jurisdictions from other states included those from Oklahoma, Arizona, New Mexico, Mississippi, Wisconsin, Oregon, Louisiana, Arkansas and Illinois.

Attending from Muleshoe were Mr. and Mrs. Spencer Beavers, Worthy Matron and Worthy Patron; Barbara Lust, Associate Matron; Mrs. Frank Hinkson, Past Matron, Mr. and Mrs. Elbert Nowell, Past Matron and Past Patron and Mrs. John Farley.

Mrs. Farley, representing Muleshoe Chapter, 792, received the Grand Appointment on Time and Talent Committee of the Grand Chapter.

Sixteen 50-year members were present to receive their certificates. On Wednesday evening a Memorial service was held for members who had passed away since last Grand Chapter session.

The 272 chapters represented were 100 percent in donations to several projects.

Included were The Eastern Star Home in Arlington; Estarl, the program for religious training for young people; the Knight's Templar Eye Foundation, helping children and adults through the tragedy of possible blindness and the "VA's" Veterans Administrative Volunteer Service. They report that thousands of dollars are annually contributed to these projects.

Mrs. Robbie Yates, Stratford, was elected Worthy Grand Matron and J.T. Sanders, Galveston, was elected Worthy Grand Patron. Other Grand Officers elected were Mrs. Sally Matrangra, Houston, Associate Grand Matron; Richard T. Porter, Fort Worth, Right Eminent Grand Commander, Grand Commander, Knight's Templar of Texas, Associate Grand Patron; Mrs. Rebecca Miles, Arlington, Secretary; Mrs. Jettie Hinton, Baytown, Treasurer; Mrs. Frances Herrin, Austin, Conductress and Mrs. Aliene Houston, Arlington, Grand Associate Conductress.

Mrs. Aliene Tilson, Plainview, is now the District Grand Matron for District Two, and Mrs. Cortez Dowlen, Canyon, is the newly-appointed Deputy

Grand Matron of District Two, Section Three. Fort Worth will be the site of the 1969 session of Grand Chapter.

October --

Apple Month

COLLEGE STATION, -- October is apple month and this year's crop is a good one, reports Gwendolyn Ciyatt, Extension consumer marketing specialist.

Now during the actual harvesting season, main varieties in stores are Red Delicious, Golden Delicious, Jonathan, Rome Beauty, Winesap and a few others. The Texas A&M University specialist says this is the season when apples wear their lowest price tags--the time when apples come from the orchards directly to market.

Does it pay to buy apples by the bushel? The answer depends on how quickly you use them and whether you have adequate storage space with proper temperature, says Mrs. Ciyatt. If the family refrigerator is the only storage you have, and, if you cannot use the apples fairly soon, it is better to purchase them by the four-pound bag.

Apples stored in the refrigerator will retain their full flavor and crispness. Store apples in the hydrator or a plastic bag.

Mrs. Ciyatt gives some "apple arithmetic" to remember as you buy this fruit:

1 bushel of apples weighs about 48 pounds--this weight varies slightly with variety and condition of the apples. 1 bushel of apples - 96 to 144 apples, depending on size.

1 pound apples - approximately 3 medium-size apples (2-1/2 to 2-3/4 inch diameter).

3 to 4 medium-size apples will yield about 1-1/2 cups applesauce.

6 to 8 medium-size apples will make a 9-inch pie. 1 bushel apples will yield 16 to 20 quarts of applesauce.

\*\*\*\*

Gossip spreads much faster than the truth; that's why there is so much talk of scandal and so little about really important matters.

Thurs. Thru Sat. WHERE YOU ALWAYS BUY THE BEST FOR LESS. **GIBSON'S DISCOUNT CENTER** Muleshoe, Texas—Open 9 A.M. to 8 P.M. Weekdays.

SEE THE NEW REMINGTON Wingmaster PUMP ACTION SHOTGUN. Beautiful checkering, Easy take down, Quick change barrels, 5 shot capacity, Rugged, dependable, lightweight, Du Pont RK-W protective wood finish. 20 Gauge Only. PLAIN BARREL 104.95 Value \$77.00. VENTILATED RIB 129.95 Value \$98.97. Remington MODEL 879 "Wingmaster" is a trademark of Remington Arms Company, Inc.

Cotton Khaki Shell Vests. No. 526/25—Vest with game bag. With elastic shell loops. A neat four button model made of medium weight field brown duck. 24 elastic web shell loops to accommodate any gauge shotgun shells. Large roomy arm holes. Sizes: S-M-L-XL. Gibson's Price Only \$2.27. Color: Khaki. Winchester NEW MODEL 190 AUTOMATIC .22 Caliber \$34.97 AUTOMATIC RIFLE.

ALCAN SHOTGUN RELOADING WADS. New Despense-A WAD CARTON. WADS-FLITE-MAX Single Unit 99¢, Box of 250 99¢. AIR WEDGE 12 Ga. Plastic over 99¢, Powerwad Box of 500 99¢. NITRO CARDS Box of 1000 77¢. FELTON WADS Box of 500 47¢. ALCAN SMOKELESS AL5, AL7, AL8 SHOTGUN POWDER 3 Lb. \$7.97 Keg.

CAMP OVEN. Camp Oven. Bakes popular oven dishes, even frozen foods. 11"x11" inside. \$6.93 Gibson's Extra Low Price.

The FIRST practical FLUORESCENT LANTERN. SAFE/BRIGHT SAFARI LITE BY BURGESS. SAFE... no flame, no heat, no danger. BRIGHT... floods the patio, camp site, tent or boat with fluorescent illumination. RUGGED... indestructible polystyrene case, stainless steel trim, positive switches. ECONOMICAL... up to 100 hours of light; AC input for even longer battery life—pennies per hour to operate. Complete with batteries. 29.50 Value... \$16.97.

Coleman 2 Burner Stove. model 425. Lighter, smaller version of Coleman's top camp stoves. 2-burners. Its 12 lbs. are easily portable. Gibson's Price \$10.97.

Coleman Fuel. Clean, clear, triple filtered. A "must" for best performance, longer life for your lantern, stove, heater. 80¢ GAL.

Coleman Lantern. Shaded Floodlight Model 228 F. Its large 8 3/4" ventilator reflects light out, around and under its own base. No shadow when hanging, no glare sitting. \$11.63.

Truck Gun Racks. # TGR 24. Gibson's Low Price \$127.

DINE and DANCE. Enjoy the Finest Food in Eastern New Mexico. Steak, Shrimp & Lobsters, and Other Taste Tempting Delights. Served from 11 a.m. to 12 p.m. LIVE ENTERTAINMENT NIGHTLY "THE VELVETONES" Appearing nightly in the Camelot Room 9 P.M. till 1 A.M. 6 nights a week. For Reservations Call 763-4433. At Second and Main. Camelot Room. Off the Lobby of Hotel Clovis.



**25-YEAR PIN AWARDED**--Mildred Davis, who has worked at the Federal Land Bank office as officer manager for the past 25 years, was presented a pin commemorating the occasion last Saturday at the annual Federal Land Bank Board meeting. Making the presentation is Harold Stephens, Regional Manager of the Amarillo Region, from Dimmitt.

### Mildred Davis Awarded FLBA 25-Year Pin

Last Saturday afternoon, at the annual Stockholders Meeting of the Federal Land Bank Association, Mildred Davis was presented a 25-year pin.

Harold Stephens, Regional Manager of the Amarillo Region from Dimmitt, presented the pin on behalf of Federal Land Bank President Herbert Decker of Houston.

On February 1, 1943, Miss Davis was hired by Noel Woodley as office assistant in the Federal Land Bank office. On the same day, Woodley reported for military service at Cornell University. For the first three months during his absence, Elizabeth Woodley was acting manager.

David Bates, now retired, of Levelland, then acted as manager of the Federal Land Bank during Woodley's tenure in the service. Woodley returned to Muleshoe on January 1, 1946 and served as manager of the local office until September 16, 1960.

In 1960, Ernest Kerr became manager of the Muleshoe Federal Land Bank office, in which capacity he still serves. Miss Davis says of her twenty-five years as office assistant, "I have seen a great deal of progress in the wonderful growth of the Muleshoe territory."

"Our office serves Bailey and Parmer counties and the agriculture and loan volume has increased greatly over the years due to the irrigation development."

"I have thoroughly enjoyed my work over the years," she continued, "and hope to serve until my retirement in five years."

### Cotton Festival To Be Held In Plainview

Thursday, Friday and Saturday of this week, the annual Hi-Plains Cotton Festival will be held in Plainview. Between 25,000 and 30,000 spectators are expected to view merchant's wares and special events at the Agriculture Center on South Highway 87.

Highlight of the three-day event will be the selection of the 1968 'Miss Hi-Plains Cotton' on Thursday night. All girls entered in this contest must be between the ages of 14 and 17 years, and come from a cotton producing family. Each candidate is sponsored by a Home Demonstration Club, 7-H Club, FFA Chapter, FHA Chapter, Young Farmers or Young Homemakers Organization.

Entertainment on the second night will be provided by an old-time gospel singing program featuring gospel singing groups from North Texas, Oklahoma and Eastern New Mexico. Winding up the entertainment portion of the show on Saturday night will be the "Prince Bolls" and "Princess Blossom" contest. Pre-school children are eligible for this contest and will also be from cotton producing families.

### New Regulations On Special Diet Foods

COLLEGE STATION, -- New regulations on special diet foods have been established by the Food and Drug Administration. They are aimed at providing the consumer with more facts about the food he buys for weight control and for other special diet needs, reports Sally Springer, Extension nutritionist.

Foods for special dietary use are intended to fill a particular physical or physiological need. These may be for persons who are overweight, underweight, diabetic, allergic to certain foods or on a saltfree diet. A special food may fit needs of infants or children, also, explains the specialist at Texas A&M University.

New regulations require the manufacturer to support his claim that the food is intended for special dietary use. A list of the dietary properties that support the claim must be printed on the label, says Miss Springer.

Foods which are sold for special dietary use in reducing or maintaining body weight must be labeled "for calorie-restricted diets." In order to be labeled such, calories must be reduced at least 50 percent. The term "lower in calorie" may be made

only if the foods contain not more than 15 calories in a serving and not more than 30 calories in the average total daily consumption of the food.

The manufacturers of artificial sweetener and foods which contain artificial sweeteners have been required to state on the label that it is or contains an artificial sweetener and that it is non-nutritive. The label of an artificial sweetener must also state the amount of artificial sweetener in a specified serving (tablet, capsule, teaspoonful) and a description of its sweetening effect in comparison to a quantity of sugar.

Foods for diabetics must be labeled: "For the diets of diabetics." The manufacturer is required to state on the label the protein, fat, carbohydrate and caloric content in 100 grams of such food.

These new regulations also require the manufacturer to provide information if non-nutritive ingredients have been added. Sometimes cellulose and other bulk which have no nutritional value are added to foods.

It is a mistake to assume, when someone asks your advice, that the questioner is interested in what you try to say.

### MHS Graduate Is Enrolled In Nurse School

Mrs. Kaye Kendall, daughter of Mr. and Mrs. R.M. Bevers, Sudan, has enrolled in the Methodist Hospital School of Nursing. Mrs. Kendall began classes in September to become a Registered Nurse.

Mrs. Kendall graduated from Muleshoe High School where her activities included National Honor Society, Future Teachers, Future Nurses, and Future Homemakers of America. She was previously employed as a nurse aide and dental assistant, and attended Texas Technological College prior to enrolling in the School of Nursing.



Mrs. Kay Kendall

**BIG WONDER**  
Every small boy wonders why his father did not have sense enough to go into the candy and ice cream business.  
--The Grit.

### Six Foods Compose USDA Plentiful List

COLLEGE STATION, --Six is the magic number for October. For this fall month hosts six special national celebrations and six foods are reported in abundance, according to the Texas Agricultural Extension Service.

For the festivities, there's National Apple Week, National School Lunch Week, Fall Cheese Festival, Rice Harvest Festival, Fish 'n Seafood Parade -- and Halloween.

Food abundance falls right in line with the celebrations. The U.S. Department of Agriculture reports plentiful offerings of apples, potatoes, rice, dry beans, pork and cheese.

Although the new apple crop is expected to be about 8 percent less than average, it's above last year's production. Since October is the peak harvest month, you can expect es-

pecially good supplies all this month.

Seasonal increase in hog slaughter should mean a greater volume of pork on the market at attractive prices.

Potato production is about 5 percent off from last year's large crop, but 7 percent above average. October's the chief harvest month of late summer and fall potatoes.

Rice, dry beans and cheese productions are all running well above average. And October is a peak month for supplies. So offerings should be plentiful, says USDA's Consumer and Marketing Service.

You'll enjoy teaming up pork and beans, apples and pork, cheese and apples, rice and pork -- really an excellent selection of "go-with" foods.

**Commercial PRINTING**  
for every business need

**FOR FAST EFFICIENT SERVICE**

CALL **Art-Craft PRINTING CO.**  
Phone 272-4681

105 E. Ave. D Muleshoe

*Wedding ANNOUNCEMENTS SOCIAL PRINTING*

**We're Bulging at the SEAMS!**  
WITH NEW FALL MERCHANDISE

- \*Skirts
- \*Sweaters
- \*Pants
- \*Pant Sets
- \*Dresses
- \*Lingerie
- \*Blouses

BEAUTIFUL FALL COLORS. SIZES 3 to 15...6 to 18

**HURRY! AND COME IN.**

**Sweetheart Lane**  
120 E. Ave. B

### Student Helpers Aid Businessman

Texas businessmen have come to rely on a statewide source of student manpower to help them serve their customers.

Take the businessman in Central Texas who called the local school district and asked for help--a student helper.

His business? Monuments. Thanks to the local school's industrial education program, the monument maker got his helper. And that young man began learning to carve stone while getting his high school diploma.

Vocational industrial education, a program administered by the Texas Education Agency, is big business in Texas. You might even say it is like a big brother to big (or small) business. This year more than 225 school districts will help train approximately 27,000 high school students in some 85 occupations, including auto mechanics, cosmetology, movie projectionist, dressmaking, sheet metal, and steamfitting. There is even a hatter in Garland.

L.V. Ballard, director of the Agency program, outlines two objectives: give students the opportunity to go into a skilled occupation as soon as they graduate from high school or continue further training at a higher vocational or technical institution.

Students in vocational industrial education may become skilled (auto mechanics, for instance), semiskilled (sheet metal worker), or semipro-

fessional (laboratory technician) through two types of programs: the day trades skill program, which now has an enrollment of 17,000 students, and the industrial cooperative training program with 6,000 students.

Trainees in the day trades skill program divide their school days between classroom instruction in regular academic subjects and training in the school's specially equipped shop. This program may extend through two or three years of training, depending on the school district.

Students in the two-year industrial cooperative training program also divide their school hours with half of them spent away from the school at the job site. The curriculum for this program calls for 700 hours of classroom training and 1,080 hours of on-the-job training.

Students in either program now earn at least the minimum hour wage of \$1.25. And some of them-- particularly the bricklayers, and electrical and iron workers--may earn \$3 an hour by their senior year.

Has the program been able to supply all the answers?

Well, take the request from a East Texas businessman for an unusual skill. Agency officials looked it over carefully and then decided the student just couldn't get in the required 700 hours of related classroom study.

Seems there is just not that much textbook material available to keep a student busy--learning taxidermy.

# Anthony's October SALE

**3 DAY SALE**  
Thurs. Fri. Sat.

**High Fashion Coat of Hi-Low Corduroy**  
Acrylic pile lined for extra warmth. Ladies. 8 to 18.

**14.99**

If you owned just one corduroy coat--this would be it. It is acrylic pile lined for cozy warmth. The chain belt and smartly tailored lines will accent your figure. Colors: brown, green or antelope.

**Brushed Tricot Gowns**  
Waltz length or long style. Ladies sizes: S, M, L, XL.

**2 FOR \$3.**

Attractively styled sleepwear of 80% acetate, 20% nylon brushed tricot knit. Warm, washable. Colors: pink, blue or maize.

**SPECIAL PURCHASE**  
**CHATHAM**  
**72" x 90" Blankets**  
Slight imperfections of their better quality blankets.

**3 FOR \$10.**

Thrifty shoppers will snap up these extra values. Beautiful better quality blankets in favorite solid colors. Your complete satisfaction guaranteed.

**Olds Ninety-Eight: Strong, silent and in the classic tradition. Take the wheel.**

Get carried away in a whole new world of luxury-car pleasures. The look is contemporary elegance. The ride is luxurious on a new, longer wheelbase. New interiors, new GM safety features, new advances in power-assisted driving pamper you at every turn. So drive one of our six elegant Ninety-Eights today. Luxury was never so exciting!

**GM**  
MARK OF EXCELLENCE

**YOUNGMOBILE THINKING**

Escape from the ordinary at your Oldsmobile dealer's. Olds Ninety-Eight Holiday Coupe

**Men's Year-rounder Jackets**  
ZIP-OUT Acrylic pile liner with quilted sleeves

It answers every challenge of the weather. The outer shell of the jacket is of fine combed cotton poplin with water repellent finish. Colors: bronze, blue or navy. Sizes 36 to 40. Regular \$12.98 value.

**9.88**

**Wellington Boots**  
October Sale of regular 12.99 Values. Smooth Black or Rough-Out.

**\$10.**

Long wear and comfort fit are yours in these Wellingtons. Shaft of boot is leather lined, the smooth leather has leather sole, the rough-out style has Neoprene sole.

**USE ANTHONY'S EASY LAY-AWAY PLAN IT'S THE THRIFTY WAY TO BUY**

**Editorial**

**Wallace & Anarchists**

One of the remarks attributed to George Wallace in recent weeks concerned anarchists, who often lie down in front of automobiles, and perform other negative, disrupting stunts.

"The first anarchist who lies down in front of my car when I become President, that's the last automobile he'll ever want to lie down in front of," Wallace was quoted as saying.

On the one hand comments on the above statement have reflected outrage and fear that Wallace's attitude is intolerant and dangerously right-wing. On the other, many have applauded the statement as at least showing backbone in these times when rioters, demonstrators and anarchists seem to be carrying everything before them, and intimidating society in general.

Without attempting to pass on the merits of either argument, or the statement itself, the most significant feature in the present ruckus is that only in recent years would such a statement have won sympathy and support from so many Americans.

In other words, warm acceptance of this sentiment in many circles in various sections of the country proves better than anything else what radical lawless actions of extremists have accomplished and are accomplishing. They are producing stronger and stronger right-wing sentiment all over the country.

Extremism has always bred a counter reaction; history has proved this so often it's difficult to understand the mental processes of extremists, and those who champion them on television and in the press.

**NEWS NOTES**

**SMALL CAR PLANNED**  
New York--Chairman James M. Roche has announced that General Motors will introduce an American-built small car that will be more than a foot shorter than any car GM makes in the U.S. The GM car will be engineered, produced and distributed by Chevrolet Motor Division and will appear in the summer of 1970.

November 1st as planned. Attorneys and judges agreed the jurors may be confined during Thanksgiving, Christmas and New Year's holidays and are asking postponement until the first of the year.

**FREE FUNERALS**  
Milan, Italy--The communal council of Milan has ruled that the city will pay for all funerals whether the family is rich or poor. The costs would be included in the city budget and will pay for coffin, hearse, burial and transportation of relatives.

**POPE ON YOUTH**  
Rome--Pope Paul IV, addressing thousands of Romans and tourists recently, deplored extremism among youths today and called their riotous demonstrations "explosions of folly." He charged that contemporary society triggered some of the students' riots.

**OVER-ZEALOUS GROOM**  
Niteroi, Brazil-- Police received an unusual call--a 19-year-old newlywed was having a fight with his father-in-law. Reports are that the new bridegroom was caught kissing his mother-in-law on a band soon after the wedding.

**ASKS TRIAL DELAY**  
Los Angeles--The expected trial of Sirhan B. Sirhan, accused assassin of Senator Robert F. Kennedy, may not begin

**WASHINGTON NEWS REPORT**

The Soviet Army--  
Its Czech Invasion--  
What Impressed Germany--  
Washington's Warning--

WASHINGTON, D.C. -- The speed and weight of the Soviet invasion of Czechoslovakia is still a lively subject in western capitals. Especially impressed with the swift movement of 500,000 troops were the West Germans.

The mobility of the present-day Soviet army is a far cry even from the victorious Russian army of World War II. In World War II Soviet offensives required much time in preparation and the actual advance sometimes was slowed by logistics problems.

The recent massive and lightning occupation of Czechoslovakia demonstrated to the world that the present-day red army is highly mobile. Because about 100,000 of those half million invaders arrived on the German frontier only hours after they crossed the Czech border, the feat's significance was pressed home on West Germans.

Germany has nuclear weapons all over the country, though U.S. forces retain the final power to use them, to make the key decision, along with NATO. The weapons are jointly manned --but even this system leaves some in Bonn highly concerned.

They feel that the late President Kennedy changed the Eisenhower-Dulles massive retaliation policy to one of ground response, in case of attack. Thus many in Bonn do not feel Washington would order a massive nuclear assault on Russia if the Russians crossed the German borders, or the East Germans did so.

Despite NATO's three successive warnings to Moscow recently, that NATO would respond immediately if Germany's frontiers were crossed, just what that response would be, and what it could be, are matters of speculation. What concerns Bonn is the knowledge that President Johnson is on the way out, that



THE EGG AND I

All letters to the Editor of reasonable length are welcome and will be published. Letters to the Editor must be signed, however, names will be withheld upon request.

he obviously is detente-minded, or naive, whichever definition one prefers, and that the United States is heavily committed in Asia. This seems to some Germans to add up to a particularly vulnerable position for both the U.S. and West Germany.

They fear the likely aggression, if it comes, would be at first a clash between East and West German troops, and they think Moscow would play it by ear, to some extent, as the fighting spread--and as nuclear weapons were held back.

The U.S. army in Germany is ready to fight if the Bavarian border is crossed by the Communists, and most officers assume U.S. units would fight with all weapons at their disposal -- including nuclear weapons. If they do not, the fight is as well as lost from the beginning if the Russian army joins in on a large scale.

Thus the critical question would probably arise, in any aggression against Germany, of the use of nuclear weapons at the very beginning and the use of ICBM's against the main enemy, Russia, if the fighting spread and was going against the west.

The Russian announcement that most occupation troops would be withdrawn from Czechoslovakia has limited meaning for those charged with the defense of West Germany because perhaps five divisions will remain on the German border and others could quickly back up that spearhead if the Russians decide to risk a try at Germany--the one country in Europe they fear.

Some political experts, both in Washington and Bonn, see the Czech invasion of proof of weakness in the Soviet governmental system, more than an effort to conquer more of Europe, and one can only hope they are right.

**PLEASANT AGE**

The age of discretion is when you learn that nothing is as important as you once thought it was.

-Star, Minneapolis

**NOT ONE**

The world does get better. We haven't heard of a single flagpole sitter practicing his profession this year.

-Daily News, Beloit, Kan.

**Ford Speaks Out on Dinner For Clayton**

Commenting on the number of Austin officials who attended the Clayton appreciation dinner in Littlefield Monday night, Rep. Clayton's Republican opponent, Frank Ford, stated this week that he welcomes their entry into the race. "These are the same professional politicians," said Ford, "Who voted to increase our sales tax by 50% this year while ignoring nearly every mayor and city councilman in the district by not returning to the local governments."

"This dinner was initiated in Austin by the same special interest power-clique which pressured my opponent into sponsoring daylight savings time against the wishes of the people who elected him just because L.B.J. and the T.B. lobbyists wanted it. These are the ones who have overlooked this district's pressing need for more flood control and conservation dams, and who didn't even seem to notice the rising crime rates until someone told them it was a political issue."

"These are the same politicians," Ford continued, "Who seemed to ignore the fact that Texas dropped from 40th to 44th among the states in literacy over the past eight years while they voted at every regular session to double their own salaries. These are the ones who recently added \$30 million in new spending in the secrecy of the Speaker's apartment, including \$500,000.00 for development of L.B.J.'s state park, and are now talking about the need for \$350 million in new taxes as soon as the next session of the Legislature convenes."

"I also consider it to be a state issue," Ford concluded, "That Texas' one-party monopoly was the political breeding ground for L.B.J., whose recent prominence in national politics has resulted in a tragic no-win war, depressed farm prices, inflation, sky-rocketing crime rates, and \$20,000,000 salaries in the war on poverty for friends of the Administration while the poor stay poor. These politicians have had their say."



**Dear Turnrow Tunkel . . .**

O. C. McBride

I understand that a new limousine is being built for presidential use. It will weigh 8,000 pounds.

If Geo. Wallace should be elected, it would take a lot of LSD to make a demonstrator crazy enough to lie down in front of that thing.

Don't you think Curt Flood should have caught that fly ball in the seventh inning in the last game of the World Series?

Yes, but that's the way my luck runs. I had a little bet on the Cards, and Flood comes up with "Dodge Fever" on a crucial play.

Did you read that Orville Freeman is being mentioned for a job as head of the Association of American Railroads?

That figures. The railroads are trying to eliminate many of their passenger trains, and Orville is an expert at elimination. He has eliminated more farmers than the boll weevil.

Do you think newsmen are guilty of biased reporting of riots and violence in the U.S.?

Maybe in a few cases, but most reporters are just trying to do their jobs, and it's their duty to be where the action is. I felt sorry for one fellow I read about--after covering the Chicago convention, he was assigned to the corner of Commerce and Akard in Dallas on the night before the Texas-O.U. game. I understand he has asked to be sent to Vietnam for "rest and recuperation."

Did you read that Red China's defense minister has abolished rank in the Chinese army? All soldiers are considered to be equal.

That should be a fighting outfit, but most of the fighting will be to decide who pulls K.P. duty.

I understand that many new apartment houses being built have a policy of renting to single people only.

That's what I call "housing discrimination." I don't think people looking for an apartment should be penalized for a past mistake.

**FEWER DONKEYS**

**WINS BET BUT FINED**

Dublin--The Irish donkey, once used for agricultural purposes, has become such a demand that donkey dealers aren't able to supply demand. Donkeys are now popular as children's pets and most Irish donkeys are exported to England.

Wildwood, N.J.--Robert H. Cropp won a dollar bet, but was fined \$100 for trespassing. The 22-year-old busboy had bet his friend he could climb a 200-foot television tower--which he did--but police were attracted by the large crowd and were there to make the arrest.

**GO LAZBUDDIE LONGHORNS**

**SHERLEY-ANDERSON LAZBUDDIE ELEVATOR**  
Federally Licensed & Bonded  
Ph. 965-2922 Lazbuddie

**LAZBUDDIE GARAGE**  
P.O. Box H Ph. 965-2188  
Lazbuddie

**TIDE PRODUCTS, INC.**  
Fertilizers-Farm Chemicals  
Friendly People-Fast Service  
Symbol of Quality  
Clay's Corner Ph. 965-2330

**FARMER'S UNION CO-OP**  
Farm Supplies, Fertilizers, Gas  
Lazbuddie, Texas

**MULESHOE STATE BANK**  
Oldest, Strongest, and Friendliest  
Let us help you make that goal!  
Member FDIC Muleshoe

**FIRST NATIONAL BANK**  
Muleshoe, Texas  
\$1,000,000.00 Capital Structure



Back Row: Coach Pat Casey, Gary Elliott, Mike Casey, Larry Hodges, Monte Barnes, Frank Hinkson and George Wilson. Middle Row: Bobby Balderas, Rene Flores, Roque Flores, Loy Dale Clark, Roy Flores, Steve Foster and Coach Mike Flaniken. Front Row: Terry Scott, Pablo Mendoza, Jimmy Noland, Mark Ramage, Troy Steinbock and Derrell Matthews.

This week's game-Friday, Oct. 18th-8:00 P.M.- Amherst-There

**LAZBUDDIE CAFE**  
**PAT'S BEAUTY SHOP**  
**MOORE'S WELDING SHOP**  
**BRATCHER MOTOR SUPPLY**  
**CLAY'S CORNER GROCERY & STA**

**MOHAWK AUTO PARTS**  
**SANITARY BARBER SHOP**  
**POYNOR'S WHITE STORES, INC.**  
**MULESHOE MOTOR COMPANY**  
Anderson's Montgomery Ward Agcy.

**FRY & COX, INC.**  
PHONE 272-4511  
Muleshoe

**HARVEY BASS**  
APPLIANCE  
Muleshoe

**WESTERN '66'**  
Lazbuddie Phone 965-2191  
Muleshoe Phone 272-4556  
Needmore Phone 946-2271

**St. Clair's**  
MULESHOE  
Phone 272-4453

**FOSTER FERTILIZER COMPANY**  
Phone 965-2921  
Lazbuddie

**LAZBUDDIE GROCERY**  
Shurfine Foods Buccaneer Stamps  
Mr. and Mrs. John Aduddell  
Let's go all the way, Longhorns!

**O. C. Mc Bride & Sons Gin**  
Win District, Longhorns!  
Lazbuddie

**S I B GIN**  
We're with you all the way!  
Rt. 3, Muleshoe

**RUDY'S Free Pickup & Delivery**  
Dry Cleaning & Laundry  
Wed. and Sat. Phone 385-3233  
Littlefield

**El Nuevo LEAL'S Restaurant**  
The Best Mexican Food on the Plains  
(Hamburgers for the Children)  
Open 11a.m. - 10p.m. except Tuesday  
1600 W. Am. Blvd. Muleshoe



# Earth News

By Beulah Newton

Mrs. Irvin Ott called in the home of Mrs. Bulah Newton Sunday morning.

Those attending Grand Chapter of Order of Eastern Star were, Mmes. Donald Runyon, Melvin Brock, Jerry Kelley and Johnny Murrell. They reported a grand time.

Mr. and Mrs. M.H. Been attended the foot ball game at Ada Oklahoma Friday night and visited their son and wife, Mr. and Mrs. Jerry Been.

Mr. and Mrs. Harvy Hickman returned home from Houston last Wednesday evening. Mrs. Hickman was in Houston for eye treatment. They also visited their son Harvy Hickman Jr. in Loleta Tex.

Mr. and Mrs. Gerald Inglis visited his sister and family, Mr. and Mrs. Eugene Griffin in Littlefield Sunday afternoon.

Guests in the Harvy Hickman home Sunday was, Mr. and Mrs. W.A. McCool of Dalhart, Mrs. Callie McCool of Muleshoe, Mr. and Mrs. Kay Harmon and children of Clovis New Mexico, Mr. and Mrs. A.C. Barton and Mrs. Minnie Pate of Earth.

Mrs. Bud Gooch returned from Big Springs Monday of last week, where she had been for medical treatment. She is feeling much better at this time.

Mrs. Walter Elam and baby daughter, Cherri Lynn of Lubbock spent the day Thursday with her parents Mr. and Mrs. Leon Foster and David.

Mrs. Stan Kilmer of Lubbock spent the day Thursday visiting her parents Mr. and Mrs. Bud-

dy Adrian and grandmother Adrian.

Don Davis, son-in-law of Mrs. Bessie Cearley, and his band, of Miami Florida, played in Clovis New Mexico 4 nights last week. Don staid on until Monday to visit with Mrs. Cearley.

What ??? Home coming. When ??? October 18. Where??? Springlake-Earth school. There will be a supper, beginning at 6 P.M. The main attraction will be the game between Sudan and Springlake - Earth. DO'NT MISS IT.

Mrs. Jimmy Eagle took Mr. and Mrs. Jack Eagle and Mrs. Claude Eagle to Clines Corner New Mexico, last week where they were met by their son Ray Eagle. The Eagles will spend some time with their son and family at Grants New Mexico.

Hellen and Welda Barton flew to Dallas for the stock show and sale, Sunday. Welda has some sheep entered in the show.

Guests of Mrs. J.D. Newton over the week end were, Mr. and Mrs. Wayne Davis Cliff and Cliffs friend Kelvin Holob all of Pecos Texas. Also calling Sunday were, Mrs. Adline Newton, Mrs. Nannie Ginn and Mrs. Garner Ball.

Mr. and Mrs. R.S. Brown of Altus Oklahoma were guests of Mrs. Sam Cearley last week. They also visited Mr. and Mrs. Kenneth Cowley and Mrs. Janie Doughty. Mrs. Doughty is the mother of the other ladies.

Chuck Smith, son of the assistant manager of Pattersons Pan and Save, had surgery last Friday at Methodist hospital in Lubbock. It is reported he is doing fine.

Mrs. Kathrin Hensley is visiting her sisters, Mr. and

Mrs. L.S. Griffin and Mr. and Mrs. Herb Wendborne. Mrs. Hensley lives in Mangum Oklahoma.

Mothers of the F.F.A. boys met at the Ag. barn Friday afternoon to make plans for the consession sales for the pig sale this week end. Those present were, Mmes. Weldon Barton, J.J. Coker, Orvil Cleavinger, Gene Templeton, John Bridges, and Leon Foster. The ladies say it is going to be a pleasure to work in the new kitchen.

Mrs. Sam Jones is in the hospital in Tmple, Texas for observation and tests. Mrs. Jones is some improved since being moved from Halecenter to Temple. Mrs. Carl Jones is with her, Carl returned home Sunday evening and reported his mother feeling much better than when they moved her to Temple.

Mr. and Mrs. Roy Neal attended the wedding of their granddaughter in Clovis Saturday afternoon. Miss Clydia Newell, daughter of Mr. and Mrs. Clvde Newell of Clovis New Mexico was united in marriage Saturday afternoon at 2 to Steven Ford, son of Mr. and Mrs. Ray Ford of Farwell, Texas at the Sandia Baptist Church in Clovis. The couple will reside in Dallas where he is employed.

Mr. and Mrs. Roy Neal were members of the group that was honored at a dinner following the marriage of their granddaughter, in Clovis New Mexico Saturday evening. Mr. and Mrs. Frank Murray honored the brides family with a lovely dinner in their home.

Guests over the week end in the home of Mr. and Mrs. Homer Starkey were Mrs.



SHADES OF THE OLD WEST--This year, as in past years, the annual cattle drive was made from Sherman Inman's 'Ponderosa' to the local cattle sales barn. Shown herding the cattle across the railroad track near the sales barn last week are Clayton Myers, Willard Tibbets, Sherman Inman and Cody Balch. Between 90 and 100 head of cattle were moved.

Starkeys sister and boys, Mrs. Melvin McClure, Jackie and Scottie. Melvin is employed with South Western Public Service Company and is being transferred to Floydada.

Mr. and Mrs. GERAL Inglis spent Sunday afternoon in Littlefield with Mrs. Inglis sister and family, Mr. and Mrs. Derral Nichols and children.

Mrs. Estell Bearden spent the day Sunday visiting with Mr. and Mrs. Jim Rolls in Amherst.

Mrs. Roy Neal returned home Thursday evening from Lubbock where she had been staying with her son, Max Neal and children while Mrs. Neal was in the hospital with the new baby.

Mrs. Fred Ussery is in Lubbock this week with her daughter and family Mr. and Mrs. Max Neal. The Neals have a new baby and Mrs. Ussery is rocking the baby, among other things.

Mr. and Mrs. Leon Foster and David went to Lubbock Monday to get the cast removed from Davids leg. David has been wearing the cast for almost four months after having a broken leg.

Weekend guests of the Buddy Adrians were their daughter and son-in-law, Mr. and Mrs. Stan Kilmer of Lubbock. Stan is recuperating from an illness.

Weldon Barton and Mrs. Leon Foster shopped in Lubbock Monday for the new kitchen at the Ag. barn. They bought pans and all other gadgets they need for the kitchen.

Sunday dinner guests of Mr. and Mrs. Buddy Adrian were Buddy's mother and sister, Mrs. Sammy Adrian, Mr. and Mrs. Bob Kennett, a niece, Mrs. Sharron (Ward) Robins all of Amarillo. Another niece Mrs. Mike Rhodes (Carron Ward) of Levelland, Mr. and Mrs. Claude Holder and children of Earth. Mrs. Adrian is spending this week visiting her sons, John and Buddy Adrian.

Mrs. Emmert Rose is a patient in a hospital in Lubbock undergoing tests and x-rays.

Don Park was transferred to the Methodist Hospital in Lubbock Thursday where he will undergo bone surgery on his shoulder.

The grain harvest is in full swing at this time. Some soy beans have been harvested but most of them are not ready. There have been two or three bales of cotton ginned, but it is late, too, this year.

The elderly people of our community in the rest homes are in fair condition. Grannie Green and Mrs. Patterson at Muleshoe are about like they have been for some time. Mrs. Eula Whitford and Mrs. Mildred Free at Amherst are both in bed most of the time. Mr. Belew, O.B. Fanning and Mrs. Clark in the homes in Littlefield are all doing fair. Mrs. Dora Bulls in Levelland is in bed all time but no worse than she has been for some time. Mr. McNeal at a home in Lubbock is in a poor condition, still knows no one most of the time.

Our hearts go out to these, our people.

Mrs. Willis White is resting very well at her home in Springlake. She spent about six weeks in Amherst hospital and Methodist in Lubbock and is glad to be at home.

## Obituaries

### Ella M. Ebeling

Ella Marie Ebeling, 67, Littlefield, died October 11 in Amherst Manor Rest Home. Mrs. Ebeling was a sister of Rudolph Wiedebush, Muleshoe.

She had lived in Littlefield most of her life, having moved to Littlefield from Burnet, Tex., where she was born June 29, 1901.

Funeral services for Ella Marie Ebeling were held Monday, October 14 at St. Martin's Lutheran Church, Littlefield. Officiating was Rev. Phillip Berry, pastor. Burial was in Littlefield Cemetery under direction of Hammons Funeral Home.

Survivors other than Wiedebush include one daughter; Mrs.

Troy Lance, Amherst; five sons, Norbert Ebeling, Tulsa, Okla.; Valgene Ebeling, Albuquerque; Audie Ebeling, Waco; Bill Ebeling, Austin and Frank Jr., Dallas; two brothers, Edmond Wiedebush, San Antonio and Rudolph Wiedebush, Muleshoe; three sisters, Mrs. Neta Williams, Austin; Mrs. Louise Phelps, Johnson City and Mrs. Agnes Duncan, Austin; nine grandchildren and six great-grandchildren.

"Accidents Go Up When The Sun Goes Down," is a slogan so true. Darkness hides danger, giving the driver a false sense of security. That is the season traffic accidents increase during October's shorter days and longer nights. Statistics prove that traffic deaths will increase over 40 percent during this period of shorter days and longer nights.

At sundown, long shadows and fading light make it increasingly difficult for drivers to spot traffic hazards and stop in time. The veteran patrol supervisor said, "Make it a habit to turn on your driving lights at the first sign of fading light and falling shadows."

Senate backs life term for violent crimes.

Favorite Hymn  
Teacher asked all the children to write down the name of their favorite hymn.

Everyone wrote except little Mary.  
"Come on, Mary, write it down," coaxed the teacher.  
So little Mary blushing wrote, "Johnny Brown."

FRANK CHURCH, Senator (Idaho):  
"The time has come to face that the convention system is obsolete."

## Accident Total Now Standing At 48 in County

The Texas Highway Patrol investigated five accidents on rural highways in Bailey County during the month of September, according to Sergeant Thurman Keffer, Highway Patrol Supervisor of this area. These crashes resulted in one person killed, two persons injured, and an estimated property damage of \$5,805.

The rural traffic accident summary for this county during the first nine months of 1968 shows a total of 48 accidents resulting in one person killed, 22 persons injured, and an estimated property damage of \$33,383.

"Accidents Go Up When The Sun Goes Down," is a slogan so true. Darkness hides danger, giving the driver a false sense of security. That is the season traffic accidents increase during October's shorter days and longer nights. Statistics prove that traffic deaths will increase over 40 percent during this period of shorter days and longer nights.

At sundown, long shadows and fading light make it increasingly difficult for drivers to spot traffic hazards and stop in time. The veteran patrol supervisor said, "Make it a habit to turn on your driving lights at the first sign of fading light and falling shadows."

Senate backs life term for violent crimes.

Sat. & Sun., October 19 & 20

**8 99¢**

KING SIZE WALLET CREATIVE COLOR PORTRAITS FOR ONLY

NO LIMIT

PHOTO HOURS 9 A.M. TO CLOSING

GET PICTURES MADE OF GRANDPA, GRANDMA, DAD, MOM AND ALL THE LITTLE ONES AT THESE SAME LOW PRICES!

**SHUGART COLOR PHOTOS**

**Jim's Pay & Save**

Any electrician who knows what's watt is in the

Yellow Pages

**POLAROID CAMERA**

#210 \$39

Reg. 49.98

**POLAROID COLOR PACK FILM**

Reg. 5.39 \$3.99

**WHITE DUAL CUSTOM**

Now Sale Priced!

2 600-13 Tubeless Blackwalls Only \$25

Guaranteed for 25,000 miles!

\* Plus Tax and Two Old Tires.

**NIMROD**

25 SHOTGUN SHELLS FIELD LOAD

Score Big with Nimrod!  
12 GA., 6 or 8 SHOT

The Game Is "In the Bag" with Nimrod!

• 3 DR. 1 OZ. Load!  
• Proven Uniform Pattern!  
• Available in Paper Case!  
• Similar Savings on Nimrod 16 & 20 GA. Shells!

**244**

REGULAR \$2.69

**SEAT COVERS**

FOR YOUR PICKUP AND GRAIN TRUCKS. 100% naughyde.

Guaranteed to outlast your truck.

**\$15**

Installed Free

TIRE SIZE	EXCISE TAX PER TIRE	BLACKWALLS	WHITWALLS
600-13	1.58	2 for \$25*	2 for \$30*
650-13	1.81	2 for \$30*	2 for \$35*
700-13	1.92	2 for \$31*	2 for \$36*
695-14	1.95	2 for \$31*	2 for \$36*
735-14	2.06	2 for \$33*	2 for \$38*
775-14	2.19	2 for \$35*	2 for \$40*
825-14	2.35	2 for \$39*	2 for \$44*
855-14	2.56		2 for \$48*
885-14	2.85		2 for \$52*
775-15	2.21	2 for \$35*	2 for \$40*
815-15	2.36	2 for \$39*	2 for \$44*
845-15	2.54		2 for \$48*
885-15	2.76		2 for \$52*

Get The Jump on Ole Man Winter

**WINTER-IZE NOW and SAVE!**

**SALE SPECIAL**

**WHITE SUPREME ANTI-FREEZE and coolant**

Ethylene Glycol Base prevents rust, clogging and corrosion! Protect your car now!

Now Only **1.19** GAL.

**POYNOR'S**

**WHITE STORE'S, INC.**

303 Main Muleshoe

HARMON'S HIGHLIGHTS

# Southern Cal. #1

There just has to be one Saturday in every football season that is a little "quieter" than the rest - when all heart patients can relax just a wee bit. And after the events of last week, this week just has to be it!

And of course the old (or new) Top Twenty went through a pretty thorough over-hauling. Southern Cal took over the top spot with Kansas and Ohio State right on their heels. Drop-outs were numerous as L.S.U., Michigan State, California, Oklahoma, and U.C.L.A. all disappeared from sight. Miami moved back into the select group along with newcomers Texas Tech, Stanford, Auburn, and Michigan.

Penn State, #8, Syracuse, #11, and Houston, #17, are all resting on "quiet-Saturday." However, Numbers One, Two, and Three will all be very busy. Southern Cal should get by Washington by about 28 points. . . Kansas is a 20-point favorite over a real upset-minded Oklahoma State. . . and Ohio State is picked over Northwestern by 21 points.

And it looks as though Alabama might lose its second game in three weeks. 6th-ranked Tennessee is an eleven-point favorite over the 19th-ranked Crimson Tide in one of these do-or-die Southeastern Conference struggles.

The big job of trying to derail the undefeated Arkansas express goes this week to the "almost-ranked" Longhorns of Texas. The Razorbacks, rated 10th, are favored to resist and desist de-railment, however, winning by one point.

Southern Mississippi gave Alabama a big scare three weeks ago, and they're planning the same type of party for 18th-ranked Ole' Miss this Saturday. This is just a hunch, but we think the Southerners from the "way-down Deep South" are going to tip Mississippi by 3.

Real busy mending their boilers this week, 4th-ranked Purdue may have some trouble with Wake Forest. . . The Deacons are three-touchdown underdogs. Notre Dame, #5,

should roll over Illinois by about 35 points.

In the Big Ten, 20th-ranked Michigan is expected to keep pace with Ohio State, handing the Hoosiers of Indiana their first conference loss. The difference is 11 points. 7th-rated Georgia will beat Vanderbilt by 23, and Miami, resting in the Number 9 spot and hoping to stay awhile, is 19 points too strong for Virginia Tech.

Y'know what? It's going to be a pretty noisy football Saturday after all!

## Bailey County Teachers Attend Meet

The English teachers of Bailey County are joining the elementary, secondary, and college teachers of English of fifteen other West Texas counties in a District XIII English Workshop on the Texas Technological College campus, Saturday, October 19. The meeting begins at 9 a.m. in the foyer of the University Theatre. The meeting is under the general oversight of Dr. Richard Crider of the Tech English Department.

Since the Texas Joint English Committee is concerned with the effective teaching of English at all levels, the theme for this year's workshop is, "A Vertical View of English: Grades I through College." The program, planned by Aubrey Green of Lubbock Christian College, will consist of demonstrations, discussions, publishers displays, business sessions, and a luncheon in the Union Ballroom. Dr. Mary Louise Brewer will deliver the luncheon address entitled "The Finished Product."

## Conference On Careers To Be Held

A special invitation is being issued to all school counselors, school nurses, principals, superintendents, and persons working with youth groups concerning careers to attend a special, day-long health careers conference to be held at the Koko Palace, Thursday, October 24. There is no registration fee and lunch will be served courtesy of the Texas Health Careers Program. Registration begins at 8:30 a.m. and the meeting will end at 4:30 p.m.

Eighteen speakers will make presentations concerning the various careers associated with the health care industry. Each of the 18 speakers is presently active in the particular profession they will discuss.

The invitation is open not only to people in Lubbock but throughout the South Plains and Eastern New Mexico. The program is being jointly sponsored by Texas Health Careers Program, Texas Nurses Association (District 18), Texas Chapter American Physical Therapy Association, South Plains Society of Radiologic Technologists, American Association of Medical Records Librarians, Lubbock Dietetic Association, West Texas Tuberculosis Association, Methodist Hospital School of Nursing, and Lubbock Vocational School of Nursing.

Anyone needing additional information should call the school of Nursing office at Methodist Hospital, Lubbock, Texas, phone SW2-1011.

### The Lonely Heart

THANKS TO G. COTTON, DALLAS, TEXAS



Weather conditions ideal for survival and population buildups of insects, including cotton boll weevils, have created the necessity for a new "defensive end" position in the High Plains Diapause Boll Weevil Control Program.

Ed Dean, Director of Field Services for Plains Cotton Growers, Inc., which initiated the weevil war in 1964, reports that for the first time this year weevils have invaded the Plains above the Caprock from the south county line of Dawson up through Borden and Lynn counties Northwest of Post.

He said "We have been aware since 1964 that this kind of 'end run' by the weevil was possible, and we have kept the area under almost constant surveillance since that time. But it was not until this year that entomologists judged this movement from the South as a serious threat to vast acreage of High Plains cotton."

The surveillance mentioned by Dean, consisting of regular, intensive surveys, has revealed that the heavy migrations are emanating from cotton fields scattered through range land in Borden county. It was deemed necessary to relieve pressure at the source of migration before spraying above the Caprock would be effective, and these heavily infested fields have already been sprayed twice.

Since the area involved was outside the zone on which the original spray contracts were let this year the Texas Department of Agriculture furnished the aircraft for applying insecticide to these scattered areas.

Subsequent action was decided on at a meeting of the Boll Weevil Technical Advisory Committee on September 24. Entomologists and other committee members agreed that a separate contract should be let as soon as possible for spraying up to 70,000 acres in Borden, Dawson and Lynn counties.

are weevils around us, and if we give them the slightest quarter, they'll take advantage of us every time.

Regarding the cost of this new protective measure Dean said, "We had not expected this new expense, and we reduced producer contributions this year to 25 cents per bale on the assumption it wouldn't be necessary to spray the southern area."

The previous three years producers in PCG's 23-county area had put up 40 cents per bale to keep weevils off the Caprock. And Dean says future developments will determine whether the control program can continue to be effective at the 25 cents per bale cost.

"But it wouldn't make sense to spend the money we've spent the past four years to successfully stop weevils from coming in from the east and then let them creep in from the south," Dean said.

Not only has ideal insect weather brought on a surge of weevils from the South, infestations this year also have occurred on more acres above the Caprock along the Eastern edge of the Plains than in either of the previous two years.

But the number of infested areas above the Caprock is still far below the acreage it was necessary to spray in 1964 and 1965, and Dean notes "There is no telling how far west the weevil would have gone in a year such as this had their numbers not been greatly reduced by the control program each year since 1963."

Along the southern front, entomologists recommend that producers with newly infested fields who desiccate prior to harvest add one half pound of Methyl Parathion to desiccant. They suggest this as an inexpensive way to kill weevils and prevent them from infesting adjacent fields as they search for new food supplies.

They warn, however, that Malathion and Parathion are toxic insecticides and that peas or other edible crops interplanted with cotton or planted adjacent to cotton where drift is likely should not be harvested for three days after the use of Malathion and seven days after Parathion.

Otherwise, if these insecticides are used according to directions no adverse effects will be experienced, entomologists say. It is well to check with your County Agent when in doubt.

Also, destruction of green bolls dumped from strippers on turnrows to prevent weevils emerging from infested bolls is a good practice according to the weevil experts.

The Technical Advisory Committee was also given a report on the regular portion of the weevil control program, which involves spraying of infested fields in Briscoe, Motley, Dickens, Kent, Crosby, and Floyd counties.

Spraying in those counties began September 3, and through September 27 some 320,000 aggregate acres had been treated in three applications.

According to Roy Moritz, PCG's coordinator of field activities, the first two applications went on according to schedule and proved very effective in controlling weevils.

numbers and migration. Completion of the third application was delayed by weather about five or six days but as of September 27 spraying was back on schedule.

As of this writing reports on the effectiveness of the third application are not complete.

## LAZBUDDIE SCHOOLS' LONGHORN STAMPEDE

by Junior Class



BOB PRICE RECEIVES AWARD--Congressman Bob Price, left, recently received the "Watchdog of the Treasury" award in honor of his 100 percent economy voting record in the 90th Congress during 1967-68. Making the award is John C. Mason, President, National Associated Businessmen, Inc., who congratulated Price on his outstanding voting record and "courage to stand up against the pressure groups who advocated unnecessary Federal spending."

## San Antonio Site of Annual Historical Meet

Charles R. Woodburn, president of the Texas State Historical Survey Committee, announced the tenth Annual Meeting of the Survey Committee and its private affiliate, the Texas Historical Foundation, will be held in San Antonio, November 1 and 2.

Membership for the two organizations totals more than 3,500 members. Those in attendance at the meeting will hear discussion on a variety of topics to include the National Historical Preservation Act of 1966; historic preservation grants; the Future of the Institute of Texan Cultures; History and Tourism; How to Write a County History; Setting up a Local History Collection in a Public Library; and a Status Report on the RAMPs Program. RAMPs is the five year plan of the Survey Committee to record, mark, preserve, survey and encourage appreciation of Texas' history.

At the awards luncheon on Saturday, members of 254 County Historical Survey Committees and fellow citizen historians will learn the winners for 1968 in the various areas of County Committee Competition (designed to encourage local participation in the RAMPs program).

Awards at the luncheon will be given for the Best County Committee Newsletter, Best Program of Work and Best Scrapbook. Also the Best Chairman of a County Historical Survey Committee and the Best Sub-Committee Chairman will be announced.

In addition, a 30-minute color film, "How Will We Know It's Us?", dealing with historical preservation and restoration, will be previewed. An educational tour of San Antonio's historic points of interest, including the King William Historic District, is also scheduled.

Headquarters for the meeting is the Gunter Hotel. Registration is \$15. The meeting is open to all Texans interested in the multiple aspects of Texas history. For further details, write the Texas State Historical Survey Committee, P.O. Box 12276, Capitol Station, Austin 78711.

Waiting for a visitor is one of the more tiresome ways of wasting time.

# The Harmon Football Forecast

TOP 20 TEAMS (Forecasting Average: 595 Right, 178 Wrong, 21 Ties ..... 770)

1-SOUTHERN CAL	6-TENNESSEE	11-SYRACUSE	16-TEXAS TECH
2-KANSAS	7-GEORGIA	12-AUBURN	17-HOUSTON
3-OHIO STATE	8-PENN STATE	13-STANFORD	18-MISSISSIPPI
4-PURDUE	9-MIAMI, FLA.	14-NEBRASKA	19-ALABAMA
5-NOTRE DAME	10-ARKANSAS	15-FLORIDA	20-MICHIGAN

Saturday, Oct. 19-MAJOR COLLEGES

Air Force	27	Colorado State	14
Arizona State	20	Oregon State	15
Arkansas	24	Texas	11
Army	27	Rutgers	23
Auburn	15	Georgia Tech	10
Boston College	24	Tulane	7
Bowling Green	24	Kent State	6
Brigham Young	17	Arizona	16
Buffalo	21	Villanova	19
California	15	U.C.L.A.	14
Cincinnati	21	Wichita	12
Clemson	21	Duke	6
Colorado	22	Kansas State	14
Dartmouth	14	Brown	6
Dayton	31	Southern Illinois	8
Florida	27	North Carolina	7
Georgia	30	Wendell	10
Harvard	17	Cornell	17
Holy Cross	17	Boston U.	6
Iowa	28	Wisconsin	13
Kansas	34	Oklahoma State	14
L.S.U.	17	Kentucky	9
Louisville	23	Marshall	7
Memphis State	10	Florida State	7
Miami, Fla.	27	V.P.I.	10
Michigan	25	Indiana	14
Michigan State	20	Minnesota	17
Navy	27	Pittsburgh	24
Nebraska	17	Missouri	15
New Mexico State	16	San Jose State	13
N. Carolina State	27	Virginia	21
North Texas	28	Tulsa	23
Notre Dame	49	Illinois	7
Ohio State	28	Northwestern	7
Ohio U.	24	Miami, Ohio	14
Oklahoma	31	Iowa State	21
Oregon	20	Idaho	10
Pennsylvania	26	Urbig	13
Princeton	26	Colgate	13
Purdue	31	Wake Forest	10
Richmond	26	Furman	14
South Carolina	18	Maryland	15
Southern Cal	42	Washington	14
S.M.U.	30	Rice	13
South'n Mississippi	17	Mississippi	13
Stanford	21	Northwestern State	8
Tennessee	21	Alabama	20
Texas (El Paso)	21	New Mexico State	20
Texas A. & M.	21	U. of Texas	21
Texas Tech	28	Mississippi State	0
Toledo	17	Western Michigan	7
Utah State	21	Missouri State	15
V.M.I.	20	The Citadel	19
West Texas	26	Arlington	21
West Virginia	14	William & Mary	0
Wyoming	27	Utah	19
Xavier	37	Northern Illinois	17
Yale	39	Columbia	7

Other Colleges--SOUTH and S'WEST

Appalachian	35	Catawba	7
Arkansas A. & M.	20	Harding	0
Arkansas State U.	21	Trinity	14
Arkansas Tech	20	Arkansas St. College	15
Bethany, W. Va.	27	Adelbert	6
Carson-Newman	23	Elon	14
Chattanooga	22	East Tennessee	16
Coast Guard	19	Southwestern, Tenn.	14
Eastern Kentucky	28	Akron	12
Emory & Henry	14	Western Carolina	8
Farmont	20	Hillsdale	8
Florence	20	Henderson	8
Glennville	20	Bluefield	8
Lamar Tech	24	Abilene Christian	21
Lenoir-Rhyne	27	Guilford	13
McMurry	24	Sam Houston	7
Missaps	13	Ouachita	10
Morehead	23	Youngstown	20
Murray	28	Middle Tennessee	17
NE Louisiana	23	McNeese	20
Randolph-Macon	23	Delta State	8
SW Louisiana	23	Howard Payne	15
Southwest Texas	28	Eastern Michigan	15
Sul Ross	20	East Texas	8
Tampa	20	Concord	20
Texas A. & I.	31	Jacksonville	7
Texas Lutheran	20	Hampden-Sydney	12
Troy	14	Concord	20
Washington & Lee	14	Tennessee Tech	0
West Va. Tech	14	Shepherd	0
Western Kentucky	21	Newberry	7
Western Maryland	31		
Wofford	34		

Other Colleges--MIDWEST

Alma	37	Adrian	0
Ashland	27	John Carroll	6
Baldwin-Wallace	16	Utterbin	11
Ball State	23	DePauw	13
Bethany, Kansas	25	McPherson	6
Bradley	24	Eastern Illinois	19
Butler	20	Evansville	16
Capital	15	Marietta	18
Carthage	24	Augustana, Ill.	18
Central Michigan	24	Central State, Ohio	0
Central Missouri	27	Rolla	17
Central Oklahoma	20	Central Oklahoma	17
Central State, Mo.	14	Principia	13
Central U. of Iowa	20	Concordia, Mo.	14
Defiance	19	Manchester	7
Doane	35	Hastings	0
Drake	27	Omaha	15
Duluth	26	Hamline	21
Emporia College	29	Bethel	0
Findlay	25	Ohio Northern	7
Franklin	18	Indiana Central	14
Indiana State	23	Valparaiso	6
Kansas Wesleyan	21	Ottawa	22
Langston	25	SE Oklahoma	21
Macalester	21	Augsburg	13
Nebraska Wesleyan	19	Missouri Valley	14
NE Missouri	22	SW Missouri	8
Northern Michigan	30	Quantico Marines	10
Ohio Wesleyan	26	Muskingum	14
Slippery Rock	17	Wilmington	12
SE Missouri	32	NW Missouri	14
SE Oklahoma	27	NE Oklahoma	12
Washington U.	20	Colorado College	13
Washington & Jeff'n	21	Case Tech	7
Wheaton	23	Elmhurst	0
Winona	31	Michigan Tech	6
Wittenberg	35	Heidelberg	0
Wooster	13	Denison	10
Yankton	20	SW Minnesota	14

Other Colleges--FAR WEST

Cal Lutheran	21	LaVerne	13
Cal Poly (Pomona)	20	Chico	17
Cal Poly (S.L.D.)	29	Fresno State	20
Central Washington	25	Western Washington	8
Colorado State	22	Eastern New Mexico	21
Eastern Montana	45	Carroll	0
Hawaii	24	Santa Clara	14
Hayward	21	Navajo	17
Humboldt	23	Davis	15
Idaho	33	Pacific Lutheran	10
Idaho State	27	Idaho State	20
Linfield	25	Weber	20
Montana	27	Idaho State	20
Montana State	28	Claremont	6
New Mexico H'lands	24	Colorado Mines	7
Northern Arizona	28	San Fernando	8
Occidental	34	Claremont	6
Oregon College	14	Eastern Oregon	0
Redlands	15	Riverside	8
Sacramento	22	San Francisco State	20
San Diego State	28	Los Angeles	14
Santa Barbara	21	Long Beach	21
Williamette	25	Puget Sound	13

MAKE A GOAL WITH THE... FIRST NATIONAL BANK

"The bank with a million dollar bank structure" Muleshoe, Texas Member FDIC

## WINTER IS TOUGH ON ANY CAR!

DRIVE IN FOR A COMPLETE MOTOR TUNE-UP

Take winter wraps off that engine. Make a date with us to put zing into your car with a tune-up.

### PLAINS AUTO SERVICE

(ACROSS FROM CASHWAY)

South Main MULESHOE Phone 272-4576

## GUARANTEED AUTO REPAIRS

## NEW CONCEPT IN SPRINKLER IRRIGATION - THE FARMHAND WALKING WATER SYSTEM

New \*Kink-proof tower to tower safety system.

New \*Gaskets eliminated by continuous one-piece sprinkler line.

New \*Skids give you better traction, better stability, more floatation.

New \*One oil hydraulic cylinder controls movement - All your irrigation water goes for your crops.

New \*Patented, positive in-line control. System won't buckle, tangle or go down.

New \*You control both rate of travel AND water flow according to your needs.

New \*Tall towers put the sprinkler line above crops

New \*Annual lubrication cuts maintenance time to a minimum.

For more information on Farmhand Walking Water Irrigation Systems stop in and see us or call collect

## FARMHAND MECHANIZED MUSCLE

# Sprink-L-Rite Corporation

4th and Sycamore - Clovis, N. Mex. Ph. AC 505/762-4503

# Muleshoe's Annual "BACK THE MULES"

LAST WEEK'S Last Week's Card Voided  
WINNERS

Two Cards  
This Week

# CONTEST

FOOTBALL

**ENTER TODAY! and WIN CASH PRIZES!**



**LET'S  
BACK  
THE  
MULES**

**WIN WEEKLY PRIZES!**  
FIRST PRIZE **\$ 5** SECOND PRIZE **\$ 3**  
**GRAND PRIZE \$50** For expenses and two tickets to the Cotton Bowl at Dallas, Texas. There will also be a contest and prizes for the Bowl Games!

You Have Until 5 P.M.  
Friday to Enter Contest  
Watch for the Official  
Entry Blank Each Week

*This Contest Made Possible by the Following Mule Booster Firms:*

- |  |                            |
|--|----------------------------|
| <b>Mohawk Auto Parts</b>                         | <b>Muleshoe Locker</b>     |
| <b>Muleshoe State Bank</b>                       | <b>Muleshoe Electric</b>   |
| <b>Richland Hills Texaco</b>                     | <b>James Glaze Co.</b>     |
| <b>Ray Griffiths &amp; Sons</b>                  | <b>Art Craft Printing</b>  |
| <b>Pool Insurance Agency</b>                     | <b>White's Cashway</b>     |
| <b>King Grain &amp; Seed Co.</b>                 | <b>Plains Auto Parts</b>   |
| <b>W. Q. Casey Insurance</b>                     | <b>First Street Conoco</b> |
| <b>Muleshoe Publishing Co.</b>                   | <b>Mills Machine Shop</b>  |
| <b>Main Street Beauty Salon</b>                  | <b>First National Bank</b> |
| <b>Farmer's Co-op Elevator</b>                   | <b>Muleshoe Co-op Gins</b> |
| <b>Production Credit Association</b>             | <b>Muleshoe Motor Co.</b>  |
| <b>Wrinkle Welding &amp; Machine Shop</b>        | <b>Ready Mix Concrete</b>  |
| <b>Tri-County Savings &amp; Loan Association</b> | <b>Beavers' Flowerland</b> |

RULES SAME AS LAST WEEK

**Card A OFFICIAL ENTRY FORM ONLY ONE ENTRY PER PERSON**

NAME \_\_\_\_\_ ADDRESS \_\_\_\_\_  
CITY \_\_\_\_\_ STATE \_\_\_\_\_

SOUTHERN MISS. <input type="checkbox"/>	MISSISSIPPI <input type="checkbox"/>
UTAH <input type="checkbox"/>	WYOMING <input type="checkbox"/>
INDIANA <input type="checkbox"/>	MICHIGAN <input type="checkbox"/>
NEBRASKA <input type="checkbox"/>	MISSOURI <input type="checkbox"/>
AIR FORCE <input type="checkbox"/>	COLORADO STATE <input type="checkbox"/>
TCU <input type="checkbox"/>	A&M <input type="checkbox"/>
PITTSBURG <input type="checkbox"/>	NAVY <input type="checkbox"/>
FLORIDA STATE <input type="checkbox"/>	MEMPHIS STATE <input type="checkbox"/>
NORTH TEXAS STATE <input type="checkbox"/>	TULSA <input type="checkbox"/>

**TIE BREAKER**  
California \_\_\_\_\_ SCORE VS. UCLA \_\_\_\_\_ SCORE

**Card B OFFICIAL ENTRY FORM ONLY ONE ENTRY PER PERSON**

NAME \_\_\_\_\_ ADDRESS \_\_\_\_\_  
CITY \_\_\_\_\_ STATE \_\_\_\_\_

TENNESSEE <input type="checkbox"/>	ALABAMA <input type="checkbox"/>
WISCONSIN <input type="checkbox"/>	IOWA <input type="checkbox"/>
ARKANSAS <input type="checkbox"/>	TEXAS U. <input type="checkbox"/>
DUKE <input type="checkbox"/>	CLEMSON <input type="checkbox"/>
GEORGIA TECH. <input type="checkbox"/>	AUBURN <input type="checkbox"/>
COLORADO <input type="checkbox"/>	KANSAS STATE <input type="checkbox"/>
MINNESOTA <input type="checkbox"/>	MICHIGAN STATE <input type="checkbox"/>
OKLAHOMA STATE <input type="checkbox"/>	KANSAS <input type="checkbox"/>
MARYLAND <input type="checkbox"/>	SOUTH CAROLINA <input type="checkbox"/>

**TIE BREAKER**  
Dartmouth \_\_\_\_\_ SCORE VS. Brown \_\_\_\_\_ SCORE

- Cobb's**
- Dari Delite**
- Ladd Pontiac**
- BMG Motors**
- Dinner Bell Cafe**
- Texas Sesame**
- Western Drug**
- Jerry's Tire Co.**
- Decorator's 216**

# Enochs News

by Mrs. J. D. Bayless

Mr. and Mrs. Raymond Austin returned home Wednesday from a two weeks trip in Calif. They visited his sister, Mr. and Mrs. D.J. Vilman at Marced Calif. Also his two Ralph Beasley brothers, Mr. and Mrs. Garland Austin and Mr. and Mrs. Cliff Burris at Santa Juan, Calif., on their return home they spent Tuesday night in Clovis, N.M., with her mother, Mrs. A.M. Moore, and Mrs. Moore returned home with them for a visit.

Guests in the Carl Hall home Friday afternoon were their daughter, Mr. and Mrs. Bill Burris and children of Wellman. They also attended the ball game at Bula between Wellman and Bula. Bula lost their game to Wellman with a score of 14 to 56.

Enochs W M S met 9:30 a.m. Tuesday for their Mission program from the Royal Service book. Following the program there was a short business meeting. There was a motion and second to have the general meeting the first Tuesday of the month, and business the fourth Tuesday, and that different groups set their time and place for their meetings. Mrs. Sandra Austin appointed Mrs. C.R. Seagler as Bible study leader, Mrs. H.B. King appointed Mrs. L.E. Nichols as Prayer leader and Mrs. Harold Layton as Soul Winning leader.

Those attending the meeting were Mesdames L.E. Nichols, Junior Austin, J.E. Layton, J. O. Dane, H.B. King, Quinton Nichols, J.W. Layton, Chester Petree, Bennie Hall, Keith Price, J.B. Vanlandingham, Harold Layton, Dale Nichols, Carl Hall, C.R. Seagler, and Mrs. C.H. Byars cared for the 5 children, Greg Austin, Paula Nichols, Jana and Jolesa Price and Keith Layton.

Mr. and Mrs. N.O. Sullivan of Lubbock were in route home from Dallas, where they had been visiting their son, Rev. and Mrs. T.J. Sullivan when a woman hit the rear of their car when they slowed down for construction on the road, Mrs. Sullivan received a broken rib and Mr. Sullivan was to see the Dr. again Monday for observation. The Sullivan's were former residents of Enoch's, community, and a cousin of Mrs. Joe Milsap.

Visiting in the home of Mr. and Mrs. John Gunter recently were her brother and wife Mr. and Mrs. Paul W. Miller of Cooper.

Mrs. J.D. Bayless drove to Levelland Wednesday morning and went to Lubbock with her niece, Mrs. Harold Arant and visited with her sister, Mrs. Ray Cunningham and Mrs. Owens of Wells, also a niece, Mrs. Dwayne Vaughn and her daughter, Mrs. Britt Robertson

and son Jackie of Lubbock in the home of her sister, Mrs. Gracy Swanner and son Jimmie.

Mr. and Mrs. Donnie Newman and children Matt, Mark and Cindy also Mrs. Newman mother, Mrs. Colgan all of Dallas, spent the week with his parents, Mr. and Mrs. G.R. Newman. Other supper guests in the Newman home Tuesday were Mrs. Bobbie Joe Newman and children, Judy, Debbie, Lanett, and Joe Bob of Muleshoe. Wednesday afternoon the group visited in the C.R. Reasoner home at Needmore. Mr. and Mrs. Donnie Newman and family visited in his brother's home Mr. and Mrs. Bobbie Joe Newman Thursday in Muleshoe.

Company in the J.C. Snitker home last week-end were her brother, Mr. and Mrs. Jimmie Green and daughter, Jimmie Lou of Canyon.

Mr. and Mrs. Harold Layton and children, Susan and Robert visited his sister, Mr. and Mrs. Eldred Mize and son, Sterling at Crosbyton Sunday afternoon. Mr. and Mrs. C.C. Snitker went to Roswell, N.M. Saturday to be at the bedside of their son Stanley as he underwent emergency surgery for a bleeding ulcer, the Dr. removed 1/4 of his stomach, the last report he was doing very well.

day were Edd Autry and his son-in-law Jack Jackson of Clovis, Mrs. Autry and Mrs. Jackson joined their husbands Saturday.

Those from Enoch's attending Pete Turney's funeral in the First Missionary Baptist Church at Morton Wednesday October at 3:30 p.m. were Mr. and Mrs. Edd Autry, Mr. and Mrs. Bob Newton and Mrs. Myrna Turney.

Mr. and Mrs. Bob Newton and sons, Steve and Tom and Patricia Grusendorf drove to College Station Friday night after the Foot Ball game at Bula, To visit the Newtons son Dennis who is going to College at A&M they returned home Sunday.

The farmers are very grateful for the beautiful fall weather, the cotton is opening very fast. The Enoch's Co-op Elevator is still crowded.

Dean Gilliam gined the first bale of cotton gathered in the community, Friday at the Enoch's gin. The bale weighed out at 435 pounds. Second gined in the county.

Mrs. Preston Harrison and son Chad returned home Saturday from her trip to Lewisville and Andrews, he nephew, William Lee Nixon of Lewisville returned with her for a three weeks visit.

Lesia Angel of Lubbock spent Saturday night and Sunday with her grandmother, Mrs. Olive Angel.

Mr. and Mrs. Carl Hall were in Lubbock Sunday afternoon to visit her sister, Mr. and Mrs. J.T. Burns. He has been ill for some time.

Mrs. Guy Sanders went to Roaring Springs Sunday afternoon to see her mother, Mrs. M.D. Harding who is ill.

Mr. George Fine visited in Lockney Tuesday till Saturday with her brother, Harmon Mills. Mrs. Mills spent the week in a hospital at Temple she has been ill for some time.

Mr. and Mrs. E.F. Campbell were in Lubbock Monday to be at the bedside of their son Erwin Campbell as he had surgery on his gums. He was able to go home Friday afternoon.

Mr. and Mrs. Curt Johnson moved to Tahoka, last week, they will be missed very much in the community as they have lived in Enoch's many years. We wish them good luck and happiness in their new community.

Guests in the home of Mr. and Mrs. Chester Petree Sunday were her sister, Mr. and Mrs. Charlie Williamson of Lubbock and their son's, Mr. and Mrs. Kenneth Petree of Clovis, Mr. and Mrs. Dannie Petree and son, Monte also his sister-in-law Mrs. Syble Petree of Morton.

Mr. and Mrs. Joe Milsap drove to Borger Sunday to visit her brother and wife Mr. and Mrs. Hugh Anderson.

Mr. and Mrs. Charlie Byars visited in the home of an uncle, Mr. and Mrs. Ozie Price of Carlsbad, N.M., Sunday to be with them and a host of relatives as Mr. and Mrs. Price celebrated their 60th annl.

Fishing at a lake near Hub Saturday afternoon were Mr. and Mrs. Duane Clem and Mr. and Mrs. J.D. Bayless.

Mr. and Mrs. Elwood Autry took Gwen, Linda and Lavan to Albuquerque, p.m. Sunday to see their father, Arles Autry who is very ill in the veterans Hospital there.

Mrs. Bennie Hall and children of Enoch's and her parents, Mr. and Mrs. Olan Darland of Morton, were in Risingstar Sunday for the 58 wedding anni. of Mrs. Hall grandparents, Mr. and Mrs. Dock Hammonds, also parents of Mrs. Darland.

No 100

## GENERAL ELECTION Bailey County, Texas November 5, 1968 OFFICIAL BALLOT

No 100

GENERAL ELECTION  
Bailey County, Texas  
November 5, 1968

NOTE: Voter's signature to be affixed on the reverse side.

**INSTRUCTION NOTE:**

Vote for the candidate of your choice in each race by placing an X in the square beside the candidate's name.

You may vote a straight ticket (that is, vote for all the candidates of a certain party, and for no candidates outside that party's column) by placing an X in the square beside the name of the party of your choice at the head of the party column. (If you use this straight-ticket method of marking, do not mark squares beside the names of individual candidates.)

Candidates for:	<input type="checkbox"/> DEMOCRATIC PARTY	<input type="checkbox"/> REPUBLICAN PARTY	<input type="checkbox"/> AMERICAN PARTY	WRITE-IN
President and Vice-President	<input type="checkbox"/> Hubert H. Humphrey and Edmund S. Muskie	<input type="checkbox"/> Richard M. Nixon and Spiro T. Agnew	<input type="checkbox"/> George C. Wallace and S. Marvin Griffin	<input type="checkbox"/>
U. S. Representative, 18th Congressional District	<input type="checkbox"/> J. R. (Dick) Brown	<input type="checkbox"/> Bob Price	<input type="checkbox"/>	<input type="checkbox"/>
Governor	<input type="checkbox"/> Preston Smith	<input type="checkbox"/> Paul Eggers	<input type="checkbox"/>	<input type="checkbox"/>
Lieutenant Governor	<input type="checkbox"/> Ben Barnes	<input type="checkbox"/> Doug DeCluitt	<input type="checkbox"/>	<input type="checkbox"/>
Attorney General	<input type="checkbox"/> Crawford C. Martin	<input type="checkbox"/> Sproesser Wynn	<input type="checkbox"/>	<input type="checkbox"/>
Comptroller of Public Accounts	<input type="checkbox"/> Robert S. Calvert	<input type="checkbox"/> John M. Bennett, Jr.	<input type="checkbox"/>	<input type="checkbox"/>
State Treasurer	<input type="checkbox"/> Jesse James	<input type="checkbox"/> Manuel Sanchez	<input type="checkbox"/>	<input type="checkbox"/>
Commissioner of General Land Office	<input type="checkbox"/> Jerry Sadler	<input type="checkbox"/> Millard K. Neptune	<input type="checkbox"/>	<input type="checkbox"/>
Commissioner of Agriculture	<input type="checkbox"/> John C. White	<input type="checkbox"/> E. G. Schuhart, II	<input type="checkbox"/>	<input type="checkbox"/>
Railroad Commissioner	<input type="checkbox"/> Jim C. Langdon	<input type="checkbox"/> Jim Segrest	<input type="checkbox"/>	<input type="checkbox"/>
Associate Justice, Supreme Court, Place 1	<input type="checkbox"/> Sears McGee	<input type="checkbox"/>	<input type="checkbox"/>	<input type="checkbox"/>
Associate Justice, Supreme Court, Place 2	<input type="checkbox"/> Tom Reavley	<input type="checkbox"/>	<input type="checkbox"/>	<input type="checkbox"/>
Associate Justice, Supreme Court, Place 3	<input type="checkbox"/> Zollie Steckley	<input type="checkbox"/>	<input type="checkbox"/>	<input type="checkbox"/>
Judge, Court of Criminal Appeals, Place 1	<input type="checkbox"/> W. A. Morrison	<input type="checkbox"/>	<input type="checkbox"/>	<input type="checkbox"/>
Judge, Court of Criminal Appeals, Place 2	<input type="checkbox"/> Leon Douglas	<input type="checkbox"/>	<input type="checkbox"/>	<input type="checkbox"/>
State Representative, District 72:	<input type="checkbox"/> Bill Clayton	<input type="checkbox"/> Frank Ford	<input type="checkbox"/>	<input type="checkbox"/>
Member, State Board of Education, District 19	<input type="checkbox"/> William H. Evans	<input type="checkbox"/>	<input type="checkbox"/>	<input type="checkbox"/>
Associate Justice, Court of Civil Appeals, District 7	<input type="checkbox"/> James A. Joy	<input type="checkbox"/>	<input type="checkbox"/>	<input type="checkbox"/>
District Attorney	<input type="checkbox"/> Jack D. Young	<input type="checkbox"/>	<input type="checkbox"/>	<input type="checkbox"/>
Sheriff, Bailey County, Texas	<input type="checkbox"/> Dee Clements	<input type="checkbox"/>	<input type="checkbox"/>	<input type="checkbox"/>
Tax Assessor, Bailey County, Texas	<input type="checkbox"/> Jean Lovelady	<input type="checkbox"/>	<input type="checkbox"/>	<input type="checkbox"/>
County Attorney, Bailey County, Texas	<input type="checkbox"/> Roger Gorrell	<input type="checkbox"/>	<input type="checkbox"/>	<input type="checkbox"/>
County Commissioner, Precinct 1, Bailey County, Texas	<input type="checkbox"/> Matt Dudley	<input type="checkbox"/>	<input type="checkbox"/>	<input type="checkbox"/>
County Commissioner, Precinct 3, Bailey County, Texas	<input type="checkbox"/> W. H. "Bill" Eubanks	<input type="checkbox"/>	<input type="checkbox"/>	<input type="checkbox"/>
Constable, Precinct No. 1, Bailey County, Texas	<input type="checkbox"/> Roy Bayless	<input type="checkbox"/>	<input type="checkbox"/>	<input type="checkbox"/>

### PROPOSED CONSTITUTIONAL AMENDMENTS

Instruction Note: Place an X in the square beside the statement indicating the way you wish to vote.

No. <input type="checkbox"/> FOR <input type="checkbox"/> AGAINST	1	The Constitutional Amendment amending Subsection (a) of Section 62, Article XVI of the Constitution of the State of Texas relating to the Employees Retirement Fund and the Employees Retirement System of Texas, revising provisions for investments of moneys and other assets of the Fund, and changing other existing provisions and making other new provisions with respect to the administration of the Employees Retirement System.	No. <input type="checkbox"/> FOR <input type="checkbox"/> AGAINST	7	The Constitutional Amendment continuously reducing State ad valorem property taxes and abolishing all State ad valorem property taxes after December 31, 1978, except the tax levied by Article VII, Section 17, for certain institutions of higher learning.
No. <input type="checkbox"/> FOR <input type="checkbox"/> AGAINST	2	The Constitutional Amendment raising the limit on the amount that may be expended in any one year out of state funds for Public Assistance payments only to Seventy-five Million Dollars (\$75,000,000).	No. <input type="checkbox"/> FOR <input type="checkbox"/> AGAINST	8	The constitutional amendment removing certain provisions relating to purchase of fuel and refurbishing the rooms and halls of the Legislature and the requirement that the Governor, the Secretary of State, and the Comptroller must approve certain contracts of purchase.
No. <input type="checkbox"/> FOR <input type="checkbox"/> AGAINST	3	The constitutional amendment providing for investment of the Permanent University Fund by the Board of Regents of The University of Texas in certain types of securities within the prudent man rule.	No. <input type="checkbox"/> FOR <input type="checkbox"/> AGAINST	9	The amendment to Section 48a of Article III allowing contributions to be made on the basis of full salary of members of the Teacher Retirement System of Texas.
No. <input type="checkbox"/> FOR <input type="checkbox"/> AGAINST	4	The amendment of Article III of the Constitution to provide that Dallas County may issue road bonds under Section 52 of Article III upon a vote of a majority of the resident property taxpayers voting thereon who are qualified electors of said county, and to provide that bonds heretofore or hereafter issued under Subsections (a) and (b) of said Section 52 shall not be included in determining the debt limit prescribed in said Section.	No. <input type="checkbox"/> FOR <input type="checkbox"/> AGAINST	10	The constitutional amendment authorizing the Legislature to provide for the refund of the tax on cigars and tobacco products sold at retail within the corporate limits of Texarkana, Texas, or any incorporated city or town in Texas contiguous to Texarkana.
No. <input type="checkbox"/> FOR <input type="checkbox"/> AGAINST	5	The constitutional amendment providing the members of the Legislature shall receive as salary an amount not exceeding Eight Thousand Four Hundred Dollars (\$8,400) per year.	No. <input type="checkbox"/> FOR <input type="checkbox"/> AGAINST	11	The constitutional amendment authorizing the legislature to provide for consolidating governmental offices and functions and allowing political subdivisions to contract for performance of governmental functions in El Paso and Tarrant counties.
No. <input type="checkbox"/> FOR <input type="checkbox"/> AGAINST	6	The Constitutional Amendment giving permissive authority to the Texas Legislature to exempt from ad valorem taxation by the State of Texas and its political subdivisions equipment installed on real property to eliminate or abate the harmful effect of air emissions and water effluents, provided that the capital investment in such equipment complies with the air and water quality standards established by the State of Texas.	No. <input type="checkbox"/> FOR <input type="checkbox"/> AGAINST	12	The constitutional amendment to give the Legislature the power to authorize cities and counties to issue revenue bonds for industrial development purposes.
			No. <input type="checkbox"/> FOR <input type="checkbox"/> AGAINST	13	The constitutional amendment to exempt certain property temporarily stored in a public warehouse from ad valorem taxation.
			No. <input type="checkbox"/> FOR <input type="checkbox"/> AGAINST	14	The constitutional amendment fixing the time during which members of the Legislature shall be ineligible to hold other offices.

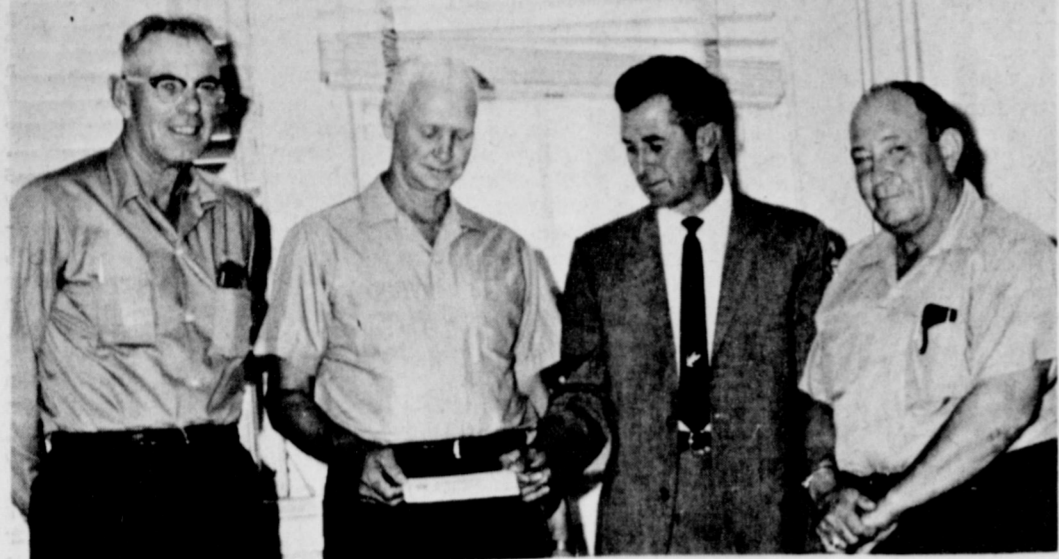
Presented In The Public Interest By:

# FIRST NATIONAL BANK

Muleshoe, Texas

"The bank with a million dollar bank structure"

Member FDIC



\$1,764 CHECK RECEIVED FROM WILDLIFE REFUGE--Following the regular session of the county commissioners Monday, Muleshoe National Wildlife Manager Bert Blair presented the county with a check for \$1,764. Pictured are from left, Loyd Stephens, W.H. 'Bill' Eubanks, Blair and R.P. McCall.

## Clayton Stresses Water; Education

Education in West Texas is tied to water resources development, according to Rep. Bill Clayton, who is seeking re-election to the Texas Legislature for the 72nd District. "Without the water importation project," said Clayton "the economy of West Texas will fall. This will cause people to leave, a lower tax base, and consequently less need for schools, churches, and other public institutions."

Clayton pointed out that hope in the area for additional water supplies would help to stabilize population and allow for continued business expansion. "But there can be little hope," he emphasized, "unless we obtain concrete success with the Texas water development program. We have to maintain our leadership with water in the legislature. Everyone involved and interested in education in West Texas surely realizes the necessity for imported water to keep our economy going," he concluded.

He says his interest in education is borne out by his work in the legislature on the program geared to make Texas' schools of higher learning second to none. He said "I also helped pass legislation that established a Vocational and Technical Training School in Waco at the old Connally Air Force Base and I have pledged my support for a bill to establish such a school in Amarillo when the Air Force Base is phased out there."

"I have continually worked

for appropriations to be used in vocational and technical training in our junior colleges and high school programs," he continued, "and higher pay for teachers are necessary for continued progress in education."

"With Rep. Red Simpson of Amarillo, I introduced a tax bill to provide enough teacher pay raise next year without having to pass still an additional tax bill in 1969," he added. "Forty five cents of each tax dollar in Texas now is spent for education. I believe in economy in government but not at the expense of needed programs, such as improving education."

Economy, according to Clayton, means "stretching every dollar spent by the state and eliminating duplication and waste."

Having served on the Appropriations Committee of the legislature, Clayton says that through his continued leadership, he would be in a position to help finance programs such as education and water development.

He concluded "I believe in the pay-as-you-go plan for state spending. And, although I want to keep taxes as low as possible, I want to help my district. Eliminating the farm-to-market road program, as proposed by an opposing-party member of the legislature this year, it is not the type of economizing I want," he says.

## Three Way

MRS. H. W. GARVIN

Mr. and Mrs. Jerry Simpson from Levelland spent the weekend with his parents, the J.S. Simpsons.

Joe Wheeler from Paris, Tex. spent a few days visiting his parents, the Johnnie Wheelers.

Boys wanting to join the Cub Scouts are invited to attend the next Pack meeting at the Scout Hut in Maple, October 31 at 8 p.m. The boys must be accompanied by their parents.

The FFA Chapter of the Three Way High School met and installed the officers for the year.

They are: President, Johnnie Furgeson, Vice President, Geno Abbe, Secretary, Allen Davis, Sentinel, Boyd Gibbs, Reporter Michael Sower, Treasurer, Mike Linsky, Advisor, Ed Blankenship, Sweetheart, Kathy Wittner.

Mr. and Mrs. W.H. Eubanks attended the Commissioners convention in Austin this week.

Mr. and Mrs. Carl Miller and daughter from Canyon spent the weekend with her mother and grandmother, Mrs. P.L. Fort and Bonnie Long.

Mrs. Mack Sides and son is spending a few days with her parents, the Jay Boyce family and other relatives in the community.

Verdell Turner from Lubbock visited his aunt, Mrs. P.L.

Fort Monday afternoon. Mr. and Mrs. H.W. Garvin left by plane Thursday for Houston to visit their daughter and family S/Sgt. and Mrs. Kenneth R. Fox and children.

The Adolph Wittner home was the scene of a Pink and Blue shower Tuesday afternoon honoring Mrs. Ed Blankenship. About 65 ladies called or sent gifts.

Mrs. Jack Furgeson visited her mother in Lenord Texas the past week.

Willford Newton visited with the J.P. Powells and many of his long ago friends.

Mrs. J.P. Powell is giving a baby shower for Mrs. Lamar Pollard (Barbra Dean Maston) Monday the 15th.

## Muleshoe...

Con't. from Page 1

persons with an interest in music are invited to attend the meeting and become associate members.

John Pitts and Walter Little were student guests at the Tuesday meeting of the Rotary Club and other guests included Herman Chandler, Prentice Mills, Jack Patterson and Hollis Madison.

Roy Whitt was speaker for the luncheon and gave a talk on the history of the United Fund. During his talk he explained the functions of the United Fund, the agencies it serves and advantages to area citizens of United Fund.

He told why the United Fund should be supported locally and why everyone should contribute to the Fund.

Mr. and Mrs. J.G. Arnn have returned from Pack Medical Foundation in New York where Arnn had a semi-annual medical checkup. Mrs. Arnn said her husband had a good report.

Mr. and Mrs. T.R. White accompanied the Arnns to New York where they spent several days before going on to Washington, D.C. for a few days.

The Whites went on to Ft. Knox, Ky. to visit their son, Cliff, before returning to Muleshoe Tuesday.

Mary DeShazo P-TA is holding it's annual parent's get-acquainted coffee this week. The coffees, scheduled by grades this week, got underway Monday morning with mothers from the first grade being introduced to the school and teachers.

Tuesday morning, was second grade mother's morning and Wednesday was for third grade mothers.

Thursday and Friday of this week will have the fourth grade mothers on Thursday and the fifth grade mothers on Friday. Time for the coffee is from

## County Receives Refuge Check From Manager

9-10 a.m. in the Mary DeShazo School cafeteria.

Mary Katherine Knotts Ewing, mother of Mrs. Herbert (Lucille) Nash, Muleshoe, died Wednesday, October 9 at 7:45 p.m. in the Live Oak Home, Red River County, Clarksville, Tex.

Mrs. Ewing was born October 17, 1880 in DeSha County, Ark. to Mary Jane Knotts and Paul Solomon Knotts.

She is survived by seven children, including Mrs. Nash.

Harden Douglass and Mickey Minckler have enrolled for the fall semester at Lubbock Christian College.

Douglass is the son of Mr. and Mrs. H.A. Douglass, Jr., 1808 Ave. D. He is a 1966 graduate of Muleshoe High School and is majoring in business.

Minckler is the son of Mr. and Mrs. R.K. Minckler, Sr., 202 W. 12th St. He is a 1968 graduate of Muleshoe High School and is majoring in biology.

John A. Thomson has reported to the Journal that he is the proud grandfather of his first grandson. On October 10, Bill David Hicks was born to Mr. and Mrs. Gary Hicks, Douglas, Ariz. Mrs. Hicks is the former Pat Thomson.

Mrs. Thomson is in Douglas with the family at this time.

David Davis, a freshman at WTSU, has been elected Freshman Senator for the Student Senate, and Winn Watson, freshman, has been selected by her dormitory as a representative on the Dorm Council.

Mr. and Mrs. James R. Berry and their three children visited last weekend in Lubbock in the home of H.L. Phares.

Mrs. Inez Kennedy has returned to her home following a weekend visit in Wheeler with her brother and wife, Mr. and Mrs. Harry Wofford.

## Cotton Root Rot

Cotton is not the only plant affected by the well known "killer" cotton root rot. Dr. Wendell Horne, Extension plant pathologist, says about 2,000 plant species are susceptible and many are ornamentals used in home landscape plans.

Nothing can be done once a plant becomes infected except remove it and replace with one more tolerant to the disease. Local county agents have a list which rates the resistance and susceptibility of most commonly grown Texas plants to the disease. Horne suggests using the most resistant plants available in your area.

The commissioners voted to split the money in the following manner: County Road and Bridge Fund, \$882; Muleshoe Public Schools, \$442; \$220 to the Bula and \$220 to the Three Way Independent School Districts.

This is the third payment to the county under Public Law 88-523, which set up the procedure now in use for distribution of revenue from the refuge receipts. This law further specifies that funds paid to the county under this act must be used for schools and or roads.

The higher rates were approved by the Interstate Commerce Commission in July.

Under the new rates the minimum charge for local parcel delivery will go from 40 to 50 cents. The minimum for parcels destined outside the local delivery area will be raised from 50 cents to 60 cents.

Almost all parcels that are charged up to \$1.10 under present rates will go up 10 cents. This accounts for more than 80 percent of all parcel post. Postmaster Beavers pointed out, There will be a 15-cent hike on most parcels now charged between \$1.10 and \$4.00, and a 20-cent increase on parcels now charged over \$4.00.

Parcel post rates are based on the weight of the package and the distance it is mailed. Higher rates for the delivery of packages and catalogs are required to bring revenue from

the Mystery Unsolved

Pat--How much do you weigh? Mike--One hundred and seventy-five pounds.

Pat--Ya musta got weighed wid yer coat on.

Mike--An' I did not. I held it in me arms all the time.

## Parcel Post Rates To Increase Saturday

Postmaster Spencer Beavers reminded postal customers today that higher parcel post and catalog rates will go into effect Saturday (October 19).

The rate increase will average 10.5 per cent and in most cases will mean an additional ten cents per parcel.

The higher rates were approved by the Interstate Commerce Commission in July.

Under the new rates the minimum charge for local parcel delivery will go from 40 to 50 cents. The minimum for parcels destined outside the local delivery area will be raised from 50 cents to 60 cents.

Almost all parcels that are charged up to \$1.10 under present rates will go up 10 cents. This accounts for more than 80 percent of all parcel post. Postmaster Beavers pointed out, There will be a 15-cent hike on most parcels now charged between \$1.10 and \$4.00, and a 20-cent increase on parcels now charged over \$4.00.

Parcel post rates are based on the weight of the package and the distance it is mailed. Higher rates for the delivery of packages and catalogs are required to bring revenue from

the Mystery Unsolved

Pat--How much do you weigh? Mike--One hundred and seventy-five pounds.

Pat--Ya musta got weighed wid yer coat on.

Mike--An' I did not. I held it in me arms all the time.

## VETERANS LAND BOARD SALE

The Veterans Land Board will receive sealed bids at the General Land Office, Austin, Texas, until 11:00 o'clock A.M., November 19, 1968, for the sale of 65 tracts of land. There will be 32 tracts offered to eligible Texas veterans only in Brown, Callahan, Cameron, Clay, Dickens, Gaines, Guadalupe, Hidalgo, Hunt, Jasper, La Salle, Liberty, Milam, Potter, Rains, Randall, Reeves, Yoakum and Zavalla Counties. There will be 33 tracts offered to non-veterans and eligible Texas veterans in Cameron, Dimmit, Hidalgo, Maverick and Newton Counties.

Tracts may be financed through the Veterans Land Board. For information and listing of tracts write to:

JERRY SADLER  
Commissioner of the  
General Land Office  
Chairman of the Veterans Land Board  
Austin, Texas 78701



**GET More for your money. Unmatched shredding performance Built-in durability.**

**BUSH HOG**

CUTS A FULL 160"

"Ask for your demonstration this week"

**JOHNSON-NIX, INC.**

MULESHOE, TEXAS

# Tax Notice

## State and County Taxes for the year of 1968

### Are payable after October 1st.

Statements of all property on the rendered roll are now in the mail. Some property owners may not receive a statement because of recent change in ownership or because owner has not rendered to Tax Assessor. If you do not receive a tax statement by October 5th, give legal description of your property to county Tax office and statement will be sent to you.

## STATE and COUNTY TAXES

PAYABLE AT THE COUNTY COURT HOUSE  
Tax Assessor's Office...Main Floor

**Pay State Taxes Early-Save Discount**

3% Discount if paid in October

2% Discount if paid in November

1% Discount if paid in December

**Everyone 21 Years of Age or Over-MUST REGISTER to VOTE**

Vote of Registration for 1969-70 Now Available

# JEAN LOVELADY

BAILEY COUNTY TAX ASSESSOR-COLLECTOR

# Congratulations

## JOHN MILLER

L.R. - Audy Mobbs, ginner, John Miller, farmer who brought in the first 1968 bales of cotton and farms 2 miles W of Muleshoe and Jimmy Presley, manager.

**Our "First" For 1968**

We are pleased to have ginned our first two 1968 bales for John Miller.

He planted Paymaster 202 May 9th. and irrigated every other row one time. This was stripped cotton. The "first" two bales from 4,590 pounds seed cotton produced 1,130 pounds lint and 1,740 pounds seed.

# PROGRESS GIN

"WE ARE READY TO GIN YOUR COTTON"

LET US SERVE YOU

# Principals-Architects Bricklayers!

Fred T. Wilhelms, Editor of the National Association of Secondary Principals Spotlight, recently wrote An Open Letter to the Public "On The Use of Principals."

Principals could be the architects of the school's program, but they carry bricks! They want to help their faculty build an instructional program that really fits, and help each teacher develop skills in teaching it; they believe this is what the principal is for; they feel guilty about not doing enough with it. But they are forced to fritter away their time 'doing chores', 'Stomping out brush fires', Wilhelms stated.

"You don't need any scholarly study to see the problem. Just put together what you already know about the typical principal's day. Chances are, you simply take it for granted that he has to be in on the student activities program, including athletics; that he should work with the janitorial staff and the cafeteria; that he should be the head man on budgeting supply-getting, yard maintenance; and that he is inevitably the

anchor man on serious matters of discipline and student conduct. You'd wonder about him if he weren't active in the P.T.A. and everything that goes under the heading of public relations. All of these things-- and many others-- are important and have to be done, but how much time do they leave for the principal's fundamental job?" Fred Wilhelms asks.

"The nub of the problem is that the principal is struggling to be two things at once: a manager and instructional leader. And the dismaying fact is that the 'minor' role tends to gobble up the time needed for the 'major' one," concludes Mr. Wilhelms.

Four of the educational leaders in the Muleshoe Schools are the "building level administrators" who with the faculties and other administrators are seeking to shape a program that considers the special needs, the special advantages or disadvantages of all the children," stated school officials.

**TOM JINKS**  
Tom Jinks, Muleshoe High

School Principal, has a B.S. and M. Ed. degree from West Texas State University, Canyon. He was a social studies teacher and coach for eleven years, seven at Clarendon, Texas and four at Clovis, New Mexico, before coming to Muleshoe. Jinks is beginning his third year as high school principal and spends a great deal of his time counseling with boys and girls relative to careers and vocations - in which they show an interest or aptitude. In the Muleshoe High School there are 528 students, 32 faculty members, one secretary, and two full-time custodians for whom the high school principal is directly responsible.

Tom Jinks is a Certified Flight Instructor and has recorded numerous hours in flying. He and his wife Jo have two children - Jan, a high school freshman, and Tim, a sixth grader.

**FRED MARDIS**

Fred Mardis, Muleshoe Junior High Principal, has a B.B.A. degree from West Texas State University and will receive his M. Ed. degree from Eastern New Mexico, Portales in May 1969.

Mardis was the assistant principal in Muleshoe High School during the 1966-68 terms and taught Distributive Education. Before coming to Muleshoe in 1965 he taught math and business courses in Gattis Junior High in Clovis, New Mexico. Mr. Mardis has had several years of business experience before his teaching career.

He was Order Section Supervisor and District Manager for Phillips 66 in Clovis. Mr. and Mrs. Mardis have two children, a son, Jim, a junior and Kathy a sophomore, in Muleshoe High School. Mary Mardis, his wife, is a first grade teacher at Mary DeShazo.

Mardis enjoys fishing and hunting and his favorite fishing sites are Gunnison, Colorado and the Conejos River in Anita, Colorado. Even though this is the first year for Mardis as principal of the Muleshoe Junior High, he has initiated and implemented several innovative ideas that he hopes will help the boys and girls.

His basic philosophy is that the welfare of the students should be the first priority in

any planning. He spent many hours this summer trying to work out a balanced schedule relative to subjects offered, class size, and many other factors. There are 546 students, 27 faculty members, one secretary, and 2 custodians in the Junior High School.

**MILTON OYLER**

Milton Oyler, Principal of Richland Hills Elementary, has a B.S. and M.Ed. degree from Oklahoma State University, Stillwater. He was a social studies teacher in Muleshoe High School for one year before he became principal at Richland Hills. The personnel includes 436 students, 20 teachers, a nurse, a librarian, a secretary and two custodians. The elementary counselor, speech therapist, and music teacher serve both Mary DeShazo and Richland Hills. Oyler takes great pride in his school, faculty, and student body. He is a good organizer and efficient manager of his building. He and his family enjoy sports events. Mr. and Mrs. Oyler have two children, Ben Ray, a college freshman, and Jana Beth, a sixth grader.

**BILL TAYLOR**

Bill Taylor, Jr., Principal of Mary DeShazo Elementary holds a M.B.A. degree from West Texas State University, Canyon. There are 467 students, 22 teachers, a nurse, a librarian, a secretary and two custodians at Mary DeShazo. Taylor was formerly head coach of the Muleshoe Mules and a social studies teacher in Muleshoe High School.

Naturally, he is still very interested in all sports events and supports the athletic programs of the school. Mr. Taylor takes a personal interest in his student body and staff and is always seeking ways of implementing effective programs. He and his wife, Margrethe, have two boys, Bucky, a high school junior, and Kenny, an eighth grader.

All the principals belong to the Texas State Teachers Association (TSTA), both on the local and state levels, and the National Education Association (NEA). Jinks and Mardis belong to the Texas Association of Secondary School Principals and are Masons. Oyler and Taylor belong to the Texas Association of Elementary Principals and Supervisors and both are life members of the Parent Teachers Association.

Each of the principals spends much of his time planning, searching and analyzing before making decisions that affect the lives of many youngsters. They have to carry many bricks in becoming the efficient educational architects!

## Workshop Held At ENMU For Teachers

An in-service workshop concerning the language experience approach to reading was held on the campus of Eastern New Mexico University, Portales, Thursday, October 10 from 9:00 a.m. to 4:00 p.m.

Eleanor Cohan, a representative from the Britannica Book Company, lectured on materials and did demonstrations with the children in Eastern's demonstration classroom.

Those attending from Muleshoe were: Mrs. Robert Sanders, Mrs. Fred Mardis, Mrs. A.T. Henderson, Mrs. Paul Harvey, Mrs. O.G. Killingsworth from Mary DeShazo Elementary School; Mrs. Charles Glover, Mrs. Glen Willoughby, Mrs. Dalton Mimms, Mrs. Jeff Ingham, from Richland Hills Elementary School; and Mrs. Benny Pena, Brian Maconi, June Arnold from Junior High School.

Hah?

Visitor-I do hope you keep your cows in a pasture.  
Milkman-Yes, Madam, of course we keep them in a pasture.

Visitor-I'm so glad to hear that I have been told that pasteurized milk is much the safest.

OR DRINKS IT?

What this country needs to restore farm prosperity is a tractor that eats corn.  
-Democrat, Davenport, Ia.

LISTEN

to  
**PAUL HARVEY NEWS**  
on  
**KRAN**

Radio Station  
1280 on your dial  
**MORTON, TEXAS**



**FORT SILL VISITS MULESHOE**--Monday morning this huge 12 ton cargo helicopter landed at Muleshoe airport for about an hour. While at the airport, several local citizens visited the craft, including C.W. Calhoun, who is pictured in the doorway of the aircraft with his son Carl, who was part of the crew on the flight. The local men in the picture loaded various supplies on the helicopter before it flew on to Clovis and Cannon Air Force Base for refueling.

## Lazbuddie News

By Mrs. C. A. Watson

Luther Ham was dismissed from the West Plains hospital, Muleshoe Saturday after being treated for several days.

Guests in the Luther Ham home Sunday were Ham's sister and her husband, Mr. and Mrs. Roy Satterfield from San Angelo. This week, visitors in the Ham home is a brother and his wife, Mr. and Mrs. Clarence Ham from Big Lake. Mrs. Mary Haley, a longtime friend of the Hams, returned to her home at Corpus after several days visit with Mr. and Mrs. Ham.

Mr. and Mrs. Hurbert Clay were at Wilcox, Ariz. the past weekend and attended the funeral of her nephew, Joe Saunders Sunday. Saunders was killed in Vietnam recently.

Mr. and Mrs. Dwan Menefee and children from Friona visited the Don McDonald family Sunday.

Darrell Embry, son of Mr. and Mrs. Chester Embry, is a student at Laramie University in Wyoming.

Sp/ Bobby Morris is in Vietnam serving most of his time near Saigon. He is the son of Mr. and Mrs. Valton Morris. He will serve in Thailand until July 1969.

Mr. and Mrs. Valton Morris were in Portales Sunday visiting her parents, Mr. and Mrs. I.G. Roberts and a sister, Mrs. Jimmie Ellison.

Marvin Mason has returned home after being in Oklahoma near Texanna and Guymen with the silage cutting harvesters.

Mrs. D.A. Tarter is presently visiting in Oklahoma with friends and relatives.

Mr. and Mrs. Troy Sharrock and children from Hub visited her parents, the L.R. Halls, Sunday. Also the Cary Dale family from Muleshoe were visitors in the L.R. Hall home Sunday.

Terry Templeton, son of Mr. and Mrs. Paul Templeton is with the Navy recruiting unit in San Diego, Calif. Edith Greaf, Reta Welch and Lavena Davis attended the District Womens meeting of the Reorganized Church of Jesus Christ, Latter Day Saints at the Church in Amarillo, Monday.

Mr. and Mrs. C.C. Greaf and Mr. and Mrs. Forest Green were among Lazbuddie folks attending the appreciation dinner

honoring Representative Bill Clayton, Monday night.

Mr. and Mrs. Dalton Mimms were in Abilene the past weekend to see their son, Mr. and Mrs. Kelly Mimms and daughter, Carl.

Mr. and Mrs. Sam Barnes and children were at Anna, Tex. for the Homecoming game Friday night.

To those who have asked about the annual Lazbuddie school Fair for 4-H, FFA and FHA, it has been decided not to have the fair this year.

John Agee was in Dallas last week attending the ASCS meeting. Agee went with the Farmer County committee group.

## Airman Stephens Is Training In Air Traffic

AMARILLO, Tex.--Airman Gerald E. Stephens, son of Mr. and Mrs. Billie J. Stephens of Friona, Tex., has completed basic training at Amarillo AFB, Tex. He has been assigned to the Air Force Technical Training Center at Keesler AFB, Miss., for specialized schooling as an air traffic specialist.

Airman Stephens is a 1967 graduate of Friona High School.

Mrs. John Agee returned from Wilcox, Ariz. during the past week. She had gone with Mr. and Mrs. John Gammon to Wilcox to visit her daughter and family the Ronnie Briggs. Marie Briggs brought Mrs. Agee home and is visiting in the area a few days. The John Gammons from Wilcox had been to Lubbock to see her mother, Mrs. W.P. Jennings who had the misfortune of breaking her hip recently.

**Smart Pupil**

The professor of chemistry was giving a demonstration of the properties of various acids. "Now," he said, "I am going to drop this fifty-cent piece into this glass of acid. Will it dissolve?"

"No, sir," replied one of the students. "No?" said the demonstrator. "Then perhaps you will explain to the class why it won't dissolve."

"Because," came the answer, "If it would you wouldn't drop it in."

## BIBLE VERSE

"... Let there be no strife, I pray thee, between me and thee."

1. Who is the author of this request?
2. To whom was he speaking?
3. What was the question between them?
4. Where may this statement be found?

**Answers To Bible Verse**

1. Abram.
2. To his nephew, Lot.
3. A quarrel between their shepherds and herdsmen over grazing rights.
4. Genesis 13: 3.

## BACKACHE & TENSION SECONDARY TO KIDNEY IRRITATION

Common Kidney or Bladder Irritations make many men and women feel tense and nervous from frequent, burning or itching urination night and day. Secondly, you may lose sleep and have headache, backache and feel older, tired, depressed in such cases. CYSTEX usually brings relaxing comfort by curbing irritating germs in acid urine and quickly easing pain. Get CYSTEX at drugists.

**WAKE UP THE LAND OFFICE!**

**ELECT Millard K. NEPTUNE**  
Land Commissioner

"Let's make state government efficient and responsive -- starting with the Veteran's Land Program!"

Paid Political Advertisement  
Texans For NEPTUNE. J. W. Hargrove, Chairman

## WOULD YOUR CONGRESSMAN VOTE FOR GEORGE WALLACE?

Some fine Texans are tempted to vote for the 3rd party candidate because they admire his stand and his statements on some of the major campaign issues . . .

### STOP AND THINK WHAT WILL ACTUALLY HAPPEN . . .

The best that Wallace supporters can hope for is enough strength to throw the election into the turmoil of a Congressional election by the House of Representatives . . .

### THEN WHAT HAPPENS?

The answer is certain and simple. Wallace supporters are at the mercy of Washington Politicians! Every vote for George Wallace automatically becomes a vote for Hubert Humphrey!

### THERE IS A BETTER CHOICE . . .

A vote for the NIXON-AGNEW ticket is a positive vote for "change" with the definite promise that our National Affairs will take a new direction . . . the direction you want it to take!

### YOU CAN TAKE OUR WORD FOR IT!



Honorable John G. Tower  
United States Senator from Texas  
Chairman, Nixon Key Issues Committee

Honorable Strom Thurmond  
United States Senator from South Carolina  
Chairman, Thurmond Speaks Committee

Ben Carpenter  
Chairman, Texans for Nixon Committee

**IF YOU REALLY WANT A CHANGE . . . NIXON'S THE ONE!**

Texans for Nixon Committee, Ben H. Carpenter, Chairman

"He says, gott'um swell lines." Right, Chief, We gott'um things you need for your car, and you can bet your tepee you'll be smoking a pipe of peace with the world when we're through.

**CENTRAL SERVICE**

Big Enough to Accommodate  
Small Enough to Appreciate

221 Am. Blvd. Ph. 272-8944

**NOW OPEN!**  
**Parks Barber Shop**  
616 South First  
Open 12 noon to 10 P.M.  
Tuesday thru Saturday  
\*Exterminator work in mornings.  
(Contact at Barber Shop)

**MRS BAIRD'S**

**Stays Fresh Longer**

Meet the  
**Muleshoe State Bank**  
Customer of the Week

**Mrs. R.B. Chappell**

Mrs. R.B. Chappell, receptionist at West Plains Hospital, is Muleshoe State Bank's customer of the week. The Chappells live at 422 W 7th. street and attend the Church of Christ. They have two daughters: Mrs. Kenny Heathington, Muleshoe and Mrs. Harold Ray Cast, Clovis, N.M. Mrs. Chappell said she had banked at the Muleshoe State Bank since 1944 and "I think this bank is great. They have always treated us very nice."  
Muleshoe State Bank is proud to recognize this customer of the week.

**MULESHOE STATE BANK**

Member FDIC

# TRADE CLASSIFIED SELL BUY ADS LEASE

**WANT ADS PH. 272-4536**  
**CLASSIFIED RATES**  
 OPEN RATES  
 First insertion, per word-6¢  
 Second and additional insertions - 4¢  
**NATIONAL RATES**  
 First insertion per word-8¢  
 Second and additional insertion-5¢  
 Minimum charge-65¢  
 Card of Thanks - \$1.00  
 Classified Display - 85¢ per col inch  
 95¢ col. inch for reverses  
**DEADLINE FOR INSERTION**  
 Thursday's Muleshoe Journal - Noon Tuesday  
 Sunday's Bailey County Journal - Noon Friday  
 The Journals reserve the right to classify, revise or reject any classified ad.  
 Check advertisement and report any error immediately  
 Journals are not responsible for error after ad has already run once.

**1. PERSONALS**

meets every Tuesday at 12:00  
**FELLOWSHIP HALL**  
 Methodist Church  
**Muleshoe Rotary Club**  
 John Shelton, Pres.

meets every Monday, 12 Noon  
**L. R.'s CAFE**  
 Clarence Christian, Pres

meets each Wednesday, 12 Noon  
**FELLOWSHIP HALL**  
 Methodist Church  
 W. E. Young, Pres.

**BRAS & GIRDLES BY PENNYRICH AT MAIN STREET BEAUTY SALON 1-19s-tfc**

**FOR RENT: 15 and 16 foot campers. By week, Call 272-3163. 1-35s-tfc**

I am in need of a small Garage to rent. With electricity. Phone 4382. 1-38t-tfc

**GARAGE SALE: A good selection of clothes, miscellaneous items. Thursday and Friday. First building east of Leal's Tortilla factory on Sudan highway. 1-42t-ltp**

**GARAGE SALE: starts Wednesday. Baby bed for sale, 318 Chicago. 1-42t-ltc**

**3. HELP WANTED**

**WANTED: Beautician, Main Street Beauty Salon, Phone 272-3448. 3-25s-tfc**

**HELP WANTED: Experienced mechanic Crow Chevy, Muleshoe, Texas. 3-35t-tfc**

**WANTED: Female to train for wool pressing at Lamberts Cleaners. 3-41t-tfc**

**ATTENTION Laundry Service**

Free pick-up and Delivery Service in Muleshoe every day. Call collect the first time 385-3811 Littlefield Texas. Then make arrangements with driver Lonnie Gibson as to what day we can service you. Littlefield Steam Laundry and Linen Service. 3-40t-6tc

**FARM FOR LEASE: 430 irrigated acres Lamb County Call 272-3736. 8-41t-3tp**

**FOR SALE: One two bedroom, modern furnished house. Call 4080. 8-39s-tfc**

**For a good buy on all types of real estate, 2 and 3 bedroom homes, some V. A. possessions, see Pool Insurance. 8-22s-tfc**

**Good stock farm for sale. Well equipped, close in, 1/2 minerals, underground water line, power sprinkler, 8" irrigation well. Will run lots of cattle, has black switch grass. See Lee Pool or call 272-4531. 8-38s-tfc**

**FOR SALE: 1961 model C Gleaner Combine. 415 W. 6th Phone 272-4191. 10-39t-tfc**

**FOR SALE: Early Harvest Cotton Separator and basket combination. See or call Leldon Phillips, 925-3510. 10-37t-tfc**

**Want to trade 40 acres close to town for a 2 bedroom house in Muleshoe. Call 272-4969. 11-42t-tfc**

**FOR SALE: Drop leaf walnut table. Good condition. Ph. 272-3795. 12-41s-2tc**

**"Repossessed 1968 model Singer sewing machine in walnut cabinet. Will zig-zag, buttonhole, blindhem, etc. Balance \$27.85 on five payments at \$6.40. Write credit manager, 1114 19th Street, Lubbock, Texas. 12-40s-tfc**

**BE gentle, be kind, to that expensive carpet, clean it with Blue Lustre. Rent electric shampooer \$1. Higginbotham, Bartlett. 12-42t-ltc**

**FOR SALE: Two piece bedroom suit with mattress \$20. Call 4028 after 5 p.m. 12-42t-tfc**

**FOR RENT: Trailer space. Call 4932. 7-41t-tfc**

**FOR SALE: New used tires, almost all sizes, Finn's L.P. Gas, phone 272-4678. 15-35t-tfc.**

**FOR RENT: 15 and 16 foot campers. By week, Call 272-3163. 1-35s-tfc**

**I am in need of a small Garage to rent. With electricity. Phone 4382. 1-38t-tfc**

**GARAGE SALE: A good selection of clothes, miscellaneous items. Thursday and Friday. First building east of Leal's Tortilla factory on Sudan highway. 1-42t-ltp**

**GARAGE SALE: starts Wednesday. Baby bed for sale, 318 Chicago. 1-42t-ltc**

**FOR RENT: 15 and 16 foot campers. By week, Call 272-3163. 1-35s-tfc**

**I am in need of a small Garage to rent. With electricity. Phone 4382. 1-38t-tfc**

**GARAGE SALE: A good selection of clothes, miscellaneous items. Thursday and Friday. First building east of Leal's Tortilla factory on Sudan highway. 1-42t-ltp**

**GARAGE SALE: starts Wednesday. Baby bed for sale, 318 Chicago. 1-42t-ltc**

**FOR RENT: 15 and 16 foot campers. By week, Call 272-3163. 1-35s-tfc**

**I am in need of a small Garage to rent. With electricity. Phone 4382. 1-38t-tfc**

**GARAGE SALE: A good selection of clothes, miscellaneous items. Thursday and Friday. First building east of Leal's Tortilla factory on Sudan highway. 1-42t-ltp**

**GARAGE SALE: starts Wednesday. Baby bed for sale, 318 Chicago. 1-42t-ltc**

**FOR RENT: 15 and 16 foot campers. By week, Call 272-3163. 1-35s-tfc**

**I am in need of a small Garage to rent. With electricity. Phone 4382. 1-38t-tfc**

**VETERANS Q's and A's**

Q -- I am a disabled veteran eligible for vocational rehabilitation and would like to know if I can take part-time training. I would like to train for a better paying job, but can't afford to

quit my present job and take full-time training because I have a wife and two children to support.  
 A -- Since July 26, 1968, as the result of Public Law 90-431, it has been possible for service-disabled veterans in need of vocational rehabilitation to be paid a proportionate assistance allowance by VA. The present full-time allowance is \$110 monthly for a veteran with no

dependents, \$150 for one dependent, and \$175 for two or more dependents. Under the new law, the allowance for three-quarters time training will be \$80, \$110, and \$130 respectively. For half-time training the allowance will be \$55, \$75, and \$85.  
 Check with your nearest VA office.  
 Q -- Are widows of World War II servicemen who died on active duty or from service-con-

nected disabilities still eligible to file applications for G.I. home loans?  
 A -- Yes. Entitlement for these widows will not expire until July 25, 1970.  
 Changing Times  
 A teacher asked her class the difference between a primitive man and a modern man. Johnny answered: "When his wife talks too much a modern man goes to his club. A primitive man just reached for it."

## TELEVISION SCHEDULE FOR THE MULESHOE AREA

KING BROS. GRAIN & SEED CO. Complete ELEVATOR SERVICE AND SEED PROCESSING FOR THE Muleshoe AREA	KGNC-TV Amarillo Muleshoe Cable 4 DAYTIME	KVII-TV Amarillo Muleshoe Cable 5 DAYTIME	KFDA-TV (10) Amarillo Muleshoe Cable 6 DAYTIME	KCBD-TV (11) Lubbock Muleshoe Cable 2 DAYTIME	KLBK-TV (13) Lubbock Muleshoe Cable 3 DAYTIME
	6:30-Amar. Colle 7:00-Today 7:25-News 7:30-Today 8:25-News 8:30-Today Show 9:00-Snap Judge 9:25-NBC News 9:30-Concentra. 10:00-Personality 10:30-Hollyw. Sq. 11:00-Jopardy 11:30-Eye Guess 11:55-NBC News 12:05-NBC News 12:10-Weather 12:20-Bill Harkins 12:30-Make Deal 1:00-Days of Live 1:30-Doctors 2:00-Another W. 2:30-Don't Say 3:00-Match Game 3:25-NBC News 3:30-Mike Douglas 4:30-Perry Mason 5:30-H-B Report	6:30-Tuggle 7:10-Happening 7:45-Tuggle 8:15-Exercising 9:00-One Life 9:30-Cavett Show 11:00-Bewitched 11:30-Treasure I. 12:00-N/W/F&R 12:30-Ruth Brent 12:55-C. Doctor 1:00-Newlywed 1:30-Dating Game 2:00-G. Hospital 2:30-Password 3:00-Run for Life 4:00-D. Shadows 4:30-Tuggle 5:30-Gilligan's I. 6:00-N/W/S	6:30-Amar. Colle 7:00-Farm News 7:20-N/W 7:35-CBS News 8:00-Capt. Kang. 9:00-Romper Room 9:30-Hillbillies 10:00-Andy G. 10:30-Coffee Time 11:00-Love of Life 11:25-News 11:30-Search T 11:45-Guiding L 12:00-News 12:10-Weather 12:30-World Turns 1:00-Love is S 1:30 Guiding Light 2:00 Secret Storm 2:25-CBS News 2:30 Edge of Night 3:00 House Party 3:25 Paul Harvey 3:30 Lucy Show 4:00 Mimik 5:00 McHale's 6:00 CBS news	7:00-Headline 7:05-Farm Report 7:25-Weather 7:30-Today 8:25-Report 8:30-Today 9:00-Snap Judge. 9:30-Concentration 10:00-Andy G. 10:30-Hollyw. Sq. 11:00-Jopardy 11:30 Eye Guess 11:55-News 12:00-Report 12:15-Com. Closeup 12:30 World Seris	5:55-Sign On 6:00-Sun. Sem. 6:30-Farm/Ranch 7:30 CBS News 7:55 Morning news 8:00-Capt. Kang. 9:00 Lucy Show 9:30-Hillbillies 10:00-Andy G. 10:30-D. VanDyke 11:00-Love of Life 11:30 Search T 12:05 Local News 12:12 Farm & Ranch 12:22 Southplains 12:30-World Turns 1:00-Love is S 1:30 Guiding Light 2:00-An. World 2:30-Don't Say 3:00-Match Game 3:25-News 3:30 Afternoon's 3:35 General Hos 4:00 Dark Shadows 4:30 Its Happening 4:55 Childrens 5:00 Newly wed THURS EVENING 5:30-CBS News 6:00-News 6:30 Texas Tech 7:00 Hawaii Five 8:00 CBS movie 10:00 news weather 10:30 Darrell Royal 10:45 Journey to 11:45 Peter Gunn 12:15 Sign-Off
	THURS. EVENING 6:15-Weather 6:25-Sports 6:30-Daniel Boone 7:00-F. Nun 7:30-Bewt 7:30-Bewitched 8:00-The Girl 8:30-Journey Unk. 9:30-F. Squad 10:00-Don M Same 11:00-Meredith 11:15-J. Bishop 12:00-Movie FRIDAY EVENING 6:30-High Chaparr 7:30-Name of the G 9:00-Star Trek 10:00-News 10:15-Weather 10:25-Sports 10:30 Chuck 11:00-Tonight Show 12:00-SIGN OFF	THURS. EVENING 6:30-Ugliest Girl 7:00-F. Nun 7:30-Bewt 7:30-Bewitched 8:00-The Girl 8:30-Journey Unk. 9:30-F. Squad 10:00-Don M Same 11:00-Meredith 11:15-J. Bishop 12:00-Movie FRIDAY EVENING 6:30-Cinema 7 7:00-Longest Miles 8:30-Sonnett 9:00-Judd 10:00-Don M Same 11:00-J. Bishop 12:00-Movie	THURS. EVENING 6:30 Post Time 7:30 Hawaii 8:00 Movie 10:00-News 10:15-Weather 10:25-Sports 10:45 Death Valley 11:15 News 11:20 Movie FRIDAY EVENING 6:00 Wild West 7:30 Gomer Pyle 8:00 CBS movie 10:00-News 10:45 Burke's Law 11:45 News 11:50 Movie	THURS. EVENING 6:00-Report. 6:30 Daniel Boone 7:30 Ironside 8:30 Dragnet 9:00-Dean Martin 10:00-Report 1:30-Tonight Show :00-Sign Off	FRIDAY EVENING 6:00-Report 6:15-Weather 6:25-Sports 6:30 Chaparral 7:30 Name Game 9:00 Star Trek 10:00-Report 10:30 Don Meredith 10:45 Movie 12:45 Sign Off SATURDAY 6:45-Cartoon 7:00 Go Go Gophers 7:30 Bugs Bunny 8:00 Wacky Races 9:00 Archie Show 9:30 Batman 10:00-Moby Dick 10:30-Superman 11:30-Johnny Quest 12:00-Lone Ranger 12:30 Lone Ranger 1:00 News/Farm 1:10 Movie 3:25 Lening & Live 3:30 Bowling 4:00 Car & Truck 4:30-Wilborn Bros. 5:00-Ernest Tubbs 5:30-Por. Wagoneer 6:00-News 6:20-Weather 6:30-J. Gleason 7:30-Three Sons 8:00-H. Heroes 8:30-P. Junction :00-Mannix :00-News 10:30-Rawhide 11:30-News 11:35-M5:3e
	SATURDAY 7:00-Roy Rogers 8:00-Super 6 8:30 Top Cat 9:00-Flintstones 9:30 The Banana 10:00-Birdman 10:30 Underdog 11:00 Birdman 11:30 Super Pres 12:00 Huck Finn 12:30-F & M Show 1:00 DOUBLE 3:30 Roller Derby 4:30 Wrestling 5:30 Frank McGee 6:00-N/W/S 6:30-The Saint 7:30-Get Smart 8:00-Movie 10:00-N/W/S/ 10:45-Joe Pyne 12:00-Sign Off	SATURDAY 7:00-Mod. Ed. 7:30-Cisco Kid 8:00-Casper 8:30-Gulliver 9:30-Voyage * 10:00-Journey 10:30-Fantastic 4 11:00-George of Jungle 12:30-Movie 1:30-Sports 3:00-Football 6:30-N/W/S 7:00-Newlyweds 7:30-Law, Welk 8:30-Holly Pal. 9:30-D. Ricles 10:00-News 10:15-Weather 10:25-Sports 10:40-Movie 12:15-Movie	SATURDAY 6:45-Cartoon 7:00 Go Go Gophers 7:30 Bugs Bunny 8:00 Wacky Races 9:00 Archie Show 9:30 Batman 10:00-Moby Dick 10:30-Superman 11:30-Johnny Quest 12:00-Lone Ranger 12:30 Lone Ranger 1:00 News/Farm 1:10 Movie 3:25 Lening & Live 3:30 Bowling 4:00 Car & Truck 4:30-Wilborn Bros. 5:00-Ernest Tubbs 5:30-Por. Wagoneer 6:00-News 6:20-Weather 6:30-J. Gleason 7:30-Three Sons 8:00-H. Heroes 8:30-P. Junction :00-Mannix :00-News 10:30-Rawhide 11:30-News 11:35-M5:3e	FRIDAY EVENING 6:00-Report 6:15-Weather 6:25-Sports 6:30 Chaparral 7:30 Name Game 9:00 Star Trek 10:00-Report 10:30 Don Meredith 10:45 Movie 12:45 Sign Off SATURDAY 6:45-Cartoon 7:00 Roy Rogers 8:00-Super 6 8:30 Top Cat 9:00-Flintstones 9:30 Banana Split 10:00-Birdman 10:30-Atom Ant 11:00-Top Cat 11:30 Super Pres 12:00 Huck Finn 1:00 Movie 2:30 Movie 4:00 Campaign and Candidates 4:30 G.E. College 5:00 Bowling 5:30 Frank McGee 6:00Adam 12 7:00 Get Smart 7:30 Ghost and Muir 8:00 movie 10:00 REPORT 10:30 Movie 12:00 Report 12:15 Sign off	FRIDAY EVENING 5:30-News 6:00-News 6:30 Mod Squad 7:30 Gomer Pyle 8:00 The Outcasts 9:00 Judd 10:00 News 10:30 Don Meredith 10:45 Movie 12:45 Sign Off SATURDAY 5:55-Sign On 6:00-Sun. Sum. 6:30 George of the 7:00 Go Go Gophers 7:30 Bugs Bunny 8:00 Wacky Races 9:00 The Archie 9:30 The Batman 10:30 The Hercules 11:30 Shazzan 12:00-Bandstano 12:00-Olympics 1:00-Discovery 1:30-Rockingham 2:00 NCAA Football 5:00 Wrestling 6:00 Don Rickles
	SUNDAY 7:00-Herald 7:30-Farm&Hom 8:00-Tom & Jerr 8:30 Aquaman 9:00 -THEATER 10:30-Glory R. 11:00-Church 12:00-Meet Press 12:30- FOOTBALL 3:00- FOOTBALL	SUNDAY 7:00-Mod. Ed. 7:30-Sunday School 8:00-Ask Minister 8:30-Cathedral 9:00-Linus Lion 9:30-King Kong 10:00-Bullwinkle 10:30-Notre Dame 11:00-Baptist 12:00-Issues&Ans 12:30-Issues&Ans. 1:00-News 1:30-G. Stallings 2:00-Linus 2:30-Discovery 3:00-Beatles 3:30-Movie 5:00-Entertainment 6:00-Giants 7:00-F.B.I. 8:00-Movie 10:00-News 10:15-N/W/S/ 10:45-Firing Line	SUNDAY 7:30-Gospel Hr. 8:00-Wills Fam. 8:30-Church 9:30-LaFavers 10:00-Rel. Quest. 10:30-Face Nation 11:00 Across 7 seas 11:30 ShowCase 12:30 NFL 4:30 Amateur Hour 5:00-zist Cen. 5:30-News 5:50-Weather 6:00-Lassie 6:30-Gentle Ben 7:00-Ed Sullivan 8:00-Smothers 9:00-Mission Im. 10:00-N/W/S/ 10:30-Theatre one 11:30-News 11:45-Movie	SUNDAY 8:00-Faith for T. 8:30-Glory Road 9:00 Insight 9:30-Answer 10:00-Ask Minister 10:45-Church 12:00-Meet Press 12:30 AFL Football 3:00 AFL Football 3:30-Golf 4:30-Skiing 5:30-Sportsman 6:00-Report 6:30-Walt Disney 7:30-Mothers-In- 8:00-Bonanza 9:00 Phyllis Diller 10:00 Report 10:30 Tonight Show 12:00 Report 12:15 Sign Off	SUNDAY 6:55-Sign On 7:00 Bullwinkle 7:30 Casper 8:00 Tom & Jerry 8:30 Aquaman 9:00-Linus 9:30 Pepe Bustos 10:00-Pepe Show 10:45-Church 11:45-Holiday 12:00-Inquiry 12:30 NFL 1:00-Basketball :00-Golf 4:30-A mateur 5:00-Wizard 6:00 Gene Stallings 7:00-Ed Sullivan 8:00-Mothers 9:00-Mission Im. :00-News 10:30 Mannix 11:30 College ball 12:30 sign off

**FOR QUICK SALE: a two bedroom house with garage, den and kitchen combination, and brick veneer. Good loan available. See Lee Pool or call 272-4531. 8-38s-tfc**

**FOR SALE OR LEASE: business building, 30' x 100' Good location. Call Brock Motor Co. Phone 272-4588. 8-37t-tfc**

**ATTENTION Laundry Service**

Free Pick-up and Delivery Service in Muleshoe every day. Call collect the first time 385-3811 Littlefield Texas. Then make arrangements with driver Lonnie Gibson as to what day we can service you. Littlefield Steam Laundry and Linen Service. 8-40t-6tc

**FOR RENT: 3 bedroom house. 715 Ave. G. Clovis 763-5701. 4-36s-tfc**

**FOR RENT: 2 and 3 bedroom brick houses. Furnished 1 bedroom apartment. Call D. L. Morrison Jr., 272-3421 or 272-3697. 4-21t-tfc.**

**FOR RENT: 2 bedroom house \$60 a month. Unfurnished 2 bedroom apartment \$80 a month Smallwood Real Estate 925 American Blvd, 272-4838. 4-42t-8tc**

**FOR RENT: 2 and 3 bedroom brick houses. Furnished 1 bedroom apartment. Call D. L. Morrison Jr., 272-3421 or 272-3697. 4-21t-tfc.**

**FOR RENT: 3 bedroom house. 715 Ave. G. Clovis 763-5701. 4-36s-tfc**

**FOR RENT: Unfurnished 2 bedroom apartment. Carpeted and draped with built-in range. Ph. 4209. 5-36s-tfc**

**Furnished apts., large or small. Nice trailer space. Ph. 272-3465. 5-24t-tfc**

**FOR RENT: 15 and 16 foot campers. By week, Call 272-3163. 1-35s-tfc**

**I am in need of a small Garage to rent. With electricity. Phone 4382. 1-38t-tfc**

**GARAGE SALE: A good selection of clothes, miscellaneous items. Thursday and Friday. First building east of Leal's Tortilla factory on Sudan highway. 1-42t-ltp**

**GARAGE SALE: starts Wednesday. Baby bed for sale, 318 Chicago. 1-42t-ltc**

**FOR RENT: 15 and 16 foot campers. By week, Call 272-3163. 1-35s-tfc**

**I am in need of a small Garage to rent. With electricity. Phone 4382. 1-38t-tfc**

**GARAGE SALE: A good selection of clothes, miscellaneous items. Thursday and Friday. First building east of Leal's Tortilla factory on Sudan highway. 1-42t-ltp**

**GARAGE SALE: starts Wednesday. Baby bed for sale, 318 Chicago. 1-42t-ltc**

**FOR RENT: 15 and 16 foot campers. By week, Call 272-3163. 1-35s-tfc**

**I am in need of a small Garage to rent. With electricity. Phone 4382. 1-38t-tfc**

## BUSINESS DIRECTORY

**ROBINSON'S BOOT SHOP**  
 127 Main - Phone 272-4721  
**Fine Western Wear**  
 MEN, WOMEN & CHILDREN  
**Shoe Repair Shop**  
 Ike Robinson  
 SERVING MULESHOE SINCE 1925.

**Farley Insurance Agency**  
 Real Estate and Insurance  
**FARM & CITY LOANS**  
 SERVICE BEYOND THE CONTRACT  
 209 West Avenue B  
 Off. Ph. 272-4727 Res. 272-3776



Keep up with your HOMETOWN NEWS



SUBSCRIBE NOW!!!!

**WESTERN DRUG**  
 Your Walgreen Agency



Prescriptions  
**Drugs & Supplies**  
 for all your Veterinarian needs  
**Fountain Service**

**People, Spots In The News**

**A REAL BLAST**, says Carol Overstreet, as she pushes button on Honeywell computer device to set off dynamite breaking grounds for Atlanta's newest commercial complex.



**GI GRAFFITTI**. Soldiers in Vietnam dig a little humor into their grim position.



**LAST LICK**: Hong Kong tot extracts all the yumminess of ice cream stick.



**CZECH CHALLENGE**: Czechoslovakian youth march in Karlovy Vary, protesting Russian military occupation. Banner says "Never again with Soviet Union!"

**Vietnam News**

The Chicago Chapter, Marine Corps Reserve Officers Association has presented the 3rd Marine Division Memorial Children's Hospital at Dong Ha with an operating room.

The chapter presented the equipment to the hospital in the name of the late Col. Jim Hurlbut, U.S. Marine Corps Reserve, a former member of the chapter and a well-known radio and television personality.

At the time of his death on Easter Sunday 1967, Hurlbut was on active duty in Washington at the request of the Commandant of the Marine Corps. He was instrumental in producing Marine Corps' special film reports concerning Vietnam, such as "The Corpsman" and "For Thou Art With Me."

The first shipment of equipment consisted of an operating table, resuscitator, large medicine cabinet and a number of medical tables and trays.

"We are certainly thankful for this equipment and it'll be put to a good and purposeful use," explained Navy Lt-Comdr. Gordon W. Phillip, Hamilton, Mont., a surgeon with "D" Co., 3rd Medical Bn., 3rd Marine Division.

The equipment will later be moved to a children's hospital that will be constructed at Quang Tri Combat Base. It is estimated that the new 60-bed hospital will be completed in the spring of 1969.

The new hospital will have a staff of seven doctors, headed by Navy Lt-Comdr. Phillip, nine Vietnamese nurses, 37 Navy corpsmen and 11 Marines.

The heavy rains which pounded Quang Tri Province in early September created problems for the Marines of Combined Action Group-4 (CAG-4).

The unit's compound, south of Quang Tri City was hit hard by typhoon Bess, and the Marines and Popular Forces (PF) troops had to temporarily evacuate the area due to rising flood waters.

Lance Corporal Norman J. Prather, Phoenix, Ariz., compound cook, managed to salvage the pork chops he had prepared for evening chow by floating them to the hungry men of his unit via an inflatable rubber mattress.

Unorthodox procedure became commonplace as the Marines began moving to higher ground. Two larger trailers were filled with everything from C-rations to sea bags, but because the roads were under four feet of water no vehicle could get through to pull them out.

Moving them to safety was left to the muscle power of the weary, rain-soaked Marines.

Eventually the gear and the Marines, along with their popular forces allies, reached a

relatively dry schoolhouse where they spent the night.

Three days later they returned to their compound and began cleaning out the mud and debris washed into their huts by Typhoon Bess.

During a fire fight with the enemy, a Marine only thinks about the fight. When it's over, one of the first things he'll do is reach for his canteen to get a drink of water.

Gunnery Sergeant Robert Lester, Oceanside, Calif., was recently denied his "after fire fight drink." The North Vietnamese (NVA) had riddled both of his canteens with bullet holes.

Lester's unit had engaged a strong NVA force and were pinned down by enemy automatic weapons fire. "Everybody was in a hole when I got up and started to move forward," explained Lester. "My senior corpsman and I were the only ones moving and the enemy had really opened up on us."

The Marines gained fire superiority and the enemy broke contact. When the shooting was over, Lester reached for a drink of water.

He concluded, "I never thought those rounds came that close to me, but I found out differently when I reached for my canteens and found them both full of holes."

Canteens are worn on the hips.....

**R.P. Monacelli Is Promoted To Lieutenant**

OGDEN, Utah--Raymond P. Monacelli of 123 Fairview Ave., Rutherford, N.J., has been promoted to first lieutenant in the U.S. Air Force.

Lieutenant Monacelli, base civil engineer at Hill AFB, Utah, is a member of the Air Force Logistics Command.

A graduate of Abraham Lincoln High School, Brooklyn, N.Y., he received his B.S. degree in mechanical engineering from New Mexico State University, where he was commissioned in 1966 upon completion of the Air Force Reserve Officers Training Corps program.

The lieutenant's wife, Penelope, is the daughter of Mr. and Mrs. Ira Brown of 606 E. Grant, Morton, Tex.

**JET PASSES TEST**

Marietta, Ga.--The Lockheed C-5 Galaxy passed its flight test and landed 94 minutes after take-off. Cruising speed is 506 miles an hour and the big plane can carry as many as 750 passengers and a crew of five.

Cardinal warns critics of papal encyclical.

**PRICED FOR SAVINGS**

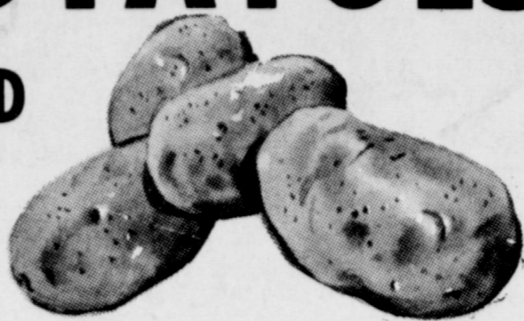
**APPLES**  
NEW MEXICO DELICIOUS OR WINESAP  
LB. **15¢**



**GOOD EATING GREATER SAVINGS!** PHONE 272-4244 FOR FREE HOME DELIVERY

**POTATOES**

RED

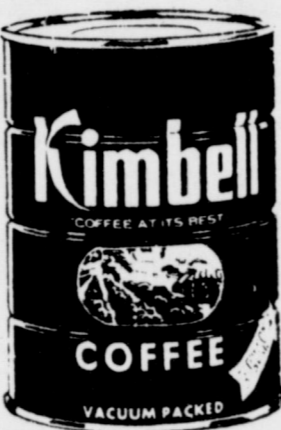


10 Lb. Cello Bag **35¢**  
TEXAS JUICY SWEET  
**ORANGES** lb. **9¢**

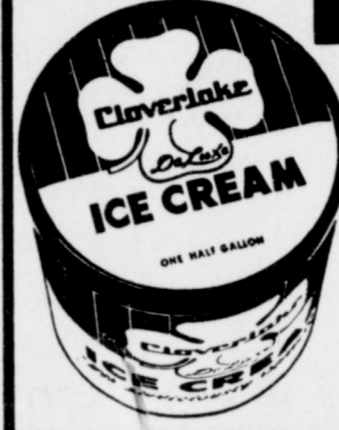
**FROZEN FOOD**

Patia Beef Enchilada **DINNERS**.....**39¢**  
34 oz. Banquet **FRUIT PIES**.....**59¢**  
9 oz. Keith's Cut **GREEN BEANS**.....**19¢**  
24 Count Keith's **DINNER ROLLS**.....**29¢**

EXTRA LARGE **AVOCADOS**.....EACH **19¢**  
NO. 1 WHITE **POTATOES**.....LB. **10¢**  
CALIFORNIA **ROMAINE LETTUCE**.....EACH **23¢**



**COFFEE**  
Kimbell's ALL GRINDS  
1 LB. **57¢**

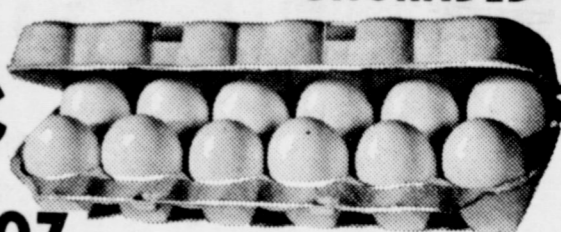


**ICE CREAM**  
Cloverlake  
1/2 Gal. **67¢**

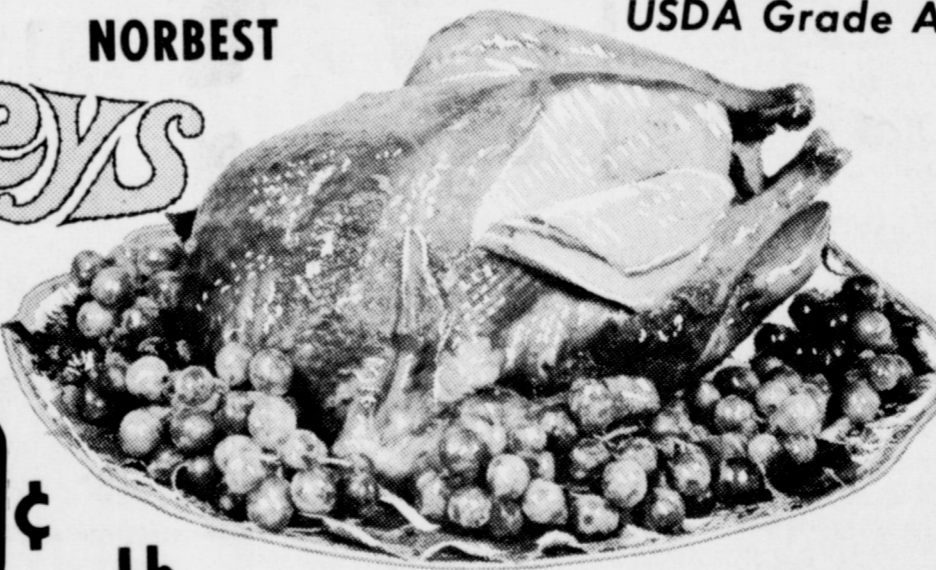
**PINTO BEANS**  
KIMBELL'S  
4 LB. **47¢**

NEW STORE HOURS  
7:30 a.m. 'till  
9:00 p.m.

**PURINA EGGS**  
UNGRADED  
**39¢** DOZ.



**TURKEYS**  
TENDER DELICIOUS  
Young Turkey **HENS**  
10 to 14 lb. Avg. **39¢** Lb.



ARMOUR STAR SLICED **BACON** 1 lb. Pkg. **69¢**

SARGENTO **BURGER CHEESE**.... **39¢**

ARMOUR STAR **FRANKS** 12 oz. Pkg. **49¢**

PINKNEY'S CENTER CUT LEAN **PORK CHOPS** Lb. **79¢**



**PORK CHOPS**  
Pinkney's FIRST CUT Lb. **59¢**

Kimbell's Giant Size **DETERGENT**.....**59¢**  
Trend Liquid 22 oz. **DETERGENT**.....**39¢**  
Pruf 22 oz. **SPRAY STARCH**.....**59¢**  
Lucky Lady 25 lb. Bag **FLOUR**.....**\$1.98**  
Delsey 4 Roll Pkg. **BATHROOM TISSUE**.....**49¢**  
32 oz. Bottle **JEWEL OIL**.....**59¢**  
Ellis Jumbo Size #2 1/2 Can **TAMALES**.....**39¢**  
Oak Hill #2 1/2 Can **PEACHES**.....**4 for \$1**  
Bama 29 oz. **APPLE BUTTER**.....**29¢**  
Chef Boy-Ar-Dee 15 oz. **RAVIOLI**.....**35¢**  
Miracle 1 lb. **MARGARINE** (KRAFT).....**4 for \$1**  
Heinz #1 Can **TOMATO SOUP**.....**10¢**  
Miniature 10 1/2 oz. **MARSHMALLOWS** (KRAFT).....**25¢**  
Schilling 4 oz. **BLACK PEPPER**.....**39¢**  
Nabisco Premium 1 lb. **SALTINES**.....**35¢**  
Libby's #303 Can **SAUERKRAUT**.....**19¢**  
Libby's Crushed #2 Can **PINEAPPLE**.....**3 for \$1**  
12 Bottle Ctn. Plus Deposit **DR. PEPPER**.....**79¢**

**GUNN BROS. STAMPS DOUBLE EVERY WEDNESDAY.**

**White's CASHWAY**

We Reserve The Right To Limit Quantities

Listen to MULETRAIN over KMUL 10:15 a.m. Sponsored by WHITE'S CASHWAY