



# THE MULESHOE JOURNAL

Dedicated to the progress and development of the great Muleshoe country

## Weather

	HIGH	LOW
Oct. 10	70	41
Oct. 11	88	42
Oct. 12	81	43
Oct. 13	79	43
Moisture for the year		14.94

VOL. 49 NO. 41

10 PAGES

Published Every Thursday at Muleshoe, Bailey County, Texas - 79347

10 CENTS

THURSDAY, OCTOBER 14, 1971

## Lovelady Announces Registration Law

★ ★ ★

★ ★

★ ★ ★

## Youth Football Plans Senior Bowl

### Youngsters To Have Year-End Playoff

The second annual Youth Football Senior Bowl Game is scheduled for 7:30 p.m. Friday, October 15, at Benny Douglas Stadium. The sixth grade players on the Saints and Chiefs team join forces to play the sixth grade players on the Packers and Cowboys teams. The Senior Bowl game is expected to have lots of fans present to watch what should be an exciting game, reports Ken Henry. It will be the first game for the sixth graders to play in the High School stadium. Most of the players will have completed two seasons of youth football and they have improved

greatly in the basic fundamentals of football. The players are better prepared to enter the Junior High School football program as a result of the Youth Football training.

Henry asks you to be the judge and come out Friday night to watch the sixth grade players in action. The Muleshoe Mules have an open date Friday, but the future Muleshoe Mules will display their talent.

The concession stand will be open and proceeds will go to the Youth Football program. There will not be an admission charge for the game, however, donations will be accepted to help continue the program for the youth of both Muleshoe and Lazbuddie.

Youth Football Inc. has already purchased over \$3,500.00 worth of uniforms and equipment. Next season additional uniforms and equipment will be needed to continue the program.

Youth Football thanks all those people who helped the

con't on Page 3, Col. 1

### First Baptist Members Leave For Crusade

around muleshoe with the journal staff

Hardin - Simmons has announced 29 students who have been elected for listing in this year's edition of "Who's Who Among Students in American Universities and Colleges."

Included in the 29 is Dean Black of Muleshoe, a senior English major.

Selection was made on the basis of the student's scholarship, his participation and leadership in academic and extracurricular activities, his citizenship and service to the school and his promise of future usefulness.

\*\*\*\*

Bailey County Justice of the Peace Morris Nowlin attended a three-day training session in Lubbock conducted by the Police Training School at Texas A&M University. The program, sponsored by a grant from the Texas Criminal Justice Council

con't on Page 3, Col. 5

### Homecoming Barbecue

A barbecue supper will be served by the Lazbuddie Senior Class, at the Lazbuddie School Cafeteria, before and after the Lazbuddie - New Home game Friday night.

The barbecue supper which has proven itself as a popular event in past years, will be served from 6:30 p.m. until game time. Serving will resume after the game.

On the menu will be Barbecue beef, Red beans, Potato salad, Cherry cobbler and all the trimmings.

Tickets may be bought from any member of the Lazbuddie Senior class. Prices are \$1.50 for adults, and \$1.00 for children 12 and under.

## Increase In Farm Yield Expected

"The winter and spring drought prevented the planting of some 40,000 acres in the heart of Bailey County. This tragedy is coming into focus as those who were fortunate enough to get a crop planted and up may make one of the best dryland grain sorghum crops in recent years", reports County Agent J.K. Adams. Adams stated that there are those still suffering from drought and no crop, but others may do very well indeed. It may not help the feelings of the man with no crop, but aver-

age yields of cotton, corn and grain sorghum should exceed the per acre production of last year so that the sum total will mean more total county crop income than was the case last year.

Farmers with limited irrigation probably benefited most from the excellent late summer and fall rains, reported Adams. Much of this limited water area will make as much or more cotton than the farmer who overwatered in late August.

The county agent said that



ESA GARAGE SALE PREPARATIONS UNDERWAY . . . Shown with some of the many items to be sold in the ESA sponsored garage sale coming up October 29, 30 and 31 are ESA member Mrs. Gary Smith, left, Mrs. Bernis Camp, librarian, and Mrs. Jack Rennels, ESA member. All proceeds from the huge, civic-

### Garage Sale Benefit For New Library

A giant civic-wide garage sale will be held in Muleshoe October 29, 30 and 31 at the old Poyner's building on Main Street. Sponsored by the Epsilon Chi chapter of Epsilon Sigma Alpha Sorority, proceeds from the huge garage sale will go for outfitting the new Muleshoe Area Public Library which is nearing completion.

Hours will be from 9 until 5 on Friday and Saturday and from 1 to 5 on Sunday afternoon. Members of the sorority will be assisting customers as they make their selections.

Other civic groups which will be helping with the sale are the Muleshoe Young Homemakers and the Progress Home Demonstration Club.

Anyone wishing to donate clothing or other articles to the sale are urged to bring

them by the old library building or call Mrs. Corky Green, chairman of the sale, who will have the articles picked up.

As the date is drawing nearer, many different and useful items have been brought to the library already. This is the one way that everyone in the community can help furnish the new library by cleaning our closets, cabinets and garages for anything suitable for selling.

### Mrs. Buhrman Takes Honors In Contest

Mrs. Cecil Buhrman took top honors in the football contest this week missing only two games and being 22 points off of the tie breaker.

John Gentry won third, missing three games but only being nine points away from the actual tie breaker score.

Marilyn Engelking came in third missing three games and being 15 points off on the tie breaker.

Mrs. Buhrman missed the Kansas and Kansas State game and the TCU - Oklahoma State game which was a tie.

Gentry and Mrs. Engelking also missed the TCU-Okla. St. tie as none of the top placers picked the tie.

So far in the contest, we have had a different winner in all three places every week. Tied for first place are Mrs. Dudley Malone, Mrs. Glen Watkins, John T. Ortiz, and Andres Gonzales and Mrs. Cecil Buhrman.

The county agent summed up by saying "There is no question, this is the highest yielding corn crop ever produced in Bailey County".

con't on Page 3, Col. 1

wide sale will be donated to furnishing the new library nearing completion at the corner of Second Street and West Avenue D. Other civic clubs that will be helping with the event are the Muleshoe Young Homemakers and the Progress Home Demonstration Club.

### Ticket Sales For Show Booming

Tickets for the Jeannie C. Riley show to be held in Muleshoe November 8, are selling out fast, reports BAC chairman, Bob Stovall.

Since only 1,000 tickets will be sold, tickets are being sold on a first come, first serve

### Lazbuddie Homecoming Set

The Lazbuddie Longhorns will play host to the New Home Leopards Friday night. Kickoff is set for 8:00 p.m. An excellent game can be expected, the Longhorns have always played a great Homecoming game. This years will be no exception.

Lazbuddie is going in the game hampered by injuries, however capable replacements will keep the fans excited all night.

Head coach Buddie Brock commented, we are going up against one of the biggest backfields we have played. New Home will try to run over Lazbuddie, but the 'Horns will be hard to run over and hard to stop. A few changes is personal, due to injuries, will spark the Lazbuddie offensive threat.

Defensive Jim Noland, and Loy Clark will team up to lead one of this years best class B defensive teams. Lazbuddie has given up little yardage this year, this is due to the aggressiveness of the defensive line. This years Homecoming Queen candidates are Debbie Engelking, Rhonda Frieder, Melany Davison, they will be escorted by Jim Noland, Loy Clark and Authur Graves.

### Voting Registration Effective March 1

Tax Assessor and Collector Jean Lovelady has announced the following explanation of the new voter registration law:

For the first time since Reconstruction, Texas law provides for permanent registration. Under Senate Bill 51, registration will entitle the voter to vote for three successive "voting years" in place of one year under the current annual

registration system. A "voting year" begins on March 1. Every initial registration is good for three successive voting years (with some qualifications); and each time the voter votes in a general or primary election or has his registration extended or renewed by notice, his registration is good for another three successive voting years, provided he remains qualified and his registration has not been cancelled.

For the first time, under Texas law, voters may reregister by voting, a common practice in other states with permanent voter registration systems. An otherwise qualified voter is automatically reregistered for another three successive voting years when he votes in a general or primary election, including a run-off. Registrars

con't on Page 3, Col. 3

### Bulletin

Three persons were taken to West Plains Memorial Hospital by Singleton - Ellis ambulance Wednesday morning following a two-car wreck at the intersection of American Blvd. and Fifth Street at 8:30 a.m.

Carl Deaton of Clovis was driving a 1970 Buick east on American Blvd, when it collided with a 1964 Chevrolet driven by Carolyn Mays of Muleshoe who was driving north on West Fifth Street.

Two passengers in the Deaton car, Mrs. Fredia Deaton and Lori Lou Harlan, were taken to West Plains Hospital where at present time their condition was not known. Carolyn Mays of Muleshoe was also admitted to the hospital with undetermined injuries.

### Thespians To Present High School Play

"Have you realized that 'Charlie Brown' is opening in Muleshoe October 19? Yes, and if you miss it, you're a blockhead!"

Shroeder, Lucy, Linus, Patty, Snoopy and all the rest invite you to come and see "You're a Good Man, Charlie Brown". Opening Tuesday, October 19, this musical comedy is set for enjoyment and laughter in Muleshoe High School's auditorium. The curtain rises at 8 p.m. sharp to reveal the care-free personalities of Charlie Brown and all his gang.

The musical comedy is based on the comic strip, "Peanuts" and is portrayed by members of Thespians Troupe 714. The personalities of these characters are portrayed by Brent Blackman as Charlie; Lucy is played by Donna Woodard; Linus by Billy Riads; Snoopy by Greta Bamert; Schroeder by Howard Kelly; Patty by Jan Jinks; and the chorus consists of Judy

Woodard and Larry Torres. The musical comedy is directed by Kerry Moore and opens with the entire cast enjoying

con't on Page 3, Col. 2

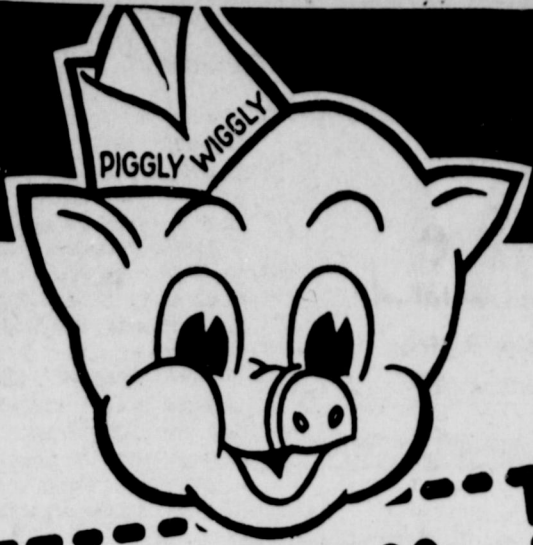
### Dogs Harass Mailman

Postmaster Spencer Beavers has again reported local postmen being harassed by packs of dogs. Last weekend a mailman was cornered by a pack of five dogs of various sizes and the mailman was forced to use his mailbag to defend himself.

The City Police Department has assured Postmaster Beavers that appropriate steps will be taken by authorities to protect mailmen from dogs. It was pointed out by the police that dog owners are liable for damages committed by their dogs to mailmen and that damages could range as high as \$2,000.



PARK CONSTRUCTION BEGINS . . . Construction on the new 12 acre tract of land that will soon be the new Muleshoe Park is now underway with the laying of plastic pipe for the new pop-up rotary electric sprinkler system. The laying of the pipe is expected to be completed by the middle of November. Hygea Sprinkler of Lubbock is in charge of the sprinkler system.



# Piggly Wiggly! The people's choice!

Clip this coupon SAVE 30¢

**CRISCO**

ALL VEGETABLE SHORTENING WITH COUPON

**69¢**

3 LB. CAN

Coupon good only at Piggly Wiggly thru October 16, 1971

Assorted Colors

**Scot Towels**

**3 \$1**

170 Sheet Jumbo Rolls

Farmer Jones Grade AA

**Large Eggs**

**35¢**

Dozen

USDA GRADE A

**Fryers**

Whole Taste The Difference USDA Grade A Makes

**29¢**

Lb.

**Cut up Fryers** Lb. **35¢**

**Celery** Garden Fresh Crisp Stalk **15¢** Lb.

A Fall Favorite

**Yams** 2 Lb. **25¢**

**Cabbage** Crisp, Green, Garden Fresh **5¢** Lb.

USDA Choice Beef,

**Family Steak**

Ranch Style, 7-Bone Cut **69¢** Lb.

USDA Choice Beef, Round Bone Shoulder Cut, Valu-Trimmed **89¢** Lb.

USDA Choice Beef, Valu-Trimmed, Blade Cut, Chuck **58¢** Lb.

Pot Roast **58¢** Lb.

USDA Choice Beef, Excellent For B-B-Que **1.19** Lb.

Boneless Brisket **1.19** Lb.

Lean Cubes of USDA Choice Beef **89¢** Lb.

Stew Meat **89¢** Lb.

Lean USDA Choice Beef, Excellent For Braising or Boiling **39¢** Lb.

Short Ribs **39¢** Lb.

Chicken Fried, Tenda-Made **89¢** Lb.

Beef Patties Little Boy Blue **89¢** Lb.

Corn Dogs 12 oz. pkg. **59¢**

Purina's Honey Suckle White Basted With Broth **55¢** Lb.

Hen Turkeys 16 Lb. Avg. **55¢** Lb.

6-oz. Pan Ready **59¢** Lb.

Whiting Fish 1 1/2 Lb. Pkg. **59¢**

Breaded, Gorton, Quick N Easy **59¢** 11 Ounce Package

Catfish Portions **59¢**

Farmer Jones, All Meat 3 Varieties 6 Ounce Package **35¢**

Decker's Cry-O-Vac Packed For Freshness **49¢** Pound

Salt Pork **49¢** Pound

Farmer Jones, Thick or Thin Smoked **1.27** 2 Lb. Pkg.

Sliced Bacon **1.27** 2 Lb. Pkg.

Raths **39¢** Lb.

Sausage **39¢** Lb.

**Canned Hams** **3 Lb. \$2.49**

HORMEL Boneless Fully Cooked, Can

**Boneless Roast** **98¢** Lb.

USDA Choice Beef, Valu-Trimmed Chuck Cut

**Bold Detergent** 49 Oz. Box **69¢**

**Instant Potatoes** Carol Ann 15 Oz. Pkg. **49¢**

**Applesauce** Whitehouse 25 Oz. Jar **39¢**

**Cut Yams** Sugary Sam In Syrup **3** 22 Oz. Can **89¢**

**Hi Plains Tomatoes** **5** 16 Oz. Can **\$1**

**Liquid Detergent** Bonne' **3** 32 Oz. Bottle **\$1**

**Golden Corn** Carol Ann Cream Style or Whole Kernel **5** 16 1/2 Oz. Can **\$1**

**Mellorine** Farmer Jones All Flavors 1/2 Gal. Ctn **29¢**

Austex

**PLAIN CHILI**

19 Oz. Can **69¢**

More Low Prices!

**Peanut Butter** Carol Ann 2 1/2 Lb. Jar **99¢**

**Saltine Crackers** Carol Ann Lb. Box **27¢**

**Marshmallows** Kraft Miniatures 10 1/2 Oz. Pkg. **29¢**

**Comet Rice** Long Grain 28 Oz. Pkg. **47¢**

**Mixed Nuts** Tom Scott 13 Oz. Can **69¢**

Dairy Case Values!

**Buttermilk** Farmer Jones 1/2 Gal. Ctn. **39¢**

Corn Oil Margarine Fleischmann's Regular 16 Oz. **53¢**

Soft Margarine Fleischmann's Corn Oil Lb. Ctn. **59¢**

Cheese Food Chef's Delight 2 Lb. Box **73¢**

Sweet Cream Butter Farmer Jones 16 Oz. Ctn. **89¢**

Cheese Slices Farmer Jones, Individually Wrapped American Slices 12 Oz. **69¢**

Ricotta Cheese Precious Brand Lb. Pkg. **79¢**

Cream Cheese Farmer Jones 3 Oz. Pkg. **13¢**

Mozzarella Cheese Signature Chunk 8 Oz. Pkg. **55¢**

Fresh Frozen Foods!

Morton's Frozen **Fruit Pies** Apple, Cherry, Peach 20 Oz. Pkg. **29¢**

**French Fries** Cal Ida, Frozen 9 Oz. Pkg. **10¢**

**Broccoli** Silverdale, Frozen Chopped 5 10 Oz. Pkg. **\$1**

VALUES GOOD OCT. 14, 15, 16 MULESHOE, TEXAS 501 W. Amer. Blvd.

The Illustrated **Columbia Encyclopedia**

Vol. One **49¢**

Volumes 2 through 22 \$1.99 each

**COCA COLA**

6 Btl. Ctn. Plus Deposit

**45¢**

50 EXTRA With This Coupon and Purchase of One (1) 84 Oz. Box

**Fab Detergent**

Expires: October 16 1971 Redeemable only at Piggly Wiggly Stores operated by Shop Rite Foods

50 EXTRA With This Coupon and Purchase of One (1) 50 Oz. Box

**Finish Dishwasher Detergent**

Expires: October 16 1971 Redeemable only at Piggly Wiggly Stores operated by Shop Rite Foods

75 EXTRA With This Coupon and Purchase of One (1) 36 Oz. Pkg.

**Gainesburgers Dog Food**

Expires: October 16 1971 Redeemable only at Piggly Wiggly Stores operated by Shop Rite Foods

50 EXTRA With This Coupon and Purchase of One (1) 40 Oz. Bottle

**Mr. Clean Liquid Cleaner**

Expires: October 16 1971 Redeemable only at Piggly Wiggly Stores operated by Shop Rite Foods

50 EXTRA With This Coupon and Purchase of One (1) 22 Oz.

**Pruf Spray Starch**

Expires: October 16 1971 Redeemable only at Piggly Wiggly Stores operated by Shop Rite Foods

50 EXTRA With This Coupon and Purchase of One (1) 15 Oz. Size

**Vaseline Intensive Care Hand Lotion**

Expires: October 16 1971 Redeemable only at Piggly Wiggly Stores operated by Shop Rite Foods

50 EXTRA With This Coupon and Purchase of One (1) 3 Pound or Larger USDA Choice Beef

**Standing Rib Roast**

Expires: October 16 1971 Redeemable only at Piggly Wiggly Stores operated by Shop Rite Foods

100 EXTRA With This Coupon and Purchase of One (1) Pkg. Three Pounds or Larger Family Pak

**Pork Chops**

Expires: October 16 1971 Redeemable only at Piggly Wiggly Stores operated by Shop Rite Foods

**PIGGLY WIGGLY**

You Can Save More!

# Hunters To Converge On Muleshoe For Hunt

Hunters from all over this area will converge on Muleshoe during three consecutive weekends in October and November, beginning on Saturday, October 31, and ending November 14, 1971.

The Muleshoe Jaycees have arranged again for land near the Muleshoe National Wildlife Refuge. This refuge is the oldest in the state of Texas and during the winter months, there are as many as 100,000 Sandhill Crane wintering away from their arctic breeding grounds. The Muleshoe population represents the largest concentration of this species in the United States.

The Jaycees will also provide directions and guides to

the hunting areas. Shells and licenses will be available and the guides will leave the Dinner Bell Restaurant, 2101 West American Boulevard, which is hunt headquarters, one and a half hours before sunrise each day. There will also be a turkey shoot during the day while the crane are in the fields feeding.

The costs for the hunt will be \$5 a day; \$7.50 a weekend; or \$15.00 for all three weekends, October 30 and 31; November 6 and 7; and November 13 and 14.

The hunter who kills the largest bird during the hunt will receive a Browning Twelve-Gauge Automatic Shotgun.

Chairman of the hunt is Doyle Turner. Committee members are Ronnie Spies, Glen Watkins, Mac Brown, Leon Wilson and Dick Johnson.

For more information contact the Muleshoe Chamber of Commerce.

## Football...

Con't from Page 1

Others coming in close in the contest this week, missing only three, were: F.W. Jones, 18 points difference in the tie breaker; Richard Engelking, 18 points; Kenneth King, 19 points; Nona Blake Douglass, 22 points; Butch Vandiver, 23 points; Adele Tompkins, 26 points; Hattie Ray Jones, 27 points; and Harold Cowan, 34 points.

## Playoff...

Con't from Page 1

program and did their part to make the program a great success. The program is designed to support the youth and help them prepare for the future in both football and life. Henry stated that "We realize our youth is our greatest asset here in Muleshoe and the trustees, coaches, and other workers trust we have done a small part in helping out youth develop into better adults."

The public is invited to come out Friday night at 7:30 to watch the second annual Senior Bowl game of Youth Football.

Muleshoe Youth Football, Inc. trustees are Doyle Turner, Clarence Christian, James Brown, Bill Russell and Kenneth Henry, chairman.

The Chief's sixth graders include Danny Wilson, Billy James, Edwin Watson, Douglas Fowler, Jeff Johnson, Trey Stoneham, and Lee Elder. Head coach is Marlin Mills and assistant coach is Bob Stovall.

Cowboy's sixth graders are Mike Windham, Ernest Vela, Royce Clay, Kent Smith, Martin Lopez, Randy Pease and Leroy Rojas. Head coach is Dick Johnson and assistant coaches are Royce Turner and Charles Phillips.

Packer's sixth graders are Martin Nowlin, Monroe Hawkins, David Rush, Mike Griffin, Kirk Lewis and Ron Feagley. Head coach is Curtis Walker and assistant coaches are Duane Seay and Mac Brown.

Saint's sixth graders are Mark Beversdorf, Brent Gunter, Mark Washington, Dean Northcutt, John Estep, David Hunt. Head coach is Derrell Oliver and assistant coaches are Bob Graves and Eugene Hawkins.

The final scheduled Youth Football games were played Saturday afternoon at Babe Ruth Park with the Saints 24 and the Packers 8. The Chiefs won 26 to 8 over the Cowboys.

In the first game of the afternoon for the Saints, Markus Beversdorf, quarterback, scored two touchdowns. Mark Washington, halfback, scored four points on two extra point tries. Brent Gunter, halfback, scored the last touchdown and Beversdorf threw a pass to Soug Corvan, halfback, for the two points after. Mike Griffin, halfback, for the Packers scored their touchdown early in the first quarter and Ross Feagley, fullback, scored the two points after.

In the second game of the afternoon, the Chiefs came on strong and scored 26 points. Leslie White, halfback, carried the ball over for two touchdowns and two extra points. Doug Fowler scored one touchdown and Edwin Watson scored six points.

## Voting...

Con't from Page 1

will make yearly checks to determine who failed to vote during the preceding three years, the first three year period commencing in 1972. Non-voters will be notified by mail that they will be dropped from the registration lists unless they return the notice affirming their qualification. In addition, a voter may request that he be retained on the lists for another three years without his having received a notice from the registrar.

The new registration system removes the old January 31 deadline for registration. Any qualified elector may apply for a voter registration certificate at any time. The registrar will issue a voter registration certificate which will be effective for any election held on the 31st day after the application is received in the office of the registrar.

Year round registration removes the need to provide late-registration for persons reaching voting age, residence or citizenship requirements.

A person may register 30 days before he becomes 18 years of age and before the completion of his first year of residence in Texas. However, a person qualified to vote by reason of age, residence, or citizenship by April 1, 1972, may register at any time beginning October 1, 1971. All these registrations received prior to January 31, 1972, are effective on March 1, 1972, and continue in effect through 1975 (with specific exceptions).

The present law governing the registration of persons eligible to use the federal post card application for an absentee ballot holds; and these persons, irrespective of the provisions stated above, may register at any time upon returning to Texas, their registration becoming effective for voting five days after issuance of the registration certificate.

Senate Bill 51 retains the present procedures for initial registration. A person may register in person before a registrar or his deputy or by mail or by agent. Only the spouse, parent or child of the voter may act as his agent and then only if a qualified voter of the same

county as the voter. For the first time, registrars will be required to purge their records of the deceased, felons and mental incompetents. The purging will be on a monthly basis and is in addition to the yearly checks on non-voters whose registration is subject to cancellation. Senate Bill 51 requires the appropriate public officials to send to the registrar monthly reports of state residents over minimum voting age who have died, been convicted of a felony or been judicially declared mentally incompetent or incompetent, only final judicial action being reported in the latter two categories.

Yet another first for Senate Bill 51 is the requirement that a voter must sign a roster at the polls when he votes. This signature is then compared with that on his voter registration certificate. If the two do not correspond, he will be denied the ballot, subject to challenge regulations. Those who vote on a lost affidavit must also sign the signature roster. The signature roster is also used for absentee voting. Special regulations apply for persons who are unable to sign because of illiteracy, blindness or infirmity.

Several changes have been made by Senate Bill 51 in current law governing voting in precincts of which the voter is not a resident. The general rule is that a person must vote in the precinct where he is domiciled. If a voter votes in a precinct in which he is erroneously registered, his vote will nonetheless be counted in an election contest provided there has been no intentional error on his part or the election judge's part, and the vote would have been validly cast in the precinct of which he was a legal resident. If the voter intentionally registers and votes in the wrong precinct, his ballot is void for all purposes. A person who moves from one precinct to another in the same county may vote in the precinct of his former residence for 30 days unless he transfers his registration during that time. He may vote in his new precinct five days after official transfer of registration. Persons who move from one residence to another within the same precinct must inform the registrar in writing of this fact. Persons who change their residence from one county to another must register anew in accordance with pro-

cedures for new registrants but for the first six months he may vote a limited ballot, using the registration certificate of the former county as evidence of registration. The registrar of the county into which the voter transferred his registration must notify the registrar of the county from which the registration was transferred.

Before March 1 every year the registrar shall prepare for each election precinct a certified list of registered voters eligible to vote during the voting year. Note: The separate column for federal elections only will no longer be required because of the enfranchisement of 18-21 year olds. If the original list clearly indicates the date of eligibility for state, county, or city elections, a second part of the original is not necessary. Consolidated and supplemental lists are also required before any given election to include names of registered voters eligible to vote in the election but not included on the March 1 list.

## Muleshoe...

Con't from Page 1

cil is designed to upgrade the understanding of JP duties.

Edwin E. Merriman, CPA, of 3208 43rd Street, Lubbock, has been re-elected to a three-year term on the governing Council of the American Institute of Certified Public Accountants.

Merriman, managing partner of the Lubbock accounting firm, Edwin E. Merriman & Company, and a partner in the Muleshoe firm, Williams and Merriman, has been a Council member since 1968. Last year he served as president of the Texas Society of CPAs.

He is a graduate of the University of Texas.

Mrs. Hattie Bolling of Odessa was a weekend guest of Mrs. Jewel Griffith. She was a former teacher at Muleshoe.

Mr. and Mrs. Jeff Seifert of Roswell, New Mexico visited with her parents and family, the Fred Stigallides' over the weekend.

Mr. and Mrs. Ben Chapman left Wednesday to attend the funeral of his brother, Alton Chapman of Denver, Colorado.

## CONGRESSMAN

# Bob Price

U.S. House of Representatives  
18th Congressional District

Congressman Bob Price said Saturday that he has requested the Secretary of Agriculture to make three major changes in the 1972 Farm Program, and supports 100% of parity release price for Strategic reserve grain. Price made his comments during the annual Hedley Cotton Festival.

"The House Agriculture Committee adopted a so-called 'Strategic Grain Reserve Bill' last week over my objection after defeating an amendment I supported which would prevent the grain from being dumped on the market at less than 100% of parity," Price said.

He added, "I can see merit in a sound strategic grain reserve bill, but it seems ridi-

culous to me for the government to go out of its way to destroy grain market prices. This would certainly occur without the 100% of parity release price."

Among those voting against the 100% of parity amendment was Congressman Graham Purcell who is an announced candidate for the new 13th District seat which includes most of Price's present 18th Congressional District.

"I have asked the Secretary to increase the yield protection to cotton farmers who lose their crops due to natural disaster. At the present time, if a farmer is unable to harvest his cotton because of natural disaster, his yield for the fol-

lowing year is reduced by 20%. Hopefully, this will be changed to avoid a penalty for those who lose a crop through no fault of their own," Price said.

The Congressman said he has also urged the Agriculture Department to increase the feeding value of grain sorghum in relation to corn.

"My amendment to the Agricultural Act of 1970 provided that the loan and price support rate on grain sorghum be tied to the feeding value in relation to corn. I have presented material to the U.S.D.A. which indicates that this relationship should be set at 95%. Hopefully, it will be set at that rate for the 1972 Farm Program," Price said.

The Panhandle Representative said his third suggestion was to reinstate a payment for additional set-aside. "This extra diversion payment can often mean the difference between profit and loss."

Richard Nixon, President: "The time has also come to give a new attention to America's own interests."



**GIBSON'S DISCOUNT CENTER**

MULESHOE, TEXAS  
Prices Good Thru Saturday

Remington 742 Automatic RIFLE

Woodmaster 243 or 30-06 **\$127<sup>97</sup>**

High Standard PUMP SHOTGUN

Pointer Model 12 or 20 ga. **\$77**

Decorator Wood 4 GUN RACK #G34-6 **\$5<sup>97</sup>**

Sportsmans HUNTING HATS

Our Reg. \$1.37 **97¢**

Yale Combination LOCK #HC34-515 **\$1<sup>47</sup>**

Victor MOUSE TRAPS

2 to pkg. 25¢ Val. **16¢**

BUSHNELL SCOPE

4 Power Custom-DM Scope #72-2407 **\$26<sup>97</sup>**

Sylvania LIGHT BULBS

Inside Frost 25-40-60-75-100 watt 2 to pkg. **34¢**

REMINGTON® LEKTRO BLADE® LB29 RECHARGEABLE SHAVER **\$24<sup>97</sup>**

Sunbeam, Decorator HUMIDIFIER Model HU-406 Gibson Special **\$69<sup>97</sup>**

Polished Brass FIREPLACE SCREEN #33 **\$14<sup>97</sup>**

NIGHT LIGHT **77¢**

Northern Mist 20 Steam HAIR SETTER #1526 **\$7<sup>99</sup>**

Polaroid 420 LAND CAMERA **\$46<sup>97</sup>**

Girls 3 Speed BICYCLE #2045 **\$39<sup>97</sup>**

Coleman 2 Burner CAMP STOVE #413G **\$15<sup>97</sup>**



**HE THOUGHT HE WAS A PRETTY SHREWD BUSINESSMAN!**

He Never Overbought,  
He Never Sold At A Loss,  
He Was Always Competitive,  
He Kept His Store Modern,  
His Clerks Were Friendly,  
He Stocked Excellent Merchandise,  
He Kept Good Books,

**BUT..... HE NEVER ADVERTISED!**

And, as a result, his business was never what it could have been! Businessmen must let their customers, and potential customers, know that their merchandise is good, their store is modern and prices are competitive. Nothing tells this story better . . . in this area . . . than the pages of The . . .

# Muleshoe & Bailey County Journals

**MULESHOE JOURNAL**  
Established February 23, 1924  
Published by Muleshoe Publishing Co., Inc.  
Every Thursday at 304 W. Second Box 443  
Muleshoe, Texas, 79547  
Second class postage paid at Muleshoe, Texas 79547

**TEXAS PRESS ASSOCIATION**  
Member 1971

L.B. Hall, President  
Jessica P. Hall, Sec.-Treas.  
L.B. Hall, Managing Editor  
Katie Foster, Society  
Elizabeth Barnett, Advertising  
Polly Ottwell, Office Manager

**SUBSCRIPTIONS:**  
Zone 1-Bailey-Parmer-Cochran-Lamb counties: \$4.00 per year, \$4.50 per year by carrier. With Sunday Bailey County Journal, both papers: \$5.50 per year; \$6.00 per year by carrier.  
Zone 11-Out-of-Territory: \$4.30 per year; With Sunday Bailey County Journal, both papers, \$4.25 per year.  
Monthly, by carrier-55¢; single copies-10¢  
Advertising rate card on application

# Miss Cowan Installed As Worthy Advisor

Miss Tracy Cowan was installed as Worthy Advisor of Muleshoe Order of Rainbow for Girls, No. 161, Saturday, October 9 at 7 p.m. in the Masonic Hall. Miss Cowan is the daughter of Mr. and Mrs. Harold Cowan. She is a Junior at Muleshoe High School.

She chose as her theme, 'Loving Others', her symbol, 'Hearts'; her colors, hot pink and light pink and her flower was the pom pom mum. Her scripture was Matthew 22: 37-39, 'Jesus said unto him, Thou shalt love the Lord thy God with all thy heart, and with all thy mind, and with all thy strength, this is the first and great commandment, and the second is like unto it, thou shalt love thy neighbor as thyself.'

The invocation was given by Martha Jane Chapman, followed by the presentation of the installing officers. They were Debbie Kerr, installing officer; Mrs. C.L. Pummill, marshal; Martha Jane Chapman, chaplain; Kathy Williams, recorder; and Cassie Precure, musician.

## E.M. Seales Named To Honor Roll

Elizabeth M. Seales of Muleshoe, a Tarleton State College student, has been named to the B Honor Roll and the Distinguished Student List for the spring semester, 1971.

In order to make the Distinguished Student List, a student must post a semester grade point average of at least 3.25 on Tarleton's 4.0 system, and the student can have no grade lower than "C".

The B Honor Roll consists of those students who carry at least 12 semester hours and have no grade below "B". Miss Seales is a business administration major.

Following the installation, Debbie Kerr and Christy Ford presented a vocal duet. Martha Jane Chapman gave a reading entitled 'Love'.

Miss Cowan dedicated her term of office to Mr. and Mrs. Ernest Kerr. She presented the Past Worthy Advisor's Pin to Debbie Kerr.

A group of rainbow girls did a flower drill in honor of the new Worthy Advisor.

The benediction was given by Martha Jane Chapman, followed by a retiring march by the Rainbow Girls.

Serving refreshments were Kathy Pena and Tani Murrah. An arrangement of hot pink and light pink pom pom mums and gladiolas center the table. Two candle holders held pink candles. The cake which was center with the traditional rainbow was decorated in the new Worthy Advisor's colors. Pink punch

## TOPS News

Muleshoe Jenny TOPS met in the Bailey County Electric meeting room Thursday October 7 with Mrs. Pat Vinson, leader presiding. Selma Redwine called the role with each person giving their gain or loss for the week.

The weekly queen was Mrs. Claude Don Holmes. First runner up was Mrs. George Chambliss and second runner up was Mrs. Dan Vinson. The queen for the month was Mary Johnson with Judy Newman as first runner up and a tie for second place went to Linda Vinson and Mrs. Dan Vinson.

Birthday gift was received by Mrs. Tom Berry from the Birthday box.

Secret pals were revealed and new pals were drawn for the month.

Guests were Mrs. Phil Provenge, daughter-in-law of Mrs. Mae Provenge and Mrs. Eva Laution of Calif., sister of Mrs. George Chambliss.

completed the table decor.

Other officers installed were Kathleen Jennings, worthy associate advisor; Christy Ford, charity; Gayla Hooten, hope; Kim Cowan, faith; Faith Free, recorder; Maribeth Dillman, treasurer; Beverly McCamish, chaplain; Prisca Young, drill leader; Carol Brown, love;

Debra Millsap, religion; Marci Rudd, nature; Kelly Cibak, immortality; Belinda Nickels, fidelity; Sheryl Brown, patriotism; Lawren Hall, service; Cynthia White, confidential observer; Frances Dunbar, outer observer; Jana Oyler, musician and Kim Small, choir director.

## State Fair To Host 4-H Dress Revue

Forty-six 4-H girls from across the state will participate in the 1971 edition of the State 4-H Dress Revue October 14-16 in Dallas.

Finalists in the annual 4-H fashion parade represent more than 15,000 girls and 150 boys currently enrolled in clothing projects in the 13 Texas Extension districts, according to Fannie Brown Eaton, Extension clothing specialist.

Top winner in the youth educational activity is awarded a trip to National 4-H Club Congress in Chicago, November 28-December 2. Contestants modeling the two outstanding all-cotton ensembles will be presented cash certificates by the Texas Cottonseed Crushers' Association. The two girls with the most outstanding all-wool garments will receive bonds from the Texas Sheep and Goat Raisers' Association.

Contestants will register at the Sheraton-Dallas Hotel on October 14, with a get-acquainted party planned for the evening's activity.

Judging will take place Friday morning. 4-H'ers in the State Dress Revue actually judge each other, considering the general garment appearance, suitability of fabric, style and color to the individual, accessories selected and overall poise of the contestant.

A Press Luncheon honoring

4-H Dress Revue participants will be held in the Sheraton's Houston Room at 1 p.m. Friday. Winners will be announced and awards presented. The Fuller Foundation, Inc. is the luncheon sponsor.

Two style shows for the public are scheduled at 10 and 11 a.m. Saturday (October 16) in the Women's Building at the State Fair of Texas. Mrs. Shirley Fitzjarrald, director and fashion coordinator of Montgomery Ward and Company, Fort Worth, will commentate the shows.

The State 4-H Dress Revue is sponsored by the Texas Agricultural Extension Service as a feature of the State Fair of Texas.

## Lazbuddie Homemakers Welcome New Members

The Lazbuddie Young Homemakers met Thursday, October 7, in the Lazbuddie Home Economics room. Projects for 1971-72 were drawn up and approved by the members. It also agreed to choose secret pals. Five new members were welcomed to the club. They were Mrs. Dale Vice, Mrs. Robert Schacker, Mrs. Harroll Redwine, Mrs. David Nelson and Mrs. Carroll Redwine.

For the entertainment part of the meeting, Mrs. Larry

## Open House Held At Styling Salon

An open house was held at Sherry's Styling Salon in the Pleasant Valley community Sunday, October 10 from one p.m. to five p.m.

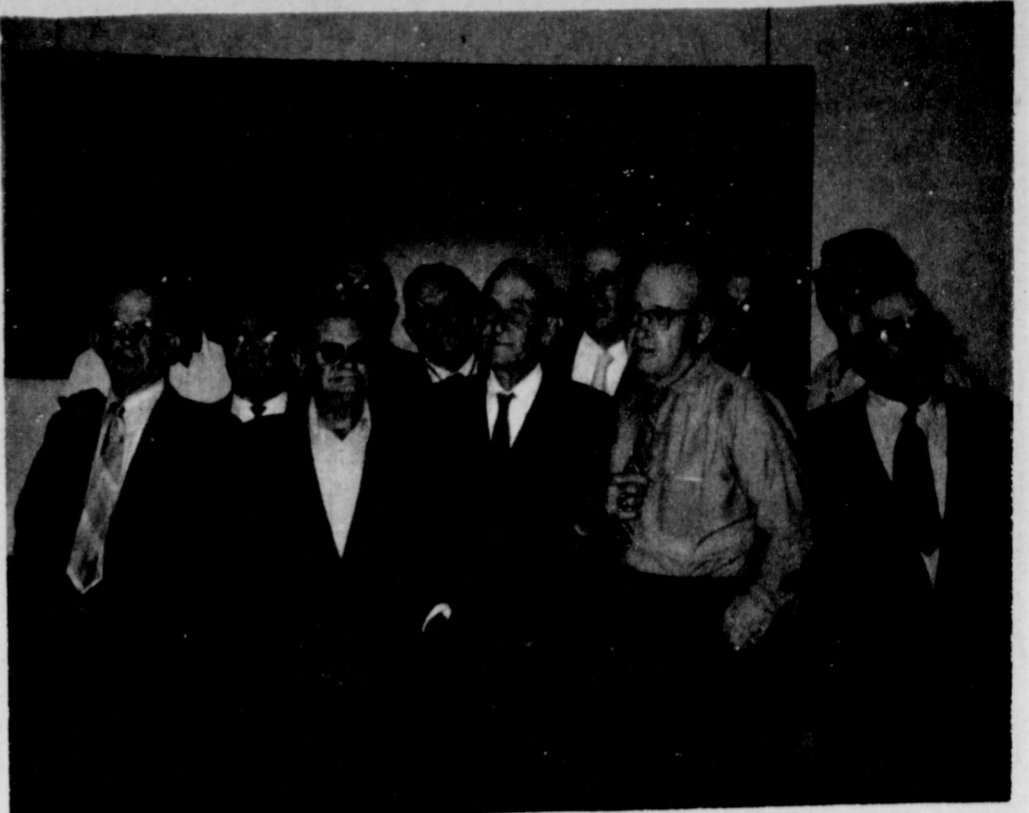
Mrs. Hilbert Wisian, owner, is a graduate of Jessie Lee's Hair Design Institute in Lubbock.

As the 31 guests arrived they were presented sample cosmetics. After a tour of the beauty salon the guests were served refreshments.

Special guests were Mrs. Albert Smyer of Lubbock, an instructor of Jessie Lee's and Mrs. Benna Styles of Lubbock for Vivian Woodard cosmetics.

First prize, a bath set, was won by Mrs. David Stovall Jr., second prize went to Mrs. Roy Whitt, it was a free shampoo and set, Mrs. Bobby Bell won the third prize of a free manicure.

Truth is the last thing some educators want to teach.



ODDFELLOWS RECEIVE 25-YEAR PINS . . . Receiving 25-year pins Thursday night at the Muleshoe Oddfellow Lodge were left to right in the back row, L.A. Green, Elbert Nowell, Cecil Atchley, Bill Maddox, Frank Snyder and Tom Berry. In the front row, left to right, are Vernice Snyder, J.W. Holmes, A.P. Lambert, C.E. Alexander, Rufus Gilbreath and A.M. Bradley. The pins were pinned on each man by his wife.

## Use Milk In Family Meals

COLLETE STATION,---Are you buying enough milk and dairy products for your family?

To decide what is enough for your family, check the daily food guide, suggests Frances Reasonover, Extension foods and nutrition specialist at Texas A&M University.

The daily food guide is a list of foods that give the nutrients needed each day for good health, Miss Reasonover explains. Milk is an important group of the food guide, necessary to the daily diet because of its calcium content.

According to the Texas Nutrition Survey, calcium is one nutrient low in the diets of Texans surveyed, the specialist reports. Calcium is needed for well formed teeth. If one provides proper care for his teeth, he has a better chance of keeping them throughout life.

## Oddfellows Receive Pins

The Texas Survey also showed very poor teeth condition in a high percentage of those examined. Although care and other conditions played a role in this poor condition, lack of calcium in the diet was one factor, Miss Reasonover emphasizes.

The specialist reminds that as a homemaker, it is vitally important you serve milk group foods and that you encourage your family to eat these nutritional foods.

Provide two to three cups of milk a day for children under nine; three or more cups for children nine to 12; four or more cups for teens; and two or more cups for adults, Miss Reasonover suggests. The pregnant woman needs three or more cups and nursing mothers, four or more cups.

Try to see that your family gets the amount of milk needed for their age group, she reminds, or that they get other milk group foods that will also provide calcium.

## Use Milk In Family Meals

Receiving 25-year membership pins from the Oddfellow Lodge Thursday evening, October 7, at the Oddfellow Lodge were L.A. Green, Elbert Nowell, Cecil Atchley, Bill Maddox, Frank Snyder, Tom Berry, Vernice Snyder, J.W. Holmes, A.P. Lambert, C.E. Alexander, Rufus Gilbreath and A.M. Bradley.

The pins were pinned on by each member's wife. The wives prepared a fish and oyster fry and served 62 persons during the evening.

Mrs. Frank Snyder received her 25 year membership pin from the Rebekah Lodge during the evening.

There're some people who arouse our suspicions every time they try to be friendly. All Kinds

A good woman inspires a man; a brilliant woman interests him; a beautiful woman fascinates him, and a sympathetic woman marries him. -Periscope, San Diego.

## District President Speaks At P-TA

Muleshoe Elementary P-TA met Monday, Oct. 11th in the Mary De Shazo cafeteria. Hospitality time began at 4 p.m. and the meeting followed at 4:15. Mrs. Robert Hunt, president, called the meeting to order. The invocation was given by Mrs. Kenneth Millsap. Mrs. Hunt then led the Pledge of Allegiance to the flag.

Mrs. Herb Ramage read the minutes of the September meeting and gave the executive committee report. The committee recommended that a letter be sent to the City Council concerning lack of proper stop signs at Richland Hills Schools. The Southeast and Southwest corners are not protected by four-way stop signs. Motion was made and seconded asking for proper signs to be erected. The motion was made and seconded that the Article VIII, Section I of the by-laws be amended. This concerns the time of the meetings.

Mrs. Walter Bartholf gave the project report on P-TA pre game suppers and named the members of the project committee. They are: Mr. Bill Taylor, the teacher is Mrs. James Crane from Mary De Shazo, the parent from De Shazo is Mrs. Robert Hooten, Milton Oyler from Richland Hills, teacher from Richland Hills is Mrs. Fred Mardis and parent is Mrs. Ray Ruthardt.

Mrs. Jimmy White gave the Treasurer's Report.

Betty Ramage, Chairman of the second pre-game supper, awarded prizes to Sheri Harlin and Lary Hooten for selling the most tickets for the supper. They each received an identification bracelet. Mrs. Wilma Smith's room received \$5, for having the largest total room sales.

Mrs. H.E. Reeder, membership chairman, reported that the P-TA has 82 members signed up.

Special announcements made were: Get acquainted coffees are to be held at Mary De Shazo Oct. 18-20. The Future Teachers from High School will help with the teaching during this time.

Any dishes left at the pre-game suppers may be picked up in the Lounge at Mary De Shazo School.

Wanda Harmon introduced the speaker, Mrs. Francis Sams, 14th District President from Plainview. Mrs. Sams showed two films. The first one was "Who Says We Can't?", telling what a P-TA can and cannot do. The second film was "Mr. Main Motion", a film on parliamentary procedure.

Mrs. Edith Fox, first grade teacher, won the room count for Richland Hills. She had 10 parents to sign. Mrs. Clifton Finley, third grade teacher,

won room count at Mary De Shazo with seven parents signing. Meeting was then adjourned. Next meeting - Nov. 8th.



**Golden Value Days SPECIALS**



**Thermal Knit Shirts Or Drawers**

100% Cotton Gold or White

Sale Price **\$2.00** EA

Men's Sizes S-M-L-XL

Long sleeve navy type Raschel thermal shirt or all elastic waist, ankle length drawers. Regular 2.49 to 2.99 quality. Big savings. Thrifty shoppers will buy now.

**SHOP SAVE TODAY 100% POLYESTER DOUBLE KNITS**



**SPECIAL \$11.88**

Sizes 10 to 20 and 14 1/2 to 22 1/2

Shown are only two of many styles

Fashioned in magnificent 100% polyester. It never loses its shape and is completely washable, requires little or no ironing. You'll find they are expertly tailored and meticulously detailed.



**WELLINGTON BOOTS**

Men's regular 14.99 values

**11.50**

High gloss black leather boots. New tapered toe last. Leather leg linings. Oak bend outsoles, rubber heels. B width 8 to 12. D width 6 to 12.



**QUILTED CAR COATS**



Boy or Girls Sizes 4 to 7 7.99 Values

**\$6.00**

Quilted nylon hooded jackets for real protection in cold weather days ahead. Boy's in blue, green or brass. Girl's in blue or orange.

**START SHOPPING FOR CHRISTMAS NOW**

Use our convenient lay-away plan

**5% off on ALL Bikes, Wagons and Tricycle** And You Can Use Lay-Away

**perry's** FABRIC CENTER

128 Main Muleshoe Phone 272-4620

**DOUBLE KNIT NEW SHIPMENT**

FLAT FOLD SOLIDS & PRINTS #138

SAVE AT **\$2.99** YD.

**DAWN THURS. FRI. SAT. ONLY**

**KNITTING WORSTED** Reg. \$1.39 **99¢** SKEIN

**PERFECT FALL SPORTSWEAR** PLUSH TEXTURE CLOTH BACK

**SPORT VELVET** \$2.99 yard

100% RAYON FACE ON BOLTS 45"-54" wd.

**PRESTON ANTI LEAK ANTI FREEZE** \$9.96 CASE \$1.96 ea.

The Sandhills Philosopher



Editor's note: The Sandhills Philosopher on his Johnson grass farm has been reflecting on a new rule the government has offered.

By 1974, according to an article I read in a newspaper last night, all new cars must be equipped with seat belts that have to be fastened before the car will start.

This was ordered, the government said, because despite the fact all new cars now come equipped with seat belts, less than 30 per cent of the people use them.

So, after 1974, the seat belt will be hooked up with wires some way with the ignition switch, and the car won't start unless the belt is fastened.

This sounds like a good idea and if it works it ought to be utilized further.

For example, instead of a key to start your car with, the government should require a punch card and a complicated slot on the dashboard.

The right holes punched and the card inserted, the car starts only if the seat belt is fastened.

But another series of holes won't let it start unless you've registered to vote, another unless you've actually voted, another unless you've paid your taxes, another unless you've had all your shots, donated to the community chest, etc.

You get the idea. You can shape this country up almost completely through the punch card system of turning on the ignition in everybody's car.

By putting enough holes in the card to cover practically everything, morally, ecologically, politically, etc., you could come up with a system whereby anybody who could still start his car after 20 years of driving would be qualified to serve on the Supreme Court without even the 80 percent of 1971 crop, being investigated. Like it is, which is to be sold over a

Grain Producers Initiate Drive

The Grain Producers Association is initiating a nationwide drive to encourage all grain producers (milo and corn) to follow its plan for "orderly marketing".

First, placing 20 percent of 1971 crop in government reserve with intentions of not redeeming it until the 1972-73 marketing year, or a market price of \$2.50 per cwt.

Second, hold balance (80 percent) until January 1, 1972, in order to see what the actual with a system whereby anybody who could still start his car after 20 years of driving would be qualified to serve on the Supreme Court without even the 80 percent of 1971 crop, being investigated.

Third, distribute the market, which is to be sold over a period of six months (about 15% per month).

Fourth, U.S.D.A.'s announcing a 1972 grain program that will cut back in production of grain in 1972.

GSPA President, A.W. "Dub" Anthony, Jr., of Friona, said, "If all farmers will follow this plan, we will definitely see higher grain prices again, and not in the too distant future, it is up to the farmers."

"It is our hope that the banks and elevators will add their encouragement to this program," Anthony said.

Check on economic ruin. The depression that ruins most men is the cute little dimple. -News-Herald, Des Moines.

Tidiness Pays. Don't smoke in bed. The ashes falling on the floor may be your own. -Tribune, Chicago.

Song of Woe. All that I am or ever hope to be, I owe. -Appeal, Memphis.

STATE CAPITAL Highlights AND Sidelights

AUSTIN, Tex. -- A new year-round voter registration law went into effect for Texans on October 1.

Predictions are that it will make significant changes in the political structure of the state. New rules governing the operation of political party conventions also will begin operating next year.

\*Voters can register at any time (except for a temporary cutoff 31 days before each election). Registration is good for three years, and is automatically renewed by participation in an election during that period.

\*Eighteen - to - 21 - year-olds may register and are eligible to vote in local, state and federal elections under a new U.S. constitutional amendment.

\*Rising or resident registration deputies may sign up voters anywhere - apartments, union halls, club rooms, dormitories, industrial plants, office buildings, supermarkets or private residences.

\*Lawrence Miller Jr. of Dallas is new chairman of the Texas Real Estate Commission. Joe Teller, Texas Water Quality Board deputy director, was selected for Water Pollution Control Federation of America executive committee.

\*STAFF TO FIGHT FOR TREATY - The state is prepared to go to the U.S. Supreme Court to get title to all artifacts recovered from Spanish galleons which sank off Padre Island more than 400 years ago.

\*Texas Antiquities Committee was told a decision is near by Brownsville federal court in a long legal dispute over the treasure. Platoro Ltd., a Gary, Ind., salvage firm, recovered the valuables in 1967 and proposes a 50-50 split with the state which demands the entire treasure.

Meanwhile, Committee learned an underwater archaeologist has agreed to help set up a program to recover artifacts from another ancient Spanish galleon near Padre Island next year.

COURTS SPEAK -- The Supreme Court dismissed the appeal of relatives of Clyde Barrow who lost a suit against Warner Brothers Studio claiming character defamation in the movie "Bonnie and Clyde."

In a pile of other decisions released after a summer recess, the High Court:

In other recent appointments, Smith picked; \*Jimmie Joe McCuan of Pasadena to the Industrial Accident Board.

\*Marshall Fromby of Plainview and Richard S. Slocumb of Galena Park to the Coordinating Board, Texas College and University System.

\*Doug Crouch to succeed Frank Coffee, who resigned, as Tarrant County (Fort Worth) district attorney.

\*Drs. Walter H. Fischer of Temple, Sterling H. Pruitt of Fort Worth and Harvey H. Kennedy of Longview to the State Board of Chiropractic Examiners.

\*Lt. Col. Belisario D.J. Forres of San Antonio as chairman of statewide Veterans Day activities October 25.

John W. Cardwell, former Georgetown newspaperman, was named deputy director of the Texas Office of Economic Opportunity.

Lawrence Miller Jr. of Dallas is new chairman of the Texas Real Estate Commission. Joe Teller, Texas Water Quality Board deputy director, was selected for Water Pollution Control Federation of America executive committee.

\*STAFF TO FIGHT FOR TREATY - The state is prepared to go to the U.S. Supreme Court to get title to all artifacts recovered from Spanish galleons which sank off Padre Island more than 400 years ago.

\*Texas Antiquities Committee was told a decision is near by Brownsville federal court in a long legal dispute over the treasure. Platoro Ltd., a Gary, Ind., salvage firm, recovered the valuables in 1967 and proposes a 50-50 split with the state which demands the entire treasure.

Meanwhile, Committee learned an underwater archaeologist has agreed to help set up a program to recover artifacts from another ancient Spanish galleon near Padre Island next year.

COURTS SPEAK -- The Supreme Court dismissed the appeal of relatives of Clyde Barrow who lost a suit against Warner Brothers Studio claiming character defamation in the movie "Bonnie and Clyde."

Industrial Expansion Wednesday and Thursday (Oct. 13-14) here. Five industries received special expansion awards.

Veterans Day is being observed October 25 for the first time this year. Banks and public offices will close under federal law.

Pink bollworm precautions were urged by Agriculture Commissioner John C. White in 22 South Texas counties--Bexar, Atascosa, Bee, Calhoun, DeWitt, Dimmit, Frio, Goliad,

Every week of the college football season has its special, and this Saturday's schedule is loaded! . . . Colorado-Oklahoma . . . Alabama-Tennessee . . . Southern Cal-Stanford . . . Arkansas-Texas . . . Notre Dame-North Carolina . . . and those are only samples!

We said last week that there was hardly any breathing-room between the first four teams in our Top 20. So . . . Michigan continued to win, yet dropped from 1st to 3rd because power quotients did a bit of shifting.

In the Southwest Conference, it's "Title-Time" again. That's the time when the league championship is decided in the annual Longhorn-Razorback showdown.

The Big Eight features Oklahoma against 9th-ranked Colorado. The Buffaloes are as undefeated as the Sooners, but Oklahoma registered the biggest victory last week by whipping Texas. Two toughies in a row could be a killer for the

Sooners, but they should win another one, this one by 12 points. Alabama is #4 . . . Tennessee is #17. And since this is a Southwest Conference matchup, anything can happen. However, we look for the Crimson Tide to keep rolling, and for the Volunteers to take their second loss of the season, Alabama by eighteen.

It's about time we took a brief look at just how our old battered crystal ball has been behaving since the start of the 1971 season. And, believe me, it's been cloudy on occasion! However, we do get a few right now and then, and naturally that's what keeps us climbing out on the weekly limb.

Alabama is #4 . . . Tennessee is #17. And since this is a Southwest Conference matchup, anything can happen. However, we look for the Crimson Tide to keep rolling, and for the Volunteers to take their second loss of the season, Alabama by eighteen.

It's about time we took a brief look at just how our old battered crystal ball has been behaving since the start of the 1971 season. And, believe me, it's been cloudy on occasion! However, we do get a few right now and then, and naturally that's what keeps us climbing out on the weekly limb.

Saturday's Grid Activity Loaded

Every week of the college football season has its special, and this Saturday's schedule is loaded! . . . Colorado-Oklahoma . . . Alabama-Tennessee . . . Southern Cal-Stanford . . . Arkansas-Texas . . . Notre Dame-North Carolina . . . and those are only samples!

The Harmon Football Forecast

Table with columns for various states (Nebraska, Oklahoma, Texas, etc.) and their predicted performance in football games.

Presented by "Sports Enthusiasts' Firms. TEXACO Service Stations. Ray Griffiths & Sons Elevators.

REPORT of CONDITION of MULESHOE STATE BANK. Consolidated Report of Condition of "Muleshoe State Bank" of Muleshoe in the State of Texas and Domestic Subsidiaries at the close of business on September 30, 1971.

Report of Condition of the FIRST NATIONAL BANK of Muleshoe County of Bailey In The State Of Texas. at the close of business on Sept. 30, 1971, Published in Response to call made by comptroller of the currency, under Title 12, United States Code, Section 161, Charter No. 14745 National Bank Region No. 11

Used Furniture Wanted. By The House Full Or By The Piece... Swap Shop. Muleshoe Call 272-3074.

TEXACO Service Stations. Sam Fox, Consignee. Phone 272-4688. Ray Griffiths & Sons Elevators. "Grain & Seed Is Our Business" 121 W. American Blvd, Phone 272-4585 or 272-4586

At Muleshoe Junior High

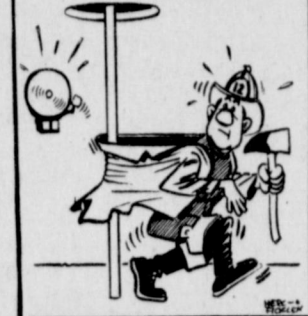


## Mules Win Double Victory Over Gattis

You should have been at the Benny Douglas Stadium Thursday, October 7, you would have seen the future Mules at work. The Muleshoe eighth grade B team played the B team of Gattis Junior High of Clovis. They played at 5 p.m. and the Mules beat Gattis by a score of 34 to 26.

The Muleshoe eighth grade A team played the Gattis Junior High A team here after the B game. The A team won by a score of 14-6. The game may have been an expensive one in that there were two victims of the game from Muleshoe hurt,

### The Lonely Heart



## Eighth Grade Girls Athletics

Rebound! Rebound! Oh no I mean SINK IT!! Get that ball Rogers! Hustle! Alright five laps around the top! But coach! Get going Ramml!

These, and others, are the many yells heard from the gym during first period, by the eighth grade athletics class.

This year, the girls have worked hard and really tried. Coach comments, they are shorter, but faster. So far they have been working on basic fundamentals. Miss Sharon Whittner, the girls coach, says they have a desire to play, and it takes time and practice to make a good team.

Coach Whittner gave us the following, and listed it as: Coaches' Quotes

"Hustle, Hustle, get down low, get your eyes on the goal! Black! Quit being so lazy! King! Get off the floor! Grimsly! Quit using two hands! Webb! Use a little form! Purcell! Quit hopping like a kangaroo! Peace! Get that ball on top of your head! Carpenter! Slow down and use your head! Griffen! Slow

## Six Weeks Test Week

Now is the time for all good students to come to the aid of their grades. It is six weeks test week here at Muleshoe Jr. High School. If you have come through these past six weeks in sound body and mind, you have a rare talent.

Both new and old teachers alike have been doing a fine job this six weeks, and are ready to see how much we have learned. The teachers at Jr. High use a number grade system, for example: 90-100 is an A, 80-89 is a B, 70-79 is a C, 65-70 is a D, and below 65 is a F. Well, good-bye and good luck!!!!!!

zales, Susie Gonzales, Mary Ann Gonzales, Beverly Gray, Vicki Griffen, Susan Grimsly, Teresa Hamilton, Debbie Purcell, Cynthia Rogers, Karen King, Earma Kelly, Darla Hunter, Katie Pease, Judy Layne, Alta Ramm, Tonya Hardaway, Donna Provins, Olga Costilla, Sherrel Rasco, Diana Vinson, Denise Harrison, Alice Lopez, Olga Martinez, Tammy Webb, Beverly Gray, Connie Johnson and Janie Lang.

## Historical Society Selects New Members

On the first of October the Junior Historical Society had a pinning ceremony for their new members. The way the students got in was by applying through their History teachers. The teachers saw if the students filled certain requirements, such as the students had to have an overall average of 80.

On the first the old members went around putting red, white and blue pins on the students who were lucky enough to get in.

## Seventh Grade Intramurals

The Seventh Grade football players kicked off their intramural season this week with two games. The Rams and the Lions played first in a very exciting game. The Rams led off the scoring when Tony Vela passed to Mark Slayden for six points. Julian Dominguez added the extra points. Later in the game Vela again accounted in the scoring when he ran a sweep for a touchdown. Dominguez again added the P.A.T. The Lions offense was unable to score and the game ended with the Rams on top 16-0. On Friday the Vikings took on the Colts in a defensive battle that ended in a 0-0 tie.

**BACK THE JUNIOR HIGH MULES**

Muleshoe Junior High School Plays

Morton

At Morton, Texas

Thursday, October 14, at 5 o'clock

**Cox Drive In Theatre**

Sat. & Sun., Oct. 16-17

**John Wayne**  
**Richard Boone**  
**"Big Jake"**

TECHNICOLOR® SERIAL SOUND Maureen O'Hara

**"VISIT OUR SNACK BAR"**

SHOW TIME 8:15 p.m.

**AUTO REPAIR EXPERTS**

Get a Major Tune-up

Only the latest methods in modern electronic tune-ups are used. Specialized equipment will quickly pin-point the trouble.

Plains AUTO PARTS P.O. Box 586 MULESHOE, TEXAS 79547

South Main MULESHOE Phone 272-4576

## Historical Society Elects New Officers

Patty Pena

On Monday, October 4, the Muleshoe Junior High Historical Society met for the election of officers. The officers for this coming year are: Ricky Claybrook - President; Kim Small - Vice President; Alta Ramm - Secretary-Treasurer; Patty Pena - Reporter; Cynthia White - Parliamentarian. No business was discussed or taken up. The meeting was adjourned.



## Mrs. Scoggins Is New Teacher

My name is Mrs. Doris Scoggins. I have lived in Muleshoe all my life. I attended Muleshoe High School. I graduated from Eastern New Mexico with a B.S. degree. My husband's name is Kearney. I have two children Jason, 5, and Preston, 4. My hobby is sewing and I have a special interest in horses. This is my first year of teaching and I enjoy it very much. I teach five classes of Science and one of Math.

## Mark Gregory

Mark Gregory, eighth grade A team rides motorcycles as a pastime. Mark bought his motorcycle four weeks ago at Calvert Motors. He bought it for \$185. It's a Honda 65 and Mark rides it as often as possible. Mark doesn't have his license yet, so he rides in a pasture near his house.

Mark has had one wreck. A screw in his wheel locked and he couldn't turn it. It over-turned. Mark said he has nearly wrecked a hundred times.

Mark has had to buy new points and a plug for his cycle. So far this is all the cycle has cost. He gets about fifty miles a gallon. Mark is pretty happy about the way things have been going for him.

## Court House News

**NEW CARS**

Ruby M. Weaver, 1972 Chevrolet, Armes Chevrolet.

Mrs. C.E. Layne, 1971 Ford, Muleshoe Motor Co.

Mrs. Elizabeth Watson, 1972 Pontiac, Rierson Pontiac.

Harvey Blackstone, 1971 Chevrolet pickup, Crow Chevrolet.

Charles Edward King, 1972 Chevrolet pickup, Crow Chevrolet Co.

Muleshoe State Bank, 1972 Pontiac, Ladd Pontiac.

Pete Tarlton, 1971 Chevrolet grain truck, Gwatney-Wells Chevrolet.

L.C. Stalcup, 1971 Ford pickup, Muleshoe Motor Company.

Ralph W. Glover, 1972 Chevrolet, Crow Chevrolet.

**MARRIAGE LICENSE**

Hilario Holguin Lerna, Enochs, and Esperanza Bereno Rodriguez, Enochs.

Larry Wayne Tucker, Meadow, and Connie Lee Pruitt, Muleshoe.

Guadalupe C. Pineda, Muleshoe, and Ermila C. Muniz, Muleshoe.

Frank Guzman, Muleshoe, and Maria Guadalupe Martinez, Muleshoe.

Harold Eugene Williams, Clovis, and Tessie Geneva Rush, Muleshoe.

Stephen Joel Hassler, Clovis, and Alice Marie Fowler, Muleshoe.

Woodrow Archie Franklin, Godley, Texas, and Bernice Agnes English, Muleshoe.

Margarito Hernandez, Muleshoe, and Eulalia Castillo, Muleshoe.

**WARRANTY DEEDS**

Kearns Grain and Seed Co., Inc. to Paris Milling Co., V.T. Tanner to Paris Milling Co.

Dillard Morris and wife, Flowella Morris, to Fred Harries, all of Lot number two and all of the northeasterly 10 feet of Lot number three, Block number one, Murrah Addition number one, to the town of Muleshoe.

Kenneth W. Everett and wife Carolyn Suzann Everett to Joe Collins all of Lot number four, Block number one, Hillcrest Addition to the town of Muleshoe.

H.D. King and Hope King, husband and wife, to King Brothers Grain and Seed Co., Inc. a tract of land out of Section 20 and 33, Block Y, W.D. and F.W. Johnson Sub-division, number two, Bailey County.

## Medical Assn' Adopts Policy Drug Program

AUSTIN--A policy position on the state's new vendor drug program has been adopted by the Texas Medical Association after a lengthy meeting with representatives of the Texas State Department of Public Welfare.

The Executive Board of the 11,000-member medical association stated that the primary responsibility of the physician is to provide quality medical care for all his patients, based on the patients needs and not upon program restrictions. TMA pledged its support to those programs which can contribute to the quality of medical care and which are designed to permit the physician to prescribe medication in his usual manner--written or oral prescriptions--as required for the care of the patient.

James H. Sammons, M.D., TMA president, said that "the existing vendor drug program regulations do not contribute to the quality of medical care and impose restrictions which place the physician in a position of enforcing the program's limits."

Many problems were faced by both physicians and pharmacists when the new system of providing prescription drugs for Texas welfare recipients began on Sept. 1 of this year.

State welfare department guidelines sent to physicians last month placed a major administrative burden upon physicians, including extensive paperwork and legal liability. TMA representatives pointed out at that time that these additional responsibilities would seriously curtail the physician's time for treating patients.

By action of its Executive Board, the Texas Medical Association has asked the Texas welfare department to reconsider the provisions of the vendor drug program and to reorient the physician's role to one of providing prescriptions. Specifically, the following concepts were stated: 1) Any program must be based upon the physician's prescription and need; 2) Limitations to the drug program should be defined in the program and patients and providers informed of the limitations; 3) No prior authorization should be required; 4) No diagnosis of the patient's condition should be required; 5) Prescription refills should follow customary prescription practices; and 6) The welfare department should consult with the Texas Medical Association regarding any new program or policy prior to implementation.

## Nora Hudnall Services Held

Funeral services for Mrs. Nora Lee Hudnall, 91, were held Wednesday, October 13, at the Lazbuddie Baptist Church with Rev. Dale Cain, pastor, officiating. Burial was in Castro Memorial Garden, Dimmitt, under the direction of Singleton-Ellis Funeral Home of Muleshoe.

Mrs. Hudnall died Monday in the Parkway Manor in Lubbock. Her home was in the Lazbuddie Community having lived there since 1930 moving from Earth, Texas.

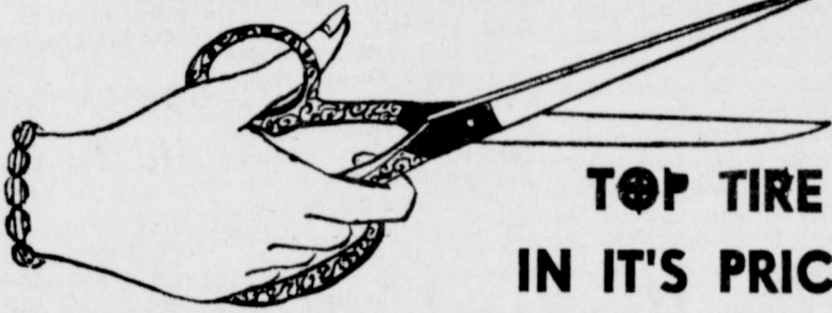
She was born May 8, 1880 in Morgantown, Ky. She was a member of Sunnyside Baptist Church.

Survivors include one son, Harvey of Texico, N.M., two daughters, Mrs. George Poteet of Muleshoe and Mrs. Robert Johnston of Lubbock, one sister, Mrs. Therman Kemp of Morgantown, Ky., one brother, Murray Childress of Morgantown, Ky., 12 grandchildren and six great-grandchildren.

# LOOK-TO-SHOOK



## TIRE PRICES CUT



OF CONSHOHOCKEN

TOP TIRE VALUE IN IT'S PRICE RANGE!

6.50-13	16.79	F.E.T. 1.78	7.00-13	17.79	F.E.T. 1.96
6.95-14	17.79	1.94	8.25-14 OR 15	21.79	2.38
7.35-14 OR 15	18.79	2.04	8.55-14 OR 15	23.79	2.53
7.75-14 OR 15	19.79	2.17	8.85-14 OR 15	26.79	2.84

### HEADQUARTERS FOR TRAILER TIRES

7.60-15, 6 PLY TUBE TYPE . . . .	\$16.79	9.00-14, 6 PLY TUBELESS . . . . .	\$18.79
----------------------------------	---------	-----------------------------------	---------

USED TRAILER TIRES 14" & 15" \$4.50 & up

**\* TRUCK TIRE SPECIALS \***

6.70 x 15 6 PLY	22.79	F.E.T. 2.40	7.50 x 17 8 PLY	43.79	F.E.T. 4.25
6.50 x 16 6 PLY	26.79	2.65	7.50 x 20 8 PLY	49.79	5.15
7.00 x 15 6 PLY	26.79	2.85	8.25 x 20 10 PLY	56.79	6.21
7.00 x 16 6 PLY	30.79	3.00	9.00 x 20 10 PLY	67.79	7.22
7.00 x 17 8 PLY	37.79	3.72	10.00 x 20 12 PLY	90.79	9.24
7.50 x 16 6 PLY	40.79	3.68	10.00 x 22 12 PLY	101.79	9.24

USED TRUCK TIRES ALL SIZES \$15 & up

FAST - DEPENDABLE FIELD AND HIGHWAY SERVICE

★★ RECAP SPECIALS ★★

7.75 x 14 or 15 . . . . . \$9.79

8.25 x 14 or 15 . . . . . \$10.79

8.55 x 14 or 15 . . . . . \$11.79

CHECK OUR TRACTOR AND COMBINE TIRES Before You Buy! You'll Save More.

# Shook Tire Co.

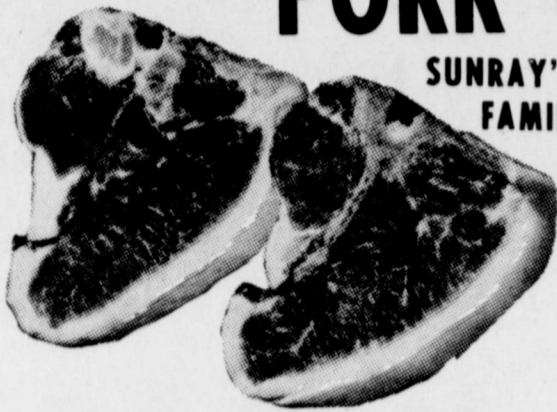
301 N. FIRST MULESHOE PHONE 272-3420

Any lumber company that pines for you is in the Yellow Pages



# BUDGET STRETCHERS

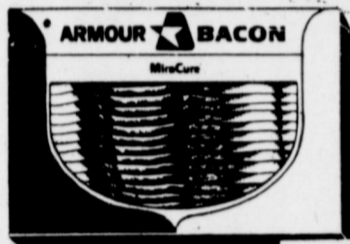
**PORK CHOPS** 69¢  
 SUNRAY'S EXTRA LEAN  
 FAMILY PAK FULL 1/4  
 PORK LOIN Lb.



ARMOUR'S STAR ALL MEAT SKINLESS  
**FRANKS** 12 oz. Pkg. 59¢  
 ARMOUR STAR ALL MEAT  
**BOLOGNA** 1 Lb. Pkg. 69¢

## BACON

ARMOUR'S STAR



THIN SLICED  
 1 Lb. Pkg. 59¢

BORDEN  
**BUTTERMILK**  
 1/2 GAL. CTN. 39¢



Matching  
 Completer  
 Pieces

THIS WEEK'S ITEM  
 OCT. 11 - SAUCER 90¢  
 OCT. 16 EACH PIECE ONLY value  
**19¢** WITH EACH \$5 PURCHASE

HERE'S HOW OUR PLAN WORKS  
 WITH EACH \$5 PURCHASE YOU ARE ENTITLED TO BUY ONE PIECE FOR JUST 19¢... WITH A \$10.00 PURCHASE, TWO PIECES AT 19¢ EACH AND SO ON. YOU MAY COMPLETE YOUR SET IN JUST 15 WEEKS.

## FRYER PARTS

USDA GRADE A FRESH DRESSED  
 GOLD NUGGET MARKET CUT  
**DRUMSTICKS** Lb. 49¢  
**WISHBONES** Lb. 79¢  
**BREASTS** Lb. 69¢  
**THIGHS** Lb. 59¢  
**BACKS & NECKS** Lb. 10¢  
**WINGS** Lb. 19¢

ARMOUR STAR GOLDEN FULLY COOKED  
 BONELESS  
**HAM** 1 1/2 lb. can \$1.98  
 BLUE MORROWS "TENDER MADE"  
**STEAK FINGERS** Lb. 79¢

TEXAS FIRM GREEN HEADS  
**CABBAGE**  
 Lb. 5¢

TEXAS GOLDEN  
**SWEET POTATOES** Lb. 15¢  
 COLORADO D'ANJOU  
**PEARS** Lb. 19¢  
**CRANBERRIES**

Ocean Spray Fresh  
 1 LB. CELLO BAG

**29¢**

## Wonderland of FROZEN FOODS

10 oz. pkg. Trophy Sliced  
**STRAWBERRIES** 25¢  
 10 oz. pkg. Keith's  
**CHOPPED BROCCOLI** 25¢  
 10 oz. pkg. Keith's Snow White  
**CAULIFLOWER** 25¢  
 Banquet  
**T.V. DINNERS** 45¢

6 BTL. CTN.  
**COCA COLA**  
 KING SIZE 45¢  
 PLUS DEPOSIT

DEL MONTE  
**PEACHES**  
 #2 1/2 CAN  
 3 \$1 for  
 PEACH HALVES

IMPERIAL  
 PURE CANE  
**SUGAR**  
 5 Lb. Bag 39¢  
 Limit 1 with a \$5 purchase or more  
 EXTRA FINE granulated

- 14 1/2 oz. Pkg. Nabisco Chips Ahoy 53¢
- 24 oz. ctn. Borden's COTTAGE CHEESE 37¢
- Giant Size Box BONUS DETERGENT 75¢  
 For Pre-Soaking Laundry
- BIZ 15 oz. can Pruf \$1.09
- SPRAY STARCH 32 oz. Bottle 49¢
- LIQUID PLUMR 32 oz. Bottle 75¢
- GLADIOLA 7 1/4 oz. pkg. 2 for 19¢
- CORN BREAD MIX 5 lb. Bag
- GLADIOLA FLOUR 2 Roll Pkg. Delsey 49¢
- BATHROOM TISSUE 2 for 69¢  
 18 1/2 oz. Box Duncan Hines Reg.
- CAKE MIXES 38 oz. Bottle 3 for \$1
- CRISCO OIL 32 oz. Bottle Welch's 99¢
- CRANBERRY JUICE COCKTAIL 1 lb. pkg. Tastee Solid 59¢
- OLEO 32 oz. Jar Bama Pure 2 for 35¢
- PEACH PRESERVES 1 lb. Tin Richelleu All Grinds 49¢
- COFFEE 10 oz. can Del Monte 79¢
- TOMATO SAUCE 2 for 25¢  
 #303 Can Del Monte
- TOMATO WEDGES 29¢
- SWEET PEAS 4 for \$1  
 12 oz. can Del Monte Whole Kernel Golden
- CORN 5 for \$1  
 #2 1/2 can Gebhardt's Jumbo
- TAMALES 39¢



Plains Cotton Growers, Inc. has "reactivated" its long term effort to minimize completion in the marketplace between producer held cotton and cotton held in government stocks, according to Donald Johnson, PGC Executive Vice President.

The current push is to get the minimum resale price of Commodity Credit Corporation stocks of cotton raised from 110 percent to 115 percent of the loan, plus carrying charges. At the 1971 loan level of 19.5 cents a pound, this would increase CCC's minimum sale price by almost a cent. If the loan for 1972 is raised to 21 cents as many think it will be, the minimum CCC price would go up by slightly more than a cent.

Put another way, the higher minimum would mean the lowest price at which CCC could sell cotton would be about three cents, instead of two cents, above the loan price. "This would give producers a little better competitive edge when they place each year's crop on the market," Johnson says.

In a letter to Kenneth Frick, USDA's Administrator of the Agricultural Stabilization and Conservation Service, Washington, Johnson stated "Raising the minimum from 110 percent to 115 percent of the loan is needed to (1) encourage needed cotton production by improving producer income protection, and (2) encourage the use of normal marketing channels instead of the 'catalog cycle' which occurs at considerable government expense."

In the past PGC requests that the CCC minimum be raised have drawn protests that such a move would interfere with forward commitments in the market. But Johnson's letter to Frick points out that now, with market prices well above the proposed minimum resale price, this problem does not exist. With a 21-cent loan, a 115 percent minimum would be 24.15 cents per pound, while both CCC sales and average spot market quotations recently have been well above 27 cents.

Under current supply conditions and present market prices the higher minimum CCC resale price will have no actual effect on producer income because CCC stocks are sold at the announced minimum or at the market price, whichever that supply and market conditions can change over a very short period of time. Johnson's letter stated "and producers need assurance their production will meet minimum price competition from CCC cotton under all supply-demand conditions if they are to be expected to produce cotton on acreage above paying base allotments."

Johnson, a member of the National Cotton Advisory Committee, proposed the higher minimum when that committee met in Washington last month and the idea met very little opposition. Producer, ginner and merchant representatives on the committee voiced approval while only one committee member, from the textile segment of the industry, spoke against the proposal. It was mentioned in the meeting that feed grains now have a 115 percent of the loan minimum, and that the increase would put the two commodities on equal footing.

Another PGC-supported move to improve the competitive position of producer owned cotton with cotton held by CCC, the "anniversary type" loan, was initiated with this year's crop. This will enable producers to retain ownership of their cotton for ten months after it is tendered to CCC as collateral for loans. Previously CCC took title to all cotton on August 1 each year, regardless of when the loan was made.

Johnson's letter to Frick concluded by saying "It has been known for years that the cotton producer's major dilemma revolves around the question of how to maintain adequate stocks to supply the market without depressing market prices to the level of the loan. We think the anniversary loan was a significant step toward answering that question, and a little greater 'headroom' between the loan and CCC resale prices will be another step in the right direction."

## Right Harvest Mean Bean Profits

COLLEGE STATION--Soybean producers can put a few extra dollars in their pockets this fall through proper harvesting practices, said R.J. Hodges, agronomist with the Texas Agricultural Extension Service.

"Harvest losses generally average three bushels of soybeans per acre," notes the agronomist. "Proper harvesting could mean a saving of \$6 or more per acre."

Nationwide, one of every ten bushels of soybeans produced is lost at harvest time, inflicting a loss of more than \$350 million on the industry. A loss of four seeds per square foot is equal to about one bushel per acre.

"With soybeans in strong demand this year, careful attention to the harvesting operation is especially important," points out Hodges. "Producers should first of all check the moisture content of the beans and begin harvesting when it reaches 13 percent. Operating the combine at a slower ground speed and keeping the cutterbar close to the ground also bring in more soybeans."

The combine should be properly adjusted, says Hodges. Once in the field, it should be operated at a ground speed of two and one half to three miles per hour. Reel speed should be slightly greater than the combine's ground speed. The reel should be run deep enough in the beans to control the stalks.

## Market Report

COLLEGE STATION,---Before making out your food shopping list this week, consider these marketing guidelines from Gwendolyn Clyatt, Extension consumer marketing specialist.

Store specials on beef and pork continue to offer appealing values for budget menus.

At the beef counter, look for good buys on chuck roasts and steaks, round steaks, ground beef and liver. And, popular steak cuts are highlighted in some markets.

"You'll likely see good pork buys on Boston butt roasts, fresh picnic roasts, shoulder steaks, rib chops, and smoked hams and ham portions," says Mrs. Clyatt.

Attractive prices may also be found on fryer chickens in many markets. Good egg supplies continue, with very reasonable prices, the specialist reports. However, Grade A large and Grade A medium eggs are about equal values this week.

A wide variety of milk products is available to help you serve the family an adequate diet economically and attractively.

"The simplest way to get milk into family meals is to serve it as a beverage," she says. Choose to suit your family's taste--fresh whole milk, fresh skimmed milk, buttermilk, chocolate or flavored, reconstituted dry milk or canned milk products. Whatever the kind used, remember extra chilling enhances the flavor.

At the produce counter, items in best supply at the most economical prices include prunes, apples, bananas, grapes, avocados, cabbage, carrots, yellow onions, hardshell squash varieties, potatoes and celery.

ON POVERTY AID  
 The Senate has endorsed escalation of the war on poverty, approving \$5.9 billion legislation that would continue to expand programs to aid the nation's 47.5 million poor and near-poor. It would also aid unemployment among the young through the Youth Corps.

AID FOR JOBLESS  
 The Department of Labor has revealed its plans for immediate allocation of \$200-million for emergency public service jobs in cities, counties and neighborhoods where unemployment is high.

GUNN BROS.  
 STAMPS  
 DOUBLE EVERY  
 WEDNESDAY

White's CASHWAY  
 We Reserve The Right To Limit Quantities

Listen to  
 MULETRAIN  
 over KMUL  
 10:15 a.m.  
 Sponsored by  
 WHITE'S CASHWAY