

THE GRAHAM LEADER

ESTABLISHED AUGUST 16th, 1876.

WITH MALICE TOWARD NONE; WITH CHARITY FOR ALL

OLDEST NEWSPAPER IN NORTHWEST TEXAS

VOLUME XLIV.

GRAHAM, TEXAS, THURSDAY, JANUARY 22, 1920.

NUMBER 22.

FOR COUNTY ATTORNEY

Floy V. Hinson this week announces his candidacy for the office of County Attorney of Young county. His announcement is subject to the action of the Democratic primary.

Floy Hinson was reared in this county and is one of our most promising young men. He is a brilliant young man, possessing energy to accomplish great things, and a record for making good at all undertakings that is indeed enviable. He entered the Graham schools in 1913 and in 1917 graduated from the high school with first honors. In the debating contest at Austin that year he was chosen to represent the Wichita District and acquitted himself in a manner that elicited favorable comment from the leading educators of the State. After graduating from the Graham high school, he entered the State University at Austin, and in June last year, he was admitted to the bar. For the past six or eight months he has been practicing law in Graham, with offices over the Graham National Bank. He is a deserving young man, fully qualified to discharge the duties of the office to which he aspires with credit to himself and his constituents, and we speak for him a fair consideration of his claims by the voters at the polls on election day.

AT CHRISTIAN CHURCH

Bible School at 10 a. m.
Communion at 11 a. m.
Preaching service at 11:15 a. m.
Junior C. E. at 3 p. m.
Senior C. E. at 6:15 p. m.
Preaching at 7:15 p. m.
Cardial welcome for all.

W. I. Gilmore, living out on the Inis Route, has been a regular reader of The Leader from the time it was founded, over forty-three years ago, and he appreciates its visits so much that he does not like to miss a copy. So when the paper failed to come out on time last week he came to the office and handed in his renewal for another year.

Dave Clarke is sick of tonsillitis.

PRESBYTERIAN AUXILIARY.

The Presbyterian Auxiliary greeted the New Year with a meeting of special interest at the home of Mrs. Charles Donnell. Thirteen were present. Mrs. C. B. Hockaday presided over the meeting and gave a very inspiring New Year's message to the Auxiliary. Mrs. R. A. Duncan read a greeting to the President from the Auxiliary. The devotional was led by Mrs. T. J. Price which was followed by a symposium in which Mrs. H. L. Morrison responded with "Evangelism;" Mrs. C. S. Wynns, "Church Erection;" Mrs. T. J. Price, "Mountain Missions;" Mrs. E. B. Garrett, "The West;" Mrs. Z. A. Hudson, "Colored Work;" Mrs. I. L. Cunningham, "Mission Schools;" Mrs. C. B. Hockaday, "Foreign Speaking." Mrs. Nat Price was elected secretary of Bible Study and Prayer Band. The organization contributed \$42.50 toward an auto bus for the Files Valley Presbyterian Orphanage.

The verse drill was held. A contest gave variety in which answers to leading questions denoted articles in "Grandmother's Kitchen." In the contest Mrs. H. L. and Mrs. A. A. Morrison and Mrs. R. G. Hallam succeeded and were presented little booklets entitled "Shall the Presbyterian Orphanage be moved from Files Alley?" New Year's resolutions were written on the folders and the contest which were read and the most clever was thought to be "I'll try to make my good better and my better best."

Press Secretary

Ford Automobile in excellent condition, for sale at a bargain.—J. R. SMITH, Graham. 21ptfc

Rev. T. M. Cunningham, pastor of the Presbyterian church at Throckmorton and the Presbyterian church at Eliasville, spent Monday and Tuesday in the city. He is an old printer and naturally likes to be about a print shop, so he spent a great deal of his time in the office while here and we learned to our entire satisfaction that he is not averse to labor.

WOMAN'S MISSIONARY SOCIETY

The Woman's Missionary Society of the Methodist church met Monday afternoon at the parsonage. The President, Mrs. T. E. Bowman, called the meeting to order and the prayer was led by Dr. Bowman. Mrs. Addie M. Graham read the third chapter of First Corinthians, after which Rev. Bowman gave a talk on the splendid work accomplished by the Society during 1919 and the need of a new church.

The business meeting then followed. Roll call was answered by verses from the 12th chapter of Romans. The minutes of the last meeting were read and approved.

A detailed report of the work for the year ending January 1st, was read by Mrs. E. S. Graham, after which the Society pledged itself to raise \$1,000.00 toward the building of a new church.

A short business meeting will be held next Monday afternoon at the parsonage, and all members are urged to be present.

The meeting was closed by prayer.

CIVIC LEAGUE NOTES

Every member of the Civic League is urged to be present at the next meeting which will be on Thursday, February 4, at 3 o'clock, at the court house. This is to be the annual meeting and will be a most important one.

Work is progressing on the park. Underbrush is being cleared away and the grounds prepared for putting out shrubbery and laying out the landscape in general. All members of the League are especially reminded that now is the time to pay your poll tax. Much important legislation will come up this year and it is important that women of Texas qualify themselves now in order that they may vote in the elections. Remember, January 31st is the last day to pay your poll tax. Do it today—not only for your own well being but in special consideration of the Federations of Women's Clubs who are making great efforts to line up the women of Texas.

HOME MUTUAL LIFE INSURANCE

The Young County Relief Association, of which W. M. Matthews is the secretary, has paid to relatives of deceased members since its organization eighteen years ago, \$68,074.00. The oldest member has not been out more than \$115.00, which is less than an average of ten dollars a year—the cheapest life insurance ever known—and, too, the members have had the satisfaction of seeing to whom their money is paid and the good it has done, in many instances having been paid to parties who are known by a majority of the members of the Association.

The Young County Relief Association is a mutual life insurance company in which the members pay one dollar each to the relatives of a deceased member. There are no salaried officers to pay, no rents to pay, no expenses of any kind with the exception of \$1.00 a year to the secretary, and every cent is paid out in death claims.

Every person should carry some insurance and the Young County Relief Association is the cheapest to be found.

HAVE YOU BEEN ENUMERATED?

The census enumerators in some instances are finishing up their work, and it behooves every individual who possesses civic pride in his city or community to be enumerated and to see that each of his friends and acquaintances are enumerated. It is not only a duty the individual owes his government to be enumerated, but the penalty is severe on all who willfully dodge or defy the official enumerators. If you have not been visited by a census enumerator let it be known at your very earliest convenience, and the United States will see to it that you are waited on.

W. P. STINSON,
Assistant Supervisor for Young County, Texas.

A. B. Casburn has just completed a modern nine-room bungalow for Cal Masey in College Heights.

LYDEN MAKING 1900 BARRELS MANY NEW LOCATIONS MADE

LOCAL OIL COMPANY BEING ORGANIZED

A company of local citizens is being formed in Graham to buy and develop forty acres of land in the Sarah Tankersley Survey in the southern part of Young county. The company is to be capitalized at \$60,000.00 to be used in paying for the lease and developing it. All moneys subscribed are to be paid into Graham banks, which are to act as trustees for the company. The money subscribed is not to be paid out for any purpose whatever until fifty per cent has been paid in, and then only upon check signed by the president and secretary, who are to be elected from among the subscribers. The \$60,000.00 is divided into 600 units of the value of \$100.00 each, and subscriptions of from \$100.00 up will be received until the total amount is subscribed.

The organizers of the new company are among our most successful business men and they are to be congratulated upon the selection of this choice piece of land in the heart of what now promises to be one of the very best oil fields in the country.

FOR COUNTY TREASURER

Mrs. Julia Baynes is a candidate for re-election to the office of County Treasurer of Young County, subject to the action of the Democratic primary.

Mrs. Baynes has served one term as County Treasurer and has proven herself capable of keeping the financial records of the county in a business like manner, neat and accurate, and has at all times been courteous and obliging. There have been no tangles in the books since she has had charge of them, and her record in the office has been such as to merit her candidacy the closest consideration by the voters.

She will appreciate any and all favors shown her.

The Lyden well of the Prairie Oil & Gas Co., in the vicinity of Eliasville, which came in three weeks ago with an initial flow of 650 barrels per day has increased to 1900 barrels, and as a result interest has turned to that part of the field. Many new locations have been made in that vicinity during the past week and it is now certain that all that section will undergo a vast amount of development as soon as weather conditions will permit.

The freight yards in Graham are again congested with oil-field supplies owing to the fact that the roads are in such a condition that it is impossible to carry heavy loads over them, but three new rigs with boilers and all equipments, were loaded out Monday and will be erected on some of the new locations at once.

The Lyden, Milam and Donnell No. 1 virtually extend the field to South Bend. This is every foot Graham territory. All supplies must come through this city, and as the new field develops the demands upon the town will increase. Our people realize this and every effort is being exerted to keep the town up to or ahead of the development. Many new business houses are to be erected at once, rent houses are being hurriedly built and rooming houses enlarged. Young county is no longer considered wildcat territory. Every well that has been sunk in the county has struck oil, but owing to the fact that facilities for caring for the product have not been obtainable until recently, the work of development has been slow. Now that the field has broadened to our very doors and that development is certain there can be no doubt of the greatest rush to this section in the spring that has ever attended the opening of a great oil field, and none of Graham's citizens can afford to lose one moment in preparing for it.

The Guaranty State Bank

Will Open For Business next Tuesday, January 27, 1920

We will open for business on Tuesday, January 27th, 1920 and cordially invite the public to call around to see us. We will very much appreciate an opening deposit, and a share of your banking business, promising good efficient service at all times. We are daily expecting our fixtures to arrive, but will open whether they come in or not. Will appreciate your business whether large or small.

This will be a GUARANTY FUND BANK—"The non-interest bearing and unsecured deposits of this Bank will be protected by the Depositors' Guaranty Fund of the State of Texas." No Depositor has ever LOST A DOLLAR deposited in a State Bank of Texas. Line up with the "NEW BABY" and Grow with us

The Guaranty State Bank

(The Bank of Personal Service)
Graham, Texas

Officers and Directors

ARTHUR MAULDIN, President

R. G. HALLAM, Vice President
Grain Dealer

J. WILEY MOORE, Vice President
Stockman and Farmer

L. B. WIGGINS, Assistant Cashier

MISS LINA PRICE, Assistant Cashier

J. J. GALLAHER,
Proprietor The Dolman House

W. M. MILLER,
Proprietor Graham Sanitary Market

GIRLS! DRAW A MOIST CLOTH THROUGH HAIR

Let "Danderine" save your hair and double its beauty



Oh, girls, such an abundance of thick, heavy, invigorated hair; a perfect mass of wavy, silky hair, gloriously fluffy, bright and so easy to manage.

Just moisten a cloth with a little "Danderine" and carefully draw it through your hair, taking one small strand at a time; this magically removes all dirt, excess oil and grease, but your hair is not left brittle, dry, stringy or faded, but charmingly soft, with glossy, golden gleams and tender lights.

"Danderine" is a tonic-beautifier. Besides doubling the beauty of the hair at once, it checks dandruff and stops falling hair. Get delightful Danderine for a few cents at any drug or toilet counter and use it as a dressing and invigorator as told on bottle.—Adv.

Not for Him.

"Here's just the thing for your new mansion," said the art dealer, "Daubigny's famous canvas, 'The Portrait of a Lady.'"

"How much is it worth?" asked the man who had recently grown rich in the oil fields.

"Only \$100,000."

"What! A hundred thousand bucks for the picture of a lady! Great Christopher, man! I don't even know her!"

BULLY!

If Bilious, Constipated or Headachy, take "Cascarets"

Feel grand! Clean up inside! Your system is filled with liver and bowel poison which keeps your skin sallow, your stomach upset, your head foggy and aching.

A stitch at nine may prevent a rip at ten.

Catarh Cannot Be Cured by LOCAL APPLICATIONS, as they cannot reach the seat of the disease. Catarh is a local disease, greatly influenced by constitutional conditions.

When the bubble bursts the get-rich-quick financier looks like an ordinary thief.

Ask for "HILL'S" FIVE MILLION PEOPLE USED IT LAST YEAR

CASCARA QUININE BROMIDE Standard cold remedy for 20 years—in tablet form—safe, sure, no opiates—breaks up a cold in 24 hours—relieves grip in 3 days.

BURNS This soothing, healing, penetrating remedy takes all the smarting pain out of burns, scalds, cuts, sprains, etc. and cures like a charm.

HUNT'S LIGHTNING OIL

CAPUDINE It's Liquid No Acetanilide Relieves Quickly GRIPP-ACHES BY DOSE AND IN BOTTLES—10¢, 30¢ & 60¢

GOOD PROFIT IS FOUND IN KELP

Besides the Commercial Potash Many Valuable By-Products Are Turned Out.

EXPERIMENTS ARE SUCCESS

Plant Established by Government in California Demonstrates Profit Can Be Made With Production on Commercial Basis.

Washington.—Kelp, apparently, is going to be a profitable source of potash, an important fertilizer ingredient that the United States formerly obtained almost wholly from Germany.

Among the by-products whose commercial obtainability has been established are iodine, common salt, ammonia, and bleaching carbon. This bleaching carbon, formerly imported from Europe and sold for 20 cents a pound, has been prepared and sold from the Summerland plant at 15 cents a pound and appears at present about able to pay the production cost of itself and the potash, with good reason to believe that it may ultimately be made to pay the operating cost of the entire enterprise.

The field broadens tremendously as progress is made," reports the chief of the bureau of soils.

Submarine "Valley" Found Off Mendocino

San Francisco.—The approximate location and shape of an uncharted submarine valley, which caused the wreck of the steamer Bear with the loss of five lives in 1910, has been reported by Captain Lukins of the surveying vessel Wenonah of the Coast and Geodetic Survey.

The unknown presence of this formation is blamed for the wreck of the steamer Bear, whose captain was deceived by soundings taken in its vicinity during a storm.

KERENSKY NOW IN 'BEANERY'

Former Russian Leader Said to Be Working in London Restaurant

New York.—Alexander F. Kerensky, successor to the czar as ruler of Russia, is now working in a "beef and beanery" in London, according to Gregory Zilboorg, who says he was Kerensky's secretary of labor and who spoke here last night at the intercollegiate socialist convention.

Bonds for Shelf Paper

Seattle, Wash.—How \$4,000 of Seattle Improvement bonds, bought by a son for an income for his mother, were used by her to paper pantry shelves, was disclosed when some of the mutilated bonds were brought to the office of City Treasurer E. L. Terry to see if they had any value.

"Brownies" Quit British Service

London.—The last group of "brownies" has just left the government service, causing general lamentation. These were young messenger girls who were taken on during the war and were called brownies because of their special brown dresses, which were supplied by authorities. It is said that they proved themselves much smarter and quicker than boys.

TO BRING BACK OUR DEAD FROM FRANCE



Six officers and sixty civilian employees have gone to Europe in connection with the bringing back to the United States of the bodies of our soldiers killed in France.

TAX YOU MUST PAY ON 1919 INCOME

This Schedule of Rates Is for an Individual Entitled to the \$2,000 Exemption—Heavy Penalties for Those Who Fail to File Returns.

Table with columns: Net Income, Rates per cent, Normal Tax, Surplus Tax, Total Tax, Pct. of Income, Decrease From 1918. The table lists tax rates for various income levels from \$2,000 to \$1,000,000.

The first \$4,000 of net income in excess of the exemption of \$2,000 is subject to a normal tax of only 4 per cent, but all net income in excess of \$4,000 is subject to a normal tax of 8 per cent.

Getting up into the range of higher salaries, take for example, an individual with a net income of \$20,532.80. The tax on an income of this amount comes between the tax on a net income of \$20,000 and \$20,000. Now, the schedule gives the tax on a net income of \$20,532.80 as being \$3,070.

For a single man (whose exemption is only \$1,000), whose salary ranges between \$2,000 and \$5,000, an addition of \$40 must be made to the total tax shown in the above table.

For each child under eighteen years a deduction of \$80 must be made from the total tax shown above for incomes ranging above \$2,000 and up to \$6,000.

Heavy penalties are imposed for those who fail to file their returns between January 1 and March 15. The full tax may be paid in full at the time of filing the return, or if it is desired to make the payments in four installments the first must be paid by March 15, the second by June 15, the third by September 15, and the fourth by December 15.

Every person whose income equaled or exceeded \$1,000 for single persons or \$2,000 for those who are married must file a return regardless of whether the income is large enough to require the payment of the tax.

I SALUTE "DODSON'S LIVER TONE"

Never Gripes or Sickens You Like Nasty Calomel. All Biliousness, Headache, Constipation Is Gone



You're bilious! Your liver is sluggish! You feel lazy, dizzy, your head is dull, your tongue coated, breath bad, stomach sour and bowels constipated. But don't take salivating Calomel. It makes you sick; you may lose a day.

Calomel is mercury which crashesto into your bile like dynamite, breaking it up. That's when you feel that awful nausea and cramping.

To enjoy the nicest, gentlest liver and bowel cleansing you ever experienced take a spoonful of harmless Dodson's Liver Tone tonight.

Live Salesmen & Brokers Wanted

The Big 1,000 Acre Oil Company has 1,000 acres seven miles south of the Kemp-Munger-Allen well. This stock is selling fast in Wichita Falls and we want a few good men to represent us out of the city.

Write or Wire for Order Books, Maps and Literature

HARWELL BROKERAGE CO. CENTRAL STOCK EXCHANGE WICHITA FALLS

Keep Milk Fresh. One of the wonders of the British Dairy association show, according to the London Daily News, was a Danish appliance for keeping milk fresh for two years or more.

GREEN'S AUGUST FLOWER. Constipation invites other troubles which come speedily unless quickly checked and overcome by Green's August Flower which is a gentle laxative, regulates digestion both in stomach and intestines, cleans and sweetens the stomach and alimentary canal, stimulates the liver to secrete the bile and impurities from the blood.

Where it Hurt. Ethel—Did you hear about the stunt that Jack pulled on Mabel?

Grace—No; what is it?

Ethel—He sold all her old love letters to the junk man for old paper.

Grace—Oh, there's nothing to that. Ethel—No, but with the money he got he bought an engagement ring for another girl.

To insure glistening-white table linens, use Red Cross Ball Blue in your laundry. It never disappoints. At all good grocers, 5c.

The Thing That Counts. A girl doesn't mind her rival's being exceedingly clever if she is also, consolingly ugly.

Sore Eyes, Blood-Shot Eyes, Watery Eyes, Sticky Eyes, all healed promptly with nightly applications of Roman Eye Balsam. Adv.

Idle Boast. "When I put my foot down once, it stayed there." "Did you ever put it down on an unexpected tack?"

Don't hide your light under a bushel. Use the bushel to cover your faults—if it is big enough.

Ask for Overalls and Coveralls made of Stifel Indigo Cloth. It's the brawny, "muscular" material that is made into color-fast, wear-ever work clothes.

Stifel's Indigo Cloth Standard for Over 25 Years

Ask for Overalls and Coveralls made of Stifel Indigo Cloth. It's the brawny, "muscular" material that is made into color-fast, wear-ever work clothes.

Stifel's Indigo Cloth Standard for Over 25 Years

Ask for Overalls and Coveralls made of Stifel Indigo Cloth. It's the brawny, "muscular" material that is made into color-fast, wear-ever work clothes.

Stifel's Indigo Cloth Standard for Over 25 Years

Ask for Overalls and Coveralls made of Stifel Indigo Cloth. It's the brawny, "muscular" material that is made into color-fast, wear-ever work clothes.

Stifel's Indigo Cloth Standard for Over 25 Years

Ask for Overalls and Coveralls made of Stifel Indigo Cloth. It's the brawny, "muscular" material that is made into color-fast, wear-ever work clothes.

Stifel's Indigo Cloth Standard for Over 25 Years

THE LEADER

Published Every Thursday by
The Graham Leader Company

Entered at the Post Office at Graham, Texas, as second-class mail matter.

Subscription Rates:
One Year \$1.50
Three Months50

Advertising Rates:
Display, per inch 25c
One-half to one page, per inch 20c
Reading notices, per line 10c
Four Weeks is a Newspaper Month
Obituaries, cards of thanks and resolutions of respect will be charged for at the regular rate.

NOTICE—Any erroneous reflection upon the character, standing or reputation of any person, firm, or corporation which may appear in the columns of The Leader will be gladly corrected upon its being brought to the attention of the publishers.

ANNOUNCEMENTS

For Representative 99th District:

HERMAN T. McBRAYER

For Public Weigher, Pre. No. 1:

GEORGE BLACK.

For Sheriff:

JOHN W. SAYE.

For District Clerk:

WILLIE RIGGS.

For Justice of the Peace, Pre. No. 1:

C. D. BREWTON.

The ballot is the very handmaiden of liberty and, woe unto the people who neglect to use it, for when the ballot ceases to function corruption and tyranny become enthroned.—George Bailey in the Houston Post.

V. M. Hale, who owns a nice little farm near South Bend, was in to see us yesterday, and to renew for The Leader for himself and his son, P. V. Hale, at Rotan, Texas. He said a new location had been made on the J. J. Scott place, three hundred yards from the Hale house, and a star rig is being erected there. Everything will soon be ready for work and drilling. Mr. Hale said, would likely start during next week. In speaking of the roads, Mr. Hale said he was of the opinion that the hauling of heavy oil machinery would be a very difficult task within the next few days if weather conditions do not improve. Enroute to town he met parties with heavy boilers and he believed they would be unable to reach the fields owing to the bad road conditions.

Texas faces many serious problems this year that can be settled only at the ballot box. Shall the schools be allowed to go to ruin, shall childhood be protected from the blight of industrial exploitation, shall the payment of the cost of the War be shifted off of the rich upon the backs of the poor by unjust laws, shall the homeless be helped to secure homes, shall booze and vice again be legalized, and in general shall all the progressive measures of the past few years be nullified? The women of the State turned the tide and redeemed the State two years ago. Every call of duty and loyalty demands now that they prepare to protect the measures that they advocated and defend the men who listened to their pleas in 1917. The women of Texas are not quitters. They will pay their poll taxes and be prepared to fight for good government again.

E. S. Cusenbary, father of our efficient County Tax Collector, D. D. Cusenbary, was in the city on business last Friday and in conversation with The Leader man he remarked that if Young county needs any one thing more than another it is better roads. He lives out at Murray, in the western part of the county, and for the past three weeks the roads have been in such a condition that farmers were unable to travel them. There is only one way to remedy this condition, Brother Cusenbary—the bond way. Young county must sooner or later follow the example set by our neighbors in Stephens county and vote bonds sufficient to build and maintain good hard surfaced roads. There can be no better time to consider this than the present, when the oil development is in its infancy, and money is so easily obtained. Young county cannot afford to go longer without good roads.

Your neighbor will mind the baby long enough for you to go to the court house and pay that poll tax. Armed with your tax receipt you can help elect the next president; without it you cannot vote for dog catcher.

CITATION IN PROBATE

On Order to Appoint Permanent Guardian

THE STATE OF TEXAS

To the Sheriff or any Constable of Young County—Greeting:
YOU ARE HEREBY COMMANDED to cause the following citation to be published in a newspaper of general circulation which has been continuously and regularly published for a period of not less than one year preceding the date of the citation in the County of Young, State of Texas, and you shall cause said citation to be printed at least once each week for the period of ten days exclusive of the first day of publication before the return day hereof:

CITATION IN PROBATE

The State of Texas.
To all persons interested in the welfare of Lucy Mayes, Cora Mayes, Adele Mayes and Norris Mayes, Minors:

On the 6th day of January A. D. 1920, the Honorable W. P. Stinson, County Judge of Young County, Texas, made an order appointing Henry Mayes temporary guardian of the person and estate of the above named minors, which said order is now recorded in the Probate minutes of said Court, said minors having an estate of the probable value of \$4200.00, consisting of real and personal property.

All persons interested in the welfare of Lucy Mayes, Cora Mayes, Adele Mayes and Norris Mayes, Minors, are hereby cited to appear before the County Court of Young County, Texas, at the Court House in the City of Graham, Texas, on the 5th day of April, A. D. 1920, the same being at a regular term of said Court, then and there to contest such appointment if they so desire, and that if such appointment is not contested at such term, then the same shall become permanent.

Here Fail Not, But have you before said Court on the first day of the next term thereof, this Writ, with your return thereon, showing how you have executed the same.

Witness my hand and official seal, at Graham, Texas, this 6th (L.S.) day of January, 1920.

21-3c C. W. HINSON,
Clerk County Court, Young County, Texas.

I hereby certify that the above and foregoing is a true and correct copy of the original Writ now in my hands.
M. M. WALLACE, Sheriff.

CITATION BY PUBLICATION

THE STATE OF TEXAS

To the Sheriff or any Constable of Young County—Greeting:

YOU ARE HEREBY COMMANDED to summon J. B. Merchant, who is a non-resident of the State of Texas, and whose residence is believed to be in the State of Arkansas, by making publication of this Citation once in each week for four consecutive weeks previous to the return day hereof, in some newspaper published in your County, if there be a newspaper published therein, but if not, then in any newspaper published in the 29th Judicial District; but if there be no newspaper published in said Judicial District, then in a newspaper published in the nearest District to said 30th Judicial District, to appear at the regular term of the Justice Court of Precinct No. 1, Young County, to be held at the Court House thereof, in Graham, Texas, on the last Monday in February A. D. 1920, the 23rd day of February, 1920 A. D. 1920, then and there to answer a petition filed in said Court on the 9th day of January, A. D. 1920, in a suit, numbered on the docket of said Court No. 1725, wherein J. W. Carlton is Plaintiff, and J. B. Merchant, a non-resident of the State of Texas, and whose residence is believed to be in the State of Arkansas, is Defendant, and said petition alleging that said J. B. Merchant is indebted to the Plaintiff, J. W. Carlton, in the sum One Hundred Thirty Nine and 80-100 and interest thereon at the rate of ten per cent from Feb. 15, 1919, for money had and received, and praying for judgment for debt of Plaintiff, together with interest thereon, and all costs of suit.

Herein Fail Not, but have you before said Court, at its aforesaid regular term, this writ, with your return thereon, showing how you have executed the same.

Given under my hand and the seal of said Court, at office in (L.S.) Graham, Texas, this the 9th day of January, A. D. 1920.

21-4c C. D. BREWTON,
Justice of the Peace, Prec. No. 1, Young Co., Texas.

Notice to Debtors and Creditors

The State of Texas
County of Young.
To those holding claims against the Estate of Frank H. Goudy, deceased, No. 724.

The undersigned having been duly appointed temporary administrator of the Estate of Frank H. Goudy, deceased, late of Young County, Texas, by W. P. Stinson, Judge of the County Court of said County, on the 30th day of December, A. D. 1919, during a regular term thereof, hereby notifies all persons indebted to said Estate to come forward and make settlement, and those having claims against said Estate to present them to him within the time prescribed by law at his residence at Eliasville, Young County, Texas, where he receives his mail, This the 30th day of December A. D. 1919. P. O. Eliasville, Texas.

20-23c E. L. GOUDY,
Temporary Administrator of the Estate of Frank H. Goudy, deceased.

Douglas Largen, assistant state health officer, has been sent to Muskogee, Oklahoma, and other nearby points to make an investigation of the new disease which is reported to be assuming proportions of an epidemic. The step is being taken in order that the Texas board of health may take such steps as are necessary to prevent the spread of the disease into the State.

Notice!

Graham, Texas, January 20, 1920.

We, the undersigned, being desirous of forming a company for the purpose of buying and developing a certain tract of land, containing forty (40) acres in the Sarah Tankersley Survey, southern part of Young County, Texas, and having an aversion for the usual stock company and the evils pertaining to the formation and promotion of same, and knowing the antipathy of the general public for companies of this character, hereby agree to form a closed Company with a capital of Sixty Thousand (\$60,000.00) Dollars for the purpose of paying for lease and developing same.

No promotion stock will be issued, but each subscriber hereto has an undivided interest equaling his pro-rata share of the Sixty Thousand Dollars subscribed, in the lease on said land and all production or income that may be derived from any and all sources by the Company.

All moneys subscribed shall be paid into the Graham National Bank or the Guaranty State Bank, of Graham, Texas, which Banks shall act as Trustees for the Company, and not to be paid out for any purpose whatever until at least 50% of the \$60,000.00 has been paid in, then only upon check signed by the President and countersigned by the Secretary of the Company.

The officers, being President, Vice President, Secretary and Treasurer, to be elected from among the subscribers hereto, will transact all business for and in the name of the Company.

Sixty Thousand Dollars compared with the capital of the usual Stock Company is a small amount, but in this instance there being no promotion stock, no excessive commissions on stock sales, no extravagant officers' salaries nor sumptuous offices to maintain, is sufficient to pay for the acreage and to drill one well complete, purchase tankage and necessary pipe lines.

With reference to acreage owned by the Company, the forty acres described lies three-quarters of a mile North and West of the Roxana Donnell Well in Survey No. 1111, which is reported as making 100 barrels daily, at a depth of 1877 feet. It is demonstrated that this sand does not extend to the South, as the same company's McCharen Well three-quarters of mile South and West, missed this sand at the same depth; also the Goode Well missed this sand to the North and East. Consequently the trend of of this formation is to the North and West. We have the chance to get oil at 1870 feet; also another sand at approximately 2200 feet. Every geologist that has worked over this territory speaks highly of this land for shallow production. We are also in the same formation as the J. W. Hill Well, of the Mid-Kansas to the South, which is making about 500 barrels of oil daily; the Richard P. Lydon Well of the Prairie Oil & Gas Co., producing 2000 barrels; and the Mid-Kansas Milam Well, also a good producer. We have five proven, productive sands underlying our lease. HOW CAN WE MISS GETTING A GOOD WELL?

It is unnecessary to dwell at length upon the profits to be derived from one well, be it only a 100 barrel well, such as the Donnell Well above mentioned, and there is room on forty acres for several wells. Should we secure production on this acreage our investment is returned many times.

The opportunity is presented you to become associated with men whose only object in the formation of this Company is the production of oil. The business of the Company will be conducted by men of the highest business ability and integrity, along clean, efficient business methods and at a minimum of expense.

The \$60,000.00 is divided into 600 units of the value \$100.00 each. Subscriptions of from \$100.00 up will be received until the total amount is subscribed. \$500.00 or \$1000.00 invested with us will mean from \$50,000.00 to \$100,000.00 to you in the event production is secured.

For personal interview and for further information see any man whose name is subscribed hereto. Practically half the total amount is subscribed; we expect to put the rig a standard derrick, on the location within the next week. A contractor is ready to move his tools to location within two days, so there is but little time to get your subscription in.

Subscription blank is attached. Kindly fill out blank, attach draft for amount of units you want payable to Graham National Bank or Guaranty State Bank, Trustee, and mail to Graham, Texas.

Respectfully,

CHAS. GAY,
President Graham National Bank
D. E. STIMSON, Investments
M. A. WITHERS,
Rig Building Contractor
J. L. WOODS,
Jeweler and Confectioner
H. W. DYER, Contractor
J. F. SMITH, Leases and Royalties
KUHNS & IRVINE, Drilling Contracts
JOE JOHNSON, Farmer

ARTHUR MAULDIN,
President Guaranty State Bank
J. J. GALLAHER,
Hotel Man and Banker
A. L. BARNES, Practical Oil Man
M. E. WHITE, Contractors and
H. E. LAUGHLIN, Service Trucks
J. N. SHELTON,
Mgr. Southwestern Tel. Co.
A. G. WALKER, Contractor

APPLICATION BLANK

I hereby subscribe for _____ Units at \$100.00 each of the Company being formed to develop forty acres of the Sarah Tankersley Survey, in southern part of Young County, Texas. Check or Draft, payable to the Graham National Bank, Trustee, or the Guaranty State Bank, Trustee, Graham Texas, attached hereto. It is understood that no part of this money is to be expended for any purpose until at least 50% of the \$60,000 is paid in.

(rel)

A Hint to the Wise is Sufficient

Its no secret that Graham is on a Wonderful Boom. Furthermore, we know that it has progressed more in the last year than any five years put together. We recognize the fact and now assure you that we are going to keep pace. Watch our store grow and perfect itself in every department. Cost what it may, we are going to give our former and future patrons the service in a mercantile way that a town of this size demands. Again we say **WATCH US GROW,**

HAVE YOU A NEW HOME?

If you have, we want to help you make it attractive and inviting for yourself and your visitors. To do this we have bought for you a lovely line of **COLOR-CRAFT DRAPERIES**—in all colors—Old Rose, Rich Browns, Wreath Designs and Wonderful Weaves. To match these draperies we also carry the **MARQUISSETTE**—in the Ecru, Old Ivory and Plain White.

R. F. SHORT & COMPANY

A Complete Shipment of

—**FOOT REST**
—**HOSIERY**

We call your attention to the line of Silk Hosiery for both Women and Men. You will find sheer fineness and quality for the lowest of values.



E. J. BUMSTED & CO.

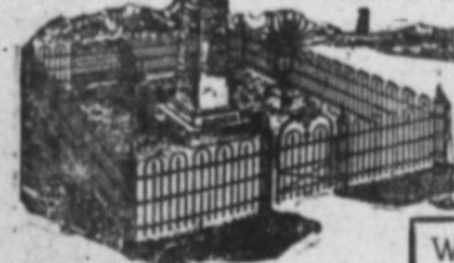
Graham City Property Exclusively

Shawnee Park Addition
College Heights Addition



No Matter for What Purpose You Want Iron Fence We Can Supply Your Wants

For Residences, Divisions on Property Lines, Cemeteries, Private Burying Grounds, Cemetery Lot Enclosures, Church and School Property, Court Houses and Jails



Beautify and Protect the Cemetery Lot

WE are direct factory representative in this section for The Stewart Iron Works Co., "The World's Greatest Iron Fence Works." Their immense output enables them to figure on a small manufacturing profit, thereby giving us advantage of the lowest prices, which puts us in a position to quote low prices to the property owners.

W. E. BAKER, Agent
GRAHAM, TEXAS

ARE YOU SATISFIED

—with common place Wall Paper, or have you secretly envied the more artistic decorations of your neighbors and friends—



If so, you probably would be surprised if we told you that some of the very papers you admired were purchased from us and the price—but that would be telling.

Better Come in and See for Yourself

CAN YOU BEAT IT?

James B. Lusk, General Contractor

Both Phones 51

No. 624. Official Statement of the Financial Condition OF THE

LOVING STATE BANK,

At Loving, State of Texas, at the close of business on the 31st day of Dec. 1919, published in the Graham Leader, a newspaper printed and published at Graham, State of Texas, on the 15th day of Jan., 1920.

RESOURCES.	
Loans and Discounts, personal or collateral,.....	\$90,133.00
Loans, real estate,.....
Overdrafts,.....	326.92
Bonds and W. S. Stamps,.....	8,529.50
Real Estate (banking house),.....	2,000.00
Furniture and Fixtures,.....	1,723.00
Due from Approved Reserve Agents, net,.....	87,001.39
Cash Items,.....	247.54
Currency,.....	5,935.00
Specie,.....	2,311.30
Interest and Assessment in Depositor's Guaranty Fund,.....	795.11
Acceptances and Bill of Exchange,.....	1,146.07
Other Resources, Collections	199.83
Total,.....	\$206,348.66
LIABILITIES.	
Capital Stock paid in,.....	\$12,500.00
Surplus Fund,.....	2,030.00
Undivided Profits, net,.....	7,026.25
Individual Deposits, subject to check,.....	184,812.41
Total,.....	\$206,348.66

STATE OF TEXAS, County of Young. We, M. H. Steadham, as vice-president, and D. F. Ford, as cashier of said bank, each of us, do solemnly swear that the above statement is true to the best of our knowledge and belief.

M. H. STEADHAM, Vice Pres.
D. F. FORD, Cashier.
Subscribed and sworn to before me, this 10th day of Jan., A. D. 1920.
W. H. BAKER,
Notary Public Young Co. Texas.
Correct—Attest: H. G. MILLICAN
W. W. GREGG,
W. A. SHOWN,
Directors.

SHOW GUARANTEES THEIR PERFORMANCE

Manager Rhea of the Graham Opera House has secured the famous Dubinsky Bros. Stock Co. for the week of January 26th. This company is playing 3 one-week stands between El Paso and Tulsa. The company numbers eleven people, each one an artist in his or her line.

This show has played for ten weeks at the Crawford Theatre, El Paso. All of their plays are new and not old plays under new names. They give a guarantee that you must be pleased beyond a shadow of a doubt or your money will be refunded cheerfully.

The opening play Monday, "Which One Would You Marry?" is the late

Chicago success and is one of the greatest comedy dramas to be produced in recent years. Reserve seats will be on sale at Harmon Bros. Saturday.

A special feature with this Company is real vaudeville between acts. Most stock companies think a vaudeville act is an actor singing. Dubinsky Bros. give you real big time vaudeville between each act. Two separate vaudeville acts between each act.

If you like good, clean wholesome, amusements, be there Monday night and if every promise is not fulfilled your money will be refunded.—Adv.

Attention, Confederate Veterans
Owing to the inclemency of the weather, the members of Fitzhugh Chapter U. D. C. have decided it best to postpone the celebration of Gen. R. E. Lee's birthday from January 19th, until Monday, February 2, 1920.
MISS LINNIE HERRON, Pres.

FOR SALE—Stalk Cutter, practically new, about half price.—J. M. ATCHESON, Farmer Route. 21-2p

LOST—ON Graham-Loving road Jan. 17th, between Graham and Flint Creek lane, a new, large plaid Mackinaw. Finder please leave at Leader Office and greatly oblige—Loser.

Auto Shawls, the warmest kind, at PRICE BROS. 21-2c

MODERN BUNGALOW FOR SALE—Six rooms and bath; second story unfinished, fine location. Phone E. E. WHITE. 21-3p

LOST—A pair of spectacles in new case. Supposed to have been left on counter of some store in Graham. Please leave at Leader Office.

The Graham band will appear in a home talent at the opera house in the near future.

Hear Dr. H. E. Beckler on Stewardship February 6-7-8.

Several new boilers and engines were loaded out from the freight yards here the first of the week for the oil fields in the vicinity of South Bend and Ivan.

Frostproof Cabbage Plants for Sale
lect, \$2.00 per 1000. Ask price large quantity, all varieties.

Cabbage Plants, postpaid, \$2.00 per 1000. Cabbage Plants, express col- GEORGIA-TEXAS PLANT CO. 21-4p. Dallas, Texas.

Barley for sale. Guaranteed free from Johnson grass, \$1.25 per u.—T. D. McAfee. 20-22p

FOR SALE—Rooming house, eighteen rooms fully furnished; located near business center of Abilene. Have one year lease on building. Apply at 170 1-2 Chestnut street Abilene, Texas. 20-22p

See those Ford Cushions at PRICE BROS. 21-2c.

See those Ford Cushions at PRICE BROS. 21-2c.

DEPUTY TAX ASSESSOR
Edgar Steele will serve as deputy tax assessor during my absence from office. 21-4p. L. H. HARRIS,

GRAHAM OPERA HOUSE

ONE WEEK Starting Monday Jan. 26

DUBINSKY BROS., STOCK COMPANY

(The Daddy of Them All)

Presenting for the first time in Graham the following well known plays:—

Confessions of a War Bride
Mother of Mine Playthings
Binging up Father The Brat

4 HIGH CLASS VAUDEVILLE ACTS EVERY NIGHT 4

This Company comes direct from a ten week engagement at the Crawford Theatre at El Paso, and opens February 10 at Convention Hall, Tulsa, Okla., for an indefinite engagement. THIS SHOW IS GUARANTEED—Your Money's Worth or Your Money Back.

Opening Play Monday Night—Which One Would You Marry—a great 3-act Comedy Drama.

Reserved Seats on Sale Saturday at Harmon Bros
Prices 50 cents and 75 cents

Be There Monday Night, Sure!

FROM THE BOLT

In our Dress Goods department you can get many ideas for that early Spring dress. We have just received some beautiful Spring patterns in Foulards and Georgettes

Beautiful, Fancy Early Spring Patterns in 36 inch Foulards—

\$3.50 to \$6.50 the yd.

Fancy printed Georgettes will be worn this Spring Good variety of colors and patterns—

\$4.50 the yard



And remember, that every yard of goods that goes over our counters is measured by means of the "Measuregraph." This insures you of correct measurements and calculations

RAINCOATS

The Provident Man provides against Life's "Rainy Day." Next to a Bank Account we know of nothing that can give such "Rainy Day" satisfaction as one of our Raincoats.

We have a very Complete Line for Men, Women and Children.

Men's Fancy Belted Coats in Khaki and Cravenet colors, attractively priced from—

\$12.50 to \$25.00

Ladies' Raincoats in various Qualities Styles and Colors—\$12.50 and \$17.00

Children's "Slip On" Coats as low as 4.50

REMNANTS

To make room for our new stock of bolt goods, we have placed all short lengths on our Remnant Counter. Here you will find excellent patterns in Silks and Gingham at surprisingly low figures

SHOES

Due to our shortage of shelf room we are having to make some unusual sacrifices in Ladies' Shoes. We have a large stock coming, and in order to take care of them are offering—

Values that are worth in todays market from \$3.50 to \$6.00—
For only \$2.95

Shoes that are unusual values in todays market from \$6.00 to \$10.00—For only \$3.95

This is an opportunity that's not likely to come your way again—Come in and let us fit you in these extraordinary values



GRAHAM OLNEY

The John E. Morrison Company

NEWCASTLE LOVING

PERFECT HEALTH

WE WILL HELP YOU KEEP FIT

—TRY THE NEW DRUG STORE—
—THEY MAY HAVE IT—

First Door West of Graham National Bank

ACCURACY SERVICE COURTESY

L. M. Davis Drug Co.

PRESCRIPTION DRUGGISTS

GRAHAM, TEXAS

CITATION BY PUBLICATION
THE STATE OF TEXAS
To the Sheriff or any Constable of Young County—Greeting:
YOU ARE HEREBY COMMANDED to summon William M. Dobbs and his unknown heirs, Eliza A. Dobbs and her unknown heirs, George B. Dobbs and his unknown heirs, James C. Loving and his unknown heirs, J. O. Mundell and his unknown heirs, Cyrus A. Mundell and his unknown heirs, Emma Doss and her unknown heirs, Esther E. Smith and her unknown heirs, William Seldon and his unknown heirs, Joseph Ferguson and his unknown heirs whose residences are unknown to Plaintiff by making publication of this Citation once in each week for four consecutive weeks previous to the return day hereof, in some newspaper published in your County, to appear at the Court House thereof, in the County of Young County, to be held at the Court House thereof, in Graham, Texas, on the 1st Monday in March A. D. 1920, the same being the 1st day of March, A. D. 1920, and there to answer a petition filed in said Court on the 2nd day of January A. D. 1920, in a suit numbered on the docket of said Court as No. 6967, wherein Mrs. Mary Baldwin, a feme sole, A. H. Baldwin, E. L. Baldwin, C. P. Baldwin, R. L. Baldwin, Mattie Jane Matthews, Virgil Matthews, W. L. Baldwin, R. Y. Baldwin, Alice Atchison, C. L. Atchison, Lena Hill, John Hill, Marion M. Baldwin, W. H. Baldwin, Anna Cartwright, a feme sole, Hattie Baldwin, Willie Baldwin, De Witt Baldwin, Alvin Baldwin, Thurman Baldwin, Fred Baldwin, by their next friend and guardian, Eliza Lee

and Eliza Lee for herself, and Cora Maitzen, H. C. Maitzen are Plaintiffs, and William M. Dobbs and his unknown heirs, Eliza A. Dobbs and her unknown heirs, George B. Dobbs and his unknown heirs, James C. Loving and his unknown heirs, J. O. Mundell and his unknown heirs, Cyrus A. Mundell and his unknown heirs, Emma Doss and her unknown heirs, Esther E. Smith and her unknown heirs, William Seldon and his unknown heirs, Joseph Ferguson and his unknown heirs are Defendants, and said petition alleging trespass to try title and damages on the following described land premises, situated in Young County, Texas, holding and claiming the same in fee simple, to-wit: Land in Young County, Texas, and being 206 acres of land out of T. E. & L. Co. Sur. No. 1019, Abet. No. 825, Patent No. 1052, Vol. No. 14 and being the same land conveyed to F. M. Baldwin by J. M. Kirby and wife on the 7th day of June A. D. 1884, and the said deed is recorded in Vol. 18, page 76 of the Deed Records of Young County, Texas, and the record thereof is hereby made, for a complete description of said land. That the Plaintiffs have had and held the above described land and premises in peaceable, adverse, continuous, open, and hostile possession, cultivating, using and enjoying the same for a period of more than ten years and ever since the Statute of ten years limitation: That Defendants be cited to appear and answer this petition and that Plaintiffs have judgment for the title and possession of the above described land and premises, with costs of suit.
Herein Fail Not, but have you before said Court, at its aforesaid next

regular term, this writ, with your return thereon, showing how you have executed the same.
Witness Willie Riggs, Clerk of the District Court of Young County.
Given under my hand and the seal of said Court, at office in Graham, Texas, this 5th day of January, A. D. 1920.
20-23c. WILLIE RIGGS,
Clerk District Court, Young County, Texas.

CITATION BY PUBLICATION
THE STATE OF TEXAS
To the Sheriff or any Constable of Young County—Greeting:
YOU ARE HEREBY COMMANDED to summon Benjamin Hill, Sr., B. J. Hill, Ben. Hill, Jr., Jas. M. Bouldin, Mary Hill Lee A. Hill, Wm. J. Hill, J. M. Hill, M. P. Hill, Bershoba Hill, Riley B. Roberts, Jas. G. Hill, Albert Sidney Hill, Jas. W. Hill, Isaac L. Rhea, Henry Rhea, Isham Perry, Matilda Perry, M. L. Lafferty, W. E. Kaye, C. P. Benson, F. L. Thomas, Mrs. M. E. Marshall, and her husband Marshall, and the unknown heirs of Benjamin Hill, Sr., B. J. Hill, Ben. Hill, Jr., Jas. M. Bouldin, Mary Hill Lee A. Hill, Wm. J. Hill, J. M. Hill, M. P. Hill, Bershoba Hill, Riley B. Roberts, Jas. G. Hill, Albert Sidney Hill, Jas. W. Hill, Isaac L. Rhea, Henry Rhea, Isham Perry, Matilda Perry, M. L. Lafferty, W. E. Kaye, C. P. Benson, F. L. Thomas, Mrs. M. E. Marshall, and her husband Marshall, whose residences are unknown to Plaintiff by making publication of this Citation once in each week for four consecutive weeks previous to the return day hereof, in some newspaper published in your County, to appear at the next regular term of the District Court of Young County, to be held at the Court House thereof, in Graham, Texas, on the 1st Monday in March A. D. 1920, the same being the 1st day of March, A. D. 1920, and there to answer a petition filed in said Court on the 17th day of December, 1919, in a suit, numbered on the docket of said Court No. 6963, wherein S. J. Allen is Plaintiff and Benjamin Hill, Sr., B. J. Hill, Ben. Hill, Jr., Jas. M. Bouldin, Mary Hill Lee A. Hill, Wm. J. Hill, J. M. Hill, M. P. Hill, Bershoba Hill, Riley B. Roberts, Jas. G. Hill, Albert Sidney Hill, Jas. W. Hill, Isaac L. Rhea, Henry Rhea, Isham Perry, Matilda Perry, M. L. Lafferty, W. E. Kaye, C. P. Benson, F. L. Thomas, Mrs. M. E. Marshall, and her husband Marshall, and the unknown heirs of Benjamin Hill, Sr., B. J. Hill, Ben. Hill, Jr., Jas. M. Bouldin, Mary Hill Lee A. Hill, Wm. J. Hill, J. M. Hill, M. P. Hill, Bershoba Hill, Riley B. Roberts, Jas. G. Hill, Albert Sidney Hill, Jas. W. Hill, Isaac L. Rhea, Henry Rhea, Isham Perry, Matilda Perry, M. L. Lafferty, W. E. Kaye, C. P. Benson, F. L. Thomas, Mrs. M. E. Marshall, and her husband Marshall, are Defendants, and said petition alleging suit in trespass to try title and damages on the following described property in Young County, Texas, to-wit: Lots Five (5) and Six (6), Seven (7), and Eight (8) in Block No. 107, of the Town of Graham, in Young County, Texas. That Plaintiff and those under whom he

claims title to said land have had and held actual, open, adverse, notorious and undisputed, possession of said premises, holding the same under fence paying all taxes due thereon for a period of more than ten years next before the date hereof, using, cultivating and enjoying the same. That Defendants and each of them be cited to appear and answer herein, and that on a final trial hereof, Plaintiff have judgment for the restitution of said land, for his damages, costs of suit, etc.
Herein Fail Not, but have you before said Court, at its aforesaid next regular term, this writ, with your return thereon, showing how you have executed the same.
Witness Willie Riggs, Clerk of the District Court of Young County.
Given under my hand and the seal of said Court, at office in Graham, Texas, this 1st day of January A. D. 1920.
20-23c. WILLIE RIGGS,
Clerk District Court, Young County, Texas.

SHERIFF'S NOTICE OF ELECTION
THE STATE OF TEXAS
County of Young
Notice is hereby given that an election will be held on the 2nd day of April, 1920, at School House in Common School District No. 41 of this County as established by order of Board of County School Trustees of this County, of date the 2nd day of June, 1916, which is recorded in Book 1, page 324 of the minutes of the School District Boundary Board to determine whether a majority of the legally qualified property taxpaying voters of that district desire to tax themselves for the purpose of supplementing the State School Fund apportioned to said district, and to determine whether the Commissioners' Court of this County shall be authorized to levy, assess and collect annually a tax of and at the rate of an increase of 15 cents on the \$100.00 valuation of taxable property in said district for said purpose.
All persons who are legally qualified voters of this State and County and who are resident taxpayers in said district shall be entitled to vote at said election.
Said election was ordered by the County Judge of this County by order made on the 20th day of January, 1920, and this notice is given in pursuance of said order.
Dated the 20 day of January, 1920.
M. M. WALLACE,
Sheriff, Young County, Texas.

R. J. Johnson was here from Newcastle last Saturday.
R. M. Davis has moved here with his family from Ivan. They will make Graham their home.
TO LEASE—120 acres of good land.—Call Leader office. 22-3
Mrs. E. H. Casburn spent last Saturday with relatives at Eliasville.
Mr. and Mrs. Ellis who have been managing the Walker House for some time have returned to this farm and R. R. Hibbles has taken charge of the house.

HOLSTEINS FOR SALE
I will sell at my farm, south of Graham, on Saturday, January 31, twenty-five or thirty head of pure Holstein cattle.
C. E. HOLLAND.

Rev. J. E. Evans returned last Saturday night from a visit to Odessa, Texas. He says there is no oil excitement out there.
J. F. Barnett, one of Newcastle's leading citizens, was in the city on business Tuesday and paid our sanction a pleasant call.
J. W. Crabtree was here from South Bend Monday and handed us his renewal to The Leader and Dallas News.

J. L. Woolfolk, one of the early settlers in Young county, was here from Newcastle last Saturday and took advantage of our clubbing offer with the Dallas News.
A. L. Owan, a resident of the Bunker community, was in to see us on business last Saturday. He is quite confident oil exists under the soil in his section and will some day in the near future be brought to the surface.
J. M. Hubbard, editor and proprietor of the Newcastle Register paid our office a fraternal call last Saturday. Jim is a good wholesome fellow and we are always glad to see him.
M. P. Wilson last Saturday sold the Golden Rule Garage to F. McDonald who has taken charge of the business. Mr. Wilson has accepted a position in the oil fields.

FOR SALE
New six-room Airplane House with bath and wired for lights. Also new four-room house. Vaughan-Stone Addition, east of square.
BECCRAFT BROS.

Mrs. J. W. Timmons, of Havre, Montana, is at the bedside of her son, Edward, at the home of Mrs. Bettie Medlan. Ed was seriously injured in California by a horse and was brought here recently by his sister, Miss Julia Monas.

GRAHAM COAL CO.
—handling—
BRIDGEPORT
COAL
Place your orders NOW for future delivery. Both Phones 51

PROFESSIONAL CARDS

JOHNSON & JOHNSON
LAWYERS
West Side of Square
GRAHAM - - - TEXAS

ARNOLD & ARNOLD
ATTORNEYS-AT-LAW
Will practice in all State and Federal Courts, loan money upon lands, buy and sell vendor's lien notes, etc. Have complete abstracts of titles and can furnish same on short notice.

L. A. KAYSER
ATTORNEY-AT-LAW
Land Law a Specialty
Hinson Building, Graham, Texas.

FLOY V. HINSON
ATTORNEY AT LAW
Real Estate, Federal Loans at 5 1/2%
Office over Davis Drug Co.

G. DRUMMOND HUNT
ATTORNEY AND COUNSELOR
AT LAW
American Exchange Bank Building
DALLAS - - - TEXAS

DR. W. A. MORRIS
DENTIST
Office over Graham National Bank
GRAHAM - - - TEXAS

J. L. WOODS
OPTICAL SPECIALIST
All refractive defects corrected
No Drugs
We Use the Improved Electric Test Chart.

F. G. BOURLAND
BUILDER AND CONTRACTOR
I can save you some money if you will see me before building.

If you want a house built call on
B. B. GARRETT
CONTRACTOR AND BUILDER
GRAHAM - - - TEXAS

DR. M. H. CHISM
DENTIST
Office at Chism's Studio
GRAHAM - - - TEXAS

C. E. TURNER
Local Representative
San Jacinto Life Ins. Co.
Daquon, Texas