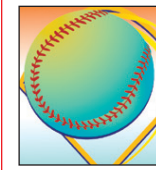




Additional MISD graduation photographs...
Page 12



Longhorn Pride workshop...
Page 10



Muleshoe players named to all-district team...
Page 9



Muleshoe Journal



Striving to be your source for local news

Volume 89, No. 23

www.muleshoejournal.com

Muleshoe, Texas

50¢

June 5, 2008

MAHD board discusses clinic expansion; to look at financing

By Larry Thornton
Managing Editor

The Muleshoe Area Hospital District's board of director voted to "pursue financing" for the expansion of the Muleshoe Family Medicine Clinic, currently operated by Dr. Bruce Purdy, during a special meeting Monday.

The idea of expanding the rural health clinic to allow all of the local physicians to operate under the same roof, and capture a larger federal reimbursement, has been eyed by the board and the hospital administration for several years, and toward that end the hospital board contracted with Consolidated Financial Resources, Inc., to consider financing options available to the district.

Ray Mason, the chief executive officer of the hospital district, reminded the board prior to Monday's

bit pro-active in what we're doing," Mason said. "...We can make it work.

"It'll pay for itself," board vice president Bob Donaldson said, "and it will make us money."

Donaldson, who has years of experience in retail

Ramtech Building Systems of Mansfield, which he said would build a \$5,100 square foot "permanent modular building" for \$979,200.

"They have some beautiful work," said Mason, who said he traveled to Mansfield to look at Ramtech's company

'We've got to be a little bit pro-active in what we're doing.'
— Ray Mason, MAHD CEO

marketing, added that the increased foot traffic at the clinic would increase the foot traffic at the hospital.

Although the initial presentation made by CFR was for a multi-million package that would fund the expansion with additional financing, and restructure the existing bond debt against Park View Nursing Care Center with the expected financial turn around at the

site with Pierson and former board president Ronnie Dent, at a construction cost that he said would be significantly lower than onsite construction.

"Are we going to go ahead and pursue modular design?" Mason asked.

Along with some other work the hospital board has been considering, such as re-roofing the hospital for about \$113,000 and installing individual heating and cooling units in each of the patient rooms for an additional \$45,000, the estimated cost of the expansion is a little less than \$1.4 million. The original estimate was \$1.7 million, Mason said.

As part if the expansion, the hospital plans to purchase the three houses immediately south of the clinic on First Street.

Previously, the board acquired a bank loan to fund the purchase of the property, which the district expects to pay off through its financial packet.

The MAHD board members plan to meet with CFR representatives next week to listen to the financing recommendations.

'We're at a crossroad where we need to pursue financing.'
— Wayne Pierson, MAHD president

vote that a study about three years ago estimated that about \$330,000 in federal medicaid and medicare reimbursements were "being left on the table."

And while it is estimated that this amount is probably less than it was back then, the amount is still high enough to pay for the expansion.

"We've got to be a little

nursing home due to the AccessCare dialysis unit the board decided not to pursue Consolidated's initial recommendation.

"We're at a crossroad where we need to pursue financing," board president Wayne Pierson said. He also noted that the board had turned full circle concerning the clinic expansion and appeared to be back at its original idea... focusing primarily on the clinic.

During Monday's meeting, Mason presented some information received from

Chamber of Commerce Independence Day preparations are under way

The Muleshoe Chamber of Commerce & Agriculture is hard at work planning for another Independence Day celebration in the Bailey County seat.

This year's holiday highlights include several events that have become a

tradition in the Muleshoe's July 4 blowout, including a pancake breakfast sponsored by the Jennyslippers, a brisket cook-off, a cobbler contest, muleshoe pitching at the Jennyslippers' MulePutt miniature golf course, a

softball tournament, a talent show sponsored by Carolyn's Christmas Creations, and of course... the Independence Day parade.

Individuals and groups interested in participating in one or all of the events are

encouraged to pick up entry forms at the chamber office, 115 E. American Blvd., or from the chamber's website at www.muleshoe.org.

For additional information about the Independence day event in Muleshoe call the following telephone

numbers:
General information — chamber office at 272-4248; booth information — Kristi Parker at 272-315; softball tournament — Richard Orozco at 946-6063; or the talent show — Carolyn Johnson at 272-5911.

Local Weather

Thursday
Mt. Sunny..... 94/53

Friday
Sunny..... 91/62

Saturday
Sunny..... 98/62

Sunday
Sunny..... 99/62

Monday
Mt. Sunny..... 94/60

Tuesday
Pt. Cloudy..... 95/61

Wednesday
Mt. Sunny..... 96/59

Give It
A Thought

The best laid plans of mice and men involve a mouse trap

Words to ponder from Beverly

Missed your paper?
Call the Journal
at 272-4536, between
8:00 a.m. and 5 p.m.



Muleshoe graduates Class of 2008

The Muleshoe Independent School District graduated its class of 2008 during Friday's ceremonies, following 1976 MISD graduate Coach Carey Sudduth's advice on "real world stuff." Using a small whiteboard during portions of his speech, Sudduth encouraged the students to go out into the world, but return occasionally to share their accomplishments.

Photographs by Larry Thornton



Photograph by Larry Thornton

Moving the big rocks

Officials at the Muleshoe Independent School District had something else to cheer about Friday other than the evenings commencement ceremonies.

On Friday, construction crews moved in and began the work required to move the utilities for the next phase of the district's multi-million dollar construction... the expansion of Muleshoe High School.

Pictured on the left, heavy equipment operators tear out the old concrete bus lane on Monday.

MULESHOE FORD-MERCURY

1125 West American Blvd.
Muleshoe
272-4251
800-432-7617

\$7,000 OFF SUPER DUTIES



Some restrictions may apply. See dealer for details. Vehicle shown for illustration only.



Alzheimer's support group

The Bailey County Alzheimer's Disease Support Group will be meeting Thursday, June 12, at noon, at Park View Nursing Care Center. Lunch will be served.

For more information contact Debbie Crabtree, Bailey County Aging Services, 272-3647, or Mandi Seaton, Bailey County extension agent — Family and Consumer Sciences, Texas AgriLife Extension Service, Bailey County, 272-4583.

Food safety program offered

Texas AgriLife Extension Service of Bailey, Cochran and Hockley Counties are offering training to reduce the number of illnesses due to eating contaminated food at home or at food service establishments.

The training session will be offered for \$89 on June 16-17, from 8:30 a.m. to 5 p.m., at the Bailey County Extension Office, 118 W. Ave. C., in Muleshoe. The cost includes training materials and the State food manager certification examination, and deadline for registration will be June 9, 2008.

For more information contact Mandi Seaton, Bailey County extension agent — Family and Consumer Sciences, 118 W. Ave. C., Muleshoe, TX 79347, 806-272-4583.

Diabetes support group

The Bailey County Diabetes Support Group will meet on Tuesday, June 17, at 6:30 p.m., in the dining room of Muleshoe Area Medical Center. This program is free of charge to anyone interested.

For more information, contact Mandi Seaton, County extension agent — Family and Consumer Sciences, Texas AgriLife Extension Service, Bailey County, 118 W. Ave. C., Muleshoe, TX 79347, 806-272-4583.

Bank promotions announced

The board of directors of Muleshoe State Bank has announced the promotion of Bill James to vice president and Derek Prater to assistant vice-president.

Prater has been employed with the bank since 1996. He first worked in the data processing area and later in 1999 became the bank's auditor and compliance officer.

His prior banking experience was with First State Bank Dimmitt.

Prater was raised and educated in Muleshoe. He was previously employed at Wes-Tex Feedyard, Bruce Inc., and Total Television of Amarillo.

He is the son of Arnold and Pat Prater of Muleshoe, and the father of three girls — Brittany, Bethany and Bailey.

James came to work for Muleshoe State Bank in 1999 as an assistant vice-president in charge of mortgage loans and consumer lending.

His prior banking experience was with First Bank Muleshoe, and the Texas State Banking Department as a field examiner.

James grew up in Muleshoe, and attended West Texas University, graduating in 1982 with a

bachelor of science degree in finance.

He is the son of Willie and Laverne James of Muleshoe, and has a son — Myles, who is currently attending Texas Tech University.

Out of the Depths, Hope!

I love the Psalms. They are so filled with the reality of life that we can all find ourselves in them as the reality of our own lives crowds in. Consider, for example, Psalm 130, a psalm for real people, flesh and blood humans, who haven't got life all figured out, who make mistakes pretty regularly, whose lives have plenty of room left for growth.

Someone once made fun of the Puritans by saying that they



Focus On Faith
Curtis Shelburne

thought themselves so holy that they had to hold on to the huckleberry bushes to keep from inadvertently ascending.

The writer of this psalm knows that such is not his situation. He has been driven to his knees and to the Lord by his own weakness. His cry for help and mercy so well expresses the cries of us all when we also fall far short that this psalm has often been used in the worship and liturgy of God's people down through the centuries to express their need, their confession, their trust.

The psalmist (likely not David on this one) begins by acknowledging, "I'm in a mess, and only you, my God, can save me!" My Bible renders this, "O Lord, out of the depths I cry to you!" (NIV).

Eugene Peterson gets the point across well in his paraphrase (*The Message*): "Help, God—the bottom has fallen out of my life! . . . Listen to my cries for mercy."

This cry for mercy comes

4-H News

Seven Bailey County 4-H members participated in the South Plains Dist. 2 4-H Roundup held on May 3 in Levelland.

Jackson Myers and Craig Black presented an illustrated talk entitled "Wildfire and Wildfire Prevention," receiving second place in the senior Safety and Injury Prevention category.

Jackson and Craig will advance to the Texas State 4-H Roundup on June 12, at Texas A&M University, in College Station.

Shelbi Harrison and McKenna Dunham received first place with their method demonstration "Focus on Fashion" in the intermediate Clothing and Textile contest.

Bailey Bales received first place with her twirling routine in the Share-the-Fun Choreographed Routine division.

Garrison Myers received second place with the song "Give Me Wings" in the Share-the-Fun Vocal

competition.

Kayla Preston received fourth place in the junior Share-the-Fun Poetry competition with the poem "Clarence" by Shel Silverstein.

Bailey County 4-H members also competed in the Dist. 2 4-H Photography Contest.

Participants included Miranda deBruin, Johnny deBruin, McKenna Dunham and Garrison Myers.

Miranda deBruin received first place in the junior Color/ Natural Landscape division.

McKenna Dunham received second place in the Intermediate Color/ Natural Landscape category.

McKenna was also awarded Honorable Mention with her first place photograph in the intermediate Color/Floral division.

Garrison Myers was awarded Best of Show with his first place photo in the intermediate Color/Animal category.



Lazbuddie High Students of the Year

Chase Timms and Brittney Schacher were recognized as Lazbuddie High School's Students of the Year during the school's recent awards banquet.

Time for new appliances?

WE ARE YOUR HOMETOWN WHIRLPOOL DEALER.

McDaniel's APPLIANCE We now carry Speed Queen!

1020 Main Street, Clovis, NM 505-762-4481 or 800-682-7891

Dr. J.W. Haltom
Family Dentistry & Orthodontics

For A Limited Time **\$50 OFF** Crowns and Bridges

Erika Trotter, Amber Garcia, Jessica Haltom & J.W. Haltom

- Emergencies Seen Promptly
- Insurance Accepted
- Patient Financing
- Adults & Children Welcome
- Televisions & Head Phones In Treatment Rooms
- Relaxation Gas

806-385-6935
320 East 8th Street, Littlefield, Texas

Muleshoe Journal USPS 367820
Established Feb. 23, 1924 Published by Panhandle Weeklies, LLC.
Every Thursday at 201 W. Ave. C, P.O. Box 449, Muleshoe, TX 79347.
Periodicals paid at Muleshoe, TX.
Postmaster: Send address changes to the Muleshoe Journal, P.O. Box 449, Muleshoe, TX 79347.

We are qualified members of:
Panhandle Press Association, West Texas Press Association and Texas Press Association

© 2007

Sandra Aven, Publisher
saven@hearstnp.com
Leah Bell, General Manager/Ads
advertising@muleshoejournal.com
Larry Thornton, Managing Editor
editor@muleshoejournal.com
Bookkeeping/ Classified Advertising
classifieds@muleshoejournal.com

Subscriptions:
By Carrier Yearly — \$22
Bailey County, by mail — \$24
Elsewhere — \$35
By E-mail — \$22
Advertising rate cards on request

"Advertisers should check their ad the first day of insertion. The Journal will not be liable for failure to publish an ad or for a typographical error or errors in publications except to the extent of the cost of the ad for the first day of insertion. Adjustment for errors will be limited to the cost of that portion of the ad where the error occurred."

Find a Deal for Dad on WIRELESS THAT COSTS LESS!

Compare our prices!
You'll find that Plateau Wireless offers more ways to save on great services and products!

MOTOROLA KRZR only \$49.95

Bluetooth, MP3 player, camera, video and more!
While supplies last.

OUR BEST PLAN ONLY \$39.95

- > 1000 Anytime Minutes with FREE Nationwide Long Distance
- > FREE Unlimited Night and Weekend Minutes with FREE Nationwide Long Distance
- > FREE Unlimited Mobile-to-Mobile
- > FREE Carryover Minutes
- > FREE Loyalty Minutes

NATIONWIDE Unlimited Text Messaging only \$4.95 mo.

SAVE EVERY MONTH AT PLATEAU WIRELESS!!

PLATEAU Wireless

Hurry to Plateau and sign up to text and talk! Way To Go, Plateau!

Muleshoe
Five Area Telephone Coop.
302 Uvalde
(806) 272-7700

Muleshoe
Connection Warehouse
117 Main St.
(806) 272-5532

Frona
WT Services
1010 Columbia
(806) 250-5555

www.plateauwireless.com 877-PLATEAU (752-8328)

CARRYOVER & LOYALTY MINUTES

Contract Term: Two years. Early termination fees: \$100 per year, maximum of \$200 and is prorated. Night and Weekend hours are Monday through Thursday 7:00 PM through 6:59 AM and Friday 7:00 PM through Monday 6:59 AM. When outside the designated home area, Roaming: \$50 per minute with Free Long Distance. Additional taxes, fees, and surcharges may apply. Carryover Minutes: unused plan minutes are carried over month to month. Loyalty Minutes: 30 minutes after one year of service, 60 minutes after three years of service and 100 minutes after five years of service. Carryover and Loyalty Minutes are removed on the date of disconnect and/or forfeited in the event of suspension/termination for nonpayment. Plan only available on GSM phones. Offer not available in all markets. Certain restrictions apply. See store for details. Offer ends 6/30/08.

Curtis Shelburne is minister of the 16th & D Church of Christ in Muleshoe.

Spinning Rowels

by Larry Thornton

What's in the sky? Is it a bird... is it a plane? No, it's... yuuchh!

Most of us have been there, on one if not both sides. You're traveling, and have to make a pit stop for... being as delicate as I can, non-automotive reasons. Of course, if you're a parent, that single pit stop rapidly increases in number depending upon the number of youngsters traveling with you.

Sure, it's no problem if you are in a vehicle equipped with facilities, such as a recreational vehicle or a tour bus. But sometimes modern conveniences aren't so convenient.

What do you do if you've waited as patiently as possible, your eyes have turned yellow, and you can't avail yourself of the closest stand of trees or convenience store?

Such has been the case of the astronauts aboard the International Space Station, who recently reported that its "port-a-potty"... isn't.

As slim as the choices for sheltering trees are in the Texas panhandle, we've got forests compared to route traveled by the space station. And even if there wasn't that problem with the cold and vacuum of space, there's always that nosey high school science class with it's telescope checking out the space station and its occupants from 211 miles below to prevent you from parking and stepping outside for a moment.

Yes, things have got to be rough for the astronauts. You can clinch your teeth only so long before you need a dentist. Where's Josephine the plumber, or even Mr. Whipple when you need them?

In the past, the Pentagon has drawn flack for reportedly spending thousands of dollars for a claw hammer, but compare that to the \$19 million cost of the current non-functioning facility circling overhead. No doubt the astronauts would vote to bankrupt the space program right about now if that's what it took to get some relief.

Should we be surprised that the astronauts and scientists in space can't fix the problem? They may have passed the TAKS test and gone to college, but right about now I think they'd gladly pay weekend or holiday rates for a plumber.

In recent years, there has been a lot of concern about "near earth objects," asteroids and comets, etc., that occasionally enter the earth's orbit.

And while such "natural" objects and "man-made" objects — such as NASA's space debris that finds its way home — are usually burnt up in the atmosphere, I can't help but wonder if the impact of a giant asteroid that could cause the extinction of all life on earth is the worst thing falling from above.



Watson Students of the Week

Among the student honored as Students of the Week for May 7 at Watson Junior High were: Azucena Gonzales, Miriam Ramos, Mikah Stiles, Josh McIntosh, Betsy Careaga and Matthew Ambriz.

MISD graduation includes "unconventional" students

Muleshoe ISD students who completed their graduation requirements at PEP, but were not included in this year's 2008 Senior Edition included:

Felicia Nicole Cavazos, Kayla Kristine Harp, Justin Henry Kube, Leonardo Mendoza, David Ricardo Rodriguez, Jesus Adrian Rodriguez, Maria Delos and Angeles Rodriguez.

Students who returned to

high school to complete their graduation requirements were Elizabeth Mendoza Ramirez and Milagros Janet Reyes.

Friday's graduation ceremonies also recognized two students who were graduating early — Alicia Danielle Porter and Sunny Laurel Snider, both juniors who have already completed the required course work and state TAKs tests.

June blood drives announced

Friday, June 13, won't be an "unlucky day" for those who receive a special gift as a result of the blood drive to be held at Springlake First Baptist Church.

United Blood Services will be conducting a blood drive at the church from 3:30-6:30 p.m., on Friday, June 13, at 213 W. Hwy. 70, in the donor bus.

This drive is especially important because it is being held right before summer starts. Participation drops off slightly at summer blood drives. At the same time, donations throughout the region drop in the summer

because high schools, which are enthusiastic blood drive sponsors, are not in session.

You must be 17 yrs old, in good health, weigh 110 lbs, and have photo identification to donate blood.



A second blood drive is set to be held at Muleshoe United Supermarket, on Saturday, June 14, from 11 a.m. until 2:15 p.m., in the donor bus.

Call 272-3120 to schedule an appointment to donate at the drive in Muleshoe.



Lance Insurance
Competitive Rates, Variety of Leading Companies
For Home, Auto, Commercial and Crop
806-227-2466

Charles Oil & Gas, Inc.
DOT Inspections on semi trucks and trailers
Hwy. 60
Bovina, Texas
251-1284

SOUTH PLAINS COLLEGE
Rural Network/Dual Credit
Summer Session I June 2-July 2
Online, Plainview, Denver City, Muleshoe

SUMMER I CLASSES:
American Government
Beginning Algebra
College Algebra
English Composition I
History

ONLINE DUAL CREDIT COURSES:
English 1301
History
Government
Math
Psychology
Speech
Sociology

For more information, call (806) 894-9611, ext. 2340.
www.southplainscollege.edu

Love those Mules, Hornets, Longhorns and Wolverines!

Nursery turns to alternative crop

By Terry Brewster

Good businessmen are always looking for new products to increase revenue and build excitement for a business. In an effort to do just that, local nurseryman Robert Shafer of Shafer's Nursery has done something most might consider unconventional.

He hasn't turned to a new variety of oak or spruce to entice buyers to his business. He's turned to the tomato - nature's strangest fruit.

Shafer has converted his 7,000 square foot greenhouse into Muleshoe's newest hothouse, home to 1,200 tomato plants.

To complete the renovation, he installed a new plastic roof to help guarantee the success of his latest venture.

The seedling plants themselves were started just two months ago in south Texas and Shafer expects his first crop to come off the vine by mid June. The season should last through late summer.

Each of the 1,200 plants is capable of producing up to 40 pounds of fruit, but being his first season, Shafer will be happy with 20.

Greenhouse tomatoes require between four and five square feet of growing space per plant, so his large facility is at full capacity right now.

"I've protected them from seven or eight freezes since they were planted," he said.

Each day, all his tomatoes are pollinated with the help



of a leaf blower which vibrates the cluster flowers which in turn transfer the pollen from the anthers of one plant to the stigma and blooms of the next.

"Pollination is necessary to set the fruit," he said. "Since the wind isn't a factor in greenhouse tomato growth, I have to create wind for them."

Shafer could have opted for using an electric vibrator, toothbrush or mist blower to create the wind, but being a nurseryman, his leaf blower seemed to be the logical choice.

He also could have opted to use the time tested old fashioned method - bumblebees - but he didn't see the beauty of becoming a bee wrangler in the process.

The converted greenhouse has also been equipped with a drip system for watering and heating and ventilation to regulate temperature.

Shafer is taking an organic approach to growing his three varieties of tomatoes which include Heirloom. To date, he hasn't used any pesticides or insecticides to ward off disease and pests.

But due to the plants being grown in a controlled environment, he understands that disease can get out of control rapidly if not watched closely.

A primary concern is keeping Tobacco Mosaic Virus away from his crop. And you guessed it, that means no smoking in the greenhouse because cigars, cigarettes and pipes can all be infected with the disease which can then contaminate the plants by way of a simple touch of the hands.

Shafer will be selling his tomatoes from the roadside nursery as soon as Mother Nature gives him the go ahead.

Shafer's Nursery

623 W. American Blvd., Muleshoe • 272-5802

FULL SERVICE NURSERY &

LANDSCAPE SERVICE



TREES - SHRUBS - BEDDING PLANTS
POTTING SOIL - BARK

ugly Tree Sale!

"Robert's Choice"
ORIGINAL \$120
NOW \$60

Good trees - Just need some TLC!

VINE RIPENED TOMATOES SOON!



Senior Citizen News

By Laverne Winn

Is everyone staying cool these hot dry days? For an afternoon of cool fellowship and fun we invite you to come and visit at the Oneita Wagon Senior Citizens Center. The coffee, tea or water is always ready.

Tuesday, June 10, Al Harrison with Calvert Home Health, will be at the

center for his weekly visit for blood pressure reading. We appreciate his help in this area. Should you need a record of your readings be sure and come by between 10:30 a.m. and noon.

Tuesday, June 10, Craig Black and Jackson Myers, 4-H participants, will be bringing an illustration on wild fire control. This

should be a very interesting program. We urge you to come have lunch and enjoy the illustration.

Wednesday, June 11, the regular Board of Directors meeting will begin at 1 p.m. at the center. The meetings are open to the public.

The South Plains Community Action Agency Senior Companion helpers

will be meeting at the center on Wednesday, June 11. We are happy to have the group come and enjoy the center.

Ben Jackson, with Hearing Technology of Lubbock, will be at the center on Thursday, June 12, from 9 a.m. until noon. Anyone

needing help in this area should make plans to visit

with him. Friday, June 13, NursCare will be at the center from 10:30 a.m. until noon checking blood pressures and heart rates. The helpers are all really nice and enjoyable to visit with. So make plans to come by and visit with them.

Remember our Tuesday night senior dance. This

is a good night out for you to enjoy music, fellowship and fun. Even if you do not dance, come and visit with your friends.

Our next Bunco games will be June 17. Mark your calendars. The players have a great time. Prizes are given.

Bingo on Thursday at Continued on page 6

BAILEY COUNTY DEVOTIONAL PAGE

LAW OFFICE OF TINA DAVIS
Criminal - Probate - Family Law
101 S. Main, Muleshoe • 272-7776

United Supermarkets

McCORMICK SEEDS, INC.
400 East Ash • 272-3156
Muleshoe, Texas
A COMPLETE LINE OF FIELD SEEDS
Tim McCormick

WAYNE COPLEY TRUCKING
CALICHE, SAND & ROCK PRODUCTS
P.O. Box 63 (806) 272-3697
Muleshoe, Texas 79347 Mobile: (806) 946-8072

IRRIGATION PUMPS & POWER
Zimmatic W. Hwy. 84
CENTER PIVOTS 272-5597

Deaf Smith County Grain, Inc.
Cliff A. Skiles, Jr.
Jeb S. Skiles

1ST BANK MEMBER FDIC
202 South First 272-4515

MULESHOE TIRE
107 Main St., Muleshoe • 272-4594
After Hours Service: 946-7668

BOEHNING DAIRY
690 CR 45, Earth
"MILK - A PART OF EVERYTHING THAT IS GOOD!"

HENRY INSURANCE AGENCY
Rama Smalling Agent
111 W. Avenue B (888-658-4581)
P.O. Box 563 (806) 272-4581
Muleshoe, TX 793477 Fax (806) 272-5892

MULESHOE ANIMAL CLINIC
GENERAL PRACTICE
MV'S
1430 US Hwy. 84, Muleshoe Office: 272-3061

"THE FIVE AREA TELEPHONE COOPERATIVE, INC."
West Plains Telecommunications, Inc.
Five Area Systems, Inc. • Plateau Wireless
Five Area Long Distance • Five Area Internet
302 Uvalde Muleshoe, USA (806) 272-5533

PAGO FEED YARD, INC.
Commercial Cattle Feeders
P.O. Box 956, Friona 265-3281
Feller Hughs - Mgr.

TEXAS FARM BUREAU INSURANCE Co.
1612 W. American Blvd., Muleshoe • 272-4567

McDONALD'S OF MULESHOE
1315 W. American Blvd. • 272-3333
Open at 5 AM every day! i'm lovin' it

CENTRAL COMPRESS & WAREHOUSE
SUDAN, TEXAS

Open Arms by Max Lucado

If you ever wonder how in the world God could use you to change the world, look at the people God used to change history. A ragbag of ne'er-do-wells and has-beens who found hope, not in their performance, but in God's proverbially open arms.

Abraham- God took what was good and forgave what was bad and used "old forked tongue" to start a nation. Moses- would you call upon a fugitive to carry the Ten Commandments? God did. David- his track record left little to be desired, but his repentant spirit was unquestionable. Jonah- God put him in a whale's belly to bring him back to his senses. But even the whale couldn't stomach this missionary for too long.

On and on the stories go: Elijah, the prophet who pouted; Solomon, the king who knew too much; Jacob, the wheeler-dealer; Gomer, the prostitute; Sarah, the woman who giggled at God. One story after another of God using man's best and overcoming man's worst.

The reassuring lesson is clear. God used (and uses!) people to change the world. People! Not saints or superhumans or geniuses, but people. Crooks, creeps, lovers, and liars—he uses them all. And what they may lack in perfection, God makes up for in love.

Jesus later summarized God's stubborn love with a parable. He told about a teenager who decided that life at the farm was too slow for his tastes. So with pockets full of inheritance money, he set out to find the big time. What he found instead were hangovers, fair-weather friends, and long unemployment lines. When he had had just about as much of the pig's life as he could take, he swallowed his pride, dug his hands deep into his empty pockets, and began the long walk home; all the while rehearsing a speech that he planned to give to his father.

He never used it. Just when he got to the top of the hill, his father, who'd been waiting at the gate, saw him. The boy's words of apology were quickly muffled by the father's words of forgiveness. And the boy's weary body fell into his father's opened arms.

The same open arms welcomed him that had welcomed Abraham, Moses, David, and Jonah. No wagging fingers. No clenched fists. No "I told you so!" slaps or "Where have you been?" interrogations. No crossed arms. No black eyes or fat lips. No. Only sweet, open arms. If you ever wonder how God can use you to make a difference in your world, just look at those he has already used and take heart. Look at the forgiveness found in those open arms and take courage.

And, by the way, never were those arms opened so wide as they were on the Roman cross. One arm extending back into history and the other reaching into the future. An embrace of forgiveness offered for anyone who'll come. A hen gathering her chicks. A father receiving his own. A redeemer redeeming the world.

No wonder they call him the Savior.
From No Wonder They Call Him the Savior © (W Publishing Group, 1986, 2004) Max Lucado

This devotional & directory is made possible by these businesses who encourage all of us to attend worship services.

- | | | |
|---|---|---|
| <p>ASSEMBLY OF GOD
FIRST ASSEMBLY OF GOD
521 South First Street
272-3017
S.S. 9:45 am,
W.S. 10:30 am & 6:00 pm,
Wed. 7:00 pm
EL BUEN PASTOR
415 E. Ave. F - 272-5455
Pastor Domingo Luna -
272-4542
S.S. 9:45 am, W.S. 11 am & 6
pm; Wed. 7 pm</p> | <p>CATHOLIC
IMMACULATE
CONCEPTION
CATHOLIC CHURCH
805 E. Hickory
Leonardo Pahamtang, Min.</p> | <p>LUTHERAN
ST. JOHN LUTHERAN
Lariat, TX • David Symm, Min.
S.S. 10:30 am; W.S. 9:30 am</p> |
| <p>BAPTIST
CALVARY BAPTIST
1733 W. Ave. C.
Rev. Jeff Coffman
CIRCLE BACK BAPTIST
Intersection FM 3397 & FM
298
FIRST BAPTIST
220 West Ave. E
Dr. Stacy Conner
FIRST BAPTIST
Lazbuddie • 965-2126
PRIMERA IGLESIA
BAUTISTA
223 E. Ave. E
Interim Rev. Troy Smith
PRIMITIVE BAPTIST
621 South First
Elder Bernard Gowens, Min.
PROGRESS BAPTIST
Progress, TX
PROGRESS SECOND
BAPTIST
Arthur Hays, Min. - 1st & 3rd
Sundays
RICHLAND HILLS BAPTIST
Bro. Larry Thornton
17th & West Ave. D
S.S. 10 am; W.S. 11 am &
6 pm; Weds. 7 pm
TRINITY BAPTIST
314 E. Ave. B - Bennie
Wright, Min.</p> | <p>EPISCOPAL -
CHARISMATIC
ST. CLEMENTS CHURCH
COMMUNION OF CHRIST
THE REDEEMER
Hwy. 214 South • 272-5954
Father Sergio Leal
Sun. W.S. 10:30 am</p> | <p>METHODIST
FIRST UNITED METHODIST
507 W. 2nd St.
S.S. 9:45; W.S. 11:00;
Praise & Prayer 6 PM;
Weds. 6 PM Youth Activities;
Sun. 5 PM Jr. High Bible
Study; 6 PM Sr. High Bible
Study
Pastor Monty Leavell,
272-5517
LAZBUDDIE METHODIST
S.S. 9:30 am; W.S. 10:30 am
Pastor Ken Peterson
965-2121
EL DIVINO SALVADOR
U.M.C.
619 E. 5th Street & Ave. G,
Javier Careaga, Pastor
272-6888</p> |
| <p>CHRISTIAN
TRINITY CHRISTIAN
CENTER
1723 W. American Blvd.
272-3877
Reydon Stanford, Pastor
Sun. W.S. 10:30 am
CENTRO CRISTIANO
117 E. Birch St.
Hermanos Barron
S.S. 10 a.m.; W.S. 11 a.m. &
6 p.m.; Wed. 7 p.m.</p> | <p>CHURCH OF CHRIST
LARIAT CHURCH OF
CHRIST
Wesley Roach, Min.
S.S. 10 a.m.; W.S. 11 a.m. &
6 p.m.; Wed. 7:30 p.m.
LAZBUDDIE CHURCH OF
CHRIST
Nathan Crawford, Min.
S.S. 9:30 am; W.S. 10:20 am
& 5 pm; Wed. 7 pm
MULESHOE CHURCH OF
CHRIST
22nd & W. American Blvd.
S.S. 9:30 am; W.S. 10:20 am
& 6 pm; Wed. 7:30 pm
16th & AVE. D
CHURCH OF CHRIST
Curtis Shelburne, Min.
272-4619
S.S. 9:30 am; W.S. 10:30 am;
Growth Gr. 1:30 pm;
Wed. 7:00 pm</p> | <p>PENTECOSTAL
UNITED PENTECOSTAL
LIGHTHOUSE
207 East Ave. G
1-800-454-6051
S.S. 10 am; Thursday,
Bible Study 7 pm</p> |

May God Bless You Abundantly!

J&S Dairy
1260 CR 1038, Muleshoe
272-7706

minsa CORPORATION
US Hwy. 84 East
Muleshoe • 272-5545

Lazbuddie Feeders, Ltd.
We make your dairy bull calves worth more!
Lazbuddie, Texas
965-2435

MAPLE COOP GIN
927-5501
Maple, Texas

Interim HEALTH CARE
110 E. Ave. C
Muleshoe 272-5549
www.InterimHealthcare.com
LeAnn Altman • Myranda Wilhite, RN-BSN • Olivia Barrera • Arlene Brozek • Twilla Rutter

MULESHOE PEA & BEAN, INC.
1680 CR 1044, Muleshoe • 272-5589
Ed, Nicky & Chad Nickels

BCEC BAILEY COUNTY
ELECTRIC
COOPERATIVE
ASSOCIATION
Muleshoe — 272-4504 Morton — 266-8600

Serve Wholeheartedly, as if you were serving the Lord, not men.
Ephesians 6:
MV'S
2601 W. American Blvd.
P.O. Box 631
Muleshoe, Texas
(806) 272-4266
Mobile (806) 946-8763
mviinc@fivearea.com

Pizza Hut
1412 W. American Blvd.
Muleshoe • 272-4213
Open: Sun-Mon. 11AM-11PM
Lunch Buffet: Sun-Fri. 11:30 AM-1:30PM
Monday Night Buffet: 6-8PM
COMING SOON
PIZZA HUT WING STREET!
"Gather round the Good Stuff!"

Lal's TORTILLA FACTORY
105 E. Ash St., Muleshoe • 272-5772
Phillipians 4; "I can do all things through Christ who strengthens me."

Lowe's MARKETPLACE
401 W. American Blvd. • Muleshoe • 272-4585

2800 West
American Blvd.
Muleshoe
272-4296
Ray Lee
EQUIPMENT CO., LTD.

WESTERN DRUG
& Something Special Gifts
1411 W. American Blvd. 272-3106 Muleshoe

Farmers Coop Ass'n of Sudan
P.O. Box 120 • Sudan, Texas
227-2461
Mobile: (806) 638-7692 FAX (806) 227-2102
Dennis Flowers, Gen. Manager Email: dflowers@fivearea.com

Don't lose sight, we are still in Vision!
Antiques & Fine Things
2104 W. American Boulevard
Muleshoe • 272-4217

PROGRESS DAIRY
"Quality milk from our family to yours"
806.925.6410

BAILEY COUNTY DEVOTIONAL PAGE

Obituaries

Lucy Faye Smith

Graveside services for Lucy Faye Smith of Muleshoe were held on Saturday, May 31, at Portales Cemetery. Lucy went to be with the Lord on Wednesday, May 28, 2008, in Muleshoe at the age of 81 years.

Lucy Faye was born in Portales on Aug. 15, 1926, to Robert L. and Mattie L. Stinson-Yoachum. She lived in Portales until 1965. She attended grade school and met and married her husband, Eric, in Portales. Lucy also received her masters degree in business from Eastern New Mexico University. She and Eric moved to and taught in Georgia for one year, then moved to Muleshoe, where Lucy Faye taught English and business at Muleshoe High School for 25 years.

Lucy Faye was very involved as Past Worthy Advisor in the Portales Rainbow Assembly, Past Worthy Matron in the Portales Chapter Order of the Eastern Star, 50 year member of Beta Sigma Phi, member of the Delta Kappa Gamma Professional Women Educators, president of Dist. 17 Texas State Teachers Association, member of Chi Omega Sorority Eastern New Mexico University — of which she was the founding advisor for the sorority, member of the Yucca Temple Daughters of the Nile, member of the Texas Retired Teachers Association and director of Enloe State Bank in Enloe. Even with the



LUCY FAYE SMITH

above memberships, she still found time to play bridge and travel.

Lucy is preceded in death by her husband — Eric, on Feb. 6, 1991; both of her parents — Robert and Mattie Yoachum; her brothers — Carl and Stinson Yoachum; and her sisters — Norene Thomas, Della Mae Little and Jessie Lee Hobbs.

Lucy Faye is survived by her daughter and her husband — Patricia Charles (Chuck) Thatcher of Portales; a brother-in-law and his wife Joe and Laverne Turner of Ft. Worth; three nieces — Marilyn Gardner of Portales, Jessie Norene Robinson of Tucumcari and Bobby Virgin of Clovis. Also surviving Lucy Faye are several other nieces, nephews, many friends and former students who will all greatly miss her.

Pallbearers for Lucy Faye will be Michael Hobbs, Butch Gardner, Troy Gardner, Cyle Sharp, Jett Sharp and Danny Garcia. Honorary Pallbearers will be Dr. Bruce Purdy, George Washington and Joe Turner.

Memorial contributions may be made to Park View Nursing Care Center, 1100 West Ave. J, Muleshoe, Texas 79347.

Loma Gustin Moseley

Church services for Loma Gustin Moseley, 95, of Muleshoe, were held on Friday, May 30, at the First United Methodist Church of Muleshoe with the Rev. Monty Leavell officiating.

Burial followed in Muleshoe Memorial Park Cemetery.

Loma died on Sunday, May 25, 2008, in University Medical Center, Lubbock. She was born to Tracy and Alma Jones Page on March 23, 1913, in Jack County, near Jacksboro, and raised in the Cundiff Community.

She came to know the Lord at the age of 11 years, and was baptized in an earth tank and joined the Cundiff Methodist Church.

Loma married Charlie D. Gustin on Dec. 26, 1932, and they moved to and farmed in the Parmer County near Lazbuddie. Charlie died in 1971.

She moved to Muleshoe and moved her membership to the First United Methodist Church from Lazbuddie Methodist Church. She received a life-time membership of the Women's Social Christianity Service, while a member at Lazbuddie.

Her favorite Bible verse was "Do unto others as you would like them to do unto you."

She then married Marlin Moseley on Oct. 29, 1993, in Farwell. Loma was a patient, loving, kind and friendly



LOMA GUSTIN MOSELEY

person and did very little complaining. She lived at Park View Nursing Home in Muleshoe for the past few years of her life. She was preceded in death by a stepson and his wife, Geoffrey and Dorothy; two grandsons — Ronnie Lee Gustin and Dennis Gustin; a granddaughter — Gena King, a great granddaughter — Brandi Brown; three sisters — Ila Hughes, Stella Bailey and Corabell Jennings; and two brothers — Alton and Eldon Page.

Survivors include her husband — Marlin Moseley; two sons and their wives — Leland and Geneva Gustin of Chandler, Ariz., and Ronne and Betty Gustin of Lubbock; two brothers-in-law — Joe Bates Jennings of Muleshoe and Ila Page of Wichita Falls; two stepsons — Sonny and Don Moseley; eight grandchildren, 18 great-grandchildren and a great-great-granddaughter.

Memorials may be sent to Park View Nursing Care Center, 1100 W. Ave. J, Muleshoe, Texas 79347, or to one's favorite charity.

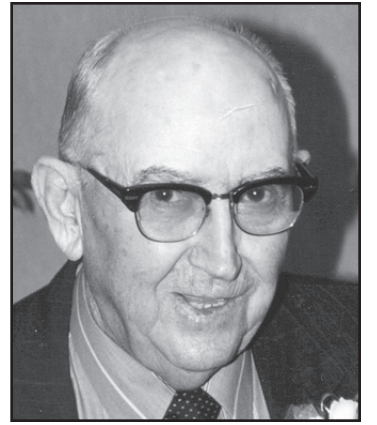
Ray Castleberry

Church services for Ray E. Castleberry, 90, of Friona, formerly of Farwell, were held on Saturday, May 31, at the First Baptist Church of Farwell with the Rev. Kyle Clayton and the Rev. Rick Burton officiating.

Burial followed at the Meadow Cemetery.

Castleberry died on Tuesday, May 27, 2008, in Prairie Acres Nursing Home in Friona. He was born on Aug. 29, 1917, in Gainesville to Robert and Dorothy Castleberry, and married Pauline Whisenhunt in Clovis, N.M., on Dec. 24, 1935. She preceded him in death on Feb. 27, 2000. He was also preceded in death by a son — J. R. Castleberry, on May 13, 1989, and two brothers and two sisters.

Castleberry had lived in



RAY E. CASTLEBERRY

the Prairie Acres Nursing Home for the past one and a half years.

He was a farmer and a deacon of the First Baptist Church of Farwell.

Survivors include a son — Ron Castleberry of Lafayette, Ind.; a daughter and her husband — Linda Jo and Bob Whitson of Stillwater, Okla.; seven grandchildren and 14 great-grandchildren.

Horace Ring

Funeral services for Horace W. Ring, 82, of Muleshoe were held on Friday, May 30, at the First Assembly of God in Muleshoe, with the Rev. Bob Elder officiating.

Graveside services were held on the same date at Hansford Cemetery at Spearman

Ring died on Tuesday, May 27, 2008. He was born on July 2, 1925, in Paris, and married Mattie Morgan on Sept. 20, 1947.

She preceded him in death in 1993. He was also preceded in death by a son — Jerry Ring.

Ring was employed by

Gifford Hill for 29 years, and by Irrigation Pumps & Power for 30 years. He was a member of the First Assembly of God Church.

Survivors include two sons — Johnny Ring of Spearman and Richard Ring of Muleshoe; three daughters — Barbara Rhea of Dumas, Onie Easter of Dumas and Rita Duncan of Spearman; 13 grandchildren, 13 great-grandchildren and two great-great-grandchildren.

Memorials may be sent to Pleasant Hills Children's Home, c/o First Assembly of God Church, Box 905, Spearman, TX 79081.

Alta Fern Wedel Bock

Church services for Alta Fern Wedel Bock, 84, were held on Sunday, June 1, at the Earth United Methodist Church in Earth with the Rev. Charlie Johnson officiating.

Burial followed in Earth Memorial Cemetery following the service.

Fern passed into the Lord's loving hands on May 28, 2008, after a short illness. She was born to Alton F. and Mary Fern Wedel of Littlefield on Aug. 7, 1923, in Throckmorton, and married Melvin L. Bock of Earth on Nov. 17, 1950.

She was a graduate of Littlefield High School, and a member of the First United Methodist Church of Earth since 1951. Fern was also a member of the Eastern Star and worked with the Rainbow Girls.

Melvin and Fern Bock had two sons — Galen D. Bock of Midland and Kem

Bock of Earth.

She was preceded in death by both her parents and twin brothers.

Survivors include her husband — Melvin L. Bock of Earth; a sister — June Free of Stephenville; a brother — James P. Wedel of Muleshoe; two sons and their wives — Galen D. and Becky Bock of Midland, and Kem and Kathy Bock of Earth; three grandchildren and their spouses — Angela Wayne Wallace of Muleshoe, Jennifer and Cody White of Dalhart, and Timothy and Roxane Bock of Midland; five great-grandchildren Hailey, Brianna, and Kimberlee Wallace, Colton and Brandon Bock; and several nieces and nephews.

Memorials may be sent to your favorite organization or the Earth Memorial Cemetery, P.O. Box 523, Earth, TX 79031.

Mary Bryant

Church services for Mary Anna Bryant, 80, of Muleshoe are set for 2 p.m. on Thursday, June 5, at the First Baptist Church of Muleshoe with the Rev. Dr. Stacy Conner officiating.

Burial will follow in Muleshoe Memorial Park Cemetery.

Bryant died on May 31, 2008, in the Park View Nursing Care Center. She was born on May 25, 1928, in Bryson City, N.C., and married Don Bryant in Muleshoe on April 10, 1948.

She was preceded in death by her parents — Julius and Dora Watson.

Bryant was a member of the First Baptist Church of Muleshoe.

She was a homemaker and also worked with her husband on their farm.

Survivors include her



MARY ANNA BRYANT

husband — Don Bryant of Muleshoe; three daughters — Terry Addison of Ft. Sumner, N.M., Stephanie Stephens of Plano, and Treena Matthews of Dimmitt; a sister — Pearl Whittemore of Forest City, N.C.; 10 grandchildren and three great-grandchildren.

Memorials may be sent to the Park View Nursing Care Center, 1100 W. Ave. J, Muleshoe, TX 79347.

Minnie McCray

Funeral services for Minnie Marie McCray, 92, of Crosbyton were held on Friday, May 30, at Resthaven's Abbey Chapel of Lubbock with the Rev. Dr. Stacy Conner and the Rev. Hugh Huber officiating.

Burial followed at Resthaven Memorial Park.

McCray died on Tuesday, May 27, 2008. She was born on Dec. 25, 1915, in Lubbock County to Walter Loyd Altman and Addie Eugene Gassaway, and married Ardis Glen McCray on Jan. 12, 1936, in Clovis, N.M.

Her husband preceded her in death on Dec. 21, 2000. She was also preceded in death by a son — Jerry Glen McCray on Dec. 4, 2003.

The McCrays retired from farming in Kansas and moved to Lubbock in 1980.

She moved to an assisted



MINNIE MARIE MCCRAY

living facility in Crosbyton in 2004

Survivors include three daughters and their husbands — Glenda and Henry King of Ransom Canyon, Laura and Bill Hand of Spearman and Alice Ronnie Reed of Lubbock; a son and his wife — Gary and Jo McCray of Muleshoe; a daughter-in-law — Janelle McCray of Crosbyton; 14 grandchildren, 41 great-grandchildren and three great-great-grandchildren.

Sudan Church of Christ VBS set

The Sudan Church of Christ will be hosting Vacation Bible School June 9-11, from 9:30-11:30 a.m. On Wednesday, June 11, the parents may join their children for a hot dog lunch.

COMPLETE AUTOMOTIVE REPAIR



272-5330
Cell: 946-8274

IRRIGATION ENGINES & SERVICE
COMPUTER DIAGNOSTICS
OIL CHANGES STATE INSPECTIONS
803 W. American Blvd., Muleshoe

100th Birthday Celebration!

Henrietta Pummill is turning 100 years old!

Her birthday celebration will be held on Saturday, June 7 in Fort Worth, but Henrietta would love to receive birthday cards from her Muleshoe friends!



Please send your best wishes to Henrietta by way of: Ms. Beth Whorton, 626 Pelican Hills Drive, McKinney, TX 75069.

Subscribe to the Journal! 272-4536

Brighton Beach Towel Frenzy
Receive an exclusive Brighton Beach Towel as your gift with any Brighton Sunglasses. (Limit one per customer, while supplies last.)

Don't miss the Brighton Trunk Show Thursday, June 5th.

Kristi's
614 Broadway
Downtown Plainview
806-296-7254

Brighton

Now thru June 15th, 2008



May Business of the Month announced

The Muleshoe Chamber of Commerce & Agriculture recently announced the selection of Circle R Dairy as its Business of the Month for May 2008. Pictured above are Jayme Gladden, Raul Mosqueda, Jill Gladden, Randi Mull, Toni Ray, Jake Dowell, Ronnie Ray, Brandi Angeley, Cory Collins and Ray Ybarra.

Senior Citizen News

Continued from page 4
1:30 p.m. is a good place to see friends and have fun. Come where you can stay cool and enjoy fun and fellowship.

Menu for June 9-13
Monday, June 9 — Beef stir fry, steamed rice, Chinese vegetables, wheat

roll, fruit and cookies.
Tuesday, June 10 — Baked ham, scalloped potatoes, black-eyed peas, salad, cornbread and brownies.

Wednesday, June 11 — Grilled steak, gravy, mashed potatoes, green beans, salad, wheat roll and

fruit cobbler.
Thursday, June 12 — King Ranch chicken, pinto beans, tossed salad, cornbread and cake.

Friday, June 13 — Fish or chicken strips, gravy, beans, coleslaw, cornbread and fruit salad.



Attending the Lazbuddie Longhorn Pride leadership workshop were, from left to right: Back row — Jessica Howard, Rochelle Smith, Anna Harder, Amy Howard, Kylie McGhee, Brittney Schacher, Sid Morris, James Baca, George Harder, Delvin Thompson, Luis Galaviz, Richie Aguilar, Jose Lulu, Jared Timms, Arthur Gomez, Alex Lopez, Kenton Randolph, Charles Baca and Alfredo Chavira; front row — Denise Sanchez, Jessica Estrada, Natasha Barnes, Monica Vera, Katie Chavez and Haley Beasley.

Lazbuddie leadership workshop held

Lazbuddie ISD held a leadership workshop for students that contributed toward Longhorn Pride through fund raisers or qualifying for Longhorn pride.

Students went to a park north of Clovis, N.M., for lunch before going to Patriot

Outdoors, located north of Clovis, where they attended a workshop and enjoyed their rock climbing wall facilities.

Brittney Schacher and Rochelle Smith presented a power point on their different experiences they have had through Longhorn Pride.

BOOTS Work & Dress
SHOES Casual & Athletic
CLOTHING Western & Athletic

GENERAL WILLIAMS STORE
SINCE 1963

1405 West American Blvd.
Muleshoe, Texas
806-272-MULE (6853)

College News

Angelo State dean's list

Jamie F. Hall and Joel J. Salcido of Muleshoe were recently included on the dean's list for the 2008 spring semester at Angelo State University in San Angelo.

Texas Tech University president's list

Jonathan Layne Sheets of Muleshoe was recently listed among students from Texas Tech University who have been placed on the President's Honor List for the 2008 spring semester.

TSU-San Marcos dean's list

Montana L. Steinbock of Muleshoe has been named to the 2008 spring semester dean's list at Texas State University-San Marcos.

Students named to SPC dean's list

Sarah M. Ruthardt and Joshua C. Shelburne, both of Muleshoe, were among the South Plains College students named to the dean's honor lists for the spring 2008 semester.

Wind power meeting set

The Blackwater Valley and Lamb County Soil and Water Conservation Districts are sponsoring a meeting entitled "Wind Facts: A Landowners Guide" on Wednesday, June 11, at 1 p.m., at the Lamb County Ag Community Center, 17th and Hwy. 385, Littlefield.

The purpose of the event, which is open to the public, is to answer questions regarding leases with wind energy companies.

Jennyslippers to host bazaar

A Mules Day Bazaar is being sponsored by the Jennyslippers on Saturday, Sept. 13, from 9 a.m. until 5 p.m., at the Bailey County Coliseum.

Applications for both space are being accepted until Sept. 5. For applications or additional information contact Elaine Parker at 806-272-3165 or 806-729-6753.

Publication of Obituaries

Obituaries printed in the Muleshoe Journal are printed free of charge and contain the following types of information:

Date and details of funeral and place of burial; date and place of birth and parents names; date of marriage;

Limited biographical information, including the highest level of schooling achieved, service in the Armed Forces, profession (and retirement information if applicable); names of relatives who have preceded the person in death;

Names of survivors (including husband and wife, parents, in-laws, brothers, sisters, grandparents (only the number of grandchildren, great-grandchildren and great-great-grandchildren) will be included; and where memorials may be directed.

We will be pleased to run a one column black and white photo at no charge. A larger photo or a color photo will cause the obit to be paid.

Please keep in mind that everything must be submitted by your funeral home.

Thanks for reading!

POWER Lab VBS
Join us as we Discover Jesus' Miraculous Power

June 9-12
9:00 am - 12:00 noon
First Baptist Church
220 W. Avenue E
806-272-4224

Registration at 8:30 am June 9 or pre-register by June 6 at the church office.

open 'til midnight or later

99¢ plus tax shakes

SONIC

1011 Hall · Littlefield
1633 American · Muleshoe

Participating locations only. Offer expires 6/30/08. Regular Shakes only. Premium shakes not included

Tour De Muleshoe
Muleshoe Heritage Foundation
2008
Starting at 9 AM

14th Annual Heritage Foundation
Tour de Muleshoe
Saturday June 14
Starting at 9 AM
Choose from 100K, 40 Mile or 10 Mile Bike Tours

Registration:
Pre-register thru June 7th to be eligible for our \$500 Cold Hard Cash Drawing
(\$20 entry fee. Registration forms available at the Heritage Center Depot weekdays 1-5 PM, at Adrian Photography, 218 W. 2nd or from any Heritage Board member)

Late registration is accepted the day of the race from 7-9 AM at the Bailey County Coliseum, 2206 W. American Blvd.

Ride packets should be picked up at the Coliseum on June 14. Packets include: water bottle, ride number, route map, collector t-shirt and meal ticket good for the Spaghetti Meal (served 11:30 AM to 2 PM).

Kids' Bicycle Rodeo - FREE
Registration begins at 9 AM; events start at 10 PM (Helmets are mandatory)
Ages: Kindergarten thru 5th grade next year
Ribbons awarded for first thru sixth place in several events. All participants will receive a Tour de Muleshoe water bottle.

Spaghetti Meal
Free to all riders. Extra tickets may be purchased at the site or ordered with pre-registration. \$4 for adults; \$2 under 12 years

Drawings
Drawings for door prizes will be held after all riders are in. Drawing for the \$500 Cold Hard Cash for pre-registrants only will also be held at this time.

All race proceeds go to: MULESHOE HERITAGE FOUNDATION

A Big Thanks To Our Business Sponsors!

MULESHOE STATE BANK
BAILEY COUNTY ELECTRIC COOPERATIVE
UNITED SUPERMARKETS
BAMERT SEED CO.
HENRY INSURANCE AGENCY
FIVE AREA TELEPHONE COOPERATIVE

FIRST BANK
LEAL'S RESTAURANT

Five Area, West Plains scholarship recipients announced

Five Area and West Plains have awarded \$600 scholarship to students continuing their education at an accredited vocational school, college or university.

The Five Area/West Plains board of directors of selected the scholarship winners at the board meeting held on April 29.

Among the scholarship winners — high school seniors who reside in one of the telephone exchanges served by the companies, are:

- Jason Davis, Lazbuddie High School, the son of Rosa Davis, who plans to attend Universal Technical Institute in Avondale, Ariz., to study automotive.

- Regina Mata, Lazbuddie High School, the daughter of Eraul and Valentina Mata, who plans to attend West Texas A&M University in Canyon to study psychology.

- Brianna Sanchez, Lazbuddie High School, the daughter of Evaristo Sanchez, Jr., who plans



OLGA AGUNDIZ



JASON DAVIS



JACEY DAVISON



ERIC DEBNAM



AMANDA FURR



COLTON HEINRICH



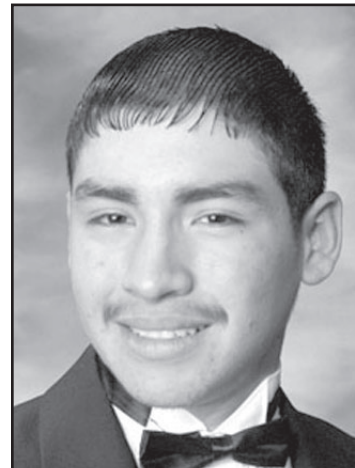
MARCOS LOPEZ



REGINA MATA



JORDYN NELSON



ADRIAN PEREZ

to pursue a career in early childhood education at West Texas A&M University.

- Colton Heinrich, Muleshoe High School, the son of Cliff and Kelly Heinrich,

who plans to attend South Plains College in the field of welding technology.

- Adrian Michael Perez, Muleshoe High School, the son of Adrian and

Danna Perez, who plans to attend Eastern New Mexico University to study music and theater.

- Amanda Furr, Springlake/Earth High School, who

plans to attend Amarillo College to study nuclear medicine.

- Olga Agundiz, Sudan High School, the daughter of Gloria Agundiz, who plans to attend West Texas A&M University to pursue a degree in general-business.

- Jacey Davison, Sudan High School, daughter of Mart and Lori Davison, who plans to attend Texas Tech University to pursue a career in engineering.

- Eric Debnam, Sudan High School, the son of Skokie Schlehuder, who plans to pursue a career as a college coach or trainer at Eastern New Mexico University.

- Marcos Lopez, Sudan High School, the son of



BRIANNA SANCHEZ

Jose Marcos Lopez, who is planning to pursue a career in public relations at Texas Tech University.

- Jordyn Nelson, Sudan High School, the daughter of Brent and Geyna Nelson, who plans to pursue a career in broadcast journalism at South Plains College.

Lazbuddie Junior High Longhorn Pride travels to Lubbock

Lazbuddie Junior High Longhorn Pride went on an outing to Lubbock on Thursday, May 15. Students had to qualify four out of the last five six-weeks and do six hours of community service to qualify to go on the trip. The students who participated in the trip included Allison Weaver, Paola Estrada, Todd Nichols, Karina Galaviz, Ian Thompson, Ashton Mason, Katlyn Hicks, Austin Mason, Jarrod Jesko, Shyann Rainey, Justin Shacher and Shay Scott.





Prices Good Thru 6/14/08

ASSORTED 16 OZ. MONSTER ENERGY DRINK
2 FOR \$3.00

ASSORTED BROWNIE BAKER BROWNIES
\$1.29 EA.

Store #34
312 W. American Blvd.
Muleshoe, Texas
272-4862

ALLSUP'S ASSORTED ICE CREAM
1/2 GALLON
\$3.79



ALLSUP'S "MOO" MILK
BUY 12 GALLONS OF FRESH ALLSUP'S MILK... GET ONE FREE!

ASSORTED REGULAR \$1.29 DORITOS TORTILLA CHIPS
\$1.09



HERSHEY'S, HERSHEY'S WITH ALMONDS, KIT KAT, REESE'S PB CUPS OR PAYDAY REGULAR SIZE
HERSHEY'S CANDY BAR
79¢



BAR-S 12 OZ. PKG. MEAT FRANKS & TENDER CRUST 8 COUNT HOTDOG BUNS
\$1.59



MORE SPECIALS

BLUE BUNNY THE CHAMP! CONE EACH	79¢
TOM'S FRIES ASSORTED FLAVORS REG. \$1.99	2 FOR \$3.00
CHEEZ-ITS PARTY MIX ASSORTED FLAVORS EACH	99¢
SOFT N' GENTLE BATH TISSUE 4 ROLL PKG.	\$1.19
ALLSUP'S SANDWICH BREAD 24 OZ. / 99¢ EACH OR	2 FOR \$1.69
ALLSUP'S WHEAT BREAD 24 OZ. / \$1.09 EACH OR	2 FOR \$1.89
CHINET PLASTIC CUPS 20 COUNT	\$1.99

COMBO MEALS

COMBO NO. 1 BACON/EGG BISCUIT & 16 OZ. COFFEE	\$2.09	COMBO NO. 6 3 TAMALES, HOWLERS & 32 OZ. TALLSUP	\$2.69
COMBO NO. 2 SAUSAGE/EGG BISCUIT & 16 OZ. COFFEE	\$2.09	COMBO NO. 7 2 HOT LINKS WITH BREAD & 32 OZ. TALLSUP	\$2.59
COMBO NO. 3 BBQ SANDWICH & 32 OZ. TALLSUP	\$2.09	COMBO NO. 8 2 CORN DOGS & 32 OZ. TALLSUP	\$2.69
COMBO NO. 4 HOMESTYLE POPCORN CHICKEN & 32 OZ. TALLSUP	\$2.79	COMBO NO. 9 CHIMICHANGA & 32 OZ. TALLSUP	\$2.49
COMBO NO. 5 SPICY POPCORN CHICKEN & 32 OZ. TALLSUP	\$2.79	COMBO NO. 10 2 BEEF & BEAN BURRITOS & 32 OZ. TALLSUP	\$2.69

ALVARADO PARTY RENTALS

INFLATABLE BOUNCER
Safe - Affordable Fun For Kids!
BEST PRICES AROUND

272-5588
2 Hrs. \$50 - 4 Hrs. \$75 - 6 Hrs. \$100
8 Hrs. \$125

Birthday Parties • School Functions • Special Events
DELIVERY, SETUP & PICKUP

SE HABLA ESPAÑOL EDDIE & RACHEL ALVARADO
DJ SERVICES ALSO AVAILABLE

1105

RED WING SHOES

The Fair Store
120 Main 272-3500

Muleshoe Bail Bonds
Anzaldua Tax Service
272-3001
Notary Public service available.
804-A W. American Blvd., Muleshoe

Advanced Lube & Wash
Advance Towing & U-Haul Service/Boxes
272-5842

Now doing Certified State Inspections
OPEN AT 8:30 AM - Need an affordable oil change or detail car wash? We pick up and deliver free of charge within the city limits! Call 272-5842 for service!
502 N. 1st Street, Muleshoe

MULESHOE CATTLE MARKET

The Muleshoe Cattle Market is brought to you each week by Muleshoe Livestock Auction, located east of Muleshoe on U.S. 84. Muleshoe Livestock conducts sales every Saturday, beginning with hogs, sheep and goats at 10 a.m. and cattle following at approximately noon.

REPRESENTATIVE SALES - SAT., MAY 31, 2008

673 head of cattle, 90 hogs and 507 sheep and goats for a total of 1270 livestock sold at the May 31 sale. Market steady on most classes of cattle with good demand. Not enough feeder cattle to truly test market. Good set of young pairs offered. Packer cows & bulls steady.

FOR INFO. ON SALES OR TO CONSIGN CATTLE - 272-4201

Seller, City	#	Type	Wt.	CWT or PH
Idabell Ortega, Anton	2	Blk. bulls	350 lbs.	at \$138.00
Jim Birkenfeld, Denver City	Red str		375 lbs.	at \$125.00
FM Farms, Brownfield	12	Mxd. str	338 lbs.	at \$134.00
FM Farms	2	Blk. str	228 lbs.	at \$330.00
FM Farms	5	Char. str	422 lbs.	at \$126.00
James Synatschk, Sudan	3	Blk. str	445 lbs.	at \$121.00
James Synatschk	BWF str		685 lbs.	at \$109.50
Caferino Reyes, Hereford	4	Mxd. str	588 lbs.	at \$107.00
Kennedy Cattle, Muleshoe	5	Mxd. str	595 lbs.	at \$110.00
JCL Inc., Muleshoe	17	B&BWF str	403 lbs.	at \$124.50
RDJ LLC, Spade	5	Mxd. str	611 lbs.	at \$109.00
Dale Hand, Clovis	2	Blk. str	713 lbs.	at \$105.00
B&M Cattle, Lubbock	3	Mxd. str	758 lbs.	at \$108.00
Jesus Retana, Farwell	Char. hfr		160 lbs.	at \$245.00
Norman Taylor, Friona	Char. hfr		170 lbs.	at \$280.00
Isabell Ortega	3	Blk. hfrs	335 lbs.	at \$111.00
KP Farms, Lubbock	3	Blk. hfrs	400 lbs.	at \$113.00
Jim Birkenfeld	Blk. hfr		460 lbs.	at \$107.00
Jack Douglas, Littlefield	3	Blk. hfrs	548 lbs.	at \$108.00
Dale Hand	4	Blk. hfrs	618 lbs.	at \$101.00
Abraham Friesen, Seminole	3	BWF pairs		\$1210.00
Abraham Friesen	Blk. pair			\$1150.00
Abraham Friesen	BWF pair			\$1125.00
Abraham Friesen	3	BWF pairs		\$985.00
Cage Ranch, Muleshoe	2	RWF cows	1130 lbs.	at \$59.75
Cage Ranch	2	Mxd. cows	1140 lbs.	at \$59.00
Mike Beauchamp, Bovina	Char. cow		1430 lbs.	at \$58.00
Francisco Armandariz, Sudan				Blk. cow 1155 lbs. at \$57.50
Owen Young, Levelland	BMF cow		1370 lbs.	at \$56.50
Stan Adcock, Lubbock	Brin. cow		975 lbs.	at \$56.50

NEWTON APPLIANCE SERVICE

"We sell & service heating & air conditioning units"

NEW Crosley Appliances

Cedar Creek Antiques & Used Furniture

215 Main St., Muleshoe
Open Tues.-Fri. 10-5
806-272-3272

South Plains College Muleshoe Center
621 W. 2nd, Muleshoe

For information on College Credit Classes & various Health Occupation Classes available at the Muleshoe Center, call Connie Kenmore 272-3346

Or go by the Center, Mon. or Tues. 9 AM-4 p.m.

This ad sponsored by the Muleshoe Area Educational Foundation

ADVERTISE YOUR BUSINESS HERE!

Ask Leah or Terry how to rent this space for just **\$9-11.25 per week!**

272-4536

ADVERTISE YOUR BUSINESS HERE!

Ask Leah or Terry how to rent this space for just **\$9-11.25 per week!**

272-4536

Carolyn's Christmas Creations

106 E. American Blvd. Muleshoe, Texas 272-5911
www.visitcarolyns.com
Open Daily

'Tis Always Christmas at Carolyn's!

Check out our Book Giveaway... ...send us your filled-in form!

Newspaper Fun!
www.newspaperfun.com
Animills LLC © 2008 V5-N22

LOWE'S MARKETPLACE

401 W. American Blvd. Muleshoe, Texas 272-4585

BCEC

BAILEY COUNTY ELECTRIC COOPERATIVE ASSOCIATION

305 E. Ave. B Muleshoe, Texas 272-4504

SHIPMAN'S BODY SHOP, INC.

410 N. 1st Street Muleshoe
272-4408

• 24 hr. Wrecker Service
• Complete Collision Repair
• Glass Work

Family owned for over 35 years
Garry Shipman

Long Weekends Away!

Have you packed your things for our weekend away, Glade? I've stuffed everything into my pack, Forest!

Long weekends away! More and more families are taking a few long weekends away from home in place of one longer vacation. It still takes a lot of planning to get ready, but people like the change of pace from their weekly routines and feel they get more breaks. Some families like the idea of visiting three or four different places during the year. It's also a good way to make time to visit relatives and still be able to have a couple of private get-aways for just your own family. **Fill in the puzzle with things you might do or places you might visit:**

What Should We Pack?

To know what you need to pack you have to think about the activities that you will be doing and the weather. **Find and circle these items:**

TOOTHBRUSH I O U B M O C T

H J U S O A P T G H T O L C E C A F
A E D R T G F O J G S H I R T K O P
I C F E I H O W J G R O J G R T C J
R T S E O H S E H B E K O P H T F D
B K H B O U T L G F P A J A M A S E
R J G O F S H G B Y P G C V E S T A
U H D R I K H F T E I V I Y G F N U
S H F H I C M O P L D E S A F A T
H A O T O O T H P A S T E F V J P E
S E A A G S I P K J G T F R E D S W
V Y R B L K J H O O P M A H S H R

slippers pajamas bathrobe underclothes hairbrush comb toothbrush toothpaste soap shampoo face cloth towel shirt pants shoes socks

- take a tour on a ship
- beach
- your Mom's or Dad's Mom or Dad
- place to ski and be entertained
- place to ride horses or herd cattle; a Dude _____
- learn about raising animals and growing crops on a _____
- ride a Ferris Wheel at the amusement _____
- live in a cabin at a _____ near a lake _____
- busy place full of people, tall buildings, lights and cars
- higher than hills; you can see the peaks before you get there

camp farm seashore
cruise Ranch grandparent
city park resort mountains

What Will We Pack it in?

You can pack your belongings in a knapsack, nylon bag or use a:

1 2 3 4 5 6 7 8 9 10 11 12 13 14 15 16 17 18 19 20 21 22 23 24 25 26 27 28 29 30 31 32 33 34

Forest's Stuff

Keep Your Paws Off...

Find and circle 10 compound * words, including the word that will appear when you unscramble these letters. * (2 small words put together to make a new one)

e s c t a u i s

Enter the Reading Club Fun Book Giveaway

Free Stickers for each entry!

This summer we will give away dozens of books and many stickers to encourage kids to read. Just send in this signed form to be entered in the giveaway. No purchase needed. One entry per person. (Void where prohibited by law.) Visit ReadingClubFun.com for more details.

Cut out & mail this form to:

Reading Club Fun
P.O. Box 646
Canton, CT 06019

Name _____
Age _____ Grade _____ Boy Girl
Street _____
Apt. _____ City/Town _____
State _____ Zip _____

Which newspaper is this? _____
Grownup Signature (over 18) _____

ADVERTISE YOUR BUSINESS HERE!

Ask Leah or Terry how to rent this space for just **\$9-11.25 per week!**

272-4536

What Belongings Would You Need?

Ugggh! Heavy! I need to find my book.

For:

- sleeping
- rain
- directions
- comfort
- boating
- small cuts
- seeing
- news and weather
- drinks
- reading fun

A. umbrella
B. sleeping bag
C. First Aid kit
D. cooler
E. stuffed animal
F. radio
G. flashlight
H. life vests
I. books
J. maps

Newspaper Fun! Created by Animills LLC © 2008

Sports

All-district baseball selections include Muleshoe players

By Delton Wilhite
Sportswriter

When the final team in a district is eliminated from the state playoffs then the district may release their all-district selections.

San Saba defeated the Dimmitt Bobcats in the Regional Semifinals this past week.

The 2008 Mule baseball team had eight members named to the District 2-AA All-District Teams.

Three Mules were named to the first team, two to the second team and three were honorable mentions.

Elias Alvarado was picked the first team as a utility player. He played the outfield, short stop as well as pitched for the Mules. He was successful in pitching the two winning games in the bi-district series with Sanford-Fritch.

Victor Vasquez was chosen as a first team outfielder. He pitched for the Mules but did most of his damage to opponents by chasing down fly balls and taking away apparent hits. He also chased down ground balls and got them back to the cut-off man

to hold or throw out base runners.

Caleb Conner made the first team as an infielder. He played second base and plugged up the right side of the infield by chasing down pop flies, line drives and grounders.

"All three of these guys were very instrumental our success this season," said Mule baseball coach Shane Fuller.

"They led us on the field with their gloves as well as their bats. They were willing to do what ever it took to put a game in the win column," the coach added.

Tanner Bales earned a second team selection as an infielder. He played first base for the Mules and dug throws out of the dirt as well as went high a wide for others.

Stephen Dominguez was named to the second team as an infielder as well. He played short stop and third for the Mules and defended the left side of the infield.

"These two guys will be missed by the team as they are both graduating along with Elias," continued Fuller. "They got better and better

as the season progressed both in the field as well as at the plate. They hit with power as well as for average."

Gunner Kirby, Ceasar Lopez and Ray Ramirez were Honorable Mentions to the All-District Team.

"It is too bad there are only so many spots on the all-district teams," said Fuller. "These three would be welcome additions to any team in the district. Ceasar graduated and will leave a big hole in our batting order."

"Victor, Tanner, Stephen, Gunner, Ceasar and Ray all hit home runs for us this season. We could send a lot of power to the plate this season. I believe the team is already looking forward to next year and trying to figure who will be taking up the roles of our seniors. That is the part of the fun in high school sports," the coach said.

"These guys as well as their team mates always came ready to play whether it was practice or a playoff game. I was proud of each of them and wish the graduates the best in their futures."

Bailey County 'Relay for Life' set for Friday

A total 12 teams have signed up for this year's "race for the purple," the Bailey County Relay for Life, according to April Castillo, event coordinator.

The theme for the 2008 relay is "Celebrate, Remember and Fight Back," and will held on June 6., beginning at 5 p.m., at Muleshoe's Benny Douglass Stadium.

While registration for the event starts at 5 p.m., the opening ceremonies are set for 6 p.m., and the Survivor and Caregivers' lap will take off at 6:30 p.m.

Other events included in the relay's schedule for June 6 include:

- Messages to Heaven balloon release — 8 p.m.
- Lip sync competition — 8:15 p.m.
- The Miss Relay Contest, featuring a bevy of beauties who will probably need to shave their beards before applying their makeup — 9 p.m.
- A five-man relay — 9:30 p.m.
- The Luminaria ceremony, with Kimberly Nickels speaking for Jaci Nickels — 10 p.m.
- Karoke and line dancing, following the luminaria at 10 p.m.
- The Fight Back Ceremony, with speaker Rhonda Myers — Midnight.
- A "Best Hairdo" competition — 1 a.m.
- Closing ceremonies — 2

a.m. Cancer Society, along with There will be on-site specialty activities to entertain venders raising money for and make this year's relay a memorable event.

Engagement



CODY CLARK AND MARISSA DAVIS

Davis, Clark engaged to wed

Bryan Davis and Karen Davis of Sudan announce the engagement of their daughter, Marissa Marie Davis of Lubbock, to Cody Edward Clark, also of Lubbock.

The prospective bride is a 2005 graduate of Sudan High School. She is employed by Texas Tech University Health Science Center.

The prospective groom is the son of Gary and Brenda Clark of Muleshoe.

He is a 2006 graduate of Muleshoe High School, and is attending South Plains College majoring in business finance. He is employed by Century 21 as a real estate agent in Lubbock.

The wedding has been set for June 21, 2008, at the First United Methodist Church in Lubbock.

The Sudan Buzz



Our Little Honey Bee's...

Sudan Hornets girls T-Ball team had a wonderful and fun season. The coaches did a great job of introducing the girls to softball. Watching the girls play was a great joy to all of their families and friends. The team members, pictured on the left, are: Top row — Lexi Swart, Emma Rich, Jentrye Bellar, Sierra Baker, Callan Netherland and Madison Powers; second row — Reagan Larson, Sydnie Miller, Payton Tolbert, Pricila Trillo, Danielle Davila, and Charity Likes (not shown). The coaches are Benny Baker (not shown) Chris Larson and Torrey Tolbert.

Sudan Senior Citizen News...

Just a reminder, Sudan Senior Citizen Business Meetings are held the fourth Monday of each Month at 6 p.m. at the Sudan Senior Citizen Center. All members are encouraged to attend.

Email your Sudan news to Leslie Powers at:

lslpowers@yahoo.com

Have story or photo ideas? Let Leslie know!

LLANO HOMES, LLC
Let us build your dreams
Larry Sawyer
806-523-1627
Currently developing "Sunset Estates" in Sudan

HILL SERVICE CENTER
E. Hwy. 84
Sudan, Texas
Complete Auto Repair
Minor John Deere Tractor Repair
227-2373

Remodeling & Renovations **806-543-8092**
free estimates
bonded & insured

Commercial Residential

SUDAN ISD
EXCELLENCE
IN
EDUCATION

WWW.SUDANISD.NET
Hwy. 303 PHONE: (806) 227-2431
SUDAN, TX 79371 FAX: (806) 227-2146

FROM START TO FINISH
FARMERS COOP ASSN. OF SUDAN
IS WHERE YOU NEED TO BE.

From applying your Pre-Plant Fertilizer, to in-season crop consultation, to ginning your cotton, Farmers Coop Assn. of Sudan is committed to your success.

Dennis Flowers, General Manager
806-227-2461, Ext. 201
There is no better time then now to make a change

KING AG AVIATION, INC.

Specializing in Aerial Spraying - Insecticide, Herbicide & Seeding - Field Scouting Service

Johnny King Home (806) 227-2211
P.O. Box 189 Fax (806) 946-3659
Sudan, Texas 79371 Mobile (806) 946-7309
Business (806) 946-3399 Vernon Office (940) 552-6102

Waltz ACROSS Texas CD **3.04%*** APY
3 YEARS FOR MINIMUM YIELD OF
PLUS 3 Rate Increases!
See our website for complete details

Bank Smart. Live Well. Enjoy the Ride.
www.FirstUnited.net

The Annual Percentage Yield (APY) is effective as of May 1, 2008 and is based on a 3.00% rate compounded monthly. This promotional CD is good for a limited time only and the APY is subject to change and is accurate as of publication date. Minimum balance of \$25,000 is required to open a Waltz Across Texas CD as well as a checking account at First United Bank. Penalty for early withdrawal and fees could reduce earnings on the account. IRAs are not allowed.

Amarillo • Canyon • Dimmitt • Earth • Lamesa • Littlefield • Lubbock • Seagraves • Seminole • Sudan

Hands-only cardiopulmonary resuscitation discussed

Submitted by Mandi Seaton, Bailey CEA-FCS

According to Andrew Crocker, Texas AgriLife Extension Service Program Specialist, more than 165,000 people experience cardiac arrest each year and 75% of those episodes happen in the home. A person in cardiac arrest has very little chance of survival unless immediate action is taken to sustain him or her until medical help arrives.

Cardiac arrest is a condition in which the heart abruptly stops pumping blood. In many cases, the heart suddenly goes from a regular heartbeat to twitching, called ventricular fibrillation, which does not allow blood to move through the body. Crocker states that when the heart stops, the absence of oxygenated blood may cause brain damage in only a few minutes — death may occur in as little as eight to ten minutes.

Cardiac arrest strikes immediately and without warning. Signs may include sudden collapse, loss of responsiveness and failure to breathe normally. If you see someone collapse in a public place or at home and you think it might be cardiac arrest, there are some things that you should know and some actions you may take.

Conventional cardiopulmonary resuscitation (CPR) is a lifesaving technique useful in

many emergencies in which someone's breathing or heartbeat has stopped. CPR may involve a combination of chest compression and mouth-to-mouth rescue breathing to keep oxygenated blood flowing to the brain and other vital organs until professional medical help arrives.

To learn conventional CPR properly, take an accredited first-aid and CPR training course. Check with your chapter of the American Heart Association, American Red Cross, or your local hospital or clinic to see what offerings they may have for a CPR and basic first-aid training course.

Crocker reports that in the new guidelines from the American Heart Association, even people who have not training in CPR may be able to help in an emergency situation by hands-only cardiopulmonary resuscitation. The hands-only technique eliminates a potential hindrance to providing help — fear of mouth-to-mouth contact.

These new guidelines work out to a simple, two-step measure:

1. Dial 911 to call for emergency medical help
2. Push hard and fast on the center of the chest and continue until medical professionals arrive

It is not dangerous to perform chest compressions

even is the heart is still beating. You cannot make a person any worse than he or she already is. You may break ribs, but the alternative is almost certainly death. Only stop compressions when either the person or the medical professionals tell you to stop or you are too tired to continue.

Although very important, CPR alone may not restore a heartbeat, says Crocker. A fibrillating heart may require an electric shock to enable it to resume a normal heart beat. However, until then, chest compressions are the only means to move blood to the patient's brain, heart, and other organs. Without chest compressions, a fibrillating heart will use up its energy supply and the person may not survive.

If an automated external defibrillator (AED) is nearby, have someone look for it and take it to the person. Do not delay or interrupt chest compressions in the meantime. Attach the AED to the patient, switch it on and follow the machine's voice instructions. If you are not trained to use an AED, a 911 operator may be able to guide you in its use. Instructions from the AEDs are so simple almost anyone can use them without prior training.

If the person has not begun moving after about two minutes and an AED is available, apply it and

follow the prompts. The American Heart Association recommends administering one shock, then resuming CPR for two more minutes before administering a second shock. Continue CPR until there are signs of movement or until emergency medical personnel take over.

It's still best to have CPR done in the conventional way by trained medical professionals. The new recommendations apply only to adult cardiac arrest victims outside a hospital setting.

Hands-only CPR should not be used on infants or children or adults whose cardiac arrest is from respiratory causes. Conventional CPR with mouth-to-mouth breathing remains the appropriate technique for persons who are in respiratory arrest. In respiratory arrest, the primary problem is not the heart but a lack of oxygen than eventually leads to cardiac arrest. Respiratory arrest may be caused by drug overdose, alcohol intoxication, carbon monoxide poisoning, severe asthma attack, or drowning or choking.

For more information,

visit the American Heart Association's website.

You may also contact Mandi Seaton, County extension agent — Family and Consumer Sciences at (806) 272-4583.

Sudan VBS set

The Sudan Church of Christ will be hosting Vacation Bible School June 9-11, from 9:30-11:30 a.m.

On Wednesday, June 11, the parents are invited to join their children for a hot dog lunch.

Come worship in
Song and Testimony
with
Charlie Mahone
& Sandra Dee

Muleshoe Cowboy
Fellowship

Sunday, June 8

7:00 PM

710 E. American Blvd.
Muleshoe

CAROLYN'S JULY 4TH TALENT SEARCH

Time to take the stage!

Do you sing, dance, act,
play an instrument, do stand-up
comedy or impersonations?

If so, you could walk away \$500 richer from Carolyn's July 4th Talent Search! Carolyn's is offering a \$300 cash prize to the winner chosen by the judges and a \$200 cash prize to the People's Choice (popular vote) award!

So, fill out the attached registration form and schedule an audition or submit a demo tape. If selected, you'll perform at Carolyn's July 4th celebration and hopefully walk away with the money!

TALENT ENTRY

Name: _____
Address: _____
Phone Number: _____
Description of Talent Entry: _____

Length of Entry: _____

Return entries to: Carolyn's, 106 E. American Blvd., Muleshoe, TX 79347 272-5911

Library News

By Dyan Dunagan

The Summer Reading program starts June 2.

The prizes for this year are:

- Two year olds to Pre-K — 10 person party at McDonalds.

- Kindergarten to second grade — a telephone.

- Third to fifth grade — an MP3 player

- 12 to 18 year olds — a Nintendo DS

Every Wednesday in June we will have programs for all age children. The schedule is:

- 9-10 a.m. Kindergarten to second grade — June 4, Going on a book hunt; June 11, Dr. Savia Book visits the library; June 18, Locked in the library; June 25, What book should I choose.

- 10:30-11:30 a.m. Third to fifth grade — June 4, How do I find it? Areas in the library; June 11, Dr. Savia Book visits the library; June 18, Library survivor; June 25, Library scavenger hunt.

- 2-2:30 p.m. Two year olds to Pre-K (Parents are encouraged to attend) —

- June 4, Shapes; June 11, Colors; June 18, Alphabet; June 25, Numbers.

- 3-4 p.m. 12 to 18 year olds — June 4, Chocolate tasting party; June 11, Game-ology; June 18, Trivia games; June 25, American Idol.

If you want more information about our Summer Reading Program, go to: www.mapl.lib.tx.us click on "news and events" on the left hand side of the screen and then click on "Library News and Events." We hope to see you there!

Muleshoe Ex-Students award scholarships

The Muleshoe Ex-Students Association recently awarded \$750 scholarships to two of Muleshoe's 2008 graduates.

The students are Corie Ann Black, who will be pursuing a degree in photo-journalism at South Plains College, and Ashley Grumbles, who will pursuing a degree in nursing at South Plains College.



ASHLEY GRUMBLES



CORIE BLACK

PUBLIC NOTICE NOTICE OF SHERIFF'S SALE

THE STATE OF TEXAS
COUNTY OF BAILEY

By virtue of an Order of Sale issued out of the Honorable 287th Judicial Distret Court of Bailey County, on the 3rd day of June, by the Clerk thereof, in the case(s) styled as follows:

Cause No. 8062

Styling: Bailey Central Appraisal District v. Joe Porras Jr. Individually and as Heir Of Joe Porras Sr. Deceased

Legal Description: 1. Section 39, Block Y, Tract 9 of the WD&FW Johnson Survey to the City of Muleshoe, Bailey County, Texas.

Cause No. 8287

Styling: Bailey Central Appraisal District v. Maria Sigala

Legal Description: 2. Lot 21, 22, Block 18, of the Original Town Addition to City of Muleshoe, Bailey County, Texas.

Cause No. 8460

Styling: Bailey Central Appraisal District v. Jose Tafolla

Legal Description: 3. Middle Part of Tract 2, Block 1, Harvey Addition to the City of Muleshoe, Bailey County, Texas.

Cause No. 8465

Styling: Bailey Central Appraisal District v. Jesus Agundis

Legal Description: Lots 18, 19, Block 1, of the McCain Addition to the City Muleshoe, Bailey County, Texas.

and to me, as Sheriff, directed and delivered, I will proceed to sell, at 2:00 o'clock p.m. on the 1st day of July, 2008, which is the first Tuesday of said month, at the East door of the Courthouse of Bailey County, in the City of Muleshoe, Texas.

Levied on the 3rd day of June, 2008, as the property of said defendants, to satisfy the judgement rendered in the above styled and numbered cause, together with interest, at 12 percent per annum, and all costs of suit in favor of each jurisdiction.

"ALL BIDDERS MUST NOW DISPLAY PROOF OF COMPLIANCE WITH 34.015 OF TEXAS TAX CODE."

GIVEN UNDER MY HAND THIS 3RD DAY OF JUNE, 2008.

Richard Willis
SHERIFF, BAILEY COUNTY, TEXAS
BY DEPUTY

Published in the Muleshoe Journal on June 5, 2008.

classified overflow

CLASSIFIEDS

Deadline is Monday at 5 PM to place a Classified ad. Call 272-4536.

PUBLIC NOTICE

PUBLISHER'S NOTICE

All real estate advertising in this newspaper is subject to the Fair Housing Act which makes it illegal to advertise "any preference, limitation or discrimination based on race, color, religion, sex, handicap, familial status or national origin, or an intention, to make any such preference, limitation or discrimination." Familial status includes children under the age of 18 living with parents or legal custodians, pregnant women and people securing custody of children under 18."

This newspaper will not knowingly accept any advertising for real estate which is in violation of the law. Our readers are hereby informed that all dwellings advertised in this newspaper are available on an equal opportunity basis. To complain of discrimination, call HUD toll-free at 1-800-669-9777. The toll-free telephone number for the hearing impaired is 1-800-927-9275.



REAL ESTATE

PRICE REDUCED! EARTH, TEXAS - 3 bdrm., 1 3/4 bath, brick, 1,800 sq. ft. +/-, family room, dining room, kitchen, utility area, single attached garage, central heat/air, updated nicely.
PARMER CO. - Exceptional two-story country home south of Farwell situated on 11.411 surveyed acres. 4 bdrms, 3 1/2 baths, two car garage, lots of storage/closet space, central heat, 81/2 ft. ceilings. You will not believe the hardwood floors in this home!!
SPRINGLAKE, TEXAS - 3 bdrm., 3 bath, basement, brick with metal roof, 3,581 sq. ft. +/-, family room with fireplace, large game room with fireplace, formal living room, dining room, kitchen, utility, lots of storage, double garage, central heat/air.
IN THE COUNTRY - Lazbuddie School District - 3 bdrm., 2 bath brick home on 6+ acres, family room with fireplace, dining room, kitchen, utility, lots of storage, central heat/air, nice metal barn, horse barn and corral with pipe-rail fence.
LAMB COUNTY GRAIN FACILITY - Elevator with 2 boot pits, office, scale, warehouse with load dock, over 1.5 million lbs. of upright storage, cleaner and dryer, pavement.
COCHRAN/YOAKUM CO, TX - 2400 acres including 625 acres expiring CRP. Good area to develop irrigation.
PARMER CO. - 960 acres, good dairy location or irrigated farm.
CASTRO/HALE CO. - Choice section, strong water, 1/2 mile sprinkler & irr. wells, pavement.
LAMB CO. - 480 acres full dev., prvmt. and quarter divided by Hwy. 70.
CHECK OUR WEBSITE for data and pictures of many farms, ranches, feedyards, dairies and choice dairy locations with permits and acreages with homes.

www.scotlandcompany.com
 Ben G. Scott — Broker 800/933-9698 day/eve

Cleavinger & Associates

MIKE CLEAVINGER — (806) 239-5139
 TARA JORDAN — (806) 433-4289

Over 10,000 Acres For Sale

- Farms and ranches in Bailey, Lamb, Parmer, Castro, Cochran and Dickens counties.
- Homes in Parmer, Lamb and Lubbock counties.
- Commercial Property in Bailey and Lamb counties.



- Farms — Fieldton, Roundup, Earth, Levelland, Plainview.
- Levelland — Immaculate horse ranch, \$800,000.
- Lubbock — 5A tracts (one well). Start \$15,000.
- Pettit — 4/2 DBL wide, steel shop, 6A. \$85,000 (2 mi. E).

FARRAR & ASSOCIATES

806-894-7099

Bailey County, South of Muleshoe — Beautiful 3 bedroom, 2 bath brick home with fireplace, sunroom, barn and outbuildings on 10 acres. Excellent condition. \$135,000.

Visit our website for all listings at www.streetsrealestate.com

Sellers and Buyers • Farm • Ranch • CRP
 Hunting • Rural Properties
STREET REAL ESTATE • PLAINVIEW, TX
JOHNNY STREET • 806-847-7400

Byrd Realty Ronald Byrd
 Licensed Broker
 Crista Bass
 Sales Associate

228 Main Street, Muleshoe, Texas
www.byrdrealestate.net

NEW LISTING - Remodeled 3 bedroom, 1-3/4 bath brick home, Central A&H, appliances, storage, sprinkler system, fenced backyard, 2 car garage, plus more.
DRASTICALLY REDUCED-GREAT DEAL-Do not miss out on this Nice 3 bedroom, 1-3/4 bath brick home, large utility, fireplace, sunroom, central heat/air, sprinkler system, 2 car garage, fenced back yard, all on corner lot.

NEW LISTING - Beautiful 3,000 plus brick home on 4 plus acres, NE of Lazbuddie, central heat/air, FP, sunroom, finished basement, MANY EXTRAS!!
Great Starter Home! 2 bedroom, 1-1/2 bath brick home, central A&H, built-ins, appliances, fenced backyard, all on corner lot.

Spacious 3 bedroom, 2-3/4 bath brick home, central A&H, built-ins in kitchen, large utility, wood floors, freestanding fireplace in living room, lots of storage, all on corner lot. Priced to sell. Call today!
TO BE MOVED - 16x80 Fleetwood, 3 bedroom, 2 bath home, built-in, heat pump, all electric, nice porch, great starter or get away home. Priced to sell.

WE NEED HOUSE LISTINGS!!
 160 acres on highway includes very nice 3 bedroom, 2 bath brick home. Refrigerated air and central heat, built-ins, fireplace, large utility and 2 car garage. Has circular sprinkler, 2 wells, 70'x100' hay barn, 24'x25' storage building and more.

WE NEED FARM LISTINGS!!
 Office: (806) 272-5380
 Toll Free: 1-888-999-3846

PUBLIC NOTICE

NOTICE OF SHERIFF'S SALE (REAL ESTATE)

BY VIRTUE OF A WRIT OF EXECUTION issued out of the 95th JUDICIAL DISTRICT Court of DALLAS County, Texas, in a certain cause numbered DC-07-10301-D. On the 8TH day of April A.D. 2008, styled: Daimler Chrysler Financial Services Americas LLC vs. James Thompson, to me, as Sheriff Richard Wills directed and delivered, I have levied upon this 27th day of May A.D. 2008 and will between the hours of 10:00 A.M. and 4:00 P.M.. on the first Tuesday in July A.D. 2008, it being the 1st day of said month, at Bailey County Court House 300 South 1st Street of said Bailey County, proceed to sell at public auction to the highest bidder for cash in hand, all right, title and interest, if any, which the defendant had on the 27th day of May A.D. 2008, or at any time thereafter, of in and to the following described property:
 1107 West Ave. J Muleshoe, Bailey County Tx. 79347 Parkridge, Lot 78 .2089 ACRES.
 Said property is levied on as the property of James Thompson and will be sold to satisfy the judgment for \$10,681.98 Dollars plus interest awarded and all costs of said sale.
 GIVEN UNDER MY HAND on this 27th day of May A.D. 2008.
 Richard Wills, Sheriff Bailey County, Texas
 By Richard Wills
 Richard Wills Sheriff

HOUSE FOR SALE BY OWNER
 Beautifully updated 3/2/2, 2447 sq. ft. w/amenities. Lg. kit., lg. utility w/ stor., lg. open din./lv. w/ sky lts. & stone FP, sunroom add. w/wet bar/gas FP w/sep. hot tub area, screened porch, stm. celler, 2 outbdgs., spkl. sys., landscaping, cinder. fence. Must see to appreciate, 1514 W. Ave C. By appt. only., call 272-4643.
 1006 W. 6th St. - Nice 3/2 on corner lot. Approx. 2,000 sq. ft. Den, lv. room, utility. Lg. bedrooms w/X-Lg. walk-in closets, large master bath. Kitchen-ceramic tile/double oven. 2 water heaters, Cent. H&A, spr. sys. 14x24 workshop/storage. Motivated seller! Call Monica 272-2015.
 1,200 sq. ft. brick home, central refrigerated air, single car garage, 2BDRM/1BA. Call 806-272-4388.

You read this ad. Chances are your neighbor did too! Call Leah at 272-4536 to advertise in the classifieds - a great investment!

FOR RENT
 Office space for rent. 1604 W. American Blvd. Inquire at (806) 272-7548.

PUBLIC NOTICE

Muleshoe I.S.D. is accepting sealed proposals for interior remodeling at the Dillman campus. Specifications may be acquired by contacting Sam Whalin at (806) 272-7330 between the hours of 8:00 a.m. and 4:00 p.m., Monday thru Friday. Sealed Proposals are due no later than Thursday, June 12 at 4:00 p.m. at the Muleshoe I.S.D. administration office located at 514 W. Ave. G. Please mark envelopes in the lower left-hand corner "Dillman Remodeling." M.I.S.D. reserves the right to receive or reject any and or all proposals in the best interest of the district.
Published in the Muleshoe Journal on May 29 and June 5, 2008.

HOUSE FOR SALE BY OWNER

Beautifully updated 3/2/2, 2447 sq. ft. w/amenities. Lg. kit., lg. utility w/ stor., lg. open din./lv. w/ sky lts. & stone FP, sunroom add. w/wet bar/gas FP w/sep. hot tub area, screened porch, stm. celler, 2 outbdgs., spkl. sys., landscaping, cinder. fence. Must see to appreciate, 1514 W. Ave C. By appt. only., call 272-4643.

1006 W. 6th St. - Nice 3/2 on corner lot. Approx. 2,000 sq. ft. Den, lv. room, utility. Lg. bedrooms w/X-Lg. walk-in closets, large master bath. Kitchen-ceramic tile/double oven. 2 water heaters, Cent. H&A, spr. sys. 14x24 workshop/storage. Motivated seller! Call Monica 272-2015.

1,200 sq. ft. brick home, central refrigerated air, single car garage, 2BDRM/1BA. Call 806-272-4388.

FOR RENT
 Office space for rent. 1604 W. American Blvd. Inquire at (806) 272-7548.

AccessCare
 dialysis in your hometown
RNs and Dialysis Techs needed ASAP to join our growing team!
 AccessCare Dialysis will soon be opening new centers in Brownfield and Muleshoe. We need Registered Nurses with 6 months dialysis experience and current Texas license; and Dialysis Technicians with dialysis and patient care experience. Certification is a plus, but not required. We offer paid benefits (health and life insurance), guaranteed hours, longevity bonus, paid time-off, productivity bonus, and 401 K plan. For immediate consideration, please submit your resume to personnel@accesscaredialysis.com or fax to 512-328-0779.

FARM HAND
 with good cultivating and sprinkler operation experience wanted. Must speak English. Call Jimmy Wedel @ 806-272-5901.

MISCELLANEOUS

Certified Nurse Aide Classes
 Beginning June 16th
Pre-Registration is Required
Class size is limited. Runningwater Draw Care Center (806) 285-2677 Olton

Rex Lowery Painting
Painting in the Muleshoe area over 40 years!
 FREE ESTIMATES
Cell: 789-9142

SERVICES

Are you receiving monthly payments from sold property? If so, I can get you cash for your monthly payments. For a free quote call Mark Phipps (806) 265-5394 or go to my website at notebizz.com

GARAGE SALE

Church-wide Garage Sale
 Saturday, June 7 8:00-4:00
 First Baptist Church Bus Barn
 215 Turner Street Texico, NM
 Furniture, clothes, knick knacks, toilets, home appliances, shop desk, toys and LOTS more, to benefit the Youth Department!

ADVERTISE!

HELP WANTED

AccessCare

RNs and Dialysis Techs needed ASAP to join our growing team!
 AccessCare Dialysis will soon be opening new centers in Brownfield and Muleshoe. We need Registered Nurses with 6 months dialysis experience and current Texas license; and Dialysis Technicians with dialysis and patient care experience. Certification is a plus, but not required. We offer paid benefits (health and life insurance), guaranteed hours, longevity bonus, paid time-off, productivity bonus, and 401 K plan. For immediate consideration, please submit your resume to personnel@accesscaredialysis.com or fax to 512-328-0779.

NURSING SIGN ON BONUS

Parmer County Community Hospital is seeking candidates for the positions of Registered Nurse/Charge Nurse and LVN. Positions are full time and requires excellent verbal skills, basic computer knowledge and skills, phone skills and ability to professionally interact with the medical staff and public. Prior Charge Nurse experience preferred for RN. Must be able to work all shifts. Mail resume to, or stop by for application: Parmer County Community Hospital, Human Resources, 1307 Cleveland, Friona, TX 79035.

Plant Operator Muleshoe, Texas

Great company, great people, great benefits. Plant operator will take hourly readings, monitor analytical equipment, use MS Word and MS Excel, climb ladders, use various wrenches and supervise plant activities. Can get full major/medical, dental, vision, 401K. This is a great job and possible career for someone willing to start from the bottom and work their way up. Will train the right person. Pick up application at 930 FM 1760 Muleshoe, TX and ask for Chris or call 806-786-0778 or 806-925-6654.

Park View Nursing Care Center is accepting applications for:

- LVN Charge nurse available. Contact Yolanda Mendoza at 806-272-7578.
- Weekend RN Manager and Certified Nurse Aides needed. Contact the DON. 806-272-7578.
- Asst. Director of Nurses. RN preferred. Contact Yolanda or Sandy at 806-272-7578.

LHC Family Medicine Clinic is seeking a Family Nurse Practitioner (FNC) or Physician Assistant (PA) to provide professional medical services in the community health center setting. Must have a current NP or PA certification and license with the State of Texas. At least 1-2 years experience as a FNP or PA. Hours are 8:00 to 5:00, M-F. Apply at Lamb Healthcare Center, 1500 S. Sunset, Littlefield, Texas. For more information call 806-385-6411. LHC is an EEOC employer.

Muleshoe I.S.D. is accepting applications for custodial positions full or part time available. Minimum starting wage is \$7.50 or more based on years of experience. Salary includes benefits, paid holidays and paid vacation. Applications may be picked up at the M.I.S.D. administration office at 514 W. Ave. G, between the hours of 8:00 a.m. and 4:00 p.m., Monday thru Friday. Information concerning the positions can be obtained by contacting, Sam Whalin at (806) 272-7330. M.I.S.D. is an EOE.

SALES PEOPLE NEEDED! Guaranteed salary plus commission, paid vacation, no experience necessary. Bilingual a plus. Apply in person at Big Valley Auto of Muleshoe, 1112 W. American Blvd. or call 272-7777.

Lamb Healthcare Center is accepting applications for a full time night licensed RN, LVN, and CNA. Applications may be picked up at 1500 S. Sunset, Littlefield, Texas. For more information call 806-385-6411, ext. 214. LHC is an EEOC employer.

REAL ESTATE

Nieman Realty

116 E. Ave. C • George Nieman, Broker • 272-5285 or 272-5286

CHECK OUR LISTING INFO., PHOTOS, ETC. ON-LINE AT WWW.NIEMANREALTY.COM
 HAVE BUYERS! NEED HOME AND LAND LISTINGS!!

RICHLAND HILLS - PARKRIDGE - HIGHLAND

- VERY NICE 3-2-2 Brick, corner lot, built-ins, Cent. A&H, approx. 1973' lv. area, guest cottage/eff. aptmnt. workshop!!! \$134,900.
- VERY NICE 4-4-2 Brick Home on corner lot, approx. 3500' lv. area, Cent. A&H, built-ins, FP, auto. spkrl., large finished basement!! MUCH MORE!! \$265K!!
- NICE 3-2-4 Home, Cent. A&H, built-ins, FP w/insert, water softener, auto. spkrl, fenced yd., corner lot, Lots of storage!! \$119K!! (approx. 2004' lv. area)
- VERY NICE 3-2-2 Brick, Cent. A&H, built-ins, FP, wood laminate & tile approx. 1818' lv. area, cov. patio, 15' x 30' pool, large storage/wkshop, fenced yd.!! \$149K!!
- NICE 2-1-3 carport Home, carpet, tile, fans, fenced yd., storage bldg. MORE!! \$45K!!
- NICELY REMODELED 3-2-2 Brick Home, corner lot, Cent. A&H, built-ins, FP, approx. 2159' lv. area, auto. spkrl., add. lot w/ stor/workshop Bldg.!! \$173,000!!
- 2 NICELY REMODELED DUPLEX UNITS & 1 NEW Duplex unit!! PRICED TO SELL!!
- NEW 3-2-2 Brick Home, Cent. A&H, built-ins, alarm sys., spkrl. sys., fenced yd., numerous other amenities. 140K!!
- BEAUTIFUL CUSTOM BUILT 3-2-2 Brick Home, built-ins, FP, isolated master, safe rm., patio, nicely landscaped, spkrl. sys., fenced yd.!!
- NICELY REMODELED 3-2-2 Brick, new Cent. A&H, built-ins, FP, 3125' lv. area, spkrl. sys., fenced yd., MORE!!
- VERY NICE 3-2-2 Brick, Cent. A&H, built-ins, fireplace, utility, new paint, carpet, tile, arium doors, blinds, 7 fans, cov. patio, stor. bldg., fenced yd.!! MORE!! \$130,000!!
- VERY NICE 3-2-5-2 Brick Home, Dual Fuel Heat Pump, built-ins, FP, basement, cent. vac. & humidifier systems, auto. spkrl., workshop/storage, fenced school area!! \$169,500!!

HIGH SCHOOL AREA

- FIXER-UPPER 3-2-2 Brick, auto. spkrl., Cent. A&H, built-ins, 2105' lv. area, 2 carport, 15' x 30' pool, 750' workshop/RV storage, corner lot!! \$40,000!!
- NICE 3-2-1 carport Home, Cent. A&H, built-ins, FP, approx. 1794' lv. area, auto. spkrl., 2 carport, 15' x 30' pool, 750' workshop/RV storage, corner lot!! \$84,500!!
- VERY NICE 2-1-2 brick, Cent. A&H, built-ins, new paint, carpet, wood laminate, fenced yd., 2 carport, 15' x 30' pool, 750' workshop/RV storage, corner lot!! MUCH MORE!! \$85K!!

RURAL

- 3 office units on 40.6' x 140' lot across from courthouse!! \$33,000!!
- VERY NICE CHURCH BLDG. WITH PARSONAGE - Possible Owner Finance!! Price Reduced!!
- GOOD INCOME PROPERTY-LONG TERM LEASE-Approx. 8,075' office bldg. w/ approx. 20,000' paved parking area!! PRICE REDUCED \$350K.
- NICELY REMODELED - 800 sq. ft. Bldg., Cent. A&H, updated electrical & plumbing. PRICE REDUCED \$35,000.
- 4.2 acre tract at edge of town, 40' x 60' metal insulated bldg., 2 other sheeltrn bldgs., chainlink fenced area, numerous uses!! \$59K!!
- Approx. 1274' Building, 75' x 140' lot, U.S. Hwy. 84!! \$39.5K!!
- 100' x 140' tract, corner lot on Hwy. 84, 1760' Bldg., 1076' Bldg., 308' storage, & 2-56' x 22' metal canopies w/paved area!! \$49.5K!!
- FORMER RICHLAND HILLS TEXACO - 1414' Bldg. + 1080' canopy + 16.530' asphalt paving!!

COMMERCIAL

- NICE OFFICE/SHOP/WAREHOUSE on .7 acre on N. Hwy. 214, Cent. A&H, insulated shop & warehouse, has 1-3/4 bath & 1-1/2 bath!! MUCH MORE!! PRICED TO SELL!! \$85K!!
- 1900' Off. Bldg., 106' x 140' lot on Hwy. 70 and 84!! \$79.5K!!
- ANA'S BEAUTY SHOP — Approx. 1120' bldg., with or without furniture & fixtures!! PRICE REDUCED!!

COMMERCIAL

- NICE OFFICE/SHOP/WAREHOUSE on .7 acre on N. Hwy. 214, Cent. A&H, insulated shop & warehouse, has 1-3/4 bath & 1-1/2 bath!! MUCH MORE!! PRICED TO SELL!! \$85K!!
- 1900' Off. Bldg., 106' x 140' lot on Hwy. 70 and 84!! \$79.5K!!
- ANA'S BEAUTY SHOP — Approx. 1120' bldg., with or without furniture & fixtures!! PRICE REDUCED!!

COMMERCIAL

- NICE OFFICE/SHOP/WAREHOUSE on .7 acre on N. Hwy. 214, Cent. A&H, insulated shop & warehouse, has 1-3/4 bath & 1-1/2 bath!! MUCH MORE!! PRICED TO SELL!! \$85K!!
- 1900' Off. Bldg., 106' x 140' lot on Hwy. 70 and 84!! \$79.5K!!
- ANA'S BEAUTY SHOP — Approx. 1120' bldg., with or without furniture & fixtures!! PRICE REDUCED!!

COMMERCIAL

- NICE OFFICE/SHOP/WAREHOUSE on .7 acre on N. Hwy. 214, Cent. A&H, insulated shop & warehouse, has 1-3/4 bath & 1-1/2 bath!! MUCH MORE!! PRICED TO SELL!! \$85K!!
- 1900' Off. Bldg., 106' x 140' lot on Hwy. 70 and 84!! \$79.5K!!
- ANA'S BEAUTY SHOP — Approx. 1120' bldg., with or without furniture & fixtures!! PRICE REDUCED!!

SERVICES

Computer Help & Web Design
 Home - Office - Small Business
 Brant Wedel - www.onecsguy.com
 Email: brant@onecsguy.com
 806-252-7834

REAL ESTATE

ERA Courtyard REAL ESTATE

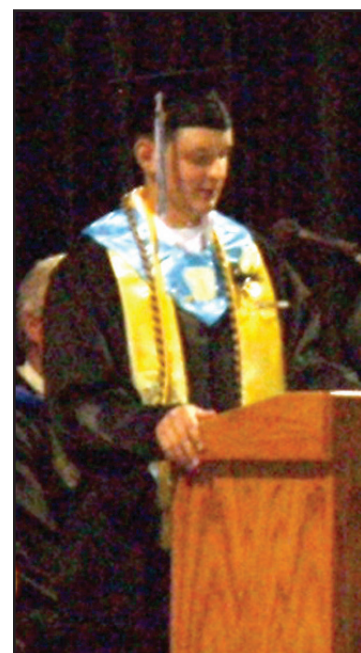
• 4/2/1 Brick home, app. 1600 sq. ft., about 4 mi. from Sudan on FM 155. 2 bdrms, 2 baths, FP and central AC and heat. Priced w/5 ac. of land. \$75,000.
 • 2/1/1 in Sudan, 201 Worth Street, Sudan. Remodeled home with steel roof. This house has been extensively updated and is practically move-in ready. This is one you need to see to appreciate.
Monty Edwards, Agent (806) 786-5426

Vic Coker Land Co.
 Agricultural Real Estate


• **Bailey County C.R.P.**-354 acres south of Muleshoe. Good grass cover, nice rolling topography. Good domestic well. Current C.R.P. contract expires in 2010. Mule deer in the area. Good potential for deer and other wildlife development.
 • **Lamb County** - 160 Acres northwest of Earth. Excellent soil. Lays perfect, 3 wells, Center pivot. Good set of catch pens for livestock.
 • **Southern Parmer County** - 160 acres. Late model sprinkler. 2 wells make 500 g.p.m. Good bases & yields. Corners in CRP at good rate.
 • **RURAL RESIDENTIAL** •
 • **Lazbuddie Area** - 3 bedroom, 2 bath on 4.75 acres. Pavement. Various outbuildings & pens.
 • **Lamb County** - Earth - Beautiful, red brick home. 4 bedrooms, 3 baths, 4 park garage, lots of storage, fenced back yard, sprinkler system, \$130,000. Too nice to pass up.
 316 Main Street • Muleshoe, Texas
 Office: 806-272-3100 Home: 806-965-2468
 Website: www.vicoland.com

Muleshoe Graduation 2008

Photographs by Larry Thornton



BIG SELECTION!

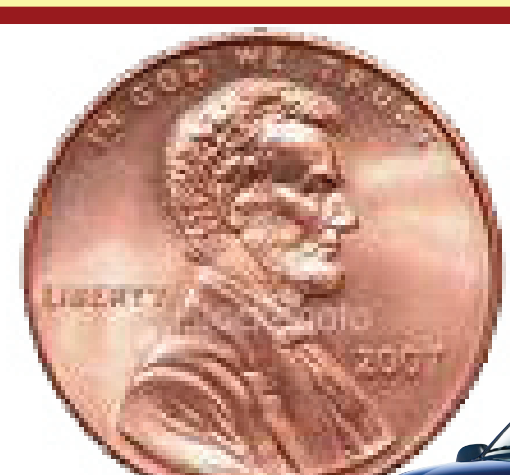


HUGE SAVINGS!


BIG VALLEY

Now A Bigger Selection Under The Sun!

Buy any vehicle & we'll give you a year's supply of gas for Just a Penny!



Or take the Big Valley \$2500 check to use as you like.



*New vehicles are at the Clovis & Portales locations only.

MULESHOE 1112 W. American Blvd. (806) 272-7777

CLOVIS 3300 E. Mabry Dr. (575) 762-2986

PORTALES 1115 N. Chicago (575) 356-8581

Fuel purchase based on 12000 miles for 12 month period, at an average of 18 mi per gallon, \$2500 annual value. See dealer for details.



CLOVIS TRUCK & TRAILER SALES

John Hays
Truck & Trailer Sales
Ph. 575-935-0163
Cell. 806-382-0732
Fx. 575-935-0165

P.O. Box 5086 • Clovis, NM 88102
4900 Mabry Dr. • Clovis, NM 88101

www.clovistrucksales.com

"A Division of Amarillo Truck Center"



2008 Sterling Bullet
Quad Cab 4x4
\$46,000



2005 Peterbuilt 379
C15 Cat Engine
\$65,000



1997 Freightliner FLD120
With 15' OX Dump Body
\$34,500



2007 Sterling 360
20 Ft. Supreme Body
\$44,100



2005 Freightliner M2
With Mercedes Engine
\$35,000

Questions about other vehicles?
john@clovistrucksales.com

