



Mules sink the Pirates...
Page 6



September is Farm Safety Month...
Page 10-11



Week Two Football Contest results...
Page 7



Muleshoe Journal



Striving to be your source for local news

Volume 89, No. 38

www.muleshoejournal.com

Muleshoe, Texas

50¢

September 18, 2008

Precinct #1 commissioner candidates speak out

As part of the *Muleshoe Journal's* continuing effort to keep the voting public informed, candidates for the position of Bailey County Precinct #1 Commissioner — Mickey Merriott and incumbent Floyd "Butch" Vandiver — were asked to respond to questionnaires.

Mickey Merriott was born and raised in Muleshoe. His parents are Lonnie and Nelda Merriott. He has one older brother, Gary Merriott, who resides in Amarillo, and he has been married to his wife Dawn (Branscum) Merriott for 17 years. She is the daughter of Lexie and Joan Branscum of Earth.

Merriott has a step-daughter and a step-son, both of whom who both reside in Amarillo and three



MICKEY MERRIOTT

grandchildren.

He graduated from Muleshoe High School in 1977, attended college in Amarillo majoring in automotive engineering, where he also took small business and business administration classes before graduating on Dean's list at Amarillo College, Aviation Maintenance Aerospace



Manufacturing, and is employed at Higginbotham-Bartlett of Muleshoe.

Floyd "Butch" Vandiver has lived, raised a family and operated a farm and business as a resident of Bailey County. He has been married to Doris (Gregory) Vandiver for 48 years. They have three children — Monti, Staci, and Tyrris —

and six grandchildren. He is an active member of the Muleshoe Church of Christ and has served on the board of the Oneita Wagon Senior Citizen Center. He enjoys spending time with his family, golf, dominoes, and fishing.

Please list your qualifications for county commissioner, and explain



FLOYD "BUTCH" VANDIVER

why you think you are the best candidate for the position.

Merriott — First and foremost, I am a Christian. I have good morals and values and plan to instill those values as I make decisions for Precinct 1. I have had experience in working for Bailey County. I was employed in Precinct

#3 under Joey Kindle, and Precinct #1 under Jack Dunham.

I fully understand what is expected in rural county road maintenance. I have seen what can be done and I can see what could be done. I have operated most of the equipment in use in this precinct today. I would like the opportunity to be a "hands-on" commissioner and feel that I could help restore some pride back into this precinct by the maintenance and care that I have plans to implement.

I have had several years of supervisory experience while living in Amarillo. Responsible for planning, budgeting and

Continued on page 3

Muleshoe drops to middle of sales tax pack

By Larry Thornton
Managing Editor

Dimmitt came out ahead in this month's race for the tax revenue dollar with the largest percentage increase of the area communities, leaving Muleshoe in the middle of the field.

Dimmitt's 22.47 percent increase represented a \$5,355.08 increase in the sales tax allocation it received from the Texas Comptroller's office. While Muleshoe's 1.2 percent increase meant it collected only \$ 471.15 more than in the same period of 2007.

September's sales tax allocations include local sales taxes collected in July and reported to the Texas State Comptroller's office in August.

Sales Tax Results			
City	Net Payment	Same period Prior year	Percent Change
Muleshoe	\$39,726.60	\$39,255.45	1.20%
Dimmitt	\$29,177.61	\$23,822.53	22.47%
Morton	\$10,986.73	\$10,879.09	0.98%
Littlefield	\$61,935.79	\$58,453.52	5.95%
Olton	\$10,647.07	\$ 9,219.78	15.48%
Sudan	\$ 3,360.15	\$ 2,805.47	32.15%
Earth	\$ 5,900.30	\$46,014.71	-87.17%
Farwell	\$ 7,740.83	\$ 7,197.33	7.55%
Bovina	\$ 6,244.89	\$ 6,346.28	-1.59%
Friona	\$28,273.82	\$24,296.42	16.37%

At the bottom end of the scale was Earth, which showed an "earth-shattering" drop of -87.17 percent. No answer as to why Earth's 2007 allocation for September totaled \$46,014.71 was available from the comptroller's office last year, but it's comparison with the \$5,900.30 from the same period this year significantly skewed the

results. Coming in second, with an increase percentage of 19.77 was the City of Sudan, which took in \$554.68 more in sales tax revenue for this period, but still shows a 20.33 percent decline in its year to date allocation figures.

Following Sudan was

Continued on page 3



Enjoying a mule moment

Area residents gathered in Muleshoe on Saturday, Sept. 13, to watch and participate in the annual Mule Days celebration. Pictured above, a group of mule riders take part in the morning's parade before journeying to the Good Times Arena, located north on Hwy. 214, for a variety of gymkhana events. Turn to the back page for additional parade and Mule Days photographs.

Photograph by Larry Thornton

Local Weather

Thursday

Sunny..... 78/47

Friday

Sunny..... 79/49

Saturday

Sunny..... 78/51

Sunday

Sunny..... 77/52

Monday

Sunny..... 78/53

Tuesday

Sunny..... 80/52

Wednesday

Sunny..... 79/50

Give It
A Thought

"Do not envy a violent man or choose any of his ways"
— Proverbs 3:31

Missed your paper?
Call the Journal
at 272-4536, between
8:00 a.m. and 5 p.m.



Homecoming queen and her court...

Muleshoe ISD senior April Gardea, the daughter of Jose and Adrianna Gardea, was crowned as the 2008 Muleshoe High School Football Homecoming Queen during ceremonies on Friday afternoon, Sept. 12. The coronation was moved up due to the poor weather expected at game time. Members of the queen's court included Caitlyn Durben, junior, the daughter of Bill and Pat Durben; Jessica Behrends, junior, the daughter of Earl and Donita Behrends; Cassie Steinbock, senior, the daughter of Terry and Judy Steinbock; and Lupita Andrade, senior, the daughter of Benito and Antonia Andrade.

School board approves additional bond sale

By Larry Thornton
Managing Editor

The Muleshoe Independent School District's board of trustees authorized the issuance of \$3 million in Unlimited Tax School Building Bonds during Monday's regular meeting, setting in place the final bricks of the \$25 million building program authorized by the district's voters in the May 2006 election.

Although the school district had scrimped and cut to fit the district-wide expansion into the \$22 million available — combining district funds with Existing Debt Allotment funds, the recent news that the school district would be receiving \$3 million in Instructional Facilities Allotment funds will allow the district to re-think how some of the multiple projects

are done.

The recent news also brought out an interesting fact concerning the projects' financing... the total cost of the projects, including the payment of the interest on the \$22 million bonds over a 30-year period, and the \$3 million in bonds authorized Monday, over a 15-year period, is slightly more than \$40.5 million.

Of this amount, the State of Texas will be paying all but \$21,630,622.

Superintendent Gene Sheets compared the situation to going to a bank, borrowing \$25 million over a 30-year period, interest free, and then learning you only have to pay back \$21 million.

Doug Whitt of Southwest Securities appeared before

Continued on page 3



77 Years and Going Strong

MULESHOE STATE BANK

Muleshoe Branch
272-4561
101 W. American Blvd.
Farwell Branch
481-9580
801 Ave. A



MAMC blood drive

Muleshoe residents can donate blood on Monday, Sept. 29, at the Muleshoe Area Medical Center, 708 S. First, from 8 a.m. to 5:30 p.m.

Those eligible to donate blood are encouraged to give now, since United Blood Services is on Critical Appeal for "0 negative" blood types.

Volunteer blood donors must be at least 16 years old, weigh at least 110 pounds and be in good health. Additional height and weight requirements apply to donors 22 and younger, and donors who are 16 must have signed permission from a parent or guardian.

Donors are asked to bring a photo identification and donor card every time they donate. First-time donors receive a donor card with their blood type in the mail shortly after their first donation. Call Melba King at 272-4857 to make an appointment.

Historic village open for tours

Muleshoe's historic village offers an authentic look at life in the early days of our area. Free, guided tours are available Monday - Friday, from 1-5 pm.

The facilities may also be used for private parties and community events. The village is operated by the Muleshoe Heritage Foundation, a 501c3 charity. Donations are always needed. Call 272-5873 for more information.

Pre-game ticket sales

Muleshoe ISD will have pre-game general admission football ticket sales Wednesday through Friday during the season for home games only. Tickets are \$3 for adults and \$2 for students. Tickets will be available at the administration office and the high school office.

MEDC takes no action on T&S Concrete application

The Muleshoe Economic Development Corporation took no action in regards to an application from T&S Concrete during its Sept. 11 special meeting.

Although MEDC board members expressed an interest in helping the business, and had scheduled a closed session to discuss the issue with the applicants, it was explained that additional documentation was needed before the application process could proceed.

MEDC board vice president Max King, who chaired the meeting due to the recent resignation of long-time president Wanda Hooten, said, "This will help the citizens more than anything in the community," referring to the need for a readily available supply of concrete for local building projects.

In other business, the board discussed the vacancy left by Hooten's resignation, and approved a recommendation that Bruce Barrett be appointed to the board.

The recommendation, along with a recommendation that board member Jose

Sanchez be reappointed to the board will be sent to the Muleshoe City Council for its approval.

Sanchez, who has served on the MEDC board for the past six years, has the least seniority of its five members.

Hooten has served on the board since its inception.

In other business, the MEDC board approved the minutes from its May 8 and July 28 special meetings.

Charles Oil & Gas, Inc.
DOT Inspections on semi trucks and trailers
 Hwy. 60
 Bovina, Texas
 251-1284

COMPLETE AUTOMOTIVE REPAIR

Burton Service Center

272-5330
 Cell: 946-8274

IRRIGATION ENGINES & SERVICE
COMPUTER DIAGNOSTICS
OIL CHANGES STATE INSPECTIONS

803 W. American Blvd., Muleshoe

Bridal Selections
 for
Lydia Wolcott-Williams
 bride of
Dan Williams
 Shower: Sept. 20th

Carolyn's
 106 E. American Blvd.
 Muleshoe, Texas
 272-5911

Births

Carol Meza

Juan Carlos and Sandra Meza of Muleshoe are proud to announce the birth of their daughter, Carol, on Sept. 10, 2008, at 8:55 p.m., at Lamb Healthcare Center of Littlefield.

Carol weighed six pounds, eight ounces at birth and was 18-3/4 inches in length.

Her grandparents are Isabel Robles and Benjamin Bellescas.

Onelsea Lopez

Ruben and Oneida Lopez of Farwell are proud to announce the birth of their daughter, Onelsea, on Sept. 8, 2008, at 11:33 p.m., at Lamb Healthcare Center of Littlefield.

She weighed six pounds, five ounces at birth, and was 18-3/4 inches in length.

Onelsea has two siblings, Antonio and Lindsey.

Corrections

Dr. Carolyn Schuster and Dr. Brett Wood, both of Keller, who recently announced their engagement, have a chiropractic practice in Southlake, and not Springlake as was stated in last week's issue of the *Muleshoe Journal*.

The *Journal* recognized the error and apologizes for any inconvenience it might have caused.

Correction Policy

Although the *Muleshoe Journal* tries to be accurate in the news stories and releases it publishes, the newspaper recognizes that errors occasionally occur.

An effort will be made to correct typographical errors, or misstatements of facts, in news stories voluntarily submitted for publication as soon as possible — if brought to the newspaper's attention in a timely manner, but will not include rerunning the news story or related photographs.

Corrections necessary from inaccurate or illegible information provided to the newspaper will not be published free of charge.

Paid publication items — whether advertisements, obituaries or items that don't meet the criteria for free publication — may be rerun if the original publication includes significant error.

Who are they?

Do you have any blank spots in your photo albums? Photographs that have been submitted for publication in the *Muleshoe Journal* may be picked up during regular business hours.

The photograph above, and a large number of other photographs, have accumulated at the news office. Please reclaim this piece of family history.

Plateau Delivers FREE GAS and Wireless that Costs Less!

\$1500 GAS Giveaway

Be a Lucky Winner!
 Plateau's giving away \$1500.00 of FREE Gasoline — \$100.00 at a time!
 Register to Win!

OUR BEST PLAN ONLY \$39.95

- > 1000 Anytime Minutes with FREE Nationwide Long Distance
- > FREE Unlimited Night and Weekend Minutes with FREE Nationwide Long Distance
- > FREE Unlimited Mobile-to-Mobile
- > FREE Carryover Minutes
- > FREE Loyalty Minutes

Phones starting at a PENNY!

MOTOROLA v197
 Bluetooth, sleek design and more!

SPECIAL OFFER! The BIG BUTTON Phone

ONLY \$29.95

SAMSUNG a436

NETWORK EXPANSION

NEW CELL SITE IS LOCATED AT:

- Grady — Located in downtown Grady, NM. This site provides coverage to downtown Grady and Hwy 209 in the area.

SAVE EVERY MONTH AT PLATEAU WIRELESS!!

PLATEAU Wireless

www.plateauwireless.com 877-PLATEAU (752-8328)

Hurry to Plateau and sign up to text and talk! Way To Go, Plateau!

Muleshoe
 Five Area Telephone Coop.
 302 Uvalde
 (806) 272-7700

Friena
 WT Services
 1010 Columbia
 (806) 250-5555

Contract Term: 2 years. Early termination fees: \$100 per year, maximum of \$200 and is prorated. Night and Weekend hours are Monday through Thursday 7:00 PM through 6:59 AM and Friday 7:00 PM through Monday 6:59 AM. When outside the designated home area. Roaming: \$5.50 per minute with Free Long Distance. Additional taxes, fees, and surcharges may apply. Carryover Minutes: unused plan minutes are carried over month to month. Loyalty Minutes: 30 minutes after one year of service, 60 minutes after three years of service and 100 minutes after five years of service. Carryover and Loyalty Minutes are removed on the date of disconnect and/or forfeited in the event of suspension/termination for nonpayment. Plan only available on GSM phones. Phone offers require 2-year commitment. Offer not available in all markets. See store for details. \$1500 Plateau Gas Giveaway prize is one (1) \$100 gasoline voucher per person. Limit: one prize per person. Drawings held on Oct. 15, 2008. Need not be present to win. Registration and offer ends 9/30/08.

Muleshoe Journal USPS 367820
 Established Feb. 23, 1924 Published by Panhandle Weeklies, LLC.
 Every Thursday at 201 W. Ave. C, P.O. Box 449, Muleshoe, TX 79347.
 Periodicals paid at Muleshoe, TX.
 Postmaster: Send address changes to the Muleshoe Journal, P.O. Box 449, Muleshoe, TX 79347.
 We are qualified members of:
 Panhandle Press Association, West Texas Press Association and Texas Press Association © 2007

Sandra Aven, Publisher
 saven@hearstmp.com

Leah Bell, General Manager/Ads
 advertising@muleshojournal.com

Larry Thornton, Managing Editor
 editor@muleshojournal.com

Bookkeeping/ Classified Advertising
 classifieds@muleshojournal.com

Subscriptions:
 By Carrier Yearly — \$22
 Bailey County, by mail — \$24
 Elsewhere — \$35
 By E-mail — \$22
 Advertising rate cards on request

Advertisers should check their ad the first day of insertion. The Journal will not be liable for failure to publish an ad or for a typographical error or errors in publications except to the extent of the cost of the ad for the first day of insertion. Adjustment for errors will be limited to the cost of that portion of the ad where the error occurred.

The Muleshoe Housing Authority is now accepting applications for housing for agriculture workers.

Handicap units available. Gas, electricity, water, sewer and garbage are included.

For more information call Bea at 806-272-5560.
 Office hours:
 Monday thru Friday, 8:30 a.m. to 4:30 p.m.

La Autoridad de Cubierta de Muleshoe ahora está aceptando aplicaciones para viviendas para los trabajadores de la agricultura.

Unidades de la desventaja son disponibles. El gas, la electricidad, el agua, la alcantarilla y la basura son incluidos.

Para más información, llame Bea al numero 806-272-5560.
 Horas de oficina:
 Lunes por viernes, 8:30 mañana-4:30 por la tarde

Muleshoe school board meets, acts...

Continued from page 1
the board at Monday's meeting in regards to the bond authorization, congratulated the board on the IFA award, and talked about the district's Standard & Poor's bond rating.

"You've done an outstanding job," Whitt said,

referring to the S&P report on the district's "very strong financial performance."

While Whitt praised the school board and administration for its efforts, the board members had similar praise for Whitt, calling his assistance in the months leading up to the

bond election "pivotal" in gaining the support of the district's voters.

In other business, the school board:

- Adopted a tax rate of \$1.04 for maintenance and operation, and 33 cents for debt service, for a total tax rate of \$1.37.

Sheets noted that the 33 cent debt service tax rate is a penny under the proposed amount, and four cents under the projected amount prior to the bond election in 2006.

"It's pretty exciting to me that we under where we projected," Sheets said.

• Noted that some of the bricks from the front of the auditorium, including "Abilene" bricks from the interior of the columns have been saved and are available for individuals who would like a souvenir from the high school expansion project.

Sales tax...

Continued from page 1

Olton with a \$15.48 percent increase, representing \$1,427.29 more in allocated tax dollars.

At the other end, the decline in Bovina's allocation, a drop of 1.59 percent was no doubt offset slightly with its 2.0 percent tax rate. Except for Littlefield, which as a sales tax rate of 1.75 percent, all other communities in the area remain at 1.5 percent.

The state collected \$2 billion in sales tax in August, up 7.7 percent when compared to taxes collected a year ago.

The comptroller's office distributed a total of \$491.9 million in September sales tax payments to local governments, showing a 10 percent increase when compared to the September 2007 distribution.

In 2008, the local sales tax allocations are up 6.7 percent compared to the same period in 2007.



BCEC crew headed to Ike relief

A crew from Bailey County Electric Cooperative headed south this week to help with the Hurricane Ike damage relief effort. Members of the crew, pictured above, included Kip McCall, Tony Fullen, John Kelley, Justin Price, Kody Morris, Clinton Kelley, Jose Mendoza and Kody Green.

Precinct #1 commissioner candidates...

Continued from page 1
implementing various projects for the company.

While living in Amarillo, I had the opportunity to work with the Amarillo Economic Development Commission and the Small Business Development Center to try to develop Lone Star Trikes, a company providing low-cost transportation for handicapped individuals.

While working with these two entities, I gained great insight on starting and growing a small business. I feel that this is how communities can grow a strong tax-base without placing the tax burden on its citizens.

Vandiver — I have lived in Bailey County for more than 50 years and understand the needs and function of county government. I have a vast amount of experience in operating a business and public service as evidenced by the following: 12 years experience as county commissioner of Precinct 1; completion of over 180 hours of continuing education in county government; strong leadership within Bailey County; willingness to listen to the people and consider their suggestions; ability to make tough decisions for the betterment of Bailey County.

I have been and will continue to be conservative with the peoples' money in an attempt to keep taxes as low as possible, and have a willingness and ability to stand up for what is right regardless of popularity.

It is the combination of the above attributes that make me the best candidate for Bailey County

Commissioner Precinct 1.

What do you perceive to be county's greatest assets?

The hard working citizen's of Bailey County.

Merriott — These people built the county, they take pride in where they live and continue to build the future of not only our community but the entire county.

Vandiver — When one considers assets many times only monetary and physical property come to mind, but in this case it is the people which are the greatest asset of Bailey County and it is the people which give the County its character and make it a great place to live. Bailey County also has a strong agriculture base as well as strong businesses, health care providers, schools, and churches.

What do you perceive to be the greatest problems faced by the county, and how would you suggest these problems be addresses.

Merriott — I feel one of the biggest challenges in Bailey County is to lower taxes. I see people moving out of our county just to escape the high taxes. It is cheaper to live in a neighboring county and commute. Bailey County ranks in the top 20 highest tax counties in the state. I would like to see more effort given to seeking new businesses in our county. Also, I would seek other avenues of revenue through grants. The Texas Association of Counties website has a site listing thousands of grants available to counties and is updated weekly. I would cut costs wherever and

whenever possible and develop ways to perform our tasks more efficiently in Precinct #1. Eliminating wasteful spending would help in this endeavor. If I am elected commissioner, I plan on being a full-time commissioner, not part-time. My time and effort will be devoted to the citizens of my precinct and Bailey County.

Vandiver — Bailey County faces many of the same social problems as the rest of the country, but escalating expenses are likely the greatest problem faced by Bailey County.

Currently, I believe the best way to approach escalating expenses is to be very conservative with the peoples' money while maintaining county services at an acceptable level. Cutting costs when possible and becoming more efficient to make the most of what we have should always be the first consideration.

Lance Insurance

**Competitive Rates, Variety of Leading Companies
For Home, Auto, Commercial and Crop**

806-227-2466

Time for new appliances?

WE ARE YOUR HOMETOWN WHIRLPOOL DEALER.

McDaniel's APPLIANCE

1020 Main Street, Clovis, NM
505-762-4481 or 800-682-7891

We now carry Speed Queen!

Lower Your Accident Risk Take a Break

**National Farm Safety Week
September 21-27**

Farmers who overwork run the risk of making mistakes. Not only will your muscles ache, but also fatigue may cause you to hesitate when seconds count.

Rest is a must when pushing your body to the limit. Great Plains Ag Credit and The National Safety Council urge you to take breaks when harvest takes its toll.

**Robert & Tommy are cooking lunch
FOR ALL AREA FARMERS**

Monday, September 22 • From 11am to 1pm

1602 West Highway 60
Friona, Texas
806-250-2758
greatplainsagcredit.com

GREAT PLAINS...GOOD PEOPLE

If we can't fix it, throw it away!

Sheetrock, Drywalling, Tape & Bed, Patch Up Jobs, Acoustic & Paneling, Small Concrete Jobs, Picket Fences, Bathroom Remodeling, Floor Tile, Sky Lights, Carports, Garage Doors, Insulation, Etc. Add On's and Roofing – References Available

Handy Randy

We will travel!

Pager: 766-9342
Home: 806-385-3103

Member of BBB of Lubbock

Cell: 806-632-5261
Littlefield, TX

Dr. J.W. Haltom

Family Dentistry & Orthodontics

For A Limited Time

\$50 OFF

Crowns and Bridges

Erika Trotter, Amber Garcia, Jessica Haltom & J.W. Haltom

- Emergencies Seen Promptly
- Insurance Accepted
- Patient Financing

- Adults & Children Welcome
- Televisions & Head Phones In Treatment Rooms
- Relaxation Gas

806-385-6935

320 East 8th Street, Littlefield, Texas

BIG

EVENT

LIMITED TIME OFFER

You're Gonna Love This Place!

IN PORTALES!

300 S Ave C, Portales, NM

It's the biggest event of the season. Design your home with great Ashley styles for every room in the house. OFFER ENDS SEPT. 29, 2008

BIG	BIGGER	BIGGEST
spend \$1000-\$1999 and get	spend \$2000-\$2999 and get	spend \$3000 or more and get
\$100	\$150	\$200
mail-in rebate	mail-in rebate	mail-in rebate
PLUS		
\$500	\$500	\$500
gas redemption opportunity	gas redemption opportunity	gas redemption opportunity
REDEEMABLE AT MOST MAJOR GAS COMPANIES		
PLUS		
NO INTEREST & PAYMENTS	NO INTEREST	NO INTEREST
UNTIL JANUARY 2010	UNTIL JANUARY 2011	UNTIL JANUARY 2013

Gas Redemption Opportunity: Purchase a minimum of \$1000 of merchandise between September 3 and September 29 for the opportunity to participate in a Gas Redemption Program. The Gas Redemption Program will enable you to receive a redemption coupon for \$25 of gas for those months where you purchase a minimum of \$100 of gas and timely comply with program details. Total of all redemption coupons can not exceed \$500. Limit one gas redemption voucher (gas redemption opportunity) per household. Other important terms and conditions apply, see store for complete program details.

Senior Citizen News

By Laverne Winn
The pancake breakfast on Saturday was a huge success. Thanks to you for coming and supporting the center. We enjoyed having the homecoming class and hope they will come back to see us. We are so proud of our center, we invite all to come in and visit. Our appreciation to Bert,

Bryant, and Kayla for helping with the signs. You are great trouper and we love you. Friday, Sept. 19, the retired teachers will be meeting at the center beginning at 10 a.m. Superintendent Gene Sheets will be presenting a program. All retired teachers are urged to attend. Come for the meeting and stay and enjoy the lunch with

friends. Tuesday, Sept. 23, will be dance night. Make plans to meet your friends and enjoy a night of fun and fellowship. Bring your favorite snack dish. All you young people, under 60 that is, maybe you have a grandmother, grandfather, mom, dad, uncle or aunt that is over 60 and needs a night out.

Make plans to bring them for a night out at the center. There is good music, a lot of fun and fellowship. The dance begins at 7 p.m., a pot luck supper break at 8:30 p.m. and ends at 10 p.m. The September birthday party will be Thursday, Sept. 25. All of you senior citizens with birthdays in September

make plans to come and join in the party at noon. Thanks to all of you who took the time to vote on the board members. We appreciate your caring for the center. The votes were counted on Tuesday, Sept. 16. The new board members will be posted at the center and will be in next week's news.

Menu for Sept. 22-26:
Monday, Sept. 22 — Smothered chicken with gravy, scalloped potatoes, sweet peas, salad, wheat roll, cookies and fruit.
Tuesday, Sept. 23 — Brisket, pinto beans, potato salad, sliced onions, tomatoes, pickles, cornbread and iced cake.
Continued on page 5

BAILEY COUNTY DEVOTIONAL PAGE

Don't lose sight, we are still in Vision!
Antiques & Fine Things
2104 W. American Boulevard
Muleshoe • 272-4217

"THE FIVE AREA TELEPHONE COOPERATIVE, INC."
West Plains Telecommunications, Inc.
Five Area Systems, Inc. • Plateau Wireless
Five Area Long Distance • Five Area Internet
302 Uvalde Muleshoe, USA (806) 272-5533

MULESHOE VALLEY INC.
2601 W. American Blvd.
P.O. Box 631
Muleshoe, Texas
(806) 272-4266
Mobile (806) 946-8763
mviinc@fivearea.com

WESTERN DRUG
& Something Special Gifts
1411 W. American Blvd. 272-3106 Muleshoe

MCDONALD'S OF MULESHOE
1315 W. American Blvd. • 272-3333
Open at 5 AM every day! **i'm lovin' it!**

PAGO FEED YARD, INC.
Commercial Cattle Feeders
P.O. Box 956, Friona
265-3281
Feller Hughs - Mgr.

MAPLE COOP GIN
927-5501
Maple, Texas

Pizza Hut
1412 W. American Blvd.
Muleshoe • 272-4213
Open: Sun.-Mon. 11AM-11PM
Lunch Buffet: Sun.-Fri. 11:30AM-1:30PM
Monday Night Buffet: 6-8PM
PIZZA HUT WING STREET IS HERE!
"Gather round the Good Stuff"

Farmers Coop Ass'n of Sudan
P.O. Box 120 • Sudan, Texas
227-2461
Mobile: (806) 638-7692 FAX (806) 227-2102
Dennis Flowers, Gen. Manager Email: dflowers@fivearea.com

2800 West American Blvd.
Muleshoe 272-4296
Ray Lee EQUIPMENT CO., LTD.

MULESHOE PEA & BEAN, INC.
1680 CR 1044, Muleshoe • 272-5589
Ed, Nicky & Chad Nickels

United Supermarkets

IRRIGATION PUMPS & POWER
Zimmatic W. Hwy. 84
CENTER PIVOTS 272-5597

minsa CORPORATION
US Hwy. 84 East
Muleshoe • 272-5545

Interim HEALTHCARE
110 E. Ave. C
Muleshoe 272-5549
www.InterimHealthcare.com
LeAnn Altman • Jamie Shipp, RN-BSN • Olivia Barrera • Arlene Brozek • Twilla Rutter

Lowe's MARKETPLACE
401 W. American Blvd. • Muleshoe • 272-4585

Perfect Love by Max Lucado

Isn't it good to know that even when we don't love with a perfect love, he does? God always nourishes what is right. He always applauds what is right. He has never done wrong, led one person to do wrong, or rejoiced when anyone did wrong. For he is love, and love "does not rejoice in unrighteousness, but rejoices with the truth" (1 Cor. 13:6 NASB).

God passes the test of 1 Corinthians 13:6. Well, he should; he drafted it. So where does this leave us? Perhaps with a trio of reminders. When it comes to love:

Be careful.
Until love is stirred, let God's love be enough for you. There are seasons when God allows us to feel the frailty of human love so we'll appreciate the strength of his love. Didn't he do this with David? Saul turned on him. Michal, his wife, betrayed him. Jonathan and Samuel were David's friends, but they couldn't follow him into the wilderness. Betrayal and circumstances left David alone. Alone with God. And, as David discovered, God was enough. David wrote these words in a desert: "Because your love is better than life, my lips will glorify you.... My soul will be satisfied as with the richest of foods" (Ps. 63:3, 5 NIV).

Be prayerful.
What if it's too late? Specifically, what if you're married to someone you don't love—or who doesn't love you? Many choose to leave. That may be the step you take. But if it is, take at least a thousand others first. And bathe every one of those steps in prayer. Love is a fruit of the Spirit. Ask God to help you love as he loves. "God has given us the Holy Spirit, who fills our hearts with his love" (Rom. 5:5 CEV). Ask everyone you know to pray for you. Your friends. Your family. Your church leaders. Get your name on every prayer list available. And, most of all, pray for and, if possible, with your spouse. Ask the same God who raised the dead to resurrect the embers of your love.

Be grateful.
Be grateful for those who love you. Be grateful for those who have encouraged you to do what is right and applauded when you did. Do you have people like that in your world? If so, you are doubly blessed. Be grateful for them. And be grateful for your Father in heaven.

From A Love Worth Giving © (Thomas Nelson Publishers, 2004) Max Lucado

This devotional & directory is made possible by these businesses who encourage all of us to attend worship services.

ASSEMBLY OF GOD
FIRST ASSEMBLY OF GOD
Pastor Ryan Pate
521 South First Street
272-3017
S.S. 9:45 am,
W.S. 10:30 am & 6:00 pm,
Wed. 7:00 pm
EL BUEN PASTOR
415 E. Ave. F - 272-5455
Pastor Domingo Luna -
272-4542
S.S. 9:45 am, W.S. 11 am &
6 pm; Wed. 7 pm

BAPTIST
CALVARY BAPTIST
1733 W. Ave. C.
Rev. Jeff Coffman
CIRCLE BACK BAPTIST
Intersection FM 3397 & FM
298
FIRST BAPTIST
220 West Ave. E
Dr. Stacy Conner
FIRST BAPTIST
Lazbuddie • 965-2126
PRIMERA IGLESIA BAUTISTA
223 E. Ave. E
Interim Rev. Troy Smith
PRIMITIVE BAPTIST
621 South First
Elder Bernard Gowens, Min.
PROGRESS BAPTIST
Progress, TX
PROGRESS SECOND BAPTIST
Arthur Hays, Min. - 1st & 3rd
Sundays
RICHLAND HILLS BAPTIST
Bro. Larry Thornton
17th & West Ave. D
S.S. 10 am; W.S. 11 am &
6 pm; Weds. 7 pm
TRINITY BAPTIST
314 E. Ave. B - Bennie
Wright, Min.

CHURCH OF CHRIST
LARIAT CHURCH OF CHRIST
Wesley Roach, Min.
S.S. 10 a.m.; W.S. 11 a.m. &
6 p.m.; Wed. 7:30 p.m.
LAZBUDDIE CHURCH OF CHRIST
Nathan Crawford, Min.
S.S. 9:30 am; W.S. 10:20 am
& 5 pm; Wed. 7 pm
MULESHOE CHURCH OF CHRIST
22nd & W. American Blvd.
S.S. 9:30 am; W.S. 10:20 am
& 6 pm; Wed. 7:30 pm
16th & AVE. D
CHURCH OF CHRIST
Curtis Shelburne, Min.
272-4619
S.S. 9:30 am; W.S. 10:30 am;
Growth Gr. 1:30 pm;
Wed. 7:00 pm

May God Bless You Abundantly!

CATHOLIC
IMMACULATE CONCEPTION
CATHOLIC CHURCH
805 E. Hickory
Leonardo Pahamtang, Min.

EPISCOPAL - CHARISMATIC
ST. CLEMENTS CHURCH
COMMUNION OF CHRIST
THE REDEEMER
Hwy. 214 South • 272-5954
Father Sergio Leal
Sun. W.S. 10:30 am

CHRISTIAN
TRINITY CHRISTIAN CENTER
1723 W. American Blvd.
272-3877
Reydon Stanford, Pastor
Sun. W.S. 10:30 am
CENTRO CRISTIANO
117 E. Birch St.
Hermanos Barron
S.S. 10 a.m.; W.S. 11 a.m. &
6 p.m.; Wed. 7 p.m.

CHURCH OF CHRIST
LARIAT CHURCH OF CHRIST
Wesley Roach, Min.
S.S. 10 a.m.; W.S. 11 a.m. &
6 p.m.; Wed. 7:30 p.m.
LAZBUDDIE CHURCH OF CHRIST
Nathan Crawford, Min.
S.S. 9:30 am; W.S. 10:20 am
& 5 pm; Wed. 7 pm
MULESHOE CHURCH OF CHRIST
22nd & W. American Blvd.
S.S. 9:30 am; W.S. 10:20 am
& 6 pm; Wed. 7:30 pm
16th & AVE. D
CHURCH OF CHRIST
Curtis Shelburne, Min.
272-4619
S.S. 9:30 am; W.S. 10:30 am;
Growth Gr. 1:30 pm;
Wed. 7:00 pm

LUTHERAN
ST. JOHN LUTHERAN
Lariat, TX • David Symm, Min.
S.S. 10:30 am; W.S. 9:30 am

METHODIST
FIRST UNITED METHODIST
507 W. 2nd St.
S.S. 9:45; W.S. 11:00;
Praise & Prayer 6 PM;
Weds. 6 PM Youth Activities;
Sun. 5 PM Jr. High Bible
Study; 6 PM Sr. High Bible
Study
Pastor Monty Leavell,
272-5517
LAZBUDDIE METHODIST
S.S. 9:30 am; W.S. 10:30 am
Pastor Ken Peterson
965-2121
EL DIVINO SALVADOR
U.M.C.
619 E. 5th Street & Ave. G,
Fernando Sanchez, Pastor
272-6888

PENTECOSTAL
UNITED PENTECOSTAL LIGHTHOUSE
207 East Ave. G
1-800-454-6051
S.S. 10 am; Thursday,
Bible Study 7 pm

INTER DENOMINATIONAL
NEW COVENANT
Plainview Hwy.
Steve Claybrook, Pastor
W.S. 10 am; Wed. 7 pm
MULESHOE COWBOY FELLOWSHIP
710 E. American Blvd.
Steve Friskup, Minister
272-5199
Service: 7:30 p.m. Thursday

LAZBUDDIE FEEDERS, LTD.
We make your dairy bull calves worth more!
Lazbuddie, Texas
965-2435

MULESHOE ANIMAL CLINIC
GENERAL PRACTICE
M V S
MULESHOE VET SUPPLY
1430 US Hwy. 84, Muleshoe Office: 272-3061

LAW OFFICE OF TINA DAVIS-RINCONES
Criminal - Probate - Family Law
101 S. Main, Muleshoe • 272-7776

HENRY INSURANCE AGENCY
Rama Smalling
Agent
111 W. Avenue B
P.O. Box 563
Muleshoe, TX 79347
888-658-4581
(806) 272-4581
Fax (806) 272-5892

PROGRESS DAIRY
"Quality milk from our family to yours"
806.925.6410

TEXAS FARM BUREAU INSURANCE CO.
FARM BUREAU INSURANCE
1612 W. American Blvd., Muleshoe • 272-4567

CENTRAL COMPRESS & WAREHOUSE
SUDAN, TEXAS

McCORMICK SEEDS, INC.
400 East Ash • 272-3156
Muleshoe, Texas
A COMPLETE LINE OF FIELD SEEDS
Tim McCormick

Deaf Smith County Grain, Inc.
Cliff A. Skiles, Jr.
Jeb S. Skiles

MULESHOE TIRE
107 Main St., Muleshoe • 272-4594
After Hours Service: 946-7668

1ST BANK MEMBER FDIC
202 South First 272-4515

Leal's TORTILLA FACTORY
105 E. Ash St., Muleshoe • 272-5772
Phillipians 4; "I can do all things through Christ who strengthens me."

Lazbuddie Feeders, Ltd.
We make your dairy bull calves worth more!
Lazbuddie, Texas
965-2435

MULESHOE ANIMAL CLINIC
GENERAL PRACTICE
M V S
MULESHOE VET SUPPLY
1430 US Hwy. 84, Muleshoe Office: 272-3061

LAW OFFICE OF TINA DAVIS-RINCONES
Criminal - Probate - Family Law
101 S. Main, Muleshoe • 272-7776

HENRY INSURANCE AGENCY
Rama Smalling
Agent
111 W. Avenue B
P.O. Box 563
Muleshoe, TX 79347
888-658-4581
(806) 272-4581
Fax (806) 272-5892

BOEHNING DAIRY
690 CR 45, Earth
"MILK - A PART OF EVERYTHING THAT IS GOOD!"

BCEC BAILEY COUNTY ELECTRIC COOPERATIVE ASSOCIATION
Muleshoe — 272-4504 Morton — 266-8600

WAYNE COPLEY TRUCKING
CALICHE, SAND & ROCK PRODUCTS
P.O. Box 63 (806) 272-3697
Muleshoe, Texas 79347 Mobile: (806) 946-8072

J&S Dairy
1260 CR 1038, Muleshoe
272-7706

BAILEY COUNTY DEVOTIONAL PAGE

Obituaries

Rylea Edwards

Graveside services for Rylea Paeg Edwards, 2 Days, of Slaton, was held on Friday, Sept. 12, at Muleshoe Memorial Park Cemetery with Dale Griswold officiating.

Rylea died on Wednesday, Sept. 10, 2008, in Covenant Lakeside Hospital of

Lubbock. She was born on Monday, Sept. 8, 2008, in the same hospital.

Survivors include her parents — Matthew and Trisha Edwards; and grandparents — Scoty and Carrie Edwards of Farwell and Kyle and Mandy Whitaker of Muleshoe.

Claude McDowell

Memorial services for Claude McDowell, 77, of Muleshoe, are scheduled for a later date, at Brewster Cemetery at Clarksville.

McDowell died on Tuesday, Sept. 9, 2008, at his residence in Muleshoe. He was born on March 29, 1931, in Clarksville to James and Irene McDowell, and married Doris Reed in Clarksville on Oct. 5, 1948.

McDowell moved to Muleshoe in 2004 from Paris. He was a truck driver, with his last truck driving job being with Wal-Mart.

Survivors include his wife — Doris McDowell; three

sons — Dennis McDowell of Muleshoe, Terry McDowell of Rio Rancho, N.M., and Jerry McDowell of Derby, Kan.; four daughters — Glenda Stevens of Muleshoe, Debra Williams of Friona, Patricia McDowell of Plainview and Tracey Williams of Hub; two sisters — Vivian Moore of Levelland and Lynn Weems of Clarksville; a brother — Gerald McDowell of Paris; 31 grandchildren, 36 great-grandchildren and seven great-great-grandchildren.

D.T. Garth

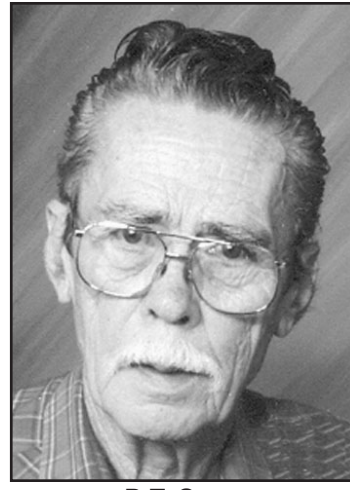
Memorial services for D.T. Garth, 75, of Muleshoe, are scheduled for Sunday, Sept. 21, at Muleshoe Cowboy Fellowship Church with Allen Smyer officiating.

Garth died on Sept. 7, 2008, in Muleshoe. He was born on Sept. 2, 1933, in Muleshoe to Royce and Vernice Garth, and married Jeanne Richmond in Hereford, N.C., on Aug. 22, 1955.

He was preceded in death by a daughter — Virginia, in January 2008.

Garth was a lifetime resident of Muleshoe and was owner and operator of Garth Sheet Metal. He was a member of the Muleshoe Masonic Lodge, Muleshoe VFW, Muleshoe American Legion and American Vets of Clovis, N.M.

He served in the U.S. Navy and the Army National



D.T. GARTH

Guard.

Survivors include his wife — Jeanne; two sons — John Garth of Hereford and Kip Garth of Austin; a daughter — Jo Garth of Lubbock; a sister — Latain Buck of McKinney; and one grandchild.

Memorials may be sent to the American Cancer Society, 3411 73rd St., Lubbock, Texas 79423.

Betty White

Chapel services for Betty White, 68, of Lubbock, were held on Wednesday, Sept. 17, at Lake Ridge Chapel and Memorial Designers with Steve McMeans officiating. Graveside services followed at Muleshoe Memorial Park Cemetery.

White died on Sept. 14, 2008, at the Covenant Medical Center in Lubbock. She was born on Jan. 18, 1940, in Amherst to Elmer and Vera Downing, and married Jimmy R. White in Muleshoe at the Main Street Baptist Church on Jan. 18, 1958.

She was a homemaker and a member of the First Baptist Church of Dalhart, where she lived until moving to Lubbock in 2004.

She attended Muleshoe High School.

White was preceded in death by her parents.



BETTY WHITE

Survivors include her husband — Jimmy White of Lubbock; two sons and their wives — Jimmy and Deanna White of Midwest City, Okla., and Joe and Karen White of Waterford, Wis.; a sister — Maxine Kimbrough of Lubbock; a brother and his wife — Elmer and Billie Downing of Lubbock; and two grandchildren.

Senior Citizen News

Continued from page 4

Wednesday, Sept. 24 — Grilled steak, gravy, mashed potatoes, green beans, salad, wheat roll and fruit cobbler.

Thursday, Sept. 25 — Beef with gravy over noodles, mixed greens, carrots, wheat roll, Jello™ and fruit.

Friday, Sept. 26 — Fish or chicken strips, gravy, beans, coleslaw, cornbread and fruit salad.

Nina Redwine

Graveside services for Nina Redwine, 84, of Bovina were held on Friday, Sept. 12, at the Muleshoe Memorial Park Cemetery in Muleshoe, with Mickey Chambliss, minister of the Lazbuddie Church of Christ and Carrol Redwine, of Van Buren, Ark., officiating.

Redwine died on Tuesday, Sept. 9, 2008, at her residence. She was born on Nov. 15, 1923, in Lawn to John and Emma Parish Counts, and married J.C. Redwine on Jan. 7, 1940, in Ft. Sumner, N.M.



NINA REDWINE

She was preceded in death by her husband on Sept. 3, 1981, and by a

grandson — Russell Redwine, on Dec. 11, 1987.

Redwine had lived in Parmer County since 1942 after moving from the Littlefield area.

She was a member of the Lazbuddie Church of Christ, and a former member of the First Baptist Church.

Survivors include three sons — Clyde Redwine and Harrol Redwine, both of Friona, and Carrol Redwine of Van Buren, Ark.; a sister — Audine Sanders of Tucumcari, N.M.; a brother — Johnny Ray Counts of Richmond, Va.; six grandchildren and five great-grandchildren.

BCEC annual election results listed

Individuals elected to the Bailey County Electric Cooperatives' board of directors at the Sept. 2 annual meeting included Noah Estrada for Dist. 3, and Keith Layton for Dist. 6.

Thanks for reading!

The children and grandchildren of **Don & Laura Seales** cordially invite you to attend the celebration of their 60th Anniversary... **Saturday, September 20** 2:00 p.m. **Muleshoe Senior Citizens Center** 319 South Main Street, Muleshoe

Your presence is the only gift desired.

2008 Nissan Versa 1.8S HB skt# 83116, 83119
\$800 Rebate
 or
2.9% for 60 months W.A.C.
 32 mpg hwy

2008 Nissan Sentra 2.0S skt# 83133, 83140
\$1,500 Rebate
 or
\$1,000 Rebate & 3.9% for 60 months W.A.C.
 33 mpg hwy

2008 Nissan Altima Sdn 2.5S skt# 83132
\$1,250 Rebate
 or
\$1,000 Rebate & 4.9% for 60 months W.A.C.
 One Left! 31 mpg hwy

2008 Nissan Maxima 3.5SE Loaded skt# 83104, 83109
\$4,000 Rebate
 or
0.9% for 60 months W.A.C.
 or
1.9% for 72 months W.A.C.

WWW.BENDERNISSAN.COM
BENDER HONDA-NISSAN (575) 762-3701
 3000 Mabry Drive Clovis, NM 88101 Se Habla Español

IN TEXAS, THE SOIL IS RICH, BUT **OUR TRADITION IS RICHER.**

FIRST AG CREDIT
 PART OF THE FARM CREDIT SYSTEM

For over 90 years we've been there to help - whether you're a first generation farmer or your family's been in the business for ages. We believe in being as diverse as Texas itself, after all, we're Texan, too.

Agribusiness Loans | Home Loans | Farm & Ranch Loans
 Operating, Equipment & Livestock Loans | Recreational Land Loans

Muleshoe 806.272.3010 | agmoney.com |

Texas-Born 1916

Sports

Mules sink Lubbock Cooper Pirates' hopes for victory, 53-19

By Delton Wilhite
Sportswriter

The Pirates of Lubbock Cooper sailed into Benny Douglas Stadium on a Sea of Hope. By the time the smoke cleared the Mules had sunk their ship and drained the sea. The Pirates walked home following the Trail of Despair.

The first half ended with the Mules leading 26-19. A wakeup call from their coaches at the intermission fired up the young Mules. They stormed back in the second half to score 27 unanswered points in the second half to finish off the Pirates 53-19.

The Mules spotted the Pirates an early touchdown on a 12-play drive that ate up most of the opening period. Tyler Sutton found a seam for the tally from two-yards out. Cooper failed to kick the point after to lead 6-0 with 2:27 left in the first period.

The opposition has scored first in each of the first three games the Mules have played this season.

Juan Sanchez returned the ensuing kick back to the Mule 46. Four plays later Wes Wood pump faked to freeze the defense and allow Ray Ramirez to get 10 yards behind the Pirates. W. Wood's pass was on the mark and Ramirez trotted in to the end zone for a 39-yard pass and run to knot the score at 6-6.

Cooper struck again early in the second period on a Queston Evans two-yard dive. The two-point conversion failed but the Pirates led 12-6 with 11:12 remaining in the half.

"The game went about as we expected," said Mule coach David Wood. "They came out like a house-a-fire and then as the game went on we took the game over. It is always good to get a win on Homecoming because of all the distractions that happen during the week."

"Cooper had a lot of emotions due to the mishap the previous week and I am not sure how much that affected the outcome of the game."

"But our offense just kept firing and then we made some adjustments defensively at the half and shut the out in the second half."

Victor Vasquez did not even allow the Pirate fans to finish celebrating as he broke lose up the middle on the ensuing kick return and zipped 85 yards to retie the game just 13 seconds after the Pirate TD. Vasquez tacked on the point after to break the tie and give the Mules the lead for good.

In a surprise move the Pirates went for the needed yard on fourth down at their own 39. The Mules stunted right into the play and blew it up one yard behind the line to take possession at the Cooper 38.

Three plays later the Mules hit pay dirt with a swing pass to Lane Wood coming out of the backfield to the right side. When L. Wood got the ball in his hands he cut back left behind a wall of blockers that ushered him 35 yards to the end zone. Vasquez kick was good to put the Mules up 20-6.

L. Wood was back in the end zone nine plays later on a 24-yard pass over the middle. Adrian Muniz had knocked the ball loose from a Pirate and Nathaniel Chavez recovered for the Mules. The Mules led 26-12 with 4:24 left in the half.

Sutton cut the Mule lead to just seven points on a quarterback sweep around the left end. He ran through the Mule defense for 52 yards to the end zone. Jacob Del Toro tacked on the final point of the night for the Pirates. The Mules led 26-19 at the intermission.

The Mules received to start the second half and

marched 68 yards in seven plays. L. Wood blasted over from the three to extend the Mule's lead to 32-19.

Vasquez stripped a Pirate receiver of the ball and recovered the fumble on the Mule 16 to stop a Pirate threat in the third period.

Ramirez capped the eight-play 84-yard drive with a 27-yard pass and run to push the Mule advantage to 38-19 with just under four minutes left in the third period.

Ramirez also put on a defensive show by intercepting a Sutton pass on the Mule 32 and returned the ball to the Cooper 45.

Seven plays later W. Wood hung the ball out of bounds five-yards deep in the end zone. Vasquez made sure both feet were inbounds and extended his body and arms out of bounds for the spectacular catch. The throw covered the final 13 yards.

Cooper Washington ran a post pattern from the far right side and W. Wood found the 6-5 receiver open in the stratosphere. Washington went up and hauled in the ball for the two-point conversion. That tally extended the Mule lead to 40-19 with two seconds left in the third quarter.

The two teams exchanged punts in the fourth period before Jared Skipworth took the controls for the Mules. He faked the hand off and scooted 19 yards off left tackle. Caleb Conner slipped on first down attempting to make a cut but picked up eight yards.

Skipworth tossed a swing pass to Stevie Cisneros on the left side. He picked



Photograph by Stacy Conner

Mule Cooper Washington pulls in the ball for a touchdown in Friday's game.

his way for 10 yards and a personal foul penalty tacked on 15 more to the Pirate 18. Sanchez blasted up the middle for 16 yards and then was rewarded for his night's work as he blasted in from two-yards for his first varsity TD. Vasquez kick capped all scoring at 53-19 with 4:10 left in the game.

The Mules rolled up 405 yards on the Pirates with 282 coming through the air and 123 on the ground. W. Wood was 16 of 26 for 272 yards and Skipworth connected on one toss for 10 yards.

L. Wood led the Mules on the ground with 10 carries for 72 yards and one TD. Sanchez carried seven times for 40 yards and one tally. Seven mules made

Continued on page 7

Home Phone Service from Alltel

With Basic Universal Service from Alltel, you get unlimited local calling for \$14.99 per month and nationwide long distance for just 10 cents a minute.

Call 1-800-278-9174 or visit alltel.com/bus for more information.



Alltel customers may be eligible to receive monthly reduced-rate telecommunications service under the Federal Lifeline and Link-Up programs if they satisfy applicable eligibility criteria. If you think you qualify, please visit your local retail store or alltel.com/lifeline for further information. Alltel offers Lifeline/Link-Up service only in areas where the company has been designated Eligible Telecommunications Carrier status.

As an Eligible Telecommunications Carrier, Alltel offers the following services in accordance with CFR 54.101 in both Lifeline and non-Lifeline service offerings:

- Voice-grade access to the public switched network
- Flat-rated local exchange service
- Dual-tone multi-frequency signaling
- Single-party service
- Access to 911 emergency services
- Access to operator services
- Access to long-distance service
- Access to directory assistance
- Toll blocking to qualifying low-income customers

Unlimited local calling is subject to a limited home calling area. Calls made to phone numbers outside the home calling area will incur additional toll charges. Contact a sales representative for local calling details. Initial activation & deposit may apply. Compatible equipment required. Select equipment not yet TTY compatible. Service is not available in all areas. Prices exclude taxes, assessments, surcharges, operator-assisted calls, credit card & toll charges. Additional charges may apply, including a regulatory & administrative surcharge. Other restrictions may apply. The information contained herein is subject to change. The applicable rates, terms & conditions of service are contained in a Service Agreement & any Addendums.



Plains Regional Medical Group
www.phs.org/prmc

Experienced general surgeon joins Plains Regional Medical Group.

Plains Regional Medical Group welcomes general surgeon Manoel Rodamilans, MD, to our growing family of physicians. Dr. Rodamilans has more than 30 years of general surgery experience and is now accepting new patients.

Dr. Rodamilans completed his internship in general surgery at Rogers Williams Hospital in Providence, Rhode Island, and his residency in general surgery at Bay State Medical Center in Springfield, Massachusetts. During his residency, he completed a four-month rotation in surgical oncology at Roswell Park Memorial Institute in Buffalo, New York. Dr. Rodamilans is board-certified in general surgery by the American Board of Surgery.

To schedule an appointment, please talk to your primary care provider or call 769-7577. Dr. Rodamilans office is located at 2200 W. 21st St., Clovis. Office hours are 8 a.m. to 5 p.m., Monday through Friday.

Plains Regional Medical Group is a department of Plains Regional Medical Center



Fall Piano Lessons For All Ages!

Call Fran Hamilton @ 272-4759

Hwy. 84 E. of Muleshoe • 272-5545

MULESHOE ANIMAL CLINIC & MULESHOE VET SUPPLY
1430 US HWY. 84, MULESHOE
272-3061 OR 272-4990

United Supermarkets
104 W. 9th St.
Muleshoe, Texas
272-3120

AGRO DISTRIBUTION, LLC
Clovis Hwy. West
Muleshoe • 272-4203
Bruce Bruns, Location Mgr.

Leal's RESTAURANT
1010 W. American Blvd.
Muleshoe, Texas
272-3294
"The Original - Since 1957"

LOWE'S MARKETPLACE
401 W. American Blvd., Muleshoe

Irrigation Pumps & Power
www.drippi.com
West Hwy. 84
Muleshoe • 272-5597
Zimmatic

BCEC BAILEY COUNTY ELECTRIC COOPERATIVE ASSN.
305 E. Ave. B, Muleshoe
272-4504

MILK FOR THE SOUL DRINK ORGANIC BOEHRING DAIRY FARMS

WESTCARD 66 Western "66"
607 N. 1st St.
Muleshoe • 272-4556

FIVE AREA TELEPHONE COOPERATIVE
302 Uvalde
Muleshoe, TX
272-5533

HONEY COMB JENNIFER PARKER Cosmetologist
120 West Ave C
Muleshoe, Texas
Bus: 806-272-5108
Cell: 806-241-8046
Cuts, Color, Highlights, Perms, Manicures, Pedicures and Waxing

Photo Makers
1814 W. Ave D
Muleshoe
806-272-3090
photomakersonline.com

GO MULES!

HARTLINE HEATING & A/C
(806) 272-7762
Turn to the Experts

Pizza Hut
1412 W. American Blvd.
Muleshoe - 272-4213

Miules, Lady Mules 'kick off' season at Running Water Draw

By Delton Wilhite
Sportswriter

The Mule and Lady Mule cross-country teams kicked off their 2008 season in Plainview in the Running Water Draw Meet.

The Lady Mules finished eight with a team total of

290 points. The Mules also finished eighth with a team total of 152.

"I was proud of all of the kids today," said Mule cross-country coach Carey Sudduth. "They are still running themselves into shape and we should see

improvement each week."

Yvonne Gardea set the pace for the Lady Mules and finished the two-mile course in 12th with a time of 13 minutes 45.59 seconds. Sarah Johnson ran 20th with a 13:58.20 and Lupita Andrade finished 68th in a

time of 15:11.78.

Baylee Bessire finished in 89th with a 15:34.58 and Sandy Mojica finished in 101st with a 15:50.33.

April Gardea crossed in 106th place in a time of 15:57.91 and Amy Regalado was 112th with a 16:02.48.

Sterling Leopard led the Mules with a second place finish in a time of 16:31.70 on the three-mile course. Weston Griswold finished in 11th with an 18:40.87 and Matthew Ambriz took 33rd

Continued on page 10

BOOTS SHOES CLOTHING
Work & Dress Casual & Athletic Western & Athletic

1405 West American Blvd.
Muleshoe, Texas
806-272-MULE (6853)

Varsity Mules... Continued from page 1

catches in the game with Ramirez leading the way with 6 grabs for 138 yards and two TDs.

L. Wood had four catches for 65 yards and two TDs. Vasquez snagged two passes for 20 yards and one TD. Washington had one catch for 24 yards, Chavez grabbed one for 20 and Cisneros caught one for 10 yards.

Washington, Ramirez,

L. Wood, Adrian Muniz and Austin Bamert led the defensive charge with eight tackles each. Vasquez, Head and Muniz each caused fumbles and Cisneros, Vasquez and Bamert recovered fumbles. Ramirez and Muniz each picked off a pass.

"I could just go down the list of players that made great individual contributions tonight but it was always for

the team. We are 3-0 on the season and now we had better get ready for Crane," concluded Wood.

The Crane Golden Cranes are ranked in the top 10 in the various polls in Class 2A. It will be a playoff type atmosphere as the Mules meet a ranked team on neutral site. Both teams are traveling to Denver City for the match. The Mules are the visiting team.

Football contest results are in

By Leah Bell
General Manager

The second week of competition saw an influx of several more players trying to knock last week's top dog out of the number one position, and they did just that. The bad news is that he was replaced by another newcomer!

This week's first place \$25 prize is going to Troy Moore who managed to do something no one else could — not miss a game.

Troy will earn 10 cumulative points for his win this week, but maybe more importantly he has earned the right to brag just a little.

He wasn't too far off the tiebreaker score either, guessing 35 total points would be scored between Amarillo River Road and Friona. The actual total number scored was 32.

Five other players missed just one game this week and are probably swallowing the taste of envy as they read this story now.

Finishing in second through sixth place and earning nine to five cumulative points respectively were: Jaden Herrera, Devnie Orozco,

Terry Field, Zedrick Herrera and Veronica Gonzales.

Rounding out the top ten spots for the week were: Travis Bessire and Gabe Toscano (4 pts.), Fernando Toscano (2 pts.) and Darryl McCamish (1 pt.).

Just out of the race this week: Ruben Mata, Hilbert Wisian, last week's winner Joe Cortez and Sue Bessire.

Wondering how you fared? Here are what some other contestants did this week: James Buie and William Orozco (16th place tie), Bruce Bruns (18th place), Felipe Gonzales and Raymond Villalobos (20th place tie), Joe Flores (26th place), Charlotte Holt (27th place), J.C. Orozco (29th place), and Charles Waggoner (32nd place).

Cumulative points earned through Week 2: Terry Field-15, Joe Cortez-10, Troy Moore-10, Charles Waggoner-9, Jaden Herrera-9, Devnie Orozco-8, James Buie-7, Donnie McDonald-6, Zedrick Herrera-6, Raymond Villalobos-5, Veronica Gonzales-5, Tommy King-4, Gabe Toscano-4, Travis

Bessire-4, Linda Flores-3, Ed Dabrowski-2, Fernando Toscano-2, Ruben Mata-1, William Orozco-1, Darryl McCamish-1.

Just a reminder, anyone over the age of 12 can play our weekly football contest. It's good family fun!

Entries can be mailed to us at: Football Contest, P.O. Box 449, Muleshoe, Texas 79347. They must be received at the *Journal* office no later than 4 p.m. on Friday prior to that week's games, or be postmarked on that date.

Entries may also be emailed to either ctyankee@fivearea.com or advertising@muleshoejournal.com. You need not have an original copy of the contest to enter.

Our \$200 grand prize will be awarded after the end of the Mules' regular season to the person gathering the most cumulative points throughout the season.

A weekly \$25 prize will be awarded to the individual who makes the least number of incorrect guesses and comes closest to the tiebreaker score.

Notice of Tax Revenue Increase

The MULESHOE AREA HOSPITAL DIST. conducted public hearings on September 11, 2008 and September 18, 2008 on a proposal to increase the total tax revenues of the MULESHOE AREA HOSPITAL DIST. from properties on the tax roll in the preceding year by 2.564103 percent.

The total tax revenue raised last year at last year's tax rate of 0.400000 for each \$100 of taxable value was \$1,202,179.35.

The total tax revenue proposed to be raised this year at the proposed tax rate of 0.400000 for each \$100 of taxable value, excluding tax revenue to be raised from new property added to the tax roll this year, is \$1,232,688.82.

The total tax revenue proposed to be raised this year at the proposed tax rate of 0.400000 for each \$100 of taxable value, including tax revenue to be raised from new property added to the tax roll this year, is \$1,259,511.57.

The Board of Directors of Muleshoe Area Hospital Dist. is scheduled to vote on the tax rate that will result in that tax increase at a public meeting to be held on September 25, 2008 at Muleshoe Area Medical Center, Hospital Dining Room, 708 South First Street, Muleshoe, TX 79347 at 6:00 PM.

EACH WEEK WE'LL PAY 1ST PLACE \$25!!!!

GRAND PRIZE WINNER GETS \$200
AFTER MULESHOE'S LAST REGULAR SEASON GAME!

FOOTBALL CONTEST

RULES

Circle your choice as the winning team in each of the 12 games below. The entry with the most correct entries will win the weekly \$25 prize. In the event of a tie, the entrant who picks the closest to the actual tie breaker score will win.

Grand Prize Winner - Each week, points will be awarded to the TOP 10 FINISHERS (1st Place=10 pts., 2nd Place=9 pts., 3rd Place=8 pts., etc.). The person finishing the regular season with the most accumulated points will receive the Journal's \$200 Grand Prize! So play every week to increase your chances!

Entries may be mailed to the Muleshoe Journal, P.O. Box 449, Muleshoe, Texas 79347, dropped off at the office (201 W. Ave. C) during business hours, M-F, 8-5 or Emailed to: advertising@muleshoejournal.com or ctyankee@fivearea.com. Please indicate FOOTBALL CONTEST ENTRY. Need not have original entry form to enter.

Entries for any week's contest must be postmarked before or received in our office by 4 PM on Friday of that week's games. No exceptions! Muleshoe Journal employees and their families are not eligible to win. Decision of the judges is final. Games not marked will be counted against the player. Must be at least 12 years old to play.

TIE BREAKER

(Write in your guesses for the score of this game)

Muleshoe _____ vs Crane _____

CIRCLE YOUR CHOICE OF WINNER

1. Childress vs. Sanford-Fritch
2. Dimmitt vs. Bovina
3. Floydada at Post
4. Friona vs. Sudan
5. Idalou at Lubbock Cooper
6. Alpine at Clint
7. Ozona at Brady
8. Bushland vs. Stratford
9. Amarillo Highland Park at Boys Ranch
10. Baylor at Connecticut
11. Miami at Texas A&M
12. Massachusetts at Texas Tech

Entries due
by 4 PM on
Sept. 19th!

ENTRY BLANK

Name: _____

Address: _____

Phone: _____

DEAF SMITH
COUNTY GRAIN
CR N 213, Muleshoe • 272-8918

L&L
Pallet Supply Inc.
Muleshoe / Amarillo, TX
Office 806-272-5041
Monday-Friday
8am - 5pm

FIVE AREA
TELEPHONE
COOPERATIVE
302 Uvalde, Muleshoe, TX
272-5533

Lowe's Marketplace
401 W. American Blvd.
Muleshoe, Texas
272-4585
We love our Mules!

HI-TEK
AUTOMOTIVE
322 N. First Street, Muleshoe
272-3480

Muleshoe Journal
www.muleshoejournal.com
201 W. Ave. C • 272-4536
Striving to be your source for local news!

Springlake Potatoes
&
Barrett Produce

MAPLE
COOP GIN
927-5501
Hwy. 596 - Maple, Texas

Danny's
CATERING FINS & HENS
5101 Ave. Q, Lubbock
806-744-0400 or 1-800-962-1035

McDONALD'S
OF MULESHOE
1315 W. American Boulevard
806-272-3333

CLAY'S
CORNER
GIN
558 Hwy. 214, Muleshoe - 965-2176

ALVARADO PARTY RENTALS

INFLATABLE BOUNCER

Safe - Affordable Fun For Kids!
BEST PRICES AROUND

272-5588

2 Hrs. \$50 - 4 Hrs. \$75 - 6 Hrs. \$100
8 Hrs. \$125

Birthdays Parties - School Functions - Special Events
DELIVERY, SETUP & PICKUP

SE HABLEA ESPAÑOL - EDDIE & RACHEL ALVARADO
DJ SERVICES ALSO AVAILABLE

2233

RED WING SHOES

The Fair Store

120 Main 272-3500

Muleshoe Bail Bonds

Anzaldua Tax Service

272-3001

Notary Public service available.
804-A W. American Blvd., Muleshoe

Advanced Lube & Wash

Advance Towing & U-Haul Service/Boxes

272-5842

Now doing Certified State Inspections
OPEN AT 8:30 AM - Need an affordable oil change or detail car wash? We pick up and deliver free of charge within the city limits! Call 272-5842 for service!
502 N. 1st Street, Muleshoe

MULESHOE CATTLE MARKET

The Muleshoe Cattle Market is brought to you each week by Muleshoe Livestock Auction, located east of Muleshoe on U.S. 84. Muleshoe Livestock conducts sales every Saturday, beginning with hogs, sheep and goats at 10 a.m. and cattle following at approximately noon.

REPRESENTATIVE SALES - SAT., SEPT. 13, 2008

1047 head of cattle, 25 hogs and 496 sheep and goats for a total of 1568 livestock sold at the Sept. 13 sale. Market steady on most all classes of cattle with good demand.

FOR INFO. ON SALES OR TO CONSIGN CATTLE - 272-4201

Seller, City	#	Type	Wt.	CWT or PH
Circle R Dairy, Muleshoe	5	Hol. str.	265 lbs.	at \$70.00
Circle R Dairy	6	Hol. str.	307 lbs.	at \$68.00
Ramiro Sanchez, Levelland	1	Char. bull	310 lbs.	at \$137.00
Luis Flores, Muleshoe	3	Blk. bulls	343 lbs.	at \$135.00
Sarah Catlett, Lubbock	11	Mxd. str.	586 lbs.	at \$108.00
Sarah Catlett	4	Mxd. str.	628 lbs.	at \$105.00
JCL Inc., Sudan	10	Blk. str.	639 lbs.	at \$112.00
JCL Inc.	35	Blk. str.	723 lbs.	at \$109.75
C Bar C Ranch, Tatum	11	Blk. str.	666 lbs.	at \$112.50
C Bar C Ranch	39	Mxd. str.	782 lbs.	at \$107.25
Victor Bros., Plains	95	Mxd. str.	726 lbs.	at \$107.50
Victor Bros.	46	Mxd. str.	802 lbs.	at \$104.00
Encino Ranch, Lamesa	5	Mxd. str.	727 lbs.	at \$110.00
Encino Ranch	43	Mxd. str.	807 lbs.	at \$106.25
Encino Ranch	7	Char. str.	890 lbs.	at \$136.00
Liborio Avalos, Hereford	1	BWVF hfr	190 lbs.	at \$270.00
Ramiro Sanchez	1	Blk. hfr	195 lbs.	at \$330.00
Guadalupe Flores, Hereford	10	Mxd. hfrs	390 lbs.	at \$110.00
FM Farms, Brownfield	3	Mxd. hfrs	397 lbs.	at \$107.00
Victor Bros.	12	Blk. hfrs	470 lbs.	at \$115.50
Victor Bros.	53	Blk. hfrs	568 lbs.	at \$105.50
Victor Bros.	64	Blk. hfrs	633 lbs.	at \$105.00
WB Ethridge, Morton	1	Red cow P7		\$700.00
Hip O Cattle, Muleshoe	1	Blk. cow	1140 lbs.	at \$63.00
Hip O Cattle	1	Red cow	1200 lbs.	at \$61.50
Weaver Farms, Muleshoe	1	Red cow	1000 lbs.	at \$61.00
Taylor Gray, Plains	1	Hol. cow	1245 lbs.	at \$60.50
Taylor Gray	2	Hol. cows	1170 lbs.	at \$60.00
Campos Dairy, Friona	1	Hol. cow	1475 lbs.	at \$58.00
Campos Dairy	1	Hol. cow	1520 lbs.	at \$58.00

NEWTON APPLIANCE SERVICE

"We sell & service heating & air conditioning units"

NEW Crosley Appliances

Cedar Creek Antiques & Used Furniture

215 Main St., Muleshoe
Open Tues.-Fri. 10-5
806-272-3272

South Plains College Muleshoe Center

621 W. 2nd, Muleshoe

For information on College Credit Classes & various Health Occupation Classes available at the Muleshoe Center, call **Connie Kenmore 272-3346**

Or go by the Center, Mon. or Tues. 9 AM-4 p.m.

This ad sponsored by the Muleshoe Area Educational Foundation

Tickled Paint

806-272-7720
www.tickledpaint.com

Date Night

Friday Sept 19th 6-9pm

Get **20% OFF** your purchase of 2 or more items!

Bring mom, dad or make it a family date!

1523 W. American Blvd., Muleshoe, TX

ADVERTISE YOUR BUSINESS HERE!

Ask Leah or Terry how to rent this space for just **\$9-11.25 per week!**

272-4536

Carolyn's Christmas Creations

106 E. American Blvd. Muleshoe, Texas 272-5911
www.visitcarolyns.com
Open Daily

'Tis Always Christmas at Carolyn's!

We are learning about animals... ...that are extinct or are at risk.

Newspaper Fun!

www.readingclubfun.com Annimills LLC © 2008 V5-N37

LOWE'S MARKETPLACE

401 W. American Blvd. Muleshoe, Texas 272-4585

Animals at Risk

Do you know what the word 'extinct' means? When we say an animal is extinct, we mean that you cannot find one like it anywhere on earth. There are none left! An example of extinct animals would be dinosaurs. You've never seen one alive have you?

Animals and plants have disappeared through natural causes such as storms, volcanic eruptions or diseases. Some kinds of animals have been wiped out simply because people were hungry and killed them for food before the animals had a chance to replace their populations. In some cases, people have carelessly or cruelly been the cause of low numbers of animals.

Animals may be threatened by loss of their homes or poisons sprayed to kill pesky insects. Some animals are hunted just for souvenirs! They may be at risk for lower numbers of their kind. When their numbers become very low there is a chance of those animals becoming extinct. At this point we call them 'endangered.'

People can help by refusing to buy things made from animals and passing laws against hunting when numbers of animals are low. We can create parks, reserves and zoos for breeding, and support National Wildlife Refuges.

Animals at Risk

Fill in the puzzle with some animals that are at risk:

- Arctic; hunted for fur, numbers growing
- Europe, Asia, North America; hunted for killing farm animals
- Florida, Africa, Australia; their swampy homes have been drained; killed for skins and food
- few small groups left in mountainous bamboo forests of China
- large gentle animals in African jungles; not enough room for gathering food, raising families; killed for body parts
- followed by fishermen seeking tuna; drown in nets; now companies support ways to fish that do not kill needlessly
- Africa, Asia; poachers kill them for their horns
- beautiful cat of India, Russia; killed for skin; threat to people
- ocean animal; largest animal in world; hunted
- giant lizard; very few left

Some kinds of mice are at risk too!

Can you fill in the sentence below with these vowels?
e a e o
a i a a

Some m _ m m _ l s like the three pictured on this page are _ t _ r _ s k _ r _ n d _ n g _ r _ d

The quagga was an animal that lived in Africa. With stripes on its front half and plain brown on its back half it looked half zebra and half horse.

BCEC

BAILEY COUNTY ELECTRIC COOPERATIVE ASSOCIATION

305 E. Ave. B Muleshoe, Texas 272-4504

Extinct Animals

When animals are "extinct" it means that there are no more of them. The dinosaurs are probably the best known of the extinct animals. Can you find the extinct animals listed below?

S P J G Z I B F C U J B D X Z C K I
A Q U H B X N U C C F D E N C V C D
B N D O D O B I R D A C S T M M K O
E U Q O B V G U Z O L H E A P F X G
R R E D G A Z E L L E U R E H H B T
T W O O L L Y M A M M O T H J M N S
O Z F R T R X O Q L K I B B A D P N
O P G O L D E N T O A D A U J P V I
T W N A A Y V M Y U U K N O M G W V
H Z G T A R P A N W I L D H O R S E
T T R I C E R A T O P S I C Q L M E
I V Y V X A P O R M X G C B T T R H
G N R R B J F G E H U V O Z O O G V
E D W O O L L Y R H I N O C E R O S
R F Q G L E Z F F Z P W T S K C K P

sabertooth tiger woolly rhinoceros triceratops
tarpan wild horse woolly mammoth desert bandicoot
golden toad dodo bird red gazelle

Who Am I?

(eetchah)

Africa is my home. I run faster than any animal in the world. People hunt me for my beautiful fur.

Free!

Whaaaaat!!! You haven't joined yet?

You're right!

I don't want to miss any of the fun so I'll sign up right now!

Visit our website www.readingclubfun.com for more cartoon fun and to see the answers to the puzzles. While you are there, join our new national reading club.

SHIPMAN'S BODY SHOP, INC.

410 N. 1st Street Muleshoe

272-4408

• 24 hr. Wrecker Service
• Complete Collision Repair
• Glass Work

Family owned for over 35 years
Garry Shipman

FARMERS INSURANCE GROUP

Symbol of Superior Service

FARMERS

Julie DeBruin Agent

Call for a free quote
AUTO • LIFE HOME • BUSINESS

1602 W. American Blvd. Muleshoe, Texas
272-7548

jdebruin@farmersagent.com

What Could It Be?

If you listen to T.V. news or read newspaper articles, you would have heard about the concern cropping up for this animal. Reporters have been talking about "colony collapse." Swarms of these little, flying creatures have been disappearing and no one knows why.

We need this animal to pollinate fruits, vegetables and flowers. They provide honey too. Our food supply might be in trouble if too many of these disappear!

Follow this color key to fill in the puzzle to see what it could be!

B = black Y = yellow W = white G = green

What Could It Be?

A word search puzzle with a grid of letters. The letters are arranged in a pattern that suggests the word "BEE".

Congressman says: Energy vote expected later this week

I expect the House will vote on energy legislation later this week, but we are still waiting for more details about the bill.

One of the biggest questions is whether House leaders are willing to work across the aisle to pass legislation to increase our supply of energy that is supported by a majority of Americans or whether they will just go through the motions to say Congress had a vote.

Congress must have a full and open debate on energy solutions from a wide range of energy sources. From the information I have so far on this bill, I'm afraid it doesn't open up enough new exploration and also contains new taxes and mandates. That approach is not going to get the job done.

Any bill I can support needs to open up sizeable

new domestic energy production, extend the wind production tax credit, reduce regulatory barriers to nuclear power and refinery expansion and help achieve affordable and accessible new sources of renewable energy and energy efficiency.

Congress has heard from the American people that they want us to work on solutions to increase the supply of energy produced here at home so we can stop sending billions of dollars to other countries to buy energy.

Congress needs to act in the best interest of the American people and pass meaningful energy policy.

House passes bill to support rural veterans...

I am very pleased the House was able to work together last week to pass the Rural Veterans Access to Care Act, which

RANDY'S ROUNDUP

UPDATE BY CONGRESSMAN RANDY NEUGEBAUER

I cosponsored. This bill will enable rural veterans enrolled in the VA health system to receive care locally rather than traveling long distances to VA facilities. Many Texas veterans living in rural areas will be part of the demonstration project authorized by this legislation.

The Rural Veterans' Access to Care Act, would establish a three-year pilot program in several rural regions of the country to allow the most underserved rural veterans to take advantage of existing rural health providers, such as local hospitals, community health centers and rural health clinics

To qualify, a veteran must live at least 60 miles from

a VA primary care facility like an outpatient clinic, 120 miles from a VA hospital or 240 miles from a VA specialized care facility when seeking that care.

Now that this bill has passed the House, it is up to the Senate to act to send this commonsense legislation to the President's desk. I hope the Senate will act on this needed legislation this year.

Your financial security...

When we see reports in the news about difficulties that different financial institutions are having, the first question many of us may have is, "How secure is my money?" The good news is that our local and state economy and financial institutions are

not experiencing the same problems that other areas of the country are. In addition, protections are in place for account holders, customers and investors.

When it comes to investments, the federal Securities and Exchange Commission protects customers in many circumstances.

For examples, customers of Lehman Brothers have their investment accounts protected through insurance by the Securities Investor Protection Corporation.

The Financial Industry Regulatory Authority, the non-governmental regulator for securities firms, provides more information on investor protections, as well as educational resources regarding savings and investing.

For bank deposits and accounts, federal deposit insurance covers your

combined checking, savings, money market or certificate of deposit accounts up to \$100,000.

Joint accounts are protected up to \$100,000 per owner, and IRAs are protected up to \$250,000. Credit union accounts are similarly protected.

As a member of the House Financial Services Committee, I am following our nation's financial market situation very closely. My first objective is protection of the taxpayers.

I also believe our financial system must be stable for the long term in order to support savings and investment, allow consumers and businesses to access credit and keep America competitive.

Thanks for reading!



The Sudan Buzz

Hornets 'limp' way from first loss of season

By Lonnie Wilhite

The young Sudan Hornets football team waltzed into Plains carrying a 2-0 record but left limping at 2-1 as they lost their first game of the 2008 season to the Cowboys 18-12.

The Hornets have been able to overcome their turnovers and mental mistakes by creating havoc with their strong defense.

The Plains Cowboys were able to do what Ralls and Bovina could not do and that was to make the big play

Wilson to celebrate 90th birthday

Sudan resident Elsie Wilson is celebrating her ninetieth birthday and her family and friends are invited to help commemorate this event at a "Come and Go" birthday celebration to be held Saturday, Sept. 27, from 3:00-4:30 p.m. at 104 Ormand Street in Sudan.

In lieu of gifts, the family requests cards and sharing of fond memories with Elsie.

count on the scoreboard.

The Cowboys opened the scoring with a 34 yard field goal on the leg of Tim Brock with 15 seconds left in the half.

Plains seemed to be a different team in the second half. Following a Sudan punt the Cowboys started a drive at their 29 and moved to their 49 yard line. Quarterback, Chris Addison, dashed 51 yards to extend the Cowboy lead to 10-0.

Sudan started their ensuing drive on their seven yard line and was pushed back to the two.

The Hornet punt was blocked when Plains brought the house. The safety pushed the Cowboy's

lead to 12-0.

Sudan had to kick to Cowboys from their 20. Plains returned the kick to the Sudan 32 yard line.

The Hornet defense stiffened to hold the Cowboys and forced a 50-yard field goal attempt. The ball hit the crossbar and fell short.

Sudan took over on their 32 with 5:50 left in the third quarter. They scored with 2:44 left on a 44-yard Derrick Williams scamper. The two-point conversion failed and Plains led 12-6.

The two teams exchanged punts and fumbles to start the fourth period. The Cowboys claimed the ball on the Sudan 30 with 6:35

left in the game.

Addison again found the end zone from one-yard out to extend the lead to 12. The two-point conversion failed.

Sudan punted on their next possession but Plains made a critical mistake and attempted to convert on fourth down in their own end of the field.

Addison was sacked for a big loss and was called for a personal foul penalty when he spiked the ball after the play in frustration.

The Hornets reached the Plains 22 yard line with 1:09 left in the game.

Williams found double-

Sudan booster buttons offered

Sudan Booster Club is selling buttons of varsity and junior high football players and cheerleaders.

They buttons are \$2 each.

Contact Shawnda Wood ay 227-2550 or shawndawood@sudanisd.net to place an order.

teamed BJ Davis in the end zone for a score that took only one play and seven seconds.

The tally cut the Cowboy advantage back to six after the failed two-point conversion.

Sudan's inside kick

attempt was anticipated by the Cowboys and they covered the ball. Plains took a knee to run final seconds of the game off the clock for the win.

The Hornets travel to Friona to confront the Chieftains this Friday night.

Sudan Ex-Students/Teachers homecoming set for Sept. 26-27

The Sudan Ex-Students/Teachers will be holding a homecoming Sept. 26-27.

The homecoming pep rally starts at 3:15 p.m. on Friday where the homecoming queen will be crowned.

The junior class is serving a supper from 5-6:30 p.m., followed by the ball game between the Sudan Hornets and the Anton Bulldogs at 7:30 p.m.

The classes of 1928, 1938, 1948, 1958, 1968, 1978, 1988, 1998 and 2008 will be the honored classes.

Also, all former band students are especially invited as this is the 50th anniversary of the first I

rating ever received by a Sudan Band.

This was quite momentous as the ratings prior were mostly Vs.

Lee Boyd Montgomery, the band director who arrived in Sudan in August 1958 and pulled some 40 students together to accomplish this feat, will be honored at this time also. Any other band directors attending also will be recognized.

Registration and a reception begin at 11 a.m. on Saturday, Sept. 27, with a meal at 12:30 p.m.

A short business meeting and entertainment will be held after the meal.

SUDAN ISD
EXCELLENCE
IN
EDUCATION

WWW.SUDANISD.NET
Hwy. 303 PHONE: (806) 227-2431
SUDAN, TX 79371 FAX: (806) 227-2146

FROM START TO FINISH
FARMERS COOP ASSN. OF SUDAN
IS WHERE YOU NEED TO BE.
From applying your Pre-Plant Fertilizer, to in-season crop consultation, to ginning your cotton, Farmers Coop Assn. of Sudan is committed to your success.
Dennis Flowers, General Manager
806-227-2461, Ext. 201
There is no better time than now to make a change


KING AG AVIATION, INC.
Specializing in Aerial Spraying - Insecticide, Herbicide & Seeding - Field Scouting Service
Johnny King Home (806) 227-2211
P.O. Box 189 Fax (806) 946-3659
Sudan, Texas 79371 Mobile (806) 946-7309
Business (806) 946-3399 Vernon Office (940) 552-6102

STRONG • SAFE • SECURE
We are a true West Texas bank. Our ownership lives here. Your money stays here and our entire staff is committed to the communities we serve.
FIRST UNITED BANK EST. 1907 MEMBER FDIC
West Texas Born... West Texas Strong... West Texas Proud.
Rated 4-Stars by BankRate.com
Rated 4-Stars by Bauer Financial
www.FirstUnited.Net Amarillo • Canyon • Dimmitt • Earth • Lamesa • Littlefield • Lubbock • Seagraves • Seminole • Sudan

Cross country meet... Continued from page 7

in a time of 19:58.82. Isaias Guerra ran 41st with a 20:50.97 and Angel Garcia finished 88th in a time of 23:26.18. Roper Kerby was 69th with a time of 23:44.55. The Mules and Lady Mules were back in action this past Saturday in Amarillo. The Lady Mules were 10th as a team and the Mules competed as individuals as they were one runner short of a team. "Other school activities and illness we did not have enough runners," continued

Sudduth. "But we were improved over the week before so I continue to be encouraged about our teams." Johnson paced the Lady Mules with a time of 14:04 and Andrade finished with a 14:33. BreAnn Baca ran a 14:46 and Bessire finished with a 16:10. Jessica Behrends crossed in a time of 16:30. "Sterling Lepard finished third in the boys division and after having been ill all the night before he was feeling a little weak. We will

be working hard the next two weeks and compete again in Lubbock September 27th on the Mae Simmons course." Lepard finished the three-mile course in a time of 17:42. Griswold ran a 19:58, Angel Alvarez had a 24:17 and Carlos Bustillos finished with a 28:10. The junior varsity Lady Mules finished third in Plainview with a team total of 64. BreAnn Baca led the charge with a sixth place finish in a time of 15:20 and Jenna Whitworth was 10th with a 15:47. Andrea Solano

was 14th with a time of 16:10 and Devnie Orozco was 15th in a time of 16:11. Morgan Smith finished 19th with a 16:21 and Ali Eagle took 23rd with a 16:33. Marisela Casanova finished 34th with a 16:40 and Samantha Reyna finished 35th in a time of 16:48. Isaac Bryan is the only junior varsity Mule runner and he finished 26th in Plainview with a 19:38 and ran a 22:03 in Plainview. The Mules and Lady Mules will run in Mae Simmons Park in Lubbock Sept. 27.

FSA election slate is set

A slate of nominees for the county committee election has been established, according to the Bailey County Farm Service Agency. The next step in the election process is mailing the ballots, which will begin on Nov. 3. Voters have until Dec. 1 to return properly completed ballots to the county office. Elected committee members and alternates take office on Jan. 1, 2009. Prospective voter requirements include: Anyone who is eligible to participate in any FSA Program provided by law, regardless of the status of funding, and who meets one of the following requirements is eligible to vote for County Committee members; who is of legal voting age and participates or cooperates in any FSA Program, or, is not of legal voting age, but supervises and conducts the farming operations on an entire farm. If you have any questions about eligibility to vote, contact the Bailey County FSA Office.

NATIONAL FARM & RANCH SAFETY WEEK SEPTEMBER 21-27, 2008

Top 10 Farm Safety Tips For Producers

1. Stay alert, and be aware of your surroundings.
2. Account for the mental and physical differences associated with age.
3. Be sure to include hazard and safety lessons when training workers.
4. No seat, no rider, no exceptions. Extra riders can cause distractions and block access to controls.
5. Use hydraulic equipment cautiously, and control operations from the tractor seat only.
6. Never attempt to unplug equipment while power is engaged.
7. Use safety identification markers, turn signals, flashing lights, and/or escort vehicles when driving farm equipment on public roads.
8. Carry a fire extinguisher on every piece of powered equipment.
9. Prepare a safe play area for children away from machinery.
10. Enforce basic safety rules for others, and follow them yourself.

SAFELY RULES WHEN WORKING WITH AND AROUND TRACTORS

- FASTEN YOUR SEAT BELT IF THE TRACTOR HAS ROPS
- REDUCE SPEED WHEN TURNING
- AVOID OPERATING TRACTORS NEAR DITCHES, EMBANKMENTS AND HOLES
- IF YOU GET STUCK, GET HELP FROM ANOTHER TRACTOR
- DO NOT PERMIT OTHERS TO RIDE
- HITCH ONLY TO THE DRAWBAR AND HITCH POINTS
- NEVER ENGAGE IN STUNT DRIVING OR HORSEPLAY
- SET THE BRAKES SECURELY WHEN THE TRACTOR IS STOPPED
- INSPECT YOUR TRACTOR REGULARLY
- USE SPECIAL CAUTION WITH ARTICULATED-FRAME TRACTORS
- USE COMMON SENSE WHEN OPERATING TRACTORS

PLAY IT SAFE ON THE FARM!

TOMMY GREGORY Sales
www.edeere.com
Ray Lee
EQUIPMENT CO., LTD.
2800 W. American Blvd., Muleshoe
(806) 272-4296 or Mo. 946-8477
tommyg@rlec.com

SPARKLE Cleaners
"WE CARE - ABOUT YOU"
114 E. Ave. C, Muleshoe
806/272-3570

FIVE AREA TELEPHONE COOPERATIVE, INC.
West Plains Telecommunications, Inc.
Five Area Systems, Inc.,
Plateau Wireless
Five Area Long Distance
Five Area Internet
303 Uvalde, Muleshoe
272-5533

MULESHOE ANIMAL CLINIC & MULESHOE VET SUPPLY
1430 US Hwy. 84, Muleshoe - 272-3061

TEXAS FARM BUREAU INSURANCE Co.
1612 W. American Blvd.
Muleshoe, Texas
806/272-4567
FARM BUREAU INSURANCE

LOWE'S MARKETPLACE
401 W. American Blvd.
Muleshoe
806/272-4585

Coyote Lake Feedyard, Inc.
1287 FM 1731, Muleshoe • 806/946-3321

BCEC
BAILEY COUNTY ELECTRIC COOPERATIVE ASSN.
305 E. Ave. B - Muleshoe, Texas
806/272-4504

Muleshoe Tire
107 S. Main Street, Muleshoe
806/272-4594

Dale Oil Co.
Chevron
413 W. American
Muleshoe
806/272-5576

Bailey Central Appraisal District
302 Main Street, Muleshoe
806/272-5501

Pearson Meat Co.
401 S. Main Street, Muleshoe
806/272-4703

Farmers and ranchers need to remember that the general public does not often realize tractors and other agricultural machinery often cannot legally travel faster than 25 mph and have limited maneuverability. Farmers and ranchers should use their mirrors to watch for motorists. When planning to make a left turn, look to see if someone is attempting to pass. If so, let them pass before starting the turn, if the turn is located in a designated passing zone.

Writer reminds readers that 'politics', 'government' are not 'bad words'

First let me express my appreciation to Judy and Howard Watson for their letter in a recent issue of the paper.

It was real nice, you set the bar high and I will try to never disappoint you. I can reassure you that our love is mutual.

A number of people have commented favorably on our letter "about politics" and I appreciate them. After all, "politics" is not a bad word, neither is "government."

Conventions are about politics, but they are not

government. They are party affairs, a process by which the parties select certain nominees for certain offices, they adopt budgets and attend to other affairs. But they do of course conduct their proceedings according to governmental laws.

Since the Republican Convention there has been considerable excitement about the office of Vice President, and the qualifications required for one to serve in it.

Just for amusement, the one duty set out in the



constitution, and there's only one, is to preside over the Senate while it is in session. But that might turn out to be a pretty hard job. But in recent years it has developed into a responsible position.

People ask me, "Do you enjoy watching those things?"

Yes, I do. In fact I have watched every convention and every election since 1928. And I have watched and studied every administration since then, I like to hear the speeches and listen to the commentators — and the delegates with others in attendance.

The way some of them

whoop and holler and prance around — the silly costumes they wear and the funny hats are to me, somewhere between amusing and amazing. But as David Brinkley used to say, "Somehow it works."

Most of the people I've talked with about the conventions say, or indicate, that they don't like to watch them. And perhaps it would be better if they conducted themselves with a little more grace and dignity.

For after all they speak as representatives of the

people of America. And their work is very important. I'm sure you are fully aware of that as I am, perhaps more so.

Then when the fun is over, the speeches delivered and the votes cast, we will have our leaders for the next four or eight years. And we should have a fairly accurate sense of direction that we as a nation might expect to travel during those years.

Furthermore the proposals espoused by the new leaders might very well affect the

Continued on page 12

HELP PREVENT TRAGEDY ON THE FARM...FOLLOW THE RULES!



Safe Use of Harvesting Equipment

Harvesting equipment is a necessity on farms to gather the crops for a bountiful harvest. Harvest time is primary revenue time on many farms and is also one of the peak periods for farm injuries and deaths. Many of these injuries can be prevented through effective farm safety management.

- Develop a "safety first" attitude. Follow safe work practices all the time and set a good example for others.
- Be physically and mentally fit before operating equipment. Fatigue, stress and worry can distract you from safely operating equipment. Take frequent breaks.
- Pay attention to all safety information. Read operator's manual and warning decals.
- Inspect the equipment and correct any hazards before operating.
- Identify hazardous areas on equipment and make sure you stay away from moving parts. Beware of pinch points, shear points, wrap points, pull-in areas, thrown objects, crush points, stored energy hazards and freewheeling parts.
- Make sure everyone who operates the equipment has the appropriate training and is physically able to operate it safely.
- Shut down equipment, turn off the engine, remove key and wait for moving parts to stop before dismounting equipment.
- Keep bystanders and others away from equipment operation area. Do not allow "extra riders", especially children.

Inspection

- Are PTO shields in place?
- Are safety locks operational?
- Is a 20 lb. "ABC" fire extinguisher in place?
- Is reflective "Slow Moving Vehicle" signage in place?
- Are guards and shields in place?
- Are there any leaks in hydraulics?
- Are lights working properly?

Tractor Safety

Farm tractors provide the primary source of power on many farms. Studies show that the farm tractor is involved in a high proportion of farm fatalities and severe injuries. To avoid them, follow safe management principles and implement a tractor safety program on your farm.

- Develop a "safety first" attitude. Follow safe work practices all the time and set a good example for others.
- Be physically and mentally fit when operating tractors. Fatigue, stress, medication, alcohol and drugs can detract from safe tractor operation. Take breaks.
- Read operator's manual and warning decals. Pay attention to safety information.
- Equip the tractor with a Rollover Protective Structure (ROPS) and wear seat belts.
- Inspect the tractor for any hazards and correct them before operating.
- Make sure everyone who operates a tractor has received training and is physically able to operate it safely.
- Shut down equipment, turn off engine, remove key and wait for moving parts to stop before dismounting equipment.
- Keep bystanders and others away from tractor operation area. Do not allow "extra riders," especially children.

Inspection

- Are ROPS in place and seat belts used?
- Is the operator's platform clear of debris?
- Are lights and flashers operational?
- Is the hydraulic system free from leaks?
- Is a fully equipped first aid kit on the tractor?
- Is a PTO master shield in place?
- Is a reflective "Slow Moving Vehicle" emblem posted?
- Are tires properly inflated?
- Is a 20 lb. "ABC" fire extinguisher in place?

D-C Communication
401 5th Street • P.O. Box 252
Farwell, TX 79325
806-481-3883
or
505-760-7925 Cell

Muleshoe Coop Gin
Darwin Robertson, Manager
272-4794

McDonald's of Muleshoe & Littlefield
i'm lovin' it
Susan & Steve Credle
Owners

Bailey County Propane
512 Hwy. 214, Muleshoe
272-4474

O&C Erection Sprinkler Ser.
Repair & Assemble
Lupe Olivarez
1584 US Hwy. 84 Muleshoe, Texas 79347
Mobile: 946-8736
Office: (806) 272-5018

dairydirect@plateautel.net
Dairy Direct
Craig & Jeannette Albin
2508 N. Prince, Clovis, NM
505-762-7997 or Mo. 505-714-3745

MULESHOE ALLEY INC.
STEVE STANCELL
2601 W. American Blvd., Muleshoe
272-4266 or (806) 946-8763
mviinc@fivearea.com

Scott Johnson Farm Service
Office: (806) 481-6655
Fax: (806) 481-6656
Scott's Cell: (505) 309-9400
Mickey's Cell: (505) 309-9200
Email: sjfs@plateautel.net
www.sjfs.us
• Custom Farm Management
• Forage Harvesting
• Commercial Trucking
• Chemical Application
120 US Hwy. 84, Farwell

Lubbock Electric Co. Inc.
Electric Motors, Controls & Industrial Supplies
1108 34th St., Lubbock, TX 79411
800-692-4474 • 806-744-2336 (Steve)
www.lubbockelectric.com

Jarman Seed
801 W. American, Muleshoe
806/272-5985

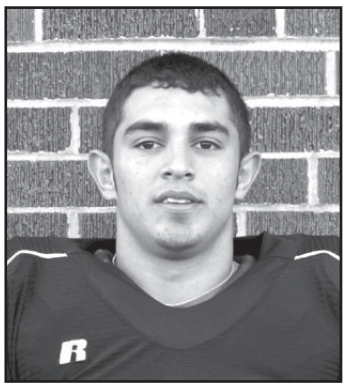
Submersible & Turbine Pump Sales & Service
Drip Irrigation
Electric Motors Pump Panels
Center Pivot Sales & Service
Irrigation Pumps & Power, Inc.
West Hwy. 84, Muleshoe
272-5597 • 946-9222 Eric McElroy

Muleshoe Chamber of Commerce & Agriculture
115 E. American Muleshoe
806/272-4248
MULESHOE OCTOBERFEST OCT. 18TH

The general public needs to know that tractors and other agricultural machinery often cannot travel faster than 25 mph. Limited speed vehicles are identified by a Slow-Moving Vehicle (SMV) emblem. The general public needs to realize that tractors towing long trailing or wide machines may need to move to the right before completing a left turn. Therefore, look for unmarked field and other entrances where the tractor and / or machine may turn in before attempting to pass. Don't assume the operator is waiting for the motorist to pass just because he / she moves to the right.

REMEMBER: Only pass if you are in a designated passing zone. Drive Defensively!

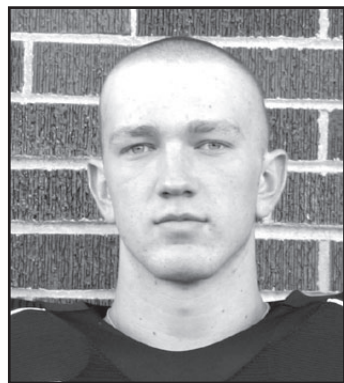
MISD Football Players of the Week



RAY RAMIRIZ (21)
MOST VALUABLE PLAYER



VICTOR VASQUEZ (24)
OFFENSIVE PLAYER



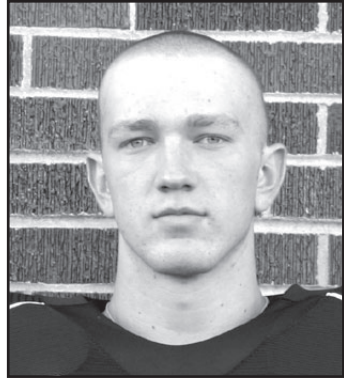
COOPER WASHINGTON (14)
SLOBBER KNOCKER



JOSEPH STRADER (78)
LINEMAN OF THE WEEK



ADRIAN CHACON (50)
SPECIAL TEAMS PLAYER



COOPER WASHINGTON (14)
SLOBBER KNOCKER

Prepare now to keep your family safe in the event of a disaster

Submitted by Mandi Seaton, Bailey CEA-FCS

Although disasters kill hundreds and injure thousands of people each year in the United States, local residents can help keep themselves and their families safe in emergencies by taking a few steps to become prepared now.

September is National Preparedness Month, which is part of an annual effort to help communities in every state become better prepared for disasters. To help citizens become disaster-ready, the Texas AgriLife Extension Service, the Texas Department of State Health Services, the U.S. Department of Homeland Security and the American Red Cross are offering information on the steps each person should take before a disaster occurs.

Being disaster-prepared is more than just knowing what to do in case of a tornado or a fire. It also involves:

- Developing and practicing an emergency plan for your family
- Preparing 72-hour disaster supplies kits for your home, office, and car
- Understanding your community's warning systems and evacuation routes

Something...

Continued from page 11 lives of our children and grandchildren for years to come. Because they are all calling for a change in the affairs of the country.

Personally, I have great respect for our public officials for, in the main, I think they have the good of the people at heart, and their desire to serve is genuine. Most of them are good and decent men and women.

They are well intentioned and they work hard to perform their duties as good as they can. And they have a lot to do.

I know there's many that don't measure up to these standards, but for their own selfish and sinful purposes fall away, and that casts a dark shadow over all of us. And I hate that.

But, as you know, it exists not only in government, but in the business world, in the field of athletics, in the schools, in the churches and in other fields of activity. Somehow, some way we must do better than that for America is better than that.

• Knowing whom to contact in your community for more information

• Getting involved in local preparedness efforts

Disasters most often are unpredictable, and they can be devastating.

But the more you prepare, the better you will know exactly what to do and where to go and the more likely that you and your family will be safe.

For more information on

Pre-game ticket sales under way

Muleshoe ISD will have pre-game general admission football ticket sales Wednesday through Friday during the season for home games only.

Tickets are \$3 for adults and \$2 for students, and will be available at the administration office and the high school office.

Subscribe to the Journal!

Publication of Obituaries

Obituaries printed in the Muleshoe Journal are printed free of charge and contain the following types of information:

Date and details of funeral and place of burial; date and place of birth and parents names; date of marriage;

Limited biographical information, including the highest level of schooling achieved, service in the Armed Forces, profession (and retirement information if applicable); names of relatives who have preceded the person in death;

Names of survivors (including husband and wife, parents, in-laws, brothers, sisters, grandparents (only the number of grandchildren, great-grandchildren and great-great-grandchildren) will be included; and where memorials may be directed.

We will be pleased to run a one column black and white photo at no charge. A larger photo or a color photo will cause the obit to be paid.

Please keep in mind that everything must be submitted by your funeral home.

disaster education, contact the Texas AgriLife Extension Service, Bailey County, at 806-272-4583 or visit the office at 118 W. Ave. C., Muleshoe, TX.

Other tips are available through a nationwide network known as the Extension Disaster Education Network (EDEN). Texas EDEN information is on the web at <http://texashep.tamu.edu>.

Elsie Wilson is turning 90!

You are invited to a "Come & Go" Birthday Celebration!

*Saturday, Sept. 27th
3:00 - 4:30 p.m.
104 Ormand Street
Sudan, Texas*

Cards Only...No Gifts Please!

Atul B. Joshi, M.D., Orthopedic Surgeon, providing advanced care in your neighborhood.



Experience state-of-the-art orthopedic care in your hometown. Atul B. Joshi, M.D., of Covenant Medical Group, Lubbock, Texas, specializes in trauma, fracture management, joint replacement and Birmingham Hip Resurfacing. The fourth Wednesday of each month he will hold office hours at Dr. Lansang's office, located at 717 W. 2nd Street in Muleshoe, Texas. To schedule an appointment please call 806.725.4818.

For more information call 806.725.4818, or visit www.CovenantOrthopaedic.com.

Covenant Medical Group

Join Us
Thursday, Sept. 25th
from 11:00 until 5:00
for a special showing of

Blue Willi's
A life more pleasant!

See the exciting new colors and styles for Fall 2008. Receive 40% to 70% savings on purchases of "Retired Styles"

Kristi's
614 Broadway 806-296-7254
Downtown Plainview

BIG VALLEY MULESHOE

IF YOU'RE LOOKING TO MAKE AN EXCITING CAREER CHANGE, WE WANT TO MEET WITH YOU!

We offer a great work environment with an aggressive pay plan. No experience necessary. We will guarantee \$300 a week. Must be goal oriented with a great attitude. Come by today and speak with Rick Wilcox.

1125 W. American Bld. in Muleshoe (806) 272-7777

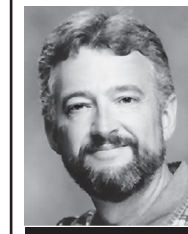
Our God Is Stronger Than Any Storm

Boy, the weather's been weird lately!

As I write, some of my good friends and family down south are scrambling to get out of Dodge (make that "Houston") as Hurricane Ike gets ready to come ashore. (In the old days, you may recall, hurricanes were all women. Hmm. Ike may be scary but I'll betcha a ticked off Tina would be a lot scarier! We'll know more soon.)

Lubbock was not the best choice for sanctuary last week. Cars were flooding out and floating around, schools were closed, and life was more than a little wet. Texas Tech's football stadium looked like the old Roman Coliseum flooded to float ships and boats so naval "battles" could thrill the crowds! (I wonder how high dollar fake turf reacts to sitting in some serious soup for that long?)

In any case, we've been reminded recently that you don't have to live on the coast to get to deal with the havoc that storms of many sorts can wreak. Storms in nature get our attention as they blow away, wash away, pound away, our inflated opinions of our own ability to "control" our world and our lives. When they come, we do what we can, "batten down the hatches," hunker down, covey up, and pray for strength to hang on. And we know that the strength we most need is not our strength at all, but the strength of our Creator, the only One who ever spoke a word and calmed a storm.



Focus On Faith
Curtis Shelburne

Well, hey, friends and folks from down in the swamp, just hustle on up here to God's country, high and dry, and hang out with us for a while. Right?

Well, usually. But not this time around!

In our flat and dry part of the world, two cowboys sittin' on a fence spit tobacco juice at the same time and Lubbock has mudslides and flooding. (Well, at least, flooding. It's far too flat for anything to slide much in Lubbock. Being short of such sliding things, they named a road "Slide.")

It doesn't take 10 or so inches of rain in just a couple of days to cause some serious problems over there, but that's pretty much what Lubbock got last week even as Hurricane Ike was bearing down on Houston. So . . . wherever you might choose to run if a hurricane is after you,

It's true with hurricanes and floods. It's also true with the gale force winds that spin around us at times and remind us that marriages and finances and children and health and, and, and, are not things we can ever tame and control. About the time we give in to the arrogance that causes us to think that we can, two cowboys spit tobacco juice in Lubbock, Tina kicks Ike out of the house and toward Houston, or . . .

Life happens. But God is stronger than storms.

Curtis Shelburne is minister of the 16th & D Church of Christ in Muleshoe.

www.muleshoejournal.com
Your online news source

DeShazo Elementary 'recognized' by TEA for third year

DeShazo Elementary has received the "Recognized" rating from the Texas Education Agency (TEA) for the third straight year in a row. This rating is the second highest rating the

state. "We are extremely proud of the accomplishments of DeShazo," Assistant Superintendent Don Wood said. "As the standards continue to increase and the

test becomes more rigorous, DeShazo has been able to stay above the curve and above average schools."

"The district is striving diligently to achieve the highest level of achievement and we want to celebrate our accomplishments along the way. Every campus can celebrate because every campus improved in certain areas," he added. "I believe we can achieve a Recognized rating for the district this upcoming year and I am excited about the way our staff has moved in attaining this goal.

Campus and district ratings are based primarily on the Texas Assessment of Knowledge and Skills (TAKS) scores given to students in grades third through 11 and campuses

that do not contain these grades will be given a rating based on the campus who receives their students.

Dillman Elementary is the feeder school for DeShazo and therefore has received the "Recognized" rating as well.

The state gives schools and districts ratings - Exemplary, Recognized, Academically Acceptable (average) or Academically Unacceptable - based on TAKS scores, drop-out rate, and/or completion rate. The district, as well as Watson Junior High and Muleshoe High School, has been rated as Academically Acceptable.

For a school to receive the rating of Recognized, at least 75 percent of the students must pass each section of

the tests administered at that campus. In addition to all students passing at the 75 percent mark, every subgroup - Hispanic, White and Economically Disadvantaged - must also pass at that rate.

"We are honored to be a Recognized campus," DeShazo Principal Debbie Gallman said "The Recognized rating is a tribute to our students, staff, and parents. It takes all of us working together to provide the best education possible for each student."

"I am most proud of the relationship that exists between our staff and students," she added. "Our kids know we care enough to only accept their very best and our students meet the challenge set before

them. It just doesn't get much better than that."

The tests given at DeShazo include Reading (grades 3-5), Math (grades 3-5), Writing (grade 4), and Science (grade 5). To achieve an Exemplary rating all students and subgroups must pass all tests at a 90 percent passing rate.

"Congratulations to DeShazo Elementary and Dillman Elementary for their Recognized Rating from TEA," Superintendent Gene Sheets said. "We are extremely proud of the excellent, well-rounded education that students receive in Muleshoe. This award is a tribute to the hard work and dedication of the faculty and staff at both Dillman and DeShazo Elementary."

Jennyslipper News

The Jennyslippers met on Aug. 26 for their regular meeting at the Girl Scout Hut with 12 members present.

Elaine Parker, president, asked Nelda Merriott to ask the blessing on the food.

A comprehensive treasurer's report was handed out to each member. Appreciation was expressed for the good support of the community for the Mule-Putt miniature golf course.

Elaine reported that well over 20 booths had been reserved for the first annual Jennyslipper Crafts Bazaar, being held in conjunction with Mule Days on Sept. 13, with calls coming in every day. This included food booths for burritos, as well as barbecue and sausage on a stick. All were excited about our favorable responses. Elaine, Donna and June will meet at 6 a.m. at the Bailey County Coliseum on Saturday morning to mark off the spaces.

The Jennyslippers will be placing a "float" in the "Kickin' It Up" parade and hoped that the community would place many entries of all kinds in the parade for the expected crowd.

The Jennyslippers invited the "MHS Class of 1953" to ride on the trailer in the parade and there's good response on that.

The Jennyslippers hosted two tournaments on Mule Days, Saturday afternoon, at the Jennyslippers Mule-Putt Golf Course beside the Coliseum on W. Hwy. #84.

Doug, Anna and Kem

Bales oversaw the "Mule Days Mule Shoe Pitching Tournament and other Jennyslippers oversaw the "Mule-Putt Golf Tournament"

One of the Jennyslippers was having her 50th birthday - and having a hard time of it. Someone brought in a cake with 50 candles burning - lighting up the room like a forest fire!

Suddenly the door burst open and a "fireman" answered the five-alarm fire call with a bucket of "water" and doused the "elderly recipient".

(Actually, it was a "dousing" of cut-outs from a hole puncher.) The group sang "Happy Birthday" and a couple of songs from their "Over the Hill" songbook. We're sure she felt much better.

On the nights we have home ball games it was decided that we would not open Putt. It continues to be open on Friday, Saturday and Sunday evenings from 7 p.m. to 11 p.m. and parties are still being booked.

Someone mentioned that it would be nice if we and the townfolks dressed Western for Mule Days, adding to the festive look Play Day at the Good Times Arena is eagerly anticipated also.

The Jennyslippers continue to meet on the second and fourth Tuesdays of each month at the Girl Scout Hut, 215 W. 2nd, and visitors are welcomed - and usually hugged.

Education

A note from the Superintendent

Great expectations at Muleshoe

By Gene Sheets
MISD Superintendent

Muleshoe has always had high expectations for its school system. That is one of the qualities of the school district that drew me to Muleshoe eight years ago.

The community continues to have high expectations for the school system. The community has high expectations in the classroom and extra-curricular activities; in the facilities and maintenance; and in employee and student behavior. We believe that students rise to the level of expectation that we set for them.

This year, I have observed an even higher level of expectation than before on every campus. We are committed to continuous improvement in every area of the school district. Let me give you an example from just one of our campuses that exemplifies this higher level of expectation this year.

Last week, Mr. Salazar, the Watson Junior High principal, announced over the intercom to the junior high students that he would be coming around to each classroom. He would give a small prize to any student who, randomly chosen, could recite the Watson Junior High Student Expectations

without missing a word.

In every classroom, the student chosen was able to say the Campus Expectations - without missing a word! All the teachers whom he asked were able to say them as well.

Below are those expectations. I think you will agree that these expectations would be good for all of us to memorize and apply in our daily lives:

- Show respect to all people at all times.
- Show kindness to others.
- Accept criticism with honor.

These expectations cover just about everything I can think of that has to do with how people treat each other. These campus expectations are posted all over the halls and in every classroom at Watson Junior High.

Faculty, staff, and students at the junior high have begun to use these expectations to guide them in relating to each other.

That's what we expect at Watson Junior High. That's what we expect at all of our campuses. Our goal is for every student and every employee to reflect these expectations in how they treat each other.

As they say at Watson Junior High School, "That's just what we do."



Has Alcohol Enhanced Your Life
Or the Lives of Your Family & Friends?

Protect Our Families!

Vote Against

Alcohol Sales in Bailey County

Early Voting at the Bailey County Courthouse

October 20th - October 31st

Election Day November 4, 2008

Paid for the Concerned Citizens of Bailey County

Ha el alcohol Mejorado su vida O las
vidas de su Familia y Amigos?

Proteje nuestras Familias!

Vote En Contra de Ventas se Alcohol en el Condado de Bailey

Vote temprano en el edificio del juzgado del
Condado de Bailey

Octubre 20 - Octubre 31

Dia de Elecciones Noviembre 4, 2008

Pagado por ciudadanos del Condado de Bailey

The 'Little Angel' with a big legacy for the Lone Star State

Long before the first of the familiar six flags flew over Texas, this land was home to native peoples who developed productive, advanced cultures prior to the dawn of recorded history. And, their heritage forms an important foundation of modern Texas.

One of these societies, which settled in present-day East Texas, included a native woman who stood at the juncture between early civilizations and new ones, where east met west in the southern part of North America.

Spanish explorers, who encountered her around the beginning of the 1700s, called her Angelina, which meant "little Angel."

Angelina is one of the few native women specifically remembered from the Indian culture that began in Texas centuries before the arrival of European explorers.

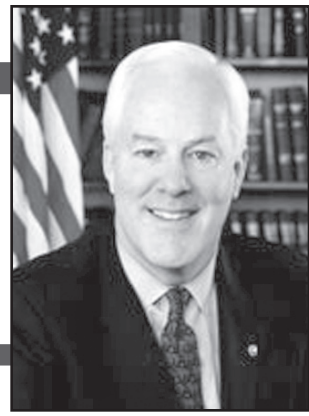
A slim biography of Angelina, often enhanced with legends, emerges from records of Spanish and French expeditions.

Both nations sought friendly relations with the Caddos in order to secure a foothold and hinder each other in this strategic location in the "new" world. Their admiration for her is one thing they agreed on.

They recognized her value as a translator and guide. The Spanish called her "a learned Indian woman" and "the sagacious Indian interpreter."

Records of a French explorer describe her as someone who spoke Spanish and "let us have some guides for hire."

Another, believed to have recuperated under her care, wrote that she "served me



Texas Times

By
U.S. Sen.
John Cornyn

all the best she had, and she had as much love for me as if I had been her child."

These descriptions of Angelina put a human face on a great society, the Caddo Nation, which occupied East Texas north to the Red River and parts of Oklahoma, Arkansas and Louisiana.

Angelina's people, the Hasinai, were a southern Caddo tribe settled in the valleys of rivers now known as the Neches and the Angelina around Lufkin.

The Caddo word for friends produced the name Texas.

Compared to the far-ranging Plains Indians, Caddo tribes often stayed close to home to tend their crops. They lived in beehive-shaped huts built of poles covered with thatch. At the time of the European

expeditions into East Texas, the Caddo tribes depended on farming, but also hunted, fished and gathered wild nuts, fruits and native plants. Corn was their main crop, along with beans, squash, pumpkins and sunflowers.

The Caddos, writes anthropologist W.W. Newcomb, Jr., "achieved a level of cultural development unsurpassed by other Texas Indians, possessing comparatively advanced technique and tools for exploiting the resources of nature."

Another writer describes "the prestige the Caddo Nation enjoyed among other Texas tribes."

The Caddo culture ultimately could not withstand encroachment by settlers and the new diseases that came with them.

By one estimate, the Caddo population dropped

as much as 95 percent after the arrival of the Europeans.

This happened so rapidly that most of Hasinai Caddos were gone from East Texas before Angelina County was named for "the Little Angel."

Descendants of the Hasinai from Texas today live on Caddo lands in southwestern Oklahoma.

The legacy of the Caddo civilization in East Texas, though, lives on. Archeological research at the Caddoan Mounds State Historic Site west of the city of Nacogdoches, another Indian name, provides significant knowledge of a major Caddo community.

Exploring the history of Texas teaches us the value of the contributions

of successive peoples and generations. Each has built on the knowledge and mistakes of others.

We also have schools, libraries, museums, archives, archeologists and historians to uncover, preserve and interpret our history.

Everything we learn about our past is an investment in our future.

ENTERPRISE PBR TOUR

COMING TO CLOVIS!



GET YOUR TICKETS AT:

- Joes' Boot Shop
- Clovis Chamber of Commerce
- Big Valley in Portales

Adults \$15
Kids 6-12 yrs \$10

Sept 19th and 20th

FRIDAY & SATURDAY

7:30 pm

CURRY COUNTY FAIRGROUNDS ARENA

Meet the PBR Bull Riders!

Get their autographs on Saturday, Sept 20 from 12-1pm at Big Valley in Portales or 2-3pm Joe's Boot Shop in Clovis

Muleshoe Feed Barn

AND **HI-PRO FEEDS**

Come see us for your show animal feed!

INVITE YOU TO **CUSTOMER APPRECIATION DAY**

FRIDAY, SEPT. 26 • 11 AM-2 PM

311 W. American Blvd., Muleshoe • 272-5626

More CLASSIFIEDS

Deadline: 5 PM Monday - 272-4536

REAL ESTATE	FOR SALE	FOR SALE	GARAGE SALE
<p>Byrd Realty Ronald Byrd Licensed Broker Crista Bass Sales Associate</p> <p>228 Main Street, Muleshoe, Texas www.byrdrealestate.net</p> <p>New Listing- READY TO MOVE IN!! Very nice 3 bedroom, 1 3/4 bath, brick home, central H&A, FP, built-ins, tile floors, sunroom, gorgeous landscaping, fenced backyard, 2 car garage, plus 3 car carport in back. A MUST SEE!!!</p> <p>NEW LISTING - Remodeled 3 bedroom, 1-3/4 bath brick home, Central A&H, appliances, storage, sprinkler system, fenced backyard, 2 car garage, plus more.</p> <p>NEWLY REMODELED HOME-Beautiful 3 bedroom, 1 bath, brick home, central A &H, appliances, lg. family room. Storage buildings, fenced backyard, single har garage, carpet. This is a MUST see home!</p> <p>Commercial Listing- 120 W Ave C., approx. 2100 sq. ft., building will make a nice office space, good location.</p> <p>NEW LISTING- Beautiful 3,000 plus brick home on 4 plus acres, NE of Lazbuddie, central heat/air, FP, sunroom, finished basement, MANY EXTRAS!!!</p> <p>TO BE MOVED - 16x80 Fleetwood, 3 bedroom, 2 bath home, built-in, heat pump, all electric, nice porch, great starter or get away home. Priced to sell.</p> <p>NEW LISTING - Muleshoe - 158 Acres with circular sprinkler system and nice brick, 3 bedroom, 2 1/2 bath home. Just outside city limits. Approx. 2,224 sq. ft. of living area. Basement, central heat and air, many extras. Owner will divide and sell house with up to 10 acres. call Carlton Johnson. 806-789-4289.</p> <p>Office: (806) 272-5380 Toll Free: 1-888-999-3846</p>	<p>Vic Coker Land Co. Agricultural Real Estate</p> <ul style="list-style-type: none"> • Hall County - Memphis Area - 320 Acres near Lakeview. Two wells, two center pivots. Good bases, yields and direct payment. One circle in second year alfalfa. Pavement on 2 sides. • Lamb County - 160 Acres northwest of Earth. Excellent soil. Lays perfect, 3 wells, Center pivot. Good set of catch pens for livestock. • Southern Parmer County - 160 acres. Late model sprinkler. 2 wells make 500 g.p.m. Good bases & yields. Corners in CRP at good rate. • Lamb County - Northwest of Amherst. 346 acres. Two center pivot sprinklers. 5 wells all tied together. 75% of one pivot is in grass. Good direct payments. <p>316 Main Street • Muleshoe, Texas Office: 806-272-3100 Home: 806-965-2468 Website: www.vicoland.com</p>	<p>Thousands of packaged baseball cards for sale. A collector's dream! \$500 OBO. 806-239-7509. <small>.1f9h-18</small></p> <p>2 Submersible: 1- 25 horse, 1- 30 horse 750' Setting Column Pipe. Call 1-806-292-6921. <small>.2pd9-18</small></p> <p>Complete New 5-pc bedroom set, still boxed. Worth \$1300, take \$475. 806-438-0081. <small>.1ch9-18</small></p> <p>Low Profile bed, dresser, mirror, nitestand, expresso, nickel hardware. Sell \$750. 806-438-0081. <small>.1ch9-18</small></p> <p>SLEEP ON CLOUD - brand new complete memory foam mattress set. Never opened. Motivated Seller. \$365. 806-438-0081. <small>.1ch9-18</small></p> <p>\$550 New 5-pc Chenille Living Room set. Factory Warranty. 806-549-3110. <small>.1ch9-18</small></p>	<p>Pottery barn style chocolate sofa, loveseat. Still boxed. Worth \$4100, sell \$1375. 806-549-3110. <small>.1ch9-18</small></p> <p>Cherry dining table & chairs. Deep, mirror finish. Boxed. List \$700, take \$250. 806-549-3110. <small>.1ch9-18</small></p> <p>Brand name Orthopedic Chiropractic mattress set, unused. \$150. 806-438-0081. <small>.1ch9-18</small></p> <p>Mattress- all new King set (pillowtop) left in pkg. Original warranty. Will take \$250. 806-549-3110. <small>.1ch9-18</small></p> <p>5-pc Complete dinette set. Never go to use, still boxed. Will let go for \$175. 806-549-3110. <small>.1ch9-18</small></p> <p>FULL Size Orthopedic matt. set, in plastic \$130. New TWIN size \$100. 806-549-3310. <small>.1ch9-18</small></p>
<p>Cleavinger & Associates <i>"Real Estate Just Became A Breeze"</i></p> <p>MIKE CLEAVINGER — (806) 239-5139 TARA JORDAN — (806) 433-4289</p> <h3>Over 10,000 Acres For Sale</h3> <ul style="list-style-type: none"> • Farms and ranches in Bailey, Lamb, Parmer, Castro, Cochran and Dickens counties. • Homes in Parmer, Lamb and Lubbock counties. • Commercial Property in Bailey and Lamb counties. <p style="text-align: center;"><small>MULTIPLE LISTING SERVICE</small> MLS <small>EQUAL HOUSING OPPORTUNITY</small> REALTOR</p> <p>Bailey County, South of Muleshoe — Beautiful 3 bedroom, 2 bath brick home with fireplace, sunroom, barn and outbuildings on 10 acres. Excellent condition. \$125,000.</p> <p>Visit our website for all listings at www.streetsrealestate.com Sellers and Buyers • Farm • Ranch • CRP Hunting • Rural Properties STREET REAL ESTATE • PLAINVIEW, TX JOHNNY STREET • 806-847-7400</p>	<p>House For Sale By Owner</p> <p>MUST SELL NOW!! \$79,900 OBO</p> <p>1,800 sq. ft. home. 3 bedroom, 1-3/4 bath, owner financing or rent w/ option to buy. OPEN Saturday, Sept. 13, 1-3 PM, 101 Cemetery Rd., Earth, TX. 520-616-9705. <small>.2pd9-11</small></p> <p>Nice brick home on 5A., on Hwy 54. 3-2-2, Central A/H, 40x50 metal barn, recent remodel. Call 806-946-3676 or 806-946-7015. <small>.7ch8-21</small></p> <p>1,200 sq. ft. brick home, central refrigerated air, single car garage, 2BDRM/1BA. Call 806-272-4388. <small>.1f91-10</small></p> <p>2/ 1-1/2 /2 brick home with lots of charm. Basement, lots of closet space, office, storage bldg. Remodeled bath and kitchen area. 1584 sq. ft. Great mixture of old and new conveniences. Priced to sell. Corner of 7th and American Blvd. 806-239-5033. <small>.1f91-18</small></p>	<p>FOR SALE</p> <p>Huge Garage Sale. Lots of furniture and girls clothes. Starts Friday, Sept. 19 @ 6 pm and Sat. Sept. 20 @ 8 am. 1006 W 6th St. <small>.1ch9-18</small></p> <p>FOR SALE</p> <p>STEEL BUILDINGS Factory Deals Can Erect www.scg-grp.com Source #13Y Phone # 806-523-8752</p> <p>Cute English Bulldog Puppies for Sale. Pure Breed, M&F, W/ Pics., 10 wks, with 1 yr health guarantee certificate, \$650. For more details, contact Adeola Smith at sdesmond84@gmail.com <small>8ch9-18</small></p> <p>ADVERTISE! 272-4536</p>	
<p>LAMB CO., TX. - permitted 400 acres, currently in grass, CRP and dryland farming, irr. wells on property, access by county road with railroad/hwy 84 frontage. Also listed 265 acres available within two miles of property.</p> <p>NARA VISA, NM. 800 acres irrigated by 3 sprinklers & 3 wells all tied together on 5 circles plus 1,200 acres native grass, all weather road.</p> <p>SPRINGLAKE, TEXAS - 3 bdrm., 3 bath, basement, brick with metal room. 3,581 sq. ft. +/-, family room with fireplace, large game room with fireplace, formal living room, dining room, kitchen, utility, lots of storage, double garage, central heat/air.</p> <p>LAMB COUNTY GRAIN FACILITY - Elevator with 2 boot pits, office, scale, warehouse with load dock, over 1.5 million lbs. of upright storage, cleaner and dryer, pavement.</p> <p>COCHRAN/YOAKUM CO, TX - 2400 acres including 625 acres CRP, 3 pivots, good water.</p> <p>WESTERN PARMER CO. - 1280 ac. in close proximity to many Texas & NM dairies with 1097.3 ac. CRP, plus 182.7 ac. grassland and irr. wells, & underground line.</p> <p>CASTRO/HALE CO. — Choice section, strong water, 1/2 mile sprinkler & irr. wells, pavement.</p> <p>HWY. 70 WEST OF OLTON - 480 ac. dev. with sprinklers & irr. wells & 160 ac. with wells and sprinkler, divided by Hwy. 70.</p> <p>CHECK OUR WEBSITE for data and pictures of many farms, ranches, feedyards, dairies and choice dairy locations with permits and acreages with homes.</p> <p>www.scottlandcompany.com Ben G. Scott — Broker 800/933-9698 day/eve</p>	<p>SALE</p> <p>Summer Clearance Sale! Everything in the store - \$3 for a brown bag. Sept. 19 & 20. 401 S. Main, Heritage Thrift Shop. <small>.1ch9-18</small></p>	<p>SERVICES</p> <p>Computer Help & Web Design Home - Office - Small Business Brant Wedel - www.onecsguy.com Email: brant@onecsguy.com 806-252-7834</p>	

Give the Muleshoe Journal as a gift to Someone you Love. Call us at 272-4536.

CLASSIFIEDS

Deadline is Monday at 5 PM to place a Classified ad. Call 272-4536.

PUBLIC NOTICE

NOTICE OF RECEIPT OF APPLICATION AND INTENT TO OBTAIN AIR PERMIT RENEWAL PERMIT NUMBER 40766

APPLICATION Muleshoe Cooperative Gin Company, has applied to the Texas Commission on Environmental Quality (TCEQ) for the renewal of Air Quality Permit Number 40766, which would authorize continued operation of the Cotton Gin located at 1750 County Road 1048, Muleshoe, Bailey County, Texas. The facility will emit the following air contaminants: particulate matter including particulate matter less than 10 microns in diameter, organic compounds, nitrogen oxides, carbon monoxide, and sulfur dioxide. This application was submitted to the TCEQ on August 13, 2008. The application is available for viewing and copying at the TCEQ central office, the TCEQ Lubbock regional office, and the Bailey County Clerk's Office, 300 South 1st Street, Suite 200, Muleshoe, Bailey County, Texas. The facility's compliance file, if any exists, is available for public review in the Lubbock regional office of the TCEQ. The TCEQ executive director has determined the application is administratively complete and will conduct a technical review of the application. Information in the application indicates that this permit renewal would not result in an increase in allowable emissions and would not result in the emission of an air contaminant not previously emitted. **The TCEQ may act on this application without seeking further public comment or providing an opportunity for a contested case hearing if certain criteria are met.**

PUBLIC COMMENT You may submit public comments, or request for a contested case hearing to the TCEQ Office of the Chief Clerk at the address below. The TCEQ will consider all public comments in developing a final decision on the application. **The deadline to submit public comments is 15 days after newspaper notice is published.** After the deadline for public comments, the executive director will prepare a response to all relevant and material, or significant public comments. If only comments are received, the response to comments, along with the executive director's decision on the application, will then be mailed to everyone who submitted public comments or who is on the mailing list for this application, unless the application is directly referred to a contested case hearing.

OPPORTUNITY FOR A CONTESTED CASE HEARING You may request a contested case hearing. The applicant or the executive director may also request that the application be directly referred to a contested case hearing after technical review of the application. A contested case hearing is a legal proceeding similar to a civil trial in state district court. Unless a written request for a contested case hearing is filed within 15 days from this notice, the executive director may act on the application. **If no hearing request is received within the 15-day period, no further opportunity for hearing will be provided.** According to the Texas Clean Air Act §382.056(o) a contested case hearing may only be granted if the applicant's compliance history is in the lowest classification under applicable compliance history requirements and if the history request is based on disputed issues of fact that are relevant and material to the Commission's decision on the application. Further, the Commission may only grant a hearing on those issues raised during public comment period and not withdrawn.

A person who may be affected by emissions of air contaminants from the facility is entitled to request a hearing. If requesting a contested case hearing, you must submit the following: (1) your name (or for a group or association, an official representative), mailing address, daytime phone number, and fax number, if any; (2) applicant's name and permit number; (3) the statement "[I/We] request a contested case hearing;" (4) a specific description of how you would be adversely affected by the application and air emissions from the facility in a way not common to the general public; (5) the location and distance of your property relative to the facility; and (6) a description of how you use the property which may be impacted by the facility. If the request is made by a group or association, the one or more members who are standing to request a hearing and the interests the group or association seeks to protect must also be identified. You may also submit your proposed adjustment to the application/permit which would satisfy your concerns. Requests for a contested case hearing must be submitted in writing within 15 days following this notice to the Office of the Chief Clerk at the address below.

If any requests for a contested case hearing are timely filed, the executive director will forward the application and any requests for a contested case hearing to the TCEQ Commissioners for their consideration at a scheduled Commission meeting. Unless the application is directly referred to a contested case hearing, the executive director will mail the response to comments along with notification of Commission meeting to everyone who submitted comments or who is on the mailing list for this application. **If a hearing is granted, the subject of a hearing will be limited to disputed issues of fact relating to relevant and material air quality concerns raised during the comment period.** Issues such as property values, noise, traffic safety, and zoning are outside of the Commission's jurisdiction to address in the proceeding.

MAILING LIST In addition to submitting public comments, you may be asked to be placed on a mailing list for this application by sending a request to the TCEQ Office of the Chief Clerk at the address below. Those on the mailing list will receive copies of future public notices (if any) mailed by the Office of the Chief Clerk for this application.

INFORMATION Written public comments or requests for a public meeting or contested case hearing should be submitted to the Office of the Chief Clerk, MC-105, TCEQ, P.O. Box 13087, Austin, Texas 78711-3087. For more information about this permit application or the permitting process, please call the Office of Public Assistance, Toll Free, at 1-800-687-4040. Si desea informacion en Espanol, puede llamar al 1-800-687-4040. General information regarding the TCEQ can be found at www.tceq.state.tx.us. Further information may also be obtained from Muleshoe Cooperative Gin Company, P.O. Box 569, Muleshoe, Texas 79347-0569 or by calling Mr. Kelley Green, Texas Cotton Ginners' Association at (512) 476-8388.

Published in the Muleshoe Journal on September 18, 2008.

PUBLIC NOTICE

For sale by sealed bids.
• 1986 GMC 1500 Suburban, 152002 mileage
• 1961 GMC 4000 Pumper Truck with 500 gallon tank, 18734 mileage.
Sealed bids to be received by noon on September 30, 2008 at Muleshoe City Hall, 215 S First St, Muleshoe, TX.

LeAnn Gallman, TRMC, MMC City Secretary
City of Muleshoe
215 S First St
Muleshoe TX 79347
PH 806-272-4528
FX 806-272-5260
email lgallman@fivearea.com
Published in the Muleshoe Journal on September 4, 11, and 18, 2008.

PUBLIC NOTICE

NOTICE OF RENEWAL APPLICATION
This is a Renewal Application for Private Club Registration Permit, N-054986 and Beverage Cartage Permit for Muleshoe Country Club located at 900 Country Club Road, Muleshoe, TX 79347. Board of Directors are: Jason Box, President Kurt Miller, Vice President Vince Erdmann, Secretary-Treasurer Darren Box, Member David Jenkins, Member Bill James, Member Buck Johnson, Member
Published in the Muleshoe Journal on September 11 and 18, 2008.

HELP WANTED

Regence Health Network is taking applications for a LVN RHN Muleshoe Clinic is accepting applications for a License Vocational Nurse (LVN) Assist the physicians and mid-level practitioners in rendering general nursing care to clinic patients and assisting the provider during the treatment and examination of patients. Graduation from an accredited school of vocational nursing, Licensed to practice vocational nursing in state of Texas. Possess a practical knowledge of nursing techniques. Posses the ability to work productively with individuals, be able to exercise good judgement and be in good health, neat and clean. Bilingual in English/Spanish desirable. Apply 208 W. Second St. Muleshoe TX, or fax resume with cover letter to Wally Chavez @ 806-293-8413 EOE.
Full or Part time. Farm Tractor Operator needed. Experience and references required. Call 806-272-5901.
Help wanted. Laborers, pays \$11 - \$12/hr, in Muleshoe and Bovina area. Call 575-763-5428. Apply at Matchmakers Employment, Clovis, NM 88101.
Minsa Corp. seeks Projects & Maintenance Dept. Manager for Muleshoe, Tx; Bachelor's degree is elec. or mech. eng. req'd or equiv. + 5 yrs progressive exp in elec/mech engr. Send resumes to Tony Scolley, PO Box 484, Muleshoe, TX 79347.
Business Analyst - Muleshoe, TX. This position for Xcel Energy will handle the budgeting and reporting duties for the Talk Station and Plant X Station. Duties include accounting, budgeting and forecasting, coordinating the annual and monthly budget process, and assuring correct accounting practices. This includes performing detailed and variance analysis, reporting to department leadership, and maintaining the books and records for the Station. Must have a degree in accounting, finance, business (or equivalent) and 8 plus years directly related experience. Excellent communication skills, proficiency in MS Office Suite and willingness to travel occasionally. For more information and to apply, visit www.xcelenergy.com referencing posting number ES-TX-0126. Posting expires 9/23/08 at 5 pm CDT.

NURSING SIGN ON BONUS
Parmer County Community Hospital is seeking candidates for the positions of Registered Nurse/Charge Nurse and LVN. Positions are full time and requires excellent verbal skills, basic computer knowledge and skills, phone skills and ability to professionally interact with the medical staff and public. Prior Charge Nurse experience preferred for RN. Must be able to work all shifts. Mail resume to, or stop by for application: Parmer County Community Hospital, Human Resources, 1307 Cleveland, Friona, TX 79035.

Lamb Healthcare Center is accepting applications for a full time night licensed RN, LVN, and CNA. Applications may be picked up at 1500 S. Sunset, Littlefield, Texas. For more information call 806-385-6411, ext. 214. LHC is an EEOC employer.

Continental Credit is seeking an Assistant Manager for Muleshoe office. Pick up application and job description at 206 Main St.

Elevator Help Needed
The AGP Grain Marketing elevators are in need of elevator help for various locations. Applicants must be at least 18 years of age and must pass a pre-employment physical and drug screen. Must be able to work in grain dust. If interested, please pick up applications at the main office in Bovina or call 806-251-1521 local, or toll free at 866-583-7362.

Muleshoe ISD is seeking a qualified individual to serve as Special Education teaching assistant at the High School campus. Application for this position may be picked up at the Superintendent's office, 514 W Ave G. Anyone having questions concerning this position can contact Gene Sheets, Superintendent, at 806-272-7404 or Elizabeth Ward, High School Principal, at 806-272-7303.

LAND FOR SALE

1/4 land for sale by owner. Productive quarter, good water. Lazbuddie area. 806-272-3217 or 505-235-1374.

PUBLISHER'S NOTICE

All real estate advertising in this newspaper is subject to the Fair Housing Act which makes it illegal to advertise "any preference, limitation or discrimination based on race, color, religion, sex, handicap, familial status or national origin, or an intention, to make any such preference, limitation or discrimination." Familial status includes children under the age of 18 living with parents or legal custodians, pregnant women and people securing custody of children under 18.

This newspaper will not knowingly accept any advertising for real estate which is in violation of the law. Our readers are hereby informed that all dwellings advertised in this newspaper are available on an equal opportunity basis. To complain of discrimination, call HUD toll-free at 1-800-669-9777. The toll-free telephone number for the hearing impaired is 1-800-927-9275.



PUBLIC NOTICE

ORDINANCE NO. O-435-0908
An ordinance of the city council of the City of Muleshoe, amending the code of ordinances of the City of Muleshoe, amending fees as provided for in Appendix A, and providing for an effective date of October 1, 2008 of said amendments. PASSED and APPROVED on this the 15th day of September 2008.
Cliff Black, Mayor
LeAnn Gallman, City Secretary
Published in the Muleshoe Journal on September 18, 2008

Subscribe to our online service (Journal-D) and get your newspaper Weds. morning before it hits the newsstand! ONLY \$22.00/yr. or add the service to your existing subscription for just \$5! 272-4536 Easy! Quick! Cheap!

Did you clean out closets over the weekend? Thinking of having a big garage sale? Advertise it here! 272-4536

REAL ESTATE



Nieman Realty



116 E. Ave. C • George Nieman, Broker • 272-5285 or 272-5286

CHECK OUR LISTING INFO., PHOTOS, ETC. ON-LINE AT WWW.NIEMANREALTY.COM HAVE BUYERS! NEED HOME AND LAND LISTINGS!!

RICHLAND HILLS - PARKRIDGE - HIGHLAND
• VERY NICE 3-2-2 Brick, corner lot, Cent. A&H, built-ins, FP, cov. patio, fenced, yd., auto. spkrl., workshop, 2 stor. bldgs!! \$135,000!!!
• NICE 3-2-2 Brick, Cent. A&H, built-ins, FP, fans, approx. 1718' lv. area, fenced yd.!! \$105K!!
• VERY NICE 3-2-2 Brick home, Cent. Geothermal Heat Pump, built-ins, FP, approx. 2757' lv. area, sunroom w/ wet bar, lg. basement, jacuzzi tub in master, wuto spkrl., fenced yard., cov. patio, wkshp./stor. bldg.!! \$184,900!!
• CUSTOM BUILT (2004) 3-2-2 Brick home, Cent. A&H, Built ins, FP, approx 1932' lv. area, fenced yd. auto spkrl., 720' workshop/storage w/ 1 1/2 bath!! MUCH MORE!! \$225!!
• VERY NICE 3-2-2 Brick, corner lot, built-ins, Cent. A&H, approx. 1973' lv. area, guest cottage/eff. aptmnt. workshop!!!! PRICE REDUCED!! \$119,500!!
• VERY NICE 4-4-2 Brick Home on corner lot, approx. 3500' lv. area, Cent. A&H, built-ins, FP, auto. spkrl., large finished basement!! MUCH MORE!! \$265K!!
• VERY NICE 3-2-2 Brick, Cent. A&H, built-ins, FP, wood laminate & tile approx. 1818' lv. area, cov. patio, 15' x 30' pool, large storage/wkshp, fenced yd.!! PRICE REDUCED!! \$139K!!
• NICE 2-1-3 carport Home, carpet, tile, fans, fenced yd., storage bldg. MORE!! \$45K!!
• NICELY REMODELED - 3-2-2 Brick Home, corner lot, Cent. A&H, built-ins, FP, approx. 2159' lv. area, auto. spkrl., add. lot w/stor. workshop Bldg.!! \$173,000!!
• 2 NICELY REMODELED DUPLEX UNITS & 1 NEW Duplex unit!! PRICED TO SELL!!
• NEW 3-2-2 Brick Home, Cent. A&H, built-ins, alarm sys., spkrl. sys., fenced yd., numerous other amenities. 140K!!
• BEAUTIFUL CUSTOM BUILT 3-2-2 Brick Home, built-ins, FP, isolated master, safe rm., patio, nicely landscaped, spkrl. sys., fenced yd.!!
• NICELY REMODELED 3-2-2 Brick, new Cent. A&H, built-ins, FP, 3125' lv. area, spkrl. sys., fenced yd., MORE!!
• VERY NICE 3-2-2 Brick, Cent. A&H, built-ins, fireplace, utility, new paint, carpet, tile, atrium doors, blinds, 7 fans, cov. patio, stor. bldg., fenced yd.!! MORE!! \$130,000!! Price Reduced!! \$115,000.
• VERY NICE 3-2-5 Brick Home, Dual Fuel Heat Pump, built-ins, FP, basement, cent. vac. & humidifier systems, auto. spkrl., workshop/storage, fenced yd., corner lot!! \$169,500!!
• VERY NICE 3-2-2 Brick, Cent. A&H, built-ins, FP, approx 1920' lv. area, cov. patio, fenced yd., auto spkrl., & stor. bldg.!! \$139K!!
• NICE 3-2-2 Brick, Cent. Geothermal heat pump, built-ins, 2 FP, sunroom, hot tub, approx 2448' lv. area, screened porch, cellar, auto spkrl., stor. bldgs, \$149K!!
HIGH SCHOOL AREA
• 3-11/2-1 carport home, corner lot, cent. A&H, thermal windows & doors, cov. patio!! \$59,500!!

COMMERCIAL
• VERY NICE 3-2-2 P&P Home, built-ins, fans, deck, fenced yd., wkshp./stor.bldg., auto.spkrl., MORE!! \$84,500!!
• NICE OFFICE/SHOP/WAREHOUSE on .7 acre on N. Hwy. 214, Cent. A&H, insulated shop & warehouse, has 1-3/4 bath & 1-1/2 bath!! MUCH MORE!! PRICED TO SELL!! \$85K!!
• 1900' Off. Bldg., 106' x 140' lot on Hwy. 70 and 84!! \$79.5K!!
• ANA'S BEAUTY SHOP — Approx. 1120' bldg., with or without furniture & fixtures!! PRICE REDUCED!!
• VERY NICE CHURCH BLDG. WITH PARSONAGE - Possible Owner Finance!! Price Reduced!!
• GOOD INCOME PROPERTY-LONG TERM LEASE-Approx. 8,075' office bldg. w/ approx. 20,000' paved parking area!! PRICE REDUCED \$350K.
• NICELY REMODELED - 800 sq. ft. Bldg., Cent A&H, updated electrical & plumbing. PRICE REDUCED \$35,000.
• 4.2 acre tract at edge of town, 40' x 60' metal insulated bldg., 2 other sheelron bldgs., chainlink fenced area, numerous uses!! \$59K!!
• 100' x 140' tract, corner lot on Hwy. 84, 1760' Bldg., 1076' Bldg., 308' storage, & 2-56' x 22' metal canopies w/paved area!! \$49.5K!!
• FORMER RICHLAND HILLS TEXACO - 1414' Bldg. + 1080' canopy + 16,530' asphalt paving!!
RURAL
• APPROX. 80 ACRES OF RURAL LAND PRICED TO SELL!!
• VERY NICE 4-3 doublewide (2006) on 7.38 acres, Cent. A&H, built-ins, FP, fenced yd., 25' x 40' Metal Bldg. septic system, domestic well, on pavement close to town!! \$152K!!
• NICE 3-2-2 Brick, Cent. A&H, built-ins, 2163' lv. area, 191' bsmt., pool, wksp./storage, roping arena, horse barn on 5.99 ac., MORE!! \$120K!!
• VERY NICE 3-2 doublewide (1998) on 14.68 acres on Hwy. 84, Cent. A&H, built-ins, FP, 40' x 80' Metal bldg. (insulated) w/ 1/2 bath, office, MUCH MORE!! \$148,900!!
• Nice 3-2 Home at edge of town on .8 acre tract, Cent. A&H, built-ins, FP, efficiency apt. or guest cottage, horse barn & corral!! PRICE REDUCED!! \$99,900!!
• NICE 4.8 acre homesties, close to town, deed restricted!! \$17,500!!
• NICE 3-2-5 carport Home on 2 acres, Cent. heat, Cent. evap. air, built-ins, fireplace, fans, utility, cellar, large shop, stor. bldg., MORE!! PRICE REDUCED \$109,500!!
• CLAY'S CORNER — VERY NICE 3-2-75-2 HOME on 5 acre tract, Cent. A&H (Elec. Heat Pump), built-ins, FP, 1100 sq. ft. new in 2005 plus additional updating w/carpet, tile, paint, fenced yd., cov. patio, 600' workshop/storage Bldg.!! Numerous other amenities!! \$169,500!!

MISCELLANEOUS

Need your house or office cleaned? Call Patricia. 806-445-7968.
Call A Sales Rep Today!

Did you know....
Our classified section appears in its entirety on the Muleshoe Journal website at www.muleshoejournal.com. 272-4536

Rex Lowery Painting
Painting in the Muleshoe area over 40 years!
FREE ESTIMATES
Cell: 789-9142

• Maple - 3-2-1, 3A, \$66,000.
• Pettit - 6A, Shop, Well, Cellar
• Farms — Fieldton, Roundup, Earth, Levelland, Plainview.
• Levelland — 40A tracts W, NE and at Roundup.
• Levelland - Brick home on 147 A of grass.

FARRAR & ASSOCIATES
806-894-7099

Courtyard REAL ESTATE
ERA
• 605 Boesen - 3 bed, 2 bath, 2 garage brick home in Sudan. Newly remodeled. \$50,000.
Monty Edwards, Agent
(806) 786-5426

Mule Days 2008



Don't forget to vote!

Clovis Community College and
THE CITIZENS BANK of CLOVIS present:

THE CULTURAL ARTS SERIES

For Your Listening Pleasure...

CHIARA CIVELLO

"The best jazz singer of her generation."

-Tony Bennett

SATURDAY
SEPT. 27

7 p.m.

Lyceum Theater

\$20 General Admission
\$15 Seniors/Military/Students

Tickets: 575.769.4035
Info: 575.769.4956

www.clovis.edu



KICK-OFF Your Entertainment with Rapid Communications!



High-Speed Internet

- X No busy signals, never have to wait for service.
- O Stream music and videos quickly and easily!
- X Shop, pay bills, and keep in touch with friends and family!
- O No worries, no phone line or cable wire needed to receive service.



Cable TV

- X Get all of your local channels including sports, news, kids programming, and all the most popular cable networks.
- O No unattractive dish on the side of your house.
- X No need to worry about service interruption by the weather - Entertainment is guaranteed rain or shine!



Get both services for only

\$66

per month*

Rapid
Communications
your local link to the world

Receive Free Professional Installation
with a One Year Commitment!

1.800.963.4984

RED HOT CLEAR THE LOT SALE

AT ALL 3
LOCATIONS!

ZERO
DOWN!

BIG VALLEY
PORTALES CLOVIS MULESHOE

NO PAYMENTS FOR 90 DAYS ON THESE PRE-OWNED VEHICLES!



2007 DODGE RAM 1500 QUAD CAB SLT
V8, AUTO, PW, PL, TILT, CRUISE & MORE...

STARTING AT **\$304⁰⁰**

8 TO CHOOSE FROM!

A MONTH!

2007 MERCURY GRAND MARQUIS GS

LOADED, HALF TOP

ONLY **\$247⁰⁰**
A MONTH!



Stk# OW619399

2008 CHRYSLER PT CRUISER, TOURING

LOW MILES, PW, PL, TILT, CRUISE

3 TO CHOOSE FROM! STARTING AT **\$229⁰⁰**
A MONTH!



Stk# DP108539

2007 DODGE CHARGER SE

SPORTY, LOW MILES, PW, PL, TILT, CRUISE

STARTING AT **\$289⁰⁰**
A MONTH!



Stk# DP108539

All units 0 Down Plus T T & L! 78 months at 7.9% apr wac.



FREE PBR TICKETS!

*See Your Local Big Valley Representative for Details!

A Dealership with A New Attitude!
1125 W. American Blvd. (806) 272-7777

Rapid Communications 2008. For new residential customers only. Offer expires 9/30/08. Includes Expanded Basic Service and the Silver High-Speed Internet package. *Price guaranteed for one year. Available services & pricing may vary and not be available in all areas. Regular retail rates apply thereafter. Download & upload speeds are maximum speeds; they may vary & are not guaranteed. Franchise fees, taxes, installation, restrictions & other fees may apply, the actual amount depending on location & service ordered. A wireless antenna will be required at installation. Minimum computer requirements may be required. If service is cancelled before 12 months, a \$100 service charge may be applied to the customers account. Offer subject to change. Other restrictions may apply. West Texas. RAPID09685