

STERLING CITY NEWS-RECORD

Vol. 78

"Since 1890" PUBLISHED EVERY FRIDAY AT STERLING CITY, TEXAS

AUGUST 29, 1969

No. 33



AROUND
THE
COUNTY



ARTHUR BARLEMANN, JR. COUNTY AGENT

One bite in eight—that's how much of our food comes from overseas. While some of it competes directly with our own foods, much of it is types and kinds we wouldn't otherwise have but like very much.

It's pretty hard to think of eating very many meals without a cup of coffee, a glass of iced tea, or a cup of cocoa. All these beverages come from other countries—Asia, Africa, South or Central America.

Or, try to imagine meat without pepper, hot rolls without cinnamon, gingerbread without ginger, baked ham without cloves. Cooking without these spices or herbs, as well as eating without them, would be boring since we have grown up with them and are accustomed to having them to flavor our food. Again, the majority of the spices used in cooking come from overseas.

Some of the imported foods do compete directly with foods we grow here in this country. Among these are some meats, dairy products, fruit and vegetable products. These imports do work hardships on our farmers or producers but many of them are products that we as consumers have grown used to and desire.

During the last week, only one screwworm case was confirmed in the Southwestern United States at the Mission Laboratory. The sample came from New Mexico.

Non-screwworm samples received at the laboratory continue to decline with only twenty-two samples being received from throughout the U. S. during the past week. This decline is causing some concern among the program officials. All livestock owners are urged to maintain their vigilance for suspected cases. In areas where showers have fallen this week, activity could step up as the weather cools. Pet owners are being urged to keep up their guard also by the program officials. The last case in Texas, you recall, was in a dog in El Paso. It ended confirmed cases in Texas when identified on August 14.

The rains of the past few days, scattered though they are, may bring trouble to pecan producers. They may be responsible for the appearance of the pecan weevil.

The pecan weevil is a late season pest of pecans. When severe infestations occur, the insect can destroy a large portion of the crop. Losses were heavy in this area because of the pest in 1967; losses in 1968 were very small.

The weevil spends the winter in the ground and emerges as an adult late in August and early in September following rain or irrigation. Female weevils deposit their eggs in the pecans during this time. Creamy white grubs hatch from the eggs and feed inside the nuts, causing destruction of the kernels and adherence of the shuck to the shell. When the grubs mature, they chew a hole about one-eighth inch in diameter in the shell, emerge from the nut, and drop to the ground. The entire life cycle of the insect requires from two to three years; most of the time is spent in the soil.

The weevils ordinarily damage the same trees year after year. If you have trees that ordinarily are damaged by the weevil, it is a good idea to check these trees periodically for the next month.

STERLING COUNTY OIL-GAS ROUNDUP

Sterling County oil and gas wells pumped some \$8.4 million into the county's economy last year, according to a study just released by the Texas Mid-Continent Oil & Gas Association.

Value of production from oil wells was \$7.9 million and from natural-gas wells \$467,000, based on the most recent U.S. Bureau of Mines figures compiled by the Association. The county ranked 108th in the state in value of production.

"Output from Sterling County is part of this country's domestic oil supply which is endangered by some of the proposals now before Congress," commented Corbin J. Robertson, Association president. "Attempts to destroy percentage depletion provisions of our income tax laws and to nullify present controls over imported oil could discourage further development of Texas oil resources. Eventually oil markets now shared by the county would be given over to foreign producers."

Last year, the county produced 2.7 million barrels of crude oil and 3.6 billion cubic feet of natural gas.

Of this total, county landowners and others with mineral interests received royalty payments of \$1.1 million.

The state received \$398,000 in production taxes with crude oil accounting for \$365,000 and natural gas \$33,000. A number of school districts in the county lean heavily on oil production for ad valorem tax support, such as Sterling City, 49.2%.

Drilling expenditures were an estimated \$4 million. Of the 51 wells drilled in the county, 21 were completed as oil wells and 1 as a gas well, according to Ira Rinehart's Yearbook. The 29 dry wells or holes cost \$2.2 million. There were 18 wildcats drilled. The Texas Employment Commission lists 23 workers on oil and gas payrolls, which totaled \$138,000.

Inspection may be made by placing a piece of canvas or sheet on the ground below these trees and jarring the limbs. Usually the weevils will fall to the ground but this is not always true. It is wise to check the nut clusters for weevils also. If three or more weevils are found per tree, control measures should be applied. Traps may also be used to catch the weevils as they emerge from the soil. This has been done in some of the pecan producing areas of the state and has worked well in the past. Several traps were built by John Brock last year and placed under trees. However, last year the weevils were not a problem and no weevils were trapped. The traps are in place this year and are being checked periodically.

Two insecticides are recommended for use in home orchards. The two recommended are DDT and Carbaryl (Sevin). A spray of either is recommended; spray the entire tree. There is one precaution to the use of the two insecticides: neither should be applied after the shucks have begun to split.

SCHOOL LUNCH ROOM MENUS

TUESDAY, SEPTEMBER 2

Chicken Fried Steak-Gravy
Mashed Potatoes
String Beans
Tossed Salad
Sugar Cookies
Rolls, Milk

WEDNESDAY, SEPT. 3

Barbequed Chopped Meat
Buttered New Potatoes
Peas and Carrots
Stuffed Celery
Peach Cobbler
Rolls, Milk

THURSDAY, SEPTEMBER 4

Fish Portions
Pinto Beans
Corn O'Brien
Carrot and Raisin Salad
White Cake
Rolls, Corn Bread, Milk

FRIDAY, SEPTEMBER 5

Hamburgers
French Fried Potatoes
Apple Crisp
Milk

Lunchroom Tickets or Books For Sale

Lunchroom tickets will be sold to the students in the classrooms Tuesday, September 2, during the morning. There will be a weekly ticket for \$2.00 and a monthly ticket for \$8.00. For those who pay for lunches daily the price is 40c for school children. The guest lunches cost 60c per person.

CARD OF THANKS

I would like to thank Sterling Volunteer Fire Department, all volunteers, friends and neighbors that helped fight the fire on top of Grubbs Canyon--Goat Mountain. Your help was appreciated.

CHARLIE DAVIS

Bill Blair and Crisp Williams are spending the week in Ruidoso, N.M.

NOTICE, BALL PLAYERS

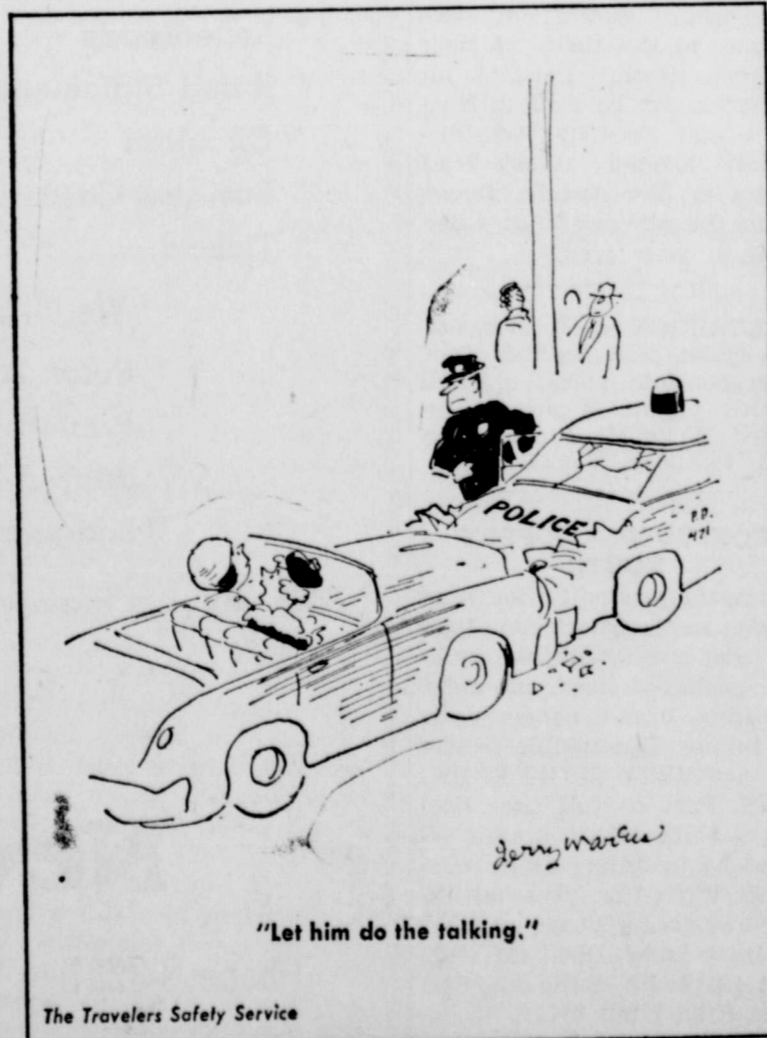
All pony leaguers, turn in your suits to Stan Horwood; all Giants turn in suits now to Rance Hord; and all Astros turn in suits to Jack Peel.

FOR SALE—Two wheel all metal trailer 4' x 8½'. Spare tire and jack included. Price \$100. 100 8"2" pipe posts \$1.10 each. Steel sucker rods \$1.30. Also other pipe. Ph. 378-3521.

Phone in news of your visitors or visits to the News-Record. Phone 8-3251.

Alcoholocaust

Jerry Marcus



The Travelers Safety Service

Rear-end collisions are a result of speed and inattention.

HOSPITAL NOTES

Patients in the Sterling County Hospital on Thursday morning of this week included—

Mrs. D. O. Mercer
Mrs. Laverne Stanfield of Abilene
Mrs. Monseis Rodriguez
Dismissals since Thursday morning of last week include—
Mrs. Melvin Parker and infant daughter, Sheri Monita
Mrs. Glenn Schneider

Sterling Highway Work Scheduled

The Texas Highway Commission has approved the expenditure of \$31,500.00 for State Highway safety and betterment work in Sterling County during 1970.

The work authorized includes the following projects: State Highway 163 from Sterling City South, a distance of 8.9 miles—Asphalt Seal Coat.

U.S. Highway 87 from 7.0 miles Northwest of Sterling City to west edge of Sterling City—Asphalt Seal Coat.

District Engineer J.A. Snell of San Angelo said that the projects in Sterling County, which will involve 15.6 miles, will be under the supervision of R. N. Jennings, District Maintenance Engineer of San Angelo.

Hurt in Car Crash

Mrs. Laverne Stanfield of Abilene was hurt with head and scalp lacerations as her car was rolled over on the Robert Lee highway just north of town late Monday afternoon. She was brought to the Sterling County Hospital for treatment by a Lowe ambulance.

Now Working in Beauty Shop

Mrs. Jim (Janie) Lange is now working at Viola's Beauty Shop here Fridays and Saturdays. She has had six years of experience in shops in Balinger, said Mrs. Viola Gaston.

To Open Texaco Truck Stop

T. A. Gartman of Los Angeles, Calif. has leased the Texaco Truck Stop Cafe here and will open it this weekend. He is a son of Mrs. T.A. Gartman of Sterling City.

School Opens Here Next Tuesday

Football-Pep Squad Barbecue Held

The high school mothers club hosted the annual football-pep squad barbecue and season's kickoff last Saturday evening at the school. The affair had been scheduled for the city park but rain drove it indoors. Mrs. Kirk Hopkins is this year's president.

A barbecued chicken dinner with salads, beans, cake and drinks was served to several hundred persons.

School superintendent O.T. Jones introduced the new teachers, and football coach Sam Barnett introduced the 199 Eagle football squad boys. The four cheer leaders led in some yells and the program ended with the singing of the Sterling school song.

Scrimmage with Mertzton There September 5

Football coach Sam Barnett said this week that the Eagles would scrimmage the Mertzton Hornets there at 7 p. m. on September 5. Danny Slaughter is assistant coach this year.

1969 FOOTBALL SCHEDULE

Sterling City High School
Sept. 12 — Southland T
Sept. 19 — Union H
Sept. 26 — Smyer H
Oct. 3 — Whitharral T
*Oct. 10 — Gail T
**Oct. 17 — Garden City H
*Oct. 24 — Dawson H
*Oct. 31 — Wellman T
*Nov. 7 — Klondike T
*Nov. 14 — Loop H
Nov. 21 — Open
*District Games
**Homecoming

UNLICENSED DRIVERS, NOTICE

Anyone driving on the highways, streets, or alleyways of the State of Texas without a valid driver's license in his possession is guilty of a misdemeanor and upon conviction can be fined from \$1.00 to \$200.00. After August 31, 1969 this law will be strictly enforced by this office and the Highway Patrol.

F.J. CANTRELL, Sheriff

Labor Day Will Be Holiday

Superintendent of schools O.T. Jones has announced that the Sterling City Schools will open on Tuesday, September 2 at 8:30 a.m. and will end at 2:30 p.m. that day for the first day's session.

Monday, September 1, will be observed as a holiday, Labor Day.

High school registration or pre-registration was Tuesday of this week and the teachers have been working at the school doing pre-opening work this week.

Superintendent of schools O. T. Jones heads the school and James Thompson is the high school principal again. Bobby Dodds is grade school principal. The teachers will be as follows:

FIRST GRADE—Mrs. Ray Lane and Mrs. Juanita Johnson.

SECOND GRADE—Mrs. Dayton Barrett.

THIRD GRADE—Mrs. Tom Asbill.

FOURTH GRADE—Mrs. Arthur Barlemann, Jr.

FIFTH GRADE—Mrs. Jack Douthit.

SIXTH GRADE—Mrs. Marvin Foster.

SEVENTH GRADE — Mrs. Danny Slaughter.

EIGHTH GRADE — Bobby Dodds, home room

HIGH SCHOOL—Mrs. Adele Fleming, English and school annual.

Mrs. Danny Slaughter, business, high school pep squad, and 7th and 8th grade English.

Danny Slaughter, biology, general science, assistant football coach, 6th and 7th grade science, and boys basketball coach.

Mrs. Frank Milligan, librarian.

Fred Igo, vocational agriculture.

James Salvato, math, chemistry and physics.

Mrs. Early Barton, homemaking.

Sam Barnett, history and football coach.

The Thanksgiving holidays will be from Nov. 27 to 30.

The Christmas holidays will be from December 20 through January 4.

Good Rains Cover Sterling Area

Teachers Attend Language Arts Workshop

Mrs. Irene Lane and Mrs. Juanita Johnson, teachers in Sterling school, recently completed a one week workshop designed to train them in the use of an innovative Language Arts Program this fall. Mrs. Lane and Mrs. Johnson were among eleven teachers participating in the week of intensive study.

Recent visitors in the home of the Vernon Blackmans were Mrs. Lou Weinrich and sons, Keith, Eric, Darryl and Wray. The fall varied each time it fell, and some ranchers got more or less than the amounts at the town gauge, but now all have had lots of rain. The rains broke the long, hot, dry drouthy spell, which saw more than 60 days of 100 degree plus weather here.

Lightning started grass fires on David Glass' ranch Saturday but very little damage was done.

Over Five Inches Total

Good rains have covered the area over the past five or six days, ranging from three to as much as five inches.

Last Saturday nearly .25 of an inch fell here in town. On Sunday a tenth fell. Monday saw .45 inch fall and Tuesday added a half inch. Early Wednesday morning .30 fell and that afternoon it broke loose and rained more than three inches here in town.

The fall varied each time it fell, and some ranchers got more or less than the amounts at the town gauge, but now all have had lots of rain.

The rains broke the long, hot, dry drouthy spell, which saw more than 60 days of 100 degree plus weather here.

Early spring rains had put the ranges in good condition, and now these rains will help the fall and winter condition.

1969 MODEL CLOSEOUT AT CAPERTON CHEVROLET CO.

We have the widest selection of 1/2 ton pickups in Texas, and will not turn down any reasonable offer or trade. Plenty of 4 speeds, and automatic transmissions with six and eight engines.

Also have a good selection of 1969 Model Impalas, Chevelles, Novas.

Our sell-down starts now, and will continue until all 1969 Chevrolets are sold.

Check out all the deals that your neighbor has told you about, and trade again at the place that cares about you.

Caperton Chevrolet

BRONTE, TEXAS
Phone 473-2501

STERLING COUNTY BUDGET NOTICE

On this August 11th, A.D. 1969, the Commissioners' Court of Sterling County, State of Texas, in regular session, find that House Bill 768, Chapter 206, Section 12 and amendments thereto of the General Laws of the State of Texas, set out that the Commissioners' Court in each County shall, each year, provide for a public hearing on the COUNTY BUDGET, which hearing shall take place subsequent to August 15th, and prior to the levy of taxes by the Commissioners' Court.

In compliance with an order passed by the Commissioners' Court of Sterling County, Texas as made on the 11th day of August, A. D. 1969, notice is hereby given that a public hearing will be had on the Budget of Sterling County, Texas as prepared for the year 1970, at 10:00 o'clock A.M. on the 8th day of September, 1969, at the Courthouse in Sterling City, Texas in the Commissioners Courtroom, at which time any taxpayer in Sterling County, Texas shall have the right to be present and participate in such hearing.

TO CERTIFY WHICH, witness my hand and seal of office in the City of Sterling City, Texas, this the 11th day of August A.D. 1969.

(Seal) W.W. Durham
County Clerk, Sterling County, Texas.

Social Security News CHILDREN'S BENEFITS

The children of a deceased woman worker now have the same right to social security payments on their mother's account as they do on the account of the father, says Ted F. Moellering, District Manager of the Social Security Administration in San Angelo, Texas.

Some children, who could not qualify for benefits at the time their mother died, may now be paid. These survivors' insurance payments may continue each month to age 22 if the child remains in school and does not get married.

"This change is the result of a new definition of 'dependency' in the Social Security Act," Mr. Moellering explained. "Of course, the deceased mother must have worked on social security jobs long enough to be insured. In some cases, children whose mother died as early as 1947 can now be paid."

"An application for the child's benefits must be filed," he said. "We would like for anyone who believes he may be eligible to receive the payments to get in touch with the social security office without delay."

This applies especially to those whose applications were denied at the time of their mother's death. Detailed information can be secured from the Social Security Administration located at 300 West Harris in San Angelo, Texas, or see the representative when he is in your area.

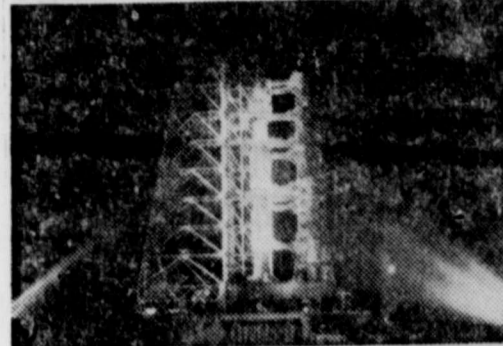
SACRIFICE equity in beautiful spinet piano in this area, to responsible party. Small monthly payments may be assumed. Write Mr. J. Hall, Box 3192, Lubbock, Texas

CONFECTION SUPPLY ROUTE

Unusual opportunity for man or woman to restock new type coin dispensers with high quality packaged food products. Handling brand names only. No selling. Dependable person can net VERY HIGH EARNINGS. Part or full time. Requires \$1150 to \$3250 cash secured by inventory and equipment. Write for personal interview, giving phone number to Inter-State Dist. Co., 455 East 4th South, Suite 206, Salt Lake City, Utah 84111.

Phone in news of your visitors or visits to the News-Record. Phone 8-3251.

Women Who Sew Launched Firm That Helps Launch Astronauts



A battery of 50 searchlights flood the Apollo launch site with light of the proper intensity and reliability for filming of the blast-off (left). Artist's conception shows Apollo Command/Service Module (right)



locked to Lunar Module (center) after they had been gently pushed away from the booster (left). Singer provides equipment and services for almost all stages of the Apollo missions.

Although more than 41 million women in America sew, few of them realize how their stitches in time have helped our country's race with Russia to the moon.

The boom in home sewing, still going on, has led to so much expansion by America's leading sewing machine company that today, Apollo astronauts count on the firm for over 50 different products and services.

Even before the launch, astronauts rely for help on the



Apollo Mission Simulator is the primary training system in which astronauts prepare for their round trips to the moon.

huge, diversified firm that got its start by making only sewing machines. All astronauts practice their missions many times in highly realistic Apollo and Lunar Module simulators built by the Link Division of The Singer Company. The same division is also responsible for the maintenance of the Manned Spacecraft Center's

simulator complexes in Houston and at Cape Kennedy.

Other Singer ground support activities include furnishing pressure and vacuum relief valves used to protect on-site fuel storage tanks from collapse or explosion and pulse generators that are mounted in the launch tower as part of the ground checkout system.

Flooding the launch site with light during blast-off of Apollo spacecraft is a battery of 50 searchlights produced by another Singer unit. This illumination provides lighting intensity, color definition and reliability for the complete filming of Saturn V launches.

Once in space, other Singer products play starring roles. Virtually all major segments of the Apollo booster and modules contain components or systems designed and built by a Singer division. Typical of the high-precision equipment assisting astronauts during their space journeys is electro-luminescent panel instrumentation, a space-age "dashboard" built by Singer's Kearsott Division. Designed to meet rigid NASA requirements for lighting in a darkened space cabin, the panel glows to provide a clear display of flight information.

The astronauts even rely on Singer for their de-ionized drinking water, which is con-

trolled and dispensed by an American Meter Division stainless steel water meter.

Back on Earth, the progress of the all-important return trip is monitored by Singer-built



Lunar landscape depicted in mural at the American Museum-Hayden Planetarium. Cutaway shows actual lunar space suit.

communications equipment used at master control and down range locations.

Interestingly, The Singer Company, which in eleven years has evolved from a sewing machine manufacturer to a science-oriented producer of a diversity of products, has also been called upon to apply its historic capability. Singer sewing machines are used to sew the space suits worn by astronauts on the Apollo missions.

WESTERN MATTRESS

SAN ANGELO, TEXAS

600 Block N. Chadbourne Phone 653-4507

SPARE TIME INCOME

Refilling and collecting money from new type high quality coin operated dispensers in this area. No selling. To qualify you must have car, references, \$600 or \$2,900 cash. Seven to twelve hours weekly can net excellent monthly income. More full time. For personal interview write Pentex Distributing Company, 3131 (A) Stemmons Freeway, Dallas, Texas 75247. Include phone number.

Typewriter Paper for Sale at News-Record

Sterling City News-Record

YOUR PRINTING HEADQUARTERS

LOOK NO FURTHER THAN THE NEWS-RECORD BUILDING IN STERLING CITY FOR ALL OF YOUR PRINTING REQUIREMENTS

- * Letterheads
- * Ruled Statements
- * Circulars
- * Business Cards
- * Tickets
- * Envelopes
- * Padded Forms
- * Programs
- * Pamphlets
- * Card Forms

Wedding Invitations

- * Sales Books
- * Printed Tags
- * Snap-A-Part Stock Forms
- * Lodge and Club Booklets

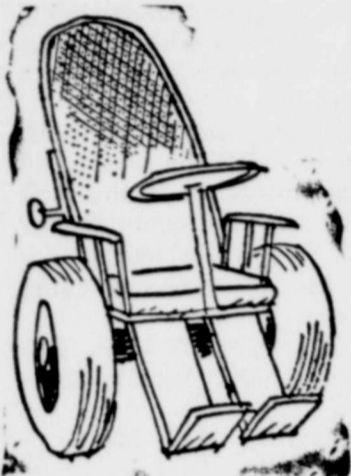
Also - Rubber Stamps, Adding Machine Paper and Stationery -

News-Record

Phone 8-3251

Box 608

Sterling City



Does your car feel like it has stiff joints? Get our

CHARTED LUBRICATION

We'll lubricate moving parts point by point with just the right lubricants for smooth driving!



Murrell's Humble Service Station

Phone 8-2591
Sterling City, Texas

City Barber Shop

Andrew Coronado, Prop.
"YOUR HEAD IS MY BUSINESS"

the Bible speaks to you

CHRISTIAN SCIENCE
RADIO SERIES

SAN ANGELO KGKL
960 on Your Radio Dial



HENRY BAUER

CONSIGNEE
Ph. 8-4321 Sterling City, Tex.
WHOLESALE

The Foster Insurance Agency

RUTHE FOSTER

Auto, Fire, Casualty,
Livestock Insurance

Ph. Of. 378-4911-Home 378-3453
Sterling City, Texas

Ranchers, Farmers, Businessmen: Bookkeeping service all reports, etc. Reasonable. Free details. Simtax, P.O. Box 3054, San Angelo, Tex. 76901

Own A Profitable Business Part or Full Time Work For Added Income We Secure Locations

Earning Potential \$780.00 a month, or more, depending on size of route.

Reliable man or woman wanted as distributor in this area to restock company secured locations such as restaurants, bowling alleys, and etc. with national brand pizzas sold through our electric ovens which will bake in four minutes. No experience necessary. We furnish all advertising, merchandising, and support material. Will not interfere with present occupation, as locations can be serviced evenings or weekends.

Cash investment of \$2,200.00 to \$4,000.00 is required. Also a good car and 4 to 8 spare hours a week. If you can meet these requirements and cash investment, and are sincerely interested in a fast repeat business of your own then WRITE giving Name, Address, and Telephone Number, for local personal interview with a Company Representative.

CROWN PIZZA CORP.
7578 Olive Boulevard
University City, Mo. 63130



Young people need help in

hitting the mark

Spiritual perception to see the real purpose of life and moral strength to reach it — this is the help they need.

(One of the words for sin in the early Bible meant "to miss the mark.")

Young people gain a more accurate aim in life through a better understanding of God and man. They'll be welcome at the

Christian Science Sunday School

pupils up to the age of 20

SUNDAY SCHOOL 9:30 A.M.

FIRST CHURCH OF CHRIST
SCIENTIST
720 S. Abe San Angelo

STERLING CITY NEWS-RECORD

JACK DOUTHIT, Publisher
Entered November 10, 1902, at the Sterling City postoffice as second class matter.

Published Every Friday

SUBSCRIPTION RATES
\$3.00 A YEAR IN COUNTY
\$3.50 A YEAR IN STATE
\$4.00 A YEAR OUT STATE

NEWS established in 1890
RECORD established in 1899
Consolidated in 1902

Cards of Thanks, reader or classified ads are charged for at the rate of 5c per word for the first insertion and 3c thereafter

Phone in your personal items of news—your visits, your visitors, your parties, etc. News-Record 8-3251.

At the Churches

CHURCH OF CHRIST
Marion H. Hays, Minister
Bible school 10:00 a.m.
Morning worship 11:00 a.m.
Evening Classes 6 p.m.
Night Worship 7:00 p.m.
Wednesday Mid-Week
Mid-week Service 8:00 p.m.

FIRST BAPTIST CHURCH
Andy Daniels, Pastor
Sunday school 9:45 a.m.
Morning worship 11:00 a.m.
Training Union 6:30 p.m.
Evening Worship 7:30 p.m.
Teachers Meeting 7:00 p.m.
Prayer Meeting 7:30 p.m.

LA HERMOSA BAPTIST MISSION
Sinforoso Barrera, Pastor
Sunday School 9:45 a.m.
Morning Worship 11 a.m.
Training Union 6:00 p.m.
Evening Worship 7:00 p.m.
Prayer Meeting 7:00 p.m.

FIRST PRESBYTERIAN CHURCH
David Marx, Pastor
Sunday school 10:00 a.m.
Morning worship 11:00 a.m.

FIRST METHODIST CHURCH
Harold Orr, Pastor
Church school 10:00 a.m.
Morning worship 11:00 a.m.
Evening Worship 7:00 p.m.

ST. PASCHAL BAYLON CATHOLIC CHURCH
Sunday Mass 8:00 a.m.
Thursday Mass 7:00 p.m.

Call 8-4451 for Appointment



Vanity Beauty Shop
RUBY POTTS, Owner

STERLING Volunteer Firemen
2nd & 4th Mondays

For Insurance Needs
FOR AUTO, FIRE AND CASUALTY AND LIFE INSURANCE, Use Your Local Reliable and Tested Agent—**DURHAM INS. AGENCY**
DURHAM ABSTRACT CO.
Abstracts and Title Policies

POSTED—All land operated by me posted against trespassing and hunting. Violators prosecuted.
GEO. McENTIRE, JR.

Allen Insurance
SEE US FOR YOUR REAL ESTATE AND INSURANCE NEEDS

In Sterling Butane Co. office
VERA DELL ALLEN

In case of fire dial 8-4771.

Civil Service

FEDERAL CAREER OPPORTUNITIES

The U.S. Civil Service Commission has issued three new nationwide announcements of mid-level Federal career opportunities in professional fields, and a fourth outlining opportunities for Stenographers and Typists in Washington, D. C. and vicinity.

Interested applicants can get the announcements from Federal Job Information Centers in many large cities, from many post offices, except in cities where Federal Job Information Centers are located or from the Interagency Board of U.S. Civil Service Examiners, 1900 E St. N.W., Washington, D.C. 20415.

The announcements are:

1. Professional Opportunities for Social Scientists. GS grades 9 through 12. Covered are such positions as Economist, Social Science Analyst, Social Science Program Specialist, Sociologist, Historian, Anthropologist, Manpower Analyst, Social Work Program Specialist, and additional closely related positions in other social science fields. Many of the opportunities are in various Federal agencies in Washington, D. C. and vicinity and in foreign countries. Some are in other parts of the United States. Annual starting salaries currently range from \$8,462 to \$12,174. They are expected to increase by about 9 percent in the middle of this year. There are no written test requirements. Applicants will be rated on the basis of professional experience, education, and training. Work descriptions and the necessary qualifications, along with special credit provisions for graduate study, superior undergraduate academic achievement, subsequent work experience including part-time or unpaid experience, and certain teaching experience, are detailed in Announcement No. WAS-827, Professional Opportunities for Social Scientists.

2. Professional Opportunities for Social Worker and Social Service Representative. Social Worker positions, GS grades 9 through 12, are in the Bureau of Indian Affairs, the U. S. Public Health Service, and the Veterans Administration, throughout the United States and Puerto Rico; and in agencies of the District of Columbia Government and other Federal agencies located in Washington, D. C. and vicinity. Social Service Representative positions, GS grades 8 through 12 are primarily in the D.C. Government and other agencies in the Washington metropolitan area. Annual starting salaries currently range from \$7,699 at GS-8 to \$12,174 at GS-12; they are expected to increase by about 9 percent in the middle of 1969. No written tests are involved. Applicants will be rated on the basis of education, experience, training and personal aptitude for the nature of the work. Most of the professional Social Worker positions call for successful completion of all requirements for a masters degree. Full details of training and experience qualifications for the various grade levels are in Announcement No. WAS-904, Professional Opportunities for Social Worker and Social Service Representative.

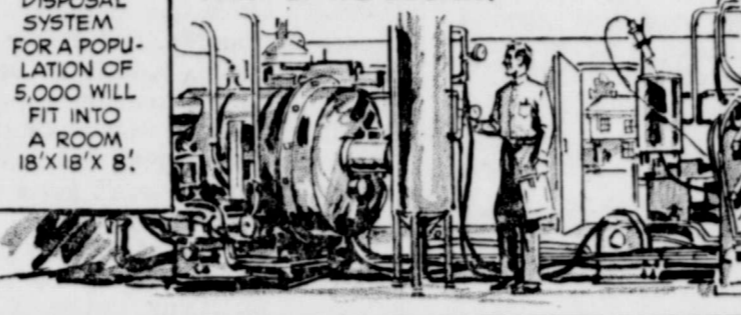
3. Professional Careers for Educators and Librarians. This announcement will be used to fill positions of Education Specialist and Education Services Officer, GS grades 9 through 12; Program Specialist and Advisor (Education) GS grades 9 through 12; Public Health Educator GS grades 9 through 12; Librarian, GS grades 7 through 12; Job Corps Teacher, GS grades 5 through 11 and Job Corps Guidance Counselor, GS grades 7 through 11. Annual starting salaries for these positions range from \$5,732 at

In Our Time

SMALL COMMUNITIES, UNDER 10,000 INHABITANTS, CAN NOW BREATHE EASY ON PROBLEMS OF SLUDGE DISPOSAL FROM THEIR SEWAGE TREATMENT SYSTEMS... NO ODOR OR AIR POLLUTION, THE ONLY OUTPUT IS A SMALL PLUME OF STEAM...



THE UNIQUE CYCLONIC-FLOW BURNER OF THE NEW DORR-OLIVER FS DISPOSAL SYSTEM ASSURES THAT ALL ORGANIC SLUDGE IS COMPLETELY DESTROYED AT DEODORIZING TEMPERATURE. COMBUSTION GASES ARE SCRUBBED FREE OF SOLIDS, THERE IS NO ODOR, SOOT OR FLY ASH. AIR POLLUTION CONTROL IS AN INTEGRAL PART OF ITS DESIGN.



THE ENTIRE DISPOSAL SYSTEM FOR A POPULATION OF 5,000 WILL FIT INTO A ROOM 18' X 18' X 8'.

Just off the "Strip" in Las Vegas

NEVADA

55 MODERN AIR-CONDITIONED ROOMS AND SUITES (SOME KITCHENETTES) WITH RADIO/TV, ELECTRIC HEAT • LARGE SWIMMING POOL AND PATIO • COFFEE SHOP • WALKING DISTANCE TO STRIP • ENTERTAINMENT AND CASINOS • AMPLE FREE PARKING • TRUCKERS WELCOME • FAMILY RATES • OPEN YEAR 'ROUND. TELE: (702) 384-1937



Monte Carlo motel

1600 South Main Street (U.S. 91 and 466) Las Vegas, Nevada 89104

In case of fire, dial 8-4771.

GS-5 to \$12,174 at GS-12. They are expected to increase by about 8 or 9 percent in the middle of this year. Many positions are located in various Federal agencies in Washington, D. C. and vicinity. However, certain Federal agencies have needs throughout the United States. Examples: Program Specialist and Advisor (Education) U.S. Office of Education Job Corps Teacher and Guidance Counselor, National Park Service and National Forest Service; Public Health Educator, Health Services and Mental Health Administration. Qualifying education and experience for all of these positions vary considerably. For details, consult Announcement WAS-908, Professional Careers for Educators and Librarians.

All qualified applicants will receive consideration for Federal employment without regard to race, religion, color, national origin, sex, politics, or any other non-merit factor.

When asking for announcements and application forms, applicants are advised to ask at the same time for Civil Service Commission Pamphlet No. 4, "Working for the U.S. A." which provides important general information about the kinds of appointments, the physical abilities required, veteran preference, and other conditions of Federal employment.

For Social Security

People who sign up for social security only to gain Medicare coverage are often amazed to learn that they will also be drawing some checks for the year, according to Ted F. Moellering, District Manager of the San Angelo Social Security Office.

For instance, a person entitled to a monthly benefit of \$122.90 who expects to earn \$3000 in 1968 would draw a check of \$17.40 for June, 1968, and full checks for the rest of the year.

"This is possible because of the liberalized retirement test under the present social security law," Mr. Moellering said.

"A social security beneficiary can earn \$1680 per year and draw his checks every month. If his earnings are \$2880 or less, an amount equal to one-half the earnings between \$1680 and \$2880 is subtracted from total benefits payable for the year. If earnings are over \$2880, an additional one dollar for every dollar over \$2880 is subtracted from benefits payable.

"There has been no change in the provision that a person can draw a check for each month that he is age 72, regardless of his total earnings for the year."

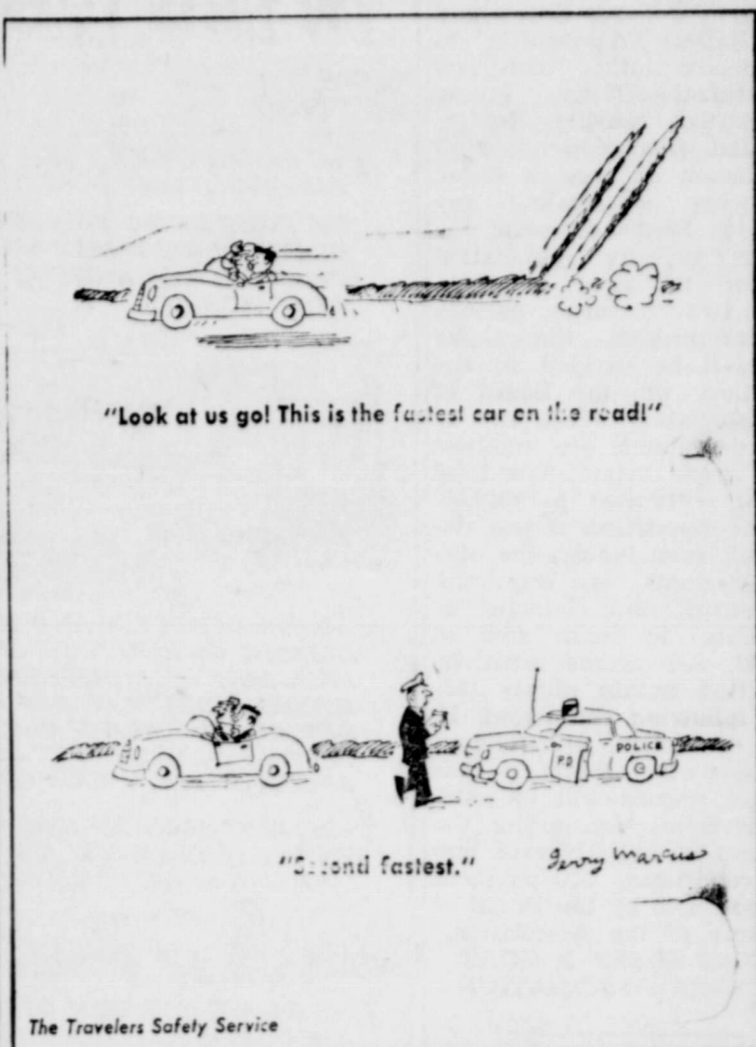
For further information, contact the Social Security Administration at 3000 West Harris Avenue in San Angelo, Tex. or see the representative when he is in your area.

The "length of marriage" requirement in social security's definition of "widow", "widower", and stepchild of a deceased worker" has been changed, reports Ted F. Moellering, District Manager of the San Angelo Social Security Office. A widow, widower, or stepchild may now qualify for social security benefits based on a marriage that has been in existence for only 9 months just before the death of the worker.

Mr. Moellering added that in some cases a marriage that has lasted for as little as 3 months may qualify the survivor. These are cases involving accidental death or death in the line of duty in the uniformed services. Benefits under this change in the law were first payable in February, 1968. Any person who has been previously disqualified because a marriage had not been in effect long enough should contact the Social Security Office at 3000 West Harris Avenue in San Angelo, Texas, or see the representative when he is in your area.

Alcoholocaust

Jerry Marcus



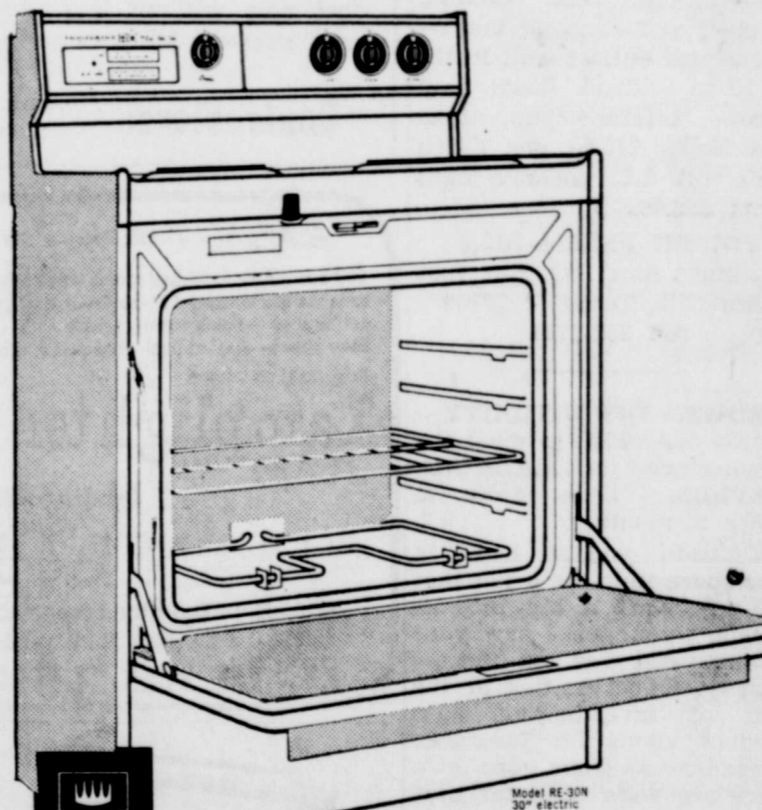
"Look at us go! This is the fastest car on the road!"

"Second fastest."

The Travelers Safety Service

Excessive speed was involved in accidents resulting in more than 800,000 casualties in 1968.

FRIGIDAIRE
range with
ELECTRIC SELF-CLEANING OVEN



Frigidaire bothers to build in more help.

Forget the back-breaking drudgery of oven cleaning. Today the American woman has the range with amazing ELECTRIC SELF-CLEANING OVEN! Set it and leave it alone. Your electric oven cleans itself. Cost of electric cleaning is just pennies—little more than a nickel.

5-year Warranty backed by General Motors!

1-year Warranty on entire Range for repair of any defect without charge, plus 4-year Protection Plan (parts only) for furnishing replacement for any defective Surface Heating Unit, Surface Unit Switch, or Oven Heating Unit.

FREE WIRING

With the purchase of an electric range, WTU will give FREE 220 VOLT WIRING to any WTU customer in a single family residence.

WEST TEXAS UTILITIES
AN INVESTOR OWNED ELECTRIC COMPANY
Equal Opportunity Employer

REWARD NOTICE

A reward of \$500.00 will be paid by the Texas Sheep and Goat Raisers Association to any person (other than law enforcement officers) giving information causing the arrest and final conviction of any person or persons found butchering or stealing any sheep or lambs or goats belonging to any Association member in good standing. When two or more persons give information, the above sum will be divided at the discretion of the Board of the Association. When two or more defendants are involved in a single crime, the total reward is limited to \$500.00, but the conviction of one defendant, even though the other defendants are acquitted, will entitle the claimant or claimants to said sum of \$500.00. All claims must be submitted within ninety (90) days following conviction. If, upon conviction, a defendant confesses other thefts, no additional reward will be paid. All devisions concerning the payment of such reward and the conditions of payment will be made by the Board of Directors of the Association. TEXAS SHEEP & GOAT RAISERS ASSOCIATION

CANDY SUPPLY ROUTE

Instant income.—NEEDED, man or woman to restock new and amazing coin dispensers with brandname merchandise. If you have the drive and determination to become successful, then write us today. Earnings can exceed \$900.00 per month. To qualify you must have a good car, be able to devote no less than 8 SPARETIME hours a week, and have the necessary capital of \$1550.00 to \$3450.00. For information write: STRATEGIC FRANCHISES 500 South Ervay—Suite 629 A Dallas, Texas 75201.

Miscellaneous Items for Sale "LIFETIME GOODIES"

Water filters—Hard Chrome well cylinders — Rust-proof well pipe, Wear-proof sucker rods—Lifetime Tank Coating for steel and concrete tanks—Perma-cups outlast well leathers 10 to 1—Tank floats and valves— Lifetime guaranteed light bulbs \$10.00 per dozen —110 volt A.C. portable light plants \$52.50.

VIRDEN PERMA-BILT
2821 Mays Ave. P.O. Box 7066
Amarillo, Texas 79109
806 352-2761

BUSINESS OPPORTUNITY

MEN WANTED to meet the growing need for CLAIM ADJUSTORS. Earn \$450 to \$1,000 a month. We train you at home in your spare time for a job that can pay you a big income, provide your car, pay your expenses and give you lifetime security. Opportunities in the field of investigating auto accident claims for insurance companies or from your own office are wide open for men who want extra income or a full time, fascinating career. Nationwide placement assistance given. Write today to: **Nationwide Claims Adjustors Training Division**
5904 E. Colfax,
Denver, Colorado, 80220

SPARE TIME INCOME

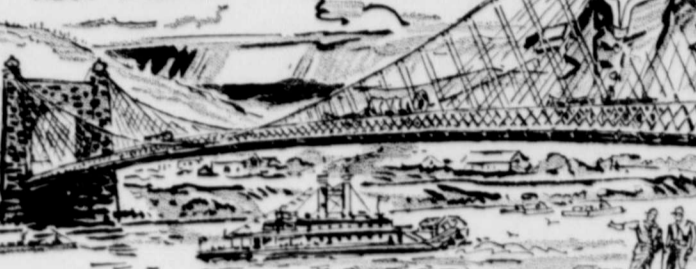
Refilling and collecting money from NEW TYPE high quality coin operated dispensers in your area. No selling. Car, references, \$1000.00 or more cash required. Seven to twelve hours weekly can net excellent monthly income. More full time. For personal conference write D & B Distributors, Inc., P. O. Box 18811, Oklahoma City, Okla. 73116. Include phone number.

WANTED—MAN OR WOMAN SPARE TIME

To refill and collect money from machines dispensing Hi-Grade Candy, Gum and Sport Cards in this area. Supplement your income. Easy to do. \$475.00 cash required for inventory. Include phone number. Write P. O. Box 853, San Angelo, Texas.

IN THIS WORLD

THE MODERN SUSPENSION BRIDGE IS AN AMERICAN INVENTION AND ACHIEVEMENT. THE FIRST LONG-SPAN SUSPENSION BRIDGE IN THE WORLD STILL SERVES TRANSPORTATION NEEDS AT WHEELING, WEST VIRGINIA.



ORIGINALLY BUILT IN 1849 BY PIONEER CIVIL ENGINEER CHARLES ELLET, JR., THE BRIDGE LACKED NECESSARY DECK STIFFENING STAYS AND TRUSSES... DURING A STORM IN 1854 IT FAILED BUT WAS LATER REBUILT DEFINING AND ADVANCING NEW CIVIL ENGINEERING METHODS THAT ARE RECOGNIZED TODAY IN SUSPENSION BRIDGE CONSTRUCTION.

THUS, IN SPANNING THE OHIO RIVER FOR MORE THAN A CENTURY IN ITS PRESENT FORM, IT HAS BEEN AN IMPORTANT LINK IN THE DEVELOPMENT OF THE NATION.



THE BRIDGE HAS BEEN DESIGNATED BY THE AMERICAN SOCIETY OF CIVIL ENGINEERS AS A NATIONAL HISTORIC CIVIL ENGINEERING LANDMARK.

ATTENTION MEN! LEARN TO OPERATE HEAVY EQUIPMENT

- Scrapper
- Bull Dozer
- Grader
- Pull Shovel
- Drag Line
- Clam Shell

Trained Men are earning over \$165 Per Week

Complete training gives you Actual experience on machines at our resident training center, with employment assistance upon completion. Mail coupon for complete information.

QUALIFY NOW

For the many high paying jobs in heavy construction, building roads, bridges, dams, pipe lines, air fields, office buildings, etc. Local and foreign employment opportunities. You can start now without leaving your present job.

UNIVERSAL EQUIPMENT OPERATORS SCHOOL
130 Whiteside Bldg.
Lubbock, Texas

Name _____ Age _____
Street _____
City _____ State _____
Ph. _____ Hrs. at Home _____

Contractors:

Information about our trained operators available on request

"A mighty fine place to stay"

100 beautifully furnished rooms—poolside cabanas and suites—TV—radio—message lights—coffee shop—dining room—private club—baby sitters—heated pool—banquet space

Tel: (214) DA 7-4575

Lampighter MOTOR INN

9033 R. L. Thornton Freeway on U. S. 80 & 67, East at Loop 12
DALLAS, TEXAS

Siesta MOTEL

for business or vacation

Spacious rooms, air-conditioning, large swimming pool and lounging area...
24 hour Waffle House; Dining room for steaks or complete meals...

\$8.00-\$10.00 - single
\$10.00-\$14.00 - double

FAMILY OF FOUR "SPECIAL" AT \$15.00;
Executive Suites from \$15.00-\$19.00 daily.

Siesta Motel

Mobil
American Express
Carte Blanche
Accepted

4441 Fredericksburg Road
(U.S. 87 N. Business, Between Loop 410 and Downtown)

SAN ANTONIO, TEXAS

Behind the 8-Ball



By the editor.

LITTLE SIDELIGHTS OF THE TRIP OUT WEST

On the rim of the Grand Canyon, one family in a big station wagon piled out and the fairly small children all ran to the edge of the canyon while daddy was setting up his camera on a tripod. Mother of the group yelled out to the kids, who were getting kinda close to the edge: Now you kids lined up and don't get a bit closer than right here; this is no GAME you know. She was worried about 'em.

8—BALL

When we were in Fred Harvey's concession at the entrance of the Petrified Forest about two p.m. (which is a good days drive from the canyon in my book) a woman with her family was urging them to hurry up—or we won't get to DO the Grand Canyon today. Guess they meant to Do it by moonlight.

8—BALL

The Mexican troubador singer in La Placita cafe in Old Town in Albuquerque wore his pants or slacks up real high at the waist—in fact the waist line hit him right under his arm pits, it seemed to me.

8—BALL

The National Park Service Ranger at the Wupatki Indian Ruins just north of Flagstaff, asked us if we in that little red Texas car. (It had a University of Florida sticker on it). We said yes. He said he was a student at Florida State University, which is at Tallahassee. A lot of college boys work for the park service in the summers.

8—BALL

At Zion National Park in Utah, presumably college girls were working in the big lodge and concession building there. One evidently was having her birthday that day, and she had to wear a big sash sign saying MISS BIRTHDAY 19, and she had on some real fancy clothes. Guess that's all part of the fun they have.

8—BALL

Lots of vacationers take the family dog along. Many, many families in campers, trailers or just in cars (but evidently on a vacation trip) just couldn't leave the dog at home. Some kid or mama would be leading the dog on a leash. Some few had cats.

8—BALL

Work was being done on the highway over Hoover Dam and traffic would be held up from one end to let traffic get through, and then the flagman would let the others come. At the end of each bunch of cars (it was on a big curve and you couldn't see) the flagman on your side would give the last car a baton and tell that driver to hand it to the other flagman—so he would know to let his cars start. He handed us a baton to give the other flagman and said tell him the water is coming down. (He kinda grinned when he said it so it was some kind of a signal between them). Well, we just had to stop and look at something on the dam, and then we went on down—and handed the flagman the baton—and he started his stopped cars moving. Bet those cars thought they had to wait an awful long time.

8—BALL

CONSOLE SPINET PIANO. Will sacrifice to responsible party in this area. Cash or terms. Write Credit Mgr. Tallman Piano Stores, Inc. Salem, Oregon 97308.

FOUND—Weiser house key on chain. Also set of GM car keys. Identify and pay for ad at News-Record.

In case of fire dial 8-4771.

Fire Department Suggestions

TO REPORT A FIRE
1. DIAL 8-4771.
2. GIVE YOUR FULL NAME

3. GIVE THE LOCATION OF THE FIRE AND WHAT IT IS (HOUSE, BARN, OR WHATEVER), AND HOW TO BEST GET TO IT.

4. STAY ON THE PHONE, IF POSSIBLE, UNTIL THE PERSON TAKING THE CALL HAS ALL THE INFORMATION HE WANTS.

5. IF IT IS A HOUSE FIRE CLOSE ALL DOORS AND WINDOWS YOU CAN GET TO SAFELY, THEN GET IN THE CLEAR AND STAY AT THE SCENE. ONCE YOU ARE OUTSIDE THE HOUSE, DO NOT GO BACK IN THE BUILDING!

WHEN THE SIREN BLOWS

1. STAY OFF THE STREET OR ROAD BEING USED BY THE FIRE TRUCKS AND FIREMEN.

2. DO NOT PARK CARS OR TRUCKS WITHIN ONE BLOCK OF THE FIRE.

3. NEVER, NEVER RUN OVER A FIRE HOSE, EVEN IF IT IS FLAT.

In all instances, use common sense, be as calm as you can, and give all information clearly completely, but in as few words as possible.

Social Security Tips

A number of widows and surviving children of deceased workers in this area could be missing out on social security money due them, according to Ted F. Moellering, district manager of the Social Security Office. Many changes have been made in recent years concerning benefits for widows and children. Some who would be eligible do not know about the new rules, Mr. Moellering said. Mr. Moellering further noted that at present there are over three million young widows and children receiving a monthly social security check.

A widow who is completely disabled and over age 50 can receive reduced widow's benefit if she becomes disabled within seven years of her husband's death or the time she last had a child entitled to benefits in her care. Also, widows who remarry after age 60 may retain a part of the widow's benefit.

Children who would be otherwise entitled because of the death, disability, or retirement of a parent except for being over age 18, can now receive student benefits if they are in full-time school attendance, unmarried, and under age 22.

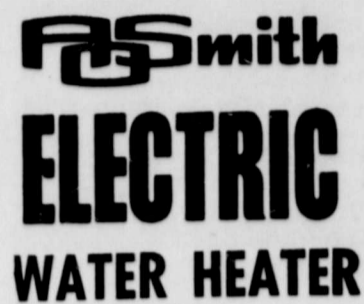
Children also have full protection now on their mother's account under the same rules that apply to a father's account. This present law will result in a number of children being able to receive social security benefits when their mother dies or becomes disabled, including some who were previously turned down under the old law, Mr. Moellering said.

Anyone knowing someone who might qualify for benefits under these provisions is urged to have them get in touch with their Social Security Office at 300 West Harris Avenue in San Angelo, Texas, or see the representative when he is in your area.

ATHLETE'S FOOT GERM HOW TO KILL IT.

IN 3 DAYS if not pleased with strong T-4-L liquid, your 48c back at any drug store. Watch infected skin slough off. Watch healthy skin replace it. No more itch and burning! Use antiseptic, soothing T-4-L FOOT POWDER too—fine for sweaty feet, foot odor; stays active in the skin for hours. NOW AT ALL DRUG STORES.

YOUR BEST BUY!



HERE'S WHY!

- NO FLUE. FITS ANYWHERE!
- NO PILOT, NO FLAME!
- CLEAN, ODORLESS!
- QUICK RECOVERY!
- FULL 10 YEAR GUARANTEE!

FREE WIRING

Free 220 volt normal wiring to residential customers of WTU who buy an electric water heater from a local dealer.

Lowe Hardware & Furniture Co.

Ph. 8-4141 Sterling City, Tex.

FOR SALE—1951 Chevrolet Pickup. \$125.00 See Andrew Coronado.

HELP WANTED

INTERVIEWER wanted for part-time telephone survey work. Give phone number. must have private line. Not a selling job. Air mail letter, including education, work experience and name so preference to: American Research Bureau, Field Staff Department, 4320 Ammendale Road, Beltsville, Maryland 20705.

INCOME—SPARE TIME

No selling. Refill and collect money from NEW TYPE coin operated dispensers in this area. To qualify must car, references, \$600 to \$1900 cash. Ten hours weekly can net excellent income. More time can result in more money. For personal interview write **Advance**, Box 176, Elmwood Park, Illinois. Include phone number.

In case of fire, dial 8-4771.

Keep up on current affairs the easy way

Read the Pulitzer Prize winning Christian Science Monitor. Rarely more than 20 pages, this easy-to-read daily newspaper gives you a complete grasp of national and world affairs. Plus fashion, sports, business, and the arts. Read the newspaper that 91% of Congress reads.

Please send me the Monitor for
 1 year \$26 6 mos. \$13
 3 mos. \$6.50
 Check or money order enclosed
 Bill me

name _____
 street _____
 city _____
 state _____ zip _____

THE CHRISTIAN SCIENCE MONITOR
 Box 125, Astor Station
 Boston, Massachusetts 02123