

**Journal Files**

**50 Years Ago**

**1933**  
The school board and other men of the Progress Community installed carbine lights in the school house Wednesday and Thursday.

After a six months session, the public school at Circleback will close Friday afternoon.

**30 Years Ago**

**1953**  
Grocery specials advertised in the Journal this week included: bacon 49 cents a pound; round steak 79 cents a pound; roast 39 cents a pound; rib steak 49 cents a pound; short ribs 25 cents a pound; loin or T-bone steak 55 cents a pound; shortening 3 pound tin 59 cents; salad dressing 49 cents quart jar; Kleenex 300 count 19 cents; radishes 3 cents a bunch; bell peppers 19 cents a pound; tomatoes 2 cello packages 19 cents; yellow squash 19 cents a pound; oranges 9 cents a pound; giant economy size Post Tosties 25 cents; large size Grape Nut Flakes 19 cents and tissue 2 rolls 25 cents.

**20 Years Ago**

**1963**  
Muleshoe High School band added new laurels last weekend to its long string of victories when the "Mighty M" group participated in the southwest's toughest contest series the Enid, Okla. band festival. Muleshoe was the only band in its class to finish in two first divisions and a second. No band placed in the top bracket in all three divisions.

Muleshoe and Bailey County staged a benefit dance last Saturday night that gave the library fund a husky boost.

**10 Years Ago**

**1973**  
Grocery items advertised in the Journal included: 10 roll package tissue 69 cents; paper towels 29

cents; 180 count napkins 3 for \$1; 12 ounce carton cottage cheese 29 cents; 1/2 gallon buttermilk 39 cents; 1/2 gallon ice cream 65 cents; strawberries 29 cents

**USDA Releases Home Canning Safety Changes**

The United States Department of Agriculture has released new processing recommendations for tomatoes and tomato juice, applesauce, fruit purees and pumpkin. To prevent food borne illness and the loss of valuable home canned foods, specialists with the Texas Agricultural Extension Service are urging home canners to follow the new USDA guidelines. The USDA now recommends the following:

**Kitchens Remodeled For Lifestyle**

"In the past, kitchens were planned for efficiency; now they are planned for lifestyle," says Dr. Peggy Owens, a housing specialist. "The kitchen is usually one of the first rooms that homeowners want to remodel," says Owens, who is with the Texas Agricultural Extension Service, Texas A&M University System. Americans spent \$18.5 million last year on building and remodeling kitchens, says Owens. The sale of kitchen cabinets for remodeling projects alone, has risen 76 percent since 1975, she adds.

Studies show that kitchens are remodeled on the average of every 12 to 15 years. So with the tremendous number of homes built in the 1960's coming "due" for remodeling, even more homeowners will be involved with kitchen projects, says Owens. According to Owens, the current trend is to remodel separate kitchen, dining and living rooms into one "great room" with more open space.

"In fast-paced, dual-earner families, the kitchen is where people meet, so a space arrangement where living areas flow into the kitchen make more sense," she says. Remodelers now tend to create multi-purpose areas for eating, hobbies, or home record-keeping as well as cooking. Using all available space for storage is another trend, especially in smaller kitchens. Open shelving on walls and shelf space on the top of cabinets are often added to kitchens to increase storage, she notes. In addition, remodelers are adding tile and warm woods to their kitchens for both function and decoration, says Owens.

a box; tomatoes 29 cents a pound; lettuce 25 cents a pound; cello carrots 2 for 25 cents; 4 ears fresh corn 39 cents; large eggs 49 cents a dozen; round steak \$1.19 a pound; rib steak \$1.91 a pound; sliced bacon 93 cents a pound; stew beef \$1.18 a pound; ground beef 88 cents a pound; sirloin steak \$1.19 a pound; pot pies 7 for \$1; and canned pop 8 cents.

toes should no longer be used. •The hot pack processing time for canning tomatoes should be increased to 35 minutes for pint jars and No. 2 cans, and to 45 minutes for quart jars and No. 2 1/2 cans. •The hot-pack processing time for canning tomato juice should be increased to 35 minutes for pint and quart jars, and for No. 2 and 2 1/2 cans. •Strained (pureed) pumpkin and winter squash should not be canned at home. Instead, cubed pumpkin and squash may be canned using a processing time of 55 minutes for pint jars and 90 minutes for quart jars. •The processing times for applesauce and fruit puree should be increased to 20 minutes for pints, quarts, No. 2 and 2 1/2 cans.

According to Marilyn Haggard, a foods and nutrition specialist with the Extension Service, the changes in canning recommendations are based on research conducted at land-grant universities and the Eastern Regional Research Center of the USDA.

"The recommendation to more than triple hot-pack processing times for tomatoes was based on research which indicated that shorter times could be insufficient under certain conditions," says Haggard. Insufficient processing could allow botulism organisms to survive the heat treatment, grow and produce harmful toxins, she explains. "We consider this especially important since tomatoes are the most popular type of produce for home canning grown by Texas gardeners," states Haggard.

Poor heat penetration through dense foods and the high heat resistance of a particular mold led the USDA to recommend increased processing times for applesauce and fruit purees. They also recommend that strained (pureed) pumpkin or winter squash ready for making pies or casseroles should consider freezing the puree instead," says Haggard. "Now is the time to correct Extension bulletin, B-194, 'Home Canning... Fruits and Vegetables,' or other instructions before the canning season begins," she adds.

The longest national anthem is that of Greece, which contains 158 verses.

PK grills provide the convenience of natural gas fired barbecuing... have heavy top and bottom aluminum castings and H-shaped stainless steel burners for years of long wear... and exclusive Range Rock briquettes with controlled porosity for even heat and less flare-up.

PK DELTA 1 Single burner model with 270 sq. in. chrome-plated cooking grid and 120 sq. in. step-up grid. List price \$155.00 Less 20% -31.00 124.00 Plus installation 8.20 5% sales tax 7.00 ICASH PRICE \$200.20 BUDGET PRICE \$242.28 Budget terms: no down payment, \$6.73 per month for 36 months.

ARKLA Arkla aluminum grills are feature-packed for all the pleasures of cooking out... with easy-cleaning porcelain enameled cast-iron cooking grids, up-front control center, stainless steel H-shaped burner, and natural lava rocks. ARKLA GRB40-EU Real value for big families - 37 3/4 sq. in. cooking grid with 168 sq. in. elevated chrome wire cooking surface, independent dual controls for each side of burner, and lid-mounted cast indicator. List price \$303.00 Less 20% -60.60 242.40 Plus installation 12.12 5% sales tax 7.00 ICASH PRICE \$324.52 BUDGET PRICE \$392.40 Budget terms: no down payment, \$10.90 per month for 36 months.

DUCANE Dual burner and controls let you use 0 1/2-half or all of burner. 325 sq. in. cast iron cooking grid, plus 120 sq. in. chrome-plated step-up grid for warming. List price \$228.00 Less 20% -45.60 182.40 5% sales tax 9.12 Plus installation 7.00 ICASH PRICE \$261.52 BUDGET PRICE \$316.44 Budget terms: no down payment, \$8.79 per month for 36 months.

DUCANE 1502 Dual burners, dual controls - one for each side, when you don't need to use the full 410 sq. in. porcelainized-steel cooking grid, plus 108 sq. in. chrome warming rack and Vermont Maple side shelf. List price \$372.00 Less 20% -74.40 297.60 5% sales tax 14.88 Plus installation 7.00 ICASH PRICE \$388.46 BUDGET PRICE \$462.60 Budget terms: no down payment, \$12.85 per month for 36 months.

DUCANE 802 Single burner model with 310 sq. in. nickel-chrome-plated cooking grid and 108 sq. in. warming rack. List price \$216.00 Less 20% -43.20 172.80 5% sales tax 8.64 Plus installation 7.00 ICASH PRICE \$251.44 BUDGET PRICE \$304.20 Budget terms: no down payment, \$8.45 per month for 36 months.

DUCANE 4000 Two burners - one main and one Rotis-A-Grate vertical burner, electronic ignition, 310 sq. in. porcelainized-steel cooking grid, rotisserie motor and spit, all packaged in an elegant cart with large storage area, redwood-stained side shelf, heavy-duty dual wheels, and connection hose. List price \$711.00 Less 20% -142.20 568.80 5% sales tax 28.44 Plus installation 45.00 ICASH PRICE \$642.24 BUDGET PRICE \$777.24 Budget terms: no down payment, \$21.59 per month for 36 months.

DUCANE 2002 Three burners - two for grilling and one Rotis-A-Grate vertical burner for roasting, 310 sq. in. porcelainized-steel cooking grid, 108 sq. in. chrome warming rack, automatic ignition, rotisserie motor and spit, and Vermont Maple side shelf. List price \$495.00 Less 20% -99.00 396.00 5% sales tax 19.80 Plus installation 7.00 ICASH PRICE \$482.80 BUDGET PRICE \$587.89 Budget terms: no down payment, \$16.33 per month for 36 months.

**FamilyLand Heritage Program Announced**

Agriculture Commissioner Jim Hightower announced today that registration for the 1983 Family Land Heritage Program will open May 10 and extend through August 16.

"Hard times have dogged the farmer constantly," said Hightower, "making it all the more commendable that some families have managed to keep the old home place in production for a century or more." The Family Land Heritage Program was created by the Texas Department of Agriculture to honor families who own land which has been maintained in agricultural production for 100 years or more by the members of that family. Since 1974, when the program began, 1,558 properties in Texas have qualified for the Family Land Heritage Program.

The basic requirements of the program are: Continuous agricultural production on the farm/ranch for 100 years, land ownership within the family, complete operation or supervision of the farm/ranch production by family members who are Texas residents, and a size of at least 10 acres with a minimum of \$50 income from farm or

ranch products or if less than 10 acres, sales of at least \$250 a year. TDA is the final judge of eligibility. "The major emphasis of my administration is to protect and encourage the family farm system," said Hightower, "and no one is more representative of the

ingenuity and perseverance of that system than these families. They are living, productive symbols of an entrepreneurial unit that is our lifeblood. While we will celebrate their achievements of the past, we really are pointing out the importance they hold for us in the future. We will honor this year's certified registrants at a state ceremony in the Capitol next November," Hightower said. The honorees will receive a certificate and a copy of the Family Land Heritage Registry. The Registry is a brief history of each farm or ranch and includes old photographs of

**Rodeo Team Heads For Nationals**

The Eastern New Mexico University rodeo team finished their regular season rodeo schedule in fine form this past weekend in Hobbs when the women's team placed second, and the men's team placed fourth at the New Mexico Junior College rodeo.

Anna Crespin paced Eastern's scoring attack as she placed second in goat tying and fourth in the barrel racing competition. Crespin, a native of Las Vegas, N.M., scored 99 of Eastern's 213 points, while Jodie Palmer added another 72 points on her second place finish in the barrels. Jinita Williams rounded out the Zias scoring when she picked up a fifth place in the goat tying event for 27 points. Sul Ross State won the overall women's title behind the effort of All-Around Cowgirl Tami Noble, as she picked up 144 of her team's total of 300. Eastern finished second, followed by Western Texas College in third with 186 points and New Mexico Junior College came in fourth at 87.

In the men's division, the 'Hounds were only able

to place in the bareback bronc competition as Kenny Smith placed second and Casey Gardner tied for fourth. Smith and Gardner picked up a total of 106.5 points which was good enough for fourth overall.

Sul Ross State also won the men's division with 397.5 points, with 151.5 of those points coming from the performance of All-Around Cowboy Cody Lambert. Western Texas College placed second at 192.5, while NMJC held down the third position with 172.5 points. The Eastern's women's team placed second overall in the region this year, and thus qualified for the national finals to be held on the campus of Montana State University in Bozeman, Montana. Rocky Tivis also qualified for nationals in the calf roping competition. In 1981, the women's team won the national title, while in 1982 they finished third.

Summit Savings Money Market Rates		
304 Main	Muleshoe	272-5527
6 Months Money Market Certificate	Money Fund	Super Now Checking
8.679%	8.75%	6.75%
Rates Subject To Change Every Tuesday.		

**SAVE 20% ON A GAS GRILL**



**... JUST WHEN YOU WILL USE IT MOST!**

Here's an opportunity to buy a gas grill at a big savings... and have the whole summer ahead to enjoy it. That's a real bargain! You will make the most of our great West Texas evenings and weekends cooking outdoors. Gas grills give food that wonderful outdoor flavor without the mess of charcoal or the bother of LP tanks. And, while you are having a hot time in the backyard, your kitchen stays cool. The money you save by buying now will put a lot of hamburgers and steaks on that grill. Now's the time to move up to gas grill cooking while prices are down.

Prices in this ad reflect corrections from those listed in Energas statement enclosure on gas grills.

**PAIRO KITCHEN**  
PK grills provide the convenience of natural gas fired barbecuing... have heavy top and bottom aluminum castings and H-shaped stainless steel burners for years of long wear... and exclusive Range Rock briquettes with controlled porosity for even heat and less flare-up.

PK DELTA 1 Single burner model with 270 sq. in. chrome-plated cooking grid and 120 sq. in. step-up grid.  
**ONLY \$6.73 PER MONTH\***  
List price \$155.00 Less 20% -31.00 124.00 Plus installation 8.20 5% sales tax 7.00 ICASH PRICE \$200.20 BUDGET PRICE \$242.28 Budget terms: no down payment, \$6.73 per month for 36 months.

**PK REGENT 1**  
Dual burner and controls let you use 0 1/2-half or all of burner. 325 sq. in. cast iron cooking grid, plus 120 sq. in. chrome-plated step-up grid for warming.  
**ONLY \$8.79 PER MONTH\***  
List price \$228.00 Less 20% -45.60 182.40 5% sales tax 9.12 Plus installation 7.00 ICASH PRICE \$261.52 BUDGET PRICE \$316.44 Budget terms: no down payment, \$8.79 per month for 36 months.

**ARKLA**  
Arkla aluminum grills are feature-packed for all the pleasures of cooking out... with easy-cleaning porcelain enameled cast-iron cooking grids, up-front control center, stainless steel H-shaped burner, and natural lava rocks.  
**ARKLA GRB40-EU**  
Real value for big families - 37 3/4 sq. in. cooking grid with 168 sq. in. elevated chrome wire cooking surface, independent dual controls for each side of burner, and lid-mounted cast indicator.  
**ONLY \$10.90 PER MONTH\***  
List price \$303.00 Less 20% -60.60 242.40 Plus installation 12.12 5% sales tax 7.00 ICASH PRICE \$324.52 BUDGET PRICE \$392.40 Budget terms: no down payment, \$10.90 per month for 36 months.

**DUCANE 2002** Three burners - two for grilling and one Rotis-A-Grate vertical burner for roasting, 310 sq. in. porcelainized-steel cooking grid, 108 sq. in. chrome warming rack, automatic ignition, rotisserie motor and spit, and Vermont Maple side shelf.  
**ONLY \$16.33 PER MONTH\***  
List price \$495.00 Less 20% -99.00 396.00 5% sales tax 19.80 Plus installation 7.00 ICASH PRICE \$482.80 BUDGET PRICE \$587.89 Budget terms: no down payment, \$16.33 per month for 36 months.

**DUCANE 1502**  
Dual burners, dual controls - one for each side, when you don't need to use the full 410 sq. in. porcelainized-steel cooking grid, plus 108 sq. in. chrome warming rack and Vermont Maple side shelf.  
**ONLY \$12.85 PER MONTH\***  
List price \$372.00 Less 20% -74.40 297.60 5% sales tax 14.88 Plus installation 7.00 ICASH PRICE \$388.46 BUDGET PRICE \$462.60 Budget terms: no down payment, \$12.85 per month for 36 months.

**DUCANE 802** Single burner model with 310 sq. in. nickel-chrome-plated cooking grid and 108 sq. in. warming rack.  
**ONLY \$8.45 PER MONTH\***  
List price \$216.00 Less 20% -43.20 172.80 5% sales tax 8.64 Plus installation 7.00 ICASH PRICE \$251.44 BUDGET PRICE \$304.20 Budget terms: no down payment, \$8.45 per month for 36 months.

**DUCANE 4000** Two burners - one main and one Rotis-A-Grate vertical burner, electronic ignition, 310 sq. in. porcelainized-steel cooking grid, rotisserie motor and spit, all packaged in an elegant cart with large storage area, redwood-stained side shelf, heavy-duty dual wheels, and connection hose.  
**ONLY \$21.59 PER MONTH\***  
List price \$711.00 Less 20% -142.20 568.80 5% sales tax 28.44 Plus installation 45.00 ICASH PRICE \$642.24 BUDGET PRICE \$777.24 Budget terms: no down payment, \$21.59 per month for 36 months.

**Country Basket SALE \$1.69**



This Monday  
May 9 thru  
Sunday May 15  
Only at participating stores.

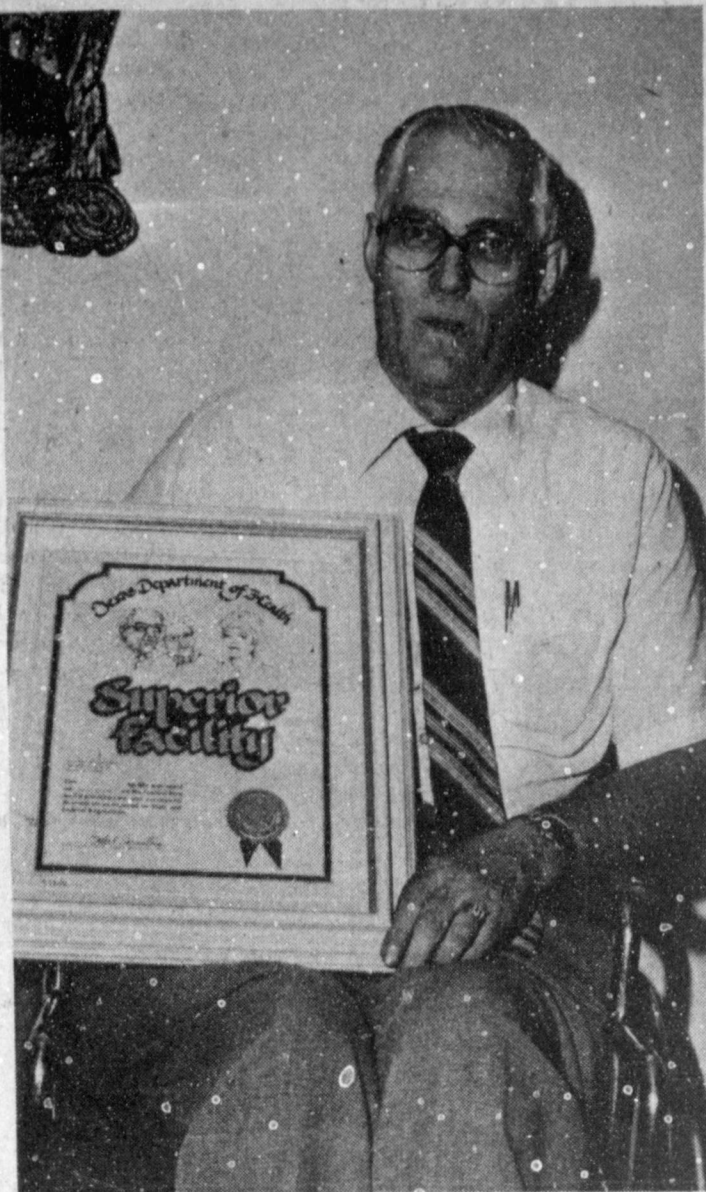


Sizzling chicken-fried meat strips, golden fries, Texas toast and creamy country gravy. Come 'n get it at a special sale price!  
**Just keeps on getting better.**

**ASK ANY ENER GAS EMPLOYEE**

**Sale Ends July 31, 1983**

Copyright 1982 Tex. D. Q. Council. All Rights Reserved. TM Trademarks of the Tex. D. Q. Council. Registered Trademark Am. D. Q. Corp.



Jim Swanner, Administrator



A group of ladies enjoying the sun in the patio



Members of the nursing staff.

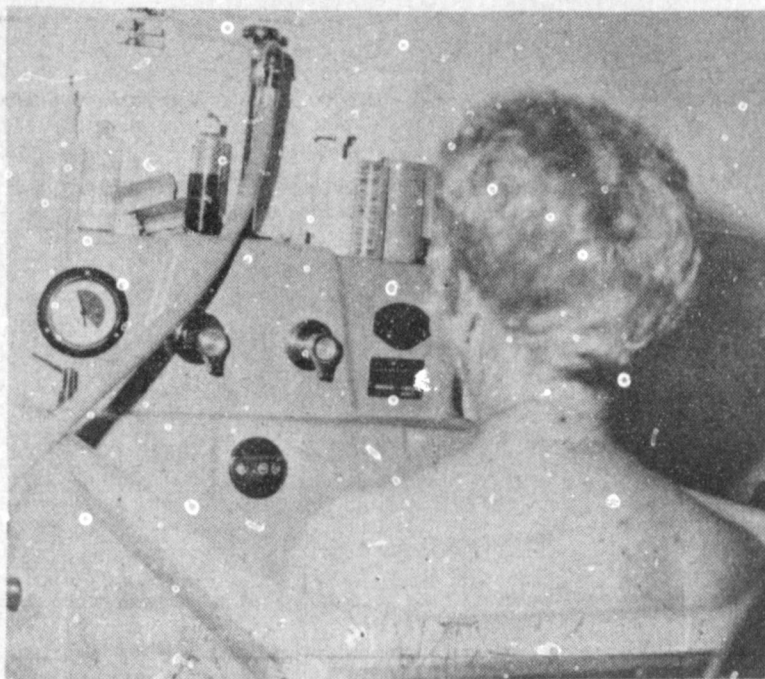
# NATIONAL NURSING HOME WEEK

MAY 15-21

You Are Invited To Open House  
At The Muleshoe Nursing Home  
On Sunday May 15 From  
2:30 to 4:00 P.M.



Ladies being served in the kitchen



Resident in the sauna.

*"Love Is Ageless"*

In 1954, Drs. B.O. McDaniel, W.F. Birdsong and Slemmons bought West Plains Hospital from Drs. M.F. and L.T. Green. Dr. McDaniel commented, "We began to see the need for a Nursing Home, and some of the people in the hospital needed nursing home care, not hospital care." In the year 1962 Dr. McDaniel, Dr. Birdson and Dr. Slemmons constructed a 30-bed nursing home which was joined to the hospital. In 1965, with a lengthy waiting list, the nursing home was enlarged to a 57-bed capacity.

The hospital administration and the Muleshoe Hospital and Nursing Home Auxiliary began an extensive renovation program in 1978. The day room was enlarged and a fireplace was added; suspended ceilings were put in the day room and in all the hallways; fly trap doors were installed at the entrance of each hall. The additions make the hallways lighter and keep the home warmer in the winter time. New carpet was installed in all the halls of the nursing home, in the activity director's office and in the nurse's lounge. Other additions include a sauna and new furnishings in a portion of the nursing home.

A variety of activities help fulfill the social, emotional and spiritual needs of each resident. Activities are designed not to just keep each resident busy to fulfill individual needs. A concentrated effort is made to have a less institutional atmosphere and a more home-like atmosphere. Many of the ladies enjoy the beauty shop, all residents enjoy the craft classes and the exercise classes.

Jim Swanner is administrator of the nursing home, and is justifiably proud of the superior rating received recently by the Muleshoe Nursing Home. Currently there is a staff of 45 persons to assist the 53 residents and there is a waiting list of 40 persons waiting for a room.

The Muleshoe Hospital and Nursing Home Auxiliary joins in asking you to attend the open house, and remind that the Christmas Card Project and all memorials are used to constantly update and renew the nursing home for the comfort and enjoyment of the residents and staff.



Visiting in the Day Room.



Ora Roberts, Lois Ethridge and Alma Henley in the dining room.



Dorothy Green works on Clara Rickert at the Beauty Shop



Mrs. Alva Shofner in the Day Room.



Ernest Kerr watching television.



One group taking craft classes.

## Pioneer Round-Up Scheduled Saturday

The Pioneer Round-Up, scheduled for Saturday, May 14, will be the fifty-fifth consecutive year the Plainview Business and Professional Women's Club has sponsored this event. The theme chosen is "A Touch of the Past." The first celebration took place March 14, 1929 in the City Auditorium in Plainview when Mrs. Adella Drew served as president. Jackie Masso, the current president of the Plainview BPW Club, stated all activities this year will be held in the Hale County Agriculture Center.

The reception beginning at 10:00 a.m. at the Hale County Agriculture Center in Plainview, is a big feature and is a time when the real "old timers" get together to reminisce and exchange stories of the past. President Masso and her assistants are expecting many pioneers from near and afar to arrive soon after 10:00.

One of the few remaining parades in Plainview will be staged at 2:30 p.m. originating at the Santa Fe Depot on north Broadway. Those participating are asked to be on hand by 1:30 p.m. Parade will move south on Broadway to the American Legion where it will disband.

Durward Lynch will be parade marshal. The color guard will also head the parade and the Plainview bands will march. Some floats have already been entered and Nancy Butlis,

chairman of the parade committee, stated additional floats are welcome on that date. Antique cars, riding clubs, and miscellaneous riders are some of the other attractions scheduled for the parade. Winners will be announced at the night program.

The concessions and Kountry Kitchen will be open all day at the Hale County Agriculture Center and Shelly Gammagr and Dorothy Morton are the chairmen. Sandwiches, pies and cakes will be available at lunch time.

The evening activities will also be held in the Hale County Agriculture Center. From 6:00 to 8:00 p.m. the chuck wagon supper will be served. "Take out" plates will also be available. The meal will consist of son-of-a-gun, barbecue, sour dough biscuits and all the trimmings. Lou Ella Scarbrough, chairman of the Foods Committee, gives assurance that plenty of food is being planned for and that this year the members of the BPW Club will prepare the food and assist in the cooking. The club members will "rock the beans" on Thursday afternoon with the cooking beginning early Saturday morning.

The program, chaired by Pat Kelly, beginning at 8:00 p.m., will be presented by the "Southwest Express," a musical group from Olton and Kress.

To highlight the evening's activities, the Pioneer Woman of the Plains will be announced. Prizes will be awarded to the couple who have been married the longest, the oldest pioneer present and to the pioneer (over 60) traveling the farthest distance to attend the Round-Up. There will also be group singing.

The square dance will conclude the Pioneer Round-Up again this year. Helen Pemberton, chairman of the committee, has announced that Roy Johnson of Amarillo, will be the caller. She stated that all who like to square dance, waltz and participate in other couple dances are invited to do so. The Agriculture Center is air conditioned and will be comfortable for dancing from 9:00 p.m. until 12:00 midnight.

Tickets, \$3.75 (tax included) includes the supper, program and square dance, and may be purchased from any member of the Plainview BPW Club or secured at the door. Mrs. Pemberton is ticket chairman. People of all ages are most welcome and are cordially invited to attend and help make this 55th Pioneer Round-Up on May 14 the best yet.

Other committees appointed to help carry out activities during the Pioneer Round-Up are as follows: Registration, Mary Lindquist; Door, Bula McGowan; Float, Gretchen Bills; Serving, Doris Henderson and Publicity, Jo Ann Clements.



**NEW AUXILIARY OFFICERS**—The Muleshoe Nursing Home and Hospital Auxiliary installed new officers Monday evening during their annual dinner meeting. (L-R) Elizabeth Watson, guest speaker; Clara Lov Jones, president; Sammie Ethridge, first vice president; Clara Crain, second vice president; Faye Poynor, treasurer; Ruth Clements, assistant treasurer; Laverne James, recording secretary and Neil Magby, corresponding secretary.



**BETA SIGMA PHI CITY COUNCIL OFFICERS**—Pat Black, president of the Beta Sigma Phi city council, installed city council officers for the coming year. (From Left) Jan King, service coordinator; Judy Wilbanks, recording secretary; Doris Scoggin, corresponding secretary and social coordinator; Lindy Schuster, vice president; and Janelle Turner, president. Not pictured: Linda Marr, treasurer.



The annual harvest of an entire coffee tree is required for a single pound of ground coffee.

## Hospital And Nursing Home Auxiliary Installs Officers

The Muleshoe Hospital and Nursing Home Auxiliary held their annual dinner meeting at the Corral Restaurant, Monday May 9 at 6 p.m. The tables were decorated by Betty Johnson and Sammie Ethridge with pink carnations, candles and napkins.

The officers table centerpiece was pink silk flowers given by the Muleshoe Hospital Board.

## Childrens Home Associates Tack Quilts

The Portales Christian Childrens Home Associates of Muleshoe met Monday, May 2 in the home of Vickie Hendricks with 12 members present. Those present included: Marie Collum, Jesse Sherwood, Ethel Julian, Mabel Caldwell, Onedia Cornelison, Blanche A'brey, Nan Gatlin, Mae Provence, Beth-Lue Harper, Modine Elmore, Bernice Amerson and the hostess, Ms. Hendricks.

The afternoon was spent in tacking two quilts for the home and working on the cookbook that the home is compiling to sell for the home.

Ms. Hendricks served sandwiches, potato chips, brownies, ice cream, coffee and tea.

er, Faye Poynor; assistant treasurer, Ruth Clements; recording secretary, La Verne James and corresponding secretary, Neil Magby.

Chairpersons include: Thrift Shop, Sammie Ethridge; shampoo room, Clara Crain; vending machines, Faye Poynor and Betty Ramage; volunteer service, Sammie Ethridge; membership, Mildred Redwine; publicity, Dorothy Hanes; community service, Paula McMeans; projects and memorials, Dorothy Green;

historian, Skeet Bradshaw; Chaplain, Rue Kimbrough; and public relations, Betty Johnson and Clara Lou Jones.

For her first duty as president, Mrs. Jones presented the following awards: pin for 500 hours service, Mildred Redwine; bar for additional 500 hours service, Dorothy Green, Sammie Ethridge, Clara Crain, Clara Lou Jones, Johnnie Kimbrough and Rue Kimbrough.

Bars for 10 hours service went to: Dorothy Green, Sammie Ethridge, Clara Crain, Betty Ramage, Faye Poynor, Mabel Caldwell, Johnnie Kimbrough, Rue Kimbrough, Beth Watson and Ruth Williams.



**RETIRING OFFICER**—Dorothy Green turned her presidential gavel over to Clara Lou Jones at the Nursing Home and Hospital Auxiliary meeting Monday evening. Mrs. Green had been president for a number of years.

## TOPS Club Chapter 34

TOPS Club chapter Tx. No. 34 met at 6:30 p.m. Thursday, May 5 in the meeting room of Bailey County Electric. Clara Lou Jones, leader, called the meeting to order. The TOPS pledge was recited and the fellowship song sung.

Laverne James called the roll with 15 members present. Minutes of the previous meeting were read and approved.

Ruth Clements celebrated her birthday and received a gift from the birthday box. The members sang happy birthday to her.

Clara Lou Jones was named weekly best loser. First runner up was Lora Wallace and Lena Gartin was second runner up.

Named monthly best loser was Lora Wallace with Rose Sain as first runner up and Ruth Clements second runner up. Nan Gatlin was named TOPS Queen.

A card was signed by the members to be sent to Jenny Mitchell.

Visitors present included Shelley Sain, Donae Parker and Ly Kinda Tyson. For the program Shelley and Donae presented a method demonstration entitled "4-H Strippers." They presented this program at Lubbock Saturday, May 7 on the Texas Tech campus for 4-H District Roundup.

## We Are Pleased To Introduce



Gene Atkins  
Career Agent  
Representing

Farm Bureau Insurance  
Life, Fire, Auto, Liability, Crop, Hail

Bailey Co. Farm Bureau

1612 W. Amer.

272-4567

Special Coupon

A Very Special

# St. Clair's

110 Main      Coupon      272-4453

Bring Coupon To Store For

## \$10<sup>00</sup> OFF

Any Pant, Skirt or Short

Offer expires Saturday      Values      \$32<sup>00</sup> to \$40<sup>00</sup>

**WAISTBAND** — RAY ROL® elastic waistband fit — no roll or pinch

**BODY** — front-lined for flattering trouser shape. Reinforced seat and in-seam assures strength and shape

**LINED FLY** — keeps its shape and stays flat

**POCKETS** — TWIZ® so there's no bunching

**WRAPPED** for strength

**OUTLET SEAM** — for easy waist adjustment

**SEAMS** — CHAIN STITCHED for elasticity and strength

**STRETCH** — Flex to ease into the fabric, so the fit moves with you — TailorFlex

**OPEN FLAT** for a smooth fit

# TAILOR FLEX

By

## ALLISON COLLECTIBLES

PRICES EFFECTIVE  
MAY 12-14, 1983

WHILE SUPPLIES LAST!

OPEN 24 HOURS  
FOR YOUR CONVENIENCE!  
SELF SERVE GAS

<b>BBQ SANDWICH</b> 99¢	<b>STEAK FINGER SANDWICHES</b> 59¢	<b>ON A STICK GERMAN SAUSAGE</b> 99¢
----------------------------	---------------------------------------	---

**BORDEN'S ASSORTED ICE CREAM** \$1.69  
1/2 GAL. RD. CTN.

**SPRING FEVER TV SPECIALS**

**KRAFT REG. SMOKE BBQ SAUCE** 18 OZ. BTL. **59¢**

**KRAFT STACK PACK AMERICAN CHEESE SINGLES** 16 OZ. PKG. **\$1.89**

**BORDEN'S ASSORTED FRUIT DRINKS** **79¢** GAL.

**DR. PEPPER** \$1.69  
12 OZ. CANS 6 PK.

**ALLSUPS MONEY ORDERS** **19¢** STILL ONLY

## Beta Sigma Phi Sorority Observes Founder's Day

The three Muleshoe chapters of Beta Sigma Phi sorority held their annual Founder's Day festivities at the country club on Tuesday, April 26th. Forty-two members were present at the banquet.

Beta Sigma Phi is a women's social, service, and cultural organization. It is the largest Greek letter sorority in the world and has grown in its 52 year history from one chapter of

seven women to a sorority of 250,000 members active in 12,500 chapters in countries throughout the world.

Beta Sigma Phi members have this year formed new chapters in such faraway places as England, Indonesia, Norway and Australia. More chapters will soon be formed in the West Indies and American and Western Samoa. This effort to spread Beta Sigma Phi and form new chapters is symbolic of two goals shared by all members of the organization; that is, to extend the hand of friendship to community women; and to enjoy, to the fullest extent, the opportunities for personal growth that Beta Sigma Phi offers every member.

Life, learning and friendship are the bywords of Beta Sigma Phi. Begun in the midst of the Depression by Walter W. Ross, Beta Sigma Phi was originally designed to provide an outlet for women who, in those hard financial times, could not attend college and were obliged to remain home and support their families. Walter Ross provided these women with a program of cultural study so they could have a chance at intellectual and social growth.

From the first chapter formed in Abilene, Kansas Beta Sigma Phi has grown from a small social and cultural group into an international sorority that devotes much time to service efforts as well.

Hardly a charitable, health, or cultural group exists today that has not been helped in some way by Beta Sigma Phi. Internationally, the chapters have created several special funds to which they contribute: the International Loan Fund, through which members help each other; the International Endowment Fund, which has donated over a million dollars to health research groups, homes for underprivileged children and many other causes; the Exemplar Fund which helps support Literacy Village in India; and a college scholarship fund for members or their sons or daughters.

Cultural and social activities still continue among the chapters. Each year, members are provided with a different outline of study in the liberal arts. Members also plan socials throughout the year, including traditional events like Founders' Day, the Valentine Ball, and the Mother's Day Luncheon at which the First Lady of the

Year, an outstanding member of the community, is honored.

Some local Beta Sigma Phi projects have included the family fun night bingo carnival sponsored by Alpha Zeta Pi, the Christmas home tour sponsored by Xi Omicron Xi, and the bridge/shanghai tournament sponsored by Preceptor Zeta Rho.

Muleshoe Beta chapters have contributed money to the Mule Putt Golf Course, the Senior Citizens Housing Complex, the Nursery at the Methodist Church, the public library, and various other Muleshoe projects. The chapters sponsor families in need at Christmas and help with bingo at the nursing home each month. They also contribute to Girl's Town as one of the international Beta Sigma Phi projects.

At the annual banquet to honor founder Walter W. Ross, Pat Black, president of the Beta Sigma Phi city council, presided and installed the new city council officers for next year. They are President-Janelle Turn-

er, Vice-President - Lindy Schuster, Recording Secretary-Judy Wilbanks, Corresponding Secretary/Social Coordinator-Doris Scoggin, Treasurer-Linda Marr, and Service Coordinator - Jan King.

Each chapter president presented the officers for next year and the pledges to be installed as new members were introduced. Lucy Faye Smith conducted the honorary Order of the Rose Ritual for Melba King. This is a special ritual to honor outstanding members who have been in sorority for fifteen years.

The highlight of the banquet was the presentation of awards by each chapter. Alpha Zeta Pi honored Paula McMeans as their Pledge of the Year and Betty Bush as the Woman of the Year. Xi Omicron Xi chose Lindy Schuster as their outstanding Woman of the Year, and Doris Scoggin was chosen by Preceptor Zeta Rho to be honored as their Woman of the Year. The banquet closed with a musical selection "My Sister, My Friend," the first place song in the international contest this year, that was sung by Jo Jinks, Jan King, D-bbi Hutto, Joan Lewis and Donna Green.



WOMEN OF THE YEAR—Three Muleshoe chapters of Beta Sigma Phi sorority named their "Woman of the Year" at the annual Founder's Day festivities April 26. (From Left) Lindy Schuster, Xi Omicron Xi Woman of the Year; Betty Bush, Alpha Zeta Pi Woman of the Year; and Doris Scoggin, Preceptor Zeta Rho Woman of the Year.

### RECIPE



bones and cut chicken into large pieces. Mix chicken, vegetables, spaghetti and seasonings. Add juice and 1

quart broth. Cook slowly until thick, not dry. Sprinkle cheese over top. Serves 12.

By Sarah Anne Sheridan

No one wants to spend too much time preparing food for couples invited to their summer home. This recipe, with a salad and garlic toasted bread, is a hit.

- 1 hen (5 lbs.)
- 16 oz. spaghetti
- 2 c chopped onions
- 2 c chopped green pepper.

- 1 large can mushrooms
- chicken broth
- 1 qt. tomato juice
- 1 t worcestershire sauce

- 1/4 t curry powder
- 1/2 c grated cheese
- salt and pepper.

Cook hen until tender, saving broth. Saute onions, pepper, celery and mushrooms in butter. Cook and drain spaghetti. Remove



MELBA KING

The thoughts of youth are long, long thoughts. -H.W. Longfellow.

All seek joy, but it is not found on earth. -St. John Chrysostom.

**\$99<sup>00</sup>** For 2 Months  
Reg. '125

### MAY SPECIAL

For Circulation, Arthritis, Firming, Weight Loss And Over All Conditioning

For Both Men & Women

Form A Carpool With Your Friends And Call For An Appointment



519 Phelps 385-4216

**Fat Walker's**

Happy Loveless, Owner & Operator



PAULA MCMEANS

### IT'S TIME FOR Rug Doctor.

Cleans office carpets and upholstery too! When your business office needs a good cleaning, try Rug Doctor and save.



Rent the Rug Doctor at:

Fry & Cox, Inc.  
401 S. First

Pay & Save  
515 W. American

### IT'S THE MOST!



The world's largest house is the Biltmore House in Asheville, NC. Its 250 rooms were built by George Washington Vanderbilt in the 1890s on an estate of 119,000 acres. The house is still owned by Vanderbilt's kin.



Another house is raising its roof to allow more people to enjoy its lovely rooms. It's the King David Manor on Long Island's oceanfront in Long Beach, NY. No senior residence stands taller in the esteem of those in the know than this magnificent facility. The new addition will add a seventh floor overlooking the famed Boardwalk.

*It isn't Being Done*  
About the hardest work for a man is looking pleasant while his wife introduces him to a fellow to whom she was once engaged.

-Times, Los Angeles.

## Dance - Gymnastics

NOW ENROLLING FOR SUMMER GYMNASTICS

June 7th Ages 3 yrs. Up

Boys & Girls

For Information & Registration  
Call 272-4017, Or 965-2353  
Or 965-2689

Sheri Hawkins &  
Cindy Purdy's

219 E. Ave. B

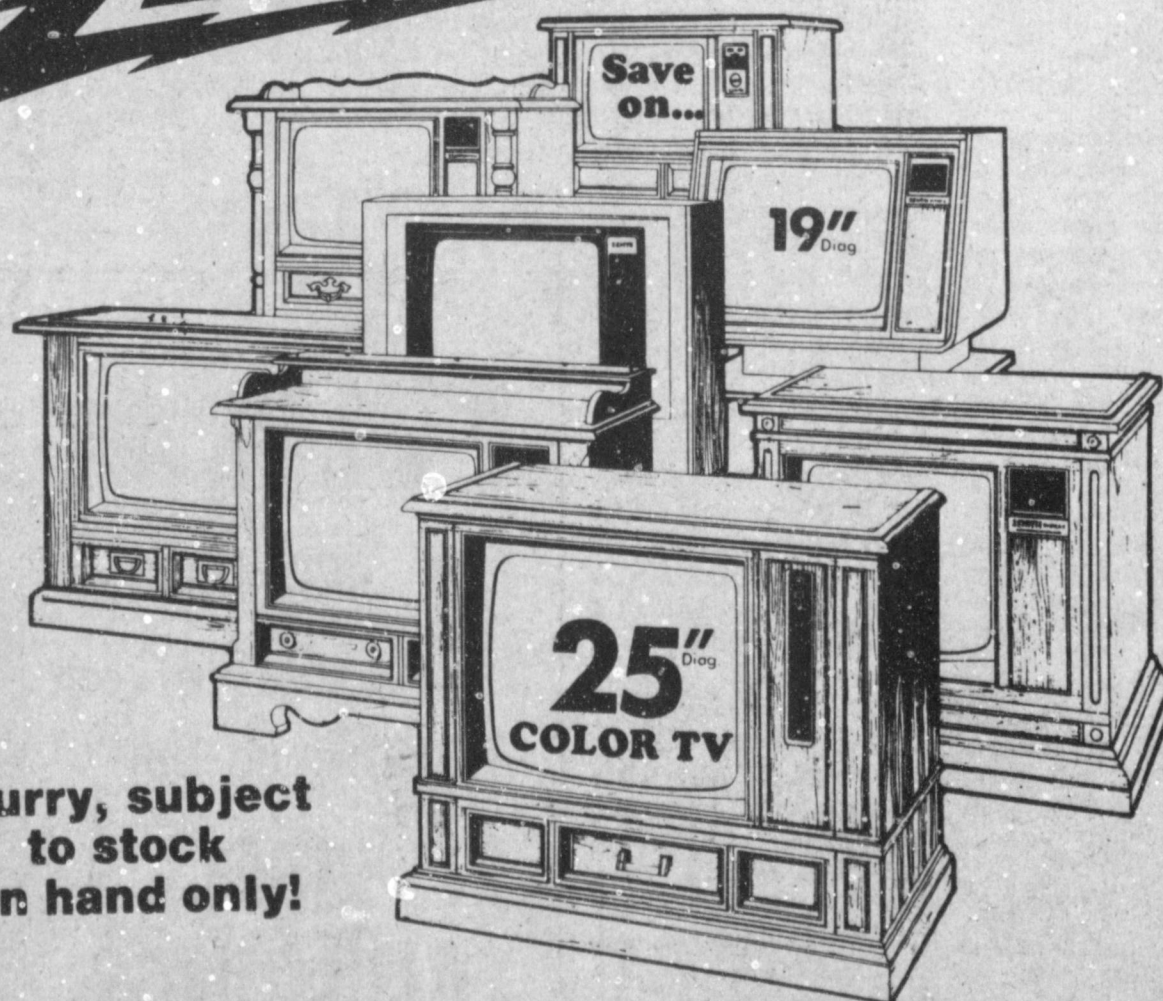
School of Dance and Gymnastics



HOME OF THE MULESHOE TWISTERS GYMNASIIC TEAM

# 1983 MODEL CLOSE-OUT!

## ZENITH



13" COLOR \$298<sup>00</sup> 25" COLOR \$598<sup>00</sup> 19" COLOR \$368<sup>00</sup>

Save now on all '83 Model Zenith ...

Televisions • Stereos • Radios • Video Cassette Recorders

**Wilson**  
Appliances

Trained Technicians to Service Our Products

Store Hours:  
8:00-6:00  
Mon-Sat.

117 Main

272-5531

## Memorial Day Signals Driver Stress, Fatigue

Memorial Day signals the end of school and the beginning of summer vacations. There will be an increase in the number of vehicles on our streets and highways, according to Major Vernon Cawthon, Regional Commander of the Texas Department of Public Safety.

Cawthon stated, "countless lives would be saved if drivers would not disregard their own safety and the safety of others. Speeding, drinking drivers, and carelessness will account for the greatest percentage of deaths this Memorial Day weekend."

DPS records show that 88 persons died in traffic accidents on Texas streets and highways during the Memorial Day weekend last year, and the DPS Commander pointed out that, "one drinking driver or speeding motorist has destroyed an entire family."

Cawthon said, "Holiday or vacation trips should be planned and a rest stop should be made every two hours to allow drivers and passengers a chance to get out and stretch to help eliminate stress and fatigue."

Major Cawthon added, "Drivers who think ahead, stay alert, wear their seat belt, avoid the use of alcohol while driving, and obey speed limits can have a safe trip and a great vacation."

## CUA Acres...

Cont. from Page 1  
the soil. It may be grazed following the restricted period, but no mechanical harvest is permitted.

This may be a point of confusion for some people because of the many acres of small grains planted prior to January, 1983 that were allowed to be harvested for hay. This will not be the case for crops planted after January, 1983. All cover crops planted after January on conserving-use acreage will be subject to the "no mechanical harvest rule," explains Tanksley.

All questions regarding these types of rules should be referred to the local ASCS office that is responsible for the area where the land is located. That ASCS office will have all the rules and regulations applying to the particular acreage along with appropriate dates for programs, says Tanksley.

## Commissioners...

Cont. from Page 1  
Sheriff's department and authorized the County Judge to advertise for bids to dispose of obsolete office machines owned by the county.

The Commissioners also accepted a bid by Muleshoe Concrete Company to install 12 1/4 square feet of concrete to specifications required at the Coliseum. This work is necessary to repair existing pavement near one of the large doors of the Coliseum.

Reports from the County Treasurer for the month of April were approved, along with payment of routine county bills. Tax collections were reviewed.

The Court authorized the County Judge to execute application for service delivery area designation including the 13 original counties in the SPAG area.

Transfers of funds were also approved by the Court, with \$20,000 being drawn from the Road and Bridge General fund to be divided equally among the four precincts. Another \$20,000 was transferred from the general funds to officers salaries; \$30,000 from the General Fund Certificate of Deposit to general fund; and one quarter of the Road and Bridge "CD" was transferred to Road and Bridge fund No. 1.

## Cashway...

Cont. from Page 1  
ily moved to Muleshoe on October 1, 1945 where he became Cashway store manager for Elmer Gollehon. White purchased the store from Gollehon, in 1959. He and his wife, Marie, who was active in community affairs, operated the store until her death on January 1, 1970.

White's Cashway was incorporated on January 1, 1971 and White and the former Vivian Stevenson were married in 1971. Mrs. White is a longtime employee of First National Bank. Mrs. White is not retiring at this time, although she does plan to take a leave of absence from the bank to spend some time traveling with her husband.

White's Cashway will conduct their final day of business on Sunday, May 29. The store will be closed on Monday, May 30, for Memorial Day and the new owners will assume their ownership at that time.

## Athletic Awards

Cont. from Page 1  
Kevin Wiseman, "set themselves apart from the crowd." "They try, they work and they accomplish their goals, mostly in a quiet and unassuming manner." "Track athletes have to have a tremendous amount of dedication and self-motivation to excel," Wiseman said. The Name Jersey awards for this school year went to Thurman Coleman, Tony Luna and Michael Isaac.

Two other track and field awards which identify athletes with leadership and accomplishment of their goals are the "MuleKicker" awards. This year's MuleKicker awards went to John Wuerflein and Martin Mendoza. Coach Wiseman described this honor as a tribute to their "Mule Spirit."

The media awards which traditionally are chosen by the high school athletes from the ranks of their own were presented to outstanding athletes in each division of sports at Muleshoe High School. Presentations were made by Gerald Reid of KMUL and Shirley Farmer of the Muleshoe Publishing Company. Recipients of the outstanding or most valuable player awards and their categories are as follows: Alex Paez, football; girls basketball, Marilyn Lewis; boys basketball, John Isaac; volleyball, Mary Ann Ybarra; girls golf and Championship golf player, Sam Gonzales. In tennis, the boy's award went to Terry Graves; girl, Stacy Smith; girls track, Marilyn Lewis, boy's track Darin Shaw; Field events, Michael Isaac, cross-country, Tony Luna.

Besides the awards listed above, teams and outstanding individuals were recognized, along with the athletic honor roll for 1983, which is another story for another day. Cheerleaders were also introduced and awarded a token of appreciation by captains of the football team.

Senior athletes were in the Spotlight Tuesday evening, as they stepped through a giant Muleshoe to the sound of their accomplishments being cited by Coach Windy Williams. Those seniors who will end their high school careers with this year will close a chapter of their lives with the end of this year, said Williams, defining the event as a very emotional time. Those



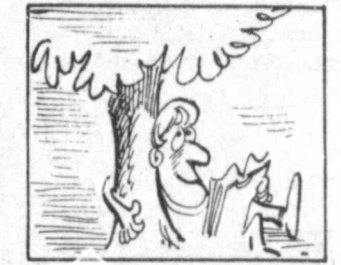
**MULE KICKERS**-John Wuerflein and Martin Mendoza were also honored for their leadership abilities in athletics at the banquet Tuesday evening. Both young men were cited for being the source of that extra effort that you sometimes need to get where you're going.

## Cotton...

Cont. from Page 1  
vance deficiency payment rates are set at 6.4 cents per pound.

Under the acreage reduction program for 1983, the amount of 20 percent has been set. A paid land diversion program has been set for up to 5 percent; and there is the availability of a seed cotton loan program.

Regulations implementing this notice are available from ASCS offices. This information was derived from the Federal Register, dated April 21, 1983, p. 17122.



There are about 679 different species of trees native to the continental U.S.

## Traffic Deaths Decrease First Time Since 1976

Statewide traffic deaths decreased last year for the first time since 1976, according to statistics released by the Texas Department of Public Safety.

Colonel Jim Adams, DPS director, said 4,271 traffic fatalities were reported in 1982, a reduction of 9.1 percent compared to the previous year. The mileage death rate decreased 12.8 percent to 3.4 deaths per hundred million miles traveled in 1982 compared to 3.9 in 1981.

Adams believes the reduction in fatalities resulted from several factors.

"Stepped-up enforcement by DPS and local officers brought about a 25 percent increase in DWI arrests last year," he said. "The Highway Patrol has also been concentrating on speed enforcement, and this has helped bring the top speeds down on our highways."

The DPS director said public concern about DWI has contributed to the decrease in fatalities.

"Widespread attention to the drunken driving problem by the news media and citizen groups has increased the public's recognition of the seriousness of this menace," Adams pointed out. "Motorists who drink now have a greater fear of the consequences of driving under the influence of alcohol, and consequently are being more careful. Our challenge now is to sustain this public concern to help turn this temporary

reduction into a lasting accomplishment. Pending DWI legislation will assist greatly in this respect."

Adams noted that 25 percent of the statewide fatalities (1,066) were DWI related.

"We still maintain that this statistic would be in the 50 percent range if state law required blood alcohol measurements from all drivers involved in fatal accidents," he said. "But this figure makes it plain that DWI remains one of the leading causes of traffic deaths."

Motorcycle operator and passenger deaths totaled 403 in 1982, an 8.8 percent decrease compared with the previous year. Four out of five of the motorcyclists killed were not wearing protective headgear when the accident occurred.

More than 98 percent of the persons killed in passenger vehicles were not wearing seat belts.

"Although we saw a significant reduction in statewide fatalities last year, the number of per-

sons injured in traffic crashes decreased less than one percent to 204,666," Adams said.

According to estimates by the State Department of Highways and Public Transportation, motorists traveled 124.910 billion miles in 1982, representing a four percent increase over 1981.

## ASCS News

Cont. from Page 1  
harvested. The wheat or barley crop mentioned, says the Director, will still have to be destroyed by shredding or plowing by July 15. This is the final date set by the State Committee.

Farmers need to remember that this service mentioned must be requested no later than May 25, 1983. Producers having questions regarding the foregoing information need to contact the Bailey County ASCS office for answers and details.

Williamson has requested that area farmers and producers sign up for measurement services as soon as possible so that plans may be made for the

work. "Actually, June 10 is the latest that we would want a producer to sign up for the measurement service," Williamson stated.

On a final note, all area producers should take note of the fact that the Bailey County ASCS office will be closed on May 30 in observance of Memorial Day this year.

\*\*\*\*\*

The Food and Drug Administration requires that packaging which makes a specific nutritional claim must have the product's nutritional content printed on the label, says Marilyn Haggard, a foods and nutrition specialist with the Texas Agricultural Extension Service, Texas A&M University System. The label must show the serving size, calories, and amounts of protein, carbohydrates and fats per serving. It must also indicate the percentage of US RDA provided per serving. The RDA stands for "recommended daily allowance" or the approximate amounts of protein, vitamins, and minerals needed by adults for good health. To eat an adequate diet, the total amount of food consumed in a day should add up to about 100 percent of the US RDA for nutrients, says Haggard.

## Around Muleshoe

Cont. from Page 1  
16. Teams may sign up between now and then. A \$60 sign-up fee is required per team. Those wishing to enter may call Evelyn Pope at 272-3976 or 272-4023.

New Covenant Christian Academy will have pre-enrollment day for students, age five and six, on Friday, May 13th at 10:45 a.m. at the church. In order to qualify for the

"learning-to-read" program, the student must pass a reading readiness test. Those students who are not ready to read will be in the regular kindergarten program. A limited number of students will be accepted. Any interested parent is welcome to visit the learning center on Friday, May 13th at 10:45 a.m. If you have any questions, please call 965-2787 for more information.

## One Act Play

Cont. from Page 1

were Freddy Vela as Old Martin, Danny Seales as Valverde, David Pruitt as DeNizza, Jeff Combs as Pizzaro, Perry Flowers as Diego, Scott Ellard as DeSoto, Hector Garcia as Felipe, Chad Williams as Challuchima, Cheyenne Bickel as Villac Umu, Michael Isaac as Atahualpa, Jimmy Lee as the Inca Chief, David Vela as Young Martin, Brenda Flowers, Kelly Hamblen, and Tonda

Gunstream as Incas. Stage Crew members were Dale Hughes, Melissa Wagnon, Gary Watkins. Alternates in the show were Shelli Walker, Belinda Clayton, and Betsy Lunsford. Costume designer and sponsor Sandy Robinson. Muleshoe High School's Production of The Royal Hunt of the Sun by Peter Shaffer was arranged in agreement with Samuel French, Inc. of New York City.



**OUTSTANDING PLAYERS**-The most valuable players in each sports event were also honored at the annual MHS Athletic Banquet. Those honored were: (Back-left) Michael Isaac, Sammy Gonzales, Terry Graves, Arin Shaw, Tony Luna, John Isaac. (Front-left) Mary Ann Ybarra, Stacy Smith, Alex Paez, Denise Wilson and Marilyn Lewis.

## Rotary...

Cont. from Page 1  
nursing home entirely. Mrs. Jones stated that the Thrift Shop was one of their on-going projects and that clothes that were donated to it, were greatly appreciated.

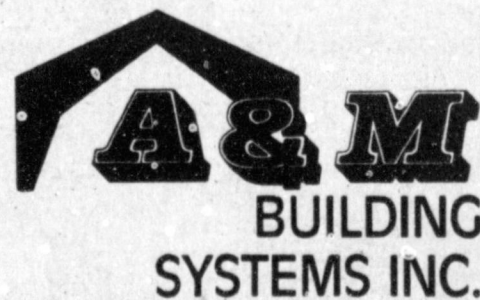
The Rotary Fish Sale was cancelled Tuesday, due to the truck being caught in a severe snow storm.

Smile

## 24-HOUR PLUMBING SERVICE

LEAL'S PLUMBING

272-3588



"Lasting Value From The Ground Up"

## STEEL BUILDINGS

For the lowest prices on steel buildings in the area-Contact A&M Building Systems. Direct factory quality and value.

**Built To Your Specifications No Middleman-Direct To You**

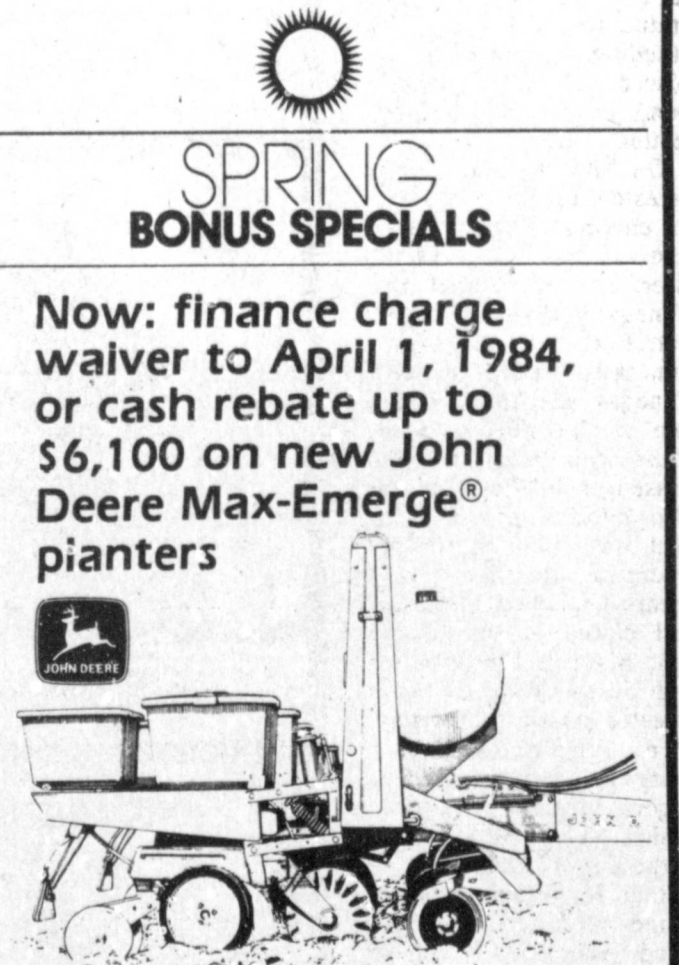
Complete erection and concrete provided by A&M's experienced concrete and construction crews.

Call Toll Free

**1-800-545-2255**

2600 E. Mabry Drive,

Clovis, N.M.



During May, it's important to buy that new Max-Emerge model in the size you need for a very sound financial reason.

If you pay cash, finance wherever you choose, or finance with John Deere without waiver, you'll receive the cash from John Deere in the amount indicated below for the model you choose. Or, if you finance with John Deere, you can elect to have the finance charge waived to April 1, 1984.\*

Model	May '83 Cash in Lieu of Waiver	Model	May '83 Cash in Lieu of Waiver
7000 Front-Folding		7000 Conservation	
24-row N	\$6100	8-row N	\$1300
18-row N	\$4400	6-row W	\$1100
16-row N	\$3900	6-row N	\$1000
12-row W	\$3500	4-row	\$700
12-row N	\$2600	7100 Integral	
8-row W	\$2200	12-row N	\$1200
2000		10-row N	\$1000
12-row N	\$1900	8-row N	\$900
8-row W	\$1200	8-row W	\$800
8-row N	\$1100	6-row N	\$700
6-row N	\$800	6-row W	\$600
4-row W	\$500	4-row W	\$500
4-row N	\$500		

\*John Deere financing plans subject to approved credit. These offers may be reduced in value or withdrawn at any time.

## Dent-Rempe

1516 W. American

272-4296

For The Best Garden Or Flower Bed,

Get Your Bedding Plants Now!

New Stock Weekly! Hanging Baskets, Too!

Pick Up At

**PIVOT PRODUCTS**

Call 272-5134

West Of Muleshoe On Hwy. 84.

Home Delivery Available In Muleshoe On Full Flat Sales.

# Law Agencies Put In Busy Week

Activities in the Muleshoe Police Department and Bailey County Law Enforcement agencies as well as the DPS have been exceptionally busy over the past week's time. A number of accidents were recorded over the period from May 2 to May 9, along with the usual mixture of offenses.

On May 7, an accident occurred in Muleshoe as Aurora Elizarraraz was backing from a parking space and encountered a second vehicle driven by Maria Maldonado. On May 6, an assault was reported to City Police by Raul Olivias. Olivias alleged that he had been kicked in the left leg by a Spanish male behind the Alps Store. No charges have been filed in this case at the time of this report.

City Officers arrested Brandon Dee Hall on May 7 on an alleged charge of driving while license suspended. He was stopped in the 100 block of Main street, after officers noticed expired plates on the vehicle he was driving. Hall was issued a citation for the traffic offense and then taken to the Bailey County Sheriff's office where he was jailed on the DWLS charge, pending bond. The vehicle Hall was driving was impounded.

On May 7, Harley Madison Fincher, Jr. was arrested by City Officers on an alleged charge of disorderly conduct on North Highway 214, where he was observed by officers. He was taken to the Police Department and later released on a \$55 bond. Also on the 7th, Sidney Thomas Slinger was arrested in the 1200 block of American Boulevard on a charge of public intoxication. Slinger's vehicle was allegedly stalled in the street and officers who stopped to help him discovered his condition. Officers arrested the suspect and he was taken to the Bailey County SO where he was booked for public intoxication, pending bond. His vehicle was impounded.

Pedro Antonio Salamanca was arrested on May 8 on an alleged charge of public intoxication, after officers observed him driving erratically and allegedly hitting a curb. He was taken to the Sheriff's office and a further check on his DPS status revealed four outstanding warrants. He was placed in jail, pending bond on the public intoxication charge.

On May 9, local officers arrested Eleuterio Venegas on charges of alleged DWI and assault on a police officer. Officers stated that Venegas almost hit their patrol car and they pursued him. After he was stopped, Venegas allegedly kicked one of the officers in the chest with both feet. A passenger in the auto was also intoxicated. The suspect was taken to the SO where he refused to take a breath test; he was booked and placed in the County Jail. Maurillo Rey Ramirez and Jesus Martinez were arrested on this same date on a public intoxication charge. They were passengers in the Venegas vehicle. They were placed in the County Jail.

Raul R. Guerra was arrested on May 2 on an alleged failure to appear charge on a traffic citation. Guerra was released after paying a fine in the amount of \$50 to Judge Huckaby.

On May 3, Jay Richard Hawkins and William Todd Allison were involved in a two car accident, when Hawkins allegedly made a turn into the path of the Allison vehicle. A utility pole was also struck and damaged to the extent of \$100.

On April 30, two minor drivers were involved in a fender-bender type accident on a parking lot. The run-in occurred when both cars started to pull out of the parking lot.

Arrested on May 4 on an alleged charge of No Drivers License was Noble Glover, Jr. Police reported that Glover was stopped in the 1900 block of American Boulevard after the officers failed to see any registration on his vehicle. Glover was taken to the Bailey County Law Enforcement Center for further processing, however was eventually given a ticket and given ten days to appear. His vehicle was stored by

Combination Motors. On May 3, Lisa Varis McElroy reported to City Police the theft of a "Huffy" bike from the driveway of her home. This matter is currently under investigation.

On April 29, a Cashway Grocery Store employee allegedly delivered two sacks of groceries totaling \$41.65 to an incorrect address; however, when the delivery boy and a store official returned to the incorrect residence to recover the groceries, the party in the home refused to return them, stating that they had been paid for. This matter is still being investigated.

On April 25, Steve Thrasher, manager of C.R. Anthony's in Muleshoe reported an alleged theft to local police, involving the taking of a small Micro LCD Key Ring calculator valued at \$12. Charged in the incident was Betty Tarter Glaze.

Recorded in the Bailey County Law Enforcement jail book for the past week were the following dispositions: On May 3, Emileo Sandoval was arrested on an alleged assault charge. He was released after three days in the County Jail. On May 4, Domingo Ramos, Jr. was arrested on a Capias warrant. He later paid a fine and was released. On May 6, Gilbert Lopez Recio was charged with DWI. He was assessed ten days jail time and a \$250 fine plus \$65 in court costs.

Also recorded in the jail book was a disposal on May 7 on Sidney Thomas Slinger, who was charged with alleged public intoxication. He was assessed a \$75 bond. Also on May 7, Brandon D. Hall was arrested and jailed on an alleged charge of driving with license suspended. He was released after posting a \$750 property bond. On May 9, Maurillo Ramirez was arrested on alleged charge of public intoxication. He was released following the payment of a \$75 fine. On May 8, Pedro

\*\*\*\*\*  
Why, when the 5 cents federal gasoline tax was recently imposed, did so many stations hike prices by ten cents?

Salamanca was arrested on an alleged public intoxication charge. He was also found to have outstanding

## Municipal Justice Courts Have Full Dockets

With a two week's report to file this week, Judge Linda Huckaby has been busy with a backlog of work on filings and disposals of cases in Municipal Court. The filings and disposals are listed for the period from April 26 to May 9 and total 54 filings of new cases and 38 disposals of old cases.

A total of fourteen filings were made during the period of time involved on charges of bad checks. Twelve filings were made on speeding violations. A total of six were filed on for public intoxication and five for running a stop sign. Three cases were filed for failure to yield right of way and two each for no drivers license and no liability insurance.

One case each was filed on each of the following offenses: following an emergency vehicle, impeding traffic, no motor cycle license, running red light, unsafe backing, disorderly conduct and defective head lamps.

Cases disposed of during the two week period included thirteen for speeding, four each for running stop sign, public intoxication, and bad checks. Two cases each were disposed of for on expired stickers, disorderly conduct, and no drivers license. One case each was disposed of on each of the following charges: no motor cycle license, permitting unlicensed minor to operate motor vehicle, following an emergency vehicle, no in-

warrants. Salamanca paid a \$46.60 fine and posted a \$75 bond prior to his release.

insurance, negligent collision and defective headlamps.

In Justice Court, Justice of the Peace Jack Bates reported a total of 34 cases filed and 25 cases disposed of during the past week. Filings included fourteen for speeding, five for no MVI, four for expired plates and two for no drivers license. One case each was filed on each of the following charges: unregistered trailer, defective top lamp, no motor carrier authority, trespassing on private land, improper load, failure to stop at stop sign, no liability insurance, over allowed gross weight and operating a motor vehicle without headlamps.

Cases disposed of in Justice Court this week included ten for speeding, four for expired plates, two for defective stop lamps, two for over allowed gross weight and one each for the following: no motor carrier authority, failure to drive in one lane, no MVI on trailer, no MVI, running stop sign, no liability and one for no drivers license.



To help guard against losing your pet permanently, be sure he has an ID tag attached to his collar, bearing his and your name and address.

**GILCO DRILLING COMPANY, INC.**  
TEST HOLES DOMESTIC SMALL IRRIGATION WELLS  
701 E. GRANT WAYNE GILLIAM 266-8650  
MORTON



CARRIE SADLER

## New Covenant Academy Will Graduate One

The awards banquet for the New Covenant Christian Academy will be held on May 17 at 6:30 p.m. at the fellowship hall of the First Assembly of God Church. The theme for the banquet will be the "Garden of Eden." A musical program will be presented by the students of the academy prior to the awards presentation.

Graduation exercises for one student will be held in conjunction with the banquet.

Carrie Sadler will graduate and a reception will be held in her honor following the program.

## Sorghum Producers Request Nominations

Texas Grain Sorghum Producers Board has set September 15, 1983 as the date for its biennial election of directors. Three sorghum farmers will be elected to the board for six year terms. They will fill positions of directors whose terms expire this fall.

The Texas Grain Sorghum Producers Board is

responsible for the administration of collections and expenditures of grain sorghum assessments from the twenty-nine county area of the Texas High Plains in which TGSPB operates. Any sorghum farmer within this area is eligible to have his name placed on the ballot.

A nomination requires the farmer's signature to certify that he is willing to serve and the signatures of ten other sorghum farmers

who are also subject to the TGSPB assessment. All nominations must be received by TGSPB by August 15, 1983. Nomination forms may be requested from the TGSPB office, Box R, Abernathy, Texas 79311.

On September 1, ballots will be mailed to sorghum farmers whose names are on file in the TGSPB office. Ballots will also be available in the office of each county agent in the twenty-nine county TGSPB area.

The TGSPB assessment is used to carry on a program of market development and research to improve the profitability of sorghum production.

**ROBERT D. GREEN, INC.**  
200 West American Blvd.  
MULESHOE, TEXAS 79347  
OLDSMOBILE — BUICK — PONTIAC — GMC

**TERRY YELL**  
Sales Representative

Business Phone 806 272-4588  
Home Phone 806 272-4948

**True Value** HARDWARE STORES

**TOOL VALUE OF THE MONTH**  
4.99  
White Supplies Last  
8-In. Cut Hedge Shears  
Steel blades w/pruning notch. Unbreakable handles. 2004  
Quantities Limited

**HARDWARE VALUE OF THE MONTH**  
turtle wax  
2.99 Price Plus Sales Tax  
-100 Mail In Refund Offer  
1.99 Your Final Cost  
White Supplies Last  
MINUTE WAX™  
Silicone Auto Polish  
Just spray on and wipe off for beautiful silicone protection. 115  
Quantities Limited

Our case lot sale ends May 20 - Reserve your paper goods now.

**Fry & Cox, Inc.**  
401 S. 1st 272-4511

**Free Microwave Cooking Classes**  
Each Saturday  
10:00 MDT  
11:00 CDT

The Microwave & More Store  
1605 North Prince Clovis, New Mexico 88101  
Tired of everyday? ... step up to Gourmet!

# ATTENTION LAWN OWNERS!

**JOIN OUR LAWN PARTY**

**HOMELITE/JACOBSEN LAWNMOWER TRUCKLOAD SALE**

Prices Effective Thru May 12th - May 14th

**NEW HOMELITE/JACOBSEN WALK BEHIND MOWERS AT UNBELIEVABLE PRICES!**

**JACOBSEN® LAWN KING™**

- Convenient on-handle Command Control™ system.
- Snap-off cowl for easy access to engine.
- Briggs & Stratton engine.
- Heavy-gauge steel deck, fully baffled for better discharge.
- Mulching Kit — standard with Lawn King 20.
- Quick-change wheel height adjusters.

AS LOW AS **\$188<sup>75</sup>**

Free Frisbee & Balloons For The Kids!

5 MODELS AVAILABLE

**JACOBSEN® SUPER BAGGER™**

- Large reinforced 3-bushel rear catcher.
- Powerful Briggs & Stratton engine.
- Snap-off cowl — quick access to engine.
- Convenient on-handle Command Control™ system.
- Rust-resistant die cast aluminum deck.

AS LOW AS **\$279<sup>25</sup>**

3 MODELS AVAILABLE

**JACOBSEN® TURBO-VAC®**

- Briggs & Stratton 3 1/2-hp engine.
- Convenient on-handle Command Control™ system.
- Snap-off cowl — easy access to engine and dip stick.
- Quick-change wheel height adjusters.
- Rust-resistant die cast aluminum deck.
- Adjustable handles.

AS LOW AS **\$257<sup>50</sup>**

2 MODELS AVAILABLE

**A&M FARM AND RANCH SUPPLY**

**CLOVIS** 2600 E. MABRY DR.  
**PORTALES** 1601 S. AVE. D  
**MULESHOE** 1300 W. AMERICAN BLVD.



# SPRING

# Muleshoe Area Business Directory



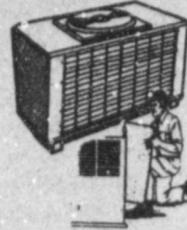
We at the Muleshoe State Bank, say we're proud of you, One Act Play cast, and Kerry Moore for helping to make Muleshoe a community that's standing proud, throughout Texas!

**Muleshoe State Bank**  
Member FDIC

'Summer's On The Way!'

Your Complete Air Conditioning Headquarters.

- ★ Pads
- ★ Pumps
- ★ Bearings
- ★ Hose
- ★ Fittings



401 S. 1st **Fry & Cox, Inc.** 272-4511

**COCA COLA** 32 OZ. \$1.89 PLUS DEPOSIT

TONY'S SAUSAGE, HAMBURGER OR PEPPERONI PIZZA \$1.79

**SERV-ALL**  
**THRIFTWAY**

501 American 272-4739



**Reynolds & Young Inc.**  
803 W. American 272-4236



Doran Reynolds And H.A. Douglass At Reynolds & Young

"We are continuing to offer the best in sales in service," said Doran Reynolds, one of the owners of Reynolds & Young Equipment Co., located at the corner of West American Blvd. and West Eighth Street. "During the past year, we have added Hesston tractors to our line - as we are continuing to try to bring to our customer what he wants. Our hay producers are also important to us" added the former Austin resident.

The Case dealer said they also handle Krause Tillage equipment, and the company is tied into the Case computer system to help locate parts faster for the farmer.

Reynolds first worked for the company in 1974-75 during the summer, and prior to that time had at least six years working for J. I. Case.

"We plan to continue to try to give our customers the best service," he added, "through field service if possible, and in-shop service. We also try to maintain an adequate supply of parts to help keep our customers working in their fields," he concluded.

THURSDAY SPECIAL

**SIRLOIN** 6 oz. \$4.65

with Salad Bar

Choice of Potato 8 oz. \$5.25

**Sunday Buffet**  
Chicken - Roast Beef \$3.95  
Potatoes - Green Beans

**Dinner Bell**

2103 American 272-3460

Your Graduation Gift Headquarters

For Her  
Perfume  
Stationery  
Make-Up Mirror

For Him  
After Shave  
Toiletries By Jovan  
Travel Kit

For Them  
Stuffed Animals Or Billfolds

**Damron Rexall Drug**

308 Main 272-4210

Serving Farmers Through  
Marketing Corn, Wheat  
& Other  
Grains



Texas Sesame

272-4231

**MOST MODERN FLUID  
BLEND PLANT IN THE  
AREA**

Here To Serve Your Needs  
For 22 Years

**Foster Fertilizer**

LAZBUDDIE 965-2921

Lee's Western Wear Has Just  
The Right Gift For Your Graduate.  
See Our Excellent Selection  
Of Clothing, Boots & Accessories.



lee's WESTERN WEAR, INC.

1910 American 272-4663

Leal's - Known For  
The Best In  
Mexican Foods  
Closed on Monday



**Leal's Nuevo  
Restaurant**

1542 W. American 272-3294

**Three  
Locations To Serve  
You**  
MULESHOE  
CLAY'S CORNER - ENOCHS  
Farmer's Co-op Elevators



**Spudnuts**

The Upper Crust of the Donut World

**SPUDNUT  
SHOP**

328 Main 272-3542

Congratulations to all the  
persons who worked so  
diligently to construct and open  
the miniature golf course. Mule  
Putt Golf Course is an asset  
to our community.  
**First National Bank**

202 S. First Member FDIC 272-4515

Planting Time Is Just Around The Corner - We At Sherley-Anderson  
Are Your Area Dealers For Pioneer - Golden Acres & Richardson Seeds.

We Also Can Obtain

Geo. Warner, Ring-Around, Texas Triumph & Browning Seed

We Hope We Can Be Of Service For Finding  
The Right Seed For You.



**Sherley-Anderson Elevator**

Laz. addie 965-2922

DETERGENT  
**BOLD III** 20 OZ. 99¢

OTTER  
**POPS** 18 CT. \$1.05



515 W. American 272-4406



# AID TO MILLIONS CLASSIFIED ADS

## DEADLINE FOR CLASSIFIED ADS IS TUESDAYS AND FRIDAYS 11:00A.M

CLASSIFIED RATES  
1st Insertion Per Word...\$15  
Minimum Charge...\$2.30  
2nd Insertion Per Word...\$13  
Minimum Charge...\$2.00  
CARD OF THANKS Per Word...\$20  
CLASSIFIED DISPLAY \$1.70...per column inch  
BLIND AD RATES 50% more  
DEADLINES 11 a.m. Tues. for Thurs. 11 a.m. Fri. for Sun. WE RESERVE THE RIGHT TO CLASSIFY REVISE OR REJECT ANY AD. NOT RESPONSIBLE FOR ANY ERROR AFTER AD HAS RUN ONCE.

APPLICATIONS BEING Accepted by Muleshoe Police Department for Secretary. Requirements: Typing 60 wpm or better. Minimum 5 years secretarial experience. Able to learn dispatching duties. Residency requirement (those not able to meet requirements need not apply) NO PHONE CALLS ACCEPTED. Must apply in person, 8 a.m.-5p.m., Mon. - Fri. 215 E. Avenue B, Muleshoe. EQUAL OPPORTUNITY EMPLOYER. 3-19t-3tc

### 5. APTS. FOR RENT

FOR RENT: 1 bedroom apartment. For information call 272-4754 after 5 p.m. 5-17t-tfc

### 8. REAL ESTATE FOR SALE

IDEAL 90' lot for mobile home or double wide mobile home and 50' lot, 2 and 3 BR houses. 272-4732 days, 272-4827 nights and weekends. 8-10t-tfc

3 BEDROOM HOUSE for sale: 2 car garage, 2 bath, covered patio, new carpet, nice location, living room, dining room, kitchen with built-ins. \$38,000. 272-3006. 8-17s-8tc

FOR SALE BY OWNER: 3 br, 2 bath brick home. Fireplace, carpeted garage. Beautiful yard & covered patio. Close to high school. 272-3402 or 272-3839. 8-19s-tfc

HOUSE FOR SALE: 2350 sq. ft. 3 bedroom, 2 baths, formal living room, den with fireplace, dining room, kitchen, laundry room with sewing center, basement, double car garage, patio, storage shed, 2 lots. Located 1/4 mile east from Earth, Texas on hwy 70. Call (806) 257-3785. 8-14s-tfc

BY OWNER: Approximately 1,800 sq. ft., 3 bedroom, 2 bath home. About 4 years old. Lots of closets, large living area with fireplace. Built ins, carpet throughout. Large covered patio, storage shed, two carport with storage. Large fenced lot with nice landscaping. Call 272-5545 8:00 a.m.-5:00 p.m. or 272-5363 after 5:30 p.m. weekdays or weekends. 8-19t-tfc

### NEW HOMES

No Down Payment  
Low Monthly Payment  
You May Qualify!

272-4266

Rex Harris John Craig Broker Builder 8-16t-tfc

Bingham & Nieman Realty

116 E. Ave. C 272-5285 \*\*\* 272-5286

"We Appreciate Your Business!"

George & Dianne Nieman 8-1t-tfc

### KREBBS REAL ESTATE

If it's Real Estate you want, we have it or can get it.  
Appraisals  
Tele. 272-3191-office and residence 8-16s-tfc

MUST SELL: 7 month old mobile home. 14'x70'. Westfield by Fleetwood. Financing available. 272-3116 or 272-3319. 8-19s-2tc

FOR SALE: 3 bedroom house, 2 baths, patio, carport. Call after 4 p.m. weekdays 272-4085. 8-14t-tfc

EXTRA NICE 3-1/2-1. New carpet, paneling through out. Screened in patio. Call 4541 or 5671 after 5:00 p.m. Ask for Debby. 8-13t-tfc

### MUST MOVE SOON - PRICE REDUCED FOR QUICK SALE

- by owner. 3 bedroom, 1 bath home. Located on corner lot, fenced back yard, storm windows, siding and much more. Priced in mid 20's. Assumable 10% loan. Call 272-5193. 522 W 8th. 8-18s-4tptfc

### 9. AUTOMOBILES FOR SALE

1981 DATSUN 200 SX - automatic, air, AM-FM stereo cassette, all power assits, 28,000 miles, excellent MPG, \$6,500 after 5 p.m. 272-3028. 9-18s-4tp

FOR SALE: 1979 XLT Ford 150 1/2 T pickup. 351 motor, two-tone, air cond., power brake, steering, AM/FM Rdio. Rear hitch, side rails. Carpeted, side mirror, chrome hubcaps. Wife's pickup. Extra clean. Only 33,000 miles. Call 946-3474. 9-19s-tfc

FOR SALE: 1975 Volkswagen Rabbit. Good condition. Call after 5 p.m. 272-4903. 9-19t-8tc

### 11. FOR SALE OR TRADE

GAME CHICKENS for sale. Chicken wire & coop. 272-4113. 11-18t-4tc

### HONEY FOR SALE

Nick Landers 334 W. Ave. J. 272-3096 15-5t-tfc

FOR SALE: Beginner Cadet flute. \$50. 272-5371. 11-18t-tfc

69 FORD CAMPER SPECIAL. Self contained, fully loaded. Sleeps 6. 927-5423. 15t-9tfc

UTILITY TRAILER 8x16 tandem axle. Low boy with lights, 7000 lbs. \$675.00 each. Call 744-4993 anytime. Kirkland Machine, 510 N. Ave. H Amarillo Hwy. Lubbock, Tx 79417. 11-18t-6tp

### 12. HOUSEHOLD GOODS

BURROWS UPHOLSTERY AND FURNITURE REPAIR 209 W. 2nd Phone 272-4255 15-5t-tfc

### 15. MISCELLANEOUS

FRANK'S REFRIGERATION APPLIANCE & SERVICE PARTS & REPAIR 315 W. 3rd. Ph. 272-3822 15-5t-tfc

GARDENER'S: Use our Special Plant Food - designed specifically for Special Gardeners. Baker Farm Supply, 1532 West American, 272-4613. 15-12s-tfc

WANTED: Used Honey Extractor. 272-4536. tfc

ALEX'S TIRE SERVICE For service 24 hours a day telephone 272-5012 or Mobile 965-2242. 224 East Fourth Street, Muleshoe, Tx. 79347. 15-5s-stfc

FEED YOUR TREES Use Pecan and Fruit Tree Food from Baker Farm Supply. 1532 West American, 272-4613. 15-12s-tfc

### 18. LEGAL NOTICES

#### NOTICE TO ALL PERSONS HAVING CLAIMS AGAINST THE ESTATE OF S.P. STOCKARD, DECEASED

Notice is hereby given that original letters testamentary upon the Estate of S.P. Stockard, Deceased, were issued to me, the undersigned, on the 9th day of May, 1983, in the proceeding indicated below my signature hereto, which is still pending, and that I now hold such letters. All persons having claims against said estate, which is being administered, in the County Court below named, are hereby required to present the same to me at the address below given, before suit upon the same are barred by the general statutes of limitations, before such estate is closed, and within the time prescribed by law.  
My post office address is 1507 West Avenue C, Muleshoe, Texas 79347.

#### WE BUY USED FURNITURE AND APPLIANCES

CALL 272-3030 HARVEY BASS APPLIANCE 15-5t-tfc

BARBECUE GOATS for sale: 925-6416. 15-19s-4tc

GIGANTIC RUMMAGE SALE: Multi family. Appliances and many surprises. Old Western Auto Bldg., Friday, May 13th. 15-19t-1tc

\*\*CREDIT PROBLEMS\*\* If your mobile home loan was turned down for any reason, I will help! Call Johnny collect at 0-806-763-5319, Lubbock.

\*\*A-1 MOBILE HOMES\*\* Largest retail chain in USA! No one wants your business like we do! Try us! Call Johnny collect at 0-806-763-5319, Lubbock. 15-19t-15tc

HOME REPAIRS. F.M. Saldana Construction. Licensed and bonded plumber. Specialize in cement, carpenter work, remodeling, painting, acoustical ceilings. 272-4955. 15-16s-tfc

WANTED TO BUY sideroll sprinklers, 2", 3", 4", sprinkler pipe. Call *State-line Irrigation*. 272-3450 or 385-4487. 15-49s-tfc

Will do haystacking. Have truck and loader. Phone 272-3600. 1-19s-3tc

### CASH

Paid for Aluminum Irrigation Pipe-Old Motors-Scrap Iron Copper-Pump Brass, etc.  
For Prices Call 806-765-8837 Lubbock American Iron And Metal, Inc. 3202 Quirt Lubbock, Texas 15-17s-8tc

### CONCERNED

about someone's drinking  
HELP IS AVAILABLE through Al-Anon Call 227-2350 or 965-2207 or come to visit Tuesday nights, 8:30 p.m. at 1116 W American Boulevard, Muleshoe. 1-18s-tfc

### 17. SEED AND FEED

FOR SALE: Cottonseed with 90% germ, treated with Vitatex and Capitat. Phone 925-6421. 17-18t-tfc

FOR SALE: Delinted cottonseed GFA 71 and Quataw. Good germination. 946-3375 or 946-3422. 17-18t-4tc

Dated this 9th day of May, 1983.

Euleta Stockard, Executrix of the Estate of S.P. Stockard, Deceased, No. 1554, County Court, Bailey County, Texas. 19t-1tp

### 18. LEGAL NOTICES

ORDINANCE NO. 236A AN ORDINANCE MAKING IT UNLAWFUL TO CONSUME AN ALCOHOLIC BEVERAGE OR TO BE IN POSSESSION OF AN OPEN CONTAINER OF ALCOHOLIC BEVERAGE WITH THE INTENT TO CONSUME SAID ALCOHOLIC BEVERAGE OR PUBLICLY OWNED OR CONTROLLED PROPERTY WITHIN THE CORPORATE LIMITS OF THE CITY OF MULESHOE, TEXAS; DEFINING TERMS; DECLARING POSSESSION OF AN OPEN CONTAINER OF AN ALCOHOLIC BEVERAGE PRIMA FACIE EVIDENCE OF AN INTENT TO CONSUME SAID ALCOHOLIC BEVERAGE; DECLARING A VIOLATION OF THIS ORDINANCE TO BE A MISDEMEANOR AND PROVIDING FOR A PENALTY UPON CONVICTION THEREOF; PROVIDING FOR SEVERABILITY; AND DECLARING ITS EFFECTIVE DATE.  
NOW THEREFORE BE IT ORDAINED BY THE CITY COUNCIL OF THE CITY OF MULESHOE, TEXAS:  
SECTION 1.  
As used in this ordinance, the following definitions will apply:  
(a) "Alcoholic beverage" means alcohol, or any beverage containing more than one-half of one percent of alcohol by volume which is capable of use for beverage purposes, either alone or when diluted.  
(b) "Possession" means care, custody, control or management. Ownership is unnecessary nor is the possession required to be exclusive.  
(c) "Open container" shall include bottles or other containers of alcoholic beverage which have had the seal broken but have the cap or lid on the container and shall also include containers such as cups, mugs, glasses, thermos bottles, and flasks.  
(d) "Publicly-owned property" - Streets and right-of-ways, alleys, sidewalks, parks and publicly-owned parking lots.  
(e) "Publicly-controlled property" - Property under the care and control of a governmental entity.  
SECTION 2.  
It shall be unlawful for any person to drink or consume an alcoholic beverage or have in such person's possession an open container of alcoholic beverage with the intent to drink or consume said alcoholic beverage while on any publicly-owned or publicly-controlled property within the corporate limits of the City of Muleshoe, Texas.  
Possession of an open container of alcoholic beverage will be prima facie evidence of an intent to drink or consume said alcoholic beverage.  
SECTION 3.  
Any persons who shall be convicted of a violation of this ordinance shall be deemed guilty of a misdemeanor and, upon conviction thereof, shall be punishable by a fine of not less than \$1.00 nor more than \$200.00.  
SECTION 4.  
Should any provision of this ordinance be declared invalid for any reason, such declaration shall not affect the validity of other provisions of this ordinance, it being the intent that the provisions of this ordinance be severable and remain valid notwithstanding such declaration.  
SECTION 5.  
This ordinance shall become effective from and after its final passage and publication as provided by law.  
PASSED AND APPROVED THIS 3rd Day of MAY, 1983.

/s/ by Charles Bratcher

## Texas A&M Horse Short Course Set May 26, 27

Horse enthusiasts will be treated to a wide range of activities at the 1983 Horse Short Course at Texas A&M University May 26-27.

Among these will be a session on management recommendations, a tour of Brazos County horse farms, a cutting horse training clinic, a horse sale and open cutting horse contests.

"This year's short course deals in all facets of the horse industry-production, management, training and use," says Dr. Doug Householder, horse specialist with the Texas Agricultural Extension Service, Texas A&M University System. The Extension Service is conducting the short course in conjunction with Texas A&M's Department of Animal Science.

"We are combining some key discussions on horse production with a training clinic and farm tours to see actual demonstrations and practical applications of various methods and techniques," adds Householder. "The sale the second day is designed to raise funds to complete the A&M Animal Science Department's N.W. 'Dick' Freeman Arena. Mr. Freeman contributed immensely to Texas A&M's horse program as well as to the Texas horse industry."

Discussions during the opening session of the short course, which begins with registration at 7:30 a.m., include exercise physiology in horse training and conditioning, reproductive performance in broodmares, controlling flies on horse ranches, and an overview of horse research at Texas A&M.

The Brazos County Extension Horse Committee is

Mayor, City of Muleshoe ATTEST: /s/ by Mary J. Hicks City Secretary, City of Muleshoe. 18-18t-2tc

registration at 7:30 a.m. at the livestock pavilion. The sale will offer a mixed set of about 60 yearlings, two and three-year-olds, and pregnant mares of fashionable cutting, halter, race and performance breeding from the Texas A&M herd as well as from several prominent Texas horse producers.

Buster Welch of Merkel, a professional horse trainer, will conduct a cutting horse clinic the first evening at Texas A&M's new livestock pavilion. The clinic will include live demonstrations on riding and training the cutting horse, notes Householder.

The special Freeman Arena Development Horse Sale will be featured the second day of the short course and will begin with

## Nation's Small Business Week Is Proclaimed

President Reagan has proclaimed the week of May 8 through 14 as Small Business Week.

In issuing the proclamation, the President said, "Our Founding Fathers envisioned a Nation whose strength and vitality would emerge from the ingenuity of its people, and they understood that a Nation's prosperity is dependent on the freedom of its citizens to pursue their hopes, dreams, and creative ambitions."

Small Business Week is held annually to honor and recognize the contributions of America's small business men and women.

There are 13.3 million small businesses in this country and their number has been growing steadily for decades. By taking steps to encourage the formation and success of small business, America can help ensure its economic standing in the world.

President Reagan said, "Today small business plays an even more vital role in our National life and is responsible for the creation of well over half of the new jobs in our economy. Small business is also in the forefront of utilizing technological advances."

The two-day program of activities will conclude with an NCHA (National Cutting Horse Association) Open Cutting Horse Contest beginning at 6 p.m. Friday.

Registration information on the Horse Short Course is available from any county Extension office or from Householder, Department of Animal Science, Texas A&M University, College Station, Texas 77843.

The President continued, "America's entrepreneurs and small business owners are among the most dynamic and innovative leaders of the business community. Their willingness to confront uncertainty with creativity and determination to succeed helps our Nation meet the challenges we face today."

For more information about small business, visit or call the district office of the U.S. Small Business Administration located in Suite 200, Regency Plaza, 1611 - 10th Street in Lubbock; telephone (806) 743-7462.



Sports and recreational activities account for more than 39,000 eye injuries treated in hospital emergency departments each year. The racquet sports-tennis, racquetball, squash-accounted for more than 4,200 injuries last year, reports the National Society to Prevent Blindness, an organization founded 75 years ago.

You can give your eyes a sporting chance by using protective eyewear while you play.

## Muleshoe Youth Baseball Schedule

Table with columns for SUNDAY, MONDAY, TUESDAY, WEDNESDAY, THURSDAY, FRIDAY, SATURDAY and rows for May 1983 and June 1983. Includes game times and team matchups.



**Open Letter  
To The Public**

OPEN LETTER TO ALL CUSTOMERS OF WHITE'S CASHWAY GRO., INC.

Dear Customer:  
We wish to advise you White's Cashway Gro., Inc. was sold Tuesday, May 10, 1983 to Mike Perez of Muleshoe, Texas. Mr. Perez and his associates will assume ownership of Cashway May 30, 1983. It is necessary that no further credit be extended as of May 14th and all accounts will be due and payable in full by June 4, 1983; after that date payments can be made to P.O. Box 463 or at the residence of Jerie Wagnon, Rt. 3 Box 35.

We want to express our sincere gratitude and appreciation for your patronage with us over these many years. You have made it a pleasure to be in business in Muleshoe and we hope you will give Mr. Perez the opportunity to serve you as we have in the past.

Sincerely yours,  
T.R. White  
Jerie Wagnon

pd. advertisement

**Letter To  
The Editor**

Dear Mr. Hall:  
Congratulations are in order for Gov. Mark White, Sen. Ted Lyor of Rockwall and Rep. Fred Agnich for their successful efforts in passage of the Texas Wildlife Conservation Act of 1983.

Not to be forgotten is Texans for Wildlife Conservation, whose members include the more than 800 sportsmen's clubs in Texas. The group was formed to promote passage of the act, which would not have been possible without their devotion and sacrifice of time and energy.

The act gives the Texas Parks and Wildlife Department statewide authority for wildlife management and eliminates locally specialized wildlife laws previously in effect in 116 Texas counties. The Texas Wildlife Conservation Act at last enables the Parks and Wildlife Department to manage our state's wildlife resources on a scientific basis statewide.

In my opinion, it is the most far reaching wildlife conservation legislation ever passed in the state.

Generations to come of outdoor enthusiasts and sportsmen truly owe Governor White, Senator Lyon, Representative Agnich and Texans for Wildlife Conservation a debt of thanks.

Sincerely,  
Ed L. Cox, Jr.  
Vice Chairman,  
Texas Parks & Wildlife Commission

**News of  
Area Servicemen**

Pvt. Martin Mercado Jr., son of Martin and Janie Mercado of 1205 Walnut St., Friona, Texas, has completed one station unit training (OSUT) at the U.S. Army Infantry School, Fort Benning, Ga.

OSUT is a 12-week period which combines basic combat training and advanced individual training.

The training included weapons qualifications, squad tactics, patrolling, landmine warfare, field communications and combat operations. Completion of this course qualifies the soldier as a light-weapons infantryman and as an indirect-fire crewman.

Soldiers were taught to perform any of the duties in a rifle or mortar squad.

His wife, Theresa, is the daughter of Edmund and Hortencia Bernera of Menard, Texas.

He is a 1981 graduate of Friona High School.

The crocodile continually grows new sets of teeth to replace old teeth.

**ICE MACHINES**  
(NEW & USED)  
-SALE OR LEASE-  
SERVICE & REPAIR  
**CLAIBORNE**  
REFRIGERATION  
505/763-5405 OR 505/762-0122

**WHITE'S CASHWAY  
SUPERMARKET  
MULESHOE, TEXAS**

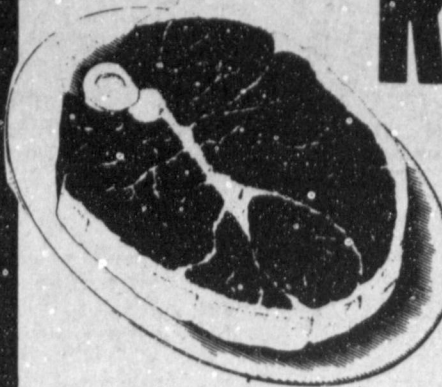
**Gold Bond Stamps!  
Double On Wed. & Sat.**

Monday Thru Friday - 7:30 A.M. to 8:00 p.m.  
Saturday - 7:30 a.m. to 9:00 p.m.  
Sunday - 12 noon to 7:00 p.m.



U.S.D.A. HEAVY AGED - BONE IN

**ROUND STEAK**  
Lb. **\$1.79**



BONELESS ROUND STEAK.....Lb. **\$1.99**

CUBED **STEAK**.....Lb. **\$2.49** BONELESS RUMP OR SIRLOIN TIP **ROAST**.....Lb. **\$2.49**

12 OZ. TYSON'S ASSORTED **CHIC 'N QUICK**.....**\$2.29**

KRAFT RED RIND 1/2 MOON CHEDDAR **CHEESE**.....Lb. **\$2.29** ARMOUR STAR **BACON**.....1 Lb. **\$1.79**

**MEAT SPECIALS**

6 BOTTLE CARTON-32 OZ. 7-UP, REGULAR OR DIET **DR. PEPPER**.....PLUS DEPOSIT **\$1.89**

FRITO-LAY All Varieties **CHIPS**.....1/2 Lb. PKG. **99¢**

8 OZ. AGREE **CONDITIONER OR SHAMPOO** **\$1.59**

6.4 APM REGULAR **TOOTHPASTE** **\$1.39**

7 OZ. EDGE **SHAVE GEL** **\$1.49**

**PRODUCE**

FLORIDA YELLOW

**CORN**  
**4/\$1**  
EARS

MEXICO VINE RIPE **CANTALOUPE**.....Lb. **59¢**

9 OZ. CELLO FLORIDA **RADISHES**.....**4/\$1**

TEXAS YELLOW OR ZUCCHINI **SQUASH**.....Lb. **39¢**

MEXICAN LARGE **PINEAPPLES**.....Ea. **99¢**

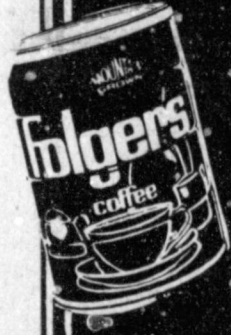
**SPECIAL  
values**

**QUALITY BARGAINS**

FOLGERS ALL GRINDS

**COFFEE**

**\$2.19**  
1 Lb.



DINTY MOORE

**BEEF STEW**

**\$1.49**  
24 OZ.



COMET LONG GRAIN

**RICE**

28 OZ. **89¢**

4 BAR ZEST **BATH SOAP**.....**\$1.59**

WHITE SWAN QUARTERS **MARGARINE**.....1 Lb. **59¢**

WINDEX WINDOW **CLEANER**.....12 OZ. **99¢**

FOLGERS CRYSTALS **COFFEE**.....8 OZ. **\$3.69**

DEL MONTE ROJA OR PICANTE **SALSA**.....8 OZ. **59¢**

DEL MONTE **DICED CHILIES**.....4 OZ. **2/89¢**

DEL MONTE **REFRIED BEANS**.....17 OZ. **2/89¢**

BEST MAID DILL, POLISH, HAMBURGER **PICKLES**.....32 OZ. **\$1.19**

PRINGLES REGULAR, LITE, RIPPLE TWINS **POTATO CHIPS**.....9 OZ. **\$1.29**

GLADIOLA ALL PURPOSE

**FLOUR**

**99¢**  
5 Lb.



25 Lb. GLADIOLA FLGUR...\$4.89

BUTTER FLAVOR

**CRISCO  
SHORTENING**

**\$2.09**  
3 Lb.



LONE STAR

**DOG FOOD**

**\$1.99**  
10 Lb.



ATHINS SWEET

**RELISH**

**\$1.19**  
22 OZ.

IVORY DISH

**LIQUID**

**\$2.59**  
48 OZ.



GLADIOLA CORN BREAD OR BISCUIT

**POUCH MIXES**

**4/\$1**  
6 OZ.



NICE & SOFT

**BATH TISSUE**

**\$1.89**  
6-ROLL PKG.



OXVDOL

**DETERGENT**

**\$2.79**  
84 OZ.



**V-8 JUICE**

6 PK. **99¢**  
6 OZ.

With Super Saver Booklet

**TOMATO SAUCE**

8 OZ. **3/59¢**

With Super Saver Booklet

**T.V. DINNERS**

11 OZ. **39¢**

With Super Saver Booklet

**Super Savings**

**Super Savings**

**NICE & SOFT  
BATH TISSUE**

6 ROLL PK. **\$1.49**

With Super Saver Booklet

**ARMOUR STAR  
BACON**

1 Lb. **\$1.39**

With Super Saver Booklet

**DR. PEPPER**

PLUS DEPOSIT **\$1.39**

With Super Saver Booklet

WHITE SWAN 6 OZ. **ORANGE JUICE** **2/89¢** STILWELL 12 OZ. **BREADED OKRA** **59¢**

BANQUET ALL VARIETIES **T.V. DINNERS** 11 OZ. **79¢**

FROZEN FOOD