

WEATHER

September 7 82 52 .18
 September 8 62 52 .00
 September 9 76 57 .00
 September 10 85 64 .02

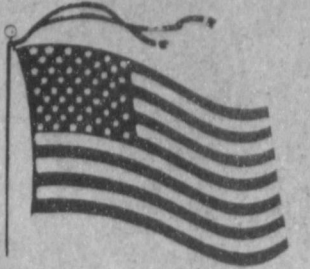
Moisture for Year: 15.18

Muleshoe Journal 20¢

'The Community Of Opportunity - Where Water Makes the Difference'

Foreman Company
 Box 68

Muleshoe, Ill. 61462

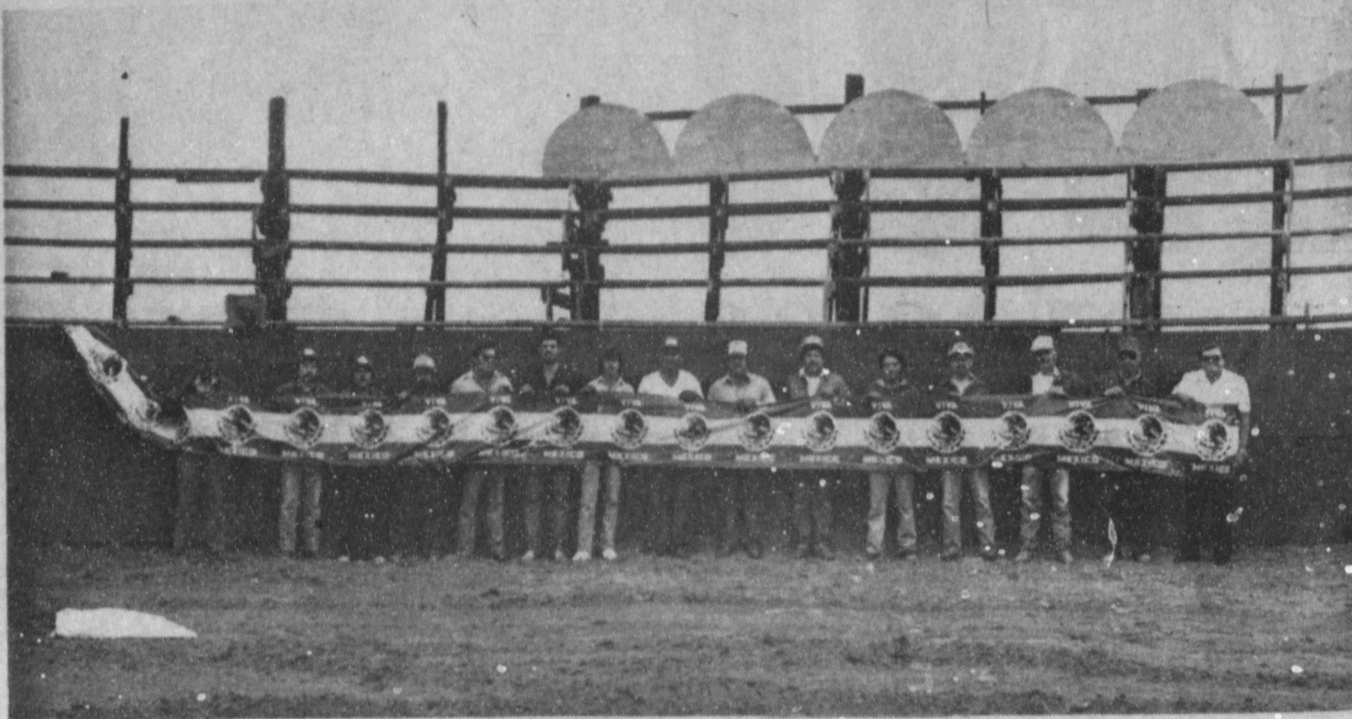


Vol. 63 No. 36

10 Pages Today

Published Every Thursday at Muleshoe, Bailey County, Texas 79347

Thursday, September 11, 1986



KNIGHTS OF COLUMBUS CONSTRUCT ARENA--Last Sunday afternoon, these members of the Knights of Columbus display 'Viva Mexico' banners at their new Mexican rodeo arena, located some two miles east of Muleshoe on Highway 84. They are busy this week adding the finishing touches to the brand new arena prior to a Mexican Rodeo scheduled for Sunday afternoon at 3 p.m. in conjunction with Mexican Independence Celebrations. Admission will be \$5 for adults and \$1 for children under the age of 12. Food booths will be available also.

Mules Will Tangle Friday With Former Foe Boys Ranch

Just because the Boys Ranch football team was soundly defeated (48-7) by Panhandle in

the season opener last Friday night, don't ever sell that team short. Muleshoe has spent many a year being trounced by the strong young men from Boys Ranch up the road near Dumas.

They have always been impressive opponents when the Mules have tackled them, and no less should be expected, even though the Mules slapped Olton 22-14 in a come from behind, fourth quarter victory Friday night.

Friday night be at Benny Douglass stadium for the 8 p.m. game, and you surely won't be disappointed in the game, or in the Muleshoe Mules. They will be coming into the game fresh from the Olton victory, in good physical shape, and definitely 'up' for the game.

Last Friday, the Mules ran 42 plays from scrimmage for 224 yards, an average of 6.0 yards per attempt. They also had 14 passes for 93 yards, an average of 7.0 yards per carry and amassed an offense of 327 yards.

During this time, they gave to their opponents 38 carries from scrimmage for 159 yards, or an

average of 4.0 yards per carry. They completed 11 passes for 87 yards, with 8.0 average yards per pass. Olton had a total of 246 offensive yards.

Armando del Toro carried 19 times for the Mules for 134 Cont. Page 6, Col. 1

Simple Assault, Sale Of Alcohol Are Filed Here

Customers picked up by the police? That's right. Saturday evening and Saturday night, customers from a certain 'business' in Muleshoe found themselves intercepted by law enforcement officers and their purchases confiscated.

Officers had 'staked out' a residence in Muleshoe, and watched people leaving the residence with their purchases. The people were then intercepted, detained and their purchase (beer) confiscated.

After collecting enough evidence to constitute 'just cause' to obtain a search warrant, city and county officers moved quickly. They drove to the front and back of the residence, and coordinated a time to reach both front and back doors of the home quickly.

The 41-year old resident of the house came outside and struck Sgt. Richard Bonham as he was going up onto the front porch of the home, the officers went inside the home.

The officers confiscated approximately 19 cases of beer, which was loaded into the back of a pickup, inventoried and hauled to the police department. The man was also taken, in handcuffs after he had to be subdued, to the sheriff's office where he was held on charges of simple assault on a police officer, and possession and sale of an alcoholic beverage.

At presstime, the man was still jailed on the charge.

FHA Students Will Have Dinner

The Future Homemakers of America (FHA) from Muleshoe High School will serve the pre-game dinner on Friday, September 12, preceding the Muleshoe/Boys Ranch football game in Muleshoe.

Serving hours will be from 5:30-7:30 p.m. in the Muleshoe High School cafeteria. Tickets will be \$4 for adults and \$3 for children 12 years of age and younger.

On the menu will be Beefy Muleshoe Stew, cornbread and hot rolls, salad bar, fruit cobbler, iced tea and coffee.

The FHA girls say, "Thank you for supporting the Mules and the FHA members."

Mexicans To Celebrate Independence Sunday

Something Special Scheduled At Sudan On Thursday Night

It will be Something "very special" for Sudan on Thursday, September 18, when the Sudan Chamber of Commerce and The Anchor Brothers Band present the ninth 'Something Special.'

Beginning at 7 p.m. in the Sudan High School auditorium, The Anchor Brothers Band, who usually close out the Something Specials, will be opening the show, and the only act other than an outstanding group, who will be the "singers of the evening."

Nationally-known and famous Gold City Quartet, home-based in Glencoe, Ala. will be in Sudan for a concert. For the past several weeks, the group has had the number one gospel song in the nation.

Formed in 1981, the group has had phenomenal success in their five year career. They are considered to be the fastest moving, highest rising quartet in gospel music.

Tim Riley is manager of the group, and bass singer. Mike LeFevre, a member of the LeFevre Family Singing group, sings baritone. Ivan Parker is the lead singer of the group. Brian Free is first tenor and is considered to be one of the strongest and most dynamic in the gospel industry.

They are joined by pianist, Gary Jones; Jerry Lloyd, steel guitar; John Noski, drums and Jeff Hullender, bass guitar. Riley also has 'Something Special' for the youngsters, and the young at heart, with his comical portrayal of a 'Make-believe Cletus.'

Set aside the night of September 18 to be in Sudan for a super-special 'Something Special'. Admission will be \$4 for adults and \$2 for children under 12, and free for those under the age of six.

Although most of the celebration is scheduled for Sunday afternoon and Sunday night in Muleshoe, people of Mexican heritage are eagerly awaiting their own special annual celebration.

September 16 is traditionally recognized by Mexican people as their own Independence Day celebration.

The annual celebration is a commemoration of the beginning of Mexico's fight for

independence from Spain.

It officially commemorates the shout of freedom issued by Father Miguel Hidalgo y Costilla to his congregation early on the morning of September 16, 1810, in the little village of Dolores, Guanajuato, Mexico. The historic cry rallied the masses and began the war which would later free Mexico from Spanish oppression.

In Muleshoe, members of the Knights of Columbus have been very busy for the past few months, constructing a Mexican rodeo arena, east of Muleshoe, just to the south of Valley Grain on Highway 84.

The arena is unique in appearance in that it is circular, and is constructed of solid lumber. It also features a long 'neck' where most of the rodeo action originates, coming into the circular arena. Stock pens are to the side of the 'neck.'

Mexican charreadas will be in Muleshoe from Plainview and from El Paso to entertain with a Mexican rodeo, beginning at 3 p.m. on Sunday at the new arena. Last year was the first year for a Mexican rodeo here, even though it was held in a regular arena which was not adequate for the uniqueness of a very 'different' type of rodeo.

Rodeo action gets underway Sunday afternoon at the new arena, and ticket prices are \$5 for adults and \$1 for children under the age of 12. Rodeo action and plenty of food booths will be on hand for the afternoon of activities.

Sunday night at 9 p.m., the Cont. Page 6, Col. 5



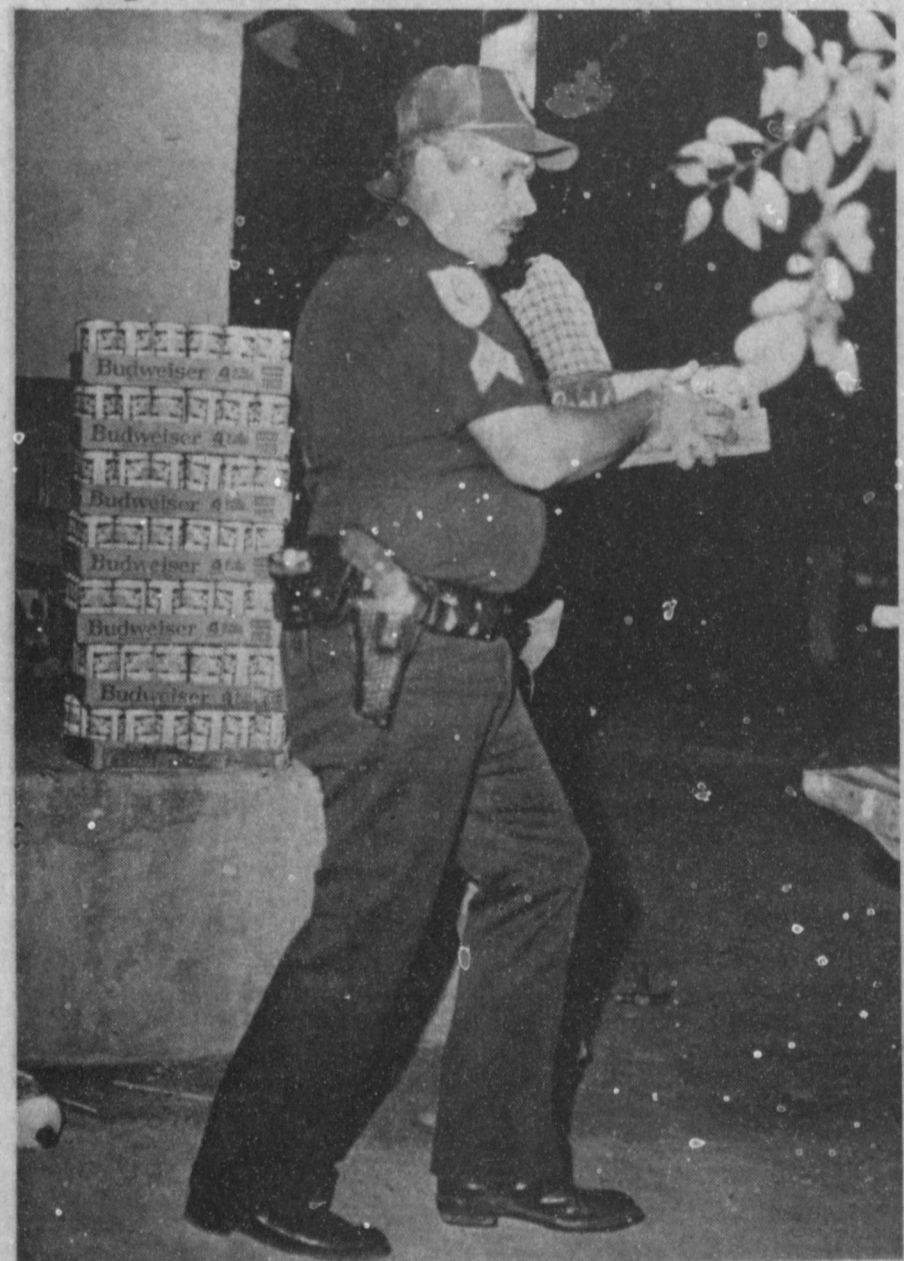
 A Defensive Driving class is scheduled for September 16-17 at the Muleshoe Police Department, according to Lt. Wayne Holmes, instructor.

He said the class is scheduled for 6:30-10:30 p.m. each of the two evenings, and cost of the class is \$5.

You may register with the MPD dispatcher through September 16.

 Lazbuddie Young Homemakers have received their first shipment of Del Cerro pecans. The cost this year is \$4 per pound, or \$48 per case.

For your pecans for all your holiday cooking and baking, call Pat Randolph at 965-2915 or contact any Lazbuddie Young Cont. Page 6, Col. 1



LOADING OUT--Late Saturday night, members of the City and County police were at a residence in Muleshoe loading out cases of beer. Nearly 19 cases of beer were confiscated, and a local man was charged with simple assault on a police officer, and possession and sale of an alcoholic beverage. Pictured loading cases of beer is MPD Sgt. Richard Bonham.

Kay Graves First Winner Of New Contest

Aw, C'mon you guys! Surely you can do better than that. In the first annual Merchants Football Contest for the year, who came up the winner? Yup, you're right--it was a female.

Kay Graves was the only contestant for the first week to miss only one game and took the contest for the first time. This win got her the \$6 weekly first place check, along with 10 big points to count toward the grand prize at the end of the contest some weeks away.

Kay missed the Colorado-Colorado State game to take first place.

Now, when it got to second place, four persons missed two games each--so the judge had to resort to the tiebreakers to determine the winners of second and third places.

Longtime contestant and former resident of Muleshoe, C.O. 'Dutch' Larue, now of Dimmitt, won second place and eight points when he missed the Boston College-Rutgers game along with the Colorado-Colorado State game. But he was only 32 points off on the double tiebreaker score. He received \$3 and eight points.

Third place was won by Buck Ragsdale, who missed the Mississippi State-Syracuse game and the Colorado-

Cont. Page 6, Col. 5

Cross Country Teams Compete At Levelland

Muleshoe Coach Jerry Johnson said he is very proud of his cross country team from Muleshoe High School, following their first competition for the 1986-87 school year. The teams competed at Levelland last Saturday.

Muleshoe girls had 110 points, to 117 for Dalhart, 164 for Lubbock Monterrey; 173 points for Lubbock Coronado and 174 points for Hereford.

"It was an excellent meet for our first meet of the year," said Coach Johnson. "Our next meet is Saturday, September 13 in Brownfield."

"We are not sure, but we may possibly have the largest girls' team in the state. We took 23 girls to run at Levelland and we will take 32 to Brownfield."

A total of 118 girls competed at Levelland last weekend, with the following results for the Muleshoe Cross Country team:

Jennifer Green, 11th, 14:32; Heather Hutton, 20th, 14:47; Kelly Conklin, 22nd, 14:50; Jo Ann Gutierrez, 23rd, 14:51; Esther Acosta, 34th, 15:13; Amy Alvarado, 36th, 15:17; Caroline Liles, 50th, 15:43; Amy Harrison, 54th, 15:56; Debbie Brown, 55th, 15:57; Michelle Cox, 56th, 15:58; Anna Jaramillo, 63rd, 16:31; and Wendy Green, 64th, 16:31.

Also, Gloria Gilliam, 74th, 17:07; Brenna Matthews, 88th, 17:43; Amber Green, 89th, 17:44; Gloria Orozco, 90th, 17:46; Stacy McElroy, 91st,

18:02; Shelly Berry, 93rd, 18:11; Cont. Page 6, Col. 4

County Receives Letter Granting Ambulance Use

Bailey County Judge Gordon H. Green said he received a letter from Westworld Community Healthcare, Inc. regarding the ambulance service operated by Westworld.

Westworld said in the letter that they would allow the county to assume control of the ambulance service for the county and use the two ambulances owned by Westworld and the present ambulance building located behind West Plains Medical Center for up to a year.

The county will assume all expenses for the ambulance service effective September 15, and will operate the ambulances on that basis while county officials explore other possibilities for the ambulance service.

Judge Green said he has been consulting with Richelle Watkins, director of the ambulance service concerning budgeting, supplies and necessities to operate the ambulance.

According to the judge, the public will have no noticeable change with the transition of the ambulance service, as uninterrupted service will continue in Muleshoe.



MARIA VASQUEZ



MINA GUILLEN



SYLVIA POSADAS

Attend The County Fair

Friday, Sept. 12

Bailey County Civic Center & Coliseum

Saturday, Sept. 13

8 FOOTBALL 6 CONTEST

Grand Prize: \$100.00

**Contest Winners
Last Weeks Winners**

1. Kay Graves
2. Dutch Larue
3. Buck Ragsdale



Weekly Prizes

1st **\$6**
2nd **\$3** 3rd **\$2**

CONTEST RULES:

1. Pick the winner of each of the games contained in the advertisements on this page. Write the name of the teams you think will win opposite the game number in the blanks provided on the official blank.
2. The contestant must be 12 years of age or older.
3. Only one entry per person may be made for any one contest.
4. Bring your entry blank by The Journal office by 5:00 p.m. Friday, or, if mailed, the entry must be postmarked no later than 5:00 p.m. Friday. Write "FOOTBALL CONTEST" on the mailed entry, and mail to P.O. Box 449, Muleshoe, Tex. 79347.
5. Mark the winners and *WRITE IN THE SCORE* of the tiebreaker game. This score will be used to break weekly as well as determine grand prize winner. Decision of The Journal's scoring judges will be final.
6. Check the team you think will win; 10 points for first place, 6 points for second place and 4 points for third place.
7. To count for grand prize, entries must be on official blank printed in the paper.

1. OUR SAVING THING: DON'T PAY TILL SPRING! Call For FREE Estimate On Carrier Heat Pumps Today!!

SAVE with lower heating costs. Carrier high efficiency delivers! SAVE with no payments or interest charges till April, 1987.



Bomer Electric
272-5175
ARIZONA STATE VS MICHIGAN STATE

2. Ben Franklin Open 8-8 Mon.-Sat. Sun 12-5
Better quality for less

2104 WEST AMERICAN BLVD. PH. 272-3855

Cocoon New Videos Just Arrived
Iron Eagle Offbeat Youngblood Trouble
After Hours Quick Silver Hitcher In
Weekend Football Follies Delta Force Mind
Las Vegas NFL Crunch Course Murphy's Romance
Summer Fantasy
ARKANSAS VS MISSISSIPPI



3. Henry Insurance Agency, Inc.

KENNETH R. HENRY
CERTIFIED INSURANCE COUNSELOR
REAL ESTATE BROKER
RONNIE HOLT

111 W. AVENUE B MULESHOE, TEXAS PHONE 806/272-4581

BOSTON COLLEGE VS CALIFORNIA



4. No Job Too Large Or Too Small
Visit Bob Stovall For All Your Commercial Printing


Bob Stovall Printing
221E. Ave. B 272-3373

COLORADO VS OREGON



5. "For All Your Prescription Needs Visit The Friendly People At Western Drug"

Western Drug Co.
114 Main 272-3106
KENTUCKY VS RUTGERS



Official Entry Blank

name _____
address _____ phone _____

1. _____ 7. _____
2. _____ 8. _____
3. _____ 9. _____
4. _____ 10. _____
5. _____ 11. _____
6. _____

TIEBREAKER
TEXAS A&M VS. L.S.U.
MIAMI, FLA. VS. TEXAS TECH

Muleshoe Fertilizer 7.
SUPPORTS
The Muleshoe Mules
Kearney, Preston & Jason Scoggin
Home 272-4846 Mobile 272-3001
Hwy 70 Office 272-3443
TEXAS VS STANFORD



8. POLYFLEX House Paint
\$13⁷⁷ gallon
Jones-Blair
Polyflex Latex HOUSE PAINT
Higginbotham-Bartlett Co.
215 Main 272-3351
SOUTH N CALIFORNIA VS ILLINOIS



9. Lay Away Now!!
Please come in before Nov. 1st and take an EXTRA 10% OFF including Layaways paid by Dec 24th.
Other Christmas Catalogue Items arriving daily at Catalogue Sale Prices. Lay-a-way Now!!!

Lindesy Jewelry
202 Main 272-3355
NORTH CAROLINA VS KANSAS



10. We Have Football Mums Support The Junior Class, Buy A Homecoming Mum. Decorators Floral & Nursery
616 S. 1st 272-4340
NAVY VS VIRGINIA





1986 "MULES" Football Schedule

Sept. 5	Home	Olton	8:00
Sept. 12	Home	Boys Ranch	8:00
Sept. 19	Home	Hart	8:00
Sept. 26	There	Spring Lake-Earth	8:00
Oct. 3	There	Lockney	8:00
Oct. 10	There	Friona*	7:30
Oct. 17	Home	Floydada*	7:30
Oct. 24	Home	Littlefield*	7:30
Oct. 31	There	Tulia*	7:30
Nov. 7	Home	Dimmitt*	7:30

* District 2-AA

6. Ask Us About Family Insurance Review!! Call Gene Atkins, Ricky Barrett or James Lee
Free-No Obligation Available to Anyone

Bailey Co. Farm Bureau Ins.
1612 W. American Blvd. 272-4567
MIAMI [OHIO] VS CINCINNATI

11. "Three Locations Too Serve You" Enochs
Clays Corner Muleshoe
Farmers Co-Op Elevators 272-4335
MICHIGAN VS NOTRE DAME



Journal Files

60 Years Ago

BAILEY COUNTY EXHIBIT WINS NINTH PLACE AT AMARILLO 1926

Exhibiting with the strongest competition ever entered at Amarillo Tri State Fair, Bailey County won ninth place (\$75.00). Counties from Oklahoma, New Mexico and Texas were present with the best they could find in their respective territories. The agricultural show was the best the Exposition has ever shown.

Bailey County has never failed to win a premium in the past few years. In fact Bailey County is hard to beat.

50 Years Ago

1936

SCHOOL TACKY PARTY
The senior class at Muleshoe High School were entertained

with a "tacky party" at the high school gymnasium Tuesday evening, honoring members of the faculty and the senior class.

Many interesting and entertaining games and contests were played.

Thirty students and teachers attended, all dressed in appropriate tacky costumes for the occasion.

Refreshments of ice cream and cookies were served.

40 Years Ago

1946

MORE THAN 800 PUPILS ENROLLED IN MULESHOE SCHOOLS

More than 800 pupils have been enrolled in Muleshoe schools according to the figure released Tuesday from the office of the superintendent.

High School has an enrollment of 235. There are about 540 in the grade school and 25 in the negro school.

The schools have a complete faculty. The lunch room is operating efficiently, feeding a large number of pupils.

The superintendent announced that the school board has plans to bring the negro school to a fully accredited, standard school. The term will be 9 months this year.

30 Years Ago

1956

ABOUT PEOPLE YOU KNOW

Jacque Baker was injured last Friday morning while he was making a ditch with his tractor. He put the tractor into third gear instead of first and it overturned. He suffered a fractured rib and bruises, but escaped more serious injury, and was released from a local hospital Saturday.

20 Years Ago

1966

AROUND MULESHOE
Jack Young was elected state president of District and County Attorneys' Conclave of Texas in Austin recently. Mrs. Young also attended conclave. Also attending was county attorney Roger Gorrell.

10 Years Ago

1976

Grocery specials advertised this week in the Journal included: 5 lb. flour 79 cents; 2 lb. pinto beans 33 cents; paper towels 2/89 cents; 8 oz. can tomato sauce 6 for \$1; green beans 4/\$1; sweet peas 35 cents; sauerkraut 4/\$1; coffee \$1.49 lb.; enchilada sauce 49 cents; 2 oz. jar Nester 99 cents; 5 lb. sugar 89 cents; 1 lb. bag sausage \$1.35; 2 lb. bag sausage \$2.69; round steak, sirloin steak, rump roast or pikes peak roast 89 cents lb.; T-bone steak \$1.08; sirloin steak \$1.29 lb.; tenderized steak \$1.29 lb.; boneless fully cooked hams \$1.55 lb.; pork steak 98 cents lb.; pork roast 89 cents lb.



TROPHY WINNER--Vickie Williams, seven year old daughter of Mrs. Celia Williams, of Sudan recently participated in the "National Kids of America Beauty and Talent Pageant held at the Loews Ananole in Dallas. Vickie was eligible for Nationals for having won in the Clovis, N.M. pageant which was held in May. In the Nationals in Dallas, she received the trophy for the best female vocalist in the 7-9 year old group.

Michigan Is Expected To Win National Title

Michigan and Norte Dame square off in South Bend in a match-up that should answer some interesting questions. Irish fans will be anxious to see if Lou Holtz can turn the Norte Dame football program around as quickly as he did at Minnesota. Wolverine fans were looking to a possible National Championship, a Big Ten Title, and a return to the Rose Bowl after a three-year absence. It's a key contest for both. Norte Dame lost in Ann Arbor last fall in its opener 20-12. That started the Irish on a disappointing 5-6 season. Michigan, losing only a 12-10 decision to Iowa, defeated Nebraska 27-23 in the Fiesta Bowl. The Wolverines appear to be the stronger of the two, but Lou Holtz's magic just might produce and Irish Rabbit.

Iowa, Big Ten Champion in 1985, starts a new season without All-American quarterback Chuck Long. The Hawkeyes will not trounce Iowa State 57-3 as they did last fall. However, the Cyclones will still be out-classed in the opener for both teams.

Southwest Conference champion Texas A&M visits L.S.U. in Baton Rouge. And just being a visiting team there is a challenge in itself. L.S.U. was the runner-up in the Southeast Conference last fall, finishing with a 9-1-1 regular season record. Baylor upset the tigers in the Liberty Bowl in December 21-7. A&M shocked Auburn in the Cotton Bowl on January 1st, 36-16. With tongue in cheek, we're picking the Aggies to win in Baton Rouge.

Muleshoe Journal USPS 367-820
Established February 23, 1924. Published by Muleshoe Publishing Co., Inc. Every Thursday at 204 W. Second, Box 449, Muleshoe, Texas, 79347. Second Class postage paid at Muleshoe, Texas, 79347.

TEXAS PRESS ASSOCIATION
AWARD WINNER

1986
L.B. Hall-President & Publisher
Sammye Hall-Vice-President & Controller
Cleta Williams-Mexas
Evelene Harris-Society
Bobby Midson-Advertising
Little Nina-Bookkeeping

SUBSCRIPTIONS:
Muleshoe Journal and Bailey County Jour-J
Bailey and surrounding counties \$14.75
Muleshoe Journal and Bailey County Journal
Outside of Texas \$16.50
Elsewhere in Texas \$12.50
Muleshoe Journal and Bailey County Journal
Outside of Texas \$12.50
Yearly by Carrier \$12.50
Advertising rate card on application.

Quickies: Georgia will up-end Duke.. Southern California will nudge Illinois.. and Tennessee will beat Mississippi State.

Another Southwest-South-east confrontation, Arkansas hosts Mississippi in Little Rock. The Razorbacks slipped by the Rebels 24-19 last fall, but the margin could be bigger this time. Arkansas finished in a 3-way tie for second place in the conference in '85 edging Arizona State in the Holiday Bowl 18-17.

District Governor Visits At Rotary

According to an announcement made at the Rotary meeting Tuesday at noon, the Rotary Rummage Sale is 'on again' for Saturday, September 13. It will be held in the old Anthony's building just south of Damron Drug.

Any donated items can be called in to The Journal, 272-4536; to Clifton Finley, Ray Day at Thriftway or to Bill Liles at Federal Land Bank.

Guest speaker for Rotary was District Governor Roy Ward of Lubbock. He is a member of the Rotary Club of Lubbock.

His talk was centered around the Rotary International Theme for this year. "Rotary Brings Hope."

He pointed out that it is 'Hope to the world -- through international service - the student exchange - and the Rotary Foundation. It is hope to the District - through district projects, including the two Ryla Camps and the diabetic camp for children.

"It is also Hope for local activities - the county fair - Girl Scout programs - the Mule Putt Golf Course - the Muleshoe Heritage Foundation and the Mule Days Festival."

Ward said, "You are leaders in the community. The community looks to you for a positive attitude and to carry out the theme of 'Hope' for the year."

WEDNESDAY

10
SEPT. 1986

How do I market my cotton this year?
See ginner about:
TELCOT Check-out!

7:00
7:30
8:00
8:30
9:00
9:30
10:00
10:30
11:00
11:30
12:00
1:00
1:30
2:00
2:30
3:00
3:30
4:00
4:30
5:00

✓ Equity Trading
✓ Adjusted World Price Information
✓ Prompt Receipt of Loan Payment
✓ Up-to-Date Market Information
✓ Access to Over 40 Major U.S. Cotton Buyers
✓ Firm Offer

If the new Farm Bill has you confused about the options you have to market your cotton crop, talk to your ginner about the TELCOT advantage. You'll see why thousands of farmers rely on the cotton marketing leader. TELCOT...the window of the marketplace!

CALENDAR OF EVENTS

Sept. 11-17
THURSDAY, SEPT. 11
FRIENDSHIP CLUB
2:30 p.m.

TOPS CLUB
6:30 p.m.

MULESHOE SQUARE DANCE CLUB
8 p.m.

OLDFELLOWS LODGE
7:30 p.m.

HOBBY CLUB
2 p.m.

FRIDAY, SEPT. 12
KIWANIS CLUB
6:30 a.m.

MONDAY, SEPT. 15
MOONLIGHT EXTENSION CLUB
7:30 p.m.

PTA
7:00 p.m.

TUESDAY, SEPT. 16
REBEKAH LODGE
7:30 p.m.

ROTARY CLUB
12 (noon)

TRIANGLE CB CLUB
8p.m.

MASONIC LODGE
7:30 p.m.

WMU
2:30 p.m.

ATHLETIC BOOSTERS
7:30 p.m.

ALCOHOLIC ANONYMOUS
8 p.m.

WEDNESDAY, SEPT. 17
DUSTY PRAIRIE EXTENSION CLUB
2:30 p.m.

LIONS CLUB
12 (noon)

PUBLIC NOTICE

BRIEF EXPLANATORY STATEMENTS OF PROPOSED CONSTITUTIONAL AMENDMENTS GENERAL ELECTION NOVEMBER 4, 1986

PROPOSITION NO. 1 ON THE BALLOT

Senate Joint Resolution 15 proposes a constitutional amendment that would permit the legislature to provide by general law for the apportionment of the value of railroad rolling stock among the counties in which the property of the railroad is located for purposes of property taxation, and would delete the requirement that the Comptroller participate in making the allocation. To comply with both statutory and constitutional law, the apportionment currently is being made by the State Property Tax Board in conjunction with the Comptroller.

The proposed amendment will appear on the ballot as follows:

"The constitutional amendment to allow the legislature to provide by general law for the apportionment of the value of railroad rolling stock among counties for purposes of property taxation."

PROPOSITION NO. 2 ON THE BALLOT

Senate Joint Resolution 33 proposes a constitutional amendment that would replace the constitutional requirement that the subject of a bill be expressed in its title with a mandate that each house of the legislature adopt rules of procedure that would require the subject of each bill to be expressed in its title in a manner that gives the legislature and the public reasonable notice of that subject. Determining compliance with the rule would be the responsibility of the legislature. Cur-

rently, a law is invalidated if a court finds its caption is defective. The amendment would provide that past and future enactments may not be held void on the basis of an insufficient title.

The amendment also would eliminate the suggestion that the state's laws be revised every ten years, and instead would provide for continuing revision of state laws.

The proposed amendment will appear on the ballot as follows:

"The constitutional amendment requiring each house to include in its rules of procedure a rule that each bill contain a title expressing the bill's subject, and providing for the continuing revision of state laws."

PROPOSITION NO. 3 ON THE BALLOT

House Joint Resolution 73 proposes a constitutional amendment that would permit the Legislature to authorize any county, city, town, or other political subdivision to use public funds or credit to pay insurance premiums on non-assessable life, health, or accident policies. Due to the prohibition in the constitution against the lending of credit and granting of public money, political subdivisions currently are prohibited from becoming shareholders in associations such as mutual-insurance companies, in which policyholders are shareholders. A non-assessable mutual insurance policy does not allow a company to raise capital by assessing the policyholder an extra amount on a pre-

mium. This amendment will allow mutual insurance companies and stock companies to bid for life and health group policies of political subdivisions. Public liability will be limited to the payment of premiums specified in the contract.

The proposed amendment will appear on the ballot as follows:

"The constitutional amendment allowing political subdivisions the opportunity to engage in and transact business with authorized mutual insurance companies in the same manner as with other insurance companies."

PROPOSITION NO. 4 ON THE BALLOT

Senate Joint Resolution 4 proposes a constitutional amendment that would repeal the prohibition against branch banking by state banks and would allow state banks and national banks domiciled in this state to establish and operate banking facilities at locations within the county or city where they are domiciled. The amendment would also authorize the Legislature to permit a state bank or a national bank domiciled in this state to engage in business at more than one place if it acquires a failed state bank or national bank domiciled in this state.

The proposed amendment will appear on the ballot as follows:

"The constitutional amendment to provide that a bank may offer full service banking at more than one location within the city or county where its principal facility is located, subject to limitations and restrictions provided by law."

Estos son los informes explicatorios sobre las enmiendas propuestas a la constitucion que apareceran en la boleta el dia 4 de noviembre de 1986. Si usted no ha recibido una copia de los informes en español, podrá obtener una gratis por llamar al 1/800/252/8683 o por escribir al Secretario de Estado, P.O. Box 12887, Austin, Texas 78711.

The Bob Harmon Forecast

Sat., Sept. 13 - Major Colleges - Div. 1-A

Alabama	20	Kent State	17
Arizona	28	So. Mississippi	14
Arizona State	24	Michigan State	23
Arkansas	27	Colorado State	14
Arkansas State	21	Memphis State	13
Arkansas State	26	Mississippi	14
Baylor	28	Louisiana Tech	10
Boston College	24	California	21
Brigham Young	37	New Mexico	7
Colorado	21	Oregon	17
Eastern Michigan	30	Youngstown	20
Fresno State	23	Oregon State	10
Fullerton	22	Idaho State	21
Georgia Tech	26	Furman	13
Georgia	34	Duke	7
Idaho	23	Central Michigan	10
Indiana	31	Louisville	13
Iowa	35	Iowa State	6
Kentucky	20	Rutgers	14
Maryland	35	Vanderbilt	13
Miami, Fla.	31	Texas Tech	7
Miami (Ohio)	24	Cincinnati	22
Michigan	27	Notre Dame	10
Minnesota	23	Bowling Green	17
Missouri	21	Utah State	14
Navy	27	Virginia	24
Nevada-Las Vegas	27	Portland State	13
North Carolina	24	Kansas	20
NE Louisiana	17	SW Louisiana	14
Northern Iowa	24	Kansas State	10
Ohio State	23	Washington	13
Ohio	21	Marshall	20
Oklahoma State	23	Tulsa	14
Pacific	23	Wyoming	21
Pittsburgh	27	No. Carolina State	13
Purdue	33	Ball State	7
South Carolina	30	Western Carolina	12
Southern California	26	Illinois	24
S.M.U.	28	Rice	7
Syracuse	27	Army	23
Temple	28	Western Michigan	15
Tennessee	30	Mississippi State	13
Texas A & M	20	L.S.U.	21
Texas-El Paso	20	New Mexico State	13
Texas	26	Stanford	20
Toledo	25	Wichita	12
Tulane	28	T.C.U.	20
Utah	22	San Diego State	20
V.P.I.	23	Clemson	22
Wake Forest	34	Boston U.	10
Washington State	33	San Jose State	13
West Virginia	26	East Carolina	10
Wisconsin	31	Northern Illinois	14

Other Games - East

24	Shippensburg	7
25	Corland State	20
19	Buffalo State	7
30	Delaware Valley	17
21	Duquesne	17
24	Albany State	23
23	Franklin & Marshall	19
26	Eck Haven	17
22	Alfred	6
33	Glenville	21
27	Vagner	17
23	Susquehanna	20
23	East Stroudsburg	14
27	Lowell	20
23	Randolph-Macon	10
34	Ramapo	6
28	Robert	7
31	Glassboro	7
21	California State	20

Other Games - Midwest

33	Ohio Northern	6
37	Delaware	6
34	Elmhurst	6
38	John Carroll	10
33	Concordia, Neb.	7
21	Marquette	14
27	Grand Valley	10
23	Gustavus	14
26	Hiram	7
24	SE Missouri	13
27	Nebraska Wesleyan	13
28	Bethel, Minn.	10
28	Wis. Stevens Point	21
24	Cameron	14
28	Lincoln	7
23	Wis.-Whitewater	10
25	Ashland	10
25	NW Oklahoma	10
23	Trine Wesleyan	15
25	Anderson	7
27	Wittenberg	21
21	St. Joseph	13
27	Northwood	6
41	Carroll, Wis.	6
38	Missouri Valley	7
27	SW Oklahoma	21
24	Wisconsin-Stout	7
26	Kearney	14
27	Missouri Western	17
28	Central Missouri	17
23	Washington	20
30	Coane	12
30	Arkansas Tech	10
24	Franklin	10
33	St. Olaf	10
22	Wayne State, Mich.	20
28	South Dakota State	20
24	North Dakota	10
24	Wisconsin-Oshkosh	22
31	Ohio Wesleyan	7
20	Chicago	12
21	Carthage	7
27	S-W Baptist	6

Other Games - South & Southwest

24	Jacksonville State	23
33	Morehouse	7
23	Texas Lutheran	14
24	Trinity	12
21	Arkansas-Pine Bluff	6
21	Georgetown, Ky.	7
24	Farmort	21
24	Catawba	17
24	Southern Arkansas	17
23	Ferrum	6
27	Washington & Lee	17
27	Valdosta	21
20	Safford	7
26	Evangel	10
24	Tartleton	21
17	Gulford	13
21	North Alabama	20
28	Fayetteville	10
26	St. Paul	12
21	Georgia Southwestern	12
23	Centre	20
26	Savannah	20
22	Central Florida	21

Other Games - Far West

31	LaVerne	6
26	San Francisco State	7
21	Chico State	14
23	New Mexico Highlands	10
28	St. Mary	10
35	Northern Colorado	7
21	Sonoma	7
26	Mesa	7
24	Colorado College	13
21	Whitser	20
23	Redlands	7
30	Southern Utah	7
28	Eastern Oregon	20

Sponsored By: **Muleshoe Co-op Gin**



"TOP TEN" FINALISTS--Christie Phillips, ten year old daughter of Mr. and Mrs. Dewayne Phillips of Farwell, recently participated in the National Kids of America Beauty Pageant, held at the Loews Anatole in Dallas, when some 350 boys and girls ages 3-17 competed. To be eligible for this participation in the Nationals the Participant had to have won first or second place in a local pageant which Christie received the crown for modeling and beauty in the pageant held in Clovis, N.M. in May. She received the large trophy for being one of the top ten finalists in Beauty and the smaller ones are for placing second in modeling sleepwear and sportswear and third for modeling partywear in the "Showbiz" portion of the Grand Finale. She is the granddaughter of Mr. and Mrs. Morris Phillips of Muleshoe and Mr. and Mrs. G.C. Ritchie of Sudan.

Young Homemakers

The Lazbuddie Young Homemakers installed their 1986-87 officers Thursday, Sept. 4th. Incoming officers include: president, Lana Copp; vice president, Jackie Harris; secretary, Mandy Seaton; reporter, Debbie Magby; and historian, Becky Street.

Lana Copp, president, presided over the business meeting. The club decided to purchase a water fountain for the elementary playground. The club also voted to have another book dairy this year in the spring.

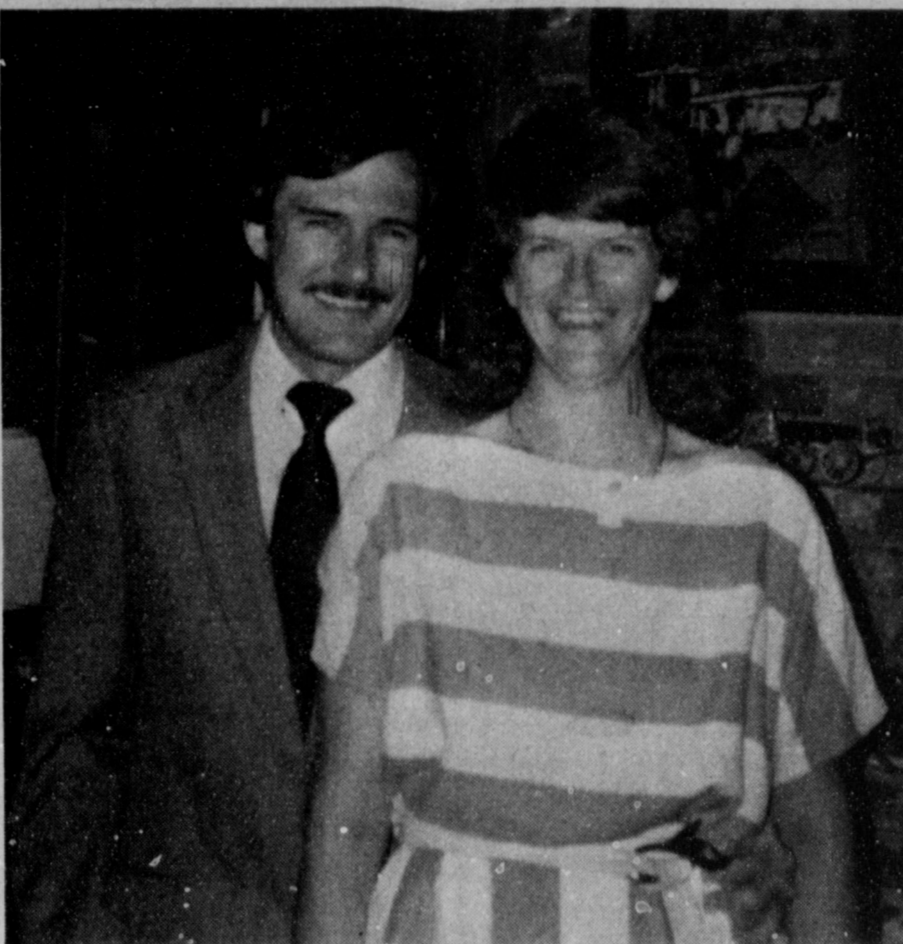
The Young Homemakers have received their pecans and are selling them for four dollars a pound. Anyone interested in purchasing pecans can contact Pat Randolph at 965-2915.

A membership tea will be hosted by the Young Homemakers Thursday, Sept. 11 at 2 p.m. Anyone interested in joining Lazbuddie Young Homemakers is urged to attend.

Following the business meeting secret pals were revealed and members were served ice cream sundaes.

Members present included: Janice Bradshaw, Jackie Harris, Debbie Magby, Reta Mimms, JoAnn McDonald, Mandy Seaton, Becky Street, Lana Copp, Pat Randolph and the advisor, Barbara Lust.

GET READY FOR THE FAIR
Sept. 11-13



ENGAGEMENT ANNOUNCED--Yvonne and Bobby L. Fritz of Richardson announce the engagement and approaching marriage of their daughter, Lavelle Ann to Lonnie Dale Ferris of Houston, son of Verna and Joe Ferris of Muleshoe. Vows will be exchanged on November 8 in Arapaho United Methodist Church. The bride is a graduate of Richardson High School, class of 1978, and is a 1982, graduate of Rice University. She is currently employed as a Chemical Engineer for Rohm and Haas, Texas in Houston. Ferris is a graduate of Muleshoe High School and graduated from Texas Tech University in 1977. He is currently employed as a Mechanical Engineering Supervisor for Rohm and Haas, Texas in Houston.

Lane Annual Family Reunion Held

Labor Day weekend 57 persons attended the Verge and Ruby Lane annual family reunion. The event was held at Abilene State Park at Abilene.

Guests began arriving on Thursday and continued through Sunday. It was reported that everyone enjoyed visiting, looking at family pictures, pitching horseshoes, playing cards and dominoes. Swimming in the park pool and hiking was available to everyone.

A Mountain Oyster fry was held on Friday, a fish fry Saturday and a barbecue on Sunday.

A fun "Family Picture Book" was made by David and Betty Terrell and presented to Mr. and Mrs. Verge Lane.

Marie Lane of Elgin was the oldest member present while the youngest member was Lakin D'Lane Hatcher, baby daughter of Mr. and Mrs. Roger Hatcher of Clovis N.M.

The person traveling the most miles to attend was R.E. Lane of Columbus, Ga.

Those attending from Littlefield were: Mr. and Mrs. Verge Lane; Mr. and Mrs. O.W. Still, Lana Pierce and Micheal Busbea.

Others attending were: Mr. and Mrs. Jack Lane and Michelle of Stegall, Mr. and Mrs. Joe Lane and Linj of Arlington; Mr. and Mrs. Jimmy Lane, Tammy, Mandy, and Kara; and Mr. and Mrs. Chris Rector, all of Amarillo.

Also Mr. and Mrs. Lonzo Pierce, Nancy Simmons, Mr. and Mrs. Pat Stephenson, Keith and Kamie, all of Lubbock; Mr. and Mrs. Junior Pierce, Curt,

Shane and Crystal of Levelland; Mr. and Mrs. A.R. Puckett, Quinlan; Mr. and Mrs. Chuck Still, Mark and Carl of Plano.

And Mr. and Mrs. Stephen Demel, Cynthia, Melissa and Jonathan Bennett, all of Stegall; Mr. and Mrs. David Terrell, David and Amy Clark, all of Garland; Mr. and Mrs. Dwaine Lane and Steven of Watauga; Mr. and Mrs. Eugene Lane of Rockdale; Tonya Bachelor of Arlington; Mrs. Roger Hatcher and Lakin of Clovis, N.M.; R.E. Lane of Columbus, Ga.; and Mrs. Marie Lane of Elgin.

Also attending were Dennis Reeves of Lubbock and Steve Hart of Red Oak.

For All Your Local News Or Club Activities Call 272-4536 Or Come By The Journal Office

Wilhites Host 'Old Time Sake' Reunion

A meeting for "Old Times Sake", for food and fellowship in the home of Clarence and Lida Wilhite, was the one time owner and manager of St. Clair's Department Store and his employees.

Those present included: Dorothy and Irvin St. Clair, Mrs. Elsie Goss of Tulsa, Okla., Clifton Finley, Mr. and Mrs. Olan Burrows, Mrs. Cliff Odom, Mrs. Eva Ashford, Mrs. Corda

Taylor, Mrs. Floyd Grimsley, Mrs. Roland Mathieson, Mr. and Mrs. Oscar Timms and Clarence and Leda Wilhite.

It was reported that the noon was spent enjoying the delicious food, supplied by everyone who attended, and recalling old experiences and good times of helping to build a business that they were all proud of.

This occasion was first celebrated in 1985, at the home of Cliff and Alda Odom, when Mrs. Goss came to Muleshoe for a short visit from Duncan, Okla.

Upon her return, for another brief stay it was decided to repeat their special time, with old friends and co-workers.

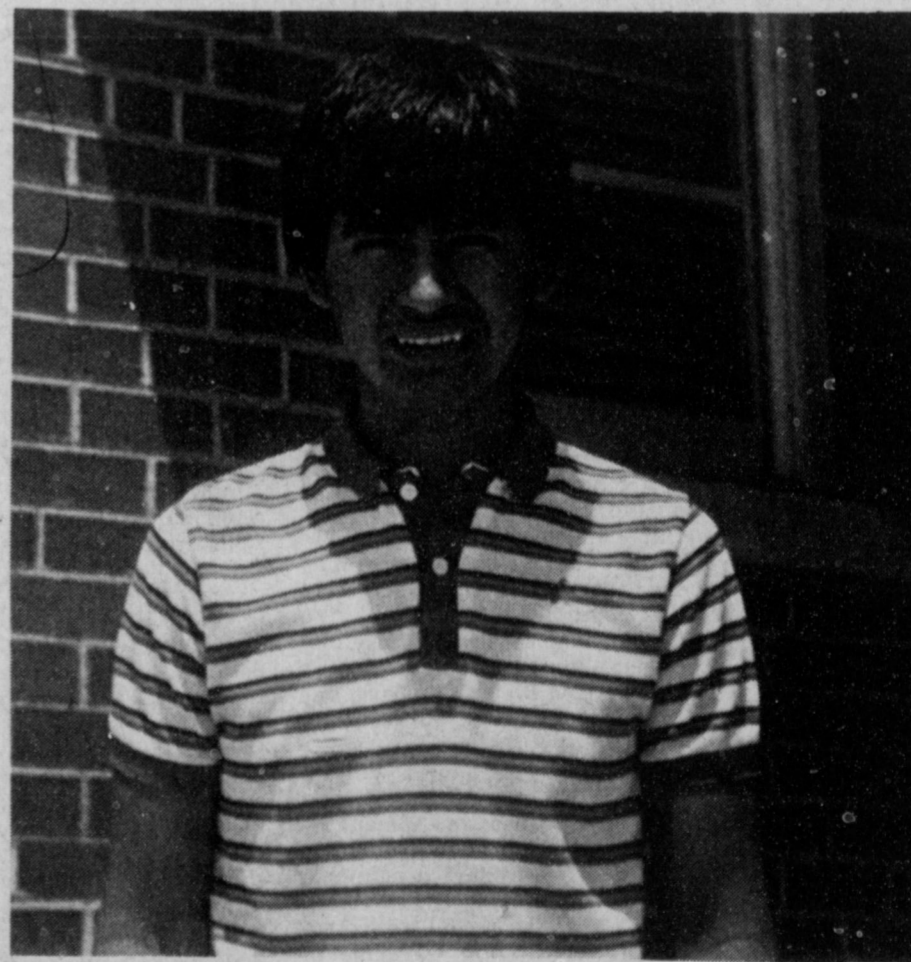
3 Days Only Entire Stock Ladies & Junior Fall & Winter Sweaters

20% off
Long or Short Sleeve Sweaters Of Your Choice

ANTHONY'S
272-3478 321 Main
Mon.-Sat. 8:00 a.m.- 6:00 p.m. Sun. 1-5

SALUTE To Our LEADERS OF TOMORROW

We Believe Our Youth Of Today Will Provide Effective Leadership Tomorrow!!



LEADER OF TOMORROW--Our Leader of Tomorrow for this week is Juan Flores, the son of Ceila and Rito Flores. Juan is a 7th grader at Watson Junior High. Mexican food and pizza are his favorite foods and math is his favorite subject in school. Juan's favorite colors are blue and red and as hobbies he enjoys riding his bike and mowing lawns. After high school Juan would like to attend Texas Tech and become an engineer. We are happy to recognize this young man as a "Leader of Tomorrow."

PROUDLY PRESENTED BY:



You Are Invited To Bailey County Farm Bureau's Annual Meeting
Saturday, Sept. 13, 1986
Muleshoe High School Cafeteria
400 Block W. Ave. G.

Free Meal Of B-B.Q & Home Grown Vegetables
Serving Begins 6:30 p.m.

Texas Farm Bureau President S.M. True Will Be On The Program
Drawings For Door Prizes
High School Citizenship Students Will Speak!

Election Of Four Directors!
Come To The Convention & Let Your Ideas Be Heard.



DOLLS-DOLLS-DOLLS--From the collection of Beti Watson. In the display case at the Muleshoe Public Library, these dolls are Composition play dolls from 1910 to 1940 and some are in their original clothes.



LATEST ARRIVALS

Erin Kendall Gallman
Mr. and Mrs. David Gallman are the proud parents of a daughter born Tuesday, Sept. 2 at 10:43 a.m. in South Plains

Get Ready For the Fair!!
Sept. 11-13

Creative Living

by Sheryl Borden

Western memorabilia and citrus gift giving will be discussed on "Creative Living" at 12 (noon) on Saturday, September 13. Ronnie Jones is the assistant principal at Watson Junior High School in Muleshoe, TX, and he's turned his interests in old western movies into quite an expensive collection of western memorabilia. He'll show examples of different movie items and tell some interesting stories about some old-time cowboys, such as Hopalong Cassidy, Allan "Rocky" Lane and John Wayne.

For a special gift that is sure to please any recipient, consider giving a citrus fruit basket gift or other gift items featuring fresh citrus fruit. B.J. Doerfling is the supervisor for the consumer test kitchen at Sunkist Growers, Inc. in Van Nuys, CA, and she will show several different ideas for gift giving -- all incorporating fresh, colorful citrus fruits.

On Thursday, September 11 at 12 noon, "Creative Living" will feature computerized patterns and information for having a participating pizza party. Laura Varney, founder of Clothing Design Concepts, Inc.

in Manhattan, KS will discuss customized computerized patterns for all sizes and shapes. Each pattern is custom made to the person's own personal measurements, and is adaptable for other fashion details, such as pockets, variations on bodice designs and fly front pants. The segment will specifically cover the customized pants patterns, which is their most popular pattern, since so many people have trouble fitting pants.

Elizabeth Wundelick, Southwest Meat Packers Assn. from Dallas, TX will discuss having a participating pizza party on a shoestring budget. She will prepare two different recipes for pizza and share some interesting serving suggestions and containers.

"Creative Living" is produced and hosted by Sheryl Borden. The show is carried on more than 95 PBS stations in the United States, Canada, Guam and Puerto Rico, and is distributed by Pacific Mountain Network. Viewers can request copies of printed material offered on the show by calling on KENW-TV's toll-free telephone lines. In New Mexico, the number is 1-800-432-2361, out-of-state; 1-800-545-2359 and Portales and Roosevelt County: 562-2112. Viewers are asked to call between 8:00 a.m. and 5:00 p.m., Monday through Friday.

Rebekah Lodge

Muleshoe Rebekah Lodge No. 114 met at 7:30 p.m. Tuesday, Sept. 2 in the Lodge Hall. Sue Haire, the Lodge representative to the United Nations, gave an excellent slide presentation on her recent trip. The members enjoyed visiting with Sue and her mother" said a spokesperson for the group.

Refreshments of punch and cookies were served.

The meeting was called to order by Noble Grand Renee' Rudd. Novella Price, Chaplain, gave the opening prayer. Minutes of the previous meeting and a treasurer's report were given and the members reported on those persons who were ill.

Correspondence was read to the membership and two new members were accepted. Initiation for Mike Hill and Carol Williams will be held on Tuesday, Sept. 16.

Lodge was closed with a prayer by Ruby Garner.

Hospital in Amherst. The young lady weighed eight pounds and seven ounces and was 22 inches long. She has been named Erin Kendall. Grandparents are Mr. and Mrs. Roy Farley of Muleshoe and Mrs. Lorraine Gallman of Lazbuddie. Great grandparents are Mr. and Mrs. Henry Bass of Muleshoe.

Shannon James Mc Clanahan

Mr. and Mrs. Pat Mc-Clanahan are the proud parents of a son Shannon James, who was born Saturday, Aug. 30 at 11:10 p.m. in St. Mary's Hospital in Lubbock.

Shannon James weighed seven pounds and 11 ounces and was 21 inches long. He is the first child for the couple.

Grandparents are Mr. and Mrs. George Campbell of Borger and Mr. and Mrs. Jim McClanahan of Findley, Ohio.

Great grandmother is Mrs. N.A. Hammond of Borger.

GOLDEN GLEAMS

A blow with a word strikes deeper than a blow with a sword.

-Robert Burton.

Deliver your words not by number but by weight.

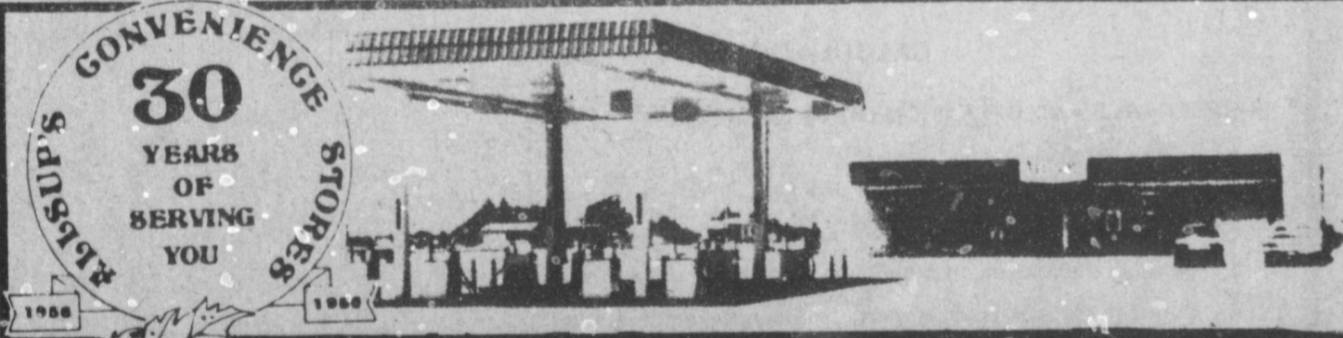
-H.G. Bohn.

(approximately)
FRESH PEACH CRISP
4 cups peach slices, 1/2 cup all-purpose flour, 1/2 cup brown sugar, packed, 1/4 tsp. grated lemon peel, 1/4 tsp. nutmeg, 1/8 tsp. salt, 1/4 cup butter.
Place peaches in 9-inch pie plate. Combine flour, sugar, lemon peel, nutmeg and salt; cut in butter until mixture resembles coarse crumbs. Sprinkle flour mixture over peaches. Bake at 375 degrees, 35 to 40 minutes or until topping is lightly browned. Serve warm with ice cream if desired.
YIELD: 6-8 servings.



Wranglers
Wrangler \$14.99
Everyday Low Price
Lee's Western Wear, Inc.
1910 W. American Blvd. 272-4663

Judi Sheppard Missett's
Jazzercise
Having tried all the others--spas, aerobics, etc.--I can truly say Jazzercise has the right idea. It's a fantastic approach to physical fitness, with positive psychological effects. It's one of the best things I've ever done for myself.
#1 FITNESS PROGRAM IN THE USA
Class Schedule
Monday And Wednesday
9:00 a.m. - 5:15 p.m.
- 6:30 p.m.
Friday
9:00 a.m. - 6:15 p.m.
For More Information Call :
Terri Precure 272-5073
Located:
219 E. Ave. B. Muleshoe



ALLSUP'S CONVENIENCE STORES

FRESH & HOT
Breakfast Burritos 299¢ FOR 2
Hot Links 2 FOR 99¢ ONLY

WOLF BRAND PLAIN
Chili 15 OZ. CAN 99¢
WOLF BRAND W/ BEANS
Chili 15 OZ. CAN 79¢

FOR GOOD COOKING
Wesson Oil 38 OZ. BTL. \$1.89
HUNT'S WHOLE PEELED
Tomatoes 2 14 1/2 OZ. CANS 99¢
HUNT'S TOMATO
Juice 46 OZ. CAN 79¢
LIBBY SAVIENNA
Sausage 2 5 OZ. CANS 89¢
GEBHARDT'S JUMBO
Tamajes 28 OZ. CAN \$1.29
MADE WITH 99% PURIFIED WATER
Allsup's Ice LARGE BAG \$1.09
DEL MONTE IN IT'S OWN JUICE
Pineapple 2 15 1/2 OZ. CANS \$1.19
KRAFT STACK PACK AMERICAN SINGLES
Cheese 16 OZ. PKG. \$1.19
KRAFT HALF MOON COLBY
Cheese 16 OZ. PKG. \$2.49
PILLSBURY BUTTERMILK COUNTRY STYLE
Biscuits 5 10 CT. CANS \$1.00
ALLSUP'S ASST. FLAVORS
Ice Cream 1/2 GAL. RND. CTN. \$1.59

Borden's Hi-Pro Milk 99¢ 1/2 GAL. CTN.

Allsup's Celebrates 30 Years of Serving You... Gives you Affiliated Foods National Brands Sale

Del Monte Vegetables

16 OZ. CUT GREEN BEANS
15 OZ. SPINACH
17 OZ. SWEET PEAS
17 OZ. WH. KERN. GOLD CORN

3 \$1 CANS

30 Year Anniversary Special
Allsup's Tallsup 39¢ FOR ONLY 32 OZ. CUP

Folger's ELEC. PERK AUTOMATIC DRIP COFFEE \$2.59 1 LB. CAN

PRICES EFFECTIVE SEPT. 11, 12, 13, 1986

WATER PAK CHICKEN OF THE SEA LIGHT
Chunk Tuna 6 1/2 OZ. CAN 59¢
ENRICHED FLOUR
Gold Medal 5 LB. BAG 89¢

MOVIE & VCR RENTALS
The Very Best in Home Video Entertainment!
ALL YOU NEED IS YOUR TV!

Coca-Cola \$1.85 6 pk 12 oz. cans

Mules-Boys Ranch

Cont. From Page 1
yards, an average of 7.1 yards each time; Michael Dunahm carried 14 times for 71 yards, an average of 5.1 yards each time; Todd Bessire had six carries for 26 yards, and an average of 4.3 yards. Quarterback Johnny Garcia carried three times for three yards, an average of 1.0 yards each time.
QB Garcia completed six of 14 attempts in passing for 93 yards and was not intercepted. His principal receiver was Jerry Mendoza had received two passes for 70 yards, an average of 35 yards each time; Armando del Toro received two passes for six yards, or three per attempt; Scott Bickel latched onto one aerial for 10 yards, an average of 10 yards and Todd Bessire received one pass for seven yards, an average of seven yards.
Michael Dunham scored one TD and ran the extra points for two, for a total of eight points; Armando del Toro ran one TD for six points; Todd Bessire ran one TD for six points; and Greg Young kicked two extra points.
Johnny Garcia punted three

times for 113 yards, an average of 37.7 each punt.
QB Garcia tackled one and assisted in six tackles; Sergio Gonzales assisted in two tackles; Jerry Mendoza had one tackle and three assists; Todd Bessire had three tackles and five assists; Chris Harris had one tackle and two assists; Armando del Toro had six tackles and 10 assists; Michael Dunham had three assists; Michael Angeley had two tackles and five assists; Glen Flowers had one assist and Russell Brown had one tackle and six assists.
Also, Mark Mata had one assist; Ritchie Tillema had four tackles and 11 assists; Freddie Paez, one tackle and 11 assists; Salvador Olivarez, two assists; B. Mora, two assists; James Ziegenfuss, three assists; Greg Moton, one tackle, five assists; Francisco Ybarra, 11 tackles, five assists; Scott Bickel, four tackles, six assists and Shawn Bussey, one assist.

Texas A&M engineers reveal potential for domestic rubber industry

COLLEGE STATION — After successfully producing more than 400 pounds of rubber from the wild desert shrub guayule, engineers at Texas A&M University say the potential exists for a domestic natural rubber industry based in the arid Southwest.
Using a continuous simultaneous solvent extraction process, researchers at the university's Food Protein Research and Development Center pilot plant obtained the rubber with new techniques that reduce the need for water and energy, said John P. Wagner, associate director and principal investigator on the guayule program.
Guayule (pronounced wy-yoo-lee) is a shrub native to the Trans-Pecos area of west Texas and northern Mexico that provided 50 percent of America's rubber supplies in the early 1900s. As the nation's need for rubber increased, however, it became easier and cheaper to buy natural rubber (hevea) supplies from trees grown in the tropics.
"Natural rubber is the second most costly raw material after petroleum im-

ported by the United States," said Wagner. "The present annual demand in the U.S. is around 800,000 metric tons, all of which must be imported from countries having rain forest climates," he said.
There are indications that some rubber-producing countries are converting rubber plantations to more profitable crops such as palm and coconut trees, he said.

Cross Country...

Cont. From Page 1
Lydia Alfaro, 97th, 19:12; Michelle Stout, 98th, 19:13; Justine Hanes, 101st, 19:14; Tiffani Collins, 102nd, 19:14 and Stacy Stroud, 111th, 24:13.
With 118 runners in the boys division, the results were as follows: Boys Ranch, 48 points; Muleshoe 76 points; Lubbock Monterey, 164 points; Hereford 176 points; Levelland, 238 points; Dalhart, 241 points; Lubbock High, 252 points and Brownfield, 297 points.
Individual results were as follows: Rudy Flores, first, 16:30; Norman Perez, 3rd, 16:39; Greg Garcia, 17th, 17:32; Michael Garza, 24th, 18:01; Steven Sandoval, 31st, 18:13; Ramon Sachez, 37th, 18:19; Miguel Sanchez, 36th, 18:19; Richard Ring, 38th, 18:21; George Alvarado, 49th, 18:54; Ronnie Perez, 57th, 19:12; Kevin King, 97th, 21:25 and Jeffery Noble, 99th, 21:31.

Celebration...

Cont. From Page 1
annual dance and queen coronation is scheduled for La Mulita, with a group, Los Rieleros del Norte from Chihuahua, Mexico on hand to provide the music.

Also during the evening, the 1986-87 queen will be crowned. Candidates this year include

Contest...

Cont. From Page 1
Colorado State game. However, he was 35 points off on the tiebreakers. Ragsdale received a \$2 check, along with six points toward the grand prize.
Two Lazbuddie residents also missed two games each, both being the Boston College-Rutgers game and the Colorado-Colorado State games. Also, each was 36 points off on the tiebreaker. They are Donnie McDonald and Doyle Weir.
All other contestants missed three or more games.
But, don't despair, there's still a lot of time, so be sure to get your entry in for the weekly contest.

Sylvia Posadas, Mina Guillen and Maria Vasquez.

There are future plans for the location where the new arena is located, according to Raymond Sanchez, president of the Knights of Columbus.

A Mexican heritage center is expected to be at the location, as foundation has already been run for a Knights of Columbus Hall.

We want to have a place for the future for our young people," said Sanchez. "We want them to learn horses, rodeo, dances and other Mexican heritages. We want to have a place for Mariachis for Folkloricos and a place to have Mexican celebrations where our young people won't forget their heritage."

With construction on the arena scheduled to be completed in time for the weekend celebration, the Knights of Columbus said they owe a big 'thank you' to the Muleshoe Co-op Gin, the Needmore Co-op Gin, Tolk Station and others who contributed poles, steel and other construction necessities.

Muleshoe...

Cont. From Page 1

Homemaker.

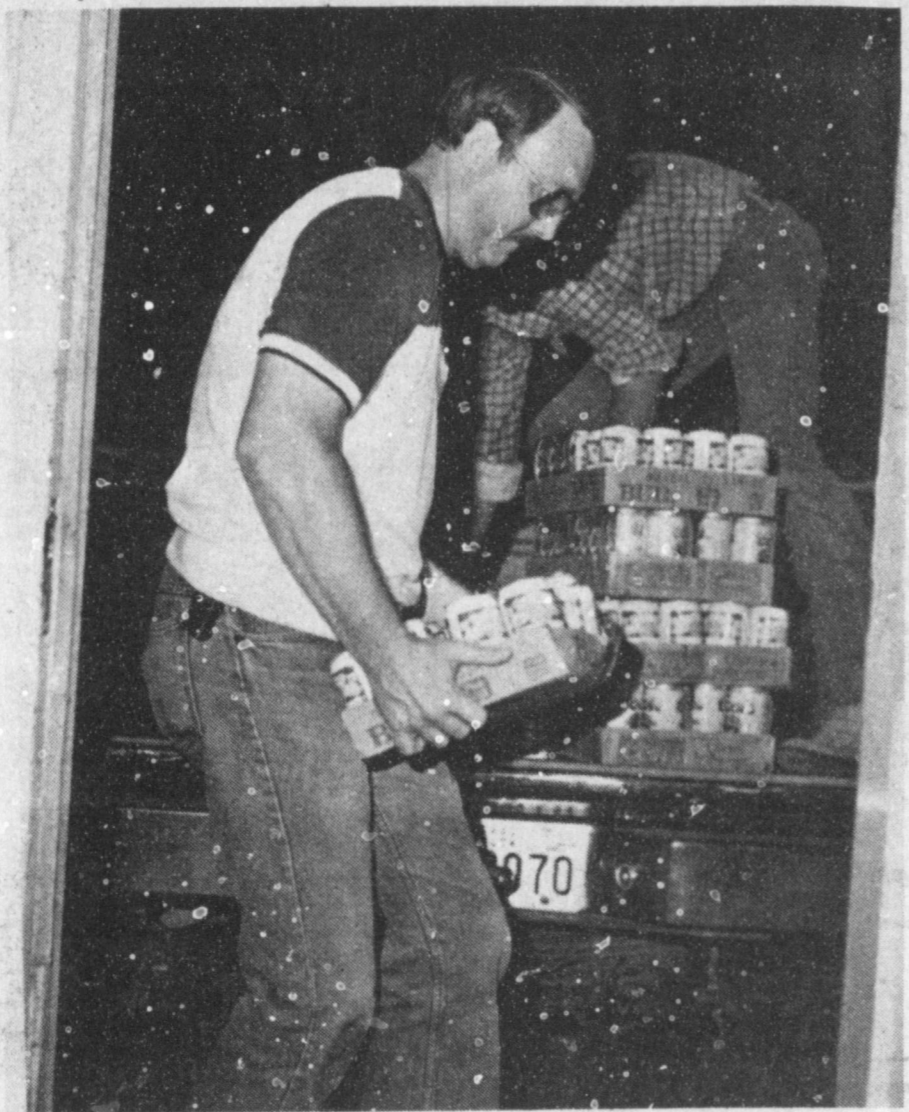
Bailey County Farm Bureau will host their annual county convention on Saturday, September 13, beginning at 6:30 p.m.

Dinner will be served in the Muleshoe High School cafeteria at 6:30 p.m. Following the meal of barbecue and homegrown vegetables, the business meeting will convene at 8 p.m.

Included on the program will be speeches by seminar students election of four directors, reports by agency manager, James Lee; Sudduth Field and Co. and an address by S.M. True, president of the Texas Farm Bureau.

Seaman Apprentice David G. Phelps has graduated from Naval Recruit Training at Great Lakes, Ill. He is the son of Mr. and Mrs. Donald Phelps, and a 1976 graduate of Friona High School.

He took courses in Naval History and traditions in firefighting. He also studied chemical, biological and radiological warfare and specialized in postal training.



LOADING IN--After confiscated beer was moved to the Muleshoe Police Department late last Saturday night, it was unloaded and inventoried again. Pictured here unloading cases of beer are Muleshoe City Police Chief Les Irwin (nearest camera). In the background, moving the nearly 19 cases of beer to the tailgate was Randy Watkins.

The Muleshoe Young Homemakers are selling Del Cerro pecans again this year. The pecans are from Stahmann Farms, Inc. of Las Cruces, N.M. and are selling for four dollars per pound. If you need pecans you are asked to contact Tammy Huggins at 272-5604. Pecans will be delivered in town if you are unable to pick them up.



Happy 10th
Birthday
Cathy
Grandma &
Great Grandma

SCHOOL DISTRICT: Lazbuddie ISD

CALCULATION OF EFFECTIVE TAX RATE, ESTIMATED UNENCUMBERED FUND BALANCES, AND DEBT SCHEDULE

I, Ronald E. Procter, Chief Appraiser for Lazbuddie ISD, in accordance with Sec. 26.04, Property Tax Code, have calculated \$ 98917 per \$100 of value as the tax rate which may not be exceeded by more than three percent by the governing body of the Lazbuddie ISD without holding a public hearing as required by the code.

The estimated unencumbered fund balance for Maintenance & Operation fund: \$ 211,871.00.
The estimated unencumbered fund balance for Interest & Sinking fund: \$ 66,991.00.

The following schedule lists debt obligations that 1986 property taxes will pay:

Bonded Obligations - \$84,565.00

[Expand worksheet as necessary to list debt obligations. If the unit needs additional space, refer the reader to the portion of the notice showing the debt schedule. See examples.]

Ronald E. Procter, C.P.A.
9/8/86 Chief Appraiser

CALCULATION OF EFFECTIVE TAX RATE

MAINTENANCE AND OPERATION (M&O) TAX RATE	
1. 1985 total tax levy	\$467,012.00
(1985 tax rate: M&O \$ <u>75.12</u> I&S \$ <u>17.89</u> \$ <u>.93</u> / \$100)	
2. Subtract 1985 debt service (I&S) levy	\$ 88,732.28
3. Subtract 1985 taxes on property in territory no longer in unit in 1986	\$ -0-
4. Subtract 1985 taxes for property becoming exempt in 1986	\$ 756.69
5. Subtract 1985 taxes for property appraised at less than market value in 1986	\$ 2,414.93
6. Subtract frozen M&O levy of over-65 homesteads	\$ 3,821.28
7. Subtract 1985 M&O taxes used to regain lost 1984 levy	\$ -0-
8. Adjusted 1985 M&O levy (subtract #2, #3, #4, #5, #6, and #7 from #1)	\$371,286.82
9. 1986 total taxable value of all property	\$ 47,113,997
10. Subtract 1986 value of new improvements added since 1/1/85	\$ 254,700
11. Subtract 1986 value of annexed property added since 1/1/85	\$ -0-
12. Subtract 1986 value of over-65 homesteads with frozen taxes	\$ 912,359
13. Adjusted 1986 taxable value for M&O (subtract #10, #11, and #12 from #9)	\$ 45,946,938
14. Divide the adjusted 1985 M&O levy (#8 above) by the adjusted 1986 taxable value for M&O (#13 above) (\$ <u>371,286.82</u> ÷ \$ <u>45,946,938</u>)	\$.008080
15. Multiply by \$100 valuation	× \$100
16. Effective M&O rate for 1986	\$.80808 /\$100
INTEREST AND SINKING (I&S) TAX RATE	
17. 1986 I&S levy needed to satisfy debt	\$ 84,565
18. Subtract frozen I&S levy of over-65 homesteads	\$ 896.35
19. Adjusted 1986 I&S levy (subtract #18 from #17)	\$ 83,668.65
20. 1986 total taxable value of all property	\$ 47,113,997
21. Subtract 1986 value of over-65 homesteads	\$ 912,359
22. Adjusted 1986 taxable value for I&S (subtract #21 from #20)	\$ 46,201,638
23. Divide the adjusted 1986 I&S levy (#19 above) by the adjusted 1986 taxable value for I&S (#22 above) (\$ <u>83,668.65</u> ÷ \$ <u>46,201,638</u>)	\$.0018109
24. Multiply by \$100 valuation	× \$100
25. Effective I&S rate for 1986	\$.18109 /\$100
APPRAISAL ROLL ERROR RATE	
26. Rate to raise the 1985 levy because of appraisal roll errors \$ _____ ÷ (\$ _____ - \$ _____) × \$100	\$ NA /\$100
27. Add rate to regain 1985 taxes lost because of appraisal roll errors \$ _____ ÷ (\$ _____ - \$ _____) × \$100	\$ NA /\$100
28. Total rate to adjust for appraisal roll errors	\$ NA /\$100
TOTAL EFFECTIVE TAX RATE FOR 1986	
29. Effective M&O rate (#16 above)	\$.80808 /\$100
30. Add effective I&S rate (#25 above)	\$.18109 /\$100
31. Add rate to adjust for appraisal roll errors (#28 above)	\$ NA /\$100
32. 1986 Effective Tax Rate	\$.98917 /\$100
1986 Effective Tax Rate is the tax rate published as required by Sec. 26.04, Property Tax Code.	
STATE AID/EQUALIZATION ENRICHMENT AID RATE	
33. Rate to replace lost state aid or qualify for maximum equalization allotment \$ _____ ÷ (\$ _____ - \$ _____) × \$100	\$ NA /\$100

Fair Time Special !!

3 Days Only

Subscribe
To The Bailey County
&
Muleshoe Journals

1/2 price

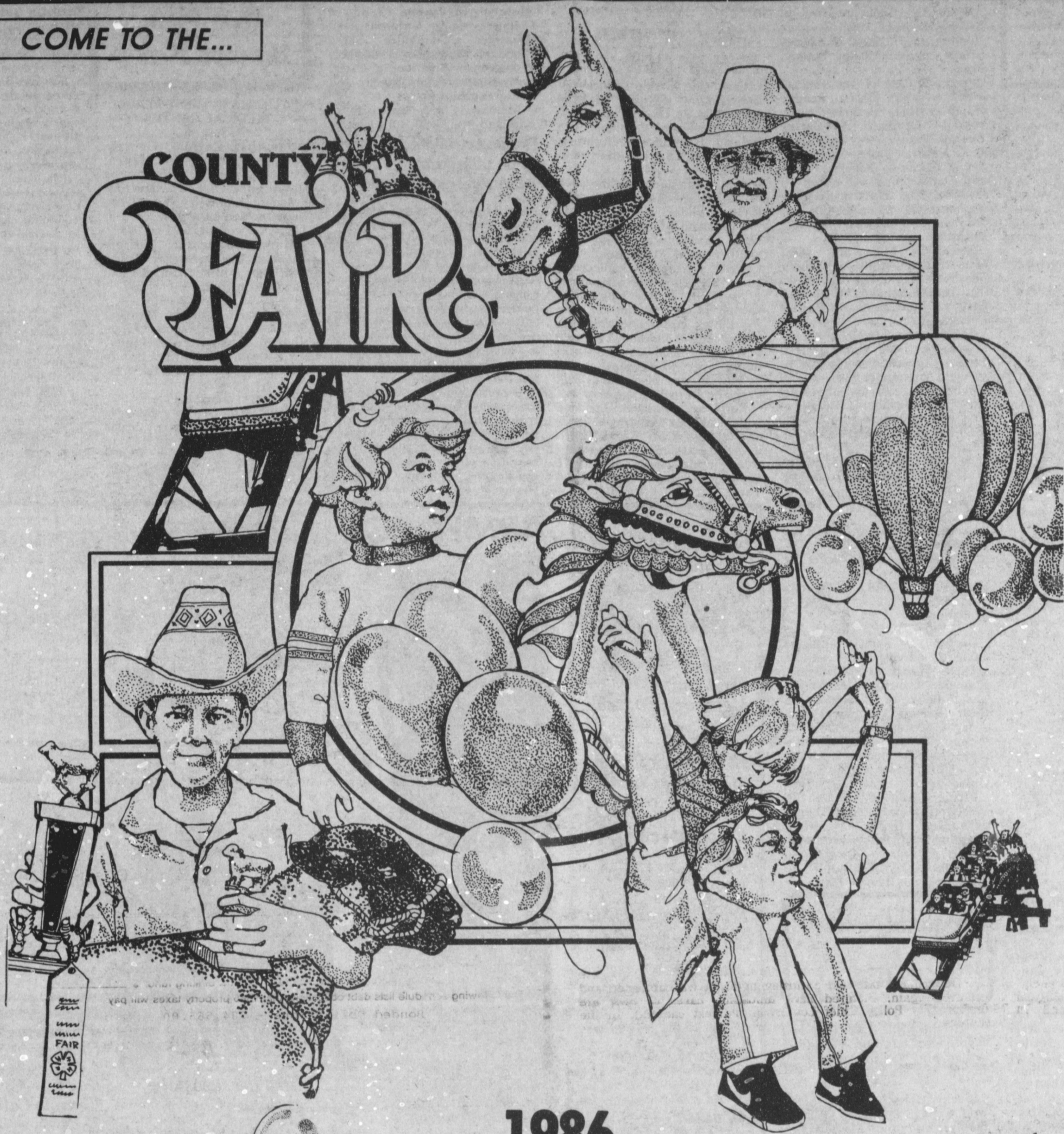
Thrown By Carrier Reg. \$12.50 **Now \$6.25**
By Mail (In Town Or Surrounding Counties)
Reg. \$14.75 **Now \$7.40**
Checks Or Money Orders Must Be
Postmarked On Or Before September 13.

Name: _____
Address: _____
City: _____
ZIP Code: _____



COME TO THE...

COUNTY FAIR



Horticulture

1986

Bailey County

Small Pet Show

Agriculture

West Plains Fair

Craft & Hobbies

September 11, 12, 13

Canned
Fruits &
Vegetables

Culinary

Fine Arts

The Following Businesses Urge You To Come Out
And Attend The Bailey County West Plains Fair :

First Bank

Honey Comb

Black Insurance

Serv-All Thriftway

Lambert Cleaners

Muleshoe Floral & Gifts

Ana's House of Beauty

Decorators Nursery & Floral

Farmer's Co-Op Elevators

Glenna's Beauty Retreat

Bailey County Farm Bureau

Muleshoe Trade Center

Cliff Allen Saddle Shop

Shipman & Son's Body Shop

Courthouse News

MARRIAGE LICENSE
Robert Stephen Pace, Lazbuddie and Cheryl Lynn Stanton, Texico, N.M.; Christopher Lane Johnson and Adena Lindt, Muleshoe; Sam Fee, Jr. Baltimore, Md. and Kathy Ann Taylor, Lubbock; Bobby Wayne Judah, Clovis, N.M. and Verna Ruth Richardson, Plainview; Noe Mora Jr. and Becky Rojas Acosta, Muleshoe.

WARRENTY DEEDS

Jimmy Van Thomas to Jackie Yurr Robinson--A one acre tract of land out of the N/2 of Section 77, Block Y.W.D.&F.W. Johnson Subdivision No. 2, Bailey County, Texas, also known as Tract No. 3, of the as follows: Beginning at a 3/8" iron

as follows: Beginning at a 3/8" iron rod set in the East Row line of FM Highway No. 3269, and the NW corner of a one acre tract of land, known as Tract No. 3 of the Millen Subdivision No. 2, from whence the N.W. corner of Section 77, Block Y.W.D.&F.W. Johnson Subdivision No. 2, Bailey County, Texas bears No. 49' 45" West a distance of 145.2 feet to a 3/8" iron rod set for the SE corner of this tract; thence North 89' 30' 35" West a distance of 300 feet to a 3/8" iron rod set in the East Row line of FM Highway No. 3269 for the SW corner of this tract; thence North 0' 49' 54" East along the East Row line of FM Highway No. 3269 a distance of 145.2 feet to the place of beginning and containing one acre of land.

K.K. Krebbs and wife, Fay Krebbs to Acension Garcia and wife, Felipa Garcia--All of lot number (30), of the K.K. Krebbs Subdivision of a portion of the E/155 acres of Section 53, Block Y.W.D.&F.W. Johnson Subdivision No. 2, lying South of U.S. Highway 84, Bailey County, Texas.

Clay Birdwell and wife, Martha Birdwell to Britt Birdwell, as his sole and separate property and estate--All of the West one half of Section No. 88, in Block A, Nelvin, Blum and Blum Survey, in Bailey County, Texas.

Thomas W. Terrell and wife, Janice Doyleen Terrell to Murray Davis, A (10) acre tract out of the East part of Section (23), of the subdivision of Leagues (141) and (142), Hansford County School Land in Bailey County, Texas.

Joyce Campbell to Faye Houston--The north (30) feet of Lot Number (15), in Gatlin Addition, to the town of Muleshoe, Bailey County, Texas.

Joyce Campbell to Faye Houston--All of Lot Number (14), Gatlin Addition to the City of Muleshoe, Bailey County, Texas.

Clayton Myers and wife, Gladys Myers to Thurman D. Myers and wife, Rhonda D. Myers--A 5.6 acres tract of land. Beginning at a point in the South line of the N.W./4 of the SE/4 of Section No. 21, Block Y.W.D.&F.W. Johnson's Subdivision No. 2, Bailey County, Texas.

Rudolph Moraw and wife, Janie Lou Moraw to Elizabeth Christene Hoyt, George Alvin Moraw and Charles Allen Moraw--Tract 1: All of the E/2 of Tract Number (2), League Number (185), Swisher County School Lands in Bailey County, Texas.

Tract 2: All of the W/2 of Block Number (6), League Number (185), Swisher County School Lands in Bailey County, Texas.

Tract 3: All of the E/2 of Tract Number (3), in League Number (185), Swisher County school Lands, in Bailey County, Texas.

J. Nozarro Flores and wife, Sylvia Flores to Forteno Flores and Eleno Flores--All of Lot (3) in Block (3), Warren Addition Number (2) to the City of Muleshoe, Bailey County, Texas.

Cecil E. Mills and wife, Winnie Ruth Mills to Jimmy Lee Mills--All of Lot (17), Block (5), Lenau Subdivision to the City of Muleshoe, Bailey County, Texas.

Ethel Stone Carroll, a widow to Wes-Tex Feed Yards, Inc., a Texas Corporation--The W/ly 10' of Lot Number (19), all of Lot Number (20) and the E/ly 10' of Lot Number (21), Richland Hills Addition to the City of Muleshoe, Bailey County, Texas.

COUNTY COURT

Marshall Jackson, Order of Dismissal
Ricardo Eugenio Barron, Judgement
Robert Gonzales, Order of Dismissal
James Albert Smith, Order of Dismissal
Robert Ortiz, DWI, 20 Days in Jail \$250 Fine, two years probation

DISTRICT COURT

James C. Embry Jr. and Janice Kay Embry DV
First Bank of Muleshoe, Formerly known as First National Bank of Muleshoe, VS Rickey Barrett, Judgement
Jack McCarty, D.O. VS Westworld Community Healthcare, Inc. Temporary Restraining Order and Show--Cause Order
Homer Allgood, M.D. VS Westworld Community Healthcare, Inc. Order of Judge Granting Temporary Restraining Order
Lorene Kay Ruotolo and Anthony Cono Ruotolo DV

Sudan News by Evelyn Ritchie

Mr. and Mrs. Kenn Carr and family have returned home from vacationing at Cloudercroft, N.M. for the past several days.

Shelly Gore has been home from College Station to visit her family, Mr. and Mrs. James Gore and Tammy.

The Llanos Altos Baptist Men's rally will be Sept. 2 at the Anton First Baptist Church with the meal being served at 7:00 p.m.

All men in the Llanos Altos Association are invited to come and bring their wife. The program will begin at 8:00 with a group of West Texas Baptists who witnessed in the Tasmanian devil's territory.

Mr. and Mrs. Bob Terry of Red River, N.M. visited this week with his mother, Mr. and Mrs. Les Hewitt in Littlefield. They also brought Gladys' great granddaughter, Jodi Michelle Bow of Las Cruces, N.M. Jodi is 3 years old.

Mrs. Hewitt has been in Littlefield Medical Center for a few days also.

Bob Finley Local Woman's Father Dies

Graveside funeral services for Bob Finley, 59, of Amarillo were held at 11 a.m. Tuesday, Sept. 9 in Friona Cemetery with Leland Hutson, Minister of Friona Church of Christ, officiating.

Burial was under the direction of Schooler-Gordon Colonial Chapel. Finley died Sunday at the Parkland Memorial Hospital Burn Unit, where he and another man, Steve Bentley of Canyon, were airlifted following being burned while attempting to put out a fire which had started in an elevator on July 29. Finley suffered burns over 90 percent of his body. Bentley was less critically injured, with burns over 40 percent of his body, and was discharged from Parkland Burn Unit on Aug. 25.

Born in Farwell, Finley married Violet Mahurin in 1952, at Portales, N.M. He had lived in Amarillo since 1982, moving from Florida. He was a feedmill operator at Randall County Feed Yard.

Survivors include his wife, Violet; two sons, J.V. of Cleburne and Maron of Amarillo; a daughter, Shera Wood of Muleshoe; a brother, Woodroe of Amarillo; a sister, Ruby Finley of San Angelo; and five grandchildren.

Memorials may be made to Parkland Memorial Burn Unit.

Hands-on wildlife museum to be utilized by A&M veterinary students

COLLEGE STATION — A hands-on wildlife museum for veterinary students, believed to be the first of its kind in the nation, has opened at Texas A&M University to help train professionals who will work with wildlife and the non-native species being raised by Texas ranchers, say officials.

The museum is part of Texas A&M's new, privately funded wildlife and exotic animal research center, which will probably house its first species of non-native antelope this fall.

"We will use this museum as a basic teaching unit for veterinary and other graduate students to assist the understanding of wildlife medicine and health care, and just the size and feel of animals many of them have never before seen up-close," said center director Dr. Stephen Seager, a veterinary scientist.

West Plains Hospital Report

PATIENTS IN WEST PLAINS MEDICAL CENTER

Sept. 5
Jonathan Chisom, Georgia Thomas, Lorenzo Rodriguez, Magarita Lopez, San Juana Dominguez, Irene Hutton, Francis Gilbreath and Cindy Quintana and baby girl

Sept. 6
Humberto Orozco, Georgia Thomas, Lyndi Austin, Jessie Rodriguez, Irene Hutton and Randy Armstrong

Sept. 7
Humberto Orozco, Georgia Thomas, Lyndi Austin, Jessie Rodriguez, DeWayne Haney, Effie Mae Shepard, Randy Armstrong and Eufemia Cardenis

Sept. 8
Humberto Orozco, Georgia Thomas, Lyndi Austin, Jessie Rodriguez, DeWayne Haney, Effie Mae Shepard, Randy Armstrong and Eufemia Cardenis

Marital satisfaction, not marital conflicts, affects children's happiness

COLLEGE STATION — It isn't the yelling and screaming around the house that will affect a child's happiness and anxiety levels — what counts is how satisfied his parents are with their marriage, says a Texas A&M University psychology researcher.

John Neal Stewart, who recently completed work for a doctoral degree in counseling psychology at Texas A&M, studied the impact of marriage dynamics on children in 70 families. Stewart was particularly interested in whether overt conflict or marriage happiness had greater influence on how children view themselves and how happy they feel.

Stewart found conflict had virtually no impact on how children see their own behavior, appearance, relationships with peers, anxiety levels, happiness or intellectual ability.

But their general happiness and anxiety were significantly affected by the level of marriage satisfaction reported by their parents. The greater the satisfaction, the higher the child's happiness and the lower the anxiety levels, Stewart said.

Immaculate Conception Catholic Church

Father Patrick Maher
Northeast of City

First Baptist Church

220 West Ave. E.
Berry Bradley, Pastor

First United Methodist Church

507 W. 2nd Muleshoe
Bill Kent, Pastor

El Divino Salvador Methodist Church

5th and Ave. D
Jose M. Fernandez, Pastor

Emmanuel Baptist Church

Iglesia Bautista Emmanuel
107 East Third
Isaias Cardenas, Pastor

Trinity Baptist Church

314 E. Ave. B
Rev. V.L. "Buster" Huggins

Muleshoe Church Of Christ

Clovis Hwy
David Alessandro, Pastor

16th & Ave. D Church Of Christ

Sunday 10:30 a.m.
Evening 6:00 p.m.
Wednesday 8:00 p.m.

Spanish Assembly Of God

East 6th and Ave. F.
Luis Campos, Pastor

St. John Luthern

Sunday School & Bible
Classes 9:30 a.m.
Church Services 10:30 a.m.

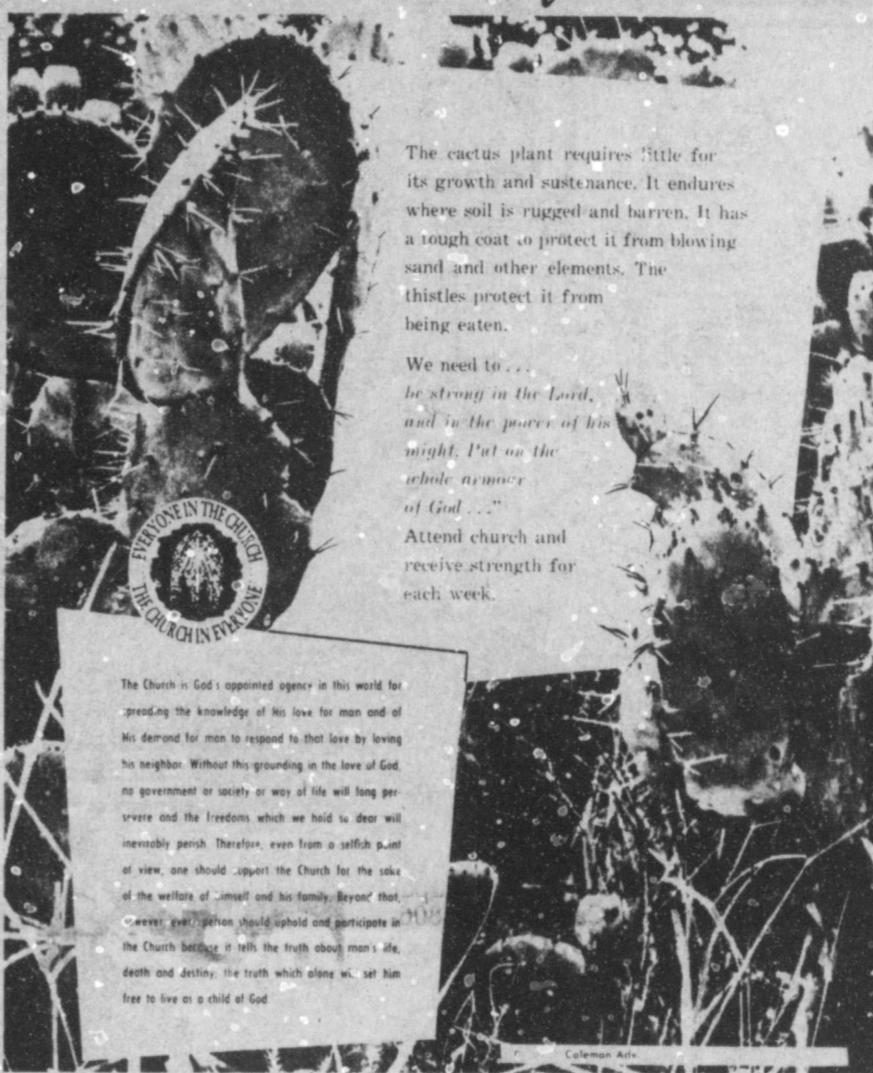
Muleshoe Baptist Church

8th and Ave. G.
Bob Dodd, Pastor

Frimera Iglesia Bautista

223 E. Ave. E.
Roy Martinez, Pastor

ARMED FOR Self Protection



The cactus plant requires little for its growth and sustenance. It endures where soil is rugged and barren. It has a tough coat to protect it from blowing sand and other elements. The thistles protect it from being eaten.

We need to be strong in the Lord, and in the power of his might. Put on the whole armor of God...

Attend church and receive strength for each week.

The Church is God's appointed agency in this world for spreading the knowledge of his love for man and of his demand for man to respond to that love by loving his neighbor. Without this grounding in the love of God no government or society or way of life will long preserve and the freedom which we hold so dear will inevitably perish. Therefore, even from a selfish point of view, one should support the Church for the sake of the welfare of himself and his family. Beware that every man should uphold and participate in the Church because it tells the truth about man's life, death and destiny, the truth which alone will set him free to live in a child of God.

Jehovah Witness

Friona Hwy
Boyd Lowery, Pastor

Calvary Baptist Church

1733 W. Ave. C.
Rev. Darrel Martin

Circle Back Baptist Church

Intersection FM 3397 & FM 298
946-3676
Ron Linbarger, Pastor

United Pentacostal Lighthouse Church

207 East Ave. G.
Rev. J.A. Torres

The Community Church

Morton Hwy
H.D. Hunter, Pastor

Church Of The Nazarene

06 W. Ave. C.
Dennis Hayes Pastor

New Covenant Church

Plainview Hwy
Sunday 10:00 a.m.
Wednesday 7:00 p.m.
Jimmy Lowe, Pastor

Longview Baptist Church

965-3413
B.C. Stonciphier, Pastor

Progress Baptist Church

Paul Brigham, Pastor
Progress, Texas

Progress Second Baptist Church

1st and 3rd Sunday
Clifford Slay, Pastor

St. Matthew Baptist Church

Corner of West Boston & West Birch
M.S. Brown, Pastor

Richland Hills Baptist Church

17th and West Ave. D.
Brook Sanders, Pastor

Lariat Church Of Christ

Sunday School 10:00 a.m.
Worship 11:00 a.m. & 6:00 p.m.
Wednesday Services 7:00 p.m.
Sam Billingsley, Minister

Primitive Baptist Church

Corner of Ithaca St. and Fire Ave
Elder Glen Williams, Pastor

Templo Calvario

507 South Main
Sunday 10:00 a.m.
Sunday Evening 7:00 p.m.
Evangelical Services
J.L. Soto, Pastor

First Assembly Of God

Ron Dysart
9:45 Sunday School
11:00 Morning Worship
6:30 Evening Services
7:30 Mid Week Services
272-3984

Primitive Baptist Church

621 South First
Elder George Johnson, Pastor

Western Drug

114 Main

272-3106

Baker Farm Supply

1532 W. American

272-4613

Farmers Spraying Service

Lazbuddie

965-2624

Main Street Beauty Salon

272-3448

115 Main

Muleshoe IGA Supermarket

272-4244

402 Main

Robert D. Green, Inc.

272-4588

7400 W. American Blvd

Muleshoe Fertilizer

Office 272-3443

Home 272-4081

Mobile 965-2256

1st Bank

202 South First

272-4515

John's Custom Mill

272-4373

523 Amer. Blvd

Irrigation Pumps & Power

272-4483

West Hwy. 84

Farmers Co-Op Elevators

272-4490

American Valley Inc.

Hwy. 84 W.

272-4266

Dairy Queen

1204 W. American

272-3412

James Roy Meat Market

506 W. American

272-4361

Lookin' Good

206 Main

272-5052

Five Area Telephone Co-Op Inc.

302 Uvalde

272-5533

Bratcher Motor Supply

107 E. Ave. D.

272-4288

Attend The Church Of Your Choice



LOOKING INTO THE ARENA--A Mexican Rodeo is a lot different from rodeos most people are accustomed to. The arena is round, and looks into this "neck" where the action starts out, moving into the round ring. This arena, and pens, are nearly ready for the first rodeo, scheduled for Sunday afternoon.

Muleshoe Journal

Classified

Call 272-4536

EATING OUT

By Rose Hughes

ONCE in a while one finds a locally-owned, small-town restaurant tucked away off the main roads that's a delight. Such a restaurant the writer found recently on a trip from the Midwest to Florida.

BRANCHING off I-26 east to go through Augusta, one leaves going south on 25 and 121. In the little town of Waynesboro, two blocks off the main street, one finds the local cafeteria.

THERE we find home-cooking, hot vegetables, a good selection, and an atmosphere reminding one of the 1930's and 1940's.

READERS must ask for the name-it slips memory. But everyone knows it-it's THE place in Waynesboro, the only place like that in town. If going north, turn off to the right, in the middle of town.

MEALS are served daily and Sunday, lunch and dinner, and travelers can get in and out fast. A good lunch will cost, perhaps \$4.00.

YOU can see immediately this is a town gathering place. When the hostess asks if everything's all right and sits and talks among local friends, you know this is Hometown, USA.

SMILES

Just How Far

Bill--On what grounds does your father object to me?
Jenny--On the grounds about the house.

The keenest punishment is to ignore a man who tries to insult you.

18. Legal

Bailey County will use the following rules and procedures to comply with its responsibility under the Indigent Health Care and Treatment Act.

Application can be requested from/at The Aging Services and Health Care Office in the Courthouse. Assistance in completing the application will be provided if needed. Contact Glen Williams for assistance.

Bailey county will use rules and procedures found in the County Indigent Health Care Program Handbook published by the Texas Department of Human Services. In summary, these are the rules:

1. Application forms must be completely filled out.
2. Verification of income, termination of income, residence, household composition, and resources is required, if questionable.
3. Net income cannot exceed

COUNTY INDIGENT HEALTH CARE PROGRAM Maximum Countable Income Standards

Family Size	Single Adult and Adult with Children	Couples and Couples with Children	Children Living with Ineligible Adults who are not Legal Parents
1	\$ 75	---	\$ 63
2	150	120	90
3	184	200	126
4	221	226	151
5	256	252	184
6	284	289	210
7	308	324	261
8	351	350	287
9	377	392	330
10	420	418	356
11	446	461	399
12*	488	487	425

* Add \$38 for each additional household member if the household size exceeds 12 persons.

4. Liquid resources assets cannot exceed \$1000. The equity value of a car greater than \$1500 is counted against the \$1000 limit. Personal property and homestead are exempt assets.

5. Eligible persons must be a resident of Bailey County.

6. Applicants must provide all requested information and documentation requested or applications will be denied.

7. Applicants have the right to appeal adverse decisions.

8. Information and forms relative to processing such appeals are available at the above mentioned office, assistance will be provided, and all appeals will be made to the Bailey County Commissioner's Court.

Some Doctors Have Unique Characteristics

Texas physicians who practice in freestanding emergency clinics (FECs) "are less likely to have completed residency programs and...place a high priority on fixed hours," according to the September issue of Texas Medicine.

This and other findings are from a study of Texas physicians who practice either partially or entirely in what the authors found is a new practice option for young physicians--the FEC. Writing in the official Texas Medical Association journal, Rose Yunker, PhD, Martha Levine, and Abdul Sajid compared the results to information on all Texas physicians. The authors are all with the office of educational development, The University of Texas Medical Branch, Galveston.

Commenting on the rationale for the study, the authors cite rapid spread of FEC's and "their profound public policy

implications relating to the quality, continuity, and availability of medical care, as well as the commercialization of medical practice."

The article notes that while there are 4.9 percent doctors of osteopathy practicing in the state, there are more than 14 percent practicing in FECs. Physicians practicing in a freestanding emergency clinic are generally younger than Texas physicians as a whole, with nearly 70 percent receiving their medical degrees after 1970.

The study also revealed that only 38 percent of FEC physicians have hospital privileges. This, the authors state, is a "reflection of the strict ambulatory nature of FEC care." Generally, these physicians also work fewer hours than physicians in more traditional settings, such as a solo or small group practice.

Volunteer Wheat Can Hurt Crop

Volunteer wheat in summer fallowed fields may look innocent enough, but these rogue plants can significantly hurt the coming wheat crop and should be eliminated.

"The problem is that volunteer wheat hosts a growing number of insects and disease-causing organisms," points out Dr. Travis Miller. "These insects and diseases reduce grain yields and frequently require one or more applications of expensive fungicides or insecticides. Such problems could be avoided or reduced by one or two light tillage operations or the use of an effective herbicide," notes Miller, an agronomist with the Texas Agricultural Extension Service, The Texas A&M University System.

Evidence is mounting that volunteer wheat is responsible for a good portion of the rust problem that has plagued the Texas wheat crop the past two years. Favorable weather conditions and huge acreages of susceptible wheat varieties have added to the problem.

"Informal surveys in several areas of the state are revealing the presence of leaf rust in

volunteer wheat this summer," says Miller. "A good job of volunteer wheat destruction will reduce early rust infestation and may impact the progress of rust in the field next spring."

Other problems aggravated by volunteer wheat over-summering in fields are the brown wheat mite and wheat curl mite along with wheat streak mosaic virus complex (for which the wheat curl mite serves as a vector). Destruction of volunteer wheat, which is the host prior to planting, is the best and least costly control of these mites and the virus disease they cause, explains the agronomist.

The Russian wheat aphid, which has gained considerable notoriety since its discovery in Texas wheat last March, will readily survive on volunteer wheat and wheat grasses which are found in fallow wheat fields, according to Miller. He recommends careful seedbed preparation and destruction of volunteer wheat and grasses in and around wheat fields to reduce this pest's habitat and initial infestation levels.



The circulatory system of the human body contains about 60,000 miles of blood vessels and capillaries.

11. For Sale Or Trade

MOVING SALE antiques, tools, toys, books, canning supplies, much much more. 8 to 6 Fri. Sat. & Sun. 314 W. 6th Muleshoe. L11-37t-2tc

FOR SALE: 120 Acres of irrigated farmland. Owner finance. Call 214-492-5769 after 9 a.m. n11-35s-8tpts

13. Property For Lease

FARM STORAGE for lease 60'x100' barn, flat storage. Government approved. Muleshoe, Texas 79347. L13-36s-8tc

15. Misc.

ROUND-UP application pipe-wick mounted on Hi-boy 30 inch or 40 inch rows, call Roy O'Brian 265-3247. o15-28t-tfct

17. Seed & Feed

ATTENTION FARMERS We are buying corn. Birdwell Cattle Feeders. Phone 946-3321. b17-36s-tfc

18. Legal

JOHN DEERE 7730 combine 411529 224 platform 532165. Belong to Bruce Caldwell, Bovina, Texas. Call September 10, 1986 at 10:00 a.m. at Dent Co. Muleshoe, Texas. 18-3tc-36t

Too Late To Classify

FOR SALE 1977 Mercury Marquis very clean. Call 272-4349. 9-37t-2tc

Enochs News by Mrs. J.D. Bayless

Mrs. Winnie Byars visited her daughter, Mrs. Nadine Parr in Lubbock Sunday and her other daughter, and husband, Mr. and Mrs. Henry Hardaway from San Angelo also visited with them, also a granddaughter, Kelly and Randy Robinson of Witharral.

Mrs. J.D. Bayless was in Muleshoe Wednesday on business and was a dinner guest in the home of a sister-in-law Mrs. Clara Coffman.

Guest in the home of Mrs. Etta Layton last Monday was a granddaughter, Mr. and Mrs. Jerry Nichols and children, Kristen and Landon of Muleshoe.

Mr. and Mrs. Dale Nichols spent a week in a Cloud Croft, N.M. and their daughter, Paula and James Grant, met them there and they fished and visited and enjoyed camping out.

Spending Friday night and Saturday with Rev. and Mrs. David Graves were Dr. Ronald Berry and two children of Plainview.

Mrs. Edward Crume and Mrs. Etta Layton spent a day the past week with their sister, Mrs. Juanita Snow in Muleshoe.

Mr. and Mrs. E.N. McCall spent Thursday night with their daughter and husband, Brenda and Robert George, Friday morning they visited Mr. and Mrs. John Gunter, and Mrs. Reet Dick at John Knox Village, they were former residents of Enochs.

8. Real Estate

CHARLOTTE PIERCE, BROKER
400 Craig Street
Texico, N.M.
(505) 482-9188
Fully Licensed
In New Mexico & Texas

RAISE YOUR KIDS IN THE COUNTRY! CONSIDER THESE:

Very nice 3-bedroom brick home located at 914 Hickory.

3-bedroom house approx. 8 miles Northwest of Muleshoe, on paved West Camp Road, with 40 acres of land presently used as horse farm, with 6" irrigation well, motor and roll-type sprinkler. Also has barns, shop building, and lots of extras. Owner would sale house and 2 acres.

3-bedroom home approx. 3 1/2 miles West of Muleshoe, on Clovis highway, on small tract with room for horses.

FOR SALE: Small down payment. Take over payments, 2 bedroom, 2 bath, double wide mobile home. Super nice. 272-5010. b8-29t-tfc

FOR SALE: Nice 3 bdrm, 1 1/2 baths, carport, shadow box patio cover, central heat, evap. air. Located near schools, call 272-5038. w8-32t-tfc

14'x76' Fleetwood, 3-2 \$99.00 down, \$189.00 per month, 10 years at 13.5% apr. Call DON 1-806-763-5319 Collect. a8-30s-tfc

14'x60' 2-1 1/2 \$500.00 down, \$153.00 per month, 12 years at 14.875% apr. Super nice. Call DON 1-806-763-5319, Collect. a8-30s-tfc

HOUSE FOR SALE 3 bedrooms, 2 bath, double garage, new central heating, air conditioning, plumbing, fixtures, roof drive way, carpet. In the high school area reasonable price 272-4446. d8-37t-tfc

882 Shult nice house. \$99.00 down, \$225.00 per month, 180 months at 13.5% apr. Call DON 1-806-763-5319 Collect. a8-30s-tfc

FOR SALE: 3 bedroom, 2 bath, 2 detached garages near DeShazo. By appointment 272-5732 after 5:00. 421 W. Ave. D g8-25s-tfc

\$99 DOWN
On a 1983 DOUBLEWIDE with fireplace. Hard board siding 1680 Sq. ft. of living space for only \$457 per month, this super nice home will not last long or come by A-a Mobile Homes in Lubbock or ASK FOR DON or call collect. 763-5319 today, 180 months at 14.75% A.P.R. a8-31s-tfc

Bingham & Nieman Realty
116 E. Ave. C
272-5285
272-5286
"We Appreciate Your Business!"
George & Dianne Nieman

HOUSE FOR SALE located in Lazbuddie 3 bdrm, 2 baths, utility, garage, brick, big lot, private well. It interested call 965-2126 or 965-2191. f8-32s-tfc

FOR SALE: New posts and rails for wood and fence. Call after 9 a.m. 965-2732. p11-3. tfc

1. Personals

OWN A highly profitable and beautiful shoe store. Ladies-Childrens - Mens. Guaranteed first quality name brands at retail prices 40 to 50 percent below your competition. We offer this unique opportunity for a fast return on your cash investment. Over 200 nationally known brands-1500 styles *Andrew Geller *Evan Picone *Bass *Nike *Reebok *Soft Spots and many more. \$18,900 to \$39,900 includes beginning inventory-training - and fixtures. Call Anytime. Prestige Fashions 501-329-2362. 1-37t-1tpts

NOW OPEN 2nd Hand Rose Thriftshop. In Lazbuddie next to Buddies Market. 11 to 5. 1-36t-2tp

2. Lost & Found

22 HEAD, 450 pound crossbred heifers, F-bar brand on the right hip and orange tag on right ear. Call James Sides 825-2399. s2-36t-4tc

3. Help Wanted

EASY ASSEMBLY WORK! \$714.00 per 100. Guaranteed payment. No Sales. Details-Send Stamped Envelope: ELAN-6469 3418 Enterprise, Ft. pierce, FL 33482. 3-36t-8tpts

HELP WANTED Valley Grain Products Elevator now taking applications for temporary harvest help. No phone call please. Main office located 1 1/4 miles east on hi-way 84 v3-34s-tfc

FEDERAL, STATE & CIVIL SERVICE JOBS \$14,757 to \$57,785/Year. Now Hiring. CALL JOB LINE 1-518-459-3611 Ext. F-6696 for listing. 3-37t-3tpts

4. Houses For Rent

RUIDOSO CHALET: 4 bedroom for rent by day, weekend, or weekly. Call 505-257-2622. Owner Dr. Albertson. a4-49t-tfc
FOR RENT: 1 bedroom house partially furnished. Call 272-3410 or come to 902 W. 6th. 4-36s-2tp

5. Apts. For Rent

FOR RENT unfurnished 2 bedroom apartment call 965-2188 or 272-4754. s5-37t-tfc

8. Real Estate

WEST TEXAS largest selections of repossessed mobile homes 2 & 3 bedrooms available, low low down payments. Call 1-800-792-0032. Mustang Mobile Homes. m8-16t-tfc

14'x80' BENDIX 3-2 with ac. completely refurbished. New Carpet. For only \$258.00 per month, Call Don 1-806-763-5319 Collect or Come by A-I Mobile Homes in Lubbock. \$875.00 DOWN 14.875% APR 144 months. a8-30s-tfc

CLASSIFIED RATES
First Insertion
Per Word.....\$5.15
Minimum Charge \$2.30

Consecutive Insertions
Per Word.....\$3.13
Minimum Charge \$2.00

CLASSIFIED DISPLAY RATES
Per Column Inch

Blind Ad Rates
50% More

DEADLINES
12 Noon Tues.
For Thursday Paper
12 Noon Fri.
For Sunday Paper
We reserve the right to classify, revise, or reject any ad. No responsibility for any error after ad has run once.

1. Personals

HOME REPAIRS R.M. Saldana Construction, licensed and bonded plumber. Specialized in cement, carpenter work, remodeling, painting, acoustical ceilings, 272-4955. s1-16s-tfc

JERRY'S ROOFING & Painting, Roofing & painting -all types. Call for free estimate. Jerry Helton 272-3836. h1-21t-tfc

CHILD CARE: 8 years experience under Texas license. References. Balanced meals. Planned activities. Very large play area, inside and out. Lots of affection. Call Dianne Allison 272-3304. 1-35t-tfc

MARY KAY COSMETICS Josie Flowers 272-3865. 1-40s-tfc

I WILL do crocheting for baby gifts, sweaters, afghans, etc. Call 272-5607 after 6 p.m. or on weekends.

CUSTOM DISKING and sewing, etc. Call 272-4193 after 6 p.m. 1-36s-2tp

SALE! 50% OFF! Flashing arrow sign \$269! Lighted, non-arrow \$259! Nonlighted \$229! Free Letters! Few left. See locally. 1 (800) 423-0163, anytime. 1-37t-1tpts

OWN YOUR OWN Jean-Sportwear, Ladies Apparel, Childrens/Maternity, Large Sizes, Petite, Dancewear/Aerobic or Accessories Store. Jordache, Chic, Lee, Levi, Izod, Gitano, Guess, Calvin Klein, Sergio Valente, Evan Picone, Liz Claiborne, Members Only, Gasoline, Healthtex, over 1000 others. \$14,300 to \$25,900 Inventory, Training, Fixtures, Grand Opening Etc. Can Open in 15 Days. Mr. Keenan (303) 678-3639. 1-37t-1tpts

Kenneth Evins' Handyman Service
Painting Remodeling Repairing And More
Call: 965-2759
Muleshoe, Tx 79347

CONCERNED About Someone's Drinking? **HELP IS AVAILABLE** through Al-Anon Call 227-2350 or 965-2870 or come to visit Tuesday nights, 8:00 p.m. or Saturday mornings at 10:30 a.m. at 1116 W. American Blvd., Muleshoe

MULESHOE
AREA

Fall '86

BUSINESS
DIRECTORY
AND
SHOPPING
GUIDE

tropical sno Hawaiian Shave Ice



Good Sept. 11 - 14
Tropical Sno
1516 W. American Blvd.

Come in and let
LynEldon Randolph
help you with those
Motor repairs!



Muleshoe Motor Company
1225 W. American Blvd. 272-4251

True Value
HARDWARE STORES

Install Your Own
Total House **Master PLUMBER**



Deluxe Water Filter System

With Valve in Head
Includes Filter Cartridge
For Cleaner, Better Tasting,
Sediment-Free and Odor-Free
Water. Choose the Filter Cartridge
to Solve Your Water Problem. 583 328

ONLY
\$32.99

Fry & Cox, Inc.
401 S. 1st. 272-4511

Luncheon Specials

Monday- Chicken Fried Steak.....	\$4.99
Tuesday- Chopped Steak.....	\$4.99
Wednesday- Smoked Sausage.....	\$4.99
Thursday- Steak Fingers All You Can Eat..	\$4.99
Friday- Catfish.....	\$4.69
Saturday- 6 oz. Strip.....	\$5.75
Sunday Filet Mignon.....	\$6.50

all
W/ Unlimited
Salad Bar

K-BOB'S

1008 W. American Blvd. 272-7517

tropical sno



Tropical Sno started many years ago in Hawaii as a cool, refreshing way to enjoy those warm days. Friends would shave a block of crystal-clear ice by hand and make a cold, flaky snow. They would cover the snow with fruit juices and fresh fruit and create a fantastic island treat, and now this great idea from the island is being introduced into the Muleshoe Area and becoming more and more popular. The fine flakes of snow absorb the flavors and make every bite delicious.

Tropical Sno was first introduced to Muleshoe in April 1986 by Jeff and Keisha Meeks. They have since opened Tropical Sno stands in numerous towns of the Panhandle and South Plains.



Tropical Sno

1542 W. American Blvd. 272-3294

3
Locations

To Serve You

**Farmer's Co-Op
Elevators**

Clays Corner Enochs Muleshoe
Phone 272-4335



Bewitch Them!

Turn heads with a
smashing new look!

Come in and let Glenna
or Pat give you a new updated
image.

Glenna's Beauty Retreat

207 Ave. G. 272-3092



Savor
the best in Mexican
food by eating at
Leal's

Leal's El Nuevo Restaurant

1542 W. American Blvd. 272-3294

Bruce Refrigeration & Electric

XIT Drive

Owner - Bill Bruce

Providing Complete, Professional Service &
Maintenance on heating, air conditioning and
commercial refrigeration

Featuring

Borg Warner - York - Luxaire



For the best Mexican
food in town-

Come to Viola's!!

Viola's Restaurant

2002 W. American Blvd. 272-3838

Fall Is In The Air!

It is time for a new you!

Try a new hair style or
perm.

Call one of our operators today
for an appointment.

Main Street Beauty Salon

115 Main 272-3448

**The Energy Sol-A-Terra
Saver**



You can stay comfortable 12 months out of the year, and save money on your utility bills. With water and a little electricity you can use Sol*A*Terra heat pump efficiency to heat and cool your home. Sol*A*Terra is quiet, safe, economical, and reliable, and no chimney is required. You can own a Sol*A*Terra heat pump today!

Southwestern Geothermal