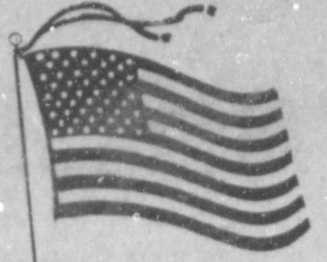


WEATHER

July 17	(Not Available)
July 18	94 64 .00
July 19	96 65 .22
July 20	81 63 .00

Muleshoe Journal

'The Community Of Opportunity-Where Water Makes The Difference'



Vol. 65, No. 29

8 PAGES TODAY

Published Every Thursday At Muleshoe, Bailey County, Texas 79347

20¢

Thursday, July 21, 1988

Sales Tax Rebate Still Shows Slow Upward Climb

Postmistress Is Chosen At Lazbuddie

Connie J. Barnes has been appointed the new postmaster at Lazbuddie, effective July 2, Sectional Center Manager/Postmaster Donald S. Bloyd of Lubbock has announced.

Mrs. Barnes, a native of Muleshoe, has served as postmaster relief in Lazbuddie for the past three years.

Bloyd said Postmaster selections are made on a basis of merit from a list of qualified candidates submitted to the Sectional Center Manager by a review committee. The review committee, composed of sectional center director from the same sectional center, a postmaster from the same sectional center, and a sectional center director from a different sectional center, review the applicants for the position and recommend to the sectional center manager those candidates who best meet the position requirements.

The sectional center manager then selects and recommends to the Postmaster General the best qualified person for appointment to the vacancy.

Mrs. Barnes is married to Royce Barnes, a rancher and farmer. They are the parents of two children, Les, age 19 and Doug, age 15.

Mrs. Barnes' hobbies include skiing, reading, and raising a variety of dogs in her kennel. She has served in various capacities in the First Baptist Church where she is a member. Connie currently serves as President of the First Responders which is the medical unit of the Lazbuddie Fire Department.

Mrs. Barnes is anxious to meet all the Lazbuddie customers and assist them with mailing needs.

Summer Band For MHS Starts On August 1

Mark Heidel, Muleshoe High School band director, said summer band rehearsal will begin on Monday, August 1.

Freshmen band members, new members and officers are asked to meet at the MHS band hall at 10 a.m. on that date.

The full band will meet at 6 p.m. on August 1, for the summer band that will conclude on August 31.

Director Heidel said bring your instrument and wear comfortable clothing.

44th Annual Rodeo Scheduled At Earth

For the first time, the 'Biggest Rodeo in the Southwest for the Size of the Town' will be two nights instead of the traditional three nights.

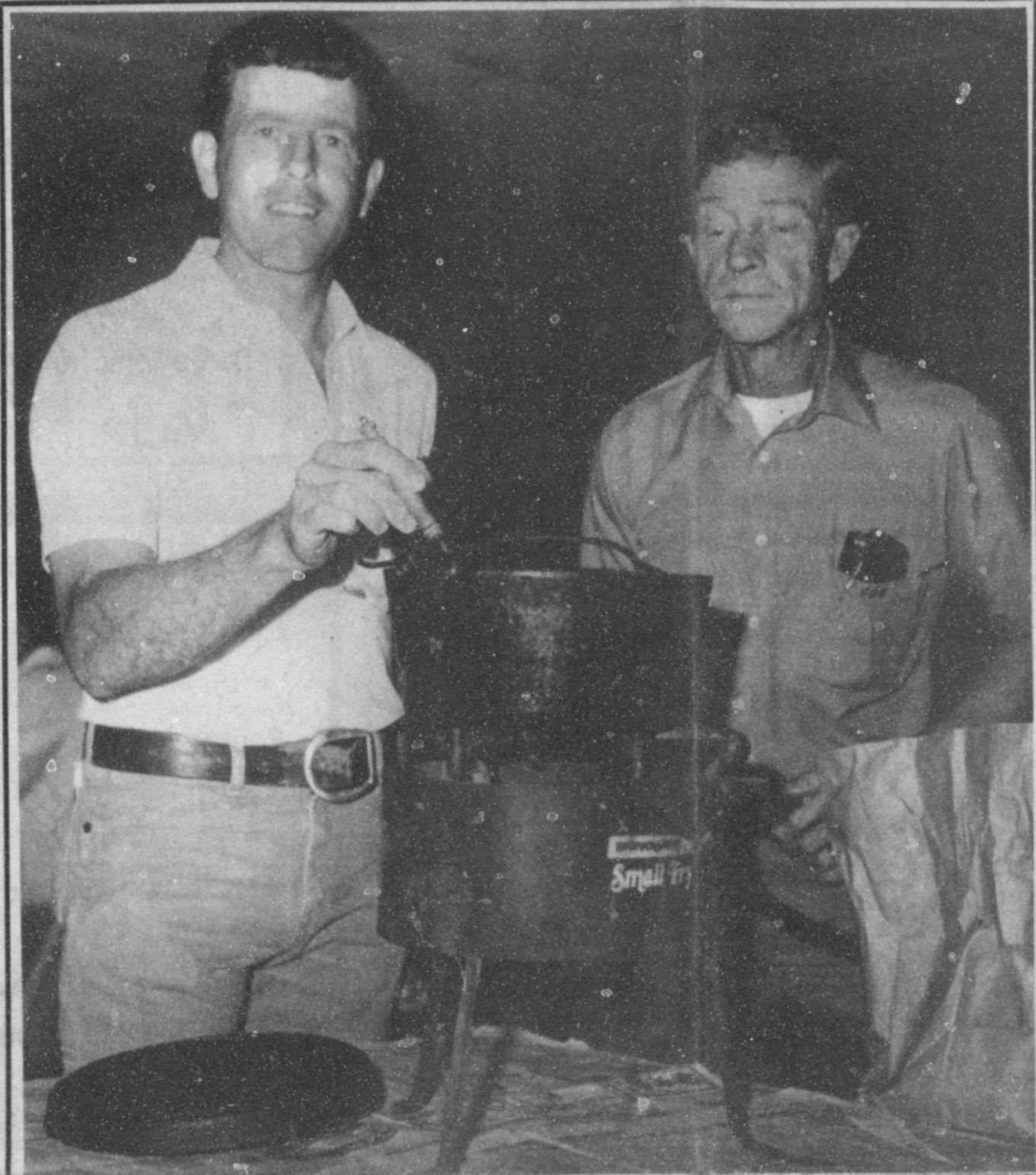
This year, the 44th annual rodeo will be tomorrow, Friday, and Saturday nights, July 22-23 at 8:30 p.m.

Also, the traditional barbecue will be held on Saturday, instead of Thursday evening, as in the past.

On Friday, preceding the rodeo, the Springlake - Earth Lions Club will serve hamburgers, chips, beans and tea for \$3 on Friday, and free watermelon will also be served.

The hamburger supper will follow the 6:30 p.m. parade on Friday.

Admission to the rodeo will be \$5 for adults and \$3 for children 12 and under.



COOKIN' UP A STORM--Tuesday, at the Muleshoe Rotary Club's weekly meeting, something different took place. Dr. Barry Cowart, left, was in charge of the program. He set up a small cooker on a table in the meeting room at the Bailey County Civic Center and cooked. As Dr. Jerry Gleason right, presented a film on a shark expedition made by Dr. Gleason and his family on July 8, Dr. Cowart served pieces of the shark to the Rotarians and guests present. Dr. Gleason's comments during the film were hilarious, and the Rotarians soundly applauded the speaker when he had finished the program.

(Journal Photo)

Gypsum Blocks, Resistance Meters Help Accurate Moisture Readings

Gypsum blocks and resistance meters offer producers "a window into the soil" by providing moisture readings for the portion of the soil profile in which they are placed.

These soil moisture monitoring devices are currently available for purchase by producers through the High Plains Underground Water Conservation District No. 1 or local County Soil and Water Conservation offices.

Gypsum blocks consist of a wire or a wire mesh embedded in an inch-long gypsum cylinder. When connected to a hand-held resistance meter, these blocks help the irrigator determine how

much moisture is currently available in the root zone profile. The electrical resistance varies with the amount of moisture store in the soil, and readings taken over a period of time will give producers an indication of the crop's moisture use rate.

Gypsum blocks work best with less water-sensitive crops such as cotton and grain sorghum. However, many corn producers have also used them successfully.

City Approves Agreement For RR Crossing

It was a very short meeting for members of the Muleshoe City Council Tuesday, with only one item on the agenda.

All of the discussion in the 30 minute meeting at the city hall.

Councilmen discussed and approved an agreement with AT&SF Railroad for an access to the new airport under construction east of Muleshoe, just off Highway 84.

It was explained that for the railroad to go ahead with the crossing, they must have the Council's approval, according to Muleshoe Mayor Darrell Turner.

An access road to the airport will cross the railroad spur, over the railroad and to Highway 84.

Total cost for the access road is expected to be \$118,115, according to figures released, and that does not include the cost of signals at the crossing.

Also discussed were hangars for the airport, and disposition of the city-owned hangars at the old airport.

City Manager Dave Marr said space has currently been prepared for eight units (hangars) at the new airport.

State Comptroller Bob Bullock said Tuesday that payments to cities that collect local sales tax continued to show an increase this month, with July payments up 14.3 percent over those sent in July last year.

"The gaining strength in our state economy is being reflected on a local level, and local governments can continue to expect a steady increase in their share of sales tax collections," Bullock said.

Shark Bits; -A Treat For Rotary

It was a 'fun' program for the Muleshoe Rotary Club Tuesday, when Dr. Barry Cowart was in charge of the program, and introduced Dr. Jerry Gleason.

Dr. Gleason presented a film on a fishing expedition he and his family made on Friday, July 8, some 20 miles off the coast of Port Aransas.

Mixed in with humorous dialog outlining the experiences of hooking, playing, and finally landing, a shark, the program was interspersed with 'lively and explicit' dialog from the persons on the boat playing the shark.

As Dr. Gleason's wife, Margaret filmed all the action, Dr. Gleason looked on as sons Jerry and Jimmy played the shark, finally landing it and dragging it into the boat.

Incidentally, one most unusual aspect was that portions of the shark were cooked and served as 'tidbits' to the Rotarians as they viewed the film.

And, just in case you have never tasted shark -- it's good.

Prior to the program, Brad Poyner won the Polio Plus drawing, where the prize was a \$10 gift certificate from Poyner's.

Introduced were new members Gene Atkins and Kerry Moore, with Moore actually rejoining Rotary.

President George Nieman said A. J. Liles and Brandon Wilson, who have been attending Camp RYLA, came home with good reports about their experiences.

Nieman also said he had visited with Clifton Finley, who is hospitalized in Lubbock, and reported he is doing well.

Visitors at the meeting included Kevin King, Lance King, Marlin Poyner, Todd Bessire, Andy Crawford, W. G. Harlan, Barak Harlan, and Martin Chandler.

Statewide, year-to-date payments are 10.8 percent higher than the same period last year, according to Bullock.

For the year, Muleshoe's payments show an increase of 14.85 percent. To date this year, total payments are \$120,769.98, and to date at this time in 1987, were \$105,152.83. However, monthly payments for this pay period are down by some 13.05 percent. Net payment this period was \$14,147.59, down from the \$16,271.30 for this same period last year.

In Cochran County, Morton is showing a 29.81 percent increase for the year. Total payments to date a year ago were \$26,954.11. Cont. Page 6, Col. 1

Extension Office Asks Producers For Surplus Hay

According to Bailey County Extension Agent Spencer Tanksley, "the drought in parts of Texas and in many sections of the Central United States has surfaced the need for many producers to find adequate forage to supplement cattle through this short grazing period."

"If you need hay for your cattle or if you have surplus hay for sale, we would like to know so we can help everyone throughout the state have access to forage for their livestock."

The Extension agent continued, "we will be maintaining a list of producers who have hay for sale at the county Extension office. We would like to know what your forage situation is and if you have hay for sale. Please call our office as soon as possible, but not later than Thursday, July 21 (today). Then, each week, please call to let me know if you have hay for sale, or if you have sold any hay you have listed."

"If you need hay, please call us and we will be able to give you the name and phone number of producers who have hay for sale."

"Remember, a new list of people with hay for sale will be developed each week, so keep me informed of your situation. Counties with surplus hay will be listed on a statewide news release that will help bring the buyer and seller together."

"Your cooperation is very important to the success of this operation," concluded Tanksley. "Please help us and your fellow livestock producers by letting us know weekly what your hay situation is."



CHECKING GRAPEVINES FOR BUGS--Dr. Pat Morrison, entomologist from the Lubbock A&M Extension Service looks over some bugs found on grapevines in Muleshoe recently. Looking on as Bailey County Agent Spencer Tanksley, right, shows some of the bugs is Myrtle Creamer, who was one of 29 local residents asking for evaluation of plant problems during the Extension office's annual plant clinic in Muleshoe. Dr. Morrison advised Mrs. Creamer what chemicals to spray on her grapevines, and how to treat borers in fruit trees. The entomologist explained processes to use to help save endangered fruit trees and grapevines, as well as local and area vegetables, shrubs and ornamental trees.

(Journal Photo)

**MULESHOE
AREA**



Spring/Summer '88

**BUSINESS
DIRECTORY
AND
SHOPPING
GUIDE**

Bring springtime freshness into your home with sparkling clean upholstery, carpets, drapes and bedspreads.

Lambert Cleaners
123 Main 272-4726

Henry Insurance Agency, Inc.
"Serving All Your Insurance Needs"
111 W Ave. B 272-4581

Allstate PROFESSIONAL INSURANCE AGENTS
KENNETH R. HENRY
CERTIFIED INSURANCE COUNSELOR
REAL ESTATE BROKER

Custom Framing

- Photos,
- Prints,
- Oils,
- Shadow Boxes,

Large Selection of Moldings & Mats
Muleshoe Art Loft

CAN'T FACE
Those home repair jobs?
Remember...
It's easier to do a small job now than to tackle a big job later!

Lenau Lumber Co.
202 E Ash Ave. 272-4222

Q. If you were looking for a high speed metal drill bit where would you find it?

Pick-Up Seat Exchange
Complete Seat Overhaul

Replacement Springs Molded Carpets
McCormick's Upholstery and Drapery
1009 S. 1st. Muleshoe, Texas 79347
806-272-4660

NOE'S SPECIAL
Meat and Bean Burrito Topped with Chile, Cheese and Jalapeno Peppers
\$3.15

Viola's Restaurant
2002 W Amer. Blvd. 272-3838

A. Fry & Cox
Q. If you were looking for a hard metal drill bit, you need a cobalt drill bit. Where would you find it?

Jones Blair Celebration Wall Paint 2 gal.
\$10.98
While supply last.
Last Week
Higginbotham-Bartlett Co.
215 Main 272-3351

24 hour TOWING SERVICE
Combination Motors and Salvage
Rt 2 Box 240
Muleshoe, Texas 79347
Gerry Pierce
Day 806-272-4458
Night 806-272-5057

A. Fry & Cox
Q. If you were looking for even harder metal drill bit. You would need a Titanium coated drill bit. Where would you find it?

5 Locations To Serve You!

Clays Corner	Pleasant Valley
Old Griffith	Muleshoe
Enochs	

Farmer's Cooperative Elevator
113 N. 1st. 272-4490

Drill Bit Organizer MM800
Select-A-Drill organizer holds up to 17 bits
Reg. \$4.99 **Sale \$1.59**

Fry & Cox, Inc.
401 S. 1st 272-4511

A. Fry & Cox
Fry & Cox, Inc.
401 S. 1st 272-4511

CHALUPAS

1 Bean & Cheese	\$1.95
1 Meat, Bean & Cheese	\$2.50

El Nuevo Leal's Restaurant
1542 W Amer. Blvd. 272-3294

THIS WEEK'S SPECIAL:
86
Chrysler Lebaron
\$7450

Muleshoe Motor Co.
1225 W Amer. Blvd. 272-4251

WES-TEX FEED YARDS, INC.
CUSTOM CATTLE FEEDING
P.O. Box 425
Muleshoe, Texas 79347
Telephone 806/272-7555

Auto Painting-Wrecker Service
-Free Estimates-
Tractor Glass & Windshields
Shipman & Son Body Shop
410 N 1st 272-4408

Poynors At Convention To Buy Winter Supplies

Paul, Brad and Darla Poynor of Muleshoe's Coast to Coast Home & Auto Store, joined over 2,500 other store owners at the company's fall/winter merchandise meeting and convention in Nashville, Tenn. last month.

At the convention, the Poynors purchased fall and winter merchandise and were introduced to new lines including plumbing, housewares, home entertainment, hardware, automotive, sporting goods, toys, appliances and more. Owners also had an opportunity to view an exact duplicate of Team Choice, CoastAmerica's newest franchise in sporting goods.

CoastAmerica Chairman Richard H. Bard reviewed the company's financial success, including a 54 percent increase in net income over last year. Bard also discussed CoastAmerica's continued growth with the establishment of two new franchise opportunities -- Coast to Coast Home & Auto, and Team Choice, its 'test' specialty sporting goods stores in Minneapolis, Minn. and Milwaukee, Wis.

"We're part of America," Bard said, "bringing more and more goods and services across the United States." "In the first six months of 1988, Coast to Coast stores sold 61,000 bicycles (175 truckloads), two and one half million light bulbs, nearly five million quarts of oil, 40,000 lawn mowers (130 truckloads),

135 truckloads of riding lawn tractors and three and one half million feet of garden hose, nearly one million pounds of nuts, bolts, nails and screws, and 850,000 gallons of paint.

Bard also noted the continued expansion of the company. "With the OTASCO and Coast to Coast Home & Auto's, we have expanded to over 1,200 stores in 38 states," he said.

The convention, held at the Opryland Hotel, was the largest convention ever held at the 1,800 room, 358 acre meeting and convention facility. Attendees had the opportunity to visit on-site attractions of The Grand Ole Opry, Opryland (120-acre musical entertainment theme park), The General Jackson Showboat, Hee-Haw and Nashville Now tapings and see the sights of "Music City, USA" including the Country Music Hall of Fame and Museum, Jack Daniels distillery and the Hermitage, the restored home of Andrew Jackson.

Other highlights included a special opening-convention appearance by legendary entertainer, Minnie Pearl; dinner shows by Diane Sherrill and Brenda Lee and over \$80,000 in door prizes contributed to convention attendees.

The Poynor's Coast to Coast store has been located in Muleshoe since 1965.

Stephen Harper Memorial Services Held Tuesday

Memorial services for Stephen A. Harper, 21, of Morton were held at 2 p.m. Tuesday, July 19 in the Morton First Baptist Church with the Rev. Fred Tinsley, pastor of the Holy Cross Episcopal Church at Lubbock, officiating, assisted by the Rev. Fred Wahler, pastor of St. Luke's Episcopal Church at Levelland.

Another memorial service was conducted at 2 p.m. Wednesday, July 20 in Pro-Cathedral of St. Clement Episcopal Church at El Paso with the Rev. Eugene Myrick of El Paso officiating.

Cremation was under the direction of Ellis Funeral Home of Morton. Harper died at 4:02 p.m. Saturday in Lubbock General Hospital.

Born Jan. 18, 1967, in El Paso, he had been a resident of Morton since 1984, moving there from Vernon. He was a trainee with Super Shop Automotive Performance Center at Lubbock, and was a member of the Pro-Cathedral of St. Clement Episcopal Church at El Paso. He had attended Texas Tech University at Lubbock and South Plains College at Levelland.

Survivors include his parents, Stephen D. and Minnie Harper of Morton; grandparents, John C. Davis of Happy Valley, Labrador Canada and Mrs. Edith Harper of El Paso; a brother, Michael Harper of Lubbock; six uncles, Russell Harper of El Paso, and Manuel Davis, Joshua Davis, Sam Davis, Eldred Davis and Harold Davis, all of Canada; four aunts, Andra Crossland of El Paso, Cathy Brady of Dallas, and Vera Butt and Rita Massie, both of Canada.

The family suggests memorials be made to your favorite charity.

Patients At West Plains Medical Center

JULY 14
Veldon Wallace, Leisha Wallace, Fernanda Chavez, Stacey Autrey, Dona Teague and Darrell Turner.

JULY 15
Fernanda Chavez, Darrell Turner, Jennifer McDaniel, Eliza Espinoza and Espinoza Baby boy.

JULY 16
Fernanda Chavez, Chester Embry, and Jennifer McDaniel.

JULY 17
Tommy Barrera, Chester Embry and Jennifer McDaniel.

Habit of Complaint

"I suppose you were thankful for the heavy rain." "Oh yes," replied Farmer Cornstossel "though I don't see why them weather folks couldn't provide to keep it in the fields instead of letting it stray around muddyin' up the roads."

Fox

"We're More Than Movies"

New Hours:

Monday-Friday 2-10 p.m.

Saturday 11 a.m. -10 p.m.

Sunday 1-8 p.m.

New Releases:

Lenard Part 6

Baby Boom

Can't Buy Me Love

Full Metal Jacket

Benji The Hunted

Action Jackson

Nuts

Like Father Like Son

Less Than Zero

Coming Soon:

Telephone

D.O.A.

Raw

Good Morning Vietnam

Moving

Jail Bird Rock

You Can't Hurry Love

Moon Struck

Last Emperor

Arcade & SnackBar

16 Flavors Ice Cream

Sundaes

Popcorn

Candy

Every

Monday & Tuesday

Rent One Movie--Get A FREE

Scoop Of Ice Cream

(one for each movie)

803 W. American Blvd.

Muleshoe

272-5981

Muleshoe Youth Baseball Advances To Regional



PONY LEAGUE ALL-STARS ADVANCE---Pictured from left, 13-14 year old All-Stars, back row, are Isabel Murrufu, Luis Abeyta, Michael Hardwick, Ricky Diaz and Julian Colunga; middle row, from left, Joe Santellana, coach; Gary Bannister, Andy Storms, Scott Hamilton and Bobby Tagle; and front, from left, Hector Guevere, George Barron, Ricky Flores, Richard Villarreal, coach; and Henry Ogas, coach. Team members are from Muleshoe, Bovina and Friona. (Journal Photo)



12 YEAR OLD ALL-STARS IN REGIONAL ACTION---For the 1988 12 year old All-Stars, Carl Gable was named manager and Ronnie Bunch, coach. Team members (not in order) are Chad Freeman, Andy Wilson, Ruben Jaramillo, Jonas Hernandez, Justin Gardner, Joe Garcia, Carlos Guerra, Chad McCormick, Pedro Nunez, Brett Thomas, Preston Gable and Americo Aguirre. (Journal Photo)



10 YEAR OLD ALL-STARS CONTINUE PLAYING---Pictured (not in order) are members of the 1988 10-Year old All-Star Baseball team members: Noah Carter, Cyle Marr, Michael Reyna, Chad Johnson, Koy Wilhite, Barak Harlan, Gabriel Mendoza, Eduardo Olivas, Corey Dodd, Johnny Rodriguez, Josh Slayden and Michael Jaramillo. Manager is Joe Lozano and Rocky Flores is coach. (Journal Photo)

Congratulations On Your District Wins And Good Luck At Regional Play-Offs

Sponsored By The Following Businesses:

Serv-All Thriftway

Southwestern Public Service

B&B Feed Supply

Bob Stovall Printing

Main Street Beauty Shop

Jim Cramer & Co.

Ana's House Of Beauty

Farmers Co-op Elevators

Perry Brothers Inc.

Burton Service Center

Bingham & Nieman Realty

Wes-Tex Feed Yards

Harvey Bass Appliance

El Nuevo Leal's Restaurant

Glenna's Beauty Retreat

Bailey County Propane Inc.

Shipman & Sons Body Shop

Clifton B. Allen Custom Saddle Maker

Muleshoe Truck & Auto Service Center

Williams Brother Office Supply

Journal Files

60 Years Ago

THE WHEAT HARVEST

About the most interesting picture in Texas just now is the wheat harvest in the Panhandle where thousands of harvest hands, harvesting machines and threshing machines are busy getting the golden grain ready for market. Fully 25 percent of the wheat fields in the upper plains are under cultivation this year for the first time. The yield is so abundant that the railroads are having trouble in getting and distributing freight cars in a way to handle the crop to best advantage.

50 Years Ago

1938

ESTIMATE OF BAILEY COUNTY VALUATIONS SHOW 1938 INCREASE

While tax rolls in the Bailey County collector's office have not yet been fully completed, yet a requested estimate from the State Department furnished indicates a several thousand dollar increase, according to statement of official collectors of the county. Preliminary estimate furnished

for the state valuation for this year to be \$3,338,568, while the county valuation for tax purposes \$4,030,328. This is an increase valuation for the state of \$64,608. over 1937, and \$27,448 for the county over the last year.

40 Years Ago

1948

Grocery specials advertised this week in the Journal included: Pork and beans, No. 1 tall can 10 cents; sour or dill pickles 25 cents quart; No. 2 can hominy 13 cents; No. 2 can blackberries 25 cents; No. 2 can peas 10 cents; No. 2 can sauerkraut 10 cents; No. 1 can tomato soup 12 1/2 cents; No. 2 can pinto beans 12 1/2 cents; No. 1 can sliced pineapple 17 cents; 46 ounce can tomato juice 25 cents; vienna sausage 15 cents can; No. 2 1/2 can apricots 27 cents; pork roast 55 cents pound; sliced bacon 55 cents pound; fresh catfish 59 cents pound; bologna 43 cents pound; and fresh tomatoes 15 cents pound;

30 Years Ago

1958

SEPTEMBER STARTING DATE SET FOR U.S. 84 WIDENING PROJECT

Widening of U.S. 84 within the city limits is expected to begin about September 1, it was announced this week, following the signing of maintenance agreements between the Highway department and the Muleshoe City Council.

Earlier plans called for construction to begin in July, but delays in securing approved plans for the project have caused the start date to be set back to September.

20 Years Ago

1968

Grocery specials advertised this week in the Journal included: 10 pound bag sugar 98 cents; coffee 69 cents pound; 3 pound shortening 49 cents; biscuits 5 cents can; No. 300 can crushed pineapple 19 cents; 2 pound jar honey 79 cents; 18 ounce jar barbecue sauce 39 cents; 46 ounce can pineapple grapefruit juice 89 cents; No. 303 can sweet peas 4 for \$1; tall can milk 3 for \$1; 25 pound bag flour \$1.99; pork chops 59 cents pound; backbone 59 cents pound; bacon 69 cents pound; enchilada dinners 39 cents; 8 ounce pot pies 6 for \$1; cucumbers 5 cents pound; apples 23 cents pound; grapes 29 cents pound; and white potatoes 10 pounds 45 cents.

10 Years Ago

1978

CLASSIFIED ADS NOW IS YOUR CHANCE

One acre tracts in scenic part of country, wonderful neighbors, good location, bus route, mail route, good country living. If you have always wanted to live in the country, call 946-3648 for more details. \$200 down and \$25 per month, you can become country people.

Distinction

"Pro" means "for" and "con" means "against." This explains the difference between progress and Congress.



ENGAGEMENT ANNOUNCED—Mr. and Mrs. Earl Boeve of Leadville, Colo. announce the engagement and approaching marriage of their daughter, Diana Kay to Byron Vaughn, son of Mr. and Mrs. LaVerne Vaughn of Earth. Marriage vows will be exchanged at 11 a.m. Saturday, July 30 in the Leadville Presbyterian Church. A reception will follow in the Boeve home. Miss Boeve is a graduate of Lake County High School in Leadville and has been attending Colorado State University at Ft. Collins, Colo. Vaughn is a 1979, graduate of Springlake-Earth High School and has also been attending Colorado State University, where he is presently completing his Ph.D.

Bridal Luncheon Honors Sharla Harrison

The Green Oaks Tea Room in Lubbock was the scene of a bridal luncheon Saturday, July 9 honoring Sharla Harrison, bride elect of Kevin George.

The bride elect's chosen colors of dusty pink and country blue were carried out in the table decorations.

The hostesses presented the honoree with a place setting of

Stephanie Brown Celebrates Birthday

With Party

Stephanie Brown was honored Sunday, June 26 on her first birthday with a party held in the home of her mother, Terri Brown.

"Crayons and Teddy Bears" was the theme and party favors were crayons, crayon stickers and bubbles.

Cake, ice cream and punch were served to the following Kim Moss, Sherri Foley, Johnathan Edwards, Brandon Hill, Brandi, Heather and Cindy Nichols, and her aunt and cousins, Sherri and Kimberly Doty, all of Sudan, and uncle Andy Melton of Munday.

her silverware.

Guests included Mrs. Al Harrison of Canyon, Mrs. Wayne George of Levelland, Mrs. Gary West and Angie of Littleton, Colo., Missy Fisher and Nancy George of Lubbock, Mrs. W.C. Masten and Sheribob Taylor of Sudan.

Hosting the event were Patty Miller, Jane Netherland, Loretta Reid, Willie Mae Rice, Mrs. Joe Ellison, Mrs. Joe Burt Markham, Mrs. Ralph May, Mrs. Radney Nichols, Mrs. F.M. Smith and Mrs. Bob Taylor.

Bridal Shower Honors

Miss Denise Pruitt

The home of Mrs. Pete Lance was the scene of a bridal shower Saturday, July 9 honoring Denise Pruitt, bride elect of Paul Kent.

Special guests included Joy Pruitt of El Paso, mother of the honoree; Patsy Kent of Sudan, mother of the prospective groom; Polly Kent, grandmother of the prospective groom; Pam Kent, sister of the prospective groom, of Colorado City; and the prospective groom's aunts, Lucy Kent and Peggy Kent, both of Sudan, and Mattie Benting of Muleshoe.

Other special guests included two of the honoree's bridal attendants, Allyson and Kari.

The serving table was covered with a peach table cloth with a lace overlay and accented with a silk floral arrangement in shades of peach, which was a part of the hostesses gift. The honoree's corsage was in shades of peach and lilac, her chosen colors.

A fruit plate, breads, coffee and punch were served from crystal and silver appointments.

The hostesses gift was a gas barbecue grill along with the centerpiece from the serving table.

Hostesses for the occasion included Miss Lisa Bishop, Mrs.

Gaylon Burns, Mrs. Brian Burns, Mrs. Glen Cardwell, Mrs. Robin Davis, Mrs. Steve Edwards, Mrs. Louis Fields, Mrs. Doug Gardner, Mrs. Raymond Harper, Mrs. W.B. Kittrell, Mrs. Bo Lance, Mrs. Pete Lance, Mrs. Ralph May, Mrs. Pete Phillips, Mrs. Bernard Wilson, Mrs. Donald Powell, Mrs. Dwayne Powell, Mrs. Elray Rasco, Mrs. Bob Summer, Mrs. Calvin Vernon, Mrs. Ed White, and Mrs. John Williams.

ONE MINUTE SPORTS QUIZ

1. Who won the Belmont Stakes June 4th?
2. What's the distance in the Belmont?
3. What horse holds the all-time Belmont record?
4. For whom does Jim Morrison play baseball?

The Answers:

1. Risen Star.
2. 1 1/2 miles, longer than the Derby or the Preakness.
3. Risen Star's sire, Secretariat; Risen Star's time was second best.
4. The Atlanta Braves.

How Long Has It Been Since You Told Someone How Special They Are?

- Balloon Bouquet
- Bud Vases
- Floral Arrangements
- Plants
- Silk Flowers

Our Newest Gift Idea:

Depression Glass

Decorators Floral & Gifts

616 South First Muleshoe 272-4340



Marissa Swann Allison

Mr. and Mrs. Fred Allison of Greenville are the proud parents of a daughter born at 8:11 a.m. Monday, June 13 in Citizens Memorial Hospital at Greenville.

The young lady weighed seven pounds and seven ounces and was 21 and half inches long. She has been named Marissa Swann Allison.

She has a sister Olivia Jean, seven years of age, and two brothers, Daniel Fred, five years, and Stuart Glen, three years.

Grandparents are Mr. and Mrs. Harold Allison of Muleshoe and Mrs. Vincent McCaul of Yuma, Arizona.

Great grandmother is Loveta Cumpsten of Lovington, N.M. formerly of Muleshoe.

Muleshoe Journal USPS 367-820
 Established February 23, 1924. Published by Muleshoe Publishing Co., Inc. Every Thursday at 304 W. Second, Box 449, Muleshoe, Texas 79347. Second Class postage paid at Muleshoe, Texas 79347.

TEXAS PRESS ASSOCIATION

L.B. Hall President & Publisher
 Sammy Hall Vice-President & Controller
 Clara Williams News
 Evadne Harris Society
 Danett Ranch Advertising
 Lillie Sims Bookkeeping

SUBSCRIPTIONS
 Muleshoe Journal and Bailey County Journal
 Bailey and surrounding counties
 Muleshoe Journal and Bailey County Journal
 Elsewhere in Texas \$14.75
 Muleshoe Journal and Bailey County Journal
 Outside of Texas \$15.50
 Yearly by Carrier \$12.50
 Advertising rate card on application

*Advertisers should check their ad the first day of insertion. The Journal will not be liable for failure to publish an ad or for a typographical error or error in publication except to the extent of the cost of the ad for the first day insertion. Adjustment for errors will be limited to the cost of that portion of the ad where the error occurred.

Prices Are Melting Away

On Summer Merchandise
30% off
 Some Merchandise Is 50% off.

Lookin' Good

206 Main Phone 272-5052

JULY 21-27 THURSDAY, JULY 21
ODDFELLOWS LODGE
 7:30 p.m.

HOBBY CLUB
 2:30 p.m.

KNIGHTS OF COLUMBUS
 8 p.m.

TOPS CLUB
 6:30 p.m.

CHAMBER OF COMMERCE
 11:30 a.m.

FRIDAY, JULY 22
KIWANIS CLUB
 6:30 p.m.

AARP
 11:30 a.m.

TUESDAY, JULY 26
WMU
 2:30 p.m.

ALCOHOLIC ANONYMOUS
 8 p.m.

REBEKAH LODGE
 7:30 p.m.

ROTARY CLUB
 12 (noon)

JENNYSLIPPERS
 12 (noon)

WEDNESDAY, JULY 27
LIONS CLUB
 12 (noon)

RUMORS
 3800 Mabry Drive, Clovis

Clovis' Original Classic Rock & Roll Happening
 Where It Still Happens Without Dress Code Or Cover Charge

Daily Drink Specials
 Munchie Hour
 Daily (M-F)
 From 5-7

We Play What You Want To Listen To, If We Have It, We'll Play It—Music From The 60's, 70's & 80's

Happenings At Rumors
Thursday, July 21st - Dance Your Dirtiest
At Our First Dirty Dancing Contest
 From 9 p.m.
 Cash Prizes & T-Shirts

Coming Soon
Elvis and Madonna Look Alike Contest
 -Talent Contest-
 -Hot Legs Contest-

Look For Clovis' First Beach Volleyball Contest
 Details Will Be Announced Soon.
 Proceeds Go To Local Charity

Join Us At Rumors-Where You Tell Us What You Want To Listen To
 Next Door To Season's Restaurant - Where You Don't Have To Drive To Party After Dinner

Creative Living

by Sheryl Borden

Information on seafood cooking and hints of furniture repair will be presented on "Creative Living" on Tuesday, July 26 at 12 noon and repeated on Saturday, July 30 at 2:00 pm on KENW-TV. (All times are Mountain.)

Marilyn Rose is with the Florida Department of Natural Resources Seafood Marketing Bureau, and she is going to discuss and demonstrate some of the major cooking methods for seafood with emphasis on steaming, grilling and microwaving seafood. She will explain the "10-minute" rule about cooking seafood and show a fish measuring instrument. Ms. Rose is from Plantation, FL.

Homer Formby, one of the country's best known authorities in the area of refinishing furniture and care of fine wood will be on the show and will share some very simple furniture repair hints. Formby is a third generation furniture restorer, and all of his tips and hints have come from years of personal experience. He lives in German, Town, TN.

On Tuesday, July 26 at 9:30 pm and on Thursday, July 28 at 12 noon, information will be presented on cooking turkeys, consumer research and cake decorating. Let's talk and cook with butterball turkeys with Mary Jo Bergland, Swift and Co. in Glen Ellyn, IL.

Ever wonder if companies really listen to consumers? Debra Block, spokesperson for Toshiba, Inc. in Wayne, NJ. will explain how important it is for consumers to respond to surveys and questionnaires when buying new

appliances.

Finally, Jane Kuori, a food stylist from Chicago, IL will share some cake decorating ideas to make your cake look as good as it tastes.

Seafood is an ideal "heart healthy" food! Most seafood is low in total fat, saturated fat and cholesterol. Seafood is high in protein, low in calories and sodium and a good source of vitamins and minerals as well as being quick and easy to prepare.

One rule for cooking fish is to cook fish 10 minutes per 1 inch of thickness. (To determine thickness, measure thickest part of fish with a ruler.) Double cooking time for frozen fish. The 10 minute rule applies for all cooking methods except microwaving.

Remember, fish cooks quickly. Fish is cooked when the flesh becomes opaque and flakes easily with a fork. Overcooking tends to toughen and dry out the flesh.

SEAFOOD SEASONING MIX
1 tsp. dried dill weed, 1/2 tsp. dried basil, 1/2 tsp. onion salt and 1/4 tsp. white pepper

Combine all ingredients and use in the following recipes.

SEAFOOD SAUCE
1 recipe Seafood Seasoning Mix, 1 1/2 cups sour cream, 1/4 cup mayonnaise, 3 Tbsp. white wine, 1 Tbsp. lemon or lime juice

Combine all ingredients and mix thoroughly. Chill at least 2 hours to thicken and blend flavors. Serve with steamed shrimp or crab, or baked or steamed fish. YIELD: 1 1/2 cups sauce.

Twenty-Third Season Of 'Texas' Opens

The blazing musical, "Texas" plays each summer in Palo Duro Canyon near Amarillo and Canyon, Texas, has company members with roots in this area. They are playing to large crowds and last year the show attracted 100,000 people from all fifty states and 84 foreign countries.

This is the twenty-third season for this story of the land in the Texas Panhandle, the land and the people who settled it: what it did to them, and what they did to it. It is the joys-expressed in dance and song-and the struggles: the prairie fire, and drought and storms. It is the coming of the railroad and how it changed the lives of the cattlemen and the settlers and the young people who were drawn together.

Members of the company come from 13 states and one foreign country and are chosen through auditions. They are gifted actors, singers and dancers who survived stiff competition to find places in this professional show.

The producer is the non-profit corporation, the Texas Panhandle Heritage Foundation, organized in 1961 to build a theatre for this drama in music written by the Pulitzer prize-winning playwright, Paul Green.

Make reservations as early as possible to see "Texas" which runs in 1988 through August 27, nightly except Sundays.

Write "Texas" Box 268, Canyon, Texas 79015 or call 806-655-2181 for information and tickets.

Week-end orders should be made several weeks ahead.

The following cast members have connections in this area: Stephanie Wynn Dolle of the Box office is the granddaughter of Mr. and Mrs. Herbert Dolle of

Littlefield and the niece of Mr. and Mrs. J.T. Dolle, also of Littlefield.

Taralena Machel Cole, singer, is the niece of Mr. and Mrs. Clifford Bills of Muleshoe and Kurt Maxwell is the grandson of Mr. and Mrs. Earl Peterson of Muleshoe, and the nephew of Mr. and Mrs. Harold Maxwell and Sandy Peterson, both of Muleshoe.

Fifth Birthday Party Honors Kimberly Doty

Kimberly Doty was honored recently on her fifth birthday with a party in the home of her parents, Mr. and Mrs. Craig Doty of Sudan.

"Snoopy and the Peanuts Gang" was the theme carried out and a cake, homemade Milky Way ice cream, and punch were served to the guests, following the playing of games.

Those attending were Bethany and Hanna Williams, Brandon Hill, Danielle and Lance Martin, Tracy and D.J. Provence, Tabitha and Gwenn Gore, Kelli and Tiffany Flowers, Lisa, Kent, and Lauren Waiser, Brandi and Heather Nichols, Kristen, Brandon and Jodee Lyle, also her grandmothers, Joyce Thompson of Munday, Lafern Doty and Mrs. Verdie Gann of Sudan, aunts, and cousins, Vickie and Lindsey Robinson of Lubbock and Terri and Stephanie Brown of Sudan and Uncle Andy Melton of Munday.

Mankind is divided into two classes—the getters and the givers.



QUILTERS OPENS AT ENMU—The women of the 1900's look westward to fulfill their dreams in ENMU's Summer Corral Playhouse's production of *Quilters*. The actors are (from left) Jeanie Wozencraft, Netty Hendrickson, Karyl Lyne, Carrie Scott and Paula Criss. *Quilters* will be performed on July 28, 29, and 30 at 8 p.m. with a 2 p.m. matinee on July 31. For ticket information and reservations call 562-2710.

Magic Plains Collector's Showcase Set At Borger

Put the youngun's and the Mrs. in your trailer and tool on over to Borger, Texas for the *Magic Plains Collector's Showcase* on August 13th and 14th. Everything from Grandma's Stockings to treasures of the Old West will be on display, no doubt! Don't forget your collectibles as listed below, but most importantly don't forget to get details and reserve exhibit space immediately with Borger Chamber of Commerce P.O. Box 490, Borger, TX 79008 or telephone (806) 274-2211.

Booth space will be available for \$5.00 outdoors, or \$15.00 indoors, space being 8'X10'. Tables rent for \$5.00. Exhibitors should plan to move into the Dome on Friday afternoon starting at 1:00 p.m. continue till 9:00 p.m. Plan your display so that 50 percent to 2/3 of items on the table are the collectibles.

Ribbons will be awarded for first, second, and third place for each division (Junior, Novice, and Open) in each category. Novice include those 12 years and up, Juniors are under 12. Novices have 25 items or less in their collections. Exhibitor should choose a category for their collection exhibit for competition. Suggested categories include the following: Advertising items, artistic items, automobiles, aviation, nautical and military, coins, stamps, currency and tokens are one category while farmstead items, and glass and ceramic related items are another.

Household and kitchen items will come in for attention along with Indian artifacts. Don't forget instruments, or knives, guns and weapons. Liquor, wine and beer collectibles are always popular so are also included.



"TEXAS"---Kurt Maxwell, son of Virgil Maxwell of Hereford and Patricia Maxwell of Canyon, formerly of Muleshoe, attends Canyon High School as a sophomore and is active in Student Council. He is a trainer for the varsity football and basketball team and plays on the J.V. Baseball team. He enjoys swimming, water skiing, sports, hunting, and fishing. Kurt has made several trips to Old Mexico with mission teams.

True friendship is based upon service to others, not upon favors received.

Quilters To Open In Portales

Quilters, a drama adapted by Molly Newman and Barbara Dameshek from the book by Patricia Cooper and Norma Bufford, has been performed around the world, including the Princess Grace Theatre in Monaco. It will open in Portales Thursday, July 28, with the Eastern New Mexico University's Summer Corral Playhouse in the University Theatre. The show plays through the 30th at 8:00 p.m. and there is a special 2:00 matinee on Sunday, July 31.

The universal appeal of *Quilters* is the portrait that it paints of the people that settled the prairies of New Mexico, Texas and Oklahoma. It is a portrait of determination, strength and the ability people have to fulfill their dreams. The play revolves around ten women and the stories from their lives. They use the patterns from their quilts to illustrate and record their lives, their deaths, their marriages, their children, their disasters and their triumphs. *Quilters* is a collection of tales, portrayed by the actors but told by the women who actually lived them and who lived them in this area of New Mexico. It is a play that will make you laugh and make you cry and entertain you and, most of all, revitalize your faith in the human spirit.

Tickets can be purchased for *Quilters* at the University Theatre Box Office, Valley Federal Savings & Loan in Portales or the ENMU Clovis Campus. Ticket prices are \$5 adults, \$4 senior citizens, \$3 children and \$2 ENMU students. Group rates are available. For more information and reservations, call 562-2710 in Portales.

Sidewalk SALE

Plus You'll Find Great Savings Inside the Store on Back-to-School Fashions

<p>Large Selection Handbags 50% off</p>	<p>Good Selections 1/2 price Lingerie</p>
<p>Large Group Red Wing Boots \$39.97 (Factory Defects)</p>	<p>Asst. Colors Cup Towels 97¢ (12 x 12)</p>
<p>Large Selection Mens, Womens, Jrs., Childrens Clothing and Shoes 50% off and more</p>	

WE'VE GOT BIG BACK-TO-SCHOOL SAVINGS FOR YOU!

<p>Save 25% Women's Casual Top and Chic® Denim Trouser Your Choice 14.97</p> <p>Reg. 19.99 ea. Candy stripe blouse with long sleeves and double pockets. Underside of collar features paisley trim. Chic® denim trouser is 100% cotton. Double pleat front, side pockets. Sizes 8-18.</p>	<p>OP® T-shirts for Boys and Men</p> <p>Boys, Sizes 8-20 5.97 Men's, S,M,L,XL 6.97</p> <p>Made of 100% cotton with short sleeves, crew-neck and bright screen print. Choose from a wide range of colors and prints.</p>
<p>Save 10% Keds® Sneakers 17.97</p> <p>Reg. 19.99 pair. 100% machine washable cotton. Sizes 5-10.</p>	<p>Save 20% Prewashed Levi's® 501® Jean 19.97</p> <p>Reg. 24.99. 100% cotton with button-fly, 5-pockets, straight leg. Prewashed indigo blue. Men's 27-42.</p>

Sale prices effective through July 21st-July 23rd

ANTHONY'S

Your Family Fashion & Value Store

321 Main 272-3478 Muleshoe

SMOKING IN 28 MINUTES

Don Carlile, Certified Hypnoterapist

only **\$175** with a one year guarantee

(806) 795-1253 phone for your appointment

Special Group Discounts and Company Programs Available

Carlile Hypnotism Institute

5313 50th Suite C-3 Lubbock

Tax...

Cont. from Page 1
and were \$34,990.43 for the same time this year. Monthly payments are shown to be down by some 2.91 percent from a year ago. Last year the payment was \$3,794.64, and was \$3,684.31 for the net payment for this period. Littlefield was down 5.50 percent for the latest payment, with \$16,290.80 for this period, compared to \$17,238.50 for the same period a year ago. For the year, Littlefield shows a 3.85 percent increase. Payments to date for this year are \$142,493.76 and were \$137,206.00 at this same time in 1987.

From Parmer County, Friona reported a decrease for the year in sales tax receipts, with \$54,693.44 for the total to date this year, compared to \$56,459.06 at this time a year ago. Their latest payment for this year was \$5,655.12, down by 25.15 percent from the \$7,555.06 for the same period a year ago.

Houston's payment of \$10 million was up 17.5 percent over last year's allocation, Bullock said, and Dallas' payment showed a 10.1 percent increase.

Allocations to the state's six metropolitan transit authorities also showed an increase of 17.5 percent, with their checks totaling \$28.9 million. El Paso's city transit department, the only CTD in Texas, received a payment of \$794,658.

Checks totaling \$5.8 million were also mailed Tuesday to 81 counties that collect the one-half percent county tax, Bullock said. July's checks represent taxes collected by monthly filers in May and reported to the Comptroller's office by June 20, according to Bullock.



CLASSROOM MANAGEMENT AND DISCIPLINE PROGRAM--Five teachers from the Lazbuddie Independent School District were among the teams of personnel from 13 Texas school districts who took part in the third of four weeklong Classroom Management and Discipline Program (CMDP) sessions at Southwest Texas State University in San Marcos July 11-15. Under the direction of Margaret Dunn (center, standing), the program is designed to help participants establish and maintain a learning climate that fosters self discipline and provides a basis for academic and personal success in the state's schools. Pictured from right to left are Labuddie teachers Carl Bodiford, Anne Farris, Cynthia Furr, Dunn, Barbara Hall and Becky Jones.

Sudan News

By: Evelyn Ritchie

Sue Whiteaker hosted the Ruth Sunday School Class Monday evening in the Fellowship hall of the FBC. Mutt Hanna presided over a short business meeting and the group enjoyed snack foods of meats, vegetables, crackers, fruit and ice tea.

Attending were Sue Chester, Libby Mudgett, Sara Woods, Mutt Hanna, Evelyn Ritchie and the hostess.

Oleta Reese underwent knee surgery last week and will remain a patient in the Methodist hospital in Lubbock for the next several days.

Son Whitmire remains a patient in the Methodist hospital where he has been for the past several weeks.

Linda Powell returned home

Sunday from the Methodist Hospital in Lubbock where she underwent surgery recently.

Grace Patterson is a patient in the Methodist Hospital.

Mr. and Mrs. R.B. Knox have returned home from visiting his sister, Martha Cross of Decatur.

She recently underwent a liver transplant and it was reported she is doing well.

Ila Ruth Gilreath has returned home from having surgery recently in Lubbock. She is recuperating well.

Raymond Hanna a former Sudan resident is a patient in a hospital in Fort Worth.

Mr. and Mrs. Sam Miller and boys recently returned from Pagosa, Colo. where they visited with her parents, the Chestnuts during the July 4th holidays.

Visiting this week with Mr. and Mrs. Wayne Doty has been their granddaughter Stephanie Gore of Odessa. Joining them was Crystal Doty of Littlefield.

Mr. and Mrs. Ferrell Ford of Seymore visited last week with his mother, Mrs. Daisy Ford and sister, Mr. and Mrs. R.B. Knox and other family members.

Hazel House a former Sudan resident is a patient in the Methodist hospital.

Gladys Terry Hewitt has been a patient in the Methodist hospital for the past several days.

Mr. and Mrs. Wayne Rogers vacationed last week in Ruidoso, and Las Cruces, N.M. and Cloudcroft and other places of interest.

Mr. and Mrs. Dale Hanna have returned from visiting in Fort Worth with his parents, Mr. and Mrs. Raymond Hanna. They were there with them while Raymond was hospitalized.

It was reported that Craig Doty will be undergoing surgery on his shoulder on Monday.

Fredda Gage of Austin has been here visiting with her parents, Mr. and Mrs. Ves Patterson while Grace has been hospitalized.

Mr. and Mrs. Dennis Flowers and children have returned home from vacationing in San Antonio where they visited Sea World and several other places of interest.

Mr. and Mrs. Pete Edwards

vacationed for a few days in Ruidoso, N.M. recently.

Mr. and Mrs. Joe Bellar have returned home from vacationing in Miss. where they visited her sister, Mr. and Mrs. James Bryant & girls.

The Young Baptist women met on Monday July 18, at 7:00 p.m. in the home of Tracey Provence for their monthly meeting and salad supper.

Margaret Bellar recently underwent heart surgery at the Methodist Hospital.

The last Saturday of each month there will be "Paint-In" for all interested persons. This is held at the community center and the next Paint-In will be held August 20. Everyone is invited to come out and enjoy the day painting.

Gloria Humphreys has been in Dallas to attend a Journalism seminar the past few days.

Gypsum Blocks

Cont. from Page 1

make the hole, then the diameter is the same as the gypsum block and only one block may be used per hole.

The wires leading from the blocks are then connected to a stake at ground surface and coded to indicate the level at which the gypsum block is buried.

One means of coding involves tying a knot in the wire to match the level at which the block is buried. For example, four knots would mean a block is buried at the four-foot level, while two knots would indicate a block at the two-foot level. Another means of identification is to attach a different color of tape to each wire to indicate the level where the block is buried.

Electrical resistance within the block is measured by the meter and displayed as a percent of field capacity value. The resistance correlates to the amount of soil moisture. A reading of "0" is dry while readings of "10" or higher generally indicate wet soil conditions.

Producers should make frequent readings to determine the amount of water in storage during different crop development stages. Special care should be taken to monitor rainfall effects on the land's soil moisture. After summer rainfall, the top few inches of the soil profile may be wet, while the deeper subsoils require additional water to bring them to field capacity. By taking gypsum block readings, producers can determine the amount of water stored in the soil and irrigate accordingly.

The High Plains Water District has published Water Management Notes Dealing with the use of gypsum blocks and other soil moisture monitoring devices. These booklets are available without charge to producers residing within the District service area.

For more information about the use of gypsum blocks and resistance meters, contact your local County Soil and Water Conservation District, the USDA-Soil Conservation Service, or the High Plains Underground Water Conservation District No. 1, 2930 Avenue Q, Lubbock, Texas 79045.

Genuine religion is conspicuous because it lacks display.

Freedom isn't always the right to do and say what you please.

'BILLY THE KID'

Historical/Musical Drama
1988 - Second Season

Caprock Amphitheatre

in Eastern New Mexico
10 miles south of Interstate 40 (Exit 356) at San Jon
Along the top of the Bluffs of the Llano Estacado
(49 Miles north of Clovis on Hwy 209 & 469)

June 16-Aug 20

Thurs., Fri., & Sat. nights 8:30 (Mtn)
Show tickets: \$6 adults, \$3 children under 12 and \$5 for Senior Citizens (65 & over) and for groups of 15 or more. Only groups of 15+ need make reservations - 3 weeks in advance.
P. O. Box 337, San Jon, NM 88434
1-505-576-2455

★ P. O. Box 337, San Jon, NM 88434 ★
1-505-576-2455
B-B-Q 6:30 - Adult \$5, Under 12 \$3.50

NOTES ... COMMENTS

- Haste rarely saves time.
- Never expect good luck to make up for loafing.
- Passion and defiance seldom solve a problem.
- High flying causes more than airplane accidents.

15. Misc.

15. Misc.

Storm Cellars
Concrete & Iron Reinforced
Ref. In Muleshoe.
Lynn Miller
Littlefield, Tx 385-6801

Make sure your equipment is ready to make hay when you're ready to make hay

The hay-making pros at John Deere have all the parts you need to keep your John Deere mower, rake and baler in top condition. They're all top quality, all at everyday low prices.

New Dura-Cut™ knife sections, for instance, are double heat-treated, chromed, and have deeper serrations for longer life. For optimum raking performance, count on John Deere highly flexible rubber-ball rake teeth to pick up all your crop. And to ensure smooth power delivery for mowing, conditioning, baling or chopping, install our top quality U-joint kits.

Check over your equipment, then check out our prices. For the price of most imitations, you can own the real thing. See us today.



LEADERSHIP YOU CAN COUNT ON

Dent & Co.

W. Hwy. 84 Muleshoe 272-4296

GRAIN PRICES
YELLOW CORN.. 5.23 cwt
YELLOW FOOD CORN.. call
WHITE FOOD CORN.. call
MILO.... 4.52 cwt
SOYBEANS.... 8.02 cwt
NEW WHEAT.. 3.18 cwt
COMMODITY CERTIFICATES
100%
Prices July 19, 1988
MARKETS COURTESY OF
FARMERS CO-OP
ELEVATORS
272-4335 Muleshoe, Texas

Help Purchase Bailey County Memorial Park Cemetery!

Make Your Pledge Today.

Help Form A Non-Profit Organization To Purchase The Cemetery For Local Control!

No Pledge Is Too Small.

I PLEDGE \$ _____ TO THE FUND TO PURCHASE THE BAILEY COUNTY MEMORIAL PARK CEMETERY. I UNDERSTAND IF OUR OFFER IS NOT ACCEPTED BY THE TRUSTEE, THEN THIS PLEDGE IS NOT BINDING.

NAME: _____

ADDRESS: _____

TELEPHONE: _____

MAIL TO: Box 403, Muleshoe, Tx 79347

Leaf Through Classifieds

Call 272-4536

CLASSIFIED RATES
Per Word.....\$1.15
Minimum Charge \$2.30

Consecutive Insertions
Minimum Charge \$2.00

CLASSIFIED DISPLAY RATES
\$1.75
Per Column Inch

DEADLINES
12 noon Tues.
For Thursday Paper
12 noon Friday
For Sunday Paper
We reserve the right to classify, revise, or reject any ad. Not responsible for any error after ad has run once.

1. Personals

FRANK'S
Refrigeration & Appliance Service Parts & Repairs
817 Gum
Muleshoe, Texas 79347
Phone Business 272-5090 Home 272-3822. f1-6s-tfc

OWN YOUR OWN
Apparel or Shoe Store, Choose From: Jean/Sportswear, Ladies, Men's, Children/Maternity, Large Sizes, Petite, Dancewear/Aerobic, Bridal, Lingerie or Accessories store. Add Color Analysis. Brand Names: Liz Claiborne, Healthtex, Chaus, Lee, St Michele, Forenza, Bugle Boy, Levi, Camp Beverly Hills, Organically Grown, Lucia, Over 2000 others. Or \$13.99 One Price Designer, Multi Tier Pricing Discount or Family Shoe Store. Retail Prices Unbelievable for Top Quality Shoes Normally Priced From \$19. To \$60. Over 250 Brands 2600 Styles. \$17,900 to \$29,900: Inventory, Training, Fixtures, Airfare, Grand Opening, Etc. Can Open 15 Days. Mr. Loughlin (612) 888-6555. 1-29t-1tpts

PIANO FOR SALE WANTED: Responsible party to assume low monthly payments. See locally. 1-800-288-4260. 1-27t-10tp

PIVOT TIRES
11.00 x 24.5
10.00 x 22.0
\$65.00
1-800-336-4383
Southwest Ag Parts

CONCERNED
About Someone's Drinking?
HELP IS AVAILABLE
through Al-Anon
Call 272-2350 or 965-2870 or come to visit Tuesday nights, 8:30 p.m. or Saturday mornings at 11:00 a.m. and through AA call 965-2870 or come visit Tuesday nights, 8:30 at 620 W. Second, Muleshoe.

Comforting
"Don't be so nervous," whispered the fight manager, cheerily. "Remember—if he was any good he wouldn't be fighting you."

3. Help Wanted

LAZBUDDIE ISD Accepting applications for cafeteria staff & manager, bus drivers, & high school secretary. Apply in person at supt. office Monday-Friday 8-4. L3-29s-2tc

HELP WANTED needing an LVN or RN preferably home care experience. Full time office sales & delivery must be able to deliver heavy equipment. Physical required. For interview call 272-5266, Mark Benedict B&B Medical Supply, Inc. b3-24t-tfc

GENERAL SHELTERS
Of Texas, Inc.
The fastest growing manufacturers of portable buildings is seeking a dealer in the area for retail sales of portable buildings. Lot and small investment required. Excellent opportunity to expand existing business with low risk.
Contact Mike Wulf
General Manager
1-800-634-8103
3-29t-8tpts

SALES REP.....HYDROTEX Inc. a multi-million dollar 50 year old National Lubrication Company needs a Sales Representative to call on Commercial and Industrial Accounts in the MULESHOE area. High Commissions. Product training Provided. Life / Health Insurance available. No Inventory required. For Personal Interview call 1-800-443-1506 or sent resume to: HYDROTEX - DEPT 2187-E PO Box 560843 DALLAS-TX 75356. 3-29s-2tpts

4. Houses For Rent

FOR RENT OR LEASE
4 bedroom, 2 bath home single car garage with opener, fireplace, built-in dishwasher, electric oven, carpet & drapes through-out fenced yard. Deposit and rent required available August 1st reference requested. Call 272-3767 to see. 4-29s-5tp

FOR RENT 4 bdrm, 3 bath, 4000 sq. ft. living space in country. Contact Carl Gable 272-3315. g4-25t-tfc

FOR RENT: House 2 bedrooms and one bath. Near town call 272-5629. L4-29s-4tc

8. Real Estate

AMERICA REDI-Homes 10000 19th Street West Lubbock, Tx: New Homes For Sale: Three bedrooms, two baths, living room, dining room, utility room, air conditioned. No money down. 100% financing. To be moved. Call (806) 885-4505. 8-27s-8tp
FOR SALE: 14 x 72 Cameo II mobile home at 406 W. 8th. Excellent Condition. Priced to sell/ Call 272-5719. 8-29t-4tp

8. Real Estate

NICE 3 bedroom, 2 bath house, 2 miles west of Muleshoe. With large barn. Nice location. Call 946-3340. d8-25s-tfc

4 BEDROOM HOME in good location. Fenced in yard with storage building. 1621 W. Ave. C. Call 894-3889. s8-15s-tfc

4 BDRM home in good location fenced in yard with storage building. 1621 W. Ave C. Call 894-3889. s8-15t-tfc

FOR SALE by owner Richland Hills 3 bdrm, 2 bath, fireplace, stormwindows, central air & heat large storage building. 272-5194. f8-27t-16tc

9. Automobiles For Sale

2 USED CARS, Mercury & Pontiac, 45,000 miles, 272-4696, 509 E. Austin, 213 E. Fir. p9-29s-2tc

10. Farm Equip. For Sale

EQUIPMENT for sale 2 tractors, 2775 Massey, tub grinder, road grader, 3 feed trucks, terex payloader & other equipment. 272-3315. g10-25t-tfc

11. For Sale Or Trade

RABBITS for sale have papers. Rex & some satins. Jrs. & Srs. reasonable call 965-2722. h11-28s-4tc

15. Misc.

6 Family Garage Sale July 22 & 23 Friday & Saturday 9 to 5 baby clothes, kids clothes, many misc. items. Remodeling sale 8 miles North of Muleshoe on 214 & 1 mile West. w15-29s-2tc

Whose Mistake?
Customer: "Say, you made a mistake in that prescription you filled for my wife. Instead of quinine you used strychnine."
Clerk: "You don't say! Then you own me 40 cents more."

8. Real Estate

Whitt-Reid Real Estate
3 Bedroom, one bath, fully furnished w/furniture, all you need is a marriage license and move in. \$35,000 total. 25H31

HOME IN Progress-3 bedroom, 2 bath, \$27,500. 25H34

WHAT ABOUT a comfortable home in Pool Addition over 2000 SF living space, (4) bedroom, (2) baths, plus rented apartment, all for only \$32,000-you need to see it. 25H35

CLEAN, well kept 2 bedroom, 1 bath on paved street, reduced to \$20,000. 0H-14

BROKER AND CERTIFIED REAL ESTATE APPRAISER
CALL ROY
HOME 272-3058
OR THURSIE 272-5318 OR GEORGE 272-4047

Judderth Realty, Inc.
109 FIFTH STREET
(806) 481-3288 (806) 481-9194
FARWELL, TEXAS
Realtors/Certified Appraisers
WE NEED FARM LISTINGS

116 E. Ave C BINGHAM & NIEMAN REALTY 272-5285 or 5286

PRICES REDUCED UP TO \$7,000 on 2 & 3-1-1 Brick Homes, Cent. heat, Energy Efficient. PRICED FROM \$23,500!! Approx. \$600.00 total move-in, payments based on income for qualified Buyers!!!

RICHLAND HILLS
IMMACULATE 3-2-2 Brick, corner lot, Cent. A&H, built-ins, FP, loads of storage & closet space, much more!

PRICE REDUCED-3-1-1 Brick, Cent. heat, Evap. air, built-ins, fenced yard....

JUST LISTED-Very Nice 3-2-3 Home, Cent. A&H, built-ins, FP, fans, spktr. sys., fenced. PRICED TO SELL!!!!

JUST LISTED-3-2-2 Brick, Cent. A&H, built-ins, FP, nice patio, & more. \$60's!!!!
HIGHLAND & STEWART
JUST LISTED-VERY NICE 3-2-2 Brick, Cent. A&H, newly remodeled kitchen with built-ins, storm windows, fenced yard, storage bldg. and much more!!!!

NICE 3-2-2 Brick Home (2 story), on corner lot, Cent. A&H, built-ins, and much more. LET'S LOOK TODAY!!!

JUST LISTED 3-2-1 carport Brick, Cent. A&H, built-ins, fenced yard, & much more. PRICED TO SELL!!!!

JUST LISTED-Nice 5-3 Brick Home, Cent. A&H, built-ins, utility earhtone carpets, covered patio, fenced yard, & much more. \$60's!!!!
HIGH SCHOOL
3-2-1 Brick+2 carport, Cent. A&H, built-ins, fenced yard, Eff. Apt. or workshop & storage area. \$40's!!!!

JUST LISTED- Very well kept 3-1 1/2 Home, Cent. heat, nice carpets, storm windows, storage bldg. & more. \$40's!!!!

3-1-1 home, corner lot, Cent. A&H, built-ins. \$30's.....

3-1-1 home, new carpets, floor furnace, evap. air, built-ins, storage. Completely repainted interior & exterior \$20's.

IMMACULATE-3-2-1 1/2 carport, Brick Home, Cent. A&H, built-ins, nice finished basement with fireplace, sprktr. sys., & much more!!!!

8% A.P.R. FINANCING TO QUALIFIED BUYER on this 3-2 Brick, Cent. A&H, built-ins, 2 fireplaces, nice large rooms, sprinkler sys.!!!!

JUST LISTED-3-1 home, nice carpets, new roof, storm windows & much more. \$20's!!!!

JUST LISTED VERY NICE-3-2-2 Brick, Geothermal Sys., built-ins, nice carpets, fenced. PRICED TO SELL!!!!
DIANNE NIEMAN, BROKER

JUST LISTED-NICE 2-1-1 home, wall furnace heat, earhtone carpets, \$19,500.00! LENUAU ADDITION
VERY NICE-2-1-1+2 carport home, Cent. Heat, evap. air, nice carpets, wood stove, storm windows & doors. Large storage-workshop. \$20's!!!!

JUST LISTED-COZY 3-1 1/2-1 home, Cent. heat, nice earhtone carpets, fenced yard, storage bldg., & more!!!!

JUST LISTED-3-1-1 home, Cent. A&H, utility, storage bldg., cellar, gas grill, & more. \$20's!!!!
COUNTRY HOMES
JUST LISTED-2-2-1 brick home on 1 acre on pavement, close to town, Cent. A&H. \$40's!!!!

2-1-1+1 carport home on 1 acre on pavement close to town, built-ins, wall furnace heat, evap. air, satellite system, and fenced area for horses or calves. \$20's!!!!

2-1 home, 20 acres, sub. pump, sprinkler, barns & corrals. \$40's!!!!

JUST LISTED-Nice, well-maintained Self-Service Laundry, 34 washers, 16 dryers in nice, modern building, excellent location. Books available to qualified Buyer.

SALE OR LEASE nicely remodeled office bldg. with over 3,000 sq. ft. of area, excellent location across from Courthouse. PRICED TO SELL!!!!

JUST LISTED-Nice 4-2-1 Brick on 1.267 acres, built-ins, fireplace, Heat & Air, ceiling fans, many improvements, fruit trees!!!!

APPROX. 3,000 sq. ft. bldg.. Railroad frontage. CASH PRICE \$15,000.00

JUST LISTED-69+ acres, improved pasture, 8" well, undgrd. line, fenced, plus nice 3-2-2 home, Cent. A&H, built-ins, utility, storm cellar, nice shop bldg. & much more, close to town!!!

VERY NICE-3-2-1 Home on 1 acre, clcse to town, Cent. Heat, Evap. air, nice carpets, nicely remodeled. \$30's!!!!

JUST LISTED-3-2 Home, Cent. A&H, built-ins, FP., sprktr. sys., Satellite, plus nice metal office bldg. Cent. A&H, plus mobile home for rental unit on .466 ac. at edge of town. PRICED TO SELL!!!!

GEORGE NIEMAN, BROKER

8. Real Estate

JAMES F. HAYES & CO.
AGRICULTURAL REAL ESTATE
Vic Coker-Agent
806) 965-2468

* **160 ACRES** South of Clovis lays good, good water, good Center Pivot Sprinkler Fully **SOLD**. A nice one!

2 LABORS SOUTH OF MULESHOE Longview Area, Good Soil, fully allotted Call for more details.

460 ACRES WEST OF BOVINA on State Line. 300 gallon **SOLD**, good soils, 70 Acres of grass, **SOLD** allotments, terms available!

313 ACRES on Farmer County-Castro County line. 2 wells, 2 tailwater pits, good allotments, steel barn, terms available.

2-160 Acre tracts northwestern Lamb County good water-2 wells on each farm good soil; lay good, Immediate possession.

1-210 Acre Farm-Lamb County: Steel barn & other improvements, 2 wells lots of underground pipe good soil & lays good. Immediate possession available.

120 Acres - Bailey County - West of Muleshoe. Allotted, will accomodate a circle sprinkle. Some terms possible.

640 ACRES NORTH OF LAZBUDDIE- ON PAVEMENT , 1 sprinkler, good soil water, some grass.

80 ACRES East of Muleshoe with center pivot sprinkler, wheat & alfalfa, good opportunity.

107 ACRES East of Muleshoe, center pivot sprinkler, many improvements, wheat & alfalfa. NICE

2311 Acres Lamb County Southeast of Earth. 1100 Acres **SOLD**, 1200 Acres grass. 2 electric **SOLD** Pads for 4 more sprinklers. Excellent water. Terms Available.

15,000 head capacity feed **SOLD** yard with rolling stock. 200 Acres **SOLD** of water with 2 sprinklers. Good **SOLD** & water. Rare opportunity.

* In cooperation with a New Mexico Broker.
Call Vic for Farm & Ranch Appraisals

Henry Realty
111 W. Ave. B Muleshoe 272-4581

JUST LISTED-2 Bdrm., 1 bath, large utility, nice fenced yard in Country Club Addition. Owner financing available.

ONE ACRE sites for home construction. 3 miles East of Muleshoe on Hwy. 3 lots remain.

3 Br., 2 bath, spacious home outside city limits, near city on highway. 29'x40' metal building. Lot 85'x620'.

3 Br., 1 bath, completely remodeled, edge of city on highway.

OUTSIDE city limits, 3 bdrm, 2 bath, utility, new kitchen, carport, built in oven & cooktop, wood burning fireplace, 2 car garage with one electric opener, house sits on 1 acre lot.

4 Bdrm., 2 Bath, 2 Car Garage, Central Heat/Air, Large Utility, Carpet, near down town. Excellent condition.

FOR LEASE, 2 bdrm, 1 bath, rock home near high school in excellent condition.

Kenneth R. Henry
Broker
272-4581
Judy Coker
Agent 965-2468

Think Classified!

Red Hot! Summer Sale

McCARTY FOOD

BREADED CHICKEN TENDERS

BREADED CHICKEN BREAST PATTIES

BREADED CHICKEN NUGGETS

3 LB. BOXES

\$8.99

HEAVY GRAIN
FED BEEF
ROUND STEAK

\$1.79

LB.

ComKing
HAM
WATER BREADED
HALF HAM
3 TO 4 LB. AVG.
\$1.79
LB.

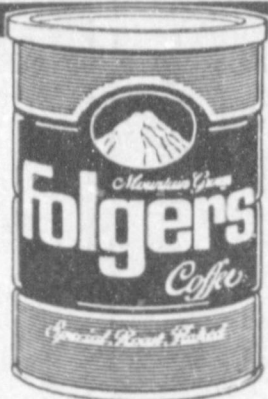
HEAVY GRAIN FED BEEF BONELESS
ROUND STEAK LB. **\$1.99**

OSCAR MAYER SLICED MEAT
BOLOGNA 8 OZ. PKG. **\$1.39**

WILSON'S
MEAT FRANKS 12 OZ. PKG. **99¢**

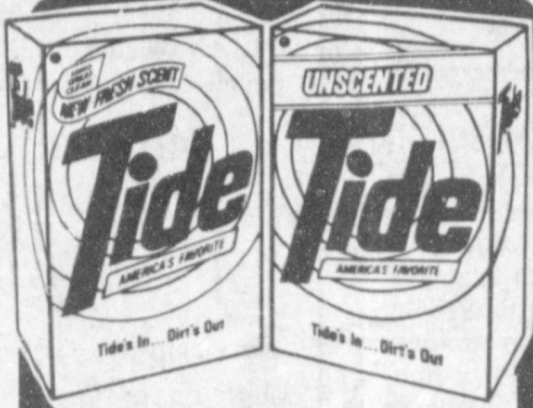


SUGAR SWEET
KOOL-AID
8 QT. SIZE
\$1.99



SPECIAL ROAST FLAKED
FOLGERS COFFEE
11.5 OZ. CAN

\$1.49



\$1.50 OFF LABEL
TIDE DETERGENT
147 OZ. BOX

\$5.79



KRAFT ASSORTED
BARBECUE SAUCE
18 OZ. BTL.

79¢



FOR YOUR BATHROOM
CHARMIN TISSUE
4 ROLL PKG.

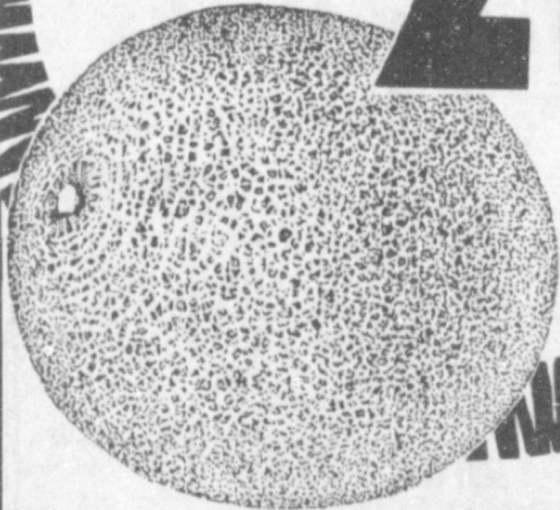
99¢

DEL MONTE
TOMATO CATSUP
32 OZ. JUG
99¢

NEW CROP PECOS
CANTALOUPE

29¢

LB.



FRESH TEXAS

PEACHES

49¢

LB.

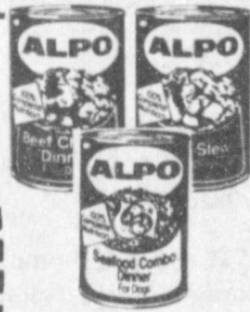
CALIFORNIA SWEET WHITE OR SEEDLESS MIX OR MATCH LB. **99¢**
FRESH WHITE **ONIONS** 4 LBS. **\$1.00**
NEW CROP TEXAS BAKING **POTATOES** 4 LBS. **\$1.00**
CALIFORNIA FRESH **CARROTS** 4 1 LB. PKGS. **\$1.00**

ASSORTED VARIETIES

ALPO DOG FOOD



3 \$1
14 OZ. CANS



TARTAR CONTROL

COLGATE TOOTHPASTE



4.6 OZ. TUBE

99¢

PAPER
BOUNTY TOWELS
JUMBO ROLL

79¢

CAMPBELL'S
PORK & BEANS
16 OZ. CANS

39¢

COFFEE CRYSTALS
INSTANT FOLGERS
12 OZ. JAR

\$5.99

GLAD
LAWN BAGS
REG./THIN MAXI

18 CT. PKG. **\$1.99**

KOTEX PADS

30 CT. PKG. **\$3.29**

KRAFT
MAYONNAISE
32 OZ. JAR

\$1.99

ALL VARIETIES VLASIC
DILL SPEARS
24 OZ. JAR

\$1.59

RED/GOLDEN
HAWAIIAN PUNCH
46 OZ. CAN

99¢

HEALTH & BEAUTY

CURAD
FLEX BANDAGE
SUNBLOCK LOTION

20 CT. PKG. **\$1.29**

COPPERTONE

4 OZ. BTL. **\$5.29**



IVORY ASSORTED CONDITIONER OR
SHAMPOO
\$1.49

15 OZ. BTL.

FROZEN

BANQUET REG. OR MOZZARELLA CHEESE

CHICKEN NUGGETS 10 1/2 OZ. PKG. **\$2.49**

BANQUET ASSORTED
BREAST TENDERS 9 OZ. PKG. **\$2.49**

SOFT FROZEN ASSORTED-PINTS
YOPLAIT
\$1.49
16 OZ. CTN.

BORDEN ROUND
ICE CREAM
\$1.79
1/2 GAL.



DAIRY DELIGHTS



BORDEN
HOMO MILK
\$2.29
1 GAL.



BUTTERMILK/HOMESTYLE
SHURFINE BISCUITS
10 CT. CANS
5 \$1
FOR

RAID
ROACH FOAM 12 OZ. CAN **\$2.99**
RAID
INDOOR FOGGER 6 OZ. SIZE **\$2.99**
HOUSE & GARDEN
RAID SPRAY 13 OZ. CAN **\$3.49**

THRIFTWAY

AAFFILIATED
FOODS INC.
MEMBER STORE

WE ACCEPT FOOD STAMPS...WE RESERVE THE RIGHT TO LIMIT

"WE CARE"

PRICES EFFECTIVE
JULY 17-23, 1988

PLAINS DIET COTTAGE
CHEESE 16 OZ. CTN. **99¢**
KRAFT 1/2 MCGH CH. COLBY
CHEESE 16 OZ. PKG. **\$2.79**
KRAFT DELUXE AMERICAN
SLICES 12 OZ. PKG. **\$1.79**