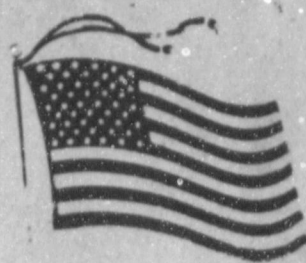


WEATHER

August 28	94	60	.00
August 29	61	50	.34
August 30	67	57	.04
August 31	78	57	.00

Muleshoe Journal

The Community Of Opportunity-Where Water Makes The Difference



Vol. 65, No. 35

12 PAGES TODAY

Published Every Thursday At Muleshoe, Bailey County, Texas 79347

20¢

Thursday, September 1, 1988

More Activities Added For Birthday Celebration



Saturday night, Muleshoe City Police investigated a reported burglary at Poyner's Otasco Store on Main Street.

Several guns were reported taken in the burglary.

By Monday morning, two suspects were in custody, and the investigation was continuing at presstime.

Anyone wishing to help decorate the Muleshoe 75th Birthday cake is asked to call Ann Johnson at 272-5746.

She will give you details on the phone.

No experience is necessary, and she will train you 'on the spot' if you're interested in cake decorating.

Bailey County commissioners will meet in special session at 10 a.m. on Thursday, today, in the Bailey County courthouse.

Items on the agenda after approval of minutes of the previous meeting include payment of routine county bills; review of pledges by the county depository; consider proposed budget for FY1989 and miscellaneous items.

Shelly Sain and Trisha Burgess, both seniors at Texas Tech University have both entered college for the fall session and are both recipients of the AAUW Fall Scholarship, which has been sent directly to the school.

Degrees were conferred on 276 West Texas State University students last Thursday, in commencement exercises which were conducted in the Amarillo Civic Center auditorium.

Dr. Louis J. Rodriguez, president of Midwestern State University, delivered the commencement address.

Receiving a degree from Muleshoe was Carolyn S. Gilbreath, who received a Bachelor of General Studies.

Casey King, daughter of Joe and Melba King, was awarded 'Outstanding College Student of America' recently.

She is the granddaughter of Mrs. Reta Johnson and Mrs. Elizabeth King, both of Muleshoe.

Dusty Prairie and Progress Extension Homemakers Clubs will jointly sponsor a Truck Load Fabric Sale on Friday, September 2, 9 a.m.-6 p.m.

It will be in the old Western Auto Store building at 318 Main.



FOOTBALL COACHES TALK ABOUT UPCOMING FOOTBALL SEASON--Guest speakers at Rotary on Tuesday at noon were Muleshoe Athletic Director and Head Football Coach Dale Keeling and his four varsity football coaches. Coach Keeling talked about the upcoming football season, with the first game scheduled Friday night at Brownfield, against the Brownfield Cubs. Pictured from left are Coaches Tom Duncan, Brad Eblen, Jim Stewart, Kyle Carver and Dale Keeling. Although lacking in depth, the coaches are optimistic about this year. [Journal Photo]

Mules; Brownfield Cubs Will Tangle In Football Opener

This week, to start off the 1988 football season, the Muleshoe Mules will meet the Brownfield Cubs at Brownfield for an 8 p.m. season opener.

Muleshoe Athletic Director and Head Football Coach Dale Keeling told the Muleshoe Rotary Club Tuesday that Brownfield will be a "Very tough team to take on, as they are the number one rated AAA team on the South Plains."

According to Coach Keeling, Brownfield has a very good quarterback as well as a good tailback and wide receiver.

"If our kids do what we have

asked of them this week, and contain the quarterback, we could surprise Brownfield.

"All of our non-district season will be very 'tough' this year," added Coach Keeling, "but, if we stay injury-free, we will do all right."

The coach reminded the Rotarians that for three weeks now, the 1988 Muleshoe Mules have been practicing and have played two scrimmages. He told the group that the coaches saw a lot of improvement last week against Canyon from their first scrimmage the previous week with Sanford-Fritch.

"Depth-wise, we're not doing very good," said the coach. "Last spring, we had 96 players from high school, and when we started practice three weeks ago, we only had 58 players, with about 38 being from the top three grades."

Cont. Page 6, Col. 1

It's Football Contest Time!

With the beginning of the fall school term, a popular event begins each week in *The Muleshoe Journal*. It is time for the fall football contest. The contest will be in each Thursday edition of *The Journal* through the high school and college season.

Cash prizes are awarded weekly for the contest, with a chance to win the grand prize at the conclusion. Point accumulation is the 'key' to winning the grand prize.

Again this year, the Bob Harmon Football Forecast, one of the country's most popular sports features, will appear in *The Journal* each week during the 1988 football season, starting today, Thursday.

Now in his 32nd year of football forecasting, Bob Harmon's prognostications are published in over 400 newspapers ... dailies, weeklies and college publications ... in 45 states.

Harmon uses a formula to arrive at the rating for each of the more than 640 football teams that he follows each fall. The score that is predicted is simply the interpolated difference between the numerical rating of one team and the numerical rating of its opponent.

And, though boasting a college forecasting accuracy equal to any in the nation, The Harmon Forecast makes no wild claims of unbelievable guessing percentages. Harmon has a proven accuracy over the past 30 years of between 73.6 percent and 77.9 percent. His pro forecasting average is between 64.0 percent and 74.2 percent.

Bob Harmon is a graduate of the University of Minnesota and he and his wife, Miriam, live just outside Middletown in Circleville, New York.

September 9-10 promises to be two fun-packed, busy days for Muleshoe. The Bailey County West Plains Fair will open to the public at 1 p.m. on Friday, September 9. It will be open until 7 p.m., and close in time for the home football game and before game meal.

On Saturday, September 10, the doors will open at the Bailey County Civic Center at 10 a.m. and close at 6 p.m. Drawings for

gift certificates will be held all during the Fair on Friday and Saturday.

In addition to the drawings, other activities will be held. At 1 p.m. on Saturday, a historical costume contest will be held. A pet show will be held at 2 p.m. and the huge birthday cake will be cut at approximately 2:30 p.m.

Ann Johnson is supervising the icing and decorating of the cake. All cakes to be used in this birthday cake are asked to be at the Civic Center by 3 p.m. on Friday, September 9. Anyone interested in helping with the cake decorating will be given a free lesson in cake decorating from Mrs. Johnson. Please call Mrs. Johnson at 272-5746 if you would like to help.

In addition to the Fair, the American Legion Post #403 at 1419 West Avenue B, will hold a barbecue supper on Saturday, September 10. The meal will be served from 3-6 p.m. at the Legion Hall. Tickets are \$3.75 per plate and advance tickets are on sale now from any Legion member.

Commercial booths for the Fair are being handled by the Rotary Club with Dickwood in charge of reservations. Everyone is encouraged to participate in the Fair with items entered, booths set up, activities scheduled, or just attending and enjoying the celebration.

Bakers for the huge birthday cake are still needed. Anyone wishing to bake and donate an oblong (rectangular) or square yellow cake, to be iced into one huge birthday cake, is asked to call the Chamber office at 272-4248.

Costumes are being encouraged in all businesses and on all individuals out during the two day event. Businesses are encouraged to decorate their windows in the 75th Birthday theme. The windows will be judged and awards given to the best window, store, participation, etc. Kenneth King is also scheduling window painting for businesses and has several designs drawn up for

Cont. Page 6, Col. 1

Congressman Brings Candidacy To Muleshoe

It was 'lemonade' time at the Bailey County courthouse Tuesday morning when Larry and Sharon Combest and company visited in Muleshoe.

U. S. Representative Larry Combest (R-Texas) began a two-day anniversary tour of 15 West Texas counties on August 29 to formally announce to the people of the 19th Congressional District his candidacy for re-election.

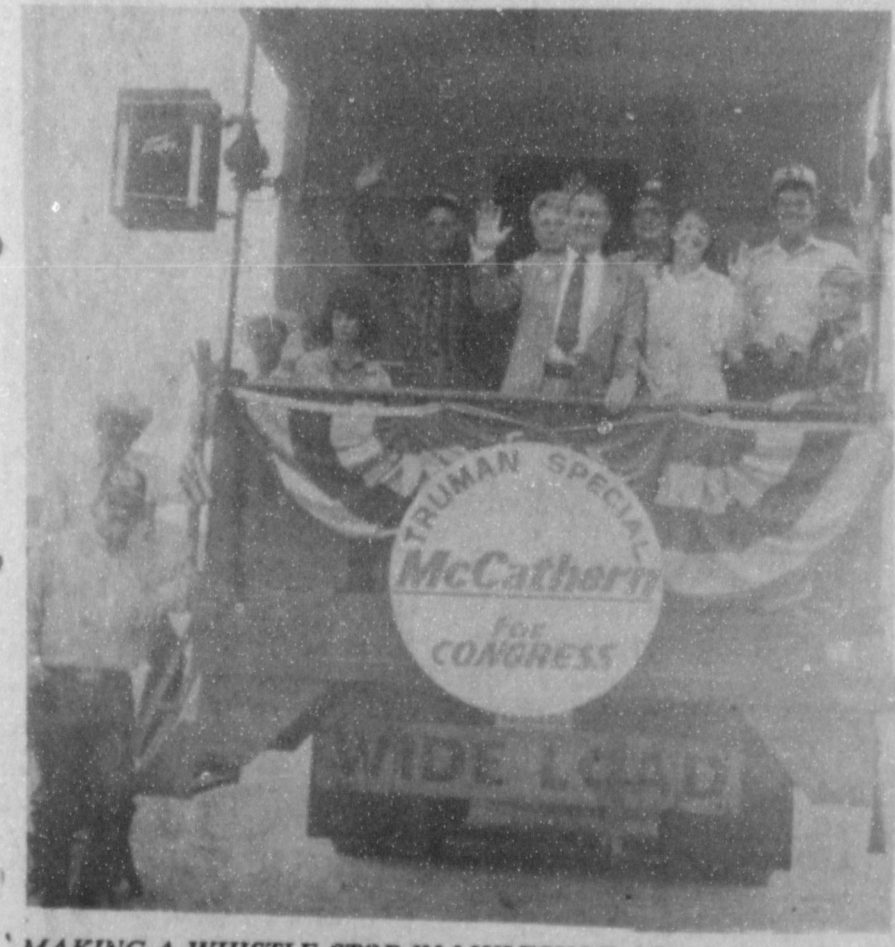
He has officially adopted the dates of August 29-30 to announce his candidacy as those were the dates he chose for his formal announcement the first time he ran for the office five years ago.

"The future of West Texas is looking brighter, and continued strong, proven leadership is needed to see that our future is

Cont. Page 6, Col 1



INCUMBENT CONGRESSMAN ANNOUNCES FOR RE-ELECTION--On Tuesday morning, Congressman Larry Combest, along with his wife, Sharon, were in Muleshoe to officially announce his candidacy for re-election to the office of Congressman, 19th District. They visited with local people and served lemonade on the east side of the courthouse. [Journal Photo]



MAKING A WHISTLE STOP IN MULESHOE--Monday morning, Gerald McCathern, Democratic candidate for Congress for the 19th District, was in Muleshoe in his 'Truman Special,' a caboose fitted with wheels and pulled by a truck tractor. He is in the center of the picture, surrounded by his visitors east of the Courthouse in Muleshoe. [Journal Photo]

Candidate McCathern Travels With Caboose

It was a real "whistle-stop" for Gerald McCathern on Monday morning, when he made a swing through Muleshoe on the campaign trail.

McCathern, Democratic candidate for U. S. Representative, is

opposing Republican Congressman Larry Combest, who is also seeking re-election.

Chugging into Muleshoe, it was a startling sight and sound when McCathern's 'Truman Express' parked on the east side of the Bailey County courthouse.

Accompanied by realistic whistles, and the clanging sounds made by a train traveling down a track, his caboose was mounted on wheels, and pulled by a large truck.

The back of the caboose was decorated with red, white and blue bunting, and McCathern spoke from his vantage point, looking out over a group of people who had gathered to gape in wonder at the caboose that appeared on the courthouse property.

McCathern, who resides at Hereford, said he chose the caboose for two reasons: one was the 'Truman Special' was named for former U.S. President Harry S Truman. McCathern said Pres. Truman conducted a very successful 'whistle-stop' campaign for President in 1948.

He also said the second reason for conducting his campaign in the caboose was to remind people what it was like during the years of President Truman's administration. McCathern added that prices were good for agriculture, oil, labor, businesses and Main Street.

Cont. Page 6, Col. 1

COOK UP A COOKOUT!



U.S.D.A. GRADE A
PILGRIM'S PRIDE
WHOLE FRYERS

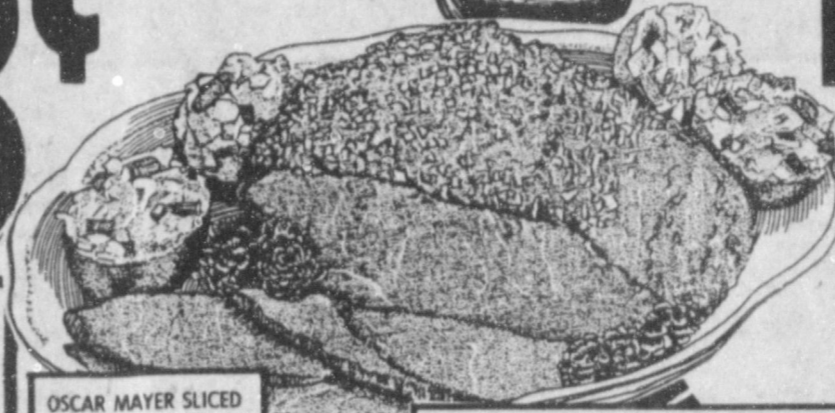
68¢
LB.



HEAVY GRAIN
FED BEEF-PACKER TRIM
WHOLE IN THE BAG
7 TO 12 LB. AVG.

BRISKET

99¢
LB.



MEAT SPECIALS

WILSON'S 96% LEAN REG./HONEY BONELESS FULLY COOKED 2-4 LB. AVG. HALF HAMS LB. \$2⁴⁹	LEAN AND MEATY PORK MEDIUM-3 1/2-5 1/4 LB. AVERAGE SPARE RIBS LB. \$1³⁹
FRESH FRYER LEG QUARTERS LB. 49¢	WILSON'S REGULAR MEAT FRANKS 12 OZ. PKG. 69¢
FRESH FRYER THIGHS OR DRUMSTICKS LB. 69¢	GOOCH'S GERMAN BRAND SMOKED SAUSAGE 12 OZ. PKG. \$1¹⁹

OSCAR MAYER SLICED
MEAT BOLOGNA
8 OZ. PKG. **88¢**

MARKET TRIMMED TABLE READY
LB. **\$1⁸⁹**



KINGSFORD
CHARCOAL BRIQUETS
10 LB. BAG
\$1⁹⁹



GULF CHARCOAL
LIGHTER FLUID
32 OZ. SIZE
\$1⁴⁹



ABSORBENT PAPER
BRAWNY TOWELS
JUMBO ROLL

68¢



CITRUS HILL FROZEN
ORANGE JUICE
12 OZ. CAN

99¢



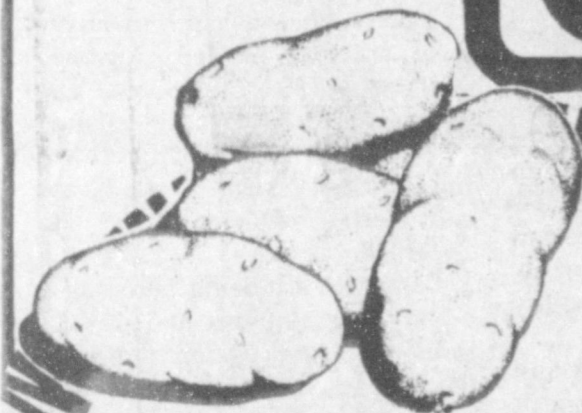
SHURFINE ASSORTED
SODA POP
12 OZ. CANS

69¢
FOR

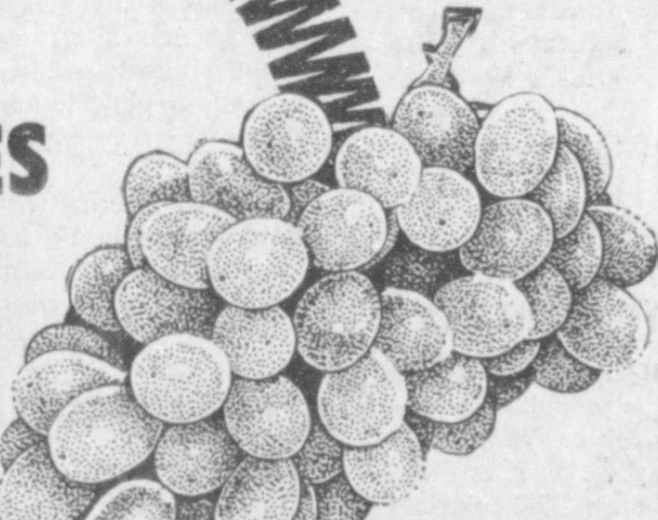


ALL TYPES LAY'S
POTATO CHIPS
REG. \$2.49

\$1⁴⁹



U.S. NO 1
POTATOES
\$1⁵⁹
10 LB. BAG



GOLDEN
RIPE BANANAS
LB. **29¢**

VAN CAMP'S PORK & BEANS HAMBURGER OR CONEY	4	16 OZ. CANS	\$1⁰⁰
TENDERCRUST BUNS	3	PKGS.	\$1⁰⁰
VIVA NAPKINS		140 CT. PKG.	69¢

CRISCO OIL FRENCH'S SQUEEZE	64 OZ. JUG	\$2⁸⁹
MUSTARD	16 OZ. BTL.	79¢

THE SAVINGS ARE HOT

SHELF FAVORITES

SCOTTISSE 1000 SHEETS PER ROLL BATH TISSUE FLUSHABLE CLEANSING	4 ROLL PKG.	\$1⁷⁹	SUGAR SWEET KOOL AID	2 QT. SIZE	69¢
SOFKINS WIPES 40" OFF LABEL-DETERGENT	40 CT. PKG.	\$1⁴⁹	SUGAR SWEET KOOL AID	8 QT. SIZE	\$2²⁹
TIDE CONDENSED	42 OZ. BOX	\$1⁶⁹	SUGAR SWEET LEMONADE COUNTRY TIME	8 QT. SIZE	\$2¹⁹
EAGLE BRAND CEREAL	14 OZ. CAN	\$1³⁹	DRINK MIX CRYSTAL LIGHT	8 QT. SIZE	\$2⁷⁹
POST TOASTIES SCOTTIES	18 OZ. BOX	99¢	MORTON ICE CREAM SALT	4 LB. PKG.	69¢
FACIAL TISSUE LUZIANNE	280 CT. BOX	99¢	SWEETHEART 16 OZ. SIZE BIG CUPS	18 CT. PKG.	89¢
TEA BAGS IBC 12 OZ. N.R. BOTTLES	24 CT. PKG.	\$1⁶⁹	MARCHING GESE 9 INCH PAPER PLATES	36 CT. PKG.	\$1²⁹
ROOT BEER LIQUID DISH 40" OFF LABEL	6 PACK	\$1⁹⁹	BETTY CROCKER CHERRY/STRAWBERRY FRUIT WRINKLES	5.4 OZ. PKG.	\$1⁸⁹
SUNLIGHT BEST MAID HAMBURGER	22 OZ. BTL.	99¢	BETTY CROCKER ASSORTED FRUIT ROLL UPS	4 OZ. PKG.	\$1⁸⁹
DILL SLICES SHURFINE TOMATO	32 OZ. BTL.	89¢	DETERGENT-75" OFF LABEL LIQUID TIDE	64 OZ. JUG	\$3⁴⁹
KETCHUP LONG GRAIN	32 OZ. BTL.	99¢	60" OFF LABEL-FAB. SOFTENER SNUGGLE LIQUID	96 OZ. JUG	\$2⁹⁹
COMET RICE ALINT JEMIMA YELLOW	42 OZ. BOX	\$1⁷⁹	45" OFF LABEL-FAB. SOFTENER SNUGGLE SHEETS	60 CT. PKG.	\$2⁷⁹
CORN MEAL ALINT JEMIMA WHITE/SELF RISING	2 LB. PKG.	59¢	BATH SOAP SAFEGUARD	3 BAR PACK	\$1⁹⁹
CORN MEAL	2 LB. PKG.	59¢	PERSONAL SIZE IVORY	4 BAR PACK	99¢
MASA TRIGO	4 LB. BAG	89¢	BATH SOAP ZEST	3 BAR PACK	\$1⁹⁹
MASA TRIGO	20 LB. BAG	\$8⁴⁹	FROZEN		
MASA HARINA HERSHEY ASSORTED	5 LB. BAG	\$2³⁹	BIRDSEYE CORN ON THE COB	4 EAR PKG.	\$1¹⁹
CANDY BARS REGULAR	6 PACK	\$1⁸⁹	GORTON'S STICKS/FILLETS MICRO FISH	7-8 OZ. PKG.	\$2¹⁹
KOOL AID	7 2 QT. SIZE	\$1⁰⁰	BUTTERMILK OR HOMESTYLE EGGO WAFFLES	11 OZ. PKG.	99¢

DAIRY DELIGHTS

SOFT FROZEN ASSORTED YOPLAIT	6 PACK	\$2²⁹
ICE CREAM ASSORTED GOLD RUSH BARS	6 PACK	\$2²⁹
GOLD RUSH NUGGETS	18 CT. PKG.	\$2²⁹
SLICES REG./EXTRA THICK VELVEETA	12 OZ. PKG.	\$1⁸⁹
TOUCH OF BUTTER SPREAD	3 LB. TUB	\$1⁶⁹
BORDEN HI PRO MILK	GAL.	\$2²⁹
BORDEN SHERBET ICE CREAM	1/2 GAL.	\$1⁵⁹

HEALTH & BEAUTY

REG./GEL TARTAR CONTROL COLGATE	4.3 OZ. PUMP	\$1⁵⁹
EXTRA STRENGTH GELCAPS TYLENOL	50 CT. PKG.	\$3⁴⁹
ANTI-PERSPIRANT ASSTD. SURE	4 OZ. SIZE	\$2³⁹
ASSORTED SURE ROLL-ON	1 1/4 OZ. SIZE	\$1⁸⁹
LISTERINE MOUTHWASH	32 OZ. BTL.	\$2⁵⁹
WESTERN FAMILY VITAMIN C	100 CT. BTL.	\$1⁵⁹

ALL TYPES
COCA-COLA
12 OZ. CANS **\$1³⁹** 6 PAK

THRIFTWAY

WE ACCEPT FOOD STAMPS...WE RESERVE THE RIGHT TO LIMIT

AT AFFILIATED FOODS INC. MEMBER STORE

PRICES EFFECTIVE
AUG. 28-SEPT. 3, 1988



COUPON EXPIRES SEPT. 7, 1988
KRAFT
BARBECUE SAUCE
28 OZ. BTL.
88¢
WITH COUPON THEREAFTER REGULAR PRICE

SCHOOL BUS SCHEDULE

The Muleshoe Independent School District School Buses will stop at designated stops only, for eligible bus riders to the Mary DeShazo and Dillman Schools.

BUS STOPS FOR MORNING RUN

Bus #1
Ave 1 & East 3rd St.
Ave D & East 6th St.
Ave D & East 5th St.
DeShazo School
West 10th & Avenue D
West 14th & Avenue D
Dillman School

Bus #2
Ave F & East 6th
Ave D & East 5th
Ave D & East 3rd
DeShazo School
10th St & Ave D
14th St & Ave D
Dillman School

Bus #3
DeShazo School
West 10th & Ave D
West 14th & Ave D
Dillman School

Bus #5
Highway 214 & Ave I
Main & Ave F
Ave F & 3rd St.
DeShazo School
West 10th & Ave D
West 14th & Ave D
Dillman School

Bus #6
Joliet & Gum St.
Houston & Hickory St.
Austin & Birch St.
DeShazo School
West 10th & Ave D
West 14th & Ave D
Dillman School

Bus #7
Dillman School
West 14th & Ave C
West 10th & Ave C
DeShazo School

Bus #8
West Birch & Boston St.
West Birch & Dallas St.
DeShazo School
10th St. & Ave D

14th St. & Ave D
Dillman School
Bus #9
Ivy & Joliet Streets
Ithaca & Country Club
400 Dallas St.
DeShazo School
West 10th & Ave D
West 14th & Ave D
Dillman School

Bus #10
Dillman School
West 14th & Ave C
West 10th & Ave C
DeShazo School
Bus #11
Dillman School
West 14th & Ave C
West 10th & Ave C
DeShazo School

Bus #12
West 19th St. off Hwy 84

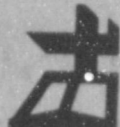
Dillman School
14th St. & Ave C
10th St. & Ave C
DeShazo School
Bus #13
Austin St. & Elm Ave
Austin St. & Cedar Ave
DeShazo School
West 10th & Ave D
West 14th & Ave D
Bus #27
Back of Dinner Bell Cafe
Dillman School
West 14th & Ave C
West 10th & Ave C
DeShazo School
Bus #28
Joliet St. & Fir
Fir & Ithaca St.
DeShazo School
West 10th & Ave D
West 14th & Ave D
Dillman School
The 3rd, 4th & 5th Grade stops will be Avenue C & West 10th, Avenue C & West 14th, and the

Dillman School.
The Kindergarten, 1st & 2nd Grade will load and unload at Dillman School, Avenue D & West 14th, Avenue D & West 10th, and DeShazo School.

In Fashion

Early fall is "suing-up" time. A most attractive suit, in black wool crepe, features a long double-breasted jacket with a slim skirt that gives a streamlined look. The chemise of the sixties is in fashion again. One will find more attention is focused on color combinations, high necklines and shoulder accents in the latest chemise fashions. In selecting heavy fall necklaces, always check the clasp for quality and durability.

BIBLE VERSE



"We are troubled on every side, yet not distressed."

1. Who wrote the above statement?
2. To whom was he writing?
3. Where was he at the time of this writing?

4. Where may this statement be found?

- Answers to Bible Verse**
1. The Apostle Paul.
 2. The Christians located at Corinth, Greece.
 3. In Macedonia.
 4. 2 Corinthians 4:8A.



with Quality and Savings

Hot New Denim Styles by Calvin Klein®
Cherokee® Lee®, Levi® for Juniors
Val. \$33⁹⁹ to \$68⁹⁹

20% Off

Lee Levi for Children
Val. \$14⁹⁹ to \$27⁰⁰

Levis® Original 501™
Pre-washed Jeans Sale

19⁹⁹ blue
21⁹⁹ black/gray

Reg. 28.99. Pre-washed 100% cotton denim with button-fly styling. Sizes 28-33 waist.

Wrangler® Cowboy® Cut Jeans For Men Sale

14⁹⁹ blue denim
19⁹⁹ gray/black/natural

Val. to 24.99. The Pro-Rodeo jean made of 100% cotton denim, loaded with quality Wrangler® fit and construction. Men's sizes 28-42.

- CALENDAR OF EVENTS**
AUG. 31-SEPT. 7
WEDNESDAY, AUG. 31
LIONS CLUB
12 (noon)
- THURSDAY, SEPT. 1
HOBBY CLUB
2 p.m.
- KNIGHTS OF COLUMBUS
8 p.m.
- TOPS CLUB
6:30 p.m.
- FRIDAY, SEPT. 2
KIWANIS CLUB
6:30 a.m.
- COMMISSIONERS COURT
10 a.m.
- SUNDAY, SEPT. 4
GUADALUPANA SOCIETY
2 p.m.
- MONDAY, SEPT. 5
AAUW
7 p.m.
- MULESHOE 4-H CLUB
7:30 p.m.
- TUESDAY, SEPT. 6
ATHLETIC BOOSTERS
7:30 p.m.
- ALCOHOLIC ANONYMOUS
8 p.m.
- MASONIC LODGE
7:30 p.m.
- ROTARY CLUB
12 (noon)
- EASTERN STAR
8 p.m.
- REBEKAH LODGE
7:30 p.m.
- WEDNESDAY, SEPT. 7
LIONS CLUB
12 (noon)

Girls' R.C.™ Canvas Tennis Shoe by Hush Puppies®

Sale 9⁹⁹

Reg. \$13. Back to school in light-weight classic canvas tennis shoes. Color Pink in the Girls Sizes 8½ - 12 High-Top Only

Entire stock Reebok® and Nike® Athletic Shoes

Save 20%

Reg. 34.99-57.99. We have an extensive collection of high-top and lo-top styles perfect for sport or school. Save 20% on all styles in sizes for men, women & children.

Camp Mocs by Dexter®

Sale 44⁹⁹

Reg. 50. "The" shoe for back to school in '88! This classic camp moc is made of soft leather with long wearing rubber out sole. Men's sizes 7-12.

FURTHER REDUCTIONS

50% Off Most Summer Seasonal Merchandise

(No Layaways on Summer Clearance Merchandise)

Truck Road Fabric Sale

Sponsored by Dury's Prairie and Progress Extension Homemakers Club

Friday - September 2, 1988
9:00 am - 6:00 pm

Old Western Auto Store Building
378 Main
Muleshoe, Texas

Bentley's
Smart Fashion
Muleshoe

110 Main 272-4119

Open 9 a.m. to 6 p.m. Mon. thru Sat. Closed Sunday

Miss Robinson, Hamilton United In Marriage



MR. AND MRS. RANDALL HAMILTON

(nee Danielle Robinson)

Miss Danielle Robinson became the bride of Randall Hamilton in a candle light ceremony Friday, July 22 at 6:30 p.m. in the First Baptist Church of Bosque Farms, N.M. The Rev. John Torrison, pastor of the First Baptist Church of Carrizozo, N.M., uncle of the bride, read the double ring vows.

Parents of the couple are Mr. and Mrs. John Robinson of Bosque Farms, N.M. and Mr. and Mrs. Elbert Hamilton of Muleshoe.

Marriage vows were repeated before two spiral candelabras accented with rose alstroemeria, pink rose buds, white miniature carnations, white peruvian lilies and greenery. A unity candle sat on a round table covered with a white lace table cloth.

Given in marriage by her parents, the bride wore a floor length gown of satin and lace featuring an empire bodice with a stand-up collar, Venise lace, sequins and pearls. Her full skirt was trimmed with ruffles and satin and lace extended into a chapel length train. Her walking length veil of illusion was caught to a teardrop headpiece of Venise lace and pearls.

She carried a cascading bouquet of silk rose alstroemeria, pink rose buds, white miniature carnations, white peruvian lilies and pearls.

Mrs. Kelly Robinson, pianist, and Clyde Green, organist, accompanied Miss Stacie Welch, soloist, as she sang.

Amy Robinson of Bosque Farms served as her sister's maid of honor. Bridesmaid was Chaney Robinson, sister of the bride, of Bosque Farms. Tiffany

Hamilton, daughter of the groom, served as flower girl.

The attendants wore tea length gowns of dusty rose jacquard. They carried clutch bouquets with the same flowers as that of the bridal bouquet.

Elbert Hamilton, father of the groom, of Muleshoe served as best man. Groomsman was Tommy Atkins, brother-in-law of the groom, of Dallas was groomsman.

Ushers were Kelly Robinson, uncle of the bride, of Los Lunas and Wes Weaver, uncle of the bride of Peralta.

Following the ceremony a reception was held in the fellowship hall of the church.

Following a wedding trip to Santa Fe, the couple will make their home in Plainview.

The bride is a graduate of LLHS, Los Lunas High School,

and is a student at Wayland Baptist University at Plainview.

Hamilton is a graduate of Muleshoe High School and is a student at Wayland Baptist University and is employed at Sherwin-Williams at Plainview.

West Texas Watercolor Society Workshop Set

The West Texas Watercolor Society will feature Pat Deadman, watercolorist, in a workshop September 14, 15 and 16, 9 a.m. to 4 p.m. at the Garden and Arts Center, 4215 University Avenue, Lubbock, Texas 79413. Pat Deadman excels in her efforts to help students attain a strong design element in their creative work. To quote her regarding her plans for the workshop, "the path from design realism to semi-abstract will include sessions on design, color and value." Workshop participants should plan to bring sketches and/or photographs that they have made in order to take advantage of their own experiences and talent. Beginning students as well as experienced artists should find the workshop beneficial.

During 1987, Pat Deadman's Watercolor Workshops in Waco and Corpus Christi, Texas and Tallahassee, Florida were enthusiastically received. Her workshops are very enjoyable and students credit her effective teaching methods with helping them develop added facility in watercolor painting. In fact, some of her students have won

awards in competitive shows as a result of this development. This year she has scheduled workshops in New Mexico and Colorado in addition to Texas.

Pat is now a member of the National Watercolor Society and has been elected to active membership in the American Watercolor Society. She has won numerous awards and her work appears in several traveling exhibitions. Her paintings and technique were featured in the July, 1987 issue of the Artist's Magazine, and in "Watercolor '88", an American Artist publication. Her work is represented by galleries in Florida and Ohio. She resides in Corpus Christi, Texas.

Total fee for the three day workshop is \$75.00. To reserve a space in the workshop, mail a \$25.00 check payable to the West Texas Watercolor Society to workshop chairperson, Eleanor Woodson, 3303 42nd Street, Lubbock, Texas 79413. Enrollment is limited due to space. For additional information, telephone AC 806-795-4277.

*** Experience without learning is better than learning without experience.



STELLA MORGAN

Birthday Celebration Honors Stella Morgan

An early eighty-ninth birthday celebration honoring Stella Morgan was held in conjunction with the "Morgan family reunion Friday and Saturday, August 12 and 13 at Pop's Place, west of Muleshoe. Mrs. Morgan has been a resident of Muleshoe since 1969, when her husband, Elbert, entered the Muleshoe Nursing Home. He died in 1970.

Their eight children, J. T. Morgan of Bridgeport, TX; Ray Morgan of Burleson, TX; Elsie Williams of Muleshoe; Ruby Edler of Muleshoe, Jack Morgan of Raeford, NC; Bobbie Patterson of Mineral Wells, TX; Patsy Marvin of Newalla, OK; and Melba Stokes of Austin, TX planned this special celebration for their mother.

On Friday night, sixty-seven family members enjoyed fried chicken, beans, potato salad, cole slaw and home-made cookies. It was reported that there was lots of hugging and talking for many of these present had not seen each other in years.

"Many family members enjoyed the Mule Days Parade and craft booths Saturday morning before gathering at Pop's Place that afternoon for locally grown watermelon. Seventy-nine family members wearing special Morgan family T-shirts attended a hamburger and hot dog cookout Saturday night. Afterwards, Mrs. Morgan was showered with birthday cards and gifts from her family. Cake and ice cream completed the birthday celebration. Music was provided by family members. Games, visiting and reminiscing kept everyone occupied the rest of the evening."

All eight of her children and their husbands/wives, sixteen grandchildren and many of their spouses; twenty-nine great grandchildren were in attendance. Also attending were a

sister-in-law, Fae Haney of Bridgeport, TX and a niece, Nelda Vincent, and her husband, Willie, from Chico, TX.

Family members attended from several areas of Texas, as well as Oklahoma, Oregon, North Carolina, and South Carolina. A phone call from another niece in California added to the festivities.

Mrs. Morgan was one of the first residents at the Harmon Elliott Housing Complex in 1981, and enjoyed her apartment until she entered the Muleshoe Nursing Home in the fall of 1986. She now enjoys ceramic class, and stays busy doing crochet and plastic canvas projects. She is a member of the First Baptist Church in Muleshoe.

When asked how she enjoyed her birthday party, Grandma Morgan replied, "I am so glad everyone came to see me."

In Fashion

The event of Mickey Mouse's 60th birthday is influencing much of the fall sportswear. Early teens will be wearing spectator sweats and lumberjack shirts adorned with Mickey's likeness.

Don't overlook the fashion, in this line, for the very young. Mickey and Minnie

sweatshirts with bright colored ribbed collar and sleeve detail will be a "must" for youngsters. Mickey sweatshirts and sweatpants are also available. The elastic waisted poodle skirt featuring Mickey and Minnie returns.

Toy shelves are filled with Mickey and Minnie mementos of every description. Toddlers love them.

It's **A&M's 15th ANNIVERSARY** **Win Instant Cash** **Bash** Just around the corner. **Keep Looking!** For complete details see this Sunday's A&M Flyer, Sept. 4, 1988. **Be Ready!**

Photography by Oecia

Oecia's is the one you should always remember for special occasions.

Think Christmas in September.

Early appointment required on a 20% discount.

For payment, delivery and reorders from Lonnie Gibson contact Photography By Oecia.

512 Phelps Littlefield, TX 385-5169

New Arrivals For

BACK TO SCHOOL

ROCKY MOUNTAIN

Jeans!!

1/2 Price Clearance On Summer Merchandise Continues

Lookin' Good

206 Main Muleshoe 272-5052

Muleshoe Journal USPS 367-820

Established February 23, 1921. Published by Muleshoe Publishing Co., Inc., Every Thursday at 304 W. Second, Box 449, Muleshoe, Texas 79347. Second Class postage paid at Muleshoe, Texas 79347.

Member NATIONAL NEWS PAPER ASSOCIATION WEST TEXAS PRESS ASSOCIATION PANHANDLE PRESS ASSOCIATION

L. B. Hall, President & Publisher
Sammye Hall, Vice President & Controller
Clara Williams, News
Evelene Harris, Society
Lillian News Bookkeeping

Muleshoe Journal and Bailey County Journal
Bailey and Surrounding Areas
Muleshoe Journal and Bailey County Journal
Elsewhere in Texas \$14.75
Muleshoe Journal and Bailey County Journal
Outside of Texas \$18.50
Yearly by Carrier \$12.50
Advertising rate card on application

IT'S TWICE AS FUN WHEN IT'S TWO MEALS IN ONE.

SONIC BROWN BAG special

Drive in to SONIC and treat the whole family with Brown Bag Specials. They're only \$3.99 each. And they're only at SONIC.

**2 REGULAR BURGERS
2 ORDERS OF FRIES
2 MEDIUM COKE'S**

\$3.99 PLUS TAX

OR OTHER SOFT DRINK

SONIC

1633 W American Blvd. 272-3998

MEMO:

You Are Invited To

Bailey County Farm Bureau's Annual Meeting

Saturday, Sept. 10, 1988

At The

Muleshoe High School Cafeteria

400 W. Ave. G.

Free Meal Of Bar-B-Q And Home Grown Vegetables

Serving Begins At 6:30 p.m.

Drawings For Door Prizes!

High School Citizenship Students Will Speak!

Election Of Four Directors!

Come To The Convention & Let Your Ideas Be Heard!

FARM BUREAU TEXAS

Huttons' Honored With Anniversary Reception

Mr. and Mrs. Horace Hutton of Muleshoe were honored with a golden wedding anniversary reception Sunday afternoon, Aug. 28 in the Bailey County Civic Center. The event was hosted by their children and grandchildren, Betty Parkman of Lovington, N.M.; David and Prynness Fietz, Benjamin, Brennan and Brook Fietz of Sundown; Wayne and Martha Parkman of Lubbock; Larry and Michelle Carter of Wolforth; Jerry Hutton of Muleshoe; Tracy and Dewayne Hutton of Lubbock; Terry and Druscilla Hutton, Heather, Corley and Holly of Muleshoe; Dr. Joe and Sharron Putman, Matthew, Melissa, and Nathan Mark of Bedford; Michael of Lubbock.

A large wedding cake iced and decorated in gold adorned the bride's table, which was covered with a white lace table cloth.

Silver Haired

Legislator Speaks

To Local AARP

The local chapter of A.A.R.P. met Friday, August 26 at the Civic Center for their regular monthly meeting.

Myrtle Creamer, president, conducted the business meeting. Dorothy Bowers read the minutes of the previous meeting and a treasurer's report was given by Muriel Lewis.

Billie Downing and members of her committee, representing the Bailey County History Book, gave a short up-date on the book, stating they hoped to have it ready by Christmas.

Fern Madera, the Silver Haired Legislator from Levelland spoke briefly on her position and thanked area citizens for their support.

Mark Benedict, of B&B Medical Supply told the group about the equipment and services his company can furnish Muleshoe residents.

The program and covered dish luncheon was enjoyed by 35 members and their guests.

The next A.A.R.P. meeting will be the fourth Friday of September and all senior citizens are welcome to attend.

Cake and punch were served from brass appointments.

The groom's table was also covered with a white table cloth and German chocolate cake, almond tea and coffee were served. Sausage rolls, cheese rolls, ham rolls, finger sandwiches, miniature muffins, cheese platter and a fruit platter were served from the hors d'oeu-vre table.

Joe Putman showed a slide presentation of Mr. and Mrs. Hutton and their children when their children were growing up. A table consisting of memorable items and pictures was also on display.

Members of the houseparty were: Dianne Brown, Chris Ford, Elaine Damron, Bonnie Green, Mildred Williams, Janelle Turner, Dorothea Humiston Smith, Pat Nichols, Robbin Taylor, Marietta Thomas of Morton, Gladys Wilson, Willie Mae Graves, and Kerma McGuire.

Family members wore white boutonnières or corsages and the houseparty wore gold corsages.

Guests were registered from Fort Morgan, Colo., Colorado Springs, Colo., Portales, N.M., Causey, N.M., Clovis, N.M., Lovington, N.M., Beaumont, Houston, Waco, The Metro Plex, San Angelo, Big Spring, Shamrock, Rising Star, Slayton, Lubbock, Olton, Shallowater, Earth, Amarillo, Morton, Whiteface, Sundown, Wolforth, Plains, Levelland, Goodland, Ralls, Dimmitt, Abernathy, Littlefield, Brownfield, Eden, Roswell, N.M. as well as Muleshoe.

Mrs. Hutton stated that they received many beautiful and unusual gifts. Also many floral offerings from friends.

Hutton and the former Irene Pruitt were married on August 27, 1938, in Bronte, TX and moved to Bailey County in 1947, the Three Way community. In 1960, they moved to Muleshoe. Hutton is a farmer and they are members of the Church of Christ.

Sincerity is a pleasing
and vanishing virtue.

The best way to avoid
bills is to pay cash.

The trouble with the
world is the people in it.



MR. AND MRS. HORACE HUTTON

Home Economists Set Four Year Agenda

Home economists from 90 countries nine from Texas, set a 4-year agenda for improving family well-being at their 16th world congress, held in Minneapolis July 24-29.

Some 1500 delegates participated in the event, conducted every four years by the International Federation for Home Economics (IFHE).

Nancy Granovsky, a family economics specialist with the Texas Agricultural Extension Service, was chair of the U.S. planning committee and organizer of international conference. She also serves as IFHE vice-president for the Americas.

"The meeting underscored the fact that the problem facing families are world-wide," she said, "and home economists have a very important role to play in addressing the issues of food, nutrition, lifestyles and family health."

Granovsky said the world congress adopted a resolution that calls on governments to devote greater material and human resources to programs dealing with family well-being.

The meeting agenda reflected the home economists' new challenge of providing educational programs to deal with the effect of AIDS on families and individuals.

Dr. Luc Montagnier of the Pasteur Institute in Paris told IFHE delegates that they must take advantage of the time they have before the broader population is infected, to work on prevention.

A reminder of the dichotomy of northern and southern hemispheres was issued by Dr. Alexandra Stephens, Regional Officer of the Food and Agricultural Organization, Bangkok, Thailand.

"The unequal distribution of resources for food results in the people of the North eating too much while those in the South have too little," according to Stephens. "One-half billion of the people in the world are undernourished and, in spite of our efforts, the situation is not improving."

Delegates heard these and other speakers from around the world address subjects such as health policy, alcohol and drug abuse, food supplies and health education.

Melissa Waggon Recieves Bachelor Degree

Melissa Waggon graduated from Lubbock Christian University in August 1988, with a Bachelor of Science in Education Degree.

While attending L.C.U. she played with the band one year, sang in the Acappella Chorus two years, toured Europe with the chorus summer of '86, England, Germany, France, Austria, Belgium Hungry, and Switzerland.

She was also active in Kappa Social Club, three years, sang in "Mountain Top Singers of Broadway Church of Christ. Worked at Sentinel Book Store Three years while attending L.C.U.

She spent three summers working with children at Camp Blue Haven Christian Camp at Las Vegas, N.M.

She has accepted a teaching position with the Dallas Independent School District and will be teaching second grade at Winnetka Elementary school. The Dallas School District has approximately 79,000 elementary students.

The daughter of June and Betty Waggon of Muleshoe, and the granddaughter of La

Dema Wright, also of Muleshoe. is a 1984, graduate of Muleshoe High School where she was active in band, Flag choir, Future Homemakers of America, Future Teachers of America, H.E.C.E. and was selected as Who's Who in American Teenagers her senior year.

REEVALUATING NUTRITIONAL NEEDS

Many Americans are risking their health everyday when they eat improperly. To eat more nutritionally-balanced meals, individuals need to organize their kitchen, plan their menus and reevaluate their pantry, refrigerator and freezer. Janet Vaughn, R.D., at Methodist Hospital, offered a solution to improve improper eating habits.

What to keep in the pantry (and what not).

Toss Out: white rice, potato chips, corn chips, all-purpose flour, white bread and rolls, sweetened, refined cereals and junk foods.

Replace With: brown rice, pop corn, whole grain crackers, whole wheat flour, whole wheat breads and rolls and whole grain cereals.

What to keep in the refrigerator (and what not).

Toss Out: whole mile, cheddar, swiss and cream cheeses, sour cream, heavy cream, mayonnaise, sausage, bacon and luncheon meats.

Replace With: skim or low fat milk, cottage, mozzarella, ricotta and special fat-modified cheeses, low fat yogurt, lite mayonnaise and sliced turkey breast or turkey ham.

What to keep in the freezer (and what not).

Toss Out: high fat cuts of meat, ice cream and junk snacks.

Replace With: lean cuts of meats, ice milk and frozen yogurt.

WHEN YOU PREPARE FOODS Correctly preparing dishes plays a big part in improving eating habits. The Food and Nutrition Department of Methodist Hospital offers the following tips when preparing a meal.

* Use only lean cuts of meat. Cut off all visible fat.

* Bake, broil or roast meats rather and frying them.

Latest Arrivals



Chelsie Marie Combs

Sonny and Amy Shay Combs are the proud parents of a daughter born August 4 in Memorial Hospital in Dumas.

The young lady weighed six pounds nine ounces and was 20 inches long. She has been named Chelsie Marie.

Grandparents are Les and Barbara Barber of Dalhart, Rose Marie Combs and Alfred B. Combs, both of Dalhart.

Great grandparents are Tennie B. Lambert of Muleshoe and R.L. Barber of Lazbuddie.

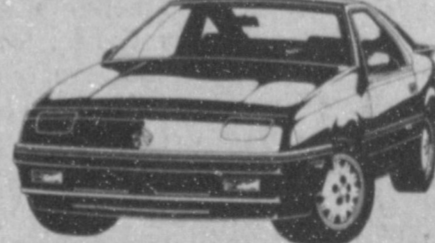
IT'S MULESHOE MOTOR'S ALL-OUT SALES BLITZ!

THE '89's ARE COMING! EVERYTHING'S PRICED TO MOVE!

The All-Out Sales Blitz is on! Save big on every car, truck and van in stock! The '89's are on their way and everything must go to make room for more. So, we're slashing prices on everything in stock. The clearance prices may never be better. So hurry in today during our All-Out Sales Blitz on 88 models. You could save a bundle!

PLUS, GET CASH BACK FROM DODGE!

SAVE UP TO \$1275*



Get an exciting, well-equipped Dodge Daytona Pacifica with plenty of power and performance and save up to \$1275 when you combine the \$1000 cash back from Dodge and up to \$275 savings on our optional equipment packages. And that's before we start dealing!

SAVE UP TO \$1200*



If you want a sleek, front-wheel drive car with sporty good looks, choose Dodge Shadow - with over 40 standard features. You can save \$1200 when you combine \$500 cash back from Dodge with \$700 in ES package savings. Come in and make your best deal!

SAVE UP TO \$1650*



Get a great deal on a Ram-tough full-size pickup. For work or play nothing will get the job done like a Dodge pickup. And now you can save \$1650 when you combine \$750 cash back from Dodge with \$900 savings from our Prospector III package (available on many models). Get a well-equipped truck and save!

SAVE UP TO \$620*



Get a Sales Blitz deal on the sporty, imported Dodge Ram 50 pickup. Plus, you can save \$620 when you combine \$500 cash back from Dodge and \$120 in Express package savings. Don't let this opportunity pass you by!

*Total savings based on combining cash back from Dodge on selected vehicles in stock with package savings. Package savings depend on model and package and are based on list prices of package items sold separately.

BUCKLE UP... AND PLEASE DRIVE SAFELY.



Muleshoe Motor Co. Inc.

1225 W. American Blvd. Muleshoe 272-4251

"Car Capital of the West Plains"

 We sell  and service
 sewing machines
 HARVEY  BASS
 APPLIANCE
 122 S. 1st Muleshoe 272-3030

We Will Be Open This Sunday September 4, 1:00p.m. - 5:00p.m.
 For Your Shopping Convenience.
  ANTHONY'S
 Your Family Fashion & Value Store
 321 Main 272-3478 Muleshoe

BACK TO SCHOOL
 Cotton Sweaters reg. 32.00
 \$19.95
  B. Jay's
 309 Main - Clovis

Football Opener

Cont. from Page 1

Not only in Muleshoe, but in other schools, freshmen are not showing up for football. Very few schools can field enough players for both a junior varsity and freshman team, so most schools, including Muleshoe, will be combining the two teams, and there will be no freshman team as such this year.

Coach Keeling said the Brownfield coach told him they have only 37 players in the top three grades, one less than on the roster at Muleshoe.

He said with only five more sophomores out for football, Muleshoe could have both junior varsity and freshman teams this year.

McCathern...

Cont. from Page 1

"Somewhere down the line, especially since 1981, we have fallen apart, and are getting deeper and deeper in debt each year," he commented.

McCathern talked about the trade deficit and the billions of dollars involved.

"Agriculture is the most important issue we face today," he said. "We have a Congressman we sent to Washington four years ago who has voted time and again against higher prices for our products, and has voted eight times for lower prices. With his attitude, he doesn't deserve to be our Congressman, and doesn't deserve our vote again. This year, we have a choice."

McCathern also said Larry Combest had refused to meet his challenge for debates in the district, and said he cannot defend himself against his stands on Social Security, education, Medicare and agriculture.

The candidate also said he was not taking any PAC money, and had sent any PAC money back -- "I don't want to be obligated to big international companies, I want people of the district to tell me how to vote," he concluded.

Celebration...

Cont. from Page 1

your approval.

An area for antique display is being planned, and if you have antiques you would like to 'show off' please contact the County Extension agent's office at the courthouse, or the Chamber of Commerce office at the city hall.

There's still room for any and all to participate in the activities. Please call the Chamber office with your plans.

Pork Referendum Vote Scheduled In September

Pork producers in Bailey County will have an opportunity to vote in a special referendum September 7-8 as authorized by the Pork Promotion, Research and Consumer Information Act of 1985, according to Bailey County Extension agent, Spencer Tanksley.

Purpose of the referendum is to determine the continuance of the 100 percent checkoff program which provides funds for pork research and promotion to enhance the pork industry, added Tanksley. The checkoff is at the rate of 25 cents per \$100 on all hogs and pigs, as well as on all imported hogs and pork products.

Referendum voting will be conducted in the county Extension office during normal business hours, September 7-8.

Producers and importers unable to vote in person may request an absentee ballot from Dr. Bill Thomas, Extension Swine Specialist, Kleberg Center - Room 212, Texas A&M University, College Station, Tex. 77843.

Absentee ballots will be available from now until close of business on August 26.

Going into Friday night's game, Muleshoe will be in the I-formation. They had planned in the spring to go to the Wing-T, but the loss of three key players forced them back to the I-formation again.

Coach Keeling said starters for the Friday night game are Jeff Hicks at quarterback; Eric Richardson, Timmy Shipman, Michael Dunham, A. J. Liles, Chris Young, Benny Parker, Salvador Olivarez, Brad Long, Jaime Olivarez, Doug Chitwood and Estevan Sandoval.

In other Rotary action, it was noted that Rotary District Governor J. D. Cage was at his home club, Muleshoe, for the Tuesday meeting.

President George Nieman said Dick Chitwood reported the booths going very well for the Bailey County West Plains Fair and 75th Birthday celebration in Muleshoe next week.

He also said Flight for Life from St. Mary's Hospital at Lubbock would be at the Civic Center on Saturday during the fair and celebration.

President Nieman also won the Polio Plus drawing for this week.

Randy Field was in charge of the program.

Combest...

Cont. from Page 1

secure," Combest said. "New opportunities are opening up in the 19th District, and together we can turn those opportunities into reality."

He continued, "The best form of government is a government of the people, and I believe I have successfully represented the citizens of the 19th District."

An advocate of helping the West Texas farmers, he helped write the 1985 Farm Bill. Combest says the farm bill has been a success and that he wants to make sure it works for all West Texas producers.

"I supported and successfully amended the 1985 Farm Bill to provide income protection for High Plains cotton producers. In preparing the next farm bill, I intend to work just as hard to extend the income-protecting legislation to include wheat and feed grain producers," Combest explained.

In Congress, Combest reminded he has also been a champion of the Texas oil industry. The Congressman continues to seek a national energy policy to bring stability to the oilfields, as well as having the Permian Basin designated as a labor surplus area to help put unemployed oil workers back into the workplace.

"Together, we can continue to work to ensure that West Texas gets its fair share and has a strong voice in the federal government," Combest concluded. "We have made tremendous progress in the past four years, and with your support we can continue to let our views be known on Capitol Hill."



ONE MINUTE SPORTS QUIZ

- Who is Wayne Gretsky?
- How old is he and his new wife?
- Who is Mark Woodforde?
- How old is Don Sutton?

The Answers:

- Star hockey player from Edmonton, just signed by L.A. Kings.
- 27.
- Australian tennis pro.
- The just-released Dodger pitcher is 43.

Senator Bill Sarpalius



Reports



RURAL HEALTH CARE CRITICAL

AUSTIN — One of the big myths making the rounds in Texas during the last few years is that the state has a surplus of physicians, and like all myths, this one has very little basis in fact.

The roots of the myth lie in the patient-to-doctor ratio enjoyed by some of the states larger cities, most notably Houston. There, the ratio is lower than the national average, and some physicians report their standard of living also is lower than the national average.

So, of course, some observers take Houston's situation, apply it to the rest of the state and suddenly we have the myth that says all of Texas has too many doctors.

The truth, unfortunately, is quite different. A Task Force on Rural Health Care delivery has been conducting a series of meetings around the state to determine Texas' real health care needs. This is the picture that's been emerging.

- Forty-three counties have no medical facility.
- Thirteen counties have no physician.
- and, another 53 rural hospitals closed during 1987.

Yet for some reason the surplus myth persists. Highly-respected publications such as *Texas Monthly* and the *Dallas Morning News* have used the alleged surplus as a basis for calling for the abolition of the Texas Tech Health Sciences Center.

That's absurd, of course. Tech's Medical School does an outstanding job of keeping the physicians it graduates in rural West Texas. Since Tech graduated its first medical class in 1976, the patient-to-doctor ratio has dropped dramatically in the 22 counties surrounding and including Amarillo. The ratios have dropped a similar amount in the Lubbock and El Paso areas too.

But, keeping the Tech Health

Science Center's doors open by itself won't solve Texas' rural health care problems. The state and federal governments must address other aspects of the problem.

We must, for instance, find a way to curb the skyrocketing cost of medical malpractice insurance. This affects rural physicians in a disproportionate fashion since rural physicians' salaries tend to be lower than the salaries of their urban colleagues.

Which brings us to another troubling problem. Five years ago Congress changed the Medicare system radically. To curb costs, they required Medicare to begin "bracketing" illnesses into a variety of categories and then paying a flat fee for each category regardless of the actual cost of treatment. Congress further determined that medical care in each category would be 25 to 40 percent cheaper in rural areas.

That hasn't been the case, yet physicians in rural areas are making 25 to 40 percent less per Medicare case than urban physicians, even if the cost of each case is the same. This alone is enough to drive doctors from the country to the city.

The task force is not to the point

where it has finalized recommendations, so no solution has begun to take clear shape. There can be no doubt, though, that we need a

solution. Good health care is critical to a community, both in human and economic terms.

People in any community deserve basic, reliable health care. And, no community can hope to grow if it doesn't offer good health care.

Those are the most basic facts the Legislature and Congress will need to consider in their deliberations next year.

If you have any questions about rural health care, or other issues, please contact us at P.O. Box 12068, Austin, Texas, 78711.

Enochs News

By: Mrs. J.D. Bayless

Mrs. Bill Key and Mrs. Doris Huff visited in the home of a sister, Mr. and Mrs. Bobby Adams, and the Adams grandchildren, Tannin and Keily.

Mr. and Mrs. Harold Johnson of Yucaipa, Ca. and Ellen Bayless visited Mrs. Etta Layton Saturday afternoon.

Mr. and Mrs. Ted Thomas of Friona, were visitors at the Baptist Church Sunday morning.

We Are Now Open.

We Appreciate Your Patience

And Welcome The Opportunity

To Serve You.

Open Tuesday-Sunday 11:00A.M.-9:30P.M.

**El Nuevo Leal's
Restaurant**

1524 Amer. Blvd. Muleshoe 272-3294

The Bob Harmon Forecast

Thurs., Sept. 1-Major Colleges-Div. 1-A

Brigham Young	24	Wyoming	21
Southern Cal	27	Boston College	14

Saturday, Sept. 3

Air Force	28	Colorado State	13
Arizona	31	Oregon State	10
Arkansas	26	Pacific	7
Baylor	21	Toledo	20
Boise State	24	Nev.-Las Vegas	14
Clemson	27	Long Beach State	17
Luke	24	V.P.I.	7
East Carolina	24	Northwestern	14
Eastern Michigan	20	Tennessee Tech	10
Florida	49	Miami, Ohio	14
Florida State	24	Montana State	0
Fresno State	24	Miami, Florida	20
Georgia	33	New Mexico	12
Illinois	23	Tennessee	23
Iowa	23	Washington State	17
Kent State	30	Hawaii	14
Kentucky	27	Youngstown	21
L.S.U.	22	Central Michigan	7
Maryland	21	Texas A&M	13
Memphis State	23	Louisville	10
Mississippi State	28	Mississippi	20
Navy	23	Louisiana Tech	14
Nebraska	49	James Madison	21
No. Carolina State	31	Utah State	7
Northern Illinois	26	Western Carolina	12
Pittsburgh	24	Akron	20
San Jose State	41	Northern Iowa	7
South Carolina	35	New Mexico State	7
So. Mississippi	21	South Carolina	13
SW Louisiana	21	S. F. Austin	6
Syracuse	33	Fullerton State	17
Texas Tech	20	Temple	7
Texas El Paso	27	North Texas	10
Tulane	27	Mankato State	10
Tulsa	20	Tenn.-Chattanooga	6
U.C.L.A.	38	Kansas State	10
Virginia	34	San Diego State	7
Wake Forest	34	William & Mary	13
West Virginia	35	Villanova	7
Wisconsin	27	Bowling Green	10
		Western Michigan	20

Other Games - East

*California State, PA	22	Wayne State, MI	21
*Carnegie-Mellon	31	Duquesne	6
*Cheyney State	24	St. Paul	8
Clarion	24	American International	15
Concord	21	Lock Haven	10
Fordham	20	King's Point	13
*Geneva	21	West Virginia Wesleyan	20
Hofstra	36	Pace	6
Liberty	28	Edinboro	13
Mansfield	23	Montclair	21
*Mercyhurst	26	Brockport	14

Other Games - Midwest

*Augustana, SD	21	Minnesota-Morris	14
*Benedictine	21	Tarkio	12
*Butler	24	Farris	17
Carroll, MT	27	Minot	0
Central State, OH	49	Urbana	10
Cogdora, MN	20	Moorhead	34
Dickinson, ND	18	Dakota Wesleyan	8
Drake	20	Black Hills	14
Evangel	22	Simpson	20
*Grand Valley	21	Lincoln	12
Hillsdale	23	NE Missouri	10
Jamestown	21	St. Francis, IL	13
*Kearney	21	Huron	16
*Lakeland	17	Northern State	13
*Mid-America	35	Olivet, IL	16
Minnesota-Duluth	34	Nebraska Wesleyan	12
*Missouri Valley	21	Central Methodist	16
*Missouri-Rolla	27	Wisconsin-Superior	7
Morningside	21	Peru	20
*NE Oklahoma	27	Missouri Western	17
*Nebraska-Kearney	21	Northwestern, IA	12
Northern Michigan	35	Missouri State	17
*Quincy	31	Wayne State, NE	16
*South Dakota State	17	North Dakota U.	13
*St. Cloud	23	Eureka	14
St. Joseph	23	Central Missouri	20
*Tennessee Tech	20	Chadron	17
*Wisconsin-Whitewater	24	Wisconsin-Stevens Point	23
	38	NIW Missouri	13
	22	Nebraska Wesleyan	13
	21	Iowa Wesleyan	19
	24	Winona State	10
	30	Dubuque	7
	28	Findlay	17

Other Games - South & Southwest

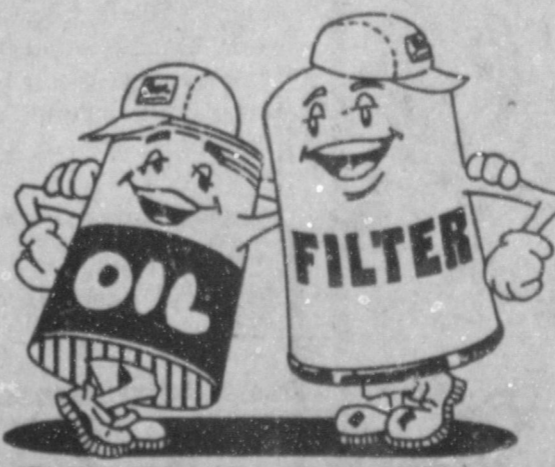
Alabama A & M	20	North Alabama	10
Arkansas Tech	23	SW Baptist	20
Bloomsburg	25	Norfolk	7
Carson-Newman	27	Fairmont	12
Catawbi	21	Wofford	13
*Central Arkansas	24	East Central Oklahoma	23
Elon	21	Winston-Salem	17
Emory & Henry	30	Ferrum	14
*Georgetown, KY	40	Union, KY	6
Hampton	45	District of Columbia	6
Harding	37	Lane	7
*J.C. Smith	23	Elizabeth City	15
*Jacksonville State	26	Samford	14
Lebanon Valley	20	Bridgewater VA	17
Lenoir-Rhyne	30	West Virginia Tech	10
Livingston	24	East Texas	7
*Livingstone	22	Bowie	20
*Mississippi Valley	34	Miles	6
Morris Brown	21	Clark	14
Rose-Hulman	22	Millsaps	14
*Savannah State	23	Fayetteville	21
Sewanee	31	Tennessee Wesleyan	7
Shepherd	20	Wingate	13
*Troy	34	SE Missouri	10
Virginia State	17	West Virginia State	10
*Virginia Union	27	Morgan State	7
*West Liberty	23	Waynesburg	17

Other Games - Far West

*Colorado Mines	22	Hastings	20
Fort Hays	24	Western State	20
*Northridge	27	Hayward	10
Santa Clara	23	Chico State	14
*St. Mary's, CA	22	St. Joseph's	21

Farmer's Co-Op Elevators

JOHN DEERE OIL



JOHN DEERE FILTERS



Engineered to work together to give your equipment maximum protection.

**SAVE
on
the
PROTECTION PARTNERS**

Dent & Co.

W. Hwy. 84

Muleshoe

272-4296

A&M's Celebration Spectacular

It's almost here. Just 5 more days until the Biggest Bash the southeast has seen. Look for A&M! Flyer in Sept. 4th paper for all the details.

YCC Summer Program Teaches Youth Conservation; Environment

(Editor's note: The following story is the fifth in a series of five, written by Texas Tech journalism student Leigh Rudy, and provided exclusively to *The Journal* by Tech's School of Mass Communications through a grant from the Reader's Digest Foundation.)

As most high school students prepare for the beginning of school, they can reflect on their summer job and the friends they made. But, members of the Youth Conservation Corps can take joy in knowing the work they did on the Muleshoe National Wildlife Refuge will make the "Refuge more pleasant for campers and visitors."

"YCC is a program for young men and women 15 through 18 years of age. It is a 'work-learn-earn' program where the young adults are involved with a government agency such as the Forest Service, U. S. Fish and Wildlife Service and the National Park Service. The enrollees are paid minimum wage for a 40 hour week," according to the U. S. Department of Agriculture, who administers the program.

"The Goal is to provide work for high school age people and at the same time, provide them with insight on conservation and the environment," said Don Clapp, manager of the Muleshoe National Wildlife Refuge.

"The enrollees in the program are chosen through a random process. We have someone not involved in the program to draw the names out of a hat," said Clapp. "We had all boys. One was from Morton, and the other four were from Muleshoe."

"We also hired a YCC group leader from Sudan who had worked here before. Each day the group leader was supposed to explain how the project was related to the environment. For example, he explained the reason for painting a boundary sign 'tan' instead of 'bright blue,'" Clapp said. "The group completed

various projects. They built a fence which was 5/8 of a mile long while digging the post holes by hand. They also constructed a nature trail.

"We tried to give them some options when they were doing a project," he said. "We told them they could change the trail using the trees for landscaping and their imagination."

painting. Metal buildings were given a new color. In the campsite area, picnic tables were painted brown and the metal trash cans were painted a tan color," he said.

"The group also had a quick moment of excitement when a rattlesnake was seen while they were counting the ducks, but safety procedures were always followed and we did not have any accidents," Clapp said.

"The enrollees wore steel-toed boots and hardhats. If they were involved in a project such as

State Shows In The Black Says Bullock

State Comptroller Bob Bullock on Friday said Texas government will end its fiscal year next week in the black for the first time in two years.

"When the state closes its books on the 1988 fiscal year on August 31, we'll be ahead by nearly \$100 million, and that's a sure sign the Texas economy is rebounding," Bullock said.

Last year at this time, the state was in the hole \$745 million. At the end of 1986, the balance in the General Revenue Fund was a minus \$231 million.

Bullock made the announcement at the West Texas Council of the Texas Chamber of Commerce's mid-year meeting Friday morning in Abilene.

The dramatic turnaround from a large deficit to a positive balance in just one year is further evidence of Texas' strong economic recovery, Bullock added.

He said that state income from sales taxes, motor fuels, insurance, oil and natural gas and the franchise tax are all better than expected.

"It's another clear indication that the Texas economy bottomed out in the spring of 1987 and is a sustainable recovery," Bullock said.

"Texas manufacturing is coming back because of the lower value of the dollar and increasing competitiveness of U.S. exports.

Consumer spending is being buoyed by confidence that the recession brought about by the collapse of oil and real estate speculation is over and that better times are ahead," Bullock continued.

Bullock said that in June he raised his revenue estimate of 1988 major fund revenues by \$319 million in anticipation of the economic improvement, but "the economy's performance has even exceeded our expectations."

Bullock's early revenue estimate for the 1990-91 state budget shows projected state income for the next session of the Legislature will be enough to cover the cost of state services at the current level for the first time in five years.

trimming trees, they also wore goggles. The group leader had a tailgate safety session each morning to remind them of safety precautions.

"There were group, as well as individual activities. Watering the trees was an individual activity. This was done twice a week, and they all took turns," Clapp continued. "These projects teach them to work as a team, because getting along with others is an important asset to have."

"We accomplished 25 out of the 28 projects planned. We usually do a public service work such as picking up litter along a highway, but we did not get to do that this year," Clapp said.

"On the Friday at the end of the program, we had a picnic for the parents, enrollees and the refuge staff. We gave a slide presentation of the enrollees working and the projects they had finished," he said. "They also got certificates along with ball caps with the YCC emblem on them."

"I have worked at refuges where an ex-YCC member will come back to visit or to tell me they used to work on that refuge," Clapp said.

YCC is an interesting experience. "It provides the youth with summer work and also accomplishes some work at the government agencies that the regular staff would not get done," Clapp concluded. "The program rotates with the Buffalo Springs Lake Refuge every two years, so next year, if there is a program, it will be there."

Hopefully, after spending a summer with the YCC, the enrollee will begin to take more of an interest in conservation and the environment. The visitors to the Muleshoe National Wildlife Refuge will clearly see the difference made by this summer's group of YCC members.

Enochs News By: Mrs. J.D. Bayless

Mrs. Winnie Byars visited her granddaughter, Mr. and Mrs. Randy Robinson and family, at Whitharral Friday.

Olene and Ray Cunningham of Lubbock were dinner guests in the home of her sister, Mrs. Ellen Bayless, Thursday.

Mrs. Olive Cox of Muleshoe was a dinner guest in the home of Mrs. Etta Layton, Friday. Others visiting with them in the afternoon was Mrs. David McDaniel and girls of Littlefield and Mrs. Jarrol Layton and children.

Congratulations to Mrs. Dolores Mosser of Slaton, daughter of the E.N. McCalls, who finished her studies and will teach History at Texas Tech.

Mr. and Mrs. Dale Nichols and Mrs. Donnye Baker flew to Riley North to the Cotton Independent Cooperated Foundation the past week, with a group of others.

Billy and Tony Newton of Snyer are spending the week with their grandparents, Mr. and Mrs. Bob Newton, and their grandparents of Morton are also visiting them today, Monday.

Mr. and Mrs. Harold Johnson of Ca. left Monday, Aug. 29 for Big Spring after spending 13 days with thier aunt, Mrs. Ellen Bayless.

Mrs. Ellen Bayless got a letter from her daughter, Mr. and Mrs. Cleo Hall, who have been gone on a tour through Las Vegas, Nevada, Canada, Alaska and other places. They are back to their summer home at Show Low, Az. They and a wonderful trip. She is the daughter of Mrs. Ellen Bayless.

Rev. David Graves, wife, Mary & children are home from their vacation to Dallas where they visited relatives.

Bollworm Eradication Program 'Successful'

A responsive boll weevil control program by Texas High Plains growers has been suggested as a model for a national program to eradicate the costly cotton pest.

The High Plains diapause boll weevil control program has been successful, both economically and environmentally, for almost 25 years and has been conducted without undue controversy.

This message came from witnesses who testified in Lubbock recently during one of three public "scopings" conducted by the Animal and Plant Health Inspection Service (APHIS) of the U. S. Department of Agriculture.

Other scopings were in Montgomery, Ala. and Phoenix, Ariz.

Witnesses at the Lubbock session included growers, three entomologists with the Texas Agricultural Extension Service and Texas Agricultural Experiment Station, and representatives of the National Cotton Council.

They cautioned that a beltwide eradication program should have flexibility to meet different local conditions and have grower acceptance to succeed.

A scoping is a first step in preparation of an environmental impact statement (EIS) for the proposed national project, explained Michael Werner, APHIS environmental specialist who conducted the three sessions.

He said objectives are to identify public and agency concerns, facilitate efficient preparation of an EIS, define issues and alternatives requiring detailed examination, and help ensure that draft statements adequately address relevant issues.

The boll weevil, introduced into the U. S. from Mexico in 1892 near Brownsville, spread quickly across this nation's cotton belt. It is now the most important agricultural pest in the U. S., responsible annually for more than \$300 million in crop losses and control costs.

Dr. Ray Frisbie, Extension entomologist at College Station, who coordinates the statewide Extension integrated pest management program, testified at Lubbock that the boll weevil

"causes a loss of \$12 to \$20 million annually in Texas."

APHIS proposes to implement a program to eradicate the weevil from infested growing areas and protect these areas from reinfestation through a cooperative control program with Mexico.

Texas producers initiated the control program in 1964 in the Plains area. Its goal was to suppress the pest and prevent its spread from the Rolling Plains onto the Caprock escarpment which marks the beginning of the High Plains.

Annual program evaluations show an average reduction of 62 percent of the potential overwintering boll weevil population on the High Plains, testified Dr. James Leser, Extension entomologist at Lubbock.

This weevil population reduction has minimized migration pressure, "and the boll weevil hasn't succeeded in establishing permanent infestations in the High Plains cotton region," Leser said.

An economic assessment of the first nine years of the suppression effort, conducted by Dr. Ron Lacey, economist with the Texas Agricultural Experiment Station, indicated that curtailing the program would increase the use of insecticide by about 14 million pounds annually and cause yield declines of 100,000 bales, a total annual loss of \$30 billion.

With the program cost averaging \$1 million a year, Leser extended Lacey's projection through 1983, indicating that the 21-year span would have cost \$20 million with benefits of \$1.3 billion.

"It has been a considerable success for 25 years while having no documented negative impact on nontarget fauna (animals)" Leser said.

West Plains Medical Center 272-4524

Fresh Vegetables Still Available In Late Summer

Even though summer is coming to a close, Texans can still enjoy their favorite garden vegetables. In fact, you probably should make an effort to eat more from this high nutrient, low calorie food group, says the Texas Medical Association.

Most people who have ever tasted vegetables right out of the garden agree that fresh is best. However, because of new technology in the produce industry, crops can be packaged and shipped so they reach the supermarket nearly field-fresh.

Vegetables are a good source of vitamin A, C, folic acid, minerals, and fiber. Some of the health problems they can help alleviate are high blood pressure, heart disease, and high cholesterol levels.

To help keep vegetables nutritious, store them in a cool, dark place, and away from air.

Also, when it comes to nutritional value, the general rule is the darker the better. For example, dark leafy lettuce and spinach have more nutrients than light green iceberg lettuce.

BACK-TO-SCHOOL BUYS

Wrangler® Cowboy Cut® ProRodeo® Denim Jeans for Men

Wrangler ORIGINAL COWBOY CUT JEANS

Sale **13.97** Indigo Blue... Reg. 19.99

Sale **15.97** Gray or Black... Reg. 22.99

Wrangler® jeans are made from 100% cotton denim and feature their Cowboy Cut® for a more comfortable fit. Styled with 5-pockets and a straight leg that fits over boots. Plus they're the only jeans endorsed by the Professional Rodeo Cowboy Association. Indigo blue in men's sizes 27-42, gray or black in sizes 28-38.

Also Includes Style 936

Boys & Mens Hanes Briefs

Mens 6 Pk. Boys 6 Pk.

\$6.97 Reg. \$8.97 **\$5.97** Reg. \$7.99

Mens Lo-Cut Sport Socks & Boys 6 Pk. Tube Socks

Mens Boys

\$3.97 **\$2.97**

Size 9-11 Reg. \$3.97
Size 6-8 1/2 Reg. \$3.97
Size 4-6 1/2

Entire Stock Of LEE,® LEVI,® & CHIC® Blue Denim Jeans For Juniors

SALE **\$17.97** Reg. \$24.99

Mens & Boys "OCEAN PACIFIC" T-Shirts

Mens Boys

\$6.97 Reg. \$11.00 **\$5.97** Reg. \$8.99

Girls Cotton Panties Sizes 2-14

SALE **\$1.97** Reg. \$2.99

3 Pk.

"HANES HER WAY" Cotton Briefs

Reg. \$4.99 - \$5.49 **\$3.97** 3 Pk.

Progressive Computer Solutions for Progressive Business

HelpLine Consultants specializes in Apple Macintosh and Apple II computer systems for Small Business, Desktop Publishing, Computer Aided Design, home, and educational needs.

HelpLine Consultants offers the following services:

- On-site needs Assessment and Analysis
- Hardware and Software purchasing
- System Installation and Implementation
- On-site Client Training (Microsoft Word, Works, Excel, SuperPaint, MacDraw, Quark Express, PageMaker, AppleWorks, and others)
- Custom Application Template Design
- Custom Data Bases
- Networking of Apple Systems to your existing MS-DOS systems
- File Transfers MS-DOS to Macintosh
- Continued support after installation

Bobby Turner
Rt. 2 Box 1205 • Muleshoe, Texas 79347 • (806) 925-6665

Open This Sunday 1:00 P.M. - 5:00 P.M.

ANTHONY'S™ Your Family Fashion & Value Store

321 Main Muleshoe, Texas

Sale Begins Wed. Aug. 31
Sale Ends Sun. Sept. 4th

272-3478

School Safety Calls For 'Buckling-Up'

Parents who "Buckle up" themselves and their children could save much more than a price discount during back-to-school activities this fall.

Back-to-school means new tennis shoes and notebooks and more cars on the road. Driving through mounting bottlenecks and snarled traffic with the number of vehicles exceeding holiday loads requires every precaution. "Buckling up before driving to the next shopping center or sale can be a major defense against being injured or killed," said Carla Baker, state-wide coordinator for the Safe Riders Program at the Texas Department of Health.

The proper use of child safety seats is especially important during this potentially dangerous driving time. "Most accidents happen close to home in town, during peak traffic," said Baker.

Although use of child safety restraints has increased slightly since last year, the 1988 figures are still below 1986, according to the latest Texas Transportation Institute survey. After reaching a peak of nearly 60 percent in 1986, the rate of compliance with the state's 1984 child safety seat law declined to 49.9 percent in 1987 and has risen to 51.9 percent for 1988.

"Many parents see that their children have new clothes and books but then neglect them when they ride in a car or truck," said Baker. "School-age children should be buckled up securely even if the destination is a shoe store only three blocks away. And little brothers and sisters -- state law requires children under age two to ride in a safety seat. Because young children are more apt to be seriously injured in an accident, it's best for them to

ride in a safety seat until age four," Baker said.

A growing list of statistics continues to prove the wisdom of older children and adults using safety belts. Almost four out of five occupants who escaped serious injury in accidents on Texas roads in 1987 were wearing seat belts, according to the Texas Department of Public Safety. There were three times more fatalities in accidents where occupants did not wear safety belts.

Information on safety belt and safety seat use and on locations where low-income parents may borrow a safety seat is available from the Safe Riders Program. For information from Safe Riders, call toll-free, 1-800-252-8255.

Shop
Muleshoe
First

Three-Way News

By: Mrs. H. W. Garvin

Mrs. Joe Sowder and Mrs. Bobby Foley were in Lubbock Wednesday on business.

Mr. and Mrs. R.L. Davis visited Mr. and Mrs. George Tyson Tuesday evening.

Mrs. Dale Nichols from Enochs visited Mrs. H.W. Garvin Thursday evening.

Mr. and Mrs. Adolph Wittner spent the week end in Missouri visiting their daughter, the Larry Flowers family.

Mrs. H.W. Garvin and George Tyson received word Saturday evening of the death of a sister, Mrs. V.W. Rikard, of Okmulgee, Okla. Funeral services were held Monday morning in Okmulgee. Survivors are her son Jack, three

grandchildren, five sisters and one brother. Jessie Wilhelm of Oklahoma City, Ellen Phillips of Comanche Texas, Janie Godfrey of Brownwood, Alice Whatley of Melvin, Katie Garvin of Maple and George Tyson of Maple. Mrs. Rikard was a retired nurse.

Several people from the community attended the 50th wedding anniversary of Mr. and Mrs. Horace Hutton of Muleshoe. The Huttons lived in our community several years.

Most of the people in the community are home after vacations. The College students will soon be going back to college.

Mrs. Inez Sanders and Mrs. Dean McBee from Enochs visited Mrs. H.W. Garvin Saturday.

Mr. and Mrs. V.A. Lane and Mutt Steal from Littlefield visited the Jack Lane family Friday.

The Three Way football team had a scrimmage with Loop team Friday evening.

Mrs. Jack Lane and grandchildren visited in Littlefield with her sister Mrs. Emil Macha.

Mr. and Mrs. Kenneth Fox from Clovis were supper guests with her mother Mrs. H.W. Garvin Sunday evening.

The community received rain Sunday of an inch or more over the whole community.

Best of Press

So Live

So live that you wouldn't be ashamed to sell the family parrot to the town gossip.

—Whitsitt Impressions.

Some Do

Some men scheme for years to get political office and, getting, don't know what to do with it.

—Blade, Toledo.

Usually

Conscience is that still, small voice that warns us—but doesn't stop us.

—Gosport.

Summer Vacation Almost Over, School Begins

Summer vacation is just about over and kids across the state will be returning to school, many of them aboard big yellow and black school buses. One of the most common sights on the state's roadways during the school year, these buses can carry from 71 to 83 seated students on any given trip each day, depending on bus style. Texas Safety Association encourages parents to remind their children about school bus safety rules.

Last year in Texas, 1,685 accidents involving school buses were reported that resulted in 1,085 injuries. Although nine fatalities were attributed to these accidents, none were passengers on the buses. In 1986, the 1,696 accidents involving school buses accounted for 1,022 injuries and five deaths.

Since many school bus accident victims are struck by vehicles while waiting for buses, children should be reminded to:

-Line up away from the road and wait for the approaching bus to come to a complete stop before entering the roadway to board.

-Avoid pushing and shoving.

-Use the grab handle when boarding and move directly to a seat.

While the bus is in motion, children should:

-Avoid horseplay

-Refrain from shouting or

making loud noises that could distract the driver.

-Remain seated for the entire trip, even when the bus is approaching its destination.

Upon arrival at the bus's destination, children should:

-Exit the bus in a quiet and orderly manner.

-Walk about 12 feet to the front of the bus so the driver can see them, and wait until the driver signals them before attempting to cross the street.

-Remember that although it is against the law for vehicles to pass a school bus that is loading or unloading passengers, some drivers still do. Students should check both ways on any street before crossing.

One of the most often asked questions regarding school buses is, "When is it legal or safe to pass a stopped school bus when its lights are flashing?" According to the Texas Motor Vehicle Laws Uniform Act (6701d, Sec. 104b): "The driver of a vehicle upon a highway with separate roadways need not stop upon meeting or passing a school bus which is on a different roadway or when upon a controlled-access highway and the school bus is stopped in a loading zone which is part of or adjacent to such highway and where pedestrians are not permitted to cross the roadway."



THE TURKEYS---This team proved not to be a turkey after all during the miniature golf games Tuesday night, Jennyslippers family social. Following the hard fought games of miniature golf, home made ice cream and cake was served. Team members (L-R) Nancy Kidd, Lacy Kirk, Thursie Reid, Cari Kidd, Bobbie Harrison and Hubert Kidd.

Thank You

Thanks so much to everyone for all the cards, flowers, telephone calls and visits during Guy's recent confinement in the Methodist Hospital.

Also we especially want to thank Brother Barry Bradley for his many visits & prayers, and to everyone for all the words of encouragement & prayers in our behalf.

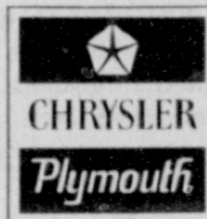
God Bless Each Of You

Sincerely,

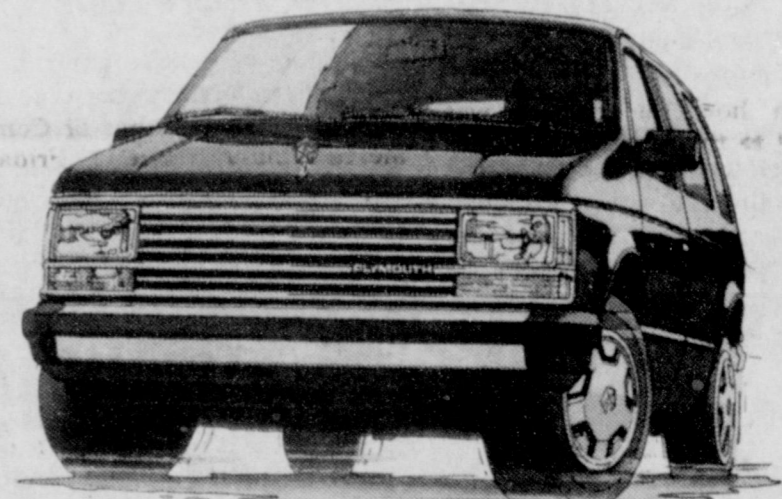
Guy & Elsie Kendall

Everything GOES!

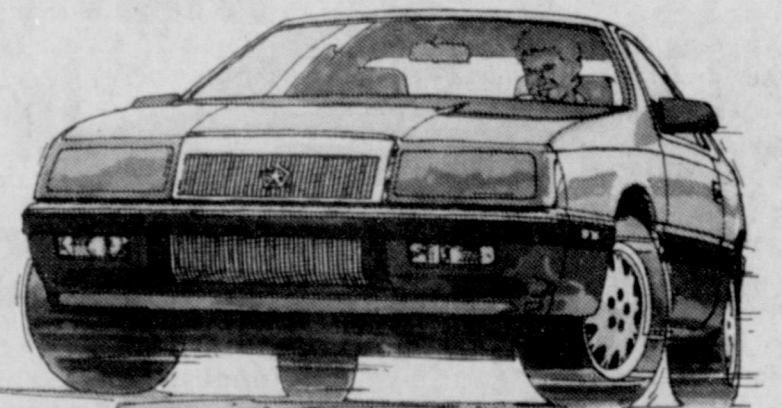
YEAR-END CLEARANCE



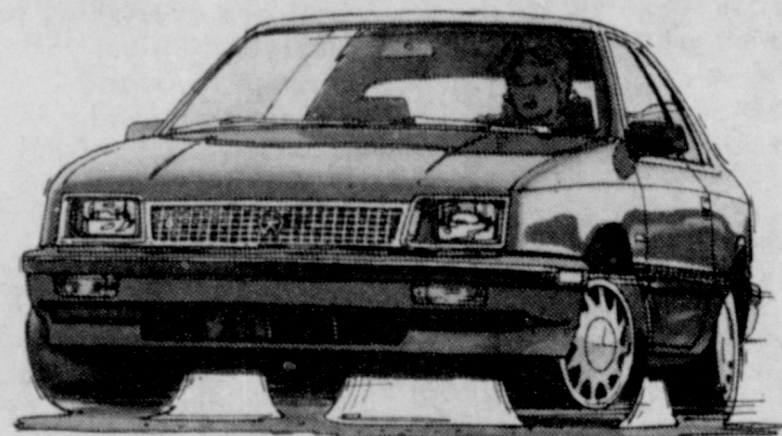
PLYMOUTH VOYAGER
\$10,887* **GOES!**
CLEARANCE-PRICED TO SELL NOW!



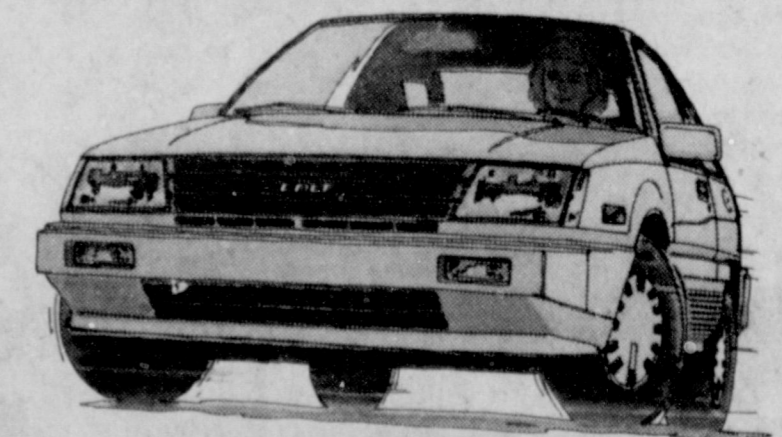
CHRYSLER LEBARON COUPE
\$10,995 BASE PRICE*
-1,000 FACTORY CASH BACK**
\$9,995 **GOES!**



PLYMOUTH SUNDANCE
\$7,995 BASE PRICE*
-500 FACTORY CASH BACK**
\$7,495 **GOES!**



COLT DL. IMPORTED FOR PLYMOUTH.
\$8,098 BASE PRICE*
-500 FACTORY CASH BACK**
\$7,598 **GOES!**



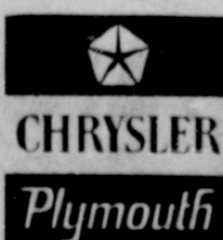
*Base sticker price. Title, taxes and destination charges extra. **Cash back for retail buyers on new 1988 dealer stock.

HURRY! BEFORE IT'S OVER!

Muleshoe Motor Co.

1225 W. Amer. Blvd. Muleshoe 272-4251

"Car Capital of the West Plains"



Journal Files

60 Years Ago

1928
TEXAS COTTON CROP RATED
6,137,000 BALES
A total of 6,137,000 bales of cotton may be expected from the

Sudan Fireman Of The Week

Carl Burnett is this week's Fireman of the Week for Sudan Volunteer Fire Department. He has lived in Sudan or in the surrounding farming area all of his life. He is the son of Mr. and Mrs. John Burnett.

He and his wife, Sylvia, have two daughters, Gina, who is a sophomore at West Texas State University and Melanie who is in the 11th grade at Sudan High School and who is also involved in the Rappelling-Rescue Team of the Sudan Fire Department.

Carl has been on the Sudan Fire Department for 15 years and was involved with the emergency Medical Services before the County gave Sudan an ambulance. He became an ECA in 1976 and with further schooling, an EMT in 1978. He has served as the Secretary of the fire department, and assistant EMS Chief for 10 & 8 years respectively. He has also been the Fire Marshall for the City of Sudan for 9 years, and is serving on the South Plains EMS Training Committee which meets in Lubbock and regulates how much and what kind of training the volunteer and paid EMS Personnel of this region must have.

Carl leads a busy life. He is employed by SPS at Tolk Station and is active in other organizations. One being the Fraternal Order of Eagles, a charity organization, of which he now serves as the New Mexico State President. It is his belief that no matter what, he must still find time for volunteer work in his community, whether it be helping the senior citizens, putting out fires, cloud watching in bad weather, or helping with the Emergency Medical Services.

17,595,000 acres probably remaining for harvest in Texas. H.H. Schutz, statistician of the Federal Department of Agriculture, said today in view of the August 1 condition reports on the crop.

The condition was 70 percent normal, compared with 59 percent on the corresponding date last year and 63 percent as a 10-year average.

Cotton picking is active in the southern part. The yields are disappointing in some localities, but in others are somewhat better than those of last year. Long duration of dry weather has caused a considerable amount of premature opening of bolls.

50 Years Ago

SCHOOL OPENS

School opened in the Progress community Monday morning with 81 pupils enrolled.

There will be a meeting held at the school house Friday night to organize a P.T.A. All parents of the community are invited to attend.

40 Years Ago

1948

WALGREEN AGENCY FOR WESTERN DRUG

The Western Drug Co., has announced their affiliation with the Wallgreen Drug Company, to the extent they will feature Wallgreen products.

The Western Drug Co. has for a number of years been progressing with the growth of the city and community of Muleshoe and surrounding territory. The quality and reputation of Wallgreen Drugs and sundries makes another boost in progress in the drug business in town.

30 Years Ago

1958

MULESHOE HOSPITAL ADDING MORE SPACE

Expected to be complete in two weeks, a new addition now under construction will give Muleshoe Hospital and Clinic an

additional four bed capacity for patient care.

The hospital now has a ten-bed capacity, and increased patient loads have resulted in the new construction.

In addition to the patient rooms, the new addition will also contain needed storage space.

20 Years Ago

1968

ESTIMATED POPULATION NEAR 10,000

Various officials have made an educated research survey of Bailey County and Muleshoe. In addition to the county seat town, estimates of rural communities have also been given.

A summary of the totals taken in August and concluding September 15 show the entire county of Bailey to have an estimated population of 9,984 while the city of Muleshoe's estimated population stands at 5,225.

10 Years Ago

1978

SCHOOLS SHOW LOSS IN '78 ENROLLMENT

With the first half week of school gone by, enrollment in the four Muleshoe public schools is down some 38 students from the first week of school last year.

In September, 1977, school enrollment hit the peak for the year at 1,717 students, which leveled off. Last year, on the first week of school, some 1,653 students were enrolled, compared to 1,615 on the third day this year.

Superintendent Neal B. Dillman reminded that following the Labor Day Holiday, additional students are usually enrolled in the four schools in Muleshoe. However, several students, who are children of migrant workers, usually withdraw from classes when their parents move with the harvest completion.

Nasty

A business college displayed a poster offering "A Short Course in Accounting for Women."

It has now been withdrawn. Someone wrote across it, in a bold, unmistakable masculine hand, "There is no accounting for women."

College Football Off To A Flying Start

Four great contests initiate the 1988 college football season, seven of the eight teams involved having appeared in post-season bowl games last season.

Boston College hosts Southern California on Thursday, Tennessee plays at Georgia on Saturday, L.S.U. entertains Texas A&M, and Miami is at home against Florida State. Delightful nail-biters!

The Trojans beat the BC Eagles 23-17 in the second game of the 1987 season, and are favored to do the same Saturday. Incidentally, Southern Cal was the first Pac-10 team to lose to the Big Ten in seven years as Michigan State nipped SC last New Year's Day 20-17.

The Southeast Conference heats up in a hurry with the Georgia-Tennessee match-up. The Bulldogs were 8-3 last year, finishing fourth in the conference, while the Vols finished third, 9-2-1 overall. The two teams were 2-0 in post-season play, Georgia whipping Arkansas 20-17 in the Liberty Bowl, and Tennessee winning over Indiana in the Peach Bowl 27-22. The home-standing Bulldogs get the nod over the Volunteers.

Texas A&M won the Southwest Conference in 1987, and L.S.U. finished runner-up to Auburn in the Southeast Confer-

ence. The Aggies will be looking for revenge in this contest at the Tigers whipped A&M in last year's opener 17-3. These two were also big winners in last year's bowl games, L.S.U. handing South Carolina its seventh loss in seven bowl appearances, 30-17 in the Gator Bowl. Texas A&M pounded Notre Dame in the Cotton Bowl, 35-10. Winner here: L.S.U.

Miami edged Florida State 26-25 last season on its way to a perfect season, a 20-14 win over Oklahoma in the Orange Bowl,

9. Automobiles For Sale

FOR SALE 1986 Plymouth Caravelle. 23, 150 miles. Call 272-3897 after 5:00 p.m. week-days, anytime Saturday and Sunday. h9-33s-4tc

18. Legals

PUBLIC NOTICE

The Commissioners Court of Bailey County will conduct a public hearing and consider the proposed county budget for the fiscal year beginning October 1, 1988, and ending September 30, 1989 (FY 1989). The hearing will be on Monday, September 12, 1988, at 10:00 a.m. in the Commissioners Courtroom in the Bailey County Courthouse.

The proposed budget for FY 1989 provides for cost of living salary increases for certain officials and employees of five percent.

The proposed tax rate is 35.5 cents per \$100.00 of valuation. g18-35t-1tc

15. Misc.

YOUR former ranching neighborhood is now a ghost town. "Read all about it!" "Swearing: Cowntown, Ghost Town," call Ethel Wilkerson, 505-763-6543, or write her at 3104 North Main, Clovis, N.M. 88101. w15-34t-4tc

OPEN YOUR OWN beautiful discount retail store. Choice of jeans-sportswear, large lady, infant-pre-teen or family shoe store. First quality top name brands. \$14,900.00 to \$26,900.00 investment includes fixtures, inventory, training and more. Prestige Fashions 1-800-247-9127. p15-35t-4tc

Tiffin II

New arrivals from the transition from girls 14, Young Jr. & Pre-Teen fashions. 6 new styles Rocky Jeans, T-shirts, ribbon, fabric, paints, tie dye & much more. Don't miss our bargain rack. All new looks soon at Tiffin II, Earth, 257-2223. t15-35t-1tc

GRAIN PRICES

YELLOW CORN... 4.95 cwt
YELLOW FOOD CORN... Call
WHITE FOOD CORN... Call
MILO... 4.12 cwt
SOYBEANS... 7.55 cwt
NEW WHEAT... 3.25 cwt
COMMODITY CERTIFICATES
100%

Prices August 30, 1988
MARKETS COURTESY OF
FARMERS CO-OP
ELEVATORS
272-4335 Muleshoe, Texas

Patients At West Plains Medical Center

AUG. 25

Anais Rodriguez, John Vnger, Sheila Stevenson, Debra Jones, Joyce Turnbow and Kent Kirkwood

AUG. 26

Anais Rodriguez, John Vnger and Rosario Villarreal

AUG. 27

John Vnger, Kip Brock and Rosario Villarreal

AUG. 28

Kip Brock, Ronald Chartier, Rosario Villarreal and Darrell Kenemer

Everybody Finds What They Need In The Classifieds!

Cars...houses...
appliances...pets...
services...the classifieds
features everything for
everybody...just
browse through
them sometime!



Give Us A
Call At :272-4536 For
Your Advertising Needs!

Muleshoe/Bailey County Journals

304 W 2nd

Muleshoe, Texas 79347

272-4536

Back by popular demand!

Get a

BUCK-A-BLADE

...on blades for your Case IH
or competitive disk harrow

That's right. We'll refund you one buck for every Case IH Earth Metal® 20-inch and 22-inch disk blade you buy between now and September 30, including crimped-center blades for Case IH harrows and full-concavity blades for competitive harrows.

Best of all, there are no top or bottom limits on how many you can buy...the more you buy, the more you save. Look over your harrow and determine your needs. Just bring in the coupon below.



22" .5.0mm solid blade

\$17.06

after rebate - as long as supply lasts

BUCK A BLADE REBATE

To receive \$1.00 off of every 20" and/or 22" Earth Metal disk blade purchased, submit this completed mail-in certificate, and your sales receipt dated between Sept. 1, 1988, and Sept. 30, 1988. Requests must be postmarked no later than Oct. 15, 1988.

Send to:
BUCK A BLADE REBATE
P.O. Box 7722
Young America, MN 55473-7722

Allow 8-8 weeks to process your order. Void where prohibited, taxed, or restricted by law. Offer good only in U.S.A., APO's, FPO's, and Canada.

The following must be filled out completely to qualify for the rebate.

Blade Part Number(s) Purchased	_____
Number of Blades Purchased	_____
	x \$1.00
Total Refund	_____
Please send refund to:	
Name	_____
Address	_____
City	_____
State/Prov	_____
Postal Code	_____

C & H Equipment

Telephone 806/272-5514

West Highway 84 • Muleshoe, Texas 79347

Play It Smart... Get Into THE CLASSIFIEDS

272-4536



- CLASSIFIED RATES
Minimum Charge \$2.30
- 2. Lost & Found
- 8. Real Estate
- 8. Real Estate
- 8. Real Estate
- 8. Real Estate
- 8. Real Estate
- 8. Real Estate

Consecutive Insertions
Minimum Charge \$2.00

CLASSIFIED DISPLAY RATES
\$1.75 Per Column Inch

DEADLINES
12 noon Tuesday For Thursday Paper
12 noon Friday For Sunday Paper
We reserve the right to classify, revise, or reject any ad. Not responsible for any error after ad has run once.

1. Personals

FRANK'S
Refrigeration & Appliance Service Parts & Repairs.
817 Gum Muleshoe, Texas 79347
PHONE
Business 272-5090 Home 272-3822
f1-6s-tfc

DEPENDABLE child care learning atmosphere supervised play & good meals. Ages 2-5 also after schooler's call 272-4815.
k1-34t-4tc

B & G MOWERS--Custom CRP shredding. Call Gary at 965-2625.
k1-35t-2tc

CONCERNED About Someone's Drinking? **HELP IS AVAILABLE** through Al-Anon
Call 272-2350 or 965-2870 or come to visit Tuesday nights, 8:30 p.m. or Saturday mornings at 11:00 a.m. and through AA call 965-2870 or come visit Tuesday nights, 8:30 at 620 W. Second, Muleshoe.

8. Real Estate

Henry Realty

111 W. Ave. B Muleshoe 272-4581

RURAL HOME 3 bdrm, 2 bath, large den on one acre with many extras, fenced with barns, fruit trees, garden, extra storage, storm cellar and satellite dish.

JUST LISTED-2 bdrm., 1 bath, large utility, nice fenced yard in Country Club Addition. Owner financing available.

ONE ACRE sites for home construction. 3 miles East of Muleshoe on Hwy. 3 lots remain.

3 Bdrm., 2 bath, spacious home outside city limits, near city on highway. 29'x40' metal building. Lot 85'x620'.

3 Bdrm., 1 bath, completely remodeled, edge of city on highway.

OUTSIDE city limits, 3 bdrm, 2 bath, utility, new kitchen, carport, built in oven & cooktop, wood burning fireplace, 2 car garage with one electric opener, house sits on 1 acre lot.

4 bdrm., 2 bath, 2 car garage, central heat/air, large utility, carpet, near down town. Excellent condition.

FOR LEASE, 2 bdrm, 2 bath, rock home near high school in excellent condition.

LOST black Labrador 3 month old male. Reward call 272-4027 or 272-4009.
b2-34s-4tc

3. Help Wanted

TOWN & COUNTRY
Food Stores is now taking applications for full-time and part-time store clerks. Starting pay for store clerks is \$4.00 per hour. If you are aggressive and willing to learn and contribute apply at 1900 W. Amer. Blvd. or 107 E. Amer. Blvd. t3-35s-4tc

BE A WINNER WITH MERRI-MAC. 3 Demonstrators needed to represent our 100% guaranteed line of Gifts, Toys, Home Decor and Christmas items. Great FREE KIT program, up to 25% comm., bonuses, prizes. No investment, delivering, collecting. Car & phone necessary. Call FREE 1-800-992-1072.
3-34t-2tpts

4. Houses For Rent

2 bdrm house for rent. Call 272-3817.
k4-35t-2tc

8. Real Estate

REPOS. No credit needed. 2-3 bdrm, call 806-894-8187.
b8-34t-8tc

4 BDRM. home in good location fenced in yard with storage building. 1621 W. Ave. C. Call 894-3889.
s8-15t-tfc

8. Real Estate

Sudderth Realty, Inc. REALTOR

109 FIFTH STREET
(806) 481-3288 (806) 481-9194
FARWELL, TEXAS
Realtors/Certified Appraisers
WE NEED FARM LISTINGS

Need a home? Down payment a problem? Little or no credit? Bad credit? Let me help! Call Dale collect 763-5319.
a8-35t-4tcts

\$99 down. Perfect starter home 1982 2-1 with refrigerated air, \$160 a month, 10 years 11% APR call Dale collect 763-5319.
a8-35t-4tcts

ATTENTION first time home buyers. No credit needed. 2-3 bdrm, call 806-894-7212.
b8-34t-8tc

Beautiful 28x48 3-2 Shult double wide! storm windows, new drapes, new carpet, built in hutch and large pantry. Large master bdrm, has double closets, large master bath, has double sinks & separate shower. Free delivery & set up for more information call Dale collect 763-5319.
a8-35t-4tcts

FOR SALE by owner Richland Hills 3 bdrm, 2 bath, fireplace, stormwindows, central air & heat, large storage building. 272-5194.
f8-35t-8tc

116 E. Ave. C. BINGHAM & NIEMAN REALTY 272-5285 or 5286

PRICES REDUCED UP TO \$7,000 on 2 & 3-1-1 Brick Homes, Cent. heat, Energy Efficient.

PRICED FROM \$23,500!!! Approx. \$600.00 total move-in, payments based on income for qualified Buyers!!!!

RICHLAND HILLS
IMMACULATE 3-2-2 Brick, corner lot, Cent. A&H, built-ins, FP, loads of storage & closet space, much more!

PRICE REDUCED-3-1-1 Brick, Cent. Heat, Evap. air, built-ins, fenced yard.....

JUST LISTED-Very nice 3-2-3 Home, Cent. A&H, built-ins, FP, fans, splkr. sys., fenced. PRICED TO SELL!!!!

JUST LISTED-3-2-2 Brick, Cent. A&H, built-ins, FP, nice patio, & more. \$60's!!!

HIGHLAND & STEWART
JUST LISTED-VERY NICE-3-2-2 Brick, Cent. A&H, newly remodeled kitchen with built-ins, storm windows, fenced yard, storage bldg. and much more!!!!

NICE-3-2-2 Brick Home (2 story), on corner lot, Cent. A&H, built-ins, and much more. LET'S LOOK TODAY!!!! 60's

JUST LISTED-3-2-1 carport Brick, Cent. A&H, built-ins, fenced yard, & much more. PRICED TO SELL!!!!

JUST LISTED-Nice 5-3 Brick Home, Cent. A&H, built-ins, utility earhtone carpets, covered patio, fenced yard, & much more \$60's!!!!

JUST LISTED-Nice 3-1 1/4-1 Brick Home, Cent. A&H, built-ins, large den w/fireplace, fenced yard, storage bldg. \$50's!!!!

HIGH SCHOOL
3-2-1 Brick+2 carport, Cent. A&H, built-ins, fenced yard, Eff. Apt. or workshop & storage area. \$40's!!!!

JUST LISTED-Very well kept 3-1 1/2 Home, Cent. heat, nice carpets, storm windows, storage bldg. & more. \$40's!!!!

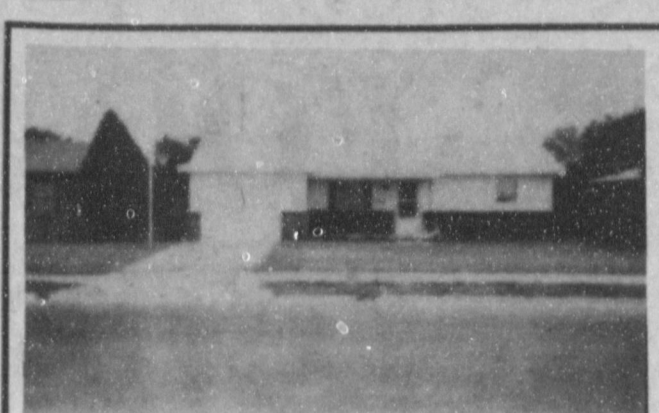
3-1-1 home, corner lot, Cent. A&H, built-ins. \$30's.....

3-1-1 home, new carpets, floor furnace, evap. air, built-ins, storage. Completely repainted interior & exterior \$20's.

IMMACULATE-3-2-1 1/2 carport, Brick Home, Cent. A&H, built-ins, nice finished basement with fireplace, sprklr. sys., & much more!!!!

8% A.P.R. FINANCING TO QUALIFIED BUYER on this 3-2 Brick, Cent. A&H, built-ins, 2 fireplaces, nice large rooms, sprinkler sys.!!!!

JUST LISTED VERY NICE-3-2-2 Brick, Geothermal Sys., built-ins, nice carpets, fenced. PRICED TO SELL!!!!
DIANNE NIEMAN, BROKER



FEATURED THIS WEEK BY:
Whitt-Reid
201 Main Real Estate 272-3611

3-1 1/2 detached garage, dishwasher, disposal 2 yr old roof, good location. Pay equity & take up payments.

BROKER AND CERTIFIED REAL ESTATE APPRAISER
CALL ROY WHITT
Home 272-3058
OR THURSIE REID OR GEORGE POTEET
272-5318 272-4047

JAMES F. HAYES & CO.
AGRICULTURAL REAL ESTATE
Vic Coker-Agent
(806) 965-2468

2 LABORS SOUTH OF MULESHOE
Longview Area, Good Soil, fully allotted Call for more details.

313 ACRES on Parmer County-Castro County line. 2 wells, 2 tailwater pits, good allotments, steel barn, terms available.

2-160 Acre tracts northwestern Lamb County good water-2 wells on each farm good soil; lay good, immediate possession.

1-210 Acre Farm-Lamb County: Steel barn & other improvements, 2 wells lots of underground pipe good soil & lays good. Immediate possession available.

640 ACRES NORTH OF LAZBUDDIE- ON PAVEMENT 1 sprinkler, good soil water, some grass.

80 ACRES East of Muleshoe with center pivot sprinkler, wheat & alfalfa, good opportunity.

107 ACRES East of Muleshoe, center pivot sprinkler, many improvements, wheat & alfalfa. NICE

Call Vic for Farm & Ranch Appraisals

AMERICA REDX - BUILT HOMES
10000 18TH STREET WEST (806) 885-4505
LUBBOCK, TEXAS 79407 (806) 793-0103

MOVE INTO YOUR OWN HOME

100% Financing (no down payment)
3 Bedroom, one bath, living room, dining room and kitchen. **\$29,900**
\$329.22 per month

This price includes:
* Central Air Conditioning & Heating
* Carpeted
* Thermal Pane Windows
* Your Choice of Colors
* Steel Doors
* Telephone Jacks
* Foundation & Footing
* Front and Back Steps
* Garbage Disposal
* Dishwasher
* Range, Oven & Hood
* Full Cabinets
* Inside & Outside Lights
* Move onto your lot

SE HABLA ESPANOL

EXCEL CORP. WANTS YOU

Now available, full time production positions in the Slaughter and Fabrication divisions. As an EXCEL employee you are eligible for:

- (1) Paid Holidays
- (2) Competitive Wages
- (3) Prescription Drug Card
- (4) Aggressive Safety Program
- (5) Quarterly Incentive Pay Plan
- (6) Employee Involvement Groups
- (7) Employee of the Month Program
- (8) Company Funded Pension Program
- (9) Free Medical, Dental & Vision Insurance

Applications are processed at the Friona Plant with the following interview schedule: Tuesday through Thursday 8:30 AM (CDT) until 11:30. Friday interview schedule is in Hereford, Texas at the Texas Employment Commission 2:00 P.M. until 5:00. Applications can be obtained by coming to the Friona Division Guard's Office at any time convenient to you.

EXCEL
West Hwy. 60 • Friona, TX • (806)-295-3201
Excel is an Equal Opportunity Employer.

JUST LISTED-NICE 2-1-1 home, wall furnace heat, earhtone carpets. \$19,500.00!
LENAU ADDITION
VERY NICE-2-1-1 1/2 carport home, Cent. Heat, evap. air, nice carpets, wood stove, storm windows & doors. Large storage-workshop. \$20's!!!!

JUST LISTED-COZY 3-1 1/4-1 home, Cent. heat, nice earhtone carpets, fenced yard, storage bldg., & more!!!!

JUST LISTED-3-1-1 home, Cent. A&H, utility, storage bldg., cellar, gas grill & more. \$20's!!!!
COUNTRY HOMES

JUST LISTED-2-2-1 brick home on 1 acre on pavement, close to town, Cent. A&H. \$40's!!!!

HOME TO BE MOVED OR LEASE LAND-Nice 4-3-2 Home. Cent. A&H, built-ins, fireplace, loads of storage & closet area, 2150 sq. ft. of living area, much more. \$40's!!!!

2-1-1 1/2 carport home on 1 acre on pavement close to town, built-ins, wall furnace heat, evap. air, satellite system, and fenced area for horses or calves. \$20's!!!!

2-1 home, 20 acres, sub. pump, sprinkler, barns & corrals. \$40's!!!!

JUST LISTED-Nice, well maintained Self-Service Laundry. 34 washers, 16 dryers in nice, modern building, excellent location. Books available to qualified Buyer.

SALE OR LEASE nicely remodeled office bldg. with over 3,000 sq. ft. of area, excellent location across from Courthouse. PRICED TO SELL!!!!

PRICE REDUCED-Nice 4-2-1 Brick on 1.267 acres, built-ins, fireplace, Heat & Air, ceiling fans, many improvements, fruit trees!!!! 70's

APPROX. 3,000 sq. ft. bldg. Railroad frontage. CASH PRICE \$15,000.00.

JUST LISTED-69t acres, improved pasture, 8" well, undgrd. line, fenced, plus nice 3-2-2 home, Cent. A&H, built-ins, utility, storm cellar, nice shop bldg. & much more, close to town!!!!

VERY NICE-3-2-1 Home on 1 acre, close to town, Cent. Heat, Evap. air, nice carpets, nicely remodeled. \$30's!!!!

JUST LISTED-3-2 Home, Cent. A&H, built-ins, FP., sprklr. sys., Satellite, plus nice metal office bldg. Cent. A&H, plus mobile home for rental unit on .466 ac. at edge of town. PRICED TO SELL!!!!

GEORGE NIEMAN, BROKER

Bob Stovall Printing

No Job Too Large
Or Too Small



Visit Bob Stovall
For All Your
Commercial
Printing!

221 E. Ave. B 272-3373
Air Force vs. Colorado State

Higginbotham

-Bartlett Co.

215 Main
272-3351

Ball State
vs.
Toledo

Special
reg. 1.19
.57
latex gloves
624 818/95 624 373/97
624 729/96
SEPT EMBLEIC

Ask Us About Family
Insurance Review!
Call Ricky Barrett,

Tommy Sisemore or David Tipps

Free No Obligation Available to To Anyone
Bailey County Farm Bureau



• LIFE • CROP
• AUTO • HOME

1612 W. Amer. Blvd. 272-4567
Dimmitt vs. Roosevelt



Shipman's Body Shop

Auto Painting
FREE ESTIMATES
Tractor Glass
&
Windshields

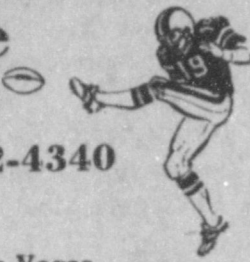


"We Appreciate Your Business"
410 N. 1st 272-4408
Littlefield vs. Guymon, OK

Decorator's Floral & Gifts A Complete Floral Service

616 S. 1st 272-4340

Baylor vs. Nev.-Las Vegas



FOOTBALL CONTEST

Grand Prize: \$50⁰⁰

1st Weekly Prizes 3rd
\$10 **\$7⁵⁰** **\$5⁰⁰**
2nd
Weekly Winners

CONTEST RULES

1. IN EACH ADVERTISEMENT YOU WILL FIND A GAME LISTED. CIRCLE THE TEAM YOU THINK WILL WIN. The person's score that most closely matches the TIE BREAKER SCORE will be declared the winner. If several persons are still tied the prize money will be split.
2. The contestant must be 12 years of age or older.
3. Only one entry per person may be made for any one contest.
4. Bring your entry blank by The Journal office by 5: p.m. Friday, or if mailed, the entry must be postmarked no later than 5: p.m. Friday. Write "FOOTBALL CONTEST" on the mailed entry, and mail to P.O. Box 449, Muleshoe, Texas 79347.
5. Circle the winners and WRITE IN THE SCORE of the tiebreaker game. This score will be used to break weekly as well as determine the grand prize winner. Decision of The Journal's scoring judges will be final.
6. Check the team you think will win; 10 points for first place, 6 points for second place and 4 points for third place.
7. To count for the grand prize, entries must be on official blank printed in the paper.

S
U
P
P
O
R
T

T
H
E
M
U
L
E
S

Official Entry Blank

Name _____
Address _____
Phone _____

TIEBREAKERS

MULESHOE VS. BROWNFIELD
FLORIDA STATE VS. MIAMI, FLA.

MULESHOE MULES Varsity Schedule

Sept. 2 BROWNFIELD T 8:00
Sept. 9 SHALLOWATER H 8:00
Sept. 16 DENVER CITY T 8:00
Sept. 23 GREENWOOD* H 8:00
Sept. 30 RIVER ROAD T 8:00
Oct. 7 DIMMITT* H 7:30
Oct. 14 FLOYDADA* T 7:30
Oct. 21 TULIA* H 7:30
Oct. 28 FRIONA* T 7:30
Nov. 4 LITTLEFIELD* T 7:30

JUNIOR VARSITY Schedule

Sept. 1 BROWNFIELD H 7:00
Sept. 8 SHALLOWATER T 6:30
Sept. 15 DENVER CITY H 5:30
Sept. 22 FARWELL H 8:00
Sept. 29 RIVER ROAD H 7:00
Oct. 6 DIMMITT* T 7:00
Oct. 13 FLOYDADA* H 7:00
Oct. 20 TULIA* T 7:00
Oct. 27 FRIONA* H 7:00
Nov. 3 LITTLEFIELD* H 7:00

FRESHMEN Schedule

Sept. 1 BROWNFIELD H 5:30
Sept. 8 SUDAN T 6:30
Sept. 15 DENVER CITY H 7:30
Sept. 22 LITTLEFIELD T 5:00
Sept. 29 RIVER ROAD H 5:30
Oct. 6 DIMMITT* T 5:30
Oct. 13 FLOYDADA* H 7:00
Oct. 20 TULIA* T 5:30
Oct. 27 FRIONA* H 5:30
Nov. 3 LITTLEFIELD* H 5:30

* Homecoming
* District Games

Henry Insurance Agency, Inc.



KENNETH R. HENRY
CERTIFIED INSURANCE COUNSELOR
REAL ESTATE BROKER



111 W. Ave. B 272-4581
Floydada vs. Idalou

Leal's El Nuevo Restaurant

Celebrating 31 Years
Of Business In Muleshoe

1524 W. American Blvd.
272-3294

Friona vs. Amarillo River Road



WES-TEX FEED YARDS, INC.



CUSTOM CATTLE FEEDING

Custom Cattle
Feeding
272-7555

Muleshoe, Texas 79347
Texas Tech vs. North Texas

Farmers Co-Op Elevators

5 Locations To Serve You

Clays Corner Enochs
Muleshoe Old Griffith

Pleasant Valley
272-4335

Memphis State vs. Mississippi



Combination Motors And Salvage

Gerry Pierce Day 806-272-4458
Night 806-272-5057

Rt. 2 Box 240
Muleshoe, Tx.
79347



Tulsa vs. Kansas State

Irrigation Pumps & Power, Inc.



Pump Sales & Service
Pivot Parts & Service
Pump Efficiency Testing

W. Hwy 84 Muleshoe 272-5597

Northern Illinois vs. Akron



Muleshoe Fertilizer SUPPORTS

The Muleshoe Mules
Kearney, Preston

Hwy 70

Office 272-3443
Home 272-4081
Mobile 965-2257

Georgia vs. Tennessee



Western Drug Co.

"For All Your Prescription
Needs Visit The Friendly
People At

Western Drug

144 Main 272-3106

L.S.U. vs. Texas A&M



Lenau Lumber Company



For All For all your
fix-up, paint-up needs
remember Lenau Lumber.

202 E. Ash 272-4222

Wisconsin vs. Western Michigan



Rt. 3 Box 1120

272-4787 or
272-3539

Eastern Michigan vs. Miami, Ohio

