

Commissioners In Heated Session

Despite adamant opposition from Bailey County Precinct Three Commissioner Joey Kindle and Bailey County Ambulance Service Director, Jim Fitzgerald, Judge Jim Watson Tuesday ordered certified letters be sent to persons whose names are 'on the books' as owing a bill for being transported in an ambulance here.

Fitzgerald attended the Tuesday morning special session of commissioner's court with three objectives in mind - to give an ambulance financial report, to ask for a raise for the full time EMTs employed at the ambulance service and to discuss a training program.

According to the report, the ambulance made 37 runs in October, 1989 and billed out \$7,144. In November, they made 24 runs, and billed out \$5,649.05; in December, 22 runs, billing out \$5,183.75; and through January 29, had made 22 ambulance runs, billing out \$5,497.05.

Fitzgerald said a total of \$23,473.85 had been billed out for the 105 ambulance runs, with collections of \$13,490.32. At this time, accounts receivable is \$20,045.81, according to the figures turned in to commis-

sioners.

Bad debts were shown to be \$30,025.08 -- and that's where the commissioner's meeting first 'heated up.'

The ambulance service director explained that some of the bills go back for three full operating years, and he considered them uncollectable.

He said this breaks down to around \$10,000 per year, which can be alleviated some since the Bailey County EMS is "working very hard to collect money."

Fitzgerald said, "you can't collect from someone where you know the money's not there.

Some of these are for Medicare patients who do not have supplemental insurance to pay the difference."

Fitzgerald added, "My recommendation is to forget about trying to collect the \$30,000, and go from here. I do not like small claims court, and feel it is not the answer."

The ambulance director gave several examples of what has caused some of the bills to be unpaid. He said Medicaid and Medicare pay set amounts -- and will pay no more.

In the instance of Medicare, the amount that is paid by

Medicare frees the patient from any further payments. Although some have supplemental insurance to pick up what Medicare does not cover, many older people, on fixed income, cannot afford the supplemental insurance, he said.

Also, some Medicare claims were not filed in time by the ambulance service, and so were not paid because of the time limit established by Medicare to file a claim.

Judge Jim Watson said he wanted certified letters sent to everyone with "past due" accounts, giving them 'X' num-

ber of days to pay the account or be filed on in court.

Over the objections of both Kindle and Fitzgerald, Watson commented, "At least he can have his day in court and plead his case. Otherwise, I think he owes it."

Looking at the two-inch thick stack of unpaid ambulance bills, Fitzgerald explained that a person previous to him (as ambulance director) had pulled every file for the last three years, and many documentations were missing. He said the auditor said he has virtually 'nothing' except

Cont. Page 6, Col. 1

WEATHER

January 28	42	13	.00
January 29	48	15	.00
January 30	63	16	.00
January 31	59	16	.00

Muleshoe Journal

'The Community Of Opportunity-Where Water Makes The Difference'



Vol. 68, No. 5

14 PAGES TODAY

Published Every Thursday At Muleshoe, Bailey County, Texas 79347

Member 1989
TEXAS PRESS ASSOCIATION 20¢

Thursday, February 1, 1990

Seaton, Black Show 'Top' Livestock Pollard, Robertson, Show 3-Way Grand Champions

In both the heifer and steer show at the annual Three Way Livestock Show last Saturday, it was Russell Pollard and Joshua Tooley.

Russell showed both the first place in the heifer division and champion heifer. Joshua Tooley

had the second place and reserve champion heifer.

For the steers, it was Joshua Tooley with the champion and Russell Pollard with the reserve champion.

Russell took grand champion honors and Joshua reserve champion honors in the cattle division. Joshua also won showmanship.

Results of the cattle show are as follows, with the exhibitors listed in order of their placings:

CATTLE HEIFERS

Russell Pollard, Joshua Tooley, Vaden McCaul, Larry Robertson't Page 3, Col. 1

Heart Group Sets Annual Radio Day

By Linda Turner
President
Bailey County Division
American Heart Association

Each February, the Bailey County Division of the American Heart Association participates, along with cities and counties across the nation, in Heart Month activities.

Our own unique event is our Radio Day and Auction. On this day, volunteers from our community have two goals: to inform our listeners of the risk factors of cardiovascular disease and to raise money for much-needed research into the nation's number-one killer, heart and blood vessel disease.

Through the generosity of KMUL, our volunteers are able to bring you vital information regarding ways to prevent heart disease. We talk about life-saving measures and advances in research. At the same time, we have a lot of fun and auction off items to our listeners.

When our volunteers approach you for a donation to our Radio Day and Auction, please give from the heart. Your gift for us to auction off will be most appreciated.

In the event your business does not provide merchandise, the money you donate will still be added to the project and used for research towards cardiovascular disease. Your gift, whether it be money or material, is valuable.

As president of the Bailey County Division of the American Heart Association, please accept my sincere thanks for your past support. I hope you continue to support us now and in the future.



SWEETHEARTS OF THE FFA--Saturday afternoon, Stacy Hodges, left, and Holley Morris distributed ribbons, rosettes, banners, trophies and buckles to the winners at the annual Lazbuddie Livestock Show. They are the sweethearts of the Lazbuddie FFA, and this is one of their duties each year. (Journal Photo)

Mexican Restaurant Opening In Scotland

Nelda Merriott and Wannie (Mrs. J. W.) Frazier, are very excited about a new business venture by their niece, Robin McCoy.

Mrs. McCoy will be opening a new Mexican restaurant *Durango's* in Aberdeen, Scotland on February 14.

Durango's will be only the fourth Mexican restaurant in all of Scotland.

And adding to the enhancement of the venture is that Roy Anzaldua left today, Thursday, for Aberdeen to be the chef at the new restaurant.

Anzaldua is flying from Dallas, to London and on to Aberdeen. He said he was excited about helping with Robin McCoy's new adventure and promise to bring real Mexican food to Scotland.

Although Anzaldua is undecided about how long he will stay in Scotland, he said he hopes to see some of the country while there.

A native New Mexican, Robin's sister, Kathy, lived in Muleshoe with Mrs. Merriott to finish high school. She married Logan Puckett, also a Muleshoe native. They live, with their two children, in Jakarta, Indonesia.

In 1988, Nelda Merriott and Ellen Ladd visited Kathy and her husband in Aberdeen.

Mrs. Merriott said Aberdeen is the third largest city in Scotland. It borders the North Sea which supports large off-shore oil drilling operations. Robin's husband, Dave, is in the oil business.

Mrs. Merriott added that many Texans, and southwesterners, live in Aberdeen. They all agree that one thing they miss the most is Mexican food - and they try to make up for that lack when they come back to the U.S. to visit.

They say the diet of the average Scotsman is rather bland food - but Mrs. McCoy said she feels that soon, they too, will enjoy the special taste of real Mexican food.

The businesswoman has converted and remodeled a building which features a basement kitchen, a ground floor restaurant, a second floor club, and a third floor which is now used for storage, but may become living quarters in the future.

Robin McCoy and her sister, Kathy Puckett visited Muleshoe last summer gathering information on ingredients for Mexican food and sampling Mexican foods in all the local restaurants.

Mrs. McCoy will be incorporating many local Mexican food

Cont. Page 6, Col. 5

At Lazbuddie Saturday afternoon, the Precinct Barn was packed with exhibitors, parents and interested citizens for the annual Lazbuddie Stock Show.

Bruce Hinrichs, County Extension Agent from Clovis was on hand to judge the lambs and swine.

First division to be shown was the lambs. Seth Black won grand champion hip honors with his Hampshire. Taking the reserve grand champion honors was Shana Foster, also with a Hampshire.

Junior Showmanship was won by Cody Clark while Casey Russell was awarded the senior showmanship.

Results of the lamb show are as follows:

FINE WOOL LIGHT WEIGHT

Edward Terry, also reserve breed champion; Casey Russell, Jody Morris and Craig Russell.

HEAVY WEIGHT

Cody Clark, also breed champion; Dawnda Magby and Jana Vise.

Mia Jennings Is Finalist For Scholarship

Mia Jennings, Lazbuddie High School senior, has been notified that she is one of 64 finalists who has combined athletics with classroom success and active participation in school and community.

Fina Oil and Chemical Company, the main operating subsidiary of American Petrofina, said she is a finalist for the 1989-90 Fina All-State Scholar-Athlete Team.

The 64 finalists were selected by a panel of judges from more than 2,000 applicants. Applications were received by Fina from public and private schools across the state.

Under the program's challenging eligibility requirements, each qualified applicant had to be a high school senior who had participated in varsity athletics at the interscholastic level, be in the top ten percent of his or her class, and have a grade average of 90 or above.

In addition to athletic and academic achievement, the candidate was judged on leadership and participation in worthwhile school and community activities.

From the 64 finalists, the selection committee, a panel of recognized leaders in a variety of fields, will select the 12 team members and the honorary team captain in February. Each team member will receive a \$3,000 college scholarship, and will be honored, along with his or her parents and coaches, at a June awards banquet in Dallas.

FINEWOOL CROSS LIGHT WEIGHT

Shana Foster, also breed champion; Eric Williams, Casey Russell, Jody Copp, Shena Seaton and Krista Smith.

HEAVY WEIGHT

Cade Morris, also breed champion; Amber Richards, Craig Russell, Edward Terry and Jody Morris.

HAMPSHIRE LIGHT WEIGHT

Seth Black, also breed champion; Jody Copp, Cade Morris, Holley Morris and Krista Smith.

HEAVY WEIGHT

Shana Foster, also reserve breed champion; Dawnda Magby, Josh Morris and Lacy Clark.

SUFFOLK LIGHT WEIGHT

Jana Vise, Shena Seaton and Edward Terry.

HEAVY WEIGHT

Cody Clark, also breed champion; Cade Morris, also reserve breed champion; Seth Black and Cody Clark.

SOUTHDOWN

Shana Foster, also breed champion; Wayne Terry, also reserve breed champion; Amber Richards, Jana Vise and Eric Williams.

Shena Seaton exhibited the grand champion swine and Kia

Cont. Page 8, Col. 4

Five Area Telephone Plans Meet

Five Area Telephone Cooperative, Inc. will hold its annual Membership Meeting Saturday, February 3, at the Bailey County Civic Center in Muleshoe. Registration will be 9-10 a.m. and the meeting will start promptly at 10 a.m.

A drawing will be held for many prizes donated by area merchants and industry suppliers as well as some furnished by the cooperative. All members will receive a door prize.

A meal prepared by Needmore Community Women's Organization will be served at noon.

Voting will be for directors in Districts Five, Six and Seven. Bob Foley and Sam Burnett have been nominated from District Five, Maple. Bob Foley is present director and is eligible for re-election.

Billy Tiller and Don A. Harper have been nominated from District Six, Bula. Billy Tiller is the present director and is eligible for re-election.

Rex Griffiths and Elree Gandy have been nominated from District Seven, Lehman. Rex Griffiths is the present director and serves as vice president of the Board of Directors and is eligible for re-election.

around muleshoe

Calvary Baptist Teens are selling Great Valentine Cookies again this year.

The cost is \$3.50 each and they are decorated and delivered within the city limits.

To place an order, contact any Calvary Baptist Teen or call 272-5319 or 272-4012.

The Teens say, "Thanks for helping us go to camp."

Harvey Bass notified *The Journal* that the next MAC drawing will be on the first Saturday in March, at the downtown location in Muleshoe.

The Muleshoe Eastern Star Chapter will sponsor a blood drive for United Blood Services on Friday, February 9, at the Muleshoe State Bank meeting room.

Hours will be 10 a.m.-6 p.m.

The Muleshoe High School graduating class of 1980 is planning their 10-year reunion and are unable to locate mailing addresses for the following people:

Bobby Bartholf, John Carrion, Gloria Castorena, Sally Castorena, Randy Isabell, Chriselda Lopez, Erminia Martinez, Curtis Milsap and David Patterson.

Also, Beatrice Pedroza, Berma Ranjel, Gloria Recio, Jonnette Richards, Arthur Rojas, Ramiro Torres, Olivia Vasques, Tommy Edmundson and Daniel Atwood.

If you know a way to locate any of the above people, please contact Shelley Turnbow at 272-5719 or Pam or James Atwood at 272-4833 after 5 p.m.

Two students from the Muleshoe area are among the 526 Eastern New Mexico University students named to the 1989 fall semester Dean's Honor Roll.

Eastern students receive one of four designations as a Dean's Honor Roll student and are graded on a 4.0 scale. Summa cum laude students have a 3.8 to

Con't Page 3, Col. 2

Three Way Stockshow

Cont. From Page 1

son, Marvin McCaul, Daniel Reeves and Rebecca Robertson.

STEERS
Joshua Tooley, Russell Pollard, Robin Tooley, Larry Robertson and Rebecca Robertson.
Larry Robertson's Finewool Cross lamb was shown to the grand championship in the show. Winning reserve championship honors was Joshua Tooley, with his Hampshire.

Results of the sheep show are as follows, with the winners listed in order:

SHEEP FINE WOOL
Jonathan Bennett, first and breed champion; Joshua Tooley, second and reserve champion; Daniel Reeves and Missy Jeffcoat.

FINE WOOL CROSS LIGHTWEIGHT
Larry Robertson, first and breed champion; Joshua Tooley, Rhianna Anglin, Melissa Bennett, Robin Tooley and Chad Welch.

HEAVYWEIGHT
Jonathan Bennett, first and reserve breed champion; Rebecca Robertson, Cynthia Bennett, Daniel Reeves and Monty Turney.

SOUTHDOWN
Joshua Tooley, first and grand champion; Melanie McCaul, Robin Tooley, Marvin McCaul and Lauren Foote, also reserve champion.

HAMPSHIRE LIGHT WEIGHT
Robin Tooley, Melanie McCaul, Robin Tooley, Marvin McCaul and Cynthia Bennett.

MEDIUM WEIGHT
Robin Tooley, Carrie Kindie, Cynthia Bennett, Melinda Turney and Monty Turney.

HEAVY WEIGHT
Joshua Tooley, also breed champion; Vaden McCaul, also reserve breed champion; Chad Welch, Vaden McCaul and Jonathan Bennett.

SUFFOLK LIGHT WEIGHT
Larry Robertson, also breed champion; Carrie Kindie, also reserve breed champion; Kyle Walker, Melinda Turney and Rebecca Robertson.

HEAVY WEIGHT
Daniel Reeves, Cynthia Bennett, Larry Robertson, Melissa Bennett and Scott Pollard.

Russell Pollard showed the grand champion in the swine division, and Daniel Reeves had the reserve grand champion.

Following are the winners of the swine show, listed in order:

SWINE BERKSHIRE
Joshua Tooley, also breed champion; Chad Welch, also reserve breed champion; Sheila Tucker, Larry Robertson and Scott Pollard.

CHESTER WHITE
Melanie McCaul, also breed champion; Marc Tucker, also reserve breed champion; and Daniel Reeves.

DUROC LIGHT WEIGHT
Marc Tucker, Daniel Reeves, Rebecca Robertson and Vaden McCaul.

HEAVY WEIGHT
Scott Pollard, also breed champion; Keith Kindie, also reserve breed champion; Chris Locke, Robin Tooley and Marc Tucker.

HAMPSHIRE LIGHT WEIGHT
Scott Pollard, also breed champion; Keith Kindie, also reserve breed champion; Chris Locke, Robin Tooley and Marc Tucker.

HEAVY WEIGHT
Scott Pollard, also breed champion; Keith Kindie, also reserve breed champion; Chris Locke, Robin Tooley and Marc Tucker.

champion; Keith Kindie, also reserve breed champion; Chris Locke, Robin Tooley and Marc Tucker.

County Officials Must Become More Involved

County elected officials must become more involved in state politics to solve local issues, according to State Rep. Mark Stiles, D-Beaumont.

"Too many times counties have thought that someone else will take care of their problems," said Stiles, who chairs the House Committee on County Affairs. "And don't just throw up your hands and say, 'We have a problem.' Help us (legislators) formulate the answers, because we certainly do not have all the answers."

Stiles will bring that message to the 32nd annual County Judges and Commissioners Conference today, Jan. 25 at the Hilton Hotel in College Station. The event, which began on Jan. 23, is sponsored by the Texas Agricultural Extension Service's V.G. Young Institute of County Government.

The representative, who also serves on the Legislative Criminal Justice Board, believes that criminal justice is the biggest problem now facing the state's 254 counties.

"Criminal justice is the biggest problem because of jail overcrowding," Stiles said. "It has to be solved at the local level."

County jails across the state have a capacity to house 35,000 inmates at a time, according to Jack Crump, Texas Commission on Jail Standards executive director.

"Unfortunately, we are having to house about 39,000 inmates so you can see that we are averaging about 4,000 over the capacity," Crump said. "The problem is that the incarceration rate continues to increase."

Stiles said county government officials collectively form a powerful voice which can help formulate state policy on major issues such as jail crowding. But he added that the Texas Legislature must adequately appropriate money for county governments to administer the

laws.

"We need to stop all programs that sound great but are not well funded," he said. "Funding is very important. They (county governments) have had too many mandates without the funds."

Some issues addressed during the three-day meeting will involve separate sessions for county commissioners and judges. Rural roads will be the topic for the county commissioners with sessions on maintenance and legislation. The judges will hear discussions on multiple arraignments, protective orders, commitment procedures and juvenile offenders.

In general sessions, participants will hear an address by Kay Baker, president of Kay Baker Associates in Austin, on "Winning the Race for Leadership through Education." Other topics will include county purchasing laws, the Open Meetings Act, ethics for elected officials, risk management and tort liability, the new criminal justice reform law and highlights from the 71st Legislature.

Also on the agenda are sessions on handling county money, federal redistricting requirements, sanitary landfills and rural addressing for 911.

Participants may earn up to four credit hours or 0.4 continuing education units.

The V.G. Young Institute of County Government was created by the 61st Legislature in 1969 to help county officials become more effective public servants. The institute is named for the late V.G. Young who, as Texas Agricultural Extension Services assistant director, established in 1956 the first regular program of informal education for Texas government leaders.

More information is available from the institute's coordinator, John Gilmartin, at (409) 845-4572 or Texas A&M University, Special Services Building, Suite 103, College Station, Texas 77843.

Scott Pollard, also breed champion; Joshua Tooley, Melanie McCaul, Russell Pollard and Scott Pollard.

HEAVY WEIGHT
Marc Tucker, also reserve breed champion; Keith Kindie, Jonathan Kindie and Larry Robertson.

SPOTS
Chris Locke, also breed champion; Russell Pollard, also reserve breed champion; Vaden McCaul, Kyle Kindie and Vaden McCaul.

YORK LIGHT WEIGHT
Daniel Reeves, also breed champion; Kyle Kindie, Sheila Tucker, Sheila Tucker and Rebecca Robertson.

HEAVY WEIGHT
Sheila Tucker, also reserve breed champion; Sheila Tucker, Chad Welch, Kyle Kindie, and Sheila Tucker.

CROSSES LIGHT WEIGHT
Marvin McCaul, Marc Tucker,

Robin Tooley and Chad Welch.

HEAVY WEIGHT
Russell Pollard, Jonathan Kindie, Larry Robertson, Marvin McCaul and Chris Locke.

Preceding the show was the Arts and Crafts Show and the Pet Show.

Muleshoe Journal USPS 367-630
Established February 23, 1974. Published by Muleshoe Publishing Co., Inc., Every Thursday at 304 W. Second, Box 469, Muleshoe, Texas, 79347. Second Class Postage Paid at Muleshoe, Texas, 79347.

Member 1990
TEXAS PRESS ASSOCIATION

L. B. Hall, P. O. Box 148, Sammie Hall, Vice President, Controller
Cleta Williams, News
Evelyn Harris, Society
Holly Millage, Advertising
Dora Tomczak, Classified

SUBSCRIPTIONS
Muleshoe Journal and Bailey County Journal
Bailey and surrounding counties
\$ 4.75
Muleshoe Journal and Bailey County Journal
Outside Texas, \$16.50
Yearly By Carrier
\$12.50

Advertising Rate Card on Application
Advertisers should check their ad the first day of insertion. The Journal will not be liable for failure to publish an ad or for a typographical error or errors in publication except to the extent of the cost of the ad for the first day of insertion. Adjustment for errors will be limited to the cost of the portion of the ad where the error occurred.

Muleshoe...

Cont. From Page 1

4.0 grade point average while magna cum laude recipients have a 3.7 to 3.79 GPA. Cum laude students hold a 3.6 to 3.69 GPA and students receive 'honors' is they have a 3.25 to 3.59 GPA.

Carol D. Ewins, a junior in elementary education major, cum laude; Melissa Sanchez, a senior elementary education major, cum laude.

Lou Ann Black of Muleshoe has been named to the Dean's List at South Plains College for the 1989 fall semester.

To be selected for the Dean's Honor List, students must maintain a minimum 3.25 grade point average while carrying at least 12 semester hours.

Galaine Mowery of Maple has been named to the President's List at South Plains College for the 1989 semester.

To be selected for the President's Honor List, students must maintain a 4.0 or straight A grade point average while carrying at least 12 semester hours.

Ben Franklin
Better quality for less
2104 W. Amer. Blvd. Mon.-Sat. Sun. 12-5 p.m.
727-3855 8 a.m.-8 p.m.

Quilters Specials
Large Selection
Fabrics **50¢ yd**

New Shipment
Southwestern Prints

Large Selection
Lace
2 yd **\$1.00**

1 Full Table
Fabrics
25-75% OFF

Excell
Assorted Colors
100% Polyester
Thread
200 yd spool **15¢**

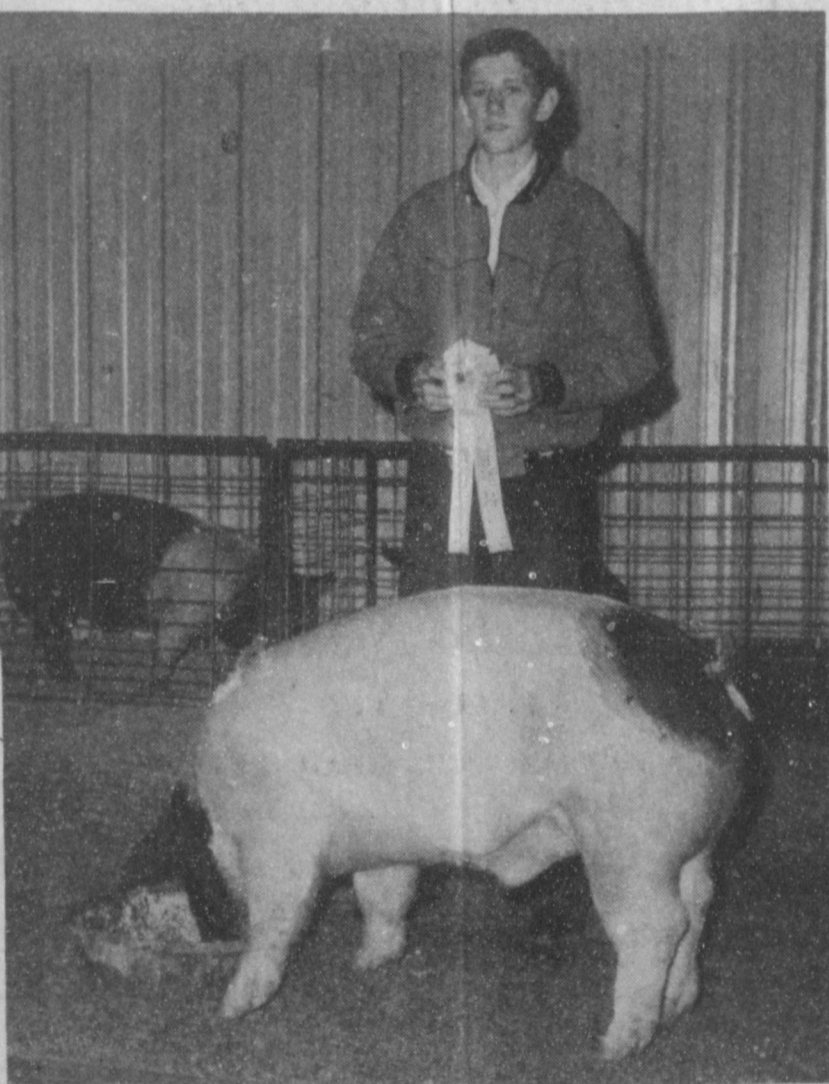


FINE WOOL CROSS RESERVE BREED CHAMP--Shown with his reserve breed champion Fine Wool cross lamb is Edward Terry. The animal won at the Lazbuddie Livestock Show. (Journal Photo)



RESERVE GRAND CHAMPION SWINE--Kia Morris shows the banner and trophy she won for showing the Reserve Grand Champion Swine at the annual Lazbuddie Livestock Show last Saturday afternoon. (Journal Photo)

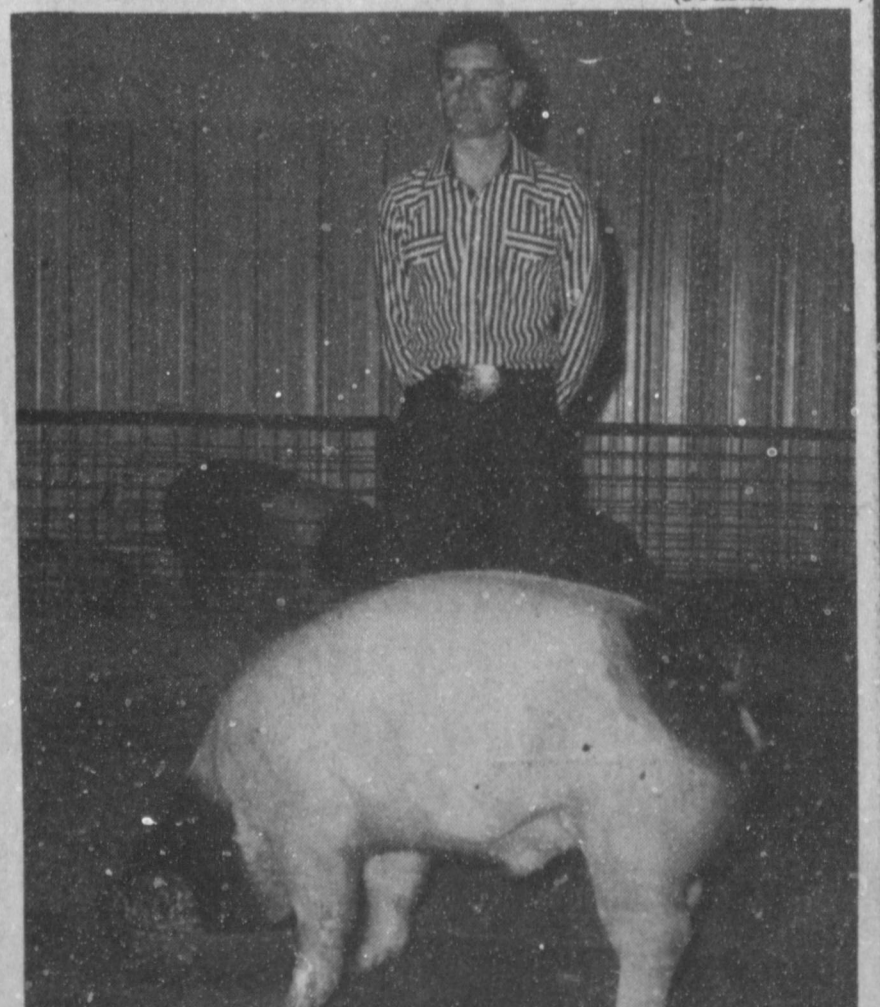
Congratulations Lazbuddie Stock Show Winners



JASON THOMAS WITH WINNER--Jason Thomas showed the light middle weight breed champion at the Lazbuddie Livestock Show last Saturday afternoon. (Journal Photo)



SETH BLACK SHOWS CHAMPION LAMB--As Seth Black shows his Grand Champion Lamb, his sister, Savannah, shows the buckle he received. Seth won the honor at the annual Lazbuddie Livestock Show. They are the children of Mr. and Mrs. Ricky Black. (Journal Photo)



SWINE SHOWMANSHIP--Casey Bradshaw won senior showmanship honors in the swine division at the annual Lazbuddie Livestock Show last weekend. (Journal Photo)

**Farmers Co-Op
Elevators**

Baby Shower Honors Stephen Arnold Lowe

The New Covenant Church was the scene of a baby shower Sunday, January 28 honoring Stephen Arnold Lowe. Anita Taylor registered the guests as they called at 2:30 p.m.

Pineapple punch and an assortment of cookies were served from a table covered with a peach colored tablecloth with a white net overlay accented with a blue ribbon. The centerpiece was a silk floral arrangement in shades of blue and peach. Stephen Arnold's mother was presented with a baby sock corsage.

The hostesses gift was a car seat. Hostesses for the occasion included: Kathie Ballard, Rosemary DePlama, Ann Faver, Yvonne Field, Zona Gatewood, Diane Grumbles, Jo Harmon, Laura Helton, Pam Helton, Toni

King, Brenda Lackey, Pat Prater, Anita Taylor and Danette Underwood.

Rebekah Lodge News

Patsy Chance, Noble Grand of the Rebekah Lodge No. 114 called the lodge to order. The American flag was presented by Francis Burrows, escorted by Sandi Robinson. The Rebekah banner was presented by Mildred Kendricks, escorted by Lucille Harp. The opening prayer was given by Fern Davis, assisted by Linda Tosh.

Roll Call by June Green showed 21 members present. Minutes of the previous meeting were read and approved.

Communications were read from secretaries, treasurers, clerks and Scribes Associations regarding the meeting to be held in Muleshoe on February 11.

Mrs. Tosh was presented with a gift certificate from the lodge in appreciation of her service as Noble Grand.

The members were reminded that they need to take things for door prizes for the Secretaries, Scribes, Clerks and Treasurers Association meeting.

Pat Langfitt, Lodge Deputy gave a school of instructions. A sheet was passed out regarding the Rose Petal Club. Each member was asked to fill out the sheet and hand it back in.

South Plains Association will be held on April 21 at Plainview.



MRS. RHONDA LOWE AND STEPHEN ARNOLD



CHECK FOR MEALS ON WHEELS--The Rev. Richard W. Edwards, right, pastor of the First United Methodist Church and Pamela Thomason presented a check to Glenn Williams recently, for the Meals On Wheels. The check represents one half of the proceeds from the church's annual turkey dinner, which was held last fall. Kay Graves, not pictured, and Ms. Thomason are co-chairman of the project. (Journal Photo)

Young Homemakers

The Muleshoe Young Homemakers met Tuesday, January 9 at the Muleshoe Church of Christ. The program for the month was brought to the club by Betty Wagon from *Something Special*. She demonstrated creative twist roses. She had various arrangements with them in it as well as different styles to choose from. She then ask each one present to make one. The program was enjoyed by everyone attending.

The meeting was called to order by President Terry Marricle. A discussion was held about donating money to the church for the use of the building. It moved and seconded to give them \$150. The pictorial project was moved and seconded to decline doing this year. A traveling bake sale was discussed, but was decided to vote on it at a later date.

It was reported that Story Hour was held Wednesday, January 17 at the library. Ruth Owen was in charge of treats and Terry Marricle had the story.

Craft night was January 23. Mrs. Marricle and Cindy Magby demonstrated beaded socks. Several were in attendance to learn the crochet stitch which added a ruffle to simple cotton socks.

The door prize at craft night was won by Deanne Rasco.

The next meeting will be on February 13, at 7 p.m. The program will be on Child Abuse in Texas.



New Arrivals

Bryan Cole

Marty and Julie Widemon are the proud parents of a son, Bryan Cole, who was born Wednesday, January 17 at 7:55 p.m. in South Park Medical Center at Lubbock.

The young man weighed seven pounds and one ounce. He has a sister, Ashley Diane.

Paternal grandparents are Mr. and Mrs. Dub Wolfe and maternal grandparents are Mrs. Shirley Radford of Farwell and Neal Radford of Earth.

Great grandparents are Mr. and Mrs. Clarence Mitchell of Farwell.

DeShazo Students To Jump Rope For Heart

Students at DeShazo Elementary school will jump rope to raise funds for the American Heart Association in a Jump Rope For Heart during regular physical education classes starting Monday, January 29.

Students will jump rope as team members. Each team member will jump until tiring and then pass the rope to another team member. The sequence is repeated for a maximum of three hours.

Prior to the event, each participant will recruit sponsors, family, friends and neighbors to make pledges based on each minute their team jumps.

Following the event, the student will return to sponsors with a verified report of how long they jumped and collect the pledges. These pledges will then be turned in to Jump Rope For Heart coordinators at the school, and forwarded to the local American Heart Association.

All participants receive Certificates of Appreciation. In addition, students who return their money by a special date will receive prizes based on the amount collected. Individuals turning in \$100-\$199.99 will receive their choice of a Jump Rope For Heart backpack or barrel bag; \$200 or more, a warm-up suit.

"The kids really get excited over this. More than the prizes, they get a real sense of satisfaction from helping

people," said Laura Johnson, physical education teacher at DeShazo School.

Ms. Johnson stated that the event benefits the American Heart Association's research, education, and community service programs. Also, "Jumping rope is great physical exercise. It requires a minimum of space and equipment, and can be pursued and enjoyed throughout life."

The Jump Rope For Heart event is co-sponsored by the American Heart Association, and the Texas Association for Health, Physical Education and Recreation. More than 80,000 students across Texas are expected to participate in the event.

Simple Solution

"Conductor," complained the passenger, "that fellow sitting there is a lunatic! He keeps claiming he's George Washington."

"I'll take care of that," said the conductor. "Next stop Mount Vernon!"



ATTENDING WORKSHOP--Friday morning librarians and board members from the North half of the West Texas Library System gathered at the Muleshoe Public Library for a Policy Making Workshop. (Journal Photo)

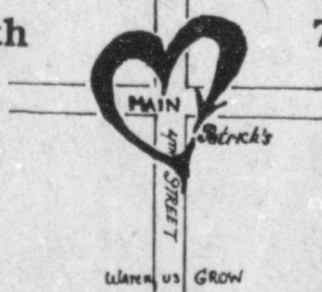


A whale's heart beats only nine times a minute.

WE ARE MOVING TO LARGER AREA

Patrick's
"HALL of DIAMONDS"

103 W. 4th 762-3317



AROUND THE CORNER TO THE CORNER
IN THE HEART OF DOWNTOWN CLOVIS

SALE - ENTIRE STOCK OF JEWELRY - SALE AT SPECIAL PRICES

SAVE ON TOP QUALITY JEWELRY WITH SERVICE
from a family jeweler staying in Clovis.

30% to 50%

Everything Must GO.

* Credit Terms Available

ANTHONY'S CLEARANCE Sale

Selected Fall and Winter Merchandise
50% Off Regular Price

3 Big Days Only
Thurs., Fri. & Sat.

Look for the Clearance Tags and SAVE!

Example- Here's How it Works
(Fall and Winter Merchandise)
Reg. Price \$20
Now Only \$10

Selected Groups of Fall and Winter Merchandise! Check This List!

- ✓ Women's & Jrs' Woven Blouses
- ✓ Women's & Jrs' Dress Blouses
- ✓ Women's & Jrs' Dresses
- ✓ Men's Long Sleeve Woven Sport Shirts
- ✓ Men's Suits and Sport Coats
- ✓ Men's Striped Dress Shirts
- ✓ All Family Outerwear
- ✓ Young Men's Fashion Pants
- ✓ Men's Flannel & Acrylic Shirts
- ✓ Women's Fashion Boots
- ✓ Men's Long Sleeve Knit Shirts
- ✓ Infants', toddlers' & Girls' Fleece
- ✓ Women's Dress & Casual Shoes
- ✓ Boys' Long Sleeve Knit Shirts
- ✓ All Family Sweaters

Store Hours:
Mon. - Sat. 9 a.m. - 6 p.m.

Sale prices effective through
Feb. 3, 1990



ANTHONY'S
We're Good At Making You Look Great!

321 Main 272-3478

Journal Files

60 Years Ago

1930

JOURNAL IS EIGHT YEARS OLD TODAY

Birthdays usually mean a great deal to an individual. Most of us want to look back over the past year to see what we have accomplished or make note of the things we should have done.

So it is with a business to a certain extent. The Journal is eight years old today. Many people remember the first newspaper for Muleshoe. It was called the Bailey County Bugle. This little sheet was kicked and cuffed around like a stepchild for a year or two, then the name was changed to The Journal.

We will not go into details about the past struggles. In fact we are not familiar with many of them. However The Journal has kept pace with the progress of the county and Muleshoe making an honest effort to serve the community as a whole.

With the steady growth of the county, it has been necessary to build The Journal larger each year in order to better serve this great section of the Plains. We are proud of the fact that we have been in service for that we have a host of friends who appreciate our efforts.

On this day we wish to thank our many friends for their loyal support, and assure you once again that The Journal will continue to work for the best interests of Muleshoe and Bailey County.

50 Years Ago

1940

SUDAN REDUCES ITS TAX RATE

Sudan City Commission last week reduced its municipal tax rate from \$1.50 to \$1.33 on the \$100 valuation of city property.

It was also ordered that the city water rate, beginning with February, would be reduced from \$2.00 to \$1.75 minimum rate.

40 Yeras Ago

1950

COUNTY GINNINGS HIT 66,893 BALES

The year 1949 was a record cotton production year in Bailey County, as is well known to all, but figures of ginnings released this week by Marion F. Harris, special representative of the Bureau of the Census show the extent of last years crop convincingly.

The report showed that Bailey County gins had turned out a total of 66, 893 bales prior to January 16, 1950, of the 1949 crop. Total to the same date last year from the 1948 crop was 23,641.

30 Years Ago

1960

Grocery specials advertised this week in the Journal included: coffee 59 cents pound; sugar 5 pounds 45 cents; 5 pounds flour 45 cents; 2 No. 303

cans peas 35 cents; No. 2 1/2 can peaches 25 cents; 46 ounce can grapefruit juice 25 cents; 29 ounce can tomato juice 15 cents; No. 300 can new potatoes 10 cents; No. 1/2 can vienna sausage 23 cents; 16 ounce can Spaghetti and Meat Balls 25 cents; No. 1/2 can tuna 25 cents; No. 303 can corn 2 for 25 cents; hams 39 cents pound; 2 pound bag sausage 39 cents; rib steak 59 cents pound; bacon 39 cents pound; pork chops 39 cents pound; and country style back bone 35 cents pound.

20 Years Ago

1970

MRS. BILLY WILLIAMS CONSERVATIVE HOMEMAKER OF YEAR

Mrs. Billy Williams has been named Conservation Homemaker of the Year for Bailey County by Blackwater Vailey Soil Conservation Service, Texas Agricultural Extension Service and by the Fort Worth Press.

Mr. and Mrs. Williams are the parents of "four wonderful children" Peggy, 19, is a freshman at Texas Tech University majoring in business; David Wayne, 17, is a junior at MHS and Billy Don, 16, is a freshman. Terry Frank, five, will be six intime to start to school next fall.

Joyce Scarbrough moved to Muleshoe with her parents, Mr. and Mrs. Henry Scarbrough when she was only two years old. Miss Joyce Scarbrough and Billy Franklin Williams were married Sept. 17, 1949.

They lived the next three years in the Earth and Olton communities where Willams worked at farming. The following nine years he was employed by Johnson-Pool Hardware Company.

In speaking of family recreation, Mrs. Williams said "we work together and we play together". They play football together and enjoy going to games together.

On school nights after homework is done they watch TV or play Canasta, or on bad days sometimes put a puzzle together.

Birthdays are a big thing for the Williams'. The children are given at least one game and after a cake has been cut and gifts opened, we enjoy the new game together.

Billy Don is a chess player and was given a special set of his own. They have a basketball goal and sometimes practice table tennis. A croquet set is kept up and ready in the front yard most of the time. They also play badminton, with Mrs. Williams as scorekeeper.

The entire family enjoys hunting rabbits. "After the water has been changed and there is still a little daylight, enough to see without lights, we get into the pickup and drive over the pastures for a while". "Half of the fun is hearing about why they didn't get this one or that and the bragging" said Mrs. Williams.

"Its not all fun, there is a serious side of farming" said the Homemaker of the year. "We

borrow from FHA for both farm and household expenses. A budget is required but the Williams only borrow enough to last until the hay season, then they use the income from the hay to pay current expenses and repay the loan". Unless it is absolutely necessary, we do not make any major purchases until we have repaid our loan and we shop around to try to get the most for our money.

No matter how the crops come out, we have something to fall back on. In years past we have depended on food that we raised to see us through, with very little extra."

"It gives me a feeling of accomplishment to do things for my family," said the devoted homemaker, wife and mother, "And no matter what it is, it is always appreciated. This is what makes life worthwhile."

10 Years Ago

Library News

by Anne Camp

A Policy Making workshop was held Friday, January 26 in the meeting room of the Muleshoe Area Public Library. Attending were Librarians, and Board members from the North half of the West Texas Library System. Jo Amandes of the System coordinated the event.

The twenty seven participants were greeted by Anne Camp and Nancy Kidd, manager of the Muleshoe Chamber of Commerce, who gave each a "Welcome" Packet to remember their visit to Muleshoe. Kay Graves, Friends of the Muleshoe Library president helped with refreshments. Izetta Shain, Muleshoe System Representative also attended.

First on the agenda coffee, and a tour of library. Many commented on how nice this library is.

Presenter for the workshop was Beth Glass, Librarian from South Plains College, Lubbock Campus. She gave a very interesting and informative program on the subject of *Library Policies*-what are they?, why do we need them?, and how do we write them. It was stressed that every library needs a written policy, and that the policy should contain three parts- a *Mission Statement*, the *Policies*, and also the *Procedures* to carry out the stated objectives. Discussion was held on each of these. A group discussion was held on Library problems, and how they can be solved by being included in policies. A wide range of problems were brought up, to name a few; latch-key kids, overdue books, emergencies such as fire, tornadoes, or medical such as patron becoming ill, censorship, grafitte, transients, disruptive behavior, and theft of Library property. There was no shortage of problems, but each library's may be better handled by the establishment of policies for situations that might arise.

The goal of the workshop was for each participant to gain the knowledge and skills to enable them to write and implement policies for their own library. Evaluations were taken at the

AARP Report

Muleshoe A.A.R.P. group met in regular session at 11:30 a.m. Friday, January 26 at the Bailey County Coliseum.

Marie Parker gave the invocation after which a pot-luck spread was enjoyed by a good number of members and six visitors.

The program, given by the "Gospel Notes" was introduced by Bertie Thompson. It was reported that everyone enjoyed the vocal numbers rendered by this group.

After installation of the 1990 officers, a short business meeting was declared. Recognition of birthdays, shut-ins, and the sick and distressed was in order. A kitchen committee was appointed and new business was dispensed with.

Officers for the year 1990 are: president, Leon Lewis; vice president, Sammie Ethridge; treasurer, Clara Lou Jones; and secretary, Dorothy Bowers.

The meeting was adjourned with a prayer.

1980

ICY, FRIGID WEATHER INVADES SOUTH PLAINS

If you don't like the weather on the South Plains just wait a little while, and it will change. From a balmy, spring like day to close out the annual Bailey County Junior Livestock show on Friday, the weather changes overnight to another weekend frigid ice storm.

Shortly after daylight Saturday morning, ice was beginning to coat vehicles, trees and anything exposed to the elements in the latest of continuing weekend ice storms.

Despite minor problems with electric power lines breaking, along with several power poles, Bailey County escaped a major problem that plagued a lot of communities who were without electrical service for up to several days in some instances.



POLICY MAKING WORKSHOP--Beth Glass, librarian from South Plains College, Lubbock Campus, presented a Policy Making Workshop at the Muleshoe Public Library Friday. Several towns from this area were represented. (Journal Photo)

Coming In February Special Tree Sale

1 1/4" -- 2" Balled and Burlap; shade and Evergreen

Ash Ceder Elm Redbud Mimosa
Honeylocust Sycamore Texas Red Oak
Globe Willow Weeping Willow

Japanese Black Pine Austrian Pine

Trees Will Be Here Feb. 8th!!

Call and Reserve Yours Now!

Have you been wanting a tree that's BIG enough to look like one? These are a perfect size and affordable too!

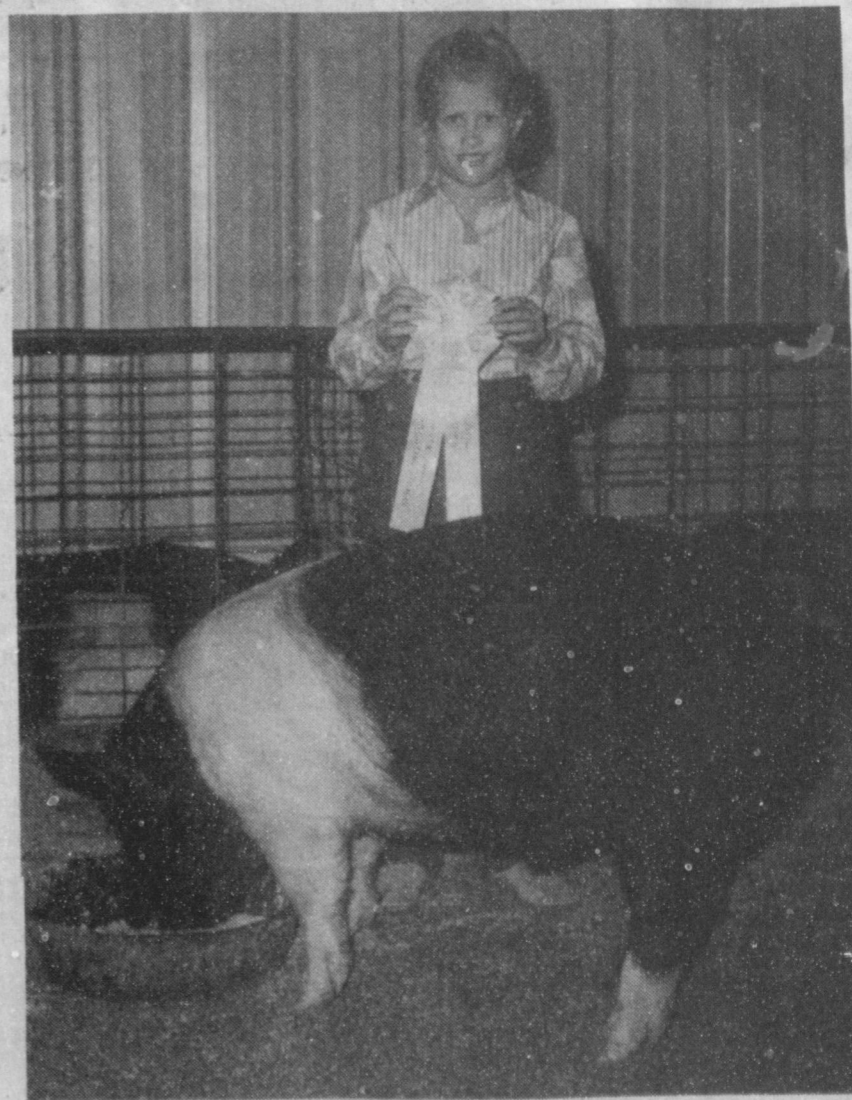
(Fruit trees available in Spring)

Kristy's Plants

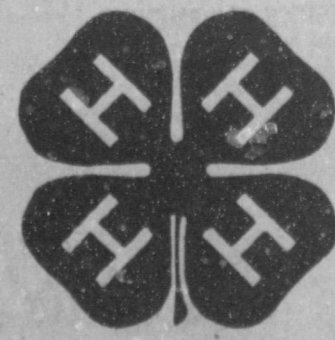
710 E. American BLVD
272-5536



Congratulations



MIDDLE WEIGHT BREED CHAMP--Shown with her middle weight breed champion swine is Shena Seaton. This was at the Lazbuddie Livestock Show. (Journal Photo)



Lazbuddie Feeders

All Winter Clothing

1/2

Men's Shop
Ladies' Apparel
Junior & Missy

OFF & More

See Our

New Spring Arrivals

JEANS by JAY

1015 W. 2nd 2 Blocks From ENMU 356-3787
PORTALES

Commissioners

Cont. From Page 1

ledger cards, added the ambulance director.

Ricky Mata, former fulltime EMT employee at the Bailey County Ambulance Service said an interim director took everything out of the files after the former director, Richelle Watkins, left and alphabetized the records. "It really messed us up," he said, "that's all we had to go by. We didn't know when the calls were made, and are still trying to put everything back in order. There are many records we cannot find. We don't know what happened to them, they're just not there."

Judge Watson insisted that Fitzgerald bill everyone, and send certified letters to all, including Medicare patients.

The judge was reminded that the people would have to go out and hire lawyers for something 'that's not their fault.' However, the judge still ordered the ambulance director to send out the certified letters.

Kindle added, "I'm still not satisfied that it's the right thing to do."

Then, Fitzgerald said he had been unable to find qualified persons willing to go through all the training required to become an EMT, regardless who pays for it. He explained that it takes a minimum of 15 people to conduct a class, and ideally, at least 20 people, because of drop-outs.

"Volunteers are getting very scarce," he said. "I have been trying to put together a class at Morton, and cannot fill it. F. E. (Shaheen) has been trying to put together an EMT class at Levelland and only has four signed up. We're going to have to send ours to Lubbock to school."

He also said, in response to a question by Judge Watson, "Can we attract people if the county pays for it?"

Fitzgerald told him, "No, I don't think so. Volunteers are dedicated enough they are willing to pay for their classes themselves."

He told about the recent resignation of Ricky Mata, who became a paramedic about a month ago. Mata resigned to take a job at Tucumcari making \$14,000 per year more than he made in Muleshoe with the Bailey County Ambulance Service.

"Volunteers are not just jumping off the street. I also have a problem with the fact that you have 13 volunteers working now who paid their own way through school. They are true volunteers and dedicated. If they are not

busy, they always notify us, if you need me today, I am available."

He also requested raises for the two fulltime EMTs at the Bailey County EMS. He said he was wrong to compare their salaries to roadhands, commenting, "I am an ex-roadhand and can operate a maintainer. I learned it in the service, with my sergeant telling me that I did wrong. I did not go to school to become a maintainer operator."

"My people (at the EMS) are professionals, who keep on with continuing education. They work their tails off, and they're dedicated and they care."

"Yes, I was wrong to compare them with roadhands." (roadhands are paid 1,464 per month and EMTs are paid \$1,030 per month.)

Breaking after 12 for lunch, it quickly became another 'heated' session in the afternoon.

Going into executive session for a meeting with Bailey County Coliseum Manager Joyce Holmes the judge and commissioners went to the court room upstairs.

Very shortly, they came back downstairs, and the rest of the meeting with Mrs. Holmes was conducted in open session.

Mrs. Holmes wanted to discuss overtime, or the county's handling of overtime "not just for my department, but other departments. We need to get paid for it, or be able to get time off for it."

"I just want to be treated like any other county employee," she added.

Judge Watson said he was under the impression Joyce (Mrs. Holmes) was spending a lot of hours there (at the coliseum) when she could have taken off."

Mrs. Holmes reminded him that according to the written guidelines for the coliseum manager, she was required to be at the coliseum during any function, and also should take one-half day, compensatory time, during each week. "That can't always be done," she said.

"I gradually realized that Joyce was trying to communicate to me she wanted to know why she wasn't paid overtime like others were paid," said the Judge.

"This kind of puts us in a bind," said the judge. "We don't have overtime in the budget. Why didn't you put it in your budget for the coliseum?"

The coliseum manager told commissioner's court, "No one ever talked to me about a coliseum budget. I'm not out at

the coliseum just for the fun of it. I'm working. It takes a lot of work out there. I've cut back all the hours I can possibly cut back."

In questioning what the law 'reads' on the large number of overtime hours accumulated by the coliseum manager, which is 534.75, she said, "I didn't check the law because I figured it was up to the judge to keep up with the law."

Mrs. Holmes also told the judge "I gave you the figures the first of August. Why didn't you take care of it then?"

Judge Watson's response, "It took me awhile to realize you wanted to be paid for those hours."

Again Mrs. Holmes reminded the commissioners, "I want to be treated like any other county employee."

Judge Watson tried to push through a compromise that would pay only \$2,189.99 of the nearly \$8,000 owed to Mrs. Holmes for overtime, and hire a part-time manager so she could take off for 240 hours, or six weeks, for the balance.

When he was reminded that may not be legal according to the Department of Labor, Labor Standards, the judge commented, "I'm not concerned myself if she files anything with the Labor Board. I'm sure they'll just come in, make an investigation and put it on their records."

Many times, the judge questioned Mrs. Holmes about the hours she "actually worked."

The following is an excerpt from a tape made during the meeting Tuesday afternoon:

"...The question is whether the hours were actually spent at work," Judge Watson.

"Are you questioning that, judge?" (voice of Clea Williams of The Journals.)

"Clea, I'm going to have to ask you not to speak unless you're given the floor. Starting right now." (Judge Watson.)

Judge Watson did not at any time answer the question during the meeting.

All four commissioners highly praised Mrs. Holmes and the way she cared for the coliseum.

They refused to make a budget amendment and asked for a Department of Labor spokesman to visit commissioner's court to bring them up to date on laws concerning employees and overtime.

"It's a stab in the back," said Bailey County Sheriff Jerry Hicks a short time later during the same meeting. "You can't try to make people work more hours for less money. I just don't think this is fair to the people."

Sheriff Hicks had been summoned to commissioner's court to hear a proposal by Judge

Watson that deputies and jailers be put on a "fluctuating" rear schedule, explaining that the more hours they worked on the fluctuating scale, the less money they would make.

Again, the commissioners did not go along with Judge Watson in his efforts to change the personnel policy, saying they preferred to wait until the law could be thoroughly explained by a Department of Labor, Labor Standards Board person.

Stockshow...

Cont. From Page 1

Morris had the reserve grand champion swine.

Casey Bradshaw won the senior showmanship, while Jason Thomas took the junior showmanship honors.

Swine were divided into weight divisions for the Lazbuddie show, with the following results:

LIGHT WEIGHT

Justin Puckett, Justin St. Clair, Dawn Weir, Mandy Magby, Cole St. Clair and Dean Gallman.

LIGHT MIDDLE WEIGHT

Jason Thomas, Edward Terry, Kia Morris, Dustin Weir, Adam St. Clair and Joshua McDonald.

MIDDLE WEIGHT

Kia Morris, Shena Seaton, Lori Bradshaw, Casey Bradshaw, Wayne Terry and Jody Copp.

LIGHT HEAVY WEIGHT

Dawn Weir, Jay Seaton, Brice Redwine, Mandy Magby, Justin St. Clair and Deon Gallman.

MIDDLE HEAVY WEIGHT

Justin Puckett, Dustin Weir, Brice Redwine, Brice Redwine and Julie McDonald.

HEAVY WEIGHT

Shena Seaton, Brett Thomas, Jody Copp, Jay Seaton, Brice Redwine and Adam St. Clair.

At the conclusion of the regular show, approximately 20 youngsters considered too young to show in the regular show, had the Pee Wee Showmanship contest.

The two judges decided that each of the children had earned a blue ribbon for their efforts in showing their borrowed lambs.

The best way to get ahead in life is to stop talking about it and do something about it.

Mexican Restaurant

Cont. From Page 1

recipes in her menu. Mrs. Merriott commented, "I'm glad they chose Muleshoe and our restaurants as the 'final word' on good Mexican food."

They also learned that Valley Grain of Muleshoe ships masa to London, as other of her supplies for the restaurant will come from London.

As the restaurant is considered unique for Scotland, and will be the first in northeastern Scotland, the Aberdeen newspaper wrote the following article:

"American Robin McCoy is full of beans about her new business in Aberdeen."

"A New Mexican, she decided that a taste of old Mexico was needed to spice up the city's menu of night spots."

"In early January she hopes to open the doors of the only Mexican restaurant north of Edinburgh and only the fourth in Scotland."

"Between then and now Robin hopes to transform the desolate former plumber's store on the corner of Union Row and Summer Street into a gastronomic hotspot fit for a fiesta."

"While she promises the food won't be too hot to handle for the customers of the cool Northeast, Robin is confident they'll eagerly tackle the tacos, savour the salsas and dip into the guacamole dished up by chef, Roy Anzaldúa."

"Roy's family run five Mexican restaurants in southern Texas on the border with Mexico," said Robin.

"Although she herself has experience in setting up similar businesses in the US, this will be Robin's first such venture in Aberdeen, a city she first came to love a dozen years ago when she and her husband, David, who works with Mobil, came to live here."

"The couple moved back west to Dallas while their daughter went through college but were drawn back to Scotland two years ago."

"Now a grandmother and about to move home to Midstock-et Road, Robin has no doubts about where she wants to stay."

"It's really nice here - the nicest place I've ever been and

that's why I want to open a little business in Aberdeen," she said.

"It was to her homeland she turned to find a name for the new restaurant. She knew a town called Rango in Mexico, which reminded her of the town of Durango, near her childhood home - hence Durango's."

"She also had to look across the Atlantic for some of the specialist ingredients to stock the kitchen of Durango's, not to mention the ethnic fabrics and ornaments with which architect George Arnold is planning to adorn the hacienda-style interior."

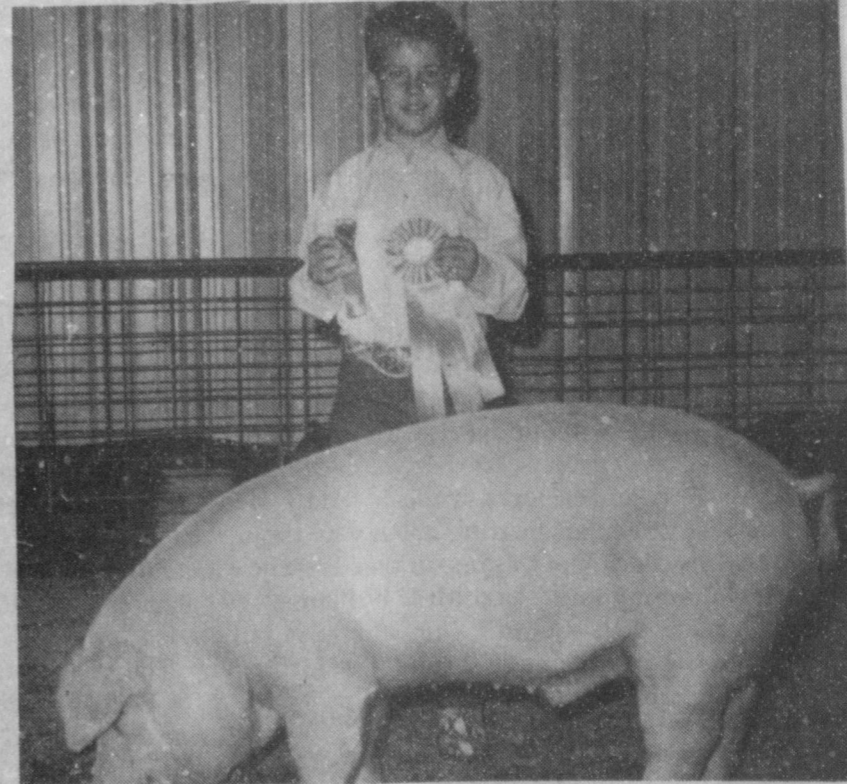
"When Durango's opens it will offer a full selection of typical home-made Mexican cuisine."

"As Aberdeen Licensing Board has already said 'si' to a restaurant license, Durango's diners will also be able to toast their tostadas with a measure of margarita - tequila with triple sec or cointreau, lime juice and crushed ice."

"And if her customers raise their sombreros to her new Mexican adventure, Robin hopes it might even reward her with some real Aztec gold."

Donate Blood Friday, February 9th Muleshoe State Bank 10 a.m. - 6 p.m. United Blood Services

Congratulations



DUSTIN WEIR SHOWS MIDDLE HEAVY WEIGHT BREED CHAMP--Last Saturday, Dustin Weir showed the middle heavy weight breed champ at the Lazbuddie Stock Show. (Journal Photo)



JUSTIN PUCKETT HAS WINNER--Justin Puckett had the Reserve Breed middle heavy weight swine at the Lazbuddie Livestock Show last Saturday. (Journal Photo)

Paco Feed Yard

AUCTION

Friday, February 2, 1990 — Sale Time: 10:00 a.m.

LOCATED: From Dimmitt, Texas, 6 miles West on Highway 86 then 5 1/4 miles North on F.M. Highway 1055 then 1/2 mile East; OR From Hereford, Texas, 14 miles South on F.M. Highway 1055 to Easter, Texas then 2 miles South on F.M. Highway 1055 then 1/2 mile East.

RONNIE LANCE & OTHERS — Owners

Telephones: Mr. Lance — (806) 364-8394 or Jimmy Reeves — (806) 864-3362 or Jim Summers — (806) 864-3611

I am quitting farming and the following will be sold at Public Auction — Any announcement Sale Day takes precedence.

<p>TRACTORS —</p> <ul style="list-style-type: none"> 2-1979 International 1486 Diesel Tractor, Cab, A/C, Htr., Radio, T.A. W.F., 3-pt. D.H., Weights 18x38 Rubber 1-1973 Farmall 1066 Diesel Tractor, Cab, A/C, Htr., Radio, T.A. W.F., 3-pt. D.H., Weights, 16.9x38 Rubber <p>COMBINE, REEL, GRAIN CART —</p> <ul style="list-style-type: none"> 1-1979 International 1450 Axial Flow Diesel Combine, Cab, A/C, Htr., Radio, Hydrostatic Drive, I.H.C. 210" Header, 28Lx26 Rubber, (1641 Hours, No Corn) 1-24 Hume Reel, Paris 1-Phares-Wilkins 400 Bushel Grain Cart <p>WATER TRUCK, GRAIN TRUCK —</p> <ul style="list-style-type: none"> 1-1954 International S.A. Water Truck, 6 Cylinder Engine, 5 Speed Trans, 8.25x20 Rubber, With 1,000 Gallon Water Tank, B&S Gas Motor & Pump 1-1949 Chevrolet S.A. Grain Truck, 6 Cylinder Engine, 4 Speed, 14" Bed, 8.25x20 Rubber <p>EQUIPMENT —</p> <ul style="list-style-type: none"> 1-John Deere 7100, 8 Row, 3-pt. Max-Emerge Planter, Flatless, Double Boxes 1-Krause 24" Hydraulic Fold Offset Disc 1-Servis 1310, C.T., 4 Row Shredder 1-Hamby 7 Row, D.S.B., 3-pt. Lister, G.W., Coulters, Hydraulic Makers 1-Hamby 21" T.S.B., 3-pt. Chisel/Sweep Plow, D.C.W. 1-Hamby 16" T.S.C., 3-pt. Chisel/Sweep Plow, G.W. 1-Hamby 21" D.S.B., 3-pt. Tool Carrier, With Hamby P.T.O., D.C.D. Rodweeder, Gauge Wheels 2-Hamby 9 Shank Deep Ripper Plows, G.W., 3-pt. (1 With Fertilizer Attachment) 1-Hamby 5 Shank, T.S.B. Stubble Mulch Plow, 3-pt. (1 Tye 21" D.S.B. A.A. Fertilizer Rig, Flow Divider, G.W.) 1-International 6 Row, 3-pt. Rolling Cultivator, G.W. 1-International 760, 14' Disc Disc 1-International 500 Cycle, 6 Row, 3-pt. Air Planter, D.D. 1-Eversman 9' Camelback Land Floot 18-International 185 Ind. Planter Units, Double Discs, (6 F/C Boxes, 12 Metal Boxes, 6 Fur Parts) 1-PMC 8 Row, F.M. Ropewick Applicator 1-International 10, 20"8" Grain Grill, C.C., P.W. 1-SM 21" D.D.B., 3-pt. Tool Carrier, With Tye 12" Bed Roller 1-SM 6 Row, D.S.B., 3-pt. Middle Runner Plow, G.W. 	<ul style="list-style-type: none"> 1-Hamby 10" D.T. Cultipacker 1-Eversman 6" D.T. V-Ditcher, C.C. Late Model 1-Eversman 6" D.T. V-Ditchers 1-Schaler 6" Offset Disc 1-Servis 2 Row, D.T. Shredder 1-Servis 6" 3-pt. Blade 1-International 224, 21", Folding Gang Rotary Hoe 1-12" D.T. Gang Rotary Hoe 1-SM 4 Row, D.D.B. Tool Carrier, With Von Rumbin P.T.O., S.C.D. Rodweeder 1-Big 12" 6 Row, D.T. Cultipacker 1-6 Row Ropewick 1-3-pt. Lift Boom <p>IRRIGATION —</p> <ul style="list-style-type: none"> 2-Chrysler 413 Irrigation Engines, (Needs Valve Job) 1-Chevrolet 292 Irrigation Engine, (Needs Valve Job) 1-Dismobile 455 Irrigation Engine, (Needs Valve Job) 40 Joints 7" x 20" Galv. Pipe, 40" Rows, 2" Ornings 23 Joints 7" x 30" Flowline 75 Joints 8" x 30" Flowline 2-P&R 8" 7" Surge Valves 8-12" x 8" Irrigation Hydrants 1-Lot 7" Irrigation Fittings, T.S. 1 1/2" End Caps 1-Large Lot Irrigation Fittings, 2", 1 1/2", 1 1/4" 1-Lot 7" x 30" Sock Material 1-12" Allalfa Valve 1-Lot Tap Str. As 1-Lot Dresser Couplings, 8 1-SM S.A. Pipe Trailer, With Coil Link Axle <p>TRAILERS, TANKS, SPRAY EQUIP. —</p> <ul style="list-style-type: none"> 1-Donahue 21" T.A. Implement Trailer 1-4 Wheel Flatbed Trailer 3-550 Gallon Overhead Fuel Tanks & Stands 1-350 Gallon Overhead Fuel Tank & Stand 1-105 Gal. Fuel Tank 1-30 Gallon Propane Tank Pump, 6 Row Boom 1-Wylie 200 Gallon F.C. F.M. Sprayer, With Ace Hydraulic Pump, 6 Row Boom 1-Bryhill 300 Gallon D.T. Sprayer, Ace P.T.O. Pump, 8 Row Boom 1-Clark 400 Gallon Stainless Steel T.T. Spray Rig 1-13' Spray Boom <p>LIVESTOCK EQUIPMENT —</p> <ul style="list-style-type: none"> 11-14 x 5 Metal Stock Panels 7-14 x 4 Metal Stock Panels 2-10 x 5 Metal Stock Panels 1-3-pt. Wire Roller 1-7 Stock Water Tub 1-Lot Electric Fence Posts 1-Lot Electric Fence Chargers 2-Spools Electric Fence Wire 1-Set Pickup Stock Racks For L.N.B. 16-Cattle Mineral Blocks <p>TRACTOR & TOOL MAKEUPS —</p> <ul style="list-style-type: none"> 2-Sets I.H.C. 18.4x38 Axle Duals, (1486 Hubs) 2-Sets I.H.C. 16.9x38 Axle Duals, (1066 Hubs) 1-Hamby 10", 4"x7" Tool Carrier, With 24" Bar Behind, Hydraulic Flotation Gauge, Wheels, 3-pt. L.T.M. 2-John Deere 21", 4"x7" Tool Carriers, 3-pt. 1-21" S.S.B. Tool Carrier 1-7x24" Toolbar 1-Lot 24" Toolbars, Various Lengths 1-SM 12" Bed Roller 3-Texas Row Dikers 6-Hamby Barring Off Disc Units 4-John Deere Stabilizers 6-Hamby 1' x 3" Shanks & Clamps 7-1' x 3" Shanks & Clamps 1-Lot Shanks, Clamps, Spacers, Various Sizes 13-I.H.C. Richard Shanks 3-Stubble Mulch Shanks With 24" Sweeps 4-Home Shanks 12-Water Furrow Bullets 1-Tye Toolbar Transport Tire & Wheel 1-Lot I.H.C. Front & Rear Tractor Weights 2-Ace P.T.O. Sprayer Pumps 1-Lot Eversman Bed Shaper Parts 1-R.A.C. 3-pt. Hitch 1-Set Gauge Wheels 1-20" R.C. Iron Drag 1-21" R.R. Iron Drag 4-Insecticide Boxes 1-Lot Hydraulic Cylinders 1-Single Front For Farmall Tractor 6-Drive Shafts 1-Lot Sweeps, Knives, Discs <p>NON-Classified —</p> <ul style="list-style-type: none"> 1-Lot Implement Tires & Wheels 1-Lot Well Casing, Various Sizes & Lengths 1-Lot Hammers 1-C.I. Gas Can 1-Lot Part Barrels Oil 1-Factory Barrel Rack 3-Boil Racks 1-Lot Farm Chemicals 2-Mix Cans 1-Mat Gas Shop Weater 1-Lot Forks, Shovels 1-Lot Bolts, Nuts, Washers 1-Bird Trap 1-Land Measuring Wheel 2-Gas Regulators 1-Hand Sprayer 3-8.25x20 Truck Tires & Wheels 1-Lot Filters 1-Hand Sprayer 4-Pickup Toolboxes 1-Lot Items Too Numerous To Mention
---	--

Terms of Sale: Cash — Lunch Will Be Available
All Accounts Settled Day of Sale

Five Star Auctioneers

P. O. BOX 1030 — PLAINVIEW, TEXAS 79073-1030

WINCH TRUCK AVAILABLE ON SALE DAY • BRING YOUR TRUCK OR TRAILER • WE ARE AGENTS AND AGENTS ONLY

Congratulations

Lazbuddie

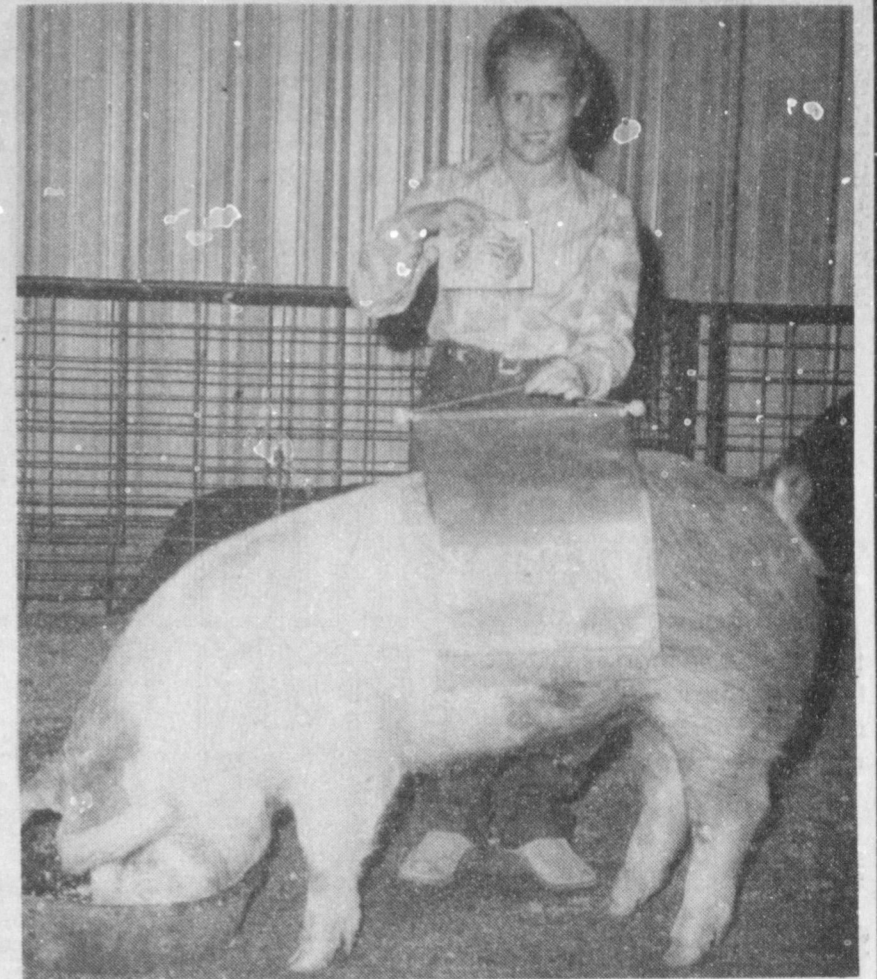
Stock Show Winners



EDWARD TERRY SHOWS RESERVE BREED CHAMPION--As he proudly shows off his Reserve Breed Champion rosette, Edward Terry's light medium weight pig quietly eats. (Journal Photo)



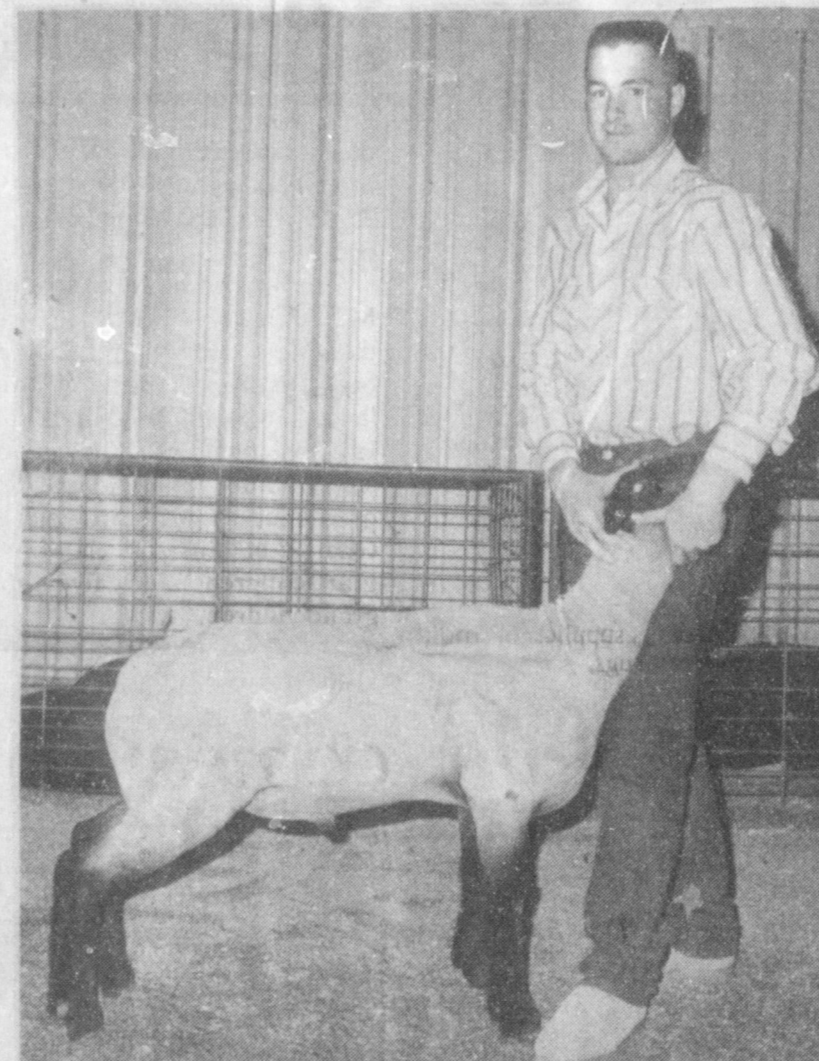
LIGHT WEIGHT BREED CHAMPION--Justin Puckett showed the Light Weight Breed Champion pig at the Lazbuddie Livestock Show last Saturday. (Journal Photo)



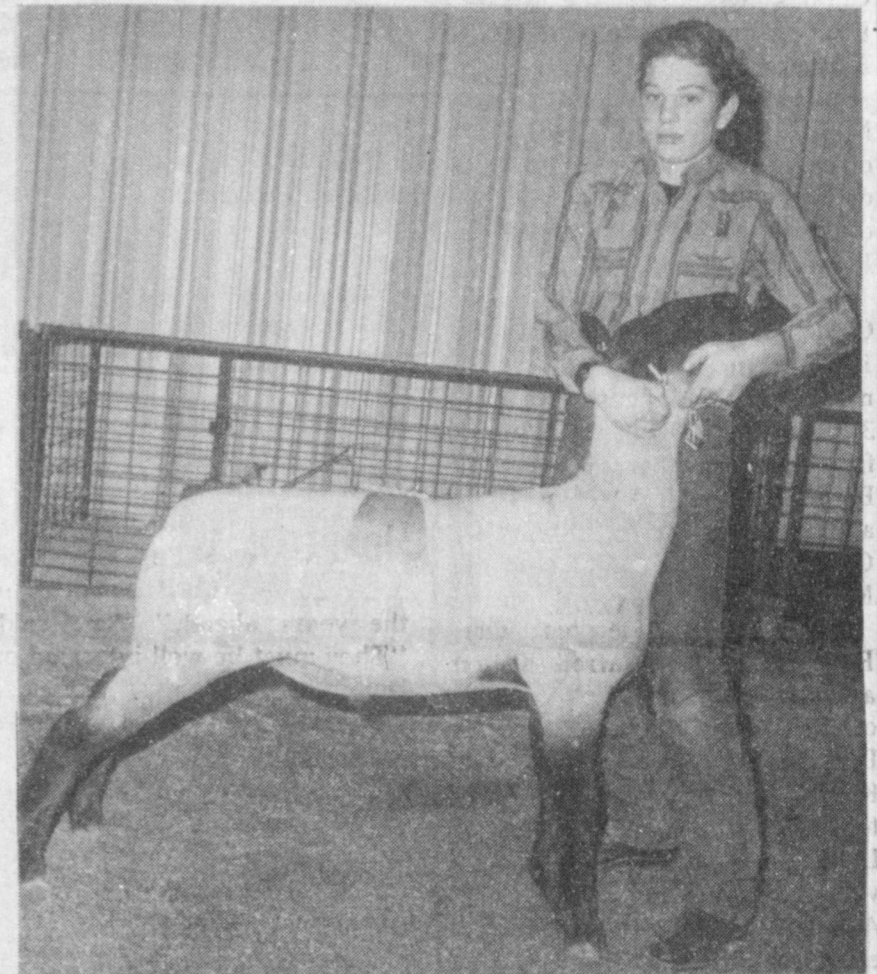
GRAND CHAMPION SWINE--Shena Seaton is pictured with her banner and buckle, and, her Grand Champion Swine, at the annual Lazbuddie Livestock Show. (Journal Photo)



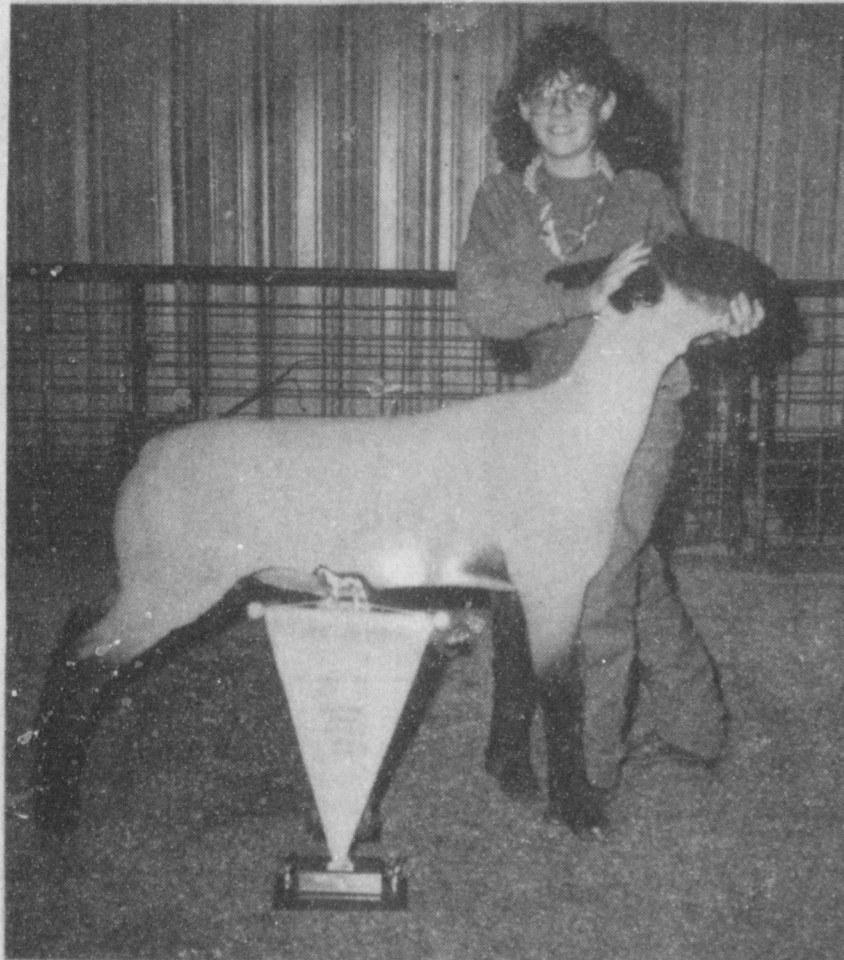
HEAVY WEIGHT RESERVE BREED CHAMPION--Brett Thomas received the rosette for the Heavy Weight Division of the swine show at the Lazbuddie Livestock Show. (Journal Photo)



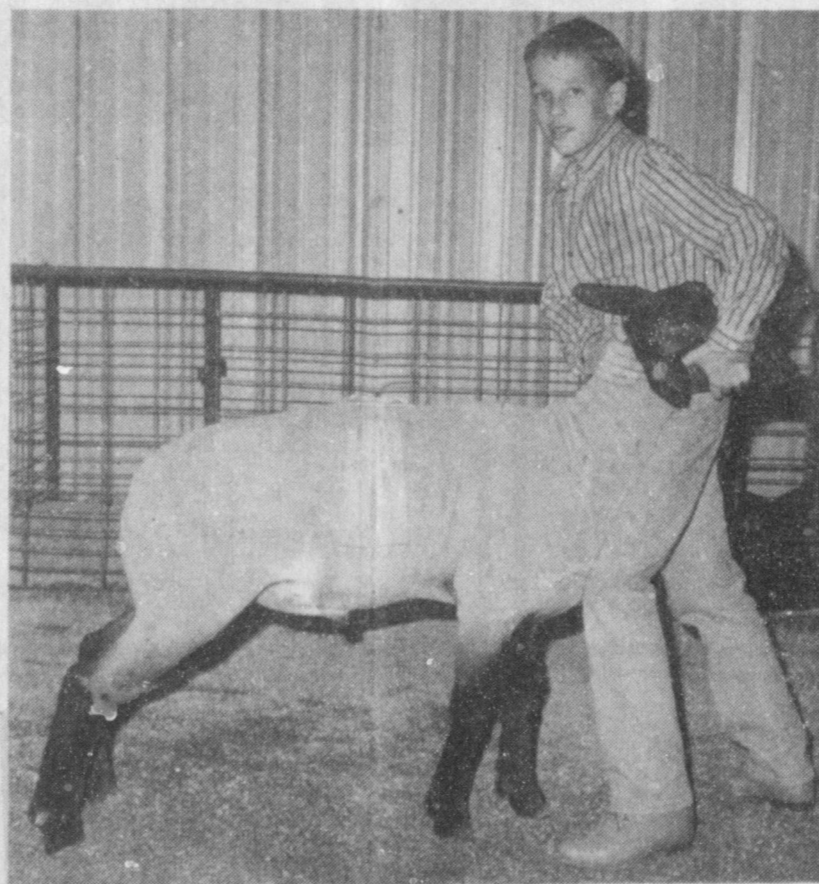
LAMB SENIOR SHOWMANSHIP--In good form, Casey Russell won the Senior Showmanship in the lamb division at the annual Lazbuddie Livestock Show last Saturday. (Journal Photo)



SUFFOLK BREED CHAMPION--Cody Clark is pictured with his Breed Champion Suffolk at the Lazbuddie Livestock Show last weekend. (Journal Photo)



RESERVE GRAND CHAMPION LAMB--It was a reserve grand championship for Shana Foster and her lamb at the Lazbuddie Livestock Show last weekend. (Journal Photo)



FINE WOOL CROSS BREED CHAMPION--It was Breed Champion for Cade Morris' Fine Woe! Cross at the Lazbuddie Livestock Show last Saturday. (Journal Photo)



LIGHT HEAVY WEIGHT WINNER--Dawn Weir is shown with her light heavy weight breed champion swine at the Lazbuddie Livestock Show. (Journal Photo)

Proudly Sponsored By The Following Civic-Minded Businesses:

Leal's Restaurant

1st Bank

Muleshoe Publishing Co.

Joe's Boot Shop & Country Junction

Serv-All Thriftway

Foster Fertilizer, Inc.

Viola's Restaurant

American Valley, Inc

Farmer's Spraying Services, Inc

North Lazbuddie Gin Co.



EMPLOYEE OF MONTH REGONIZED—Gayle Turner, secretary of the First Baptist Church, was recognized as Employee of the Month. Gayle has been secretary of the First Baptist Church for 20 years as of last August. Shown congratulating Gayle are back row, L-R, Wanda Wiley, Darrell Turner, Bary Moynihan, George Neiman and Merlin Neel. Front row, L-R, Nancy Kidd, Chamber Manager, Rev. Barry Bradley, Gayle Turner, Robert Montgomery, Chamber President, and Bob Stovall. (Journal Photo)

TALL Now Open For Applicants

The Texas Agricultural Lifetime Leadership program (TALL) is now open for applicants, according to Dr. L. S. Pope, who coordinates the program for the

Robert Kelton

Funeral Services Set Today

Funeral services for Robert Kelton, 75, will be held at 2 p.m. today, Thursday, Feb. 1 in Ellis Funeral Home Chapel of the Chimes with the Rev. Barry Bradley, pastor of the First Baptist Church, officiating.

Burial will be in Muleshoe Memorial Park under the direction of Ellis Funeral Home of Muleshoe. Kelton died Monday in Walls Hospital at Huntsville.

Born Jan. 4, 1915, in Stigler, Okla., he moved to Muleshoe in 1929 from Stigler, Okla. He married Faye Woodfin on Dec. 30, 1945, in Muleshoe. He was a farmer, a member of the First Baptist Church in Muleshoe, and a former director of Muleshoe Co-op Gin and Plains Co-op Oil Mill.

Survivors include his wife, Faye; two sons, Carroll Kelton and Arron (Sonny) Kelton, both of Lubbock; three daughters, Donna Bownds of Hobbs, N.M., Karen Westmoreland of Arlington, TX, and Sharon Tabor of Lubbock; a sister, Mamie Province of Clovis, N.M.; a brother, Acie Kelton of Clovis, N.M.; and eight grandchildren.

Modene Hudson Services Held Monday

Funeral services for Modene Hudson, 80, of Albuquerque, N.M. were held at 2 p.m. Monday, Jan. 29 in the First Baptist Church of Morton with the Rev. John Jenkins, a retired Baptist minister from Lubbock, officiating.

Burial was in Morton Memorial Cemetery under the direction of Ellis Funeral Home of Morton. She died at 10:30 p.m. Thursday in Camino Vista Manor Nursing Home at Albuquerque.

Ms. Hudson was born Dec. 19, 1909, in Grapeland, TX and

Agricultural Extension Service. The deadline for consideration is February 15.

"TALL is designed to assist young men and women associated with agriculture in developing leadership skills," Pope said. The first group of 24 members visited ten agricultural areas of Texas, plus a trip to Washington, D. C., and northern Europe. During the two-year program, they were able to interact with over 175 outstanding leaders, according to Pope. A similar schedule is planned for Group II.

The basis for selection into TALL is evidence of leadership ability and desire to take on decision-making roles in Texas agriculture, Pope said. In order to gain entrance into the program candidates must go through a rigorous selection process, including an interview.

TALL is sponsored largely from outside grants and scholarships, but participants must pay part of the cost. Members must be between the ages of 25 to 40 years and be involved in an agricultural pursuit in Texas.

"Agricultural leaders must make some critical decisions in the years ahead," Pope said. "They must be well-informed on key issues and must recognize the complex society in which we live. Also, they must be able to speak out and be willing to address problems facing agriculture. It is important that they interact effectively with leaders outside of agriculture."

moved to Albuquerque a year ago from Morton, where she had resided 50 years. She was a homemaker and a member of the First Baptist Church. She married Ray Hudson on Dec. 5, 1929 in Portales, N.M. He died Aug. 3, 1987.

Survivors include a son, Sonny Hudson of Spain; a daughter, Rae Dene Hathaway of Albuquerque, N.M.; a brother, H. Thorton of Hemmett, Calif.; five grandchildren; and six great grandchildren.

Candidates for the second group of TALL can contact their County Extension office or District Extension headquarters for further information. They can also write Dr. Pope at 242 Kleberg Center, TAMU, College Station, Texas 77843.

BIBLE VERSE

"Now the brother shall betray the brother to death, and the father the son; and children shall rise up against (their) parents, and shall cause them to be put to death."

1. Who made this statement?
2. Where does it appear in the Bible?
3. What other gospels express the same idea?
4. Where were these words spoken?

Answers:

1. Jesus.
2. Mark 13:12.
3. Luke 21:16 and Matthew 10:21.
4. On the Mount of Olives.

FDA testing supplies of milk in 13 states for drugs.

Senator Gramm Preparing For New Legislation

U. S. Sen. Phil Gramm is preparing tough new legislation "to address the number one problem in America: crime without punishment."

The plan, which was unveiled in Washington, requires mandatory federal sentences for violent and drug-related crimes. It will also require felons to work while in prison and allow temporary facilities such as tents to be used for housing some convicted felons.

The Gramm bill declares a five-year national emergency imposes much stiffer sentencing and incarceration measures.

Mandatory sentences would be set for certain crimes, including a minimum of 10 years for the sale of drugs to a minor, 20 years for use of a firearm during a crime and death or life imprisonment with no parole for murder committed during another crime.

In an attempt to cut prison costs, the bill will allow use of barracks or tents on closed military bases for temporary detention of convicts and would allow prison authorities to eliminate "non-essential prison construction costs" such as air conditioning.

"The objective is to take the

violent criminals and drug thugs off the streets of America, put them in prison, put them to work and end the situation where they prey on law-abiding citizens," Gramm said in announcing the legislation.

The bill was immediately denounced by the American Civil Liberties Union, which said that drug use is declining in the United States.

Sports aren't everything but they provide good competitive training for boys and girls.

Petra Morales

Services Set

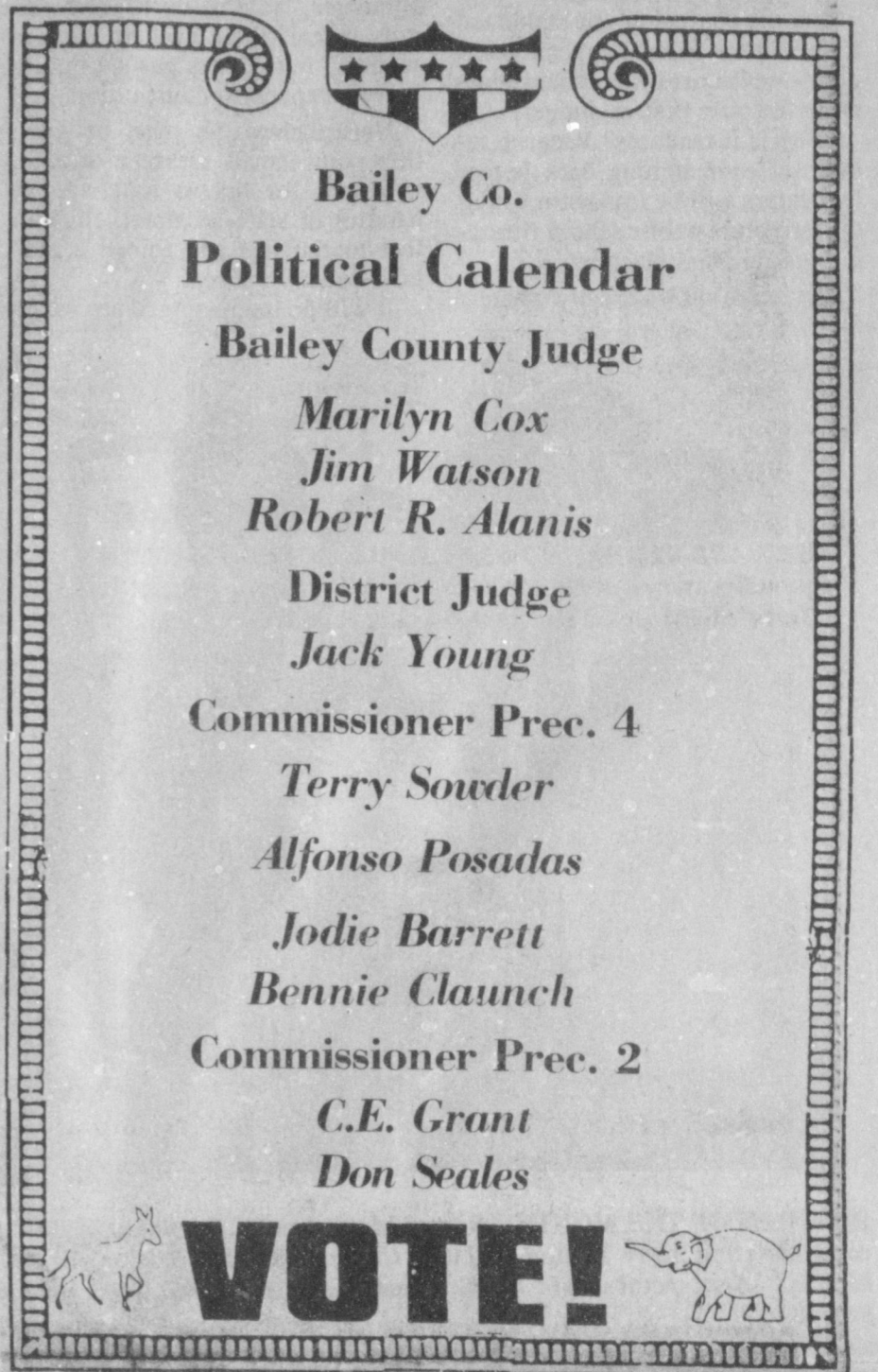
In Morton

Funeral services for Petra Cruz Morales, 68, of Morton will be held at 10 a.m. today, Thursday in St. Ann's Catholic Church with Father George Thekkedam, pastor, officiating, assisted by Father Alfonso San Juan, Missionary Priest from Houston. Rosary was said at 8 p.m. Wednesday in St. Ann's Catholic Church.

Burial will be in Morton Memorial Cemetery under the direction of Ellis Funeral Home of Morton. Ms. Morales died at 11:40 p.m. Monday in the Methodist Hospital at Levelland.


Born March 12, 1921, in Cuervo, N.M., she had been a resident of Morton since 1969, moving there from Morton. She was a homemaker and a member of St. Ann's Catholic Church. She married Joe A. Morales on Aug. 25, 1945, in Santa Rosa, N.M. He died in 1979.

Survivors include a son, Joe M. Morales of Morton; four daughters, Fina Perez of Lubbock, Frances Roberts of Levelland, and Tirsia Pireto and Vicky Harvey, both of Morton; two sisters, Julia Sisneros of Albuquerque, N.M. and Louise Gunter of Roswell, N.M.; 19 grandchildren; and five great grandchildren.



Bailey Co.
Political Calendar
Bailey County Judge
Marilyn Cox
Jim Watson
Robert R. Alanis
District Judge
Jack Young
Commissioner Prec. 4
Terry Souder
Alfonso Posadas
Jodie Barrett
Bennie Claunch
Commissioner Prec. 2
C.E. Grant
Don Seales
VOTE!



Congratulations



SHANA FOSTER HAS CHAMPION SOUTHDOWN—Pictured with her Breed Champion Southdown at the Lazbuddie Stock Show last weekend is Shana Foster. (Journal Photo)

Wilber-Ellis Co. - Tide Division

When it comes to our customers...

WE AIM TO PLEASE

Biggest Sale Ever!

1989 Chrylsers, Plymouths, Dodges,
1-F150 Ford Pick-up
Must Be Sold!

Fantastic Reduced Prices - Low Interest Rates
or Rebates - No Money Down With Approved
Credit!

1-1989 New Yorker

1-1989 Dodge Caravan

1-1989 Plymouth Horizon

1-1989 Dodge Colt

1-1989 Plymouth Reliant

1-1989 Dodge Spirit

1-1989 Dodge Dakota

1-1989 Dodge Ram 50

1-1989 Ford F-150

Open Til 7 p.m.

Beginning Wednesday

Jan. 31. We Will Be Open
Saturday Until ?

Sale Prices Good For a Limited Time
Or While Units Available!

Top Dollar Given For Trade Ins!!


A Select Group Of 1989 Lease Cars Also For Sale

"Car Captiol Of The West Plains"

Muleshoe Motor Co.

1225 W. Amer. Blvd.
Muleshoe
272-4251

STATE CAPITAL



HIGHLIGHTS

By Lyndell Williams
TEXAS PRESS ASSOCIATION

AUSTIN—Declaring there was method in his madness, Gov. Bill Clements last week set the special session for Feb. 27, which will run over the last two weeks of the March primary campaigns.

But the confusion was stabilized a bit when a federal appeals court postponed court-ordered new elections for state district judges.

Why is it madness? Because instead of campaigning back home, legislators will be in Austin voting to restructure public school financing and judicial elections.

Clements knows exactly what he

is doing. With no place to hide and little time to explain, every vote cast by lawmakers will be noted by voters back home.

No one, not even veteran observers, is willing to predict how this is going to turn out. Perhaps the membership of the Legislature will be altered irreversibly.

Decade's Realignment

The losers? It's difficult to predict, but more Democrats face primary challengers than Republicans. As liberal Democrats push conservatives and moderates out, the Republicans pick up strength in November.

The winners? The ones who vote right — the way folks back home want them to — liberal or conservative, Democrat or Republican.

Few have ever doubted that Clements, a lame-duck, had the guts to call their hand in such a manner, but he was pushed into it by two expensive court orders.

Nevertheless, he must be getting some small measure of satisfaction, for not so long ago a handful of state senators held his feet to the fire and forced a tax hike down his throat.

It will be interesting to see what

strategy those senators serve back. But beyond court orders and political grudges, Clements has dumped all the chips on the table and dealt the cards.

It's the last and biggest installment of the rapid voter realignment that has occurred in Texas in the 80s.

Texas will sail into the 90s a true two-party state, and we will find out in March which party will be steering the ship.

Lewis' Ethics Memo

House Speaker Gib Lewis drew a Republican opponent, Fort Worth businessman Edward Gore, and all eyes are watching that race.

Lewis sent a memo to fellow House members urging them not to be stampeded by media pressure overdoing legislative ethics as a campaign issue.

"I strongly support a reasoned, balanced approach to ethics reform," Lewis said in his memo. "However, strengthening the ethics laws is a difficult assignment which requires a meticulous, detailed analysis."

His opponent intends to use the ethics issue against Lewis in the campaign.

Lewis went through this same

scenario last election, which didn't stop him from winning a fourth term as speaker.

Mattox Reverses Stance

After Attorney General Jim Mattox reversed himself and asked the 5th U.S. Circuit Court of Appeals to stay a ruling that state district judges in nine urban counties run in non-partisan elections in May, the court agreed.

The elections will proceed under current state laws.

Clements, who had earlier asked Mattox to seek the stay on behalf of the state, blamed Mattox for wasting time.

Republican Camp

Some regular party Republicans are upset with what they see as a dirt probe of Clayton Williams by his gubernatorial opponent, Kent Hance.

Hance said he hired Gary Maloney, a national party official, to investigate Williams' claims that he created 100,000 jobs for Texans, and that Maloney dug up dirt on his own regarding Williams' drinking and brawling.

Williams is sticking to his guns about his entrepreneurial boast. The other stuff apparently happened in younger days.

Meanwhile, Hance announced that former Marine Lt. Col. Oliver North, a key figure in the Iran-Contra scandal, will appear at two of his fund-raising events in February.

Democratic Camp

Those interested in the aftermath of the workers compensation wars are watching the Pasadena-Galveston senatorial race, where incumbent Chet Brooks is challenged by labor's Rep. Lloyd Criss.

Labor union bosses and trial lawyers, angered that Brooks broke a stalemate against them in the recent special session, are apparently determined to defeat Brooks.

But Brooks, dean of the Texas Senate, is hard on the campaign trail, backed by no less than former state Sen. Babe Schwartz, a power himself.

Nevertheless, the area is rife with oil refineries and other industrial plants with high labor union membership.

For the aficionado, this remains the race to watch.

Germanies to team up on better housing project.

Beef Producers Advised Of Calving Problems

Beef producers have been advised for some time to reduce calving difficulties in their replacement heifers by measuring the pelvic area of each and selecting those with the largest pelvic openings.

This technique can help reduce calving problems because the heifers with the larger pelvic areas will generally experience less calving difficulty than those with smaller pelvic areas.

Recent research also has shown that calving difficulty is unlikely if as a yearling, the heifer's pelvic area is at least two square centimeters for every expected pound of calf birthweight.

In other words, a heifer with a yearling pelvic area of 180 centimeters could easily deliver a calf with a 90-pound birthweight.

But there is another side to the story. Some producers have concentrated only on selection for large pelvic area in their heifers and have failed to give calf birthweight its needed attention.

Without question, heavy birthweights are the other major factor responsible for calving problems, according to beef cattle specialists with the Texas Agricultural Extension Service.

Current research shows that to effectively reduce calving difficulties, ranchers should select both for a large pelvic area in their heifers and then breed them

to sires with known calving ease. Bulls that are proven to sire calves of light birthweights are classified through progeny records as easy calving sires.

For many ranchers, the combined approach of selecting for these qualities has essentially eliminated calving difficulties.

Producers also should remember that a heifer's pelvic area is influenced by her weight, age and height. Older, heavier heifers have larger pelvic areas.

This indicates that producers should select their oldest, heaviest heifers during the weaning season and make sure that their feeding management is designed to allow these heifers to obtain desirable weights.

At 14-16 months of age, heifers should weigh at least 65 percent of their expected mature weight. By 24 months of age, they should weigh at least 85 to 90 percent of their expected mature weight.

Parmer County Political Calendar

Parmer Co.

Judge

Leland Gustin



BUSINESS OF THE MONTH--Robert Montgomery, President of the Chamber of Commerce is shown congratulating Jerry Hutton of Little Chevron Service Station, as he was named "Business of the Month." Also pictured are Merlin Neel, George Nieman, Nancy Kidd, Chamber Manger, and Bob Stovall. (Journal Photo)

1990 Crop

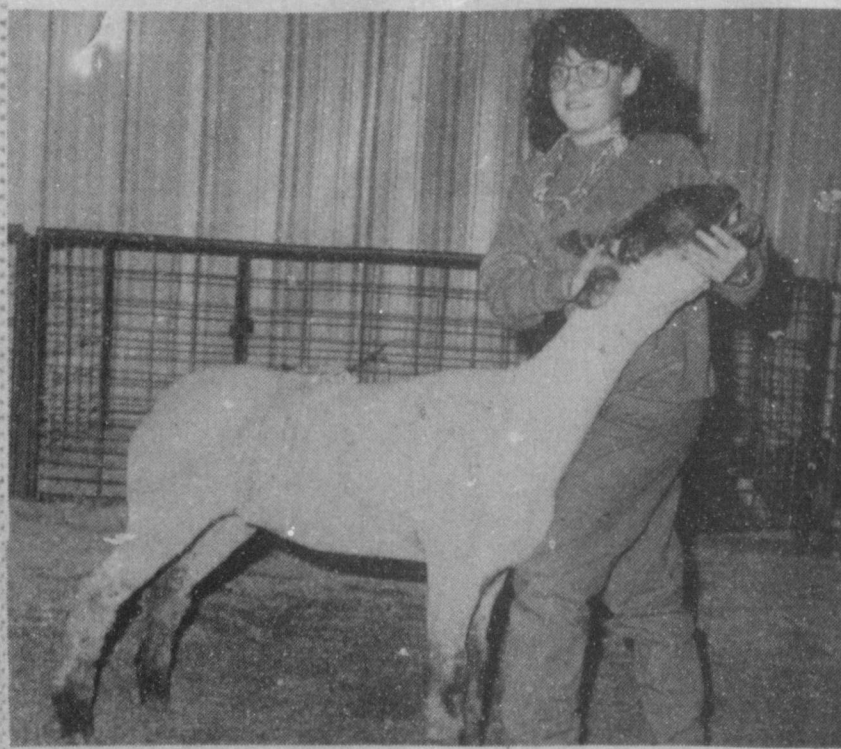
	Pool Cash Advance	Sale Flat	Sale Basis	Month
Feed Corn.....	4.31	4.31	0.03	March
White Cobb Yellow.....	4.10	5.00	0.42	March
Red Cobb Yellow.....	4.00	4.44	0.10	March
White Food Corn.....	5.00	6.00	0.98	March
Milo.....	3.61	3.61	-0.36	March
Soybeans.....	No Pool	4.89	-0.69	March
Wheat.....	No Pool	3.44	-0.37	KC March

95%
Prices effective Jan. 30, 1990

Farmer's Co-Op Elevators
272-4335

Congratulations

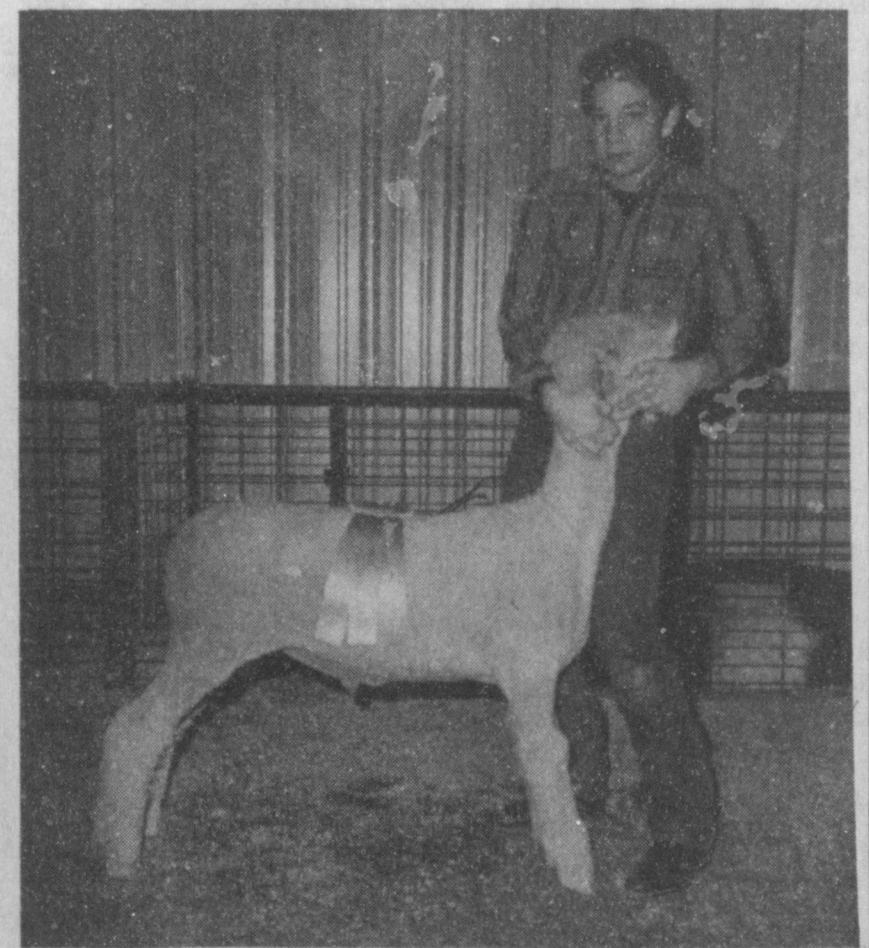
Lazbuddie Stock Show Winners



RESERVE BREED HAMPSHIRE--Shana Foster exhibited the Reserve Breed Hampshire last Saturday at the Lazbuddie Livestock Show. (Journal Photo)



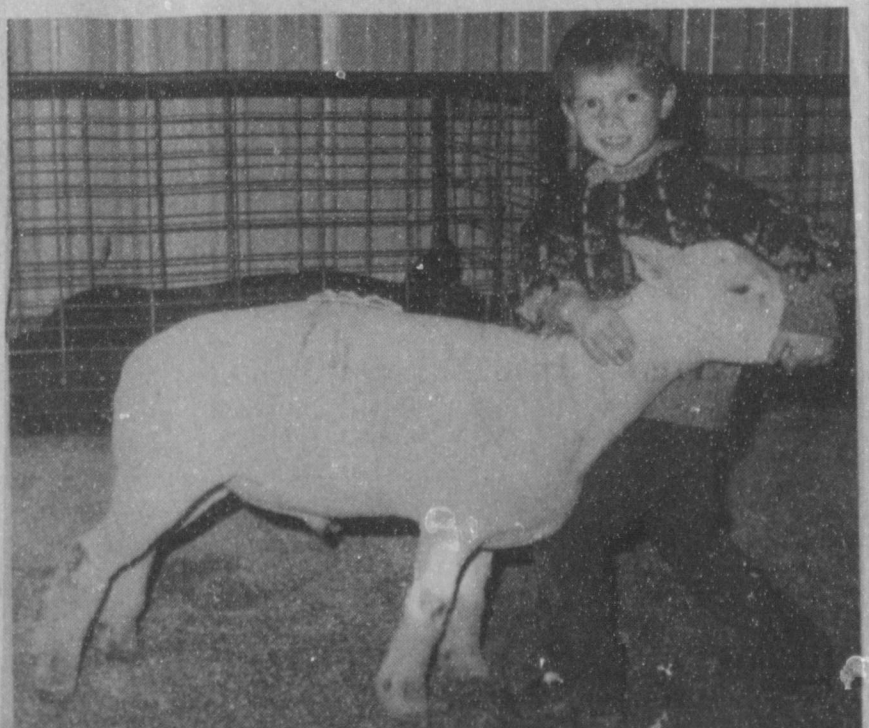
LIGHT HEAVY WEIGHT CHAMPION--Jay Seaton shows off the rosette he won with his Reserve Breed Champion Light Heavy Weight swine at the Lazbuddie Livestock Show. (Journal Photo)



FINE WOOL BREED CHAMPION--Cody Clark is pictured with his breed champion Fine Wool Cross lamb at the Lazbuddie Livestock Show. (Journal Photo)



RESERVE BREED CHAMPION--Cade Morris exhibited the Reserve Breed Champion Suffolk at the Lazbuddie Livestock Show last weekend. (Journal Photo)



SOUTHDOWN RESERVE CHAMPION--Wayne Terry won Reserve Breed Champion with his Suffolk lamb during the Lazbuddie Livestock Show. (Journal Photo)

West Texas Rural Telephone Co-op

Patricia Del Toro Named First Scholar Of Month

Patricia Del Toro was selected by the Muleshoe High School National Honor Society as the first Scholar of the Month. This prestigious honor will be awarded each month to a freshman or sophomore student based on scholastic achievement, leadership, extracurricular activities, and teacher evaluation.

The Scholar of the Month award is presented in order to recognize outstanding underclassmen who actively take pride in their school and their academic studies.

Patricia is a sophomore at Muleshoe High School and takes part in Student Council, serving as the 1989-90 Historian. She

represents the Sophomore class as president and she participates in Speech. Patricia is a member of the High School yearbook staff and is currently participating in the UIL Calculator contest.

Each month the National Honor Society will nominate three students from the freshman and sophomore classes. These students will be selected from the ten students who have the highest grade point average for the previous six weeks grading period. After the teacher evaluation, the National Honor Society will select and announce the

Scholar of the Month. "Congratulations Patricia for being honored as the January Scholar of the Month."

MHS Honor Society Meets In Moore Home

The Muleshoe High School National Honor Society met on January 22 in the home of Mary Moore. The meeting was called to order by Tricia Underwood, president of the club, and a prayer led by Sharla Evins followed.

The Scholar of the Month project was discussed and the club was informed of the winner. Patricia Del Toro was chosen as the recipient of this prestigious award.

It was decided that a trophy case in the hall would be designated for the Scholar of the Month in order for everyone to be able to recognize the honoree.

The next meeting will be held in the home of Tricia Underwood on February 22.

The meeting was adjourned and refreshments prepared by Ronnie Gail and Sherry Barrett were served.

"We would like to extend a special thanks to Mary Moore for allowing us to meet in her home."

Going Down
"How old are you, my little man?"
"I don't know sir. Mother was 28 when I was born, but now she is only 24."

Patients in Muleshoe Area Medical Center

JAN. 25-29
THURSDAY

Cassidy Snell, Mylissa Thompson, Lorenzo Mata, Lillie Wuerflein, Rocky Guerra, Cynthia Villegas, Nora Burch, Jewel Griffiths, Lucille Branscum, Ruth McCarty, Jennifer Elizarraraz, Annie Chavez, Irene Hutton, Rosie Osburn, Hattie Jones and Callie Brown

FRIDAY

Mylissa Thompson, Lorenzo Mata, Lillie Wuerflein, Rocky Guerra, Cynthia Villegas, Nora Burch, Jewel Griffiths, Lucille Branscum, Elvira Trevino, Cecil Davis, Annie Chavez, Sylvia Bennett, Rosie Osburn, Hattie Jones and Callie Brown

SATURDAY

Sonia Murillo, Laura Moon, Lillie Wuerflein, Nora Burch, Olene Watts, Lucille Branscum, Issak Unger, Conrad Williams, Cecil Davis, Tracy Angeley, Orbay Jarmen, Hattie Jones and Callie Brown

SUNDAY

Sonia Murillo, Lillie Wuerflein, Nora Burch, Olene Watts, Lucille Branscum, Issak Unger, Conrad Williams, Cecil Davis, Tracy Angeley, Orbay Jarmen, Hattie Jones and Callie Brown

Survivors include her husband, Santiago; six daughters, Aberina Gallegos of Phoenix, Ariz., Lou Gallegos of Tucumcari, Sylvia Lira of Muleshoe, Helen Gallegos, Clara Vigil and Priscilla Garcia, all of Clovis, N.M.; two sons, Lawrence Moralez and John Moralez, both of Clovis, N.M.; 22 grandchildren; and 14 great grandchildren.

Domacio Moralez Local Woman's Mother Dies

Funeral services for Mrs. Domacio Moralez, 69, of Clovis, N.M. were held at 10 a.m. Tuesday, Jan. 30 in St. Joseph Catholic Church in Logan with the Rev. Augustine Abeywickrema officiating.

Burial was in Logan Cemetery under the direction of Dunn Funeral Home of Tucumcari. Rosary was said Monday at 7 p.m. in the evening at St. Joseph Catholic Church.

She died on Friday, Jan. 26 at Clovis High Plains Hospital.

She was born on May 28, 1920, in Mosquero. She was a homemaker and had been employed at Clovis Steam Laundry. She was a member of the

Catholic Church and Sociedad de Nuestra Senora del Carmen.

Survivors include her husband, Santiago; six daughters, Aberina Gallegos of Phoenix, Ariz., Lou Gallegos of Tucumcari, Sylvia Lira of Muleshoe, Helen Gallegos, Clara Vigil and Priscilla Garcia, all of Clovis, N.M.; two sons, Lawrence Moralez and John Moralez, both of Clovis, N.M.; 22 grandchildren; and 14 great grandchildren.

**Celebrate
Life**

Donate Blood
Friday, Feb. 9
10 a.m.-6 p.m.
Muleshoe State Bank
United Blood Services

WIHS Honor Roll

FIRST SEMESTER SIXTH GRADE

Rudy Apodaca, Samantha Caswell, Robbie Clapp, Donna Davis, Yolanda DeHoyos, Raul Del Toro, Kit Dominguez, Candelara Garcia, Summer Gibbins, Barak Harlan, Suzy Hodges, Holly Hutton, Marla Ivy, Michael Jaramillo, Chad Johnson, Brittany Kirby, Jeff Lewis, Laura Lira and Irene Logan

Also Brandi Morgan, Holly Norris, Laura Puckett, Johnny Rodriguez, Maria Rodriguez, Michael Sanchez, Mandy Seals, Joshua Slayden, Rebecca Snell, Dacia Stewart, Samuel Villarreal, Koy Wilhite and Michelle Williams

SEVENTH GRADE

Jason Barrett, Fara Black, Jimmy Bonham, Mikki Bowen, Jack Bush, Jason Carlson, Jared Clarkson, Tiffany Copley, Angela Crawford, Tommy Day, Holly Donaldson, Chris Edwards, Geneva Eggers, Bryan Field, Jesus Flores, Jodie Foster, Patricia Franco, Jimmy Gauna and Julie Gilleland

Also Keetha Glover, Lance Latham, Audra Lee, Lacey Lloyd, Russell McGuire, Anna Mendoza, Jose Mendoza, Stephanie Perez, Amy Peterson, Dink Pitcock, Misty Richardson, Edward Rodriguez, Christa Trussell and Rebecca Warren

EIGHTH GRADE

Brooke Barrett, Leah Bruns, Kelli Caldwell, Mason Conklin, Gail Copley, Jeanne Cox, Misty Davenport, Shawna DeLaney, Cathy Espinoza, April Franklin, Chad Freeman, Mark Garcia, Jenna Glover and Johnny Gonzalez

Also Emily Harris, Lori Hodges, Kristin Holmans, Chad McCormick, Stephanie McNutt, Chad Montgomery, Donna Puckett, Stephanie Quintana, Jim Rogers, Shane Schuster, Brooke Sinclair, Sonya Smith, Courtney Tanksley, Jackie Thomas, Marianne Toombs, Shawn Wheeler and Andy Wilson

THIRD SIX WEEKS SIXTH GRADE

Samantha Caswell, Robbie Clapp, Donna Davis, Yolanda DeHoyos, Raul Del Toro, Kit Dominguez, Candelara Garcia, Summer Gibbins, Barak Harlan, Suzy Hodges, Holly Hutton, Marla Ivy, Michael Jaramillo, Chad Johnson, Brittany Kirby, Jeff Lewis, Laura Lira and Irene Logan

Also Brandi Morgan, Holly Norris, Laura Puckett, Johnny Rodriguez, Maria Rodriguez, Michael Sanchez, Mandy Seals, Joshua Slayden, Rebecca Snell, Dacia Stewart, Samuel Villarreal, Koy Wilhite and Michelle Williams

SEVENTH GRADE

Jason Barrett, Fara Black, Jimmy Bonham, Jack Bush, Jared Clarkson, Angela Crawford, Tommy Day, Holly Donaldson, Chris Edwards, Geneva Eggers, Bryan Field, Jesus Flores, Jodie Foster and Julie Gilleland

Also Keetha Glover, Lance Latham, Lacey Lloyd, Russell McGuire, Anna Mendoza, Jose Mendoza, Stephanie Perez, Amy Peterson, Dink Pitcock, Misty Richardson, Edward Rodriguez, Christa Trussell and Rebecca Warren

EIGHTH GRADE

Adriana Apodaca, Brooke Barrett, Leah Bruns, Kelli Caldwell, Mason Conklin, Gail Copley, Jeanne Cox, Misty Davenport, Shawna DeLaney, Cathy Espinoza, Casey Estep, April Franklin, Chad Freeman, Mark Garcia, Emily Harris, Lori Hodges and Kristin Holmans

Also Stephanie McNutt, Donna Puckett, Stephanie Quintana, Jim Rogers, Brooke Sinclair, Sonya Smith, Courtney Tanksley, Marianne Toombs, Shawn Wheeler and Andy Wilson

**Republican
Political Calendar
Bailey County Judge
James Warren**

JV Basketball News By Coach Tom Duncan

Over the stretch of the past week, the Muleshoe JV boys ran their record to 2-3 in district play. Last Friday, the Dimmitt JV manhandled the Mules 88-28.

Sophomore Corley Hutton led the Mules with 13 points; Chris Dominguez had one point; John Noble had six points and Jim Carpenter, Josh Alanis and Brent Hernandez had two points each.

We had some rough moments against Dimmitt and just flat made mistakes that a team should not make.

Dimmitt has just about embarrassed the whole league by running scores from 80 to 100's. When they came out vs. us, we got in their face and still they hit 79 percent to 85 percent from the field.

Our task is to rebound and play hard. As we stated that we began to prepare for Floydada. Tuesday past, the Mules made the 95 mile trip to Whirlwind-land and the hard work and good attitude paid off, we, the JV Mules went, saw and conquered the Winds in their home gym in what proved to be a very exciting contest.

Afere a 6-6 first quarter, the Mules led at half, 13-10; after the third 20-16. Then in a rough and tumble fourth, the Mules outscored the Winds 15-13 for a final of 35-29.

Points were made by Chris Dominguez, 10; Corley Hutton, 10; Jim Carpenter, four points; Brent Hernandez, two points; John Noble, four points; Robbie Gauna, five points.

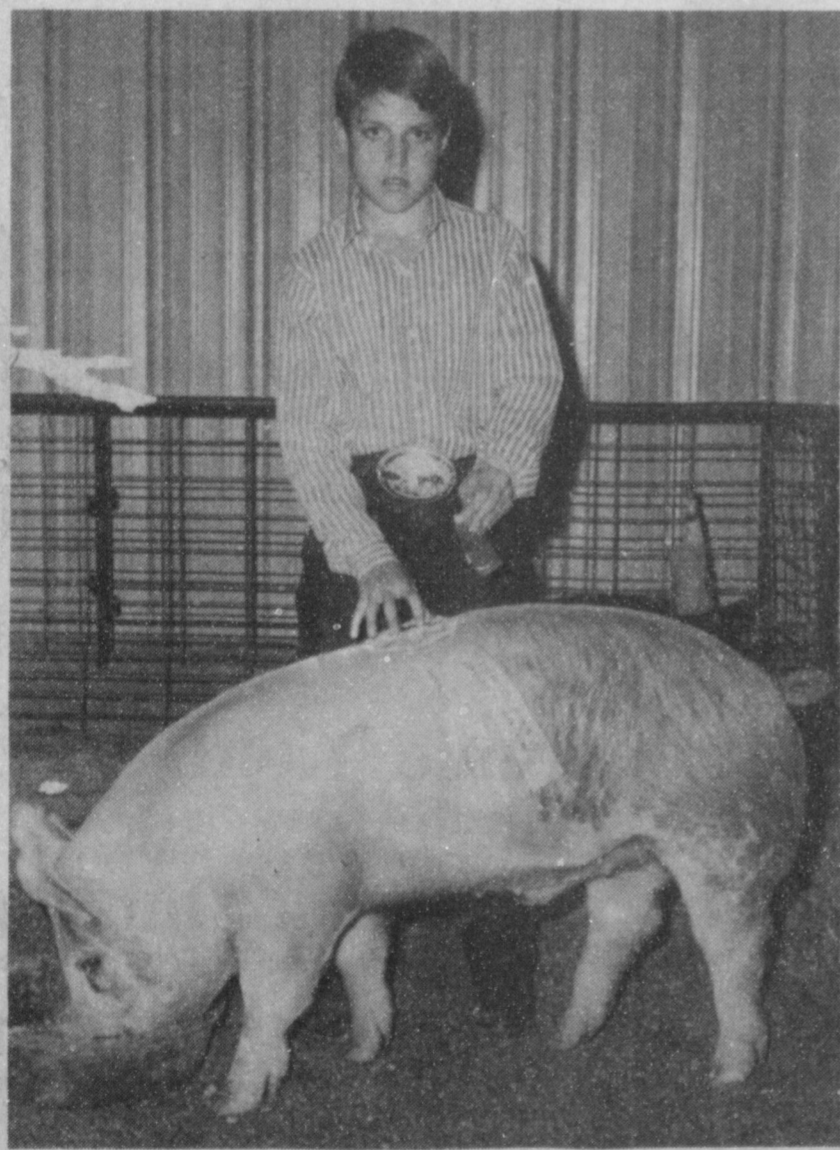
I was extremely excited that we beat this bunch because we played one of the best team efforts we had all year.

In the same breath, Floydada has just beaten Friona and Tulia earlier.

I hope this serves to teach our kids they have the same skills as others and that they can succeed if they apply poise, patience and effort. Until next time... (write-up on Tulia, Friona games next time.)

Congratulations

Lazbuddie Stock Show Winners



LIGHT WEIGHT RESERVE BREED CHAMP—Justin St. Clair is shown with his light weight swine, which won Reserve Breed Champion at the Lazbuddie Livestock Show. (Journal Photo)

**Sherley Anderson-
Lazbuddie Elevators**

AUCTION

Thursday, February 1, 1990 — Sale time: 10:00 a.m.

LOCATED: From Lazbuddie, Texas, 5 1/2 miles East on F.M. Highway 145 then 2 miles South on F.M. Highway 303; OR From Earth, Texas, 6 miles West on U.S. Highway 70 then 8 1/2 miles North on F.M. Highway 303; OR From Muleshoe, Texas, 12 miles East on U.S. Highway 70 then 8 1/2 miles North on F.M. Highway 303.

NICKELS FARMS — Owner
Telephone: Mike Riley — (806) 227-2385 (Day) or (806) 272-5115 (Night) OR Jim Summers — (806) 864-3611
We are quitting farming and the following will be sold at Public Auction — Any announcement Sale Day takes precedence.

TRACTORS —
1-1988 John Deere 4850 MFWD Diesel Tractor, Cab, A/C, Htr., Radio, P/S Trans., W.F., 3-pt., Triple Hydraulic Weights, Quick Hitch, Load Leveling Hitch, 20.8x42 Rubber, With Duals, (3500 Hours)
1-1984 John Deere 4450 MFWD Diesel Tractor, Cab, A/C, Htr., Radio, P/S Trans., W.F., 3-pt., D.H., Weights, Quick Hitch, 18.4x38 Rubber, (3498 Hours)
1-1981 John Deere 4840 Diesel Tractor, Cab, A/C, Htr., Radio, P/S Trans., W.F., 3-pt., Triple Hyd. Weights, Quick Hitch, 20.8x38 Rubber, (6551 Hours)
1-1979 John Deere 4640 Diesel Tractor, Cab, A/C, Htr., Radio, P/S Trans., W.F., 3-pt., D.H., Weights, Quick Hitch, 20.8x38 Rubber, (8556 Hours — 1500 Hours On Engine Overhaul)
1-1970 Farmall 1456 Diesel Tractor, Cab, T.A., W.F., 3-pt., D.H., Weights, 18.4x38 Rubber
1-1957 Ford 900 LPG Tractor, W.F., 3-pt., P.T.O., Fenders
1-1957 Farmall 350 LPG Tractor, W.F., Draw Bar, 15.5x38 Rubber
1-1953 Ford Jubilee LPG Tractor, W.F., 3-pt., P.T.O., Fenders, (Needs Repair)

GRAIN TRUCK, WINCH TRUCK, MOBILE HOME, BOX CAR —
1-1973 Chevrolet C-65 T.A. Grain Truck, 427 Engine, 5 Sp.-2 Sp., Midwest 24' Bed, T/C Hoist, 10.00x20 Rubber, (43,900 Air-Tual Miles), New Paint
1-1981 Ford 2 Ton S.A. Winch Truck, P/S, Letand Bed, Tulsa 30 Ton Winch, Gun Poles, Rolling Tail Board, New Rubber
1-Town & Country 60'x12', 2 Bedroom Mobile Home, Refrigerated Air Conditioner
1-Refrigerated 40' Box Car

COTTON STRIPPERS, COTTON MODULE BUILDER, BOLL EGGER —
1-1982 John Deere 484, 4 Row, Self Propelled Diesel Cotton Stripper, Cab, A/C, Htr., Radio, (955 Hours)
1-1979 John Deere 484, 4 Row, Self Propelled Diesel Cotton Stripper, Cab, A/C, Htr., Radio, (1641 Hours)
1-Big 12 32' Cotton Module Builder, Cab
1-Big 12 Boll Egger

EQUIPMENT —
1-1989 Miller Flex Blade King, 7 Shank, 35' Hydraulic Folding, D.T. Stubble Mulch Plow, With Tractor Mulch Attachment, (Plowed Less than 1,000 Acres)
1-John Deere 7100, 8 Row, 3-pt. Max-Emerge Planter, Plateless, Double Boxes, Monitor, Incorporators, W.P.W. Above Max-Emerge Planter)
1-John Deere 8 Row, 12' Split Type Bed Roller, (For Above Max-Emerge Planter)
1-John Deere 335, 27', Hydraulic Folding Tandem Disc
2-Miller 18' Offset Discs, Triple Beam
1-International 480, 21' Folding Tandem Disc
2-Lilliston 8 Row 40", 3-pt. Rolling Cultivators, Big Bar, 4 Ties, 1 Set Gauge Wheels
1-Lilliston 8 Row 30", 3-pt. Rolling Cultivator, Big Bar, Gauge Wheels
1-International 9 Row, 3-pt. Lister On I.H.C. 7'x7' Bar, 2 Sets Gauge Wheels, R&I Hydraulic Markers
1-Sasse 10 Row 30", D.D.B., 3-pt. Lister, 2 Sets D.G.W.
1-Byrd R.A.C. 8 Row D.S.B. Disc Bedder, 3-pt., 2 Sets R.A.C. Gauge Wheels, L.T.M.
2-Hamby 8 Row, D.S.B., 3-pt. Knifing Rig, 2 Sets Gauge Wheels, L.T.M.
1-Hamby 8 Row, D.S.B., 3-pt. Hydraulic Rodweeder Rig, 2 Sets Gauge Wheels, D.C.D.

2-Int. 140, 4.18", 3-pt. Spinner Mouldboard Plows
4-John Deere 400, 8 Row, 3-pt. Rotary Hoes
1-Big Ox 11 Shank, 3-pt. V-Ripper Plow, D.G.W.
1-Orthman 9 Shank, 3-pt. Ripper Plow, G.W.
1-Big Ox 9 Shank, 3-pt. V-Ripper Plow, G.W.
1-Byrd R.A.C. 21', T.S.B., 7 Shank, 3-pt. Stubble Mulch Plow, 2 Sets R.A.C. Gauge Wheels, L.T.M.
1-Hamby 28', T.S.B., 3-pt. Chisel/Sweep Plow, L.T.M. Dual Gauge Wheels
1-Hamby 21', T.S.B., 3-pt. Chisel/Sweep Plow, D.G.W., L.T.M.
2-John Deere No. 60, 8 Row, 3-pt. Gauge Wheel Drive Lister Planters, On 4'x7' Bars, 2 Sets Gauge Wheels
1-International 8 Row Spring Shank, 3-pt. Cultivator, 1 Set Gauge Wheels
1-Be-Cor D3P 65, 12'x50' D.T. Land Scaper Plane, With 6 Carrier Wheels
1-SM 24', Double Blade, D.T. Land Float, D.C.W.
1-Kent 36', D.T. Folding Field Cult., Tine Harrows
1-S&S 8 Row, D.S.B., 3-pt. Knifing Rig, 2 Sets G.W.
1-Bush Hog 4 Row, D.T. Chopper
1-Bush Hog 2 Row, 3-pt. Shredder
1-Servis Rhino 1500, 8', 3-pt. Hyd. Blade
1-R&I 4 Bottom Plow Packer
1-Schabas 4 Bottom Plow Packer
1-Noble 28' Lift Mulch Harrow
6-Noble 7' Lift Mulch Harrow Units
1-John Deere Van Brunt 16-10' Grain Drill, C.C.
1-Eversman 6', 3-pt. V-Ditcher, C.C.
1-King 3-pt. Disc Ditch Filler
1-Hoerner 14', 3-pt. Chisel Plow, L.C.
1-3-pt. Lift Boom

IRRIGATION —
2-Chevrolet 454 Irrigation Engines, (1-1989 Run 1 Season 1-1988 Run 2 Seasons)
1-International 445 Irrigation Engine, (Good)
1-Oldsmobile 403 Irrigation Engine, (Needs Repair)
1-G.E. 75 H.P. Electric Vertical Hollowshaft In. Motor
100-Joints 7'x20' Gated Pipe, 40' Rows
30-Joints 6'x20' Gated Pipe, 40' Rows
20-Joints 8'x30' Flowline 1-Lot Irrigation Panels
4-Joints 8' Flowline, Various Lengths
2-P&R 7' Solar Surge Valves
4-Waterman 6'x12' Irrigation Hydrants
2-Waterman 7'x12' Irrigation Hydrants
1-Lot L's, L's, Short Joints, End Caps
1-Large Lot Aluminum Irrigation Tubes 3", 2", 1 1/2", 1 1/4"
1-Lot 2" Plastic Irrigation Tubes
4-Irrigation Pipe Packs 1-Metal Ditch Stop
1-Lot Drive Shafts
2-Motor Covers
1-Lot Irrigation Taps
1-Inject-A-Meter Pump
1-Baldwin Lube Filler, (For Irrigation Engine)
2-SM Pipe Trailers: 1-4 Wheel, 1-2 Wheel

TRAILERS, TANKS, SPRAY EQUIP. —
1-Donahue 24', T.A. Implement Trailer
1-SM 24' Goose-neck, T.A. Flatbed Trailer, Steel Floor
2-Cobby 4 Wheel Chassis, Steel Runners
2-2 Wheel P Pickup Bed Trailers
1-1,000 Gallon Propane Tank, 200 P.S.I.
1-Raven 1550 Gallon Poly Nurse Tank
1-Lot Gasoline Parts, 1-750 Gal. Water Tank
1-SM 450 Gallon S.A. Fuel Nurse Tank
2-Snyder 100 Gallon Poly Mixing Tanks
1-1989 Lee 750 Gallon Poly H. Clearance 4 Wheel Water Nurse Trailer, (Like New)
1-Wylie Twin Set 200 Gallon F/G Side Mount Spray Rig
1-Wylie 4 Seat, D.T. Spot Sprayer, With 110 Gallon Poly Tank, 12 Volt System, 4 Umbrellas

LIVESTOCK EQUIP., AUGER-LOADER —
20-Powder River 5'x14 Metal Cattle Panels
8-10' Metal Cattle Panels
1-8' Round Water Tub
1-Lot Electric Fence Posts, With Insulators
1-Lot Wooden Fence Posts
1-Lot 6' Posts 2-Electric Fence Chargers
1-Lot 4' Posts, With Insulators
1-12'x30' P.T.O. 3-pt. Grain Auger-Loader

TRACTOR & TOOL MAKEUPS —
1-Set 18.4x38 John Deere Axle Tractor Duals, (for 4450 & 4640)
2-Sets 20.8x38 John Deere Axle Tractor Duals, (for 4840 & 4850)
1-Hamby 28', T.S.B., 3-pt. Tool Carrier, With 2 Extension
1-28'x24' Diamond Toolbar
1-Sam Stevens Stakecutter Units, With 1'x3" Shank
1-Hamby 8 Row, Split Type Cultipacker
4-Gandy Insecticide Boxes, Complete
8 Lilliston Barring D.T. Disc Units, With Reel Knives
8 Lilliston Rolling Cultivator Row Units
1-Ace Hydraulic Pump 4-R.A.C. Stabilizers
2-Hamby Guide Cone Stabilizers
2-Tee Stabilizer Couplers
24-Water Furrow Bullets 16', 12', 10'
16-Rolling Fenders, (8 John Deere, 8 Hamby)
5-Ansley Row Dikers 8-Hamby 1'x3" Shanks
16-Hamby 1'x3" Clamps, 4'x4"
1-Lot Shanks, Clamps, Spacers
9-John Deere Curved Orchard Shanks
8-Hamby Spring Loaded Cultivator Shanks
1-Set Hamby Gauge Wheels, With Flotation Rubber
1-Set Lilliston Gauge Wheels
8-SM Pickup Units For 484 Stripper
1-Lot John Deere 484 Stripper Parts
1-Lot Rolling Cultivator Lines
1-Lot Hyd. Cylinders 1-Lot Fertilizer Chisels
1-Sweep Rack & D Sweepers, Knives, Chisels, Busters

SHOP EQUIPMENT, NON-CLASSIFIED —
1-Miller Roughneck I.F. 180 AMP Portable Welder
1-Coats 20 20 Air Tire Changer
1-Ingersoll 5 H.P. 3 Phase, Shop Air Compressor 120 Gallon Tank
1-Carolina 20 Ton Hydraulic Shop Press
1-Carolina Electric Band Saw
1-Mico Cutting Torch 2 Wheel Bottle Carts
1-Tire Spreader 1-Lot Belts
1-Electric 110 Volt Air Compressor 1-Lot Belts
1-16 Gal. Wet Dry Vac 1-14' Wooden Parts Shelf
1-16'x16' Metal Shop Door
1-Large Lot Bolt, (Most New Carriage)
1-GPI 12 Volt Fuel Transfer Pump
1-Turbill 12 Volt Fuel Transfer Pump
1-Twin Set Pickup Rutane Tanks
1-Lot 1", 2", 4" Pipe
1-Lot Tires & Wheels, Some Flotation
1-Lot Paint 1-Lot Chemicals
1-Tire Rack 1-Lot Belts
1 Gas Lawn Mower 1 Lot Radiator Hoses
1 Office Desk & Chair 1 2 Drawer Filing Cabinet
1-Lot Bearings 1-Lot Gearhead Oil
1-Lot Scrap Iron & Items Too Numerous to Mention

Five Star Auctioneers
Box 1030 — Plainview, Texas 79073-1030

Terms of Sale: Cash — Lunch Will Be Available
All Accounts Settled Day of Sale

Five Star Auctioneers
P. O. BOX 1030 — PLAINVIEW, TEXAS 79073-1030

WINCH TRUCK AVAILABLE ON SALE DAY • BRING YOUR TRUCK OR TRAILER • WE ARE AGENTS AND AGENTS ONLY

MHS Spotlights English Department

Students in today's world must demonstrate effective communication skills in order to "survive" academically, professionally, and personally. These skills include reading comprehension, writing adeptness, thinking ability and proper use of grammar mechanics. Teachers in the English Department at Muleshoe High School work closely with each other and with the school librarian in order to help the students attain these skills.

Department chairman Johanna Wrinkle also teaches vocabulary and all sections of English IV; regular, academic and honors. She summarized her goals for the 1989-90 school year by commenting, "My goal this year is to have students learn the necessary life skills through the study of literary classics. All the trials of mankind have been recorded in literature and by being able to analyze these troubles in literature, students become aware of real life and the qualities they must possess to succeed in life." She expressed her unwavering belief in young people by stating that today's young people reflect the values of society in general and that she does not think they are any worse than any other preceding generation. Mrs. Wrinkle finds young people a joy to be around and she enjoys working with them. Her rapport with students reflects her basic philosophy that students are the leaders of tomorrow; she added, "I hope in some small way I can help them build a worthwhile life."

Mrs. Wrinkle began her teaching career in Muleshoe immediately after her graduation from ENMU; she holds both a B.S., with a major in English and a minor in business, and an M.Ed. from the university in Portales, New Mexico. This is

her fourteenth year to teach in Muleshoe High School. She and her husband, Roy, have three children; Gary Wrinkle, Sharon Bolding, and Cynthia Smith. She enjoys reading, playing bridge, sewing, traveling, and playing with grandsons, Jonathan and Mark Bolding and Austin Wrinkle.

Pat Watson is in her sixth year at Muleshoe High School after teaching sixth grade reading for ten years at the junior high school level and one semester in a third grade classroom. She earned her Bachelor of Music Education degree at ENMU, with a double major in elementary education and music education. Further certification for all-levels music and English was attained at Texas Tech University. Her current assignment includes regular and honors English III and creative writing; in addition, she and Hellen Adrian co-sponsor the yearbook. Mrs. Watson strongly believes in young people and loves working with them. She stated that she never "gives up" on students and feels that each one, with teaching and encouragement, can learn and attain his or her academic and personal goals. In reference to goals for the year, Mrs. Watson wants to assist her students to develop strong writing skills, an appreciation of literature, an understanding of the universality of literary selections, and an improved comprehension in reading. She also sets as a high priority the desire to see her students develop better self concepts and a deeper understanding of themselves.

W.T. and Pat Watson have three sons, David, Ed, and Clifford, all of whom graduated from Muleshoe High School. Six of her major interests in life at this time are the grandchildren: Matthew, Nathan, Jennifer, Martha, Hanna, and Seth. She has played either the piano or organ for church services since she was twelve years of age and is currently the organist at First Assembly of God Church; this reflects her love for music. In addition to these "hobbies," she

enjoys sewing and reading.

Paul White, in his first teaching assignment, teaches English II and one class of CLA III; he also fulfills duties in the coaching department. He is a graduate of Stratford High School and Wayland Baptist University, and he and his wife, Tammy, have one daughter, Chassidi. He enjoys all sports and in his spare time, he is involved with woodwork; in addition, he raises registered Quarter-horses.

White stated that "Everybody wants to hit a homerun; my job is to try and give them the opportunity." This philosophy is backed up by his desire to create a classroom setting that will supply the necessary material to prepare his students for English III. In addition to his goals and expectations as a classroom teacher, he hopes, in his coaching assignment, to coach his team to a district championship.

Alice Liles is currently teaching English I and leadership at the high school level; she taught for seven years at Edna, Texas, and has taught for nine years for MISD. She graduated from Lamar Consolidated School in Rosenberg, Texas, and attained her Bachelor of Science degree from Texas A&M and her Master of Education at the University of Houston, Victoria. She and her husband, Bill, have two children; Caroline is a sophomore at Texas Tech and A.J. is a senior at MHS. Mrs. Liles stated that one primary goal for the 1989-90 school year is to give her students an appreciation for literature; in addition, she hopes to help the students feel good about themselves. She views teaching as an enjoyable profession and stated that she enjoys working with high school-age students. She added, "It is fun and interesting to watch them grow and mature. I would like to think that somewhere along the

way I am able to make a positive impact on that process."

In order to meet the needs of students with special needs in the language arts area, Correlated Language Arts and English as a Second Language courses are offered. David Gray, now in his sixteenth year with the MISD, teaches both of these courses. Gray received his Bachelor of Arts degree from Olivet Nazarene College in Kankakee, Illinois. He previously taught for two years at Hayward Jr. High School in Springfield, Ohio. His primary goal for the school year is to raise every student's grade level ability by at least one and one-half years, as measured by the CAT test. Concerning his philosophy of teaching and working with students, Gray commented, "Our children need a firm hand, a wise counsel, a loving heart, and a deep self-respect for themselves and a love for others." He views teaching as a good way to help

implement this philosophy.

Gray is married to the former Kay Kittrell and has three children, Tonya Jean, Timothy Galen, and Tracey Scott; he also has two stepdaughters, Shawna and Sonya Smith. He finds motorcycle riding, horseback riding, and reading to be enjoyable hobbies.

Barbara Milburn, librarian at Muleshoe High School, might best be described as "an English teacher's best friend." It is she who makes all library sources available for all teachers, but, in addition, she also does a teaching unit for library skills for all English students and supplies excellent assistance in the preparation of the research paper. She summarized her goals for the year by stating that she hopes to be sure every student is able to adequately use library materials such as the *Reader's Guide to Periodical Literature* and all materials associated with the reference section. She revealed her love for and her belief in students by stating, "I love working with high school students. I feel that we have outstanding students. I am impressed with them and their instructors."

Mrs. Milburn holds a Bachelor of Arts degree; in addition, she has earned her library certification with twenty-seven graduate hours of work. She has been with the MISD for twenty years; her previous teaching experience include two years in Levelland, one year in Whitharral, and four years in Walsh, Colorado. Mrs. Milburn has two children; Bill and his family live in Amarillo, and Jenny Oliver and her family live in Olton. Four grandchildren are the "apples" of her eye as well as her most enjoyable hobby. She also enjoys reading and gardening when time is available.

The English department at Muleshoe High School, along with its librarian, form a group that is dedicated to excellence in all areas of the study of English.



David Gray, Pat Watson, Barbara Milburn, Kerry Moore and Paul White. Seated: Lucy Faye Smith and Johanna Wrinkle.

Shop
Muleshoe
First!

HOMESTEAD EXEMPTIONS



CAN LOWER THE PROPERTY TAXES ON YOUR HOME

A homestead Exemption

lowers the property taxes on your home by lowering its taxable value. For example, if your home is valued at \$50,000 and you receive a \$5,000 homestead exemption, your home will be taxed as if it were worth only \$45,000.

You qualify

for a homestead exemption if you owned your home on January 1 and used it as your primary residence on January 1. It doesn't matter whether your home is a house, a condominium or a mobile home.

Exemptions are available

to all homeowners on their school taxes. Additional exemptions are available to homeowners who are disabled or age 65 or over. Other exemptions may be offered to homeowners by school districts, counties, cities, and special districts. All taxing units offer exemptions to disabled veterans.

Apply to

your local appraisal district office at the address shown below for all exemptions you may qualify for. Application forms are available at this address.

If you received a homestead exemption on your present home in 1989 you won't need to apply again for 1990 unless the chief appraiser requires you to reapply.

However, if you passed your 65th birthday or became disabled before January 1, file a new application to receive the additional exemptions.

If you haven't received an exemption on your present home, or if you moved to a new home, make a new application for 1990.

The deadline

for applications is April 30, 1990. Contact your appraisal district before then if you need more time.

For more information, get a free copy of the pamphlet, *Taxpayers' Rights, Remedies, Responsibilities*, at your appraisal district office or from the State Property Tax Board in Austin.

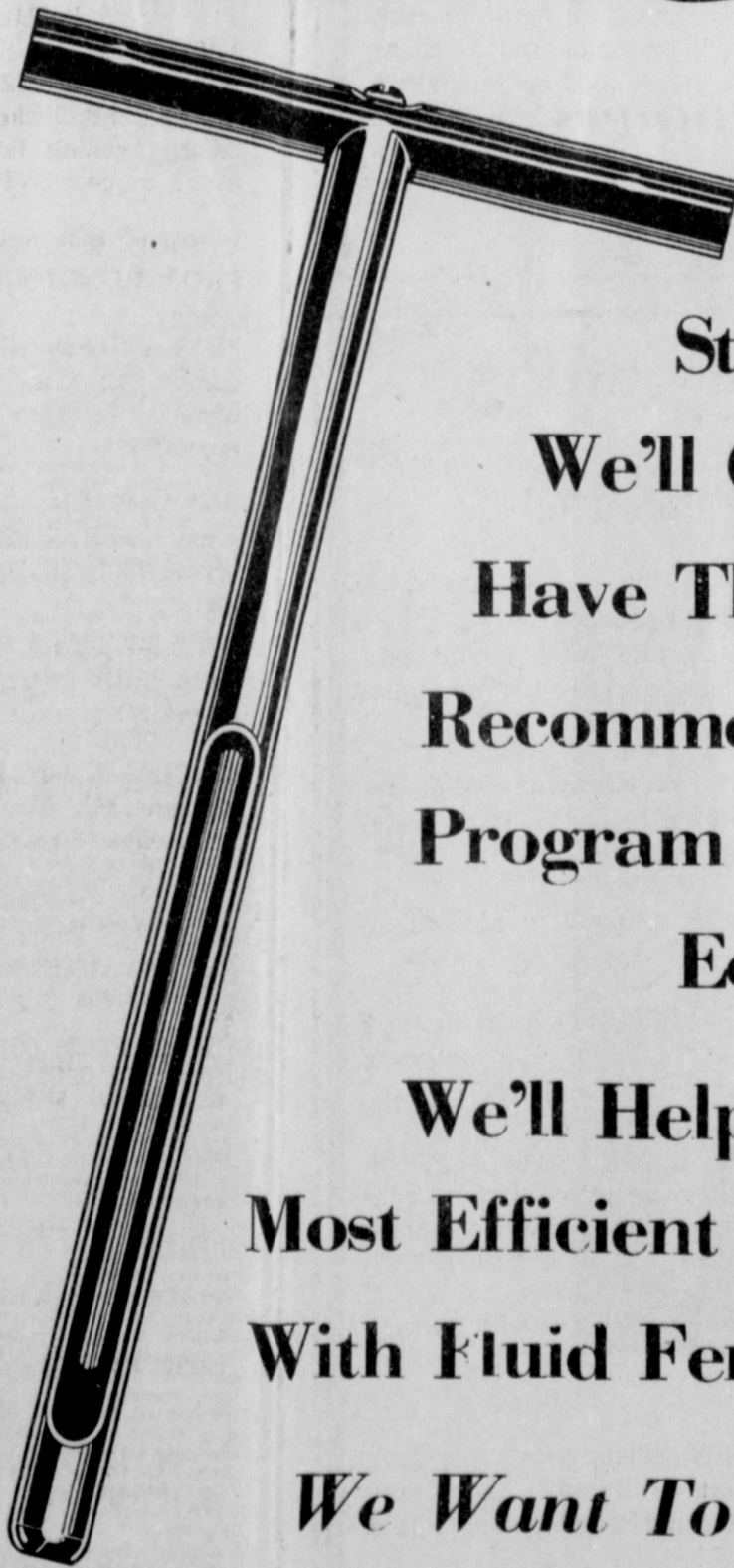
Bailey County

Appraisal District

104 E. Ave. C

272-5501

Don't Guess - Soil Test



Start Out Right

We'll Get Your Samples,

Have Them Analyzed, And

Recommend The Best Fertility

Program For Your Maximum

Economic Yield.

We'll Help You Work Out The

Most Efficient Timing And Placement

With Fluid Fertilizers.

We Want To Be Your

Fertilizer Dealer!

Western "66" Co.

Earth Hwy

Muleshoe

272-4556

CLASSIFIEDS 272-4536

CLASSIFIED RATES

15 Words & Under
Minimum Charge
\$2.30
Thereafter
\$2.00
16 Words & Over
1st Insertion
15 cents per word
2nd Insertion
13 cents per word

CLASSIFIED
DISPLAY RATES
\$1.75
Per Column Inch

DEADLINES
12 noon Tues.
For Thursday Paper
12 noon Friday
For Sunday Paper

To receive the re-
duce rate after the
first insertion ad
must run continous-
ly.

We reserve the right
to classify, revise, or
reject any ad. We are
not responsible for
any error after ad
has run once.

1. Personals

CONCERNED About Someone's Drinking?

HELP IS
AVAILABLE
through Al-Anon
Call 272-2350 or
965-2870 or come to
visit Tuesday nights,
8:00 p.m. or Saturday
mornings at 10:30 a.m.
and through AA call
965-2870 or come visit
Tuesday nights, 8:00
at 620 W. Second,
Muleshoe.

WANTED: Mature in-
dividual with extensive
farm background to
manage assembly and
handling department.
Contact C&H Equip-
ment at 272-5514.
C1-4t-4tc

DKK Custom Farm-
ing. Contact Keihm
Smith at 965-2629 or
965-2189.
1-1s-8tp

3. Help Wanted

NEED someone to do
part-time tractor driv-
ing. Must be experi-
enced. Call 946-3352
after 7:00.
3-5t-4tp

"ATTENTION HIRING!"

Government jobs-your
area. Many immediate
openings without wait-
ing list or test. \$17,840
-\$69,485.
C3-3s-4tp

TEXAS REFINERY
CORP. needs mature
person now in Mule-
shoe area. Regardless
of experience, write
W. K. Hopkins, Box
711, Ft. Worth, TX
76101.
T3-4s-2tc

4. Houses For Rent

FOR RENT: 2-3 bed-
room, one bath hous-
es. \$300 cash. Call
272-4011.
H4-5t-4tc

Shop
Muleshoe
First!

5. Apts. For Rent

APARTMENTS FOR
RENT: 1 or 2 bed-
rooms. Furnished and
unfurnished. Some
bills paid. 272-7575.
P5-2t-tfc

FOR RENT: Furnished
1 bedroom garage
apartment. Water
paid. See at 202 W. 8th
after 5 or 6 p.m.
C5-2s-tfc

9. Automobiles For Sale

83 FORD Customized
Van. B&W-T.V.. Al-
most New Tires, Fiber-
glass carrier, Radio
and Cassette, F&R
Heat and Air.
965-2766.
9-5t-2tp

11. For Sale Or Trade

FOR SALE: 150 bags
of PM 145 cotton seed.
90% germ. Call 946-
3352 after 7:00.
11-5t-4tp

FOR SALE: Portable
Welder on trailer. Call
946-3352 after 7:00.
11-5t-4tp

LOT FOR SALE: Rich-
land Hills. Great view.
710 W. 20th. 140x140'.
Call 272-4344 or 272-
3510.
J11-52t-tfc

15. Misc.

Grooming Services

by Keva Peterson


Monday thru Friday
8:00 a.m. to
6:00 p.m.

Complete grooming of
all breeds
by appointment only!
Keva Peterson

315 W. Ave. K. 272-3473

20. Public Notice

NOTICE TO CREDITORS

Notice is hereby
given that original Let-
ters of Administration for
the Estate of REV. GENE H. DAVIS, DE-
CEASED, were issued on
January 29, 1990, in
Docket No. 1823,
pending in the County
Court of Bailey Coun-
ty, Texas, to: STEPH-
ANIE DAVIS.

The address of the
Administrator is in
Bailey County, Texas,
the post office address
is:

Post Office Box 664
Muleshoe, Texas
79347

All persons having
claims against this
Estate which is cur-
rently being adminis-
tered are required to
present them within
the time and in the
manner prescribed by
law.

DATED the 29th day
of January, 1990.
Gordon H. Green
Attorney for the Estate
G20-5t-1tc

8. Real Estate

FOR SALE BY OWN-
ER: 3 bedroom, 3 1/2
bath brick home. Den,
formal living room and
dining room, kitchen
and utility, double
garage, lots of storage,
storm cellar, in good
location. Also included
2-bedroom rent house.
Call 272-3353.
G8-5t-8tc

FOR SALE: 143 Acres
on Highway 70. High-
way frontage 2 sides,
Underground pipe, 6"
well Electric, 13 Acres
Pasture Call 965-2766.
8-5t-2tp

LAND FOR SALE:
160 Acres -- Farmer
County, 299.13 Acres
-- Castro County. Acre-
age Appraisal Real
Estate. 794-9109.
W8-4s-4tc

FOR SALE BY OWN-
ER: 2-1-1 new painted
inside, fenced back-
yard and storm cellar.
Nice neighborhood.
Call 925-6477.
K8-4t-4tc

FOR SALE: 320 acres
of dry land in the
Goodland area. 272-
4622.
K8-4t-10tc

FOR SALE: Really nice
modernized older
home. Huge rooms, 3
baths, fireplace, sits
on 1/4 of a block. Heat
pump and refrigerated
air. Call 272-3267 or
272-3304 after 6:00
p.m.
A8-3t-tfc

YOUR MONEY

Homemade Money: How to Make It

Experts predict that as many
as a million new businesses
will be launched this year by
people working out of their
own homes. This increase will
bring the total number of
homebased businesses in the
United States to 14 million.

What are these people doing
in the privacy of their homes?
Many are women turning their
homemaker skills into money.
These businesses range from
child-care centers to image
consulting services, from the
publishing of newsletters to the
marketing of handicraft
products.

There is money to be made at
home. "Many part-time
homebased businesses gross
\$30,000 or more, and a few
full-time businesses in my net-
work have reported incomes
close to a quarter of a million
dollars annually," says Bar-
bara Brabec, a leading
spokesperson for the
homebased industry.

The crucial factor for anyone
considering starting a
homebased business is to be
sure to do their homework. "If
there is a real need for the
product or service, if the busi-
ness cash flow is managed
well, and if the company has a
good grasp on marketing tech-
niques, it is quite likely that
the business will succeed," says
Brabec.

To make researching a
potential business idea easier,
there are many sources of free
or inexpensive business infor-
mation and help. More than
500 of the best resources are
listed in Brabec's book
Homemade Money. For help
in establishing a legal and
profitable homebased busi-
ness, send for Brabec's free
"Proven Guides to Success"
booklet. To sample her
quarterly *National Home Busi-
ness Report*, include \$4. Write
to: National Home Business
Network #1, Box 2137, Naperville,
IL 60567.

8. Real Estate

LAND FOR SALE: 7,000 acres of irrigated
land. Will sell any part, or all. Sprinkler,
fenced, and water tanks for cattle in each
circle. Good cattle operation and excellent
living quarters. Land is good for vegetables
or grains. Near Earth, Texas. Will also sell
or lease.

Randy Johnson
(806) 272-3056

Henry Realty

111 W. Ave. B. 272-4581
Muleshoe, Tx.

NEW LISTING- 3 bedroom, 1 1/4 bath, 1 car
garage, carpet, central A/H, fenced yard,
storm windows, shop building, good
condition in a good location.

3 Brdm., 2 bath, spacious home outside city
limits, near city on highway. 29x40 metal
building. Lot 85'x620'.

3 Brdm., 1 bath, completely remodeled,
edge of city on highway.

COMMERCIAL PROPERTY-Ideal location
on West American Bld. 150' highway
frontage. A great business opportunity.

RURAL HOME-3 Brdm., 2 bath, large den
on one acre with many extras. Fenced with
barns, fruit trees, extra storage, storm
cellar, and satellite dish. Priced to sell.

SPACIOUS-2 Brdm., 2 bath, with garage.
Freshly painted. Fireplace. Ready to move
in.

JUST LISTED-Outside city - 3 Brdm., 2
bath, garage on one acre. Carpet with
drapes and blinds. Dishwasher. Good
storage.

3 bedroom, 2 bath, carpet, large living
room. Excellent condition, near high school.
Priced to sell.

3-BEDROOM, 2-bath,
double-wide mobile
home for sale.
272-3438.
C8-47s-tfc

FOR SALE OR RENT:
2 bedroom, 2 full bath
mobile home, on 45'x-
150' fenced lot. Call
272-5435, after 5 p.m.
G8-49t-tfc

Enochs News

by: Mrs. J.D. Bayless

Mrs. Bill Key was in Morton to
help her sister, Mrs. Bonnie
Long celebrate her birthday the
past week.

Mrs. Winnie Byars of Semin-
ole visited in the community
Tuesday with Mrs. Bill Key.
Mrs. Ellen Bayless had lunch
with Mr. and Mrs. E.N. McCall
and spent the night with Mrs.
Inez Sanders.

Visitors at the Baptist Church
Sunday morning were Mrs. Bill
Burris, Mr. and Mrs. Cleo Hall
and Ashley Grant.

Mrs. Winnie Byars of Semin-
ole and Mrs. Peachie Byars of
Odessa visited Mrs. Inez Sanders
Tuesday afternoon.

Mr. and Mrs. Burford Peter-
son visited her sister, Mrs.
Lucille Smith at Hart Monday.

Mrs. Bonnie Blackstone flew to
Arlington Thursday to attend the
wedding of a niece, Kerri Coats
and Christeen Nielsen at the
Southern Methodist University,
Perkins Chapel. Her children,
Thomas and wife, Terri Black-
stone, Ann and Gary Johnston
and children, Monte and Brian
all of Arlington, Dale and
Carolyn Blackston, Jeff, Chyrl
and Beckie, met Bonnie there to
attend the wedding Thursday
night. She returned home Sun-
day.

Mr. and Mrs. Joe Dale Doak of
Wylie came to visit her mother,
Mrs. Ellen Bayless Friday
afternoon and spent the night
and went to Brownfield Saturday
to visit his mother, Mr. and Mrs.
Johnny Windson.

Mr. and Mrs. Shorty McCall,
her brother, Mr. and Mrs. Lee
Kelly of Plainview, and sisters,
Mr. and Mrs. R.T. Lytle of
Conroe, Mr. and Mrs. Fred
Locker of Littlefield, all had
supper with Mr. and Mrs. Fred
Locker Friday night. They had
supper with Mr. and Mrs. Shorty
McCall Saturday night and Mr.
and Mrs. Lytle spent the night
with them.

Dr. Ronald Berry of Memphis,
Texas spent Saturday night and
Sunday with Rev. and Mrs.
David Graves and children.

Guest in the home of Mr. and
Mrs. Goldman Stroud Sunday
were their children, Mrs. Sandra
Dickey of Lubbock, Mr. and
Mrs. Gene Stroud and son,
Justin, of Dimmitt, Mrs. Carolyn
Kirby and children of Three
Way, and a friend Travis
Lambert of Muleshoe.

Mr. and Mrs. Buford Peterson
visited their sister-in-law, Mrs.
Louise Peterson who was in the
St. Mary's Hospital in Lubbock
the past week.

Mr. and Mrs. Steve Newton
and children, Billy and Tony of
Snyer, Mr. and Mrs. Tom
Newton and children, Amanda
and Barry of Morton were guests
in the home of their parents, Mr.
and Mrs. Bob Newton Sunday.

Mr. and Mrs. Shorty McCall
spent Saturday night with their
daughter, Brenda and Robert
George, their granddaughter,
Marthan and Rick Walker and
children of Eager, AZ came and
visited with them.

Mrs. Goldman Stroud visited
in the home of Mr. and Mrs.
Boyd Maxeys Thursday at
Littlefield.

Mr. and Mrs. Bob Newton was
in Hereford Thursday to see their
grandchildren, Patric and Cory
and attend the Fat Stock Show
where their grandchildren were
showing their calves and pigs.

We were so sorry to hear about
the sick folks, G. O. Smith fell
and broke his shoulder, Mrs.
Troy Price's mother is ill, Mrs.
Barbara Price's dad, C.C. Har-
vey, had surgery at Methodist
Hospital. Mr. and Mrs. Clifford
Snitker are still not well. Get well
soon every one.

Mrs. Inez Sanders and Mrs.
Etta Layton were dinner guests
with Mrs. Ellen Bayless Sunday.

Jack and Roger Beasley of
Hereford visited Mr. and Mrs.
Harvey Blackston recently.

Too Late To Classify

HELP WANTED
Male general laborer
for nursery/garden
center. Only non-smo-
kers need apply. Call
between 9 a.m.-12
noon, Monday thru
Thursday. 272-5536.
P3-5t-tfc

8. Real Estate 8. Real Estate 8. Real Estate 8. Real Estate

Bingham & Nieman Realty

116 E. Ave. C

272-5285 or 272-5286

RICHLAND HILLS
JUST LISTED-IMMACULATE-ENERGY
EFFICIENT 3-2-2 Brick, Cent. A&H,
built-ins, FP, sunken lv. area with cathedral
ceiling, ceiling fans, earhtones, storage
bldg., much more!!!!!!\$50's

4 NICE RESIDENTIAL LOTS PRICED
FROM \$5,000.00!!!!!!

JUST LISTED- Nice 3-2-2 Brick on large
corner lot, Cent. A&H, built-ins, storm
windows & doors, large basement, much
more!!!!!!

JUST LISTED - 3-2-2 Brick on corner lot,
Cent. A&H, built-ins, FP, cov. Patio &
more. \$60's!!!!!!

NICE 3-2-2 Brick, Cent. A&H, built-ins, FP,
auto. spkrl. system, fenced yd. & much
more!!!!!!

VERY NICE 3-2-2 Brick Home, Cent. A&H,
built-ins, FP, Wtr. Sftnr., auto. spkrl., Cov.
Patio, Stor.-Shop. & much more!!!!!!

HIGHLAND AREA
NICE 3-2-2 Brick home (2 story), on corner
lot, Cent. A&H, built-ins, and much more.
LET'S LOOK TODAY!!!!!!\$60's

Nice 3-2-1 Brick, Cent. A&H, built-ins, FP,
fenced yd., st. bldg.

NICE 3-2-1 Brick Home, Cent A&H,
built-ins, large den with fireplace. Fenced
yard, storage bldg. \$40's!!!!!!

PRICE REDUCED 2-2-2 Brick, corner lot,
Cent. A&H, spacious rooms, utility, cov.
patio, fenced yard, & much more. \$40's!!!

HIGH SCHOOL
JUST LISTED-COZY 2-1 Home, nicely
remodeled, fenced yard, & more \$17,000!!!!

2-1 1/2-1 Brick, fl. furnace, CA, fenced yard
& more:\$20's!!!!

NICE 2-1 1/2-1 Home, corner lot, built-ins,
nice carpet, heat pump, fenced yard,
storage bldg. & more!!!!!!

PRICE REDUCED 3-1-1 Home earhtone
carpets, fenced yard, storm cellar &
workshop!!!!

JUST LISTED-IMMACULATE 3-2-2 Brick,
Cent. A&H, built-ins, FP, energy efficient,
ceiling fans, 15'x30' shop-storage bldg.,
fenced yd. & much more.\$40's!!!!!!

3-2 Home, nicely remodeled, Heat pump,
storm windows & doors, well insulated,
ceiling fans, fenced yd., storage bldg. &
more!!!!!!\$20's

NICE 3-2-2 Home, Cent. A&H, earhtone
carpets, covered porch, beautiful fenced
yd.!!!!!!

LENAU ADD.
3-1 Home on corner lot, wall heat, fenced
yd. \$20's!!!!!!

COUNTRY HOMES
JUST LISTED-NICE 3-3-2 Brick Home on
one acre tract at edge of town, Cent. A&H,
built-ins, FP, sunroom, office sauna, wet
bar, auto. spkrl., fenced yd., plus other
amenities!!!!!!

JUST LISTED 3-2-2 Brick on 25 acres, close
to town, Cent. A&H, built-ins, shop, barn,
new 4 wire fence all around, much
more!!!!!!

3-2-3 carport Home on 11 acres at edge of
town, Cent. A&H, built-ins, storm cellar,
barns, & corrals. \$50's!!!!!!

3-1-1 Home on approx. 5 acres at edge of
town, domestic will and irrig. well, barns &
more.\$20's!!!!!!

PRICE REDUCED-VERY NICE 3-2-1 Home,
on 1 acre, close to town. Cent. Heat, Evap.
air, nice carpets, nicely remodeled.
\$30's!!!!

2-1 Home, 20 acres, sub. pump, sprinkler,
barns & corrals. \$40's!!!!

EXCELLENT COMMERCIAL TRACT 175' x
100', Hwy. 70 & 84, railroad spur access at
rar. approx. 1200 sq. ft. bldg. PRICED TO
SELL!!!!!!

NICE 3,500 sq. ft. office bldg. across from
Courthouse. PRICED TO SELL!!!!!!

JUST LISTED-NICE COMMERCIAL BLDG.
ON MAIN HIGHWAY, Approx. 2800 feet of
area, suitable for various types of business.
Possible Owner Financing to qualified
Buyer.\$20's!!!!!!

GEORGE NIEMAN, BROKER

DIANNE NIEMAN, BROKER

Three Way News

by: Mrs. H.W. Garvin

Mrs. Robert Kindle and Mrs. Rayford Masten were in Leveland Monday to visit Mrs. Minnie Dupler who was a patient in the hospital.

The Three Way basketball teams played Whiteface Tuesday night losing both games. On Friday night Three Way played Plains there with Three Way girls winning and boys losing.

Three Way fat stock show and Arts and Crafts was held at the Ag building Saturday with a catered barbecue lunch being served at noon. A good turn out attended.

Mr. and Mrs. W.T. Simpson attended church in Shallowater Sunday at a family gathering and had lunch at the church.

Mrs. D.A. Williams spent

Friday afternoon with her parents, the George Tysons.

Funeral services was held Friday afternoon at Three Way Baptist Church for Minnie (Mom) Dupler. A pioneer of the Maple Community coming here from Oklahoma with her husband and children in 1928. The family settled two miles south west of Maple. Four of her children were born in the house she lived in up until her death. All who new Mom loved her. This reporter had been close neighbor of Mom all 62 years. She will be missed in the community.

Mr. and Mrs. Adolph Wittner visited their daughter, the Baxter Vaughn's in Plainview Saturday and their grandson, Camron, came home with them.

Mr. and Mrs. DeWayne Smith from Panhandle spent Thursday night with the Jack Lane family.

The Kindle family all had lunch in the Robert Kindle home Sunday.

Tuesday evening Clifford and Bill Dupler visited Mrs. G.W. Garvin. On Wednesday Pat, and Peggy Dupler and Mrs. Frances Marmon visited Mrs. Garvin and Thursday evening Paulene and Hazel Dupler visited Mrs. Garvin.

YOU make the difference

Donate Blood Friday, February 9th 10 a.m. - 6 p.m.

United Blood Services

A DIVISION OF BLOOD SYSTEMS INC. A MEMBERSHIP CORPORATION

Romanians find road to freedom paved with uncertainty.

LOUISA'S LETTER

Dear Louisa,
I want to say something about parents who neglect the child and about parents who cannot understand their own child.

When adults sneer at authority, make fun of the "cops", impugn the law and are openly disrespectful of national and international dignitaries they are actively teaching their children the same habits.

Human beings are creatures of habit and criminal behavior is learned. Any child reared in an upset home with parental strife, indecision and lack of authority will be an upside-down child. Some people say the only reason for spanking a child is because the child is "bothering" them and they are tired. This is wrong and this is a negative position.

There is a way to teach children permanent ways of obedience but this cannot be done in a time of anger. A child who is disappointed over a broken toy or is crying because he is overtired should not be punished as he is

already suffering.
Parents should be in accord in disciplining a child and not fight each other. "Honoring your father and mother" is still one of the commandments. I don't advocate never punishing a child but it should not be done in anger or because the adult is only considering themselves.

Answer:
Your letter had a lot of truth in it. You have covered the issue pretty well.

Dear Louisa,
I have a dear girl friend and we visit each other all the time. Just lately her father has tried to put his arm around me if we happen to be alone.

It gives me the creeps, but I hate to say anything to her about it. Do you think I should stop going over there?

Answer:
If you visit your friend avoid being left in the room with her father. There is nothing as

disgusting as a father with a dirty mind.

The best plan would be for you to insist on her visiting you and for you to stay away from her house as much as possible.

Address: Louisa, Box 532, Orangeburg, S.C. 29115

H&R Block wants to save you money.

We dig for every deduction and credit to which you are entitled. We'll find you the biggest tax refund you have coming. Put us to work for you.

H&R BLOCK
America's Tax Team
224 W. 2nd 272-3332
Weekdays 9-6
Sat. 9-5

LIVING ROOM SUITES

- Sofa and Love Seat
Beautiful Soft Blue Azure Cover.
..... NOW BOTH \$397
- 6 Pc. All Wood Den Group
Sofa, Rocker, Chair, Cocktail & 2 End Tables on Washed Pine.
..... 1 Only \$647
- 3 Pc. With Sleeper Sofa
Beautiful Hi-back sleeper sofa in Brown's or Blue's with matching love seat and chair trimmed in Oak with Brass accents
..... NOW \$987
- Corner Sectional
Rich Brown Sleeper Corner Table Love Seat and 2 Matching End Table's Also included round matching Cocktail Table
..... NOW \$857
- Sofa and Chair
Your Choice of Brown or Blue-Overstuffed Load.
..... NOW \$497

- Blue Print Cotton Sofa
With Matching Throw Pillows.
..... NOW \$197
- Beautiful Solid Oak Desk
A Beautiful Addition to Any Home.
..... \$277
- Solid Oak China Cabinet
Must See This One
..... 1 Only \$597
- Quality Queen or Full Iron Bed
Headboard, Footboard, & Rails.
..... NOW \$127

- Large All Wood Curio Cabinet
Dark Oak Finish.
..... 2 ONLY \$177
- All Wood Admiral's Quarters
Includes Loft Bed-Trundle Bed-Chest and Bedding.
..... NOW \$257

- Beautiful Solid Oak Hall Tree
With Mirrored Back-A Place For Your Hats and Umbrella's too.
..... \$157
- Entertainment Centers
Holds Your TV and Stereo & VCR. Closed Door on Bottom.
..... NOW \$77

ODD-N-ENDS

- Brass Vanity with Stool
..... 1 Only At \$59
- Set of 3 Brass N Glass Cocktail Table
with 2 Ends-Etched Glass.
..... 3 Sets ONLY \$97
- Entertainment Center with Glass Doors
For Your Stereo and VCR and 2 Drawers on Bottom.
..... NOW \$167
- 7 Different Styles of Cocktail Tables
As Is - Close Outs.
..... Values to \$219 \$77
- China Cabinet by Quality
All Wood.
..... 1 Only \$297
- Cannon Ball Bed
Queen Size with Top of the Line 15 Year Bedding and Frame.
..... \$397
- Bryohill China Cabinet
As Is.
..... \$347
- Large Brass Finish Baker's Rack
Priced in the Box.
..... \$19.97
- Bar Stools
30" High Back Bar Stools
..... \$24.97
- Love Seat by Simmon's
Multi Tone Color
..... 1 Only \$197
- Love Seat Sleeper
Love Seat opens to a Twin Size bed-Antron Cover
..... NOW \$187

- Cheval Mirrors
Brass & Glass Adjustable Floor Mirrors.
..... NOW \$67
- Solid Oak Entertainment Center
6 Ft Tall
..... 1 Only \$187

- New Item-Must See to Appreciate**
- 9x12 Bound Carpets \$97
 - 12x12 Bound Carpets \$147
 - 12x15 Bound Carpets \$167

- 4x6 Fringed Oval Rugs
..... \$24.97
- 6x9 Fringed Oval Rugs
..... \$47
- 8x12 Fringed Oval Rugs
..... \$87

- Bassett Mirrors**
Beautiful Framed Mirrors by This Leading Mfg.
..... NOW \$18.88

CHAIRS-ROCKERS

- Easy Chair
Comfortable Long Lasting Antron in Blue & Mauve with Oak Trim with Matching Ottoman.
..... NOW BOTH \$197
- Barrell Back Rocker-Swivel Rockers
Choice of Beautiful Velvet Covers.
..... NOW \$87
- Odd Chairs
Values to \$199
..... 3 Left NOW \$97

RECLINERS

- Action Recliner by Lane
Soft Blue Velvet
..... \$247
- Kiddie Recliner
..... 1 Only \$59
- Barcalounger Recliner Rocking Recliner
Soft Blue.
..... 1 Only \$187

DINETTES

- 7 Pc. Semi Formal Dining Table
Table Has Formica Top - 6 All Wood Chairs with Padded Seat.
..... \$297
- Glass Octogan Dining Table
With 4 Brass Chairs-Some Assembly Required.
..... \$97
- 7 pc. Kitchen Set
Table has Formica Top with 6 padded chairs.
..... NOW \$187

We Just Finished Our Inventory And Look What We Found!

Special Offer

WHILE THEY LAST!

SATURDAY

Doors Open 9 A.M. Sharp till 5 P.M.
Lots of 1 of A Kind Items
Priced to 90!
And 90 Day's Same As Cash Too!
W/Approved Credit.

BEDROOMS

- Large Bedroom Suite
Queen Ann Style Poster Bed Queen Size- Includes Triple Dresser, Mirror Chest, Poster Bed and Night Stand.
..... NOW \$897
- Also Available King Size...\$997
- Black Lacquer Bedroom Set
Triple Dresser, Panel Mirror, 5 Drawer Chest- Full or Queen Headboard & Nite Stand
..... NOW \$397
- Mattress Set
Twin Size - 15 year warranty
..... Both Pieces \$157
- Mattress Set 15 year warranty- Full Size-Comfort Care-
..... both Pieces \$167
- Queen Size-Comfort Care-
..... Both Pieces \$197
- Mattress Set
Full Size-5 year Warranty
..... 1 Only-\$147 set
- King Size 10 year
..... \$247 set

MATTRESSES

- Mattress & Box Spring
Top of the Line-15 Year Pillow Top Mattress, Full Size
..... \$297 Set
- King Size Mattress Set
10 Year Warranty-King Coil.
..... \$247 set
- Mattress & Foundation
5 Year, Queen Size.
..... 2 Only \$97

DINING ROOMS

- Broyhill 7 Pc. Dining Room Table
With 6 Upholstered Chairs.
..... 1 Only \$567
- Broyhill Table and Matching Hutch
Cherry Wood, Large Table, 2 Leaf with 6 Chairs and Matching China Cabinet.
..... 1 Only NOW \$1397
- 7 Pc. Dining Table by Sidix
Large Pedestal Table with 2 Cap. Chairs and 4 Side Chairs and 2 Leafs.
..... NOW \$647

TERMS OF SALE

- Time Payment Plan
 - No Down Payment
 - Visa or Mastercard
 - Cash or Check
 - 90 Days Same as Cash
- All items priced U-haul-But delivery is available. All items must be removed from bldg.

BARGAIN WORLD FURNITURE

318 Main - Clovis - 762-2304

LIMITED TIME SPECIAL!

Get 'em while they last!

YOUR CHOICE \$8.00

A steal at \$9.00

SS445 BRASS SOFA SERVER SS380 LG. WOOD SOFA SERVER