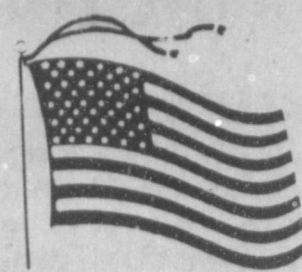


WEATHER

February 11	62	19	.00
February 12	70	25	.00
February 13	80	29	.00
February 14	75	25	Tr.

Muleshoe Journal

'The Community Of Opportunity-Where Water Makes The Difference'



Vol. 68, No. 7

10 PAGES TODAY

Published Every Thursday At Muleshoe, Bailey County, Texas 79347

MEMBER 1990
TEXAS PRESS ASSOCIATION 20^c

Thursday, February 15, 1990

Commission Approves Ambulance Letter

Give O.K. To Overtime, Deputies, Salary Increases

Jim Fitzgerald, director of the Bailey County Ambulance Service met with Bailey County Commissioners Monday morning, to present several 'collection' letters compiled by his office staff on orders of Judge Jim Watson.

Judge Watson also presented the draft of a letter he had composed to send to persons who owe the Bailey County Ambulance Service.

Fitzgerald again explained that federal law limits what can be billed to a Medicare patient. He explained that Medicare will approve the amount they will pay for any medical services, then pay 80 percent of the amount they approve. The patient can only be billed for the 20 percent of the Medicare "Approved Amount," and no more. In many instances, Medicare patients do not have supplemental insurance according to the ambulance director. He suggested that all insurance be filed with assignment of benefits to Bailey County.

He also suggested the 60 days for payment by private pay patients be changed to 30 days.

Fitzgerald also spoke out again about being against using the threat of taking older people to court in order to try to collect ambulance bills.

Commissioner R. L. Scott spoke out against the letters as presented. "I'm still not too pleased," he said. "I just don't know how strong we need to go. We can't single out people and you sure can't single out Medicare people. Some can take care of their bills and some can't. Older people don't need threats to pay their bills."

Judge Watson said he was still in favor of going back (on the old bills to 1987) without overstepping legal boundaries and try to collect on them.

Fitzgerald asked how to handle ambulance bills for deceased patients, and the judge told him to bill the children.

After nearly an hour of discussion, four letters were approved by commissioners to send to ambulance patients who show delinquent bills.

After some discussion, the withholding provision for six months salary of 10 percent for Cindy Brown was lifted, although the new Bailey County Ambulance Service employee will still work her six month probationary

period. The salary requirement was waived by commissioners.

After a nearly one hour executive session Monday afternoon, commissioners approved a salary increase to \$15,000 for EMT-SS, such as Jackey Wayne Burris. This will increase to \$17,572 in 60 days when Burris completes his Advanced Cardiac Life Support certification. Those hired as fulltime employees by Bailey County Ambulance Service, holding the EMT-SS (Special Skills) certification, will now start at the \$15,000 salary.

Commissioner Don Seales reminded Commissioners, "We have a situation here where it could generate enough money back in here to offset some of this (salary increase) or pay the entire increase. Other departments do not do this."

According to Commissioner Joey Kindle, "We have to compete with other Ambulance Services. These salaries are low."

Fitzgerald also told Commissioners that the Bailey County EMS Volunteers have extended their coverage hours from 5 a.m. to 6 a.m., to help the regular ambulance employees.

They had cut back some of their coverage in the early morning hours, because by making transfers to out of town hospitals kept them from getting to their regular places of employment on time.

Commissioners also heard from Bailey County Sheriff Jerry Hicks who requested the commissioners to approve up to six regular unpaid deputy sheriffs. He said he currently has three former deputy sheriffs who have regular jobs, but want to work as unpaid deputies in order to keep their certifications current.

After some discussion, the

Absentee Voting

Starts Wednesday

Absentee balloting for the March 13 Primary Elections begins Wednesday, February 21 and will conclude on Friday, March 9.

Bailey County Clerk Barbara McCamish said persons who expect to be out of town for the Primary Election may cast their ballot in her office at the Bailey County Courthouse.

Rotary Speaker Discusses Food For Real People

Real People Eat Real Food was the emphasis made by Bret McCasland, who was in charge of the Rotary program for Tuesday.

He spoke on the Beef Checkoff Program, where beef producers of all kinds, including dairy cattle, pay \$1 per head when they sell any live beef.

He said the program, which was passed by 75 percent of all U.S. beef producers in May, 1988, was established entirely to promote the beef industry.

The \$1 per head is every time cattle change ownership.

Four major points were mentioned by McCasland:

- (1) The program is entirely controlled by the beef industry;
- (2) each 50 cents contributed stays in the state where the sale was made; (3) only five percent of the money obtained is used for administrative purposes; and (4) the dollars collected can only be used for promotion, information and research.

Marilyn Cox

Gets Scholarship

As Honor Student

Valentine's Day was very special for Marilyn Cox this year.

She was among select students honored at the ENMU-Clovis campus Wednesday evening with an honors banquet.

Mrs. Cox is a Legal Studies student at the Clovis campus of ENMU, and she, among other students were feted with a banquet in recognition of their listing on the Dean's Honor Roll for the fall semester.

She was also presented a scholarship to be applied to continued studies.

She received her awards for her studies in Family Laws; Legal Environment of Business; Women, Power and Politics and Lettering I.

According to McCasland, the targeted audience in promotions are persons 25-55 years of age, and who make \$30,000 or more per year. Some information is also directed toward foreign countries.

He said the entire promotion is centered around *Real People Eat Real Food*.

Included in new promotions are nutritional information and the positive points of beef. He said that since Jan. 1987, over 5,500 positive articles have been written about beef.

"Beef is good for us and can be a part of a heart healthy lunch," said the speaker. He also talked about the new pre-school educational kits, and videos for coaches to use to show their athletes on the benefits of beef.

McCasland said the Beef Checkoff program generates about \$73 million per year.

He also gave a breakdown on the cholesterol and saturated fats in beef as compared to other items such as chicken, pork, shrimp and cheddar cheese. Beef was very near to both chicken and pork.

Cont. Page 6, Col. 3

AHA Auction Last Weekend Nets \$2,800

Members of the Bailey County Chapter of the American Heart Association and local volunteers rose early last Saturday to begin the Annual Radio Day Auction at KMUL Radio Station.

From 7 a.m.-3 p.m., these hardworking AHA supporters auctioned off items, manned the phones, and delivered merchandise, baked goods and handmade items.

Winston Allison, chairman of Development Communications for the Bailey County Chapter, coordinated the auction with over 100 people in the community donating items.

A total of \$2,803.55, which includes \$692 in cash donations, was raised.

Enthusiastic volunteers added much to the success of the Radio Day. They included Ethel Allison, Hugh Young, Tadd Young, L. T. Johnson, Jimmy Low, Bary Moynihan, Dennis Hayes, Darrell Turner, and Kent Wiley.

Members of the Bailey County Chapter of the American Heart Association who participated were Winston Allison, Janie Moraw, Janie Moynihan, Linda Turner, Dorothy Turner, Georgia Pena, and Wanda Wiley.

President Linda Turner said, "A tremendous THANK YOU goes to all who supported Radio Day by bidding and buying, working, and donating to this worthwhile project from everyone associated with the American Heart Association!"

Bailey County

Electric Meet

Slated Saturday

The Annual Meeting of the Bailey County Electric Cooperative Association is scheduled for Saturday, February 17, at the Muleshoe High School auditorium.

Registration is 9-10 a.m., with the meeting scheduled to begin at 10 a.m.

At registration, tickets for a free luncheon for Cooperative members and their special guests will be available.

During the business meeting, a directors' election will be conducted.



EL PASO SHOWMANSHIP WINNER--Katie Blac' daughter of Rex and Brenda Black, proudly shows off the trophy she was presented for winning steer showmanship at the El Paso Livestock Show last weekend. (Journal Photo)

School Board Holds Lengthy Regular Meet

It was a busy evening for the seven members of the Muleshoe Independent School District Board of Trustees Monday night, who faced a very full agenda.

First item of business after the routine opening of the session was to approve a public hearing for tonight, Thursday, on the proposed single member districts as sought in a federal lawsuit filed against the school system.

Dr. Lawrence Ward, superintendent, said the law did not require legal publication of the hearing, and the board can go ahead and set an election date, authorize filings for the board, and to go as far as can be done before the suit is finalized.

Strategic Planning was discussed, with the board being informed there would be no problem instituting the goals of the Strategic Planning Commission as no Strategic Planning goal can ever be done without board approval.

The Strategic Planning goals were briefly discussed, and each board member presented a folder with the goals and initial plans approved, or sought, by the Strategic Planning Committee during a three day retreat in January.

Another proposal before the board was put on hold until the next board meeting. The possibility of a MISD Efficiency Plan was discussed and not finalized. It will be pursued more in the next regular board meeting.

A discussion was also held on the 1990-91 school calendar. Dr. Ward explained that the schools in Muleshoe's district attempt to coordinate their calendars as all are in the same UIL league in

athletics and academics.

The mandated workdays and in-service days were also discussed, as well as when they be inserted into the school calendar.

Dr. Ward said school can now begin the week September 1, which can be as early this year as August 27.

Each semester must be a minimum of 86 days, and no more than 89 days, according to Dr. Ward. Weather days and Project Graduation were also discussed, along with the annual Bailey County Junior Livestock Show dates.

Teachers and administrators will also have an input for the school calendar before it will be finalized at a future meeting.

Approval was given to board members to attend the National School Board Association meeting in April in New Orleans. Board Vice President Cindy Purdy said she and former Board President Julie Cage had attended the National meeting and she commented, "It was one of the best meetings I ever attended. It was well organized, and well because."

Attendance of a school holiday, the February 26 meeting of the school board will not be held. The March 12 meeting was moved to Monday, March 5, and the regular March 26 meeting will be held on the scheduled date.

Tax collections, fund reports, and bank balances were also discussed at length, with Assistant Superintendent for Business Dr. Tom Alvis giving a breakdown on each fund.

One item to be included on a March meeting will be the

Cont. Page 6, Col. 1

Crime Line UPDATE

Bailey County Deputy Sheriff Don Carter, coordinator of the Bailey County Crime Line, has released a list of crimes reported from this county that are still on the 'books' showing not cleared up.

They include:

1. Burglary of a residence approximately two and one half miles east and one mile south of Muleshoe, off highway 84. Reward \$700.
 2. Burglary of the Farmers Co-op Elevator. Reward \$300.
 3. Burglary of the Muleshoe Livestock Auction. Reward \$300.
 4. Burglary of the Lamb Star Feeders. Reward \$300.
 5. Several burglaries of motor vehicles, located at McDaniel Trucking in the 100 block of East 5th St. Reward \$300.
 6. Burglary of a residence where a saddle and other items were taken. Reward \$300.
 7. Burglary of a truck where several tools were taken from the truck, located about ¼ mile west of Muleshoe. Reward \$300.
 8. Burglary of a warehouse located within the city limits of Muleshoe. Reward \$700.
 - Burglary of a barn, located approximately eight miles west of Muleshoe. Reward \$500.
 9. Theft of three utility trailers from within Bailey County. Reward \$300.
- Deputy Carter said, Call 272-HELP, and remember -- you will remain completely anonymous.



LAZBUDDIE YOUTH WIN JACKETS--Grand Champion winners Shena Seaton, left, front and Seth Black, show off the jackets donated for their wins at the annual Lazbuddie Livestock Show last month. Back left is Darla Rhodes, of Joe Rhodes Boot Shop, donators of the jackets and Rick Copp, Lazbuddie vo-ag instructor. (Journal Photo)

African Honey Bees Create New Problems

Perhaps as early as March, the first arrivals of the so-called "killer" bees are expected to cross the Rio Grande into Texas. But according to the Texas Department of Health (TDH), their migration to the U.S. will probably be much less dramatic than some media and fiction writers have depicted.

Bobby Davis, an entomologist and director of the TDH General Sanitation Division, explained that the insects may pose an increased danger to individuals who are highly allergic to bee stings, but should not be considered a hazard to most people.

"We want the public to know what makes the AHB (Africanized honeybee) different from other bees. We also want to caution people who are allergic to insect stings that bee stings can be fatal," Davis said. Two or three Texans, stung by common honeybees, die each year.

Davis explained that AHB is a hybrid species, a cross-breed between common European honeybees and a more aggressive African species. The African bees were accidentally released in Brazil about 30 years ago. Even to scientists, the hybrids look almost identical to common honeybees, but their behavior can be drastically different.

"What concerns us most about AHB is that it is more likely than other bees to attack and sting in large numbers if anyone threatens its colony or swarm. Although the venom of Africanized bees is no more toxic than that of other honeybees, the number of stings a person might suffer may be much greater. If the person is already allergic to bee stings, or if he is stung by large numbers of bees in a swarm it can be fatal." Hence the name, "killer" bees.

Davis said he thinks the name "killer" bee is a misnomer. "They are hard-working honeybees, and if you don't disturb their colonies, chances are they won't bother you."

As many as 10 deaths in Mexico may have resulted from AHB stings in the past four years. Other Central and South American countries have recorded increased bee sting deaths as the AHB swarms have spread northward from Brazil.

Another characteristic of AHB is its tendency to abscond--to separate into new swarms to start new colonies. "Whereas most common honeybees are content in beekeepers' hives, the AHB swarms sometimes seek more unlikely places to hide, such as old barrels, vacant buildings--nearly anything that offers shelter. That creates the danger that someone might stumble upon them," Davis said.

Rural Housing Funds Available

Temple, 2-7-1990, Rural Housing funds are being targeted to 100 counties in 38 states across the nation that need it the most, including Colorado, Frio, Maverick, Presidio, and Zavala, according to J. Lynn Futch, State Director for the Farmers Home Administration (FmHA).

FmHA, rural credit service of the U.S. Department of Agriculture, regularly funnels millions of dollars annually in housing funds into the small towns and rural areas of Texas.

"Our efforts to provide safe, decent, and adequate housing for rural residents have been successful, and yet, some areas are still desperately in need of housing assistance," Futch said.

"We have identified counties that need additional FmHA housing assistance and we are starting a demonstration program to target an additional \$840,000 for multi-family housing and \$1,436.00 for single family housing to them," he said. The counties involved are still fully eligible for the regular single family and multi-family allocations of housing funds the state receives.

Counties were identified as eligible for the program on the

Davis said that the most likely persons to have serious problems with the Africanized bees are beekeepers and farmers, particularly in the Valley, where nearly all crops are dependent upon bee pollination. "Beekeepers are going to have to be wary of having their hives taken over by AHB, and some of them who may be lax in wearing protective clothing are going to have to be more careful. Farm workers are going to have to watch for wild swarms, and take care not to provoke them."

Davis added that young children and the elderly, who might not be able to move quickly, especially should avoid these bees. "We advise that anyone who finds a wild bee colony should contact the local health authority or an experienced beekeeper to make sure they are removed or destroyed safely."

basis of a high percentage of very-low income households and substandard housing.

After analysis of the volume of FmHA loan and grant making in fiscal years 1986-88, counties identified as both "needy" and "underserved" by FmHA housing programs were selected for the program.

Applicants for assistance under the demonstration program must meet all the eligibility requirements for FmHA's housing programs. Information on applying for housing assistance from FmHA can be obtained from any FmHA office. Applications for single family home ownership and housing repair programs are processed at FmHA county offices. Applications for rental housing are processed at FmHA district office.

SMILES

Mental Footwork

"Does your husband get much of a kick out of his vacation?"

"Indeed he does. It gives him a lot more leisure to grumble."

Pre-Plant Water Now Very Important

Annual pre-plant soil moisture survey results released by the High Plains Underground Water Conservation District No. 1 and the USDA-Soil Conservation Service confirmed what many area irrigators have already suspected--they will need to apply a pre-plant irrigation to bring the five-foot root zone soil profile to field capacity before 1990 planting begins.

Current soil moisture deficits range from two to 10 inches of water needed to fill the soil profile within the 15-county Water District service area. However, a majority of the cropland fields measured during the pre-plant soil moisture survey will need from four to eight inches of water to reach field capacity, says Mike Risinger, USDA-SCS Soil Scientist.

"The only sites with significant amounts of stored soil moisture were in the more heavily irrigated areas of the Water District. Fields fully irrigated in 1989 usually contained two to three inches more stored soil moisture than dryland fields. However, in areas where only limited irrigation was carried out, the fields were not significantly wetter than dryland fields," says Risinger.

He adds that the driest soil conditions may be found in dryland wheat growing areas in the northern portion of the Water District and in dryland cotton growing areas in the southern portion of the District.

Pre-plant soil moisture conditions have a direct bearing on crop yield prospects. Historically above-average crop yields are produced in the High Plains area when the root zone of the soil profile is near field capacity prior to planting. Any irrigation made and/or precipitation received between now and spring planting will improve soil moisture conditions and crop prospects for 1990.

Since the Texas High Plains normally receives about three inches of rainfall prior to May planting, Risinger says installing furrow dikes is one way producers can utilize the free moisture provided by nature to

their best advantage.

"Research has shown that the use of furrow dikes to hold precipitation in place until it can soak into the soil is one of the most cost-effective conservation practices that High Plains producers can use to increase crop yield profits," he says.

During December 1989 and January 1990, field personnel from the Water District and the USDA-SCS took moisture readings at 237 soil moisture monitoring sites across the 15-county Water District service area. Neutron probes were inserted into permanently-installed aluminum access tubes, and readings were taken at six-inch intervals throughout the five-foot root zone soil profile.

The annual soil moisture monitoring results are designed to inform irrigators about general soil moisture availability and

deficit conditions within the Water District. With this information, irrigators can estimate the amount of water they will need to apply during pre-plant irrigation to bring the soil to field capacity without over-irrigating or under-irrigating.

Risinger reminds producers that the soil moisture survey results are intended to illustrate general soil moisture trends and that the data should not be used as a substitute for checking moisture conditions in individual fields.

Additional information regarding the 1990 pre-plant soil moisture survey is available by contacting your local USDA-Soil Conservation Service office or the High Plains Underground Water Conservation District No. 1, 2930 Avenue Q, Lubbock, Texas 79405, or call (806) 762-0181.

Through the decades, Kiwanis clubs find new ways to serve communities

In each of the past seven decades, whether marked by economic boom or bust, by peace or war, Kiwanis clubs have faced new challenges and sought new ways to serve their communities.

1920-1930

The 1920s were a booming growth decade for the young Kiwanis organization. Membership rose from 28,000 in 1920 to 104,000 in 1930. The Kiwanis motto, "We Build," was adopted in 1920 and the six Objects in 1924. US-Canada Day developed into Canada-US Goodwill Week, the oldest continuing Kiwanis observance. The first Key Club was organized in 1925, an idea that would eventually grow into the largest high school service organization in the world.

1930-1940

The world economic depression brought hard times for Kiwanis. From 1930 to 1934, Kiwanis clubs lost 25,000 members. But the depression also presented many new opportunities for service. In 1936, President Roosevelt invited Kiwanis leaders to the White House and praised their active efforts to fight the depression. Membership began to grow again, and the 2,000th club was chartered in 1938.

1940-1950

The Kiwanis International Foundation was founded in 1940 on the 25th anniversary of Kiwanis. Canada and then the United States entered World War II, and 15,000 Kiwanians were soon in uniform. But membership grew as civilians sought

ways to serve their nations on the home front. Kiwanians sold more than \$2 billion worth of war bonds and collected 3 million tons of scrap for the war effort.

Peace brought even greater membership growth. As the Iron Curtain went up, Kiwanis service activities focused on promoting democratic values and political freedoms. In 1949, more than 1,200 clubs sponsored the first Kiwanis Kids Day.

1950-1960

The 1950s were a second golden age for Kiwanis, which reached 4,000 clubs and 250,000 members by mid-decade. Kiwanis also sponsored the first Farm-City Week to promote understanding between the rural and urban sectors of society. Circle K International, a service club for college students, won official Kiwanis sponsorship and grew rapidly. Democratic freedoms and good citizenship remained the focus of major service programs.

1960-1970

In 1961, Kiwanis convention delegates approved expansion beyond the two founding nations of the United States and Canada. By the end of the decade, Kiwanis clubs were active in dozens of nations throughout western Europe, Latin America, and the Asia-Pacific region.

By 1967, however, the anti-establishment era had dawned, and Kiwanis membership failed to increase for the first time since 1934. Drugs, another aspect of the new age, were a growing concern, and Kiwanis International launched "Operation Drug Alert" to discourage drug use by young people.

NOTICE NOTICE

In the Sunday, Bailey County Journal issue, dated February 11, 1990 the full page ad for Serv-All Thriftway was not the correct ad.

The correct advertisement is the circular that was distributed in the Bailey County Journal, February 11, 1990.

Serv-All Thriftway wishes to apologize for any inconvenience to our shoppers!!



You may pick-up a circular at the store

JV Basketball News
By Coach Tom Duncan

On the previous Friday evening the Muleshoe J.V. Boys Basketball fought and clawed their way to a solid third or fourth place in the District standings by coming out on the winning side of a teeter totter of a game with Floydada. The Mules slid past the Whirlwinds in a dull of defenses 33 to 31. We played sluggish in a few instances then we played good in other instances. Over the last 10 games the J.V. Boys played hard and continued the improvement which will benefit the Basketball program in the future.

Through the progression of the season, the J.V. had its ups and downs but the dominating factor between our kids was the never say die spirit. Quiet frankly with that spirit coupled with continued participation and believing the program and kids will be a domineering force in the future.

The season record was 6-22. However a tick of the clock, a bounce of the ball or a good decision (one more) could have pushed the J.V. Mules to a better

finish. But a coach or team can't hang their future on what ifs.

It was an interesting season and watching these kids mature and working with them was Great. The following is game summary of each district game:

M.J.V. 36
TULIA
TULIA 47

C. Hutton, 10 points; J. Noble, 10 points; J. Carpenter, 6 points; B. Hernandez, 6 points; C. Dominguez, 2 points; and A. Crawford 2 points.

M.J.V. 37
FRIONA 52

C. Dominguez, 5 points; C. Hutton, 2 points; B. Hernandez, 4 points; J. Noble, 2 points; E. McElroy, 9 points; and R. Guana, 13 points

M.J.V. 48
LITTLEFIELD 37

C. Hutton, 7 points; A. Crawford, 5 points; J. Noble, 14 points; J. Carpenter, 2 points; B. Hernandez, 6 points; R. Guana, 4 points; and E. McElroy, 8 points

M.J.V. 28
DIMMITT 88

C. Dominguez, 1 point; C. Hutton, 12 points; J. Noble, 6 points; J. Carpenter, 2 points; J. Alanis, 2 points; and B. Hernandez, 2 points

M.J.V. 35
FLOYDADA 29

C. Dominguez, 3 points; C. Hutton, 10 points; J. Carpenter, 4 points; B. Hernandez, 2 points; J. Noble, 4 points; and R. Guana, 5 points

M.J.V. 30
TULIA 62

C. Hutton, 12 points; J. Noble, 2 points; A. Crawford, 2 points; J. Carpenter, 6 points; E. McElroy, 2 points; M. Hicks, 2 points; and M. Lewis, 3 points

M.J.V. 30
FRIONA 77

C. Dominguez, 5 points; C. Hutton, 9 points; J. Noble, 3 points; A. Crawford, 5 points; C. Collins, 2 points; and E. McElroy, 4 points

M.J.V. 34
LITTLEFIELD 23

Cub Scouts News

Muleshoe Boy Scout Pack 620 came away with three first place trophies at the George White District Pinewood Derby Races held at Levelland's Texan Doam. The races were conducted by grades first, second, third, fourth and fifth grade scouts unlimited and adults unlimited.

In the first grade Tiger Cub class Rocky DeHoyus, son of Mario and Sonovia DeHoyus came away with the first place trophy and Cade Hooten, son of Gary and Hollye Hooten finished in fifth place.

In the second grade Wolf Cubs, Bret Clements, son of Delmer and Pat Clements was awarded the first place trophy. The fourth grade Webelos first place trophy was won by Jerry Cisneros, son of Paul and Tina Cisneros.

Other boys who competed and won several races, before being eliminated were Luke Bruns, Aaron Purdy, Greg Pena and Payton Rennels.

In the fifth grade Webelos Adam Graves and George Martinez finished tied for fourth place.

In the adults unlimited Mario DeHoyus finished second and Joe Gear in third place.

"Pack 620 wishes to thank Mario DeHoyus and Joe Gear for their help with the brackets in these races" said John Graves. Transportation was provided by Cindy Purdy and Paul Cisneros.

A. Crawford, 2 points; J. Noble, 1 point; K. Kenmore, 2 points; and Eric McElroy, 29 points

M.J.V. 32
DIMMITT 54

C. Dominguez, 2 points; J. Noble, 5 points; E. McElroy, 19 points; B. Hernandez, 3 points; J. Alanis, 2 points; and J. Carpenter, 2 points

M.J.V. 33
FLOYDADA 31

E. McElroy, 13 points; C. Dominguez, 5 points; B. Hernandez, 5 points; and J. Noble, 10 points

Need More Time to File?

You may get an automatic four-month extension of time to file, if you file Form 1040 or 1040A.

To get the automatic extension, you must file Form 4868, "Application for Automatic Extension of Time to File U. S. Individual Income Tax Return," and forward it by April 16, 1990 to the IRS processing center for your area.

But remember, an extension of time to file is NOT an extension of time to pay.

After you've made an estimate of your tax for the year, you must pay the balance due with your Form 4868. If you underestimate the amount you owe, you will have to pay interest on the unpaid amount. If that amount is more than 10% of your tax, you will have to pay, in addition to interest, a failure-to-pay penalty.

If you file Form 1040EZ or intend to request IRS to compute your tax, you are not eligible for an automatic extension. Also, you are not eligible if you are under a court order to file by the regular due date.

Muleshoe Journal USPS 267-820
Established February 23, 1974. Published by Muleshoe Publishing Co., Inc. Every Thursday at 304 W. Second, Box 449, Muleshoe, Texas, 79347. Second Class Postage Paid at Muleshoe, Texas, 79347.

Member 1990
TEXAS PRESS ASSOCIATION

L. B. Hall, Publisher
Sammye Hall, Vice-President/Controller
Cleta Willis, News
Evelene Harris, Society
Holly Minkap, Advertising
Dora Tocco, Classified

SUBSCRIPTIONS
Muleshoe Journal and Bailey County Journal
Bailey and surrounding counties
\$4.75

Muleshoe Journal and Bailey County Journal
Outside Texas, \$11.50
Yearly By Carrier
\$12.50

Advertising Rate Card on Application
Advertisers should check their ad the first day of insertion. The Journals will not be liable for failure to publish an ad or for a typographical error or error in publication except to the extent of the cost of the ad for the first day of insertion. Adjustment for errors will be limited to the cost of this portion of the ad where the error occurred.

Three Way News
by Mrs. H.W. Garvin

Mrs. Adolph Wittner spent the first part of the week in Plainview visiting her daughter, the Baxter Vaughn family.

Tuesday night the Three Way basketball teams played Amherst there losing both games. Friday night the Three Way teams played Whiteface here losing.

Mrs. Jack Lane from Three Way and her mother, Mrs. Nettie Quesenberry from Muleshoe visited their daughter and sister, Mr.

and Mrs. Amel Macha in Littlefield Tuesday.

We welcome a new car, Maple, it is G. and M. Auto Supply and Repair.

Lupe Solaz from Whiteface spent Monday with Mr. and Mrs. George Tyson.

Mr. and Mrs. Ralph Davis from Lubbock spent Thursday with their daughter, the Bill Dolle family.

Wilma Mill from Austin spent the past week visiting her sister, Mr. and Mrs. Pete Tarlton.

FEBRUARY SPECIAL CONEY COMBO

- Ex-Long Cheese Coney
- Medium Soft Drink

Simplify the hectic holiday hustle-bustle with an easy-to-eat-there-or-take-home February Special Coney Combo from Sonic. It's an extra long cheese coney with zesty chili plus a medium soft drink.



SONIC 1633 W. Amer. Blvd. 272-3998
©1989 SONIC INDUSTRIES INC.

Introductory Special
NEW Unlead Plus Gasoline
Higher Octane & Keep Clean Detergent Additives For Fuel Injectors & Carburetors.

Unlead Plus 89 Octane **1.08⁹** a gal.
Unlead 86 Octane **1.06⁹** a gal.
Super Unlead 90 Octane **1.14⁹** a gal.

You'll Notice The Difference In Your Car's Performance With The First Tank!

Your Discount Station With Full Service!

Evins Sonshine Station
623 W. Amer. Blvd. Muleshoe 272-5216

AT YOUR BOILING POINT ABOUT ALL THAT JUNK

...and what to do with it?
Don't get in a stew about all that useless junk and stuff lying about your attic and garage! Your recipe for quick cash and more space is to call us at the classifieds. Let us help you get out of hot water and collect some cool cash too!

Muleshoe & Bailey Co. Journals
272-4536

NOTICE OF ANNUAL MEETING OF MEMBERS BAILEY COUNTY ELECTRIC COOPERATIVE ASSN.

Will be held in the Muleshoe High School Auditorium February 17, 1990 10:00 a.m.

- ★ A free noon meal will be served to Cooperative members and their families.
- ★ Registration begins at 9:00 a.m. You must register to get meal tickets between 9:00 a.m. and 10:00 a.m.
- ★ The business meeting will include:
Financial Report
Progress Report
General Condition Report on the cooperative
- ★ Members will elect Directors from No. 3 and No. 6 and handle any other business that should come before the meeting.

★★ Note: If you are a member or shareholder of a company, corporation or civic organization, and you are acting as a voting delegate, you must present a letter of authorization at the registration table signed by the president and secretary of that organization.

Journal Files

50 Years Ago

1940

GOOD CROPS RAISED ON LOW RAINFALL DURING 1939

Citizens of this area may have surprise registered in their minds when they learn they raised such good crops last year on such small rainfall; but such is typical of this section of the state where apparently precipitation last longer and is more readily available for crop production.

Total rainfall here for last year, according to figures presented by Judge R.J. Klump, keeper of the government weather station in Muleshoe was only 14.05 inches against 20.02 inches in 1938 and 19.01 inches for 1937.

40 Years Ago

1950

DALLAS FIRM GETS CONTRACT FOR CONSTRUCTION OF NEW CO-OP BUILDING

Contract for construction of a new headquarters building in Muleshoe for Bailey County Electric Cooperative Tuesday was awarded to Dolph Construction Company, of Dallas.

The new building will go up on lots owned by the Cooperative at the corner of East First Street and Avenue B in Muleshoe. This is only a half block east of the post office, one block east of Main Street. Plenty of parking space will be available around the building.

30 Years Ago

1960

BOY SCOUTS OF AMERICA SET FOR OBSERVANCE OF 50TH ANNIVERSARY

The nation marks the 50th anniversary of the Boy Scouts of America starting with Boy Scout Week Feb. 7-13.

Impressed with the helpfulness of an unidentified British Boy Scout in 1910 who lost his way in a London fog, learned about scouting from his founder, Sir (later Lord) Robt. Baden-Powell and incorporated the organization in Washington DC on Feb. 8, 1910.

From the modest beginning in 1910 the Boy Scouts of America has grown in 50 years to the active enrollment today of more than five million boys and leaders and an alumni of 28,500,000 others who have been influenced

Tax and Business Travel

Beginning in 1989, some business travelers will not be able to deduct some of their business deductions if they are reimbursed by their employers for their expenses and yet, are not required to adequately account to their employer for their travel or other business expenses. Also, a deduction may not be permitted if they keep any allowance or reimbursement in excess of the expenses for which they do adequately account.

This occurs because the employer reports allowances or reimbursements paid under a nonaccountable plan as part of the employee's wages on Form W-2. The employee, however, can deduct as miscellaneous itemized deductions, only the expenses that exceed two percent of his or her gross income.

In the past, employees could deduct all of their reimbursed expenses as an adjustment or reduction to their gross income, regardless of whether the expenses were adequately accounted for, or if any excess reimbursements were returned.

Business travelers who (under their employer's accountable plan) are required to account for all of their business expenses, and, have reimbursements equal to their expenses, or return any excess reimbursement or allowance to their employer, may not deduct business expenses since they are not reported on the W-2.

by the Scout Oath of Law.

The South Plains Council, Boy Scouts of America, was organized in January 1925. The first annual meeting of the council was held at O'Donnel, Texas in 1926 at which time officers were elected and a budget of \$11,200 was adopted.

20 Years Ago

1970

CITY HALL OPEN HOUSE DATE IS SET

Tentative date and time for open house and dedication of the new city hall and law enforcement center in Muleshoe has been set. The date and time will be Monday, Feb. 9, 2-5 p.m.

Lieutenant Governor Ben Barnes will be in Muleshoe to give the principal address at the ceremonies.

10 Years Ago

1980

SHOWMANSHIP WINNERS

Brenda Dodd, daughter of Mr. and Mrs. Bob Dodd won the 'Showmanship Award' in the livestock show, and Alan Harrison, son of Mr. and Mrs. Ted Harrison, won the 'Showmanship Award' in the steer division.

JIMMY DALE BLACK AWARD WINNER

Alan Harrison was named winner of the coveted 'Jimmy Dale Black Award' during the Bailey County Junior Livestock Show.

4-H Seeking

Former Members

A 4-H volunteer leader is gathering names, addresses and phone numbers of former 4-H members with plans to eventually form an alumni organization.

Janie VanZandt of Pampa, herself once a 4-H'er, says no comprehensive record of former members exist--a void she plans to fill.

"It's very important we have a list of these people. We'd like to know who is where so we can gather them together for reunions as well as draw on their expertise from time to time," she said. "We'd also like to be able to recognize them for special contributions they've made to their communities."

"All of this can be done if we have a record of former members and form an alumni organization," she said.

Four-H--which stands for head, heart, hands, health--is the largest youth organization in the nation. Its mission is to develop self-directed, contributing, productive members of society.

About 24,500 4-H members live in Texas Districts 1 and 2, which roughly encompass the Panhandle and South Plains. About 383,000 members are in Texas.

VanZandt plans to build a network of 4-H supporters, many former members, throughout the area. VanZandt sees many as potential volunteers.

"Alumni need to be updated on what's going on in the organization. They might see something they want to be involved in. They might want to give back to the organization that gave them so much," she said.

"I think many former 4-H members look back and realize how fortunate they were to be involved. Kids that participate in any youth group are less likely to get into trouble," she said.

VanZandt encourages 4-H alumni to send their names, addresses and phone numbers to her at: 2201 Dogwood, Pampa, Texas 79065.



CALLING THE SQUARE DANCES--Tom Roper of Illinois was in Muleshoe Saturday night to do the calling for the Muleshoe Square Dance Club's annual Anniversary Dance. Several square dance clubs from this area were in attendance. (Journal Photo)

Survey Shows High Percentage, Wedding Gowns Sewn At Home

Wedding gowns are the stuff dreams are made of, but where does the bride-to-be begin and what will it take to make her dreams come true? The Sewing Fashion Council answers these and other questions in "Wedding Belles," a 20 page guide printed in vivid color that provides information on selecting patterns and choosing fabric and notions for wedding gowns as well as special occasion dressing and bridal accessories.

According to industry statistics, 40 percent of wedding fashions are sewn at home or by a dressmaker. "A wedding is one of the most important events in a woman's life," says Caryl Svendsen of The Sewing Fashion Council. "By sewing or designing her own dress, a woman can have exactly what she wants without spending an exorbitant amount to get it."

This season's bridal looks range from fanciful confections of tulle and lace to satin gowns that are simple and elegantly traditional. The full-skirted silhouette remains the preferred shape. Bodices are embellished with sequins, pearls, lace, ribbon and even fringe! And for bridesmaids, the cute, little-girl styles are replaced by slimmer dresses with a more sophisticated and dramatic ballgown look.

"Wedding Belles" features information on how to find a dressmaker and how to identify the gown style and fabric that's most flattering to the bride's figure. Special occasion tips and trends for mother of the bride and bridesmaid dresses illustrate which colors, fabrics, and style is best suited for evening and partywear. A timetable indicating target dates for each step in the process of creating the bridal gown suggests when to shop for fabric and lace and what to do

with leftover fabric. "When sewing her own wedding gown, the bride-to-be should keep in mind that she can mix and match a bodice from one dress with a sleeve or skirt from another to create a tailor made, one-of-a kind design that spotlights her best features," Svendsen explains. "You can also save as much as 80 percent of the cost of an off-the-rack gown."

Fabric stores offer personalized service, an extensive selection of lace and trim, and special-occasion boutiques within the store. This season, fabrics are rich and softly colored. Soft pink or unusual texture is used to heighten the interest of simple shades. Cotton eyelet looks crisp and new; low luster satin is romantic as well as slimming; chiffon adds elegant ease; point d'esprit is dreamy.

Whether she is an expert sewer, a beginner who would like to sew some aspect of the bridal attire or simply a woman who has her own design ideas, sewing offers the bride more options and greater control. With sewing she is not tied to a particular style, fabric, color or price tag.

To obtain a copy of "Wedding Belles", send \$1.00 plus your name and address to "Wedding Belles", C/O The Sewing Fashion Council, P.O. Box 431M, Madison Square Station, New York, New York 10010.




CELEBRATING SIXTY YEARS--Mr. and Mrs. George Tyson of Maple will celebrate their 60th wedding anniversary with a reception Sunday, February 18, from 1:30 to 3 p.m. in their home. The event will be hosted by their children, Mr. and Mrs. T. J. Durham of Lubbock; Mr. and Mrs. W. B. Price of Ft. Worth, Buck Tyson and Sandy Davis of Terrell, Mr. and Mrs. D. A. Williams of Enochs and Mr. and Mrs. Troy Tyson of Levelland. The couple have 12 grandchildren and eight great grandchildren. Tyson and the former Hattie Garvin were married on February 18, 1930 in Clovis, N.M. They have resided in the Maple community these 60 years. "Friendship of yesterday, today and tomorrow is our gift, we ask no other." (Guest Photo)

Simple

Master of the House: "Why did you tell your mistress what time I came home last night after I had told you to be quiet about it?"

Maid: "I didn't sir. She asked me what time it was, and I told her I was too busy getting breakfast to notice."



Bailey Co.
Political Calendar
Bailey County Judge
Marilyn Cox
Jim Watson
Robert R. Alanis
District Judge
Jack Young
Commissioner Prec. 4
Terry Sowder
Alfonso Posadas
Jodie Barrett
Bennie Claunch
Commissioner Prec. 2
C.E. Grant
Don Seales

VOTE!

Parmer County
Political Calendar
Parmer Co.
Judge
Leland Gustin

COUNTRY BASKET*!



\$1.99 FOUR FINGERS SALE PRICE JAN. 29 - FEB. 18, 1990

Delicious country-fried steak fingers, golden fries, Texas toast, and Dairy Queen's own special gravy. Six-finger basket: SALE PRICE \$2.99.

ON SALE IN



* Reg. U.S. Pat. & Tm. Off. Am. D.Q. Corp. TM Reg. U.S. Pat. & Tm. Tx. D.Q. Op. Coun. © Tx. D.Q. Op. Coun. At participating Dairy Queen stores.

18 Years old



1 Year old



She's our Valentine
Treasure and our greatest pleasure!
Happy "18th" Sheila.
We love Ya.
Mom, Dad & Rammie!



LEADING THE GRAND MARCH--Deon and JoAnna Gallman, daughter and son of Robert and Ellen Gallman, led the Grand March Saturday night at the Muleshoe Square Dance Club's annual Anniversary Dance. These youngsters took square dance lessons last year, making it a three generation activity. Not only are their parents members of the Muleshoe Squares, so are their grandparents, J. W. and Gloria Herrington. (Journal Photo)



DANCERS OF ALL AGES--Twenty-seven and a half squares from the young to not so young attended the annual Anniversary Dance Saturday night at the Civic Center. Three generations of one family, J. W. and Gloria Herrington, Robert and Ellen Gallman and Deon and JoAnna Gallman, were on hand to enjoy the dance. (Journal Photo)

AAW Holds Regular Monthly Meeting

The Muleshoe chapter of AAUW (American Association of University Women) met Monday, January 5 at the Old Depot with Ethel Allison, Esther Marie Dillman and Bula Mimms as hostess.

Jean Allison and her civics class presented the program on the importance of the Bill of Rights.

Cherry cheese cake, lemon chiffon dessert, cookies and spiced tea or coffee were served.

A short business meeting was conducted and it was announced that Teen Awareness week will be March 10-14.

The February Girl of the Month is Shonda Strahan.

Those present included: Jean Allison, Ethel Allison, Nancy Benham, Julie Cage, Joyline Costen, Pam Hancock, Nan Johnson, Bula Mimms and Lucy Faye Smith.

Nursing Home News
by: Joy Stancell

Ella Faubus' grandson, Wayne, visits her each afternoon and goes with her to the dining room for supper.

Tuesday afternoon Nobie Phipps, Laverne James, Beth Watson, Olive Cox, Claudine Embry and Lula Maye Shanks came to shampoo and set the ladies hair. Dustie Moynihan gave manicures.

Up coming events--Kings Kids from the United Methodist Church in Clovis Saturday. Mardi Grais stand by for more details.

We wish to thank our residents that do volunteer work. Thank you Effie Smith, Ora Roberts, Patsy Franklin and Pearl Cox. We appreciate your work.

Creative Living

by: Sheryl Borden

Information on a two-way voice communication system, the newest Playmobile sets, and low-calorie ground turkey will be featured topics on "Creative Living" on Tuesday, February 20 at 12 noon and Saturday, February 24 at 2 p.m. (All times are Mountain.)

James Brown, Program Coordinator with Emergency Response Systems, Inc. in Los Angeles, CA, will tell about a two-way voice communication system that brings help at the push of a button. This state of the art communication system is especially appropriate for the elderly, for the disabled or for people with special medical conditions.

Diane Creston, representative from Playmobil in New York, New York, is going to talk about their newest miniature worlds. Playmobil is a system of "themed" sets filled with little men, women, children and all the everyday things one would find in the real world. Diane will show some of their latest sets which are all scaled to work together so kids can mix and match to their hearts content.

Teresa Farney, from National Turkey Federation in Reston, VA will demonstrate a variety of recipes using lean ground turkeys. Burgers, for one, will never be the same now that low-calorie ground turkey has been discovered.

On Tuesday, February 20 at 9:30 p.m. and repeated on Thursday, February 22 at 12 noon, "Creative Living" will present information on how fabrics and window treatments can affect moods, how junk can be turned into joy, and how to make high-calcium Italian Bread and Cheese Salad.

Peggy Gikas, owner of Twin Oaks in Farwell, TX, will show four different moods created through the use of different fabrics and different window treatments.

Sandy Allison, former Texas Extension Agent from Lubbock, TX, will share several very interesting ways to make toys out of things you might otherwise be ready to throw away. Sandy has quite an assortment of toys and items that will delight your youngster and not put a dent in the pocket book.

Robin Blackburn, representative from the National Dairy Board, is going to demonstrate making a high-calcium Italian Bread and Cheese Salad.

"Creative Living" is produced and hosted by Sheryl Borden. The show is carried on more than 100 PBS stations in the United States, Canada, Guam and Puerto Rico and is distributed by Pacific Mountain Network, Denver, CO.

BASIC TURKEY BURGER PLUS

- 1 Pound Ground Turkey
- 1/2 Cup finely chopped onions
- 1 Teaspoon soy sauce
- 1/2 Teaspoon garlic powder
- 4 Burger Buns, toasted
- 1/2 Cup seasoned bread crumbs
- 1 Egg, beaten
- 1 Teaspoon Worcestershire sauce
- 1/2 Teaspoon dry mustard

In a large bowl, combine turkey, bread crumbs, onions, egg, soy sauce, Worcestershire sauce, garlic powder and mustard. Shape meat mixture into 4 patties, each 1/2-inch thick. On lightly greased broiling pan, about 6 inches from heat, broil burgers 3 to 4 minutes per side, or until no longer pink in center. Serve burgers on buns.

APPROXIMATE NUTRIENT CONTENT PFR SERVING: 378 KCAL; 28 gm protein; 14 gm fat;

33 gm carbohydrate; 807 mg sodium; 144 mg cholesterol.

TURKEY BURGERS AL GRECO

- 1 Recipe Basic Turkey Burger
- Plus
- 1 Cup tomato, chopped
- 1/2 Cup cucumber, sliced thin
- 4 Mini pitas
- 6 Tablespoons Feta cheese,

crumbled
1/2 Cup onion, sliced thin
Prepare Basic Burgers according to recipe. To open pitas, cut off tips; insert burgers. Evenly sprinkle cheese, tomato, cucumber and onion into each pita.
APPROXIMATE NUTRIENT CONTENT PER SERVING: 339 KCAL; 27 mg protein; 18 gm fat; 16 gm carbohydrate; 621 mg sodium; 175 mg cholesterol.

CREAMY MUSHROOM TURKEY BURGERS

- 1 Recipe Basic Turkey Burger
- Plus
- 1/4 Teaspoon dried thyme leaves
- 1/8 Teaspoon salt
- 1 Cup plain low-fat yogurt
- 2 Tablespoons margarine
- 1/2 pound mushrooms, thinly sliced
- 2 Tablespoons brandy
- 1/2 Teaspoon garlic powder
- 1/8 Teaspoon pepper

Prepare Basic Burgers according to recipe. In a medium skillet over medium-high heat, saute mushrooms and thyme leaves in margarine 1 to 2 minutes. Add brandy, garlic powder, salt and pepper; cook for 1 minute. Stir in yogurt and heat until warm. Serve burgers topped with mushroom sauce.

APPROXIMATE NUTRIENT CONTENT PER SERVING: 361 KCAL; 19 mg fat; 19 mg carbohydrate; 747 mg sodium; 145 mg cholesterol



ONE OF TWENTY-SEVEN SQUARES--This was only one of the Twenty-seven and a half squares that gathered at the Civic Center Saturday night for the annual Anniversary Dance. (Journal Photo)

ANTHONY'S SPRING PREVIEW Sale



Save up to 40%

Juniors' Fashion Tops for Spring

Sale 7⁸⁸ or 2 for \$15

Reg. 12.99 each. Choose from the cap sleeve sweater or the short sleeve fashion T-shirt with crested pocket. Both are made from 100% cotton and come in assorted spring fashion colors. For junior sizes S,M,L.

Levi's® 501® Prewashed Jeans for Juniors

Sale 19⁹⁷

Reg. 26.99. The original button-fly jean is now on sale! Levi's® 501® jeans are made from 100% prewashed cotton denim and styled with a button-fly, five-pockets and straight leg silhouette. In indigo blue for junior sizes 3-13.



Save 25%

Men's Le Tigre® Short Sleeve Knit Shirts

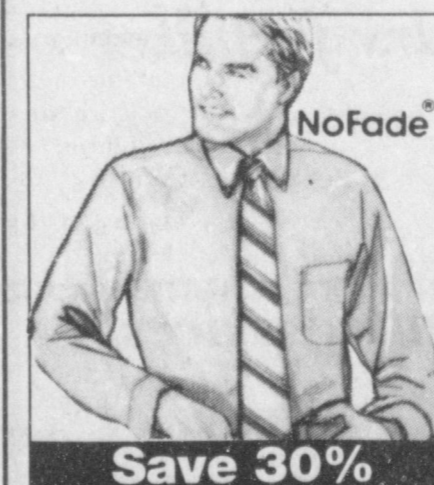
Sale 9⁹⁷

Reg. 13.99. Le Tigre® knit shirts are made from a polyester-cotton blend for cool comfort. Styled with short sleeves, soft knit collar and 2-button placket front. Choose from assorted solid colors in men's sizes S,M,L.

EZ's by Haggard® Casual Slacks for Men

Sale 21⁹⁷

Reg. 29.99. This casual fashion pant from Haggard® is made from 100% cotton twill for easy care and is styled with a plain front. In your choice of black, khaki or olive drab. Men's sizes 32-42.

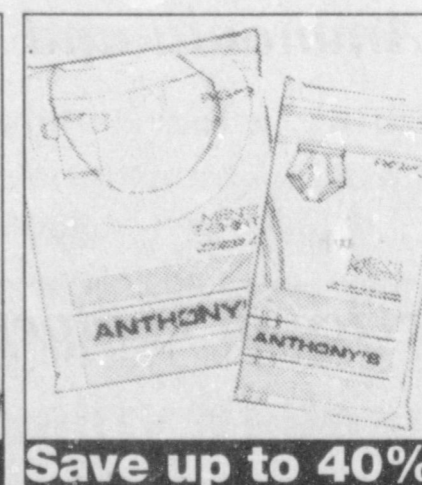


Save 30%

Men's NoFade® Long Sleeve Dress Shirts

Sale 10⁹⁷

Reg. 15.99. Our NoFade® dress shirts are a cotton-polyester blend and feature a button-down collar and seven-button front. Choose from white, maize, blue or pink. For men's sizes 14 1/2-17 1/2.



Save up to 40%

Anthony's® 3-Pack Briefs and T-shirts for Men

Sale 3⁹⁷

3-Pack, Reg. 6.99. Made from 50% cotton-50% Kodol® polyester. In white. Briefs in sizes S,M,L,XL. Anthony's® T-shirts, S,M,L,XL, 3-Pack, Reg. 8.99. Sale 3-Pack for 5⁹⁷



Save 25%

Girls' 3-Pack Hanes Her Way® Cotton Panties

Sale 2⁹⁷

3-Pack, Reg. 3.99. HANES HER WAY® panties are 100% cotton and come in assorted colors and prints. Sizes 4-14. Girls' Hanes® Showtoons® panties, 3-Pack, Reg. 4.99. Sale 3-Pack for 3⁹⁷

Save up to 40%

Hanes® Isotoner® Fashion Pantyhose for Women

Sale 2 Pair for \$5

Sheer, Reg. 3.95 pair. Control Top, Reg. 4.50 pair. Isotoner® pantyhose for legs that go non-stop. Sheer or control top styles. Sizes I, II, III.

Save 40%

Women's Cotton Canvas Sneakers

Sale 5⁹⁷

Reg. 9.99. In-Action® fashion sneakers feature lace-up styling and a cotton canvas upper that is machine washable. White, red, navy or black. Sizes 5 1/2-9, 10.

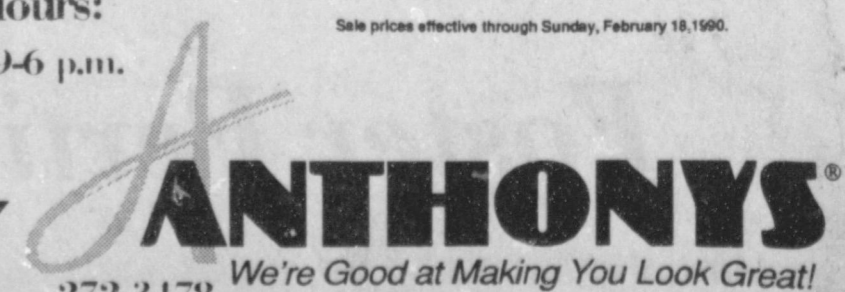
Super Buy

Women's Hair Accessories Buy 1, Get the 2nd for 1/2 Price

Reg. 4.99 to 7.99. Save on headbands, pony tail wraps and barrettes. Buy 1 at regular price. Get the 2nd of equal or less value for 1/2 price. Styles will vary.

Store Hours: Mon-Sat, 9-6 p.m.

Sale prices effective through Sunday, February 18, 1990.



321 Main Muleshoe, Tx. 272-3178

TREE Sale

The Trees Have Arrived And Are Ready For You!

Come By And Pick Yours Out Today!

Shade and Evergreens 1 3/4"-2" Balled and Burlap

(Fruit Trees Will Be Available Next Month)

Kristy's Plants

710 E. Amer. Blvd.

272-5536

H&R Block wants to save you money.

We dig for every deduction and credit to which you are entitled. We'll find you the biggest tax refund you have coming. Put us to work for you.

H&R BLOCK

America's Tax Team 224 W. 2nd 272-3332

Weekdays 9-6

Sat. 9-5

Ambulance Letter

Cont. From Page 1

commissioners approved up to six deputies, subject to their being covered by workman's comp and the sheriff's liability insurance.

Sheriff Hicks also requested a part for a new intoxilyzer, received through a grant. The necessary part to make the piece of equipment operable was not included in the grant. Commissioners approved the less than \$400 purchase.

Bailey County Treasurer Dorothy Turner presented her report, and also told commissioners she had set up a \$100,000 investment fund last week for Precinct Four.

Also meeting with commissioners was Joyce Holmes, manager of the Bailey County Coliseum.

She told commissioners, "The problem with the coliseum and overtime needs to be settled."

"I didn't start this, it started last July. I have turned in my

Board...

Cont. From Page 1

possibility of hiring a truant officer for the Muleshoe ISD. Dr. Ward said he has worked in school districts with a truant officer, and said when a judge works with the school, and fines parents \$50 per day that their child is not in school, "it really makes a difference." He said the only alternative a parent will have is to go to court and declare their child who won't attend school 'incorrigible.'

Assistant Superintendent Tom Alvis reported that the new roof for the Watson Junior High School gym has been completed, and the stage lighting at Muleshoe High School is completely done now.

Cindy Purdy reported that Elizabeth Watson is home and 'doing fine' after her open heart surgery in January, "but she still has a long way to go."

Following a short break, the board went into executive session to consider contract renewals for assistant superintendents, directors, principals, assistant principals, athletic director, and band director.

overtime hours, and as of last October, I have kept a time sheet as required by the judge, and have checked in and checked out.

"I think something needs to be done. This needs to be taken care of."

On questioning by the commissioners, Mrs. Holmes told the county commissioners that she had received papers to file from the Wage and Labor Board compliance officer in Lubbock.

She said if she filed the complaint, the compliance officer said he would come in and check everything out. If violations were found, the county would be fined for the violations.

Although commissioners had asked that a representative attend a commissioner's meeting Mrs. Holmes said the compliance officer said they would not meet with the commissioners, and suggested the commissioners get an attorney.

Mrs. Holmes also reminded county commissioners of a former county employee who quit and got all his overtime "with no questions asked."

She added, "I need one of the commissioners to make a proposal, or whatever, so I can get back to my work and things get back to normal."

"You still need to treat all county employees the same."

Although Commissioner Scott and Commissioner Kindle said they would like to get everything settled, Judge Watson said, "There are allegations that we have broken the law. We need a labor attorney."

Although nearly 645 hours of overtime had been turned in, more than 100 were beyond the two year statute of limitation.

Judge Watson again interjected, "How far do you want this investigation to go? If you want a full investigation, tell me."

The judge also advocated changing the coliseum directors job description and paying straight time pay for all hours worked. The monthly salary would remain the same.

However, he was overruled by commissioners, who unanimously approved paying the 514 overtime hours logged in the last

two years, and as Commissioner Kindle said, "wiping it off the books."

In other action, the commissioners approved a budget amendment, adding funds for a part time manager for the coliseum, to relieve some of the long hours required for Mrs. Holmes.

Rotary...

Cont. From Page 1

The speaker said six ounces of beef is equivalent to eight pounds of broccoli in the amount of iron you get.

McCasland also showed a video which explained how the Beef Checkoff program works.

Before the program, President Terry Hutto discussed the possibility of obtaining a special Paul Harris Fellow and again reminded of the District Conference in New Mexico April 20-22.

Ted Barnhill was winner of the Polio Plus drawing.

Guests included Farwell Rotarian Mark Williams; also, Jerry Bruns, Ernest Cadenhead and Rotary Ann Judy Watson.

Reduce Future Tax Shock

All interest and dividends you receive must be reported on your tax return. You can reduce the possibility of future problems with the IRS if you report your interest and dividends properly on your tax return. If you receive more than \$400 in interest or more than \$400 in dividends, you must also complete and attach the appropriate schedule to your return. If you file a Form 1040A, you must attach a Schedule 1. If you file a Form 1040, you must attach a Schedule B.

Payers of interest and dividends report payments to you on Forms 1099-INT for interest payments and Forms 1099-DIV for dividend payments. When a brokerage firm sends you a 1099-DIV, "Statement of Recipients of Dividends and Distributions," you should list the brokerage firm as the "Payer," and the total amount reported on the 1099-DIV should be shown on the appropriate tax form.

Follow the instructions for Schedule B to report interest and dividends on your return and reduce the possibility of future problems with the Internal Revenue Service. For more information on investment income and expenses, you may order free Publication 550, Investment Income and Expenses, by calling toll-free, 1-800-424-3676.

Wheat Crop 'Hurting' From Lack Of Moisture

Most of Texas' struggling 6-million acres of winter wheat has been thrown two roundhouse curves from the weatherman and in some areas is looking at a called third strike.

Lack of rainfall has kept much of the dryland crop from emerging or making a stand and hard freezes at year's end damaged parts of the irrigated wheat, as well as the dryland.

Now, unseasonably warm weather in many sections of the state is cutting the chances for vernalization, which requires cold temperatures to develop seeds and seedlings, report agronomists with the Texas Agricultural Extension Service.

Across the state, soil moisture conditions for wheat are only 38 percent as good as normal for this time of year, reported Rodney Mosier, executive assistant to the Texas Wheat Producers Board of Amarillo. Last year, conditions were 45 percent of normal, he said. If such conditions continue, forage and grain yields can be expected to suffer proportionately.

Conditions in the Panhandle and High Plains areas, which annually produce a third of the state's wheat, are only 30 percent of normal, Mosier said.

"We've had only about one inch of moisture from snows the end of January," Mosier said of the Panhandle. "We've had nothing else since before planting time."

Heavy and prolonged freezes the end of December damaged some of the irrigated wheat, he said. About 30 percent of the wheat acreage in the Panhandle and South Plains is irrigated.

In the Rolling Plains, only three or four of 20 counties can even hope for a near-normal crop, said U. U. 'Al' Alexander, Extension Service agronomist at Vernon.

"Those counties (Wilbarger, Wichita, Archer and Young) got up to a stand fairly early and

primary stem," Alston said. He said farmers were reporting very few tillers in wheat that had made a stand.

Warm weather in January and February is complicating the situation in Central Texas, Alston said. "We're convinced there's no way we're going to get enough cold weather now to have vernalization," he said.

WASHINGTON NOTES

On Hiring Civilians

Defense Secretary Dick Cheney ordered a freeze on hiring civilians at the Defense Department for the rest of this fiscal year, the Pentagon announced.

On Census Workers

Americans on federal assistance can make money as census takers without it counting against their benefits, under a program by the Health and Human Services Department.

No Invasion planned

The Bush administration, while critical of progress toward the Feb. 25 elections in Nicaragua, has no plans to use Panama as a precedent and invade the Central American nation, the White House said.

	1990 Crop			
	Pool Advance	Cash	Sale Flat	Sale Basis Month
Feed Corn.....	4.39	4.39	0.04	March
White Cobb Yellow.....	4.10	5.00	0.38	March
Red Cobb Yellow.....	4.00	4.52	0.11	March
White Food Corn.....	5.00	6.00	0.94	March
Milo.....	3.69	3.69	-0.35	March
Soybeans.....	No Pool	4.95	-0.70	March
Wheat.....	No Pool	3.45	-0.41	KC March

95% %
Prices effective Feb. 13, 1990

Farmer's Co-Op Elevators

272-4335



MR FARMER

Foster Fertilizer features a blend of custom mixed and applied Liquid Fertilizers

ALSO

Anhydrous Ammonia and dry fertilizer is available.

A custom service at competitive prices.

We have been serving this area for 29 years.

Let us mix and apply your fertilizer according to your Specific Soil Requirements.

'Your Business is Appreciated'

Foster Fertilizer

Lazbuddie, Tx. 965-2421



Thursday, February 15, 1990 - Sale Time: 9:37 a.m.

LOCATED: From Dimmitt, Texas, 6 miles West on Highway 86 then 7 miles South on F.M. Highway 1055 to Flagg, Texas, then 1 1/4 miles East on F.M. Highway 1524; OR From Earth, Texas, 13 miles North on F.M. Highway 1055 to Flagg, Texas then 1 1/4 miles East on F.M. Highway 1524; OR From Hart, Texas, 11 miles West on F.M. Highway 145 then 3 miles North on U.S. Highway 385 then 4 miles West on F.M. Highway 1524.

DAMRON FARMS & OTHERS - Owners

Telephone: Clyde Damron, Jr. - (806) 647-4572 or Jim Summers - (806) 864-3611

We are reducing our farming operation and the following will be sold at Public Auction - Any announcement Sale Day takes precedence.

TRACTORS -

- 1-1979 John Deere 4640 Diesel Tractor, Cab, A/C, Htr., Radio, P/S Trans., W.F., 3-pt. D.H. Weights, Quick Hitch, 18.4x38 Rubber, (650 Hours On Engine 0/0)
- 1-1979 International 1485 Diesel Tractor, Cab, A/C, Htr., Radio, New T.A. New Clutch & Fly Wheel, W.F., 3-pt. D.H. Weights, 18.4x38 Rubber
- 1-1979 International 1485 Diesel Tractor, Cab, A/C, Htr., Radio, W.F., 3-pt. D.H. D.P.T.O. Weights, 18.4x38 Rubber, (Motor Thashed)
- 1-1979 Farmall 1466 Diesel Tractor, Cab, A/C, Htr., D.H. Weights, D.P.T.O., 18.4x38 Rubber
- 1-1971 Farmall 856 Diesel Tractor, W.F., 3-pt. D.H. D.P.T.O. Weights, 18.4x38 Rubber
- 1-1970 Farmall 826 Diesel Tractor, Cab, A/C, Htr., Hydro, W.F., 3-pt. D.H. D.P.T.O. Weights, 16.9x34 Rubber
- 1-1966 Farmall 1206 Diesel Tractor, W.F., 3-pt. D.H. D.P.T.O., 18.4x38 Rubber
- 1-1964 Farmall 906 Diesel Tractor, W.F., 3-pt. No Arms, D.P.T.O., 16.9x34 Rubber
- 1-Super M LPG Tractor, S.F. P.T.O., 2-pt., 14.9x38 Rubber
- 1-Allis Chalmers C Gas Tractor, Tricycle Front, (Salvage)

COMBINE, ATTACH., GRAIN CARTS -

- 1-International 403 LPG Combine, Cab, 14' Header
- 1-International 864 6 Row 40" Corn Platform, Savers
- 1-Heston Head Number Units
- 1-Phares Wilbarger 400 Bushel Grain Cart
- 1-Wetmore 400 Bushel Grain Cart

STRIPPERS, COTTON MODULE BUILDER -

- 1-1976 International 95 2 Row, Self Propelled Diesel Cotton Stripper, Cab, Hydrostat, New Engine & New Hydraulic Pump & Motor
- 2-International 91 2 Row Brush Cotton Strippers, Baskets
- 1-International 90 2 Row Brush Cotton Stripper, Basket
- 1-Howell 32 Cotton Module Builder, (1984 Model), Cab

TRUCKS, VEHICLES -

- 1-1978 Kenworth Cabover, T.A. Truck Tractor, Twin Screw, Big Cam 350 Cummins Engine, 10 Speed Trans., (1424.5 Rubber, (15,000 Miles On Overhaul))
- 1-1976 Chevrolet Titan 90 Cabover, T.A. Truck Tractor, Twin Screw, 290 Cummins Engine, 10 Speed Trans., 1124.5 Rubber, Bud Wheels
- 1-1974 International Loadstar 1600 T.A. Grain Truck, V8 Engine, 5 Sp., 2 Sp., Midwest 22' Bed, 1/2' Hoist, Trip Top, 1000x20 Rubber, (Wrecked)
- 1-1960 International S.A. Grain Truck, 4 Speed, 14' Bed
- 1-1957 Chevrolet S.A. Grain Truck, 4 Speed, 14' Bed
- 1-1975 Chevrolet 1 Ton A-Frame Truck, With Electric Hoist Truck, V8 Engine, 4 Speed
- 1-1985 Ford F-150 1/2 Ton 4x4 Pickup, V8 Engine, A/T, A/C, Htr., Radio, L.W.B.
- 1-1980 Ford 1/2 Ton Pickup, V8 Engine, A/T, L.W.B.
- 1-1980 Ford 1/2 Ton Pickup, 5 Cyl. On LPG, 4 Speed
- 1-1979 Ford F-150 1/2 Ton Pickup, 6 Cylinder, A/T, A/C, Htr., Radio, L.W.B.
- 1-1979 Chevrolet 1/2 Ton Pickup, V-6 On LPG, A/T, L.W.B.
- 1-1979 Chevrolet Custom 1/2 Ton Pickup, V8 On LPG
- 1-1978 Ford F-150 Ranger 1/2 Ton Pickup, V8 Engine, A/T, A/C, L.W.B., Toolbox
- 1-1977 Dodge Custom 200 Pickup, V8 Engine, 4 Speed
- 1-1976 International Scout Terra 2 Wheel Drive Pickup, V8 Engine, P/S, A/T, Pipe Racks
- 1-1974 International 444 Scout, V8 Engine, 4 Speed
- 1-1974 International 200 1/2 Ton Pickup, 6 Cyl., 4 Speed

EQUIPMENT -

- 1-John Deere 7100 8 Row 30", 3-pt. Max Emerge Planter, Double Boxed, Plate Type
- 1-John Deere 220 20' Hydraulic Fold Offset Disc
- 2-Miller Offset Discs, 1-14", 1-16"
- 1-International 16' Offset Disc
- 2-International 140 4-18" 3-pt. Spinner Mouldboard
- 1-Tee 12 Row, T.S.B., 3-pt. Disc Lister, G.W.
- 1-Hamby 32', T.S.B. Hydraulic Folding Chisel/Sweep Plow, 1 Set D.G.W., 1 Set S.G.W., 3-pt.
- 1-Byrd R.A.C. 28' T.S.B., 3-pt. Chisel/Sweep Plow
- 1-Lilliston 21', T.S.B., 3-pt. Chisel/Sweep Plow, D.G.W.
- 6-Stanby Jumbo Planter Units, D.D., 444 With Complete Belt Sizer & Tester
- 1-Alleghey 6 Row, 3-pt. P.T.O. Bed Shaper-Vegetable Tine
- 1-Lilliston 8 Row 38" 3-pt. Rolling Cultivator, Big Bar
- 3-Lilliston 8 Row 40" 3-pt. Rolling Cultivators, 5 Tine
- 1-Lilliston 6 Row, 3-pt. Rolling Cultivator, Big Bar
- 2-International 4 Row D.T. Fall Shredders, 1-8 Row, 1-6 Row
- 1-Hamby 8 Row, T.S.B., 3-pt. Lister Rig, Sliding Markers
- 1-Hamby 6 Row, S.S.B., 3-pt. Lister Rig, G.W. Markers
- 1-7 Row D.D.B., 3-pt. Lister, Markers, 1 Set D.G.W.
- 1-7 Row D.D.B., 3-pt. Lister, 2 Sets G.W. Reinforced Bar
- 1-Hamby 21', T.S.B., 7 Shank, 3-pt. Stubble Mulch Plow
- 1-Brooks 6-14", 3-pt. Spinner Mouldboard Plow
- 1-Graham Hoeme 30' Hyd. F.W. 3-pt. Chisel/Sweep Plow
- 1-International 500 Cycle 6 Row 3-pt. Air Planter, D.D.
- 1-8 Row Set IHC 500 Cycle Row Units, Accra Plants
- 1-4 Row Set IHC 500 Cycle Row Units, Double Discs
- 1-International 8 Row, 3-pt. Flex Rotary Hoe
- 1-International No. 224 8 Row, 3-pt. Gang Rotary Hoe
- 3-International No. 224 6 Row, 3-pt. Gang Rotary Hoers
- 1-John Deere 6 Row, 3-pt. Gang Rotary Hoe
- 1-Phares Wilbarger 4 Row, 3-pt. Gang Rotary Hoe
- 2-International 4 Row D.T. Fall Shredders, C.C.
- 3-Dempster 9-12" Deep Furrow Grain Drills
- 1-John Deere DR A 20-8" Grain Drill, C.C., S.D.
- 1-Moline 20-8" Grain Drill, Steel Wheel, Levers
- 1-SM 21', D.D.B., 3-pt. Sweep Rig, G.W.
- 2-5 Row, D.D.B., 3-pt. Listers, G.W. Markers
- 1-King 3-pt. Disc Ditch Filler
- 1-Service 2 Row, 3-pt. Blade
- 1-Service 8', 3-pt. Blade
- 1-Dempster 6 Row, D.D.B. 2-pt. Planter, G.W.
- 1-Fox Super 100, D.T., P.T.O. 2 Row Silage Cutter
- 1-International 3-16", 2-pt. Spinner Mouldboard Plow
- 1-Howe 28' Lift Mulch Harrow
- 1-Midwest 21' Lift Mulch Harrow
- 3-Howe 7' Lift Mulch Harrow Units
- 1-Home 9 Shank 3-pt. Chisel Plow, Levels, L.L.
- 1-Set Equipment Too Numerous to Mention

IRRIGATION -

- 3-Moline HD 800 Irrigation Motors, (2 Runnables)
- 2-Moline 800 Irrigation Motors, (Complete)
- 15-Moline 605 Irrigation Motors, (Complete)
- 10-Moline 605 Irrigation Motors, (Parts)
- 1-Moline 336 Irrigation Motor, (Complete)
- 2-Moline 283 Irrigation Motors, (Complete)
- 3-Chrysler 410 Irrigation Motors, (Good)
- 3-Chrysler 413 Irrigation Motors, (Good)
- 1-Dobbs 7 1/2 H.P. Floating Lake Pump, (Not Run 2 Yrs.)
- 1-Perless 50 H.P. Gearhead, 3:4 Ratio, (Needs Repair)
- 1-Perless 20 H.P. Gearhead, 1:1 Ratio, (Good)

80-Joints 7"x20" Gated Pipe, 38" Rows

70-Joints 7"x20" Gated Pipe, 40" Rows

20-Joints 8"x30" Gated Pipe, 40" Rows, (Sliding Gates)

20-Joints 8"x30" & 20" Gated Pipe, 40" Rows

100-Joints 10"x20" & 30" Flowline

40-Joints 8"x30" Flowline

2-Waterman 12'x8" Irrigation Hydrants

1-Lot Aluminum Fittings, Various Kinds

1-1968 Self Propelled Gas Sweeper, 14' Hdr., Wisconsin Gas Engine

1-Genl 1500 Round Hay Baler, 540 P.T.O.

1-Heston Stak Mover, 30' - 1-Gebo's Round Bale Carrier

1-Portable Cattle Loading Chute

3-Round Cattle Water Tubs, Various Sizes

1-Lot Electric Fence Posts, Wire Insulators

1-Sammann Hydraulic Wire Roller

1-6'x16" Portable Grain Auger

MOBILE HOME -

- 1-1971 12'x36' 2 Bedroom Mobile Home, Den, Kitchen, Bath, Carpet, (No Title)

TRAILERS, TANKS, SPRAY EQUIP. -

- 1-Hobbs 42' 1 A Aluminum Double Hopper Bottom Grain Trailer, Rollover Top, 1000x20 Rubber
- 1-1979 Wilson 42' 1 A Double Hopper Bottom Grain Trailer, 1124.5 Rubber, Bud Wheels, Rollover Top
- 1-1978 Temple 40' 1 A Aluminum Double Hopper Bottom Grain Trailer, 1124.5 Rubber, Bud Wheels
- 1-Easley 16' G.N. S.A. Stock Trailer, 1/2 Metal Cover
- 3-Big 12, 24' 4 Wheel Flatbed Trailers
- 1-Cobey 4 Wheel Flatbed Trailer, Steel Runners
- 2-4 Wheel Flatbed Trailers
- 1-Home 14' 2-pt. Carrier Trailer
- 1-SM 10' 1 A Flatbed Trailer
- 1-2 Wheel Pickup Bed Trailer
- 1-Lot Big 12 Exp. Metal 8'x8'x24' Cotton Trailer S/B
- 1-1800 Gallon Goose-neck Water Trailer, Triple Axle With 350 Gallon Fuel Tank, With 12 Volt Pump
- 1-1100 Gal Poly Water Nurse Tank, GAS Gas Eng., Pump
- 1-1000 Diesel Tank On 4 Wheel Trailer
- 2-800 Gallon Fuel Tank, 4 Wheel Trailers, H.C.
- 2-300 Gallon Pickup Fuel Tanks
- 2-500 Gallon Diesel Tanks On 4 Wheel Trailers
- 2-Butane Tanks 1-300 Gallon, 1-500 Gallon
- 1-Lot Tanks Too Numerous to Mention

TRACTOR & TOOL MAKEUPS -

- 1-Set 18.4x38 Axle Duals, (6440 Hubs)
- 1-S&S 21', T.S.B., 3-pt. Top Carrier
- 1-Hamby 8 Row Set Disc Broder Units
- 1-Lot Makeups Too Numerous to Mention

RADIOS, PHONES, NON-CLASSIFIED -

- 1-Motorola UHF Base Radio, Frequency 466.1
- 1-Standard UHF Base Radio, Frequency 466.1
- 1-Motorola UHF Mobile Radio, Frequency 466.1
- 1-Standard UHF Mobile Radio, Frequency 466.1
- 1-General Electric Master Executive Mobile Telephone Private Line, With Headset
- 1-Lot Miscellaneous Items Too Numerous to Mention

Terms of Sale: Cash - Lunch Will Be Available
All Accounts Settled Day of Sale
NOTE: Please Bring Your Own Check Book If You Have Not Established Yoursell
With Our Company, Please Bring Bank Letter

★★★★★

Five Star Auctioneers

P. O. BOX 1030 - PLAINVIEW, TEXAS 79073-1030

WINCH TRUCK AVAILABLE ON SALE DAY • BRING YOUR TRUCK OR TRAILER • WE ARE AGENTS AND AGENTS ONLY

Congressman Combest Boosts Savings Plan

To encourage savings and productivity, U. S. Representative Larry Combest (R-Texas) signed on as an original co-sponsor of the "Savings and Economic Growth Act of 1990."

"I am pleased to announce my early support for a plan that is aimed at improving the national savings rate while encouraging investments that will lead to greater productivity," said Combest. "This legislation is a starting point for the individual, for small businesses, and for first-time home buyers."

The "Savings and Economic Growth Act" is the centerpiece legislation for family savings investment and economic growth as outlined by President Bush in his State of the Union Address to Congress on January 31, 1990. The bill has three basic components:

FAMILY SAVINGS ACCOUNTS

Individuals would be allowed to make non-deductible contributions up to \$2,500 per year (\$5,000 per family) to a savings account with earnings exempt from tax while in the account.

* After seven years, tax-free withdrawals could be made.

* Funds withdrawn after three years would be subject to income tax and an additional ten percent penalty on earnings.

* If funds are not withdrawn, earnings continue to accumulate tax free.

CAPITAL GAINS TAX CUT

Reduces the current 33 percent maximum capital gains tax to a three year phased-in rate to 19.6 percent for assets held longer than three years; 22 percent for two year assets; and 26 percent for assets held one year.

* Lower capital gains tax rates benefit millions of Americans: in 1987, 41 percent of the net capital gains were earned by taxpayers with adjusted gross incomes of under \$50,000.

HOME OWNERSHIP INITIATIVE

First-time homebuyers will be allowed to withdraw up to \$10,000 without penalty from their Individual Retirement Accounts (IRAs) if the first home costs no more than 110 percent of the median home price in the area.

* Regular contributions can

continue to be made to IRAs and other qualified savings plans, including the Family Savings Accounts.

* The deductibility of contributions to IRAs would remain unchanged.

"This plan provides the incentive for savings with the opportunity for investment for small businesses and for families acquiring their first homes," said Combest. "With the government out of the way, the American people can save their earnings and make sound financial investments. From the time of our pioneer grandparents, the savings pool in America has been the reservoir that built American business and provided a roof for the family. With this savings and investment legislation, we can return to that spirit of self-reliance and pioneer values."

Sudan Honor Roll

FIFTH GRADE

Breanne Baker, Heather Bourland, Kyle Brown, Chad Chester, Heath Harper, Kris Humphreys, Kyla Morris and Alicia Seymore

SIXTH GRADE

Justin Bellar, Marjoe Bigbee, Roger Huey, Kassie Kinnie and Lee Ray

SEVENTH GRADE

Adam Azua, Alan Black, Muffin Davis, Danny Harper, Danielle Martin, Corey McAdams and Brodie Miller

EIGHTH GRADE

Dickie Gipson, Rickie Gipson, Omar Jimenez and Joey Martin

NINTH GRADE

Jason Bellar, Spencer Evins, Wally Flores, Becky Hawley, Clint Humphreys and Jill Reid

TENTH GRADE

Quenna Bigbee, Clay Carr and Cari Schovajsa

ELEVENTH GRADE

Julie Brotherton, Monty Edwards, Tanya Fisher, Penni Hargrove, Quincy Lee, Brandy Martin, Nichole Maxfield, Gayla Rasco, Suzanne Reid and Glenna Testerman

TWELFTH GRADE

Diego Belez, Jarod Bellar, T.J. Bright, Mandy Carr, Hyla Ford, Ronnie Freeman, Kay Lynn Gordon, Kristi Hargrove, Jay Harrison, Kyle Maxfield, Melanie McKillip and Shea Patterson

Breast Cancer Screening Set Here March 2

The Breast Cancer Screening Project of the Don and Sybil Harrington Cancer Center and the High Plains Baptist Hospital of Amarillo will continue community outreach clinics for early detection of breast cancer. The clinic provides for early detection of breast cancer. The clinic provides low cost screening which includes a breast exam, professional breast examination, and mammography. The clinic is staffed by professionals including a Registered Nurse specially trained in breast cancer detection.

The clinic is scheduled in Muleshoe for Friday, March 2, 1990, from 10 a.m. to 2:20 p.m. at the Muleshoe Area Medical Center. For information about

Lazbuddie Elementary Names Best

Students at Lazbuddie Elementary received ribbons and were honored recently on being selected Citizen of the Month from their homerooms. They are the following:

Pre-Kindergarten: Julian Chavez, son of Ramos and Maria Chavez

Kindergarten: Trey Nickels, son of Nickey and Debbie Nickels

1st Grade: Cole St.Clair, son of Tommy and Jana St.Clair

2nd Grade: Jeffrey Seaton, son of Jimmie Dale and Rickie Seaton

3rd Grade: Kara Clark, daughter of Danny and Martha Clark, and Christina Martha, daughter

of Sergio and Blanca Martha
4th Grade: Deon Gallman, son of Robert and Ellen Gallman
5th Grade: Shana Foster, daughter of Lyndon and Step-

hanie Foster
Mrs. Anne Farris, principal, congratulated the students and commended them for showing qualities of citizenship.



CITIZENS OF THE MONTH FOR JANUARY--These students were named Citizens of the Month at the Lazbuddie Elementary School. They are from left, back row: Deon Gallman, Shana Foster and Christina Mata; middle row, from left, Cole St. Clair and Jeffrey Seaton; front row, from left, Julian Chavez and Trey Nickels. Not pictured is Kara Clark. (Guest Photo)

Real Estate Foreclosure Auction

For benefit of U.S. Small Business Administration

QUARTER SECTION BAILEY COUNTY LAND

DATE & TIME: March 6, 1990... (Tuesday)... 10:05 a.m.

SALE SITE: East door of Bailey County Courthouse... Muleshoe, Texas

LEGAL: All of SW 1/4, Block 68, Block "Y", W.D. and F.W. Johnson's Subdivision No. 2, Bailey County, Texas

OWNER: Roy Lee Ryan, et ux Betty Jo Ryan

LOCATION: 4 1/2 miles North of Muleshoe city limits on Hwy 214, then 2 miles East to SW corner of farm

DESCRIPTION: Good producing farm with 8" Gas & Electric Irrigation wells. Mostly level with slope on NE Corner has underground pipe and 4 room house.

TERMS & CONDITIONS

Real Estate will be sold subject to all taxes (& prior to lien) to the highest bidder, for cash on day of sale. Title will be conveyed by Substitute Trustee's Deed. Small Business Administration Reserves The Right To Bid.

PLEASE NOTE:

Sale is being made without covenant or warranty, expressed or implied as to title, possession or encumbrances. Please have your attorney or title company inspect title before sale.

Dick Watson Auctioneers

P.O. Box 717, Olton, TX, 79064
Phone: (806) 285-2593
License No. 6724

Nursing Home News

by: Joy Stancell

Ora Roberts was visited Monday by Susie Whatley, Ollie Sebring and Ruby Clark. Visiting recently were Bonnie Roberts and Cheryl Kenney from Sudan, and Darla Kay. Her son, James, will be entering the hospital in Albuquerque this week.

Clara Weaver spent the day Monday in her home in the Lazbuddie community.

Wilmoth Clements, Pearl Cox, and Stella Morgan all went out during the weekend to be with their families.

Guy Kendall was visited by S.W. Inman Wednesday afternoon. Elsie, his wife, visits daily.

Fluff Baldwin was visited by his daughter and son-in-law, Mr. and Mrs. Joe Rhodes, Sunday. His wife, Lois, visits him daily.

Ruby Malone's recent visitors were Ruby Garner, Ruth, Helen, Barbara, Ruth Brisco, Tommy, Bob Hall, and son, Lonnie, of Corpus, Mary and Jerry Hicks, Robert and Nelda Hunt, R.L. and Doris Scott, J. E. Embry, Winnie Berry, Susie Whatley, Ollie Sebring and Ethel Walden of Earth. Ruby went out with Helen for a visit Wednesday.

Bernice Amerson was visited by her sister, Juanita Jarman, Wednesday.

We wish to thank Shawna Delaney for making the residents the beautiful balloon bouquets for their birthdays.

We are blessed by so many loyal and hard working volunteers. We need you to know that you do make the difference--a wonderful difference.

Thursday afternoon Winnie Berry and J.E. Embry came to visit and play table games with the residents.

Each Saturday J.C. Shanks comes to cut the men's hair. Wednesday morning Clifton Finley goes shopping for us. Wednesday afternoon Barbara Blackman serves juice and visits the residents. Glenda Jennings and Iva Carpenter came on Wednesday afternoon for a sing-a-long. Laverne James and Ruth Clements play bingo and table games with the residents on Saturday. Kathrine Sanders comes for Sunday morning Bible Study.

Three Way News

by: Mrs. H.W. Garvin

Mr. and Mrs. Wayne Clark from Dumas spent Sunday with his sister, the W.T. Simpsons. Mrs. Inez Clark from Shallowater was released from Methodist Hospital Saturday and is staying with her daughter, the W.T. Simpsons.

Republican Political Calendar
Bailey County Judge
James Warren

HOMESTEAD EXEMPTIONS



CAN LOWER THE PROPERTY TAXES ON YOUR HOME

A homestead Exemption

lowers the property taxes on your home by lowering its taxable value. For example, if your home is valued at \$50,000 and you receive a \$5,000 homestead exemption, your home will be taxed as if it were worth only \$45,000.

You qualify

for a homestead exemption if you owned your home on January 1 and used it as your primary residence on January 1. It doesn't matter whether your home is a house, a condominium or a mobile home.

Exemptions are available

to all homeowners on their school taxes. Additional exemptions are available to homeowners who are disabled or age 65 or over. Other exemptions may be offered to homeowners by school districts, counties, cities, and special districts. All taxing units offer exemptions to disabled veterans.

Apply to

your local appraisal district office at the address shown below for all exemptions you may qualify for. Application forms are available at this address.

If you received a homestead exemption on your present home in 1989 you won't need to apply again for 1990 unless the chief appraiser requires you to reapply.

However, if you passed your 65th birthday or became disabled before January 1, file a new application to receive the additional exemptions.

If you haven't received an exemption on your present home, or if you moved to a new home, make a new application for 1990.

The deadline

for applications is April 30, 1990. Contact your appraisal district before then if you need more time.

For more information, get a free copy of the pamphlet, *Taxpayers' Rights, Remedies, Responsibilities*, at your appraisal district office or from the State Property Tax Board in Austin.

Bailey County Appraisal District

104 E. Ave. C

272-5501



ZIMMERMAN HYBRIDS



" White Seed Corn Specialists "

We have more on-going white hybrid research than any other seed company; which has resulted in exceptional grain quality from hybrids adaptable to tough High Plains growing conditions

- No. 1 1989 National White Food Corn Test: Halfway, TX.
- No. 2 1989 National White Food Corn Test: Halfway, TX.

All Zimmerman White Hybrids ranked in top 20 of 80 entries in National White Food Corn Test: Halfway, TX. 1989

Zimmerman White Hybrids ranked in top 10 in National White Food Corn Tests since 1986.

" Highest Quality Yellow Hybrids, "

- Z-27Y: Top performer in ensilage tests with high yield grain harvestability.
- Z-20Y: Excellent Food Grade Grain with high test weight.

YOUR ZIMMERMAN HYBRIDS DEALERS are:

SCOGGIN AG CENTER Muleshoe, TX.

272-4613 1532 w. Amer. Blvd.

JERRY DON GLOVER Lazbuddie, TX.

965-2162

SOUTHWEST AGRI-SERVICES Dodd, TX.

965-2338

JIM ALLISON Muleshoe, TX.

272-5291

The proven performance of Zimmerman Hybrids will put the odds in your favor at harvest time.

Enochs News

by: Mrs. J.D. Bayless

Guests in the home of Mrs. Faye Jones recently were her cousins, Mrs. Trudy Peters of Wellington and Chris Jolly of Amarillo. ***

Mrs. Ellen Bayless was in Muleshoe Wednesday on business and visited her sister-in-law, Mrs. Clara Coffman. ***

Rev. Jim Green and wife, Lill, of Lubbock were visitors of the Baptist Church Sunday where he preached both services. They were dinner guests in the home of J.E. and Wanda Layton. He was a former member of the church where he preached when they taught school at the Bula school. ***

Mrs. Sandra Frank and daughter of Sudan visited in the home of Mr. and Mrs. Shorty McCall Sunday afternoon.

Fourth Grade Keyboarding At Lazbuddie

Lazbuddie Elementary's fourth graders are taking a class in keyboarding where they are learning to type with accuracy and correct techniques. They are in the middle of a twelve-week program taught by the high school business teacher, Mrs. Marsella Jennings. The class meets in the typing room for thirty-minute lessons each day.

The purpose of the course is to teach Lazbuddie's young students the proper use of the keyboard in order to improve computer skills and meet state requirements for elementary keyboarding.

Last year, Lazbuddie I.S.D. drafted a District plan for

We were sorry to hear David McDaniel of Houston formerly of our area was in the hospital. Get well soon David.

Mrs. Alberta Bryant of Littlefield was a visitor at the Baptist Church Sunday morning and was dinner guest in the home of Mrs. Inez Sanders. ***

Mrs. Tommy Lewis and children of Littlefield and Mr. and Mrs. Steve Pollard and baby of Morton were dinner guests in the home of their parents, Mr. and Mrs. Harrie Pollard Sunday. ***

Mrs. Elnita Key and sister, Mrs. Bobby Adams were in Littlefield Saturday and visited Mrs. Lucille Johnson at Knights Nursing Home. They also visited in the home of Mr. and Mrs. Donnie Carpenter. ***

Supper guests in the home of Mrs. Etia Layton Sunday night were her sons, Harold Layton of

Dell City, Mr. and Mrs. J.E. Layton, also Rev. and Mrs. Jim Green of Lubbock, Mrs. Jerry Nichols and son, Landon of Muleshoe, and Mrs. Junior Austin of Lubbock and Mrs. Olive Cox of Muleshoe. They attended church at the Baptist Church Sunday night. ***

The W.M.U. ladies selected Vonna Hamilton to be their

Minnie Luman

Buried Sunday

At Sudan

Graveside services for Minnie Shafer Luman, 94, of Hartselle, Ala., were conducted at 2 p.m. Sunday in Sudan Cemetery with the Rev. Barry Bradley, pastor of the First Baptist Church in Muleshoe, officiating.

Burial was under the direction of Asmusen-Cain Funeral Home. Local arrangements were by Ellis Funeral Home. Ms. Luman died Thursday in Hartselle Nursing Home.

Born in Wood County, she was a homemaker and a member of Hawkins' First Baptist Church.

Survivors include a son, Jim Shafer of Hartselle, formerly of Muleshoe; and two sisters, J.W. "Bub" Shafer of Stephenville, formerly of Muleshoe, and Dwayne Luman of Quitman; two stepdaughters, Mary Ruth Garrison of Arizona and Louretta Meeks of Coma; a sister, Lorene Bennett of Hawkins; two grandchildren; and two great-grandchildren.

Valentines Sweet Heart and presented her with a red valentine box of candy, Sunday morning at Church.

Adam Galan

Funeral Services Set Today

Funeral services for Adam Galan, 74, of Earth will be held at 10 a.m. today, Thursday, Feb. 15 in the First Baptist Church of Earth with the Rev. Trinidad Cano, pastor of the Modesto Baptist Church in California, officiating.

Burial will be in Earth Memorial Cemetery under the direction of Parsons-Ellis Funeral Home of Earth.

Galan died at 2:40 p.m. Monday in St. Mary's of the Plains Hospital in Lubbock.

Born April 15, 1915, in San Angelo, he had been a resident of Earth since 1952. He was owner of a wrecking yard and a member of the Earth First Baptist Church. He married Camila Lopez on Nov. 13, 1946, in San Angelo.

Survivors include his wife, Camila; two sons, Adam Galan, Jr. of Grand Prairie and Alfred Lopez of Lubbock; a daughter, Eva Frietz of Earth; three sisters, Omega Hernandez of Big Springs, TX, Paula Cano of Modesto, Calif., and Aurora Martinez of Rotan, TX; three brothers, Alonzo Galan of Crowell, Felix Galan Jr. of Big Springs, and Alvera Galan of Amarillo; 11 grandchildren; and one great grandchild.

Margaret Atchison

Services Held

Here Sunday

Funeral services for Margaret Atchison, 80, were held at 4 p.m. Sunday, Feb. 11 in the Richland Hills Baptist Church with the Rev. Allen Peterson, pastor, officiating, assisted by the Rev. Dale Berry, pastor of the Trinity Baptist Church.

Burial was in Muleshoe Cemetery under the direction of Ellis Funeral Home. Mrs. Atchison died at 8 p.m. Friday in Muleshoe Health Care Center.

Born January 26, 1910, in Oklahoma, she was a sales lady for St. Clairs Department Store and Cobb's Department Store before retiring in 1982. She

married Roy Thomas Atchison on Sept. 3, 1930, in Altus Oklahoma. She moved to Muleshoe in 1944, from Dickens, TX and was a member of the Richland Hills Baptist Church.

Survivors include her husband, Roy T.; a son, Leon Atchison of Brady; three daughters, Betty Petterson of Littlefield, Carolyn Compton of Irving, and Joyce Shafer of Hartselle, Alabama; a sister, Viola Perkins of Anchorage, Alaska; 12 grandchildren; and 13 great grandchildren.

Obviously

"I suppose all this talk about a sailor's life being all wine, women and song is exaggerated."

"It certainly is! You seldom hear singing in the barracks."

HAPPY BIRTHDAY

Vicky Bermea

We Love You!!!

Andy Bermea, Jr.

Mr. & Mrs. Andy Bermea, Sr.

Richard, Dora, & Joshua Toscano

Get The Most For Your Fertilizer Dollar

★ Complete, Computerized Formulations Including Micronutrients, Tailored To Your Soil Test On Your Farm

★ Only Fluids Can Be Custom-Blended And Assure Complete Uniformity Throughout The Mix (Think About It-- You Can't Apply Fertilizer Evenly On The Ground With An Uneven Mix In The Hopper)

★ Only Fluids Give You This Much Flexibility In Application Methods:

- Our Custom Broadcast Application. (No Dry Applicator Can Match It) Even Enough To Add Herbicides If You Wish.
- Our Custom Surface Banding Concentrates Your Fertilizer To Minimize Nutrient Tie Up In The Soil.
- We Can Help You Gear Up To Apply Fluids Yourself-- While You're Doing Another Tillage Operation.
- Only Fluids Are Acceptable For Fertilization Through Your Center Pivot.

**Let's Visit About Fluid Fertilizers-----
The Modern Alternative For Your Farm**

Western "66" Co.

Earth Hwy.

Muleshoe

272-4556



LAZBUDDIE FOURTH-GRADERS LEARN KEYBOARDING SKILLS

**THESE ARE THE DAYS
TO SAVE 6%...
FEBRUARY 19-24**



Hurry in to see your Pioneer sales representative during Pioneer Days.

Special 6% savings soon will end on every Pioneer® brand product you purchase! We have the performance and savings you won't want to miss.

See your Pioneer sales representative during Pioneer Days:

**Gene Paul Jarman
Pioneer Seed
801 Amer. Blvd.
272-5985
Home-965-2340**



PIONEER
BRAND PRODUCTS

All sales are subject to the terms of labeling and sale documents.
*Registered trademark of Pioneer Hi-Bred International, Inc., Des Moines, Iowa, U.S.A.

CLASSIFIEDS 272-4536

CLASSIFIED RATES
 15 Words & Under Minimum Charge \$2.30
 Thereafter \$2.00
 16 Words & Over 1st Insertion 15 cents per word
 2nd Insertion 13 cents per word
CLASSIFIED DISPLAY RATES
 \$1.75 Per Column Inch
DEADLINES
 12 noon Tues. For Thursday Paper
 12 noon Friday For Sunday Paper
 To receive the reduce rate after the first insertion ad must run continuously.
 We reserve the right to classify, revise, or reject any ad. We are not responsible for any error after ad has run once.

1. Personals

CONCERNED About Someone's Drinking? HELP IS AVAILABLE
 through Al-Anon
 Call 272-2350 or 965-2870 or come to visit Tuesday nights, 8:00 p.m. or Saturday mornings at 10:30 a.m. and through AA call 965-2870 or come visit Tuesday nights, 8:00 at 620 W. Second, Muleshoe.

FOR YOUR WEDDING, BIRTHDAY, anniversary, congratulations, shower, holiday, or any occasion cakes, or cookies: Call Lora Wallace 272-5006 or (272-4301 and leave message). Have lots of new "89"- "90" character pans!
 1-6s-2tp

\$200 REWARD
 Missing: 10-day old Saler bull calf. Call Clovis 505-482-3617.
 1-6s-2tp

FOR YOUR Wedding Cakes. Decorated Cakes (Such as Hamburger, Pizza Cakes) Portrait or Cartoon Cakes, Special Valentine Cakes, For loved ones or office friends. Call Ann Johnson 272-5746.
 J1-5s-tfc

3. Help Wanted

AIRLINES NOW HIRING!
 Flight Attendants, Many Other Positions! \$17,500-\$58,240. Call (1) 602-838-8885 Ext. X-10191.
 C3-6t-4tp(ts)
ATTENTION! HIRING!
 Cruise Ship, Casino, Hotel Jobs! Free Travel Benefits! Details. (1) 602-838-8885. Ext. Y-10191.
 C3-6t-4tp(ts)
ATTENTION:
 Earn Money Reading Books! \$32,000/year Income Potential. Details (1) 602-838-8885 Ext. Bk-10191.
 C3-6t-4tp(ts)

3. Help Wanted

MEDICAL RN-LVN MEDICAL ASSISTANT OR PHEBOTOMIST
 Need Examiner to do Mobile insurance physicals in Muleshoe, Sudan, Earth, and Farwell. Part-time, flexible hours. Must be a proficient blood drawer. Call 1-800-548-3193. Ext. 265.
 P3-6s-3tc(ts)

5. Apts. For Rent

APARTMENTS FOR RENT: 1 or 2 bedrooms. Furnished and unfurnished. Some bills paid. 272-7575.
 P5-2t-tfc

11. For Sale Or Trade

PIANO FOR SALE: Wanted: Responsible party to assume small monthly payments on piano. See locally. Call credit manager 1-800-447-4266.
 J11-6s-7tp

15. Misc.

PAT WALKER Reducing Machine for sale. Call collect 1-713-448-3403 or 1-409-295-6717
 15-6s-3tp

17. Seed and Feed

NEED EXTRA SPACE IN YOUR BARN?
 Let us pay Cash for your unwanted or outdated planting seed. Free pick up service. Cash paid for your planting seed when picked up. Write approx. # of bags of cottonseed, grain sorghum, corn, or other seed to:
 Bio-Soil
 P. O. Box 98556
 Lubbock, TX 79499
 Please include phone number!

8. Real Estate

2 BEDROOM HOUSE For Sale in Muleshoe. 219 W. 11th. Call 247-2330.
 M8-6t-6tc

FOR SALE BY OWNER: 3 bedroom, 3 1/2 bath Brick home. Den, formal living room and dining room, kitchen and utility, double garage, lots of storage, storm cellar, in good location. Also included 2-bedroom rent house. Call 272-3353.
 G8-5t-8tc

FOR SALE: Really nice modernized older home. Huge rooms, 3 baths, fireplace, sits on 1/4 of a block. Heat pump and refrigerated air. Call 272-3267 or 272-3304 after 6:00 p.m.
 A8-3t-tfc

FOR SALE OR RENT: 2 bedroom, 2 full bath mobile home, on 45'x-150' fenced lot. Call 272-5435, after 5 p.m.
 G8-49t-tfc

8. Real Estate

FOR SALE: 320 acres of dry land in the Goodland area. 272-4622.
 K8-4t-10tc

8. Real Estate

3-BEDROOM, 2-bath, double-wide mobile home for sale. 272-3438.
 C8-5s-tfc

Henry Realty
 111 W. Ave. B. 272-4581
 Muleshoe, Tx.

NEW LISTING: 3 bedroom, 1 1/4 bath, 1 car garage, carpet, central A/H, fenced yard, storm windows, shop building, good condition in a good location.

3 Brdm., 2 bath, spacious home outside city limits, near city on highway. 29x40 metal building. Lot 85'x620'.

3 Brdm., 1 bath, completely remodeled, edge of city on highway.

COMMERCIAL PROPERTY-Ideal location on West American Blvd. 150' highway frontage. A great business opportunity.

RURAL HOME-3 Brdm., 2 bath, large den on one acre with many extras. Fenced with barns, fruit trees, extra storage, storm cellar, and satellite dish. Priced to sell.

SPACIOUS-2 Brdm., 2 bath, with garage. Freshly painted. Fireplace. Ready to move in.

JUST LISTED-Outside city - 3 Brdm., 2 bath, garage on one acre. Carpet with drapes and blinds. Dishwasher. Good storage.

3 bedroom, 2 bath, carpet, large living room. Excellent condition, near high school. Priced to sell.

Bingham & Nieman Realty
 116 E. Ave. C. 272-5285 or 272-5286

RICHLAND HILLS
JUST LISTED-IMMACULATE-ENERGY EFFICIENT 3-2-2 Brick, Cent. A&H, built-ins, FP, sunken lv. area with cathedral ceiling, ceiling fans, earthtones, storage bldg., much more!!!!150's

4 NICE RESIDENTIAL LOTS PRICED FROM \$5,000.00!!!!

NICE RESIDENTIAL LOT WITH GREAT VIEW SOLD

JUST LISTED- Nice 3-2-2 Brick on large corner lot, Cent. A&H, built-ins, storm windows & doors, large basement, much more!!!!

JUST LISTED - 3-2-2 Brick on corner lot, Cent. A&H, built-ins, FP, cov. Patio & more. \$60's!!!!!!

VERY NICE 3-2-2 Brick Home, Cent. A&H, built-ins, FP, Wtr. Sftnr., auto, spkrl., Cov. Patio, Stor.-Shop, & much more!!!!!!

HIGHLAND AREA
NICE 3-2-2 Brick home (2 story), on corner lot, Cent. A&H, built-ins, and much more. LET'S LOOK TODAY!!!!160's

NICE 3-2-1 Brick Home, Cent. A&H, built-ins, large den with fireplace. Fenced yard, storage bldg. \$40's!!!!!!

PRICE REDUCED 2-2-2 Brick, corner lot, Cent. A&H, spacious rooms, utility, cov. patio, fenced yard, & much more. \$40's!!!!

HIGH SCHOOL
JUST LISTED-COZY 2-1 Home, nicely remodeled, fenced yard, & more \$17,000!!!!

2-1 1/2-1 Brick, fl. furnace, CA, fenced yard & more. \$20's!!!!

NICE 2-1 1/2-1 Home, corner lot, built-ins, nice carpet, heat pump, fenced yard, storage bldg. & more!!!!!!

PRICE REDUCED 3-1-1 Home earhtone carpets, fenced yard, storm cellar & workshop!!!!

JUST LISTED-VERY NICE 3-1-1 Brick, Cent. Heat, Evap. air, DW, earhtone carpets, nice deck area, fenced yd., st. bldg. & much more. \$30's!!!!!!

GEORGE NIEMAN, BROKER **DIANNE NIEMAN, BROKER**

18. Legals

LEGAL NOTICE FIVE AREA TELEPHONE COOPERATIVE UNCASHED CAPITAL CREDIT CHECKS
 The following list of Five Area Telephone Cooperative, Inc., members receiving service in 1979, 1980, 1981, 1982 & 1983 were issued capital credit checks. These checks have not been cashed and are currently being held in the Five Area Telephone office. These refund checks need to be delivered to the members and cashed so we can close our books. We would appreciate any assistance in locating these members. Please call our office at (806) 272-5533 or write to Five Area Telephone Cooperative, Inc., P.O. Box 448, Muleshoe, Texas 79347.
 Mollie Burch, W.L. Burnett, Jr., Willie Copeland, Jerry Cooper, Charles Cotton, Bob Cowley, D&Y Farms, Otis Eldon Davis, Joe Dias, Dewayne E. Daniell, Marshall F. Davis, J.B. Davis, Linda Davis, Joe Dozel,

8. Real Estate

PROPERTY FOR SALE
 ON the Co-op Gin Road. 272-4006.
 8:5s-6tp

18. Legals

Dennis Eaks, Robert Elliott, Energy Link Industries, Martin Enriquez, Carl Eybers, Manuel Flores, William Flores, Debbie Foreman, Brent Fountain, June Frazier and Milton M. Frazier
 Also Edmundo Garcia, Ray R. Garcia, Sotero Garcia, G.R. Garrison, Victoria Gonzales, Melquiades Gonzales, Jimmy Gunnels, Charles R. Hall, Dor-man C. Harrison, Larry B. Henley, Amelia Hernandez, L. Hodnett, Ralph Hughes, Billy J. Jackson, Nathan Jefferson, D.J. Kelton, Hank Kesey and David King
 Also Ralph D. Laywell, Cleofas Lopez, Manuel Lopez, Mike Lucero, Ed McBride, Ed L. McCrary, Sue C. Mader, L.A. Martin, Robert E. Martin, Roberto Marquez, Florentino Mendoza, Randy Minter, Steve Monreal, Bob Morgan, Paul & Janice Morrow, Robert E. Moss, Walter Murphree, Larry Nall, J.W. Nichols, Beverly Nickell, Eugene Olson, Manuel Orozco,

8. Real Estate

FOR SALE OR RENT:
 House in Lenau addition. 3 bedroom, 1 bath. 965-2838.
 G8-5s-4tc

18. Legals

Jacky Payne, Manuel Porras and Teordro Quezada
 Eugene Reavie, Patricia Reneau, Republic Drilling, Adolfo Reyes, Jose Reyes, Ray Reynolds, Charlie Robertson, Carlos Rodriguez, Terry D. Rogers Farm, Richardo Salinas, Gracie S. Sanchez, Satellites West, Eusebio Sepeda, Raymon B. Sisco, Smith Greecry, Sandra Stroebel, Velda Suttle, Jerry Tandy, Jock Terry, Alex Valdez, Roque Valencia, John Verhage, Tyrone Walker, George/Kathleen Ward, Albert John Ware, Garland Warren, V.C. Weaver, Rufus Williams, Charles White, Tommy Woolsey, Kenneth V. Wright, Michael J. Wright, Loyd Yates, Tobias Zapata and Lee Martinez

8. Real Estate

LAND FOR SALE: 7,000 acres of irrigated land. Will sell any part, or all. Sprinkler, fenced, and water tanks for cattle in each circle. Good cattle operation and excellent living quarters. Land is good for vegetables or grains. Near Earth, Texas. Will also sell or lease.

Randy Johnson
 (806) 272-3056

18. Legals

UNCASHED CAPITAL CREDIT CHECKS
LEGAL NOTICE
 The following list of persons receiving service in 1979, 1980, 1981, 1982, & 1983 were issued capital credit checks. These checks have not been cashed. If you have these checks in your possession please cash them so we can close this account. We will appreciate any help you may be able to provide in delivering this cash to the proper locations.
 Dusty Bailey, Jacob L. Bailey, Wesley L. Bentley, Bledsoe Grocery & Market, Toby Booth, Sawnie Branscum, Mac Brown, Chuck Cole, Jerry Copley, Jim Claunch, Ralph Deases, M.L. Eldridge, Jimmy Ellis, Ruben Flores, Debbie L. Fred, Larry Free, John Gunter, III, Jimmy S. Harris, B.J. and Paula Hodnett, Dale Wayne Jahay, Raymond J. Jaramillo, Robert L. Johnson, R.E. Jones, Van Kerr, M.G. Killough, Francis King-Estate, Lazbuddie Fire Department, Vernon Lott, L.A. Lucero and Gilbert Lueras
 Also Keith and Judy Madole, Amador Mendoza, Jack Merket, Lloyd C. Miller, Rex or Malyna Miller, Bill Morgan, Juan Moran, Eugene Munselle, Loyd E. New, Gary Nichols, Peabody Testing, Arthur Pedroza, Progress Creek Farm, Harrol Redwine, Roy Renfro, John H. Reynolds, Rev. J.C. Robinson, Gene Rogers, E.L. Schlottman, C.V. Sims, Irvin A. Smith, Hershel M. Tanner, Roberto Trevizo, Dean Vansandt, W.L. Welch and Berry Wilhoit

NOTICE TO CREDITORS

Notice is hereby given that original Letters Testamentary for the Estate of MINNIE FRANCES DUPLER, DECEASED, were issued on February 13, 1990, in Docket No. 1828, pending in the County Court of Bailey County, Texas, to: BILLY EUGENE DUPLER.
 The address of the Executor is in Bailey County, Texas, the post office address is: Post Office Box 16 Maple, Texas 79344
 All persons having claims against this Estate which is currently being administered are required to present them within the time and in the manner prescribed by law.
 DATED the 13th day of February, 1990.
 Gordon H. Green Attorney for the Estate C18-7t-1tc

SELL-RENT-TRADE OR BUY THROUGH THE CLASSIFIEDS!

272-4536

CONSUMER TIPS

Diamond Buyers Beware

True or False?
 •Diamonds with certificates are of high quality.
 •Jewelers with diplomas all grade diamonds alike.
 •Diamonds with high clarity and color grades are always very brilliant.
 All of the above are false. Renee Newman, author of *The Diamond Ring Buying Guide: How to Spot Value and Avoid Ripoffs*, points out:
 •Certificates can come with lower-quality diamonds as well as those of high quality.
 •Diamond grades can vary widely from one jeweler to another.
 •Diamonds that are poorly cut can lack brilliance even if they have high clarity and color grades.
 Diamond buying is complex and stakes are high if you make a mistake. But with the proper knowledge, even the average consumer can get good buys on diamond jewelry.
 To learn more about judging diamond quality and comparing prices, ask for *The Diamond Ring Buying Guide* (150 pages, 85 photos) at your local bookstore or jewelry supply store, or send \$14.50 (including shipping) to Intl. Jewelry Pubs., P.O. Box 13384, Los Angeles, CA 90013. Mention the name of this newspaper and you will receive a free brochure jewelry pouch with your order.

Cash Rewards Up To \$1,000 For Information! Call Bailey County Crime Line 272-HELP