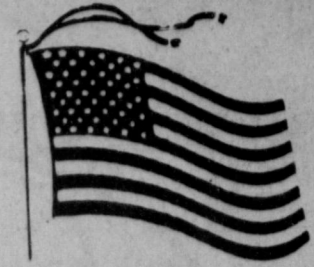


**Panhandle
Press
Association**
1989
Award Winner

Muleshoe Journal

'The Community Of Opportunity-Where Water Makes The Difference'



Vol. 68, No. 14 12 PAGES TODAY Published Every Thursday At Muleshoe, Bailey County, Texas 79347 **MEMBER 1990 TEXAS PRESS ASSOCIATION 20¢** THURSDAY, APRIL 5, 1990

CAFB Speaker Talks About Expansion

around
muleshoe

The Jennyslippers have reminded that applications for the 1990 Jennyslipper scholarship should be turned in to Linda Marr, Muleshoe High School counselor, by Monday, April 16.
No applications will be accepted after the Monday deadline.

United Methodist Youth will sponsor a youth dance, 9 p.m.-1 a.m. on Friday, April 13.

The dance will be at the American Legion Hall with Scotty Snipes providing the music.
Admission is \$4 per youth.

Jeff Hicks from Muleshoe will be appearing in the Western Texas College production of the Agatha Christie mystery *Ten Little Indians* April 17-21.

Curtain time in the Fine Arts Theatre will be at 8 p.m. nightly. Tickets for April 17 and 19 are \$5 each. The April 20 and 21 productions will be a dinner theatre format, with dinner at 7 p.m. and the performance following. Tickets for dinner and the show are \$13 each and they must be picked up by noon on April 20.

Muleshoe High School will be celebrating its "Local Scholarship Week" April 6-13. Applications for the 13 local scholarships will be available in Civics classes and in the counseling office.

Students are encouraged to fill out the applications and have them returned to the counseling office by 12:20 on Friday, April 13. The scholarships will be delivered to the various groups and organizations for their selection.

One hundred sixty-eight student honors will be presented at the Southwestern University Honors Convocation. Honors will be awarded by various academic departments, scholarship programs, and academic and honor societies.

Local student recognized for academic achievement for 1989-90 was:
Traci L. Elliott, daughter of Mr. and Mrs. Ronald L. Elliott. She was presented as a member of Psi Chi, the national honor society in psychology.

Bailey County Electric Plans Rate Reduction

Duane Lloyd, general manager of Bailey County Electric Cooperative Association, says that members of Bailey County Electric Cooperative will receive lower electric rates as a result of expected wholesale rate reductions.

Golden Spread Electric Cooperative and Bailey County Electric Cooperative asked the Federal Energy Regulatory Commission to reduce SPS' wholesale rates in a filing made August 31, 1989. A hearing is scheduled to begin July 23 before an administrative law judge in Washington, D.C.

Lloyd noted that SPS recently announced lower rates for Texas retail ratepayers. "This rate reduction does not apply to SPS' wholesale customers such as



SUPER MATHLETES WIN TROPHY-Seventh and eighth grade students from Watson Junior High School placed first at ENMU's Math Bowl held last Saturday in Portales. Fourteen area Texas and New Mexico schools participated in a double elimination tournament. The context was similar to the television show "Jeopardy" with categories consisting entirely of math questions. The ENMU Math/Science Bowl is sponsored by the Blue Key Math/Science Honorary. Second place went to Carlsbad and Elida received third. Mathletes representing Muleshoe were standing from left, Shawn Wheeler, Mark Garcia, Jose Mendosa and Shawna Delaney. Kneeling with the trophy is Mason Conklin. Sponsor of the local youth is Karen McLaughlin. (Journal Photo)

Bennie Claunch Wins Election As Commissioner, Precinct 4

With a very light turnout, even in Precinct Four with a contested county commissioner race, the deciding vote saw a spread of only five points.

By the time the vote was tallied, Bennie Claunch had defeated Alfonso Posadas by five votes. Claunch received a total of 179 votes, to 174 for Alfonso Posadas.

Claunch carried his home

boxes of Bula and Needmore by 50-8 at Needmore and 79-6 at Bula.

Posadas carried the absentee

Lady Mules Sending Two To Regional

Last weekend, the Lady Mules participated in the district track meet, and two tracksters, Monica Clemmons in the high jump, and Monica Swint, in the shot put, qualified for regional competition in Odessa on April 27-28.

As a team, the Lady Mules placed third with 73 points, behind Tulia with 200 points and Dimmitt, with 124 points.

Founding out the field were Friona, Littlefield and Floydada. Coach Bob Davis said the scoring went as follows:

FIELD EVENTS
Monica Swint, first in shot and second in discus.

Shana Hardwick, fourth in discus. Monica Clemmons, second in high jump and sixth in long jump.

Amber Green was fourth in triple jump.

RELAYS
Winning fourth place in the 400 relay were Amber Green, Blanca Sanchez, Monica Swint and Monica Clemmons.

A team of Amber Green, Blanca Sanchez, Erin Kelley and Monica Clemmons, placed third in the 800 relay.

For the 1600 relays, Amber Green, Blanca Sanchez, Becky Donaldson and Heather Hutton, placed fifth.

Erin Kelley was fifth in both the 100 hurdles and the 300

Cont. Page 6, Col. 5

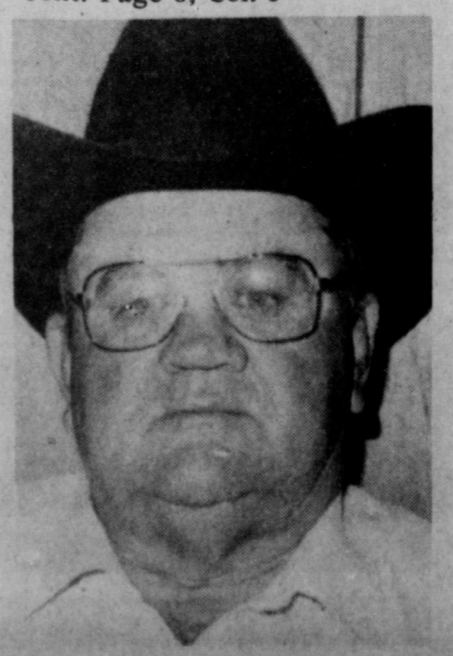
To show the light vote, 129 voted at the courthouse, out of 1029 registered voters. At the coliseum, 116 of the 779 registered voters went to the polls. It was 31 out of 176 at Three Way. From the Methodist Church, only 131 of the 930 registered voters went to the polls.

At Bula, the vote was heavier, with 87 of 132 registered voters casting ballots. Needmore has 105 registered voters, and 58 cast votes Tuesday. From the city hall box, there are 503 registered voters, and 137 cast ballots in the runoff election.

In the March Primaries, Claunch received 92 votes to 177 for Posadas.

Although Posadas had not given a definite answer, he is expected to ask for a recount or challenge the election shortly after the votes are canvassed by the Bailey County Commissioners Court on Friday.

In the event he decides to



BENNIE CLAUNCH

About 30 miles to the northwest of Muleshoe, Clovis, N.M. is all set to grow by nearly 2,000 people during the next year.

At noon Tuesday, Lt. Col. Rick Burleigh from Cannon Air Force Base, was speaker, and talked about the planned expansion of the air base, as well as the F-111 fighter plane.

Introduced by Curtis Shelburne, who was in charge of the program, Col. Burleigh said he had been stationed at the air base since August, 1989.

The Canton, Ohio, native, talked about the F-111, and about the training conducted at CAFB for pilots on the FD-111, which has been constructed since 1966.

He explained that the F-111 is a two-engine, two-person, fighter class bomber, with the capability of dropping nuclear weapons.

"Basically, it is the only airplane in the world that flies hands-off, in the weather, and 200' off the ground," he explained.

The colonel said all the F-111s at CAFB are the D-models, which were built in 1968-1969.

In talking about the expansion program for the base, Col. Burleigh said CAFB will obtain 48 aircraft; 1662 military people; 77 civilians. He said military construction will be \$48 million and 700 military housing units will be constructed in Clovis and Portales.

Most of the expansion is expected from July, 1990 through July, 1991.

This breaks down to the summer of 1990, when 50 officers, 500 enlisted people and 950 dependents will arrive at the base.

In the fall of 1991, an additional staff of 125 officers, 1000 enlisted men, 75 civilians and 1800 dependents will arrive at Cannon.

As housing and military installations are being constructed, some temporary facilities will be used, he added.

Included in the influx of new residents will be 800 more school children for military and 400-800

for construction and indirect additions to the schools.

Roads will be upgraded around the base, and there is the possibility of another overpass, to the west of the present overpass onto the base.

For more than 25 minutes following his presentation, Col. Burleigh answered questions posed by the Rotarians, most of them concerning the F-111 airplane.

Before the speaker took the podium, Rotary President Terry Hutto one more time reminded of the upcoming District Conference and asked Rotarians to be present for the April 24th Cont. Page 6, Col. 1

Journals Win Three Awards AT PPA Meeting

Last Saturday morning, at an awards breakfast in Amarillo, *Journal* editor Clea Williams accepted three plaques from the Panhandle Press Association.

The *Journal* won first place in advertising initiative; second place in sportswriting; and third place in spot news photo.

The 80th PPA Convention, held in the Harvey Hotel Convention rooms, featured Texas Governor Bill Clements as speaker at the Friday luncheon; Spike Dykes, head football coach from Texas Tech University as the Friday night banquet speaker and former Speaker of the House Billy Clayton as the Saturday noon luncheon speaker.

Some of the others presenting programs during the two day convention included U.S. Rep. Bill Sarpalius; Lubbock Attorney Don Richards; and state legislators Dick Waterfield and Teel Bivins.

Professional journalists made up other discussion panels for the two days.

A trade show featured the latest in computers and software, especially designed for newspapers.

Commissioners Approve Longer Hours For Some

Despite making a comment, "I don't want them (jailers, ambulance personnel and deputies) to work for nothing," Bailey County Commissioner Joey Kindle paved the way for such an event to

Lazbuddie FFA Judging Teams 4th In District

Rick Copp, vo-ag teacher for the Lazbuddie Schools took his livestock judging teams to two competitions last weekend, with the following results:

At the South Plains Livestock Judging competition in Levelland last Friday, a team composed of Casey Russell, Casey Bradshaw and Lance Ivy, placed third high in swine, fourth in sheep, and eighth overall.

Individually, Justin Morris was second in sheep judging. In competition in the Area meet on Saturday at Texas Tech University in Lubbock, Eric Williams and Craig Russell were on the dairy cattle judging team.

Placing 34th out of 52 teams was the horse judging team, composed of Monty Foster, Kirk Jesko, Justin Morris and Clint Ferris.

The team placed 20th in Area and fourth in district competition.

The livestock judging team placed 14th out of 113 teams; and won sixth in the area and second in district.

Team members included Casey Russell, Casey Bradshaw, Lance Ivy and Jason Morris.

possibly happen Monday afternoon.

Commissioner Kindle, seconded by retiring Bailey County Commissioner Rudolph Moraw, to have the jailers, ambulance personnel and deputies work for 171 hours in 28 days before being eligible for comp time or overtime pay.

Despite protests by Bailey County Sheriff Jerry Hicks, that it would not be fair for the emergency personnel to work the extra hours, when all other county employees only work 160 hours in 28 days before becoming eligible for comp time or overtime pay.

"I just want to see these people treated the same as all other county employees," reiterated Sheriff Hicks, but to no avail.

In the ensuing vote, three commissioners voted for the increase in working hours, but Commissioner R. L. Scott did not vote.

Sheriff Hicks said the ambulance service people would be only very slightly affected by such a change, and added, "my deputies are going to do their jobs, regardless," he said it would create a definite hardship for jailers.

He reminded that it is his deputies, who constantly work short-handed, who are accumulating all the overtime hours.

This was in response to a remark by both the county judge and a commissioner that a deputy could perhaps work an extra shift

Cont. Page 6, Col. 3

WEATHER

April 8	67	38	.00
April 9	76	46	.00
April 10	77	38	.00
April 11	65	37	.00

Easter

FIXINGS

YOUR WHOLE FAMILY WILL ENJOY

40" OFF LABEL ASSTD. DISH LIQUID
DAWN
22 OZ. BTL.
\$1.39

40" OFF LABEL ASSTD. LAUNDRY DETERGENT
TIDE
39 OZ. BOX
\$1.99

ASSORTED PAPER TOWELS
VIVA
JUMBO ROLL
79¢

DUNCAN HINES ASSTD. SHEETCAKE
CAKE MIX
18 1/2 OZ. BOX
59¢

ASSORTED GRINDS COFFEE
FOLGERS
39 OZ. CAN
\$4.99

DUNCAN HINES ASSORTED R.T.S. SHEETCAKE
FROSTING
11 OZ. CAN
79¢



U.S.D.A. GRADE A SELF-BASTING WITH TENDER TIMER
SHURFINE TURKEYS
ANY SIZE

LB. **69¢**

- LOUIS RICH TURKEY **MEAT FRANKS** 12 OZ. PKG. **99¢**
- HUISKEN'S ALL BEEF-10 LB. FAM. PAK **\$14.99**
- HAMBURGER PATTIES** BY THE PKG. **\$1.59**
- HILLSHIRE FARM REG./POL./BEEF/LITE **SMOKED SAUSAGE** LB. **\$1.99**
- WILSON'S **CORN KING FRANKS** 12 OZ. PKG. **89¢**
- SELECT FRESH PORK 3 1/2-5 1/2 LB. AVG. **SPARE RIBS** LB. **\$1.49**

CORN KING
HALF HAMS
2-4 LB. AVERAGE
\$1.69
LB.



BONELESS WILSON'S CORN KING FULLY COOKED

WHOLE HAMS
6-8 LB. AVERAGE

\$1.59
LB.



- LOUIS RICH GROUND **TURKEY MEAT** 1 LB. ROLL **99¢**
- HEAVY GRAIN FED BEEF BONELESS TOP **SIRLOIN STEAK** LB. **\$2.69**
- HEAVY GRAIN FED BEEF **T-BONE STEAK** LB. **\$3.99**
- WILSON'S 96% FAT FREE BONELESS REG./HONEY FULLY COOKED **HALF HAMS** 2-4 LB. AVERAGE LB. **\$2.89**
- WILSON'S CERTIFIED REG./LOW SALT **SLICED BACON** 1 LB. PKG. **\$1.59**
- LOUIS RICH BNLS. FULLY COOKED 3-5 LB. AVG. **TURKEY HALF HAMS** LB. **\$1.89**



QUARTERS
PARKAY MARGARINE
1 LB. PKG.

39¢



Purchase Scott products and you'll help raise \$1,000,000 for Ronald McDonald House

BATH...FAMILY
SCOTT TISSUE
4 ROLL PKG.

69¢



GRANULATED PURE CANE
C&H SUGAR
5 LB. BAG

\$1.69



ALL PURPOSE FLOUR
GOLD MEDAL
5 LB. BAG

77¢



SHURFINE GRADE A
LARGE EGGS
DOZEN

79¢



24 OZ. BOTTLE FRENCH'S
YELLOW MUSTARD

\$1.09



15 OZ. BOX DUNCAN HINES CAKE MIX
ANGEL FOOD

\$1.99



45 CT. BOX KLEENEX
DINNER NAPKINS

\$1.19



8 3/8 INCH REG. / COMPARTMENT CHINET DINNER
PLATES
15 CT. PAK

\$1.79

CHINET 16 OZ.
BOWLS
15 CT. PAK

\$1.29



SCHILLING
VANILLA
1 OZ. BTL.

\$1.19



LOW CAL SWEETENER
EQUAL
100 CT. BOX

\$3.49

GOLDEN RIPE
BANANAS
LB. **38¢**

- VINE RIPENED **TOMATOES** LB. **49¢**
- RED RIPE **STRAWBERRIES** PINT **69¢**
- SPRING FRESH **ASPARAGUS** LB. **\$1.49**
- CALIFORNIA CRISP **CELERY** STALK **38¢**
- CALIFORNIA FRESH **GREEN ONIONS** 4 BUNCHES **\$1.00**
- CALIFORNIA **CARROTS** 3 1 LB. BAGS **\$1.00**

THOMPSON
SEEDLESS GRAPES

LB. **58¢**



IMPERIAL BROWN/POWDERED
SUGAR
2 LB. BAG

\$1.19



LAY'S POTATO
CHIPS
2.89 SIZE

\$2.39



GINGHAM GIRL ANGEL FOOD
RINGS
13 OZ. PKG.

\$1.49

GINGHAM GIRL
SHORTCAKES
4 CT. PKG.

2 \$1
FOR

- ASSORTED VO-5 **CONDITIONER** 15 OZ. BTL. **99¢**
- ASSORTED VO-5 **HAIR SPRAY** 10 1/2 OZ. CAN **\$1.69**
- ASSTD. MOUTHWASH **SCOPE** 24 OZ. BTL. **\$3.59**
- TOOTHPASTE **AQUA-FRESH** 6.4 OZ. TUBE **\$1.89**
- ACTIFED** 24 CT. BTL. **\$4.19**

ASSORTED VO-5
SHAMPOO
15 OZ. BTL. **99¢**

- 15 OZ. PKG. PILLSBURY ALL READY **PIE CRUST** **\$1.89**
- 8 OZ. CAN PILLSBURY **CRESCENT ROLLS** **\$1.39**
- 8 OZ. BOX PHILADELPHIA **CREAM CHEESE** REGULAR OR LIGHT **99¢**

SHURFINE **SOUR CREAM** 1/2 PINT CTN. **2 FOR \$1**

SHURFINE **WHIPPING CREAM** 1/2 PINT CTN. **2 \$1** FOR

SHURFINE ASST. **ICE CREAM** 1/2 GAL. RND. CTN. **\$1.79**

- 2 CT. PAK PET RITZ DEEP DISH **PIE SHELLS** **\$1.29**
- RHODES WHITE/FLAKED WHEAT **DINNER ROLLS** 36 CT. PKG. **\$1.99**
- RET RITZ APPLE/PEACH/CHERRY FRUIT **COBBLERS** 26 OZ. BOX **\$2.49**
- SHURFINE WHIPPED **TOPPING** 12 OZ. TUB **99¢**

- REGULAR OR BUTTER FLAVORED SHORTENING **CRISCO** 3 LB. CAN **\$2.59**
- VEGETABLE OR CORN **CRISCO OIL** 48 OZ. BTL. **\$1.79**

AT AFFILIATED FOODS INC.
MEMBER STORE
WE ACCEPT FOOD STAMPS...
WE RESERVE THE RIGHT TO LIMIT
PRICES EFFECTIVE
APRIL 8-14, 1990



ALL TYPES
COCA-COLA
2 LITER BOTTLE
\$1.09

**Patients in
Muleshoe Area
Medical Center**

APRIL 6-9
FRIDAY

Jeanette Fine, Thomas Duncan, Trisha Burgess, Nick Black, Ruby Clark, Audrey Langfitt, Clio Middlebrooks, Treasa Criswell, and Connie Nigh

SATURDAY

Demetria Gillian, Jeanette Fine, Thomas Duncan, Trisha Burgess, Nick Black, Audrey Langfitt, Clio Middlebrooks and Connie Nigh

SUNDAY

Demetria Gillian, Veronica Lopez, Jeanette Fine, Allie

**Dorothy Brown
Services Held At
Oklahoma Lane**

Funeral services for Dorothy Harris Brown, 78, were held at 2 p.m. Wednesday, April 11 in the Oklahoma Lane Methodist Church with the Rev. Jim Ed McGuire, a Baptist minister from Lubbock, and Bret McCasland, minister of the Muleshoe Church of Christ, officiating.

Burial was in Muleshoe Cemetery under the direction of Ellis Funeral Home. Mrs. Brown died at 7:30 p.m. Sunday in Muleshoe HealthCare Center.

Born Nov. 17, 1911, in Hereford, she had been a resident of Bailey County since 1943. She moved from Hereford to the Oklahoma Community in 1933. She was a homemaker and a member of the First Christian Church of Canyon. She married Dee Brown on Aug. 15, 1937, in Texico, N.M.

Survivors include her husband, Dee; two sons, James Brown of Muleshoe and Mac Brown of Muleshoe; a sister, Wilma Carmichael of Hereford; a brother, L.G. Harris of Nashville, Tenn.; and seven grandchildren.

**Anna Hill
Funeral Services
Held Monday**

Funeral services for Anna C. Hill, 89, of Farwell were held at 2 p.m. Monday in Ellis Funeral Home Chapel with the Rev. Richard Edwards, pastor of the First United Methodist Church, officiating.

Burial was in Muleshoe Cemetery under the direction of Ellis Funeral Home. Mrs. Hill died at 5:50 p.m. Thursday in Farwell Convalescent Center.

Born May 22, 1900, in Indian Territory, Oklahoma, she had been a resident of Farwell since 1978, moving there from Muleshoe, where she had resided since 1929. She moved to Muleshoe from Anadarko, Okla. She was a homemaker a member of the First United Methodist Church at Progress and Muleshoe and WSCS (Women's Christian Society Service). Her husband, Arthur Sewell Hill died in 1961.

Survivors include a son, Martin C. Hill of Lake Havasay City, Ariz.; three daughters, Mrs. Betty Robinson of Garden Grove, Calif., Mrs. JoAnn Miller of Farmington, N.M., and Mrs. Lawana Sue McCarter of Clovis, N.M.; 16 grandchildren; 31 great grandchildren; and four great great grandchildren.

ATTENTION

Your only local media of general circulation that qualifies for & has a 2nd class newspaper subscribers mailing permit.
U.S. Post Office Approved.

Muleshoe Journal USPS 347-820
Established February 23, 1924. Published by Muleshoe Publishing Co., Inc., Every Thursday at 301 W. Second, Box 449, Muleshoe, Texas, 79247. Second Class Postage Paid at Muleshoe, Texas, 79247.

Member 1990
TEXAS PRESS ASSOCIATION

L. B. Hall, Publisher
Sammy Hall, Vice President Controller
Cora Wilkins, News Editor
Dorothy Harris, Society Editor
Holly Millap, Advertising Editor
Dora Teague, Classified

SUBSCRIPTIONS
Muleshoe Journal and Bailey County Journal
Daily and surrounding counties
\$14.75
Muleshoe Journal and Bailey County Journal
Outside Texas, \$16.50
Yearly By Carrier
\$12.50

Advertising Rate Card on Application
Advertisers should check their ad the first day of insertion. The Journal will not be liable for errors in publication except to the extent of a typographical error or error in publication except to the extent of the cost of the ad for the first day of insertion. Adjustment for errors will be limited to the cost of the first portion of the ad where the error occurred.

Horsley, Trisha Burgess, Richard Edwards, Audrey Langfitt, Clio Middlebrooks, and Connie Nigh
MONDAY

Veronica Lopez, Allie Horsley, Trisha Burgess, Rex Black, Audrey Langfitt, Clio Middlebrooks, Donald Miller and Connie Nigh

R.O. Gregory

**Services Held
Here Wednesday**

Services for R.O. Gregory, 76, were held at 11 a.m. Wednesday, April 11 in the First United Methodist Church with the Rev. Richard Edwards, pastor, officiating, assisted by Bret McCasland, minister of the Muleshoe Church of Christ.

Burial was in Muleshoe Memorial Park Cemetery under the direction of Ellis Funeral Home. Gregory died at 6:50 a.m. Monday in St. Mary's Hospital in Lubbock.

Born Feb. 11, 1914, in Weinert, he had been a resident of Bailey County 44 years moving here from Ropesville. He was a farmer and owner of Leo's Machine Shop. He was a member of the Muleshoe First United Methodist Church. He married Fern Bake on April 10, 1980 in Plainview.

Survivors include his wife, Fern; two step-sons, Larry Holt of Clyde and Dan Holt of Plainview; two daughters, Lavayne Williams of Lubbock, and Doris Vandiver of Muleshoe; a step-daughter, Paula Tribble of Birmingham, Alabama; a sister, Naydeen Burris of Elida, N.M.; a brother, Boyd Gregory of Dallas; 12 grandchildren; and 10 great grandchildren.

LOVE

What is Love?
Is love something you think you feel inside.
That your not quite sure of.
Or is love something you want to feel inside?
Love is how you feel and care about someone else.
Its a passion that comes straight from your heart.
Love is not something you fool around with.
When you really fall in love you feel a spark inside you go off.
And then and only then will you really and truly be LOVE...

Written by
Isaac Miramontes

**NOTICE OF TARIFF
CHANGE TO
CENTRANET® SERVICE**

GTE Southwest Incorporated gives notice of its proposed tariff changes to CentraNet® service, which is a Central Office-based service that provides PBX-type features to multi-line business customers and is currently being offered in all company wire centers where such facilities exist to provide the service.

The Public Utility Commission of Texas approved a generic tariff for CentraNet® service up to 100 lines in Docket No. 7652. The proposed tariff revision would establish specific rates for CentraNet® service involving 101 to 400 lines. Other proposed revisions involve the rate applicable to changes, additions, or deletions to the data bases and a new rate is proposed for additional trunks.

The names of the three CentraNet® packages have changed from Standard, Premium, and Deluxe to CentraNet® 1000, CentraNet® 2000, and CentraNet® 3000, respectively. Direct Call Pickup has been added to the three CentraNet® packages while Multiple Call Park and Shared Speed Call 30 have been added to CentraNet® 2000, and Speed Call 30 and Call Forward Busy/No Answer Split have been added to CentraNet® 3000. Flexible Night Answer and Automatic Route Selection also have been added as new optional features.

The proposed changes and new service offerings have been assigned Docket No. 9251, and pursuant to Section 43(d) of the Public Utility Regulatory Act will become effective June 23, 1990. Rates for service will be applicable to customers who subscribe to the service as well as existing customers. Therefore, there will be no effect on any other rates of the company. The company's gross annual revenues will increase by approximately \$399,600, or less than one percent annually.

The proposed rates are on file with the Public Utility Commission of Texas, and are available for public inspection at the offices of GTE Southwest Incorporated. Persons who wish to intervene or otherwise participate in these proceedings should notify the Commission. The deadline to intervene in this docket is 3:00 p.m., April 9, 1990.

A request to intervene, participate, or for further information, should be mailed to the Public Utility Commission of Texas, 7800 Shoal Creek Blvd., Suite 400N, Austin, Texas, 78757. Further information may also be obtained by calling the Public Utility Commission Consumer Affairs Division at (512) 458-0223 or (512) 458-0227 or (512) 458-0221 teletypewriter for the deaf.

GTE
GTE Southwest
Incorporated

**Melva Carmickle
Funeral Services
Pending Here**

Funeral services for Melva Hawkins Carmickle, 44, of Lubbock were pending with Ellis Funeral Home in Muleshoe at press time Wednesday morning.

Ms. Carmickle died at 9:04 a.m. Tuesday in University Medical Center in Lubbock.

Born Feb. 24, 1946, in Muleshoe, she moved to Lubbock in 1975, from Muleshoe. She was a homemaker. She married Ronald Carmickle in April 1988, in Lubbock.

Survivors include her husband, Ronald; her mother, Mrs. Julia

Hawkins of Muleshoe; three sisters, Alta Gates of Phoenix, Ariz., Alma Crim of Muleshoe, and Alene Tindal of Hereford; and five brothers, Delbert Hawkins of Dallas, Leroy Hawkins of Lubbock, Richard Hawkins of St. Petersburg, Florida, and Wesley Hawkins and Eugene Hawkins, both of Muleshoe.

**NOTES,
COMMENT**

Work hard and complain less.

Some people stay mad over little things.

The trouble with spring gardens is summer grass.

Proven statistic: Two cannot live as cheaply as one.

What the average farmer wants is profit, not discussion.

"The last thing my old mower cut was the cost of a new Snapper."



- Trade in your old mower
- And cut the cost of a new Snapper Rider
- For example, add up the savings shown for model 2812x61 with a 12 hp engine and 28" deck

Retail 1859.95
Bagger Extra

Get at least
\$200
trade allowance

SNAPPER

Offer valid when you buy at regular retail price. Not valid with any other promotion. Limit one trade-in per transaction. At participating dealers. Hurry, offer ends soon.

A&M Farm and Ranch Supply, Inc.

1302 W. Amer. Blvd.

272-5571

1990 Crop		1990	Month
Pool Cash Advance	Sale Flat	Contract Basis	
Feed Corn.....Mkt.....	4.61,-0.14	No Bid	May
White Cobb Yellow.....	4.50	5.00,0.07	May
Red Cobb Yellow.....	4.00	4.75,-0.06	May
White Food Corn.....	5.00	6.00,0.63	May
Milo.....Mkt.....	3.81,-0.59	No Bid	May
Soybeans.....No Pool.....	5.13,-0.78	-0.95	May
Wheat.....No Pool.....	3.30,-0.33	-0.34	KC May

96 3/4 %
Prices effective April 10, 1990

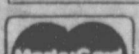
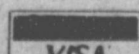
Farmer's Co-Op Elevators
272-4335

Come help us celebrate our 10th Anniversary at Shipley Furniture. During our sale we've marked down our entire inventory of quality, American made furniture!

10th Anniversary SALE

<p>LA-Z-BOY SLEEPER SOFAS W/Innerspring Mattress</p> <p>\$499⁰⁰ & Up</p>	<p>LA-Z-BOY RECLINERS Don't Settle For Less Than The Best In Comfort, Style and Beauty!</p> <p>\$299⁰⁰ & Up</p>	<p>ALL COLORS SWIVEL ROCKERS Starting At</p> <p>\$239⁰⁰</p>	<p>LA-Z-BOY 2-PC. SECTIONAL Herculon Velvet</p> <p>\$1598⁰⁰</p>
<p>LA-Z-BOY LOVESEAT RECLINERS SALE PRICED!</p>		<p>SOFA & LOVE SEAT SETS STARTING AT \$899!</p>	
<p>COMPLETE ONLY BEDROOM SUITES Dresser, Mirror, Chest, Headboard, Nitesand.</p> <p>\$1099⁰⁰</p>	<p>SOLID WOOD DINING ROOM SUITES Table & 6 Chairs. Starting At</p> <p>\$1599⁰⁰</p>	<p>ALL PURPOSE ENTERTAINMENT CENTERS For TV, Stereo, Etc. Starting At</p> <p>\$175⁰⁰</p>	<p>SOLID WOOD DAY BEDS Mattress Not Included. BRASS</p> <p>\$159⁰⁰</p>
<p>COFFEE TABLES/END TABLES TO PLEASE ANYONE!</p>			
<p>QUALITY NAME BRAND SOFAS Starting At</p> <p>\$499⁰⁰</p>	<p>RIDGEWAY GRAND FATHER CLOCKS Starting At</p> <p>\$1199⁰⁰</p>	<p>BEAN BAGS ALL SIZES, SHAPES, COLORS!</p>	
<p>LARGE SELECTION-CURIO CHINAS STARTING AT \$199</p>			
<p>QUALITY ODD LOVE SEATS Your Choice</p> <p>\$349⁰⁰</p>	<p>LARGE SELECTION ASSORTED LAMPS Many Colors</p> <p>20% OFF</p>	<p>YOUTH'S BEDROOM GROUPS 2 Colors/Open Stock</p> <p>SAVE</p>	<p>SOLID WOOD DINETTE TABLES With 4 Chairs</p> <p>\$599⁰⁰</p>
<p>KINCAID WALL UNITS OAK - 3 PC. - CHERRY</p>			
<p>SEALY AND SERTA MATTRESS SETS (Full-Size)</p> <p>\$299⁰⁰ & Up</p>	<p>CHROM CRAFT BAR STOOLS All Sizes</p> <p>SAVE</p>	<p>"SOUTHWEST STYLE" EXCELLENT SELECTION</p>	

Just in time to spend that Tax Rebate Check!



Use our terms, your Visa or MasterCard

Shipley Furniture

1305 MAIN 763-7534



JUNE PLANS REVEALED—Ms. Marcia Henry would like to announce the engagement and approaching marriage of her daughter, Kacy Karol to Jason Scott Scoggin, son of Ms. Doris Scoggin and Kearney Scoggin. Vows will be exchanged June 8 in the first United Methodist Church of Muleshoe. Miss Henry and Scoggin are both graduates of Muleshoe High School and Texas Tech University. Miss Henry is currently employed by Marriott Corporation at South Plains College, Levelland. Scoggin is employed by Dekalb Research Station, Hastings, Nebraska. (Guest Photo)

Muleshoe Squares

By Mary Alice Ramm

The Muleshoe Squares will have a halfway dance this Thursday night in honor of our students. They are halfway thru lessons. It will be held at 7 p.m. in the American Legion Hall on Ave B. Visitors are welcome.

This is also our second quarter of the year. Quarterly dues and a salad supper, Thursday, April 12.

There are lots of places to Square and Round dance this month. To start off, How about—Friday, April 13th, Merry Mixer Special, Merry Mixer Building, South of Lubbock, with Marshall Flippo, caller.

Monday, April 16th, Solo Squares halfway dance. They have forty plus students. L.A.S.R.D. Center, 120th University. Dennis Horn will be the caller.

Friday, April 20, Y Squares of Clovis, New Mexico, Trail In Square and Round Dance, 7 p.m. Mt. time., District callers doing the Squares, Area Cuers doing the Rounds, \$5 donation per couple. I.O.O.F. Hall 821 Connelly St.

Saturday, April 21st. New Mexico District Jamboree Square and Round Dance. James Bickley School, 500 West 14th. Clovis, N.M., Mt. Time 1:30-3 p.m. Square Dance workshop, James Pettus and Carl Cox 7-7:30 p.m. Request Rounds 7:30 to 10:30 p.m. District Callers and Cuers. Non-District members \$7 per couple.

Friday, April 27th Diamond

Jubilee Anniversary Dance, Merry Mixer Building, Larry Letson caller.

Traveling Tumbleweed Squares will be at Palo Duro State Park at Canyon, Texas the week end of April 27-29. If you have a travel trailer or like to camp out and square dance; they would like for you to join them. Friday night they will square dance with the Canyon Club. Saturday night they will square dance down in the park.

Saturday, April 28th Kuntry Kuzzins Anniversary Dance L.A.S.R.D. Center. Johnny Wykoff caller. Don Dillard Cuers. \$4 donation per person. Salad supper at 7 p.m. Dance at 8 p.m.

Saturday, April 28th, Circle Eights of Clovis, N.M. Annual Spring Fling Square and Round Dance. James Bickley School, Clovis, N.M. Ken Kirby caller, Jack and Dale Orio cueing. \$6 donation per couple. 7-7:30 p.m. Mt. time pre-rounds.

If one really wants to plan ahead on Tuesday, May 1st, May Day and Anniversary Dance for Starlight Swingers, Portales, N.M. More information on this later.

Don't forget the 28th Annual Texas State Federation Square and Round Dance May 31st, June 1st and June 2nd, Lubbock Memorial Civic Center, Lubbock, Texas.

Visitors always welcome. Muleshoe Squares dance on the 2nd, 4th and 5th Thursday nights.



WALKING FOR FIREWORKS—Jeremy, Tory and Gage Tosh; Lisa Marie and Adam Ramirez; Billy Jack Lynch; Stephanie Kirk; Amy and Cade Hooten; Mark and Russell McGuire; Amy, Stacy and Mindy Locker; Kyle Hahn and Jennyslippers Dona Kirk and Mary Ann Ramirez participated in the Walk-A-Thon Sunday afternoon. This annual Walk-A-Thon, sponsored by the Jennyslippers, is held each year to raise funds for the purchase of fireworks for the July 4th celebration. (Journal Photo)

Journal Files

60 Years Ago

1930

DRIVERS WARNED ABOUT HEADLIGHT LAW VIOLATIONS

According to authoritative information, State Highway patrolmen are warning automobile owners about driving cars and trucks at night with only one light burning. The fines for such law violations range from \$1 to \$100, including court costs.

Patrolmen with headquarters at Lubbock are making this territory and will see that the law is enforced.

50 Years Ago

1940

SPECIAL PRICES ON FIRESTONE TIRES
That you may become better acquainted with the many virtues, high quality and long wearing ability of the famous Firestone tires, we are offering: **FIRST QUALITY FIRESTONE CONVOY TIRES**

\$7.84 each and your old tire Muleshoe Motor Company

40 Years Ago

1950

THREE DEAD AS FIRST TORNADO OF SEASON DROPS DOWN ON PLAINS

Cecil Atchley, butane truck driver for Green Butane of Muleshoe was in the storm which hit the little community of Sunnyside Tuesday night and assisted in getting help for the stricken settlement.

Three persons died in the tornado, some thirty persons were injured and hospitalized and most of the buildings were destroyed when the twister struck with little warning.

A little earlier severe winds and hail struck Muleshoe community. About 5:30 barns and outbuildings at the Burl Black home northwest of town were blown down, and at Friona the wind crushed a trailer house about the same time and three were injured.

Tornado warnings had been issued for a wide strip of the Plains including Muleshoe and area.

30 Years Ago

1960

Grocery specials advertised this week in the Journal included: coffee 2 pound tin \$1.39; 25 pounds flour \$1.98; 9½ ounce large can tuna 39 cents; No. 300 can beef tamales 25 cents; No. 300 can beef stew 33 cents; No. 303 can tomatoes 2 for 21 cents; No. 303 can pears 23 cents; No. 303 can pineapple 23 cents; 12 ounce can corn 2 for 25 cents; pint Wessen oil 29 cents; club steaks 99 cents pound; franks 43 cents pound; short ribs 23 cents pound; 2 pound package bacon 89 cents; sirloin steak 89 cents pound; rib steak 59 cents pound; lemons 10 cents pound; radishes 5 cents bunch; bananas 10 cents pound; and cabbage 5 cents pound.

20 Years Ago

1970

WINTER WEATHER WALLOPS COUNTY
Winter whistled back into Muleshoe area late Friday afternoon and left the entire area

paralyzed from ice and snow drifts.

Slightly before 4:30 p.m. Friday, a massive sand storm preceded the whistling norther which raced through the area. Before night, all the motel rooms were filled and that started a long night for State Highway Department, Sheriff's office and City Police officers.

The visibility was reduced to zero with blowing ice which stuck to windshields faster than it could melt and blowing drifting snow. Cars began piling up along the side of highways, especially in the Clay's Corner area. Some 40 people were reported stranded at Clay's Corner Grocery and some of them wearing shorts, and had no coats with them.

At a late hour Saturday morning Parmer County officers were attempting to get into a location near Black Water Draw east of Bovina and southwest of Hub where two boys were reported to be frozen to death in an old barn.

Officers had not managed to get in to where the bodies were by presstime. No details of the incident were available.

Bailey County officers were notified shortly before noon that both boys were Muleshoe residents.

10 Years Ago

1980

TEACHER OF THE WEEK

Mrs. LaNelle Skaggs was chosen as Teacher of the Week by the Student Council at MJHS, where she teaches in the Resource Room. She has taught school for 10 years, two of them at MJHS and at Lazbuddie eight years, where she taught Junior High and High School English. She received college degrees in English and Spanish and an LLD Endorsement.

When asked about her teaching experience at MJHS, She replied, "This school is by far the

best school in which I've taught as the students and faculty are so cooperative.

Something Fishy

A persistent salesman refused to leave when the secretary told him the boss was out. Finally, weary of being a prisoner in his own office, the boss admitted the salesman.

"My secretary told you I was out," exclaimed the puzzled boss. "How'd you know that I was in?"

"Easy," explained the salesman. "Your secretary was working."

Jill Noble Named April Scholar Of Month

Jill Noble became the April Scholar of the Month during the March 22 meeting of the MHS National Honor Society.

A sophomore, Jill takes part in many school related activities. She represented MHS as a junior varsity cheerleader, both her freshman and sophomore years.

"Jill takes great pride in her academic studies and she is considered a model student by all of her teachers" said a spokesman for the group.

She is the daughter of Sandy and Deborah Noble of Muleshoe and has a sister, Lisa, attending Texas Tech as a freshman.

"The National Honor Society would like to extend a sincere 'Congratulations' to Jill Noble, April's Scholar of the Month.



JILL NOBLE

Gift Selections
For
Dayna Hamilton
Bride Elect Of
Shannon Williams
ART LOFT

You Are Invited
to the
Second Annual
Eastern New Mexico &
West Texas Women's
Spiritual Growth Retreat
May 4th & 5th
Heritage House Inn
Muleshoe, Tx.
Early Registration - April 15
Final Registration - April 17
For More Information Call:
505-762-1924 or 806-389-5384

TAXPAYERS' Rights, Remedies, Responsibilities

Want to learn more about the property tax system? That's possible by reading a pamphlet the State Property Tax Board has written and made available at the local appraisal district office.

It's called "Taxpayers' Rights, Remedies, Responsibilities" and it may help you save money. Learn about tax relief available through

- homestead exemptions
- disabled veteran exemptions
- special productivity value for farm, ranch, and timber land
- tax deferral for over-65 homeowners

You'll learn how your property is appraised. That way, you can decide if the appraisal district's value is reasonable.

If you think it isn't, the pamphlet tells you how to prepare an appeal to the appraisal review board. You'll learn the types of protests the appraisal review board can hear and useful evidence to bring to your hearing.

Important dates in the tax year are listed. You'll know what your responsibilities are and when you are obligated to satisfy them.

"Remedies" is free to taxpayers. Ask for yours today at

State Property Tax Board

Box 15900 Austin, TX 78761-5900

Bailey County Tax Appraisal District

104 E. Ave. C. Muleshoe 272-5501

SONIC
Burger & Shake
CAR HOP SPECIAL
REGULAR SONIC BURGER
REGULAR SONIC SHAKE
\$2.19 PLUS TAX
REGISTER TO WIN A CALIFORNIA WEEKEND TRIP FOR 2 (BEACH PARTY GUESTS OF HONOR)
1633 W. Amer. Blvd.
272-3998
1990 SONIC INDUSTRIES INC.



LIBRARY RECEIVES CHECK--Mayor Darrell Turner and Anne Camp proudly show off a \$7,000 check, a grant to be used for new books for the Library. (Journal Photo)

Library News

by Anne Camp

The Muleshoe Area Public Library has been named a recipient of the 1990 J. Frank Dobie Trust Award, which is given annually to small Texas Libraries in towns of 25,000 or less population. To be eligible, a grant proposal had to be submitted to the committee before March 3, 1990. The Awards were announced at the annual meeting of the Texas Library Association at the Dallas Convention Center on Wednesday, April 4th.

Ann Camp, Librarian was present at the Trustees and Friends of Libraries luncheon where the announcement and recognition of the recipients was made. Luncheon attendees, well over 600, gave a big round of applause when the Committee spokesman announced that the amount of the award this year is \$7,000. In previous years it

varied between \$4,000 and \$5,000.

The late J. Frank Dobie, the renowned Texas Western author left this Trust Fund in his will specifically for the purchase of new books for small libraries. Each book purchased from the Trust fund will have a special bookplate naming the benefactor.

The check along with a letter of congratulations from the Chairman of the award committee, Heartsill Young was received, and the letter stated that the award was given in recognition of the need for additional book resources and of the support given the library by its staff, Board/Friends group, local government and the community at large.

Needless to say, this grant will boost the book budget for the library for 1990, and will result in

many badly worn books being replaced, and many new books added. As always, suggestions are welcomed by the public.

A letter of appreciation has been sent to the committee by Librarian Anne Camp on behalf of librarian and staff, the Friends group and the city of Muleshoe.

BRIEFS

Bush, Kaifu of Japan, conclude recent talks with promises.

Supreme Court strengthens hand of U.S. agents overseas.

Hollings pushes for ceiling on campaign spending.

World Bank gives its OK to \$60 million loan to China.

Three Way News

by: Mrs. H.W. Garvin

Mr. and Mrs. Bill Dolle and Darla spent the weekend in Canyon visiting Bill's brother, Don Dolle and family, and help Mrs. Don Delle celebrate her birthday. ***

Mrs. H.M. Garvin visited her brother, the George Tysons Friday afternoon. ***

Mrs. Joe Sowder attended the funeral of an uncle Arvil Wall, Thursday. Services were in Steed Todd Chapel of Clovis. Burial was in Oklahoma Lane Cemetery. ***

Second Annual Spiritual Retreat Set In May

"Women from several churches are helping plan the Second Annual Eastern New Mexico and West Texas Women's Spiritual Growth Retreat. It will be May 4 and 5 at the Heritage House Inn in Muleshoe. The retreat is non-denominational and is designed to give women from all walks of life a weekend of fellowship, enrichment and spiritual renewal.

Speaker for the retreat will be Cindy Miller from Munice, Indiana. She is a wife, mother, teacher, counselor, and marketing director who speaks from her heart about relationships, self-esteem, stress management and

Tex-Mex Cooking Demonstration Planned Here

Southwestern Public Service and Bailey County Extension will be co-sponsoring a "Tex-Mex Cooking" Cooking demonstration on April 23 from 2 to 3:30 p.m. at the Bailey County Coliseum, 2201 W. American Boulevard, Muleshoe.

Mrs. Kay Davis, SPS Home Economist, will present the demonstration after which those attending will be invited to taste the different foods prepared. Free recipes will be given to everyone and will include recipes which have been demonstrated.

Kandy McWhorter, County Extension Agent in Home Economics for Bailey County, invites area cooking enthusiasts with an interest toward Mexican food to come and enjoy this very special demonstration.

Educational programs conducted by the Texas Agricultural Extension Service serves people of all ages regardless of socio-economic level, race, color, sex, religion, handicap or national origin.

other topics.

Early registration deadline is April 15, final registration date is April 27. For more information call (505) 762-1924, or (806) 389-5384.

Earth Day Scheduled April 21

Earth Day 1990 in Earth will be celebrated Saturday, April 21 at the City Park in Earth.

Activities will begin at 10 a.m. with speakers and tree planting in the City Park. There will be a concession stand, environmental booths and activities. Craft booth space is available for rent to interested persons.

At 11 a.m. there will be a keynote speaker and tree planting at the new firehall on Highway 70.

Hamburgers will be sold by the Volunteer Fire Department. The Auxiliary will have ice cream and cakes.

A special mobil post office will be in the park for commemorative cancellations.

Final event of the day will be the Chamber of Commerce dinner in the school cafeteria. Ace Reid is to be the speaker for the banquet.

For more information you may call 806-257-2111 between 9 a.m. and 5 p.m.

Carter asks Contra rebels to try peace.

Changes in Gramm-Rudman all but certain.

Council says moon, Mars travel needs more study.



ARROW OF LIFE AWARD--Kermit Price, Adam Graves, Corey Williams and James Cox received the Arrow of Life Award during the Boy Scout Blue and Gold banquet Friday night. The South Plains Indians provided the entertainment. (Journal Photo)

MHS National Honor Society Met In Huckaby Home

The National Honor Society of MHS met March 22 in the home of Holly Huckaby at 7:30 p.m. The meeting was called to order by Tricia Underwood and a prayer, lead by Amber Green, followed.

Following the roll call, the end of the year induction of new members was discussed. The date will be decided during the next business meeting.

Scholars were briefly discussed and Jill Noble was selected as the April Scholar of the Month. She represents MHS as a sophomore and exhibits and extracurricular activities.

The meeting was adjourned and refreshments were served. "A big thank you goes out to Linda and Holly Huckaby for letting us meet in their home and for preparing the wonderful refreshments."

Colorful Easter Ideas

Easter Lilys
Day Lilys
Daisy Mums
(Free Delivery)

Roses
Climbing Blaze - Hybrid Tea
Miniature

Largest Selection Ever Of
Trees & Shrubs

Kristy's Plants

710 E. Amer. Blvd. 772-5536

ESTATE SALE

6 1/2 miles S. on Hwy 214
(Pink Brick House on West)

Saturday, April 14th

10:00 a.m. - 5:00 p.m.

Cash Only! 946-3443

Roxeanne Lucero, M.D.

Dermatology

- Diseases & Surgery of the Skin -

New Address:
**809 B. Parkland
Clovis, NM 88101**

(behind Village Restaurant on Prince St.
next to North Plains Mall)

Now filing your Medicare Insurance Claim
New expanded appointment schedule

Telephone (505) 763-5559

Where Is The Easter Bunny?

 <p>Home Cured Bone-In Hams</p>	<p>\$ 1 89 lb</p>
 <p>Larry's Bacon</p> <p>2 lb. Pkg</p>	<p>\$ 1 59 lb</p>
 <p>Larry's Own Sausage</p> <p>2 lb Sticks</p>	<p>\$ 1 25 lb</p>
 <p>Larry's Own All Meat Hamburger Patties</p> <p>2 lb Pkg</p>	<p>\$ 1 55 lb</p>
 <p>(6% Soy) Soy Protein Patties</p> <p>5 lb Box</p>	<p>\$ 1 19 lb</p>

Let Us Smoke Your Easter Turkey!

Winkler Meat Co.

401 Main 272-4703

School Board

Studies Budget

Monday night was 'budget time' for members of the board of trustees of the Muleshoe Independent School System.

Local funds are used for these various divisions of the school and it was noted that the following budget amounts, and slight accompanying increases, were noted:

Special Education, \$12,180, five percent; Athletic, \$100,940, 7.85 percent; High School, \$111,918, 15.7 percent; DeShazo Elementary, \$38,054, six percent; Watson Junior High, \$36,858, 12 percent; and Dillman Elementary, \$36,800, 11.43 percent.

Principal Wyer also said MHS wanted to express thanks and appreciation to the school board for their continued support.

Assistant MHS principal Gene McCain, reported on the At-Risk Program designed for the school, and said all school campuses are participating in the program.

Board member Cindy Purdy reported on the 'VIPS' which is Volunteers in Public Schools.

Mrs. Purdy said volunteer parents have started helping at Dillman Elementary, beginning this week, and they plan to take the VIPS program throughout the school system.

Attorney Paul Lyle, who was said to 'specialize' in school laws, was hired on a retainer-basis for the balance of the school year.

The superintendent, Lawrence Ward was named to the Joint Committee for the Education Service Center; and the meal reimbursement was tabled until the next meeting.

Rotary...

Cont. From Page 1

meeting when Bob Finney will be introducing a special speaker, an economist.

Todd Ellis was winner of the Pólio Plus drawing.

Visiting Rotarians included Ted Holder, governor's rep, Levelland; Zeb Deck, Roy Cahill and Larry McKillip, all of the Portales Rotary. Other guests included Richard Murphy, Eric Dixon, Rob Tanner, and Rotary Anns Cindy Purdy and Judy Watson.



RIBBON CUTTING CEREMONIES HELD--Last week, the Muleshoe Chamber of Commerce and Agriculture held a ribbon cutting ceremony for one of Muleshoe's newest businesses, Sparkle Cleaners. Performing the ribbon cutting duty was Muleshoe Mayor Darrell Turner, and Lonnie Adrian, Muleshoe CofC president, is holding the certificate containing the "First Dollar of Profit" for the new cleaners. Also shown are Sparkle Cleaners personnel and CofC members. (Journal Photo)

Wheat Aphid Back In News This Spring

The return of warm weather is bringing with it the return of the Russian wheat aphid, and farmers across the High Plains need to keep close watch on their fields. This pest has survived the winter and its populations are now beginning to increase on the South Plains.

Bailey County Extension Agent Spencer Tanksley said the Russian wheat aphid first appeared in the U.S. in March, 1986, near Muleshoe. Since then it has spread into 14 western states of the Great Plains. Its economic impact on farmers in this area has been estimated at some \$50 million on an annual basis.

The insect overwinters on wheat and certain other host plants as both mature and immature females. There are no males in the population. They give birth to living young and, therefore, have the ability to increase rather rapidly.

Last year, the aphid had a tremendous rate of increase in

April. The aphids appear to more heavily infest stressed wheat and are often worse in dryland wheat.

Wheat growers should begin to scout their wheat fields carefully now for these aphids as populations begin to surge.

As the aphids feed on the wheat leaves, they cause the leaves to turn purplish in color, often with longitudinal white streaks. This results from a powerful toxin injected into the leaves while the pest feeds. Infested leaves also will curl up, much like a soda straw.

RWA infection symptoms are

Commissioners...

Cont. From Page 1

as a jailer, to relieve a jailer, so they would not have to work any extra hours.

"That's my problem now," reminded the sheriff. "As short-handed as I am with deputies, they are the ones already accumulating the extra hours."

And, in response to a remark made by Sheriff Hicks that his deputies don't begin to put down all the hours they work, county judge's secretary Donna Kirk, said the hours should be put down, because ultimately, the county would be responsible for paying for the extra hours.

Sheriff Hicks said if his deputies were to be restricted on hours worked "we'll just have to shut down. We can't operate regular hours without at least two more people."

Commissioner Kindle said he wanted to try the new system of the certain designated county employees working the 171 hours in 28 days, "to see how it works out."

The Chamber Corner
by Nancy Kidd,
Chamber Manager

The Muleshoe Chamber of Commerce announces that the banquet tickets for the annual chamber banquet, which will be on Thursday, April 26, at the Muleshoe High School cafeteria and auditorium, are now on sale at the following businesses or from the following directors:

Muleshoe Chamber of Commerce; Adrian Photography -- Lonnie Adrian; Atkins Insurance Agency -- Gene Atkins; Bobo Insurance and Art Loft -- Inez Bobo; Family Hair Salon -- Pat Young; Servall Thriftway -- Ray Day; Muleshoe State Bank -- Robert Montgomery; Merlyn Neel; Wiedebush & Co. -- Jeri Wiedebush; Cliff Black; Pat Langfitt; Bingham & Nieman Realty -- George Nieman and J & L Fashions -- Leon Logsdon.

Tickets are \$10 in advance for adults or \$12 at the banquet; and \$7 in advance for students or \$9 at the banquet.

Any Chamber of Commerce member who is a business, or individuals, who purchase two banquet tickets in advance will receive, free of charge, a Muleshoe belt buckle. Limit is one per member.

Election...

Cont. From Page 1

formally request a recount, Posadas will have until 5 p.m. on Sunday to file the proper papers.

Only 806 voters went to the polls in Bailey County Tuesday. The Democrats voted 541 for Jim Mattox and 223 for Ann W. Richards for Governor.

They gave the edge for state treasurer to Tom Bowden with 371 votes, while 275 cast ballots

Lady Mules....

Cont. From Page 1

hurdles.

Monica Clemmons was third in the 200 m dash; and April Hugg placed fifth in both the 1600 m run and the 3200 m run.

for Nikki Van Hightower.

For Justice, Supreme Court, Place Two, Bailey County voted 473 for Bob Gammage and 158 for Ross Sears.

Frank Maloney got Bailey County's nod for Judge, Court Criminal Appeals, Place One, with 349 votes. His opponent, Morris L. Overstreet received 241 votes.

Fourteen Republicans cast votes in Bailey County Tuesday, to decide winners in two races.

For Commissioner of General Land Office, Wes Gilbreath received five votes, and Grady Yarbrough, four. Rick Perry received eight votes for Commissioner of Agriculture to one for Richard McIver.

When you send your nomination for the man, woman, and farm family of the year to the Chamber, please have information about your nominee. The CofC needs to know why you think they should be nominated. You may mail or bring your information to the CofC office.

MAN OF THE YEAR _____

WOMAN OF THE YEAR _____

FARM FAMILY OF THE YEAR _____

or call your nominations to: 272-4248
(Thank you! -- Nancy Kidd, Manager)

PERFORMANCE-TESTED
GO WITH GM PARTS!

Go With Performance-Tested and proven GM Quality Parts, SAVE Now On Our Two Spring Service Specials... and Go With GM Parts!

Mr. Goodwrench

PERFORMANCE TESTED TARGET PARTS

Transmission Service Special	Front-end Alignment Rear Wheel Drive Cars Only and 1/2 Ton Pick-up
\$55.95	\$31.50

GM Parts **Robert D. Green, Inc.**
2400 W. Amer. Blvd. 272-4588

INTRODUCING . . . The Super IRA!!

Did you know if you are self-employed that you can contribute up to 15% of your income or \$30,000.00 a year with the same simplicity of an IRA.

See your agent at Bailey Co. Farm Bureau and ask him about a simplified employee pension plan, or SEPP.



Southern Farm Bureau
LIFE INSURANCE COMPANY
JACKSON, MISSISSIPPI

- Over \$20 Billion of Life Insurance in force
- Over \$620 Million of Annuity Assets
- Rated "A+" (Superior) by A.M. Best Co.

Bailey County Farm Bureau

1612 W. Amer. Blvd.

272-4567

EXENCIONES DE RESIDENCIA



PUEDEN REDUCIR LOS IMPUESTOS QUE PAGA POR SU CASA

Una exencion de residencia

le ayuda a reducir los impuestos sobre la propiedad que tiene que pagar por su residencia reduciendo el valor que se utiliza como base para calcular sus impuestos. Por ejemplo, si su casa esta valorada de \$50,000 y usted recibe una exencion de residencia de \$5,000, usted va a pagar impuestos de residencia como si su valor fuese de \$45,000.

Usted puede recibir

una exencion de residencia si usted era el dueño de su casa el primero de enero y la usaba como su residencia principal en la misma fecha. No importa si su residencia es una casa, un condominio o una casa remolque.

Hay exenciones

que cualquier persona que es dueño(a) de su residencia puede usar para rebajar sus impuestos escolares. Exenciones adicionales se ofrecen a dueños de residencia que estan incapacitados o tienen 65 años o mas. Otras exenciones pueden ofrecerse a propietarios por distritos escolares, condados, ciudades y distritos escolares.

Solicite todas

las exenciones que usted puede recibir en la oficina local del distrito de valoracion en la direccion que se cita abajo.

Si usted recibio una exencion para su residencia actual en 1989, usted no necesita solicitarla para 1990 a menos que el jefe de valoracion pida que haga una nueva solicitud.

Sin embargo, si usted cumplio 65 años o quedo incapacitado antes del primero de enero haga una nueva solicitud para recibir exenciones adicionales.

Si usted no ha recibido una exencion para su residencia actual o si se cambio de casa haga una nueva solicitud para 1990.

Usted tiene que hacer

su solicitud antes del 1 de mayo de 1990. Comuniquese con su distrito de valoracion antes de esa fecha si necesita mas tiempo para hacerla.

Para tener mas informacion usted puede recibir una copia gratis del folleto *Los Derechos, Remedios y Responsabilidades del Contribuyente de Impuestos* en la oficina del distrito de valoracion o puede pedirla del Consejo Estatal de Impuestos sobre la Propiedad (State Property Tax Board) en Austin.

Bailey County Appraisal District

104 E. Ave. C.

272-5501

EASTER BLESSINGS TO ALL



SUNRISE SERVICES

Sunday, April 15, 7:00 a.m.

16th & Ave. D. (By Tennis Courts)

"For God so loved the world, that he gave his only begotten Son, that whosoever believeth in Him should not perish, but have everlasting life."

John 3:16

This Easter celebrate by worshiping the Lord together at your house of Worship. Share Easter joy with those you love. Experience the rebirth!

This Easter Page Presented By The Following Businesses:

- | | | |
|--|---|---------------------------------------|
| <i>Terry Field Insurance</i> | <i>Glenna's Beauty Retreat</i> | <i>Wes-Tex Futures, Inc.</i> |
| <i>Posada's Radiator</i> | <i>Irrigation Supply</i> | <i>American Valley Inc.</i> |
| <i>Leal's Restaurant</i> | <i>Ana's House of Beauty</i> | <i>Viola's Restaurant</i> |
| <i>Shipman & Son Body Shop</i> | <i>Dairy Queen</i> | <i>Valley Grain Products Inc.</i> |
| <i>Church's Fried Chicken</i> | <i>Noble TV & Appliance</i> | <i>Lambert Cleaners</i> |
| <i>Chubby's Beauty Shop</i> | <i>Farmer's Co-Op Elevators</i> | <i>Bingham & Nieman Realty</i> |
| <i>Skagg's Motor Machine</i> | <i>Allison Bookkeeping & Tax Service</i> | <i>Scoggin Ag Center, Inc.</i> |
| <i>Bailey County Farm Bureau</i> | <i>Bernice's Beauty Shop</i> | <i>Williams Bros. Office Supply</i> |
| <i>Muleshoe Retail Merchants Assn.</i> | <i>First Bank</i> | <i>Decorator's Floral & Gifts</i> |
| <i>Wes-Tex Feed Yards, Inc.</i> | <i>Muleshoe Truck & Auto Service Center</i> | |
| <i>Muleshoe Livestock Auction Inc.</i> | <i>Muleshoe Trade Center</i> | |
| <i>W.T. Service Inc.</i> | | |

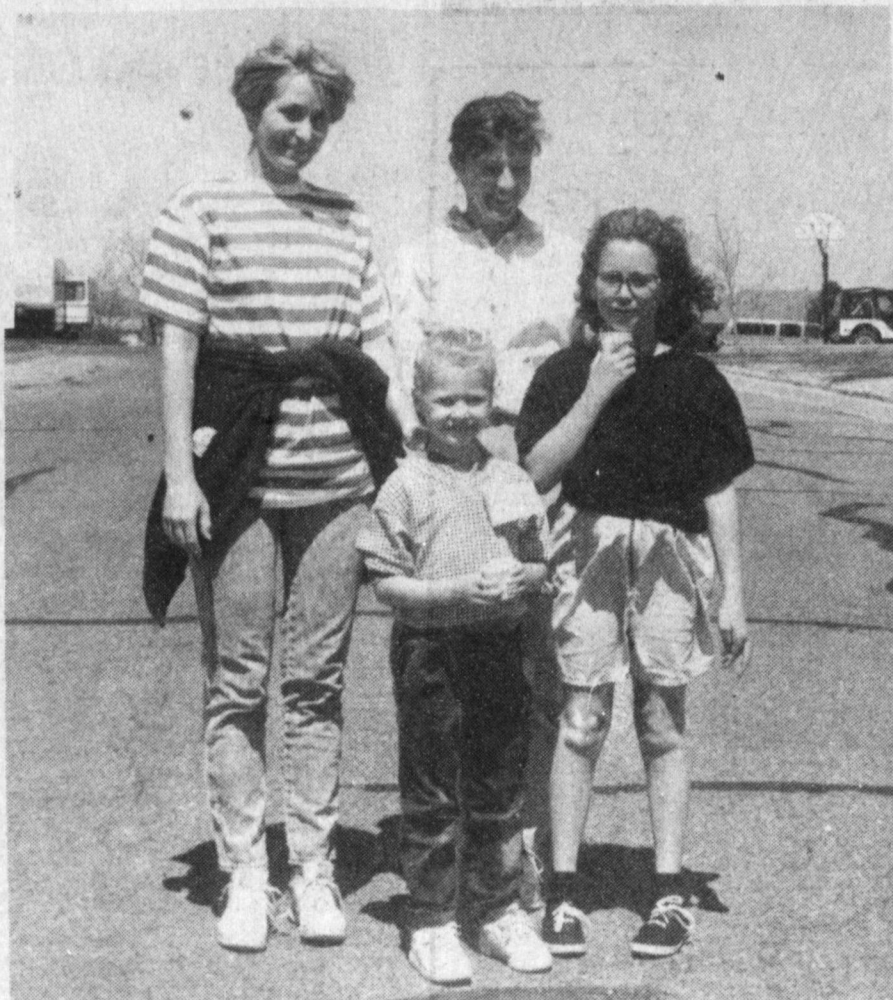


Area Happenings In Muleshoe

Week Of April 1 - 8, 1990



BLUE & GOLD BANQUET ENTERTAINMENT---Last Friday night during the Blue & Gold Banquet for the local Scouts troop, the South Plains Indian Dancers of Lubbock provided entertainment for the large crowd gathered at the First United Methodist Church. The Indians performed dances and told Indian legends. Pictured here is (L-R) Chris White, Ray Deleon and John Cory. Cory is the advisor for Explorer Post 140 and did the inducting of the local scouts to the higher levels. (Journal Photo)



WALK-A-THON---A Journal photographer caught this group as they were about to begin their journey in the Walk-A-Thon Sunday afternoon, sponsored by the Jennyslippers. A second Walk-A-Thon will be held at a latter date. Everyone is reminded to make their checks payable to the Jennyslippers. (Journal Photo)



PROVIDING ENTERTAINMENT FOR SCOUTS---Ray Deleon of the South Plains Indian Dancers of Lubbock performed in front a large crowd at the Blue & Gold Boy Scouts Banquet held last Friday in the First United Methodist Church Fellowship Hall. Deleons' routine was enjoyed by everyone. (Journal Photo)



JENNYSLIPPERS SPONSOR WALK-A-THON---Sunday afternoon a Journal photographer caught this group, (front) Lisa Marie Ramirez, Adam Ramirez and Stephanie Kirk, along with Jennyslippers Billie Downing, (back) and Mary Ann Ramirez as they began their Walk-A-Thon walk. (Journal Photo)



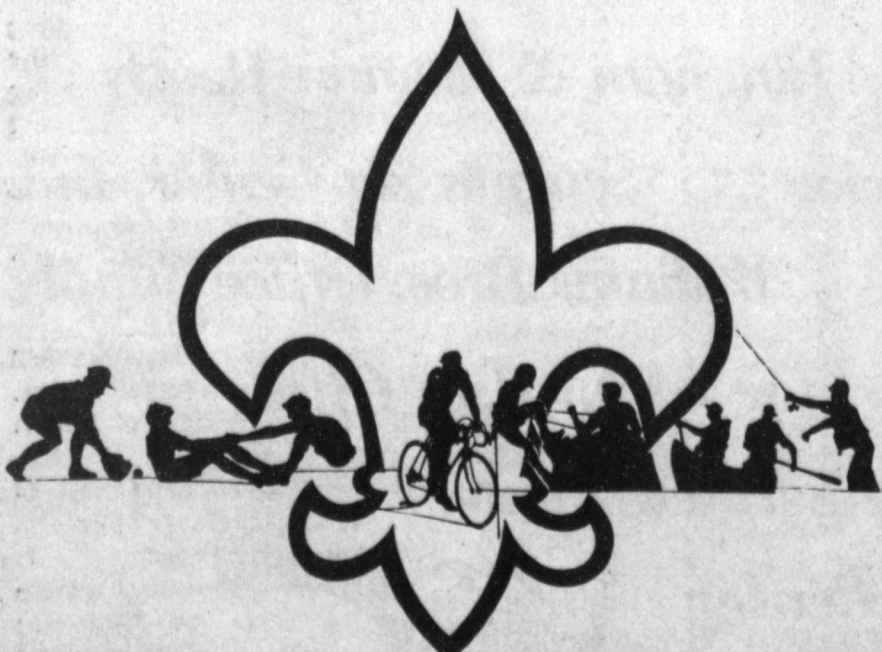
LOCAL SCOUTS GET AWARD---Receiving their pins from their parents for the Arrow Of Life Award is from (L-R) Adam Graves with his parents Mr and Mrs John Graves, James Cox and his parents Mr and Mrs Ed Cox, Kermit Price and his parents Mr and Mrs Arnold Price and Corey Williams with his parents Mr and Mrs Roger Williams. John Cory performed the ceremonies for the Arrow Of Life award. (Journal Photo)



SORE FEET MOUNTAIN---These two walkers stopped off at Sore Feet Mountain for refreshments and a rest before completing their walk in the Walk-A-Thon Sunday afternoon. Lorene Lynch, Jennyslipper, was on hand to serve the refreshments. (Journal Photo)



RETURNING FROM WALK---This group was a little tired but for some the end of only one trip around the designated area Sunday afternoon at the Jennyslipper Walk-A-Thon. Another Walk-A-Thon is being planned for a later date. (Journal Photo)



CLASSIFIEDS 272-4536

CLASSIFIED RATES

15 Words & Under
Minimum Charge
\$2.30
Thereafter
\$2.00

16 Words & Over
1st Insertion
15 cents per word
2nd Insertion
13 cents per word

CLASSIFIED
DISPLAY RATES
\$1.75
Per Column Inch

DEADLINES
12 noon Tues.
For Thursday Paper
12 noon Friday
For Sunday Paper

To receive the re-
duce rate after the
first insertion ad
must run continous-
ly.

We reserve the right
to classify, revise, or
reject any ad. We are
not responsible for
any error after ad
has run once.

1. Personals

CONCERNED
About Someone's
Drinking?
HELP IS
AVAILABLE
through Al-Anon
Call 272-2350 or
965-2870 or come to
visit Tuesday nights,
8:00 p.m. or Saturday
mornings at 10:30 a.m.
and through AA call
965-2870 or come visit
Tuesday nights, 8:00
at 620 W. Second,
Muleshoe.

WANT TO BUY: 3
Cemetery lots in Mule-
shoe Memorial Park,
Cemetery. 272-4852 after
6 p.m.
K1-14s-3tc

3. Help Wanted

ATTENTION:
EASY WORK EXCEL-
LENT PAY! Assemble
products at home. De-
tails. (1) 602-838-8885.
Ext. W-10191.
C3-14s-4tp

ATTENTION:
EARN MONEY READ-
ING BOOKS! \$32,000/
year income potential.
Details (1) 602-838-
8885. Ext. Bk 10191.
C3-14s-4tp

ATTENTION-HIRING!
Government jobs -
your area. Many im-
mediate openings
without waiting list or
test. \$17,840-\$69,485.
Call 1-602-838-8885.
Ext. R10191.
C3-14s-4tp

RN needed for primary
home care. Work Mon-
day-Friday. Full ben-
efit package and com-
petitive salary. Contact
Sheryl Stansifer at
Community Action
Home Health 894-
7872, Levelland.
C3-14s-2tc

WANTED: Adminis-
trative Secretary. Ex-
perience required.
Typing, calculator, dic-
tation. Applications
accepted through April
18. In person only.
Muleshoe Area Medi-
cal Center, 708 South
First.
M3-14s-3tc

3. Help Wanted

WANTED: Delivery
drivers. Must be 18
years old, have own
vehicle, drivers license
and insurance. Come
by Pizza Hut.
P3-15t-tfc

CASH BUSINESS
Buy this high profit
candy vending route.
Nationally proven pro-
gram since 1959. Nice
family business-in-
cludes training. Re-
quires cash investment
of \$4237 to \$14070.
Call 1-800-328-0723.
EAGLE INDUSTRIES
since 1959.

M3-15t-1tp
LVN OR RN to com-
plete mobile insurance
physicals. Must draw
blood. Flexible hours.
Call 1-800-692-4485.
E3-15t-3tc

4. Houses For Rent

REPAIR HOUSE in
exchange for rent. Call
915-446-2820.
B-12s-8tc

11. For Sale Or Trade

FOR SALE: Two Ford
300 irrigation mover.
Ready to run. Call
272-4132.
Y11-15t-4tp

15. Misc.

FIVE FAMILY garage
sale at John Little-
fields, 910 E. Juniper.
South of Country Club.
April 12, 13, and 14
from 9 until 6. Clothes
in all sizes, radio
equipment, household
goods and toys.
S15-15t-1tp

18. Legals

The BAILEY COUNTY
ASCS OFFICE IS
NOW TAKING
APPLICATIONS FOR
EMPLOYMENT
THRU April 20, 1990.
Applicants must be
citizens of the United
States, be of good
character, and person-
ality suited to work
with farmers, people
who work in business
and others. Two tem-
porary positions will be
filled.
Computer experience
would be beneficial,
typing required, and
skilled in 10 key
adding machine. Must
have clerical office
experience.
Candidates shall be
considered without
discrimination because
of race, color, religion,
national origin, sex,
political affiliation,
personal sponsorship,
physical or mental
handicap, age, marital
status, or other non
merit factors. ASCS is
an Equal Opportunity
employer.
B3-15t-1tc

8. Real Estate

HOUSE FOR SALE: 4
Bedrooms, 1 Bath, 1
Car Garage. Also Com-
mercial. (505) 763-
4846 Home; (505) 763-
4841 Business.
B8-14t-3tc

FOR SALE: 3-Bed-
room red brick house.
1815 W. Ave. C; Call
272-3767.
B8-13t-tfc

8. Real Estate 8. Real Estate

Henry Realty

111 W. Ave. B. 272-4581
Muleshoe, Tx.

RICHLAND HILLS-3 Bdrm, 2 bath, 2 car
garage Brick Home on the market with
central heat and air, all carpet, automatic
yard sprinkler.

NEW LISTING 3 Bedroom, 1 bath in Lenuau
Addition. Well insulated with storm door
and windows. Patio room with Thero pane
windows and free standing wood burning
stove. Landscaped to perfection with easy
care of grounds. Low utility cost. Priced to
sell.

3 Bdrm., 2 bath, spacious home outside city
limits, near city on highway. 29x40 metal
building. Lot 85'x420'.

COMMERCIAL PROPERTY-Ideal location
on West American Blvd. 150' highway
frontage. A great business opportunity.

RURAL HOME-3 Bdrm., 2 bath, large den
on one acre with many extras. Fenced with
barns, fruit trees, extra storage, storm
cellar, and satellite dish. Priced to sell.

SPACIOUS-2 Bdrm., 2 bath, with garage.
Ereshly painted. Fireplace. Ready to move

JUST LISTED- Outside city- 3 Bdrm., 2
bath, garage on one acre. Carpet with
drapes and blinds. Dishwasher. Good
storage.

3 Bedroom, 2 bath, carpet, large living
room. Excellent condition, near high school.
Priced to sell.

Estate Planning Saves Taxes And Frustration

"A properly drawn estate plan may save many farm and ranch families up to \$200,000 in estate taxes." This statement made by Wayne A. Hayenga, Texas Extension Economist and Attorney, assumes a lot of information: a married couple who "like each other" and want to care for each other, who have a farm or ranch worth \$1 million or more, and want to pass it on to their children.

This is an eye opening fact for many farmers and ranchers. In fact, many people only worry about estate planning if they hear of a friend's "problem" in settling an estate or paying estate taxes. "But," Hayenga continued, "for many families the estate tax savings are not as large-if they have smaller operations. In fact, for many farm/ranch families, the income tax savings of a properly prepared estate plan can be greater than the estate tax savings."

Three two-day seminars talking about these complicated tax topics will be held at: San Angelo on May 8-9; Waco, May 15-16; and Harlingen on May 22-23.

The program is structured to help farmers and ranchers learn how to lower their tax burden and ease administrative burdens that affect passing their estates to their loved ones. In addition to discussing estate planning systems, tax savings possibilities will be discussed from corporations, partnerships and trusts when family members are involved in the business.

Making gifts to avoid estate taxes will be discussed also. "There are two problems with making excessive gifts--the first is dying poor; the second is the adverse income tax consequences the gift can cause the recipient. A properly planned estate can save many dollars in income taxes for the heirs."

Two problems that affect family operations--planning for

inflation and growth of the business will be discussed. Another topic, how to be fair among all children when one child is interested in the family business and the others are not will be addressed.

This seminar has been conducted 48 times and attended by over 2200 people in the state. At the last four seminars, over 40 percent of the participants were there for the second time to increase understanding of this complicated but crucial subject for their families.

The registration fee is \$60.00 and registration information is available at your County Agricultural Extension Office, or from Wayne A. Hayenga or Carol Sabo, Agricultural Economics Department, Texas A&M University, College Station, TX 77843. Phone: (409) 845-2226.

Sudan News By Ann Gaston

Dan Wood is home from a lengthy stay in the hospital.

E.A. Harris is reported to be home as of Thursday.

Martha Baker has been admitted to the Littlefield Hospital for therapy.

Lee Williams is still at St. Mary's undergoing therapy treatment.

Louise Parrish is reported to be doing very well at home.

Danny Conley has returned to school after having knee surgery last Wednesday. He is doing very well.

Melanie Donette McKillip has accepted an appointment to the United States Air Force Academy as a member of the Class of 1994. Thomas C. Wilkinson, Colonel, USAF, and Director of Admissions congratulated Miss McKillip on her decision to join a select group of the nation's finest young people as she took this challenging and rewarding step toward becoming a professional Air Force Officer.

Colonel Wilkinson also said, "Melanie, you have earned a rare opportunity to participate in one of this country's finest officer training programs. This scholarship is awarded to less than 15 percent of our applicants. Your previous accomplishments indicate you have the potential to meet the demands and challenges of the Academy."

Melanie will be joining the Cadet Wing on June 29, 1990.

Navy Cadet Bradley B. Byerley, son of Georgann Rasco of Sudan has completed his first solo flight.

Byerley is undergoing primary flight training with Training Squadron-27, Naval Air Station, Corpus Christi, Texas. His 14-week basic course, which included 65 inflight training hours was the initial step of the Naval Integrated Flight Training System. His follow-on training with jets, helicopters or multi-engine aircraft will lead to designation as a naval aviator. He is a 1985 graduate of Sudan High School.

Those having birthdays April 1-7 include: April 1, Jan Smith, Joyce Carr and Hershel White; April 2: Mandy Davis; April 3: Richard Walker; and April 4: Evelyn Ritchie, Dennis Flowers, and Mary Ann Harper.

April 5: Lisa Edwards, Barbara May and Dana Ray Dudgeon; April 6: Heath Harper, John Corley, Pete Phillips, Amanda Pickrell, Charlie Smith and Louise Parrish; and April 7: Floy Arnold and Dean Johnson.

8. Real Estate 8. Real Estate

LAND FOR SALE: 7,000 acres of irrigated land. Will sell any part, or all. Sprinkler, fenced, and water tanks for cattle in each circle. Good cattle operation and excellent living quarters. Land is good for vegetables or grains. Near Earth, Texas. Will also sell or lease.

Randy Johnson
(806) 272-3056

Bingham & Nieman Realty

116 E. Ave. C

272-5285 or 272-5286

RICHLAND HILLS
IMMACULATE-ENERGY EFFICIENT 3-2-2
Brick, Cent. A&H, built-ins, FP, sunken lv.
area with cathedral ceiling, ceiling fans,
earthtones, storage bldg., much more!!50's

NICE 3-2-2 Brick, 2,300' + lv. area,
earthtone carpets, built-ins, FP, cent. A&H,
fenced yd. & more \$70's!!!!!!

4 NICE RESIDENTIAL LOTS PRICED
FROM \$5,000.00!!!!!!

NICE 3-2-2 Home, HEAT PUMP, built-ins,
FP, earthtone carpets, fenced yard, & much
more. PRICED TO SELL!!!!!!

3-2-2 Brick on large corner lot, Cent. A&H,
built-ins, storm windows & doors, large
basement, much more!!!!!!

JUST LISTED-3-2-2 Brick on corner lot,
Cent. A&H, built-ins, FP, cov. Patio &
more. \$60's!!!!!!

VERY NICE 3-3-2 Brick Home, Cent. A&H,
built-ins, FP, Wtr. Sftnr., auto. spkrl.,
Cov. Patio, Stor.-Shop, & much more!!!!!!

HIGHLAND AREA
NICE 3-2-1 Brick Home, cent. A&H
built-ins, large den with fireplace. Fenced
yard, storage bldg. \$40's!!!!!!

JUST LISTED-VERY NICE 4-2-1 Brick.
Cent. A&H, built-ins, earthtone carpets,
large utility, enclosed patio, storm windows
& doors, gas grill, spkrl. sys., stor. bldg.,
fenced yd. & more. \$60's!!!!!!

PRICE REDUCED 2-2-2 Brick, corner lot,
Cent. A&H, spacious rooms, utility, cov.
patio, fenced yard, & much more. \$40's!!!!

HIGH SCHOOL
2-1/2-1 Brick, fl. furnace, CA, fenced yard
& more. \$20's!!!!!!

PRICE REDUCED 3-1-1 Home earthtone
carpets, fenced yard, storm cellar &
workshop!!!!!!

JUST LISTED-VERY NICE 3-1-1 Brick,
Cent. heat, Evap. air, DW, earthtone
carpets, nice deck area, fenced yd., st.
bldg., & much more. \$30's!!!!!!

3-2 Home, nicely remodeled, Heat pump,
storm windows & doors well insulated,
ceiling fans, fenced yd., storage bldg. &
more. \$20's!!!!!!

George Nieman, Broker

JUST LISTED- NICE 2-2 Home, large
kitchen-dining area, storage bldg., fenced &
more. \$17,000!!!!

LENAU ADD
JUST LISTED-3-1 1/2 Home, Cent. heat,
Evap. air, new paint and counter-top,
fenced yd., storage bldg., & more.
\$30's!!!!!!

3-1 Home on corner lot, wall heat, fenced
yd. \$20's!!!!!!

NICE 4-2-2 carport HOME, Cent. A&H,
built-ins, FP, Cent. Vac., Office, sewing
Area, fenced yard, & MUCH MORE.
\$40's!!!!!!

COUNTRY HOMES
JUST LISTED-NICE 3-3-2 Brick Home on
one acre tract at edge of town, Cent. A&H,
built-ins, FP, sunroom, office sauna, wet
bar, auto. spkrl., fenced yd., plus other
amenities!!!!!!

NICE 3-2 Home on 1 acre on pavement close
to town, Cent. A&H, built-ins, large
kitchen, lv. rm., den, utility, large
storage-workshop, & more!!\$50's!!!!

3-2-2 Brick on 25 acres, close to town, Cent.
A&H, built-ins, shop, barn, new 4 wire
fence all around, much more!!!!!!

3-2-3 carport Home on 11 acres at edge of
town, Cent. A&H, built-ins, storm cellar,
barns, & corrals. \$50's!!!!!!

3-1-1 Home on approx. 5 acres at edge of
town, domestic well and irrig. well, barns &
more. \$20's!!!!!!

VERY NICE 3-2-1 Home on 1 acre, close to
town, Cent. Heat, Evap. air, nice carpets,
nicely remodeled. \$30's!!!!!!

2-1 Home, 20 acres, sub. pump, sprinkler,
barns & corrals. \$40's!!!!!!

EXCELLENT COMMERCIAL TRACT 175' x
100', Hwy. 70 & 84, railroad spur access at
rear approx. 1200 sq. ft. bldg. PRICED TO
SELL!!!!!!

NICE 3,500 sq. ft. office bldg. across from
Courthouse. PRICED TO SELL!!!!!!

JUST LISTED-NICE COMMERCIAL BLDG.
ON MAIN HIGHWAY, 2800 feet of
area, suitable for various types of business.
Possible Own or Financing to qualified
Buyer. \$20's!!!!!!

Dianne Nieman, Broker

272-4536

THROUGH THE CLASSIFIEDS!

SELL-RENT-TRADE OR BUY

MULESHOE AREA



Mid-Winter '90



BUSINESS DIRECTORY AND SHOPPING GUIDE

**WES-TEX FEED
YARDS, INC.**
Custom Cattle Feeding
Wes-Tex Feed Yards, Inc.
272-7555

**Henry
Insurance Agency,
Inc.**
"Serving You Since 1964"
KENNETH R. HENRY
CERTIFIED INSURANCE
COUNSELOR
REAL ESTATE BROKER
111 W. AVENUE B
PHONE 806/272-4581
MULESHOE, TEXAS 79347

**WE'VE DONE THE ART PART.
NOW YOU DO YOURS.**
ART
IS
WHERE TO BUY

All Irrigation Supplies
Underground Plastic Pipe
Above Ground Gated Plastic Pipe
Solar Surge Valves
Irrigation Supply
J.C. & Zona Gatewood
607 E. Amer. Blvd. 272-4466

HAPPY EASTER!

Leal's Will Close
After Saturday,
April 14th For The
Easter Holiday.

We Will Re-Open

For Business

On

Tuesday, April 24th

- Thank You

Leal's Restaurant
LEAL'S
DELUXE DINNER
Chile Relleno, Taco
Enchilada (meat or cheese)
Tamale, Chalupa, Beans &
Rice
\$7.75
Substitutions Extra Closed Monday
1524 W. Amer. Blvd. 272-3294

WLT SERVICES INC.
319 E. American Blvd.
MULESHOE, TEXAS 79347
Mobile Communications
Two-Way Radio Repair
GARY PARKER
Technician
Muleshoe - 806-272-4888 Hereford - 806-364-7311

**Pivot Products Distributors,
Inc.**
Frontier Hybrid Seed Corn
3030B
\$38.00 a bag
710 E. Amer. Blvd. 272-5536

*We appreciate all of
our customers and look
forward to serving you in
the future.*
Lambert Cleaners
123 Main 272-4726

Tired of looking at that
Old Carpet?
*We have a large inventory of
Used Carpet!*
Check with us before you buy.
Muleshoe Floor Covering
122 S. Main Curtis Carpenter 272-3555

**BEEF OR
CHICKEN FAJITAS**
Served with Pico de
Gallo, 2 Flour Tortillas,
Sour Cream Beans, Rice
& Guacamole
Closed Tuesday **\$6.50**
Viola's Restaurant
2002 W. Amer. Blvd. 272-3838



Leal's

**1•2•3
Lunch Special**
1) Your choice of a single topping Personal Pizza
or a Pasta Dish with meat sauce (Spaghetti
or Cavatini)
2) Trip thru the Salad Bar
3) Your choice of Iced Tea or a Med. Soft Drink
All for Only \$3.69
Pizza Hut.
Makin' it great!
1412 W. Amer. Blvd. 272-4213

**WE RECOMMEND
ferti-lome**
Lawn & Garden Products
**Time To Use
ferti-lome
LAWN FOOD**
Kearney Scoggin
Scoggin Ag Center, Inc.
"Where Fertilizer Is Our Business"
1532 W. Amer. Blvd. 272-4613



**5 Locations
To Serve You!**
•Clays Corner •Enochs •Muleshoe
•Pleasant Valley •Old Griffith
**Farmer's
Co-Op Elevators**
272-4335

**True Value
HARDWARE
VALUE
OF THE MONTH**
3.88 Master
ELECTRICIAN
**Crimp "N" Cut
Tool** 48677-022
QUANTITIES LIMITED
Fry & Cox, Inc.
401 S. 1st 272-4511

