



Mule Plex Play Practice Begins Monday

around
muleshoe

In the first night of action for the Muleshoe Youth Baseball, the K-Bars fell to the Mustangs, 5-18.

Winning pitcher was Johnny Rodriguez and losing pitcher was Michael Jaramillo.

Homeruns were by Josh Slayden for the K-Bars and Johnny Rodriguez of the Mustangs.

Bailey County 4-H Exchange Group will be selling chances for two "Cash" prizes to be drawn for during the evening intermission at the July 4th activities in the park, reports Kandy McWhorter, County Extension Agent.

A \$2 donation per ticket (or three tickets for \$5; will put your name in the hopper for the drawing. The winner does not have to be present to win.

Proceeds from this project will be used by the Exchange Group to help entertain 4-H'ers and their sponsors from North Dakota during the same week of the 4th.

So, whenever you are approached by a Bailey County 4-H'er offering you a chance at these two cash prizes, please be generous.

The more tickets you have, the better chance you have of getting your money back ... and MORE!!

Representing the Lazbuddie FFA at the Area FFA Convention in Lubbock last weekend were Casey Russell, Casey Bradshaw and Jason Morris.

All three applied for their State Lone Star Degree and were approved on the area level.

They will be recognized at the State FFA Convention in July scheduled to be held in Lubbock.

On Thursday, May 31, the Lazbuddie FFA will sponsor a rabies clinic at the ag building at the school.

Dr. Jerry Gleason of the Muleshoe Animal Clinic will be administering the shots.

Cost will be rabies, \$7; distemper, \$9; DHL, \$14 and parvo, \$9. Or the series of shots can be obtained for \$30.

Strategic Planning Provides New Goals

(Editor's note: The following story was written exclusively for The Journals by Christine Dew Cox, a student in the Mass Communication Department at Texas Tech University, Lubbock. This and other stories are made possible by a grant from the Reader's Digest Foundation.)

"Creating and planning to meet the demands of the future and not just letting the future happen is one of the aspects of Strategic Planning, but is far more complex," said Superintendent of Muleshoe Schools, Dr. Lawrence Ward.

Strategic Planning is what the Muleshoe Independent School District uses in preparing students for the future in providing a quality education program. Strategic Planning was created by Dr. Bill Cooke, an economics professor, who formulated the program to help businesses, but found it also worked in education.

The concept of Strategic Planning is that the world is changing fast and since people



U. S. ARMY VISITS MULESHOE TUESDAY--This helicopter set down at the Bailey County Civic Center shortly before noon Tuesday, and four U. S. Army personnel disembarked. They were joined by Florene Watson, center, of Borger. The Army personnel and Mrs. Watson provided the program for the Muleshoe Rotary Club on Tuesday. Shown from left are CW4 Lance Barton; Col. Don Watson; Mrs. Florene Watson; Sgt. William Cifers and Capt. Danny Powers. The helicopter also visited at Muleshoe High School before leaving town. Col. Watson is a Muleshoe native, the son of Lutisha Watson and the late C. A. Watson. (Journal Photo)

U.S. Army Helicopter Here For Tuesday Rotary Meeting

Using a 'hometown' setting, Col. Don Watson made a special presentation at the Muleshoe Rotary Club Tuesday at noon.

Col. Watson said the award was traditionally given when someone has a change of command, and is usually done in a military setting.

However, he wanted to show the hometown folks how a commendation is presented.

With that, he called Capt. Danny Powers to the front of the room, and as the Army Captain stood stiffly at attention, read the commendation to the crowd as they stood in respect.

Capt. Powers has been in charge of the Army helicopter operations at Amarillo, and is the last Army officer left to be reassigned.

He was awarded for 'meritor-

ious' service.

Capt. Powers was caught off guard, as he had not expected the commendation to be given in Muleshoe. However, he did express his pleasure in receiving his commendation in Col. Watson's hometown.

Col. Watson, who is stationed at Carswell AFB in Fort Worth is in charge of the helicopter division, and was in Muleshoe, along with Capt. Powers, CW4 Vance L. Barton and Sgt. William Cifers for the noon Rotary meeting.

Also in Muleshoe to speak at the meeting was Florene Watson, Borger.

The Army Col. spoke of Mrs. Watson's extensive flying background, including serving in the military in World War II, and cited the many aircraft she has piloted over the years.

Mrs. Watson spoke to the group on the Texas Aviation historical Society, which was founded in Amarillo in 1987.

She gave much of her own background in flying, including how she took her first plane ride in about 1929, and became 'hooked' on flying immediately.

She told how the future Texas Aviation Historical Society Museum had received five military aircraft, mainly through the efforts of Col. Watson. He praised Col. Watson's dedication in trying to help the Aviation Historical Museum "be able to get off the ground" and told how hard it is to acquire military aircraft.

Mrs. Watson, who has been a college instructor for 30 years, showed slides of World War II planes and told many of her flying adventures in World War II.

She encouraged participation in the 1990 Air Show which will be held in Amarillo in August.

WEATHER

May 13	88	42	.00
May 14	90	49	.00
May 15	93	50	.00
May 16	91	54	.00

After receiving approval from the School Board, Ward selected 25 people from the community to participate in Strategic Planning. The people selected

Cont. Page 6, Col. 1

The cast has been chosen and next Monday night, May 21, play practice gets underway for the second annual Mule Plex Production Co.'s Family Fun Night.

This year, Hart and Kaufman's *The Man Who Came To Dinner* will be staged both nights of the production, July 2-3, along with many variety acts, and the popular candy sale for well over a hundred prizes.

In conjunction with the beginning of practice and to finalize plans, Mule Plex Production Co., Inc. will hold a meeting Monday, May 21, at 7 p.m. in the Muleshoe State Bank meeting room.

Even members of the play cast are encouraged to stop by the meeting before going to the high school auditorium for their first practice night.

Cast members for the play to be staged in the Muleshoe High School Auditorium include:

Jan Pierce, Mrs. Stanley; Miss Preen [nurse], Jo Beth Edwards; June Stanley, Dawn Long; Sarah [cook], De Anna Rasco; Mrs. Dexter [neighbor],

Marilyn Cox; Mrs. McCutcheon, [neighbor], Sherri Shipman; Maggie [secretary], Janet Gracey; and Harriet Stanley, Jeanne Cox.

Also, Lorraine Sheldon, Sharon Angeley; Dr. Bradley, Jack Young; Mr. Whiteside, John Gulley; Beverly Carlton, Marc Steele; Bert [newspaperman] Roger Clarkson; Mr. Stanley, John Street; John [butler], Barry Wilson; Richard Stanley, Robert Orozco; and Sandy [June's boyfriend], Larry Parker.

The Man Who Came To Dinner is a light comedy, with a 1940's setting.

It takes place at the home of Mr. and Mrs. Stanley, in a small town in Ohio.

The play should be another 'star' in the crown of Kerry Moore, who will be the director again this year.

Included along with the play will be many variety acts. Those interested in performing in variety acts are encouraged to sign up.

More variety acts are being Cont. Page 6, Col. 1

Sales Tax Rebate Reflecting Downturn

State Comptroller Bob Bullock said Friday that his office sent \$138 million in monthly local sales tax rebates to 1,156 Texas cities and counties.

"The Texas economy is still on track, and the increase in sales tax rebates reflects that," Bullock said.

Checks to cities totaled more than \$126 million, an increase of 7.27 percent over payments made last May, Bullock said.

Muleshoe's latest payment was in the amount of \$19,616.05 which is down 15.75 percent from the \$23,283.97 received for the same period a year ago. To date, payments are 7.68 percent below last year's total at the same time. Payments to date for this year are \$89,343.26, compared to \$96,774.30 at the same time a year ago.

In Cochran County, Morton also shows a decrease in both the current monthly payment and the payments to date for the year. Their current payment was \$4,998.76, down 18.56 percent from the \$6,138.00 received at this time last year.

To date for the year, Morton has received \$23,625.84, down by 9.55 percent from the \$26,-

121.29 received to date at this time last year.

Littlefield reflects a drastic drop in current payments and for the year. This pay period, Littlefield received \$21,905.76, down 27.33 percent from the \$30,143.57 they had received in May last year. For the year, Littlefield has received a total of \$92,934.23, down by 19.21 percent from the \$115,036.17 they received through May a year ago.

From Parmer County comes the report that Friona has taken an upward swing in current payments. Their May payment was \$15,635.98, up 26.06 percent over the \$12,403.59 they had received in May last year. To date in 1990, Friona has received \$49,506.49, up 3.69 from the 1989 total to date of \$47,743.66.

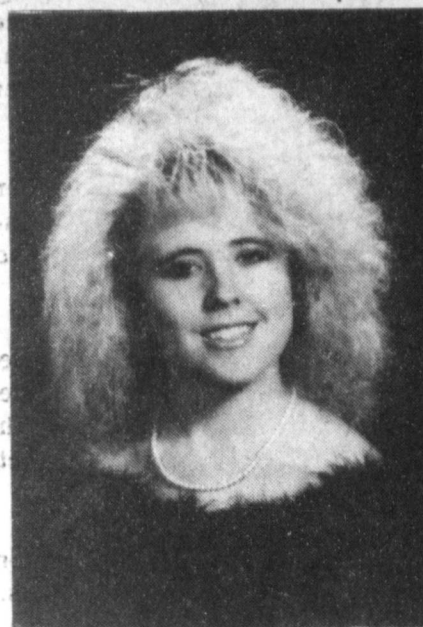
Houston received the largest payment, at \$22.19 million, while Dallas received \$13.97 million, the second largest payment. San Antonio received \$7.38 million and Austin received \$5.64 million.

Counties statewide were sent more than \$12 million this Cont. Page 6, Col. 3



TAHITIAN BEAUTIES SERVE AT BANQUET--The setting was in Tahiti, complete with waterfalls, and these lovely Tahitian misses who are some of those who served juniors and seniors, and special guests at the annual Junior-Senior Banquet last Saturday night. One more time, the junior-senior banquet provided an 'outstanding' setting. (Journal Photo)

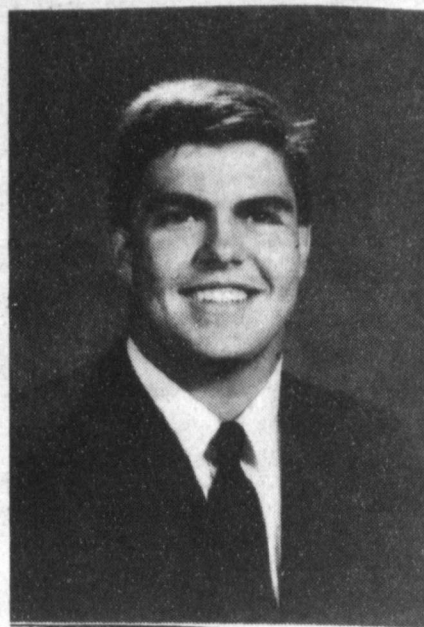
1990 Graduating Class Of Sudan High



Hyla Le Ann Ford



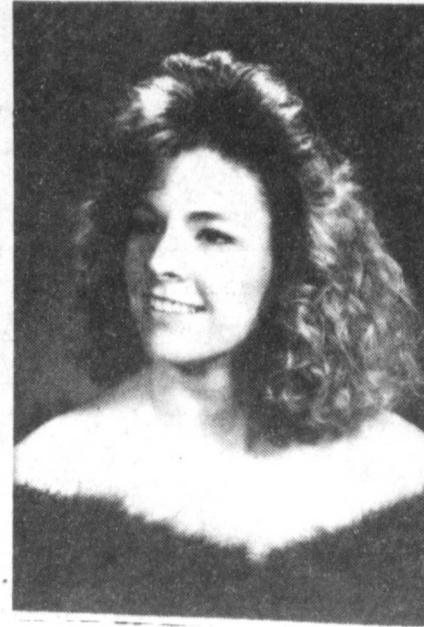
Melanie Donette McKillip



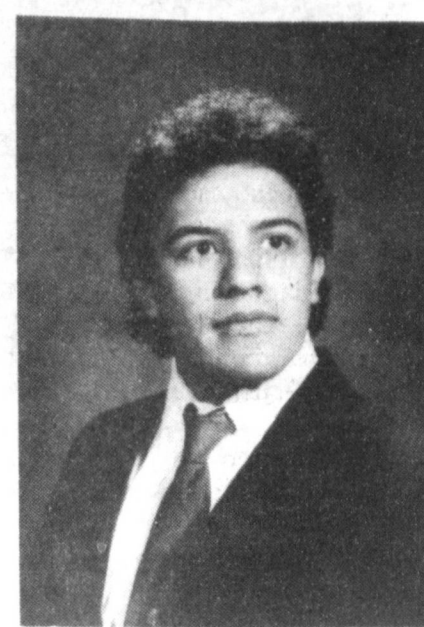
T.J. Bright



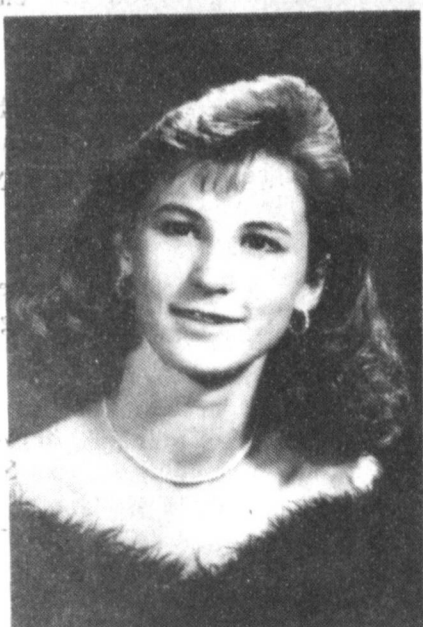
Patricia Camarillo



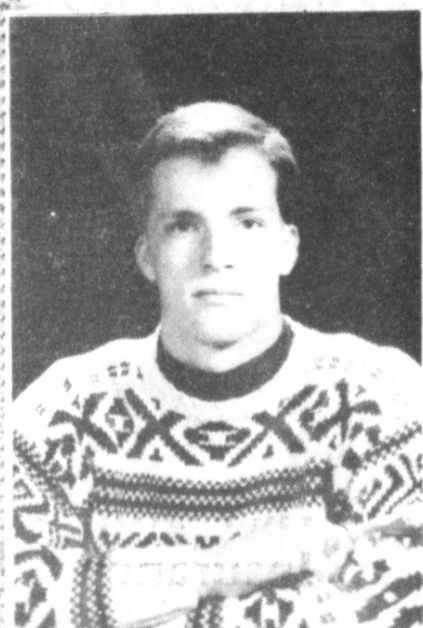
Kristi Hargrove



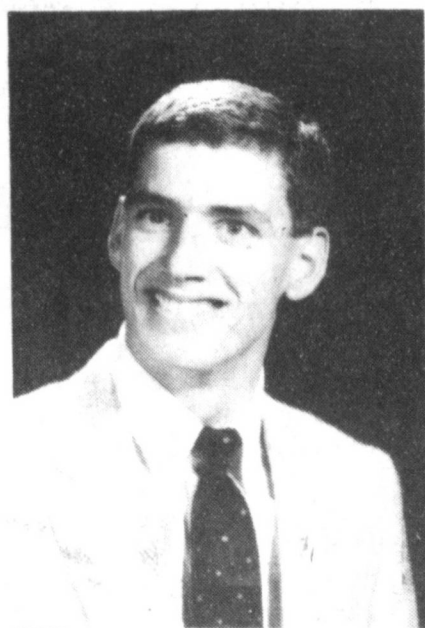
Diego Belez



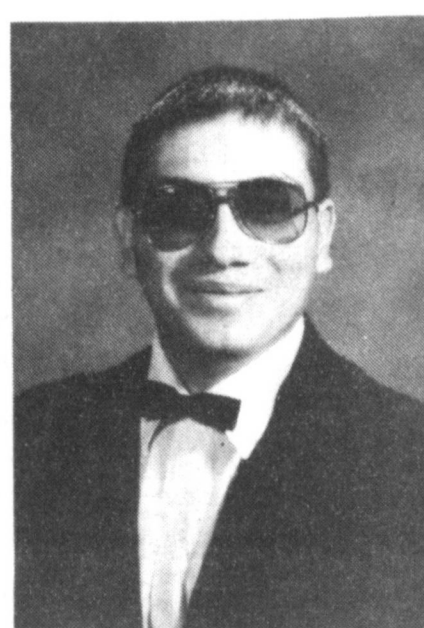
Mandy Annett Carr



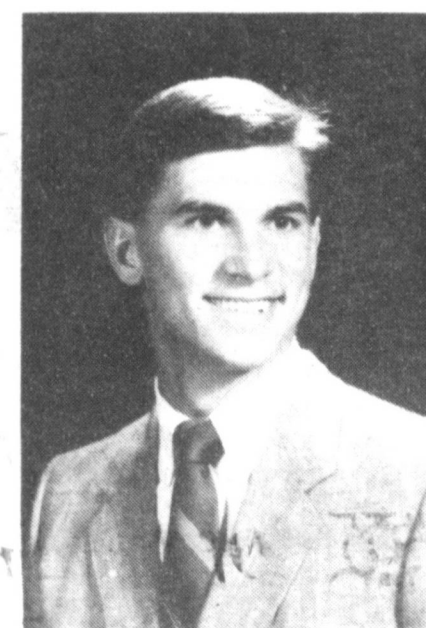
Jay Harrison



Justin Holley



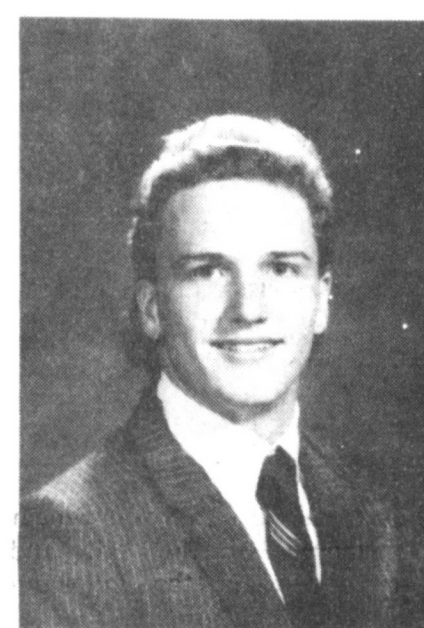
Efrain Maldonado



Rodney Kyle Maxfield



Olga Lidia Ruiz

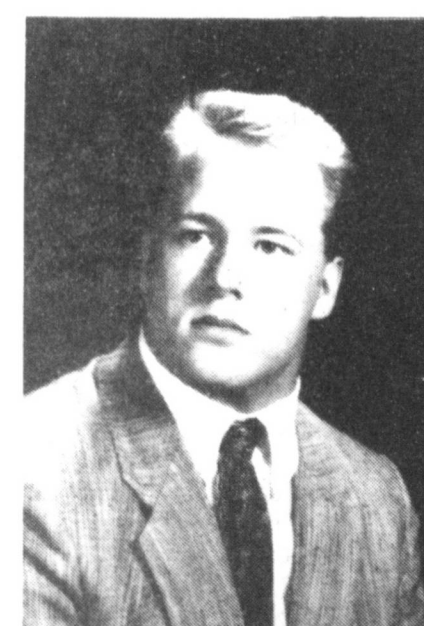


Charles Schovajsa

**Sudan
Livestock & Feeding**

East Hwy 84 Sudan, Tx 227-2421

This Page Proudly Sponsored By The
Following Sudan Businesses:



James Richards

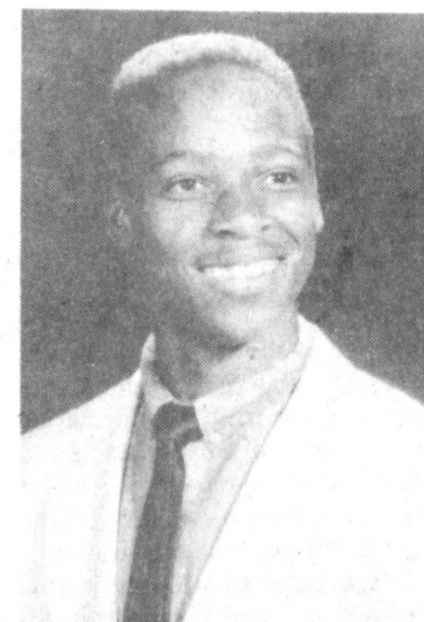
**G & C
Auto Supply**

123 Commerce Sudan, Tx 227-2021

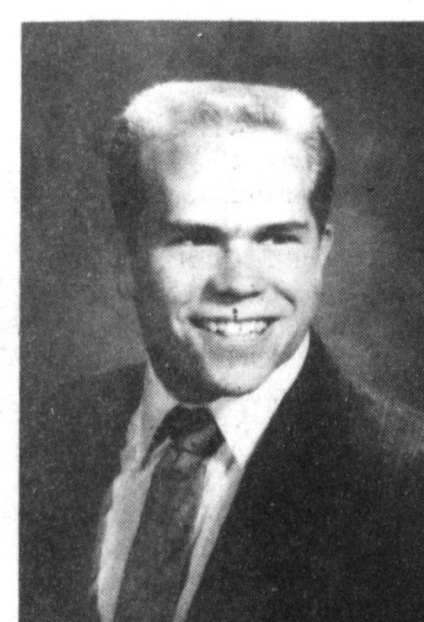


**Farmers Co-Op Gin
of Sudan**

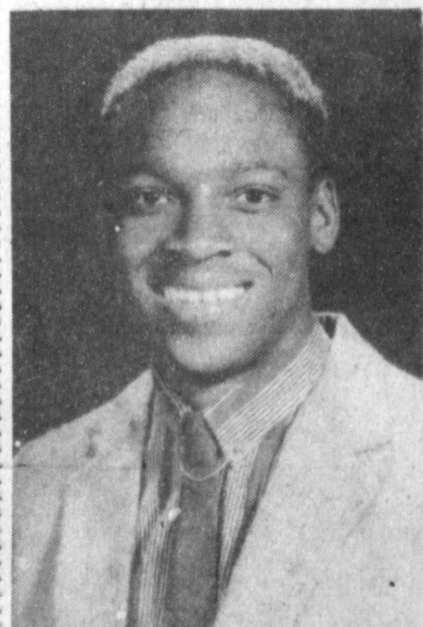
Sudan, Tx 227-2461



Donnie Freeman



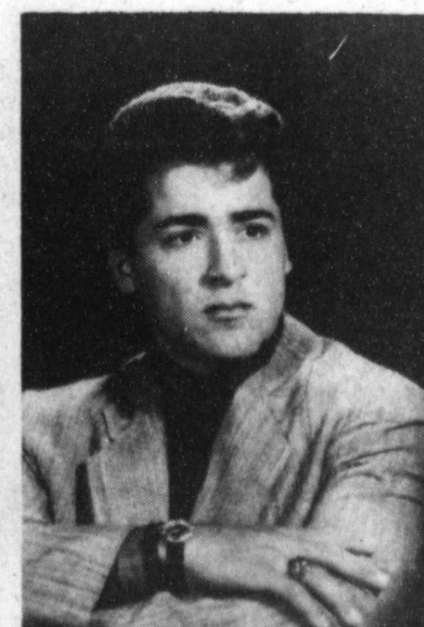
Jarod Anthony Bellar



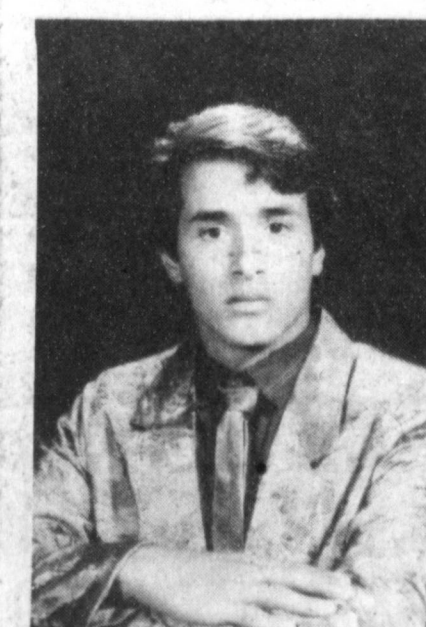
Ronnie Freeman



Mitzi Glascock



Joe Lewis Gonzales



Ronnie Gonzales



Kay Lynn Gordon



Olga Montes

Russian Wheat Aphid Still Plagues Farmers

Knowing the preferred meal of the Russian wheat aphid has set a new course for controlling the costly insect on U.S. grain.

When the Russian wheat aphid dines, scientists have found that it goes for a sickly, stressed plant—not a healthy stalk. Diagnosing the crop's condition, therefore, will help determine when a farmer should spray insecticide to control the bug.

A joint effort of scientists in five states is adding the new dimension to the computerized economic threshold models that calculate control needs.

"By the summer, we will have a modified threshold," said Dr. Tom Archer, a Texas Agricultural Experiment Station entomologist in Lubbock who is on the national team.

Since the Russian wheat aphid invaded the United States in 1986 near Lubbock, the state's farmers have spent almost \$11 million battling the yield-reducing bug, according to Rodney Mosier of Amarillo, Texas Wheat Growers Association executive assistant.

In 1989, farmers spent \$1.7 million to control the aphid and still lost more than 4.6 million bushels to insect damage, he said.

Within two years of the Russia wheat aphid's arrival, U.S. entomologists had devised a formula to determine control based on the percentage of aphid-infested tillers. Prior to that, the only control recommendations were from South Africa, where control was based on the amount of damage that could have been seen in a field.

"If someone is growing a high-value crop, and they have put a lot of money into it," Archer said, "Their threshold is different than for one who is just growing wheat for whatever it will bring."

Wheat production differs from most other crops. Texas wheat is planted in the fall and harvested early the following summer. Some producers allow cattle to graze the fields until the spring then harvest what grows after the animals are removed. Others do not allow grazing, aiming instead for higher grain yields. A portion is irrigated, the rest is dryland farmed.

The myriad of those treatments results in wheat fields in varied conditions. That led scientists to explore the relationship of production methods to Russian wheat aphid control.

"With the new model, we will be able to tell the farmer, based on the irrigation and rain level, when to control," Archer said. "If a dryland field has had a lot of rain, it may have thrifty plants as opposed to a dryland plant suffering from drought."

Wheat production varies even more throughout other growing states; Archer pointed out, so the network of scientists is vital to developing the new economic threshold model.

"The Russian wheat aphid has spread from Texas to Canada and west to the Pacific coast in every state," he said. "The rest of the country is not like Texas, so we have put together a group of people in the distribution region including Colorado, Montana, Washington and California."

Archer said that the new model, ready when most of the 1991 crop is planted in about five months, probably will be offered as a service by county Extension agents.

"It will be a computer program in which the county Extension agent helps the farmer answer a set of questions about the wheat crop—like whether it is irrigated, how much rain has been received and what variety the crop is," Archer said. "Then it will ask information about the Russian wheat aphid, such as the level of infestation. From this, the program will tell the probability of yield and the gain or loss from spraying or not."

He said the computer model eventually will be updated to account for the number of aphid predators or parasites in the field to form even more precise control decisions.

Letter To The Editor

Dear Editor:

I live in Friona and I am needing some help in locating some people.

We have an all high school reunion for all ex-students and teachers every five years.

I am wondering if there is anyone in your reading area that could help me locate the following people: Ruth Wimberley, Morris Bruns, Jerry Scarbrough, Mike Phipps and Randy Waggoner.

If there is anyone reading this that are ex students or teachers and interested in the reunion but don't know who to contact may get in touch with me.

My address is:

Elizabeth McLellan
P. O. Box 102
Friona, TX 79035
Phone # 806-247-3251

Thanks so much for your help.
Elizabeth McLellan

The computerized control decisions, however, will aid farmers until scientists can breed plants resistant to the aphid or devise more biological control through parasites.

"The Russian wheat aphid is here to stay," he said. "Right now the only control is with pesticides. If we can come up with resistant plants or biological control, we will be better able to deal with outbreaks."

Bonnie Terry Green Funeral Services Held In Earth

Funeral services for Bonnie Terry Green, 74, of Earth, were conducted in the First Baptist Church at Earth at 2 p.m. Tuesday, May 15, 1990. Pastor Rev. Joe Vernon, conducted the final rites. Interment was in Earth Memorial Cemetery under direction of Parsons-Ellis Funeral Home of Earth.

Mrs. Terry died at 4:35 p.m. Sunday, April 13 in Muleshoe Area Medical Center following a brief illness.

She was born July 6, 1915 in Ada, Oklahoma and moved to Lamb County in 1929 from Amarillo.

She was a homemaker. Mrs. Green was married to Golden Green in Amarillo, and he preceded her in death in 1958. She was a member of the Baptist Church in Earth.

Her survivors include a son, Terry Green, of Earth, and two grandchildren.

Gene Scarbrough Funeral Services Held Wednesday

Funeral services for A. E. 'Gene' Scarbrough, 82, of Muleshoe, were conducted at 2 p.m. Wednesday in the 16th and D. Church of Christ. Conducting the services were Ellmore Johnson, Church of Christ minister from Lubbock, assisted by Van McCormick, Clovis, N.M. and Curtis Shelburne, pastor of the 16th and D Church of Christ.

Interment was in Muleshoe Memorial Park under direction of Ellis Funeral Home. Scarbrough died at Muleshoe Area Medical Center on Monday, May 14, following a lengthy illness.

He was born June 11, 1907 at Rockdale, TX and moved to Bailey County from Littlefield in 1946. He was a retired farm mechanic, having worked at the John Deere Company for 24 years.

He was married to Grace Conner on December 8, 1928 at Littlefield. He was a member of the 16th and D Church of Christ and was a veteran of World War II, having served in the U. S. Army.

His survivors include his wife, Grace; one son, Archie Scarbrough of Abilene, TX; one daughter, Mary Julian, Grand Prairie, TX; three brothers, Henry Scarbrough, Muleshoe; Bill Scarbrough, Levelland and Edward Scarbrough, Alamogordo, N.M.; six grandchildren and 10 great-grandchildren.

Three Way News by: Mrs. H.W. Garvin

Mr. and Mrs. Bill Key and Vonna attended the senior class supper at the Three Way Baptist Church Wednesday night.

Gladys Alexander Graveside Services Held Wednesday

Gladys Alexander, 86, of Sudan, died Sunday, May 13, in St. Mary of the Plains Hospital in Lubbock following a lengthy illness.

Graveside services were conducted at 3 p.m. Wednesday at the Silverton Cemetery, with James Withrow, a Sudan minister, officiating.

She was born March 30, 1904 in Hico, TX and moved to Lamb County 10 months ago from Palmdale, CA. She was a homemaker.

She was married to Joe W. Alexander on April 17, 1925 in Alamogordo, N.M. He preceded her in death on April 7, 1967.

She was a Methodist. Her father was a Methodist minister at Silverton.

Survivors include one daughter, Nancy Alexander, of Sudan, seven grandchildren and several nieces and nephews.

The family suggests memorials to the Sudan Ambulance Service.

Mr. and Mrs. Bud Huff were in Lubbock Tuesday on business

The community received rain early Wednesday morning amounts varying from a quarter of inch to almost an inch. Farmers are beginning to plant cotton in the community.

Mrs. Jack Lane took her mother, Mrs. Nettie Quesenberry from Muleshoe to the doctor in Lubbock Friday.

Tuesday afternoon Laverne James, Olive Cox, Claudine Embry, Mrs. Phipps, Beth Watson came to shampoo and set the ladies hair.

Our thanks to Irene Thorn for the delicious homemade cookies.

Ora Roberts was visited by her friend, Dollie Spell, from Farwell recently.

The members of Maple Church of Christ all ate supper at Buddy's in Morton Sunday evening.

Mrs. H.W. Garvin visited her brother, Mr. and Mrs. George Tyson Friday.

Mr. and Mrs. Jack Reeves visited his sister, the Sid Conners, in Post Sunday.

Most of the people who are in a hurry have nothing else to do.

We Have A Greenhouse Full Of Bedding Plants!

We Also Have

Hanging Baskets, Rose Bushes, Trees, Geraniums, Market Baskets, Garden Seed, Potting Soil, Peat Moss!

Check With Us For All Your Gardening Needs!

Kristy's Plants

710 E. Amer. Blvd. 272-5536

PROTECT YOUR INVESTMENT NOW Before the storm with Hail Crop Insurance

Call your Texas Farm Bureau Insurance Company Representative. Ask him if you qualify for a...

15% DEVIATION

Ask him for information on a...

CROP HAIL

Bailey County Farm Bureau

272-4567

FARM BUREAU INSURANCE

Patients in Muleshoe Area Medical Center

MAY 11-14 FRIDAY

Rocky Guerra and Carolyn Craddock

SATURDAY

Rocky Guerra, Gloria Escobedo, and Carolyn Craddock

SUNDAY

Rocky Guerra, Gloria Escobedo, Carolyn Craddock, Mary Whitson, and Norma Fabela

MONDAY

Rocky Guerra, Gloria Escobedo, Carolyn Craddock, Mary Whitson, and Norma Fabela

ATTENTION

Your only local media of general circulation that qualifies for & has a 2nd class newspaper subscribers mailing permit.

U.S. Post Office Approved.

Muleshoe Journal USPS 367-820
Established February 23, 1924. Published by Muleshoe Publishing Co., Inc. Every Thursday at 304 W. Second, Box 449, Muleshoe, Texas, 79347. Second Class Postage Paid at Muleshoe, Texas, 79347.

Member 1990
TPA TEXAS PRESS ASSOCIATION

L. B. Hall, P. J. Jaber
Sammy Hall, Vice President Controller
Chris Williams, News
Evelyn Harris, Society
Jelly Millip, Advertising
Dora Tenease, Classified

SUBSCRIPTIONS
Muleshoe Journal and Bailey County Journal
Bailey and surrounding counties
\$14.75

Muleshoe Journal and Bailey County Journal
Outside Texas, \$16.50
Yearly by Carrier
\$17.50

Advertising Rate Card on Application
Advertisers should check their ad the first day of insertion. The Journal will not be liable for failure to publish an ad or for a typographical error or error in publication except to the extent of the cost of the ad for the first day insertion. Adjustment for errors will be limited to the cost of that portion of the ad where the error occurred.

John Deere Sale

Decisions... Decisions... Decisions...

During Deere Season our entire line of walk-behind mowers and tractors is on sale. That means that the toughest decision you may have to make is to decide which machine is right for you. As your John Deere dealer, we can tailor-fit the right product to meet your needs.

\$579⁰⁰ Walk-Behind Mower

\$1499⁰⁰ RX75 Riding Mower

\$1999⁰⁰ STX30 Lawn Tractor

Deere Season ends May 31.

Nothing Runs Like a Deere

Use your John Deere Credit Card*

DENT. & CO.

W. Hwy 84 Muleshoe, Texas 272-4296

*Availability subject to approved credit.

Muleshoe Squares News

The Muleshoe Squares want to thank everyone who bought state tickets from the members. On June 2, the Squares will know who won the three prizes. This is the only money making project each year.

Muleshoe Squares students are on the count down. They are doing great and the group is really enjoying them. They will graduate June 28. There will be a dance in their honor, plus a salad supper. All members are encouraged to attend. It will be held at the American Legion Hall.

Special dates to remember:

Merry Mixers Anniversary Special, Saturday, May 19, M&M Building, 7:00 p.m. Salad Supper, 8:00 to 10:30 p.m. Square Dance. Special Door Prizes. Troy Ray, caller from Maybank, Texas. \$4 per person. 62nd Annual Pioneer Round-up. Saturday, May 19. Ollie Limer Center, Plainview, Texas. Supper 6:00 to 8:00 p.m. Square Dance 9:00 p.m. Caller Sid Perkins. Meal and all entertainment \$5. \$2 after 8 p.m.

Old Settlers Square Dance celebrating Floyd County Centennial 1890-1990. May 26 at Duncan Elementary School, Floydada, Texas. Callers Sid Perkins and James Pettus. Chuck Wagon Salad Supper 7:00 p.m. Hoedown 8:00 p.m. Door Prizes and a Honey Pot. \$3 per person.

State Pre-Festival Dance. Lubbock Memorial Civic Center, Lubbock, Texas, June 1, 1990. Lubbock Area Callers, Cuers and Clogging Instructors, 7:00 p.m. Rounds, 7:30 p.m. Grand March. \$8 per couple, \$4 single.

28th Annual Texas State Federation Square and Round Dance Festival, June 2, 1990. Lubbock Memorial Civic Center. Schedule of Activities start at 8:00 a.m. and special events take place all day. Panels, Fashion Show, workshops for

Square Dancing, Round Dance, Clogging and teen funshop. 6:00 p.m. Special Exhibitions, 7:15 Assemble for Grand March 7:30 p.m. Grand March, 8:00 p.m. All level dancing. Make your reservation now. Ladies, save your money, there will be over 30 exhibitors with all kinds of Square Dance items to sell. There just might be something there you can't do without. The State Festival, June 2, ladies, please wear white blouses, black skirt, black slip, black pettipants, black hose and black shoes. Large gold and white cotton boll on right hand side of skirt. Men, please wear white shirt, black slacks or jeans, small gold and white cotton boll on left leg of slacks.

The state festival is open to visitors. If you would like to see something really pretty and impressive, come with us to Lubbock, June 2. If at all possible, the Muleshoe Squares would like you to attend the June 28 Square Dance graduation in Muleshoe.

MICROWAVE TIPS

Do you know how to properly defrost steaks?

As a rule, you can figure on four to eight minutes per pound in defrosting. Place plastic around steak or use the package the steak is wrapped in.

Using power level Defrost, microwave half the time you estimate. Then turn over the steaks and microwave the rest of the time. You can either separate the steaks and let them stand to complete defrosting, or defrost them a minute or two more.

Use a rubber spatula to separate and examine them carefully after separation to see whether letting them stand or more microwaving is the best procedure.

The person who said you can live without money never tried it.

Donna Ham To Judge National Piano Auditions

Donna O. Ham of Lubbock will be the judge at the National Piano Playing Auditions sponsored by the American College of Musicians National Guild in Muleshoe.

The Auditions will be conducted in the First United Methodist Church Sanctuary Friday and Saturday, May 18-19.

Local teachers participating will be Elaine Hamilton with seven students; Lisa Hamilton with 11 students; and Fran Hamilton with 28 students.

Mrs. Ham holds a Bachelor of Music degree in piano perfor-



DONNA O. HAM

Rebekah Lodge News

Noble Grand, Patsy Chance, called the Muleshoe Rebekah Lodge #114 to order at 7:30 p.m.

Vice Grand, Dorothy Brown-

ing, was seated in her chair. The American Flag was presented by Francis Burrows, escorted by Sandi Robinson.

The Rebekah Banner was presented by Mildred Kendrick. Opening prayer was given by Velma Howell, assisted by Ina Wilemon.

Altar assistants were Audrey Langfitt, Ruby Green, Francis Burrows and Sandi Robinson.

Fern Davis read the minutes of the previous meeting and the roll call showed 16 members present.

Communications read were a thank you card from Georgia Lee Bullion and from the Chamber of Commerce about Trash and Treasure Sale on the first Saturday of each month.

Initiation will be held on the 22nd of May. Rebekahs will have a salad supper and dress in formal wear.

The 22nd of May will also be the first night of nominations for officers for the ensuing term.

The Lodge voted to purchase a vacuum cleaner from Poyorns.

Pat Langfitt and Ruby Green were appointed co-chairmen of the committee to get together skits for the Lubbock Rally.

The installing team practiced. No further business, refreshments were served by June Green, Joyeline Costen and Fern Davis.

Latest Arrivals



Morgan Sharee Bickel

Cheyenne and Twila Bickel of Lubbock proudly announce the birth of their first daughter, Morgan Sharee Bickel. She was born at 10:03 p.m. on April 30, 1990 in St. Mary of the Plains Hospital in Lubbock. She weighed seven pounds, five ounces and is 20 inches long.

Morgan has a 13-month old brother, Zachary.

Grandparents include Roy and Charlotte Donaldson, Helen Bickel and Bennie Bickel, all of Muleshoe.

Great-grandparents are B. H. Bickel of Muleshoe and Sterling and Dorothy Donaldson of Farwell.

Kappa Phi, and the Lubbock Music Teachers Association.

It's good business, even in family deals, to keep the record straight.

Smart parents let their children learn something by experience.

Labor devices do no good unless the time saved is wisely utilized.

NEWS VIEWS

Strom Thurmond, Senator (R-SC), introducing bill against child pornography: "Those who steal the innocence away from our children must face harsh punishment."

Robert Polhill, freed American hostage: "I hope this will be just the beginning. I have friends there. I am eager to see them released and see this chapter of history closed."

To Better Serve You,
We Now Have TOLL FREE Number
1-800-999-2207
Eye Surgery Center/Eastern
New Mexico Eye Clinic
Dr. Dik S. Cheung, M.D.
1820 W. 21st Street Clovis, NM

Gifts for the Graduate from ANTHONYS

FREE GIFT WRAPPING On All Anthony's Purchases

Can't Find the Perfect Gift? Give an Anthony's Gift Certificate. It's Always the Right Choice!

Save 32%
London London® Fashion Denim Skirts and Skirtalls for Juniors
16⁹⁹
Sale
Reg. 24.99. Casual fashion for juniors by London London®. Choose from skirts or skirtalls. Made from 100% cotton denim in assorted acidwash finishes. For junior sizes 3-13.

Juniors' Tank Tops
Sale 3 for \$10
Reg. 4.99 Each. Choose from two styles by One Step Up®. In assorted colors. Sizes S,M,L.

Juniors' Crop Tops
Sale 2 for \$10
Reg. 7.99 Each. By One Step Up®. Made from 100% cotton in assorted colors. Sizes S,M,L.

Save 1/3
Juniors' One Step Up® Knit Shirts
9⁹⁹
Your Choice
Scoop Neck T-shirt, Reg. 14.99. Made from 100% cotton with oversized styling and embroidery on chest pocket. In assorted solid colors. Junior sizes S,M,L.
Henley Collar Shirt, Reg. 14.99. The short sleeve top features henley collar styling and comes in assorted fashion colors. Junior sizes S,M,L.

Save 25% to 42%
Women's Short Sleeve Pocket T-shirts Sale **4⁴⁹** Or 3 for \$12
Reg. 6.99. The short sleeve knit shirt features a single chest pocket. Made from a polyester-cotton blend in your choice of basic and fashion colors. For women's sizes S,M,L.
Large Group of Women's Knit Tops **25% off**
Sale 5.99 to 14.99... Reg. 7.99 to 19.99. Choose from a large group of styles. Made from easy care knit blends in assorted fashion colors. For women's sizes S,M,L.

20% Off
Watch It® Fashion Watches for Men and Women
Sale **19⁹⁹**
Reg. 24.99. Save now on a new Watch It® fashion watch. Choose from a variety of styles for men and women.

Save \$5
Levi's® Denim Jeans in Fashion Finishes for Men
Sale **26⁹⁹** and **29⁹⁹**
Reg. 31.99 and 34.99. Save now on selected styles of Levi's® fashion denim jeans for men. Choose from the popular 501® and 550® jeans in your choice of fashion finishes including whitewash, beach and more. Made from 100% cotton with five-pockets and a straight leg silhouette. In men's sizes 29-38.

Super Buy
Spring Sport Coats and Slacks for Men
25% Off
Slacks Reg. 27.99... Sale 20.99
Sport Coat Reg. \$75... Sale 56.25
Choose from a variety of spring styles. Made from lightweight blends in your choice of colors. Men's coats sizes 38-46. Slacks sizes 32-42. Styles and sizes may vary by store.

Store Hours:
Mon. - Sat.
9:00 a.m. - 6:00 p.m.
321 Main, Muleshoe 272-3478

Anthony's Credit Card - The Smart Shopper's Choice

ANTHONY'S
We're Good at Making You Look Great!



GARDEN SPOT OF THE WEEK--The new decorations at Mary DeShazo Elementary School won the first "Garden Spot of the Week" for the past week. The Jennyslippers sponsor the Garden Spot of the Week, and encourage nominations for a particularly pretty spot in someone's yard. Make your nomination by calling the Muleshoe Chamber of Commerce and Agriculture by noon on Wednesday. (Journal Photo)

SONIC Triple Feature

\$3²⁹ PLUS TAX

DOUBLE MEAT DOUBLE CHEESEBURGER • FRIES • MEDIUM COKE • OR OTHER SOFT DRINK.
OFFER GOOD THROUGH MAY 31, 1990

1633 W. Amer. Blvd.
272-3998

©1990 SONIC INDUSTRIES

Sudan News
by Ann Gaston

Mr. and Mrs. Marvin Tollett attended the West Texas Adult Muscular Dystrophy retreat held at the Holiday Inn South in Lubbock Friday, Saturday and Sunday.

Farmers Coop Association of Sudan held their Annual Stockholders Meeting Thursday, April 26, 1990 at 7:30 at the Sudan School Activity Room with some 200 attending. A meal of fried fish, chicken, and all the trimmings was catered by Danny's Hens and Fins.

After the meal Edward Fisher, President of the board called the meeting to order. Calvin Vernon, Secretary gave the invocation and then read the minutes of the previous annual meeting.

Guests were then recognized by Edward, those being, Ronnie Brown with Farmers Coop Compress, Jackie Dane with Farmland Industries Inc., Jimmy Nail with Plains Cotton Coop Ass'n, Jack Sebastian with Plains Coop Oil Mill, Raymond Rister with Levelland Delinting, and Randy Field and his son Douglas with Sudduth Field & Co. of Muleshoe.

Randy Field gave the audit report for the year ending February 28, 1990.

Elections were held for two board of directors with Bobby Carson and Jerry Damron being re-elected.

Recent visitors in the home of Mr. and Mrs. Bob Drake were Lawrence Drake of Tulia, Mr. and Mrs. Garland Wade of Austin, and Mr. and Mrs. Harvey Frick of Lubbock.

Micheal Williams of the kindergarten class of Muleshoe, invited his great-grandmother, Edith Williams to eat at school with him on "Grand-parents Day", last Wednesday. After lunch the grandparents enjoyed about an hour of playground activities observing the many things made possible for the children to play on. When recess was over, Edith visited with her aunt, Lucille Harper in Muleshoe.

Lt. Col. Betty Griffin of Bear, Delaware and Sybil Turner of Mexia, Texas were recent houseguests of Dr. Eveylyn Milam and Mrs. John K. Milam.

Kay Wiseman, Nell Gentry, Wendy and Allan Branson went to Abilene last Thursday night to see Linda Wiseman in concert with the ACU Concert Band. They also visited with Linda's fiance, John Kay.

Recent visitors in the home of Mr. and Mrs. Dale Newson were their daughters and families. Tatia Snell, Matt and Tony of North Richland Hills in Ft. Worth, Sonya and Neil King, Nathan and Courtney of Lubbock, Nicole and Scott Richards, Haley and Jordon of Sudan and Marissa and Mike Pugh, Todd and Mica of Sudan and Polly Hargrove also of Sudan.

The Sudan High School band banquet was held on Tuesday, May 1 in the High School Cafeteria and the welcome was brought by Paula Ford. Barbeque was served by the Cattle Call of Amarillo.

Band director Bruce Kenner presented the awards followed by Jerry Bartley, Petersburg band director who gave the program. Special guests were Mrs. Kenner and Mrs. Bartley.

Hyla Ford received the Band Booster Scholarship of \$500 and she also received the John Phillip Sousa Award. Mitzi Glascock received the Band Director's Award.

The Sudan Hornets Major Little League Baseball Team won first place in Littlefield's tournament, last weekend. The tournament had 14 teams in it from Lubbock, Littlefield, Morton, and Sudan.

Sudan played Littlefield Fire Dept. for their first game and won 20-2. Their second game was against Wolforth Twins, and won 12-11. The third game against the Morton White Sox ended with a score of 12-2. The championship game was against Morton Cardinals in which they won 11-1. Frankie Zarate received Best Defensive Player.

The United States Achievement Academy announced today that Micheal Lane Bartley has been named a United States National Collegiate Award winner in Drafting Technology. This award is a prestigious honor very few students can ever hope to attain. In fact, the Academy recognizes less than 10% of all American college students.

Misti Bartley, a 1989 graduate of SHS was inducted into Alpha Lambda Delta which was founded in 1924 and is a National Academic Honor

Society for Freshmen at San Angelo State University. She was inducted on Saturday, April 21st during a luncheon honoring the inductees and their parents.

Wednesday, April 25th, Alpha Lambda Delta held their election of officers for the upcoming year.

Misty Bartley was elected Editor of the organization for 1990-91. This office is responsible for all newspaper articles, campus news, flyers, etc.

St. Mary of the Plains Hospital announced today it has reached an agreement in principle with the Board of Directors of South Plains Hospital/Clinic in Amherst to provide assistance in re-opening the clinic portion of the facility.

The announcement was made by Charley O. Trimble, St. Mary president and chief executive officer.

The hospital, located eight miles northwest of Littlefield, ceased operations on July 14, 1989, after serving as a health-care cooperative since 1942.

"We are very happy that St. Mary's has agreed to work with us in getting our clinic re-opened," said Harvey Patterson, chairman of the hospital's five member volunteer board.

"South Plains Hospital has served western Lamb County for almost 50 years, and we are excited that we have the opportunity to re-establish that service," he added "We think it is vital that we have a facility in Amherst to meet the medical needs of people of this area.

Trimble said St. Mary Hospital has agreed to help the hospital re-organize its debt, attract a physician, provide support staff for that physician, and provide a working capital loan.

St. Mary's will also develop a long range plan for the hospital and provide consultative services from its various resources.

Currently, only the pharmacy, business office and medical records office are operational. Carol Hill continues to serve as acting administrator.

Swimming is a good sport for those who can stay afloat.

Death takes no holidays--watch your driving at all times.

Education is a process that either never begins or never ends.

Nursing Home News
by: Joy Stancell

Happy May birthdays to Darlene Prather, May 1st and Jo Miller, May 17th.

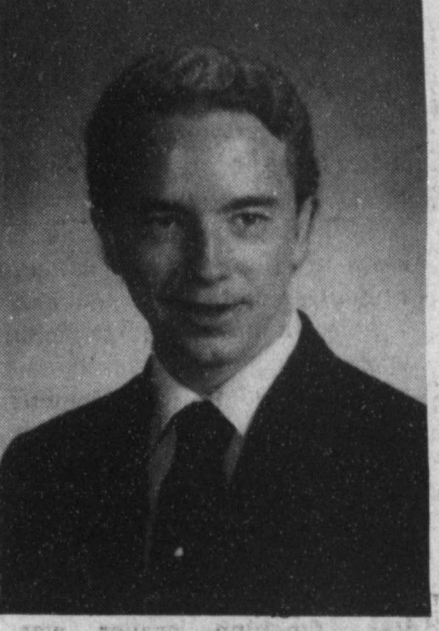
Ella Faubus was visited Tues. by her son and daughter-in-law, Mr. and Mrs. M.C. Faubus of McAdu, Tex. Also her daughter Julia.

Steve Raney Receives Degree At U.T.

Steve E. Raney, son of Lee Raney of Levelland, and Jamie Coulter of Lubbock, will receive his Doctor of Jurisprudence degree at 2 p.m. Sunday, May 20, at the University of Texas at Austin.

A native of Muleshoe, he is a 1983 graduate of Littlefield High School; received an associate degree from South Plains College, Levelland in 1985 and was named Outstanding Business Student at South Plains. He received a Bachelor's degree from the University of Texas in 1987.

His paternal grandparents are Edd and Mary Edmiston and Winnie B. Wurst, and the late Dave Coulter, all of Muleshoe.



STEVE E. RANEY

Cora Duncan and her husband, Gordon, attended the weekly Sing-A-Long Wednesday afternoon. Rhonda assisted by Tammy shampooed and set Cora's hair just before the Sing-A-Long.

Bernice gave Thelma Sterns a new perm Wednesday afternoon.

Dennis Hayes came Friday afternoon to lead us in gospel songs and shared scripture and his thoughts and feelings.

Louise Legg came Tuesday morning to give the residents ceramic lessons. Residents participating were Effie Smith,

Clara Weaver, Stella Morgan, Guy Kendall, Rosemary Pool, Pearl Cox and Bernice Amerson.

Cash Rewards
Up To \$1,000
For Information!
Call
Bailey County
Crime Line
272-HELP

Now's The Time To Buy John Deere Lawn & Garden Equipment.

Your John Deere Dealer is celebrating *Deere Season*, and that means great deals for you. Get 90 days same as cash when you use your John Deere Credit Card to purchase John Deere lawn and garden equipment. That's no payment and no finance charge for 90 days while you enjoy the performance and value only John Deere equipment can offer. If you don't have a John Deere Credit Card, you can get on-the-spot approval at your local John Deere dealership. Stop in today for the best value in lawn and garden equipment and 90 days same as cash financing.

90 DAYS SAME AS CASH AHEAD

JOHN DEERE CREDIT

Dent & Co.
W. Hwy 84 272-4296
Muleshoe, Texas

Availability subject to approved credit. A 10% down payment is required as quality for 90 days same as cash. After 90 days, finance charge will begin to accrue at 19.9% APR. APR may be lower in some states. A \$0.50 per month minimum finance charge may be applied to unpaid balances.

True Value
HARDWARE STORES
"Store Of First Choice"
Your Lawn & Pest Control Center

6.29 Pt. 25% Diazinon for hard-to-kill insects on flowers, lawns and trees. 59628	7.19 Isotox [®] Insect Killer protects flowers, shrubs, ornamentals, more. Pt. 01601	7.19 Malathion [®] 50 Insect Spray kills a variety of pests. Safe on fruit trees, etc. Pt. 01641
7.99 Home Pest Control in ready-to-use formula for roaches, more. Gal. 01983	12.15 5,000-Sq. Ft. Lawn Food With Insect Control	4.49 24-Oz. Home Pest Insect Control in sprayer for indoor/outdoor use. 01980

Fry & Cox, Inc.
401 S. 1st 272-4511

HOLMBERG'S Graduation Sale
SPECIALS Good through May 31

Men's & Ladies Seiko & Pulsar Watches Some up to . . .40% off	Diamond 14-K Ear Studs Reg. 34.50 \$9⁹⁵ Pr.
Diamond Ear Stud & Pendant 3 pc. set Reg. 299.00 SALE \$199⁰⁰	Cultured Pearl Necklace 18 inch - 14 K catch Reg. 495.00 SALE \$289⁰⁰
All 14K Gold Neckchains 1/2 Price	Mickey Mouse Watches
14K Gold Bracelets 30% off	Texas Tech Watches
	Texas Univ. Watches
Men's & Ladies Nugget Watches Gold Filled Reg. 199.00 \$129⁰⁰	Tennis Bracelets 1 carat diamonds - 14 K Gold Reg. 999.00 SALE \$699⁰⁰
Cross Pen Sets engraved FREE	All Store Items Not on SALE. . .20% off
Boy's & Girl's I.D.'s engraved FREE	Many Diamond Rings 50% off

CREDIT TERMS

Holmberg Jewelry
312 Main • 762-9376
(Serving Clovis 49 Years)

CREDIT TERMS

Strategic Planning

Cont. From Page 1

ranged from businessmen to students, and all of them spent three days in uninterrupted work sessions coming up with various educational objectives and things they wanted to accomplish for the Muleshoe schools.

"Coming up with objectives was not easy," said Ward. "We focused on human values and what kind of value system the people of West Texas have. Values are one of the most stable things, and we wanted to build on them."

One of the purposes of Strategic Planning is to recognize that people can have different ideas, but they do not have to be right or wrong on everything. Strategic Planning works at building on the values that a community holds dear, but at the same time making people

Play...

Cont. From Page 1

sought this year, so if you have a talent, including comedy, see Phylis Angeley, Nancy Barnhill, Bobbie Nell Dunham or Sharon Grant. They will be happy to help you get signed up.

Also to be featured will be Muleshoe native, Lee Horsley.

He and his family will be in Muleshoe July 2-4, and he will make appearances at the Family Fun Night, as well as at the July 4th activities.

Lee Horsley was star of *Matt Houston* and is currently the star of *TV's Paradise*.

Also, again this year, the Muleshoe Activities Committee will be heading up the candy sales.

During an intermission, sacks of candy will be sold (and they sell out quickly) with many of the sacks bearing a very special 'surprise' inside. Inside many of the sacks will be a number. The purchaser can take the number to the stage and claim the prize with the corresponding number displayed onstage.

Be sure to make your plans now to attend Family Fun Night on July 2-3 at the Muleshoe High School auditorium.

aware of new knowledge and opportunities.

"It is difficult to implement a plan like this because it involves giving up past traditions and people find that hard to do," said Ward.

Strategic Planning tries to focus on flexibility skills so that students can create their own opportunities and recognize them when they come their way. The students must be able to create what they can offer the future.

"It is essential that the children of today and tomorrow be taught to look forward and not back," said Ward.

Strategic Planning is a process and a discipline that is geared to meet the needs of the Muleshoe Schools, and it provides an unrestricted examination of issues. Its concept is based on the belief that the basic curriculum style of teaching and learning is over, and it will not meet the demands of today and tomorrow.

According to Ward, "The people of Muleshoe recognize a need for the type of educational system that Strategic Planning offers. With everyone's help and cooperation we can strive to enhance the lives of students today and tomorrow."

U.S. Army...

Cont. From Page 1

Visiting Rotarians were Chris Gikas and Hugh Moseley from the Texico-Farwell Club; Bill Adling, the Southwest Lubbock Club; and Raymond D. Haslam, Hamburg, PA. who was given a Muleshoe Rotary Banner to take home.

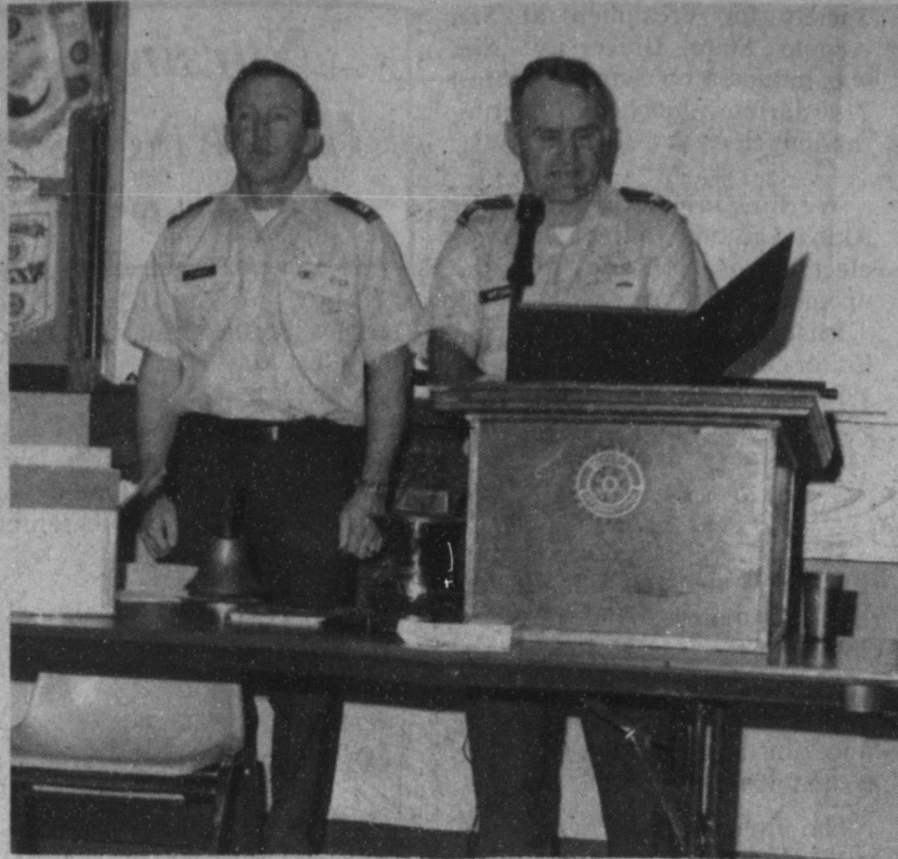
Other guests included T. J. Hutto; Gant Barnhill; Todd Bessire; and Rotary Anns Marie Bass and Judy Watson.

GOLDEN GLEAMS

He is bare of news who speaks ill of his mother.

—Irish Proverb.

God could not be everywhere so he made mothers.



ARMY COMMENDATION PRESENTED--As a surprise to Capt. Danny Powers, left, Col. Don Watson presented the U. S. Army Capt. with a special Commendation of Merit during the Tuesday meeting of the Rotary Club in Muleshoe. Capt. Powers is standing at attention as Col. Watson reads the commendation before the Rotary Club. (Journal Photo)

Wheat Field Day, May 24

Training which will provide certified pesticide applicators credits necessary to renew their licenses will be a part of the annual Panhandle Wheat Field Day at Amarillo and Bushland on May 24.

This year's event will begin here at 8:30 a.m. at the Texas

Tax...

Cont. From Page 1

month, for an increase of 16 percent over last May's payments. One reason county payments are up is that more counties impose the 1/2 percent sales tax now than a year ago, Bullock said.

This month's checks include taxes collected on March sales and reported in April by businesses filing monthly returns, and also includes taxes reported by those filing quarterly returns for the months of January, February and March.

Merchants collect sales taxes and send them to the Comptroller's office with their tax returns. The state keeps its share and sends cities and counties their portion of the sales tax.

All local sales taxes must be approved by local voters and may be used for any legal city or county expenses. Most areas put the money into their General Fund and use it for operations like firefighting, maintaining roads and law enforcement.

A&M University Agricultural Research and Extension Center, 6500 Amarillo Blvd. West. Participants completing the training given here by the Texas Agricultural Extension Service can receive three continuing education units toward their pesticide applicator certification, said Dr. Brent Bean, Extension Service agronomist.

Beginning at 1 p.m., tours of wheat research plots will be held at the U.S. Department of Agriculture - Agricultural Research Service laboratory three-quarters-mile west of Bushland on Interstate 40.

Research conducted there by scientists of USDA-ARS and the Texas Agricultural Experiment Station will be explained, said Dr. B.A. Stewart, USDA research director at the facility.

Stops will include the irrigated wheat variety nursery, research plots for integrated insect and disease management, weed control, tillage, and grazing pull off.

The field day is sponsored by the Extension Service, Experiment Station, USDA-ARS and Texas Wheat Producers.

SPS Starts New Program

This Week

Southwestern Public Service Company (SPS) announced on Tuesday, a program designed to promote the region through technology commonly found today in U. S. offices -- the fax machine.

The electric company has produced messages promoting the local four-state region that are designed to be affixed to the bottom of fax cover sheets. They are available free from SPS offices to any business in the service area using a fax machine. The material also can be obtained through local chambers of commerce and economic-development foundations.

The messages are available for Texas, New Mexico, Oklahoma and Kansas. All read: "Wish you were here ... Call and I'll tell you why!" The sheets are individualized for each community in which SPS maintains an office.

The Texas version carries the emblem for The High Ground of Texas, and the New Mexico version has the emblem for The Business Quarter of New Mexico. The Oklahoma and Kansas versions highlight those states. The High Ground and Business Quarter are regional economic-development efforts in which SPS participates.

"The proliferation of fax machines is truly incredible," said Gary Gibson, SPS president of marketing. "What an obvious way to spread the good news about this part of the country."

The economic - development messages are designed to be

photocopies to the bottom of a company's existing cover sheets, which typically designate to whom the fax is being sent and from whom it originates. Most cover sheets have the company's letterhead at the top.

"We are all spokesmen for this part of the country. These messages will let everyone with a fax machine get involved in economic development. We're not asking businesses to send extra fax messages but to use the sheets in the normal course of business," Gibson said.

Muleshoe SPS manager, Ron Montgomery, said the new fax sheets have been distributed to the Muleshoe Area Industrial Foundation.

MAPLE BRANCH
Bailey Co. Sheriff's Office
946-3300

Cash Rewards
Up To \$1,000
For Information!
Call
Bailey County
Crime Line
272-HELP

Here's the help you've been looking for. If you want to learn how to get the most out of your new (or old) computer, call Marc Steele at Reliable Solutions, 272-3265 in Muleshoe, 9 a.m. to 5 p.m. M - F. Reasonable rates.

We also do custom programming and help with your business accounting needs.

RESEARCH SERVICES AVAILABLE

NEED A YARD MAN?
CALL
CAPPY GATEWOOD
272-5435
ANYTIME
15 Years Experience

THERE'S NO WORRY OF VAPOR DRIFT WITH BUCTRIL®

UNLIKE 2,4-D OR DICAMBA, THERE'S NO WORRY OF VOLATILE VAPOR DRIFT WITH BUCTRIL® SO NOW WE CAN CONTROL COCKLEBUR, VELVETLEAF AND OTHER BROAD-LEAVES WITHOUT INJURING NEARBY SOYBEANS OR OTHER SENSITIVE CROPS.

NOTHING MEASURES UP TO BUCTRIL®!

BUCTRIL® HERBICIDE

Wilbur-Ellis
Ideas to grow with®
965-2330

TIDE DIVISION
ROUTE 3 - BOX 1010
MULESHOE, TEXAS 79347

As with any crop protection chemical, always read and follow instructions on the label.
BUCTRIL is a registered trademark of Rhone-Poulenc. © 1989 Rhone-Poulenc Ag Company

SUPER CHEVY WEEKEND

AUTO SHOW
May 19th, 1990
2500 E. MABRY DRIVE
8:00am - 5:00pm Entry Fee: \$10

Auto Show Classes

1. Chevrolet Cars 0 to '64
2. Chevrolet Cars '65 & Up
3. Special Class '55 to '57 Chevrolet Cars
4. All Camaros
5. All Corvettes
6. Chevy Pickups thru '72
7. Chevy Pickups '73 to Current Model

Classes for Original, Restored and Custom Chevrolets of all ages. Cars and Trucks will be judged separately. Trophies will be awarded for First, Second and Third Place in each class. A People's Choice Award will also be awarded.

Return the Pre-Registration Form below to Doc Stewart's. Contact Dan Carlson, Service Manager or Richard Kelley, Parts & Service Director for more details.

Look, Listen & Watch for more details on the Super Chevy Weekend!

Pre-Registration Form

Name _____
Address _____
City _____ State _____ Zip _____
Model of Chevrolet _____
Competition Class _____

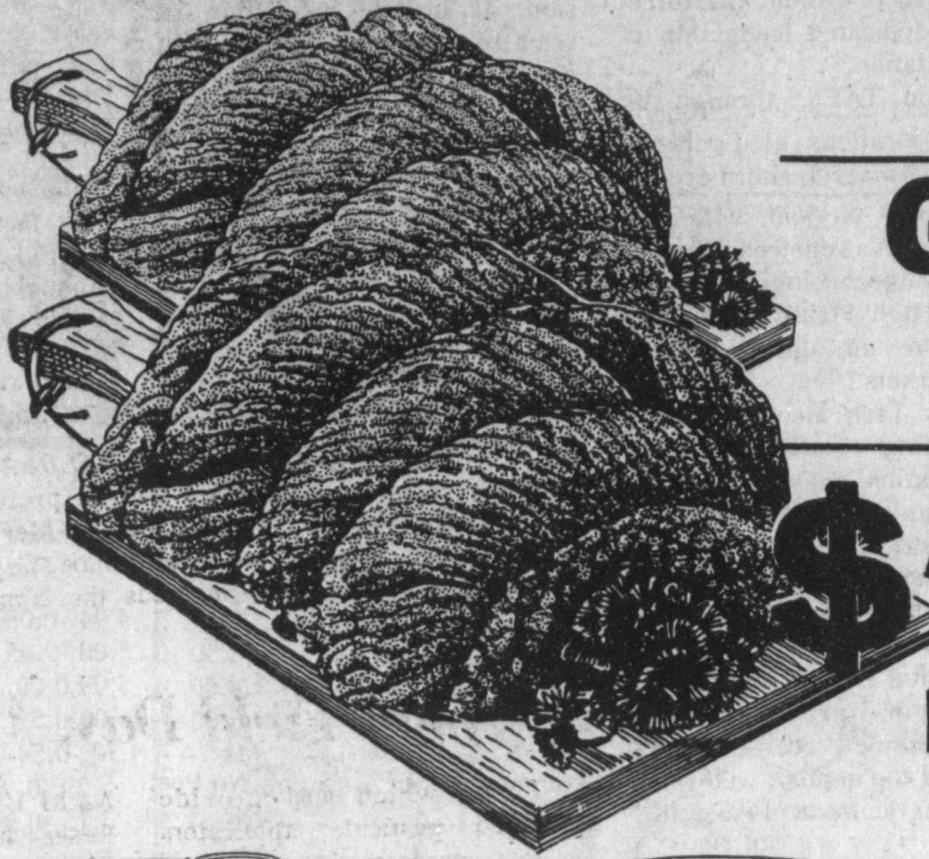
Return to: Doc Stewart Chevrolet
P.O. Box 640
Clovis, N.M. 88101
Attn.: Dan Carlson

* Not responsible for Loss or Damage at the show or on our lot.

DOC STEWART
CHEVROLET • GEO • BUICK
2500 MABRY DR. - CLOVIS, N.M. - (505) 763-4465

MAY FOOD SALE

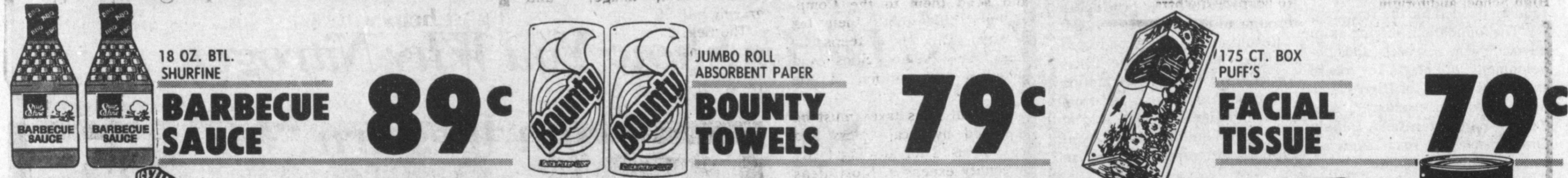
- LOUIS RICH
GROUND TURKEY 1 LB. ROLL **\$1.49**
- MENU MASTER
GROUND CHICKEN 1 LB. ROLL **99¢**
- PEYTON'S REGULAR/THICK
SLICED BACON 1 LB. PKG. **\$1.28**
- HILLSHIRE FARM-ALL VARIETIES
SMOKED SAUSAGE LB. **\$2.29**
- DECKER MEAT OR BEEF
CORN DOGS 1 LB. PKG. **\$1.69**
- DECKER
MEAT BOLOGNA 12 OZ. PKG. **\$1.19**
- DECKER
MEAT FRANKS 12 OZ. PKG. **\$1.19**



WEIGHT WATCHERS
Ground Beef
\$2.39
LB.



NICE'n SOFT 4 ROLL PKG. 89¢	TIDE DETERGENT 136 OZ. BOX \$6.29	APPLE JUICE 64 OZ. BTL. 99¢	SLIM FAST 15 OZ. CAN \$3.49	GREEN BEANS 16 OZ. CANS 3.99¢
---	---	---	---	---



BARBECUE SAUCE 18 OZ. BTL. SHURFINE 89¢	BOUNTY TOWELS JUMBO ROLL ABSORBENT PAPER 79¢	FACIAL TISSUE 175 CT. BOX PUFF'S 79¢
---	--	--

HEFTY LAWN & LEAF BAGS 10 CT. PKG. \$1.79	LEMONADE COUNTRY TIME ASSORTED MIX 8 QT. CANISTER \$2.39
PLATES DISPOSABLE HEFTY 50 CT. PKG. \$1.49	KOOL-AID SUGAR SWEET ASST. 8 QT. CANISTER \$2.39
PREGO CHUNKY/REG. FOR SPAGHETTI SAUCE 30 OZ. JAR \$1.79	CEREAL POST REG./WITH ALMONDS HONEY BUNCHES OF OATS 16 OZ. BOX \$2.49

GARDEN FRESH BROCCOLI 88¢ STALK

CALIFORNIA NEW CROP PEACHES \$1.48 LB.

GREEN CABBAGE 4 LBS. \$1.00	RED ONIONS LB. 78¢
GREEN LIMES 5 FOR \$1.00	RED APPLES LB. 48¢
MEXICAN MANGOS EACH 99¢	ORANGES 4 LB. BAG \$1.38

HERSHEY'S CANDY HERSHEY ASSORTED BARS 6 CT. PKG. \$1.89	CAMPBELL'S SOUP SPECIAL REQUEST CAMPBELL'S CREAM OF MUSHROOM SOUP 10.7 OZ. CANS 2.89¢
WHISKAS CAT FOOD ASSTD. VARIETIES WHISKAS 6 OZ. CANS 3 \$1	SAFEGUARD BATH SOAP WHITE/GOLD 3 BAR PAK \$1.79

SHURFINE COTTAGE CHEESE 24 OZ. CTN. 99¢	LUNCH WAGON SLICES 12 OZ. PKG. 99¢
SHURFINE GRADE A LARGE EGGS DOZEN CTN. 77¢	

ASSORTED PERT PLUS 15 OZ. BTL. \$2.99	32 OZ. BTL. LISTERINE MOUTH WASH \$3.99
100 CT. BTL. TABLETS/CAPLETS BAYER ASPIRIN \$3.99	28 CT. PKG. PLAYTEX TAMPONS \$4.59

PET RITZ APPLE/PEACH/CHERRY FRUIT COBBLERS 26 OZ. BOX \$1.99	6 CT. PKG. SHURFINE FUDGE BARS 99¢
8 OZ. BOX BOOTH "HEAT 'N SERVE" FISH STICKS 89¢	

CASCADE 50 OZ. BOX/BTL. \$2.39	BIZ BLEACH FOR WHITER WHITES 30 OZ. BOX \$2.69
--	---



AT AFFILIATED FOODS INC.
MEMBER STORE
WE ACCEPT FOOD STAMPS...
WE RESERVE THE RIGHT TO LIMIT
PRICES EFFECTIVE
MAY 13-19, 1990

ALL TYPES COCA-COLA
2 LITER BTL.
\$1.09

High Plains Foundation Plays Key Research Role

The High Plains Research Foundation, which for 30 years has worked to assist West Texas agricultural producers, is initiating new efforts to benefit these producers.

Originally a privately-funded, non-profit research and educational entity, the foundation's present role is that of a clearinghouse and facilitator for agricultural research and education throughout the area.

The foundation's board of trustees, under the chairmanship of James E. (Pete) Laney of Hale Center, last year set five new goals for the organization: to bring together groups and individuals interested in High Plains agriculture as a forum to assess needs for and evaluate results of research; to define needs for research, education and extension; to communicate these needs to state institutions and agencies; to support such research by advocating resources and assisting in community awareness, and to help evaluate such research and development.

The foundation now serves as a network linking people from all walks of life who have an interest in supporting and promoting agricultural research in Texas, with an emphasis on the High Plains, Laney explained.

The board is made up of farmers, ranchers, representatives from commodity groups of nearly every crop, and of producer and agribusiness organizations.

Twice a year, the board meets with leaders of agricultural research and extension agencies to discuss research and educational programs that will most benefit producers. Such agencies include the Texas Agricultural Experiment Station, Texas Agricultural Extension Service, Texas Tech University and West Texas State University.

Information from these discussions is then presented to legislators, who determine the funding needed for the research.

"The foundation, serving as an advocate for research and development, will play a key role in the future destiny of High Plains agriculture and economy", said Dr. Robert E. Merrifield, Deputy Director of the Texas Agricultural Experiment station.

Noting the "long standing and productive partnership" of TAES and the foundation since the 1970's, Merrifield said such synergism "couldn't have been accomplished without the forceful and dedicated leadership of the foundation.

He said TAES, through its research locations at Lubbock, Halfway, Amarillo and Vernon, "is pleased to join with the foundation in a renewed effort to develop the technology necessary to keep High Plains agriculture competitive in domestic and world markets."

"Texas Tech also values its longstanding relationship with the foundation", said Dr. Sam E. Curl, dean of the College of Agricultural Sciences. The "outstanding individuals who have provided leadership for the foundation over the past 15 years" have helped insure that High Plains producers and agribusinessmen receive the full benefits of top quality, well-coordinated agricultural research", Curl said.

"The foundation has been particularly instrumental in stimulating and nurturing the high level of research collaboration which exists today between Texas Tech University and the various agencies of the Texas A&M University System", Curl said.

Dr. Zerle L. Carpenter, director of the Extension Service said his agency is "proud to be a partner with the High Plains Research Foundation in a unified effort to help the region's agricultural industry prosper".

Carpenter said that for many years the foundation has served as a source of sound production information for the area's agricultural interests. "The Extension Service, through its specialists and county agents, has made excellent use of this information in delivering sound, unbiased educational programs to agricultural producers throughout the region", he said.

Results of research conducted by these agencies at the Texas Agricultural Experiment Station facilities here, purchased from the foundation last year, and at the Experiment Station facility at Lubbock are represented in an

annual progress report. This is mailed to all supporting members of the foundation.

"This report contains more information than ever", Laney said. It includes a listing of scientists conducting research not only in West Texas, but across the state, as well as daily weather data for the High Plains growing season.

"The foundation encourages agricultural leaders and legislators from other parts of the state and nation to visit the High Plains so that we may exchange ideas on the needs of agricultural research," Laney said.

Three Way News

by: Mrs. H.W. Garvin

Mr. and Mrs. Adolph Wittner were in Lubbock Wednesday to visit her father B.J. Emerson who is a patient in St. Mary's hospital and be with Eugene Wittner who underwent open heart surgery.

Mr. and Mrs. Rodger Hatcher and girls from Clovis spent Tuesday with her parents the Jack Lanes.

Thursday evening the Three Way faculty and school board honored the seniors with a banquet at the Cattle Baron restaurant in Portales.

Mr. and Mrs. Vance Davis from Sundown were supper

guests in the Bill Dolle home Friday evening.

Mr. Bud Huff was a patient in Cochran Memorial hospital in Morton Wednesday and Thursday.

Mrs. H.W. Garvin visited her brother the George Tysons Friday afternoon.

Mr. and Mrs. Bill Dolle and Darla visited his parents Mr.

and Mrs. Herbert Dolle in Littlefield Saturday evening.

Mario and Efran Guillen went to State competition in Stephenville over the weekend in track. They both won 10th place, one in the high jump and the other in the triple hurdle.

Mr. and Mrs. James Kindle were in Clovis Saturday shopping.

1990 Crop		1990		
Pool Cash	Sale	Contract	Month	
Advance	Flat	Basis		
Feed Corn.....Mkt.....	4.94,-0.08	No Bid	May	
White Cobb Yellow.....	4.50	5.00,-0.05	No Bid	May
Red Cobb Yellow.....	4.00	5.09,0.00	No Bid	May
White Food Corn.....	5.00	6.00,0.51	No Bid	May
Milo.....Mkt.....	4.12,-0.54	No Bid	May	
Soybeans.....No Pool...	5.29,-0.96	-0.95	May	
Wheat.....No Pool...	3.15,-0.34		KC May	

98 1/2 %
Prices effective May 15, 1990
Farmer's Co-Op Elevators
272-4335

Moving Sale!!

Saturday & Sunday

May 19 & 20
8:00 a.m. - Till ?

Linens

Pots & Pans

Decorations

Dishes

Appliances

& More!!

705 W. 3rd St.

Plan Now To Get Better Nitrogen Efficiency For Your Corn.

Let Us Show You Why Nitrogen Solutions From Western "66" Are Your Best Buy---

- ★ Less Application Loss Than Ammonia!
- ★ Recent Research Shows A Combination Of Ammonia And Nitrate Nitrogen Gave Higher Corn Yields Than Either One Alone.(You Get Both In Solution)
- ★ Flexible Application Alternatives - Sidedress While You Cultivate, Or Apply Through Irrigation Water.
- ★ Add Other Nutrients At The Same Time If Needed. - See How Economical Sulfur Can Be Added.

Let Us Help You Plan A Maximum Economic Yield Program To Produce Top Profits For You. Call Or Come By Soon.

Western "66" Co.

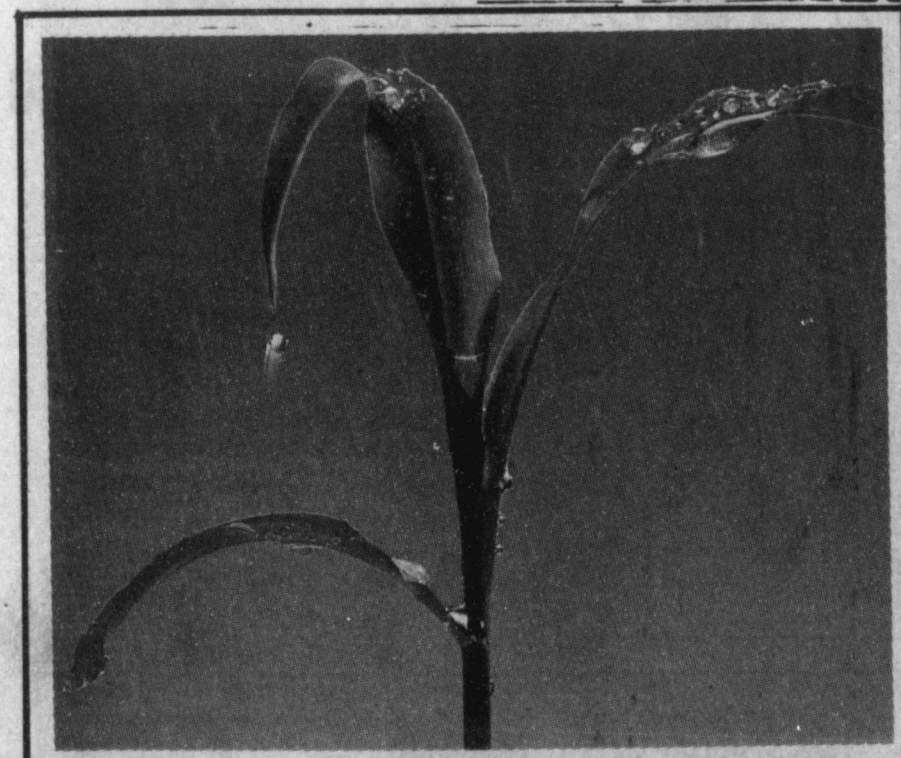
Earth Hwy. Muleshoe, Tx. 272-4556

How About You?
Anyone who thinks he knows all the answers isn't up to date on the questions.
--Ibube, Chicago.

An Afterthought
It is important to build character. And, sometimes, it is important to rebuild.
-News, Brunswick, Ga.

True Enough
Any government that is big enough to give you everything you want is big enough to take everything you have.
-Record, Columbia, S.C.

Your Best
Don't be afraid to use what talents you possess; the woods would be very silent if no birds sang except those who sing best.
-Sentinel, Onawa, Ia.



Use Treflan® herbicide for a cleaner corn harvest

An application of Treflan...

- Controls over 40 tough weeds and grasses, including shattercane, sandbur, woolly cupgrass, and foxtail right up to harvest.
- Can be chemigated or sprayed on and cultivated into the soil.
- Offers low cost weed control.
- Won't leach out.
- Won't harm your field corn when applied at the two leaf stage or taller.
- Can be combined with atrazine for even broader spectrum control.

Treflan... for safe, economical, extended weed control!

Wilbur-Ellis

Ideas to grow with®

965-2330

Treflan

TIDE DIVISION

ROUTE 3 - BOX 1010

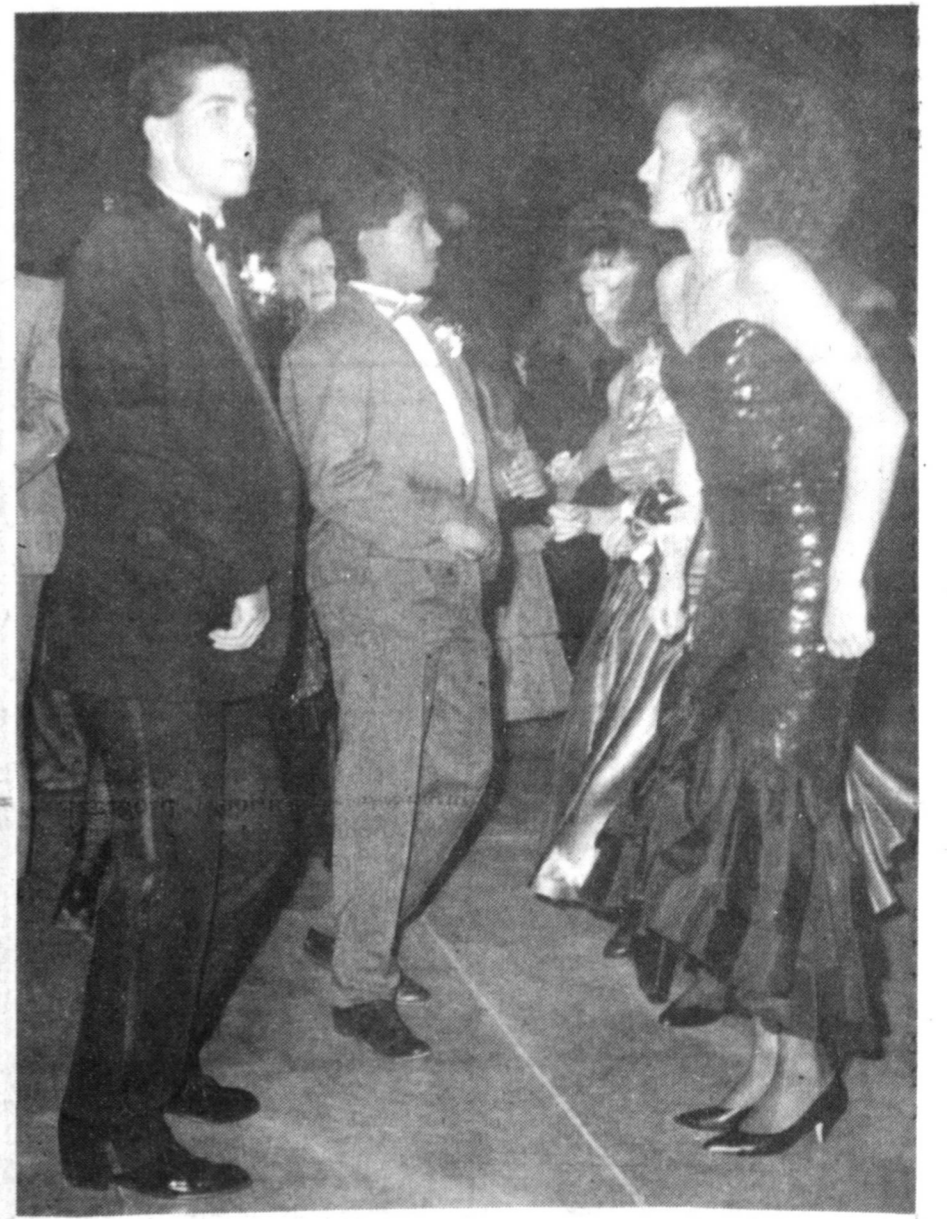
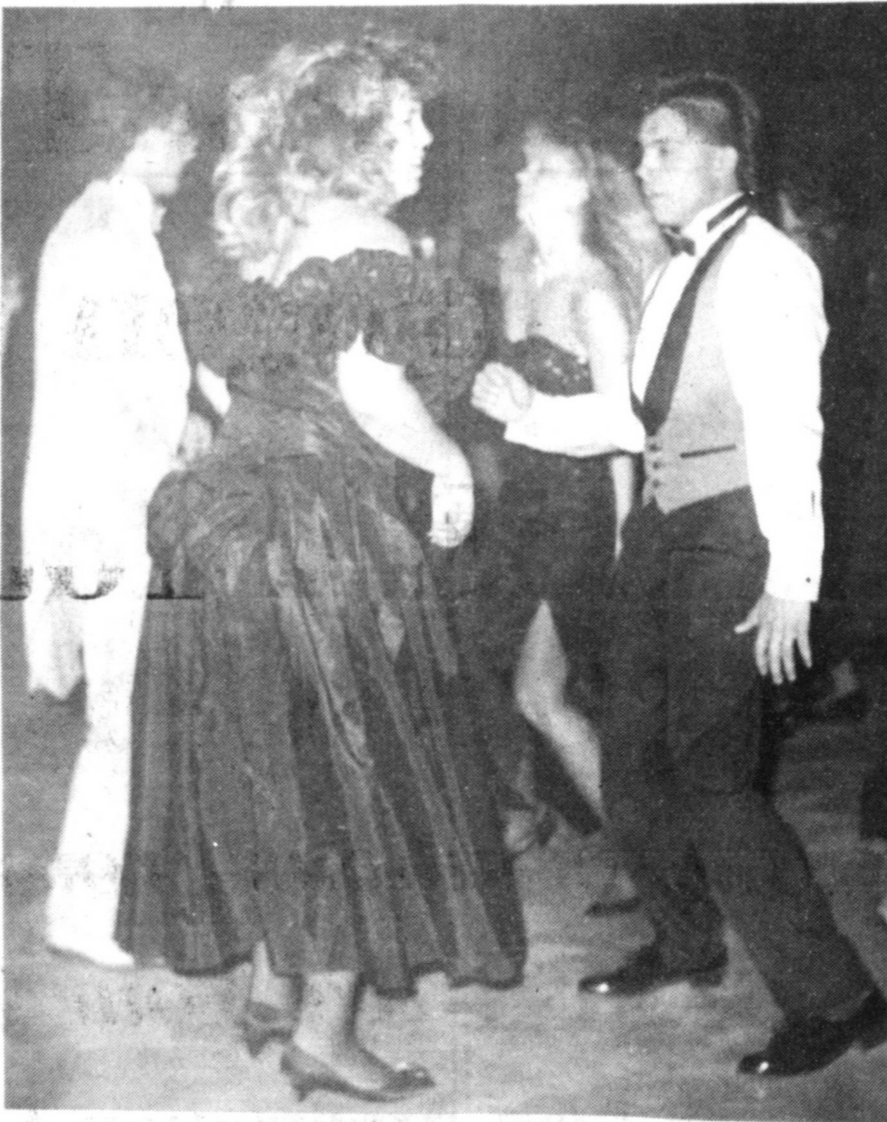
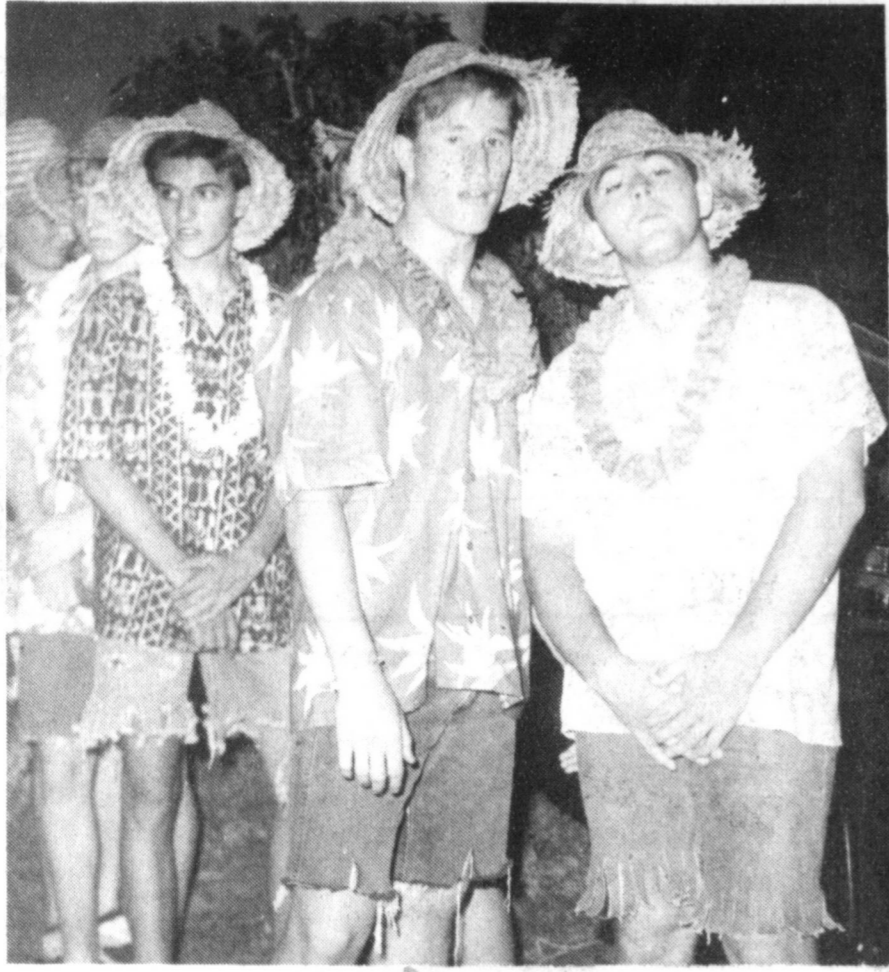
MULESHOE, TEXAS 79347

Treflan® is a registered trademark of Elanco. For best results, always read and follow label directions.

Tahitian Twilight

MHS Junior - Senior Banquet & Prom

May 12, 1990



Presenting The 1990 Muleshoe Youth Baseball Schedules

(Please Clip And Save For Reference)

MAY

Monday	Tuesday	Wednesday	Thursday	Friday	Saturday
14	15	16	17 6:30 K-Bars - Rangers	18 6:30 Mustangs - Vets.	19
21 6:30 Orange - Red Bears - Colts Longhorns - Rangers 7:30 Tourquoise - Purple	22 6:30 GIRLS, Blue - Orange Maroon - Gold U-Bars - Merchants Longhorns - K-Bars 7:30 Green - Blue	23	24 6:30 Purple - Orange Dollar Bills - Fireballs Mustangs - Rangers 7:30 Red - Tourquoise	25 6:30 Blue - Maroon Dollar Bills - Bears Longhorns - Vets GIRLS, Blue - Green 7:30 Gold - Green 8:00 Colts - Fireballs 8:30 Mustangs - K-Bars	26
28	29	30	31 6:30 GIRLS, Orange - Green Orange - Blue Merchants - Bears Rangers - Longhorns 7:30 Green - Red 8:00 Dollar Bills - U-Bars 8:30 K-Bars - Vets		
			JUNE	1 6:30 Tourquoise - Gold Colts - Merchants Mustangs - Longhorns GIRLS, Orange - Blue 7:30 Maroon - Purple 8:00 Fireballs - U-Bars 8:30 Vets - Rangers	2
4 Red - Maroon Merchants - Dollar Bills Rangers - K-Bars 7:30 Gold - Orange 8:00 Bears - Fireballs 8:30 Vets - Mustangs	5 6:30 Purple - Green U-Bars - Colts K-Bars - Longhorns 7:30 Blue - Tourquoise 8:00 Fireballs - Merchants 8:30 Rangers - Mustangs	6	7 6:30 Orange - Maroon GIRLS, Green - Blue Colts - Dollar Bills Vets - Longhorns 7:30 Blue - Gold 8:00 Bears - U-Bars	8 6:30 Purple - Red GIRLS, Green - Orange Fireballs - Dollar Bills Vets - K-Bars 7:30 Tourquoise - Green 8:00 Colts - Bears	9
11 6:30 Gold - Red Merchants - U-Bars Longhorns - Mustangs 7:30 Green - Orange 8:00 Bears - Dollar Bills	12 6:30 Blue - Purple Fireballs - Colts 7:30 Maroon - Tourquoise 8:00 U-Bars - Dollar Bills	13	14 6:30 GIRLS, Blue - Green Green - Maroon Bears - Merchants 7:30 Red - Blue 8:00 U-Bars - Fireballs	15 6:30 GIRLS, Orange - Green Purple - Gold Merchants - Colts 7:30 Tourquoise - Orange 8:00 Fireballs - Bears	16
18 6:30 Colts - U-Bars 8:00 Merchants - Fireballs	19 6:30 Dollar Bills - Colts 8:00 U-Bars - Bears	20	21 6:30 GIRLS, Blue - Orange 6:30 Dollar Bills - Merchants	22	23
25	26	27	28	29	30

Mustang League

Bears
Colts
U-Bars
Merchants
Dollar Bills
Fireballs

Bronco League

K-Bars
Rangers
Longhorns
Vets.
Mustangs

T-Ball

Orange
Red
Tourquoise
Purple
Maroon
Gold
Green
Blue

Girl's Softball

Green
Orange
Blue

First Team Listed Will Be Home Team



PRESENTED IN THE PUBLIC INTEREST BY:

Farmer's Co-Op Elevators

5 Locations To Serve You!

Clays Corner

Enochs

Muleshoe

Old Griffith

Pleasant Valley

272-4335



CLASSIFIEDS 272-4536

CLASSIFIED RATES
 15 Words & Under Minimum Charge \$2.30
 Thereafter \$2.00
 16 Words & Over 1st Insertion 15 cents per word
 2nd Insertion 13 cents per word
CLASSIFIED DISPLAY RATES
 \$1.75 Per Column Inch
DEADLINES
 12 noon Tues. For Thursday Paper
 12 noon Friday For Sunday Paper
 To receive the reduce rate after the first insertion ad must run continuously.
 We reserve the right to classify, revise, or reject any ad. We are not responsible for any error after ad has run once.

1. Personals

CONCERNED
 About Someone's Drinking?
HELP IS AVAILABLE
 through Al-Anon
 CALL 272-2350 or 965-2870 or come to visit Tuesday nights, 8:00 p.m. or Saturday mornings at 10:30 a.m. and through AA call 965-2870 or come visit Tuesday nights, 8:00 at 620 W. Second, Muleshoe.

3. Help Wanted

PARTS MANAGER
 For **NEW DEALERSHIP**
 Must Have GM Experience
 Preferably Chevrolet
 • Excellent Growing Company
 • Excellent Benefits and Pay Plan
 Call John Case (505) 356-3501
 Teague - Strebeck Chevrolet Portales, NM
 T3-20t-2tc

TOWN & COUNTRY FOOD STORES
 We are seeking career minded individuals for part time and full time employment. Must be dependable, have good customer relations, work, learn, and contribute. Applications available at both stores. Drug test required.
 3-19s-tfc

WANTED: Muleshoe Area Hospital District is looking for a good maintenance man in the engineering department. Must live in the Muleshoe Area Hospital District or be willing to relocate. Applications may be picked up at the business office.
 M3-19t-4tc

APPLY NOW to operate firework stand in Muleshoe area June 24-July 4. Must be over 20. Make up to \$1,500.00. 1-800-955-1023 or 1-512-429-3808. 10 a.m.-5 p.m. F3-19t-11tc

3. Help Wanted

Nat'l. Corp.
 Seeking help in retail sales. Full and Part Time positions available. \$7.50 starting rate. 745-5561.
 M3-18s-4tc

"ATTENTION POSTAL JOBS!"
 Start \$11.41/hour!
 For application info call (1) 602-838-8885, Ext. M-10191, 6 a.m.-10 p.m., 7 days.
 C3-18s-4tp

"ATTENTION: EARN MONEY TYPING AT HOME!"
 32,000/yr income potential. Details. (1) 602-838-8885 Ext. T-10191
 C3-18s-4tp

SUMMER HELP: Two field scouts and one demonstration aide for June, July, August, and part-time in the first week of September. Applicants must have their own vehicle to use on the job. Applications available in County Extension Office in Farwell and Muleshoe. Individuals need to apply by May 4, 1990.

HELP WANTED
 Needing a waitress at the Country Club. Apply in person.
 M3-20t-tfc

9. Automobiles For Sale

FOR SALE: 1985 GMC 305 pickup. 44,000 miles. Power steering, power brakes, electric windows and locks. Call 272-4567.
 T9-20t-4tc

Harley Davidson, 1974 Sportster. New Tires, New Exhaust System. Very Clean. 806-762-0961 after 6:00 pm.
 T9-20t-1tp

CLEAN 1979 Ford F-150 4-Wheel Drive. Butane system, tool boxes. Asking \$2400.-
 oo. 272-5646.
 9-19s-3tp

GOVERNMENT SEIZED
 and Surplus vehicles from \$100. Fords, Chevys, Corvettes, etc., in your area. For info call 1-800-827-1051. ext. A2841.

11. For Sale Or Trade

PIANO FOR SALE
 Wanted: Responsible party to assume small monthly payments on piano. See locally. Call credit manger 1-800-447-4266.
 J11-20t-7tp

15. Misc.

First United Methodist Junior High Youth are having a 14-family garage sale this Saturday May 19 9:00 a.m.-4:00 p.m. at 324 Main (across from Anthony's). There will be lots and lots of things for all ages. Toys, clothes, necklaces, tapes/records, swing set, and various household items. Books and much more. Please stop by and have a look!!
 F15-20t-1tc

15. Misc.

3-Family Garage Sale. Friday & Saturday. 8:00 - 5:00. Hwy. 303, 4-blocks W. of Sudan School. Lots of Goodies.
 M15-20t-1tc

CUSTOM SWATHING and Baling. Two round balers. Ronnie Spies. Late or early. 965-2720.
 s15-16s-8tc

8. Real Estate

Smallwood Real Estate



214 W. 9th--New Carpet, 3 Bedroom, 1 3/4 Bath, Living Room, Fireplace, Large Den & Dining Area, Gen-Air Cook Top, Built-in Oven, Dishwasher, 1 Car Garage. Fenced Back Yard. Priced to Sell. Assumable Loan.

FOR RENT---Furnished Office, 201 Main. 4 Private Offices & Large Reception Area. Reasonable Rent.

REPRO'S
REPRO'S REPRO'S
 Finance Company desperate to sell. No credit-No problem. We deliver. Call 806-894-8187.
 B8-18s-8tc

8. Real Estate

FOR SALE OR RENT: 3 bedroom brick home with fireplace. Located 3 miles west of Earth on Highway 70. 272-3056.
 J8-16t-tfc

ATTENTION FIRST TIME
 home buyers. Two & three bedroom mobile homes. No credit. We deliver. Call 806-894-7212.
 B8-18s-8tc

Comptroller Releases Drug Conviction Info

State Comptroller Bob Bullock said Wednesday the first conviction of a drug dealer for evading the state tax on illegal drugs has resulted in the maximum sentence of 10 years in prison for a Texarkana man.

Odus Weaver, 48, was arrested last September in Texarkana with 7.3 grams of cocaine.

Bullock said Comptroller agents seized \$1,680 from Weavers bank account for payment of the drug tax in September after issuing a tax bill and filing a lien against Weavers bank accounts.

"This conviction, plus our tax seizure, puts drug dealers on notice that Texas has gotten tougher on drug dealing. If they don't get out of business or get out of Texas, they face longer prison sentences and they will have to deal with our tax collectors," Bullock said.

Bowie County Criminal District Attorney John Miller Jr., who prosecuted Weaver on the tax evasion charge, also obtained a jury conviction against Weaver for possession of cocaine with a 34 year prison sentence. In addition, the court ordered Weaver to forfeit \$8,000 in drug money in his possession.

"The drug tax law was intended to give prosecutors another tool to use against drug dealers in our state and Bowie County District Attorney John Miller has shown it can be effective. It can put drug dealers behind bars and take profit out of

dealing illegal drugs," Bullock said.

The drug tax law, which went into effect September 1, 1989, requires dealers to pay a tax of \$200 per gram on controlled substances, such as cocaine, and \$3.50 per gram on marijuana. Any dealer caught with untaxed drugs must pay the tax and can be prosecuted for criminal tax evasion which is a felony with a possible prison sentence of two to 10 years.

Bullock said his office has issued tax bills to 96 people who have been charged with failure to pay the drug tax. Fifteen of those have requested hearings to protest the tax and 38 cases have been referred to the Attorney General's Office for legal action to collect the delinquent taxes.

Bullock said his agents have seized about \$8,000 from four drug dealers. In addition, the Comptroller has collected more than \$10,000 from the sale of drug tax stamps. The law requires drug dealers to purchase the drug stamps and put the stamps on all containers of illegal drugs as proof that the tax has been paid.

"When the drug tax law was passed by the Legislature, some people thought it was a joke. But there's one more drug dealer in prison today who isn't laughing about it," Bullock said.

Enochs News by: Mrs. J.D. Bayless

Visiting the McCalls' Saturday was their daughter and husband, Mr. and Mrs. Steve Mosser and son of Slaton.

We were sorry to hear that Mrs. Loretta Layton of Dell City is in the hospital in El Paso. We wish all of our sick folks a speedy recovery.

Mr. and Mrs. J.E. Layton spent the last week with his brother, Harold Layton at Dell City, to help out with the planting.

Mr. and Mrs. Bob Newton attended the Cotton Ginners meeting at the Civic Center in Lubbock Thursday and Friday.

Mr. and Mrs. Bill Key were in Muleshoe Tuesday and visited in the home of Mr. and Mrs. Gary Welch.

Mr. and Mrs. Goldman Stroud visited their daughter and husband, Phil and Sandra Bealvilo at Lubbock Sunday afternoon. He had just come home from the hospital.

Mr. and Mrs. Elwood Autry and JoAnn left on Friday to see their daughter and family, Barbara and Mike Roman and Heather at Houston. Their son, Tim, was home from college. They spent Easter Sunday with them and came home on Monday.

Chris and Chairty Riley of Plainview, former residents of Bula, their dad was the pastor at Bula for several years, and the Bula pastor, Rev. Russ Gardner, also of Plainview were dinner guests in the home of Mr. and Mrs. Edward Crume Sunday. Chris and Chairty also had parts on Charley Seaglers program Sunday night at Enochs.

8. Real Estate 8. Real Estate

Bingham & Nieman Realty

116 E. Ave. C 272-5285 or 272-5286

RICHLAND HILLS
IMMACULATE-ENERGY EFFICIENT 3-2-2 Brick, Cent. A&H, built-ins, FP, sunken lv. area with cathedral ceiling, ceiling fans, earthtones, storage bldg., much more! \$150's

NICE 3-2-2 Brick, 2,300' + lv. area, earthtone carpets, built-ins, FP, cent. A&H, fenced yd. & more \$70's!!!!!!

4 NICE RESIDENTIAL LOTS PRICED FROM \$5,000.00!!!!!!

NICE 3-2-2 Home, HEAT PUMP, built-ins, FP, earthtone carpets, fenced yard, & much more. **PRICED TO SELL!!!!!!**

3-2-2 Brick on large corner lot, Cent. A&H, built-ins, storm windows & doors, large basement, much more!!!!!!

JUST LISTED 3-2-2 Brick on corner lot, Cent. A&H, built-ins, FP, cov. Patio & more. \$60's!!!!!!

VERY NICE 3-3-2 Brick Home, Cent. A&H, built-ins, FP, Wtr. Sftnr., auto. spklr., Cov.Patio, Stor.-Shop, & much more!!!!!!

HIGHLAND AREA
NICE 3-2-1 Brick Home, cent. A&H built-ins, large den with fireplace. Fenced yard, storage bldg. \$40's!!!!!!

JUST LISTED-VERY NICE 4-2-1 Brick, Cent. A&H, built-ins, earthtone carpets, large utility, enclosed patio, storm windows & doors, gas grill, spklr. sys., stor. bldg., fenced yd. & more. \$60's!!!!!!

PRICE REDUCED 2-2-2 Brick, corner lot, Cent. A&H, spacious rooms, utility, cov. patio, fenced yard, & much more. \$40's!!!!

HIGH SCHOOL
 2-1/2-1 Brick, fl. furnace, CA, fenced yard & more. \$20's!!!!!!

PRICE REDUCED 3-1-1 Home earthtone carpets, fenced yard, storm cellar & workshop!!!!!!

IMMACULATE 2-1-1 Home, Cent. A&H, built-ins, nice carpets, storm windows & doors, well insulated, nicely remodeled, fenced yd., cellar, & much more. \$20's!!!!!!

3-2 Home, nicely remodeled, Heat pump, storm windows & doors well insulated, ceiling fans, fenced yd., storage bldg. & more. \$20's!!!!!!

LENAU ADD
JUST LISTED 3-1 1/2 Home, Cent. heat, Evap. air, new paint and counter-top, fenced yd., storage bldg., & more. \$30's!!!!!!

3-1 Home on corner lot, wall heat, fenced vd.\$20's!!!!!!

NICE 4-2-2 carport HOME, Cent. A&H, built-ins, FP, Cent. Vac., Office, sewing Area, fenced yard, & MUCH MORE. \$40's!!!!!!

COUNTRY HOMES
NICE 3-1-2 Home on 4.25 acres on pavement close to town, 2 large (barns-workshop) plus other small bldgs. \$60's!!!!

NICE 3-2 Home on 1 acre on pavement close to town, Cent. A&H, built-ins, large kitchen, lv. rm., den, utility, large storage-workshop, & more!! \$50's!!!!

3-2-2 Brick on 25 acres, close to town, Cent. A&H, built-ins, shop, barn, new 4 wire fence all around, much more!!!!!!

3-2-3 carport Home on 11 acres at edge of town, Cent. A&H, built-ins, storm cellar, barns, & corrals. \$50's!!!!!!

3-1-1 Home on approx. 5 acres at edge of town, domestic well and irrig. well, barns & more. \$20's!!!!!!

VERY NICE 3-2-1 Home on 1 acre, close to town. Cent. Heat, Evap. air, nice carpets, nicely remodeled. \$30's!!!!

2-1 Home, 20 acres, sub. pump, sprinkler, barns & corrals. \$40's!!!!!!

EXCELLENT COMMERCIAL TRACT 175' x 100', Hwy. 70 & 84, railroad spur access at rear approx. 1200 sq. ft. bldg. **PRICED TO SELL!!!!!!**

NICE 3,500 sq. ft. office bldg. across from Courthouse. **PRICED TO SELL!!!!!!**

CLASSIFIEDS 272-4536

8. Real Estate 8. Real Estate

LAND FOR SALE: 7,000 acres of irrigated land. Will sell any part, or all. Sprinkler, fenced, and water tanks for cattle in each circle. Good cattle operation and excellent living quarters. Land is good for vegetables or grains. Near Earth, Texas. Will also sell or lease.

Randy Johnson
 (806) 272-3056

Henry Realty

111 W. Ave. B. 272-4581
 Muleshoe, Tx.

2 Bedroom, 1 bath, good location, priced to sell. \$14,000.

2 Bedroom, 1 bath, fireplace, Lenau Addition. A good buy. \$15,000.

NEW LISTING 3 Bedroom, 1 bath in Lenau Addition. Well insulated with storm door and windows. Patio room with Thero pane windows and free standing wood burning stove. Landscaped to perfection with easy care of grounds. Low utility cost. Priced to sell.

3 Bdrm., 2 bath, spacious home outside city limits, near city on highway. 29x40 metal building. Lot 85'x420'.

COMMERCIAL PROPERTY-Ideal location on West American Blvd. 150' highway frontage. A great business opportunity.

RURAL HOME-3 Bdrm., 2 bath, large den on one acre with many extras. Fenced with barns, fruit trees, extra storage, storm cellar, and satellite dish. Priced to sell.

SPACIOUS 2 Bdrm., 2 bath, with garage. Freshly painted. Fireplace. Ready to move in.

JUST LISTED- Outside city- 3 Bdrm., 2 bath, garage on one acre. Carpet with drapes and blinds. Dishwasher. Good storage.

3 Bedroom, 2 bath, carpet, large living room. Excellent condition, near high school. Priced to sell.

George Nieman, Broker

Dianne Nieman, Broker

**MULESHOE
AREA**

**Spring/
Summer '90**



**BUSINESS
DIRECTORY
AND
SHOPPING GUIDE**

**WES-TEX FEED
YARDS, INC.**

Custom Cattle Feeding

Wes-Tex Feed Yards, Inc.
272-7555



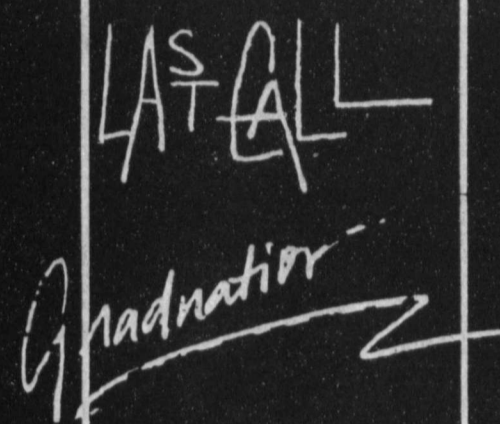
**Henry
Insurance Agency,
Inc.**

"Serving You Since 1964"

KENNETH R. HENRY
CERTIFIED INSURANCE
COUNSELOR
REAL ESTATE BROKER



111 W. AVENUE B
PHONE 806/272-4981
MULESHOE, TEXAS 79347



THE MULESHOE NET WFT



W.T. SERVICES INC.

319 E. American Blvd.
MULESHOE, TEXAS 79347

**Mobile Communications
Two-Way Radio Repair**

GARY PARKER
Technician

Muleshoe - 806-272-4888

Hereford - 806-364-7311



Stacey Davis, Mgr.

Pizza Hut has been open in Muleshoe since 1977. Stacey Davis is the manager with JoAnn Gomes as assistant mgr.

The Pizza Hut specializes in Pan, Thin-Crispy or Hand Tossed Traditional Pizzas with your choice of toppings.

They also serve delicious Hot Sandwiches, Spaghetti or Cavatini & Breadsticks.

They also have a Super Salad and Soup Bar. And your choice of coffee, tea or soft drinks.

Stacey and JoAnn invite you to come in and enjoy a meal with them.

Delivery Available After 5:00 p.m.



1412 W. Amer. Blvd.
272-4213



MEXICAN FOOD RESTAURANT

Closed Mondays
1606 W. Amer. Blvd.
272-3294

**CHICKEN
ENCHILADA PLATE**
3 Enchiladas, Red or Green
Sauce Bean and Rice

\$4.49



"Your Local CarQuest Dealer!"

FARMER'S

We Are Open Everyday

Mon. - Sat. 8:00 a.m. - 6:00 p.m.
For All Your Auto Parts Needs!

Muleshoe Auto Parts

Day-272-4596
217 N. 1st Danny Shipman Night-965-2155

All Irrigation Supplies
Underground Plastic Pipe
Above Ground Gated Plastic Pipe
Solar Surge Valves

Irrigation Supply

J.C. & Zona Gatewood

607 E. Amer. Blvd.

272-4466

Viola's Restaurant

2002 W. Amer. Blvd.

272-3838

Closed Tuesday

No. 3

**COMBINATION
PLATE**

Chile Relleno, Taco,
Beans and Rice

\$4.75



Dursban Kills Grubs,
Fleas & Ticks In Your
Yard And Around
Your House!

Kearney Scoggin

Scoggin Ag Center, Inc.

"Where Fertilizer Is Our Business"

1532 W. Amer. Blvd.

272-4613



**5 Locations
To Serve You!**

- Clays Corner •Enochs •Muleshoe
- Pleasant Valley •Old Griffith

**Farmer's
Co-Op Elevator's**

272-4335



2.99 Road Atlas
& Travel Guide
QUANTITIES LIMITED



Fry & Cox, Inc.

401 S. 1st.

272-4511