



Severe Weather Bounces Around Area

around muleshoe

URGENT MEETING

Do you have a talent? Would you like to show people what you can do?

If so, Mule Plex Production Co. Inc. needs you for the annual Family Fun Night Variety Acts for July 2-3.

Mule Plex Production Co. Inc., variety chairmen, have called a meeting for people interested in appearing in the variety acts.

The meeting will be tonight, Thursday, May 31, at 7 p.m. in the Muleshoe State Bank meeting room.

You are encouraged to attend and sign up for the variety acts.

Mule Plex would like to have different variety acts each of the two nights' production.

BOX SUPPER SET

The Muleshoe Heritage Foundation is sponsoring an Old Fashioned Box Supper on June 15 in the Bailey County Coliseum.

Box suppers will be sold to the highest bidder. Buyers may take their box supper home or join the community in the festive atmosphere of the coliseum.

Full details will be coming at a later date.

Make plans now to attend!!!

Don't miss the fun times of Vacation Bible School at the Muleshoe Church of Christ, June 4-8 from 9:30-11:30 a.m.

The theme will be *Island in the Sun - Living in the Warmth of God's Love* with daily lessons from the Bible.

There will be classes for ages two years through the fifth grade.

Wednesday night, everyone is invited to view the children's classrooms, and to enjoy their singing, a short Bible thought, and refreshments.

Plan to be a part of this exciting week.

Sharon Bolding, a Muleshoe High School graduate, graduated from the University of Texas
Cont. Page 6, Col. 1



RECEIVE LONGHORN SPIRIT AWARD--Last Saturday night during the Lazbuddie Athletic Banquet held in the school cafeteria, the 'Spirit Award' was given to, from left, Leland Brockman, Mia Jennings, Eddie Zamora and Diana Cozby. The 'Spirit Award' is given annually to the most spirited and athletic individuals. (Journal Photo)

Local Enumerator Takes Part In National Agricultural Survey

Although some of us may have trouble getting from "here" to "there," Alma Crim of Muleshoe has no problem finding her way as she travels the back country roads with only a stock tank or windmill as a landmark.

In fact, the less travelled highways and byways of Texas provide many of the short cuts Crim needs as part of her job as a field enumerator with the Texas Agricultural Statistics Service.

Beginning June 1, Crim will once again fill up the gas tank and log many travel miles, as she begins interviewing farmers and ranchers in Bailey County for a national agricultural survey. 1990 may be the year to count people, but Crim is going to be busy counting livestock and collecting data on crop acres.

Information gathered on this confidential survey will be used

to make state and national estimates of crop acres, livestock inventories and grain stocks, information that is vitally important to the producers in Bailey County, Crim noted.

"These estimates are a working tool farmers and ranchers can use in their production, marketing and investment decisions and are the only unbiased information source available," state statistician Dennis Findley reported.

Survey information will be extremely important this year in measuring crop and livestock losses from the severe flooding across north and east Texas.

Field enumerators provide a basic link in the data collection service of the Texas office, since they are the primary personal contact Texas producers have with the agency. Currently there are over 100 field enumerators working on farm and ranch surveys across the state.

Most of the enumerators have an agricultural background and are familiar with the many day-to-day problems facing Texas producers. "Like the farmers and ranchers they are interviewing, our enumerators also deal with low prices and severe weather conditions at harvest and mother cows that wait until 3 a.m. to calve," Findley added.

3-Way Students Receive Award From President

Ron Walker, principal at Three Way School, made the following announcement this week:

The Presidential Academic Fitness Awards for the 1989-90 school year will be presented to the following students at the Three Way ISD Awards assembly: Chris Locke, Debbie Locke, Sheila Tucker and Melinda Turney.

George Bush, President of the United States, sent the following message, along with the awards:

"I am delighted to congratulate the 1990 Presidential Academic Fitness Award winners.

"By taking full advantage of your educational opportunities, you have shown the judgement, character, and determination necessary to succeed in all your endeavors.

NWS Confirms Tornado West Of Earth Tuesday

For the first time this year, the local area had it's first 'taste' of severe weather.

Congressman

Combest Will

Visit Muleshoe

"You're invited," says U. S. Representative Larry Combest, who will be visiting in Muleshoe Thursday afternoon, (today).

He will travel to Littlefield, Muleshoe and Lubbock on Thursday, as well as making a side trip to Halfway.

The 19th District Representative said he will be visiting with residents of the Muleshoe area, and will encourage questions and inquiries about what is happening in Washington right now.

He will also view a demonstration at Halfway of interest to agricultural producers searching for new ways to improve efficiency when irrigating their farmland.

"I always want to hear what is on the minds of the people of West Texas regarding the issues being debated in Congress," said Combest.

"Your advice and counsel is important in making decisions on legislation and matters affecting West Texas and the nation.

After a 2 p.m. meeting at Littlefield, Congressman Combest will arrive in Muleshoe for a 4:30 p.m. meeting in the meeting room of the Bailey County Civic Center.

Then, on Friday, Combest travels to a farm near Ralls for a demonstration of the low energy application (LEPA) irrigation system.

First indication of the potential deadly weather was in New Mexico, when a line of thunderstorms formed and dropped a tornado to the ground between Ft. Sumner and Clovis, N.M.

Although the tornado stayed on the ground for a few minutes, it was in remote ranch country and did no structural damage, but did stir up a lot of dirt.

That line of thunderstorms moved to the northeast, but was out of the immediate Bailey County area.

Around 12:30, a booming thunderstorm lashed Muleshoe, with large drops of rain and small, pea-sized hail that peppered downtown Muleshoe for a few minutes, while depositing very little rain to the west part of the city.

The storm that passed to the southeast of Muleshoe, moved into Lamb County, where a tornado was reported on the ground some six miles west of Earth.

Spotted by the public, the tornado was confirmed by the National Weather Service from Lubbock.

Apparently, the tornado did no damage, going back into the clouds within a short time.

Some damage was reported to electrical poles, with some 21 being reported being 'down' in the area of the reported tornado.

The tornadic activity prompted numerous severe thunderstorm and tornado warnings and watches throughout the area, although every warning and watch in this area was cancelled early as the fast-moving storms moved on out of the area.

In Muleshoe, with the brief, very heavy rain and pea-sized hail, only .18 in rain was

Cont. Page 6, Col. 3

'Miz Darla,' 'Miz Peaches' Talk About Celebration

Remember 'Mis Darla' and 'Miz Peaches' from last year? Well, they arrived back in Muleshoe this week, and on Tuesday, were re-introduced at Rotary by Paul Wilbanks.

Miz Darla and her southern belle cousin, Miz Peaches, all the way from Atlanta, GA definitely had a few things on their minds, too.

First, they talked about Mule Plex Production Co. and the upcoming Family Fun Nights for July 2-3.

Both were full of southern drawl praise for the play cast of *The Man Who Came To Dinner* and even called on one of the play cast members, Roger Clarkson, who was at Rotary, to make a few comments.

They gave the play cast names and encouraged people to be ready to attend one (or both) nights of the production this year.

Then, they talked about the variety acts and how Phyllis Angeley and Nancy Barnhill hope to have enough variety acts to have different variety acts each night of the two-night production.

The duo reminded of the Thursday night meeting at 7 at the Muleshoe State Bank for people to sign up to be in the variety acts in the production.

Then, the ever-popular candy sales provided another boost.

They said over 4,000 bags of candy will be prepared, with many, many prize slips to be included in the 50 cent bags of candy.

They encouraged business people to donate a prize for the candy sale.

Then, Miz Darla said, "We have been saving the best for last, Lee Horsley will be in Muleshoe for three days during the July 2-3 Mule Plex Production Co.'s Family Fun Night, and also on July 4th.

Special tickets have gone on sale at both Muleshoe State Bank and First Bank for a section of reserved seats for the production this year. The section will be \$5 and not too many tickets will be available.

Cont. Page 6, Col. 1



THE CAST OF COUNTRY CARAVAN--South Plains College's 1990 edition of *Country Caravan*, a 90-minute country music feast that combines contemporary chartbusters with memorable country classics, will come to Muleshoe for a performance June 15. Showtime is 8:30 p.m. in the new city park. Admission is free. *Country Caravan's* performance is being sponsored by the Muleshoe Chamber of Commerce and Agriculture. (Guest Photo)

WEATHER

May 24	95	57	.00
May 25	95	60	.00
May 26	94	63	.00
May 27	96	52	.00
May 28	84	53	.00
May 29	85	56	.00
May 30	85	45	.18

 <p>ASSORTED ABSORBENT HI-DRI TOWELS JUMBO ROLL</p> <p>289¢ FOR</p>	 <p>REGULAR OR HOT PLAIN HORMEL CHILI 15 OZ. CAN</p> <p>79¢</p>	 <p>KRAFT ASSORTED BARBECUE SAUCE 18 OZ. BTL.</p> <p>79¢</p>	 <p>CHICKEN OF THE SEA WATER OR OIL PACK-LIGHT CHUNK TUNA 6 1/2 OZ. CAN</p> <p>49¢</p>	 <p>DECAF HILLS BROS. COFFEE 13 OZ. CAN</p> <p>\$2.99</p> <p>ASST. GRINDS COFFEE HILLS BROS. 39 OZ. CAN</p> <p>\$4.69</p>	 <p>KRAFT ASSORTED MIRACLE WHIP 32 OZ. JAR</p> <p>\$1.69</p>	 <p>REGULAR OR SUNRINSE FABRIC SOFTENER DOWNY SHEETS 40 CT. BOX</p> <p>\$1.99</p>	 <p>HIS OR HERS ASSORTED SIZES HUGGIES DIAPERS CONVENIENCE PACK</p> <p>\$8.99</p>
--	--	---	---	---	---	--	--

NATIONAL BRANDS SALE

1000 SHEET ROLL SCOTTISSUE 4 ROLL PKG. \$1.79	JONNY CAT CAT LITTER 10 LB. BAG \$1.59	KRAFT DINNER-VELVEETA SHELLS & CHEESE 12 OZ. BOX \$1.49
LIQUID LAUNDRY DETERGENT AJAX 64 OZ. BTL. \$1.99	BONUS PACK INSTANT 100% TEA NESTEA 3.6 OZ. JAR \$2.89	PLANTERS REG./LO-SALT/UNSALTED COCKTAIL PEANUTS 12 OZ. CAN \$1.99
TALL KITCHEN HEFTY BAGS 15 CT. BOX \$1.39	ASST. COLORS FACIAL TISSUE KLEENEX 175 CT. BOX 89¢	HUNT'S TOMATO SAUCE 4 8 OZ. CANS 99¢
30 GAL. TRASH HEFTY BAGS 10 CT. BOX \$1.69	POST COCOA OR FRUITY PEBBLES 13 OZ. BOX \$2.79	HUNT'S TOMATO PASTE 2 8 OZ. CANS 89¢
VIVA ACCENTS NAPKINS 140 CT. PKG. 89¢	POST SUPER GOLDEN CRISP 18 OZ. BOX \$2.99	CAMPBELL'S 6 OZ. CANS V-8 JUICE 6 PACK CANS \$1.79
RAID INSECT REPELLANT OFF! 6 OZ. CAN \$2.79	HERSHEY SQUEEZE CHOCOLATE SYRUP 24 OZ. BTL. \$1.59	CAMPBELL'S SOUP CHICKEN NOODLE 2 10 OZ. CANS 99¢
RAID YARD GUARD 16 OZ. CAN \$3.99	ORVILLE REDENBACHER POPCORN 15 OZ. JAR \$1.39	FRANCO AMERICAN SPAGHETTIOS 2 15 1/2 OZ. CANS 99¢
RAID ROACH CONTROLLER 12 CT. PKG. \$3.59	ORVILLE REDENBACHER NAT./BUTTER MICRO POPCORN 6 CT. PACK \$2.99	HUNT'S ASSORTED SPAGHETTI SAUCE 27 1/2 OZ. CAN 99¢

MARGARINE PARKAY 16 OZ. QTRS. 289¢ FOR	TOTINO'S ASSTD. PARTY PIZZA 10.6 OZ. BOX 99¢	GELATIN ASSORTED JELL-O 3 OZ. BOXES 399¢ FOR	DOG FOOD GRAVY TRAIN 20 LB. BAG \$6.99	HUNT'S KETCHUP 32 OZ. SQZ. BTL. 99¢
--	---	--	---	--

REGULAR OR HONEY 24 LBS. AVG.
BONELESS FULLY COOKED
WILSON 96% FAT FREE HALF HAMS LB. **\$2.59**

WILSON'S REGULAR/ POLISH/BEEF/ CHEESE SMOKED SAUSAGE LB. \$2.19	FARMLAND PORK OR PORK & BACON LINK SAUSAGE 12 OZ. PKG. 99¢
WILSON'S TENDER LEAN SMOKED PORK CHOPS LB. \$2.89	PRICES PIMENTO OR JALAPENO CHEESE SPREAD 7 1/2 OZ. CTN. \$1.39
OSCAR MAYER BUN LENGTH WIENERS 1 LB. PKG. \$1.49	PRICES PIMENTO CHEESE SPREAD 14 OZ. CTN. \$2.39
OSCAR MAYER BUN LENGTH BEEF FRANKS 1 LB. PKG. \$1.89	PEYTON SLICED COOKED HAM 12 OZ. PKG. \$3.39
OSCAR MAYER SLICED MEAT OR BEEF BOLOGNA 12 OZ. PKG. \$1.49	PEYTON SLICED CHOPPED HAM 12 OZ. PKG. \$1.99
LOUIS RICH TURKEY VARIETY PACK 12 OZ. PKG. \$1.99	PEYTON MEXICAN STYLE CHORIZO 8 OZ. PKG. 99¢

BONELESS CENTER CUT ROUND STEAK LB. \$1.89	BONELESS STEAK OR ROAST SIRLOIN TIP LB. \$2.39	BONELESS RUMP ROAST LB. \$1.89
--	--	---

REGULAR OR LOW SALT SLICED
WILSON BACON 1 LB. PKG. **\$1.49**

HEAVY GRAIN FED BEEF
ROUND STEAK LB. **\$1.69**

KRAFT AMERICAN
REGULAR
SINGLES 12 OZ. PKG. **\$1.99**

GREEN GIANT SWEET
PEAS/WK. CORN/MIXED
VEGETABLES 16 OZ. BAG **99¢**

KRAFT
VELVEETA 2 LB. BOX **\$4.29**

KRAFT HALFMOON COLBY OR CHEDDAR
CHEESE 16 OZ. PKG. **\$3.29**

PILLSBURY BM/SM/TNDR. LAYER
BISCUITS 4 10 CT. CANS **99¢**

KRAFT SPREAD
TOUCH OF BUTTER 3 LB. TUB. **\$1.99**

FISHER BOY
FISH STICKS 8 OZ. PKG. **99¢**

ICE CREAM
HEATH BARS 6 CT. PACK **\$1.79**

HEATH ICE CREAM
SANDWICH 6 CT. PKG. **\$1.99**

ORE-IDA CRINKLE CUT OR
GOLDEN FRIES 2 LB. BAG **\$1.59**

REG/EXTRA CREAMY
COOL-WHIP 8 OZ. TUB **89¢**

NEW CROP ITALIAN SWEET
RED ONIONS LB. **59¢**

RED RIPE
TOMATOES CELLO PACK **49¢**

NEW CROP BING
CHERRIES LB. **\$1.79**

CALIFORNIA JUICY
ORANGES 4 LB. BAG **\$1.39**

NEW CROP
NECTARINES LB. **\$1.49**

SNO-WHITE
CAULIFLOWER EACH **89¢**

FRESH CRISP
CELERY STALK **49¢**

JUICY SWEET
CANTALOUPE LBS. **3\$1**

BATH SIZE BAR ZEST SOAP 3 BAR PACK \$1.79	TEXSUN UNSWEET-PINK GRAPEFRUIT JUICE 46 OZ. CAN 89¢	LUZIANNE FAMILY TEA BAGS 24 CT. PKG. \$1.49	FABRIC SOFTENER REGULAR/SUNRINSE DOWNY LIQUID 96 OZ. BTL. \$2.99	PETER PAN CRUNCHY/CREAMY PEANUT BUTTER 18 OZ. JAR \$1.89	CORN OR VEGETABLE WESSON OIL 48 OZ. BTL. \$1.99	DISH DETERGENT REG./LEMON-LIME PALMOLIVE LIQUID 32 OZ. BTL. \$1.69	HORMEL POTTED MEAT 3 OZ. CANS 499¢ FOR	ALL TYPES COCA-COLA 2 LITER 99¢
--	--	--	--	---	--	--	--	--

Our Best to you!
The Grocery Gang

GEBHARDT JUMBO TAMALES 28 OZ. CAN \$1.49	HORMEL VIENNA SAUSAGE 2 5 OZ. CANS 89¢	KRAFT FRICATA/TH. ISL SALAD DRESSING 8 OZ. BTL. 99¢	NABISCO REG./DOUBLE STUF OREO COOKIES 20 OZ. PKG. \$2.69	NABISCO ORIG/CHWY CHIPS AHOY! 18 OZ. PKG. \$2.49	NABISCO RITZ CRACKERS 16 OZ. PKG. \$2.29	NABISCO PEANUT BUTTER SANDWICH RITZ BITS 10 OZ. BOX \$2.29	KRAFT JET PUFF OR MINI MARSHMALLOWS 10 OZ. PKG. 69¢	ASSORTED M&M'S CANDY BARS 8 CT. PKG. \$1.89	HERSHEY KISSES/MINI/REESE MINIATURES 16 OZ. PKG. \$2.59	YORK MINTS BONUS ASSORTED FLAVORS 2 18 OZ. PKG. \$2.59	TIC TAC MINTS 2 5 1/2" SIZE 79¢
---	---	--	---	---	---	---	--	--	--	---	---

SUPER SAVINGS

JOHNSON'S BABY OIL 14 OZ. BTL. \$2.29	JOHNSON'S REG/GENTLE COND. 15 OZ. BTL. \$2.69	ASSORTED TOOTH PASTE COLGATE 4 1/2 OZ. TUBE \$1.29
JOHNSON'S REG/CORNSTARCH BABY POWDER 9 OZ. SHAKER \$1.69	JOHNSON'S BABY CONDITIONER 15 OZ. BTL. \$2.69	TABLETS OR CAPSULES BENADRYL 24 CT. PKG. \$2.99
JOHNSON'S BABY BATH 8 OZ. BTL. \$1.99	REG/MINT DENTAL RINSE ACT 12 OZ. BTL. \$2.79	SYLVANIA 60/75/100 WATT LONG LIFE LIGHT BULBS CT. PACK \$1.39
JOHNSON'S SWABS 375 CT. PKG. \$2.29	ASSORTED TOOTHBRUSHES REACH EACH \$1.69	EVEREADY C OR D BATTERIES 2 CT. PKG. \$2.29
JOHNSON'S REG/W BABY POWDER BABY LOTION 9 OZ. BTL. \$2.39	ATHLETE'S FOOT CREAM MICATIN 5 OZ. TUBE \$3.99	EVEREADY 9 VOLT BATTERY 1 CT. PKG. \$2.29
JOHNSON'S BABY OIL MOUSSE 5 7/8 OZ. CAN \$3.19	ATHLETE'S FOOT SPRAY MICATIN 3 OZ. CAN \$3.49	EVEREADY AA BATTERIES 4 CT. PKG. \$2.99

thriftway

PRICES EFFECTIVE MAY 27-JUNE 2, 1990
WE RESERVE THE RIGHT TO LIMIT QUANTITIES

AA AFFILIATED FOODS INC. MEMBER STORE

MHS Spotlights Cafeteria, Custodian Workers

Muleshoe High School, with approximately thirty classrooms, a library, and a gymnasium, requires diligent behind-the-scenes work in order to keep the campus clean and appealing for the day-by-day activities of its students and personnel. In addition, the high school cafeteria serves approximately 750 people each day, and one group of ladies prepares each meal. Muleshoe High School would like, therefore, to spotlight the support personnel on campus who perform these daily tasks.

Margie Howard, who has been employed as a custodian at MHS for eleven years, summed up her goals for the year by stating that she wants "to enhance the learning atmosphere of the school by maintaining an attractive and serviceable campus." In addition to the many hours she completes at the school, Mrs. Howard finds time to visit her five children, all adults, and her twelve grandchildren. She also enjoys hobbies such as cooking and Bingo.

Other custodians who work with Mrs. Howard include Emilio Estrada and Celso Gonzalez. This trio is assisted occasionally by students.

With a combined total of fifty-two years experience cooking and serving students in the school lunchroom, six ladies diligently perform this task each day. They start with the breakfast menu early in the morning and conclude with the lunch duties about 2:00 each afternoon; in addition, they are asked at times to help with a pre-game meal during football

season and other community meals that are prepared and served in the high school cafeteria. Directing the lunchroom activities for all campuses

is Jean Whalin, who has worked for MISD for eighteen years. Margaret Stevens, manager of the MHS cafeteria, has been employed with the district for

fifteen years. Other ladies who work in this capacity include LaNell Stancell, with eleven years experience; Kay Ramage, one year; Rebecca Lozana, three years, and Lee Vinson, four years.

Tasks such as those performed by the custodians and the lunchroom workers are necessary for the successful operation of Muleshoe High School. These support personnel are appreciated by the school's administrators, faculty, and students.



MHS Custodians



MHS Cafeteria Workers

**Cash Rewards
Up To \$1,000
For Information!**

Call
**Bailey County
Crime Line
272-HELP**

ATTENTION
Your only local media of general circulation that qualifies for & has a 2nd class newspaper subscribers mailing permit.
U.S. Post Office Approved.

Muleshoe Journal USPS 367-820
Established February 23, 1924, Published by Muleshoe Publishing Co., Inc., Every Thursday at 304 W. Second, Box 449, Muleshoe, Texas, 79347. Second Class Postage Paid at Muleshoe, Texas, 79347.

Member 1990
TA TEXAS PRESS ASSOCIATION

L. B. Hall, Publisher
Sammy Hall, Vice President Controller
Curtis Williams, News
Evelene Haritz, Society
Molly Millap, Advertising
Dora Tuccano, Classified

SUBSCRIPTIONS
Muleshoe Journal and Bailey County Journal
Bailey and surrounding counties \$14.75
Muleshoe Journal and Bailey County Journal
Outside Texas, \$18.50
Yearly By Carrier \$12.50

Advertising Rate Card on Application
*Advertisers should check their ad the first day of insertion. The Journal will not be liable for failure to publish an ad or for a typographical error or errors in publication except to the extent of the cost of the ad for the first day of insertion. Adjustment for errors will be limited to the cost of that portion of the ad where the error occurred.

SONIC
TRIPLE Feature

\$3.29 PLUS TAX

• **DOUBLE MEAT DOUBLE CHEESEBURGER**
• **FRIES** • **MEDIUM COKE***
*OR OTHER SOFT DRINK.
OFFER GOOD THROUGH MAY 31, 1990

1633 W. Amer. Blvd.
272-3998
©1990 SONIC INDUSTRIES

Nursing Home News

by: Joy Stancell

Maye Shanks, Bonnie Green, Laverne James and Noble Phipps came to shampoo and set the ladies hair. Dustie Moynihan gave manicures.

L. Blalack was visited this week by his sister Nora, Mr. and Mrs. D. B. Head.

Bernice Amerson went out to visit with her sisters, Lorene and Juanita.

Thelma Stearns was visited by her son and daughter-in-law, Charles and Lois Stearns of La Canada, Calif. over the week-end.

Sunday afternoon, the New Covenant Church came for church services.

We were honored to have Ricki Kelly's young gym group to come perform for us last week.

Tuesday afternoon, Lula

Thursday, Friday, Saturday SPECIALS

LIVING ROOM SUITES

Hi Back Sofa with Recliner's
in Southwest Print-2 Sets Only\$397
Matching Love Seat.....\$297

Sofa, Love Seat and Chair
In Blue or Brown Floral Pattern.
Early American Style\$597

Corner Sectional
Soft Brown Antron Cover High Back, with 2 Recliners.
NOW \$797

Sleeper Sectional
Southwest Price. Rich Blue with Motion-Includes 1 Recliner, Wedge, Queen Sleeper. **NOW \$947**

Sofa and Chair
Your Choice of Brown or Blue-Overstuffed Load.
NOW \$497

Brass Finish Cocktail Table
with 2 End Tables\$97

Broyhill Table and Matching Hutch
Large Table-2 Captain Chairs & 4 Side Chairs-Matching Hutch\$997

Solid 2x6 Bunk Bed's
With Mattress\$157

Twin-Full Bunk Bed's
Bright Beautiful Blue
Color-Includes Mattress\$387

Large All Wood Curio Cabinet
Dark Oak Finish.2 ONLY \$177

Bright Red Twin Size Tubular Bed
Includes Interspring Mattress\$187

4 Chair Glass Dinettes
Octagon Shape Table with 4 Chairs.
White They Last\$97

Large Bed Room Suite
All Wood Triple Dresser, Mirror, Chest,
Full or Queen Headboard, Nite Stand.....\$797

"Saturday Specials"
90 Day's Same As Cash
W/Approved Credit

Brass Vanity with Stool
.....1 Only At \$87

Cheval Mirrors
In Black or Brass Finish\$29

Entertainment Center with Glass Doors
Black Lacquer. For Your Stereo and VCR and 2 Drawers on Bottom.
.....NOW \$187

Bentwood Rockers
While They Last\$57

Rattan Swivel Rockers
Includes Large Cushion\$97

4 Gun Cabinet
Lighted On Top.....\$147

Solid Oak China Cabinet
1 Only.....\$397

Large Brass Finish Baker's Rack
Priced in the Box.\$24

Bar Stools
30" High Back Bar Stools\$24.97

Love Seat by Simmon's
Multi Tone Color
.....1 Only \$197

Sleeper Sofa's
By Simmon's. Interspring Mattress on All Sofa's. Several Colors to Choose From.
NOW \$397

3 Pc. Blue or Brown Floral
Early American
Sofa, Chair, Love Seat
.....\$587

Ginger Jar Lamp's
Lots of Colors to Choose From
.....\$19.97

Southern Mattresses

Twin Size Mattress Sets.....\$97
Full Size Mattress Sets\$147
Queen Size Mattress Sets.....\$197

CHAIRS-ROCKERS and RECLINERS

Action Recliner by Lane
3 Pillow Back Style-"The Spoiler"
.....\$297

Action Recliner by Lane
Soft Blue Velvet\$247

Swivel Rockers by "Kay Chair"
Red Velvet Covers\$119

Kiddie Recliner
.....1 Only \$59

Queen Anne Chair
1 Only.....\$127

Barcalounger Recliner Rocking Recliner
Soft Blue.1 Only \$187

**FREE Delivery To Muleshoe
With \$300 Purchase**

BARGAIN WORLD FURNITURE

318 Main - Clovis - 762-2304

20th ANNUAL
Pioneer Days
PRCA
RODEO
Clovis, N.M.
JUNE 7-8-9
8:00 P.M. NIGHTLY
Sponsored by CURRY COUNTY MOUNTED PATROL

Stephanie Cox Named AAUW Girl Of Month

Miss Stephanie Cox, the daughter of Marilyn and Reagan Cox is the May AAUW Girl of the Month. Stephanie is a

Society where she acts as senior student at Muleshoe High School and she exemplifies the outstanding qualities

required to be chosen as an AAUW Girl of the Month.

Each month the American Association of University Women selects a junior or senior student who demonstrates leadership in school, church, and community activities and is of high moral caliber.

Stephanie has been very outstanding in the speech and theater department for the past four years at Muleshoe High School. She played Juliet in the One-Act Play which went to State this year. At State, Stephanie was named to the all-star cast. She earlier was named to the all-star cast at district and region and was named the best actress at area.

Stephanie was chosen for the all star cast in the one act competition at state both as a sophomore and a junior. She was named as district and area best actress her junior year. She has been a regional qualifier in poetry as a sophomore, junior, and this year as a senior.

Stephanie is a member of Future Teachers of America where she serves as district corresponding secretary and as chaplain in the local chapter. She was chosen as a district Miss FTA in 1989. She is a member of the National Honor

treasurer.

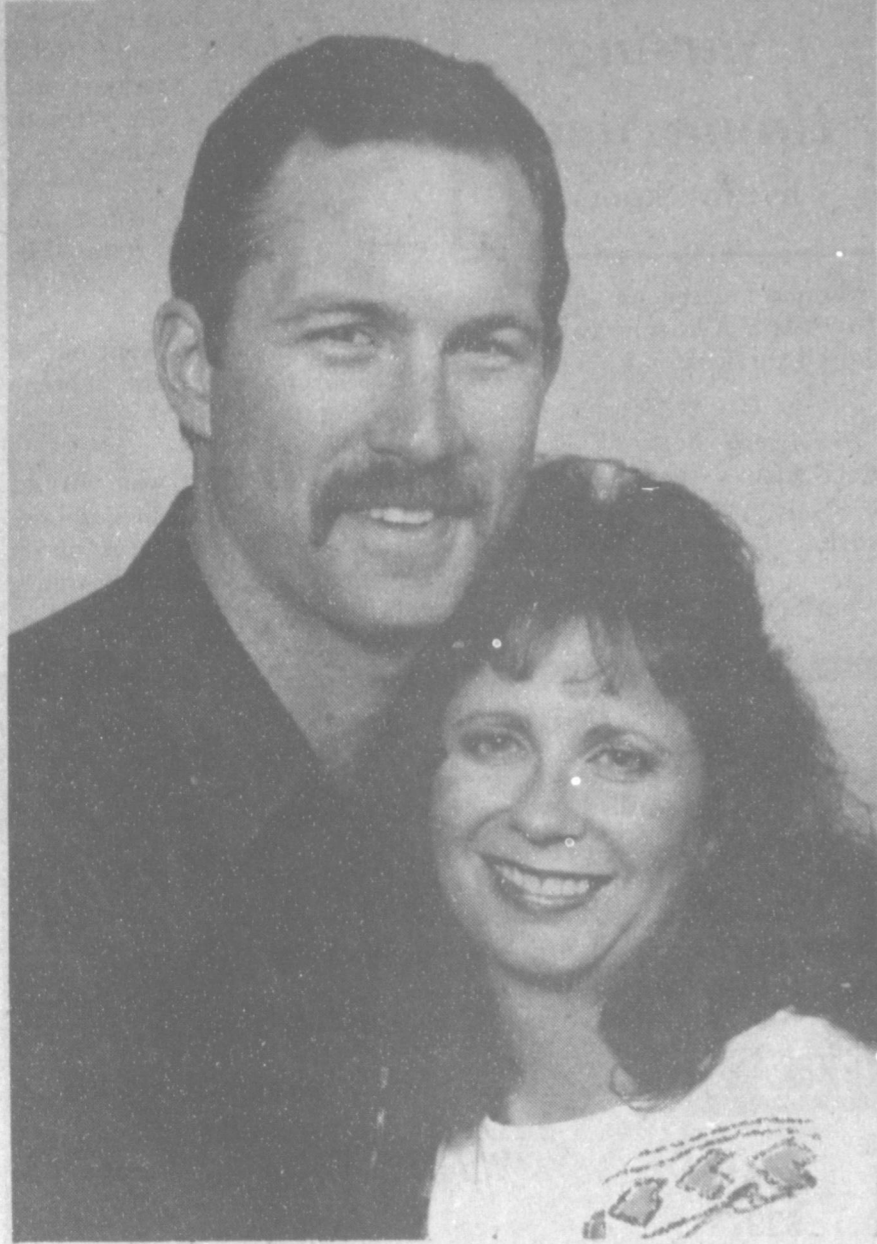
She is a member of the Student Community Action Club and as a member of this club, she works to make the Muleshoe area a better place to live. This club works with the Muleshoe Heritage Foundation to help preserve some of the Muleshoe are heritage.

Stephanie was chosen by the local Rotary Club to attend camp RYLA in 1989. She is a member of the First United Methodist Church and a Youth Group.

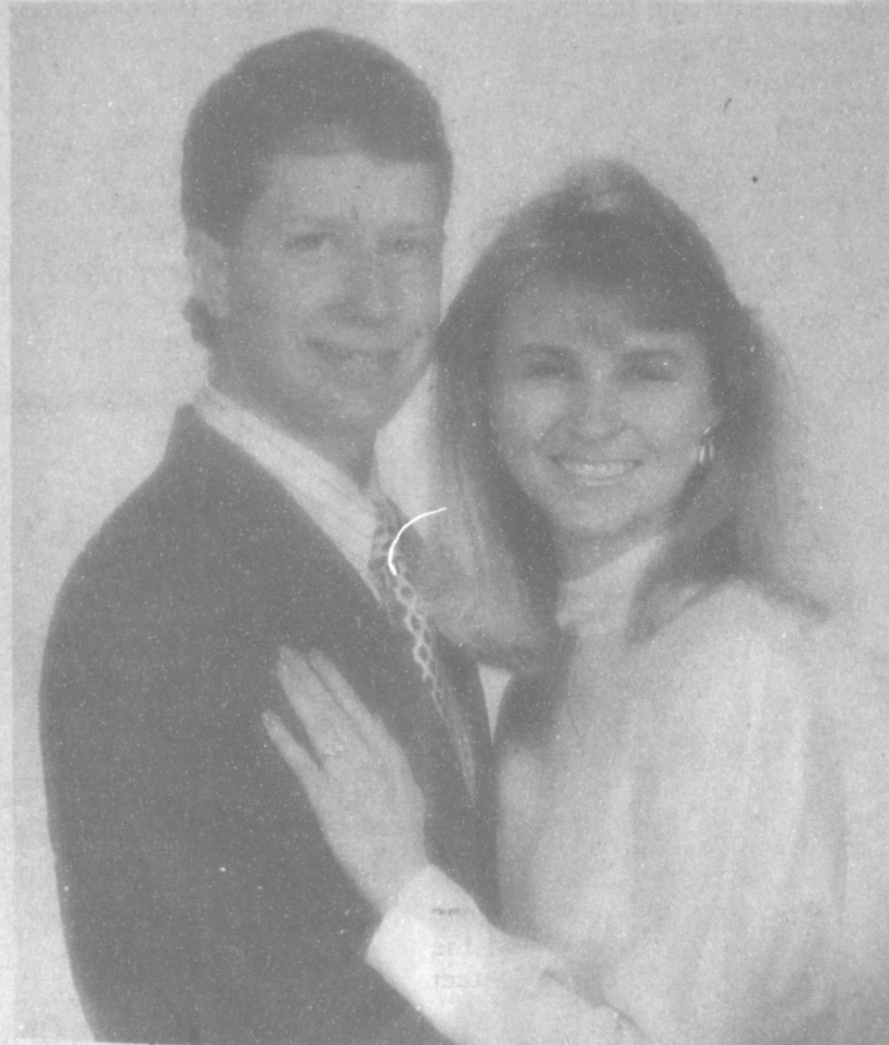
AAUW is pleased to name this unique young lady as the Girl of the Month for May.



STEPHANIE COX



ENGAGEMENT ANNOUNCED--Belinda Henry of Muleshoe, and David Head of Lafayette, LA, are pleased to announce their engagement and approaching marriage. Vows will be exchanged July 8, 1990, in the First United Church of Muleshoe. Parents of the couple are Gabe and Pat Deal, Lubbock, and the late J. A. Nickels, and Marshal and Jo Anne Head of Muleshoe. Belinda is a graduate of Muleshoe High School and Texas Tech University. David, also a Muleshoe High graduate, is employed by Conoco Oil Company and is a May, 1991, candidate for graduation from the University of Southwestern Louisiana, Lafayette. The couple will make their home in Lafayette. (Guest Photo)



JULY WEDDING PLANNED--Mr. and Mrs. Robert Odle of Kingman, AZ, announce the engagement and approaching marriage of their daughter, Toby Odle, to Wade King of Muleshoe. Wade is the son of Mr. and Mrs. Joe King of Muleshoe. The couple plan to be married in Jamaica in early July. Toby is employed at Triton Technologies, Inc. of Austin. Wade is a student at the University of Texas at Austin and will graduate in December of 1990, with a degree in Marketing. (Guest Photo)

AARP Report

Muleshoe AARP met in regular session Friday, May 25. After the invocation by Sherman Inman, and the presentation of the flag, a pot-luck-lunch and fellowship was enjoyed by approximately twenty members and friends. The program was introduced by Bertie Thompson. The Rev. Mike Doyle, church minister and chaplain, spoke about 'Friendship and Love' the necessary bond-builders of the great-life. He also gave an

overview of his "Labor of Love" in our local nursing home; where he volunteers as a truly unconditional-agent-of-love.

The president, Leon Lewis, presided over the business meeting which included the approval of minutes and the treasurers report.

Correspondence from the Chamber of Commerce was read and a discussion on entering a float in the July 4th parade was opened. The decision was not affirmative.

Happy birthday was sung for Sebie Sebring. The sick and distresses of the community was noted and cards were to be appropriately sent.



Latest Arrivals

Kayler Patrick Lee

Rodney and Perri Lee of Lubbock welcome the birth of their son Kayler Patrick Lee who was born May 21 at 11:19 p.m. in Methodist Hospital, Lubbock, Tx.

Kayler came into this world weighing eight pounds, seven ounces and was 21 inches long. He has a brother, Kellen, five

years old; and a sister, Kaitlin, who is two years old.

Grandparents are Haney and Faye Poynor of Lubbock and Finis and Lanelle Lee of Bakerfield, California.

Great-grandmother is Dorothy Redding of Crosbyton.

Once in a while when you expect to have a good time you have it.

Gift Selections Of
Toby Odle
Bride-Elect Of
Wade King

MULESHOE
ART LOFT

True Value HARDWARE STORES

Check Our Paint Department
To Find The Finest Quality
Interior Paint Available!

ULTRA SATIN

ACRYLIC WALL FINISH

The finest quality interior paint available.

Manufactured in factories owned by True Value Hardware Stores.



- One Coat Coverage
- Luxurious Satin Finish
- Soap & Water Clean Up
- Stain Resistant
- Color Fast
- Non Spatter
- Quick Drying
- Scrubbable

LIMITED LIFETIME WARRANTY

We manufacture it—we stand behind it—for a LIFETIME! If you, the original purchaser, are not completely satisfied with this product's performance in your home after you have applied it per label instructions, bring your sales receipt or the container to the True Value Hardware Store of purchase for replacement or, if you prefer, a full refund.

This warranty shall remain in force for as long as you own your home, but does not include the cost of labor. This warranty gives you specific legal rights, and you may also have other rights which vary from state to state.

We Have A Large Selection Of
Gifts For Those Grads & Bridal Showers.

See Our Paint Specialists, Vicki, Michelle or Jim
For All Your Paint Needs!!

Fry & Cox, Inc.



401 S. 1st

Muleshoe

272-4511

Play & Win starts **May 23rd**

Convenient Cash

Over 400,000 Prizes Available
Win Up To \$1000 In Cash!

THIS WEEK'S SPECIAL
COKE
ALL PRODUCTS
\$1.79

CANDY BARS-PLAIN OR W/ALMONDS/KIT KAT/REESE'S PEANUT BUTTER CUPS
HERSHEY'S
ON SALE
3 BARS \$1

Stop by your favorite Allsup's Store to pick up your game piece and game rules. Up to \$50,000 in cash and over 400,000 free instant prizes will be given away. You can win one of 5 top cash prizes of \$1,000 playing Allsup's Convenient Cash. Come play Allsup's Convenient Cash and become a winner with us.

HERSHEY'S GENUINE CHOCOLATE FLAVORED DRINKS
8 OZ. CTN.
2 FOR 79¢

HAM, EGG AND BISCUIT EACH **69¢**
BIG LEAGUE CHEW EACH **59¢**

ON SALE NOW! TRIPLE STACKER SANDWICHES DELI EXPRESS ON SALE **69¢**

INTRODUCING **MagiCans**

Can't Beat The Real Thing.

YOU COULD WIN CASH INSTANTLY OR OTHER GREAT PRIZES... ANYTIME, ANYWHERE! LOOK FOR MagiCans ANYWHERE YOU BUY COCA-COLA CLASSIC.

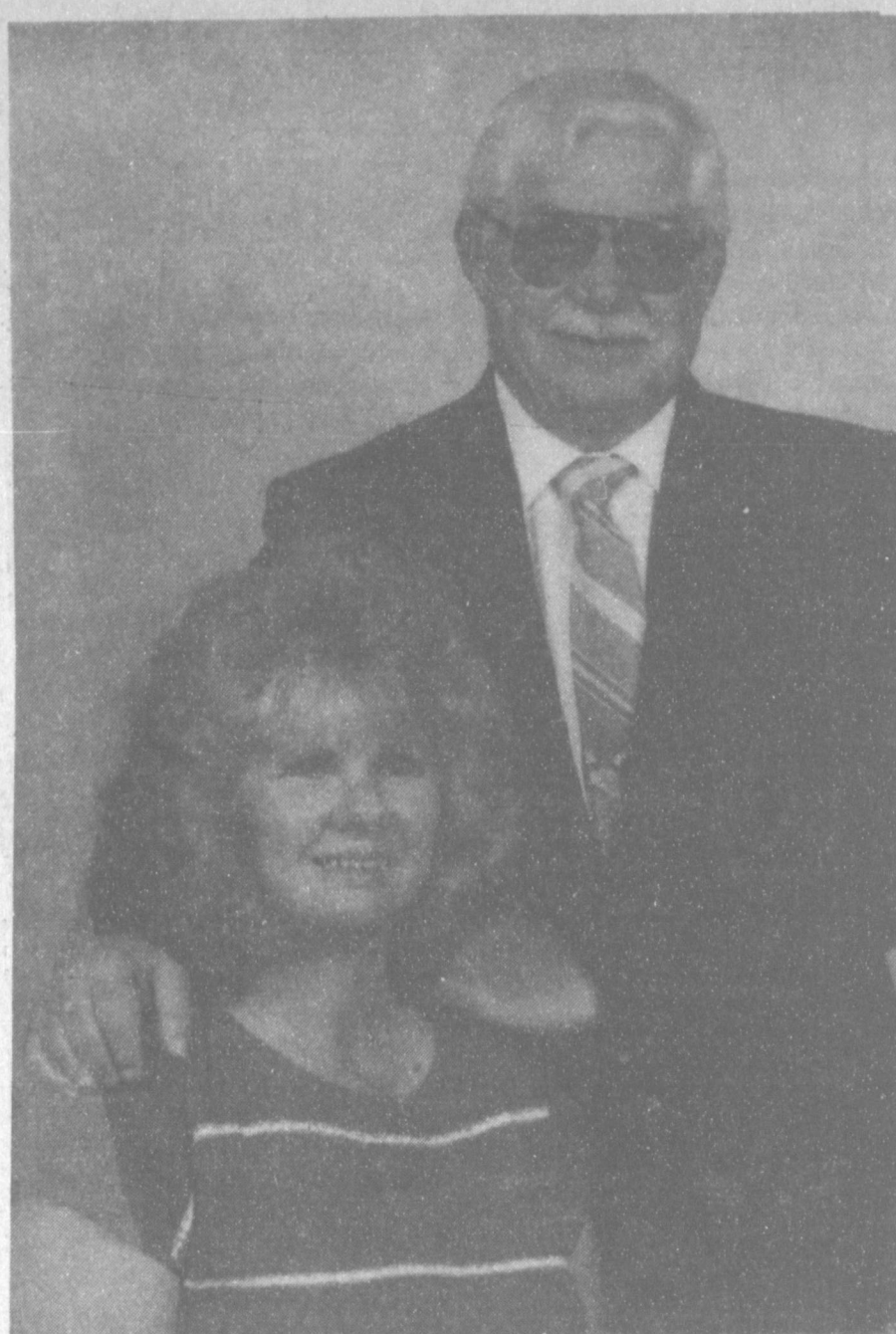
There's Magic In The Real Thing!

No Purchase Necessary. See Official Rules for details. Game ends when ever supplies are depleted or 8/15/90, whichever comes first.

© 1990 The Coca-Cola Company. Coca-Cola and the Dynamic Ribbon Device are trademarks of The Coca-Cola Company.

Allsup's
318 W. Amer. Blvd.
272-8954

PRICES EFFECTIVE
MAY 30 thru JUNE 5, 1990



CELEBRATING TWENTY-FIVE YEARS--Jimmie and Cheri Kemp of Midland will be honored with a twenty-fifth wedding anniversary Sunday, June 3 at their home. Barbara Pitchford, Vonnell Lindsey, Paula Beshears, Josie Norwood, Bea Garza and Nancy Holt will host the occasion. Kemp and the former Cheri Grow were married on June 6, 1965 in Muleshoe by the bride's father, Rev. C. M. Grow. They have made their home in Lubbock, Plains, Denver City, Brownfield, Amarillo and Phoenix, AZ. They have resided in Midland the past ten years, where they are both employed by Furr's Super Markets. They are the parents of four children, Melissa Kemp of San Diego, Calif. and Donald Kemp, Timothy Kemp and Joseph Kemp, all of Midland. They are members of the First Christian Church and Mrs. Kemp is a member of Beta Sigma Phi Sorority. (Guest Photo)

Senior Citizens

The Senior Citizens met at the Depot Monday, May 28th, for our regular covered dish luncheon. The invocation was given by J.C. Shanks. There were twenty present to enjoy the fellowship and the delicious meal.

Katie Roubinek, our president, had charge of the business. Clifton Finley announced there will be another garage sale for the Cemetery, it will be at the St. Clair building from 9 to 12 Saturday morning, June 2nd.

The Birthday Song was sung for Helen Pruitt. Mae Wilterding had charge of the program. The Pledge of Allegiance was led by Clifton Finley. We then sang America and the Battle Hymn of the Republic.

Velma Gwyn read the poem, 'I Sing A Song Of Remembrance.' She brought many things of the good times and then played tribute to our Service men and to those gone before. Velma then played the piano and we sang, 'I'll Meet You In The Morning.'

Opal Robison played two numbers on the piano, 'Till Gabriel Blows His Horn' and 'The Garden Of Prayer.' J.C. Shanks read a poem, 'A Sermon In Soap.'

Mae Wilterding, Eva Ashford, Clara Coffman, and J.C. Shanks sang two numbers, "Jesus Is The Way" and "Beyond The Shadows."

Former MHS Grad Received Home Economics Award

Carol Dean Seaborn, a home economics doctoral student, has recently received the Oklahoma State University College of Home Economics 1989-1990 award for Outstanding Scholarly Activity at the Doctoral Level.

This \$600 a month award recognizes Seaborn as having the most outstanding dissertation.

Seaborn is also the recipient of the General Foods Fund Fellowship and the Oklahoma State Centennial Research Excellence Award.

She is active in the Graduate Student Council, American Dietetic Association, Society for Nutrition Education, American Home Economics Association, Institute of Food Technologists, Phi Kappa Phi, Sigma Xi, American Institute of Nutrition and the American Association of Diabetes Educators.

She is a 1965 graduate of Muleshoe High School. She received her bachelor's degree in 1971 and her master's degree in 1984 from Texas Tech University.

She is the daughter of Mrs. Clara Jarnagin, Lubbock, Tx.

Mildred Head read a poem, "Planting Your Own Garden," "Turnip and help others, turnip with smiles--Lettuce, let us be faithful, always friendly--"



faithful, always friendly--Squash, squash your tongue, never criticize--Peas, be present, pray and praise--Do I work one of these rows? You will reap a good harvest.

J.C. and Odessa Shanks sang, "He the Pearly Gate Will Open."

The closing prayer was by Duward Head.

Dollars for Scents

En route to take Mandy out on their Saturday night date, Rastus had stopped at the barber shop to acquire some salatorial embellishments.

When he finally knocked on Mandy's door, she smiled, sniffed emphatically, and said, "Boy, you smell like a barberpole cat!"

The 20th Annual Curry County Pioneer Days Rodeo

Thursday, Friday & Saturday

June 7th, 8th and 9th.

Performance Times 8 p.m. M.D.T.

Curry County Mounted Patrol Arena, Clovis, N.M.

Bareback Riding Bull Riding
Saddle Bronc Riding Calf Roping
Steer Wrestling (Big Bull) Team Roping
Steer Roping Girls Barrell Racing

And Of Course Clovis's Own Wild Cow Milking

Pioneer Days PRCA Rodeo Don Endsley
Mike Cervi, Producer Announcer

Clovis, N.M.

Introduction to Steer Roping Wednesday Evening, May 31st 8 p.m.

Steer Roping, June 7th

Presented by the Curry County Mounted Patrol

Journal Files

60 Years Ago

1930

POTTERY USED BY FIRST AMERICANS IS FOUND HERE

Lloyd B. Studor, archaeologist, with headquarters in Amarillo, was in Muleshoe Wednesday looking over the country here. In company with Mr. A.P. Stone he visited several places near here where old Indian relics may easily be found. Many arrow heads, scraping knives, lance heads and pieces of pottery, some decorated, were found. Mr. Studor expressed belief that many relics of early man could be found in this part of the country and plans to return here at a future date to continue his search.

Many people have picked up arrow heads, rings and the like for souvenirs. Mr. Stone having one of the best collections we have seen. Some of the lance heads, scraping knives and arrow heads almost perfect. These articles are found for the most part in the sand hills and

near lakes.

50 Years Ago

1940
SUMMER IRRIGATION RATES NOW ON

The summer irrigation rates to municipal water users in Muleshoe is now on, being effective with this month's bills.

The special rate, granted by the commission each summer gives double amount of water for the same charge. Regular rate is 3,000 gallons minimum for \$2.00 whereas the special rate allows 6,000 gallons for the same money.

This rate is special to citizens benefit desiring to irrigate lawns, flower and vegetable gardens.

Completely Enwrapped

"I like to see a man completely wrapped up in his work," declares an employer. He would have thoroughly enjoyed watching us wallpaper the spare room the other day.

Smart People Eat Real Food...



...While They Lose Weight With Weight Watchers.

A lot of weight loss programs would like you to believe in miracles. But miracles don't come in fancy packages, powdered mixes, or expensive pills.

With Weight Watchers new Fast & Flexible Program, you'll lose weight safely and sensibly while eating real food. You'll keep right on enjoying your everyday life with family and friends... go to picnics, parties, and your favorite restaurants. Most importantly, you'll learn how to keep the weight off once you lose it.

Join the millions of smart people who have lost millions of pounds eating real food with Weight Watchers. Call us now and join for only \$10.



JOIN NOW FOR ONLY...

Registration Fee \$19.00
First Meeting Fee \$ 9.00
Regular Price\$28.00

YOU SAVE \$18.00

Offer ends June 23, 1990

CALL TOLL FREE 1-800-359-3131

Come to the Weight Watchers meeting nearest you.

MULESHOE
American Boulevard Church of Christ
2201 West American Boulevard
Mon: 5:30 pm

MULESHOE
The Old Cowal
1008 West American Blvd.
(Lunch Purchase Required)
Wed. 12 Noon

WEIGHT WATCHERS It's Smart.
Offer ends June 23, 1990. Offer valid at locations listed. South Texas, West Texas, and Santa Barbara County, CA. Offer not valid with any other offer or special rate. Offer valid for new and returning members only. Offer valid for Traditional Weight Watchers meetings only. Weight Watchers is a trademark of WEIGHT WATCHERS INTERNATIONAL, INC. ©WEIGHT WATCHERS INTERNATIONAL, INC. 1990

Gift Selections Of
Jana Wuerflein
Bride-Elect Of
Darrell Riley

MULESHOE
ART LOFT

Radio Shack

AMERICA'S TECHNOLOGY STORE

DEALER

GRADS & DADS SPECIALS

TANDY® 1000 SL/2

PC-Compatible With Color Monitor and Bonus Software

Save \$474.80 \$999

Reg. Separate Items 1473.80

MS-DOS® is built right in! #25-1402/1043/1331

Software Bonus Pack
Quicken, Instant Pages and RightWriter programs.

CREATING NEW STANDARDS

RELIABLE QUALITY

Over 1500 engineers and technicians develop, evaluate and test to our exacting standards

NOBODY COMPARES

PROMPT SERVICE

7000 drop-off points nationwide insure dependable service to your satisfaction. More than 1,000,000 parts stocked. We service what we sell

NOBODY COMPARES

Sound-Sampling Electronic Keyboard

Digital sampling, adjustable tempo, memory. #42-4004 Batteries extra

Cut 44%

4995 Reg. 89.95

VHS VCR With On-Screen Programming

Cut \$70 279.95 Reg. 349.95

Full-function wireless remote makes programming 14-day/6-event timer a snap! Quick-Timer recording. #16-510 Remote batteries extra.

CB With Channel Controls on Mike

LED display. #21-1514

HALF PRICE!

4995 Reg. 99.95

Digital-Ready 5 1/4" Car Speakers

Flush mount. #12-1708

Cut 33%

3995 Reg. 59.95

Mini AM/FM Stereo Goes Anywhere

#12-722 Batteries extra

Save 33%

1995 Reg. 29.95

Personal Receiver With Headphones

Cut 34%

2488 Reg. Separate Items 37.90

#12-136/33-1000 Batteries extra

STUDFINDER Spots Wall Studs Fast

Cut 35%

1288 Reg. 19.95

Easy to use! #64-2825

FM Wireless Room Monitoring System

Save 20%

1995 Reg. 24.95

Just plug into AC. #43-208

Wilson Appliance, Inc.

117 Main A Radio Shack Dealer 272-5531

Most Major Credit Cards Welcome

MS-DOS licensed from Microsoft Corp.

Around Muleshoe

Cont. From Page 1

at Arlington May 19, 1990. Ceremonies were held on the campus at Texas Hall at 7 p.m. with a reception afterward in the Bluebonnet Room of the Student Activities Building.

Ms. Bolding received a Bachelor of Arts degree with an elementary education teaching field. She has been hired by the Mansfield Independent School District to teach third grade this fall.

Attending the ceremonies were her sons, Jonathan and Mark; her sister, Cynthia Smith of Friendswood; her brother and wife and nephew, Gary, Diane and Austin Wrinkle of League City; and her parents, Roy and Johanna Wrinkle of Muleshoe.

Sgt. Charlie Simmons of the Plainview office of the Lubbock Highway Patrol District said, "In Bailey County, our troopers investigated no fatal accidents, two personal injury accidents and two property damage accidents in the month of April."

Omar Sanchez from Lazbuddie received an associate of applied science degree in marketing and management during

Celebration...

Cont. From Page 1

Then, after light-hearted banter about Lee Horsley, the duo moved on to a clean-up campaign prior to the three day celebration.

Miz Darla said they had secured a source of flower planter boxes at \$2 each and encouraged businesses to sign up to purchase some of the flower boxes. They also said Kristy's Plants had agreed to provide flowers for the boxes at a nominal cost.

Miz Peaches concluded by saying, "Let's all work on making this a big, big celebration for Muleshoe."

Prior to the guest speakers, President Terry Hutto presented a report on the sale of the Hawaiian Trip tickets; and asked George Nieman to announce the names of the boys and girls chosen to attend Rotary Camp RYLA this summer. Girls will be Monica Swint and Michele Holmans. The boys chosen are Colin Tanksley and Guy Wiley.

Gary Glover was winner of the Polio Plus drawing for the week.

Guest Rotarian was Charles Aycock of the Texico-Farwell Club; other guests were Ernest Cadenhead; Jason Clarkson, Mike Tree; Gant Barnhill, Duane Castleberry, and Rotary Ann Judy Watson. Monica Swint and Michele Holmans were also present.

Letter To The Editor

To The Muleshoe Journal:
To The People of Muleshoe and the surrounding community:

I think you are all of the same minds about our town and community, that is, if we could get our people involved in cleaning, and painting, and all it takes to make Muleshoe stand out to passerbys and visitors, soon it will be growing like the Muleshoe we used to have.

For example, just take a little time and go down to the Joe and Darla Rhodes part of town (Joe's Boot Shop and Country Junction) and see what they have done to help brighten up Muleshoe. They are to be commended.

Go down and give them a little bit of your time, a hand shake or even a hug, it takes it all to make people realize they are appreciated.

If I could call back a few years, I would be happy to help clean and make our town a good clean and happy place to live in.

I have always loved our town and community, and still do, but we need to do a lot of cleaning up to bring it back to the standard it once had.

Thank you again Joe and Darla, I hope the good Lord above will give you strength to carry on.

Sincerely,
Myrtle Creamer

South Plains College's 32nd annual graduation ceremonies recently in Texan Dome.

Sanchez was among a record number 710 SPC students from the Levelland and Lubbock campuses and extension program at Reese Air Force Base who were awarded associate degrees and certificates.

Sheila Tucker, 1990 salutatorian of Three Way High School, has been named a recipient of the Smallwood Scholarship, South Plains College officials announced this week.

She is among 55 area high school seniors who have been named to receive South Plains College's most prestigious scholarship award.

Miss Tucker is the daughter of John C. Tucker and step-daughter of Jeanette Tucker of Rt. 3, Sudan. She is the granddaughter of Mr. and Mrs. D. L. Tucker and Minnie Childs of Morton.

Clovis Pioneers

Will Celebrate

The twentieth annual Pioneer Days PRCA Rodeo is scheduled for Thursday, June 7, through Saturday, June 9, 1990 in Clovis New Mexico. The performances are at 8:00 pm each night.

Local entries for each event will be taken on Friday, May 25, Saturday, May 26, and Monday, May 28, from 10:00 am to 5:30 pm each day. Rodeo Headquarters is in room 165 at the Holiday Inn of clovis, telephone 505-762-9045. Cash only will be accepted with no late entries and no exceptions.

The eighth annual 'Single steer Roping' will begin at 10:00 am on Thursday, June 7th. The first go-round will feature some 60 of the world's top steer ropers. The top 24 ropers will complete the second go-round with a roping at each rodeo performance. Introduction of the steer ropers will begin at 7:00 pm-mountain time- on Wednesday, June 6th, at the Holiday Inn in Clovis.

For further information, contact mounted patrol captain Bill Adams telephone 505-763-3613, or rodeo director Benny Fulgham, telephone 505-763-6231 in Clovis.

Trash And Treasure Items, Places Listed

Several sales have been announced by the Muleshoe Chamber of Commerce and Agriculture for the first "Trash and Treasure" sale this Saturday in Muleshoe.

Muleshoe Memorial Park Cemetery will hold a garage sale on Saturday, 9 a.m.-12 noon at St. Clair's Store building at 110 Main Street.

For additional information, call Ruby Spurlock at 272-3157 or Clifton Finley at 272-3261.

Weather...

Cont. From Page 1

recorded at the official weather reporting station.

As downtown Muleshoe had water running curb deep for a few minutes, the west part of town, from about Eighth or Ninth Street to the west, only had a very brief shower that left little water to run off.

With hard winds blowing, the moisture was insufficient to keep dust from blowing, and all afternoon, the sky remained 'brassy' as dust clouds partially obscured the blue sky.

Gaines and Yoakum Counties to the south of Muleshoe, were the first to report tornadic activities, although NWS said the clouds showed 'hooks' no tornadoes were reported.

By 3 p.m. both Midland and Ector counties, to the south and west of Bailey County were reporting severe weather.

In Bailey County, very little rain was reported as the storms swept through to the northeast.

By late Tuesday afternoon, the sky was clear throughout the area, and on Wednesday morning, no evidence of clouds or rain were in sight.

The National Weather Service said Bailey County's next opportunity to record any moisture would probably be on Friday as a new weather front moves through.

Dryland farmers still anxiously look at dry fields as they wait for moisture to plant some type of crops for this year.

MAPLE BRANCH
Bailey Co. Sheriff's Office
946-3300

AAU (11 and under) girls' basketball team will hold a fund raiser for a trip to nationals in Orlando, FLA.

They will be holding a bake sale and raffle ticket sale for:

(A) Two \$50 gift certificates at James Roy's Meat Market. You need not be present to win. You will have your choice of meat. Tickets are \$1 each and each ticket has two chances to win.

(B) A queen-size navy schoolhouse quilt has been donated by Shoe String and Shirt Tail Custom Quilting in Farwell. You need not be present to win. The quilt will be on display at the AAU booth in downtown Muleshoe on Saturday. Tickets are \$2 each or 3-\$5. The drawing will be June 15.

For more information, call Bessie Engram, Muleshoe Ab-

stract Co., 272-4732.

New Visions Nazarene Church will hold a 'Fun Fair Day' Saturday, June 2, at the Old Western Auto building.

Check out their bargains.

Arline Phelps will have a double garage full of bargains on Friday and Saturday, June 1-2; 9 a.m.-3 p.m.

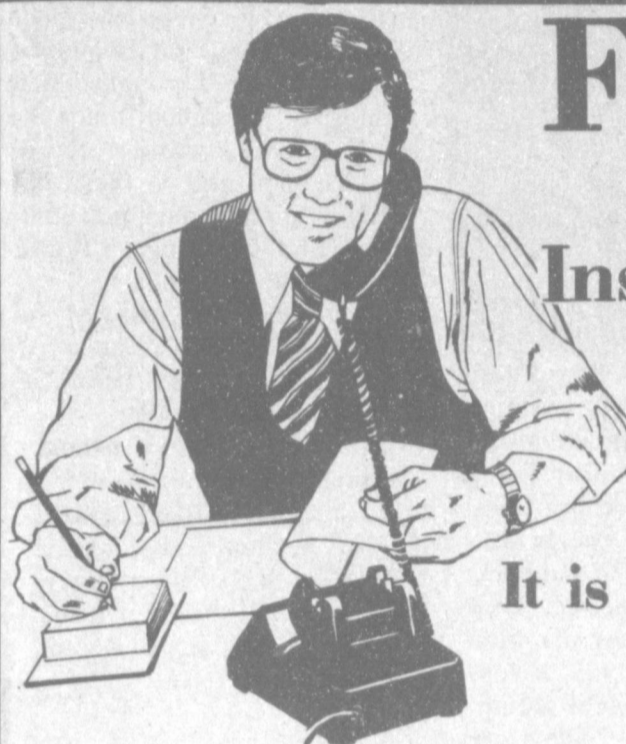
The location is 310 E. Fir.

Cleta Williams will hold a final "Odds and Ends" Moving Sale at 705 West Third St. Saturday.

Items will include a twin size mattress and box springs, in good condition for \$30; plus small electrical appliances; large lamps, knick knacks.

It begins promptly at 9 a.m.

NEED A YARD MAN?
CALL
CAPPY GATEWOOD
272-5435
ANYTIME
15 Years Experience



Farmers Some Insurance Rates Have Been Reduced From Last Year!

It is time to insure your
crops today!

Bailey County

Corn.....\$4.00 Per Hundred Dollars
Wheat.....\$8.08 Per Hundred Dollars
Cotton.....\$12.75 Per Hundred Dollars

Parmer County

Corn.....\$4.25 Per Hundred Dollars
Wheat.....\$11.05 Per Hundred Dollars
Cotton.....\$11.05 Per Hundred Dollars

Lamb County

Corn.....\$4.25 Per Hundred Dollars
Wheat.....\$11.05 Per Hundred Dollars
Cotton.....\$12.75 Per Hundred Dollars

Ronnie Holt Insurance

After hours call welcome Home Phone 965-2842

Earth Hwy Muleshoe 272-3614
"Western 66 Office"

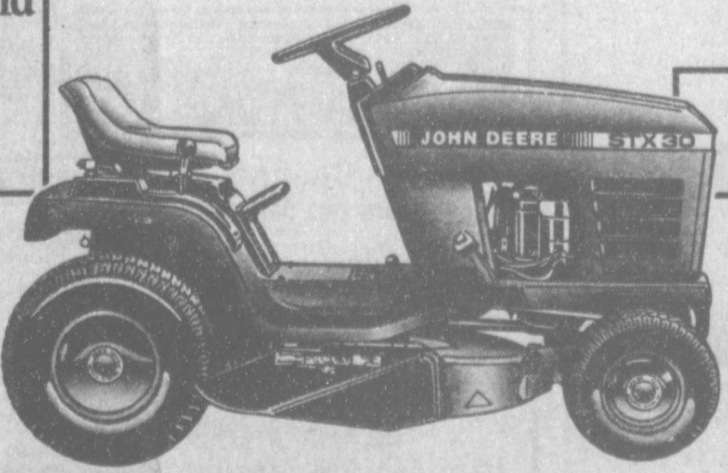
John Deere Sale

Decisions... Decisions... Decisions...

During Deere Season our entire line of walk-behind mowers and tractors is on sale. That means that the toughest decision you may have to make is to decide which machine is right for you. As your John Deere dealer, we can tailor-fit the right product to meet your needs.



\$579⁰⁰ Walk-Behind Mower



\$1999⁰⁰ STX30 Lawn Tractor



\$1499⁰⁰ RX75 Riding Mower

Deere Season ends May 31.

Nothing Runs Like a Deere

Use your John Deere Credit Card*

DENT. & CO.

*Availability subject to approved credit.

W. Hwy 84

Muleshoe, Texas

272-4296

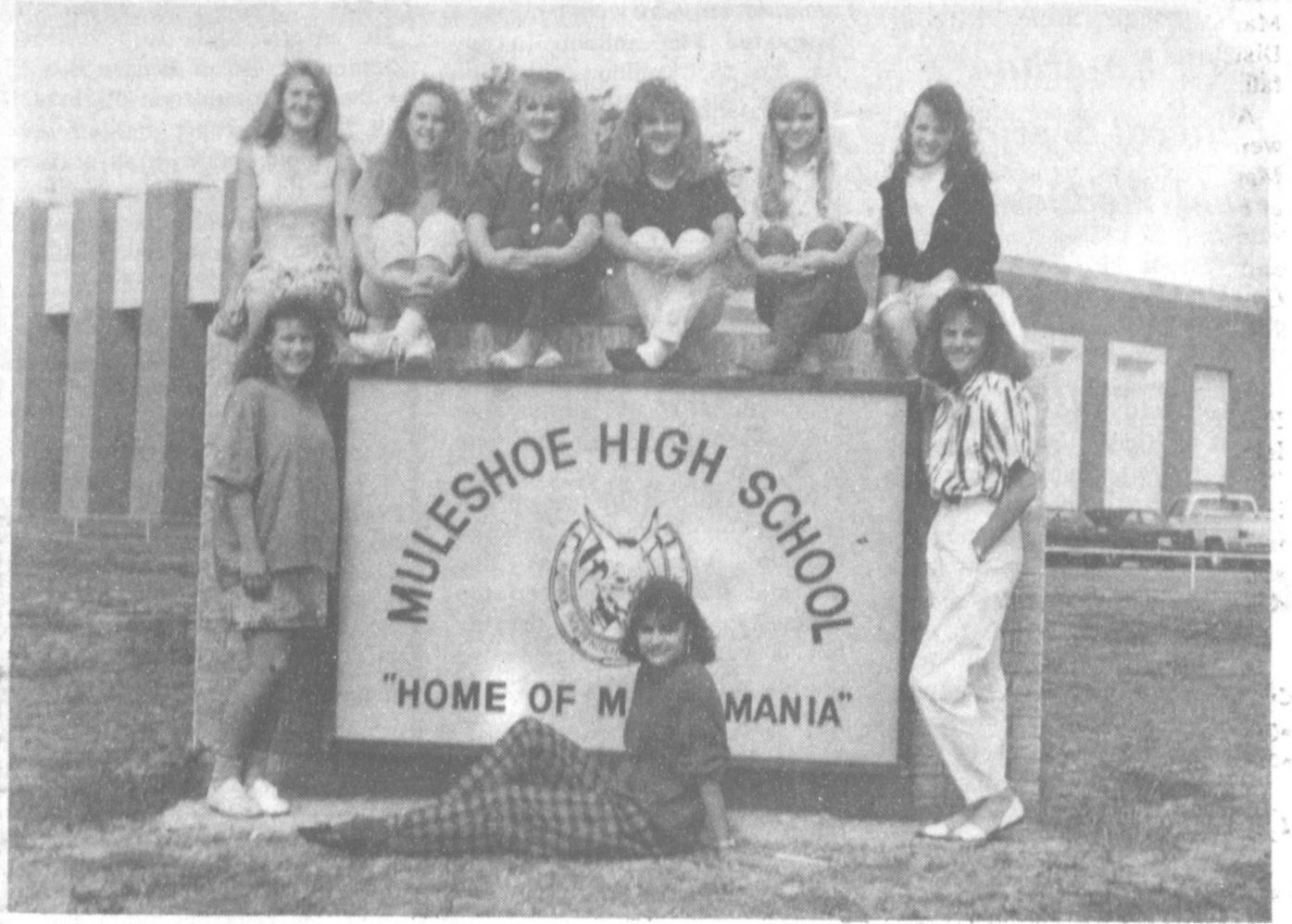


Area Happenings

During Week Of
May 20-26



NEW BAND OFFICERS FOR 1990-91 SCHOOL YEAR--Newly elected band officers were named recently by Mark Heidel, MHS band director. New officers are back row (L-R) Amanda Ashford (Asst. Librarian); Sheila Garner (Asst. Librarian); Courtney Graves (Librarian); Blain Ferris (Vice-President); Guy Wiley (Drum Major); and Ric Peterson (Chaplain). Front Row (L-R), Maria Almanza (Secretary); Charla Holt (Jr. Representative); Sonya Cisneros (Soph. Representative); Marsha Wilson (Sr. Representative); Stacy Knowlton (President); and not pictured, Jeremy Bruns (Asst. Drum Major). (Journal Photo)



NEW 1990-91 VARSITY CHEERLEADERS--Elected as the new varsity cheerleaders recently were, Top Row (L-R) are Erin Kelley, Amy Turner, Jill Noble, Shea Wilbanks, Marsha Wilson and Lashelle Scoggin. Middle Row, Chanda Kemp and Tiffany Angeley, and sitting, Yvette Hernandez, Mascot. (Journal Photo)



JUNIOR VARSITY CHEERLEADERS FOR 1990-91 SCHOOL YEAR--Recently elected as the new Junior Varsity squad are Top Row, (L-R) Sonya Cisneros, Kristen Chitwood and Jennifer Johnson. Bottom row are Becky Botkin and Emily Harris. (Journal Photo)



METHODIST DAY CARE CENTER GRADUATION--Last Friday at noon, graduation exercises were conducted at the Methodist Day Care Center for nine youngsters. A program was attended by parents of children attending the Day Care Center. Shown from left, back row are Jenna Boyd, Belle Angeley, Shani Rasco, Gradee Adrian and Joni Garcia. Front row, from left, Chanse Williams, Chase Winkler, Stephen Seymore and Eva Pylant. (Journal Photo)



DANCING TO THE BEAT--Providing entertainment at the TMC graduation last Thursday night were these little dancers from the Texas Migrant School. They performed two dances for the large crowd in attendance. The graduation ceremonies were held at the Chicano Unidos center. (Journal Photo)



RECEIVE BAND AWARDS--Receiving the band awards for the school year 1989-90 were Jenny Bennett (left), COMMENDABLE SERVICE; and Kelly Conklin (right), JOHN PHILIP SOUSA award. Also receiving awards, but not pictured, were Jimmy Johnson, LOUIS ARMSTRONG JAZZ AWARD; Ronnie Gail Barrett, OUTSTANDING LEADERSHIP; Michelle Finney, OUTSTANDING MARCHER; Sharla Evins, MHS BAND AWARD; and Jason Clarkson, SEMPER FIDELIS MUSICAL EXCELLENCE award. These awards were presented the students at the annual Spring Band Concert. (Journal Photo)

Texas Senate Week In Review

For the first time in more than a decade, the Texas Legislature is poised this week to attempt to override Governor Bill Clements' veto of an education funding reform plan and an accompanying sales tax hike bill to fund it.

Jack Knowlton Funeral Services Held Wednesday

Funeral services for Jack Knowlton, 77, of Muleshoe, were conducted at 11 a.m. Wednesday, May 30, at Ellis Funeral Home Chapel of the Chimes with Rev. James Williams of Victory Baptist Church and retired Baptist minister Rev. Bob Dodd, officiating. Interment was in Muleshoe Memorial Park under direction of Ellis Funeral Home of Muleshoe.

Knowlton died at his residence in the Y-L community following a lengthy illness. He was pronounced dead at 1:55 a.m. on Sunday, May 27, 1990, by Justice of the Peace Todd Ellis.

He was born June 5, 1912 at Iowa Park, TX and moved to the Needmore community in 1955, before moving to Y-L in 1955. He was a retired farmer.

Jack Knowlton was married to Lennie Lee Holt on September 7, 1947 at Ft. Sumner, N.M. She preceded him in death on February 15, 1988.

His survivors include seven sons, Gary Knowlton, Muleshoe; Billy Knowlton, Marvin Don Knowlton and Douglas Knowlton and Dennis Knowlton, all of Ft. Worth; Wayne Knowlton of Guthrie, OK; and Norman Knowlton of Peru, Indiana; three daughters, Mrs. Beatrice Mooney, Ft. Worth; Mrs. Sharon Campbell, Colorado Springs, Colo. and Mrs. Jacque Melton of Seminole, OK; two sisters, Lois Gray of Seminole, TX and Marie Walker of San Jose, Calif.; 28 grandchildren and 17 great-grandchildren.

deadline hovering and negotiations between legislators and the Governor's office stalled. Clements vetoed Senate Bill 1, the school funding bill, last week. The Senate, on a vote of 23 to 8 that fell along partisan lines, acted quickly to override the veto. The House is expected to attempt an override Tuesday (May 29).

Meanwhile, the House last week passed, on a vote of 94 to 51, the half-cent sales tax increase bill that would raise an estimated \$450 million to pay for the \$550 million education reform plan. The remainder needed to fund the bill would come from combined budget cuts and transfers totaling \$154.7 million.

The Senate also passed the sales tax bill last Friday. House Bill 129, the sales tax bill, would increase the state sales tax rate from the current 6 cents on the dollar to 6½ cents. That bill cleared the Senate on a vote of 24 to 6.

At the close of the last special session on education reform, Clements vetoed the tax hike bill and has vowed to do the same this session. If the tax bill is vetoed, both legislative houses will attempt an override this week. A successful override requires a two-thirds vote in each house. The current special session ends Thursday (May 31).

Lawmakers have been in three special sessions since February 27 attempting to design a plan that would meet a State Supreme Court mandate to bring equity to the system the state uses to distribute money to public schools.

The court has given the state a final deadline of Friday (June 1) to come up with a plan or face takeover of the fund distribution system by court-appointed master William Kilgarlin.

If efforts fail to override Clements' veto of Senate Bill 1 or the anticipated one of House Bill 129, the court master will draw his own plan. Last fall the court ruled the current funding system unconstitutional because it favors property-rich school districts over poorer ones.

Services For Josefina Reyes To Be Conducted Friday

Funeral services for Josefina Reyes, 62, of Muleshoe, will be conducted at 11 a.m. Friday, June 1, in Immaculate Conception Catholic Church with the Father Pat Maher, pastor, officiating. Interment will be in Muleshoe Cemetery under di-



JOSEFINA REYES

rection of Ellis Funeral Home of Muleshoe. Rosary was at 7:30 p.m. Wednesday in Ellis Funeral Home Chapel.

Mrs. Reyes died at 7:40 a.m. Tuesday, May 29 in a hospital in Lubbock following a lengthy illness.

She was born November 26, 1927 in Driscoll Co., Texas and was a nurses aide. She was married to Jose Reyes in June 1955 in Edinburg, TX.

She was a member of Immaculate Conception Catholic Church.

Her survivors include her husband, Jose; one son, Rene Reyes, Muleshoe; five daughters, Elva Anzaldua and Blanca Anzaldua, both of Lariat; Annie Zamarron, Weslaco; Orfelinda Vasquez, Notus, Idaho; and

Linda Ballin, Weslaco; three sisters, Carmen Basaldua and Celia Banda, both of Pharr, TX; and Guadalupe Rivera, San Juan, Nuevo Leon, Mexico; three brothers, Pablo Falcon and Seferino De' Los Reyes, both of Pharr and Manuel De' Los Reyes, Notus, Idaho; 18 grandchildren and eight great-grandchildren.

It takes a good worker not to think of an excuse for not doing something that hasn't got to be done.

We must be getting along in years; so far, we haven't any idea who will win the big league pennants.

1990 Crop		1990		
Pool Cash Advance	Sale Flat	Contract Basis	Month	
Feed Corn.....Mkt.....	4.91,-0.09	No Bid.....	May	
White Cobb Yellow.....	4.50.....	5.00,-0.04	No Bid.....	May
Red Cobb Yellow.....	4.00.....	5.06,-0.01	No Bid.....	May
White Food Corn.....	5.00.....	6.00,0.52	No Bid.....	May
Milo.....Mkt.....	4.09,-0.55	No Bid.....	May	
Soybeans.....No Pool.....	5.14,-0.92	-0.95.....	May	
Wheat.....No Pool.....	3.02,-0.34	KC May	

99%
Prices effective May 29, 1990

Farmer's Co-Op Elevators
272-4335

Thank You

We would like to thank everyone for the flowers, cards, visits and prayers during my hospitalization.

Thank You,
Evelene & Wayland Harris

Patients in Muleshoe Area Medical Center

MAY 25-29 FRIDAY

Leslie Moraw, Jodie Wheeler

SATURDAY

Van Rogers, Katherine Rogers, Diana Noland, Maria Salazar, Jodie Wheeler, and Jacob Hernandez

SUNDAY

Diana Noland, Maria Salazar, and Jacob Hernandez

MONDAY

Diana Noland, Maria Salazar, Jesse Vargas, Rosemary Lopez, and Jacob Hernandez

TUESDAY

Diana Noland, Maria Salazar, Jesse Vargas, Rosemary Lopez, and Jacob Hernandez

Plan Now To Get Better Nitrogen Efficiency For Your Corn.

Let Us Show You Why Nitrogen Solutions From Western "66" Are Your Best Buy---

- ★ Less Application Loss Than Ammonia!
- ★ Recent Research Shows A Combination Of Ammonia And Nitrate Nitrogen Gave Higher Corn Yields Than Either One Alone.(You Get Both In Solution)
- ★ Flexible Application Alternatives - Sidedress While You Cultivate, Or Apply Through Irrigation Water.
- ★ Add Other Nutrients At The Same Time If Needed. - See How Economical Sulfur Can Be Added.

Let Us Help You Plan A Maximum Economic Yield Program To Produce Top Profits For You. Call Or Come By Soon.

Western "66" Co.

Earth Hwy.

Muleshoe, Tx.

272-4556

VALLEY

Get a Quote

And get round trip air fare on us!

Choose from Hawaii, the Bahamas or Disney World. Just get a bonafide quote — that's all, just a quote — and then keep your eye out for palm trees. Look below for more details.**

PLUS CASH BACK
WHEN YOU BUY A NEW VALLEY 6000

\$1000*	CASH BACK FROM MAY 14-JUNE 16, 1990
\$1400*	CASH BACK FROM JUNE 17-AUG. 18, 1990
\$ 800*	CASH BACK FROM AUG. 19-SEPT. 15, 1990

*Based on purchase of a 7 tower Valley 6000. Some restrictions may apply. See your Valley dealer for complete terms and other lease rates available.

0.0% APR Lease Rate*

OR

LOW INTEREST FINANCING*

SEE US TODAY FOR FULL DETAILS

American Valley, Inc.

W. Hwy 84 272-4266

Get a quote on a Valley, and we will fly you and a guest to Hawaii, the Bahamas or Disney World.

You pay for 7 nights accommodations at one of the participating resorts (or stay longer if you like) and we give you a certificate for 2 Roundtrip Air Tickets in a Vacation Package loaded with extras!

Travel anytime you want. (Surcharges apply to peak season and non-motorist departures.) Additional conditions apply. See your participating Valley dealer for complete details.

HAWAII—choose from over 300 hotels or condominiums.

Includes: Full American breakfast on your first day; 1: Flower lei greeting; 1) Service of a four representative; 1) Optional tour island packages.

BAHAMAS—choose from a variety of beautiful properties such as the fabulous Xanadu 5-star resort.

Includes: Free cruise for two; Fort Lauderdale to Freeport & back, with breakfast, lunch, dinner & shows aboard the Scandinavian Sun

DISNEY WORLD—choose a 1, 2 or 3-bedroom furnished condo.

Includes: Free car rental for 1 week with unlimited mileage; 1) Free all-day cruise for two from Port Canaveral, with 3 buffet meals; 1) Resort amenities.

CLASSIFIEDS 272-4536

CLASSIFIED RATES

15 Words & Under
Minimum Charge
\$2.30
Thereafter
\$2.00

16 Words & Over
1st Insertion
15 cents per word
2nd Insertion
13 cents per word

CLASSIFIED
DISPLAY RATES
\$1.75
Per Column Inch

DEADLINES
12 noon Tues.
For Thursday Paper
12 noon Friday
For Sunday Paper

To receive the re-
duce rate after the
first insertion ad
must run continous-
ly.

We reserve the right
to classify, revise, or
reject any ad. We are
not responsible for
any error after ad
has run once.

1. Personals

CONCERNED
About Someone's
Drinking?
HELP IS
AVAILABLE

through Al-Anon
CALL 272-2350 or
965-2870 or come to
visit Tuesday nights,
8:00 p.m. or Saturday
mornings at 10:30 a.m.
and through AA call
965-2870 or come visit
Tuesday nights, 8:00
at 620 W. Second,
Muleshoe.

3. Help Wanted

RN, LVN
Flexible hours. Ex-
ceptional opportunity
for independent pro-
fessional to work for a
well known, highly
respected National
Paramedical Corpora-
tion. Must draw blood
1-800-692-4485.

E3-22t-2tc
ATTENTION:
POSTAL JOBS!
Start \$11.41/hour! For
application info call
(1) 602-838-8885, Ext.
M-10191, 6am-10pm,
7 days.

C3-21s-4tp
ATTENTION-HIRING!
Government jobs-your
area. Many immediate
openings without
waiting list or test.
\$17,840-569,485. Call
1-602-838-8885. EXT
R10191.

C3-21s-4tp
APPLY NOW to oper-
ate firework stand in
Muleshoe area June
24-July 4. Must be
over 20. Make up to
\$1,500.00. 1-800-955-
1023 or 1-512-429-
3808, 10 a.m.-5 p.m.
F3-19t-11tc

TOWN & COUNTRY
FOOD STORES
We are seeking career
minded individuals for
part time and full
time employment.
Must be dependable,
have good customer
relations, work, learn,
and contribute. Appli-
cations available at
both stores. Drug test
required.

TEXAS
It's Like A Whole Other Country.

5. Apts. For Rent

SMALL EFFICIENCY
Apartments for Rent.
\$35 a week; \$100
deposit. Call 272-5414
after 5:00 pm.

11. For Sale Or Trade

FOR SALE: 1977, 24
foot Prowler Travel
Trailer. Good condi-
tion. Call 272-5227.
11-22t-3tp

FOR SALE: Electric
dryer. Older, but in
excellent condition.
\$50 firm. Also, twin
mattress and box
spring, good, \$30 for
both. Call Clea at
272-4536 days, or af-
ter 6 p.m., call 272-
3265.

For Sale: 1978 Hoi-
day Travel Trailer.
32' Self-Contained.
Call 946-3633 even-
ings.

R11-21s-8tc

PIANO FOR SALE
Wanted: Responsible
party to assume small
monthly payments on
piano. See locally.
Call credit manger
1-800-447-4266.

J11-20t-7tp
ESTATE SALE
June 1 and 2
starting at 8:30 a.m.
Arnold, Grace Morris
Home
223 W. Ave. E.
22t-1tp

8. Real Estate

8. Real Estate

8. Real Estate

18. Legals

18. Legals

18. Legals

Henry Realty

111 W. Ave. B. 272-4581
Muleshoe, Tx.

2 Bedroom, 1 bath, good location, priced
to sell. \$14,000. SOLD

2 Bedroom, 1 bath, fireplace, Lenau
Addition. A good buy. \$15,000.

NEW LISTING 3 Bedroom, 1 bath Lenau
Addition. Well insulated with storm door
and windows. Patio room with Thero pane
windows and free standing wood burning
stove. Landscaped to perfection with easy
care of grounds. Low utility cost. Priced to
sell.

3 Bdrm., 2 bath, spacious home outside city
limits, near city on highway. 29x40 metal
building. Lot 85'x420'.

COMMERCIAL PROPERTY-Ideal location
on West American Blvd. 150' highway
frontage. A great business opportunity.

RURAL HOME-3 Bdrm., 2 bath, large den
on one acre with many extras. Fenced with
barns, fruit trees, extra storage, storm
cellar, and satellite dish. Priced to sell.

SPACIOUS-2 Bdrm., 2 bath, with garage.
Freshly painted. Fireplace. Ready to move
in.

RICHLAND HILLS-3 bedroom, 2 bath, 1
car garage Brick Home. Central heat and
air, carpet, shop, storm cellar. Storage for
motor home, metal trim, beautiful yard.
Built in range and oven, plus washer and
dryer.

3 Bedroom, 2 bath, carpet, large living
room. Excellent condition, near high school.
Priced to sell.

FOR SALE OR RENT-
3 bedroom brick home
with fireplace. Located
3 miles west of Earth
on Highway 70. 272-
3056.
J8-16t-tfc

HOUSE FOR SALE or
Rent on 40 acres.
Country living with
city privileges. 925-
6432. If no answer
272-3459.
M8-21s-tfc

REPRO'S REPRO'S
Finance Company
desperate to sell. No
credit-No problem. We
deliver. Call 806-894-
8187.

B8-18s-8tc
ATTENTION
FIRST TIME
home buyers. Two &
three bedroom mobile
homes. No credit. We
deliver. Call 806-894-
7212.

B8-18s-8tc
FOR SALE: 3-Bed-
room red brick house.
1815 W. Ave. C. Call
272-3767.

B8-13t-tfc

Cash Rewards
Up To \$1,000
For Information!
Call
Bailey County
Crime Line
272-HELP

NOTICE OF OPPORTUNITY

Notice is hereby
given that South
Plains Community Ac-
tion Association, Inc.
is seeking Financial
Assistance from the
U.S. Department of
Transportation under
the Section 18 Grant
Program. Grant funds
will be used to contin-
ue providing Rural
Public Transportation
on a demand response
bases with 24 hour
notice. These services
are for all communi-
ties in Bailey, Coch-
ran, Garza, Hockley,
Lamb, rural area of
Lubbock, Lynn, Terry
and Yoakum counties.
The system will pur-
chase computer and
office supplies, fuel,
maintenance, contract
services, printing ser-
vices and insurance.

Special provisions
for transporting the
Elderly and Handic-
apped are available.
Fares will be charged
for all transportation.
However, persons re-
ceiving services under
CSBG, SSI, Medicaid
and JTPA may qualify
for subsidized fares.

Copies of the grant
proposal are available
for inspection by the
public at 411 Austin
Street, Levelland.

Any person wishing
to request a public
hearing on the pro-
posed project must
submit that request in
writing to South
Plains Community Ac-
tion Association, Inc.,
411 Austin Street,
Levelland, Texas prior
to June 15, 1990.

S18-21s-2tc

NOTICE OF ELECTION

The Farmers Home Administration
(FmHA) county committee election this
year will be held on June 29, 1990. The
ballot below must be filled out, detached
and mailed and received or returned in
person to Bailey County FmHA, 115 E .
Avenue D, Muleshoe, TX 79347 not later
than June 29, 1990. If you do not vote in
person you should mail your ballot inside a
blank envelope marked ballot to ensure a
secret ballot. This blank envelope should
be placed inside the envelope you use to
mail your ballot. Your name and address
must be legible on the outer envelope.
Failure to provide this information will
render your ballot invalid. Only one ballot
may be voted in person or by mail by any
voter. Votes in envelopes containing more
than one absentee ballot will not be
counted. Ballots and envelopes may also
be obtained from your local FmHA office.

The slate of nominees for Bailey County
Committee are listed in the ballot below.
The qualifications of persons voting are
described in the "Voter Certification
Statement." For further information re-
garding voting and voter eligibility, see
the County Office listed above. FmHA
elections are open to all eligible voters
without regard to race, color, religion,
national origin, age, political affiliation,
marital status, sex, and/or handicap.

U.S. DEPARTMENT OF AGRICULTURE
FARMERS HOME ADMINISTRATION
BALLOT FOR COUNTY COMMITTEE
MEMBER(S)

State: TEXAS County: BAILEY
*Candidates
Doyce L. Turner

Please detach this notice before voting
ballot

VOTER CERTIFICATION STATEMENT
Subpart W of Part 2054 of Title 7, Code of
Federal Regulations requires that all
eligible voters for FmHA county or area
committee elections meet the following
eligibility requirements: (a) be farmers or
spouses of farmers; and (b) have their
principal farming operation within the
county or area for which the election is
being held.

By submitting this ballot, I attest that I
meet the criteria to vote.

F18-22t-1tc

Bingham & Nieman Realty

116 E. Ave. C

272-5285 or 272-5286

RICHLAND HILLS

IMMACULATE-ENERGY EFFICIENT 3-2-2
Brick, Cent. A&H, built-ins, FP, sunken lv.
area with cathedral ceiling, ceiling fans,
earthtones, storage bldg., much more!!50's

NICE 3-2-2 Brick, 2,300' + lv. area,
earthtone carpets, built-ins, FP, cent. A&H,
fenced yd. & more \$70's!!!!!!

4 NICE RESIDENTIAL LOTS PRICED
FROM \$5,000.00!!!!!!

NICE 3-2-2 Home, HEAT PUMP, built-ins,
FP, earthtone carpets, fenced yard, & much
more. PRICED TO SELL!!!!!!

3-2-2 Brick on large corner lot, Cent. A&H,
built-ins, storm windows & doors, large
basement, much more!!!!!!

JUST LISTED-3-2-2 Brick on corner lot,
Cent. A&H, built-ins, FP, cov. Patio &
more. \$60's!!!!!!

VERY NICE 3-3-2 Brick Home, Cent. A&H,
built-ins, FP, Wtr. Sftnr., auto. spklr.,
Cov. Patio, Stor.-Shop, & much more!!!!!!

HIGHLAND AREA
NICE 3-2-1 Brick Home, cent. A&H
built-ins, large den with fireplace. Fenced
yard, storage bldg. \$40's!!!!!!

JUST LISTED-VERY NICE 4-2-1 Brick,
Cent. A&H, built-ins, earthtone carpets,
large utility, enclosed patio, storm windows
& doors, gas grill, spklr. sys., stor. bldg.,
fenced yd. & more. \$60's!!!!!!

PRICE REDUCED 2-2-2 Brick, corner lot,
Cent. A&H, spacious rooms, utility, cov.
patio, fenced yard, & much more. \$40's!!!!

HIGH SCHOOL
2-1 1/2-1 Brick, fl. furnace, CA, fenced yard
& more. \$20's!!!!!!

PRICE REDUCED 3-1-1 Home earthtone
carpets, fenced yard, storm cellar &
workshop!!!!!!

IMMACULATE 2-1-1 Home, Cent. A&H,
built-ins, nice carpets, storm windows &
doors, well insulated, nicely remodeled,
fenced yd., cellar, & much more. \$20's
!!!!!!

3-2 Home, nicely remodeled, Heat pump,
storm windows & doors well insulated,
ceiling fans, fenced yd., storage bldg. &
more. \$20's!!!!!!

LENAU ADD

JUST LISTED-3-1 1/2 Home, Cent. heat,
Evap. air, new paint and counter-top,
fenced yd., storage bldg., & more.
\$30's!!!!!!

3-1 Home on corner lot, wall heat, fenced
yd. \$20's!!!!!!

NICE 4-2-2 carport HOME, Cent. A&H,
built-ins, FP, Cent. Vac., Office, sewing
Area, fenced yard, & MUCH MORE.
\$40's!!!!!!

COUNTRY HOMES

NICE 3-1-2 Home on 4.25 acres on
pavement close to town, 2 large (barns-
workshop) plus other small bldgs. \$60's!!!!

NICE 3-2 Home on 1 acre on pavement close
to town, Cent. A&H, built-ins, large
kitchen, lv. rm., den, utility, large
storage-workshop, & more!!\$50's!!!!

3-2-2 Brick on 25 acres, close to town, Cent.
A&H, built-ins, shop, barn, new 4 wire
fence all around, much more!!!!!!

3-2-3 carport Home on 11 acres at edge of
town, Cent. A&H, built-ins, storm cellar,
barns, & corrals. \$50's!!!!!!

3-1-1 Home on approx. 5 acres at edge of
town, domestic well and irrig. well, barns &
more. \$20's!!!!!!

VERY NICE 3-2-1 Home on 1 acre, close to
town, Cent. Heat, Evap. air, nice carpets,
nicely remodeled. \$30's!!!!!!

2-1 Home, 20 acres, sub. pump, sprinkler,
barns & corrals. \$40's!!!!!!

EXCELLENT COMMERCIAL TRACT 175' x
100', Hwy. 70 & 84, railroad spur access at
rear approx. 1200 sq. ft. bldg. PRICED TO
SELL!!!!!!

NICE 3,500 sq. ft. office bldg. across from
Courthouse. PRICED TO SELL!!!!!!

U.S. Media Fails

Recent months have pro-
duced one of the media's most
dismal failures. It concerns Li-
thuania. Readers and viewers,
many with thin historical back-
grounds, are entitled to at least
minimal backgrounding of the
news. They haven't gotten it.

The average newspaper story
and television commentary about
Lithuania for months has regularly
and consistently overlooked the
vitaly important information that
Lithuania is a state within Russia.
It's not a separate nation, histor-
ically, unless one goes back hundreds
of years.

Lithuania was taken from
Russia in 1919 by the Western
Allies, years after Russia sur-
rendered to Germany in 1917.
Russia was then helpless to react, in
revolutionary ferment and chaos.
But when there was a chance to
regain the Baltic republics, in 1940,
Russia retook them.

This doesn't imply Lithuania
should not be free. All westerners
hope it will be free. Mikhail
Gorbachev even offered the
republic a road to freedom, by
the constitutional means within a
period of years.

Impulsive Lithuanian leaders,
thinking they could, if necessary,
entice the western world into a
confrontation with Russia and
thereby gain immediate freedom,
flagrantly defied Moscow's au-
thority and unilaterally declared

the state automatically independent.
In doing this they also
threatened to destroy Gorbachev.
No Russian leader can stay in
power if his policies mean
disintegration of the nation.

Americans should have been
given the facts. The U.S. media has
ignored historical facts, which
mean so much. They have stressed
the irrational, urged confrontation.
Russian leaders look upon the
Lithuanian crisis as a domestic
issue, by international and his-
torical precedent, it is.

In the U.S. a chorus of
hardliners have been demanding, a
U.S. and NATO reaction and tough
measures against Moscow. Not one
person meanwhile, has been killed
in Moscow's attempt to have Li-
thuania conform to constitutional
process. (How many did we kill in
Panama?)

Ignorance among media
types in this instance, resulting in
misleading the public, could set
back U.S.-Russian relations, with
tragic consequences. Mischief
makers selfishly interested in
prolonging the cold war or the
arms race have exploited this
ignorance, influencing the media
and population.

Where are the leaders, in the
executive and legislative branches,
who should have gone public long
ago to explain the Lithuanian crisis
intelligently in accurate historical
background?

8. Real Estate

8. Real Estate

BIBLE VERSE

FOR SALE

Must sell 813 Acres. Good Bailey
County dry land farm. 3 Tracks-
one tract has 4 irrigation wells, 350
acres of cotton. Also maize and
wheat allotment. Priced for quick
sale. Call owner, Gerald Singleton.

915-459-2708
home
915-459-2444
work

"Whatsoever ye do, in word
or in deed, do all in the
name of the Lord Jesus,
giving thanks to God the
Father through him."

1. Who is the author of
the advice?
2. To whom was he
writing?
3. Upon what occasion?
4. Where may this verse
be found?

Answers:
1. Paul the Apostle.
2. The Christians in the
church at Colosse.
3. To counteract the in-
fluence of false leaders who
had come into the church.
4. Colossians 3:17.

George Nieman, Broker

Dianne Nieman, Broker

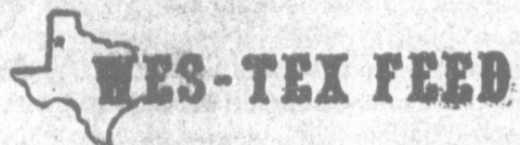
CLASSIFIEDS CALL 272-4536

MULESHOE AREA

Spring/ Summer '90



BUSINESS DIRECTORY AND SHOPPING GUIDE



**WES-TEX FEED
YARDS, INC.**

Custom Cattle Feeding

Wes-Tex Feed Yards, Inc.

272-7555



Henry

Insurance Agency,

Inc.

"Serving You Since 1964"

KENNETH F. HENRY
CERTIFIED INSURANCE
COUNSELOR
REAL ESTATE BROKER



111 W. AVENUE B
PHONE 806/272-4561
MULESHOE, TEXAS 79347

Treat your imagination

MULESHOE ART LOFT



WAT services inc.

319 E. American Blvd.
MULESHOE, TEXAS 79347

Mobile Communications

Two-Way Radio Repair

GARY PARKER
Technician

Muleshoe - 806-272-4888

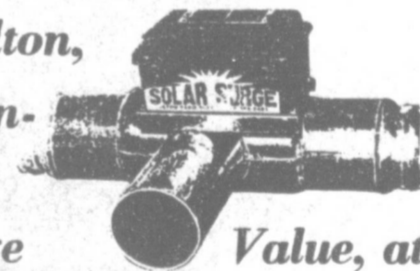
Hereford - 806-364-7311



1st Anniversary OPEN HOUSE

Thursday, May 31st

Robin Spain, of Olton,
will be here to demon-
strate his own inven-
tion - The Solar Surge
Value, at
2 p.m.



Come by, and Register for \$50 cash to
be drawn for that afternoon.

You Need Not Be Present To Win.
We handle the poly-pipe that works
great for those corners of pivots. They
have adjustable gates.

Come by and talk to J.C. or Zona, they
have all your irrigation needs. They also
have irrigation engine covers.

Irrigation Supply

607 E. Amer. Blvd.

272-4466



MEXICAN FOOD RESTAURANT

TOPPED SOPAIPILLA

Sopaipilla topped with ground
beef, cheese, lettuce, tomato
& guacamole

\$4⁷⁹



Closed Mondays
1606 W. Amer. Blvd.

272-3294



"Your Local CarQuest Dealer!"

Store Hours:

Open Mon. - Fri. 9:00 a.m. - 8:00 p.m.

Saturday

8:00 a.m. - 6:00 p.m.

Sunday

1:00 - 5:00 p.m.

Muleshoe Auto Parts

Day-272-4596

217 N. 1st

Danny Shipman

Night-965-2155

All Irrigation Supplies

Underground Plastic Pipe

Above Ground Gated Plastic Pipe

Solar Surge Valves

Irrigation Supply

J.C. & Zona Gatewood

607 E. Amer. Blvd.

272-4466

Viola's Restaurant

2002 W. Amer. Blvd.

272-3838

Closed Tuesday



**NO. 2
COMBINATION
PLATE**

Chile Relleno, 2
Enchiladas, Meat or
Cheese

\$4⁷⁵

607 E. Amer. Blvd.

272-4466

Dursban Kills Grubs,
Fleas & Ticks in Your
Yard And Around
Your House!

Kearney Scoggin

Scoggin Ag Center, Inc.

"Where Fertilizer Is Our Business"

1532 W. Amer. Blvd.

272-4613

**DURSBAN
GRANULES**



5,000 Sq. Ft. 15,000 Sq. Ft.
\$9⁷⁵ \$17⁷⁵

**5 Locations
To Serve You!**

•Clays Corner •Enochs •Muleshoe
•Pleasant Valley •Old Griffith

**Farmer's
Co-Op Elevator's**

272-4335



ORTHO

\$2⁴⁴

383984
Kleenup® Grass &
Weed Killer in an easy-to-
use 24-oz. sprayer. 04367



Fry & Cox, Inc.

401 S. 1st.

272-4511

**Pivot Products Distributors,
Inc.**

Now is the time to install
Moisture Block for the coming
Irrigation Season!

We have a full line of irrigation needs
in stock as well as Moisture Blocks.

710 E. Amer. Blvd.

272-5536

2 Pc. Dark Dinner

\$2⁸⁹

Hours:

10:00 a.m. - 10:00 p.m.

Remember Us For Your Picnics!



Carry Outs
Welcome

1411 W. Amer. Blvd.

272-5581

**Every Tuesday
Is KIDS' Night!**

Tuesday Night kids get a FREE single-topping
Personal Pan Pizza when their Parents order a
Medium Pizza at the regular price.

Plus Kids - You Also get a FREE copy
of Nickelodeon Magazine!



Makin' it great!

1412 W. Amer. Blvd.

272-4213