



WEATHER

June 28 82 57 1.1
June 29 88 58
June 30 86 61
July 1 93 60

Muleshoe Journal

The Community Of Opportunity-Where Water Makes The Difference

Vol. 70, No. 27

Published Every Thursday At Muleshoe, Bailey County, Texas 79347

TEXAS PRESS ASSOCIATION 20¢

Thursday, July 2, 1992

Tornado Hits Stegall Saturday Night

around Muleshoe

Norene Pierce, manager of the local Sears Catalogue Store in Muleshoe, notified the Journal Monday that the local catalogue store will close their doors on July 31. The last day customers can order will be July 21.

All Sears catalogue stores nationwide will be closing.

The local store has been in Muleshoe approximately 25 years.

Mrs. Pearson stated that Trophies and More will remain open in their present location.

Members of the graduating class of 1982 who are interested in riding in the parade Saturday are asked to be at the Boy Scout grounds, parade line-up, at 9:30 a.m.

All area veterans are asked to go to the Boy Scout Grounds Saturday morning to ride on the float in the parade.

The Swisher County Activities Association will sponsor a Trap Shoot July 12, starting time will be 1:30 p.m. at Tule Lake, two miles east of Tulia on F.M. 1318 and then two miles north and then one mile east.

Cash prizes will be awarded. For more information, you may call David Gibson at 995-3726. Henry Roach, 995-2477 or Donald Adams at 668-4618.

John D. Harlan has been commissioned a second lieutenant through the Air Force ROTC program, and earned a bachelor's degree at Texas A&M University in College Station.

Harlan is the son of Nolan H. and Betty Harlan of Sudan.

Cont. Page 6, Col. 2



DEEP WATER ON ROADWAY--Sunday morning water was over the highway in several places on 1760 as the result of the storms Saturday night. Crops in the area suffered damage due to hail, which accompanied the rain. (Journal Photo)

No Injuries Reported One Home Damaged

A long line of severe thunderstorms developed over Eastern New Mexico late Saturday afternoon. The storms continued to travel eastward, prompting the National Weather Service to issue tornado watches and warnings as well as severe thunderstorm, warnings for much of the South Plains, including Bailey County.

Residents of Stegall, Baileyboro, and Needmore found themselves directly in the storm's path.

In the Stegall Community a tornado struck the home of Francisco Armandariz, on the Pollard farm. Mrs. Terry Pollard reported that even though the house was still standing, and no one was injured, windows were broken and the house was flooded. She also stated that a silo was blown away and at the Carl Pollard's home large trees were uprooted and they lost their well house. "We lost all of our crops," Mrs. Pollard said.

The Bailey Gin was also hit by the tornado. "They will probably have to put up a new building," said Pat Duplar. She also told the Journal that trailers were scattered in the road. "We received from two to two and a half inches of rain, and some hail, it got all our crops," Ms. Duplar continued.

Bailey County Electric was also hit hard by the storm. The Journal talked to Duane Lloyd, manager, Monday morning and Lloyd stated that they lost approximately 150 poles from the Bailey Gin Co. west of Baileyboro, on 1741 and the Arch Highway. "There must have been two or three tornadoes in that area," Lloyd said. "We have had help from Lamb County Electric, South Plains Electric, Lighthouse Electric and Lytegar Electric." Although these men worked diligently throughout the weekend, not everyone had electricity Monday morning. Lloyd stated that they hoped to have all electric service restored by Tuesday night.

Mrs. Clifford Mardis, six miles south of Muleshoe on Highway 214, reported that they received hail ranging from pea to golf ball size. "We lost all our crops," Mrs. Mardis said. "We lost our cotton about a month ago and our milo Saturday. The wind was terrible and the hail was still on the ground Sunday morning on FM 746. If we can get into the fields this week,

we'll go back with milo, if not we'll have to plant wheat."

Zeffa Shafer reported that they had two inches of rain Saturday. "We were only five miles from the tornado," Mrs. Shafer said. "I have lived here 60 years and this is the first time I have seen anything like this," referring to the weather.

The Texas Department of Highways and Public Transportation employees worked until 4:30 Sunday morning putting out Water Ahead signs on all highways, as well as directing traffic where the highline poles and electric wires were on the roads. "There was a lot of water on FM Roads 298 and 746," Rhonda Smith, secretary, said. "To the north, the water was the worst at the Bailey, Parmer County line. Although the water was over the highway and mud had to be cleaned off the road, the highway was never closed."

Cont. Page 6, Col. 1

Big July Fourth Celebration Planned

If you like to stay busy and have a lot of fun Muleshoe is the place to be as we 'Salute Our Flag and Our Country' over the Fourth of July holidays. Make your plans now to come early and stay late.

The Muleshoe Chamber of Commerce and Agriculture, along with various businesses and organizations around Muleshoe promise you a fun filled, exciting weekend.

Activities get underway on

Thursday, July 2 at 9 a.m. when Jana Stanfield, Curt Brummett and Gene Grassie will be at Joe's Boot Shop. They will be at Joe's until 6 p.m. and again on Friday from 9 a.m. until 6 p.m.

At 7 p.m. Thursday and Friday you can see the Mule-Plex Production Company's play "The Butler Did It" in the Muleshoe High School Auditorium.

In addition to the play, there will be candy sales, with lots of prizes, thanks to the local merchants who made this possible.

On Saturday, July 4th Activities will begin at 7 a.m. with a sidewalk breakfast, sponsored by the Kiwanis, being served until 10 a.m. in front of Higginbotham-Bartlett. You may also register for the 10K and two mile run at 7 a.m. in the south parking lot of Muleshoe State Bank.

Jay Messenger Will Participate In TALL Program

Jay Messenger, vice president of Muleshoe State Bank, has been selected to participate in the third class of the Texas Agricultural Lifetime Leadership (TALL) program. TALL is a leadership program aimed at identifying and developing the leaders needed to shape and direct the future of agriculture.

"I am honored and excited to have the opportunity to participate in this experience," said Messenger. "The next two years will be very exciting and educational."

TALL is a two-year leadership educational program designed for people ages 25 to 40 in agriculture-related careers. The 26 member class meets about three days every other month and studies current issues related to agriculture. Included in the curriculum are seminars held in another state, Washington, D.C., and a foreign country.

"The applicants for TALL III were all talented agricultural people," said John Sykes, TALL Coordinator. "The competition was strong and the judges had a difficult time determining this class."

The 10K and two mile run will begin at 8 a.m. as will the kid's activities sponsored by Alpha Beta Pi Sorority, in front of Poynor's. These activities will continue until 10 a.m.

At 9 a.m. the parade will begin to line up on the south end of Main Street and registration for the American Legion Muleshoe Pitching Contest will be held at the old Chevrolet Lot on Main Street.

At 10 a.m. floats, antique cars and unique vehicles, two different classes, cars carrying dignitaries, riding clubs, commercial floats, individual riders or walkers, and animals will form a parade which will travel down Main Street to Highway 84, turn west to the Morton Highway and travel down the Morton Highway past the Muleshoe Health Care Center before returning to the Boy Scout Grounds on Main Street.

Following the parade, the Muleshoe Pitching Contest will begin at 10:30.

If you like to play games (three legged sack race) and many more, you don't want to miss going to

Cont. Page 6, Col. 5

MISD Will Review Voting Districts

The Board of Trustees of Muleshoe Independent School District will continue its review of the voting districts established in 1990 to see if revisions are necessary based upon the 1990 census. The plan adopted in 1990 provides for five trustees to be elected from single-member districts and two trustees to be elected at-large in the school district. One of the five single member districts-district Three-has a majority Hispanic population. District Three is currently represented by Frank Saldana.

Earlier in the year, the Trustees contracted with Map Resources, Inc. of Austin to apply the 1990 census data to MISD voting districts in order to determine what shifts in population had taken place since the 1980 census was taken.

Cont. Page 6, Col. 4

The Britannia

by Johanna Wrinkle

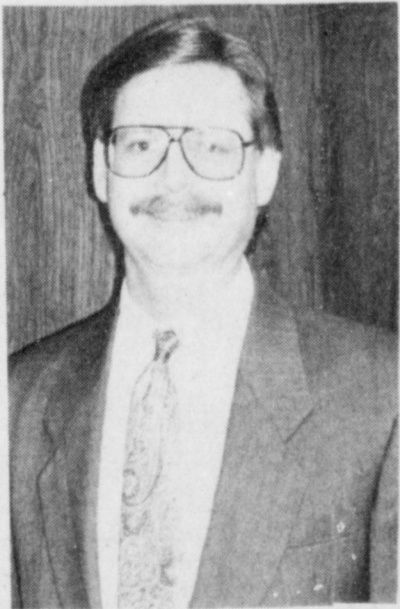
"This summer one-third of the nation will be ill-housed, ill-nourished, and ill-clad. Only they call it a vacation." Joseph Salak

So we were on vacation!! Twelve ladies ventured forth June 4th to begin a fifteen-day tour of the British Isles. Those on the tour included Virginia Bowers, Jane Rudd, Lucy Smith, Ruby Lee Kerr, Jerry Mayo, Jean Allison, and Sammy Allison from Muleshoe, Susie Spain of Olton, Hazel West of Vancouver, Washington, Gaynell Pitts of Hughes Springs, Texas, (both formerly of Muleshoe), Esther Green of Kerrville and myself.

Those of us from Muleshoe arrived at Lubbock Regional Airport between 1:00 p.m. and 2:00 p.m. We were all eager except that we were to face the challenge of the "American Eagle" at 3:00. The little plane landed and we said goodbye to our relatives. We walked down the steps, out to the plane, then up the steps into the three-across fourteen-row turbo airplane. After sitting fifteen minutes, we were told the flight stewardesses seat would not unlock so we would have to unload while they tried to repair it, then we could reload or if it could not be repaired we would have to wait until 6:05. Our problem was we were to depart for London at 5:30. After about thirty minutes the pilot received permission to tie the seat and the stewardess could sit in a passenger seat. Everyone said goodbye again! We were on our way! They called ahead for assistance for us. When

we arrived we had to take a bus to the terminal to get to Gate One!! We again walked up a couple flights of stairs and, of course, no one was there in a cart to greet us. We landed about 5:10. We walked until we were to Gate Nine and we commandeered a cart. We arrived at Gate Twenty-three at 5:25. They were waiting for us to arrive. The nine of us were to have met the three others outside the gate but they were on the plane waiting. Esther, Gaynell, and Hazel had talked to the steward and told him if we didn't get there in time that they would get off the plane. He called and told them we had landed so everyone felt better. We met a happy group on the plane and made introductions and then we were off. We were all on the last two rows.

Cont. Page 6, Col. 1



JAY MESSENGER

June Rainfall
4.86 Inches
1992 Moisture To Date
15.17



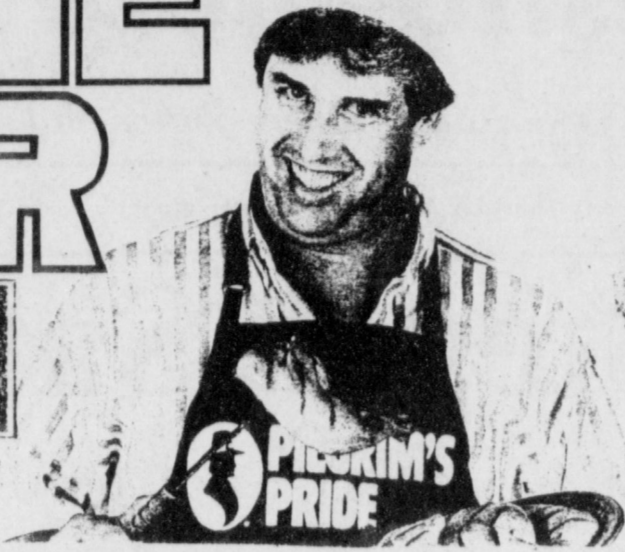
TAKING OATH OF OFFICE---Tim Campbell, Left, president of the Muleshoe Area Hospital District board, administered the oath of office to Rual Trevino at the last Hospital Board Meeting. (Journal Photo)



Attend
Celebration
Thursday, Friday & Saturday



SHURFINE SUMMER SALE



HEAVY GRAIN FED BEEF
Whole Boneless TOP SIRLOIN **\$1.99** LB.

HEAVY GRAIN FED BEEF BONELESS Top Sirloin Steak **\$2.49** LB.



U.S.D.A. GRADE "A"
WHOLE FRYERS
49¢ LB.

SUMMER-VALUES

NEW SHURFINE MEAT ITEMS Fully Cooked . . . Ready to Heat and Serve

SHURFINE Hot & Spicy Wings \$1.99 LB.	A FAMILY FAVORITE Shurfine Meatballs \$1.79 LB.
SHURFINE Chicken Breast Patties \$2.09 LB.	SHURFINE Chicken Breast Nuggets \$2.19 LB.

SHURFINE SALAMI OR PICKLE & PIMENTO LOAF
Luncheon Meats
99¢ 12 OZ. PKG.

SHURFINE
Turkey Ham
\$1.59 1 1/2 TO 2 LB. AVG. LB.

SHURFINE
Meat Bologna
79¢ 12 OZ. PKG.

SHURFINE BEEF, CHICKEN, HAM, CORNED BEEF, PASTRAMI, TURKEY
Thin Sliced Meats
39¢ 2.5 OZ. PKG.



SHURFINE
MEAT FRANKS
49¢ 12-OZ. PKG.

SHURFINE
SLICED BACON
\$1.29 1-LB. PKG.

SHURFINE Ham Salad 99¢ 7.5 OZ. CTN.	SHURFINE Chicken Salad 89¢ 7.5 OZ. CTN.	SHURFINE JALAPENO OR PIMENTO Cheese Spread 99¢ 7.5 OZ. CTN.
---	---	---

SHURFINE ASSORTED
Soda Pop
689¢ 12-OZ. CANS FOR

SUMMER FRESH PRODUCE

SWEET RED RIPE Watermelon
\$1.29 20 LB. AVG. EACH

Sweet Juicy Cantaloupe **3\$1** LBS.
Red Ripe Tomatoes **49¢** LB.

SHURFINE
Charcoal Briquets
\$1.39 10 LB. BAG

SHURFINE
Tomato Ketchup
79¢ 32 OZ. BTL.

Soft Spread
99¢ 3-LB. TUB

SHURFINE CREAM STYLE OR WHOLE KERNEL
Golden Corn Cut Green Beans, Pork & Beans
399¢ 15 TO 16-OZ. CANS FOR

SHURFINE REG. OR NATURAL
Apple Sauce
89¢ 25 OZ. JAR

SHURFINE PLAIN AND COLORED
Ice Cream Cones
59¢ 12 CT. PKG.

SHURFINE
Grape Juice
\$1.49 48 OZ. BTL.

SHURFINE SWEETENED
Condensed Milk
99¢ 14 OZ. CAN

SHURFINE
Evaporated Milk
89¢ 12-OZ. CAN

SHURFINE
Shur Saving Nacho Chips
\$1.99 3-LB. BAG

SHURFINE
Liquid Bleach
79¢ GAL. JUG

SHURFINE CHOKY OR SMOOTH
Peanut Butter
\$1.49 18-OZ. JAR

FROZEN FOODS

SHURFINE ASSORTED
Ice Cream
\$1.59 16-OZ. PKG.

SHURFINE CHOCOLATE SYRUP
\$1.29 24 OZ. CTN.

SHURFINE REG. OR PINK
Lemonade
59¢ 12-OZ. CAN

SHURFINE
Tater Nuggets
\$1.29 24 OZ. BAG

SHURFINE
Fudge Bars
99¢ PKG. OF 6

SHURFINE VEGETABLES
89¢ 16-OZ. PKG.

- CUT GREEN BEANS
- MIXED VEGETABLES
- GREEN PEAS
- WHOLE KERNEL GOLDEN CORN

FRESH FROM THE FIELD
Radishes **49¢** BUN.
Yellow Squash **69¢** LB.
Zucchini Squash **69¢** LB.
Avocados **3\$1** 3 OR 4.
Cauliflower **99¢** EA.
Salad Mix **\$1.19** EA.
Cole Slaw Mix **89¢** EA.
Baby Peeled Carrots **89¢** 1-LB. BAG.

Yellow Onions **4\$1** LBS.
FRESH Green Onions **3\$1** BUN.
Sweet Fresh Corn **4\$1** EARS.
Fresh Head Lettuce **69¢** EA.
Honey new Melon **49¢** LB.

FRESH
Peaches
69¢ LB.

FRESH
Red Plums
69¢ LB.

THOMPSON
Seedless Grapes
99¢ LB.

SHURFINE
Foam Cups
89¢ 20-CT. 15-OZ.

SHURFINE WHITE
Facial Tissue
79¢ 250-CT. BOX

SHURFINE 9-INCH PAPER
Heavy Duty Plates
\$1.99 10-CT. PKG.

SHURFINE HEAVY DUTY
Aluminum Foil
\$1.39 18" WIDE 37" LONG

SHURFINE ASSORTED
Potato Chips
69¢ 7-OZ. BAG

SHURFINE
Mac & Cheese Dinners
99¢ 7.25-OZ. BOX

SHURFINE WATER PACK ONLY
Chunk Light Tuna
289¢ 5.5-OZ. CAN

SHURFINE
Saltine Crackers
59¢ 16-OZ. BOX

SHURFINE LIQUID
Laundry Detergent
\$2.99 48 OZ. BTL.

SHURFINE HEAVY DUTY COMBO PACK
Spoons and Forks
69¢ 24 CT. PKG.

SHURFINE
Blended Cat Food
\$1.89 3.5-LB. BAG

SHURFINE LEMON
Auto. Dish Detergent
\$1.79 9-OZ. BOTT.

SHURFINE
Sugar Frosted Flakes
\$2.29 9-OZ. BOTT.

SHURFINE
Corn Flakes
\$1.29 9-OZ. BOTT.

SHURFINE
Paper Towels
299¢ ROLLS FOR

SHURFINE ASSORTED
Ultra Laundry Detergent
\$1.49 42 TO 48 OZ. BOX

SHURFINE HAMBURGER SLICED
Dill Pickles
89¢ 32 OZ. JAR

SHURFINE
Shurfine Dog Food
\$3.89 70-LB. BAG

SHURFINE
Barbecue Sauce
99¢ 16-OZ. BTL.

SHURFINE
Salad Dressing
99¢ 32-OZ. JAR

SHURFINE
Shurfine Flour
\$3.99 5-LB. BAG

SHURFINE
Sauerkraut & Cut Beets
99¢ 3 CANS FOR

SHURFINE
Hominy or Blackeye Peas
99¢ 3 CANS FOR

SHURFINE SWEET RELISH
Pitted Olives
\$1.19 19 OZ. JAR

SHURFINE
Lemon Juice
\$1.39 12 OZ. BTL.

SHURFINE
Sauerkraut & Cut Beets
99¢ 3 CANS FOR

SHURFINE
Hominy or Blackeye Peas
99¢ 3 CANS FOR

SHURFINE SWEET RELISH
Pitted Olives
\$1.19 19 OZ. JAR

SHURFINE
Lemon Juice
\$1.39 12 OZ. BTL.

Lowe's Pay-n-Save MARKETPLACE

PRICES EFFECTIVE
 JUNE 28-JULY 4, 1992

ALL FLAVORS
COCA-COLA
 6 PK./12 OZ. CANS 3 LTR. BTL.
\$1.49 **\$1.79**

WE RESERVE THE RIGHT TO LIMIT QUANTITIES IN TEXAS

HAPPY FOURTH OF JULY



THE CLASS OF 1942--is holding its 50 year reunion July 4 at the Depot. Muleshoe High School graduating seniors that year were (left to right, top to bottom): Estral Peel, Norma Lee Pool, Lonnie Wilhite, Mary Dale Gean, Leona Bartley, Vivian Harris, Helen Arnold, Robert Trapp, Theresa Pierson, Pinky Barbour, Ruth Heard, Howard Ashley, Wilma Carter, Mary Francis King, Sybil Brown, DeAlma Vaughn, Ima Jean Briscoe, Wynelle Eskridge, Spud Thomas, Jack Williams, principal, W. C. Cox, superintendent, P. C. Windsor, sponsor, Dixon

Wagon, Gloria Gowdy, Fern Smith, T. M. Cox, Josephine Jesko, Mary Sue Osborne, James Hall, Fern Graham, Betty Jo Jordan, Ansel Ashford, Jane Wooley, Orene Tipton, Ross Glaze, Mary Jesko, Harry Walker, Barbara Mae Morris, Alvis Newton, Lois Howard, Geraldine Taylor, Earl Schmitz, Doris Gordon, Raymond Loe, Dorothy Cox, James Jennings, Willodyne Gatewood, Troy Jordan, Lois Renfro, Sam Damron, Boyd Lowery, Ruth Day, James Bentley, Dortha Hardage, Claude Garth. Not pictured: Tommy Haley and Sarah Heard. (Guest Photo)



Noemi Sanchez

Shower Honors Sanchez

A baby shower honoring Noemi Sanchez was held at the Catholic Center Saturday, June 27 from 2 to 4 p.m. Guests were greeted by Venessa Bustillos and the honoree. Guests were registered by Venessa Bustillos.

Server was Hilda Valles, cousin of the honoree from Plainview. The serving table was covered with an off white linen cloth. Appointments were of crystal and silver. The arrangement was a ceramic bassinets and train filled with ivy.

Nuts, mints, assorted cookies, lime sherbet punch and cake were served.

Honoree's corsage was of blue, white, and yellow baby's booties with ribbons of the same colors.

Hostess gift was a maternity

gown, play pen, swing, diaper bucket filled with assorted lotions, powders and bath toys.

Special guests were Irma Acosta, the honoree's mother; Cuca Sanchez, the honoree's mother-in-law; and Irene and Hilda Valles, cousins of the honoree from Plainview.

CALENDAR OF EVENTS

Thursday, July 2

- 12 noon American Cancer Society
- 2 p.m. Muleshoe Hobby Club
- 6:30 p.m. TOPS
- 7:30 p.m. Muleshoe Mule Skinners
- 7:30 p.m. Oddfellows Lodge

Friday, July 3

- 6:30 a.m. Kiwanis

Sunday, July 5

- 2 p.m. Guadalupe Society

Tuesday, July 7

- 12 noon-Rotary
- 7:30 p.m. Rebekah Lodge
- 7:30 p.m. Beta Sigma Phi (Alpha Zeta Phi and Zeta Rho)
- 8 p.m. Eastern Star

Wednesday, July 8

- 12 noon-Lions

Ritzy Lady

Linda Goen, Owner Kathryn Day, Manager

508 Phelps Ave. Littlefield, Texas 385-3818

Store Hours Monday Thru Saturday 9:30 - 6:00

Will Be Open Saturday, July 4

Savings Everyday. Everything that arrives is immediately discounted 20%.

You do not have to wait for a sale!

Featuring Brands By: Prestwyck, Eagle Eye, Sharon Young, Justice Co., Carolyn Rothwell, Alexander Brown, Pine Cove

We offer: Free Alterations, Free Gift Wrapping, Lay-A-Way, Visa, MasterCard, Discovery

Muleshoe Journal (ISSN 0025-5718) Published February 21, 1992. Published by Muleshoe Publishing Co., Inc., 401 Main, P.O. Box 443, Muleshoe, Texas 79347. Second Class Postage Paid at Muleshoe, Texas 79347.

MEMBER 1992 TEXAS PRESS ASSOCIATION

L. B. Hill, Publisher
 Kaye Hill, Vice-President/Comptroller
 Evelyn Harris, News Editor
 Joyce Adams, Secretary
 Holly Milroy, Advertising Manager
 Diana Bernice, Classified Manager
 Muleshoe Journal and Baby's Own Journal
 Dallas and surrounding counties.
 By Mail \$12.95
 Muleshoe Journal and Baby's Own Journal
 Everywhere.
 \$17.50
 Muleshoe Journal and Baby's Own Journal
 B. Carter Yearly \$14.00
 Advertising Rates Listed on Application
 Subscribers should check their ad the first day of insertion. If it is not there, they should check again on the second day. If it is not there on the third day, they should check again on the fourth day. If it is not there on the fifth day, they should check again on the sixth day. If it is not there on the seventh day, they should check again on the eighth day. If it is not there on the ninth day, they should check again on the tenth day. If it is not there on the eleventh day, they should check again on the twelfth day. If it is not there on the thirteenth day, they should check again on the fourteenth day. If it is not there on the fifteenth day, they should check again on the sixteenth day. If it is not there on the seventeenth day, they should check again on the eighteenth day. If it is not there on the nineteenth day, they should check again on the twentieth day. If it is not there on the twenty-first day, they should check again on the twenty-second day. If it is not there on the twenty-third day, they should check again on the twenty-fourth day. If it is not there on the twenty-fifth day, they should check again on the twenty-sixth day. If it is not there on the twenty-seventh day, they should check again on the twenty-eighth day. If it is not there on the twenty-ninth day, they should check again on the thirtieth day. If it is not there on the thirty-first day, they should check again on the first day of the following month. If it is not there on the second day of the following month, they should check again on the third day of the following month. If it is not there on the fourth day of the following month, they should check again on the fifth day of the following month. If it is not there on the sixth day of the following month, they should check again on the seventh day of the following month. If it is not there on the eighth day of the following month, they should check again on the ninth day of the following month. If it is not there on the tenth day of the following month, they should check again on the eleventh day of the following month. If it is not there on the twelfth day of the following month, they should check again on the thirteenth day of the following month. If it is not there on the fourteenth day of the following month, they should check again on the fifteenth day of the following month. If it is not there on the sixteenth day of the following month, they should check again on the seventeenth day of the following month. If it is not there on the eighteenth day of the following month, they should check again on the nineteenth day of the following month. If it is not there on the twentieth day of the following month, they should check again on the twenty-first day of the following month. If it is not there on the twenty-second day of the following month, they should check again on the twenty-third day of the following month. If it is not there on the twenty-fourth day of the following month, they should check again on the twenty-fifth day of the following month. If it is not there on the twenty-sixth day of the following month, they should check again on the twenty-seventh day of the following month. If it is not there on the twenty-eighth day of the following month, they should check again on the twenty-ninth day of the following month. If it is not there on the thirtieth day of the following month, they should check again on the first day of the following month. If it is not there on the second day of the following month, they should check again on the third day of the following month. If it is not there on the fourth day of the following month, they should check again on the fifth day of the following month. If it is not there on the sixth day of the following month, they should check again on the seventh day of the following month. If it is not there on the eighth day of the following month, they should check again on the ninth day of the following month. If it is not there on the tenth day of the following month, they should check again on the eleventh day of the following month. If it is not there on the twelfth day of the following month, they should check again on the thirteenth day of the following month. If it is not there on the fourteenth day of the following month, they should check again on the fifteenth day of the following month. If it is not there on the sixteenth day of the following month, they should check again on the seventeenth day of the following month. If it is not there on the eighteenth day of the following month, they should check again on the nineteenth day of the following month. If it is not there on the twentieth day of the following month, they should check again on the twenty-first day of the following month. If it is not there on the twenty-second day of the following month, they should check again on the twenty-third day of the following month. If it is not there on the twenty-fourth day of the following month, they should check again on the twenty-fifth day of the following month. If it is not there on the twenty-sixth day of the following month, they should check again on the twenty-seventh day of the following month. If it is not there on the twenty-eighth day of the following month, they should check again on the twenty-ninth day of the following month. If it is not there on the thirtieth day of the following month, they should check again on the first day of the following month.

Larry's Bar B-Q Wagon Will Be At Joe's Boot Shop July 2,3,4!

<p>1/2 Beef \$1.55 lb. Cut & Wrapped To Your Specifications!!</p>	<p>KC. Strips By The Loin \$3.99 lb.</p>
<p>Pork Spare Ribs By The Side \$1.29 lb.</p>	<p>West Texas Seasoning Salt \$2.25 1 1/2 lb. Fresh Ground Cross Black Pepper \$3.75 1 lb.</p>
<p>Hamburger Patties (2 lb. pkg.) \$1.69 lb. 3-1 4-1</p>	
<p>Winkler's Own Breakfast Sausage 6 Lb. Box Sliced \$1.50 lb.</p>	<p>German \$1.99</p>

Winkler's Meat Co.
 401 Main 272-4703



Mia Jennings

Mia Jennings To Compete In Scholarship Pageant

Mia Jennings, daughter of Mr. and Mrs. Joe Bryan Jennings of Lazbuddie, will compete in the Miss Texas Scholarship Pageant July 5-July 11 in the Tarrant County Convention Center in Fort Worth.

Mia won the title of Miss Lake Meredith by competing in the Miss Texas Preliminary last November in Borger.

The Miss Texas/Miss America Pageant involves four areas of competition. A 10-minute private interview with the judges composes 30%, talent provides 40%, and evening gown and swimsuit comprise 15% each.

For talent, Mia will perform at the piano "Rhapsody in Blue," by George Gershwin. Mia's first piano teacher, Dr. Cecil Bolton of Oxford, Mississippi, edited the piece for her, and Bob Wood of Nashville, Tennessee, recorded a background orchestral accompaniment tape. Mia will perform her talent competition on Friday evening, July 10, at the pageant.

Mia will be a junior at Baylor University where she is a Dean's Honor Roll student majoring in accounting with a piano performance minor. At Baylor, Mia is a member of Delta Delta Delta, Gamma Beta Phi, Alpha Lambda Delta, Mu Phi Epsilon,

Swimmers Not Only Candidates

Swimmers aren't the only candidates for swimmer's ear, a potentially dangerous condition caused by moisture in the ear canal.

"Swimmer's ear is not really a sports-related condition," says Dr. Dan Franklin, an otolaryngologist at The Methodist Hospital. "Anyone who takes a shower, perspires when exercising, or, for that matter, lives in the humidity of Houston get it."

Swimmer's ear is a layman's term for inflammation and infection in the external ear canal. It happens when water breaks down natural skin barriers, allowing bacteria to infect the ear's soft tissue.

Pain in the ear is the most common symptom of the condition. Other, less common symptoms can include fever and hearing loss.

Franklin says swimmer's ear is usually preventable by keeping the ear dry. "Over-the-counter ear drops containing acid and alcohol can help keep the ear dry," he says. "But once an infection sets in, you should see a physician."

Treatment is two-pronged: keeping the ear canal clean, and applying antibiotic ear drops.

Franklin issues a special warning for people with immune system deficiencies, such as diabetics, leukemia patients, and organ transplant recipients. "If these people have symptoms of swimmer's ear, they should see a physician immediately and receive aggressive treatment," he advises. "Otherwise, the infection can spread to the bones of the ear and become very difficult to get rid of."

That parliament votes to cut military power.

ATPE News Features Listing

For the fifth straight year, ATPE News, the official publication of the Association of Texas Professional Educators, has published a job listing featuring education positions available throughout the state. The nine-page listing, which can be found in the May/June issue of ATPE News, contains jobs available for the 1992-93 school year.

The ATPE job listing is published twice a year in the May/June and November/December issues of ATPE News. It also is updated on a monthly basis and is available free of charge to ATPE members, as well as non-members. Copies of the job listing can be obtained from the ATPE state office by calling 1-800-777-ATPE.

Also in the May/June issue of ATPE News is a cover article that answers the question "Are today's students falling behind in the quest for physical fitness?" Unfortunately, the answer is yes. Instead of getting in a few laps at the track or at the swimming pool, the majority of America's youngsters are spending hours each day in front of the television. The importance of physical fitness for children is emphasized in the article; tips for parents and schools in promoting healthy lifestyles also are included.

The May/June ATPE News also contains an article addressing school policymaking concerning suspected child abuse; a column discussing school district responsibility in providing the 20 hours of staff development required by the 72nd Legislature; and a preview of the 1992 ATPE Leadership Workshops, which will be held in July at seven locations across Texas.

ATPE is the largest independent, nonunion educators' association in the state and nation. Its membership consists mostly of classroom teachers but also includes administrators, paraprofessionals, retired educators, education students and public members.

ATPE News is published five times a year by ATPE. Subscriptions are \$10 per year and

are available by writing to the Editor, ATPE News, 505 E. Huntland Drive, Suite 250, Austin, TX 78752-3792.

You Said It

After all is said and done, you usually find more has been said than done.
-Times, Marshalltown, Ia.



Keanu Daniel Espinoza

Arturo and Eliza Espinoza of Muleshoe announce the birth of a son, Keanu Daniel Espinoza. The child was born June 22 at 4:19 p.m. and weighed 7 lbs., 14 oz.

Grandparents are Juana Maria Reyes of Bovina and Hugo and Rosario Espinoza of Uvalde. Great grandparent is Mario De Los Angeles of Bovina.

Soviet files yield info on Nazi war criminals.

HAPPY FOURTH OF JULY

We Will Be Open 4th of July!

Register To Win

\$50 Worth of Lottery Tickets & A \$50 Gift Certificate from Connie's Place
Drawing To Be Held Saturday, July 4th at 1:00 p.m.



Lee Britting, Ricki Finlan, Tammy Flores & Steve Kennedy Buffet:

Chicken Fried Steak with potatoes, vegetables, salad bar and dessert

Call-in Orders Welcome - Open 5:00 - 4 p.m.

Connie's Place

Owner - Connie Dominguez
121 Main Muleshoe 272-3126

Annual Summer Sale

Fantastic Savings On All Summer Fashions
We Will Be Closed Saturday July 4th

Tiffin II of Earth

257-2223

Thurs. • Fri. • Sat.

Also!! OPEN The Next Few Sundays For Your Shopping Convenience 12 to 4 p.m.

2nd
3rd
JULY



BARGAIN

4th

DAYS

EVERYTHING'S ON SALE

MEN'S ★ WOMEN'S ★ KIDS'

- ★ ALL SHORTS, SWIMWEAR, SKIRTS & TANKS
- ★ ALL KNIT SHIRTS, SPORT SHIRTS & DRESS SHIRTS
- ★ ALL ACCESSORIES & FURNISHINGS
- ★ ALL DRESS, CASUAL & ATHLETIC FOOTWEAR
- ★ ALL DRESSES, SEPARATES & COORDINATES

ANTHONY'S

SAVE UP TO 50% OFF REGULAR PRICE

Excluding:
Every day Low Priced
\$99.99 Womens Coats
\$109.00 Mens Leather Coats
Stuff Shirts Stripped Shorts

PLUS We've taken an Extra 25% Off every Yellow Ticket item!

Exclude Already Advertised Items



Lisa Noble

Shower Honors Lisa Noble And Chaun Gunstream

A bridal shower honoring Lisa Noble and Chaun Gunstream was held Sunday, June 28 from 2-3:30 p.m. in the home of Ben Green.

Guests were greeted by Lisa Noble, Debra Noble, Jill Noble, Bonnie Green, Jeanine Gunstream, and Tonda Outlaw. Guests were registered by Jill Noble. Servers were Sharla Saylor and Marsha Watkins.

The tablecloth for the serving table was of white linen. Appointments were of brass and crystal. The arrangement was of Swedish green ivy with brass candles and green napkins.

Lemon nut iced tea and hazelnut coffee with apricot bars, sand tarts

and apricot thumbprint cookies were served.

The honoree's corsage was of clusters of small mauve silk roses. The hostess gift was a Hoover vacuum cleaner.

Special guests were Nona Griffin, Jill Noble, Tanya Outlaw, Dean Gunstream, and Pearl Gupton.

Hostesses were Nancy Barnhill, Sue Bessire, Diane Brown, Judy Cox, Billie Downing, Linda Elder, Bonnie Green, Karen Harris, Connie James, LaVerne James, Pat King, Fran O'Grady, Helen Redwine, Sherry Shipman, LaNell Skaggs, Shelia Stevenson, Pat Watson, Judy Wilbanks, Carol Williams, Terri Young.



Donae Parker

Shower Honors Donae Parker

A bridal shower honoring Donae Parker was held from 2 to 3:30 p.m. Sunday, June 28 at the 16th and Ave. D Church of Christ Friendship Room.

Guests were greeted by Donae and her mother, Jean Parker. Guests were registered by Erin Wilhite.

Servers were the hostesses. The tablecloth was of white lace and linen. Silver and crystal appointments were used. The arrangement was in teal and peach.

Punch, thumbprint cookies, nuts

and mints were served. The honoree's corsage was of white carnations with teal and peach accents.

Hostess gift was individual gifts from the hostesses.

Special guest was Donae's grandmother, Robin Taylor.

Hostesses were Millie Throckmorton, Janie Hughes, Juanna Shelburne, Juarie Smallwood, Nelda Wilhite, and Clara Harbin.



FAMILY SINGERS--the Barry Cowart family presented several Christian music selections at the noon luncheon of the American Association of Retired Persons held June 26 in the Bailey County Civic Center. Among the selections were "He's Still Working On Me," "People Need the Lord" and "Jesus Loves Me." Pictured are (back row): John Bryan, 13 and Jo Ellen; (front row): Amber, 5; Joel, 7; Barry; and Robin, 11. Cowart is a veterinarian here. (Journal Photo)



GARDEN SPOT OF THE WEEK--is the home of Mr. and Mrs. Doyle Turner on the Plainview Highway. The award is made by the Jennyslippers Organization. (Journal Photo)

Good News Department

Ex-Patient Returns to Shriners Hospital



Former patient and beloved "Shriners Kid," Juana, (center, in

wheelchair) was the focus of a special get-together recently with the staff of the Intermountain Unit of Shriners Hospitals for Crippled Children in Salt Lake City, Utah. As a child in Bolivia, Juana was critically burned and, because of a subsequent infection, had to have both of her legs amputated. She was eventually brought to the Shriners Hospital for treatment, where her zest for life never wavered. During her three-year stay, the longest of any child at the hospital, Juana brightened many lives. She remains a source of great pride for her two families--the one in Bolivia and the other in Utah, where she's now pursuing a master's degree in child development at Utah State University.

Misty Bartley Makes Honor Roll

Misty Bartley of Sudan, a student attending Angelo State University in San Angelo, is listed on the honor roll for the spring semester at the university.

Ms. Bartley, daughter of Mr. and Mrs. Gene Bartley of Sudan, is a marketing major at ASU, and is listed on the 3.50 to 4.00 honor roll.

Luck is often the product of attention and ability.

Robert Woodson Sr., president, National Center for Neighborhood Enterprise:

"These people (organizations seeking more welfare money) have been pushing programs and solutions that are in essence dependency-producing programs."

Very few realize that the dictionary is a good book to study.

Summer Time Specials

*Jewelry, Purses, Cosmetics
Ladies & Children's Clothes*

Spring & Summer

25% to 50% off

Latrell's Fashions

Phone 272-3459 1519 West American Boulevard
Open Daily 10:00 a.m. - 6:00 p.m.

Ben Franklin

Better quality for less
Mon-Sat. 8 a.m.-8 p.m.
Sun. 12-5 p.m.
2104 W. Amer. Blvd. 272-3588

INDEPENDENCE DAY BLOWOUT

Check Our Parking Lot Specials

Large Group Household Items

75% off

Large Group Assorted Merchandise

50% off

McCalls Patterns (excluding Stitch & Save & McCall Crafts) 3 days only

75% off

Fabrics solids & prints, 44 to 45 inches wide wide assorted blends

99¢ yd.

3 days only Wicker Baskets

25% off

Portable Reg. 29.99 Foldaway Table 3 days only

19.99

Vinyl Stack Yard Chairs Reg. 13.97

7.77 each

Portable, Baked Enamel on Steel 170 sq. inches Cooking Surface Reg. 19.99 Gas Grill

14.99

3 days only

100 page Reg. 5.99 Photo Albums

3.99

Hyonex 2 Cu. Ft. Pine Bark Nuggets

3.77

Prices Good Friday, Saturday & Sunday Only!
Open July 4th 8 a.m. to 6 p.m.

Britannia

Cont. From Page 1

but we were off. We all had cokes, etc. and waited for dinner. It was delicious: fillet mignon, carrots, potatoes, broccoli, rolls, cheese, and ice cream. Then I began to feel decent and I could feel the stress leaving my body. I just didn't think we would make the plane. I set my watch ahead six hours to match London time. So at 9:00 p.m. our time changed to 3:00 a.m. We flew over Detroit, Michigan, and Montreal, Canada, on the way over. Esther and I had a nice visit and then we were ready to try to sleep.

Day 2-Friday

We had an excellent breakfast after a rather sleepless night. We were to arrive at 8:45 a.m. So the flight was approximately nine and one-half hours. We flew over Ireland and could see it clearly. As we were approaching Gatewick, we flew into a heavy bank of clouds, so I think we actually did not land until a little after 9:00. Apparently another plane or two came in at the same time because it took over an hour to go through customs. We met Jan, our tour guide, after we picked up our suitcases. I could tell immediately that we had a "winner" in a tour guide. We went to the coach and drove into London. This took over an hour. We were fortunate about our hotel and its location. Hotel Rubens was on Buckingham Palace Road just across from the Royal Mews and Buckingham Palace.

We checked into our hotel and then met several others and went to Harrod's Department Store. Harrod's is the largest department store in the world. The food department has always been my favorite part. We each bought some tea and an item or two and took a taxi back to the hotel at 4:00. We showered and changed for dinner at 5:30 at the LeCasion. Before leaving for dinner we met the other group with whom we were to travel. The other two groups were from Louisville and Paducah, Kentucky. We surely

Storm...

Cont. From Page 1

Sunday morning water was still rushing across 1760, just like a river, at one point up on the fenders of cars. Most of the travelers were turning around rather than attempting to cross, while those that did cross crept across. A number of dirt roads were flooded, from side to side, giving the effect of a river.

Hail damage could also be seen to young corn along 1760.

The large siren was sounded and all storm shelters were opened, warning Muleshoe residents to take cover, when it was reported that a tornado was spotted at Clay's Corner and it was headed toward Muleshoe. Muleshoe received 1.1 inches of rain. Storm clouds also hit the Lazbuddie and Y.L. area. The Journal talked to Foster Fertilizer Monday morning and a spokesperson told the Journal they received about three inches of rain and some hail Saturday night.

Marilyn Gable, in the Y.L. Community reported that they had two and a half inches of rain and hail.

Mrs. Larry Kemp stated that they lost their cotton earlier in the year and replanted it with maize. Saturday night they lost their maize to the hail.

On the Don Bryant farm, they had from slightly over one and half to two and half inches of rain and hail. Mrs. Bryant stated that they lost their soybeans in the hail storm. They also received hail on their corn.

enjoyed both groups. We had beet stroganoff with rice and I thought it was good but apparently no one else liked it. We had trifle for dessert—and this ended up being the dessert for several nights I think. The restaurant was a small one with pink tablecloths with old wine bottles for candle holders. We were back to our hotel by 8:00, and we were a very tired bunch of travelers. Esther, my sister, and I were sleepy so it didn't take us long to get to bed.

EDITORS NOTE: The story will continue in Sunday's edition of the Bailey County Journal. Beginning with Saturday.

Muleshoe...

Cont. From Page 1

The Bailey County 4-H'ers will have a concession stand at the new City Park on the Fourth of July and will be open from 6 p.m. until the fireworks.

You are asked to take your family, class reunions, visitors, to the concession stand for a cook out!!

The 4-H Exchange Group will be selling hamburgers, cooked on charcoal, hot dogs, chili dogs, sausage on a stick, and Lots of French Fries, plus cold drinks for your picnic convenience.

The Muleshoe Kiwanis will host a Miniature Golf Tournament on July 4th.

Couples-Low Ball will be \$5.00 per couple and trophies will be awarded to the first, second and third place teams.

Sign up starts at 3:30 p.m. and play begins at 4:00.

The Kiwanians would like to remind you that all money spent to the Kiwanians is spent in Muleshoe.

Terry Darling of Lazbuddie has been named to the 1992 Six-Man All-Star Basketball Teams. The All Star games will get underway at 8 p.m. Friday, July 17 in the DL Ligon Coliseum at Wichita Falls.

Efrain Guillen of Three Way has been named to the 1992 Six Man Football Team. His game will get underway at 7 p.m. Saturday, July 18 in the Memorial Stadium in Wichita Falls.

Tickets to these games are \$5.00 for adults; \$3.00 for children and military; and children under six are free.

Messenger...

Cont. From Page 1

"Messenger will have an opportunity to make many new friends and see agriculture and other issues from many different viewpoints," said Sykes. "The seminars will provide him with 10 years of experience within the two-year period."

Those interested in TALL should contact Sykes at the Texas Agricultural Extension Service, 103 Administration Building, College Station, Texas, 77843.

Noisy people wonder why anyone desires to be quiet.

Courtesy is a virtue that seems to be on the wane.

There's little honesty left in conversations these days.

A good dog is usually worth twice his weight in good friends.

Never get mad with an individual who does not know as much as you do.



CORN TAKES A BEATING---This corn field on 1760 took a beating during the storms Saturday night. (Journal Photo)

Sudan Celebrates 75th Anniversary

Sudan celebrated its 75th anniversary Saturday with an all day celebration. Downtown Sudan was filled with live music and hundreds of townspeople and former residents from as far away as Hawaii and Virginia.

Sudan High School graduates from a half century ago and earlier gathered at Sudan Hotel or the Senior Citizens' Center to reminisce and chat while the children enjoyed stick-horse races, a tractor pull and water polo.

Sudan had a population of 1,400 people in 1950 but that figure dipped to under 1,000 at the last census. But some of the longtime residents say, its the town's friendly nature that has attracted people over the years. As one Sudan resident who has lived in Sudan since 1923 put it, it's a friendly place. It's a good place to raise kids."

Waymon Gordon, a retired service station owner and a 1933 graduate of Sudan High School, said life in a small town has agreed with him for the six plus decades that he has lived in Sudan.

"I like living in a small town," Gordon said.

Jonelle Bandy married and left Sudan after high school and she and her husband moved back to Sudan three different times before permanently settling there in 1970.

Mrs Bandy said that she had always said as a kid that she would never move back to Sudan, but she moved back three times.

After graduating from Sudan High School in 1941, Genevieve Kerr worked as city security for two years before moving to Lubbock. She and her husband, who worked in the oil patch traveled across the United States for several years. Mrs. Kerr said she returned to Sudan four years ago to care for her ailing mother, who died in December. "The town has changed considerably, we used to have four cotton gins. In 1941, on a Saturday afternoon, you had wall-to-wall people downtown," Ms. Kerr said. "Everyone would come to town, and the stores would stay open until midnight."

Ms. Kerr said one thing has not

July Fourth

Travelers Warned

The Fourth of July is one of the most highly celebrated of all holidays throughout the United States, and rightly so. This occasion should be remembered and should be celebrated, because of the rights and the freedoms that each of us possess.

We are also reminded this time each year that far too many will not have much to celebrate about in this great State of Texas. Major Vernon Cawthon, Regional Commander of the Texas Department of Public Safety, states, "at least 50 percent of all traffic deaths are alcohol related and during this holiday many people will celebrate this holiday by consuming alcoholic beverages. We urge those that drink to plan their celebrations and to always have a sober driver behind the wheel of their automobiles, if the automobiles must be used. For everyone to remember, if you drink, don't drive—if you drive, don't drink. Become a responsible person, if you are going to drink, help us protect you as well as the other people, on our state streets and highways."

Major Cawthon said, "Remember to obey all traffic laws and to use that little piece of insurance that is lying right beside you, buckle that safety belt. It costs no money and only takes about two seconds to insure yourself. So, let's all have a happy and enjoyable holiday."

changed in Sudan in more than 50 years, is the town's friendly people.

"I never thought I'd come back and live in Sudan, but I still have lots of friends here," she said.

School...

Cont. From Page 1

At its meeting on July 20, the Board will consider appointing an advisory committee of citizens to review this data and make recommendations to the Board on possible changes. Any citizen wishing to be considered for service on the committee is encouraged to call the Superintendent's office at 272-3389 and leave their name, address, and phone number.

Any changes made in the existing plan must be submitted to the Justice Department for approval.

Every Year

New types of fishing lures are introduced every year, and fishermen continue to bite.

-State, Columbia, S.C.

Bothersome

Conscience is what hurts when everything else feels so good.

-Farm Almanac.

Celebration

Cont. From Page 1

he Bailey County Courthouse at 11 a.m. These games will be sponsored by individual Jennislyper members. Also the Muleshoe Athletic Booster Club will sponsor a Punt, Pass, and Kick Contest, behind Damron Drug Store parking lot, on First Street at 11 a.m.

After all of the activity, you are sure to be hungry and the following organizations will have food and refreshment booths at 12 noon; Rotary Club will be in front of Muleshoe Trade Center; Larry's Red Wagon will be at Joe's Boot Corner; the Cheerleaders will be in front of Damron Drug; Otwell's Caribbean Ice will be in front of Perry's; VFW and American Legion will be in front of Chevrolet Lot; Ed's Sno-cone Van, in front of BB's Bakery; the First Baptist Church will be in front of Anthony's; the Rebekah's in front of Sears; and the Spanish Assembly of God Church will be in front of Damron Drug.

Now it is time to work off some of that food, those of you who can still move. A Dunkin' Tank, sponsored by Leadership Muleshoe and the Chamber of Commerce will be set up next to Perry's, at 1 p.m. Also at 1:00, there will be a Tractor Pull in front of Sears and Muleshoe Trade Center and an open house will be held at the Heritage Complex until 5 p.m.

An old Settlers Reunion will be held at 2 p.m. at the Bailey County Coliseum. A Golf Scramble Tournament at the Country Club and Turtle Race in front of Anthony's and Spudnut Shop is also scheduled for 2 p.m.

An all male Wet T-Shirt Contest, no age limit young and old, will be held at 3 p.m. in the parking lot of Fry and Cox, 401 South First Street. Decorate your own T-shirt and come join in all the fun and laughter. There is a \$2.50 entry fee. There will be a minimum prize of \$25.00 and a dry Muleshoe T-Shirt. This is a family fun event and there are to be no profane or lude T-shirts.

The Muleshoe Volunteer Firemen will challenge any organization to Water Polo at 4 p.m. in front of Winkler's Meat on Main Street.

At 5 p.m. it's time to clean up Main Street.

All activities will move to the New City Park at 6 p.m. There

will be more food and you may relax and enjoy the music, from local entertainers.

A gigantic Fireworks Display, co-sponsored by the Jennislypers and Muleshoe Chamber of Commerce and Agriculture has been scheduled for 10 p.m. in the New City Park. Volunteer Firemen will be in charge of shooting the fireworks.

Following the Fireworks, there will be a Street Dance in front of KMUL Radio Station.

Country recording artist and songwriter, Becky Hobbs and Larry Scott will be at Joe's Boot Shop all day.

There will also be a softball tournament in the New City Park.

Muleshoe's Fourth Annual Remote Control Airplane Show is also scheduled at the New City Park from 9 a.m. to 4 p.m. The first 30 registered pilots will receive a grab bag.



ONE MINUTE SPORTS QUIZ

By Christian Thorlund

1. Who won the French Open women's title?
2. Who won the men's title?
3. What horse won the Belmont Stakes?
4. How old is Dave Winfield (Toronto Blue Jays)?
5. What NFL rookie scored 22 TD's in 1965?

Answers:

1. Monica Seles.
2. Jim Courier.
3. A.P. Indy.
4. 40.
5. Gale Sayers, Chicago Bears.

Small Chance

A chance remark is anything a man manages to say when two women are talking.
-Seagull, Ogden, Utah.

Come One - Come All
And Help
'Salute Our Flag & Our Country'

July 4th
In Muleshoe

Parade Old Settlers Reunion

Lot's of Activities For Every Age!

Mule Shoe Pitching Muleplex Production Fireworks

10K & 2 mile Run

WES-TEX FEED YARDS, INC.

CUSTOM CATTLE FEEDING

272-7555

JONES

PONTIAC • GMC • MAZDA
3300 E. Mabry Drive Hwy 60-70-84
East Clovis 762-2986

Welcomes

Kim Humphreys
Sales Representative

Jones proudly welcomes Muleshoe's own Kim Humphrey's to their sales staff. Kim Invites all her past customers and friends out to see her for their next vehicle.

Jones Pontiac * GMC * Mazda

Eighteen Texas Counties Declared Disaster Areas

Low-interest emergency loans are available to eligible farmers and ranchers in 18 Texas counties that were declared federal disaster areas due to freeze or excessive rain between Sept. 1 and Dec. 31, 1991, Texas Agriculture Commissioner Rick Perry said.

In making the declaration, U.S. Secretary of Agriculture Edward Madigan named Briscoe, Clay, Collingsworth, Floyd, Motley and Young counties as primary disaster areas.

In addition, Armstrong, Baylor, Gary, Hall, Jack, Montague, Palo Pinto, Stephens, Swisher, Throckmorton, Wheeler and Wichita counties were declared contiguous disaster areas.

Cottle, Crosby, Dickens, Donley, Hale, King and Lubbock counties were included under the same disaster under a previous disaster designation.

The U.S. Department of

Agriculture was unable to confirm that sufficient losses were sustained in Childress and Hockley counties due to the drought and freeze

between Oct. 1 and Dec. 31, 1991 to designate those counties as primary disaster areas.

These declarations allow family-size farm operators in both the primary and contiguous areas to apply for emergency assistance from the Farmers Home Administration.

Report Of Crops Daily Potential Water Use

"Don't Pray For Rain If You Don't Take Care of What You Get" is the title of two historical precipitation charts recently published by the High Plains Underground Water Conservation District No. 1, to commemorate its 40th anniversary.

The two charts show respective precipitation amounts for Lubbock and Amarillo as reported by the National Weather Service during the 80-year period from 1911 through 1991.

Precipitation totals have been previously run in the Water District's monthly newsletter, The Cross Section, and have been very popular with readers.

The historical precipitation charts remind people to maximize the free water provided by Mother Nature, which reduces the demand for ground water.

Also, the charts provide a historical record of the average rainfall in the past and can be used by producers to gauge possible amounts of rainfall in the future to help determine how much irrigation will be necessary to maximize crop yields.

"Water conservation is everyone's responsibility. People need to be aware of rainfall amounts, so that they can take them into account when irrigating their lawns and gardens. By not over-irrigating, they can help conserve area water resources," said A. Wayne Wyatt, Water District manager.

Maximum use of rainfall is also important to agricultural producers "Agricultural production can be increased with utilization of precipitation," said Wyatt. One way of utilizing the precipitation is through furrow diking.

Furrow dikes are mounds of soil mechanically installed in the furrow that create small reservoirs to hold rainfall. Research has shown that furrow dikes increase yields. For example, for each inch of water available above the basic water needs for plant development, cotton will yield 30 to 40 pounds of lint per acre.

Selected methods of maximizing rainfall by both farmers and townspeople are illustrated by photos and text along the border of the charts.

"The precipitation charts encourage harvesting and utilizing every drop of precipitation possible. The result will be increased crop yields for farmers, lush lawns and gardens for city residents, and an extension of the life of the High Plains Ogallala Aquifer," said Wyatt.

Copies of the Lubbock and Amarillo historical precipitation charts are free of charge to residents within the 15-county High Plains Water District service area.

Wyatt added that brochures

containing water conservation ideas and suggestions may also be picked up by the public in the reception area of the High Plains Water District office in Lubbock.

For a set of the Lubbock and Amarillo historical precipitation charts, contact the High Plains Underground Water Conservation District No. 1, 2930 Avenue Q, Lubbock, Texas 79405, (806) 762-3181, or visit your local High Plains Water District County office.

To be designated as a primary disaster area, the Farmers Home Administration determines if a sufficient number of farmers in each county suffered losses of 30 percent or more. The counties designated as contiguous disaster were declared so because they were adjacent to the primary disaster area, but did not have the same extent of losses.

Each loan application will be considered on its own merits, taking into account the extent of losses, security available, repayment ability and other requirements.

For more information, producers should contact a local FmHA county office.

Three Way News

by: Mrs. H.W. Garvin

Mr. and Mrs. D. A. Williams from Morton visited her father George Tyson.

Good News Department

Trash Bags Made From Your Recyclables Keep America Cleaner

The pollution solution may be in the bag, experts are saying—the trash

bag, that is.

One way to keep our landfills less full is to recycle our trash instead of just throwing it away and turn it into useful products. A good example of this is the recycling process that leads to the creation of Ruffies® Eco-Choice™ plastic trash bags. New from Carlisle Plastics, Inc., these unique bags are made from film containing at least 33 percent consumer-recycled plastic bottles.

When you buy a plastic milk jug, detergent, water or shampoo bottle, use the contents and throw the bottle away for curbside collection or bring it to a community recycling center, it may be among those purchased by Carlisle and processed in the company's recycling facility. There the bottles are ground, washed and converted into pellets for subsequent blending with a special high-strength plastic to make Eco-Choice bags.

More good news to many is the fact that Eco-Choice bags, which bear the Good Housekeeping seal, are thinner, but just as strong as conventional trash bags, so they contain less plastic—and less material winds up in landfills.

Patients in Muleshoe Area Medical Center

JUNE 26

Raymond Toscano, Maria Sanchez, Mark Goff, Jr., Iva Smith

JUNE 27

Raymond Toscano, Maria Sanchez, Mae Wilterding, Mark Goff, Jr., Iva Smith

JUNE 28

Daniel Ramirez, Ashley Quesada, Mae Wilterding, Wylie Lee, Iva Smith, Maxine Harris

JUNE 29

Daniel Ramirez, Ashley Quesada, Mae Wilterding, Wylie Lee, Iva Smith, Maxine Harris

Letter To The Editor

Wichita Falls Board of Commerce and Industry Convention & Visitors Bureau

June 25, 1992

We are pleased to announce the Texas Six-Man Coaches Association will hold their annual Clinic and All-Star Games in Wichita Falls from July 12 through July 18. This will be a fun-filled week of activities culminating with the exciting All-Star Boys Basketball, Girls Basketball, and Football Games on Friday and Saturday showcasing the finest small school athletic talent in Texas. The Six-Man All-Star Football Game will include a Queen's Ceremony at half-time.

I am enclosing a games flyer, team rosters (Look for your local All-Star Athletes), local press release, and local news article for your information. Please feel free to reproduce the rosters and games flyer in your newspaper.

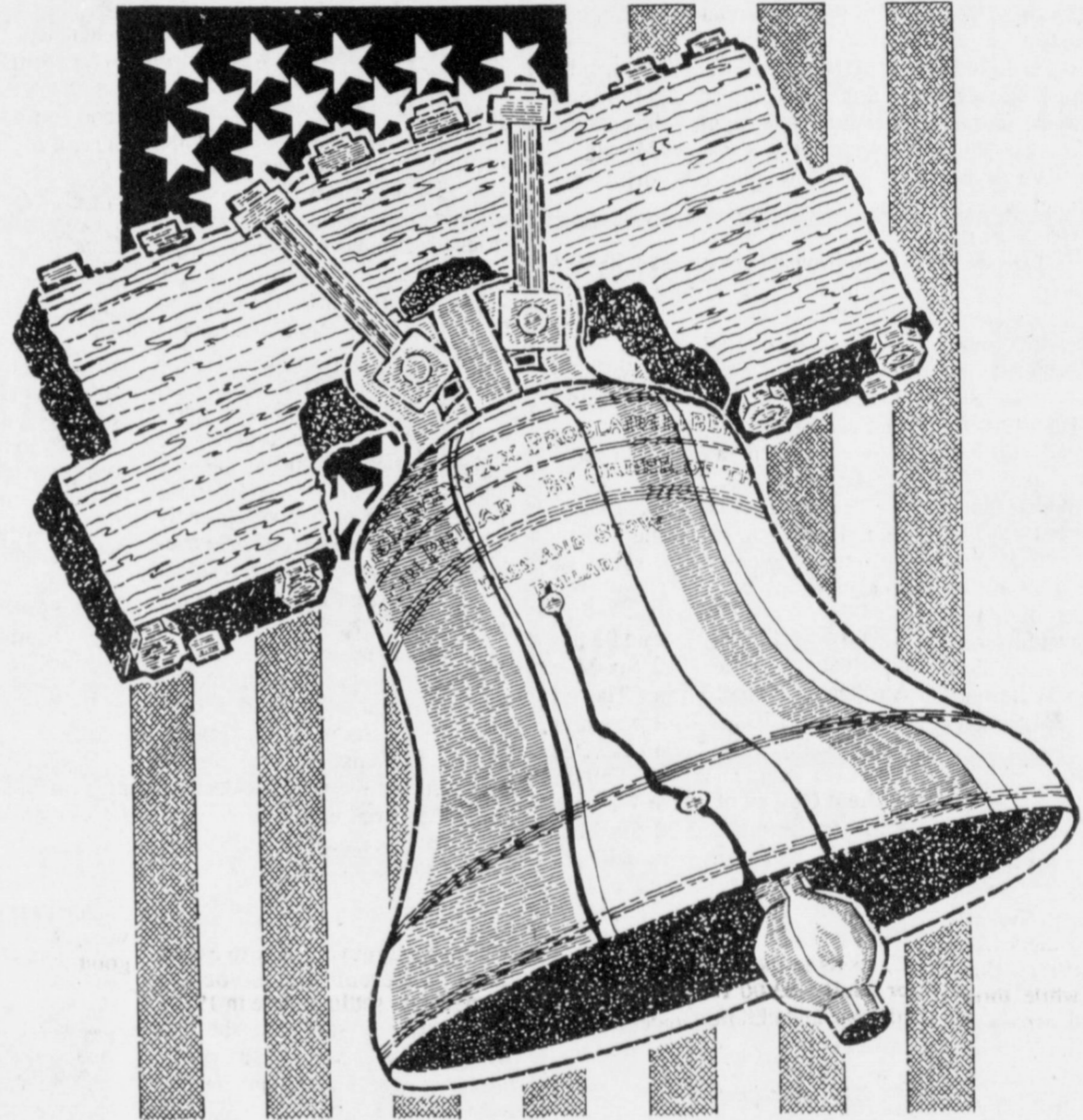
I would like to extend an invitation to you or any member of your staff to attend the games of other scheduled activities if you so desire. Please notify me if you will be attending, and I will have press passes available.

The Convention & Visitors Bureau requests that you send us a tear sheet of any articles published in conjunction with this announcement.

Please contact me if I can be of further assistance.

Sincerely,

Ken Walsh
Wichita Falls Convention & Visitors Bureau



In Pursuit Of Life, Liberty And Good Times 4TH OF JULY ACTIVITIES GUIDE

Thursday, July 2nd & Friday, July 3rd

9:00 a.m. Jana Stanfield, Curt Brummett and Gene Grassie at Joe's Boot Shop until 6:00 p.m.

7:00 p.m. Mule-Plex Production "The Butler Did It" -- Muleshoe High School Auditorium

Tractor Pull - in front of Sear's & Muleshoe Trade Center
Heritage Openhouse until 5:00 p.m. -- Heritage Foundation Complex

2:00 p.m. Old Settler's Reunion -- Bailey County Coliseum
Golf Scramble Tournament - Muleshoe Country Club
Turtle Races - in front of Anthony's and Spudnut Shop

Saturday, July 4th, 1992

7:00 a.m. 10K & 2 mile run registration begins - South parking lot of Muleshoe State Bank
Kiwanis Sidewalk Breakfast until 10 a.m. --in front Higginbotham-Bartlett

8:00 a.m. 10K & 2 mile run begins
Kids Activities-- in front of Poyner's until 10 a.m.

9:00 a.m. PARADE LINE-UP BEGINS AT SOUTH END OF MAIN STREET
Registration for Muleshoe Pitching begins-- American Legion at Old Chevrolet Lot on Main Street

10:00 a.m. PARADE BEGINS

10:30 a.m. Muleshoe Pitching Begins

11:00 a.m. Jennyslippers at the Bailey County Courthouse -- GAMES, GAMES
PUNT, PASS & KICK CONTEST-- Muleshoe Athletic Booster Club -- Behind Damron Drug Store Parking Lot on 1st Street

12:00 p.m. Refreshments and FOOD FOOD FOOD

1:00 p.m.

Dunkin' Tank -- Leadership Muleshoe & CofC -- next to Perry's

3:00 p.m. Men's Wet T-Shirt Contest -- Fry & Cox Parking Lot

4:00 p.m. Water Polo -- in front of Winkler's Meat Co. -- Firemen challenges any organization

5:00 p.m. CLEAN-UP MAIN STREET

6:00 p.m. New City Park Activities - Food, Relax & Music from local entertainers

10:00 p.m. FIREWORKS! FIREWORKS! -- Co-Sponsored by Jennyslippers and Chamber of Commerce & Agriculture -- New City Park

AFTER FIREWORKS -- DANCE IN THE STREET IN FRONT OF KMUL!!!!

- ALL DAY ACTIVITIES -
- COUNTRY RECORDING ARTIST & SONGWRITER -
- BECKY HOBBS & LARRY SCOTT -
AT JOE'S BOOT SHOP

3-2 PITCH SOFTBALL TOURNAMENT AT NEW CITY PARK
MULESHOE'S 4TH ANNUAL REMOTE CONTROL AIRPLANE SHOW AT NEW CITY PARK

Saturday Evening - Putt Putt Tournament

Be one of over FIVE MILLION instant winners at Chevron!



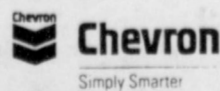
That adds up to more than one winner every second from now to August 9th.

And the winning is easy. Just pull into any participating Chevron station, ask for a Pump-Match-Go™ game card and give it a scratch. If the prizes match you win. How'd you like to drive away in a new 1993 Ford Probe GT? We're giving 31 away.



Along with millions of instant win coupons worth \$1 to \$1000 in Chevron gasoline, free Armor All® Protectant Sponge Paks -- over \$7 million worth of prizes.

But you can't win if you don't play. So stop by Chevron, today. Chances are, you'll have something to talk about.



Southside Chevron 502 S. 1st
Johnnie's Chevron 202 W. Amer. Blvd.



AND THE HIGH PLAINS TOO

MULESHOE STATE BANK

and Farwell Branch

101 West American Blvd.

Phone 806/272-4561


MULESHOE, TEXAS 79347



MEMBER FDIC

MULESHOE AREA Spring/Summer '92 BUSINESS DIRECTORY AND SHOPPING GUIDE

The Wilburn
Tostadas topped with beans, rice, taco meat, cheese, lettuce, tomato, guacamole and topped with even more cheese!
\$5.89



Closed Mondays
Leal's Restaurant
1606 W. Amer. Blvd. Muleshoe 272-3294

Henry Insurance Agency, Inc.
"Serving Your Insurance Needs Since 1964"

KENNETH R. HENRY
CERTIFIED INSURANCE COUNSELOR
REAL ESTATE BROKER



111 W. Ave. B.
Phone 806/272-4581
Muleshoe, Tx. 79347

Gift Selections of
Lisa Noble
bride-elect of
Chaun Gunstream
Muleshoe Art Loft

Macklanburg-Duncan®



Your Choice
99¢ per tube

Higginbotham-Barlett Co.
"Quality & Service At The Right Price"
215 Main Muleshoe 272-3351


LET'S PRAY FOR PEACE
As We Celebrate Freedom On The Fourth

Open Until 2:00 p.m.
Saturday, July 4th!


Come and Have Breakfast before the Fourth of July Parade!

Wilson Drilling Co.
"Complete service from the bottom of the well to the bottom of the Glass"

Domestic * Irrigation * Test Holes



*INSURED * BONDED
W. Hwy 84
272-5521
TX LIC 02628W NM WD1152



Dinner Bell Restaurant
Open 7 days - 6 a.m. - 9 p.m.

Daily Noon Buffet
11 - 2 p.m.

Friday Fish Buffet
11 - 9 p.m.

Homemade Bread & Desserts Made To Order
2103 W. Amer. Blvd. Muleshoe 272-5871

Thursday Night Special
Steak & Shrimp
with choice of potato
\$6.59
w/Salad Bar - \$1.59 extra

Friday Buffet
All Day - All You Can Eat
Fish & Shrimp
includes:
salad bar, vegetable, cole slaw, french fries, cobbler and homemade bread
\$5.89

1*2*3 Lunch Special

- 1) Your choice of a single topping Personal Pizza (Pan or New Thin Crust) or a Pasta Dish with meat sauce (Spaghetti or Cavatini®)
- 2) A trip through the Salad Bar
- 3) Your choice of Iced Tea or a Medium Soft Drink.

All For Only **\$3.89**

Delivery Available
11:30 am - 1:30 pm
& After 5:00 pm

Pizza Hut
1412 W. Amer. Blvd. 272-4213



Grubworms Are Now Active And Ahead of Schedule!
Now Is The Time To Kill Those Grubworms!

We Still Have Our Greenhouse Full of Flowers!

Kristy's Plants
710 E. Amer. Blvd. Muleshoe 272-5536

Saturday Noon Buffet
All You Can Eat
Calf Fries & Chicken Fries
includes:
Salad Bar, vegetable, french fries, cobbler and homemade bread
\$5.89

Tired of Cleaning?

Let us help you with your cleaning of your Carpet, Upholstery, Drapes & Bedspreads

at
Lambert Cleaners
123 Main Muleshoe 272-4726



Combination Plate No. 4
Chile Relleno, Taco, Enchilada Beans and Rice
\$5.25

Open 11:00 a.m. - 9:30 p.m.
Closed Tuesdays

Viola's Restaurant
2002 W. Amer. Blvd. Muleshoe 272-3838

We Have Cobblers, Pies & Homemade Breads Made to Order!
Call In Advance For Your Order!

Open 7 Days A Week
6:00 a.m. - 9 p.m.

Dinner Bell Restaurant
2103 W. Amer. Blvd. 272-5871

COUPON

Doublemeat Hamburger with Large fries, and small drink
\$3.25 plus Tax
with cheese add 25¢
New Hours:
Mon. - Sat. - 11 a.m. - 8 p.m.
Sundays - 1 - 6:30 p.m.

We Will Be Closed Saturday, July 4th!
The Snack Shack
222 W. Ave. H. Muleshoe 272-3840
Coupon Good Until July 8th!

Weed 'Em Out!
With quality products from ferti-lome

WEED OUT™ Plus Lawn Fertilizer
Three weed killers in one great fertilizer. Kills all broadleaf weeds and feeds your lawn a "balanced meal" at the same time. Safe to apply on all types of turf grasses.



Kearney Scoggin
Scoggin Ag Center, Inc.
"Where Fertilizer Is Our Business"
1532 W. Amer. Blvd. Muleshoe 272-4613

Combination Motors & Salvage

We specialize in Motor Repairs and Rebuilding!
New & Used Parts Available
Wrecker Service - 24 hours a day!
272-4458

Summer Home Improvement Sale!

Shop Inside Where It's Cooooool.....

Wet T-Shirt Contest
(All Male Contest)
Saturday, July 4th at 3:00 p.m.
Come Join The Fun!

Hours: Mon. - Sat. 8 a.m. - 6 p.m. Sun. 1:30 p.m. - 4:30 p.m.

Fry & Cox True Value
Hardware, Lumber & Building Materials
401 S. 1st Muleshoe 272-4511



Precautions Protect Hunter and Landowner

Although summer has barely begun, many hunters already are seeking landowners' permission to hunt on private property when deer season opens in November.

Permission is granted via a *hunting lease*, which may last for the entire season or for a few weeks or days. A lease may be an oral agreement, but this option is not recommended, says Judon Fambrough, an attorney and senior lecturer with the Real Estate Center at Texas A&M University.

"A hunting lease not only grants the hunter permission to enter a landowner's property, it sets the terms and conditions of entry and use," explains Fambrough. "Thus, the lease agreement should be written, read and signed by all parties to avoid potential disputes."

While individual lease terms may vary, key issues should be addressed in all leases.

"Because landowner liability in Texas depends on the amount charged for entry in the lease, landowners may want to use a signed waiver from the hunter releasing the landowner from liability," says Fambrough. "However, the hunter must realize what rights are being given up and must grant the waiver willingly and intentionally."

Further details on arranging a hunting lease are given in Fambrough's *The Texas Deer Lease*, a 12-page publication from the Real Estate Center. The report, which includes a sample waiver form, is available for \$1 in Texas and \$2 out of state from the Real Estate Center, Texas A&M University, College Station, Texas 77843-2115. Request publication NR-570 and include \$1 handling charge per order.

For a sample copy of the waiver form only, send a stamped self-addressed envelope to the Real Estate Center at the above address.

The Real Estate Center was created in 1971 by the Texas Legislature to meet the needs of many audiences, including the real estate industry, instructors, researchers and the general public. The Center's comprehensive program of research and education yields publications, audiovisuals and computer software distributed widely under the slogan "Solutions Through Research."

Time For Thought

When politicians agree, the angels may rejoice but the voters just wonder what's cooking.

-Globe, Boston

Low Interest Loans Available For Farmers

Low-interest emergency loans are available to eligible farmers and ranchers in 17 Texas counties that were declared federal disaster areas due to early freeze, low water temperature and heavy and continuous rainfall from Oct. 1 to Dec. 31, 1991, Texas Agriculture Commissioner Rick Perry said.

In making the declaration, U.S. Secretary of Agriculture Edward Madigan named Cameron, Deaf

Smith and Ellis counties as a primary disaster areas. In addition, 14 contiguous counties were declared disaster areas. They are Castro, Dallas, Henderson, Hidalgo, Hill, Johnson, Kaufman, Navarro, Oldham, Parmer, Potter, Randall, Tarrant and Willacy counties.

These declarations allow family-size farm operators in both the primary and contiguous areas to apply for emergency assistance from the Farmers Home Administration.

To be designated as a primary disaster area, the Farmers Home Administration determines if a sufficient number of farmers in

each county suffered losses of 30 percent or more. The counties designated as contiguous disaster areas were declared so because they were adjacent to the primary disaster area, but did not have the same extent of losses.

Each loan application will be considered on its own merits, taking into account the extent of losses, security available, repayment ability and other requirements.

For more information, producers should contact a local FmHA county office.

NEWS VIEWS

Claibourne Darden, Atlanta pollster:
"Bill Clinton has not registered much excitement with the black vote."

Iris Wilson, Democratic Black Caucus of Florida:
"Black folks are the only block of votes the Democratic Party can count on."

Maurice Strong, secretary general of recent earth summit Rio Conference:
"We must change. We are on a course leading to tragedy."

Cloudfcroft Workshops Continue Through July 31

The unique village of Cloudfcroft, New Mexico has a cool climate and quaint shops that appeal to a wide range of tastes. This cool village will be the host to a variety of artists and art classes this summer. Classes will range from the beginner to the serious artists.

Nationally and internationally known artists from all over the United States are scheduled to teach all kinds of media during the summer. These workshops will run from June 8 through July 31, 1992.

Subject matter will include still life, landscape, portrait, figure, flowers, and fabric painting. Also colored pencil techniques, basketry, pottery-terra cotta-clay, wildlife, drawing, painting, watercolor, pastels, quilting, and don't forget the American cowboy and Indian. There will be classes for children and teens as well as adults.

Anyone desiring further information of a descriptive brochure may contact Rhea White, 213 E. Fir Ave, Muleshoe, TX 79347, or call (806)272-3889



TENNIS WINNERS--Sharon Johnson of Muleshoe and Kristen King of Lubbock took second place in the 16 year old division doubles at the Plainview tennis tournament June 20-21. Sharon and Kristen, 14 and 13 respectively, were entered in the 16 year division for lack of 14 year olds entered in the tournament. They were eliminated from 1st place by a state ranked doubles team from Coronado High School in Lubbock. This was the first time Sharon and Kristen had been teamed together in doubles. Sharon is the daughter of Robert and Ann Johnson of Muleshoe and Kristen is the daughter of Dr. and Mrs. Rob King of Lubbock. (Guest Photo)

Government May Dictate Future Cars

(NU)-The federal government may want to put you behind the wheel of a smaller, less safe and more expensive car. This is the warning being sounded by a group called the Coalition for Vehicle Choice, whose more than 2,000 member organizations are opposing higher gas mileage standards for cars and pickup trucks. According to them, Congress is spinning its wheels trying to reduce gasoline use by legislating drastic increases in vehicle mileage requirements.

Several bills have been introduced which would raise motor vehicle fuel economy standards to 40 miles per gallon (mpg) over the next decade. In addition, Congress may consider proposals to limit carbon dioxide (CO₂) emissions by the year 2000 that could force the building of smaller and lighter cars, vans and pickup trucks. One may wonder "What does CO₂ have to do with gas mileage?"

CO₂ is one of several gases produced by burning gasoline. Despite what some think, however, it is not a pollutant. In fact, humans exhale CO₂ as a natural part of breathing, and plants need it to create oxygen. But CO₂ is a greenhouse gas, which some say is building up in the atmosphere and causing global warming. Although there is still no consensus in the scientific community on whether global warming is happening or how fast, some say we should limit CO₂ just in case — no matter what the cost to consumers.

Because controlling CO₂ means burning less gasoline, the government would most likely raise gas mileage standards in order to comply with such proposals. Corporate Average Fuel Economy (CAFE) standards, as they are called, would have to be raised to as high as 45 mpg. At present, these standards require the fuel economy of the entire fleet of cars produced by each manufacturer to average 27.5 mpg.

Opponents of dramatic increases point to a recent National Research Council study though, which says automakers could meet a 37 mpg standard by the year 2006, but only by building smaller and lighter vehicles. Also, according to the study, a 34 to 37 mpg average would add \$500 to \$2,750 to the price of a new car or pickup. A simple calculation shows that the money saved at the gas pump by a more fuel efficient vehicle may not be worth it. If the fuel-saving technology costs \$1,000 more to get six more mpgs, at today's average gas price of \$1.06 per gallon, a

consumer wouldn't get the \$1,000 investment back until his odometer went past 135,000 miles.

Safety experts both in and out of government warn that higher standards will reduce vehicle safety and utility. Smaller and lighter cars, pickups and vans do not offer as much crash protection as larger, heavier vehicles. Likewise, they are not able to haul large payloads or comfortably accommodate as many passengers as larger vehicles.

The Coalition for Vehicle Choice is urging Americans who want to find the vehicles they need on showroom floors in the future to write or call their members of Congress and tell them to vote against any proposals to increase CAFE standards or to limit CO₂ emissions.

ATTENTION MR. FARMER

We Are Now Contracting Confectionary Sunflower!

This is a Total Acreage Contract to be delivered to a local delivery point.

Sunflowers are a quick maturing crop with a good profit potential!

Western Sunflower Co.

Colby, Kansas

Local Representative - Jack Little 806-272-4805



TRACTOR TIRE SALE



Farm Utility Tire

- Can be used as wagon tire or front tractor tire.
- Floats across difficult, wet fields.
- Wide load area means minimum ground compaction.
- Rugged 3-T cord body.

\$57⁵⁰
9.5L-15 TL 8 ply



Dyna Torque Radial

- Revolutionary three-lug/pitch design improves traction and ride.
- Computer-designed "natural" shape casing improves tire body life.
- Radial construction provides better traction, lower fuel and overall costs.

\$595.00
18.4R-38 1 star



Dyna Torque II

- Excellent traction with long-bar, short-bar lugs.
- Designed for improved stability and roadability, plus reduced vibration.
- High-strength polyester cord body and heavy-duty rim shield help protect tire from damage.

\$490
18.4-38 6 ply



Four Rib

- Uniform pressure distribution for on-road mobility important for higher horsepower tractors.
- Positive steering.
- Bruise-resistant nylon cord.

\$97⁵⁰
10.00-16 6 ply





Terri & Mike Hann invite you to come by and make your tractor tire selections with us.

James Crane Tire Co.



Mike Hahn 272-3594 322 N. 1st. Muleshoe, Tx. 272-4594 Mobile 946-7501

NEW! The Real



"BILLY THE KID"
New Mexico's Historical OUTDOOR DRAMA
by Doc McAlister

Each Friday & Saturday
JULY 3 - Aug. 22
8 p.m.
Cattle Call BBQ 6:30 - 8 PM

Caprock Amphitheatre
10 miles south San Jon, NM
(Exit 356 off I-40)

No Reservation Needed
except for groups of 20
or more

505-576-2455
After July 3 Call
Boxoffice 576-2779



Ginger Caldwell
Haversham



Janet Gracey
Miss Maple



Jac Greene
Peter Flimsey



Sharron Angeley
Charity Haze



Mike Caldwell
Chandler Marlowe

Mule Plex Production Co., Inc.
Proudly

PRESENTS

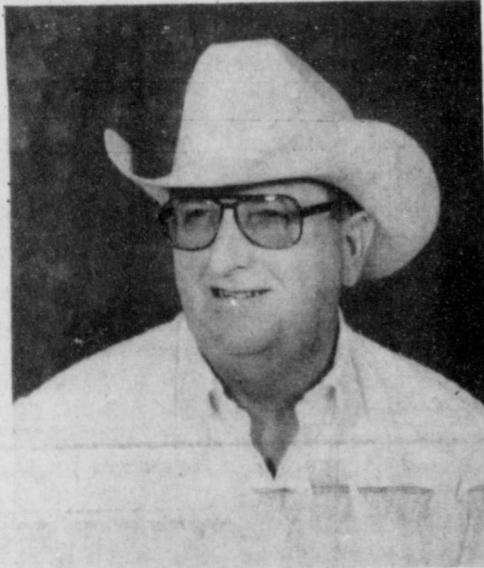
It's
Fourth Annual

Family Fun Nights

Thursday - Friday

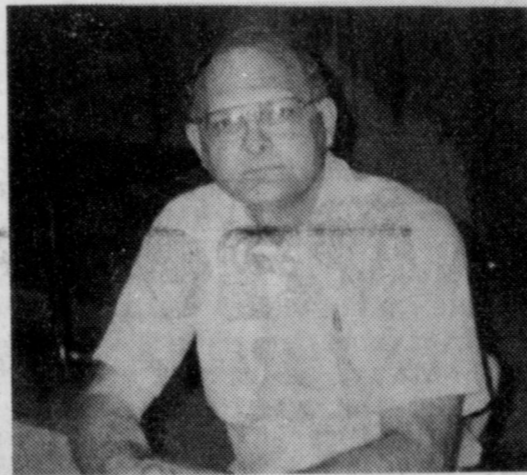
July 2 - 3, 1992

Mulshoe High School
Auditorium

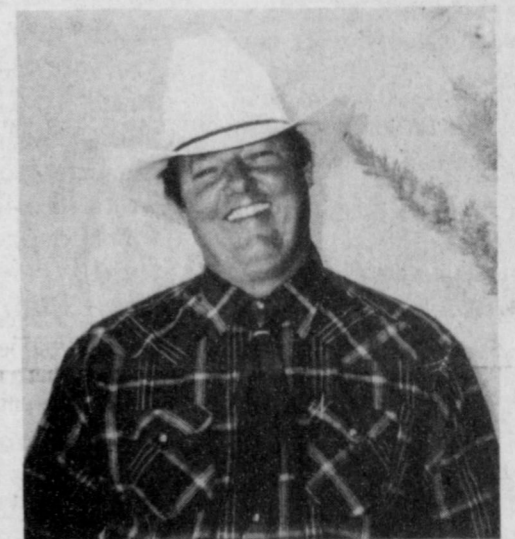


Curt Brummett

Curt Brummett, an Author and Speaker/Storyteller is a native of Clovis, New Mexico. Nationally known, Brummett has performed at the Cowboy Symposium and Celebration in Lubbock for three years, the Staked Plains Roundup in Hobbs, N.M., The Cowboy Gathering at Goodwell, Okla. the Eastern New Mexico Cowboy Poetry Gathering in Roswell, N.M., the Cowboy Caldron (gathering) in Bracketville, Texas, the Arizona Cowboy Poets Gathering in Prescott, Arizona and at the poetry gatherings in Battlement Mesa, Durango and Arvada, Colorado. He has appeared at the Cowboy Hall of Fame in Oklahoma City with Red Steagall and Wally McRea. An extinguished author, Brummett first starting writing stories as a senior in high school. His first story was sold back in 1986 which was the same story that he wrote for his senior English teacher. He has written three books, "A Snake in the Bathtub" and "Other Stories and My Dog's A Democrat" as well as "Roping Can Be Hazardous To Your Health". The stories that Brummett writes and tells have nothing to do with day long gun battles or hot and heavy love affairs, instead his stories are about heroes that are common everyday ranch kids or grown ups that are just trying to survive.



Kerry Moore, Director
Mr. Moore once again directs the Mule-Plex Production Co., Inc. play for the Family Fun Night. The play is titled "The Butler Did It". Mr. Moore does an outstanding job of directing the play.



Gene Grassie

Gene Grassie a native of Dexter, New Mexico was named Grand National Yodeling Champion at Tucson, Arizona on November 16, 1991. He is married to Martha Randle and has 3 children. He has been a Church of Christ minister for the past 26 with the last 16 years in Dexter. He has been a Director and Speaker for Restoring New Testament Christianity, an international radio ministry, the past 10 years. Grassie operates a private recording studio and provides sound reinforcement and entertainment for schools and local events. He also performs at Cowboy Poet gathers, Jamborees, clubs and organizations, school assemblies, Senior Citizen Centers, and Scouting encampments. Accompanying Grassie on the piano is Sharlene Jensen, a native of Dexter, N.M. also.

Master of Ceremonies
Darrell Turner

7:30 p.m. - Anchor Bros Band

8:15 p.m. - Comedy Thriller

9:15 p.m. - Candy Sales

9:30 p.m. - Variety Entertainment

(Thursday - Curt Brummett & Leon Autry)

(Friday - Curt Brummett & Gene Grassie)

"The Butler Did It"

By Tim Kelley

The entire action of the play takes place in the attractive living room of Ravenswood Manor, Miss Maples home on Turkey Island. A group of Mystery Writers gather at Miss Maples home for a weekend party to collect clues of a previous murder. While there, a murder is committed and each of the nine characters left tries to find out who did it.

Director: Kerry Moore
Set Design &
Stage Manager: Dale Hughes
Sound: Ruben Saldana

Haversham:.....Ginger Caldwell
Rita:.....Marvon Raef
Miss Maple:.....Janet Gracey
Laura Carlye:.....Sherri Shipman
Charity Haze:.....Sharron Angeley
Father White:.....Jack Young
Chandler:.....Mike Caldwell
Louis Fan:.....Virgil Snell
Rick Carlye:.....Scott Miramontes
Peter Flimsey:.....Jac Greene
Butler/Ludwig Flush:Jonathan Brewster

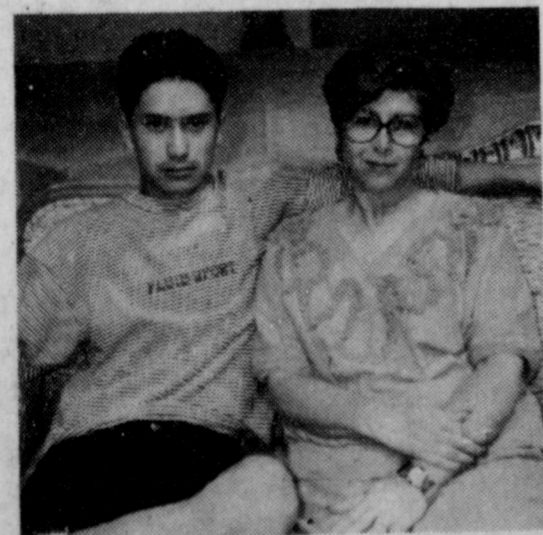
Costume Managers:
Arlene Phelps & Patsy Chance

Props:
Billie "Little One" Jones,
Betty Jo Beaty, Gladys Black,
Glenda Dale, Mary Crane,
Hazel Gilbreath

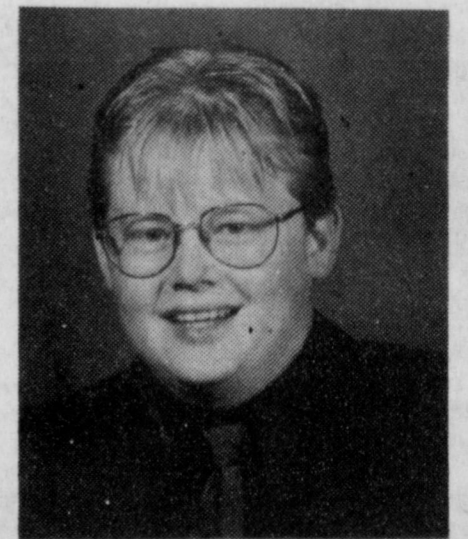
- Make-up -
Courtney Graves
- Hairstyles -
Nancy Barnhill



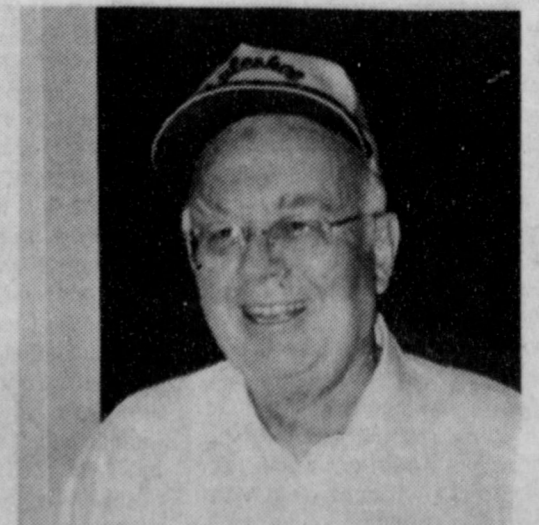
Marvon Raef
Rita



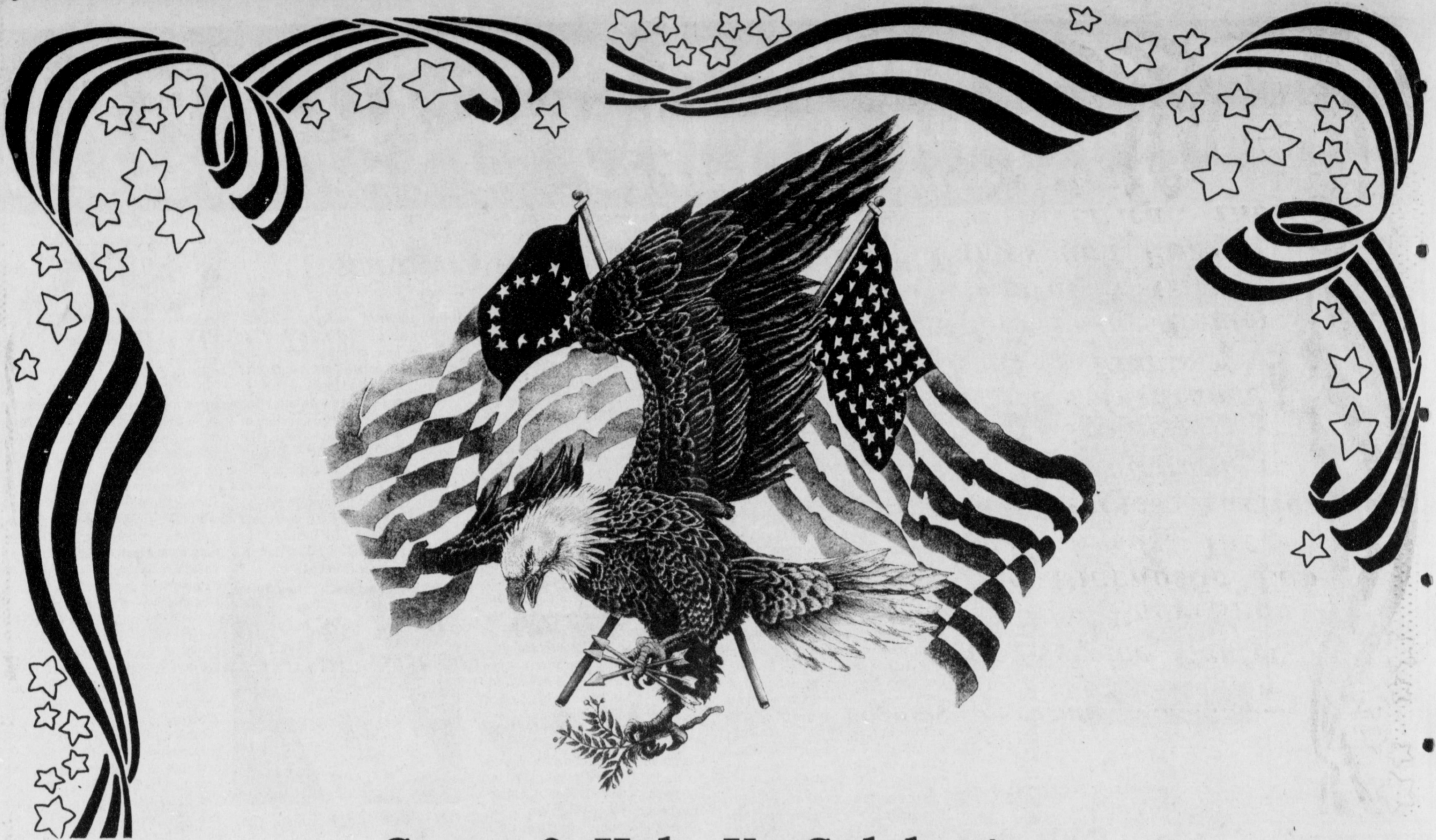
Sherri Shipman & Scott Miramontes
Rick & Laura Carlye



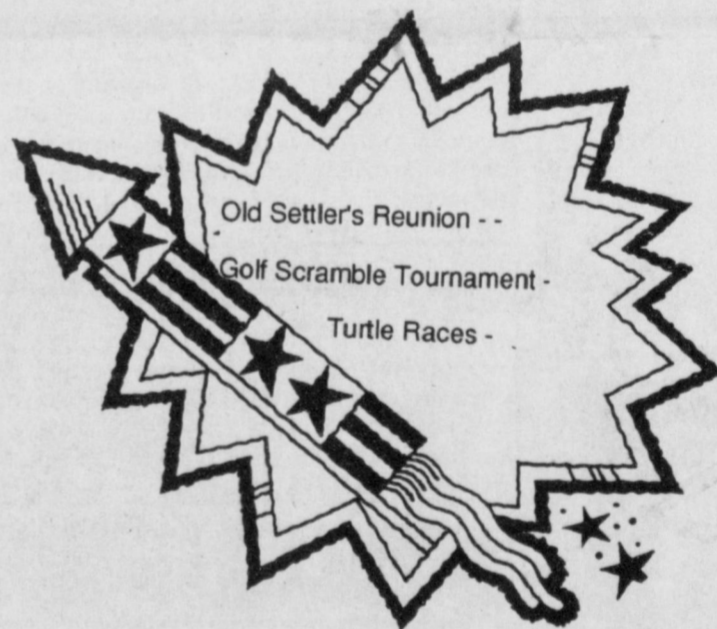
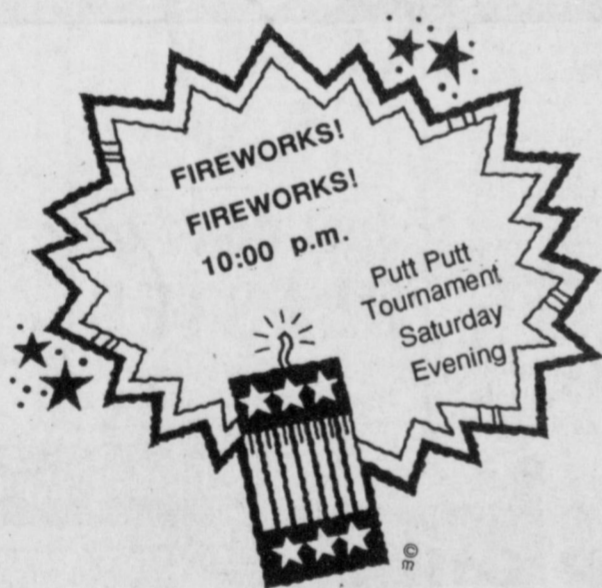
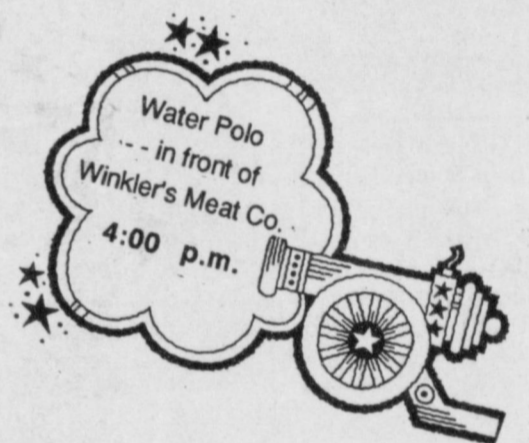
Virgil Snell
Loui Fan



Jack Young
Father White



**Come & Help Us Celebrate
4th of July
As We Also Make A
"Salute To Our Flag
& Country"**



..... This Page Proudly Sponsored By The Following Merchants

- | | |
|--|--------------------------------------|
| Bailey County Farm Bureau | Muleshoe Truck & Auto Service Center |
| A & M Farm & Ranch Supply | Shipman & Son Body Shop |
| Spudnut Shop | Lambert Cleaners |
| Muleshoe Diagnostic Lab | |
| Clifton B. Allen Custom Saddle Maker | McCormick Seeds, Inc. |
| Richland Hills Texaco | Pivot Products |
| Muleshoe Livestock Auction | |
| Allison Bookkeeping & Tax Service | Leal's Restaurant |
| Skaggs Motor Machine | Violas Restaurant |
| Perry Brothers | |
| Posada's Radiator | Sudduth Field & Co. |
| Terry Field Insurance | |
| Retail Merchants Association of Muleshoe | Kristy's Plants |
| Wilson Drilling | Family Hair Salon |
| Muleshoe Trade Center | |
| Bingham & Nieman Realty | Decorator's Floral & Gifts |
| Bob Stovall Printing | Irrigation Pumps and Power |
| Scoggin Ag Center, Inc. | Ronald Ashford Electrical, Inc. |
| Williams Brothers Office Supply | Alex's Tire Service |
| Main Street Beauty Salon | |