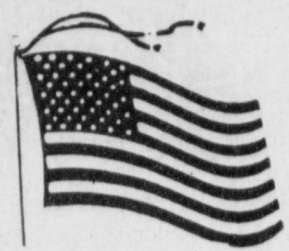


Weather

November 8, 1992 66-37
November 9, 1992 74-29
November 10, 1992 76-38
November 11, 1992 75-39

Muleshoe Journal

'The Community Of Opportunity-Where Water Makes The Difference'



Vol. 70, No. 46

Published Every Thursday At Muleshoe, Bailey County, Texas 79347

TEXAS PRESS ASSOCIATION 25¢ Thursday, November 12, 1992



QUALIFIES FOR STATE---In a Cross Country Meet held Saturday at Mae Simmons Park in Lubbock the MHS Girls Cross Country Team and Eric Cisneros qualified for State competition, to be held in Georgetown on November 14. The Lady Mules placed third with the top three teams in the region advancing to State. Cisneros placed third in the individual competition earning him a place in the State Competition. (L to R) Coach Cranford, Crystal Sharp, Gloria Mendoza, Keetha Glover, Shane Schuster, Becky Viss, Dacia Stewart, Rebecca Green. Seated, Eric Cisneros. Not pictured, Julie Gilliland. (Journal Photo)

Local ASCS Releases Current Sign-Up Dates

Danny Noble, County Executive Director of the Bailey County ASCS office released the following information to the *Journal* Tuesday morning.

COMMITTEE ELECTION
Ballots will be mailed November 27, 1992, to eligible voters in

LAA-3 (Community C). The final date to return voted ballots is December 7, 1992. Please vote for the farmer of your choice and return it to this office.

FEDERAL CROP FINAL PLANTING DATES
The final planting date for wheat,

barley, and oats for the 1993 crop year is November 15, 1992.

ACP-ANA SIGNUP
Specific signup periods have been replaced with a continues signup throughout the year with only six approval periods. The County Committee will approve cost-share requests during their regular meeting for the months of January, February, March, April, August and September. For 1993, Bailey County is offering the following practices:

1. Estab. of Permanent Veg. cover (grass)
2. SL-2H (25), Control of Sand Shinnery Oak
3. SL-4, Constructing Terrace Systems
4. SL-5, Constructing Diversion Terraces
5. SL-6A, Construct. Wells for Livestock Water
6. SL-6C, Inst. Pipelines for Livestock Water
7. WC-4, Reorganizing Irrigation systems (Pipe)

ACP-LTA SIGNUP
Signup for LTA's (Long Term Agreement) will begin November 16, 1992, and end November 27,

1992. The LTA offers a producer the option of planning conservation work for a period of 3 to 5 years with the guarantee of having funds available, if approved, to carry out the work.

Bailey County is offering all seven practices available at 75 percent cost-share. For further information, contact this office or the SCS office.

"NL" PAYMENTS FOR 1991
There will be no 1991 "NL" payments for 1991 corn and grain sorghum due to the 12-month National Market Average being above the National Loan rate. No additional deficiency.

FARM STORED LOANS
Producers are reminded that you will be subject to penalties applicable to unauthorized removal or dispositions if CCC Loan Collateral is moved or disposed of without prior County Office approval.

WOOL AND MOHAIR
March 1, 1993, is the final date for filing your 1992 Wool and Mohair sales documents for the incentive program. We recommend that you file your documents by

Cont. Page 6, Col. 1

Cross Country Team Advances To State

Placing third in the Region 1 Cross Country Meet Saturday at Mae Simmons Park in Lubbock qualified the Muleshoe High School Girls Team for the State Competition to be held in Georgetown Saturday. The top 10 finishers and the top three teams in each class earned state berths.

Shane Schuster placed 12th in the individuals with 12:42. Rebecca

Green came in 16th with 13:06, Julie Gilleland 17th with 13:10, and Keetha Glover, 20th with 13:22; and Gloria Mendoza placed 28th with a time of 13:48.

Becky Viss and Crystal Sharp also ran on Varsity. Becky placed 55th and Crystal placed 71st. The alternate was Dacia Stewart. The girls put up a mean fight with the second place team only beating them by about 20 points. Congratulations Lady Mules!

Although the boys team didn't qualify for state, one runner, Eric Cisneros, did.

Cisneros ran a superb race Saturday according to his coach. His coach stated that he had done an excellent job of running all year long, plaining in the top three in all of the meets. "He has an excellent chance to walk away with the state title this next Saturday."

Cisneros ran the three-mile course at Mae Simmons Park in 16 minutes, behind Canyon's Alex Rivas (15:47) and River Road's Jason Buie (15:58).

As one of Class 3A's top 10 finishers, Cisneros advanced to the state meet.

All together, the Varsity boys team placed fifth with a total of 157 points. With such a young team, their coach believes they will have a better chance of advancing to State in years to come.

Edward Olivas placed 33rd with a time of 17:43; Shawn Wheeler, 35th with a time of 17:48; Salome Cisneros, 53 with a time of 18:54; Mason Conklin, 59 with a time of 19:05.

Russell Reyes and Charlie Acosta also ran on the Varsity team. Russell placed 63rd and Charlie Placed 70th. The alternate was Ricky Cisneros.

Both Muleshoe teams would like to thank all of their family and friends who have continually supported them throughout the fall season, and especially their coach, Kyle Cranford, for al of the hardwork and hours he has put into making them the best they can be. Congratulations Lady Mules and Eric Cisneros, and good luck!

Margarethe Taylor Takes First Place In Weekly Contest

This was another one of those weeks when the women came out on top in the weekly football contest.

A first time winner, this season, Margarethe Taylor missed four games, giving her a first place win.

Four contestants missed five games, so the *Journal* judges were forced to go to the tiebreakers.

Terry Field missed five games and was off two points on the tiebreakers giving him a second place win. Adding these six points to points earned in earlier wins, a first (10) points and a third (four points) gives Field a total of 20 points.

Coming in third place was Marilyn Engelking, who also missed five games, but was seven points off in the tiebreakers.

Also missing five games were Gerald Shanks, 13 points off and Buck Johnson, 41 points off.

With this week's win Ms. Taylor and Billie Joann Smith are tied for first place with 20 points. Keep those entries coming in, there is still time for anyone to win. A number of contestants are trailing close behind, and could still win.

Continuing Education Classes Offered

Continuing education classes with credit from South Plains College are being considered and will be offered at Muleshoe I.S.D. when there is enough interest.

The School District must gather enough student enrollment in a particular subject to fund a class. The class size must be 15 or more students and the cost for a three hour class will be under \$110 for in-state students.

Some classes which could be considered are English, History, Math, Science, P.E., T.A.S.P. Review, Computer Intro. or Application, Beginning Spanish.

You may call M.I.S.D. curriculum office at 272-3325 as soon as possible in order to be counted for this project or if there is a particular class you would like to take.

have been some reports, however, of farmers who personally have seen cranes pulling cotton from standing cotton stalks and tossing the lint into the air, apparently in play. This, along with their feeding of green wheat during the winter or sprouting corn in early spring, has caused problems for some farmers. There are several ways to combat these problems, including the use of devices such as "scare cranes" and acetylene explodes. Another option is legal crane hunting, but be sure and follow the latest Migratory Game Bird Regulations

Cont. Page 6, Col. 1

Lazbuddie Longhorns Advance To Playoffs

The Lazbuddie Longhorns will take to the field again this Friday night against Meadow. Game time will be 7:30 p.m. in the Longhorn stadium. Tickets will be adults \$3.00 and students, \$2.00.

Wrapping up the district crown a little over a week ago, the Longhorns advanced to the playoffs with a 10-0 record, including five district wins.

In last Friday night's game, the Longhorns defeated the Cotton Center Elks 61 to 7 in the Lazbuddie Longhorn Stadium.

Leland Brockman set the tone early as he returned the opening kickoff 80 yards into the endzone and kicked the point after kick.

Brockman scored again on an eight yard pass from Thomas. The kick failed.

Racking up still more scores, Mario Zamora scored on a 22 yard pass from Thomas. Brockman kicked the extra point.

Matt Cosby scored on a 23 yard pass from Thomas. The kick failed.

Miller scored on a 11 yard pass from Thomas, adding still more scores on the scoreboard. The kick failed.

Lureas scored another touchdown for the Longhorns on a one yard pass from Thomas. Miller kicked the extra point.

Bomer scored on a 22 yard pass from Elliott (Miller passed to Bomer for a two point conversion).

Bomer scored again on a 12 yard pass from Elliott. The kick was blocked.

Cotton Center returned the blocked PAT. McBroom added more scores to the scoreboard when Elliott threw him a 28 yard pass. Miller kicked the extra point.

Sandhill Cranes Flock To Wildlife Refuge

By: Flavio Garza, SC Soil Conservation Service

It's that time of the year! The population in the Lower Rio Grande Valley swells as Winter Texans begin filling RV parks. Here in the Texas panhandle, populations also swell as sandhill cranes arrive here after a long migration from up north. According to information compiled by personnel at the Muleshoe National Wildlife Refuge, the first cranes arrived at the refuge on or about September 24. They also counted approximately 2,000 birds on October 15 and approximately 8,000 on October 20. These numbers usually peak in November and December.

The sandhill crane stands approximately 48 inches high with a wingspan of 80 inches. The overall coloration is ash-gray. The average weight of the male is approximately 12 pounds. The male and female look the same,

around muleshoe

except the female is smaller. In flight, the sandhill crane flies with its neck and legs extended. At a distance, these cranes may be mistaken for the great blue heron. However, when in flight, the heron's neck is folded with the head drawn back to the shoulder. The herons are also usually found alone, whereas cranes are usually in flocks.

The crane's nesting grounds can usually be found in Alaska, Canada and northern U.S. They usually leave here and migrate back north in late February. They arrive at their nesting grounds by the middle of May. Sandhill cranes are monogamous so the male will have only one mate during the nesting season, and they both take part in nest construction and incubation of eggs. Two eggs are usually laid, sometimes only one and rarely three. Incubation period is from 29 to 32 days. After hatching the young are fed regurgitated food, but they are soon looking for their own food, mostly insects. The breeding age is usually at three years. Their life span is from 12 to 15 years.

Sandhill cranes generally feed on waste grain left in the field after harvest. Cranes are also known to feed on cottonseed in stripped cotton fields, but they generally do not bother unstripped cotton. There

MISD Board Meets In Regular Session
The board of trustees of the Muleshoe Independent School District met at 7 p.m. Monday in the School Administration Building.

Cindy Purdy, president, called the meeting to order and Curtis Shelburne gave the invocation.

Mrs. Purdy also recognized the visitors and school officials present. Minutes of the previous meeting were approved as read.

The board voted to adopt and ratify the Board Policy Manual as revised during the Policy.

Randy Field, CPA met with the board and presented a detailed audit report of the school system. Field also reported that the group health plan was in very good shape. The board approved the audit report for the 1991-92 school year.

During the informational reports, Mrs. Purdy reported that the board hours were in compliance with the completion of all required hours.

Bill Moore, superintendent, gave a report on the Fair Share Finance Plan book he had received.

Cont. Page 6, Col. 2

Later, Lynn R. Smith, editor of the *Monticello Times* in Minnesota, spearheaded that state's first D-DAY, or Don't Smoke Day spread like wildfire throughout Minnesota, and then blazed west to California where it became the Great American Smokeout.

It is estimated there are 38 million exsmokers in the United States.

Cont. Page 6, Col. 2

Community Thanksgiving Service Set


The Annual Community Thanksgiving Service will be held on Sunday evening, November 22 at 7 p.m. at the First United Methodist Church, 507 W. 2nd, as Christians from churches all over the community will be gathering to express together their mutual thankfulness for God's many blessings in our lives and community.

Music will be provided by several local churches and various other musical groups. Rev. David McIntyre, from the New Visions Nazerene Church, will be delivering the message.

As has become the custom, a free-will offering will be taken for the Transient Aid Fund overseen by the Bailey County Ministerial Association and used to try to provide the necessary emergency assistance to needy travelers who come through the community throughout the year.

"This fund has been a blessing to many and certainly is a tremendous help to our community and to our member churches as we try to responsibly provide help to those in real need," said Curtis Shelburne, minister of the 16th and D Church of Christ. "As we thank God for the blessings He has put into our lives, we can use this opportunity to share His blessings with others."

Following the service, everyone is welcome to stay and enjoy light refreshments which will be provided in the fellowship hall.




1606 W. Amer. Blvd. 272-3294

Backing The Mules 100%

Closed Mondays
Bi-District Playoffs
Perryton vs. Tulia
Friday, 7:30 p.m., Borger HS

Higginbotham-Bartlett Co.
215 Main 272-3351



Eureka Upright
• Powerful, Lifetime-Lubricated Motor
• Carpet Height Adjustment
• Edge Kleener*
• On Both Sides
• Use Genuine Eureka Bags - Style F & G

SAVE \$10
69⁹⁵

Model 1432
Clemson vs. Maryland

Bailey County Farm Bureau 

David R. Tipps, Agency Manager


For All Your Insurance Needs

*LIFE *CROP
*AUTO *HOME


"Helping You Is What We Do Best"

1612 W. Amer. Blvd. 272-4567
Purdue vs. Michigan State

Stacey and Staff
Backing The Mules
100%



1412 W. Amer. Blvd. 272-4213
Army vs. Northern Illinois

Henry Insurance Agency, Inc.

Kenneth R. Henry
Certified Insurance Counselor
Real Estate Broker

111 E. Ave. B 272-4581
Utah vs. Wyoming

FOOTBALL CONTEST

Grand Prize: \$150.00

Weekly Prizes

1st - \$10 2nd - \$7.50
3rd - \$5.00

Weekly Winners

1st. Margarethe Taylor 2nd. Terry Field
3rd. Marilyn Engelking

Contest Rules:

1. IN EACH ADVERTISEMENT YOU WILL FIND A GAME LISTED. CIRCLE THE TEAM YOU THINK WILL WIN. The person's score that most closely matches the TIE BREAKER will be declared the winner. If several persons are still tied the prize money will be split.
2. The contestant must be 12 years of age or older.
3. Only one entry per person may be made for any one contest.
4. Bring your entry by the Journal Office by 5:00 p.m. Friday, or if mailed, the entry must be postmarked no later than 5:00 p.m. Friday. Write "FOOTBALL CONTEST" on the mailed entry, and mail to P.O. Box 449, Muleshoe, Texas 79347.
5. In the Tiebreaker Games WRITE IN THE SCORE of the tiebreaker games. This score will be used to break weekly as well as determine the Grand Prize winner. Decision of *The Journal's* scoring judges will be final.
6. Winners will receive 10 points for first place, 6 points for second place and 4 points for third place.
7. To be eligible for the Grand Prize, entries must be on Official Entry Blanks printed in the newspaper.
8. Employees of *The Journal's* are not eligible to enter any one contest.





Decorator's Floral & Gifts

Backing The Mules
100%

Betty Wuerflein, Owner
616 S. First Muleshoe 272-4340
West Virginia vs. Rutgers

Linda's Kitchen
(located in Damron Drug)

Closed Saturday & Sunday

100% Beef Homemade
Hamburger Patties
- Sandwiches - Salads -
- Drinks -
- Homemade Pies -

308 Main 272-4210
Oklahoma vs. Oklahoma State

The Spudnut Shop
The Upper Crust of the Donut World
The Original Potato Flour Donut

Check Our Weekly Luncheon Specials

Mon. - Sat. 5 a.m. - 2 p.m.

328 South Main Street
Muleshoe, Tx. 272-3542
San Diego State vs. Hawaii

Western Drug Co.
114 Main 272-3106

"For All Your Prescription Needs Visit The Friendly People At Western Drug"

Supporting The Mules All The Way!

Bi-District Playoffs
Claude vs. Sudan
Friday, 7:30 p.m., Hale Center

We Support The Mules 100%

Let Us Help You Get Those Fall Garments Ready For School and any other Social Functions!

at
Lambert Cleaners
123 Main Muleshoe 272-3840
Baylor vs. Rice

Connie's Place
121 Main 272-3126

Hours:
Mon. - Fri. - 5:00 a.m. - 4:00 p.m.
Sat. - 5:00 a.m. - 2:00 p.m.

Daily Buffet:
Includes Salad Bar & Cobbler

Serving Breakfast Daily
Connie Dominguez, Owner
Central Michigan vs. Western Michigan

Official Entry Blank

Name _____
Address _____
Phone _____

TIEBREAKERS

California vs. Arizona State
Georgia Tech vs. Wake Forest

Dinner Bell Restaurant
2103 W. Amer. Blvd. 272-5871
Muleshoe

Open 7 Days A Week 6:00 a.m. to 9:00 p.m.

Daily Noon Buffet - 11 a.m. - 2 p.m.
- All You Can Eat -
(includes Salad Bar, Cobbler, Ice Cream & Homemade Bread) **\$5.89**

Nightly Friday
Steak Specials Fish Buffet
Mon. - Thurs. & (Catfish & Shrimp)
Sat. - Sun. 11 a.m. - 9 p.m.
Breakfast Served Anytime!
Kansas vs. Colorado

Wilson Drilling & Southwestern Geothermal

Box 405 272-5521
Stanley Wilson Dee Puckett

Tx. Lic. 02628W
N.M. Lic. WD1152

Nevada-Reno vs. Utah State

MULESHOE MULES Varsity Schedule	JUNIOR VARSITY Schedule	FRESHMEN Schedule
Sept. 4 MORTON T 8:00	Sept. 10 IDALOU H 7:30	Sept. 4 MORTON T 5:30
Sept. 11 IDALOU T 8:00	Sept. 17 COOPER H 7:00	Sept. 10 TBA 5:30
Sept. 18 COOPER T 8:00	Sept. 24 ROOSEVELT T 7:00	Sept. 17 COOPER H 5:30
Sept. 25 ROOSEVELT H 8:00	Oct. 1 TBA 7:00	Sept. 24 ROOSEVELT T 5:30
Oct. 2 COLORADO CITY T 8:00	Oct. 8 FLOYDADA* T 7:00	Oct. 1 SHALLOWATER H 5:30
Oct. 9 FLOYDADA* H 7:30	Oct. 15 LITTLEFIELD* H 7:00	Oct. 8 FLOYDADA* T 5:30
Oct. 16 LITTLEFIELD* T 7:30	Oct. 22 DIMMITT* H 7:00	Oct. 15 LITTLEFIELD* H 5:30
Oct. 23 DIMMITT* T 7:30	Oct. 29 TULIA* T 7:00	Oct. 22 DIMMITT* H 5:30
Oct. 30 TULIA* H 7:30	Nov. 5 FRIONA* T 7:00	Oct. 29 TULIA* T 5:30
Nov. 6 FRIONA* ** H 7:30		Nov. 5 FRIONA* T 5:30

* Homecoming
* District Games ** Parents Night

Bob Stovall Printing

No Job Too Large Or Too Small!

Come By And Visit With Us For All Your Commercial Printing!

221 E. Ave. B. 272-3373
Southern California vs. Arizona

Viola's Restaurant
For The Best Mexican Food Come To Viola's!

Open 11:00 a.m. - 9:30 p.m.
Closed Tuesdays

2002 W. Amer. Blvd. 272-3838
Bi-District Playoffs
Springlake-Earth vs. Idalou
Friday, 7:30 p.m., Levelland HS

Sudduth Field & Co.

David L. Sudduth, CPA
Randall L. Field, CPA

Backing The Mules
100%

104 W. 2nd Muleshoe 272-4291
Stanford vs. Washington State

Kearney Scoggin

Scoggin Ag Center, Inc.
"Where Fertilizer Is Our Business"

1532 W. Amer. Blvd. Muleshoe, Tx. 79347
P.O. Box 452 272-4613
Louisville vs. Pittsburgh

We want to wish everyone Good Luck in the upcoming school year!

Thanks to all our customers, we appreciate all of you for patronizing

Go Mules! **The Snack Shack** Go Mules!
Mon. - Fri. 11 a.m. - 2 p.m.
Closed Saturday & Sunday

The Snack Shack
222 W. Ave. H. Muleshoe 272-3840
Boston College vs. Syracuse

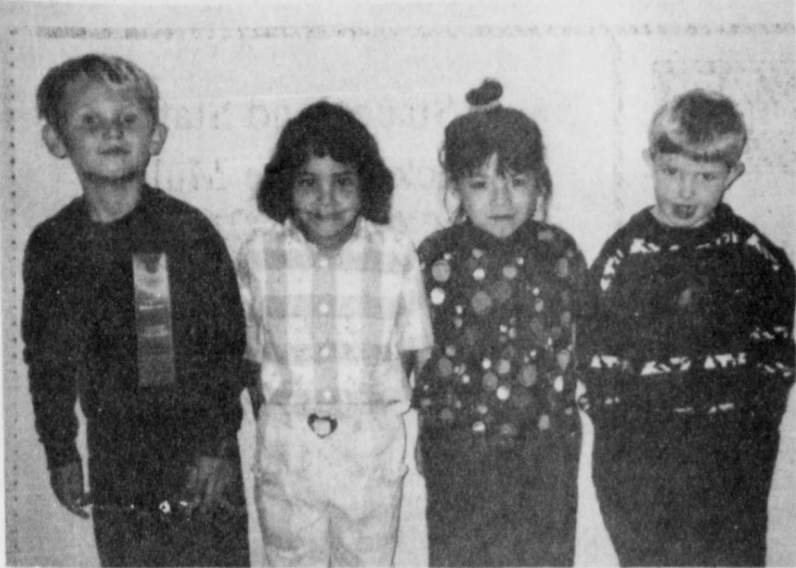
Alabama Picked Over Mississippi State

When two powerful, closely matched teams meet, we usually throw a couple of points to the home team, but the recent history of three of this week's top games makes us wonder how good an idea that is. The first is Penn State at Notre Dame. The Nittany Lions have come away the winners the past two years, at home last season (35-13) and in South Bend in 1990. Notre Dame won in '89 and '88, once at home and once in State College. So this year we don't care much that Notre Dame is at home. We're picking the Irish in a close one because they have one of the most productive offenses in the country, and because those losses the past two years should give them a motivational edge.

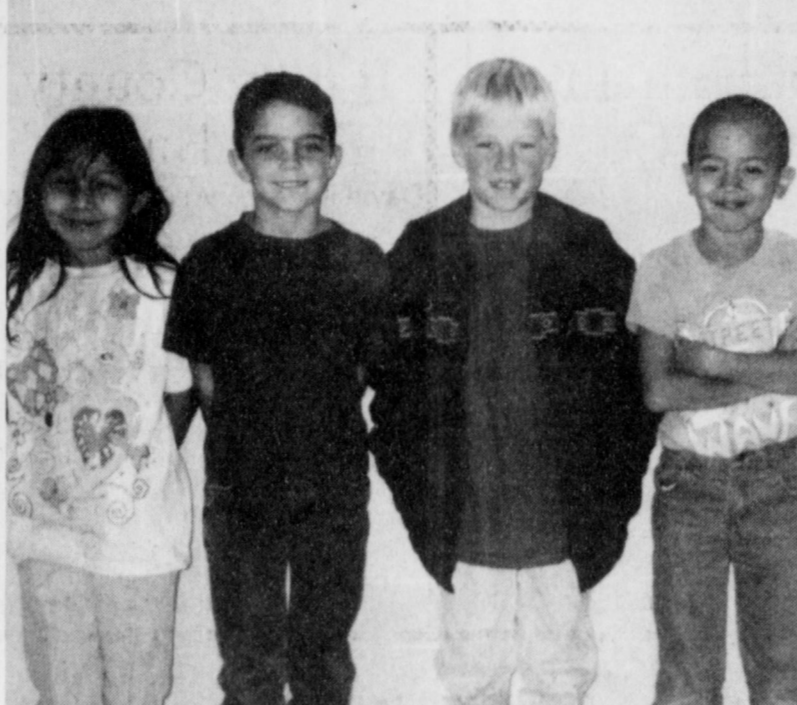
Two more of the Pac 10, Washington State and Stanford, have performed almost identically against each other, the Cardinal winning in Pullman last year, 49-14, winning in Palo Alto in 1990, losing on the road in '89 and losing at home in '88. Stanford will win not because it's back in Palo Alto, but because it's one of the top five defenses in the country. You've probably noticed that we just happened to have picked three home teams. Well, we don't have to go out on a limb to favor the visitor in another big game, among the leaders of the West division of the Southeast Conference. At home or away, no matter where they play, Alabama always beats Mississippi State, and the Crimson Tide will do so again this year.

Our forecasting accuracy continues to improve. Through Halloween weekend we'd picked 1,293 right and 412 wrong, for an average of .758.

The memory of the just survives in Heaven.
-William Wordsworth.



STUDENTS OF THE WEEK- For the week of October 5th through 9th are Speech-Charles Hammer, Music-Kristina Castorena, P.E.-Crystal Williams, Library-Phelicia Alarcon, Computer Lab- Trisha Robertson, Computer- Joshua Mitchell.



STUDENTS OF THE WEEK-For the week of October 26th through 30th are Speech-Laura Vasquez, Music-Cory Hunt, P.E.-Roger Viss, Library-Eric Villa, Computer Lab-Cody Radford, and Computer-Mariello Ceballos.

Patients In Mulshoe Area Medical Center

NOVEMBER 3, 1992
Bridgett Bara, Altha Turner, Mae Wilterding, Ella Osband, Clemmie Ladd, K.B. Martin, Marie Guillen, Antonia Cadena, Martha Boyd, Cindy Maldonado, John Agee, W.T. Millen.

NOVEMBER 4, 1992
William Schonasky, Bridgett Bara, Katherine DePalma, Altha Turner, Andrew Lewis, Earl Ladd, Mae Wilterding, Ella Osband, K.B. Martin, Rachel Harmon, Vance Wagon, Cindy Maldonado, Jeanette Fine, John Agee, Linda Nowell.

NOVEMBER 5, 1992
Mae Wilterding, Kendrick Mimms, Katherine DePalma, Bryan Flores, Adrian Flores, Patsy Longsdale, Ella Osband, Patty Pyle, K.B. Martin, Rachel Harmon, Fedelina Camarena, Vance Wagon, Earl Ladd, John Agee, Yesenia Trevino, Lori Haseloff.

NOVEMBER 6, 1992
Mae Wilterding, Kendrick Mimms, Adrian Flores, Noemi Sanchez, Patty Pyle, K.B. Martin, Vance Wagon, Patsy Longsdale, Earl Ladd, John Agee, Yesenia Trevino.

NOVEMBER 7, 1992
Mae Wilterding, Kendrick Mimms, Jessie Lopez, Noemi Sanchez, Ken Angely, K.B. Martin, Nelline Spencer, Fred Curtis, Vance Wagon, Patsy Longsdale, Earl Ladd, John Agee, Della Watson.

NOVEMBER 8, 1992
Mae Wilterding, Jessie Lopez, Noemi Sanchez, Nelline Spencer, Fred Curtis, Vance Wagon, Earl Ladd, Della Watson, Ken Angely.

NOVEMBER 9, 1992
Mae Wilterding, Jose Cuevas, Jessi Lopez, Elvia Pacheco, Ethel Allison, Edith Lambert, Noemi Sanchez, Ken Angely, Hector Flores, Nelline Spicer, Fred Curtis, Vance Wagon, Charles Lewis, Earl Ladd, Elizabeth Arenivaz, Della Watson.

Search For Rural Hero

The search is under way for the rural hero for 1992, according to Ben Bullard, president of the Texas Farm & Ranch Safety Council, which presents the annual rural heroism award.

The 1992 recipient will be announced March 22, 1993, at the 55th annual Texas/Southwestern Safety Conference and Exposition to be held at the Austin Convention Center in Austin.

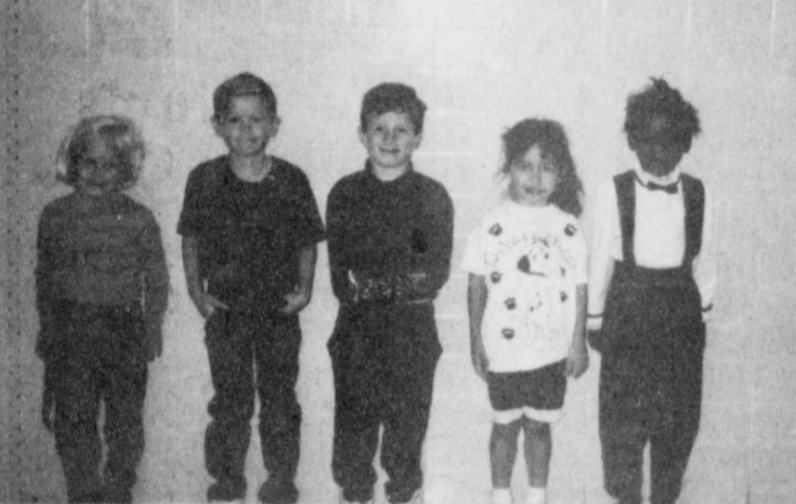
Deadline for submitting 1992 entries will be Feb. 1, 1993, Bullard said. Send all nominations to the Texas Farm & Ranch Safety Council, Box 2689, Waco, Texas, 76702-2689.

To qualify for the honor, a candidate must have performed an heroic act of human-lifesaving within Texas during 1992. Preferably, it should be related to farming and ranching, Bullard said.

The 1991 winner, John Michalak of Lott, Texas, who took the lead in rescuing his boss and fellow cowboy from floodwaters on "Big Creek" south of Marlin, in December 1991. He received his award at the Westin Galleria in Houston last March.

Nominations should include a written account of the incident and the names, addresses and telephone numbers of all persons involved. Newspaper clippings and photos should also accompany when available, Bullard said.

Bullard is a field safety representative for the Texas Farm Bureau Insurance Companies' Safety and Underwriting Division.



STUDENTS OF THE WEEK-For the week of October 12th through 16th are Speech-Mitci Hawkins, Music-Barry Morris, P.E.-Trent Black, Library-Sarah Dominguez, and Computer-Arcasia Cools.



STUDENTS OF THE WEEK-For the week of October 19th through 23rd are Speech-Marlie Black, Music-Savanah Howard, P.E.-Marlo Valdez, Library-Stacy Mata, Computer Lab-Henry Garcia, and Computer-Yuri Marquez.

Corn Production

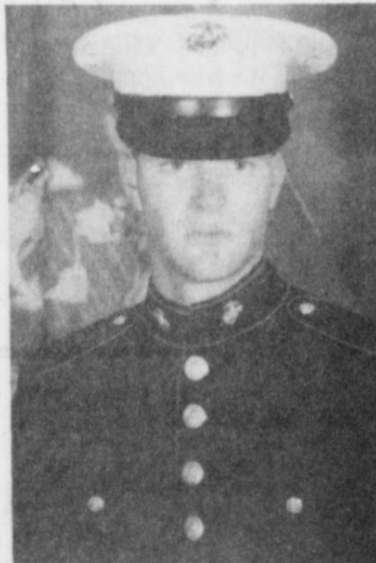
The nation's corn farmers will cut production next year under a government decision that could stop the current slide in corn prices and boost growers' revenues in 1993.

Abortion Gag Rule

The Bush Administration's so-called "gag rule," forbidding most workers in federally funded family-planning clinics from counseling women on the option of abortion, has gone into effect.

Gulf Vets

Eleven cases of a rare parasitic disease carried by a desert sand fly have been diagnosed among U.S. veterans of the Desert Storm conflict, Army expert Lt. Col. Robert F. DeFraites, an epidemiologist, said.



MARINES---Jason Redwine, a graduate of Mulshoe High School officially earned the title, "United States Marine," during recent recruit graduation ceremonies at Marine Corps Recruit Depot, San Diego. Redwine will serve four years in the Marine corps as a Resource Management Personnel.

(Guest Photo)

GOING OUT

OF BUSINESS

30% TO 75% OFF STOREWIDE

(Excluding Select Skin Care and Prosthesis)

<p style="font-weight: bold;">LARGE GROUP SWEATERS</p> <p style="font-size: 1.5em; font-weight: bold;">40% OFF</p>	<p style="font-weight: bold;">LARGE RACK BLOUSES</p> <p style="font-size: 1.5em; font-weight: bold;">40% OFF</p>
--	--

EVAN PICONE HOSE-Buy 2-Get 1 FREE

Lady You-Nique

420 Main Street, Clovis



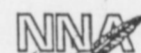
AIR FORCE---Airman Billy P. Williams has graduated from Air Force basic training at Lackland Air Force Base. During the six weeks of training the airman studied Air Force mission, organization and customs and received special training in human relations. In addition, airmen who complete basic training earn credits toward an associate degree through the Community College of the Air Force. Williams is the son of Glenda Stevens of Mulshoe and a graduate of Mulshoe High School, class of 1992. (Guest Photo)

Mulshoe Journal

USPS 367-820

Established February 23, 1924. Published by Mulshoe Publishing Co., Inc. Every Thursday at 304 W. Second, P.O. Box 449, Mulshoe, Tx. 79347. Second Class Postage paid at Mulshoe, Tx. POSTMASTER: Send address changes to the Mulshoe Journal, P.O. Box 449, Mulshoe, Tx. 79347.

We Are Qualified Members Of:
Panhandle Press Association, National Newspaper Association, West Texas Press Association and Texas Press Association.

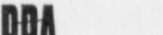


National Newspaper Association



MEMBER 1992

TEXAS PRESS ASSOCIATION



PANHANDLE PRESS ASSOCIATION

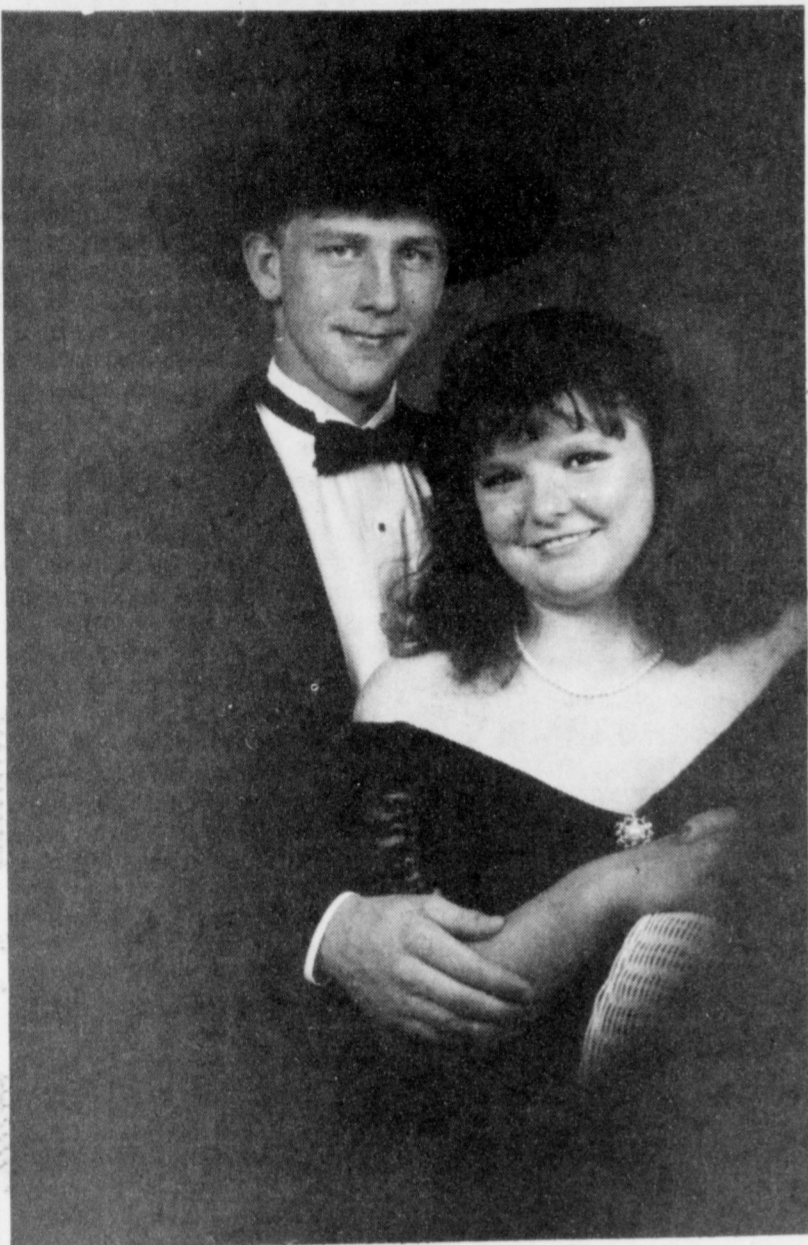
L.B. Hall, Publisher
Sammye Hall, Vice-President/Controller
Evelene Harris, News
Auree Boatman, Society
Holly Millip, Advertising
Dana Bermea, Classified
CORLAND
SUBSCRIPTIONS
Mulshoe Journal and Bailey County Journal
By Carrier Yearly - \$14.00
Bailey and surrounding counties
By Mail - \$15.75
Elsewhere - \$17.50
Advertising Rate Cards on Application
Advertisers should check their ad the first day of insertion. The Journals will not be liable for failure to publish an ad or for a typographical error or errors in publication except to the extent of the cost of the ad for the first day of insertion. Adjustment for errors will be limited to the cost of that portion of the ad where the error occurred.

THE BOB HARMON FORECAST

Sat., Nov. 14 - Major Colleges - Div. 1-A			Other Games - East		
Akron	27	Youngstown	24	Albany, N.Y.	19
Alabama	28	Mississippi State	16	Alleghepy	3
Army	24	Northern Illinois	23	American International	10
Baylor	28	Rice	21	C.W. Post	28
Boston College	30	Syracuse	28	Colby	21
Bowling Green	31	Ball State	18	Corland	23
Brigham Young	24	Air Force	14	Delaware Valley	19
California	22	Arizona State	21	Franklin & Marshall	26
Central Michigan	26	Western Michigan	21	Hamilton	37
Clemson	28	Maryland	23	Indiana U., Pa.	30
Colorado State	29	Ohio U.	12	Ithaca	26
East Carolina	34	Arkansas State	6	Lebanon Valley	27
Florida	29	South Carolina	16	Lycoming	23
Florida State	38	Tulane	6	Middlebury	28
Georgia	27	Auburn	13	Millersville	20
Georgia Tech	24	Wake Forest	21	Moravian	29
Iowa	30	Northwestern	20	Moravian	29
Kansas	27	Colorado	23	Moravian	29
Kentucky	26	Cincinnati	17	Moravian	29
Louisville	25	Pittsburgh	20	Moravian	29
Miami	45	Temple	3	Moravian	29
Miami, O.	27	Kent State	12	Moravian	29
Michigan	40	Illinois	7	Moravian	29
Mississippi	28	Louisiana Tech	15	Moravian	29
Missouri	24	Kansas State	17	Moravian	29
Nebraska	36	Iowa State	9	Moravian	29
Nevada-Reno	21	Utah State	20	Moravian	29
New Mexico	33	Texas-El Paso	26	Moravian	29
New Mexico State	31	Cal State Fullerton	19	Moravian	29
North Carolina State	34	Duke	20	Moravian	29
Ohio State	33	Penn State	28	Moravian	29
Oklahoma	27	Indiana	27	Moravian	29
Oregon	31	Oklahoma State	20	Moravian	29
Purdue	28	U.C.L.A.	21	Moravian	29
San Diego State	26	Michigan State	27	Moravian	29
San Jose State	31	Hawaii	24	Moravian	29
Southern California	29	Pacific	27	Moravian	29
Stanford	28	Arizona	24	Moravian	29
Tennessee	34	Washington State	24	Moravian	29
Texas	34	Memphis State	27	Moravian	29
Texas A & M	34	S.M.U.	10	Moravian	29
Texas Tech	33	Houston	21	Moravian	29
Toledo	30	T.C.U.	21	Moravian	29
Utah	24	Eastern Michigan	8	Moravian	29
Vanderbilt	29	Wyoming	22	Moravian	29
Virginia Tech	23	Navy	17	Moravian	29
Washington	42	Southern Mississippi	17	Moravian	29
West Virginia	25	Oregon State	0	Moravian	29
Wisconsin	27	Rutgers	21	Moravian	29
		Minnesota	17	Moravian	29



Proudly Presented By:
WES-TEX FEED YARDS, INC.
CUSTOM CATTLE FEEDING
272-7555



ENGAGEMENT ANNOUNCED-Susanna Sue Edwards and Scott T. Gray would like to announce their engagement and approaching marriage. Susie is the daughter of Dorena Feagley of Muleshoe and William Edwards of Odessa, Tx. She is a senior at Muleshoe High School, and is currently employed at the Muleshoe Journal. Scott is the son of Neva Gray and David Gray, both of Muleshoe. He is a 1992 graduate of Muleshoe High School and is currently in the United States Air Force. The wedding is planned for February 6, 1993 at the Richland Hills Baptist Church in Muleshoe.

Jews For Jesus Sing

The Jews for Jesus traveling evangelistic team, "The Liberated Wailing Wall" will be coming to Muleshoe on Saturday, November 21. They will be presenting a program of music and testimony at First Baptist Church, at 7:00 p.m.

Jews for Jesus have been singing their songs for almost two decades. Back in 1968, a group of Jewish Christians decided they wanted to sing the gospel in a way that was more familiar to them than the standard brand of church music. They wanted music with a harmony and rhythm that could blend their Jewish culture experience with a message. Their message proclaims Jesus as Messiah, which as Jews for Jesus leader, Moishe Rosen put it, "is all too often considered to be outside the realm of Jewish thought." The music has been combined with the message to create a cultural religious experience called "Jewish Gospel Music." "Some songs reflect the poignant longing that has been a part of our synagogue worship throughout the ages. Others are

bursting with the same joyful exuberance you expect to find at a Jewish wedding." This sound is achieved through a variety of instruments, some more traditional than others. Piano, guitar, synthesizer, saxophone, violin, and the dunbek (middle Eastern drum) are among the instruments.

Jews for Jesus is an independent missionary organization founded in 1973 by Moishe Rosen. The staff consists of more than 100 workers based in North America, Argentina, Great Britain, France, the Ukraine, and South Africa. Their goal is to let Jewish people know that the gospel is for them--that belief in Jesus does not take away one's culture and heritage. The Jews for Jesus Liberated Wailing Wall will be singing and telling their story here in Muleshoe. They're bringing their Hebraic music, their ethnic costuming and instrumentation, and their zeal. And they are inviting whoever wants, to come hear what being Jewish has to do with believing in Jesus.

Ben Franklin

"Our Variety Is Showing"

2104 W. Amer. Blvd.

272-3855

Fabric Sale

New Arrivals!

45-60" Widths Cottons, Poly Cottons
Knits

77¢ per yard

Sunday Only

November 15

12-5 p.m.



STUDENTS OF THE MONTH-for the month of November have been named at Lazbuddie Elementary School. They have exhibited outstanding qualities of citizenship, leadership, and character. They are (pictured from left to right) back row: Jason Jesko, 5th grade, son of Larry and Dixie Jesko, Sarah Jennings, 4th grade, daughter of Jim Don and Kim Jennings, and Trey Nickels, 3rd grade, son of Nicky and Debbie Nickels. Middle row: Michelle Puckett, 2nd grade, daughter of Ronnie and Kim Puckett, Robby Martin, 1st grade, son of Tommy and Linda Martin, and Marli Johnson, kindergarten, daughter of Roger and Debbie Johnson. Front: Jason Hill, Pre-Kindergarten, son of Tommy Hill and Sherri Barnes.



Kerry Thuitt

Bridal Shower Honors Thuitt and Finney

A bridal shower honoring Kerry Thuitt and Alan Finney was held Sunday, November 8, 1992 from 2:00 to 3:30 p.m. in the home of Dr. and Mrs. Bruce Purdy.

Guests were greeted by Cindy Purdy, Barbara Finney, Kerry, and her mother, Nancy Thuitt, and were registered by Suzanne Messenger.

Amanda Messenger served refreshments of apricot bars, lemon bars, pecan tarts, coffee and spiced tea, and burgundy colored mints from a table covered with a white linen tablecloth. Adorning the center of the table was a basket of needlepoint ivy with burgundy twigs, a burgundy bird and burgundy ribbon.

The honoree's corsage was of burgundy rosebuds with hunter green net and ribbon.

The hostesses presented them with a wood and antique brass lamp with a pleated raw silk shade.

Special guests at the gathering were Alan's Aunts, Helen Kirk of Odessa, and Paula Finney of Plainview; Kerry's mother, Nancy Thuitt and grandmothers, Consuelo Thuitt and Gladys Hendrix both of Post; and Kerry's aunt, Ann Shannon, also of Post.

Out of town guest was Trish Eckles of Tulia.

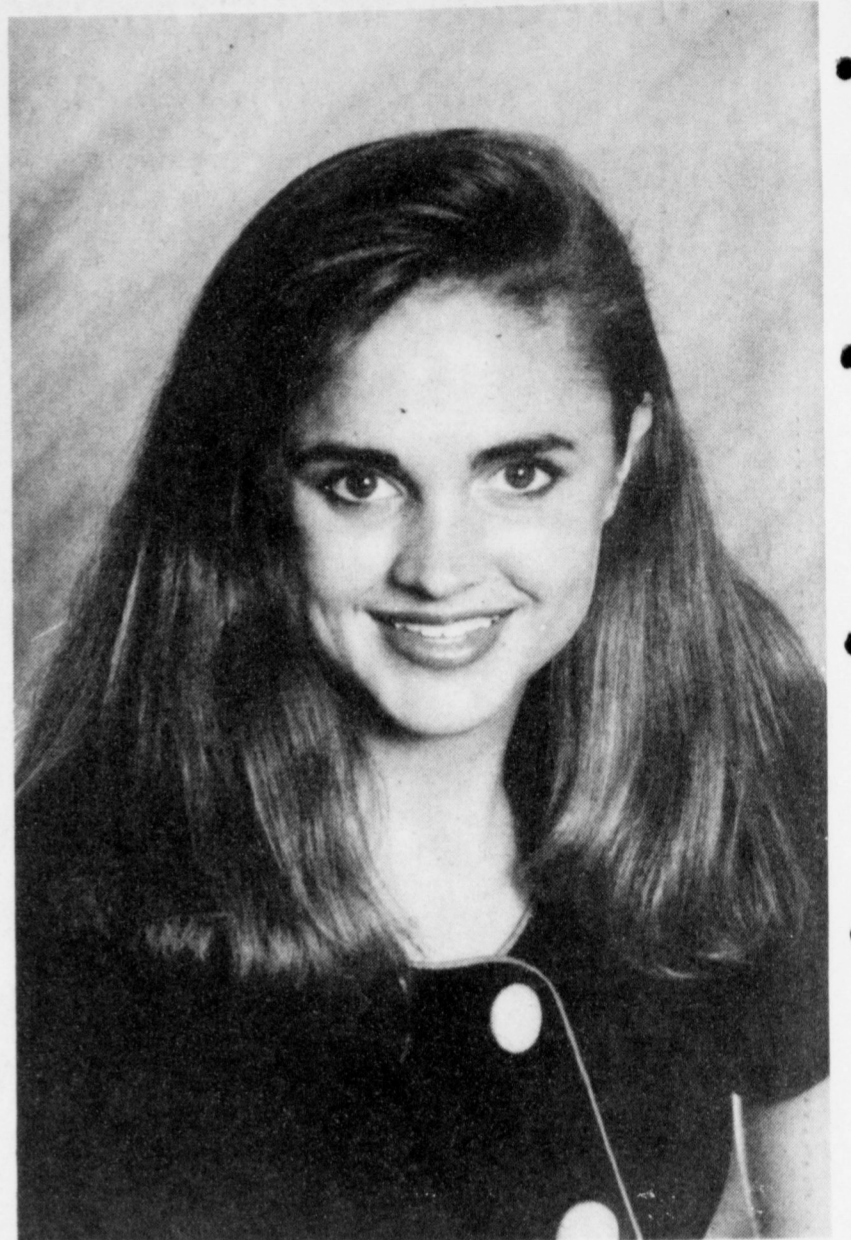
More Subsidy Payments

Farmers who received partial early payments on subsidies for this year's grain and cotton crops will get an additional 10 percent of the estimated final amount, Agriculture Secretary Edward Madigan has announced.

Be Reasonable

A new congressman flung down several typewritten sheets before his secretary.

"Don't use such long words in my speeches," he said. "I want to know what I'm talking about."



Mia Jennings

Lazbuddie Resident Named Baylor Homecoming Queen Nominee

Mia Jennings of Lazbuddie is one of 68 nominees for Homecoming queen at Baylor University.

Jennings, the daughter of Joe Bryan and Marsella Jennings, is a junior accounting major at Baylor. She will represent Phi Gamma Delta social fraternity.

A member of Delta Delta Delta social sorority, Jennings has participated in the Greek Council for Christ, a group which promotes Christian activities within the Greek organizations, as well as Freshmen council.

She has been named to the Dean's list and the Mortar Board Top 100 Freshmen. Mortar Board is a national senior honor society, organized as a local group (Laurel

Society) in 1961. She is a member of Mu Phi Epsilon, international music organization and also actively participates in the Baptist Student Union.

Bridal Shower To Be Held

There will be a bridal shower honoring Gena Sharp and Scott McBee at 2:00 p.m., Saturday, November 11, 1992, given by Dian Sherrill at 712 W. Ave. K. in Muleshoe.

Selections have been made at Anthony's, Something Special, Higgenbotham, Fry and Cox, and Amherst Department Store.

Steve Smith Plumbing

**All Types Of Plumbing
No Job To Big Or To Small
Quality Guaranteed Work
For Appointment Call 272-5791**

Good Gobble! It's Turkey Time! We Will Be Serving Our Thanksgiving Buffet

**Thursday, November 19
11 a.m. - 4 p.m.**

*Turkey, Dressing, Pumpkin & Pecan Pie,
And All The Trimmings!*
All You Can Eat

\$6.25

We Will Closed Thanksgiving Day, Nov. 26.

Connie's Place

121 S. Main Muleshoe 272-3126



Muleshoe Art Association's Artist Of The Month



Elsie McMillan

Elsie McMillan of Lubbock, formerly of Earth, has been named the Muleshoe Artist of the Month for the month of November. She has been a member of the Art Association since 1972.

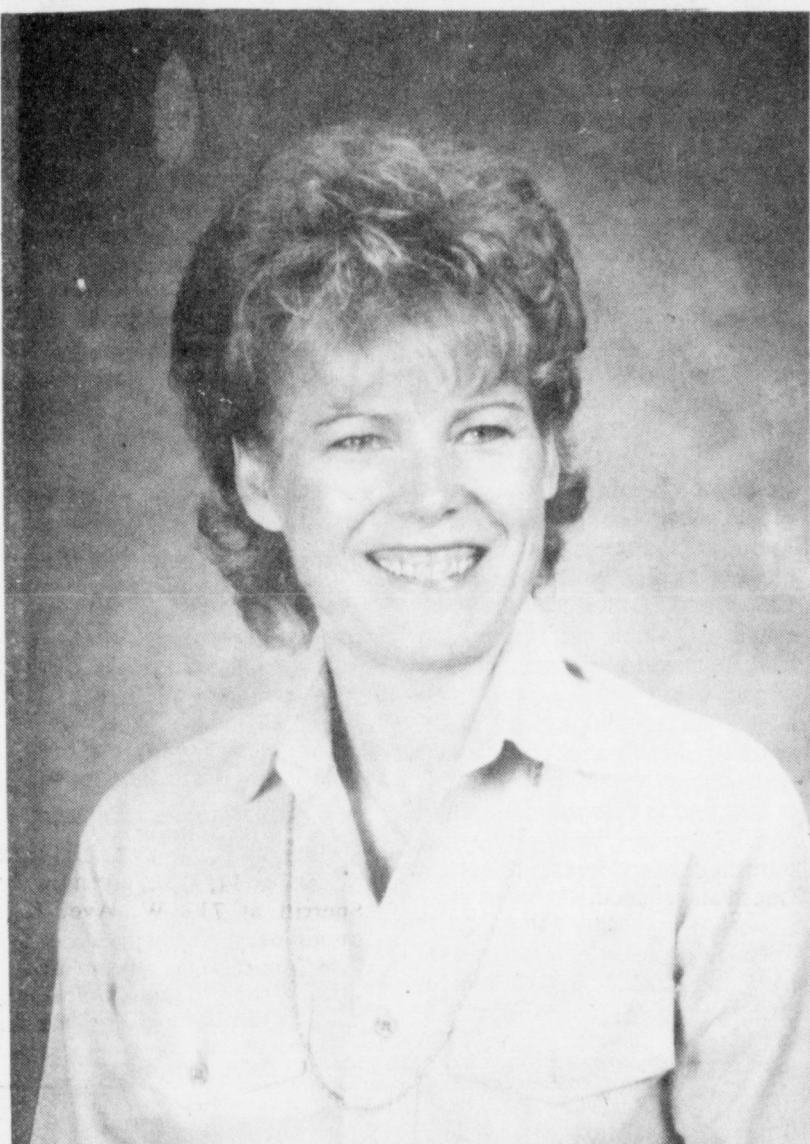
"The business establishments, banks, newspapers and library supported the art association over the years. I would like to thank all of you for the support you have given us over the years," said Elsie.

She adds, "I have studied and

studied to improve. Each time we have our membership show, I see so many really good paintings, and wonder how I can possibly win an award, but sometimes I do. This encourages me to keep trying. I enjoy helping to check in the paintings and working with the other members to get the show

ready for the judging. I was lucky, and won best of show only once, and other first, second, third and honorable mention place honors, encouraged me to keep painting."

She now lives in the Lubbock Area at Buffalo Springs Lake, and belongs to the Lubbock Art Association and West Texas Water Color Society. She will continue to be a member of the Muleshoe Art Association and hopes they can grow in number and continue with their shows.



Mrs. Glen King

Former Three Way Teacher Receives Honors

Mrs. Glen King, a former resident of Muleshoe, currently residing in Crosbyton, has been selected as one of the 65,000 teachers, (5%) of the nation's teachers, to be included in the 1992 edition of "Who's Who Among America's Teachers". This is the second edition to be published.

According to Paul Krouse, publisher of "Who's Who Among America's Teachers", there is no greater honor than to be recognized for excellence by former students who have indicated "You have made a difference in my life."

Only students who have been cited for excellence themselves in "Who's Who Among American High School Students" or the National Dean's List, can submit nominations.

Mrs. King taught three years at Three Way I.S.D., six years at Morton I.S.D. and is currently teaching at Crosbyton I.S.D. where she has taught for 12 years.

A Totally Texas Thanksgiving

This Thanksgiving start a new tradition in your family by serving a "Totally Texas Menu".

From the gobbler to the sweet potato pie, planning a menu of foods grown or processed in Texas is easy, affordable and wholesome.

"As Thanksgiving approaches, we Texans are truly blessed with an abundant harvest," Agriculture Commissioner Rick Perry said. "We produce all the ingredients necessary for a sumptuous holiday feast right here in the Lone Star State."

Perry launched the Texas Department of Agriculture's "Totally Texas Menu" campaign last November to encourage supermarkets, hotels, caterers, and consumers to market and consume meals using Texas foods and beverages--not only during the holiday but year-round.

Thanksgiving is an especially bountiful season in Texas. With fall vegetable harvest under way in the Rio Grande Valley and South Texas, broccoli, cauliflower, winter squash, celery and lettuce should be

plentiful.

Pecanharvest has also begun, the East Texas sweet potato harvest is in and shipments of grapefruits and oranges are rolling out of the valley to markets statewide.

As for the main course, turkey supplies are expected to be excellent this year. Whole birds will average about 95 cents a pound, but consumers will find bargains at supermarkets featuring Thanksgiving specials. Ham, which is being sold at competitive prices, is also abundant.

Perry said a "Totally Texas" Thanksgiving menu may feature this typical holiday fare, but it doesn't necessarily have to.

"The state's cultural heritage is so varied and its agricultural production so bountiful, it's possible to prepare a whole range of alternatives without straying from the Texas concept," he said.

Possible substitutes might include Hill Country ranch-raised venison or West Texas prime rib, and for dessert, instead of traditional

pie, and apple strudel--a favorite of Czech Texans--or a creamy Mexican flan.

And don't forget to toast the holiday with a bottle of Texas wine from one of the state's 26 wineries, or glasses of chilled Texas milk or Texas bottled water.



MICROWAVE TIPS

When making grilled cheese sandwiches in a microwave, remember cooking time is very short.

Preheat browning dish, then place one or two sandwiches (2 slices of cheese or a slice of cheese and slice of cooked ham) in dish to brown. Outside of bread slices should be buttered.

Flatten with spatula. Cook on High for only about 20 seconds, then turn and cook another 25 seconds. If further cooking is needed to melt cheese, cook 15 to 45 seconds longer.

Ben Franklin®
Mon. Thru Sat. 8:00 a.m. to 8:00 p.m. Open Sun. Noon to 5:00 p.m.
2104 West American Blvd.

TOY TOWN

Layette Trayette Doll. 10 1/2-in. jointed doll with rooted hair & 11-pc. layette in three different styles. 66

8.97

Set

Doll Corvette or Limousine. Limousine Corvette 85

11.97 6.97

"Our Variety Is Showing"

Jenga® Game. Organize blocks to keep tower upright. MB

11.77

ea. 16

Bachman® HO Train Set with 36-in. round track, locomotive, and cars. 125

22.97

Set

Diversified® Light & Sound Laser Gun or Parris® Double Holster Gun Set. Gun with 8 sounds or 2 cap pistol gun set 110

7.97

ea.

Cellular Play Telephone. With 20-working buttons. 92

3.77

ea.

Ohio Art® Etch-A-Sketch®. Twist knobs to draw. 54

8.97

ea.

Shelcore® Pop-Up Pets or Musical T.V. 4 pets pop up when buttons/knobs activated or animated look T.V. 138

7.97

ea.

Proll® Rockin' U.S.A. Instruments or Guitar. Trumpet, clarinet or guitar. Includes song & instruction book. 93

4.97

ea.

6.97

ea.

4x4 Stunt Vehicles. Battery operated asstd. stunt rigs. 131

3.97

ea.

Ceaco® Deluxe Jigsaw Puzzles. 550-pc. 18x24-in. sizes. 21

3.97

ea.

Don't Go to Jail, Trouble, Beauty and the Beast, Aggravation

7.97

ea.

Pool Table, Thin Ice, Sorry or Grabbin' Grasshoppers Games. The fun way to test your skill & dexterity. 20-26-41

9.97

ea.

Teenage Mutant Ninja Turtles® Mutations or Smash Em' Bash Em' Figures. Your choice. 102

5.77 5.47

Petite Pals Dolls. 8-in. Christmas or traditional dolls with an unbreakable porcelain face. Your choice of styles. 75

6.97

ea.

GLOVE SOFT!



Soft cowhide upper, cushion insole and urethane wedge sole. Easy-going Dunoon comfort for weekdays or weekends.

The Fair Store
120 Main 272-3500
RED WING SHOES
Made in U.S.A.

Make Your Reservations NOW

For Our Delicious Thanksgiving Buffet

11:30 - 2:30

(In Order To Better Serve You, Please Make Your Reservations A.S.A.P.)

A Carrousel Of Good Food

1902 W. American Blvd.
272-4131

Finance Plan Does Not Mandate Tax Rate

Everyone wants to know--and understandably so--what the proposed school finance plan now before the Legislature will cost in terms of state spending and local property taxes.

The technically correct answer is that it will cost the state whatever future Legislatures decide to budget for it, and it will cost the local districts whatever the local school boards decide they want to tax and spend.

The plan does not mandate a local property tax rate, but instead leaves it up to the local school board as to the level they choose to participate in state school aid and local enrichment.

Cranes...

Cont. from Page 1 when hunting sandhill cranes.

For more information on sandhill cranes or other wildlife, contact the Soil Conservation Service office at 272-5124, or come by 105 E. Avenue D in Muleshoe. Programs and services of the Soil Conservation Service are offered on a nondiscriminatory basis without regard for race color, national origin, age, sex, religion, marital status or handicap.

ASCS...

Cont. from Page 1 January 31, 1993.

RECONSTITUTIONS

We need to know now of any changes that would cause a farm or farms to be combined or divided for the 1993 Program Year.

1992 COOPERATIVE GINS

The following gins in Bailey County have certified the use of bagging and ties that meet CCC requirements to place cotton in the CCC Loan Program: Bailey Gin, Bula Gin Company, Farmers Co-Op of Enochs, Maple Co-Op Gin, Muleshoe Co-Op Gin, West Camp Gin.

BURNING CROP RESIDUE

Producers who have received cost-share payments from ASCS on an ACP practice within the past 5 years or 10 years, depending on the practice, may be required to refund or forfeit payments if they deliberately burn any annual crop residue, unless they first receive a waiver from the County Committee.

CROP INSURANCE REQUIREMENTS

Some FCIC/MPCI Agents have not been requiring producers to file an AD-1026. To receive USDA benefits, producers are required to comply with Highly Erodible Land Conservation (HELIC) and Wetland Conservation (WC) provisions. An AD-1026 is used to determine whether a producer's farming plans for the year would cause them to be ineligible for USDA benefits. A producer who does not file an AD-1026 before a crop loss could be found ineligible to receive the indemnity after the claim is filed. In these cases, the insurance agency may refund your premium instead of paying the insurance claim. Check with your FCIC/MPCI agent to make sure that they have a copy of your AD-1026.

INTEREST RATE

The Loan Interest rate for November is 3.125 percent.

OFFICE CLOSED

This office will be closed Thursday, November 26, 1992, in observance of Thanksgiving Day.

SCS COMMENTS

Remember that crop residue and wind strips must be maintained through the month of March. All spot checks in March will be focused toward maintaining residues and windstrips, which is what the majority of operators in Bailey County have planned. Failure to do this will result in the farm being out of compliance for the 1993 crop year. If you have any questions on your plan, come see us at the SCS office in Muleshoe.

But despite the fact, critics of the plan have charged wrongly that it will mandate \$3 billion in added property taxes. The truth is, those critics largely represent the professional education bureaucracy which really wants the state to spend \$4.5 billion additional new dollars on the schools.

Certainly neither the state nor the local districts can raise that kind of money over the next two years. That is not a reflection on the educational needs of this state; it is simply economic reality.

History indicates that local property tax increases are inevitable, regardless of what school aid distribution plan is used to allocate the state's money.

School districts have year after year raised taxes locally for several reasons--to maximize their draw on the state formula, to enrich their local programs and to maintain or increase their per-student spending even as enrollments increase and property values remain flat.

A computer "model"--a projection --of the proposed school plan was run to see what local property taxes would be under a given set of circumstances. Those circumstances included assumptions that every district would grow in enrollment, would set a tax rate to maximize its state aid and would increase per-student spending by three percent per year. Given even that top-dollar assumption, the model showed \$2 billion in local tax increases statewide.

But again, that will not happen unless it is the decision of every one of the 1,000-plus local boards to pursue such spending and taxing increases.

The school finance plan before the Legislature is a delivery system, not an appropriations bill.

School...

Cont. from Page 1

A report was also given on the Dillman Library. The librarian is in the process of moving into the library.

The food service was also reported on. It was reported that the food service continues to increase cash sales. "The food is very good," said Buck Johnson.

Johnson reported on the purchase of two more cameras and are in the process of getting boxes so they can be installed.

The meeting adjourned and the board members went into executive session.

Letter To The Editor

Dear Editor:

With all the bad news we're faced with each day, I want to tell you some good news.

Members of churches of Christ across the country are joining together in a special effort to pray for the leaders of our great nation.

We're calling the campaign **In God We Trust** and we're asking people in our community to join members of churches in Christ in prayer for those men and women who will be leading our country.

Just imagine the country we could have if all our leaders made Godly decisions! I hope everyone will get involved in praying for our national leaders, for those in city and county government, our school administrators, and for those moms and dads who lead our families.

We can improve the news we see in our newspaper if we'll place God first in our lives! Please join churches of Christ in prayer to help bring America back to God.

Clarence McMahan
785 W. Ave. J
Muleshoe, Tex.

The plan includes a constitutional amendment which would bind the state to fairness and equity in allocating its money--but it will not bind either the state or the local districts to any set amount of spending.

Some wish it would, some hope it could. But that is a matter for the budget-writing process of the regular session. Today, the question is passage of an equitable distribution system to keep the courts from taking over--or closing--the school system as they have threatened to do.

Senator Teel Bivins

Even in the face of these very real incentives, I would be less than honest if I didn't tell you there are major obstacles in our road to reaching consensus.

Most of my colleagues agree that to bring this issue to a close will require a constitutional amendment. This will allow the people of Texas to have the final say once and for all on the issue of school funding. However, to get a constitutional amendment on the ballot requires a two-thirds vote of the Legislature. You may recall that it has taken Herculean effort to arrive at a majority vote of the Legislature in our previous attempts to deal with the issue. A two-thirds vote appears to be a very daunting prospect.

Another hurdle is that the House of Representatives is in the midst of a speaker's race. With the leadership void there, the likelihood of the House arriving at a two-thirds majority on any plan is at best unlikely.

Finally, it is an absolute fact of life that legislatures do not act until they are faced with an absolute, hard, drop dead deadline. It is simply the nature of the legislative process that no group of legislators will bring their votes to the table if they feel they have time to negotiate further and therefore possibly better the end product for their constituencies. The problem here is that Dec. 10 (the final date of the Fourth Called Session of the 72nd Legislature), is not perceived to be a hard deadline. Rather, the hard deadline is June 1, 1993.

By pointing out these difficulties, I'm not defending the Legislature nor making excuses for it. Rather I'm only sharing with you the political realities with which we must deal beginning Nov. 10. Also, I don't want to leave the impression there is no hope. Gov. Richards, Lt. Gov. Bullock and Speaker Lewis have offered a plan that could be the starting point of a final solution. As laid out, the plan has many

Health Care: A Right Or A Privilege

By Larry Milner,
President and CEO of the Texas Chamber of Commerce

Health care has become one of the hottest topics of the decade as lawmakers at the state and federal levels search for workable methods to provide basic health care coverage to everyone.

However, politicians aren't the only ones struggling with this issue. Employers, health care providers, insurance companies and families are all looking for solutions that will contain increasing costs while at the same time make health care accessible to those who are uninsured or underinsured.

The key issue underlining every health care discussion can be boiled down to this one question--Is health

care in America a right or a privilege? And while the discussion is seldom framed in the context of "a right versus a privilege," that is really the major philosophical issue which must eventually be addressed by any health care solution.

There is no question we should provide help to those who are unable to help themselves, as is currently the case through charitable and indigent health care programs. America and Texas have been built on that belief. However, if you carry the premise of providing a completely unconfining right of health care for everybody to its logical end, then we must provide all citizens with every conceivable medical need. There is not enough money in the world to do that.

Many believe "if people have a right to a lawyer, then they should also have a right to a doctor." That sounds simple and fair. But, how much of a right should a person have? Is it unlimited? If so, each individual would then have a right, supported by law, to every needed medical procedure whether or not they could pay for it.

Here's an extreme example: an elderly person, suffering from various effects of the natural aging process, needs a specialized and expensive procedure which doctors feel provides little hope for saving that person's life. If denied the procedure, that person or his or her family members would then be able to sue the providers involved in the decision not to operate. With unlimited health care as an unrestricted right, the providers would lose the case.

If a person could not pay for an operation, the taxpayers would be required to pick up the tab, just as we currently do for criminals who cannot afford lawyers. If taxpayers have to pay for every operation which every person needs, no matter the condition or financial capability, health care costs would skyrocket even more than now.

If a line is drawn to determine how we'll ration health care, then someone must draw it. The State Legislature of Oregon has attempted to answer the question. Their new "rationing" program is receiving strong opposition on both sides of the aisle in Washington.

Somewhere personal responsibility must enter the picture. Should someone who has abused him or herself over a lifetime be allowed to force others who have carefully maintained a healthy life style to pay for the former's indulgences? maintained a healthy life style to pay for the former's indulgence's?

Think carefully about the choices between "a legal unlimited right for everyone versus "a privilege plus help for the poor." There is no single solution that will create a groundswell of support from political, business and community leaders so the question will certainly be with us for some time.

The Texas Chamber of Commerce is a statewide business organization with more than 4,000 members from every area of the state. The mission of the Texas Chamber is to enhance the business environment in Texas by representing business before state and federal governments in cooperation with local chambers of commerce and other business organizations.

Money Talk

By Charles Carlson
Dow Theory Forecasts

While the European Common Market has received much media attention, the North American Trade Accord could have a bigger impact on the U.S.

The agreement between Mexico, Canada and the U.S. would create a regional trading bloc of approximately 370 million people, producing \$6 trillion worth of goods and services each year.

The agreement, which will not go into effect for at least a year, still needs the approval of the governments of the three countries.

Some primary features of the accord include:

* The elimination of all tariffs between the three countries over 15 years.

* Greater access to the Mexican market for U.S. and Canadian manufacturers.

* The removal of restrictions on cross-border trucking and bus operations.

Should the agreement be approved, it could open up major trading opportunities for the three countries.

problems. The Teacher

Retirement System is needlessly dragged into it, and the treatment of sparsely populated, "property wealthy" school districts in the Panhandle needs to be vastly improved. I'm pleased to report that a plan I have developed to deal with financing public school facilities has received widespread bi-partisan support. It's absolutely critical that we address the facilities issue. If we don't, we'll not have achieved a complete solution to the school finance problem.

I pledge to you that I'll go to Austin and put all of my effort, energy, and action into working for an equitable solution to this most difficult issue.

Bailey County EMS Sponsors Toys For Tots

The Bailey County EMS are sponsoring the Toys-For-tots again this year and need the help of the entire community.

"We will need lots of toys, and can goods which will be distributed to the children in the area," said Larry Rasco.

Donations may be taken to the EMS office, behind Muleshoe Area Medical Center.

Applications can be filled out at the EMS office at 715 W. 2nd. from 8 a.m. to 5 p.m. Monday through Friday.

Application forms are available now, but no applications will be accepted after the December 15 deadline.

"We would like to say THANKS to those who have made Christmas a little happier for the children," Rasco continued.

Muleshoe Area Hospital District would like to thank the following people for their donations during the previous month:

MULESHOE AREA MEDICAL CENTER
MULESHOE AREA HEALTHCARE CENTER

- Memorials -

Given In Honor Of
Nettie Long Family
By
Kevin Smith

- Donations -

- Memorials -

- Donations -

Volunteers Plus
Five Area Telephone
Mr. & Mrs. Earl Peterson
Ladies, Muleshoe Church Of Christ
Lariat Lutheran Church
Narcia Messenger
Muleshoe Journal
Decorators Floral and Gift
Pay N Save
Richland Hills Baptist
Spudnut Shop

- Adopt A Room -

JOIN THE MEXICAN FIESTA

ON SALE AT DAIRY QUEEN NOV. 9-22, 1992

3 BIG, ALL-BEEF TACOS \$1.49

TACO SALAD \$2.49

Dairy Queen

© Reg. U.S. Pat. & Tm. Off. Am. D.O. Corp. © Tx. D.O. Op. Coun. At participating Dairy Queen stores.

Coupon

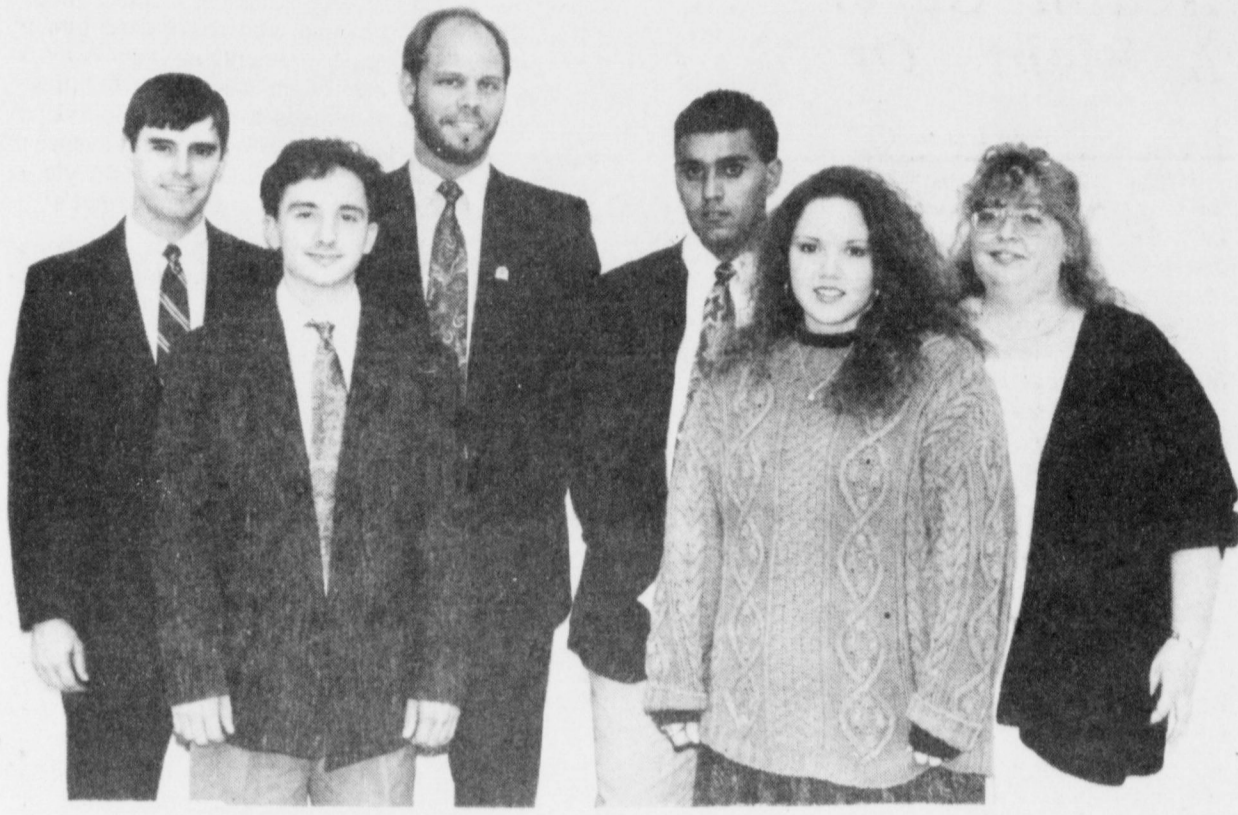
Carrousel of Good Food

1902 W. American Blvd. Muleshoe

Saturday Lunch

COUPON

Buy 1- 1/2 lb. Hamburger
Get Another @ 1/2 Price
(Coupon Expires Nov. 21, 1992)



NEW OFFICERS NAMED---Officers of the Southwestern Oklahoma State University Pharmaceutical Association at Weatherford for the 1992-93 school year are (front from left) Galen Perkins, Frederick, photographer; and Lezlee Hensley, Royse City, Texas, president-elect. (back from left) Jimmy Green, Mulshoe, treasurer; George Doupe, Norman, Oklahoma, president; Labeed Diab, Orland Park, Ill., vice president; and Tamera Ally, Sayre, secretary. (Guest Photo)

**Texas Cancer Council Grant Given
Tech Health Sciences Center,
Don & Sybil Harrington Cancer
Center, Amarillo**

The Don and Sybil Harrington Cancer Center along with the Texas Tech University Health Sciences Center has been approved to receive a \$60,000 grant from the Texas Cancer Council. The grant contract that began on September 1, 1992 is titled "West Texas Coalition for Cancer Control" and will focus as a planning grant for the establishment of a coalition with significant community involvement, to address all areas of cancer control, patient support and patient treatment.

"The overall goal of the project is to develop a cancer control network to address the needs of rural West Texas," Dr. James K. Luce, Interim President and Medical Director of the Harrington Cancer Center, stated about the grant. He continued, "The purpose of this project is to identify the existing cancer treatment, education, research and detection

services available, assess the needs, and develop a regional cancer care plan." Dr. Luce also serves as the Project Director.

Amarillo, Lubbock, El Paso, and Odessa will each serve as centers to assemble groups of concerned health providers and citizens who will study the impact of cancer in their individual areas.

The unique demographic attributes of this area put The Don and Sybil Harrington Cancer Center and The Texas Tech University Health Sciences Center in a perfect strategic position for the development of large scale programs to address the underserved populations of West Texas' rural areas.

Egypt begins effort to preserve paintings in Tut's Tomb

Enochs News

by: Mrs. J.D. Bayless

Mr. and Mrs. Bob Newton attended the 50th Anniversary of her sister, Bill and Jean Lindsey in Levelland Sunday. All of Mr. and Mrs. Lindsey's children and grandchildren were present.

Mr. and Mrs. Dale Nichols went to Clovis, NM Sunday evening to eat out with their son, Mr. and Mrs. Jerry Nichols and children, Kristen and Landon. The occasion was to help Kristen celebrate her birthday.

Mr. and Mrs. Bill Key were in Littlefield Sunday afternoon to visit her sister and husband, Robert and Lucille Butler.

BRIEFS

Senate makes armed auto theft federal crime.

Low mortgage rates fail to lure home buyers.

**Opportunity
Hotline To
Promote
Affordable
Housing**

Texas Farmers Home Administration (FmHA), one of eight federal agencies and government-sponsored enterprises have united in an effort to help thousands of persons, including very low-to-moderate-income families, achieve home ownership.

It is being reported by Neal Sox Johnson, State Director of FmHA,

**In Search Of
Miss Texas
American Coed**

Applications are now being accepted for interested young women ages 8-19 in participating in the Tenth annual MISS TEXAS AMERICAN COED PAGEANT to be held at the Hyatt Regency at Reunion in Dallas.

The pageant has three age divisions: Coed 16-19, Teen 13-15, and Pre-teen 8-12.

In 1992 over \$750,000 in cash awards, prizes, and scholarships were given out nationwide.

The winner of the Coed pageant will receive an all-expense paid trip to Hawaii to compete in the national pageant. The winners of the Teen and Pre-teen age divisions will receive a trip for two to Disneyworld and to Tampa to compete in their national pageants.

The reigning MISS TEXAS AMERICAN COED is Stephanie Roye from El Campo. The 1992 MISS TEXAS AMERICAN TEEN is Agueda Schessler from Killeen and the 1992 MISS TEXAS AMERICAN PRE-TEEN is Amy Hulbert from W. Columbia.

For applications and further information write or call: AMERICAN COED PAGEANTS 10902 Crabapple Rd. Roswell, GA 30075 1-800-937-COED

that these eight organizations have established a joint marketing information center in Dallas. Alfred A. DelliBovi, Deputy Secretary of the Department of Housing and Urban Development (HUD) and Chairman of the National Housing Advisory Board serves as the contact person.

By dialing the toll-free Housing Opportunity Hotline number, 1-800-362-2944, a caller will receive information on homes being offered for sale by the organizations anywhere in Texas.

Until now, persons interested in buying homes offered for sale by federal agencies and government-sponsored enterprises have had to contact each individual organization to learn what is available.

"President Bush and HUD Secretary Jack Kemp have established home

ownership and affordable housing opportunities as a domestic priority to expand home ownership among very low-to moderate-income families," said DelliBovi. "This initiative will make it much easier for these Americans to achieve their dream of home ownership."

The Farmers Home Administration assist rural America by guaranteeing private sector loans and by providing temporary, supervised direct loans to farm and housing borrowers who have a reasonable chance for success, and whose current needs cannot be met at reasonable rates and terms by commercial sources. The Agency is committed to excellence in providing its services.

Women's groups call for tougher laws on domestic violence.



RECEIVES AWARD---Wilson Appliance owned and operated by Gordon Wilson received recognition for sales performance by the Radio Shack division of Tandy Corporation. The sales award plaque was presented to Wilson and his wife, Marilyn, at the Radio Shack annual meeting in Dallas. Making the presentation was Jack O'Connor, western division sales manager. (Guest Photo)

Dr. A.R. Ploudre

Optometrlist

Family Vision Care Contact Lens Texas & New Mexico Medicaid

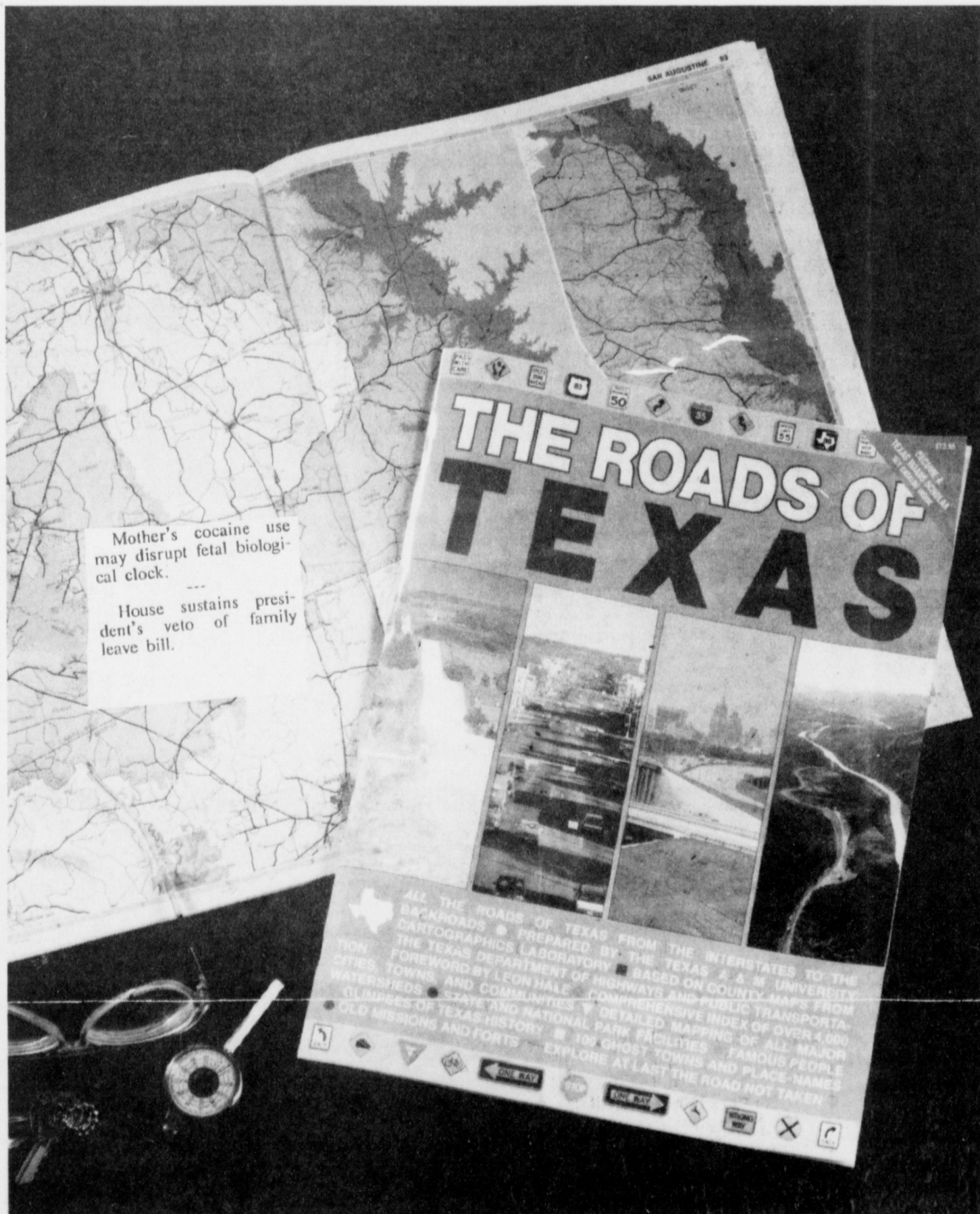
* Announcing, New Program of Special Assistance to Provide Vision Care to Low Income Families - Call For Information

505-762-2951 1515 Gidding St., Clovis, N.M.

* Credit Arrangement Available Upon Prior Approval

HEALTH INSURANCE CALL Mark Morton 109 S. 1st Mulshoe 272-7519

Let us show you a Texas you've never seen before.



- All 172 pages in full color
- Each page measures a large 15 x 11 inches
- Presents the entire state in stunning detail
- Appendices and specialty maps of many different features

THE ROADS OF TEXAS is the culmination of a mammoth project that has involved many individuals for over two years. When you get your copy of THE ROADS OF TEXAS you'll wonder how you ever traveled the state without it.

This 172 page atlas contains maps that show the complete Texas road system (all 284,000 miles) plus just about every city and community! Texas A&M University Cartographics Laboratory staff members produced the maps, based on county maps from the State Department of Highways and Public Transportation. The details shown are amazing—county and local roads, lakes, reservoirs, streams, dams, historic sites, pumping stations, golf courses, cemeteries, mines and many other features too numerous to list.

THE ROADS OF TEXAS \$12.95

Texas Country Reporter Cookbook . . . the cookbook everyone is talking about

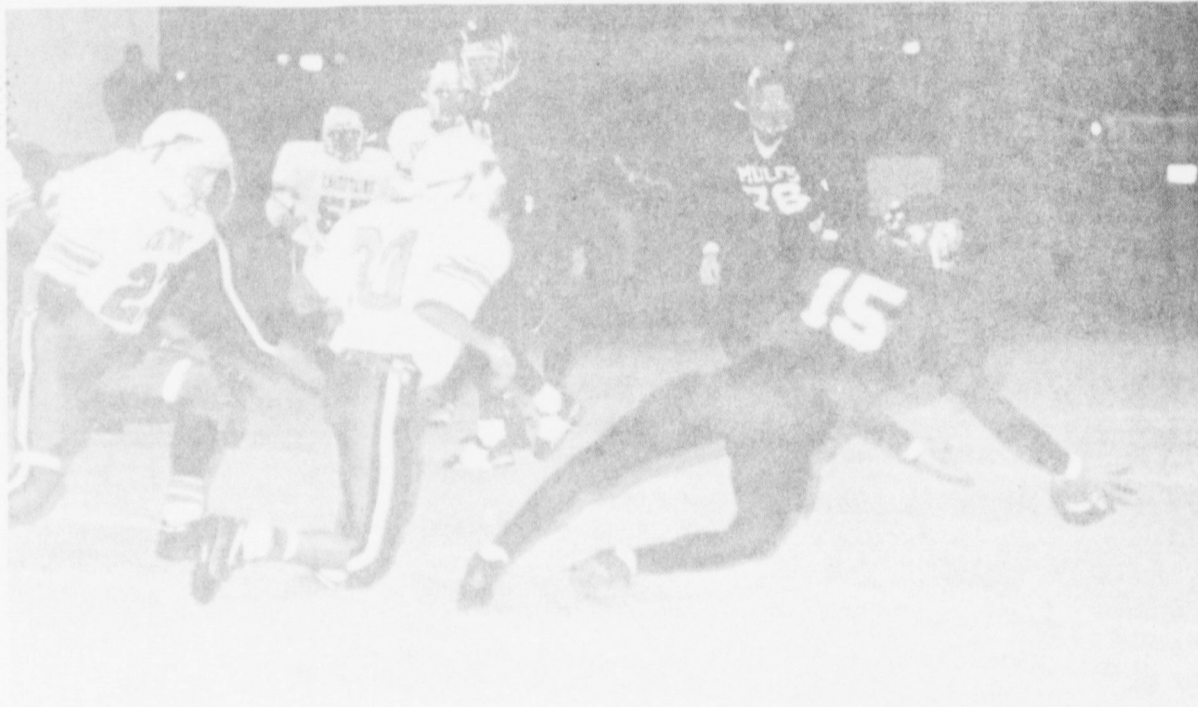
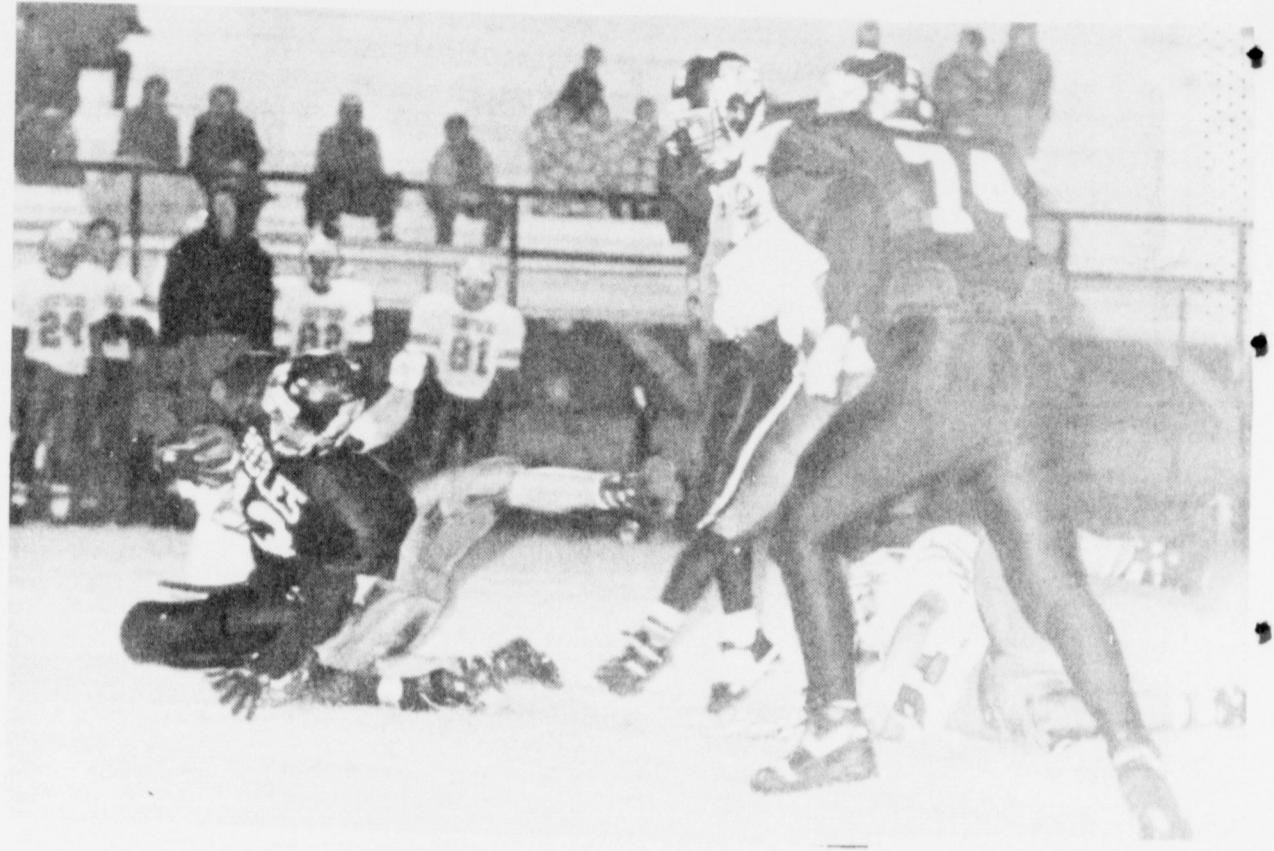
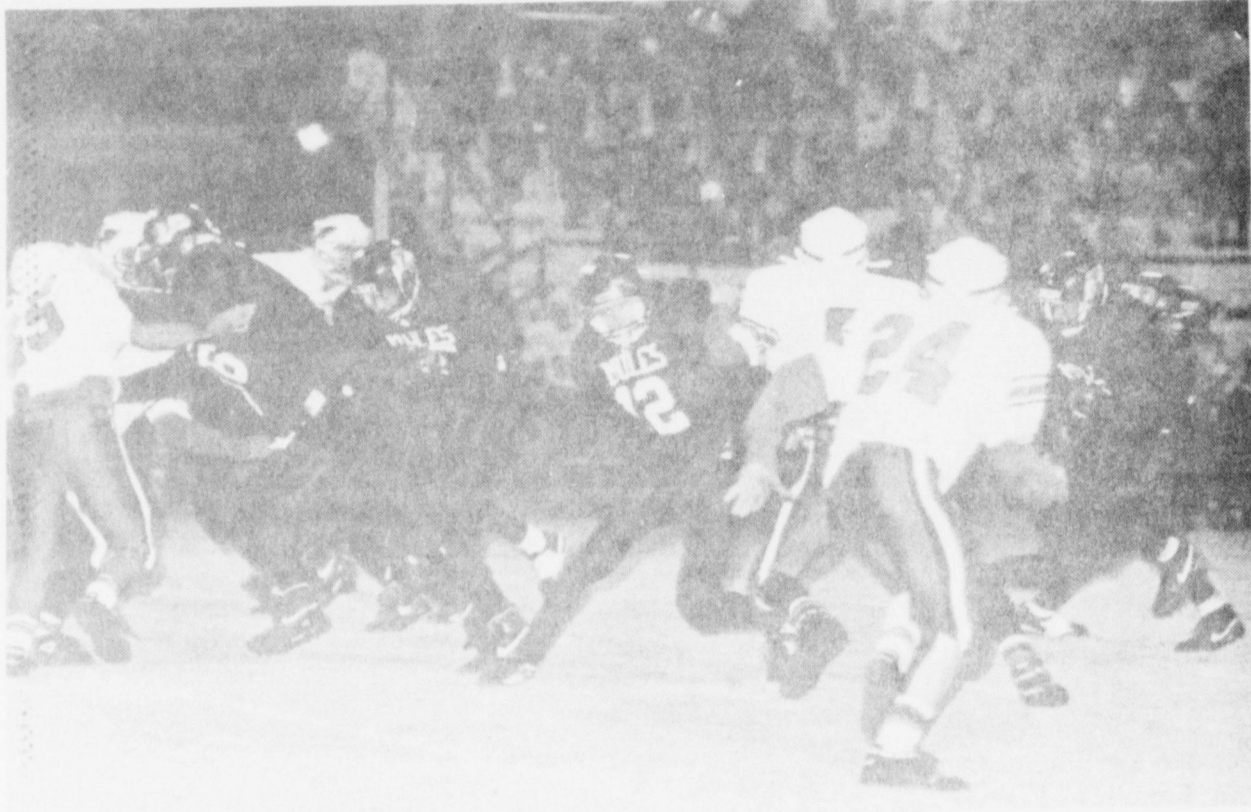
- 256 pages of easy-to-prepare recipes from the viewers of the popular tv show hosted by Bob Phillips
- Features interesting quotes on recipes ranging from 1944 War Worker rolls to a creative concoction using Texas tumbleweeds A GREAT GIFT

TEXAS COUNTRY REPORTER COOKBOOK \$13.95

**Also Available
The Roads
of Arkansas
&
The Roads
of New Mexico
\$12.95**

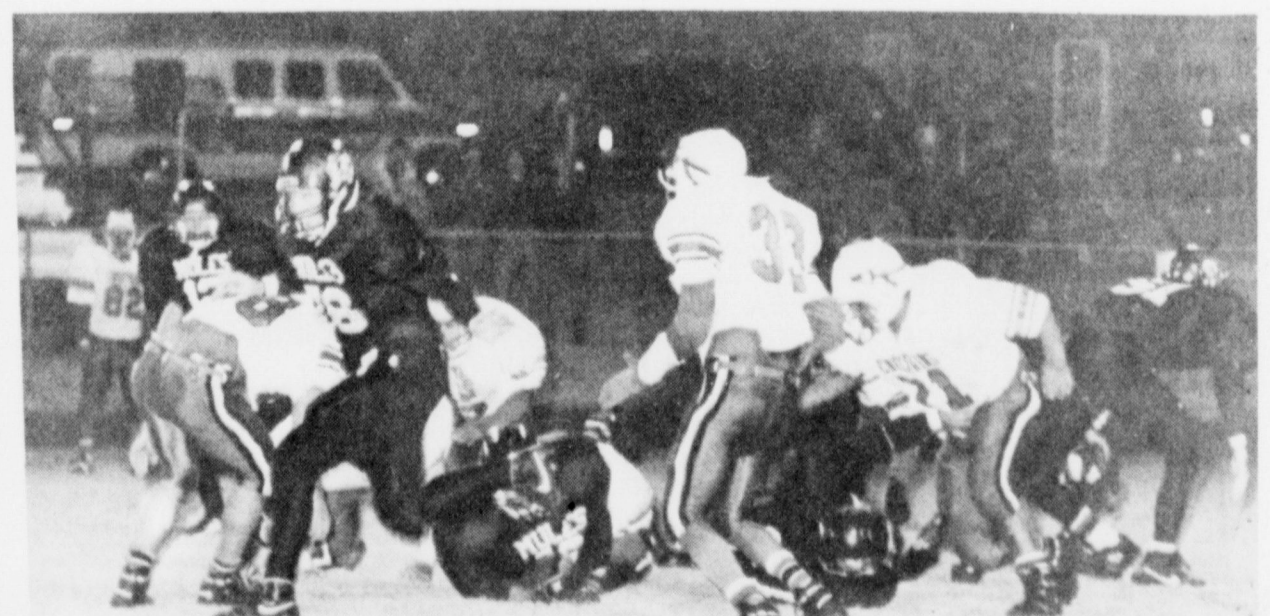
Available At Journal Office

304 W. Second, Mulshoe TX



Muleshoe Mules End Season With A Win Over Friona

Mules 28 Chieftains 17



CLASSIFIEDS 272-4536

CLASSIFIED RATES

15 Words & Under
Minimum Charge
\$2.30
Thereafter
\$2.00
16 Words & Over
1st Insertion
15 cents per word
2nd Insertion
13 cents per word

CLASSIFIED
DISPLAY RATES
\$1.75
Per Column Inch

DEADLINES
12 noon Tues.
For Thursday Paper
12 noon Friday
For Sunday Paper

To receive the reduced
rate after the first
insertion, ad must run
continuously.

We reserve the right to
classify, revise, or reject
any ad. We are not
responsible for any error
after ad has run once.

1. Personals

CONCERNED
About Someone's
Drinking?
HELP IS
AVAILABLE

through Al-Anon
Call 272-2350 or
965-2870 or come to
visit Tuesday and
Thursday nights, 8:00
p.m. & through AA call
965-2870 or come visit
Tuesday nights, 8:00 at
620 W. 2nd, Muleshoe

For more information and
assistance regarding the
investigation of get-rich-
quick, work-at-home and
other financial/business
opportunities, The
Muleshoe and Bailey
County Journals urges its
readers to contact the
Better Business Bureau,
1206 14th St., #901,
Lubbock, TX 79401
or call (806)763-0459

3. Help Wanted

SEEKING

Highly motivated individuals interested in training for a management position with one of the fastest growing marketing organizations in the country. Excellent income potential. Part or full time for Bailey County area. To request a personal interview, write: Box 163, Denver City, TX 79233 3-45-4tp(ts)

TRUCK & TRACTOR
DRIVERS WANTED:
Monthly salary, lots of
travel. Job runs March-
December. Contact Scott
or Charles at SCB
Farms, Inc. in Bovina,
TX--(806)238-1206
S3-44s-tfc

PARK RANGERS
Game wardens, security,
maintenance, etc. No
exp. necessary. For info
call (219) 769-6649 EXT
9689, 8 A.M. to 8 P.M.
7 days.



5. Apts. For Rent

2 Bedroom Apartment
For Rent: Call
272-4622
K5-45t-tfc

2 Bdrm. furnished or
unfurnished apartments.
Good location. Water
paid. Call 272-7575.
P5-44s-tfc

1 Bdrm. furnished
apartment. Water paid.
Good location. Call
272-7575.
P5-44s-tfc

9. Automobiles For Sale

CHEAP! FBI/U.S. SEIZED

89 MERCEDES.....\$200
86 VW.....\$50
87 MERCEDES.....\$100
65 MUSTANG.....\$50
Choose from thousands
starting \$25.
FREE Information-24
Hour Hotline.
801-379-2929
Copyright # Tx340JC
A9-39t-16tp

15. Misc.

FOR RENT:
Large Self Storage rooms
with 24 hour a day
access. Call J & J Self
Storage at 272-4307.
S15-44s-tfc

CATERING--your
place or ours!
TAKE OUT
DESSERTS
(Call Ahead)
THE
CARROUSEL
272-4131
tfc

Major Appliance
and Minor Home
Repairs!
Call 272-4450
HENDERSON
SERVICE, CO.
tfc

18. Legals

The Muleshoe
Independent School
District will accept bids
on a six passenger, 4
door sedan which
meets/exceeds the
following specifications:
114.3" wheel base, 4.6
liter V-8 engine,
automatic transmission
w/overdrive, PS, PB,
AC, Power seats, tilt
wheel, speed control,
AM/Fm radio/cassette,
automatic lights, 1992
model w/11,250 miles or
less, white exterior paint,
rear window defroster. Bid
should be submitted to
Buck Johnson, Asst.
Supt. MISD, 514 W.
Ave. G, Muleshoe, TX
79347 in an envelope
marked "Sealed Bid". Bids
will be opened at 11:00
a.m. on Monday, Nov.
16, 1992. Muleshoe ISD
reserves the right to
accept/reject any or all
bids.
M18-45t-2tc(T)

Faith in one's self is
the foundation of suc-
cess.

Must Be
Voice: "How do you
feel this morning?"
Second Voice: "Fine."
Voice: "I guess I
have the wrong num-
ber."

Classify! Call 272-4536

Experimental Aircrafts
An experimental air-
craft known as the X-31
has flown maneuvers at
a 70-degree angle of at-
tack, the Pentagon an-
nounced. Other advanced
U.S. fighter aircraft com-
monly do not exceed 20
to 45 degrees

Congratulated
First Student: "So the
president just expelled
you, eh? What did you
say to him?"
Second Student: "I
congratulated him for
turning out such fine
young men."

15. Misc.

JOHNSON CATERING
Now booking holiday banquets, parties, & open houses.
Full meals or standup catering. Also all kinds of holiday
cakes, candies, etc. Weddings-Quinceaneras. Free 4x6
individual or family pix included for each banquet
scheduled. 272-5746
tfc

Johnson Photography
Seniors, Weddings, Portraits, Groups, Quinceaneras.
1-8x10, 4-5x7.8 wallet--\$25.95 Portrait Christmas cards
& gift certificates 10% discount. Your home or mine.
272-5746

HIGH PLAINS ANTIQUE DEALERS ASSOCIATION

ANTIQUES,
COLLECTIBLES &
HANDICRAFTS SHOW
AND SALE DEPRESSION
AND CARNIVAL GLASS
PRIMITIVES,
FURNITURE AND
GLASSWARE

Nov. 14 10 A.M. 6 P.M.
Nov. 15 12:00 5 P.M.
ROY S. WALKER
COMMUNITY CENTER
316 W. Grand (where First Street & HWY
60 merge into West Grand Ave.) Clovis,
N.M.

Admission \$1.50 Donation
For information contact Jerry
Radcliff,
(505)762-2562
45s-2tp

8. Real Estate

8. Real Estate

8. Real Estate

8. Real Estate

8. Real Estate

Bingham & Nieman Realty

116 E. Ave. C George Nieman, Broker 272-5286 or 272-5285

RICHLAND HILLS
PRICE REDUCED 3-2-2 Brick, Cent. A&H,
built-ins, FP, sunken lv. area, ceiling fans,
earthtone carpets....RH-1
3-3-1 car carport-Large Brick home with built-
ins, 2 fireplaces, extra storage, Priced in the
\$60's!!! RH-3
NICE RESIDENTIAL LOTS...\$5,000 UP
4-2-2 Brick, Large living/dining combined...
\$50's!!! RH-5
3-2-1 Brick, Cent A&H, with fenced yard...
\$50's!!!! RH-6
3-2-2 Brick with fireplace, 5 ceiling fans, new
carpet & paint, new dual fuel heat pump,
abundance of closet space...\$90's...RH-8
HIGH SCHOOL
3-2-1 carport Brick, built-ins, lg. isolated master
bdm., covered patio...\$40's...HS-1
IMMACULATE LARGE BRICK HOME 3-2-2
Heat Pump, built-ins, Whirlpool, loads of
storage, lg. shop-storage, \$70's!!! HS-2
3-2 Remodeled, heat pump, built-ins, fenced yd.,
storage bldg. \$20's!! HS-3
3-1-1 Brick, heat pump, fenced yard, current
FmHA financing..Price reduced..H-4
4-2-2 Brick, Built-ins, Cent. A&H, ceiling
fans...\$40's!!! HS-5
FmHA financing to a qualified buyer 3-1 1/2-1
Brick in tip-top shape...\$20's!!! H-6
HIGHLAND AREA
3-2-1 Brick, Cent. A&H, FP, built-ins.
MAKE OFFER!!!! HL-1
LENAU ADDITION
3-1-1 car carport-Den with fireplace, floor furnace
heat. Low \$20's!!!L-8
3-2-1 Siding Home, built work shop, cellar,
water softener...\$40's.
REMODELED BRICK 3-2-1 With Cent.
heat, built-ins---PRICE REDUCED!!L-2

3-1-1 Carport home, Cent. A&H, built-ins, FP
fenced yd. \$20's!!!! L-3
3-1 1/2-1 cent. heat, evap. air, cov. patio
fenced yd. L-4
3-2-1 carport Neat & Clean, built-ins, A&H,
cov. patio, storage bldg...\$30's!!! L-5
3-2-1+carport, Brick, ceiling fans, Approx. 2060
sq. ft...\$40's!! L-6
JUST LISTED-2-1-1 Carport, fenced back yard,
with two storage bldgs..Priced in the \$20's L-7
4-3 Bath, Brick, on 2 acres, built-ins, FP,
Geothermal Ht. pump, horse stalls, pens & tack rm.
Also income producing shop on location or use for
your own needs...\$80's!! PRICE REDUCED!!!!
VERY NICE 4-2-2 Brick home on 6 ac., Cent.
A&H, 2300'+lv. area, Much More!! \$70's!HR-4
3-2-2 Brick, blt.-ins, Ht. pump, FP, 2.5 acres
on pavement. \$60's!!! HR-3
3-2-3 Carport Mobile home on 11 ac. edge of
town, MAKE OFFER!!! HR-5
3-2-1 on 1 acre, Cent. Heat, Evap. Air,
Remodeled, \$30's!! HR-6
3-1-2 Home on 1 1/2 acres storm cellar &
storage bldg...\$20's!!!! HR-8
3-2 home on 40 acres barn and more..
\$40's!!!! HR-9
3-2-2 home on 1 acre on paved hwy.,
Own's financing...
ASK ABOUT OUR COMMERCIAL LISTINGS!!!
JUST LISTED--Property on Hwy. 84---Can be
used as residential or commercial, large shop,
storm cellar, two story home, lot size
140'x100'...C-1
Circle Back Area-177 acres of good dryland...
Fully Allotted!!!
PLEASANT VALLEY-160 acres, 8" well,
Lindsey circle!!!!
354 ac. S. of town, good allot. &
yields!!!!

Classify!

15. Misc.

15. Misc.

Custom Cowboy Services

Gathering-
Processing-Doctoring
All Phases Of Cattle Work

Wheat Cattle Available
Experienced- Professional
Jim Bohler
272-3540
Muleshoe



ONE MINUTE SPORTS QUIZ

Job Situation Up in the Air?



Whatever your situation,
whether you're looking for a job
or offering one, classifieds can
help. It's a fact, classifieds is the
most popular method of match-
ing the right people to the right
jobs. Let classified help you and
your job situation!

Muleshoe
Journal
272-4536

By Christian Thorlund

- For whom does Russel Maryland play football?
- Who was the No. 1 NFL draft choice in 1990?
- Who won the Georgia Tech-FSU game?
- How old is Jack Morris?
- How old is John Smoltz?

Answers:

- The Dallas Cowboys.
- Jeff George, of Illinois, by Indianapolis.
- FSU, 29-24.
- 37.
- 25.

8. Real Estate

HOUSE FOR RENT:
2 Bedroom, 1 Bath,
Double Carport, Fenced
Back Yard, 1902 W.
Birch, Call 272-3696,
B8-45s-tfc

2100 sq. ft. 4 bedroom
brick with new timber-
line roof. Total electric-3
year old heat pump-(heat
& cool), 2 baths, double
garage, lots of closets.
Call 272-4793 or 5531.
C8-45t-tfc

Assume Loan
3-1-1 Brick, Blinds,
Fans, Central Heat,
Fenced Yard, 1424 West
Avenue C. 272-5234,
S8-44s-tfc

2 Sections irrigated farm
land 10 miles North of
Hereford, 8 wells, large
grain base, lays good.
Home, steel shop, pipe
corrals, underground
lines, \$450 per acre.
Owner will finance part.
409-543-5636
H8-45s-8tc

HENRY REALTY

111 W. AVE. B 272-4581

Muleshoe, Tx.

2 bedroom, 1 bath, 1 car garage, brick veneer. Country
Club Addition. Central heat and air. Very nice.

2 bedroom, 1 bath, detached 2 car garage, extra lot and
well for garden. Country Club Addition.

Spacious 2 bedroom, 2 bath with one car garage.
Fireplace. Ready to move in.

New listing-2 bedroom, 1 bath, redone for qualified
buyer.

3 bedroom, 2 bath, carport, spacious home outside city
limits near city on highway. Lot is 85'x402'. Metal
building is 29' by 40'. Great setup for workshop.

FOR LEASE-3 bedrooms, carpet, spacious
living area, fenced yard. Near high school.

COMMERCIAL PROPERTY
Ideal location on West American Blvd. 150' highway
frontage. A great business opportunity.

West American Boulevard 150' frontage. Priced to sell.

LAND
160 acres irrigated farm land with pivot sprinkler SW of
Muleshoe. 60 acres of wheat. Ideal for livestock
operation. Good water.

240 acres irrigated farm west of Muleshoe. Equipped
with sprinkler pivot system, underground electricity.
Underground pipe for water. Priced to sell.

Lowe's Pay-n-Save MARKETPLACE

THE BEST IS ALWAYS AT LOWE'S

Pt. Stockton
Coca Cola
6 Pack Cans
\$1.59
Coca Cola
\$1.59
6 pack
12

Lowe's QUALITY Pay-n-Save MARKETPLACE

Guaranteed Freshness!

Boneless Bottom
Round Steak
\$1.57 lb.
Single Pack \$1.87

Fresh Fryer Jumbo Thighs or
Drumsticks
59¢ lb.

Lowe's Fresh Produce
Red Rome Apples
39¢ lb.

New Crop Ruby Red
Grapefruit
39¢ ea.

Medium
Pork Spare Ribs
\$1.29 lb.

Boneless
Rump Roast
\$1.97 lb.

New Crop
Tangerines
99¢ lb.

Lowe's Fresh Produce
D'Anjou Pears
59¢ lb.

OHSE Meat
Salami, Bologna & Luncheon
\$3.77 3 lb. Pkg.

Free Hormel Bacon With The Purchase of Whole or Mini
Hormel Cure 81 Ham
\$3.99 lb.

Boneless Beef
Stew Meat
\$1.97 lb.

Fritos
Corn Chips
\$1.49 \$1.99 Size

Post Toasties
Post Toasties
99¢ With Coupon. Thereafter \$1.79 18 oz.

(STORE NAME) COUPON
Toasties® corn flakes
99¢ With This Coupon
Good Only at Lowe's Pay n Save Marketplaces

Buy a Hormel Cure 81 Ham and Get One Hormel Bacon #2000
FREE
One Coupon Per Customer
Limit One Per Customer
Expires 11-18-92

Baby Steps
Huggies Diapers
\$6.99 Limit 1
One Coupon Per Customer.
Thereafter \$7.99
Expires 11-18-92

Imperial
Margarine Quarters
3 \$1 1 lb. Qtrs. For
Blue Bunny
2 \$3 1/2 Gal For

HEALTH & BEAUTY

Suave
Hand Lotion
\$1.29 ea. Asst. 10 oz.

80 ct.
Band-Aid
\$1.99 80 ct. Asst.

Anti-Perpirant
Deodorant
\$1.29 1.75 oz.

Suave
Shampoo
\$1.29 10 oz.

Suave
Conditioner
\$1.29 10 oz.

Vick's
Nyquil
\$3.79 6 oz.

F.A.C. Perfect Balance, Colombian & French Roast
Hills Bros. Coffee
\$2.79 Coffee Mate \$2.39 12 & 13 oz.

DAIRY
Kraft
Velveeta Cheese
\$2.79 1 lb. Pkg.
Merico
Big Flaky Biscuits
2 \$1 10 oz. For

Shurita 112%
Milk
\$2.09 Gallon
Pillsbury Cinnamon or
Danish Rolls
\$1.39 9.5 oz.

FROZEN FOOD

Green Giant
Broccoli Cuts
99¢ 16 oz.

NEW
Punch
99¢ 12 oz.

Ore-Ida
Taters
\$1.69 2 lb.

Ore-Ida
Onion Rings
\$1.59 20 oz.

Night hawk
Asst. Dinners
\$1.89 6-7 oz.

Lowe's Pay-n-Save MARKETPLACE
401 W. Amer. Blvd. Muleshoe 272-4585
515 W. Amer. Blvd. Muleshoe 272-4406
Prices effective November 8 - 14, 1992
WE RESERVE THE RIGHT TO LIMIT QUANTITIES IN TEXAS
Our Best is for You!