



WEATHER

Nov. 15 70 27
Nov. 16 71 25
Nov. 17 74 36
Nov. 18 75 49

Muleshoe Journal

'The Community Of Opportunity-Where Water Makes The Difference'

Vol. 70, No. 47

Published Every Thursday At Muleshoe, Bailey County, Texas 79347

TEXAS PRESS ASSOCIATION 25¢

Thursday, November 19, 1992



COWBOYS FROM FOUR STATES---competed in the Muleshoe Roping Club Steer Roping held Saturday (November 14) at the newly remodeled arena. The arena was renovated this past summer and made large enough to accommodate the steer roping event. (Journal Photo)

City Council Passes Sales Tax Ordinance

The Muleshoe City Council passed an ordinance calling for a special election, adopting a one half of one percent local sales tax for the Economic Development within the city, during the council meeting Tuesday morning.

Members of the Muleshoe Area Industrial Foundation, with Jay Messenger as representative; Chamber of Commerce and Agriculture, Mike McDearmon, representative; Muleshoe Activities Committee, Mark Morton, representative; and the

Jennyslippers, Nancy Kidd, representative, met with the City Council.

"The Muleshoe Area Industrial Foundation believes that the tax is essential due to the fact Economic development, job creation, and retention of jobs and businesses is crucial to the future of Muleshoe and the surrounding area, and

"Smaller communities such as Muleshoe are at a competitive disadvantage in acquiring and retaining businesses due to the fact that we are competing against communities that have access to monetary resources that are acquired from such things as an economic sales tax, and

"The Industrial Foundation Board feels that the people of Muleshoe should have the opportunity to decide if the Muleshoe area should vigorously pursue economic development with adequate resources, therefore

"The Board of Directors of the Muleshoe Area Industrial Foundation requests that the Muleshoe City Council call for an election on the optional one half cent sales tax for economic development in the Muleshoe Area."

The resolution was signed by board members including: Duane Lloyd, Ronald Ashford, Cliff Black, Jay Messenger, Kenneth Henry, Rex Harris, and Merlyn Neel.

McDearmon stated that the chamber board was in agreement with the Industrial Foundation. "We realize the need and advantages to the community and the directors are in favor of giving the public a chance to vote on the issue."

"Of those attending the meeting, the called meeting Monday afternoon, the Jennyslippers were in agreement with the calling for a vote," said Mrs. Kidd. "We have to create revenue. We would like for all county voters to get to vote, not just those in the city."

Mayor Robert Montgomery asked for comments from anyone else attending the meeting. "It is very important that we all realize all of the boards desire the same thing, the need to let the citizens decide if they want a one half cent Sales Tax for economic development.

Councilman Juan Chavez mentioned that the minority didn't have a representative at the council Cont. Page 6, Col. 1

Cargile Takes First Place In Contest

This was another week for upsets in college football, at least for those games selected for the contest.

Three people missed five games, so the Journal judges were forced to go to the tiebreakers for the winner and there again it was very close.

Wade Cargile came in first place with five games missed and 32 points off on the tiebreakers. This ten points combined with two previous wins gives Cargile a total of 18 points.

Ruth Malone came in second. She missed five games and was 33 points off on the tiebreakers.

Coming in close behind was Bill Taylor, who also missed five games and was 35 points off on the tiebreakers.

Keep those entries coming in, there is still time for anyone to win.

Terry Field and Billie Joann Smith are tied with 20 points. Cargile is close behind with 18 points.

Others having ten or more points include: Jo Wood, 10; Marilyn Engelking, 10; Rosa Hernandez, 14; Tony Nicolas, 16; Jimmy Crawford, 12; Gerald Shanks, 10; Nelda Hunt, 10; Steve Shrode, 10; and Margarethe Taylor 10 points.

As you can see, a first place win could make a difference in the outcome for the big prize of \$150.00.

Heritage Foundation Plans Community Christmas

While many are still talking "turkey" and planning their Thanksgiving dinner, the directors of the Muleshoe Heritage Foundation are busy planning a unique Christmas event that they hope starts a tradition for the town of Muleshoe---a community wide old fashioned Christmas and Carol of Lights, to be held Thursday, December 17.

The directors voted to secure enough lights to completely frame all of the buildings presently located on the Heritage Complex. With the help of the SCAC Organization, they will be decorating the inside of the Janes Ranch House in vintage holiday finery bringing the spirit of Christmas Past to the present.

The directors didn't stop there; however. They know that an old fashioned Christmas is not complete without the aroma of vanilla and butter oozing from the fresh baked holiday treats. The public will enjoy their old family favorites of tea cakes and gingerbread as they sip on a beverage guaranteed to bring back wonderful sweet memories of Christmases that used to be.

The program for the event includes tours of the Ranch House and the community-wide caroling. The highlight, of course, will be the throwing of the switch that turns the Heritage complex into a Wonderland of Christmas lights. After the caroling, everyone is welcome to go into the Depot for homebaked cookies and wassail.

It was reported to the Journal that the Muleshoe Heritage Foundation is thrilled to plan this evening at no charge to promote community spirit and wholesome family fun. With so much news today about the decline of family values, they hope to sponsor a family event that promises to be as much fun to do as it is to view!

Lazbuddie Longhorns Win Bi-District Play-offs

The Lazbuddie Longhorns will be taking on Valley Friday night in the six-man Regional play-offs Friday night in Silverton.

Game time will be 7:30 p.m. Lazbuddie will be the home team and will occupy the East Side of the stadium.

Tickets will be \$2.00 for students and \$3.00 for adults.

In last Friday's bi-district game Lazbuddie defeated Meadow 58 to 8 while Valley defeated McLean 78 to 30.

Meadow put the first scores on

the scoreboard Friday night before Lazbuddie went in for the kill.

In the first quarter, Travis Andrews scored on a 60 yard run for Meadow and kicked the extra point, putting them 8-0 over the Lazbuddie Longhorns.

Leland Brockman scored for Lazbuddie on a 58 yard pass from Brett Thomas and the kick failed, leaving the Longhorns trailing 8-6.

The Longhorns didn't trail long. Dee Martinez scored on a 17 yard pass from Thomas and the kick failed. The score then stood 14 to 8 Lazbuddie.

Mario Zamora ran six yards and Jon Colby Miller kicked increasing the Longhorns lead and at the end of the first quarter Lazbuddie was 20-8 over Meadow.

In the second quarter, Miller scored on a nine yard pass from Thomas and Miller kicked.

Miller also scored on a 14 yard run and kicked the extra point.

Thomas came back and scored on a 33 yard run and the kick failed, giving Lazbuddie a lead of 42 to 8 at half time.

Opening up the second half, Cozbezy scored on a 50 yard pass from Thomas and Brockman kicked

the extra point.

At the end of the third quarter the score was Lazbuddie Longhorns 50-Meadow 8.

In the third quarter Casey Rowland downed the ball in the endzone for a safety.

Thomas came back with the final score of the game with a 50 yard run and the final score in the game was Lazbuddie 58-Meadow 8.

Lazbuddie had seven first downs to Meadow's three. In Rushing yardage, Lazbuddie had 21-164 and Meadow 31-148.

Lazbuddie had 225 yards passing while Meadow had 23.

The Longhorns didn't loose any fumbles while Meadow lost 3-3.

Lazbuddie were penalized five times for 40 yards and Meadow was penalized six times for 40 yards.

Leading rusher for the Longhorns, Zamora rushed eight times for 91 yards, Andrews rushed 14 times for 129 yards for Meadow.

In passing: Thomas, Lazbuddie, 11-25-2 225 yards and Rowland 4-8-0 23 yards for Meadow.

Lazbuddie was also on top in receiving, Brockman 5-89 and Zamora 3-62; Meadow Andrews 2-17.

Farm Loan Program Targets Disadvantaged

The Farmers Home Administration (FmHA) has activated a loan program designated to help members of socially disadvantaged

groups acquire land for farming.

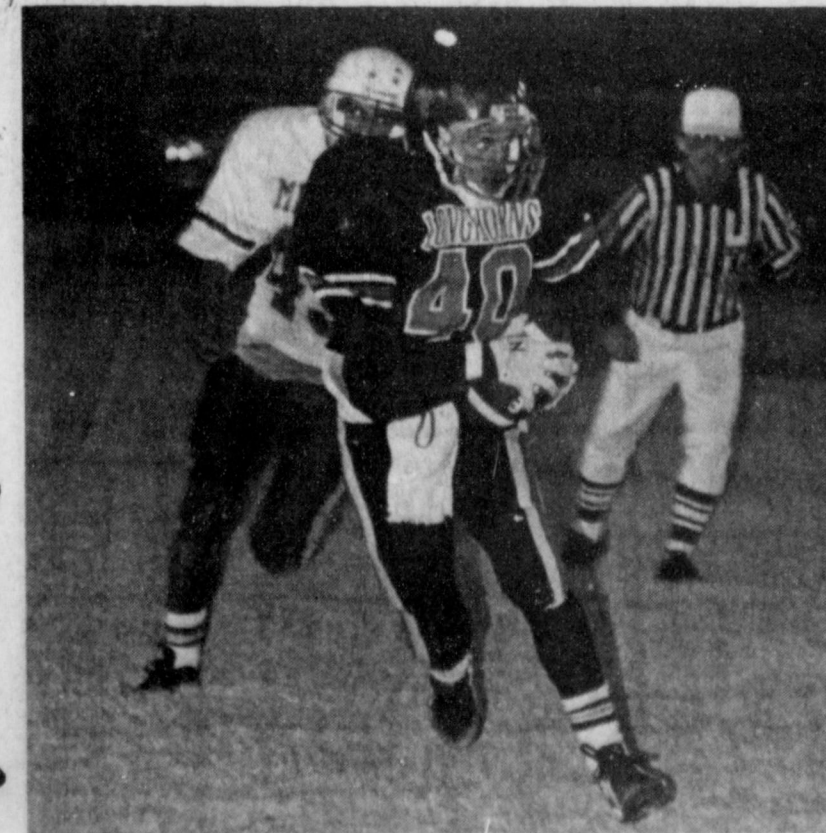
The Socially disadvantaged outreach in mandated by the Agriculture Act of 1987 and defines a Socially Disadvantaged Applicant (SDA) as "an applicant who has been subjected to racial or ethnic prejudice or cultural bias because of their identity as a member of a group without regard to their individual qualities."

Applicants must be a member of the following race/ethnic original groups: 1. Black (not of Hispanic origin), 2. Hispanic, 3. American Indian or Alaskan Native, 4. Asian or Pacific Islander.

UNDER THE NEW program, FmHA will try to find persons in those categories who are interested in farming and can also be prepared to sell or lease to them a farm held in the inventory if any are available in that county. FmHA can also provide other loan and technical assistance, if needed, to help the borrower get started.

For additional information, interested persons should contact their local FmHA county supervisor. The FmHA is a rural credit agency of the U.S. Department of Agriculture. The Muleshoe County FmHA office is located at 115 E. Ave D., Box 1007, Muleshoe, TX.

The Federal Equal Credit Cont. Page 6, Col. 2



LONGHORNS WIN BI-DISTRICT---Matt Cozbezy carries the ball into the endzone for a touchdown Friday night during the Lazbuddie-Meadow Bi-District game Friday night. The Lazbuddie Longhorns won 58 to 8 over Meadow. (Journal Photo)

Craft Named Bank of America Manager

The Muleshoe Branch of Bank of America has named a new manager, replacing Darrell Turner who moved to Plainview.

Rubie Craft comes to the Muleshoe branch from Farwell, where she was manager. Mrs. Craft plans to be in Muleshoe three days per week until December when she will be here full time.

Although Mrs. Craft stated that she didn't have any plans to move to Muleshoe at this time, she is not ruling that out.

Mrs. Craft was raised in the Dodd community and moved to the West Camp community in 1948. She graduated from Farwell High School and attended E.N.M.U. and Clovis Community College.

She worked 12 years for the Farwell ASCS office 12 years and operated a private kindergarten for nine years.

Prior to beginning work for Tri-County in 1979, Mrs. Craft worked in the Farwell Public School system for six years.

She and her husband, Bill, have two sons and a grandson, Terry and his family lives in Aurora, Co. and Chip and his wife lives in Lubbock. Their grandson lives in Aurora.


Mrs. Craft has three brothers and their families living in this area. Buster Kettrell, who lives South of Muleshoe; T.J. Kettrell of Farwell and Truman Kettrell in Texico, N.M.

"I am very excited and pleased to be working with Loretta Lloyd and Jeane Mills," Mrs. Craft said. "We invite the people of the community to come by, and I am looking forward to meeting the people in

this area." "My desire is that B of A will meet the needs of the people in this area," Mrs. Craft continued.



BANK OF AMERICA MANAGER---Rubie Craft has been named the new manager of the local branch of Bank of America, replacing Darrell Turner, who moved to Plainview. (Journal Photo)



1606 W. Amer. Blvd. 272-3294

Backing The Mules 100%

Closed Mondays
Area Playoffs
Valley (10-1) vs. Lazbuddie (11-0)
Friday, 7:30 p.m., Payne Field, Silverton

Higginbotham-Bartlett Co.
215 Main 272-3351



Eureka Upright
• Powerful, Lifetime-Lubricated Motor
• Carpet Height Adjustment
• Edge Kleaner™
• On Both Sides
• Use Genuine Eureka Bags - Style F & G

SAVE \$100 **69.95**
Model 1432

Iowa vs. Minnesota

Bailey County Farm Bureau 

David R. Tipps, Agency Manager


For All Your Insurance Needs

*LIFE *CROP
*AUTO *HOME

"Helping You Is What We Do Best"

1612 W. Amer. Blvd. 272-4567
Oklahoma State vs. Kansas State

Stacey and Staff
Backing The Mules
100%



1412 W. Amer. Blvd. 272-4213
Brigham Young vs. Utah




Henry Insurance Agency, Inc.

Kenneth R. Henry
Certified Insurance Counselor
Real Estate Broker

111 E. Ave. B 272-4581
Northern Illinois vs. Toledo

FOOTBALL CONTEST

Grand Prize: \$150.00

Weekly Prizes
1st - \$10 2nd - \$7.50
3rd - \$5.00

Weekly Winners
1st. Wade Cargile 2nd. Ruth Malone
3rd. Bill Taylor

Contest Rules:

1. IN EACH ADVERTISEMENT YOU WILL FIND A GAME LISTED. CIRCLE THE TEAM YOU THINK WILL WIN. The person's score that most closely matches the TIE BREAKER will be declared the winner. If several persons are still tied the prize money will be split.
2. The contestant must be 12 years of age or older.
3. Only one entry per person may be made for any one contest.
4. Bring your entry by the Journal Office by 5:00 p.m. Friday, or if mailed, the entry must be postmarked no later than 5:00 p.m. Friday. Write "FOOTBALL CONTEST" on the mailed entry, and mail to P.O. Box 449, Muleshoe, Texas 79347.
5. In the Tiebreaker Games WRITE IN THE SCORE of the tiebreaker games. This score will be used to break weekly as well as determine the Grand Prize winner. Decision of The Journal's scoring judges will be final.
6. Winners will receive 10 points for first place, 6 points for second place and 4 points for third place.
7. To be eligible for the Grand Prize, entries must be on Official Entry Blanks printed in the newspaper.
8. Employees of The Journal's are not eligible to enter any one contest.



Decorators Floral & Gifts

Backing The Mules
100%


Betty Wuerflein, Owner
616 S. First Muleshoe 272-4340
Miami vs. Syracuse

Linda's Kitchen
(located in Damron Drug)

Closed Saturday & Sunday

100% Beef Homemade
Hamburger Patties
- Sandwiches - Salads -
- Drinks -
- Homemade Pies -

308 Main 272-4210
Illinois vs. Michigan State



The Spudnut Shop
The Upper Crust of the Donut World
The Original Potato Flour Donut

Check Our Weekly Luncheon Specials
Mon. - Sat. 5 a.m. - 2 p.m.

328 South Main Street
Muleshoe, Tx. 272-3542
Purdue vs. Indiana

Western Drug Co.
114 Main 272-3106

"For All Your Prescription Needs Visit The Friendly People At Western Drug"

Supporting The Mules All The Way!

Area Playoffs
Springlake-Earth (10-1) vs. Memphis (9-1)
Friday, 7:30 p.m., Randall HS, Amarillo

We Support The Mules
100%

Let Us Help You Get Those Fall Garments Ready For School and any other Social Functions!

at
Lambert Cleaners
123 Main Muleshoe 272-3840
Cincinnati vs. Akron

Connie's Place
121 Main 272-3126

Hours:
Mon. - Fri. - 5:00 a.m. - 4:00 p.m.
Sat. - 5:00 a.m. - 2:00 p.m.

Daily Buffet:
Includes Salad Bar & Cobbler

Serving Breakfast Daily
Connie Dominguez, Owner

North Carolina vs. Duke

Official Entry Blank

Name _____
Address _____
Phone _____

TIEBREAKERS

Baylor vs. Texas
Texas Tech vs. Houston

Support The Muleshoe Mules & Lady Mules As They Begin Their 1992-93 Basketball Season

Dinner Bell Restaurant
2103 W. Amer. Blvd. 272-5871
Muleshoe

Open 7 Days A Week 6:00 a.m. to 9:00 p.m.

Daily Noon Buffet -
11 a.m. - 2 p.m.
- All You Can Eat -
(includes Salad Bar, Cobbler, Ice Cream & Homemade Bread) **\$5.89**

Nightly Friday
Steak Specials Fish Buffet
Mon. - Thurs. & (Catfish & Shrimp)
Sat. - Sun. 11 a.m. - 9 p.m.
Breakfast Served Anytime!
Michigan vs. Ohio State

Wilson Drilling & Southwestern Geothermal

Box 405 272-5521
Stanley Wilson Dee Puckett

Tx. Lic. 02628W
N.M. Lic. WD1152

Hawaii vs. Wyoming

Bob Stovall Printing

No Job Too Large Or Too Small!

Come By And Visit With Us For All Your Commercial Printing!

221 E. Ave. B. 272-3373
San Diego State vs. Fresno State

Viola's Restaurant
For The Best Mexican Food Come To Viola's!

Open 11:00 a.m. - 9:30 p.m.
Closed Tuesdays

2002 W. Amer. Blvd. 272-3838
Area Playoffs
Spur (7-3) vs. Sudan (9-2)
Friday, 7:30 p.m., Tiger Stadium, Wolfthorh

Sudduth Field & Co.

David L. Sudduth, CPA
Randall L. Field, CPA

Backing The Mules
100%

104 W. 2nd Muleshoe 272-4291
Virginia vs. Virginia Tech

Kearney Scoggin Scoggin Ag Center, Inc.

"Where Fertilizer Is Our Business"

1532 W. Amer. Blvd. 272-4613
Muleshoe, Tx. 79347
P.O. Box 452
New Mexico vs. Colorado State

We want to wish everyone Good Luck in the upcoming school year!

Thanks to all our customers, we appreciate all of you for patronizing The Snack Shack

Go Mules! Go Mules!

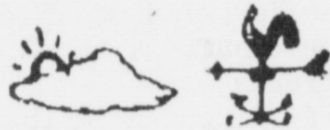
Mon. - Fri. 11 a.m. - 2 p.m.
Closed Saturday & Sunday

The Snack Shack
222 W. Ave. H. Muleshoe 272-3840
Florida vs. Vanderbilt



Fourth Grade Students Of The Month
Toni Gray and Chris Hall

Know The Weather



In the formation of clouds and moisture particles, does air contract as it rises?

Air, of course, expands on rising. What contracts is the capacity of the rising air to hold moisture as it cools in rising. Relative humidity thus increases as rising air cools and if the dewpoint is reached clouds are formed.

Fog therefore is created near the ground when air with sufficient moisture is cooled. A good rule of thumb is that for each

20 degrees change in temperature relative humidity is either doubled or halved.

If air at more than fifty percent relative humidity is cooled twenty degrees F, its capacity to hold moisture is halved and the dewpoint is reached and fog or precipitation results. That's what happens when air is cooled as it rises and forms clouds.

One can expect a decrease in temperature of about two degrees F for each thousand feet--as a general but not exact rule.

Transition Period

Old age is when you find yourself giving good advice instead of setting a bad example.

-Tester, Patuxent River, Md.

A Difference!

Some women show a lot of style; some styles show a lot of women.

-Count Down, Los Angeles.

MICROWAVE TIPS

When microwaving such things as stews, one gets a better tomato flavor using the juice of tomatoes instead of water, as many recipes call for.

Also, in stirring casseroles such as stews one distributes the heat. If microwaving a casserole which shouldn't be stirred, rotate the dish. You can also move the dish to opposite corners of the oven--diagonally.

Many stews are helped by a teaspoon of Worcestershire sauce.

Join the Great American SmokeOut on November 19th!



Give Cigarettes "The Boot"!



Miss Texas Farm Bureau To Be Chosen

A Miss Texas Farm Bureau will be chosen along with talent find and free enterprise speech winners at the 59th annual TFB convention at Corpus Christi November 29 through December 2.

The youth activities will take place Nov. 29 at the Bayfront Plaza Convention Center in Corpus Christi.

The free enterprise speech overall winner will receive a \$4,000 scholarship. The runner-up receives a \$2,500 scholarship while each of four finalists will receive a \$1,500 scholarship.

Miss TFB for 1992 will receive a \$2,000 scholarship; the runner-up receives a \$1,500 scholarship. The talent find winner receives a \$2,000 scholarship, and the runner up receives a \$1,500 scholarship.

Contestants in the Miss TFB state competition are: Tammy Walker, Dalhart; Marla Rudd, New Home; Thayneigh Nilson Ray, Jacksboro; Lisa Carol Greaves, Denton, and Wendy McLean, Ben Wheeler.

Other Miss TFB contestants include: Emilee Ann Benton, Eden; Shala Kaye Morris, Brownwood; Rhonda Wolfe, Lampasas; Shannon Riddle, Livingston; Kandy Pruitt, Campwood; Heather Harp, Mount Belview; Carmen Elaine Goodrich, Yoakum; and April Patricia Campbell, Oakville.

The speech contestants include: Sarah Graham, Stratford; Kimmie Melton, Plainview; Stacy Hooks, Decatur; Jana Casada, Farmersville; Tracy Renee Lum, New Boston; and Neil Childs, Big Spring.

Other speech contestants are: Angela Treadway, Gorman; Any Bumpus, Lampasas; Clayton Clark Blakeney, Woodville; K.C. Allen, Uvalde; Sheri Folz, Wallis; Dawn Ohlendorf, Lockhart; and Michael Alan Troutman, Oden.

The talent find contestants include: Misty White, Stamford; Jennifer Tusa, Waco; Pamela Kay Holsberry, Livingston; Cynthia Harbison, D'Hanis; Nikki Callaway, College Station; Janetta

Bridal Shower Honors Cindy Cleavinger

A bridal shower honoring Cindy Cleavinger, bride elect of Kelly Harrison, was held Saturday, November 14, 1992 at the home of Georgette Isaac at 10:00 a.m.

Guests were greeted by Georgette Isaac, Cindy Cleavinger, Betty Harrison, and Nalene Dent, and were registered by Cassidy Cleavinger.

Refreshments of sausage balls, miniature muffins, breads, coffee and juice from crystal and silver appointments were served by Mandy Cleavinger. The table was draped with an ecru embroidered linen tablecloth, adorned with an

ivy plant, accented by two love birds.

The honoree wore a white rose corsage accented with ecru ribbon, and was presented a lamp and table centerpiece from the hostesses.

Special guests honored at the shower were Patricia Maupin of Wildorado, Beth Moudy of Earth, Grandmother of the bride-elect, Annie Lewis of Earth, and Tara

Jorden of Pampa.

Hostesses for the occasion were Sue Bessire, Dorothy Ray Harlan, Donna Nickels, Betty Glaze, Darla Rhodes, Lavon Hunt, Gayle Turner, Sue Holt, Georgette Isaac, Phyllis Angely, Marilyn Cox, Norma Prather, Glenda Dale, Terry Young, Suzie Claunch, Jo Dean Neel, Betty Carpenter, and Donna Black.



Cindy Cleavinger

Progressive Extension Homemakers Christmas Jubilee

The Progressive Extension Homemakers of Silverton are sponsoring a Christmas Jubilee on Saturday, November 21, 1992 from 10:00 a.m. to 5:00 p.m. at the County Showbarn on the Southwest side of Silverton. Admission is free.

There will be a crafts show with ceramics, denim jackets, vests, and ties, leather collars, wooden crafts, crocheted items, imitation dooney bags, stuffed animals, and Christmas ornaments. There will also be booths featuring the Kenneth Wyatt Galleries, Coca-Cola Wares, and water colors and collages. For your sweet tooth you can purchase Christmas candy, assorted cheesecakes, and Christmas cookies. Eat lunch in the Mexican Food booth or just enjoy coffee and muffins.

For the children there will be a Christmas store featuring gifts for mom, dad, grandparents, and friends. All items will be priced under \$5.00

Food Labels

Consumer groups want to sharply limit use of the word "healthy" on food packages, allowing it only to describe meals that provide a variety of nutrients and are low in fat, cholesterol and sodium.

Christmas Shopping Preview



Patches of Paint & Sherri's Jewelry

101 Main
Will Be Open Saturday Nov. 21
Until 9 p.m.

Lay A Ways Welcome

We Have Gift Certificates Available!

Book Your Smoke Turkey & Hams Early!



Let Us Smoke Your Holiday Turkey!

1/2 Beef \$1.51 lb.

Locally raised grain fed

Cut & Wrapped To Your Specifications

Larry's Dry Cured Bone-In Hams \$2.49 lb.



New York Strip Steaks By The Loin \$3.99



Whole Pork Loins \$1.69 lb. Cut & Wrapped To Your Specifications



Boneless Hams \$2.69 lb.



Larry's Breakfast Sausage 2 lb. stick \$3.00 lb.



Winkler Meat Co.

401 Main Let Us Cater Your Next Party!! 272-4703





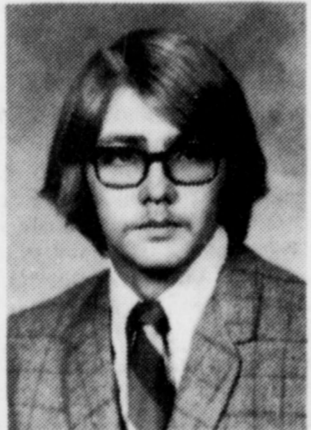
Joe and Darla would like to remind you not to forget Country Junction for your Christmas Gifts & Decorations!

It is loaded with Spanish Colonial Furniture and Oak dining tables and chairs, Roll top desks, new selection of handpainted pottery. Many Christmas decorating items. Wooden reindeer firescreens, yard decorations, stuffed santas, wooden santas, and more!!

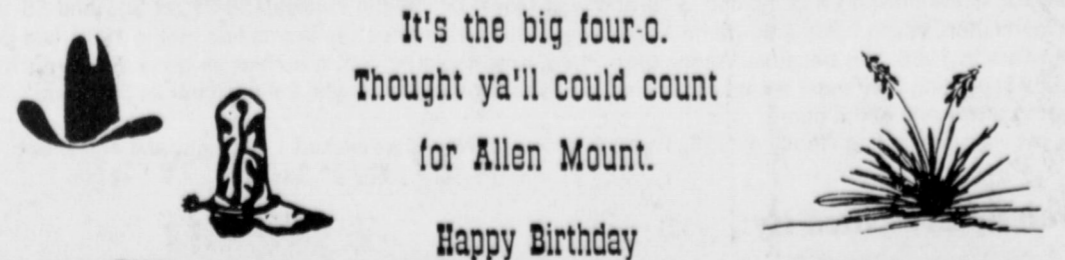
For Your Shopping Convenience We Will Be Open Saturday, November 21 until 9 p.m. Come hear Jacky Wayne Burris.



106 E. Ave. B. AND COUNTRY JUNCTION 272-5074

Oh, don't ya know.
It's the big four-o.
Thought ya'll could count
for Allen Mount.
Happy Birthday





CITIZEN OF THE MONTH-Student Community Action Club Members Stacie Harris and Sonya Cisneros present Stephanie Barrett, September Citizen of the Month.

Though my mouth be dumb
my heart shall thank you.
-Nicholas Rowe.

Three things for which thanks
are due: an invitation, a gift, and
a warning.
-Welsh Proverb.

Employee Exchange Program Announced

A new employee exchange program between the U.S. Fish and Wildlife Service and the National Park Service was announced today by Assistant Secretary of the Interior for Fish and Wildlife and Parks, Mike Hayden.

"This program is consistent with the President's policies of strengthening the management of government programs and increasing efficiency," Hayden said. "Employees of each of these agencies can learn much from each other. The Fish and Wildlife Service is without a doubt the world's finest scientific organization dealing with wildlife and its habitat while the Park Service is unmatched when it comes to managing natural and cultural resources for the enjoyment and education of the public."

A primary goal of the exchange is to help the Fish and Wildlife Service improve interpretation programs for the public on its 485 National Wildlife Refuges and 78 National Fish Hatcheries.

At the same time, the exchange will help the Park Service with the scientific management of its living natural resources at the 365 units of the National Park Service.

"Public support for wildlife conservation is critical to the future of our mission—we simply must get people excited about conserving wildlife," said Fish and Wildlife Service Director, John Turner. "The exchange will help us become a more people-oriented agency, as well as a wildlife-managing agency."

National Park Service Director James Ridenour said, "It is important for the Park Service to improve its scientific base and deal with the ever-increasing pressure on the natural resources within our parks, including growing numbers of visitors."

"Fish and Wildlife Service biologists will provide our employees invaluable insight into the science needed to keep the Parks healthy and vital into the 21st century," Ridenour said.

NASA begins search for space aliens.



Zacarey Brent Stancell

Carey and Kathy Stancell of West Camp are proud to announce the birth of their first son, Zacarey Brent. He was born November 12, 1992 at 3:45 p.m. in Lubbock Methodist Hospital. He weighed 8 pounds and was 21 1/2 inches long.

Grandparents are Bennie and Carolyn Stancell of West Camp and John and Jody Thomas of Masterson, Texas.

Great-grandparents are Joessie and Lois Stancell of West Camp.

Keifer Rylan Ruthardt

Jerry J. and Tonya D. Ruthardt of Muleshoe would like to announce the birth of their new son, Keifer Rylan, born at the Roosevelt General Hospital in Portales on November 15, 1992 at 5:15 p.m. He weighed 6 pounds and 6 ounces and measured 19 1/2 inches.

Keifer's grandparents are Jerry and Darlene Ruthardt and Don and Dianne Copley, all of Muleshoe.

His great-grandparents are H.D. and Opal Ruthardt, June and Tip O'Neal, J.R. and Ella Copley, all of Muleshoe, and Emily Schoolcraft of Cleburne.

Proud great-great-grandparents are Basil and Opal Foster of Levelland.

Victoria Maria Alvarado

Eduardo and Rachel Alvarado of Harrisonville, Missouri, formerly of Muleshoe are the proud parents of a daughter, Victoria Maria, who was born at 11:30 p.m. Friday, November 13 in Cass Medical Center in Harrisonville, Missouri.

The young lady weighed seven pounds and eight and half ounces and was 19 and one half inch long. She has two older brothers, Eddie, Jr., five, and Elias Anthony, two and a half years.

Grandparents are Johnny and Mary Hodges and Maria Alvarado, all of Muleshoe. Great grandmother is Maria Romo of Muleshoe.

National Honor Society

The Muleshoe Chapter of the National Honor Society met Thursday night, November 12, 1992 at Leal's. The meeting was called to order by Stacie Harris. Tera Kellar then gave the Treasurer's report. Before the business began, officers were recognized. They are: Stacie Harris, President; Summer Wiley, Vice-President; Jody Thomas, Secretary; Amanda Ashford, Reporter; Tera Keller, Treasurer; and Blanca Sanchez, Student Council Representative.

The business then began with ideas for the year's fund raisers. The next order of business was to suggest ideas for the service project. The meeting was then adjourned and everyone enjoyed a delicious meal.

O give thanks unto the Lord, for He is good: for his mercy endureth forever.
-Psalms 107:1.

Parenting Pointers

From Your Friends At DeShazo Elementary
...Read to or with your children daily. This way, both parents and children are developing a habit of reading while forming a special bond with each other.
From '101 Ways Parents Can Help Students Achieve'



CITIZEN OF THE MONTH-Student Community Action Club Members Angie King and Stacie Harris present Janelle Turner, Citizen of the Month for October.

Wise
The wise man doesn't expect to find life worth living; he makes it that way.
-Grit.

Quick Quip
Some callers can stay longer in an hour than others do in a week.
-Irish Digest.

Ben Franklin

Our Variety Shows

2002 W. Amer. Blvd. 272-3855

Mon. - Sat. 8 a.m. - 8 p.m. Sun. 12 - 5 p.m.

Prices Good Thru Nov. 25, 1992

	35 Ct. Indoor/ Outdoor Lights End to End Connect
1.97	
	10 Ct. Musical Bells Plays 12 Holiday Tunes Reg. 29.99 19.97
	150 Ct. Light Set 8 Electronic Functions Reg. 12.88 9.99
	25 Ct. Outdoor Christmas Lights Clear, Red, Green, Blue or Multi Compare Our Prices
5.97	
	16" Parchute Santa Reg. 9.99 7.99
	6 ft. Canadian Pine Christmas Tree Reg. 59.99 33.00
	Christmas Calendar 6 Markers, Color Your Way To Christmas Reg. 8.99 6.99
	Grapevine Trumpet Wreaths Reg. 9.99 7.99
	Abaca Angels 7" 2.49
	Canadian Pine 18" Wreaths 3.49
	Bamboo Turkeys Reg. 9.99 7.99
	Mini Glue Gun Low Temp 3.99
	Self Stick 25 Ct. Bows 2 pkgs. 1.00
All Christmas Wrap 25% off	

JEWS FOR JESUS
presents
The Liberated Wailing Wall
an experience of Messianic Joy!
Saturday, November 21, 7:00 PM
First Baptist Church
220 W. Avenue E
Muleshoe, Texas
Admission Free

An offering for the evangelistic work of Jews for Jesus will be received.
JEWS FOR JESUS, 60 Haight Street, San Francisco, CA 94102-5895

—TICKET—

Fry & Cox Lumber Hardware
PRESENTS
Black's Magic & Illusion
Friday, November 20
8:30 p.m.

—Place—
Store Location
401 South First
Muleshoe, Texas

10 years old and under **MUST** be accompanied by an adult

Come and See The Magical Illusion Of Someone Suspended In The Air It Might Be You!
Magical Christmas Bargains from 6 p.m. - 11 p.m.

**around
muleshoe**

The Post Art Guild will hold their Holiday Arts and Crafts Sale on November 19-28 in the Algeria Art Center at Post.

There will be no booth fee, but a 20 percent commission will be charged on all sales. P.A.G. will man the show and handle all sales.

Tables and peg-boards are limited, so you are asked to please contact P.A.G. about your needs.

There will be a one day open air sale on November 21 with a \$20 booth fee and you will not be charged a commission. Each one is to take their own display materials.

Stacy D. Conner, pastor of the First Baptist Church, was elected to the Baptist General Convention of Texas Executive Board during the annual meeting of the 2.5 million-member BGCT in Corpus Christi, No. 9 and 10.

The 193-member executive board conducts the business of the BGCT between annual sessions.

KAMR-TV has announced that they will be broadcasting the LOTTO Texas drawings live from Austin. These live broadcasts will air each Saturday and Wednesday evenings at 9:59 p.m. Central Time (8:59 p.m. Mountain Time). William M. Dunaway, vice president and general manager, said "We have received a number of

City Council...

Cont. from Page 1
meeting and Dave Marr, city manager responded by stating, "I believe that all of these organizations have a minority in the membership as well as minority businesses represented."

Before putting the issue to a vote, Mayor Montgomery reminded the councilmen and those attending that they were NOT voting on the ordinance, only voting on calling a special election calling for a one half percent Sales Tax to be used for economic development.

The council voted to pass ordinance 323 A and have it placed on a ballot for the voters to consider on January 16, 1993.

In a meeting Monday afternoon, Mrs. Kidd stated that the tax would generate approximately \$100,000 a year, with only ten percent being allowed for administrative purposes. She also stated that it would take approximately five years to generate enough money to work with.

"An average family of four to five people earning \$21,000 per year would pay about \$100 yearly in tax," Mrs. Kidd said. "We all waste that much money."

If at any time the voters are not satisfied with the economic development, ten percent of the registered voters may call for an election on the dissolution of the corporation, the governing body shall order an election on the issue.

inquiries from viewers wanting to know if we planned on broadcasting the actual live drawings. Because of the interest we are pleased to accommodate the television viewers in the Panhandle."

The Olton Young Homemakers will hold their Arts and Craft Show on Saturday, Nov. 28 from 9 a.m. to 5 p.m. at the Olton School lunchroom at 8th and Ave G.

There will be a large selection of crafts, gift ideas and home decorations as well as woodwork, clothing and jewelry.

Santa will be there from 2 to 4 p.m. and you may have your picture made with him.

There will also be a snack bar and a drawing for a door prize every hour.

Farm Loan...

Cont. from Page 1

Opportunity Act prohibited creditors from discriminating against credit applicants on the basis of race, color, religion, national origin, sex, marital status, handicap, age (provided that the applicant has the capacity to enter into a binding contract); because all or part of the applicant's income derives from any public assistance program or because the applicant has in good faith exercised any right under the Consumer Credit Protection Act. The Federal agency that administers compliance with the law concerning this creditor is the Federal Trade Commission, Equal Credit Opportunity, Washington, D.C. 20580.

Local Woman Named To Alcohol Drug Abuse Board

Carolyn Johnson has been chosen to serve as a Board Director for the Lubbock Regional Council, Texas Commission of Alcohol and Drug Abuse. The governing board is a corporation chartered by the State. It's primary purpose is to aid in prevention of and educational about substance abuse and chemical dependency/addiction among residents of the region.

Board members are selected from individuals with a variety of backgrounds and interests, each of whom have special areas of expertise which can be of benefit to the Council. Mrs. Johnson was selected because of her experience and knowledge in the field of drug and crime prevention. She will serve as tri-county Director for Bailey, Cochran, and Hockley counties.

Her duties as Board Director will be to assist in the selection and evaluation of the Executive Director for the Council, to make policy decisions, and to access whether objectives of the organization are being met and services adequately rendered in the three county area she serves.

Mrs. Johnson has over ten years experience in the field of drug and alcohol abuse. She has previously worked with the U.S. Office of Education in their Drug Free Schools and Communities Program.

She also served as a Drug and

Crime Prevention Director in Williamson County with a grant program funded through the Criminal Justice Division of the Governor's office.

At the present time, she is working as a Prevention Service Coordinator for the State of New Mexico--serving a seven county area through Mental Health Resources, Inc. In addition, she works as an instructor at Ciovis Community College for the course, "Our Youth--A Generation At Risk!"

Mrs. Johnson was officially placed on the Board Monday, November 9th after an interview with the Council's Administrators.

**Three Way
ISD Board
Met Thursday**

The board of trustees of the Three Way Independent School District met at 7 p.m. Thursday in the Administration Office of the school.

The meeting was called to order and minutes of the previous meeting were approved as read, and payment of routine bills was approved.

Following the principals reports, a report was given from the Auditors, and the Text Book committee.

A discussion was held on the Site Base Decision Plan and the District Wide Improvement Plan.

Also on the agenda was School Board Training, Board Assessment, Administrative Appraisals and Administration Assessment.

The State Purchasing Resolutions and checking accounts along with workmans compensation was discussed.

A school finance update was given before the board meeting was adjourned.

Pension Choice

A new government regulation will give employees greater choice and flexibility in pension plans in which they direct their own investments.

Contract Savings

USAir's new contract with the Machinists Union will save the airline \$60 million through wage reductions and productivity improvements over the next 12 months, the company said.

New Intel CPU

The country's leading supplier of computer chips announced it will offer a chip design that allows computers to "sleep" when they are idle, dramatically reducing energy use.



CHECK FOR MEALS ON WHEELS---Representing the Jennyslip-pers, Donna Kirk, right, presented a check to Sharon Plott for the Meals on Wheels as Glenn Williams looks on. (Journal Photo)



MASH PRESENTS CHECK---Pat Angeley, representing MASH, presented a check to Sharon Plott for the Meals on Wheels organization as Glenn Williams and Connie Dominguez looks on. (Journal Photo)



PANCAKES FOR EVERYONE---Monday morning Chris Cakes of Oklahoma cooked pancakes and sausage for a large crowd who attended the breakfast. James Crane Tire Co. and Goodyear Tire and Rubber hosted the breakfast in appreciation of their customers loyalty and patronage. (Journal Photo)

**Make Your
Reservations NOW
For Our Delicious
Thanksgiving Buffet
11:30 - 2:30**

(In Order To Better Serve You, Please Make
Your Reservations A.S.A.P.)

*A Carrousel
Of Good Food* | 1902 W. American
Blvd. | 272-4131

**JOIN THE
MEXICAN
FIESTA**

ON SALE AT DAIRY QUEEN NOV. 9-22, 1992

**3 BIG, ALL-BEEF TACOS
\$1.49**

**TACO SALAD
\$2.49**

Dairy Queen

© Reg. U.S. Pat. & Tm. Off. Am. D.Q. Corp. © Tx. D.Q. Op. Coun. At participating Dairy Queen stores.

Great Holiday Gift Giving is "in the Bag!"

**Motorola Tote Phone
Just \$79!
While Supplies Last!**
Antenna and installation extra

Tis the season...
to open up everyone's
line of communications
—with a cellular phone
from Liberty!

And right now you can get
the perfect gift
at the perfect price!
—Just \$79
for a Motorola
high quality cellular phone.

Call or stop by to see us or one of our
nearest authorized agents today!
With a Motorola Cellular Tote Phone,
holiday gift giving is truly "in the bag!"

**LIBERTY
CELLULARPHONE
NETWORK**

Assuring You Quality Equipment and
Quality Service After the Sale!

—Authorized Agent—
Wilson Appliance 272-5531

Texas Children Asked To Help Track Monarch Butterflies

Texas school children and other good butterfly catchers are being asked to help a Kansas entomologist determine the migratory patterns of the monarch butterfly, currently en route to Mexico for the winter.

Midwesterners have tagged tens of thousands of the large orange butterflies which began their annual trek from the north a month ago, according to Dr. Orley "Chip" Taylor, Jr., and entomologist at the University of Kansas in Lawrence. He said the program aims at assessing the insects' well being.

Taylor wants to participate in the Monarch census by catching them, checking for a numbered tag on the right wing, and reporting the number. This will help Taylor, and others who study the annual migration, determine a more precise pathway for millions of Monarch butterflies to their winter home in the dense forest of inner Mexico.

Conflicting reports about the Monarch population in the United States have researchers wondering whether the butterflies have been harmed or simply have changed their migratory pathway. In the Eastern United States, the low monarch population this year is being blamed on unusually severe weather in Mexico last winter. But researchers in the Midwest report that monarchs there have been plentiful this year.

"Perhaps they winter in another part of Mexico and follow a migratory pathway that is unknown at this point," Taylor said of the midwestern monarch population.

Taylor, who also researches the Africanized honey bee in Northern Mexico, said the apparent disappearance of monarchs this summer along the East Coast may have a couple of explanations: either the monarchs changed their northward migration last spring, returning almost exclusively to the Midwest or it was primarily the eastern population that died out last winter in Mexico.

Since the early 1930's, the annual migration of monarchs across the United States has been studied by scientists hoping to find out where the millions of butterflies flew. It was not until 1975 that the winter roosting area discovered near the summit of the thickly forested Cerro Pelon mountain northwest of Mexico City.

This year, researchers there discovered that up to three-fourths of the butterflies apparently were killed by heavy winter rains and extreme cold.

Taylor said that if the monarchs traveling through Midwest are plentiful, the butterflies may be wintering at a site not yet discovered. Thus he enlisted the

help of hundreds of school children and their teachers to tag monarchs flying through Kansas.

He said finding out where the butterflies are entering Mexico from the United States may help determine if there is a different wintering ground for at least a portion of the monarch population.

The numbered tag, which is similar to a grocery store price sticker, is applied to the butterfly after rubbing the scales off a small

portion of the right forewing. If handled gently, the butterfly is not harmed by the tag.

Texas school children and others, especially those closer to the southern border, can be a part of the study by catching monarchs to see if a tag is present, Taylor said. If so, the number on the tag should be recorded and reported along with other information such as the date, location, general weather conditions and other observations if any. The butterfly can be released to continue its trip after reading the tag number. Taylor said Texans also may obtain tags to apply to monarchs that have not been marked.

Data about tagged monarchs should be mailed to Taylor, department of Entomology, 7005 Haworth Hall, University of

Kansas, Lawrence, Kansas, 66045. Tags also can be requested from that address.

Monarchs are beginning to show up in Texas and will continue to fly through for three or four weeks, according to Dr. Ed Riley, an entomologist with the Texas Agricultural Experiment Station in College Station.

"The best time to see them is at the end of the day when the sun is low and the monarchs are looking for flowers to feed on," Riley said. "They must have nectar to maintain energy."

"They cluster in meadows and stay there through the night," said Riley, who already has seen a monarch this season in College Station. "Sometimes they roost in large numbers."

For more information about the tagging program, call Taylor at (913) 864-4051.

they may contact the TxDOT district office in their area.

People may mail or fax their written comments to Thomas A. Gabriel, Director of Planning and Policy, TxDOT, 125 E. 11th Street, Austin, Texas, 78701-2483, Fax 512/475-2951. The deadline for submitting comments is 5 p.m., Nov. 5, 1992.

Public Comment Requested

Anyone interested in bicycle or pedestrian lanes, landscaping, historic preservation or the environment can have a hand in forming the state's transportation enhancement program.

The Texas Department of Transportation invites public comment on its proposed program framework for transportation enhancements. Transportation enhancement projects include rehabilitation of historic transportation buildings, archaeological planning and research, and mitigation of water pollution as a result of highway runoff. Except for bicycle or pedestrian walkway projects, these enhancements cannot be located on a local roads or rural minor roads.

Ten percent of federal funds apportioned to states for the Surface Transportation Program must be used for these enhancement programs. During the six-year term of the new federal transportation bill, the Intermodal Surface Transportation Efficiency Act of 1991, Texas would have \$180 million for such projects.

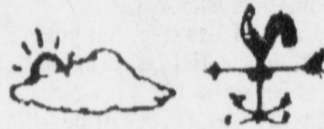
Any project must comply with federal laws governing environmental processes.

"No one knows better what the people of Texas want in the way of transportation than the people of Texas," said TxDOT Executive Director Arnold Oliver. "People know where their area needs landscaping or preservation or a bicycle lane. We want to hear about it."

Anyone who wants to examine the program TxDOT is considering

may write the Division of Planning and Policy, Texas Department of Transportation, 125 E. 11th Street, Austin, Texas, 78701-2483. Or,

Know The Weather



What is frost? Can it occur when the temperature is above thirty-two degrees?

Frost is nothing but frozen dew and, naturally, dew will not freeze until the freezing point is reached at thirty-two degrees. So it has to be freezing to produce frost.

What confuses most people on this point is the fact that the temperature has to touch thirty-two degrees only briefly to freeze the minute water particles on blades of grass, etc.

The frost might last an hour or two--and be visible in shady areas long after the temperature reading is above freezing--but you can be sure it dropped to at least thirty-two when you see frost.

NOTES, COMMENT

Fast cars and disability insurance somehow go together.

Steve Smith Plumbing

All Types Of Plumbing

No Job To Big Or To Small

Quality Guaranteed Work

For Appointment Call 272-5791

Honey Mustard Chicken

1/2 cup coarse ground mustard
1/4 cup Dijon style mustard
Makes 4 servings

1/4 cup honey
2-3 pounds boneless chicken breasts and/or thighs, skin removed

1. Combine coarse mustard, Dijon mustard and honey. Set aside.
2. Place chicken in 9-in. oven-safe dish. Put dish on broiling trivet and broil in preheated oven 25 to 30 minutes or until chicken is no longer pink. When chicken is about half cooked, pour off any liquid and brush with sauce to cover chicken pieces completely.



STEER ROPING-- has a little different twist. These cowboys rope 600 pound steers, toss the rope over the hip of the steer, and lay the steer down. Then, they dismount and tie any three legs of the steer together, similar to calf roping, but the animal is much larger. This cowboy was captured in action Saturday afternoon at the Muleshoe Steer Roping competition. (Journal Photo)

Before the CHRISTMAS Rush

Big & Tall Department

<ul style="list-style-type: none"> ■ Dress Shirts ■ Leather Coats ■ Large Selection Sweaters & Jackets ■ Traditional & Western Suits & Sport Coats 	<ul style="list-style-type: none"> ■ Silk Apparel ■ Nunn Bush Shoes
--	---

FREE Gift Wrapping Christmas Layaways Welcome

Edwards Quality Men's Wear

Where Quality Is Affordable

Store Hours: 2521 N. PRINCE
Mon-Sat. 9:30-6:00 (Adjacent to North Plains Mall)
Thurs. until 7:00 CLOVIS 763-1411

In Fashion *SB*

Plaid patterns are very good for dresses and suits this year. In some suits, the jacket is in plaid and the straight skirt is made in an outstanding solid color in the plaid. Scarfs are an interesting accessory.

Every little girl loves to dress like mom and what could be more attractive than dresses made from the same fabric. More mom and daughter look-alikes feature sweaters with floral-embellished ribbons.

GLOVE SOFT!

Soft cowhide upper, cushion insole and urethane wedge sole. Easy-going Dunoon comfort for weekdays or weekends.

A D E EE EEE
10-14 6-16 8-13 7-13 7-13

The Fair Store

120 Main 272-3500

RED WING SHOES
Made in U.S.A.
Credit and responsibility limited by guarantee.

It's Our 33rd Anniversary

33% OFF

<ul style="list-style-type: none"> - Mayo - La-Z-Boy - Charles Custom 	<ul style="list-style-type: none"> - Kincaid - A La-Z-Boy Company - Tell City - Rock City
--	--

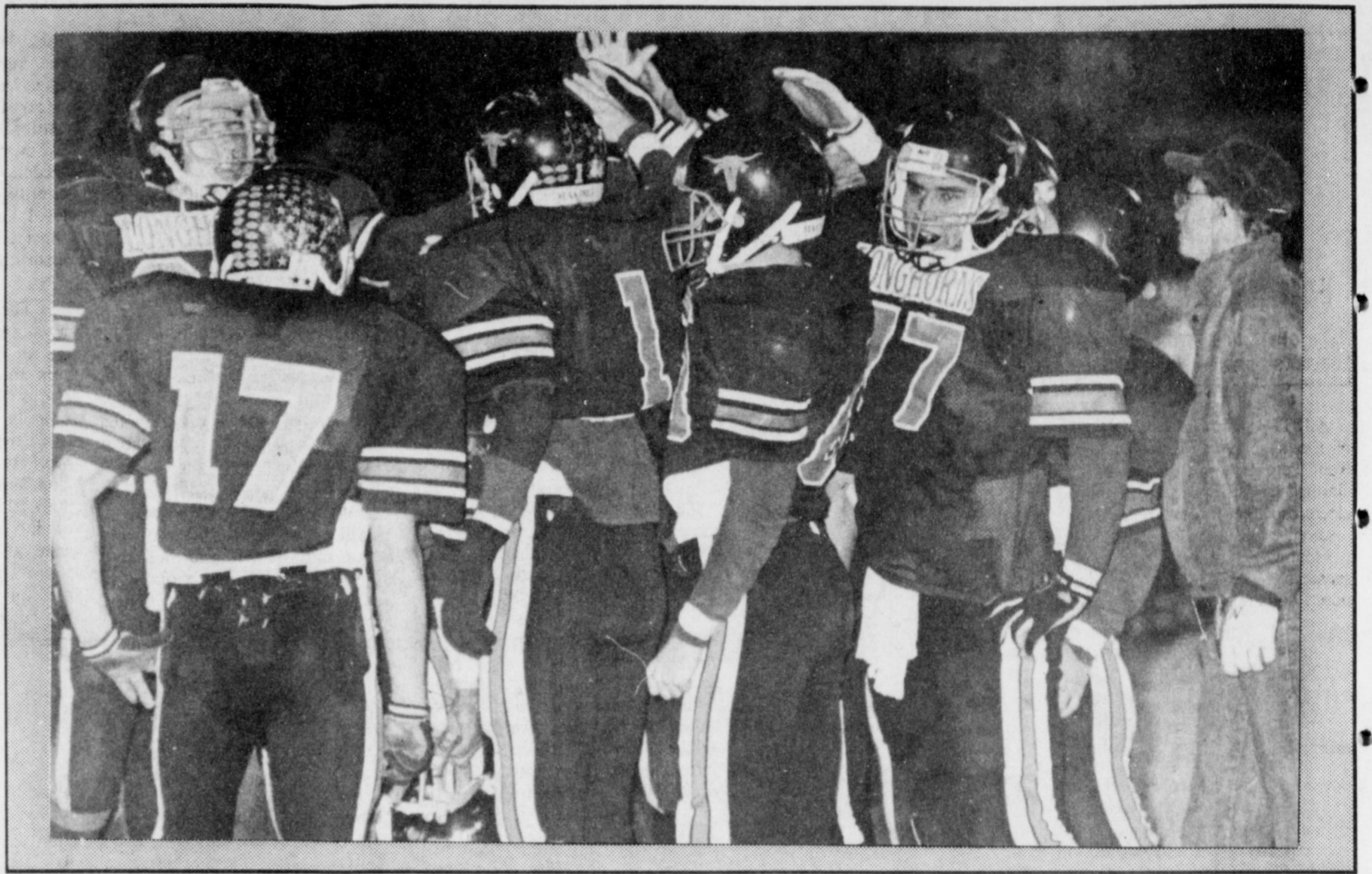
(Bedding Not Included)

"Your Quality Furniture Store"

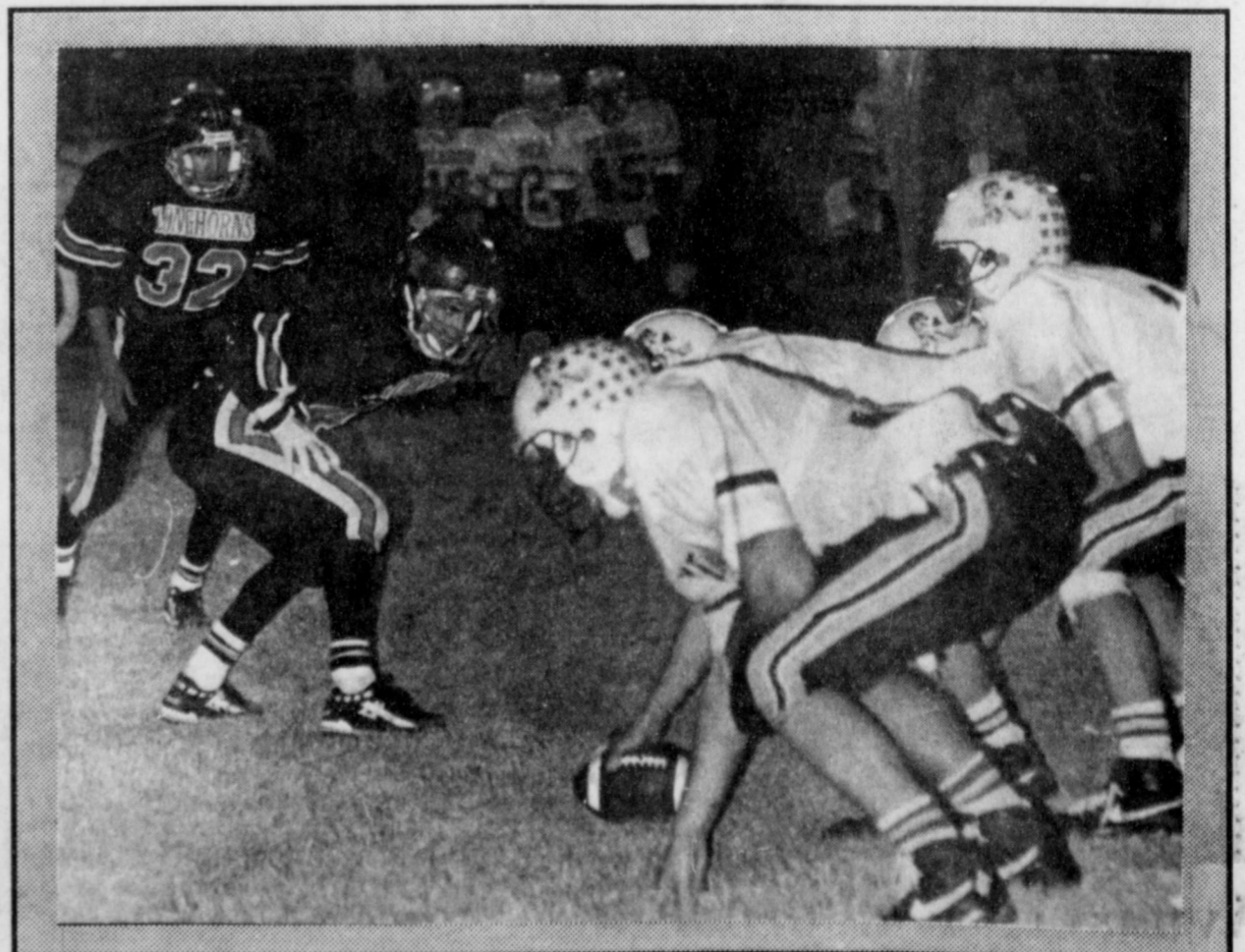
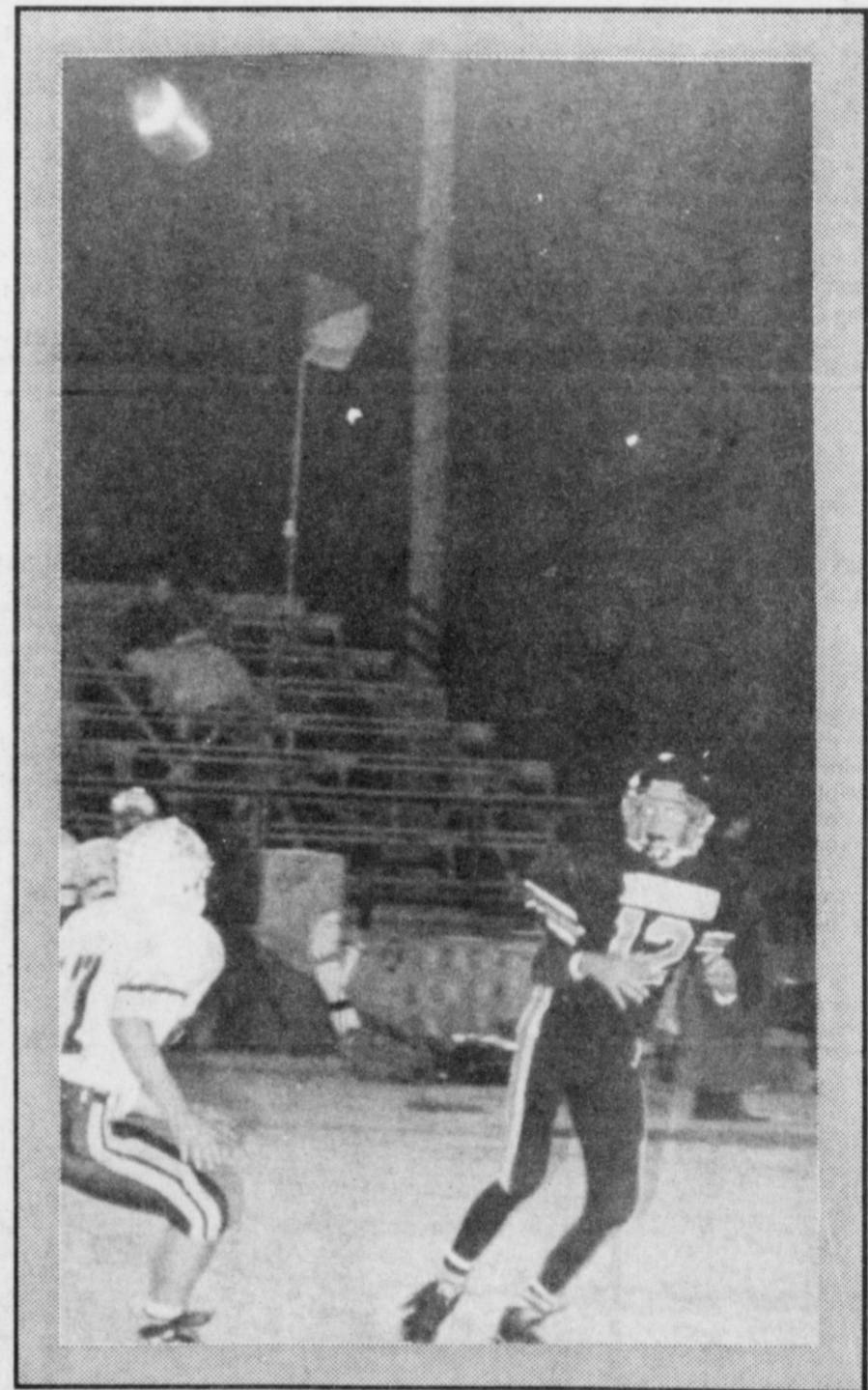
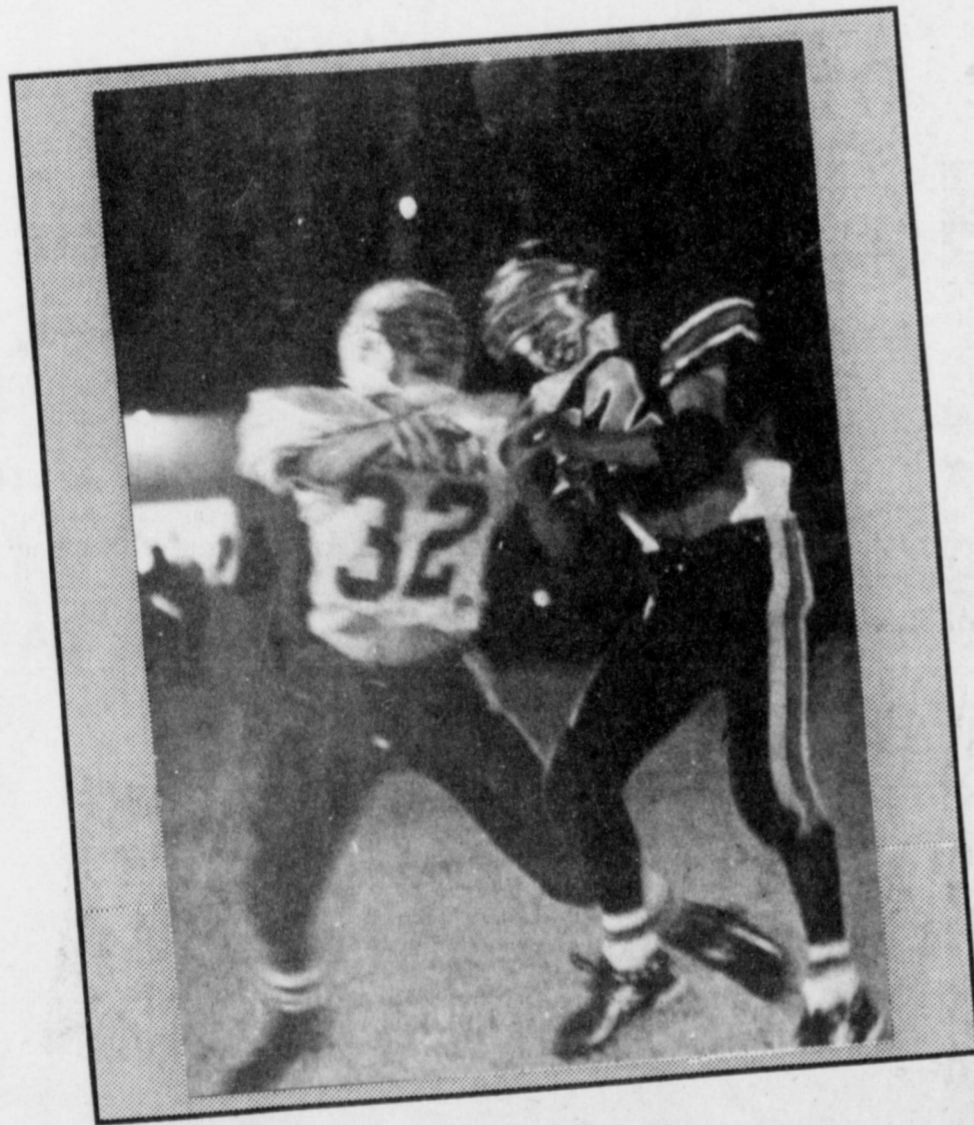
CALTON FURNITURE

507 E. 2nd Portales 359-1442

Longhorns Top Broncos For Bi-District Title



Lazbuddie 58 Meadow 8



State Capital



HIGHLIGHTS

By Lyndell Williams
TEXAS PRESS ASSOCIATION

AUSTIN — On opening day of the special session last week, Rep. Pete Laney, D-Hale Center, claimed he has enough votes to be elected speaker in January's regular session.

Meanwhile, across the rotunda, senators quickly adopted a proposed constitutional amendment to

shift money from property-rich to property-poor school districts, then prepared to confirm some 300 of Gov. Ann Richards' new appointments.

But in the session's opening days, Laney's announcement completely overshadowed the called purpose of the session: to remedy the state's system of funding public schools.

Sources close to lame-duck Speaker Gib Lewis said one scenario has him stepping down this session — when all other business is finished — to let House members elect Laney immediately.

Lewis, D-Fort Worth, did not seek re-election, and the House must elect a new speaker at the beginning of each regular session.

Organize, Save Time

By installing a new speaker now, the House could make the January election a formality, avoiding the traditional two-week slow period while the new speaker hires his

staff and makes committee appointments.

By week's end, all other major speaker candidates had conceded to Laney, fueling the early House organization theory.

Ironically, Laney's victory claim came one day before former House Speaker Gus Mutscher pleaded guilty to conspiracy to commit mail fraud in a land development scam that bilked investors out of nearly \$1.5 million in Washington and Fayette counties.

Mutscher, 59, pleaded guilty minutes before he was to stand trial before a federal jury in Galveston on 14 felony charges including mail fraud and money laundering. Sentencing is set for Jan. 8.

Senate Passes Amendment

Senators approved, 29-2, a proposed constitutional amendment labeled the "Fair Share Plan," drafted by Gov. Richards, Lt. Gov. Bob Bullock and Lewis.

It makes no provision for a tax increase, but opponents — mostly Republicans — say it will necessitate a state personal income tax in the near future.

The Senate plan would write minimum school funding standards into law and allow property tax dollars to be shifted from rich to poor school districts.

The Culberson Plan

House Republicans, who have enough seats to block any proposed amendment, are backing the Culberson Plan.

Rep. John Culberson, R-Houston, proposed a constitutional amendment that would bar the courts from judging the school finance system.

His plan removes the minimum funding standard and caps the percentage of funds which can be shifted between schools.

Hispanic members called Culberson's plan "racist."

Crazy Enough to Do It

State District Judge Scott McCown has threatened to cut off state revenue to schools — shutting them down — unless the Legislature equalizes funding by June 1.

Last week, Lewis warned House members, "the judge is crazy enough to do it. I've had him checked out and he's crazier than a stone-dead possum."

Culberson told members Judge McCown "is determined to control the entire school finance system in Texas from his courtroom."

McCown has been often quoted for saying: "If there's no education in Texas for six months, who cares?"

Audit Finds School Waste

While Republicans were opposing a raid on property-rich districts, school administrators were preparing to lobby for more money.

But a warning from Lewis to back off, plus the release of a new state audit showing the state can save \$640 million annually on public education by 1997, quieted their push for funds.

"They ought to clean up their own house before they come here to ask for more money," Lewis said.

Dan Casey of the Texas Association of School Boards called the report by State Auditor Lawrence Alwin "the auditor's version of a drive-by shooting."

Beef Tariffs Blasted

Texas Agriculture Commissioner

CALL Mark Morton 109 S. 1st Muleshoe 272-7519

HEALTH INSURANCE

STATE FARM Mutual Automobile Insurance Company HOME OFFICE Bloomington, ILLINOIS



A BLESSING FROM PARADISE---Tommy Blessing and Spanky, his horse, from Paradise, Tx. were the big winners in Saturday's Steer Roping competition with an average time of 60.781 seconds on four head. The Muleshoe Roping Club hosted the event. (Journal Photo)

COUPON
A Thank You Gift From
SUPERIOR MED-EQUIP
Suppliers of Medical & Home Care Equipment

Bring This Coupon In And Receive A
FREE Fever Thermometer!

Sherry Wisian 272-3757 or 272-3600
Manager 623 W. 2nd, Muleshoe

Rick Perry said Mexico violated the spirit of the free trade agreement last week by placing high tariffs on U.S.-produced beef and live cattle.

Several Texas ranchers, cattle feeders and meat packers reacted angrily to the tariff. Some speculated the tariff was a warning to President-elect Bill Clinton not to dismantle the free trade agreement.

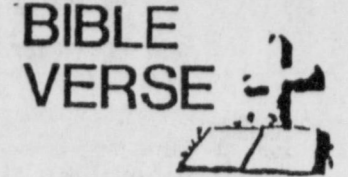
Other Highlights

■ The State Board of Education textbook committee fined publishers more than \$90,000 for 300 errors found in U.S. history textbooks being used now in Texas schools.

■ Investigations by the Texas Workers Compensation Commission have resulted in three felony convictions and at least 22 arrests or indictments since June 1991, state officials said.

■ "Thieves" from within the medical industry, such as doctors who defraud Medicaid and Medi-

care programs, are contributing to the nation's health care crisis," Attorney General Dan Morales says. "These white collar criminals rob every single honest American of hard-earned resources."



"Thou therefore endure hardness, as a good soldier of Jesus Christ."

1. To whom were these words addressed?
2. By whom were they spoken?
3. Who were Timothy's mother and grandmother?

Answers:
1. To Timothy, a young preacher of the Gospel.
2. By Paul, the Apostle.
3. Jewish women, named Eunice and Lois, respectively.

The Bailey County EMS Needs Your Help!

The Bailey County EMS Organization Needs Canned Goods, Groceries, Christmas Trees, New and Used Toys, Donations --- Anything That Will Help Make Christmas A Better and Happier One For The Area's Needy Families!!

If You Know Of A Family In Need Please Contact:
The Bailey County EMS - 272-4390
Linda - 272-3877
or
John - 272-5887

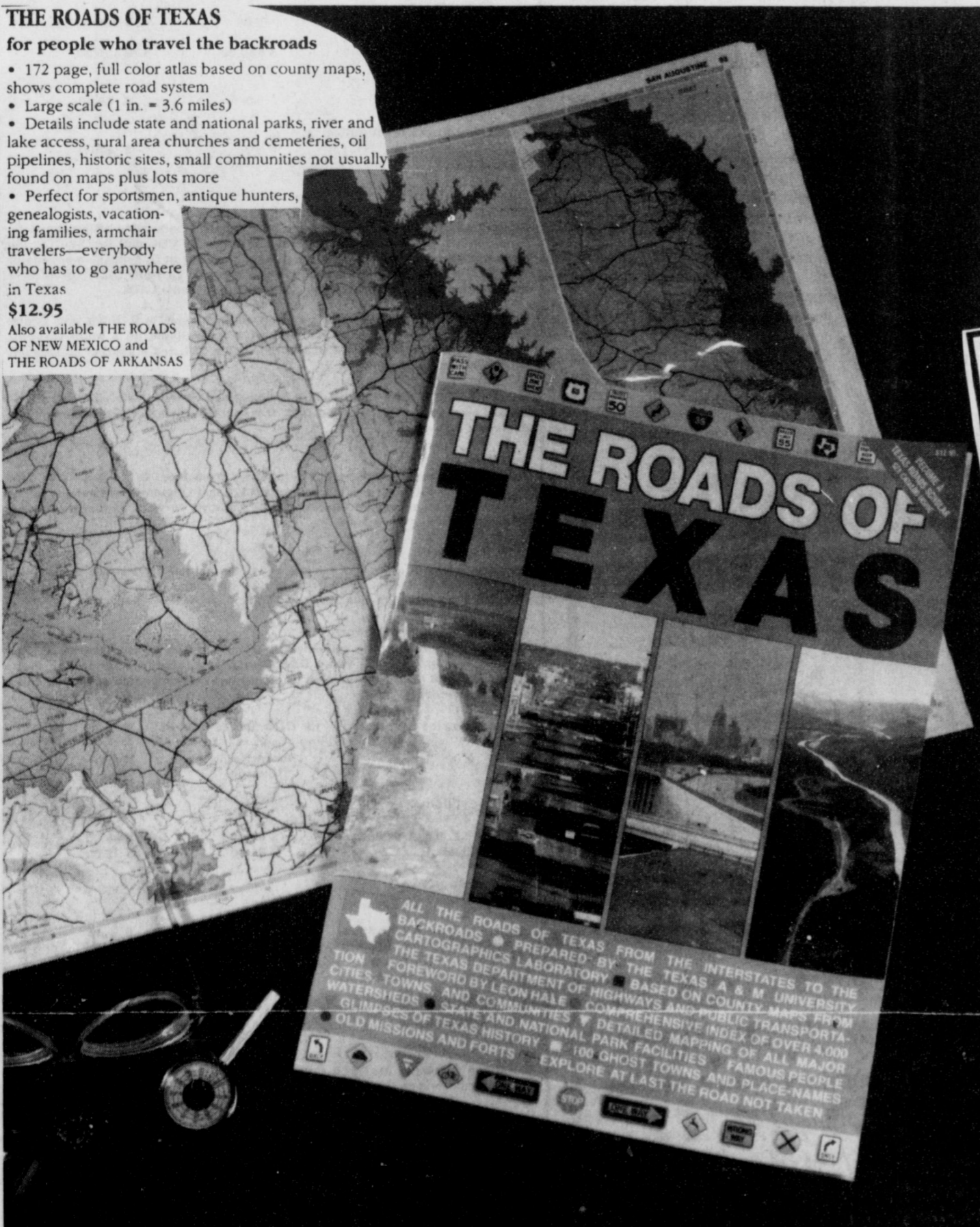
Texas books for everyone on your gift list

THE ROADS OF TEXAS

for people who travel the backroads

- 172 page, full color atlas based on county maps, shows complete road system
- Large scale (1 in. = 3.6 miles)
- Details include state and national parks, river and lake access, rural area churches and cemeteries, oil pipelines, historic sites, small communities not usually found on maps plus lots more
- Perfect for sportsmen, antique hunters, genealogists, vacationing families, armchair travelers—everybody who has to go anywhere in Texas

\$12.95
Also available THE ROADS OF NEW MEXICO and THE ROADS OF ARKANSAS



- All 172 pages in full color
- Each page measures a large 15 x 11 inches
- Presents the entire state in stunning detail
- Appendices and specialty maps of many different features

THE ROADS OF TEXAS is the culmination of a mammoth project that has involved many individuals for over two years. When you get your copy of THE ROADS OF TEXAS you'll wonder how you ever traveled the state without it.



TEXAS COUNTRY REPORTER COOKBOOK
for cooks who enjoy reading about Texas cooking

- Over 400 favorite recipes from the viewers of the popular TV show hosted by Bob Phillips
- Colorful anecdotes about the history of the dish
- Great variety of recipes including Washday Cobbler, Blue Northern Meatball Stew, Hard Times Cake, Top of Texas Chili—just to name a few.



WILDFLOWERS OF TEXAS
for Texans who want to know more about wildflowers

- Popular field guide covering 378 species
- Easy-to-use with description opposite each photo
- Color coded for quick identification

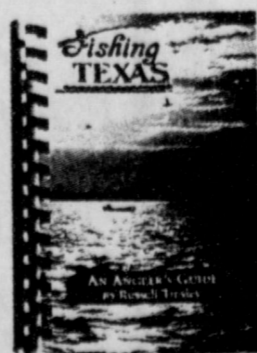
\$12.95

FISHING TEXAS

for fresh and saltwater fishermen

- Indispensable guide written by Russell Tinsley
- Covers 120 varieties
- Full page color illustrations
- Sections on proper bait and tackle, handling fish, record catches and more

\$12.95



Also Available
The Roads of Arkansas & The Roads of New Mexico
\$12.95

Available At Journal Office

304 W. Second, Muleshoe TX



LUBBOCK, Friday, November 13, 1992
By Shawn Wade

Speculation about the size of the 1992 crop is close to being over according to Lubbock-based Plains Cotton Growers (PCG). The remarkable performance of the 1992 crop has been a continual source of wonder across the High Plains.

Early expectations for the area crop were dismal at best following the unprecedented destruction of well over half of the areas expected 3.1 million cotton acres in late May and early June. The latest USDA projection is for the High Plains to harvest near 1.39 million acres of cotton.

Initial yield estimates for the remaining acres for the most part reflected the late start much of the cotton had received as well as the fact that the majority is located in areas south of Lubbock. Most cotton in this area is produced under dryland conditions.

"This year's crop has really been a surprise," notes PCG Executive Vice President Donald Johnson. "Early predictions of a crop at or below one million bales have been proven wrong and we are now looking at a crop near 1.5 million bales."

USDA's November estimate for Texas crop reporting districts 1-N and 1-S was raised to 1.51 million bales. Districts 1-N and 1-S account for the majority of the counties served by PCG and are commonly used as an estimate of the area's production.

The increase is entirely due to the better than expected yields being achieved in district 1-S. The November yield estimate for this area was increased by 51 pounds to 524 pounds per acre.

"Examples of how far this year's crop has come can be seen in the grades we've been seeing at the classing office," says Johnson.

Through November 5, 108,304 bales have been classed in the Lamesa and Lubbock classing offices. From this total a remarkable 65 percent have graded 31 or better, 67 percent have mike values between 3.5 and 4.9, and 78 percent have an average staple length of 34 or better. He adds that strength is averaging slightly over 28 grams/tex at both offices.

Announcement of the 1993 loan level and the preliminary announcement of the 1993 Acreage Reduction Program (ARP) is good news for cotton producers according to Lubbock-based Plains Cotton Growers.

The announcement, made November 2, ended speculation about USDA's preliminary decision on the ARP which was set at 7.5 percent for 1993. The 1990 Farm Bill requires the Secretary of Agriculture to make the preliminary announcement by November 1. The final ARP percentage will be announced by January 1, 1993.

Also announced was the 1993 loan level at 52.35 cents for the base quality, unchanged from 1992. What has changed for 1993 is how the base quality is described. The change in the description was necessary to reflect the upcoming separation of color and leaf in the USDA grading system.

For the 1993 crop the base quality will be color grade 41, leaf grade 4, staple length 1 and 1/16 inches, micronaire 3.5-3.6 and 4.3-4.9, and strength 24-25 grams/tex.

Average cost of public university tuition up 10 percent.

Record ozone depletion over South Pole.

Words are but empty thanks. -Coley Cibber.

Air pollution in Mexico City at danger level.

Legislation Signed To Save Exotic Bird Species

The hope for survival of some of the world's most beautiful and threatened exotic birds grew stronger today as President Bush signed into law the Wild Bird Conservation Act of 1992.

The law is designed to restrict the import of wild-caught birds, primarily parrots and parrot-like species, as pets. The United States is the world's largest importer of these birds, with imports totaling nearly a half million each year.

"The Administration is very concerned about the conservation of exotic bird species and the depletion of wild populations due to trade," said Secretary of the Interior Manuel Lujan. "I am gratified by the broad-based support this legislation received."

Mike Hayden, Assistant Interior Secretary for Fish and Wildlife and Parks, said, "President Bush's signing of the Wild Bird Conservation Act show that this country is determined not to contribute to the loss of the native wild birds of other countries."

The Act imposes an immediate moratorium on the import of eight species of wild birds thought to be particularly at risk due to trade. Already listed as threatened under the 116 nation Convention on International Trade in Endangered Species of Wild Fauna and Flora (CITES), these species include the Fisher's lovebird and the blue-fronted Amazon parrot.

Other bird species can continue to be imported for 1 year, after which imports of all CITES-listed birds will be prohibited unless the species is on an approved list published by the Interior Department's U.S. Fish and Wildlife Service. In considering a species for this list, the Service will use the best available scientific and management information and ascertain whether or not regulatory and enforcement measures in the country of origin are adequate.

The Act also gives the Interior Department authority to ban the import of any non-CITES bird species if the exporting country does not meet specific criteria established by the Act.

In addition, the Service is to determine the status and management, if any, of wild or captive-bred species entered into international commerce. Captive-breeding facilities must meet

criteria described in the Act which are designed to ensure that trade is not detrimental to wild birds. For wild-caught CITES-listed birds, the Service must determine the CITES is being effectively implemented for the species in its country of origin.

The new law also seeks to ensure humane treatment of birds. The methods of capture, transport, and maintenance en route must minimize the risk of injury or damage to health.

Another provision of the Act establishes the Exotic Bird Conservation Fund. This fund will use monies collected from penalties, fines, donations, and any additional appropriations for projects to conserve exotic birds in their native countries. Many of the countries where these birds are found do not have funds available to conduct conservation activities, or develop acceptable management plans.

"The law will help assure

November Is Diabetes Awareness Month

Diabetes is one of the leading causes of death in this country, affecting more than 12 million Americans. In addition to being one of the leading causes of death by disease, diabetes also contributes to the onset of other diseases such as stroke, renal failure, heart disease and blindness.

Diabetes is caused by a reduced amount of insulin flow. Insulin transports glucose, or blood sugar, to body cells where it is used as immediate energy or stored for later use. When insulin is low, glucose transport is slowed, compromising the body tissues' access to essential energy.

There are two types of diabetes, insulin dependent and non-insulin dependent. Insulin dependent diabetes occurs most frequently in children and young adults and is characterized by the sudden appearance of; constant urination, abnormal thirst, unusual hunger, rapid weight loss, irritability, weakness and fatigue and nausea and vomiting.

If these symptoms are present a doctor should be consulted immediately because insulin dependent diabetes can be life-threatening.

Non-insulin dependent diabetes usually occurs after the age of 30. Its symptoms are the same as those for insulin-dependent diabetes but may also include; drowsiness, itching, a family history of diabetes, blurred vision, excessive weight gain, tingling and numbness of the feet, skin infections and slow healing.

Treatment for diabetes involves a strict diet to meet special needs and to control blood sugar levels. This diet also allows diabetics to maintain an appropriate body weight. Some diabetics require insulin injections or oral hypoglycemics to manage their diabetes.

Methodist Hospital offers a Monthly Diabetes Clinic to help those with diabetes learn to manage the disease. The next one-day clinic, which features speakers, hand-outs and lunch, will be conducted November 21 from 8:30 a.m. to 2 p.m. The fee for the clinic is \$10 for those under 65 years of age and \$5 for persons over 65. Reservations are required and can be made by calling (806)793-4301.



Who Knows?

1. How are metamorphic rocks formed?
2. From what substance is marble formed?
3. Who was Luther Burbank?
4. Name the state bird of New Hampshire.
5. How do states pass in review at the presidential inaugural parade?

Answers:

1. By heat and pressure within the earth's crust.
2. Limestone.
3. One of the greatest plant geneticists in history.
4. Purple Finch.
5. In order of their admission to the Union.



There's Christmas In The Air!

You Are Invited To A Special Avon Christmas Showing

Saturday, November 21

10 a.m. - 5 p.m.

1718 W. Ave. F Muleshoe


There will be a door prize drawn for and favors for everyone.

Holly Millsap

Rose Buckner



My, My How You Two Have Grown Up These Past Years!



Happy Birthday Mary Louisa & Ronnie

Love, Mom, Dad, the rest of the gang, & Leroy

American consumer that they can safely purchase pet birds knowing that they are not harming populations in the wild or contributing to inhumane treatment," said John Turner, Director of the U.S. Fish and Wildlife Service.

Under the requirements of the Act, the Service is to publish a call for information, in the Federal Register and through the United States Department of State, on the wild bird conservation programs in all exporting countries.

PUBLIC NOTICE

GTE Southwest Incorporated (GTSW) and Contel of Texas Inc. (Contel) have filed an application with the Public Utility Commission of Texas to seek approval to provide two new private line services and to change rates for existing services. GTE's intraexchange DS1 Service will be offered pursuant to the rates proposed with this filing and will no longer be available through concurrence with GTE's interLATA access tariff rates which are lower. Contel's intraexchange DS1/DDS Service will be offered pursuant to the rates proposed with this filing and will no longer be available through Contel's current private line tariff rates. Existing customers with DS1/DDS Services will not be affected by these rate changes. DS1 1.544 Megabits per second (Mbps) Service and Digital Data Service (DDS) will normally be used for the transmission of data communications or large volumes of voice communications between two locations. These services are optional and will not affect the existing rates of customers who do not order these services. The estimated annual effect on GTE-SW's revenues in the first year is \$1,080,567. The estimated annual effect on Contel's revenues in the first year are \$42,383.

DS1 Service

DS1 Service is an intraLATA Private Line Service which provides a dedicated, high capacity channel which may be used for simultaneous two-way transmission of voice data or other digitally encoded customer information signals. DS1 Service provides a transmission speed of 1.544 Mbps and is designed to provide an average performance of at least 95 percent error-free seconds of transmission over a continuous 24-hour period.

DS1 Service is available in and between all exchanges of GTE-SW and Contel where digital facilities exist. DS1 Service is available on a point-to-point intraLATA basis between two Customer Designated Locations (CDL), between a Serving Wire Center (SWC) and a CDL, between a CDL and a point of connection with another service provider or between two SWCs.

IntraLATA DS1 Private Line Service is comprised of three rate elements: DS1 Local Loop, DS1 Transport and DS1 Transport Termination. Each element is described below.

DS1 Local Loop

This rate element is for the cable facilities from the CDL to the SWC. The customer has two payment options for the purchase of DS1 Local Loops. There is a month-to-month plan or term contract Optional Payment Plan (OPP).

The month-to-month payment basis allows the customer to establish and disconnect DS1 Services, without penalty, other than to meet the minimum service interval of one month's service, as needed. Under the month-to-month service, the additional DS1 Local Loop rate applies only when the additional DS1 Local Loop (s) is (are) ordered at the same time and between the same two CDLs as the first DS1 Local Loop.

The OPP plan allows the customer to select a term of service (1 YR, 3 YR and 5 YR) with lower monthly rates associated with longer term contracts. If the customer selects an OPP, additional DS1 Local Loops may be ordered and installed at the Additional DS1 Local Loop rate between any SWC and CDL covered by the OPP, at any time during the term of that OPP.

DS1 Transport

This rate element is for the mileage sensitive charges for transporting a DS1 signal between Serving Wire Centers. Transport occurs only when the two CDLs being connected are served by two different SWCs.

DS1 Transport Termination

This rate element is for the equipment to terminate DS1 Transport at the SWCs. This charge applies only when DS1 Transport is required for the service configuration of the customer. One transport termination charge applies at each end of the DS1 Transport.

Proposed Rates and Charges for DS1 Service are as follows:

	Nonrecurring Charge	Monthly Rates
DS1 Local Loop		
Month-to-Month		
First System	\$ 1,000.00	\$ 298.00
12-month term		
First System	-0-	\$ 283.00
36-month term		
First System	-0-	\$ 255.00
60-month term		
First System	-0-	\$ 226.00
Additional System	\$ 130.00	\$ 130.00
DS1 Transport		
Per airline mile	-0-	\$ 16.00
DS1 Transport Termination		
Per Termination	-0-	\$ 40.00

Digital Data Service

Digital Data Service (DDS) is an intraLATA Private Line service which supports synchronous, full-duplex transmission between the CDL and the SWC or the point of connection with another telephone company at transmission speeds of 2.4, 4.8, 9.6, 19.2 and 56 kilobits per second (Kbps). DDS provides a transmission path for digital data signals within the same LATA.

DDS Service is available in and between all exchanges of GTE-SW and Contel where digital facilities exist. DDS Service is available on a point-to-point intraLATA basis between two CDLs or between a CDL and a point of connection with another service provider.

IntraLATA DDS Private Line Service is comprised of three rate elements: DDS Local Loop, DDS Transport and DDS Transport Termination. Each element is described below.

DDS Local Loop

This rate element is for the cable facilities from the CDL to the SWC. The customer may establish and disconnect DDS Local Loops without penalty other than the minimum service interval of one month's service, as his/her needs demand.

DDS Transport

This rate element is for the mileage sensitive charges for transporting a DDS signal between SWCs. Transport occurs only when the two CDLs being connected are served by two different SWCs.

DDS Transport Termination

This rate element is for the equipment to terminate DDS Transport at the SWCs. This charge applies only when DDS Transport is required for the service configuration of the customer. One transport termination charge applies at each end of the service.

Proposed rates and charges for DDS are as follows:

	Nonrecurring Charge	Monthly Rates
DDS Local Loop		
2.4, 4.8, 9.6, & 19.2 Kbps	\$ 85.00	\$ 85.00
56 Kbps	\$ 85.00	\$ 95.00
DDS Transport		
Per airline mile		
2.4, 4.8, 9.6 & 19.2 Kbps	-0-	\$ 1.60
56 Kbps	-0-	\$ 3.20
DDS Transport Termination		
2.4, 4.8, 9.6, 19.2 & 56 Kbps	-0-	\$ 20.00
Per Termination		

This filing has been assigned Consolidated Docket Nos. 11408/11435. The deadline to intervene in this docket is January 1, 1993.

Persons who wish to intervene or otherwise participate in these proceedings should notify the Commission. A request to intervene, participate, or for further information, should be mailed to the Public Utility Commission of Texas, 7800 Shoal Creek Boulevard, Suite 400N, Austin, Texas, 78757. Further information may also be obtained by calling the Public Information Division of the Public Utility Commission at (512) 458-0256, or (512) 458-0221 teletypewriter for the deaf.



CLASSIFIEDS 272-4536

CLASSIFIED RATES

15 Words & Under
Minimum Charge \$2.30
Thereafter \$2.00
16 Words & Over
1st Insertion 15 cents per word
2nd Insertion 13 cents per word

CLASSIFIED DISPLAY RATES

\$1.75 Per Column Inch
DEADLINES
12 noon Tues.
For Thursday Paper
12 noon Friday
For Sunday Paper

To receive the reduced rate after the first insertion, ad must run continuously.

We reserve the right to classify, revise, or reject any ad. We are not responsible for any error after ad has run once.

3. Help

Wanted

WANTED
Mature woman needed for Part-Time Christmas Wrapping. Apply in person. Joe's Boot Shop. Non Smoker Preferred. J3-47t-2tc

WE'LL PAY YOU to type names and addresses from home. \$500.00 per 1000. Call 1-900-896-1666 (\$1.49 min/18yrs+) or Write: PASSE-K883, 161 S. Lincolnway, N. Aurora, IL 60542. P3-47t-4tp(ts)

4. Houses For Rent

FOR RENT
1 bedroom furnished house. Bills paid. Near High School. For more information call 272-4789. A4-46s-5tc

5. Apts. For Rent

Extra Nice 2 bedroom apartment with 1 bath. Electric oven with electric cook top. Disposal dishwasher. Central heating & cooling. \$325 a month. Call 272-4889. L5-47t-tfc

2 Bdrm. furnished or unfurnished apartments. Good location. Water paid. Call 272-7575. P5-44s-tfc

1 Bdrm. furnished apartment. Water paid. Good location. Call 272-7575. P5-44s-tfc

9. Automobiles For Sale

CHEAP! FBI/U.S. SEIZED

89 MERCEDES.....\$200
86 VW.....\$50
87 MERCEDES.....\$100
65 MUSTANG.....\$50
Choose from thousands starting \$25.
FREE Information-24 Hour Hotline.
801-379-2929
Copyright # Tx340JC
A9-39t-16tp

11. For Sale Or Trade

1/4 Section- 1 mile East West Camp Gin, then South 1/2 mile to N.W. corner or farm: 2 irrigation wells. \$350.00/acre. 214-328-5253. L8-47t-2tp

FOR SALE 6" pump 180' setting plus Bows. Wood lined tubing, bows designed to pump 600 gal under pressure. Price 2000.00. Call 946-3628. 11-47t-2tp

FOR SALE

AKC Labrador Puppies, Cream Colored. Call **272-4805**
Classify!
Call 272-4536

15. Misc.

ACTION VIDEO

123 MAIN STREET
MULESHOE, TEXAS
NEW RELEASES
"FAR AND AWAY"
"MAXIMUM FORCE"
"K2"
"THUNDER HEART"
"GLADIATOR"
Open 11 a.m.-10 p.m. Monday-Sunday
47t-2tc

JOHNSON CATERING
Now booking holiday banquets, parties, & open houses. Full meals or standup catering. Also all kinds of holiday cakes, candies, etc. Weddings-Quinceaneras. Free 4x6 individual or family pix included for each banquet scheduled. 272-5746 tfc

Johnson Photography
Seniors, Weddings, Portraits, Groups, Quinceaneras. 1-8x10, 4-5x7, 8 wallet-\$25.95 Portrait Christmas cards & gift certificates 10% discount. Your home or mine. 272-5746

9. Automobiles For Sale

MUST SELL! 91 MERCURY COUGAR LS, 2-Door Coupe, Automatic Transmission, Air Conditioning, Power Windows, Power Door Locks, Tilt Steering Wheel, Cruise Control, Power Mirrors, Power Seat, Tinted Windows, AM/FM Stereo. No old contract to assume, no back payments to make. Just need responsible party to make reasonable monthly payments, call Doug Hulderman in the Credit Dept., FRIONA MOTORS 806/247-2701

MUST SELL! '87 OLDSMOBILE DELTA 88 ROYALE, 4-Door, Automatic Transmission, Air Conditioning, Power Windows, Power Door Locks, Tilt Steering Wheel, Cruise Control, Power Seat, AM/FM Stereo Cassette. No old contract to assume, no back payments to make. Just need responsible party to make reasonable monthly payments, call Doug Hulderman in the Credit Dept., FRIONA MOTORS 806/247-2701

MUST SELL! 86 Ford E-150 Club Wagon, XLT, 7-Passenger, Two Tone Paint, 4 Captains Chairs, Power Windows, Power Door Locks, Tilt Steering Wheel, Cruise Control, AM/FM Stereo Cassette, Dual Gas Tanks, Running Boards, Low-Low Miles. No old contract to assume, no back payments to make. Just need responsible party to make reasonable monthly payments, call Doug Hulderman in the Credit Dept., FRIONA MOTORS 806/247-2701

8. Real Estate

Bingham & Nieman Realt y

116 E. Ave. C George Nieman, Broker 272-5286 or 272-5285

RICHLAND HILLS
PRICE REDUCED 3-2-2 Brick, Cent. A&H, built-ins, FP, sunken lv. area, ceiling fans, earhtone carpets....RH-1

3-3-1 car carport-Large Brick home with built-ins, 2 fireplaces, extra storage, Priced in the \$60's!!! RH-3

NICE RESIDENTIAL LOTS...\$5,000 UP

4-2-2 Brick, Large living/dining combined... \$50's!!! RH-5

3-2-1 Brick, Cent A&H, with fenced yard... \$50's!!!!!! RH-6

3-2-2 Brick with fireplace, 5 ceiling fans, new carpet & paint, new dual fuel heat pump, abundance of closet space...\$90's....RH-8

HIGH SCHOOL

3-2-1 carport Brick, built-ins. lg. isolated master bdrm., covered patio...\$40's....HS-1

IMMACULATE LARGE BRICK HOME 3-2-2

Heat Pump, built-ins, Whirlpool, loads of storage, lg. shop-storage, \$70's!!! HS-2

3-2 Remodeled, heat pump, built-ins, fenced yd., storage bldg. \$20's!! HS-3

3-1-1 Brick, heat pump, fenced yard, current FmHA financing..Price reduced..H-4

4-2-2 Brick, Built-ins, Cent. A&H, ceiling fans...\$40's!!!! HS-5

FmHA financing to a qualified buyer 3-1 1/2-1 Brick in tip-top shape...\$20's!!!! H-6

HIGHLAND AREA

3-2-1 Brick, Cent. A&H, FP, built-ins. MAKE OFFER!!!! HL-1

LENAU ADDITION

3-1-1 car carport-Den with fireplace, floor furnace heat. Low \$20's!!!L-8

3-2-1 Siding Home, built-in work shop, cellar, water softener...\$40's.

REMODELED BRICK-3-2-1 With Cent. heat, built-ins---PRICE REDUCED!!!L-2

15. Misc.

FOR RENT:
Large Self Storage rooms with 24 hour a day access. Call J & J Self Storage at 272-4307. \$15-44s-tfc

Major Appliance and Minor Home Repairs!
Call 272-4450
HENDERSON SERVICE, CO.
tfc

CATERING--your place or ours!
TAKE OUT DESSERTS (Call Ahead)
THE CARROUSEL
272-4131
tfc

Fry & Cox Lumber Hardware

PRESENTS

Black's Magic & Illusion
Friday, November 20 8:30 p.m.

Place—
Store Location
401 South First
Muleshoe, Texas

10 years old and under **MUST** be accompanied by an adult

Come and See The Magical Illusion Of Someone Suspended In The Air It Might Be You!
Magical Christmas Bargains from 6 p.m. - 11 p.m.



8. Real Estate

2 Sections irrigated farm land 10 miles North of Hereford. 8 wells, large grain base, lays good. Home, steel shop, pipe corals, underground lines, \$450 per acre. Owner will finance part. 409-543-5636 H8-45s-8tc

GARAGE SALE
1710 W. Ave. G. Friday 7:00 pm to 9:00 pm and Saturday 9:00 am til 4:00 pm. Bed linens, furniture, clothes, highchair. J15-47t-1tc

GARAGE SALE
1710 W. Ave. G. Friday 7:00 pm to 9:00 pm and Saturday 9:00 am til 4:00 pm. Bed linens, furniture, clothes, highchair. J15-47t-1tc

8. Real Estate

FOR SALE
2100 sq. ft. 4 bedroom brick with new timber-line roof. Total electric-3 year old heat pump-(heat & cool). 2 baths, double garage, lots of closets. Call 272-4793 or 5531. C8-45t-tfc

2100 sq. ft. 4 bedroom brick with new timber-line roof. Total electric-3 year old heat pump-(heat & cool). 2 baths, double garage, lots of closets. Call 272-4793 or 5531. C8-45t-tfc

8. Real Estate

Assume Loan
3-1-1 Brick, Blinds, Fans, Central Heat, Fenced Yard. 1424 West Avenue C. 272-5234. S8-44s-tfc

FOR SALE:
2 Bedroom, 1 bath house. Large lot, outside city limit on improved road. Private well. Plenty of room for expansion. Ph. 272-5169 D8-44s-tfc

HENRY REALTY

111 W. AVE. B 272-4581
Muleshoe, Tx.

2 bedroom, 1 bath, 1 car garage, brick veneer. Country Club Addition. Central heat and air. Very nice.

2 bedroom, 1 bath, detached 2 car garage, extra lot and well for garden. Country Club Addition.

Spacious 2 bedroom, 2 bath with one car garage. Fireplace. Ready to move in.

New listing-2 bedroom, 1 bath, redone for qualified buyer.

3 bedroom, 2 bath, carport, spacious home outside city limits near city on highway. Lot is 85'x40'. Metal building is 29' by 40'. Great setup for workshop.

FOR LEASE-3 beds, carpet, spacious living area, fenced yard. Near high school.

COMMERCIAL PROPERTY
Ideal location on West American Blvd. 150' highway frontage. A great business opportunity.

West American Boulevard 150' frontage. Priced to sell.

LAND
160 acres irrigated farm land with pivot sprinkler SW of Muleshoe. 60 acres of wheat. Ideal for livestock operation. Good water.

240 acres irrigated farm west of Muleshoe. Equipped with sprinkler pivot, **SOLD** underground electricity. Underground pipe for **SOLD** rolls or big gun sprinklers. Priced to sell.

Test Your Ulcer Knowledge

1. Ulcers are caused by what you eat or too much stress.

False - Neither what you eat nor too much stress has been linked solidly to ulcer disease. Recent studies show that smoking, drinking alcohol, and long-term use of aspirin or aspirin-like products pose the greatest risk.

Research indicates people who smoke heavily develop ulcers twice as often as those who don't smoke; moreover, their ulcers are less likely to heal. Also, researchers have found that smokers are more susceptible to a relapse and may have a higher risk of incurring a fatal ulcer.

2. Chronic heartburn is a symptom of an ulcer.

True - Chronic heartburn is one of the symptoms of ulcer disease. Other symptoms include a sharp or burning pain localized in the pit of the stomach, usually striking sometime after meals and/or at night; a burning sensation in the throat or behind the breastbone; nausea; and vomiting. If any of these symptoms are persistent, a trip to a doctor for proper diagnosis and treatment is in order.

3. Surgery is a common treatment for ulcers.

False - In 1976, nearly 155,000 operations were performed to save the lives of patients with bleeding ulcers. The following year, the first H₂-receptor antagonist, Tagamet® (cimetidine), was introduced in the United States. This drug revolutionized ulcer therapy, and by 1989 there were fewer than 15,500 ulcer-related surgeries. Tagamet effectively relieves ulcer pain, in most cases during the first night of therapy, and heals the ulcer itself, usually in four to eight weeks.

4. You can get an ulcer at any age.

True - There are two types of ulcers, duodenal and gastric, and either can strike anyone at any age. The most common type is the duodenal ulcer, which occurs slightly more often in people 30 to 50 years old. Less common are gastric ulcers. The majority of people with this type of ulcer are older than 45 years. However, people older than 60 seem to be at twice the risk of developing gastric ulcers than other age groups.

Job Situation Up in the Air?



Whatever your situation, whether you're looking for a job or offering one, classifieds can help. It's a fact, classifieds is the most popular method of matching the right people to the right jobs. Let classified help you and your job situation!

Muleshoe Journal 272-4536

Read the Classifieds

272-4536

Lowes's Pay-n-Save MARKETPLACE

HAPPY THANKSGIVING

Lowes's QUALITY MEAT

We Also Have Fresh Turkeys, Ducks, Geese

Buy a Decker Ham Get a Shurfine Turkey 10-14 lb. With Coupon

FREE!

Boneless Top Sirloin Steaks **\$2.29** lb.

Boneless Rump Roast **\$2.17** lb.

Butterball Turkeys 16 to 22 lb. Avg. **79¢** lb.

Jennie-o Turkey Half Ham **\$1.47** lb.

Jennie-o Turkey Link Sausage **88¢** 12 oz.

Jennie-o Turkey Roast **2.55** 2 lb. Boxes For

Fork Butt Roast Any Size **\$1.17** lb.

Peyton's Sliced Bacon **99¢** 1 lb.

Decker Spiral Cut Half Ham **\$2.67** 6 to 7 lb. Avg.

Wilson Half or Whole Ham **\$2.99** lb.

Extra Lean Ground Beef **\$1.57** lb.

Jimmy Dean Pork Sausage **\$1.88** 1 lb.

Smoked Fully Cooked Turkey **\$1.27** lb.

Frozen Baking Hens **77¢** 5 to 7 lb. Avg.

Chicken Livers & Gizzards **79¢** lb.

Bone-in Turkey Breast **\$1.27** lb.

Golden Ripe Bananas **3 \$1** lbs. for

Green Onions **3 \$1** Bunches For

Sweet Potatoe **3 \$1** lbs. For

Navel Oranges **38¢** lb.

Red Delicious Washington Apples **48¢** lb.

Fresh Broccoli **69¢** lb.

Baking Potatoes **4 \$1** lbs. For

Yellow Onions **4 \$1** lbs. For

Fresh Celery Stalks **18¢** lb.

Lowes's Pay-n-Save MARKETPLACE General Mills

Gold Medal Flour **69¢** 5 lb. Asst.

Betty Crocker Blueberry Muffin Mix **\$1.59** 13 oz.

Betty Crocker Cake Mix **88¢** 18 oz.

Parkay Margarine Quarters **2 89¢** 1 lb. boxes for

Tender Crust Brown & Serve Rolls **2 Pkgs. 79¢** For

6 Pack Cans Coca Cola **\$1.59** Asst. 6 Pack 12 oz.

Imperial Sugar **\$1.39** 4 lb. bag

Betty Crocker Brownie Mix Caramel Fudge Walnut **\$1.99** 22 oz.

Betty Crocker Frosting Ready To Spread **\$1.39** 16 oz.

Assorted Cool Whip **79¢** 8 oz. tub

Grands Biscuits **99¢** 16 oz. Asst.

Land o Lakes Sweet Cream Butter **\$1.39** 1 lb.

Lowes's Pay-n-Save MARKETPLACE FROZEN FOOD

Mrs. Smith's Pumpkin Custard Bake & Serve Pie

Mrs. Smith's Apple Bake & Serve Pie

Mrs. Smith's Apple or Pumpkin Pie **\$2.29** 26 oz.

Rhodes Bread Dough White or Wheat **\$1.69** 16 oz.

Pet Ritz Pie Shells 10 oz. 2 Pack **99¢**

Shurfine Grade A Large Eggs **79¢** 18 count pkg.

All Ready Pie Crust **\$1.69** 15 oz.

Shurfine Sour Cream **2 \$1** 1/2 Pints For

Rhodes Rolls Texas, Wheat or Flaky **\$2.19** 3 lb. 36 ct.

Pet Ritz Deep Dish Pie Shells **\$1.29** 12 oz. 2 Pack

Shurfine Whipping Cream **39¢** 1/2 Pint ctn.

Shop Lowe's Marketplace & Pay-n-Save for Low Low Prices!!!

Lowes's Pay-n-Save MARKETPLACE

401 W. Amer. Blvd. Muleshoe 272-4585

515 W. Amer. Blvd. Muleshoe 272-4406

Prices effective November 15 - 25, 1992

WE RESERVE THE RIGHT TO LIMIT QUANTITIES IN TEXAS

Our Best to you!