



WEATHER

Nov. 22 33 19 2in. S .13
Nov. 23 49 19
Nov. 24 55 24 4in S .31
Nov. 25 28 19 T. S T

Muleshoe Journal

'The Community Of Opportunity-Where Water Makes The Difference'

Vol. 70, No. 48

Published Every Thursday At Muleshoe, Bailey County, Texas 79347

TEXAS PRESS ASSOCIATION 25¢

Thursday, November 26, 1992

around muleshoe

Dana Rasco's name was inadvertently left off the list of employees at Bank of America, in a story run Sunday.

The Volunteer Plus Organization plans to purchase carpet with the money donated to the Christmas Card Project this year.

Due to bad weather, the Boy Scouts were unable to pick up the bags of groceries last Saturday. Pick-up day has been re-scheduled for December 5 or if you would rather, you may take your bag of groceries to 401 N. 1st. on Tuesdays or Thursdays between 10 a.m. and 3 p.m. All groceries will go to the local Food Box.

The Lazbuddie Longhorns will be playing Dell City Friday night (if the weather permits) at Grady, in the Quarter finals.

A special two-hour, telecast of the Final Championship Round of the National Finals Rodeo, from Las Vegas, Nevada, will be sponsored locally by Earl Ladd and Sons, Inc. of Muleshoe.

The coverage will be broadcast on America's largest Sports network ESPN on December 13th from 4 to 6 p.m. EST.

This exciting broadcast will feature the top Professional Rodeo Cowboy Association athletes competing for world champion titles in bareback bronc riding, steer wrestling, team roping, saddle bronc riding, calf roping and bull riding, as well as Women's Professional Rodeo Association barrel racing.

Over \$2,000,000 in purse for this Super Bowl of Rodeo. Coverage of the final championship go-round is sponsored by Heston Corporation and participating Heston Farm Equipment dealers across the United States and Canada.

The Bailey County Commissioners Court will meet in regular session Monday, November 30. The meeting will get underway at 10 a.m. and continue until all business is concluded:

- 1. Approve the minutes of the previous meeting.
- 2. Review, approve and order payment of County bills.
- 3. Approve payroll.
- 4. Consider ENMR Telephone

Cont. Page 6, Col. 1

Bailey County EMS Sponsors Toys For Tots

The Bailey County EMS are sponsoring the Toys-For-tots again this year and need the help of the entire community.

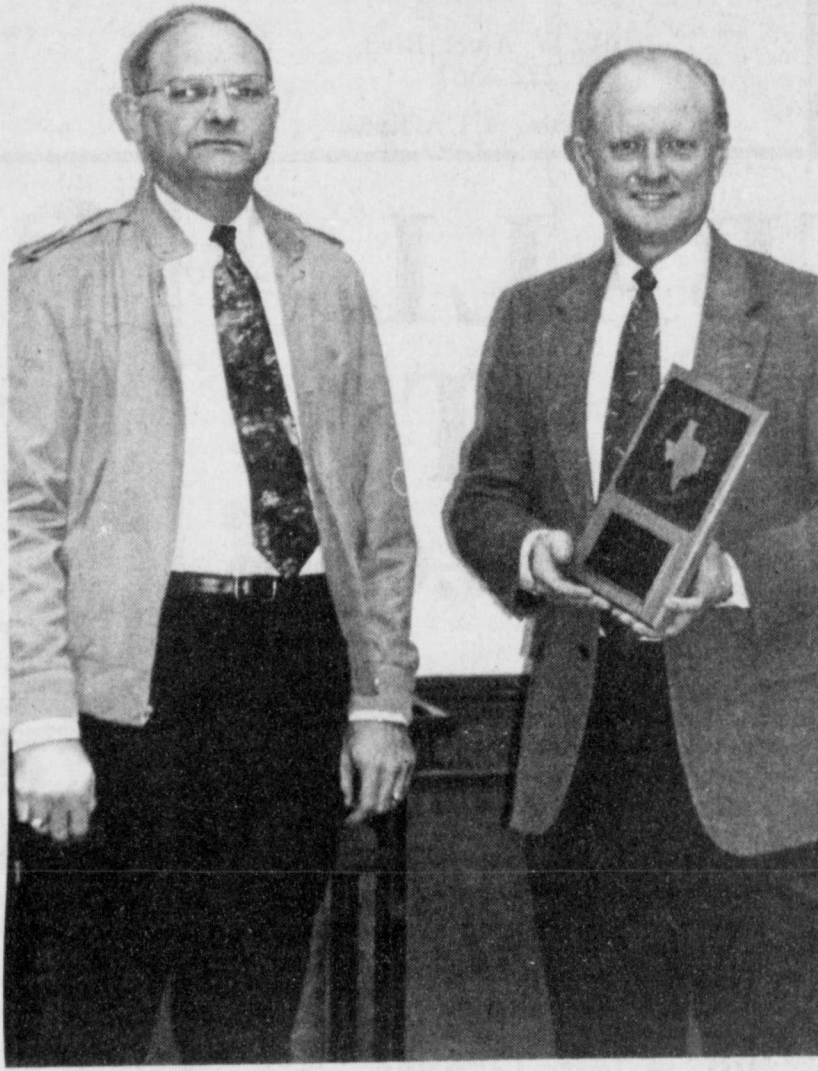
"We will need lots of toys, and can goods which will be distributed to the children in the area," said Larry Rasco.

Donations may be taken to the EMS office, behind Muleshoe Area Medical Center.

Applications can be filled out at the EMS office at 715 W. 2nd. from 8 a.m. to 5 p.m. Monday through Friday.

Application forms are available now, but no applications will be accepted after the December 15 deadline.

"We would like to say THANKS to those who have made Christmas a little happier for the children," Rasco continued.



REGIONAL TEACHER OF THE YEAR--Joe Neeley, right, presented Kerry Moore a plaque designating him Regional Teacher of the Year, during Monday morning's school board meeting. Moore will also receive a check in the amount of \$500.00. (Journal Photo)

Kerry Moore Regional Teacher Of The Year

High Winds Accompany Snow In Area

Area residents woke Tuesday morning to a winter storm, winds and blowing snow. Unofficially the Muleshoe area received three inches of snow along with the high winds resulted in drifts in many areas, resulting in hazardous driving conditions.

The Muleshoe schools started one hour later than normal and some meetings were canceled.

An upper-level storm system over southwestern Colorado Monday spawned blizzard conditions which moved into the area around mid-night.

Even though the skys cleared Tuesday morning, the wind and low temperatures prevented much melting of the snow.

According to the National Weather Service in Lubbock, area residents stand a good chance of avoiding a white Thanksgiving. Temperatures are expected to remain low.

The first winter storm moved through the area Saturday, bringing with it light snow, high winds and low temperatures.

It was reported that some portions of the city were without electricity for up to two hours, due to the winds. Bailey County Electricity employees were on the job all day Saturday and until around 12 midnight Saturday night restoring electricity to the rural area.

Teacher Nominated For Committee Post

Monte Hasie, District 15 representative on the State Board of Education, has nominated John Gulley, along with three other area teachers to committee posts subject to approval by the Texas Education Agency.

Hasie, whose district includes 47 counties throughout the Panhandle, western and southern sections of the South Plains and part of the Permian Basin, selected the four nominees for posts on four subject area advisory committees.

The panels will make recommendations on content specifications and evaluation criteria for textbooks submitted under the 1994 Proclamation.

Gulley, who teaches Social Studies and Spanish II at Muleshoe High School was nominated for the committee on Social Studies and World History.

Novetta Washington of Odessa, fourth grade teacher at Ireland Magnet School, Ector County Independent School District was commended for the committee on Elementary Language Arts, Composition and Language, Grades 1-6;

Marian Blakely of Littlefield, teaches English IV Advanced Placement, regular, English IV and English I honors at Littlefield High School; suggested for the committee on Secondary Language Arts, Language and Literature, grades 6-8 and Literature I-IV;

Another nominee, Joanne Bowers of Plainview High School Science Department head there who has experience teaching Biology I and II and Physics was picked for the committee on Science Biology I-II

Superintendent Bill Moore introduced Joe Neeley 17ESC who presented Kerry Moore a plaque. Moore was named Regional Teacher of the Year.

In making the presentation Neeley stated that Moore must really be good to have been selected as Regional Teacher of the Year from 4500 teachers in the region.

Moore has taught in the Muleshoe Independent School 32 years. "In this 32 years he must have had a real impact on the people of the community." Moore will receive a check in the amount of \$500.00.

The Support Staff Award for the month of December went to Pauletta Crawford. Ms. Crawford is payroll coordinator/insurance clerk for MISD. She has worked in payroll since becoming a MISD employee in May 1974--18 and a half years ago.

Ms. Crawford is a native of O'Donnell. She has been married to Jimmie Crawford for the past 42 years. Her son, Doug, daughter-in-law, Tanya and her three grandchildren all live in Muleshoe. Her hobbies include watching her grandchildren's sports, sewing, painting, and travel.

The Crawfords have lived in Muleshoe since 1955. Ms. Crawford worked in the Bailey County Clerk's office for 11 years prior to her employment with Muleshoe ISD.

Her nominations for this award came from several campuses. Typical of the nominations were words like "dedicated, loyal, knowledgeable, helpful, patient, steadfast, friendly, and willing to help."

and Science IV.

"I am pleased to make these nominations to the Texas Education Agency for these important committee posts," Hasie said. "We had several excellent recommendations from superintendents across the area and it was tough to select only four."

Hasie said selection of nominees is based on their exemplary backgrounds or training or because Cont. Page 6, Col. 1

Local Family Featured By SPS

The following article was taken from Southwestern Public Service Company 1992 Annual Report (50th Anniversary Edition).

In the 1970s Darla Rhodes and her husband, Joe, were busy raising their family and enjoying country life at their home outside of Muleshoe, Texas. Each worked hard during the day--she at home, he in the agriculture industry. In addition, the Rhodes family had a small, but growing business selling boots.

As if they didn't have enough to do, the couple also raised cattle and

Alene Bryant Takes First Place In Contest

This was another of those weeks when if you missed more than three games in the weekly football contest, you were out of luck.

Three contestants missed three points, so the Journal judges were forced to go to the tiebreakers.

Alene Bryant missed three games, and was two points off on the tiebreakers, giving her a first place win. Add these ten points to a previous second place win and she has a total of 16 points.

Adam Graves also missed three games and was eight points off in the tiebreakers, giving her a second place win.

Tony Nicolas missed three games and was 39 points off in the tiebreakers, giving him third place. Add these four points to his two previous wins gives him a total of 20 points.

Four entries only missed four games.

There is only one more week left in the contest and several persons could get their share of the grand prize with a winning entry next week.

Tony Nicolas, Billie Joann Smith, and Terry Field all have 20 points. Coming in close behind is Wade Cargile with 18. Alene Bryant has 16 and Rosa Hernandez has a total of 14 points.

Be sure to get those entries in next week, you could be a winner.

sheep. Growing up in farm and ranch families, they respected the land and knew future generations of Bailey County residents would depend upon it for their livelihood as well.

Spurred by the "Energy Crisis" of the '70s, Southwestern Public Service Company was proposing to build its second major coal-fired power plant, near Muleshoe. When Jo and Darla heard the plans, they had some questions: How would such a facility effect the land, the air and the area's water resources? The environmental movement was beginning to take hold with mainstream Americans. Any plant that came into their community had to be environmentally sound.

Darla joined a contingent of Muleshoe citizens who traveled to Amarillo to see firsthand what an SPS coal-fired plant looked like. "You hear things about big plants," Darla said. "So we wanted to see what SPS had done in Amarillo." Her conclusion: "We were impressed."

What she and the other Muleshoe citizens saw was Harrington Station, built in the mid-1970s as SPS's first modern clean-coal plant. They learned the plant used low-sulfur western coal and had other environmentally sound features, including baghouses, which act like giant vacuum cleaners, preventing ash from escaping into the air. SPS in the '70s became the first electric utility in the nation to construct a baghouse on a large new generating unit.

Darla also saw the recycling of fly ash from the plant. Instead of dumping the ash produced from burning coal, SPS sells it for use in construction projects.

In addition, SPS maintains a zero-discharge water policy at Harrington, and all its plants. Under that policy, water from Harrington is used for irrigation of crops outside the plant, and none is wasted.

After the Amarillo visit, Darla and Joe felt better about the prospects of a large generating

Cont. Page 6, Col. 2




STAFF MEMBER OF THE MONTH--Pauletta Crawford received the Support Staff Member award Monday morning during the school board meeting. Ms. Crawford is the payroll coordinator/insurance clerk for the MISD, where she has been employed for the past 32 years. Amorl Price, school board member, made the presentation. (Journal Photo)



Happy Thanksgiving!





1606 W. Amer. Blvd. 272-3294

Backing The Mules 100%

Closed Mondays

Chicago vs. Cleveland

Higginbotham-Bartlett Co.
215 Main 272-3351




Eureka Upright
• Powerful, Lifetime-Lubricated Motor
• Carpet Height Adjustment
• Edge Kleener* On Both Sides
• Use Genuine Eureka Bags - Style F & G

SAVE \$10 **69.95**

Model 1432

Arkansas vs. L.S.U.

Bailey County Farm Bureau 

David R. Tipps, Agency Manager

For All Your Insurance Needs

*LIFE *CROP
*AUTO *HOME


"Helping You Is What We Do Best"

1612 W. Amer. Blvd. 272-4567

Minnesota vs. L.A. Rams

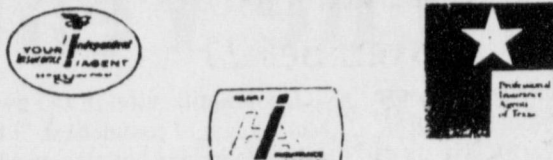
Stacey and Staff

Backing The Mules 100%



1412 W. Amer. Blvd. 272-4213

Hawaii vs. Tulsa



Henry Insurance Agency, Inc.

Kenneth R. Henry
Certified Insurance Counselor
Real Estate Broker

111 E. Ave. B 272-4581

Grambling vs. Southern U.

FOOTBALL CONTEST

Grand Prize: \$150.00

Weekly Prizes

1st - \$10 2nd - \$7.50
3rd - \$5.00

Weekly Winners

1st. Alene Bryant 2nd. Adam Graves
3rd. Tony Nicolas

Contest Rules:

1. IN EACH ADVERTISEMENT YOU WILL FIND A GAME LISTED. CIRCLE THE TEAM YOU THINK WILL WIN. The person's score that most closely matches the TIE BREAKER will be declared the winner. If several persons are still tied the prize money will be split.
2. The contestant must be 12 years of age or older.
3. Only one entry per person may be made for any one contest.
4. Bring your entry by the Journal Office by 5:00 p.m. Friday, or if mailed, the entry must be postmarked no later than 5:00 p.m. Friday. Write "FOOTBALL CONTEST" on the mailed entry, and mail to P.O. Box 449, Muleshoe, Texas 79347.
5. In the Tiebreaker Games WRITE IN THE SCORE of the tiebreaker games. This score will be used to break weekly as well as determine the Grand Prize winner. Decision of *The Journal's* scoring judges will be final.
6. Winners will receive 10 points for first place, 6 points for second place and 4 points for third place.
7. To be eligible for the Grand Prize, entries must be on Official Entry Blanks printed in the newspaper.
8. Employees of *The Journal's* are not eligible to enter any one contest.



Decorator's Floral & Gifts

Backing The Mules 100%

Betty Wuerflein, Owner
616 S. First Muleshoe 272-4340

Florida A&M vs. Bethune-Cookman

Linda's Kitchen
(located in Damron Drug)

Closed Saturday & Sunday

100% Beef Homemade
Hamburger Patties
- Sandwiches - Salads -
- Drinks -
- Homemade Pies -

308 Main 272-4210

Tennessee vs. Vanderbilt

The Spudnut Shop
The Upper Crust of the Donut World
The Original Potato Flour Donut

Check Our Weekly Luncheon Specials

Mon. - Sat. 5 a.m. - 2 p.m.

328 South Main Street
Muleshoe, Tx. 272-3542

New Orleans vs. Miami

Western Drug Co.
114 Main 272-3106

"For All Your Prescription Needs Visit The Friendly People At Western Drug"

Supporting The Mules All The Way!

Quarterfinals
Lazbuddie (12-0) vs. Dell City (9-2)
Friday, 8:00 p.m., Grady High School,
Lenora, Tx.

We Support The Mules 100%

Let Us Help You Get Those Fall Garments Ready For School and any other Social Functions!

at
Lambert Cleaners

123 Main Muleshoe 272-3840

Miami vs. San Diego State

Connie's Place
121 Main 272-3126

Hours:
Mon. - Fri. - 5:00 a.m. - 4:00 p.m.
Sat. - 5:00 a.m. - 2:00 p.m.

Daily Buffet:
Includes Salad Bar & Cobbler

Serving Breakfast Daily
Connie Dominguez, Owner

Georgia vs. Georgia Tech

Official Entry Blank

Name _____
Address _____
Phone _____

TIEBREAKERS

Mississippi vs. Mississippi State
Rice vs. Houston

Dinner Bell Restaurant
2103 W. Amer. Blvd. 272-5871
Muleshoe

Open 7 Days A Week 6:00 a.m. to 9:00 p.m.

Daily Noon Buffet -
11 a.m. - 2 p.m.
- All You Can Eat -
(includes Salad Bar, Cobbler, Ice Cream & Homemade Bread) **\$5.89**

Nightly Friday
Steak Specials Fish Buffet
Mon. - Thurs. & (Catfish & Shrimp)
Sat. - Sun. 11 a.m. - 9 p.m.

Breakfast Served Anytime!
Florida State vs. Florida

Wilson Drilling & Southwestern Geothermal

Box 405 272-5521
Stanley Wilson Dee Puckett

Tx. Lic. 02628W
N.M. Lic. WD1152

Notre Dame vs. Southern California

Support The Muleshoe Mules & Lady Mules As They Begin Their 1992-93 Basketball Season

Bob Stovall Printing

No Job Too Large Or Too Small!

Come By And Visit With Us For All Your Commercial Printing!

221 E. Ave. B. 272-3373

San Diego vs. L.A. Raiders

Viola's Restaurant
For The Best Mexican Food Come To Viola's!

Open 11:00 a.m. - 9:30 p.m.
Closed Tuesdays

2002 W. Amer. Blvd. 272-3838
Regionals
Sudan (10-2) vs Plains (9-2)
Friday, 7:30 p.m., Levelland High School

Sudduth Field & Co.

David L. Sudduth, CPA
Randall L. Field, CPA

Backing The Mules 100%

104 W. 2nd Muleshoe 272-4291

Green Bay vs. Tampa Bay

Kearney Scoggin

Scoggin Ag Center, Inc.
"Where Fertilizer Is Our Business"

1532 W. Amer. Blvd. Muleshoe, Tx. 79347
P.O. Box 452 272-4613

Fresno State vs. Texas-El Paso

We want to wish everyone Good Luck in the upcoming school year!

Thanks to all our customers, we appreciate all of you for patronizing **The Snack Shack**

Go Mules! Go Mules!

Mon. - Fri. 11 a.m. - 2 p.m.
Closed Saturday & Sunday

The Snack Shack
222 W. Ave. H. Muleshoe 272-3840

Neveda-Las Vegas vs. Cal State Fullerton

Who Really Pays For Child Support?

by Don Morales

Last year, the parents of more than 500,000 Texas children decided to let you bear the cost of raising their offspring.

Why should you pay money out of your pocket to raise the children of absentee parents while they get a free ride? The answer is that you shouldn't.

Failure to provide child support is not only a crime against the child, but ultimately against the society that must bear the cost. All too often, that cost results in discouraged, underprivileged kids who find their way into gangs, drugs and prison.

In most states, child support enforcement is the responsibility of state human service departments. In Texas, the Office of the Attorney General is responsible for child support enforcement. We think this responsibility fits with our other law enforcement duties because the stakes are so high for all of us.

The Texas child support program ended state fiscal year 1992 with almost three quarters of a million cases. When you look beyond the staggering case load and the statistics, you see a whole bunch of kids without school clothes, school supplies, bicycles or braces. Often, these children live much of their childhoods without the benefit of either parent, because the one responsible parent, typically a woman, often has to work two jobs, or work at night to support herself and her children.

That's why making sure that parents live up to their financial responsibility to their children is

one of the most important duties of my office, and the reason we utilize half of all agency staff to perform child support collection services.

I'm proud to say that the dedication of our staff is paying big dividends. We collected \$301.7 million in fiscal year 1992, 28 percent more than we collected in 1991. Combined with the child support collected by counties through their county registries, these efforts represent hundreds of millions of dollars in direct aid to children in Texas, many of whom are forced by the negligence of their non-custodial parent to live on taxpayer supported welfare.

Nationally, the Texas child support program has moved from 14th in 1990 to 10th in 1991, and sixth among states in collections from federal income tax refunds. Our goal is to continue dramatic improvement in enforcement efforts because we want Texas to be one of the most difficult states to pass the child support buck to taxpayers. If this means giving the state of Texas the power to revoke professional and drivers licenses for those who refuse to pay, or to garnish insurance reimbursement checks, then I say let's do it.

Even though we routinely collect more each month than we did in the entire year before this program was transferred to the Attorney General's office, we are far from satisfied. We think government agencies, like successful businesses, have to change and innovate to make their programs work.

Currently we are developing a

pilot project with the Mexican state of Tamaulipas to allow us to collect child support from parents who flee to Mexico. And we are considering legislation that would improve the state's ability to collect child support.

One area where we've made great strides is establishing paternity. These days referrals from Aid to Families with Dependent Children (AFDC) account for most of our new cases. These referrals are averaging more than 10,000 new cases each month.

Typically, these cases have no paternity or child support orders established. So our job is not just a matter of collecting money on a court order, but establishing that order in the first place. In a paternity case, this involves four steps: finding the alleged father; establishing paternity through blood tests; establishing a court order for payment; and finally, actually collecting money from the father. This process is time consuming and difficult, but it is necessary.

Again, we're getting results. Each month this year, we have established paternities for more children than we were able to do in all of 1988. In a typical month, we will establish paternities and child support orders for more than 2,000 children!

However, for us to make really significant inroads into this problem of supporting other people's children, we've got to prevent as well as remedy. Texas still ranks first in the number of births to girls 14 years and younger. Not only do teenage pregnancies pose difficult and costly problems for Texas taxpayers, but these pregnancies almost always place the children of teenagers in an at-risk category. Too many at-risk children will suffer from abuse and neglect. Too

many of these infants will ultimately enter the welfare system and the criminal justice system.

There is growing recognition among government officials that today's failures to maintain effective child support will turn into tomorrow's law enforcement nightmares. That's why we have spent more than a year reorganizing, computerizing and streamlining child support enforcement operations in the Texas Attorney General's Office. And that's why I enthusiastically endorse the recommendations made by the U.S. Commission on Interstate Child Support this past summer. One key recommendation is the establishment of a national computer network that can effectively track negligent parents across state lines.

While action by both the federal and state government can help, nothing is more important than local involvement. Community leaders must help teenagers understand that having a child is a moral responsibility. But parenting is also a legal responsibility. Neglecting to pay for a child's welfare is a crime that can be proven in a court of law and enforced by sheriffs and constables, and it is a financial responsibility that lasts for a minimum of 18 years.

Children must come first in our society, not last. Until they do, we will continue to harvest the bitter fruit born of broken families and betrayed childhoods.

Best of Press

Built-In Defense
No enemy nation could take the risk of invading us. Our youth are too well armed.
-Enquirer, Cincinnati.

BIBLE VERSE

Before him shall be gathered all nations: and he shall separate them one from another, as the shepherd separateth the sheep from the goats.

1. Where does this quotation occur in the Bible?
2. Who spoke these words?
3. To what event do they refer?
4. Does this quotation appear

elsewhere in the Bible?

- Answers:
1. Matthew 25:32.
 2. Jesus in a parable.
 3. The last judgment.
 4. No.

Aimed High
Today's mighty oak is just yesterday's little nut that stood its ground.

Investigative panel:
L.A. riots could be repeated.

Christmas Trees
Will Be Here Friday
November 27
1620 W. Amer. Blvd.
(Old Weidebush Bldg.)
Fresh Cut Or Flocked
Curtis Carpenter & Keith Hawkins
(Formerly C&D Christmas Trees)

Muleshoe Journal USPS 367-820
Established February 23, 1924. Published by Muleshoe Publishing Co., Inc. Every Thursday at 304 W. Second, P.O. Box 449, Muleshoe, TX 79347. Second Class Postage paid at Muleshoe, TX. POSTMASTER: Send address changes to the Muleshoe Journal, P.O. Box 449, Muleshoe, TX. 79347.

We Are Qualified Members Of:
Panhandle Press Association, National Newspaper Association, West Texas Press Association and Texas Press Association.

NNA National Newspaper Association
PPA PANHANDLE PRESS ASSOCIATION
TEXAS PRESS ASSOCIATION MEMBER 1992

L.B. Hall, Publisher
Sammye Hall, Vice-President/Comptroller
Evelene Harris, News
Annette Bottoman, Society
Holly Miley, Advertising
Diana Bermea, Classified
SUBSCRIPTIONS
Muleshoe Journal and Bailey County Journal
By Carrier Yearly - \$14.00
Bailey and surrounding counties
By Mail - \$15.75
Elsewhere - \$17.50
Advertising Rate Cards on Application

Advertisers should check their ad the first day of insertion. The Journals will not be liable for failure to publish an ad or a typographical error or errors in publication except to the extent of the cost of the ad for the first day of insertion. Adjustment for errors will be limited to the cost of that portion of the ad where the error occurred.

Army Expected To Blast Navy December 5

Alabama hosts Auburn on Thanksgiving Day, with a chance to go undefeated in the regular season for the first time since 1979 and to set up a meeting with Miami in the Sugar Bowl for the national championship. The Crimson Tide has beaten the Tigers the past two seasons, including a 13-6 win last year, but Alabama fans won't feel properly avenged until the team makes it three in a row. Why? Because in 1989, the last time Alabama was 10-0 going into its final game of the season, as it is this week, it lost that game--to Auburn, 30-20. This year, however, the teams are less evenly matched, and Alabama should have a relatively easy time of it. Next week the Tide plays in the inaugural Southeastern Conference Championship game.

Nebraska and Oklahoma meet on Friday in Norman, Okla., with the Cornhuskers expected to win, as they did last year, 19-14. If so, a final win against Kansas State on Dec. 6, in the last pre-bowl college game of the year--in Tokyo, no less--will wrap up the big Eight title for Nebraska.

On Saturday, Florida and Florida State face off in Tallahassee. The Gators beat the Seminoles last year for the first time since 1986, 14-9, which, of course, we predicted. But we won't stick our necks out again, even though Florida has firmly established itself as a Top 20 team; Florida State just looks too strong. In the meantime, the Gators are battling Georgia for leadership of the eastern division of the Southeastern Conference, while the Seminoles have the Atlantic Coast Conference title wrapped up.

On Dec. 5, Army hopes to even its series against Navy at 43 games apiece. Once again, both teams have had dismal seasons--Navy had won only once before last week's game with Rice--but, like last year, the Cadets have been less dismal. Once again we'll pick Army, even though that was a mistake last year, when the

Midshipmen pulled off a 24-3 upset. Though Nov. 14 our forecasting average was .755, with 1,580 games right and 513 wrong.

THE BOB HARMON FORECAST

Thursday, Nov. 26 - Thanksgiving Day			(Nov. 28 cont'd)				
*Alabama	32	Auburn	13	*Hawaii	24	Tulsa	19
Alabama State	30	Fayetteville	7	Miami	37	*San Diego State	21
*Presbyterian	24	Newberry	21	*Mississippi	26	Mississippi State	24
Texas A & M	27	*Texas	19	*Nevada-Las Vegas	28	Cal State Fullerton	21
						*Notre Dame	31
						Rice	30
						*Houston	28
						Tennessee	28
						*Vanderbilt	16
Friday, Nov. 27			Saturday, Dec. 5				
Nebraska	28	*Oklahoma	14	Army	26	Navy	21
						*Hawaii	27
						Alabama	30
						(Georgia or Florida)	
						27	
Saturday, Nov. 28			Sunday, Dec. 6 (Tokyo)				
*Arkansas	27	L.S.U.	24	Nebraska	34	Kansas State	10
Florida A & M	30	Bethune-Cookman	10				
*Florida State	31	Florida	17				
Fresno State	29	*Texas-El Paso	14				
*Georgia	33	Georgia Tech	16				
Grambling	26	Southern U.	14				

NATIONAL FOOTBALL LEAGUE FORECAST

Thursday, Nov. 26		MINNESOTA 30		**LA. RAMS 26	
**DALLAS 32	N.Y. GIANTS 25	Minnesota has won four straight from the Rams, including last year's 20-14 win. The Vikes, about to face Philadelphia, S.F. and Pittsburgh, better take a deep breath while they can.			
The Cowboys held off the Giants 34-28 in the second week of the season, nearly blowing a 34-0 lead. N.Y. warmed up for Dallas against Denver and Philly; next week the Giants face Washington.					
HOUSTON 24	**DETROIT 18	**NEW ORLEANS 28			
In their last meeting three years ago, Houston won an offensive battle, 35-31. As poorly as the Lions have played this year, they're just the sort of pesky team that gives the Oilers fits.					
		MIAMI 25		The game of the week, between teams that haven't played in six years. The key will be how well Miami's powerful but unpredictable offense does against the Saints' stingy defense.	
Sunday, Nov. 29		PITTSBURGH 24		**CINCINNATI 13	
**ATLANTA 17	NEW ENGLAND 9	Six weeks ago Pittsburgh's offense was sputtering, but the Steelers still shut down the Bengals 20-0. Since then Pittsburgh has improved almost every phase of its game; Cincy is overmatched.			
The worst of the AFC East vs. the worst of the NFC West, in what will probably be an exciting game, since neither team does defense. They last played in 1989, when the Falcons won 16-15.					
BUFFALO 33	**INDIANAPOLIS 14	**SAN DIEGO 21		L.A. RAIDERS 20	
Buffalo took no prisoners in a 38-0 rout of the Colts in week three, led by defensive back Henry Jones' two interception returns for TDs. Battling Miami in the AFC East, Buffalo can't let up.					
The Chargers and Raiders split their two games in 1991, but that's unlikely this season--not with San Diego catching fire and L.A. continuing to struggle. They'll play again in three weeks.					
CHICAGO 28	**CLEVELAND 27	**SAN FRANCISCO 31		PHILADELPHIA 27	
This one's almost too close to call, especially with the Browns at home--where they've beaten the Bears twice in a row, including the last time they met, three years ago.					
**GREEN BAY 20	TAMPA BAY 17	**WASHINGTON 26		PHOENIX 23	
Back in September the Buccaneers bombed the Packers 31-3, when Vinnie Testaverde completed 22 of 25 passes for 363 yards and ended Green Bay's three-game winning streak against the Bucs.					
KANSAS CITY 27	**N.Y. JETS 19	Monday, Nov. 30		DENVER 30	
When the Chiefs and Jets last played, in 1988, the Chiefs won 38-34. This year only K.C. seems capable of scoring that many points as it tries to stay within striking distance of Denver.					
		**SEATTLE 10		Last year the Broncos won one (16-10) and the Seahawks won one (13-10), but Denver can't afford another split this up-and-down season. These two will also play again in three weeks.	



OPENING UP OUR YOUNGSTER'S FUTURES-Some of the programs provided to students at the Computer Lab at Dillman Elementary were being demonstrated at the Open House held there last week.

1st Anniversary Sale
Friday & Saturday Only
25% OFF
All Suits In Stock
- Western & Traditional Styles (alterations not included)
Great Selection SWEATERS All Under \$50
BIG & TALL Department
HOLIDAY HOURS Now until Christmas 9am-8pm (Beginning Dec. 6 Sunday 1-6pm)
Edwards Quality Men's Wear
"Where Quality Is Affordable"
2521 N. Prince • 763-1411
Clovis

Patients In Muleshoe Area Medical Center

- NOVEMBER 20, 1992
Juan Silva, Adrian Gonzales, Grace Scarbrough, Mae Wilterding, Ovie Manasco, Katrisha Bradley, Baby Girl Tosh.
- NOVEMBER 21, 1992
Victor Foss, Grace Scarbrough, Mae Wilterding, Ovie Manasco, Katrisha Bradley, Carlos Flores, Baby Girl Tosh.
- NOVEMBER 22, 1992
Victor Foss, Mae Wilterding, Baby Girl Tosh.
- NOVEMBER 23, 1992
Victor Foss, Clio Middlebrooks, Teodocia Daniel, Mae Wilterding, Samantha Tosh.

Proudly Presented By:
WES-TEX FEED YARDS, INC.
CUSTOM CATTLE FEEDING
272-7555

New Skin Care And Image Consultant Receives Certification

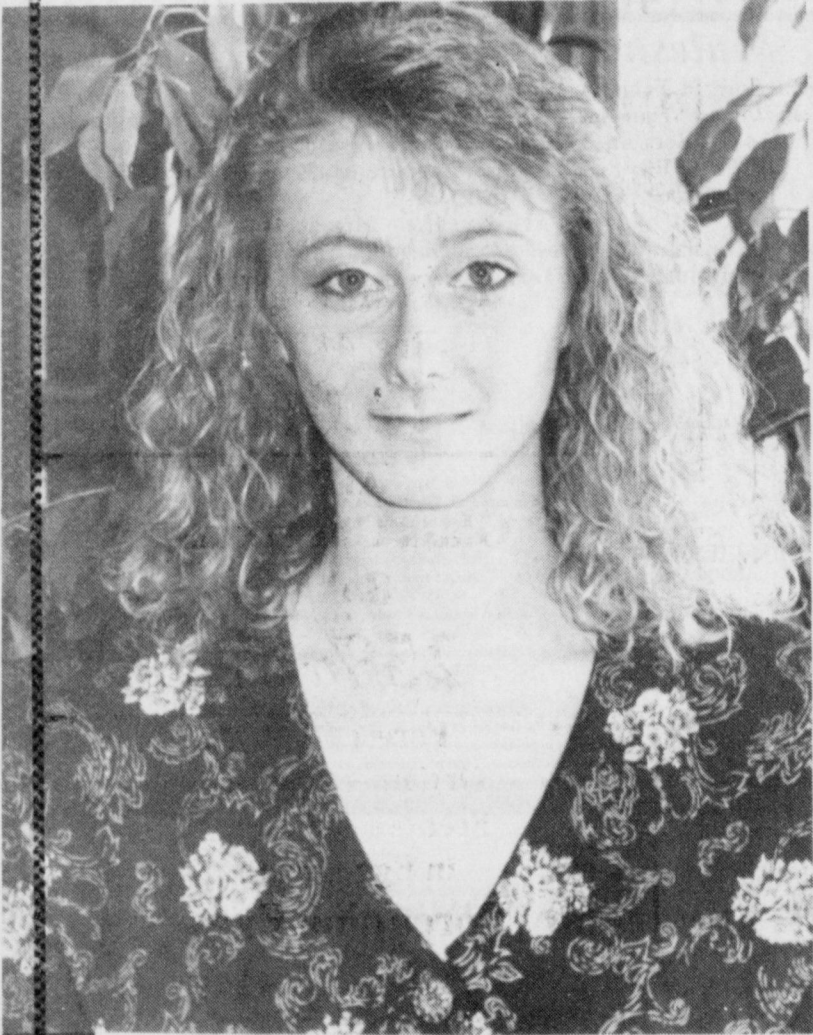
After completing a comprehensive training program, Jackie Scoggin of Muleshoe, has been certified as an independent Skin Care Consultant for BeautiControl Cosmetics, Inc. headquartered in Dallas, TX. Ms. Scoggin has been trained to offer BeautiControl's exclusive Total Image Solution which includes complimentary services like skin condition analysis with patented Skin Sensors, color analysis and make-up/fashion personality analysis, plus customized skin care, color-coded cosmetics, computer-assisted image analysis and the "Instant Image Makeover" video and Color Book

Set. BeautiControl Cosmetics has been named repeatedly by Forbes and BusinessWeek magazines as one of the best and fastest growing publicly-held companies in North America. BeautiControl has over 30,000 Skin Care and Image Consultants in the United States and Canada and reported sales in excess of \$58 million at the end of 1991.

For more information about BeautiControl's products and services, or becoming a certified BeautiControl Skin Care and Image Consultant, contact Ms. Scoggin at 272-3752 or 272-4613.

Lon Mabon, Oregon activist: "The homosexuals want to force society to accept their lifestyle as good and normal," referring to effort to have Oregon declare opposition to lifestyle.

Richard Bork, rejected high court justice, lawyer: "She actually said, 'I don't pay the taxes, Harry and the little people pay taxes,'" commenting on his action seeking new trial for Leona Helmsley.



Gina Sharp (bride-elect of Scott McBee)



FIVE GENERATIONS-Five generations gathered recently for a visit. They are: seated, great-great-grandmother Gladys Flippin, Mineral Wells; great-grandmother Melba Cunningham, Muleshoe; grandmother, Kay Knowlton, Muleshoe; mother, Diane Neel, Amarillo; and baby Hayden Kent Neel. Guest photo

Creative Living

With Sheryl Borden

Information on the beverage of the 90's and products that meet personal needs will be the featured topics on "Creative Living" on Tuesday, November 24 at 12 noon and Saturday, November 28 at 2:00 p.m. (all times are mountain). "Creative Living" airs on public broadcasting station KENW-TV, from Eastern New Mexico University.

Marie Rama, representative of the Tea Council, will demonstrate brewing techniques and explain the four golden rules for making the perfect cup of tea. Ms. Rama is from Mt. Vernon, New York.

Vicki Gagliano, Sanyo Fisher Corporation, will tell about the products being designed to help people feel good about themselves. Ms. Gagliano is from Chatsworth, Ca.

On Tuesday, November 24 at 9:30 p.m. "Creative Living" will present information on new uses for household classics and gifts made out of purchased placemats. On Thursday, November 26 at 12:00 noon "Creative Living" will not be shown due to special programming, but will return to its regularly scheduled time the following week.

Deborah Durham, creative

consultant to J.C. Penny Home, will show new and unique uses for classic household items. Mrs. Durham is from Malibu, CA.

Pam Aulson, owner of Patch as Patch Can, will demonstrate how to make unique gifts out of purchased fabric placemats. Since 90% of the work is already done for you, the possibilities are endless. Ms. Aulson is from Glen Cove, New York.

"Creative Living" is produced and hosted by Sheryl Borden. The show is carried on more than 100 PBS stations in the United States,

Canada, Guam, and Puerto Rico and is distributed by Pacific Mountain Network, Denver, CO.

Viewers can request copies of materials offered on the show by sending one 29 cent stamp for each handout requested. Send the stamps, along with your name, address, and booklets requested to:

"Creative Living" Requests
% KENW-TV Station #52
Eastern New Mexico University
Portales, New Mexico 88130

HHS chief: Major study on violence not racist.



HAPPY BIRTHDAY-A birthday party was given for the November birthday honorees: Pictured, Mamie Askew, 11/30/1900; and unavailable for photo were Birdie Warren, 11/21/1903; Johnnie Chappel, 11/27/1915 and L.C. Blalack, 11/30/1912. The Needmore Community Club hosted the party and entertainment was provided by Mr. and Mrs. J.C. Shanks and the Needmore Club. Flowers were by Kathy's Kreations.

Bridal Shower Held

In honor of Gena Sharp, bride-elect of Scott McBee, a shower was held Saturday, November 21, 1992 in the home of Dian Sherrill.

Guests were greeted and registered by Dian.

Cheryl Williams and Iris Hinchey served refreshments of quiche, cocktail wieners, cheese squares, olives, crackers, cookies, cheese log, mints, punch and coffee from a table draped with a white lace tablecloth.

Hostess presented Gina with a gift of sheets and a comforter.

Special guests were Betty Obenhaus and Iris Hinchey.

Hostesses for the occasion were Dian Sherrill, Cheryl Williams, Paula Price, and Janetta Thompson.

Bailey County 4-Hers Participate In Food Show

Seven Bailey County 4-Hers participated in the South Plains District 4-H Food Show on Saturday, November 21, 1992, at Levelland High School.

Lauren Foote, a 4-H'er from the Three Way Club won first place in the Junior 1 Nutritious Snacks and Desserts category. She was competing against 18 other 4-H members from throughout the district.

Joshua Tooley, another Three Way 4-H'er, placed second in the Junior 2 Nutritious Snacks and Desserts category. There were a total of 16 in his competition.

Other 4-Hers who participated and their awards are listed below:

*Jessica Robinson-blue award in

the Junior 1 Breads and Cereals category.

*Robin Tooley-blue award in the Junior 1 Fruits and Vegetables category.

*Robin Cowart-red award in the

Junior 2 Main Dish category.

*Audra Lee-red award in the Senior Breads and Cereals category.

*Marianne Toombs-red award in the Senior Main Dish category.

Congratulations to all of these 4-Hers on a job well done!

We Are Your Headquarters For Wheelchairs, Walkers, Oxygen, Shower Benches And Any Other Medical Equipment You Might Need!

SUPERIOR MED-EQUIP
Suppliers of Medical & Home Care Equipment

© mpc 623 W. 2nd Muleshoe
Sherry Wisian, Manager, 272-3757 or 272-3600
Come In Or Call Sherry Today & Discuss Your Medical Needs

Joe's Boot Shop & Country Junction
Muleshoe, Texas



Save Into The Wee Hours During
MOONLIGHT MADNESS

1-800-658-6378

Friday, November 27

9:30 a.m. - 12 Midnight

Moonlight Madness Sale Starts at 7 p.m.

Men's & Ladies Leather

Lacer Ropers
49.00

ALL Rodeo & Leather

Jackets & Dusters
10% off

ALL Men's & Boys

Shirts
20% off

20% off ALL Ladies Jeans & Blouses

10% off ALL Panhandle Slim Boots

10-12 p.m. 1 Rack Men's Shirts 22.00

(Capes, Brushpoppers & More)

(Over 400 Pair)
Rocky Mountain, Panhandle Slim
Roper Jeans
19.99

(1 Lot) Justin Ladies
Regular & Lacer
Ropers
59.00

(Large Selection)
Rocky Mountain
Blouses
16.99

Over 400
15X-20X-30X
Hats Available

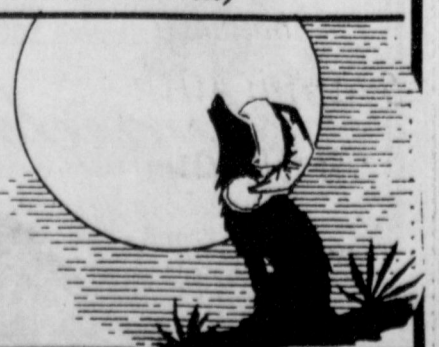
For Your Shopping Enjoyment,
Live Entertainment By Special
Guests, Venus Holmes
& JoAnn Tucker

USA
Leather Jackets
Reg. 349.00 299.00

Register For Free Christmas Yankee Candle Basket To Be Given At Country Junction at 8 p.m. and a \$55.00 Joes Boot Shop Jacket To Be Given Away at 10 p.m. (Must Be Present To Win)

Enter The Scavenger Hunt--
Winner To Be Given A \$500 Gift Certificate!

**Joe's Boot Shop
AND COUNTRY JUNCTION**
106 E. Amer. Blvd/ 272-7504



**Dinner Bell
Restaurant**

2103 W. Amer. Blvd. Muleshoe
272-5871

We Will Be Closed Thursday, Nov. 26
We Will Be Open Friday, Nov. 27 Til 12 a.m.

**Fish, & Shrimp Buffet
5.89**

Includes Salad Bar and Homemade Bread
Come Try Our Extended Salad & Dessert Bar
10% Senior Citizen Discount

Now Taking Orders For Those Special
Holiday Desserts & Breads



Ronnie Gail Barrett

Miss Caprock Beauty Pageant

Ronnie Gail Barrett of Muleshoe will compete December 4, 1992 in the annual Miss Caprock Beauty Pageant at South Plains College.

A 20 year old sophomore secondary education major, she is the daughter of Sherry and Ronnie Barrett.

The festivities, featuring 16 contestants, begin at 8:00 p.m. in the SPC Theater for the Performing Arts. Admission is \$2 per person. Master of Ceremonies will be Terry

Isaacs, SPC assistant professor of history.

Five semi-finalists will be selected following modeling in casual and formal wear. After a series of questions, Miss Caprock Beauty will receive a \$500 scholarship; while the first runner-up will be awarded a \$300 scholarship.

The festivities are coordinated by the SPC Student Activities Office.

Lazbuddie School Students Of The Month

High School

Junior High

Craig Russell is the 18 year old son of Kenneth and Sherry Russell. His birthday is September 6. His food preference is fajitas, with Dr. Pepper as the drink of his choice. Garth Brooks' "The Dance" is his favorite tune. His top pick for movie is Pure Country. Cheers rates as his no. 1 TV show. Top achievements in school subjects goes to Computer Lit. Craig considers dancing his favorite hobby. Red becomes him. Asleep at the Wheel awakens his senses. Tom Sawyer appeals to Craig for his special book.

Jarah Redwine is a the 16 year old daughter of Bobby and Debra Redwine. Her birthday is April 3. Red Velvet Cake and Dr. Pepper is her favorite food and drink. "Red Red Wine" rates as her top song choice. Her movie list includes Hoosiers. Rescue 911 presides as top TV preference. Priority subject in school is computers. Hobby specialists consist of basketball and riding horses. She prefers something in red. George Strait and the Ace in the Hole Band lead as music interests. Prince of Tides wins the book choice.

Softer Pickings

Girl: Father is so pleased to hear that you are a poet.

Boy: Is he? That makes me divinely happy.

Girl: You see, he tried to throw out my last boy friend, but he was a wrestler.

Jason Thomas is the 13 year old son of Randy and Terry Thomas. His birthday is October 12. Mexican food and Tea rate as a great meal for Jason. "Where the Sidewalk" and "Overnight Mail" by George Strait wins the best song category. Pure Country is his favorite movie choice. TV preferences include Home Improvement and Full House. Favorite subject in school is math. Hobbies consist of roping and playing sports. Color choice is blue. Hank the Cowdog applies as top book.

Amber Richardson is the 12 year old daughter of Andy and Cathy Richardson. Her birthday is September 12. Food and drink preferences include pizza and Dr. Pepper. "The Valley of Love" by Peter Saterre rates as top song. Karate Kid 1 wins the best movie category. Saved by the Bell appeals to Amber as pick for favorite TV show. History rates as her best subject. Amber enjoys riding horses as a hobby. The color purple wins for her. Wilson Phillips ranks as No. 1 band. Special book is The Black Stallion.

Tough Break

"I'm surprised that your mother agreed to your marrying Bill when she dislikes him so."

"Well, she said she just wants to be his mother-in-law a while."

Area Retired Teachers

On Friday, November 20, 1992 at 3:00 p.m., the Area Retired Teachers met in the Fellowship Hall of the 16th and Ave. D. Church of Christ.

Refreshments of cake, nuts, coffee or iced tea were served by the hostesses, Mabel Wolfe and Winona Dudgeon.

Wilma Smith called the meeting to order, Elizabeth Watson opened with prayer, and the President led the group in the Pledge of Allegiance to the U.S.A. and the Texas flags.

Paul Wilbanks of Western Drug was introduced and he explained how members of TRS-Care 3 could have prescriptions filled in home town pharmacies.

Kandy McWhorter gave a very interesting guide for our daily food. The food pyramid emphasizes foods from the five basic food groups, protein, vitamins, minerals and fiber.

Those present were: Wilma Smith, Maude Blaylock, Betty Griswold, Ann Oyler, LaDelta Vernon, Wilma Dudgeon, Letha Patterson, Margie Moore, Mabel Wolfe, Betty Jo Davis, Maxine Ragsdale, Lucy Faye Smith, Pauline Guinn, Katherine Sanders, Elizabeth Watson, Jean Allison, Josephine Mitchell, Mary B. Obenhaus, Alene Bryant, Ethel Allison, Joyline Costen, Robin Taylor, and Kandy McWhorter, guest.

MHS Journalism Class Wins Award

The Journalism class of Muleshoe High School attended the 59th Annual Convention of the Panhandle High School Press Association held at West Texas State University on Tuesday, November 17, 1992.

The theme of this year's conference was "Focus on Your Future". Speakers and workshops discussed journalism as a career and techniques for improving high school year books and newspapers. Last year's journalism staff won the third place overall award for Division II schools for the 1992 Muletrain, the theme for which was "Wind of Change". Hector Arzola won third place for feature copy he wrote that appeared in last year's annual. Chris Dominguez, Mandy Shipman, Courtney Graves, Melissa Toombs, Patricia Del Toro, Rebecca Cortez, Celia Villalobos, and Shea Wilbanks also worked on last year's annual.

Put In His Place

Husband--Why does a woman say she has been shopping when she hasn't bought a thing?

Wife--Why does a man say he's been fishing when he hasn't caught a thing?

Just Inquiring

A young man dated a young lady a few times. Then some weeks passed, and when she hadn't heard from him, she sent a telegram: Dead, delayed, or disinterested?

To which the young man promptly wired back: Hunting, fishing, or trapping?

Health Insurance

Q: Who helps protect you from high medical costs?

A: Mark Morton
109 S. 1st
272-7519
Muleshoe, Tx.



State Farm Mutual
Automobile Insurance Company
Home Office:
Bloomington, Illinois

Muleshoe Hobby Club

Muleshoe Hobby Club met Thursday, November 19, 1992 at 2:00 p.m. at the Senior Citizens Complex with Kathryn Hancock as hostess. There were nine members and four guests present. Members present were Sammye Ethridge, Jane Williams, Frances Bruns, Loma Baker, Laura Mae Stancell, LaDema Wright, Kathryn Hancock, and Glenda Morris. Visitors were Sherry Wisian, Ruth

Briscoe, Jeanette St Clair and Janie Moseley.

Sherry Wisian gave a program on Superior Med. Equip., Inc. Medical rental-Sales and Repair for Senior Citizens was discussed.

The hostess gift was won by Loma Baker.

The next meeting will be the Christmas Party December 17, 1992 at the Senior Citizens Complex at 1:00. Everyone is invited to bring a favorite snack and an exchange gift.

Researchers find new gene flaw linked to one type of Alzheimer's.

Parenting Pointers

From Your Friends At

DeShazo Elementary

...Check out your local library. Make sure you and your child have a library card. Include a trip to the library in your weekly schedule.

From "101 Ways Parents Can Help Students Achieve"

Number of federal workers drops for 2nd straight year.

Ben Franklin®

Our Variety Shows

2104 W. Amer. Blvd. 272-3855
Mon. - Sat. 8 a.m. - 9 p.m. Sun. 12 - 6 p.m.

Giant 3 Day Sale

Fri., Sat., & Sun. **ONLY**

Fri. 8 a.m. - 12 Midnight

Sat. 8 a.m. - 9 p.m.

Sun. 12-6 p.m.

"Go Go"
My Walking Pup

Reg. 44.97

25.00

Lightable W/Christmas
& Troll Designs
Sweatshirts

Reg. 12.99 **10.99**



Silk Metallic
By Teters
Poinsettia Bushes
25% off

64 Ct. Box Plus 8
Retired Colors
Crayola
Collectors Box
Reg. 7.99
4.99



Hyponex 40 lb. bag
Organic Peat
Hyponex 40 lb. bag
Manure
2 for 3.00



ALL
Glass Christmas
Balls

25% off

Forest Fresh,
Ornamental Only
Scented Pinecones
in Egg Create
Porcupine Eggs

Reg. 3.99 **1.99**



Convenience Packs
Huggies Diapers

8.49



Canadian Pine 7 1/2 Ft.
Christmas Tree

Reg. 149.99 **79.99**



Seward American Made
Easy Open, Easy Lock
Trunks

Reg. 24.99 **17.99**

ALL 6 Pack
Soft Drinks

1.00

While They Last



All Pangburn
Chocolate
Millionaires
25% off



4 Ply Red Heart
Yarn
1.17 Skien

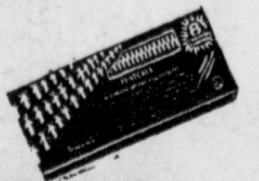


Selected 100 Ct. End to End

Super Bright Light Sets

Approximately
50% Brighter Than
Standard
Reg. 5.99

3.99



Boxed
Christmas Cards
By Cleo

75% off



12"
Straw Wreaths
1.00

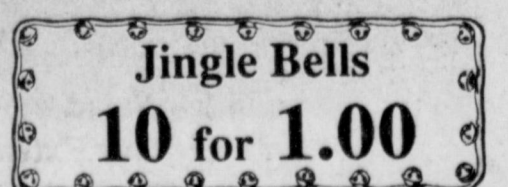


Framed
Southwest Prints
50% off



Jingle Bells

10 for 1.00



Large Selection Toys Marked Down

The "Rabbit" May
have a few gray hairs
but he still has his
bounce!
Happy 40th
Birthday
Your Sister
Terry



Teacher Of The Year

Cont. from Page 1

Curtis Shelburne gave the invocation.

Mrs. Purdy recognized the visitors present including: Phyllis Kinnesen, 17 ESC Region, Joe Neeley, 17 ESC Region, Paulette Crawford, Kerry Moore and Bill Adling.

The first item of business was the air conditioning of the schools on all four campuses. The air conditioning was discussed at the September 23 meeting and postponed until the Nov. 23 meeting. Total estimated cost for the air conditioning is \$505,000. The board voted to go ahead with the air conditioning.

It was reported that work on the new Science Labs and Library at the high school were right on schedule. The completion date has been set for October 25, 1993.

During the informational reports, Moore reported on a Leadership Conference he attended last week.

Moore also asked the board members to co-host a reception for staff and faculty of the MISD. He stated that there would not be a set time for each board member to be present, he would like for them to go by and wish the teachers and faculty a "Merry Christmas" and have some punch and cookies.

Superintendent Moore also reported on a plan which was introduced to the House of Representatives by Steve Oden. Under this plan, each Texas county would become a taxing district, and property tax revenue generated within a county would be shared with all school districts in that county.

These county units would exist only for taxing purposes, much like county education districts. "But, unlike CEDs, these county units would be made up of only one county, as opposed to the multi-county CEDs we have today."

Moore stated that this plan was opposed by the Texas Association of School Boards because if you (the county) didn't vote for it, it is

Teacher...

Cont. from Page 1

of their recognized abilities as teachers in the subject fields.

Final approval of all nominees is expected in March, 1993, Hasie said.

Muleshoe...

Cont. from Page 1

Cooperative burying cable in county right-of-way.

5. Consider changes in compensating Ambulance director's on-call days in excess of twelve (12) days per month.

6. Consider purchase of computer and printer on a cost share basis for Bailey County Extension Office.

7. Consider Contract and Agreement for Detention of Juvenile Offenders with Reeves County.

8. Consider Lease Agreement with Muleshoe Area Hospital District for use of Ambulance Service building.

9. Consider issuing payroll checks early for second pay period in December due to Christmas holiday.

10. Conduct public hearing for the purpose of reapportionment of County Commissioners Precincts and Voter Tabulation Districts (Election Precincts), and consolidation of Justice of the Peace Precincts and Constable Precincts. (6 p.m.)

an automatic consolidation. They feel that the entire plan is underfunded.

It was also reported that John Gulley, a teacher in MHS, has been nominated to committee posts, subject to the approval by the Texas Education Agency.

Buck Johnson, assistant superintendent of operations reported that the sprinkler system at Dillman Elementary is almost complete and they are working on the drive at Dillman, where the busses will load and unload.

Jo Mayhugh reported that there are still 38.49 percent of the taxes not collected.

Payment of routine bills was approved.

With no further business, the board went into executive session.

Following the executive session, Mrs. Purdy gave a report on the Board Self-Appraisal Instruments. "We are right on track, we have stayed with the board code." She stated that she felt that they all had the same goal, they are all interested in the academic good of the students.

Local Family

Cont. from Page 1

station rising amid the cotton, sorghum and wildflowers of the Texas South Plains.

Today, Tolk Station has operated for a decade as SPS's newest and largest plant. It sits nine miles east of Muleshoe and uses similar clean-coal and clean-air technologies and practices as those used at Harrington Station. And Tolk is an important part of the Muleshoe Community.

Joe and Darla Rhodes have moved their boot business out of their house and into a store downtown. They count Texas Governor Ann Richards among their customers, along with many SPS employees who work at the nearby power plant.

"We not only appreciate the SPS work force, but the plant itself," Darla said. "It seems so clean that I never worry about environmental problems."

SPS's Harrington and Tolk stations are among the cleanest in the nation. In fact, if all coal-fueled power plants had sulfur emissions as low as those of SPS's, the national sulfur-reduction goals of the new federal Clean Air Act already would have been met.

Since the two plants have been on-line, the environmental benefits have been significant. More than three million tons of fly ash have been recycled. Eighty-one billion gallons of city waste water have



GIRLS CROSS COUNTRY TEAM---Members of the Girls Cross Country Team were presented certificates during the school board meeting Monday morning. The girls were district champions and went all the way to state. (Journal Photo)

been recycled through SPS plants in Amarillo and Lubbock. The U.S. Environmental Protection Agency used SPS's baghouses as the model for developing standards for the industry.

SPS is continuing its environmental progress. Besides the coal-fueled units, SPS utilizes clean natural gas, and cogeneration, which uses steam from various manufacturing processes to generate electricity. In addition, SPS subsidiary Utility Engineering recently designed a power plant featuring circulating fluidized bed boilers, the premier technology to burn coal cleanly.

The company continues to avoid environmentally sensitive areas as it sites transmission lines and other structures. SPS's efforts in this area have twice been recognized by the U.S. Bureau of Land Management.

Company environmental efforts are now being focused on meeting the requirements of the new federal Clean Air act. Compared with many utilities, SPS is in good shape to meet the new requirements. However, additional monitoring and reporting could require more money.

Darla and Joe Rhodes aren't familiar with all the federal environmental regulations. But they know first-hand that SPS shares their concern for the future of the land, air and water.



BOYS CROSS COUNTRY TEAM--- The Boys Cross Country Team was presented a certificate during the school board meeting Monday morning. The boys were district champions and advanced to regional. Eric Cisneros, front center, went all the way to state competition. Pictured along with the team is their coach, Coach Cranford. (Journal Photo)

CLEAN TEXAS 2000

QUESTIONS TO THE CLEAN TEXAS 2000 HOTLINE: 1-800-458-9796

Q: I own a small full-service gas station. I'd love to help out by taking used motor oil from people other than my oil-change customers, but with all the regulations you people have, I'm afraid I'd be responsible for disposal of hazardous wastes if someone brought me some contaminated oil.

A: You have an excellent point, but it's one that the Texas Water Commission is taking care of.

As a registered used oil collection center, you will be protected from liability should you find a hazardous waste mixed in with used oil. Once you find the contamination, you will be responsible for disposing of it properly, but you will be reimbursed for Water Commission-approved expenses (up to \$5,000). To apply for reimbursement, you must provide documentation of your handling of the material. For information about registering as a collection center, call CLEAN TEXAS 2000 at 800-458-9796.

Q: My new compost is doing great, with one exception. It doesn't seem to break down leaves from my live oak tree. Am I doing something wrong?

A: You're probably not doing anything wrong, just not enough of the right thing! Leaves from the live oak tree and similar oaks are among the hardest yard materials to break down because of their tough, waxy surfaces. We have several suggestions that should help -- and one caution -- you should expect your compost to take somewhat longer to mature because of the oak leaves. First, if you can shred or chip the leaves in a chipping machine or by running over them with a lawn mower, you will speed the process by creating more surfaces for the active compost to break down. Be sure to add plenty of water when you start your compost. Second, if you can add horse manure, grass clippings or any other nitrogen source to build your heat level, you will see the oak leaves decompose more quickly. Our last suggestion is to increase the size of your compost, or at least be sure that the oak leaves aren't the dominant ingredient in your compost. A general rule of thumb is for your minimum size to be three feet by three feet by three feet. If you can add more grass clippings, vegetable scraps and other leaves, your process will speed up.

ONE MINUTE SPORTS QUIZ

By Christian Thorlund

1. At NFL season half-point, what team held the best record?
2. Who is the manager of the Texas Rangers?
3. In what sport is David Wheaton well known?
4. As of the 1st, what pro golfer led in money winnings?
5. Who was National League rookie of the year?

Answers:

1. Dallas, 7-1.
2. Kevin Kennedy.
3. Pro tennis.
4. Fred Couples.
5. Erick Karros of Los Angeles.

Fry & Cox

Lumber **True Value** Hardware

401 S. First Muleshoe

Mon. - Sat. 8 a.m.-6 p.m. Sunday 1:30-4:30 p.m.

Holiday



Magic

"Table Magic"

Performed by Nick Black

Friday, Nov. 27, 1992 Open 8 p.m. - 12

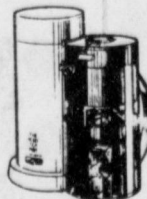


Motion Lights 8.99

Buddy "L"

"Voice Command" Race Hauler Truck 39.99

MR. COFFEE



Ice Teapot #164632 29.99



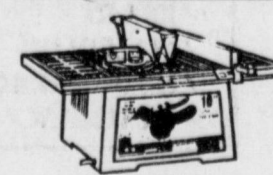
6 1/2 ft. Christmas Tree #204845 59.99

HUFFY



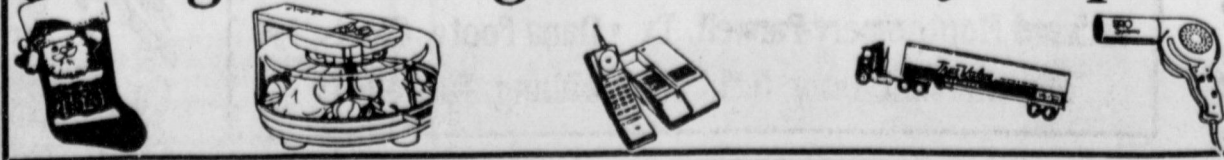
20" Dirt Dog Bike #165597 75.00

"Baby All Gone" 19.99

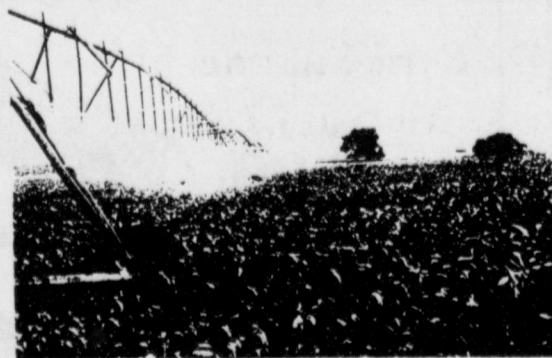


10" Bench Table Saw 129.99

Magical Bargains In Every Dept.



TIRED OF TRYING TO GET THE KINKS OUT?



Ask your Lockwood Dealer why the competition recommends wire alignment for long systems. He knows, and we do too. Lockwood's patented wire alignment system known as "LOCK-IN-LINE" keeps your system on the straight and narrow, running forward or reverse.

SEE YOUR LOCKWOOD DEALER FOR DETAILS.

Irrigation Supply 607 East American Boulevard Muleshoe, Texas 79347 806-272-4466 or 272-3246

J.C. & Zona Gatewood, Owners LOCKWOOD CENTER PIVOTS BUILT BETTER THAN THEY HAVE TO BE!



Letter To The Editor

Dear Editor:

Each Thanksgiving, as my family comes together to count our many blessings, we always pause to give thanks for the bountiful harvest from our American agricultural industry. The quality and variety of food that fills our nation's larders is a testament to the productivity of hard-working farmers and ranchers across this great land.

Today, less than 2 percent of our population lives on farms and ranches, but thanks to the efficiency and productivity of these Americans, our producers supply 11 percent of the world's food grains, 15 percent of its feed grains, 25 percent of all beef and 11 percent of its pork.

Working hand-in-hand with our producers are processors, shippers, manufacturers, wholesalers and retailers, many of them from our urban areas, who are responsible for

many blessings that our rural and taking this agricultural bounty to billions of consumers worldwide. Clearly, a dynamic working relationship between our rural and urban residents is essential to keep American agriculture strong.

November 20-26, 1992, has been designated National Farm-City Week to encourage a better understanding of the important contributions each group makes to the well-being of the other. We are all partners in the progress and prosperity of this great land and it is fitting that our celebration of National Farm-City Week occurs as we commemorate Thanksgiving.

It is in everyone's best interest that our farms and ranches and our cities remain strong. After all, they have worked together to make our nation the leader it is. But we must also understand our similarities and differences, our strengths and weaknesses, and our interdependence and independence.

Sincerely,
Rick Perry
Texas commissioner of Agriculture
city residents have bestowed upon us.



OPEN HOUSE-Mrs. Lepard's Pre-K classroom was open and ready for inspection at Dillman Elementary School's Open House last week. Here, Mrs. Lepard practices her philosophy of puzzle solving with one of her students.

No Seconds
To err is human—but it takes a better excuse the second time.
-Record, Columbia, S.C.

Emma Nesbitt Funeral Services Set Friday

Funeral services for Emma Nesbitt, 90, of Morton will be held at 2 p.m. Friday in the First United Methodist Church of Morton with the Rev. Ken Peterson, pastor, officiating.

Burial will be in Morton Memorial Cemetery under the direction of Ellis Funeral Home. Ms. Nesbitt died at 3 a.m. Nov. 24 in Cochran Memorial Hospital.

Born February 20, 1902, in Gunter, TX, she married George Nesbitt on Sept. 9, 1922, in Hobart, OK. He died April 2, 1979.

Ms. Nesbitt had lived in Morton since 1933, moving there from Roosevelt, OK. She was a Pioneer business woman operating Morton Produce with her husband from 1940 to 1960. She was a carrier for Lubbock Avalanche Journal 15 years and was a charter member of the Morton Senior citizens.

Survivors include a son, Floyd Nesbitt of Levelland; a daughter,

Lorene Hatch Funeral Services Set Friday

Funeral services for Lorene Hatch, 87, will be held at 11 a.m. Friday, Nov. 27 in the Trinity Baptist Church with the Rev. James T. Auld of Springfield, Missouri officiating.

Burial will be in Muleshoe Memorial Park Cemetery under the direction of Ellis Funeral Home. Ms. Hatch died at 6:50 a.m. Tuesday in Hobbs Health Care Center in Hobbs, N.M.

Born in Piedmont, Alabama, Ms. Hatch moved from Muleshoe to Hobbs in 1987. She had been a Muleshoe resident from 1950 to 1987. She married James Tobie Hatch on January 3, 1925 in Anson. He died October 30, 1979. Ms. Hatch was a homemaker and a member of the First Baptist Church of Lovington, N.M.

Survivors include a daughter, Christine Auld of Hobbs, N.M.; two sisters, Mary Chloe Kennedy and Naomi Fain, both of Haskell; a brother, Fred Morgan of Hobbs, N.M.; seven grandchildren and fourteen great grandchildren.

She was preceded in death by a son, William "Billie" Hatch in 1989.

Grandsons will be casket bearers.

June Taylor of Morton; three brothers, Edker Miller of Roosevelt, OK., Pete Miller of Roosevelt, OK., and Glen Miller of Roosevelt, OK.; two sisters, Faye Barker of Hobart, OK; and Lucille Hooker of Wichita Falls, TX.

She was preceded in death by two daughters Louise Talley in 1982, and Christine Shields in 1985, and a son Lawrence Nesbitt in 1990.

The family suggests memorials to Morton Senior Citizens, 201 N.W. 1st Morton, TX 79346.

Paralyzed!

On the last game of the high school football season recently a young player trying his best to impress fans and coaches and play well made a hard tackle on the ball carrier.

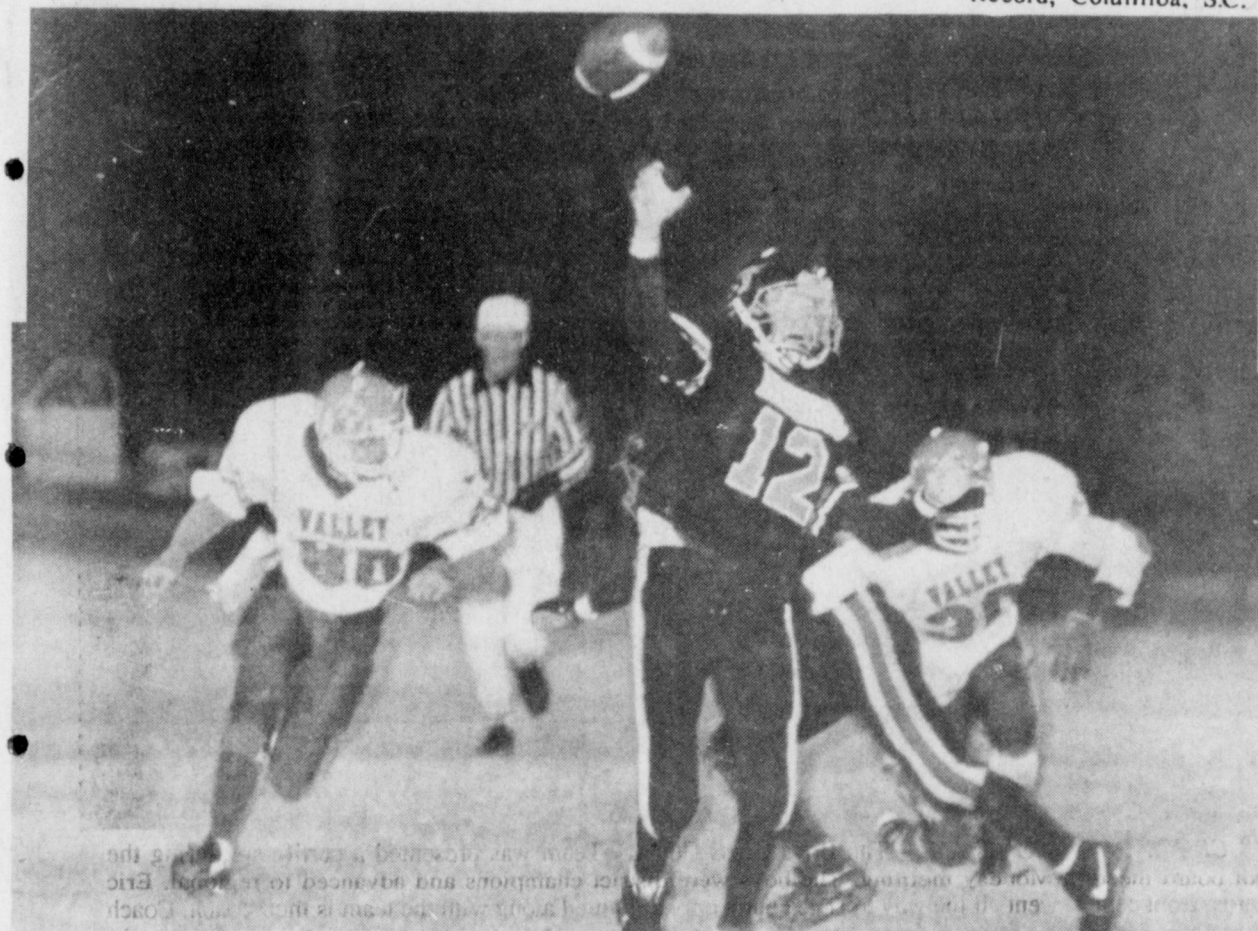
He ruptured his spinal cord, is paralyzed from the neck down and will never walk again. This is the price the 16-year-old, consumed with the hype, peer pressure and overemphasis on football, paid for playing the game.

Many others were paralyzed with broken necks or ruptured spinal cords this fall; it happens every year, and some die from injuries received. Announcers and coaches who like to see "a good hit" and who praise impressionable youngsters when they crash into an opponent as hard as they can are never paralyzed by these "hits."

The price is too high. Football—in schools and colleges—remains excessively violent. If only one youngster a year is paralyzed, that's too many.

Unity of feelings and affections makes the strongest relationship.
-Publius Syrus.

Behold how good and how pleasant it is for brethren to dwell together in unity.
-Psalms 133:1.



CHUNKING A PASS—Brett Thomas, 12, of the Lazbuddie Longhorns is shown here as he threw one of his three touchdown passes against the Valley Patriots Friday, November 20, at Silverton. The Lazbuddie Longhorns will play Dell City this Friday for Regional Playoffs. Lazbuddie won over Valley, 25-14.

(Journal Photo)

Protecting Your Eyes

• **SEE YOUR DOCTOR** promptly if you have problems with dry, red eyes or irritated eye lids. Many factors contribute to ocular irritations. They may be caused by medications, allergens, contact lens wear, air pollution, or other more serious irritants.

• **GET THE RED OUT** of your eyes, naturally, with an increasingly popular Swiss eye drop. Try Similasan Eye Drops #1, a natural product from Switzerland that currently outsells all others in that country. Eye care professionals recommend these drops rather than artificial tears which soothe and lubricate the eye, but do nothing to relieve redness. This product, which is only sold through eye care professionals and natural product stores, clears and soothes the eye naturally instead of using chemical vasoconstrictors, the main ingredient of regular redness relieving drops.

• **KEEP EXTRA GLASSES** around as too much contact wear may irritate eyes. Giving your eyes a rest is another natural way of soothing irritation.

Natural remedies can soothe sensitive eyes.



314 Wheeler
482-3363 or
800-748-2459
New Holiday Hours:
9 a.m. to 8 p.m. Mon. through Sat.
1 to 6 p.m. Sun. CST
We Accept **Layaways Welcome**
Free Gift Wrapping - Free Alterations

Wrangler BRUSHPOPPER Shirts
50% OFF With Purchase Of
ONE REGULARLY PRICED SHIRT

Justin Ropers \$79⁹⁸ **Justin Lacers** \$89⁹⁸

20% OFF
ENTIRE MEN'S DEPARTMENT
including
✓ COATS
✓ SUITS
✓ SHIRTS
✓ SLACKS
✓ SPORTCOATS
✓ RESISTOL FELT HATS
✓ BELTS
✓ BILLFOLDS
✓ STERLING ACCESSORIES
✓ FRAGRANCE

20% OFF
ENTIRE LADIES' DEPARTMENT
including
✓ WIND SUITS
✓ ROBES
✓ SKIRTS
✓ SWEATERS
✓ BLOUSES
✓ JEANS
✓ BELTS
✓ BILLFOLDS
✓ JEWELRY
✓ HANDBAGS
✓ FRAGRANCE

GIRLS JEANS Sizes 4-14 **30% OFF**

BOYS SHIRTS Sizes 0-18 **20% OFF**

Congratulations To Our Open House Door Prize Winners:
Richard Montgomery-Farwell, Tx • Dana Foote, Clovis, NM
Allison Field, Dora, N.M. • Nell Walling, Farwell, Tx

"Program Car Clearance Sale"

***\$0 Down**
& No Payments Till 1993

***\$169 a month**
'92 Ford Escort LX
'91 Ford Tempo GL

***\$189 a month**
'92 Ford Tempo GL
'92 Ford Escort SW

***\$199 a month**
'92 Ford Mustang LX
'92 Mercury Topaz
'92 Ford Tempo GL

***\$269 a month**
'92 Ford Thunderbird LX
'92 Mercury Cougar LS
'91 Ford Aerostar XL

Pick Your Vehicle & Pick Your Payment.
All Vehicles Have Remaining Factory Warranty Available.
"Se Habla Espanol"

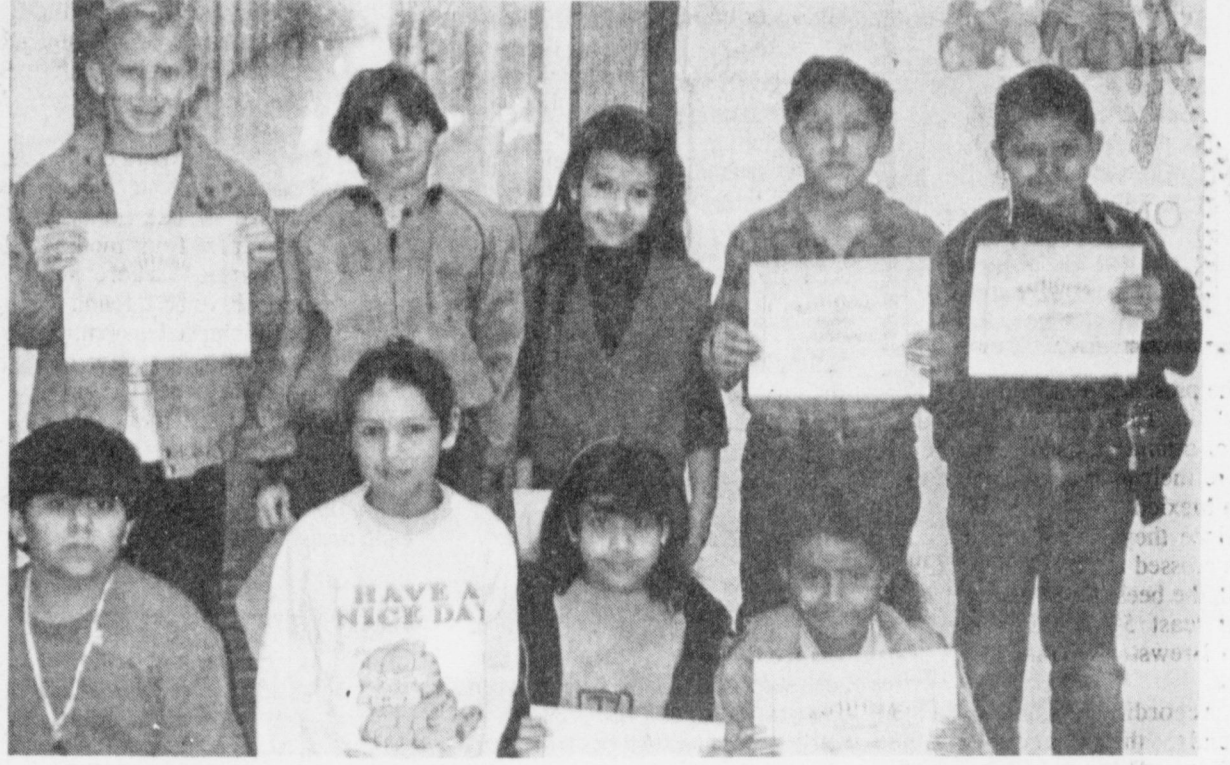
*Plus Tax, Title & License. On Approved Credit. Payment Based on 9.5 APR For 60 Months

Muleshoe Motor Co.
"Car Capitol Of The West Plains"
1225 W. Amer. Blvd. 272-4251

DeShazo Elementary



Third Grade Perfect Attendance Award Winners



Third Grade Perfect Attendance Award Winners



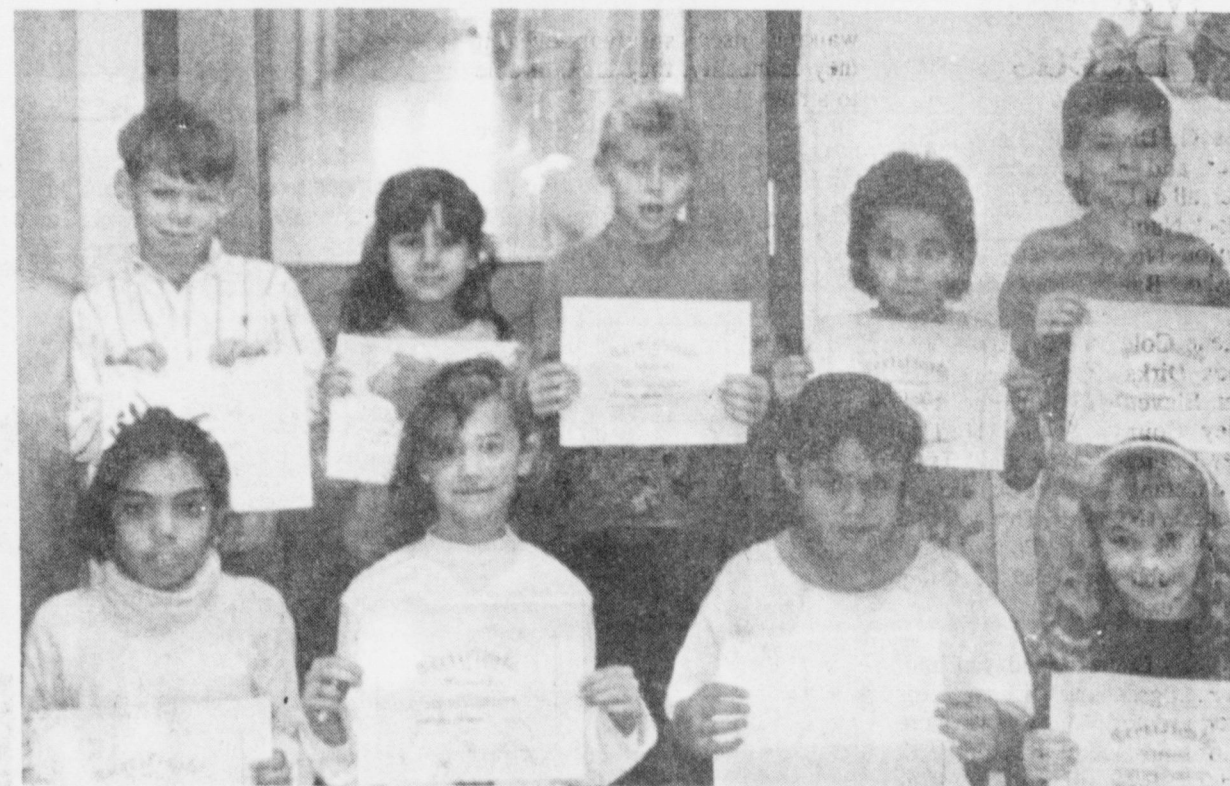
Third Grade Perfect Attendance Award Winners



Third Grade Perfect Attendance Award Winners



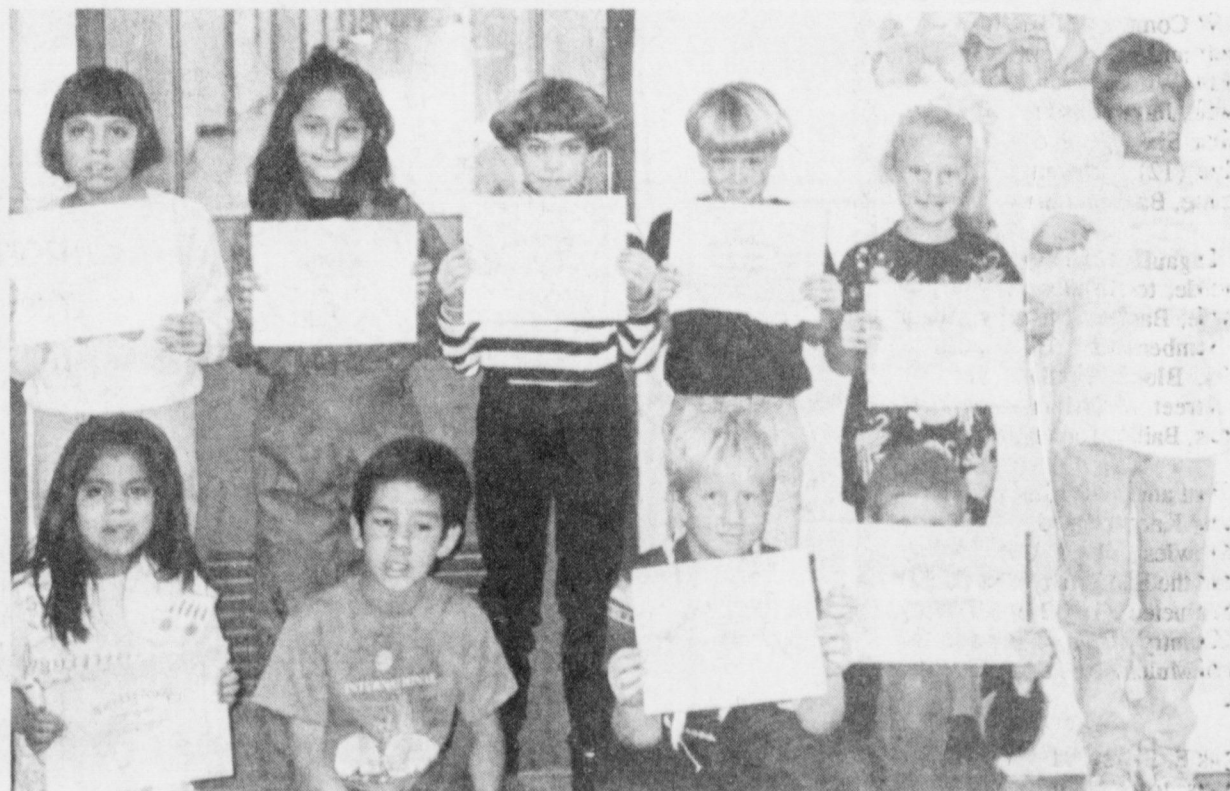
Third Grade Perfect Attendance Award Winners



Third Grade Perfect Attendance Award Winners



Third Grade Perfect Attendance Award Winners



Third Grade Perfect Attendance Award Winners

Second Six Weeks Award Winners



standpoint." "When the Africanized honey bees have posed problems, they have been as easily eliminated as any other honey bees," he said.

Davis said that bees, wasps, hornets and other stinging insects should never be allowed to nest in houses or buildings used by people or animals. "Whether they are Africanized bees or common yellow jackets, they are pests if they nest near people, and should be treated as such. If the insects sense that their nests are threatened, they will sting."

He added that the venom of an Africanized honey bee is no more potent than that of any other honey bee. The dubious nickname of "killer" originated with political enemies of a researcher in Brazil who accidentally released the African species in the wild in 1957.

Davis recommended the following tips on controlling Africanized honey bees, as well as other stinging pests:

*A wild colony of bees which poses a threat to people can be removed by any bee keeper. If no beekeeper is available, the nest can be destroyed.

*Bees can be killed with any variety of pesticides made for the purpose, although any pesticide labeled as a space spray for controlling adult mosquitoes is usually sufficient. A solution of soap and water is an inexpensive, efficient alternative outside of buildings.

*Wasp and hornet sprays are ideal against bees, since they allow the user more distant from the hive or nest.

*Insect control on private property is the responsibility of the owner in most Texas communities. Owners should inspect structures for likely insect nesting areas at least every 30 days to prevent large colonies with hatching young from developing. Honey bees are only protective of such "brood colonies."

*Anyone wanting to kill a nest or hive should first examine the area to be sprayed, noting all entrances and exits in daylight. The hive can be sprayed after dark, when all the insects will be present. Stinging pests are rarely able to fly in darkness.

*After a hive or nest has been sprayed, be cautious of crawling or walking insect survivors-even if they cannot fly, they are still able to sting.

*Remove any remnants of the hive or nest when daylight returns.

Davis said, "No license is required for citizens using general use pesticides on their own

property. However, anyone who is paid to apply pesticides or inspect property for insects, with a few exceptions needs a certified noncommercial applicator license from the Texas Structural Pest Control Board."

Davis added, "If people will be as cautious as they always should have been about nests of stinging insects, they will be relatively safe-not only from bees, but from all stinging wasps, hornets, and yellow jackets." He explained that the inspection service which regulates the Texas bee industry prohibits beekeepers from moving bees from counties where the Africanized bees have been found.

"The industry-imposed quarantine began as a measure to slow the bees' spread through the state until beekeepers had time to evaluate their impact on the honey industry. It is purely for scientific and economic purposes-not a public health measure," Davis said.



The word tragedy comes from the Greek word tragos meaning "goat."



A BRAND NEW SIGHT-The new library at Dillman Elementary was open and waiting for visitors last week at their open house. The new facility is a welcomed blessing to our young readers at Dillman.

Lazbuddie Elementary School Honor Roll

Principal's "A" Honor Roll

FIRST GRADE
Robby Martin, Shawndee Nichols, Bethenie Sanchez, and Kolby Wilkerson.

SECOND GRADE
Lucinda Guzman, Andy Martin, Brady Mimms, Michelle Puckett, Tobin Redwine, and Tyrel Templar.

THIRD GRADE
Savannah Black, Jodi Coker, Kayla Copp, Shannon Redwine, and Colt Richardson.

FOURTH GRADE
Kati Mimms
FIFTH GRADE
Staci Foster and Garrett Magby.

"A-B" Honor Roll

FIRST GRADE
Kelli Harris, Shonnah Black, Nicholas Cuevas, Josh Hill, David Godinez, John Howard, Amanda Martinez, Raul Mata, Shelby Templar, Sterling Via, and Kevin Williams

SECOND GRADE
Cobey Branscum, Eric Magby,

Courthouse News

Marriage Licenses

Deon Earl Branaman of Muleshoe to Shirley Kathleen Chapman of Muleshoe.

Warranty Deeds

James G. Bishop to Larry Dale Parker and wife, Janet Elaine Parker, all of Lot Number Three (3) in Block Number Two (2) Hillcrest Addition No. 2 to the City of Muleshoe, Bailey County, Texas.

Imogene Cole to Kay Swint and Brenda Dirks, Tract one: all of Labor Eleven (11) League 177, Motley County School land in Bailey County, Texas and Tract two: a rectangular tract of land out of Section Number Thirty Nine (39), Block "Y", W.D. and F.W. Johnson Subdivision No. 2, Bailey County, Texas.

Judith Kay Logsdon and husband, Leon F. Logsdon, to William Adair Gossett and Jim Witt, a 0.495 acre tract of land out of the Southeast Quarter (SE/4) of Section Fifty-three (53), Block "Y", W.D. and F.W. Johnson Subdivision, Bailey County, Texas.

G & W Company, William Adair Gossett and wife, Anita Gossett, and Jim Witt to Leon F. Logsdon and wife, Judy Logsdon, all of Lot Number Six (6), Block Number Twelve (12), original Town of Muleshoe, Bailey County, Texas.

Fred Stigaulde and wife Lorena Stigaulde, to Charles E. Murphy and wife, Barbara Murphy, all of Lots Numbered 61, 63, 65, 67, 69 and 71, Block Number Six (6), Pear Street Addition, Town of Progress, Bailey County, Texas.

E.T. Ford and wife, Chris B. Ford, to Lanny Knowles and wife, Dovie M. Knowles, all of Lot Twenty (20) and the East Thirty feet (E 30') of Lot Nineteen (19) Block Twenty (20), Country Club Addition to the town of Muleshoe, Bailey County, Texas.

Douglas E. Bales and wife, Eunice M. Bales, to T.L. Timmons all of the East One-Half (E/2) of the Northwest Quarter (NW/4) of Section Thirty-One (31), Block "Y", W.D. and F.W. Johnson Subdivision No. 2, Bailey County, Texas.

Velma Fried to N.J. Johnson, all of Lots Forty-One (41) Forty-Two (42) Forty-Three (43) and Forty-Four (44) in Block "A", Town of Muleshoe, Bailey County, Texas, and a tract of land out of Section Number 54 in Block "Y", W.D. and F.W. Johnson Subdivision No. 2, Bailey County, Texas.

GOBBLE GOBBLE GOBBLE



I got to make money fast...for me time is very limited during this season.

THAT'S WHY I USE THE CLASSIFIEDS

Muleshoe & Bailey County Journals

272-4536

PUBLIC NOTICE

GTE Southwest Incorporated (GTSW) and Contel of Texas Inc. (Contel) have filed an application with the Public Utility Commission of Texas to seek approval to provide two new private line services and to change rates for existing services. GTE's intraexchange DS1 Service will be offered pursuant to the rates proposed with this filing and will no longer be available through concurrence with GTE's interLATA access tariff rates which are lower. Contel's intraexchange DS1/DDS Service will be offered pursuant to the rates proposed with this filing and will no longer be available through Contel's current private line tariff rates. Existing customers with DS1/DDS Services will not be affected by these rate changes. DS1 1.544 Megabits per second (Mbps) Service and Digital Data Service (DDS) will normally be used for the transmission of data communications or large volumes of voice communications between two locations. These services are optional and will not affect the existing rates of customers who do not order these services. The estimated annual effect on GTE-SW's revenues in the first year is \$1,080,567. The estimated annual effect on Contel's revenues in the first year are \$42,383.

DS1 Service

DS1 Service is an intraLATA Private Line Service which provides a dedicated, high capacity channel which may be used for simultaneous two-way transmission of voice data or other digitally encoded customer information signals. DS1 Service provides a transmission speed of 1.544 Mbps and is designed to provide an average performance of at least 95 percent error-free seconds of transmission over a continuous 24-hour period.

DS1 Service is available in and between all exchanges of GTE-SW and Contel where digital facilities exist. DS1 Service is available on a point-to-point intraLATA basis between two Customer Designated Locations (CDL), between a Serving Wire Center (SWC) and a CDL, between a CDL and a point of connection with another service provider or between two SWCs.

IntraLATA DS1 Private Line Service is comprised of three rate elements: DS1 Local Loop, DS1 Transport and DS1 Transport Termination. Each element is described below.

DS1 Local Loop

This rate element is for the cable facilities from the CDL to the SWC. The customer has two payment options for the purchase of DS1 Local Loops. There is a month-to-month plan or term contract Optional Payment Plan (OPP).

The month-to-month payment basis allows the customer to establish and disconnect DS1 Services, without penalty, other than to meet the minimum service interval of one month's service, as needed. Under the month-to-month service, the additional DS1 Local Loop rate applies only when the additional DS1 Local Loop (s) is (are) ordered at the same time and between the same two CDLs as the first DS1 Local Loop.

The OPP plan allows the customer to select a term of service (1 YR, 3 YR and 5 YR) with lower monthly rates associated with longer term contracts. If the customer selects an OPP, additional DS1 Local Loops may be ordered and installed at the Additional DS1 Local Loop rate between any SWC and CDL covered by the OPP, at any time during the term of that OPP.

DS1 Transport

This rate element is for the mileage sensitive charges for transporting a DS1 signal between Serving Wire Centers. Transport occurs only when the two CDLs being connected are served by two different SWCs.

DS1 Transport Termination

This rate element is for the equipment to terminate DS1 Transport at the SWCs. This charge applies only when DS1 Transport is required for the service configuration of the customer. One transport termination charge applies at each end of the DS1 Transport.

Proposed Rates and Charges for DS1 Service are as follows:

	Nonrecurring Charge	Monthly Rates
DS1 Local Loop		
Month-to-Month		
First System	\$ 1,000.00	\$ 298.00
12-month term		
First System	-0-	\$ 283.00
36-month term		
First System	-0-	\$ 255.00
60-month term		
First System	-0-	\$ 226.00
Additional System	\$ 130.00	\$ 130.00
DS1 Transport		
Per airline mile	-0-	\$ 16.00
DS1 Transport Termination		
Per Termination	-0-	\$ 40.00

Digital Data Service

Digital Data Service (DDS) is an intraLATA Private Line service which supports synchronous, full-duplex transmission between the CDL and the SWC or the point of connection with another telephone company at transmission speeds of 2.4, 4.8, 9.6, 19.2 and 56 kilobits per second (Kbps). DDS provides a transmission path for digital data signals within the same LATA.

DDS Service is available in and between all exchanges of GTE-SW and Contel where digital facilities exist. DDS Service is available on a point-to-point intraLATA basis between two CDLs or between a CDL and a point of connection with another service provider.

IntraLATA DDS Private Line Service is comprised of three rate elements: DDS Local Loop, DDS Transport and DDS Transport Termination. Each element is described below.

DDS Local Loop

This rate element is for the cable facilities from the CDL to the SWC. The customer may establish and disconnect DDS Local Loops without penalty other than the minimum service interval of one month's service, as his/her needs demand.

DDS Transport

This rate element is for the mileage sensitive charges for transporting a DDS signal between SWCs. Transport occurs only when the two CDLs being connected are served by two different SWCs.

DDS Transport Termination

This rate element is for the equipment to terminate DDS Transport at the SWCs. This charge applies only when DDS Transport is required for the service configuration of the customer. One transport termination charge applies at each end of the service.

Proposed rates and charges for DDS are as follows:

	Nonrecurring Charge	Monthly Rates
DDS Local Loop		
2.4, 4.8, 9.6, & 19.2 Kbps	\$ 85.00	\$ 85.00
56 Kbps	\$ 85.00	\$ 95.00
DDS Transport		
Per airline mile		
2.4, 4.8, 9.6 & 19.2 Kbps	-0-	\$ 1.60
56 Kbps	-0-	\$ 3.20
DDS Transport Termination		
2.4, 4.8, 9.6, 19.2 & 56 Kbps		
Per Termination	-0-	\$ 20.00

This filing has been assigned Consolidated Docket Nos. 11408/11435. The deadline to intervene in this docket is January 1, 1993.

Persons who wish to intervene or otherwise participate in these proceedings should notify the Commission. A request to intervene, participate, or for further information, should be mailed to the Public Utility Commission of Texas, 7800 Shoal Creek Boulevard, Suite 400N, Austin, Texas, 78757. Further information may also be obtained by calling the Public Information Division of the Public Utility Commission at (512) 458-0256, or (512) 458-0221 teletypewriter for the deaf.



Traveling With The Texas Angler

Disappearing Giant Catfish

by Keith Warren



Keith Warren

Sunday night, a good friend of mine called and said if I wanted to get some big catfish video to head down to Choke Canyon - they were biting. This familiar voice belonged to guide and longtime friend, Elroy Krueger.

Elroy and I were partners fishing team tournaments in the mid-80's. During the many years of fishing together, we developed not only a good friendship, but a mutual respect for each other as fishermen. Krueger is a man of his word, as well as an excellent fisherman.

In years past, I have been fortunate enough to shoot some of my best videos with this seasoned pro. From black bass and crappie to alligator gar and catfish, this man can catch 'em. So, when he said come on down, I knew it was a sure deal. He already had checked his lines and discovered catfish over 20 pounds, including 2 forty pounders and one over 50! This was sure to be an exciting and informative jug line show!

Each fall, giant catfish turn on due to the dropping water temperature. Before and during cold fronts is when Krueger has found it to be the best time to catch these fish. He also has discovered they feed at night, right before and during a full moon.

By strategically placing jug lines near deep water drop offs such as creek beds and old stock ponds, you can consistently catch big catfish. Krueger's choice for bait is cut carp (chunks approximately 3X3"), placed on a circle hook. Carp is a good bait because it is a natural food, it stays on the hook well, and it is plentiful.

Krueger had put out 10 jug lines in a 25' deep creek channel right before last week's cold front. Each jug had 5 hooks that were evenly spread from the weight to the float. The main line is attached to a large floating jug and is weighted down

with a large anchor. Each hook (or staging) is attached to the main line with a 2' length of 200 lb. test troutline and a swivel. The swivel prevents catfish from twisting up the entire jug line, or twisting off.

As Krueger, my cameraman, and I met at the South Shores boat ramp, the wind was already blowing up to 20 mph. For some reason, the wind is worse on Choke Canyon than most other Texas lakes, probably due to its closeness to the coast. With the camera ready to capture the landing of huge catfish, we launched the boat and headed to the creek channel that held the jug lines. As we crossed the lake, the waves were in the 2-3 foot range, just rough enough to make it very difficult to find the floating jugs. Approaching the area, Krueger said, "keep your eyes peeled for the jugs, they're right in this area." All three of us looked for over an hour and were unable to locate any of the ten jug lines that were put out the day before. Elroy figured that the wind could have picked up during the night and the big fish could have drug the lines to deeper water. If that happened to be the case, we'd never see the float under the surface.

With frustration and disappointment on our faces, we put the gear up, and the boat back on the trailer. Krueger said he'd keep trying to get some more big cats, and when he had them on the lines, he'd let me know. At this point, we still thought that mother nature had dealt us a bad hand, and the lines had disappeared.

Then, in acquaintance of Kruegers approached us and said, "The big catfish must've started to bite, there were a couple of guys that were cleaning over 300 pounds of them last night. They caught them on jug lines in just a couple of hours." Now, things started to make sense. The lines were gone

all right, but the wind wasn't the culprit; they had been stolen, and there wasn't a thing we could do about it. Somewhere out there are a couple of fish thieves who know they did wrong, or at least let's hope they do. Next time, Krueger has fish on his lines, he hopes to catch these guys, but odds are, that'll never happen. At least these guys better hope it doesn't. Before you pull up someone's jug line, you'd better ask yourself this question, "I wonder what it's baited with, and I wonder who's watching."

Elroy Krueger can be reached at 512/786-4775.

Keith Warren is the host of "The Texas Angler Television Show", which broadcasts statewide. You can catch *The Texas Angler* locally on KAMR/Amarillo and KLBK/Lubbock commencing January 3, 1993.

For more information contact The Texas Angler at 512/625-3474.

USDA finalizing regulations for pesticide record keepers.

Health News

Although there is no cure for Alzheimer's, care givers can help to enhance the quality of their life as well as their loved one's by:

*Providing for their personal safety by removing clutter from the home and by closely monitoring their ability to drive.

*Helping to orient the patient by posting memory joggers, for example "wash your hands," above bathroom sink.

*Treating patients with dignity. Try to remember that objectionable behavior is the fault of the disease, not the person.

*Building a close network of family, friends and support personnel, such as clergy and social workers, to rely upon.

Threeway Honor Roll

- SECOND SIX WEEKS HONOR ROLL**
- KINDERGARTEN**
"ALL A"
Patrick Duarte, Sarah Furgeson and Jennifer Kirby.
- "A AVERAGE"**
Miriam Alaniz, Jennifer Harp, Michael Holmes, Chris Kindie, Lance Martinez, Scott Morin, Monica Rodriguez and Rigoberto Rodriguez.
- FIRST GRADE**
"ALL A"
Gentry Calhoun, Andrew Foote, Buddy Holmes, Veronica Martha and Libby Williams.
- "A AVERAGE"**
Canaan Heinrich
- SECOND GRADE**
"ALL A"
Sammy Castillo, Ashley Layton and Julie Salamanca.
- "A AVERAGE"**
Antonio Jasso, Robert Pina, Alma Rodriguez and Daisy Villarreal.
- THIRD GRADE**
"ALL A"
Alma Castillo, Anthony Furgeson, Melissa Lopez, Taylor McDonald, Christy Mills and Robert Rodriguez.
- "A AVERAGE"**
Joal Armendariz, Kara Heinrich, Claudia Morin and Ivan Navarro.
- FOURTH GRADE**
"ALL A"
Stefanie Calhoun and Kristal Martha.
- "A AVERAGE"**
Lauren Foote, DeAnne Martha, Ernesto Navarro and Darsy Villarreal.
- FIFTH GRADE**
"ALL A"
Monty Kirby, Rebecca Robertson, Jessica Robinson and Rosa Soliz.
- "A AVERAGE"**
Scott Pollard, Abel Rodriguez, Patricia Rodriguez, Alberto Valderas and Kasey Wright.
- SIXTH GRADE**
"ALL A"
Janice Martha
- "A AVERAGE"**
Jonathan Kindie, Martha Lopez and Joshua Robinson.
- SEVENTH GRADE**
"ALL A"
Joshua Tooley
- "A AVERAGE"**

- Trace Landess and Russell Pollard
- EIGHTH GRADE**
"ALL A"
"A AVERAGE"
Melanie McCaul and Diana Salamanca.
- NINTH GRADE**
"ALL A"
"A AVERAGE"
Keith Kindie and Torrey Roberts.
- TENTH GRADE**
"ALL A"
"A AVERAGE"
Lisa Salamanca and Erin Sowder.
- ELEVENTH GRADE**
"ALL A"
Melissa Bennett and Roxana Rodriguez.
- "A AVERAGE"**
- TWELFTH GRADE**
"ALL A"
Gisela Perez and Michael Smith.
- "A AVERAGE"**
Malisa Guillen and Wade Wilson.

Services Held For Claude Eagle

Services for Claude Eagle, 74, of Earth are scheduled for Wednesday, November 23, 1992 at the First Baptist Church in Earth, with the Rev. Bobby Broyles, pastor, officiating.

Burial was in the Earth Memorial Cemetery under the direction of Parson's Ellis Funeral Home.

Eagle died November 23, 1992 at Clovis High Plains Hospital. He was born May 5, 1918 in King County, Tx., and married Maggie Kelley October 18, 1948 in Lubbock, Tx.

Claude had lived most of his life in Lamb County. He was a farm and ranch hand. He was a member of the First Baptist Church in Earth.

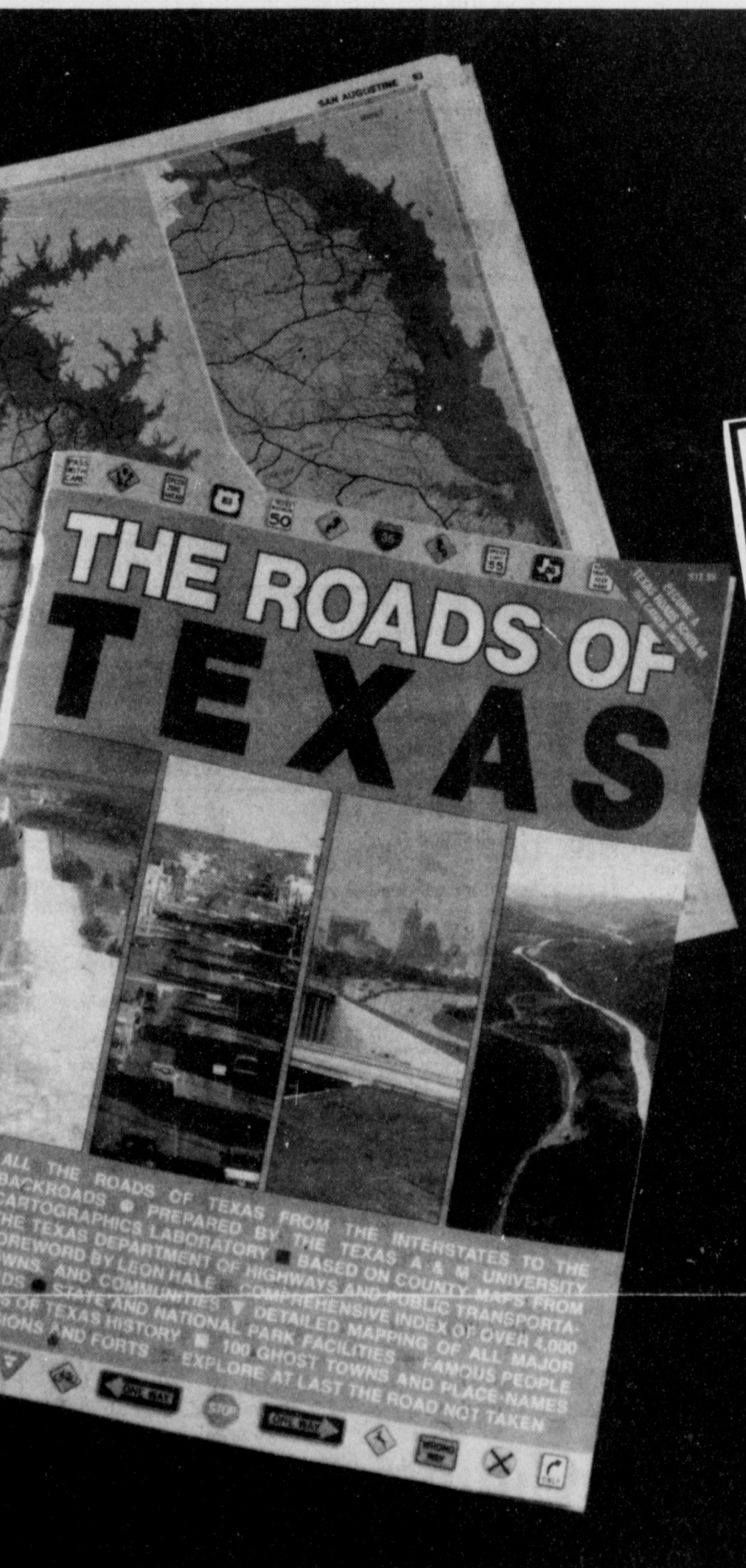
Survivors include his wife; one son, Glen Eagle of Clovis; two daughters, Barbara Cowan of Pampa and Wilma Barlow of Amarillo; four brothers, J.B. Eagle of Grants, NM, Ray Eagle of Lawn, Tx., Pete Eagle of Bakersfield, Ca., and Marvin Eagle of El Sabrante; one sister, Louise Clark of Grants, NM; fifteen grandchildren; sixteen great-grandchildren; and four great-great grandchildren.

Texas books for everyone on your gift list

THE ROADS OF TEXAS
for people who travel the backroads

- 172 page, full color atlas based on county maps, shows complete road system
- Large scale (1 in. = 3.6 miles)
- Details include state and national parks, river and lake access, rural area churches and cemeteries, oil pipelines, historic sites, small communities not usually found on maps plus lots more
- Perfect for sportsmen, antique hunters, genealogists, vacationing families, armchair travelers—everybody who has to go anywhere in Texas

\$12.95
Also available THE ROADS OF NEW MEXICO and THE ROADS OF ARKANSAS



- All 172 pages in full color
- Each page measures a large 15 x 11 inches
- Presents the entire state in stunning detail
- Appendices and specialty maps of many different features

THE ROADS OF TEXAS is the culmination of a mammoth project that has involved many individuals for over two years. When you get your copy of THE ROADS OF TEXAS you'll wonder how you ever traveled the state without it.

TEXAS COUNTRY REPORTER COOKBOOK
for cooks who enjoy reading about Texas cooking

- Over 400 favorite recipes from the viewers of the popular TV show hosted by Bob Phillips
- Colorful anecdotes about the history of the dish
- Great variety of recipes including Washday Cobbler, Blue Norther Meaatball Stew, Hard Times Cake, Top of Texas Chili—just to name a few.

\$13.95



WILDFLOWERS OF TEXAS
for Texans who want to know more about wildflowers

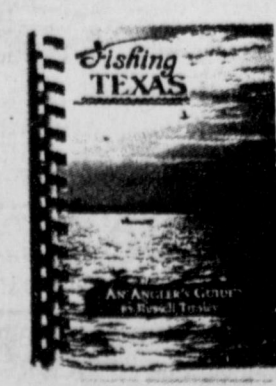
- Popular field guide covering 378 species
- Easy-to-use with description opposite each photo
- Color coded for quick identification

\$12.95

FISHING TEXAS
for fresh and saltwater fishermen

- Indispensable guide written by Russell Tinsley
- Covers 120 varieties
- Full page color illustrations
- Sections on proper bait and tackle, handling fish, record catches and more

\$12.95



Also Available
The Roads of Arkansas & The Roads of New Mexico
\$12.95

CLASSIFIEDS 272-4536

CLASSIFIED RATES

15 Words & Under
Minimum Charge \$2.30
Thereafter \$2.00
16 Words & Over
1st Insertion 15 cents per word
2nd Insertion 13 cents per word

CLASSIFIED DISPLAY RATES
\$1.75
Per Column Inch

DEADLINES
12 noon Tues.
For Thursday Paper
12 noon Friday
For Sunday Paper

To receive the reduced rate after the first insertion, ad must run continuously.

We reserve the right to classify, revise, or reject any ad. We are not responsible for any error after ad has run once.

1. Personals

CONCERNED
About Someone's Drinking?
HELP IS AVAILABLE
through Al-Anon
Call 272-2350 or 965-2870 or come to visit Tuesday and Thursday nights, 8:00 p.m. & through AA call 965-2870 or come visit Tuesday nights, 8:00 at 620 W. 2nd, Muleshoe

For more information and assistance regarding the investigation of get-rich-quick, work-at-home and other financial/business opportunities. The Muleshoe and Bailey County Journals urges its readers to contact the Better Business Bureau, 1206 14th St., #901, Lubbock, TX 79401 or call (806)763-0459

3. Help Wanted

OB NURSE
Small, friendly hospital needs RN for OB Unit. OB experience preferred. Must be eligible for New Mexico Licensure. Contact Brandy Barrett, Human Resources, Roosevelt General Hospital, 1700 S. Ave. O, Portales, NM 88130, 356-4411 ext 301.
EOE

WE'LL PAY YOU to type names and addresses from home. \$500.00 per 1000. Call 1-900-896-1666 (\$1.49 min/18yrs+) or Write: PASSE-K883, 161 S. Lincolnway, N. Aurora, IL 60542.
P3-471-4tp(ts)

TRUCK & TRACTOR DRIVERS WANTED:
Monthly salary, lots of travel. Job runs March-December. Contact Scott or Charles at SCB Farms, Inc. in Bovina, TX--(806)238-1206
S3-44s-tfc

WANTED
Mature woman needed for Part-Time Christmas Wrapping. Apply in person. Joe's Boot Shop.
Non Smoker Preferred.
J3-471-2tc

3. Help Wanted

Unique Sales Opportunity

Offering Fast Start Bonus Program High Commissions in **MULESHOE** Monthly Performance Bonuses Insurance Available
CALL 1-800-999-4712.
EOE

SALES REP

Sales Person to call on Commercial, Industrial, and Agricultural business in the **MULESHOE** area. Excellent Commissions and Bonuses available. Background in Sales or Mechanical aptitude helpful.

HYDROTEX
1-800-999-4712
EOE

5. Apts. For Rent

Extra Nice 2 bedroom apartment with 1 bath. Electric oven with electric cook top. Disposal dishwasher. Central heating & cooling. \$325 a month. Call 272-4889.
L5-471-tfc

2 Bdrm. furnished or unfurnished apartments. Good location. Water paid. Call 272-7575.
P5-44s-tfc

1 Bedroom furnished apartment. Water paid. Good location. Call 272-7575.
P4-44s-tfc

7. Wanted To Rent

WANTING to rent or lease 2 or 3 circles of land 272-5385.
L7-47s-8tc

11. For Sale Or Trade

FOR SALE
AKC Labrador Puppies, Cream Colored. Call 272-4805

The cookbook everyone is talking about
TEXAS COUNTRY REPORTER COOKBOOK
256 pages of recipes from the winners of the popular tv show hosted by Bob Phillips
\$13.95
Pick up your copy at the newspaper office.

Custom Cowboy Services
Gathering- Processing-Doctoring All Phases Of Cattle Work
Wheat Cattle Available Experienced- Professional
Jim Bohler
272-3540
Muleshoe

15. Misc.

Major Appliance and Minor Home Repairs!
Call 272-4450
HENDERSON SERVICE, CO.

Can profitably farm sandhill land. Financial partner and land needed.
Box 1901, 79408. 806-744-8517.
H-48t-1tp

JOHNSON CATERING
Now booking holiday banquets, parties, & open houses. Full meals or standup catering. Also all kinds of holiday cakes, candies, etc. Weddings-Quinceaneras. Free 4x6 individual or family pix included for each banquet scheduled.
272-5746

Johnson Photography
Seniors, Weddings, Portraits, Groups, Quinceaneras. 1-8x10, 4-5x7.8 wallet--\$25.95 Portrait Christmas cards & gift certificates 10% discount. Your home or mine.
272-5746

STORAGE SPECIAL

Rent A Storage Room For December And Get January **FREE**
\$27.50 A Month
New Occupants Only
J&J SELF STORAGE
272-4307

8. Real Estate

Bingham & Nieman Realty

116 E. Ave. C George Nieman, Broker 272-5286 or 272-5285

RICHLAND HILLS
PRICE REDUCED 3-2-2 Brick, Cent. A&H, built-ins, FP, sunken lv. area, ceiling fans, earthtone carpets....RH-1
3-3-1 car carport-Large Brick home with built-ins, 2 fireplaces, extra storage. Priced in the \$60's!!! RH-3
NICE RESIDENTIAL LOTS...\$5,000 UP
4-2-2 Brick, Large living/dining combined... \$50's!!! RH-5
3-2-1 Brick, Cent A&H, with fenced yard... \$50's!!!!!! RH-6
3-2-2 Brick with fireplace, 5 ceiling fans, new carpet & paint, new dual fuel heat pump, abundance of closet space...\$90's....RH-8
HIGH SCHOOL
3-2-1 carport Brick, built-ins. Ig. isolated master bdrm... covered patio...\$40's...HS-1
IMMACULATE LARGE BRICK HOME 3-2-2
Heat Pump, built-ins, Whirlpool, loads of storage, lg. shop-storage, \$70's!!! HS-2
3-2 Remodeled, heat pump, built-ins, fenced yd., storage bldg. \$20's!!! HS-3
3-1-1 Brick, heat pump, fenced yard, current FmHA financing..Price reduced..H-4
4-2-2 Brick, Built-ins, Cent. A&H, ceiling fans...\$40's!!! HS-5
FmHA financing to a qualified buyer 3-1 1/2-1 Brick in tip-top shape...\$20's!!!! H-6

HIGHLAND AREA
3-2-1 Brick, Cent. A&H, FP, built-ins. MAKE OFFER!!!! HL-1
LENAU ADDITION
3-1-1 car carport-Den with fireplace, floor furnace heat. Low \$20's!!!!L-8
REMODELED BRICK-3-2-1 With Cent. heat, built-ins--PRICE REDUCED!!!L-2

You can't lose---or get lost---with **THE ROADS OF TEXAS!**
Get your copy at the newspaper office. Only 12.95

You can't lose---or get lost---with **THE ROADS OF NEW MEXICO**
SPEED LIMIT 55
Get your copy at The Muleshoe Journal Only \$12.95

You can't lose---or get lost---with **THE ROADS OF ARKANSAS**
DO NOT PASS
Get your copy at The Muleshoe Journal Only \$12.95

20. Public Notice

NOTICE OF PUBLIC HEARING
The Bailey County Commissioners Court will hold a Public Hearing for the purpose of reapportionment of County Commissioners Precincts and Voter Tabulation Districts (Election Precincts), and consolidation of Justice of the Peace Precincts and Constable Precincts.
The hearing will be held at the Bailey County Courthouse on Monday, November 30, 1992, at 6:00 p.m. All persons are invited to come and participate.
Marilyn Cox
County Judge

8. Real Estate
3-1-1 Carport home, Cent. A&H, built-ins, FP fenced yd. \$20's!!!! L-3
JUST LISTED-2-1-1 Home with Heat Pump, has extra insulation in attic & floors...\$20's...L-4
3-2-1 carport Neat & Clean, built-ins, A&H, cov. patio, storage bldg...\$30's!!! L-5
3-2-1+carport, Brick, ceiling fans, Approx. 2060 sq. ft...\$40's!!! L-6
2-1-1 Carport, fenced back yard, with two storage bldgs..Priced in the \$20's L-7
4-3 Bath, Brick, on 2 acres, built-ins, FP, Geothermal Ht. pump, horse stalls, pens & tack rm. Also income producing shop on location or use for your own needs...\$80's!! PRICE REDUCED!!!!
VERY NICE 4-2-2 Brick home on 6 ac., Cent. A&H, 2300'+lv. area, Much More!! \$70's!HR-4
3-2-2 Brick, btl-ins, Ht. pump, FP, 2.5 acres on pavement. \$60's!!! HR-3
3-2-3 Carport Mobile home on 11 ac. edge of town, MAKE OFFER!!! HR-5
3-2-1 on 1 acre, Cent. Heat, Evap. Air, Remodeled, \$30's!! HR-6
3-1-2 Home on 1 1/2 acres storm cellar & storage bldg...\$20's!!!! HR-8
3-2 home on 40 acres barn and more... \$40's!!!! HR-9

8. Real Estate

FARM FOR SALE
Muleshoe 4 E, on Hwy 70, 143 Acres Irrigated, 6" well, 127 Acres Cultivated 0 to 1 % slope.
RODGERS REAL ESTATE
(806) 299-1103
45s-4tp(S)tfc

8. Real Estate

FOR SALE
2100 sq. ft. 4 bedroom brick with new timberline roof. Total electric-3 year old heat pump-(heat & cool). 2 baths, double garage, lots of closets. Call 272-4793 or 5531.
C8-45t-tfc

8. Real Estate

Assume Loan
3-1-1 Brick, Blinds, Fans, Central Heat, Fenced Yard. 1424 West Avenue C. 272-5234.
S8-44s-tfc

8. Real Estate

2100 sq. ft. 4 bedroom brick with new timberline roof. Total electric-3 year old heat pump-(heat & cool). 2 baths, double garage, lots of closets. Call 272-4793 or 5531.
C8-45t-tfc

8. Real Estate

2 Sections irrigated farm land 10 miles North of Hereford. 8 wells, large grain base, lays good. Home, steel shop, pipe corals, underground lines, \$450 per acre. Owner will finance part.
409-543-5636
H8-45s-8tc

8. Real Estate

FOR SALE:
2 Bedroom, 1 bath house. Large lot, outside city limit on improved road. Private well. Plenty of room for expansion.
Ph. 272-5169
D8-44s-tfc

8. Real Estate

240 acres irrigated farm west of Muleshoe. Equipped with sprinkler pivot system, underground electricity. Underground pipe for big gun sprinklers. Priced to sell.

Letter To The Editor

Dear Editor:

Each Thanksgiving, as my family comes together to count our many blessings, we always pause to give thanks for the bountiful harvest from our American agricultural industry. The quality a variety of food that fills our nation's larders is a testament to the productivity of hard-working farmers and ranchers across this great land.

Today, less than 2 percent of our population lives on farms and ranches, but thanks to the efficiency and productivity of these Americans, our producers supply 11 percent of the world's food grains, 15 percent of its feed grains, 25 percent of all beef and 11 percent of its pork.

Working hand-in-hand with our producers are processors, shippers, manufacturers, wholesalers and retailers, many of them from our urban areas, who are responsible for taking this agricultural bounty to billions of consumers worldwide. Clearly, a dynamic working relationship between our rural and urban residents is essential to keep American agriculture strong.

November 20-26, 1992, has been designated National Farm-City Week to encourage a better understanding of the important contributions each group makes to the well-being of the other. We are all partners in the progress and prosperity of this great land and it is fitting that our celebration of National Farm-City Week occurs as we commemorate Thanksgiving. It is in everyone's best interest that our farms and ranches and our cities

remain strong. After all, they have worked together to make our nation the leader it is. But we must also understand our similarities and differences, our strengths and weaknesses, and our interdependence and independence.

Health News

Living with Alzheimer's
November is National Alzheimer's Disease Awareness Month. Alzheimer's disease which produces a progressive decline in memory, thinking and behavior affects more than two million Americans.

Although Alzheimer's disease affects individuals differently, according to Thomas Hutton, M.D., a neurologist on staff at Methodist Hospital, it is possible to generally determine what to expect.

*During the beginning phase, a person may exhibit memory loss, forget names and misplace items.

*As mental abilities begin to decline, daily activities become impaired. Travel to a new place or managing daily finances becomes impossible. Affected individuals may repeat questions frequently, exhibit poor concentration and show decreasing attention to daily tasks. At the same time, they may deny that there is a problem.

*Later, patients become unable to cope without assistance. They may not recall major aspects of current life or recognize family members. Personality changes are common at this point.

*During the final stage of the disease individuals become completely disoriented and incapacitated. All verbal skills become impaired and total care is usually required.

8. Real Estate

A greased spatula will get sticky cookies off the cookie sheet more easily.

8. Real Estate

2 Sections irrigated farm land 10 miles North of Hereford. 8 wells, large grain base, lays good. Home, steel shop, pipe corals, underground lines, \$450 per acre. Owner will finance part.
409-543-5636
H8-45s-8tc

8. Real Estate

FOR SALE:
2 Bedroom, 1 bath house. Large lot, outside city limit on improved road. Private well. Plenty of room for expansion.
Ph. 272-5169
D8-44s-tfc

HENRY REALTY

111 W. AVE. B 272-4581
Muleshoe, Tx.

2 bedroom, 1 bath, 1 car garage, brick veneer. Country Club Addition. Central heat and air. Very nice.

2 bedroom, 1 bath, detached 2 car garage, extra lot and well for garden. Country Club Addition.

Spacious 2 bedroom, 2 bath with one car garage. Fireplace. Ready to move in.

New listing-2 bedroom, 1 bath, redone for qualified buyer.

3 bedroom, 2 bath, carport, spacious home outside city limits near city on highway. Lot is 85'x402'. Metal building is 29' by 40'. Great setup for workshop.

FOR LEASE-3 beds living area, fenced yard. Near high school.
COMMERCIAL PROPERTY
Ideal location on West American Blvd. 150' highway frontage. A great business opportunity.

West American Boulevard 150' frontage. Priced to sell.

LAND
160 acres irrigated farm land with pivot sprinkler SW of Muleshoe. 60 acres of wheat. Ideal for livestock operation. Good water.

240 acres irrigated farm west of Muleshoe. Equipped with sprinkler pivot system, underground electricity. Underground pipe for big gun sprinklers. Priced to sell.

Classify! Call 272-4536

Pre-Christmas Sale



13MZW Full Fit Denims
Wranglers
\$15⁹⁹
38" Lengths \$17⁶⁹



Ladies' **Rocky Mountain Jeans**
SAVE \$5 PAIR

Walls #35230 Navajo
Rodeo Jacket
Black Grey, Red & Turquoise
\$44⁹⁹
XL Sizes \$47⁹⁹



Walls #35210 Navajo Trim
Jacket
Turquoise, Black, Red
\$44⁹⁹

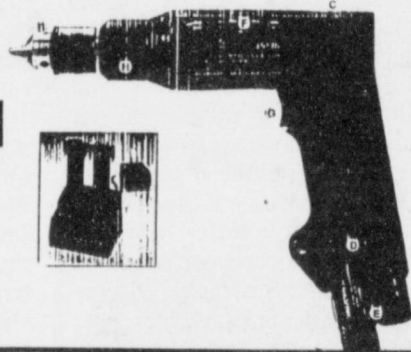
#DE94SK-2 Dewalt
Cordless Drill
With 2 Batteries
\$179⁹⁹



Laredo
All Laredo
Ropers
Reg. \$49.99
NOW \$47⁹⁹

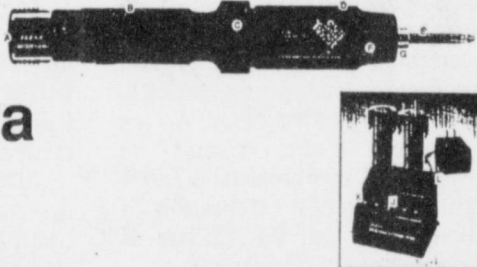
Model 2236 7.2 Volt Cordless Drive-R-Drill

#2236 Skill 3/8
Driver Drill
\$39⁹⁹



Model 2207 SKIL Twist Xtra Screwdriver

#2207 Skill
Twist Xtra
\$22⁹⁹



Men's Long Sleeve Western **Panhandle Slim Shirts**.....NOW \$5⁰⁰ OFF
Ladies' **Panhandle Slim Jeans**.....SAVE \$5 Pair.
Ladies' **Panhandle Slim & Rocky Mountain Tops**...\$5⁰⁰ OFF
Men's Cheyoteah Long Sleeve **Wrangler Western Shirts**.....SAVE \$5⁰⁰
Amity **Billfolds, Trifolds & Ladies' Secretary** 25% OFF

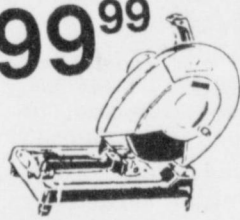
Walls #2486 Olive & #2487 Navy
Twill Coveralls
\$45⁹⁹
XXL & Tall Sizes Slightly Higher



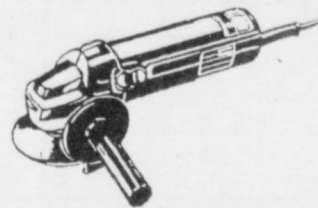
MOBILE AIR
5 HP, 60 Gallon Vertical Compressor
\$429⁹⁹
Model G500BPL60V



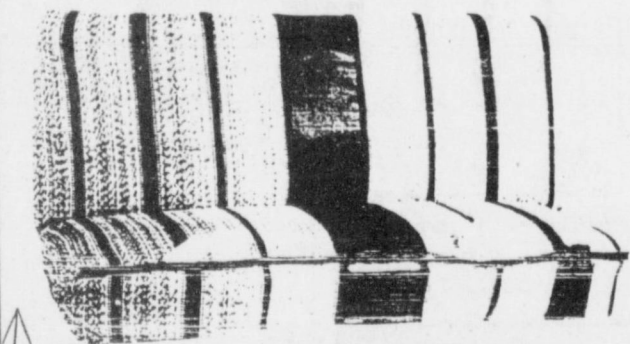
\$199⁹⁹
14" CUT-OFF SAW MODEL 2414
• easy cutting action in steel and cast iron
• powerful 13 AMP hi-tech motor • 3800 RPM for fast efficient, clean cutting • light-weight for easy transporting • AC/DC switch • vise assembly holds stock securely at up to a 45° angle



\$53⁵⁹
Trakita 4 In. Disc Grinder
4.6 amp, 11,000 rpm for fast and efficient grinding, cutting or deburring. Model 9514B. 20438



OUTLAW
Rugged Western Style Blanket
Auto and Truck Seat Cover
2 Piece Indian Blanket **Seat Covers**
With Gun Scabbard & Pouches
\$21⁹⁹



Sanborn
#100007 7 Gallon **Air Tank**
\$24⁹⁹

National Decorations, Assorted,
Porcelain Houses
3 or 4 Styles Shown
\$7⁹⁹



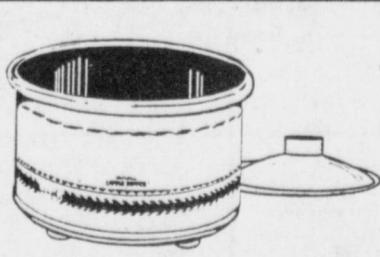
#8925, 8929 & 8935
25 Lite Set
Red, Multi-Colored & Transparent Multi-Colored
\$7⁹⁹



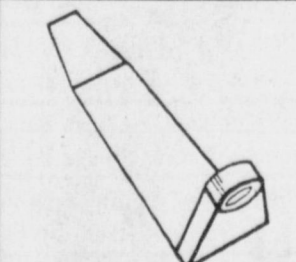
RIVAL 5 Qt. Country Crock Pot
Wide, 10" crock easily holds a roast or chicken. Removes for convenient serving and cleaning. No stirring, burning or critical timing. 66897
\$29⁹⁹



#3204SW Rival **Little Dipper**
\$6⁹⁹



\$2⁴⁹
Mini (24 Count) **Shingle Tab**
Fits under shingles to hold mini lights secure. Easy to install and remove.



\$2⁴⁹
(25 Count) **Outdoor Christmas Light Holders**
Plastic tab holds securely under shingles to hang C7 or C9 lights.



\$39⁰⁰
6 1/2 Ft. Mountain Pine
Natural-looking tree is flame retardant and has a 4" branch diameter.



#9265 & 9266
70 Lite Set Add A Lite
Multi-Colored & Clear
\$3¹⁹



#92105 & #92106
105 Lights Add A Light Set
\$4⁴⁹



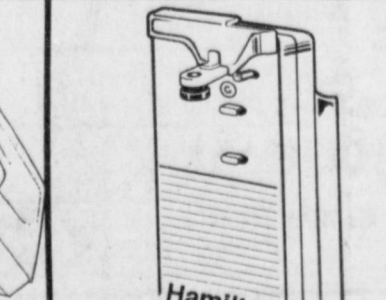
Plus Free Apple Corer
Tater Twister
Twists potatoes and vegetables into curls or spirals in seconds with 2 interchangeable cutting blades. 62992
\$29⁹⁹



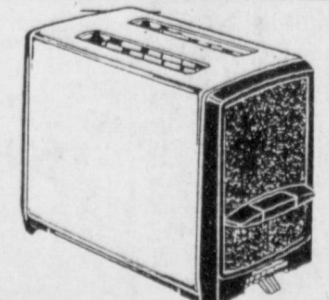
HAMILTON BEACH 3 Speed Hand Mixer
Model 230V
\$8⁹⁷
• 3 speed convenience
• Fingerlip speed control
• Non-splash, chrome-plated beaters
• Top-mount beater eject button
• Comfort grip handle



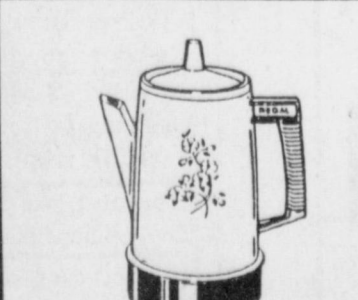
#76100 Hamilton Beach **Can Opener**
\$8⁷⁹



#T620B Hamilton Beach **Toaster**
\$9⁹⁹



REGAL 8-Cup Poly Perk
Brews and warms 4 to 8 cups. Durable, easy-to-clean, with lock cover. Removable cord. 60322
\$9⁹⁹



BRIK Building Bricks
#4014 28 Piece Starter Set
\$22⁹⁹
• LIFE-SIZE BLOCKS CREATE LIFE-SIZE TOYS
• LOCKING PEG SYSTEM EXPANDS CREATIVITY
• FUN FOR CHILDREN OF ALL AGES
• LIFETIME WARRANTY
• INDOOR/OUTDOOR

