

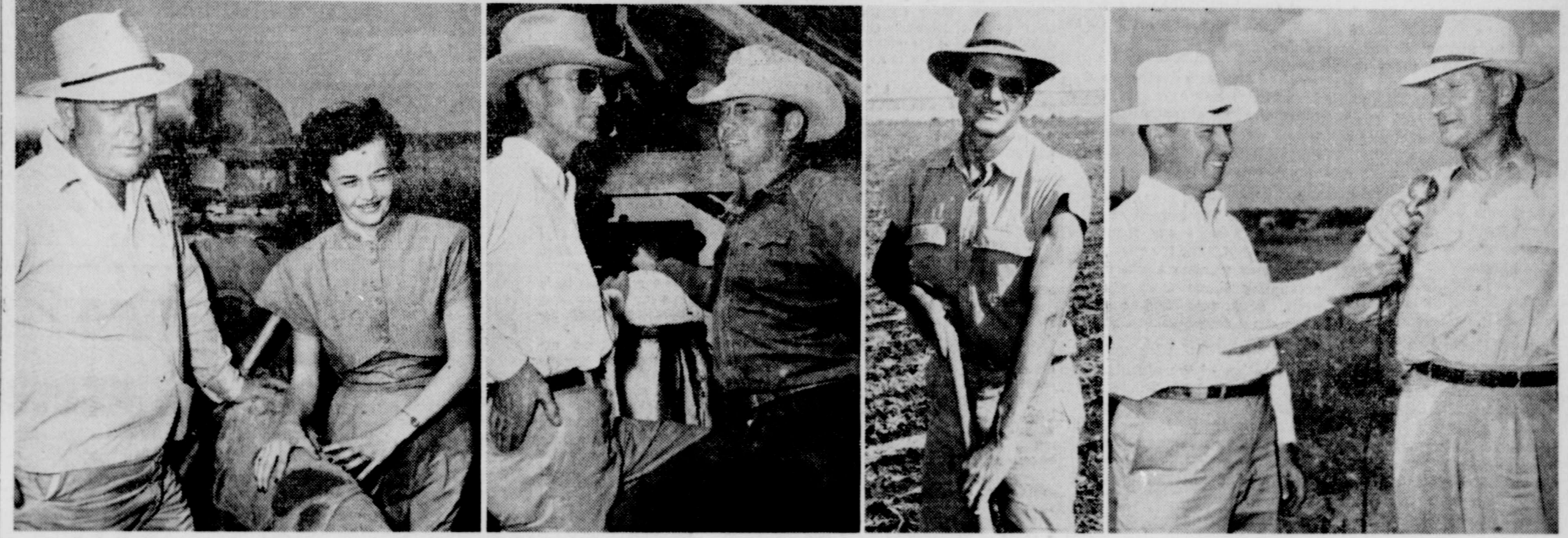
ST 25, 19
P. Dickson
Monday
Don
Vernon
atment.
TER
exas
ative
rance

BRISCOE COUNTY NEWS

THE CIRCLE AROUND
YOUR NAME MEANS
YOUR SUBSCRIPTION
HAS EXPIRED

VOLUME 41, NUMBER 35
PUBLISHED EVERY THURSDAY AT SILVERTON, BRISCOE COUNTY, TEXAS
THURSDAY, SEPT. 1, 1949

New Pumps and Spillways Hold Spotlight on Tour



Amarillo Daily News Regional Staff Photo.
Conservation Engineer Travis Black and Mrs. Dena Wood, attractive clerk for the Cap Rock Soil Conservation District, watch Harry Morckel's pump at work on the Merle J. Montague Farm. Carroll Garrison shows his improved concrete spillway and pump shed to Lynn Welch, right, dry land farmer 5 miles east of Silverton. Montague shovels dirt to hold an irrigation ditch carrying lake water. Briscoe County Agent Leo White, left, introduces Ray Grace, irrigation specialist of Plainview.

Briscoe Co. Farmers See Latest Irrigation Innovations

By GARLAND SMITH
Amarillo Daily News Farm Writer

Briscoe County farmers, like their Floyd County neighbors to the south, are looking into the possibilities of lake-to-higher-ground irrigation. A demonstration showing how it can be done climaxed a 40-mile farm tour Friday through the southwestern part of Briscoe County. Some 50 guests, most of them farmers and agricultural leaders, watched the event at the invitation of the board of supervisors, Cap Rock Soil Conservation District.

Harry Morckel, Floydada farmer-business man, pioneer and zealous advocate of this new type of irrigation for dry land farmers on the South Plains, set up his \$3,000 pumping rig on the Merle J. Montague farm, 7 miles southwest of Silverton, especially for the show.

As skeptical observers stood by Morckel lifted the water 8 feet high from Montague's 60-acre lake, pressured it 800 feet through aluminum pipe uphill, then pushed it another 800 feet in an open ditch.

Montague, one of the most outstanding young Briscoe farmers, distributed the water through tubes on stubble to give the plot an extra drink before he plants wheat in September.

"This extra drink, during extended dry spells, could mean the difference between success and crop failure," Morckel said. "In some years lake water could increase your yields by one-fourth or one-third."

Morckel said water in small, natural lakes in the Texas Panhandle-South Plains also contains valuable plant food not found in wells.

"Because sediment accumulates following every rain, lake water has minerals, such as phosphate and others, the soil needs," he said. "By using lake water, which most farmers consider a nuisance anyway, you can fertilize your land and quench the thirst of crops at the same time."

Lake water is cheap, too, Morckel said, because no drilling is required. He estimated the total cost of equipment for the operation at \$3,000, including a pump of the Chrysler industrial engine type, aluminum pipe and freight charges.

Although the pump's maximum capacity is 1,000 gallons a minute, Morckel and his mechanic, George Reynolds, held it down to 850 gallons. The ditches were inadequate to take water faster.

"You have to prime the pump only once," Morckel said. "Thereafter, you just start the engine."

The Floydada farmer told the visitors 100 acre feet of water will put 4 inches of moisture on 300 acres. He said he could afford to use his equipment on a contract basis at \$4 an hour, or the equivalent of \$4 an acre.

"One feature of this demonstration we had not tried before is the screen, or door, at the mouth of the intake pipe," he said. "This screen eliminates the whirlpool which forms at the mouth of the pipe, thereby enabling us to pump more gallons per minute."

Cap Rock conservationists early this week dug the ditches on the Montague farm which, indeed, is one of the bright spots in this area. Montague has 250 acres of wheat land, 100 acres in row crops and 1,000 acres in pasture.

To reach his farm, the caravan of 15 automobiles, led by Conservation Engineer Travis Black, left the court house and proceeded west on Texas Highway 86.

First stop was the Frank Mercer farm, 4 miles southwest of Silverton just off the state highway. Here, the visitors saw how crested wheat had crowded out all other grasses seeded in a mixture three years ago.

"This plot is proof crested wheat will grow on dry land in Briscoe County," explained County Agent Leo White, master of ceremonies for the afternoon. "We are recommending crested wheat for dry land pasture mixes now."

At the farm of Earl Cantwell, chairman of the board of supervisors, 10 miles southwest of here, the group saw 10 acres which had been bench leveled with district equipment at an approximate cost of \$13 an acre.

"This land which used to be steep will take water as well as \$100 or \$200 an acre ground," said Ray Grace, irrigation specialist of Plainview. "Ten benches here, about 1,700 feet long, are level from end to end and side to side. The benches are cut in the middle so that both ends of the field can be watered at the same time."

Grace said the benches enable Mr. Cantwell to obtain maximum results with a limited water supply. Mr. Cantwell has grain sorghum on the plot this year.

Carroll Garrison, 8 miles southwest of Silverton, showed the guests the concrete spillway and pump shed he has constructed at one of his irrigation wells.

"The spillway moves the water in a hurry and keeps it from eating out the bar ditch near the well," White said. "Although it isn't the best in the country, the shed is adequate and economical, the kind most farmers can afford to build."

Edwin Crass, 12 miles southwest of here, pointed out the difference in cotton on alfalfa ground and steady cropped land. He also escorted the visitors across a field of sorghum on which he had grown hubam clover two years before.

"It's easy to see the cotton is healthier on alfalfa land," White said. "Mr. Crass will get a better quality. A rotation system with legumes is good business."

White also estimated the yield of sorghum on the clover plot will double production on similar land where no legumes have been turned under in recent years.

Silverton Independent School Will Open Sept. 6

According to an announcement made by Supt. Wm. F. Talley, Silverton Independent School will open the 1949-50 term September 6, at 9 a. m.

Opening exercises will be held at 9:00 in the high school auditorium and immediately after this children will enroll for classes. All parents and patrons of the school are invited to attend these exercises.

Buses will make regular routes as scheduled last year. In the event that changes are needed to better serve the community these will be made later in the week. Buses will return the children at 11 a. m.

The Cafeteria will open Wednesday noon to serve hot, well balanced lunches at 25 cents per lunch.

"It Happens Every Spring" at Palace Sunday, Monday

Showing at the Palace Theatre Sunday and Monday, September 4, 5, "It Happens Every Spring", with Ray Milland, Jean Peters and Paul Douglas. It is a different type of story and very funny. Everyone should enjoy this picture, particularly ball fans.

Be sure and see "It Happens Every Spring."

Local People Visit Carlsbad Caverns

Mr. and Mrs. Paul Reid and children, P. H. McKenney, Mrs. Mac McKenney and children, of Amarillo and W. L. Messimer, visited Friday and Saturday at Carlsbad Caverns. They reported a very enjoyable trip.

Miss Gladys Hyatt, of Plainview, spent the week end with her parents, Mr. and Mrs. W. J. Hyatt.

Visitors in Dudley Home This Week

Miss Jeanne Dudley has as her guests this week Misses Marty Bond, of Amarillo; Mary Swenson, of Spur; Polly Bryan, of Plainview. All the girls are students of Tech College, Lubbock.

Jim Lumpkin, Briscoe County PMH secretary, states that all farm operators whose farms the new allotment effects, have been notified and asked to come into the local PMA office to be informed of their allotment.

Lumpkin further states that letters are being mailed early next week to all wheat producers giving a thorough explanation of the 1950 wheat allotment program.

New Acreage Allotment Progres Discussed at Lubbock

At a 16-county, District 2PMA conference, held in Lubbock August 23 and 24, Henry Marshall, State PMA expert reviewed the new Acreage Allotment Program. Marshall stated that individual acreage allotments for the 1950 wheat crop will not be charged from the listings sent out three weeks ago unless 46 per cent of the 1948 or 1949 crop exceeds that amount.

The PMA official pointed out that the total acreage for each of the two years will be figured on the amount of wheat seeded that year plus the amount of summer fallow which was in wheat the previous year. Which ever of these figures is the largest will be multiplied by .4616.

If the acreage arrived at is larger than the previous allotment which was based on the wheat acreage for the years 1945-1948, the latter figures will be the farm's 1950 wheat allotment. If it is smaller the present allotment will stand.

Although the farmer will not be required to sow all of his allotment, the wheat allotment will have a definite bearing on the

Ray A. Howard Assigned to 5th Armored "Victory" Division

Recruit Ray A. Howard, son of Mr. A. A. Howard of Route 1, Silverton, has been assigned to the Fifth Armored "Victory" Division for fourteen weeks of basic training.

Reactivated July 6, 1948, the Fifth Armored "Victory" Division hung up a brilliant war record in six European campaigns during World War II. Before the end of 1949 Camp Chaffee is expected to have 20,000 troops, making it the largest Army Training Center in the Nation.

Before entering the Army, Recruit Howard was employed by his father as a mechanic.

He is now assigned to Btry "D", 95th Armored Field Arty. Bn.

Quitaque School Issues Approved

In the school district election Saturday balloting was light but decisive according to an unofficial report.

The proposal to set the tax rate and assume bonded indebtedness of the enlarged Quitaque Independent School District was passed, 71 votes for and 6 against the proposition.

Consolidation with Quitaque of the Edgin, Kent and Gasoline districts made the election necessary under the Gilmer-Aiken school law.

Coach Cortese is working hard to put in shape the boys for the coming season, and it is the desire of the fans of the community to discuss ways and means of assisting in the development of the boys into a winning team.

Remember, Monday night, September 5, and be on hand for the Quarterback Club meeting. Everybody is cordially invited to attend.

Quarterback Club to Hold Special Meeting September 5

The Quarterback Club has called a special meeting for Monday night, September 5, to be held at the school auditorium. All local fans are specially urged to attend this meeting at which time plans will be worked out for the coming season.

Ray A. Howard Assigned to 5th Armored "Victory" Division

Recruit Ray A. Howard, son of Mr. A. A. Howard of Route 1, Silverton, has been assigned to the Fifth Armored "Victory" Division for fourteen weeks of basic training.

Reactivated July 6, 1948, the Fifth Armored "Victory" Division hung up a brilliant war record in six European campaigns during World War II. Before the end of 1949 Camp Chaffee is expected to have 20,000 troops, making it the largest Army Training Center in the Nation.

Before entering the Army, Recruit Howard was employed by his father as a mechanic.

He is now assigned to Btry "D", 95th Armored Field Arty. Bn.

Quitaque School Issues Approved

In the school district election Saturday balloting was light but decisive according to an unofficial report.

The proposal to set the tax rate and assume bonded indebtedness of the enlarged Quitaque Independent School District was passed, 71 votes for and 6 against the proposition.

Consolidation with Quitaque of the Edgin, Kent and Gasoline districts made the election necessary under the Gilmer-Aiken school law.

Coach Cortese is working hard to put in shape the boys for the coming season, and it is the desire of the fans of the community to discuss ways and means of assisting in the development of the boys into a winning team.

Remember, Monday night, September 5, and be on hand for the Quarterback Club meeting. Everybody is cordially invited to attend.

Quarterback Club to Hold Special Meeting September 5

The Quarterback Club has called a special meeting for Monday night, September 5, to be held at the school auditorium. All local fans are specially urged to attend this meeting at which time plans will be worked out for the coming season.

Ray A. Howard Assigned to 5th Armored "Victory" Division

Recruit Ray A. Howard, son of Mr. A. A. Howard of Route 1, Silverton, has been assigned to the Fifth Armored "Victory" Division for fourteen weeks of basic training.

Reactivated July 6, 1948, the Fifth Armored "Victory" Division hung up a brilliant war record in six European campaigns during World War II. Before the end of 1949 Camp Chaffee is expected to have 20,000 troops, making it the largest Army Training Center in the Nation.

Before entering the Army, Recruit Howard was employed by his father as a mechanic.

He is now assigned to Btry "D", 95th Armored Field Arty. Bn.

Quitaque School Issues Approved

In the school district election Saturday balloting was light but decisive according to an unofficial report.

The proposal to set the tax rate and assume bonded indebtedness of the enlarged Quitaque Independent School District was passed, 71 votes for and 6 against the proposition.

Consolidation with Quitaque of the Edgin, Kent and Gasoline districts made the election necessary under the Gilmer-Aiken school law.

Coach Cortese is working hard to put in shape the boys for the coming season, and it is the desire of the fans of the community to discuss ways and means of assisting in the development of the boys into a winning team.

Remember, Monday night, September 5, and be on hand for the Quarterback Club meeting. Everybody is cordially invited to attend.

Quarterback Club to Hold Special Meeting September 5

The Quarterback Club has called a special meeting for Monday night, September 5, to be held at the school auditorium. All local fans are specially urged to attend this meeting at which time plans will be worked out for the coming season.

Ray A. Howard Assigned to 5th Armored "Victory" Division

Recruit Ray A. Howard, son of Mr. A. A. Howard of Route 1, Silverton, has been assigned to the Fifth Armored "Victory" Division for fourteen weeks of basic training.

Reactivated July 6, 1948, the Fifth Armored "Victory" Division hung up a brilliant war record in six European campaigns during World War II. Before the end of 1949 Camp Chaffee is expected to have 20,000 troops, making it the largest Army Training Center in the Nation.

Before entering the Army, Recruit Howard was employed by his father as a mechanic.

He is now assigned to Btry "D", 95th Armored Field Arty. Bn.

Quitaque School Issues Approved

In the school district election Saturday balloting was light but decisive according to an unofficial report.

The proposal to set the tax rate and assume bonded indebtedness of the enlarged Quitaque Independent School District was passed, 71 votes for and 6 against the proposition.

Consolidation with Quitaque of the Edgin, Kent and Gasoline districts made the election necessary under the Gilmer-Aiken school law.

Coach Cortese is working hard to put in shape the boys for the coming season, and it is the desire of the fans of the community to discuss ways and means of assisting in the development of the boys into a winning team.

Remember, Monday night, September 5, and be on hand for the Quarterback Club meeting. Everybody is cordially invited to attend.

Quarterback Club to Hold Special Meeting September 5

The Quarterback Club has called a special meeting for Monday night, September 5, to be held at the school auditorium. All local fans are specially urged to attend this meeting at which time plans will be worked out for the coming season.

Ray A. Howard Assigned to 5th Armored "Victory" Division

Recruit Ray A. Howard, son of Mr. A. A. Howard of Route 1, Silverton, has been assigned to the Fifth Armored "Victory" Division for fourteen weeks of basic training.

Reactivated July 6, 1948, the Fifth Armored "Victory" Division hung up a brilliant war record in six European campaigns during World War II. Before the end of 1949 Camp Chaffee is expected to have 20,000 troops, making it the largest Army Training Center in the Nation.

Before entering the Army, Recruit Howard was employed by his father as a mechanic.

He is now assigned to Btry "D", 95th Armored Field Arty. Bn.

Quitaque School Issues Approved

In the school district election Saturday balloting was light but decisive according to an unofficial report.

The proposal to set the tax rate and assume bonded indebtedness of the enlarged Quitaque Independent School District was passed, 71 votes for and 6 against the proposition.

Consolidation with Quitaque of the Edgin, Kent and Gasoline districts made the election necessary under the Gilmer-Aiken school law.

Coach Cortese is working hard to put in shape the boys for the coming season, and it is the desire of the fans of the community to discuss ways and means of assisting in the development of the boys into a winning team.

Remember, Monday night, September 5, and be on hand for the Quarterback Club meeting. Everybody is cordially invited to attend.

Quarterback Club to Hold Special Meeting September 5

The Quarterback Club has called a special meeting for Monday night, September 5, to be held at the school auditorium. All local fans are specially urged to attend this meeting at which time plans will be worked out for the coming season.

Ray A. Howard Assigned to 5th Armored "Victory" Division

Recruit Ray A. Howard, son of Mr. A. A. Howard of Route 1, Silverton, has been assigned to the Fifth Armored "Victory" Division for fourteen weeks of basic training.

Reactivated July 6, 1948, the Fifth Armored "Victory" Division hung up a brilliant war record in six European campaigns during World War II. Before the end of 1949 Camp Chaffee is expected to have 20,000 troops, making it the largest Army Training Center in the Nation.

Before entering the Army, Recruit Howard was employed by his father as a mechanic.

He is now assigned to Btry "D", 95th Armored Field Arty. Bn.

Quitaque School Issues Approved

In the school district election Saturday balloting was light but decisive according to an unofficial report.

The proposal to set the tax rate and assume bonded indebtedness of the enlarged Quitaque Independent School District was passed, 71 votes for and 6 against the proposition.

Consolidation with Quitaque of the Edgin, Kent and Gasoline districts made the election necessary under the Gilmer-Aiken school law.

Coach Cortese is working hard to put in shape the boys for the coming season, and it is the desire of the fans of the community to discuss ways and means of assisting in the development of the boys into a winning team.

Remember, Monday night, September 5, and be on hand for the Quarterback Club meeting. Everybody is cordially invited to attend.

Quarterback Club to Hold Special Meeting September 5

The Quarterback Club has called a special meeting for Monday night, September 5, to be held at the school auditorium. All local fans are specially urged to attend this meeting at which time plans will be worked out for the coming season.

Ray A. Howard Assigned to 5th Armored "Victory" Division

Recruit Ray A. Howard, son of Mr. A. A. Howard of Route 1, Silverton, has been assigned to the Fifth Armored "Victory" Division for fourteen weeks of basic training.

Reactivated July 6, 1948, the Fifth Armored "Victory" Division hung up a brilliant war record in six European campaigns during World War II. Before the end of 1949 Camp Chaffee is expected to have 20,000 troops, making it the largest Army Training Center in the Nation.

Before entering the Army, Recruit Howard was employed by his father as a mechanic.

He is now assigned to Btry "D", 95th Armored Field Arty. Bn.

Quitaque School Issues Approved

In the school district election Saturday balloting was light but decisive according to an unofficial report.

The proposal to set the tax rate and assume bonded indebtedness of the enlarged Quitaque Independent School District was passed, 71 votes for and 6 against the proposition.

Consolidation with Quitaque of the Edgin, Kent and Gasoline districts made the election necessary under the Gilmer-Aiken school law.

Coach Cortese is working hard to put in shape the boys for the coming season, and it is the desire of the fans of the community to discuss ways and means of assisting in the development of the boys into a winning team.

Remember, Monday night, September 5, and be on hand for the Quarterback Club meeting. Everybody is cordially invited to attend.

Quarterback Club to Hold Special Meeting September 5

The Quarterback Club has called a special meeting for Monday night, September 5, to be held at the school auditorium. All local fans are specially urged to attend this meeting at which time plans will be worked out for the coming season.

Ray A. Howard Assigned to 5th Armored "Victory" Division

Recruit Ray A. Howard, son of Mr. A. A. Howard of Route 1, Silverton, has been assigned to the Fifth Armored "Victory" Division for fourteen weeks of basic training.

Reactivated July 6, 1948, the Fifth Armored "Victory" Division hung up a brilliant war record in six European campaigns during World War II. Before the end of 1949 Camp Chaffee is expected to have 20,000 troops, making it the largest Army Training Center in the Nation.

Before entering the Army, Recruit Howard was employed by his father as a mechanic.

He is now assigned to Btry "D", 95th Armored Field Arty. Bn.

Quitaque School Issues Approved

In the school district election Saturday balloting was light but decisive according to an unofficial report.

The proposal to set the tax rate and assume bonded indebtedness of the enlarged Quitaque Independent School District was passed, 71 votes for and 6 against the proposition.

Consolidation with Quitaque of the Edgin, Kent and Gasoline districts made the election necessary under the Gilmer-Aiken school law.

Coach Cortese is working hard to put in shape the boys for the coming season, and it is the desire of the fans of the community to discuss ways and means of assisting in the development of the boys into a winning team.

Remember, Monday night, September 5, and be on hand for the Quarterback Club meeting. Everybody is cordially invited to attend.

Quarterback Club to Hold Special Meeting September 5

The Quarterback Club has called a special meeting for Monday night, September 5, to be held at the school auditorium. All local fans are specially urged to attend this meeting at which time plans will be worked out for the coming season.

Ray A. Howard Assigned to 5th Armored "Victory" Division

Recruit Ray A. Howard, son of Mr. A. A. Howard of Route 1, Silverton, has been assigned to the Fifth Armored "Victory" Division for fourteen weeks of basic training.

Reactivated July 6, 1948, the Fifth Armored "Victory" Division hung up a brilliant war record in six European campaigns during World War II. Before the end of 1949 Camp Chaffee is expected to have 20,000 troops, making it the largest Army Training Center in the Nation.

Before entering the Army, Recruit Howard was employed by his father as a mechanic.

He is now assigned to Btry "D", 95th Armored Field Arty. Bn.

Quitaque School Issues Approved

In the school district election Saturday balloting was light but decisive according to an unofficial report.

The proposal to set the tax rate and assume bonded indebtedness of the enlarged Quitaque Independent School District was passed, 71 votes for and 6 against the proposition.

Consolidation with Quitaque of the Edgin, Kent and Gasoline districts made the election necessary under the Gilmer-Aiken school law.

Coach Cortese is working hard to put in shape the boys for the coming season, and it is the desire of the fans of the community to discuss ways and means of assisting in the development of the boys into a winning team.

Remember, Monday night, September 5, and be on hand for the Quarterback Club meeting. Everybody is cordially invited to attend.

Quarterback Club to Hold Special Meeting September 5

The Quarterback Club has called a special meeting for Monday night, September 5, to be held at the school auditorium. All local fans are specially urged to attend this meeting at which time plans will be worked out for the coming season.

Ray A. Howard Assigned to 5th Armored "Victory" Division

Recruit Ray A. Howard, son of Mr. A. A. Howard of Route 1, Silverton, has been assigned to the Fifth Armored "Victory" Division for fourteen weeks of basic training.

Reactivated July 6, 1948, the Fifth Armored "Victory" Division hung up a brilliant war record in six European campaigns during World War II. Before the end of 1949 Camp Chaffee is expected to have 20,000 troops, making it the largest Army Training Center in the Nation.

Before entering the Army, Recruit Howard was employed by his father as a mechanic.

He is now assigned to Btry "D", 95th Armored Field Arty. Bn.

Quitaque School Issues Approved

In the school district election Saturday balloting was light but decisive according to an unofficial report.

The proposal to set the tax rate and assume bonded indebtedness of the enlarged Quitaque Independent School District was passed, 71 votes for and 6 against the proposition.

Consolidation with Quitaque of the Edgin, Kent and Gasoline districts made the election necessary under the Gilmer-Aiken school law.

Coach Cortese is working hard to put in shape the boys for the coming season, and it is the desire of the fans of the community to discuss ways and means of assisting in the development of the boys into a winning team.

Remember, Monday night, September 5, and be on hand for the Quarterback Club meeting. Everybody is cordially invited to attend.

Quarterback Club to Hold Special Meeting September 5

The Quarterback Club has called a special meeting for Monday night, September 5, to be held at the school auditorium. All local fans are specially urged to attend this meeting at which time plans will be worked out for the coming season.

Ray A. Howard Assigned to 5th Armored "Victory" Division

Recruit Ray A. Howard, son of Mr. A. A. Howard of Route 1, Silverton, has been assigned to the Fifth Armored "Victory" Division for fourteen weeks of basic training.

Reactivated July 6, 1948, the Fifth Armored "Victory" Division hung up a brilliant war record in six European campaigns during World War II. Before the end of 1949 Camp Chaffee is expected to have 20,000 troops, making it the largest Army Training Center in the Nation.

Before entering the Army, Recruit Howard was employed by his father as a mechanic.

He is now assigned to Btry "D", 95th Armored Field Arty. Bn.

Quitaque School Issues Approved

In the school district election Saturday balloting was light but decisive according to an unofficial report.

The proposal to set the tax rate and assume bonded indebtedness of the enlarged Quitaque Independent School District was passed, 71 votes for and 6 against the proposition.

Consolidation with Quitaque of the Edgin, Kent and Gasoline districts made the election necessary under the Gilmer-Aiken school law.

Coach Cortese is working hard to put in shape the boys for the coming season, and it is the desire of the fans of the community to discuss ways and means of assisting in the development of the boys into a winning team.

Remember, Monday night, September 5, and be on hand for the Quarterback Club meeting. Everybody is cordially invited to attend.

Quarterback Club to Hold Special Meeting September 5

The Quarterback Club has called a special meeting for Monday night, September 5, to be held at the school auditorium. All local fans are specially urged to attend this meeting at which time plans will be worked out for the coming season.

Ray A. Howard Assigned to 5th Armored "Victory" Division

Recruit Ray A. Howard, son of Mr. A. A. Howard of Route 1, Silverton, has been assigned to the Fifth Armored "Victory" Division for fourteen weeks of basic training.

Reactivated July 6, 1948, the Fifth Armored "Victory" Division hung up a brilliant war record in six European campaigns during World War II. Before the end of 1949 Camp Chaffee is expected to have 20,000 troops, making it the largest Army Training Center in the Nation.

Before entering the Army, Recruit Howard was employed by his father as a mechanic.

He is now assigned to Btry "D", 95th Armored Field Arty. Bn.

Quitaque School Issues Approved

In the school district election Saturday balloting was light but decisive according to an unofficial report.

The proposal to set the tax rate and assume bonded indebtedness of the enlarged Quitaque Independent School District was passed, 71 votes for and 6 against the proposition.

Consolidation with Quitaque of the Edgin, Kent and Gasoline districts made the election necessary under the Gilmer-Aiken school law.

Coach Cortese is working hard to put in shape the boys for the coming season, and it is the desire of the fans of the community to discuss ways and means of assisting in the development of the boys into a winning team.

Remember, Monday night, September 5, and be on hand for the Quarterback Club meeting. Everybody is cordially invited to attend.

Quarterback Club to Hold Special Meeting September 5

The Quarterback Club has called a special meeting for Monday night, September 5, to be held at the school auditorium. All local fans are specially urged to attend this meeting at which time plans will be worked out for the coming season.

Ray A. Howard Assigned to 5th Armored "Victory" Division

Recruit Ray A. Howard, son of Mr. A. A. Howard of Route 1, Silverton, has been assigned to the Fifth Armored "Victory" Division for fourteen weeks of basic training.

Reactivated July 6, 1948, the Fifth Armored "Victory" Division hung up a brilliant war record in six European campaigns during World War II. Before the end of 1949 Camp Chaffee is expected to have 20,000 troops, making it the largest Army Training Center in the Nation.

Before entering the Army, Recruit Howard was employed by his father as a mechanic.

He is now assigned to Btry "D", 95th Armored Field Arty. Bn.

Quitaque School Issues Approved

In the school district election Saturday balloting was light but decisive according to an unofficial report.

The proposal to set the tax rate and assume bonded indebtedness of the enlarged Quitaque Independent School District was passed, 71 votes for and 6 against the proposition.

Consolidation with Quitaque of the Edgin, Kent and Gasoline districts made the election necessary under the Gilmer-Aiken school law.

Coach Cortese is working hard to put in shape the boys for the coming season, and it is the desire of the fans of the community to discuss ways and means of assisting in the development of the boys into a winning team.

Remember, Monday night, September 5, and be on hand for the Quarterback Club meeting. Everybody is cordially invited to attend.

Quarterback Club to Hold Special Meeting September 5

The Quarterback Club has called a special meeting for Monday night, September 5, to be held at the school auditorium. All local fans are specially urged to attend this meeting at which time plans will be worked out for the coming season.

Ray A. Howard Assigned to 5th Armored "Victory" Division

Recruit Ray A. Howard, son of Mr. A. A. Howard of Route 1, Silverton, has been assigned to the Fifth Armored "Victory" Division for fourteen weeks of basic training.

Reactivated July 6, 1948, the Fifth Armored "Victory" Division hung up a brilliant war record in six European campaigns during World War II. Before the end of 1949 Camp Chaffee is expected to have 20,000 troops, making it the largest Army Training Center in the Nation.

Before entering the Army, Recruit Howard was employed by his father as a mechanic.

He is now assigned to Btry "D", 95th Armored Field Arty. Bn.

Quitaque School Issues Approved

In the school district election Saturday balloting was light but decisive according to an unofficial report.

The proposal to set the tax rate and assume bonded indebtedness of the enlarged Quitaque Independent School District was passed, 71 votes for and 6 against the proposition.

Consolidation with Quitaque of the Edgin, Kent and Gasoline districts made the election necessary under the Gilmer-Aiken school law.

Coach Cortese is working hard to put in shape the boys for the coming season, and it is the desire of the fans of the community to discuss ways and means of assisting in the development of the boys into a winning team.

Remember, Monday night, September 5, and be on hand for the Quarterback Club meeting. Everybody is cordially invited to attend.

Quarterback Club to Hold Special Meeting September 5

The Quarterback Club has called a special meeting for Monday night, September 5, to be held at the school auditorium. All local fans are specially urged to attend this meeting at which time plans will be worked out for the coming season.

BRISCOE COUNTY NEWS

M. B. Cavanaugh, Owner and Publisher
Published Every Thursday at Silverton, Texas

Subscription (in Briscoe County) per year.....\$2.00
Subscription (outside Briscoe County) per year..... 2.50

Entered as second-class mail matter at the Post Office at Silverton, Texas, under the Act of Congress of March 3, 1879

SCHOOL DAYS ARE HERE AGAIN AND YOUNGSTERS WILL BE ON THEIR WAY

The ringing of school bells will soon start thousands of boys and girls back to school, and many will be leaving home for the first time. This first day at school will long be remembered not only by the pupil but probably by dad and mother as well. There is a lot more to getting Junior or Sister off to school these days than providing them with new shoes and a dinner pail, says Mrs. Eloise Johnson, extension family life specialist of Texas A. and M. College.

A complete physical check up is in order, she says. Special attention should be given to the ears, eyes, teeth and throat. If it hasn't already been done the child should be immunized against diphtheria and vaccinated against smallpox. A healthy child is a better student, will learn faster, and enter into the school activities, says Mrs. Johnson.

The beginner should be able to take care of himself and above all he must be able to get along with other children. He must know something about safety. For there are automobiles to watch, streets and highways to cross and there will be new dangers on the

playground that he may never have experienced at home. Mrs. Johnson suggests that you do a little pre-school teaching at home to familiarize the beginner with the new experiences that go with attendance at school. He should understand what discipline means and that his teacher is his friend. Parents should build up a desire in the child so he'll want to go to school.

All of our farm grains are deficient in vitamin A, except yellow corn. Green pastures, green leafy alfalfa meal and yellow corn will supply hogs with all their vitamin A requirements.

A half ounce of new improved cerasan or a like amount of cerasan M will treat one bushel of planting seed. Use it on wheat or oats. This treatment will aid in preventing losses from stinking smut, seed rots and seedling blights and dockage losses at selling time.

The action of the organic supplied by legumes when plowed under provides more water for following crops by increasing the water-holding capacity of the soil.

Frigidaire at Simpson Chevrolet Company. 1016

Coffee Users Get Headaches When off Brew

NEW YORK.—Swearing off coffee gives some people a headache. One man, drinking six cups a day, gave it up because of a church precept. He began having throbbing headaches that lasted six hours each time.

His doctor traced the trouble to giving up caffeine. Caffeine pills helped the man. Drinking four bottles of a cola drink each day brought him complete relief. Gradually he cut down on the cola until he no longer missed having caffeine daily.

The story is told by Dr. Noah D. Fabricant in a new book, "Headaches. What Causes Them. How to Get Relief." Giving up caffeine is one of the unusual causes sometimes of man's most common complaint, he says.

"It's been estimated that half of all patients who seek medical advice or attention have headache as one of their complaints," he writes.

Most Can Be Helped
"But most headaches can be relieved, and when understood, cured."

Headache isn't a disease of itself, but a sign of disease or emotional trouble, he explains.

As for the main causes of headaches:

Many are associated with eye-strain and can be corrected easily by the proper eyeglasses.

Neuralgias, or pains along the cranial or spinal nerves, can cause severe and sharp headaches. Sometimes pain-relieving drugs help. Or the nerve may be treated with alcohol, or else be severed.

The common cold often brings headaches along with other discomforts. Rest is the best treatment for a cold, Dr. Fabricant says.

Sinus disease is not as common a cause of headache as many people believe, he adds. Rest, use of heat, nose remedies, and pain-relievers like aspirin often help. Surgery may be needed in bad cases.

Migraine Ranks High
Migraine ranks high among headaches that cause the most misery. More women have it than men. Attacks may last from a few hours to several days. People who suffer from migraine are likely to be perfectionists, highly emotional, tense, and overconscientious. There doesn't seem to be any single cause of migraine, he says. Often one reason for the pain is a widening of important arteries in the neck, and there are drugs that will contract the arteries.

"Headache of emotional origin is probably more common than most of us realize," he continues. "The emotional, restless, fidgety individual besieged by worries, anxieties, overwork, and too little sleep is an obvious cause-and-effect victim. In many circumstances, the emotional difficulty is unknown."

The doctor must try to help the person find the reason for his emotional stress.

High blood pressure may bring on headaches. The treatment is to try the things that reduce blood pressure.

New Memorial Honors First Marine Air Force

MIAMI SPRINGS, FLA.—A new memorial commemorating the First Marine aviation force now stands between the lanes of a dual highway near here. The memorial occupies a spot near the original site of the unit, which was organized in 1918.

Erected by the Miami committee of the First Marine Aviation Veterans association, the memorial was dedicated on the "Fighting First's" 30th anniversary in November, 1948, during the Association's annual convention. Cost of the monument was met by voluntary donations by members of the group.

During World War I, the First Marine aviation force was ordered to France to take part in the bombing attacks on the German submarine bases. It was later transferred to the British army and finished out the war as a harassing force, carrying out bombing attacks behind the German lines.

Huge Animated Figure Is Railway Show 'Star'

CHICAGO.—A two-story Paul Bunyan—the largest animated figure ever constructed—was the star of the Chicago and North Western Railway exhibit at the 1949 railroad fair on Chicago's lake front.

The figure, which was able to talk, smile, blink its eyes, and move its head and arms, was built to the proportions of a 35-foot man. Seated in the center of the diorama of the north woods it towered 23 feet from the floor.

The giant came to life with the help of a complex system of pulleys, cables, microphones, sound-recording devices, speakers and electric motors that synchronized his words and gestures as he told tall tales of his exploits.

Frank Koval, assistant to the president of the railway, said the gigantic axman was chosen as the central figure for the exhibit because he "typifies the size and spirit of the region served by the railway."

Masseur, Blind 18 Years, Regains Complete Eyesight

HOPKINTON, MASS.—Totally blind for 18 years, Edward R. Ray, 63, a masseur, has reported his sight has returned.

"It's true," he told newsmen happily. "I'm sitting on top of the world. In fact, it's a whole new world."

Ray said his eyesight came back to him suddenly but he waited 36 hours "to be sure it wasn't a cruel freak."

Ray's optometrist, Dr. Edwin T. Olson of Worcester, called the event "a most astonishing thing."

Dr. Olson said he had examined Ray frequently in the last eight years, adding, "There seemed nothing to be done to help him."

Dr. Olson said he had not examined Ray since he said his sight was restored. He said Ray was "too excited" to be examined yet.

Ray said he was walking through a hall to the kitchen in his home "when suddenly everything became bright."

"I was so startled I stood stock still," he said. His brother-in-law, Joseph Deegan, was visiting at the time. Ray said, and was sitting in kitchen with Mrs. Ray.

"My God, I can see!" I shouted to Deegan," Ray went on. "He looked from me to my wife, and then his brother Charlie walked in. The three of them looked at one another. They must have thought I was crazy."

"I went over to the kitchen table and picked up a newspaper and read out the headlines. They believed me then."

"The thing that impresses me the most," Ray went on, "is the brightness of things. Everything is so colorful and I had almost forgotten what colors looked like."

His eye troubles began when he was 9, Ray said. While playing games, a stick struck him in the right eye, he said, and eventually cost him the sight of that eye.

For nearly 35 years, Ray said he was blind in one eye and the other was gradually weakening. In 1931 he became completely blind, Ray said.

Air-Conditioned Bed Intrigues Purchasers

GRAND RAPIDS, MICH.—An air-conditioned bed got more than a second look from buyers at the semiannual Grand Rapids furniture market.

The bed had a foam rubber mattress with holes punched in it for cooled air to come up around the occupant.

The air-conditioning unit was installed in a 36x76-inch bed frame built to the floor. It had air filters, fans and a container for water or dry ice, and was controlled by a thermostat.

The bed, a product of Walter B. Stiles, had a heating element for cold weather. With the thermometer hovering around 96 degrees in the building, buyers paid little attention to that phase of the bed.

Mystery of 'Lost Colony' Holds Allure for Tourists

MANTEO, N. C.—The mystery of what happened to the "Lost Colony," first English settlement in America, probably will remain unsolved forever.

No detective, however, is needed to find the cause for the tremendous success of the symphonic drama based on the ill-fated colony established by Sir Walter Raleigh here on Roanoke Island in 1587.

The public simply won't let it fold.

As a result, "The Lost Colony," a drama written for a one-season stand back in 1937, began its ninth year of production. Staged in an amphitheatre seating more than 3,000 persons on the historic site of Fort Raleigh, three miles north of here, "The Lost Colony" has become a major tourist attraction.

The drama had its premiere on July 4, 1937, to memorialize two events which occurred at Fort Raleigh—the establishment of the first English colony in America and the birth of Virginia Dare, the first English child born in the new world.

Planned as a local, one-season production, the drama had hardly finished its first season before requests to repeat it began flowing in from everywhere. Produced again in 1938, "The Lost Colony" proved itself a solid hit.

Repeated each July and August from 1937 to 1941, the drama was revived in 1946 following a four-year wartime suspension, and was witnessed that year by 52,000 persons.

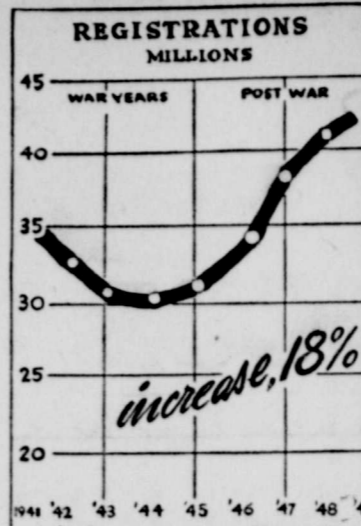
Faulty Memories Catch Two Million Americans

KANSAS CITY, MO.—Faulty memories caught up with almost two million Americans last year, and the Hallmark greeting card company here has proof. It rescued them with that many "belated" birthday greeting cards.

The firm published belated greetings for forgetful wives, husbands, sons, daughters, and friends—for a total of 20 different such occasions. And if sales continue to mount the number of cards devised for overlooked occasions may be increased.

Are there cards for husbands who let their wedding anniversaries slip by unnoticed? But yes!

Automotive Industry Moves Ahead



Automotive production at record levels; more automotive jobs than ever before; motor vehicle travel sets new record! This is the story of progress just revealed in the automotive industry by the Automobile Manufacturers Association.

DETROIT—In the first six months of 1949, the automotive industry produced nearly 3,000,000 new cars, trucks and buses—almost as many units as were turned out in the full year of 1946. A steady increase has been registered since the industry surmounted its war reconversion problems. A 55% gain in production was made in 1947 over 1946, and a 10% gain was registered in 1948 over the preceding year. The half year of 1949 is up 20% from the first six months of 1948.

Industry jobs jumped from 6,700,000 in 1941 to 9,020,000 in 1948. This means one out of every seven job holders in the nation earns his wages in the highway transportation industry. These jobs cover manufacturing, road building, sales and service, trucking and miscellaneous work.

Main street is dotted with more businesses keyed to highway transportation, and over 90% of them are small enterprises, employing less than 20 employees each. Business accounts for 56% of all car trips; social and recreational driving is 16% of the total; shopping 12% and other purposes 16%. Rural travel climbed from 169 billion miles in 1941 to 197 billion in 1948. Urban travel increased from 163 billion miles in 1941 to 203 billion in 1948.

Governmental agencies are collecting an all-time high in automotive dollars. Special taxes alone now exceed \$3 billion annually, with motor trucks accounting for more than a third of the total. One of the largest tax items is the federal excise levy on new motor vehicles. First invoked as a "temporary emergency measure" in 1932, it has been increased twice since, instead of being repealed.

What's Doing Churches

THE METHODIST CHURCH

Rev. Grady Adecock, Pastor

Sunday School 10:00

Morning Service 11:00

Childrens and Young People's

Meeting 7:00

Evening Service 7:30

WCS every other Monday at 3:00

CHURCH OF CHRIST

Arnold Banks, Evangelist

Sunday Bible Study 10:00

Sunday Communion and

Preaching 11:00

Sunday Young People's

Meeting 8:00 P. M.

Monday, Ladies Bible

Study 4:00 P. M.

Wednesday, Prayer

Meeting 8:00 P. M.

FIRST BAPTIST CHURCH

Rev. G. A. Elrod, Pastor

Preaching 8:00

Training Union 7:00

Prayer Meeting Wednesday 8:00

W. M. U. Monday 4:00

Sunbeams Monday 4:00

Junior G. A.'s Monday 3:00

Brotherhood Monday 8:00

PRESBYTERIAN CHURCH

Sunday School 10:00

PREACHING

Each Second Sunday 11:00

Each Fourth Sunday 3:00

Auxiliary every 1st and 3rd Monday in the homes of the members.

Every Baking INSURED

Even Ingredient Costs!

NO WONDER MY POP STOPS AT PHILLIPS 66 STATIONS! THEY SURE TREAT YOU RIGHT 'ROUND HERE!

THAT'S WHAT I LIKE ABOUT PHILLIPS 66 STATIONS—GOOD PRODUCTS AND GOOD SERVICE, TOO!

THAT PHILLIPS 66 GASOLINE CAN BE DEPENDED ON FOR HIGH-LEVEL PERFORMANCE ALL YEAR 'ROUND!

Good gasoline and friendly, willing service go hand in hand at Phillips 66 Stations. Wherever you drive, look for the familiar orange and black Phillips 66 Shield, symbol of a gasoline that's controlled to give you high-level driving performance all year 'round. For easy starting and smooth response in any weather, rely on Phillips 66.

Good gasoline and friendly, willing service go hand in hand at Phillips 66 Stations. Wherever you drive, look for the familiar orange and black Phillips 66 Shield, symbol of a gasoline that's controlled to give you high-level driving performance all year 'round. For easy starting and smooth response in any weather, rely on Phillips 66.

Good gasoline and friendly, willing service go hand in hand at Phillips 66 Stations. Wherever you drive, look for the familiar orange and black Phillips 66 Shield, symbol of a gasoline that's controlled to give you high-level driving performance all year 'round. For easy starting and smooth response in any weather, rely on Phillips 66.

Good gasoline and friendly, willing service go hand in hand at Phillips 66 Stations. Wherever you drive, look for the familiar orange and black Phillips 66 Shield, symbol of a gasoline that's controlled to give you high-level driving performance all year 'round. For easy starting and smooth response in any weather, rely on Phillips 66.

Good gasoline and friendly, willing service go hand in hand at Phillips 66 Stations. Wherever you drive, look for the familiar orange and black Phillips 66 Shield, symbol of a gasoline that's controlled to give you high-level driving performance all year 'round. For easy starting and smooth response in any weather, rely on Phillips 66.

Good gasoline and friendly, willing service go hand in hand at Phillips 66 Stations. Wherever you drive, look for the familiar orange and black Phillips 66 Shield, symbol of a gasoline that's controlled to give you high-level driving performance all year 'round. For easy starting and smooth response in any weather, rely on Phillips 66.

Good gasoline and friendly, willing service go hand in hand at Phillips 66 Stations. Wherever you drive, look for the familiar orange and black Phillips 66 Shield, symbol of a gasoline that's controlled to give you high-level driving performance all year 'round. For easy starting and smooth response in any weather, rely on Phillips 66.

Good gasoline and friendly, willing service go hand in hand at Phillips 66 Stations. Wherever you drive, look for the familiar orange and black Phillips 66 Shield, symbol of a gasoline that's controlled to give you high-level driving performance all year 'round. For easy starting and smooth response in any weather, rely on Phillips 66.

Good gasoline and friendly, willing service go hand in hand at Phillips 66 Stations. Wherever you drive, look for the familiar orange and black Phillips 66 Shield, symbol of a gasoline that's controlled to give you high-level driving performance all year 'round. For easy starting and smooth response in any weather, rely on Phillips 66.

Good gasoline and friendly, willing service go hand in hand at Phillips 66 Stations. Wherever you drive, look for the familiar orange and black Phillips 66 Shield, symbol of a gasoline that's controlled to give you high-level driving performance all year 'round. For easy starting and smooth response in any weather, rely on Phillips 66.

Good gasoline and friendly, willing service go hand in hand at Phillips 66 Stations. Wherever you drive, look for the familiar orange and black Phillips 66 Shield, symbol of a gasoline that's controlled to give you high-level driving performance all year 'round. For easy starting and smooth response in any weather, rely on Phillips 66.

Good gasoline and friendly, willing service go hand in hand at Phillips 66 Stations. Wherever you drive, look for the familiar orange and black Phillips 66 Shield, symbol of a gasoline that's controlled to give you high-level driving performance all year 'round. For easy starting and smooth response in any weather, rely on Phillips 66.

Good gasoline and friendly, willing service go hand in hand at Phillips 66 Stations. Wherever you drive, look for the familiar orange and black Phillips 66 Shield, symbol of a gasoline that's controlled to give you high-level driving performance all year 'round. For easy starting and smooth response in any weather, rely on Phillips 66.

Good gasoline and friendly, willing service go hand in hand at Phillips 66 Stations. Wherever you drive, look for the familiar orange and black Phillips 66 Shield, symbol of a gasoline that's controlled to give you high-level driving performance all year 'round. For easy starting and smooth response in any weather, rely on Phillips 66.

Good gasoline and friendly, willing service go hand in hand at Phillips 66 Stations. Wherever you drive, look for the familiar orange and black Phillips 66 Shield, symbol of a gasoline that's controlled to give you high-level driving performance all year 'round. For easy starting and smooth response in any weather, rely on Phillips 66.

Good gasoline and friendly, willing service go hand in hand at Phillips 66 Stations. Wherever you drive, look for the familiar orange and black Phillips 66 Shield, symbol of a gasoline that's controlled to give you high-level driving performance all year 'round. For easy starting and smooth response in any weather, rely on Phillips 66.

Good gasoline and friendly, willing service go hand in hand at Phillips 66 Stations. Wherever you drive, look for the familiar orange and black Phillips 66 Shield, symbol of a gasoline that's controlled to give you high-level driving performance all year 'round. For easy starting and smooth response in any weather, rely on Phillips 66.

Good gasoline and friendly, willing service go hand in hand at Phillips 66 Stations. Wherever you drive, look for the familiar orange and black Phillips 66 Shield, symbol of a gasoline that's controlled to give you high-level driving performance all year 'round. For easy starting and smooth response in any weather, rely on Phillips 66.

Good gasoline and friendly, willing service go hand in hand at Phillips 66 Stations. Wherever you drive, look for the familiar orange and black Phillips 66 Shield, symbol of a gasoline that's controlled to give you high-level driving performance all year 'round. For easy starting and smooth response in any weather, rely on Phillips 66.

Good gasoline and friendly, willing service go hand in hand at Phillips 66 Stations. Wherever you drive, look for the familiar orange and black Phillips 66 Shield, symbol of a gasoline that's controlled to give you high-level driving performance all year 'round. For easy starting and smooth response in any weather, rely on Phillips 66.

Good gasoline and friendly, willing service go hand in hand at Phillips 66 Stations. Wherever you drive, look for the familiar orange and black Phillips 66 Shield, symbol of a gasoline that's controlled to give you high-level driving performance all year 'round. For easy starting and smooth response in any weather, rely on Phillips 66.

Good gasoline and friendly, willing service go hand in hand at Phillips 66 Stations. Wherever you drive, look for the familiar orange and black Phillips 66 Shield, symbol of a gasoline that's controlled to give you high-level driving performance all year 'round. For easy starting and smooth response in any weather, rely on Phillips 66.

Good gasoline and friendly, willing service go hand in hand at Phillips 66 Stations. Wherever you drive, look for the familiar orange and black Phillips 66 Shield, symbol of a gasoline that's controlled to give you high-level driving performance all year 'round. For easy starting and smooth response in any weather, rely on Phillips 66.

Good gasoline and friendly, willing service go hand in hand at Phillips 66 Stations. Wherever you drive, look for the familiar orange and black Phillips 66 Shield, symbol of a gasoline that's controlled to give you high-level driving performance all year 'round. For easy starting and smooth response in any weather, rely on Phillips 66.

Good gasoline and friendly, willing service go hand in hand at Phillips 66 Stations. Wherever you drive, look for the familiar orange and black Phillips 66 Shield, symbol of a gasoline that's controlled to give you high-level driving performance all year 'round. For easy starting and smooth response in any weather, rely on Phillips 66.

Good gasoline and friendly, willing service go hand in hand at Phillips 66 Stations. Wherever you drive, look for the familiar orange and black Phillips 66 Shield, symbol of a gasoline that's controlled to give you high-level driving performance all year 'round. For easy starting and smooth response in any weather, rely on Phillips 66.

PALACE.. THEATRE

SILVERTON, TEXAS

'The place to go for good entertainment'

SATURDAY, SEPTEMBER 3
GRAND CANYON

With Richard Arlen and
Mary Beth Hughes

SUNDAY AND MONDAY,
September 4, 5
IT HAPPENS EVERY SPRING

With Ray Milland, Jean Peters and
Paul Douglas

TUESDAY AND WEDNESDAY,
September 6, 7
HIDEOUT

Lloyd Bridges and Adrian Booth in

PLUS SECOND FEATURE
Monte Hale and Paul Hurst in
LAW OF THE GOLDEN WEST

THURSDAY AND FRIDAY
September 8, 9
STREETS OF LAREDO

With MacDonald Cary, William Holden
and William Bendix
In Color

COLCHICUM

... The Wonder Bulb

6 for \$2

Simply place these bulbs on bare tabletop, piano, or window sill—then enjoy the astonishment of your friends.

GUARANTEED to flower without soil, water or care. Complete story in each carton. Excellent gift for flower lovers, children, club-me, and neighbors.

TOP QUALITY BULBS for only \$2 each. Imported from Holland—SUPPLY LIMITED. Send \$2 today. Satisfaction Guaranteed. Order entails you as Club Member, without obligation, in the future.

Bull of the Month Club

125 Madison, Dept. 307 - Chicago 3, Ill.

A Good Place To Stop Wherever You Go!

Phillips 66

FILL 'ER UP WITH PHILLIPS 66 GEORGE... I'VE GOT LOTS OF MILES AHEAD OF ME TODAY!

NO WONDER MY POP STOPS AT PHILLIPS 66 STATIONS! THEY SURE TREAT YOU RIGHT 'ROUND HERE!

THAT'S WHAT I LIKE ABOUT PHILLIPS 66 STATIONS—GOOD PRODUCTS AND GOOD SERVICE, TOO!

THAT PHILLIPS 66 GASOLINE CAN BE DEPENDED ON FOR HIGH-LEVEL PERFORMANCE ALL YEAR 'ROUND!

Good gasoline and friendly, willing service go hand in hand at Phillips 66 Stations. Wherever you drive, look for the familiar orange and black Phillips 66 Shield, symbol of a gasoline that's controlled to give you high-level driving performance all year 'round. For easy starting and smooth response in any weather, rely on Phillips 66.

PHILLIPS 66 GASOLINE

We Are Always At Your Service

FARMERS
STATION

ALVIN REDIN, MANAGER

Wholesale Distributors
H. O. WOOTEN GROCER CO.
Memphis, Texas

Priest 'Unusu Of Bus

LIVE LEVEL Roman Co pressed bel penings at being on Green "m of his gun The R parish pri could't s only that i Father come as "not be ec ligious."

The prie at the hon wrote brie he asked and Mrs. neighbors. eral occa sial.

The prie were writt room after had been i bed and th sages was the room v and pencil.

The "sp began a knocking occurred early in J stopped. reported. of nine o Father wrote the Mother of whether it in bodily Yes."

The prie asked for the letter paper.

The per the floor a priest sal might be by were aske Father say wheth comment rowste, matter. I written re to the bis ment on t

Woman By Usin CHICCA an mar candy to man wi Two Charles short ch candy s before I Sander weighs ger, Mr 32, who struggle then rat a holdu fled aff she suff The n San An he told Texas a candy s

Azizia, I Holds H WASHI live wher in Azizia That's Libia, a Tripoli, v ture evel condition 1922. On soared t geograp If you search o United S in southi ficial rebea bureau s Even his up to li the low-l For tl how low the place village c eters th February, ogized These champio ture ei plenty o mometer Along gulf in t unofficial 180 degr boiling s

Fire De To Cool HAGE departm off 6,000 As th degrees, Martin's and diet Martin of birds officiala The fir afternoon of wate survivon

Priest Witnesses 'Unusual' Deeds Of Busy 'Spirit'

LIVELY GROVE, ILL.—A Roman Catholic priest has expressed belief that mysterious happenings at a farm near here centering on 11-year-old Jerome Greten "might have been the work of his guardian angel."

The Rev. Edward Dahmus, parish priest at near-by St. Libory, said in reply to a question, "I couldn't say that it was a miracle, only that it was very unusual."

Father Dahmus described Jerome as "a normal boy, who would not be considered especially religious."

The priest made an investigation at the home and reported a spirit wrote brief answers to questions he asked in the presence of Mr. and Mrs. Tony Greten and several neighbors. This happened on several occasions, Father Dahmus said.

The priest said the messages were written on paper in Jerome's room after the paper and a pencil had been placed between the boy's bed and the wall. None of the messages was written while persons in the room were looking at the paper and pencil, he added.

The "spirit manifestations" first began the night of May 1 with a knocking on Jerome's bed. They occurred almost every night until early in June, when they suddenly stopped, members of the family reported. The Gretens are parents of nine other children.

Father Dahmus said the spirit wrote that it loved "Mary, the Mother of God," and when asked whether it had ever been on earth in bodily form, answered "X—Yes."

The priest added that when he asked for the name of the spirit, the letter "X" appeared on the paper.

The pencil was thrown across the floor on several occasions, the priest said, when questions that might be considered improper were asked.

Father Dahmus, 70, declined to say whether he has received any comment from Bishop Albert Zurewste, Belleville, Ill., on the matter. The priest submitted a written report on his investigation to the bishop, who made no statement on the matter.

Woman Defeats Burglar By Using Butcher Knife

CHICAGO.—A five-foot woman manager of a downtown candy shop used a butcher knife to fight off a husky holdup man wielding a penknife.

Two policemen captured Charles Sanders, 23, after a short chase from the Dutch Mill candy shop. He had taken \$14 before he fled.

Sanders is six feet tall and weighs 210 pounds. The manager, Mrs. Elizabeth Bergstrand, 32, who weighs 100 pounds, struggled with Sanders briefly, then ran to the street, shouting a holdup was in progress. He fled after her. In their scuffle she suffered a small finger cut.

The man gave his address as San Antonio, Tex. Police said he told them he came here from Texas and had robbed another candy store of \$15.

Azizia, Near Tripoli, Holds High Heat Mark

WASHINGTON.—You think you live where it's hot? You should live in Azizia!

That's a town in northwestern Libya, about 25 miles south of Tripoli, where the highest temperature ever recorded under standard conditions was taken September 13, 1922. On that day the thermometer soared to 136.4 degrees, the national geographic society reported.

If you prefer to confine your research on heat extremes to the United States, visit Death Valley in southeastern California. An official reading of 134 degrees has been taken there at the weather bureau station on the valley's edge. Even higher temperatures, ranging up to 150 degrees, may occur in the low-lying interior.

For those interested in seeing how low the temperature can drop the place is the northern Siberia village of Verkhoyansk. Thermometers there hit 90 below zero in February, 1892—a reading still recognized as the world's record.

These are the meteorological champions—the official temperature extremes—but there are plenty of other claimants to thermometer fame.

Along the coast of the Persian gulf in southern Iran, for instance, unofficial temperatures of 150 to 180 degrees have been taken in the boiling sun.

Fire Department Called To Cool off Turkeys

HAGERSTOWN, MD.—The fire department was called out to cool off 6,000 turkeys.

As the mercury climbed to 100 degrees, 500 gobblers on Adam Martin's near-by farm keeled over and died.

Martin, already out \$2,500 worth of birds, put in a hurry call to city officials. They sent out a fire truck. The firemen spent the rest of the afternoon shooting cooling streams of water into the air and over the survivors.

Important to Watch Diet Between Forty and Sixty

Mr. and Mrs. America, who like to eat what they want when they please, have begun to see the handwriting on the wall. The warning has been posted by medical authorities, and it reads something like this: "If you want to live to a ripe old age, watch your diet as you turn 40. People who eat whatever suits their fancy in middle age are shortening their lives."

This is not idle talk. Geriatrics—that branch of medicine which studies the special problems of older persons—has collected plenty of evidence to convince skeptics that diet is most important to good health in the sunset of life.

It's ironic to think that Americans aren't living as long as they might—ironic because today's adults already can anticipate living a full decade longer than the folks back in 1930. Thanks to medical science, average life expectancy in the U.S. is now in the neighborhood of 70 years. About 50 million Americans are 40 years old and up. More than 9 million are 65 and over, and in another thirty years there should easily be 22 million in this group. On the surface, all would appear to be rosy.

Yet doctors have come around to the view that the present average life span isn't as long as it should be. Given no complicating factors, they say, the average healthy American should live into his 80's in full good health—if he would consult his doctor during the critical age period between 40 and 60 and watch his diet! Doctors think, too, that there are entirely too many of our older citizens suffering from the so-called diseases of old age—primarily because they didn't pay attention to their diets as they approached middle age.

Zoologists Seek to Solve Lobster Housing Shortage

The Southern California spiny lobster has a housing problem, believe it or not. And this may mean a shortage of the lobsters themselves with a resultant big loss to the California fishing industry.

The zoology department on the Los Angeles campus of the University of California, under a grant-in-aid from the California fish and game commission, is looking into the situation.

Robert Lindbergh, a U. C. L. A. graduate student who has made a special study of lobsters, will be in charge of the investigation under the general supervision of Dr. Theodore Bullock, associate professor of zoology.

It may be that thousands of feet of hollow tile or some sort of prefabricated concrete housing will be the answer to the problem, furnishing the lobster the protection he needs from hungry fish.

This problem is only one phase of the research, which will be actually a study of the fundamental biology of the lobster. Breeding habits, migratory tendencies, and mortality rate for egg to maturity are a few of the problems with which the study will be concerned.

Radioactivity Explained

Radioactivity is the process by which a chemical element spontaneously ejects from its atomic nuclei alpha particles (which are nuclei of helium atoms) or beta particles (which are electrons) and changes to another element, frequently with emission of radiation similar to very high energy X-rays, explain G. E. research scientists.

There are three radioactive series known in nature, of which the best known is the one that starts with uranium. In 14 steps this changes to lead, radium being the seventh stage. Some of these steps take an average time of thousands of years and some but a fraction of a second. In addition to elements that are naturally radioactive, others may be made so by bombarding them with particles or high energy from the cyclotron and other "atom smashers."

Herbs for Cooking

Herbs for cooking are of three different kinds—pungent, herbs for accent, and herbs for blends. Here are some suggestions for using herbs with meat. With beef use sweet marjoram, dill, thyme, chervil or parsley. For pork you may try marjoram, caraway or sage. Lamb calls for the same herbs as beef, plus garlic, and veal the same, plus basil. Poultry seasoning may be a combination of basil, lovage, marjoram, parsley, rosemary, summer savory, sage and thyme. Dill, basil, tarragon and thyme are tasty with fish while with eggs you may try basil, marjoram, rosemary, thyme, tarragon, chervil, chives, parsley or savory.

"Settlement House"

A rich little girl's sympathy for the poor and her desire to "have a big house in the midst of many poor houses" resulted in one of the most outstanding settlement houses of all times. The World Book encyclopedia says that Jane Addams realized her ambition when she moved into the large Hull mansion on Chicago's near west side. Jane's "big house" became a meeting place for her neighbors who lived in the surrounding tumble-down tenements.

new fabric story makes a new dress, newer



*mid-sizes
The new fashion idea
for today's smart half-size figure*



It's a study in contrasts and a look of luxury, this jacketed dress! Peg Palmer offers the news-worthy whisper of rayon ribbon plisse against the hush of soft rayon tissue faille in a dress to wear on an important evening . . . or with jacket, for daytime. Taupe, black or brown. Mid-14 to mid-20.

*AS SEEN IN VOGUE



*Sanforized: Residual shrinkage less than 1%



Minx Modes

Junior dresses in a fashion-right collection for Fall . . . to fit your junior budget as becomingly as they fit your junior figures. Okayed by the famous Minx Modes Junior Board of Review . . . here exclusively. Come see . . . try them on.

also L. W. J.* sizes 9 to 15 in many of the same smart styles for long-waisted juniors . . . a revolutionary new Minx Modes idea for you who love junior styles but need extra length at waistline, sleeves and skirt. 00.00

*Reg. U. S. Pat. Off.

Style Shoppe

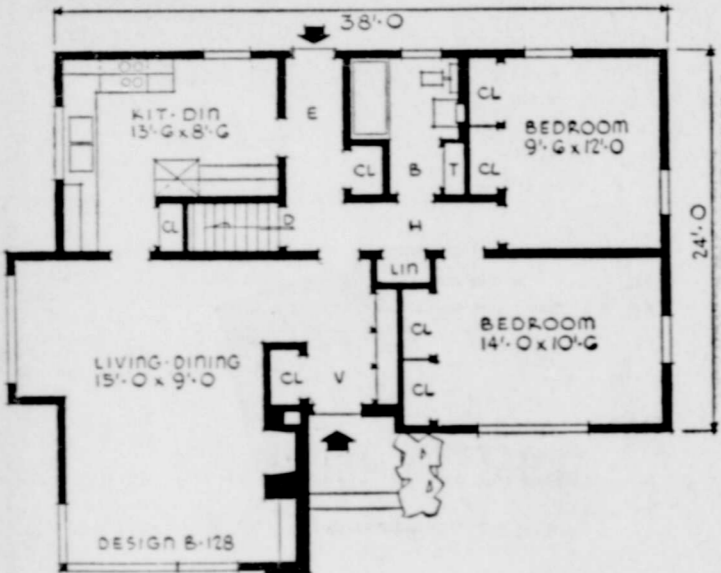
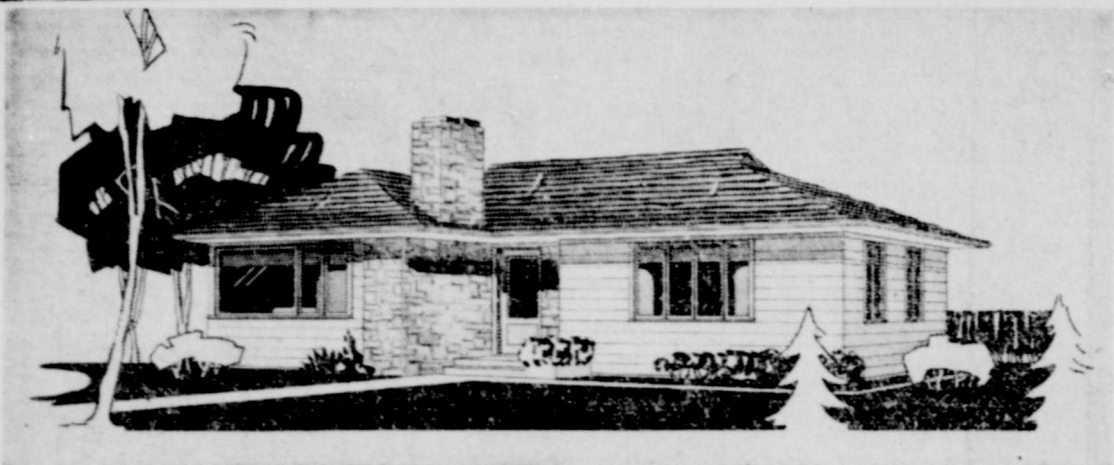
SOUTH SIDE SQUARE ——— FLOYDADA, TEXAS

During the First Week of School With the First Purchase of 25c or More of School Snpplies

Silverton Pharmacy

WE WILL GIVE A FREE DRINK! SEE US FOR YOUR SCHOOL SUPPLIES.

A HOME TO LIVE IN



Design B-128. Excellent circulation between rooms and well placed closets are outstanding features of this plan. Each bedroom has two wardrobe closets. There is a large closet for each entrance, and bedroom hall closet, linen cabinet in the bathroom and a china closet in the kitchen over the stairs. A storage wall, 7 feet long and 18 feet deep, just inside the front entrance, provides storage for card tables, games and miscellaneous equipment. A projection of three feet pro-

vides a dining alcove in the living room, adjoining the kitchen. The other end of the living room has large corner windows and a fireplace with book shelves. The kitchen has space for informal dancing. The double compartment sink is under the windows, the stove on the rear wall and the refrigerator in the cupboard on the inside wall. The plans call for frame construction, using wide siding, except for the living room extension and entrance which are faced with

either stone or roman brick. The dimensions of the main house are 38 feet by 24 feet. The floor area is 1080 square feet and the cubage is 29,862 including full basement. For further information about type of construction used and plan features address the Home Building editor of this newspaper or see your local lumberman.

L. T. D. CLUB MET WITH MRS. LANHAM

The L. T. D. Club met with Mrs. Johnnie Lanham August 23. Guess what's were given to Mrs. Coleman Garrison and Mrs. Lem Weaver.

Refreshments were served to the following: Mesdames L. D. Griffin, Lem Weaver, Coleman Garrison, Ware Fogerson; guest Mrs. E. E. Minter.

The next meeting will be with Mrs. Dee McWilliams, September 6.

Mrs. Cliff Hodges and daughters, of Corpus Christi, Texas recently visited in the home of Mr. and Mrs. J. T. Hodges. Mrs. Hodges and daughters were enroute to Casper, Wyoming, and Yellowstone National Park on a two weeks trip.

MRS. TALLEY WILL TEACH PRIVATE LESSONS

Mrs. W. F. Talley has announced that she will teach private lessons in Speech, tap dancing and personality singing. Classes will start September 12. Mrs. Talley urges all wishing to take from her please register by September 10. 35-1tp

MISS DOROTHY GARVIN TO ENROLL IN BEAUTY SCHOOL

Miss Dorothy Garvin, daughter of Mr. and Mrs. Dee Garvin will leave Friday for Amarillo where she will enroll in San Jacinto Beauty School. School will open September 6. Mrs. Garvin and Jeanie will accompany Dorothy to Amarillo Friday and return in the afternoon.

PERSONALS

Mrs. Len Perkins and Miss Gerie Mae Perkins visited in Kirklund over the week end and attended the Hugh Hassell reunion. They also visited Mr. and Mrs. Horace Wilcox in Childress while away.

Mr. and Mrs. C. B. Young visited Sunday in Bridle Bit with Mr. and Mrs. R. E. Young.

Mr. and Mrs. Arnold Turner and children spent Tuesday and Wednesday at Carlsbad Caverns.

Mr. and Mrs. Billy Joe Womack and daughter, of Amherst, visited his parents, Mr. and Mrs. Bruce Womack over the week end.

Rev. and Mrs. G. A. Elrod spent several days last week in Abilene with their daughter.

Mr. and Mrs. W. J. Hyatt visited Friday in Amarillo with their son, W. J. Hyatt, Jr., who is a patient in the Veterans Hospital.

Mrs. Idella Hyatt of Tulia, spent the week end with relatives in Silverton.

Claud Crossing Community Club Met August 26

Mrs. Gabe Garrison entertained the ladies of the Claud Crossing Community Club in her home Friday morning, August 26, with a nine o'clock coffee.

A centerpiece of dahlias ornamented the beautiful table set with pottery for twelve. The livingroom was decorated with asters, where the ladies went for their exchange of Sunshine gifts.

Attending were Mesdames Kemp Thompson, Obra Watson, Albert Mallow, Arnold Turner, Gordon Alexander, Bud Posey, Don Garrison, Lee D. Bomar, Clyde Lightsey and Edd Thomas.

The next meeting will be with Mrs. Clyde Lightsey Thursday, September 8.

Five Games Scheduled for Texas Tech Freshmen

Five games are on the 1949 football schedule for the Texas Tech freshmen this fall under guidance of Allie White, new coach.

The night of Friday, September 30, the West Texas State "fish" will invade Jones Stadium for a night game. The night of Saturday, October 22, the junior Red Raiders will go to Roswell, New Mexico, for a game with New Mexico Military academy. The afternoon of Friday, October 28, Red Coats, Texas Tech letterman, will bring his Odessa Junior college team to Lubbock for an afternoon encounter.

The Tech freshmen are to travel to Abilene for the annual encounter with the Hardin-Simmons first-year team the afternoon of Friday, November 11, while the season will close on Saturday, November 19, when a return engagement with the West Texas State "fish" is staged in Canyon. Coach White has asked his freshmen candidates to report Monday, September 12, for the first workout. He expects one of the best groups of first-year men in Tech history to report. Numerous stars of leading Texas high schools last fall have indicated they will attend Tech.

Mr. and Mrs. Jim Baird and family visited in the home of Mr. and Mrs. Len Perkins Sunday night.

Mrs. Lee D. Bomar, Patsey and Joe Lee, and James Ross Alexander spent Wednesday in Plainview.

.62 of An Inch of Rain Fell Here Friday Night

Silverton received .62 of an inch of rain Friday night, and most of the county received from a light shower to as much as .80 of an inch. Row crops were needing moisture and the wheat farmers also needed rain in order to prepare their land to plant. Some are plowing their land this week and others will start in a few days.

.19 of an inch fell in Silverton Wednesday morning.

Frigidaire at Simpson Chevrolet Company. 104c

TRY A NEWS WANT AD

Frigidaire at Simpson Chevrolet Company. 104c

For HIGH or LOW Blood Pressure

Hundreds have found Relief with Boaz Tablets. If not satisfied after taking one full bottle...your money refunded.

SILVERTON PHARMACY

KIMBLE OPTOMETRIC CLINIC

Dr. J. W. Kimble
Dr. O. R. McIntosh
Optometrists
Floryada, Texas

DON'T PASS UP FOOD VALUES—MAKE OUR STORE YOUR FOOD BUYING CENTER

It is always our intention to give you the best foods at the lowest legitimate values possible.

We carry nationally advertised brands, brands that have to be good!

IN OUR MARKET YOU WILL FIND CHOICE MEATS AND OTHER MARKET PRODUCTS

We are grateful for the many pleasant customers we have made since entering business. If you have never shopped at our store for foods, we want you to try us.

Y & M FOOD MARKET

C. B. ESTELLE C. G.

ALL LINES OF PROPERTY INSURANCE FOR CITY — FARM — RANCH PROPERTIES

C. E. ANDERSON

BASEMENT COURT HOUSE — SILVERTON, TEXAS

MOURNING DOVE — WHITE-WINGED DOVE OPEN SEASONS 1949

MOURNING DOVES
OPEN SEASON -- NORTH ZONE: Sept. 1 to Oct. 15, both days inclusive. Shooting hours, one-half hour before sunrise to sunset.

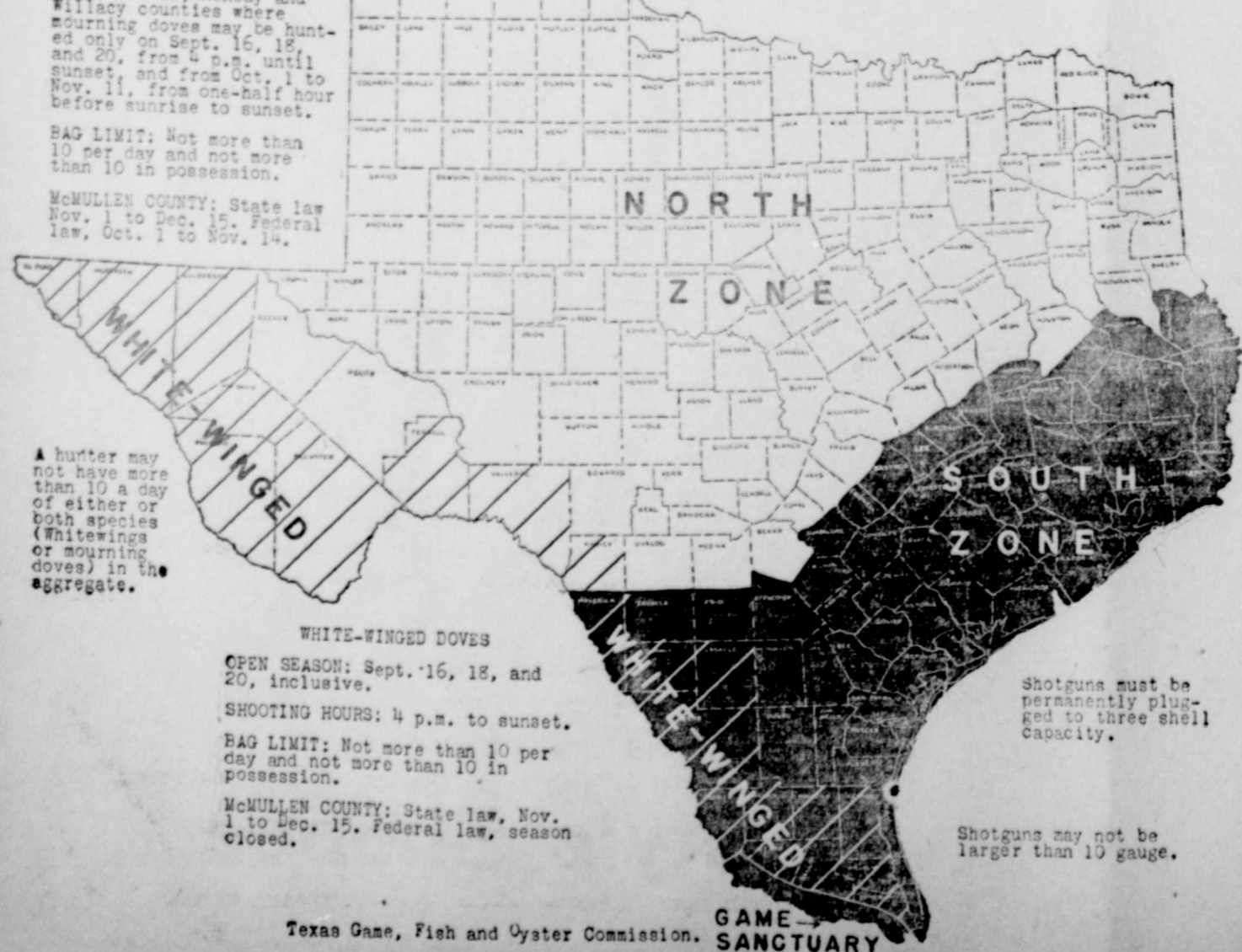
SOUTH ZONE: Oct. 1 to Nov. 14, both days inclusive, except in Cameron, Hidalgo, Starr, Zapata, Webb, Maverick, Dimmit, LaSalle, Jim Hogg, Brooks, Kenedy and Willacy counties where mourning doves may be hunted only on Sept. 15, 16, 17 and 20, from 4 p.m. until sunset, and from Oct. 1 to Nov. 11, from one-half hour before sunrise to sunset.

BAG LIMIT: Not more than 10 per day and not more than 10 in possession.

McMULLEN COUNTY: State law Nov. 1 to Dec. 15. Federal law, Oct. 1 to Nov. 14.

Unlawful to take white-wings or Chachalaca South of U. S. Highway 25, formerly State Highway 4, in southern tip of Texas marked on the map as "GAME SANCTUARY."

No hunting permitted in game refuges and game preserves.



▲ hunter may not have more than 10 a day of either or both species (Whitewings or mourning doves) in the aggregate.

WHITE-WINGED DOVES
OPEN SEASON: Sept. 16, 18, and 20, inclusive.
SHOOTING HOURS: 4 p.m. to sunset.
BAG LIMIT: Not more than 10 per day and not more than 10 in possession.

McMULLEN COUNTY: State law, Nov. 1 to Dec. 15. Federal law, season closed.

Shotguns must be permanently plugged to three shell capacity.

Shotguns may not be larger than 10 gauge.

Texas Game, Fish and Oyster Commission. GAME SANCTUARY



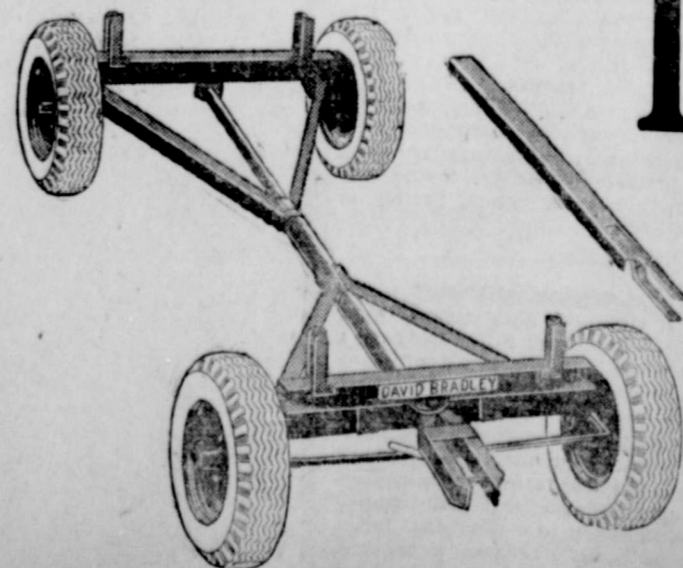
Steel Frame Trailer

EASY HAULING, 4-TON CAPACITY WITHOUT TIRES

ALL NEW

126.95

\$13.00 DOWN
\$10.00 MONTH



Adjustable radius rod-type gives short turning radius with stable load support at all 4 corners. Wheel base extends from 7 to 11 feet. Takes up to a 16 foot box. Heavier end loads made possible as box steel axles are built up to 3x5 in. in front and 3x6 in. in rear. Demountable drop center rim center rim steel disc wheels.

Get Your Supplies Here

- SWINGLINE TOT STAPLERS
- PARCEL POST LABELS
- SCOTCH TAPE
- INK PADS
- STAPLES
- RUBBER STAMP INK
- CARBON PAPER
- ANNOUNCEMENT CARDS
- WEDDING ANNOUNCEMENTS
- BOX STATIONERY
- VISITING CARDS

Briscoe County News

Past Unfolds Gloriously In Gigantic Grand Canyon

Probably the only place in the world where the earth's past visibly unfolds itself, chapter by chapter, is within the craggy recesses of Arizona's gigantic Grand Canyon.

There, the seemingly impossible experience of seeing a billion and a half years of this sphere's changing geology becomes a reality—and, what is more, it is possible in two hours time. All it takes is ordinary powers of observation and supreme faith in the sure-footedness of a mule.

The journey into history, through a space of time incomprehensible to the human mind, starts on a narrow trail at the north rim of the canyon, located in north central Arizona and accessible only in summer. From there it goes down through five geologic eras of the earth's strata, each representing millions of years.

Down into the present, youthful Cenozoic era to the succeeding Mesozoic, Paleozoic, Algonkian and, oldest of all, the Archean, the visitor and his mule shatter speed records beyond belief.

In this awesome operation they are actually moving at a rate of millions of years per hour. The Algonkian, or second oldest era, is passed at the rate of a billion years in a few seconds, being the thinnest of the geologic layers of rock.

Below, on the floor of the Grand Canyon, where men and mules spend the night at Phantom Ranch, is the oldest terrain in the world; part of the vistas which came into being beyond the ages when the earth was a lonely sphere, newly created and without habitation.

New Things Brought Forth By Chemical Engineering

Chemical engineers check into propositions for making new things like nylon, molasses from orange waste, or better soaps. They study all the angles, and if the proposition looks good, they design a process.

Sometimes they have to try out part or all of the process on a small "pilot" scale. When the process is satisfactory, they design a plant, supervise its construction, and when it is finished they start it up.

Starting up is usually a tough job. It may take as long as several weeks to get everything working right. When the plant is running smoothly, the engineer turns it over to the regular operations and then starts over with more studies to make the plant turn out better and cheaper products.

Since chemical engineers are familiar with basic reactions, plant design, manufacturing operations and economics, many hold executive positions in companies in the process industry.

All kinds of manufacturers use chemical engineering services. Wherever materials are heated, cooled, boiled, condensed, mixed, separated, dried, treated or reacted with other chemicals or materials, or where corrosion is a problem, chemical engineering skills are used.

About Bed Sheets

Miss Florence King, textiles and clothing specialist, University of Illinois college of agriculture, says it is poor economy to have too few sheets and overwork them. She recommends at least four sheets per bed if you can possibly stretch your budget to cover that number. Six per bed will allow for even better rotation and increase the life span of the sheets. When buying new sheets, make sure they are long enough. They usually come in two lengths—99 and 108 inches. Sheets are measured before they are hemmed, so allow for this difference when buying. Miss King recommends the longer sheets because the extra length will allow for tucking in and take care of possible shrinkage.

Pig-Pen Comfort Pays Off

Housing the spring pig crop in a suite at the Ritz might sound like a comic cartoonist's fantasy—but with some practical modifications the idea makes good sense. "Comfortable pigs turn feed and water into cash for the owner, because the pig is a comfort-loving animal," is the way the Journal of the American Veterinary Medical association sums up the swine-housing situation. If quarters are too hot or too cold, too damp or too dry, pigs will not utilize feed to the best advantage. Crowding and lack of ventilation also slow down the rate of gain as well as increase the risks of disease.

Prefer Home-Made Dresses

More than 75 per cent of the dresses for girls in three-to-six year group were made by their mothers, in a Kansas clothing study made by Miss Naomi Johnson, extension clothing specialist at Kansas state college. In the study Miss Johnson interviewed 100 home demonstration unit members, who had daughters in this age group, on their likes and dislikes. The children in these families were not using hand-me-downs, and only three members out of the 100 reported making over garments for their children. Dresses were not being given as gifts to these families for their children.

Sunday Will Be Big Day of 5th Annual Boys Ranch Rodeo

This coming Sunday is the big day of the Fifth Annual Boys Ranch Rodeo. Roy Rogers, and his wife, Dale Evans will be the feature attraction of the show. They are making this trip a family affair, and are bringing their two daughters, Cheryl, 8, and Linda Lou, 6. Roy's manager, Art Rush will also accompany them.

The boys from the Ranch have all their Rodeo riding and roping polished up, under the direction of Leonard Stroud, former Worlds Champion trick roper and trick rider.

The Boys Ranch Rodeo will be held at the Tri-State Fair Grounds in Amarillo, and there will be two performances, 2:00 p. m. and 8 o'clock p. m.

In 1946 Texas ranked first in the number of horses and mules on farms and third in the number of horses and mules on farms and third in the number of mules on farms. Today about 65 per cent of Texas' farms do not have a team on the place, and only about 200,000 horses were used in crop production in 1948.

Frigidaire at Simpson Chevrolet Company. 101c

TRY A NEWS WANT AD.

To Buy, Sell, Trade or Rent - Try Want Ad

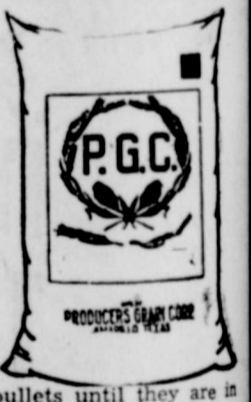
PLAINVIEW SANITARIUM AND CLINIC

801-813 West Eighth Street, Plainview, Texas

- | | |
|------------------------------------------------------|-----------------------------------------------------------|
| E. O. Nichols, M. D. Surgery and Consultation | Hugh B. O'Neil, M. D. Internal Medicine, Cardiology |
| J. H. Hansen, M. D. Radiology | C. C. Jackson, M. D. Eye, Ear, Nose, Throat |
| E. O. Nichols, Jr., M. D. Surgery and Gynecology | Edward T. Driscoll, M. D. Orthopedics |
| Randall E. Cooper, M. D. Neurology and Psychiatry | R. Schoonover, M. D. Urology |
| E. G. McCarthy, M. D. Obstetrics and Gynecology | Ralph V. Williams, B. S. Registered Physical Therapist |
| Warren W. Eddy, B. S. Psychology | Lenore Krussell, B. S. Registered Physical Therapist |
| Lee B. Soucy, M. T. (ASCP) Chief of Laboratory | Henry C. Kirkegard, R. T. Chief X-Ray Technician |
| Susie C. Riggs, R. N. Supt. of Nurses | H. M. Simmons Business Manager |

W. W. Kirk
Hospital Administrator
X-RAY AND RADIUM—PATHOLOGICAL LABORATORY
DEPARTMENT OF PHYSICAL THERAPY

P. G. C. GROWING MASH WILL PRODUCE BIG STRONG PULLETS



It's important to properly feed growing pullets for future egg profits—all essential vitamins and other important food elements can be supplied in P. G. C. GROWING MASH. Keep P.G.C. GROWING MASH before your growing pullets until they are in production.

For complete markets reports tune in on Radio Station KGNC, 7:15 on your dial, at 1:45 P. M., Mondays, Wednesdays, Fridays and Saturdays.

See Your P. G. C. Dealer!

Silverton Co-Op

Krueger, Hutchison and Overton Clinic LUBBOCK, TEXAS

- | | |
|-----------------------------------------------------------------------------------------------------------------------------------------------------------------------|-------------------------------------------------------------------------------------------------------------------------------------------------------------------------------------------------------------------------------------------------------------------------------------------------------------------------------------------------------------------------|
| GENERAL SURGERY J. T. Krueger, M. D. J. H. Stiles, M. D. (Ortho.) H. E. Mast, M. D. A. W. Bronwell, M. D. A. Lee Hewitt, M. D. (Limited to Urology) | INTERNAL MEDICINE W. H. Gordon, M. D. (Limited to Cardiology) R. H. McCarty, M. D. Brandon Hull, M. D. INFANTS AND CHILDREN M. C. Overton, M. D. Arthur Jenkins, M. D. GENERAL MEDICINE G. S. Smith, M. D. (Allergy) R. K. O'Loughlin, M. D. X-RAY A. G. Barsh, M. D. PATHOLOGY AND MICROBIOLOGY M. Gerundo, M. D., Ph. D. |
|-----------------------------------------------------------------------------------------------------------------------------------------------------------------------|-------------------------------------------------------------------------------------------------------------------------------------------------------------------------------------------------------------------------------------------------------------------------------------------------------------------------------------------------------------------------|
- O. R. Hand, M. D.
Frank W. Hudgins, M. D. (Gyn.)
- BUSINESS MANAGER—J. H. FELTON

AUTOMOBILE AND TRACTOR REPAIR

Auto Lite Spark Plugs, A. C. Fuel Pumps, Delco Batteries, Starters and Generators; Delco Remy and Auto Lite Ignition Parts.
LOCATED ON SOUTH SIDE SQUARE IN BUILDING FORMERLY OCCUPIED BY SIMPSON APPLIANCE CO.
BRUCE WOMACK

How to Be Surveyed First True Sky Atlas

A four-year scientific campaign is making to probe the vast outer reaches of space on an unprecedented scale, and to take the world with the first true Sky Atlas in mankind's history.

This unique undertaking in celestial mapping was announced today by Dr. Gilbert Grosvenor, president of the National Geographic Society, and Dr. Lee A. Hodge, president of California Institute of Technology, on behalf of the institutions which are co-sponsoring the project.

The work will enlist the facilities of the celebrated observatory on Mount Wilson, Calif., and the observatories of some of the nation's most prominent astronomers. These astronomers confidently expect discoveries of major importance to be made in the exhaustive search to map the stellar ghost world of galaxies that exist billions of light years beyond our system.

They hope for clues that finally may lead to answers on questions now baffling and unexplored: How does the entire universe operate? Does the curve somewhere out on the vast stretches of the cosmos? Can a key be found to the secrets of the cosmos, particularly with regard to the corner of it occupied by the little known component which includes the earth?

As known as the National Geographic Society—Palomar Observatory survey, the research project will utilize the space-covering, angle Schmidt photo telescope, the industrious partner of Palomar's 200-inch glass giant.

Spays Not Suited Small Garden; Use Hoe

A substitute has yet been found for the hoe in controlling weeds in backyard garden, says Jack H. H. extension specialist in horticulture at Michigan state college.

Though chemicals have been developed to control weeds in commercial plantings of beets, carrots, onions, peas, asparagus, strawberries, and raspberries, they are not to be used in the small home garden where many varieties of plants grow close together.

Those which kill most weeds in gardens without injury to the carrots, beets and other crops. Salt solutions which may safely be used will destroy most other plants which may be growing in the next row. The excellent lawnicide, 2,4-D, will destroy almost all vegetable crops except corn and damage most ornamentals.

A sharp hoe is still the most effective means of weed control in all plots. Keeping a sharp edge on the tool reduces the effort needed to do a good job. Rose Adams in large gardens, wheelbarrows in which are mounted sweeps do an excellent job and save time and labor.

British Currency

"Bill" in Britain means a bank note. If it's over 10 shillings usually pay part of it with a "bill" to you. Ten shilling bank notes are the commonest though they do have paper money for five pounds (fivers), pounds (tenners) and upwards. "Bob" and "quid" notes (get the idea?) are colorful affairs and watermarked on paper, the former in brown, the latter in blue and pink. And best of all there's the guinea which has no coin or note at all. It exists only in the mind. As salons and doctors specialise their fees in guineas and guinea means one pound plus shilling, or four dollars and fifty cents. Way back of course, it used to be a coin of this denomination which took its name from the source of its gold i.e. Guinea.

Lake Maracaibo

A curious assembly of salt-water fresh-water fishes share Venezuela's great Lake Maracaibo backwash from the backwash of the lake at its northern end with great salt-water rivers pouring into it from the south. Both the river and species have adapted themselves through thousands of generations to life in this mixed environment, according to a report on Venezuelan fishes by Dr. Leonard Schultz, Smithsonian Institution curator of fishes, recently issued by the U. S. national museum. This, together with the nearby Lake of Venezuela, Dr. Schultz says, should be considered one of the country's greatest natural resources.

Bang's Control

In the year 1927, the first Bang's Control herds of cattle were accredited in Kansas under the working supervision of the Department of Pathology. The certificate was renewed each year provided the blood tests showed the absence of the disease. Bang's was among the first states to adopt the rapid of plate test for infection disease having done experimental work determining the accuracy and sensitivity of the test in 1927.

There is no substitute for the superior flavor and delicious goodness of vegetables grown in your own garden.

Soils stay cooler in the summer and warmer in the winter when they are protected by a cover crop.

Frigidaire at Simpson Chevrolet Company. 10tfc

Dr. R.F. McCasland

DENTIST

Heard and Jones Building

Phone 25 Tullia, Texas

Regulations Changed For Organized Reserve Corps

Austin, Texas. — Changes in regulations for Organized Reserve Corps attendance have eased the method in which Reservists can become eligible for armory training pay, Colonel Oscar B. Abbott, Executive of the Texas Military District, announced here today.

The new regulation authorizes pay to be paid on an individual attendance basis for all personnel except personnel assigned to special units. Heretofore 60 per cent of the assigned strength of a unit had to be present for the officers to become eligible for pay. Enlisted Reservists were paid regardless of attendance.

The special units delegated from this new regulation are Class "A" units that have a minimum of

80 per cent full strength officers and 40 per cent full strength enlisted Reservists. Most of the units in Texas are not in this category.

Colonel Abbott said that "This will ease some of the problems of the smaller units in cases where officers have attended 100 per cent and enlisted Reservists attended 20 per cent—causing the officers to miss their pay for the meeting while enlisted Reservists received pay. There will be a control feature established by requiring specific individual attendance standards for Reservists desiring to be assigned or attached to units authorized this pay."

Other changes that came out in the new regulation reduce the number of pay drills of former Class "A" units in meeting their new strength requirements from 48 to 24 pay meetings per year. It also provides a probationary period for officers failing to meet attendance requirements, but permits leaves of absence to deserving Reservists to meet business requirements or for illness or hardship reasons.

Hog cholera can be controlled if swine producers will follow a program of strict sanitation and vaccination on their farms.

Three Texas counties rank high among the leading counties in the United States in Jersey activities. Hopkins was fifth in number of registrations and seventh in the number of new buyers. Harris was fifth in number of transfers and Baxar ninth in number of registrations. Texas led all states in total registrations, transfers, new breeders and total number of cows on Register of Merit test.

Small grain pastures for fall and winter grazing will supply scarce feed items in the winter ration.

The McDonald Observatory of Texas is the second largest in the United States.



On Labor Day

America proudly takes time out to pay tribute to every worker in the land. In observance of this holiday, our bank will not be open on Monday, September 5.

★ ★ ★

First State Bank

SILVERTON, TEXAS

THIS BANK WILL BE CLOSED AT NOON (12:00 O'CLOCK) ON SATURDAYS.

THE BEST PROOF WE HAVE

THAT WE GET PRETTY CLOSE

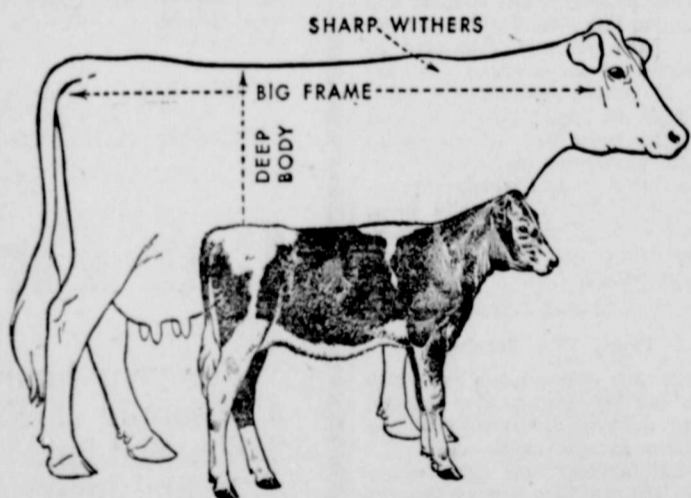
To what's right in the grocery line is that so many of the experienced housewives remain our constant customers. That couldn't happen if we didn't have goods about as they ought to be. No store could have a better recommendation than a steadily growing list of customers.

THEN WHY NOT LET US PLEASE YOU TOO?

NANCE Food Store

HUGH DURENE

SEE YOUR Future Cow AT 4 MONTHS



RAISE BIG CALVES WITH DAIRY QUALITY ON PURINA CALF STARTENA

A big-framed, quality, 4-month-old heifer almost always makes you a real milk cow... that's why it's so important to you to grow a strong, deep-bodied calf, instead of one that is paunchy, and soft with "milk-fat". You'll find that Purina Calf Startena grows good calves: big and loose-hided with strong bones

and rugged frames... calves that are capable of developing into strong-bodied, heavy-milking dairy cows. This year, raise a couple of calves on Calf Startena, and see for yourself the difference it makes in size and dairy quality. You'll save about one-half the cost of milk feeding, too.

✓ SAVES MILK
✓ SAVES MONEY
✓ SAVES TIME

Your Store with the Checkerboard Sign

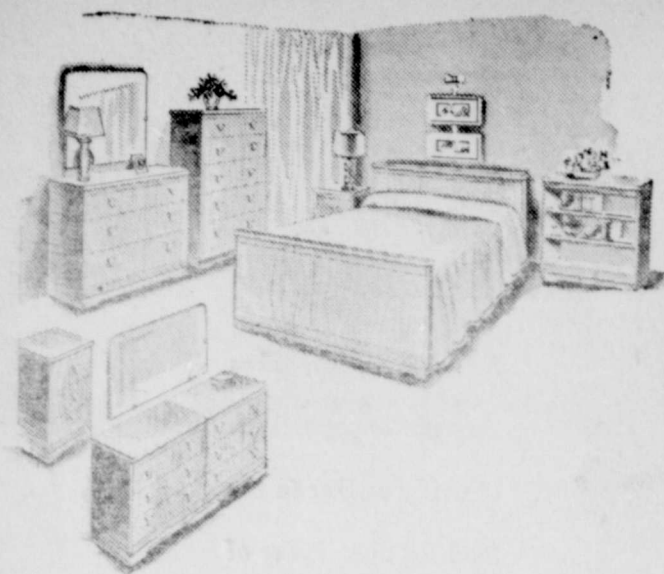
HARVEST-QUEEN GRAIN COMPANY FORMERLY FARMERS GRAIN CO.

West of the Railroad Track, Silvertown, Texas

DO YOU KNOW HOW MANY HOURS OF SERVICE YOUR TRUCKS NEED ANNUALLY?

How many hours of service do your trucks need in a year to do their best for you? Not very many, if your trucks run little and do light work. More, if your trucks do tough jobs and pile up high mileage. Fewer service hours, if your trucks are new. More, if they are old. But no matter what the age of your trucks, and no matter what their hauls, we can tell you just how often they should be inspected and serviced in order to perform at top efficiency. This "custom-made to your needs" service is a real money-saver and trouble-avoider. It pays off big in service economy and operating efficiency. So get in touch with us promptly, and get the exact service prescription for your trucks.

CRASS MOTOR AND IMPLEMENT COMPANY



Special Prices---

TO SEPTEMBER 1

Bedroom Suites, was \$138.50, now reduced to **\$100.00 Cash**
 1 6-piece Bedroom Suite, was \$271.20, now reduced to **\$200.00 Cash**
 1 General Electric Washing Machine, was \$159.95, now **\$125.00 Cash**

We have some new patterns in 12 foot Lenolium and 9 and 12 foot wool rug patterns to pick from. Delivery on these on short notice.

Stodghills Hardware

Phone 84

We Can't Take Time

To tell you about every item we sell, but we will be glad at any time to show the following:

Myers Sucker Rod Type Pressure Pumps,

Hot Point Refrigerators, Ranges and Deep Freeze Boxes.

Plumbing Fixtures and Supplies. Doors of all kinds.

Ideal Weather Stripped Window Units.

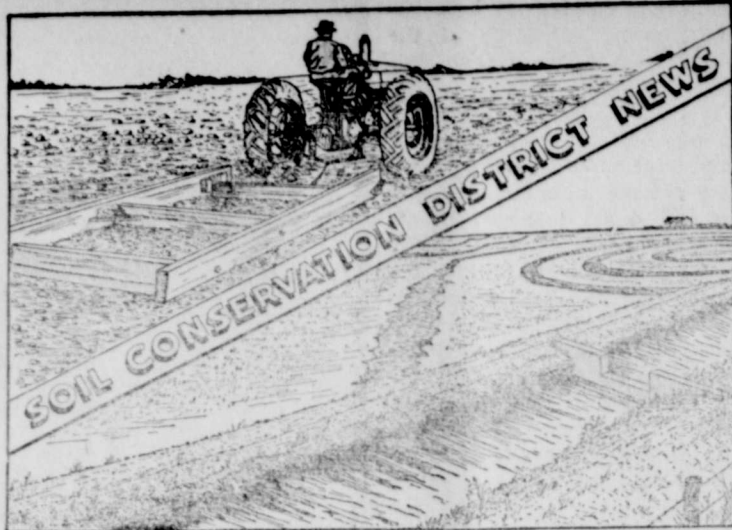
Kelvinator Refrigerators and Deep Freeze Boxes.

Youngstown Kitchen Cabinets.

Paints and Varnishes as good as they make.

Enquire here for **T. C. CHERRY, Painter and Paper Hanger.**

WILLSON & SON LUMBER COMPANY
 We Appreciate Your Business



Supervisors for Cap Rock District—Earl I. Cantwell, Chairman; Obra Watson, Bray H. Cook, L. A. McJimsey and R. L. Brunson

Improved Pasture? Yes, under irrigation certain of the introduced grasses and legumes have proven that they merit being called improved. Their yield is high and under some conditions the animal unit carrying capacity per acre is almost unbelievable. Some farmers have reported grazing as high as 5 or more cows to the acre. However, a safer carrying capacity would be about two cows or their equivalent per acre. Severe overgrazing will damage the pasture until their usefulness is limited. A few cooperators of the Cap Rock Soil Conservation District have planted improved pastures and others are anxious to try it. The improved pasture not only serves as an economical source of livestock feed, but it has a high value in proper land use and the prevention of erosion.

The seeding plans used by the farmers vary from a pure stand of grass with a legume to a mixture of several grasses and a legume. Each method has its advantages and its disadvantages. For instance if the plot of ground to be seeded to improved pasture is small, it will probably be to the farmers advantage to plant a mixture of several grasses to insure a longer season of grazing. If the plot to be seeded is large, it may be preferable to plant several plots with a pure stand of grass and a legume and rotate grazing on these plots. This method insures a more uniform distribution of grazing of the different grasses.

The grasses most commonly used here for improved pasture are: Bromo grass, Orchard grass, Fescue (Alta or Meadow), Crested wheatgrass, and Perennial Ryegrass with one of the following legumes: Birdfoot trefoil, Hairy vetch, Sweet clover, alfalfa or Red clover. Bromo grass is especially palatable and usually makes a slow start the first season after planting. Therefore the livestock have a tendency to grub it out the first year, and a large amount of it has to be used in the grass mixture. The Perennial Ryegrass is a dryland grass and matures seed faster than the other grasses if water is not applied when needed. Since it is a prolific seed producer it may crowd out some of the other grasses in the mixture if it is not seeded in small quantities. Although it is important to use a legume in the mixture or pure stand of grass, it should never be seeded in large quantities. This helps prevent bloating and keeps them from crowding out the grasses.

Whether a mixture or a pure stand of grass is used, a few general recommendations will help in the care and improvement of the pasture.

1. Irrigate prior to planting on the flatter slopes and do not irrigate again until the grass and legumes are high enough to keep from covering with soil.
 2. It may be advisable to apply from one to three hundred pounds of superphosphate.
 3. Use borders where land is flat and use controlled floating where land is steep.
 4. Irrigate often enough to keep grass and legume a bright green color.
 5. Keep stock off land until soil surface is dry to prevent puddling.
- Now is the time to seed those improved pastures. The soil conservation service will be glad to assist in any way possible in regard to type of mixtures, rate of seeding, source of grass and legume seed and other necessary information.

Mrs. Lucille Simmons and Clifford Hyatt, of Harlingen, Texas visited over the week end with Mr. and Mrs. W. J. Hyatt. Mrs. Simmons and Mr. Hyatt is Mr. Hyatt's brother and sister.

Beth Joiner and H. Roy Brown made a business trip to Hereford Monday.

First Atlantic Flight Made Thirty Years Ago

Thirty years ago last June, two men landed their plane in an Irish bog and finished the first non-stop flight across the Atlantic. The pilot was John Alcock, and the navigator Arthur Whitten Brown. These British flyers had taken 15 hours 57 minutes for the 1,890 miles at an average cruising speed of 118.5 miles per hour.

They flew in a Vickers-Vimy twin-engine bomber which was converted to carry sufficient fuel for the flight. They risked their lives by taking off with an overload of 1,000 lbs. more weight than the craft's capacity of 12,500 lbs. The two men took off from St. Johns, Newfoundland, and landed at Clifden, in Galway. The feat was historic, for it demonstrated the coming age of the plane, and ushered in the modern air age.

At that time little was known of the weather conditions over the stormy North Atlantic, and the flight needed not only superb courage, but also great skill in piloting and navigation.

The two men were knighted for their achievement by King George V, and a newspaper, the London Daily Mail, awarded them the \$40,000 it had offered for the first to accomplish the crossing.

John Alcock was later killed in an air crash in France. The Vickers-Vimy plane is preserved in the Science museum in London.

The first solo crossing of the Atlantic came eight years later, when Col. Charles Lindbergh flew from New York to Paris.

Highway Center Stripes Check Head-on Smashes

Head-on collisions, the deadliest and most gruesome of all traffic accidents are averted many times a day by a simple line of paint on a highway pavement. Charles M. Upham, engineer-director of the American Road Builders' association pointed out in discussing safety measures in connection with the opening of the 1949 touring season. He stressed the psychological effect of the center stripe in saving thousands of lives by keeping motorists in their proper lane.

"Separating traffic streams removes one of the greatest hazards of the road," Upham continued. "The center median or strip is the best method, but where it cannot be provided, as on two-lane highways, the painted or inset center stripe offers a valuable substitute which all states are now using on their heavily travelled roads."

Experts of the public roads administration estimate that one-third of America's surfaced highways are now center striped. Upham cited. The cost of striping and restriping this 100,000 miles of highways each year is estimated at \$2,800,000 or an average cost per mile of \$28.00, according to PRA. Studies by ARBA based on these estimates show that in spite of all efforts to secure uniformity, center striping is still widely diversified. Some states use solid lines, others broken lines. Widths vary, as do colors, with white and yellow predominating.

Brush Pile Burning

Here are some rules by which fires can be kept under control where burning of brush piles and debris is deemed necessary:

Avoid burning on dry, windy days. Do not burn during the hot part of the day. Wait until late afternoon when the wind has died. Fires burn more slowly and are easier to control during the evening and early morning. Have enough help available to control the fire if it spreads. Rake a wide path or fire-line around the area to be burned. Arrange brush in small piles. Burn one pile, then feed on the brush from nearby piles to keep the number and size of burning piles to a minimum. Burn against the wind.

'Wonder' Mahogany Tree

The most perfect mahogany tree ever discovered, felled in the gold coast colony of British West Africa, is now being made into high-class furniture for American homes. The tree was 55 feet long up to its first branches and 158 feet high. It measured 5.875 feet in diameter through its bole, and 18 feet in circumference. Because of its majestic size and the rare wealth of figured mahogany it contains, the tree is believed to have flourished in the equatorial Aderi Deni jungle since before the Pilgrim Fathers landed in America.

Oil as Anti-Freeze

Many people wonder why a light motor oil cannot be used in their automobile radiator as an anti-freeze. Such a substitution is not recommended. The oil would soften the rubber gaskets and hose connections. It would be a fire hazard, for if oil leaked out it would fall on the hot engine. Furthermore, oil has a much lower heat capacity than water (or the usual anti-freeze agents) so it might not be able to carry the heat away fast enough to prevent overheating of the engine.

Wise County Reunion Held at Mackenzie Park Sunday

Three hundred visitors celebrated the first Wise county reunion of South Plains residents Sunday at Mackenzie State park, Lubbock.

A bountiful lunch was spread at 1 p. m. and many oldtime friendships were renewed, said Mrs. Estelle Gibson, chairman of the program committee.

It was voted to make the occasion an annual affair on the third Sunday in August. The following officers were elected: Daniel Bryan, 1017 Eighth, president; J. T. Meek, 604 Ave. S, vice president; Mrs. Carl Matthes, 2421 Twenty-fourth, secretary; J. H. Williamson, 1606 Ave. Y, treasurer; and Mrs. Gibson, of 2421 Twenty-fourth, Mrs. Julia Meek, 604 Ave. S, and Mrs. John Wheelock, Silverton, members of the program committee.

Visitors registered were from Anton, Amherst, Abernathy, Bledsoe, Brownfield, Chico, Dimmitt, Dalhart, Crosbyton, Earth, Floydada, Fort Worth, Hale Center, Hereford, Idalou, Lorenzo, Leveland, Littlefield, Lamesa, Lubbock, New Deal, Post, Petersburg, Plains, Plainview, Ralls, Silverton, Seagraves, Wichita Falls, Milnesand and San Jon, New Mexico.

Miss Betty Burson Honored With Bridal Shower

Miss Betty Burson, daughter of Mr. and Mrs. True Burson, was honored with a miscellaneous bridal shower at the home of Mrs. O. T. Bundy Tuesday afternoon. Hostesses were: Jeanne Dudley, of Silverton, Polly Bryan, of Plainview, Marty Bond, of Amarillo, Mary Swenson, of Spur, Mrs. C. E. Anderson, of Quitaque and Mrs. Leonard Mouser of Spade.

The guests were received by Mrs. Bundy, the honoree, and her mother, Mrs. True Burson.

A matrimonial ship of roses and gladiolas with a blue parasol indicating shower centered the desk and an upside down bowl of flowers with blue and white shower ribbons centered the table.

Refreshments consisted of blue and white rolled sandwiches, white cake and punch. Favors were small parasols.

Out-of-town guests were: Mrs. Mrs. Paul Bryan, Plainview; Miss Betty Sumpter, Amarillo and Mrs. Don Rountree of Hale Center.

Obra Watson Home is Scene of Family Reunion

The Obra Watson home was the scene of a family gathering Sunday, August 28. The occasion was in honor of Mr. and Mrs. Jesse Dendy and son, Ronald, of Burbank, California, who are visiting his sister, Mrs. J. S. Watson. This is the first reunion of the brother and sister in 43 years. Mr. Dendy moved with his father to California when only a small boy.

Those in attendance were: Mr. and Mrs. Jesse Dendy and son, of Burbank, California; Mrs. Orren Burnside, of San Diego, California; Mr. and Mrs. John Dendy and son, Stanley, of Amarillo; Mr. and Mrs. Weldon Dendy and family, of Crosbyton; Mrs. J. Dendy, Crosbyton; Mr. and Mrs. ONeal Watson and family, of Amarillo; Mrs. Mary Watson Jones, of Perryton; Mrs. W. E. Schott, Sr., of Silverton; Mr. and Mrs. Grady Wimberly, of Silverton; Mrs. J. T. Wimberly, of Frederick, Oklahoma; Mr. and Mrs. Sid Richards, of Silverton; Mr. and Mrs. J. S. Watson, of Silverton; Mrs. Barney McKinney and son, of Lamesa, and Mr. and Mrs. Obra Watson and son, Joe Bob.

Mrs. Rayburn Burgess is spending this week in Newkirk, Oklahoma, visiting her parents, Mr. and Mrs. H. W. Kersieck. Mr. Kersieck has been seriously ill for sometime.

Mr. and Mrs. J. M. Thompson were in Plainview Monday on business.

Frigidaire at Simpson Chevrolet Company. 10tfc

Stapling Machines and staples at the News office.

Mrs. Wade Willis and daughter of San Antonio visited with brothers, Roy and W. Coffee week.

Betty Sumpte, of Amarillo, is visiting Betty Burson this week.

ROY TEETER
 Silverton, Texas
 Special representative
 Franklin Life Insurance Co.
 Springfield, Illinois.

BRISCOE COUNTY CLINIC HOSPITAL SILVERTON, TEXAS PHONE 14

DR. JAMES M. SHY
 Surgery, Urology
 DR. JAMES E. FITE
 Surgery, Obstetrics
 DR. GALE SEIGLER
 Internal Medicine
 DR. E. B. KNOLLHOFF
 Anesthetist, Pediatrician
 LOUISE STROUD
 Supt. Nurses
 A. C. FRY
 Business Manager

Clinic Closes Noon Saturday. Doctor Available for Emergencies.

OPEN EARLY AND LATE

Home Made PIES at Plumnelly Cafe We Serve the Best of

GOOD FOOD
 Make it a Pleasant Habit By Eating Here

PLUMNELLY CAFE
 VERN'S SERVICE STATION
 At Tulia-Floydada Highway Junction

Car of Cement

We have just received a carload of cement. Call us for your needs.

Car Fir Lumber

For your lumber needs we have a nice supply of Fir Lumber in 2x4's, 2x6's, Shiplap. We also have other sizes and material in pine lumber.

Martin Senour Paints

Our stock of Martin Senour Paints and Varnishes will take care of any paint or varnish job you might be planning. Let us serve you with paints and wall papers.

LOANS FOR REPAIR WORK

We have loans available on repair work for as long as three years if desired, and in amounts up to \$2,500.00.

FOGERSON LUMBER & SUPPLY COMPANY

"To Furnish You With the Best in Building Materials is Our Pleasure."

PHONE 16