

Senior citizens share in the spirit

By MARTHA TOLES FROST
City Editor

God calls the plays. There are no accidents.

So said coach Randy Adair at a pep rally for the Mules Friday morning at the Muleshoe Area Healthcare Center.

Activity director Joy Stancell arranged the pep rally to show that healthcare residents are still a part of the community.

She hoped it would demonstrate "the things that we can do, even in a nursing home. We want our football team to know we support them—win or lose."

For its spirited pep rally and innovative decorations, the Muleshoe Healthcare Center won this week's Community Spirit Award.

Director of nursing, Terri Brown, headed up the window dressing and other decorations in the nursing home.

Adair stood among black and white balloons, near two cardboard "goal posts" wrapped with black and white crepe paper.

"I'm here to make you laugh and share what I believe," Adair began the pep talk. "I'm happy to say I'm a Christian in his hands."

Residents laughed as the head coach reminisced about growing up in Talpa, Texas,



Spirit

Muleshoe Area Healthcare Center won the Community Spirit Award this week for its innovative pep rally and decorations to support the Mules. Pictured above are (back row, left) residents Vera Engelking and M.T. Hukill, Ombudsman Nancy Kidd and Activity Director Joy Stancell. Pictured in front are (from left) volunteer Cari Kidd (with mule), resident Lora Dale and Director of Nursing Terri Brown. In the picture at right is Muleshoe cheerleader Michelle Williams leading a cheer for residents and the Mules at the healthcare center's pep rally before the last home game.



Journal photos by Martha Toles Frost

where he studied the 3R's ("ropin', ridin' and romance") and was known as "stick horse."

"Life is sweeter if people care about one another," Adair said, reminding his audience to support the team by listening to the game on the radio.

"The Mules will win," he predicted as residents cheered (although the Mules were de-

feated in their last home game, as it turned out.)

"Losing has been hard," Adair said. "My son is a senior on the team. I'm coaching my own son, and it's his last year."

Like a play-by-play sports commentator, Adair narrated for the residents the last crucial minutes of the Floydada game (35-34) in which the other team

ran a kick off back for a touch-down at the last minute.

"There are no accidents," Adair said again. "God put me in Muleshoe, Texas. God has a plan for Randy Adair."

After the pep talk, residents were treated to cheers led by healthcare volunteer worker Cari Kidd.

Then, three Muleshoe cheer-

leaders—Heather Hooten, Regan McElroy and Michelle Williams—made a special appearance to lead more cheers.

Along with residents and healthcare workers, Adair and the Muleshoe cheerleaders were served homemade cookies decorated with black and white icing in honor of the school colors.

Clovis woman injured in US 84 accident

By MARTHA TOLES FROST
City Editor

A Clovis woman injured in a one-vehicle rollover near Muleshoe Monday was listed in stable condition at St. Mary's Hospital in Lubbock Tuesday.

Nickola Thomas, 21, was transported by ambulance to Muleshoe Area Medical Center, then airlifted to Lubbock.

Thomas—one of three passengers in a 1995 Dodge Caravan en route to a Tupperware meeting in Lubbock—was ejected from the back seat and knocked unconscious. She was not wearing a seat belt.

According to Department of Public Safety Trooper Bill Horton, the driver of the van, Kristin Moore, 24, of Clovis, swerved to avoid a 1982 Chevrolet pickup driven by Danny Fluellen of Amherst.

Horton said both vehicles were traveling east on Highway 84. The truck reportedly crossed from the inside lane into Moore's lane while trying to take the crossover at the Bailey/Parmer county line.

Moore avoided the pickup, crossed over both lanes and went off the road, rolling over 1 1/2 times, according to the DPS report.

Moore and the other passenger, Lori Rexwinkle, 26, also of Clovis, were transported to Muleshoe Area Hospital by Sheriff Jerry Hicks.

Moore and Rexwinkle had been wearing seat belts and were not seriously injured.

Shallowater running toward state playoffs

By RICK WHITE
Managing Editor

Talent at Shallowater runs deep.

Shallowater continues to enjoy success even after moving up a class from 2A to 3A two years.

Last week, the Mustangs 7-2, 3-1 clinched a playoff berth with a 35-3 win at Floydada.

Friday, the Mules (0-9, 0-4) end their season at Shallowater (7:30 p.m.).

Coaching continuity plays a big part in the Mustangs' success, according to Muleshoe head coach Randy Adair.

"The kids seem to understand what's going on," Adair said. "They've been in the playoffs a lot. Most of their success has been in 2A. But they've been pretty successful in 3A too."

Shallowater's losses this season were to Seminole (19-10) and 2-3A leader Littlefield (41-10).

Shallowater always seems to have two or three players that can hurt you with big plays, according to Adair.

Shallowater likes to pound the ball at the defense, then go deep with the pass or run trick plays.

"They'll take their shots

District 2-3A standings

	Overall	District
Littlefield	9-0	4-0
Shallowater	7-2	3-1
Friona	6-3	2-2
Dimmitt	3-6	2-2
Floydada	3-6	1-3
Muleshoe	0-9	0-4

Results	
Nov. 3	
Dimmitt 21, Muleshoe 0	
Shallowater 35, Floydada 3	
Littlefield 26, Friona 15	
Schedule	
Nov. 10	
Muleshoe at Shallowater	
Littlefield at Dimmitt	
Floydada at Friona	

deep," Adair said.

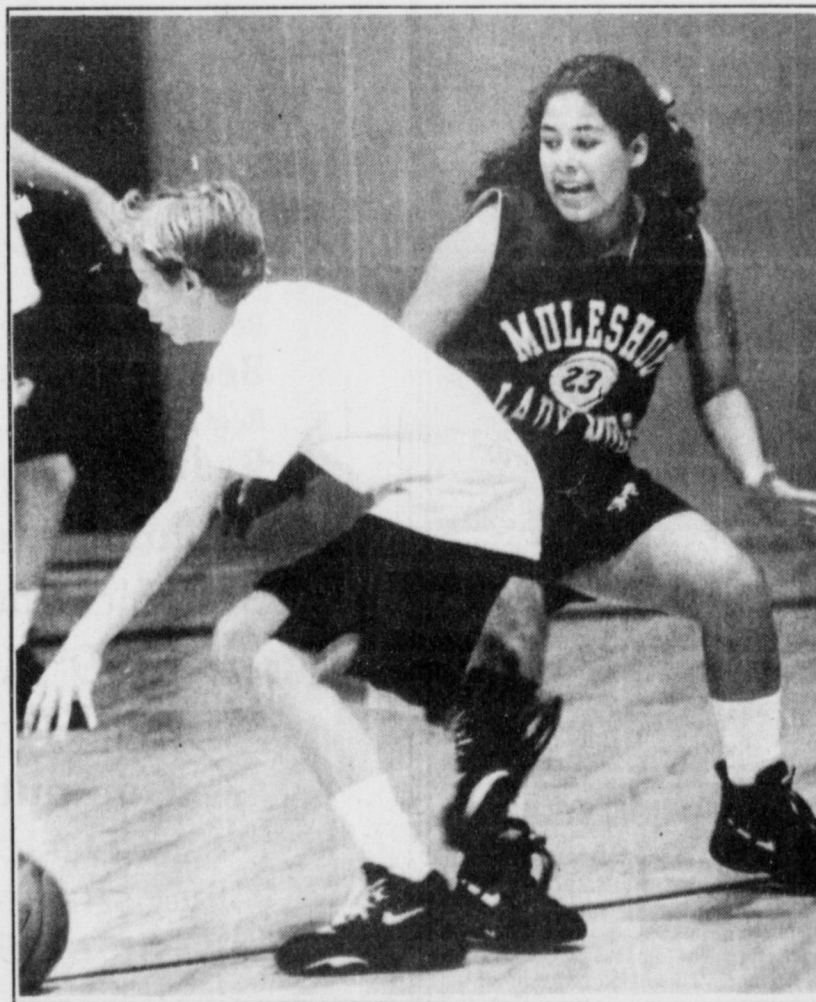
Quarterback Blane Brown's favorite targets are speedy wide receiver Jay Lusk and rangy (6-5, 220 pounds) tight end Cole Roberts.

When they run the ball, Peter Garza is a quick, tough runner inside. He gets help from Junior Guzman, who rushed for 115 yards and two touchdowns against Floydada.

In contrast, it's the lack of the big play that's been a problem for Muleshoe.

The Mules are averaging a respectable 189.1 yards a game rushing, but lack a reliable passing attack and big-play capability.

Senior quarterback Daniel



Defensive drill

Mason Sinclair drives around Raquel Posadas during Tuesday's Muleshoe High School Lady Mules basketball practice. The Lady Mules scrimmage at Frenship Saturday.

Garbarino is their lone breakaway threat, but he's listed as doubtful for the season finale after suffering a knee injury in the first half against Dimmitt.

Sophomore Mike Woodard will take over for Garbarino.

Adair said Woodard did a good job in the second half against Dimmitt, especially considering that he didn't prac-

tice at that spot in the week of practice leading up to the game.

Dimmitt shutout Muleshoe, 21-0, last week, scoring two touchdowns in the first four minutes of the game.

"We spotted them a 15-point lead, and we're not good enough to do that," Adair said. "Offensively, we had too many mental mistakes."

Continued on page 10

McCasland, Smith & McCann contributed to late nightmares

Since I've stayed up a lot of Late Nights covering Muleshoe football, I thought I could come up with a pretty good top 10 list. But I didn't have as much material to work with as David Letterman.

So here's the short list.
Most impressive teams:
3. Portales — The Rams qualified for the state playoffs for the first time since 1988 and appear to have a legitimate shot at New Mexico's AAA title.

2. Friona — Friona was dominating on both sides of the ball in a 41-6 win. The Chieftains swarmed to the ball and made the Mules pay when they got there. Plus, they had a good scheme out of the wishbone. They did a good job of isolating their playmakers in one-on-one situations.

1. Seminole — This up-and-coming program scored on every possession except its final one (time ran out) in a 48-6 win. Seminole rushed for 497 yards. The Indians combined both quickness and strength.

Most impressive individual performances:

3. (tie) Andy Kendrick, Friona — Kendrick ran for 137 yards and two touchdowns and added a 37-yard

Rick White Managing Editor

catch that set up the Chieftains second touchdown.

Ramon McCann, Floydada — McCann only hurt the Mules on two plays. But oh, how they hurt.

McCann scored on a 67-yard run in the third quarter before returning a kickoff 79 yards with a minute left to beat the Mules, 35-34.

2. Josh Smith, Denver City — Generic in name, but hardly common in talent. Smith didn't put up gaudy numbers in Denver City's 17-14 win, but was impossible to stop on the follow options. Great throw on a 28-yard touchdown pass on fourth-and-15 in the first half and his 26-yard pass set up the Mustangs' game-winning field goal in the fourth quarter.

1. Brice McCasland, Lubbock Cooper — McCasland scored on an 84-yard run on the first play from scrimmage en route to a 213-yard, two touchdown performance. He also ran 33 yards on a fake punt and caught three passes out of the

Continued on page 3

Christmas Card project starting

The Volunteer Plus Christmas Card project of Muleshoe is now accepting donations.

The project, run by Joyeline Costen and Lona Embry, raises money to buy gifts for Muleshoe Area Health Care Center nursing home.

Mail donations to PO Box 202, Muleshoe, Texas, 79347-0202.

Chalk artist/soloist

Jeannine Wimberley, chalk artist and soloist, will be in concert Sunday at 7 p.m. at the First Baptist Church in Muleshoe, 220 W. Ave. E.

She has presented her "invisible" chalk talks in 23 states, using special techniques with black light.

The artist also sings and plays several instruments, including keyboard and marimba.

The concert at First Baptist in Muleshoe is free to the public. A free will offering will be taken.

For more information, call M. Scott Pace at 272-4224.

Horsley in "Snowy River"

Actor Lee Horsley, who calls Muleshoe his hometown, is scheduled to make two guest appearances as a ne'er-do-well prodigal father in "Snowy River: The McGregor Saga" Saturday, Nov. 11 and 18.

Horsley's character, Seamus O'Neil—thought to be lost at sea—returns home just two weeks after his "widow" has remarried.

The two-part series will air on the Family Channel at 5 p.m. Central time.

Blood Services Board

The Muleshoe Advisory Board of United Blood Services will meet at Leal's Restaurant in Muleshoe Nov. 9 at noon.

Plans for upcoming blood drives will be discussed. The public is invited to attend and offer suggestions.

For more information, call Pat Kennamer, (800) 333-6920.

Veteran's breakfast

American Legion Post #403 and VFW Post #8570 are holding a Veteran's Day Breakfast Saturday, Nov. 11 from 6-9 a.m. at the American Legion Hall on 15th Avenue at Avenue B in Muleshoe.

All veterans, spouses, widows and widowers are invited.

Christmas Parade

The Muleshoe Chamber of Commerce & Agriculture is holding its third annual Christmas Parade "Lone Star Christmas" Saturday, Dec. 2 at 6:30 p.m.

Cash prizes will be awarded for first (\$300), second (\$100) and third prize (\$50).

Participation is free, but a \$10 fee is necessary to be eligible to win one of the cash prizes. Entries may consist of an automobile, float, etc. Entry deadline is 5 p.m. Dec. 1 at the Chamber office.

Entries should not include Santa Claus, as there should only be one Santa in the parade.

For more information, contact the Chamber at (806) 272-4248.

Turkey drawing

Twenty five turkeys will be given away by the Muleshoe Activity Committee Nov. 18 in a MAC bucks raffle.

MAC bucks are awarded with purchases from local merchants.

The drawing is at 2 p.m. on the corner of Main Street and C Avenue. Winners must be present.

Christmas Bazaar

FRIONA — The Parmer County Christmas Bazaar is Nov. 10-11 at the Friona Community Center.

Bazaar hours are 10 a.m. to 6 p.m. Friday and 9 a.m. to 4 p.m. Saturday.

The Bazaar includes demonstrations and a fashion show Saturday at 10:30 a.m.

Anne Frank exhibit

PORTALES NM — The Ann Frank Story Exhibit, a photographic retrospective of the young diarist, is on display in the Runnels Room of Golden Library at Eastern New Mexico University through Nov. 12.

Admission is free.

The exhibit chronicles the life of Anne Frank, from her family's roots in Frankfurt, Germany, to their life hiding in Amsterdam, to the eventual fate of the residents of the "Secret Annex," the hiding place Frank called home for two years.

The exhibit is comprised of rare photographs from the Frank family's photo album and the archives, as well as historical documents depicting life in Nazi-occupied Holland.

Pep plans open house

PEP — Open House for Pep High School is scheduled for Nov. 20 from 3 to 7 p.m., according to "Pep Talk," the new school paper. "All staff will be in attendance and will welcome parents and visitors to their rooms. Tours of the school will be encouraged."

The school is nearing completion of remodeling to connect the two main buildings.

Science Fair

PORTALES, NM — Eastern New Mexico University is hosting its annual Southeastern Regional Science Fair March 2, 1996.

Students in grades 6-12 are eligible.

Continued on page 10

Marriages

The following marriages licenses have been issued at the Bailey County Clerk's Office in Muleshoe for the month of October:

- David Kent Lutz and Angela Nicole Scott
- Antonio Garcia and Angelica Maria Garcia
- Harold Calvin Burge and Mary Jo Archer
- Andres Efrain Perez and Norma Linda Martinez
- Rocky Leo Levi Statler and Sherry Radawn Garner
- Aubrey Heathington and Margaret R. Kimbrough
- Gene Michael Torres and Rebecca Denie Sanders
- Sidney Thomas Sliger, Jr. and Glenna Pauline Raney

The following marriage licenses have been issued at the Parmer County Courthouse in Farwell for the month of October:

- Jeffrey M. Krumbholz and Crystal M. Adams
- Kelly Leon Olguin and Jaque Lee
- William M. Hill and Sierra R. Arnold
- Christopher E. Byrd and Misty Dawn Leary
- Robert Snyder Alexander and Maria E Beaumont
- David Austin Lawson and Raquel Habon Vanous
- Michael Oracio Zamora and April Renee Edmonson
- Walter Wayne Lackey, Jr. and Amy Dion Harrison

Breakfast

American Legion Post #403 & VFW Post #8570

Invites all veterans (men & women), their spouses, widows and widowers to come have breakfast with them.

Saturday, Nov. 11th 6:00 a.m to 9:00 a.m.

At the American Legion Hall 15th & Ave. B, Muleshoe

AROUND

MULESHOE

TAKE ADVANTAGE OF THESE FALL SAVINGS

GET \$15⁰⁰ OFF GOODWRENCH TUNE-UP
Special Includes: Spark plugs, fuel filter, check timing cap, rotor, belts, PVC valve and air filter

GET \$15⁰⁰ OFF GOODWRENCH BRAKE JOB
Special Includes: Inspect wheel cylinders and seals, replace pads and shoes, turn rotors and drums

COOLANT SYSTEM CHECK \$25⁰⁰
Special Includes: Check complete cooling system and 1 gallon antifreeze

TRANSMISSION SERVICE \$51²⁵
Special Includes: Transmission filter & fluid check, linkage and adjustment of transmission. Four wheel drive & foreign cars may be slightly higher

LUBE AND OIL FILTER \$15⁰⁰
Special Includes: 5 quarts oil, oil filter, 10 point maintenance check. Diesels and trucks may be slightly higher

GOODWRENCH ENGINE!!
73-85 350 \$1,060
88-94 350 \$1,430
36 month 50,000 mile warranty. 4.3 454 and diesel also in stock. Call for labor prices

1 COMPLETE 88-94 350
Engine Is Complete From Fan Blade To Flywheel Includes new A/C compressor, throttle body, distributor exhaust manifolds, air cleaner and flywheel \$2,890

GENUINE GM PARTS? CALL US BEFORE YOU CALL IT QUILTS
We do all service and body repairs the way they should be done

DOC STEWART
CHEVROLET • GEO • BUICK
2500 Mabry Drive...Clovis, NM.....(505) 763-4465

Expires 11-15-95

1-800-530-8842

Best Prices of the Year for our Pre-Holiday SALE

Mayo Sofas **\$599⁹⁵ UP**
Reg. \$899.00, 1-Only
Mayo Sleeper SALE **\$599⁰⁰**
Reg. \$2195, 2 Pc. Queen
Sleeper/Love SALE **\$1495⁰⁰**
Reg. \$1745, Berkline Swing Twin
Rocker & Matching Swivel Recliner SALE **\$1245⁰⁰**
Reg. \$1699, 2 Pc. Country Plaid
Mayo Sofa/Love SALE **\$1195⁰⁰**
La-Z-Boy
Reclina-Rockers **\$279⁰⁰ UP**
Reg. \$263.00, Tell City
Children's Rockers SALE **\$199⁹⁵**

Swing Rockers
Reg. \$259.00
SALE **\$219⁰⁰**
Rocking Love Seats
Reg. \$659.00
SALE **\$449⁰⁰**

La-Z-Boy Sectional
Reg. \$2686-SALE **\$1795**

La-Z-Boy Sleepers
Reg. \$859.00 SALE **\$599⁰⁰ UP**
Queen Reg. \$969.00
SALE **\$699⁰⁰ UP**

La-Z-Boy Sofas **\$699 UP**
Reg. \$4560.00, 4 Pc. Thomasville
Bedroom Group SALE **\$2495⁰⁰**
Reg. \$3545.00, 4 Pc. Thomasville
Bedroom Group SALE **\$2195⁰⁰**
Restonic Anniv. 4/6 **\$249⁰⁰** 5/0 **\$299⁰⁰**
Restonic Bedding Topaz
4/6 **\$399⁰⁰ Set** 5/0 **\$499⁰⁰ Set** 6/6 **\$849⁰⁰ Set**

1-Oak Computer Desk
Reg. \$749.95-SALE **\$569⁹⁵**

La-Z-Boy Chair & Ottoman
Reg. \$778 SALE **\$599⁰⁰**
Thomasville, Set of 3
Occasional Table
Reg. \$1300 SALE **\$650**

Reg. \$2750, 7 Pcs., Table 48x70x114
Solid Oak
Dining Room SALE **\$1833³⁰**
Reg. \$3174, Tell City 7 Pc., Table 48"x72"
Dining Room SALE **\$2116⁰⁰**

Solid Oak 5 Pc. Dinette
Reg. \$999-SALE **\$666⁰⁰**

Calton Furniture
507 E. 2nd Portales, NM 359-1442
Where Hwy. 70 Divides

Scouting for new leaders of the pack

By MARTHA TOLES FROST City Editor

New Girl Scout leaders in Muleshoe learned about scouting Monday night.

The orientation at the Muleshoe Girl Scout Hut was led by Robin Green, who has been involved in Girl Scouting in Japan, California, and the Lubbock area.

Hosting the occasion with a homemade meal was Nelda Merriott, Muleshoe's service unit manager.

Green, director of membership and marketing, offered her experience and resources to Daisey (for girls in kindergarten) assistant leaders Erminia Pena and Kim Arington and junior leader Renee Rudd, who attended the meeting.

Green cautioned leaders to avoid "re-inventing the wheel" if someone else has already figured out how to do a certain

project effectively.

"Time is better spent figuring out something that has not been done before," she told them.

She discussed the many areas of interest in scouting from outdoor life, mental and physical well-being, and diverse people, to science today and tomorrow, and the arts.

She mentioned the contemporary, sensitive issues that might especially interest older girls and help them learn to think for themselves.

For leaders a little worried about camping out, Green suggested roughing it indoors.

Green challenged new leaders to enlist the help of girls' parents to attend workshops to learn various projects or to drive in car pools.

Finally, she spoke of the value of scouting in helping girls to learn to make educated decisions and right choices.



Journal photo by Martha Toles Frost

Serving God and country

Girl Scout director Robin Green encourages new scout leaders Monday night in the Girl Scout Hut in Muleshoe.

Merriott honored for community service

By MARTHA TOLES FROST City Editor

Nelda Merriott of Muleshoe is one of 10 area women being honored by the Caprock Girl Scout Council Nov. 18 at the third annual Women of Distinction Scholarship Banquet.

The banquet will be held at the McInturff Conference Center in Lubbock to honor women who have had a direct and powerful influence on the lives of others.

Honorees are women who are current or former residents of the 18-county area, who have had a direct and powerful impact on American girls and women.

They are persons of influence and importance who have

made significant contributions to their community and society in general.

Merriott, who has two sons, became a registered Girl Scout the first time as an adult.

She says her long career as a public servant (presently Bailey County District Clerk) led her to serve others and to help girls take advantage of scouting.

Muleshoe has been Merriott's home since 1947. She has been involved in Jennyslippers, Little League and Red Cross.

As Service Unit Manager for the Muleshoe Girl Scouts, she began a renovation project of the Girl Scout Hut, 815 W. Second, in 1985.



Nelda Merriott

The service unit now includes 11 units, and Merriott is taking on leadership of a Senior Girl Scout troop.

Garcia wins HECE speaking competition

Jorge Garcia won the Muleshoe High School Home Economics Cooperative Education public speaking competition.

Garcia, a second-year HECE student, won \$100 for his efforts. A total of 25 students entered the competition.

The competition was in preparation of the upcoming Voice of Democracy Scholarship competition sponsored by the Veteran's of Foreign Wars and their ladies auxiliary.

Charles Acosta was second, Candy Garcia third, and Jesse Olivas and Marcia Garcia tied for fourth.



Garcia being congratulated by Crystal Casto for winning a public speaking contest.

**Back The Muleshoe Mules!!
Attend ALL games!!**

Lighting Accents

Introduces
Bask It
Gourmet Foods
& Gift Baskets

We Deliver & Ship!
Inside Guy's Electric
217 Sycamore, Clovis, NM
505-769-1470
MASTERCARD & VISA WELCOME



FEEL FIT!
1177
B C D E EEE
8 1/2-9 9 1/2-10 10 1/2-11 11-12 12
The Fair Store
120 Main 272-3500
Muleshoe, Texas
RED WING SHOES
MADE IN U.S.A.

NEW CAR SHOW

November 6-12

FEATURING THE 1996 MODELS -

- BENDERS
- JONES PONTIAC
- BAILEY-STREBECK
- DOC STEWART
- WATSON MOTORS

Find A Christmas Tree In One Of The Cars and You Could Win A \$100 Gift Certificate!



North Plains Mall

one good thing after another

Monday-Saturday 10:00 AM - 9:00 PM; Sunday noon - 6:00 PM

Keeping an eye on Texas

City/airport	Passengers departing, '94	Percent change 1989-94
Laredo	101,211	77%
McAllen	338,785	59%
Waco	52,882	42%
Houston Int'l	11,323,220	41%
Brownwood	2,039	28%
Temple	4,272	27%
Corpus Christi	534,793	24%
Killeen	55,805	24%
Dallas Love	3,412,858	23%
El Paso	1,879,205	22%
Austin	2,549,651	21%
College Station	87,494	21%
San Antonio	3,084,768	19%
Abilene	74,121	13%
Texarkana	45,976	11%
DFW	26,226,728	10%

The number of passengers departing from Texas airports increased by a statewide average of 19 percent from 1989 to 1994.

SOURCES: John Sharp, Texas Comptroller of Public Accounts and Texas Department of Transportation.

Muleshoe Journal USPS 367820

Established February 23, 1924. Published by Triple S Publishing, Inc. Every Thursday at 324 W. Second, Box 449, Muleshoe, TX 79347. Second Class Postage paid at Muleshoe, TX.

POSTMASTER: Send address changes to the Bailey County Journal, P.O. Box 449, Muleshoe, TX 79347.

We are qualified members of:
Panhandle Press Association, National Newspaper Association, West Texas Press Association and Texas Press Association

WEST TEXAS PRESS ASSOCIATION MEMBER 1995

PPA TEXAS PRESS ASSOCIATION

Scot Stinnett, Publisher
Lisa Stinnett, Vice-President/Comptroller
Rick White, Editor
Holly Millsap, Classifieds
Pat Durben, Advertising

SUBSCRIPTIONS: Muleshoe Journal and Bailey County Journal By Carrier Yearly - \$15.00 Bailey and surrounding counties: by mail - \$16.75 Elsewhere - \$18.50 Advertising Rate Cards on Application

Advertisers should check their ad the first day of insertion. The Journals will not be liable for failure to publish an ad or for a typographical error or errors in publications except to the extent of the cost of the ad for the first day of insertion. Adjustment for errors will be limited to the cost of that portion of the ad where the error occurred.

Having A Garage Sale?

Advertise It In The Muleshoe Journal Classifieds!

Call 272-4536

PUBLIC SALE! SINGER PUBLIC SALE!

NEW SCHOOL SEWING MACHINES WITH PROFESSIONAL SERGING STITCH

OUR SINGER EDUCATION DEPARTMENT placed orders in an anticipation of large school sales. Due to budget cuts, these were unsold. These machines must be sold! All machines offered are the most modern machines in the SINGER line. Instruction manual and extras are included. 10 Year limited warranty. These heavy duty machines sew on all fabrics.

LEVIS • CANVAS • UPHOLSTERY • NYLONS • STRETCH • VINYL • SILK • SPECIAL SWEATSHIRT APPLIQUE • EVEN LEATHER!

YOUR PRICE WITH THIS AD: **\$198⁰⁰**

WITHOUT THIS AD: \$429.00!

* Other Singer Models Available at Similar Savings

With these new SINGER Machines, you just set the dial code and see professional results. Straight sewing, zigzag, built-in buttonhole (any size), invisible blind hem, monogram, satin stitch, embroidery, darning and elastic stitch, applique, sews on buttons and snaps, top-stitch. ALL OF THIS AND MORE WITHOUT THE NEED OF OLD-FASHIONED CAMS OR PROGRAMMER.

Cash, Checks, Lay-A-Way, Visa, MC, American Express & Discover Accepted

ALCO

One Day Sale Only Thursday, Nov. 16th • 9am-5pm 272-5525

Factory Demonstrations Will Be On Hand

2% Surcharge For Credit Cards 1401 W. American Blvd., Muleshoe

Pep School facelifted, upgraded

By MARTHA TOLES FROST
City Editor

PEP — Pep High School, an alternative academic campus, is undergoing changes in its physical plant and its educational programs.

Director Fredda Schooler described the progress in remodeling to connect the two main buildings.

Work in progress

Bob Estep Construction Company has almost completed the interior. The outside lacks paint, a back porch and sidewalks.

Maintenance director Chuck Wright planted flowers with the help of Roy Morrison's science class. And Keith McCain's building trades class built cabinets for Schooler's office and also worked on the math lab.

The bus barn for Whiteface and Pep buses is complete except for electricity. New chairs have been added to classrooms, and old chairs have been taken to the cafeteria for extra seating, Schooler said.

Educational improvements

In the area of educational improvements, Pep is expanding the range of PACE reading materials for recovery of skills and remediation.

With the help of a \$39,000 grant from the CH Foundation (funded by the Mallot Ranch of Sundown), Pep is adding computers and software in several departments.

Business classes will be provided with CDROM. Three science stations of PLATO and two math stations of PLATO for Algebra II are being added for individual, programmed learning.

New software is being purchased for science classes and the "school-to-work" program.

English classes are getting a new computer and software, along with a laser printer to enhance classroom publishing, and the English computer is being moved to the English as a Second Language (ESL) room in order to utilize ESL software purchased earlier.

A Hundred Years from Now

Life has always been a balancing act between the haves and have-nots.

Less populated industrial countries use the major portion of fossil fuel while third world countries still farm by hand and recreate. The world population is expected to increase by a billion every upcoming decade.

If we could snap our fingers and by magic, make some change that might save the earth from its inhabitants, what would we do?

"Birth control," said Steve.

"You mean anything?" asked J.D.

"Yup ..." I said.

"I'd transport everybody into the future 100 years to see how the earth would have been taken care of under their generations."

A great idea ... though hard to predict. But we could compare it to someone in the past lookin' forward to today.

My grandpa was born in 1866 in Bonham, TX. Twenty years later he had moved to Oklahoma, staked a claim in the land run of '89, married and started a family. He was a farmer, horseman and fiddle player.

If he was suddenly transported at age 34 to today, how would his world have changed?

First, I think he'd notice there's a lot more



people ... and a lot less farmers. Yet these farmers are producing enough to feed their neighbors.

The absence of draft horses and mules would be a shock. He'd see smoking diesel tractors draggin' discs, combines, cotton pickers and corn pickers through the fields. Bushels per acre might leave him speechless as would dairy cows that milk 70 lbs. a day, a 20,000 head feedlot, hog and chicken confinement barns and the loss of self-sufficiency on the family farm.

However, the air would be less breathable, the water less palatable, the work ethic less valued, family time less taken, sunsets less viewed and neighbors less trusting.

The environment would have been compromised by farming in order to feed the 3 times increase in population. As less good farm ground was available due to urban encroachment more technological innovations would have been required to keep up.

So, what is our world gonna be like in 100 years? It's hard to predict, but there is one guarantee that should keep farmers busy improving our methods ... there's gonna be a lot more people to feed.

Better Business Bureau Report

By Nan Campbell

The Better Business Bureau has been receiving many calls from consumers asking about tips on moving. Since people seem to be on the move, we offer these tips.

You need to do some advance legwork to save yourself frustration and possibly money. Ask for recommendations on moving companies from friends or family and check the reliability of the company you choose with the BBB.

Get estimates from at least three movers and compare services and charges of each. Make sure you understand the mover's responsibilities and your obligations.

A binding estimate is a guaranteed price. Non-binding estimates are the estimator's best guess and have no limit on what the move will cost.

You may be able to save

some money by negotiating the rate, packing yourself or moving fewer things; and remember that moving expenses may be tax deductible.

For a reliability report on the mover of your choice, call your Better Business Bureau at 763-0459 or (800) 687-7890.

The U.S. Postal Inspection Service has issued an alert stating that unauthorized demand drafts in the amount of \$299 are depleting unsuspecting consumers' bank accounts without their permission.

The demand drafts are made payable to I.D.M. after an initial contact by a firm called

INTERNATIONAL LOTTERY PAYOUT SERVICE out of British Columbia, Canada offering to retrieve funds they may have already won.

Western 66 Congratulates the Mule & Lady Mule of the Week!



CHRIS SHELburne



CHELSEY CONKLIN

Chris Shelburne is a sophomore and the son of Curtis and Juana Shelburne. He has been an outstanding block in the Tandem Backfield for the Mules offense. He also started defense as an end. To date, he has 26 tackles and 4 quarterback hurries.

Chelsey Conklin is a junior and the daughter of Garland and Susan Conklin. She has served all year as Athletic Trainer in football and in the girls athletics. Chelsey has done so in an outstanding manner.



The CardStop
24 Hour Fuel Service
715 W. American Blvd., Muleshoe
To apply for a card, contact WESTERN 66
272-4556
We have diesel!

Support the Muleshoe Mules!
Attend all school activities!!

Don't let the Acorn hit you on the head!!

Come by
Muleshoe Motor Co.
and see one of
our



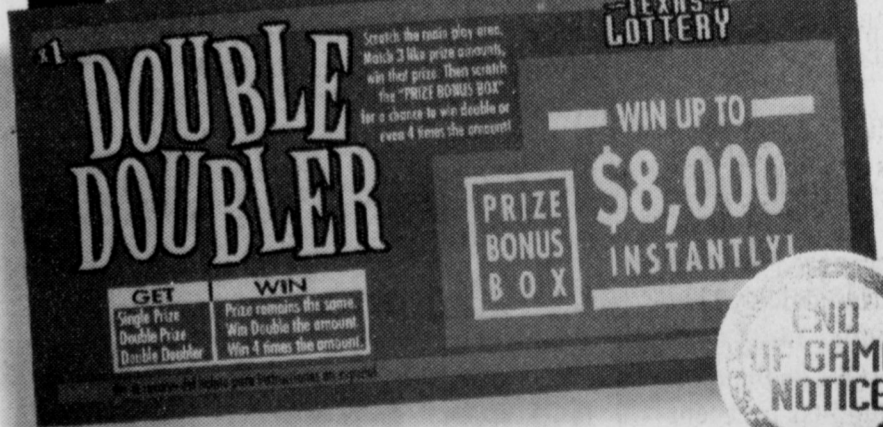
about a specially
priced new or used
car or truck.



MULESHOE MOTOR COMPANY, INC.

1225 W. American Blvd. Muleshoe, TX 79347
1-800-432-7617 272-4251

Play Double Doubler Before It Splits.



Pretty soon, the Texas Lottery scratch game you've known and loved called Double Doubler will be gone. The official end of the game is November 1, 1995. However, you can buy tickets and redeem winning tickets for prizes until April 29, 1996. To play Double Doubler, scratch the play area and match three like amounts. Then scratch the prize box to see if you instantly double that amount. Win up to \$8,000 instantly. Prizes over \$599 must be claimed at any of the 24 Texas Lottery Claim Centers. Questions? Call the Texas Lottery Customer Service Line at 1-800-37-LOTTO.



Acosta selected HECE star student

Charles Acosta, son of Mr. and Mrs. Dimas Acosta, was named the Home Economics Cooperative Education Star student of the month.

Charles received the honor based on his participation in group activities, classroom and job performance.

Charles works at Lowe's Marketplace as part of the HECE program. The MHS senior is a second-year HECE student and has been employed at Lowe's for more than a year.

Charles is active in the HERO organization, participates in many community service projects, and runs cross country and track.



Charles Acosta, left, with Lowe's manager Bill Gilbert

Public Record

Obituaries

Audrey Ross Dudley

MULESHOE — Funeral services for Audrey Ross Dudley, 85, of Muleshoe were held Wednesday in the Trinity Baptist Church with the Rev. Robert Brown, pastor, officiating.

Burial followed in the Muleshoe Memorial Park under the direction of the Ellis Funeral Home of Muleshoe.

Mrs. Dudley died Monday, Nov. 6 in the Muleshoe Area Medical center after an illness.

She was born July 4, 1910 in Roanoke, TX. She married Dewey Ross, Sept. 4, 1927 in Sudan. He died April 11, 1966.

She married W.M. "Matt" Dudley, July 12, 1983 in Muleshoe. He died Feb. 19, 1993.

She had been a resident of Muleshoe since 1924, moving here from Floyd Co., TX. She was a homemaker and a member of Trinity Baptist Church of Muleshoe.

Survivors include three sons, don Ross of Mineral Wells, TX, Ollie Ross of Olton and Larry Ross of Muleshoe; two daughters, Gwen Ross of Sugarland, TX and Della Puckett of Muleshoe; one brother, Willard Carter of Muleshoe; one sister, Lucille Harp of Muleshoe; 13 grandchildren and eight great-grandchildren.

South Plains Community Action Association's Temporary Emergency Food Assistance Program (TEFAP) will not be receiving any commodities for the month of November 1995. We have distributed everything that was stored in our warehouses. For the month of November, we will not be distributing any commodities at all. We will let you know sometime in November if we will receive anything for the month of December 1995. Thank you for your time and attention. If you have any questions, please call Frank Hernandez at (806) 894-3800.

Veteran's Day

Nov. 11, 1995

It is our pleasure to honor veterans, past & present, and especially the men and women of our community who have served in our armed forces.



Remember

Those Who Served

Clark's Central Texaco
221 West American Blvd.
272-3915

Alex's Tire Service
302 E. American Blvd.
272-5012

American Valley Inc.
W Highway 84
272-4266

Terry Field Insurance
223 E. Ave. B
272-5551

Bob Stovall Printing
221 E. Ave. B
272-3373

Lowe's Pay-N-Save
515 W. American Blvd.
272-4406

Dale Oil Company Inc.
413 W. American Blvd.
272-5576

Bailey Gin Co.
Peanut Hawkins
946-3397

Pizza Hut
1412 West American Blvd.
272-4213

Muleshoe Livestock Auction
E. Hwy 84 272-4201

Muleshoe Trade Center
213 E. Ave. B 272-5987

T.J.'s Donuts
328 South Main
272-3542

Sudduth Field & Co.
104 West 2nd
272-4291

Thank you for the time you gave and the work you did!

Germania Farm Mutual Insurance
127 Main 272-5060

Pasada's Radiator
272-3269

Wes-Tex Feed Yard, Inc.
Louis Reeder, Mgr.
272-7555

Leal's Restaurant
1010 W. American Blvd.
272-3294

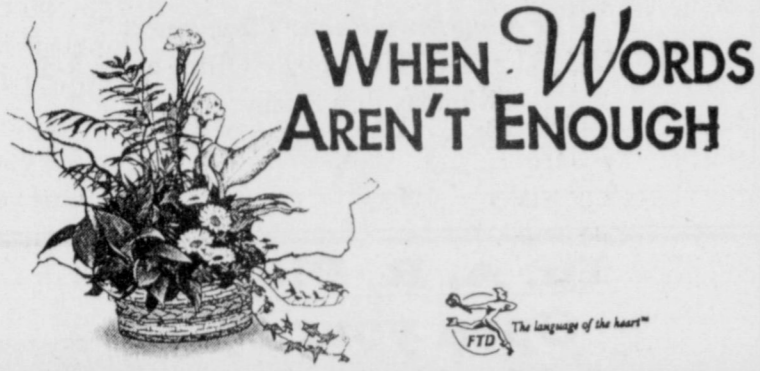
Bailey County Farm Bureau
1612 W. American Blvd.
272-4567

Decorators Floral & Gifts
616 S. First
272-4340



Your Holiday Directory

Shop these Muleshoe merchants during this holiday season!



WHEN WORDS AREN'T ENOUGH



Decorator's Floral & Gifts
616 S. 1st Muleshoe 272-4340

A great selection of Feed

SHOW LAMB FEED

- Showmaster Lamb Starter
- Hi-Pro 1440 & 1630

SHOW PIG FEED

- Wayne 16-50 • Nutrena RT Green
- Acco Showmaster • Hi-Pro 1465

Muleshoe Feed Barn

311 W. American Blvd. 272-5626

We're Home!
Muleshoe Art Loft
Come see our newly remodeled "original" locations featuring these departments:

- Antiques
- New Gifts
- Accessories
- New Furniture
- Lamps & Mirrors
- Gourmet Foods
- Baby Gifts
- Toys
- Complete Interior Design Dept.
- Silk Flowers, Arrangements

Custom Framing Dept. will open soon!
1529 West American Blvd.



DEWEY MOORE

Mohawk Auto Parts Co.
1701 West American Blvd. Muleshoe, TX 79347
Bus: (806) 272-4425
Home: (806) 272-3234

We appreciate your business.

BRATCHER MOTOR SUPPLY

Located at 107 East Ave. B, for the past 28 years, Tommie and Charles Bratcher have served the auto parts needs of our community. Our goal has always been to bring you top quality auto parts at the best price possible. We remain independent of the various chains so that we may continually seek the best deal for our business and our customers. All this time, we have been a part of our community participating in Little League, PTA, Fine Arts Boosters, Athletic Boosters, The Chamber of Commerce, and our church.

We feel very blessed to be a part of this community and are thankful for the friends that we have here.

Thanks,
Charles and Tommie

Bratcher Motor Supply

107 E. Ave. B MULESHOE, TX 79347
(806) 272-4288

Batteries, Belts, Bearings, and other Automotive needs

2 Medium Specialty Pizzas
for **\$13.99**

Delivery Available
11 a.m.-1:30 p.m. & after 5:00 p.m.



1412 W. American Blvd.
272-4213

Sheree's Attic

MERLE NORMAN
COSMETIC STUDIOS
FREE GIFT
with purchase of 2 items.
\$25 minimum

Owner Sheree Hunt
1519 W. American Blvd. 272-3459

SUPERIOR MED-EQUIP

Suppliers of Medical & Home Care Equipment

Manager - Sherry Wisian
623 W. 2nd St. Muleshoe, TX 79347
806-272-3757 or 272-3600
800-765-1160 or 800-283-8980

IN HOME SERVICE AROUND THE CLOCK

Oxygen Concentrator & Portable Oxygen



Henry Insurance Agency sells and services most types of general insurance. Auto, home, farm & ranch, fire, crop, & liability coverages are just a few of the personal and commercial lines of insurance available as well as life, health, specialty coverages and bonds. We can put together a package to suit your needs.

If you own an auto and haven't checked Allstate's auto rates then you are probably paying too much for your present auto insurance. WE INVITE COMPARISON TO YOUR PRESENT AUTO INSURANCE RATES with any company. For property, compare Allstate and American States rates...you might be pleasantly surprised.

Come by our office or schedule an evening appointment at your home for your free insurance review including some of the top life insurance products to the industry.

For Life, Health, General Insurance and Real Estate, contact Mike McCallum.

For Auto Coverage, contact Jeri Chapman.

For Property and General Insurance, contact Rama Smalling.

Henry Insurance Agency

111 West Avenue B P.O. Box 563
Muleshoe, TX 79347 (806) 272-4581

Lasting Impressions

Teleflora
Flowers, Plants, Silk Arrangements & Gifts for all occasion

Helen Hunter, owner
272-4287 516 S. 1st

Replacement Bulbs for Christmas Lights

1/2 PRICE

All Christmas Ornaments

1/2 PRICE



New Bikes Are In!

Fry & Cox

Lumber True Value Hardware

401 S. 1st Muleshoe 272-4511

OPEN Monday-Saturday 8:00 a.m. - 6:00 p.m. Sunday 1:30 p.m. - 4:30 p.m.



\$12.95
With The Purchase Of WIX Filters

In the good old days you'd see a lot of 1951 Ford F1 Pick-Ups at drive-in movies. Now you can own your own 1/25 scale, limited edition, die-cast metal model for a special low price with the purchase of WIX filters. Then if you really want to go back in time, you can order this '40 Ford Modified Race Coupe with trailer for just \$19.25 (plus shipping and handling) and four WIX filters proofs of purchase.

Both models are highly detailed and double as coin banks. But hurry, this double feature ends soon.

Bratcher Motor Supply WIX FILTERS
107 E. Ave. B 272-4288

We pick up and repair all types of irrigation motors, service & repair late model GM's, Fords & Dodge automobiles & trucks.

SPECIALIZING IN GENERAL AUTOMOTIVE REPAIR WORK OF ALL KINDS.

Muleshoe Truck & Auto

301 N. 1st 272-5111

Mike McCallum Agent

Henry Insurance Agency

111 West Avenue B
Post Office Box 563
Muleshoe, Texas 79347

Auto, Home Life, Health Property & General Insurance

FAX (806) 272-5892
PHONE (806) 272-4581

Topped Sopaipilla

Sopaipilla topped with taco meat, cheese, lettuce, tomatoes and quacamole.

\$4.95

Leal's Restaurant

1606 W. American Blvd. 272-3294

Hicks elected president elect of TMAC, Inc.

Mary Hicks, City Secretary, Muleshoe, was elected president elect of the Texas Municipal Clerks Association, Inc., at its annual meeting held in conjunction with the Texas Municipal League Conference in Dallas.

The Texas Municipal Clerks Association, Inc., is a statewide association with 742 members. The Association operates the Texas Municipal Clerks Certification Program located at the University of North Texas, Denton. The Certification Program is recognized and endorsed by Sec-

tion 22.074 of the *Local Government Code, Vernon's Annotated Civil Statutes*. TMCA, Inc., published the *Texas Municipal Election Law Manual, the Texas Municipal Law and Procedure Manual* and the *Texas Municipal Clerks and Secretaries Handbook*.

Hicks will be charged with the responsibility of accomplishing the goals and objectives of TMCA, Inc. The Association is dedicated to serving the demands of excellence in Texas' local government and public problem solving. Its principal missions are to moti-



Mary Hicks vate Texas city clerks and city secretaries to become leaders in their fields of governance and to provide an educational program for the beginning and career city clerk and city secretary.

Friends meet in Lazbuddie

The death of a child is one of the most devastating life experiences, regardless of their age. There is no way to prepare parents and surviving children to cope with the tragedy.

Compassionate Friends, an international support group for bereaved parents and siblings, offers friendship and understanding.

Compassionate Friends have learned that the death of a child can best be understood by another bereaved parent.

The group believes bereaved parents can help each other toward a positive resolution of their grief, understanding that each parent must find his or her own way through grief. Expressing thoughts and feelings is part of the healing process and the group offers an opportunity for sharing and learning from other bereaved parents.

A local chapter of Compassionate Friends has been established in Lazbuddie to accommodate the community and the surrounding area.

The group meets the second Thursday of every month at 7:30 p.m. at the Fellowship Hall of the Methodist Church in Lazbuddie.

For more information contact Glenda Jennings at 965-2483 or Jan Thompson at (806) 894-6138.

The Phone Company

The area telecommunications services are provided by **Five Area Telephone Cooperative, Inc.** and its subsidiaries.

- *West Plains Telecommunications, Inc.
- Five Area Systems, Inc.
- Plateau Cellular Network, Inc.

Bula • 933	Lehman • 525
*Olton • 285	*Earth • 257
Maple • 927	*Springlake • 986
Lariat • 925	*Muleshoe • 272
*Sudan • 227	Lazbuddie • 965
Needmore • 946	

The home town Phone Company
806-272-5533 or 1-800-741-6925 Office hours 8-5
Monday thru Friday
302 Uvalde St. Muleshoe, TX 79347



Employee of the month

Peggy Bates (center front) was named the Muleshoe Chamber of Commerce employee of the month for October. Bates is the chief jailer at the Bailey County detention Center. Also pictured Chamber members (from left) Jim Henderson, Starla Ellis, County Sheriff Jerry Hicks, Lary Hooten and J.B. Douglas.

Horns

Continued from page 5

mally pass-happy Longhorns rushed for 178 yards.

St. Clair led the ground game with 88 yards on seven carries, including a 70-yard touchdown run that gave the Longhorns a 22-14 halftime lead.

St. Clair completed 8 of 28 passes for 134 yards, including scoring strikes of 28 yards to Warren and five yards to Nickels in the first half.

Brice Foster added 83 yards rushing on 23 carries for Lazbuddie, and caught six passes for 39 yards. Warren finished with 56 yards on three receptions.

Silverton (5-4, 2-2) scored

District 2-1A six man		
	Overall	District
Amherst	9-0	4-0
Whitharral	8-1	3-1
Silverton	5-4	2-2
Lazbuddie	5-4	2-2
Three Way	4-4	1-3
Cotton Center	1-8	0-4
Results		
Nov. 3		
Three Way 80, Cotton Center 30		
Lazbuddie 28, Silverton 14		
Amherst 58, Whitharral 8		
Schedule		
Nov. 10		
Lazbuddie at Three Way		
Cotton Center at Whitharral		
Amherst at Silverton		

on a nine-yard run by **Arnold Garza** and a 20-yard run by **Anthony Gamble**.

LIKE A GOOD NEIGHBOR,
STATE FARM IS THERE.®

Mark Morton
101 S. Main Muleshoe
272-7519

State Farm Insurance Companies
Home Offices: Bloomington, Illinois

Dr. A. R. Ploudre
Open your eyes to vision care that works with your budget!

- Quality care at a reasonable cost
- Contact lenses
- Eyeglass prescriptions filled
- NM & Texas Medicaid, Medicare Assignment

We are also proud to provide special assistance to low income families in need of vision care. Families who feel they qualify are encouraged to call for more information.

Payment plan available • Se Habla Espanol

1515 Gidding St., Clovis, NM
(505) 762-2951

Have A Nice Day!!!

1-800-658-6378 106 E. American Blvd. Muleshoe, Texas
And Country Junction

Midnight Madness Sale
Saturday Nov. 11 Open 6:00 pm til midnight

- FREE Entertainment - Magician Jamie O'Hara 6pm-11pm
- Play "Columns of Cash" - Winnings To Be Used At Auction Dec. 16

All Men's Shirts 20% OFF	Resistol Black Golds \$300
All Belts 15% OFF	Men's Pioneer Wear Jackets 25% OFF
Ladies' Jeans Hundreds of pairs! Roper, Rocky Mountains \$19.99	Boots Tony Lama Bullhide & Shrunken Shoulder \$20 OFF 13", 15", 17" tops
	Montana Silversmith & Crumrine Jewelry 10% OFF

HEARING MADE EASY

No Batteries to Buy!

Just put it in your ear & hear!

- ☑ Do people seem to MUMBLE
- ☑ Do you HAVE TROUBLE HEARING what people are saying
- ☑ Do you have to ask others to REPEAT

"I've spent my life helping people like you, who were told a hearing instrument would not help them to hear better. Let me put my experience to work for you. Come and hear for yourself. There is no cost or obligation for my FREE hearing check-up."

Terry Hill
Hearing Instrument Specialist

DON'T MISS THIS OPPORTUNITY FOR A FREE ELECTRONIC HEARING EVALUATION
Find out for yourself...The Elite Rechargeable Hearing System could be the answer you've been waiting and looking for...please don't let the Elite Rechargeable Hearing System's small size fool you. IT WORKS GREAT!
Battery Operated Models Available.

NOW!...300 CONVENIENT SERVICE CENTERS

CALL NOW
For An Appointment To Avoid Waiting
1-800-392-1041

Muleshoe Texas
Monday, Nov. 13th 10 a.m. - 4 p.m.
The Depot
2200 American Boulevard

PLEASE BRING A FRIEND OR LOVED ONE, SOMEONE WHOSE VOICE IS FAMILIAR. HEARING TESTS ALSO AVAILABLE IN THE PRIVACY OF YOUR HOME. THESE FREE TESTS ARE PERFORMED BY HEARING AID SPECIALISTS FOR THE PURPOSE OF HEARING SYSTEM SELECTION. HEARING AID DEVICES WILL NOT PROVIDE THE SAME BENEFIT TO ALL USERS.

TRUCKLOAD HAT SALE

Limited number of 15X, 20X and 30X available!

Great Prices On BAILEY & STETSON FELT HATS

Your Hat... Hand-creased to your satisfaction by Curtis!

2X & 3X	\$49
5X	\$79
7X	\$89
10X	\$99
15X	\$159
20X	\$179
30X	\$199

If You Didn't Buy Your Hat At Joe's, You Paid Too Much! **SALE GOOD NOV. 9-24**

Watch for our **Midnight Madness Sales!**
Nov. 11, 24, Dec. 2, 16 Open 6:00 pm til midnight

FALL COLLECTION OF VALUE!



All Types
6 pack, 12 oz. cans
Sprite
\$1.29

Meat



Boneless
Top Sirloin Steaks
\$1.99
lb.

Bone-In
Pork Butt Roast lb. **99¢**
Bar S Meat
Bologna 1 lb. pkg. **79¢**
Bar S Jumbo
Meat Franks 1 lb. pkg. **89¢**
Value Pack, Bone-In
Country Style Ribs lb. **\$1.29**
Jumbo Fresh Fryer
Drumsticks or Thighs lb. **69¢**

Bone-In
Pork Steak
Great for Asado
Pork Stew Meat
lb. **\$1.59** lb.

Oscar Mayer Ham & Cheese or Chopped Ham
8 oz. pkg. **\$1.69**

Thorn Apple Valley, Smoked Turkey Breast or Sliced Cooked Ham
1 lb. pkg. **\$3.39**

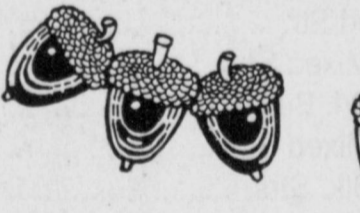
Corn King, 12 oz. pkg.
Sliced Bacon **\$1.19**
Corn King, 12 oz. pkg.
Meat Franks **69¢**
Corn King, 2 lb. pack
Sliced Ham **\$4.99**
Wilson Polish or
Smoked Sausage 1lb. pkg. **\$1.69**
Wilson Extra Lean Original or Classic
Honey Ham lb. **\$3.49**

Casserole
Pinto Beans
4 lb. bags
2 for \$3

Lite, California or Florida
Sunny Delight
Citru Punch, 64 oz. btl.
2 for \$2

Assorted,
6 pk., 12 oz. cans
Lowe's Drinks
\$1.19

Assorted
Lowe's Drinks
3 liter btl.
89¢



Frozen

Dairy

Health & Beauty

STILWELL OLD FASHIONED
Cobblers
APPLE • BLACKBERRY • CHERRY • PEACH
32 oz. pks.
2 for \$5

I CAN'T BELIEVE IT'S NOT BUTTER!
Spread Quarters **\$1.19**
I CAN BELIEVE IT'S NOT BUTTER!
Butter 1 lb. **\$1.29**
YOUR CHOICE!

SYLVANIA DOUBLED LIFE
Light Bulbs
60/75/90 watt
4 pack
2 for \$3

MENTHOL, LYPTEL, CHERRY
ROSEMARY, LEMON, SPEARMINT,
VITAMIN C ESSENCE, OR SICE BLEND
Halls Cough Drops
36 ct. pkg.
99¢

12
CRUNCH TICS
2 for \$4

Blue Bunny
Crunch Sticks
12 ct. pks.
2/\$4

Land-O-Lakes No-Fat or Light
Sour Cream
16 oz. ctns.
\$1.19

ASSORTED 12-15 OZ. SHAMPOO
7-15 OZ. CONDITIONER
7 OZ. BALSAM
OR 4 OZ. STYLING AIDS
Salon Selectives Hair Care Products
YOUR CHOICE!
\$1.99

SWANSON
Pot Pies
5 for \$3

PILLSBURY BUTTERMILK, BUTTER TASTIN,
FLAKY, HOMESTYLE
OR SOUTHERN STYLE
Grands! Biscuits
17.3 oz. **\$1.19**

SAVE \$1.00 ON Advil
24 CT ONLY
Good Only At Lowe's Pay-N-Save Marketplace
115 435

Produce

4 pack, Cello
Tomatoes **79¢**
Fresh Green
Leaf Lettuce ea. **49¢**

Fresh
Bell Pepper or Cucumbers **3 for \$1**

Large Size, Fresh Cello
Lettuce
head **59¢**

Your Choice, Red/Golden
Delicious or Granny Smith

Apples
lb. **69¢**

Texas
Grapefruit
lb. **4/\$1**

Star-Kist STAR-KIST WATER/OIL PACK **Chunk Light Tuna** 6 oz. can **59¢**

MJB PREMIUM COFFEE 12-13 oz. can **\$1.99**

Chips Ahoy! Reduced Fat, Regular, Sprinkled, Chewy, or Stipped, Nabisco **Chips Ahoy! Cookies** 14.5-18 oz. pkg. **\$1.99**

Chips Ahoy! CHUNKY **Chips Ahoy!** 16 oz. bag **\$2.19**

BAKING NEEDS

OREO ARISCO HONEY MAID GRAHAM OREO, OR NILLA **Pie Crust** 99¢

MARATHA WHITE'S GLADIOLA WHITE OR YELLOW Cornbread 6 oz. pks. **4/\$1**

CARNATION Evaporated Milk 12 oz. can **59¢**

LIBBY'S Pumpkin 16 oz. can **79¢**

RED OR BLUE LABEL Karo Syrup 32 oz. btl. **\$2.99**

Ruffles RUFFLES ASSORTED **Potato Chips** **\$1.79**

Campbell's **Chicken Noodle Soup** 10-10.75 oz. cans **2/\$1**

V-8 V-8 Juice 46 oz. can **\$1.69**

Gold Medal Fudge **Brownie Mix** 10 oz. pks. **2/\$1**

TACO BELL TACO BELL MILD, HOT, MEDIUM OR WILD **Thick'n Chunky Salsa** 16 oz. jars For **2/\$3**

DEL MONTE **Tomato Sauce** 8 oz. cans For **5/\$1**

Scott's SCOTT'S 1000 SHEETS WHITE ASSORTED **Bath Tissue** 4 roll pkg. **\$2.59**

Pedigree PEDIGREE MEAL TIME SMALL CRUNCHY BITES **Dog Food** 22 lb. bag **\$6.99**

Ruffles RUFFLES SCENTED **Tall Kitchen Bags** 30 ct. For **2/\$3**

Ruffles RUFFLES SURE STRENGTH **Trash Bags** 40 ct. **\$2.69**

HELLMANN'S ONE STEP™ DRESSING *Coleslaw *Potato Salad *Tuna Salad **\$1.99**

Exclusively from the Heritage Mint Ltd.

Country Collection

16" Authentic Porcelain Dolls

- Charming Handcrafted costumes
- Fine bisque porcelain combined with premium quality materials
- Soft, realistic hairstyles
- Meticulously handpainted

Suggested List \$49.99

\$19.99

9 Beautiful Dolls To Choose From

w/\$10.00 purchase at participating stores, w/out purchase \$24.99 each

WESTERN MONEY UNION TRANSFER™ "The fastest way to send money"

Lowe's **Pay-n-Save**

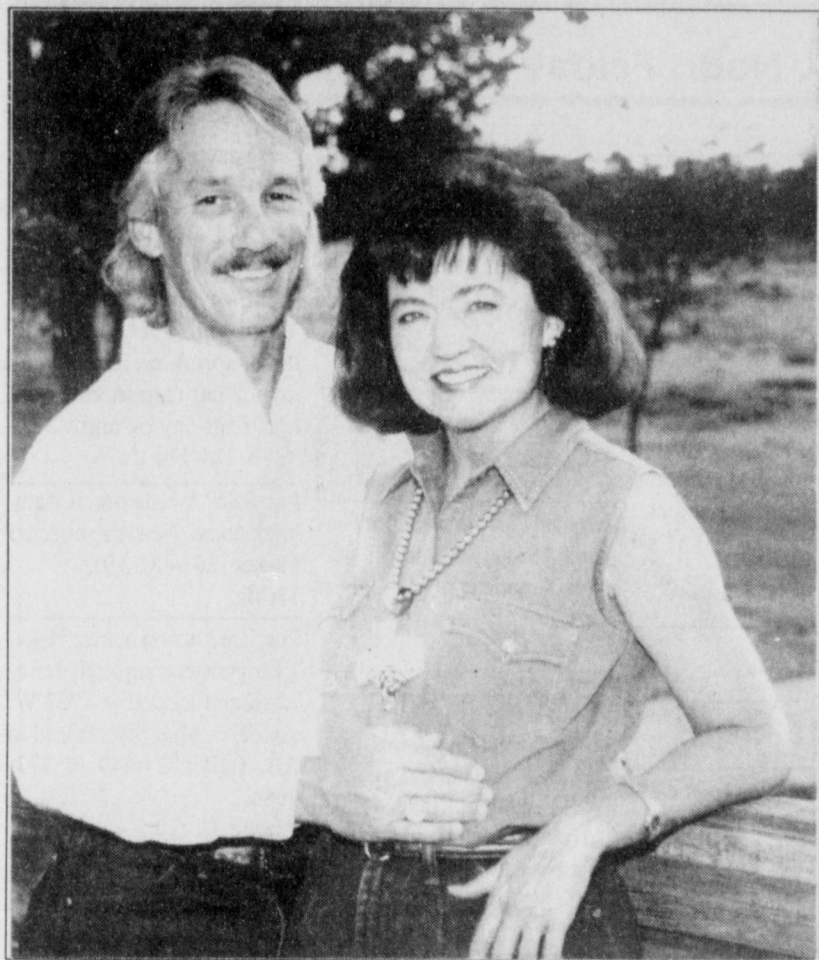
MARKETPLACE 515 W. American Blvd. Muleshoe 272-4406

401 W. American Blvd. Muleshoe 272-4585

WE RESERVE THE RIGHT TO LIMIT QUANTITIES IN TEXAS

Prices Effective November, 1995

Engagements



Eddie Dean Ethridge and Sheila Ann Moraw
Leigh and Leslie Moraw and DeLana, Cameron and Michael Ethridge announce the engagement and approaching marriage of their parents, Sheila Ann Moraw and Eddie Dean Ethridge. Sheila is the daughter of T.L. and Christina E. Kelley of Lubbock. She is a 1969 graduate of Lubbock High School and a 1994 graduate of American Commercial College. She is currently employed at Lowery Plumbing, Heating and Air Conditioning. Eddie is the son of Gene and Melba Ethridge of Slaton. He is a 1969 graduate of Moses Lake Washington High School. He attended South Plains College and is currently employed by the City of Slaton. The couple plan a Nov. 18 wedding at their home in Lubbock.

Weather

R. G. Bennett, Muleshoe

Date	High	Low
Saturday, Nov. 4	46	27
Sunday, Nov. 5	43	27
Monday, Nov. 6	73	27
Tuesday, Nov. 7	73	36

KENW-TV

Public Television

In the Wild

Robin Williams, Debra Winger, and Christopher Reeve journey **In the Wild** this fall as PBS launches a new wildlife adventure series. Each of the three specials follows one of the celebrities as they travel into the untamed natural world to encounter the animals of their choice — the ever-popular dolphin, the rare giant panda, and the mighty gray whale.

When asked which animal he most wanted to explore in the wild, world-famous actor and comedian Robin Williams had no doubts — a dolphin. In "Dolphins with Robin Williams," filmed in the waters off Hawaii, the Bahamas, and in various parts of the Caribbean, Williams sets out to investigate dolphin intelligence and communication.

"Pandas with Debra Winger" features the actress in China's bamboo forests. One of the first Westerners filmed with the rare and endangered wild giant panda, Winger crosses a landscape of physical and spiritual wonder to come face-to-face with the animal.

Finally, **In the Wild** visits "Gray Whales with Christopher Reeve." Prior to his recent accident, Christopher Reeve was an avid scuba diver. He was inspired by his uncle, who was one of the pioneers of the Aqua-lung. Reeve grew up with stories of the deep and, when asked which animal he most wanted to encounter, he immediately chose the gray whale.

In the Wild airs Mondays at 8:00 and 12:00 a.m. beginning November 13th.

Values Matter Most with Ben Wattenberg

Pundits said the 1992 election of Democrat Bill Clinton meant that voters cared foremost about the economy. But just two years later, with the economy flourishing, the same voters elected a Republican majority in Congress.

What happened? **Values Matter Most with Ben Wattenberg** argues that social issues like crime, welfare, affirmative action, and educational discipline have become more important to voters than economic issues.

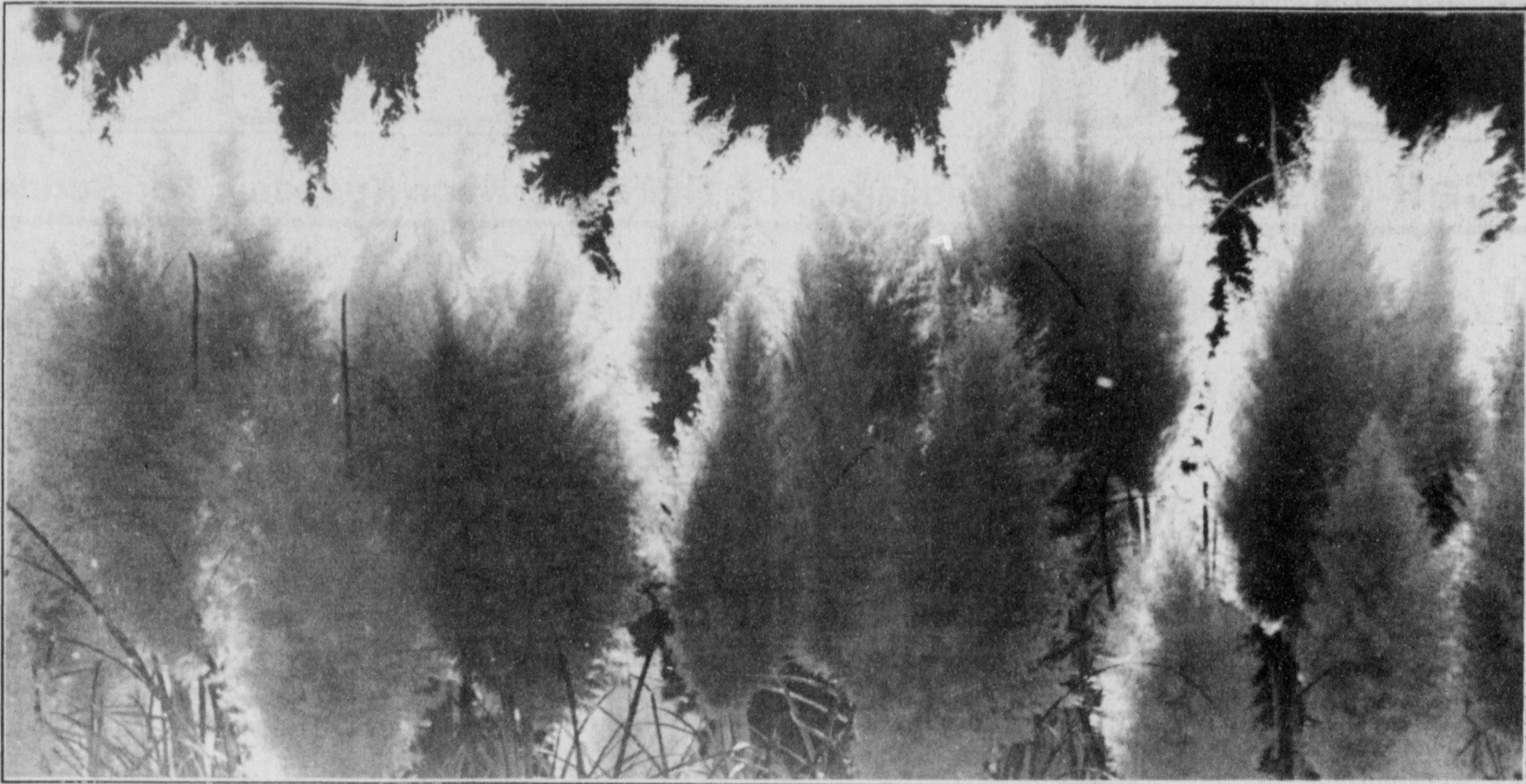
According to Wattenberg, value issues were responsible for the 1994 Republican congressional victory, are the impetus for Democrats to change in order to remain in the White House and regain strength in Congress, and pose the possibility that an independent presidential candidate may surprise the country in 1996.

Values Matter Most with Ben Wattenberg includes interviews with some of the nations' leading experts and scholars: John DiIulio of Princeton University on crime; Diane Ravitch of the Brookings Institution on education; Shelby Steele of San Jose State on affirmative action; and James Q. Wilson of the University of California on welfare.

Values Matter Most with Ben Wattenberg will be broadcast Monday, November 13th at 10:00 p.m. The program repeats Sunday, November 26th at 12:00 a.m. on KENW-TV.

Channel 3 Television from
Eastern New Mexico University, Portales, New Mexico

Have A Nice Day!



So long sun

A patch of Pampa grass in the Richland Hills section of Muleshoe gathers in the last rays of sunshine last month.

Journal photo by Rick White

Tops News

Tops Chapter Nov. 34 met at the Muleshoe Church of Christ, Thursday, Nov. 2, at 6 p.m. Leader Laverne James called the meeting to order. The Tops pledge was recited and the fellowship song was sang. Mrs. James led the group in a prayer.

Betty Jo Davis, weight re-

order, called the roll with 20 members answering with amount they had lost or gained. Minutes of the previous meeting were read by Aurora Mata, secretary and were approved as read. Ruth Clements, treasurer, gave the treasurer's report.

Loretta Lloyd was named

best loser for the week. Runners up are Ernestine Steinbock, first runner-up and Evelene Harris, second runner-up.

Monthly best losers are Evelene Harris, best loser; Aurora Mata, first runner up and Noemi Sanchez, second runner up.

The group decided to change the time of meeting to, weigh in starts at 5:30 p.m. and the meeting will begin at 6 p.m.

Evelene Harris is our groups' century pin recipient. Mrs. Harris has worked hard to take off and keep off 100 pounds. Keep up the great example Evelene.



OVER 300 Ford Trucks

THE BEST SELECTION IN NEW MEXICO!



1996 FORD F-150

Your Choice of 20

- Loaded With:
- Power Windows • Power Door Locks • Air Conditioning • AM/FM Cassette
 - Cruise Control • Tilt Steering Wheel • Rear Anti-Lock Brakes • 4.9 Liter Engine
 - Cab Step • Cloth Bench Seat • 2 Tone Paint • Aluminum Wheels • Much More!

Only \$179 Month

24 month Red Carpet lease. First month's lease payment, \$200 refundable security deposit and 10% down payment are due at lease inception. Lessee is responsible for excess wear and tear. Subject to 8c per mile over 30,000 miles. Lease subject to credit approval and insurability as determined by Ford Credit. Payment excludes tax, title and license. Payment includes qualification of \$300 commercial rebate assigned to dealer. Residual \$12,936.30. See dealer for end of lease options. Stock # FTA41449.



1996 FORD F-150 4x4

Your Choice of 20

- Loaded With:
- Power Windows • Power Door Locks • Air Conditioning • AM/FM Cassette
 - Cruise Control • Tilt Steering Wheel • Rear Anti-Lock Brakes • 4.9 Liter Engine
 - Cab Step • Cloth Bench Seat • 2 Tone Paint • Aluminum Wheels • Much More!

Only \$199 Month

24 month Red Carpet lease. First month's lease payment, \$200 refundable security deposit and 10% down payment are due at lease inception. Lessee is responsible for excess wear and tear. Subject to 8c per mile over 30,000 miles. Lease subject to credit approval and insurability as determined by Ford Credit. Payment excludes tax, title and license. Payment includes qualification of \$300 commercial rebate assigned to dealer. Residual \$14,734.30. See dealer for end of lease options. Stock # FTA20222.



1996 FORD F-150 Super Cab

Your Choice of 15

- Loaded With:
- 5.0 Liter V-8 Engine • Automatic Transmission • 40-20-40 Cloth Bench Seat
 - Power Windows • Power Door Locks • Air Conditioning • AM/FM Cassette
 - Cruise Control • Tilt Steering Wheel • Remote Keyless Entry • Much More!

Only \$289 Month

36 Month Customer Option Plan - Then Walk Away
Excludes tax, title and license. Subject to lender's approval and prior sale. Payments based on 45,000 miles per contract, 9.25% APR and \$2259 down - cash or trade equity. Payment includes qualification of \$300 commercial rebate assigned to dealer. See dealer for other end of term options.



1996 FORD F-250 Super Cab

Your Choice of 25

- Loaded With:
- 7.3 Liter Power Stroke Turbo Diesel Engine • 40-20-40 Cloth Bench Seat
 - Power Windows • Power Door Locks • Air Conditioning • AM/FM Cassette
 - Cruise Control • Tilt Steering Wheel • Remote Keyless Entry • Much More!

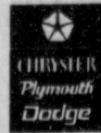
Only \$379 Month

36 Month Customer Option Plan - Then Walk Away
Excludes tax, title and license. Subject to lender's approval and prior sale. Payments based on 45,000 miles per contract, 9.25% APR and \$2723 down - cash or trade equity. Payment includes qualification of \$300 commercial rebate assigned to dealer. See dealer for other end of term options.

Hurry In For Big Savings On Ford Trucks!

TEAGUE STREBECK

The very best prices and service anywhere...
We personally guarantee it!



1115 North Chicago
Portales, NM
(On the first curve into Portales)

(505) 356-8581 (505) 762-3845