

Muleshoe Journal



Volume 74, No. 28

Published every Thursday at Muleshoe, Bailey County, Texas 79347

Thursday, July 4, 1996

Officials urge fireworks safety

Despite recent rainfall in Bailey County, officials continue to stress caution in using fireworks July 4th.

"The rain has helped, but we still have all that dry grass and wheat," said Bailey County Judge Marilyn Cox. "A lot of places in the County have not even gotten three-fourths of an inch, while some have gotten nearly seven. We are thankful for the rains but there is still a big, big danger."

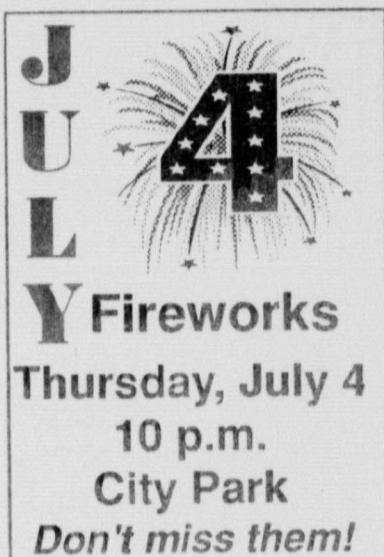
County Commissioners passed a county-wide ordinance banning the use of aerial fireworks within a half-mile radius of native grass, CRP, and wheat fields June 10. Violation of the ordinance is a class C misdemeanor, punishable by a maximum \$500 fine.

"I would remind everyone of the ordinance passed by the court June 10," Cox said. "Anyone that does not obey that order commits a criminal offense and will be prosecuted. It is my desire that everyone would respect the property and lives of others and keep that order."

Fire Marshall Jimmy Mills said that rainfall in the county has varied too much to assume that it is now safe to use fireworks.

"We are still trying to discourage everybody from shooting fireworks at home," Mills said. We urge everyone to save their money and come out to the park and see the fire department's demonstration."

In past years, problems have arisen during the fire department's display due to



spectators lighting fireworks into the crowds. While the fire department urges July 4th celebrants to view the park demonstrations, Mills said spectators should not shoot their own fireworks in the park.

"People just don't realize how very dangerous that can be," he said, noting that it is illegal to use fireworks inside the city limits.

In response to ordinances passed in counties across the state, many fireworks stands have opted not to sell missiles and rockets.

Lori Tosh of Muleshoe operates a fireworks stand west of town. She said that the Texas Pyrotechnics Association, a fireworks manufacturer, has stopped supplying and selling stick missiles and bottle rockets state-wide, and have ordered sellers and stand operators to follow suit.

"We're selling the fireworks that hopefully burn out before they hit the ground," Tosh said. "But people should still be careful."



A wrinkle in time

Buddy Beach (left) takes on the look of a fifty-year-old farmer in preparation for the "Keepers of the Legend" dress rehearsal Sunday night. Cindy Barrett (right) assisted in creating the wrinkles.

Getting the makeup call

By JOANNA GALLMAN
Journal staff writer

It was a Mary Kay Cosmetics nightmare.

Frantic actors, wielding sponges with every color of base imaginable, scrambled to paint on their game faces. The room looked like a war zone. The masses gravitated around the makeup table, trading lipsticks and brushes like sorority girls dressing for the fall rush.

"Where's the powder — who's got the eye-liners?" echoed in the overcrowded room.

The disarray preceded the first dress rehearsal of "Keepers of the Legend"

Sunday night.

The locally-produced, historical play opens Wednesday, and runs nightly through July 9. Performances begin at 8:30 p.m. at the Muleshoe Heritage Foundation.

Mothers of the actors, volunteers from beauty salons, and others with theatrical experience worked more than two hours, painting and brushing on the personalities of the actors.

"Remember, if you don't look like a clown in the mirror, I won't be able to see you on stage," shouted Sally Messenger over the chaos.

Although many of the characters only needed cosmetic reinforcement to be

seen on stage, others had to take on the appearance of characters twice their age.

"I'm 32, but I look 26, so making me look old is pretty hard," said performer Buddy Beach.

Beach portrays John Masters, a farmer in his mid-50s. To attain the weathered, sun-beaten look of his character, Beach blends eye pencils and powders to darken every crease and natural wrinkle in the corners of his eyes, mouth and forehead.

Silver hair paint is used to complete the aged look.

The first dress rehearsal serves as a sort of orientation for the actors, who decide their makeup colors and record

Continued on page 3

Train wreck Saturday injures two

A train collided with a pickup Saturday morning in front of the Muleshoe Livestock Auction, injuring two Levelland men.

The two men were injured when an eastbound Santa Fe train collided with the 1996 Chevrolet pickup being driven by O.M. Morris, 76, at 10:25 a.m., according to the Department of Public Safety.

Morris was listed in satisfactory condition Monday at Methodist Hospital in Lubbock. Morris was transported to Methodist after complaining of neck pain at the scene.

The passenger, 74-year-old James Wright, was treated for lacerations at Muleshoe Area Medical Center and was released.

Morris was headed west on U.S. Highway 84 when he turned into the Muleshoe Livestock Auction. The train struck the pickup just behind the cab. The truck went airborne, separating from an empty livestock



Book em'

Bailey County Extension Service Agent Curtis Preston (left) takes a nose print from a Hereford steer Friday at the Muleshoe Animal Clinic. Stock show officials are able to keep accurate records of animals using photographs, nose prints (right) and ear tags.

Booking bovines keeps shows honest

By RICK WHITE
Managing Editor

The sad, brown eyes pleaded innocence as he peered out from behind the heavy steel bars.

He was one bewildered bovine.

In a flash, he was photographed, printed, given a number, then hustled into a holding pen.

His only crime was wanting to be a grand champion.

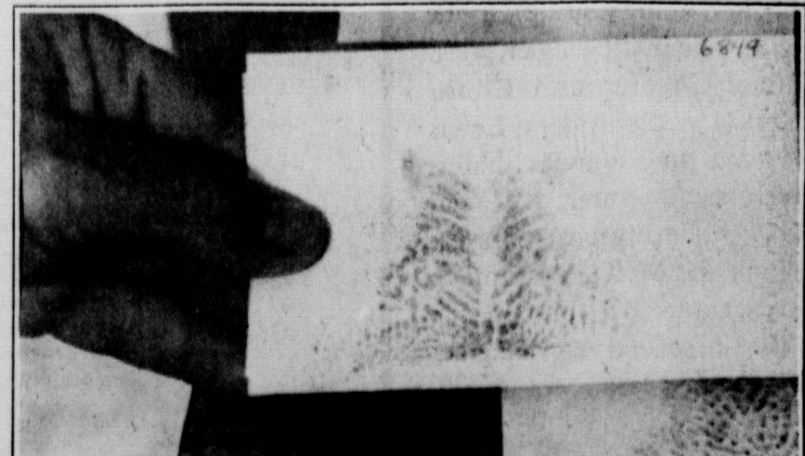
The Hereford steer was one of 65-70 steers that were vali-

dated for the Bailey County and state stock shows. Steers and heifers had to be validated June 29-30 to be eligible for next year's stock shows.

Once the steers were loaded into a squeeze chute at the Muleshoe Animal Clinic, officials from the Future Farmers of America and 4-H validated the steers three ways — a photograph, a nose print, and an ear tag.

An animal's nose print is almost as distinctive as human

Continued on page 4



Continued on page 2

FROM THE RECORDS

Rheata White Art Studios presenting art demos July 3-6

Rheata White's Art Studio will be presenting live art demonstrations July 3-6 at Joe's Boot Shop.

Mickey Stephans and other artists will be demonstrating silk painting July 3 at 11 a.m., Buster Jones will be presenting paper casting July 4 at 10:45 a.m., and Rheata White will be demonstrating general art July 5 at 2:30 p.m. Paul Milosevich and other artists will be demonstrating oil painting July 6 at 1 p.m.

World War II reunion slated for July 10-13 in Irving

World War II Veterans who served in the 37th Combat Engineers in Camp Bowie, Texas, or the 591st Engineer Boat Regiment in Europe are being sought for a reunion July 10-13, in Irving's Holiday Inn Holidome DFW Airport South.

To make reservations, veterans should call (214)986-8806 or (800)360-2242. Veterans are encouraged to mention the 591st EBR when they call.

Motley County Junior Rodeo slated for July 12-13 in Roaring Springs

The 22nd Annual Motley County Junior Rodeo will be held at the Old Settler's Arena in Roaring Springs July 12-13.

Two rodeo performances are scheduled for Friday night at 7:30 p.m. and Saturday night at 4 p.m. Rodeo books will close at 5 p.m. on July 9.

Division prizes include saddles, a set of Rickey Trammell bits and spurs, and Montana Silversmith belt buckles.

A dance will be held nightly at 9 p.m. For more information or entry blanks, contact Cathey Turner, Rodeo Secretary, Box 666 Matador, TX 79244, (806) 347-2834, or Beverly Logsdon, County Extension Agent, Box 670, Matador, TX 79244.

Muleshoe DECA hosting Broom and Mop Sale

The Muleshoe DECA chapter will be holding a broom and mop sale in the Muleshoe State Bank parking lot July 3-4.

The sale will begin each morning at 8 a.m. Brooms, mops, brushes, and many other cleaning aids made by the blind will be on sale.

For more information, call Kandy Wilcox at 965-2678.

10th Annual Clovis Music Festival slated for July 26-27

Two concerts have been scheduled for July 26 and 27 in Clovis, NM during the 10th Annual Clovis Music Festival.

The concerts will feature the Fireballs, Frankie Valli and the Four Seasons, the Bellamy Brothers, and Wade Haynes. Both concerts will begin at 8 p.m. in Rock Staubus Gymnasium on the Clovis High School campus.

Other activities scheduled for the music festival include a hot air balloon rally, a classic car show, and tours of the original Norman Petty Studios.

For details and ticket information, contact the Clovis/Curry County Chamber at (505)763-3435, 215 Main Street, Clovis, NM 88101; Cannon Air Force Base at the Office for Information, Travel and Tickets, (505)784-2563; or the North Plains Mall Marketing Office, 2809 N. Prince, (505)769-2308.

South Plains College campuses schedule fall registration Aug. 22

Fall registration at South Plains College in Levelland is scheduled to begin Aug. 22.

Registration on the SPC Levelland campus will be from 8:30 to 11:30 a.m. and from 1:30 to 6:30 p.m. Aug. 21 and is designated for pre-registered students receiving financial aid only.

The SPC Lubbock campus, located at 1302 Main, will hold registration Aug. 21 for returning students who have enrolled in the spring or summer 1996 semesters. Returning student registration is from 9 a.m. until noon for students with last names L-Z, from 3 to 6 p.m. (A-K) and from 6 to 7 p.m. (A-Z).

New student registration on the SPC Lubbock campus is Aug. 22, from 9 a.m. to noon for last names L-Z, and from 3 to 6 p.m. for A-K. Open registration on the Lubbock campus is from 6 to 7 p.m. Aug. 22.

Open registration for SPC courses offered at Reese Air Force Base is Aug. 19-20. Enrollment will be held from 4:30 to 7 p.m. Aug. 19 and from 5:30 to 7:30 p.m. Aug. 20 in Building 920, room 130. SPC offers four 11 week sessions on the base.

Classes at all three locations begin Aug. 26.

To obtain a fall 1996 schedule of classes listing course information at all three campuses, contact the SPC Office of Admissions and Records in Levelland, at 894-9611 ext. 2374 or 2375, SPC Lubbock at 747-0576, ext. 4660 or 4606, or the Base Education Office at Reese AFB at 885-3048.

Muleshoe student named to Baylor Dean's Academic Honor List

Norris Mason Conklin of Muleshoe was recently named to the Baylor University's Dean's Academic Honor List.

Conklin, a sophomore, had to maintain a minimum grade-point average of 3.7, while enrolled in at least 12 semester hours to be named to the list.

Wreck

Continued from page 1

trailer, and landed in the train easement about 75 feet away.

Morris told DPS Trooper Bill Horton he didn't see or hear the train coming. An engineer on the 64-car Santa Fe train told Horton it looked like the truck was trying to get across ahead of the train.

"They were lucky they weren't injured more seriously," said Horton.

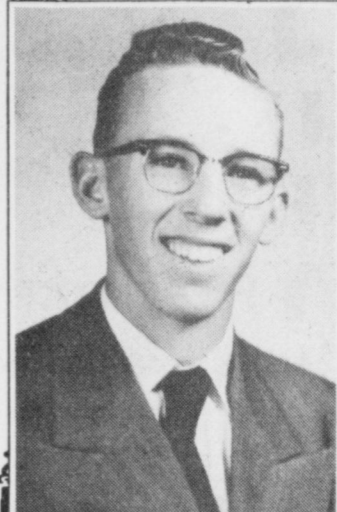
Both men, who told Horton they come to the auction fre-

quently, were wearing their seat belts.

Morris is being charged with failure to yield the right of way.

It was the second accident at the crossing in the last 3-4 months, according to C.L. Myers of the Muleshoe Livestock Auction. No one was injured in the last accident.

There are railroad crossing signs on both sides of the tracks on the dirt entrance road, but no crossing bars.



Happy
60th to our
special
guy!
Much love,
Your Family

THE CARROUSEL of Good Food

will be open
Friday, July 5
For Lunch

-In Addition To Our Regular Menu-
ALL YOU CAN EAT Salad Bar

1902 W. AMERICAN BLVD.
MULESHOE (806) 272-4131

Fish & Wildlife proposes youth hunting day

The U.S. Fish and Wildlife Service is considering a proposal to allow states to set aside a "Youth Waterfowl Hunting Day," providing young people an extra hunting day before or after the regular waterfowl season.

"Traditionally, hunters have been the most avid conservationists, contributing far more than their share so that all Americans can enjoy wildlife," said John Rogers, the service's acting director.

"Young people learn more than just how to hunt when they go into the field," Rogers said. "They learn valuable lessons about preparedness, responsibility, outdoor ethics,

and wildlife conservation. They become part of our conservation future."

If the proposal is enacted, states would be able to select one "Youth Waterfowl Hunting Day" in addition to their regular duck season. The day would have to be held outside of any regular duck season on either a weekend or holiday when youths would have the maximum opportunity to participate. They day could be held up to 10 days before or after any regular duck season and within any split or a regular duck season.

The youngsters would have to be 16 years old or younger and accompanied by an adult

at least 18 years old. The adult would not be allowed to hunt. Both the youth and the accompanying adult would have to be properly licensed according to state law.

Under the proposal, the daily bag limit would be no more than four ducks. Flyway-specific restrictions applying to the regular duck season also would be in effect.

The public may comment on the proposal until July 5, 1996. Comments should be sent to: Chief (MBMO), U.S. Fish and Wildlife Service, 634 Arlington Square, U.S. Department of the Interior, 1849 C Street, NW., Washington, DC 20240.

Muleshoe Square Dance Club meets

The Muleshoe Square Dance Club met at the Civic Center for their second Thursday meeting for the month of June.

Graduation was held, and Marshall Cooks was presented with his diploma and welcomed as a club member.

The new officers elected for the coming year are: Orville and Loren Clevengier, president; Chester and Elinor Yerby, vice president; Lewis Wayne and Wanda Shafer, secretary/treasurer; J.W. and Gloria Herington, reporter; Frank and Melba McCamish, historian; Bill and Fern Pittman, second year delegate; Frank and Melba McCamish, first year delegate.

Guests from Portales, Clovis and Plainview enjoyed refreshments of homemade ice cream and cake.

Don't forget the Mountain Hoedown in Ruidoso, July 12 and 13th. Our own caller, James Pettus, will be one of

the featured callers.

The next dance night will be July 11 at the Civic Center. Come and dance with us.

Muleshoe Journal USPS 367820

Established February 23, 1924. Published by Triple S Publishing, Inc. Every Thursday at 304 W. Second, Box 449, Muleshoe, TX 79347.

Second Class Postage paid at Muleshoe, TX.
POSTMASTER: Send address changes to the Bailey County Journal, P.O. Box 449, Muleshoe, TX 79347.

We are qualified members of:
Panhandle Press Association, National Newspaper Association,
West Texas Press Association and Texas Press Association

WEST TEXAS PRESS ASSOCIATION

TA

MEMBER 1996

TEXAS PRESS ASSOCIATION

PPA
Panhandle Press Association

Scot Stinnett, Publisher
Lisa Stinnett, Vice-President/Comptroller
Rick White, Editor
Holly Millsap, Classifieds
Pat Durben, Advertising

SUBSCRIPTIONS: Muleshoe Journal and Bailey County Journal
By Carrier Yearly - \$22.00
Bailey and surrounding counties: by mail - \$24.00
Elsewhere - \$26.00
Advertising Rate Cards on Application

*Advertisers should check their ad the first day of insertion. The Journals will not be liable for failure to publish an ad or for a typographical error or errors in publications except to the extent of the cost of the ad for the first day of insertion. Adjustment for errors will be limited to the cost of that portion of the ad where the error occurred.

INDEPENDENCE DAY CELEBRATION SALE

OVER 350 QUALITY USED VEHICLES TO CHOOSE FROM!

1989 Plymouth Reliant <small>Stock # D487630</small> ONLY \$2,932	1991 Ford Escort <small>Stock # F1410874</small> ONLY \$3,826
1992 Plymouth Acclaim <small>Stock # D4229304</small> ONLY \$5,106	1991 Pontiac Grand Am <small>Stock # D4814279</small> ONLY \$6,251
1994 Mercury Topaz <small>7 To Choose From</small> ONLY \$6,431	1993 Ford Escort <small>Stock # F4235610</small> ONLY \$6,831
1995 Ford Escort <small>Stock # F4287973</small> ONLY \$8,441	1995 Dodge Neon <small>Stock # D4817775</small> ONLY \$9,838
1993 F-150 Supercab XLT <small>Stock # X4848416</small> ONLY \$13,452	1994 Chevy 3/4 Ton 4x4 <small>Stock # Z4214802</small> ONLY \$17,926
1996 Ford Windstars <small>8 To Choose From</small> ONLY \$19,422	LeBaron Convertibles Only 6 Left <small>Stock # AC</small> \$9,984

HURRY IN FOR SPECIAL HOLIDAY PRICES!

TEAGUE-STREBECK CREDIT UNLIMITED

WHOLESALE TO THE PUBLIC

AUTOMOTIVE CREDIT FOR EVERYONE!



I was very pleased with the service from Mike Ortiz and Jerry. I was in a vehicle within a matter of two hours. I would recommend this dealer to anyone.



The salesman listened to our budget plan and really did help us get the pickup we wanted. The staff was really friendly, helpful and very honest with us. Thank you again for all your help.



Mike Ortiz was very helpful. He worked with our trade-in. The car we bought was clean and full of gas. Thank you.

AUTOMATED CREDIT APPROVAL HOTLINE

1-800-419-4773

NO SALES PERSON • ENTER YOUR INFORMATION FROM YOUR TOUCH TONE PHONE!
NO PAPERWORK • YOU'LL KNOW HOW MUCH MONEY YOU QUALIFY FOR!
REGARDLESS OF PAST CREDIT PROBLEMS - CALL NOW!

TEAGUE
STREBECK





(505) 356-8581 (505) 762-3845
1115 North Chicago
Portales, NM
(On the first curve into Portales)

*The very best prices and service anywhere...
We personally guarantee it!*

Clinton beefs up school lunch program



BAXTER BLACK
ON THE EDGE OF COMMON SENSE

It should not go unnoticed or unrecognized that President Clinton "beefed" up the school lunch program. As I understand it, for the school year '96-'97 he enacted an earlier-than-usual purchase of 50 million dollars worth of beef to stimulate the sinking cattle market. That will bring the projected total for '96-'97 school year to \$163 million. Last year in '95-'96, \$150 million was approved for the school lunch program.

At \$1.75 a pound, that's about 373 million quarter pounders, or 75 million school kids' lunches for a week, or 1.4 million kids' lunches for a year.

That's also 1.7 million pounds of beef on the rail at \$97.75/cwt or 1450 live steers weighing 1150. In 1995, the U.S. marketed 35.5 million live slaughter cattle.

So, "Every little bit helps," said the little ol' lady as she tinkled in the sea.

But we who engage in the cattle business have no room to gripe that the government is not doing more. We are part of true, free-market enterprise. We chose it or it chose us. There are many other occupations that are more secure, that offer company insurance, paid vacations and the chance to break even after a lifetime.

We offer a product that has almost universal acceptance. It is usually the premium selection on the menu. You work your way up from club sandwich and chicken fingers to prime rib.

In spite of the rallying cry that we must make our product more consistent, it is still the most common blue ribbon entree you can order. I think it is a noble goal to try and make our product more uniform, particularly regarding tenderness. Maybe we can reach that goal. That would mean finding a specific breed or type of critter that consistently results in a more tender steak, or maybe a method of preparation or pre-paration that produces the most tender meat.

However that is not going to be easy. Different breeds or body types have been selected or evolved to suit the country in which they're raised. Braymers in Saskatchewan and Shorthorns in south Texas will always be a hard sell.

It is to our good fortune that even when beef is tough, it has a flavor that encourages consumers to continue ordering it. We should remember that no matter how high or how low the price of cattle goes, we always sell all we produce.

My thanks to the President and the Congress for their school lunch program expenditures. Your efforts do not go unappreciated. We will get through this bad market and keep producing beef in spite of the set backs. "Cause when it's all said and done, "That's what we do."

New Federal law puts teeth in fraud prevention

Tough new federal regulations aimed at telemarketing fraud took effect Dec. 31, 1995.

Passage of the Telemarketing and Consumer Fraud and Abuse Prevention Act may put significant dents in the activities of con artists specializing in defrauding consumers over the phone.

Some of the things you need to know are:

* If a prize is offered, you have to be told immediately that no purchase or payment is needed to win it.

* It is illegal to make you buy something or to say that a purchase will improve your chance to win. You cannot even be required to pay "shipping charges." The caller must tell you how to enter without making a purchase.

* You cannot be asked to

pay in advance for certain services, including cleansing your credit report of damaging credit information, finding you a loan or a credit line, recovering money scammed from you by someone else or acquiring a prize that some telemarketer falsely said you had won. Under the new rules, you pay for these services only if they are actually delivered.

* Telemarketers may not intimidate you or use profane or threatening language.

* If you are guaranteed a refund, the caller has to tell you the limitations and particulars. If no refund is mentioned, however, the caller need not tell you anything, so be sure to ask. If no refunds are allowed, however, all telemarketers must disclose that fact.

Makeup

Continued from page 1

them for efficiency during performances.

While the actresses did not seem to mind the bustle of the makeup room, many of the actors lingered outside, reluctant to undergo the process typically reserved for females.

Beach was one of those who stood outside, clinging desperately to his dignity.

"You notice how I'm staying out here," laughed Beach. "I don't mind the eye-liner that much, it's just all that greasy makeup that I don't like."

The cast uses a base that has been affectionately renamed "grease paint." Messenger said the base is extremely thick and greasy.

"It feels like you have this plastic mask on your face," she said. "It's not like regular makeup, where it blends in and you can't feel it. You can definitely tell it's there."

The makeup, moustaches, and silver hair paint for the production were ordered from

a theatrical supply in Lubbock.

Although some of the actors could remember which colors they used in last-year's production, most were starting the dress-up process again.

As each actor determined and applied the best color of foundation, eye-liner, blush and

mascara, the colors were approved by Messenger and recorded on a tablet for reference during performance week. Once the look was completed, the character was ready to begin rehearsal.

Sometimes the actors take their faces off the stage, as did

actor Heath Scott.

"Last year, after one of the performances I went to Town and Country with my makeup on," Scott said, sporting fresh lipstick and eye-liner. "I opened the door for this girl. She turned around and looked at me and said 'my gosh you've got the prettiest eyes!'"

The scarlet hue of his face was no longer a cosmetic exaggeration.



Mirror, mirror
Erin Gallman, a "Keepers of the Legend" performer, checks her makeup at a dress rehearsal Sunday night.

Extra Fun, Extra Photos

FREE

2nd Set Of 3" and 4" Standard Prints Every Tuesday

Order a set of 3" or 4" Standard color print at regular price and receive a 2nd set Free!

GET THE ALCO Advantage

1401 W. American Blvd. 272-5525
Monday-Saturday 9 am-9 pm; Sunday 12 noon-9 pm

Natal Colorwatch system

Dummy Roping

Thursday, July 4th
5 p.m. to 9 p.m. City Park

BE THERE TO SIGN UP BY 6 P.M.
\$2.00 per team 3 head progressive
PAYBACK IN THE AVERAGE ONLY

ENTER UP TO 4 TIMES

LEAL'S RANCH WAGON
Serving fajitas, barbecue & more on Joe's Parking Lot

FREE BARBECUE!
With Best Purchase

FREE PEPSI

FREE Balloons!

Joe's Boot Shop
and Country Junction
MULESHOE, TEXAS
1-800-658-6378

Invites you to the 13th annual

BOOT TENT SALE

Over 4,000 pairs of boots under the tent!

WEDNESDAY ★ THURSDAY ★ FRIDAY ★ SATURDAY
JULY 3, 4, 5, & 6, 1996

OPEN DAILY
9:30 AM-6 PM CDT

GREAT BUYS
on men's shirts, ladies' blouses & jackets under the TENT!

Special Guest Emcee Daily!
Radio Personality Larry Scott of KWKH, Shreveport, LA.

Wednesday	Thursday	Friday	Saturday
Jody Nix Kim Blakey & Home Cookin	Johnny Bush Bubba Cox & Larlat Kim Blakey & Home Cookin	The Bob Wills Inspirational Bubba Cox & Larlat Kim Blakey & Home Cookin	Johnny Gimble Bubba Cox & Larlat Kim Blakey & Home Cookin

For the Kids each day! Clowns "Orange Jetter" & "Red Top"

BOOTS

TONY LAMA Calfskin 11" & 13" tops	\$49
Bulhide, Snakeskins & Lizards 13" tops	\$79
Bulhide, Smooth Ostrich, Calfskin, Snakeskin & Lizard	\$45
Bulhide, Crazy Horse & Buckaroos 13"-15", 17" & 18" tops	\$89
TONY LAMA & PANHANDLE SLIM Smooth Ostrich & Shark Skin	\$99
JUSTIN & CHIPPEWA Ropers & Lazers	\$69
CHIPPEWA Lace-up Work Boots	\$39
KARMA KIDS Sport Lacers	\$29

HATS

Buckles, Billfolds & Hatbands	\$6
Dashboard Spilloons	\$6
NOCONA, TONY LAMA & VOGT Belts	\$10

ACCESSORIES

STETSON & BAILEY Felt Hats	\$29
RESISTOL 20X Black Gold Hats	\$300
Kid's Straws 6X	\$16
Men's & Ladies' Straws 6X	\$19

CLOTHING

DAVID JAMES, WALLS & "RODIE WALKER" Men's & Ladies' Rodoo Jackets	\$35
ROCKY MOUNTAIN & ROPER Jeans	\$19.99
Ladies' Blouses	\$15
Men's Shirts	\$15
KARMA KIDS Sport Lacers	\$29

Ted's Texas Taters

Bob Wills & The Inspirational

Johnny Bush

Johnny Gimble

Kim Blakey & Home Cookin Band

Jody Nix

celebrate

In addition to hourly drawings these items will be given away ALL 4 DAYS!

FREE - Vogt Belt
FREE - Tony Lama T-Shirts
FREE - Joe's Boot Shop T-Shirts



Boxed in

Employee Jennifer Winders checks on hats in preparation for the 13th annual Joe's Boot Shop Tent Sale July 3-6, which draws thousands of shoppers from all over the southwest.

XIT Rodeo is PRCA event

DALHART — The 60th annual XIT Rodeo and Reunion announces a major change in the rodeo.

This year's rodeo will be a PRCA event. We hope to offer our spectators the best of the best.

There will be a rodeo performance on August

1, 2 and 3 at 7 p.m. and a slack performance at 8 a.m. on Aug. 3rd.

The XIT Reunion will still offer the excitement of pony express races on Aug. 3rd, US numbered roping on July 27th and 28th, and PRCA Steer roping slack on July 31st.

Prints

Continued from page 1

finger prints, said County Extension Agent Curtis Preston, busy inking a steer's nose and getting an imprint on a three-by-five index card. Preston said all animals have distinct nose prints.

This year, nose prints will also taken for sheep.

The validation process discourages cheating at stock shows, where the grand champion steer at the big shows like Houston and Fort Worth can bring \$60,000. Last year's Bailey County grand champion brought \$2,500.

The Phone Company

The area telecommunications services are provided by Five Area Telephone Cooperative, Inc. and its subsidiaries.

***West Plains Telecommunications, Inc.**
Five Area Systems, Inc.
Plateau Cellular Network, Inc.

Bula	•933	Lehman	•525
*Olton	•285	*Earth	•257
Maple	•927	*Springlake	•986
Lariat	•925	*Muleshoe	•272
*Sudan	•227	Lazbuddie	•965
Needmore	•946		

The home town Phone Company

806-272-5533 or 1-800-741-6925 Office hours 8-5
 Monday thru Friday
 302 Uvalde St. Muleshoe, TX 79347

Happy Birthday America!



Join In The Fun In Muleshoe!

There's Something Planned For Everyone Of All Ages!!

• Games • Fireworks • Booths
 • Music • & More!!

These sponsors invite you to get out and enjoy the festivities....

Leal's Restaurant

1010 W. American Blvd.
 272-3294

Decorators Floral & Gifts

616 S. 1st 272-4340

Lowe's Marketplace and Pay-N-Save

401 W. American Blvd. 272-4585
 515 W. American Blvd. 272-4406

McCormick Seed, Inc.

400 E. Ash Ave. 272-3156

T.J.'s Donuts

328 S. Main 272-3542

Germania Farm Mutual Insurance



127 Main 272-5060

Wes Tex Feed Yards

Custom Cattle Feeding
 272-7555

Sherley Anderson Lazbuddie Elevators

Lazbuddie, TX 965-2922

Calvary Baptist Church

1733 W. Ave. C 272-4012

Alex's Tire Service

302 E. American Blvd.
 272-5012

Scoggin Ag Center, Inc.

1532 W. American Blvd. 272-4613

Bailey County Farm Bureau

1612 W. American Blvd. 272-4567

Coyote Lake Feedyard, Inc.

Muleshoe 946-3321

Irrigation Pump & Power, Inc.

272-5597

Western '66"

Earth Highway 272-4556

Muleshoe Journal

304 W. 2nd 272-4536

Home Folks Caring For Folks At Home.



MULESHOE AREA HOME HEALTH

Agency

Featured Patient

Audrey Lillian Magby has lived in Muleshoe since 1984. She was married to the late James Richard Magby. She has four children - Irene Morris of Progress, Flowella Johnson of Clovis, Boyd Magby of Muleshoe and Lee Magby of Muleshoe. She has 11 grandchildren, 28 great-grandchildren and three great-great-grandchildren.

Mrs. Magby has always enjoyed being a homemaker, as well as piecing quilts in the past. She belongs to the Assembly of God in Muleshoe.

She says the girls at the Home Health Agency are all very nice. They take very good care of her.



Audrey Lillian Magby

To receive Home Health Services, talk with your physician or talk with hospital personnel when you are hospitalized.

24 Hour # 272-3346

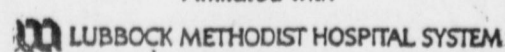
Local Nurse on call 24 hours a day to offer prompt service.

We accept Medicare, Medicaid and Private Insurance

It Is Your Right To Choose The Home Health Agency You Prefer.



Affiliated with



FREE Information On Advance Directives

Also known as Living Wills or Right To Die Directives.

You may call our agency 272-3346 for these directives. You may also obtain these forms and assistance at 623 West 2nd Street.

Kristi Chapman feted with bridal shower

Kristi Chapman, of Levelland, bride-elect of Wade Wilson, also of Levelland, was honored with a bridal shower Saturday, June 22 in the home of Darlene Henry.

Kristi is the daughter of Mr. and Mrs. Larry Chapman of Muleshoe, and Wade is the son of Rod Wilson of Maple and Jerri Wilson of Clovis.

Special guests attending the shower included the bride-elect's mother, Jeri Chapman, Jan Cooper, of Lubbock, and Lori Wrinkler of Roswell, NM, aunts of the bride-elect.

Also attending were the mother of the future groom, Jerri Wilson, and grandmother, Mary Wilson. His sister, Niclole Wilson, and aunts, Suzanne Droben, Trena Wilson and Kathy Thomas also attended.

The hostess gift was an en-



Kristi Chapman

tainment center and a set of knives.

Hostesses were Janice Bradshaw, Holly Hooten, Jan Glover, Lori Bandy, Donna Thompson, Darlene Henry, Druscilla Hutton, Elaine Greenhouse, Ruth Locker and Glenda Powell.

The couple plan a July 12 wedding at the Muleshoe Church of Christ.

Garden spot of the week



Garden bouquet

Daisies, sunflowers, hibiscus, and a variety of other flowers dot the garden of Charles and Marie Lenau at 313 E. Fir. The Lenau's garden was named the Jennyslippers garden spot of the week.

LETTER TO THE EDITOR

Dear Editor,

I am writing this letter to thank the Good Samaritans of Muleshoe for restoring the Muleshoe cemetery.

My sisters and I appreciate your time and efforts in standing the vandalized headstones, including that of our parents, Grover Cleburne and Elneita Wakefield Gray.

It is refreshing and heart-warming to see such community concern and spirit in the resolution of this problem.

Your compassion and kind actions will not be forgotten.

Sincerely,

The Gray Family
John E. Gray, Lubbock
Jeanne Gray Williams, Lubbock
Kathy Gray Hartsell, Ardmore, Okla.

PUBLIC RECORD

OBITUARIES

Houston Morris

EARTH — Graveside services for Houston Morris, 68, of Earth, were held Monday at the Springlake Cemetery with the Rev. Bobby Broyles, pastor of the First Baptist Church of Earth, officiating.

Burial arrangements were under the direction of the Parsons-Ellis Funeral Home of Earth.

Mr. Morris died June 27 at his residence after an illness. He was born August 13, 1927 in Coryell County.

He had been a resident of Earth for 25 years, moving

there from Friona. He was a veteran of WWII, having served in the U.S. Army. He was a welder.

Survivors include three sons, Ronnie Morris of Earth, Johnny Morris of Post and Phillip Morris of Calif.; two daughters, Gala Ramonda of Liberty, and Angilla Nicholson of Hereford; four sisters, Joann Mullin of Chandler, Johnnie Mae Vinson of Blue Mound, Ruby Atkinson of Conroe, and Nola Hiitt of Blue Mound; three brothers, Billy Wayne and Rayburn Morris of Ft. Worth, and Ishmel Morris of Lubbock; 10 grandchildren.

AUSTIN — The Texas General Land Office (GLO) has scheduled a special sealed bid sale of 100 tracts of surplus state and tax foreclosure land for July 16.

The land office is authorized to dispose of surplus tracts that are not generating income for the state.

Located in 34 Texas counties, the tracts range in size from a 1.18 acre tract in Leon County to a 1,239.5 acre tract in Presidio County.

Permanent School Fund (PSF) land, or excess land owned by the state, will be sold to generate revenue for the support of public education in Texas.

Tracts obtained by counties

through tax foreclosure have been deeded to the state. The General Land Office was given the authority to sell these tracts as well.

Some of the tracts in West Texas are being sold according to a conservation easement with the Texas Historical Commission to protect sites that have archeological or historical significance.

Minimum bids have been set for each tract. There is no limit on the amount that may be bid above the minimum. Bids must be received no later than 10 a.m., July 16, 1996, the time of the bid opening. Bid opening will be held in Room 831, Stephen F. Austin Bldg., 1700 N. Congress, Austin.

For more information on the sale and a bid packet, contact Greg Rives at 1-800-348-9161. A \$5 check or money order must be sent to the Texas General Land Office, 1700 N. Congress, Rm. 720, Austin, Texas 78701-1495.

This sale includes properties in the following counties: Anderson, Bexar, Borden, Brewster, Coke, Cooke, Culberson, Dallas, Dawson, Eastland, Fannin, Goliad, Hamilton, Hood, Hudspeth, Jeff Davis, Jones, Leon, Lynn, Midland, Mills, Montague, Montgomery, Orange, Pecos, Presidio, Rains, Red River, Reeves, Runnels, Rusk, Taylor, Terrell, Upshur and Ward.



The Fair Store
120 Main 272-3500

KENW-TV

Public Television

In Performance at the White House

"Linda Ronstadt and Aaron Neville"

They're back together again! Linda Ronstadt and Aaron Neville are reunited on stage for an all-new **In Performance at the White House**. Hosted by the President and Mrs. Clinton, this hour-long performance special celebrates the rich variety of America's popular music with several of the Grammy-winning artists' biggest hits.

During the evening performance, Ronstadt and Neville, who have been mutual fans and friends for a long time, entertain the audience with three of their best known duets — "Don't Know Much," "All My Life" and "When Something Is Wrong With My Baby" — as well as several popular solo sets. In addition, Ronstadt who has recorded three critically-acclaimed Spanish-language albums, appears on stage with the 12-member mariachi band, Los Camperos De Nati Cano.

In Performance at the White House "Linda Ronstadt and Aaron Neville" will be broadcast Wednesday, July 10th at 2:00 p.m.

Live From Lincoln Center

"Mostly Mozart Opening Concert"

Live From Lincoln Center presents "Mostly Mozart Opening Concert" from the stage of Lincoln Center's Avery Fisher Hall. Hugh Downs hosts this two-hour gala opening festival.

The highlight of the program is the guest appearance of two superstars of the classical music world — Itzhak Perlman and Pinchas Zukerman — in Mozart's Sinfonia Concertante in E Flat for Violin, Viola, and Orchestra, K. 364, with the Mostly Mozart Orchestra conducted by Gerard Schwarz. The concert opens with Stölzel's festive fanfare, Concerto for six Trumpets, and closes with Mozart's Symphony No. 41 in C, K. 551 ("Jupiter").

"Mostly Mozart Opening Concert" airs Wednesday, July 10th at 8:00 p.m. on KENW-TV with a stereo simulcast on KENW/KMTH-FM.

Signal to Noise: Life with Television

Signal To Noise: Life with Television is a three part series about television and its impact on people's everyday lives. Children, parents, consultants, soap opera addicts, cable network managers, advertising agency executives, news reporters, and producers and stars of television offer frank, revealing observations about their relationships with our most beloved household appliance. **Signal to Noise** examines the hold this pervasive medium has had on our perceptions of ourselves, our world, and our future since it first entered our homes almost half a century ago.

Signal to Noise: Life with Television will be broadcast Thursdays at 9:00 p.m. beginning July 11th. The series repeats Sundays at 12:00 midnight.

Channel 3 Television from
Eastern New Mexico University, Portales, New Mexico

Strebeck Auto Network

Our Affiliation With
18 New Car
Franchises Gives
You A Better Selection!



Scott Emeson
"Creditman"



Ed Butler
Manager



Janet Williams
Sales



Jacob Gutierrez
Sales
(Se Habla Espanol)

- Credit Problems?
- Slow Credit?
- Bad Credit?
- Bankrupt or Divorce?

Strebeck Auto Network Will Sell You A Car!

97%

CREDIT APPROVAL

If you've had past credit problems, even repossessions, we have a program for you!

Cars from **\$500** & UP Down

Bring In This Ad - Receive An Extra \$100 Discount

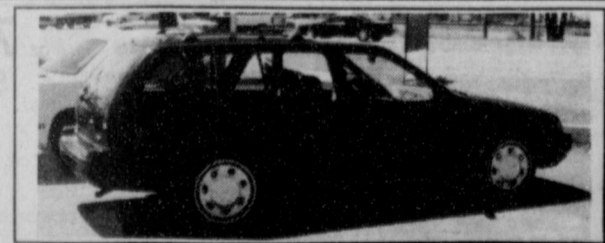
(Good Thru 7-31-96, Limit One Per Customer)



1986 Toyota Celica GT

Clean, pwr. sunroof, 5 spd., am/fm cassette, a/c

SALE PRICE **\$3,199⁰⁰**



1995 Ford Escort Wagon LX

Cruise, automatic, a/c

SALE PRICE **\$9,995⁰⁰**

The very best prices and service anywhere...We personally guarantee it!

• All cars subject to prior sale and lenders approval

(505) 763-8856 • 2118 MABRY DR. • CLOVIS, NM

Affiliated Foods Inc.

50th Anniversary



All Types, 24 Pk. Cube
Pepsi-Cola
\$3.89

MEAT

Small Pack
lb. **49¢**



Pilgrim's Pride Jumbo Pack Leg Quarters
lb. **39¢**

- Shurfine, Assorted Luncheon Meats 12 oz. pkg. **79¢**
- Shurfine Chopped Ham 6 oz. pkg. **\$1.29**
- Shurfine Cooked Ham 6 oz. pkg. **\$1.49**
- Shurfine, Assorted Wafer Thin Meats 2.4 oz. pkg. **39¢**
- Shurfine Potato Salad 14 oz. ctn. **79¢**
- Shurfine Reg./Jalapeno Pimento Spread 7.5 oz. ctn. **\$1.29**
- Shurfine Regular Pimento Spread 14 oz. ctn. **\$1.99**
- Shurfine Strawberry Fruit Gelatin 14 oz. ctn. **79¢**
- Shurfine Link Breakfast Sausage 11 oz. pkg. **99¢**
- Shurfine Reg./Hot Breakfast Sausage 2 lb. roll **\$3.49**
- Shurfine Reg./Hot Breakfast Sausage 1 lb. roll **\$1.79**

Preferred Trim Boneless Rib Eye Steaks lb. **\$4.49**
One Package Sliced Free, Whole Boneless Rib Eyes lb. **\$3.79**

Shurfine Jumbo Meat Wieners
1 lb. pkg.
79¢

SAVE!! Preferred Trim, Family Pack Boneless Round Steak
lb. **\$1.29**

SAVE!! Shurfine, Reg. or Polish Smoked Sausage
lb. **\$1.29**

Preferred Trim Boneless Round Steak
Single Pack, lb. **\$1.39**

Preferred Trim, Boneless Rump Roast
lb. **\$1.69**

Preferred Trim Boneless Sirloin Tip Steaks
lb. **\$1.99**

Tenderized Beef Cube Steak
lb. **\$2.19**

Fresh Ground Round
lb. **\$1.79**

PRODUCE

10¢ each SALE



- Sweet Juicy Peaches
- California Fresh Nectarines
- Juicy California Plums
- Red Delicious Apples (Lunch Box Size)
- Tropical Kiwi
- Tangy Fresh Lemons
- Jewel Green Limes
- Valencia Oranges
- Salad Size Tomatoes
- Yellow Onions

Shurfine Assorted Soda Pop
6 pack, 20 oz. btl. **2/\$3**

Asstd. Grinds Shurfine Coffee
39 oz. can **\$4.99**

Shurfine, Cut Green Beans, French Sliced Green Beans, Cream Style Golden Corn, Whole Kernel Golden Corn, Spinach, Mixed Vegetables, Sweet Peas
13.5-15.2 oz. **3/\$1**

- Assorted Shurfine Picante Sauce 16 oz. jar **99¢**
- All Varieties, Shurfine Tortilla or Nacho Chips 40 oz. bag **\$1.99**
- Shurfine, Reg./With Bleach, Ultra Laundry Detergent 42-47 oz. box **\$1.99**
- Shurfine Mustard, Turnip Greens, Whole/Sliced Potatoes, Whole/No Salt Diced Tomatoes, Sauerkraut Vegetables 13.5-16 oz. cans **2/89¢**
- Shurfine Luncheon Meat 12 oz. can **\$1.19**
- Shurfine Assorted Ultra Diapers 18-36 ct. pkg. **\$3.99**
- Shurfine Macaroni & Cheese Dinners 7.25 oz. boxes **4/\$1**
- Shurfine Assorted Gelatin 3 oz. pkg. **4/\$1**
- Shurfine Squeeze Ketchup 40 oz. btl. **\$1.39**
- Shurfine Pinto Beans 4 lb. bag **\$1.49**
- Shurfine Apple Cider or Apple Juice 64 oz. btl. **\$1.69**
- Shurfine Gravy or Chunk Dog Food 20 lb. bag **\$3.99**
- Shurfine Reg./Hickory Smoked BBQ Sauce 18 oz. btl. **59¢**
- Shurfine Cranapple Cocktail or Cranberry Juice 48 oz. btl. **\$1.99**
- Shurfine Raspberry or Strawberry Cran Drinks 48 oz. btl. **\$1.99**

- Shurfine Sliced or Chopped Ripe Olives 2.25-4.25 oz. can **59¢**
- Shurfine Small Pitted Ripe Olives 6 oz. can **\$1.19**
- Shurfine Stuffed Spanish Olives 5.75 oz. jar **\$1.39**
- Shurfine Fresh Pack, Reg. or Kosher Dill Pickles 46 oz. jar **\$2.39**
- Shurfine Hamburger Dill Slices 46 oz. jar **\$1.99**
- Shurfine Sweet Pickle Relish 16 oz. jar **\$1.39**
- Shurfine, Spaghetti Rings or Spaghetti W/Cheese Sauce Assorted Pasta 15 oz. can **2/\$1**
- Shurfine Assorted Ravioli W/Meat or Spaghetti w/Meat 15 oz. can **79¢**
- Western Family Waffle Creams or Fudge Stick Cookies 9 oz. pkg. **2/\$3**
- Shurfine Plain or Assorted Ice Cream Cones 12 ct. box **59¢**
- Shurfine, 12 pk. Ice Cream Sandwiches **\$1.99**
- Plain or Assorted Western Family, 9 oz. pkgs. Creme Wafers Cookies **2/\$3**
- Shurfine Imitation Vanilla 8 oz. btl. **89¢**
- Shurfine Garlic Salt 5.25 oz. btl. **89¢**
- Shurfine Black Pepper 4 oz. can **\$1.29**

Shurfine, Assorted 2 ply Decor Paper Towels
1 roll pkg. **2/\$1**

Shurfine Citrus Punch
64 oz. btl. **79¢**

Shurfine, Compare to Van Camps Pork and Beans
15.5 oz. can **4/\$1**

Shurfine Briquets Charcoal
20 lb. bag **\$1.99**

Shurfine 1 lb. quarters Margarine
39¢

- Shurfine Charcoal Lighter Fluid 32 oz. btl. **99¢**
- Shurfine Boutique Facial Tissue 95 ct. box **99¢**
- Assorted Shurfine Napkins 120 ct. pkg. **99¢**
- Shurfine Heavy Duty Spoons, Forks Combo Plastic Ware 24 ct. pkgs. **69¢**
- Shurfine Yellow Corn Meal 5 lb. bag **\$1.29**
- Shurfine Heavy Duty Foil 18"x37" box **\$1.39**
- Shurfine Ultra Liquid Laundry Detergent 50 oz. btl. **\$2.99**
- Shurfine Lemon Auto Dish Detergent 50 oz. box **\$1.69**
- Shurfine Sheets Fabric Softener 20 ct. box **89¢**
- Shurfine Spray Glass Cleaner 22 oz. btl. **\$1.39**
- Shurfine Ultra Fabric Softener 20 oz. btl. **\$1.79**
- Shurfine Instant Coffee 2 oz. jar **\$1.29**
- Shurfine Spanish Peanuts 12 oz. jar **\$1.69**

Shurfine Assorted Potato Chip
6 oz. bag **59¢**

Shurfine All Purpose Flour
25 lb. bag **\$2.99**

- Shurfine Assorted Flavors Totally Tea 16 oz. btl. **2/\$1**
- Shurfine Assorted Unsweetened, COMPARE TO KOOL-AID Drink Mix 2 qt. pkg. **10/\$1**
- Assorted Shurfine Grapefruit Juice 64 oz. btl. **\$1.99**
- Shurfine Raisin Bran Cereal 20 oz. box **\$1.99**
- Shurfine Corn Flakes Cereal 12 oz. box **89¢**
- Shurfine Cranapple Cocktail or Cranberry Juice 48 oz. btl. **\$1.99**
- Shurfine Raspberry or Strawberry Cran Drinks 48 oz. btl. **\$1.99**
- Shurfine Corned Beef Hash 15 oz. can **\$1.19**
- Shurfine Grape Jelly 32 oz. jar **99¢**
- Shurfine Strawberry Preserves 18 oz. jar **\$1.59**
- Shurfine Creamy or Crunchy Peanut Butter 28 oz. jar **\$2.49**
- Shurfine Shurfine Cinnamon or Honey Graham Crackers 16 oz. box **\$1.29**
- Shurfine White Distilled Vinegar 1 gal. jar **\$1.69**

Shurfine Granulated Pure Sugar
4 lb. bag **\$1.29**

Shurfine Water or Oil Packed Chunk Light Tuna
6 oz. can **2/89¢**

Shurfine Frozen Reg. or W/Pulp Orange Juice
COMPARE TO MINUTE MAID
12 oz. cans **79¢**

Shurfine Liquid Bleach
1 gallon jug **79¢**

Frozen Specials

- Shurfine, 4 ear pkg. Corn on the Cob **2/\$3**
- Shurfine Fancy Taters Reg. or Country Style Hash Browns 24-32 oz. **\$1.29**
- Shurfine Brussel Sprouts 18 oz. **\$1.29**
- Shurfine Sliced Strawberries 10 oz. **79¢**
- Shurfine Whipped Topping 12 oz. **\$1.19**

Reg. or Pink Shurfine Lemonade or Fruit Punch
12 oz. can **59¢**

Shurfine Asstd. Blended Broccoli & Cauliflower, Chopped Broccoli, Broccoli Cuts Frozen Vegetables
16 oz. **99¢**

Dairy Specials

- Cheddar/Mozzarella Shurfine Shredded Cheese 4 oz. **79¢**
- Colby/Mild Cheddar/Cheddar Shurfine Longhorn Cheese 16 oz. **\$2.69**
- Shurfine Reg. or Fat Free American Singles 12 oz. **\$1.79**
- Shurfine Orange Danish or Cinnamon Rolls 12.4-13.9 oz. can **\$1.39**
- Shurfine Assorted Texas Style Biscuits 12 oz. can **69¢**

16 oz. btl. Shurfine Citrus Punch
4/\$1

Shurfine Soft Cream Cheese
8 oz. tub **\$1.19**

Shurfine A Change for the Butter Spread
16 oz. **79¢**

Health & Beauty Aids

Western Family Non-Coated Aspirin
100 ct. btl. **69¢**

- Western Family ChlorTabs 24 ct. pkg. **\$1.39**
- Western Family Decongestant HistaTabs 24 ct. pkg. **\$1.69**
- Western Family Tablets/Coplets Ibuprofen 100 ct. pkg. **\$2.99**
- Asstd. Western Family Anti-Plaque Rinse 16 oz. btl. **\$1.49**
- Western Family Assorted Hair Care 13 oz. btl. **\$1.99**
- Western Family Active SPF 15 or Moist SPF 15 or 30 Sunblock 4 oz. btl. **\$2.69**
- Western Family Hydrogen Peroxide 8 oz. btl. **39¢**

WESTERN UNION MONEY TRANSFER™
"The fastest way to send money"

Lowie's MARKETPLACE

515 W. American Blvd.
401 W. American Blvd.
Muleshoe 272-4585

Pay-n-Save

WE RESERVE THE RIGHT TO LIMIT QUANTITIES IN TEXAS

Muleshoe 272-4406

PRICES EFFECTIVE JULY 3-9, 1996

Journal Classifieds

Call 272-4536 Deadlines: For Thursday, 5 p.m. Monday; for Sunday, 5 p.m. Thursday Call 272-4536

Subscribe Today!

Mulshoe Journal and
Bailey County Journal

SUBSCRIPTION RATES

Carrier	\$22 ⁰⁰	Year
Mulshoe-By Mail ...	\$24 ⁰⁰	Year
Out Of Town	\$26 ⁰⁰	Year
College	\$20 ⁰⁰	Year

Call Today 272-4536

Subscribe to the Journal call 272-4536

CLASSIFIED RATES

15 Words And Under, First Run: \$3.00
Every Run After The Initial Run: \$2.55
16 Words And Over: 1st Run .20 Per Word
16 Words And Over: 2nd Run .17 Per Word

CLASSIFIED DISPLAY RATES

\$3.00 Per Column Inch

DEADLINES

For Thursday Paper, 5 p.m. Monday
For Sunday Paper, 5 p.m. Thursday

To Receive The Reduced Rate After The First Insertion, The Ad Must Run Continuously. We Reserve The Right To Classify, Revise, Or Reject Any Ad. We Are Not Responsible For Any Error After Ad Has Run Once



Tongue prints are as unique as fingerprints.

Time To Put Away All The Holiday Stuff.



Sad, but true. The holidays are finally coming to an end. So this is your last chance to play Holiday Cash and Holiday Game. Both games end July 1, 1996. But you can still purchase any remaining tickets or claim any prizes until December 28, 1996.

With Holiday Cash you can win up to \$500 instantly. Holiday Game features a top prize of \$25,000.

You can claim any prizes up to \$599 at any Texas Lottery retailer. Prizes of \$600 or more are redeemable at any of the 24 regional Texas Lottery claim centers or by mail.

Any questions? Just call the Texas Lottery Customer Service Line at 1-800-37-LOTTO (1-800-375-6886).

Real Estate

For Sale - By owner, 3 bdrm, 1 3/4 bath, single garage in Richland Hills Addition of Mulshoe. For more info call 806-965-2477.
22s-tfc

For Sale - 3 bdrm, 2 bath, 2100 sq. ft. - recently updated - new central air, fireplace, and lots of extras \$65,000 - Open House Sunday, July 7, 2-5 p.m., 1722 W. Ave. D or Call 272-4818 for an appointment.
26t-4tpd

For Sale by Owner: 4-3-carport, basement, large lot, newly remodeled, builtins, formal living and dining area, family den and dining area, 3300 sq. ft. 272-3024.
27s-4tpd

Help Wanted

AVON

Has Openings For Representatives For Information, contact Tommie - Toll Free 1-888-222-5099 Independent Representative
26s-4tpd

NOW IS THE TIME TO START CLEANING OUT THOSE CLOSETS AND SELL THOSE UNWANTED ITEMS IN THE CLASSIFIEDS
Call 272-4536

Mulshoe Independent School District is now taking applications for bus drivers for the 1996-97 school year. For more information, please call Richard at MISD, 272-4710.
25s-6tc

Automobile

1990 Dually extended cab, automatic, 460 engine, fuel injection, all power, \$11,995.00 (505) 359-1775, Portales

1991 extended cab, dually diesel, \$10,995.00 (505) 359-0947, Portales

1987 Corvette, loaded, 5 speed, 64,000 actual miles, extra nice (505) 359-1775, Portales

1994 Chrysler LHS, low miles, loaded, sunroof, \$17,995.00 (505) 359-1775, Portales

Ford Pick-ups - extended cabs - all with 460 engines. 4 to choose from. (505) 359-0947, Portales

For Sale

For Sale: Maytag Washer and Dryer. Call 965-2389.
27s-tfc

For Sale: Metal Shop, 60 ft x 80 ft, on 230 ft. x 175 ft. lot. Call 272-4817 or 272-5205
27s-4tpd

For Sale - Real Cheap Hens - Geese - Ducks - Pot Belly Pig - Rabbits - Guinea pigs - Love birds with cages - pea hen. 806-257-2212.
25s-3 sun pd.

Wanted

\$\$ WANTED \$\$
We buy used mobile homes. We pay top dollar, any year, any condition. We need your used mobile home. Please Call 1-800-404-1321.
7t-tfc

Want to do house cleaning. Call Becky 272-5205.
27s-3tpd

More Metal Buildings and Roofing

For Free Estimates
Call 272-4462 - after 6 p.m. or 946-8738 - Mobile
27t-4tpd

A leader in the telecommunications field.

SALES

Expansion and growth requires us to add to our sales team. We are now recruiting energetic, enthusiastic, motivated outside sales representatives for the Levelland area. Experience preferred but not required, will train.

We offer a great opportunity within one of the fastest growing industries that includes: stability of a base salary, plus an attractive commission/bonus structure, vehicle allowance, cellular telephone, medical/dental/life, 401 (k) retirement savings plan, vacation and more. Rapid advancement opportunities. EOE. Please submit your resume and cover sheet to:

Human Resource, 1005 College Avenue Levelland, TX 79336 No Phone Calls Please
22t-tfc

Farm For Sale

1 Acre For Sale or Trade, Large Barn, 2 wells, and Septic Tank. Call 903-963-7917
25s-5tc

Water Well Drilling Baling - Back hoe and Pump Service
Sudan Drilling & Irrigation
227-2436
27t-2tc

Concealed Hand Gun Course

July 13, 1996
8 a.m. to 6 p.m. in Hereford.
10% discount for preregistration
Class includes
Passport Photos and Range Fees
Contact Toby Turpin
806-364-6362
27t-3tc



GUTHALS Nursery & Lawn Sprinklers

1001 E. First St. Clovis, NM
505-763-4243
HOURS: 8:00-5:00
Tuesday-Saturday

PRIMESTAR Mini Dish TV
About \$1 per day
No dish to buy.
505-762-0679
1-800-815-2358 pin #9240
23t-tfc

Miscellaneous

Round-up Applications Pipe-Wick mounted on high-boy. 30" or 4" rows. Cotton, Milo, Soy Beans and Corn.
Call Roy O'Bryan, 806-265-3247.
25t-tfc

Two beautiful triple-wide homes on display...
Fireplace, glamour bath, spacious kitchen and living room. Central Heat & A/C!
Great Homes You Must See!
For individual and professional service Call Sandy Tiner at ...

PH PORTALES HOMES
Portales Homes
(505) 356-5639
1-800-867-5639
DL366
Se habla espanol

BETTER LIVING MOBILE HOMES

Spring Special
6 - 1800' sq. ft. Double Wides to choose from.
\$10,000 SAVINGS
WAS \$59,000
SPRING SPECIAL
\$49,995
Hurry in - these won't last long!
Model #8952*
*Approximate
1-800-404-1321
(505)356-5448
Portales
Lic. # D00681
'Se Habla Espanol'

Nieman Realty

116 E. Ave. C George Nieman, Broker 272-5285 or 272-5286

RICHLAND HILLS

JUST LISTED-IMMACULATE 3-2-2 Brick Home, Geo. Heat Pump, Built-ins, FP, Nice landscaped yd., Stor. Bldg., MORE!! \$70's!!! RH3

NICE 3-3-1 Brick, cent. Heat, Evap. Air, built-ins, 2000' + lv. area, fenced yd., stor. bldg., MORE!! \$60's!!! RH-2

VERY NICE 3-2-2 Brick, cent. A&H, built-ins, FP, approx. 2,000' + lv. area, auto, spklr., storage bldg., fenced yd., MORE!!! \$60's!!! RH-1

NICE 3-2-2 Brick, cent. A&H, built-ins, FP, approx. 2150' lv. area, fenced yd., MORE!!! \$69K!!! RH-7

HIGHLAND AREA

VERY NICE 2-1-1 Home, wall furnace, window air, nicely decorated, storm cellar, stor. bldg. \$20's!! HL-7

2 Bdrm, 1 bath home, fenced yard. \$16,500!!! HL-4

VERY NICE 3-2-2 Brick, Cent. A&H, built-ins, fenced yd., spklr. sys., MUCH MORE!!! \$60's!!! HL-1

3-2-2 home, Cent. A&H, built-ins, fenced yd., corner lot. \$30's!!! HL-2

VERY NICE 3-2-1 carport Home, heat pump, built-ins, nice carpet, fans, storage-workshop! MUCH MORE!!! \$40's!!! HL-6

NICE 3-2 Home, Heat Pump, FP, fenced yd., stor. bldg. \$30's!! HL-3

VERY NICE 3-11/2-2 carport home, Geothermal Heat Pump, built-ins, FP, fenced yd., Stor. Bldg.!!! HL5

VERY NICE 3-2 Home on 13.2 acre tract on pavement close to town, built-ins, large shop w/office, large barn, storage bldgs. & MUCH MORE!!! \$125K!!! HL-1

NICE 3-2-2+2 Carport Brick Home on 2.5 acres on pavement, close to town, Heat Pump, built-ins, FP, MUCH MORE. \$70K!!! HL-3

JUST LISTED-3-2-2 Home 1.36 ac. on pavement, Cent. A&H, built-ins, freshly painted interior & exterior, fans, fenced yd., 31' x 40' barn!!! \$40's!!! HL-2

LENAU ADDITION

Nice 2-2-2 Brick, on corner lot, heat pump, fenced yard, storage bldg., MORE! \$40's!!! L-1

NICE 3-2-1 carport Home, geothermal heat pump, fenced yd., storage bldg. \$27,500!!! L-3

JUST LISTED - NICE 3-2-1 Home, built-ins, heat pump, extra insulation, fenced yd., stor. bldg., \$30's!!! L-4

HIGH SCHOOL

NICE 2-1-1 Brick, Heat Pump, nice carpets, well insulated, storm windows & doors. \$30's!!! HS6

NICE 3-2 Home, Cent. A&H, built-ins, nice carpet, fans, stor. bldg., fenced yd. \$30's HS5

PRICE REDUCED-NICE 3-2-2 carport home, cent. A&H, built-ins, guest cottage or eff. apartment, instl. wkshop-stor. bldg. w/elect., fenced yd., & MORE!!! \$39K HS2

JUST LISTED -2-1-1 Home, floor & wall furnace, evap. air, siding exterior, stor. bldg., fenced yard!!! \$20's!!!! HS-7

JUST LISTED-NICE 2-1-1 Home, nice carpets, stove, refrig., wall furnace, covered deck, fenced yd., stor. bldg., MORE!!! \$20's!!! HS-4

COUNTRY CLUB

2-1-1 carport home, wall furnace heat, nice carpet, storm shelter, storage bldg., fenced yd. MORE!!! \$20'S.

RURAL HOMES

NICE 3- 2-2 Brick, cent. A&H, built-ins, FP, approx. 15 acres, irrig. well & equip., barns, corrals, MUCH MORE!!! \$95K!!! HL-4

2-2-1 carport Mobile Home on .665 acres on pavement close to town, Cent. heat, evap., air, DW, large barn, stor. bldg. and MORE!!! \$25K!!! HL-5

VERY NICE 3-11/2-1 Home on 8 acres, on pavement close to town, Cent. A&H, built-ins, sun room, concrete cellar, storage bldgs., fenced yd., RV cover, mobile home hookups, stock pens, fenced acreage, & MORE!!! \$50's!!! HL-6

ASK ABOUT OUR COMMERCIAL LISTINGS!!!

Office Bldg. & 2, 160' shop bldg., 184' of frontage on Highway 214. PRICED TO SELL!!! \$20's!!!

160 acre tract, 8" well, circle spklr. w/drops, fully allotted!!!

PARMER - BAILEY CO. Area-Elevator & Cleaning Facility - 12 million lb. Capacity, Scales, Dryer, & Office on approx. 6.5 acres!!! PRICED TO SELL!!! POSSIBLE OWNER FINANCING!!!

Cattle industry suffers cyclic down-swing

Drought, Mexican imports, overproduction, NAFTA, poor winter grazing, the high cost of feed and alleged anti-competitive concentration in the meat packing industry have all been cited as contributing factors in the current problems faced by Texas cattle producers since late 1995.

The following Special Industry Report from Comptroller John Sharp is designed to sort out the causes of the lagging cattle market, while informing Texans of the best course of action toward economic improvement.

Industry Production and Overproduction: The Horns of a Dilemma

The cattle industry's contribution to the diversified Texas economy is often overlooked — despite the fact that cattle production actually brings in more dollars than natural gas production.

In 1995, the total value of cash receipts for cattle and calf production in the state is estimated to have reached a record \$6.3 billion. This exceeds the estimated total value of natural gas produced (\$5.6 billion), but is somewhat less than the total value of oil production in the state (\$8.5 billion).

In addition, the beef cattle industry is by far the largest sector in the Texas agriculture industry (Figure 2). In 1994, revenues from cattle accounted for nearly one of every two dollars received in agriculture, or more specifically, 47.8 percent of all cash receipts. This not only greatly exceeds the share of total agricultural receipts generated by cotton, the state's second largest agricultural product, which accounts for 9.2 percent of all farm receipts, but even exceeds the value of all Texas crops combined (34.5 percent of all agricultural cash receipts).

The beef cattle industry is generally comprised of several components, including ranchers or cattle producers, feed lots, slaughter houses and other facilities such as auction yards.

In 1995, there were 635 feedlots in Texas, and 12 slaughter houses with at least 200 head capacity. The 5.5 million cattle marketed out of those feedlots in 1995 constitute the "fed beef" portion of the industry. The remaining cattle marketed for beef are predominantly "cull cows," that are no longer used or needed to increase the size of herds. Such cattle are sent directly to slaughter facilities.

The cattle industry is not immune from cycles of high and low production. As seen in Figure 3, the inventory of cattle in Texas on January 1, 1995, stood at more than 15 million head, down slightly from 1994 levels, but still among the highest inventories since 1977. Cattle herds in Texas have been building since they hit a low

point of less than 13 million head in 1990.

Nearly all agricultural commodities are subject to such cycles, with the length of time between peaks and troughs of production controlled largely by the speed with which additional production can be brought into the market and supply changes translated into price signals to the consumer.

In the cattle industry, such cycles tend to occur over periods of eight to twelve years. By comparison, cycles in the hog industry tend to be considerably shorter, usually about four years in duration.

Although the exact timing of any particular peak or trough in the cycle often has a rationale all its own, one general rule of producer behavior underlies the cyclical process: the same behavior that is individually smart is also collectively disastrous. If prices are high, the appropriate response for any particular producer is to try to increase the amount produced.

Collectively, such behavior on the part of all producers yields an oversupply of the commodity, resulting in declining prices and the "down side" of the cycle.

Such apparently is the case now. As seen in Figure 3, the real price of cattle, adjusted for inflation, has seen three peaks since 1970. Consequently, cattle inventories have also seen three peaks during this same period.

The price-driven cyclical nature of the cattle industry is apparent in Figure 3. Moreover, it seems equally clear that some of the current concerns about the cattle market in Texas are the result of economic cycles in cattle production. This is by no means the only influence on the state's cattle industry.

Mexican Cattle and NAFTA

One recurring concern expressed by cattle producers in Texas is that an influx of cattle from Mexico as a result of the North American Free Trade Agreement (NAFTA) has had a great deal of influence on low U.S. cattle prices and the level of oversupply. But the situation is more complex.

From 1970 to 1985, imports of feeder and slaughter cattle from both Mexico and Canada generally amounted to less than one percent of the U.S. cattle inventory. Beginning in 1986 through 1989, cattle imports from Mexico jumped rather substantially, roughly doubling from one half of one percent of the U.S. inventory in the first half of the decade, to averaging nearly one percent of the U.S. inventory in the second half.

No doubt some of the increase in imports from Mexico in 1986 and 1987 can be attributed to the devaluation of the

peso. In 1988 and 1989, both Mexican and Canadian imports began to gain market share as U.S. beef prices began to rise. In addition, in 1988, the Mexican government lifted quota restrictions on exports of cattle to the U.S.

With domestic supplies limited by low U.S. cattle inventory levels from 1990-91 and strong prices during the same period, imports from both Canada and Mexico surged. From 1990 to 1993, Mexican and Canadian imports responded to the strong U.S. cattle market by nearly doubling their share relative to the U.S. inventory levels.

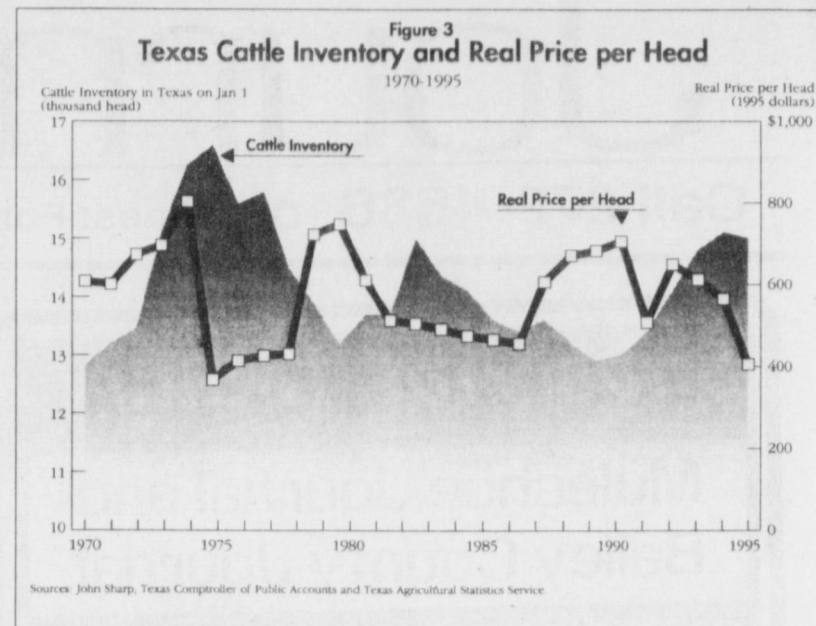
In 1994, the first year in which NAFTA was in effect, the share of Mexican and Canadian imports relative to the domestic market actually dipped slightly. Imports from both countries rebounded in 1995, but a continuing drought

in northern Mexico caused imports from Mexico to increase at a more rapid pace than imports from Canada, as Mexican ranchers rushed to sell herds they could not afford to feed.

Recently, imports from Mexico have dropped off dramatically. During the first three months of 1996, imports of feeder and slaughter cattle and calves from Mexico into the U.S. dropped to 159,000 from 608,000 during the same period in 1995.

This pattern of trade seems to indicate that NAFTA alone has had a minimal effect on the current condition of the cattle market in the U.S. for three reasons.

First, while there has been a surge in imports from both Mexico and Canada, this preceded NAFTA by several years, and appears to be in response to strong market condi-



tions in the U.S.

Second, the 1995 influx of cattle from Mexico seems to be largely related to drought conditions in Mexico and aided by the December 1994 peso devaluation. Third, the tariff levels on cattle preceding the implementation of NAFTA were minor, amounting to 1.2 percent of value.

By mid-1996, the largest effects of Mexican cattle im-

ports are likely to be over and future developments in Mexico could actually aid in ameliorating oversupply conditions in Texas.

According to Jim Schwertner, a Texas livestock dealer, if drought conditions in northern Mexico subside, ranchers there could fuel a growing demand for Texas cattle to restock their herds.

Summertime Directory

A Full Line of

- Dog Food • Cat Food
- Horse Feed • Cattle Feed
- Hog Fed • Chicken Feed
- Garden Supplies

Muleshoe Feed Barn
311 W. American Blvd. 272-5626
HOURS: 8:00-6:00 Monday-Saturday

Did You KNOW?

50% OFF

All Toys

Muleshoe Art Loft
1529 West American Blvd. 272-3485

Have A Fun & Safe 4th from Muleshoe Art Loft

THURSDAY, JULY 4TH

10 a.m. - Parade
2 p.m. - Events in the Park
8 p.m. - Keepers of the Legend
10 p.m. - Fireworks
11 p.m. - Dance

Muleshoe Art Loft
1529 West American Blvd. 272-3485

- SEE US FOR ALL YOUR TRAILER PARTS -

Full Line of Bearings, Hubs, Spindle & Parts

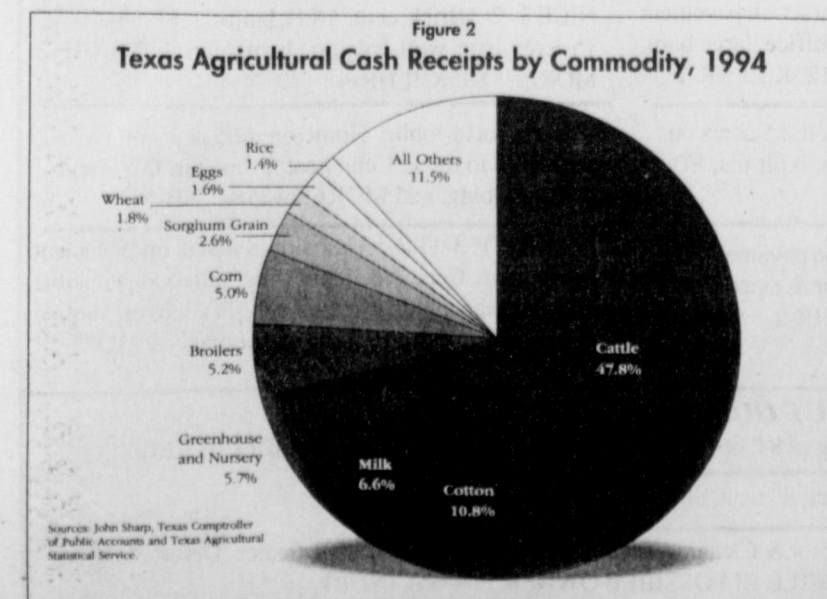
James Crane Tire Co.
322 North First 272-4594

Humco
Alcohol & Peroxide **3/99¢**

Johnson & Johnson
First Aid Kit **\$8.39**

Maximum Strength Pain Reliever
Neosporin **\$3.29**

Damron Drug
308 Main 272-4210



4th of July Sale

20-35% OFF
Sterling Silver & Accessories

50% OFF
All Spring Merchandise

Sale good July 1-6

Door Prizes & Lemonade
July 3-July 6

The Fig Tree
220 Main Muleshoe 272-7561

Come Check our Rates!

We Have Monthly Auto Insurance

Delton Wilhite & Associates
1631 W. American Blvd. 272-3652