

All Around the Town

by Mary Ann Sarchet

What would you think of a person who reports to the News Office that he had just seen a motorcycle go by pulling a four-wheel cotton trailer?

As expected in this case, we accused Bud of dipping into the vanilla while stocking shelves at the grocery store.

A motorcycle pulling a load of cotton?

I'll always be a kid at heart when it comes to Christmas! Even though I grumble loudest about not having enough time to get everything done that I want to do during Christmas, I do love the season and everything about it.

I grumble about the needles that shed off the tree and stick in the carpet and have to be picked up by hand. Invariably I find a few here and there long after the tree is gone. But I just couldn't bring in an artificial tree to symbolize new life, and the house certainly wouldn't have that outdoorsy smell that is so much a part of Christmas to me.

One of the nicest things about Christmas is driving through towns to see the decorations, walking through stores to look at the bright colors of the special things displayed for the holidays.

When I was a little girl we usually were in San Antonio every Christmas, and we always went down to Joske's to see the window decorations. There was a huge chair in which sat a large, jolly mechanical Santa that laughed and patted the chair arms, there were elves with hammers and saws, and so many things to delight a child. These things delight me still, and I hope they always will.

Something has happened already this season that will give me a life forever, if all goes well. This story has its beginning at least 13 years ago when I pulled up two tiny evergreen seedlings by their roots. I can't tell you anything more about this—but you may be able to guess the rest. I wrapped the tiny trees in wet paper towels and took them home and set them out in my front yard where I hoped to be able to decorate them for future Christmases. In the wintertime when it snowed, I shoveled snow up all over them because I knew that if they were in their native soil they would be buried beneath the snow. And the snow melted last because of my piling it up around them.

When we moved to Silvertown almost 11 years ago we didn't have a home and yard, and since we were reluctant to leave the little trees, we transplanted them again—this time back of my in-laws' home.

One of the trees was damaged by weed killer years ago, but the other blossomed into a magnificent tree—and has outgrown its surroundings. The community Christmas tree on the courthouse square in Tulia was not doing so well, and somehow my father-in-law persuaded Swisher County to buy our tree. It was transplanted again—for the last time, I'm sure—a few days ago and now stands near the bandstand at Tulia's community tree.

When you are in Tulia, please look for my Christmas tree. (I'll probably always think of it as MY tree.) You can bet that after all the TLC, Pa Sarchet has given it all these years, he will probably continue to look after it himself. (He has a green thumb, and can grow anything anywhere.) The tree—now about seven feet tall and growing every year—has an unusually beautiful shape and color, I think, and I'd just like for you to see it.

From such a humble beginning, perhaps it will live to bring joy to many for a long, long time.

Minyard Long of Gardena, California, has visited his mother, Mrs. Eugene Long, and other area relatives and friends since Monday of last week. Mr. and Mrs. William Long and Diane of Tulia and Mr. and Mrs. George Long and Nicky were Thanksgiving Day dinner guests of Mrs. Eugene Long. Nancy Long, a student at Texas Tech, and Roy Lynn Long, a student at WTSU, were also dinner guests of their grandmother. The family enjoyed dinner in the George Long home Sunday evening.

Bank Open House Planned Sunday

First State Bank in Silvertown has scheduled its open house Sunday afternoon, December 7, and has extended an invitation to the public to visit its new banking facility.

Officers, directors and employees of the bank will be on hand to greet visitors from 1:00 until 5:00 p.m.

The bank has continued operations in the present location while

the remodeling and building have been completed, and this has presented some problems for the staff; however, as the finishing touches are applied, the inconvenience of the past 7½ months is

being quickly forgotten in the new atmosphere.

The old facility included 25,000 square feet of space, and the new structure covers an area of 75,000 square feet.

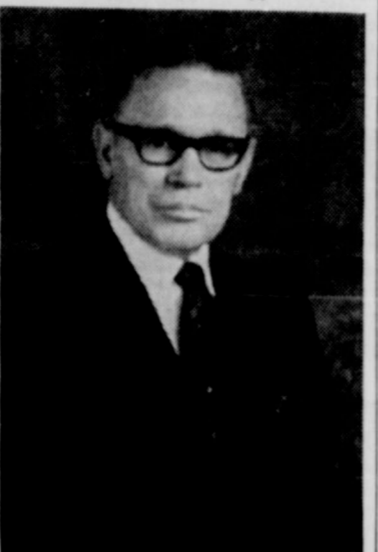
Exterior of the building now has an Italian travertine marble facade with large double-door entrances and duranodie bronze aluminum doors in which are set rounded panels of solar bronze

glass. The north wall of the bank lobby is accented by three slim floor-to-ceiling solar bronze windows.

Planned for the convenience of banking customers, the facility



D. T. NORTHCUTT
Chairman of the Board



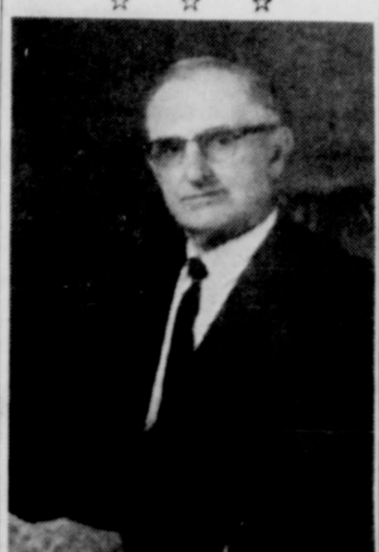
WILLIAM J. STRANGE
President



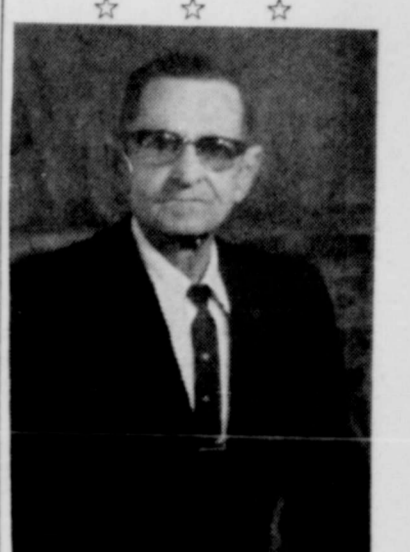
PAT L. NORTHCUTT
Vice-President



H. B. SIMPSON
Vice-President



ALVIN REDIN
Director



SPENCER LONG
Director

Silvertown: Heart Of The Scenic Caprock



BRISCOE COUNTY NEWS

VOLUME 61

NUMBER 49

SILVERTOWN, (Briscoe County) TEXAS

THURSDAY, DECEMBER 4, 1969

First State Bank Organized Here In '45, Chartered '46

A meeting was held at the Coffee Hardware in December 1945, to organize the First State Bank

in Silvertown, Texas. The charter was granted January 23, 1946.

Directors elected were James F. Smith, Heydon Hensley, W. Coffee, jr., D. T. Northcutt, R. G. Hughes, Sam Hamilton and T. R. Whiteside. James F. Smith was elected President, and served in that capacity until 1965. W. Coffee, jr., was elected as the bank's Vice President and Heydon Hensley was chosen to be Cashier.

Perry Whittemore began his duties of managing the bank in 1946, and was elected Vice President and Cashier in 1949. He was later elected Executive Vice President and served in that capacity until 1965.

D. T. Northcutt was elected Vice President in 1962 and was employed in the bank from 1952 until 1965. He was elected Chairman of the Board in 1965.

Spencer Long was elected as a Director in January 1947, and Alvin Redin's election as a Director came in July 1950.

William J. Strange was employed by the bank in January 1950, and he continued this employment until he moved to White Deer in 1952. Returning to Silvertown in 1954, he began his duties as Cashier, was elected as a Director in 1958 and became the bank's President in 1965.

H. B. Simpson has been employed by the bank since 1956, with the exception of two years in the United States Army. He was elected Vice President in 1965 and became a Director in 1967.

Pat L. Northcutt was elected as a Director in 1959 and as Vice President in 1965.

Employees of the bank at the present time include Mrs. Coleman Garrison, secretary; David Tipton, Cashier; Mrs. Bill Verden, Mrs. Noel Deavenport, Mrs. Seymour Brannon, Stephen Jarnagin. Mr. and Mrs. Sid Richards have been employed at the bank since 1968.

John Deere Day Activities Planned

Thompson Implement Company has extended a public invitation to attend their John Deere Day, activities of which will begin at 7:00 p.m. Thursday, December 4, in the Pioneer Room of the First State Bank here.

Refreshments will be served and a brand-new 21-inch electric-start John Deere power mower will be given away as a door prize.

Entertainment will feature "The Great Combine Race", in which the new generation of John Deere combines will challenge the capacity champions of yesterday. In other films new equipment will be shown, and the heart of farming will be seen through the eyes of a farm family.

Mrs. Turner Buried Monday Afternoon

Funeral services were conducted at 2:00 p.m. Monday at the First Baptist Church here for Mrs. Annie E. Turner. Rev. C. H. Murphy, jr., pastor, and Earl Cantwell, minister of the Rock Creek Church of Christ, officiated.

Burial was in the Silvertown Cemetery, with arrangements under the direction of the Silvertown Funeral Home.

Nephews were pallbearers. Mrs. Turner died at 9:00 a.m. November 28 at Thurman's Nursing Home in Amarillo.

Mrs. Turner, daughter of the late Mr. and Mrs. A. S. Milby, was born May 31, 1884, in Green County, Kentucky. She had been a resident of Briscoe County since 1927, but had been in ill health and had resided at the nursing home for the past six years.

She was preceded in death by her husband, J. C. Turner, in 1960.

She was a member of the Baptist Church. She is survived by one daughter, Mrs. Mabel Mercer of Lone Star; one son, J. C. Turner, jr., of Memphis, Tennessee; three grandchildren and two great-grandchildren.

New residents in Silvertown are Mr. and Mrs. Lyndal Carey, who have moved here from Claude and are residing at 203 Braidfoot. They have a daughter, Carolyn, 8, and a son, Mike, 18 months old, and are members of the Baptist Church.

In addition, a host of new farm machines and implements were seen, plus a new crawler tractor and an industrial fork lift.

Cotton Referendum Being Held this Week

A referendum for the 1970 crop of upland cotton is being held by mail December 1 through December 5, 1969. Generally, those eligible to vote in this referendum are producers who are entitled to share in the 1969 upland cotton crop or its proceeds. Ballots must be returned to the Briscoe County ASCS office or be postmarked by midnight December 5, 1969.

If at least two-thirds of the voters approve quotas, a cotton program featuring marketing quotas, acreage allotments, price support loans and payments and other provisions will be in effect in 1970. A producer, by keeping within his farm allotment, may be eligible for loans, payments and other benefits.

If quotas are disapproved by more than one-third of those voting in the referendum, allotments will remain in effect for the 1970 crop, but there will be no marketing quotas, no penalties on excess cotton, no price support payments, and no export market acreage.

Price - support loans at 50% of parity will be available to growers who do not exceed their farm's acreage allotment.

Additional information is available from the Briscoe County ASCS office. If you think you are an eligible voter and have not received a ballot, you should secure one from the ASCS office today.

Mr. and Mrs. Johnnie Lanham, Ian Lanham and Dick Rydholm, both students at Texas Tech, visited Mr. and Mrs. Freddie Dunham and Jason in Austin during the Thanksgiving holidays. They also visited Mr. and Mrs. Roger Allen and daughter in Dallas.

Thanksgiving dinner guests in the home of Mr. and Mrs. P. H. McKenney were Mr. and Mrs. Albert Reid of Houston; Mr. and Mrs. Leroy Shipman of Plainview; Mrs. W. W. Reid, Belva Davis, Mr. and Mrs. Jerry Miller and Mrs. Mildred Reid.

Christmas Bazaar To Be December 6

The annual Century of Progress Study Club Christmas Bazaar will be held in the House Chevrolet Showroom Saturday, December 6, beginning at 9:00 a.m.

Everyone is invited to come early in order to have a good selection of foods from which to choose. Holiday cakes, pies, candies, jellies and many other items will be for sale.

Save your own precious time during this busy season by choosing your treats from the variety to be offered at the Bazaar.

Roving Santa Claus Will Be Here Again This Year

The Christmas season is quickly approaching again, and it will soon be time for Santa Claus to visit in Silvertown again.

Santa has sent word via the Silvertown Young Homemakers that he will be in this area December 8-13 to visit in the homes of children.

Santa will visit in the homes of all the children who are interested in seeing him, but due to the long trip from the North Pole, a \$1.00 fee will be charged each family with whom he visits. This will help cover his expenses.

If you want Santa to come to your home, you must make an appointment with him. These appointments may be arranged by calling 823-4141. The earlier you call, the quicker Santa will come to see you.

Chap. Darrell Long, son of Mr. and Mrs. Bill Long of Tulia, has been stationed in Vietnam for the past several months.

Deep Test For Oil Underway Near Here

Cockrell Corporation, continuing its oil exploration in the Palo Duro Basin, is drilling wildcats in Floyd and Briscoe counties.

The No. 1 C. O. Allard deep well test south of Silvertown was reported to be down to 2,461 feet at the end of last week. Casing had been set at 2,450 feet.

Cockrell Corporation has drilled numerous tests recently in adjoining Floyd County, and is presently below 3,480 feet on the No. 1 E. E. Wells.

Printz Brown was moved into Room 659 at Northwest Texas Hospital in Amarillo Monday, after having been in the intensive care unit since November 24. He has been using the Pacemaker quite a lot to regulate his heartbeat since suffering a series of heart attacks, but has been able to walk in the halls of the hospital this week.

Mrs. Carl Crow returned home Tuesday of last week after a five-week visit with her son and family, Mr. and Mrs. John H. Crow, Carl and Don in Dallas and with relatives in Waco, Alvarado, Cleburne, Irving and Fort Worth.

Owlettes Defeat Pantherettes Again

In the rematch between the Silvertown Owlettes and the Quitaque Pantherettes played here Tuesday, the Owlettes stormed to a 62-44 win, their second of the season from Quitaque.

Evelyn Wood dumped in a big 40 points for Silvertown, while the Pantherettes were led in scoring by Jackie Cheatham, who ripped the cords for 34 points.

The Owlets lost a 30-46 decision to the Panthers in the second game of the evening.

Brunson scored 16 points for the winners. Bob Hutsell, Alvin May and Finas Ivory each scored 7 points for the Owlets.

Brown Previews New Tractor Models

Don Brown, owner of Brown-McMurtry Implement Company in Silvertown, has just returned from Sheridan, Illinois, where he joined H. L. Hudson, IH district manager, of Dallas to witness the presentation of new International farm tractors, as well as new farm and industrial equipment scheduled for introduction in 1970. Many millions of dollars have been invested in research and development by the firm to develop these new products.

Among the machines shown at IH's Hickory Hill Farm was a new 130 hp turbo-powered farm tractor; two additional heavy-duty models equipped with hydrostatic drive; and another heavy-duty diesel tractor in the 90-plus hp

now includes the new Pioneer Room which is available to civic groups for community functions. Tastefully furnished with traditional and antique groupings, it is carpeted in a pale green tweed and is paneled with ash. Silk vinyl completes the decor from paneling to ceiling.

Dedicated to the men and women who settled this area of the Texas Panhandle, the Pioneer Room is decorated with photographs and souvenirs from days gone by. A copy of a sheet from the Briscoe County Property Assessment for Rendition of Taxes for the year 1896 is framed and hangs on the north wall. Included among the names listed on the page are ancestors of people who make their home here today.

Also framed is a list of the 1896 tax roll and a partial list of the 1917 tax roll.

Photographic enlargements of early-day scenes in Silvertown are also framed for hanging in the Pioneer Room. A framed collection of checks written in the 1800's, dated from 1872 to 1899, is another item of interest.

The Pioneer Room will accommodate 200 people. It is complete with a built-in projection screen, 100 stacked chairs and 10 banquet tables.

Antique pieces which have been placed in the Pioneer Room include a credenza, which was built about the time the settlers first began coming to Briscoe County, and a table which was located in the First State Bank at the time of its organization in 1946. The table has been refinished to match the credenza. There are also several travertine marble topped occasional tables with antique bases.

Adjacent to the Pioneer Room is the kitchen-dining area, where customers and employees may relax for coffee. Distinctive ash-paneled cabinets and a southwestern mural complete the scene around robin's egg blue wrought-iron tables and chairs.

Glass dividers and a pierced walnut screen separate the hallway and vault area from the lobby of the bank, which has been enlarged and completely remodeled.

A grey-green slate floor has been added, as well as walnut paneling and companion cork and straw vinyl wall covering. New oak and walnut furniture has been placed in the offices and in the conference room.

Carpeted in celadon green, the conference room has been enlarged. Massive walnut occasional tables, accented by unusual pieces of hand-carved onyx, are arranged with chairs upholstered in ultramarine blue and in off-white. Large oil color portraits of the bank's directors are hung in the conference room.

Furnishings throughout the bank are designed for comfort in traditional styling, and there has been an extensive use of art in western paintings, drawings and sculpture for a warm, rustic appearance.

A Carl Smith painting, "Sun Going Down," hangs in the office of Bank President William J. Strange. Two pieces of bronze sculpture, "The Post Hole Digger" and a copy of "The Plough Boy", are also located there. A framed collection of antique coins, which belongs to Donald Dee West, son of Mr. and Mrs.

SEE OPEN HOUSE—
Continued On Page Four

Published every Thursday at Silverton, Texas
 Entered as second-class mail matter at the Post Office at Silverton, Texas,
 under the act of Congress of March 3, 1879.
CHARLES R. SARCHET PUBLISHER
MARY ANN SARCHET EDITOR

SUBSCRIPTION RATES PER YEAR
 in Briscoe and Adjoining Counties \$2.50
 in Other Texas Counties and Out of State \$3.50
 Display Advertising Rates Available On Request
 Classified and Legal Advertising Rates, each insertion 3c per word
 Minimum Charge per insertion for Classified and Legal 50c
 Cards of Thanks 50c

MEMBER OF
 TEXAS PRESS ASSOCIATION AND PANHANDLE PRESS ASSOCIATION

Local News

Mrs. Ben Lesley and Bruce of El Paso visited her uncle and aunt, Mr. and Mrs. Gordon Alexander, and also with Mr. and Mrs. Randall Eddleman and family, Mr. and Mrs. Charles Sarchet and Ken and other friends from Thursday until Saturday of last week. Coach Lesley's team was participating in a basketball tournament at Amarillo High School, and the Coronado team defeated Odessa Permian and Amarillo Tascosa before dropping the championship game to Borger Saturday night.

Mr. and Mrs. Dwight Rampley and Ty Don of Weatherford, Oklahoma, spent the weekend with their parents, Mr. and Mrs. O. C. Rampley and A. T. Bingham.



David Tipton was employed by the First State Bank in February 1963, and was elected cashier of the bank in 1965.

County Spelling Bee Director Named

Charlie M. Payne, Silverton Junior High Principal, is the 1970 Spelling Bee Director for Briscoe County.

The Briscoe County Bee will be held before April 1, 1970, and the champion will go to Amarillo on April 25, 1970, for the annual regional Bee elimination. The regional winner will win an all-expense paid trip to Washington, D. C. the first week in June.

Last year Joan Cross, daughter of Mr. and Mrs. G. W. Lee, was the Briscoe County Champion and placed tenth in the Regional Bee. The champion was an eighth grader in the Silverton School.

The 1970 Golden Spread Bee will be co-sponsored by West Texas State University and the Am-

arillo Globe-News. L. J. (Jack) Edmondson, West Texas State University Director of Public Services, will be Bee Director for the Golden Spread. Again there will be a secondary contest—unique only in the Golden Spread—open to contestants from the sixth and lower grades. These Juniors will be guests of the Amarillo Globe-News at the Regional Bee on April 25, but will not spell unless they represent the senior division also.

Jean Reeves was the County Junior Champion for 1969. Her parents are Mr. and Mrs. Bob Reeves. She was a sixth grader in the Silverton Schools.

The first - place winner in the Regional Bee will go to Washing-

ton as the district champion. The Washington trip includes several sightseeing trips and entertainment, the annual Bee banquet and presentation of awards. The Golden Spread winner will also receive a traveling plaque to be placed in his or her school.

Other outstanding prizes will be available. They include a Zenith portable television, a 24 - volume set of Encyclopaedia Britannica, a copy of the Lincoln Library, Britannica World Atlas, and cash prizes.

Each County Champion receives an engraved plaque and gold pin. Each County Junior Champion is given a trophy and a silver pin during intermission at the Regional Bee (but there is no regional contest between the juniors).

In the school contest, each winner receives a Paper-Mate pen inscribed "School Champion." "I Entered" and "School Champion" ribbons will be awarded EACH participant in both junior and senior divisions.

This will be the 43rd year for the National Spelling Bee, sponsored by newspapers throughout the 50 states, and the 22nd Bee sponsored by the Amarillo Globe-News.

"WORDS OF THE CHAMPIONS" may be ordered from Jim W. Walker, Spelling Bee Editor, Amarillo Globe-News, P. O. Box 2091, Amarillo, Texas 79105. Price—20c each.

the FINEST costs LESS HERE!

- | | | | | |
|----------------------------------|------------------|------------------------------------|---------------------|------------------|
| TUNA Shurfine 6 1/2 Oz. | 3 FOR 89¢ | Shurfine 46 Oz. | TOMATO JUICE | 3 FOR 89¢ |
| APRICOTS Shurfine 16 oz. | 4 FOR \$1 | Shurfine 16 Oz. | MUSTARD | 17¢ |
| PEARS Shurfine 16 oz. | 4 FOR \$1 | Del Monte Cream Style White 16 oz. | CORN | 23¢ |
| SHORTENING Shurfine 3 lb. | 59¢ | Asst'd. Flavors 3 oz. | JELLO | 10¢ |

12c OFF
DASH Giant Size **75¢**

CHIFFON
FACIAL TISSUE 200 ct. **4 FOR \$1**

*** MEAT MARKET**

- | | |
|--------------------------------|------------|
| RIB STEAK USDA Good lb. | 89¢ |
| CHUCK ROAST USDA Good | 53¢ |
| ARM ROAST lb. | 55¢ |
| BEEF RIBS lb. | 29¢ |

*** FRUITS & VEGETABLES**

- | | |
|--------------------------------|------------|
| APPLES Wash. Del. lb. | 12¢ |
| GRAPEFRUIT Ruby Red lb. | 10¢ |
| SWT. POTATOES lb. | 14¢ |
| CARROTS pkg. | 11¢ |

SHURFRESH
OLEO 1 lb. **5 FOR \$1**

Shurfresh Milk Has That NATURAL GOODNESS

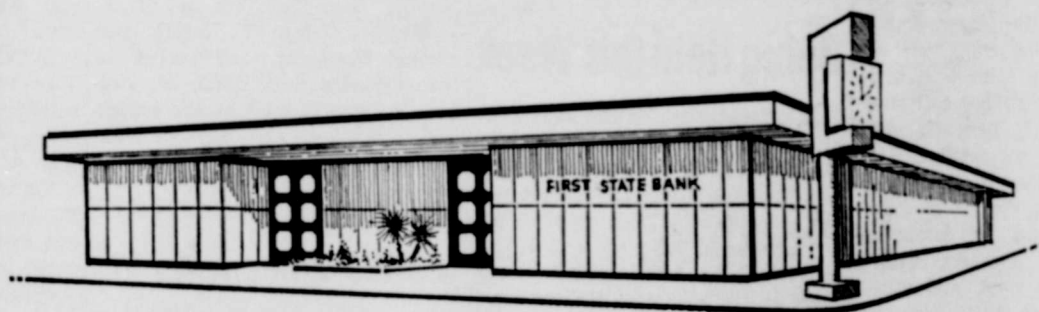


These Specials Good Friday and Saturday

Nance's Food Store

SILVERTON, TEXAS

The Directors,
 Officers and Staff
 Cordially Invite You To



open house

SUNDAY, DECEMBER 7

1:00 UNTIL 5:00 P.M.

First State Bank
 OF SILVERTON

Member Federal Reserve System and Federal Deposit Insurance Corporation

OUR NEW BANKING HOME:
 DESIGNED FOR THE
 FUTURE WITH
 YOU IN MIND



Mrs. Bill (Evelyn) Verden and Stephen Jarnagin are shown at the cashier windows in the bank. Mrs. Verden was employed by the bank from August 1957 to 1959 and returned to her bank job in 1962. Jarnagin has been with First State Bank since August 1968.

Ranchers Needing Suits For Christmas

To make Christmas a memorable event for the nearly 350 boys at Cal Farley's Boys Ranch, the "Boys Ranch Christmas Suit Fund" drive is underway. For many of the boys at the

The couple has two other children, Eric, 8 years old, and Margie, 1½ years old.

Mr. and Mrs. Allen Thomas of Vallejo, California, are parents of a son, Michael Shane, born November 15. He weighed seven pounds, eleven ounces.

Grandparents are Mr. and Mrs. Eliseo Priado of Pittsburg, California, and Mr. and Mrs. B. A. Thomas of Tulia. Great-grandparents are Mr. and Mrs. J. A. Ziegler and Mr. G. H. Thomas.

Ranch, the new suit they receive at Christmas will be the first they have ever owned, and a long-cherished gift. The boys are allowed to select their own suits from Amarillo merchants who sell them at a special \$25.00 rate. The new suits will replace worn ones that were outgrown months ago.

Ranch president Virgil Patterson stated, "These suits mean so much to the boys. They are more than just ordinary gifts because they demonstrate the faith and interest that so many people have in them."

Contributions to the Boys Ranch Christmas Suit Fund may be mailed to the Boys Ranch office, P. O. Box 1890, Amarillo, Texas 79105, or taken to the office at 600 West 11th Street in Amarillo.

Mr. and Mrs. Albert Reid of Houston visited with his mother, Mrs. W. W. Reid, from Wednesday until Saturday.

Attending a family dinner in the home of Mr. and Mrs. O. M. Dudley Sunday were Mr. and Mrs. Durward Brown of Plainview; Mr. and Mrs. John Lewis Brown of Aurora, Colorado; Mr. and Mrs. Jim Wilmet, Randy, Lisa and Amanda of Tulia; Miss Rita Brown of New York; Mr. and Mrs. James Roy Brown, Amy and Corey of Memphis; Mr. and Mrs. W. H. Graham, Ronnie, Hal, John, Andy and Steve of Lovington, New Mexico; Mr. and Mrs. Buddy Comer and Christi of Lubbock; Mr. and Mrs. Arnold Brown and Mrs. Carol Davis, Alex and Max.

Mr. and Mrs. Jerry Dee McWilliams and sons of Snyder visited Mr. and Mrs. P. H. McKenney and other relatives Thursday afternoon.

Earl Minyard has been a patient in Swisher Memorial Hospital since Monday morning. He is in Room 207.

Voter Registration Drive Underway Now

The "Operation: Everybody!" voter registration quota for Briscoe County has been set by the Texas Democratic Party at 1208, according to County Chairman Jackie Mercer.

"That figure represents 65% of our estimated voting population," she said. "The state's goal is to have 4,250,000 Texans registered between now and the end of the registration period on January 31."

"Operation: Everybody!" is a project of the State Democratic Executive Committee, but it is important that all citizens be registered to vote regardless of party affiliation," Mrs. Mercer said. "The special drive is headed by Mrs. James A. McMullen III of Fort Worth with Mrs. Carol Vance of Houston as vice chairman.

"Voter registration is free," Mrs. Mercer continued, "but everyone must register in order to vote in the 1970 elections. Application forms are available at the County Tax Assessor's Office in

* NEW BABIES

Mr. and Mrs. Dwight Rampley of 600 West Arlington No. 48, Weatherford, Oklahoma, are parents of a son, Ty Don, born there at 2:23 a.m. November 20. He weighed six pounds, four and a half ounces.

Grandparents are A. T. Bingham and Mr. and Mrs. O. C. Rampley, all of Silverton. Great-grandparents are Mrs. Mary Rampley and Mrs. Stella Davis, both of Silverton.

Mr. and Mrs. Donald Ray Turner of Odessa are parents of a son, John Jacob, born November 27 at Lockney General Hospital. He weighed six pounds, eleven ounces.

Grandparents are Mr. and Mrs. Ed Jones of Muleshoe and Mr. and Mrs. John Turner. Great grandparents are Mr. and Mrs. Oscar Wylie of Lockney.

the courthouse. "As of Tuesday afternoon of this week, there had been 580 voter registrations filed in Briscoe County —far short of the 1208 goal."

The Accomplishment Of The New

First State Bank

In Silverton



DESERVES OUR RECOGNITION

AND BEST WISHES FOR THE FUTURE!



STAFFORD-LOWDON
FORT WORTH, TEXAS

Best Wishes To
FIRST STATE BANK
On The Completion
Of Its New Facilities!



We are Happy To Have Had A Part In Providing Both The Bank And Pioneer Room, and Point With Pride to Our Work

ELMER SMITH PAINTING CONTRACTOR

201 Thomas Boulevard Plainview

Setting The Pace For Progress

Your lovely new building is truly a mark of progress . . . it was our privilege to have been general contractor for its construction.

You have shown the way for others who believe in the future of this community and this area. We're proud to offer our congratulations and share your pride in the beautiful new home of the First State Bank in Silverton.



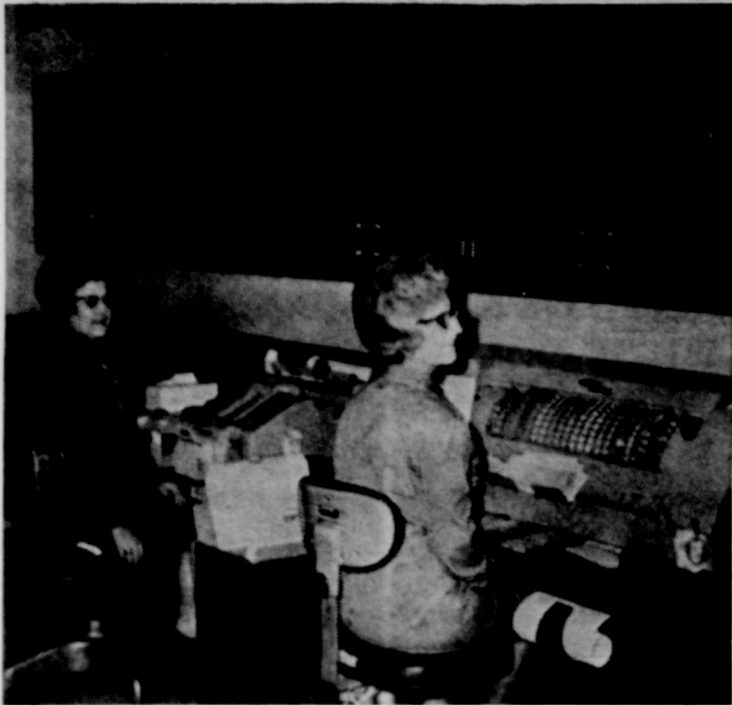
It is a pleasure to join with you in extending a cordial invitation for all to visit this grand new facility during the open house on Sunday, December 7.

May this be just one of the many successes you will have as you continue in service to the citizens of the area.

Lon D. Cartwright

CONTRACTORS

Plainview, Texas



Bookkeepers, Mrs. Seymour (Ruby) Brannon and Mrs. Noel (Bethleen) Deavenport, are shown at work in their department of the First State Bank. Mrs. Brannon began work at the bank in August 1965 and Mrs. Deavenport was employed there from September 1959 until 1964 and returned to work there in 1965.

OPEN HOUSE —
Continued From Page One

Strange, also adds to the office decor. Outside the entrance to the private office is another bronze sculpture, "The Rearing Horse," which has been placed on an antique marble pedestal.

Other southwestern art, by Ed Butler of Lubbock, Ted Bell of Floydada, Peter Hurd, Harold Bugbee and Mrs. Bugbee, hangs throughout the bank.

An electronic posting machine has been added in the bookkeeping department since the remodeling began last April 16, and a new burglar alarm system was installed this week. A new addressing machine has been added.

A large new storage area has been provided, as well as new coat closets and rest rooms.

The firm of architects in charge of the building was McMurtry and Craig of Lubbock, and the interior decoration has been done by Mr. and Mrs. Hoyle McMurtry of Lubbock and Mr. and Mrs. William J. Strange. General contractor was Lon Cartright of Plainview.

Texas Farmers Union Convention Opens

Theme of the 66th Annual Convention of Texas Farmers Union will be "Farmers Union—Fighting to Save the Farm Program." According to Farmers Union officials, plans will be laid at the convention to mount a statewide grassroots crusade in support of the Federal farm programs.

Convention headquarters will be in the Windsor Hotel in Abilene and the convention will open with the evening session today, December 4, and will conclude with the annual banquet Saturday evening, December 6.

A host of nationally-known farm organization and government leaders will fill the three-day convention schedule with interest-packed speeches. Included are Fred Heinkel, president of Mid-continent Farmers Association of Columbia, Missouri; Ray Watson, president of the Illinois Farmers Union from Odell, Illinois; Senator Ralph Yarborough, chairman of the Senate Labor and Public Welfare Committee; Tony Dechant of Denver, president of the National Farmers Union; Ray Novak, executive vice president of National Farmers Union Insurance; and Jay Naman of Waco, president of Texas Farmers Union.

The convention will give priority attention to drafting policy recommendations to guide the direction of the organization in 1970.

Delegates to the Texas Farmers Union Convention from Briscoe County who will attend the Abilene convention are Joe Brannon, Jimmy Myers, Harold Edwards, Robert Haley Hill, Riley Harris and John Francis. Others to attend from Silvertown are Beryl Long, director of Texas Farmers Union District II; Fred Mercer, president of Silvertown Local; and Gilbert Elms.

Dinner guests in the J. D. Nance home Sunday were G. B. Shelburne, jr., of Amarillo; Kathy Stalcupp of the Childrens Home in Lubbock; Nanda Barrett of Plainview; Mr. and Mrs. John T. Francis, Lori, Lesa and Dave, Mr. and Mrs. Earl Cantwell, Mr. and Mrs. Elton Cantwell, Debbie, Mary Chris, Brenda and Roger, Mr. and Mrs. Wayland Fitzgerald, Mr. and Mrs. Nance.

G. B. Shelburne had recently returned from a tour of the Holy Land and the group enjoyed hearing him tell of the highlights of the trip. He spoke at both services of the Rock Creek Church Sunday.

Johnnie Jowell has arrived in Vietnam, and has a new address: SSG John E. Jowell 462-74-1022 C Troop, 2nd Sqdn., 1st Cav. APO San Francisco, Calif. 96321

IT'S SANTA LETTER TIME!

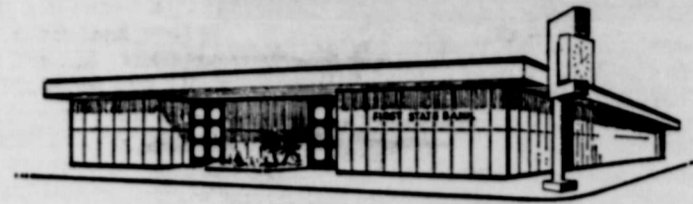
Christmas is growing nearer and it's time for the boys and girls to write their letters to Santa Claus.

By a special agreement with the North Pole, Santa has agreed to let the Briscoe County News publish the letters he receives from the Silvertown area.

You can either bring your letters to the News Office or mail them directly to Santa Claus at the North Pole. All of the letters are guaranteed to reach Santa before Christmas if you mail them early!

NEED A HOBBY?
Visit Sylvia's Corner
Many new items to arrive soon!
FOGERSON
Lumber & Supply

**OUR BEST WISHES
TO THE MEN AND WOMEN
OF THE FIRST STATE BANK
IN SILVERTON!**



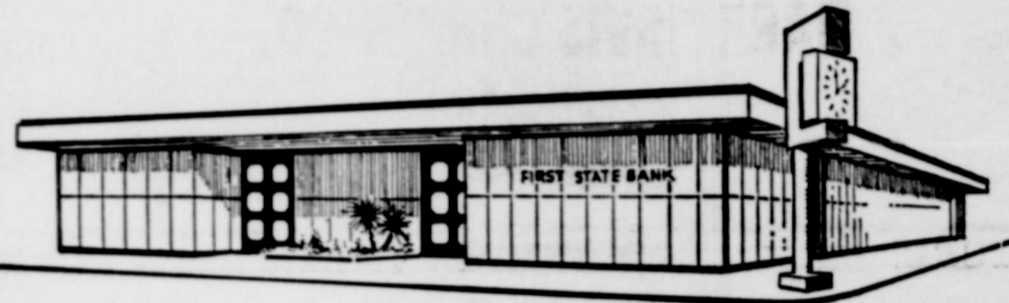
We are pleased to have had a part in the building of your new banking facility and Pioneer Room.

HIGGINBOTHAM - BARTLETT
LUMBER COMPANY

296-6335

Plainview, Texas

BEST WISHES!



It was a pleasure to have installed Heating and Air Conditioning in the First State Bank's new home of convenience.

HAMMOND SHEET METAL
HEATING & AIR CONDITIONING

Floydada, Texas

HURRY! HURRY! HURRY!
BIGGER FOOD BUYS!

- JUICE PINEAPPLE KIMBELL 46 OZ. 39¢**
- CHILI WILSONS 24 OZ. 79¢**
- SWT. PICKLES PICKLE FAIR 32 OZ. 69¢**
- GREEN BEANS KIMBELLS CU T303 25¢**

- VIENNA SAUSAGE LIBBYS 27¢**
- JELLO ASST. FLAVORS 3 OZ. 10¢**
- POP CORN POP RITE 1 LB. WHITE 15¢**
- ICE CREAM BELL ASST. 1/2 GAL. 73¢**
- PUMPKIN PIE MORTONS 9 IN. 39¢**

So Fresh!
PRODUCE

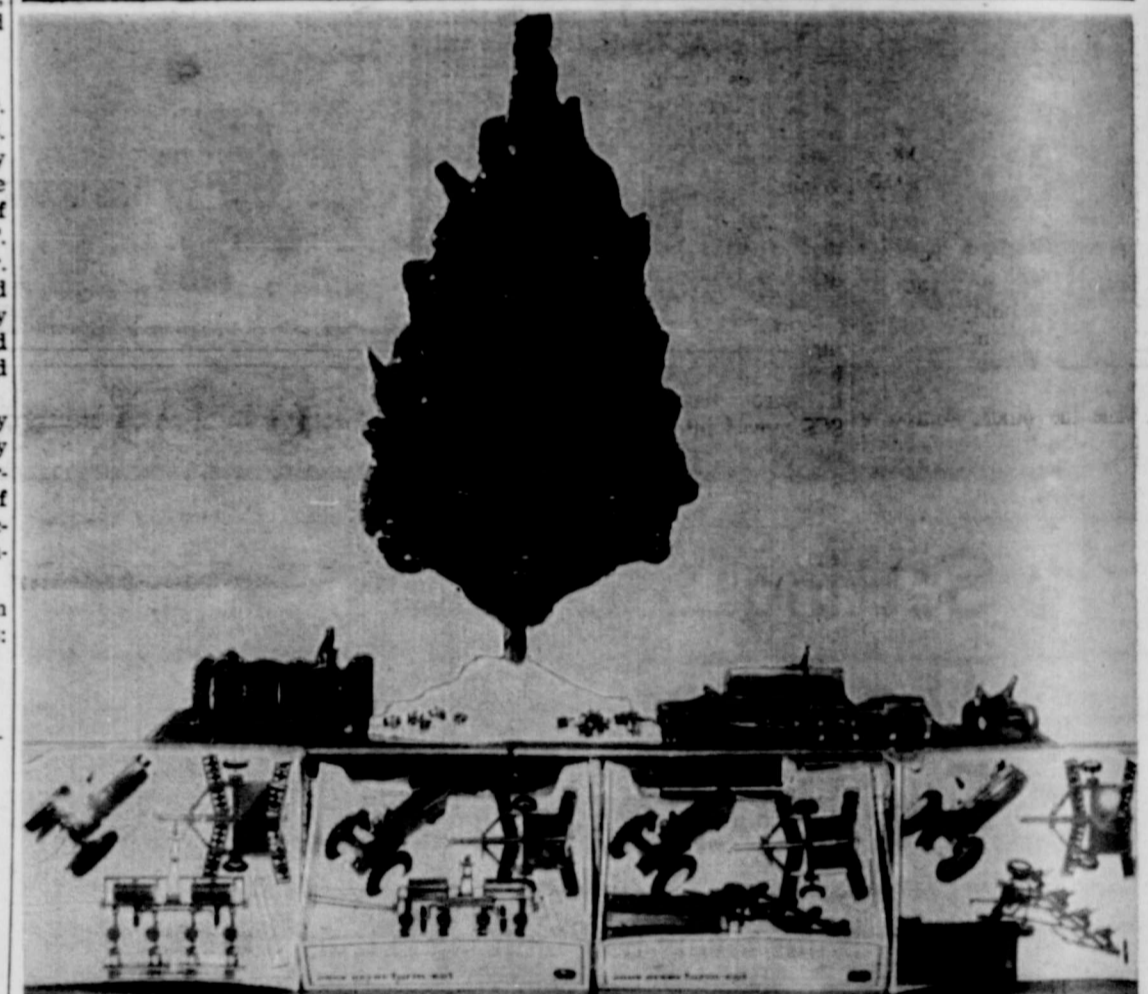
- GRAPEFRUIT RUBY RED 4[¢] 39¢**
- APPLES WASH DEL. FCY 13¢**
- POTATOES COLO. RUSSETS 20 LB. 72¢**
- TURNIPS TEX. PURPLE TOP 10¢**

Now Better!
MEAT BUYS

- BISCUITS KIMBELLS 10 CT. 3[¢] 25¢**
- BACON LONGHORN SLAB 69¢**
- T-BONE STEAK USDA 93¢**
- LOIN STEAK USDA 93¢**

BUD'S Grocery and Market

Free Delivery Specials Good Friday and Saturday Silvertown, Texas



GIVE THEM A JOHN DEERE TOY

The kids like to "work" with the same kind of equipment that Dad does! Give them authentic John Deere toy equipment for Christmas. Not only are these toys a most-wanted item, but they are sturdy and made to last a long time.

Now on display are the
JOHN DEERE PEDDLE TRACTOR & TRAILER
NEW 5020 & 4020 J D TRACTOR TOYS
AND ALL THE EQUIPMENT TO GO WITH THEM

SET OF SEVEN JOHN DEERE MINIATURE TOYS
Includes 1960 John Deere 4010 Row-Crop Tractor, 1958 John Deere 730 Row-Crop Tractor, 1952 John Deere Model 60 Tractor, 1939 John Deere Model A Tractor, 1923 John Deere Model D Tractor, 1914 Waterloo Boy Tractor, and the 1892 Freulich Tractor

HEY MOM! HOW ABOUT A TRACTOR RADIO FOR DAD!

See Them Today At
RAY THOMPSON IMPLEMENT COMPANY, INC.

Bank Has Grown Through The Years

Growth of First State Bank in Silverton has been steady throughout its history, as shown by the assets shown on the yearly fall statements:

October 4, 1946	\$ 526,880.43
October 7, 1947	1,006,245.39
October 30, 1948	901,075.51
October 30, 1949	1,026,200.68
October 4, 1950	1,018,527.18
October 10, 1951	1,181,747.69
October 5, 1952	1,403,025.87
October 30, 1953	1,225,287.05
October 7, 1954	1,445,275.30
October 5, 1955	1,571,115.30
October 27, 1956	1,495,267.29
October 11, 1957	1,677,820.66
October 24, 1958	2,043,438.51
October 6, 1959	2,304,474.56
October 3, 1960	2,307,775.50
October 27, 1961	2,514,933.15
October 28, 1962	3,927,891.60
October 30, 1963	3,776,123.86
October 1, 1964	4,021,545.02
October 13, 1965	4,152,535.38
October 20, 1966	3,543,798.11
October 4, 1967	4,657,172.92
October 30, 1968	5,139,108.32
October 21, 1969	5,711,985.52

Capital and surplus also have kept pace with growth, with capital increasing from \$35,000 to \$100,000, and the surplus going up from \$15,000 to \$240,000. This growth is broken down by years as follows:

CAPITAL	
January 21, 1956	\$ 35,000.00
January 29, 1952	50,000.00
January 31, 1957	75,000.00
February 1, 1966	100,000.00
SURPLUS	
January 21, 1946	\$ 15,000.00
July 18, 1949	20,000.00
December 16, 1948	25,000.00
September 16, 1949	35,000.00
January 23, 1952	50,000.00
January 29, 1957	75,000.00
December 29, 1959	85,000.00
December 15, 1960	100,000.00
June 15, 1961	110,000.00
December 21, 1961	125,000.00
December 8, 1962	135,000.00
December 19, 1963	150,000.00
January 20, 1966	200,000.00
December 21, 1966	220,000.00
January 22, 1969	240,000.00

Mrs. Eugene Long and Mr. and Mrs. Charles Gowin were accompanied by Mrs. Fannie Mae Wilson of Blackwell recently to visit New Braunfels. Mrs. Long visited her friends, Mr. and Mrs. Gus Long, while the others toured a mill and went sightseeing. Leaving New Braunfels, they and Mrs. Wilson drove along the Gulf of Mexico and Corpus Christi and spent the night at Alice. Returning to Blackwell, they visited Mrs. Long's brother, W. E. Tait, and all were Sunday guests of his daughter and family, Mr. and Mrs. Bert Hyde at Nolan. The Gowins

REDI - MIX CONCRETE
To supply your every need, large or small
Fogerson Lumber & Supply

MAYTAG WASHERS AND DRYERS
Sales and Service
Fogerson Lumber & Supply

ENJOY YOUR HOMETOWN NEWSPAPER and THE DALLAS NEWS
You'll keep up with all that's happening

- LOCALLY
- STATEWIDE
- and
- AROUND THE WORLD

THE DALLAS MORNING NEWS IS TEXAS' FIRST METROPOLITAN NEWSPAPER

Only \$2.60 a Month to Subscribe to
The Dallas Morning News

FILL OUT AND MAIL THIS COUPON

CIRCULATION DEPARTMENT
THE DALLAS MORNING NEWS
COMMUNICATIONS CENTER
DALLAS, TEXAS 75222

Please start my subscription to The Dallas Morning News at once. I understand that the price is \$2.60 a month.

NAME

ADDRESS

CITY & ZIP

NEW BABY

Mr. and Mrs. Roger Allen of Dallas are parents of a daughter, Andrea Rene, born there November 18. She weighed seven pounds and thirteen and a half ounces. Grandparents are Mr. and Mrs. John Allen of San Antonio and Mr. and Mrs. Johnnie Lanham.

Breedlove Cited At State Meeting

Norvell G. Breedlove, office manager of the Swisher County ASCS office, was awarded the Texas Award, the South Central Award (which includes five states) and an award from the National Association of ASC County Office Employees, for distinguished service to ASCS at the annual convention of TASCOC (Texas Association of ASC County Office Employees) held November 1 at the Baker Hotel in Dallas. These are top awards in ASCS. Breedlove received them because of his service to farmers and other accomplishments since he went to Tulsa as office manager from Midland County in June 1962. Under his leadership, the Swisher County ASCS office received awards for Outstanding County in the District in 1966, 1967 and 1968. In 1968, Breedlove received a High Quality Performance Award.

Breedlove, 31, has been with ASCS ten years. He served one year in Lubbock County under the Office Manager Trainee Program, one year in Midland County as office manager, and went to Tulsa as the Swisher County office manager in June 1962, succeeding Elmer C. Craig, who resigned. Since going to Tulsa, he has trained three men under the Office Manager Trainee Program who have been placed in counties as office managers. They are: Bobby J. Weatherly, who is office manager in Reeves County; Charles W. Mayfield, office manager in Deaf Smith County; and David Robnett, who is office manager in Wichita County.

At the present time, he is training Billy D. Colston, a native of Floyd County.

In 1967, Breedlove began trying to get a modern office to house all government agencies. In March 1968, FHA, ASCS and SCS moved into a new, well-equipped one-story modern building which is easily accessible to farmers. This arrangement promotes and speeds up the flow of work for all USDA agencies.

Breedlove has been active in Tulsa Jaycees, Little League baseball, and Toastmasters. At the present time, he is president of the Plains Federal Credit Union. A graduate of Silverton High School and Clarendon Junior College, Breedlove also attended Texas Tech.

He is the son of Mr. and Mrs. Frank Breedlove of Silverton and is married to the former Betty Fitzgerald of Silverton. They have three sons, Chris, Craig and Curtis.

Attending the convention in Dallas were Mr. and Mrs. Norvell Breedlove of Tulsa and Mr. and Mrs. Charles Wayne Mayfield of Hereford.

and Mrs. Long returned home on Monday of last week.

Among those attending open house to celebrate the Golden Wedding Anniversary of Mr. and Mrs. J. C. Rhoderick Sunday were Fish Wilson, Lockwood McCracken, Mrs. J. E. Chandler, Mrs. A. C. Barrett, Mr. and Mrs. Orlin Stark, Ray and Virgie Persons, Pete Rice, Mr. and Mrs. S. C. Brown, Neva Dale Morrison, Mr. and Mrs. Glen Ramsey, Greg, Dana and Reven, Mrs. John Rogers, Minnie Mae Roberson, Mrs. Yolanda Roberson, Mr. and Mrs. Scott Bolton, Mr. and Mrs. Tom Barbee, Mrs. Elaine Hamner, Mrs. Grady Starkey, Mrs. J. T. Bradley, Mrs. Seney Bogan, all of Quitaque;

Also, Mr. and Mrs. Pete Clark of Flomot; Mr. and Mrs. Carl Hudson of Childress; Jean Grundy of Lamesa; Rev. and Mrs. R. E. Harrison of Wichita Falls; Mr. and Mrs. Paul Hamilton of Denton; Mr. and Mrs. Morris Brown; Mr. and Mrs. Randy Willingham, Mrs. Naomi Deweers, Mrs. P. W. Stewart, Mrs. John F. Jago, Mrs. Mildred Jago Egan, Mrs. Guy Mullins, Mr. and Mrs. Frank Carder, Mr. and Mrs. W. R. Kuykendall, all of Amarillo;

Also, Robert Woods of Lubbock; Mrs. Porter Anderson and Mrs. S. E. Campbell, both of Tulsa; Mr. and Mrs. W. A. Cox, Mr. and Mrs. Frank Hawkins, all of Lockney; Mr. and Mrs. Gordon Montague and son and Mrs. Ted Hancock and son, all of Plainview; Mr. and Mrs. C. O. Faver, Hale Center; Mrs. Ida Harwell, Mrs. Betty Evans, Burney Hancock of Hobbs, New Mexico, and Mrs. Zeph Fogerson of Clovis, New Mexico,

CHRISTMAS RECITAL PLANNED
Sam and Mary Catherine Brown of Tulsa will present voice and piano students in recital at 7:30 p.m. Friday, December 5, at the First Baptist Church in Tulsa. A Christmas theme will be used. Parents and friends are invited to attend.

Mr. and Mrs. Charles Gowin have been in Amarillo several days, and Mrs. Gowin is undergoing tests and examination at Northwest Texas Hospital.

Old Volcanoes
Clay samples show that volcanoes erupted off the Florida coast about 30 million years ago.

sisters and brother of Mrs. Rhoderick;

Also, Mr. and Mrs. Will Lyon of Quitaque, brother-in-law and sister of Mr. Rhoderick.

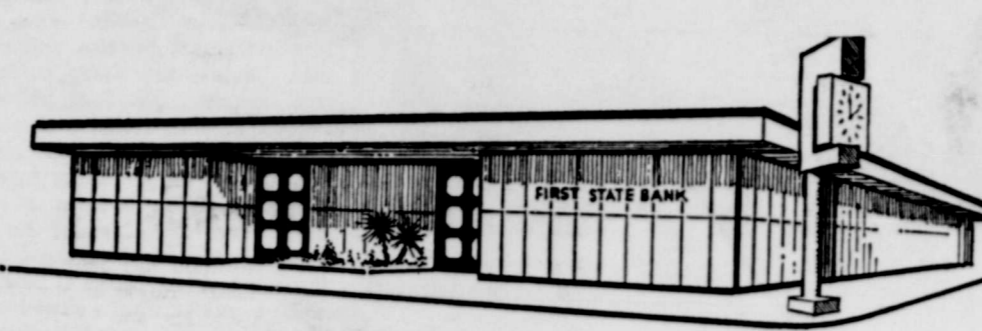
The Rhodericks also had a number of long-distance telephone calls during the day, including two from California, and calls from Maryland, Pennsylvania, New Mexico, Arizona, Kansas and Texas.

SPRAY CANS MMM SCOTCH-GARD FABRIC PROTECTOR
FOGERSON LUMBER AND SUPPLY

AMERICAN AUCTION SERVICE
AUCTIONEERS ■ APPRAISERS ■ CONSULTANTS
Anything Anytime Anywhere
"We're ready to handle your Farm Sales!"
Executive Offices 1203 East Central 806-383-8190, Amarillo, Texas
Bennie Reagan, Rt. 1, Box 68, 806-847-4803, Silverton, Texas

WELCOME

TO THE OPEN HOUSE OF THE
FIRST STATE BANK IN SILVERTON



May we extend a hearty welcome and congratulations on the completion of a stunning addition to Silverton's bright future.

MARK DAVIS CARPET CO.
OF AMARILLO

355-4416 4523 S. Western



The Great Combine Race

You Are Cordially Invited To Attend

Farming Frontiers '70

The New Generation of John Deere Combines Challenge Yesterday's Capacity Champions In "The Great Combine Race" Other New Equipment Will be shown in "Furrow on Film" and "A Way of Life"

REFRESHMENTS WILL BE SERVED

Your Dealer Will Be Giving Away a Brand-New 21-inch Electric Start John Deere Power Mower! Register at the John Deere Day - You may be the Lucky Winner!

7:00 P.M. THURSDAY, DECEMBER 4, 1969 **PIONEER ROOM AT FIRST STATE BANK**

SPONSORED BY
RAY THOMPSON IMPLEMENT, INC.

Montague-Schrandt Vows Exchanged In Candlelight Church Ceremony

Amid mediterranean arrangements of pink mums and before an altar banked with palms and topiary trees, Miss Janet Lynn



Mrs. Wayne Alton Schrandt

Montague and Wayne Alton Schrandt pledged nuptial vows in a double-ring ceremony performed by the Rev. Robert Sewell in the United Methodist Church in Silverton on Wednesday evening, November 26.

Mr. and Mrs. Roy Montague of Silverton are parents of the bride. The bridegroom is the son of Mr. and Mrs. Alton Schrandt of Ocean-side, California.

Given in marriage by her father, the bride wore a formal gown of imported polyanza over bridal taffeta designed with an empire bodice overlaid with Venice lace. Her victorian neckline and lantern sleeves were also enhanced with Venice lace. Deep cuffs of lace caught the full polyanza sleeves at the wrists. Her full double skirt of polyanza swept into a court train, falling to chapel length from beneath a self-fabric bow. Her Camelot hat of matching Venice lace held her tiered veil of bridal illusion, which extended into a chapel veil. She carried a cascade bouquet of roses.

For something old, the bride added a brooch belonging to her paternal grandmother. Her bridal gown was something new, she carried a prayer book borrowed from her mother, and wore the traditional blue garter with a penny in her shoe.

Miss Carron Montague, sister of the bride, and Mrs. Roland Montague of Lubbock, served as maid and matron of honor. Other bridal attendants included Miss Linda McWilliams and Miss Carol Ann Montague. Miss Paula Montague, sister of the bride, and Miss Marsha Teeple were candlelighters.

The bride's attendants wore ruby velvet gowns with empire backs accented by self-fabric bows. Their victorian necklines and front panels were adorned with pink lace. Floor-length veils of pink tulle were attached to Camelot hats of matching ruby velvet and pink lace. The bridesmaids carried pink velvet muffs ornamented with dark red duchess roses.

Miss Cindy Hawkins of Quitaque was flower girl and Kerry Copeland of Fort Worth was ring bearer.

Mike Jones of Hale Center served as best man. Groomsmen included Roland Montague of Lubbock, brother of the bride, Dale Kisor of Hale Center and David Woody of Canyon.

Seating the guests were Steve Brown of Silverton, Ronnie Hutchinson of Quitaque, Steve Woody of Canyon and Bill Pigg of Kress.

Following the ceremony, reception guests were received in the Pioneer Room of the First State Bank. Three circular tables were arranged in the serving area, with the center table draped with floor-length lace and holding the bride's colonnade cake in shades of pink. Identical tables were covered with floor-length antique pink satin. One was appointed with an antique silver coffee service, the other with a silver punch service. Massive arrangements of pink flowers in silver epergnes enhanced the serving tables.

After a wedding trip to Juarez, the couple will be at home in Am-

Announced Engagement



MARY ANN CRAWFORD

Mr. and Mrs. Wayne Crawford of Kress announce the engagement and approaching marriage of their daughter, Mary Ann, to Mr. Larry Schaefer, son of Mr. and Mrs. R. B. Schaefer of Garden City.

A February 21 wedding is being planned and the vows will be recited in the First Baptist Church in the Claytonville community.

Miss Crawford was graduated from Kress High School and is a 1969 graduate of Texas Tech University with a bachelors degree in

education. She is presently teaching English in Silverton High School. Mr. Schaefer, a graduate of Garden City High School, also attended Texas Tech University. He is presently engaged in farming in the St. Lawrence community south of Garden City.

For traveling the bride wore a white wool pant suit with contrasting red wool top accented with a long piped red scarf. A cut-a-way coat in matching white wool completed her costume.

The bride is a graduate of Silverton High School.

A graduate of Plainview High School, the bridegroom is a junior at West Texas State University.

A rehearsal supper was held the evening preceding the wedding.



The Congregation Of The CHURCH OF CHRIST Meeting At Rock Creek

EXTENDS A GRACIOUS WELCOME TO ALL TO ATTEND ANY AND ALL OF OUR SERVICES.

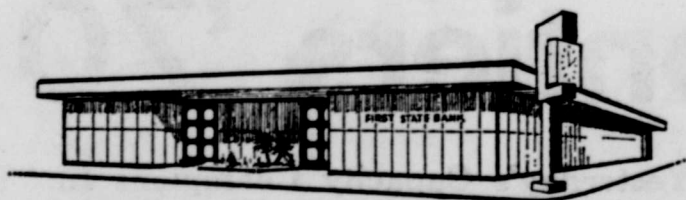
SUNDAY

Morning Worship 10:30 a.m.
Evening Worship 6:00 p.m.

WEDNESDAY

Evening 8:00 p.m.

SINCERE BEST WISHES TO THE OFFICERS AND EMPLOYEES OF FIRST STATE BANK IN SILVERTON



Such Forward Thinking And Planning Deserves Congratulations From All Of Us.

RI 1-3201

Bennett's

Printing - Office Supplies - Office Furniture
1829 Corsicana Dallas

education. She is presently teaching English in Silverton High School. Mr. Schaefer, a graduate of Garden City High School, also attended Texas Tech University. He is presently engaged in farming in the St. Lawrence community south of Garden City.

BEST WISHES TO FIRST STATE BANK IN SILVERTON ON THE COMPLETION OF YOUR NEW BANKING FACILITY



We Are Happy To Have Been Chosen To Furnish The Color Portraits For The Conference Room.

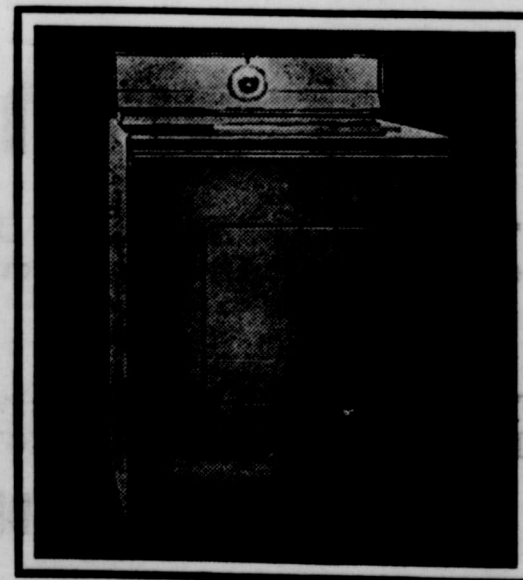
Gray's Studio

1222 West 10th

Amarillo, Texas



BE OUR GUEST... 300 LOADS FREE (A \$15.00 VALUE)



NOW AT YOUR PARTICIPATING DEALER

Buy your new electric clothes dryer now and, as our customer, you will receive a \$15.00 certificate. At 5¢ a load, total operating cost, it's just like getting 300 loads dried free. Don't delay - buy now and take advantage of this valuable 300 offer.



Clean Electric Cooking

SWISHER Electric Cooperative, Inc. Tulia, Texas

LIGHTHOUSE Electric Cooperative, Inc. Floydada, Texas



WHAT'S BETTER THAN A CHRISTMAS GIFT? TWO CHRISTMAS GIFTS...

THE PATIO PAIR!



MASTER CHEF (AMK)



This popular patio pair is now being offered at this special sale price especially for the holiday season. And, while the next few months may not be patio weather, there's no reason you should wait 'til Spring to give your family these fine gifts.

Come warmer weather the economical gas barbecue grill and the charming gas light will be a welcome addition to your patio scene. So, call Pioneer Natural Gas and tell them you want to give the patio pair to your family for Christmas. Why wait 'til warm weather to be nice to your family?

THE SPECIAL "PATIO PAIR" PRICE

\$99.95

Installed, plus tax



Home Notes

by MRS. NAOMI HUNT
Briscoe County

BUYING A CHRISTMAS TREE

Shopping for a Christmas tree always is exciting.

First you decide where you're going to put the tree and what size it should be. Will a tall, stately fir look good in the living room or should you get a shorter, fuller tree like pine and put it in the family room?

Choose the spot carefully, because a Christmas tree shouldn't be near a fireplace, radiator, television set, or other source of heat. Then with the perfect spot picked out and the size of the tree figured, you can decide about the kind of tree you want.

Scotch pine, a fast-growing tree that holds up well through the holiday season, is about the most popular Christmas tree. Most varieties of Scotch pine have bushy branches and long needles (up to three inches) like most other pines. Douglas fir, which has soft, short needles that are attached all around the twig, is second on the list of favorites. Balsam fir has short, rather rounded needles and twigs that grow at right angles to the branches so they look like crosses. Eastern red cedar, a relative of the juniper tree, looks graceful and feathery with its small, scale-like leaves. Red or Norway pine, with slender needles five to six inches long, is the fifth favorite Christmas tree. The symmetrical spruce trees, with their short, rather stiff needles, are also popular in many areas.

Whichever kind of tree you choose, your next decision is probably when to buy it. Specialists with the U. S. Department of Agriculture say your Christmas tree will probably keep fresher longer if you buy it early and keep it in water, even if you don't want to



Mrs. Coleman (Bessie) Garrison has been employed as the First State Bank's secretary since April 1954. She was pictured in her new office which is decorated with southwestern art.

decorate it right away.

Now for the big decision on the Christmas tree lot! Which tree looks best? USDA's Consumer and Marketing Service has developed U.S. grades for Christmas trees, as for most other agricultural products, that describe different levels of quality. The grades for Christmas trees — U.S. Premium (top quality), U.S. No. 1 and U.S. No. 2 — are based on shape, density, freshness, and cleanness of the trees and on absence of defects. While the grades are used mainly in wholesale trading, you may sometimes find trees tagged with the U.S. grade.

If you don't, here are some things to keep in mind when you select your tree:

To be sure it's fresh, rap the base of the tree on the ground. If many needles drop off, the tree is too dry.

Look the tree over in an open space with good lighting (daylight, if possible) so you can check its shape.

Don't forget to look for crooks in the trunk or large bare spaces between branches.

If you use a star or angel on the top of the tree, you'll want to be sure to have a strong single leader at the top.

When you get the tree home, saw about one-half inch off the bottom so it will absorb water. If you buy the tree early, keep it in a bucket of water in a cool, shady place, preferably outside, and saw another half-inch off the butt when you put the tree in a stand. Use a stand that holds water and keep water in the stand at all times.

You'll have a tree you'll enjoy throughout the holidays if you choose it carefully and keep it fresh.

Thanksgiving Day guests in the home of Mr. and Mrs. Paul Stanford in Amarillo were their son-in-law and daughter, Mr. and Mrs. Rodney Horne and daughters of Amarillo; Mr. and Mrs. Dwight Rampley and son and Mr. and Mrs. Wayne Rampley and son, all of Weatherford, Oklahoma; Mr. and Mrs. Marlin Jarnagin, Steve Jarnagin, Mrs. Jim Reid and Warren, Mr. and Mrs. Edwin Davis, Lanis and Martha, Mr. and Mrs.

RECEIVES RECOGNITION

FOR OUTSTANDING SERVICE

Jon J. LaBaume, District Conservationist for the Soil Conservation Service in Floyd County, recently received a certificate of merit and a cash award in recognition of the commendable manner in which he directed operations of the Floydada Work Unit which resulted in the unit achieving excellence in its accomplishments for Floyd County. The award was based on the 1969 fiscal year, which ended July 1, 1969.

Last year, LaBaume received a cash award and a certificate of merit while on the SCS staff in Wellington. LaBaume has been with the SCS 6½ years, while at Silverton, Wellington and Floydada.

At the present time, LaBaume has on his staff two soil conservationists, one soil scientist, one conservation technician and two part-time conservation technicians.

LaBaume, his wife Elaine and son Coy reside in Floydada. He is the son-in-law of Mr. and Mrs. Ashel McDaniel of Silverton.

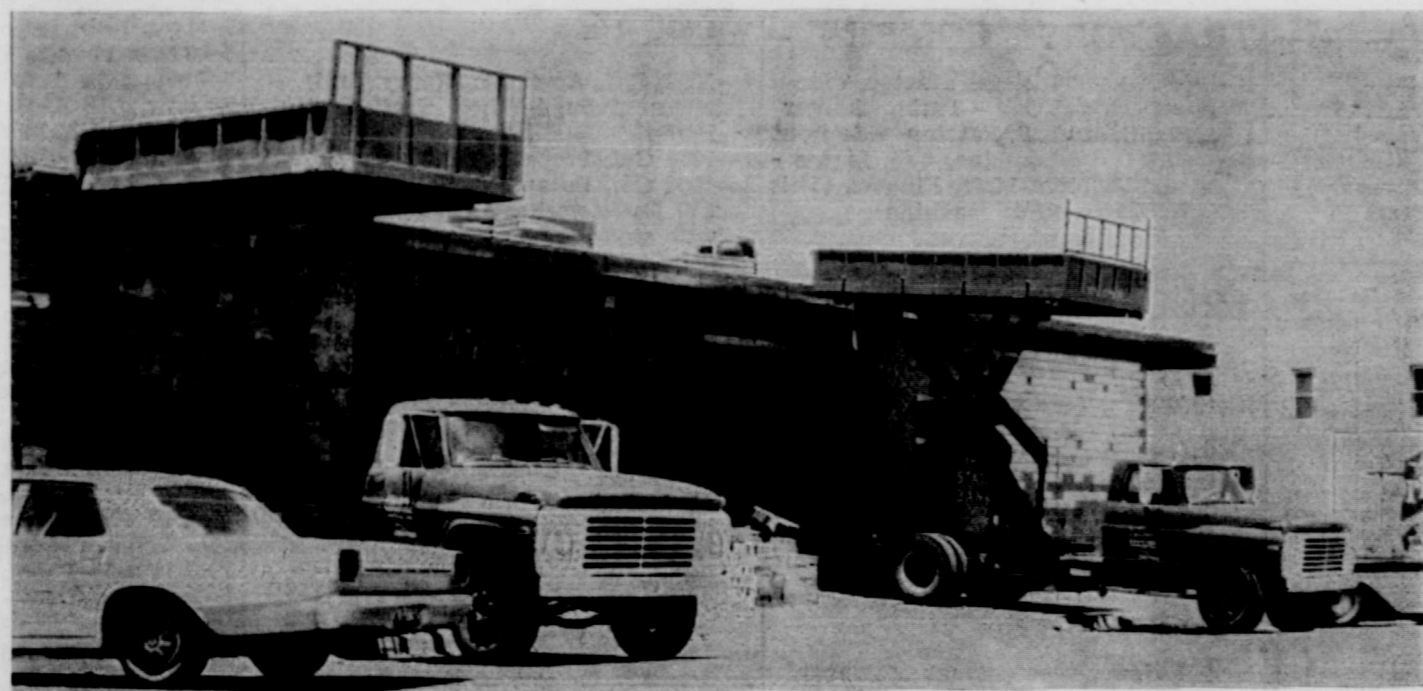
Luncheon guests in the home of Mr. and Mrs. Clyde Hutsell on Thanksgiving Day were Mr. and Mrs. Flute Hutsell and family, Mr. and Mrs. Edd Hutsell and family, Mrs. Riddell C. Hutsell and family, Rev. and Mrs. R. C. Guest, Steve Brown, Terry Grimland, Mrs. Jim Brooks and her grandsons, Steven and Phillip Brooks of Borger.

Mrs. Jim Reid and Warren spent several days last week in Weatherford, Oklahoma, with Mr. and Mrs. Dwight Rampley and Ty Don.

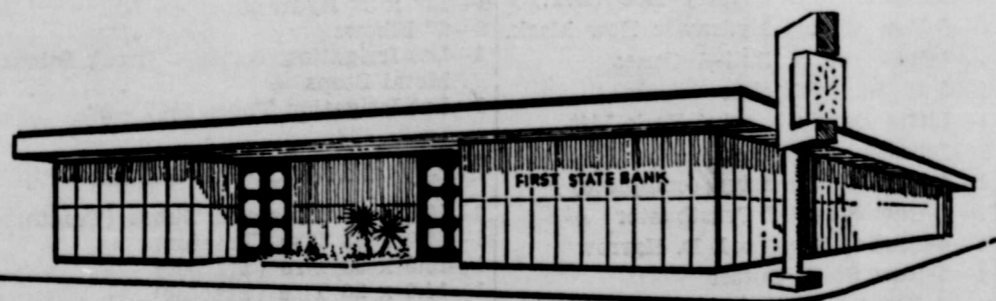
James Davis, Jim and Diane, Mrs. Jerry Perkins and Krischel, Mrs. Carol Davis, Alex and Max and Mrs. D. H. Davis.

DECORATOR
CHAIN AND BRACKETS
Black - Gold - Copper
FOGERSON
LUMBER & SUPPLY

A Roof Over Your Head--



Not the least part in constructing the spacious new First State Bank was the roof we supplied. In keeping with the security and safety of this beautiful facility, only the finest workmanship and materials to insure a lifetime of protection would do. -- That's what we did!



J. Q. Long Roofing Co.

ROOFING CONTRACTOR
Plainview, Texas

ORDER YOUR COPY TODAY

1970
1971

No other single volume contains as much Texas information! It's a "Must" Reference Book for Businessmen — Students — Teachers — Farmers — Homeowners — Anyone with an interest in Texas. Covers every phase about Texas history, geography, economics and politics. Map and full details on each county. Thorough information on manufacturing, oil, transportation, crops and livestock.

TEXAS ALMANAC

"THE ENCYCLOPEDIA OF TEXAS"

Over 700 Pages

ON SALE AT NEWSSTANDS, BOOK STORES, DRUG STORES AND OTHER PLACES WHERE BOOKS ARE SOLD

ORDER FROM **The Dallas Morning News**

MAIL THIS COUPON

THE TEXAS ALMANAC DIVISION
THE DALLAS MORNING NEWS
COMMUNICATIONS CENTER
DALLAS, TEXAS 75227

Please send to:
NAME

STREET NO.

CITY, ZIP AND STATE

Enclosed is remittance in the amount of \$ covering:
... Copies Clothbound @ \$3.01 per copy
... Copies Paperbound @ \$2.43 per copy
Mail prices include tax, packaging and postage

FOR SALE

BOOK YOUR CHRISTMAS PARTIES now by calling Agnes Bingham at City Cafe. 49-3tc

HOWARD'S SEVEN - ELEVEN Grocery For Sale. Stock and all equipment. Other interests. 48-tfc

BABY CALVES FOR SALE. Snooks Baird, Phone 4411. 46-tfc

ANTIQUES - 2 CHINA CABINETS, Oval Marble End Table, 3-piece Oak Bedroom Suite, Oak Wash Stand, Bowl and Pitcher Sets. 806 Braidfoot Street, Ph. 2811, J. R. Steele. 49-tfc

FOR SALE: 1967 YELLOW Rally Sport Camaro; 6-cylinder. Contact Orville Turner, jr. Phone 847-4598. 47-4tp

WASHER AND DRYER FOR Sale. Call 3781 or see David Tipton. 45-tfc

WE HANDLE MILLER OFFSET Plows. See them today! Brown-McMurtry Implement. 44-tfc

SLIDE RULES: \$1.95 and \$2.95. Includes case and instruction manual. Briscoe County News. 37-tfc

HOT WATER HEATERS, 20 - 30 Gallon; gas and butane. Brown Hardware. 38-tfc

MY CLEANING PLANT IS FOR Sale. I believe we have the finest cleaning system in the industry. Will train anyone interested. Kenneth Sharp. 18-tfc

PLANTING SEEDS

- ☆PAYMASTER
☆RICHARDSON
☆WARNER

SERVICE ELEVATOR

OLD SCRATCH CATTLE OILERS, sales, service, parts and insecticides available through Henry T. Hamblen, Wayside, Texas. 5-tfc

FOR YOUR SINGER SEWING Machine sales and service, call 3381, Briscoe County News. 1-tfc

WE MAKE KEYS

Fogerson Lumber & Supply
Silverton

A GOOD LINE OF GRAHAM-Hoeme and Nichols Sweeps. Get your needs at J. E. (Doc) Minyard Implement. 1-tfc

ASK ME ABOUT FASHION Two Twenty. Fairy McWilliams, Phone 3701. 27-tfc

JOIN N.F.O. - THE FARM YOU Save May Be Your Own. Briscoe County N.F.O. 6-tfc

Underground Irrigation Pipe Plastic Gas Pipe

RHODE PIPE CO. Phone 5401 or 3231 Silverton, Texas

VACCINES STOCKMENS NEEDS

- ☆Franklin
☆Pfizer
☆Cutter

SERVICE ELEVATOR

CUSTOM BUTCHERING

MEAT PROCESSING - FAST FREEZING GRAIN FED CALVES AND HOGS FOR SALE.

Butchering Anyday Except Wednesday and Sunday Call Before Noon For Afternoon Butchering.

MERRELL FOOD

PHONE 3571 QUITAQUE, TEXAS

DR. O. R. McINTOSH

OPTOMETRIST Phone 983-3460 211 South Main Street FLOYDADA, TEXAS

DR. JOHN W. KIMBLE, O.D.

Contact Lenses - Visual Analysis OPEN ALL DAY SATURDAY Floydada, Texas YU 3-2496

MAIZE BALES FOR SALE. Ray Teeple, 847-4945. 18-tfc

FOR SALE: 1963 FORD 4-DOOR Galaxie 500, Power and Air. Steve Jarnagin. 46-tfc

FOR SALE: TWO BEDROOM House to be moved. Excellent condition. Call 847-4785. 43-tfc

NEW! PLAS-STICK LETTERS. Individual self-sticking letters and numbers. . . easy to apply . . . they adhere to any surface . . . weatherproof. . . washable. . . permanent. . . indoors or outdoors. Just peel them off and stick them on. \$1.00 package. Now in stock in three colors: red, black, white, in three sizes: 1/2", 2" and 3". Great for posters! Briscoe County News.

SILVERTON YOUNG HOME-makers are selling pecans a gain this year. \$1.75 pound. Contact Mrs. Wayne Stephens, 847-4341, or any other member. 38-tfc

NEW! INDIVIDUAL STENCIL lettering guides. Each package contains the alphabet, numbers and extra A, E, O, R, S. Join the letters together to say what you wish. . . paint. . . and presto! Your sign is made. 1" is 98c; 2" is \$1.19; 3" is \$1.39; 4" is \$1.98. Reusable. Briscoe County News.

GIANT WIDE-TIP MARKERS! Permanent ink. . . writes on paper, glass, plastic, wood, metal. . . Black and red. \$1.25. Briscoe County News. Ask for Nijii!

BRISCOE COUNTY 75th ANNIVERSARY Cookbooks can be purchased at Crass Motor Company, Briscoe County News, Merlene's, Tiffin's Dry Goods, and Southwestern Public Service Company. Recipes of the pioneers are included along with favorite recipes of your friends and neighbors. 39-tfc

FOR SALE: 1/2-TON 1960 FORD Pickup; 14' Hume Reel; 1963 Ford Baler, wire-type; Farmall Tractor; Lister; 14' International Swather. Phone 847-4550, Mrs. Alvie Mayfield. 42-tfc

INDEXED DICTIONARY OF 12,000 Synonyms, 10,000 Antonyms and 2,000 Homonyms, 59c. Briscoe County News

WANTED

MATTRESS SERVICE: NEW OR renovated mattresses of all types. Fast and dependable service. Phone 3381, Briscoe County News. 11-tfc

NEED PARTY WITH GOOD CREDIT in Silverton area to take over payments on 1968 Model Singer Sewing Machine in walnut console. Will zig zag, button hole, fancy patterns, etc. Five payments at \$5.55 or will discount for cash. Write Credit Department, 1114 19th Street, Lubbock, Texas 79401. 26-tfc

FURNITURE RE-FINISHED AND REPAIRED J. R. Steele Ph. 2811

DIRT CONSTRUCTION Terracing - Grader Work Edwin Bice Call Collect 995-4402 24-tfc

WANTED: DOLLS TO DRESS for needy children for Christmas. Mrs. M. B. Self. 27-tfc

WANTED: WOMEN WHO HAVE tried every way to lose weight and can't. Try TOPS. Phone 4261. 14-tfc

FOR RENT

FOR RENT BY THE DAY OR by the week: two bedroom house. Linens will be furnished and changed for tenant who needs a place to stay by the night or by the week. House will also be rented by the month or by the year. Phone 3656, Bud McMinn. 48-tfc

TWO - BEDROOM FURNISHED House For Rent. Phone 3656, Bud McMinn. 43-tfc

ONE FURNISHED AND TWO UN-furnished Apartments For Rent. Doc Minyard, Phone 2461 or 2331. 3-tfc

FOR RENT OR SALE: THREE-Bedroom house on pavement; near school. Contact Betty Gilkeyson, 3126 Bolsa Street, Santa Ana, California 92703, or phone 714-839-7310. 40-tfc

REAL ESTATE

TWO BEDROOM HOUSE FOR Sale. Phone 3656, Bud McMinn. 48-tfc

FOR SALE: TWO ACRES LAND with house. Buck Wesley. 12-tfc

FOR SALE: 100 - COW UNIT Ranch with Sprinkler System. Telephone 847-4891. 36-tfc

FOR SALE: THREE - BEDROOM Home, two-car attached garage, with four-room apartment. Reasonably priced. Financing can be arranged. Contact First Federal Savings and Loan Association, Phone Area Code 806 937-2514, or write Box 109, Childress, Texas. 41-tfc

FOR SALE: MY 3-BEDROOM Home. Norman Strange, Phone 3551. 12-tfc

FOR SALE: MY BEAUTY SHOP and equipment in Silverton. Phone Betty Gilkeyson, Area Code 714, 839-7310, Santa Ana, California. 16-tfc

TWO - BEDROOM HOUSE FOR Sale. Kenneth Sharp. 8-tfc

FOR SALE CARLOAD STEEL HOG PANELS 34"x16" Galvanized McCourt Construction Co. across from Gibson's Plainview, Texas 44-9tc

SILVERTON LODGE No. 754 A.F.&A.M. Stated Meeting Second Tuesdays 7:30 P.M. Charlie Parker, W.M. Gene Vaughan, Sec. Bob Hill, Treas.

Let Us Serve Your GRAIN MERCHANDISING Needs SERVICE ELEVATOR

Ask Me About MARY KAY COSMETICS Teresa Sutton Phone 847-4475

NEW OLDSMOBILE AND GMC PICKUPS PRICED RIGHT

GRASS MOTOR CO. Phone 2911 Silverton

ALLIS-CHALMERS

J. E. (Doc) MINYARD

BILL TURNER WELDING Floydada Highway Phone 5441

MILLING Paymaster Feeds The Feeds for Your Needs ☆Custom Mixing ☆Supplements ☆Range Blocks and Cubes SERVICE ELEVATOR

NOTICE TO THE PUBLIC: All land owned or leased by us is posted. There will be no hunting or trespassing. Violators will be prosecuted. J. H. Burson Land & Cattle Company Trust Johnnie Burson 48-3tc

CARDS OF THANKS

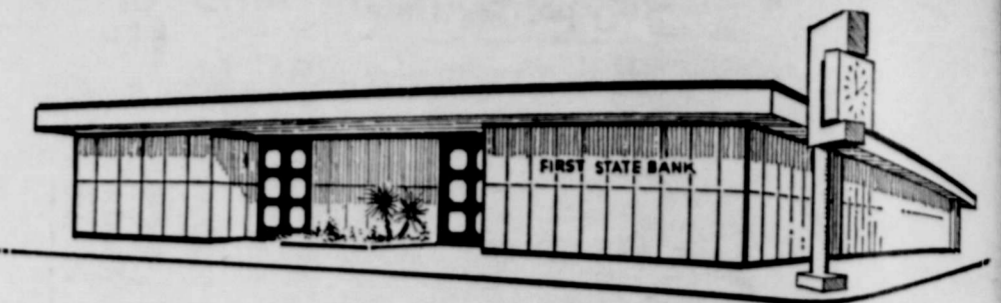
We appreciate so very much all the acts of kindness shown us during our time of sorrow. For the many beautiful cards and floral offerings, the food, prayers and calls, we will be forever grateful. Leo, Willene, Larry and Kelly Comer Buddy and Connie Comer Steve and Camellia Cassada

I would like to thank all the friends who sent flowers and cards and those who telephoned and visited me while I was in the hospital. Your every act of friendship has meant so very much to me. May the Lord bless and keep you. Leavie Criswell

AUCTIONEERS

Selling All Types of Sales

J. D. Ellis Donald Patterson Phone 293-1008 Plainview, Texas



THE FIRST STATE BANK'S NEW BUILDING

A SYMBOL OF CONFIDENCE

IN THE GROWTH OF

SILVERTON AND AREA

CITY ELECTRIC COMPANY

225 Date

Plainview, Texas

FARM SALE

TUESDAY, DECEMBER 9, 1969 TIME: 11:00 A.M.

LOCATED: From Silverton, Texas South on Highway 207 11 miles, then 2 miles East and 1/2 mile South - or, From South Plains, Texas 6 miles North on Highway 207, then 2 miles East and 1/2 mile south. From Floydada, Texas North on Highway 207, 23 Miles, then 2 miles East and 1/2 mile South.

MRS. J. V. SELF

OWNER

Due to the death of my husband, the following will be sold at Public Auction:

TRACTORS - COMBINE -

- 1-1964 J.D. 4020 Diesel Tractor, wide Front - Excel Cab - Turbo Charger
1-1957 J.D. 520 L. P. Tractor, wide front
1-1967 J.D. 95 Combine, Cab, Lights - M and W Robot-Maize Fingers. (This is an extra clean machine)

TANKS -

- 1-1000 Gal. Ammonia Nurse Tank -- mounted on 4-Wheel Trailer with Pump
1-1000 Gal. Propane Tank
1-1000 Gal. Butane Tank
1-500 Gal. Overhead Diesel-Gas Tank with stand

TRUCK - PICKUP -

- 1-1960 Ford Truck, V8 Engine - Galion Hoist - Midwest Bed
1-1964 Chevrolet 1/2-ton Pickup - S.W. B, V8 - Auto, Trans.
1-Set of Midwest Cattle Racks, 15 1/2 ft. (For above Truck.)

TOOL MAKEUPS -

- 2-J. D. A Frames
5-J.D. Lister Bottoms and Beams
10-J.D. Curved Orchard Shanks
13-J.D. Straight Orchard Shanks
1-Lot Toolbar Spacers
1-Large Lot Shanks - Clamps
3-14 ft. Toolbars
2-17 ft. J.D. Toolbars
4-Rotary Fenders
1-Hamby A. Frame
1-Set Bates Gauge Wheels
1-Int. H. P. Cylinder
1-J.D. H. P. Cylinder
2-Sets J.D. Lever type Gauge wheels
1-Set J.D. Row Markers
3-36 inch Stubble Mulchers

MACHINERY -

- 1-4-Bottom International Moldboard Plow (4-16" Spinner)
1-14 ft. King-Heavy Duty Tandem (HD T) 32-24-Good
1-J.D. 870 4-Row Double Toolbar Planter, complete
1-JD 200 4-Row Planter (Converted to Bed Planter)
1-4-Row Servis Shredder
1-2-Wheel Stock Trailer
1-4-Wheel Flatbed Trailer
1-5-Disk Moline Breaking Plow
1-Eversman Camel Back Float
1-7 Shank, 3 point Hoeme Plow
1-Caldwell 3 pt. Post Hole Digger (new)
1-6-Section J.D. Rotary Hoe (D.T.)
1-5-Row Cypert Hydraulic Row Mark.
1-4-Row set of Roll-A-Cones
1-5 ft. Blade Ditcher
1-Little Dandy 3 point Fork Lift
1-Johnson V Ditcher
1-4-Row Crustmaster (complete)
1-4-Row R and J Crustbuster
1-4-Section 3 point J. D. Harrow
1-5-Row Stalk Cutter
1-3 Point Fertilizer Unit - 250 Gal. Tank - Dempster Pump
1-J. D. 403 Disk Plow

IRRIGATION - LAKE PUMP -

- 1-6" Dobbs Ditch Master Float Mounted Lake Pump (10 H.P., 3 Phase Electric Motor)
24-Joints 8" x 30' Flow Pipe
1-Joint 6" x 30' Flow Pipe
12-Joints 6" x 30' Gated Pipe, 40" Rows
2-Joints 6" x 20' Gated Pipe, 40" Rows
2-12" x 8" Hydrants
1-12" x 8" Hydrants
2-6" Elbows
1-Lot Irrigation Tarps - Break Sticks Metal Stops
1-Lot Irrigation Tubes 1 1/2" - 2"

NEW TIRES - TUBES -

- 2-18.4 x 34 Tires and Tubes (Tractor)
1-14.9 x 38 Tire (Tractor)
1-16.9 x 30 Tire (Tractor)
1-14.9 x 26 Tire (Tractor)
1-5.00 x 8 Tire (Implement)
1-4.00 x 18 Tire (Implement)
1-7.50 x 15 Tire (Tractor)

- 1-11 x 16 Flotation Tire
6-8.55 x 14 Auto Tires
5-7.75 x 14 Auto Tires
3-8.15 x 15 Auto Tires
1-7.75 x 15 Auto Tire
1-7.35 x 14 Auto Tire
1-6.70 x 15 Auto Tire
1-8.25 x 14 Auto Tire
2-8.45 x 15 Auto Tires
3-7.00 x 16 Auto Tires
2-6.50 x 13 Auto Tires
1-13 x 38 Tractor Tube
1-15 x 30 Tractor Tube
1-13 x 24 Used Tube
1-4.00 x 12 Tractor Tube
3-8.25 x 15 Auto Tubes
2-7.00 x 20 Tubes
4-7.00 x 18 Tubes
2-10.00 x 20 Tubes
1-9.00 x 22.5 Tubes
7-650/700 x 16 Tubes
1-7.75 x 15 Tube
1-Lot used Tires - Rims

MISCELLANEOUS -

- 1-J.D. Single Front Wheel
1-Lot Electric Fence Material
1-Lot Sweeps - Lister Points
1-Set Cotton Scales
1-Lot Boomers
1-Lot Wrenches
1-Trailer Tarp
1-Floor Jack
2-Ezee Flow Dyston Boxes
1-Lot 55 Gal. Barrels
2-Land Measuring Wheels
3-14 ft. J.D. Sickles
1-Lot Forks - Spades - Hoes
1-Buggy Top
1-Part Roll Chicken Wire
2-Right Hand Sway Blocks for 4010-4
1-Lot Planter Drags
1-Fender for Single Front Wheel
1-Lot Scrap Iron
1-6-12 Volt Battery Charger
2-12 Volt Batteries
1-Lot Grease Guns - Barrel Pump
1-Funnels - Cans
1-Model X Magneto (Wico)
2-Drive Shafts
2-Ensign Regulators -
1-12 Volt Generator
3-3/4 H. P. Electric Motors
1-Set Wire Stretchers
1-Lot J. D. Wheel Weights

Terms of Sale - Cash. All Accounts Settled Day of Sale. LUNCH WILL BE SERVED BY SILVERTON LADIES-ORDER OF EASTERN STAR

JAMES CRUCE Ph. 806-864-3565 806-627-3892 Star Rt., Kress

AUCTIONEERS

BLIZZARD DATE Thursday, Dec. 11, 1969

JACK DULIN

Route 1, 806-895-3401 Plainview, Texas