

BRISCOE COUNTY NEWS

PUBLISHED EVERY THURSDAY AT SILVERTON, TEXAS 79257
 SECOND CLASS POSTAGE PAID AT SILVERTON, TEXAS 79257
 CHARLES R. SARCHET PUBLISHER
 MARY ANN SARCHET EDITOR
 SUBSCRIPTION RATE PER YEAR (Tax Included) \$3.50
 Display Adv. Rates Available on Request
 Classified and Legal Advertising Rates, each insertion 3c per word
 MEMBER OF
 TEXAS PRESS ASSOCIATION AND PANHANDLE PRESS ASSOCIATION



MR. AND MRS. VON TIFFIN
1921



MR. AND MRS. VON TIFFIN
1971

Mr. and Mrs. Tiffin To Celebrate Golden Wedding Anniversary

The 50th wedding anniversary of Mr. and Mrs. Von Tiffin will be observed with a reception from 2:00 until 5:00 p.m. in their home 4 1/2 miles north of Flomot Saturday, October 9.

Hosts and hostesses will be their sons and daughters-in-law and their daughters and sons-in-law: Mr. and Mrs. G. D. Tiffin, Mr. and Mrs. Rex Tiffin, Silvertown; Mr.

and Mrs. Donell Jeffries of Colorado Springs, Colorado, and Mr. and Mrs. R. C. McDonald, Lubbock.

Miss Alma McAdams and Von Tiffin were married in Beaver, Oklahoma on October 8, 1921. They were both born at Maud, Oklahoma.

Mr. and Mrs. Tiffin moved from Beaver to the Gasoline Community in 1921 right after their marriage where he began farming. In 1923 they moved to the Fairmont Community and farmed for four years before returning to the Gasoline Community. They moved to the Flomot Community in 1937.

All friends and relatives are invited to attend the open house.



FOR ALL YOUR LIFE INSURANCE and HOSPITALIZATION NEEDS - USE Archie Castleberry SOUTHLAND LIFE 11th and Washington Amarillo, Texas

SHINES UP BRIGHT IN MINUTES LASTS UP TO A WEEK GRIFFIN WAX SHOE POLISH

SIMPLEX TRIG RULE ESPECIALLY RECOMMENDED FOR SECONDARY SCHOOL STUDENTS

PHONE 3381
Briscoe County News SILVERTON, TEXAS
 "FOR ALL YOUR PRINTING NEEDS"

The Congregation Of The CHURCH OF CHRIST Meeting At Rock Creek

EXTENDS A GRACIOUS WELCOME TO ALL TO ATTEND ANY AND ALL OF OUR SERVICES.

SUNDAY
 Morning Worship 10:30 a.m.
 EVENING WORSHIP 6:00 p.m.
 WEDNESDAY
 Evening 7:00 p.m.

OWLS - -

CONTINUED FROM PAGE ONE

Kellum were tough defensive players all through the game, but were instrumental in keeping Petersburg from mounting another drive on the Buffs' first possession. Taking the ball the second time on their own 15, the Buffs made a first down on an offside penalty against the Owls, and rushed for another on their own 45. Another first down was made on the Owl-45, and Thompson ran the remaining 45 yards for another Petersburg score with 2:16 remaining in the third period. The pass for extras was incomplete, and Petersburg held a 22-0 lead.

The Owls ran the after-touchdown kickoff back to their own 40, and made first downs on the 49, 35, 25 and 15 yard lines in the Petersburg end of the field before the fourth period opened. Craig Culwell carried Silvertown's lone touchdown from the five-yard line with 10:05 remaining to be played in the game. Martin lateraled to Craig Culwell on the two-point conversion attempt, but this play failed to gain enough yardage, and the score stood at 22-6.

The Owls kicked off to Petersburg, and Thompson was shaken up and removed from the game. The Buffs made first downs on the Silvertown 48, 37, 23 and 13 yard lines, before beginning the series of plays which saw Perry carry the touchdown from four yards out on fourth down. The PAT run was no good, and with 4:35 remaining to be played, Petersburg held a 28-6 lead.

Outstanding defensive players for the Owls were so numerous that to name them would be to leave out some of the deserving ones; however, Rex Clayton (probably the most improved player on the team), David Kellum (he's tough, and this is only his second year in the game), David McCoy (who was injured playing on defense), John Burson (who played his best game so far this season), Carl Gallington and Mark Hutsell (both bruisers) were right up there with Dana Martin and Marvin Self in the race for the most tackles and assists.

Self's kickoffs and punts were much better than they have been - probably his best this season.

Craig Culwell was the workhorse for the Owls on offense, carrying the ball 19 times for a gain of 49 yards. Self carried 10 times for 22 yards; Gallington picked up 27 yards in three tries; Dana Martin gained 34 yards in seven carries and threw two passes to Terry Culwell for a 30-yard gain. This gave Silvertown a total offense of 162 yards as compared with 297 yards gained rushing and 40 passing for a total offense of 337 yards for Petersburg.

The Owls made 10 first downs, while the Buffs made 20. Silvertown fumbled once and recovered it; Petersburg fumbled once and it was recovered by the Owls. Martin passed seven times, completing two. Petersburg passed nine times and completed four of them. None were intercepted in the game.

The Owls will travel to Lorenzo this week to try the Hornets who don't have a very impressive season record and who haven't scored very many times themselves this year. The Hornets own a 1-2-1 record after falling to Class B Wilson 29-8 Friday night.

The Owls are improving and the experience they gained last week against Petersburg should prove valuable. I predict the Owls will be back in the WIN column this week with a big victory at Lorenzo!

SCORES OF INTEREST
 White Deer 34, McLean 14
 Canadian 19, Clarendon 13
 Claude 20, Lefors 19
 Memphis 47, Wellington 14
 Wheeler 41, Groom 13

RUNNING WRESTLING MATCH
 I was talking with Danny Andrews, sports editor for the Plainview Daily Herald, Saturday night and he was interested in knowing how we in Silvertown received the description of Marvin Self's first touchdown run against Groom as "a running wrestling match." I told him that I really didn't see anything wrong with that - that Marvin did have to break some tackles to score the touchdown. And Andrews said: "Well, Dalton (Wood) gets carried away sometimes!" Considering that Dalton had an "old" football player like John Francis sitting with him and visiting during the game, I thought he did a pretty good job of statistics-keeping.

Growers Reminded Of Provisions Of 1972 Grain Programs

Pointing out that 1972-crop barley is now being seeded in Briscoe County, local farm program official, Louie Kitchens, reminded growers that barley is included in the 1972 Feed Grain Program. It was not included in the 1971 program.

Eligible growers who plan to participate in the 1972 Feed Grain Program should take note that an acreage set-aside will be required of between 20 and 35% of a farm's barley base as well as of the corn and grain sorghum base. The exact percentage will not be known until the 1972 Feed Grain Program announcement is made by the U. S. Department of Agriculture within the next few weeks.

Inclusion of barley in the 1972 program means that the set-aside payments will be made, as they are made for corn and grain sorghum set-aside acreage. No announcement has yet been made of the payment rate. Kitchens said

the barley payment rate will be in an equitable ratio with the set-aside payment rates for corn and grain sorghum.

The reminder that barley will be included in the 1972 Feed Grain Program is also important because of the substitution provision, he said.

Substitution permits a program participant to choose a crop best suited to his farm and market operations and still earn payments and history credit for the crop historically grown on the farm.

Provided set-aside acreage and other program requirements are met, this means farmers with wheat allotments may earn wheat program set-aside payments and retain wheat history and allotment credit by growing soybeans instead of wheat. Likewise, soybeans may be substituted for barley and other feed grains to maintain history and bases.

A corn producer may switch to grain sorghum. A wheat-and-barley farm may go 100 percent to barley. Or any other combination of the permissible crops may be substituted, as the producer chooses. He will still earn set-aside pay-

ments on his farm's allotment and base crops.

Barley growers who were not in the program in 1971 were also reminded that a set-aside requirement does not mean an acreage limitation on any crop.

To illustrate, Kitchens said, "Suppose a grower has a 500-acre farm with a 100-acre barley base. If he participates in the feed grain program, he will set aside acreage representative of his cropland in the required amount and maintain it in conserving use. If the farm has a conserving base, that acreage will also be kept in con-

serving use. On the rest of the farm, the grower may plant much barley, or any other except quota crops, as he chooses. He is not limited by his base, which is used only to fix his set-aside and set-aside ment."

Full details of the 1972 Grain Set-Aside Program are expected to be received in the Briscoe County Agricultural Station and Conservation Section (ASCS) Office in the near future. Farmers will be told as soon as possible of all the details.

Make coffee time Jell-O time.



When you boil water for instant coffee, add an extra cup and make Jell-O.

DEL MONTE ROUND-UP



- DEL MONTE **FRUIT COCKTAIL** 303 2^FOR 63c
- DEL MONTE SLICED **PINEAPPLE** No. 2 2^FOR 85c
- DEL MONTE WHOLE OR CUT **GREEN BEANS** 303 3^FOR 51c
- DEL MONTE **CORN** W.K. Golden 303 4^FOR 51c
- DEL MONTE WHOLE PEELED **TOMATOES** 303 3^FOR 51c
- DEL MONTE **CATSUP** 14 oz. 2^FOR 59c
- DEL MONTE Y.C. SLICED **PEACHES** 2 1/2 can 3^FOR 51c
- DEL MONTE **PEAR HALVES** 303 2^FOR 69c

- **Fresh Meats**
- SIRLOIN STEAK** lb. 99c
- T-BONE STEAK** lb. \$1.09
- OSCAR MAYER Bologna, Pickle and Pimento, Liver Loaf, Salami, Spiced Luncheon
- COLD CUTS** 8 oz. 49c
- OLEO** Shurfresh Soft lb. 3^FOR 51c

- **Fresh Fruits and Vegetables**
- CARROTS** 1 lb. cello 2^FOR 16c
- Washington X Fancy Delicious **APPLES** lb. 29c
- ORANGES** Calif. S.K. lb. 15c
- BANANAS** lb. 9c

Shurfresh Milk Has That NATURAL GOODNESS

Nance's Food Store

SILVERTON, TEXAS



Congressman Graham Purcell from the 13th Congressional District, Texas, was a guest on the platform for the invocation of the Greater Southwest Billy Graham Crusade on Sunday, September 19, 1971. The Crusade was held at the new Texas Stadium in Irving.

Mrs. Rhode Was Guest Speaker For Junior Study Club

The L. O. A. Junior Study Club met Monday, October 4, 1971 at 8:30 p.m. in the P.C.A. community room with Mrs. Carman Rhode as guest speaker.

Mrs. Rhode showed slides and described her recent European trip. The meeting was opened with a devotional by the hostess, Mrs. Edna Eddleman.

Roll call was answered with "A Country I'd Like To See." Those attending were Mrs. Jerry Miller, Mrs. Bud Couch, Mrs. Harold King, Mrs. Steve Miller,

Mrs. Fred Edwards, Mrs. Wayne Nance, Mrs. Stanley Fogerson, Mrs. John Schott, Mrs. Eddleman, and two guests, Mrs. Rhode and Mrs. Larry Wilson.

The club's next meeting will be Monday, October 18, 1971 at 8:30 p.m. at the City Hall. Mrs. C. L. McWilliams will be the guest speaker.

Mrs. Doyle Stephens is a patient in Methodist Hospital in Lubbock. She apparently suffered a heart attack early Tuesday morning of last week.

Mr. and Mrs. W. J. Copeland, jr., and sons, Kerry and Ty, have recently moved to Silverton from Fort Worth. She is the former Donna Stephens.

Wheeler Colts Stun Junior Owls 34-0 In First District Game

by Mary Ann Sarchet Silverton's Junior High Owls hosted the Wheeler Colts in their first district game of the season Thursday evening, and suffered a 34-0 defeat.

"Turn-overs" was the name of the game. The Junior Owls received the opening kickoff, but lost the ball on a fumble on their own 28 on third down. The Colts made first downs on the Silverton 12 and 3-yard lines, and scored with 5:34 remaining in the first period. The run for extra points was good and the Colts led 8-0.

Wheeler kicked off to the Owls again, and Jack Robertson ran it out to the Silverton-32. An Owl pass was intercepted on the Owl-42 and the Colts ran for a first down on the Silverton-31. After a 5-yard penalty, the Colts saw the ball go over on downs on the Silverton-30. Silverton fumbled, the Colts recovered on the Owl-21, and the Colts scored from the 15-yard line. The two-point conversion was good and the Colts were ahead 16-0.

As the second quarter opened, the Colts made a first down on the Silverton-35 before scoring another TD. The PAT run failed, and the score stood at 22-0.

Silverton took the after-touchdown kickoff on their own 10, fumbled on first down, and Wheeler recovered on the Owl 1-yard line.

NEW BABY

Mr. and Mrs. Dick Reid of Lubbock are parents of a daughter, Amy Louella, born at St. Mary's Hospital at 11:50 a.m. Saturday, October 2. She weighed seven pounds and ten ounces.

Mr. and Mrs. Reid also have a son, Richard, who is four years old.

Grandparents are Mr. and Mrs. Bob Hill and Mr. and Mrs. J. W. Reid. Great-grandparents include Mr. and Mrs. Ted Reid of Canyon.

line. Wheeler drew a 5-yard penalty before scoring again. The PAT run failed, and the Colts were ahead 28-0.

Quarterback David Strange received a sprained ankle and watched the rest of the game from the sideline as Jack Robertson, who had been playing fullback, began calling signals for the Owls.

Silverton punted to the Colt-49, Wheeler received a 5-yard penalty and Brent Bean saved a Wheeler TD by overtaking and tackling the ball carrier on the Silverton-15. Wheeler was penalized five yards on the play, and it was called back to the Wheeler side of midfield.

The fifth and sixth grade red and gold teams played a game of touch football at the half. There are four of the fifth and sixth grade touch football teams, and the other two teams played at the halftime Friday night. They are all coached by Eugene Jennings.

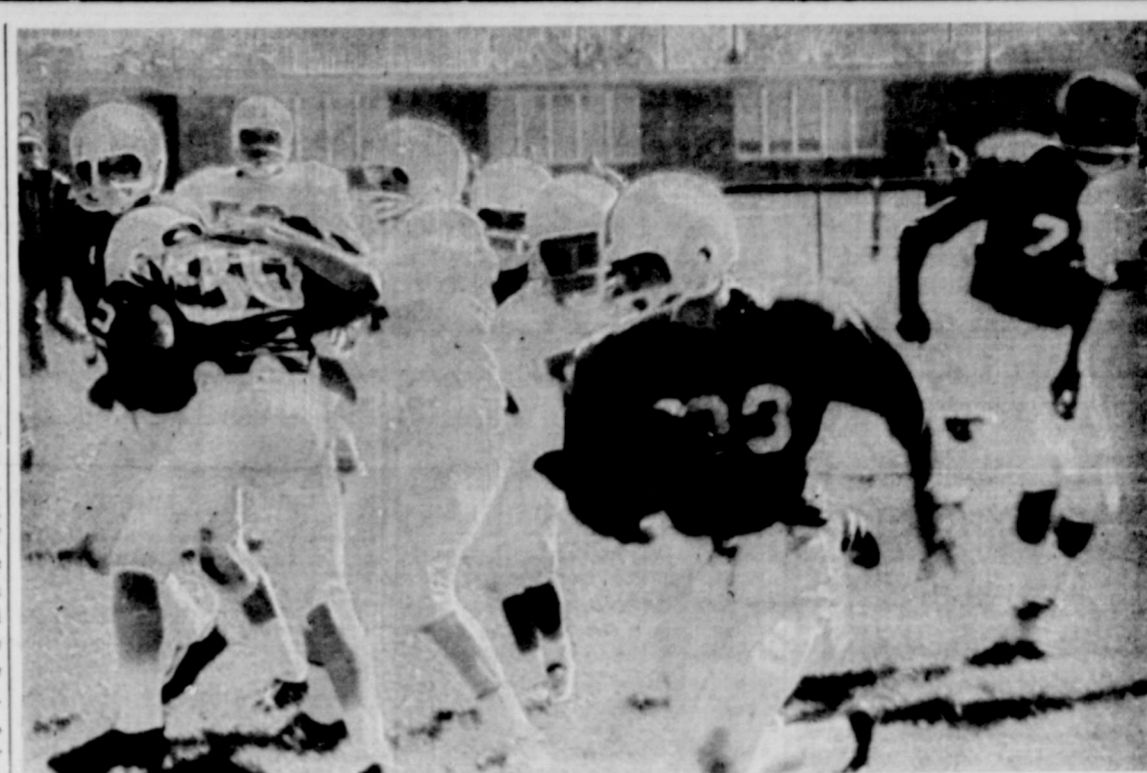
When the second half opened, the Colts found themselves facing a first-and-25 situation due to a holding penalty and punted to their own 36. The Colts then intercepted an Owl pass on the Wheeler-35.

Wheeler made first downs on the Silverton 46 and 32, then were penalized five yards for delay of the game. They fumbled, recovered and faced a fourth-and-6 situation on the Silverton-30. They made a first down on the Owl-20, Silverton was penalized half the distance to the goal for a personal foul, and Wheeler made a first down on the Owl-8. The ball went over on downs on the Silverton-4, but the Colts forced the Owls to punt and then ran it back inside the Silverton-20. After Wheeler was penalized 15 yards for clipping and five yards for illegal procedure, the Colts made a first down on the Silverton-5, where Brent Bean again saved a touchdown by overtaking and tackling the ball carrier. Wheeler received another 5-yard penalty and then ran in for the final TD of the game. The PAT run was no good, and the Colts had themselves a 34-0 win over the Owls who had barely managed a 12-8 win over the Colts after coming from behind last year with this year's ninth graders making up their team.

David Strange and Ken Sarchet served as captains for the Owls in this game.

Fernando Patino was in on quite a few tackles during the game.

The Junior High Owls will travel to Memphis today for their second district game at 6:00 p.m.



Brent Bean (23) was the ball carrier for the Nazareth Junior High Owls in their game with Nazareth here Saturday. Jack Robertson (30) is shown blocking for Brent.

Nazareth Takes 22-8 Win from Junior High

by Mary Ann Sarchet Brent Bean, Jack Robertson and Brett Gill were co-captains for the Junior High Owls Saturday when the Owls lost for the second time this season to the Nazareth Junior High, 22-8.

The first time the Swifts had the ball, their big quarterback-fullback ran 70 yards for a touchdown. Nazareth also ran the conversion and led 8-0.

The Owls made three first downs, both teams received procedure penalties, and Nazareth's big quarterback ran 82 yards for a touchdown. No conversion points were earned, and the Swifts were ahead 14-0.

Quarterback David Strange completed passes to Brett Gill and Rudy Betancourt, the pass to Gill being carried to the Nazareth-8. David Lewis recovered a Silverton fumble after Strange had carried to about the four. Jack Robertson went in for a score, which was called back due to a procedure penalty, then Robertson picked up three or four yards, then scored both the touchdown and the conversion, to put the Owls on the scoreboard, 8-14.

Nazareth ran another touchdown before halftime, which was called back because of a clipping infraction.

Silverton rushed for a first down, then gained 25 yards to the

Nazareth-32 on a pass from David Strange to Brent Bean before the Swifts intercepted an Owl pass. Then Rudy Betancourt recovered a Nazareth fumble on the Swift-21.

Betancourt also recovered a Silverton fumble on the Nazareth-15. Jack Robertson, alternating at quarterback, passed complete to Augustin Fabela, but the Owls were moved back to midfield on a face-mask violation. Nazareth received penalties for illegal procedure and delay of the game before sending their big quarterback for a 12-yard TD run and a good conversion run. The Swifts led 22-8.

Strange passed to Gill for a first down on the Nazareth-24 before the Swifts intercepted a Strange pass. Nazareth received three more illegal procedure penalties before the game ended.

The Owls played without sever-

al members of their starting lineup.

STAY AWAKE ITCHING?

Let doctor's formula stop it. Zemo speeds soothing relief to externally caused itching of eczema, minor rashes, skin irritations, non-poisonous insect bites. Desensitizes nerve endings. Kills millions of surface germs, aids healing. "De-itch" skin with Zemo, Liquid or Ointment. Quick relief, or your money back!

Stomach Upset by Gas and Acid?

Di-Gel with Simethicone quickly relieves gassy-acid upset. This unique discovery breaks up and removes painful gas-bubbles. Your relief is more complete because Di-Gel takes the acid and the gas out of acid indigestion. When you eat too well, demand Di-Gel. Tablets, liquid. Product of Plough, Inc.

NEED YOUR HAT CLEANED? Bring Us Your Hats To Be Sent Off To Be Cleaned CITY TAILORS Phone 823-6261 Silverton, Texas

HEAT-N-CLEAN In the Electric Climate Put in electric heating and we'll give you an electric dishwasher. Put clean electric heating in your single family residence and we'll give you an electric dishwasher to clean your dishes. You may choose either a built-in model or the convertible in your choice of colors - Dark Copper, Avocado, Harvest Gold, or White. We'll deliver it to your door and you take care of the installation as you see fit. To qualify for this "most wanted" appliance, the dishwasher, you need only be a customer of Southwestern Public Service Company and put permanently installed, whole-house electric heating in your present or new home with installation beginning not later than December 1, 1971, when the offer expires. Call us this week for complete information on the desirability of comfort electric heating. Don't miss out on the opportunity to receive an electric dishwasher free of extra cost! Enjoy clean living in the electric climate.

If something in your house goes on the blink, you better hope it's your telephone. It's annoying to have anything break. But it's less annoying when it's your telephone. Our repair service is good—we'll fix your phone within 24 hours. Our price is even better: no charge for repairs. General Telephone

