

DECEMBER 30
 ZONE
 CORNS
 HURT.
 Santa Letter
 Again
 For the kids to be get-
 ting letters written to Santa.
 Special agreements with the
 Pole, all letters addressed
 to the Briscoe County
 will be published in the
 edition of your home-
 newspaper.
 Letters brought or sent to
 Briscoe County News will be
 mailed to the North Pole in
 time for Santa to fill his
 with all the right things.

Silverton: Heart Of The Scenic Caprock



Briscoe County News

VOLUME 64 NUMBER 49

THURSDAY, DECEMBER 7, 1972

Owls, Owlettes In Salt Fork Classic This Week

Silverton's varsity Owls and Owlettes are entered in the Salt Fork Classic at Clarendon this week. The Owls open with the Motley County Schools at 1:30 p.m. today, and the Owlettes will go against Paducah at 4:30.

The Owlettes, if successful, will advance to meet the winner of the game between Valley High "B" and Lefors at 4:30 p.m. Friday, or the loser of the same game at 9:00 a.m. Friday.

If they win the Clarendon-Esteline game at 9:00 p.m. If they lose, the Owls will play the loser of that game at 1:30 p.m. Friday.

All games are played in the Clarendon College field house, and admission will be \$1.00 for adults and 50c for students.

Owls 55, Happy 28
 The Owls and Owlettes have gotten off to a slow start, the teams having won only one of eight games.

The successful campaign was against Happy last Friday night with the Owls taking a 55-28 win.

The Owls led at the end of each quarter, outscoring the Cowboys 13-5 in the first, 15-8 in the second

and taking a 28-12 lead into the dressing room at halftime. The Owls held a 40-19 lead at the end of the third quarter.

Leading the scoring for the Owls was John Minyard with 17 points, followed by Terry Culwell with 14. Craig Culwell got 11 points, Ken Wood 7, and Barry Francis 6.

Other Owls are Mark Hutsell, Marshall Rauch, Cris Gill, Barry Bullock and Stan Martin.

Leading the scoring for Happy were G. Looney with eight and T. McNeill with six.

Happy 18, Owlette JV 13
 The Junior Varsity Owlettes lost a close one to the Happy Cowgirls Friday night, 18-13. Silverton led 2-1 at the end of the first period, and held an 8-5 lead at the halfway stop. The Cowgirls came back in the third to outscore the Owlettes 4-0 and in the fourth frame outscored the Owlettes 9-5.

Jeanette Arnold scored six points for the Owlettes, Becky Francis hit for five and Tammy Stephens dropped in two more.

Other JV Owlettes are Reba Chappell, Danna Garvin, Julia Dickerson, Kerri Arnold, Debra Strange, Jean Reeves, Suzette Fitzgerald, Nanette Fitzgerald, and Roma Clayton.

Happy 52, Owlette Varsity 42
 Happy's Cowgirls made a double sweep over the Owlettes Friday night by defeating the varsity 52-42.

The Owlettes trailed only 16-14 at the end of the first quarter, but had dropped behind 32-25 at the half. The Cowgirls outscored the Owlettes 11-5 in the third period, and even though the Owlettes rallied and outscored their opponent 12-9 in the last quarter, it just wasn't enough.

Rhonda Sutton led her team by scoring 20 points. Amy Birdwell added 10, and Jill Hutsell and Darla Strange scored six points each.

Other varsity Owlettes are LaNell Stephens, Laura Arnold, Pam Hutsell, Karen Tiffin, Sharon Storie, Lori Francis, and Denise Culwell.

Pam Shipman scored 25 points for the Cowgirls, followed by Becky Via, with 21.

Happy 29, Owlette JV 22
 The Owlette Junior Varsity dropped their season opener to Kress, 29-22. Becky Francis scored 10 points, Jeanette Arnold netted eight and Roma Clayton added four points. Other JV Owlettes were Reba Chappell, Kerri Arnold, Brenda Payne, Suzette Fitzgerald, Nanette Fitzgerald, Debra Strange, Tammy Stephens, Peggy Kitchens, Danna Garvin and Julia Dickerson.

Kress 43, Owlette Varsity 22
 The varsity Owlettes also dropped their season opener to Kress. Five forwards shared the scoring, led by Jill Hutsell with nine. Darla Strange scored six, LaNell Stephens four, Jeanette Arnold two and Becky Francis scored a free toss.

Teresa Blackerby scored 12 for Kress.

Kress 48, Owls 45
 The Owls' first game was a heart-breaker, as they lost to the Kress Kangaroos 48-45.

Terry Culwell led the scoring with 16 points, followed by Ken Wood with 13. John Minyard caged 12 and Barry Francis added four points. Others traveling with the team were Marshall Rauch, Cris Gill, Mark Hutsell, Barry Bullock, Stan Martin and Brett Gill.

Club Has Breakfast Meeting Here
 Silverton Young Farmers held a breakfast meeting at the City Cafe on Thursday, November 30.

Fred Minyard presided over the business meeting. Calvin Shelton reported on the turkey shoot held November 18. Winners in the shoot were Wendell Hardin, Dana Martin, Don Brown, Calvin Shelton, Ken Cook, Dewey Estes, Ernest Kiker, Brad Ziegler, Wayne Mayfield, Joe Holland, Green, Benson, Mott and Dodson.

G. W. Chappell and Dwain Henderson were appointed to purchase the turkeys and slab bacon for the upcoming turkey shoot to be held Saturday, December 16 at the Gun Club Range west of town.

Junior High Wins Two At Matador
 The Junior High Owls and Owlettes took a pair of wins at Matador Monday night, with ten players on each team sharing in the scoring.

Danny Perkins led the offensive effort for the Owls with eight points. Brent Brannon, Brent Bean and Esbardo Cruz each scored six points; Darrell Reynolds, Jeff Tiffin and David Strange scored four each; Gary Turner, Jacky Vaughn and Jace Francis each added two.

Hale Center 67, Owlettes 30
 Hale Center outscored the Owlettes in each period of their game November 28 to take a 67-30 win.

Rhonda Sutton led the Owlettes with 15 points, with Amy Birdwell close behind with 13. Jill Hutsell added two points.

The other Owlettes were Laura Arnold, LaNell Stephens, Pam Hutsell, Sharon Storie, Lori Francis, Jean Reeves, Brenda Payne, Darla Strange, Karen Tiffin and

Workers are pictured laying the water line which will run under the dam and eventually to the treatment plant. The resident engineer on the job estimates that the Mackenzie project is now approximately 30 days behind schedule due to weather.

Annual Christmas Bazaar Is Saturday

Century of Progress Study Club will hold its annual Christmas Bazaar Saturday, December 9 in the show room at Grabbe-Simpson Chevrolet.

Clubmembers will offer for sale a delicious assortment of candies, pies and cakes for your Christmas entertaining. Most of these items will keep in your freezer until the holiday season is here.

The study club uses the proceeds from this bazaar to help further club projects such as the breakfast for high school honor students, Girlstown USA, vaccinations for school children and the Briscoe County Heart Fund.

Cubs To Have Christmas Party

Tuesday, December 19, Dens I, II and III will have a Christmas party at the Scout Hut at 3:30 p.m.

Gifts made by the boys will be exchanged.

Club Has Breakfast Meeting Here

Silverton Young Farmers held a breakfast meeting at the City Cafe on Thursday, November 30.

Fred Minyard presided over the business meeting. Calvin Shelton reported on the turkey shoot held November 18. Winners in the shoot were Wendell Hardin, Dana Martin, Don Brown, Calvin Shelton, Ken Cook, Dewey Estes, Ernest Kiker, Brad Ziegler, Wayne Mayfield, Joe Holland, Green, Benson, Mott and Dodson.

G. W. Chappell and Dwain Henderson were appointed to purchase the turkeys and slab bacon for the upcoming turkey shoot to be held Saturday, December 16 at the Gun Club Range west of town.

Stock Show Deadline Is Almost Here

Deadline for entering the Fort Worth Exposition and Fat Stock Show is December 15, 1972.

Mr. and Mrs. Jack Robertson were in Lubbock Monday for Gayle to see the doctor. She is to enter Methodist Hospital this afternoon (Thursday) for tests.

Flute Hutsell was to enter High Plains Baptist Hospital in Amarillo Wednesday for tests.

Club Has Breakfast Meeting Here

Silverton Young Farmers held a breakfast meeting at the City Cafe on Thursday, November 30.

Fred Minyard presided over the business meeting. Calvin Shelton reported on the turkey shoot held November 18. Winners in the shoot were Wendell Hardin, Dana Martin, Don Brown, Calvin Shelton, Ken Cook, Dewey Estes, Ernest Kiker, Brad Ziegler, Wayne Mayfield, Joe Holland, Green, Benson, Mott and Dodson.

G. W. Chappell and Dwain Henderson were appointed to purchase the turkeys and slab bacon for the upcoming turkey shoot to be held Saturday, December 16 at the Gun Club Range west of town.

Members discussed purchasing Christmas decorations for downtown Silverton. This was tabled until a later date.

Those present were Tobe Riddell, Fred Minyard, Harold Giddens, Calvin Shelton, Dwain Henderson, Charlie Parker and Wayne Stephens.

Junior High Wins Two At Matador

The Junior High Owls and Owlettes took a pair of wins at Matador Monday night, with ten players on each team sharing in the scoring.

Danny Perkins led the offensive effort for the Owls with eight points. Brent Brannon, Brent Bean and Esbardo Cruz each scored six points; Darrell Reynolds, Jeff Tiffin and David Strange scored four each; Gary Turner, Jacky Vaughn and Jace Francis each added two.

Junior High Owls 12 22 28 44
 Matador 6 13 19 24

Scoring for the Owlettes were Danna Garvin and Kim Hutsell, eight each; Jo Jo Jarrett, five; Donna Rowell and Mignone Rauch, four each; Margaret Crosslin, Robbie Martin, Lee Ann McMurtry, and Lesa Francis, two points each.

Junior High Owlettes 8 21 29 41
 Matador 4 6 8 15

Firemen Answer Call To Aldridge Home

Firemen were called to the rural home of Mr. and Mrs. Tommy Aldridge Tuesday night about 10:30. The young couple lives in the S. P. Brown home north of town.

Damage was confined to the kitchen floor where a heater had overturned.

Temperature plunged to an overnight low of 3° in Silverton, with a chill factor of approximately 30° below zero.

Olos Chitty is a patient in Swisher Memorial Hospital in Tullia after suffering a heart attack.

Toys For Tots Drive Underway

L. O. A. Junior Study Club is conducting a Toys for Tots drive here again this year. Residents are asked to donate good used or new toys for needy children. No plans have been made for repairing the toys, so the items given need to be in good condition.

If you have toys to donate, call LaJuan Eddleman, 847-4871, Donna Copeland, 823-2541, or Darla Greenhaw, 823-3491. Boxes have been placed at Nance's Food Store and at Bud's Grocery & Market for the collection of toys for tots.

Turkey Shoot Is December 16

Silverton Young Farmers will sponsor a turkey shoot Saturday, December 16 at the Silverton Gun Club Range, two miles west of Silverton on the Tullia highway.

Turkeys and slab bacon will be given as prizes. Proceeds will go toward community projects.

Second Grade To Present Assembly

The Second Grade music students of Ted Lanham will present an assembly program at 10:30 a.m. Wednesday, December 13.

This will be a special type of program, as it deals with Oriental music. The class will be ushering in the Oriental New Year in movement and song. One number will be a scarf-bell dance by the girls; another will include a fire-breathing Chinese dragon. The climax of the program will be their interpretation of an Oriental ribbon movement by both the boys and girls.

The public is invited to attend.

Roving Santa Here December 11-16

Roving Santa will be sponsored by the Silverton Young Homemakers December 11-16. To help with traveling expenses the Young Homemakers will charge \$1.50 per family.

Santa will give each child a gift. For an appointment, please call Linda Minyard, 823-4141.

Student Art Show Is March 23, 1973

The Plains Art Association's Student Art Show (sixth through twelfth grades) will be March 23, 1973.

Thirty-two cash prizes will be awarded.

Mr. and Mrs. Roy Younger were notified Tuesday of the death of his grandmother, Mrs. H. S. Jackson, at San Angelo. Funeral services are to be conducted in Kilgore today (Thursday).

Wood Harcastle has been a patient in Northwest Texas Hospital in Amarillo for the past two weeks.

Mrs. Bryan Strange was taken to Plainview by ambulance for medical attention Monday morning after she fell while getting in the car at Maxine's Beauty Shop. She is being treated at Central Plains Hospital.

Brubs Bomar has been a patient at St. Mary's Hospital in Lubbock since Saturday. He suffered a heart attack on Sunday and has been in intensive care.

Christmas Greeting Page To Help Improve City Park

L. O. A. Junior Study Club has voted to designate the proceeds of the Christmas Greeting Page project to a long-range city park improvement plan.

The Christmas Greeting Page will appear in the Briscoe County News in its issue of December 21. For a donation in any amount to the project described above, your name will be placed on the new play equipment for the park, and that new equipment could be added as money was available.

The Christmas Greeting Page will appear in the Briscoe County News in its issue of December 21. For a donation in any amount to the project described above, your name will be placed on the greeting page, along with a Christmas greeting and the explanation that you have donated to the park improvement project in lieu of sending Christmas cards locally.

You do not have to live in Silverton to take part in this project. If you live away from Silverton and would like to wish a Merry Christmas to your friends here, you may have your name placed on the page by sending your contribution to Mrs. Randall Eddleman, president; Mrs. Wayne Nance, Mrs. Gary Weaks, Mrs. W. J. Copeland, civic and projects committee, or any other member of the L. O. A. Junior Study Club.

McFALL HONORED BIRTHDAY PARTY
 Jena McFall, daughter of Mrs. Jack McFall, was celebrated with a "slumber-less" party home December 1 on her birthday.
 Cakes and cokes were served in afternoon to Amy Perkins, Bobbing, Tammi Edwards, Lowery and Jena. Supper included Donnie, Sandy and Perkins.
 Buck Payne is recovering surgery at Northwest Texas in Amarillo.

BRISCOE COUNTY NEWS

PUBLISHED EVERY THURSDAY AT SILVERTON, TEXAS 79257
SECOND CLASS POSTAGE PAID AT SILVERTON, TEXAS 79257

CHARLES R. SARCHET
MARY ANN SARCHET
PUBLISHER
EDITOR
SUBSCRIPTION RATE PER YEAR (Tax Included) \$3.50
Display Advertising Rates Available on Request
Classified and Legal Rates, Each Insertion (50c Minimum Charge) 3c per word

MEMBER OF
TEXAS PRESS ASSOCIATION AND PANHANDLE PRESS ASSOCIATION

Seventh Grade Teams Do Well In Claude Tournament

"We haven't been notified of the final results in the Claude Tournament, but I think both of our Seventh Grade teams tied for first place, Basketball Coach J. B. Carter said early this week. "We were very pleased with the showing they made."

Each of the teams played Panhandle, Claude and Shamrock. The boys defeated Panhandle and Claude, and lost by one point to Shamrock, while the girls defeated Panhandle and Shamrock and lost by two points in an overtime game to Claude.

The eighth grade teams played the same three teams, the boys dropping all three matches and the girls defeating only Panhandle.

SEVENTH GRADE GIRLS

Silverton 21, Panhandle 5

The Seventh Grade Owlettes took an early lead in the Claude Tournament last Thursday by trouncing Panhandle 21-5. Silverton held a 9-0 lead at the end of the first quarter, and extended the first quarter, and extended it to 19-5 before the midway stop. The Silverton girls scored only two points in the second half, but

they held Panhandle scoreless, and brought home a victory.

Scoring for the Owlettes were Kim Hutsell, 10; Mignone Rauch, 6; Carol Cobb, 3; Debbie Storie, 2.

Other Owlettes in action were Brenda Cantwell, Arlene Lavy, Colleen Hutsell, Marsha Yancey, Linda Vaughn, Susan Payne, Lydia Younger, Beverly Boling and Becky Perkins.

Robbie Russell scored four points for Panhandle.

Claude 25, Silverton 23

Friday night Claude outscored the Owlettes 4-2 in an overtime period to take a 25-23 win from Silverton. Kim Hutsell dumped in 18 big points for the Owlettes, assisted in the scoring by Mignone Rauch, 3, and Debbie Storie, 2.

The Owlettes led 11-0 at the end of the first quarter, but their lead was narrowed to 13-9 at halftime. The Owlettes held a 17-14 edge at the end of the third period, but had dropped into a 21-21 tie at the end of regulation play.

Diane Bagwell netted 14 points for Claude.

Silverton 20, Shamrock 15

The Owlettes poured it on in the fourth quarter Saturday night to whip Shamrock 20-15. The Silverton girls had trailed 2-1 at the close of the first frame, but owned a 9-3 lead at halftime. They failed to score in the third quarter, while Shamrock ripped the nets for six points, and the Owlettes trailed 11-10 at the opening of the last

period. In the final frame, the Owlettes outscored Shamrock 10-4 to take the win.

Kim Hutsell netted 12 points; Mignone Rauch got 6, and Debbie Storie added 2.

Teresa Polk scored nine points for Shamrock.

SEVENTH GRADE BOYS

Silverton 20, Panhandle 16

The Seventh Grade Owls opened their participation in the Claude Tournament last Thursday night with a 20-16 win over Panhandle.

The Owls trailed 6-2 at the close of the first period, and were behind 10-8 at halftime. By the end of the third stanza the Owls had gone ahead 14-12 and extended their lead in the fourth period.

Scoring for the Owls were Jace Francis 8, and Esbarido Cruz, Brent Brannon and Jacky Vaughn, four points each. Others in action for the Owls were Mike Martin, James Kitchens, Ronnie Graves and Jim Gates.

R. Darnell scored six points for the losers, followed by J. Crutehfield and W. Wright with four points each.

Silverton 21, Claude 11

Brent Brannon led the scoring in Friday night's game with nine points, followed by Jacky Vaughn, with six; Ronnie Graves, four, and Esbarido Cruz, two.

The Owls led at the end of each period, holding a 4-0 lead at the end of the first, 13-2 at the half, 17-7 at the end of the third.

R. Heckman scored six points for Claude.

Shamrock 19, Silverton 18

The Owls rallied in the fourth quarter Saturday night, but were unable to overcome the deficit they had created in the first three quarters. The Owls had trailed 6-4 at the end of the first period, 10-6 at half time and 17-12 at the

end of the third quarter. They outscored Shamrock 6-2 in the last period, but still came up a point short.

Brent Brannon and Jacky Vaughn each scored six points, Esbarido Cruz added four and Ronnie Graves canned another two points.

Mitchell got eight and Lee six for Shamrock.

EIGHTH GRADE BOYS

Panhandle 28, Silverton 17

The Eighth Grade Owls were held scoreless two quarters last Thursday night and gave up a 28-17 loss to Panhandle in the first round of the Claude Tournament. Silverton was outscored only 10-9 in the first period and the two teams scored eight points each in the final frame, but Panhandle scored four in the second and six in the third while the Owl offense was at a standstill points-wise.

Brent Bean scored five points and Darrell Reynolds and Jeff Tiffin each scored four. Jack Robertson and Danny Perkins scored two points each. Others participating were Gary Turner, Carlos Pompa, Roy Brooks, Jimmy Wilson, Carl Wilson, Jeff Jones, Augustin Fabela, David Strange and Bill Reid.

M. Scheller scored 16 points for Panhandle.

Claude 43, Silverton 21

Friday night the Owls dropped a 43-21 match to the Claude Colts. The Colts took a 23-7 first quarter lead, after which neither team scored until the third quarter. In that period the Colts outscored the Owls 12-2. The Owls came back with a strong finish, outscoring the Colts 12-8 in the last period.

Brent Bean led the scoring with seven points. Darrell Reynolds caged six, Jack Robertson got four, Gary Turner netted three and Jeff Tiffin sank one free throw.

In action for the Owls, in addition to those who scored, were Pompa, Brooks, Fabela, Jimmy Wilson, Carl Wilson, Jones, Perkins, Strange, Reid and Wes Fleming.

W. Campbell got 14 points for the Colts, and J. Forbes scored 9.

Shamrock 29, Silverton 23

Saturday night the Owls played Shamrock, and suffered a 29-23 defeat. The Owls trailed 6-4 at the close of the first quarter, and were behind 14-10 at the halfway mark. Each team scored four points in the third frame, but Shamrock outscored the Owls 11-9 in the last quarter to take the win.

Jeff Tiffin scored eight points for the Owls, Gary Turner got six, Brent Bean caged five, and Darrell Reynolds and Danny Perkins scored two points each.

B. Bonner scored six points for Shamrock.

EIGHTH GRADE GIRLS

Silverton 22, Panhandle 17

The Eighth Grade Owlettes took a 22-17 win from Panhandle in the opening round of the tournament last Thursday. The Owlettes trailed 4-2 at the end of the first period but caged eight points to two for their opponents to lead 10-6 at halftime. The Owlettes outscored Panhandle 12-11 in the second half.

Dara Garvin caged 10 points, Lee Ann McMurtry netted six, Robbie Martin sank four and Jo Jo Jarrett made two points.

Other players for the team are Jeanette Reeves, Donna Rowell, Lesa Francis, Susan Northcutt, Darlene Roberts, Donna Dudley, Margaret Crosslin, Susan Grabbe and Janie Cobb.

Choate scored eight points to lead the Panhandle offense.

Clarendon 22, Silverton 6

The Owlettes dropped their Friday night game to Claude, being outscored 22-6.

The Owlettes were behind 6-3 at the end of the first quarter, but were still in the game at halftime, trailing 9-5. Silverton was outscored 5-1 in the third quarter and was held scoreless in the last frame.

Shamrock 46, Silverton 28

The Owlettes lost to Shamrock Saturday, 46-28. They trailed 15-4

BUYING POWER STRETCHER BY GOOD "SALE" BUYING

Stretch your dollar power by making sales work for you, says Mrs. Dorothy Powell, County Extension Agent. Authorities estimate that families can save between 15 and 25 percent on purchases during the year by taking advantage of special prices.

Effective sales shopping begins with a purpose and plan in mind. Stock up on as many items as you use regularly that you have room to store. Identify future needs and be on the lookout for them. However, resist the temptation to buy just because the item is on sale. Nothing is a bargain unless you need it.

Know the regular selling price so you can recognize a reduced price. Keep in mind that prices vary from store to store. A sale price at one store may be the regular price at another.

Be an informed sales shopper

at the end of the first quarter but each team scored nine points in the second period. Shamrock moved further ahead by outscoring the Owlettes 12-4 in the third quarter, and each team scored 11 points in the last period.

by knowing your legal rights as laws make it illegal to advertise false or statements about price. The law states that store advertise an item on have a supply urge enough reasonable public demand the ad specifies a limit tity.

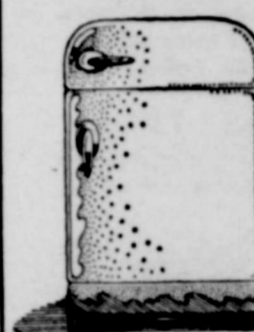
More information on ping is available from Extension Office. Con Dorothy Powell for a of ten leaflets, "Be a S per." Phone 823-4271, P. O. Box 887, Silvert.

Arthritis Sufferers

WAKE UP WITH ALL THAT STIFFNESS

New formula for minor pain is so strong can take it less often wake up in the morning out all the pain's still Yet so gentle you can this tablet on an empty ach. It's called Arthritis Formula. Get hours relief. Ask for Arthritis Formula, by the maker Anacin® analgesic tablet.

How to get your refrigerator to cook things.



Stir the right things into Jell-O® Brand Gelatin and your refrigerator will fix crunchy salads, interesting fruits and new side dishes. For over 250 exciting ideas, send 25¢ (in coin) with your name, address and zip code to: Joys of Jell-O, Box 8074, Kankakee, Illinois, 60901.



Jell-O is a registered trademark of the General Foods Corporation.



Give a gift that says

"Welcome Home"

AN OUTDOOR GAS LIGHT

An outdoor gas light adds something to the personality of a house... makes it feel more like home. Its gentle, friendly glow adds a touch of beauty and safety. Constructed of rust-free aluminum in a number of styles. Prices start at \$60.85 with budget terms available. Price includes normal installation.

OR

GIVE A GIFT OF GOOD TIMES YEAR 'ROUND AN OUTDOOR GAS GRILL

An outdoor gas grill is so easy to use. Light it and within minutes it's ready to cook, and you can control the temperature. With a gas grill there's no charcoal mess, and you still get that mouth-watering, char-broiled aroma and flavor that can't be beat. Constructed of cast aluminum. Several models are available. Prices begin at \$90.83 with budget terms available. Price includes normal installation.

OR

GIVE A PATIO PAIR

and take advantage of a \$28.50 savings on an outdoor light and grill installed at the same time and in same locality.

Ask any Pioneer employee about an outdoor gas grill and light for a gift of many good times cooking out, or call



PIONEER NATURAL GAS COMPANY

PRICED TO SAVE Christmas Budget Foods

Teri	TOWELS	Jumbo Roll	3 ^F \$1 ⁰⁰ _R
Shurfine	SALAD DRESSING	qt.	49¢
American Beauty	Macaroni'n 7 1/4 oz.		
	CHEESE DINNER	2 ^F 39¢ _R	
Shurfine Pineapple	JUICE	46 oz. can	3 ^F \$1 ⁰⁰ _R LIMIT RIGHTS RESERV
Shurfine Early Harvest	SWEET PEAS	303	4 ^F \$1 ⁰⁰ _R
Del Monte	SLICED PINEAPPLE	no. 2	39¢
Del Monte	FRUIT COCKTAIL	303	3 ^F \$1 ⁰⁰ _R
*GARDEN FRESH VEGETABLES			
	BANANAS	lb.	8¢
	ORANGES	lb.	11¢
	LETTUCE	lb.	21¢
	No. 1 Russets POTATOES	10 lb.	59¢
Shurfine Sliced Y. C.	PEACHES	2 1-2	39¢
Nestea	INSTANT TEA	3 oz.	
Armours	TEXAS CHILI	19 oz.	
* MEAT MARKET SPECIALS			
Sliced	SLAB BACON	lb.	
	T-BONE STEAK	lb.	
	CHUCK ROAST	lb.	
	BOLOGNA	lb.	

Prices Good December 8 - 9

Nance's Food Store

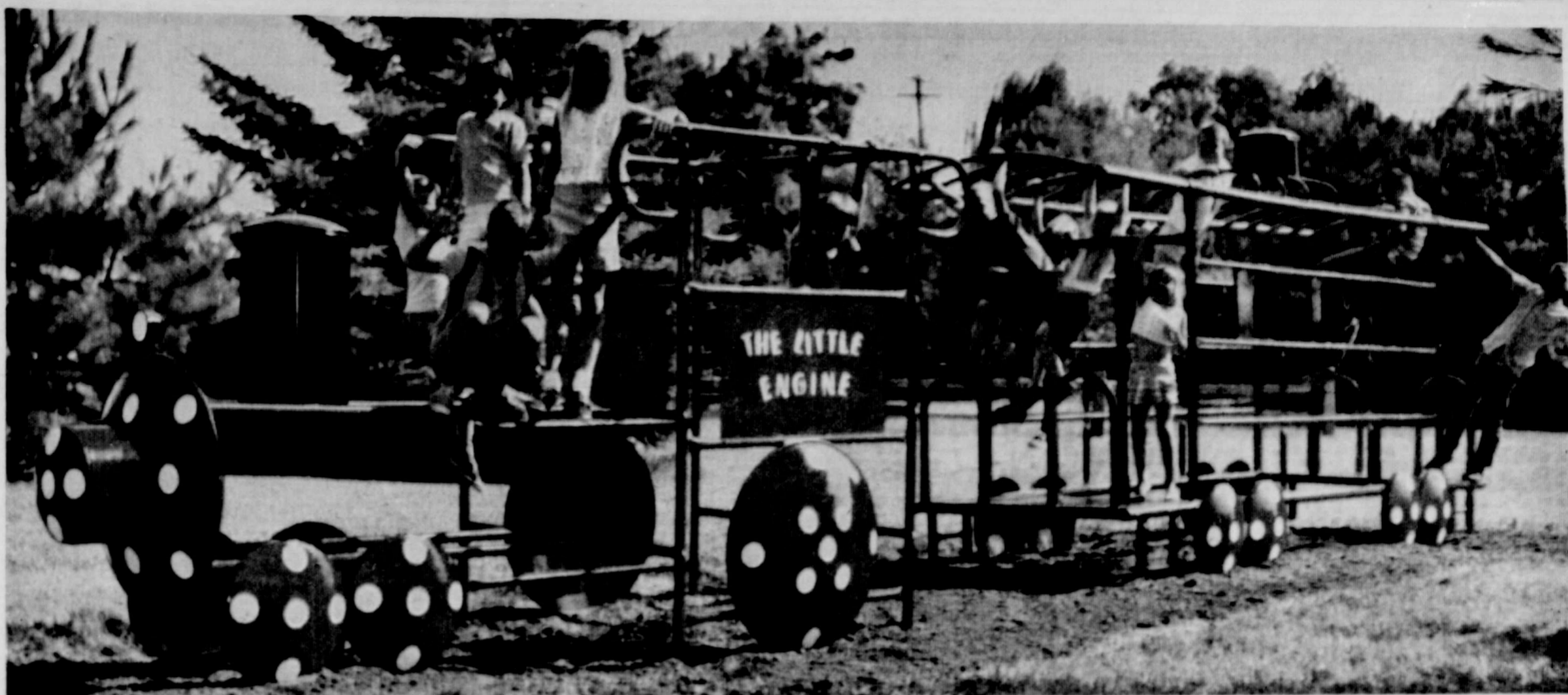
SILVERTON, TEXAS

Shurfresh Milk Has That NATURAL GOODNESS





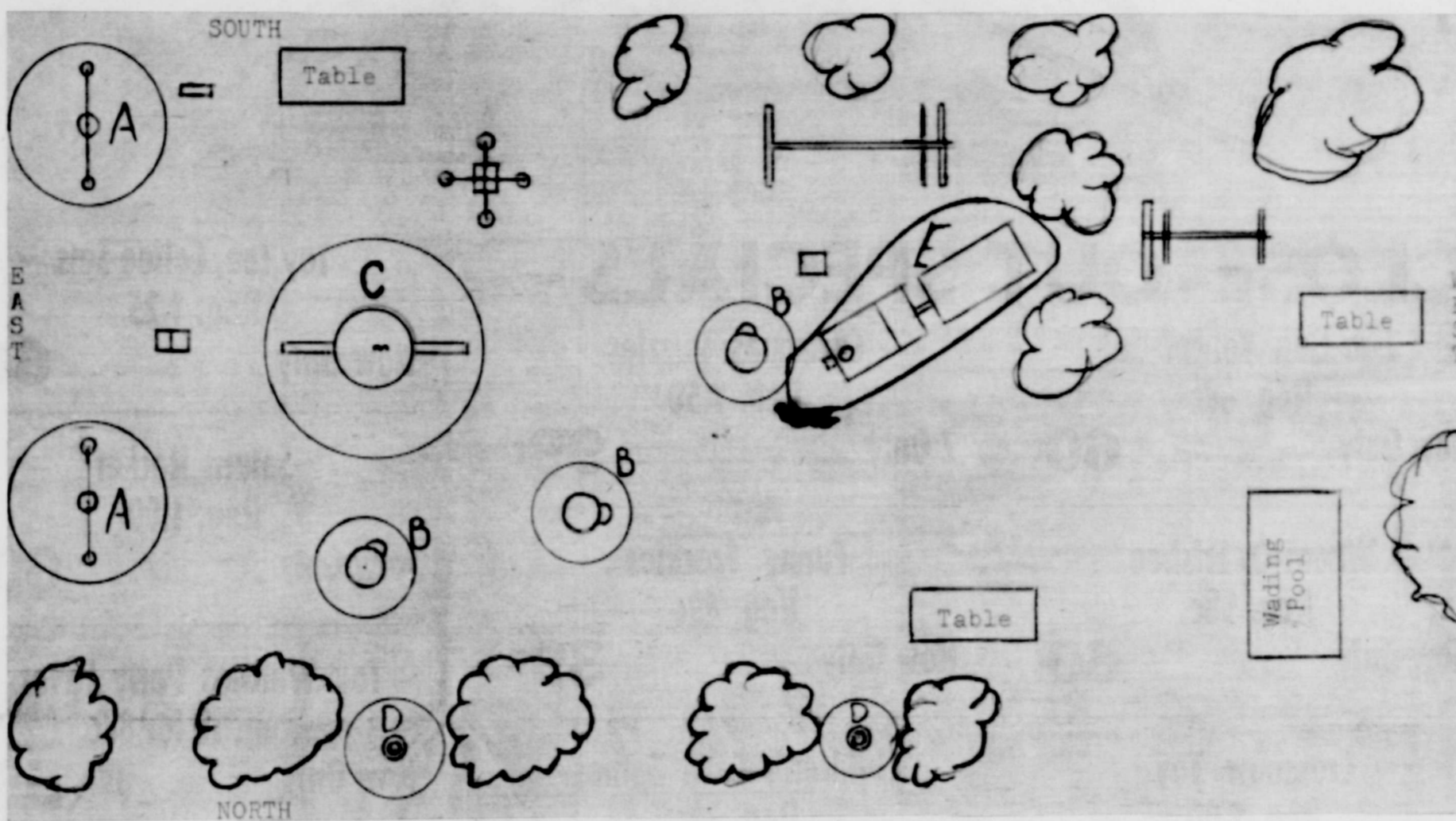
B



E



B



B

Proposed Additions To City Park

Illustrated on this page are the items of children's play equipment which it is hoped can be added to the City Park in Silverton in a long range park improvement project. Proceeds of the 1972 Christ-

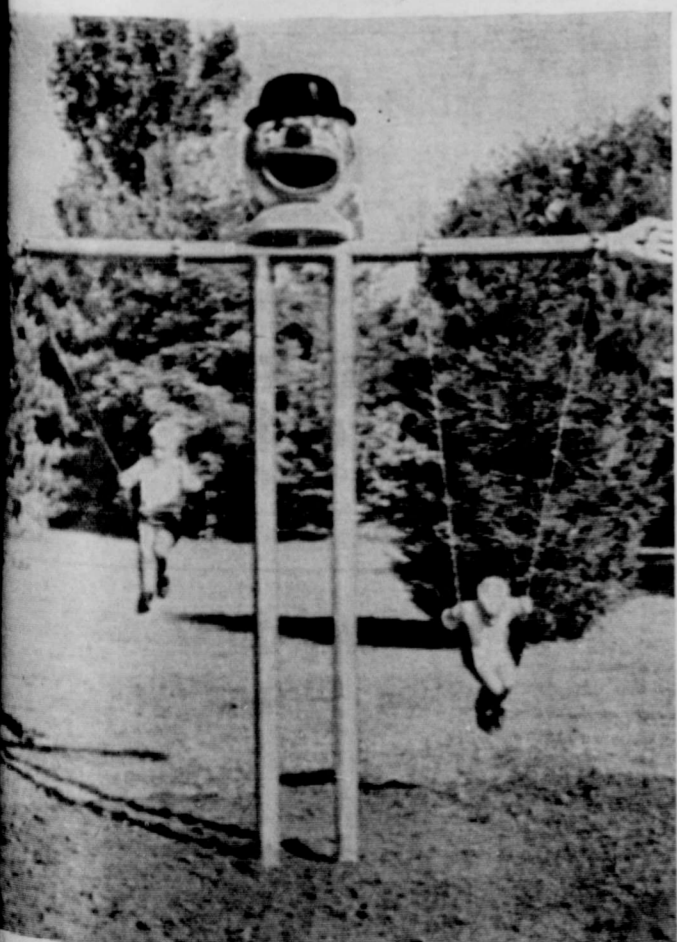
mas Greeting Page have been designated to this project.

If you would like to donate to the project, and have your name placed on the Christmas Greeting Page in lieu of sending Christmas

cards locally, you may do so by contacting any of the L. O. A. Junior Study Club or taking your contribution to the Briscoe County News.

All money donated to this pro-

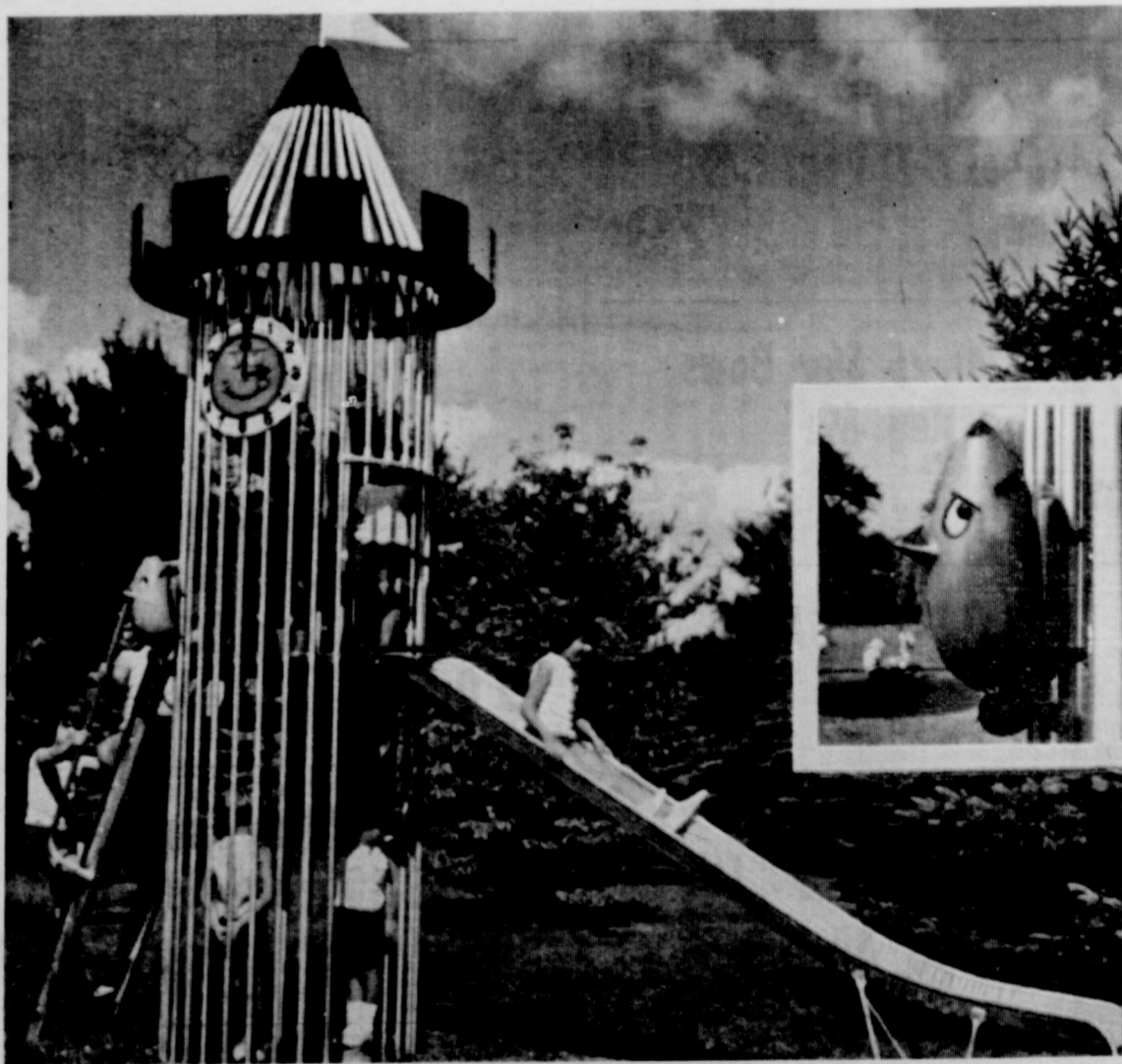
ject will be used for park improvement. Deadline for getting your name on the Christmas Page is December 18. Your donation in any amount will place your name on the special page.



A



D



C

This Page Donated To The LOA Study Club by the Briscoe County News



CLOSE-OUT SPECIALS

Two-Gun Target Set
Reg. 88c
Now Only ----- **60c**

Wham-O Frisbee
Reg. 98c
Now Only ----- **60c**

Crossbow Toy
Reg. 1.00
Now Only ----- **60c**

Easy Sew Cards
(Ages 3-6) Reg. 1.00
Now Only ----- **50c**

Stick 'Ems
(Ages 4-7) Reg. 1.49
Now Only ----- **79c**

Bag of 25 Star Bows
Reg. 89c
Now Only ----- **69c**

CHILDRENS GAMES

Orbit
Ropes and Ladders
Sheriff of Dodge City
Calling All Cars
Special Agent
(Ages 6-12) Reg. 1.50
Now Only ----- **99c**

Christmas Puzzles
Reg. 1.50
2 Only ----- **99c**

Funny Freckles
Reg. 49c
Now Only ----- **39c**

Children's Card Games
Reg. 39c
Now Only ----- **29c**

Giant Bubble Kit
Reg. 79c
Now Only ----- **79c**



MODEL KITS
Yamaha Grand Prix
Honda Scrambler
Reg. 4.50
2 Only ----- each \$**1.50**

Mr. and Mrs. Flannel Face
(3-10 years) Reg. 1.25
Now Only ----- **89c**

Magic Mary Paper Dolls
(3-10 years) Reg. 1.25
2 Only ----- **89c**

Toy Tea, Coffee Sets
Reg. 1.25
Now Only ----- **60c**

Saturn Rocket
Reg. 1.00
Now Only ----- **60c**

Toy Watches Party Favors
Reg. 10 for 88c
Now Only ----- pkg. **59c**

One Group Boxed Stationery
Reg. 1.29
Now Only ----- **59c**

Christmas Stencils
Reg. 39c pkg.
Now Only ----- **25c**

Foil Tree Icicles
Reg. 79c (pkg. damaged)
Now Only ----- **39c**

Reg. 79c
Now Only ----- **19c**

Acrylic Pile Stockings
Reg. 1.99
Now Only ----- **99c**

Reg. 99c
Now Only ----- **69c**



Lighted Ligh Post Decoration
Reg. 4.95
2 only ----- each \$**2.85**

Acrylic Pile Longjohns
Reg. 1.98
Now Only ----- \$**1.25**

Ornament Hangers
Small and Large Reg. 29c
Now Only ----- **19c**

Lighted Lamp Post Decoration
Reg. 59c
Now Only ----- **19c**

White Stardust Cotton
Reg. 79c
Now Only ----- **59c**

Stardust Tree Skirt
Reg. 1.00
Now Only ----- **69c**

Spray Snow
Reg. 59c and 69c
Now Only ----- **39c**



Briscoe County News

... DECEMBER
Dickerson
... at Br
... Strange ho
... Dickerson, bric
... with a bru
... mber 18 at th
... Labbock.
... Dickerson's cho
... and silver wer
... decorations
...
... attending were

CHR

NO INST.
\$7.00 M
During M

TUP
OPE

ALL
L
*DO
500 BR
SA
Hill F
CH
Co
HILL F

Dear F
Yo
toward
of servi
ship. Th
Doc and
have ou

Dickerson
Showered at Brunch
 Miss Dickerson honored Miss Dickerson, bride-elect of December 18 at the Lubbock. Dickerson's chosen colors were silver and silver were featured in the decorations and table settings. Attending were Mary Kay Calocino, Nancy Kay Long, Mrs. Claude Tatum, Mrs. Tommy Powers, Mrs. Bobby Baker, Mrs. Mitchell McDaniel, Mrs. Marshall Steves, Joan Cook, Genie Lamb and Rhonda Dickerson, all of Lubbock; Mrs. Roland Montague and Mrs. Edwin Dickerson of Silverton.

A December 27 wedding is planned in the home of the bride's parents.

CHRISTMAS SPECIAL
CABLE T.V.
NO INSTALLATION CHARGE
\$7.00 MONTHLY CHARGE
 During Month of December Only

TUPPERWARE
OPEN HOUSE
 ALL DAY FRIDAY,
DECEMBER 8
DOOR PRIZE
 500 BRAIDFOOT STREET
SANDI TOMLIN

Hill Farm Supply, Inc.
 Store - Wide
CHRISTMAS SALE
 Come by to see us!
HILL FARM SUPPLY, INC.

Dear Friends,
 You've been so loyal and considerate toward us in our thirty-five and a half years of service to you in our Oldsmobile Dealership. Thank you, and may you be as loyal to Doc and Joe in their Oldsmobile Life - - They have our support also!

Sincerely,
 Theron and Frances



Guest speakers at the Tenth Birthday Party of L. O. A. Junior Study Club were (from left) Mrs. O. C. Rampley, Caprock District T.F.W.C. President, and Mrs. Louis Fry of Lockney, Caprock District Director of Junior Clubs. Hostesses for the meeting were Mrs. John Schott, Mrs. Eugene Jennings and Mrs. Bud Couch. Mrs. Randall Eddleman is president of the junior club. (Briscoe County News Photo)

L.O.A. Junior Study Club Celebrates Tenth Anniversary

L. O. A. Junior Study Club celebrated its tenth anniversary last Thursday night with a party in the Pioneer Room at the First State Bank. Guest speakers were Mrs. O. C. Rampley, Caprock District TFWC President, who spoke on "Love and Friendship," and Mrs. Louis Fry of Lockney, Caprock District Director of Junior Clubs, who used a flannel board to illustrate her ideas. Guests included Mrs. Lula Belinger, Miss Anna Lee Anderson and Mrs. Theron Crass, members of the March of Time Study Club which helped organize the junior club.

Two charter members, Mrs. Leo Fleming and Mrs. Bill Durham, were present in addition to a 1963-1966 member, Mrs. Pat Northcutt. Past Presidents of the club introduced were Mrs. Charles Sarchet, 1964-1966; Mrs. Randall Eddleman, 1966-1968; Mrs. Fred Edwards, 1970-1971, and Mrs. Bud Couch, 1971-1972. The devotional, "Built Together," was given by Mrs. John Schott. Guests and members were welcomed by Club President Mrs. Eddleman.

Club members attending were Mrs. Jerry Baird, Mrs. Jimmy Burson, Mrs. W. J. Copeland, Mrs. Bud Couch, Mrs. Randall Eddleman, Mrs. Fred Edwards, Mrs. Stanley Fogerson, Mrs. Lynn Fritzel, Mrs. John Herring, Mrs. Eugene Jennings, Mrs. Jerry Miller, Mrs. Roland Montague, Mrs. Mrs. Schott, Mrs. Couch and Mrs. Eugene Jennings were hostesses, and served cake squares decorated with yellow roses and the numeral "10", nuts, mints, coffee and punch using silver and crystal appointments. The centerpiece was an arrangement of yellow mums. The refreshment table was covered with a lace cloth. Each of the club's yearbooks and the club's history scrapbooks were on display.

W.S.C.S. MEETS IN FELLOWSHIP HALL

The Woman's Society of Christian Service of the First United Methodist Church met December 5 in the fellowship hall. Society President Mrs. G. Mayfield opened the meeting with a thought for the month: "To all who received Him, who believed in His Name, He gave power to become children of God," from John 1:12.

After a short business meeting, a skit, "Include Me In," was given by Mrs. Agnes Seaney, Mrs. Valli Futch, Mrs. Nadyne Childress and Mrs. Jo Mallow. Mrs. Childress was hostess to eleven members: Oriole Alexander, Kate Turner, Wilma Hunt, Jewel Lowery, Jennie Fisher, Zelma Lee Mayfield, Agnes Seaney, Valli Futch, Jo Mallow, and one new member, Pauline Turner.

Miss Dickerson is Shower Honoree. Miss Debbie Dickerson, bride-elect of John Welch, was honoree at a miscellaneous shower and coffee Saturday, December 2, from 9:30 until 11:00 a.m. in the home of Mrs. George Long. Guests were greeted by Mrs. Long and presented to the honoree and her mother, Mrs. Edwin Dickerson, and to the mother of the prospective bridegroom, Mrs. Tom Welch of Bettendorf, Iowa. The centerpiece of white mums in a low crystal bowl with blue bows decorated the refreshment table. Miss Nancy Long, Mrs. Roland Montague and Mrs. Benny Montague of Tulsa served coffee and hot apple cider, apricot roll and cream puffs. Out-of-town guests included Miss Mary Kay Calocino, Lubbock; Mrs. Johnny McGavock, Oklahoma City, Oklahoma; Mrs. Karen Bixler, Dallas; Mrs. Gordon Montague, Plainview; Miss Roy Ann Bomar, Hereford, and Miss Jane Self, Amarillo. Assisting Mrs. Long as hostesses were Mrs. J. V. Self, Mrs. Carl D. Bomar, Mrs. Benny Montague, Mrs. Ray Teeple, Mrs. Charles Whitfill, Mrs. Roland Montague, Mrs. Roy Montague, Mrs. Verlin Towe, Mrs. C. L. McWilliams and Mrs. Edd Hutsell.

WOMEN PAST 21 WITH BLADDER IRRITATION Suffer Many Troubles
 After 21, common Kidney or Bladder Irritations affect twice as many women as men and may make you tense and nervous from too frequent, burning or itching urination both day and night. Secondly, you may lose sleep and suffer from Headaches, Backache and feel old, tired, depressed. In such irritation, CYSTEX usually brings fast, relaxing comfort by curbing irritating germs in strong, acid urine and by analgesic pain relief. Get CYSTEX at drug stores. See how fast it can help you.

Recent Bride Is Honored Here

Mrs. Delmar Byrne, the former Miss Laquita Kitchens, was guest of honor at a miscellaneous shower and coffee from 9:30 until 11:00 a.m. Saturday, December 2, in the Pioneer Room at the First State Bank.

Guests were registered by Misses Louise and Peggy Kitchens, sisters of the honoree.

Mrs. Gary Whitfill, Mrs. Dana Martin and Mrs. Ricky Hester presided at the silver coffee service and served coffee, hot spiced tea and miniature donuts. The serving table was covered with a white linen cloth, with an arrangement

of fresh ivy and white pom-poms in an avocado pottery container. Special guests were Mrs. R. C. Kitchens and Mrs. D. Oneal, mother and grandmother of the honoree.

Hostesses were Mrs. Harold Giddens, Mrs. Agnes Bingham, Mrs. Maxine Morris, Mrs. Riely Yates, Mrs. A. R. Martin, Mrs. Gary Whitfill, Mrs. Dana Martin, Mrs. Charlie Parker, Mrs. Bob McDaniel, Mrs. Roy Montague, Mrs. Troy Jones, Mrs. Farris Martin, Mrs. Alpha Matheus, Mrs. Leona Yancey, Mrs. M. L. Welch, Mrs. G. W. Lee, Mrs. Riddell Hutsell, Mrs. John Boyd, Mrs. Fred Strange, Mrs. Doyle Stephens and Mrs. Ricky Hester.

Wayne Nance, Mrs. John Schott and Mrs. Mabry Greenhaw.

ENJOY YOUR WORK

With an **IH TRACTOR RADIO**

- Large speaker... full fidelity tone.
- Eight transistors, three diodes.
- Fringe area sensitivity.
- Dustproof, waterproof, shockproof.
- Rugged enough to stand any tractor operation.
- Mounts anywhere on any 12-volt vehicle.
- Chrome plated, spring based, telescoping antenna.
- Automatic volume control.
- Superheterodyne circuit.

First to serve the farmer
BROWN - McMURTRY IMPLEMENT COMPANY
 SILVERTON, TEXAS

TIRE SPECIALS

H 78 x 14 Polyester Glass Belt - \$20.00

Phillips 66 4 Ply Polyester

G 78 x 14 White Wall - 27.50 - tax 2.56
 H 78 x 14 White Wall - 29.25 - tax 2.75
 J 78 x 14 White Wall - 30.50 - tax 2.95
 G 78 x 15 White Wall - 27.50 - tax 2.63
 H 78 x 15 White Wall - 29.50 - tax 2.81
 L 78 x 15 White Wall - 32.00 - tax 3.16

FIRESTONE STEEL RADIALS

H R 78 x 15 - 70.00
 J R 78 x 15 - 76.00
 L R 78 x 15 - 80.00
Blemished - Guarantee same as above
 J R 78 x 15 - 65.00
 L R 78 x 15 - 68.00
Prices Include Fed. Tax

SILVERTON OIL COMPANY
 Silverton, Texas

A bird in the hand...

Get this FREE ELECTRIC TIMER with the purchase of any of these Ready-Lites

The Toastmaster 24 Hour Electric Timer turns lights on and off automatically and helps protect your home from prowlers when you're away. It can wake you in the morning with music and hot coffee and repeats the operation every 24 hours without resetting. Buy the Ready-Lite of your choice now and receive this convenient electric timer free of extra charge!

MAKES A GREAT GIFT!

TRADITIONAL BLACK 59⁹⁸ EACH
 TRADITIONAL WHITE 59⁹⁸ EACH
 LAWN-GLO BLACK 69⁹⁸ EACH
 LAWN-GLO WHITE 69⁹⁸ EACH
 SENTINEL ANTIQUE GOLD BLACKWEDDING IRON 79⁹⁸ EACH

Every Ready-Lite is completely installed and includes a weatherproof outlet for Holiday lighting and decorations.

THE ELECTRIC COMPANY
 FOR 100 YEARS PEOPLE

Veteran Demo Favors Two-Party System

The first U. S. candidate he remembers voting for was the late U. S. Senator Tom Connally, who retired from that office in 1955. Senator Connally, one of the signers of the United Nations charter, also was a Democrat.

The first vote that Woods Coffee, Jr., of Dumas recalls casting in a presidential election was for Woodrow Wilson, successful Democratic nominee for the office in both 1912 and 1916.

"Democrats were about all anyone in Texas voted for in those days, in fact until just a few years back," recalls the veteran campaigner who also has been a successful candidate and for eight years was county judge in Briscoe County.

A Dumas resident since 1960, Judge Coffee this election year was co-chairman of the Moore campaign for U. S. Senator John Tower, the first Republican to reach that office from Texas since 1874.

How does he feel about actively working on the other side of the Texas political fence?

"Texas is not the strict one-party state it once was, and Senator Tower has done an outstand-



WOODS COFFEE, JR.

ing job in Washington," the judge said. "There is more voting for the man and less straight party vote." Judge Coffee for several years

was Democratic party chairman in Briscoe County, in which he served eight years as county judge between 1933 and 1943. In those days of two-year county terms the judge missed one term in this 10-year span.

In Briscoe County, he was also campaign chairman for former Governor Allan Shivers, whose crossover to the Republican side in the cross-filing of almost all top Texas officials in 1952. Shivers, the Democratic nominee for governor, led the list of Demo officers who also allowed the Republican party to make them their general election nominees in a successful effort to carry Texas for former President Dwight D. Eisenhower.

Up to that time Texas had voted only once for a Republican presidential candidate and the state was counted as part of the Democratic party "solid South."

Two years later, in 1954, Coffee was a delegate to the state Democratic party convention in which Shivers was seriously challenged for leadership by a "loyal Democrats" bloc headed by former U. S. Representative Maury Maverick of San Antonio.

"I remember that the Maverick supporters walked out but later came back to the convention," the ex-judge says.

A native of Miami, Texas, Coffee grew up on the Bar-C Ranch in the late 1890's and early 1900's just a pasture away from Adobe Walls. The Old West trading post was made famous by two Indian battles, the last one fought in 1874.

In that fight between a group of buffalo hunters, the store-keeper and the Indians, Indian scout-hunter Billy Dixon won a niche for himself in Panhandle history.

"I knew Billy Dixon," says Coffee. "In fact, I went to school with most of his children."

Dixon won fame in the battle with a shot that killed one of three Indians on a ridge a mile from the besieged trading post.

Dixon lived in the Miami area for a number of years, before setting up a store at Plemens in Hutchinson County, Coffee adds.

Coffee and his wife, who were newly-weds in 1916, left Miami that year and moved to Dallas. They were there four years before a second move to Denver, Colorado, and then in 1924 they moved back to the Texas Panhandle and settled at Pampa.

After two years, they came to Silverton where Coffee took over as manager of a lumber yard. He later owned a hardware store and a dry goods firm.

The Coffees moved to Dumas in 1960 because "we liked the coun-

Federal Policies Causing Higher Lumber Prices

"The Federal Government's policies and price control regulations are the major cause of high lumber prices," said Joe Butler, Executive Vice President of the Lumbermen's Association of Texas. The 87-year-old Austin based organization represents over a thousand Texas retail lumber dealer firms.

"The demand for lumber and forest products caused by the record breaking number of housing starts, and the federal government's inequitable controls, timber selling policies and lack of restraint on log exports, has compounded the problem rather than alleviate the present conditions," Butler continued.

In addition to the increased number of housing starts, the industry spokesman cited the following reasons for the continued rising lumber prices. (1) The lack of export controls have increased the volume of log exports from 430.6 million feet through September of last year to 512.7 million board feet through September of this year and (2) the lack of price controls on federal timber and the federal government's policy of selling logs to the highest bidder are consistently raising the log prices which are passed on in the finished product. It is estimated that the Federal government owns over 65% of the nation's forests.

"If the government's policies and regulations are continued, the American people can expect their future housing to be stamped 'Made in Japan' at the expense of the American public," Butler said.

"The Price Commission's regulations rather than increasing the supply of lumber have been 'counter productive' in that they have restricted the nation's lumber supply on many critical lumber items. The Profit Margin limitation imposed by the Price Commission has forced many manufacturers to circumvent the regula-

try up here and I was working on a farm," Coffee explains. He owns, but no longer operates, land there.

tions by discontinuing the manufacture of high manufacturing cost items such as 1" lumber for lower manufacturing cost items, resulting in critical shortages; to curtail or drastically reduce their direct carload shipments which are usually sold at a lower price, and move as much of their material through controlled warehouses at higher prices, and to increase their exports which results in less material being offered for domestic use.

"All of the above factors raise the cost of lumber and forest products to the retail lumber dealer who in turn must pass these increased costs on to the consumer and home builder," Butler said. "The retail lumber dealer is in the unenviable position of being caught in the middle between the Federal governmental policies and the manufacturer's activities on the one hand, and the wrath of the consumer and the home builder to the high lumber prices on the other hand.

"The lumber dealer's dilemma is further compounded by the fact that the Price Commission regulations permit him to pass on increased cost from the manufacturer, on one hand, yet at the same time he is saddled with the Profit Margin limitation which does not permit him to realize a greater margin of profit than he realized in the average of his two best years of 1968, 1969 and 1970. This further increases the lumber dealer's hardship since in 1969 the

price of lumber dropped drastically, and most dealers lost thousands and thousands of dollars in inventory loss during this period of time.

Unlike the manufacturers who can increase their prices to reflect manufacturing costs, raw material costs and increased productivity, the lumber dealer is not permitted to realize the benefit of increased efficiency in his op-

eration. He is actually penalized for keeping his operating down," Butler said.

"If the present governmental policies and the Price Commission regulations are continued, many independent retail lumber dealers will be forced out of business, and the consuming public will be at the mercy of the multi-level corporations," Butler predicted.

STAY AWAKE ITCHING? Let doctor's formula stop it.

Zemo speeds soothing relief to externally caused itching of eczema, minor rashes, skin irritations, non-poisonous insect bites. Desensitizes nerve endings. Kills millions of surface germs, aids healing. "De-itch" skin with Zemo, Liquid or Ointment. Quick relief, or your money back!

ITCHING LIKE MAD?

Get this doctor's formula. Zemo speeds soothing relief to externally caused itching... eczema, minor skin irritations, non-poisonous insect bites. Desensitizes nerve endings. Kills millions of surface germs. "De-itch" skin with Zemo—Liquid or Ointment.

BAZAAR

Buy Your Christmas Goodies From The Century of Progress Study Club Saturday, December 9 - 10:00 a.m.

GRABBE-SIMPSON CHEVROLET INC.

The Congregation Of The CHURCH OF CHRIST Meeting At Rock Creek

EXTENDS A GRACIOUS WELCOME TO ALL TO ATTEND ANY AND ALL OF OUR SERVICES.

SUNDAY 10:30 a.m. 6:00 p.m. WEDNESDAY 7:00 p.m.

Red Fever: it's catching!



Maybe he's not old enough to understand about the things that make IH tractors so much better. Like longer engine life and better lugging ability.

IH Hydrostatic Drive.

Or even fast, dependable parts and service.

But he knows his dad knows.

And his dad checked out the new IH tractors at a "Red Fever" field demo. And not only knows the mechanical advantages.

But the physical ones as well.

Like the safety protection an IH protective frame cab offers. It's called "Family Life Insurance".

Even if he only uses built-in roll-over protection once, it's worth the investment.

Red Fever. It's spreading everywhere.

red fever red fever red fever red fever

It's catching

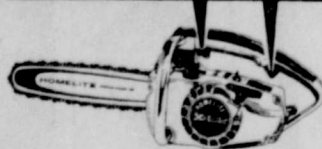
Waiver of Finance Until March 1, 1973

BROWN - McMURTRY

IMPLEMENT COMPANY I-H SALES AND SERVICE SILVERTON, TEXAS 79257

NEW HOMELITE XL2 CHAIN SAW

only saw with TWIN TRIGGER DUAL CONTROL SYSTEM



MAKES CUTTING TWICE-AS-EASY

\$119.95 ONLY

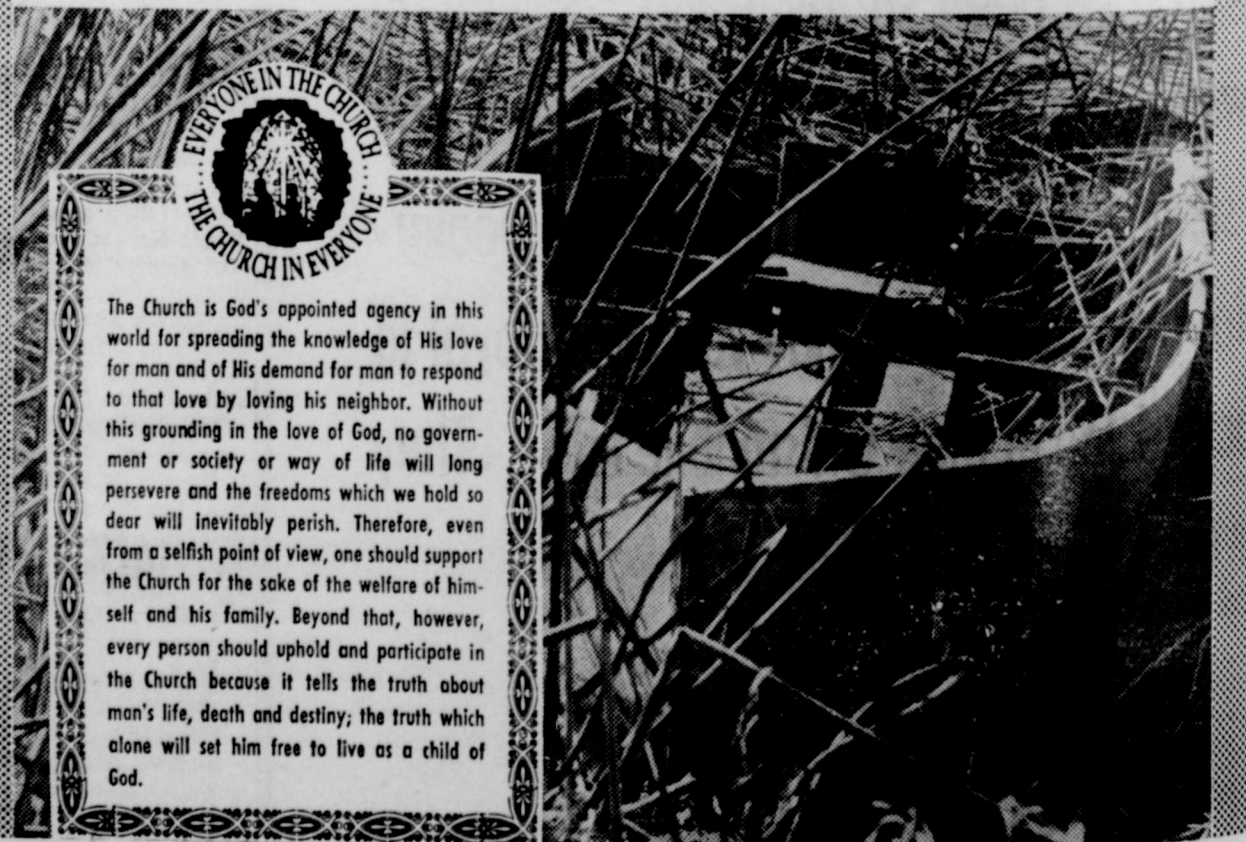
with 12" bar & chain TM—Trademark of Homelite. Look for your local Homelite dealer in the yellow pages.

BEACHED...

and forgotten!

This old forgotten boat is almost buried in the reeds. Can this boat in any way be compared to our talents? What of these talents that God has given us? Have they been beached, forgotten, buried?

Heaven expects us to help in this matter of creating a better world where brother helps brother by using to the fullest extent the talents He has bestowed upon us. God always provokes and prods mankind to do good works, and accomplish great things. And He says that if we dedicate ourselves to this matter He will help. But the decision to use our talents and develop them is our choice.



EVERYONE IN THE CHURCH THE CHURCH IN EVERYONE The Church is God's appointed agency in this world for spreading the knowledge of His love for man and of His demand for man to respond to that love by loving his neighbor. Without this grounding in the love of God, no government or society or way of life will long persevere and the freedoms which we hold so dear will inevitably perish. Therefore, even from a selfish point of view, one should support the Church for the sake of the welfare of himself and his family. Beyond that, however, every person should uphold and participate in the Church because it tells the truth about man's life, death and destiny; the truth which alone will set him free to live as a child of God.



First State Bank



ASSEMBLY OF GOD

David Nuckles, Pastor

Sunday

Sunday School..... 9:45 a.m.
 Worship Service..... 11:00 a.m.
 Evening Service..... 7:00 p.m.

Wednesday

Worship Service..... 7:30 p.m.



CHURCH OF CHRIST SILVERTON

Keith Marshall, Evangelist

Sunday

Sunday School..... 9:45 a.m.
 Morning Worship..... 10:45 a.m.
 Evening Worship..... 6:00 p.m.

Wednesday

Bible Study..... 7:30 p.m.



FIRST BAPTIST CHURCH

Larry Wilson, Pastor

Sunday

Library Opens..... 9:15 a.m.
 Sunday School..... 9:45 a.m.
 Worship Service..... 11:00 a.m.
 Library Opens..... 4:30 p.m.
 Youth Choir..... 4:30 p.m.
 Training Union..... 5:00 p.m.
 Mission Friends, G.A. and R.A..... 5:00 p.m.
 Evening Worship..... 6:00 p.m.

Second Monday

Night W. M. S..... 7:00 p.m.

Second and Fourth Tuesday

W. M. S..... 9:30 a.m.

Wednesday

Junior High Acteens..... 3:35 p.m.
 High School Acteens, first and third Wednesday..... 3:35 p.m.
 Mid-Week Service..... 7:00 p.m.
 Choir Rehearsal..... 7:45 p.m.

Second Saturday

Baptist Men..... 7:00 a.m.

FIRST UNITED METHODIST CHURCH

James Futch, Pastor

Sunday

Sunday School..... 9:45 a.m.
 Worship Service..... 11:00 a.m.
 M. Y. F..... 5:00 p.m.
 Evening Worship..... 6:00 p.m.

Wednesday

Choir Practice..... 6:00 p.m.



JERUSALEM BAPTIST MISSION

Dick Roehr, Pastor

Sunday

Sunday School..... 9:45 a.m.
 Worship Service..... 11:00 a.m.



NEW FELLOWSHIP BAPTIST MISSION

B. F. Edmonson, Pastor

Sunday

Sunday School..... 9:45 a.m.
 Worship Service..... 11:00 a.m.
 Training Union..... 5:00 p.m.
 Evening Service..... 6:00 p.m.

Wednesday

Choir Rehearsal..... 7:00 p.m.
 Prayer Service..... 8:00 p.m.



OUR LADY OF LORETO CATHOLIC CHURCH

Sunday

Mass..... 6:00 p.m.



ROCK CREEK CHURCH OF CHRIST

Earl Cantwell, Minister

Sunday

Worship Service..... 10:30 a.m.
 Evening Worship..... 6:00 p.m.

Wednesday

Worship Service..... 7:00 p.m.

PARENTS' RESPONSIBILITY

"Train up a child in the way he should go: and when he is old, he will not depart from it." Proverbs 22:6

Ask anyone what his most precious possession is, and he will almost invariably say, "My children." The desire for the welfare of our children enables us to "move mountains". We will do anything, give them anything, if we think it will help them.

The one most important thing we can do for them, however, is to instill in them a love of God, and a desire to obey him. The church can help you in this endeavor, inspire and strengthen you. We invite you to take your family to church this week. It may make a great difference in the life direction taken by your children.



The Church is God's appointed agency in this world for spreading the knowledge of His love for man and of His demand for man to respond to that love by loving his neighbor. Without this grounding in the love of God, no government or society or way of life will long persevere and the freedoms which we hold so dear will inevitably perish. Therefore, even from a selfish point of view, one should support the Church for the sake of the welfare of himself and his family. Beyond that, however, every person should uphold and participate in the Church because it tells the truth about man's life, death and destiny; the truth which alone will set him free to live as a child of God.

Coleman Adv. Ser.

BROWN - McMURTRY IMPLEMENT CO.

GRABBE-SIMPSON CHEVROLET CO., INC.

PLAINVIEW PRODUCTION CREDIT ASSN.

CITY CAFE

RHODE PIPE COMPANY

ASHEL McDANIEL TEXACO

BRISCOE COOPERATIVES

SILVERTON ELEVATORS, INC.

FIRST STATE BANK

HILL FARM SUPPLY, INC.

BRISCOE COUNTY NEWS

CITY TAILORS

BUD'S GROCERY & MARKET

LALLIE'S IN & OUT DRIVE IN

VERLIN B. TOWE AGENCY

FOGERSON LUMBER & SUPPLY

JACK'S PHARMACY

T. & F. GIN, INC.

NANCE'S FOOD STORE

SILVERTON BUTANE COMPANY

BROWN HARDWARE AND FURNITURE

JONES DEPT. STORE

FOR SALE

THE YARN SHOP WILL CLOSE
December 15. All knitting worsted, 88c; sport yarn, 50c. 49-2tc

FOR SALE: TWO MIXED BLOOD
Gilt, 75-100 lbs., \$25.00 each. O. E. May, Phone 2081, Silverton, Texas. 49-2tp

ORDER YOUR WESTERN Christmas Cards now at Merlene's. 46-tfc

FOR SALE: A.K.C. ST. BERNARD
pups, champion bloodline. Mother of pups ready for show. Ph. 995-4797, 1005 N.W. 9th, Tullia, Texas. Doyle Ozment. 48-3tc

FOR SALE: PORTABLE CORRALS
and loading chute. See Johnnie Burson. 48-2tc

EASTERN STAR BARGAIN
Store has new merchandise arriving almost daily. Lots of good girls clothes. 37-tfc

FAMBRO GATES AND PANELS,
Designed by and built for ranchers. All steel; wind proof; custom made. Full details available from the local dealer, Brown Hardware in Silverton. 40-tfc

CAMPUS CARRY-ALL — HEAVY
weight cotton twill waterproof lined bag. Ideal for carrying gym clothes and books. Drawing closure. \$1.59 each. Briscoe County News. 36-tfc

THREE WALL MOUNTED UN-
vented Gas Heaters; ideal for bathroom. Never used. Enamelled finish, two pink, one white. \$12.50 each. 823-3381, Briscoe County News. 42-tfc

CARPET NEED SHAMPOOING?
Try our new Bissell Machine even on your shag carpet. Bissell shampoo by the gallon, 1/2 gallon or 22 ounce size. Fogerson Lumber & Supply. 48-tfc

SUDAX HAY FOR SALE. RAY Teepel, 847-4945. 51-tfc

NEW SHIPMENT EATON'S FOLD
and Seal Note and Letter Papers. Gift Boxed. Also some new sheer letter papers. Briscoe County News. 36-tfc

SINGER SEWING MACHINES,
Vacuum Cleaners, Smith-Corona Typewriters, Adding Machines—Sales - Service. Here every third Thursday. Merchandise on Panel. Memphis Sewing Machine Co. 18-tfc

WE HANDLE THE NEW MICHEL-
lin Tires, steel cord tread; guaranteed 40,000 miles. Brown-McMurtry Implement. 15-tfc

FOR SALE: 5 ACRES 3 MILES
east of Silverton on Highway 86; 3" pump and 1/4" pump; fenced hog proof. Phone 823-4911, Charles Grantham. 29-tfc

A GOOD LINE OF GRAHAM-
Hoeme and Nichols Sweeps. Get your needs at J. E. (Doc) Minyard Implement. 14-tfc

WE HANDLE MILLER OFFSET
Plows. See them today! Brown-McMurtry Implement. 44-tfc

SPECIALS ON NEW CUB CADET
lawn mowers. Brown-McMurtry Implement. 15-tfc

SILVERTON LODGE No. 754
A.F. & A.M.

Stated Meeting
Second Tuesdays
7:30 P.M.
Glen Lindsey, W. M.
Gail Bullock, Sec.

RAY TEEPLE FEEDLOT

PURINA BULK FEEDS, CATTLE & HOG HEALTH AIDS
STOCKERS FOR SALE - CATTLE WORKING PENS AVAILABLE
BONDED STATE INDEPENDENT PUBLIC WEIGHER
Delivery Service On All Feeds - Ralston Purina
Credit On All Approved Accounts
Backgrounding Pens Available
CHECK WITH US FOR YOUR FEED NEEDS
Ray Teepel Perry Brunson
847-4945 847-4947
SILVERTON, TEXAS

DR. JOHN W. KIMBLE OPT.
Contact Lenses - Visual Analysis
OPEN ALL DAY SATURDAY
Floydada, Texas YU 3-2496

DR. O. R. McINTOSH
OPTOMETRIST
211 South Main Street Phone 983-3460
FLOYDADA, TEXAS

GARAGE SALE: SATURDAY, December 9. Prices reduced. Some additional items. 1 mile south of Briscoe Co-op Gin. Mrs. Elton Cantwell, Phone 847-4789. 49-1tc

FOR SALE: '49 MODEL JEEP,
Warner Hubs, 12 volt system, tow bar, 1/2 metal cab. Dale Smith, 806 455-3182. 47-4tp

1972 HONDA MINI TRAIL, GOOD
condition. \$150.00. Paul Brannon. 48-2tc

For Your
Animal Health
Needs
SEE
Norman Strange
823-3551
SILVERTON, TEXAS

LESHORE CALGIFT for all types
of advertising: Calendars, Ashtrays, Pencils, Key Chains, etc. See your local representative, Rex Tiffin. 1-tfc

MOORMAN'S FEEDS
Stretch your wheat and stalk grazing with Moorman's Protein and Mineral
It Pays To Figure Feed Cost
Contact
DONNIE MARTIN
823-5791
Silverton, Texas

HOT WATER HEATERS, 20 - 30 -
40 Gallon; Gas and Butane. Brown Hardware. 36-tfc

FOR ALL YOUR LIFE INSURANCE
and
HOSPITALIZATION
NEEDS - USE
Archie Castleberry
SOUTHLAND LIFE
11th and Washington
Amarillo, Texas

RECEIVE SHIPPED CATTLE
WITH NEW PURINA
RECEIVING CHOW TO
*help cut death rate
*lower sickness expense
*give cattle fast start
RAY TEEPLE FEED LOT

Underground
Irrigation Pipe
Plastic Gas Pipe
RHODE PIPE CO.
Phone 5401 or 3231
Silverton, Texas

OLD SCRATCH CATTLE OILERS,
sales, service, parts and insecticides available through Henry T. Hamblen, Wayside, Texas. 54tc

CARRUTH FENCE CHARGERS:
Have exchange on your rebuildable chargers. Have one that will not hurt children. Fogerson Lumber & Supply. 45-tfc

TERMITE OR TREE SPRAYING
now available by Hill Farm Supply. Call us at 823-4751 or Fred Brannon at 823-4031. 43-tfc

FOR SALE: 22 COLT MAG.,
\$65.00; 22 Automatic, \$65.00; 9mm Browning, \$130.00. Phone 795-0310, 2807 66th, Lubbock, Texas. 49-tfc

FOR SALE: 1 8" TABLE SAW
with dado blades; 1 antique walnut buffet, good condition; 1 camel back trunk, near perfect condition. J. R. Steele, 823-2811, 900 Braidfoot. 49-3tc

IT'S TERRIFIC THE WAY WE'RE
selling Blue Lustre to clean rugs and upholstery. Rent shampooer \$1. Bud's Grocery & Market. 49-1tc

FOR SALE: SOFA, BLACK IM-
itation leather sofa bed type. Call 847-4413. 49-1tp

KIRBY
In order to better serve our customers in Silverton and surrounding areas in a more efficient manner, Albert Holt has been selected as our representative of The Kirby Company of Plainview. See Mr. Holt for sales and service on Kirbys and all other makes of cleaners.
Al Holt R. C. Hinrichs
Silverton Plainview
Ph. 823-2641 Ph. 296-7752

WANTED
Have a Roto-Rooter that will handle sewer line troubles and tree roots. Will also do all kinds of pumbing, carpenter work and painting.
T. V. McClure
Phone 847-4743 48-2tc

WANTED!

WANT TO RENT FARMLAND.
Call 847-4722, A. T. Brooks. 42-tfc

WE NOW HANDLE MOORMAN'S
Feeds. Hill Farm Supply. 18-tfc

MATTRESSES RENOVATED. All kinds and sizes new mattresses for sale, including mattresses for baby beds, king and queen sizes, or tailor - made to your specification. Fast and dependable service. For appointment call 3381, Briscoe County News. 23-tfc

UNWED MOTHERS — The help
you need is available at the Methodist Mission Home. Best medical care, effective counseling, continuing High School classes, warm acceptance, and adoption service if desired. Call (512) 696-2410 or write Dr. Stockwell, P. O. Box 38410, San Antonio 78228. 9-tfc

CUSTOM SPRAYING: CALL Buck Payne, 823-3596 day or 823-6981 night. 47-tfc

LOST AND FOUND

FOUND: PRESCRIPTION GLAS-
ses in brown frames; men's. Can be claimed at the News Office.

Bill's Trim Shop
We Specialize in Pickup Seats, Car Interiors
995-4616
East of First State Bank Tullia, Texas

BILLY TURNER WELDING
Floydada Highway
Phone 5441

LOST: FOUR YEAR OLD COLLIE
two miles north of Turkey. Weight: Approximately 50 lbs. Color: Mostly gray with white markings. Answers to name of Coonie. REWARD OFFERED. Call Ronnie Eudy, 5981, Turkey. 46-tfc

REAL ESTATE

THREE BEDROOM HOME FOR
Sale. Phone 823-2401 or see Clifton Stodghill. 47-tfc

ONE FURNISHED APARTMENT
For Rent. J. E. (Doc) Minyard. 42-tfc

HOUSE FOR SALE: TWO BED-
rooms, den, garage, large fenced yard. 1104 Commerce. Phone 847-4472. 51-tfc

FOR RENT: 2 BEDROOM HOUSE
with garage. George Seaney. 49-tfc

CARD OF THANKS

The S. P. Brown family wishes to express its deep appreciation to each and every one of their many friends and neighbors for all the prayers, months of concern, lovely food and floral offerings, as well as visits and cards given during the terminal illness and death of their beloved wife and mother, Myrtle M. Brown.

Consumer Enemies

(Editor's Note: This is the second article in a series on consumer and merchant behavior. Written as the holiday season approaches, it unveils consumer enemies and their costly practices, which raises prices for other consumers.)

"It's about time consumers realize some of their worst enemies are fellow consumers," Mrs. Dorothy Powell, County Extension Agent, explained her comment noting that "thoughtlessness and deceitfulness in some consumers increase costs for all of us."

Citing information from the American Association of University Women (AAUW) and the "Texas Methodist," the agent listed cases in which consumers themselves have raised prices.

—Shoplifting, which is increasing at a rate of 20 percent each year—robs every American family of about \$30 a year. In dollars, shoplifting totals more than 3.5 billion a year—more than \$8 million a day.

Retail merchants estimate that prices of goods today are 15 percent higher than they'd be if no shoplifting problem existed. To make up for theft of a \$15 item, \$1,000 worth of goods would have to be sold to cover the loss in net profit.

—Passing bad checks has discouraged retailers from cashing checks or has encouraged them to charge for the service.

—Hospital patients who falsify addresses in order to avoid bills have increased rates for everyone. —One percent of all credit card transactions result in charge-offs, which means accounts that won't be paid. To blame are people who charge more than they can afford, and lost or stolen credit cards.

—Long distance telephone frauds totaled \$21 million in a recent year; however, company policy is resulting in many convictions, which may lessen the practice.

—Ten percent of all airplane reservations result in "no-shows." Students, businessmen and even leading politicians are among those to blame.

—Rough handling of displays and perishables in grocery stores adds about one percent to the cost of retail food operations.

*** NEW BABY**

Mr. and Mrs. Roger Younger of Amarillo became parents of a son, Trent Cole, November 17 at Lockney General Hospital. He weighed eight pounds and six ounces and was 21 inches long.

Grandparents are Mr. and Mrs. Kenneth Tate of Lockney and Mr. and Mrs. Roy Younger. Great-grandparents are Mr. and Mrs. D. D. Tate of Lockney; Mr. and Mrs. Doyce Smalley and Mr. and Mrs. A. W. Calthorp, Floydada; Mr. and Mrs. A. V. Younger, Harlingen; and Mr. and Mrs. M. B. Self.

The great-great-grandmothers were Mrs. J. B. Sweck of Mineral Wells and Mrs. H. S. Jackson of Kilgore.



Higginbotham Bartlett Co.

300 East 6th
PLAINVIEW, TEXAS

- GYPSUM WALLBOARD 1/2" 4'x8' each \$1.15
- LUMBER
- 1x6 Rough Fencing 100 Lin. ft. \$8.95
- 2x4 Econ. Dimension 100 Lin. ft. \$6.75
- 1x6 "D" Car Siding 100 Lin. ft. \$14.00
- WALL PANELING 4'x8' Prefinished Per sheet \$2.99
- PAINT
- Latex Wall Paint White and Colors Per gal. \$3.25
- CORRUGATED IRON 6' - 12' per sq. \$10.95
- POST 3"x6 1/2" Cresote .89
- 5" Steel \$1.45
- 4" Electric .32
- STOCK GATES
- Life Time Steel 14' \$27.25
- 16' \$29.35
- STORM DOORS
- Aluminum 2-8x6-8 & 3-0x6-8 \$29.50
- STOCK PANELS Galvanized Welded 34"x16' \$10.45
- 52"x16' \$11.95
- STOCK TANKS (3' thru 10') 8' \$72.95
- BARB WIRE 80 rod roll \$10.50
- DAMAGED PANELING 4'x8' per sheet \$1.50
- TRAILER MATERIAL Lumber, Paint, Wire, Hardware
- DISCOUNT PRICES
- LOW

Helps Shrink Swelling Of Hemorrhoidal Tissues

caused by inflammation
Doctors have found a medication that in many cases gives prompt, temporary relief from pain and burning itch in hemorrhoidal tissues. Then it actually helps shrink swelling of these tissues caused by inflammation. The answer is Preparation H®. No prescription is needed for Preparation H Ointment or suppositories.

FREEZONE IS FOR CORNS THAT HURT

Why fool around with painful corns? Freezone can help you remove them. You'll see. In just days, the corn will be gone... the hurt will be gone... the pads or plasters. Drop on Freezone take off corns.
freezone REMOVES CORNS AND CALLUSES

We Are Now Dealers For
POWDER RIVER CATTLE EQUIPMENT
Portable Pens, Chutes, Feeders
FOGERTON LUMBER & SUPPLY

Take The Gamble Out Of Spring Planting
Plow Down ZIPP Right Now

Why Fall Plowdown?:

- * Spreads the workload by getting most of the fertilizing chores out of the way early.
- * Places phosphorus and potash down deep in the zone to give next year's crop a full-feed program.
- * Gives nitrogen a chance to assist in decomposing residues.
- * Allows earlier planting to assure early maturity, resulting in increased yields.
- * GIVES YOU THE ADVANTAGE OF A TAX WRITE OFF BY BUYING NEXT SPRING'S FERTILIZER THIS FALL.

Why Oxy's ZIPP?:

- * ZIPP provides greater phosphorus efficiency through greater uptake by the plant.
- * ZIPP contains soluble-sulfur which regulates soil aids in phosphorus and micro-nutrient availability increases protein production.
- * ZIPP provides readily zinc and iron.
- * ZIPP contains an ammonium type nitrogen that is more resistant to leaching.

GET THE JUMP ON SPRING
Contact

HILL FARM SUPPLY, INC.
Silverton, Texas
Your Local Dealer For
OCCIDENTAL CHEMICAL CO.
Division of Occidental Petroleum Corp.
Plainview, Texas 79072



BOOST YOUR PROFITS BY FEEDING WHILE GRAZING WHEAT PASTURE
WHEAT PASTURE MINERAL
CATTLE AND HOG FEEDS - ACCO FEEDS
BUYING AND STORING GRAIN
SERVICE ELEVATOR
Phone 823-5571 or 823-6661
Leland H. Wood, Owner