

PAGE ONE

A QUICK READ OF THE NEWS

Cattlemen take beef to court

Amarillo cattle feeder Paul Engler wasn't about to take any bull from Oprah Winfrey.

So he and a dozen other cattlemen sued the popular TV talk show host after she aired a show that speculated on the possibility of a mad cow disease outbreak in the United States even though there has never been a documented case here.

Cattlemen claim they lost millions of dollars because of the show. Oprah claims she was only keeping the public informed.

Jury selections begin in an Amarillo trial on Jan. 20 to determine whether Winfrey defamed an entire industry when the disease was made fodder for her talk show broadcast in April of 1996.

Cattle prices began to fall the day of the show and fell for two weeks before rising again. Winfrey's show came at a time when drought, high feed prices and over-supply were crippling the cattle industry.

Engler claims he lost \$6.7 million because of the show.

Mad cow disease, or bovine spongiform encephalopathy, is a brain-destroying disease that ravaged cattle in Britain in the late 1980s.

It is believed the deadly disease was spread by cattle feed containing ground up sheep parts, but it was not until 1996 that British scientists announced that humans may have contracted the disease by eating infected beef.

The lawsuit falls under a 1995 Texas law that protects agricultural products from slander.

MISD releasing report cards

Parents of Muleshoe students will be receiving their child's report card this week.

Officials at Muleshoe schools are working hard to compile the grades for the last term which ended before the Christmas holiday.

Dillman and DeShazo students will be bringing their report cards home on Wednesday afternoon.

Parents of high school and junior high students can expect report cards to arrive in the mail later this week.

Classic announces increase

Classic Cable customers will be seeing an increase in their cable bills starting in February.

Effective Feb. 1, Classic Cable has announced that the basic pre-tax service rate will increase three dollars to \$28.95 per month.

Classic Cable attributes the change to the increasing cost of doing business, including the significant rise in providing cable network services such as ESPN, Disney, USA Network and WTBS.

In a letter sent to customers by Classic Cable, the company stated that the rate increase will enable them to continue providing quality programming and customer service, as well as help to develop the technology of the future.

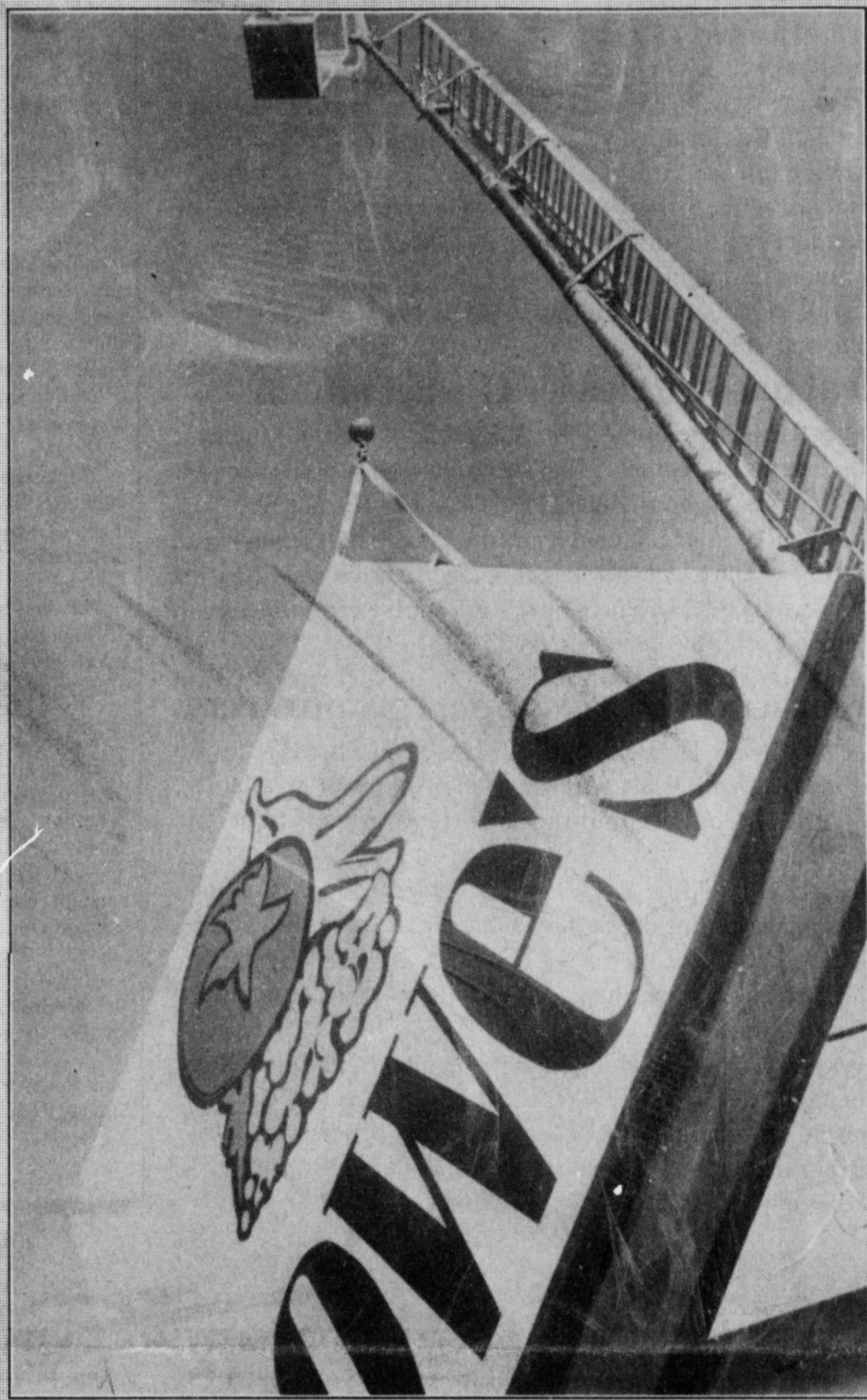
LOCAL WEATHER

	High	low	Pre.
Friday	55	16	—
Saturday	63	31	.12
Sunday	60	41	—
Total to date			.12

EXTENDED FORECAST

Fair and partly cloudy throughout the week-end. Thursday, highs in the upper 40s, lows in the 20s. Friday through Sunday, lows near 20, highs in the 50s.

HIGHS AND LOWE'S



Workers installed a new Lowe's Marketplace sign last weekend in the parking lot of the Muleshoe grocery store

City's search for development director continues

By RICK WHITE
Managing Editor

Muleshoe City Manager James Fisher admits he is anxious to find an economic development director although the actual job description and title has changed during the search.

The City is no longer looking for a full-time economic development director and is now advertising the position as assistant city manager for economic development grants and research. The position would fall directly under Fisher's supervision.

"It's been a difficult position to fill," said Fisher of a search that has dragged on past six months. Salary demands have soared as economic development has become one of the hottest fields in today's job market Fisher said and it's been a difficult sell to get experienced applicants interested in coming to Muleshoe.

Salary demands for a full-time economic director range from \$35,000 to \$50,000, Fisher said, which the city is unwilling to meet.

The salary range for the new position is believed to be in the

\$25,000 to \$30,000 range.

Fisher said it's important to find the right person for the job.

"I don't want to hire someone just to fill the position," Fisher said. "We want to move as quickly, but as cautiously as possible."

A Lubbock man was offered the position last month but turned it down.

Fisher is conducting the search and will do the hiring, he said.

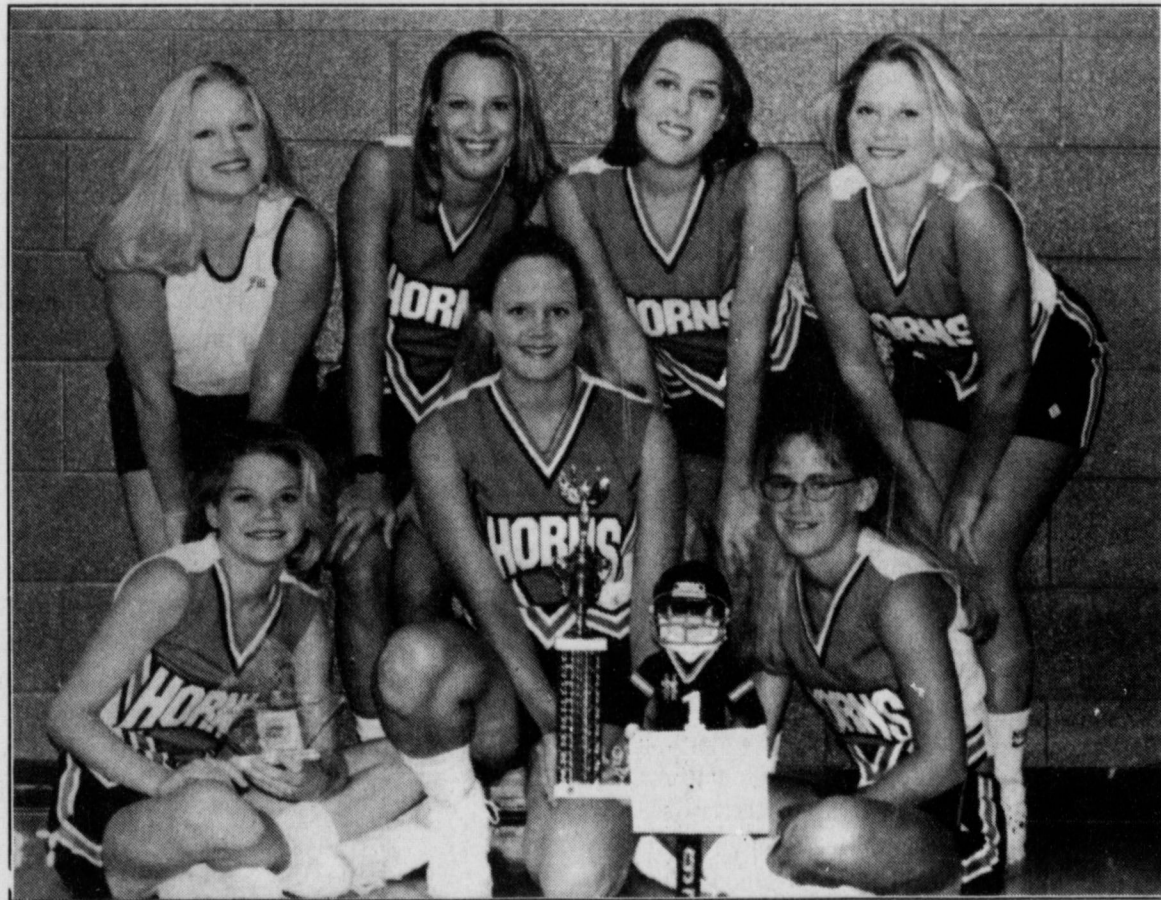
He said he is currently sifting through six or seven resumes and is trying to set up interviews.

"We'll see if we can find somebody in the mix that can do the best job for the City of Muleshoe," Fisher said. "If not, we'll go back to the drawing board."

Fisher said the job would entail working to improve current businesses and trying to attract new ones to Muleshoe. The job would also involve grants and research to try to find additional revenue.

Filling the position will allow the city to work toward

see **ECONOMIC** on page 2



NCA cheerleaders

Lazbuddie cheerleaders competing at the High School National Cheerleading Championships in Dallas last week were (back, from left) Jill Hodges, Kia Morris, Roxann Warren and Leah Turner. (Front) Staci Foster, Holly Engelking and Desirae Brakebill.

THREE CHEERS FOR LAZBUDDIE

■ Cheerleaders ninth at NCA national meet

The Lazbuddie High School varsity cheerleaders had a lot to cheer about this year, especially with the success of the Longhorn football team.

The cheerleaders recently earned some recognition and awards of their own.

The cheerleading squad, which includes Leah Turner, Desirae Brakebill, Staci Foster, Holly Engelking, Kia Morris and Roxann Warren, finished ninth at the 16th annual NCA High School National Championships in Dallas held Dec. 27-30.

The championship is the world's largest cheerleading competition and attracts more than 20,000 cheerleaders and spectators.

The National Cheerleading

Association invites teams to the championship from more than 1,100 summer cheerleading camps across the United States.

The Lazbuddie girls qualified for the national competition at the Wayland Baptist University NCA Camp in July.

The Lazbuddie cheerleaders were the first six-member team to compete at NCA fi-

see **CHEERS** on page 2

One local office will be contested in March primary

With the deadline to file for an elected County offices ending Jan. 2, it is now official that there will be only one local race contested in this year's primaries.

In March, Bailey County Democrats will have to choose between two candidates for County Commissioner of Precinct 4.

Jerry Damron of Muleshoe will be challenging incumbent Bennie Clauch of Bula for his seat on the Commissioner's Court.

Although this is the only position in the party primaries which has more than one candidate, both the Republican and Democratic ballots will have a candidate for County Clerk.

Republican Sherri Harrison and Democrat Jan Pierce will not run against each other until the General Election in September. They will vie for the office formerly held by Billie Downing, who resigned in December.

Democratic incumbents running for re-election include Marilyn Cox for County Judge, Elaine Parker for District Clerk, C.E. Grant for County Commissioner Precinct 2 and Justice of the Peace Jack Bates.

Other candidates running on the Democratic ticket include Donna Kirk for County Treasurer and Gordon Green for District Judge.

Combest draws challenger

U.S. Rep. Larry Combest drew a challenger in his bid for re-election this year.

Combest, a Republican from Lubbock whose jurisdiction covers Bailey and Parmer counties, is being opposed by Sidney Blankenship of Adrian for the House seat representing the 19th Congressional District.

Combest has been serving the district since 1985 and is expected to chair the House Agriculture Committee if re-elected.

Blankenship, 54, is an animal welfare worker.

AROUND MULESHOE

Del Toro earns engineering degree

Patricia Del Toro had graduated from the University of Texas at Austin, Dec. 7, 1997 with a Bachelors of Science in Chemical Engineering.

Del Toro, a 1992 graduate of Muleshoe High School, is the daughter of Rey and Gloria Del Toro.

Patricia has accepted a production engineering position with Union Carbide Co. in Seadrift, Texas.



Patricia Del Toro

Brown chosen by Marines for Hanoi unit

Lance Corporal Burton B. Brown, son of Mac Brown of Muleshoe and Jama Maritt of Hobbs, has been selected to serve as a Marine Security Guard at the American Embassy in Hanoi, Vietnam.

Burton's unit is a newly-formed Marine Security Guard Detachment. It is the first Marine detachment ever to reside in Hanoi. Burton, a graduate of New Mexico's Military Institute in Roswell, was hand-picked from over 1,400 other Marines for this position. He has been in the marines since July 1995.



LCpl Burton B. Brown

1998 American Heart Association's Ball

The American Heart Association invites everyone to celebrate Valentine at The Captain's Ball. This year the theme is the "Love Boat" and the romantic evening will featuring gourmet food, open bars, the Dallas Brass and Electric Band, dancing, open casino, live and silent auctions and a reverse raffle drawing for a one year lease on an automobile.

The ball will be held from 7:30 p.m. to midnight, Saturday, Feb. 14 at the Lubbock Memorial Civic Center.

The Captain's Ball is the premiere winter event for the South

Plains Region AHA raising money for the fight against heart disease and stroke.

Tickets are available for \$100 per person or \$1000 for a reserved table of 8. For more information contact Joyce McGehee at 965-2050, Anita Mitchell at 272-5630 or Linda Tucker at 272-5118.

Prenatal classes beginning in Littlefield

Lamb Healthcare Center is once again offering Prenatal Classes. The series will begin Wednesday, Jan. 14 and go through Wednesday, Feb. 4. Each class will be held at Lamb Healthcare Center from 6:30 p.m. until 8:30 p.m.

The class will be taught by Karolyn Davis, LVN. Karolyn is an obstetrics nurse with 15 years experience. She has been teaching prenatal classes for three years and is a Lactation Educator. Her classes are fun and informative.

The class is free to those who plan to deliver at Lamb Healthcare Center, and \$25 for those who plan to deliver elsewhere.

For more information, or to pre-register, please contact: Debra B. Ray, RNC at Lamb Healthcare Center, 1500 S. Sunset, Littlefield or call 1-806-385-6411 ext. 276.

Local pastor releases Gospel albums

Pastor Jack Stone of the First Assembly of God in Muleshoe invites everyone to come and celebrate the release of his two new gospel albums "Keeper of the Door" and "For His Glory."

Stone will be giving a concert and the church will be having an Open House. The event will start at 7 p.m., Saturday, Jan. 10 at the First Assembly of God, 521 S. First, Muleshoe. Refreshments will be available after the concert.

Myasthenia Gravis support group meets

The Northwest Texas Chapter of Myasthenia Gravis is holding a meeting with guest speaker Adida Adkins of St. Mary's Emergency room explaining information pertinent to Myasthenics.

The meeting will be at 11:30 a.m., Saturday, Jan. 10 at the Professional Building of St. Mary of the Plains, 4201 24th Street Suite 501, Lubbock.

The meal will be pot luck. There will be a visitation after Adkins' presentation.

Everyone is invited including anyone interested in learning more about "Myasthenia Gravis." All physicians and dentists interested in treating "Myasthenia Gravis" patients are also invited to attend. For more information call 806-298-2040 or e-mail: nwtmg@juno.com.

CHEERS

From page 1

In the non-mount division, the squads were judged on their cheerleading, dance, and gymnastic abilities in a 2 1/2 minute routine.

Lazbuddie, a six-man 1A school, competed against other high school cheerleading squads, that had up to 20 members, many being from 4A and 5A schools.

Other awards that the Lazbuddie cheerleaders have won this year include:

All six girls received a nomi-

nation to tryout for NCA All-American Cheerleader with Kia Morris and Roxann Warren making the All-American cheerleading team.

The team won the NCA spirit stick on two different nights and won it again on the last morning, which earned them the right to bring it home.

The team won the "Best decorated NCA Spirit Stick" on two different nights.

Superior NCA ribbons were earned by the squad every night

for their performances.

The Lazbuddie cheerleaders also earned the prestigious "NCA Herkimer Award." The award is only given to selected squads across the nation based on qualities of leadership, ability and character.

Several Lazbuddie cheerleaders also won the World Cheerleading Association nomination for WCA Team America during given at a private camp held at Lazbuddie in July. The camp was designed for the Lazbuddie Junior High squad, but was open to anyone.

Individuals in three divisions received nominations and are eligible to compete in the World Cheerleading Association competition in Nashville.

Pee-Wee winners were Montana Steinbock (3rd grade) and Amberlee Steinbock (3rd grade).

Junior division winners were Bethenie Sanchez (6th grade), Kayla Kimbrough (8th grade) and Savannah Black (8th grade).

Senior division winners were Turner, Brakebill, Foster, Engelking, Morris and Warren.

The NCA High School Championship will air on USA Network this spring.

ECONOMIC

From page 1

economic development on more of a full-time basis, Fisher said.

The City has built up approximately \$575,000 in its economic development fund since Bailey County voters approved a 1/2 cent sales tax increase in 1993.

Approximately \$130,000 a year is raised through the tax.

The funds are solely dedicated to economic development

although during the recent legislature, discussions were held on the possibility of additional uses such as improving city infrastructure.

Fisher said economic development has turned into a ruthless and high stakes war, with cities offering outrageous incentive packages and even cash to attract prospective businesses.

"I'm not willing to sell the community for one business," Fisher said.

January 9, 1948

January 9, 1998

50th Anniversary Celebration



Honoring Mike & Agnes Dent
January 11th from 2 pm to 4:30 pm
5322 22nd St. in Lubbock, TX.

Family & friends are invited to help celebrate this joyous occasion.

The reception is being hosted by Mike Dent of Breckenridge, TX., Joe Dent of Double Oak, TX., Fawn Musick of Wolfforth, TX., & Cathy Bonds, Connie Fulbright, & Cherry Eaton, all of Lubbock, TX.

KENW-TV

Public Television

A SCIENCE ODYSSEY

The Journey of a Century. Penicillin. The airplane. Pulsars. Organ transplants. The atomic bomb. Psychoanalysis. The Model T. DNA. Volcanoes. The computer. Apollo 8.

Travel with PBS to the dramatic frontier of scientific discovery and exploration as the most astonishing 100 years of science and technology dramatically unfold with the premiere of *A Science Odyssey* — the journey of a century. Hosted by award-winning journalist Charles Osgood, this five-part, ten-hour series explores the sweeping changes that have revolutionized life and thinking in the twentieth century.

Each two-hour episode moves chronologically through the century, blending exciting historic adventures — full of twists and turns, suspense and surprise — with the political, economic, and cultural changes that have caused (or come about because of) scientific discovery. Through illuminating first-hand interviews, rare historical footage, and state-of-the-art computer animations, *A Science Odyssey* offers a rich chronicle of the century's most revolutionary scientific and technological discoveries.

"Matters of Life and Death"

"Matters of Life and Death," the first program in *A Science Odyssey's* landmark five-part series, explores the science and the struggle behind many of the twentieth century's most dramatic medical experiments and discoveries.

"Mysteries of the Universe"

"Mysteries of the Universe," the second installment, reveals the stories of men and women who have struggled to make and understand the twentieth century's most astonishing discoveries in physics and astronomy.

"In Search of Ourselves"

"In Search of Ourselves" is filled with the powerful profiles of struggling scientists and ordinary citizens as they use all of the available scientific ideas and technologies of the day to try to understand and explain human behavior.

"Bigger, Better, Faster"

From Kitty Hawk to Cape Canaveral, the radio to the Internet, the vacuum tube to the microchip, "Bigger, Better, Faster" tells the hidden stories behind the major technological innovations of the past hundred years.

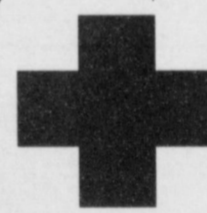
"Origins"

"Origins," the final episode, takes an epic journey from the Earth's creation to the beginnings of life to the emergence of humankind.

A Science Odyssey will be broadcast on five consecutive evenings, Sunday through Thursday, January 11th-15th at 8:00 p.m. on KENW-TV.

Channel 3 Television from

Eastern New Mexico University, Portales, New Mexico



Home Folks Caring For Folks At Home.

MULESHOE AREA
HOME HEALTH
Agency

Featured Patient

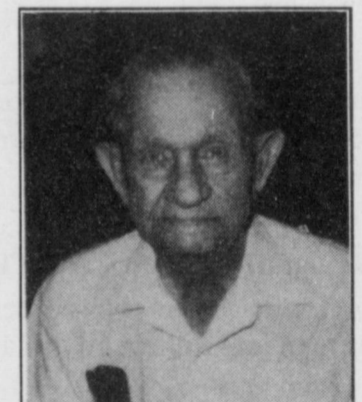
Melvin L. Young was born July 12, 1911 in Dunn, TX., which is a small community near Snyder. He moved to Plains, TX., where he lived until age 11. Then, in 1921, he moved to Lubbock and eventually, he ended up in Wolfforth. Mr. Young married Ida Teague in 1936. She passed away in 1985.

Mr. Young worked 25 years at Galbraith Steel & Supply until his retirement at age 69.

He is the proud father of 3 children: Hugh Young of Muleshoe, Linda Jackson of New Orleans, LA., and Joe L. Young. Joe passed away at the age of 53. Mr. Young has 4 grandchildren and 1 great grandchild.

He is a member of the Methodist Church and still enjoys attending services. Until his illness, Mr. Young stayed at home and still did everything for himself, including driving himself to Lubbock in the 1991 pickup he won in a contest at United Supermarket.

Mr. Young is "well satisfied" with the staff at M.A.H.H.A. "They take good care of me," he says.



Melvin L. Young

Home Care



Home is where the heart is

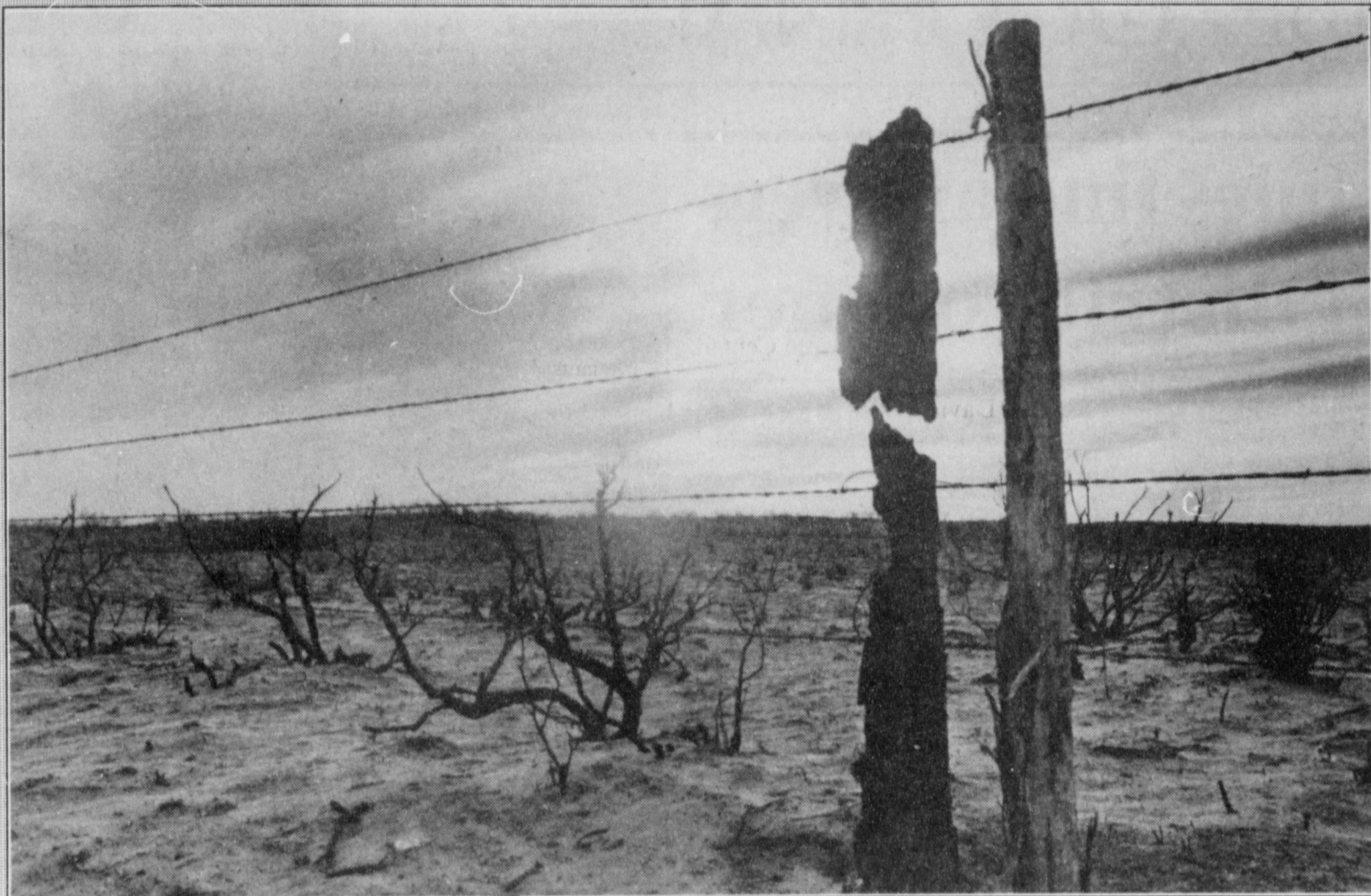
Affiliated with Lubbock Methodist Hospital Systems

To receive Home Health Services, talk with your physician or talk with hospital personnel when you are hospitalized.

We accept Medicare, Medicaid and Private Insurance
It Is Your Right To Choose
The Home Health Agency
You Prefer.

24 Hour # 272-3346
Local Nurse on call 24 hours a day to offer prompt service.

POLAR OPPOSITES



The charred remains of a fence pole stands next to its replacement along Highway 214 south of Muleshoe. A grass fire in the fall destroyed the pole and everything else in its path, leaving only sand and charred trees behind.

STAMP OUT THE FLU

GET YOUR FLU SHOT

Stamp Out The Flu and Get Your Flu Shot Today

Call 1-800-LUNG-USA for more information.

AMERICAN LUNG ASSOCIATION of Texas

Shots Recommended Between Oct. 1 - Nov. 15

2231

RED WING SHOES
Made in U.S.A.

The Fair Store
120 Main 272-3500

Dr. A.R. Ploudre

Open your eyes to vision care that works with your budget!

- Quality care at a reasonable cost
- Contact lenses
- Eyeglass prescriptions filled
- NM & Texas Medicaid, Medicare Assignment

We are also proud to provide special assistance to low income families in need of vision care. Families who feel they qualify are encouraged to call for more information.

Payment plan available • Se Habla Espanol

1515 Gidding St., Clovis, N.M.
(505) 762-2951

All childcare workers must list with state

AUSTIN—Texas lawmakers are going one step further to ease parents' minds and instill safety measures for all children in day care situations.

Effective Jan. 1, anyone taking care of at least one unrelated child regularly, and receiving compensation, must list with the state and have a background check.

In the past, Texas law regulated only home day care providers which cared for four or more children, requiring that the family businesses be either licensed or registered.

According to state officials, the state is working harder in protecting small children by checking the backgrounds of a new set of child-care providers.

"The new law applies to people who receive compensation for the regular care of three or fewer unrelated children in their own home," said Karen Eells, deputy director for programs at the Texas Department of Protective and Regulatory Services.

"The background checks are designed to ensure that no person with a criminal or substantiated child abuse history is entrusted with the care of children."

Eells said parents should always ask to see the listing certificate. Parents can also call the Child Care Licensing office to check the validity of the

certificate.

Listed family homes are not inspected by the state and the providers are not held to any health or safety standards other than the background check. Parents are responsible for making sure that the family home is a safe place where their children can thrive.

Caregivers who fall into the new category of family home child care must become listed with state by Jan. 1, 1998. If the home care provider does not become listed with the state, the provider is operating illegally and may be subject to a fine up to \$2000 and six months in jail.

To find out how to comply with the new law, caregivers should contact their local Childcare Licensing office of the Texas Department of Protective and Regulatory Services or call 1-800-862-5252.

The law applies to persons who care for one, two or three unrelated children for four or more hours per day, three days a week, for more than nine consecutive weeks. Related children are defined as the caregiver's own children, grandchildren, great-children, siblings, first cousins, nieces or nephews by blood, marriage, or adoption.

"This law does not apply to nannies, baby sitters or those who only occasionally take care of children," Eells said.

"This is for people who care for children in their own home on a regular basis."

The background checks apply to the provider, each person employed to work in the provider's home and each person over the age of 14 who

regularly or frequently stays or works at the home while children are in care.

Once the background check is completed, the family home provider will be issued a certificate of listing with the state.

Winter Bargains

Save Now at RadioShack!

79⁹⁹
SAVE \$20
Cordless phone with two keypads

Two phones in one! Enjoy clear sound from the handset or use the speaker-phone base for hands-free conversations.
reg. 99.99, #43-1050

39⁹⁹
20% OFF
Voice-activated micro recorder

Records only when you talk. Two speeds for up to 3 hours recording time on one MC-90 tape. reg. 49.99, #14-1160 Add 2 "AA" batteries or adapter: AC #273-1662, DC #270-1560

54⁹⁹
SAVE \$45
3-station FM intercom

Just plug each station into an AC outlet and you're ready to talk. Talk privately with only one station or all at once for 3-way conferences. set, reg. 99.99, #43-490

19⁹⁹
HALF PRICE!
Lightweight headphones

Titanium-layered diaphragms and wide 15-20,000Hz response for rich sound. In-line volume control. reg. 39.99, #33-1022

21⁹⁹
26% OFF
Indoor/outdoor thermometer

Also measures indoor relative humidity, F° or C° readout. For desk or wall. reg. 29.99, #63-867 Add 2 "AA" batteries

9⁹⁹ **33% OFF**
3-in-1 pocket remote for TV, VCR and cable box

Has only the buttons you use most—and they're BIG.
reg. 14.99, #15-1915 Add 2 "AA" batteries

7⁹⁹
33% OFF
Card-sized organizer

Stores 50 names and numbers for easy recall. Schedule alarm, calendar, clock, currency converter and more. reg. 11.99, #63-739

Muleshoe Journal USPS 367820

Established February 23, 1924. Published by Triple S Publishing, Inc. Every Thursday at 304 W. Second. Box 449, Muleshoe, TX 79347.

Second Class Postage paid at Muleshoe, TX.

POSTMASTER: Send address changes to the Bailey County Journal, P.O. Box 449, Muleshoe, TX 79347.

We are qualified members of:
Panhandle Press Association, National Newspaper Association,
West Texas Press Association and Texas Press Association

WEST TEXAS PRESS ASSOCIATION

PPA
Panhandle Press Association

TEXAS PRESS ASSOCIATION MEMBER 1997

Scot Stinnett, Publisher
Lisa Stinnett, Vice-President/Comptroller
Rick White, Editor
Mary Ann Dominguez, Classifieds
Leah Bell, Advertising

SUBSCRIPTIONS: Muleshoe Journal and Bailey County Journal
By Carrier Yearly - \$22.00
Bailey County — by mail - \$24.00
Elsewhere - \$26.00
Advertising Rate Cards on Application

Advertisers should check their ad the first day of insertion. The Journals will not be liable for failure to publish an ad or for a typographical error or errors in publications except to the extent of the cost of the ad for the first day of insertion. Adjustment for errors will be limited to the cost of that portion of the ad where the error occurred.

Have a Great Day!

Owned and operated by
WILSON APPLIANCE
117 Main St. • Muleshoe, TX
272-5531

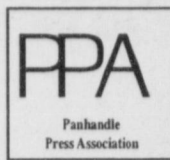
A RadioShack® Dealer

RadioShack
You've got questions. We've got answers.®

Sale prices good through 1/31/98. Prices apply at participating RadioShack stores and dealers. Items not available at a participating store can be special-ordered (subject to availability) at the advertised price. A participating store will offer a comparable value if the product is sold out. Independent RadioShack dealers and franchisees may not be participating in this ad or stock or special-order every item advertised.



MULESHOE JOURNAL

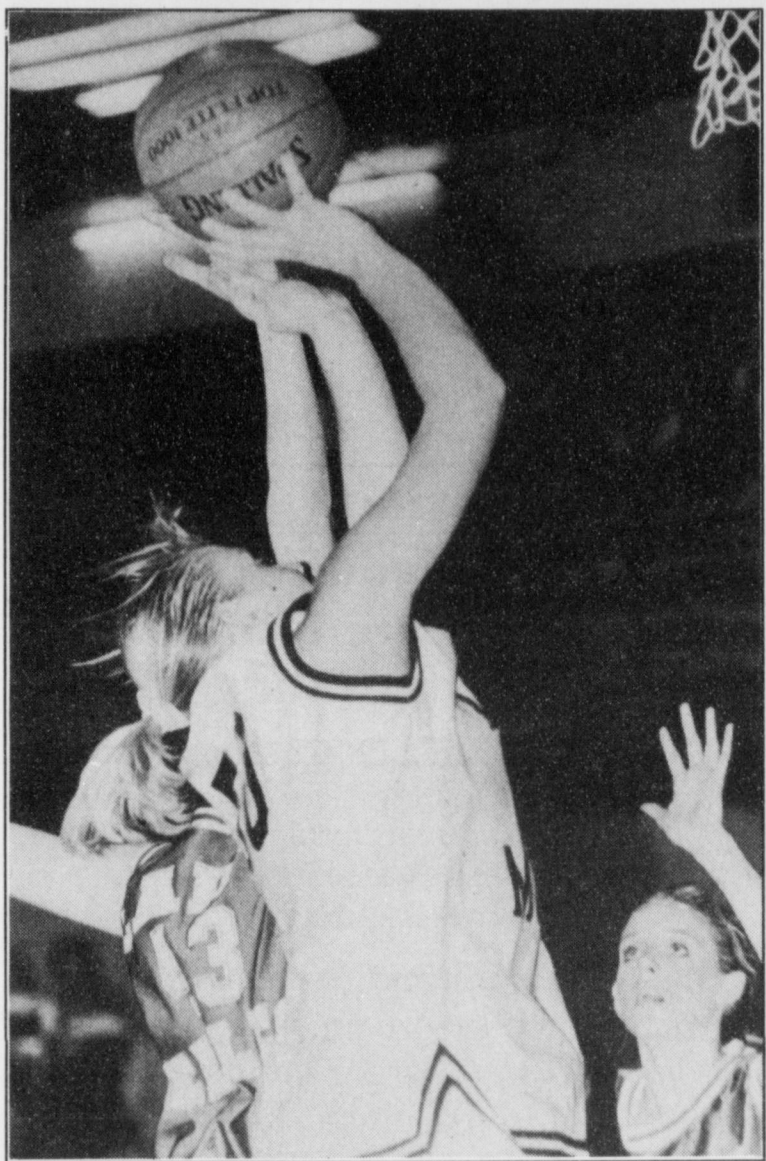


SPORTS EXTRA

Page 4

Published every Thursday at Muleshoe, Bailey County, Texas 79347

Thursday, January 8, 1998



Muleshoe's Kendra Benham powers in for a layup during a game against Sanford-Fritch earlier this season.

Defense, rebounding keys as MHS registers first 1-3A win

Muleshoe kept Dalhart off the boards and the monkey off its back with a 44-36 District 1-3A win Saturday at WJHS gym.

Lindsey Field poured in 17 points and Melissa Williams scored all seven of her points in the second half, helping the Lady Mules avoid what would have been a disastrous 0-2 start in district play.

"This gets us back on track a little bit and should help us build a little confidence," Muleshoe coach Jim Gruhlkey said after the Lady Mules (10-7 overall, 1-1 in district) bounced back from an embarrassing overtime loss to Sanford-Fritch at home in their 1-3A opener

see MHS on page 5

DISTRICT 1-3A

Girls

	Dist	All
Perryton	2-1	13-5
River Road	2-1	10-6
Friona	2-1	12-7
Muleshoe	2-1	11-7
Dimmitt	2-1	9-10
Dalhart	1-2	9-11
Sanford-Fritch	1-2	1-16
Tulia	0-3	5-14

Saturday's results
 Muleshoe 44, Dalhart 36
 River Road 59, Dimmitt 58
 Perryton 57, Tulia 26
 Friona 58, Sanford-Fritch 32
Tuesday's games
 Muleshoe 35, Friona 22
 Dimmitt 64, Tulia 31
 Perryton 50, River Road 44
 Dalhart 56, Sanford-Fritch 40
Friday's games
 River Road at Muleshoe
 Perryton at Friona
 Dimmitt at Dalhart
 Tulia at Sanford-Fritch

Mules find answers in district opener

Call off the search party. Muleshoe appears to have located its game just in time for the District 1-3A season.

Dustin Cleavinger scored 23 points and Muleshoe used a devastating second quarter to wallop Dalhart 91-58 Saturday in the district opener for both teams at WJHS gym.

After a 13-5 run through a pre-district schedule that appeared more like a jog at times, Muleshoe answered a lot of questions with the 33-point blowout, according to Muleshoe coach Ralph Mason.

"I've been fishing for the answers for a while," Mason said. "Our biggest problem was the most obvious — we weren't utilizing our strength."

Muleshoe's strength is Cleavinger, whose game had fallen off drastically in recent weeks. The 6-6 junior is averaging a team-high 14.9 points and 9.3 rebounds a game.

Respectable numbers, but far short of expectations.

"He's got to play like a man possessed every night," Mason said.

Work from inside-out in its halfcourt offense and some

DISTRICT 1-3A

Boys

	Dist	All
Tulia	1-0	18-0
Friona	1-0	13-2
Muleshoe	1-0	14-5
Dimmitt	1-0	12-5
River Road	0-1	n/a
Dalhart	0-1	n/a
Perryton	0-1	2-10
Sanford-Fritch	0-1	n/a

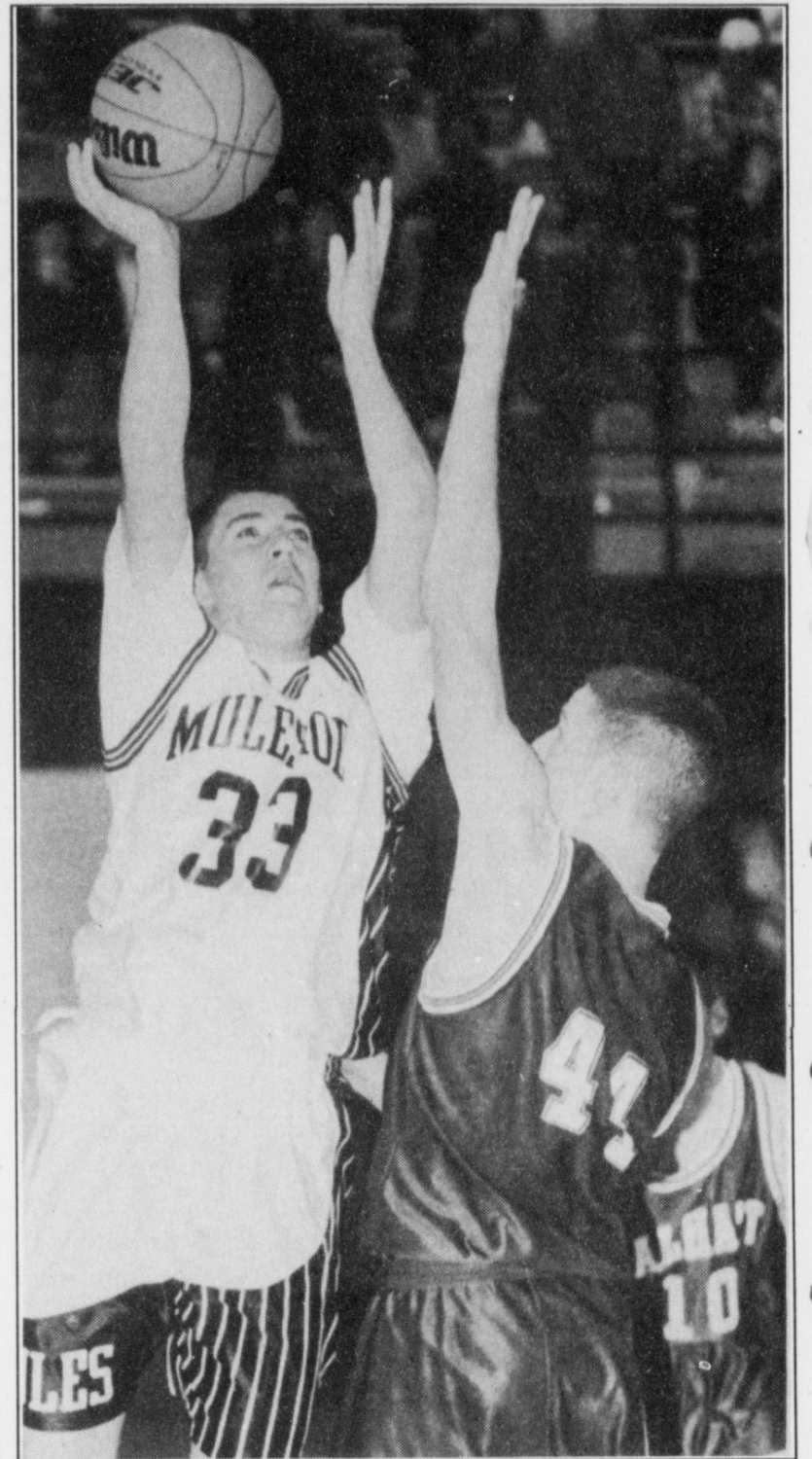
Saturday's results
 Muleshoe 91, Dalhart 58
 Friona 68, Sanford-Fritch 47
 Tulia 72, Perryton 47
 Dimmitt 66, River Road 42
Friday's games
 River Road at Muleshoe
 Perryton at Friona
 Dimmitt at Dalhart
 Tulia at Sanford-Fritch

"good old-fashioned desire" were the keys, Mason said.

"We were trying to do things individually and weren't getting everybody involved," Mason said. "Tonight, we got the ball into the post. If the shot wasn't there, we kicked it out. We were getting our shots in rhythm."

The Mules connected on nine 3-pointers in the game, includ-

see MULES on page 5



Muleshoe sophomore Bret Clements shoots over a Dalhart defender Saturday during the Mules' 91-58 win.

Muleshoe JVs sweep Dalhart

Mitch Mason scored 16 points, including a trio of 3-pointers Saturday, leading the Muleshoe junior varsity boys to a 57-39 District 1-3A win against Dalhart.

Kyle Hahn added 10 points for the Mules (12-2).

In the girls contest, Lysie Black scored seven points in the fourth quarter as the Lady Mules JV held off Dalhart 41-37.

Michelle Toscano led the Lady Mules (9-3) with 13 points and Ellen Wood chipped in 10.

BASKETBALL

Lazbuddie Junior Varsity/Junior High Tournament

Jan. 8-10

at Lazbuddie
JUNIOR VARSITY BOYS

Thursday

First round

Game 1: Nazareth vs Amherst, 9:30 a.m., new gym

Game 2: Lazbuddie vs. Cotton Center, 12:30 p.m., new gym

Game 3: Muleshoe vs Silvertown, 11 a.m., old gym

Game 4: Boys Ranch vs Farwell, 2 p.m., old gym

Friday

Championship semifinals

Game 5: Nazareth-Amherst winner vs Lazbuddie-Cotton Center winner, 2 p.m., old gym.

Game 6: Muleshoe-Silvertown winner vs Boys Ranch-Farwell winner, 12:30 p.m., new gym

Consolation semifinals

Game 7: Nazareth-Amherst loser vs Lazbuddie-Cotton Center loser

Game 8: Muleshoe-Silvertown loser vs Boys Ranch-Farwell loser

Saturday

Seventh place

Game 9: Game 7 loser vs Game 8 loser, 10 a.m., old gym

Consolation final

Game 10: Game 7 winner vs Game 8 winner, 2 p.m., new gym.

Third place

Game 11: Game 5 loser vs Game 6 loser, 7:30 p.m., old gym

Championship

Game 12: Game 5 winner vs Game 6 winner, 9 p.m., new gym

GIRLS JUNIOR VARSITY

Thursday

First round

Game 1: Lazbuddie vs Boys Ranch, 11 a.m., new gym

Game 2: Cotton Center vs Silvertown, 9:30 a.m., old gym

Game 3: Lazbuddie-Boys Ranch loser vs Farwell, 2 p.m., new gym

Game 4: Cotton Center-Silvertown loser vs Muleshoe, 12:30 p.m., old gym

Friday

Championship semifinals

Game 5: Lazbuddie-Boys Ranch winner vs Game 4 winner, 11 a.m., old gym

Game 6: Cotton Center-Silvertown winner vs Game 3 winner, 2 p.m., new gym

Consolation final

Game 7: Game 3 loser vs Game 4 loser, 11 a.m., new gym

Saturday

Third place

Game 5 loser vs Game 6 loser, 9 p.m., old gym

Championship

Game 5 winner vs Game 6 winner, 7:30 p.m., new gym

JUNIOR HIGH

8TH GRADE BOYS

Thursday

First round

Game 1: Lazbuddie vs Dimmitt, 3:35 p.m., new gym

Game 2: Happy vs Hart, 5:30 p.m., new gym

Game 3: Farwell vs Olton, 7:30 p.m., new gym

Game 4: Boys Ranch vs Muleshoe, 7:30 p.m., old gym

Friday

Consolation semifinals

Game 5: Lazbuddie-Dimmitt loser vs Happy-Hart loser, 5:30 p.m., new gym

Saturday

Consolation semifinals

Game 6: Farwell-Olton loser vs Boys Ranch-Muleshoe loser, 8 a.m., old gym

Championship semifinals

Game 7: Lazbuddie-Dimmitt winner vs Happy-Hart winner, noon, new gym

Game 8: Farwell-Olton winner vs Boys Ranch-Muleshoe winner, 9 a.m., new gym

Seventh place

Game 9: Game 5 loser vs Game 6 loser, 11:30 a.m., old gym

Consolation final

Game 10: Game 5 winner vs Game 6 winner, 1 p.m., new gym

Third place

Game 11: Game 7 loser vs Game 8 loser, 5:30 p.m., old gym

Championship

Game 12: Game 7 winner vs Game 8 winner, 6:30 p.m., new gym

JUNIOR HIGH

8TH GRADE GIRLS

Thursday

First round

Game 1: Lazbuddie vs Boys Ranch, 6:30 p.m., new gym

Game 2: Muleshoe vs Hart, 4:30 p.m., new gym

Friday

Second round


Game 3: Lazbuddie-Boys Ranch loser vs Happy, 3:35 p.m., old gym

see TOURNAMENT on page 5

We encourage everyone to attend the

Bailey County Livestock Show

January 23rd & 24th.




Friday, Jan. 23
Meat Goats
 • 8 am
Sheep Show
 • following Goats
Swine Show
 • 1 pm

Saturday, Jan. 24
Cattle Show
 • 7:30 am
Premium Sale
 • 2:30 pm

MULESHOE STATE BANK

101 W. American Blvd. • Muleshoe, Tx
 (806) 272-4561

Farwell Branch
 801 Ave. A • Farwell, TX
 (806) 481-9580



Longhorns finish third at Sundown

SUNDOWN — Lazbuddie held its own against the big boys this weekend in the Roughneck Holiday Tournament at Sundown High School.

The Longhorns went 2-1 in the tournament that featured mostly 2A schools, beating Seagraves 49-35 in Saturday's third place game on the strength of the long-range shooting of Josh Morris and the inside punch of Jason Thomas.

Thomas scored five points and Morris added a 3-pointer in the fourth quarter to seal the win.

Thomas and Morris scored 15 points each against the Class 2A Eagles. Morris hit three of his five 3-pointers in the first half, helping Lazbuddie (8-2) build a 28-14 lead.

"It was good for us to face this kind of competition," Lazbuddie coach Phil Warren said. Warren said turnovers continue to be a problem for the Longhorns, especially in a 68-62 semifinal loss to Sundown.

The Class 2A Roughnecks took advantage of its quickness in the come-from-behind win. Trailing by five, Sundown outscored Lazbuddie 24-13 in the fourth quarter.

Gary Serna scored 10 of his team-high 25 points in the period, including a 5 of 6 performance from the charity strip as

see SUNDOWN on page 7

BASKETBALL

Roughneck Holiday Tournament

at Sundown HS	Seagraves	22	16	20	12	70	Lazbuddie	6	4	8	9	27
BOYS	Three Way	8	11	8	8	33	Seagraves	12	6	15	15	46
Saturday	Leading scorers — Seagraves: R. Luckey 16, Durham 16. Three Way: Perez 9, Valderas 9.						Leading scorers — Lazbuddie: R. Warren 16. Seagraves: J. Davis 20.					
CHAMPIONSHIP SEMIFINAL	Sundown 66, Sunray 54						SEVENTH PLACE					
Whiteface 75, Seagraves 67	WHITEFACE 78, THREE WAY 28						Kermit 39, Coronado sophs 35					
FIFTH-PLACE SEMIFINAL	Whiteface 26 23 14 15 79						Fifth place					
Sunray 52, Kermit 44	Three Way 4 8 5 11 28						Sunray 79, Sundown JV 51					
FIFTH PLACE	Leading scorers — Whiteface: Allison 28, C. Krebs 13. Three Way: Perez 10.						THIRD PLACE					
SUNRAY 65, THREE WAY 61 3 OT	CHAMPIONSHIP SEMIFINAL						CRANE 47, LAZBUDDIE 44 OT					
Three Way 12 14 9 13 44 5 61	SUNDOWN 68, LAZBUDDIE 62						Lazbuddie 5 14 10 9 6 44					
Sunray 15 8 10 15 4 4 10 65	Lazbuddie 18 13 18 13 62						Crane 0 13 11 14 9 47					
Leading scorers — Three Way: Perez 16, Kindle 11, R. Pollard 10. Sunray: Rodriguez 19, Robertson 10.	Sundown 13 15 16 24 68						Leading scorers — Lazbuddie: Warren 13. Crane: Heredia 10.					
CHAMPIONSHIP	Leading scorers — Lazbuddie: Thomas 27. Sundown: Cerna 25, Palmer 21.						CHAMPIONSHIP					
THIRD PLACE	All-tournament — Cy Cribbs, Whiteface.; Tanner Davidson, Whiteface.; Wade Palmer, Sundown; Gary Serna, Sundown; Jason Thomas, Lazbuddie; Rodney Luckey, Seagraves. MVP: John Allison, Whiteface.						Seagraves 70, Sundown 51					
LAZBUDDIE 49, SEAGRAVES 35	GIRLS						Seagraves 70, Sundown 51					
Lazbuddie 15 13 7 14 49	Saturday						Friday					
Seagraves 8 6 13 6 35	CONSOLATION SEMIFINALS						FIRST ROUND					
Leading scorers — Lazbuddie: Morris 15, Thomas 15, Smith 10. Seagraves: Luckey 13.	Sundown JV 65, Coronado sophs 61						LAZBUDDIE 76, SUNDOWN JV 49					
CHAMPIONSHIP	Sundown 47, Kermit 32						Lazbuddie 16 18 24 18 76					
Whiteface 77, Sundown 75	CHAMPIONSHIP SEMIFINALS						Sundown JV 8 15 11 11 49					
Friday	SEAGRAVES 48, LAZBUDDIE 27						Leading scorers — Lazbuddie: Roxann Warren 25, Kia Morris 23, Holly Engelking 10. Sundown JV: M. Oscanas 24, Martinez 10.					
ROUND-ROBIN							Crane 51, Sunray 41					
LAZBUDDIE 61, KERMIT 60							Sundown 80, Kermit 37					
Kermit 15 11 16 18 60							All-tournament — Stewart, Sunray; Roxann Warren, Lazbuddie; Heredia, Crane; S. Davis, Seagraves; Castillo, Sundown; Green, Sundown. MVP: Jennifer Davis, Seagraves.					
Lazbuddie 13 14 10 24 61												
Leading scorers — Kermit: Henderson 25. Lazbuddie: Thomas 23, Smith 14.												
SEAGRAVES 70, THREE WAY 33												

Poor shooting stalls Lady Longhorns

SUNDOWN — A lost shooting touch led to Lazbuddie taking a couple of lumps in the Roughneck Holiday Tournament Jan. 2-3 at Sundown High School.

The Lady Longhorns (12-6) shot poorly both from the field and the free throw line in losses to Sundown and Crane.

Lazbuddie shot 20 percent from the field and made just 7 of 22 free throws in a 46-27 semifinal loss Saturday to tournament champion Seagraves.

Showing some improvement but still struggling, the Lady Longhorns shot 30 percent from the field and made slightly better than half their free throws (20 of 39) in a 47-44 overtime loss to Crane in the third-place game.

"We rebounded well and had a good effort in all the games, we just didn't put the ball in the basket enough to win," said Lazbuddie coach

Carey Sudduth, admitting his team still struggles in its halfcourt offense.

Sudduth said for the most part his team was getting the kind of shots he wanted, but just wasn't knocking them down. "We missed way too many easy shots. You can't afford to miss those shots against good teams."

Lazbuddie routed the Sundown junior varsity 76-49 Friday in a first-round game.

Sundown got 20 points from tournament most valuable player Jennifer Davis while holding Lazbuddie to a season-low for points.

"We just couldn't handle their quickness defensively," Sudduth said.

Roxann Warren was the only Lady Longhorn in double figures with 16 points.

Lazbuddie led by as many as eight points in

see STALLS on page 7

MHS

From page 4

two weeks ago.

Gruhlkey said it was simply a matter of his team learning to play harder, especially when they got tired.

"We talked before the Lubbock Cooper Tournament (where Muleshoe won 2 of 3) about playing harder," Gruhlkey said. "I think we've toughened up some."

After giving up a few offensive rebounds early, Muleshoe kept the tall and athletic Lady Golden Wolves off the boards in the second half, Gruhlkey said.

Muleshoe also controlled the tempo.

"We did a good job of adjusting in the (1-3-1) zone to their post players in the second half," the Muleshoe coach said. "We did a good job of blocking out and didn't give up the cheap buckets."

Dalhart (0-2) had four players between 5-10 and 5-11.

Leading by two at halftime, Muleshoe outscored Dalhart 24-18 in the second half.

Dalhart hit a 3-pointer at the buzzer to get the final score in single digits.

"They played well, they just didn't shot well," Gruhlkey said.

Kristin Jessop paced Dalhart with eight points.

Dalhart (36) — Tashia Washington 3 0-0 7, Kristin Jessop 4 0-1 8, Danna Smallwood 1 0-0 2, Cindy Hemoillo 1 4-4 6, Amber Porter 3 0-2 6, Rebecca White 0 0-0 0, Jennifer Lang 0 0-0 0, Kelli Reynolds 0 0-0 0, Nicole Rysavy 1 3-4 5, Jimi Lee McClesky 1 0-1 2. Totals 147-123. 3-pointers: Washington.

Muleshoe (44) — Mandy Myers 2 0-0 4, Lindsey Field 5 7-12 17, Keisha Whitt 0 0-0 0, Rhonda Copley 1 1-2 3, Kellie Morris 1 2-2 4, Amy Locker 2 2-5 4, Melissa Williams 3 1-2 7, Erin Wilhite 1 3-6 5. Totals 146-29 44. 3-pointers: none.

Dalhart 8 10 8 10 36
Muleshoe 11 9 10 14 44
Records: Dalhart 0-2. Muleshoe 10-7, 1-1. Next game: at Friona Jan. 6.

Carpet Rolls • Remnants • Area Rugs
Wood Floors • Vinyl Flooring • Ceramic Tile

STUBBLEFIELD'S
RUGS & REMNANTS

Professional Installation - Financing Available
(806) 296-7387 2408 W. 5th
Plainview, TX 79072



The largest fish is the whale shark, which weighs up to 15 short tons, twice as much as an African elephant.

MULES

From page 4

ing five in a 30-point second quarter, which ballooned Muleshoe's lead to 50-25 at halftime.

Senior wing Cyrus Norman nailed all three of his 3-pointers in the second quarter and finished with 17 points on 6 for 9 shooting.

Muleshoe shot 54 percent from the field while producing its second-highest point total of the year.

Cleavinger was 11 for 14 from the field and added seven rebounds and three blocked shots. Chris Shelburne gave Muleshoe three players in double figures with a season-high 10 points.

Jason Chaffin led Dalhart with 21 points.

Mason called the game Muleshoe's most complete performance of the season.

"It wouldn't have done us much good if it was an ugly win because we'd still be in the same boat," Mason said.

The Mules were off until Friday when they hosted River Road in a district contest.

Dalhart (58) — Tate Fuller 0 4-5 4, Jeremy Lang 2 3-4 7, Cody Roye 7 0-0 14, Chad Hodo 0 4-6 4, Jason Chaffin 9 3-10 21, Chris Barrow 0 0-0 0, Daniel Brown 1 0-0 2, Chris Gerber 3 0-0 6. Totals 22 14-25 58. 3-pointers: none.

Muleshoe (91) — Carlton Lewis 2 0-0 6, Chris Shelburne 3 4-4 10, Mason Sinclair 1 0-0 3, Matt Mason 3 1-3 8, Cyrus Norman 6 2-2 17, Douglas Field 2 0-0 4, Matt McClanahan 2 0-0 4, Bret Clements 4 0-0 8, Layne Kemp 3 0-2 8, Dustin Cleavinger 11 1-2 23. Totals 37 8-13 91. 3-pointers: Norman 3, Kemp 2, Lewis 2, Sinclair, Mason.

FG: 28-46. 3-point FG: 9-23. Rebounds: 28, 13 off. (Cleavinger 7). Blocked shots: 6 (Cleavinger 3). Steals: 14 (Mason 4). Assists: 29 (Mason 13). Turnovers: 13.

Dalhart 10 15 13 20 58
Muleshoe 20 30 21 20 91
Records: Dalhart 0-1. Muleshoe 14-5, 1-0. Next game: Hosts River Road Jan. 9.

TOURNAMENT

From page 4

Game 4: Muleshoe-Hart loser vs Olton, 4:30 p.m., new gym

Championship semifinals

Game 5: Lazbuddie-Boys Ranch winner vs Game 4 winner, 7:30 p.m., old gym

Saturday

Consolation final

Game 6: Game 3 loser vs Game 4 loser, 10 a.m., new gym

Championship semifinal

Game 7: Muleshoe-Hart winner vs Game 3 winner, 2:30 p.m., old gym

Third place

Game 8: Game 5 loser vs Game 7 loser, 6:30 p.m., old gym

Championship

Game 9: Game 5 winner vs Game 7 winner, 5:30 p.m., Saturday

JUNIOR HIGH

7TH GRADE BOYS

Thursday

First round

Game 1: Lazbuddie vs Boys Ranch, 4:30 p.m., old gym

Game 2: Dimmitt vs Olton, 6:30 p.m., old gym

Friday

Second round

Game 3: Lazbuddie-Boys Ranch loser vs Hart, 3:35 p.m., new gym

Game 4: Dimmitt-Olton loser vs Mule-

shoe, 5:30 p.m., old gym

Championship semifinal

Game 5: Lazbuddie-Boys Ranch winner vs Game 4 winner, 8:30 p.m., old gym

Game 6: Dimmitt-Olton winner vs Game 3 winner, 6:30 p.m., old gym

Saturday

Consolation final

Game 7: Game 3 loser vs Game 4 loser, 8 a.m., new gym

Third place

Game 8: Game 5 loser vs Game 6 loser, 3:30 p.m., old gym

Championship

Game 9: Game 5 winner vs Game 6 winner, 4:30 p.m., new gym

JUNIOR HIGH

8TH GRADE GIRLS

Round-robin

Thursday

Game 1: Olton vs Hart, 3:35 p.m., old gym

Game 2: Muleshoe vs Dimmitt, 5:30 p.m., old gym

Saturday

Game 3: Olton vs Muleshoe, 11 a.m., new gym

Game 4: Dimmitt vs Hart, 12:30 p.m., old gym

Game 5: Dimmitt vs Olton, 3:30 p.m., new gym

Game 6: Hart vs Muleshoe, 4:30 p.m., old gym

RODEO style

SALE! 79.99-149.99

READY TO RODEO IN JUSTIN® ROPERS & LACE-R'S FOR MEN

Lasso in the savings on Justin® genuine leather boots with a terrific fit, plus all-day comfort. Not shown, smooth ostrich in black and cognac, reg. 189.00, **SALE 149.99**; marbled Deerlite Roper in chestnut, reg. 119.00, **SALE 99.99**. At selected stores. Men's Shoes.

109.99
"Bay Apache"
Lace-Rs,
reg. 129.00.
Also, black smooth
reg. 119.00,
SALE 99.99.

79.99
Black Ropers,
also in tan,
reg. 99.00.

www.beallsstores.com

BEALLS
We're all about you!

CHARGE IT!
GET 10% OFF
ALL DAY
WHEN YOU OPEN A NEW STORE ACCOUNT.
Excludes may apply. Subject to credit approval.

Muleshoe #649
321 Main Street
272-3478

OBITUARIES

DALIA SPECK BETTS

MORTON — Dalia Speck Betts, 84, of Morton died Thursday, Jan. 1, 1998 at Lynwood Manor Nursing Home in Levelland.

Memorial services were held Jan. 5, 1998 at Ellis Funeral Home Chapel with the Rev. Renshaw, pastor of First Missionary Baptist Church of Morton officiating.

Burial followed in Morton Memorial Cemetery.

Betts was born Oct. 7, 1913 in Clarksville, Tex. She married James Douglas Betts on Sept. 4, 1940 in Clovis. He

preceded his wife in death on Sept. 9, 1987.

Betts, a homemaker, moved to Morton in 1988 from Lubbock. She was a member of the Southcrest Baptist Church of Lubbock.

Although unable to give birth, she became a mother to her nieces and nephews.

Survivors include sister, Letha Mae Daniel of Levelland; brother, Troy Speck of Springtown, Tex.; nephew, Don Daniel of Morton, who was Betts primary care giver, and several other nieces and nephews.

IRVIN OTT

EARTH — Irvin Ott, 83, of Earth died Jan. 4, 1998 at Methodist Hospital in Lubbock.

Memorial services held Jan. 6, 1998 at Earth United Methodist Church with the Rev. Larry Reed Farris officiating. Burial was held in Springlake Cemetery.

Ott was born Nov. 19, 1914 in Castro County and married Martha Edmonds on Nov. 12, 1991 in Earth.

Ott had lived in Earth all of his life. He was a farmer, a member of the Earth United Methodist Church, and a mem-

ber of the Earth Senior Citizens.

He was preceded in death by his first wife Alma Ott on Mar. 29, 1991.

Survivors include his wife Martha; three sons, Robert Ott of Earth, Terry Ott of Earth, Terrell Ott of Denver, Colo.; daughter, Irvaleen Ogletree of Alpine; stepdaughters, Ann Sipes of Amarillo, Sue Bentley of Wheeler; sisters, Evlyn Mitchell of Farwell, Betty Louder of Sunnyside; brothers, Curtis Ott of Fairburn, SD., Bob Ott of Avenger, Tex.; 15 grandchildren, 15 great-grandchildren.

Few changes for Medicare premiums in 1998

The 1998 Medicare premiums and deductibles have not changed much (if any) since 1997 reports the Department of Health and Human Services. The changes are as follows:

For inpatient Hospital Insurance (Part A) the amounts are:

- \$764 deductible for the first 60 days,
- \$191 coinsurance per day for days 61 through 90
- \$382 coinsurance per day for days 91 through 150.

For skilled nursing facility care (part A) Medicare pays for all care the first 20 days. The coinsurance for the 21st through 100th day is \$95.50 per day. Medicare does not

cover care after 100 days in the benefit period.

For those not eligible for premium-free Part A, the monthly premium is \$309, or \$170 if you have 30 quarters of work.

The 1998 Part B monthly premium remains the same at \$43.80 per month.

The Part B annual deductible remains the same; you pay the first \$100 per year.

The Balanced Budget Act of 1997 (BBA) has opened many benefits for Medicare recipients; a few follow.

Beginning January 1998, the BBA allows women over 40 to have an annual screen mammography.

Men who are age 50 and older may have annual prostate cancer screenings (beginning in 2000).

All diabetics will now be able to have their blood glucose monitors and testing strips covered. Previously, Medicare covered monitors and strips for only insulin-dependent diabetics.

In July 1998, for those who qualify, the BBA also provides coverage of procedures to identify bone mass, detect bone loss, or detect bone quality. Medicare will also pay for a physician to interpret the test results.

Beneficiaries may receive services from physicians under a private contract. The con-

tract must be signed by the beneficiary or their representative and the physician. The contract means that neither the beneficiary nor the physician will bill Medicare, and that the Medicare beneficiary will be responsible for payment of the services (the physician's charge is not limited). It also means that Medigap plans will not pay and that supplemental insurance plans may not pay for the medical care provided by the particular physician. Medicare may cover care provided by other physicians.

The BBA also begins a Medicare+Choice Program. This is essentially a term meaning "Traditional Medicare with additional choices to pay for medical care." Included are Medical Savings Accounts (MSAs), Preferred Provider Organizations (PPOs), Health

Blood test identifies people at risk of heart disease

HOUSTON — A blood test can identify people at risk of developing a form of heart disease that can cause sudden death in athletes before they have symptoms.

Researchers at Baylor College of Medicine and Methodist Hospital in Houston developed the test after discovering some of the genetic defects linked to cardiomyopathy, a disease of the heart muscle that leads to


decreased blood circulation.

In addition to being a deadly disease for athletes, cardiomyopathy is the most common cause of hospitalization for patients over age 60, often requiring heart transplants.

"If the blood test indicates someone has a genetic defect associated with cardiomyopathy, we can modify the patient's medication or implant a defibrillator that can treat sudden death," said Dr. Jean

Bernard Durand, who developed the test with Dr. Robert Roberts. Both are cardiologists at Baylor and Methodist.

The researchers are now studying more families with inherited heart disease to identify the other genes involved with cardiomyopathy. The goal is to develop one blood test that screens for all the genetic defects that can cause this type of heart disease and make it available commercially.



Muleshoe Cattle Market
SATURDAY, JAN. 3, 1998
FOR INFORMATION ON SALES OR TO CONSIGN CATTLE, CALL (806) 272-4201

REPRESENTATIVE SALES

510 head of livestock. With things getting thawed out & very muddy after 5 to 12 inches of snow in the area, receipts were low, with market good on top quality cattle.

The Muleshoe Cattle Market is brought to you each week by Muleshoe Livestock Auction, located east of Muleshoe on U.S. 84. Muleshoe Livestock conducts sales every Saturday, beginning with hogs, sheep and goats at 10 a.m. and cattle following at approximately 12 noon.

Seller, City	#	Type	Wt.	CWT or PH
Charles Lorenz, Levelland	2	Limo Bulls	327 lbs.	at \$93.50
Charles Lorenz, Levelland	1	Limo Bull	405 lbs.	at \$86.00
Bill Bradley, Amherst	2	Mxd. Strs	365 lbs.	at \$89.00
Ruben Leal, Jr., Muleshoe	1	Blk. Bull	580 lbs.	at \$65.00
T&T Cattle, Littlefield	1	RWF Str	660 lbs.	at \$72.50
Lorena DeLaCruz, Olton	4	Mxd Hfrs	329 lbs.	at \$76.50
Daniel DeLeon, Tahoka	1	Blk Hfr	365 lbs.	at \$72.00
Tino DeLeon, Tahoka	1	Blk Hfr	425 lbs.	at \$72.00
Dukatnik Farms, Levelland	3	Mixed Hfrs	473 lbs.	at \$69.00
Ernie Taggart, Levelland	1	RWF Hfr	490 lbs.	at \$68.00
Heath Scott, Muleshoe	2	BWF Pairs		\$500.00
Harrison & Harrison, Muleshoe	1	Hol. Cow P8		\$545.00
T&T Cattle, Littlefield	3	Mxd Cows P6		\$475.00
D&M Livestock, Sudan	1	Char. Cow P7		\$440.00
D&M Livestock, Sudan	1	Char. Cow P6		\$520.00
Heath Scott, Muleshoe	1	BWF Cow	1060 lbs.	at \$36.25
Sundance Dairy, Plainview	1	Hol. Cow	1390 lbs.	at \$34.50
John Snell, Muleshoe	1	Hol. Cow	1195 lbs.	at \$33.00
John Snell, Muleshoe	1	Hol. Hfr	1210 lbs.	at \$37.00
Prairie View Dairy, Muleshoe	2	Hol. Cows	1465 lbs.	at \$35.00

JOES & BOOTS SHOP
1-800-658-6378 106 E. American Blvd. Muleshoe, Texas
We Ship Everywhere

And Country Junction

January Specials
January Storewide Clearance Sales
You don't have to look hard to find a GREAT BARGAIN!

1 Rack Children's Clothing 50% Off

1 Rack Ladies' Jeans \$24.99

Men's Cinch Jeans \$32.00 (reg. \$45)

1 Rack Ladies' Clothing 40% Off

Jackets 25% Off

Men's Vests 25% Off

First Quality Rios of Mercedes Full Quill Ostrich Boots \$499 (reg. \$650)

THESE ARE WHAT THEY CALL "TEXAS SIZE" SAVINGS!

New Mexico Ag Expo Feb. 24-26

PORTALES, N.M. — It's easy to take for granted the tremendous impact agriculture has on any community. Farmers, ranchers and dairymen quietly go about their business with little fanfare or recognition for their contribution to the economy.

Each year, for the last five years, the Roosevelt County Chamber of Commerce has hosted The New Mexico Ag Expo, serving, among other things, to celebrate and bring together these determined, hard-working agricultural people. New Mexico Ag Expo '98 is slated for Feb. 24-26 at the Roosevelt County Fairgrounds in Portales and will be the biggest and best ever.

The business of agriculture and related business encompasses vast business interests which range from the farm, dairy and ranch to all their related enterprises such as implement dealers, feed and seed manufacturers, food processors, marketing, packaging and sales, to name only a few.

Considering how agriculture affects the entire economy is overwhelming and extremely complicated.

It might be easiest to examine just one facet of the agricultural industry and how it affects people in Eastern New Mexico.

"New Mexico is the 12th in the nation with the number of dairy cows it has," said Floyd McAlister, Roosevelt County Agricultural Agent.

"New Mexico is the 4th in the nation in production of milk per cow. The dairy business is the largest agricultural income of Roosevelt County."

Roosevelt County presently has 30 dairies with a combined total of 30,000 milk cows. Two new dairies will soon begin operating in the Arch community near Portales.

A dairy must have a minimum of one employee per each 100 cows to operate. That means at least 300 people are currently working in Roosevelt County dairies.

"To my knowledge, all the dairy owners in the county live on their dairies," said McAlister. "They spend their money in Roosevelt County. Their kids go to school here. They're taxpayers. They're just good members of the community."

It takes approximately 50 pounds of feed per day to feed one dairy cow.

SUNDOWN

From page 5

the Class 2A Roughnecks spread the floor and forced Lazbuddie to foul once they took the lead.

Besides forcing 27 turnovers, the smaller Roughnecks also did a good job of keeping off the offensive boards, Warren said.

Thomas scored a game-high 27 points.

Junior guard Brandon Foster was the hero in the Longhorns' 61-60 first-round win against Class 3A Kermit, hitting a game-winning 3-pointer at the buzzer.

After the teams traded turnovers with two seconds left,

Lazbuddie inbounded the ball to Foster, who canned the trey from the top of the key.

Thomas scored a game-high 23 points for Lazbuddie, which outscored Kermit 24-18 in the

STALLS

From page 5

quarter in the third-place game, but couldn't put Crane away, Sudduth said.

"We made some mistakes down the stretch — let them rebound some missed free throws."

Crane, held scoreless in the first quarter, outscored Lazbuddie

fourth quarter.

Chris Smith added 14 points for the Longhorns.

Thomas was named to the all-tournament team after averaging 21.7 points a game.

die 14-9 in the fourth quarter and 9-6 in overtime.

Warren, an all-tournament selection, paced Lazbuddie with 13 points. The 5-7 senior post averaged 17 points and 13 rebounds in the tournament.

Warren scored 25 points and Kia Morris added 23 in the first-round blowout.

BENDER

Chevrolet Oldsmobile Cadillac

NEW FOR USED PRICE!

Why Buy Used, When You Can Own A New For A Used Price!

SAVES YOU THOUSANDS! Example: 1997 Cadillac Seville **SAVINGS \$5,620⁸⁷** All New 97s Reduced To Used NADA Book

ALL 97s MUST GO!

OVER 35 CARS & TRUCKS TO CHOOSE FROM!

Example: 1997 Chevy Suburban 4x4 **SAVINGS \$7,171⁰⁴**

Any available factory rebate retained by dealer. Plus tax, title & license. O.A.C. Prices based on December 1997 Mountain States Edition NADA Used Car Guide.

BENDER

Clovis, NM Chevrolet Oldsmobile Cadillac

Bender's Family of Dealerships - You're Going To Like Our Family CHEVROLET - OLDSMOBILE - CADILLAC 2500 Mabry Drive • (505) 763-4465

Journal Classifieds

REAL ESTATE
AUTOMOBILES
HELP WANTED
GARAGE SALES

STOP & SHOP

Deadlines are 5 p.m. Monday and Thursday

Call 272-4536

Deadlines are 5 p.m. Monday and Thursday

BUSINESS OPPORTUNITY

EXTRA INCOME FOR '97
Earn \$500 - \$1000 weekly stuffing envelopes. For details • RUSH \$1.00 with SASE to:

GROUP 5
6547 N Academy Blvd. Dept N
Colorado Springs, Co. 80918

SUNSET CONST.

*Remodeling, bathrooms, etc.
* Carpets & patio
* Fence's
* Tile
* Concrete
* Painting
* All phase's
In Clovis (505) 762-7689. 54s-6tch

NO JOKE

\$1125/WK NET. TIRED OF EMPTY PROMISES? WORK FROM HOME WITH PROVEN TURNKEY SYSTEM NOT MCM
1-800-322-6169 X9944. 54T-7TCH

FOR SALE

ATTENTION!!
Kirby Sales & Service
207 W. 7th next to Sonic Drive-in. (505) 762-4991
Call for FREE Home demonstration or repair work. Clovis, NM 35t-tfc

95 Yamaha Virago motorcycle, 750cc, 2000 miles, beautiful teal and black. Kept in barn, excellent condition, will sacrifice for \$4950. Call in Muleshoe, TX. 806-272-4946 during the day and leave a message. Home most evenings. 54t-9tch

FOR SALE

Whirlpool Electric range-6 mo. White on white, like new. Purchased new home with built-in range. Must sell \$499.00 Call 272-4063. 50t-tfc

7 tour Zimmatic circle sprinkler, low hours, 12 S. & 3 west of Muleshoe. 316-845-2994. 54t-tfc

Lazy - Boy recliner, 19 inch color TV, 2 new Vellux king size blankets. 272-3388. 54t-2tpd

FLEETWOOD HOME CENTER

Portales

DOUBLEWIDE WITH 3 BEDROOMS, STORM WINDOWS, ZONE II INSULATION ONLY \$29,999. PAYMENTS UNDER \$300 PER MONTH. LAND HOME LOANS AVAILABLE OR ZERO DOWN WITH YOUR LAND. CALL PORTALES HOMES FLEETWOOD HOME CENTER 1-800-867-5639 DL.366 OF CLOVIS LOCATION 505-762-3488 DL. 772. SE HABLE ESPANOL.

HELP WANTED

"AVON", Representatives Needed Now! No Inventory Required, IND/SALES? REP, Toll Free, 800-236-0041. 51t-6tpd

ATTENTION! Texas oil co. needs dependable person to work without supervision locally. Training. Write W. L. Hopkins, Texas Refinery Corp., Dept. W - 79347, Box 711, Ft. Worth, TX 76101 - 0711. 54t-1tch

LOST

Lost Brittany female. Last seen Sunday, Jan. 4, near Amherst, 5 miles south of Plant X. If seen, call 800-633-3325 or 806-272-5480. 54t-2tch

RENT

8 X 10 & 10 X 12 mini storage units, 400 W. Hwy. 84 Sudan (806) 227-2325 or (806) 933-4347. 54t-7tch

REAL ESTATE

For sale by owner: 1400 square feet, three bedroom, one and one-half baths, formal dining room. Heat pump, large back porch, two vehicle carport. Located in the Lenau Addition, this home is charmingly decorated inside and landscaped outside. Multiple storage buildings in back. Also for sale on adjoining lot, two bedroom rent house with new central heat and air, new roof, carport. All surrounded by a 6 foot wooden fence. Will sell either or both as a package. Rent income easily makes payments on larger home. Priced to sell!! Inquire after 5 p.m. at 806-272-4946, or leave a message and we will return your call. 54t-9tch

REAL ESTATE

By owner; 2 bedroom, 2 bath, 1 carport, central air and heat, storm cellar. 272-5291. 54s-7tpd

REAL ESTATE

REAL ESTATE

JB Sudderth Realty, Inc.
FARWELL, TEXAS 79325
806/481-3288

Daren Sudderth
Associate Broker • State Certified Appraiser
Res. (806) 825-3389

- 306 acres south of Lazbuddie with three 8" irrigation wells.
- 2 circle sprinklers and 2,500 head feed lot. Good water area.
- 550 acres south of Lazbuddie with 4 irrigation wells and 4 circle sprinklers. Good water area.
- 2 Quarters-CRP-SE of Muleshoe city limits. 10 - year contract in CRP. One Quarter on Highway.

REAL ESTATE

For Sale Nice 3 Brm home with new roof. 414 East Dallas. Call collect Marlin Mills 1-806-745-0902. 54t-3th

MOBILE HOMES

16 X 60 Skyline mobile home 2 brm, 2 bath. Needs to be moved. Air conditioning and heat included, take over payments. 965-2967. 46t-tfc.

SERVICE

Sewing and Alterations. Peggy 272-6764 Experienced. Jeans, Zippers, Etc. 54s-4tpd

VEHICLES

1994 GMC SLE extended cab with short bed. 350, V-8, automatic, tilt, air, cruise, power windows and lock. \$14,000. (505) 356-5509. 45t-1tnc



THE CLASSIFIEDS
★ ALWAYS A BEST SELLER ★

Nieman Realty

116 E. Ave. C • George Nieman, Broker • 272-5285 or 272-5286

RICHLAND HILLS

3-3-1 Brick, cent. Heat, Evap. Air, built-ins, 2000' + Iv. area, fenced yd., stor. bldg. MORE!! \$60K!!! RH-2

PARKRIDGE - NICE 3-2-2 Brick, Cent. A&H, built-ins, FP, cov. patio, fenced yd. \$50's!!

HIGHLAND AREA

3-2-2 Brick, Cent. A&H, built-ins, gas log FP, fenced yd., stor. bldg., MORE!! Price Reduced!! HL-5

2-1-1 Home, vinyl siding, wall furnace heat, fenced yd. \$17,000!!! HL-1

LENAU - COUNTRY CLUB AREA

2-1-1 Carport Home, wall furnace, nice carpet, storm shelter, stor. bldg., fenced yd. \$20's!!! CC-3

2-1-1 Home, Cent. Heat, built-ins, Hardwood floors! \$19,500!! L-3

2-1-1 Home, floor furnace, win. fer. air, fenced yd, stor. bldg., \$19,500!!! L-1

Commercial Bldg. & Lot, Approx. 1790' area, Numerous uses!! \$22K!!!

HIGH SCHOOL

3-1-1 Brick, Cent. Heat!!! \$25K!!! HS-4

Nice 3-2-2 Brick, Cent. A&H, built-ins fenced yd., MORE!!! \$40's!!! HS-5

Very Nice 3-1-1- Brick Home, cent. Heat & Air, built-ins, fans, woodburning stove, nice carpets, storage bldg., fenced yd., More!!! \$40's!!! HS-7

NICE 2-1-1 Brick, Heat Pump, nice carpets, well insulated, storm windows & doors. \$30's!!! HS6

BUSINESS FOR SALE-SNACK SHACK - Lot, Buildings, furniture, and fixtures!!!!

NICE R.V. STORAGE, 14' X 40' metal bldg, 12' doors, corner lot!!

RURAL

3-2-2 Home on .92 acre at edge of town, Cent. Heat, evap. air, DW, storage bldg., fenced yd., & MORE !! \$30K!!

W. of SUDAN-NICE 3-3-2 Brick Home, 5 acre tract on Hwy. 298, Cent. Air & Heat, built-ins, large Quonset Barn, MORE!!!! \$95K!!!

JUST LISTED- NICE 4-1-2 Home, Heat Pump, Built-ins fenced yd., 2 Stor. bldgs., approx. 10 acre tract, on pavement close to town!! \$ 50's!!!

5 Acre tract on pavement close to town!

W. of Sudan- 177 acre tract in CRP !!! Price To Sell !!!

SHUR 8 SAVING CRAZY 8 SALE

PRICES EFFECTIVE JANUARY 7-13, 1998

MEAT

- Pilgrim's Pride Jumbo Pack
Leg Quarterslb. **38¢**
- Pilgrim's Pride Small Pack
Leg Quarterslb. **48¢**
- Preferred Trim Boneless
Beef Chuck Roastlb. **\$1.38**
- Shursaving Regular or Hot
Breakfast Sausage1 lb. roll **88¢**
- Farm Raised Breaded
Catfish Nuggetslb. **\$1.68**
- Shurfine
Meat Wieners12 oz. pkg **58¢**
- Fresh
Ground Chucklb. **\$1.58**
- Preferred Trim Boneless
Beef Arm Roastlb. **\$1.58**
- Preferred Trim Boneless
Beef Chuck Steaklb. **\$1.58**
- Preferred Trim Boneless Beef
Arm Charcoal Steaklb. **\$1.78**
- Cubed
Beef Stew Meatlb. **\$1.98**
- Preferred Trim Boneless
Beef Short Ribslb. **\$1.98**
- Single Serve Combo or Pepperoni
Luigi's Pizza8.5 oz. pkg **88¢**
- Shurfine Quality
Sliced Bacon1 lb. pkg **\$1.58**
- Shurfine Sliced
Turkey Breast12 oz. pkg **\$2.38**
- Shurfine 97% Lean Fat Free
Sliced Ham12 oz. pkg **\$2.38**
- Shurfine
• Meat Bologna • Cooked Salami
• Spiced Luncheon • Garlic Bologna
• P&P Loaf
Sandwich Meats12 oz. pkg **78¢**
- Shurfine Ham or
Chicken Salad7 oz. ctn **\$1.18**
- Shurfine Regular or Polish
Smoked Sausage1 lb. pkg **\$1.48**
- Shurfine Thin
• Ham • Beef • Turkey • Corned Beef
• Pastrami • Chicken
Sliced Meats2.5 oz. pkg **38¢**
- Shurfine Breakfast
Sausage Links11 oz. pkg **98¢**
- Shurfine
Jumbo Meat Wieners • 1 lb. pkg **88¢**

- All Types Dr. Pepper or
Coca-Cola6 pk. 12 oz. cans **\$1.77**
- All Types Dr. Pepper or
Coca-Cola3 liter btl **\$1.97**
- All Types Dr. Pepper or
Coca-Cola6 pk. 20 oz. btl **\$2.97**
- Select Group
• Sauerkraut • Wk/Cs Golden Corn
• Short Cut Green Beans • Pinto Beans
• White/Golden Hominy • Sweet Peas
• Whole Peeled Tomatoes
Shursaving Vegetables14-15.2 oz. cans **4/88¢**
- Shursaving All Purpose
Flour5 lb. bag **58¢**
- Shursaving Dinners
Mac & Cheese7.25 oz. boxes **6/88¢**
- Granulated
Shursaving Sugar4 lb. bag **\$1.18**
- Shurfine Regular or w/Pulp
Orange Juice12 oz. can **58¢**
- All Purpose
Shursaving Flour25 lb. bag **\$2.88**
- Shursaving
Tomato Sauce8 oz. can **8/88¢**
- Shursaving White
Bath Tissue6 roll pkg **98¢**
- Shurfine 24 Med. or 18 Large
Basic Diapersyour choice **\$2.98**
- Shursaving
Coffee Filters200 ct. pkg **88¢**
- Shursaving Lemon Liquid Dish
Detergent40 oz. btl **\$1.18**
- Shursaving Squeeze Pancake
Syrup24 oz. btl **98¢**

PRODUCE

Mix or Match Your Choice Produce

- Yellow Onions • Tropical Kiwi Fruit
- Jewel Green Limes • Tangy Fresh Lemons • 1 lb. bag Fresh Carrots
- Garden Fresh Green Onions • Small Super Select Cucumbers • Fresh Green Medium Size Bell Peppers
- Washington Red Delicious Apples • Washington Granny Smith Apples

8/88¢

FROZEN & DAIRY

- Shurfine Chocolate, Vanilla or Strawberry
Ice Cream5 qt. pail **\$3.88**
- Shurfine Apple or 100%
Grape Juice12 oz. can **98¢**
- Shurfine
Whipped Topping12 oz. tub **98¢**
- Shurfine
Corn On the Cob4 ear pkg **\$1.48**
- Shursaving
French Fried Potatoes ..80 oz. pkg **\$1.68**
- Shurfine IQF
Whole Strawberries ...16 oz. pkg **\$1.48**
- Shurfine Select Group
• Crinkle Cut Carrots • Cut Green Beans
• Mixed Vegetables • Green Sweet Peas
• Whole Kernel Corn • Peas and Carrots
Frozen Vegetables16 oz. bag **88¢**
- Shurfine 1% Lite or Fat Free
Skim Milk1/2 gal. jug **\$1.18**
- Shursaving Cheese
Singles10.6 oz. pkg **98¢**
- Shurfine
Buttermilk1/2 gal. jug **\$1.18**
- Shurfine Chilled
Orange Juicegal. jug **\$1.98**
- Shurfine
Cottage Cheese24 oz. tub **\$1.78**
- Shursaving
Margarine
Quarters16 oz. boxes **3/98¢**
- Shurfine Buttermilk or Butter Flavor
Jumbos Biscuits16 oz. can **88¢**
- Mozz./Mont. Jack or Mild Cheddar
Shurfine Cheese16 oz. pkg **\$2.98**
- Shurfine Mozzarella or Cheddar
Shredded Cheese4 oz. pkg **88¢**
- Shurfine Italian or Reg. Parmesan
Grated Cheese8 oz. can **\$2.38**

- Shursaving
Chunk Dog Food20 lb. bag **\$2.98**
- Shursaving 2 Ply White
Paper Towelsreg. rolls **2/88¢**
- Shursaving Apple Juice
Cocktail64 oz. btl **98¢**
- Shursaving Drip or Reg. Elect. Perk
Brick Coffee11.5 oz. pkg **\$1.88**
- Shursaving
Shortening42 oz. can **88¢**
- Shursaving
Liquid Bleachgal. jug **68¢**
- Shursaving
Garlic Salt20 oz. btl **\$1.18**
- Shursaving
Lemon Juice32 oz. btl **\$1.48**
- Shursaving Black
Pepper8 oz. can **\$1.98**
- Shursaving Hot
Cocoa Mix10 ct. pk **88¢**
- Shursaving Non Dairy
Creamer22 oz. jar **\$1.28**
- Shursaving Salad
Olives10 oz. btl **\$1.48**

HEALTH & BEAUTY

WESTERN FAMILY DEALS

- Western Family Children's Grape or Cherry
Non Aspirin Liquid4 oz. btl **\$2.88**
- Western Family Bubble Gum
Children's Suspension4 oz. btl **\$2.88**
- Western Family 500 M Caplets or Tablets
Ex-Strength Non Aspirin100 ct. btl **\$1.98**
- Western Family Ibuprofen Caplets or
Ibuprofen Tablets100 ct. btl **\$2.68**
- Western Family Caplets
Naproxen Sodium50 ct. btl **\$3.38**
- Western Family Regular or Mint
Milk of Magnesia12 oz. btl **\$1.88**
- Western Family Coated
Aspirin5 gr. 100 ct. btl **\$1.28**
- Western Family Extra Strength
Pain Reliever100 ct. btl **\$3.88**
- Western Family 5 gr. Tri-Buffered
Aspirin100 ct. btl **\$2.18**
- Western Family Non-Coated
Aspirin100 ct. btl **68¢**
- Western Family Normal or Oily Dandruff
Shampoo15 oz. btl **\$1.98**
- Western Family 500 MG
Vitamin C250 ct. btl **\$3.98**
- Western Family Regular or Peppermint
Antacid Tablets150 ct. btl **\$1.98**
- Western Family Ex-Strength Asstd.
Antacid Tablets96 ct. btl **\$1.98**
- Western Family
Ultra Tab Antacid72 ct. btl **\$1.98**
- Western Family Regular/Max Str.
BisMate Liquid8 oz. btl **\$1.98**
- Western Family Reg., w/Aloe Lanolin
Skin Care Lotion15 oz. btl **\$1.98**
- Western Family w/Vitamin C or Control 75
Appetite Suppressant40 ct. box **\$2.68**
- Western Family Natural or w/Aloe
Baby Wipe Refills80 ct. ctn **\$1.88**
- Western Family Nat. or w/Aloe
Baby Wipes80 ct. ctn **\$1.98**

- Shursaving Crunchy/Creamy
Peanut Spread18 oz. jar **\$1.18**
- Shursaving Elbow Mac. or
Long Spaghetti32 oz. pkg **98¢**
- Western Family
Fire Logs5 lb. size **98¢**
- Shursaving Concentrated
Laundry Detergent ...10 lb. pail **\$2.98**
- Shursaving
Pancake Mix32 oz. box **98¢**
- Shursaving White
Napkins250 ct. pkg **\$1.68**
- Shursaving Standard
Foil25 sq. ft. **58¢**
- Shursaving Fabric Softener
Sheets40 ct. pkg **\$1.18**
- Shursaving Tall
Kitchen Bags30 ct. size **\$1.48**
- Shursaving
Cat Litter25 lb. bag **\$2.28**
- Shursaving Dry
Cat Food3.5 lb. bag **\$1.38**
- Shursaving Long Grain
Rice2 lb. bag **78¢**
- Shursaving Quick or
Old Fashioned Oats42 oz. box **\$1.68**

WESTERN MONEY UNION TRANSFERSM
"The fastest way to send money"

Lowe's

MARKETPLACE

515 W. American Blvd. Muleshoe 272-4406

401 W. American Blvd. Muleshoe 272-4585

WE RESERVE THE RIGHT TO LIMIT QUANTITIES IN TEXAS

Pay-n-Save