

### The Weather

From records of Fred Byerly  
Rotan Weather Observer.

Nov. 1970	Prec.	HI	LO
Wed. 11		75	49
Thurs. 12		69	30
Fri. 13	.10	59	34
Sat. 14		42	38
Sun. 15		55	25
Mon. 16		72	38
Tues. 17		71	39

Total Precipitation to date:

1969	25.49
1970	14.00

# The Roby Star-Record

and



# THE ROTAN ADVANCE

## Local Oil Income Over \$22 Million

Fisher County's petroleum industry produces 6,655,730 barrels of crude oil valued at \$21,359,867 and 7,881,698 thousand cubic feet of natural gas valued at \$1,079,792 for an annual economic value of \$22,439,659.

These figures, just released by the Texas Mid-Continent Oil & Gas Association, show the county ranked 59th among state counties in oil and gas production during 1969.

Texas production which has registered an increase over each previous year during the past decade hit another all-time high in 1969 with 1,151,775,000 barrels, according to U. S. Bureau of Mines statistics. This is a production increase of 24.2% since 1960.

Production from Fisher County helped meet this record demand, says Kenneth E. Montague, Association President. "We are now calling on it and the rest of Texas to meet an even greater demand as events in the Middle East have again forced us to dip into our declining reserves. Unfortunately, the price for Texas oil is inadequate to stimulate enough exploratory drilling to replace reserves."

Fisher County landowners and others with mineral interests received \$2,804,957 in royalty payments last year. Texas received \$982,554 from crude oil production taxes and \$76,665 from natural gas production taxes.

Estimated drilling expenditures totaled \$956,883 with \$313,800 of that amount spent on dry holes yielding nothing for the driller. Ira Rinehart's Yearbook showed drillers completed 23 oil wells, 1 gas well and 20 dry holes. Eighteen wildcats were drilled with 17 of them dry.

The county's oil and gas processing plants also added to the economy. The Oil and Gas Journal listed 2 natural gasoline plants with a capacity of 11.0 million cubic feet daily.

Reports from the Texas Employment Commission show some 49 persons were directly employed by the oil and gas industry in the county with an annual payroll of \$390,208.

## Hammers Blast Tigers Friday

Yellowhammers earned title of Co-Champion of District 7AA with Haskell when they defeated Anson Tigers at Anson Friday night, 25-0. This concluded regular season play for both teams.

Tigers failed to threaten at any point of the game which was played in bitter, wet and cold weather. Mickey Early paced the Yellowhammers with a trio of touchdowns on runs of 23, 11 and one yard.

Wingback Hank Day added the fourth touchdown with 44 seconds remaining in the 3rd quarter on a 22-yard pass from quarterback Walter Hargrove.

Early gave Rotan a 6-0 half-

time lead with a one-yard plunge in the second quarter.

In the third period, Early scored from the 23 after Tiger punter Joe Loflin was tackled on the Anson 23. Later in the third, Early bolted in from the 11 after returning a punt from his 40 to the Anson 22, where a penalty placed the ball on the 11. Early scored on the next play.

Hank's TD came on a short flare pass from Hargrove, which he caught in the open and skipped in for the score.

Norvelle Kennedy kicked the point following the fourth score for the final 25-0 margin.

ANSON ..... 0 0 0 0-0  
ROTAN ..... 0 6 19 0-25

## Sheriff Posse Names Officers

Fisher County Sheriff Posse held their regular monthly meeting Monday night, November 9.

They elected new officers for 1971. Elected were: Jimmy Walker, Rotan, President; Dorman Bratton, Rotan, Vice-President; Secretary-Treasurer, Billie Joe McCombs, Rotan; Posse Queen, Janice Hendon, Rotan.

New directors are Donald Ballenger of Roby and Peter Wisert of Rotan, Parade chair-

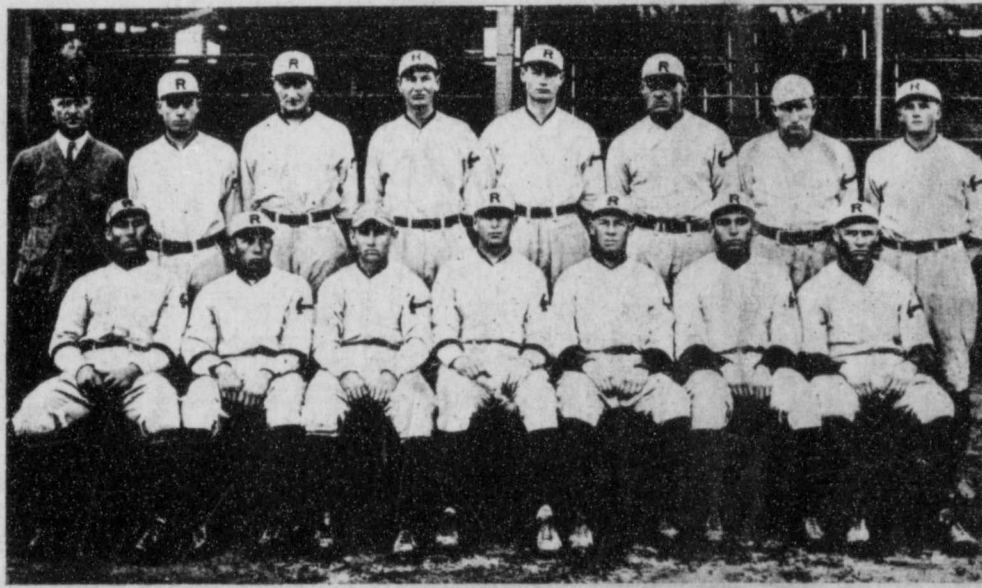
man is Glenn Upshaw of Roby and Assistant Parade chairman is Elvis Elrod of Rotan.

## Rev. Upshaw At Calvary Sunday

Rev. Thurman Upshaw, Area Missionary will hold Sunday Services at Calvary Baptist Church, Rotan.

Rev. Jack DeWitt and family are on vacation.

## 45 Years Ago . . . . *The Yellow-Hammers 1926*



TOP ROW:—J. C. Tittle, McCombs, Montgomery, Burnes, Clift, Underhill, Holder, Rash.  
SECOND ROW:—Cox, B. Bridges, M. Bridges, Robinson, H. Onstott, Ramby, B. Onstott.

The spring of 1926 found the Yellow-Hammers with their eyes on the State title. Failure to annex the 1925 title did not mar the spirit of the gang which has won for itself a state wide reputation for game fighting. For the second season all West Texas and the Panhandle went down in defeat before the battling Rotan boys. High School games were hard to find, for all teams in this section remembered the previous year and refused to play. Who could blame them? To be on the "short end" of a 30 to 0 score is rather discouraging for any team. Many games were played with independent and semi-professional teams. Not a game was lost to a high school before the annual tilt with Waxahachie. For the second season the Indians from Central Texas stood between Rotan and the State title.

Picture and information reproduced below is from Yellowhammer of 1926. Yellowhammers has just closed a good baseball season, losing to strong

Waxahachie team for State Title. The previous year Hammers had the same record going to State, losing only to the In-

dians. The copy was sent to John Young by Barto Onstott of Portales, N. M. who was a member of the team.

## Lions Win Over Lorraine 41-18

## Rev. Hudnall To Mount Pleasant

Rev. Billy Hudnall pastor of First Baptist Church, Rotan, resigned Wednesday, November 11. He accepted call from First Baptist Church at Mount Pleasant, effective immediately.

Rev. Hudnall has served Rotan church for 6-1/2 years, and during his pastorate the beautiful new church building and parsonage have been constructed. He is graduate of Hermleigh High School, Hardin-Simmons University and Southwestern Baptist Theological Seminary and is member of Executive Board of the Baptist General Convention of Texas.

Rev. Hudnall and his family were honored with a reception in Fellowship Hall following Sunday night services. The family plans to move Thursday.

Mr. and Mrs. H. H. Gibson of Roby attended the funeral of Mrs. Gibson's aunt, Mrs. E. W. Pritchard in Canyon Saturday afternoon.

The Roby Lions took a 41-18 victory over the Lorraine Bulldogs in District 5-B Friday night in a game that officials called after three quarters of play.

Scoring for Roby were Barron Wetzel with seven points, Ray Douglas with 26 points, Keith Mathies with two points and Stuart Carey with six points.

Ronald Jones scored 12 points for Lorraine and Williams six.

ROBY..... 14 8 19 X-41  
LORAIN... 12 0 6 X-18

## Hospital News

Patients admitted to Callan Hospital November 10 thru 16th. Local patients: Mrs. Ted Lovin, R. J. Rogers, Ollie Barnett, and Mrs. H. A. Graham.

Out of town patients: Mrs. Ralph Brown, Phillips; Mrs. George Field, Knox City; Mrs. Jimmy Layne, Snyder; J. P. Moore, Roby; George Darden, Girard; Calvin Carriker, Roby; Mrs. J. E. Patton, Aspermont; Mrs. Jeff Cheslier, Hamlin; Charlie Don Fincher, Girard; Floyd L. Jenkins, Hamlin; and Mrs. Cecil King, Roby.

## Dr. Wilkinson In Abilene Hospital

Dr. Robert Wilkinson of Wilkenson Clinic-Hospital has been in West Texas Hospital, Abilene since last Wednesday suffering heart attack. His condition was reported as critical and intensive unit until Monday when he was moved to private room and report Tuesday is that his condition is slowly improving.

## Brown Has Role In Tech Drama

Jay Brown, Texas Tech University theater arts major from Roby, is playing the role of Emory in Tech's Laboratory Theater production of "The Boys in the Band."

The Tech version of the stage and screen hit will run through Oct. 16, with holdover performances set for Nov. 19 and 20.

Brown has appeared in a number of Tech productions, most recently in "The Prime of Miss Jean Brodie," "Viet Rock" and "Celebration." He also has appeared in Lubbock Theater Center production of "Invitation to a March," and "A Funny Thing Happened on the Way to the Forum."

He is the son of Mr. and Mrs. Oddis Brown of Roby.

## 4-H Achievement Banquet In Rotan Saturday Evening

## Hammers Are Now Dist. Co-Champs

## Clois Bennett Has Distinctive Art Work Display

Clois Bennett, son of Mrs. Dono Darden, has produced a number of the most attractive football placards we have seen. The one he designed and produced for Rotan Yellowhammers is outstanding. They are on display and may be secured at his mother's place of business, Darden Department Store.

He is with National Collegiate Marketing Corp. of Austin, who produce a wide variety of displays. Mrs. Darden also has several other articles Clois designed.

NCMC is operating on national scale and has developed into an outstanding business.

Another interesting placard Clois designed is an illustration of mascots of all teams in the Southwestern Conference.

Mrs. Darden will be happy to show you the articles.

Rotan's Yellowhammers did themselves proud Friday night in the cold wet weather to wind up a successful season of football by drubbing Anson's Tigers 25-0.

This makes them co-champion of District 7AA with Haskell. Haskell has honor of playing Coleman Bluecats this Friday for Bi-District since they defeated the Hammers earlier. We are proud of the Yellowhammers, they played good hard, clean football the entire season. A good spirit of cooperation prevailed and we congratulate every member of the squad and Coach Davis and his staff on the enjoyable season.

The loss to Haskell's Indians was a heart breaker, but we had satisfaction of losing to one of the strongest teams to develop in the area, we wish them well in playoff games and will root for them all the way to state. They are truly champions and will represent our district well.

Calvin Carriker, Roby, was in Callas Hospital several days for treatment.

The annual 4-H Achievement Banquet will be held Saturday, November 21, at 6:30 p. m. at the School Cafeteria in Rotan, according to Richard Spencer and Mrs. Alice Ballenger.

Mac Weathersbee of Rotan will be the speaker for the event. Mike Herron of Rotan will be Master of Ceremonies of the banquet while the entire program will be handled by 4-Hers and Adult Leaders.

County Judge E. G. Perkins will present the Gold Star Awards to the outstanding 4-H boy and girl.

The banquet is being sponsored by Midwest Electric Co-op and Citizens State Bank of Roby.

First National Bank of Rotan is sponsoring the year pins and adult leader pins. Rotan Cotton Oil Mill is sponsoring the printing of the programs for the banquet.

A large crowd is expected to attend.

## Thanks From Rotan Coaches

TO THE PEOPLE OF ROTAN  
With the conclusion of Football Season for Rotan High School, the coaching staff would like to thank the Booster Club, community, businesses, and every fan for their fine support this year. We feel that we had a great season ending with a 9-1 record and as Co-Champions in a new District. We feel that we had a fine group of athletes who gave us 120% effort at all times. Without their effort and your support we would have fallen in our task.

As the sports season changes we feel that we will continue to have a good season with your support and spirit. Once again we would like to say thank you for your help and support for it was greatly appreciated.

Sincerely,  
The Coaching Staff of  
Rotan High School  
and Junior High School

## Hobbs Lost By 2 Points Saturday

Versatile Randy Roemisch threw four touchdown passes and ran for two other TDs as the Hermleigh Cardinals outscored the Hobbs Panthers, 48-46, for a successful homecoming Saturday.

The victory, which boosted Hermleigh into a second-place tie with Hobbs in District 3-B (six-man) was actually won by

Bud Kimzey, who kicked three conversions to make the two-point difference.

Rudy and John Martinez scored three touchdowns apiece for Hobbs. Both teams trail Highland by a full game in the district race, which winds up next week.

HERMLEIGH... 14 14 14 6-48  
HOBBS... 14 14 12 6-46

## Peggy Morrow Has Correct Guess

Guessing Contest closed with the end of football season Friday. The largest number of guesses for the season were turned in for Anson game.

Peggy Morrow was winner by 2 hours. She guessed 25 points at 9 a. m. Thursday and Karen Petty 25 at 11 a. m.

In the 24 point group were Sharon Blakley and E. A. Petty. Estimating 26 were: Ronnie Teichman, Mrs. A. B. Parker, Al Finch, Clay Fowler, Ernestine Acorn.

Four guessed 27, Champ Clark.

Tim Allen, Neal Neal, and Brenda Hinson. 28 was popular with William Duke, Mike Morrow, Wanda Helm, O. M. Sparks, Ross Trout, Ora Acorn, and Coach Boaz.

The Contest proved to be popular with Yellowhammer fans and caused much interest and we appreciate the cooperation of Sponsors who made the event possible.

Mrs. Lynn Gibson and Todd of Van Horn visited Mr. and Mrs. H. H. Gibson in Roby last week end.

## Rebekah Bake Sale Saturday

Rebekah Lodge will hold a Bake Sale Saturday at Darden Department Store beginning at 9 a. m.

The Lodge will hold annual Thanksgiving supper Monday night at the Hall for members and families.

Mr. and Mrs. Leslie Brown of Granbury and daughter, Mrs. Marjorie Johnson of Burleson visited Mr. and Mrs. Truett Strickland and Mr. and Mrs. Clyde South and all attended the Homecoming.

# FESTIVE FOODS for THANKSGIVING

WE HAVE ALL THE FIXINS FOR YOUR FEAST



## TURKEY TOMS

**39<sup>c</sup>** lb.

20 To 24 lb. Avg.



We Also Have A Good Selection Of Honeysuckle, Norbest and Swift Butterball Turkeys Too!

### TURKEY HENS

12 to 16 lbs Avg.

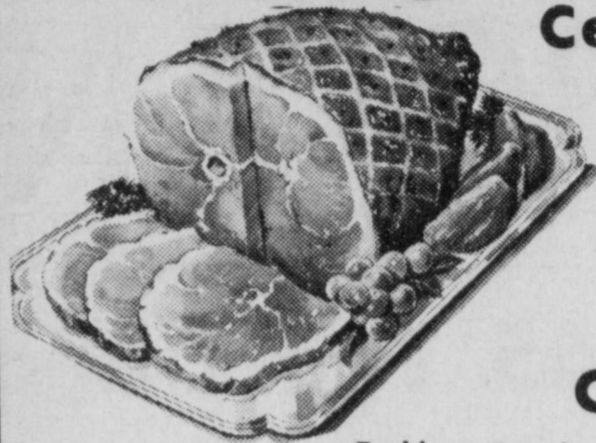
**43<sup>c</sup>**

### BAKING HENS

5 to 7 lbs. Avg.

**49<sup>c</sup>**

## HAMS



Fully Cooked

Shank Ends ---- 49<sup>c</sup>  
Butt End ---- 59<sup>c</sup>  
Half or Whole ---- 59<sup>c</sup> lb.  
Center Slices ---- 89<sup>c</sup>

### Hormel Cure Hams

5 to 6 lb Avg. **\$1<sup>29</sup>** lb.

SHURFINE

### Canned Hams

3 lb. Can

**\$2<sup>98</sup>**

Imperial Lt. Brown Powdered

### SUGAR

2 for 39<sup>c</sup>

Aunt Jemima Yellow 5 LB.

### CORN MEAL

Bama Tart n' Creamy 32 oz.

### SALAD DRESSING

Kraft-Philadelphia 8 oz.

### CREAM CHEESE

### Whipping CREAM

Gandy's

Tender Crust

BROWN 'N SERVE

**ROLLS**  
3 FOR 89<sup>c</sup>

1 1/2 lb.

**BREAD 29<sup>c</sup>**

Hormel Little Sizzler

**SAUSAGE 59<sup>c</sup>**

12 oz. Pkg.

SHURFRESH

### SLICED BACON

**59<sup>c</sup>** lb.

Yellow Onions 5<sup>c</sup> lb.  
Ocean Spray lb. Bag

Cranberries 29<sup>c</sup>

US#1 YAMS lb. 15<sup>c</sup>

California Pascal

Celery stalk 19<sup>c</sup>

Contac 10's

Cold Capsules 98<sup>c</sup>

Vo5-Reg. Plastic

SHAMPOO 15 oz. 79<sup>c</sup>

Anti-Perspirant 12 oz.

RIGHT GUARD \$1.39

Colgate Reg. 11 oz.

SHAVING BOMB 39<sup>c</sup>

1 Size Fits All

PANTY HOSE 2/99<sup>c</sup>

Kleenex

DINNER NAPKINS 3/89<sup>c</sup>

Reynolds 18x25

HEAVY DUTY FOIL 59<sup>c</sup>

Shurfine-All Green CUT 300

ASPARAGUS SPEARS 3 \$1

Shurfine 14 oz. can

**PUMPKIN 2 for 25<sup>c</sup>**

3 lb. Can  
SNOWDRIFT WHIPPED

## SHORTENING 69<sup>c</sup>

SHURFINE ENRICHED

### FLOUR

5 lb. 39<sup>c</sup>

DEL MONTE WHOLE or CREAM

### CORN

4 FOR 89<sup>c</sup>

303 Can

### Wolf

CHILI 79<sup>c</sup>

19 oz. can

### PECANS

Dromedary-Loose Pak-8 oz. Fisher 13 oz.

DATES 33<sup>c</sup>

None Such 9 oz.

Mince Meat 29<sup>c</sup>

Bruce's Cut

Mixed Nuts 79<sup>c</sup>

Schillings 4 oz.

Black Pepper 49<sup>c</sup>

### SOUR CREAM

3/\$1.00

Shurfine 16 oz. Strained

CRANBERRY SAUCE 4/89<sup>c</sup>

Del Monte 1 1/2

PINEAPPLE TIDBITS 4/89<sup>c</sup>

Shurfine 303

GREEN BEANS 4/89<sup>c</sup>

Del Monte Blended 303

SWEET PEAS 4/89<sup>c</sup>

Shurfine 4 oz.

MUSHROOMS 3/89<sup>c</sup>

Towie Maraschino

SALAD CHERRIES 3/89<sup>c</sup>

Lindsay Pitted Large 300

RIPE OLIVES 2/89<sup>c</sup>

Holsum-Manz-7 oz.

STUFFED OLIVES 2/89<sup>c</sup>

Del Monte Whole - 12 oz.

SWEET PICKLES 2/89<sup>c</sup>



10oz MORTON FROZEN PIE  
**MINCE MEAT 39<sup>c</sup>**  
MORTON FROZEN PIE  
**PUMPKIN**  
2oz MORTON FROZEN  
**PIE SHELLS**

The Entire Staff At Our Store Extends To All Our Friends and Customers The Wish That On This Thanksgiving Day Each and Every One Will Enjoy A Wonderful Day Among Friends and Relatives

We Reserve The Right To Limit Quantities

**THRIFTWAY**

Specials Good Thurs. Nov19 to Nov 25

**GLEN'S**

**SUPER MKT**

GLEN HOLT - Owner Manager - Gold Bond Stamps FREE-Double on Wed.

# F-U Faces Major Policy Decisions

A twelve-member Program Committee has completed its work on a proposed draft of the 1971 Policy Statement for Texas Farmers Union. The Committee, meeting in Waco last week, wrote into the program draft some of the key issues which will be debated at the state convention in Amarillo December 3-5.

Some of the points of controversy which are expected to spark debate on the floor of the convention include the group's position on state legislation to limit corporate farming, Farmers Union's continued support for commodity checkoff programs to support research and promotion, limitations on federal farm payments, state regulation of utilities, state taxation, postal service to the rural areas and recommendations relating to the administration of the Nixon farm bill, if it passes Congress.

Members of the Program Committee, who will present the new policy recommendations at the Amarillo convention are: Albert Kresta, Wharton, Chairman; Mrs. Larry Witten, Olton; Jim Wilson, Dalhart; Roscoe Morrison; Winters, Jerome Dorotik, El Campo; Harold Edwards, Silverton; Wayne Knox, Haslet; Joe Rankin, Falls, Mrs. Max Carrier, Roby, Walter Wilde, San Angelo; Charles Maddux, Waco, and Henry Harnly, Pampa.

The Farmers Union state convention, the organization's 67th, will headquarter at the Holiday Inn West in Amarillo. The three-day meeting will feature speeches from state and national legislative figures and farm leaders. Those speakers who have accepted invitations to address the convention include: Governor Preston Smith, Senator Ralph Yarborough, Representative Bob Price, Rocky Mountain Farmers Union president Charles Hanavan, Canadian Uniform president Paul Babe of Alberta, Canada, National Farmers Union communications vice-president Stan Weston, and National Green Thumb director, Dr. Blue Carstenson.

The Texas Farmers Union state convention which will be held at the Holiday Inn West in Amarillo December 3-5 will feature a livestock workshop. During the Saturday afternoon session, December 5, a panel of livestock specialists, from the universities and representing commercial livestock operations, will discuss current livestock production and marketing problems.

This "Meet the Livestock Experts" program will present a panel of livestock experts who will field questions from the audience. Those serving on the panel are: Moderator, Dr. Bud Uvacek, Livestock Marketing Specialist, Texas A&M University; Tom Prater, Farm Management Specialist, Texas A&M University; Dr. R. C. Albin, Associate Professor, Animal Science Texas Tech University; Carl Martin, Rancher from Menard; Jack Carrouthers, Manager Friona Feed Yards; J. L. Hutchinson, President, Clifton Cattle Co.; J. Foster Whaley, Gray County Agricultural Agent; Dr. T. D. Tanksley, Jr., Swine Specialist, Texas A&M University; and Ewell Liner, President, Lubbock Swine Breeders Assn.

A wide range of information will be available to those attending the livestock seminar session. Mr. Prater, a former county agent and farm management specialists, has worked in the field of economic analysis of cow and calf ranching operations. Carl Martin, a well known rancher in the Menard area, is a practical authority on both cow and calf and ewe and lamb ranching operations. Handling the cattle-feeding end of the discussion will be

Jack Carrouthers, a well known feedlot manager, backed up by Dr. R. C. Albin, who serves as a consultant to both feedlot and ranching operations. J. L. Hutchinson's Clifton Cattle Company grazes cattle and operates as a stocker-feeder order-buying service. Foster Whaley of Pampa is not only a well known County Agricultural Agent, but once grazing and feeding cattle.

Dr. T. D. Tanksley is one of the foremost professional swine specialists in the southwest, and brings to the panel technical as well as practical know-how on hog production. Ewell Liner of Lubbock operates the nationally known Lubbock Swine Breeders Assn., which specializes in providing commercial producers Pacific Pathogen Free breeding stock from the company's several hundred sow herd.

Dr. Uvacek is a widely known and much-in-demand spokesman in the field of livestock marketing. His experience as an economist, livestock marketing specialist, as well as livestock producer, qualifies him for his key position as anchor-man-moderator on the panel.

### Card of Thanks

We wish to thank everyone for their consideration in the passing of our loved one. Especially do we appreciate the Doctors and Nursing staff of Callan Hospital for their attention.

Mrs. Wood Byrd and family  
Hattie Coke and family  
Mattie Blevins and family  
Rachel Warren and family  
Eva Head and family  
Bulah Adair and family  
Nena Adair

### WCTCG Receives State Grant

Governor Preston Smith today approved a grant of \$31,859 to the West Central Texas Council of Governments for a regional training center. Approval of the award was recommended by Texas Criminal Justice Council at its regular monthly meeting.

Judge Joe Frazier Brown, executive director of the Criminal Justice Council, said the grant will be used by West Central Texas COG to continue its training academy for police officers in the region. Four courses will be held for 100 students with subjects ranging from criminal investigation to teletype operation and record keeping.

The classes are approved by the Texas Commission on Law Enforcement Officer Standards and Education.

An in-kind match of \$48,140 will be provided by the grantee for the project.

Counties in the West Central Texas State Planning Region are Brown, Callahan, Coleman, Eastland, Fisher, Haskell, Jones, Kent, Knox, Mitchell, Nolan, Runnels, Shackelford, Stephens, Stonewall, Taylor, Throckmorton, Comanche and Scurry.

The Criminal Justice Council, responsible for statewide planning, administers grants to units of state and local governments to assist them in carrying out projects for improving the criminal justice system. The funds come from the Law Enforcement Assistance Administration, U.S. Department of Justice, under provisions of the Omnibus Crime Control and Safe Streets Act of 1968.

## In Memory of Vern Underhill Service Held For Emma Waddell

The following, in regard to Vern Underhill, native of Rotan is taken from Phillips Co. publication:

**Vern**  
"Hello, Sheriff!" I'd say.  
"Hello, Teacher," he'd answer. It was a little game we'd been playing for nearly a quarter of a century. Then we'd talk. He was an easy and comfortable man to talk with. We'd talk about pipes, and coins, and pencils, and bacteria, and ancestors. And eventually we'd get around to baseball. Was Campanella as good a catcher as Bill Dickey? What happened to Pepper Martin?

Our relationship wasn't unique. Dozens of other guys liked to talk with Vern.

Now he's moved on. I'll bet the move was quiet and unassuming. But the work will get around - Vern's here.

He'll be sitting on a cloud, somewhere, his long legs stretched out, puffing on a pipe. Saint Pete will come wandering up and before long he will ask: "What about the Indians' chances...?"

--- Maxey Brooke

**A Reputation...**  
When our life is over, each of us leaves a reputation behind. One man leaves behind him a reputation for wisdom; another for honesty; another for loyalty; another for generosity; still another for fair play. Few of us will leave behind us a reputation for all of these. The individual who does will usually be described as "truly a fine man." No man can be paid a higher tribute.

We will remember Vern Underhill for his athletic prowess as a young man. We will remember him as a defender of the law. We will remember him as a loyal Phillips employee. We will remember him as an arbiter of arguments and a friend in time of need. But most of all, we will remember Vern as "truly a fine man."

### MENTAL HEALTH MATTERS

Bertram S. Brown, M.D.  
Director  
National Institute of Mental Health

**Getting Well Learn-In**  
A special learn-in program at a State mental hospital in Ohio is helping disturbed youngsters so successfully that most of them can return to their homes and schools within a few months.

Hawthornden State Hospital in Northfield reports 80 discharges out of 88 juvenile admissions since October 1965, when it introduced an educational and behavior modification program for young psychotic patients, age 10 to 17, mostly schizophrenics.

Only ten percent of the patients who were discharged had to return for further treatment. The others are now living at home and attending school, or pursuing careers.

The education-oriented therapy program, started by Dr. George A. Golias, is based at Hawthorne Hills School, a State-accredited school located on the hospital grounds.

Boys and girls live in separate parts of an open ward which adjoins a large school area with a library, classrooms, and gymnasium. In this setting, the hospital tries to duplicate normal school days as much as possible for the young patients.

Students must follow their school schedules closely; and all rules are strictly enforced. The youngsters know exactly what is expected of them at all times.

"The results have been tremendous," says Dr. Eliere J. Tolan, the hospital superintendent, "and the teachers are doing a great job of rehabilitating these seriously disturbed youngsters, many of whom otherwise would face long periods of hospitalization."

The Hawthorne Hills School project is being aided by a Hospital Improvement Program grant from the National Institute of Mental Health, a component of the Health Services and Mental Health Administration, U.S. Department of Health, Education, and Welfare.

## Service Held For Emma Waddell

Funeral for Emma Lee Waddell, 69, was at 2 p. m. Tuesday in the First Baptist Church with Rev. Billy Hudnall, officiating.

Burial was in Hobbs Cemetery under direction of Weathersbee Funeral Home. Miss Waddell died at 6:30 p. m. at the hospital at Abilene State School, where she had been 10 years.

Miss Waddell was born March 17, 1901, in Ellis County, the daughter of the late Mr. and Mrs. J. W. Waddell. They moved to Rotan in 1921 and to Abilene in 1946.

She was a member of the First Baptist Church of Rotan.

Survivors are five sisters, Mrs. Jerry Castleberry of Abilene, Mrs. Charlie Ramby of Merkel, Mrs. A. M. Karr of Spur, Mrs. Ellis McBeth of Rotan and Mrs. Harvey Patterson of Abilene; five brothers, Burt Waddell of Abilene, Rube Waddell of Spur, Norris Waddell of Oklahoma City, J. D. Waddell of Kansas City, Mo., and Bill Waddell of Bryan.

Pallbearers were Dono Darden, Raymond Cornelius, Junior Kiker, Truett Strickland, Charlie Rollins and Arnold Neeley.

### Card of Thanks

We would like to express our sincere thanks to all our many very dear friends in the Rotan and Fisher County area for their comforting expression of sympathy in the recent loss of our beloved mother, Mrs. Lula M. Knott. We cannot find words to justly express our deep feeling of gratitude for your remembrances and prayers which helped us and gave us strength when we needed it most. May God bless and keep you.

Mr. and Mrs. J. P. Knott,  
New Orleans, La.  
Mr. and Mrs. Don Knott,  
Huntsville, Ala.  
Mr. Robert Knott, Dallas, Tex.  
Mrs. Mary L. Oster, Dallas, Tex.

## SS is Important To Under 30

If you're in the half of the U. S. population that's under 30, you may think social security is something remote and unimportant to you right now. Not so, according to R. R. Tuley, Jr., social security district manager for the Abilene district.

"In this generally healthy and youthful group, nearly 2-1/2 million people receive benefits because they are disabled or are dependent upon disabled workers. Over 3 million widowed mothers and young children get monthly social security checks as survivors of workers," Tuley stated. "Half a million students age 18 to 22 and a quarter of a million people who became disabled in childhood get monthly benefits as the children of retired, deceased, or disabled workers," he went on. "Disabled children get social security benefits as long as they are not able to work."

"The money in cases like these is important, of course," Tuley added. "But for the young worker who knows that his family will be at least partially provided for should he be injured or die prematurely, there is also peace of mind."

Mrs. Stonie Welder, Lawrence McCombs of Hobbs, N. M. visited their parents, Mr. and Mrs. John McCombs and attended Homecoming.

Mr. and Mrs. Bud Stuard and Monea of Midland spent the week end in Rotan with her parents, Mr. and Mrs. Hollis Swartzgen.

Mrs. C. E. Toole of Troup and Mrs. Coese Nolan of Grand Prairie spent this past weekend with their parents, Mr. and Mrs. H. C. Hogan of Roby.

## James Harris Davis Eulogy



Today we honor and give thanks for the life of Harris Davis. God gave us this man of many talents, and though he's gone his memory is always with us.

I'm speaking for his students, present and past. You all knew him, so there's no need to tell you about him. I just want to remind you of a few of his outstanding qualities.

Patience - This man was one of the most patient I have ever known. I can remember times in the band hall at school when he displayed overwhelming amounts of patience. We were always rowdy and he would just stand there on the podium and wait patiently for us all to be quiet.

Empathy - During his days as a school teacher there were many times the students had to be scolded for their mischievousness. We never minded it from him, though. We always knew that he was laughing with us, and wouldn't punish us if he didn't have to.

Quiet Determination - There were many problems in Mr. Davis' life, but he always rose above them with such determination and faith. His times of depression were few, and he always seemed to be saying, "I can do it."

Love of Life - Mr. Davis was a very happy man. He was always joking and smiling. At school, at his food market, at his job as mayor, and at church, he always brightened our lives with a smile and a joke.

Participation - Harris Davis was active. In school, in city work, in being a friend, he was always ready to participate and help in any way he could. He despised idleness and always wanted to be at work doing something. Mr. Davis is described perfectly in this quotation from Boswell as he said of the death of Samuel Johnson, "All work is as a seed sown. It grows and spreads and sows itself anew."

These are all things we're going to miss in this man, but there are two things that are most important about Harris Davis that I will always connect with him. One is his love of music. No one sang like Harris. No one made chills run up your spine like Harris when he sang. No one taught it better. No one loved it more.

And that brings me to the school connection. His love of his family. Mrs. Davis was always beside him in everything he did, whether it was music accompaniment, being hostess at their parties, or leaving school arm in arm at the end of the day. He was very proud of his son, Scott, and loved him very much. And to his daughter he gave love, help, and friendship. To Patti, he was a friend that was always there.

We hurt and ache when we think of this man's death. He was a wonderful man, a kind man, and his absence is sorely felt.

To close I would like to read

this poem that seems to describe his life as no other can. Please think of these words as I read them and see how closely they fit his life.

"If" by Rudyard Kipling  
If you can keep your head when all about you are losing theirs and blaming it on you; If you can trust yourself when all men doubt you, But make allowance for their doubting too;

If you can wait and not be tired by waiting, or being lied about, don't deal in lies, Or being hated, don't give way to hating, And yet don't look too good, not talk too wise.

If you can dream - and not make dreams your master, If you can think and not make thoughts your aim, If you can meet with triumph and disaster, And treat those two imposters just the same;

If you can bear to hear the truth you've spoken Twisted by knaves to make a trap for fools, Or watch the things you gave your life to broken, and stoop and build them up with worn out tools;

If you can make one heap of all your winnings and risk it on one turn of pitch and toss, and lose, and start again at your beginnings, and never breathe a word about your loss;

If you can force your heart and nerve and sinew to serve your turn long after they are gone, And so hold on when there is nothing in you except the will which says to them, "Hold on";

If you can talk with crowds and keep your virtue, Or walk with kings - nor lose the common touch;

If neither foes nor loving friends can hurt you; If all man count with you, but none too much;

If you can fill the unforgiving minute with sixty second's worth of distance runs - Your's is the Earth and everything that's in it, And which is more, you'll be a man, my son."

And what a man he was. We students thank God for giving us this teacher, friend, and Christian. And in this time of despair, let's remember that he's happy and peaceful in Paradise.

\*\*\*\*\*

### HOW TO GET YOUR ZIP CODE

- 1. Ask your postman.
  - 2. Look at the Zip Code Map in the Yellow Pages.
  - 3. Call your Post Office.
- advertising contributed for the public good

The Roby Star-Record and The Rotan Advance Combined June 13, 1969 PUBLISHED THURSDAYS

E. H. Shelton ..... Editor  
Mayme Shelton ..... Associate Editor

2nd Class Postage Paid at Rotan, Texas 79546 Entered as Second Class matter at the Post Office, Rotan, Texas, under the Act of Congress of March 3, 1879.

SUBSCRIPTION RATE IN FISHER COUNTY \$4.00 ELSEWHERE \$4.50

Notice to the Public: Any erroneous reflection upon the character, standing, or reputation of any person, firm or corporation which may appear in the columns of this paper, will be gladly corrected upon due notice being given to the Editor.



### A THANKSGIVING PRAYER

We give thanks that thirty-five decades ago the Pilgrims landed in the new world.

We give thanks that they persevered and established principles of liberty and opportunity which formed the basis of our society.

We give thanks that they solved the monumental problems of their day in what must have seemed a cruel and hostile land.

We give thanks that they saw their problems, not as barriers, but as opportunities to build a better life for themselves and for future generations.

We pray that we of this generation will have as great courage and resourcefulness as our Pilgrim forefathers to solve the problems of today.

### CRUISE HAPPILY INTO THE HOLIDAYS WITH BAN-LON WEAR-DATED® SEPARATES

CRUISER

Donovan-Garvani AT THE CREST OF FASHION

### H. L. Davis & Co.

### UNZIPPED MAIL IS TROUBLE

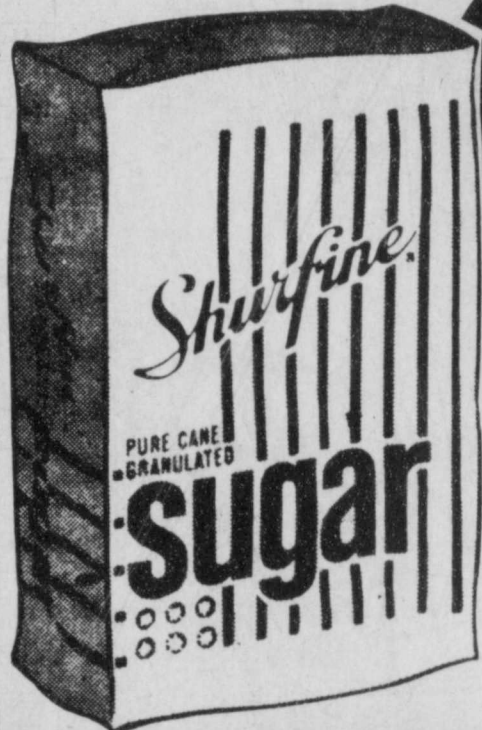
Wherever an unzipped letter goes, trouble follows. Extra steps in the sorting operations. Extra stops along the way. Don't hold up mail service. Use ZIP.

advertising contributed for the public good



# for THANKSGIVING

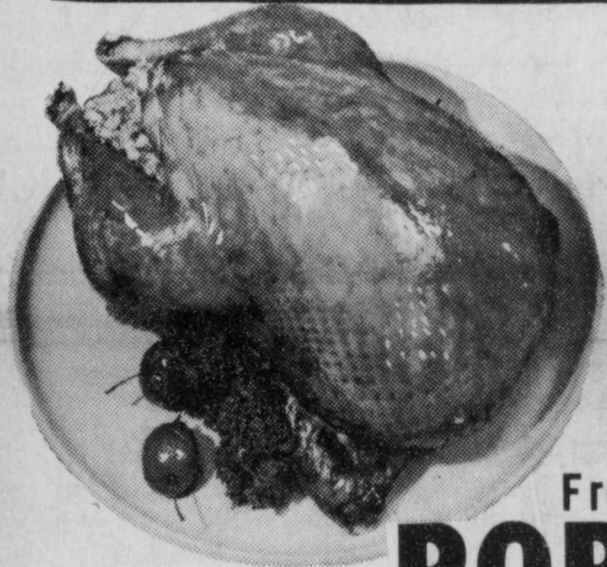
SHURFINE



# Sugar 59¢

lb. bag

WITH PURCHASE OF 6 SYLVANIA INSIDE - FROST LIGHT BULBS 60-75 or 100 WATT



Shop THRIFFEE For **QUALITY TURKEYS**  
 Thriftee Will Feature Swift Butterball --Shurfresh --Lord Marlin  
 Turn Your Order In Now

YOUR CHOICE:

**COFFEE**

MARYLAND CLUB 1 lb. ...CAN.. **85¢** SHURFINE 1 lb. ...CAN.. **79¢**

Fresh **PORK ROAST** lb. **59¢**

Fresh **PORK STEAK** lb. **59¢**

**HAMS** Half or Whole lb. **59¢**

Medium Size **SPARE RIBS** lb. **59¢**

A F **FRANKS**  
 12 oz. Pack **49¢**

**TAMALES** Elchico 300 Size **3 for \$1.00**

**BATH TISSUE** Chiffon 2 Roll **29¢**

**PAPER TOWELS** Viva Jumbo Roll 3 For **\$1**

**CRACKERS** Nabisco bag **39¢**

BANQUET **MINCE PIES**  
**PUMPKIN PIES**  
 Mix or Match 3 20 oz. Size **\$1.00**

**PANTY HOSE**  
 Fashion Girl Sheer Seamless Pair **79¢**

**MEAL** 5 lb. BAG **49¢**

FOOD KING **FRUIT COCKTAIL**  
 No 2 1/2 Cans 3 For **\$1.00**

**CRANBERRY SAUCE** Shurfine 300 Size Can **19¢**

**PUMPKIN FLOUR** Shurfine 300 Can **10¢**

**FOIL** LIGHT CRUST 5 POUND BAG **49¢**

Alco 25 ft. Roll **29¢**

Alumium

**THRIF-TEE FOOD STORES**

DOUBLE S&H GREEN STAMPS  
 Tues. & Wed. With \$5 or More Purchase  
 Quantity Rights Reserved

AFFILIATED



Thriftee Pak **RUSSETT POTATOES** 10 lb. Bag **49¢**

**CELERY** Medium STALK **10¢**

**WALNUTS** Peerless Pound Pkg. **59¢**

Gandy's **Whipping CREAM**  
 1/2 Pt. **29¢**

# Carlos' Little Mexico Restaurant



Carlos & Mary Sue Mijares in front of "Little Mexico Restaurant"

Mr. and Mrs. Carlos Mijares, owners and operators of the popular "Little Mexico Restaurant" at 1703 Avenue S in Snyder are well and favorably known over Fisher County as well as the entire area.

Carlos was born and reared in Hobbs Community and his parents, Mr. and Mrs. G. L. Mijares still live on the home place near Hobbs School. Carlos graduated from Hobbs High School and was in the service for 2 years. Following this he attended San Angelo Business College. He received his training in restaurant business for several years in San Angelo.

The cool weather we are now enjoying calls for a visit to Carlos' Little Mexico Restaurant for a feast of his authentic Mexican Food. One of his most popular new features is his Beef Chile Rellenos with Spanish Sauce, Fried Beans and Spanish Rice.

Little Mexico Restaurant is a good place - winter or summer

to eat delicious tasting Mexican food. Carlos offers Mexican dinner, special Mexican dinners, and a variety of seven other dinner plates. The Mexican dinner includes enchiladas, tamales with chili, Spanish rice, fried beans, combination salad and ice cream or sherbet and coffee or tea. The special Mexican dinner has enchiladas, tamales, chili con carne, fried beans, Spanish rice, beef tacos, and the same variety of desert and drink.

In addition to his Mexican food, you may have choice Steaks and Sea Foods.

He serves his own homemade Tamales and also they have 'take out' service.

Every Sunday they feature Turkey, Dressing and all the trimmings.

Why not entertain your holiday guests in his attractive dining room in privacy. This is also splendid for banquets, school affairs, etc.

Carlos' Little Mexico is one



PRIVATE DINING ROOM AT YOUR SERVICE

of the most popular Restaurants in the area. Among the groups of Snyder organizations meeting in his banquet room regularly are Jaycees each Friday; Real Estate Board each month; ABWA Women's Club last Thursday in

each month; and others. Remember that for any special occasion, or just out for plain relaxed dining, Carlos is the ideal place.

Pd. Adv.

## Roby School Lunchroom Menu

Roby School Lunchroom menu for week of November 23rd.

### MONDAY

Salmon Croquettes, Creamed Potatoes, Black Eyed Peas, Apricots in Syrup, Chocolate Chip Cookie, Milk, Bread.

### TUESDAY

Ham and Cheese Sandwich, Potato Chips, Lettuce, Tomato, Peanut Butter Crunch, Milk and Bread.

### WEDNESDAY

Turkey and Dressing, Cranberry Sauce, Buttered Corn, Green Beans, Fudge Cake, Milk, Bread

## Roby High School Honor Roll

Seniors: Patricia Evers, 94.17; David Niles, 93.83; Jeff McClure, 93.50; Debbie Douglass, 93.40; Aletha Morgan, 91.83; Gina Eaton, 90.57; Vonda Jones, 90.00 and Andi Whitfill, 90.00. Juniors: Clyde Pursley, 95.83; Marsha Armstrong, 93.16; and Neil Leach, 90.85.

Sophomores: Ronald Pursley, 93.16 and Audrey Carey, 91.85. Freshmen: Susan Knox, 91.71; Cindy Mash, 91.71 and Hector Hinojosa, 91.16.

## Congratulations

Mr. and Mrs. F. P. Tefsteller of Midland are the parents of a new baby boy, born November 9. He weighed 8 lbs. 14 oz. and has been named Paul Bryan. His paternal grandparents are Mr. and Mrs. Farrest Tefsteller of Roby.

The intelligent man learns from experience and is able to gauge the future by what has happened in the past.

## Consolidated Report of Condition of "CITIZENS STATE BANK" of Roby in the State of Texas and Domestic Subsidiaries at the close of business on October 28, 1970.

Financial statement table with columns for Assets, Liabilities, Reserves, and Capital Accounts. Includes sub-totals for Total Assets, Total Liabilities, and Total Reserves.

Notary Public section with signature of Zanna Anderson, Cashier, and other officials. Includes text: "I, Zanna Anderson, Cashier, of the above-named bank, do solemnly swear that this report of condition is true and correct, to the best of my knowledge and belief."

## Somebody cared.



## Be somebody.

He's confined to a hospital crib, but a CARE-MEDICO doctor is curing him. Help make the world better for the needy sick. Your contribution sends medical teams to treat patients and to train personnel. Mail a check.

MEDICO a service of CARE

Dept. A New York 10016 or local offices

## What year was it?



If you guessed 1935, you're correct. Originally, 33 million workers were covered by social security. Today, the program covers 94 million workers.

It started as a program for retired people 65 or older. Today, social security is a family program - protecting dependents and survivors, paying disabled people, and providing hospital and medical insurance.

## WHY NOT?

Do you wonder why farmers are being driven off their farms at an increasing rate? Do you know why you aren't getting an adequate price for the products that you raise? Do you wonder why the farm programs seem to work more for the interests of other groups than for farmers?

The answers are simple. Farmers are being out-lobbied in Congress. Farmers Union works for a fair price. We want to save the independent family farmer. We work to promote the passage of farm programs that work in the interest of farmers. Join Farmers Union and help other farmers and ranchers accomplish these goals!

Large advertisement for HAYES FOOD MKT. featuring Thanksgiving specials like Pumpkin, Mincemeat, Cranberry Sauce, Pineapple, Whipping Cream, Flour, Corn Bread Mix, Celery, Onions, Yams, German Sausage, Bacon, Turkey Hens, and Canned Hams. Includes a 'GREEN STAMPS' logo.

# BUYING? SELLING? RENTING? HIRING? GO CLASSIFIED

## Classifieds

5¢ per word first insertion; 4¢ per word subsequent insertions. Minimum first insertion, 75¢. Minimum subsequent insertions, 50¢. Card of thanks \$1.00 minimum. Name (not telephone no.) must be given on all charges classified, and payment due on publication.

## For Sale

Everything in store at **reduced price, Vera's Gift Shop 908, 8th st., Rotan. 48-tfc**

**FOR SALE...** 4 Bedroom house across from car wash, Tennis Loving home. See Ted Loving, 19-tfc

**FOR SALE...** House at 719 E. Burnside, N. I. Temple, 4909 S. 5th, Abilene, 18-tfc

**FOR SALE...** Elbon Rye Seed, delivered or at my place, John Ross Hale, phone after 5, 735-2855 or days 735-2277, 33-tfc

**FOR SALE-** In the country, 3 bedroom house, brick veneer, with one or two acres. See Mrs. A. V. Allen, Roby, 36-tfc

**FOR SALE OR LEASE...** Three Bedroom house, 3 blocks of town, 2 blocks from schools and churches, call 735-3209 after 7 p. m., 32-tfc

**For Sale, Used Refrigerators, Ranges, and Washing Machines - Home Lumber Company.**

**For Sale or Trade, 550 acres, 400 in cultivation, one tract 130 acres, if interested call C. R. Crowley, 1060 N. W. First St. Hamlin phone 576-3779. 25tp**

**ROTAN LODGE A.F. & A.M. No. 956**  
Meets 3rd Thurs. each month, 7:30 P. M.  
Chas. Bennett, W. M. Robert Phillips, Sec. Visitors Invited

The O. E. S. meets each Tuesday at 7:30 in the Hall.  
Bessie Shipp, Worthy Matron John K. Myers, Worthy Patron Alvis McArthur, Secretary Visitors Welcome

**FOR SALE:** Small Home in town, 605 Cleveland St. Rotan. Also, 3 bedroom house on Eunice Road to be moved. one refrigerator. Contact Mrs. R. T. Hammit, 311 E. 6th St. Rotan, 735-3386; Mrs. Era Hammit Rt. 1, Rotan, 735-2076; or Mrs. Ben Nepper Rt. 1, Roby, 776-2546. 39-tfc

**ATTENTION PARENTS AND GRANDPARENTS**  
Did you know that you can now provide an insurance Estate for your children or grandchildren between the ages of 16 and 24 for only \$30 to \$50 per year?  
For information call or write JUSTON M. MORROW, Drawer G Rotan, Texas. Phone 735-3254  
Representing Reserve Life Insurance, Home Office, Dallas, Texas

**FOR SALE:** 3 bedroom frame house, 915 E. 5th St. Rotan. May be moved. Makes nice hand house. \$3500 CASH, Snyder Savings & Loan Association, Ph. 573-9305. 38-tfc  
**For Men and Women, Stainless Brass Ring Bands Shine Like yellow gold. Worth \$100 for Arthritis, aches and pains. On sale \$10 in Roby at Gruben Watch Shop. 39-4tc**  
**FOR SALE...** 160 acre farm, good improvements, good cotton allotment, 3 miles north Rotan. Call 735-2401. 19-tfc

## FOR SALE

160 acre farm west of Rotan, on pavement, good allotments.

102 acre farm east of Rotan. Good cotton allotment.

28 Acres, irrigated. Close to town. Well improved.

500 acre, well improved stock farm, Stonewall County.

3 Bedroom with good established loan, 2 lots, fenced yard.

2 Bedroom on McArthur St. Priced to sell.

Roby, Older House in good condition, New cabinets.

Roby, Large older house on pavement. Good condition. Priced to sell.

3 Bedroom on 5th St., Rotan

Nice large duplex in good condition, paved street, good quiet location.

3 Bedroom on 5th Street.

320 acre, Well located Rotan

2 Nice Duplexes in good condition, good locations.

Several Ranches, Rotan area

160 Acre farm with good improvements. Good house and barns. Southwest Rotan.

We want to sell your house, farm or ranch. We need listings on good property. Have Buyers.

**H. THOMPSON, Salesman Rotan 735-2421 Joe D. Burk, Broker Rotan 735-2571**

**For Sale, 2 three bedroom homes; 1 two bedroom home, Justin M. Morrow, Real Estate Salesman, H. T. Fillingim Broker. 51-**

**FOR SALE...** Big 4x8 Pre-finished Mahogany Paneling \$2.59 each. Many patterns to choose from. We carry complete line of paneling accessories. Hamlin Building, Supply, Hamlin, Texas. 30-tfc

**FOR SALE...** Heston Cotton Stripper. See at Farmers Union Coop Gin, Roby. Leon Helm, 776-2626. 32-tfc

**For Sale 160 acre farm, 6 miles N.E. Rotan, half in cultivation. Priced to sell. Wendell L. Morrow. 28-tfc**

**For Sale, Alfalfa Hay, R. E. Douglas, Sylvester day Ph. 576-2361 (night 993-4384. 9-tfc**

**FOR SALE:** 3 Bed room Rock House, 1 bath, water well, Mrs. H. A. Smith, 301 E. McArthur, call 735-3322. 41-2tp

**FOR SALE:** 1 Gas Heater. Call 735-3328, Curtis Acker 41-1tc

**USE CLASSIFIED - IT PAYS**

**Federal Land Bank Association**  
Serving America's Farmers: Providers of Plenty

**For more than 50 years The Federal Land Bank of Houston has provided REPENDABLE agricultural real estate loans to Texas farmers and ranchers. LONG TERM, LOW COST loans with a repayment plan geared to meet each individual's requirement.**

**Federal Land Bank Association of Roby**  
**FOR SALE:** 1967 Impala Chevrolet. New tires, 22,000 miles, almost like new. Also, 1965 Mercury Montclair, 46,000 miles, good condition. Ernest Smith, phone 735-3448. 40-2tp  
**FOR SALE:** 4 room house and bath on corner lot direct west of Primitive Baptist Church on Highway 70, Roby. Write Mrs. Mary Holland, Rt. 2, Box 132, DeLeon, Texas 76444 or call her at 893-2221. 41-4tp  
**USE CLASSIFIED - IT PAYS**

## FOR SALE

1961-2 Ton Chevrolet Truck. See Austin McKinney at Rotan DeLinting Plant. 29-tfc

**Butler Grain bins, sealed grain storage units, platform scales and steel buildings sold by J. L. Wadleigh Const. 3405 Ave. S. Snyder, 915-573-2394. Thirty-one years in building business.**

**FOR SALE...** Elbon Rye Seed, Bulk \$4.00. Ora Seed Oats with little Johnson Grass \$1.00. Jim O'Brian, 735-2920. 29-tfc

**FOR SALE...** One 18,000 BTU Goldspot Refrigeration Air Conditioner. Like New. \$100. Call: 776-2159. 22-tfc

## SEE US FOR NEW & USED FURNITURE

and Appliances. Also many other Home Furnishings at reasonable prices. See us for your Rental Needs, Lawn Mowers, Lawn Edgers, Tillers, Hospital Beds, TV's, Baby Beds, Rollaway Beds, Ranges, Refrigerators and many other household items. Call us at any time.

**Landes Furniture 113 N. Garfield Ph. 735-3171 Rotan**

**FARM AND RANCH LOANS - CALL FRANK MORGAN, BEAL ABSTRACT CO. SWEETWATER. 23-tf**

**40 ft. Trailer for Cattle, and general hauling. James A. Clark Jr., box 88, Aspermont. Ph. 989-2913. 21-tfc**

**For Sale, 420 acre farm, and 610 acre farm, high cotton yield, feed allotment, 1-2 minerals phone 735-3254, Justin Morrow, salesman, H. T. Fillingim, broker. 4tc**

**For Sale, Used Refrigerators, Ranges, and Washing Machines - Home Lumber Company.**

**FOR SALE:** 272 acre farm, 7 room house, 4 mile NE Roby. Write Ina P. Smith, 3000 Rosedale, Dallas, Texas 75205. 40-2tp

**FOR SALE OR TRADE** for most anything. House at 501 McArthur, Rotan. Marvin Kersh, call 735-3055. 39-4tp

**SPECIAL PRICES 20 to 30% off on all size Spray Tanks. 680 gal. Water Hauling Tanks, Salt Feeders; Mineral Feeders; Automatic Cattle Watering Troughs; Automatic Hog Water Tubs; Several Size Watering Tanks for Cattle; Dog Houses and Dune Bug Buggies. 10% off Storm Cellars.**

**FIBERGLASS MFG. CO., Box 190 Roby, Phone 776-2232 39-tfc**

**CAMPER FOR SALE:** Fits short bed pick-up. J. B. Smith, 308 E. 4th St. Rotan. 40-4tp

**FOR CHRISTMAS GIVE RECORDS. First Grade LP Records-Country Tunes by Top Artists at Discount Prices. Bob Willis, Mel Tillis, Red Sovine Truck Driving and Christmas Records.**

**WATSONS 309 McKinley**

**FOR SALE:** 2 Stock feeders, one 1969 Ford posthole digger, three section Harrow Ford cultivator, KRAUSE 1 way plow, Knifing machine, cedar post and wire. Call Jayton, 237-2656, Mrs. Willis Ratliff. 40-2tc

**FOR SALE:** 1967 Cutlass Oldsmobile hardtop coupe. Red and White, equipped with power, air, etc. Low mileage. 1968 Chevrolet Impala four door sedan, equipped with power and air, also low mileage. Priced reasonable. Call 753-3351 or 735-2374.

Worms. "The Biggest and the Best in the West", also "Sure Catch" Joe B. Ogle. 36-tfc

## For Rent

**FOR RENT:** Furnished house. Corena Cole, phone Snyder 573-2405 or ask Hooper. 40-tfc

## Miscellaneous

Will do sewing, dress making and such. Mrs. Tommy Helm. 39-tfc

**IRONING WANTED, 207 E. Lee. Ph. 735-3092. 22-tfc**

**Diamond Setting...** Re-style your diamonds. Let us set in new modern settings. Finest quality work. All done in our shop. None sent out. **KNABELS JEWELERS of Hamlin 20-tfc**

**Custom harvesting, combining and cotton stripping.** Leon Helm, 776-2626, Roby. 32-tfc

## MATTRESS

New or renovated and box springs quality made. Save up to 50 percent renovated. Choice size or firmness. Guaranteed by Western Mattress Co., San Angelo. Phone Landes Furniture, Rotan 735-3171 and leave orders.

## CREATIVE PICTURE FRAMING

We are now equipped to make frames for any size picture or mirror. Several different colors and size moldings to choose from. Work guaranteed. Landes Furniture 113 N. Garfield, Rotan, Ph. 735-3171

**Monuments and Cemetery** Curbing, 308 E. 4th St. phone 735-3290, J. B. Smith. 39-tfc

**BLUE Lustre** not only rids carpets of soil but leaves pile soft and lofty. Rent electric shampooer \$1. Landes Furniture.

**FOR CHRISTMAS** Give Pictures of you and your loved ones! Don't put it off. Come in today for a sitting. Our deadline for taking pictures for Christmas is Dec. 12.

**WATSONS PHOTO 309 McKinley Rotan 39-6tp**

## NOW OPEN!

**Jake Cagle's Fishing Dock**  
Fished-Heated-Bait-Cafe  
Fish Indoors or Outdoors  
Northwest Corner Lake Ft. Phantom

**ATTENTION FARMERS**  
Portable Welding Service  
Metal Fabrication. Leon Howland, 735-3479, Rotan, Texas. 41-2tc

Have a Pennyrich Party. Contact Marinda Meador, Rt. 1, Box 25A Aspermont, Texas. Phone 256-2113. 41-2tp

**Roby Ladies Fireman's Auxiliary** will have a garage sale, Friday and Saturday at the Legion Hall. 41-1tc

It takes a good worker not to think of an excuse for not doing something that hasn't got to be done.

Texas cattle feeders on last

**COUNTY AGENT NEWS**  
by Richard Spencer



There are several factors which influence the per capita consumption of meat in the United States but, none is more important than meat production. How is the per capita consumption of meat figured in the first place? It's simple: namely, meat production plus imports, minus meat exports, divided by the human population. Since imports are small and exports insignificant, the really important factor then is meat production. Larger productions of beef, for example, tend to raise the per capita consumption level as long as they are greater than the population growth. Beef consumption per capita is expected to reach 114 pounds this year compared with 110 pounds last year.

Income is another factor highly important to meat consumption. As per capita income (after taxes) rises, meat consumption usually increases. This relationship is much more pronounced for certain cuts as steaks and roasts and less evident for items like bacon and ham. Price has a major influence on meat consumption levels and the usual pattern—as prices rise—meat consumption moves lower. Consumption of specific meat cuts, however, varies considerably in their reaction to price changes. Research indicates that the consumer's occupation also affects consumption habits. Laborers, for example, tend to eat more meat than white-collar workers.

Where one lives also influences the types of meat and the amount consumed. City dwellers, in general, eat more meat than rural people. Regional differences in meat consumption habits are real. A person who grew up in the North East U. S. is likely to consume more lamb and heavier beef than is a native Texan. Family size and its composition may also play a role in meat consumption. In general teenagers in a family usually eat more meat while older people consume very little. As a rule, the per capita consumption of meat decreases as family size increases.

Race, religion and nationality are cited as greatly affecting the meat consumption habits of people. The season of the year also comes in for consideration and is most important when specific cuts of meat are considered. The spring and summer "cook out" season brings much stronger demands for hamburgers, steaks and hot dogs while roasts and stews are winter-time favorites. And finally, meat consumption is a rather complicated process that yields a single simple figure but one that had best not be misinterpreted.

The period from Nov. 20-26 is National Farm-City Week and every citizen has a stake in its observance. Nowhere else in the world, do so many depend on so few for their food and fiber needs. The 5 percent of our population engaged in agricultural production gives the other 95 percent benefits unsurpassed anywhere. In 1969 we spent only 16.5 percent of our income for food as compared with 24 percent some 20 years ago and this despite the fact the producer is getting about 9 cents less out of every food dollar than he received 20 years ago. Too, production expenses have continued to rise; thus, keeping the cost-price squeeze a major problem for agricultural producers. Our producers are continually

searching for better and more efficient ways to keep the food and fiber supply lines filled. Today the U. S. farmer produces enough food and fiber for 45 people, about 39 at home and 6 abroad. A decade ago he supplied the agricultural needs of only 24 people.

Other problems of common interest to farm and city residents are also cited by President Nixon in his Farm City Week proclamation. He said: "With two-thirds of our population crowded onto only two percent of the land, many of our people are denied economic opportunities, adequate living space, health, cultural fulfillment, and those spiritual values without which no nation can achieve greatness. "The time for action is at hand--for careful plans to be formulated, and for decisions to be made at local governmental levels, to foster the improved distribution of population and accompanying economic activity needed during the decade of the 1970s and beyond. The Government can provide assistance, but the effort will succeed only as Americans take part in developing a policy of sound national growth. "In this effort, city dwellers and rural people alike have reason to work together toward common goals. The well-being of urban America and the welfare of rural America will increasingly intertwine as our total population expands. Better living in the one depends on better living in the other. "I request that leaders of agricultural organizations, business groups, labor union, youth and women's clubs, civic and fraternal associations, schools and other join in noting not only the interdependent roles of the producers and consumers of America's agricultural abundance but also their opportunities for cooperation in building for the future. "Farm-City Week observances in Texas will follow no set pattern but the objectives of all will be the same--to help rural and urban residents understand each others problems and further develop the appreciation each should have for the other. In other words, we just couldn't get along without each other. Sprayers and dusters should be given special attention prior to winter storage. Proper care at this time can add years to their useful life, and have them ready for use without delay next spring. All pesticide materials should be removed from the equipment by washing or by other means. Moving parts should be lubricated. Some parts may need to be disassembled for cleaning. One the fall spraying or dusting jobs are completed, these additional maintenance practices are suggested. Nozzles and strainer screens should be soaked in kerosene. A twine should be run through the spray rods to make sure they are clean.

## Legal Notice

THE STATE OF TEXAS  
TO: Shelby Ferrington, Respondent. Greeting: You are hereby commanded to appear before the District Court of Fisher County at the Courthouse thereof, in Roby, Texas, by filing a written answer at or before 10 o'clock A. M. of the first Monday next after the expiration of forty-two days from the date of the issuance of this citation, same being the 14th day of December A. D. 1970, to Plaintiff's Petition filed in said court, on the 31st day of July A. D. 1970, in this cause, numbered 3829 on docket of said court and styled In the matter of the marriage of Carolyn Ferrington, Petitioner, and Shelby Ferrington, Respondent.

A brief statement of the nature of this suit is as follows, to-wit: a suit for divorce, custody of the minor children of the parties and for a reasonable monthly child support payment. If this citation is not served within ninety days after the date of its issuance, it shall be returned unserved. The officer executing this writ shall promptly serve the same according to requirements of law, and the mandates hereof, and make due return as the law directs.

Witness, Eula Mae Hull, Clerk of the District Court of Fisher County, Texas.  
Issued and given under my hand and the seal of said court at Roby, Texas, this the 27 day of October A. D. 1970.  
Eula Mae Hull Clerk, District Court Fisher County, Texas

All hose on the spray rig should be cleaned and stored where they will not crack or freeze. Before putting the cleaned power sprayer away for the winter, pour at least a pint of new or used oil in the tank, filling it with water and starting the pump. As the water is discharged, a thin coating of oil will cover the inside of the tank, pump, valves and circulating system. The sprayer should be then drained and stored in a dry place.

Dusters, like sprayers, should be thoroughly cleaned to prevent caking, clogging and eventual corrosion. All slip joints should be given a protective coating after cleaning and before storage.

TRY CLASSIFIEDS- THEY PAY

**GENERAL UPHOLSTRY**  
Specializing in Seat Covers and Repairing Trucks for Cars, Pickups and Tailor-made Seat Covers for Cars, Pickups and Trucks - Also all types Furniture Upholstery and Repairing  
Jay Hendon Upholstry  
306 W. Snyder Av. Ph. 735-3281 - Rotan


**TAX DISCOUNT NOTICE**  
The Same Discount will apply this year as last on Early Payment of City and Water District Taxes  
The Following Will Apply:  
2% November 1 to November 30  
1% December 1 to December 31  
First and Last Days Inclusive  
CITY OF ROTAN

I can now offer all persons ALL AGES Hospital Insurance with one of the 10 largest Companies in U. S. Can cover most pre-existing conditions. Non-cancellable, guarantee renewable. Also pays Drugs, Prescriptions, Major Medical Cash Benefit and Nursing Home Care. Write or call JUSTON M. MORROW, Drawer G, Rotan, Tex. Phone 735-3254  
Representing Reserve Life Insurance Co. Home Office Dallas, Texas.

**Roby Hydro Inc.**  
PHONE 776-2240 NIGHT 776-2388  
**Butane & Propane SALES & SERVICE**  
**INTERNATIONAL - TRUCK**  
Sales and Service  
REPAIR ON ALL TRUCKS and TRACTORS  
Roby, Texas

# BEST BUYS!

Yes, sir, "Best Buys" are right here at home! When you take into consideration the real values our merchants offer plus the savings in time, gas and oil you make by shopping at home instead of more distant places, you'll agree that "Best Buys" are right here. Besides, "Your Home Trade Dollar builds a better community."



**Support Our**  
**Local Merchants**

**CITIZENS STATE BANK**  
Roby, Texas

### WMU Studies Argentis Work

Roby First Baptist WMU met at 2:30, Tuesday, November 10 for a current mission program. President was in charge of the meeting. Opening song was "To the Work".

The prayer chairman, Jo Carter, had the call to prayer.

The program "Argentina Baptist Advance" was given by different ones present. First part, Struggle for religious liberty was given by Shella Miller, second part, Argentina's Religion by Jo Carter, third part, Decade of Advance by Clara Smallwood and fourth part, Argentine Baptist Convention by Ruth Hughey.

The closing of the meeting was a season of prayer by each lady for the WMU and the entire church.

Those present were Lucy Knox, Ruth Hughey, Clara Smallwood, Jo Carter and Shella Miller.

### Christain Science Sunday Service

What the healing ministry of Christ Jesus can mean to today's world will be brought out at Christian Science church services Sunday.

Scriptural readings in the Lesson-Sermon, "Soul and Body include an account in Matthew of several healings of Christ Jesus.

One of the accompanying passages to be read from Science and Health with Key to the Scriptures by Mary Baker Eddy states: "Knowing that Soul and its attributes were forever manifested through man, the Master healed the sick, gave sight to the blind, hearing to the deaf, feet to the lame, thus bringing to light the scientific action of the divine Mind on human minds and bodies and giving a better understanding of Soul and Salvation."

### Knight-Shipp Vows Said Saturday

Miss Adraina Sue Knight and Herschel Shipp were married on Saturday, November 14, in the Rotan Church of Christ by Cecil Williams, minister.

Parents of the couple are Mr. and Mrs. Dalton L. Knight of Bossier City, Louisiana, and Mrs. Ernest Shipp of Rotan.

The double ring candlelight ceremony was read before an altar arrangement of white gladioli baskets and white floor candelabras. Wedding music was provided by vocalists Mr. and Mrs. Leon Donham, Mrs. Leonard Cleveland and Mrs. Jimmy Counts.

The bride wore a two-piece white wool suit with gold accessories and carried a bouquet of white carnations.

A reception in the Church followed the ceremony. Registering guests was Miss Susette Shipp, niece of the groom. The table was laid with a white linen cloth appointed with crystal and silver and centered with yellow daisies. First slice from the white three-tiered cake, topped with the traditional bride and groom, was cut by the couple. Miss Fay McSpadden and Miss Kay Cumming served the punch and cake, assisted by Mrs. Jack Allen, grandmother of the bride.

Friends and relatives attended from Roby, Mexia, Sweetwater, Abilene and Brownwood, also, Bossier City, Louisiana.

The bride is a graduate of St. Vincent High School, Shreveport, Louisiana. She attended college at Natchitoches and has worked with the Lions and Shriners crippled childrens camps the past three summers.

Shipp attended the Rotan schools and has completed four years with the Air Force, returning to Vietnam for eighteen months as an employee of Dynallectron Corp.

Following a short wedding trip, the couple will live in Abilene.

### Batteas To Have 50th Anniversary

The children of Mr. and Mrs. W. D. Batteas will honor their parents on their 50th Wedding Anniversary at a reception Sunday, November 29 in the home of Lester Batteas, Roby highway.

Children of the couple are Mr. and Mrs. E. B. Simmons of Abilene, Mr. and Mrs. Sterling Fudge of Jayton, Mr. and Mrs. E. S. Russell of Plainview, Mr. and Mrs. L. R. Batteas of Sweetwater, Mr. and Mrs. J. D. Batteas of Rome, N. Y., Mr. and Mrs. Donald Ebeling of Plainview, Mr. and Mrs. Ken Gragg, Anderson Field AFB, Guam, Mr. and Mrs. B. L. Nuckals of Abilene and Mr. and Mrs. Linton Batteas of Sweetwater.

Relatives and friends are asked to call between the hours of 2 and 5 p. m.

Mrs. Batteas was born in Carlsbad, N. M. and Mr. Batteas was born in Iredell, Texas.

The couple was married December 1, 1920 in Iredell and moved to Fisher County in 1937. They moved to Sweetwater in 1966. Mr. Batteas is a retired farmer.

Mr. and Mrs. Batteas have 29 grandchildren and 11 great-grandchildren.

### GOLDEN HAVEN Nursing Home NEWS



Mrs. H. D. Mitchell

After a long vacation, and many requests we will try to get the news in again.

First we'd like to thank the many friends who have requested that I write this article, in the community and in the other towns. I did not know our Roby paper went out so far and so many.

Over the past weeks there has been a lot of changes, too many for the bad. Our thanks and appreciation goes to the Harris Davis family for the beautiful flowers, the residents and all enjoyed them.

The residents in the home are all doing very well at the present time.

Mr. Smallwood recuperated and went home.

Mr. David Bennett who fell and suffered a broken hip is back from the hospital and doing fine.

Mrs. Millwee and Mrs. Drennon are still piecing quilts, and in a few days Mrs. Drennon will be 93 years old.

Mrs. Millwee is about 82, she set out her own tomato patch this year at the side of the house, and she and several of the others have had tomatoes galore, she gathered in the green ones before the freeze too.

We have some new residents in the home, Mrs. Dudley Hambricht, and her daughter Dudley stays with her. We know Mrs. Hambricht is not a stranger to the local people, but for those who don't know, she is 97-1/2 years old, she is blind, but she knits afghans, for all her friends. I believe she has made over 100. Some of her friends, Rose Daniel, Elsie Carter, Willie Newhouse and others come by almost every day to see her.

Mrs. Tootsie Whitmire is another newcomer, we want to welcome each one to our home and hope they will be happy.

We have had local visitors this week and out of town visitors too.

Mrs. Lena Keisler of Sweetwater, Mrs. J. D. Mitchell and Mrs. Nola Neely of Azle, Texas, Mr. and Mrs. Percy Pinkerton of Ft. Worth, Mrs. Alice McWhirter of Houston, Mrs. Margaret Simmons of Sweetwater and Jack Dunlap of Lubbock.

We welcome visitors anytime so drop by to see us, you'll be glad you did.

VLM

### Nancy Harper Chapter Gives Library Books

Notice has been received from Mrs. George Sprague Tolman, Librarian General of the National Society of Daughters of the American Revolution, of a gift of two books to the Society's Library in Washington, D. C. The books are "A Time to Purpose--A Chronicle of Carson County, Texas," edited by Mrs. Ralph E. Fandel, two volumes published in 1966. They were donated by Mrs. Bernice C. McCrea of John Davis Chapter in Abilene in honor of Miss Delia Baird, Regent and Mrs. L. T. Nelson, Librarian of Nancy Harper Chapter.

The Society's Library, located in Memorial Continental Hall in Washington, D. C., is a highly specialized collection of American history, genealogy, and biography of more than ordinary distinction. It is classified as one of the finest of its kind in the country and perhaps in the world.

The library was founded in 1896 with 125 reverence books. It now contains many thousand books, pamphlets, and rolls of microfilm on genealogy and related subjects. The library is used by members, potential members, genealogists, historians and archivists. Many of the more than 10,000 annual users express amazement at the valuable information available here.

The donor, Mrs. McCrea, is immediate past Librarian of the Texas Society of Daughters of the American Revolution.

### Local Delegates Attend Annual State Meeting



Mrs. Joe Miers and Mrs. Edd Hawkins

Last year 15,000 Texans died of cancer; there were many unnecessary deaths. Cancer is the second largest killer in this country, but delegates at the American Cancer Society's Twenty-fifth Division Annual Meeting held in Fort Worth, Oct. 21-22 were told the '70's would bring many advances--possibly a breakthrough.

Mrs. Edd Hawkins, delegate; and Mrs. Joe Miers, alternate, represented Fisher County at the meeting.

The delegates reported that the Society made progress in all program areas:

- Served 10,333 cancer patients with cancer dressings, hospital equipment, gift items, and other services
- Presented educational programs to over 1,526,381 people in clubs, schools, colleges, and where they work
- Awarded cancer research grants totaling over \$1,289,000

We are proud of these accomplishments", they stated. "But we are concerned, because for every reason the American Cancer Society has to stay in business, we are a tremendous failure... so long as there is

one hospital bed in use by a cancer patient, as long as one person smokes cigarettes." They concluded, "We are in business to go out of business, to eradicate cancer."

"We realize research can hasten the victory over cancer, but we have a larger responsibility here in Roby, Fisher County to increase the informational and educational program--to better serve cancer patients with all the Society and community has to offer." "We need people

who care, people who will work now, we need to set our sights toward the extinction of our organization."

Later in the meeting four prominent Texas physicians presented cancer cases and discussed the treatment now being used, especially in rehabilitation of certain types of cancer.

The 2 delegates heard Dr. A. Hamblin Letton of Atlanta, Ga., Chairman of the National Medical and Scientific Committee, stress the need for continuing volunteer leadership and control of the Society's programs. Dr. Letton was the keynote speaker at the Annual Dinner.

Calendar Club will meet Tuesday, Nov. 24, in the home of Mrs. Rudy Hamric, with Mrs. Hubert Moore, Mrs. Donald Overby, and Mrs. Louie Hayes as co-hostesses. The program will be "The Light and Joy of Christmas", given by Catherine Cawley, Home Economist for Lone Star Gas Company. It will be on preparing foods for Christmas.

Meeting time will be at 4 p. m. and members are asked to dress casual. Secret Pals will be revealed and new ones for next year will be drawn. All members are urged to be present, and to note the change in meeting time.

### Calendar Club To Hear Economist

Calendar Club will meet Tuesday, Nov. 24, in the home of Mrs. Rudy Hamric, with Mrs. Hubert Moore, Mrs. Donald Overby, and Mrs. Louie Hayes as co-hostesses. The program will be "The Light and Joy of Christmas", given by Catherine Cawley, Home Economist for Lone Star Gas Company. It will be on preparing foods for Christmas.

Meeting time will be at 4 p. m. and members are asked to dress casual. Secret Pals will be revealed and new ones for next year will be drawn. All members are urged to be present, and to note the change in meeting time.

### Roby Band To Have Tacky Party

The Roby parents of the "A" Band are having a Tacky Party for the band Saturday, Nov. 21 at 7:00 p. m. at the Pink Building. Prizes will be given for the tackiest boy and girl. This party was asked for by Mr. Davis at the last Band Booster Club meeting, Nov. 2.

On Nov. 8 Mr. and Mrs. Harris Davis took the A Band to Abilene to hear the Marine Band. He was loved and will be missed by all.

### Buzz Bugs Enjoy Games

Buzz Bugs met November 11 in the Community Building. Games of 42 and refreshments were enjoyed by J. T. Holder, Rosa B. Hyde, Claude Powers, Bobbie Pell, Lena Feagan, A. M. Pell, Emily Garrett, Minnie Porter, Mary Posey, Edna Welch, George Welch, Louada Posey, Annie L. Owen, R. E. Curlee, H. G. Rogers, Mamie Crow, H. W. Goolsby, S. R. Congleton, Hattie Cooper and Lelia Nash.

Just because a man has an axe to grind he doesn't become a woodsman.

### 4-H Busy Bees Hear Child Care

The 4-H Busy Bees met November 10 with 13 members, 2 adult leaders and one new member present.

Renee Underwood gave a talk on carrying for a young child.

Calendars were passed out to sell for the 4-H Club.

Mrs. Freddie Stuart, of Roby, underwent appendectomy last Wednesday morning at Simmons Memorial Hospital, Sweetwater. She is very much improved and hopes to be home Thursday.

## THANKSGIVING Dinner Specials

FROZAN Crtn	35¢
Frozen 12 oz.	39¢
ORANGE JUICE	39¢
MINCE PIES	39¢
BAMA SALAD DRESSING QT.	29¢
CELERY Stalk	19¢
YAMS lb.	15¢
TOMATO JUICE 46 oz. can	39¢
Kuners CORN 2 303 Cans for	49¢
Hunts PEACHES 2 no 2 1/2 cans for	69¢
Deckers OLEO lb.	22¢
Pace's BACON lb.	59¢
Pace SAUSAGE 2 lbs	79¢
Can HAMS TURKEY CHICKEN HENS	

**Young's Market**

November 27th

# 8 99¢

KING SIZE WALLET CREATIVE COLOR PORTRAITS FOR ONLY

Order Pictures For Christmas Now



PHOTO HOURS 9 A.M. TO CLOSING

NO LIMIT

GET PICTURES MADE OF GRANDPA, GRANDMA, DAD, MOM AND ALL THE LITTLE ONES AT THESE SAME LOW PRICES!

## SHUGART COLOR PHOTOS

THRIFTWAY Super Market

## FOR SALE In Roby

3 Bedroom, 2 1/2 Bath,  
20,000 Sq. Ft. New House.  
Double Car Port,  
Central Heating,  
Refrigerated Air,  
On Paved Street.

W. C. Matthies Builder

### Central Lumber & Supply Co.

Roby 776-2371 Texas

### Abilene Garden Club Bazaar

Abilene Garden Club is holding their Christmas Bazaar Dec. 4 from 9 a. m. to 6 p. m. at 300 Westwood Drive.

Booths will be filled with suitable Christmas Gifts for all ages.

Lunches will be available from 11 to 2 o'clock. Club members invite the general public to visit the affair.

Get Results! Try Classified

### NOTICE SHIPP'S LOCKER TO CLOSE

Shipp's Locker Plant in Roby will Close Nov. 30th.  
Monday, Nov. 16 was last day for Butchering.

# OUTDOOR SKETCHBOOK

FROM THE TEXAS PARKS AND WILDLIFE DEPARTMENT.



CATFISH ARE NOW BEING MARKED TEXAS STYLE BY BRANDING ONLY THE COLD-BRANDING PROCESS BEING TRIED BY DEPARTMENT BIOLOGISTS IS DIFFERENT FROM MOST COLD-BRANDING SINCE COLD, INSTEAD OF HEAT IS USED, THE MARKS ARE VALUABLE FOR RESEARCH INTO THE LIFE AND HABITS OF CATFISH!

RESERVOIRS ARE VALUABLE FOR MANY THINGS, BUT BIOLOGISTS AND ECOLOGISTS ARE POINTING OUT THAT THEY COVER VAST AREAS WHICH ARE INVALUABLE WILDLIFE HABITAT. ALTHOUGH NEW LAKES ARE INITIALLY HOT SPOTS FOR GAME FISH, ROUGH FISH EVENTUALLY BECOME THE DOMINANT SPECIES.



THE NEW POINT SYSTEM OF BAG LIMITS IN TEXAS ADDS TO THE DUCK HUNTERS' SAVVY REQUIREMENTS. THE DEPARTMENT URGES HUNTERS TO CAREFULLY STUDY WATERFOWL LAWS FOR THE SEASON OPENED NOV. 4!

YOU'RE THE SOLUTION TO WATER POLLUTION!

## MARY WORTH says:

KEEP ALL THOSE CARDS AND LETTERS COMING... USE ZIP CODE!



## Social Security Office Gives Tips on Applying

Are you getting ready to retire? Your social security office has some tips that may help save you time and trouble when you apply for your social security benefits.

A telephone call to the social security office is a good first step. The office can answer your questions and tell you how to apply and when to do it.

When you apply, bring your social security card or a record of your social security number, proof of your age, and your last year's income tax withholding statement. (If you are self-employed, bring a copy of last year's income tax return and evidence of payment of the self-employment contribution.)

If your wife also is applying for benefits, she should bring evidence of her age and her social security card or a record of her number if she has one.

The best evidence of your age is a birth or baptismal certificate made within 5 years of your birth. However, if these are not available, other documents may be used. Generally, the older the document the better.

If you have children under 18—or youngsters between 18 and 22 who are full-time students—bring their birth certificates and records of their social security numbers.

It's generally a good idea to apply about 3 months before you retire. Don't delay because you don't have any of the required documents or information. The people in the social security office will be glad to help you get the necessary information.

If you are housebound and unable to come to the office, arrangements can be made for taking your application by mail or, if necessary, someone can come to your home. Just let the social security office know.

Remember, the people in the social security office are there to help you.

## Flash-Bits from Fisher County Nursing Home

Hi there— we're back again with our news this week. Sorry we missed last week—but was in Austin worrying with examination papers.

Our Mr. Taggart is still in the hospital and not doing too well. Mr. Kersh is back home but still on the sick list.

Since our last news Mrs. Tillotson and Mrs. Watson have both shared lovely and delicious birthday cakes with us.

Mrs. Shelton returned home Sunday after an extended visit in Lubbock with the Charles Signors.

Visiting has been Mr. Rector's son and wife from Plainview; Mrs. Imogene Lane of Lubbock to see Annie Tillotson and Mrs. Whitfield; Mrs. Nibs O'Briant and children of Midland visited Lola O'Briant; Mr. and Mrs. Odell Crawford of Odessa and Cheribeth Crawford of Abilene to see Joe Kersh; Mr. and Mrs. O. D. Randolph of Sweetwater visited her dad, C. R. Polk and Mrs. Polk; Blint Ivy and daughter of Hobbs, N. M. visited his grandparents Mr. and Mrs. B. A. Ivy; Mrs. Hattie Aaron and Maxine Paulk of Buffalo Gap and Ricky Williams of Levelland visited with Lee Williams; Mrs. Levi McCollum was by to see Elsie McCollum; Mrs. Shelley's visitors have been Mr. and Mrs. Farmer of Lockney, Mr. and Mrs. Luther Maberry of McCaulley, Mr. and Mrs. Kenneth Perry and Joe Kelley of Abilene and Oran Wayne Shelley of Cisco.

Mr. and Mrs. Luther Maberry of McCaulley, Mrs. Floyd McCain of Sylvester, Mrs. Jim Whitton and Tom Garland of Hamlin, Fred White and Paul McCollom of Sweetwater and Mrs. May Hurst of Sylvester have visited with Mrs. Kiser.

Lee Williams went to Buffalo Gap Sunday to visit with relatives.

Miss Willardene Parker was in Austin last week taking examinations for Nursing Home Administrators License. She passed her State Board and thus was qualified to take the test for a Professional License. Results of this exam will not be known for approximately a month.

She was accompanied on the trip by Maurcene and Mildred Parker. On their return trip the ladies visited the LBJ Ranch and Park in Johnson City.

That's our news for now.

Mrs. Helen Headstream, Mrs. H. H. Gibson and Mrs. Ralph Headstream all of Roby visited Mrs. Walter Collin, Mrs. Beulah Moffett and Mrs. H. C. Shelton in Fisher County Nursing Home Monday afternoon.

Ethel Williams and Edith Heron of Fort Stockton visited their brother, Louis Foy Monday.

## As It Looks From Here

Omar Burleson, M. C. 17th District, Texas

Legislation of far-reaching importance is scheduled for the so-called "Lame Duck" Session which opened Monday the 16th.

Also important to the Nation are decisions with the Federal Agencies of the Administration not requiring Congressional action. Important decisions of the Supreme Court will be watched with great interest. A number of cases now pending before the Court deals with problems in the public schools based on conflicting opinions by lower courts. For instance, the State Supreme Court of New Jersey has unanimously held that even voluntary prayer in a public school uttered at a session in which students were not required to attend, is a violation of the First Amendment to the Constitution. This is the Amendment which provides for the separation of church and state.

The New Jersey case comes out of the actions of a school principal who stood before the students in the gymnasium and recited a brief nondenominational prayer which had previously been given before the United States Senate. The reading of the prayer occurred before school was open and students were advised that they were not required to attend. It was made clear that the parents were the ones who would decide whether they wanted their children to hear a few minutes of religious expression before school started. The New Jersey Supreme Court held the principal's action to be unconstitutional.

Each session of the Senate and House is officially opened with a prayer by chaplains of each body. Most, if not all, State legislatures open with a prayer.

An earlier Supreme Court decision ruled that no governmental authority can prescribe a prayer or make a prayer "a part of its curricula activity" but no where in its decision was there any prohibition against voluntary praying. The specific case referred to a local school board. The Court's ruling was directed against the doctrine of compulsion—the idea of a prescribed prayer which the students had to accept. The Court did not, and has not, ruled illegal the opportunity to participate in prayers for those who wish to do so.

The important question in the New Jersey case, soon to be decided, is whether the decision means that no prayer of any kind is to be permitted in a school building even if it is entirely voluntary.

Should the high court uphold

## Accent on Health

A weekly public service feature from the Texas State Department of Health  
J.E. PEAVY, M.D., Commissioner of Health

Today much attention is being focused on water supply as an aspect of man's environment that can be either a natural resource of great benefit to him or a vehicle by which disease organisms or toxic chemicals can be distributed widely.

The public has no way of directly protecting its own water supply. Constant vigilance by health and waterworks officials is necessary for continued safe water production and distribution. These professionals exercise this vigilance by regular evaluation of existing public water supplies and through study of proposed installations.

The Texas State Department of Health inspects the water systems in all communities throughout the State. Employees of the Water Supply Program of the Division of Sanitary Engineering review and approve plans and specifications for new water systems and additions to existing systems, and field representatives make regular surveys of facilities to secure corrections needed to assure safe drinking water for public use.

Travelers may have noticed that some communities have a sign posted at their city limits announcing that their municipal water supply has been approved by the State Health Department. This sign indicates that the

water supply does more than meet the minimum requirements of the U. S. Public Health Service Drinking Water Standards and State Health Department regulations.

Today there are some 450 public water supplies across the state that have been approved by the State Health Department and certified as safe and sanitary.

The evaluation of a public drinking water supply appraises the origin, treatment, distribution, and storage of water, and the bacteriological, physical, chemical, and radiochemical qualities of the water as it flows from the tap.

The owner or manager of every water supply system furnishing drinking water to 25,000 or more persons is required by state law to have the water tested at least once daily for the determination of its sanitary quality, and to furnish a report to the State Health Department. Public water supplies serving less than 25,000 persons must be monitored at least four times a month.

In enforcing its regulations, the State Health Department has so thoroughly blanketed the field of water sanitation with State Health Department engineers that water-borne diseases from public drinking water supplies have virtually disappeared in Texas.

## Cotton Classing Load is Heavy

Ideal harvesting weather helped to maintain a steady flow of sample receipts at the U.S.D.A. Cotton Classing Office, Abilene. Officer in charge, B. B. Manly, Jr. reports that 36,000 samples were classed for the week ending November 13, 1970 compared to 12,000 for the same period last season. The season's total is now 102,400 samples classed compared to 36,300 for a season total a year ago.

Twenty per cent of the samples classed were in the white category, 78 per cent was light spotted and 2 per cent was spotted. The predominant grade was 32 at 56 per cent.

The predominant staple lengths were 29, 29 per cent and 30, 49 per cent.

Micronaire readings showed 83 per cent in the premium range.

Pressley or strength reading show 87 per cent reading 80,000 PSI and better.

The Consumer and Marketing Service, Abilene reports that prices dropped about 100 points. Average gross prices for some predominant qualities are: 3229 brought 19.70¢; 3230 brought 20.30¢; 4229 brought 19.25¢ and 4230 brought 19.35¢.

# FARMER'S FRIEND



Meet the 8" work boot that's most popular in its class. Red Wing builds 'em to take the rough stuff. "Sweat-Proof" flexible split leather insoles stay fresh—won't crack or curl. Barnyard acid-resistant leather uppers. Crepe sole cushion comfort. Stop in—graduate to a Red Wing 8-incher!

**RED WING**  
**DARDEN DEPT. STORE**

## Harvest Swamps All County Gins

Fisher County gins are running around the clock and probably will continue at this pace for some time, depending on weather.

Royston gin reported 790 bales at noon Tuesday, Hobbs had 3464; Roby's gins 4695 and Rotan gins 5970. All gins reported their yards were about full of loaded trailers.

The yield is proving better than expected according to many farmers.

Mr. and Mrs. David Patton, David and Chris of Garland visited Mr. and Mrs. Ed Patton this week end.

Mr. and Mrs. Horace Mitchell spent a few days in Austin this week, partly on business, they visited Mrs. Mitchell's brother and family, Charlie McCright, went through the Capitol building, went in to see the Governor but he was not there.

Mrs. A. J. Reese, of Seymour and mother of Dee Reese, suffered a stroke last week. Mr. Reese has been at her bedside.

For the first time a VA program of loans for mobile home purchases are available to veterans—up to \$10,000 for a home alone; up to \$17,500 with purchase of a lot.

Under the new law, there is no longer a terminal date for a G. I. home loan for any eligible veterans, including WWII and Korean Conflict veterans who never used this benefit.

Mr. and Mrs. O. B. Cooper of Monahans were in Rotan Monday on business. They were Rotan area residents for many years before moving to Monahans and have a host of friends here. He retired from oil field work several years ago and is enjoying retirement. They have extensive land holdings in the 'old' Dowell community.

Lena (Pursley) and Bill Comcaux are now living at 4357 Forestville Dr., Forestville, Md. Bill is stationed at the Andrews Air Base and has been promoted to T/Sgt. They came home from Germany in May.

**CARPET! CARPET!!**

Home Lumber Co., now has a Complete NEW LINE OF CARPET.

A Better Selection at a Lower Price!

We install our own Carpet.

**HOME LUMBER CO.**  
Rotan, Texas

**SOME PEOPLE**  
Have To Eat Bad Food But  
You Won't As Long As  
**There Is — — — !**

**The HaTahoe Drive Inns**  
ROBY PHONE 776-2259 ROTAN PHONE 735-3161

# TAX DISCOUNT NOTICE

THE SAME DISCOUNT WILL APPLY THIS YEAR AS LAST ON EARLY PAYMENT OF COUNTY AND STATE TAXES

The Following Will Apply:

2% NOVEMBER 1 to NOVEMBER 30

1% DECEMBER 1 to DECEMBER 31

First and Last Days Inclusive

**Robert Buck**  
Tax Assessor-Collector

**SUMMERS DRUG**  
Prescription Delivery our Specialty  
Phone 735-2442

VI-MAGMA  
Multiple Vitamins 100's-\$1.50

FREE DELIVERY

**COSMETICS**  
Visit our display of  
Cosmetics.  
Here you will find  
Max Factor, Coty, Revelon,  
Helen Rubenstein, Fabrege  
and others.

PANGBURN Candies at all Times.

**Thornton's**

Experts look into the question of why we live; average citizens might attend to the "how we live" problem.

**FULL COVERAGE**

- HOME • FARM
- FAMILY • AUTO • HOSPITAL
- FARM TRUCK • CROP HAIL
- FIRE • LIFE RETIREMENT
- FARM LIABILITY
- HOMEOWNERS
- FARMOWNERS

FOR COMPLETE INSURANCE NEEDS

**C. D. HERRON**  
Agent  
Across St. from Bank  
Rotan - Ph. 735-333

**FARMERS UNION INSURANCES**



**ROTAN CHURCH OF CHRIST**  
105 E. Beauregard - 735-2344  
Cecil Williams - Minister  
Bible Study - 9:45 a. m.  
Worship - 10:30 a. m.  
Evening Worship - 6:00 p. m.  
WEDNESDAY  
Ladies Bible Class - 9:30 a. m.  
Bible Study - 7:30 a. m.

**FIRST UNITED METHODIST CHURCH**  
McCauley  
Rev. James Taylor - Pastor  
Schedule of Services  
SUNDAY  
9:45 a. m. - Morning Worship  
10:45 a. m. - Sunday School  
7:00 p. m. - Evening Worship  
Family Night  
Every 3rd Thursday

**McCAULEY BAPTIST CHURCH**  
Virgil Smith - Pastor  
Schedule of Services  
SUNDAY  
10:00 a. m. - Sunday School  
11:00 a. m. - Morning Worship  
6:00 p. m. - Training Union  
7:00 p. m. - Evening Worship  
WEDNESDAY  
7:00 p. m. - Prayer Service

**CROSS ROADS BAPTIST CHURCH**  
Rev. J. C. Ableby - Pastor  
(6 miles SW of Rotan)  
Phone 735-2097 Rotan  
Sunday School - 10:00 a. m.  
Morning Worship - 11:00 a. m.  
Training Union - 6:00 p. m.  
Evening Worship - 7:00 p. m.  
Midweek Prayer Service  
Wednesday - 7:00 p. m.

**CALVARY BAPTIST CHURCH**  
Rev. Jack DeWitt, Pastor  
Corner Genevieve and Stonewall  
Sunday School - 10:00 a. m.  
Morning Worship - 11:00 a. m.  
Training Union - 6:00 p. m.  
Evening Worship - 7:00 p. m.  
Midweek Prayer Service  
Wednesday - 7:00 p. m.

**ROBY CHURCH OF CHRIST**  
Wardell Halliburton - Minister  
Sunday:  
Bible Classes - 10:00 a. m.  
Worship - 10:45 a. m.  
Evening Worship - 6:00 p. m.  
Wednesday:  
Midweek Bible Study - 7:00 p. m.  
Thursday:  
Ladies Bible Class - 3:00 p. m.

**FIRST BAPTIST CHURCH**  
Roby  
Schedule of Services  
10:00 a. m. - Sunday School  
11:00 a. m. - Morning Worship  
6:00 p. m. - Training Union  
7:00 p. m. - Evening Worship  
WEDNESDAY  
7:00 p. m. - Prayer Meeting  
and Study Course  
7:30 p. m. - Choir Practice

**FIRST UNITED METHODIST CHURCH**  
Rotan  
209 N. McKinley - 735-2334  
Albert W. Cooper - Pastor  
Parsonage 401 N. McKinley  
Sunday School - 9:30 a. m.  
Worship - 10:30 a. m.  
U. M. Y. - 5:00 p. m.  
Evening Service - 6:00 p. m.  
W. S. C. S. Wednesday 9:30 a. m.  
Choir Practice Wed. 7:00 p. m.

**FIRST BAPTIST CHURCH**  
Rotan  
201 N. McKinley - 735-3471  
Rev. Billy Hudnall - Pastor  
Sunday School - 9:45 a. m.  
Morning Worship - 10:55 a. m.  
Training Union - 6:00 p. m.  
Sunday Night Service 7:00 p. m.  
Wed. Prayer Service - 7:30 p. m.

**CHURCH OF NAZARENE**  
Rotan  
H. D. Williams - Pastor  
Sunday School - 9:45 a. m.  
Worship - 10:40 a. m.  
N. Y. P. S. - 6:15 p. m.  
Evening Service - 7:00 p. m.  
Wednesday - 7:00 p. m.

**HIGHLAND HOME BAPTIST CHURCH**  
Rev. Leonard Payne - Pastor  
Sunday School - 10:00 a. m.  
Worship - 11:00 a. m.  
Training Union - 6:30 p. m.  
Evening Worship - 7:30 p. m.  
Wed. Prayer Service - 7:30 p. m.

**FIRST BAPTIST CHURCH SYLVESTER**  
Schedule of Services  
SUNDAY  
Sunday School - 10:00 a. m.  
Church Service - 11:00 a. m.  
Training Union - 6:00 p. m.  
Church Service - 7:00 p. m.  
WEDNESDAY  
Prayer Service - 8:00 p. m.

**FIRST UNITED METHODIST CHURCH**  
Sylvester  
Rev. S. Homer Salley - Pastor  
Schedule of Services  
SUNDAY  
9:45 a. m. - Morning Worship  
10:30 a. m. - Sunday School  
Monthly Prayer Meeting

**SAINT JOSEPH'S CHURCH**  
Rotan  
305 E. Lee St. 735-3285  
Rev. Robert C. Dillenbeck  
Masses Sunday - 8-9:30 a. m.  
Masses Weekday Consult Pastor  
Confessions before Mass

**IGLESIA BAUTSTA**  
1st Mexican Baptist Church  
W. Johnston and N. Garfield  
Sunday School - 10:00 a. m.  
Morning Worship - 11:00 a. m.  
Training Union - 7:00 p. m.  
Evening Worship - 7:45 p. m.  
Midweek Prayer Service  
Wednesday - 7:30 p. m.

**LITTLE ZION BAPTIST CHURCH**  
Rotan  
Rev. L. E. Pope - Pastor  
Sunday School - 9:45 a. m.  
Morning Service - 11:00 a. m.  
Mission Monday - 4:00 p. m.  
Wed. Prayer Meeting - 7:30 p. m.  
No. Side Circle Thurs - 8:00 p. m.

**ROTAN FORESQUARE CHURCH**  
Eighth and Genevieve  
John Waldren - Pastor  
Sunday School - 10:00 a. m.  
Worship - 11:00 a. m.  
Wed. Night Service - 7:30 p. m.

**EL PASO BAPTIST CHURCH**  
F. E. Healer - Pastor  
10:00 a. m. - Sunday School  
11:00 a. m. - Morning Worship

**HOBBS BAPTIST CHURCH**  
J. H. Skiles - Pastor  
Sunday School - 10:00 a. m.  
Morning Worship - 11:00 a. m.  
Evening Worship - 6:00 p. m.  
Wed. Prayer Service - 7:00 p. m.

**LONGWORTH METHODIST CHURCH**  
Newton Daniel - Pastor  
Schedule of Services  
SUNDAY  
10:00 a. m. - Sunday School  
11:00 a. m. - Morning Worship

**ROTAN LATIN AMERICAN CHURCH OF CHRIST**  
Lincoln and Sherman Ave.  
Jesse Salazar - Minister  
Sunday Bible Classes - 10:00 a. m.  
Worship - 11:00 a. m.  
Evening Service - 5:00 p. m.  
Wednesday Service - 5:00 p. m.

# Judge Not

St. Matthew warned us against judging others. We may look contemptuously at our neighbor, our competitor, but we must not judge him. We may even point a finger, but God strongly warned against it. "Judge not, that ye be not judged. For with what judgment ye judge, ye shall be judged: and with what measure ye mete, it shall be measured to you again" (Matthew 7:1-2). God cautioned us well. It could not have been spoken more plainly. He urged us to obey His word. He even called accusers, hypocrites, and demanded that they rid themselves of all judgment acts.

God tempers justice with mercy, but He will not hold him guiltless who commits a judgment sin.

Too often transgressors resent the kindly judge who sits in court to serve his country and his God. But the bar of justice is broad and God's mercy is not strained. His judgment, not ours, must prevail. For it is written that we must pay for our error. We must face our record in court. But those who attend church more, go to court less.



**YOU IN THE CHURCH THE CHURCH IN YOU**  
Form a combination for good. Be a regular CHURCH GOER and a daily BIBLE READER.  
© William Newsinger Features Syndicate Box 231 - Fort Worth, Texas

**Weathersbee Funeral Home**

**Landes Furniture**

**Rotan Dept. Store**

**Rotana Restaurant**

**Rotan Cotton Oil Mill**

**Rotana Inn**

**The Home Lumber Co.**

**The First National Bank of Rotan**

**Rotan Flower Shop**

**H.L. Davis & Co.**

**Calvin Gro. & Market**

**Rollins Farm Supply**

**Fisher Co. Farm Bureau**

**Floyd Garcia Station**

**Thrif Tee Food**

**Citizens State Bank Roby**

**Roby Ins. Agency**

**Noles Drug Roby**

**Midwest Electric Roby**

**Farmers Union CoOp. Gin**

**Farm Tractor & Service, Inc.**

**Sweetwater Production Credit Assn**

**GOLD  
BOND  
STAMPS**

DOUBLE STAMPS WEDNESDAYS

**BUY MORE  
COTTON  
PRODUCTS**

<b>HAMBURGER MEAT</b>	Lb.	<b>39¢</b>	
Gooch's Slab Sliced <b>BACON</b>	lb.	<b>69¢</b>	
<b>PORK CHOPS</b>	lb.	<b>69¢</b>	
Libby's <b>SWEET PEAS</b> - - - -	303 Can	<b>29¢</b>	
Mile High <b>GREEN BEANS</b>	303 Can	<b>23¢</b>	
Libby's <b>Cream Style CORN</b> - - - -	303 Can	<b>25¢</b>	
Del Monte <b>TOMATO JUICE</b>	46 oz. Can	<b>39¢</b>	
<b>CREAM of WHEAT</b> - -	28 oz. box	<b>49¢</b>	
Del Monte <b>FRUIT DRINK</b> - - -	46 oz. Can	<b>29¢</b>	
<b>CAKE MIX</b> Betty Crocker or Duncan Hines	Box	<b>39¢</b>	
<b>LIGHT CRUST FLOUR</b>	lb. bag	<b>49¢</b>	
Ocean Spray <b>CRANBERRY SAUCE</b>	300 Can	<b>26¢</b>	
<b>JEWEL COOKING OIL</b>	38 oz. Bottle	<b>89¢</b>	
<b>Pinto BEANS</b> Bulk	12¢	<b>CELERY</b> stalk	19¢
<b>ORANGES</b> 4 lb. Bag	39¢	<b>BANANAS</b> lb.	10¢
<b>PREMO DOG FOOD</b> 5 lb. Box			<b>69¢</b>

FRESH BAR-B-Q DAILY

**CALVIN'S**

We Reserve Limit Rights

**GROCERY & MARKET**

**FREE DELIVERY**

Specials Thurs.-Fri. & Sat.

**Billy Polk Home From Washington**

Billy G. Polk, Cashier at National Bank in Sweetwater and President of West Texas Chapter Bank Administration Institute, and his wife Jean (daughter of Mr. and Mrs. Thurman Upshaw of Roby) attended the 46th National Convention of America in Washington. Pope attended as delegate from West Texas Chapter.

Twenty-three hundred bankers from over the nation were in attendance.

The Polks visited a number of interesting points while in Washington, and Mr. and Mrs. Upshaw are most pleased of the couple having the nice trip.

Markie Browning has returned to Austin after a 2 weeks vacation with his parents, Mr. and Mrs. Sam Hamm of Rotan. He also visited his grandmother, Mrs. Roy Elkins of Snyder, who has been very ill for some time.

Mrs. Maude Shaw and Mrs. Angie Smith of O'Donnell visited with Mrs. Shaw's brother, H. C. Hogan and Mrs. Hogan Thursday night in Roby. They went on to Merkel to visit another brother F. T. Hogan who is ill.

Mrs. Mary Holland of DeLeon and a sister from California, have been in Roby over the week end and left Monday attending to business. They are two daughters of the late Mrs. Driver.

Most reformers are satisfied with themselves.

**L. Moore Wins Race at Artesia**

LaMoine Moore, native of Rotan who has lived in Artesia, N. M. for a number of years was elected County Commissioner on Democratic ticket in the Nov. 3 election. He unseated Roy Bowman, Republican incumbent.

His many friends in Rotan will be glad to know of his successful campaign.

**Polk Completes Basic Training**

Airman 1st Class Charles Ray Polk has recently completed 6 weeks basic training at San Antonio. He will be in Rotan for a week visit with his family, wife and children.

**How to get the Zip Codes YOU need**

1. When you receive a letter, note the Zip in the return address and add it to your address book.
2. Call your local Post Office or see its National Zip Directory when you're there.
3. Local Zips can be found on the Zip Map in the Yellow Pages.

Advertising contributed for the public good

**Yours free, just to see a Frigidaire dryer**

"Reddy's Laundry Helper"



You can get this free spot and stain removing guide by just looking at the new Frigidaire dryers. This guide helps you to clean those hard to get out stains. So see the many extras that are put into Frigidaire dryers and get your free laundry helper at WTU.

Also West Texas Utilities offers WTU residential customers free normal 220 volt wiring to customers who buy an electric dryer or combination from a local dealer or West Texas Utilities.

West Texas Utilities Company an investor owned company