

PAGE ONE

A QUICK READ OF THE NEWS

Teacher loses temper in class

This time, it was the teacher who was caught tossing erasers.

When his students couldn't grasp a math concept, instructor Ludvik Janos lost his temper and started throwing erasers around the classroom, Kent State University officials say.

Janos, 77, has been removed from his basic probability and statistics class and university officials haven't decided when he will be allowed to return, a Kent State spokeswoman said.

University officials said the Czechoslovakian-born teacher who has lived in the United States for seven years became frustrated when the 35 students in his class didn't understand a math concept.

Dogjacked! Doggone!

One minute Newman — a 2-year-old shih tzu — is salivating over a McDonald's sausage sandwich, the next he's dognapped.

Actually, Newman was carjacked after St. Olaf College football coach Paul Miller left the engine running while he went to buy the dog's sandwich in Apple Valley, Minn.

Police found the Jeep and a suspect at another McDonald's a few hours later.

Newman turned up in a snowdrift nearby. Miller and his wife, Judy, were dogsitting Newman for his honeymooning daughter.

"I can't even begin to think of the words for what we're going to say. It's like their baby," Judy Miller said. Said the coach: "When she gets back from her trip, we'll just say Newman had an adventure."

Governor's license expired

The jig is up for Montana Gov. Marc Racicot. His office confirmed that he has been driving with an expired license since last July and plans to take both the written and driving tests.

Racicot's driver's license expired on his 51st birthday — July 24, 1999.

The three-month grace period has expired.

"The governor said he completely did not realize it," a spokeswoman told the *Billings Gazette*. Racicot, a Republican, drives a state-owned car.



Drawing date: Saturday, Jan. 29
Winning numbers: 3-13-20-25-46-47
Estimated jackpot: \$7 million
Winners: 0
Next drawing: Wednesday, Feb. 2
Estimated jackpot: \$10 million

On this date in history

Feb. 10 — A historic date for Texas: The U.S. government creates the Military Department of the Gulf, which includes Texas (1865); the Reconstruction Convention meets in Austin to declare the Acts of Secession void and adopt a Constitution harmonizing with the federal one (1866); and the Legislature creates Texas Tech and requires it to be located in West Texas (1923).

LOCAL WEATHER

Mostly fair with high temperatures in low 70s should be the rule for Thursday and Friday. Expect increasing cloudiness late in the week with highs to dropping to about 70 Saturday and into the low 60s Sunday. Morning low temperatures throughout the period should be in the mid-30s.

Editor Ronn Smith can be reached at 272-4536 or ctyankee@fivearea.com

Missed your paper? Call carrier Melissa Flores at 272-6719 or the Journal during business hours, 8:30 am-5 pm.

Jury finds Reyes guilty of capital murder

By RONN SMITH
Editor

A jury in 287th District Court in Muleshoe found 26-year-old Gilberto "Tito" Reyes guilty of capital murder Monday, and immediately began hearing testimony

in the sentencing phase of his trial. The jury must decide whether to sentence Reyes to the death penalty or to life in prison.

Witnesses were called by both the prosecution and defense to influence the jury toward the maxi-

mum penalty or a life term.

On Monday, the prosecution's first witness was Mike Ratke of Farwell, who testified that in February 1998 he was driving through Muleshoe when he saw a man fire an assault rifle at a car that had sped

out of a parking lot in front of him. He identified the shooter as Reyes.

Reyes stands convicted of killing 19-year-old Yvette Barraz the next month, March 1998. She was his former girlfriend.

Texas wheat crop still on critical list

SPECIAL TO THE JOURNAL

COLLEGE STATION — The state's wheat crop remains in critical condition, despite recent cold fronts that have brought up to 6 inches of snow in some parts of Texas, the Texas Agricultural Extension Service reports.

Extension agronomist Dr. Todd Baughman of Vernon said cold fronts can be helpful when they bring moisture in the form of snow, but that was not the case.

He said light snowfall ranging from a half-inch to 2 inches covered the Rolling Plains last week, but moisture accumulation was minimal.

"The recent snow did little to help the wheat crop," Baughman said. "Growth continues to decline across the district."

He said the outlook for this year's crop hasn't changed much.

"It's not real promising," Baughman said. "Stands are poor and much of the wheat is dying."

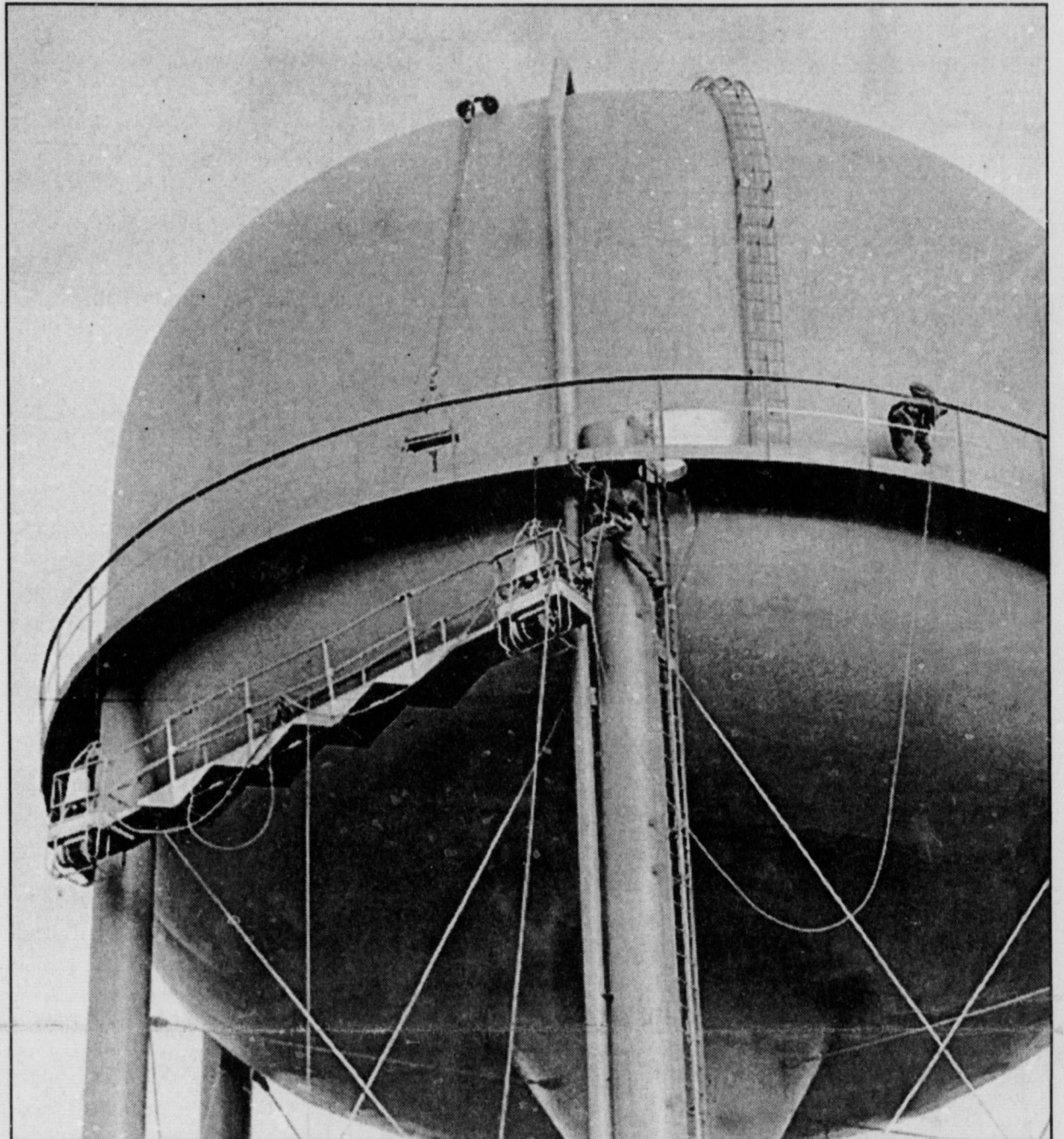
District extension director Dr. Bob Robinson of Amarillo said the moisture was welcomed in the Panhandle, where snow amounts reached 6 inches, but more is needed.

"The snow is too little too late in some cases," he said.

Extension agronomist Dr. Billy Warrick of San Angelo said the freezing temperatures didn't bring moisture to West Central Texas. He said they brought wheat growth to a "grinding halt" instead.

"It doesn't do much growing until temperatures are above 40 degrees," he said. "So it's in

see WHEAT on page 3



Journal photo: Beatrice Morin

Tanking up

Wayne Branson (on catwalk) of Branson Tank Service in Searcy, Ark., applies a coat of primer paint to Muleshoe's smaller water tower on Monday as his employee, Charles Juco (center of photo), stretches to reach from the tower's ladder to a temporary scaffolding. The work is part of refurbishing the city's water storage tanks.

Lady Mules capture another major district win

By KEVIN WILSON
Writer

The Lady Mules took a 16-8 lead in the first and held off a second-quarter rally en route to a 51-39 win over Littlefield at home Friday night.

Britni Gartin led all scorers with 18 for Muleshoe, while Lindsey Field added 11. Field also had 10 rebounds for the Lady Mules, who

moved to 4-2 in district play.

The Muleshoe scoring started the same way it ended Tuesday — with a three from Jessica Carpenter. Another three by Myndi Heathington and layups by Field and Gartin put Muleshoe up 10-0.

Littlefield was held scoreless until Huey scored on a three-point play.

Soon after, Gartin outscored the

Lady Wildcats 8-2 in the final 2:00 to end the first.

Gartin also started the second with two scores and Muleshoe led 22-6. Then Littlefield stormed back, led by Stephanie Webb who had five points during a 10-2 run to end the first half.

Despite shooting only 26 percent in the first half, the Lady Wildcats entered the third period

down only six.

Two minutes into the third, Muleshoe went on an 8-3 run to lead 32-23, but the Lady Wildcats refused to give in. Webb hit two threes in the quarter and the lead was still six when the fourth quarter started.

Littlefield's Erika Martinez led
see HOOPS on page 3

Tooley, Pollard dominate Three Way stock show awards

By SCOT STINNETT
Journal Publisher

Robin Tooley and Scott Pollard claimed the top awards during the annual Three Way Junior Livestock Show on Jan. 29 at the Three Way School Ag Barn.

Tooley exhibited grand champions in the goats, lambs and swine, while Pollard had the grand champion steer.

The show featured four steers, seven lambs, five goats and 51 hogs. Three Way FFA also hosted a barbecue meal during a two-hour break between the goat and swine shows.

A complete list of winners begins on Page 4.

Pollard's steer, the tall class winner, was the choice of judge Kelly Munson, the vocational agriculture teacher at Littlefield High School. Tooley's reserve grand came out of the short class.

Pollard also claimed the showmanship banner, while Tooley was the reserve champion.

In the lamb show, judge Chris Edens preferred Tooley's champion

mediumwool lamb. Edens, the Extension agent from Cochran County, chose the reserve champion mediumwool shown by Sarah Furgeson as the reserve grand champion.

Tooley won the lamb showmanship award, while Kaelie James was the reserve champion. Furgeson was the top junior showman.

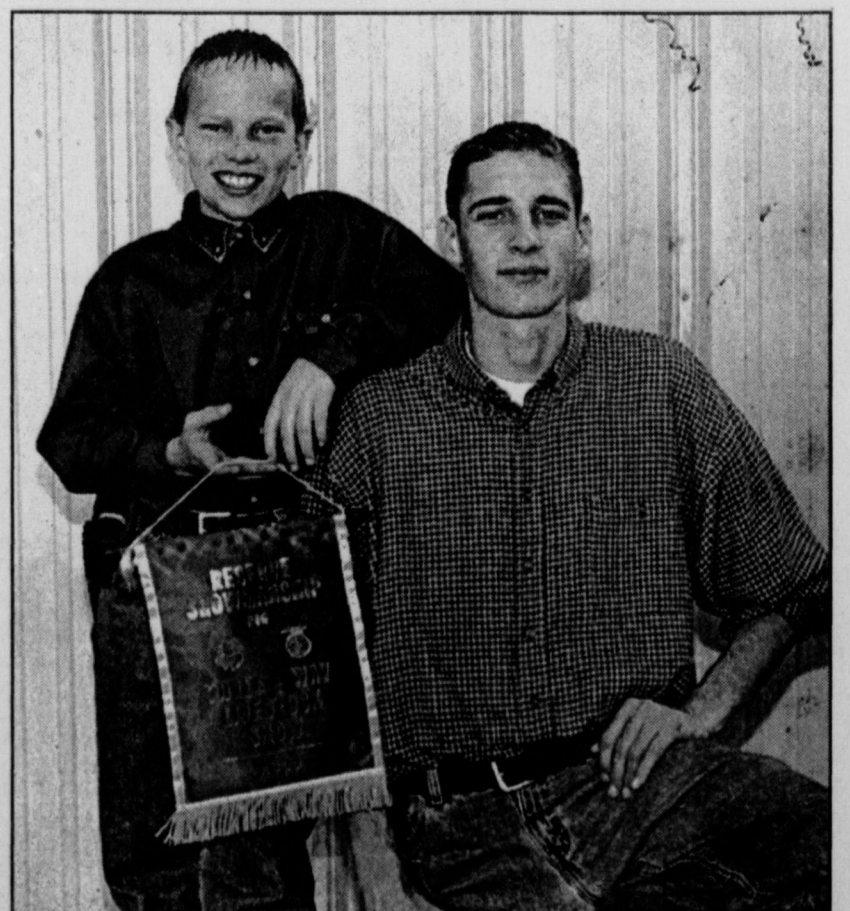
Edens chose a pair of goats exhibited by Tooley as the grand and reserve grand. She also won the showmanship, while Nathan James was the junior showman.

In the swine show, Dr. Steve Frazee of the Texas Tech School of Agriculture picked Tooley's champion Yorkshire as the grand champion and the champion Berkshire exhibited by Ashley Layton as the reserve grand champion.

Other breed champions and reserve champions in the swine show included:

- Lauren Layton, who had the champion Duroc and the reserve champion Berkshire;
- Jennifer Kirby, who had the cham-

see SHOW on page 2



Caleb Heinrich (left) won the champion junior swine showmanship banner, while Scott Pollard was the senior swine showmanship champion.

AROUND MULESHOE

Student group plans slave auction

The Muleshoe High School Teen Leadership class plans a slave auction at 5 p.m. Feb. 11 in the Watson Junior High School gymnasium.

All proceeds will help pay for the Democracy in Action trip to Austin.

Students in the auction will be offering to sell their labor for half a day or a full day. The work goes to the highest bidder.

More information is available from Mayme McElroy at 272-7303.

Five Area co-op members to meet

The annual membership meeting of Five Area Telephone Cooperative is scheduled for 10 a.m. Feb. 5 at the Bailey County Coliseum.

Registration will begin at 9 a.m.

In addition to annual reports, the members are scheduled to elect two directors. Nominees from District 2 (West Lazbuddie) are Dave Engelking and Kirby Burch; nominees from Needmore are Pudd Wiseman and Ann Sowder.

Lunch will be served at noon, and a drawing will be held for gifts.

Church sets Sweetheart Banquet

Muleshoe's First Assembly of God has scheduled a Sweetheart Banquet, in honor of Valentine's Day, in the church's new Family Life Center, 521 S. First St.

The cost is \$8 per person, and the meal will include steak, baked potato, salad, drink and dessert.

Entertainment will be provided by Brother Jack Stone singing his latest recording, "God Is Able."

Ticket purchases or more information can be obtained by calling Jason or Donna Cochran at 272-4420 or First Assembly of God at 272-3017.

Youth to provide Valentine cookies

The youth of Calvary Baptist Church in Muleshoe will be taking orders for personalized Valentine cookies.

The 9-inch boxed cookies, bearing the buyer's personal message, cost \$5 and are scheduled to be delivered Feb. 12 and Feb. 14.

Proceeds go to help pay for church camp for the students. The cost is \$5 per cookie.

Orders may be placed by calling 272-4012 or speaking to any member of Calvary Baptist.

Lazbuddie seniors sell calendars

The senior class of Lazbuddie High School is selling special events calendars, listing community events, birthdays and anniversaries.

These may be purchased for \$5 from any senior class member or class sponsor, or at the school.

Mammograms scheduled at hospital

A breast-cancer screening clinic is scheduled for Feb. 14 at Muleshoe Area Medical Center, 708 S. First St.

Participants will receive a low-cost screening mammogram. Each woman screened will receive a breast-health risk assessment and individual instruction in breast self-examination by a registered nurse.

Funding is available through the Texas Department of Health for residents who qualify for assistance.

Exams are done by appointment only. More information is available by calling (800) 377-4673.

HONORS

WAYLAND BAPTIST

Two students from the Muleshoe area made the president's list for earning 4.0 grade-point averages during the fall 1999 semester at Wayland Baptist University in Plainview.

Honorees with Muleshoe ties include junior Stacy Harlan, daughter of Sam and Jean Harlan of Lubbock, and senior Kristyn Graham, daughter of Linda Warren of Rupert, Idaho.

The students had to earn top grades while enrolled for at least 12 semester hours.

ANGELO STATE

Five Muleshoe-area students attending Angelo State University in San Angelo have been

named to the school's dean's list for the fall 1999 semester.

They include Gerardo Loya of Muleshoe, a music major; Brice Foster of Lazbuddie, government and business; Edward Terry of Lazbuddie, accounting; Dawn Weir of Lazbuddie, biochemistry; and Dustin Weir of Lazbuddie, pre-medicine.

To make the dean's list, a student must be enrolled full-time and earn at least a 3.25 grade-point average.

College aid seminar scheduled

The Jennyslippers are sponsoring their annual Financial Aid for College Seminar in the Muleshoe High School Cafeteria on Feb. 14.

The event is directed to high school juniors and seniors and their parents, but anyone seeking financial assistance for attending college is welcome.

Representatives of various colleges, the Opportunity Plan and the military will be advising students on how and when to apply, qualifications and other aspects of college funding.

Gayla Gear, the high school counselor, also will provide direction on applying for local scholarships.

There will be a drawing for a \$100 scholarship to be given away on the day of the seminar.

Lazbuddie seniors to host meal

The senior class of Lazbuddie High School has announced plans for a Valentine luncheon to be served from 11:30 a.m. to 1:30 p.m. Feb. 13 in the school cafeteria.

The menu will include brisket, scalloped potatoes, tossed salad, red beans, Texas toast and a homemade dessert.

The cost will be \$6 per plate or \$4 per "lite plate." Take-outs will be available.

Calvary plans Missions Conference

Calvary Baptist Church of Muleshoe has scheduled its annual Missions Conference on Feb. 4-6 at the church.

The services will be at 7 p.m. Friday and Saturday and 6 p.m. Sunday.

Brother Larry White of Snyder will be the guest speaker each evening. On Friday and Saturday, the 30-member Anchor Home Boys will present singing, testimonies and Bible recitations. The group is from Roloff Homes of Corpus Christi.

Also on Friday and Saturday, a meal will be served at 6 p.m. On Saturday, each Sunday school classroom will be decorated as a particular country with food from that country being served.

Other highlights are to include:

- Friday evening — the David Wisdom family will make a presentation on Mexico;
- Saturday evening, the seven-member Callahan family, former missionaries to the military in Japan, will speak; and
- Sunday evening, the Rev. and Mrs. Glenn Border, formerly of Muleshoe, will speak on their mission to the Jews.

Schools to be closed Friday

Muleshoe schools will be closed Friday as a scheduled district holiday for teachers and students.

School will resume on the regular schedule Monday.

Correction

A story on Page 1 of Sunday's *Journal* should have stated that Osbaldo Barraz of Muleshoe reported his daughter missing on March 12, 1998, not Osbaldo Reyes.

The *Journal* regrets the error.

The deadline for items to appear in *Around Muleshoe* is 5 p.m. Monday for Thursday's edition and 5 p.m. Thursday for Sunday's edition. Items may be brought to the office at 304 W. Second, mailed to P.O. Box 449, called in to 272-4536 or faxed to 272-3567.

SHOW

from page 1

pion Chester White;

- Pollard, reserve Chester and the reserve Hampshire;
- Chris Kindle, champion Cross, champion Spot and reserve champion Duroc;

- Tooley, champion Poland;
- Ashley Layton, reserve Spot;
- Tiffany Davis, reserve Poland;

- Kasey Davis, champion Hampshire; and
- Monty Kirby, reserve Yorkshire and reserve Cross.

In the showmanship contest, Pollard was judged the senior and overall champion, while Caleb Heinrich was the junior champion.

HONORS

CCC HONOR ROLL

Four Muleshoe-area students have been named to the fall 1999 semester vice president's honor roll at Clovis Community College, according to an announcement by Dr. Becky Rowley, vice president for educational services.

Those who were honored include Priscilla Aguirre, Debby Bearden, Brittini Black and Rachel Casanova.

In order to make the honor roll, students must be enrolled in at least 12 semester hours and earn a grade-point average of at least 3.5.



402

RED WING SHOES
Made in U.S.A.

The Fair Store
120 Main 272-3500



FREE SONIC CONEY

Get a FREE extra long cheese coney when you purchase one at regular price! **ALL DAY WEDNESDAYS!**

1633 American Blvd. • 272-3998 Muleshoe

Not valid with any other offers. No coupon necessary. Offer expires 2/29/00. Valid at Muleshoe location only.

Extra, Extra Photo Savings!

FREE 2nd Set!

Don't Forget to buy Kodak Film!

3" ALCO Advantage Prints
OR
4" or 5" Kodak Prints

Every Tuesday & Saturday!

ALCO Advantage

Daily: 9 A.M. to 8 P.M.
1401 W. American Blvd. • Muleshoe, TX 79347

Sunday: Noon to 6 P.M.

Offer available on 3" Alco Advantage Processing or 4" or 5" Kodak Premium Processing prints. 3" prints from 110, 126, disc and 35mm film. 4" or 5" prints from 35mm film only. C-41 Process only. Not available on (Advanced Photo System—Advantix), Panoramic or 1/2 frame 135 film. Cannot be combined with any other offer.

One of a Kind
Gift Baskets
for Valentine's Day
Hand chosen for your true love!

"I'll put my heart into making your gift special!"

See Marilyn at...
ANTIQUES & FINE THINGS
2104 W. American Blvd.
Muleshoe, TX
272-4217

Muleshoe Journal USPS 367820
Established February 23, 1924. Published by Triple S Publishing, Inc.
Every Thursday at 304 W. Second, Box 449, Muleshoe, TX 79347.

Second Class Postage paid at Muleshoe, TX.
POSTMASTER: Send address changes to the Bailey County Journal, P.O. Box 449, Muleshoe, TX 79347.

We are qualified members of:
Panhandle Press Association, National Newspaper Association,
West Texas Press Association and Texas Press Association

WEST TEXAS PRESS ASSOCIATION
PPA
Panhandle Press Association

TA MEMBER 1999
TEXAS PRESS ASSOCIATION

Scot Stinnett, Publisher
Lisa Stinnett, Vice-President/Comptroller
Ronn Smith, Editor
Andrea Kemp, Classifieds
Leah Bell, Advertising

© 1990

SUBSCRIPTIONS: Muleshoe Journal and Bailey County Journal
By Carrier Yearly - \$22.00
Bailey County — by mail - \$24.00
Elsewhere - \$26.00
Advertising Rate Cards on Application

Advertisers should check their ad the first day of insertion. The Journals will not be liable for failure to publish an ad or for a typographical error or errors in publications except to the extent of the cost of the ad for the first day of insertion. Adjustment for errors will be limited to the cost of that portion of the ad where the error occurred.

NO ONE ELSE SELLS FOR LESS!

No other dealer in Eastern New Mexico or West Texas sells for less than **Richard Barton.**

Other dealers offer savings... we control our overhead costs to give you **PLANNED** lower prices!

Choose From The Area's Largest Selection Of Quality New And Used Cars And Trucks.

Richard Barton
"A familiar name known for service, honesty, and easy dealing."
3300 Mabry Drive Clovis, NM 88101 505-762-2986 / 1-888-569-1900

PONTIAC
DIVISION OF GENERAL MOTORS

BUICK
The new thing. The way it works.

GMC
The way things should be.

Our Planned Lower Prices Bring You In, Our Award-winning Service Always Brings You Back!

*Rebate retained by dealer. All vehicles subject to prior sale & lenders approval. **With Federal Tax Refund applied towards vehicle purchase at Richard Barton Pontiac-Buick-GMC only. W.A.C.

Pontiac Grand Am SE

SALE PRICE \$225 or \$17,500 a month

47 mo. Smart Buy, 10% down, **TTL \$7,863 residual @ 5.70% APR.

GMC TX/OK Edition

SALE PRICE \$17,900

'99 GMC 4x4 Suburban

New! \$6,000 OFF LIST PRICE

NO ONE ELSE SELLS FOR LESS!

Buick Century Special Edition

SALE PRICE \$20,119

SEE HOW MUCH MORE YOU GET IN A BUICK!

Pontiac Grand Prix GT

\$299 or \$24,200 a month

18 mo. Smart Buy, 10% down, **TTL \$13,765 residual @ 5.70% APR.

GMC X-Cab SLE 2x2

\$299 or \$24,200 a month

35 mo. Smart Buy, 10% down, **TTL \$16,120 residual @ 5.5% APR.

Two weeks and counting until indoor seed-starting starts!

By **RONN SMITH**
Editor

Several cold nights have given us some flexibility in planting cool-weather vegetables, and possibly even slowed the budding of fruit trees.

I know the cold wind doesn't make it inviting to get out and tend to gardening chores, but someday soon you'll have to observe last call on:

- Giving bulbs and peonies their "January" feeding of bone meal;
- Apply horticultural oils to deciduous trees and shrubs, especially to fruit trees in the rose family — peach, plum, apricot, nectarine, pear, almond; and
- Get any remaining spring-



flowering bulbs into the ground (no doubt they won't bloom this year, or not much), but at least you'll save them for next year.

Remember, too, that garden peas need to be planted as soon as possible. You can plant them every two weeks through April to ensure a continuous supply — just know that some of those late crops may get cut short by

summer heat.

Note that trees have begun arriving at the nurseries. In climates like ours, this is traditionally the time to set out most fruit trees, if you plan to add any this year.

Larkspur seed also should be scattered as soon as possible in order to allow it sufficient cool weather to come up in the spring. (Scattering it in the fall is a good idea, too.)

In about another two weeks, it's time to start such cool-season vegetables as cabbage, broccoli, cauliflower, Chinese vegetables such as bok choy, and lettuce indoors for planting out in a few weeks.

In the last week of February, it's time to feed that High Plains

favorite, the bearded iris. But not much. I usually like half a cup of compost or well-rotted manure sprinkled around each iris and worked gently into the top inch or so of soil. If your soil is in very good shape, even a tablespoonful could be adequate.

Also toward the end of the month, those who have roses should water them on a day when temperatures are expected to stay above freezing. Give the soil two or three days to drain, then apply a balanced fertilizer and water again.

And — of course — this is a good time to be digging into that soil all the decaying organic matter you can find. DO NOT waste last year's weed

stalks unless they're still loaded with seeds, and few of them will be at this late date. If you don't compost, dig.

Happy planting!

Questions and suggestions may be directed to Garden Writer, Route 2, Box 880, Muleshoe, Texas 79347.

30% Off
One Rack Wind Wear
Williams Athletics
322 Main St. • Muleshoe, Texas • 272-6853

Thanks for making us part of your day!

HELP WANTED

Year-Around Farmhand Needed!

Need experience in operating irrigation motors and tractor driving. Good working conditions. Employment is northeast of Muleshoe. **Call 806-272-3614.**

LOANS

\$100 TO \$467

CREDIT STARTER LOANS

CONTINENTAL CREDIT

Loans while you wait. Mon.-Thurs. 8:30 a.m. to 5:30 p.m. Fri.-8:30 a.m. to 6 p.m. 206 S. Main Street Se Habla Español **Call and apply today.**

272-3673

WESTERN DRUG

& Something Special Gifts

1411 West American Blvd. • Muleshoe, Texas • (806) 272-3106

Romantic or Practical — Create Your Own Valentine's

GIFT BASKETS

- ♥ Cologne ♥ Jewelry
- ♥ Candy ♥ Picture Frames
- ♥ Rose Garden Note Cards
- ♥ Inspirational Books
- ♥ "hugs" Series of Books

CONGRATULATIONS TO THE WINNERS OF OUR HOLIDAY MADNESS GIVEAWAYS!

Muleshoe Afghans — Lona Embry, Claudine Elliott, Julia Patterson & Kristie Spies
Teenie Beanie Bears — Frank McCamish, Sandy Turner, JoAnn Chester & Ruth Hunt

Bridal Selections for...
Suzy Hodges & Chris Key
Jaime Warrick & Heath Scott
Mia Jennings & Mike O'Neal



The junior varsity Longhorns, champions of the Amherst tournament, include (back row, from left) Lucas DeLeón, Jeffrey Phillips, Moisés García, Andy Martin and coach Rich Powers; (front row, from left) Tobin Redwine, Eric Magby, Andy Martin and Shannon Redwine.

Lazbuddie boys take JV tournament title

SPECIAL TO THE JOURNAL

The Lazbuddie junior varsity boys grabbed first place in the Amherst JV Tournament during the weekend of Jan. 27-29.

On the way to the title, the JV Longhorns defeated teams from Whitharral, Anton and Cotton Center.

In the first game, Lazbuddie downed Whitharral 44-31. Top scoring performances for Lazbuddie were by Jake Loudder (12 points), Moisés García (11 points) and Jeffrey

Phillips (eight points).

In the second game, Eric Magby pumped in 14 points to help Lazbuddie trounce Anton 55-33.

Loudder and Phillips also were in double figures, with 10 points apiece.

In Saturday night's championship game, the Longhorns managed to fight off the Elks in a 53-50 squeaker.

García and Lucas DeLeón each tossed in 12 points for the winners that night, followed by Phillips with nine.

WHEAT

from page 1

the non-development mode." Warrick said nutrients can't move through the plant when temperatures are low.

"When wheat is growing, it needs phosphorus and nitrogen," he said. "And those need warm temperatures to keep them moving."

Warrick said the crop will remain inactive until temperatures rise. "There won't be any root development, tiller development or leaf development until the weather warms up again," he said.

Robinson said although

growth was slowed by the cool weather, it would take an extended period of below-freezing temperatures to significantly delay the crop.

"Wheat is inactive when temperatures are low, but it's not going to set the crop back unless the temperature remains steadily below freezing for over 72 hours," he said.

"What will really set the crop back is the lack of moisture," he added.

Soil moisture is reported as short to very short all over the Panhandle and South Plains.

HOOPS

from page 1

led off the fourth with a short jumper. Then a Heathington jumper and a Gartin layup put the lead back to eight.

Bobbie Benham responded for Muleshoe, scoring four points in the next minute. After that outburst, Littlefield never got closer than six.

Defense was a big key to the game for the Lady Mules, who held the Lady Wildcats to 28.6 percent shooting.

Another key for the defense was keeping Littlefield away from the free throw line. In Tuesday's loss to Lubbock Cooper, the Lady Mules saw 11 free throws go against them in the overtime period alone. On Friday, Littlefield got only eight points from the line.

The season may get harder for Muleshoe. The Lady Mules

have their next two games on the road before hosting Friona Feb. 8 in their regular season finale.

Muleshoe 18 6 12 15 -51
Littlefield 6 12 12 9 -39

MULESHOE
Gartin 9-16 0-0 18, Field 5-9 1-2 11, Heathington 3-13 0-0 7, Carpenter 3-8 0-3 7, Benham 1-5 4-5 6, Locker 1-1 0-0 2, Glover 0-0 0-0 0, Torres 0-0 0-0 0, Hernandez 0-0 0-0 0

LITTLEFIELD
Webb 5-12 1-2 14, Huey 4-8 2-4 10, Devoll 2-10 3-5 7, Martinez 2-7 0-0 4, Royal 1-5 1-2 3, Ka. Dancer 0-2 1-2 1, West 0-4 0-0 0, Ke. Dancer 0-1 0-0 0, Parkter 0-0 0-0 0

Rebounds - Muleshoe 35 (Field, Benham 10) Littlefield 26 (Webb, Devoll 8), 3-pt. - Muleshoe 2-7 (Carpenter 1-2) Littlefield 3-12 (Webb 3-6), Assists - Muleshoe 16 (Field 7) Littlefield 11 (Devoll 5), Blocks - Muleshoe 2 (Field 2) Littlefield 0, Steals - Muleshoe 10 (Gartin 5) Littlefield 10 (Ke. Dancer 4), Fouled out - Field.

Dayhoff's Shoes & Randy's Shoes

403 Main 410 Main

Semi-Annual Clearance Sale

Clearance Price Reductions!
Footwear Savings For the Whole Family!

- | | | |
|--|---|---|
| Women's Shoes
(Large Group)
NOW...
40%-60% OFF | Children's Shoes
(Large Group)
1/2 Price | Men's Shoes
(Large Groups)
NOW...
30%-50% |
| Handbags
(2 groups)
30%-50% OFF | Many Other Styles
30% Off | Steel Toe Workboots
30% Off |

Children's Shoes & Workboots At Randy's



"The Largest Shoe Sale in Eastern New Mexico and West Texas"

MISSED YOUR PAPER?
Call 272-4536 weekdays or 272-6719 weekends

"A Jump-Start On Education"

Kinder Steps

South Plains Headstart & Professional Educational Services (SHAPES) provides a learning environment to prepare children ages 3-5 for public school.

This Headstart Program has been in the Muleshoe area since 1995. The local program was considered a Home Base center with funding which allowed for 12 children and one teacher from 1995-1998. This year, however, is the first year for us to be a center based program with funding which allows for 20 children; one Center Director, Mrs. Agundis; one teacher, Mrs. Quezada; and one cook, Ms. Galindo. This program is designed to meet the needs of families and children in today's economy.

Kinder Steps focuses on each child's developmental skills in a variety of educational concepts, including health, nutrition, disabilities and social skills. We also support 100% parent involvement with emphasis on parent meetings and parent "labs" which are held monthly. We also allow parents to give and use their own ideas and participation in our classroom as well.

Unfortunately, Kinder Steps is currently fully enrolled and has a waiting list at this time. But, we encourage anyone who is interested in the program to stop by and visit us at the center located at 224 W. Ave. H.

224 W. Ave. H • Muleshoe, Texas

Sponsored by Flores & Son and More Metal Building & Roofing

(above) Mrs. Delgado practices parent involvement (left) Abigail Perez, Xitacey Herrera, Marzena Pineda and Jonessa Toscano practice pre-writing skills

(above) Nancy Delgado, Brandon Jaime, Carlos Nuñez, Amy Bradshaw and Fernando Rodriguez practice counting skills (left) Beatrice Toscano measures Cruz Castorena's physical growth



Robin Tooley took grand champion meat goat and also the senior showmanship title in goats at Three Way.

IRAs should never be overlooked

SPECIAL TO THE JOURNAL COLLEGE STATION — When retirement is still a long way off, it's often hard to focus on the details that get you there. But some opportunities are just too good to pass up, Certified Financial Planner Nancy Granovsky says.

"One of the best opportunities is the Roth IRA," said Granovsky, family economist with the Texas Agricultural Extension Service.

"This type of individual retirement account allows earnings to build up tax-free, even when they are drawn out during retirement," she said.

The Roth IRA is still fairly new to consumers. Introduced by the Taxpayer Relief Act of 1997, it became effective in 1998. Consumers can deposit as much money into a Roth IRA as into a traditional IRA, but that's where the similarities end.

Under both plans, the money

must come from earned sources, not invested sources. The amount of money deposited in either type of IRA cannot exceed \$2,000 per year or 100 percent of your earned income, whichever is less.

"This means that even part-time work can make you eligible to have an IRA, although if you make less than \$2,000 during the year, you couldn't deposit more than you made into your IRA," Granovsky added.

Most taxpayers, unless their incomes are unusually high, will qualify to have a Roth IRA.

The maximum annual contribution is \$2,000. **see IRA on page 7**

40% Off FLEECEWEAR
Williams Athletics
322 Main St. • Muleshoe, Texas • 272-6853

Let **DO ALL FAMILY ENTERPRISES** take the hassle out of those special events in your life!
BOOK NOW FOR **GRADUATION, WEDDINGS OR BIRTHDAYS**
We offer...
• Catering • Party Planning
• Decorating • Entertainment
• Bartending Services
Don't be late, call now!
Don't forget we do Birthday Parties for the Kids with "Pop-Pop the Clown"
272-4725
302 W. 7th in Muleshoe North Entrance

SHOW RESULTS

THREE WAY SCHOOL JUNIOR LIVESTOCK SHOW (January 29)

MARKET STEERS
Judge: Kelly Munson
Vocational Agriculture Instructor
Littlefield, TX
Short (1102 & 1176 lbs.) — 1. Robin Tooley; 2. Scott Pollard.
Tall (1200 & 1136 lbs.) — 1. Scott Pollard; 2. Robin Tooley.

Grand Champion Junior Market Steer
Scott Pollard
1st Tall
Reserve Grand Champion Junior Market Steer
Robin Tooley
1st Short
Showmanship Champion
Scott Pollard
Reserve Champion
Robin Tooley

MARKET LAMBS
Judge: Chris Edens
County Extension Agent
Cochran County
Finewool

One Class (90 lbs.) — 1. Kaylie James.

Champion Finewool
Kaylie James
Finewool Cross

One Class (125 lbs.) — 1. Sarah Furgeson.

Champion Finewool Cross
Sarah Furgeson
Southdown

One Class (120 lbs.) — 1. Robin Tooley

Champion Southdown
Robin Tooley
Medium Wool

One Class (112-145 lbs.) — 1. Robin Tooley; 2. Sarah Furgeson; 3. Kaylie James; 4. Robin Tooley.

Champion Medium Wool
Robin Tooley

Reserve Champion Medium Wool
Sarah Furgeson

Grand Champion Junior Market Lamb
Robin Tooley

Champion Medium Wool Junior Market Lamb
Sarah Furgeson

Reserve Medium Wool Showmanship
Senior & Overall
Robin Tooley

Reserve Senior Junior
Sarah Furgeson

MARKET GOATS
Judge: Chris Edens
County Extension Agent
Cochran County

One Class (86-110 lbs.) — 1. Robin Tooley; 2. Robin Tooley; 3. Nathan James; 4. Nathan James; 5. Robin Tooley.

Grand Champion Junior Meat Goat
Robin Tooley

Reserve Grand Champion Junior Meat Goat
Robin Tooley

Showmanship Overall
Robin Tooley

Reserve
Nathan James

MARKET SWINE
Judge: Dr. Steve Frazee
Texas Tech University
Agriculture Instructor

Berkshires
Lightweight (177-208 lbs.) — 1. Lauren Layton; 2. Robin Tooley; 3. Cassie

Kirby; 4. Rowdy Davis.
Heavyweight (213-224 lbs.) — 1. Ashley Layton; 2. Chris Kindie; 3. Canaan Heinrich.

Champion Berkshire
Ashley Layton
1st Heavyweight

Reserve Champion Berkshire
Lauren Layton
1st Lightweight
Chester Whites

One Class (192-244 lbs.) — 1. Jennifer Kirby; 2. Scott Pollard; 3. Cene Hood.

Champion Chester White
Jennifer Kirby
Reserve Champion Chester White
Scott Pollard

Durocs
Lightweight (183-213 lbs.) — 1. Chris Kindie; 32. Canaan Heinrich; 3. Rowdy Davis; 4. Monty Kirby; 5. Cody Kirby.

Heavyweight (218-248 lbs.) — 1. Lauren Layton; 2. Robin Tooley; 3. Tiffany Davis; 4. Jennifer Kirby; 5. Cassie

Champion Duroc
Lauren Layton
1st Heavyweight

Reserve Champion Duroc
Chris Kindie
1st Lightweight
Hampshires

Lightweight (168-198 lbs.) — 1. Robin Tooley; 2. Cody Kirby; 3. Caleb Heinrich; 4. Cenece Hood.

Heavyweight (208-221 lbs.) — 1. Kasey Davis; 2. Scott Pollard; 3. Ashley Layton.

Champion Hampshire
Kasey Davis
1st Heavyweight

Reserve Champion Hampshire
Scott Pollard
2nd Heavyweight
Poland Chinas

One Class (210-220 lbs.) — 1. Robin Tooley; 2. Tiffany Davis; 3. Colton Heinrich; 4. Stephanie Kirby.

see RESULTS on page 5

Bailey Gin Company

946-3397 • Peanut Hawkins-Mgr.

Great Show Three Way!

RESERVE CHAMPION BERKSHIRE
Lauren Layton

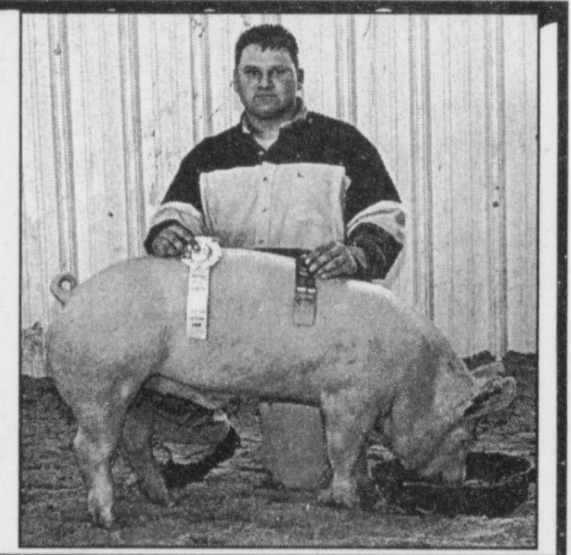


PRECURE ELECTRIC, INC.

424 N. 1st St. • Muleshoe
272-4844 or 946-7322 Mobile

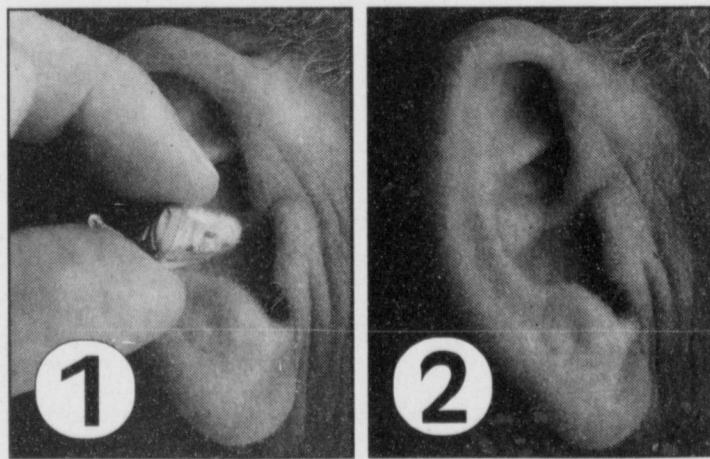
Best Wishes To All Three Way Livestock Show Winners & Participants!

RESERVE CHAMPION YORKSHIRE
Monty Kirby



New Fully Digital Hearing Aid

Now Available in Muleshoe



Digital hearing aid prescriptions are precisely matched to your hearing loss. Once inside your ear, it is hardly noticeable.

"The new Direct Digital Hearing Aid has been released. It samples sound one million times per second with more processing power than many desktop computers," said Patrick McCarty, hearing aid specialist with Livingston Hearing Aid Center.

"Sound is pre-processed and fed 32,000 times per second through the digital sound processor for statistical analysis and over 100 parameters are adjusted automatically."

The Fully Digital hearing aid automatically and continuously analyzes the sound in the wearer's environment.

This new technology is capable of fitting mild to severe hearing losses and because of the ability to program this hearing aid, it can be modified to meet the needs of the user for many years. Livingston Hearing

Aid Center offers a 60-day money back satisfaction guarantee.

Call for a free demonstration: 1-800-828-0722. Livingston Hearing Aid Center is located at the Bailey County Coliseum in Muleshoe.

ONE DAY ONLY
Mon., Feb. 7th



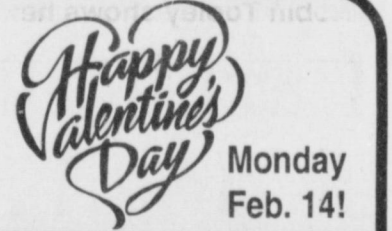
Come meet Hearing Aid Specialist, Patrick McCarty of Livingston

Hearing Aid Center. He will be demonstrating the new Direct Digital Hearing Aid one day only, Monday, Feb. 7th at the Bailey County Coliseum in Muleshoe.



1-800-658-6378 106 E. American Blvd. Muleshoe, Texas

And Country Junction



Monday Feb. 14!

Surprise Your Valentine with a gift from Country Junction!

Pamper her with a

Bed & Bath Gift Basket!

A beautifully hand-designed basket filled with Glycerin Soap, Bath Puff, Fizz Balls, Candle & More!

With each gift basket purchase, get a FREE Rose!

Free daytime delivery in Muleshoe on Saturday & Monday, Feb. 12 & 14!

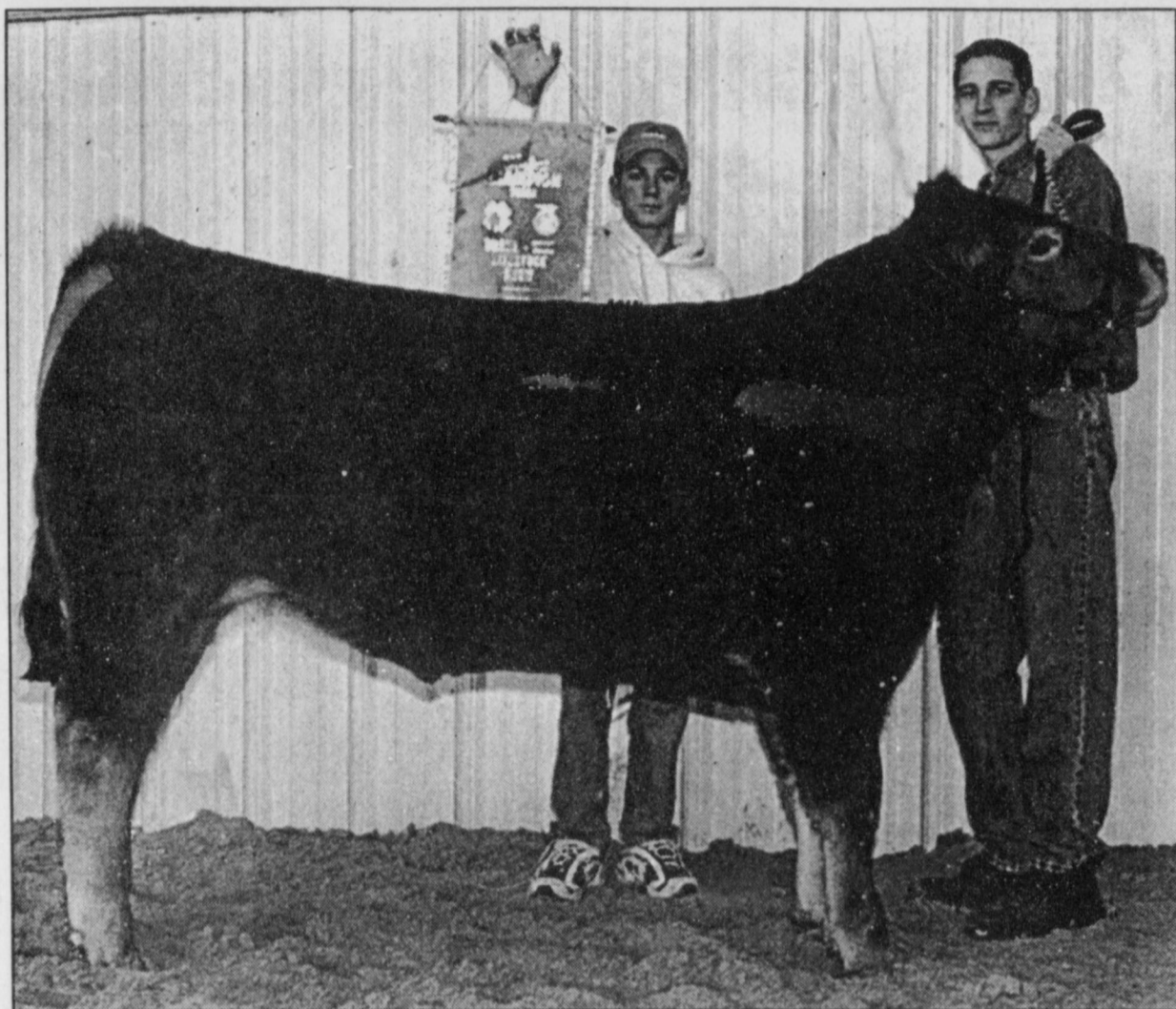


New Items at County Junction
Decorative Toppers for Yankee Candles
Buy a Large Yankee Candle, Get a FREE sampler of one of our new fragrances!

Meanwhile, at the Boot Shop...

All Jewelry & Buckles with a Heart Design are 20% Off!





Scott Pollard took both the grand champion steer award and the steer showmanship banner, but with hot competition from Robin Tooley. The two took the lion's share of prizes.



Robin Tooley shows her champion swine, a Yorkshire.



Ashley Layton shows her reserve champion swine, a Berkshire.

RESULTS

from page 4

- Champion Poland China**
Robin Tooley
- Reserve Champion Poland China**
Tiffany Davis
- Spotted Poland Chinas**
One Class (193-223 lbs.) — 1. Chris Kindle; 2. Ashley Layton; 3. Kara Heinrich; 4. Kasey Davis.
- Champion Spot**
Chris Kindle
- Reserve Champion Spot**
Ashley Layton
- Yorkshires**
Lightweight (193-210 lbs.) — 1. Robin Tooley; 2. Rowdy Davis; 3. Lauren Layton; 4. Tiffany Davis.
- Heavyweight** (216-235 lbs.) — 1. Monty Kirby; 2. Caleb Heinrich; 3. Kara Heinrich; 4. Kasey Davis.
- Champion Yorkshire**
Robin Tooley
- 1st Lightweight**
Reserve Champion Yorkshire
Monty Kirby
- 1st Heavyweight**
Crosses
Lightweight (188-207 lbs.) — 1. Monty Kirby; 2. Kasey Davis; 3. Scott Pollard; 4. Rowdy Davis.
- Heavyweight** (215-240 lbs.) — 1. Chris Kindle; 2. Robin Tooley; 3. Kasey Davis; 4. Tiffany Davis.
- Champion Cross**
Chris Kindle
- 1st Heavyweight**
Reserve Champion Cross
Monty Kirby
- 1st Lightweight**
Grand Champion
Junior Market Swine
Robin Tooley
- Champion Yorkshire**
Reserve Grand Champion
Junior Market Swine
Ashley Layton
- Champion Berkshire**
Showmanship
Senior & Overall
Scott Pollard
- Junior**
Caleb Heinrich

Hospitalizations tied to viruses

SPECIAL TO THE JOURNAL
HOUSTON — Acute respiratory virus infections are associated with high hospitalization rates among low-income individuals with chronic underlying conditions, according to a new study.

"Low-income individuals with conditions such as bronchitis, pneumonia, obstructive pulmonary disease, asthma or congestive heart failure are 10 times more likely to be hospitalized than middle-income persons with the same conditions," said the study's principal investigator Dr. W. Paul Glezen with Baylor College of Medicine in Houston. "Almost half of the patients had an acute respiratory virus infection that caused their hospitalization."

Results of the four-year study appear in the Jan. 26 edition of the *Journal of the American Medical Association*.

Researchers took throat and nasal cultures from patients at four Houston-area health clinics once those patients were admitted to the hospital with a respiratory illness.

These illnesses were influenza, respiratory syncytial virus and parainfluenza, a group of viruses that includes measles, mumps and group.

"We were surprised by the large number of parainfluenza cases in adults because we normally only see this virus in children," said Glezen, a Baylor professor of

molecular virology and microbiology.
"Many adults had become re-infected with one of these viruses,"
see **VIRUSES** on page 8

40% Off
WINTER COATS
Williams Athletics
322 Main St. • Muleshoe, Texas • 272-6853

BLACKWATER SWCD
is now selling
Grass Seed for CRP

✓ One Stop Shopping ✓ Volume Discount
✓ Competitive Pricing ✓ Random Testing for Quality

Call 272-5124, ext. 3 or 946-3361

MAPLE CO-OP GIN
Maple, TX • 927-5501
Marvin McCaul-Mgr.

CHAMPION CROSS
Chris Kindle

A Special SALUTE to the Winners of the Three Way Livestock Show!

50% Off
One Rack Winter Wear
Williams Athletics
322 Main St. • Muleshoe, Texas • 272-6853

Get a **GREAT DEAL** at **BENDER HONDA NISSAN**

#6471
98 Ford Escort LX
\$169 DOWN \$169 MONTH
Power Steering, Power Brakes, Automatic Transmission
66 mos. @ 8.5% +TT&L W.A.C.

#656771
96 Ford Taurus LX
\$199 DOWN \$199 MONTH
88 mos. @ 8.5% +TT&L W.A.C.

All vehicles plus TT&L. Subject to lender's approval & prior sale.

#6482 98 Ford Escort \$169 DOWN \$169 MONTH 66 mos. @ 8.5% +TT&L W.A.C.	#6400 96 Geo Prizm \$169 DOWN \$169 MONTH 60 mos. @ 7.99% +TT&L W.A.C.	2 to choose from #6314 98 Mercury Tracer \$169 DOWN \$169 MONTH 60 mos. @ 7.99% +TT&L W.A.C.	#6314 96 Acura Integra LS \$245 DOWN \$245 MONTH 72 mos. @ 8.5% +TT&L W.A.C.
#6314 96 Acura Integra LS Nice! Hard to find! Only \$238 MONTHLY \$500 down 66 mos. @ 8.5% +TT&L W.A.C.	#6405 99 Chevy Malibu \$240 DOWN \$240 MONTH 66 mos. @ 8.5% +TT&L W.A.C.	#950061 98 Eagle Talon \$240 DOWN \$240 MONTH 66 mos. @ 8.5% +TT&L W.A.C.	#6316 98 Honda CR-V EX Reg. \$20,650 4x4 Sale only \$19,327
#6463 99 Ford Escort SE \$199 DOWN \$199 MONTH 66 mos. @ 8.5% +TT&L W.A.C.	2 to choose from #6445 00 Dodge Neon Highline \$210 DOWN \$210 MONTH 72 mos. @ 8.5% +TT&L W.A.C.	#6445 98 Mazda Protege LX \$210 DOWN \$210 MONTH 66 mos. @ 8.5% +TT&L W.A.C.	2 to choose from #6445 98 Ford Taurus SE \$225 DOWN \$225 MONTH 72 mos. @ 8.5% +TT&L W.A.C.
#6335 97 Chevy Cavalier Z24 \$169 DOWN \$169 MONTH 66 mos. @ 8.5% +TT&L W.A.C.	#6473 97 Ford Aspire \$109 DOWN \$109 MONTH 60 mos. @ 7.99% +TT&L W.A.C.	2 to choose from #6445 97 Accord SE \$279 DOWN \$279 MONTH 72 mos. @ 8.5% +TT&L W.A.C.	#6409 94 Toyota Tercel \$129 DOWN \$129 MONTH 66 mos. @ 8.5% +TT&L W.A.C.

BENDER HONDA HONDA NISSAN
3000 Mabry Dr., Clovis • 762-3701 • 1-888-968-3702

CONGRATULATIONS
Three Way Stock Show Winners.
We're Proud of You!

RESERVE CHAMPION CHESTER
Scott Pollard

JOHN DEERE
FARM EQUIPMENT DEALER
Muleshoe Hwy. • Morton, TX • 266-5535

We're proud to support our Three Way youth!

Farmers Co-Op Gin
Assn. of Enochs
Enochs, TX • Mgr. Wade Baker
927-5511 or 927-5512

RESERVE CHAMPION SPOT
Ashley Layton

OBITUARIES

CLETA MAE WEBB

Services were held Monday at Greelawn Church of Christ in Lubbock for Cleta Mae Webb, 51, of Lubbock. Bobby Rhodes and Dale Mannon officiated. Burial was in Resthaven Memorial Park in Lubbock.

Resthaven Funeral Home of Lubbock officiated.

Mrs. Webb was born April 17, 1948, in Wanette, Okla. She died Jan. 27 at home.

She married Richard Webb on Sept. 12, 1968, in Muleshoe. She graduated from Muleshoe High School and attended Lubbock Christian College for two years. She was a member of the Meistersingers Choir at LCC.

She had worked for several cotton companies and was employed by Norwest Bank at the time of her death.

She is survived by her husband; two sons, Jeff Webb and Chad Webb, both of Lubbock; a sister, Mary Dale of Marion, Ky.; and a brother, Tom

Cornelison of New Braunfels, Texas.

The family suggests memorials to Hospice of Lubbock or the Greenlawn Church of Christ Building Fund.

LETA MAE HEFNER

Services were held Tuesday at Ellis Funeral Home Chapel in Muleshoe for Leta Mae Hefner, 82, of Lubbock. The Rev. Truman Johnson officiated. Burial was in Muleshoe Memorial Park.

Mrs. Hefner was born June 22, 1917, in Davidson, Okla. She died Jan. 29 at Covenant Medical Center in Lubbock.

She graduated from Wilson Consolidated School District No. 2 in Davidson. She married J.M. Hefner on Dec. 6, 1941, in Frederick, Okla.

They lived in Altus, Okla., from 1946 to 1963, when they moved to Muleshoe. After they retired in 1982, they traveled until 1988 when they settled in Carlsbad, N.M. They moved to

Lubbock in 1993.

She is survived by her husband; a daughter and son-in-law, Tana and Marshall Young of Dimmitt; a sister, Gladys McAlister of Muleshoe; two grandchildren, Dana Jameson of Friona and Jim Holmes of Lubbock; three great-grandchildren, Alexandra Holmes of Lubbock and Tyler Jordan Jameson and Joshua Kyle Jameson, both of Friona; a stepgranddaughter, Darla Rice; and a stepgreat-granddaughter, Danielle Rice.

The family suggests memorials to a favorite charity.

Ag Expo scheduled in Portales

The eighth annual New Mexico Ag Expo, scheduled for Feb. 22-23 at the Roosevelt County Fairgrounds in Portales, is expected to draw more exhibitors and spectators than any previous edition of the event.

Nancy Gentry, chairman of the event, said between 60 and 70 categories of products are expected to be on display.

They range from clothing to state-of-the-art farming equipment and include financial services, animal genetics, equipment repair, horse training, livestock handling and transportation equipment and others.

Gary Stone of Aucutt's General

Store said this will be the third year for Aucutt's at the expo.

"A lot of what we do is to keep our name out front in the farming and dairy industries," Stone said. "I feel the ag expo is an important thing for us to do for the community and our side of the state. We see people from all over."

Mark Clark of Portales' C&S Oil (which includes a dairy-supply division) said, "I definitely get business from the show. And it's getting bigger and better every year."

Morey Lieblich of Sandia Trailer Sales and Service in Moriarty, N.M., said, "I'm drawn to Portales and the Ag Expo because of the down-home people."

CASKETS AND MONUMENTS
"SAVE HUNDREDS OF DOLLARS!"
 FREE DELIVERY to your funeral home of choice within 100 miles of Hereford.
 337 N. MILES HEREFORD, TX
363-2700

Studies prove that reading increases knowledge.
 Subscribe to the Journal & you'll know it all! 272-4536

WILDLIFE REFUGE NEWS

By DON CLAPP

Muleshoe Wildlife Refuge

The northbound migrations of sandhill cranes has begun.

Early on Jan. 31, 15,000 cranes were seen in the Paul's Lake area; 5,000 roosted in the lake area and 10,000 were in the air to the east.

This coincides with the number observed during the fall migration in early November.

Although only around 3,000 cranes wintered on the Muleshoe National Wildlife Refuge, large numbers were in the area.

A few thousand were roosting on Bull Lake east of Bula and on a lake north of Sudan.

This year large numbers of cranes also were roosting on

lakes south of Tahoka. Tsyoshi Watanabe, a PhD candidate in the department of wildlife and fisheries science department at Texas A&M University, has been observing the feeding habits of cranes in this area, as well as the wintering distribution of two cranes in the Tahoka area banded with satellite tracking transmitters and known to have nested in Siberia.

Now that the cranes are moving northward, they will be moving through this area until late February or early March.

Most will journey to the Platte Rivers in Nebraska to stay for a few weeks before continuing to nesting grounds in Canada, Alaska and Siberia.


BAILEY COUNTY FARM BUREAU
 1612 W. American Blvd. • Muleshoe • 272-4567



CHAMPION DUROC
 Lauren Layton

Congratulations To All The Three Way Stockshow Participants!

CENTRAL COMPRESS & WAREHOUSE
 205 Railroad Ave. • Sudan, TX • 227-2388



RESERVE CHAMPION DUROC
 Chris Kindle

WE'RE PROUD OF YOU!



ALLSUP'S

Store #34
 312 W. AMERICAN BLVD.
 Muleshoe, TX
 (806) 272-4862



PEPSI

ALLWAYS

LOW PRICES!



ALLSUP'S .5 LITER BOTTLED WATER
 CASE OF 12
\$3.99

Pick Up A Silk Long Stemmed Rose For Your Valentine or Special Someone



For Only **99¢** ea.
with fill up of 8 gallons of gas or \$1.99 without gas

2 ALLSUP'S WORLD FAMOUS BURRITOS & 32 OZ. TALLSUP \$1.99

ALL VARIETIES **FRITOS & CHEETOS** REG. \$2.29 **\$1.79**

HORTENSIA NAPKINS 200 CT. **99¢**

ALLSUP'S 1%, 2% OR WHOLE MILK GALLON \$2.29

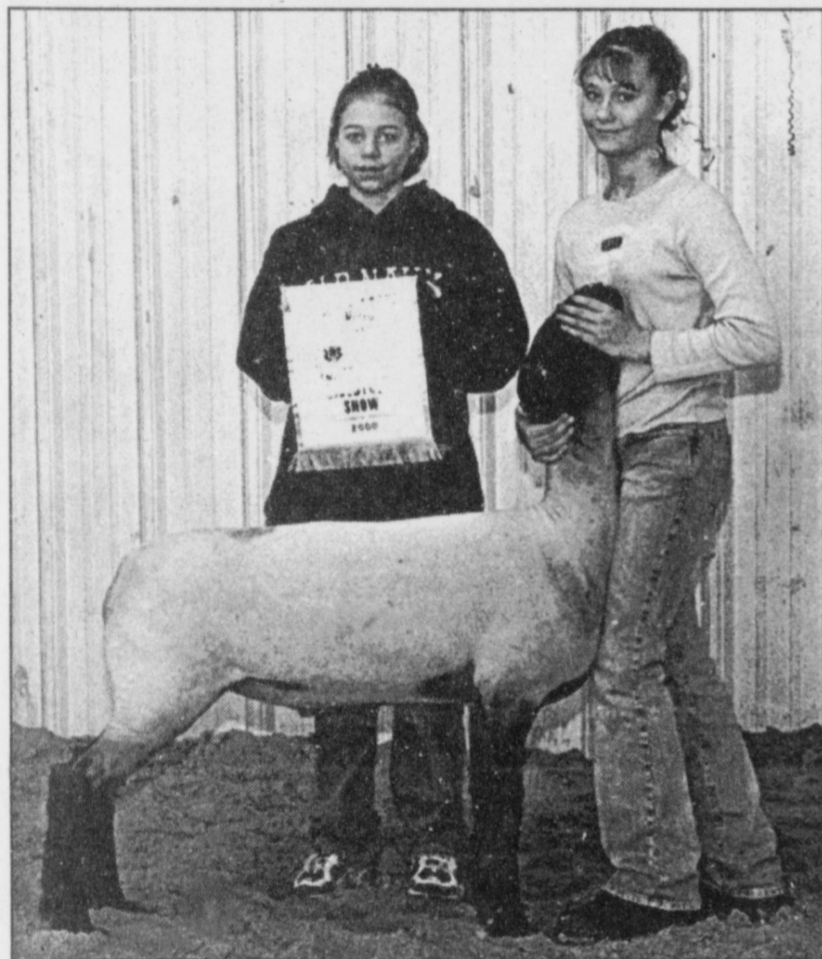
SHURFINE PAPER TOWELS 1 ROLL **69¢**

BLUE BUNNY VANILLA OR NEOPOLITAN **ICE CREAM SANDWICHES** **2 \$1** FOR

PRICES EFFECTIVE JAN. 30 TO FEB. 12, 2000 WHILE SUPPLIES LAST



Robin Tooley hauled in the champion lamb award and also took senior lamb showmanship among the many awards she captured in the Three Way show. Tooley also had the champion swine, champion and reserve champion goats and reserve champion steer.



Sarah Furgeson shows her reserve champion lamb at the Three Way show. She also won the junior lamb showmanship award. Kaylie James won the senior reserve championship in lambs at the show held last weekend.

IRA
from page 4

tribution starts to be phased out for single taxpayers with modified adjusted gross incomes between \$95,000 and \$110,000.

For married taxpayers filing a joint tax return, this phase-out begins with modified adjusted gross income between \$150,000 and \$160,000 per year.

In some cases, contributions to a traditional IRA may be tax-deductible, but they are never tax-deductible with a Roth IRA. But that doesn't keep a Roth from being a good deal for most workers, Granovsky said.

"The Roth wins out over time. It continues to grow tax-free inside the IRA, while the traditional IRA grows tax-deferred. When you start withdrawing money from a traditional, deductible IRA, you'll have to pay taxes on what you withdraw. Even with a traditional, non-deductible IRA, you'll still pay taxes on the earnings you withdraw."

Withdrawals from a Roth IRA are completely tax-free. Under the rules of Roth IRAs, the only time taxes are paid is when the Roth IRA is opened.

"That's a valuable difference, because as the value of your account grows over time, you will not have to pay additional income taxes," Granovsky said.

With both traditional IRAs and Roth IRAs, money can be withdrawn without penalty as soon as the consumer reaches age 59 1/2.

However, with a traditional IRA, consumers must begin to withdraw money by the year after they turn 70 1/2. With a Roth IRA, such withdrawals tied to age are not mandatory.

This means that Roth IRA nest eggs can continue to grow if consumers do not need to tap into them to meet retirement income needs.

Although the primary reason to invest in a Roth IRA is to save for retirement, sometimes the funds are needed for other purposes. Under certain conditions, money

can be withdrawn before age 59 1/2 from a Roth IRA without penalty.

Withdrawals for a first-time home purchase (up to a lifetime limit of \$10,000 per IRA holder) can be made tax-and-penalty free so long as the account has been in existence for at least five years.

If the shareholder dies or becomes disabled, there is no tax or penalty for withdrawing the money from the Roth IRA.

Penalty-free withdrawals are also allowed at any time to pay for higher education expenses.

"Before withdrawing funds from a Roth IRA, check with a tax adviser for official tax assistance and interpretation of the rules regarding distributions," Granovsky advised.

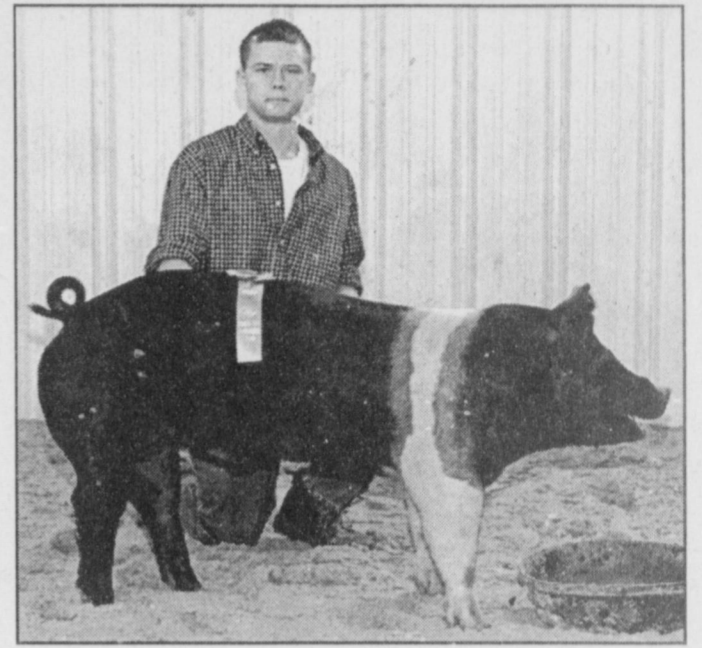
The best time to open a Roth IRA is as early in the tax year as possible. Opening an account early will let your money grow tax-free that much longer.

There are numerous investment choices for Roth IRAs, including options available from financial institutions and mutual funds.

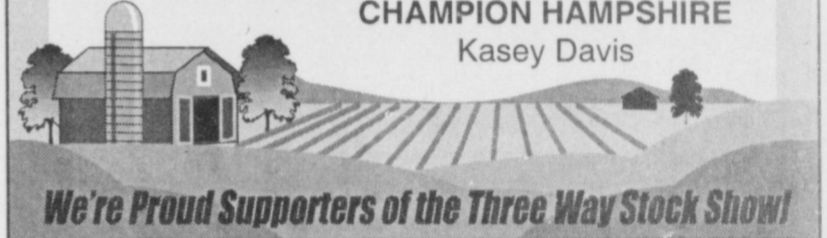


Bailey County Electric Co-Op Assn.

305 E. Ave. B • Muleshoe, TX
272-4504 (in Muleshoe) or 266-8600 (in Morton)

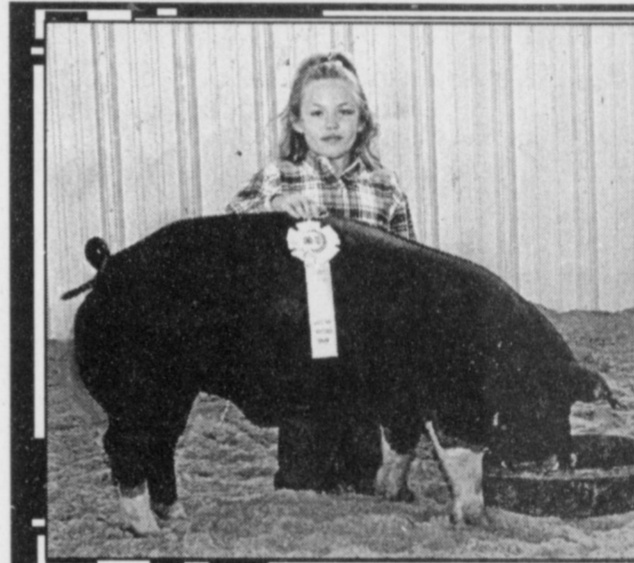


CHAMPION HAMPSHIRE
Kasey Davis



We're Proud Supporters of the Three Way Stock Show!

For any and all your Classified needs call Andrea at 272-4536



RESERVE CHAMPION
POLAND CHINA
Tiffany Davis

Rogers Grain
Goodland, TX & Rogers, NM
(505) 477-2257

We Salute The Winners Of The 2000
Three Way Livestock Show!

CONGRATULATIONS

Five Area Telephone Cooperative, Inc.

West Plains Telecom., Inc.

Five Area Systems, Inc.

Five Area Long Distance

Plateau Wireless Cellular

Five Area Paging

fivearea.com
Your local Internet Provider

to all the participants and winners of the Area Livestock Shows!

We salute each of you for your hard work and dedication in raising some of the finest livestock in the area.



THE FIVE AREA TELEPHONE ORGANIZATION

HONORS

HOOTEN

Amy Hooten of Muleshoe has been named to the dean's list for the fall 1999 semester at Lubbock Christian University.

In order to make the dean's list, a student must be taking at least 12 semester hours of work and achieve at least a 3.5 grade-point average.

LOCKER

Amy Locker of Muleshoe has been named to the dean's list for the fall 1999 semester at Lubbock Christian University.

In order to make the dean's list, a student must be taking at least 12 semester hours of work and achieve at least a 3.5 grade-point average.

MASON

Matt Mason of Muleshoe has been named to the dean's list for the fall 1999 semester at Lubbock Christian University.

In order to make the dean's list, a student must be taking at least 12 semester hours of work and achieve at least a 3.5 grade-point average.

MORTON INSURANCE AGENCY

120 S.E. 1st Street

Morton, Texas

(806) 266-5561 (806) 266-5365

FAX (806) 266-8944 Email: morton@windmill.net

Good Job Kids! Thanks for a great show 2000!



CHAMPION SOUTHDOWN
Robin Tooley

HIGGINBOTHAM-BARTLETT CO.

201 WNW 2nd • Morton • 266-5255

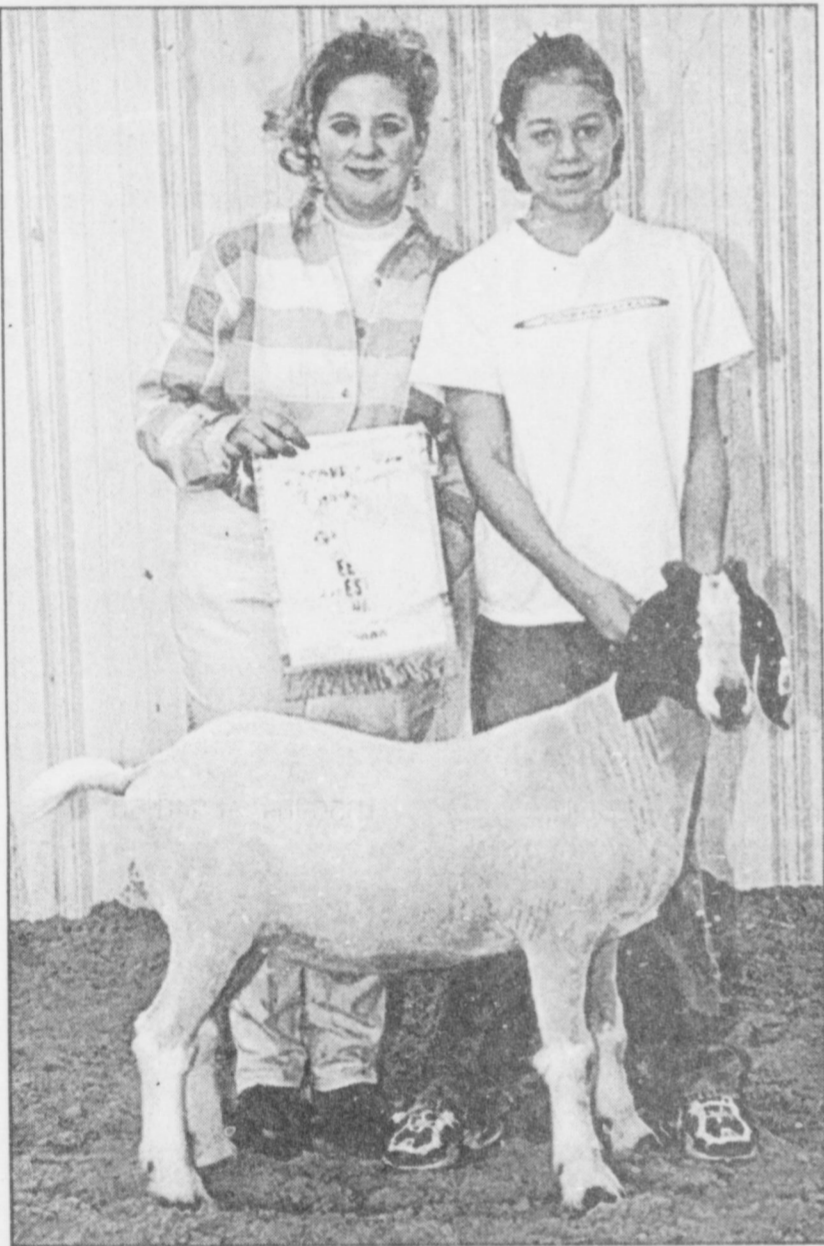
Thanks for a great show Three Way!
We're proud of all of you!

RESERVE CHAMPION HAMPSHIRE
Scott Pollard





Robin Tooley exhibits her reserve champion steer at Three Way. She also captured the reserve champion banner in steer showmanship.



Robin Tooley, winner of many championships at last weekend's Three Way show, shows off her reserve champion meat goat. She also won the goat showmanship event, with Nathan James as reserve champion in showmanship.

Community Action sets public meeting

South Plains Community Action Association plans a public meeting Feb. 8 in Levelland to discuss the Emergency Shelter Grant Program. The meeting will be from 7 p.m. to 9 p.m. in the Housing/Community Services Building, 1611 FM 300. The program is aimed at improving the lives of the homeless. More information is available by calling (806) 272-7537.

VIRUSES

from page 5

which led to the high hospitalization rates," Glezen added.

The majority of low-income individuals in the study had pulmonary problems; asthma in children and obstructive pulmonary disease in adults. Many of these individuals also were diagnosed with more than one chronic underlying condition.

Glezen believes the high hospitalization rates can be blamed on low-income patients having more than one such condition. Most do not receive ongoing treatment.

Although hospitalization rates have declined overall since 1980, hospitalization rates for acute respiratory illnesses have steadily increased during the same time period.

"This study shows the need for an expanded vaccine, like the influenza vaccine, that contains antigens for parainfluenza and RSV," Glezen said.

"If we give this vaccine annually to people with chronic underlying conditions and those in high-risk categories, such as the elderly, we can help them fight off illness and greatly decrease hospitalization rates," he added.

ENMU presents 'Heidi Chronicles'

The Eastern New Mexico University College of Fine Arts will present "The Heidi Chronicles" Feb. 17-19 in the University Theatre Center on the Portales campus.

Winner of the Pulitzer Prize and the Tony Award, "The Heidi Chronicles" — written by Wendy Wasserstein — traces the quest for fulfillment of an idealistic Baby Boomer (Heidi Holland) navigating her way through the 1960s, '70s, '80s and '90s. It has been described as "a humorous and moving story of

four friends, three decades, two genders and one woman, who've come a long way . . . maybe!" The box office opens Feb. 9. Tickets are \$7 general admission, \$6 senior citizens, \$5 pre-college and \$4 for ENMU students with a current activities sticker.

The production begins at 8 p.m. (Mountain time) with Mario Cabrera as guest director.

More information is available by calling (505) 562-2787 or visiting www.enmu.edu/~dobsonp/college/cfa.html.

50% Off
ASSORTED SHOES
 Williams Athletics
 322 Main St. • Muleshoe, Texas • 272-6853



To remove fish odor from your hands, wash them with either herb vinegar or a thin slice of lemon, then rinse your hands.

Enter Today!!!

The Muleshoe Journal's 6th Annual CUTEST BABY CONTEST





Love at First Sight

Winner will receive a \$50 Savings Bond for being selected 1999's Cutest Baby!

Enter any child born in 1999 who you fell in love with at first sight — children, grandchildren, nieces, nephews, friends, etc.

This year's contestants will appear in the April 9 edition of the Bailey County Journal. A panel of unbiased judges will pick the most attractive picture to be the 1999 Cutest Baby. All baby pictures will be printed. Babies need not be born in this area.

Bring your favorite photo along with \$10 to the Muleshoe Journal office at 304 W. 2nd Street, Monday-Friday between 8:30 a.m. and 5 p.m. or mail the coupon below with your child's photo and \$10 to Cutest Baby 1999, c/o Muleshoe Journal, P.O. Box 449, Muleshoe, Texas 79347. You may pick up your baby's picture during office hours after Monday, April 10, 2000. Arrangements must be made to return photos by mail!

Please provide phone number or address (it will not be published) so that we may contact you if we need additional information _____

Baby's Name: _____

Date of Birth: _____

Weight at Birth: _____

Length at Birth: _____

Place of Birth: _____

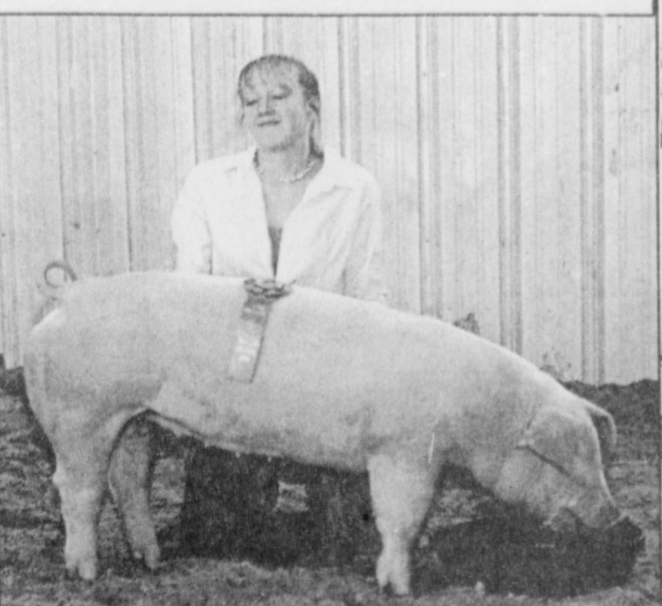
Mom & Dad's Name: _____

Grandparent's Name: _____


ENTRY DEADLINE IS MONDAY, APRIL 3, 2000 AT 5 P.M.

PARMER Co. COTTON GROWERS Co-OP GIN
 825-3701
 RON RILEY-GENERAL MGR. FARWELL, TX


Congrats to all the kids from Three Way!



CHAMPION CHESTER
Jennifer Kirby




CHAMPION SPOT
Chris Kindle




CHAMPION FINEWOL
Kaylie James

We're proud of your efforts & hard work Three Way!

MULESHOE JOURNAL
 304 W. 2nd St. • Muleshoe • 272-4536



RESERVE CHAMPION CROSS
Monty Kirby



Critical issues facing Texas counties on agenda for statewide conference

SPECIAL TO THE JOURNAL COLLEGE STATION — Examining critical issues facing Texas counties in the new millennium will be the job for more than 500 county judges and commissioners at the 42nd annual County Judges and Commissioners' Continuing Education Conference and Education Exposition Feb. 8-10.

The event will be held at the College Station Hilton Conference Center, and is sponsored by the V.G. Young Institute of County Government, part of the Texas Agricultural Extension Service.

National Association of Counties President C. Vernon Gray will be the capstone speaker, addressing the challenges and opportunities facing counties from the national perspective.

A professor of political science at Maryland's Morgan State University, Gray began his political career in 1982 as the first African-American elected to the Howard County Council.

"Texas is one of the few states requiring all elected officials to earn continuing education credits," said John Gilmartin, Extension coordinator of the institute.

"The institute provides information and educational and technical assistance to elected officials at no additional cost to taxpayers," he added.

Sessions are led by leaders in government, the private sector, academia and county officials. At 10:30 a.m. Feb. 9, representatives from the U.S. Census will present "Census/Redistricting."

"One of the current issues facing counties at this time is the

2000 census," said Richard Avery, Extension specialist, V.G. Young Institute.

"Census data is very important at the state and local level. The results of the census impact funding and political representation for the next decade."

Roads are also an important issue for counties. The Texas Department of Transportation, Texas Transportation Institute, an attorney and an engineer will host sessions on roads on the afternoon of Feb. 9.

Topics include unified road systems, basics of good roads,

right-of-way and private road issues.

"Our theme is 'Knowledge and Service: Keys to the 21st Century,'" Gilmartin said. "This year, we're offering several sessions in judicial training. We're also offering a workshop session, 'How Do you Govern: The Internet.'"

"The object of this conference is to give elected officials the tools they need so they can make informed decisions and feel confident that those decisions are based on the best and latest information."



Muleshoe Cattle Market

SATURDAY, JANUARY 29, 2000

REPRESENTATIVE SALES

651 head of cattle, 200 hogs and 204 sheep and goats for a total of 1,055 animals were sold at the January 29th sale. Steady market with good demand on stocker cfs. Feeder steers 600 & up steady from a week ago. Not enough feeder heifers to truly test the market. Pairs & Bred cows slightly weaker. Some kind of moisture would help keep all stocker markets better.

The Muleshoe Cattle Market is brought to you each week by Muleshoe Livestock Auction, located east of Muleshoe on U.S. 84. Muleshoe Livestock conducts sales every Saturday, beginning with hogs, sheep and goats at 10 a.m. and cattle following at approximately 12 noon.

FOR INFORMATION ON SALES OR TO CONSIGN CATTLE, CALL (806) 272-4201

Seller, City	#	Type	Wt.	CWT or PH
FM Farms, Brownfield	2	Char. Bulls	293 lbs.	at \$122.00
FM Farms, Brownfield	2	Mxd. Bulls	453 lbs.	at \$103.00
June Gandy, Bledsoe		BMF Str	340 lbs.	at \$110.00
Lucas Aranda, Portales, NM	2	Char. Strs	358 lbs.	at \$111.00
Betty Pool, Shallowater		YWF Bull	375 lbs.	at \$106.00
Cody Acosta, Olton		BWF Str	505 lbs.	at \$90.00
Diamond P Ranch, Hobbs, NM	6	Mxd. Strs	542 lbs.	at \$96.00
Diamond P Ranch, Hobbs, NM	14	Mxd. Strs	583 lbs.	at \$90.00
Pat Moberly, Littlefield	2	RWF Strs	600 lbs.	at \$90.00
Jacob Tiechroel, Seminole	9	Mxd. Strs	601 lbs.	at \$87.50
Jacob Tiechroel, Seminole	2	Mxd. Strs	743 lbs.	at \$84.00
Juan Hernandez, Petersburg	2	Blk. Strs	668 lbs.	at \$87.50
Jason Featherston, Levelland	3	Blk. Strs	705 lbs.	at \$84.00
Jason Featherston, Levelland	6	Mxd. Strs	788 lbs.	at \$83.00
JCL, Inc., Sudan	5	Mxd. Strs	757 lbs.	at \$85.00
FM Farms, Brownfield		Blk. Hfr	260 lbs.	at \$107.00
FM Farms, Brownfield		YWF Hfr	360 lbs.	at \$101.00
Davis Cattle, Morton		Blk. Hfr	420 lbs.	at \$89.00
June Gandy, Bledsoe	2	YWF Hfrs	470 lbs.	at \$90.00
Pat Moberly, Littlefield	3	Mxd. Hfrs	520 lbs.	at \$83.00
Diamond P Ranch, Hobbs, NM	5	Blk. Hfrs	539 lbs.	at \$89.00
Diamond P Ranch, Hobbs, NM	20	Mxd. Hfrs	497 lbs.	at \$86.50
Ronnie Vaughn, Littlefield	2	Mxd. Hfrs	625 lbs.	at \$80.00
R.B. Riley, Bovina		Char. Hfr	660 lbs.	at \$78.00
Randy Johnson, Muleshoe		RWF Pair		\$780.00
Randy Johnson, Muleshoe		Grey Pair		\$750.00
FM Farms, Brownfield	3	Char. Pairs		\$650.00
FM Farms, Brownfield	2	Char. Cows P7		\$570.00
Diamond P Ranch, Hobbs, NM		Red Cow P7		\$560.00
Davis Cattle, Morton		Red Cow P7		\$500.00
John Perrins, Hereford	2	Blk. Cows P7		\$500.00
3 Star Farms, Cotton Center		WF Cow	1355 lbs.	at \$37.50
CM Cattle, Muleshoe		Red Cow	1240 lbs.	at \$44.00
Aaron & Chip Kirby, Hale Ctr.		Red Cow	1330 lbs.	at \$40.00
Aaron & Chip Kirby, Hale Ctr.		Red Bull	1700 lbs.	at \$46.75
Cecilio Ontiveroz, Springlake		Hol. Cow	1455 lbs.	at \$41.50
Juan Hernandez, Petersburg		Red Bull	1650 lbs.	at \$48.50

Ellis Funeral Home
218 E. Washington • Morton, TX • 266-8855

Great Show

CHAMPION FINEWOOL CROSS
Sarah Furgeson

Congratulations Kids!

Journal Classifieds

STOP & SHOP

Deadlines are 5 p.m. Monday and Thursday

Call 272-4536

Deadlines are 5 p.m. Monday and Thursday

CHILD CARE

Mother of one will babysit in her Christian home. Children 14 mo. and up. References available. Call Heather at 272-6759.

HELP WANTED

Allstar Texico is looking for energetic self-motivator with good customer skills. Must have convenience store exp.

Allstar Texico
221 W. American Blvd.

Surgery Scrub Tech Part-time

No experience necessary. Must be a Muleshoe resident. Only responsible, dependable need apply.

Contact Susan Cage, RN
Muleshoe Area Medical Center
708 South First St.
Muleshoe, TX 79347
(806) 272-4524

Weight-Loss Management Program

New lease on life
Money back guarantee!
Don Holley
Herbalife Distributor
1-888-734-9629

Classified Ads

15 words minimum!
First Run .30¢
Second Run .26¢
Classified Display
Open Rate \$3.53
Muleshoe Journal
304 W. Second
(806) 272-4536

HELP WANTED

Muleshoe Motor has a position open in the SERVICE DEPARTMENT. Responsibilities include detailing, inspection stickers and maintenance. 5 paid holidays annually. Uniforms & training provided.

Apply at 1225 W. American Blvd. Mike Hanna, Service Manager
Equal Opportunity Employer

Notice of Vacancy

The City of Muleshoe is accepting applications for a Golf Course Superintendent. Prefer five years experience in course maintenance, horticulture related professional training, and knowledge of chemical applications.

The City offers a competitive salary and an excellent benefits program.

The successful candidate will be subject to a post offer drug test/physical. An application may be obtained at the City of Muleshoe Municipal Building 215 S. 1st Muleshoe TX 79347 EOE, ADA

PETS

FREE MIXED PUPPIES
8 Black Lab/Rhodesian Ridgeback
6 Dachshund/Rhodesian Ridgeback
6 weeks old
Call 272-6759
Purina puppy care kits with each puppy.

Subscribe to the Muleshoe and Bailey County Journal

\$22 Carrier
\$24 In-County
\$26 Out-of-County
Send a check to Muleshoe Journal, P O Box 449, Muleshoe, TX 79347 or pay by credit card by calling (806) 272-4536

MOBILE HOME

FLEETWOOD HOME CENTER
Portales Homes
We're celebrating Fleetwood's 50th Anniversary at New Mexico's oldest Dealership! Specials you can't believe! Call Portales Homes
FOR MORE INFORMATION
1-800-867-5639

REAL ESTATE

First Texas Ag Credit
Land Bank
◆ Long & Short-Term Financing
◆ Rural Housing
◆ Operating & Improvements
◆ AgFAst Credit Approval
◆ Cash Percentage Program
◆ Low Stock Requirement
◆ Equipment Leasing
2% to \$3,000 Maximum
316 South Main
Muleshoe, Texas
806-272-3010

House for Sale
3-1-1
915 E. Ivy
(On quiet street)
\$36,000
272-3437, after 5 p.m.

For Sale or Lease
2 Bedroom, 2 bath
2 car garage
505 E. Chicago
Day (806) 354-5290
Night: (806) 467-1886
Financing Available!

House for Sale
By Owner 3-2, Carport. Lg. storage & apt. bldg., brick veneer, fenced & cable hook-ups. N 214 on pavement. Call 272-5865, mornings.

FOR RENT-CONDO

Ruidoso Condo
3 Bedroom 3 Bath
Sleeps 8
Call Debbie at (505) 420-6700 or (806) 285-3053

Will do ironing for the public! Please call 272-3140

SERVICES

KUBE ELECTRIC
RESIDENTIAL • COMMERCIAL
REPAIRS • REMODELING
GARAGE DOOR SERVICE
ALL TYPES
CALL FOR ESTIMATES!

WELDON
(806) 481-9620 OR
(806) 946-7161
J.D.
(806) 946-8285
AFTER 5 P.M.

WANTED

Wanted
House or apartment to rent or lease. At least 2 bedrooms.
272-5298

REAL ESTATE

Nieman Realty

116 E. Ave. C • George Nieman, Broker • 272-5285 or 272-5286

RICHLAND HILLS — PARK RIDGE

- VERY NICE 2-2-2 Brick, Heat Pump, built-ins, FP, fans, fenced yd., stor. bldg., MORE!!! RH-2
- JUST LISTED-VERY NICE 3-2-1 Brick, Cent. A&H, built-ins, FP, fans, auto splkr., 1 car detached garage-workshop, fenced yd. More!!! \$70's!! RH-1

HIGHLAND AREA

- VERY NICE 2-1-1 Carport home, nicely remodeled, Cent. Heat, DW, fans, fenced yd., stor. bldg. \$29.5K!!! HL-1
- PRICE REDUCED-3-2-2 Brick, corner lot, wall furnace heat, cent. evap. air, fenced yd., stor-workshop!!! MORE!!! \$49,500!!! HL-4
- NICE 3-2-1 Carport home Cent. A&H, built-ins, fenced yard, MORE!!! \$37.5K!!! HL-6

LENAU - COUNTRY CLUB AREA

- 2-1-1 Home, Cent. A&H, DW, MORE!!! \$29.5K!!! L-3
- VERY NICE 3-2-1 Brick, Elec. Heat Pump, built-ins, fans, fence yd., MORE!!! \$39K!!! L-4
- NICE 3-2-2 Brick, Cent. Heat & Cent. Evap. air, built-ins, FP, fenced yd., stor. bldg.!!! \$40's!!! CC-1
- 3-1-1 Home, wall heat, DW, fenced yd., \$20's!! L-5

COMMERCIAL

- R.V./Mobile Home Park on 2.95 acres, home, office, 3 M.H. units. LET'S LOOK TODAY!!
- APPROX. 4,800' shop plus 600' office area on a 60' x 130' lot!!! \$60K!!!
- 246' x 145' tract, Hwy. 84, \$29.5K!!!
- VERY NICE 51 UNIT MOTEL, Priced to sell!!! Call for details!!!
- NICE 26 UNIT MOTEL, Priced to Sell!!! Call for details!!!
- 56' x 140' tract, approx. 4700' bldg., \$35K!!!
- GOOD INCOME PROPERTY - approx. 3490' bldg., paved parking, good net lease!!! PRICED TO SELL!!!

ESTABLISHED BUSINESS: Land, Bldg. & Equip., \$75K!!!

- NICE CHURCH BUILDING, approx. 2 acre tract, with 3-2 Mobile Home for classrooms or parsonage!!!

HIGH SCHOOL

- NICE 3-1-1 Brick, cent. heat, evap. air, DW, fans, fenced yd., workshop-storage, extra garage, MORE!!! \$38K!!! HS-6
- VERY NICE 3-1-1 Brick, Heat pump, DW, nice carpets, fenced yd., MORE!!! \$30's!!! HS-1
- NICE 3-2-1 Brick, Cent. A&H, built-ins, fenced yd., stor. bldg. \$50's!! HS-2
- VERY NICE 3-1-1 Home, Cent. A&H, nice carpets, six fans, 2 stor. bldgs., fenced yd., \$30's!! HS-5
- VERY NICE 3-1-1 Brick, Cent. A&H, stove, DW, fenced yd., MORE!!! \$38K!!! HS-4

RURAL

- PLEASANT VALLEY, Approx. 320 acres, 2 bdrm home, 1 bath, 2 car detached garage, on pavement!!!
- VERY NICE 4 bedrm., 2 bath, Brick Home on Hwy. 70, total elec., Geo Heat Pump, built-ins, FP, loads of storage, fenced yd., auto splkr., storage bldg. & shed, 2 acre tract. MORE!!!
- W. of SUDAN-NICE 3-2-2 Brick Home, 5 acre tract on Hwy. 298, Cent. Air & Heat, built-ins, large Quonset Barn, MORE!!! \$95K!!!
- 5 Acre tract on pavement close to town!
- Approx. 108 acres on Hwy. 70, approx. 2100' office area, 16,900' of commercial bldg. w/loading dock, 3,400' warehouse!! 2,800' runway!!!
- LONGVIEW - GOOD Dryland Labor, fully allotted, planted in wheat. \$225.00 per acre.
- 152.8 acres, 15 hp & 20 hp sub., Lockwood splkr., 85 acres seed grasses & 35 acres wheat. \$475.00 per acre.
- EARTH - (Hite Park Add.), 3 bdrm. 2 bath!!! Call for Details!!!
- NICE 3-2-2 Home on 1 acre, built-ins, MORE!!! \$40's!!!

NATIONAL BRANDS WINTER SALE

PRICES EFFECTIVE FEBRUARY 2-8, 2000

MEAT

- Cook's Shank Portion
Bone-In Hams lb. **79¢**
- Cook's Bone-In
Butt Portion Hams .. lb. **99¢**
- Preferred Trim Boneless
Beef Rump or Bottom
Round Roast..... lb. **\$1.59**
- Preferred Trim Boneless Sirloin Cut
Pork Chops..... lb. **\$1.89**
- Preferred Trim Boneless Beef Bottom
Round Steak..... lb. **\$1.79**
- Tenderized Beef
Cube Steak lb. **\$2.39**
- Fresh
Ground Round lb. **\$1.89**
- Cook's Bone-In Center Cut
Ham Steak lb. **\$2.39**
- Boneless Skinless
Chicken Breasts lb. **\$1.99**
- Louis Rich Smoked
or Oven Roasted
Breast of Turkey lb. **\$2.99**
- Hillshire Farm Assorted
Smoked Sausage .. 1 lb. **\$1.89**
- Hillshire Farm All Varieties
Hot Links..... 14-16 oz. **\$1.89**
- Hillshire Farm Links
Lit'l Smokies 1 lb. **\$2.39**
- Jimmy Dean Reg. or Hot
Breakfast Sausage 2 lb. roll **\$3.29**
- Jimmy Dean All Varieties
Breakfast Sausage 1 lb. roll **\$1.69**
- Jimmy Dean
Sausage Biscuits . 12 oz. **\$1.79**
- Decker Jumbo
Meat Franks 1 lb. **89¢**
- Decker
Meat Bologna 1 lb. **99¢**
- Decker
Cooked Ham..... 10 oz. **\$1.99**
- Decker
Chopped Ham 10 oz. **\$1.49**
- Advance Country Fried Breaded
Fingers or Patties .. 12 oz. **\$1.29**
- Advance Country Fried
Breaded Strips, Patties or
Chicken Nuggets .. 12 oz. **\$1.79**
- Oscar Mayer Roasted White
Turkey, Ham and Cheese or
Chopped Ham 1 lb. **\$2.49**
- Oscar Mayer Meat Cotto
Salami or Red Rind
Meat Bologna 1 lb. **\$1.59**

- Johnson Trigger
Shout Liquid 22 oz. **2/\$5**
- Johnson Liquid
Shout Refill 60 oz. **\$3.69**
- Aero or Trigger Resolve
Fabric Refreshener 16-17 oz. **2/\$4**
- Select Group
Lysol Spray 12 oz. **\$3.49**
- All Types
Coca-Cola, Sprite or Dr. Pepper 6 pk.-5 liter **\$1.87**
- All Types
Coca-Cola, Sprite or Dr. Pepper 6 pk.-12 oz. cans **3/\$5**

PRODUCE

- Large Cello Wrapped
Iceberg Lettuce ea. **59¢**
- U.S. No. 1
Baking Potatoes ... lbs. **5/\$1**
- Large
Navel Oranges lbs. **3/\$1**
- Large Red Ripe
Tomatoes lb. **89¢**
- Garden Fresh
Crisp Broccoli lb. **69¢**
- Large Stalk
Celery..... 2/\$1
- Whole Cello Pack
Mushrooms 8 oz. **99¢**
- Del Monte Sweet
Cantaloupe..... lb. **49¢**

- Luzianne Family Size
Excludes Decaf
Tea Bags 24 ct. **3/\$5**
- 33.8 oz. w/Sports Cap
or 50.7 oz. without
Naya Water your choice **69¢**
- 16.9 oz.
Naya Water 6 pack **\$1.99**
- Sparklett's
Drinking Water gal. **69¢**
- Home Cookin' • Chicken Noodle
• Vegetable Beef • Chicken Vegetable
• NE Clam Chowder • Creamy Potato
Campbell's Soup . 19 oz. **3/\$5**
- Campbell's Soup
Chicken Noodle... 10.7 oz. **69¢**
- Regular or Hot
Hormel Tamales .. 15 oz. **99¢**
- Ocean Spray Assorted
Grapefruit Juice . 64 oz. **2/\$5**
- Old El Paso Yellow or White Corn
Taco Shells 12 pack **\$1.39**
- Old El Paso Regular or Fat Free
Refried Beans 16 oz. **2/\$1**
- Old El Paso Assorted
Enchilada Sauce .. 10 oz. **89¢**
- Old El Paso Assorted
Thick 'N Chunky Salsa or
Picante Sauce... 15-16 oz. **3/\$5**
- Betty Crocker Assorted
Hamburger Helper 6.25-9 oz. **3/\$4**
- Betty Crocker Assorted Supermoist
Cake Mixes 18-18.25 oz. **99¢**
- Betty Crocker Assorted
RTS Frosting 12-16 oz. **\$1.39**
- Betty Crocker Select Group
Pasta Blends 4.2-5.9 oz. **79¢**
- All Purpose
Gold Medal Flour... 5 lb. **99¢**
- Assorted Betty Crocker
Rice Dishes 5-6.8 oz. **79¢**
- Betty Crocker
Specialty Potatoes 5-7.6 oz. **99¢**
- Assorted Varieties
Squeez It 6 pack **99¢**
- Betty Crocker
Brownie Mix 19.8 oz. **99¢**
- Hefty Select Group
• 50 ct. 12 oz. Bowls • 50 ct. 9 in.
Plates • 24 ct. 10 in. Comp. Plates
• 50 ct. 9 in. Color Plates
Foam Ware your choice **2/\$3**
- Assorted Glass Cleaner
Windex 26 oz. **2/\$5**
- Regular or w/Bleach 100 oz. Liquid or
Wisk **\$4.99**
- Detergent** 83-87 oz. powder **\$4.99**
- Cuddle Up Fresh Fabric Sheets
Snuggle Sheets 80 ct. **\$3.29**
- Cuddle Up Fresh or Spring Blossom
Snuggle Ultra 40 oz. **\$4.69**
- 4 ct.
Dryel Starter Kit **\$9.99**
- Floor Sweeper
Swiffer Kit ea. **\$14.99**
- Refill
Swiffer Cloths 16 ct. **\$4.99**

FROZEN & DAIRY

- Assorted Varieties Shedd's Spread
Country Crock..... 48 oz. **2/\$3**
- Assorted Varieties
Patio Burritos..... 5 oz. **4/\$1**
- Plains • Homogenized Milk • Reg.
or 1% Lowfat Choc. Milk • 2% Lowfat
Milk • Strawberry Milk • Back
Porch Lemonade • Orange Juice
• Red Diamond Sweet Tea
Snack Attack pint **69¢**
- Plains Reg. or Non-Fat
Sour Cream 16 oz. **\$1.29**
- Plains
Orange Juice gal. **\$2.49**
- Plains Non-Fat Reg. or Slim N' Trim
Cottage Cheese ... 24 oz. **\$1.99**
- Plains Select Group
Snack Attack qt. **99¢**
- Plains
Choc-O-Creme gal. **2/\$3**
- Kraft Select Group Chunk
Excludes Fat Free
Cheeses 8 oz. **3/\$5**
- Tampico Assorted
Fruit Punch gal. **\$1.39**
- Tampico Select Group
Fruit Punch 16 oz. **2/\$1**
- Minute Maid Select Group
Orange Juice 96 oz. **\$2.99**
- 16 oz. Challenge Asstd.
Quarters/8 oz. Whipped
Butter your choice **2/\$3**
- Kraft Reg. or Ex-Thick Sliced
Velveeta 12 oz. **2/\$5**
- Weight Watchers
Select Group Dinners
Smart Ones 6.25-11.5 oz. **3/\$5**
- Blue Bunny Asstd. Reg. or Hi-Lite
Ice Cream 1/2 gal. squares **\$2.99**
- Minute Maid Apple Juice or Assorted
Orange Juice 10-12 oz. **4/\$5**
- Banquet Assorted
Pot Pies 7 oz. **2/\$1**
- Banquet Assorted
Fried Chicken 25 oz. **\$2.99**
- Select Group • Fish Filets • Breaded
Fish Strips • Fish tenders • Minced Fish
Sticks • Light & Crispy Fish Fellets/Sticks
Van de Kamp's Fish 19.1-26 oz. **\$3.99**
- Sara Lee Select Group Cakes or
Pastries 8-23 oz. **\$2.99**
- Assorted Mexican
Patio Dinners 12-13 oz. **99¢**
- Ham & Cheddar Lean
Pockets or Assorted
Hot Pockets 9 oz. **2/\$4**
- Assorted Value Menu
or Select Menu
Banquet Meals ... 6.7-11 oz. **99¢**

- Quaker
Harina Preparada . 8 lb. **\$3.99**
- Libby's Chicken
Vienna Sausage .. 5 oz. **2/89¢**
- Libby's Regular
Vienna Sausage ... 5 oz. **2/\$1**
- Select Group Vlasic Sandwich
Stackers 16 oz. **2/\$4**
- Kraft Asstd. Reg./Light Done
Right/Free/Taste of Life
Salad Dressings .. 14-16 oz. **2/\$4**
- Select Group Idaho
Stuffed Tater 1.4-1.5 oz. **2/\$1**
- Plain or Iodized
Morton Salt 26 oz. **39¢**

HEALTH & BEAUTY

- 12 ct. Asstd. Liqui-Gels
or 20 ct. Asstd. Tabs
Alka Seltzer Plus your choice **\$3.29**
- Aleve 40 ct. Gelcaps
or 50 ct. Tabs/Caps
Pain Reliever your choice **\$3.99**
- Assorted Deodorant Antiperspirant
Speed Stick..... 1.8-2.25 oz. **3/\$5**
- Colgate Assorted
Shave Cream..... 11 oz. **79¢**
- Select Group
Colgate Toothpaste 6.4 oz. **\$1.99**
- Colgate Select Group
Toothbrushes ea. **2/\$5**
- General Mills 14 oz. Lucky Charms/
14-15 oz. Reg./Honeynut
Cheerios Cereal..... your choice **3/\$5**
- Reg./Hot No Beans or Reg. With Beans
Hormel Chili 19 oz. **99¢**
- Squeeze Heinz
Tomato Ketchup .. 24 oz. **99¢**
- Assorted Varieties
Quaker Instant Oatmeal 11.8-16.2 oz. **2/\$4**
- 6 Pack
Dasani Water..... .5 liter **2/\$5**
- Tombstone Supreme, Extra Cheese,
Pepperoni or 1/2 Vegetable
Pizza for One 7.28-7.6 oz. **3/\$5**
- Kraft Original, Jalapeño or Mild Salsa
Cheez Whiz..... 8 oz. **3/\$5**
- Bath Tissue
Angel Soft 4 roll **89¢**
- Coronet Prints
Paper Towels reg. rolls **2/\$1**
- 200 ft. Cling Plus or 100 ft. Classic
Saran Wrap your choice **2/\$5**
- Select Group Friskies
Alpo Dog Food ... 13.2 oz. **2/\$1**
- Assorted Cat Food
Friskies 5.5 oz. **3/99¢**
- Pretty Boy Wild
Bird Seed 10 lb. **\$1.99**
- Ocean Spray Select Group
CranDrinks 64 oz. **2/\$5**
- Original
Ranch Style Beans 15 oz. **2/\$1**
- Assorted Pico de Gallo
Ro-tel Salsa 16 oz. **\$1.39**
- Assorted Varieties
Ro-tel Tomatoes . 10 oz. **3/\$2**
- Solid Albacore in Water
Star-Kist Tuna 6 oz. **2/\$3**
- Water/Oil Pack Chunk Light
Star-Kist Tuna 6 oz. **2/\$1**
- Ragu Assorted
Spaghetti Sauce 26-28 oz. **2/\$3**
- Select Group Pasta with Meat
Chef Boyardee .. 14.7-15.5 oz. **99¢**
- Mrs. Butterworth's Regular or Lite
Pancake Syrup 24 oz. **2/\$5**
- Mrs. Butterworth's
Pancake Mix 32 oz. **2/\$3**
- Jollytime Microwave
Butter/Blast O' Butter
Popcorn 3 ct. **\$1.19**
- Old Fashioned or Quick
Quaker Oats 18 oz. **2/\$3**



WESTERN UNION MONEY TRANSFERSM
"The fastest way to send money"

Lowe's

MARKETPLACE

401 W. American Blvd. Muleshoe 272-4585

AFFILIATED FOODS INC.
MEMBER STORE
AT PARTICIPATING STORES

WE RESERVE THE RIGHT TO LIMIT QUANTITIES IN TEXAS