

PAGE ONE

A QUICK READ OF THE NEWS

Never mind that disaster alert

The state of Washington's crisis center accidentally sent out a news release about an "emergency" at the Umatilla Chemical Depot in Oregon that was intended to be used only in an internal drill.

The release, which was faxed to newspapers, TV and radio stations in Washington and Oregon, reported a fictional accident at the depot across the Columbia River from Plymouth, Wash.

In small type at the top of the page, the release said "Exercise — Do NOT publish or broadcast as an actual event."

Wild birth caught on tape

One lucky baby can look forward to growing up and seeing the scramble surrounding his own birth — on videotape, on a highway, with a cop.

Texas state Trooper Robert Turner had stopped a speeding vehicle just south of College Station. His cruiser was equipped with a video camera and a microphone. While he was talking to the stopped driver, a second vehicle pulled up behind the patrol car.

The video shows the trooper running off-camera toward the second vehicle, which carried a very pregnant Christina Pickens.

The next thing on the tape is Turner saying "I need an ambulance, a lady's having a baby."

Shortly afterward, Turner is heard saying the child has been born. The baby was not breathing, but Turner managed to discharge the fluid obstructing its airways with a smack.

The baby's name? Jordan Robert Pickens, with the middle name in honor of the trooper.



Drawing date: Saturday, Feb. 5
Winning numbers: 9-12-27-35-36-40
Estimated jackpot: \$14 million
Winners: 0
Next drawing: Wednesday, Feb. 9
Estimated jackpot: \$18 million

On this date in history

Feb. 15 — The present Texas state constitution is adopted (1876) and about 40 cattlemen meet under a great oak at Graham to form the Northwest Texas Cattle Raisers' Association — now known as the Texas and Southwestern Cattle Raisers' Association — mainly to stop cattle rustling (1877).

LOCAL WEATHER

A cooling trend can be expected after Thursday's expected high of 75. Maximum temperatures should hit about 61 Friday, 57 Saturday and 58 Sunday, with partly cloudy conditions throughout the period. Expect a low temperature of about 36 Thursday morning, dipping to 25 for Friday and settling at 31 for Saturday and Sunday mornings.

Editor Ronn Smith can be reached at 272-4536 or ctyankee@fivearea.com

Missed your paper? Call carrier Melissa Flores at 272-6719 or the Journal during business hours, 8:30 am-5 pm.

Good turnout backs detention center proposal

By **RONN SMITH**
Editor

Bailey County Judge Marilyn Cox moderated a very harmonious Monday-night public hearing on the possibility of bringing a detention center to the county: No one spoke against the proposed project.

County commissioners and most of the city council shared the stage with other local and out-of-town dignitaries, some of whom made brief remarks and then were available to answer the few questions that were asked from the audience.

Mayor Robert Montgomery said the prison would be "an anchor for our community" during times like the present when agriculture is having tough times.

"The (city) council supports 100 percent the commissioners' court in its endeavor," he said.

Curtis Preston, the county's agricultural Extension agent, stressed that agriculture injects \$75 to \$100 million annually into the community now, but if water for irrigation plays out in 10 to 20 years — as he expects — "gross income is going to decline. If you make less, you spend less. We're losing people in this community, and we need to diversify."

City Manager Rick Hanna told the citizens, "I really feel our chances of getting a facility are excellent." Then he indicated several of those on the stage with whom he had worked on previous similar projects. "These are the key players in getting those two facilities in Garza County," he added.

Garza County Judge Giles Dalby addressed the audience about how Post and Garza County acquired the facilities there now, and how Bailey County can go about it.

He said one advantage of prison-type facilities is that they are drought-proof and recession-proof, insulating an agricultural community against the ups and downs of commodity prices.

Such a facility, he said, "gives you the base economy that every community needs."

He added that by using certificates of participation in the financing of the facility, the county can set up an umbrella corporation to protect the county and taxpayers from liability "in case the bonds go

into default." In other words, if the facility was not a financial success, the county would not be liable to pay off the balance owed.

Dalby also said people from Garza County would be available to advise Bailey County officials in the beginning, to try to avoid as many pitfalls as possible.

"You're going to have pitfalls because you're going to be bringing in people from the community who just got off a tractor and now they're correctional officers," he said.

School Superintendent David Hutton addressed the proposed project from education's point of view.

"I'm sure all of us are concerned about our kiddos when we start talking about prisons," he said.

Hutton was assistant superintendent at Clyde, Texas, when Abilene constructed a prison inside the Clyde Independent School District.

He said none of the feared negative results came to pass at Clyde. School enrollment went up a little, and the availability of better jobs kept some people there who might otherwise have left.

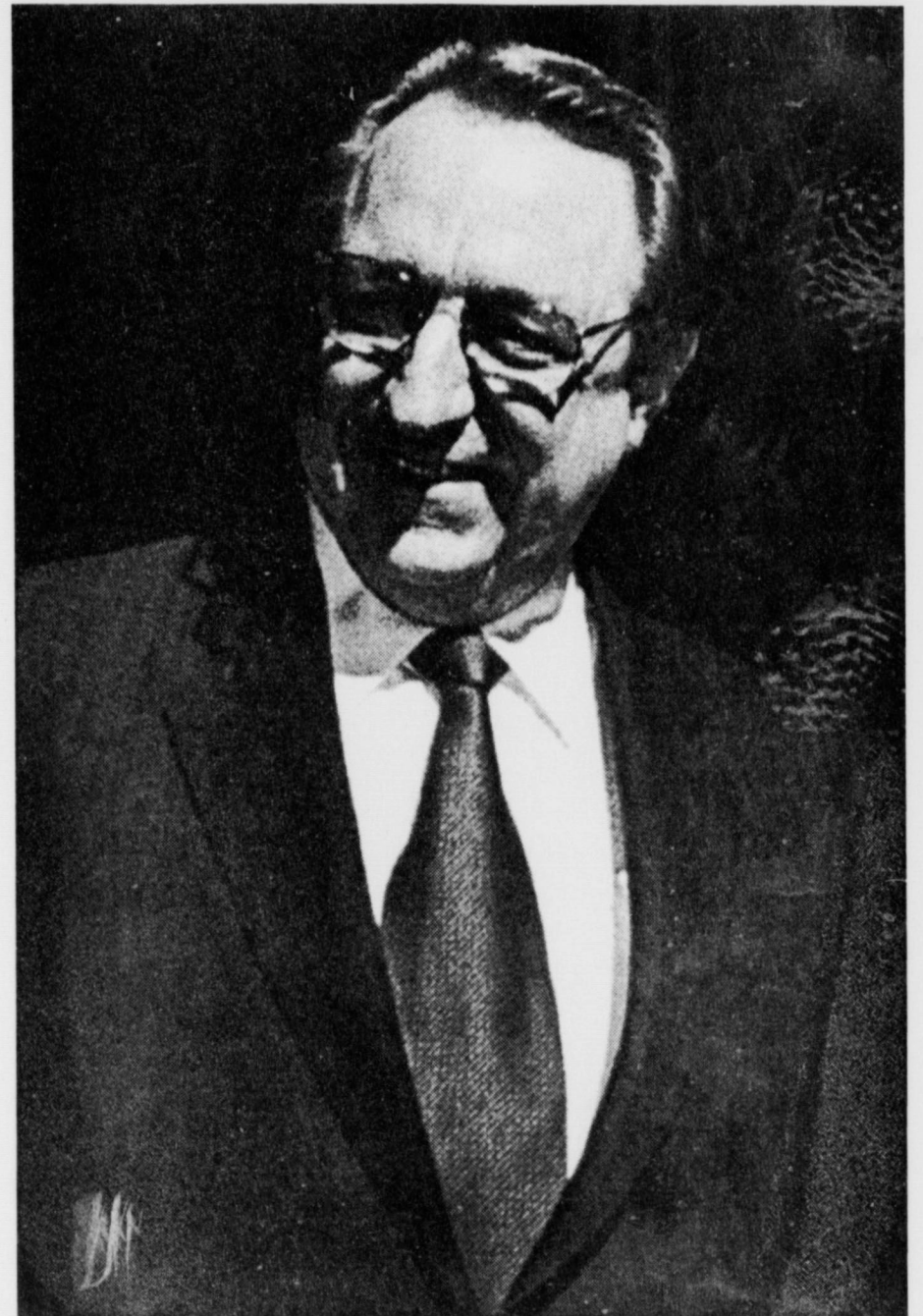
Jim Bone, administrator of the Muleshoe Area Hospital District, added that in his conversations with administrators of other small hospitals in towns where prisons have been built, the results are invariably considered positive for the hospital.

By providing the hospital with revenue that just isn't available now, a detention center could be to the advantage of all the people of the district, Bone said.

Jim Conner, regional director of Utah-based Management Training Corp., said, "This is an unusually good turnout for a meeting of this sort — it expresses a lot of interest in what's going on."

Conner's company is in the business of providing training for a prison workforce. "We hire everybody that we can locally," he said. "The team that's presented to you here tonight is not the only team ... but as far as putting something on the street, you won't find a better team," he concluded.

Likewise, James Parkey, the CEO of Corplan, based in Argyle, Texas, said, "If this is something



Journal photo: Beatrice Morin
State Rep. Pete Laney pauses during a busy day in which he honored Muleshoe schoolchildren for their TAAS test performance and attended a public hearing on a proposed detention center.

the community wants, we have the horsepower to deliver it."

Looking across the stage at the array of city and county officials plus state Rep. Pete Laney, Parkey also observed, "It is unprecedented to have this kind of political support for a project."

James L. Wedel expressed concern over what type of prisoners would be housed locally and where the prison would be located.

Cox said the discussion centers on a 1,000-bed facility for medium-security prisoners and that it would not be built "close to a residential section."

Nelda Merriott, retired district court clerk, said other clerks she had talked to praised the effect of prison construction on the community's economy.

Duane Lloyd of Bailey County Electric Cooperative said, "Our

tax base has eroded to the point where we can't pay these people (county employees) a good wage for the job they do."

And he urged citizens to get involved in the effort to secure a prison. "We can't just depend on our city and county governments to do it for us," he said.

Alfonso Posadas, who said that after 44 years in Muleshoe, "I think of it as my town," said such a major project is like a battery — it won't work with only the positive side hooked up, but the negative has to do its job as well.

Many other local residents spoke during the meeting, all of them favoring the proposal.

Laney, speaker of the Texas House of Representatives, said he will support whatever the community tells him it wants to do in regard to the detention center.

Greenbugs bothering wheat

SPECIAL TO THE JOURNAL

AMARILLO — Mild weather across the Texas Panhandle since October has allowed the greenbug, an aphid that attacks wheat, to increase to economically damaging levels in some fields, says Dr. Carl Patrick, entomologist with the Texas Agricultural Extension Service in Amarillo.

Several factors can cause the high greenbug numbers, Patrick said.

First, blame the warm weather. Then there have been too few beneficial insects like lady beetles to devour the aphid.

Then, parasitic wasps that usually build up in sorghum and can virtually reduce greenbug numbers to zero, just weren't around this year.

So the pests moved onto wheat in much greater numbers as the maturing sorghum became a less attractive food source.

"This year, the greenbugs weren't hampered by any beneficial insects or cold weather," he explained. A third, more critical condition — the current

drought — is far costlier.

Patrick thinks most producers, particularly the dryland farmers with their stands all but gone, will simply cut their losses.

Carson County farmer Stephen Warminski agreed. "Our producers are keeping a 'wait and see' attitude and praying for moisture," he said.

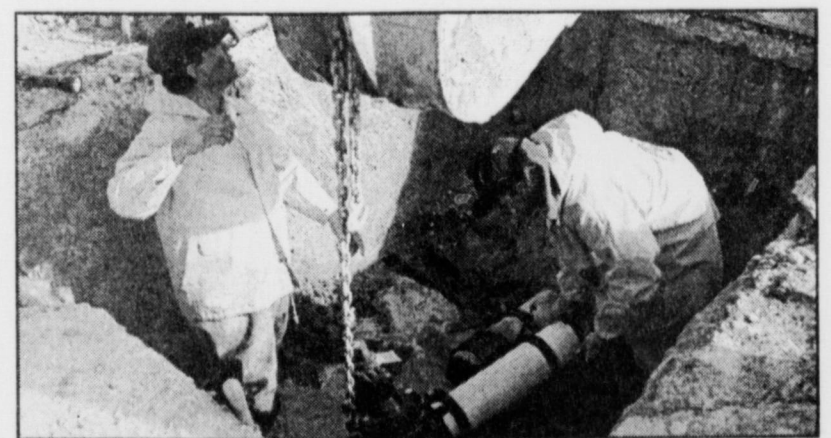
What would turn things around? The expert said a succession of cold temperatures, at least 20 degrees or colder for more than week, would kill off the greenbugs.

If the warm temperatures prevail, then Patrick said a heavy, hard rain would help by literally knocking the aphids off the plants. But the worst may be yet to come.

"Greenbug infestations typically are highest in late February and March, so the earliness of this outbreak is a concern," he said.

Patrick noted that parasite numbers aren't keeping pace with the greenbugs

see **GREENBUGS** on page 2



Journal photo: Beatrice Morin

Keeping the water flowing

Jesse Carrion (left) and Patrick Counterman replace valves in Muleshoe's city water lines along American Boulevard.

Deadline for registering to vote in March primaries is Monday

Monday is the last day voters may register in order to be eligible to vote in the March 14 party primaries.

County Clerk Sherri Harrison said Tuesday that a mail-in voter registration application with a Monday postmark will be honored.

Harrison also will be accept-

ing applications for early voting through March 7.

The actual early voting by personal appearance must be between Feb. 28 and March 10 at the clerk's office.

"If someone cannot make it up the stairs, since we don't have an elevator, I will come curbside," Harrison said

AROUND MULESHOE

Magazine features local woman

Darla Rhodes and her rural Muleshoe home are featured in the January/February issue of *Country Woman* magazine.

The magazine features several photographs from the Rhodes home showing unique decorating ideas using boots and other western themes.

Copies of the January/February issue are available for \$3.50 with a credit card by calling (800) 344-6913 and specifying the magazine name, issue date and the code: SING.

American Legion to meet Thursday

Muleshoe American Legion Post 403 will have a special meeting at 7 p.m. Feb. 10 at the Legion Hall.

All members are encouraged to attend this meeting.

Making College Count scheduled

The Making College Count In-School Presentation Program will be presented to Muleshoe High School students and parents at 9 a.m. Feb. 10 in the Muleshoe High School auditorium.

The program is based on a college guidance book, *Making College Count: A Real-World Look at How To Succeed in and After College*. The book is endorsed by the National Association for College Admission Counseling.

The program is designed to help students begin thinking about why they are going to college and what they need to accomplish there. It will be presented to more than 400,000 seniors in 2,000 high schools across the nation.

Amarillo writer to speak at luncheon

The Soup and Sandwich luncheons at 16th and D Church of Christ resume Feb. 10, with minister, author and Amarillo Globe-News columnist Gene Shelburne to speak on "Messages from God."

Shelburne is the brother of Muleshoe's Curtis Shelburne.

In light of recent book sales about "messages from God" regarding the year 2000, Shelburne will take a sometimes humorous but biblical look at what constitutes a message from God.

The public is invited. More information is available by calling 272-4619.

Students plan slave auction

The Muleshoe High School Teen Leadership class plans a slave auction at 5 p.m. Feb. 11 in the Watson Junior High School gymnasium.

All proceeds will help pay for the Democracy in Action trip to Austin.

Students in the auction will be offering to sell their labor for half a day or a full day. The work goes to the highest bidder.

More information is available from Mayme McElroy at 272-7303.

Church sets Sweetheart Banquet

Muleshoe's First Assembly of God has scheduled a Sweetheart Banquet, in honor of Valentine's Day, in the church's new Family Life Center, 521 S. First St.

The cost for the Feb. 11 banquet is \$8 per person, and the meal will include steak, baked potato, salad, drink and dessert.

Entertainment will be provided by Brother Jack Stone singing his latest recording, "God Is Able."

Ticket purchases or more information can be obtained by calling Jason or Donna Cochran at 272-4420 or First Assembly of God at 272-3017.

Youth to provide Valentine cookies

The youth of Calvary Baptist Church in Muleshoe will be

taking orders for personalized Valentine cookies.

The 9-inch boxed cookies, bearing the buyer's personal message, cost \$5 and are scheduled to be delivered Feb. 12 and Feb. 14.

Proceeds go to help pay for church camp for the students. The cost is \$5 per cookie.

Orders may be placed by calling 272-4012 or speaking to any member of Calvary Baptist.

College aid seminar scheduled

The Jennyslippers are sponsoring their annual Financial Aid for College Seminar in the Muleshoe High School Cafeteria on Feb. 14.

The event is directed to high school juniors and seniors and their parents, but anyone seeking financial assistance for attending college is welcome.

Representatives of various colleges, the Opportunity Plan and the military will be advising students on how and when to apply, qualifications and other aspects of college funding.

Gayla Gear, the high school counselor, also will provide direction on applying for local scholarships.

There will be a drawing for a \$100 scholarship to be given away on the day of the seminar.

Landers scholarship available

Applications for the Kristy M. Landers Memorial Scholarship are available from the Muleshoe High School guidance counselor.

The application deadline is March 9.

Lazbuddie seniors to host meal

The senior class of Lazbuddie High School has announced plans for a Valentine luncheon to be served from 11:30 a.m. to 1:30 p.m. Feb. 13 in the school cafeteria.

The menu will include brisket, scalloped potatoes, tossed salad, red beans, Texas toast and a homemade dessert.

The cost will be \$6 per plate or \$4 per "lite plate." Take-outs will be available.

Public calendar

Feb. 10 — 8 p.m. Three Way School Board, in the board room at the school.

The deadline for items to appear in Around Muleshoe is 5 p.m. Monday for Thursday's edition and 5 p.m. Thursday for Sunday's edition. Items may be brought to the office at 304 W. Second, mailed to P.O. Box 449, called in to 272-4536 or faxed to 272-3567.

HONORS

SHAIN

Janet Shain, a 1982 graduate of Muleshoe High School, has been selected as the laboratory

NCO of the year for the U.S. Air Force-Europe.

Shain, a 1982 Muleshoe graduate who has been

in the Air Force since 1989, is stationed at RAF Lakenheath, England. At Lakenheath, she oversees the largest chemistry/special chemistry section in the Air Force's European operations.

She was honored after an inspection by the College of American Pathologists noted zero deficiencies under her oversight.

The operation's internal competency rating also was at a 100 pass rate for the first time.

She is stationed with the 48th Medical Support Squadron at RAF Lakenheath, England.

Shain is the daughter of Charles and Izetta Shain of Muleshoe and has been in the Air Force since 1989.



Shain

and Snowy Belt of Carrollton, Texas, Mario and Mary Jane DeHoyas of Muleshoe and Danny and Ricki Kelley of Muleshoe.

Great-grandparents include Guadalupe Pollard of Lubbock, Shirlee Boyd of Muleshoe and Francis Kelley of Olton.

the Extension Service Agri-Partners program.

"It costs \$8 or more per acre for aerial application, and farmers are definitely doing the math."

Dryland crops are rated very poor at this time. If the wheat hasn't been hurt or destroyed by drought, freezes or greenbugs by now, then whatever action a producer might take would be marginal at best, Patrick said.

"We're basically betting on the weather to change things," he added. "If conditions remain the same, then there just won't be much dryland wheat to harvest."

BIRTH

NOAH BRAY KELLEY

Evan Kelley and Yolie DeHoyas announce the birth of a son, Evan Bray Kelley, born 12:37 p.m. Feb. 5 at Covenant Medical Center in Lubbock.

He weighed 8 pounds, 3 ounces and was 20 1/2 inches long.

Grandparents are Ron

Tractor collectors to meet in Plainview

The Minneapolis Moline Collectors will hold their national winter convention in Plainview's Ollie Linder Center on March 2-4.


The Texas Two-Cylinder Club will assist as guest hosts.

The Texas club's annual Fred Howard Antique Tractor and Equipment Show, held in March, is being combined with the national show this year.

A cowboy chuckwagon breakfast will be featured starting at 7 a.m. March 3.

At 10 a.m. March 4, women will be invited to a hat program at Plainview's First Assembly of God and at 7 p.m. there will be a banquet at the church, catered by County Line Restaurant of Lubbock.

A tractor pull is scheduled for noon March 3.



To the present and future patients of Dr. Bonds Clinic

We would like to apologize for any inconvenience caused by the incorrect phone number that appears in the GTE phone book. Please refer to the **Five Area Phone Book** for the **CORRECT** numbers.

For an appointment please call 272-5004.

Muleshoe Journal USPS 367820
Established February 23, 1924. Published by Triple S Publishing, Inc. Every Thursday at 304 W. Second, Box 449, Muleshoe, TX 79347.

Second Class Postage paid at Muleshoe, TX. POSTMASTER: Send address changes to the Bailey County Journal, P.O. Box 449, Muleshoe, TX 79347.

We are qualified members of: Panhandle Press Association, National Newspaper Association, West Texas Press Association and Texas Press Association.

WEST TEXAS PRESS ASSOCIATION

PPA
Panhandle Press Association

TA

MEMBER 1999

TEXAS PRESS ASSOCIATION

© 1990

Scot Stinnett, Publisher
Lisa Stinnett, Vice-President/Comptroller
Ronn Smith, Editor
Andrea Kemp, Classifieds
Leah Bell, Advertising

SUBSCRIPTIONS: Muleshoe Journal and Bailey County Journal By Carrier Yearly - \$22.00
 Bailey County - by mail - \$24.00
 Elsewhere - \$26.00
 Advertising Rate Cards on Application

Advertisers should check their ad the first day of insertion. The Journals will not be liable for failure to publish an ad or for a typographical error or errors in publications except to the extent of the cost of the ad for the first day of insertion. Adjustment for errors will be limited to the cost of that portion of the ad where the error occurred.



1-800-658-6378 106 E. American Blvd. Muleshoe, Texas



Monday Feb. 14!

And Country Junction

Pamper her with a **Bed & Bath Gift Basket** Feb. 14th!



A beautifully hand-designed basket filled with Glycerin Soap, Bath Puff, Fizz Balls, Candle & More!

It's new! It's Parkay®! No, it's butter.

Body Butter

Whipped Shea Butter - designed to soften, smooth, heal & protect your skin.

Come in for a FREE SAMPLE!

Is Your Body Sore?
Plop..Plop..Fizz..

Fizz Balls

(for your bath!)

With each gift basket purchase, Get a FREE Rose!

Free daytime delivery in Muleshoe on Saturday & Monday, Feb. 12 & 14!

New Items at County Junction

Decorative Toppers

for Yankee Candles

Buy a Large Yankee Candle, Get a FREE sampler of one of our new fragrances!



Meanwhile, at the Boot Shop...

All Jewelry & Buckles with a Heart Design are 20% Off!



AROUND THE AREA

SPC homecoming scheduled

Plans have been announced for a "Pack the Dome Night" and Homecoming 2000 for Feb. 10 at South Plains College in Levelland.

A pep rally, barbecue meal, special prize drawings, the crowning of the homecoming king and queen, and two basketball games will be part of the day's activities.

The pep rally kicks off events at 12:30 p.m. The barbecue will be served on the Texan Dome floor from 5:30 p.m. to 7:30 p.m. at a cost of \$6 — which includes tickets to the basketball games against New Mexico Junior College.

The women's game begins at 5:50 p.m. and the men's game is scheduled for 7:50 p.m.

More information is available by calling (806) 894-9611, Ext. 2221.

Law enforcement short course set

A two-day law enforcement short course, "Intermediate Arrest, Search and Seizure," is scheduled for Marh 6-7 at South Plains College's Levelland campus.

The pre-registration deadline is Feb. 24.

Classes will meet from 8 a.m. to 4 p.m. both days in SPC's Petroleum Technology-Law Enforcement Building, Room 107. Cost is \$15 per person.

The course will cover search-warrant requirements; warrantless searches of vehicles, habitations and people; and probable cause to search, seize and arrest. It is required for intermediate certification and also meets standards of credit set by the Texas Commission on Law Enforcement Officer Standards and Education.

A minimum of 10 people must enroll in order for the class to make. Registration can be completed at the first class session.

Pre-registration or more information can be obtained by calling (806) 894-9611, Ext. 2291.

Singers asked to join performance

Area singers are invited to join the Community Singers of Clovis-Portales, who will perform Brahms' "Requiem" April 30 with the Eastern New Mexico University Choirs under the direction of Dr. David Gerig.

The concert is scheduled for 3 p.m. (Mountain time) in the University Theatre Center on the Portales campus. The performance will be in English.

Rehearsals will be on Tuesdays from 7 p.m. to 8:30 p.m. (Mountain time) alternating between Clovis and Portales sites.

Scores will be provided. The rehearsals in Clovis will be at First United Methodist Church, 1501 N. Sycamore St., and those in Portales will be at the ENMU School of Music.

More information and a complete rehearsal schedule is available by contacting the School of Music office at (505) 562-2377.

Olton chamber banquet scheduled

The Olton Chamber of Commerce and Agriculture has scheduled its annual banquet for 7 p.m. Feb. 26 in the school cafeteria.

The banquet theme will be "Country Tonight," and the meal will be steak with all the trimmings.

Wynon Mayes of Canyon will do a humorous take-off on the late country entertainer Minnie Pearl.

The ticket price is \$12.50.

More information is available by calling Melba Rose at (806) 285-2292.

The deadline for items to appear in *Around the Area* is 5 p.m. Monday for Thursday's edition and 5 p.m. Thursday for Sunday's edition. Items may be brought to the office at 304 W. Second, mailed to P.O. Box 449 or faxed to 272-3567.

Women participants are beginning to show men how to rodeo

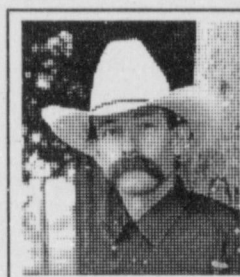
Ted called the other day to report that his 8-year-old daughter had announced she was going to become a barrel racer.

Her first request was for a real horse trailer. The 16-foot stock trailer with the cow-mature floor and faulty wiring would not suffice now that she'd made her career choice.

Ted related all this with the whipped-cog attitude of one who just found out his new mother-in-law was a chronic sleepwalker and would be moving in with him for life.

I said, "Ted, didn't you go to the National Finals Rodeo?"

"Sure," he said, brightening. "Speed and Rich won the roping, Billy Etbauer smoked 'em in the saddle broncs, Fred



BAXTER BLACK

ON THE EDGE OF COMMON SENSE

won the all around ..."

"Do you know who won the most money?" I asked.

"Well, Fred, I guess," Ted said.

"Nope, Sherry Cervi," I told him. "Matter of fact, she won \$25,000 more than the next highest money winner, man or woman."

I heard Ted drop the phone and the line went dead.

I understand. I remember I saw the final tally for the 1999 PRCA Champions and discov-

ered what Cervi had done. My first thought was the picture of the lady soccer player brazenly showing the world that women's athletics had scaled another mountain ... or two.

The soccer team's prowess and celebrity gave inspiration to womankind. Granted, many women athletes in recent history have distinguished themselves, particularly in

golf, tennis and the Olympic events.

Rodeo, too, has had its share of impressive women participants.

But, as in all other athletic events, it has been conceded that regardless of the women's ability, when competing head to head with men, they would lose.

Cervi changed that last December. Playing by the rules, all set by men, she finished the

season with the biggest paycheck in the Pro Rodeo Cowboys Association.

And if the PRCA allowed women to enter the team roping, she'd probably have won enough in that event to leave Las Vegas wearing the all-around cowboy buckle.

How about that, Ted? Maybe you better start lookin' for a new trailer.

Advertising pays!

KENW-TV

Public Television

NOVA

"Mystery of the First Americans"

In 1996, police summoned forensic investigator Jim Chatters to a river bank near Kennewick, Washington, where a human skull had been found. After checking the skull's shape and the wear on the teeth, he concluded it was a middle-aged Caucasoid male. It was thought to be possibly a nineteenth-century European settler, until more bones turned up, including a pelvis with an embedded prehistoric spear point. Carbon dating showed the remains were more than 9,000 years old, among the oldest ever found in North America.

Nova covers the remarkable story told by Kennewick Man and other ancient American skeletons, on "Mystery of the First Americans."

The discovery of Kennewick Man brings to light a riddle previously known only to a few physical anthropologists, that none of the small number of North and South American skulls that are more than 8,000 years old looks anything like today's Native Americans or their presumed northern Asian ancestors.

The ancient skulls are overthrowing the long-accepted view that America's first settlers were northern Asian hunters who arrived at the end of the last ice age, about 12,000 years ago, when the lower sea level left a land bridge connecting Siberia and Alaska.

These expert hunters are known as the Clovis people from the archaeological site near Clovis, New Mexico, where their distinctive spear points were first found.

Could other groups have arrived before the Clovis? If so, where did they come from? What did they look like? How did they get here? And what happened to them afterwards?

Nova investigates other intriguing clues about America's first settlers. In Monte Verde, Chile, archaeologists have confirmed that people were living in South America 1,000 years before the Clovis people appeared in the north.

In Alaska, remains of abundant ancient plant and animal life in a bear cave suggest that coastal regions were habitable during the last ice age and may have provided pre-Clovis immigrants a route around the glaciers into the New World.

In Nevada, a skeleton found 60 years ago and dubbed Spirit Cave Man was recently dated at 9,400 years. Facial reconstruction shows that, like Kennewick Man, he lacks the broad face and high cheek bones characteristic of Native Americans and northern Asians.

These new data suggest that the peopling of the New World may have happened not once, but many times over thousands of years, with people from different parts of Asia, by both inland and coastal routes.

"Mystery of the First Americans" on Nova can be seen Tuesday, February 15th at 8:00 p.m. It repeats Saturday, February 19th at 10:00 p.m. and Sunday, February 20th at 1:00 a.m.

Channel 3 Television from Eastern New Mexico University, Portales, New Mexico

SOUND DEALS ON GREAT SOUNDING PRODUCTS

SALE 1499

4-in-1 Universal Light-Up Remote
Take control of up to four devices.
#15-1992 Reg. 24.99
40% OFF



SALE 1999

Cordless Phone With Speed-Dial
At 66% off, they'll be flying off the shelf faster than they dial.
#43-1049 Reg. 59.99
CLEARANCE



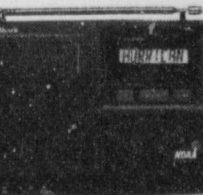
SALE 3999

each

2-Way Radios

Roger it. Copy it. Ten-four it. Our 2-way radios keep you in touch, loud and clear.

#21-1821 Reg. 49.99 \$10 OFF



SALE 5999

Weatheradio Alert

With SAME warning system, find out the weather inside your area.

#12-250 Reg. 69.99 SAVE \$10



SALE 2799

pair

Wireless Intercom

Do business within the office without even leaving your chair.

#43-493 Reg. 39.99 30% OFF



900MHz Cordless Phone

Automatically picks the clearest channel, so all you have to do is pick the color.

SALE 3999

Dove Gray #43-1107, Graphite #43-1108 Reg. 69.99.

42% OFF



SALE 899

10-Second Recording Keychain

Records quick reminders. LED indicator.

#63-953 Reg. 11.99 25% OFF

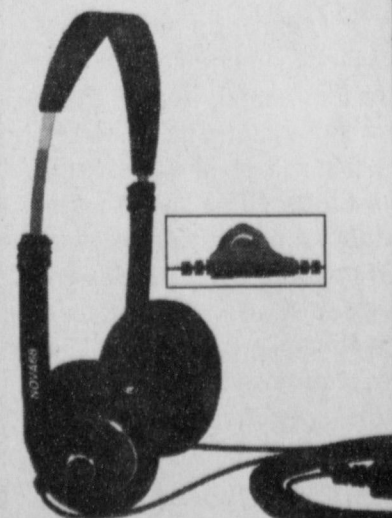


SALE 999

Nova 63 Headphones

Delivers heavy-duty sound and includes inline volume control.

#33-1128 Reg. 19.99 HALF PRICE



Most Major Credit Cards Welcome

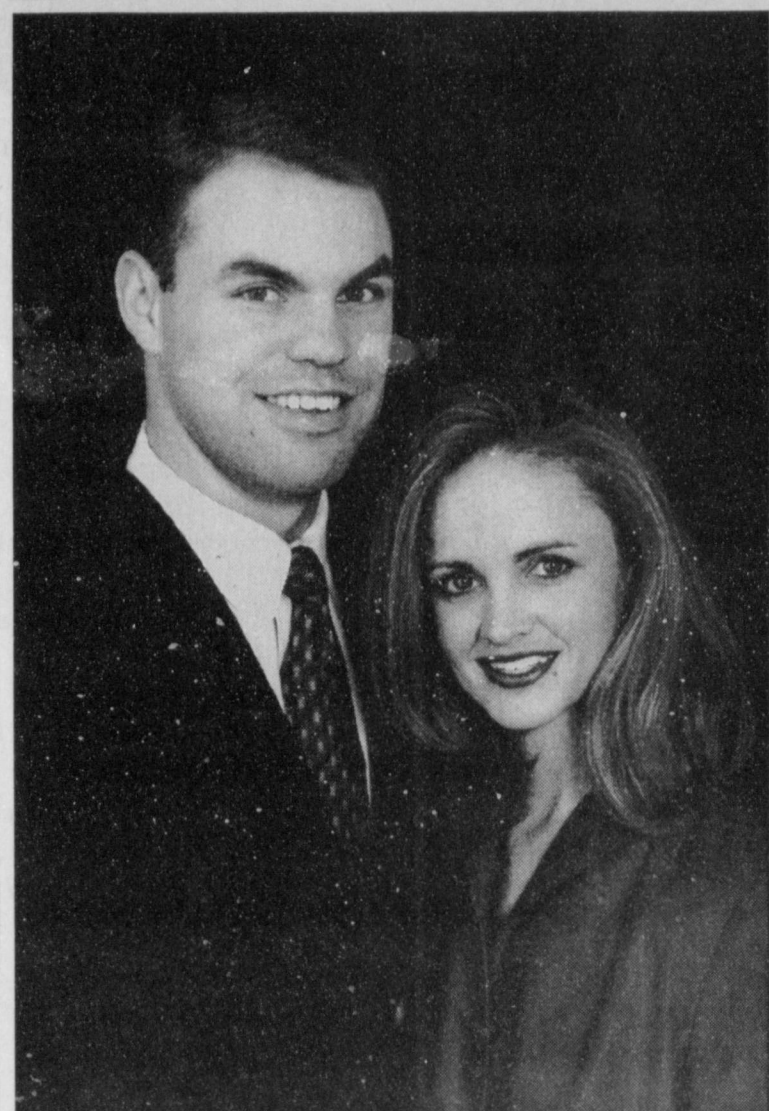
Owned and Operated By:
Wilson Appliance
117 Main • Muleshoe • 272-5532

A RadioShack® Dealer

Clearance items may not be in all stores, some may be demos. Sorry, no rain checks or phone orders. Offer/prices not available in all stores. Please inquire. Prices good through 02/26/2000.

RadioShack
You've got questions. We've got answers.®

ENGAGEMENT



Jennings — O'Neal

Joe Bryan and Marsella Jennings of Lazbuddie announce the engagement and approaching marriage of their daughter, Mia Marcel, to Michael Ray O'Neal, son of Don and Elizabeth O'Neal of Colleyville, Texas.

The bride-elect is the granddaughter of Joe Bates and Cora Bell Jennings of Muleshoe and Mary Ann Mayfield of Lazbuddie.

She is a graduate of Lazbuddie High School and of Baylor University in Waco, with a bachelor of business administration degree in accounting.

The prospective bridegroom is the grandson of Ray and Tommie O'Neal of Hurst, Texas.

He is a graduate of Trinity High School in Euless, Texas, and of the University of Texas at Austin, with a bachelor of arts degree in economics.

The bride-elect is a certified public accountant with Ernst and Young of Dallas, and the prospective groom is a regional fleet manager with Nation's Rent.

The wedding will be at noon March 18 at Park Cities Baptist Church of Dallas.

JV BASKETBALL ROUNDUP

LADY MULES 54 SHALLOWATER 44

Rendi Hodge and Megan Tipps led the way Friday night with 14 points and 12 points, respectively, as the junior varsity Lady Mules downed the Shallowater JV Fillies 54-44.

They were the game's top two scorers.

Not far behind were Shani Rasco and Melissa Flores with eight each, followed by Candace Hutto with seven and Megan Barrett with five. Flores, Barrett and Hutto each had a three.

Shallowater had a comfortable halftime lead at 28-19, but the Lady Mules roared back to

outscore the Fillies 35-16 in the second half for the win.

SHALLOWATER 51 MULESHOE 42

D.J. Domínguez bucketed 14 points and Brennon Broyles had 13 (including a three-pointer), but it wasn't enough as Shallowater's junior varsity Mustangs bested Muleshoe, 51-42.

Shallowater rode to victory on a 32-point performance by Kitchens.

Also chipping in for Muleshoe were Kyle Atwood (seven), Stephan Shelburne (five) and Joey Tucker (three). All three of them had a three apiece.

The score was tied at 34 at the end of the third quarter, but Shallowater's fourth-quarter performance was too much for the Mules.

LADY MULES 64 LITTLEFIELD 48

Melissa Flores went on a 25-point game-high scoring binge to lead the Lady Mules past Littlefield by a 64-48 score on Jan. 28.

Amanda Bell helped her out with nine and Shari Alanis added eight.

Littlefield did make it a game at times, with the Lady Mules leading 12-4 at the end of the first quarter, 22-21 at half and 40-29 at the third quarter en

LITTLEFIELD 58 MULESHOE 45

Joey Tucker, Matt Luna (with 11 each) and D.J. Domínguez (10 each) led the scoring attack in a losing 58-45 effort as the junior varsity Mules fell to Littlefield on Jan. 28.

The Mules got off to a slow start, trailing 26-16 at halftime. A more productive second half still could not pull them even with the Wildcats.

Class on jail operation set for March

An 80-hour course in basic jail school is scheduled for March 20-24 and March 27-31 at South Plains College's Levelland campus.

Classes will meet from 8 a.m. to 4 p.m. in the SPC Petroleum Technology-Law Enforcement Building, Room 107. The cost is \$90, which does not include a state testing fee.

Registration deadline is March 10.

The course is designed to help prepare Texas jailers and guards of county jails for the state certification test.

Pre-tests and post tests will be given during the

course. Topics will include basic jail operations, human relations, booking procedures, inmate maintenance and control, investigations, documents, conditions and liabilities.

Students successfully completing the course will receive Texas Commission on Law Enforcement Officer Standards and Education credit for 80 hours of training.

To pre-register or obtain more information, contact the SPC Law Enforcement Office at (806) 894-9611, Ext. 2291.

One of a Kind
Gift Baskets
for Valentine's Day
Hand chosen for your true love!

"I'll put my heart into making your gift special!"

See Marilyn at...
ANTIQUES & FINE THINGS
2104 W. American Blvd.
Muleshoe, TX
272-4217

Subscribe today.

TOPS NEWS

The Church of Christ on American Boulevard was the site Feb. 3 for the TOPS No. 34 meeting, which was presided over by leader Laverne James.

Ruth Clements, treasurer, presented the financial report and Janie Hughes, secretary, read the previous week's minutes which were then approved.

The announcement that there now are four K.O.P.S. members in TOPS No. 34 was made by leader James. When a member reaches their goal weight, they become a K.O.P.

These K.O.P.S. members are Betty Jo Davis, Lucille Harp, and also Alma Robertson and Joline Franklin, who both became a K.O.P.S. members on Jan. 13 of this year.

Davis has been a K.O.P. for three years and Lucille Harp became a K.O.P. in 1999.

Twelve members were present for the weigh-in, which was conducted by Betty Jo Davis and Alene Bryant.

Bryant and Franklin tied for the best loser. Molly Davis was the first runner-up and Hughes was the second runner-up.

In the monthly report, Polly Otwell was named the best loser. The first runner-up was Bryant, with Linda White and Franklin tied for second runner-up.

"Lowering the Fat" was the title of a discussion led by James, who pointed out that a good diet does require some fat.

She suggested many cases where low-fat items may be substituted for high-fat ones.

James also provided a timely motto: "Trimming the fat, that's where it's at!"

The next meeting will be at 5 p.m. Feb. 10 at the same site. Visitors are welcome.

30 Color Photos
\$12.99

1 - 10X13 99¢ Deposit
1 - 8X10 \$12.00 (plus tax) due at pickup
2 - 5X7
2 - 3X5
16 King Size Wallets
8 Regular Size Wallets

servicing your photo needs at

Lowe's Marketplace
401 W. American Blvd.
Muleshoe, Texas
Fri. & Sat.
Feb. 18 & 19

Come See Our Photo Valentine Vignette

group charge 99¢ per person

WE USE KODAK PAPER, FILM & CHEMISTRY

LOVE YOUR COWGIRL LOVE YOUR COWBOY

Brighton Accessories
Wrangler
Panhandle Slim
Montana Silver
Cowgirl Kisses
Rockies
Stetson
Cruel Girl
Filly Cologne
Stallion Cologne

AUCUTT'S GENERAL STORE

2600 Mabry Drive, Clovis, New Mexico • 505-762-7717
Mon.-Sat. 7:30-6:00, Sunday 12:00-5:00



Journal photo: Beatrice Morin

Learning how it's done

Muleshoe High School student Devin Carpenter (right) watches as pharmacy technician Laura Reyes fills a prescription at Western Drug. Pharmacist Paul Wilbanks looks on. Carpenter is learning his way around various medical-related environments as he studies to become a nurse's aide through Michelle Barton's Health Occupation II class.

Open house may not do the job

SPECIAL TO THE JOURNAL

What's the best technique for selling a house? The conventional wisdom says you bake the cookies, roll out the red carpet and hold an open house.

But recent surveys of real estate agents defy conventional wisdom.

A 1998 nationwide poll of Realtors by the National Association of Realtors found that only 7 percent of all home sales were through traditional open houses.

"Holding an open house is just one phase of your marketing strategy, but not the only one," says Richard Roll, president of American Homeowners Association.

Check low cost solutions for major energy savings

SPECIAL TO THE JOURNAL

Most homeowners never stop to think that they might be throwing money away every time they turn up the thermostat.

It's a little-known secret that most of the \$1,300 the average family spends on home utility bills every year is actually squandered because of wasteful, inefficient energy uses in the home.

"Making just a few, inexpensive modifications can save homeowners up to 50 percent on energy bills, make the home more comfortable, and help the environment at the same time," said Richard Roll, president of American Homeowners Association. More information is available at www.ahahome.com

Take a detailed look at where the house could be wasting energy, and then take steps to improve its energy efficiency.

Adding insulation is one of the fastest and cheapest ways to reduce energy costs. The comfort level of a house can be increased while reducing heating and cooling needs by up to 30 percent, just by investing a few hundred dollars.

A house probably needs better insulation if it is older and has not had insulation added. Only 20 percent of homes built before 1980 were well-insulated; if an addition has been added, or new siding or roofing installed, the building's energy efficiency may have been improved.

Insulation is measured in R

values—the higher the R value, the better the walls and roofs will resist transfer of heat. Insulation products come in four types—batts, rolls, loose-fill and rigid foam boards. Be sure to get the right type for the specific space to be insulated. Compare R values and costs.

The U.S. Department of Energy booklet "Energy Savers" has a chart recommending certain R values in addition to many other useful tips. It is available free by calling (800)363-3732.

Try to prevent warm air from leaking into the house during the summer and out of it in winter. Reducing these air leaks can save 10 percent or more on energy bills. It's quick and easy to caulk, seal and weatherstrip seams, cracks and openings to the outside.

The American Homeowners Association advises:

- Set your thermostat as low as is comfortable in winter and as high as possible in summer;
- Clean or replace furnace or air-conditioner filters once a month;
- Clean warm-air registers, baseboard heaters and radiators, making sure they're not blocked by furniture, carpeting or drapes;
- Turn off kitchen, bath or other ventilating fans as soon as they have done the job. One fan can pull out a houseful of air in one hour;
- Select energy-efficient equipment when you buy a new furnace or air conditioner.

ciation offers these tips:

- Price your home competitively.
 - Decorate so the house "shows" well; consider hiring a decorator who specializes in low-cost home primping for real estate sales.
 - Provide comprehensive information, including as much detail as possible about the home's construction and features, and neighborhood information on schools and community services.
 - Highlight the home's unique features. For example, if it's energy-efficient, be sure to trumpet that virtue along with the annual savings on utility bills.
- More information on any aspect of buying or selling a home is available at www.ahahome.com, the web site for American Homeowners Association.

OBITUARIES

AUDREY STOVALL

Services were held Monday at the First Missionary Baptist Church of Morton for Audrey Stovall, 82, of Morton. The Rev. Randy Johnson officiated. Burial was in Morton Memorial Cemetery.

Ellis Funeral Homes handled arrangements.

Mrs. Stovall was born April 18, 1917, in Panola County, Texas. She died Feb. 4 at home.

She had lived in Morton since 1924, moving there from Panola County. She married Brad Stovall on Nov. 17, 1934, in Levelland.

She was a homemaker and an artist. She taught Sunday school for many years at the First Missionary Baptist Church of Morton, where she was a member.

She is survived by a son, Billy Ray Stovall of Ascension Island; four daughters, Ernestine Clevenger of Morton, Barbara Walker of Brownwood, and Ginger Christian and Brenda Ragsdale, both of Garland; four sisters, Myrtle Patton of Plains, Reba Sawyer and Ruby Goodman, both of Morton, and Jeanette Smith of Midland;

two brothers, Clay Hudson and Russell Hudson, both of Morton; 12 grandchildren; and 24 great-grandchildren.

The family suggests memorials to the Rock Church Fund of the First Missionary Baptist Church (102 E. Taylor Ave., Morton 79346) or the American Cancer Society (3411 73rd St., Lubbock 79423).

IRENE STEPHENS

Services were held Wednesday in the First Baptist Church of Farwell for Irene Stephens, 88, of Farwell. The Revs. Rick Sullivan and Richard Laverty officiated. Burial was in Muleshoe Memorial Park.

Ellis Funeral Home handled arrangements.

Mrs. Stephens was born Nov. 18, 1911, in Polk County, Ark. She died Sunday at the Farwell Convalescent Center.

She married Loyd Stephens in Waldron, Ark., on Dec. 24, 1934. He died Feb. 26, 1983. They had moved to the West

Camp area from Polk County, Ark., in 1936. She was a homemaker and a member of the First Baptist Church of Farwell.

She is survived by three sons, Marlin Stephens of Anchorage, Alaska, Darrell Stephens of Farwell and Keith Stephens of Shallowater; a daughter, Karen Wright of Friona; a sister, Pauline Deutser of Beaumont; eight grandchildren; and two great-grandchildren.

The family suggests memorials to the First Baptist Church (Box 129, Farwell 79325) or the Farwell Convalescent Center (305 Fifth St.).



Stephens

CASKETS AND MONUMENTS

"SAVE HUNDREDS OF DOLLARS!"

FREE DELIVERY to your funeral home of choice within 100 miles of Hereford.

337 N. MILES
HEREFORD, TX
363-2700

50th Anniversary Celebration

Talmage and Athealee McKillip will celebrate their 50th Wedding Anniversary on Sunday, February 13, 2000 at the San Jacinto Church of Christ in Amarillo, Texas.

The reception is being hosted by Jonny and Mickey Simmons of Canyon, Danny and Robin McKillip of Amarillo and Dennis and Kristi McKillip of Frederick, Maryland.

Talmage married the former Carlene Athealee Evans on February 12, 1950 in Muleshoe.

The couple has lived in Amarillo for 50 years. Mr. McKillip was self-employed before his retirement. Mrs. McKillip is a retired PBX supervisor at BSA Hospital in Amarillo.

Mr. and Mrs. McKillip are members of the San Jacinto Church of Christ, United Commercial Travelers and a bowling league in Amarillo.

The McKillips have three children; Mickey Simmons, Danny McKillip and Dennis McKillip; ten grandchildren and four great grandchildren.

1011 Grand • Friona, Texas • 800-957-2438 or 806-250-2701

WESTERN CHEVROLET OLDSMOBILE

GREAT PRICES! **ALL NEW INVENTORY** **FRESH TRUCK LOAD!**

CHECK THESE LOW MILEAGE UNITS OUT!

<p>99 Ext. Cab Chevrolet 2 Wheel Drive, Automatic V-6, 27K Miles, Pewter \$19,995 Stk# 20249</p>	<p>99 Pontiac Bonneville SE Silver, Cloth, 9K Miles \$16,995 Stk# 30142P</p>
<p>99 Buick Century Custom White, Cloth, Low Miles, 14K Miles \$14,995 Stk# 30143P</p>	<p>99 Chevy Tahoe 4X4, Leather, 25K Miles \$28,995 Stk# 33062P</p>
<p>2001 Aurora EXTRA SPECIAL! Leather, Remote Keyless Entry, CD Player \$19,995 Stk# 90011</p>	<p>99 Chevy Astro Van \$16,995 Stk# 33075P</p>
<p>99 Chevy Blazer 4X4 Pewter, Cloth, Luggage Rack, Extra Clean, 16K Miles \$19,995 Stk# 35085P</p>	<p>97 Z71 Ext. Cab Pickup \$18,995 Stk# 20240</p>
<p>99 Olds 88 LS White Cloth, 24K Miles \$15,995 Stk# 30138P</p>	<p>99 Chevy Lumina Tan, Cloth, 24K Miles \$12,995 Stk# 30139P</p>
<p>99 Pontiac Grand Prix SE Red, 4 Door, Charcoal Cloth, Clean Car, 24K Miles \$15,995 Stk# 30140P</p>	<p>99 Chevy Cavalier Blue, 4 Door, Keep Your Payment Low, 20K Miles \$9,900 Stk# 30146P</p>

97 Astro Van - Maroon, Rear Air, Stk# 20245, \$10,500 93 Cadillac Seville - Stk# 20244, \$10,500

Lady Mules lose close one to Shallowater

By KEVIN WILSON
Writer

With the district title ready for the taking Friday, the Shallowater Fillies were ready to show everybody that their early-season loss to the Lady Mules was a fluke.

They failed in that respect, but they'll still take the 42-39 victory.

Muleshoe showed that they could play with the district champions all night. The Lady Mules had the lead five times and never trailed by more than six.

Lindsey Field again led the way for Muleshoe with an all-around game. She scored 15 points despite 2-of-13 shooting from the field. She made up for her misses with 10-of-15 free-throw shooting and a game-high 11 rebounds.

The loss to Shallowater puts the Lady Mules in a precarious position. Since they are the only team to give Shallowater a challenge this year (handing them their only defeat), they are arguably the second-best team in the district.

However, Muleshoe is in danger of missing the playoffs com-

pletely if they lose to Friona.

"It kind of makes me nervous," said Lady Mule coach Shana Simms, "but we need to beat Friona to get into the playoffs."

Throughout most of the game, the lead was not a constant for either side. The Lady Mules started the game with a 3-0 lead on Bobbie Benham's three-point play, but they trailed 10-8 at the end of the first. This was possible through a 8-2 Fillie run to end the first.

Shallowater put the lead up to six with 2:18 remaining in the half on consecutive buckets by Heather Parmenter. However, the lead did not last very long as Field hit a three 30 seconds later. A layup by Mindy Locker tied the game at 20. Shallowater took the lead into halftime on a shot by Melissa Cowart, who ended the half with 13 points.

Field started the second half by hitting three of four free throws and the Lady Mules had a 23-22 lead. But a three by Bridgette Pene, her only shot of the game, gave the lead back to Shallowater. They held the lead until the final minute, when Muleshoe went on a 6-0 run to end the quarter up 31-29.

Britni Gartin led off the fourth with two of her nine points and the Lady Mules held their biggest lead at 33-29. Parmenter scored two more baskets to tie the score again.

Three Field free throws gave Muleshoe a 36-33 lead, but Shallowater did not die. Cowart got a three-point play. Cowart finished off the Mule lead on her way to 16 points.

"When they tied it up on the three point play, we lost our composure," Simms said.

The game was full of fouls for both teams. Field and Jessica Carpenter both fouled out for Muleshoe, which committed 23 fouls. Shallowater also was guilty, committing 22. The teams shot 49 free throws combined, hitting 27 of them.

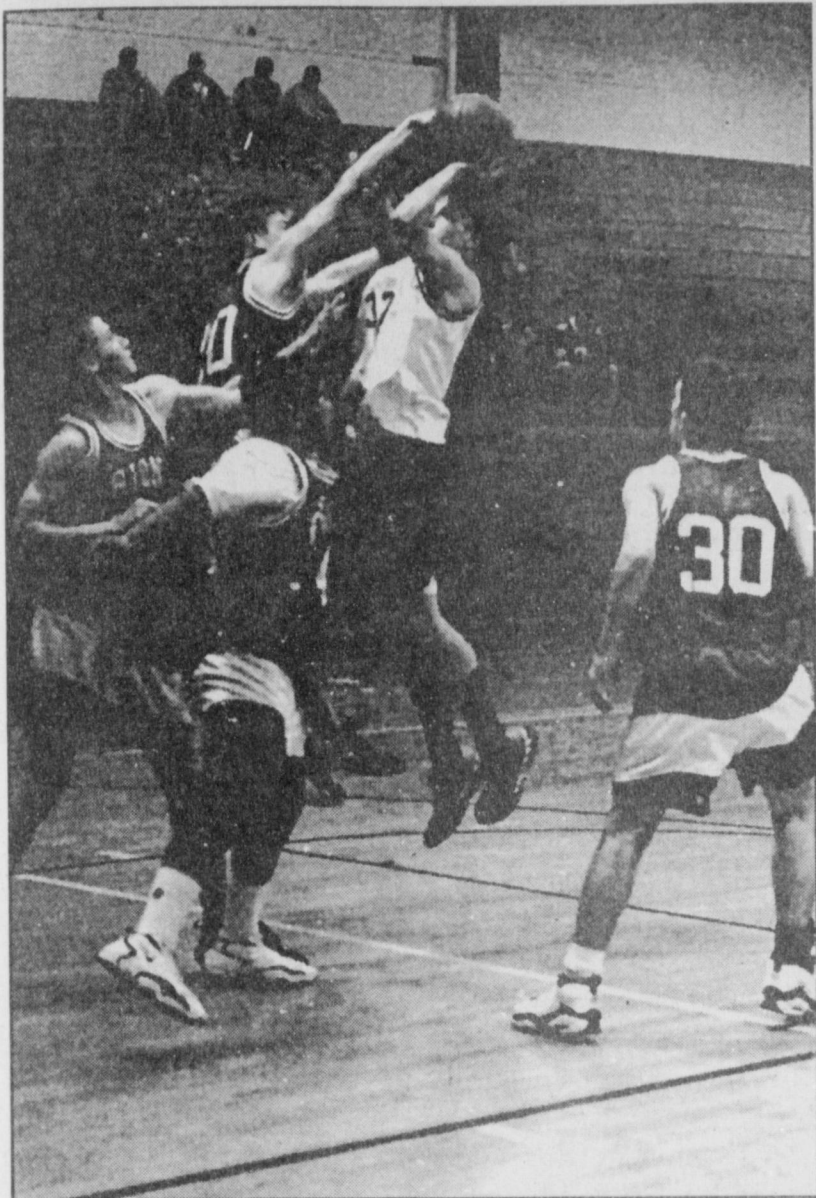
Muleshoe	8	12	11	8
S'water	10	12	7	3

MULESHOE
Field 2-13 10-15 15, Gartin 3-10 3-5 9, Benham 1-4 3-5 5, Heathington 2-10 0-0 4, Carpenter 1-2 0-0 2, Torres 1-6 0-1 2, Locker 1-1 0-0 2, Hernandez 0-0 0-0 0

SHALLOWATER
Cowart 6-10 4-7 16, Parmenter 6-10 0-0 12, S. Corkery 2-11 2-7 6, Mullins 0-3 4-7

4, Pene 1-4 0-0 3, Broome 0-2 1-2 1, Lomas 0-2 0-0 0, Salivar 0-3 0-0 0, Bixler 0-1 0-0 0, Wright 0-1 0-0 0, R. Corkery 0-0 0-0 0, Perez 0-0 0-0 0

Rebounds - Muleshoe 38 (Field 11) Shallowater 40 (Cowart 10), 3 pt. - Muleshoe 1-13 (Field 1-6) Shallowater 1-17 (Pene 1-4), Steals - Muleshoe 9 (Field, Torres, Gartin) Shallowater 5 (S. Corkery 3), Assists - Muleshoe 23 (Field 4) Shallowater 8 (S. Corkery, Salivar, Wright 2), Blocks - Muleshoe 2 (Field 2) Shallowater 2 (Broome, Parmenter 1), Fouled out - Carpenter, Field



Journal photo: Beatrice Morin

Can't stop me now

Muleshoe's Tim Hutton (No. 32) goes up for two while surrounded by Friona Chieftains in Monday night's 39-23 win for the Muleshoe ninth-grade boys.

Mules stay close to Mustang machine

By KEVIN WILSON
Writer

Good things came in a three-pack for the Mules as they outscored the Shallowater Mustangs in each of the first three periods Friday.

However, basketball also has the fourth quarter, which saw Shallowater outscore the Mules 17-7 on the way to a 54-49 victory.

The win wrapped up the district championship for Shallowater, who also won the women's district title earlier that night.

Although the Mules had most of their focus on the upcoming home stand, it was obvious the Mules never conceded victory. Mitch Mason played all 32 minutes and responded with 13 points, while Bret Clements played all but two minutes. Clements was by far the player of the game, scoring 21 points and hauling in 17 rebounds.

"He played exceptionally well," Mules head coach Ralph Mason said of Clements, who also had three blocks and three steals.

The loss puts the Mules at 4-4

in district play, which makes their upcoming home stand very important. Mason knew that Shallowater was not a "back to the wall" situation.

"If we take care of business (at home), we'll get what we probably would have gotten anyway (if we beat Shallowater)," Mason said.

The Mules can pride themselves with their job on Dustin Hill. Hill had 31 points in his last game against Muleshoe, but he was held to 10 points. Included in those 10 were two baskets when the Mustangs had the game in hand.

"Hill got a couple of cheap ones down the stretch," Mason said.

Where Hill could not perform, though, D Hudson could. After Clements tied the game at 44, Hudson hit a driving layup. Hudson's 22nd and 23rd points gave the Mustangs a lead they never gave up with 4:09 left.

"He's going to get his," Mason said of Hudson. The Mules concentrated on shutting down the rest of the Mustangs, but they were still able to prevail in the fourth.

"They are a good ball club and they've won a lot of games in the fourth quarter," Mason said of Shallowater.

Mason said there was no shame in the loss because Shallowater played very well and his Mule team did exactly what he expected of them. The biggest key was three-point shooting, where they Mules finished 7-of-24. The three-point attempts almost made up half of the 50 field goals the Mules attempted through the game.

The Mules will need to defend their home court for the next two

games against Friona and Lubbock Cooper to continue their season.

Muleshoe	13	14	15	7	-49
Shallowater	11	12	14	17	-54

MULESHOE
Clements 9-15 3-5 21, Mason 4-9 1-4 13, Bruns 3-8 0-0 7, Barrett 1-4 0-0 3, Black 1-5 0-0 3, Lewis 0-0 2-2 2, Latham 0-0 0-0 0, McClanahan 0-0 0-0 0, Shelburne 0-0 0-0 0, Riley 0-0 0-0 0

Rebounds - Muleshoe 36 (Clements 17) Shallowater 31, 3 pt. - Muleshoe 7-24 (Mason 4-6) Shallowater 6-21, Steals - Muleshoe 5 (Clements 3) Shallowater 6 (Hudson 2), Assists - Muleshoe 14 Shallowater 0, Blocks - Muleshoe 3 (Clements 3) Shallowater 3 (Shannon 2), Fouled out - None

Mules coast past Roosevelt

By KEVIN WILSON
Writer

It's hard to call a road win secondary, but that seems to be the case with the Mules.

Muleshoe's 80-45 victory over Lubbock Roosevelt on Feb. 1 put the Mules at 16-9 on the year. More importantly is the 4-3 district record, which is tied for second with Lubbock Cooper, who beat the Mules earlier this season.

The undefeated Shallowater Mustangs have already clinched the district championship, so the race is on for the last two spots.

The Mules would like to have the second spot when the season concludes, and they will have every opportunity to take it.

"We've got to take care of business at home," Mules head coach Ralph Mason said. The Mules' last two games of the regular season will be at home against Friona, 65-38 victims of the Mules earlier this year, and Cooper.

Friona and Roosevelt, with

three district wins between them, look to be out of the playoff picture. Littlefield remains close to the Mules and Pirates.

In the event of a three-way tie for the last two playoff spots, there will be a playoff between the teams. There would be a series of playoff games, depending on the coin flip, and the top two finishers would go to the playoffs with Shallowater.

In order to win the games at home, the Mules will have to continue what got them this far. Bret Clements, who had 20 against Roosevelt, must continue to score and rebound. Mitch Mason (18 points against Roosevelt) must also carry the offensive load with Clements.

Shooting is also a priority for the Mules, who have lived and/or died by the three in several games. They hit six threes against Roosevelt, but the shots didn't really factor in the big picture. The Mules led 40-20 at halftime and were never in danger.

LOANS

\$100 TO \$467

CREDIT STARTER LOANS

CONTINENTAL CREDIT

Mon.-Thurs. 8:30 a.m. to 5:30 p.m.
Fri.-8:30 a.m. to 6 p.m.

206 S. Main Street in Muleshoe

Loans while you wait.

272-3673

Call and apply today.

Se Habla Español

It's Just Around The Corner!

The Muleshoe Journal's 6th Annual CUTEST BABY CONTEST



Winner will receive a \$50 Savings Bond for being selected 1999's Cutest Baby!



Love at First Sight



Entry Deadline is Monday, April 3, 2000 at 5 p.m.

Enter any child born in 1999 who you fell in love with at first sight — children, grandchildren, nieces, nephews, friends, etc.

This year's contestants will appear in the April 9 edition of the Bailey County Journal. A panel of unbiased judges will pick the most attractive picture to be the 1999 Cutest Baby. All baby pictures will be printed. Babies need not be born in this area.

Bring your favorite photo along with \$10 to the Muleshoe Journal office at 304 W. 2nd Street, Monday-Friday between 8:30 a.m. and 5 p.m. or mail the coupon below with your child's photo and \$10 to Cutest Baby 1999, c/o Muleshoe Journal, P.O. Box 449, Muleshoe, Texas 79347. You may pick up your baby's picture during office hours after Monday, April 10, 2000. Arrangements must be made to return photos by mail!

Please provide phone number or address (it will not be published) so that we may contact you if we need additional information _____

Baby's Name: _____

Date of Birth: _____

Weight at Birth: _____

Length at Birth: _____

Place of Birth: _____

Mom & Dad's Name: _____

Grandparent's Name: _____

Brain hormone controls formation of bone tissue

SPECIAL TO THE JOURNAL

HOUSTON — A hormone that affects the brain is the most potent inhibitor of bone formation. Its absence can strengthen bones — even those weakened by menopause.

This discovery in mice by scientists at Baylor College of Medicine in Houston suggests new approaches for treating and preventing osteoporosis, a crippling disease that poses a health risk to more than 28 million Americans.

The researchers found that a certain type of menopausal mice which should have developed osteoporosis had nearly twice as much bone mass as did nonmenopausal mice. They used a mouse model in which the gene that encodes for the hormone leptin was missing, and determined that the difference in bone mass was due solely to the leptin deficiency.

"The leptin-deficient mouse is the first animal model in which lack of estrogen does not lead to osteoporosis, and the absence of leptin appears to be the reason," said Dr. Gerard Karsenty, professor of molecular and human genetics at Baylor and investigator for the study.

The research, a collaboration with scientists at the National Cancer Institute in Bethesda, Md., and the University of Hamburg in Germany, is published in the Jan. 21 issue of the scientific journal *Cell*.

The research team found that when leptin binds to a receptor in the brain's hypothalamus, cells known as osteoblasts receive a signal to stop building bone. This inhibition of bone formation occurred when leptin was injected near the hypothalamus of either leptin-deficient or normal mice.

"The hypothalamic pathway is clearly the key link to regulating bone mass," Karsenty said. "Leptin is the strongest regulator of bone formation that has been identified. And its mode of action through the hypothalamus indicates that osteoporosis is, in part, a disease of central origin, which could lead to novel therapeutic strategies."

Although drinking milk and taking other sources of calcium can be beneficial to bone, the calcium won't do as much good if the body doesn't already have bone tissue to strengthen, Karsenty said.

The next step for researchers is to apply the results from studies in mice to humans, and then develop medications based on those findings.

But leptin poses a challenge, because although it inhibits bone formation, leptin can have a positive effect on the body. Leptin alerts the brain about the body's fat levels, helping ward off obesity. The mice that lacked leptin were obese.

"Pharmaceutical companies will need to create drugs which block the molecules in leptin that stop bone formation without turning off the molecules that can affect eating behavior," Karsenty said.

The study was funded by the National Institutes of Health's National Institute of Arthritis and Musculoskeletal and Skin Diseases and National Institute of Dental and Craniofacial Research.

Karsenty's co-authors at Baylor were Drs. Patricia Ducy, Shu Takeda and Jianhe Shen, all in Baylor's department of molecular and human genetics.



Muleshoe Cattle Market

SATURDAY, FEBRUARY 5, 2000

641 head of cattle, 243 hogs and 199 sheep and goats for a total of 1,083 animals were sold at the February 5th sale. Market fully steady to stronger on stocker cattle with very good demand. Feeder cattle steady. Pairs & Bred cows fully steady. Packer cows 1-2 higher.

The Muleshoe Cattle Market is brought to you each week by Muleshoe Livestock Auction, located east of Muleshoe on U.S. 84. Muleshoe Livestock conducts sales every Saturday, beginning with hogs, sheep and goats at 10 a.m. and cattle following at approximately 12 noon.

FOR INFORMATION ON SALES OR TO CONSIGN CATTLE, CALL (806) 272-4201

REPRESENTATIVE SALES

Seller, City	#	Type	Wt.	CWT or PH
D&J Dairy, Rogers, NM	3	Hol. Bulls	per hd. 210 lbs.	at \$220.00
Jesus Hernandez, Hereford		Hol. Str	230 lbs.	at \$100.00
Ceferino Reyes, Hereford		Hol. Str	405 lbs.	at \$86.00
Santiago Flores, Clovis, NM		Hol. Str	535 lbs.	at \$76.00
FM Farms, Brownfield	3	RWF Bulls	260 lbs.	at \$142.00
FM Farms, Brownfield		Char. Bull	265 lbs.	at \$137.00
FM Farms, Brownfield	3	Red Strs	500 lbs.	at \$100.00
Jim West, Hereford		Blk. Str	260 lbs.	at \$114.00
Leobardo Aguirre, Dimmitt		BWF Str	425 lbs.	at \$104.00
Mary Lynch, Portales, NM	2	Mxd. Strs	435 lbs.	at \$109.00
Sharon Grant, Muleshoe	2	Mxd. Bulls	443 lbs.	at \$106.00
Sharon Grant, Muleshoe	2	Mxd. Bulls	458 lbs.	at \$107.00
Terry Pollard, Portales, NM	2	Blk. Bulls	483 lbs.	at \$107.00
Alonza Armendariz, Portales, NM		Blk. Str	565 lbs.	at \$93.00
George Thompson, Amherst	5	Mxd. Bulls	570 lbs.	at \$90.00
Douglas Waiden, Littlefield	7	Red Bulls	603 lbs.	at \$86.00
Mary Lynch, Portales, NM		Yell. Str	635 lbs.	at \$92.00
Norris Conklin, Muleshoe		Red Str	638 lbs.	at \$90.00
Dink Miller, Floyd, NM	6	Blk. Strs	718 lbs.	at \$86.00
Owen Young, Levelland	2	Mxd. Strs	780 lbs.	at \$84.00
Rafael Nuñez, Hereford		RWF Hfr	per hd. 205 lbs.	at \$230.00
Randy Johnson, Muleshoe	2	Red Hfrs	320 lbs.	at \$102.00
Stanley Sadler, Littlefield	6	Mxd. Hfrs	411 lbs.	at \$95.00
Mary Lynch, Portales, NM		Char. Hfr	420 lbs.	at \$95.00
Terry Pollard, Portales, NM	2	Blk. Hfrs	455 lbs.	at \$94.00
KC Land & Cattle, Muleshoe	3	Blk. Hfrs	455 lbs.	at \$93.50
Bobby Lewis, Clovis, NM	8	Red Hfrs	480 lbs.	at \$93.50
John Hill, Abernathy		Brang. Hfr	515 lbs.	at \$94.00
Jim Sample, Elida, NM	2	Mxd. Hfrs	530 lbs.	at \$92.00
Dan Bowman, Morton		Yell. Hfr	585 lbs.	at \$84.00
Chico Cattle, Abernathy	2	Blk. Hfrs	733 lbs.	at \$80.25
Owen Young, Levelland	6	Char. Hfrs	847 lbs.	at \$79.75
Barry Randolph, Shallowater		Char. Pair		\$640.00
Wade Wheeler, Muleshoe		Blk. Pair		\$680.00
Terry Pollard, Portales, NM		Blk. Cow P7		\$670.00
Terry Pollard, Portales, NM	2	Red Cows P7&8		\$630.00
Randy Johnson, Muleshoe		Red Cow P5		\$600.00
George Thompson, Littlefield		Char. Cow P6		\$570.00
Secondary Strat., Littlefield		Char. Cow	1595 lbs.	at \$40.50
Secondary Strat., Littlefield		RMF Cow	1430 lbs.	at \$41.75
George Thompson, Littlefield		RWF Cow	1070 lbs.	at \$37.50
Daniel Reeves, Maple		RWF Cow	1450 lbs.	at \$38.50
Terry Parham, Muleshoe		BMF Cow	1150 lbs.	at \$38.00
D&J Dairy, Rogers, NM		Red Cow	1030 lbs.	at \$39.25
Jennings Bros., Muleshoe		Hol. Bull	1925 lbs.	at \$47.50
Alvin Stofel, Lubbock		Blk. Bull	1785 lbs.	at \$49.75

Journal Classifieds

STOP & SHOP

Deadlines are 5 p.m. Monday and Thursday

Call 272-4536

Deadlines are 5 p.m. Monday and Thursday

HELP WANTED

Muleshoe Motor
has a position open in the SERVICE DEPARTMENT. Responsibilities include detailing, inspection stickers and maintenance. 5 paid holidays annually. Uniforms & training provided. Apply at 1225 W. American Blvd. Mike Hanna, Service Manager. Equal Opportunity Employer.

HELP WANTED

KC Mufflers
Now accepting applications for Production/Warehouse/Sales and Delivery. Apply in person, only. 425 North First Muleshoe, TX

NEEDED!
17 People to lose 20 pounds by St. Patrick's Day. All Natural, Results Guaranteed! 1-800-934-9781

HELP WANTED

Nursing Home
Activities Assistant
• Part-time
• No experience required
Contact Joy Stancell
Muleshoe Area Healthcare Center
106 West Avenue H Muleshoe, TX 79347
(806) 272-7578

REAL ESTATE

House for Sale
3-1-1
915 E. Ivy
(On quiet street)
\$36,000
272-3437, after 5 p.m.

House for Sale
3-1 3/4 & 1-car garage
• Covered patio
• Newly remodeled kitchen & bathrooms
• New carpet & linoleum throughout
• Heat pump
1426 W. Avenue C
Call 272-5703, leave a message

SERVICES

KUBE ELECTRIC WELDON
RESIDENTIAL • COMMERCIAL
REPAIRS • REMODELING
GARAGE DOOR SERVICE
ALL TYPES
CALL FOR ESTIMATES!
(806) 481-9620 OR (806) 946-7161
J.D. (806) 946-8285
AFTER 5 P.M.

Will do ironing for the public.
Please call, 272-3140

We do custom farming, combining and shredding.
For more information call (806) 272-3090, or leave a message.

SERVICES

HENDERSON SERVICE CO.
Major Appliance and Minor Home Repairs
272-4450

SERVICES

Will babysit
in my home. Daily or weekly rates. References. 272-3140

Call Andrea at the Journal for all your classified advertising!
(806) 272-4536

Clinic Manager/South Plains Health Provider Organization, Inc.

Seeking dynamic leader for our outpatient clinic in Muleshoe. Clinic has superior staff to include 2 family nurse practitioners. If you are an RN or LVN with proven leadership and motivated to provide the finest primary care to 600 patients a month, we want to hear from you. Salary is negotiable based upon education and experience.

Forward resumes to:
Director of Human Resources
South Plains Health Provider Organization, Inc.
2801 W 8th, Plainview, TX 79072
FAX: (806) 293-5227. Inquires: (806) 293-8561
An Equal Opportunity Employer

Census Bureau Expanding Job Opportunities

In an effort to recruit workers, the Census Bureau has established numerous locations throughout the Texas Panhandle for testing and screening. Each applicant is required to take a test.

Our pay is \$9 to \$11 range, well above minimum wages. Plus up to .31 cents per mile reimbursement. For more information on census jobs call 1-806-371-9317.

Census 2000 job testing sites in your area are located at:
Texas Workforce Center 804 W. American Blvd. Muleshoe, TX Every Monday - 10 a.m. Every Thursday - 12 p.m.
Fiona Redeemer Center 1304 Virginia St. Fiona, TX Every Monday - 2 p.m.
Farwell Community Center 207 9th St. Farwell, TX Every Thursday at 3 p.m.
Earth City Hall 1st and Birch Earth, TX Every Friday at 9 a.m.

LOCAL RESIDENTS ARE NEEDED TO CONDUCT CENSUS 2000.

Job opportunities include census taker positions in communities and neighborhoods, and office personnel. All office positions are located at the Local Census Office in Amarillo, TX. The Census Bureau is an Equal Opportunity Employer.

Are you connected?
Internet Users Wanteu. \$350-\$800/week. Ask Me How? 1-888-685-1400. www.why-not-you.com.

Muleshoe Co-op Gin
is now taking applications for **Head Bookkeeper**
Experience required.
Darwin Robertson, Mgr.
272-4791

JOURNAL
(806) 272-4536

FOR SALE

New Steel Building in Crate. 40x22 was \$5,880 now \$2,830. Must Sell! 1-800-282-0111.

WANT TO RENT

Two income family needs to rent a 3 bedroom house in Muleshoe. Preferably in Lenuau Addition, but will consider elsewhere. If you have a house, please call (806) 272-5941, leave a message.

FOR RENT-CONDO

Ruidoso Condo
3 Bedroom 3 Bath
Sleeps 8
Call Debbie at (505) 420-6700 or (806) 285-3053

Carriers for the Journal are Melissa and Bobby Flores.
(806) 272-6719

REAL ESTATE

House for Sale
By Owner 3-2, Carport. Lg. storage & apt. bldg., brick veneer, fenced & cable hook-ups. N 214 on pavement. Call 272-5865, mornings.

SE/4 Section 50
2.5 mi north of city limits on Hwy. 214 & 1/2 mi east to SW corner \$450/acre.
Farrar & Associates Real Estate
(806) 894-4386

First Texas Ag Credit

♦ Long & Short-Term Financing
♦ Rural Housing
♦ Operating & Improvements
♦ Ag/FAST Credit Approval
♦ Cash Percentage Program
♦ Low Stock Requirement 2% to \$3,000 Maximum
♦ Equipment Leasing
316 South Main Muleshoe, Texas 806-272-3010

REAL ESTATE

Nieman Realty

116 E. Ave. C • George Nieman, Broker • 272-5285 or 272-5286

RICHLAND HILLS — PARK RIDGE
• VERY NICE 2-2-2 Brick, Heat Pump, built-ins, FP, fans, fenced yd., stor. bldg., MORE!!! RH-2
• JUST LISTED-VERY NICE 3-2-1 Brick, Cent. A&H, built-ins, FP, fans, auto splkr., 1 car detached garage-workshop, fenced yd. More!!! \$70's!!! RH-1

HIGHLAND AREA
• VERY NICE 2-1-1 Carport home, nicely remodeled, Cent. Heat, DW, fans, fenced yd., stor. bldg. \$29.5K!!! HL-1
• PRICE REDUCED-3-2-2 Brick, corner lot, wall furnace heat, cent. evap. air, fenced yd., stor.-workshop!!! MORE!!! \$49,500!!! HL-4
• NICE 3-2-1 Carport home Cent. A&H, built-ins, fenced yard, MORE!!! \$37.5K!!! HL-6

LENAU - COUNTRY CLUB AREA
• 2-1-1 Home, Cent. A&H, DW, MORE!!! \$29.5K!!! L-3
• VERY NICE 3-2-1 Brick, Elec. Heat Pump, built-ins, fans, fence yd., MORE!!! \$39K!!! L-4
• NICE 3-2-2 Brick, Cent. Heat & Cent. Evap. air, built-ins, FP, fenced yd., stor. bldg.!!! \$40's!!! CC-1
• 3-1-1 Home, wall heat, DW, fenced yd., \$20's!!! L-5

COMMERCIAL
• R.V./Mobile Home Park on 2.95 acres, home, office, 3 M.H. units. LET'S LOOK TODAY!!!
• APPROX. 4,800' shop plus 600' office area on a 60' x 130' lot!!! \$60K!!!
• 246' x 145' tract, Hwy. 84, \$29.5K!!!
• VERY NICE 51 UNIT MOTEL, Priced to sell!!! Call for details!!!
• NICE 26 UNIT MOTEL, Priced to Sell!!! Call for details!!!
• 56' x 140' tract, approx. 4700' bldg., \$35K!!!
• GOOD INCOME PROPERTY - approx. 3490' bldg., paved parking, good net lease!! PRICED TO SELL!!
• Established Business: Land, Bldg. & Equip., \$75K!!!

• NICE CHURCH BUILDING, approx. 2 acre tract, with 3-2 Mobile Home for classrooms or parsonage!!!

HIGH SCHOOL
• NICE 3-1-1 Brick, cent. heat, evap. air, DW, fans, fenced yd., workshop-storage, extra garage, MORE!!! \$38K!!! HS-6
• VERY NICE 3-1-1 Brick, Heat pump, DW, nice carpets, fenced yd., MORE!!! \$30's !!! HS-1
• NICE 3-2-1 Brick, Cent. A&H, built-ins, fenced yd., stor. bldg. \$50's!!! HS-2
• VERY NICE 3-1-1 Home, Cent. A&H, nice carpets, six fans, 2 stor. bldgs., fenced yd., \$30's!!! HS-5
• VERY NICE 3-1-1 Brick, Cent. A&H, stove, DW, fenced yd., MORE!!! \$38K!!! HS-4
• 3-2-2 Brick, Dual Fuel Heat Pump, built-ins, fans, storage bldg., fenced yd., MORE!!! \$60K!!! HS-7

RURAL
• PLEASANT VALLEY, Approx. 320 acres, 2 bdrm home, 1 bath, 2 car detached garage, on pavement!!!
• VERY NICE 4 bdrm., 2 bath, Brick Home on Hwy. 70, total elec., Geo Heat Pump, built-ins, FP, loads of storage, fenced yd., auto splkr., storage bldg. & shed, 2 acre tract. MORE!!!
• W. of SUDAN-NICE 3-3-2 Brick Home, 5 acre tract on Hwy. 298, Cent. Air & Heat, built-ins, large Quonset Barn, MORE!!! \$95K!!!
• 5 Acre tract on pavement close to town!
• Approx. 108 acres on Hwy. 70, approx. 2100' office area, 16,900' of commercial bldg. w/loading dock, 3,400' warehouse!! 2,800' runway!!
• LONGVIEW - GOOD Dryland Labor, fully allotted, planted in wheat. \$225.00 per acre.
• 152.8 acres, 15 hp & 20 hp. sub., Lockwood splkr., 85 acres seed grasses & 35 acres wheat. \$475.00 per acre.
• EARTH - (Hite Park Add.), 3 bdrm. 2 bath!! Call for Details!!
• NICE 3-2-2 Home on 1 acre, built-ins, MORE!!! \$40's!!!



So Smart! So Simple! So Easy!

**At Lowe's... we've got you covered for
BREAKFAST & DINNER!**



See How Far Your Change Will Go With Your X-tra Savings Card



Here's How It Works!

Lowe's is giving you deep discounts on many of the items you purchase everyday! For each dollar you spend at Lowe's, we will give you a point. After 50 points (or \$50), you will receive a Lowe's X-tra Savings **Reward Coupon**. This coupon can then be redeemed for deep discounts on selected items.

Each month, Lowe's will select from our most popular items in the store and deeply discount them for our X-tra Savings Reward Coupon holders. Present your coupon and receive incredible savings on selected items.

X-tra Savings Reward Program

- Each Dollar You Spend Is Worth ONE (1) Point.
- After you earn 50 points, you will receive a Lowe's X-tra Savings **Reward Coupon**.
- Use your Lowe's X-tra Savings Reward Coupon to get deep discounts on one of the selected items.
- Only ONE (1) item can be purchased with each Reward Coupon.
- Items will be changed monthly.

Hormel Black Label Bacon

1 LB. PKG., AND

County Post Eggs

30 CT., AND

Shurfine Biscuits

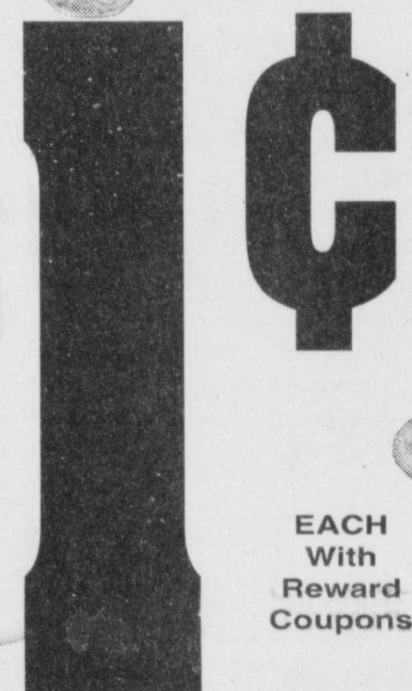
10 CT., AND

Milk

LOWE'S HOMOGENIZED/SHURFINE/SHURSAVING LOW FAT PREMIUM QUALITY ALL VARIETIES GALLON JUG., all with 2 Reward Coupons

Ground Beef

5 LB. CHUB, with 3 Reward Coupons



EACH With Reward Coupons

Use Your Reward Coupons



TO SAVE BIG!



Coke Products
12 pack
12 oz. cans

10 Lb. Bag
Chicken Leg Quarters

50¢
EACH with 1 Reward Coupon

<p>Advil Ibuprofen 24 CT. PKG. with 1 Reward Coupon</p>	<p>25¢</p>	<p>Blue Bunny Ice Cream ASSORTED 1/2 GALLON SQUARE with 1 Reward Coupon</p>
<p>Charmin Bath Tissue DOUBLE ROLL 4 CT. PKG. with 1 Reward Coupon</p>	<p>10¢</p>	<p>XTRA Detergent or Nice'n Fluffy Softener 128 OZ., with 1 Reward Coupon</p>
<p>Russet Potatoes 10 LB. BAG with 1 Reward Coupon</p>	<p>5¢</p>	<p>Lay's® Potato Chips REGULAR \$2.99 with 1 Reward Coupon</p>
<p>Gold Medal Flour 5 LB. BAG with 1 Reward Coupon</p>	<p>1¢</p>	<p>Shurfine Vegetable Oil 48 OZ. BTL. with 1 Reward Coupon</p>
<p>Country Crock Spread SHEDD'S 48 OZ. TUB with 1 Reward Coupon</p>	<p>1¢</p>	<p>Shurfine Granulated Sugar 4 LB. BAG with 1 Reward Coupon</p>

Why shop at your neighborhood Lowe's Supermarket?...

Our Prices are LOWER!

SPECIAL PRICING GOOD FEBRUARY 9TH THRU MARCH 7TH, 2000

Prices Good At Muleshoe Store Only!

WESTERN MONEY UNION TRANSFER

The Fastest way to send money worldwide.

WE HAVE MONEY ORDERS, CHECK CASHING AND PHONE CARDS.

ACCEPTED IN SELECT LOWE'S STORES...



Rug Doctor

WE RESERVE THE RIGHT TO LIMIT QUANTITIES - NOT LIABLE FOR TYPOGRAPHICAL OR PICTORIAL ERRORS.

The X-tra Savings Reward Program Good at Lowe's Muleshoe Store Only

Offer expires March 7, 2000. Points are not transferable between the two stores. No substitutions please on X-tra Savings Reward Items. Only one item may be purchased at the special deep discount per Reward Coupon.