

Robert Lee Observer

Vol. 92, No. 21

Robert Lee, Coke County, Texas (76945), Friday, Nov. 20, 1981

Single Copy 25c

Robert Lee Teams Win Over Miles in Opening 1981 Games

Robert Lee basketball teams took four victories at Miles Tuesday when they opened their 1981-82 season against the Bulldogs.

The girls A team soared high with a 79-28 win over the host team. Sara De La Pena was top pointmaker with 17; Martha Bickley had 14; Leigh Ann Rynnion 10; Mary Galvan 8; Amy Percifull 8; Cindy Gartman 6; Tracie Tomlinson 6; Debbie Cummins 6; Lupe Munoz 4.

The girls B team didn't have such an easy time but they downed the Miles girls by a close 37-36 score. Carol Longoria was high pointer with 14; Carrath Metcalf had 11; Dianne Gilchrest 10; Tina Bower 2.

PAINT CREEK CEMETERY WORKING SET FOR NOV. 21

Mrs. Zera Fields announced a working at the Paint Creek Cemetery for Saturday, Nov. 21. The cemetery association has two workings annually, one in the Spring and one on the Saturday before Thanksgiving.

Queen Contest Deadline Nears

Deadline for entering the Robert Lee-Silver Lions Queen Contest is 5 p.m., Wednesday, Nov. 25. All applications must be returned to contest chairman, Jay Leath, prior to Thanksgiving Day.

Plans are being made for a combination Lions-Ladies Christmas banquet with judging of the Teen Queen on Tuesday evening, Dec. 15.

Judging will be based on the contestant's beauty, poise, and personality (not necessarily in that order).

Thanksgiving Papers Coming Out Early

The Robert Lee Observer and The Bronte Enterprise will be printed early next week, in order for the staff to have some time off for the Thanksgiving holidays. The papers will be printed some time Tuesday (as soon as we can get them together and the printer can accommodate us). They will be mailed as soon as possible after printing.

Printing early requires all the help we can get, from our news sources and advertisers. So, we request that you get your material in as early as possible.

It will be impossible for us to take everything Monday at noon, even though that day will be our deadline. We will have to have some things in before, and we earnestly ask you start getting news and ads in by Friday, Nov. 20.

The Enterprise and Observer offices will be closed as soon as we mail next week's papers, and will not open again until Monday, Nov. 30.

Thank you in advance for your cooperation in helping us. We do appreciate you.

The boys A team almost doubled the Bulldog score as the Steers came up with a 41-21 victory. Quint Anthony led scoring with 12; Scot Long was right behind him with 11; Lupe Torres 5; Kyle Gibbs 5; Darren Williams 4; Scott Stephens 2; Matt McKinney 2.

The boys A team completed their game with a lopsided 51-33 win over the Bulldogs. High pointer was Kirby Rasco with 21; Jimmy Skinner hit 12; Bobby Boone 8; Greg Grim 4; David Rodriguez 2; Scott Stephens 2; Eddie Hood 2.

The Robert Lee teams will go to Loraine tonight (Friday) for A girls and A and B boys games, beginning at 5 p.m. The schedule calls for a trip to Talpa Tuesday, Nov. 24 for A girls and A boys games to start at 6:30 p.m.

Jr. High Teams Start Basketball

Robert Lee Junior High basketball teams started out the 1981-82 basketball season Thursday, Nov. 12. Both boys and girls teams took victories at Garden City in the opener. Miles came to Robert Lee Monday night and the girls and boys B team took wins, but the boys A team was nipped by the visiting bullpups.

The Robert Lee girls took an easy 39-22 victory over Garden City. Jana Gartman was top scorer with 13, closely followed by Missy Grim with 12; Lin Long had 6, Lee Ann Molinar 4; Patty Bloodworth 2; Dana Anthony 2.

The boys also had few problems with Garden City, as they won 41-14. Dale Hodnett and Randy Stephens both had 10 points; Kevin Johnson hit 8; Mike Sanchez 6; Jeff Meyers 4; Jim Bob Jacobs 2; Michael Torres 1.

The girls continued their winning streak by downing Miles 33-15. Grim hit 15 to lead scoring; Gartman had 10; Bloodworth 6; Dana Anthony 2.

The Robert Lee boys got nipped 36-26 by the Bullpups. Hodnett hit 10 points; Jacobs had 5; Sanchez 4; Stephens 3; Johnson 2; Meyers 2.

The boys B team outdid the visitors by a squeaky score of 24-23. High scorer was Larry Griffin with 12; Scott Robertson and Luther Lara had 4 each; Pammy Millican 2; Isasias Rodriguez 2.

Veribest is scheduled to be here Monday night. Games will start at 6 p.m. No Thursday games are scheduled due to the Thanksgiving holidays.

Coke 4-H Food Show Saturday

The Coke County 4-H Food Show will be held Saturday in Bronte at the Community Center. County Extension Agent Mary Ann Lackey said all 4-H members, boys and girls, ages 9-19, are eligible to enter the contest.

She pointed out that the contest will be for the entire county.

Winners will advance to district competition Dec. 5 in San Angelo.

Santa Claus To Visit Robert Lee Saturday

Town Business Firms To Close Thanksgiving

Most Robert Lee business firms will close for Thanksgiving and some of them will also close Friday in observance of the holiday.

The Observer tried to make a survey of the closing plans of local businesses, but it was a little difficult. Some places were not sure, some will close for one day and other will close for two days.

The only businesses which reported they would definitely be open Thanksgiving day were The Roadrunner in Robert Lee and Hillside Shamrock west of town. There may be others, since the Observer was unable to contact some firms.

Most business persons want to spend Thanksgiving with their families and friends and customers should not expect too many of them to be open on the holiday.

SCHOOL TO BE OUT

Students and teachers at Robert Lee School will be dismissed Wednesday afternoon of next week and will not report back for classes until Monday, Nov. 30.

Tax Board Directors Announced

Members of the board of directors of the Coke County Tax Appraisal Board have been elected and the five members now have in their hands the job of bringing some harmony and equality to the controversy which has developed since the taxing entities of the county created a uniform appraisal district.

The past few months have not been pleasant for many Coke County taxpayers, as they have fought back against valuations which they felt were unjustified and unequal.

Elected to serve on the board of directors of the appraisal district were the following-named men and the vote entitlement which elected them to their positions.

Martin Lee of Bronte received the largest number of 1128.0, as he received 1057 from Bronte School and 71 from the City of Bronte; James Bird Pentecost of Robert Lee and Charlie Boecking of Bronte both received 1058 from Coke County; Truman Hines had 913.5, with 842.5 from Robert Lee School and 71 from the City of Robert Lee; Wayne McCabe received other half of Robert Lee School's entitlement with 842.5.

Lined up, the figures looked like this to reach their 5000 total:

Martin Lee	1128.0
James B. Pentecost	1058.0
Charlie Boecking	1058.0
Truman Hines	913.5
Wayne McCabe	842.5
TOTAL	5000.0

The first board of directors of

Santa Claus is coming to town Saturday, Nov. 21, to kickoff the official 1981 Christmas season for Robert Lee and the surrounding community.

Santa will arrive at 5 p.m. on a Robert Lee fire truck which will pick him up after he lands at an undisclosed place at the edge of town. The jolly old fellow has assured Robert Lee children that he will have a big load of candy with him and there will be plenty for everyone.

Sponsors of the visit from

Lupe Munoz in Second Place For Class A

Lupe Munoz was second in the state among the entrants from Class A schools in the Cross Country Contest held Saturday at Southwestern University in Georgetown. However, she had to compete with runners from Class A, AA and AAA schools and came in 24th out of 110 contestants.

Coach Clyde Dukes had praise for the RLHS representative at the races. He said, "Lupe should be congratulated for her hard work and dedication in this event. She exhibited great sportsmanship and was a fine competitor."

the appraisal district, which had the unenviable job of setting up the appraisal district, was composed of Royce Fancher, Truman Hines, Douglas Gartman, George Demere and Chester Wilson. Hines is the only new member who served on the first board.

These men secured the building in which the tax office is located and appointed Mrs. Reba Roberts as Coke County's chief appraiser and Mrs. Patsy Dunn as assistant appraiser.

They employed the firm of McMorries & Company of Hereford to appraise Coke County property. Much dissatisfaction came out of the appraisals when taxpayers were allowed to meet with a board of equalization made up of Louise Johnson, Frankie Percifull and Alonzo Robbins.

Finally a tax roll was approved by the board and 1981 taxes will be based on it. However, the process has taken so much time that Coke County Taxpayers still have not received their tax statements which ordinarily come on Oct. 1.

Tax rates per \$100 valuation have been determined by the taxing entities for 1981 as follows:

Coke County	.34
RL School	.35
Br. School	.98
WC Hosp. Dist.	.19
EC Hosp. Dist.	.19
City of RL	.27
City of Bronte	.27
WV School	.68
Kickapoo WD	.01

Santa are requesting that children of the community participate in the parade to welcome the visitor. They asked everyone to "dress up in costumes and decorate your tricycles, bicycles, wagons, skate boards and big wheels for the parade. Those who take part will be judged for their efforts and ribbons will be awarded.

After the judging is over, Santa will set up shop in the Lions Club Building.

Members of Alpha Kappa Pi and Beta Sigma Phi will hold their drawing for the Christmas Tree Skirt which has been prepared. A "last chance" table will be set up to make donations and receive tickets until the last few minutes before the drawing.

"We want to give everybody a chance to have a part in this," the women said, "because we want to help the West Coke County Ambulance Fund as much as we can."

Also, during this time Santa will be listening to the wants and needs of the children who visit with him. He always does a brisk business keeping track of all the requests made by the children.

An opportunity will be provided for all children who wish to have their pictures made with Santa Claus.

For those who experience hunger pangs while waiting to see Santa, there will be plenty of desserts, cold drinks and coffee available from members of Alpha Omicron Nu.

The two sororities invite everyone to come to town Saturday and make Santa Claus welcome to Robert Lee.

Christmas lights already are up in Robert Lee, but Saturday night will be the time for the official lighting of them.

Party Planned For Seniors

A special "Honor the Seniors" party night will be held at the New Rec Hall Monday, Nov. 23, beginning at 6:30 p.m.

Everyone in the community is invited to join the senior citizens for a game night. Dominoes, 42, 88 and card games will be played.

Each person attending is requested to bring a dish of party refreshments.

The senior citizen van will run for those who need transportation. Call Zola Hatley at the Coke County Neighborhood Center, 453-2414, for reservations on the van.

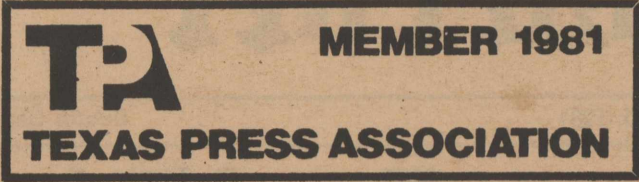
SCHOOL CALENDAR CHANGE

Due to conflicts caused by University Interscholastic League district contests, the school spring break has been changed. The spring holidays will be March 30, 31, April 1, and 2, 1982, and a holiday will be Good Friday April 9, 1982. School will be in session April 5 through 8, which were the originally scheduled holidays.

ROBERT LEE OBSERVER
PUBLISHED EVERY FRIDAY
(USPS 467-480)

Phone 453-2433

P.O. Box 127



Entered at the Post Office at Robert Lee, Texas 76945 as second class matter.

Editor and Publisher Ben Oglesby

SUBSCRIPTION RATES

Per Year In Coke County \$7.00
Per Year Elsewhere In Texas \$9.00
Per Year Outside Texas \$12.00

Any reflection on the character or standing of any person, firm or corporation is not intended and will be corrected upon notification.

AON PLEDGE RITUALS HELD FOR SIX MEMBERS

Alpha Omicron Nu held pledge rituals Nov. 10, in the home of Cindy Bessent for new members: Ara Burns, Stacy Williams, Ray Pitcock and Sandy Roe. Cindy Bessent also gave the program on "Leukemia".

Members voted to have a bake sale Saturday, Nov. 21, starting at 5:30 p.m. in conjunction with (ALPHA KAPPA PI's) drawing.

Alpha Omicron Nu's next meeting will be a Salad Supper-Turkey Tootie party Nov. 24 in the home of Linda Link.

50 YEARS AGO

The businessmen of Robert Lee are sponsoring a 4-H Club Camp to be held on the Colorado River near Robert Lee Monday and Tuesday, July 20 and 21. A big barbeque will be given the boys on Monday night. This is the first camp held in the county. A program will follow the barbeque and the boys will be permitted to hear different speakers of other communities. The camp is a result of plans of County Agent B.J. Baskin, who is in charge of the 4-H Club work in the county.

The following boys will attend: Alvin Allen, Francis Millican and J.B. Walker Jr. of Silver; Powell Armstrong, James Heron, Pat Johnson, James Youngblood, G.W. Gideon, Bronte; Michael Casey, Basil Havins, Cleo Havins, Myrph Havins, Wells Havins, Finnell Smith, Valley View; Glenn Clark, Edward Harrell, B.G. Stephenson, Tennyson; H. C. Cornelius of Juniper; Aubrey Denman, Randall Gartman, A.V. Hughes, Robert Waldie, Robert Lee; Albert Fields of Edith; Milliard McKinney, Vernon Maston, Carl Waldie, Union; Howard Millican, Tom Peays Jr., B.F. Smith, Carlton Smith, Owen Smith, Walter Thetford Jr. of Green Mountain; Dean Morrow, Jacob Morrow, John Saunders, Tom Smith, Tom Sneed Jr., Bon Spoons, Oliver Spoons, Robert Spoons, Roy Spoons, J.B. Patterson, all of Fort Chadbourne; and Earl Reed of Wildcat.

Buy and Sell with Want Ads

Personalize Your Christmas Gifts

MONOGRAMING - MACHINE EMBROIDERY
Wedding Pillows - Purses - Skirts - Towels
Gifts for Graduation and Birthdays

GAY VON MONTGOMERY

453-2806

5 years experience-2 years as instructor

Gregston Rites Held Nov. 5

Graveside services were conducted Thursday afternoon Nov. 5, at 3:00 p.m. for Wanda Ganell Gregston in the Robert Lee Cemetery. Officiating the rites was Jammie Paden, minister of the Southside Church of Christ in Robert Lee.

Miss Gregston, 29, died at her home at 11 a.m. Wednesday morning, Nov. 4.

Born in Robert Lee July 8, 1952, she attended Robert Lee schools. She was employed at West Coke County Nursing Home, on private duty, at the time of her death. She was a member of the Southside Church of Christ.

Survivors include her parents, Babe and John Gregston, of Robert Lee; four brothers, Leon Gregston of Houston, Earl Gregston of San Angelo, Darwin Gregston of Linden and Noel Gregston of Robert Lee; and several nieces and nephews.

Pallbearers for the service were Larry Anderson, Benny Rogers, Earl Lindsey, Bill Green, E.C. Bennett, Pack Wright, and Royce Hood, all of Robert Lee.

Mt. Creek Golf Club News

Golfers are reminded that Saturday, Nov. 21, is the date for the annual ABC Turkey Shoot Tournament at the Mountain Creek Golf Club. Tee off time will be 1 p.m. with all players to be registered by 12:45 p.m. Prizes for the tourney will be turkeys to be awarded to each member of the teams for the first three top spots. This is the last scheduled play of the fall ABC matches.



LOOK WHO'S NEW

Born on Tuesday, Nov. 3, at 3:31 a.m. was Jamie Leigh, new daughter of Mr. and Mrs. Junior Luna. Arriving at Shannon Hospital in San Angelo, she weighed 7 pounds, 3 ounces and is 20 inches long. She has a sister, Regina, 3 years old. Her grandparents are Mr. and Mrs. Jessie Gloria of Robert Lee, and Mr. and Mrs. Catarino Luna Sr. of San Angelo.

Michael Shane Doss II is the first born son of Mr. and Mrs. Michael Shane Doss of Graham. Born Nov. 11, at 6:30 p.m., he weighed 7 pounds, 14 1/2 ounces and was 21 inches long.

Grandparents are Mr. and Mrs. Donald Jobe of Graham, Roxie Hodnett of Robert Lee, and Bob Doss of Big Spring.

Shane's great-grandparents are Mrs. Lena Jobe of Graham, John Jobe of Edgewood, Mrs. Jean Tate of Monahans, and Mr.

and Mrs. R.W. Vaughn of Robert Lee.

The mother, the former Kathy Jobe, was Extension Service Agent for Coke County before her marriage.

Sisters Donate Church Organ

The Sisters of St. John's Hospital in San Angelo have donated an organ to Our Lady of Guadalupe Church of Robert Lee, according to Rev. Mark Woodruff, new pastor of the church. The local congregation has never had an organ. Following the biblical injunction, "Ask and you shall receive," Rev. Woodruff said he had been speaking of the need for an organ among San Angelo Catholic Churches.

The organ, made by the Estey Organ Corp of Brattleboro, Vt., had been used in the Sisters' Chapel in the hospital for a number of years. A new organ had recently been installed in the chapel.

Lee Ann Molinar of Robert Lee will be the organist, assisted by Mrs. Robert Blackwood.

Ross and Alvin Torres brought the organ from San Angelo.

WE INVITE YOU

TO BE WITH US FOR WORSHIP AND STUDY
AT ALL THESE SERVICES

SUNDAYS: 10 a.m. and 6 p.m. - WEDNESDAYS: 7:30 p.m.

NORTHSIDE CHURCH OF CHRIST

CLYDE DUKES, Minister

Phone 453-2375

CHADBOURNE AND W. 9th

ROBERT LEE, TEXAS

SPECIALS \$\$\$

Do Your Christmas Shopping Early

**TOWELS - Cannon "Wakefield" - Solid Color
Bath - Regular \$4.99 - Now \$3.47
Hand - Regular \$3.99 - Now \$2.47
Wash Cloth-Reg. \$1.99-Now \$1.77**

MR. CANDY RUG RUNNER - - - - - \$2.28

**CENTER STAGE CO-ORDINATES (4 Groups)
PRICES REDUCED 1/4 to 1/2**

**LADIES' & JUNIOR'S DRESSES
Prices Reduced 1/4 to 1/2**

**SHEETS - Full Bed Size - - - - - \$5.88 each
CASES To Match - - - - \$5.49 pair**

**BLANKET - - - Regular Price \$10.99
Full - Twin Size - Chatham Fairfax
NOW \$8.88 each**

**Register for Door Prize to be given away
November 21st**

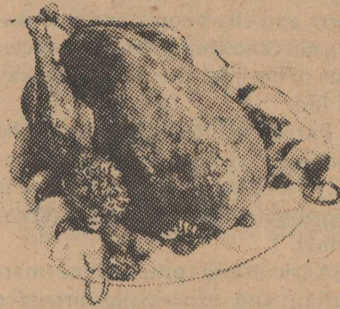
ROACH'S

FOOD SPECIALS
for your
THANKSGIVING DINNER

Armours Grade A

TURKEYS

Lb. **69c**



BULK SLICED BACON lb. \$1.39
GOOCH COUNTRY SAUSAGE 2 lb. bag \$2.49
ARMOUR TURKEY WIENERS 12 oz. pkg. 79c

HAM Hormel Cure 1
81 Cooked Lb. **\$2.99**

LITE FLUFF BISCUITS, 8 Oz. Can 5 for 99c
2 ALARM CHILI MIX 3 5/8 oz. pkg. \$1.19

Shortening Swift's Jewel 3 Lb. Can **\$1.39**

Sun Valley Oleo, qtrs. 2/89c

OCEAN SPRAY 300 CAN
CRANBERRY SAUCE 49c

303 SIZE CAN
DELMONTE CUT BEANS 49c

303 SIZE CAN
DEL MONTE SPINACH 49c

Delmonte 303 Can
Pumpkin 53c

NO. 2 CAN
Comstock Pie Apples 89c

Shop Our Store For Your
Thanksgiving Needs Now!!!

KEEBLERS 12 OZ. BOX
VANILLA WAFERS 89c

NABISCO 1 LB. BOX
PREMIUM CRACKERS 89c

Plenty of Fruit Cake Mix,
Smoke Turkeys, Chicken Hens
Mixed Nuts and Walnuts

Russet **POTATOES**
10lb. bag \$1.49

YELLOW ONIONS lb. 33c

CELLO CARROTS lb. bag 29c

Celery Fresh Crisp Stalk **49c**

Coca-Cola (Or 7-Up) 6 Can Crt. **\$1.69**

Pie Shells Mrs. Smith's Large-9 5/8 In. 2 For **99c**

COOL WHIP Birds Eye 8 Oz. Crt. **79c**

CHINET DINNER PLATES 40 ct. pkg. \$2.19

HI DRI TOWELS large roll 63c

HI DRI TOILET TISSUE 4 roll pkg. 95c

JELLO, Asst. Flavors 3 oz. box 33c

CORN KITS, By Morrison 6 oz. pkg. 25c

Gandys Whipping Cream 8 oz. crt. 69c

Gandys Sour Cream 8 oz. crt. 59c

Coupon THIS COUPON GOOD FOR \$1.00 TOWARD THE PURCHASE OF A 2 LB. CAN MARYLAND CLUB COFFEE AT WEST WAY Coupon

Let Us Wish You and Yours a
Wonderful Thanksgiving Gathering
We Will Be Closed Thursday, November 26th
These Prices Effective Thru Wednesday, November 25



MEMBER INDEPENDENT GROCERS, INC. — WE SUPPLY OURSELVES

West Way Grocery



Sheep Field Day Scheduled For Today At Paul Burns Ranch

A Sheep Field Day which should be of interest has been planned for today (Friday) at the PCR Feedlot on the Paul Burns Ranch nine miles west of Robert Lee. Arrangements for the gathering were made by the County Livestock Planning Committee. A number of subjects of interest to sheepmen will be discussed and everybody who is interested is invited to be present.

County Extension Agent Sterling Lindsey mailed out letters to producers and others who may be interested. Most of his letter is being printed below, since it gives detailed information about the meeting.

We will start with Bill Sims, executive secretary of the Texas Sheep and Goat Raisers Association. Bill will give us an update on activities of the Sheep and Goat Raisers Association. Bill will be followed by J. Lee Ensor, Bronte rancher in partners with Don Glenn of Bronte. J. Lee will tell us about their experiences with the toxic collar - why, how and the results they have had with collars.

Third up on the schedule will be Dr. Tim Turner, DVM, of Water Valley. This has been a bad sheep stomach worm year in Coke County. Tim will give us some basics on stomach worm control plus information on the use of phenothiazine salt - a practice most operators have gotten away from in recent years. Tim will also discuss the use of minerals and vitamins in sheep production.

Following Tim will be a short refreshment break. We plan to have coffee and tea available for refreshments.

Since we are nearing the winter season, immediately after the break Dr. George Ahlschwe, Extension sheep and goat specialist, will present basic information on winter supplemental feeding. Next on, will be Waldon Millican or Paul Burns to present some information on their feeding operation - length of feeding, expected costs and other basic information plus the results of feeding wheat to some lambs.

Clinton Hodges, of Sterling City, will be present with a few head of bucks and will give us a short discussion on what he looks for in selecting bucks. Then we will look at a high tensile demonstration fence that Raymond Me-

za of Twin Mountain Supply in San Angelo will have set up. Raymond will be there to answer questions those present may have to ask.

The entire program should take about 2½ hours. No doubt there will be some that will want to look at some of the lambs on feed, the feed mixing set-up, etc., and will hang on to ask questions. All in all, we should be through by 4:15 or 4:30 p.m.

We believe we have an interesting, informative and fast moving program lined up. We look forward to having you with us - next Friday, Nov. 20, 1:30 p.m.

Sincerely,
Sterling Lindsey
County Extension Agent-Ag
Coke County

EXTENSION EXTRAS

By Mary Anne Lackey

Pecans, a taste tempting, nutritious, year-round treat, are a favorite among Texans. Honored years ago as our state tree, pecan trees are native to 151 Texas counties and are grown commercially in 183 counties. Of the 60 varieties grown in the state, many were developed here. This year's pecan crop is one of the largest ever, so fresh pecans should be plentiful and reasonably priced, especially during harvest season from November through January.

Pecans are not only delicious, they're nutritious. These delicate nuts are an excellent source of protein, fat and carbohydrates--energy producing nutrients. However, their reputation as fattening is misleading because 10 large halves contain only 65 calories. The calories come mainly from the fat, but the fat is mostly polyunsaturated and contains no cholesterol.

These tasty nuts also contain iron, calcium, phosphorus, potassium, and vitamins A, B and C.

West Coke Hospital News

The following admissions and dismissals have been announced by the West Coke County Hospital:

- Nov. 10: No admissions and Jeff Hayden dismissed.
- Nov. 11: Lester Laman admitted and no dismissals.
- Nov. 12: No admissions or dismissals.
- Nov. 13: Hollis L. Ensor admitted and Lester Laman dismissed.
- Nov. 14: Cora Stone admitted and no dismissals.
- Nov. 15: No admissions or dismissals.
- Nov. 16: No admissions or dismissals.

Farm-City Week Set Nov. 20-26

"Farm and City: Partners in Progress-Key to the Future" is the theme of this year's Farm-City Week Nov. 20-26.

Purpose of the observance is to focus on the involvement of farm and city people as partners in the growing, processing, marketing and consumption of food and fiber.

In other words, Farm-City Week is aimed at promoting better understanding between farm and city people and increasing the knowledge and appreciation of each for the American way of life.

Farm-City Week is under the direction of the National Farm-City Council, Inc. which is coordinated by Kiwanis International.

Agricultural production, marketing and processing provides jobs and income for about a fourth of the working force in Texas.

One out of every 30 Texans is a farmer or rancher, and 30 percent of the state's retail trade business is directly associated with agricultural production and selling of food and fiber products.

While the overall cost of living has increased about 11 percent from a year ago, food prices in the grocery store have increased 6.4 percent and apparel has risen less than 5 percent. This compares with an increase of nearly 13 percent in housing, 16 per-

Two Accidents On Saturday Damage Cars

Two accidents occurred Saturday afternoon within about 20 minutes of each other and only about two miles apart. The mishaps involved three vehicles and occurred about nine miles north of Robert Lee.

The first was a head-on collision at the intersection Humble Road and Highway 208. A 1976 Ford pickup driven by Louis Bernard Petty of Brady and a 1976 Oldsmobile 98 driven by Clifford Gerald Minor of Abilene ran together at the intersection. The impact did considerable damage to the vehicles, but no serious injuries were reported. It is understood that Petty did receive a small laceration on his face.

The second accident happened about 20 minutes later at a point about two miles out on the Humble Road. A 1975 Oldsmobile Cutlass driven by Dr. Albert E. Hensel of Alexandria, La., went out of control where the road cuts through an embankment and goes down to a crossing over Rough Creek. As Hensel started down the drop-off, he met another car and, while trying to avoid a collision, he hit both sides of the cut through the embankment. He was reported uninjured, but his car was damaged.

Sheriff Marshall Millican and Deputy John Paul McGuire investigated the accidents.

Sheriff Millican reported that vandals shot into a repeater hut of General Telephone Co. and did considerable damage. The sheriff said 29 shots were fired into the structure, which is located about 14 miles north of Robert Lee. This is the third time the structure has been damaged by gunfire. Millican said Tuesday night he has some suspects to question about the incident.

WOMEN GOING TO WORK

Women, prepare yourselves. By 1990, 60 percent of women will either have jobs or will be looking for them as compared to 52 percent in 1980, predicts Bonnie Piernot, a family resource management specialist.

cent in fuels, 11.5 per cent in medical care and 25 per cent in public transportation.

Farm and city people make the best food and fiber team in the world and give this country the capacity to feed its own people and to export for economic gain as well as for humanitarian purposes.

Nationally farm exports total about \$44 billion with Texas contributing some \$3 billion. Production from about one out of every three acres of cropland is exported, with our leading customers being Japan, Netherlands, Mexico, China, Canada, Germany and Korea.

Texas leads the nation in exports of cotton, cottonseed and animal fats, is second in meats and meat products, hides and skins, and third in rice, peanuts and peanut oil.

"Exports help both farm and city people make a living and at the same time, they boost the economy and offset some of the cost of imported oil," according to Dr. Carl Anderson, Extension Service Marketing Economist.

Deer Season Starts With Good Hunting

As predicted by the Texas Parks and Wildlife Dept., Robert Lee experienced a productive start to the whitetail deer hunting season last weekend. Many out of town hunters converged on area ranches where they have a day or season lease. A number of relatives and friends of landowners also hunted over the weekend.

More kills were noted around town than is normally seen due to the warm fall weather. Temperatures were not low enough to cool out the meat and had to be taken inside to freezers or put on cold storage.

Jim Skinner, owner of the only cold storage vault for deer here had recorded 77 carcasses by Sunday night. As predicted, most had above average antler development and were in good shape.

Hunting will continue through Jan. 3, 1982.

"Nothing helps scenery like ham and eggs." Mark Twain

Comments Of Public Requested On USDA Conservation Program

The Secretary of Agriculture has invited the public to comment on the U.S. Department of Agriculture's proposed soil and water conservation program. The secretary's preferred program features expanded roles for local and state governments and the targeting of USDA dollars and personnel to conserving critical resource problem areas.

People who are interested in the program, or potentially affected by it, are urged to comment. Responses will be accepted through Jan. 15, 1982, and can be mailed to State Conservationist, Soil Conservation Service (SCS), P.O. Box 648, Temple, Texas 76703.

Eph Cummins, district conservationist for SCS at Robert Lee, said the secretary's proposed program would concentrate more USDA assistance in areas where soil erosion and other problems threaten to reduce agricultural productive capacity and to increase agriculture production costs. Basic USDA technical and financial assistance would continue in all areas.

The program would use local and state conservation coordina-

ting boards to identify critical problem areas, set priorities, and develop program for local and state action to solve the problems. These boards would be based on existing organizations--conservation district boards, Agricultural Stabilization and Conservation (ASC) committees, extension advisory boards and other groups.

Based on the recommendation from these local and state boards, and national priorities, more USDA assistance would be aimed at reducing the most serious soil erosion and related problems.

Cummins said the program is the secretary's response to the Soil and Water Resources Conservation Act of 1977 (RCA). It is contained in an RCA Program report and a summary leaflet with response from that can be reviewed at the local SCS or Agricultural Stabilization and Conservation Service office.

The basis for program is an appraisal of the condition, trends and natural resource problems of the nation. Published in two reports, the appraisal is also available for public reference in the two USDA offices.

B&D Builders

"WE BUILD"

Steel Patio, Carport and
Mobil Home Covers.
BARN, STORAGE
BUILDINGS AND STEEL
STRUCTOR HOMES.
ALSO REMODELING

Contact
Jack White
282-2618

ROBERT C. ROWLAND, AND ASSOCIATES

is pleased to announce the association of

Kenton H. Fish, M.D.

In the Practice of Ophthalmology
(Diseases and Surgery of the Eye)

SAN ANGELO EYE CLINIC

602 S. Abe (Bryant Blvd. South)
San Angelo, Tx. (915) 653-4586

SANTA'S FLOWER SAK

Is Overflowing

OPEN HOUSE

Sunday, Nov. 29
1-6 p.m.



Begin Registering soon for two \$25 Gift Certificates to be Given Away at our Open House.

No Purchase Necessary--
Don't Have To Be Present To Win

See Our Christmas Ideas

Open Monday thru Saturday--8:30-5:30

JOAN & ARA BURNS
Phone 453-2036



Representative
Larry Don Shaw
Reports from Austin

When I first arrived in Austin not quite a year ago, a veteran legislator got me aside and told me I could approach legislative service in two ways: I could keep my mouth shut, vote with the Speaker's team, and get along just fine... or I could try to remain independent, vote my conscience and my district, and sit and wait for the inevitable disciplinary measures.

I remember thinking at the time that he was surely exaggerating. I know now that he wasn't.

On the first day of my first session, I fulfilled a campaign pledge by refusing to support Billy Clayton's bid for an unprecedented fourth term as Speaker. I'd do it again, but it certainly turned out to be the wrong move for a state representative looking for job security.

Despite the fact that often as not I found myself on the same side as Clayton on key issues during the regular session-- on the water fund, for instance, or on ethics and anti-crime and anti-drug bills and on funding for Southwest Collegiate Institute for the Deaf-- that very first vote demonstrated my independence (a dangerous trait) and I was fair game in the high-stakes redistricting game.

Clayton's first House reappointment plan carved up the 63rd District and placed my home in a new district that I understand had, on its northernmost end, a great view of Oklahoma across the Red River. Another incumbent, Rep. W.S. "Bill" Heatly (D-Paducah), also lived in that district, and we would have had to oppose each other in the primary next May.

Fortunately, that plan was ruled unconstitutional and thrown out by a district court in Austin. That left it up to the state redistricting board (composed of the Lt. Governor, the Speaker, the Attorney General, the State Comptroller, and the Land Commissioner-- all Democrats) to draw the new district boundaries. Up until the very last day of the board's deliberations, I had every reason to expect that I would end up with at least four and possibly even all six of the District 63 counties I currently represent.

It wasn't to be, however. Attorney General Mark White, the swing vote on the panel, agreed to accept Clayton's rural plan if Clayton would agree to the urban districts favored by Comptroller Bob Bullock and Land Commissioner Bob Armstrong.

I understand that the new District 69, which contains my home in Howard County, has a great view of Mexico across the Rio Grand. Borden County is also located in this new 13-county district, which also contains the home of Republican Rep. Jerry Cockerham of Monahans. The census information indicates that District 69 is a Democratic district, and I expect to be returning to Austin next January for the 68th Legislature. I'll be formally announcing my candidacy later this year or in January.

I deeply regret losing Dawson, Scurry, Sterling and Coke Counties. I have many friends in all of them, and I've taken strength from your steadfast support of my insistence on remaining my own man in Austin. As far as I'm concerned, I'll continue to consider you a part of my constituency even though you can't vote for me, and I hope you'll let me know whenever I can be of help, even

after January of 1983.

Rep. Jim Rudd (D-Brownfield) is the incumbent living in the new 77th District, which contains Dawson County.

Sterling and Coke Counties will be in the new 66th District, which contains the home of incumbent Rep. Dick Burnett (D-San Angelo).

Scurry County is in the new 78th District. Rep. Heatly was the only incumbent living in that district when the map was drawn, but it appears that the Dean of the House will be challenged in the Democratic primary by Rep. Walter Grubbs (D-Abilene) who has moved into the 78th with the avowed intent of running against Heatly.

Social Security News Items

Most people have occasion to think about their Social Security Earnings record only in two instances--when they apply for a Social Security number and the record is established by the Social Security Administration and when they apply for Social Security retirement, disability, or survivors benefits or medicare.

In the meantime, a great deal is happening with their Social Security record. In fact, the record contains information on earnings they have accrued over their entire working lives, or at least since the program started collecting taxes in 1937. For most people, it is probably the most complete record of their work history existing in any public or private file.

The Social Security Record is very important to your future financial security. When you or your family apply for Social Security benefits, your record will be checked to see if you worked long enough under Social Security to be eligible and to figure the amount of benefits.

For this reason, they encourage people to check their Social Security record once every three years. After that it is difficult to make corrections because the law does not permit changes in the record except for specific exceptions.

Most errors are related to incorrect use of the Social Security number. Either the number is incorrect or the name does not match the number. Social Security records show that errors exist in about 6 percent of the wage items reported to them by employers.

To reduce the possibility of errors, many employers today refuse to hire people who cannot show a Social Security card, preferring not to accept the number from memory and risk getting it wrong.

Studies indicate such errors are most likely to occur in the records of people who work more than one job at the same time or change jobs frequently.

Social Security has a special post card that can be used to request a statement of earnings credited to a Social Security record. The statement will show your earnings covered by Social Security.

People who find mistakes in their records should call the Social Security office immediately. "We'll be glad to help you get the information corrected," a spokesman said.

Buy and Sell with Want Ads

Steer Band Honors Beau, Sweetheart

The Robert Lee Stompin' Steer Band honored their Band Beau and Sweetheart during the half-time activities at the last Steer football game of the season on Friday, Nov. 6.

Named Band Sweetheart was Kim Caston, a senior, daughter of Mr. and Mrs. Carlton Caston. Garnering the Band Beau honor was Bob Flowers, also a senior, son of Mr. and Mrs. Joe Flowers.

Predation Losses Need Good Remedy

Predators continue to inflict heavy losses to livestock, poultry and other wildlife, pointing to the need for an effective remedy.

That remedy could come in the use of toxic chemicals, but use of such materials, particularly Compound 1080, is not yet sanctioned by the Environmental Protection Agency.

However, some inroads are being made toward legalizing the use of these chemicals, points out Dr. Dale Wade, a wildlife specialist with the Texas Agricultural Extension Service, Texas A&M University System. Information presented at recent informal hearings may warrant the EPA to open formal hearings before an administrative law judge.

"If such hearings do come about, they would include information on the use of the 1080 toxic collar to protect sheep and goats as well as possible use of 1080-treated baits," notes Wade.

While such hearings might finally lead to an effective predator control technique for ranchers, they likely would not be completed in time to allow use of toxic chemicals during the coming winter season, adds the specialist.

"Coyotes continue to cause the heaviest losses to livestock and poultry, and their populations are increasing," says Wade. "They have been a problem to sheep and goat producers for many years, but now they also are causing increased losses in cattle. And the problem is no longer confined to western states; several eastern states now report increased coyote populations and significant livestock losses."

In addition to preying on livestock and poultry, coyotes also have inflicted heavy losses in pronghorn antelope, mule deer and other wild species in recent years, adds Wade. This has led some state wildlife agencies to support the use of toxic agents against predators.

"With ranchers currently operating at low profit margins or even losses due to poor prices, livestock losses to predators are a major concern," points out Wade. "Furthermore, these losses will ultimately be reflected in reduced meat supplies at higher prices."

Ad added factor is the loss of agricultural land to other uses when small operators can no longer survive production and predator costs. When this happens, producers, consumers and the whole nation suffers, contends the specialist.

HAS KNEE SURGERY

Brenda Gray, a RLHS senior, is recuperating from knee surgery done last Thursday in St. John's Hospital in San Angelo. Daughter of Mr. and Mrs. Les Gray, she had been troubled for some time by an athletic injury. She was able to return to school this week.



Jerry Lackey's Country Folk

P.O. Box 1542
San Angelo, TX 76902

The cowboys and this cowboy editor have ridden into camp with the last strays of the 1981 Cattleman's Round-Up for Crippled Children. And despite the depressed market conditions the CRCC can be termed a success.

Last sale of the season at Brownwood featured cattle and horses from the Central Texas area in addition to cattle from Marfa, Alpine, Fort Davis, Toyah, Austin, Throckmorton and Snyder.

Totals from sales are: Cattle Sale, Abilene, \$132,437.56; Horse Sale, Abilene, \$22,275.50; Sheep and Goat Sale, Junction, \$7,900; Special Sale, Coleman, \$15,345; Special Sale, Brownwood, \$12,000; and total cash donations, \$47,000.

The annual sales benefit the treatment programs of the West Texas Rehabilitation Center in San Angelo, Abilene and Snyder. WRTC campuses will treat more than 10,000 handicapped children and adults without charge in 1981. Patients receive a full range of outpatient services.

Donors to this year's CRCC program will have their brands put in tile on the walls of the new San Angelo WTRC, now under construction. Donation of livestock valued at \$250.00, or \$250.00 in cash is needed to qualify for the brand in tile.

While we are on the subject of the Rehab Center, let me give all the updated information we have for remaining activities for the year. After all, people throughout the Southwest where this column is circulated have a vital interest.

Another promotion arm of WTRC, the Joint Venture for Crippled Children--this is the petroleum industries annual pledge -- has raised almost \$800,000. This money too will go to aid treatment care.

JVCC started in July with a Glen Campbell benefit kickoff. Next event was a LaJet PGA Tournament, followed by an oil-field equipment auction. Bob Hope has appeared on TV commercials for three years now, as the JVCC spokesman.

"With a \$3 million annual budget, we are still a little short to making our expenses as the year closes," commented Shelley V. Smith, WTRC executive director, at a recent board meeting. "But that is the way operations run every year at this time. As people figure up their tax situations between now and January, we have the answer to many of their problems!"

San Angelo and the West Texas community had the most successful fund-drive in history in 1981 when \$2 million was raised to build a new WTRC. That facility is currently under construction with completion set for August, 1982.

So, all in all, 1981 can be marked up for a super year in WTRC history. As the holiday season approaches, our public relations people are gearing up for Rehab '82, the five-hour annual telethon which will be broadcast over a 16 station network. Already signed on contract is a variety of stars from Nashville to Lawrence Welk Show people to TV's daytime shows, etc. Rex Allen and Rex Allen Jr. will co-host the show Jan. 9, 1982, along with introduction of the show by Bob Hope.

Now, you can see when the annual Cattleman's Round-Up for Crippled Children is over and we all come into camp with the last strays, we are ready for holiday time. May yours be extra special.

DEL RIO ROPING TO BENEFIT BOYS RANCH

A \$20,000.00 Match Roping between world class ropers, Arnold Felts and Phil Lyne, will be the main attraction of the first Jim Bob Altizer Invitational Roping, Nov. 21 and 22nd. Felts and Lyne will take a total time on 12 head, six calves and six steers.

Forty of the world's top calf ropers will be on deck Saturday, the 21st, and 30 top calibre steer ropers will be the feature of Sunday, the 22nd. Ropings will begin daily at 1:30 p.m.

The roping, to be held at Jim Bob Altizer Arena on Hudson Drive, Del Rio, is in benefit of West Texas Boys Ranch at San Angelo.

Further information may be obtained by contacting Jim Bob Altizer at Box 1432, #2 Pepper Lane, Del Rio, 78840 or West Texas Boys Ranch, Box 3568, San Angelo, 76902.

Weekend guests of Mr. and Mrs. Javan Vosburg and Mr. and Mrs. Mitchell Davis were their sister and daughter, Mrs. Ione Raymond, her daughter, Fronia Sue Raymond, and her fiancée, David Estep, all of Houston.



There are many good ways

to make your money work for you. And some not so good. So don't leap into anything without taking a long, hard look. Especially if you have no savings in reserve.

And if you don't have enough savings, look into U.S. Savings Bonds. Because Bonds do make sense.

They guarantee the interest. They're guaranteed against loss, fire, and theft. And the Payroll Savings Plan is a sure, easy way to guarantee savings. Federal income tax may be deferred and there's no state or local income tax.

A little is set aside each payday for U.S. Savings Bonds. Your savings will grow until you're ready to reap the rewards of regular saving.

Saving is one of the most important financial decisions you'll ever make.





TOM LOEFFLER
Congressman
21st District - Texas

**Reports from
Washington**

Some Facts On Oil Decontrol

When President Reagan removed the last remaining controls from the price of oil and dismantled the eight-year-long "temporary" allocation program, some skeptics said prices would skyrocket, that massive oil imports would continue, and that no real increase in domestic production would result.

The facts have proved otherwise. Exploration boomed. Consumption decreased. U.S. oil imports dropped. Prices stabilized — they even declined.

Decontrol has proven that America's energy industries, from the small independent producer to the large corporation, stand ready and willing to embark upon an ambitious program to reduce our reliance on imported oil by providing the greatest amount of domestic energy at the lowest possible price.

Briefly, let's look for a moment at what the latest figures tell us about the effects of decontrol.

Critics said decontrol would not increase supplies or decrease demand. The number of newly discovered producing wells was up 41.6 percent from January to July of this year as compared to the same period in 1980. The number of active rotary drilling rigs in August of this year was up 36 percent over the same period last year. Total domestic production of crude oil has increased by more than 150,000 barrels per day during the past twelve months.

During the first six months of this year our domestic consumption dropped by 232 million barrels of oil from 1980. At the same time, our total oil imports actually fell for the first time in years by 300 million barrels over the same period last year.

Critics of decontrol said it would cause substantial increases in fuel prices, even assuming no large OPEC price increase.

But the average gasoline price for all grades was actually down an average of 2.6 cents in June 1981, compared to April 1981. And the average price of No. 2 heating oil was down 4.1 cents in May compared to March 1981.

The best news by far is that domestic drilling activity is at an all-time high while imports of OPEC oil are down to a 13-year low and likely to dip even further.

While some experts believe that OPEC no longer holds all the cards in the world oil market, this nation's and the world's energy problems are far from being solved. American industry is not to blame. For despite the industry's best efforts, our reliance on OPEC for approximately one-third of our energy needs means that those countries will continue to set the price and determine the availability of the energy we need for American homes and factories until we regain domestic energy self-sufficiency.

Because crude oil and natural gas still provide more than 70 percent of our total energy needs, we must remove still further impediments to the production and use of our great energy wealth:

- Deregulation of natural gas. Allowing the price of natural gas to rise to its true value will discourage the inefficient use of this resource and provide a stable domestic supply of clean-burning fuel for the future.
- Development and implementation of a sound plan for mineral exploration on more than two-thirds of our Federal lands that are either closed or effectively restricted from energy and mineral development. We can develop these frontiers — which may contain reserves of oil and gas equal to all known deposits to date — and do so in an environmentally acceptable manner.
- Elimination of the Department of Energy. This is a \$10 billion tax drain which has not produced one additional barrel of oil and has added to the costs all of us must pay for running this bloated bureaucracy.
- Accelerate filling of the Strategic Petroleum Reserve. In the event of an oil crisis, we must be prepared to deal with a supply interruption with energy — not with government rationing stamps.

It is my firm belief that, given the opportunity to earn the necessary investment funds and the opportunity to compete in the marketplace without government interference, America's energy industry will do its job — using American dollars to provide American jobs to produce American energy for the future.

DIVORCE, REMARRIAGE

If the divorce and remarriage rate continues, there may be a generation of step-children that may raise another generation of step-children with very little educational help in doing so, says Diane Welch, a family life education specialist.

TOO THIN NOT GOOD

Think you can never be too thin or too rich?

Not necessarily true -- especially being too thin, says Dr. Cass Ryan-Crowe, a food and nutrition specialist. Thin people are less resistant to infections and diseases, she says. Also, the person who is constantly dieting to lose extra pounds may not be getting all the necessary nutrients, such as vitamins and minerals. Iron deficiency anemia among chronic dieters is a special concern, the specialist adds.



LIONS CLUB MEETING

1st & 3rd Tuesday of each month - 7 p.m.

LIONS CLUB COMMUNITY CENTER

Buy and Sell with Want Ads.

**WORSHIP WITH US AT THE
Southside Church of Christ**

BIBLE STUDY...10:00 a.m. EVENING WORSHIP...6 p.m.
WORSHIP.....11:00 a.m. WED. BIBLE STUDY...7 p.m.
- THE FRIENDLY CHURCH -
WHERE THE BIBLE IS TAUGHT

CATLEMEN MUST BE WILLING TO CHANGE

To survive in the beef business, cattlemen must be flexible and willing to change and to produce the type of beef consumers want, according to speakers at the South Central Texas Cow-Calf Clinic at Brenham, Nov. 6. Because more women are working outside the home, they have less time to shop and to prepare meals, so they want products that are convenient. For successful marketing beef must be tender, juicy, flavorful and consistently satisfactory on a 52-week-per-year basis, and it must be advertised and promoted more aggressively. The kind of beef that can be marketed best comes from a carcass weighing 650 to 700 pounds with a yield grade of 2.5 or better that's in the "A" maturity group with at least a slight amount of marbling.

QUITE A TREE

A Morton Bay fig tree growing in Santa Barbara, Calif., is probably the largest tree in the world, reports the National Wildlife Federation. Planted in 1877 from a seed brought over from Australia, today the tree is almost 70 feet tall with a trunk more than 30 feet around. About 15,000 people could stand in its shade!

THAT'S A FACT

TIGHT FIT!
BECAUSE HIS KNEE BRITCHES WERE MISPLACED, BAREBACK RIDER NELSON HOWER QUICKLY UTILIZED HIS LONG UNDERWEAR FOR HIS PERFORMANCE. THAT'S HOW **TIGHTS** WERE DISCOVERED! THE YEAR WAS 1828.

A LASTING GIFT!
NO MATTER WHAT THE OCCASION, A PRESENT OF **U.S. SAVINGS BONDS** IS ALWAYS APPROPRIATE. AND, A PRESENT OF U.S. SAVINGS BONDS TO **YOURSELF** ISN'T A BAD IDEA! JOIN THE **PAYROLL SAVINGS PLAN** WHERE YOU WORK AND YOU'LL BE GIVING YOURSELF A GIFT THAT WILL GROW IN VALUE. SO DO YOURSELF A **BIG FAVOR!**

PLAY BALL!
SOFTBALL, CREATED AS AN INDOOR GAME, WAS FIRST PLAYED INSIDE THE FARRAGUS BOAT CLUB, CHICAGO, ILL. IN 1887. A **BROOMSTICK** WAS USED AS A BAT AND A **BOXING GLOVE** SERVED AS A BALL!

★★★★★

Puzzled?



**TRY 55...
AND MAYBE YOU WON'T BE.**

Some drivers are still puzzled over the National 55 MPH speed limit. A recent survey shows that nearly 75 per cent of the drivers say they want to keep 55 because they know it **SAVES LIVES** and conserves fuel. But many drivers still exceed the limit on occasion.

Speed increases the severity of injuries when a crash occurs, and often causes tension. So **slow down, relax...and ENJOY TEXAS.**

(a message from this newspaper and the Troopers of the Texas DPS)

WANT ADS

CLASSIFIED ADVERTISING RATES

1st Insertion Per Word 10c (\$1.50 Minimum)
 2nd and Subsequent Insertions Per Word 7c (\$1.00 Minimum)
 Additional 50c for Blind Ads
 Cards of Thanks .. Same Rates
 Legal Notices Same Rates

COPY DEADLINE

Class. Ads 4 P.M. Tuesday
 Display Ads ... 4 P.M. Tuesday

Classified ads and Cards of thanks are payable in advance unless customer carries a regular account.

PIANO TUNING AND REPAIR, 30 years experience. Phone Ben G. Arnold, 453-2361, Robert Lee. 13-tnc

MOORE DIRT CONTRACTOR, Bronte, Tex. Phone 473-3474. We do caliche and dirt work, septic systems, road building, repair and new. 24tfc-BP

FURNISHED APARTMENT For Rent. All bills paid. Call Ben Bessent, 453-2492 or 453-2632. 25-tfc

NEED HELP to assist with cleaning and office work. Mountain Creek Lodge 453-2516. 19-TNC

M & M VACUUM SERVICE: Septics and cesspools pumped. Phone 473-3474 or 473-7811. 27-tfc-BP

SPARKS WATER WELL SERVICE, Windmill and Pump Work. Prompt service. 653-9311. 17-4TC

AMWAY PRODUCTS come to you satisfaction guaranteed or your money back. June Gulley, 453-2848. 17-TNC

FOR SALE- 1 acre overlooking Mountain Creek Golf Course. Bill Hayden 453-2338. 17-TNC

FOR SALE- 1977 Ford XLT 5/8 ton Pickup with overload springs, 65,761 miles, very clean, AM-FM-Stereo, Cruise, 2 gas tanks, almost new tires, new muffler, \$3,995.00 See at J.C. Wallace's or call Troy Millican at (915)378-3601. 16TNC

AAI REPAIR SERVICE- Mobile home repairs and service, power rotary sewer line cleaning. 453-2775. 3-tnc

PECANS FOR SALE - Murlon Smith, 800 Vicki, 453-2602. 20-tnc

Monuments

LETTERING
 LOT COVERING
SAM L. WILLIAMS
 Robert Lee, Texas

SAVE \$4.00

CAR WASH, CHANGE OIL (5 Qts. Ford Oil), and **FILTER CHANGE**

Reg. Price \$23.80
NOW \$19.80

Unusually muddy or vehicles with road tar - Extra Charge.

IVEY MOTOR CO.

NOTICE TO BIDDERS

Notice is hereby given that the Commissioners' Court of Coke County, Texas will receive sealed bids in the office of the County Judge until 10:00 a.m. Monday, December 7, 1981 for the following:

SHERIFF'S CAR

One New 4-Door, 8 Cylinder Sedan
 Basic Chevrolet Impala or Ford LTD
 Engine not less than 350 Cubic Inches
 Police Package
 Automatic Transmission
 Factory Air Conditioning
 Power Brakes
 Tinted Glass
 Heavy Duty Alternator
 Power Steering
 Heavy Duty Battery
 AM Pushbutton Radio
 Remote Control Mirror
 Cloth and vinyl seat covering
 Color: White or Grey

The Commissioners' Court reserves the right to reject any and all bids and waive any technicality.

Weldon Fikes, County Auditor
 Coke County, Texas

PECANS FOR SALE. 75c lb. Pritch Brown, 319 Zero St. 453-2093, Robert Lee. BP-20-TNC

FOR SALE. lg. industrial meat saw with 1 1/2 H.P. motor. Stands upright approx. 5 1/2 ft. tall, weighs about 400 lbs. \$150.00. 453-2237. 20-2tc

FOR SALE: 1974 14x60 Trailer House, furnished. On nice fenced lot, underpinned, patio. Call Bronte 473-4041. 2tc-BP

HOME IN ROBERT LEE for sale. 3 bedrooms, brick, 1 1/2 baths, all built-ins, refrigerated air. Phone 658-7662 or 817-429-6384. 45tfc-BP

FOR SALE: 1974 14x60 Trailer House, furnished. On nice fenced lot, underpinned, patio. Call Bronte 473-4041. 2tc-BP

CARD OF THANKS

Thank you for all the cards, flowers, food, and expressed words of comfort shown to us during the loss of our loved one. God bless and keep you.

Mr. and Mrs. Max Anthony and family
 21-1tc

TEXAS REFINERY CORP. offers PLENTY OF MONEY plus cash bonuses, fringe benefits to mature individual in Robert Lee area. Regardless of experience, write A.N. Sears, Pres., Texas Refinery Corp., Box 711, Fort Worth, Texas 76101. 1tc

SHOP AT THE THREAD SHED

For
 Christmas Tree Skirt Kits
 Stocking Kits
 Felt by the Yard or Square
 Christmas Appliques
 Transfer Patterns
 Stuffed Toys
 Frumples
 Hand Made Pillows
 Afghans
 New Latch Hook Kits
 Lots of other hand made things

FREE GIFT WRAPPING

Open Tuesday & Thursday
 10 a.m. to 4 p.m.
 Or By Chance or Appointment

608 W. 17th Robert Lee

HOME IN ROBERT LEE for sale. 3 bedrooms, brick, 1 1/2 baths, all built-ins, refrigerated air. Phone 658-7662 or 817-429-6384. 45tfc-BP

NOTICE

We will be serving our **Thanksgiving Dinner** on Sunday, Nov. 22, and will not open again until Friday morning, Nov. 27th.

Your business appreciated.
Melba and Kyle Long
KONNER'S KORNER

21-1tc

BID NOTICE

Robert Lee Independent School District is accepting bids until December 17, 1981, at 8:00 p.m. when bids will be opened for a heavy duty 1/2 ton pickup. Specifications may be obtained at the school superintendent's office. Phone 915-453-2612. 2tc

MRS. ROSS TAKES FOURTH IN WOOL SEWING CONTEST

Placing fourth in the Senior Division of the "Make It Yourself With Wool" contest, held at ASU in San Angelo last Saturday, was Becky Taylor Ross of Robert Lee. Mrs. Ross, a senior student of Robert Lee High School, constructed and modeled a deep burgundy 100 percent wool suit, fully lined with a beige and burgundy print.

Other Coke County participants were Melanie Epperson of Robert Lee and Karla Badgett of Bronte in the Junior Division and Nikki Epperson of Robert Lee in the Pre-Teen Division.

MARVIN SIMPSON RECEIVES TECH DEGREE

More than 800 students at Texas Tech University received degrees in commencement exercises at the conclusion of the 1981 summer session.

Degree recipients included Marvin Simpson of Robert Lee. Marvin's parents are Mr. and Mrs. Marvin A. Simpson.

Church Elects Parish Council

A parish council for Our Lady of Guadalupe Church in Robert Lee--the first in the parish's history--was elected at the beginning of November.

Elected to the parish council were: Steve Oleksiuk, Frances Molinar, Julian Torres, Rita Munoz and Ross Torres.

The council will serve as an advisory group to Rev. Mark Woodruff, pastor of the parish. The council will oversee the financial and spiritual life of the congregation.

High on the list of parish council activities will be the planning and financing of the new church the congregation hopes to build in the spring.

RL SCHOOLS HONOR ROLLS

Principal Jerry Gibbs has announced the following honor roll for Robert Lee High School for the second six weeks:

12th Grade: Rudy Balderas, Bob Flowers, Scot Long, Kenda Rasco, Becky Ross, Shery Ross, Cixto Saucedo and Frankie Walker.

11th Grade: Quint Anthony, Debbie Cummins and Leigh Ann Runnion.

10th Grade: None.
 9th Grade: Douglas Roberts and Michael Wilson.

8th Grade: Patty Bloodworth.
 7th Grade: Becky Clendennen, Lin Long and Lee Ann Molinar.

Principal William Hood has announced the following honor roll for Robert Lee Elementary School for the second six weeks:

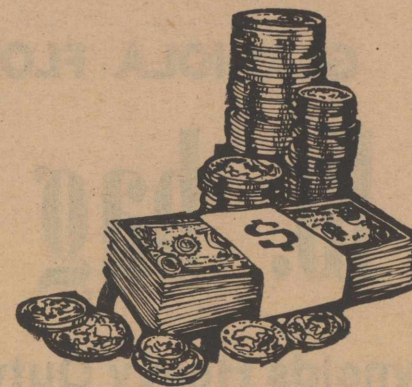
3rd Grade: Emily King and Janet Pentecost.

4th Grade: Warren Brasher, Tiffany Jameson, Dawn Kleiber and Becky Padgett.

5th Grade: Cody Anthony, Lisa Bower and Ericka Clendennen.

6th Grade: Sherry Bagley, Stevie Ebenstein, Randy Gartman, Jason Herring, Rachel Metcalf, Robert Runnion and Claudette Walker.

MONEY
 MONEY
 MONEY
 MONEY
 MONEY



The Money You Save at Home
WORKS at Home
STAYS at Home

YOUR SAVINGS ARE USED AS LOANS TO PROMOTE PROSPERITY AND MAKE OUR COMMUNITY A BETTER PLACE TO LIVE. COME SAVE WITH US.

Money Market Interest Rate

12.456% Nov. 17 - 23



Robert Lee State Bank

P. O. Box 47

Robert Lee, Texas

Phone 453-2545



ENJOY A BOUNTIFUL HARVEST

for your Thanksgiving



Coffee

Maryland Club
1 Lb. Can

\$1.99

Del Monte Pineapple 15 oz. can 63c
Del Monte Sweet Peas, 16 oz. 2/89c
Blackburn White Syrup qt. Bot. \$1.15



OCEAN SPRAY

Cranberry Sauce

16 Oz. Can

55c

Bruce Cut Sweet Potatoes 16 oz. 57c
JELLO, Asst. 3 oz. Pkg. 2 for 69c
Kraft Miniature Marshmallows 6 oz. pkg. 37c

Pumpkin

Del Monte
16 Oz. Can

55c

BAKERS COCONUT 7 oz. pkg. 69c
CORN KITS 2 for 49c

GLADIOLA FLOUR

5 lb. bag 89c



Reynolds Heavy Duty Foil 18X25 99c
Marina Bathroom Tissue 4 rolls \$1.19
NORTHERN NAPKINS 140 ct. 73c

Soft Oleo

Meadowlake
Lb.

59c

Pillsbury Biscuits, 8 oz. can 2 for 49c

Prices Good From November 20th thru
November 25th

Cranberries

Fresh 12 Oz. Pkg. **69c**

YELLOW ONIONS

lb. 29c

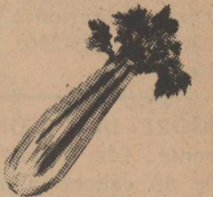
APPLES, Colo. Delicious

lb. 59c

Celery

Stalk
Each

45c



Potatoes

10 lb. bag

\$1.69

Cool Whip

8 Oz.
Crt.

75c

V.I.P. Frozen Rolls

24 count 73c

WHOLE SUN ORANGE JUICE

93c

Pie Shells

Mrs. Smith
Deluxe

99c

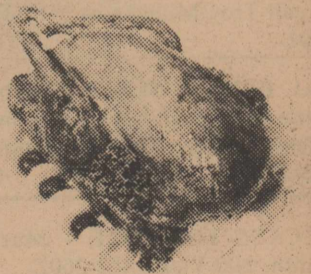
**CREAM
CHEESE**

Kraft
Philadelphia
Brand
8 Oz. Pkg.

89c

Armour
Star

Turkeys



Lb.

69c

Dankworth Sliced Slab Bacon lb. \$1.39

Gooch Country Sausage 2 lb. bag \$2.39

Hams

Hormel
Cure "81"
Halves-Lb.

\$2.99

Baker's Groc. & Mkt.