

STOCK YARDS DAILY JOURNAL

A Daily Commercial Newspaper for Modern Farmers and Stockmen and an Advertising Medium that Reaches the Buyers.

Vol. VIII. No. 128.

ST. JOSEPH, MO., FRIDAY, FEBRUARY 3, 1905.

TERMS: 1 YEAR, \$4.00. SINGLE COPY, 5 CENTS.

LIVE STOCK MARKET

Official Receipts 29 Cars, 771 Cattle; 63 Cars, 4,919 Hogs; 8 Cars, 2,235 Sheep.

STEERS OFF 10to15c FOR WEEK

Eastern Weather Conditions Depressing Factor in Fat Beef Cattle Trade.

EASY FINISH TO COW TRADE

But Closing Prices Show no Material Change Compared With Week Ago—Good Feeding Cattle Stronger For the Week—Most of Hog Supply Went at 5c Advance—About all Lost at Close—Sheep and Lambs Held Steady.

RECEIPTS FROM JANUARY 1, 1905.

1905	1904	Dec.	Inc.
Cattle	49,929	52,077	12,007
Hogs	224,345	189,246	42,678
Sheep	82,501	45,572	36,929
Res.	2,048	2,210	162

CATTLE		HOGS		SHEEP	
Jan. 27	28	29	30	31	1
913	819	1,229	1,118	7,590	275
1,188	3,091	3,737	2,444	6,849	5,114
2,547	6,017	2,359	2,108	6,392	2,137

Total for week	Previous week	Month ago	Year ago
9,578	38,781	14,851	9,642
46,171	23,571	38,750	38,750
38,750	13,928	5,769	35,988
13,928	13,928	13,928	13,928

Friday	Saturday	Sunday	Monday	Tuesday	Wednesday	Thursday
181	419	692	178	118	418	601

Total for week	Previous week	Month ago	Year ago
1,901	2,390	1,413	2,490

LIVE STOCK IN SHORT.

The following shows the estimated receipts of cattle, hogs and sheep at the five principal western markets:

Chicago	St. Louis	St. Paul	Omaha	Denver
3,500	24,000	4,000	1,800	6,500

RECEIPTS OF STOCK BY CARS.

The following shows the number of head of stock having been received by railroads centering at the stock yards:

Burlington and Missouri	Chicago, Burlington & Quincy	Chicago, Rock Island & Pacific	Great Western	Hannibal & St. Joseph	Kansas City, St. Joseph & Council Bluffs	Missouri Pacific	St. Joseph & Grand Island	Atholton, Topeka & Santa Fe
19	22	15	13	5	5	5	20	1

CATTLE.

Small Receipts Did Not Create Reliable Change in Market.

Small receipts of all kinds of cattle did not afford variety enough in the several classifications to attract much interest or create any change in market conditions. Extremely cold weather was still a factor that made buyers, whose orders were not urgent, slow to get out, the steer trade of the day had a dragging tone with prices steady to weak on the basis of recent decline. The week has seen prices for all kinds of dressed beef steers working toward a slightly easier level, the cold weather and heavy snow in the east having been a big factor in retarding the movement of both live cattle and refrigerator beef toward seaboard markets, this curtailing the immediate demand for cattle. Compared with a week ago current prices for steers are around a dime lower on all medium up to best grades. The best steers here during the week sold at \$5.40 and \$4.90@5.30, but bulk of all steers have been of qualities that have sold at \$4.75 down to around \$4.00. Common light killers \$3.60@4.00.

DRESSED BEEF AND SHIPPING STEERS.

No.	Av. Shk.	Price	Av. Shk.	Price
1	1172	4.35	1225	4.40
2	1050	4.20	965	3.75
3	1147	4.20	1000	3.65
4	1168	4.10	1170	3.50
5	1110	4.05		

COWS, BULLS AND MIXED.

The market for live stock has held up better than for steers, the proportion of it not having been as large and the eastern situation not so directly affecting the feeding of the trade at this point. Prices have not undergone any material change during the week and, while the trade movement has been retarded by the severe weather of yesterday and today, the market for the week through has been in satisfactory condition with best cows and heifers selling

at \$3.00@4.15 for the week, ordinary to choice \$3.00@3.75 with bulk at \$1.50@2.75. Canners are slow sale at \$1.50@2.75 with bulk at \$2.00@2.50. Bull supply light with weak and no change in prices. Not many well calves coming and prices strong with tops for the week at \$7.00.

HEIFERS.		
No.	Shk.	Price
1	980	4.00
2	942	3.50
3	850	3.50
4	850	3.50
5	740	3.30

COWS.		
No.	Shk.	Price
1	1145	3.45
2	1290	3.25
3	1172	3.25
4	1110	3.25
5	1040	3.15

BULLS AND STAGS.		
No.	Shk.	Price
1	1490	3.25
2	1290	3.50
3	1690	3.00
4	1490	2.75

STOCKERS AND FEEDERS.

No change of the cattle trade has been more effected by the cold weather than has the stocker and feeder trade. But light supplies of the kinds of cattle that are the most wanted now, the good weight, good quality steers, have been very light and prices have remained strong, in fact are a little higher than a week ago. In the light weights of medium and good quality there are more cattle now on hand than the demand calls for. Prices are on a weak basis, fair to choice feeders are quoted at \$3.25@4.00, common to fair \$2.90@3.25, stock steers \$2.25@3.75.

STOCKERS AND FEEDERS.		
No.	Shk.	Price
1	1170	4.10
2	880	3.85
3	880	3.85
4	880	3.85

YEARLINGS AND CALVES.

YEARLINGS AND CALVES.		
No.	Shk.	Price
1	652	3.30
2	470	3.25

FEEDING COWS AND STOCK HEIFERS.

FEEDING COWS AND STOCK HEIFERS.		
No.	Shk.	Price
1	578	2.35
2	1910	3.30

FEEDING BULLS AND STAGS.

FEEDING BULLS AND STAGS.		
No.	Shk.	Price
1	1160	2.50
2	1140	2.50

QUARANTINE CATTLE.

Two loads of Indian territory cattle were yarded in quarantine division today. The cattle averaged 1,100 pounds and sold at \$3.85 for one load, the other 1,040 pounds and sold at \$3.75.

STEERS.

STEERS.		
No.	Shk.	Price
A. Silberstein, I. T.	20	1109
A. Silberstein, I. T.	19	1049
A. Silberstein, I. T.	1	850

COWS.

COWS.		
No.	Shk.	Price
A. Silberstein, I. T.	4	942

Packers' Cattle Purchasers.

Packers' Cattle Purchasers.	
Name	Quantity
Swift and Company	300
Hammond Packing Co.	200
Nelson Morris & Co.	194
Totals	694

Packers' Hog Purchasers.

Packers' Hog Purchasers.	
Name	Quantity
Swift and Company	1,583
Hammond Packing Co.	549
Totals	2,132

week ago, \$4.42 a month ago, \$4.80 a year ago, \$6.83 two years ago, \$6.06 three years ago and \$5.38 on the same day four years ago.

PIGS AND LIGHTS—1905 LB AND UNDER.		
No.	Shk.	Price
72	195	80.45
73	195	80.45
74	195	80.45

HEAVY AND MIXED—2000 LBS AND UPWARD.		
No.	Shk.	Price
49	349	5.05
50	376	5.00
51	399	5.00

BULLS AND STAGS.		
No.	Shk.	Price
1	1490	3.25
2	1290	3.50

STOCKERS AND FEEDERS.

No change of the cattle trade has been more effected by the cold weather than has the stocker and feeder trade. But light supplies of the kinds of cattle that are the most wanted now, the good weight, good quality steers, have been very light and prices have remained strong, in fact are a little higher than a week ago. In the light weights of medium and good quality there are more cattle now on hand than the demand calls for. Prices are on a weak basis, fair to choice feeders are quoted at \$3.25@4.00, common to fair \$2.90@3.25, stock steers \$2.25@3.75.

STOCKERS AND FEEDERS.		
No.	Shk.	Price
1	1170	4.10
2	880	3.85

YEARLINGS AND CALVES.

YEARLINGS AND CALVES.		
No.	Shk.	Price
1	652	3.30
2	470	3.25

FEEDING COWS AND STOCK HEIFERS.

FEEDING COWS AND STOCK HEIFERS.		
No.	Shk.	Price
1	578	2.35
2	1910	3.30

FEEDING BULLS AND STAGS.

FEEDING BULLS AND STAGS.		
No.	Shk.	Price
1	1160	2.50
2	1140	2.50

QUARANTINE CATTLE.

Two loads of Indian territory cattle were yarded in quarantine division today. The cattle averaged 1,100 pounds and sold at \$3.85 for one load, the other 1,040 pounds and sold at \$3.75.

STEERS.

STEERS.		
No.	Shk.	Price
A. Silberstein, I. T.	20	1109
A. Silberstein, I. T.	19	1049
A. Silberstein, I. T.	1	850

COWS.

COWS.		
No.	Shk.	Price
A. Silberstein, I. T.	4	942

Packers' Cattle Purchasers.

Packers' Cattle Purchasers.	
Name	Quantity
Swift and Company	300
Hammond Packing Co.	200
Nelson Morris & Co.	194
Totals	694

Packers' Hog Purchasers.

Packers' Hog Purchasers.	
Name	Quantity
Swift and Company	1,583
Hammond Packing Co.	549
Totals	2,132

OLD TIMERS TALK CATTLE.

Country Not Disposed to Finish Steers at Present Prices of Corn and Fat Beeves.

The relation of the tidy young feeding steer to the fat, finished bovine was given a hearing last night over in that popular resort of stockmen, the Transit house. Among the party who talked feeding cattle, fat steers and market prices was Mr. M. Whitford of Galford, one of the pioneers of Nodaway county, Missouri, and S. G. Jones, of Doniphan county, Kansas. The night was just such a one as to put old timers in reminiscent mood—frigid temperature, howling wind and drifting snow out of doors made men sitting in groups about the steam radiators in the hotel lobby think and want to talk of old times on the frontier. These two gentlemen have been identified with the live stock trade during all their active lives and it was natural and easy for them to drift into a discussion of the feeding steer and his relation to the finished beef animal. Agreement was mutual and instant that, at present, there is not spread enough in prices between the feeder and fat steer to make cattle feeding a moderately safe proposition. "There is a much better show for a balance on the right side of the books in these thin yearlings of good quality than in these half-fat steers at present and prospective prices," said Mr. Jones. "Yes," said Mr. Whitford. "I came into Nodaway county in 1864 and have been identified with the cattle trade practically ever since. My experience is that where a man is fixed to handle them, the thin young steers of good quality are a better investment than the fleshy steer of same quality. The thin steer has a chance to grow into a profit while your half-fat animal of around 1,000 pounds average must depend on a small gain in weight and appreciation in selling price for his profit. At present there is hardly over a dollar per hundred weight between feeder and fat cattle prices. Logically, with corn at present prices, the spread should not be less than \$1.50.

Asked the usual questions concerning prospective supplies of fat, heavy cattle for the near future, both gentlemen agreed that feeders in their sections of country were not disposed to finish cattle under present conditions of corn and fat cattle prices.

PACKERS' HOG PURCHASERS.

Packers' Hog Purchasers.	
Name	Quantity
Swift and Company	3,475
Hammond Packing Co.	1,354
Nelson Morris & Co.	1,087
Totals	5,916

RANGE OF PRICES.

Range of Prices.					
Monday	Tuesday	Wednesday	Thursday	Friday	Saturday
\$4.55	\$4.80	\$4.67	\$4.97	\$4.87	\$4.80

AVERAGE COST.

Average Cost.			
Jan. 27	Jan. 28	Jan. 29	Jan. 30
\$4.77	\$4.87	\$4.79	\$4.79

OTHER LIVE STOCK MARKETS.

CHICAGO, Union Stock Yards, Ill., Feb. 3.—Special to The Journal: The Drovers' Journal reports: Cattle—Receipts, 3,500. Market for steers steady to 10c higher. Hog—Receipts, 24,000. Market steady to shade higher; top, \$4.92; bulk \$4.70@4.85. Estimated for tomorrow, 22,000. Sheep—Receipts, 4,000. Market steady.

KANSAS CITY, Mo., Feb. 3.—Special to The Journal: The Drovers' Telegram reports: Cattle—Receipts, 1,500. Trains late. Market slow, mostly steady. Hog—Receipts, 6,500. Market 5c higher; top, \$5.05; bulk \$4.70@4.92. Sheep—Receipts, 3,400. Market 5c@10c higher; top, \$7.35.

SOUTH OMAHA, Neb., Feb. 3.—Special to The Journal: The Drovers' Journal-Stockman reports: Cattle—Receipts, 1,400. Market steady. Hog—Receipts, 4,700. Market 5c higher; top, \$4.82; bulk \$4.70@4.75. Sheep—Receipts, 800. Market steady.

EAST ST. LOUIS, National Stock Yards, Ill., Feb. 3.—Special to The Journal: The National Live Stock Reporter reports: Cattle—Receipts, 1,500, including 750 Texas. Market steady; top \$4.20, natives unchanged. Hog—Receipts, 7,500. Market strong; top, \$4.65; bulk \$4.70@4.82. Sheep—Receipts, 2,500. Market strong.

C. A. LaPort, Piano Tuner, phones 1356. See this adv. So will others see yours. Try it.

PLENTY OF YOUNG CATTLE.

Deming, N. M., Feb. 3.—According to cattlemen living in southern New Mexico, the spring cattle sales will greatly exceed those of last year and heavy shipments are predicted. Although the stockmen lost a large portion of the calf crop early last year on account of the drought, they will be able to deliver plenty of one, two and three year olds to the market if the price is right.

Votes to Aid Roosevelt. Jefferson City, Mo., Feb. 3.—The state senate, which is over two-thirds democratic, adopted by unanimous vote the house resolution requesting the Missouri delegation in congress to support President Roosevelt's railroad freight rate bill.

Higgins Merciful to Old Man. Albany, N. Y., Feb. 3.—Gov. Higgins commuted to life imprisonment the death sentence of George A. Smith, of Churchville, 78 years old, who was to have died in the electric chair last night. Smith was convicted of the murder of his wife.

The Rock Island Cuts Rates. Chicago, Feb. 3.—There was another reduction in export grain rates yesterday when the Rock Island railroad filed a tariff of 14 1/2 cents per 100 pounds on corn for export from Omaha and Kansas City to Baltimore.

New York's Coroner a Briber. New York, Feb. 3.—The jury which has been considering a charge of attempted bribery against Coroner Moses J. Jackson, of this city, brought in a verdict of guilty.

Thompson Child to Save Life. St. Joseph, Mich., Feb. 3.—To save his child from death in flames Clarence Lowe threw it through a pane of glass into the street.

SKIPS AND CULLS.

WANT COMPANY OF RANGERS. Denver Record-Stockman; New Mexico cattlemen are trying to secure the passage of a law to create a company of rangers. The outlook is bad for the passage of the bill and there is talk of asking the Territorial Legislature to put a special tax upon the live stock of the territory.

FIELD NOTES.

INDIAN AGRICULTURAL COLLEGE. The Indian School Journal claims that Chillicothe is the only real agricultural college for Indians in the country. There everything is based on the farm and its kindred industries. The language, the mathematics, the geography, and everything that is taken up in the literary classes is derived from and based upon farming and stock raising, as far as possible. Students are taught to understand the value and characteristics of soil fertilizers, the selection and breeding of stock, seed, etc. They are taught to judge cattle, horses, poultry, grains, etc., for points. They are taught butter and cheese-making, how to feed, how to kill and how to select the best parts of beef and to convert them into meat.

KANSAS LAMBS ON TOP. Kansas fed western lambs again walked off with the top price yesterday, when E. E. Gill, of Rice, Cloud county, sold a bunch of 379 that averaged 79 pounds at \$7.50. This is the second big bunch of Kansas fed lambs to bring the price on the South St. Joseph market since January 1.

RENO FARMERS MEET. Reno county, Kansas, farmers' institute was in session at Hutchinson during four days of this week. The attendance was large and enthusiastic.

FROST FATAL TO PEACHES. The fatal things that the weather man always does to the peach crop about this time every year have begun to take their place as space fillers in new columns of the daily press; but the germ of the Ben Davis apple crop is still safe and serene.

YOUNG JACK WANTED. Want to buy good, big boned, black Jack, 3 or 4 years old. Address Lock Box 518, Stock Yards, South St. Joseph.

ANOTHER MONTE VISTA MAN. Talks of Possibilities of Famous San Luis Valley Country.

"We have not yet reached the ultimate of productive possibility in that San Luis valley country," said F. L. Bishop of Monte Vista, Colorado, who with his son, Charles, is stopping at the Transit house. "Lamb feeding is, of course, the great source of money making just now and owing to climate and peculiarities of soil this will continue to be the leading branch of agronomic industry. But, even this is new and crude. We don't know how many lambs we can finish for market, because profits come so easy to farmers of the valley that no attempt is made to get the utmost out of our pea fields. It is self-evident that the average run of our lamb feeders are making their money too easy. There has, as yet, been no call to test our productive capacity. Eventually we will get down to more systematic methods and larger results. We are just beginning to discover that there is a big profit in letting hogs follow lambs in our pea fields. In fact, 2-fer our orms crop has been sent on its way to the mutton blocks, we can make a crop of hogs on the fields left by the lambs—and this is clear velvet. Hog production will increase rapidly from now on and there is no finer pork grows on the American continent than that made from our pea-fed hogs."

JACK AND HORSE FOR SALE. I have a large jack and horse for sale cheap if sold at once. W. C. Rose, Faircett, Mo.

BOB M'DANIEL'S CAFE. 504 Edmond street. Our Specialty, steaks, game, fish and systems. New Tel. 888, St. Joseph, Mo.

GRISWOLD SEED CO. 188 south 10th street, Lincoln, Neb.

PERCHERON STALLIONS. Hart Bros. Osceola, Ia., start an ad in this issue of the Journal on Page 8 in which they offer an excellent lot of young stallions at prices that ought to sell them.

They offer home bred stallions at \$300 to \$800 and imported horses at \$1,000. They do their own buying and sell all horses at the barn in Osceola, thus reducing expenses and giving their customers the advantage of it. They have Percheron Belgian Draft and Shire horses. If in need of a good stallion write mentioning the Journal, but better go and see them and you will be lucked right.

LUCKHARDT HEREFORDS. We again call attention to the Luckhardt sale of Hereford bulls on page 8. He will sell nine head of coming two year old bulls, sired by Macbeth 116685. These bulls are not in high flesh, but are in good thrifty condition and weigh from 1,000 to 1,300. The five coming yearlings are sired by Armour Dignite 123006 bred by Chas. W. Armour of Kansas City and show good blood and wide make bulls that will do a man lots of good.

They will be sold 10 head of cows that have calves by side or will calve soon. These cows are closely bred to a number are sired by Vincent 4th 3312 by Vincent 2nd by Vincent a first prize winner at Chicago, and a few are sired by Floor Walker 46190 a grandson of Anxiety 4th Lord Wilton and Grove 3rd on his dam side, making him an exceptionally well bred bull.

Mr. Luckhardt will sell nine head of good big work mules, one team weighing 2,500 pounds.

Write for a list of a station or Hereford cattle arrange to attend this sale.

HOMESEEKERS' EXCURSIONS. The Chicago Great Western railway will on the first and third Tuesdays of each month, January to April inclusive, sell homeseekers' tickets at one fare plus \$2.00 for the round trip to points in Alabama, Arkansas, Arizona, Colorado, Florida, Georgia, Indian Territory, Iowa, Kansas, Kentucky, Louisiana, Mexico, Michigan, Minnesota, Mississippi, Missouri, Nebraska, Nevada, Tennessee, Texas, Utah, Virginia and Wyoming. For further information apply to M. F. Montgomery, city passenger and ticket agent, 414 Felix St., St. Joseph, Mo.

STOCK YARDS DAILY JOURNAL

415 West Illinois Ave., St. Joseph, Mo.

The St. Joseph Journal Publishing Co., Publishers.

W. E. WARRICK, Editor and Manager

Official Paper of the St. Joseph Live Stock Exchange.

Largest Outside Circulation of Any Paper Published in Buchanan County, Mo.

Entered at the Postoffice in St. Joseph, Mo., as Second Class Matter, September 4, 1897.

SUBSCRIPTION RATES:

Table with subscription rates: Daily, six months, \$4.00; Daily, three months, \$2.00; Daily, one month, \$1.00; Tri-Weekly, per year, \$2.00; Semi-Weekly, per year, \$1.50; Weekly, per year, \$1.00.

INSTRUCTIONS TO SUBSCRIBERS:

In asking a change of address please state your former position. State whether your paper is daily, tri-weekly, semi-weekly or weekly. State whether you pay for it or some live stock commission firm and if the latter the name of the firm.

Advertising Rates Furnished on Application.

Usual 25 per cent. commission allowed postmasters who are authorized to take subscriptions.

Stimulating Sweets.

A physician who has just crossed the threshold of godly life in one of the most conspicuous boxes at the recent New York horse show. The mere appearance there was a social triumph for him, says the press of that city.

COMMISSION WARMING UP

Cross-Examination of Russian Officers at Paris Developed Considerable Feeling.

SEVERELY CRITICISED BRITISH PRESS.

Capt. Clado Refused to Repeat a Phrase Used by Admiral Rojestevsky in a Private Letter—English Attorney Asked the Captain a Dilemma Question—Lient. Ellis Also Examined.

MOUNTAIN TRAILS COVERED.

Two Feet of Snow at Silverton, Col. Stops Outdoor Work—Western Kansas Stock Perishes.

WESTERN KANSAS STOCK PERISHES.

Topeka, Kan., Feb. 3.—Temperatures ranging from five to ten degrees below zero are reported from numerous Kansas towns.

30 Below at Sioux City.

Omaha, Neb., Feb. 3.—The bitter cold which has prevailed for 48 hours over Nebraska and western Iowa continues, accompanied in the southern part of Nebraska by a snowstorm.

COLDEST SPOT IN AMERICA.

Kansas City, Mo., Feb. 3.—The thermometer registered 14 below in Kansas City yesterday, the coldest since 1899, when it was 22. The coldest spot in the United States to-day was at Glendive, Mont., where 53 degrees below zero was reported.

PRESCRIBES LEAD PILLS.

Mrs. Ester Bowen Says Force Is the Only Thing That Will Bring President Castro to Terms.

WASHINGTON, FEB. 3.—

Dispatches received at the state department from the United States minister in Caracas, Mr. Bowen, indicate that the rupture with Venezuela which President

HE MAKES THREATS

Bigamist Hoch Says It's a Case of Mistaken Identity.

FORMER GERMAN NEIGHBOR SEES HIM

John Graf, of Bingen-on-the-Rhine, Declares the Man Under Arrest Had a Marriage Record in the Old Country.

NEW YORK, FEB. 3.—

Johann Hoch was arraigned in Jefferson Market court yesterday and remanded until Saturday, when requisition papers are expected to arrive from Chicago.

LEGISLATIVE NECESSARIES.

A statement of the goods held in store by the sergeant-at-arms of the United States senate shows some interesting articles one would scarcely expect to find among the necessities for running the national legislature.

YOUTHFUL DAYS RECALLED.

Washington, Feb. 2.—The senate spent much time discussing the distribution of ordinary farm and garden seeds by the agricultural department, the agricultural appropriation bill being under consideration.

THE UNUSUAL DISTINCTION OF BEING MARRIED BY HIS MOTHER

fell to the lot of an Ohio groom a few evenings ago. He is a resident of Kent and the ceremony took place on a Sunday evening in the Universalist church, of which his mother is the pastor.

ABLE ACTS OF THE GOVERNMENT.

He commended Secretary Wilson in high terms, saying that he had done more good than all of his predecessors in that office.

NO MONEY ABROAD.

Russia Will Not Allow Foreigners to Rebuild Her Navy.

TO ERECT NEW YARDS AT HOME.

Attempt Will Be Made to Create a Vast Shipbuilding Industry in the Czar's Empire—Charles M. Schwab's Mission.

ST. PETERSBURG, FEB. 3.—

The admiralty, having definitely committed itself to the policy of rebuilding and greatly increasing the size of the navy, although the detailed programme has not yet been completed, is already being besieged by foreign firms anxious to secure contracts.

CHARLES M. SCHWAB.

A single French firm has thus far obtained a contract for a large ship. Several other contracts may be awarded, but the admiralty has decided, instead of placing contracts abroad, to attract foreign capital to Russia for the erection of the new yards with the general purpose of encouraging and creating a vast shipbuilding industry at home.

WARSAW-STRIKERS COWED.

Bakers and Printers Return to Work and Soldiers Dominate Outbursts of Hatred of Czar.

WARSAW, FEB. 3.—

The authorities declare that the strike is practically ended. The smaller factories reopened to-day and the larger ones will Monday.

112 Bushels an Acre

right here in Nebraska. Lowest reported yields 60 bushels when common oats ran only 20 to 30 bushels.

RELIABLE SEED

A FINE LINE GARDEN, FIELD AND FLOWER SEEDS. Write for Catalogue, Price Lists, Etc., Mailed FREE.

CHESMORE'S SEED STORE,

838-846 So. Fourth St. ST. JOSEPH, MO.

PREVENTS BLACK LEG

Vaccination with BLACKLEG VACCINE is the best preventive of Blackleg—steeped, safest, surest. Each BLACKLEG VACCINE (for pig) is a dose and you can vaccinate in one minute with our Blackleg V. Injector.

PARKE, DAVIS & CO.

Home Offices and Laboratories: Detroit, Mich. Branches: New York, Chicago, St. Louis, Boston, Philadelphia, New Orleans, Kansas City, Indianapolis, Minneapolis, Memphis.

ATTENTION FEEDERS

The way to set your cattle in proper condition for market and the finishing touch on them with

COTTON SEED MEAL

OR Old Process Lined Oil Meal

CHARLES PURNELL, Room 209 Exchange Bldg., South St. Joseph, Mo.

HUNTER BROS. MILLING CO.

60 and 61 Gay St. ST. LOUIS, MO.

WILL BE HELD FOR MURDER.

Chicago Coroner Is Positive Now That Johann Hoch Murdered Mrs. Marie Welker-Hoch.

CHICAGO, FEB. 3.—

Indictment for murder will be asked by Coroner Hoffman against Johann Hoch, the alleged poisoner of many wives.

AGED AND DIGNIFIED SENATORS DISCUSS FREE SEED DISTRIBUTION AND DEIVE INTO THE SENTIMENTAL.

Washington, Feb. 2.—The senate spent much time discussing the distribution of ordinary farm and garden seeds by the agricultural department, the agricultural appropriation bill being under consideration.

GIFTS FOR WESTERN COLLEGES.

Worcester, Mass., Feb. 3.—Edward A. Goodnow, one of the most generous of Worcester's philanthropists, is dead here, aged 94 years.

THE LIMITED LEAVES TOPEKA

10:30 a. m., and the California Express at 1:25 p. m. daily.

OTHER TRAINS FOR CALIFORNIA.

The Limited leaves Topeka 10:30 a. m., and the California Express at 1:25 p. m. daily.

L. O. STILES, City Pass. Ag't.

6th and Edmond Sts. ST. JOSEPH, MISSOURI.

THROUGH SLEEPER

SOUTH ST. JOSEPH TO CHICAGO VIA THE ROCK ISLAND

THE ROCK ISLAND'S FAST EXPRESS FOR CHICAGO

and all points East leaves South St. Joseph Union Station Daily, 6:27 P. M. From Union Station, Up-town, 7:07 P. M.

JOHN J. GOODRICH, City Passenger Agent.

6th & Edmond Sts., ST. JOSEPH, MO.

CHICAGO GREAT WESTERN RAILWAY

"The Right Road"

TO Des Moines, St. Paul, Minneapolis, Dubuque and Chicago

Equipment Right. Service Right. Time Right. "IT'S ALL RIGHT."

City Ticket Office, 414 Felix St.

CHANGE OF TIME—FIVE TRAINS DAILY TO ST. LOUIS

Leave St. Joseph 7:20 and 9:50 a. m.; 2:50, 5:35 and 8:10 p. m.

HOT SPRINGS SPECIAL

Leaving there at 12:01 noon. Arrive in Hot Springs to Breakfast.

Through Sleepers, Diners and Chair Cars to Fort Smith, Little Rock and Hot Springs

For Tickets, Sleeping Car Berths and all Information Call at City Ticket Office, 602 Edmond Street.

BENTON QUICK, Passenger and Ticket Agent.

California Fast Mail.

The Santa Fe's new fast passenger train for California, El Paso, Mexico, and the Southwest.

Speedily and certainly—that's the way Santa Fe passengers go. They travel comfortably, though.

Free chair cars and tourist and standard sleepers on this train. 'Tis for you to say which you'll take. The time's just the same. Leaves Topeka at 10:20 p. m. daily.

Connecting train leaves here 7 p. m.

OTHER TRAINS FOR CALIFORNIA.

The Limited leaves Topeka 10:30 a. m., and the California Express at 1:25 p. m. daily.

The Express carries free chair cars and Pullman standard and tourist sleepers. Connecting train leaves here 7:30 a. m.

L. O. STILES, City Pass. Ag't.

6th and Edmond Sts. ST. JOSEPH, MISSOURI.

Advertisement for Rock Island System, Chicago Great Western Railway, and The Right Road. Includes text about through sleeper, Des Moines, St. Paul, Minneapolis, Dubuque and Chicago, and equipment, service, and time.

Advertisement for Missouri Pacific Railway, Change of Time—Five Trains Daily to St. Louis, Hot Springs Special, and Benton Quick, Passenger and Ticket Agent.

Advertisement for California Fast Mail, Santa Fe, and L. O. Stiles, City Pass. Ag't.

Advertisement for Reliable Seed, Chesmore's Seed Store, and Parke, Davis & Co. Prevents Blackleg.

POPULAR ADVERTISING

J. C. Hadenberg 413 Francis St., St. Joseph, Mo.

WHITE HOLLAND TURKEYS

W. F. Haspel, Manufacturer of Fine Harness, Saddles, Etc.

You Would Be Surprised to know how often our Central girl is asked if you have a telephone.

Belting! For the Best write to Lewis Supply Co.

UNEXCELLED SERVICE VIA FRISCO TO POINTS IN Missouri, Arkansas, Tennessee, Alabama, Mississippi, Georgia, Florida

HAMMONDS Coin Special Hams, Breakfast Bacon, Lard and Canned Meats

WEDNESDAY'S BUSINESS CATTLE. For a middle day of the week the total of cattle in sight at the five leading points was not more than moderately liberal.

DRESSED BEEF AND SHIPPING STEERS.

Table with columns: No., Av. Shk. Price, No., Av. Shk. Price. Lists various beef and steer prices.

COWS, BULLS AND MIXED.

The proportion of she stock compared with steers in the receipts of today was again very moderate.

HEIFERS.

Table with columns: No., Av. Shk. Price, No., Av. Shk. Price. Lists heifer prices.

COWS.

Table with columns: No., Av. Shk. Price, No., Av. Shk. Price. Lists cow prices.

BULLS AND STAGS.

Table with columns: No., Av. Shk. Price, No., Av. Shk. Price. Lists bull and stag prices.

VEAL CALVES.

Table with columns: No., Av. Shk. Price, No., Av. Shk. Price. Lists veal calf prices.

STOCKERS AND FEEDERS.

Buyers, both local and outside, were still scouting the yards in search of good weaning feeders.

FEEDING BULLS AND STAGS.

Table with columns: No., Av. Shk. Price, No., Av. Shk. Price. Lists feeding bull and stag prices.

FEEDING COWS AND STOCK HEIFERS.

Table with columns: No., Av. Shk. Price, No., Av. Shk. Price. Lists feeding cow and stock heifer prices.

FEEDING BULLS AND STAGS.

Table with columns: No., Av. Shk. Price, No., Av. Shk. Price. Lists feeding bull and stag prices.

FEEDING COWS AND STOCK HEIFERS.

Table with columns: No., Av. Shk. Price, No., Av. Shk. Price. Lists feeding cow and stock heifer prices.

FEEDING BULLS AND STAGS.

Table with columns: No., Av. Shk. Price, No., Av. Shk. Price. Lists feeding bull and stag prices.

FEEDING COWS AND STOCK HEIFERS.

Table with columns: No., Av. Shk. Price, No., Av. Shk. Price. Lists feeding cow and stock heifer prices.

FEEDING BULLS AND STAGS.

Table with columns: No., Av. Shk. Price, No., Av. Shk. Price. Lists feeding bull and stag prices.

clearance was made. Pigs failed to put in an appearance.

Prices ranged from \$4.47 to \$4.90, with the bulk selling at \$4.70 to \$4.85.

The average cost was \$4.79%, as compared with \$4.73% yesterday.

PIGS AND LIGHTS—199 LBS. AND UNDER.

Table with columns: No., Av. Shk. Price, No., Av. Shk. Price. Lists pig and light prices.

HEAVY AND MIXED—200 LBS. AND OVER.

Table with columns: No., Av. Shk. Price, No., Av. Shk. Price. Lists heavy and mixed prices.

STOCKERS AND FEEDERS.

Weather was too cold for much trade in this line and conditions remain the same as on former days of the week.

NO PRIME QUALITY LAMBS HERE EARLY.

Mar. or Was Steady. In the sheep and lamb line the receipts were light here and moderate in total for five points.

Offerings here were largely made up of Colorado fed stock but lambs were not as good in quality as yesterday.

THURSDAY'S BUSINESS CATTLE.

The coldest weather of the winter prevailed last night and today, seriously delaying the arrival of stock trains.

Receipts of cattle were reported very moderate all around, the total at five points being about 21,000, with less than 2,000 head credited to the local yards.

With temperature hovering around 15 degrees below zero and nothing of an urgent character in immediate wants of the beef trade.

PIGS AND LIGHTS—199 LBS. AND UNDER.

Table with columns: No., Av. Shk. Price, No., Av. Shk. Price. Lists pig and light prices.

HEAVY AND MIXED—200 LBS. AND OVER.

Table with columns: No., Av. Shk. Price, No., Av. Shk. Price. Lists heavy and mixed prices.

STOCKERS AND FEEDERS.

Buyers, both local and outside, were still scouting the yards in search of good weaning feeders.

FEEDING BULLS AND STAGS.

Table with columns: No., Av. Shk. Price, No., Av. Shk. Price. Lists feeding bull and stag prices.

FEEDING COWS AND STOCK HEIFERS.

Table with columns: No., Av. Shk. Price, No., Av. Shk. Price. Lists feeding cow and stock heifer prices.

FEEDING BULLS AND STAGS.

Table with columns: No., Av. Shk. Price, No., Av. Shk. Price. Lists feeding bull and stag prices.

FEEDING COWS AND STOCK HEIFERS.

Table with columns: No., Av. Shk. Price, No., Av. Shk. Price. Lists feeding cow and stock heifer prices.

FEEDING BULLS AND STAGS.

Table with columns: No., Av. Shk. Price, No., Av. Shk. Price. Lists feeding bull and stag prices.

FEEDING COWS AND STOCK HEIFERS.

Table with columns: No., Av. Shk. Price, No., Av. Shk. Price. Lists feeding cow and stock heifer prices.

STOCKERS AND FEEDERS.

Weather was too cold for much trade in this line and conditions remain the same as on former days of the week.

NO PRIME QUALITY LAMBS HERE EARLY.

Mar. or Was Steady. In the sheep and lamb line the receipts were light here and moderate in total for five points.

Offerings here were largely made up of Colorado fed stock but lambs were not as good in quality as yesterday.

THURSDAY'S BUSINESS CATTLE.

The coldest weather of the winter prevailed last night and today, seriously delaying the arrival of stock trains.

Receipts of cattle were reported very moderate all around, the total at five points being about 21,000, with less than 2,000 head credited to the local yards.

PIGS AND LIGHTS—199 LBS. AND UNDER.

Table with columns: No., Av. Shk. Price, No., Av. Shk. Price. Lists pig and light prices.

HEAVY AND MIXED—200 LBS. AND OVER.

Table with columns: No., Av. Shk. Price, No., Av. Shk. Price. Lists heavy and mixed prices.

STOCKERS AND FEEDERS.

Buyers, both local and outside, were still scouting the yards in search of good weaning feeders.

FEEDING BULLS AND STAGS.

Table with columns: No., Av. Shk. Price, No., Av. Shk. Price. Lists feeding bull and stag prices.

FEEDING COWS AND STOCK HEIFERS.

Table with columns: No., Av. Shk. Price, No., Av. Shk. Price. Lists feeding cow and stock heifer prices.

FEEDING BULLS AND STAGS.

Table with columns: No., Av. Shk. Price, No., Av. Shk. Price. Lists feeding bull and stag prices.

FEEDING COWS AND STOCK HEIFERS.

Table with columns: No., Av. Shk. Price, No., Av. Shk. Price. Lists feeding cow and stock heifer prices.

FEEDING BULLS AND STAGS.

Table with columns: No., Av. Shk. Price, No., Av. Shk. Price. Lists feeding bull and stag prices.

FEEDING COWS AND STOCK HEIFERS.

Table with columns: No., Av. Shk. Price, No., Av. Shk. Price. Lists feeding cow and stock heifer prices.

FEEDING BULLS AND STAGS.

Table with columns: No., Av. Shk. Price, No., Av. Shk. Price. Lists feeding bull and stag prices.

FEEDING COWS AND STOCK HEIFERS.

Table with columns: No., Av. Shk. Price, No., Av. Shk. Price. Lists feeding cow and stock heifer prices.

FEEDING BULLS AND STAGS.

Table with columns: No., Av. Shk. Price, No., Av. Shk. Price. Lists feeding bull and stag prices.

FEEDING COWS AND STOCK HEIFERS.

Table with columns: No., Av. Shk. Price, No., Av. Shk. Price. Lists feeding cow and stock heifer prices.

ad to arrive on a late train. Prices are now on the highest level of the winter at this market.

2 nat lbs. 100. 7 50, 270 fed west lbs. 79. 7 50, 100 fed west lbs. 89. 7 50, 90 fed west lbs. 77. 7 50, 552 fed west lbs. 74. 7 50, 200 fed west lbs. 68. 7 50, 233 fed west lbs. 65. 7 50, 60 native lambs. 70. 6 00, 1 fed west y. 90. 6 25, 90 fed west lbs. culls. 71. 6 00, 222 fed west y. with. 64. 5 85, 30 fed west lbs. culls. 66. 5 75, 35 nat lambs. 70. 5 75, 35 nat lambs culls. 60. 5 75, 19 fed west e and y. with. 81. 5 50, 100 fed west lbs. culls. 51. 5 50, 60 fed west weath feeders. 85. 5 00, 1 fed west ewe. 80. 4 50, 1 nat buck. 180. 4 00

MANUEL LISA'S ROMANCE.

Once Noted St. Louis Fur Trader's Indian Marriage Recalled by His Daughter's Death.

Trouton, Ill.—Mrs. Rosalie Ely, aged over 90 years, is dead at her home here. She was the oldest daughter of Manuel Lisa, who was prominently connected with the early history of St. Louis from 1812 to 1815.

ART GARLAND

Base Burners, the World's Best \$32.50 to \$60.

Peninsular Base Burners Warranted the Best \$20 to \$40.

Garland Oak Soft Coal Heaters From \$19 to \$28.

Round Oak Soft Coal Heaters, \$18 to \$22.

Air Tight Wood Heaters 75c Up.

PARRISH-ERICKSON HARDWARE CO.

Advertisement for Parrish-Erickson Hardware Co. featuring a large image of a stove or heater.

WHEN WRITING ADVERTISERS PLEASE MENTION THE JOURNAL.

Scourge of Beriberi. This disease, peculiar to rice-eating people, was the enemy of the military army in the war with China.

Unsurpassed for Grandeur. The finest cliff scenery in the United Kingdom is on the coast of Donegal, in Ireland.

Direct Line to Hiawatha, Seneca, Marysville, Kan.; Fairbury, Hastings and Grand Island, Neb.

Quick Time to California and the Pacific Northwest.

C. T. HUMMER, Board Trade Bldg., Room 29.

Big Renovating Sale! SUITS, CLOAKS AND FURS HALF PRICE. Hirsch Bros Dry Goods Co.

Advertisement for Parrish-Erickson Hardware Co. featuring a large image of a stove or heater.

ST. JOSEPH Stock Yards Company. We are in the Market Every Day for Cattle, Hogs and Sheep.

WHEN WRITING ADVERTISERS PLEASE MENTION THE JOURNAL. GRAND ISLAND ROUTE! Short Line Between St. Joseph and Kansas City.

H. EHRlich AND SONS

206-208 South Fourth St.

The "Victor"

Talking Machine



We carry the largest variety of Talking Machines in the city, at Prices and terms to suit.



"Victor" Machines FROM \$15 UP On Easy Payments.

H. Ehrlich and Sons, 206-208 South Fourth Street.

Stockmen and Others visiting the St. Joseph markets are cordially invited to come up town and make the acquaintance of

ST. JOSEPH'S BIGGEST AND BEST STORE

IF YOU WISH TO SELECT A DRESS PATTERN, A WRAP, A Pair of Shoes, or anything else for the folks at home, our assortments, new styles and low prices, will afford you every advantage and assurance of getting the correct thing at the right price.

Townsend & Wyatt DRY GOODS COMPANY. 5th and Felix Sts., St. Joseph, Mo.

Kansas City Southern Ry.

Special Excursions to Southwest Feb. 7 and 21, and March 7 and 21, 1905. ROUND TRIP \$15.00 RATE FROM St. Joseph, Kansas City, Atchison, Leavenworth, Topeka...

NELSON MORRIS & CO.

St. Joseph Stock Yards, South St. Joseph, Mo. SHIPPERS OF Dressed Beef MUTTON, PORK AND PROVISION DEALERS.

SHAMROCK WHISKEY Is Distilled for Medicinal Purposes From Rye and Barley Malt.

NOT SO MUCH FRAUD

Witnesses in Colorado Contest Knock Props from Under "Experts."

NEARLY ALL BALLOTS "REGULAR," Reputable Citizens of Both Parties Identify Tickets They Had Voted but Which Had Been Marked "Fraudulent" by Agents.

Denver, Col., Feb. 3.—One of the mysteries of the alleged ballot box stuffing at the election last November was cleared away by a witness in the Peabody-Adams gubernatorial contest before the joint legislative committee yesterday.

Most of the witnesses examined yesterday were foreign-born persons residing in Elyria, a suburb of this city, whose ballots had been declared by the Peabody experts to be fraudulent.

The unscalers of ballots reported on a number of ballots which the experts had testified were written by the same hand.

INDIANS AT INAUGURATION. Six Famous Chiefs Will Go to Washington March 4 and Ride Ponies in the Parade.

Washington, Feb. 2.—The inaugural committee appropriated \$2,000, or as much thereof as may be necessary, to pay the expenses of six Indians to come here to participate in President



Roosevelt's inaugural parade. They are: Geronimo, the old Apache chief now in Fort Sill, Ok.; Quannah Parker, a Comanche of Anadarko, Ok.; Buckskin Charlie, a Ute of Durango, Col.; Little Plume, a Piegan, or Blackfoot, of Browning, Mont.; American Horse, a Cheyenne of Rushville, Neb.; and Hollow Horn Bear, a Sioux of Valentine, Neb.

Taft Urges Philippine Relief. Washington, Feb. 3.—Secretary Taft has addressed to Chairman Payne, of the house committee on ways and means, an exhaustive statement of the reasons which impel him to urge earnestly on congress the passage during the present session of the pending Philippine tariff bill.

River Dam at Keokuk. Washington, Feb. 3.—The senate has authorized the Keokuk & Hamilton Water company to construct a dam across the Mississippi river from Keokuk, Ia., to Hamilton, Ill.

Strike Has Spread to Batoum. Batoum, Caucasus, Feb. 3.—The strike which started here Wednesday is becoming general.

Mrs. Rogers Reprieved. Waterbury, Vt., Feb. 3.—Mrs. Mary Rogers, who was to have been hanged Friday for the murder of her husband, has been reprieved until June.

East Catching It Now. Pittsburg, Pa., Feb. 3.—The thermometer registered 2 degrees above zero Thursday, a drop of 22 degrees in 24 hours.

California Cedes Yosemite Valley. Sacramento, Cal., Feb. 3.—By a vote of 45 to 10 the assembly passed a bill receding the Yosemite valley to the general government.

TO PLACE TABLETS IN CUBA.

Gen. Young and Col. Webb Hayes Will Mark Principal Battlefields of Spanish-American War.

Washington, Feb. 3.—S. M. B. Young and Webb Hayes will start for Cuba in a few days accompanied by Col. Arthur L. Warner, to mark the principal points where fighting occurred between the Americans and Spaniards.

Gotch Is Champion Wrestler. Cleveland, O., Feb. 3.—Frank Gotch, of Humboldt, Ia., last night successfully defended his title to champion of the United States in a wrestling match with Tom Jenkins, of Cleveland.

WANTED.—Well stocked ranch and outfit. Nebraska, Kansas or Colorado preferred. Address, Box 81, Independence, Iowa.

51 IMPORTED and Home Bred English Shire, Percheron and Belgian draft stallions for sale. Age from 2 to 7 years.

NOTICE! To the Public in General and Stockmen in Particular. Parties calling a first-class, well-bred Meat, Steaks, Chop or Pork will find the same at

12 JACKS 12 For sale 2 to 6 years old, with white pants, massive jaws and deep range.

WILSON GUSTIN, Egerton, Mo. I will sell at my farm 5 miles southeast of Tarkio, Mo.,

STOCK SALE Thursday, Feb. 9, 1905. I have the following stock: 2 registered Hereford bulls, coming 2-year old, all bull or brood.

Wanted to Buy Horses, Mares and Mules from 4 to 8 years old. Stock must be fat and broken to work.

When Writing to Advertisers Please Mention The Journal.

Four Days Sale Circuit of Duroc-Jersey Brood Sows

WATSON BROS. FEB. 15. WATSON BROS. open the circuit February 15, 1905, by selling 50 head, consisting of 17 aged sows, 3 fall yearlings and 30 head of gilts, mostly sired by the Great Bear, PREDOMINATOR, and bred to BAUNTY TRACY, by BRILLIANT; PATCHEN BOY, by PERFECTION WONDER, and WATSON EARL, by TOM WATSON, by TOP NOTCHER, CHOICE GOODS and GOBBY LORD.

GEO. ESTES & SON, FEB. 16. GEO. ESTES & SON sell on February 16, in pavilion on farm, the blood of old BRILLIANT, 60 head of sows, including 30 aged sows, the remainder gilts. These sows are bred to ALIX ADVANCE, by PROUD ADVANCE, and out of ALIX, the 1875.00 daughter of ORION, BRILLIANT, the great show and breeding boar; PARNELL BANNER, by TOM WATSON, by TOP NOTCHER and our former herd boar, FAIRVIEW CHIEF.

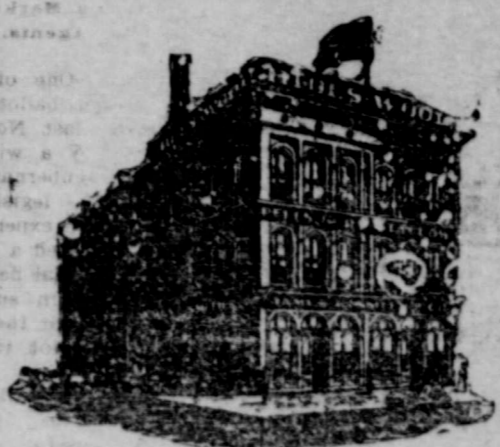
G. R. MANIFOLD, FEB. 17. MANIFOLD sells sows on February 17, 1905. Thirty-five head of good business sows, including some Toppers. He has in this sale the direct descendants of such sires as ORION, TOP NOTCHER, MISSOURI WONDER, AMERICAN ROYAL, and one daughter of the great sow GENEVIEVE.

PROUD ADVANCE STOCK CO.'S BRED SOW SALE FEBRUARY 18, 1905. To be held at the Shannon farm, Shannon City, Iowa, H. C. SHELDON, Manager.

SHAMROCK WHISKEY Is Distilled for Medicinal Purposes From Rye and Barley Malt. Age, ten years. No fuel oil, no drugs. Price, \$1 per quart; \$10 per doz.; \$1 per half dozen quart bottles, or \$1 per gal. Freight paid in any railroad station on receipt of price, or will ship C. O. D. Write for complete price list. Business record 23 years. Reference, National Bank of St. Joseph.

JAMES C. SMITH & CO.

Hides, Wool, Tallow, Furs, Pelts. Second and Edmond Sts., St. Joseph, Mo. Bell Telephone 995.



The hide market is decidedly weaker than last week, and in fact is 1-4c lower in Chicago and eastern markets. We will give you one more chance at our gc market, and will leave prices same for another week.

SPECIAL--We Will Make Our Prices 9c for This Week. Free Weekly Prices Furnished. We charge no commission. Shipping Tags Free to Shippers.

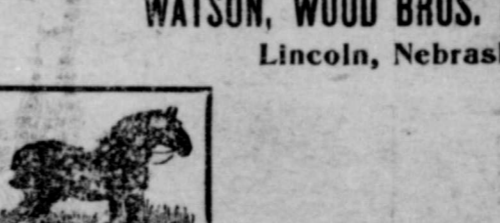
GREEN HIDES table with columns for No. 1 Large, No. 2, No. 3, No. 4, No. 5, No. 6, No. 7, No. 8, No. 9, No. 10, No. 11, No. 12, No. 13, No. 14, No. 15, No. 16, No. 17, No. 18, No. 19, No. 20.

FURS! table with columns for Mink, Opossum, Otter, Raccoon, Skunk, Wolf timber, Wolf prairie, Beaver, Muskrat.



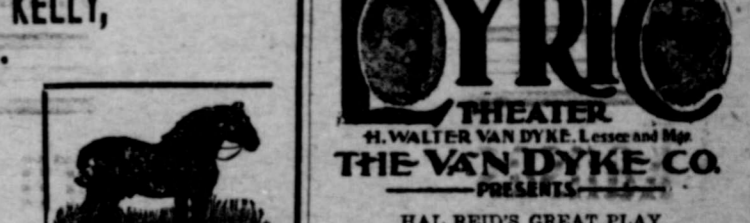
Percheron and Shire Stallions!

When you go to buy a horse stop at Lincoln, Nebraska, and see WATSON, WOOD BROS. & KELLY'S PERCHERONS AND SHIRES



Opheum

Extra! - OPENED - Extra! Sunday Evening, Jan. 29 WOODWARD STOCK CO. Direct From the Auditorium in Kansas City.



LOYRIO THEATER

THE VAN DYKE CO. PRESENTS HAL REID'S GREAT PLAY "Knobs o' Tennessee"

M'Connell Sisters Souvenir Wednesday Matinee Amateur Contest Friday Night Always the Peoples' Popular Play House.

IOWA BANNER HERD, Established 1890. Are now offering a few choice Boars for Sale. Brood Sow Sale, March 30, 1905

When Writing to Advertisers Please Mention The Journal.