

## PAGE ONE

A QUICK READ OF THE NEWS

### Man throws own funeral

Bill Robert of Madison, Wis., was determined to see his own funeral — so he threw it himself.

The 89-year-old Robert marched ahead of his coffin and six pallbearers during a mock funeral procession Sunday that he called his contribution to friends, relatives and Dixieland jazz.

He invited hundreds of people to the city's convention center, saying they no longer need to have a funeral when he really dies.

"I know so many people and I've lived such a good life in Madison, I thought it was payback time," Robert said.

His friend, jazz singer Ginny O'Brien, said she inadvertently gave him the idea when she was asked to sing at the funeral of a jazz fan last year and commented on how sad it was the deceased couldn't hear the music.

### A narrow escape — almost

Tammy Sellers managed to squeeze through one small space and out of a Fort Worth police car, but she still finds herself in a tight spot — jail.

The 5-foot-9 woman slipped through a 1.5-by-1-foot window in a Plexiglass wall dividing the front and rear seats of a patrol car and drove off with the vehicle, leading Fort Worth police on an hour long chase Sunday.

Officer Allen Speed had pulled over Sellers, a known car thief, after he saw her driving a car with temporary Oklahoma license plates and became suspicious. Speed didn't arrest Sellers, but put her in the back seat of his cruiser without handcuffs.

While Speed checked out the car, the 120-pound Sellers managed to slink through the small window and into the driver's seat. That's when the chase began. Sellers finally stopped the car about six miles away in Saginaw. She was arrested and charged with theft of a police car and fleeing authorities.



**Drawing date:** Saturday, May 20  
**Winning numbers:** 8-9-21-28-29-30  
**Estimated jackpot:** \$4 million  
**Winners:** 0  
**Next drawing:** Wednesday, May 24  
**Estimated jackpot:** \$4 million

### On this date in history

**May 26** — The United States and Mexico exchange 2,340 acres of borderland in Texas and two Mexican states to make the Rio Grande the undisputed international border from El Paso to the Gulf of Mexico (1977)

**May 28** — The Santa Rita gusher comes in, providing resources for the establishment of the Permanent University Fund to endow both the University of Texas and Texas A&M University (1923).

### LOCAL WEATHER

There should be a possibility of thunderstorms early Thursday, redeveloping in the late afternoon and possibly continuing into Friday. Daily high temperatures should range from the mid-80s to near 90 for the rest of the week, with morning lows mostly in the high 50s. By Sunday, skies should be clear again.

Editor Ronn Smith can be reached at 272-4536 or ctyankee@fivearea.com

**Missed your paper?** Call carrier Melissa Flores at 272-6719 or the Journal during business hours, 8:30 a.m.-5 p.m.

## Hospital district proceeding on nursing home

By **RONN SMITH**  
Editor

After a few years of moving at a snail's pace toward the construction of a new nursing home in Muleshoe, things will be moving

rapidly for the Muleshoe Area Hospital District in the next several weeks.

District administrator Jim Bone said Monday that if everything goes smoothly between now and then,

groundbreaking for the new facility could happen as soon as early July, with the district scheduled to receive its funds by July 20.

Considerable money — estimates run from \$30,000 to \$40,000

will be saved on the project because local and area banks have agreed to buy the entire bond issue, cutting out a middle-man fee.

see **PROJECT** on page 2

## Administrator search enters home stretch

JOURNAL STAFF REPORT

The Muleshoe School Board was meeting in closed session at deadline time late Tuesday to consider the applications received to replace David Hutton as superintendent.

At the board's regular session Monday, members voted:

- To proceed with expanding the girls' athletic dressing-room facilities and carve a small coach's office out of existing space as well. The board approved a budget amendment to cover the cost, estimated at \$30,000;

- To continue the district's membership in the Texas Purchasing Consortium (a food-buying group), substituting business manager Tracy Ray's name for that of Jo Mayhugh, who

see **SCHOOLS** on page 2



Journal photo: Beatrice Morin

### Statue dedicated

Muleshoe High School seniors Lela Hancock (left) and Christi Adrian show off "Bustin' Loose," the kicking mule statue that the two of them presented to the school Tuesday on behalf of the class of 2000. About 100 students and community members attended the dedication. Hancock thanked several people who had helped the pair create the artwork. "We had seen statues at other schools, and we just decided we wanted to do this," Adrian said later.

## Study says subsidies go mainly to few privileged farmers

SPECIAL TO THE JOURNAL

WASHINGTON — Big farms are hogging federal subsidies that should be targeted to smaller producers, an environmental group says.

More than 60 percent of almost \$23 billion in federal farm subsidies went to just 10 percent of the subsidy recipients from 1996 to 1998, according to an analysis of Agriculture Department records by the Environmental Working Group.

The 144,000 farmers and landowners in that top 10 percent received \$13.8 billion in subsidies between 1996 and 1998, an average of \$95,875 each. The average payment for the remaining 90 percent was \$6,941.

"Surely we can do better by taxpayers and farmers than to funnel so much money to so few farmers without even bothering to find out if they need it," said Clark Williams-Derry, who conducted the study.

Payments were especially concentrated among large farms in southern states. In Mississippi, 10 percent of the recipients, some 1,985 people in all, received 83 percent of the farm subsidies, an average of \$217,000 each over the three years. The average payment for the other 90 percent of recipients in the state was \$4,908.

Twenty farms in Mississippi got at least \$1 million each. In Arkansas, one recipient collected \$7 million over the three years, while another got \$5.6 million.

The study analyzed 30 million records for payments totaling \$22.9 billion over the three-year period. They include "market transition" payments capped at \$40,000 per farmer or landowner during the period that was studied and commodity price supports for grain and cotton that were limited to \$75,000 per recipient.

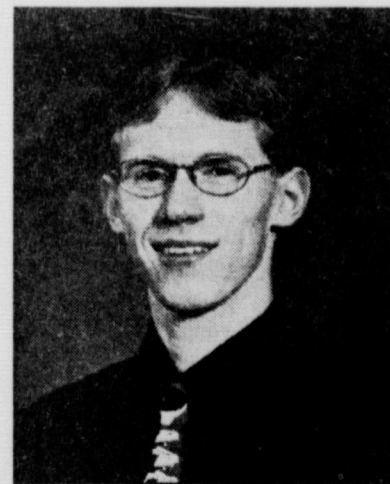
Last year, Congress doubled those payment caps to \$80,000 and \$150,000 respectively. Then in February, Agriculture Secretary Dan Glickman effectively abolished the \$150,000 limit by implementing a program authorized by Congress to allow farmers to take payments in certificates redeemable for government-held commodities. Glickman later warned that the program could become an embarrassment for farmers.

## Graduations scheduled for this weekend

Both Muleshoe and Lazbuddie high school commencement ceremonies are scheduled for this weekend, Muleshoe's at 7 p.m. Friday in the Bailey County Civic Center and Lazbuddie's at 8 p.m. Saturday in the school auditorium.

Among the featured speakers will be the respective schools' two top-ranked students, Leonard Joyner (valedictorian) and Kamal Bhakta (salutatorian) at Muleshoe and Leah Turner (valedictorian) and Amy Angely (salutatorian) at Lazbuddie.

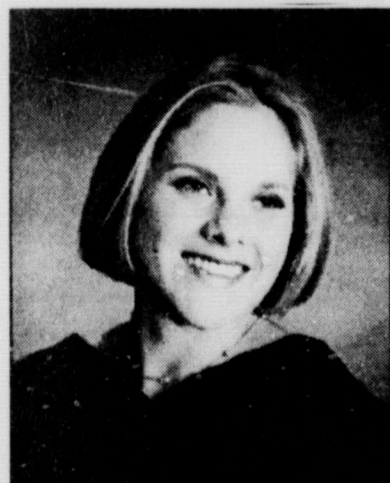
The public is invited to both events.



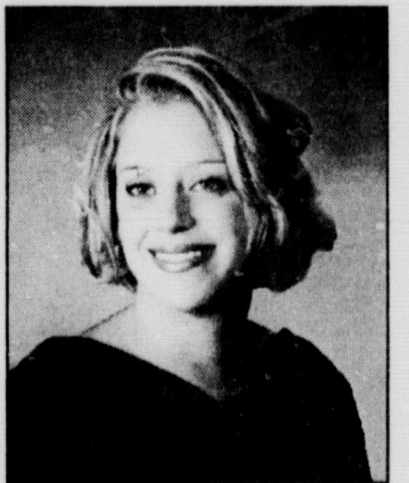
**LEONARD JOYNER**  
Muleshoe valedictorian



**KAMAL BHAKTA**  
Muleshoe salutatorian



**LEAH TURNER**  
Lazbuddie valedictorian



**AMY ANGELY**  
Lazbuddie salutatorian



Journal photo: Beatrice Morin

### Field signs to play

High school principal Dave Jenkins congratulates Lindsey Field upon her signing a letter of intent to play basketball at Clarendon College. Also shown with Field are Terry Field, her father, Denise Reed, her future basketball coach; and Charlotte Field, her mother.

## AROUND MULESHOE

### Rabies alert reaches area

Muleshoe Animal Clinic has announced a series of rabies clinics scheduled over the area, beginning with May 30 in Lazbuddie.

The initial clinic is scheduled for 4 p.m. to 6 p.m. in the Lazbuddie schools' agriculture building. More information is available by calling Jayna at 965-2988.

The second clinic is to be held in Muleshoe from 4 p.m. to 6 p.m. June 13 at the old fire station. More information is available by calling 272-3061.

June 22 from 4 p.m. to 6 p.m. is the time of a clinic at the Olton Fire Station. More information is available by calling Leroy at (806) 285-2888.

Reports of a rabies case originating in northwest Muleshoe could not be confirmed Tuesday night.

### Students' career portfolios exhibited

Business and marketing students from Muleshoe High School exhibited their career portfolios in the school library May 9.

The portfolio project was funded through a grant from South Plains College Tech Prep/School-to-Careers.

The project allowed each student to compile a collection of career-oriented documents including a biographical sketch, résumé or personal data sheet, a sample job application form, work samples, reference letters and others.

The participants are students in April Smith's business computer information systems classes and Lola Pylant's marketing dynamics and marketing management.

### Reunion invitations mailed

Invitations to the July 3 Muleshoe ex-students' reunion have been mailed, and organizers stress that anyone who attended Muleshoe schools between 1926 and 1975 but does not receive the invitation is not on the ex-students mailing list or is listed with an incorrect address.

Anyone falling into that category is asked to notify the MHS Ex-Student Association, ATTN: Secretary, P.O. Box 100, Muleshoe 79347. Organizers need a pre-registration form from everyone planning to attend in order to prepare properly.

### Tournament to benefit Kim Puckett

A softball tournament to benefit Kim Puckett is scheduled for June 2-4 at the Muleshoe softball park.

Entry fee is \$120 per team and the tournament is open to Lower

## Experts: Beef market still looking healthy

SPECIAL TO THE JOURNAL COLLEGE STATION — A beef economist with the Texas Agricultural Extension Service told producers at the recent Brazos Valley Cattlemen's Clinic that strong beef prices are likely to continue over the next three years.

Ernie Davis told the 140 participants in the audience, "Can you ever remember when it (the beef market) was better? Probably not since 1991 for most of you. And it's probably going to beat that. I'll give you a little hint as to how long it's going to last: If we save heifers, it's going to be two more years before they have calves, so that kind of gives you some kind of idea."

Davis highlighted some of the current factors affecting the

beef cattle market, which included cheap feed grain supplies, beef cow liquidation and domestic demand for beef.

Davis said cheap feed-grain prices are helping maintain a high-priced calf market, which has been good news to the cow-calf producer. And beef demand is also helping to spike pricing, he said.

"Primarily, ready-to-cook products has been helping the market," Davis said.

"The retail chains finally woke up and saw that the fast-food chains were taking away from our market," he said.

"The retailers have started using cheaper cuts, the rounds and the chucks, and started making them more tender and juicy. This process is going to save us," he added.

Class D and Class E teams. Entry deadline is May 30.

Proceeds will go to the Puckett family to help defer expenses related to her treatment for leukemia.

Awards will include first, second, third and fourth team trophies, Golden Glove and most valuable player.

A raffle for a Mizuno bag will be held during the tournament. More information is available by calling Richard Orozco at 272-3576 after 6 p.m.

### Memorial Day observance set

The Memorial Day ceremony at the Bailey County Cemetery is scheduled for May 29, with the Rev. Stacy Conner of First Baptist Church to speak at 10 a.m.

The flag ceremony will be performed by Muleshoe Boy Scouts under the direction of Dr. Bruce Purdy.

The public is invited.

### Blood drive to benefit Dr. Lewis

United Blood Services of Lubbock has announced a blood drive to benefit Charles G. Lewis of Muleshoe.

The drive is scheduled for 10 a.m. to 7 p.m. May 25 at the First Baptist Church, 220 W. Avenue E.

Lewis recently was diagnosed with multiple myeloma. He had blood transfusions while being treated at Covenant Hospital in Lubbock and is undergoing chemotherapy now.

Jody Lewis, a community relations representative for United Blood Services, said that of Muleshoe's 4,000 people, an average of only 50 donate blood at the community blood drives.

All donors in the May 25 drive will receive a complimentary thank-you gift, she said.

### Correction

A photo caption on Page 8 of Sunday's *Journal* identified members of the Muleshoe High School FHA chapter as belonging to FFA.

The *Journal* regrets the error.

### PROJECT

from page 1

The immediate step (about mid-June) for the board, Bone said, will be to adopt a resolution authorizing the issuance of the bonds and sign the construction contract.

Although construction has been delayed for several months, Bone said the contractor has polled the subcontractors and the bidders are expecting to stay within 1 percent of their original bids.

The difference is "a whole lot less than I expected it to be," Bone said.

This means the district will not have to start from scratch and seek new bids on the work.

The bond issue is expected to have a face value of \$3.225 million. Right now, the interest rate would be 6.33 percent.

The district is applying to Moody's for a bond rating, and the higher the rating, the lower the interest rate that will be required.

In other business at last Thursday's board meeting, members:

- Presented Victor Leal with an appreciation plaque for serving since 1994 and welcomed Paul Wilbanks as Leal's replacement; and

- Agreed to a lease-purchase agreement on a \$15,000 state-of-the-art anesthesia monitor. The "free-market-value" lease, as Bone explained it, will cost \$670 a month for 24 months.

### SCHOOLS

from page 1

retired last winter;

- Heard a report from High School Principal Dave Jenkins that members of the class of 1950 plan to attend this year's commencement ceremony to present a token of esteem to the school.

(This class was the first to attend classes in the current high school and the first to be Mules rather than Yellowjackets.)

- Were informed by Jenkins that members of the class of 2000 plan a unique tribute to their parents during the commencement program.

- Replaced Nick Bamert with David Tipps as the district's representative to the appraisal board and replaced Bamert with Sergio Leal as a member of the finance committee; and

- Were informed by Hutton that board members will be honored at a convocation beginning at 8:30 a.m. Friday.

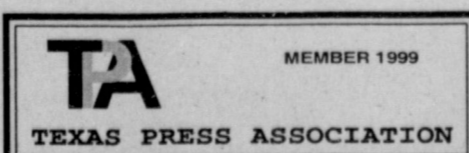
**Muleshoe Journal** USPS 367820  
Established February 23, 1924. Published by Triple S Publishing, Inc. Every Thursday at 304 W. Second. Box 449, Muleshoe, TX 79347.

Second Class Postage paid at Muleshoe, TX.  
 POSTMASTER: Send address changes to the Bailey County Journal, P.O. Box 449, Muleshoe, TX 79347.

We are qualified members of:  
 Panhandle Press Association, National Newspaper Association,  
 West Texas Press Association and Texas Press Association

WEST TEXAS PRESS ASSOCIATION

PPA Panhandle Press Association



**MEMBER 1999**

**TEXAS PRESS ASSOCIATION**

Scot Stinnett, Publisher  
 Lisa Stinnett, Vice-President/Comptroller  
 Ronn Smith, Editor  
 Andrea Kemp, Classifieds  
 Leah Bell, Advertising

© 1990

SUBSCRIPTIONS: Muleshoe Journal and Bailey County Journal  
 By Carrier Yearly - \$22.00  
 Bailey County — by mail - \$24.00  
 Elsewhere - \$26.00  
 Advertising Rate Cards on Application

\*Advertisers should check their ad the first day of insertion. The Journals will not be liable for failure to publish an ad or for a typographical error or errors in publications except to the extent of the cost of the ad for the first day of insertion. Adjustment for errors will be limited to the cost of that portion of the ad where the error occurred.\*

Sanctioned by the Professional Rodeo Cowboys Association

**30<sup>th</sup> Anniversary Celebration!**

## Pioneer Days

# RODEO

**Curry County Mounted Patrol Arena  
Clovis, NM**

**Featuring World Famous Rodeo Personalities!**

**★ Announcer ★**  
Boyd Polhamus  
NFR Co-Announcer

**★ Specialty Acts ★**  
Trick Riding  
Cowboy Gone Wild & Darling Dare Devils

**★ Stock Contractor ★**  
Mike Cervi

**Rodeo June 1-3**  
Thursday, Friday, & Saturday  
8 p.m. nightly

Thurs., June 1st  
**WRANGLER NIGHT**  
BONUS BULL RIDING THURSDAY NIGHT!

**Steer Roping**  
Tuesday, May 30  
6 p.m.

**TICKETS**

All Seats ..... \$5  
(Tuesday only)

**RODEO**

Gen. Admission ..... \$8  
Reserved Seats ..... \$9  
Box Seats ..... \$10

Sponsored by the Curry County Mounted Patrol

Tickets available at Aucutt's General Store and Curry Co. Chamber of Commerce

It's Coming! **3<sup>RD</sup> ANNUAL REDNECK REUNION**

## June 1<sup>st</sup>, 2<sup>nd</sup>, and 3<sup>rd</sup>

(Thursday, Friday and Saturday)

**Pioneer Days Rodeo tickets on sale.**

**Free Refreshments • Games • Door Prizes**

2600 Mabry Drive • Clovis, NM • (505) 762-3333 Mon.-Sat. 8 am-6 pm MDT





**1-800-658-6378** 106 E. American Blvd. Muleshoe, Texas

**We Ship Everywhere!**

**And Country Junction**

## One Stop Graduation Gifts!

For the girls...

**ALL JEWELRY**

# 20% Off

Including Brighton.

Or Select One of Our New Cologne Fragrances!

For Women...

**CRUEL GIRL & LIVE, LOVE & LAUGH**

by Brighton.

For Men...

**CINCH & LOOSE**

**Free Gift Wrapping**

**CONGRATS TO ALL AREA GRADUATES!**

For the guys...

**RUDDOCK SHIRTS**

One Shirt ..... **\$29**

Two Shirts ..... **\$50**

**WALLETS & KEY CHAINS... 20% Off**

**MEMORIAL DAY TEAM ROPING** SAT. & SUN., MAY 27 & 28

Each participant will receive a roper knife donated by...

# Achillea family offering more and more choices

By RONN SMITH  
Editor

The flowering season for the achillea (or yarrow) family is just about to burst upon us.

I have a hard time understanding why this group of plants isn't more commonly grown in area than it is — though consistently its one of the more popular perennial families nationwide.

For the most part, once you get them established, achilleas are tough, drought-resistant, heat-resistant, soil-tolerant (except for constant wet, which is seldom a problem for us) and long-blooming.

"Coronation Gold," a hybrid variety, is just about to start showing color now. When well-grown, it produces big, flat clusters of tiny flowers in bright yellow. After living so many years in the southern Arizona desert where almost everything that blooms is yellow, I got pretty tired of the color, but "Coronation Gold" always seemed fresh.

It's not a small plant, so you can't stick it in a small niche and expect it to stay in bounds. It can easily reach 3 feet if it gets all the water it needs; starved for water, it will be 2 feet tall or less — a more manageable size — but the flower heads also will be small rather than the amazing size they can



be.

It can be eye-catching if planted with one of the blue salvias (*Salvia x superba* usually can be depended on to flower at the same time, and the dark blue-violet flowers of the "East Friesland" variety make "Coronation Gold" shimmer in the sun.)

"Moonshine" is another hybrid and it grows shorter (2 feet) by nature. Its soft yellow flowers are still bright, but more soothing and not as dramatic as "Coronation Gold."

"Moonshine" looks great with purple, lavender or pale blue flowers. The metallic blue of globethistle (*Echniops ritro*) is a good contrast in pastels and blooms at just the right height to plant behind "Moonshine."

Of the species, the two most commonly grown are fernleaf yarrow (*Achillea filipendulina*), with yellow flowers similar to the hybrids, and common yarrow (*Achillea millefolium*), which flowers in red, pink or white.

Popular fernleaf yarrow varieties include "Cloth of Gold," maybe a shade deeper in color and certainly more variable in ultimate height (2 to 4 feet) than the hybrids.

Fernleaf yarrow's name pretty well describes its foliage. But if it's "ferny," then common yarrow foliage might be described as like asparagus fern — tiny, airy and a jewel-tone green.

That last remark brings up a point: I have never read in any book that common yarrow can become chlorotic, but it can in our alkaline soils. That means it will turn yellow because it isn't able to "digest" enough iron and other nutrients from the soil. Your garden center can sell you a product (usually based on powdered sulfur, I think) to take care of this; a couple of tablespoonfuls sprinkled around a big clump of yarrow is usually enough.

I've never seen fernleaf yarrow exhibit this problem, even when grown in a bed where common yarrow's leaves are yellowing.

The common yarrow blooms a little later than the varieties described above — it is just coming into bud right now. In recent years, there have been too many varieties introduced to describe them all here.

One that's sold become es-

pecially popular being sold as *A. millefolium* (but it's actually a hybrid) is called "Paprika" after the color of its flowers.

My favorite of these, hands down, is "Appleblossom."

Its tiny flowers are white in the center, shading to bright pink at the tips of each petal. You'll have to get very close to fully appreciate the complexity of color in such a minute flower. (With my eyesight being what it is these days, this usually means either using clusters of the blooms as cut flowers or getting on hands and knees to check out the details in the garden!)

A true representative of the species is "Cerise Queen," a deep pink that does well in our bright sun despite its tendency to look chlorotic if you don't help it, and the popular "Fire King," a rose-red.

A third popular species, *Achillea ptarmica*, makes white flowers and is extremely prolific-flowering. The plants

generally grow 2 or 3 feet tall. This makes an excellent flower to dry as an everlasting.

A whole new group of achilleas, gaining in popularity due to promotion by High Country Gardens in Santa Fe, are even more drought-tolerant (though you still have to water them the first summer, unless it's a wet one — whatever that used to be).

They are generally characterized by silvery leaves, low growth (only a few inches) and clusters of white flowers.

I have promised before that I'd write about these less-familiar achilleas, but my own experience with them is still being formed. Obviously, with their height, they make effective ground covers, and a big expanse of them is very attractive in bloom.

Happy planting!

Questions and comments can be sent to Garden Writer, Route 2, Box 880, Muleshoe, Texas 79347.

**Shugart's inc.**  
30 Color Photos  
\$12.99  
1 - 10X13 99¢ Deposit \$12.00 (plus tax) due at pickup  
1 - 8X10  
2 - 5X7 group charge 99¢ per person  
2 - 3X5  
16 King Size Wallets  
8 Regular Size Wallets



servicing your photo needs at

**LOWE'S MARKETPLACE**  
401 W. American Blvd. • Muleshoe, TX  
Photo Hours: 9:30 am till 6 pm  
**FRIDAY & SATURDAY**  
**JUNE 2<sup>ND</sup> & 3<sup>RD</sup>**

Remember Father's Day



## OBITUARIES

### TRINI BENHAM

Graveside services were held Monday at Bailey County Cemetery for Trini Benham, 58, of Needmore. Harry Riggs officiated.

Ellis Funeral Homes handled arrangements.

Mrs. Benham was born Jan. 28, 1942, at Tinnie, N.M. She died May 20 at home.

She married Bill Benham on Sept. 22, 1986, in Portales. She was a homemaker and had worked for many years in the New Mexico driver's license department's Roswell office.

She was a member of the Muleshoe Church of Christ.

Mrs. Benham is survived by her husband; two sons, Mario Gonzales of Needmore and Juan Gonzales of Los Angeles; a sister, Lollie Farrell of Roswell; two brothers, Manuel Montantez of Albuquerque and Albert Montantez of Tampa, Fla.; and nine grandchildren.

### "GENE" BUHRMAN

Services were held Saturday at Ellis Funeral Home Chapel for Eugene "Gene" Buhrman, 65, of Muleshoe. The Rev. J. Dean McNamara officiated. The body was cremated.

Ellis Funeral Homes handled arrangements.

Mr. Buhrman was born Nov. 11, 1934, in Clovis. He died May 18 at home.

He had lived in Muleshoe all his life and worked as a farmer. He was a member of the Muleshoe VFW.

Mr. Buhrman is survived by two sons, Clifford Max Buhrman of Albuquerque and Tracy Buhrman of Ruidoso; his mother, June Buhrman of Fort Worth; a sister, Carol Boen of Bedford, Texas; and a granddaughter, Lauren Jean Buhrman of Ruidoso.

### ROBERT MCHORSE

Services will be held at 11 a.m. Friday at Stevens Funeral Home Chapel in Coleman,

Texas, for Robert McHorse, 74, of Coleman. The Rev. Roger Hammonds will officiate. Burial will be in Coleman Cemetery.

Mr. McHorse was born Nov. 28, 1925, in Goldthwaite, Texas. He died May 21 at Coleman County Medical Center.

He attended school in Coleman and Muleshoe, graduating from Muleshoe High School in 1943. He also attended Texas A&M University.

He served in the U.S. Army Air Corps from 1944 to 1946.

He married Jeane Parker in Coleman in 1945. He was a member of the First Baptist Church of Coleman, the Aviation Club and the Masonic Lodge. He served as treasurer for the local Girl Scouts for many years.

He was a banker at the First National Bank of Coleman for 41 years.

Survivors include his wife; a daughter, Susan Perdue of Calallen, Texas; a brother, R.B. McHorse of Whitesboro, Texas; seven grandchildren; and one great-grandchild.

He was preceded in death by a son, Mark McHorse, on March 31, 1996.

### MAJOR LOVE

Services were held at 2 p.m. May 25 at the First Missionary Baptist Church in Morton for

Major L. Love, 82, of Morton. The Rev. Randy Johnson officiated. Burial was in Morton Memorial Cemetery.

Ellis Funeral Homes handled arrangements.

Mr. Love was born Feb. 23, 1918, in the Red Mud community near Spur. He died May 22 at Covenant Medical Center in Levelland.

He married Linnie Phillips on Oct. 14, 1939, in Spur and was a longtime resident of the Morton area. He was a mechanic for Farm Equipment Co. of Morton until his retirement in 1980.

He is survived by his wife; three sons, Mike Love of Levelland, Sid Love of Morton and Leland Love of Brownfield; three daughters, Delma Swinney of Morton, Diann Boyd of Morton and Clea Keith of Huntington Beach, Calif.; a brother, Jessie Love of Lubbock; 19 grandchildren; 22 great-grandchildren; and two great-great-grandchildren.

He was preceded in death by a sister, Opal Feaster, and two brothers, William Love and Henry Love.

The family suggests memorials to the Joe Arrington Cancer Center (4101 22nd Place, Lubbock 79410) or the First Missionary Baptist Church of Morton.

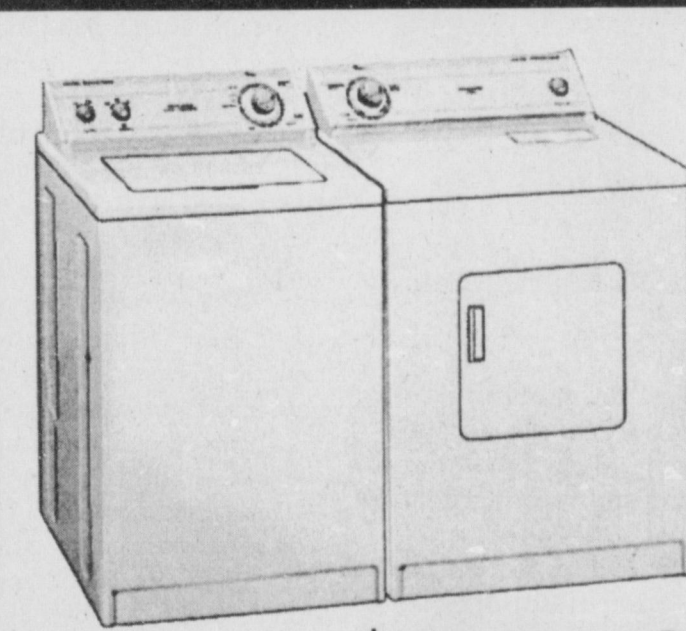
*Bridal Selections for...*

Antoinette Kidoslo & Tadd Young  
Amber Wall & Nathan Noble  
Dawnda Magby & Brandon Daniel  
Christina Candeleria & Andy Perez  
Katy Jones & Jason Williams  
Bonnie Hall & Jacob Fisher  
Jana Brown & Scott Finke  
Jennifer Sansom & Kermil Price

**WESTERN DRUG CO. &**  
**SOMETHING SPECIAL GIFTS**  
1411 W. American Blvd. • Muleshoe • 272-3106

## SUMMERTIME SPECIALS

FOR YOUR HOME — FROM WHIRLPOOL & ROPER



Roper RAX7244E/REX5635E  
Extra Large Capacity and Extra Large Capacity Plus  
Washer and Dryer Pair

- WASHER FEATURES:**
- 7 Automatic Cycles including PERMANENT PRESS and DELICATES
  - 4 Wash/Rinse Water temperatures and 4 Water Levels give you the right washing conditions for any load.
  - Multi-Action Agitator and Self-Cleaning Lint Filter for improved wash performance.
  - Automatic Bleach and Fabric Softener Dispensers for convenient use of laundry additives.

- DRYER FEATURES:**
- 5 Automatic Cycles including AUTO DRY and TIMED DRY.
  - 3 Temperature Selections with a Temperature Switch to match different fabrics.
  - Large, Reversible Side-Swing Door makes loading and unloading easy.

The Pair Only **\$649<sup>95</sup>**



Whirlpool ET18GK  
18.1 cu. ft. Top-Mount Refrigerator

- Two EZ-Vue™ Crispers
- EZ-Vue™ Meat Pan
- Accu-Chill System
- Adjustable Glass Shelves

**\$579**



**NEED A RELIABLE CAR?**  
**CREDIT PROBLEMS?**  
**CALL CHARLIE-THE YES MAN!**

Bender Honda - Nissan  
505-762-3701 or 888-968-3702  
**24 Hours — 1-888-912-LOAN**  
www.bender.getayes.com

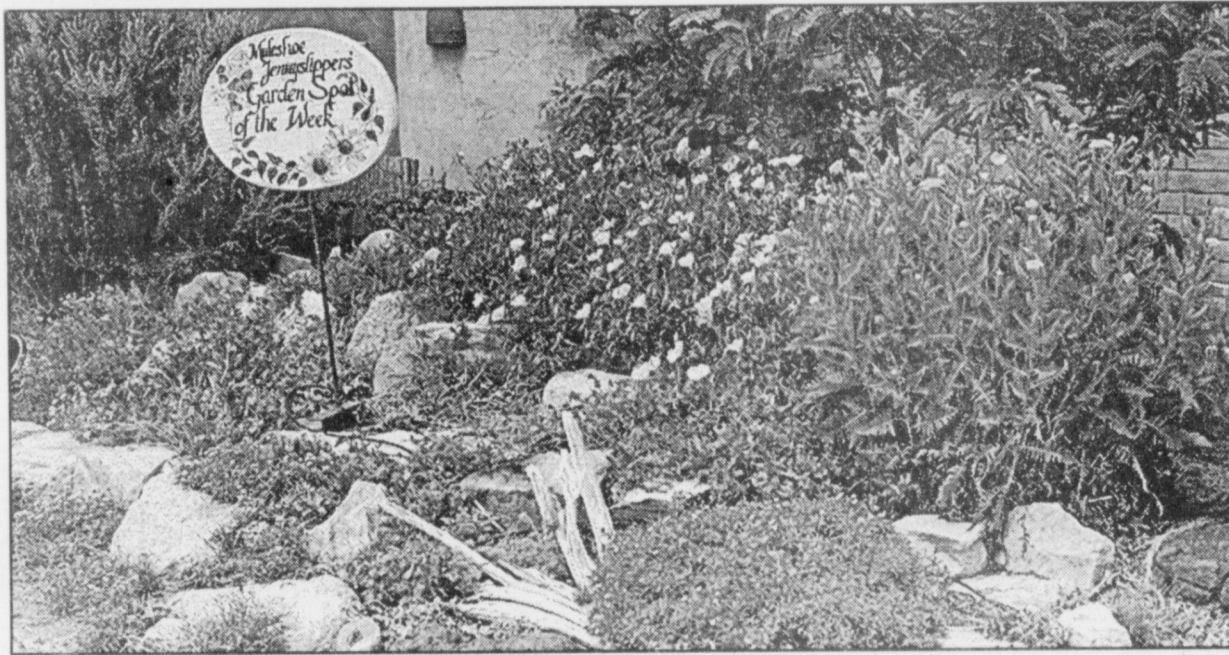
**WILSON APPLIANCE**  
117 Main St. • Muleshoe, TX • 272-5532



Journal photo: Beatrice Morin

### Scholarship presented

Muleshoe High School senior April Kelley accepts a \$500 scholarship from members of the Muleshoe Activities Committee. Gathered for the presentation are (from left) Evelyn Ellington, the recipient's grandmother; John Stevens, a committee member; Kayla Kelley, the recipient's sister; Norma Bruce, a committee member; Carla Kelley, the recipient's mother; Kelley; Carl Ellington, the recipient's grandfather; Harvey Bass, the committee president; and Marie Bass.



Journal photo: Beatrice Morin

### Garden spot of the week

Selected rocks and old wood highlight the garden of Joe Bob and Sheila Stevenson at 901 Ivy, selected as the Jennyslippers' garden spot of the week for the week beginning May 14.



### Lions Club sets charter festivities

The newly organized Muleshoe Lions Club plans to celebrate charter night at 6:30 p.m. Jun 2 in the fellowship hall of First Baptist Church.

The club's charter will be presented during the evening's festivities.

Guest speaker for the banquet will be Jimmy M. Ross of Flomot, Texas, a former international director of Lions.

A catered meal will include grilled chicken or Salisbury steak, mashed potatoes, green beans and dessert. The public is invited.

As a fund-raiser for the evening, various items donated by area merchants will be raffled off.

Tickets for the event are \$15 per person and may be purchased from Mike Precure at Precure Chiropractic or Jack Glover at the post office.

The local Lions will be administering an eyeglasses program and various other service projects. A softball tournament is being planned for this summer.

Prospective members are encouraged to visit the breakfast meetings at 6:30 a.m. the first and third Thursdays of the month. The meetings are held at the Dinner Bell Restaurant.

### State qualifiers

Representing Lazbuddie High School at the state University Interscholastic League competition in Austin on May 5-6 were (from left) Jay Seaton, Veronica Mata, Savannah Black, Kati Mimms, Tobin Redwine and sponsor Marsella Jennings. Not pictured is Leah Turner. The accounting team took first place, with Mata also capturing first as the highest-scoring individual in the state competition, Turner placing third and Black placing sixth. Jennings was the team's coach. The Lazbuddie computer science team, coached by Hardy Carlyle and including the other students (Turner was a member of both teams), placed second at state. In addition to those named above, Lazbuddie was represented in Austin by former LHS students and UIL competitors Jarah Redwine and Cameron Turner, both students at Texas A&M University, and sponsors Sarah and Ricky Black, Mandi and Rick Seaton, Tammie and Vernon Turner, Reta, Clay, Brady and Brett Mimms, and Adeana Carlyle.

### 'CREATIVE LIVING'

Information on alternative style cooking and tips on vacationing at a sports resort will be featured on "Creative Living" on May 30 at 1 p.m. and June 3 at 3 p.m. (All times are Central.)

"Creative Living" airs on public broadcasting station KENW-TV from Eastern New Mexico University in Portales.

Pete Zimmer, head chef at the Inn of the Anasazi in Santa Fe, will demonstrate some rather unusual dishes and some simple techniques and procedures in food preparation and presentation.

Jim Vidamour, director of tennis at the Sheraton Palm Coast Resort in Palm Coast, Fla., will talk about how to choose a sport's resort for vacationing.

Making wedding gowns and decorating with stencils and paint will be featured May 30 at 10:30 p.m. and June 1 at 1 p.m.

Karen Howland, custom bridal designer from Loveland, Colo., will talk about what it takes to create a perfect wedding gown and how to make a simple bride's purse that's easy enough for anyone to make.

Tracia Ledford of Orlando, Fla., representing Delta Technical Coatings, will show how to create a bath ensemble using a trio of stencils and air-dry PermEnamel paint.

"Creative Living" is produced and hosted by Sheryl Borden of Portales.

Viewers can request copies of materials offered on the show by sending a first-class stamp for each handout requested, along with name, address and booklets requested, to "Creative Living" Requests, c/o KENW-TV, 52 Broadcast Center, Portales 88130

## Magazine seeking biggest tomato

SPECIAL TO THE JOURNAL  
Texas Gardener magazine is on its second annual hunt for the state's largest tomato.

The rules are easy: All entries must be unaltered and must be grown in Texas. Gardeners may submit more than one specimen during the contest, but only the biggest can compete. The deadline for entries is Aug. 1.

Gardeners throughout Texas are eligible to enter the contest. Prizes include a White outdoor tiller, Mantis composter, Little Wonder tiller and a Honda string trimmer.

Honorable mentions will receive gifts from Little's Good Gloves, Medina, Spray-Grow, Carl Pool and Harmony.

To enter, select the largest tomato from your garden, complete the entry form (available at the address below or on the web at [www.texasgardner.com](http://www.texasgardner.com)) and mail or bring both to the Texas Gardener judging offices

(10566 N. River Crossing Road, Waco 76712).

Winners will be announced in the November/December issue of the magazine. Entries will not be returned.

Contest forms are available by mail from Texas Gardener Magazine, P.O. Box 9005,

Waco 76714. More information is available by calling (254) 848-9393.

**Sadler's ChemDry**  
Carpet Cleaning 385-6591

**Tino's MEXICAN RESTAURANT**  
104 W. American Blvd. • Muleshoe, Texas  
(806) 272-7528

**ANNOUNCES NEW HOURS!**  
Beginning Sunday, June 4

**OPEN**  
Sunday 11am till 2 pm  
Monday-Saturday 11 am till 9 pm  
Closed Tuesday

**OWNERS**  
Tino & Linda Campoya

**NEW MANAGERS**  
John Ellis & Bonnie Zamora

**BUFFET SERVED 11 am - 2 pm and 5 pm-9 pm**

Great Gift Idea for Your Graduate!

**FREE ACTIVATION!**  
5/15/2000 — 6/16/2000

500 Minutes — \$40<sup>00</sup>  
8¢ A Minute  
On Digital Cell Phones\*

All Calls in TX, NM and OK are local!\*\*

**WILSON APPLIANCE**  
117 Main St. • Muleshoe • 272-5532

\*Subject to stock on hand. \*\*Must be in standard home area.

The Ultimate **RED TAG SALE!**

Every Vehicle On Our Lot Has Been Red Tagged - That Means The Lowest Prices Of The Year!

**2000 HONDA CIVIC**  
MODEL #EJ667YPBW - #09043  
15 TO CHOOSE FROM

RED TAG WAS \$16,145  
LESS RED TAG DISCOUNT - \$1,185  
NOW \$14,960  
or \$237/mo.

**2000 HONDA PASSPORT**  
MODEL #9B325Y4BA - #09089  
5 TO CHOOSE FROM

RED TAG WAS \$27,515  
LESS RED TAG DISCOUNT - \$2,615  
\$24,900

**2000 HONDA ACCORD**  
MODEL #CG564YPBW - #09087  
20 TO CHOOSE FROM

RED TAG WAS \$19,755  
LESS RED TAG DISCOUNT - \$1,805  
NOW \$17,950  
or \$277/mo.

**SAVE! WITH EVERY USED VEHICLE RED TAG PRICED!!**

|   |   |   |  |  |   |   |
|---|---|---|--|--|---|---|
| RED TAG '98 Nissan Sentra<br>\$213/mo. \$0 DOWN | RED TAG '96 Suzuki Sidekick<br>\$240/mo. \$0 DOWN | RED TAG '97 Honda Civic<br>\$263/mo. \$0 DOWN | RED TAG '96 Honda Accord<br>\$265/mo. \$0 DOWN | RED TAG '96 Toyota Camry<br>\$268/mo. \$0 DOWN | RED TAG '99 Honda Civic<br>\$268/mo. \$0 DOWN | RED TAG '96 Honda Accord EX<br>\$293/mo. \$0 DOWN |
|---|---|---|--|--|---|---|

\* 20% down, 60 months @ 6.9% APR. \*\* 20% down, 60 months @ 5.9% APR. \*\*\* 72 months @ 9.5% APR. \*\* 60 months @ 9.5%. All vehicles on approved credit plus tax, title & license.

**3000 Mabry Drive BENDER HONDA 762-3701 1-888-968-3702**

*We Proudly Present the  
Lazbuddie  
Graduating  
Class  
of 2000*

*Class of 2000, you've earned  
a high degree of respect from  
all of us. Your hard work has really  
paid off, and we're all very proud  
of you. Congratulations on  
reaching this milestone in your life,  
and best wishes for the future!*

# CONGRATULATIONS

CLASS OF 2000! HAPPY GRADUATION! BEST OF LUCK!

*Amy Angely*



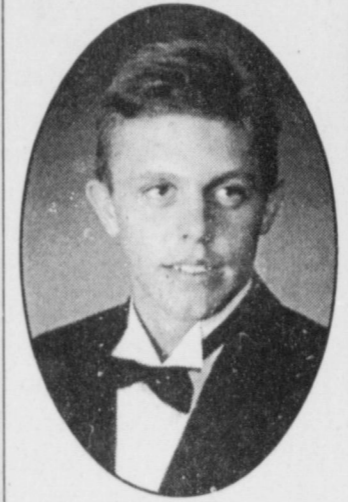
*We're Proud of You!*  
**Lazbuddie/Bovina  
Feeders**  
965-2434 or 825-2103

*Bobby Martha*



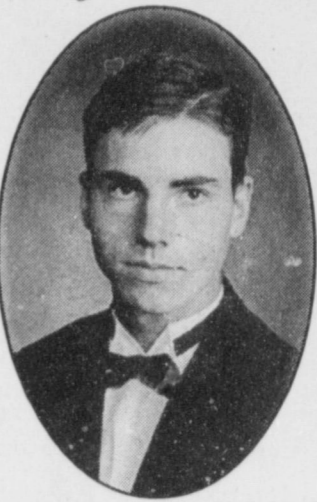
*Best Wishes & Much Success!*  
**Sherley-Anderson  
Grain Elevator**  
Lazbuddie • 965-2922

*Brandon Randolph*



*Congrats & Good Luck!*  
**HIPRO Muleshoe  
Feed Barn**  
Muleshoe • 272-5626

*Bryce Ronek*



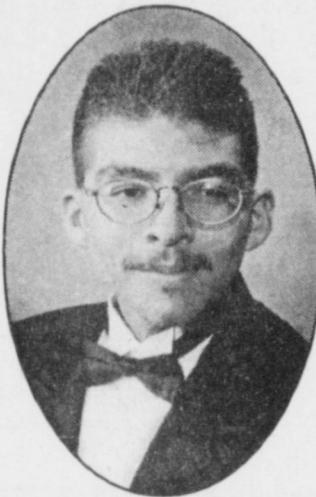
*You're Tops With Us!*  
**Muleshoe  
Pea & Bean**  
Muleshoe • 272-5589

*Desirae Brakebill*



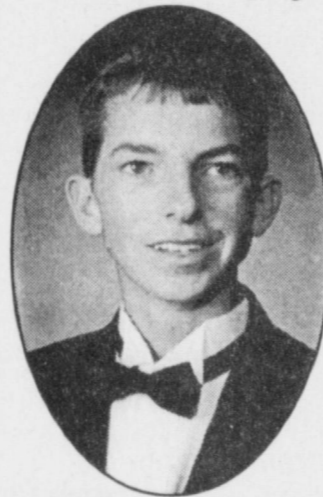
*We Applaud Your Accomplishment!*  
**Foster  
Fertilizer, Inc.**  
Lazbuddie • 965-2921

*Gabriel Juarez*



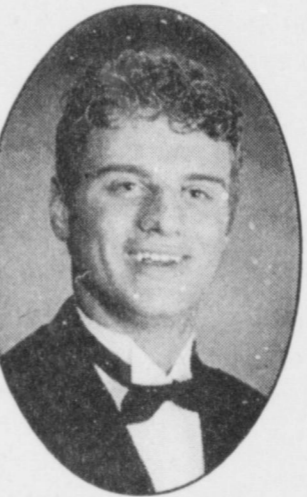
*Good Job Graduates!*  
**Muleshoe  
Co-Op Gin**  
272-4794 or 272-4791

*Garrett Magby*



*A World of Good Wishes!*  
**Ronnie Holt  
Insurance**  
Muleshoe • 272-4271

*Jason Jesko*



*The Future Is Yours!*  
**Bailey County  
Propane, Inc.**  
Muleshoe • 272-4678/272-3319

*Jeffery Seaton*



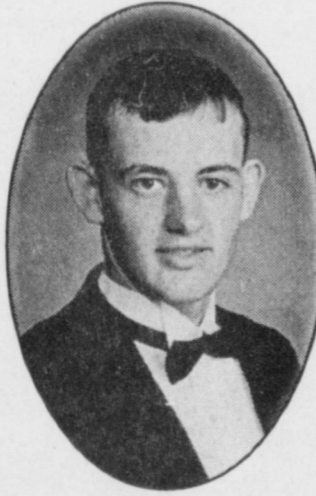
*Best of Luck To You!*  
**Muleshoe  
Valley, Inc.**  
Muleshoe • 272-4266

*Lacy Boudder*



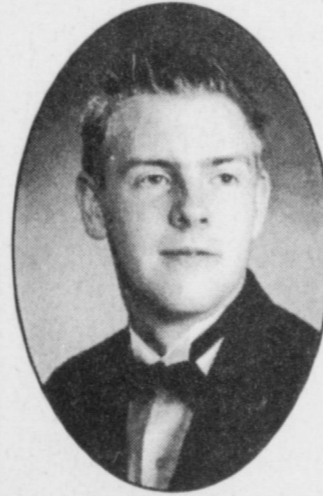
*We're Proud of You!*  
**Agro Distribution  
of Muleshoe**  
Muleshoe • 272-4203

*Laramie Wood*



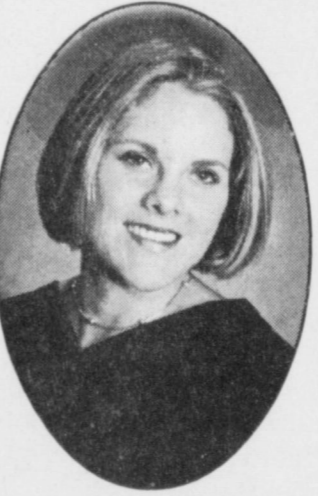
*Make Your Dreams Reality!*  
**Jarman  
Seed**  
Muleshoe • 272-5985

*Lars Angantyr*



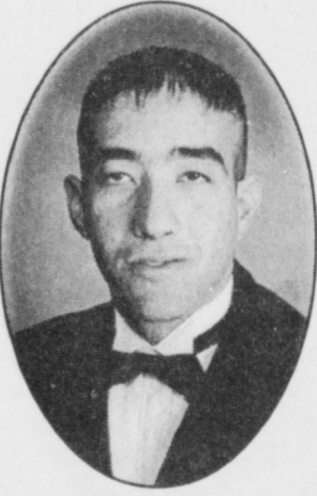
*Congrats & Best Wishes!*  
**Russell  
Spraying, Inc.**  
965-2624 or 965-2627

*Leah Turner*



*Best Wishes For Success!*  
**West Texas  
Grain, Inc.**  
Lazbuddie • 965-2817

*Miguel Melendez*



*Best Wishes & Good Luck!*  
**Wilbur  
Ellis Co.**  
Muleshoe • 965-2330

*Scottie Brown*



*Hats Off To You All!*  
**North Lazbuddie  
Gin Co.**  
Lazbuddie • 965-2754

*Staci Foster*



*We Salute You!*  
**Central Compress  
& Warehouse**  
Sudan • 227-2388

*Tyler Gartin*



*Best Wishes For Much Success!*  
**Five Area Telephone &  
West Plains Telecom.**  
Muleshoe • 272-5533

*Veronica Mata*



*Way To Go Grads!*  
**Lazbuddie Garage  
& Supply**  
Lazbuddie • 965-2188

*Zulema Marquez*



*We're Proud of You!*  
**Muleshoe & Bailey  
County Journal**  
Muleshoe • 272-4536



*Please join these young adults as they celebrate Commencement Exercises  
on Saturday, May 27 at 8:00 p.m. in the school Auditorium*

*Valedictorian: Leah Turner  
Salutatorian: Amy Angely*

# CONGRATULATIONS

## WEDDING SHOWERS



### Couple honored with shower

Erin Herman and AJ Liles pause during their wedding shower held recently in the home of Sheila Stevenson. Guests were greeted by the bride-elect, the prospective groom, and Alice Liles, mother of the groom. Guests were served slush punch and assorted sweet breads. An assortment of wildflowers in the bride's chosen colors accented the serving table. The hostess gift was flatware. Special guests were Jack Graves, grandmother of the groom; Caroline Liles, sister of the groom from Lubbock; and Alice Liles, mother of the groom from Muleshoe. The prospective bridegroom is the son of Bill and Alice Liles of Muleshoe and the bride-elect is the daughter of Ken and Gayle Herman of Danville, Calif.



### Shower honors Robinson

Shelbi Robinson pauses during her May 7 bridal shower at the home of Kerma McGuire in Muleshoe. Robinson is the bride-elect of Robert Gardner. Special guests included Sharon Gardner, mother of the groom; Jodi Boyd of Melrose, N.M., aunt of the groom; Patti Kent, mother of the bride; Faye Poyner of Lubbock, grandmother of the bride; Perri and Kaitlin Lee of Shallowater, aunt of the bride; Glenda Jennings, cousin of the bride; and Jonessa and Gage Brockman of Lazbuddie; Sherry Gunstream, aunt of the bride; Holley Morris, cousin of the bride; and Cissie Robinson, stepmother of the bride. Hostesses, in addition to McGuire, were Jacque Boutell, Sharla Saylor, Diane Saylor, Donna Locker, Dianne Brown, Christie Whitt, Sue Claunch, Tammy Black, Linda Wood, Paulette Foster, Lindy Schuster, Melinda Locke, Kay Moncrief, Druscilla Hutton, Terri Hahn, Tonya Pool, Staci Burris, Debbie Jo Kemp and Marilyn Wilson. Hostess gifts were a vacuum cleaner and a microwave.

## Prolonged drought may help wheat research

**SPECIAL TO THE JOURNAL AMARILLO** — With much of Texas in the grip of mild to severe drought, wheat growers are fielding some of this season's hardest hits.

But even now, Dr. Mark Lazar, a wheat breeder with the Texas Agricultural Experiment Station, is looking forward to reporting some positive outcomes involving his drought-resistance research during the upcoming Ag Day 2000 scheduled June 1 at Bushland, west of Amarillo.

Despite wheat's poor showing in some fields, Lazar is seeing changes in the molecular structure of plants as they respond to extremely dry conditions. He says any variation offers potential keys to fortify drought resistance.

Very low or totally absent spring rains over the past six weeks have forced yields way down. The greatest crop demand for water starts as plants approach and pass the flowering stage, Lazar said.

"This happened right in the middle of our droughty weather," Lazar noted.

Dry conditions severely reduced dryland yields, but such extremes are aiding Lazar's studies on genetic differences in yield under water stress.

Right now, he and Dr. Maria Balota, a visiting scientist from Romania, are evaluating several varieties across all breeding nurseries for a range of green leaf retention capabilities while plants are under stress.

This "stay green" trait is simi-

lar to the one found in sorghum.

Balota uses infrared or heat-detecting sensors to look for a relationship between temperature in the crop canopy, reflecting the rate of water flowing through a plant, and its ability to withstand drought.

This principle could be used to develop a screening tool to evaluate breeding lines in the future. She also thinks other radiation wavelengths might be useful with such detectors.

"What we're seeing in wheat isn't as dramatic as in sorghum," he said. "But repeatable differences in the ability to retain green leaf color do exist in the breeding lines."

The trick will be to combine strong green leaf retention with excellent yield potential and other important characteristics, since the current drought isn't likely to happen every year. Finding ways to correctly estimate green leaf retention without a strong drought also drives his research.

Over the long term, where small physiological changes can be combined to produce big results—Lazar's team will be using several closely related wheat lines to look for differences in yield response under different water availability.

"In controlled conditions,

these lines appear to have two traits that differ," he explained. One involves the capacity for leaves to remain unwilted under water stress. The second deals with the total length of the root systems. He hopes to confirm the differences in the field with individual plants derived from a cross of two closely-related lines.

"If we can accurately identify differences in these traits in single plants, then developing DNA markers for each trait and using them as selection tools is possible, too," Lazar said.



1104

RED WING SHOES  
Made in U.S.A.

The Fair Store  
120 Main 272-3500

**PUZZLED OVER HOW TO PAY FOR GRADUATION EXPENSES?**

**Continental Credit**

**LOANS \$100 to \$467**

206 S. Main St. Muleshoe, TX 272-3673

Mon.-Thurs. 8:30 a.m. to 5:30 p.m. **PHONE APPLICATIONS ACCEPTED**  
Fri.-8:30 a.m. to 6 p.m. *¡Se Habla Espanol!*

**It's Coming! 3<sup>RD</sup> ANNUAL REDNECK REUNION**

**June 1<sup>st</sup>, 2<sup>nd</sup>, and 3<sup>rd</sup>**  
(Thursday, Friday and Saturday)

**Pioneer Days Rodeo tickets on sale.** **Free Refreshments • Games • Door Prizes**

2600 Mabry Drive • Clovis, NM • (505) 762-3333 **Mon-Sat 8 am-6 pm MDT**

**AUCUTT'S GENERAL STORE**

## BIRTH

### MARKI STEARMER

Jason and Brittany Stearmer of Goodland, Texas, announce the birth of a daughter, Marki Nell Stearmer, on May 15 in the Lamb Healthcare Center at Littlefield.

She weighed 7 pounds, 14 ounces, and was 21 inches long. She has one brother, Dustin.

Grandparents include Craig and Carolyn Kirby of Stegall and Ernest and Bobbie Stearmer of Hobbs, N.M.

Great-grandparents are Reuel and Betty Kirby of Stegall, Goldman and Roxie Stroud of Enochs and J.D. and Jerry Jackson of Jal, N.M.

Her great-great-grandfather is J.G. Arn of Muleshoe.

## The Muleshoe Journal is gearing up for the 2000 Father of the Year contest!

For this year's contest, the Muleshoe Journal is looking for a **PHOTOGRAPH** that best depicts why your dad should be our Father of the Year. It doesn't matter what year or under what circumstances the photo was taken. We want to see pictures of your dad doing the things that make him a great father...playing with the kids, helping with homework, sleeping in his favorite chair, cooking dinner...etc. All entries will be judged by an unbiased group of persons based on content and originality. A one sentence caption that captures the idea of your photo would be a great addition!

### ENTER YOUR ROOKIE OR EXPERIENCED DAD TODAY!

Deadline to enter this year's contest is Tuesday, June 13, 2000 at 5 pm. Drop your entry photo off at the Muleshoe Journal office, 304 W. 2nd St. or mail your photos to us at P.O. Box 449, Muleshoe, Texas 79347. Please include a return address so that pictures can be returned. This contest is open to all fathers. Need not live in the area to enter.

Winner of the Muleshoe Journal's 2000 Father of the Year Contest will receive prizes donated by area businesses.

All contestants' pictures will be printed in the Father's Day edition of the Bailey County Journal on June 18.

**SAVE THURSDAY THRU MONDAY!**

**memorial day SALE**

**TAKE AN EXTRA 25% OFF ALL YELLOW & RED-TICKETED MERCHANDISE STOREWIDE!**

**25% OFF MISSES' KNIT TOPS**  
Reg. 14.00-16.00, **SALE 10.50-12.00.**

**25% OFF MISSES' & JRS.' DRESSES**  
Casual styles. Reg. 36.00-68.00, **SALE 27.00-51.00.**

**25% OFF JRS.' KNIT TOPS & BOTTOMS**  
Reg. 16.00-28.00, **SALE 12.00-21.00.**

**60% OFF ENTIRE STOCK FINE JEWELRY**  
Earrings, bracelets, rings and more in gold or sterling silver.

**25% OFF BILL BLASS TOPS, SHORTS**  
Reg. 24.00-28.00, **SALE 18.00-21.00.**

**25% OFF JUNIORS' WOVENS**  
Reg. 18.00-24.00, **SALE 13.50-18.00.**

**25% OFF KIDS' SETS & DRESSES**  
Reg. 16.00-24.00, **SALE 10.50-18.00.**

**SALE! 16.99-17.99 CHILDREN'S LEVI'S SHORTS**  
Girls' 2T-16, boys' 2T-20. Reg. 20.00-24.00.

**30% OFF ALL O.P. FOR YOUNG MEN**  
Reg. 14.00-38.00, **SALE 9.80-26.60.**

**SALE! 24.99 YOUNG MEN'S LEVI'S SHORTS**  
550" and 560" Red Tab stonewash styles. Reg. 30.00.

**SALE! 24.99 DOCKERS' SHORTS FOR MEN**  
Reg. 34.00. Dockers' Classic-Fit pants. Reg. 48.00, **SALE 31.99.**

**SALE! 14.99 SUN RIVER ESSENTIALS**  
Knit polos. Reg. 20.00.

**BEALLS**

For the store nearest you, call 1-800-324-1313 or log on at [www.beallstores.com](http://www.beallstores.com)

321 Main Street • Muleshoe, TX • (806) 272-3478 **Open: Monday thru Saturday 10 am to 6 pm, Sunday Noon to 6 pm**

# DPS cautions drivers on holiday weekend

SPECIAL TO THE JOURNAL

If last year's mistakes are repeated, drinking and driving could be the leading killer on Texas roadways this Memorial Day weekend.

Last year, 46 people died in 37 fatal wrecks, making Memorial Day the single most deadly holiday of 1999, according to preliminary DPS figures.

A look inside the numbers reveals that half the fatal wrecks and 47 percent (22 people) of the deaths were alcohol-related. That's far above the state average, which was 29.6 percent of the total fatalities in 1998.

"Overall, alcohol-related deaths have been declining in Texas the last several years, so the Memorial Day numbers are troubling and unacceptable," said Col. Thomas A. Davis Jr., DPS director.

"A three-thousand pound vehicle is not the place to play chicken with your life and the

lives of your fellow travelers. Driving drunk is out of style — and it's a crime," he said.

DPS troopers and many other police agencies will increase patrols over the weekend to get drunken drivers off the roads and to target speeders and seat-belt violators.

The DPS statewide Stranded Motorist Hotline, (800) 525-5555, can be used to report obviously intoxicated drivers.

The most deadly time on the road last Memorial Day weekend was between 9 p.m. and 6 a.m., when 57 percent of the fatal crashes took place — a time frame when alcohol and fatigue often are cited as factors.

Fatigued or asleep drivers are suspected in six of the fatalities.

"This may be the start of the summer vacation season, but you can't get too relaxed behind the wheel," Davis said. "If you start to nod off, please pull over to a safe place and take a break."



## Muleshoe Cattle Market

SATURDAY, MAY 20, 2000

1295 head of cattle, 286 hogs and 397 sheep and goats for a total of 1,978 animals were sold at the May 20 sale. Bulk of receipts were Pairs and Bred cows coming off of local dry wheat fields. Thin conditioned pairs and Bred cows were bought to return to country, others were split with cifs. going back to county and cows to slaughter. Not enough feeder cattle to test market.

The Muleshoe Cattle Market is brought to you each week by Muleshoe Livestock Auction, located east of Muleshoe on U.S. 84. Muleshoe Livestock conducts sales every Saturday, beginning with hogs, sheep and goats at 10 a.m. and cattle following at approximately 12 noon.

**FOR INFORMATION ON SALES OR TO CONSIGN CATTLE, CALL (806) 272-4201**

## REPRESENTATIVE SALES

| Seller, City                   | #  | Type         | Wt.       | CWT or PH   |
|--------------------------------|----|--------------|-----------|-------------|
| Ramiro Llanes, Albuquerque     | 9  | Hol. Strs    | 376 lbs.  | at \$86.00  |
| T&R Cattle, Littlefield        | 7  | Bk. Bulls    | 232 lbs.  | at \$127.00 |
| Alan Belcher, Pep, NM          |    | Brown Bull   | 265 lbs.  | at \$121.00 |
| W.H. Cotton, Anton             | 2  | Mxd. Bulls   | 330 lbs.  | at \$118.00 |
| KP Farms, Lubbock              | 3  | Char. Bulls  | 335 lbs.  | at \$110.00 |
| KP Farms, Lubbock              | 2  | Char. Strs   | 445 lbs.  | at \$100.00 |
| 2K Cattle, Brownfield          | 5  | Mxd. Bulls   | 434 lbs.  | at \$100.00 |
| Alkali Cattle, Portales, NM    | 2  | Mxd. Bulls   | 200 lbs.  | at \$130.00 |
| Stanley Pierce, Clovis, NM     |    | BWF Str      | 445 lbs.  | at \$97.00  |
| Wade Wheeler, Muleshoe         |    | Bk. Bull     | 500 lbs.  | at \$97.00  |
| John Theissen, Seminole        | 7  | Mxd. Strs    | 552 lbs.  | at \$89.00  |
| John Theissen, Seminole        | 10 | Mxd. Strs    | 616 lbs.  | at \$85.00  |
| Alkali Cattle, Portales, NM    |    | Bk. Hfr      | 170 lbs.  | at \$215.00 |
| Coyote Lake Feedyard, Muleshoe | 4  | Bk. Hfrs     | 191 lbs.  | at \$230.00 |
| Bill Roper, Littlefield        | 2  | BMF Hfrs     | 253 lbs.  | at \$115.00 |
| W.H. Cotton, Anton             | 2  | Char. Hfrs   | 265 lbs.  | at \$118.00 |
| 2K Cattle, Brownfield          | 3  | Mxd. Hfrs    | 353 lbs.  | at \$106.00 |
| T&R Cattle, Littlefield        | 3  | Mxd. Hfrs    | 432 lbs.  | at \$91.00  |
| T&R Cattle, Littlefield        | 2  | Mxd. Hfrs    | 655 lbs.  | at \$78.00  |
| 2K Cattle, Brownfield          | 4  | Bk. Pairs    |           | \$690.00    |
| Paula Nix, Springlake          | 8  | Char. Pairs  |           | \$770.00    |
| Alan Belcher, Pep, NM          |    | Char. Pair   |           | \$680.00    |
| Alan Belcher, Pep, NM          | 2  | Bk. Cows P7  |           | \$490.00    |
| T&R Cattle, Littlefield        | 10 | Bk. Pairs    |           | \$600.00    |
| T&R Cattle, Littlefield        |    | Bk. Cow P8   |           | \$500.00    |
| Bill Roper, Littlefield        | 3  | WF Cows P8   |           | \$540.00    |
| Harold Pollard, Enochs         |    | Yell. Cow P8 |           | \$490.00    |
| F&F Cattle, Portales, NM       |    | Red Cow P8   |           | \$560.00    |
| Diamond Y Cattle, Muleshoe     |    | Char. Cow P7 |           | \$550.00    |
| Diamond Y Cattle, Muleshoe     |    | Bk. Cow      | 1310 lbs. | at \$43.25  |
| Alkali Cattle, Portales, NM    |    | Red Cow      | 1580 lbs. | at \$44.00  |
| Tom Jinks, Muleshoe            | 2  | Mxd. Cows    | 1595 lbs. | at \$45.00  |
| Greg Young, Muleshoe           | 2  | Bk. Cows     | 1108 lbs. | at \$41.75  |
| Hip O Cattle, Muleshoe         | 2  | Bk. Cows     | 1343 lbs. | at \$42.00  |
| Prairie View Dairy, Muleshoe   |    | Hol. Cow     | 1505 lbs. | at \$41.00  |
| Joe Kent, Sudan                |    | Limo. Bull   | 2115 lbs. | at \$54.00  |

# Journal Classifieds

# STOP & SHOP

Deadlines are 5 p.m. Monday and Thursday

Call 272-4536

Deadlines are 5 p.m. Monday and Thursday

|   |  |   |  |   |   |  |  |
|---|--|---|--|---|---|--|--|
| <p><b>LEGALS</b></p> <p><b>MULESHOE INDEPENDENT SCHOOL DISTRICT</b></p> <p>Muleshoe I.S.D. is accepting bids for resurfacing of the Muleshoe High School track facility. Bid specifications may be obtained by calling Sam Whalin at (806)272-7330 between 8:00 a.m. and 5:00 p.m., Monday through Friday. Sealed bids are due no later than 4 p.m., Thursday, June 8, 2000, bids should be clearly marked, (Sealed Bid: Track Re-Surfacing). Muleshoe I.S.D. reserves the right to accept or reject any and/or all bids in the best interest of the district. Published in the Muleshoe Journal May 25, 2000</p> <p><b>Public Notice</b></p> <p>The Undersigned hereby give notice of application to the Texas Alcoholic Beverage Commission, Austin, Texas, for renewal of a private Club registration permit said business to be located at Hwy. 84, South Side 3.2 miles W. Hwy. 70, Muleshoe, Bailey County, Texas. Said business to be operated under the name of Ranch House Club, Officers of the Unincorporated Association of persons are: President Jim Haynes, Secretary, Mark Anthony, Treasurer, Dhaniben Nagin Patel. Published in the Bailey County Journal May 21 and 25, 2000</p> | <p><b>DRIVERS WANTED</b></p> <p>DRIVERS - LOOK AT the options! Various types of runs for van, flatbed, and owner operators. CDL training is available. Call now to learn why we are the fastest growing truckload carrier in America! Swift Transportation 1-800-284-8785 (eoe-m/f).</p> <p>DRIVERS - WHEN IT comes to benefits, we've got all the bells and whistles. *Paid weekly. *Great pay. *\$1,000 sign-on bonus. *Students welcome. SRT Call toll free: 1-877-BIG-PAYDAY (1-877-244-7293).</p> | <p><b>HELP WANTED</b></p> <p><b>Help Wanted!</b></p> <p>Mature workers for July Tent Sale. Apply in person. <b>Joe's Boot Shop</b></p> <p><b>Make up to \$2,000.00 in 11 days. Looking for Enthusiastic adult to manage a outside Muleshoe</b></p> <p>Call 10 a.m. thru 5 p.m. 1-210-622-3788 or 1-830-429-1408</p> | <p><b>HELP WANTED</b></p> <p>Muleshoe Area HealthCare Center, a 54-bed Medicaid-approved nursing home, has openings for RN, part-time; LVN, full time; or part-time; Certified Nurse Aide, full time or part-time. Contact Terry Brown, DON, 106 West Avenue H. Muleshoe, TX 79347 806-272-7578</p> <p><b>HELP WANTED!</b></p> <p>All positions. No phone calls. Apply in person at: Tino's Mexican Restaurant 104 West American Blvd. Muleshoe, Texas</p> | <p><b>SERVICES</b></p> <p>1995 Red Cadillac El Dorado This is one beautiful car! \$14,000.00 806-272-5658 See at 601 West Ave. F Muleshoe, Texas</p> <p><b>SERVICES</b></p> <p><b>J&amp;V's Catering</b></p> <p>Delivery of Home Cooked Meals Residents and Businesses</p> <ul style="list-style-type: none"> <li>• Home cooked meals</li> <li>• pies</li> <li>• cakes</li> <li>• and salads</li> </ul> <p>Please call 272-7706 or 272-4771 with your order Monday - Saturday 9AM - 8PM Daily Specials or order from menu. Please call either number, 24 hrs in advance for whole pies or cakes</p> | <p><b>FOR RENT</b></p> <p>For Rent One Bedroom Apartment Refrigerator and Range provided Call: 272-4321 daytime 272-3482 night Curtis Smith</p> <p><b>PAINTING SERVICES</b></p> <p>Give your house or place of business some T.L.C. Call Raul's Painting &amp; Decorating 505-769-3864 Recommended by Laura Leal</p> <p><b>We do custom farming, combining &amp; shredding</b></p> <p>For more information- (806) 272-3090 or leave a message</p> | <p><b>REAL ESTATE</b></p> <p><b>FOR SALE 10 ACRES WITH GOOD HOME AND STEEL CORRALS CALL 272-3732</b></p> <p><b>Sandra Chancey Real Estate Sales (806) 946-9221 P.O. Box 80 Muleshoe, TX 79347</b></p> <p><b>160 Acres 2 miles East of Enochs South of road Call 505-622-8228</b></p> | <p><b>REAL ESTATE</b></p> <p><b>First Texas Ag Credit</b></p> <p>Long &amp; Short-Term Financing Rural Housing Operating &amp; Improvements AgFAST Credit Approval Cash Percentage Program Low Stock Requirement 2% to \$3,000 Maximum Equipment Leasing 316 South Main Muleshoe, Texas 806-272-3010</p> <p><b>For Sale</b></p> <p>Very nice 3-3-carport 3100 sq. ft. Richland Hills area Lots of storage, 2 fireplaces, heat pump, playhouse and covered patio. \$86,000 CALL 272-5879</p> <p><b>HOUSE FOR SALE</b></p> <p>3-2-2 heat pump and fireplace, located on 21 acres at Progress Call 272-3557 or 272-5711</p> |
|---|--|---|--|---|---|--|--|

**HELP WANTED**

**Need Temporary Workers who can operate Farm Tractor & Shredder, and people who can operate Lawn Mower Equipment (806) 778-8867**

**ASSISTANT HEAD CATTLE PROCESSOR**

needed for Cattlemen's in Olton. Cattle experience required. Feed Yard and cattle processing experience helpful. We are willing to train the right person. Company offers good wages and benefits. Fax application and references to: Rex 285-7773 or call Rex 285-2616

**DRIVERS WANTED**

DRIVERS - CFI HIRING OTR company/student/owner operators. Company with one year experience start at 32 cpm. Students earn \$50 per day. Owner/operator start at \$.80 all miles. For more information call 1-800-CFI-DRIVE.

**DRIVER COVENANT TRANSPORT** \* Coast to coast runs \* Teams start at 42 - 45cpm \* \$1,000 sign-on bonus for experienced company drivers, experienced drivers, and owner operators. 1-800-441-4394. For graduate students 1-800-338-6428.

**Dairy Queen**

Muleshoe Store Available For Lease Own and operate your own "Dairy Queen" store Reduced Franchise Fee • Low Investment • Training Provided For information Call Bob Kralicek American Dairy Queen Corporation 913-599-2702 OR 612-396-0259

**Texas Boll Weevil Eradication Foundation NOW HIRING!**

Seasonal Positions Northwest Plains Zone

- \* Airport Recorder
- \* Trapper
- \* Ground Observer
- \* Mist Blow Operator

- At least 18 years old & valid driver's license and be insurable under foundation fleet insurance policy.
- Outdoor work. No experience necessary. Ag background helpful.
- If you worked or applied during the 1999 season, you must complete a new application for the 2000 season. For more information, apply in person:

Friona Muleshoe Littlefield Springlake  
410 W. 12th St. 710 N. 1st St. 805 E. Hwy 84 Hwy 70, FM 199  
Friona, TX Muleshoe, TX Littlefield, TX Springlake, TX  
806-247-8008 806-272-5122 806-385-4819 806-986-4200

Equal Opportunity Employer  
**Cotton ...a Texas tradition**

**Nieman Realty**

116 E. Ave. C • George Nieman, Broker • 272-5285 or 272-5286

**RICHLAND HILLS - PARK RIDGE**

- JUST LISTED-VERY NICE 3-2-1 Brick, Cent. A&H, built-ins, FP, fans, auto splkr., 1 car detached garage-workshop, fenced yd. More!!! \$70's!!! RH-1
- NICE 3-2-1 Brick, Elct. Heat Pump, built-ins, nice carpet & drapes, patio, fenced yd., MORE!!! \$50's!!! RH-2
- PRICED REDUCED - LOT 83, PKRDG., - \$2,000 OR MAKE OFFER!!!

**HIGHLAND AREA**

- VERY NICE 2-1-1 Carport home, nicely remodeled, Cent. Heat, DW, fans, fenced yd., stor. bldg. \$29.5K!!! HL-1

**LENAU - COUNTRY CLUB AREA**

- 2-1-1 Home, Cent. A&H, DW, MORE!!! \$29.5K!!! L-3
- NICE 3-2-2 Brick, Cent. Heat & Cent. Evap. air, built-ins, FP, fenced yd., stor. bldg.!!! \$40's!!! CC-1
- 3-1-1 Home, wall heat, DW, fenced yd., \$20's!!! L-5
- 2-1-1 Home, Cent. A&H, new carpet, 4 fans, manual splkr., stor. bldg., fenced yd. \$28K!!! L-1
- VERY NICE 3-2-1 Brick, Elec. Heat Pump, built-ins, fans, fence yd., MORE!!! \$39K!!! L-4

**COMMERCIAL**

- Duplex (2-2 bdrm. 1 bath units) plus 1 (2 or 3 bdrm) for residence or rental. \$30K!!!
- R.V./Mobile Home Park on 2.95 acres, home, office, 3 M.H. units. LET'S LOOK TODAY!!!
- APPROX. 4,800' shop plus 600' office area on a 60' x 130' lot!!! PRICE REDUCE!! 40K!!!
- 246' x 145' tract, Hwy. 84, \$29.5K!!!
- VERY NICE 51 UNIT MOTEL, Priced to sell!!! Call for details!!!
- NICE 26 UNIT MOTEL, Priced to Sell!!! Call for details!!!
- 56' x 140' tract, approx. 4700' bldg., \$35K!!!
- GOOD INCOME PROPERTY - approx. 3490' bldg., paved parking, good net lease!!! PRICED TO SELL!!!
- Established Business: Land, Bldg. & Equip., \$75K!!!
- Nice Building with approximately 15,450 sq. ft. of shop area

plus approx. 1,044 sq. ft. office (Dual Fuel Heat Pump for Office), 6 station phone system, restrooms (1 w/shower), loading dock, approx. 195 foot frontage. MORE !!!

**HIGH SCHOOL**

- NICE 3-1-1 Brick, cent. heat, evap. air, DW, fans, fenced yd., workshop-storage, extra garage, MORE!!! \$38K!!! HS-6
- VERY NICE 3-1-1 Brick, Heat pump, DW, nice carpets, fenced yd., MORE!!! \$30's !!! HS-1
- NICE 3-2-1 Brick, Cent. A&H, built-ins, fenced yd., stor. bldg. Price Reduced!!! \$52K!!! HS-2
- VERY NICE 3-1-1 Home, Cent. A&H, nice carpets, six fans, 2 stor. bldgs., fenced yd., \$30's!!! HS-5
- VERY NICE 3-1-1 Brick, Cent. A&H, stove, DW, fenced yd., MORE!!! \$38K!!! HS-4
- 3-2-2 Brick, Dual Fuel Heat Pump, built-ins, fans, storage bldg., fenced yd., MORE!!! \$60K!!! HS-7
- NICE 3-1-1 Home, Cent. Heat & Cent. Evap. Air, built-ins, stor. bldg., fenced yd., MORE!!! \$41.5K!!! HS-8
- VERY NICE 3-2-2 Brick, Dual Fuel Heat Pump, Built-ins, thermal windows, nice carpets, stro. bldg., fenced yd., MORE!!! \$64K!!! HS-9

**RURAL**

- PLEASANT VALLEY, Approx. 320 acres, 2 bdrm home, 1 bath, 2 car detached garage, on pavement!!!
- W. of SUDAN-NICE 3-3-2 Brick Home, 5 acre tract on Hwy. 298, Cent. Air & Heat, built-ins, large Quonset Barn, MORE!!! \$95K!!!
- 5 Acre tract on pavement close to town!
- Approx. 108 acres on Hwy. 70, approx. 2100' office area, 16,900' of commercial bldg. w/loading dock, 3,400' warehouse!!! 2,800' runway!!!
- FIX UP 3-2-2 Carport Home & 2-1-1 Home on 20 acre tract, 50' x 150' shed, 54' x 80' sheet metal barn, MORE!!! \$55K!!!
- EARTH - (Hite Park Add.), 3 bdrm. 2 bath!!! Call for Details!!!

At Lowe's,  
We're  
Cookin' Up

# A Memorial Day Cookout Sale!

PRICES EFFECTIVE MAY 24-30, 2000

## MEAT

X-tra Savings Pak  
**Ground Beef** ..... lb. **97¢**  
X-tra Savings Pak  
With Vegetables, Marinated  
**Beef Fajitas** ..... lb. **\$3.39**  
X-tra Savings Pak  
Boneless Beef  
**Charcoal Steaks** .... lb. **\$1.99**  
Market Trimmed Marinated  
**Beef Brisket** ..... lb. **\$1.97**  
X-tra Savings Pak  
Market Made Hamburger  
**Beef Patties** ..... lb. **\$1.59**  
X-tra Savings Pak  
Bone-In  
**Chicken Breast** ..... lb. **97¢**  
10 lb. Bag  
**Chicken Leg Quarters** ..... lb. **17¢**  
X-tra Savings Pak  
**Chicken Leg Quarters** ..... lb. **39¢**  
X-tra Savings Pak  
**Chicken Thighs or Drumsticks** ..... lb. **69¢**  
X-tra Savings Pak  
**Split Whole Fryers** .. lb. **99¢**  
Bar S  
**Meat Franks** ..... 12 oz. **3/99¢**  
Pork or Beef  
**Cacique Chorizo**... 10 oz. **89¢**  
Beef or Chicken  
**Delimex Taquitos** .. 24 oz. **\$5.99**  
Canadian Valley  
**Hot Links** ..... 5 lb. bag **\$6.69**

Ham & Cheese or Chopped  
**Oscar Mayer Ham** ..... 8 oz. pkg. **\$1.19**  
Jennie-O  
**Ground Turkey** .... 1 lb. roll **69¢**  
Cooked  
**Salad Shrimp** ..... lb. **\$4.69**  
Hormel Sandwich Maker  
**Chopped Ham** .... 5 lb. loaf **\$6.69**  
Hormel  
**Little Sizzlers** .... 12 oz. links **99¢**  
Black Label Asstd.  
**Hormel Bacon** .... 1 lb. pkg **\$2.79**  
Decker  
**Smoked Sausage** .. 3 lb. pkg **\$4.99**  
Decker Regular or Beef  
**Corn Dogs** ..... 1 lb. pkg **\$1.79**  
Bar S  
**Meat Bologna** ..... 12 oz. **89¢**  
Bar S  
**Beef Bologna** ..... 12 oz. **\$1.39**  
Bar S  
**Cooked Ham or Turkey Breast** ..... 10 oz. **\$1.99**  
Bar S  
**Chopped Ham** ..... 10 oz. **2/53**  
Bar S  
**Jumbo Bologna** .. 5 lb. chub **\$4.79**  
Bar S Regular or Polish  
**Smoked Sausage** .. 1 lb. **\$1.99**  
Reser's Mustard  
**Potato Salad** ..... 3 lb. tub **2/55**  
Whole Loaf  
**Muenster Cheese** ... lb. **\$1.69**

## FROZEN & DAIRY

Golden Country  
**Cheese Singles** ... 10.7 oz. **99¢**  
Blue Bunny Asstd. Round  
**Ice Cream or Frozen Yogurt** .... 1/2 gal. **2/55**  
Banquet Asstd.  
**Pot Pies** ..... 7 oz. pkg **2/51**  
Banquet Asstd.  
**Value Menu or Select Menu Dinners** ..... 6.7-11 oz. **3/54**  
17 oz. Cheese or Beef Enchiladas  
12 to 13 oz. Dinners  
**Patio Dinners** ... your choice **3/54**  
DiGiorno Asstd.  
**Rising Crust Pizza** ..... 27-36 oz. **\$4.99**  
Blue Bunny Asstd.  
**Slush Pops** ..... 24 ct. **\$2.79**

Asstd. 32 oz. Cobblers or 37 oz. Pies  
**Mrs. Smith's Cobblers or Pies** .. your choice **2/57**  
Lowe's Homogenized/Shurfine/  
Shursaving Low Fat Premium  
Quality All Varieties  
**Milk** ..... gallon jug **\$1.99**  
Strawberry Breeze, Grape  
or White Grape/Peach  
**Welch's Juice** ..... 64 oz. **\$1.99**  
Imperial  
**Margarine Quarters** ..... 16 oz. pkg **2/51**  
Kraft Asstd.  
**Cheese Singles** ... 12 oz. **2/55**  
Kraft Mild Cheddar or Colby  
**Longhorn Cheese**.. 14 oz. **2/55**  
Ruby Red Grapefruit or Assorted  
**Florida's Natural Orange Juice** ..... 64 oz. **2/55**

Assorted  
• Ice Tray 3 pk. • 5 qt. Bowl  
• 21 oz. Bowls 4 pk. • 12 oz. Tumblers 5 pk.  
• Divided Plates 4 pk. • 2 qt. Pitcher  
• 1 qt. Bowl w/Lid 2 pk. • 3 pc. Mixing Bowl Set  
• 2 pt. Shake Pour N Store • 32 oz. Measuring Cup  
• Colander • 5 qt. RD Washbasin • Dustpan  
• 9 qt. Pail • 1 Bushel Laundry Basket  
• Handy Basket • Little Stuff • 10 qt. Wastebasket



**United Plastic Brand**

Each **99¢**

## PRODUCE

Red Ripe  
**Watermelons** ..... ea. **\$1.97**  
Fresh Cut  
**Watermelons** ..... lb. **29¢**  
Sweet California  
**Nectarines or Peaches** ..... lb. **79¢**  
Tropical  
**Kiwi Fruit** ..... **6/51**  
Sweet  
**Yellow Corn** ..... **4/51**  
Hot House  
**Tomatoes** ..... lb. **99¢**  
1015 Sweet  
**Yellow Onions** ..... lbs. **3/51**  
Green Leaf or Romaine  
Garden Fresh  
**Lettuce** ..... ea. **69¢**  
Washington Extra Fancy  
**Red Delicious Apples** ..... lbs. **2/51**  
U.S. No. 1 Russet  
**Potatoes** ..... 15 lb. bag **\$1.99**  
Fresh  
**Cilantro** ..... bunches **3/51**  
Dole Green Selection  
**Salad** ..... 12 oz. **99¢**  
Dole  
**Cole Slaw** ..... 1 lb. **79¢**

Lowe's  
**Drinking Water** ..... gal. **2/51**  
Assorted Unsweetened  
Makes 2 Qts.  
**Kool-Aid** ..... **8/51**  
Country Time Asstd.  
**Lemonade** ..... makes 8 qts. **\$2.69**  
Casa de Lowe's  
Homestyle or Burrito Size  
**Flour Tortillas** ..... 10 ct. **89¢**  
Lowe's  
**Hamburger Buns** .. 8 ct. **2/88¢**  
Nice'n Fluffy Asstd.  
**Fabric Softener** .. 128 oz. **2/55**  
XTRA Asstd. Pre-priced \$2.99  
**Liquid Detergent** ..... 128 oz. **2/55**  
Ultra Soft White  
**Nothern Bath Tissue** ..... 12 roll pkg. **\$2.99**  
Solo 20 ct.-16 oz. Cups  
or 15 ct.-9" Plates  
**Party Cups or Plates** ..... your choice **\$1.29**  
Lowe's Foam  
**Ice Chest** ..... 12 qt. **\$2.99**  
Lowe's Asstd.  
**Soft Drinks** ..... 12 pk. cans **3/55**  
All Types  
**Pepsi, Diet Pepsi and Mountain Dew** .. 12 pk. cans **\$1.97**  
All Types 6 pk.  
**Pepsi, Diet Pepsi and Mountain Dew** .. 24 oz. btl. **2/54**  
All Types  
**Pepsi, Diet Pepsi and Mountain Dew** ..... 2 liter btl. **88¢**

## HEALTH & BEAUTY

Thermasilk Asstd.  
**Shampoo or Conditioner** ..... 10.5-13 oz. **2/55**  
Asstd.  
**Degree Solid Anti-Perspirant**... 1.6-1.75 oz. **3/55**  
Vaseline Asstd.  
**Intensive Care Lotion** ..... 11 oz. **\$2.97**  
Lowe's  
**Hot Dog Buns** ..... 8 ct. **2/88¢**  
Kraft Asstd.  
**Barbecue Sauce** .. 18 oz. **2/51**  
Kraft Regular or Light  
**Miracle Whip** ..... 32 oz. **\$1.97**  
Shurfine Charcoal  
**Lighter Fluid** ..... 32 oz. btl. **2/53**  
Shurfine Regular SAVE ADDITIONAL 50¢ WITH CIRCULAR COUPON  
**Charcoal** ..... 10 lb. bag **\$1.97**  
Del Monte  
**Tomato Sauce** ..... 8 oz. **5/51**  
Assorted  
**Malt-O-Meal Cereal** ..... 13-20 oz. **3/55**  
Sippy Asstd.  
**Peanut Butter** ..... 18 oz. **2/54**  
No Stick  
**Mazola Spray** ..... 5 oz. can **3/55**  
Mazola Asstd.  
**Cooking Oil** ..... 48 oz. btl. **2/55**  
Asstd. Bush's Best  
**Baked Beans** ..... 28 oz. **4/55**  
Shurfine Asstd. in Natural Juice  
**Pineapple** ..... 20 oz. can **99¢**  
Van Camp's  
**Pork and Beans**... 15 oz. **2/51**  
Butterfinger BB's, Buncha  
Crunch, Babyruth, Butterfinger,  
Milk Chocolate, 100 Grand,  
Original/White Crunch, Original  
Chunky or Oh Henry!  
**Nestle Candy Regular Bars** .. your choice **3/99¢**  
Vlassic  
**Hamburger Stack Dill or Bread and Butter** ..... 24 oz. **\$1.99**  
Best Maid Hamburger Sliced  
**Dill Pickles** ..... 32 oz. **\$1.99**  
French's Squeeze  
**Mustard** ..... 16 oz. **99¢**  
Del Monte Tomato  
**Ketchup** ..... 24 oz. btl. **99¢**  
Regular or Light  
**Kraft Mayo** .... 40 oz. bonus jar **\$2.99**  
Austex Hot Dog  
**Chili Sauce** ..... 10 oz. **2/88¢**  
Kraft Asstd.  
**Salad Dressing** ... 14-16 oz. **\$1.99**  
Nabisco Asstd. 14.5-16 oz.  
Ritz, 7-10 oz. Triscuit, Wheat  
Thins, Better Cheddars  
and 14.5-20 oz. Chips Ahoy!  
**Snack Crackers or Cookies** ..... your choice **2/54**  
Tostitos®  
**Con Queso Dip** ... 15.5 oz. **2/55**  
Asstd.  
**Lay's® Potato Chips** .... Buy One For \$2.99/Get One **FREE**  
Asstd. 20 oz.  
**Gatorade Drinks** ..... 8 pk. **\$4.99**  
Nestea Regular or Decaf.  
**Instant Tea** ..... 3 oz. jar **\$2.99**

As an added convenience, Lowe's in Muleshoe now has a wheelchair available for our customers in need of assistance while shopping.



**Shurfine**

Sample coupon for information purposes only. See circular for useable coupon.

Good only at

**10 LB. CHARCOAL**  
Regular

**50¢ OFF**

To The Consumer: This coupon good only on the product indicated. Only one coupon redeemed with purchase. To The Retailer: We will pay legitimate retailers the face value plus 6 cents handling for each original coupon received in connection with the retail sale of the product indicated. Coupon void if in excess of one coupon per purchase for redemption level. Attempted redemption without compliance is a felony. Cash redemption value 1/20th of a cent. Redeem by mailing to Royal Oak Enterprises, Inc., CRC Dept. #179, 9633 N. Mesa, Suite 601, El Paso, TX 79912-4435.

**Lowe's**  
MARKETPLACE  
401 W. American Blvd. Muleshoe 272-4585

WESTERN UNION MONEY TRANSFER<sup>SM</sup>  
"The fastest way to send money"

**AT AFFILIATED FOODS INC. MEMBER STORE AT PARTICIPATING STORES**

WE RESERVE THE RIGHT TO LIMIT QUANTITIES IN TEXAS