

## PAGE ONE

A QUICK READ OF THE NEWS

### Take the money and run

The driver of a Brinks armored truck apparently took the money and ran.

James Parker drove away in the truck — carrying several hundred thousand dollars — after a co-worker left the vehicle to pick up a deposit at a home-improvement store in Gainesville, Fla.

The truck was found later in the Brinks parking lot with the motor running — but Parker and the money remain missing.

### Town's sign popular for theft

In Harleyville, S.C., the town limits sign has disappeared from the same spot for the fourth time in five years. Town officials think they now know who has the signs: Harley-Davidson fans.

A motorcycle-shop owner says swiping Harleyville signs, which have been spotted as far away as Florida, is a point of pride among some bikers.

"I've seen them coming with a beer in one hand and the sign in the other like I's give them a brownie point or something," he said.

### Man photocopies bottom

Police arrested a man who allegedly dropped his pants in the crowded lobby of the St. Louis (Mo.) County Courthouse in Clayton and made photocopies of his buttocks.

Police found Daniel Everett holding two copies he had already made. He was making a third.

"What did I do? What did I do?" witnesses said Everett asked police.

Everett, an "immature" 38, told police that the copies were intended as a practical joke for his girlfriend.



Drawing date: Saturday, Jan. 13  
Winning numbers: 5-13-34-42-43-52  
Estimated jackpot: \$6 million  
Winners: 0  
Next drawing: Wednesday, Jan. 17  
Estimated jackpot: \$9 million

### On this date in history

**Jan. 17** — Reconstruction is declared ended in Texas after U.S. President Ulysses S. Grant refuses to send troops to Austin to oppose the election of Democratic governor (1874).

**Jan. 19** — Col. Robert E. Lee (later general) passes his 50th birthday while on duty with the U.S. Army at Fort Brown in South Texas (1857).

**Jan. 20** — Gov. James Stephen Hogg, the first native-born Texan elected governor of the state, is inaugurated (1891).

### LOCAL WEATHER

The rain and snow showers are expected to continue Thursday, along with a morning low of 13 degrees. Friday should be just as cold, but with only partly cloudy conditions, turning to mostly sunny on Friday. High temperatures in the 30s also should change to about 50 on Friday and Saturday. Morning lows also should moderate somewhat, to about 19 on Saturday and about 23 on Sunday.

Editor Ronn Smith can be reached at 272-4536 or ctyankee@fivearea.com

Missed your paper? Call carrier Melissa Flores at 272-6719 or the Journal during business hours, 8:30 a.m.-5 p.m.

## City turns thumbs down on cable-TV rate hike

By RONN SMITH  
Editor

Mayor Victor Leal, City Manager Rick Hanna and members of the Muleshoe City Council vented their frustration Tuesday — again — over what they consider the poor cable-TV service in Muleshoe.

And while the council has no power to stop Classic Cable's proposal for a \$1.98-per-month rate increase, the council members voted unanimously to go on record as refusing to approve

the increase.

Overall, the comments were milder than those directed at a Classic Cable representative who met with the council a year ago before the last rate increase.

Lea Ann Pittard, the company representative at Tuesday's meeting, assured the city representatives that the decision to raise rates again was not taken lightly.

Hanna said he was not mollified. "It's one thing to raise rates when service is wonderful,

but it's another thing to raise rates when we consider service to be subpar," he said.

He and others told the cable-company representative that Muleshoe has been having similar meetings with Classic Cable for years with no improvement in service.

The two main issues Hanna asked to have addressed were the quality of reception on Channel 3 (Fox) and getting Muleshoe Channel 6 put

see CABLE on page 2

## Texans have not filed for \$145 million in 1997 tax refunds

SPECIAL TO THE JOURNAL

Time is running out for 123,000 Texans to file their 1997 federal income-tax returns and claim \$145 million in refunds, the Internal Revenue Service announced Tuesday.

To collect the money, a 1997 tax return must be filed with the IRS no later than April 16.

"I strongly urge these individuals to take steps to claim this money," IRS Commissioner Charles O. Rosetti said. "Money that is not refunded within three years becomes the property of the U.S. Treasury."

The IRS estimates that about half of those who could claim refunds would receive less than \$464. Some individuals who had too little income to be required to file a tax return may have had taxes withheld from their wages. Others may not have had any tax withheld but would be eligible for the refundable Earned Income Tax Credit.

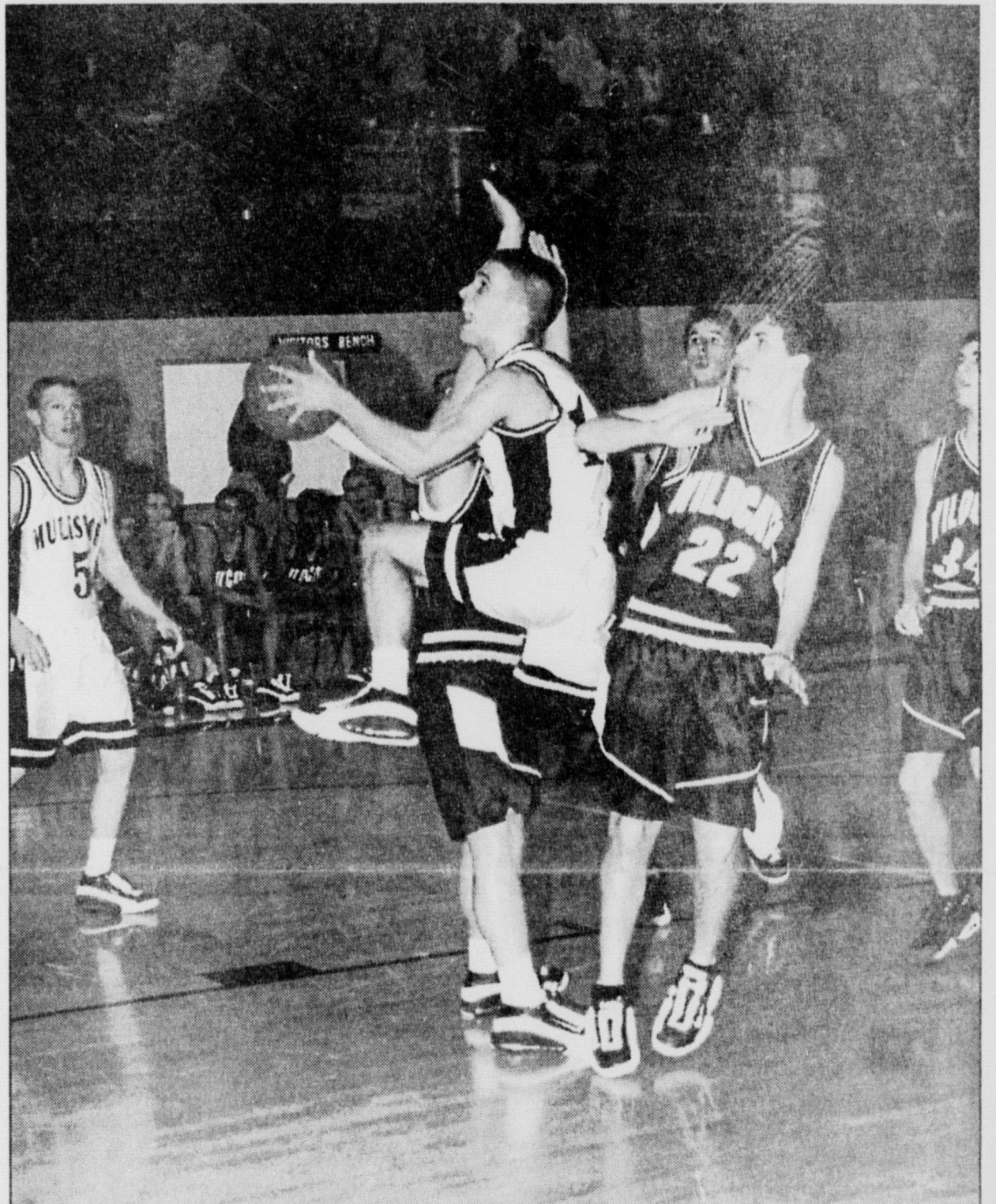
In cases where a return was not filed, the IRS allows most taxpayers a three-year window of opportunity for claiming a refund. There is no penalty assessed for filing a late return that qualifies for a refund.

For 1997, individuals qualified for the Earned Income Tax Credit if they earned less than \$29,290 with more than one qualifying child.

The IRS reminds taxpayers seeking a refund for 1997 that their checks will be held if they have not filed returns for 1998 and/or 1999.

The refund also will be applied toward any amounts still owed to the IRS and may be used to satisfy unpaid child support or student loans.

Current and previous year tax forms are available by calling (800) 829-3676 or visiting the Internet at [www.irs.gov](http://www.irs.gov).



Courtesy photo: Mike Hahn

### Mr. Aggressive

Muleshoe's Dan Williams slips between Littlefield Wildcats during Friday night's district contest, which the Mules won 41-32. See story on page 5.

## 2000 Texas cotton crop down almost a fourth from '99 total

SPECIAL TO THE JOURNAL

AUSTIN — Texas upland cotton production for 2000 is now expected to total 3.95 million bales, 22 percent less than the 1999 crop, according to figures released by the Texas Agricultural Statistics Service.

This figure is 4 percent below

the Dec. 1 forecast.

"Cotton harvest for the state is at 99 percent completion," state statistician Robin Roark reported.

Statewide harvested acreage is estimated at 4.4 million acres, 14 percent below the previous year. Yield is expected to average 431 pounds per acre compared with

475 pounds in 1999.

Production on the southern High Plains is estimated at 1.54 million bales, 27 percent less than the previous year's production. Average yield, at 361 pounds, is 65 pounds less than a year ago.

The northern High Plains crop, estimated a 890 thousand bales, is

unchanged from 1999.

U.S. upland cotton production is expected to total 16.8 million bales, up 3 percent from last year. Yield is expected to average 625 pounds per acre compared with 595 pounds in 1999. Harvested acreage is estimated at 12.9 million acres, down 2 percent from last year.

## Exhibitors brave weather for Lazbuddie stock show

FRIONA — Lazbuddie 4-H and FFA junior livestock exhibitors turned out here Saturday for the annual Lazbuddie Junior Stock Show.

Despite winds gusting to 60 mph, the exhibitors gave their livestock — and themselves — some show experience in preparation for the Jan. 19-20 Parmer County Junior Livestock Show, also scheduled for the Friona Civic Center.

Robbie Phillips of Levelland judged the show, which featured eight steers, three lambs, four goats and 63 swine. Except for the steers, the numbers were all down slightly from the previous year. But Phillips said he expected the Lazbuddie youth to win their share of the prizes at the Parmer County show, and then some.

The Lazbuddie youth will join those from Friona, Bovina and Farwell for the Parmer County show.

Landon Parham won his second consecutive junior market steer show title, winning both the British and the Cross divisions. Shonnah Black had the reserve champion steer for the second straight year, with her reserve cross.

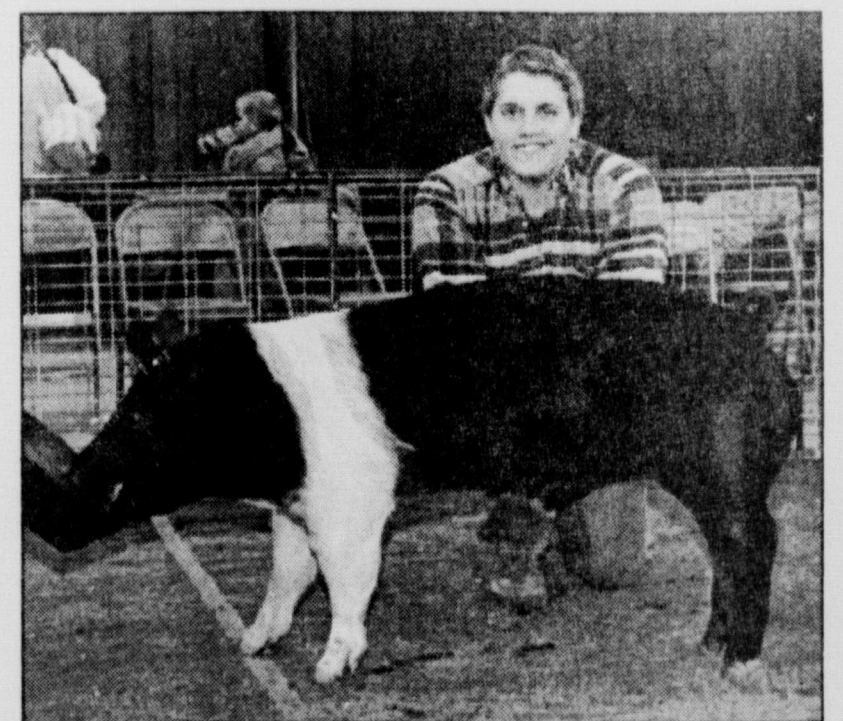
Savannah Black won the steer showmanship contest.

In the all-Mason lamb show, Suzanne Mason had the grand champion while her cousin, Logan, had the reserve champion.

Suzanne Mason also was named the champion sheep showman.

Kolby Wilkerson swept the top two awards in the meat goat show and won the showmanship contest as well.

The top swine awards went to the Hampshires, with Jay Seaton exhibiting the grand champion and Kayle Jesko the reserve.



Journal photo: Scot Stinnett

Jeffrey Seaton is all smiles after seeing his Hampshire named the grand champion junior market swine out of 63 shown at the Lazbuddie Junior Livestock Show last weekend.

see SHOW on page 6

## AROUND MULESHOE

### Jennyslippers plan installation

The Jennyslippers' 20th anniversary installation dinner is scheduled for 7 p.m. Jan. 22 at the Bailey County Coliseum.

All past members and their spouses are invited to attend. After the dinner and installation of new officers, there will be a membership drive for both adult members and Junior Jennyslippers age 13 through 18.

### License office to be closed

The Muleshoe driver's license office will be closed for the afternoon of Jan. 23.

The office will resume regular hours on Jan. 24.

### Cotton conferences scheduled

Cotton conferences have been scheduled for Jan. 24 in Friona and Jan. 25 in Muleshoe.

The Muleshoe event will be the Llano Estacado Cotton Conference at the Bailey County Coliseum. Topics are to include water and irrigation management, crop production and management strategies, pest-control options, cotton varieties and ag laws and regulations.

Five continuing education units will be offered.

More information is available by calling (806) 272-4584.

The Friona event will be the North Plains Cotton Conference. Topics are to include risk management and marketing, an insect update, cotton varieties, ag laws and regulations, irrigation and boll-weevil eradication.

### Public calendar

**Jan. 18**—7 p.m. Muleshoe Area Hospital District board, in the dining room at Muleshoe Area Medical Center.

*The deadline for items to appear in Around Muleshoe is 5 p.m. Monday for Thursday's editions and 5 p.m. Thursday for Sunday's editions.*



Journal photo: Scot Stinnett

### Grand champion lamb

Suzanne Mason poses with her grand champion lamb at last weekend's Lazbuddie Junior Livestock Show. Story begins on page 1; complete results are on page 6.

## South Plains College registration continues through Jan. 22

Prospective students interested in attending South Plains College during the spring 2001 semester can still register for classes — through Jan. 22.

Signup at the college's Reese Center campus, 9730 Reese Blvd. in Lubbock, will con-

tinue from 5 p.m. to 7 p.m. Thursday and again Jan. 22.

At the SPC Lubbock campus, 1302 Main, registration will continue from 8:30 a.m. to noon and 2 p.m. to 6 p.m. Thursday, 8:30 a.m. to 2 p.m. Friday and 8:30 a.m. to noon and 2

p.m. to 6 p.m. Jan. 22.

And at the SPC Levelland campus, 1401 S. College Ave., registration will continue from 8:30 a.m. to 3:30 p.m. and 5:30 p.m. to 6:30 p.m. Thursday, 8:30 a.m. to 3 p.m. Friday, and 8:30 a.m. to 3:30 p.m. and t:30

p.m. to 6:30 p.m. Jan. 22.

More information is available by calling the college at either (806) 747-0576 or (806) 894-9611.

Studies prove that reading increases knowledge. Subscribe to the Journal & you'll know it all! 272-4536

### CABLE

from page 1

back to Channel 6 on cable (from 17, where it is now).

In regard to the Fox channel, he said, "the quality of that picture is deplorable, and it has been for years."

Trying to lighten the proceedings, he added that "the only thing worse than the quality on Channel 3 this year was the Dallas Cowboys."

In regard to Channel 6/17, he asked that it be moved back to Channel 6 "where it belongs" on cable so that it can be included in basic cable service.

Pittard said the company would listen to these suggestions because cable television now has competition.

Hanna said there really is no competition for cable in Muleshoe because the only option is a satellite dish, and with a satellite dish the customer doesn't get news from Lubbock or Amarillo stations nor Channel 6.

He said the company has said the Fox problem has not been fixed because there is no franchise agreement between the company and the city.

He said the city has submitted proposed agreements based on similar agreements in other cities, but Classic Cable has refused them. Pittard said it was her understanding that Classic had submitted its own franchise proposal but Hanna had not approved it.

Councilwoman Sharon Grant asked why there is no local telephone number listed for the cable company's Muleshoe office.

Pittard responded that it is more cost-effective to have all the company's service calls answered in Tyler, Texas.

She said Classic had about 75 service calls from Muleshoe customers during a recent

month — or an average of less than four per business day, based on a five-day work week.

She did not explain how the current arrangement is more cost-effective — that is, since the company pays rent and utilities to keep a Muleshoe office open and pays an employee to be there, how it is more cost-effective not to have that employee answer three or four service calls per day.

"We expect better service," Mayor Victor Leal said, adding that "Channel 6 is the lifeblood of this community" and should be part of the basic cable package.

He said that if the cable company ever does anything to adversely affect Channel 6, "you will hear an outcry like you wouldn't believe."

Councilman Juan Chávez added, "We (the council) have been sitting here since Classic Cable came to Muleshoe, and we have even heard from engineers, but they don't come back because they didn't keep their promises."

He expressed skepticism that

anything would change as a result of Pittard's visit.

"If the city had any authority to do anything more, I would absolutely not recommend that the council approve the rate increase," Hanna said.

In the end, Councilman Cliff Black made the motion to disapprove the proposed rate increase, and the council backed him unanimously.

402

**RED-WING SHOES**  
Made in U.S.A.

**The Fair Store**  
120 Main 272-3500

**Muleshoe Journal** USPS 367820  
Established February 23, 1924. Published by Triple S Publishing, Inc. Every Thursday at 304 W. Second, Box 449, Muleshoe, TX 79347.  
Second Class Postage paid at Muleshoe, TX.  
POSTMASTER: Send address changes to the Bailey County Journal, P.O. Box 449, Muleshoe, TX 79347.  
We are qualified members of:  
Panhandle Press Association, National Newspaper Association, West Texas Press Association and Texas Press Association

WEST TEXAS PRESS ASSOCIATION MEMBER 2000

PPA TEXAS PRESS ASSOCIATION  
Panhandle Press Association

Scot Stinnett, Publisher  
Lisa Stinnett, Vice-President/Comptroller  
Ronn Smith, Editor  
Beatrice Morin, Classifieds  
Leah Bell, Advertising

© 1990

SUBSCRIPTIONS: Muleshoe Journal and Bailey County Journal  
By Carrier Yearly - \$22.00  
Bailey County — by mail - \$24.00  
Elsewhere - \$26.00  
Advertising Rate Cards on Application

\*Advertisers should check their ad the first day of insertion. The Journals will not be liable for failure to publish an ad or for a typographical error or errors in publications except to the extent of the cost of the ad for the first day of insertion. Adjustment for errors will be limited to the cost of that portion of the ad where the error occurred.\*

# LOANS

## \$100 TO \$467

CREDIT STARTER LOANS  
LOANS WHILE YOU WAIT  
PHONE APPLICATIONS ACCEPTED

### CONTINENTAL CREDIT

*¡Se Habla Espanol!* 206 S. Main Street  
Mon.-Thurs. 8:30 a.m. to 5:30 p.m.  
Muleshoe, Texas  
Fri.-8:30 a.m. to 6 p.m. **272-3673**

## LET'S MOOOOVE IT OUT!

Selected Men's & Women's Shoes  
**40% to 50% Off!**

\*\*\*\*\*  
Selected Children's Shoes  
**50% Off!**

\*\*\*\*\*  
Selected Clothing & Coats  
**40% to 50% Off!**

\*\*\*\*\*  
Package & Color Block Socks  
**Buy One Pair, 2nd Pair is 1/2 Off!**

*Williams Athletics*

1405 W. American Blvd. • Muleshoe • 272-6853

Good Luck to All Area Stock Show Participants! Stop & Stock Up Here!

Muleshoe State Bank encourages you to show your support for the youth of Bailey County by attending the

# 2001 BAILEY COUNTY JUNIOR LIVESTOCK SHOW

Friday and Saturday  
**January 19<sup>th</sup> & 20<sup>th</sup>**  
Bailey County Coliseum, Muleshoe, Texas

## SCHEDULE OF EVENTS

**FRIDAY, JANUARY 19**

Sheep & Goat Show ..... 8:00 am  
Gilt & Barrow Show ..... 1:00 pm

**SATURDAY, JANUARY 20**

Steer & Heifer Show ..... 7:30 am  
"Jimmy Dale Black Award" ..... Immediately following Steer/Heifer Show

PREMIUM SALE ..... 2:30 pm  
Product Auction Sale ..... 2:30 pm

*Prospective buyers are welcome to attend a luncheon beginning at 1:00 pm on Saturday, January 20, prior to the premium sale.*

## MULESHOE STATE BANK

101 W. American Blvd. • Muleshoe, Texas  
(806) 272-4561

**Farwell Branch**  
801 Ave. A • Farwell, TX  
(806) 481-9580

Each depositor insured to \$100,000  
**FDIC**

# Early-spring bulbs are looking good with all the moisture

By RONN SMITH  
Editor

Anyone who got out in the yard between snowstorms and checked on their early-spring bulbs probably got a pleasant surprise: Crocus and other welcome winter flowers came up under the snow and look very good, thanks to the unusual moisture supply.

I've often been asked whether these extremely early flowers run the risk of getting their leaves frozen by sprouting at this time of year, and the answer is no: They come up only slightly later in climates that are much colder than ours, and they survive just fine.

Fall-seeded larkspur and similar hardy annuals also looked fine as of Monday, although their growth rate is understandably slow with the



extreme cold we've seen quite a bit.

With February on the horizon, it's time for vegetable gardeners to begin gearing up. If you're game to start your own vegetable plants indoors, mid-February is the time to plant lettuce and the cabbage/cauliflower/broccoli family.

What may seem even stranger is starting tomato, pepper and

possibly eggplant seedlings by mid-February. But it isn't too early to start these strictly warm-weather crops if you plan to protect them with Wall-o'-Waters or cloches (or the plastic-covered hole method) when you set them outdoors by early April.

This will be discussed in a column early enough for you to prepare for it.

Many people are so anxious for the first taste of vine-ripened tomatoes, in particular, that they are willing to go to almost any lengths to produce them extra-early.

You also can still plant bare-root fruits and set out asparagus roots during February, and sow seeds of wildflowers for summer bloom.

If your soil is very alkaline and you want to grow some-

thing that requires a lower pH, February is the time to work in 2 pounds of ammonium sulfate and 3 pounds of soil sulfur per 100 square feet, and the soil will be ready for spring planting when the time comes.

Some other soil amendments can still be applied on ground that will be planted in the spring. Anything composted should be fine now, but if you're applying manure, make sure it's marked "composted" or at least "aged." Poultry manures, in particular, may be too strong if they aren't already composted or given time to decay before beds are planted.

When night-time temperatures are not expected to go below freezing, that is a good day to water roses, let the water soak in well, apply fertilizer, and water again.

Check drip-irrigation systems (especially for clogs caused by hard-water deposits) to make sure they are in working order. Also check for aphids on plants that have begun new growth, and blow them off with a strong spray of water if any are found.

No doubt we still face a lot of foul days before spring actually makes itself felt, but

remember that the days have been getting longer for almost a month now and another flowering and fruiting season is about to begin.

Happy planting!  
Questions and comments may be sent to Garden Writer, 571 County Road 1018, Muleshoe, Texas 79347, or e-mailed to ronnsmith@hotmail.com.

Save up to 50%  
On most Prescription, Medical Supplies  
& Personal Care Needs!

**Heartland**  
2025 W. Street • Omaha, NE 68107

Call for a Free Catalog  
or Price Quote!  
1-800-228-3353

Program Code: 1999-0000-0000

**HYPNOSIS CLINIC**  
By Ralph Weber, CHT Certified Hypnotherapist

**WEIGHT** 5:30 pm Your mental associations make you eat to feel better even when you are not hungry. Destroy them NOW!

**SMOKING** 5:30 pm The car won't start without a cigarette. This has nothing to do with nicotine, only negative neuro-associations. Destroy them and create positive neuro-associations.

\$70.00 Fee includes reinforcement tape. 110% money back guarantee at meeting only. Registration 15 mins. before. Cash, Visa/MC/Discover. No Checks. Complete in 1 hour. Now is the time. Don't miss this once-a-year opportunity. Yes, I can hypnotize you. 25 years experience. www.dcihyp.com 218-385-3404

Heritage Foundation Center Across from Dinner Bell Friday, Jan. 19

**FREE TAX REFUND ESTIMATES**  
GET YOUR TAX REFUND FAST with electronic filing. **e-file**

**It's Your Money!**

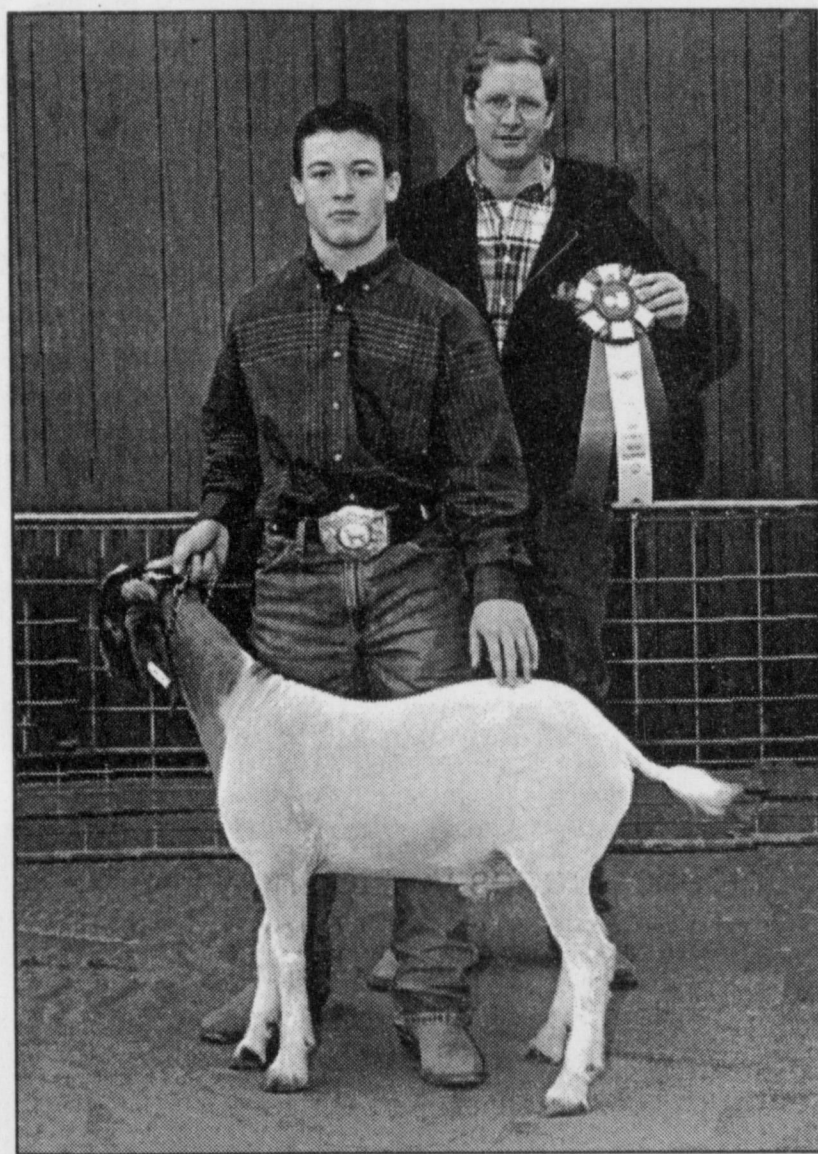
- Low Service Fees
- Refund Loans in 1-3 Days!
- Direct Deposit
- Tax Preparation Available

• Phone Applications Welcome  
• 30 Minute Approval In Most Cases!

**Gold Star FINANCE**

Open: Mon-Fri 9 am - 6 pm (MDT)

1407 N. Main • (505) 742-2737  
Clovis, NM ¡Se Habla Español!



Journal photo: Scot Stinnett

**Grand champion meat goat**  
Kolby Wilkerson poses with his grand champion meat goat at the Lazbuddie Junior Livestock Show last weekend. Story begins on page 1; complete results on page 6.

## Renting with bad credit can be tricky

SPECIAL TO THE JOURNAL  
ROCKVILLE, Md. —

Credit problems can translate into renter problems, according to Mike Kidwell, co-founder and vice president of Myvesta.org, a nonprofit financial services organization.

A less-than-perfect credit history could keep the family from living in the home they really want because many rental agencies and some private landlords do credit checks before offering a lease to a prospective tenant.

To help renters find ways to deal with imperfect credit histories, Myvesta.org has made available a free guide called "How To Rent an Apartment With Marks on Your Credit."

The publication outlines eight strategies:

- Offer a larger deposit to show that the rent is affordable

and the household finances are under control;

- Get a co-signer who has a good credit history. Note that the co-signer becomes equally responsible for the rental payments and any other charges;
- Check the credit report for inaccuracies so that the landlord has an accurate picture of the household's credit history;

- Don't be late with or skip out on rental agreements. Landlords have credit bureaus that share information about tenants' payment histories;

- Rent through a private landlord rather than through a large rental agency. Private landlords sometimes have less restrictive policies. Be sure to have character references handy;
- Try a fixer-upper. Offer to trade sweat equity for a reduction in the rent or deposit;

- Get a roommate. Sharing

expenses with a roommate can cut the rental bills in half. But be sure to get all agreements in writing in order to avoid misunderstandings when the bills arrive; and

• Trade housing for chores. Contact a local senior center for leads on elderly people in the community who are willing to share space in their homes in exchange for help with chores and upkeep.

"If you have a troubled credit history, be upfront with your landlord," Kidwell said.

"Explain the issues and be prepared to show how you've improved your finances. Also, don't blame the lenders. Landlords don't want to hear excuses, or they'll wonder what kind of excuses you'll use when the rent is due."

The free publication can be downloaded at Myvesta.org.

## A&M website creates new virtual herbarium

SPECIAL TO THE JOURNAL

SAN ANTONIO — A new website will make it easy for people to identify trees, grasses, shrubs and forbs (herbs other than grasses) native to Central South Texas.

The "virtual herbarium" is the brainchild of A&M researchers at Uvalde and features brilliant color photography and descriptions of more than 180 plants native to the southern part of the Texas Hill Country and the northern part of the South Texas plains.

The area extends from Cotulla north to Junction, and from San Antonio west to Sonora.

M. Keith Owens, a range ecology professor with the Texas Agricultural Experiment Station at Uvalde, spearheaded the project along with Robert Lyons, a range specialist at the same facility.

According to Owens, the site is of potential use to schools, students, rural landowners and

people buying rural properties but who are not familiar with the native plants. The website address is Uvalde.tamu.edu/herbarium.

Visitors to the site can look up a plant in indexes of common and scientific names. Also, pictures of plants are grouped by flower color. Simply by clicking on the name or a picture of the flower, a viewer is taken to the main page, which features a full-color photo of the plant in its native habitat and close-ups of the leaves, flowers and stems.

The narrative describes the plant's origin, where it is found, and characteristics such as height and blooming season.

**Clearance Sale**

**KitchenAid Washing Machine** **\$399** Only One Left!

Reg. \$529.95

**By Roper Clothes Dryer** **\$299** Only One Left!

Reg. \$329.95

**Dishwasher** **\$399** as low as **\$299** Clearance Sale

**WILSON APPLIANCE**  
117 Main St. • Muleshoe, TX • 272-5532

## Quanah expert addresses cotton conference

Norma Trolinder of Genes Plus in Quanah, Texas, was among those addressing last week's Beltwide Cotton Conference in Anaheim, Calif.

Trolinder is regarded as one of the world's leading authorities on genetic engineering technology.

She touched on current

transgenic cotton varieties such as RoundUp Ready, BXN and Bt cotton. These have already found their place in production systems, and Trolinder said she sees varieties with boll-weevil resistance being on the scene very soon.

She said many of the traits available in other crops can be

expected in cotton very soon, most notably a greater tolerance for low temperatures.

Also on the horizon are seed with improved vigor and development of gossypol-free seed to yield better oil.

Cotton with greater resistance to drought also was predicted.

## OBITUARIES

### LEON LOGSDON

Services were held Monday at the First Assembly of God for Leon Logsdon, 54, of Muleshoe. The Revs. Dennis Hayes and William Perhealth officiated. Burial was in Muleshoe Memorial Park.

Ellis Funeral Home handled arrangements.

Mr. Logsdon was born Jan. 21, 1946, in Watonga, Okla. He died Jan. 12 in Muleshoe.

He had lived in Muleshoe since 1973, moving here from Watonga. He worked for Savage Industries at Tolk Station. He married Judy Humphrey on Nov. 28, 1980.

He was a member of the Church of the Nazarene and the Muleshoe Jaycees, and a past member of the Muleshoe Chamber of Commerce board of directors, the Muleshoe Activities Committee and the Nazarene Church Board.

Mr. Logsdon is survived by his wife; two stepsons, Jeffrey Bussey of Lewisville, Texas, and Shawn Bussey of Plano; a sister, Wanda Bodnar of Oklahoma City; and four grandchildren, Kayla Bussey, Kelly Bussey and Kyle Bussey, all of Lewisville; and Ryan Bussey of Plano.

He was preceded in death by a brother, Wayne Logsdon, and a sister, Paula Logsdon.

The family suggests memorials to the American Heart Association (3403 73rd St., Lubbock 79423).

### APOLINAR CASTORENA

Services were held Wednesday at Our Lady of Guadalupe Catholic Church in Lubbock for Apolinar "Junea" Castorena, 55, of Lubbock. The Rev. Jim O'Connor was the celebrant. Burial was in Peaceful Gardens Memorial Park.

Calvillo Funeral Home of Lubbock handled arrangements.

Mr. Castorena was born in Mason, Texas. He died Jan. 14 at University Medical Center in Lubbock.

He had moved to Lubbock from Altus, Okla.

He is survived by six sisters, María Louise Domínguez and Natalia Baldérez, both of Hereford, Michaela Hernández of Mason, Mercedes Flores of Lubbock, Nora Sánchez of San Angelo, Dora García of Phoenix and extended family in the Muleshoe area.

He was preceded in death by his parents, Apolinar and Manuela Castorena and two brothers, Refugio "Polo" Castorena and Moisés Castorena.

### LILLIE WILLIAMS

Services were held Wednesday at Wallace Funeral Home Chapel in Tulia for Lillie Ruth Lee Williams, 67, of Amarillo. The Rev. Calvin Powell officiated, assisted by the Rev. Moody Smith. Burial was in Rose Hill Cemetery at Tulia.

Mrs. Williams was born Aug. 6, 1933, at Paducah. She died Jan. 13 at Crown of Texas Hospice in Amarillo.

She graduated from Muleshoe High School and married Ray Allen Williams Sr. on Aug. 20, 1952, in Muleshoe. She was worked for 12 years as a bank teller (part of that time in Blythe, Calif.) and was a member of the Rebekah Lodge.

They moved to Amarillo in 1992, and she managed a convenience store there for five years.

She was a member of Prairie View Baptist Church in Amarillo.

Mrs. Williams is survived by her husband; two sons, Ray Allen Williams Jr. and Joseph Roland Williams, both of Amarillo; two daughters, Sharon Kay Shipley of Midland and Jacqueline Ruth Whisnand of Blythe; a sister, Velma Howell of Muleshoe; and 10 grandchildren.

### GRACE GAMMON

Services were held Jan. 6 at the Willcox (Ariz.) Church of Christ for former Lazbuddie resident Grace Dahlman Jennings Gammon, 92, of Willcox. Burial was in Sunset Cemetery in Willcox.

Westlawn Chapel and Mortuary of Willcox handled arrangements.

Mrs. Gammon was born May 24, 1908, at Ladonia, Texas. She died Jan. 4 in Tucson.

She graduated cum laude with a liberal arts degree from Transylvania College in Lexington, Ky., in 1929. She majored in Spanish and French and was a member of Chi Omega sorority there.

She then taught school at Lazbuddie, where she married John Gammon on Oct. 29, 1933. They farmed and ranched in the Lazbuddie area until moving to Bonita, Ariz., in 1964, and farmed and ranched in the Bonita area until moving to Willcox in 1983.

She had been a member of the Northern Cochise Community Hospital Auxiliary and the Willcox Cowbells for more than 20 years.

She was known for her love of the Sulphur Springs Valley, Dos

Cabezas, the cactus, hummingbirds, Mount Graham, the dust devils and beautiful sunrises and sunsets of southern Arizona.

Mrs. Gammon is survived by her husband; her family, Jean Louise and Joe Briggs, John and Mary Lou Gammon Jr. and Marianna Gammon; a brother-in-

law, Manual De Busk; her grandchildren and their spouses, Melissa and Lance Eggers, Melinda and Fred Andrews, David and Sue Blakemore-Briggs, Marisa and Danny Harris, Mariela Grace Gammon and Savannah Gammon; great-grandchildren, Stephanie Andrews, Noah Blakemore-

Briggs, Nate Blakemore-Briggs, Ashlynn Harris, Reece Harris and Connor Harris.

She was preceded in death by a sister, Jean Shelley De Busk, on Jan. 12, 2001.

The family suggests memorials to Carondelet Hospice (1802 W. St. Mary's Road, Tucson 85745).



Castorena



**LAZBUDDIE GARAGE & SUPPLY**  
PO Box 100 • Lazbuddie  
965-2188

**Congratulations to all Lazbuddie Livestock Show Winners!**

**RESERVE CHAMPION BLACK OPB SWINE**  
Suzanne Mason



**DODD GIN**

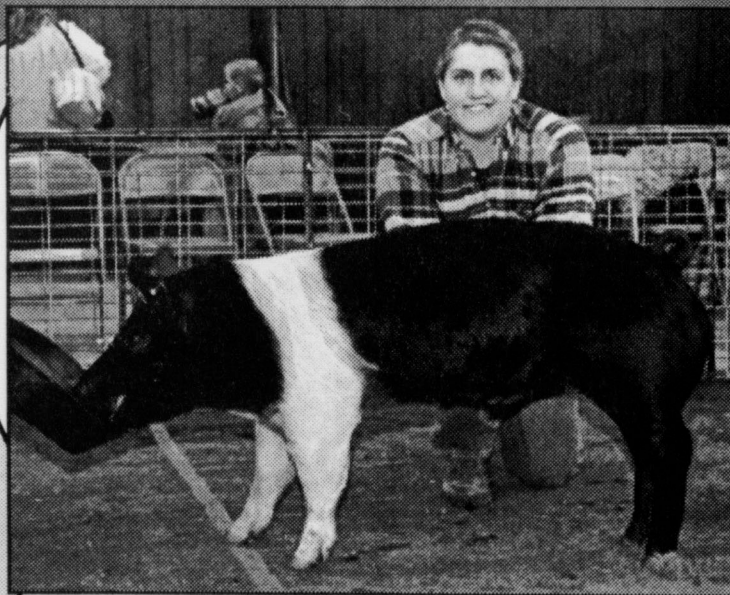
...this location serving area farmers for over 51 years

**965-2311 or 800-560-5602**

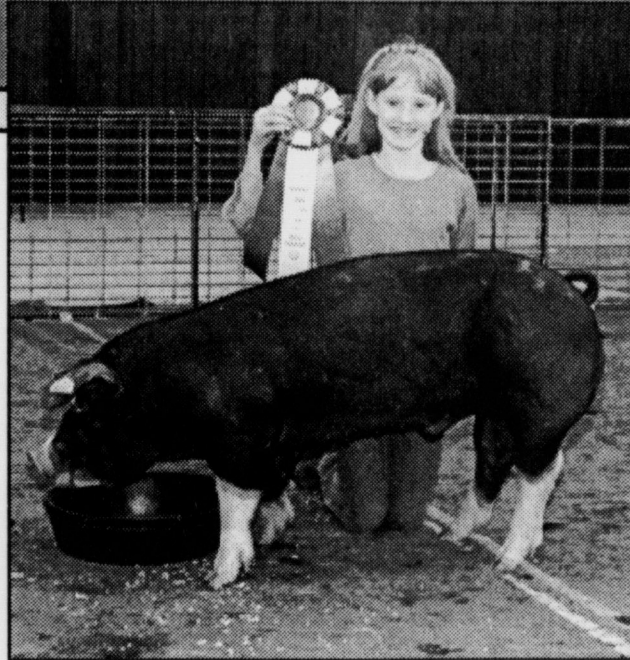
Virgil Morton — Mgr.

**GOOD SHOW LAZBUDDIE KIDS! Congratulations to you all!**

**GRAND CHAMPION LAMB**  
Suzanne Mason



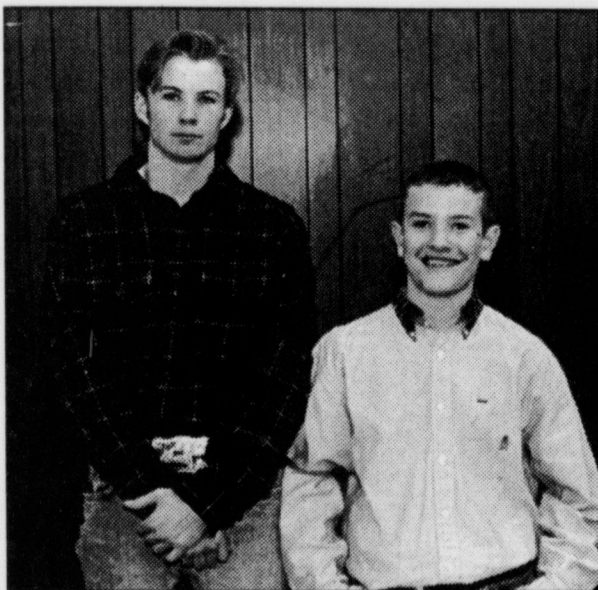
**GRAND CHAMPION SWINE**  
Jay Seaton



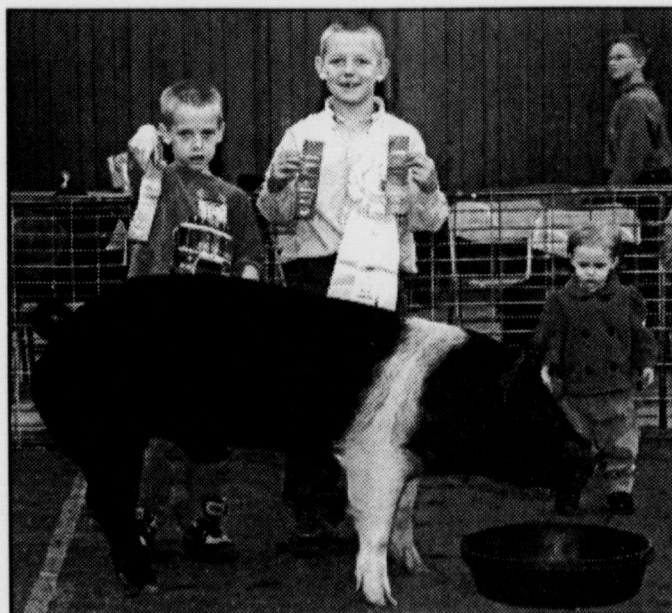
**CHAMPION BLACK OPB**  
Montana Steinbeck



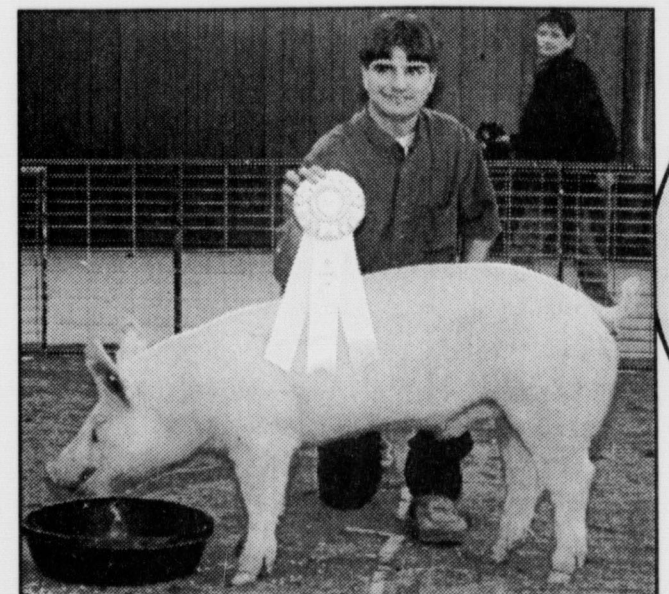
**CHAMPION DUROC**  
Brock Steinbeck



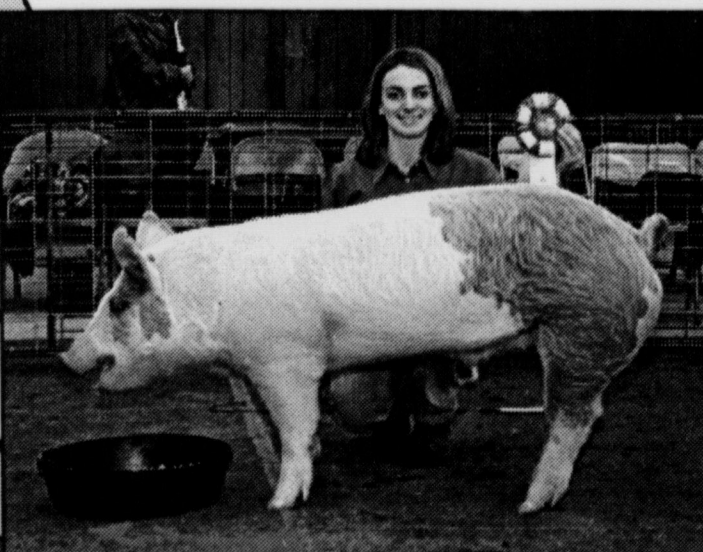
**SWINE SHOWMANSHIP AWARD**  
Sr.-Trey Nickels, Jr.-Kirby Kimbrough



**RESERVE GRAND CHAMPION SWINE**  
Kayle Jesko



**RESERVE CHAMPION YORKSHIRE**  
Jeffrey Phillips



**CHAMPION CROSS**  
Kayla Parham

**Congratulations to all Lazbuddie Livestock Show Winners... We're Proud Of You!**

**LOWE'S MARKETPLACE**  
401 W. American Blvd. Muleshoe 272-4585

## Lady Mules down Littlefield to stay unbeaten in district

By DELTON WILHITE  
Journal correspondent

The Littlefield Lady Wildcats were able to stay in Friday night's game with Muleshoe during the first half. The second half was a different story, however, and the Lady Mules walked away with a 58-37 victory.

Muleshoe played without Mindy Locker, whose nose was broken in the Jan. 5 game against Lubbock Roosevelt.

Littlefield is a young team, with no seniors, three juniors, four sophomores, two freshmen and a new coach, Jason Weese, son of Texas Tech Lady Raiders assistant coach Lyndon Weese.

During the first two periods, the Lady Cats played strong transition defense and prevented Muleshoe from scoring in transition. The Lady Mules

had to settle for attempting medium- and long-range shots that did not go in; it was as if the Muleshoe basket was "closed for repairs."

Muleshoe barely led at half-time, 24-22, and at that point the game was as close statistically as the score indicated.

After allowing Littlefield six unanswered points early in the third period, however, the Lady Mules went on a 16-point run that put them well in front to stay.

The run included two points from Shani Rasco, four from Tommie Hernández, eight from Britni Gartin and two from the charity stripe for Kayla Glover.

Hernández, knocked to the floor on a rebound attempt, kept her concentration, grabbed the loose ball and passed to Myndi Heathington,

who sent the ball long to Gartin for a layup.

Muleshoe also outscored Littlefield 16-9 in the final frame. "Tommie (Hernández) played well tonight — she pushed their post people around and out of position," Muleshoe coach Shana Simms said.

"Britni Gartin started going to the basket — Britni was Britni in the second half," Simms said. "Megan Tipps struggled in this game, but I told her 'Tuesday is a new game — get after Dimmitt.'"

Locker was released by the doctor to play against Littlefield if she wore a mask, but Simms preferred to take no chances and had told the team Locker would not play unless it was "absolutely necessary."

"She came close to entering the game in the third period,

but the other nine girls saw her stretching in the third period and stepped up their play, so Mindy did not have to enter the game," Simms said.

Scoring for Muleshoe were Gartin 17 (two threes), Heathington nine (three threes), Rasco nine, Glover and Annie Cox five each, Jessica Carpenter three and Candace Hutto two.

The Lady Mules pulled down 30 rebounds, made seven of 13 free throws, had seven steals (Gartin three and Hernández two), committed 12 turnovers and were called for 15 fouls.

The Lady Mules, now 3-0 in district, were scheduled to play at Dimmitt on Tuesday and will travel to Shallowater on Friday.

Dimmitt is 2-1 in district and Shallowater shares the lead with Muleshoe.



RESERVE GRAND CHAMPION LAMB Logan Mason

GOOD SHOW

**Russell Spraying, Inc.**

Rt. 3 Box 810 • 965-2624 or 965-2627

## Muleshoe Mules tap Littlefield in district opener

By DELTON WILHITE  
Journal correspondent

The Mules may have been in awe of Littlefield's intensity in the first half of Muleshoe's first district contest Friday, but they stepped up in the second half and outran the Wildcats for a 41-32 victory.

"It is a little hard to duplicate that kind of intensity in practice, and Littlefield is well-known for that style of ball," Muleshoe coach Ralph Mason said.

"Our kids were in a little bit of awe the first half, but we talked about it at halftime, and the second half, we came out and played like we had a purpose," he said. "We came out to win a ballgame, not just

wait around and see what happened."

The first period ended in a 7-7 dead heat, but the Wildcats built a 15-11 with three and a half minutes remaining in the second quarter. Darrell Lewis had sandwiched a bucket between a Wildcat basket and a three-pointer to put the Mules at 11; Lincoln Riley hit a bucket and a free throw and Dan Williams made three of four free throws to send the Mules in at half with a 17-15 lead.

"I felt like early in the game that whoever got a little run in the second half would win," Mason said. The third quarter remained close, but Muleshoe was able to add two points to

its lead.

In the fourth period, the Mules turned up the thermostat and took the game away from Littlefield, outscoring the Wildcats 13-8 and holding them scoreless for the final two minutes of the contest.

Lewis led Muleshoe scoring with 15, followed by Riley with 14, Jeff Shelburne with four, Williams and D.J. Domínguez with three each and Kyle Atwood with two.

Muleshoe had 10 steals (Riley three), made 10 of 17 free throws, pulled down 33 rebounds, committed 17 turnovers and was called for 14 fouls.

This week's schedule for the Mules included Dimmitt and

Shallowater, both playoff contenders (as was Littlefield).

Read It First In The Journal!



RESERVE CHAMPION DUROC Wayne Terry

Good Show Kids!

Congratulations to you all!

**WILSON APPLIANCE**

117 Main Street  
Muleshoe • 272-5532

## Opponents of change may be out-financed

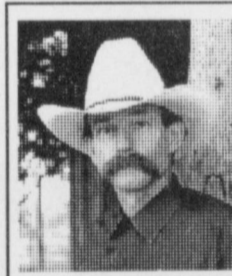
This is Howard Linus, National Public Radio, in Hopeville, Mont. Hopeville is a settlement near what was once Livingston. It resembles a camp town of the late 1880s and is one of many that have sprung up across the West.

These camps are comprised of people put off their land or out of work in the natural resource industries of timber, agriculture and mining. They are referred to as "Wheatys."

These dispossessed people have become a thorn in the side of the rightful owners of 21st-century Montana. At present, 98 percent of Montana is controlled by the federal government, conservation groups or the Turner Global Enterprise.

Shel Poltice is the executive director of the New Montana Earth Soul, an environmentally conscious development conglomerate headquartered in Washington, D.C.

Poltice explains: *We have created an ecological utopia. Bison and wolves co-habitat; sucker and whitefish spawn. Private homes are completely eco-sensitive, computer-designed, predator-proof and aesthetically pleasing. It is a paradise where only members have access. That is why these*



**BAXTER BLACK**

ON THE EDGE OF COMMON SENSE

*Hopeville squatters and their ilk must be extirpated, evicted and expelled!*

*They have been camping on New Montana Earth Soul property. They have pitiful little garden plots and crudely built log cabins, and are keeping domestic animals to eat. As if Chinese pork or Argentinian beef isn't good enough for them. They have even tried to enlist the native Montana Indian Council in their cause, but the Indians value our contribution to their casino gambling too much to get involved with the riffraff.*

Reports of violence, threats against the exclusive homeowners, and vandalism to membership-only resorts at Big Sky, Big Timber and Big Ted have been received. Y.O. Burt, head of Turner Global Security, says the Wheatys are dangerous:

*They use guerrilla tactics, damage solar stations, burn meditation kiosks. We estimate there are 85,000 living in camps within 50 miles of Turner Global's Castle Park.*

With me now is one of the Wheatys. She identifies herself as Kayo. Kayo, what gives you the right to attack

the Montana Elite Commission?

*I am a sixth-generation Montanan. My grandfather lost our family ranch in 1998 as a result of government policies bought and paid for by the malignant outsiders. They kept us suppressed for years as they slowly dismantled our ability to support ourselves. Then they took our land.*

*But we are going to take it back. Just like South Africa, just like India, just like the revolutionary militia in 1776. We who settled this great state are going to take it back from the coddled opportunists, these sheltered toothless baby robins who would not have survived three days in the real Montana. We will reclaim our own.*

But can they, these "scruffy ruffians," as Shel Poltice describes them? Or are the second-home transitory elite of Missoula, Billings and Bozeman simply too powerful and too well-armed? Only time will tell.

This is Howard Linus, National Public Radio, in Billings, New Montana.

**JOE'S BOOT SHOP**

1-800-658-6378 106 E. American Blvd. Muleshoe, Texas

**And Country Junction**

**JANUARY**

**OUTTA HERE**

SALE GOING ON NOW!

Lots of beautiful clothes remaining! Sale excludes Cruel Girl

**LADIES CLOTHING 40% OFF**

**CRUEL GIRL CLOTHING 20% OFF**

**ONE RACK LADIES CLOTHING 75% OFF**

**LADIES JEANS BUY ONE PAIR at Regular Price and GET 2ND PAIR 1/2 PRICE**

**MEN'S SPORTS JACKETS.....25% OFF**

Lots of choices in **LAMÉ OUTFITS** (And other flashy fabrics)

**PERFECT FOR THE UPCOMING LIVESTOCK SHOWS!**

*Good Luck to All Area Stock Show Participants!*

**SHOW**

from page 1



Landon Parham stands with his champion Cross, which was crowned Grand Champion Steer at the Lazbuddie 4-H and FFA Junior Livestock Show held on Saturday, January 13.

In the swine showmanship, Trey Nickels won the senior division and Kirby Kimbrough was the junior champion.

Others who exhibited breed champions and reserve champions in the swine show included:

- Montana Steinbock, who had the champion Black OPB. Suzanne Mason had the reserve champion.

- Brock Steinbock, who had the champion Duroc. Wayne Terry had the reserve champion.

- Shawndee Nichols, who exhibited the champion White OPB. Roper Smith had the reserve champion.

- Brock Steinbock, who had the champion Yorkshire. Jeffrey Phillips exhibited the reserve champion.

- Kayla Parham, who showed the champion Cross. Suzanne Mason had the reserve champion.

Lazbuddie 4-H and FFA Junior Livestock Show  
Saturday, Jan. 13, Friona, TX  
Judge: Robbie Phillips, Levelland  
Junior Market Steer Show  
British

One Class — 1. Landon Parham; 2. Logan Mason; 3. Kayla Parham; 4. Wayne Terry.

Champion British  
Landon Parham  
Reserve Champion British  
Logan Mason  
Crosses

Light — 1. Shonnah Black; 2. Triston Thorn; 3. Clifton Harris; 4. Tray Thorn.  
Heavy — 1. Landon Parham; 2. Tray

Thorn; 3. Savannah Black; 4. Shonnah Black.

Champion Cross  
Landon Parham  
1st Heavy  
Reserve Champion Cross  
Shonnah Black  
1st Light  
Grand Champion  
Junior Market Steer  
Landon Parham  
Champion Cross  
Reserve Grand Champion  
Junior Market Steer  
Shonnah Black  
Reserve Cross  
Showmanship  
Savannah Black

Junior Market Lamb Show  
Medium Wool  
One Class — 1. Suzanne Mason; 2. Logan Mason; 3. Ryan Mason.

Grand Champion  
Junior Market Lamb  
Suzanne Mason  
Reserve Grand Champion  
Junior Market Lamb  
Logan Mason  
Showmanship  
Suzanne Mason

Junior Meat Goat Show  
One Class — 1. Kolby Wilkerson; 2. Kolby Wilkerson; 3. Melanie Winders; 4. Kolby Wilkerson.

Grand Champion  
Junior Meat Goat  
Kolby Wilkerson  
Reserve Grand Champion  
Junior Meat Goat  
Kolby Wilkerson  
Showmanship  
Kolby Wilkerson

Junior Market Swine Show  
Black OPB  
One Class (190-202 lbs.) — 1. Montana Steinbock; 2. Suzanne Mason; 3. Ryan Mason; 4. Wayne Terry.

Champion Black OPB  
Montana Steinbock  
Reserve Champion Black OPB  
Suzanne Mason  
Durocs

Light (189-206 lbs.) — 1. Brock

Steinbock; 2. Kayla Parham; 3. Chelsea Nichols; 4. Tobin Redwine.

Medium (214-225 lbs.) — 1. Wayne Terry; 2. Clifton Harris; 3. Cole St. Clair.

Heavy (232-246 lbs.) — 1. Ryan Mason; 2. Dylan Haney; 3. Roper Smith.

Champion Duroc  
Brock Steinbock  
1st Light  
Reserve Champion Duroc  
Wayne Terry  
1st Medium  
Hampshires

Light (165-195 lbs.) — 1. Kirby Kimbrough; 2. Garrett Scisson; 3. Wayne Terry; 4. Clifton Harris; 5. Elizabeth Thomas.

Medium (200-215 lbs.) — 1. Jason Davis; 2. Jay Seaton; 3. Cole St. Clair; 4. Melanie Winders.

Medium-Heavy (218-230 lbs.) — 1. Jay Seaton; 2. Mandy Haney; 3. Jay Seaton; 4. Shannon Redwine.

Heavy (235-242 lbs.) — 1. Kayle Jesko; 2. Chelsea Nichols; 3. Brice Haney; 4. Shawndee Nichols.

Champion Hampshire  
Jay Seaton  
1st Medium-Heavy  
Reserve Champion Hampshire  
Kayle Jesko  
1st Heavy  
White OPB

Light (199-205 lbs.) — 1. Roper Smith; 2. Kayle Jesko; 3. Montana Steinbock.

Heavy (222-244 lbs.) — 1. Shawndee Nichols; 2. Tobin Redwine; 3. Landon Parham; 4. Jeffrey Phillips

Champion White OPB  
Shawndee Nichols  
1st Heavy  
Reserve Champion White OPB  
Roper Smith  
1st Light  
Yorkshires

Light (175-195 lbs.) — 1. Jeffrey Phillips; 2. Mariah Steinbock; 3. Garrett Scisson; 4. Clifton Harris.

Medium (213-225 lbs.) — 1. Shannon Redwine; 2. Rowdey Smith; 3. Cole St. Clair.

Heavy (226-243 lbs.) — 1. Brock Steinbock; 2. Matthew Goe; 3. Brice Haney.

Champion Yorkshire  
Brock Steinbock

**A Special SALUTE to the Winners of the Lazbuddie Livestock Show!**

**STEER SHOWMANSHIP AWARD**  
Savannah Black  
**CENTRAL COMPRESS & WAREHOUSE**  
205 Railroad Ave. • Sudan, TX • 227-2388

**MULESHOE PEA & BEAN**  
Rt. 2 Box 297 • 272-5589

**We're Proud Of You!**

**RESERVE CHAMPION CROSS**  
Suzanne Mason

**SHERLEY-ANDERSON**  
LAZBUDDIE ELEVATOR — 965-2922

**RESERVE GRAND CHAMPION STEER**  
Shonnah Black

**Congrats to all Lazbuddie Livestock Show Winners!**

**HONOR ROLL**

**MULESHOE HIGH SCHOOL Semester 1, Cycle 3**

**Ninth Grade** — Casey Barrier, Tori Barton, Sara Benham, Marlie Black, Ann Cox, Elida Diaz, Joni Garcia, Tyrel Gear, Hailey Hamilton, Erin Hancock, Stacey Mata, Joni Moreno, Christy Morgan, Tabetha Obenhaus, Stephanie Rubio, Cory Ruthardt, Karla Ruvalcaba, Jonathan Sheets, Landon Sheets and Brandi Whalin.

**Tenth Grade** — Gradee Adrian, Wyndolyn Allison, Crystal Bailey, Bailey Barrier, Summer Daniel, Silvia Garcia, Jenny Hall, Jodi Hawkins, Mindy Locker, Tisha Lovelady, Eva Pylant, Andrew Reeves, Micah Ruthardt, Cydni Vandiver, Timothy Villa, Jami Wedel and Erica Whalin.

**Eleventh Grade** — Ricardo Aburto, Blanca Arzola, Kyle Atwood, Megan Barrett, Laura Bonds, A.J. Buhman, Elizabeth Castorena, Carmen Flores, Kayla Glover, Joshua Hall, James Hancock, Rendi Hodge,

Kayla Kelley, Cami Kenemer, Denisse Lopez, Matthew Lopez, Matthew Luna, Juan Madrid, Kristen Magby, Ashley May, Suzanne Messenger, Brandon Mount, Jennifer Rempe, Lincoln Riley, Sara Sheets, Stephan Shelburne, Janna Skaggs and Laura Wood.

**Twelfth Grade** — Lindsey Altman, Letti Barrera, Brandon

Broyles, Jennifer Castorena, Melissa Flores, Birte Guderjahn, Casey Hall, Christopher Hall, Myndi Heathington, Tommie Hernandez, Stephanie Kirk, Jerrell Otwell, Luis Pacheco, Jordan Pool, Westin Price, Drew Robinson, Joey Stone, Megan Tipps, Joseph Tucker, Travis Tunnell and Dan Williams.

**'CREATIVE LIVING'**

Information on preparing dinners, free-hand painting and cooking with honey will be featured on "Creative Living" on Jan. 23 at 1 p.m. and Jan. 27 at 3 p.m. (All times are Central.)

Joan Toole, a cookbook author from Lake Forest, Ill., will share recipes and ideas for preparing dinner in almost no time.

Tracia Ledford, representative of Delta Technical Coatings Inc. in Orlando, Fla., will demonstrate a free-hand painting technique that even beginners can do.

Gretchen Frederick, spokesperson for the National Honey Board of Longmont, Colo., will

show different varieties of honey and how to pair them with food.

Information on making pillows and flax, and selecting a home day care, will be featured on Jan. 25 at 1 p.m.

Pat de Santis of West Warren, Mass., representing the Wm. Wright Co., will demonstrate the making of decorator pillows.

Jane Butel, a cookbook author from Albuquerque, will demonstrate how to make the southwestern dessert called flax.

Brenda Bishop, with the New Mexico Cooperative Extension Service in Tucumcari, will talk about selecting a home day-care provider for children.

**GRAND CHAMPION GOAT**  
Kolby Wilkerson

**We're Proud Of Our Youth!**

**CHAMPION YORKSHIRE**  
Brock Steinbock

### Keeping an Eye on Texas

#### Climbing the Ranks

The U.S. Census 2000 reports Texas is the second most-populated state, with figures that show 20,851,820 residents as of April 1, 2000. Texas gained nearly 4 million people in the 1990s, and the state's 22.8 percent increase boosted Texas past New York to the No. 2 position.

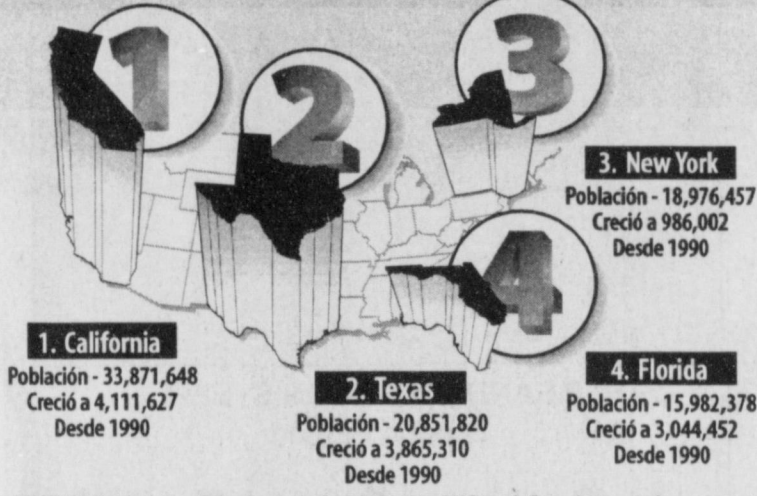


SOURCES: Carole Keeton Rylander, Texas Comptroller of Public Accounts (www.window.state.tx.us), the U.S. Department of Commerce and U.S. Census Bureau.

### Observando a Texas

#### Escalando posiciones

El Censo de los EE.UU. del año 2000 informa que Texas es el segundo estado con mayor población, con cifras que demuestran que en el 1 de abril del 2000 había 20.851.820 residentes. Texas ha ganado cerca de 4 millones de personas durante los años 1990, y el aumento del 22.8 por ciento permitió que le ganara a New York y la mandara a la segunda posición.



ORIGENES: Carole Keeton Rylander, Contralora de Cuentas Públicas de Texas (www.window.state.tx.us) y Departamento de Comercio de los EE.UU. y Oficina del Censo de los EE.UU.

## Alaskans study Texas Gulf in hopes of saving northern wildlife

SPECIAL TO THE JOURNAL COLLEGE STATION — Suffering sea lions, salmon and similar Bering Sea creatures may have healthier futures at the hands of those who live closest to them, thanks to a first-of-its-kind collaboration between communities, conservationists and a major university.

Eight Alaskans dipped into the Gulf of Mexico recently during a sampling workshop taught by researchers from Texas A&M University and hosted by the World Wildlife Fund.

What the eight pull from the Gulf training will be put into practice back home in the Bering Sea eco-region as samples are obtained and sent to the researchers for analysis and problem-solving.

"Scientists don't really understand what is in the Bering Sea," said Mike Smolen of the World Wildlife Fund in Washington, D.C. "Yet it produces the majority of the fish that is consumed in the United States. It is rich with fish."

But all may not be well in what is considered the largest fishery in the world.

People who live in the region, as well as researchers from around the world, have been noticing changes in recent years — changes such as fewer sea lions and more fish with tumors.

Unknown is what is causing the changes and whether they are widespread, a trend or a point in the pendulum of time

that will swing back. The Alaskans and the World Wildlife Fund hope to find out in time to help save the ecosystem, if that is the problem and if saving it is possible.

Smolen said the privately funded World Wildlife Fund decided to seek training for the Alaskans rather than depend on state or federal programs to assess the situation because the local people "see the changes since they are there handling the fish regularly. For 10,000 years, they have lived off the fish, whales, sea lions and seals for all their protein. Who better to know these animals?"

He said people in the tiny, sparsely populated communities in the Yukon-Kuskokwim Delta region will "play key roles as opposed to being spectators" in helping Alaskan wildlife.

"They have the key questions and will assist researchers by helping to interpret not the science but the societal impact of conditions there," Smolen said.

"The point is not to bring their communities to our standards, but to bring the information to them so that they are empowered to make a difference," he added.

#### Lazbuddie JV trips

It was Longhorns 37, Eagles 27 after Lazbuddie and Three Way junior varsity boys battled it out Jan. 9 in the Three Way gym.

Lazbuddie's Andy Martin led all scorers with 12 points (including three three-pointers), followed by nine each for Tobin Redwine (Lazbuddie) and Eric Sowder (Three Way). Redwine also bucketed a three-pointer.

stem from a better understanding of how the various components in an ecosystem impact each other, according to Dr. John Bickham, Texas Agricultural Experiment Station environmental toxicologist.

"We know that wildlife populations fluctuate over time, and that environmental contamination is only one factor," Bickham said. "But contamination means a whole new suite of insults that animals have to deal with — a piece that is not a part of the natural world."

Bickham said he hopes the community involvement will help researchers pinpoint causes for the wildlife declines and illnesses, and thus how to improve the situation.

He pointed to the Steller sea lion, whose population has declined by 80 percent since the 1960s from about 175,000 to fewer than 50,000 now along the coast from northern California to Alaska, Siberia and Japan.

And he noted that the sea lion is a "sentinel species" — one often impacted first by environmental changes — and thus can be a sign of what will happen with other species in the same ecosystem.

#### Three Way 37-27

Also contributing to Lazbuddie's winning effort were Matthew Goe with eight points, Eric Magby with five, and Wayne Terry with three.

Other scoring efforts for Three Way came from Bobby Soliz with eight points, Ivan Navarro and Landon Gray with four each, and Canaan Heinrich with two.

— Submitted by The Sports Babes

## Annual bridal show set in Amarillo

Couples planning a wedding within the next year or so will have an opportunity to see merchandise from bridal-related merchants and consultants during the 18th annual MS Benefit Bridal Show on Jan. 21 at the Amarillo Civic Center.

The show hours are 1 p.m. to 4 p.m. and tickets are available at the door for \$3.

The event is sponsored by

Gingiss Formalwear and the Amarillo Globe-News and benefits the Panhandle Chapter of the National Multiple Sclerosis Society.

Twenty-seven vendors are expected to participate in a silent auction.

Other activities will include continuous modelling of bridal and formal wear, chamber music by the Vienna Conspiracy String Quartet, a guest

appearance by Miss Amarillo Area, games, door prizes, entertainment and a giveaway of two airline tickets to anywhere in the continental United States, Mexico, Canada, the Caribbean or Bermuda.

More information is available by calling Jeri Farris, president of the Panhandle MS chapter, at (806) 468-7500 or Bill Geist, bridal show director, at (806) 353-9141.

### REPRESENTATIVE SALES

839 head of cattle, 113 hogs and 180 sheep and goats for a total of 1,132 animals were sold at the Jan. 13th sale. Lower receipts due to unfavorable weather on sale day. Market steady-2 lower on stocker cifs. Feeder cattle steady to a dollar lower with few offered. Pairs, Bred cows, and Packer cows all sold steady from a week ago.

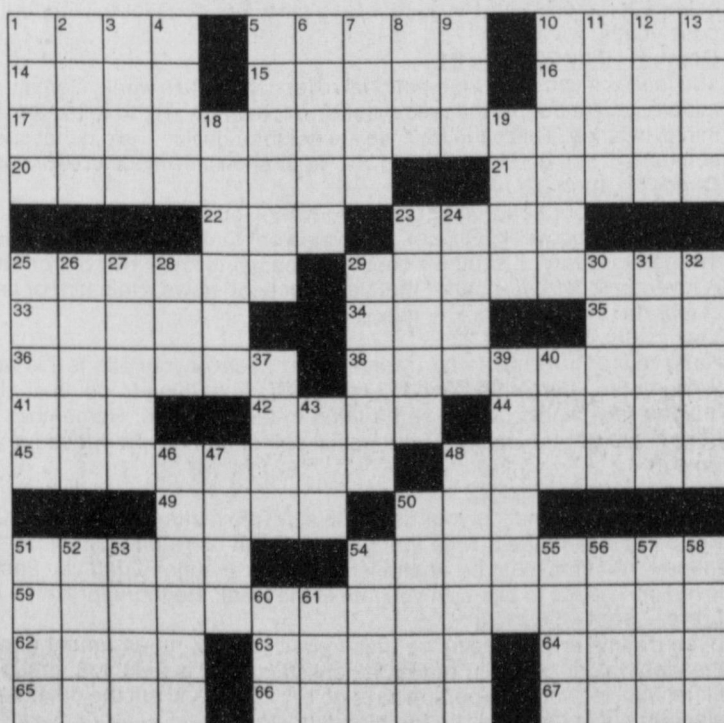
The Muleshoe Cattle Market is brought to you each week by Muleshoe Livestock Auction, located east of Muleshoe on U.S. 84. Muleshoe Livestock conducts sales every Saturday, beginning with hogs, sheep and goats at 10 a.m. and cattle following at approximately 12 noon.

#### Muleshoe Cattle Market

SATURDAY, JAN. 13, 2001

Seller, City	#	Type	Wt.	CWT or PH
Manuel Hernandez, Clovis, NM	3	Hol. Bulls	267 lbs.	at \$109.00
S&K, Lubbock	2	Hol. Strs	313 lbs.	at \$104.00
Lucas Aranda, Portales, NM	1	Blk. Bull	215 lbs.	at \$135.00
David Kinney, Whitharral	9	BWF Bulls	467 lbs.	at \$95.00
L.G. Layman, Muleshoe	2	Red Bulls	488 lbs.	at \$100.00
ACU, Morton	1	Char. Str	530 lbs.	at \$98.00
C&M Rogers, Muleshoe	2	Char. Strs	523 lbs.	at \$102.00
C&M Rogers, Muleshoe	5	Char. Strs	626 lbs.	at \$90.00
Ginny Allen, Amherst	2	Blk. Strs	600 lbs.	at \$90.00
D.C. Pearson, Ropesville	5	Red Strs	750 lbs.	at \$89.00
D.C. Pearson, Ropesville	6	Red Strs	829 lbs.	at \$84.50
B&P Cattle, Lubbock	2	Char. Hfrs	200 lbs.	at \$265.00
Murray Davis, Morton	1	Red Hfr	340 lbs.	at \$105.00
Adelaido Godinez, Muleshoe	5	RWF Hfrs	346 lbs.	at \$103.00
KP Farms, Lubbock	3	Blk. Hfrs	393 lbs.	at \$96.00
Kenneth Johnson, Littlefield	2	Char. Hfrs	453 lbs.	at \$93.00
C&M Rogers, Muleshoe	2	Char. Hfrs	473 lbs.	at \$95.00
Ginny Allen, Amherst	6	Red Hfrs	543 lbs.	at \$89.00
L.G. Layman, Muleshoe	3	Red Hfrs	563 lbs.	at \$88.50
J.D. Cattle, Friona	36	Mxd. Hfrs	590 lbs.	at \$87.75
J.D. Cattle, Friona	10	Mxd. Hfrs	637 lbs.	at \$85.00
Terry Pollard, Portales, NM	6	Mxd. Hfrs	472 lbs.	at \$94.50
Terry Pollard, Portales, NM	4	Mxd. Hfrs	656 lbs.	at \$87.50
BT Livestock, Morton	1	Red Hfr	720 lbs.	at \$80.50
Jerry Veach, Plainview	2	Mxd. Hfrs	798 lbs.	at \$78.50
David Greener, Morton	1	Char. Pair	.....	\$680.00
Lee Bilbrey, Bledsoe	1	WF Pair	.....	\$670.00
Terry Pollard, Portales, NM	2	Blk. Cows P7	.....	\$590.00
Fred Frazier, Portales, NM	5	Mxd. Cows P8	.....	\$500.00
C&M Rogers, Muleshoe	1	Char. Cow	1330 lbs.	at \$44.00
Debbie Underwood, Dimmitt	1	WF Cow	1310 lbs.	at \$43.50
Duward Dixon, Elida, NM	1	Yell. Cow	1115 lbs.	at \$40.50
Derrell Turner, Portales, NM	1	Yell. Cow	1270 lbs.	at \$43.50
Noel Cane, Hereford	1	Hol. Cow	1390 lbs.	at \$45.00
Prairie View Dairy, Muleshoe	1	Hol. Cow	1580 lbs.	at \$42.00
Greenfield Park Dairy, Portales	1	Hol. Cow	1630 lbs.	at \$42.50
Boehning Dairy, Earth	1	Hol. Cow	1810 lbs.	at \$41.50

## JUST FOR FUN



#### Clues ACROSS

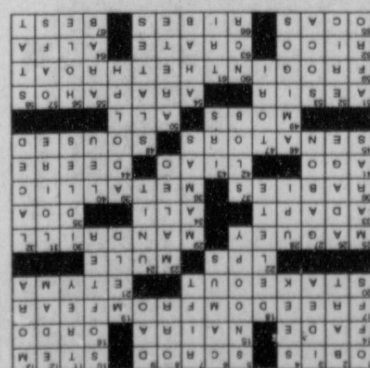
- Japanese sashes
- Boston dish
- Stalk
- Go away
- Nigerian monetary unit
- Church booklet
- One of F.D.R.'s four
- Surveillance
- Word forms
- Lasting records
- Carpet slipper
- Agave
- Baboon
- Become different
- Caliph
- Arrived extinct
- Animal disease
- Sparkling
- Back
- Chinese dynasty
- Makes tractors
- Kennedy and Thurmond
- Drunk

#### Clues DOWN

- Kills
- Young Simpson
- Content of cognition
- Try
- Inquisitorial
- Albert, French existentialist
- Opening
- Bobby, NHL champ
- Religion
- More squeezeable

- Playing card
- Mild, yellow Dutch cheese made in balls
- Short syllable (poetry)
- Remove
- Mix
- Moundbird
- Part of a larger social group
- Argentinean rodents
- Saying
- African nation
- News organization
- Female parents
- Daydreams
- French river
- Twined together
- Pig
- Ochs, publishing giant
- Romanian monetary unit
- Tax collector
- Spanish friends
- Spelling, actress
- Roofing materials
- Sharp, narrow ridge
- Hairdo
- Clapton, musician
- Soul and calypso song
- Whaling-ship captain
- Semite
- Make a cavity
- Louts
- Quantitative fact
- Company that rings receipts
- Denotes three

#### Crossword Answers







# Cost-of-caring adjustment may help hospitals across Texas

The last few years have been tough on hospitals in Texas and the rest of the nation.

Many of these critical community institutions have fallen prey to the law of unintended consequences, confronting budgetary crises that in some cases threatened their very existence.

Their difficulties were often the results of an overly aggressive government agency exceeding the intent of Congress when it balanced the federal budget in 1996.

At the time, the Congressional Budget Office estimated that the Balanced Budget Act would result in \$116 billion in Medicare savings from 1998 to 2002.

However, it turned out that the five-year impact of the act for hospitals, home health agencies and other Medicare providers would be closer to \$227 million — nearly twice the original estimate.

The Health Care Financing Administration, which manages the program, interpreted the Balanced Budget Act in a way that produced cuts in Medicare reimbursements to hospitals that went far beyond what Congress ever intended: Medicare spending was reduced last year, while the number of beneficiaries grew by some half-million. Medicare's Hospital Insurance Trust Fund expenditures fell 4.4 percent.

So, earlier this year, I introduced the American Hospital Preservation Act, a bill aimed

**CAPITOL COMMENT**




U.S. SENATOR  
**KAY BAILEY HUTCHISON**

at boosting Medicare reimbursements to struggling hospitals. My legislation was designed to get those institutions back on their feet by giving hospitals the same "cost-of living adjustment" other federal program recipients get each year.

At a time when these institutions are struggling because of higher-than-expected drug, medical and personnel costs, continued cuts are putting Texas hospitals a serious bind. Their margins have fallen by 10 percent a year for three years.

About 50 percent of an av-

erage Texas hospital's payments come from Medicare and Medicaid. Not only were Medicare cuts undermining the quality and quantity of care hospitals could provide, but these pressures threatened closures and bankruptcies as well.

The hospitals' credit — and ability to issue bonds if they needed to expand — was downgraded as well.

How bad was this hurting us? Parkland Hospital in Dallas had to cut 200 staffers and raise its property tax rate. The Harris County Hospital District had to raise taxes as well in the face of a huge looming

deficit. Baptist Health System in San Antonio cut 290 jobs. Methodist Health System in Houston cut 100 jobs. Big Bend Regional Medical Center in Alpine cut 14 staffers. And the Senior Center in Bedford had to close.

There is no way Congress could responsibly allow cuts of such magnitude, with such results, to go forward. So for more than a year I have been working with a bipartisan group of senators to get our hospitals off the critical list.

We thought we had the solution in hand last summer, but complications and delays of next year's final budget kept the situation in flux. The president had threatened to veto the budget measure that included the Medicare provider rescue package, so it was never sent to the White House for his signature. Our hospitals were left in a state of uncertainty.

Finally, on Dec. 14, Congress and the executive branch agreed on a way to finish the budget — and throw a lifeline

to the hospitals and other Medicare providers. Specifically, a cut in the inflation adjustment that was scheduled to take effect in 2001 is eliminated, meaning an additional \$4 billion over the next five years for hospitals nationwide.

This fixes the most pressing problem, but I believe we still will have to come back next year and finally restore the rest of the inflation adjustments to give the nation's hospitals continued financial stability.

## Hunger Relief starts work in area

Frances and Robert Duke of Springlake began Jan. 2 working part-time with the United Methodist Men's Hunger Relief Program for northwest Texas.

A retired couple, the Dukes have been northwest Texas coordinators for the Gleaning Network, another Methodist-affiliated agency, since 1997. During that time, they and a team of volunteers have salvaged more than 480,000

pounds of fresh food.

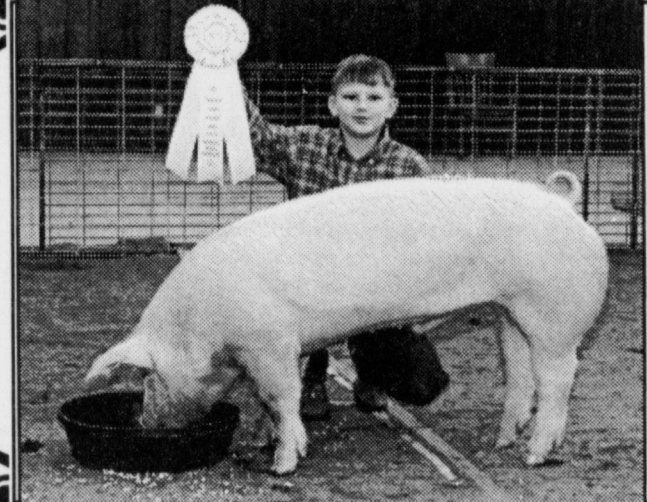
"We always need more volunteers for the gleaning operation," Frances Duke said, "especially field supervisors who are willing to be trained so we can cover a wider area, salvage more fresh food, and feed more people."

Anyone interested in volunteering may call the Dukes at (806) 647-5517 or (806) 647-6553 or e-mail them at hrnwtx@endhunger.org.

**GERMANIA**  
FARM MUTUAL INSURANCE  
127 Main St. • Muleshoe • 272-3979

*We Proudly Support  
The Youth In Our Area!*

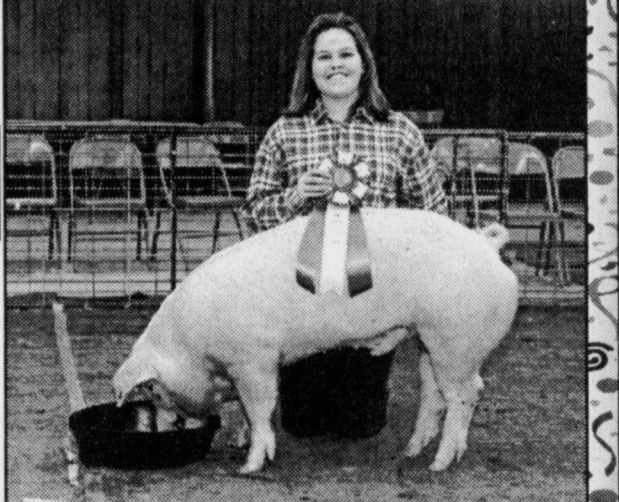
**RESERVE CHAMPION  
WHITE OPB  
Roper Smith**



**CHAMPION WHITE OPB  
Shawndee Nichols**

*Way To Go Lazbuddie  
Stock Show Winners!*

*Custom Cattle Feeders*  
**LAZBUDDIE  
FEEDERS**  
965-2434 • 965-2435 • 965-2436



# Journal Classifieds

## STOP & SHOP

Deadlines are 5 p.m. Monday and Thursday

Call 272-4536

January 18, 2001

HELP WANTED	FOR SALE	REAL ESTATE	REAL ESTATE	REAL ESTATE	REAL ESTATE	REAL ESTATE	
<p>The City of Muleshoe is taking applications for a secretarial/clerk position. Applicants should have general knowledge of office skills and be computer literate. Bilingual a plus. High School graduate/GED required. Upon employment, subject may be required to pass a drug test. Applications can be picked up at <b>City Hall, 215 South First, Muleshoe, TX</b>. Position open until filled. <i>EOE, ADA.</i></p>	<p>Complete - Computer (incl. monitor and printer) plus work station with drawers and 2 office chairs. Asking \$600 272-4118.</p>	<p><b>Apartments For Rent</b> 1 Bedroom 2 Bedrooms Call 272-3771 or 946-7668</p>	<p><b>For Sale, 3 Bedroom, 2 bath with large carport on 1 acre, 2 1/2 miles North on Hwy. 214.</b> Call (505)355-4241</p>	<p>3/2/1 plus large carport. Geo-Thermo heating/air. Fully carpeted. Yard sprinkler system. Call for an appointment at 272-3856.</p>	<p><b>For Sale</b> 14 X 60 Mobile Home 3 bedrooms, 2 baths and carport on 2 lots. All for \$14,000, OBO 272-5632</p>	<p><b>House for Sale at 823 W. Ave. D.</b> Call 806-481-5041 for an appointment.</p>	
<p><b>HELP WANTED:</b> Bailey County Electric Cooperative is accepting applications for Lineman or Lineman Trainee. Applications will be completed at the Muleshoe office at 305 E. Ave. B. Must be available 24 hours a day. All interviews will be conducted after the closing date of January 19, 2001 at 5:00 p.m. <i>BCEC is an equal opportunity employer.</i></p>	<p><b>LOST AND FOUND</b> Found South of Stegall. Female Blue Heeler with white spot on head. Call 946-3425</p>	<p><b>BAILEY COUNTY</b> 29 acres near Muleshoe, off Hwy 214 N., 8.64% Interest, \$134/Mo., Owner Finance Forest America Group 800-275-7376</p>	<p><b>Lazbuddie Area</b> 640 Acres - 4 Sprinklers 350 to 500 gallons water big wheat &amp; grazing goes, possible 50-70 thousand return by June 1. Contact Wayne Clark at 806-965-2895.</p>			<p><b>160 ACRES IRRIGATED FARM</b> One well. Lays good. Southeast of Lazbuddie.</p>	<p><b>320 ACRES IRRIGATED FARM</b> Southwest of Lariat. 4 Wells. 2 Sprinklers. Priced to Sell!!! Call Daren at J.B. Sudderth Realty, Inc. 806-481-3288.</p>
<p><b>Medical Records Transcriptionist</b> Full-time, 8 AM - 5 PM. Must type 50-55 wpm. Medical terminology desired. Contact Peggy Buhrman, RHIT, Director of Medical Records. Muleshoe Area Medical Center, 708 South First St., Muleshoe, TX 79347. 806-272-4524</p>	<p><b>Homeworkers Needed \$635 weekly processing mail. Easy! No experience needed. Call 1-800-440-1570 Ext 5085 24Hrs</b></p>	<p><b>AIR CONDITIONING</b> Financing available on new central refrigerated air conditioning-heating equipment. As low as \$59 a month. Bad credit? Bankruptcy? No Problem! <b>WE WILL FINANCE YOU!</b> Air America 791-1093</p>	<p><b>Is your business as clean as you like? For cleaning to your specifications, call 272-4815 after 5 PM.</b></p>			<p><b>HIGHLAND AREA</b> • 2-1-1 Carport, built-ins, wall furn. heat, win. evap., 5 fans, covered patio, fenced yd. \$25K!! HL-4 • NICE 3-1-1 Brick, Cent. heat &amp; evap. air, nice carpet, fans, 2 stor. bldgs., fenced yd., MORE!!! \$36.5K!! HL-1</p>	<p><b>LENAU - COUNTRY CLUB AREA</b> • 2-1-1 Home, wall furn. heat, \$18K!! L-4</p>
<p><b>Lamb Healthcare Center in Littlefield</b> — Hiring Full time and Part time Labor and Delivery RN's. Experience required. 7 pm to 7 am — Competitive Salary with Benefits with a sign-on bonus. Call 385-6411 ext. 214.</p>	<p>Cattlemen's Feedlot located in Olton, TX is looking for full-time Mill Production and Mill Maintenance personnel. Any experience is a plus, but will train the right persons. We offer great pay with benefits. Contact Kevin @ Cattlemen's Feedlot @ 806-285-2616 or 806-638-0055</p>	<p><b>UNBELIEVABLE DEAL!</b> 2000 MINUTES FOR \$39.99 FREE PHONE FREE ACTIVATION FREE CASE WITH PURCHASE OF CAR CHARGER CALL AMERICA TOLL FREE INCLUDES 750 WEEKEND MINUTES AND 750 EVENING MINUTES CELLULAR 2000 202 MAIN STREET (806)272-7523 OR 272-5153</p>	<p><b>DEADLINES FOR CLASSIFIED ADS</b> Monday 5 PM for Thursday's issue Thursday 5 PM for Sunday's issue</p>			<p><b>COMMERCIAL</b> • Duplex (2-2 bdrm. 1 bath units) plus 1 (2 or 3 bdrm) for residence or rental. \$30K!! • R.V./Mobile Home Park on 2.95 acres, home, office, 3 M.H. units. LET'S LOOK TODAY!! • APPROX. 4,800' shop plus 600' office area on a 60' x 130' lot!!! PRICE REDUCED!! \$40K!! • GOOD INCOME PROPERTY - approx. 3490' bldg., paved parking, good net lease!! PRICED TO SELL! • Established Business: Land, Bldg. &amp; Equip., \$75K!! • Nice Building with approximately 15,450 sq. ft. of shop area plus approx. 1,044 sq. ft. office (Dual Fuel Heat Pump for Office), 6 station phone system, restrooms (1 w/shower), loading dock, approx. 195 foot frontage. MORE!!! • 6,600 sq. ft. metal building with approximately 1080 sq. ft.</p>	<p><b>RURAL</b> • PLEASANT VALLEY, Approx. 160 acres, 2 bdrm home, 1 bath, 2 car detached garage, on pavement!! • W. of SUDAN-NICE 3-3-2 Brick Home, 5 acre tract on Hwy. 298, Cent. Air &amp; Heat, built-ins, large Quonset Barn, MORE!!! \$95K!! • 5 Acre tract on <b>IN CONTRACT!</b> • 3-2-1 Home, Cent. A&amp;H, built-ins, fenced yd., man, spktr., 300' stor. on .84 acre on pavement, edge of town!! \$40's!! • PROGRESS - VERY NICE 3-2-2 Home on 21.8 acres on Hwy. 84, Elec. Heat Pump, built-ins, FP, 3 fans, 10 hp., sub. irrig. well, undrgrd. tile, valves, &amp; gated pipe!!! MORE!!! \$55K!! • EARTH - 4-2-2 carport home, Heat Pump, fans, storage-workshop!! \$35K • 3 Bedroom 2 Bath Home at edge of town on pavement, .8 acre, wall furnace heat, evap. air, DW, FP, fenced yd., 20' x 24' gar./shop w/loft stor., 1 hp. dom. well!!! \$49,500!!!</p>

**Buy it, Sell it,  
Trade it  
in the Journal!**

**LOOK!**

**FOR SALE**

**Electric Range for sale. Like new!! Self-cleaning oven. Asking \$275 Call 272-5735**

**Keep Smiling!**

# CHECK OUT

# OUR WEEKLY SPECIALS

PRICES EFFECTIVE JANUARY 17-23, 2001

## MEAT

- X-TRA SAVINGS PAK ASSTD.
- PORK CHOPS** ..... LB **97¢**
- BONE-IN PORK
- SIRLOIN ROAST** ..... LB **\$1.39**
- BEEF
- SIRLOIN TIP ROAST** ..... LB **\$2.49**
- X-TRA SAVINGS PAK
- GROUND ROUND** ..... LB **\$1.99**
- X-TRA SAVINGS PAK CHICKEN
- DRUMSTICKS**
- OR THIGHS** ..... LB **69¢**
- ALASKAN
- POLLOCK FILLETS** ..... LB **\$1.79**
- ASSTD. VARIETIES HORMEL
- SLICED BACON** ..... 16 OZ. PKG **2/\$5**
- HORMEL
- LITTLE SIZZLERS**
- OR PATTIES** ..... 10-12 OZ. PKG **\$1.19**
- ASSTD. VARIETIES-SERVES 2-3
- HORMEL FULLY COOKED
- MICROWAVE OR BOIL IN BAG
- ENTREES** ..... 17 OZ. PKG **\$4.89**
- PEYTON'S
- MEAT FRANKS** ..... 12 OZ. PKG **69¢**
- PEYTON'S
- MEAT BOLOGNA** ..... 12 OZ. PKG **89¢**
- PEYTON'S
- CHORIZO** ..... 8 OZ. PKG **\$1.29**
- PEYTON'S REG. OR DOUBLE SMOKED
- SLICED BACON** ..... 12 OZ. PKG **\$1.69**
- PEYTON'S REG. OR POLISH
- SMOKED SAUSAGE** ..... 14 OZ. PKG **\$1.39**
- PEYTON'S
- CHOPPED HAM** ..... 10 OZ. PKG **\$1.99**
- PEYTON'S
- COOKED HAM** ..... 10 OZ. PKG **\$2.89**
- CASA DE LOWE'S
- TAMALES** ..... DOZEN **\$3.29**
- BALL PARK
- MEAT OR BEEF FRANKS** ..... 16 OZ. **\$1.59**

- OLD EL PASO 12 CT. WHITE
- CORN/REG. OR 3.8 OZ. MINI
- TACO SHELLS** ..... YOUR CHOICE **4/\$5**
- OLD EL PASO
- REG. OR FAT FREE
- REFRIED BEANS** ..... 16 OZ. CAN **99¢**
- CASA DE LOWE'S
- HOMESTYLE OR BURRITO SIZE
- FLOUR TORTILLAS** ..... 10 CT. PKG **89¢**

ALL VARIETIES  
**COCA-COLA, SPRITE  
OR DR. PEPPER**

6 PACK-12 OZ. CANS

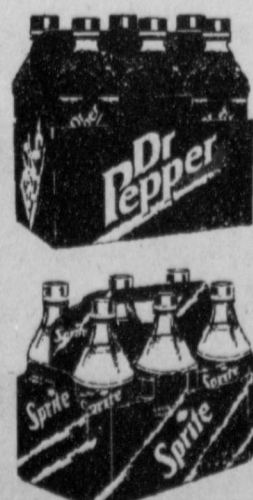
**3/\$5**



ALL VARIETIES  
**COCA-COLA,  
SPRITE OR  
DR. PEPPER**

6 PACK-.5 LITER

**2/\$4**



## PRODUCE

- U.S. NO. 1 RUSSET
- BAKING POTATOES** ..... LB **10¢**
- YOUR CHOICE
- FRESH CRISP  
SPINACH OR  
FRESH COLLARD,  
MUSTARD OR  
TURNIPS GREENS** ..... EACH **69¢**
- GREEN
- CABBAGE** ..... LBS **3/\$1**
- YOUR CHOICE
- GARDEN FRESH  
BROCCOLI, GLOSSY  
BLACK EGG PLANT  
OR SERRANO PEPPERS** ..... LB **69¢**
- SNO-WHITE
- CAULIFLOWER** ..... **2/\$3**
- FRESH
- BELL PEPPERS** ..... **2/88¢**
- CELLO
- CARROTS** ..... 1 LB. BAGS **2/88¢**
- DELICIOUS
- CHERRY TOMATOES** ..... 8 OZ. **\$1.59**
- RED RIPE
- TOMATOES** ..... 4 PACK **99¢**
- SWEET CHILEAN
- RED GRAPES** ..... LB **\$1.59**
- WASHINGTON EXTRA FANCY
- ROME OR GRANNY  
SMITH APPLES** ..... LB **88¢**
- SWEET SEEDLESS
- WATERMELONS** ..... EACH **\$3.99**

## FROZEN & DAIRY

- GLACIER
- HASHBROWNS** ..... 10 CT. PKG **\$1.19**
- ASSTD.
- PATIO DINNERS** ..... 10.6-13 OZ. PKG **77¢**
- GREEN GIANT
- NIBBLERS** ..... 6 EAR PKG **\$1.29**
- ASSTD. PATIO
- BURRITOS** ..... 5 OZ. PKG **3/99¢**
- ASSTD. PILLSBURY
- TOASTER  
STRUDEL** ..... 10-11.5 OZ. BOX **2/\$4**
- ASSTD. BANQUET
- FRIED CHICKEN** ..... 19-25 OZ. BOX **2/\$7**
- 16 OZ. REG. OR LIGHT QUARTERS
  - 16 OZ. SOFT MARGARINE
  - 2 CT. 8 OZ. SOFT MARGARINE
- PARKAY** ..... YOUR CHOICE **79¢**
- ASSTD. PILLSBURY
- HUNGRY JACK  
BISCUITS** ..... 9.5-10 OZ. CAN **99¢**
- SELECT GROUP
- KRAFT CHUNK
- CHEESE** ..... 8 OZ. PKG **\$1.88**
- SHURFINE ASSTD.
- ICE CREAM** ..... 1/2 GAL. SQUARE **2/\$4**
- ICE CREAM LITES • YOGURT SMOOTHIES • HOMEMADE VANILLA ICE CREAM BARS
- BLUE BUNNY  
NOVELTIES** ..... 12 CT. PKG **2/\$6**

## HEALTH & BEAUTY

- ASSTD. SUAVE
- SHAMPOO OR  
CONDITIONER** ..... 15 OZ. BTL **\$1**
- ASSTD. SUAVE
- LOTION** ..... 10 OZ. BTL **\$1**
- SUAVE SOLID
- ANTI-PERSPIRANT  
& DEODORANT** ..... 1.6-1.75 OZ. **\$1**
- ALEVE • 20 CT. GELCAPS
- 24 CT. TABLETS OR CAPLETS
- PAIN RELIEVER** ..... YOUR CHOICE **\$3**
- ASSTD. LIQUI-GELS
- ALKA-SELTZER PLUS** ..... 12 CT. PKG **\$3**
- 
- SOFT'N GENTLE WHITE
- BATH TISSUE** ..... 4 ROLL PKG **77¢**
- SO-DRI PRINT
- PAPER TOWELS** ..... ROLL **2/\$1**
- ASSTD. KEN-L-RATION, CYCLE OR SKIPPY
- DOG FOOD** ..... 13.2 OZ. CAN **2/88¢**
- IMPERIAL PURE CANE
- SUGAR** ..... 4 LB. BAG **3/\$4**
- PRE-PRICED \$3.29
- DORITOS®
- TORTILLA CHIPS** ..... 14.5 OZ. BAG **2/\$4**
- NABISCO
- OREO COOKIES** ..... 20 OZ. PKG **2/\$5**
- LOWE'S WHEAT
- BREAD** ..... 24 OZ. LOAF **69¢**
- QUAKER ASSTD.
- GRANOLA BARS** ..... 10 OZ. PKG **2/\$4**
- KIKKOMAN
- TERIYAKI OR  
SOY SAUCE** ..... 10 OZ. BTL **\$1.29**
- REG. OR GRANULATED
- 1.9 OZ. OR 1.7 OZ./50 CT. PKG
- SPLENDA**
- SWEETENER** ..... YOUR CHOICE **2/\$5**
- ASSTD. CHEF BOYARDEE
- MICROWAVE CUPS** ..... 7-7.5 OZ. **2/\$1**
- ASSTD. CAMPBELL'S
- CHUNKY SOUPS** ..... 18.6-18.8 OZ. CAN **3/\$5**
- MRS. FRESHLEY'S
- DANISH** ..... 5 CT. PKG **\$2.19**
- 16 OZ. BRISKET BBQ
  - 12 OZ. FAJITA MARINADE
- CLAUDE'S SAUCES** .... YOUR CHOICE **3/\$5**
- ASSTD. CLASSICO
- PASTA SAUCE** ..... 17-26 OZ. JAR **2/\$5**
- SHURFINE
- ELBOW MACARONI OR  
LONG SPAGHETTI** ..... 12 OZ. PKG **2/88¢**
- GARDETTO'S REG. OR MUSTARD
- SNACKENS** ..... 11-13 OZ. PKG **3/\$5**
- 13 OZ. CORN KIX • 18 OZ. WHEATIES
  - 14 OZ. HONEY NUT CHEERIOS
- GENERAL MILLS  
CEREAL** ..... YOUR CHOICE **2/\$5**
- ASSTD. NABISCO WHEAT
- THINS, TRISCUITS, BETTER
- CHEDDARS OR SOCIABLES
- SNACK CRACKERS** ..... 7-10 OZ. BOX **3/\$5**
- OLD EL PASO TACO
- SEASONING MIX** ..... 1.2 OZ. PKG **3/\$2**
- OLD EL PASO MILD OR MED.
- THICK & CHUNKY
- SALSA** ..... 15 OZ. JAR **2/\$4**

*Lowe's*  
MARKETPLACE

401 W. American Blvd. Muleshoe 272-4585

WESTERN MONEY UNION TRANSFER<sup>SM</sup>  
"The fastest way to send money"

AFFILIATED FOODS INC.  
MEMBER STORE  
AT PARTICIPATING STORES

WE RESERVE THE RIGHT  
TO LIMIT QUANTITIES  
IN TEXAS