

STOCK YARDS DAILY JOURNAL
405 W. Illinois Ave., St. Joseph, Mo.

The St. Joseph Journal Publishing Co., Publishers.

W. E. WARRICK, Editor and Manager
Largest Outside Circulation of Any Paper Published in Buchanan County, Mo.

Entered at the Postoffice in St. Joseph, Mo., as Second Class Matter, September 4, 1895.

SUBSCRIPTION RATES:
Daily, per year \$1.00
Daily, six months .60
Daily, three months .35
Daily, one month .10

In asking change of address, please state your former postoffice.

Advertising Rates Furnished on Application.

NEVER ALL VELVET.
Omaha Journal-Stockman: It is never "all velvet" for the cattle feeder.

BULLS AND BEARS IN TILT.
The Breeders' Gazette: Bulls and bears are still endeavoring to settle the dispute as to the legitimate value of a bushel of corn.

BACON AND HISTORY.
The epic of the west cannot be written without a tribute being paid to bacon.

WAR ON WOLVES.
Declared by Texas Sheep and Goat Raisers' Association.

DRY LAND DATA.
Government Issues Bulletins On Dry Farm Investigations.

TENTH TIME FOR ERWIN.
Re-elected Secretary-Treasurer of the Live Stock Exchange.

At the meeting of the board of directors of the St. Joseph Live Stock Exchange, held in the offices in the exchange building at the stock yards yesterday afternoon, Frank E. Erwin was re-elected secretary-treasurer.

The Ottoman War office has abolished the red fez, hitherto worn by officers and privates alike, because of its conspicuousness.

Daddy's Bedtime Story—Lost and Found

He Found Billy

IN winter, when the wind blows and the cold snow falls, is a good time for folks and animals to be safe in their own places, especially in the nighttime," said daddy one evening to Jack and Evelyn.

"This evening's bedtime story is going to be about a lost sheep which was glad to be found.

"This sheep, with many others, belonged to a farmer who lived near some high hills. He had a young daughter, a little girl named Mary, who had for a pet one of the sheep in the farmer's flock. She called the sheep Billy.

"Like most farmers who keep sheep, Mary's father had a sheep dog to help him herd the sheep. You know, a good dog is a great help to a sheep raiser, for he helps the farmer drive the sheep home when it is necessary.

"One cold winter's day it began to snow, and Mary's father went out with Nero to drive the sheep home. After a time they were all in except Billy and two other sheep. They did not find this until the rest of the sheep were home, and then the farmer said to Nero:

"Nero, we must find those three sheep, and, above all, we must find Billy. Mary would never sleep tonight if her pet were left out in the cold and snow."

"Nero barked, as much as if to say: 'All right, master. Let's go right out and find Billy and the other two foolish sheep. I'm sure I don't want them to stay out in the cold!'

"So Nero and his master hunted up and down the hills. Nero was a little distance from the man when the dog barked. The man went to the dog, and there, sure enough, in a little hollow in the side of the hill and almost covered with snow, he found Billy.

"Ah, Mary will be glad," said the farmer, and he said to Nero, 'Now, Nero, good dog, find the other two.' And Nero barked again and went on into the dark, while the farmer drove Billy home. But when he got there he was surprised to find Nero there ahead of him with the other two sheep which had been missing. Nero got a good supper that night, you may be sure."

"He was a good dog," said Jack.

"What sort of dog was he?" asked Evelyn.

"I am not sure," said daddy, "but I think he must have been like the dogs in the Alps which are used to go out and bring in lost travelers who have gone out of their way in the snow and cold. They are called St. Bernard dogs."

WANT COWBOY HUSBANDS
Girls Flood Mail of Texas Governor Asking For Pointers.

San Antonio, Texas, Nov. 22.—Maidens from New York to Portland, Oregon, and from Chicago to Kansas City and St. Louis are begging for Texas cowboy husbands.

The mail of Governor Campbell at Austin, and of Postmaster Stevens at San Antonio, is growing heavier daily with applications, many of them accompanied by photographs, from women of all ages, who want to live on the plains, a cure free and healthy life, away from "the conveniences and appliances of the great cities."

By correspondence with the San Antonio postmaster, or the governor of the state, any bachelors in Texas can probably find their affinities very easily. There are photographs by the hundreds, and both offices receive matrimonial bureaus. In one day's mail there are letters from Maine, Rhode Island, Connecticut, Iowa, Illinois, Pennsylvania, New York, New Jersey, Massachusetts and Ohio.

One young woman declares that "the men of Philadelphia are too fast and I want to marry only a genuine man, one not vitiated by the city."

Another writes from Boston that she would like to marry a man who would be happy—in other words, if you could realize the deplorable lack here of real manhood still single—and would understand the reason. The man of my choice need not be too well educated, but he must be a man, ready to do and dare at all times, this daring to be based on good judgment. He must have lived always in the open, and be able to appreciate the passages I would read him from Robert Louis Stevenson. He must be young, and a man who can laugh on the hillside gray and chilly days while rounding up his cattle, as well as in the soft southern moonlight, when the gulf breeze makes to nod the roses of romance."

SHIPPER'S HAVE INNING.
Declare Railroads Could Make More By Being Better Managed.

Washington, Nov. 22.—The shipper's have their inning today in the contest before the interstate commerce commission over the suspended proposed increases in freight rates on the eastern trunk lines.

Washington, Nov. 22.—The shipper's have their inning today in the contest before the interstate commerce commission over the suspended proposed increases in freight rates on the eastern trunk lines.

At the meeting of the board of directors of the St. Joseph Live Stock Exchange, held in the offices in the exchange building at the stock yards yesterday afternoon, Frank E. Erwin was re-elected secretary-treasurer.

The Ottoman War office has abolished the red fez, hitherto worn by officers and privates alike, because of its conspicuousness.

At the meeting of the board of directors of the St. Joseph Live Stock Exchange, held in the offices in the exchange building at the stock yards yesterday afternoon, Frank E. Erwin was re-elected secretary-treasurer.

The Ottoman War office has abolished the red fez, hitherto worn by officers and privates alike, because of its conspicuousness.

At the meeting of the board of directors of the St. Joseph Live Stock Exchange, held in the offices in the exchange building at the stock yards yesterday afternoon, Frank E. Erwin was re-elected secretary-treasurer.

KANSAS CITY HAY AND GRAIN

The following quotations are furnished daily by the Kansas City Receivers and Shippers' association for the benefit of Stock Yards Daily Journal readers and advertisements following are reliable Kansas City hay and grain merchants who solicit your consignments or orders.

Timothy—Choice, \$14@14.50; No. 1, \$13@13.50; No. 2, \$10.50@12.50; No. 3, \$8.50@9.50.

Clover mixed—Choice, \$11.50@12; No. 1, \$10.50@11; No. 2, \$7.50@9; No. 3, \$5@5.5.

Alfalfa—Choice, \$15.50@16; No. 1, \$14@14.50; No. 2, \$11@13; No. 3, \$8.50@9.50.

Packing hay—\$14@15. Straw—\$5@5.50.

HAY DEALERS. We solicit your consignments or will buy your hay F. O. B. cars your track. Write us.

K. C. HAY CO. 1500 W. 12th St., KANSAS CITY, MO. Correspondence Solicited. Bell Phone 555 M. Home Phone 559 M.

HAY CLARK WYRICK & CO. 313 W. West 11th St., KANSAS CITY, MO. Wholesale and Retail Dealers in Hay and Straw. We solicit your business. We make a specialty of handling hay on commission. Orders promptly filled. E. R. BOYNTON HAY CO., 1315 West 11th St., Kansas City, Mo.

Hay and Straw. We solicit your business. We make a specialty of handling hay on commission. Orders promptly filled. E. R. BOYNTON HAY CO., 1315 West 11th St., Kansas City, Mo.

Our splendid clientele know that Wetteroth stands for these things.

Vast Assortment Gathered from here and abroad.

Trustworthy Goods Subject to every test.

Exclusive Things as particularly fine stones and ornate mountings.

These are just a few of the reasons why discriminating buyers patronize

Wetteroth JEWELRY COMPANY The Quality Store Established in 1870. 717 Felix Street.

Write for catalogue. Member Retail Merchants' Association, Railroad Fare Rebate.

Bowsher Combination Mill Sold With or Without Elevator

The best built, best appearing, most convenient to operate, and the lightest wool men, and all commercial bodies. It was said that the greatest cause of the decrease in the number of sheep, not only in Texas, but in the western states, at large is due to this cause.

It was shown that the United States last year produced in wool less than it imported. The steady decrease in sheep stock indicates a corresponding decrease in wool production, and a natural increase in the quantity of wool imported.

The association resolved to place before the Trans-Mississippi congress a resolution calling on the federal government to appropriate \$50,000 for each state in which the various live stock industries suffered from wild animal depredations, each to appropriate a like amount, this \$100,000 to be set aside as a wolf bounty fund.

SAVE MONEY ON A HIGH GRADE SCALE FREE TRIAL of 30 days with money in your pocket. No cost or obligation.

WRITE FOR OUR FREE CATALOG and scale literature that shows you how much we save you on PATENT SCALES—all standard scales. We will send you one free if you will send us your name and address.

BEST, MOST DURABLE, ECONOMICAL MADE Unlimited Quantities. Simply see for Catalog.

American Scale Co. 2181 Wyandotte St., Kansas City, Mo.

Jerry Wing 613 Felix Street Dunlap Hall Men's Furnishings Special—50 Stetson Hats Stockmen's Trade a Specialty.

history of this section was completed when Frank Hoskins sold his 2280-acre farm, near Dayton, to former Gov. Miles C. Moore and sons for \$180,000. The Moores paid \$115,000 cash and traded 4000 acres of Franklin county land for \$75,000 balance.

The land is located near Connell. Mr. Hoskins has leased the big Dayton farm from the Moores and will farm both places.

This is the month in which to kill weeds in the flower garden.

BREEDERS DAYS TO BREED.

Hogs, sheep, cattle, horses, mules, set chickens, or plant, so as to get largest possible returns. Valuable information for 2c stamp. Immel Co., 509 Shukert, Kansas City, Mo.

ST. JOSEPH HAY AND FEED. Penny & Penny 813 to 823 South 7th St. Receivers and Shippers of HAY Grain and Mill Feed, Oil Cake Meal, Alfalfa and Alfalfa Products, Seed Oats. Write for prices on small quantities or on cars.

HAY WANTED! We want good No. 1 and choice timothy hay. Write us for price, your tracks.

FOGARTY, KNEIB & CO. 1402-A South 12th St., St. Joseph, Mo. AUCTIONEERS.

THOS. E. DEEM Live Stock Auctioneer Auction Sales of pedigreed live stock and general farm property made everywhere. Write me about your sale. I have a reputation for you. Address CAMERON, MO.

J. W. ATHEY Live Stock Auctioneer 22 years in the sale ring is my record, selling for the best breeders of high class stock of America. Wire or phone for dates. Bell Phone 1032. Atchison, Kan.

Drink the Very Best 4 Full Quarts ONLY \$3.50

OLD HAYWARD WHISKEY Full 100 Proof Absolutely Straight

Is still winning thousands of prizes among the particular folks who want real good pure delicious richly flavored whiskey. Beware of imitations, blended and cheap poisonous brands—give yourself a treat when you treat it.

4 Full Quarts \$3.50 If you order once you'll repeat it. Send trial order, try it liberally and return balance if not delighted. Money refunded.

Beautiful Maltese Sate and Cork Screw with every order. SELF & BINSWANGER The Fine Whiskey Policy. 427 G Edmond St., St. Joseph, Mo.

Profitable Pigs Must be bred right, fed right, and marketed in attractive condition. Ten years' experience proves

Swift's Digester Tankage (50 per cent Protein)

The cheapest and best concentrated feed for growing pigs. No other feed equals it for rapid gains and superior finish.

For particulars, samples, and prices, write Swift & Company CHICAGO

Kansas City St. Paul St. Louis St. Joseph Omaha Fort Worth

Wanted—Men to Learn Barber Trade. Few weeks completes. Time saved by steady practice, careful instructors and demonstrations. Tools given, diplomas granted. Wages Saturdays. Splendid demand for graduates. Write today. Moler Barber College, Kansas City, Mo.

OLD JAS. E. PEPPER 8-year Old Straight Sour Mash WHISKEY

A Six-Year-Old Straight Sour Mash Bourbon. Positively the best quality whiskey made at this price. Per gallon \$4.00 Per quart \$1.00

Old Crow Whiskey, per gallon \$5.00

Spring Hill Whiskey, per gallon \$4.00

Rolling Fork—old fashioned rye, per gallon \$3.50

Hazel Gap, 5-yr-old Bourbon, per gallon \$3.00

Old Consolation Straight Bourbon, 95 per cent proof, \$2.50 per gallon

We handle a complete line of Imported Liquors and California Wines. Make draft or money order payable to

NEVIN & SCHWEIN ESTABLISHED 1866. The Reliable Wine Merchants. 416 Felix St. Joseph, Mo. Both Phones 669

St. Joseph Stock Yards Bank South St. Joseph, Mo.

Special Facilities for Handling Live Stock Business

Proceeds of Shipments Handled With Promptness Insuring Satisfaction to Shipper and Your Home Bank.

Call and Let Us Show You Our Method

Dispersion Sale of Shorthorn Cattle At HIAWATHA, KANSAS

SATURDAY, DECEMBER 10, 1910, at 1 p. m.

The offering consists of 35 Head of Scotch and Scotch Topped Cattle, and will include the entire herd of Robinson & Conner, of Morrill, Kansas, which will be dispersed. To this herd has been added choice drafts from the herds of John McCoy & Son, of Sabetha, and D. E. Rober & Sons, of Morrill, and others. Farmers and breeders will do well to keep this sale in mind and avail themselves of this opportunity to secure some good, useful cattle.

For Catalogue Address A. F. ROBINSON, Morrill, Kansas. Cols. SPARKS, MOORE and MARION, Auctioneers.

PROTECT YOUR CATTLE FROM BLACKLEG

Take No Chances. Blacklegoids are Simplest, Safest and Surest Preventive.

FOR SALE BY ALL DRUGGISTS. WRITE FOR FREE CIRCULARS. PARKE, DAVIS & COMPANY DEPARTMENT OF ANIMAL INDUSTRY DETROIT, MICH., U.S.A.

Meier & Meier ARCHITECTS

Fifth Floor Ballinger Building All Out of Town Work Given Seventh and Edmond Streets. Prompt and Careful Attention

ST. JOSEPH, MO.

STETSON HATS AT SAM KAHN'S 518 Felix St. ST. JOSEPH, MO.

CLASSIFIED BUSINESS DIRECTORY

Reliable Professional Men and Business Institutions Who Want the Trade of Readers of The Stock Yards Daily Journal.

ABSTRACTORS. J.C. HEDEBERG 413 FRANC ST. ST. JOSEPH, MO. Abstract of Title of the City of St. Joseph and Buchanan County Telephone No. 467

STREET PAVING. HANNAH FAYE BENTON 114 S. 10th St. St. Joseph, Mo. Expertly Done and Economical—The Best and Cheapest.

TOBACCO SPECIFIC. TOBACCO HABIT CURED. DR. ELDER'S TOBACCO SPECIFIC cures all forms of Tobacco Habit in 72 to 120 hours. A positive, quick and permanent cure. Easy to take. No craving for tobacco after first dose.

ELDER'S SANITARIUM Dept. J. St. Joseph, Mo.

ARCHITECTS. ECKEL & ALDRICH Architects.

Make specialty of plans and specifications for farm residences and private and public buildings in surrounding territory. Write us. Corby-Forsace Building ST. JOSEPH, MO.

AUTOMOBILES. AUTOMOBILES. New and Second-hand Cars for Sale.

Write for Prices. St. Joseph Auto & Supply Co. 1633-37 Frederick ave., St. Joseph, Mo.

HORSES AND MULES. HORSES AND MULES.

IMPORTED PERCHERONS

Our annual Fall Shipment of Percherons, direct from France, have arrived. We can sell you a good horse as cheap as any creditable importer in the world.

PERCHERON IMPORTING CO. All Stock Yards Street Cars Pass Our Barns. 80. ST. JOSEPH, MO.

BLAIR HORSE & MULE CO. STOCK YARDS, ST. JOSEPH, MO. We Buy and Sell All Kinds of Horses or Mules.

ALL CONSIGNMENTS GIVEN OUR PERSONAL ATTENTION. All Stock Guaranteed as Represented.

Kentucky Liquor Co.

St. Joseph, Mo. Sell only the best Kentucky Whiskies and Pennsylvania Ryes. Our goods are smooth and mellow and strong in alcoholic strength and therefore give the most satisfaction.

Try Our Special Offer. 2 Full Qts. Private Stock \$3.00 All For \$6.00. 2 Quarts Prime \$2.50. 2 Qts. General McPherson \$1.80. 1 Quart Irish Whiskey \$1.50. 1 Quart White Corn \$1.00. Total Value \$9.80 Express Prepaid.

When writing to advertisers please mention THE STOCK YARDS DAILY JOURNAL

A FEW SPECIALTIES. SUPREME HAMS. SUPREME BACON. SUPREME LARD. SUPREME SAUSAGE. SUPREME DRIED BEEF and LION BRAND CANNED MEATS.

MORRIS & COMPANY. CHICAGO ST. JOSEPH KANSAS CITY ST. LOUIS. The Exchange Cotton and Linseed Meal Company Live Stock Exchange, NUFF SAID Kansas City, Mo.

When writing to advertisers please mention THE STOCK YARDS DAILY JOURNAL

WOMAN AND HER INSTINCTS

She Will Follow the Law of Her Nature Because She Cannot Help It.

Women will follow the law of their nature, not because masculine or "womanly" arguments convince them, but because it was there before they were; they can no more help it than they can stop their hearts from beating; they have no more choice in the matter than they have in regard to having hands and feet, nor as much.

Quite as amenable to the underlying laws of life are the older and sterner members of womankind who chatter on platforms about women's rights. When this kind fall, they fall like Lucifer. I have even observed, though I realize that it will take several aeons before man finds this out, that the strongest-minded women are usually the ones capable of the strongest affections, the most apparently unsexed often, in the deepest sense, the most womanly.

Mr. Stockman. When at the yards make my hotel your stopping place, Junction Hotel and restaurant, L. A. EATON, Prop.

TALE OF YACHTING CRUISE

How a Hostess Arranged a Breakdown and Got Rid of Her Bored Guests.

A few seasons back a well-known hostess chartered a splendid yacht for August and invited a large number of her friends for a three-week cruise. At first all went well, though the party was not specially well assorted; but after a few days they began to evince signs of being somewhat bored with each other's company.

"What on earth shall I do to amuse these people?" she asked. The yachtman looked at the serene sky and calm, blue water, and shook his head doubtfully.

"A storm would enliven them up a bit," he said, "but the weather looks quite settled. There is only one thing to be done. You must arrange a breakdown, the engineer will manage that all right for you. He has probably often done so before. Then you must make for the nearest port for repairs, and let your guests have a run ashore. Some of them, I expect, will find an excuse for bidding you good-by and those who remain with you will get along all right together."

The hostess took her guest's advice, and arrived at Toulon a day later, where high twenty of her guests bid her good-by.—M. A. P.

Pride of Opinion. Pride of opinion is perhaps the most common fault of us fairly educated and intelligent moderns. We form our judgment and then, as it were, defy anyone to change them. It is said that no one has ever been converted by abstract argument.

At the time of the great disaster in Martinique, the Italian bark Ornelina was taking on a cargo of sugar there. Her captain was accustomed to volcanoes and he did not like the appearance of Mont Pelee. Not half his cargo was on board, but he decided to sail for home.

"The volcano is all right," argued the shippers. "Finish your loading." "I can't know anything about Mont Pelee," said the captain, "but if Vesuvius looked that way I'd get out of Naples, and I'm going to get right out of here."

The shippers threatened him with arrest. They sent customs officers to detain him, but the captain persisted in leaving. Twenty-four hours later the shippers and the customs officers lay dead in the ruins of St. Pierre.—Kate Upson Clark, in the Christian Herald.

Cupid's Retreat. The old man was down in the furniture store. "By the way," he said, just before leaving, "my daughter has just started to have a young man calling, and I suppose I should buy them a pretty sofa to make love on."

"Yes, sir," responded the dealer, "and here is the very kind you need. It is called 'Cupid's Retreat.'"

"H'm! What are the good points?" "Why, in just one year the cover wears off, displaying a card—'It is time to get married.'"—Mack's National Monthly.

The Tattler Body. A main fact in the history of man's progress is the wonderful expressiveness of the human body. If it were made of glass or of air and the thoughts were written on steel tablets within, it could not publish more truly its meaning than now. Wise men read very sharply all your private history in your look and gait and behavior. The whole economy of nature is bent on suppression. The tattler body is all exposure.—Emerson.

FARM AND FRUIT LAND. FARM AND FRUIT LAND.

You Can't Lose Money COLORADO LANDS. If You Invest in F. E. EWING, HUGO, COLO., DEALER IN RAW AND IMPROVED LANDS. Write for Descriptive Matter, Lists, Prices, and Information.

THE LAND OF MILK AND BUTTER

Anybody Can Get the Offered Tract for Nothing Who is Able to Show Me in the U. S. Land Like This for the Money I Want to Sell For.

322 acres best bottom, sandy land there is anywhere on our globe. Located on the main railroad line, one mile from a prosperous little town; 16 acres in cultivation, a common house and barn, rest in fine timber, mostly hickory, oak, gum, elm and some few other kinds. Timber worth at least \$10 per acre clear, very easy to clear, as there is no underbrush. The land is absolutely dry year around and no overflow; there is a small creek through the land; jolting land paid this year in rotation from \$65 to \$125 per acre. The land is mine and take next 20 days \$12 per acre. If not sold till Dec. 1st, \$30 per acre. Full investigation most welcome. Make any terms if two-fifths paid down. Pay to everybody all expenses if not found as represented.

F. GRAM, NAYLOR, MO. Wayne County, Missouri, Farm Bargains. 400 a., 6 miles east of Piedmont, 300 a. fenced, 250 a. in cultivation, mostly level valley land, 150 a. in virgin timber and good pasture land, will cut 3000 feet to a 1 1/2-story frame house, very good repair; good barn and other outbuildings, family orchard, spring water, about 70 a. in meadow and 30 a. in wheat; balance corn, wheat and oats land. This is a good farm. Cheap at \$20 per acre.

Our Whiskies Are the Goods. Full measure and guaranteed satisfaction as to quality and price are the policies on which we solicit your business.

Never before was so much poor whiskey sold, and mail order buying calls for perfect confidence in your dealer. Every Transaction Guaranteed to be as Satisfactory as if You Were Dealing with Us Face to Face, or Your Money Back.

OUR CHOICE WHISKEY. 4 Full Quarts \$3.00. 8 Quarts \$5.00. 12 Quarts \$7.50. 24 Full Pints \$8.50. EXPRESS PREPAID. Make Drafts or Money Orders payable to D. FELTENSTEIN 315-319 EDMOND ST. JOSEPH, MO.

HAMMOND'S "MISTLETOE"

Hams, Breakfast Bacon, Lard and Canned Meats. Are the Finest That the Packing House Art Can Produce.

Hammond Packing Co. Chicago, Ill. St. Joseph, Mo.

When writing to advertisers please mention THE STOCK YARDS DAILY JOURNAL

SPECIAL PRICE ON LICE PROOF NESTS

"KNUDSON'S GALVANIZED STEEL" Lice Proof Nests. Almost the best of Raw Material. Greater Poultry Appliances ever invented—lice proof. Each nest has separate door for shutting in and letting out birds, and they last a lifetime. Each nest has separate door for shutting in and letting out birds, and they last a lifetime. Each nest has separate door for shutting in and letting out birds, and they last a lifetime.

C. F. Rock Plumbing & Heating Co. MODERN PLUMBING, STEAM and HOT WATER HEATING. Telephone 599. 115 North Third Street.

Seaman & Schuske Metal Works Company. SHEET METAL CORNICES and SKY LIGHTS. FIRE DOORS and SHUTTERS. Hot Air Furnaces and Steel Ceilings, Tin, Slate, Tile, Gravel and Ready Roofing. 1004 Frederick Ave. Phone 427 Old and New St. Joseph, Mo.

When writing to advertisers please mention THE STOCK YARDS DAILY JOURNAL

SWANROCK WHISKY, DISTILLED FOR MEDICAL USE. 10 YEARS OLD. ASSORTED PURE. M.J. SHERIDAN, PROPRIETOR. ST. JOSEPH, MO. IMPORTER & DEALER IN WINES and LIQUORS. Established 1878.

Shamrock Whisky, jug or bottles, \$4.50. Tennessee Rye, jug or bottles, \$4.50. Maryland Rye, jug or bottles, \$4.50. Tennessee White Corn Whiskey, \$4.50. Old Anderson Whiskey, \$4.50. Kentucky Bourbon Whiskey, \$4.50. Holland Gin, jug or bottles, \$3.00 to \$4.00. Brandy, grape, apple, peach, \$3.00 to \$4.00. Fort Wine, \$1.25, L.S. 2.00, S.O. and 4.00. SHERIDAN'S WHISKY, \$1.25, \$1.50 and \$2.00. THIS IS AN OLD, RESPONSIBLE HOUSE. Mail orders shipped promptly. Remit with order. We carry everything in the Wine and Liquor order. Price list mailed on application. M. J. SHERIDAN, 323 South Sixth Street, St. Joseph, Mo.

TRUSTEE'S SALE. Whereas, C. W. Rodecker, by his certain deed of trust dated the 27th day of October, 1909, recorded in book 379 at page 303 in the office of the recorder of deeds, within and for Buchanan County, State of Missouri, conveyed to the undersigned trustee in trust to secure the payment of his promissory note—thereby described and the interest thereon, the following described real estate, situate, lying and being in the County of Buchanan, State of Missouri, to-wit: An undivided one-half interest in and to the west fifty (50) feet of the north fifty-five (55) feet of block one (1) in Dr. Silas McDonald's addition, an addition to the City of St. Joseph, Mo., subject to a prior deed of trust on said real estate securing note for one thousand dollars (\$1,000) to the Midland Building Association, and whereas default has been made in the payments and interest due on said note and by reason of said default, according to the terms of said deed of trust all of said note has become due and payable.

Now, therefore, at the request of the legal holder of said note and in pursuance of the provisions of said deed of trust and being in the County of Buchanan, State of Missouri, this, the 19th day of December, 1910, between the hours of ten o'clock a. m. and five o'clock p. m. of that day, at the east front door of the court house in the City of St. Joseph, Buchanan County, Missouri, sell at public vendue to the highest bidder for cash the above described real estate for the purposes of said trust.

J. B. O'CONNOR, Trustee. 323 South Sixth Street, St. Joseph, Mo.

CLASSIFIED REAL ESTATE ADVERTISING

1 cent per word first insertion; 1/2 cent per word each subsequent insertion. Cash, money order or check must accompany the order. Write for Sample Copies of THE STOCK YARDS DAILY JOURNAL.

MISSOURI. NEBRASKA.

The best 160 acres in Dade County for sale at a bargain. S. D. McMillen, Lockwood, Mo. Andrew County Farms 10 to 20 miles from St. Joseph, \$50 to \$125 per acre. Lists mailed on application. Hine & Tilton, Savannah, Mo.

500 acres 2 1/2 miles of shipping point; one of the finest improved stock farms in Missouri; located close to Moberly, Mo. Price \$30 per acre. Fisher & Gaunt, Marshall, Mo.

For Sale, a Bargain—Eight hundred and twenty (820) acres stock and grain ranch in Southwest Missouri. Well located and improved. Good terms. If interested, write Home Real Estate Co., Lowry City, Mo.

Eight miles from county seat, 1,000 acres; hog wire fence; 500 in cultivation, 375 bottom; 500 open timber and pasture; several springs and branch; 8 room frame house; 2 large barns; family orchard. \$25 per acre; terms. A. W. Ollis & Co., Springfield, Mo.

For Sale on Easy Terms—160 acres three miles from county seat on Rock Island railroad, 100 acres in cultivation, 60 acres in timber pasture, plenty of good saw and post timber; good improvements, running water in pasture, also excellent soil. Ideal stock farm. Price \$5,000. Address owner, C. O. Home, Ionia, Mo.

FARM BARGAIN. 116 acres, 5 miles out, good 4-room house, large barn, other outbuildings, good soil, well watered and fenced. About 2 acres slightly rough, with timber and blue grass, nearly all of farm in grass. Worth \$75, but going at \$67.50 per acre. You will find us reliable. Dallas and Phillips, Pleasant Hill, Mo.

VERNON COUNTY, MO. Where rainfall is plentiful, and corn, timothy, clover and all staples grow to perfection. Lands are steadily advancing in price, but can now be bought for \$20 to \$25 per acre, on good terms. Write for our new list, mailed free. DE WITT HOOVER & COMPANY, Bell Phone 158, Nevada, Missouri.

JASPER COUNTY, MISSOURI. 294 acres bottom land, adjoining city of ten thousand. Two sets of improvements. Fine dairy, produce and poultry farm. Two hundred bu. potatoes to acre average. An ideal stock farm. Terms can be arranged. Write Regan Land Co., (owner) Carthage, Mo.

Mr. Man of Means, Attention Please! Will you sell or trade what you do not want, buy or trade for what you do want? If so, write immediately and tell me what you want and where you want it; what you have, where located, true description, kind and amount of improvements, distance to town and railroad. Name both price, terms and rental value. Correspondence solicited. Albert W. Cotten, Oregon, Mo.

240 ACRES. Stock and grain farm, all under fence; 140 acres this year will average 50 bushels per acre; 75 acres blue grass, small orchard, good 5-room house, good barn, extra heavy acles, housed in, three wells, abundance of water; corn cribs and other outbuildings. Two miles west of Amity. This is an extra good farm for stock feeders. Will be sold at a bargain if taken soon. Address E. E. Middleton, Amity, Mo.

CROP FAILURES ARE UNKNOWN. In the celebrated "Silkston District" in Southeast Missouri. Corn, wheat, clover, alfalfa, cow-peas, all flourish here as nowhere else. Two to three crops each season on same land. Write for literature and map. Free. If you mention this paper. C. F. Burton Real Estate & Investment Co., Silkston, Mo.

200 acres two miles of good city and close to live towns, on main traveled road, rural route, telephone. Has two sets of improvements, one eight-room house, barn 48x55, mouse-proof seed house; fifteen buildings altogether. Some of the buildings are new and the others are as good as new, having been kept in paint and repair. Three wells, two windmills and nice orchard. The soil is a deep black loam and is in the very best of condition for crop raising. This land is level, with just enough slope to drain. Every foot of the land is tillable. A bargain if sold soon.

Also have 132 ACRES just across the road from the above farm with two sets of improvements all in first-class condition. An unheard-of bargain for a quick sale.

Southwest Missouri. The country where you will neither burn up or freeze; good crops, fine grass, splendid water, excellent people and an incomparable climate. I can sell you fine dairy, stock and grain farms at very low prices.

H. B. Wann, 205 Campbell St. Springfield, Mo. FARM BARGAINS.

200 acres two miles of good city and close to live towns, on main traveled road, rural route, telephone. Has two sets of improvements, one eight-room house, barn 48x55, mouse-proof seed house; fifteen buildings altogether. Some of the buildings are new and the others are as good as new, having been kept in paint and repair. Three wells, two windmills and nice orchard. The soil is a deep black loam and is in the very best of condition for crop raising. This land is level, with just enough slope to drain. Every foot of the land is tillable. A bargain if sold soon.

Also have 132 ACRES just across the road from the above farm with two sets of improvements all in first-class condition. An unheard-of bargain for a quick sale.

200 acres two miles of good city and close to live towns, on main traveled road, rural route, telephone. Has two sets of improvements, one eight-room house, barn 48x55, mouse-proof seed house; fifteen buildings altogether. Some of the buildings are new and the others are as good as new, having been kept in paint and repair. Three wells, two windmills and nice orchard. The soil is a deep black loam and is in the very best of condition for crop raising. This land is level, with just enough slope to drain. Every foot of the land is tillable. A bargain if sold soon.

Also have 132 ACRES just across the road from the above farm with two sets of improvements all in first-class condition. An unheard-of bargain for a quick sale.

200 acres two miles of good city and close to live towns, on main traveled road, rural route, telephone. Has two sets of improvements, one eight-room house, barn 48x55, mouse-proof seed house; fifteen buildings altogether. Some of the buildings are new and the others are as good as new, having been kept in paint and repair. Three wells, two windmills and nice orchard. The soil is a deep black loam and is in the very best of condition for crop raising. This land is level, with just enough slope to drain. Every foot of the land is tillable. A bargain if sold soon.

Also have 132 ACRES just across the road from the above farm with two sets of improvements all in first-class condition. An unheard-of bargain for a quick sale.

200 acres two miles of good city and close to live towns, on main traveled road, rural route, telephone. Has two sets of improvements, one eight-room house, barn 48x55, mouse-proof seed house; fifteen buildings altogether. Some of the buildings are new and the others are as good as new, having been kept in paint and repair. Three wells, two windmills and nice orchard. The soil is a deep black loam and is in the very best of condition for crop raising. This land is level, with just enough slope to drain. Every foot of the land is tillable. A bargain if sold soon.

Also have 132 ACRES just across the road from the above farm with two sets of improvements all in first-class condition. An unheard-of bargain for a quick sale.

200 acres two miles of good city and close to live towns, on main traveled road, rural route, telephone. Has two sets of improvements, one eight-room house, barn 48x55, mouse-proof seed house; fifteen buildings altogether. Some of the buildings are new and the others are as good as new, having been kept in paint and repair. Three wells, two windmills and nice orchard. The soil is a deep black loam and is in the very best of condition for crop raising. This land is level, with just enough slope to drain. Every foot of the land is tillable. A bargain if sold soon.

Also have 132 ACRES just across the road from the above farm with two sets of improvements all in first-class condition. An unheard-of bargain for a quick sale.

200 acres two miles of good city and close to live towns, on main traveled road, rural route, telephone. Has two sets of improvements, one eight-room house, barn 48x55, mouse-proof seed house; fifteen buildings altogether. Some of the buildings are new and the others are as good as new, having been kept in paint and repair. Three wells, two windmills and nice orchard. The soil is a deep black loam and is in the very best of condition for crop raising. This land is level, with just enough slope to drain. Every foot of the land is tillable. A bargain if sold soon.

Also have 132 ACRES just across the road from the above farm with two sets of improvements all in first-class condition. An unheard-of bargain for a quick sale.

Hirsch Bros Dry Goods

Hirsch Bros Dry Goods



You All Know This Man!

It's Old Santa—the jolly, wholesome fellow that makes us all feel good. He scatters "Good Cheer" all over the land and makes thousands of boys and girls happy every Christmas. This year he has sent us more delightful toys and playthings for the boys and girls of St. Joseph than ever before. He makes his Headquarters with us every year and will come on his annual visit Nov. 25th to bid you

Welcome to Toyland

and will stay with us till Christmas. Here you will find the most complete assortment of new and novel Toys, Games, Dolls, Furniture, Wagons, Sleighs, Automobiles, Etc., that has ever been seen in this city.

Toyland

this year will be lots of fun. Bring the children in and let them enjoy it.

When It Comes to Buying

Your money will get the most at the least cost in this Big Basement Toyland.

It would be impossible to give description and price on everything in this big of store, but you'll find all the old stand-bys as well as all the new novelties. If it's made you are sure to find it here.

Dolls

Our Dolls defy description. Never before have they come to us with such gorgeous dresses, such beautiful hair, such pretty eyes. Germany, France, Japan, England, Austria, America and other nations are represented in this big Doll Show of ours by their most famous beauties. Both young and old should come and see the grandest array of Dressed and Undressed Dolls of all kinds we have ever shown.



Dressed Dolls

You are cordially invited to come and inspect the most lavish display of beautifully Dressed Dolls that we have ever shown, and seldom equaled in the larger cities. Dolls are our toy hobby and dressed ones our special "Pets," therefore you'll not be disappointed. We want every child in this vicinity to see this grand array of dolls—bring them in. The dolls are on display every day and marked in plain figures. A TRIP TO DOLLY LAND will be a great pleasure to the little miss. Price.....\$15.00, \$12.50, \$9.98, \$8.98, \$7.98, \$6.98, \$5.98, \$4.98, \$3.98, \$2.98, \$1.98, \$1.49, \$1.25, 98c, 75c, 49c, 35c, 25c and 10c

Undressed Dolls with Kid Bodies

and fine bisque faces, with and without jointed legs and arms; beautiful eyes; some with real hair, real eyelashes, real brown, curly hair, natural; others with painted lashes and painted eyebrows. Best makes and natural tints; fixed and movable eyes—\$6.98, \$5.98, \$4.98, \$4.49, \$3.98, \$3.49, \$2.98, \$2.49, \$1.98, \$1.49, \$1.25, 98c, 75c and 10c

Fine Handwerck Dolls

(Undressed)

These dolls have fine bisque heads and beautiful features, pretty curly wigs, jointed knees, hips, shoulders, elbows and wrists; closing eyes, real eyebrows and lashes, removable shoes and stockings. These are the best hand-made dolls and are beautiful to dress. Price.....\$4.98, \$3.98, \$3.49, \$2.98, \$2.49, \$1.98, \$1.49, \$1.25, 98c and 75c

Celluloid Dolls
with pretty painted features, shoes, stocks and hair; light, durable and inexpensive.....\$1.49, 98c, 75c, 49c, 25c, 10c and 5c.

Celluloid Dolls
with jointed legs and arms; extra fine quality.....\$2.98, \$2.48, \$1.98, \$1.49, 98c, 49c and 25c

Crying Baby Dolls
These are among the oldest and most attractive playthings; real crying dolls. Lots of fun.....75c

Bisque Dolls
With and without jointed legs and arms; bisque body, legs, arms and head; fine wigs, closing and stationary eyes.....5c, 10c, 15c, 20c, 49c, 98c, \$1.25 up to \$4.98.

Knit Dolls
These are good dolls for the tots to play with. Nothing about them to break.....5c and 10c

Clapping Dolls
These jolly clapping dolls are amusing for the little tots. Children like them. There are Bell Clappers, Clowns, Boys and Girls, etc.....45c, 25c and 10c

Rolly Polly Dolls
These are handsomely decorated in artistic designs and are very attractive to the little folk. The Fat Boy, Clown, Holland Girl, and Foxy Grandpa afford much amusement for old and young. You can't upset them.....\$1.49, \$1.25, 98c, 49c, 25c, 10c

Rubber Dolls
Dressed and undressed; plain and musical, no color to get into baby's mouth.....95c, 49c, 26c and 10c

New Style Rag Dolls
Dressed in pretty gingham; nothing to break, nothing to hurt the child. A splendid doll for the little one.....98c, 75c, 49c, 35c, 25c, 15c and 10c

A New Feature

of our Doll Department are the "Lifelike Babies." These dolls are an innovation in the art of doll making, and are strictly American made. Instead of the stereotyped meaningless expressions seen for years, American artists have created the "Lifelike Baby," and as the name implies, you can get a smiling, cunning, dimpled, Real Baby Doll, dressed in long clothes; or a knockabout, every day Romper Dressed Baby at all prices, from.....49c to \$4.98

Extra Special Dolls

To stimulate early buying we are going to run **500 Beautiful Bisque Dolls**, jointed, large size, 24 inches long, handsome light and dark hair, closing eyes, long eyelashes; sweet, smiling faces. Very handsome \$2.00 dolls; while they last. \$1.19

Doll Heads

Biscues, Celluloid and Indestructible.. 10c, 15c, 25c, 49c, 95c up to \$1.95

Doll Bath Room Set

These little sets come in unbreakable enameled ware, neatly painted, soap jar, wash bowl, pitcher, soap dish, etc.....49c, 75c, 49c and 25c
Other sets in tin, in great variety.....49c, 25c, 15c and 10c

Doll Wiggs

Handsome Curly Wigs, in light, medium and dark.....49c, 98c and \$1.25

Dolly Hats, Shoes, Stockings, Etc.

Doll Shoes and Slippers

In black, white and colors; assorted sizes; made from satinette. Per pair, 25c, 15c, 10c and 5c.

Doll Booties

Knitted in different styles; white and colors.....35c, 15c and 10c

Doll Sweaters

Doll Sweaters, in white and colors.....30c, 49c and 25c
Doll Sweater Sets.....98c, 75c and 49c

Doll Dresses

Beautiful little creations that will please the little mistress; all kinds and colors; priced at \$2.49, \$2.49, \$1.98, \$1.49, \$1.25, 98c, 49c and 25c.

Doll Hats and Hoods

Trimmed like Mamma's, and in the latest styles, to be sure. All kinds and prices to suit—98c, 75c, 49c, 35c, 25c, 15c, 10c and 5c.

Doll Stockings

Black, white and colors—Plain or fancy drop stitch. Per pair.....10c and 5c

Doll Union Suits

Doll Union suits.....49c, 35c and 25c

Doll Toques

Doll Toques—in assorted colors.....25c

Doll Furs

In muff and neck pieces. 98c, 69c, 49c and 25c.



Milady Doll

A handsomely gowned, jointed dolls of superior make; perfectly proportioned head and body; beautiful hair and eyelashes, closing eyes, a sweet, smiling face, gorgeous costumes and hats in different colors; large size. Special price.....\$2.98

Collapsible Go-Carts

Regular folding go-carts, nicely finished.....49c, 98c and \$1.25

Opens and closes with one motion, made of cold rolled steel, enameled in black, dash, seat and back of leather cloth, finished in red and black, folding, reversible hood, reclining back, large enough for 20 inch doll.....\$1.98

Same as above but larger, for 24 inch doll, and better finished.....\$2.98

Massive Rubber Tired Collapsible Cart, opens or closes with one motion, full upholstery, double spoke wheels, strong steel gear, finely finished, best rolled steel frame, reclining back, strong enameled handles, reversible hood, a beauty, large enough for 30 inch doll.....\$4.98

Others in extra fine finish with fenders for wheels, elegant upholstery, plenty of snap and style to them. \$4.98 up to \$9.98.

Doll Preambulators.....\$1.98 to \$10.00

Doll Carriages

Doll Carriages, wiff body, wood wheels, steel tires, good handles, two kinds.....49c and 25c



Doll Vehicles

The Pride of the Little Miss—English Style Carriages.

English Doll Carriage, with 17 inch body, dark green finish, steel wheels, steel axles, folding reversible hood, strong springs. Price.....\$1.49

Pretty English Doll Carriage, 20 inch body in dark green, steel wheels with rubber tires and double spokes, steel springs and axles, reversible hood of leather cloth. Price.....\$2.98

Fine Massive English Carriage with 24 inch body, in dark green, body lined, also folding reversible leather cloth hood, fancy handle, steel gear, 10 inch double spoke steel wheels. A beauty. Price.....\$5.98



Toy Sad Irons

These are useful toys and come in handy when you are traveling. Mrs. Potts pattern; nickel plated, detachable wood handle, with stand.....25c
Same as above, smaller.....10c

Important

Should there be any toy you want, not mentioned in this list, write us about it. We'll quote price and give information.

Gold Bond Certificates

If you have any doubt about what to get for presents, buy our GOLD BOND CERTIFICATES. We issue them for any amount from \$1.00 up. This is always good for that amount in merchandise at this store, and the recipient can select what they want. This idea is used largely all over the country now, and is satisfactory.

We Rebate Railroad Fares

Besides buying better goods for less money, you have the pleasure of a trip to St. Joseph, largest assortment from which to select, and YOUR RAILROAD FARE REBATED.

Mail Orders Filled Same Day as Received. Order at Once.

SHOP WHERE THEY ALL SHOP—AT THE BIG STORE.

Hirsch Bros' D.C.
co.

ST. JOSEPH, MISSOURI.

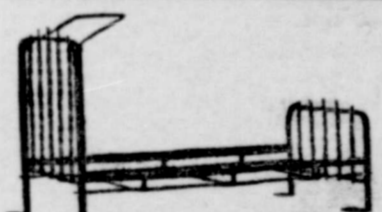
Our Famous Beauty Dolls

This is only one of our Beautiful Dressed dolls that we are selling for \$3.98. There are many elegant designs in costumes and hats at this price. The body is large, full jointed with beautiful hair and closing eyes, large eyelashes, charming face; light, medium or dark, at.....\$3.98



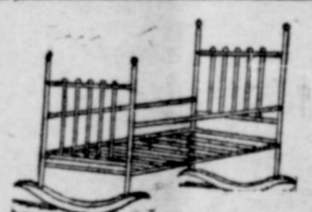
Doll Sets

Mission Sets—bed, chair, rocker and table.....49c to \$1.98
A full line of other sets at 10c to \$3.98.



Doll Beds

Woven wire.....49c
White enamel, with mattress and pillows.....\$1.98
Novel burned oak, with mattress and pillows.....\$3.49
Real Brass Beds.....\$3.98
Genuine Mahogany.....\$6.98
Oak folding doll beds, at \$2.98, \$1.98, \$1.49, 98c, 75c and 49c.
Folding Brass Beds, furnished with mattress, cover, pillows and curtain, \$1.75, \$1.49, \$1.25, 98c, 49c and 25c.
Brass Beds, made like the real beds, \$4.98, \$3.98, \$2.98 and \$1.98.

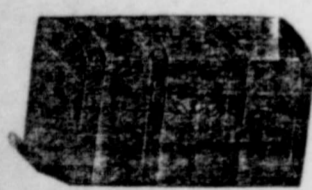


Doll Cradles

White enameled folding doll cradle, with gilt knobs; 12x15x20 inches. Price.....25c
Same as above; in size 12x18x32 inches.....49c
Other cradles in oak and wire.....49c, 25c and 10c

Doll Bassinets

Made with fancy folding wire frame, hanging basket, covered pillows and mattress, canopy top; a new and attractive combination bed, cradle and hammock for dolly.....98c, 75c and 49c

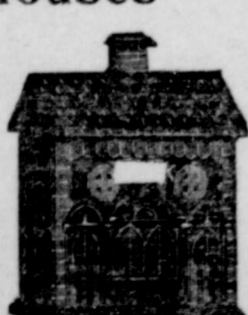


Trunks

All kinds of Trunks for dolly—canvas covered, metal covered and paper covered. All with handles, lock and key. From the neat, plain trunk to the most elaborate affair in trunkdom.....\$3.98, \$2.98, \$2.49, \$1.98, \$1.49, \$1.25, 97c, 49c and 25c

Doll Houses

We have a very beautiful assortment of Doll Houses in a large variety of styles of architecture and finish. Prices.....\$4.98, \$3.98, \$2.98, \$1.98, \$1.49, 98c and 49c



Celluloid Toys

Celluloid Toys increase in favor from year to year for sanitary reasons, also because they are light and not easily broken. Everything in the Celluloid Toy line is found here; such as Fishing Sets, Musical Horns, Polly Dolly, Dolls, Rattles, Balls, Etc. 98c, 75c, 48c, 25c and 10c

Simplex Typewriters

\$1 \$2 \$3

Will write on letter paper, envelopes, post cards and card board. These machines are intended for the children, but many will be used for practical purposes.



No. 1 writes capital letters, numerals, comma and period, on note size paper. Size, 9x5x2 1/4. Weight, 1 lb. 5 oz.....\$1.00

No. 2, a neat little note size machine with capital and small letters, numerals, comma and period. Size, 9 1/2 x 7 1/4 x 2 1/4. Weight, 2 lbs.....\$2.00

No. 3 has 84 characters and will write a full size commercial letter, standard in every way. Size, 12x9 1/4 x 3 3/4. Weight, 4 lbs.....\$3.00

