





**STARTS  
8 A. M.  
THURSDAY**

# **PENNEY'S JANUARY Bargain Days**

**THURSDAY  
FRIDAY  
SATURDAY**

### **80 Square PRINT**

Fast Color  
36" Wide  
**10c** Yd.  
Colorful Spring  
Assortment

### **Women's PANTIES**

**10c** Pr.  
Sizes, Small, Med.,  
Large—Rayon  
Pantie Styles

### **Men's Fancy Dress Sox**

**2** PR. for **15c**  
Rayon and Cotton  
Colorful Selection

### **Double Terry Bath Towel**

18"x36"  
**7 1/2c** EA.

Why Pay More?

### **BELLE ISLE PILLOW CASE**

42"x36"  
**10c** EA.

### **Sweat Sox**

All  
Wool **25c** PR.

## **81x99 SHEETS**

Limited Quantity.  
Used in White Goods  
Display.  
Wrinkled and Slightly  
Soiled.

# **35c**

### **Ladies' Tea Aprons**

**10c** EA.  
Smart—Useful  
Pretty—Fast  
Colored Print

### **Heavy Double Terry TOWELS**

**10c** EA.  
Plain and Check  
Centers

### **Rondo Deluxe Percalé Dress Prints**

Exhilarating Prints and love-  
ly solid colors—all at a  
price that's an invitation to  
sew. Our finest 36" percale.  
Fast to washing.

# **15c**

 YD.

## **BED SPREAD**

# **88c**

 EA.

Tufted  
Candlewick  
Size 87"x112"  
Buy the Color to  
Match Your  
Room

### **Extra Large Cannon BATH TOWELS**

# **25**

 EA.

Size 22"x44"  
Heavy Thirsty Towels  
in Plain or Checked  
Centers.  
Good Assortment  
of Colors.

### **Parkway LL Muslin**

36" WIDE  
UNBLEACHED  
HEAVY QUALITY

# **4 1/2c**

 YD.

### **36" Colorful Cretonnes**

**10c** YD.

### **Men's Handkerchiefs**

**2c** EA.  
Of Sturdy White  
Cotton

### **Boys' Cotton SWEAT SHIRT**

Heavy Fleece Lined  
**49c**

Plain or Cartooned

### **Sanitary—Softer Stronger Cleansing Tissue**

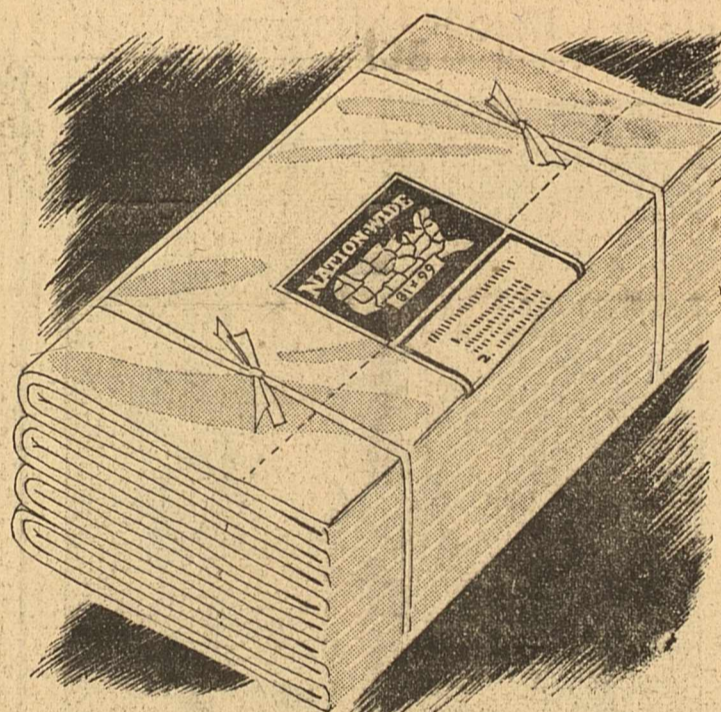
500  
Tissues **15c** Box

The merchandise in this ad was  
chosen at random from the many  
Super Values to be found in our  
store Thursday, Friday and Satur-  
day. Come early for best selection.

## **DOUBLE BLANKET**

70"x80"—FULL BED SIZE

Made of Selected  
American Cotton. **\$1 00**  
Know Their Soft  
Nappy Warmth  
and at Such  
Economy as PR.



Famous From Coast to Coast!  
**Nation-Wide Sheets** **74c**  
Smooth, firmly woven of sturdy cot-  
ton. They'll stand up under lots of  
good hard wear. For real service,  
buy Nation Wide sheets and buy  
now and save!  
Nation Wide cases, 42x36 19c 81"x99"

## **Ladies' HOUSE COATS**

Striking new patterns  
and brilliant color com-  
binations made of plain  
and slub poplins, high  
count broadcloth and  
sheeting. Zipper and  
wrap styles. **\$1 00** EA.

## **SINGLE BLANKETS**

70x80—Full Bed Size  
Made of Selected  
American Cotton.  
Know their soft nappy  
warmth and economy at **50c** EA.

## **WIZARD SHEETS**

81x99—FULL BED SIZE

Heavy Material  
Built for Service and  
Economy.  
Buy Plenty at the Low  
Price

# **50c**

EXTRA LARGE  
EXTRA HEAVY

### **BATH TOWELS**

**15c** EA.

### **Ladies' Puerto Rican GOWNS**

Hand Embroidered  
**25c** EA.  
Practical to Launder  
Built for Comfort  
and Service

## **RAYON SATIN SLIPS**

Flesh Colored  
Bias Cut  
Plain Tailored  
Service for Less

# **29c**

 EA.

### **Ladies' HOUSE DRESSES**

# **33c**

Made to Fit and  
Fit to Wear.  
Good Quality Prints  
and a Colorful  
Selection.  
Fast Color.  
Another If It Fades

### **MEN'S ATHLETIC RIBBED KNIT SHIRTS**

FAST COLOR  
BROADCLOTH

### **SHORTS**

**15c** EA.  
Shirt 36 to 46  
Short 30 to 38

## **DURRY SATIN SLIPS**

Tailored and Lace Trimmed  
Bias Cut  
Comfort at Economy

# **50c**

 EA.

American Made  
PATRIOT  
Double Edge

### **BLADES**

50 Blades **25c**

### **BLANKET MILL ENDS**

**17c** EA.  
Limited Quantity

Men's Cotton  
WASH  
PANTS

Sanforized Shrank  
**\$1.50** Pair

### **MESH DISH CLOTH**

**2** for **5c**  
Checks and Solid  
Colors

### **Flour Sack SQUARES**

New Material  
Washed, Bleached,  
Mangled

# **5c**

A Can't-Last  
Value

### **Children's PANTIES**

**10c** Pr.

Size 4 to 16  
Made of Rayon in  
Comfortable  
Pantie Styles

### **30" Fancy OUTING**

**7 1/2c** YD.

For Warmth and  
Economy

### **Men's Cover WORK SHIRTS**

Zipper Front

# **50c**

 EA.

Heavy, Serviceable  
Grey or Tan  
Cover

### **Sanitary NAPKINS**

12 Pads in Box

**2** Bxs. **15c**

SOFT  
ABSORBENT  
SOLUBLE

### **Work Gloves**

LEATHER  
PALM  
GAUNTLET **25c**

**Midland**

# **PENNEY'S**

J. C. PENNEY COMPANY, Incorporated

**Texas**



"Coca-Cola gives me that refreshed feeling"

Safeguarded constantly by scientific tests, Coca-Cola is famous for its purity and wholesomeness.



THE PAUSE THAT REFRESHES BOTTLED UNDER AUTHORITY OF THE COCA-COLA CO. BY TEXAS COCA-COLA BOTTLING COMPANY

New Device With Eye For Oil To Be Shown At Tulsa Exposition

TULSA. — A super-sensitive device for the discovery of new producing horizons in already-developed fields...

Developed by Engineering Laboratories, Inc., Tulsa, the new equipment depends upon emissions of Gamma rays from various geological structures...

"Steel pipe and casing is no obstacle to these penetrating Gamma rays," Green explained. "The rays are given off in varying intensities by different kinds of substances, and pass through steel as readily as light passes through glass."

Many persons suffering from persistent or too frequent nose bleedings have been relieved by injections of moccasin snake venom in tests.

EMINENT SCULPTOR

Crossword puzzle grid with clues for 'EMINENT SCULPTOR' and 'Answer to Previous Puzzle'.

Crossword puzzle grid with a portrait of a man and numbered squares.

Details of \$30,000,000 Spent in Texas by WPA Given by State Administrator Drought

SAN ANTONIO. — State Administrator H. P. Drought today reported details of the \$30,260,285 expended on WPA projects in Texas during the final six months of the calendar year 1939.

Improvements to highways, roads, and streets, occupying approximately the same predominant position which this category has held in the WPA program in Texas since the inception of the Federal agency, accounted for expenditures of \$14,234,020, or more than forty per cent of the total expended.

Next largest construction item covered the erection and repair of public buildings, including scores of schools, at a cost of \$3,669,490. On water distribution lines, sewage disposal plants and similar public utilities there was expended \$1,623,375.

Construction of dams, levees, drainage facilities, and other conservation work utilized \$793,176. Airport improvements were installed at a cost of \$128,611.

Producing hundreds of thousands of garments and other articles for distribution to needy Texas families, WPA sewing rooms gave employment to thousands of women during the six months period at a combined local and Federal cost of \$4,167,043.

Grouped under the general heading of professional and service projects, which accounted for expenditures of \$2,359,109, are such works as the survey of native mineral resources, study of underground water supplies, and other geological surveys, all supervised by University of Texas departments or other authoritative state agencies.

school, city, county, and other public records.

Other outstanding items listed by Drought were as follows:

Conducting of adult education classes, ranging from literacy training to early college level work, and operation of nursery schools for pre-school children from needy homes, \$615,956.

Directing of community recreational activities under the supervision of trained leaders, \$536,771.

Preservation of food products in canning plants, \$400,569.

Operation of community sanitation and public health programs, \$535,462.

Distribution of surplus commodities, including food items and WPA-manufactured garments, to the destitute, \$344,716.

Drought pointed out that of \$21,334,153 expended by WPA on the entire six months program, \$18,714,345 went directly to the workers. The remainder of the project expenditures went for materials, supplies, equipment rental and similar operating costs.

He termed as particularly gratifying the fact that more than 29 per cent of the total project cost for the period was borne by cities, counties, independent school districts and other agencies within the state of Texas.

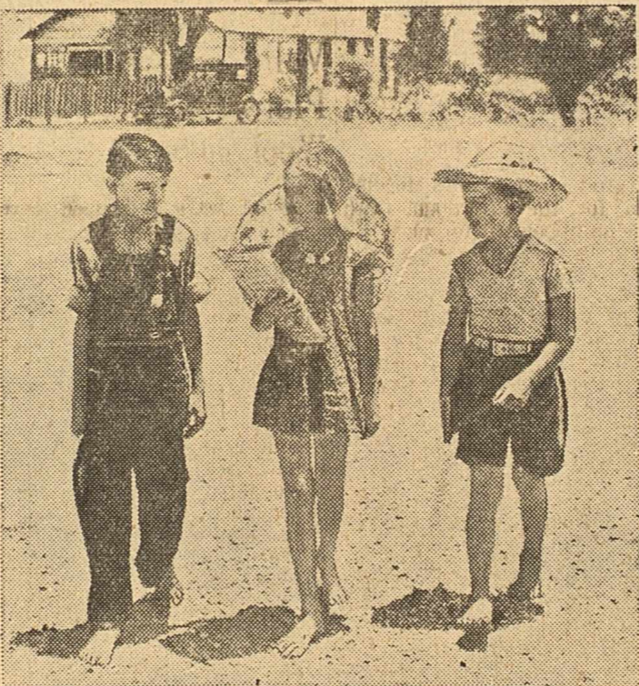
"The continued enthusiastic participation in the WPA program by local political subdivisions is the best possible proof that Texas county judges, mayors, and other officials are sincerely interested in providing work for their unemployed through the operation of useful public works," he declared. While WPA supplied \$21,334,153 during the six months period ending December 31, local agencies provided \$8,926,131, he stated.

Eight of 10 Sons in Army

LYMPHE, England (U.P.) — D. W. Keene has raised a family of fighters. He fought in South Africa and again in the World War. Now his sons are following in his steps. He has 10 sons and eight of them already are in khaki while the other two are awaiting their call.

More than half of all car-owning families in the United States have incomes for \$30 a week or less.

Bare Feet Banned



WHITE HOUSE CONFERENCE ON CHILDREN IN A DEMOCRACY

The "barefoot boy with cheeks of tan" is all right as poetry, but as a symbol of today's American youth it is taboo, decided U. S. Labor Department's Katherine Lenroot.

SIDE GLANCES

by Galbraith



"Your club wasn't much of a success for me last year. If I don't have more coming to me next Christmas, I'm going to change banks."

Studebaker Champion 29.19 miles per gallon

IN GILMORE-YOSEMITE ECONOMY SWEEPSTAKES

17% TO 29% superior in gas economy to the 3 other leading lowest price cars

Three Studebakers beat all other cars in America's greatest economy classic

Conducted under American Automobile Association supervision

COMMANDER, PRESIDENT AND CHAMPION FINISH 1-2-3

EXPERT drivers piloted the Studebaker Commander, President and Champion equipped with extra-cost overdrive that finished 1-2-3, in this year's Gilmore-Yosemite Economy Sweepstakes.

But average Studebaker Champion owners know that there's no other car in its lowest price field that's so dollar-saving as a Champion. See and drive a Champion before you decide on any lowest price car.



BROADWAY GARAGE

Hejls Service 207 West Wall—Phone 140—Midland, Texas

Insects Fought 3 Miles in Sky

WASHINGTON. (U.P.)—The United States is carrying on an aerial war less spectacular than Europe's but vitally important to this country's welfare.

Government planes have captured thousands of "enemies" nearly three miles off the ground. These "enemies" and their kind annually cause millions of dollars damage to growing crops.

The Agriculture Department has a fleet of planes that searches the skies for plant insects. Some of the planes are in the air almost every day of the year trapping the pests.

From the captured insects, entomologists are able to gather valuable new information on the habits, and particularly on the spread, of some of the destructive crop pests.

Many insects fly long distances and thus spread infestation over large areas. Others soar high and then let the prevailing wind carry them. By learning their direction and approximate numbers, the department is able to chart their spread and take action against them in new areas.

P. A. Glick, a department entomologist, has been flying in the South and Southwest for several years, collecting many of the important and destructive crop pests.

He reported the capture of boll weevils at 2,000 feet, spotted cucumber beetles at 3,000 feet and leaf-hoppers at altitudes up to 13,000 feet. Mosquitoes, common in lower layers, were found as high as 5,000 feet.

The pink bollworm moth, for example, may have invaded this country from Mexico, flying at a height of half a mile or more above the Grande river, it was found. The worst infestation was found in southwest Texas.

The insects are collected in traps especially designed for use on the

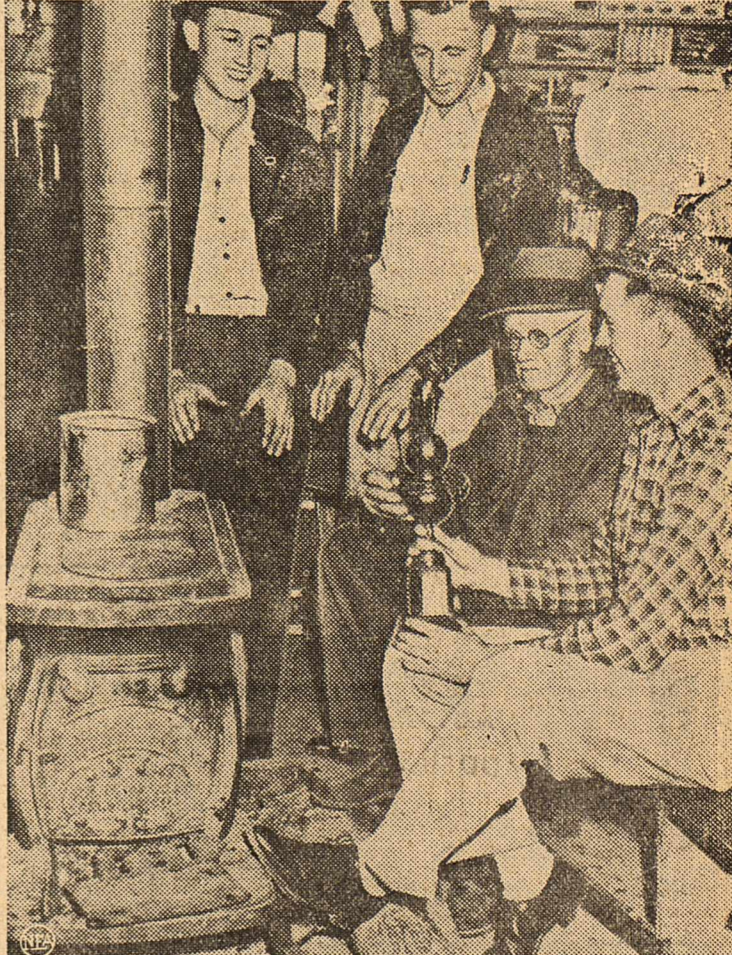
planes and controlled from the cockpit or cabin. In practice it is to rule to keep a trap section open or a designated number of minutes with the plane lying level at a certain altitude, then close the section and mount 500 or 1,000 feet and bag another sample.

Border Incident



The bride is in France and the groom is in Belgium in this picture of an odd wedding that took place recently at Honschote, Franco-Belgian frontier town. The groom, Maurice Jerome Ballen, is a mobilized Belgian soldier. Paulina Jarzyzna, the bride, is a Pole living in France. They could not be married in either France or Belgium, so they were wed with the bride sitting on one side of the frontier line and the groom on the other. The mayor of Honschote is seen performing the ceremony.

Giant Recruit in Hot Stove League



John Rucker, in checked shirt, outfield recruit acquired from Atlanta Crackers by New York Giants, displays one of his baseball trophies to members of hot stove league in general store of home town, Crabapple, Ga., population 60. Rucker, 23, is nephew of Nap Rucker, who was famous as left-handed pitcher with the Brooklyn Dodgers.



America's Social Companion

Advertisement for Coleman Floor Furnace, \$4.00 Per Month, A. & L. Housing & Lumber Co.

Rugged Farm Life Best For Youth, Says Author

BOSTON (U.P.) — Mrs. Bertha Damon, author of "Grandma Called It Carnal," thinks children should be reared in a farmhouse — without central heating, telephone, radio, hot or cold running water. She told the Massachusetts Federation of Women's Clubs that young people are too pampered and spoiled with easy living and as result aren't able to cope with the difficult years ahead of them.







