

New Tax Policy To Be Enforced

Parmer Co. Officials Delay Vote Until Mon.

Parmer County Commissioners Court Tuesday tabled a request from that county's Friends of the Library that Parmer County join Bailey County in the Texas State Library's bookmobile program.

The court stated it wished to take the weekend for further study of the matter, and would bring it to a vote Monday.

The action came at a special meeting of the governmental body during which Charles Gholz, field executive of the Texas State Library, described details of the operation to the group.

According to persons attending

from the Bailey County Friends of the Library Association, the Farwell courtroom was packed with more than 70 persons. The majority of civic and social organizations publicly joined in the drive for the bookmobile in that area.

Groups from Farwell, Friona, Bovina, Lazbuddie, Black, and Lariat as well as study clubs, the home demonstration council, Farmers Union and chamber of commerce all gave their endorsements.

The consensus of those Bailey County FOA who attended is that the request will pass when the court reconvenes Monday.

In other actions sparked by Bailey County taking the lead in bringing improved library services to the area, a large group met in Morton Monday to hear details of the bookmobile plan.

The group there will meet again Feb. 24th to form a Friends of the Library in Cockran County. Cockran County Commissioners will meet next week to vote on (See Library Page 4)



John W. Thompson Announces For Public Office

A. J. GARDNER

Funeral Services Scheduled For A. J. Gardner

A. J. Gardner, 58, long time Muleshoe resident and assistant post master, died in a Lubbock hospital Tuesday. He was post master from 1936 to 1956 when he assumed the position as assistant. He had been ill several weeks.

Gardner moved to Muleshoe from Hollis, Okla. in 1930 and was a member of the First Methodist Church, Masonic Lodge, and Lion's Club.

Services will be conducted at 2 p.m. today at First Methodist Church with the Rev. J. Frank Peery officiating. Burial is to be in Bailey County Memorial Park under direction of Singleton Funeral Home.

He is survived by his wife, Elizabeth; three sons, Paul and Max Richardson; and Don, Amarillo; his mother, Mrs. Mattie Gardner, Hollis, Okla.; one sister, Mrs. Sybil March, Floydada; and two brothers, Dr. E. L. Gardner, Eugene, Oregon and Jim E. Gardner, Houston.

John W. Thompson, parts manager of Brock Imp. Co., has announced his candidacy for sheriff of Bailey County.

The republican candidate is a family man, a long time Bailey County resident, and WW II veteran.

In his candidacy announcement, Thompson said, "If you feel as I do, that the Government of our Country, on a County, State and National level is drifting too far to the liberal side and that we need to go to a more conservative type of government, if you feel that we are not getting what we are paying for, then I solicit your vote and influence.

The greatest asset this country has is its freedom and no wise man deliberately squanders his assets."

3 Sentenced

One local man was sentenced to three years in prison and two others to four years probation in District Court sessions this week.

Ira Chester was sentenced to three years on a charge of passing a fraudulent check.

Richard Rush and Disney Slinger both pleaded guilty to charges of burglary and were sentenced to four years probation. It was the first offense for both.



FFA OFFICERS — Future Farmers of America local officers at the organization's annual banquet this week were Tommy Cornelison, Stanley Black, Jerry Bruns, Derrell Nowell, Daril Elmore, Kearney Scoggins & Bill Harbin. More than 150 attended the affair in the high school cafeteria.

FFA Holds Annual Banquet

The Muleshoe-Bailey County Chapter of the Future Farmers of America celebrated FFA Week at the organizations annual Father and Son Banquet Tuesday night.

Approximately 150 FFA members, their fathers and guests attended the affair which was held in the Muleshoe High School Cafeteria.

Highlight of the affair was an address by Mark Harbin, Area I, FFA State vice-president, who spoke on the meaning of and rea-

son for the FFA organization.

Five local men, Eugene Black, Robert Blackwood, Bill Taylor, Robert Hooten and Ralph Stevenson, were named honorary Future Farmers of America mem-

Price Esculation Hits Muleshoe Coffee Prices

It's costing Bailey County homemakers a bit more to put that morning cup of coffee on the table these days, and will probably cost them more in the weeks ahead.

Since Christmas, the "specials" price of popular brands of coffee in Littlefield stores has climbed a dime a pound, from 69 cents to 79 cents at most stores, and grocers are losing money at those prices.

The past week's wholesale market for national brands of coffee was 81 cents from some suppliers, 83 cents from others. That 79-cent coffee you may have bought last week will be at least 81 cents when your grocer replaces it this week.

Private brands of coffee are about 10 cents lower, both retail and wholesale.

So, if you are not enjoying the higher price of coffee, your grocer is enjoying it less.

The reason suppliers give, city grocers say, is that the coffee crop in Brazil — the world's major supplier — was short this season. The price will probably stay up until a new crop is marketed.

Jaycees Selling Lightbulbs To Increase Funds

Muleshoe Jaycee's is holding its annual Light Bulb Sale this week. The annual door-to-door sales effort to raise money for local projects began Tuesday and will end Thursday.

The group, which is led by Chairman Ben Yeager, will sell the bulbs in packages of eight — two 60, two 75 and four 100 watt bulbs. A goal of selling 15 cases has been set by the organization, according to Yeager.

Next Monday the group will hold its annual elections during its regular weekly meeting at Paul's Cafe.

Accidents

Texas Highway Patrol investigated two accidents on rural highways in Bailey County during January, according to Sergeant D. S. Lawson, Highway Patrol Supervisor.

These wrecks accounted for an estimated property damage of \$1,966.00.

County Attorney Instructed Sue, Foreclose and Sell

In a new "get rough" policy, the Bailey County Commissioners this week seem to be bending every effort to place the county's delinquent taxes and contract farm labor due bills on a solid businesslike basis.

At a previous meeting the governmental group passed two motions affecting the status of those persons enjoying a free ride on the county by not paying taxes or bills due for county labor on privately owned farms.

The first motion was that all past due bills owed the county for contract farm labor would be collected. However, because of ambiguous wording of the motion it was not clear at the time if the court was serious or making a political move.

According to direct and definite instructions given Roger Gorrell, county attorney this week, the commission is very serious. The instructions stated that the court would turn over the names of all persons owing past due accounts to the county attorney for collection on March 1st.

Gorrell has been instructed to collect all farm accounts without exception. His first step will be to send letters of collection requesting debtors to pay up immediately. If payment is not received within 30 days he will enter lawsuits against those who have not paid.

However, there is still one loop-hole in the instructions. The court has not told the county attorney how old a bill must be before it is considered past due. In former discussions on the matter, the commissioners have been unable or unwilling to state how old a bill had to be before it was considered to be past due.

County Judge Glen Williams, when asked to comment or clarify the instructions, stated that it was all but impossible to draw a definite line as to when a bill was to be considered past due and payment pressed for. "All businessmen have this problem," he said. "You'll handle a bill two months past due differently from another which is a year or more past due. However, we are very serious on this matter and will press for the near future col-

lection of all bills due the county."

In clarification of the second motion, which concerns the collection of back taxes, the county attorney was directed to proceed according to the tax laws.

No action will be taken on the delinquent tax matter until after delinquent tax notices are mailed on July 1st. Immediately after that the county attorney will take all steps necessary "including law suits to foreclose on and sell all property on which unpaid taxes exist."

Persons who have been taking a free tax ride on the county rolls will pay dearly for it because the state law provides for "escalated" interest on past due taxes. The interest ranges from 1 1/2 per cent on taxes one month past due to 100 per cent per month interest on taxes due on some land. All interest is compounded.

If this is figured against some land on which taxes have not been paid since the 1920's and 30's it is quite possible Bailey County might have some land in the \$10,000 per acre bracket.

A detailed statement by the county attorney follows:

In a meeting on February 14, 1964 with the Commissioners' Court of Bailey County, I received my instructions on collecting taxes and farm accounts.

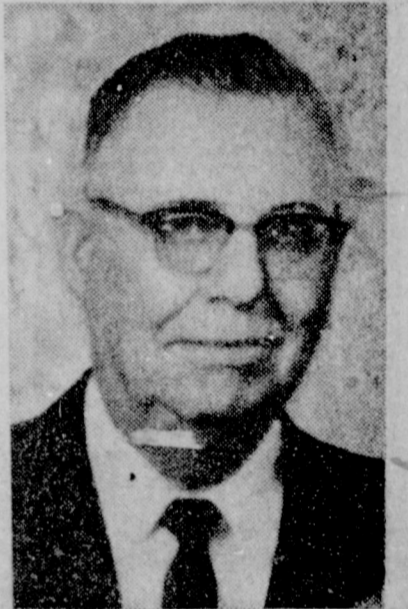
First, on taxes, I was instructed to act according to the tax statutes. Therefore, thirty days after the tax assessor-collector has sent the statutory delinquent tax notices on July 1st, I am to take all necessary steps from writing letters, to filing law suits to foreclose on and sell all property on which unpaid taxes exist.

Second, on farm accounts, the commissioners agreed that they would try to contact all persons owing farm accounts in their respective precincts. On March 1st, they are to turn over to me all the names of persons still owing farm accounts. I then will begin to take steps to collect ALL farm accounts owed to Bailey County. I am to send letters to all persons owing these farm accounts and urge each to voluntarily pay his farm account. If, after a reasonable length of time, there are persons refusing to pay these accounts, I am instructed to file law suits against each. The reason (See Tax Page 4)

High School Band Holds Concert Here

Muleshoe High School Band was presented in the High School Auditorium, Sunday at 3:00 p. m. The Band is under the direction of Miss Kathy Phillips.

Special features on the program were the Cornet Trio; Linda Scott, Tonye Welch and Linda Griffiths playing Three Cardinals, Mr. Paul Durham; conducting "Fantasy For Band" by Erickson, and a reading of "The Gettysburg Address" to a musical background by Mr. Kerry Moore.



H. E. SCHUSTER

H. E. Schuster Dies In Dallas

H. E. Schuster, 66, Bailey County pioneer died about 10 p.m. Tuesday in Saint Paul's Hospital, Dallas, where he had been a patient for more than two weeks. Schuster had undergone surgery prior to his death for a new Pacemaker to be attached to the outside, replacing the old one he had worn for sometime.

He moved here with his family from Western Oklahoma in February, 1925 and settled in the Fairview Community, where he was engaged in farming until his retirement in 1960. The Schusters moved into town after Mrs. Schuster purchased Muleshoe Jewelry in 1950.

Survivors include his wife, one son, Jack, Muleshoe; two daughters, Mrs. James Green, Muleshoe, and Mrs. Dorothy Crow, San Antonio, 1 sister, Portland, Oregon and two brothers, Russel, Okla.

Funeral services will be announced by Singleton Funeral Home, Muleshoe.

Pheasants

Bailey County Game Management Association's Sign Up A Neighbor program will be launched next week.

The new local group was formed primarily to promote the raising and stocking of pheasants in Bailey County.

Persons interested in joining the group or ordering pheasants should contact Rudolph Wiedebush, Joe Wheeler, Alvis Grogan, David Wier, Bennie Bickle, Ernest Ramm, Jack Schuster or Lester Howard.

D.E. Class

Muleshoe High School's Distributive Education Class has added \$150.96 to its treasury. The money was derived from its share of the gross sales made from the bookmobile (no connection with the Texas State Library bookmobile) which sold books at the school last week. Approximately 1400 books were sold in a four day period.



NEW OFFICERS — Muleshoe Area 4-H Club elected new officers this week. They are Mrs. Joe Harbin, area adult leader; Joan Kay Goucher, club president; Sharon Hutton and Verlyon Scoggins, council delegates. Bill Harbin (not pictured) was elected vice president.



FIRE — Muleshoe Volunteer Fire Department fighting a minor blaze at Re. Griffiths and Sons warehouse on Am. Blvd. Wednesday afternoon. Damage was confined to a wooden loading dock.



FIRE — Flames completely destroyed a small storage house on the Wiley Barker farm north of Progress this week. Although the fire was battled by two units of the Muleshoe Volunteer Fire Department, the flames had too good a start to bring under control. The small storage place was completely destroyed as were its contents of tools and small items of farm equipment. The loss was estimated at \$1,500.

Washington Birthday Specials Inside



ROOM GIVEN FLAG — Membership chairman Mrs. Joe Wheeler presented Mrs. Inez Middlebrooks' fourth grade class with a flag and stand for their accomplishment in enlisting members. They were winners of a membership contest. Mrs. Middlebrooks is shown here with the flag.



FIRST PRESIDENT — Mrs. I. W. Haney was recognized at the Monday meeting of Richland Hills P-TA as the first president of the local organization in 1927. She was presented with this floral arrangement by the group.



LIFE MEMBERSHIP — Mrs. Owen Jones was given a P-TA Life Membership pin and certificate and cited for her work in welfare, Cub Scouts, Church and P-TA. She is serving as president of Richland Hills P-TA. The presentation was made by Mrs. Ray Daniel.

Founders Day Observed By P-TA, Awards Given Monday Afternoon

Founders Day, February 17, was observed by Richland Hills Parent - Teachers Association when they met Monday afternoon in the school cafeteria.

Mrs. I. W. Haney, first president of the local organization, was a special guest and was presented a floral arrangement. Mrs. Haney has written a history of Muleshoe P-TA to which she began serving as president in 1927.

Mrs. Owen Jones, president, presided during the meeting opened with the invocation by Gladys Eggers.

Mrs. Inez Middlebrooks' fourth grade class was winner of the Membership Contest and was given a flag and stand. Mrs. Joe Wheeler, Membership chairman made the presentation.

A Life Membership Pin was awarded to Mrs. Jones who was cited for her outstanding work with Cub Scouts, Church and in P-TA. Mrs. Melvin Seymore, Life Membership Chairman, introduced Mrs. Ray Daniel, Council chairman, who in turn gave the pin to Mrs. Jones on behalf of the organization.

Elected as nominating committee were Milton Oylar, Mrs. Roland McCormick, and Mrs. Joe Wheeler who will submit nominees for new officers for the coming year.

Room count winners were Mrs. Lois Witherspoon's and Mrs. Edith Fox's first grade rooms; Mrs. Gladys Everett's second grade, and Mrs. Helen Bryant's third grade.

The program was given by Carol Jackson, minister of the Lariat Church of Christ. His subject was "Does Your Love Show?"

During his talk, he gave four major facts for the welfare of

the child and parent. They were: 1. Parents should be aware that they should not be afraid to show love for their children. 2. Stay away from a double standard... maintain the same standard for yourself and you do for your child. 3. Treat each child as an individual and remember that the each have an individual need. 4. Never impose your frustration a child is only as secure as the parent.

Ceremony Unites Miss Scarbrough, James C. Hayes

Janet Scarbrough became the bride of James C. Hayes in a ceremony read in the parsonage of the Church of Christ at Winters. Willie G. Jerigan, IV, read the single ring service.

Parents of the couple are Mr. and Mrs. H. R. Scarbrough, Muleshoe and Mr. and Mrs. A. C.

Hayes, Littlefield. The bride was attired in a street-length dress of white cotton brocade, with three-quarter length sleeves trimmed in fur and featuring a jeweled neckline.

Matron of honor was Mrs. Wanda Cox, Gatesville. She was attired in a brown two-piece suit. Best man was Moon Cathey, Winters.

For a wedding trip to San Angelo Mrs. Hayes wore a pink dress with a dropped hip line, pleated skirt with a pink and white blouse with a pink linen jumper. The bride is a graduate of

Muleshoe High School and Draugh's Business College. The bridegroom is a graduate of Littlefield High School and Tarleton State College, Stephenville. The couple are making their home in Lubbock where she is secretary for Campaigns For Christ Organization and he is employed by Grayson Enterprise Inc., Channel 13.

Bernard (Peck) Hickman started the new basketball season, his 26th at the University of Louisville, with 374 victories and 147 setbacks.

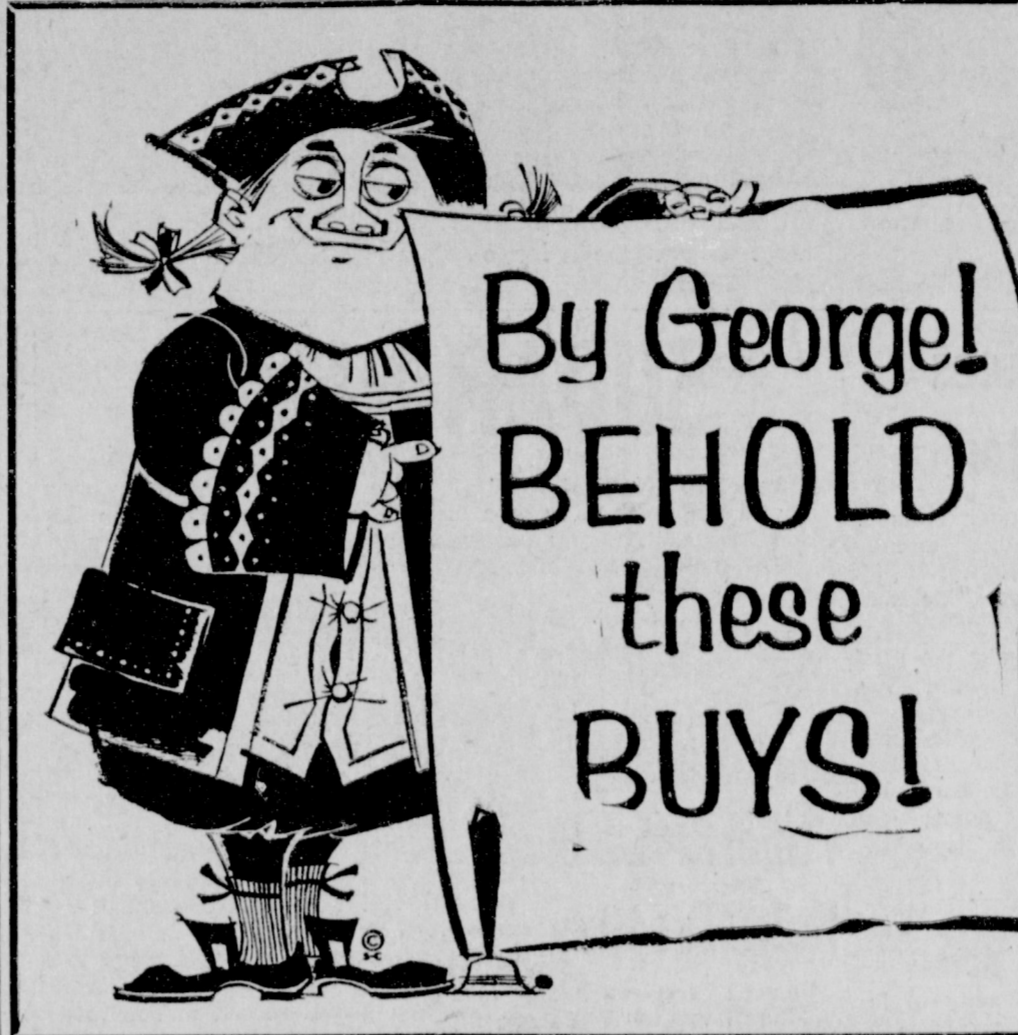
LEMMONS IS INJURED ON MOTORCYCLE

Murray Lemmons, owner and operator of Murray's Jewellery, was injured Sunday afternoon near his home on East Birch Avenue when he was thrown from a motorcycle.

While riding down the street, a dog bit Lemmons causing him to lose control of the motorcycle, it flipped twice and Lemmons is recuperating at home from broken leg bones.

FRANCIS IMPLEMENT CO.

FORD TRACTOR
Muleshoe, Texas



ONE DAY ONLY! Saturday, Feb. 22

Luggage Set 4-Piece Vinyl Covered **\$14²²**

TRYLON	Sleeping Beauty
BUBBLE BATH BUDS	FOAM RUBBER PILLOWS
Family Size	Moth Proof, \$2²²
1 1/2-lb. bag	Non-Allergenic

ST. REGIS **Electric Blankets**

Fully Automatic, 2-Year Guarantee
Convertible — Fiat or Fitted
Single **\$13.22** Dual **\$15.22**

WESTERN DRUG CO.
114 MAIN Phone 3-1060

Anthony's C.R. ANTHONY CO. WASHINGTON'S BIRTHDAY SALE

Saturday Only *By George!*
WE'VE CUT PRICES

Open 9 A.M. Sharp

1 ONLY MEN'S SUITS
100% Wool **22c**
No Alterations! First One Gets It!
1st Quality SATURDAY 9 A.M.

SPECIAL PURCHASE SPRING FABRICS
All Short Lengths **22c**
of Reg. 39, 49, & 59c
SATURDAY ONLY

LADIES LOOK AT THIS
1 ONLY **TOPPER** **\$1.22**
1st one gets it! Reg. \$15.00

SPECIAL PURCHASE, Factory Closeout
Pajamas Boys and Girl's **\$1.22**
Reg. \$1.98
SATURDAY ONLY

Girls & Ladies Anklets **22c**
Values to 59c

Men's or Boy's Sport Shirts **\$1.22**
Values to \$3.98
Supply Limited, Sat. Only

LADIES DRESSES Values to \$14.95 1 DAY ONLY \$3.22	Men's Dress SLACKS Reg. \$6.95 \$4.22 Look in Pocket (for money clip)
--	---

BY GEORGE THIS IS THE TRUTH
GRAB BOXES
WE CANNOT TELL A LIE
We Guarantee Every Item,
\$1.00 Retail Value or more
some up to \$8.00
FIRST COME FIRST SERVE
22c EACH

Misses or Ladies, Children SHOES **\$1.22**
Values to \$8.95 PR.

IT'S TREMENDOUS HONEST GEORGE SPECIAL
Jewelry
Necklace or Ear Screws Some Pins
Reg. \$1.00 & \$2 Value Purchased For this Special Event
22c
SHOP EARLY

SHOULDER STRAP Diaper Bags **\$1²²**
Reg. \$3.98
SPECIAL PURCHASE

LADIES' NYLON BRIEFS
Lace Trimmed
3 pr. **\$1²²**
You will want several pair at this thrifty price. Fine nylon with lace trim, in white and assorted colors. Sizes 5-8. Special priced while they last.

GIRL'S QUILTED ROBES **\$1.22**
Regular \$3.98
4 yrs to 14 yrs

LADIES OR GIRL'S CORDUROY SLIM PANTS **\$1.22**
Reg. \$1.98 to \$3.98
SATURDAY ONLY

COATS Ladies Wool **\$14²²**
Sat. Only, Reg \$29.95

LADIES 1st QUALITY UNIFORMS **\$3²²**
Values to \$9.95
Discount in Med. Styles

CHERRY TREE CHOPPING GLOVES **\$1.22**
All Leather Reg. \$1.98 Pr.

Special Purchase Men's Gold MONEY CLIPS 22c	Special Men's New Style TIE PINS Reg. \$1.50 22c
---	--

CUTRIS MATHES

THE LEXINGTON Model 558-23

Finest Early American design cabinet of genuine Maple veneers and hardwood solids. Features the 23" Kinacode picture tube and new, improved CM Custom 1S chassis with 23,000 volts of picture power. Two big 5" speakers for the best in sound.

\$199⁹⁵ WITH TRADE HARVEY BASS APPLIANCES

222 MAIN PHONE 3-0300

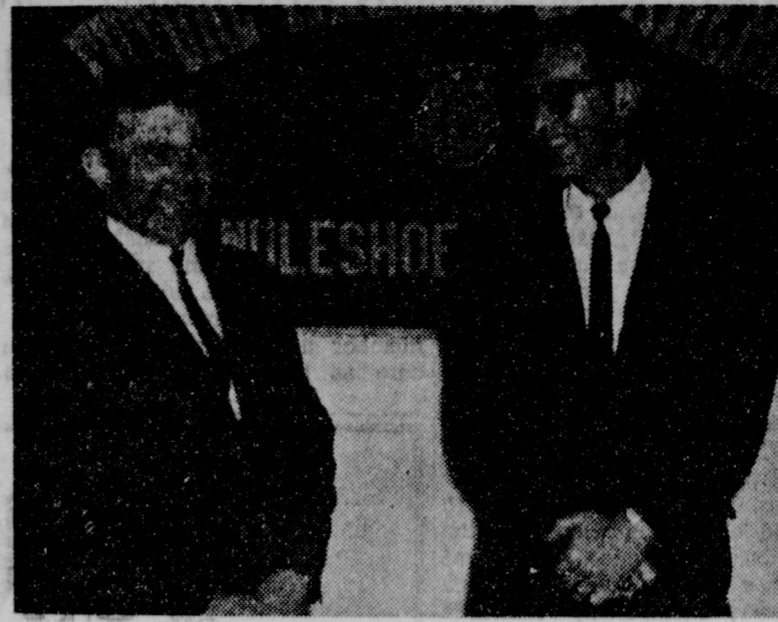
FUTURE FARMERS OF AMERICA ANNUAL BANQUET ATTENDED BY 150 PERSONS



AWARDS — Eugene Black, Robert Blackwood, Bill Taylor, Robert Hooten and Ralph Stevenson were named honorary members of the FFA and presented plaques for their work for the group.



QUEEN - Linda Dement was elected FFA Queen for '64



LEADERS — Bill Bickle and Lynn Edwards, ag teachers at Muleshoe High School and adult FFA leaders.



SINGERS — Sandra Scott, Sharon Millen, Beth Thompson entertaining at the banquet. Linda Scott accompanied the trio.

Shop George Washington Birthday Specials Sat., Feb. 22 In Muleshoe

ZALE'S COMPLETE WATCH OVERHAUL

Only **\$5.95**

INCLUDES

- cleaning, oiling, polishing
- adjusting, electrical timing
- replacing needed parts
- Fully guaranteed by America's largest jewelers!
- ONE LOW PRICE for any standard watch

Put your watch in the hands of expert Zale's craftsmen use the latest scientific equipment, replacing all needed parts including crystals, maintaining and balance staff.

DIAL REFINISHING EXTRA

ZALE'S JEWELERS

Clavia

Tax-- (continued from page one)

sonable length of time will probably be thirty days; however, there are some circumstances in which I may have to file suits more quickly, and some others which may take a longer time, but the point I want to make clear is that legal action will be taken on all farm accounts regardless how long it takes me to file a lawsuit on any individual farm account.

On behalf of Bailey County, I urge everybody owing taxes and farm accounts to please pay each as soon as possible.

I certainly don't want to "embarrass" anybody with a lawsuit, but after receiving my instructions from the Commissioners' Court, I am determined that every cent owed to the County shall be paid.

SHOP MULESHOE FIRST

DOES GETTING UP NIGHTS MAKE YOU FEEL OLD?

After 30 to 40 years of life, irritations often occur and may make you tense and nervous from too frequent awakenings both day and night. Secondarily, you may lose sleep and suffer from headaches, backache and feel old, tired, irritable. In such irritation, CISTEX usually brings fast, relaxing comfort by soothing irritating germs in stroma, acid urine and by analgesic pain relief. Get CISTEX at drugists! Feel better, fast!

Elder Services Held in Afton

I. R. Elder, 64, father of James Elder, Muleshoe, died recently at his home in Portales, N. M. Elder was a former Muleshoe resident.

Services were held in the First Baptist Church of Hamlin. Burial was in Afton Cemetery.

Survivors are his wife, four sons, James, Muleshoe; George, Dimmitt; Gerald, Lubbock; and Thurmond of the home; one daughter, Freda Nell, also of the home.

Fire Calls

Fires in Bailey County so far this year total 20, according to Muleshoe Volunteer Fire Department records. The group answered only one call this week. It was to the Wiley Baker Farm north of Progress. About \$1,500 damage was done when a small storage house and its contents were completely destroyed.

Clam juice can sometimes be substituted for fishstock in recipes, so keep the handy bottled clam product on hand.

Instead of baking two 8-inch layer cakes, bake half the batter in the big pan and the remaining in muffin pans.

SUDAN NEWS

By EVELYN M. SCOTT

Mr. and Mrs. J. V. Boulgin of Friona visited Saturday evening in the home of Mr. and Mrs. Jinks Dent.

Attending a Tupperware party Friday morning held in the home of Mrs. Billy Drum near Bula were a number from Sudan including Mrs. Martin Maxwell, Mr. and Mrs. Joe Fisher and Mr. and Mrs. Martin Maxwell had dinner in Clovis Saturday evening.

Mr. and Mrs. Wayne Howell are at Lake Brownwood fishing.

Mrs. Billy Mack Templeton underwent surgery last week at a hospital in Lubbock.

Mrs. Minnie Cockerham, mother of Mrs. Noel Lumpkin, underwent surgery last week in a Muleshoe hospital.

Mrs. George Harmon and Mrs. Lester LaGrange of Amherst were Sudan visitors Saturday and while here attended the funeral services of E. E. (Dutch) Crow.

Shop George Washington Birthday Specials Sat., Feb. 22 In Muleshoe

FRANCIS IMPLEMENT CO. FORD TRACTOR Muleshoe, Texas Adv.

Earl Darsey Funeral Services Held Tuesday

Funeral services were held Tuesday for Earl N. Darsey, 57, 1717 W. Avenue D, Muleshoe.

Darsey had been a resident since 1940 when he came here from Matador, Texas. He was born in Vernon, Texas, on May 30, 1906. He was a farmer, and long time member of the First Methodist Church.

Funeral services were held in the First Methodist Church, Rev. J. Frank Peery officiated. Burial was in Bailey County Memorial Park under the direction of Singleton Funeral Home.

Active pallbearers were J. D. Dunlap, Ken Angeley, Robert Hunt, Don Seales, Lyndel Black and Dillard Morris.

Three Way Girls And Bula Boys Win Tournament

In the District 6-B tournament held Feb. 13, 14, and 15 in the Three Way School gymnasium, the teams which emerged as victors were the Bula Boys and the Three Way girls. Teams from Pep placed second in both boys and girls. In the boys' games, Bledsoe, Three Way, and Petit were in third, fourth, and fifth, respectively. Bula girls were third, and Petit girls were fourth.

Elimination games were held on Thursday and Friday nights. Three Way boys bowed under Bula on Thursday. The quarter scores were 6-10 (for 3-Way) 35-24, 66-35, and a final 89-51 for Bula, a fast and skillful team. Tommy Terrell put in 32 points for Three Way. Three Way girls toppled Bula fens on Friday evening, with the scores by quarters 16-6, 33-21, 43-22, and a final 62-33, with the Eaglettes ahead all the way. High pointers were Madalyn Galt with 35 and Sharon Wittner with 20.

Saturday, the first game was play-off for Bula and Petit girls. The Bula Bulldogs won 31-18, between Three Way and Bledsoe, and was an exciting, action-filled contest. Halftime score was 42-42, and a three minute overtime was played. Terrell and Tommy Dupler were high point with 14 and 9. Bledsoe forged ahead and added six more points to their tally to win 48-42. The Pep and Three Way varsity girls then battled for top honors. Quarter-time scores were 14-7, 22-9, 31-14, and finally 43-20 in favor of Three Way. Stalling tactics kept the scores low. Galt was high point girl.

Final game was for boys' top honors, with Bula winning over Pep by 75-57. First and second place trophies were presented.

The Three Way Eaglettes will have two games with Wayland Queen Bees on Feb. 18 and 22, before they face the bi-district tilts.

Library-- (continued from page one)

the bookmobile program. Again the consensus of observers attending meeting in and traveling through surrounding counties is favorable.

The Morton meeting was attended by Mr. and Mrs. Mel Evans, Joe Harbin, Mrs. Matilda Slemmons, Mr. and Mrs. Roger Albertson.

LATE WANT ADS

REWARD: \$25.00 reward for information leading to the recovery of 5 joints of lateral irrigation pipe, size 4"x30; taken from my place located 4 miles South East of Muleshoe. E. O. Baker. 8t-tfc

FOR SALE: Antique clock collection, one or all. Hall clocks, mantle clocks and shelf clocks. Holiday House Motel, Friona. Call 8411, Friona. 12-8t-2tp

BE SURE

To Get The Seed You Want

- Kansas Bred Frontier Milo
- High Yielding Golden Acres
- High Germinating Cotton Seeds in the Variety you desire.

Seed Men are talking a shortage on popular varieties. So don't get caught short. See Sherman Inman or anyone from---

Baker Farm Supply

Phone 6130 MULESHOE

RED BARN'S FERTILIZER PROGRAM FOR GREATER FARM PROFITS

PLAN YOUR ROW CROP FERTILIZER PROGRAM AROUND THESE PROFIT PROVEN PRODUCTS...

- Red Barn Liquid Ammo-Phos Solutions
- Red Barn Anhydrous Ammonia
- Red Barn Chleated Iron & Zinc Solution
- Red Barn Dry Fertilizers
- Karmex DL Weed Control For Cotton
- Propazine 80-W Weed Control For Milo

DELIVERED TO THE FIELDS

Applicator Rentals or Custom Application Arranged

FREE SOIL ANALYSIS

For Greater Farm Profits See Art Davis or Ronnie Black

RED BARN FERTILIZERS - CHEMICALS

RED BARN CHEMICALS, INC.

410 N. 1st. MULESHOE Phone 7850

Your **OLDSMOBILE** will give you better service with **AMALIE** 100% Pure Pennsylvania Motor Oil

Why? Today's high compression engines running at high or low speeds; running in grueling stop and go traffic require the superior oilness, the heat resistance found only in **AMALIE** Pennsylvania Oil.

AMALIE is the oilier oil refined from the world's finest crude by special low-heat process. **AMALIE** stands up under engine heat long after conventional oils break down, thin out, drain off. Cuts wear, insures long miles of smooth engine performance....

change to **AMALIE** 100% Pure Pennsylvania Motor Oil!

Your service station man will stock **AMALIE** for you... Just ask him.

Wiedebush & Childers

WASHINGTON'S BIRTHDAY

THESE VALUES GOOD **Saturday Only!**

Seamless **Hose** Reg. 59c **22c pr.**

KAPOK PILLOWS Reg. \$1.00 **88c**

ASSORTMENT OF **HAIR BARRETT'S** Reg. 39c **2 for 22c**

Fabrics Reg. 39c yd. **4 yds. \$1**

Hair Rollers Reg. \$1.00 **66c**

PLASTIC ROSES **2c ea.**

PERRY'S 5c - 10c MULESHOE 25c - \$1

SHOP MULESHOE FIRST!



Motor Man South Side Gulf... You don't have to worry about the quality of our repair. Our products and personnel are tops in Muleshoe. We Give Gunn Bros. Stamps 601 S. First - Ph. 3-5710

Youngster Says Not For Bank

CHEER UP, money is not made to spend. That's Mrs. Alvin Allison's cry this week. Seems that she sent her grandson, 3 year old David Allison, Austin, a one dollar bill tucked inside a Valentine. His parents Mr. and Mrs. Johnny Allison told David to put the money in his Penny Bank, but he thought a Penny Bank was just no place for a dollar bill, so the young man took it to bed with him. The next morning, it was nowhere to be found and upon questioning David, he said: "I ate it because I didn't want to put it in my Penny Bank." AND HE SURE 'NUFF HAD.

Blackstone Home Scene of Meeting

Attending a 4-H Cooking lesson held at the home of Katie Blackstone were Rhonda Treider, Marsha Johnson, Raygena Treider, Marilyn Fred and Juanita Pierce. They are all students in Lazbuddie's Fourth, Fifth, and Seventh grades. A candy making session was held which is in the milk group of the basic four food groups and they also studied more about nutrition. Proper ways to measure ingredients were also taught by the leader, Katie Blackstone.

REDS AND VIETNAM

The new turmoil in South Vietnam's Government may give the Communist guerrillas an opening for an offensive that could wipe out recently reported gains by the United States-backed forces. Reports of a new Government upheaval in Saigon suggested a return to the confused conditions on which the Red Viet Cong thrived after the ouster of the Diem regime in November.



ROTARY OFFICERS — Muleshoe Rotary Club announced its new officers this week. They are Doug Haynes, treasurer; Bo Bryant, secretary and Olin Borrows, president. Earl Harris (not pictured) is vice-president.

BUY FERTILIZERS NOW! DOLLAR FOR DOLLAR. SIDE BY SIDE. YOU JUST CAN'T BEAT MIDWAY FERTILIZER For Range of Formulation or Low Price! Anhydrous & Dry Fertilizers Any kind of mixed dry fertilizer you may want! New Cotton Super, New Plow Down & Sorghum Fertilizer, New Wheat Special. MIDWAY FERTILIZER CO. Phone 965-3583 Midway, Texas

SHOP MULESHOE FIRST

88¢ WASHINGTON'S BIRTHDAY SALE STARTS SATURDAY, FEB. 22

Now, for the first time these items are available to the people in the Muleshoe area at Big Savings... by COBB'S ... Muleshoe's Leading Department Store!

Shop All Department FOR GEORGE WASHINGTON BIRTHDAY SAVINGS!

E-Z SLIP-ON BELT HOLDER RING. Two to a set — holds a complete belt wardrobe. Ideal for men or ladies. REG. \$1.00 88¢

Imported Sewing Kit Cold Tooled Leather. Zipper closure. Contains all the items for everyday sewing. Ass't. colors 4" x 3" closed. REG. \$1.00 88¢

MAKE-UP AND SHAVING MIRROR. 5" diameter. Genuine Porcelain Base & Stem, 2-way Swivel Mirror. Plain or Magnifying. REG. \$1.00 88¢

UNIQUE HOSIERY WASHER. Petal-Soft Sponge with lid to open for inspection. Handy way to wash Hosiery without tearing. REG. \$1.00 88¢

Paper Bag Holder. Holds 48 or more bags. Handy tray for pencils. Hooks to hold keys and small items. REG. \$1.00 88¢

LINT CHASER REMOVES LINT LIKE MAGIC, FOR HOME OR TRAVEL. Wood Handle, Brass Bristles. Individually Boxed. REG. \$1.00 88¢

All-Purpose Plastic Rug Runner. Resists Dirt, Wear and tear. Non-skid surface. REG. \$1.00 88¢

30" x 18" DRILL LAUNDRY BAG. DRAWSTRING CLOSURE— A must for Every house. REG. \$1.00 88¢

Shampoo & Bath Set. Fits all sizes faucet. Easily attached. ass't colors. REG. \$1.1 88¢

EYELET TOOL SET with 300 Eyelets. For Home School or Office. REG. \$1.00 88¢

BAG-O-NET SHOPPING BAG. Folds into small plastic bag when open. perfect Shopping bag reg. \$1 88¢

IRONING BOARD PAD WITH SILICONE SCORCH-RESISTANT COVER. Fits All Standard Ironing Boards. In Printed Poly Bag. REG. \$1.00 88¢

DOUBLE FACE MIRROR. with porcelain base and stem. Three wells for lipstick, eyebrow pencil, brushes, ear rings, rouge. A must for every home! \$188 REG. \$3.00

4-PC. KITCHEN SET in Assorted Prints. Two full size Pot holders, two oven mitts. Heavy quilled Cotton. REG. \$1.00 88¢

AROUND-THE-NECK MIRROR. For make-up, Shaving and Many other Uses. 2 sided. REG. \$1.00 88¢

HURRY HOT-POT. Boils 4 cups of water in minutes for instant coffee, tea or cocoa. Easy-Pour spout, comes with electric cord. Made of highly polished aluminum. \$288 REG. \$4.00

ELECTRIC DE-FROSTER. De-frosts Refrigerator in minutes. Chrome plated Plastic handle & legs. reg. \$5 \$388

PRESS-ETTE WONDER IRONING BOARD. With Silicone cover and pad. Rubber-tipped Legs will fold to fit into your suitcase or drawer. 24x9". Compact, Lightweight. REG. \$4.00 \$288

IMPORTED LIGHTWEIGHT TRAVEL IRON. With cord, AC or DC. REG. \$4.00 \$288

With cord, AC or DC. REG. \$4.00 \$288

With cord, AC or DC. REG. \$4.00 \$288

With cord, AC or DC. REG. \$4.00 \$288

MANY MANY OTHER BIG MONEY-SAVERS DURING THIS SALE!

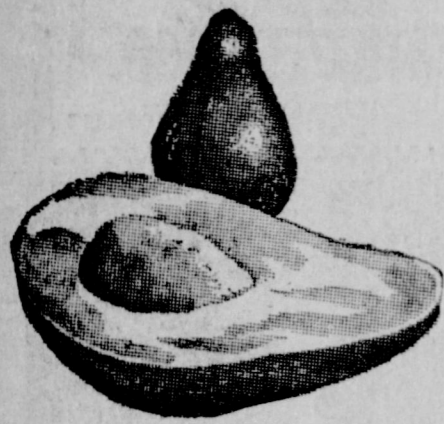


BY GEORGE! CASHWAY IS REALLY CELEBRATING WASHINGTON'S BIRTHDAY...



WASHINGTON'S BIRTHDAY

IT'S PRICE CHIPPING TIME



POTATOES Colorado Red McClure, 20 lb. bag

59c

AVOCADOS California Large Size 2 for 15c

PEARS California D'Anjou lb. 15c

APPLES

Washington Extra Fancy

Red. Delicious lb. 15c

CALIFLOWER lb. 15c California Snow White

FROZEN FOODS Spectacular

CHERRY PIES Banquet, Family Size **39c**

STEAKS Blue Morrow Quick Fixen, 20 oz. pkg. **79c**

BRUSSELS SPROUTS Keith's 10 oz. Pkg. **2 for 39c**

POTATOES Ore-Ida Crinkle Cut, 2 LB. PKG. **39c**

Chicken Pot Pies Keith's 10 oz. Pkg. **2 FOR 39c**

Perch Fillets Ocean Beauty, 1 lb. pkg. **39c**

SHORTENING Snowdrift 3 lb. Tin **59c**

PEACHES Hunts Sliced or Halves No. 2 1/2 Can **25c**

GLADIOLA FLOUR 5 lb. Bag **39c**

SUGAR IMPERIAL Pure Cane 5 lb. Bag **69c**

MAYONNAISE WESSON Qt. Jar **49c**

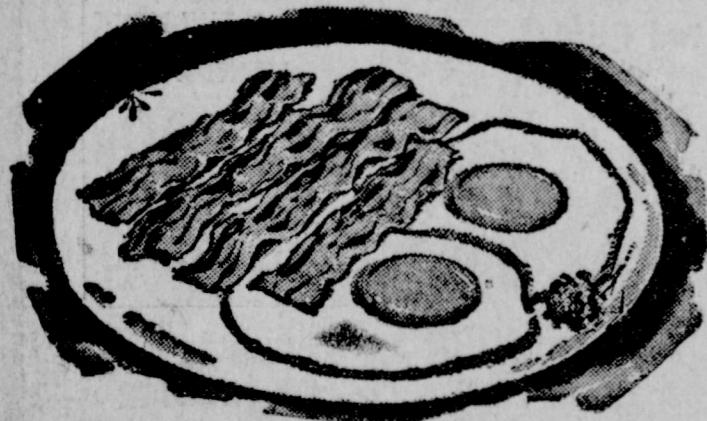


- Ritz Crackers Nabisco 1 lb. box **39c**
- Soup Heinz Chicken & Noodle No. 1 Can **2 for 29c**
- Tomato Catsup Heinz 20 oz. Bottle **29c**
- Cucumber Wafer Shedd's Lady Betty Qt. Jar **39c**
- Spaghetti & Meat Balls Ellis, No. 300 Can **2 for 49c**
- Crackers Sunshine Krispy 1 lb. box **29c**
- Breeze Giant Size Box **69c**
- Beans & Meat Balls Shedd's Lady Betty 300 can **2 for 49c**
- Prune Juice Hunts Qt. Bottle **39c**
- Stewed Tomatoes Hunts 300 can **2 for 39c**
- Spinach Del Monte Fancy No. 303 can **2 for 29c**
- Pineapple Del Monte Crushed No. 2 Can **29c**
- Tomato Juice Hunts 46 oz can **25c**
- Coffee Maryland Club (drip or reg.) 1 lb Tin **69c**
- Instant Milk Carnation 8 qt. size **69c**
- MILK Carnation Tall Cans **3 for 39c**
- INSTANT COFFEE Coffee Mate 6 oz. Jar **45c**
- Dog Food Friskies Tall Can **2 for 29c**
- Coca Cola 12 bottle ctn. Plus Depositor **69c**
- Jello Pudding Regular Ass't Flavors **4 for 39c**

IVORY SOAP Large Bar **2 FOR 39c**

IVORY SNOW Reg. Size Box **29c**

BACON EGGS XIT GRADE A Large DOZEN **49c**



Sliced BACON Wilson's Corn King, 1 lb. pkg. **49c**

CLUB STEAKS Choice Heavy Pen Fed Beef lb. **69c**

Blue Morrow's CHILI 1 lb. brick **59c**

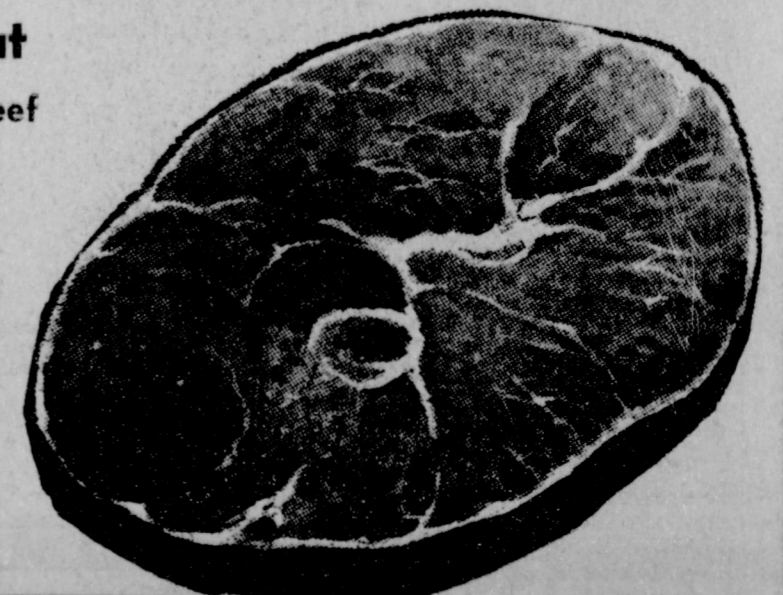
Lunch Meats Wilson's Vac Pac 6 oz. Pkg. Bologna, Liver Loaf, Olive Loaf, Pickle & Pimento **4 for \$1.00**

FRANKS Wilson's Vac Pac All Meat 1 lb. pkg. **49c**



HAM PICKNEY'S Sun-Ray, Sliced Center Cut **lb. 89c**

Hamburger Meat Choice Fresh Ground Beef **3 lb. \$1.00**



OUR BUTCHER'S CUT PRICES

...to the Bone!



GUNN BROS. STAMPS Double Every Wednesday

Listen To MULETRAIN over KMUL sponsored by CASHWAY

White's CASHWAY

Enochs News



TO EXAMINE RUBY — Dr. Milton Towler, left, of the University of Texas Medical School at Galveston, Dr. R. L. Stubblefield, center, of Southwestern Medical School in Dallas, and Dr. John T. Holbrook, right, Dallas psychiatrist, are the court-appointed psychiatrists who will examine Jack Ruby, Dallas night club operator charged with slaying the accused assassin of President John F. Kennedy. (AP Photo)

By MRS. JEROME CASH
Mr. and Mrs. Carl Hall visited his brother, Mr. and Mrs. Dan Hall, Morton Sunday afternoon.

Mr. and Mrs. R. P. McCall, Mr. and Mrs. Donny McCall, Muleshoe, visited their mother and grandmother Sunday afternoon. Mrs. L. C. McCall, Morton.

Mrs. E. C. Gilliam is in the West Plains Hospital Muleshoe, recovering from minor surgery. She expects to come home in a few days.

Mr. and Mrs. Bud Thomas and children Morton, visited his parents Sunday afternoon, the T. A. Thomas.

Arlis Autry left for Oregon Tuesday. He is going up there to work. He sold his trailer house to Mr. and Mrs. Jene Autry. They will move into it soon.

Mr. and Mrs. C. H. Byars and Eldon Byars visited their brother, Jim Byars and family of Big Springs Sunday. While there they also visited Claude Rodriguez who is in the Veterans Hospital there. Claude is recovering from a stroke he had last summer, he is able to be up in a wheel chair.

Mrs. Grace Vanlandingham is still in the Medical Arts Hospital Littlefield, she is recovering from a kidney infection. She is better at this writing.

Mrs. C. H. Byars and Mrs. J. C. Pearson visited Mrs. L. C. McCall of Morton Friday. Mrs. McCall is in the Robert Memorial Nursing Home there.

Mr. and Mrs. Clyde Coffman, Morton visited his sister and family Thursday night, Mrs. J. D. Bayless.

Mr. and Mrs. J. D. Bayless spent Sunday afternoon visiting her sister and family, Mrs. Gracie Swanner of Levelland. Mrs. Swanner has been sick and had to stay in bed, but is better at this writing.

Dinner guests in the Joe Mil-saps home Sunday night, were Mr. and Mrs. A. R. Rose and Mr. and Mrs. O. C. Kirk and grandson all of Muleshoe.

Mrs. J. D. Bayless was hos-

withdrew, but others filled in the gap, and we are sure we will have plenty of good growers by the time we wind up our sign-up period," Fisher concluded.

ess to a Tupper party Thursday afternoon at 2:30.

Mrs. H. H. Snow, Muleshoe, was the demonstrator. Games were played, directed by the demonstrator.

Those present were Mrs. Lands, Bula, Mrs. J. E. Autry, Mrs. C. P. Price, Mrs. Jerome Cash, Mrs. Carl Hall, Mrs. John Van, Mrs. J. M. Angel, Mrs. J. J. Terry, Mrs. Joe Milsap, the hostess, Mrs. J. D. Bayless, Mrs. H. H. Snow, the demonstrator. Refreshments of coffee, punch and cookies were served.

spent Wednesday night and ents, Mr. and Mrs. Jerome Cash.

Lunches for Bula School from 17 to 21.

MONDAY — Sour Kraut and wieners, buttered corn, carrot sticks, Blackeyed peas, Hot rolls, butter and honey, milk.

TUESDAY — Meat loaf, potatoes in jacket, vegetable salad, green beans, hot rolls, butter, applesauce, milk.

WEDNESDAY — Red beans, Spinach, Cabbage slaw, corn-milk.

THURSDAY — Turkey and dressing, English peas, vegetable milk.

FRIDAY — Tuna and cheese sandwiches potato chips, lettuce and tomato salad, Cherry cobbler, milk.

Mr. and Mrs. J. E. Pearson visited their daughter and family Sunday, Mrs. Bobby Don Henderson, Muleshoe. Mrs. Henderson cooker her father a birthday dinner, which was enjoyed by all.

Mr. and Mrs. Burley Roberts and children visited his brother, Norvell in Portales, N. M. Sunday. Norvell is a student at E. N. M. U.

Mrs. John F. Kennedy, former First Lady: "The knowledge of the affection in which my husband was held by all of you has sustained me, and the warmth of these tributes is something I shall never forget."

Shop George Washington Birthday Specials Sat., Feb. 22 In Muleshoe

SHOP MULESHOE FIRST



CLASSROOM TELEVISION — Miss Aida Barrera and a little wooden puppet named Richardin have teamed to become a favorite with more than 200,000 school children in South Central Texas who watch educational television in classrooms. Miss Barrera conducts a TV Spanish class regularly on

LKRN-TV, an educational television station with studios on the University of Texas campus in Austin. It beams a variety of regularly scheduled courses into classrooms of 43 school systems in the Austin-San Antonio area. (AP Photo)

400 Farmers Due To Grow Beets In Four Counties During 1964

Farmers in four counties have started signing contracts to grow sugar beets in this area, Holly Sugar Corp. announced last week. Four-hundred farmers in Deaf Smith, Castro and Parmer counties in Texas and Curry County in New Mexico, are expected to sign the acreage agreements between now and March 1. Wes Fisher, assistant Hereford Holly manager, said the company hopes to complete its sign-up program by March 1. To keep its brand-new plant operating at full capacity, when it starts running next autumn, the farmers will need to grow 26,500 acres of sugar beets. With an average of 20 tons per acre, this would supply the mill with more than half a million tons each season, he explained. When the plant gets into full production, it can "slice" 6,000 tons of beets per day, and from this some 2,000 tons of sugar can be produced. Of course not all the beets brought to the refinery each season will be processed during the growing season; a part of the crop will be stored in the company's huge tanks to be processed after the season is over, thus extending the operating period

for the mill considerably, Fisher explained.

The \$21-million plant, one mile west of Hereford, has been under construction for several

Area Shown Win Awards At In Stock Show

Ken Dawson of Earth exhibited the grand champion barrow in the junior swine division of the San Antonio Livestock Exposition Wednesday. The animal was a berkshire.

Dennis Moter of Plainview, exhibiting a Duroc, claimed the reserve champion purse in the junior market barrow division. Dawson came up with another win in that section, taking the breed championship with his berkshire.

Neil Mitchell, Lockney, and Harold Powell, Earth, won reserve championships, with Poland Chinas in the market show.

In the lamb exhibit the Green Acres Farm of Lockney won reserve honors with a ewe in the hampshire division.

months, but is expected to be completed in time to handle this year's crop.

Fisher said harvest will start around Oct. 1 and conclude in late December, depending on the season and other factors.

Farmers have been picked carefully as a result of surveys made by Holly fieldmen, Fisher explained. "We held a number of meetings throughout the autumn months in which we explained all phases of sugar beet growing," he said.

"At that time the farmers were asked to indicate whether they wanted to grow sugar beets after hearing all the facts — both good and bad.

"From these indications, the fieldmen made their surveys and recommended farmers who should grow the crop."

The surveys, Fisher said, took into consideration many factors. These included experience in sugar beet production, type of land, how much water is available and the farmer's general good practices," he said.

He said the company has had little difficulty in reaching its 400-farmer goal. "Of course, some of the people who signed intentions to grow beets later

Yarborough In Washington

Dear Fellow Texan:

The bill for cutting the income tax has been passed by both Houses of Congress and the final details are being worked out in conference.

The tax cut will mean a total of \$407 million a year more income for individuals in Texas when it becomes fully effective. This does not include the corporation tax reduction.

By the end of this month, the take-home pay of the nation as a whole will increase by \$800 million a month, an amount certain to give our economy a strong thrust forward, certain to give the taxpayer a long-needed break.

Taxes are high in America. The expenses of World War II, the Korean Conflict and the Cold War are still heavy upon us. But the taxpayer needs a break af-

ter supporting the Free World for decades.

There are some important benefits in this tax bill to lower income wage-earners.

For example, a married couple with two children and a yearly income of 3,000 has been paying about \$60 income tax. Now, a couple in this situation will no longer owe a federal income tax.

A couple with an income of \$3,000 will find on the average that its tax liability has been reduced from \$300 a year to \$200 a year. A single person with an income of \$5,000 a year and now paying an average tax of \$818 a year will have that amount cut by \$147 a year.

This tax cut goes into effect over a two-year period, two-thirds this year and the remaining one-third in 1965.

There are 1,500,000 persons

with very low incomes now paying some kind of income tax to the federal government who will go off the tax roles altogether.

There was also a lot of sentiment for reducing excise taxes, the federal sales taxes you pay on goods.

I shared that sentiment, but we needed a tax cut at once, and in order to assure that this bill passed, we kept it on income taxes entirely. However, Congress now on hearings on excise taxes, the federal sales taxes, and we hope to have some reduction on that front too within the next year.

The tax cut was not perfect. In my opinion there are loopholes and gimmicks, but if we had waited for the perfect bill, there would have been no hope for the tax cut this year.

Beneath the rule of men entirely great.

The pen is mightier than the sword.

—Bulwer Lytton.

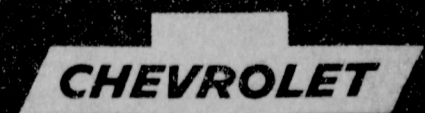
CHEVROLET

makes all types of quality trucks



FLEETSIDE PICKUPS

World's favorite pickup model. Two body sizes: 6½ and 8 feet. Two wheelbases: 115 and 127 inches. Body extends clear out over the wheels. Excellent ride with coil springs all around and independent front suspension. Cab and lower body panels are double-wall construction. Strong ladder-type frame. Standard engine is 230-cu.-in. six. A 292 six or 283 V8 available at extra cost. Also 4-wheel drive.



QUALITY TRUCKS COST LESS

Telephone your Chevrolet dealer about any type of truck

CROW CHEVROLET CO.

201 MAIN STREET

MULE SHOE

PHONE 3-1000

Now they come in colors, too!

WHITE LEVI'S

CALIFORNIAN MODEL

They're still the same slim, trim and rugged pants you call WHITE LEVI'S. But now you can get 'em in your favorite sportswear shades. Fill out your wardrobe with a couple of pairs... in the colors you like best.

THE NAME LEVI'S IS REGISTERED IN THE U. S. PATENT OFFICE AND DENOTES GARMENTS MADE ONLY BY LEVI STRAUSS & CO., SAN FRANCISCO, CALIF.

The Muleshoe Journal

Published each Thursday by The Muleshoe Publishing Co.
304 West Second Street, Muleshoe, Texas

Member of The Associated Press

Entered as second class matter at the Muleshoe Post Office under act of Congress, March 3, 1897.

SUBSCRIPTION RATES

Immediate Territory	\$4.00
Out of Territory	\$4.50
Combined with Bailey County Journal	\$5.50
Both papers in territory	\$5.50
Both Papers outside territory	\$6.25

Advertising Rate on Application.

L. B. Hall, Publisher
R. F. Goodrow, Editor
Doris Kinser, Society Editor



LBJ Joins Liberals

President Johnson has apparently won his first major political battle since taking over the Presidency—the capturing of so-called 'far-left' liberals within his own party. For many years they have rejected him as too moderate, and many opposed his designation as No. 2 man on the Kennedy ticket four years ago.

The Chief Executive wooed liberals under his wing with the State of the Union message. His welfare proposals and particularly his all-out war on poverty pleased the leftists who had expressed doubts about Johnson.

Also, in his speech, the President did not

forget the conservatives and the moderates within his party. He pleased them by pledging to cut federal spending and practice thrift.

Johnson has already apparently eliminated any trouble that might have been in store for him at the Democratic National Convention this summer. His nomination by acclamation is almost a certainty.

The President has won his first political victory for 1964, and did it far quicker than his closest advisers had though possible. His effective leadership of the party — the left as well as the center and right — is now an accomplished fact.

Nixon & Draft

Former Vice President Richard Nixon recently made it clear he would accept a 1964 draft. He told reporters he would not, however, become a candidate.

That is, Nixon says he will not campaign for the Republican nomination this year, nor it he going to have any organization.

But, after saying this, Nixon says that he will serve the public if he has the opportunity again. In short, he is available for a draft. This is the strategy which proved successful for both Dwight D. Eisenhower and for Adlai Stevenson in the fifties.

Nixon says he is aware of the fact that he leads all Republicans in the public opinion polls and says this is not surprising since he got 34 million votes in 1960.

Thus the activities, in the Republican Presidential nomination derby, are Senator Barry Goldwater, Governor Nelson Rockefeller and others, and the "draftables" include Nixon, Governor William Scranton, Governor George Romney, and others — possibly Henry Cabot Lodge among them.

Nixon says he expects the results of the Republican convention in San Francisco to be mixed. And if he expects this, he undoubtedly feels there is a chance delegates will think of the 1960 party nominee as a compromise candidate sooner or later in the convention.

It is pretty obvious, then, that Richard Nixon is available — if his party wants him.

Group Asks Rights For Local Politicos

RICHARD GOODROW

A new local organization, the BCB&PSW (Bailey County Bird and Politician Watchers Society) insists that politicians should have equal rights with monkeys.

The decision was reached after the group discussed reports that a leading zoo was giving monkeys I. Q., intelligence, and personality tests before turning them loose on already established monkey society.

The reasoning behind the tests is that since these are young monkeys some of them will eventually end up in positions of leadership and the dopes will be weeded out.

The group's membership felt the zoo's idea was pretty solid, and recommended its members begin a drive to have all local level politicians take I. Q., comprehension and personality tests so the public might see what it's getting for its vote.

In order not to make such testing too difficult for the testees, the group recommended politicians be given the same tests currently being given the monkeys.

At first members felt the tests

should be given national level politicians as well, but changed their mind when one member mentioned that the mentally deficient were regarded as holy in some countries. The group felt that if the nation were ahead somewhere in world politics we should not rock the boat.

In most areas of the nation, persons wishing to apply for positions of responsibility must face a battery of intelligence, tests. These tests predict how the man will perform in his job, and weeds out the duds.

"Since these who can pass such tests are generally working for a living, what's happened to the duds?" asked one member. Further discussion brought out that some members of the group felt they went into lines of endeavor where intelligence tests were not required. It was then voted to start a movement to make it a requirement for local level politicians to take tests as a requirement for office.

Shop George Washington Birthday Specials Sat., Feb. 22 In Muleshoe

Soil Fertility To Be Discussed At Hub Meeting

Weed control and general soil fertility will be discussed in detail at a Farmer County meeting to be held Tuesday, February 25. The meeting will get underway at 1:30 at the Hub Community Center, located six miles south of Friona.

Bill Gunter, area extension agronomist, will discuss soil fertility in general. He is widely recognized on the Plains as an expert in the field of soil fertility.

Immediately following Gunter, Elmer Hudspeth, USDA agricultural engineer based at the South Plains Research and Extension Center, Lubbock, will report on weed control in cotton and grain sorghum. Hudspeth is also well-known on the Plains — especially for his work with broadcast cotton.

This method has cut costs per pound lint cotton produced drastically over conventional row planting. Hudspeth credits use of chemicals for season-long weed control in the broadcast plantings with much credit for success of the method.

Coker says the meeting is open to everyone interested.

Parks Named All-American By Press

LUBBOCK — Texas Tech end David Parks will receive his All-American certificate from the Associated Press in a brief ceremony at halftime of the Southern Methodist-Texas Tech Basketball game here Saturday afternoon, Feb. 22.

Harold V. Kattliff, AP sports editor for the Southwest, will make the presentation. The certificate was not received from New York in time for a presentation scheduled earlier.

SHOP MULESHOE FIRST

Hicks Chapel

By MRS. BOB CARPENTER

Mr. and Mrs. Dewayne Mitchell visited in Morton Monday in the home of her father, C. B. Boyce.

Mr. and Mrs. Doyle Switt and Mary Lou, Littlefield, were dinner guests in the Bob Carpenter home Sunday.

Hicks Chapel Church was the scene of an all-church social after services Sunday night. Sandwiches and coffee were served to approximately 25 at-

FRANCIS IMPLEMENT CO. FORD TRACTOR Muleshoe, Texas

tending the event.

Mr. and Mrs. Dewayne Mitchell has her sister, Mrs. Louis Kessler, Sudan as a guest Sunday.

Barry Goldwater, Senator (R., Ariz.)

"America, for most of its years, he waged a war on poverty. I say that when the government tries to spend its way to wealth we lose that war."

Shop George Washington Birthday Specials Sat., Feb. 22 In Muleshoe

MUSHY BRAKES?



Have your wheels aligned, balanced by us. Eliminate annoying vibrations, excessive tire wear. Drive in today for complete tire service. Line up with "BEAR" Front End Equipment

PLAINS AUTO PARTS

SERVICE DEPARTMENT

421 S. MAIN

Phone 7150

GIVE YOUR EMPLOYEES AROUND THE CLOCK — AROUND THE WORLD PROTECTION

\$10,000 COVERAGE

for less than \$1.00 a month!

This special low-cost group insurance plan was developed by Great American of Dallas for both large and small business firms. Now you can eliminate expensive "unusual event" or limited coverage policies with one plan which provides accidental death benefits up to \$100,000 for business owners, top executives and employees. For complete information, call your Great American man today!

GREAT AMERICAN OF DALLAS, INSURANCE COMPANIES

GEORGE WILLIAMS

410 West 4th Phone 3-5030



SHOP MULESHOE FIRST

Meet the Muleshoe State Bank CUSTOMER of the Week

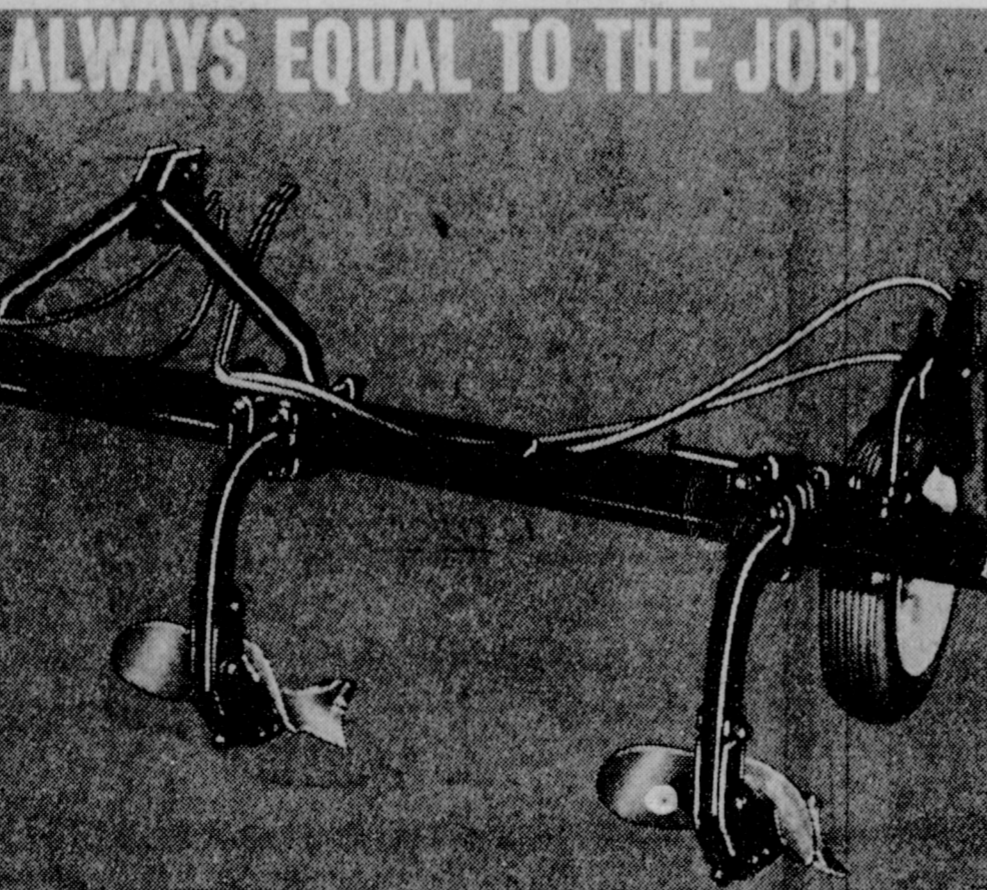


MRS. THERON WEST, of 909 Fig Street, is radio dispatcher for the police department and has banked at the Muleshoe State Bank for the past 24 years. The Wests have three children, Lt. Hiram West of Whiteman Air Force Base, Mo., Ray West, engineer for the Pure Oil Co., in Midland, and Mrs. Sharon Pierce of Muleshoe. The Wests attend Primitive Baptist Church. "Our dealings with the Muleshoe State Bank have always been very cordial and satisfying," says Mrs. West. We are happy to recognize this customer of the week.



MULESHOE STATE BANK

Member FDIC



MINNEAPOLIS-MOLINE LISTER FROM 1 TO SIX ROW, QUICKLY AND EASILY ADJUSTED TO FIT ANY SOIL CONDITION. VERY ECONOMICAL TO OPERATE WITH ANY TRACTOR! SEE IT AT--

FRY & COX BROS.

"YOUR FRIENDLY ONE STOP FARM SUPPLY"

401 S. First

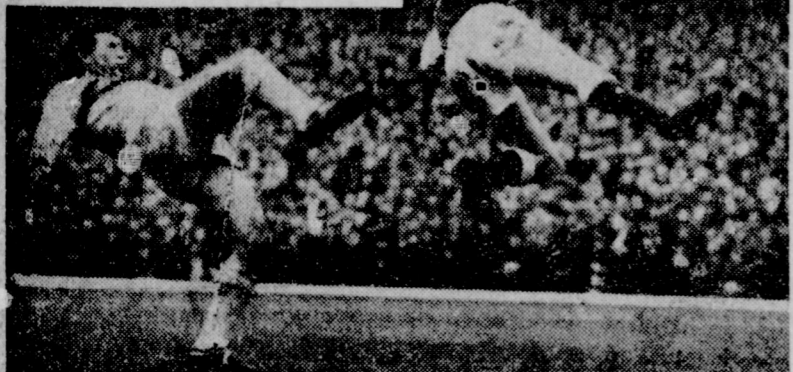
Phone 3-3660

Central States News Views

FOR WINTER—Snow and ice removal salt is loaded on barge at Cargill, Inc., rock salt mine in Southern Louisiana. Cargo will be used to ease winter driving in northern part of the country.



CONFUSED? So is Susan Nelson as she checks road sign at Appleton, Wis., intersection.



NOT WHAT IT APPEARS—Ken Brown, left, really isn't propelling Joe Baker into the air during a soccer match. Baker actually is moving toward ball to divert it from Brown's waiting toe.

Single Mustard Plant Cuts Down Field's Yields

COLLEGE STATION — Recent studies at the Southwestern Great Plains Field Station indicate that a single tansy mustard plant per square foot in dryland wheat fields reduced yields by about 10 percent.

Agronomist A. F. Wiese and Assistant Economist J. S. Wehrly of the Texas Agricultural Experiment Station staff conducted the studies and developed a guide farmers can use to determine whether control of tansy mustard will be profitable. Tansy mustard is the most common weed over much of the Texas dryland wheat producing area.

It has been known for some time that the weed did not compete with wheat for moisture when controlled with 2, 4-D ester. The recent studies thus pinpointed the damage caused by the weed in dryland wheat.

The scientists suggest that farmers watch their wheat fields in February or March, count the weeds — on a square foot basis — and make an estimate of potential wheat yield. Then by taking the 10 percent damage for a single weed per square foot and varying it up or down depending on weeds counted and using an assumed value of \$1.75 per bushel for the potential

yield and figuring the cost of applying a half-pound of chemical per acre at \$1.50 (custom rate), farmers can determine whether control of the weed would be profitable, Wiese and Wehrly explain.

The half-pound of 2,4-D ester should be applied after the wheat is fully tilled but before vigorous spring growth begins usually between February 15 and April 1, the scientists emphasize.

With one weed per square foot and a potential yield of only 5 bushels of wheat an acre, control would not pay. But if the yield were 20 bushels an acre, the profit would be \$2.00 an acre. On fields with a potential yield of 20 bushels an acre and a weed population of 4 per square foot, control would increase profit by \$12.50 an acre. The scientist conclude that if a farmer does his own spraying, the cost could be considerably less than \$1.50. It also would be profitable to treat fields with lower potential yields or weed numbers than when higher spray costs are required.

FUNERAL-COST PROBE

The Senate anti-trust and monopoly sub-committee announced that it plans to investigate "the high cost of dying" and "the high cost of medical care." Senator Hart (D., Mich.) did not elaborate but said funeral costs have recently become the center of controversy. Also that reports indicate ownership by physicians of drug stores and drug manufacturing and repackaging firms is on the rise.



WHO WOULD YOU TURN TO FOR A NEW PERMANENT?

Certainly you shouldn't come to us. The specialist you need is a beautician. We specialize in saving accounts and loans for homes. In fact, that is our only business, and because it is, we can concentrate all our efforts on these services.

The Best Place To Save And To Borrow . . .

SPECIALIZING IN SAVINGS ACCOUNTS and HOME LOANS

First Federal Savings & Loan

Home Office: Clovis, N.M., 4th & Pile
Branch Office: Portales, N.M., 2nd & Abilene

PLAY PIGGLY WIGGLY'S BEVERLY HILLBILLIES "GAME"



DOUBLE STAMPS

SATURDAY, FEBRUARY 22, this week, only with \$2.50 purchase or more!

- CHERRIES** STOKELY'S Red Sour Pitted, No. 303 Can 22c
- GREEN PEAS** DEL MONTE Garden Sweet No. 303 Can 17c
- PINTOS** BIG CHIEF 4 lb. bag 39c
- HI-C-DRINKS** Grape, Orange, Orange Pineapple, Fruit Punch, Pineapple, Grapefruit 2 46 oz. cans 57c

These Values Good in Muleshoe, February 20, 21, 22, 1964
We Reserve the Right to Limit Quantities.

TASTE-TEMPTING PRODUCE FROM PIGGLY WIGGLY!

- CARROTS** Texas Fancy 2 cello lb. bags 19c
- APPLES** WASHINGTONI Extra Fancy Red Delicious 2 lbs. 29c
- Fresh, Large Bunch, Each **ROMAINE LETTUCE** 19c
- Green Pascal, Cello bag **CELERY** 29c

- Eggs** IDEAL Grade A, Large Dozen 39c
- Catsup** MARSHALL TOMATO 12 oz. Bottle 15c
- Salmon** HONEY BOY CHUM No. 1 Can 49c
- Vienna Sausage** LIBBY All Meat No. 1/2 Can 19c
- Oleo** ELGIN COLORED 1 LB. PKG. 10c
- Biscuits** Holsum Buttermilk, Sweetmilk 5c
- Pork & Beans** CAMP-FIRE 3 no. 303 Cans 25c

Freshest Frozen Foods

- Fruit Pies** Banquet, Cherry Apple & Peach, 20 oz. Pkg. 29c
- Cherries** Chere Pi Pak 20 oz. Can 39c
- CASSEROLE** Macaroni & Cheese Banquet, 8 oz. pkg. 19c
- PIE SHELLS** Pet Ritz 2 Per Package 35c
- DONUTS** Mortons 10 oz. Pkg. 37c
- BROCCOLI** Silverdale Chopped 2 10 oz. pkgs. 29c

George Washington's Birthday

THESE PRICES GOOD SAT., FEB. 22, ONLY

- Coffee** Folgers 1 can to the first ten Customers for only 22c
- CHERRIES PIES** Banquet, Family Size 22c
- Cherries** Sturgeon Bay No. 303 Can 22c
- Peaches** Hunts No. 2 1/2 Can 22c
- Baby Food** Gerber's Strained 4 1/2 oz. jar 3 for 22c
- Pork Roast** Rodeo's Lean Northern Pork Picnic Cut, lb. 22c

Health & Beauty Aids

McLean, reg. 59c retail, 6c off label, Giant size

- Toothpaste** 39c
- Woodbury, Pink, 1/2 Price Label, tax 4c, **HAND LOTION** reg. \$1.00 retail 37c
- Prell Tube, 20c off label, reg. \$1.39 retail **SHAMPOO** Family Size \$1.09
- Reg. \$1.25 retail, 100 count bottle **ANACIN** \$1.09
- Dristan, Regular \$1.25 Retail **COUGH SYRUP** \$1.09

- Hershey's, 16 oz. Can **CHOCOLATE SYRUP** 23c
- Supreme, 16 oz. Pkg. **PECAN SANDIES** 49c
- Chicken of the Sea, Chunk **TUNA** No. 1/2 Can 29c
- Belle, Non Fat, 8 qt. size **INSTANT MILK** 59c
- Austex, 24 oz. Can **BEEF STEW** 49c
- Campfire, White - Golden **HOMINY** 2 300 Cans 25c

Piggly Wiggly Meat Always the Best

- Hen Turkeys** Clary's, USDA Grade A, Fresh Frozen 10 to 16 lb. avq., lb. 39c
- Pork Roast** RODEO'S Lean Northern Pork, Picnic Cut, Pound 29c
- Sliced Bacon** 2 lb. pkg. 97c
- Ground Beef** 3 lbs. \$1

Lean, 100% Pure Beef, Dated for Freshness

Made Fresh in our Markets, Large Family Size, Tomato & Cheese

- PIZZA** Pepperoni, Sausage & Hamburger. 49c
- Armour Star, Aged, Heavy Beef, "Valu-Sirloin Steak Trim", Pound 89c
- Armour Star, Aged, Heavy Beef, "Valu-Chuck Roast Trim", Pound 39c
- Rodeo's Lean, Northern Pork, Center **Pork Chops** Cut, Rib Chops, Lb. 59c
- Rodeo's, Lean, Northern Pork, **Pork Steak** Pound 39c
- Rodeo's, Lean, Northern Pork Small rib-**Spare Ribs** lets, Pound 49c
- 1/2 Pork Loin, completely sliced into Chops for your Freezer, **PORK LOINS** Pound 49c
- Rodeo, All Meat, 12 oz. Pkg. **FRANKS** 39c
- Continental, 4 1/2 oz. Pkg. **COOKED HAM** 59c
- Blue Marrow, Thrif-T, 20 oz. Pkg. **BEEF STEAKS** 79c
- Borden's, 8 oz. Pkg. **CREAM CHEESE** 29c

